

Home of
Ranger
College

THE RANGER TIMES

Gateway
To Famed
Lake Leon

41st YEAR

PRICE FIVE CENTS

A Small City with Big Industry - A Bright Spot for New Industry

RANGER, TEXAS, THURSDAY, FEBRUARY 16, 1961

Mid-Winter Concert Set Friday Nite

The Ranger High School Music Department will present a Winter Band Concert at the High School Auditorium at 7:30 p.m. Friday, Feb. 17, according to an announcement by Bill Auvenshine, band director.

The High School Band, Junior High Band and Beginner Band will all have a part in the concert.

The C Band (Beginners), composed of fifth and sixth graders, will present the first part of the program. Numbers in the first part of the program will be "My Faith Looks Up to Thee", the Deep River spiritual composed of "Deep River" and "Roll Jordan"; Snow White Medley, composed of "Heigh Ho", "Whistle While You Work" and "Someday My Prince Will Come"; "The Cowboy Tune"; and another medley, "Marching Along", composed of "Semper Fidelis", "El Capitan" and "Innocentia."

The B Band (Junior High), composed of seventh and eighth graders, will have the second part of the program.

"March, Activity" will be their first number, followed by "Cowboy Legend" and the Beguine Festival, a medley composed of "I Love You For Sentimental Reasons" and "I'll Remember April."

Next will be "Air for Band" and another medley, Appalachian Suite, composed of "Barbara Allen," "Lollytao-daum," and "Green Sleeves." This portion of the program will be followed by an intermission.

The A Band (High School) will present the final part of the program.

They will lead off with "Hail Miami," followed by American Folk Rhapsody, composed of "My Little Mohee", "Shantymen's Life", "Southwood Mountain", and "Sweet Betsy from Pike."

Next will be two specialty numbers, "Five Mellow Winds", with Terry Hatfield playing first alto saxophone and Peggy Neesley playing second alto saxophone, Butch Owen playing first tenor saxophone and Sandra Allsup playing second tenor saxophone and Melba Wright playing the clarinet. "Bugler's Holiday", a Band number featuring a cornet trio composed of Teddie Nesley, first cornet, Bobby Owens, second cornet. (Continued On Page Six)

Robbery and Assault Charges Face Three Men

Three Abilene men face charges of assault and robbery in connection with the holdup of a Cisco man Tuesday afternoon.

Charges were filed in Cisco Justice Court against Clifford Strickland, Alvin T. Thumilson and Walter Minor Tuesday night. The trio was later transferred to county jail in Eastland.

The three men are charged with taking \$2 in cash from Richard Bacon of Cisco. They were arrested south of Albany Tuesday afternoon. Bacon said he was picked up by the men in Dallas and robbed of the \$2, a wrist watch and a sweater a few miles east of Ranger. He said the men drove him to his home in Cisco and demanded he write them a check for more money. Instead Bacon phoned police, but the men escaped before officers arrived.

Stephenville Teenagers Get Fined for Theft

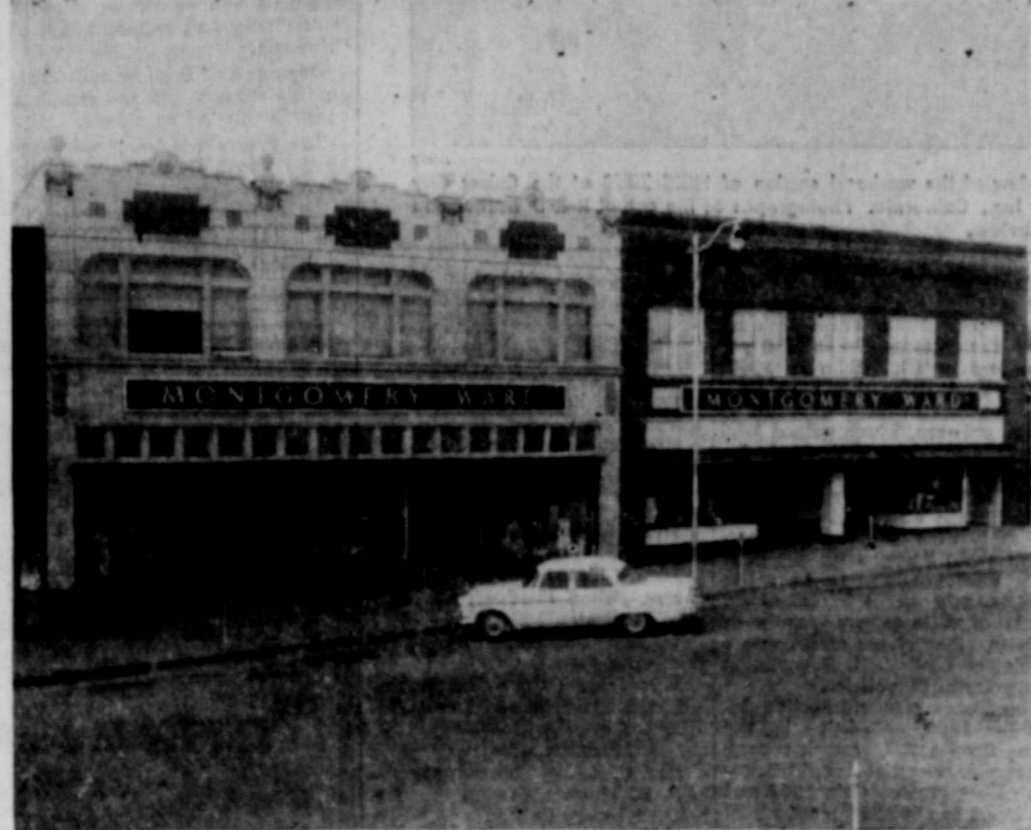
Three Stephenville teenagers Wednesday discovered that going to school isn't always educational as playing hooky.

The three boys, ages 15, 16 and 18, skipped school Tuesday at Stephenville and made a tour of Eastland County towns, stealing hub caps in Eastland, Ranger and Gorman. The trio also painted up school buses at Ranger.

The boys were spotted by some alert citizens in Ranger and he identified officers. The boys, along with their parents, made the tour of the three towns again Wednesday, this time facing judges instead of hubcaps.

In Eastland the three were each fined \$50, in Gorman each was fined \$25 and all three were also fined \$15.70 each in the Ranger City Corporation Court.

Ranger Police Chief Bob Patterson said the hubcaps were returned to the owner and felt that the fines were the best punishment for the trio.



MONTGOMERY WARDS—One of Ranger's major retail stores, not only serves Ranger but a wide surrounding area, has recently undergone a complete redesigning and relocation of departments. Wards first opened in Ranger in 1930 and has become well known throughout the area for the many lines of merchandise it handles. The Ranger store will observe an open house Thursday night from 6 to 9 p.m., to acquaint customers with their "new" store. (Photo by Capps Studio).

Mistrial Ruled By Court Judge

A juror's phone call cost Eastland County and the State of Texas several hundred dollars this week. The call resulted in a mistrial in the case titled the State of Texas vs. Billy Joe Dolberry, assault to rape.

The case ended abruptly when 91st District Court Judge Turner Collier suddenly called three witnesses to the stand Wednesday morning to testify they witnessed a juror making a phone call. The witnesses were Sheriff Lee Horn, Deputy Sheriff John Willingham and District Clerk Roy Lane. Lane actually testified he saw more than one juror make a call.

When the action came the trial was near an end. Both the State and the Defense had rested their cases and the jury was ready to hear final arguments and the charge.

Judge Collier told the jurors that some of them had disobeyed his warning that they were to stay together as a jury. He said it was his opinion that since the jury had separated there was nothing left for him to do but declare a mistrial.

The Judge told a reporter for this newspaper that he took the action on his own after hearing reports of the alleged phone calls. A reporter also witnessed three jurors separated from the others following a court recess Tuesday afternoon.

District Attorney Earl Conner and Defense Attorney Frank Sparks said the trial will probably be reset in about 60 days.

Both the defendant and the Eastland woman he is charged with assaulting with intent to rape took the stand Tuesday.

Dolberry testified he had spent most of one day in November with the woman while she drove him over much of Eastland, Comanche and Mills Counties. He said that he and the woman had been "kissing around" all day and that suddenly at his mother's home in Gorman she "threw a fit."

He denied having assaulted her in any fashion.

The woman testified he grabbed her on the arm and made a threat. She refused to say what he told her, but wrote the phrase on a piece of paper and passed it to the

Services Pending For Former Ranger Resident

Mrs. Mona Davenport Beatty, 29, daughter of a former Ranger couple, died Tuesday at Farmington, N.M. She had been a school teacher at Axted several years.

Funeral arrangements are pending and will be announced by the Killingsworth Funeral Home.

Mrs. Beatty is survived by her husband, Bob, and a three-month-old daughter, Jeannie Marie, both of Farmington; her parents, Mr. and Mrs. H. Gladys Davenport; a sister, Mrs. Gloria Conrad of Springfield, Va., and grandmothers, Mrs. J. S. Davenport and Mrs. R. L. Ross, both of Ranger.

Huge Open House and Give-away to Kickoff "New" Wards Service Plan Redesigns Store Offers Customers Convenience

C. W. Sooter, manager of Ranger's Ward store announced today that the local store has undergone a complete departmental change making it a store "Redesigned with the Customer in mind" and as of this date a new era of improved customer service begins for the shoppers of this area.

To highlight this event an open house will be held Thursday evening February 16 from 6 to 9 p.m. This celebration will be inaugurated with Ward's "Fabulous Value Sale" offering shoppers merchandise at specially reduced prices. In addition the annual Pay In May—Lay-A-Way sale will be held featuring summer items at low pre-season prices.

The evening program will consist of entertainers, prizes, and demonstrations. Coffee and donuts will be available for everyone. Johnny Angel, a rising young popular recording artist will be featured along with Ranger's own Teddie Bears and the Tradewinds from Eastland. A \$50 gift certificate will be awarded some lucky patron which can be used on the purchase of any major electrical appliance. Thirty free tickets will be given by the Majestic Theatre in Eastland. Miss Frances Hooney, Home Economist of Texas Electric, will demonstrate to shoppers the ease and convenience of cooking with electricity.

The evening's celebration will be the climax of long months of planning and work with the object in mind of giving shoppers better service than ever before both on the sales floor and in the office.

Major changes have been made throughout the entire store. Every department has been redesigned and relocated to the first floor level with the exception of the Customer Repair Service. This

department was moved to the second floor level for the purpose of enlarging in order to provide maximum efficiency of repair service.

It is planned in the near future to have installed at the rear of the store a Drive In Auto Service. This improvement will eliminate the necessity of outside servicing.

In addition to the fore-mentioned improvements, a new system has been installed wherein large Texas-size Distribution Centers have been strategically located throughout the entire nation. This new system enables smaller stores, such as the Ranger store, to operate at greatly reduced inventories and still offer shoppers a complete line of merchandise as offered in the larger stores like Abilene and Fort Worth.

The success of this new system is assured by a fleet of large trucks—The Wardfleet, which operates out of the Fort Worth Distribution Center on a daily schedule. Thus, any item, large or small, purchased through the Ranger store will be in use in the customer's home in a matter of hours. It is no longer necessary for the shopper to have the added expenses and inconvenience of journeying to distant large cities, purchasing needed items and risking damage in managing their own hauling.

Montgomery Ward & Company, through this modern streamlined system of centralized warehousing, and fast transport service offers the shoppers of this area a Metropolitan shopping service with Small Town shopping convenience.

Ranger Girls to Attend Baptist H-SU House Party

A group of girls from the First Baptist Church of Ranger will take part in the annual Texas Baptist Young Women's Auxiliary Houseparty Feb. 24-26 at Hardin-Simmons University.

In all, more than 1,200 girls from throughout the state are expected for the "houseparty." They will be quartered on the H-SU campus and in Abilene hotels.

Featured on the program will be Dr. Baker James Cautchen, executive secretary of the Foreign Mission Board of the Southern Baptist Convention. Dr. Cautchen, a former missionary himself, will speak during the closing session of the three-day gathering on Sunday morning, Feb. 26.

Other denominational leaders, missionaries and lay workers who will appear on this program are Billie Pate, YWA promotion associate for the Women's Missionary Union, SBC; Sam Presridge, Junior high choral music teacher in San Antonio; Mrs. A. L. Leake, SBC Home Mission Board worker in the Ozarks of Arkansas; Ann Wallerstein, missionary to Brazil; Mrs. Woodson Armes, wife of the pastor of Polytechnic Baptist Church, Fort Worth; Mrs. Paul Stephens, the wife of the pastor of second (Continued on Page Six)



RECORDING ARTIST—Johnny Angel, a young, up and coming recording artist will appear in person at the Ranger Montgomery Ward Open House tonight. He will sing his latest hit, "All Night Party" and autograph the record. The Teddie Bears and Tradewinds will also appear on the program from 6 to 9 p.m. tonight.

Royal Neighbors Plan Bake Sale Saturday 9 a.m.

The Royal Neighbors of America Carnation Camp No. 9059 of Ranger met at the IOOF Hall Monday night and made plans for a bake sale to be held at Arterburn's Hardware and Furniture Store at 9 a.m. Saturday.

Also included in the meeting was the practice for initiation.

The Oracle, Mrs. Della Rushing, presided. Grand honors were given to Mrs. Johnnie Poyner and Mrs. Winnie Pirkle.

Minutes of the last meeting were read by the Recorder, Izzetta Smith. Sympathy cards were signed by all present to be sent to Nora Roush whose brother died recently in Indiana.

Initiation services will be held Feb. 27 for Mrs. Audin Lummas, Mrs. Dortha Harris, Mrs. Oliff Lewis, Mrs. Mary Opal Harrison, and Mrs. Lois Murphy.

Attending the meeting were: Mmes. Rushing, Maudie Ellis, Leoma Arterburn, Laila Efferth, Lee Graham, Callie Lee, Pirkle, Poyner, Eary Wallace, Virgie Edwards, Smith, and Mr. C. E. Bell.

For your Office Supply Needs... Call the Ranger Times, MI 7-1101. All types bookkeeping supplies, filing cabinets, pencils, paper, etc.



Chick-in-Shack Plans Grand-Opening Saturday

L. N. and Raymon Bryan today announced the grand opening of the Chick-In-Shack on Highway 80 East in Ranger, for Saturday, February 18.

The Chick-In-Shack, formerly the Steak House, has undergone a complete remodeling. Rearrangement of the inside of the building has provided a much larger dining area. With the addition of new booths and counter, seating capacity has been increased from 34 to 60. The owners feel that the enlarged dining area will provide ample room for serving all customers and announced that only dining room service would be offered.

The modern design building has been repainted inside and out in pleasing color combinations.

The kitchen has also been rearranged and remodeled with much new equipment being installed. New dishes and silverware also has been provided.

The Chick-In-Shack will serve free coffee, donuts and Dr. Pepper and Coca-Cola all day Saturday to visitors.

The Chick-In-Shack, as the name indicates, will feature fried chicken. They will also serve steaks, seafoods, bar-b-q, sandwiches, hamburgers and breakfast orders. The cafe will be open daily from 6 a.m. to 12 p.m.

The Bryans invite all their friends and customers to come by Saturday and attend the grand opening.

Strawn Methodist Youth Plans Pancake Supper

The Methodist Youth Fellowship of the Strawn First Methodist Church will sponsor a benefit Pancake Supper at the church on Saturday, Feb. 25 from 5:30 p.m. to 8 p.m.

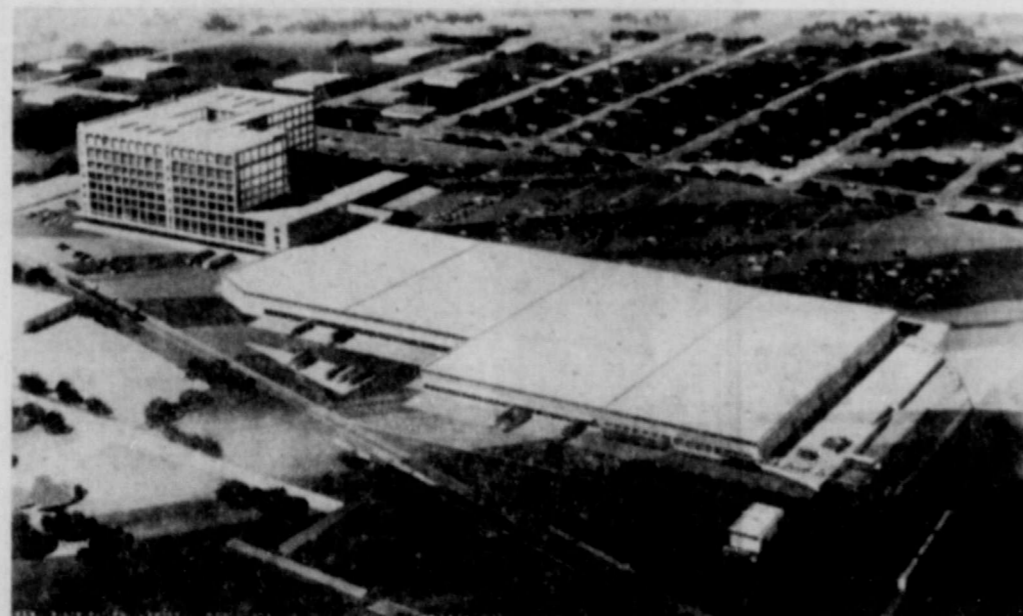
The pancake supper will be served by the Young people of the church.

Four Year Term For Theft Given Arthur Sanders

Arthur Sanders entered a guilty plea in 91st District Court Wednesday to a charge of theft and was given a four year term in the state penitentiary.

Sanders was charged with theft of over \$50 from Meglison Grocery in Cisco. He was the second Negro convicted on taking part in the theft.

Earlier this week Judge Turner Collier had ordered the man's bond forfeited when he failed to show up for trial Monday. Later it was discovered Sanders was in jail in Fort Worth at the time so the bond money will not be forfeited.



WARDS DISTRIBUTION CENTER IN FORT WORTH—This Texas-sized warehouse located in Fort Worth, covers 11 1/4 acres and serves all of the Wards stores in Texas, including the Ranger store, parts of Oklahoma, Louisiana, Arkansas, and New Mexico. Official opening of the center will be March 9.



WARDFLEET TRUCKS—This is one of the many Wardfleet trucks (large diesel not shown) that operate out of the Fort Worth Distribution Center, delivering merchandise to distant towns—providing customers with fast overnight service. Overall length of the trucks are 52 feet. Wardfleet trucks make daily deliveries to the Ranger Wards store.



C. W. SOOTER
Wards Manager

Wards Manager Looks Forward With Optimism

C. W. Sooter, manager of the Ranger Ward store, was interviewed today concerning the improvements made at the local store and he had this to say.

"Since my arrival here in September of 1961 I have made it a point to study the business and economic prospects of this area.

"The improvements made at the local store reflects a complete confidence in a bright business and economic up swing in the months ahead. In evaluating this statement, insofar as sales potential is concerned, I think it would be proper to point out the local market deserves individual consideration from any other market which our Company operates—the future looks promising.

"Recent increased sales trend plus an abundant amount of moisture which has fallen in past weeks certainly gives rise to an optimistic view point. In conjunction with this, enthusiasm has risen to a new high in the local store which is the number one ingredient contributing to the success of any venture. I have never worked with a more enthusiastic group.

"In view of these changes, of which we are fully proud, I would personally like to invite each and everyone to shop in our "new" store and observe the changes which emphasize convenience and service."

Things Are Hot... At Courthouse

Things got really hot outside the District Court room Wednesday morning just after a mistrial was ordered. So hot, in fact, that Eastland firemen had to be called to the scene to put out the fire.

A blaze started in a hall closet, but was extinguished before it caused heavy damage. District Roy Lane was busy throwing water on the fire when firemen arrived. A cigaret thrown into a waste barrel was blamed. The alarm was turned in at 11:55 a.m.

The Ranger Times

"Serving Community Betterment Since 1919"
 11M STREET—RANGER, TEXAS ESTABLISHED JUNE 1, 1919
 Entered as second class matter at the postoffice at Ranger, Texas under the act of Congress of March 3, 1879.

TIMES PUBLISHING COMPANY
 Published Tri-Weekly—Tuesdays - Thursdays - Sundays
 JOE DENNIS and ONOUS DICK, Publishers
 GENE TOWNSEND, Editor

| | |
|---------------------------------------|------|
| One week by carrier in city | .15 |
| One month by carrier in city | .45 |
| One year by mail on Ranger RFD Routes | 3.95 |
| One year by mail in county | 4.95 |
| One year by mail in state | 4.95 |
| One year by mail out of state | 6.95 |

NOTICE TO PUBLIC—Any erroneous reflection upon the character, standing or reputation of any person, firm or corporation which may appear in the columns of this newspaper will be gladly corrected upon being brought to the attention of the publishers.

CLASSIFIED

PHONE MI 7-1101

All Classified Ads Must Be Paid For In Advance

Misc. For Sale

FOR SALE: Extra clean Ford pickup. Contact B. H. King, Jr., or call MI 7-3123 after 2 p.m.

FOR RICH DIRT, sand, gravel, and driveway materials, call Robert Carroll, MI 7-1491.

WOMEN'S, Men's and children's raincoats, 1/2 price, Women's over-shoes, 1/2 price, 300 Main Street, MARY JIM'S.

FOR SALE: Standard dates, size 1, 75c; size 2, 90c. Ranger Times Office Supply.

FOR SALE: Bookkeeping supplies, post binders, indexes, receipt books, ledger sheets, storage files, sale book, order books, and many other items . . . at the Ranger Times office.

RUBBER STAMPS—Fast service, reasonable prices, no order too large or too small to get our special attention. Ranger Times.

Golden Age Nursing Home
 Mr. and Mrs. Pat Pamplin, Owner and Administrator
 State Licensed, 24 hour nursing
 104 E. 4th, Ph. Hillcrest 2-3458
 Cisco, Texas

WOMEN NEED COSMETICS
 There is a tremendous demand for Avon. We have attractive openings for capable women, in Ranger. Write:
 MRS. SIDNEY ELLIS
 1641 Bridge Ave.
 Abilene

Edwin Dittrich
 from FRANK'S TV Service of Stephenville will be at
L & J Supply Co.
 Main & Rusk Sts.
 Ranger — Ph. MI 7-1377
 Each Tues. & Sat. for complete TV Service

We Stock DuMont TV PICTURE TUBES with a 2-year guarantee. Also RCA and Sylvania Picture Tubes

FURNITURE for the Entire Home
 *
Carpet - Rugs All Prices
 *
 Be Sure To Check With Eastland


SUNNYDALE REST HOME
 211 West Fifth St.
 Breckenridge
 24-hour care for elderly or convalescent men or women. Private and semi-private rooms. Bedfast or ambulatory patients. Excellent meals—clean—comfortable—reasonable rates.
 Visit Us, Write P. O. Box 90, or Call Hickman 9-2990 Collect For Further Information

Tractors Provide Needed Power For Farming

Tractors have proven to be the greatest single factor in the mechanization of the American farm. Through the use of these machines, farmers have been able to greatly increase their production while reducing operating costs. Realizing the opportunities offered by these machines, the American farmer is constantly increasing his tractor inventory. During the fourteen-year period from 1945 to 1959, the number of tractors on American farms increased by 2.7 million. The largest percentage increase was in small tractors with less than 9-hp horsepower and drawbar capacity for one 12-inch plow.

Texas farmers, like those of the rest of the United States, are also increasing their tractor inventory. W. L. Ulich, extension agricultural engineer, says that 1959 census figures showed 277,975 tractors on Texas farms. He says this survey also indicated that about 34 percent of the Texas tractors used LPG, 9 percent diesel and 57 percent gasoline for fuel.

The current trend in Texas tractors, says Ulich, is toward diesel. About one-third of all tractors now being sold to Texans are diesel, and Ulich says this trend will probably continue so long as the price differential of fuels remains as it is today. One of the reasons for this trend is simple economics—diesels are cheaper to operate than gasoline tractors when used year-around.

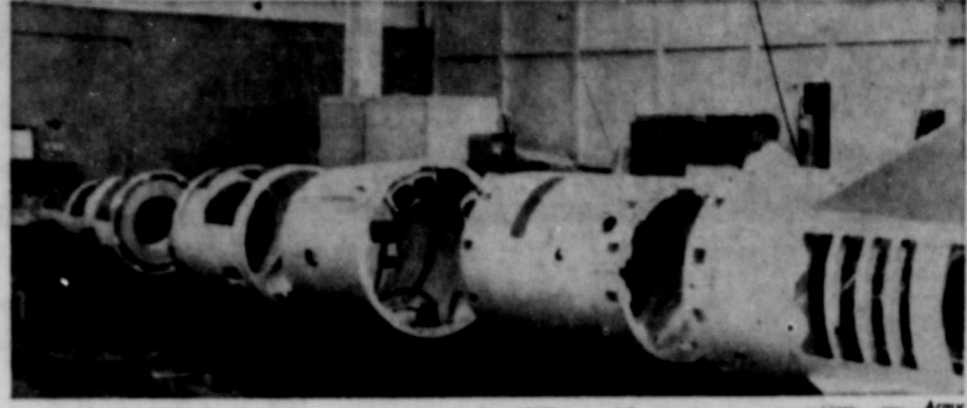
A farm tractor represents a sizable investment and it is not a cure-all for inefficient production. Ulich warns that before buying any tractor, the farmer should carefully evaluate his needs and then select the proper type tractor to suit these needs.

Free Estimates
 On A New ROOF
 Or Repair your old Roof Residential & Commercial
Eastland - Ranger Roofing Co.
 Noble Squires
 Ph. MA 9-2370 Eastland

SEE O. G. LANIER FOR OIL AND GAS LEASES AND REAL ESTATE WE BUY AND SELL
 Ph. MI 7-3450 - 113 S. Rusk Ranger, Texas

Robinson Food Market
 SPECIALS FOR FRIDAY & SATURDAY, FEBRUARY 17-18, 1961
 121 North Rusk St. Phone MI 7-3530

| | | | |
|--|--------------------|----------------|-------------|
| Fresh Lean | PORK CHOPS | lb. | 59¢ |
| Morton's Family Size Frozen | PIES | Each | 39¢ |
| • Cherry | | | |
| • Coconut | | | |
| • Apple or | | | |
| • Peach | | | |
| Fresh | CHUCK ROAST | lb. | 49¢ |
| Fresh | ROUND STEAK | lb. | 87¢ |
| Fresh Home Made | SAUSAGE | 2 Lbs. | 95¢ |
| White Swan | COFFEE | 2 lb. Can Only | 1.15 |
| Fresh | AVOCADOS | Each | 10¢ |
| Northern Colored | TISSUE | 3 Rolls For | 25¢ |
| Fresh Green | LETTUCE | Head | 10¢ |
| Light Crust | FLOUR | 5 Lb. Box | 45¢ |
| Nesbitt's—Buy One Carton, GET ONE FREE | ORANGE | 6 Bottle Ctn. | 32¢ |
| Keith's Frozen | FISH STICKS | 3 Pkgs. | 95¢ |



PLANNING STAGE: A mockup view of the warhead section of NIKE ZEUS at the Culver City Division of Douglas Aircraft Co., Inc., California. Photographs of the actual R & D warhead in various assembly stages are seen below.

cottonseed. Farmers received 15.9 per cent less for their smaller cotton crop in 1960. Farm cash income for cottonseed was 15.3 per cent less in 1960 than in 1959. However, there was a spectacular increase in income for Texas wheat growers, which gained 27.6 per cent in 1960 over 1959. Income for wheat in 1960 was \$135,475,000, compared with the 1959 income of \$106,205,000. At the same time, income from sorghum grain dropped six per cent, from \$207,479,000 in 1959 to \$194,968,000 in 1960, a direct result of a huge over-supply of corn in other states which was the second greatest crop year in Texas history. The peak production year for Texas agriculture was 1949. In that year the index, which includes 13 major crops, reached its all-time high of 145. Best opinion is that, assuming normal weather conditions, the Texas crop out put in 1961 will continue at least on a level with that of 1960. Livestock production is expected to show some increase over 1960, and this could develop some gain in total cash income. But, as elsewhere in the nation, Texas farmers and ranchers are caught in the severe cost-

price squeeze which has severely diminished their net.

Hospital News

Patients in Ranger General Hospital are:
 Mrs. Florence Roan, Cisco, medical
 Mrs. Linda Zeiters, Rising Star, medical
 Mrs. W. C. Harris, Ranger, medical
 Eunice Toone, Ranger, medical
 Mrs. Felton Brasher, Sr., Ranger, medical
 William McAfee, Blairsville, Georgia
 Miss Jesse Carter, Rising Star
 Mrs. Della Williams, Eastland
 Mrs. Annie Stephenson
 Mrs. Mary Hamilton
 Mrs. C. E. Mitchell, Ranger
 R. B. Thomas, Strawn
 Thad Davis, Gordon
 Mrs. Howell, Eastland
 Raymond Goswick, Ranger
 Mrs. W. L. Flowers, Ranger
 Baby Billy Bridges
 John Wilson, Ranger, medical
 Mrs. Allen Cook, Mingo
 Cecil Louka
 J. G. Cassell, Ranger
 E. L. Hare, Carbon
 J. D. Kellar
 Dismissed:
 Mrs. J. D. Ridling, Eastland
 Carbe Brown, Olden
 Mrs. C. V. Greenlee
 Mrs. Charles Beck, Jr.
 Mrs. Bledsoe and baby boy

bring this to
LONE STAR



... worth \$10.00 on the **NEW**
NORGE \$169.95
 with coupon
DRYER
 Name your own down payment. As little as \$5.58 per month . . . 36 mo. to pay

(MODEL DG-G-320) Has:
 • 4-way drying • Big 21-inch fan • Stationary drying rack • Super-size dryer cylinder • Knee-action door • Economical operation • 1 year motor warranty • 5-year warranty on all other moving and functional parts • Lifetime guarantee against rust

Why pay a nickel when flame-fast GAS dries the same load for a penny or less! And faster, too. Buy your new Norge now during this limited-time sale. Reliable service, free delivery and normal installation from

LONE STAR GAS COMPANY
 more than 8,000 friendly people working together to serve our communities better

Floyd Hamilton To Speak Sun. In Weatherford

Notorious gangster, Floyd Hamilton, will speak in Weatherford at the Courts Methodist Church Sunday, Feb. 19 at 5 p.m.

Hamilton is on parole from Alcatraz and will speak on Juneville Delinquency and Rehabilitation of Criminals.

He is one of the few authorities on this subject and the public is cordially invited to attend.

The program is being sponsored by the Youth Department of the church.

READ THE CLASSIFIEDS —
Chiropractor
 DR. E. R. GREEN
 115 South Rusk Street
 Mon., Wed., Fri.—1 to 5 p.m.

READ THE CLASSIFIEDS —
AUTO-TRUCK SERVICE
 • Motor Tuneup
 • Motor Overhaul
 • Wheels Balanced
 • Hydraulic and Dyna-flow Transmission Repair.
 Authorized International Harvester Parts and Service
Ranger Garage
 Hwy. 80 West - Ph. MI 7-3297
 RANGER

Knight-Hart & Company
 Certified Public Accountants
 113 South Rusk
 Announce the purchase of the accounting practice of O. G. Lanier and the opening of their office at the same location with . . .
GEORGE McAULAY, C.P.A.
 As Resident Partner



• COATS • SUITS • DRESSES •

The aristocrat of costumes
 by Ann Murray
 One style from a collection of Textured Silk Dresses, Suits and Costumes Priced from 19.95 to 69.95
69.95

ALTMANS
 North Side of Square Eastland

NEWS FROM DESDEMONA

There has been quite a bit of sickness in this community over the past week.
Edd Elges has been quite ill in the Gorman Hospital for several days.
Hugh Abel returned home Saturday after spending several days in the Gorman Hospital following a heart attack Monday.
Mr. and Mrs. Kenneth Lee of Ranger visited friends here Saturday.
Mrs. Myrtle Collins of Comanche spent the weekend here with her brother, Mr. and Mrs. Hugh Abel.
Mr. and Mrs. Burl Scott and children of New Mexico were here

on the weekend. Also her mother, Mrs. Stell Joiner and Mr. and Mrs. Robert Mears of Arlington were here visiting relatives.
Mr. and Mrs. Charles Scheuler were visiting with her mother, Mrs. Agnes Owens.
The B. V. Martins were in Comanche visiting with friends Friday.
Mr. and Mrs. Blackie Foreman of Irving were here this past

weekend visiting her parents, Mr. and Mrs. Ferrell Lewis and Buck. Mrs. Diantha Wilson, daughter of Mrs. J. N. Abernathy, left Monday night of last week to go by plane to join her husband, Raul Joe Wilson, in England.
A group of young people and their elders from the Bible Baptist Church were in Stephenville Sunday afternoon to attend a Fellowship meeting.

Don Roger, formerly of here but now of Ranger, was here for a while Sunday afternoon visiting friends.
Mr. and Mrs. Harold Maddux and sons Eddie and Richard, of Dublin visited Sunday afternoon with her grandmother, Mrs. N. S. Partain.
John Carr of Austin was here over the weekend and visited his sister and family, Mr. and Mrs.

Rob Lewis and a brother, Cecil Carr, and family.
Jackie Lou Whitlock returned home Saturday from Odessa where she had been on an extended visit with her brother Mr. and Mrs. Wayne Whitlock.
Tommy Rainey of Odessa was here over the weekend with his parents, Mr. and Mrs. Hubert Rainey, Bessie and Ann.
Several people from here at-

tended the funeral services of Grandpa Tarpley, father of Gid Tarpley, in Downing Tuesday morning at 10.
Mr. and Mrs. Jess Griffith were in Comanche Sunday to visit an old friend and schoolmate, Mrs. Ethel Smith.
Mrs. Elizabeth McDunnell of Dallas spent the past weekend with her mother, Granny Northcutt and Eva.

Mr. and Mrs. Travis Roy Wilcoxson and daughters, Judy and Jo, of Odessa spent the past weekend here with the Keiths, Wilcoxsons and the C. M. Gutherys.
Mr. and Mrs. Jimmie Burlington and son, Jimmy Carl, of Ft. Worth spent the weekend here with their parents, the Leroy Burlesons and th Skinny Lewis family.

--- READ THE CLASSIFIEDS ---



QUALITY, SAVINGS & STAMPS!
The Greatest Food Value Combination in Town!

Worth Controlled Quality Heavy Beef
CHUCK ROAST

Lb. 49¢



- Swift's Sliced Premium Bologna Lb. 49¢
- Tennessee Farm Brand Pork Sausage 2 Lb. Roll 1¹⁹
- Taste O'Sea Catfish Sticks 8-oz. Pkg. 39¢
- Gulf Princess Breaded Shrimp 10-oz. Pkg. 59¢
- Beef Round Steak Worth Controlled Quality Heavy Beef Lb. 89¢
- Shoulder Arm Roast Worth Controlled Quality Heavy Beef Lb. 59¢
- Premium Sliced Bacon Swift's Lb. Pkg. 59¢



Prices Effective Thursday, Friday and Saturday—We Reserve Right to Limit

CLIP AND SAVE!
Redeem This Coupon for EXTRA 50 Free S&H Green Stamps with Purchase of 2-Lbs. or More FRESH GROUND BEEF
Void After Sat., Feb. 18, 1961 — Limit One

Great With "W. C. Q." Beef

U. S. No. 1 RUSSET

Potatoes

10-Lb. Cello 69¢

- JELL-O All Your Favorite Gelatin Dessert Flavors 6 3-Oz. Pkgs. 49¢
- Cake Mixes All Pillsbury Deluxe, Layer Cake Mixes 3 Pkgs. 87¢
- Maxwell House All Grinds Coffee (Net) Lb. Can 59¢

- Crisp Apples Red, Rome Beauty Lb. 19¢
- Lettuce Firm, Crisp 2 Heads 25¢
- Tomatoes Select 3's, 4's Carton 15¢
- Fancy California Navel Oranges Lb. 19¢
- Young, Tender Crisp Carrots 2 Lb. Cello 25¢
- Crisp, Green Celery Hearts Cello Pkg. 25¢

Radishes

Crisp, Red Cello Pkg. 5¢

Meat Pies
Libby's-Chicken, Beef, Turkey 4 8-oz. Pkgs. 89¢

Tamales
Patio, Beef, Frozen 12's Pkg. 39¢

- Golden Corn Rose-Dale Cream Style or Whole Kernel 6 303's Cans 79¢
- Potatoes Minute Instant, Mashed, 7¢ off Label (Net) 2 6 1/2-oz. Pkgs. 49¢
- Whole Apricots Hunt's Unpeeled 4 2 1/2's Cans 1⁰⁰
- Chili with Beans Austex Save 11¢ 2 300's Cans 59¢
- Austex Tamales Save 9¢ 2 300's Cans 49¢

- Phillips Tablets Milk of Magnesia 75's Save 16¢ 43¢
- Haley's "M-D" Medium Size Save 13¢ 47¢
- Senna Laxative Dr. Caldwell's Save 14¢ 49¢
- Libby's Unsweetened Grapefruit Juice 3 46-oz. Cans 1.00
- Green Giant, Whole Green Asparagus 19-oz. Can 49¢
- Libby's Fruit Cocktail 303's Can 25¢

CLIP AND SAVE!
Redeem This Coupon for EXTRA 100 Free S&H Green Stamps with Purchase of 2-Lb. Loaf, Kraft's 2-Lb. Velveeta Cheese
Void After Sat., Feb. 18, 1961 — Limit One

CLIP AND SAVE!
Redeem This Coupon for EXTRA 50 Free S&H Green Stamps with Purchase of Two 6-Packs Baby Ruth 2 6's Pkgs. 49¢
Void After Sat., Feb. 18, 1961 — Limit One

CLIP AND SAVE!
Redeem This Coupon for EXTRA 50 Free S&H Green Stamps with Purchase 8-oz. Bottl. Wishbone Italian Dressing . . . 37¢
Void After Sat., Feb. 18, 1961 — Limit One

CLIP AND SAVE!
Redeem This Coupon for EXTRA 50 Free S&H Green Stamps with Purchase of Quart, Bruce 5-Minute Wax Remover
Void After Sat., Feb. 18, 1961 — Limit One

FREEZER-PLEASER

Lamb Sale!



Choice Carcass Completely Processed

Lamb is nutritious, high in protein and low in calories. Delicious recipes available with purchase.

Lb. 39¢

RANGER FROZEN FOOD CENTER

216 N. Austin RANGER Dial 7-3281

Xi Zeta Nu Chapter Meets In Dennis Home Tuesday, Feb. 14

Xi Zeta Nu Chapter of Beta Sigma Phi Sorority met in the home of Mrs. Dwayne Dennis Tuesday, Feb. 14 at 8 p.m.

The meeting was opened with the members repeating the opening ritual in unison.

A short business meeting was presided over by the president, Mrs. Howard Oliver. Roll call and minutes were read by Mrs. Norman Huffman, secretary.

The meeting was closed with the members repeating the closing ritual in unison.

During the social hour refreshments of cherry tarts, coffee, and an assortment of dips were served.

The refreshment table was laid with a valentine, cloth and was centered with a valentine arrangement of pink hyacinth surrounded by a large red heart and red net in a white ceramic container. Cups, plates and napkins carried out the theme and red nut cups held heart-shaped mints.

Royal Service Is Program for Missionary Union

The Woman's Missionary Union of the Second Baptist Church met for a Royal Service Program Monday, Feb. 13 at the church. "Witness Where We Are," was the theme, and Mrs. O. J. Caraway, program chairman of the Mildred Lovegren Circle was in charge of the program.

Meeting was opened with the group singing "Christ for the Whole Wide World" and Mrs. Floyd Caraway led the opening prayer. Special music was brought by Mrs. J. D. Nichols and Mrs. Floyd Caraway.

Parts on the program were given by Mmes. Nichols, Lera Beck, J. B. Baker, Eddie Squiers, G. P. Rose and H. H. Sutton. The closing meditation and prayer was brought by Mrs. Walter Mitchell.

Mrs. Albert Williams presided over the short business meeting. Mrs. Bob Wymer read the names of the missionaries on the prayer list for the day and Mrs. Squiers led in prayer.

Those present were: Mmes. O. J. Caraway, Lera Beck, Floyd Caraway, J. D. Nichols, Bob Wymer, Walter Mitchell, Mary Wheat, Everett Noth, Eddie Squiers, G. P. Rose, Mae Rodgers, Joe Caulder, Mary Crabtree, W. C. Tipton, H. H. Sutton, Ida Coleman, Verma Hartsfield, J. B. Baker and Albert Williams.

Noble Grand Presides Over Rebekah Meeting

Ethel Johnson, Noble Grand, presided over the regular session of the Rebekah Lodge, Tuesday, Feb. 14.

Routine business was transacted and sick reports were given. It was reported that Bessie Harris was in the Ranger Hospital and Marion Mahaffey was in the Eastland Hospital.

The penny prize was furnished by Ruby Greer and won by Gertrude Gideon.

The following committees were reported: Finance, Homer Blackwell, C. Y. Brown and Clara Ivy; Refreshment, Louise Caulder, Lena Patterson, Eula Blackwell; Entertainment, Louise Caulder, C. E. Bell, Vergie Brown; Sick, Vergie Brown, Laura Todd, Sudie Strong and Clara Ivy.

Those present were Ethel Johnson, Eula Blackwell, Eary Wallace, Ruby Greer, Sudie Strong, Clara Ivy, Lena Patterson, Louise Caulder, Laura Todd and Gertrude Gideon.

RETURNS HOME

Mr. and Mrs. L. D. Summers have returned home from a business trip to St. Louis, Mo.

On the return trip they visited their son, Pvt. Sammy Summers who is stationed at Fort Leonard Wood, Mo. They also visited with Joel Grissom and Harvey Bryant of Ranger.

SPRED SATIN

The 100% Latex Paint

Reg. 6.49 Value ... **5²⁰**

House of Color

Hwy. 80 E. Jack Williams

APPLIANCE SPECIALS

1961  Whirlpool

13-Cu. Ft. Upright or 15-Cu. Ft. Chest FREEZER **199⁰⁰**

1961  Whirlpool

DRYER 139⁰⁰

Other new, used and repossessed models to choose from.

RANGER FROZEN FOOD CENTER

216 N. Austin RANGER Dial MI 7-3281

Grand Opening

CHICK-IN-SHACK

HWY. 80 EAST—RANGER

Saturday Feb. 18

Free All Day Sat.
COFFEE, DONUTS,
DR. PEPPER AND
COCA-COLA



Delicious,
Golden
Brown
FRIED CHICKEN
Juicy, Plump and
Tender ...
Just the Way You
Like It!

—ALSO—

STEAKS - SEA FOOD - BAR-B-Q
SANDWICHES - HAMBURGERS

OPEN DAILY 6 A.M. to 12 P.M.

L. N. and Raymon Bryan

PLUMBING

MASONRY

PAINTING



ROOFING

WIRING

SIDING

CEMENT

FLOORING

LANDSCAPING

CARPENTRY

ADD-A-ROOM

It will pay you to see us if you're planning to modernize, add living space, make repairs, paint or put any other improvements or additions into your home! Free and accurate estimates on all building needs.

Ranger Lumber & Supply Co.

Calvin Brown—Earl Brown Ranger

Phone MI 7-1481



18

JET-SMOOTH CHEVROLETS

PRICED LOWER than competitive models!!!

Every one of the 18 Chevrolets you see here is priced lower than comparable competitive models.* Proof of how easy it is to fit a Chevy into your budget. And every model gives you Chevy's Jet-smooth ride and dozens of other engineering and styling advantages you can't find in anything else selling at anywhere near the money.

*Based on a comparison of manufacturers' suggested retail prices (including Federal tax) for models with 118-inch wheelbase or above.

See the new Chevrolet cars, Chevy Corvairs and the new Corvette at your local authorized Chevrolet dealer's

ANDERSON CHEVROLET COMPANY

111 S. AUSTIN STREET RANGER PHONE MI 7-1161

Mrs. Fyffe Is Hostess to WSCS Circle No. 2

Mrs. Loyce Fyffe was hostess Monday, Feb. 13 to Circle No. 2 of the Woman's Society of Christian Service of the First Methodist Church.

ness meeting, which was opened with a prayer led by Mrs. Fyffe. After announcements were made, minutes of the previous meeting were read and approved. Sixty-six calls were reported. Mrs. E. I. Danley, cheer fund chairman, reported \$3.95 in the treasury.

It was voted on by the circle to prepare lunch for the Men's Club of the Methodist Church in the near future. Mrs. Danley brought the devotional with the meditation entitled

"The Word of God" using scripture from Psalms and Deuteronomy. The group sang, "Have Thine Own Way" after which Mrs. D. E. Pulley presented the program using "The Lord's Prayer" as the theme. Scripture was taken from "The Sermon on the Mount."

Treasurer, Mrs. Gaston Dixon, reported 31 pledges had been made, pledging \$555.50 with \$397.50 paid in to date.

T. D. Stewart, E. H. Mills, C. N. Adams, J. A. Bates, Guy Brown, E. L. Danley, Arthur Deffebach, Vernon Deffebach, Gaston Dixon, R. E. Johnson, Alice Landers, D. E. Pulley, B. H. Peacock, Francis, and the hostess, Mrs. Fyffe.

After the meeting was adjourned, refreshments and a social hour was enjoyed by the group

GO TO CHURCH SUNDAY

As Time Goes Marching on—

... more and more land titles become involved in an endless chain of normal, every-day events precipitated by marriage, divorce, lunacy, illegitimacy, birth, death, the hidden heir and many other natural and unnatural happenings within the family circle. Thanks to time it has a tendency to cure some titles with possession a controlling influence, but wrecks and changes the status of many others. Your abstract is a safeguard—keep it up to date.

EARL BENDER & COMPANY

Eastland, (Abstracts since 1923) Texas

ABOUT YOUR HEALTH

A 60-year-old grandmother refused her physician's suggestion of a chest x-ray to help him diagnose her ailment.

She had heard how x-ray might affect the health of her grandchildren. They were healthy youngsters, she explained, and she wanted to keep them that way. The incident has become a classic example of a disconcerting misconception about radiant energy.

Radiant energy is like fire or electricity. Used unwisely it can kill or maim. Used with caution it becomes man's servant, bringing him fabulous benefits.

been tools of unparalleled importance in medicine and dentistry. X-ray and fluoroscopic machines, properly operated, actually permit a physician or dentist to photograph the interior of the human body. "Amid" beams of deep-penetrating rays — sometimes pushed by two million volts of electricity may efficiently treat cancer in practically any body organ.

Within recent years industrial uses of radioactive isotopes — another type of radiant energy have grown to enormous proportions. More than 400 individuals and firms in Texas are presently registered to use them under State Board of Health rules and regulations.

With isotopes oil men can locate underground leaks, and engineers can detect flaws in structural steel or measure the life of cutting tools. The thickness of paper, the fullness of a sealed can, the effectiveness of a washing machine, the quality of floor wax can thus be gauged.

These endless advantages are the reasons for possible peril. It is simple arithmetic — the more you use anything, the greater is the chance for misuse.

READ THE CLASSIFIEDS

NEWS FROM

- Houston
- Texas
- The World

IN THE HOUSTON POST

Written and Edited to Merit Your Confidence

SUBSCRIPTION RATES

- By Mail: Daily & Sunday \$1.75
- Daily Only \$1.30
- Sunday Only \$1.00

SINCE 1884
... quality workmanship and efficient service, approved throughout this area.

Alex Rawlins & Sons
Designers and Builders of Monuments Since 1884
Weatherford, Texas Phone LY 4-2726

FREE \$38,000.00 in FROZEN FOODS



Register for \$38,000.00 in Frozen Foods!

3993 Winners of Bel-air Frozen Foods. Winners in every store.

- Shortening Royal Salt (Crisco 14 oz. Can) 3 69¢
- Detergent Safeway White Magic, Giant Box 55¢
- Mellorine Joyal Vanilla, Chocolate, Strawberry or Neapolitan, 11 Gal. Can. 49¢
- Cherry Pie Safeway Bel-air Frozen, Large 8 inch pie, 1 1/2 Lb. Pie 39¢
- Cherries Brach's or Burt's Milk Chocolate Covered, (While supply lasts), 12 Oz. Box 49¢
- Grated Tuna Tempest Light Meat, 2 1/2 Oz. Cans 39¢

- 3090 Winners of One Week's Supply (\$3.00 Worth) of Bel-air Frozen Foods.
- 774 Winners of One Month's Supply (\$12.00 Worth) of Bel-air Frozen Foods.
- 129 Winners of One Year's Supply (\$144.00 Worth) of Bel-air Frozen Foods.

It's Easy to Win—Simple Rules as follows:

Also Enter the Bel-air RCA Whirlpool Freezer Contest. Win one of 200 eleven cubic ft. freezers.

Each store has a separate drawing for prizes. All prizes will be awarded by each individual Safeway Store. There will be six weekly drawings, plus the Grand Prize drawing. Between 19 and 66 prizes in each store. The only requirement to enter our Bel-air-ama and be eligible to win is to complete and deposit a free entry blank. Customers may register every time they visit Safeway but each entry is eligible for the current week's drawing only. Entry blanks are available at the checkstand—no purchase is necessary. All prizes are to be redeemed in units of \$2.00 worth of Bel-air Frozen Foods, as selected by the winner. All redemptions must be completed by February 28, 1962. First drawing will be held in each store at 6 p.m., Saturday, February 18, 1961. Second weekly drawing will be held one week later and so on until six weekly drawings have been held. The Grand Prize drawing will be held after the sixth weekly drawing. Customers do not need to be present to win. Names of weekly prize winners will be posted after they are drawn. Only persons 18 years of age or older are eligible to win in this contest. Safeway employees and members of their immediate families are not eligible to participate.

- Highway Corn Whole Kernel Golden, 7 Oz. Cans 10¢
- Safeway Sweet Peas Town House, 8 Oz. Cans 10¢
- Gardenside Tomatoes No. 1 For casseroles, 10¢
- Maine Sardines Admiral Brand—16 oz. Cans 10¢
- Safeway Prune Town House Large, 1 1/2 Lb. Cans 39¢
- Breaded Shrimp Tempest Brand Frozen, 10 Oz. Pkg. 49¢
- 3-Minute Oats Perfect breakfast cereal, 2 1/2 Oz. Boxes 43¢
- Fleischman's Margarine 100% pure, 1 Lb. Cans 39¢
- Fresh Butter Study Lane fine quality, 1 Lb. Cans 69¢
- Blossom Time Milk To last 72 hrs. in can, Gal. 93¢
- Golden Book Atlas Volume No. 40 Europe and Asia, Book 99¢



Chicken Hens
U.S.D.A. Inspected for wholesomeness. Selected for superb quality eating. 3 1/2 to 6-pound average. Lb. 39¢

SAFEWAY Gives these Valuable **GOLD BOND STAMPS** your nearest Redemption Center is 443 Walnut, Abilene

- Large 'A' Eggs Breakfast Eggs, Grade 'A' Quality, Large size, Doz 55¢
- Large 'AA' Eggs Cream of the Crop Grade, 'AA' Quality, Large size, Doz 59¢
- Airway Coffee 1-Lb. Bag 49¢
- Vel Beauty Bar Toilet Soap, 2 Lbs. 39¢
- Palmolive Soap Pink, 3 Lbs. 29¢
- Palmolive Soap Pink, 2 Lbs. 27¢

- Pie Cherries Town House Red Sour Filled, 3 No. 303 Cans 69¢
- Fresh Blackeye Peas Or New Whole Potatoes, 300 Highways, Can 10¢
- Ocean Perch Fillets Boneless, Captain's Choice Frozen, 1-Lb. Pkg. 39¢
- Spinach Gardenside, No. 303 Can 10¢
- Salmon Tempest Chum, 1-Lb. Can 59¢

- More Meat Values!**
- Pork Cutlets Master Meats, For a quick and easy meal, Lb. 59¢
- Sausage Wiegala or Hof, 2 Lb. 75¢
- Canned Ham Bulk Hickory Smoked, 3 Lb. 1.30
- Chili Burt's—No. 300 cans of Highway Red Kidney Beans free with purchase of 1 Lb. chili, 1-Lb. 69¢
- Bacon Safeway Thick Sliced, A truly breakfast treat, 2 Lb. Pkg. 99¢
- Round Steak U.S.D.A. Choice Grade Heavy Beef, Fat cut, Lb. 85¢
- Rump Roast U.S.D.A. Choice Grade Heavy Beef, "Naturally aged," Lb. 79¢

- Safeway Fresh Vegetables and Fruits!**
- Lettuce** Firm, crisp heads. Perfect for making lettuce and tomato salads. Head 10¢
- Avocados For making dips or salads, 2 25¢
- Lemons Sunlit—Perfect for lemonade, 6 19¢

- Fab Detergent (14 oz. 1-lb.) Large 29¢
- Ad Detergent For automatics, 6 1/2 Oz. Box 75¢
- Vel Detergent For washdays, Large Box 32¢
- Liquid Vel Detergent Pink, 22 Oz. Bottle 61¢
- Aiax Cleanser (14 oz. 1-lb.) 2 29¢
- DuPont Sponges Super size, Box 49¢

- Safeway Values Galore!**
- La Lani Drink** Pineapple-Grapefruit, 29 Oz. Can 21¢
- Peanut Butter** Real Roast, 12 Oz. Jar 35¢
- Zippy Dill Pickles** Safeway Whole, 2 22 Oz. Jars 55¢
- Apple Pie** Or Peach Pie, Bel-air Frozen, Large 8 inch size, 1 1/2 Lb. Pie 39¢

- Lipton Tea Bags Orange Pekoe, 16 Oz. 25¢
- Lipton Tea Orange Pekoe For a refreshing drink, 16 Oz. 43¢
- Lipton Instant Tea So easy to serve, 16 Oz. Jar 53¢
- Hunt's Tomato Catsup Pink, 2 16 Oz. Bottles 43¢
- Uncle Ben's Rice Long Grain, 14 Oz. 29¢
- Colgate Deodorant Fluorid—Spray or Foam, 16 Oz. 79¢
- Paper Plates Gardenside White, 8 inch, 40 Cans 49¢

- RYE BREAD** (Contains 100% rye flour) 1-Lb. Loaf 19¢
- BALLERINA BREAD** With extra added egg. 1-Lb. Loaf 33¢
- Cinnamon Rolls** Baked in Sauce, Mrs. Wright's, Reg. 10¢, 25¢ 25¢
- Hot Cross Buns** 1/2-lb. 1-crust 25¢
- Blaines Rum Cake** A perfect dessert, 1-Lb. Cake 39¢

- Mexican Dinner Frito Beans, 16 Oz. Pkg. 67¢
- Allsweet Margarine Soft, 1-Lb. 26¢
- Spaghetti Dinner Pink, 8 Oz. Pkg. 27¢
- Pillsbury Best Flour For baking, 5 Lb. Bag 55¢

SAFEWAY
Conveniently Located to Serve you at Eastland

Local AND LONG DISTANCE MOVING STORAGE

A carton or a carload... we move it promptly, carefully. Storage facilities and service are the finest. Low rates. Insurance available.

FREE ESTIMATES! Ranger Transfer and Storage
M. D. Underwood, Mgr.
Phone MI 7-1344

See Us For FURNITURE • APPLIANCES CARPETS

Every Day Low Prices Means Savings For You
No carrying charges on furniture for 1 full year
FREE DELIVERY

Ranger Furniture Exchange
"BRASHIER'S"
123 N. Rusk Ranger Phone MI 7-1404


New Accounts
An Everyday Pleasure To Us:
Welcoming New Savers

A business man drops in to invest reserve funds in a safe and profitable way... a housewife wants to save for a home... a small boy has a few dollars to open his own savings account. It happens every day HERE, for an endless number of savings purposes, and they're all welcome. And so are you! We'll be happy to serve you.

First Federal Savings • Loan Association of Ranger
204 Main Ranger, Texas Phone MI 7-1011

READ THE CLASSIFIEDS

Income Tax Return?
SEE
Ruby Springer
for careful analysis. DON'T TAKE A CHANCE of paying too much, or failing to qualify for SOCIAL SECURITY protection. Farmers, Ranchers, all Self-employed, the young and those approaching retirement age—**ARE YOU QUALIFIED?** Let's talk it over.
RUBY SPRINGER
Ranger, Texas MI 7-3230




TRAGIC CARPET—From Iran this knotted rug with picture of the kingdom's former Queen Soraya has come to Duesseldorf, West Germany, where it is owned and displayed by M. Azhabekzadeh, right. Iran's Shah Mohammed Reza Pahlevi divorced Soraya in 1953 because she failed to bear a male heir to the throne.

PENNEY'S buys of the week! **TOMORROW, 9:00 a.m.!**
WEEKEND CHECK LIST

COTTON TWILL MATCHED SETS!
2⁶⁹ 3²⁹
shirt: sizes 14-18 pants: sizes 28-50
They're cut over Penney's own proportioned fit patterns for an action-free fit. Shirts have 2-button adjustable cuffs! Pants have heavy duty zipper.

NEW! COTTON CORDS
2⁹⁸
boys' sizes 6 to 20
Automatic wash'n wear, little or no iron slacks. Tailored for slim trim fit.



Ralph Yarborough Report
Dear Fellow Texans:
Over the past ten years, despite our state's over-all population growth, 144 of our 254 Texas counties have lost population. Many of the counties which lost population are ones where family farm income has been low and unemployment heavy. The last official count showed that we had 30 counties in Texas where the average net cash farm income per family was less than \$1,000 a year.
With costs of living and farming at an all time high, thousands have been driven off their farms and into the cities to look for work. Instead of finding the steady work they need, too often they simply join the ranks of the jobless in the city. This has caused "spotted prosperity." While employment and business have generally improved in some areas, particularly in larger cities, the people in too of our historic Texas cities and counties are seeing hard times.
For example, one of the most serious job shortages in our state exists at Texarkana, a city not far from my own. East Texas community of Chandler, in Henderson County. For many months there has been a proportionately large number of men without work in Texarkana. Some 2,975 workers, which is 8.1 percent of the entire work force there, were unable to find jobs in December. In December, total statewide unemployment stood at 191,500, and increase of 32,100 jobless workers over the 159,400 Texans who were hunting jobs in December, 1959. We are fortunate that Texas hasn't had anything like the unemployment of West Virginia, Pennsylvania and other states.
While we are grateful that the situation in Texas is no worse, we must move to assist those who are stricken and be certain that the trouble does not grow. I'm privileged to be one of the Senate co-authors with Senator Paul Douglas of Illinois, of the Area Redevelopment Bill, Senate Bill Number 1, the Administration's major proposal aimed at helping people in local areas where income is low and job opportunities are few—helping them to develop new industry and to create new jobs for their own people.
Here basically is what this Area Redevelopment Bill is designed to do:
1. It will send technical specialists to the affected areas to help plan needed improvement;
2. It will provide low interest rate loans for construction of new plant facilities.
3. It will establish vocational retraining programs for jobless workers with subsistence payment during this retraining period, to prepare them for new jobs in the new local plants requiring new skills.

Mid-Winter —
(Continued from page one)
net and Norman Carroll, third corner.
This will be followed by "Cari-begaine" and "Sound of Music". The final number on the program will be the always popular "Stars and Stripes Forever" by John Philip Sousa.
Auvenshine urged everyone to attend the concert. He said that all three of the bands had made much progress this year and that they would present an outstanding concert.

Ranger Girls—
(Continued from Page One)
Baptist Church, Raytown; Mrs. W. H. Galin, Dallas YWA assistant director; Karen Carpenter, pianist and student at Howard Payne College; and Patricia Ransom, organist and high school senior at Crosby, near Houston.
The Young Women's Auxiliary organizations unite Baptist Girls in advancing world mission causes through study, prayer, service, stewardship, and Christian living. Annual houseparties such as the one at H-SU are designed to further these goals by making young women more aware of opportunities for Christian service. Theme of the 1961 program will be "To Tell the World".

Majestic Offers Johnny Angel On Stage Saturday
Johnny Angel, popular singing star, will be a guest star at the Majestic Theatre's "Talent Unlimited" show Saturday.
Angel will appear on the show along with such groups as Trade Winds and the Teddy Bears, plus other acts gathered for the talent show.
The stage show starts at 12:45 Saturday and from 1 to 1:30 p.m. it will be broadcast by KERC radio.
Teenagers in the area who would like to appear on the show in the future should contact KERC.
Persons attending the stage show may stay and see the regular movie at no extra charge.

We are shocked when a plane crashes kills 50 people, yet accept the annual traffic death toll of 37,000 without comment. . . . Gas station attendants insist on polishing your perfectly clean windshield, yet often forget it when it's coated with dust or grime. . . . The guy whose foolish actions cause a minor accident is always the one who gets mad at the other driver.

YOU ARE CORDIALLY INVITED TO A FREE PUBLIC LECTURE ON **CHRISTIAN SCIENCE** ENTITLED **CHRISTIAN SCIENCE: THE OPEN DOOR TO THE KINGDOM OF HEAVEN** BY **ELBERT R. SLAUGHTER, C. S., OF DALLAS, TEXAS**
Member of the Board of Lectureship, of The Mother Church, The First Church of Christ, Scientist, in Boston, Massachusetts IN CHURCH EDIFICE
Corner Plummer and Lamar
Presented by First Church of Christ, Scientist, Eastland, Texas **TUESDAY, FEBRUARY 14, 1961, AT EIGHT P. M.**
ALL ARE WELCOME

—Call MI 7-1101 for Classifieds—

YOU ARE ALWAYS WELCOME



ORGANIZED IN 1882

11:00 The People they Brought to Jesus Pastor
7:30 Believing What the Bible Teaches Pastor

FIRST BAPTIST CHURCH
RALPH E. PERKINS, Pastor LEE RUSSELL, M. M.

You'll also find **LOW PRICES** where you see this sign



So, when you shop where you see the S&H Green Stamp shield, you're dollars ahead at the start. And dollars ahead again when you redeem your S&H Green Stamps for beautiful and useful gifts. See them at your nearest S&H Redemption Center or in the pages of the S&H Green Stamp Ideabook.

TEXAS DIVISION
The S. & H. Green Stamp Company
1960-61 Green Stamp Ideabook

These Beautiful **Full-Color Prints** of the Southwest's Best-Loved Birds are for you

Reproductions shown here are 1/7 actual size.



Another Humble exclusive!



...when you change to **UNIFLO** motor oil



Ask for a Gift Coupon



SIGN OF **Happy Motoring.**

"Humble" "Happy Motoring" Registered Trade Marks Humble Oil & Refining Company

WOMEN'S ACTIVITIES
Friday, February 17
World Day of Prayer will be held at 3 p.m. in the First Christian Church, Friday, February 17.
The ladies of the Woman's Society of Christian Service of the First Methodist Church will be in charge of the program. This program of worship will be directed by Mrs. Joe Francis.
Everyone is invited to attend this worship service.

RANGER DRIVE-IN
HIGHWAY 80 EAST ON RANGER HILL MI 7-1149
Adults 50c—Kiddies Under 11 Free
Boxoffice Opens 6:45 — Show Starts at 7:00
THURSDAY - FRIDAY - SATURDAY

TOMBOY and the CHAMP The Gallant, all-heart story
CANDY MOORE BEN JOHNSON
JESSE WHITE as CHAMPY, the Angus
in Eastman COLOR

FREEVUE EVERY SATURDAY NITE
SUNDAY - MONDAY - TUESDAY

THE RED, WHITE AND BLUE SHOW OF THE YEAR!

ELVIS PRESLEY
10 GREAT SONGS!
G-I-BLUES
HAL WALLIS
TECHNICOLOR

THE STAR CAST: JULIET PHOENIX

MAJESTIC Adults 60c Student 40c Children 25c
TODAY THRU SATURDAY
CLINT WALKER AND ROGER MOORE and the seven hells they went through for the GOLD OF THE SEVEN SAINTS

LETICIA ROMAN - ROBERT MIDDLETON - CHILL WILLS - GENE EVANS
Screenplay by LEON BRACKLEY and LEONARD FREEMAN
Produced by LEONARD FREEMAN Directed by GORDON DOUGLAS - WARNERSCOPE - WARNER BROS.

EXTRA! — SATURDAY 12:45 ONLY
ON STAGE IN PERSON
Dick Spaulding's "Talent Unlimited"
—Special Guest Star—
"JOHNNY ANGEL"
Star Radio - Records - Nite Clubs
Plus—The Teddy Bears • Tradewinds
Plus Other West Texas Finest Talent
STARTING SUNDAY

CARY GRANT DEBORAH KERR ROBERT MITCHUM JEAN SIMMONS
"THE GRASS IS GREENER"



IDEA FOR A LAW
A bill before Congress is an idea for a law.
Who thinks it up? A congressman, the home folks, the President, almost anybody.
How does it become a law?

1. The congressman calls on the Congressional Legislative Service to cast the idea into legal language.
2. He drops his bill into a legislative hopper. The clerk numbers and passes it to the Speaker of the House of Representatives. He refers it to a committee. There it may "die" unless the sponsor asks for action.
3. If he does, the committee may consider the bill or assign it to a subcommittee to consider the bill. Usually, either the committee or the subcommittee will hold hearings, study the merits of the bill, and prepare a report on it to be submitted to the House.
4. At long last the committee

FRESH AND FLAVORFUL COTTAGE CHEESE

Great tasting! Spoon Boswell's Cottage Cheese onto crisp, colorful, fresh vegetables or cling peaches—it makes one of the most salads. Tastes as good as it looks too. Use extra creamy Boswell's Cottage Cheese made fresh and flavorful—gives you needed proteins.



SCHOOL OF TOMORROW—The ultra-modern look in schoolrooms is demonstrated in Chicago by Joan Nelson. Classroom features television, streamlined lighting fixtures, carpeting and "tr-oid" desks that can be folded out for increased work area.

- votes on it. If most members support it, it goes "out of committee" to the House.
5. It gets on the calendar and the House Rules Committee says how, when, and for how long the House may review the bill.
6. The Speaker sets a time for debate with equal time to both sides.
7. Afterwards the House votes. If passed, the bill becomes an "act" and goes to the Senate.
8. The Senate President refers the act once again to a committee which may "table" it, or report it out with or without changes.
9. The Majority Policy Committee sets the time for debate on the bill, and a member asks to have the act considered. If this motion is carried, it calls for debate, perhaps amendments, and a vote.
10. Often, if the Senate (or the House) amends the bill, it goes back to the House (or Senate) for another vote. Failing that, the bill goes to a "conference committee" of both houses (as a rule, seven members from each) to iron out differences. Result: often a compromise. Should the

- conference committee disagree, the bill dies.
11. If it agrees, the Act goes back to both houses for a final vote.
12. If approved, the Act goes to the President. He may (1) sign it and make it a law; (2) veto it (two-thirds of both houses may over-ride his veto); or (3) neither sign nor veto it.
13. If he does not sign it, the Act becomes law in 10 days if Congress is still meeting. If Congress has gone home, the Act dies by "pocket veto."
14. Bills starting in the Senate must go to the House of Representatives and thence to the President.

(This newfeature, prepared by the State Bar of Texas, is written to inform—not to advise. No person should ever apply or interpret any law without the aid of an attorney who is fully advised concerning the facts involved, because a slight variance in facts may change the application of the law.)

—Read The Classifieds—

Around The Campus

We are all proud to be called Americans, but many would be surprised to learn that there are a few who have a better right to the name than the majority of us. Those people were here long before Columbus discovered this great land. They were the American Indians. One of the most colorful tribes in American history was the Cherokee tribe. Pat Blakely, a sophomore from Seagraves, is a descendant of the Cherokees. His great-great-grandparents were full blooded Cherokees. His great-grandmother married a white man, who was a Cherokee agent for the United States. Stories were passed from Pat's great-grandmother to his grandfather and down to Pat's mother.

Although there have been three generations since his great-great-grandparents, much of the legend of the Cherokee tribe is still known by Pat's mother. One interesting story Mrs. Blakely tells is that of a small puppy being the only tame animal that her grandmother had. Mrs. Blakely has a necklace of colorful beads that were passed down to her by her father. The necklace is much more beautiful than the most expensive Indian jewelry that can be bought today. Also she has a cradle which her grandmother gave her. Mrs. Blakely's grandmother had once been strapped in the cradle and carried about.

Texas Labor Groups Listed In New Ledger

Some 1739 labor organizations in Texas, including three in Ranger, are listed in the U. S. Department of Labor's new Register of Reporting Labor Organizations. Houston led the list of Texas cities with 226 labor organizations listed in the Register, followed by Dallas with 158, Fort Worth with 138, San Antonio with 78, and El Paso with 74.

Area Director Oscar P. Welch of the Labor Department's Bureau of Labor-Management Reports in Dallas said the register resulted from the reporting requirement of the Labor Management Reporting and Disclosure Act of 1959. The national total, as of June 30, 1960, was 62,278.

The primary purpose of publishing the register, he said, was to provide a complete list of reporting organizations.

To comply with the law, the basic information report (LM-1) must be filed by all labor organizations except those composed entirely of employees of federal, state, county, or local governments, of corporations owned by such governments, and local central labor bodies.

Additional reports also are required by the law, including annual financial reports which are due within 90 days after the end of an organization's fiscal year.

The scores in the ball games with Olden were Carbon men, 39, Olden men, 36; Carbon women, 25, Olden women, 33.

O. K. Gro. & Mkt.

501 W. Main - Ranger - Ph. MI 7-3477

MRS. TUCKER'S Shortening 3 Lb. Carton 65¢

BAMA—Large 18-Oz. Glass Plum Jam Each 31¢

LIGHT CRUST FLOUR 5 Lb. Box 49¢

Kuner's—303 Can Apple Sauce 2 for 33¢

Mile-Hi Cut—303 can Wax Beans 2 cans 33¢

Marshall—303 Can Sliced Beets 2 for 29¢

Tuxedo Blended Tuna 2 cans 39¢

SWIFT'S HONEY-CUP MELLORINE 1/2 Gal. 39¢

GULF PRINCESS PEELLED AND Deveined Shrimp 12-oz. Bag 98¢

Keith's Fish Sticks Pkg 39¢

Patio — With Gravy Tamales Pkg. 37¢

KEITH'S FROZEN FOODS BROCCOLI SPEARS WHOLE OKRA BABY LIMAS ENGLISH PEAS Your Choice 5 For 89¢

PEPPERIDGE Apple Turnover 4 To A Box Each 59¢

Hot Links Lb. 49¢

Polish Sausage Lb. 65¢

FRESH GROUND Hamburger Lb. 39¢

ECONOMY STEAK Lb. 59¢

HO-MADE ALL PORK SAUSAGE Lb. 39¢

CLUB STEAK Lb. 69¢

First Cut Pork Chops Lb. 39¢

Lone Star Thick Sliced Bacon 2-Lbs. 98¢

LONGHORN CHEESE Lb. 49¢

ELIMINATE FIRE HAZARDS and LOSS!

DO YOU BELONG TO THE 7 OUT OF 10 UNDER-INSURED PROPERTY-OWNERS?

Don't push your luck too far! Phone us now! Additional coverage costs so little!

DEFECTIVE WIRING, APPLIANCES caused 13 percent of all home fires last year and 4 percent of all home fire fatalities!

May Insurance Agency

INSURANCE — REAL ESTATE
W. J. Sipes Phone MI 7-3582
GIVE YOUR HOME A SAFETY CHECK-UP

HUMBLE

Expert Wheel Balancing

which will give you a smoother ride and easier driving.

WE GIVE S & H GREEN STAMPS

OPEN 7 A.M. to 10 P.M.

CAMPBELL'S HUMBLE STATION

Highway 80 & Main Ranger, Texas

WHAT GOOD'S AN OIL STICK UNLESS SOMEONE CHECKS IT?

City driver! Let us give that engine the extra protection it needs. Constant stop-and-go driving causes faster contamination of oils. Changing oil every 4,000 miles isn't enough—it should be done every 30 days to insure fine engine performance. Drive in, let us change that oil today!

8 PIECE SUITE

- 1 Studio Divan
- 2 Platform Rockers
- 2 Step Tables
- 1 Coffee Table
- 2 Lamps

\$114⁵⁰

CHOICE OF 4 COLORS. FREE DELIVERY — NO INTEREST OR CARRYING CHARGE ON FURNITURE FOR ONE FULL YEAR!

RANGER FURNITURE EXCHANGE

123 North Rusk "Brashier's"—Ranger Phone MI 7-1404

Freshest taste in bread

MRS BAIRD'S ENRICHED BREAD

Of all full-size cars only '61 Ford Fairlane saves most and costs least!

"It's America's lowest-priced, full-size 6-passenger car including the equipment most people want"

1961 FORD FAIRLANE most beautiful way to save on the low-price field

HERE'S PROOF YOU CAN SAVE MORE WITH A '61 FORD

Costs LEAST TO BUY

Costs LEAST TO DRIVE

Get our Winter SAVE-MOST DEAL on a '61 Ford Fairlane

FUNDERBURG FORD SALES

Pine and Rusk RANGER Phone MI 7-1555

WARDS TRADE-IN CARNIVAL

407 Main
Dial MI 7-3224
Ranger, Texas



**BIG TRADE-INS
BIG
Savings
BIGGEST BUYS
IN TOWN**

FULL 24-MONTH GUARANTEE

Better than new car tires, yet cost you less! Impact-resistant Nylon cord body is "built to take it". 3,000 gripping edges are at your command to give better car control and to insure safer stops.

16⁸⁸
6.70-15
Tube Type
Blackwall

NO CASH DOWN
Your old tire is the down payment

*All prices plus excise tax, trade-in free

RIVERSIDE 4-SQUARE GUARANTEE

1. Against road hazards for the specified time. Adjustments prorated on months used.
2. Against defects in materials, workmanship for life of tread. Adjustments prorated on tread wear.
3. Nationwide service at all branches.
4. Satisfaction guaranteed. Adjustments based on sale price when returned.

| NYLON 64—Tube Type | | | NYLON 64—Tubeless Type | | |
|--------------------|---------------------------|---------------------------|------------------------|---------------------------|---------------------------|
| Size | Black Price with Trade-in | White Price with Trade-in | Size | Black Price with Trade-in | White Price with Trade-in |
| 6.70-15 | 14.88 | 19.88 | 6.70-15—7.50-14 | 19.88 | 22.88 |
| 7.10-15 | 20.88 | 23.88 | 7.10-15—8.00-14 | 22.88 | 25.88 |
| 7.40-15 | 23.88 | 26.88 | 7.40-15—8.50-14 | 25.88 | 28.88 |
| 8.00-15 | 25.88 | 28.88 | 8.00-15—9.00-14 | 27.88 | 30.88 |

Plus excise tax and your old tire

6⁰⁷
TRADE-IN FOR YOUR OLD BATTERY!



BATTERIES INSTALLED FREE

RIVERSIDE SUPER POWER with "CLIMATE CONTROL"

The exclusive "climate-control" feature provides added start power during winter, added plate and battery protection in summer. See it demonstrated today!

19⁸⁸ 12-V, type 245 Reg. 25.95
22⁸⁸ 12-V, type 29N Reg. 28.95

TRADE IN YOUR OLD BATTERY NOW ON A NEW RIVERSIDE

| ECONOMY SPECIAL 24-MONTH GUARANTEE | EXTRA POWER 6-VOLT 30-MONTH GUARANTEE | OUR BEST RIVERSIDES 36-MONTH GUARANTEE |
|---|---|--|
| 6-volt, types 1, 2L Without trade 12.95 9.82 | 6-volt, types 1, 2L Reg. Without trade 15.95 11.88 | 6-volt, types 1, 2L Without trade 19.45 14.44 |
| 12-volt, type 245. Without trade 15.95 12.88 | 12V, 245. 24-month. Without trade 18.95 14.88 | 12-volt, type 245. Without trade 21.95 16.88 |

Types 1, 2L fit most: Chev. Ford, Plym. Dodge '48-55
Type 245 fits most: Chev. '55-60; Plym. Dodge '56-60
Type 29N fits most: Ford and Mercury 1955-1960

GUARANTEE
Full service guarantee for the specified time, prorated on the months used. Adjustments based on price before trade-in when returned.

MONTGOMERY WARD

Circle No. 1 Meets Mon. In Turner Home

Circle No. 1 of the Woman's Society of Christian Service of the First Methodist Church met Monday, Feb. 13 in the home of Mrs. J. L. Turner.

The meeting was called to order by the chairman, Mrs. B. J. Dudley. Mrs. C. E. May led the opening prayer.

A report was given by the treasurer, Mrs. A. J. Ratliff. The minutes of the previous meeting were read and approved. Sixty-eight visits to the ill and shut-in were reported.

The devotional "What is the Word?" was given by Mrs. F. S. Pearsall and Mrs. Glen Hamner gave an interpretation of "The Lord's Prayer."

Refreshments were served to the following members: Mmes. S. M. McAnelly, A. W. Brazda, B. Harrison, C. E. May Sr., A. J. Ratliff, F. S. Pearsall, L. A. White, Annie Sharp, A. H. Powell, Edmond Keller, C. E. Shawfield, Edmond Hamner, B. S. Dudley the hostess, Mrs. Turner and one visitor, Mrs. D. C. Groff of New York City.

Mrs. Cole is Hostess Tues. To Bible Study

The ladies of the Merriman Baptist Church met Tuesday afternoon at 1:45 p.m. in the home of Mrs. C. J. Cole for the weekly Bible study.

The study was opened with a prayer led by Mrs. Owen Falls. Mrs. Cole brought the devotional which was taken from the 35th and 36th chapters of Jeremiah.

Mrs. A. E. Dawson dismissed the group with prayer.

Refreshments were served to the following: Mmes. G. D. Falls, Owen Falls, A. W. Dawson, J. W. Vinson, W. S. Vinson and the hostess, Mrs. C. J. Cole.



NEW LOCATION—All offices at the Montgomery Ward store in Ranger have been relocated into a centralized location which will provide better customer convenience. The offices are now located on the lower floor next to the catalog order department. Pictured left to right are Mrs. Claudia Crossley, credit manager, Miss Barbara Crabb, assistant credit manager, Mrs. Ora Roberts, catalog order department manager and Mrs. Agnes Hamilton, cashier. Also pictured is C. W. Sooter, store manager. (Photo by Capps Studio).

Centralization of Offices Is Noted Improvement at Montgomery Ward

The relocating and redesigning of the offices in the "New" Wards Store in Ranger has done much for the convenience of Wards customers.

The offices have been relocated to the first floor level and centralized into one area.

These departments are managed by five efficient employees who have many years of service with Wards.

The catalog department, which has always done a large volume of business each year, is under the management of Mrs. Ora Roberts. She is a familiar sight around the Ward store, having been with the store for 17 years.

Mrs. Claudia Crossley is the credit department manager. This department has been relocated to the first floor level next to the catalog order department. Mrs. Crossley has been with the Ranger Wards store for 13 years.

Mrs. Agnes Hamilton is another long-time employee of Wards. She is the cashier and this department is also located in the new office setup. Mrs. Hamilton has been with Wards for 13 years.

Also in the credit department is Miss Barbara Crabb. She is assistant credit manager and graduated from Ranger High School last year and has been with the Company for one year.

The only office not located in the new centralized office area is the office of Mrs. Ruth Williams. She has charge of the invoice and record department. This department takes care of the ordering for the store. She has been with the company for eight years.



MRS. RUTH WILLIAMS
Invoice and Records Dept. Mgr.

Fifty-One Years of Experience Qualify Wards Ladies Sales Force

Wards has a ladies sales force consisting of six women who have a total of 51 years service with Wards in Ranger.

This sales force, with its many

years of selling experience, is well qualified to manage the department in which they are working.

Mrs. Winnie Cox, who is in the piece goods and drapery department, has been with Wards for 19 years. This department has been completely stocked to provide the customer with any pattern or design of material that they might desire.

Miss Altha Dooley has eight years service with Wards. She works in the houseware department. This department has the largest selection of dishes in this area and carries a complete assortment of designs and patterns.

Mrs. Virginia Rayfield, who works in the ladies and childrens wear department has been with the Company for eight years. The stock in this department has also been increased. A complete line of under garments can be found here.

The baby department is also in charge of Mrs. Rayfield. This line has been increased and now you can find a complete array of baby furniture and almost any other item that might be needed for the baby.

The ladies fashion department is managed by Mrs. Jo Rogers. She has been with Wards for seven years. Here you can find the latest fashions in Juniors, Misses and Ladies fashions. A complete line of coats, dresses and sports wear is offered customers.

Mrs. Gertie Emfinger greets customers in the men's department. She has been with Wards for four years. The stock in her department has been increased to offer a wider selection in men's shirts and trousers.

Mrs. Marie Gardenhire has been with Wards for four years and she works in the shoe and men's work clothes department. This department is now offering a wider selection in shoes and the latest in work clothes.



MRS. VIRGINIA RAYFIELD
Ladies and Childrens Wear Department Manager



MRS. JO ROGERS
Ladies Fashion Dept. Mgr.



MRS. MARIE GARDENHIRE
Shoe Department Mgr.



MRS. WINNIE COX
Piece Goods and Drapery Dept. Manager



MISS ALTHA DOOLEY
Houseware Dept. Mgr.

BAKE SALE
at
Arterburn's Hardware
Saturday
FEBRUARY 18
9 a.m. to 12 noon
Sponsored by
Royal Neighbors of America

YOUR Independent Insurance AGENT
"SERVES YOU FIRST"

We're at the end of your phone



—In case of a loss

We're here to help you, not only when you buy insurance—but when you have a loss and want to collect on it.

That is one advantage of having a local, neighbor insurance agent.

All insurance should be bought as if you might have to collect tomorrow. Does it protect you fully? Does it fit your needs? Let us provide the right America Fore policies for you—and let us stand ready to aid you in case of a loss.

C. E. MADDOCKS & CO

Insurance - Real Estate
207 Main Phone MI 7-1171

COLDS
Relieve aches and pains of colds with STANBACK Tablets or Powders. Also use as gargle for sore throat due to colds. STANBACK'S S. A. (Synergistic Action) reduces fever, brings faster, more complete relief. Remember... Snap back with STANBACK!

The Barbecue Pit
HIGHWAY 80 EAST — PHONE MI 7-9390
All Kinds Barbecue
Catering Service — Custom Barbecuing
—Open Until 8 p.m. Except Sunday—
THE BARBECUE PIT