

Callahan County

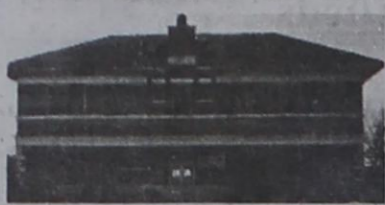
# Baird Star

©2005 Eastland/Callahan County Newspapers

Callahan County Star  
888-227-1708 or  
254-629-1707  
Fax 254-629-2092  
telegram@eastland.net

50¢

31¢ By Mail



The Baird Weekly Star,  
Established  
December 8, 1887

Volume 119, Number 50

Baird, Texas 79504

Thursday, December 14, 2006

**Basketball Season Begins in Callahan**

**CROSS PLAINS Tournament**

Cross Plains 32, Lipan 40

also in

**Clyde Lions Club Invitational**

Eula 65, Clyde 51

Clyde 8 15 13 15-51  
Eula 16 12 17 21-65

**Clyde 57, Lubbock High 29**

Clyde 12 19 13 12-57  
Lubbock 11 8 4 6-29  
Clyde - Tasha Welch  
15, Emily Yates 9, Lacy  
Layman 9, Brooke Harris  
6, Jessi Villanueva 6  
Lubbock - Ramirez 8,  
Flores 7, Martinez 5.  
Records: Clyde 9-5  
J.V. Score - Clyde 38,  
Lubbock 23.  
Freshman score - Clyde  
27, Ballinger 24

**Cross Plains 60, Novice 27**

Cross Plains 10 25 12 11-60  
Novice 2 10 3 12-27  
Novice - Watts 12.  
Cross Plains - Bennett  
15, Scott 13, Cook 9.  
RECORDS -  
CROSS PLAINS 9-7

**Baird P.T.O. Fundraiser 2006**

Baird P.T.O. is excited to announce two new ways that everyone in our community can help raise funds or obtain equipment for Baird schools. The exciting part is that everyone can participate, regardless of their income or whether they have school-aged children. All you need to do is save your cash register receipts from any Lawrence Brothers' grocery store and by clipping the "Box Tops for Educa-

tion" tops from your favorite General Mills, Pillsbury, Yoplait, Betty Crocker, Old El Paso, Hamburger Helper, Ziploc, Cottonelle, Hefty and Scott products. Turn them into the school and the PTO will redeem them for ten cents each. Cash register receipts will be totaled and can be redeemed for equipment such as calculators, art supplies, playground equipment, and even computers.

**15-A 2006**

**All District Football Team**

**15-A 1st Team**  
Quarterback: Tyler Orlando, Senior, Baird.

Wide Receiver: Justin English-Junior, Baird.

Outside Linebacker:

2nd Team: Garrett Jennings: Full Back, Sophomore, Baird.

Kody Parker, Offensive Line, Senior, Baird.

Chris English, Wide Receiver, Sophomore, Baird.

Kody Parker, Grand Ole Oplin December line-up

The Grand Ole Oplin is proud to announce it's band line-up for the month of Dec.

Starting off the month of December on the first was Muddy Creek here playing all of your favorite items, on Dec. 8th Country Classics will join us playing the kind of music that will make you want to get up and dance. On December 19th, Texas Touch will join us playing their own special kind of country music, and on Dec. 22nd Muddy Creek will return playing some more of your favorite country tunes. There will be no dance at the Grand Ole

Continued Inside:

Thanks for Reading The Callahan County (Baird) Star

Defensive End, Senior, Baird. Garrett Jennings, Sophomore, Baird. Justin English, Junior, Baird.

**Baird 15-A Honorable All-District Football Selections**

Center-Justin Roberts.  
Offensive Line-Ty Culp, Jud Clark  
Defensive End-Justin Roberts.  
Defensive Back-Jessee Mendez.  
Inside Linebacker-Justin Patterson.

**Callahan County SWCD is Now Taking Custom Map Orders**

The Callahan County SWCD is proud to announce that we have recently purchased a plotter and is now offering to design maps for landowners, hunters, and interested individuals. The plotter will produce up to 36" maps in color or black/white. The cost will depend on the size and design of each individual map.

For more information on how to purchase a land map

(Continued Inside as Call Maps)

**Cross Plains Christmas Classic**

Baird 64, Hamlin 60

**Cross Plains 36, Rising Star 27**

Cross Plains 6 6 9 15-36  
Rising Star 7 5 11 4-27  
Cross Plains - Harris 10,  
Scott 7, Bennett 7.  
Rising Star - Stone 12,  
Harris 15.

**Lipan 61, Baird 54**

Lipan 6 17 15 23-61  
Baird 11 14 17 12-54

**Cross Plains 58, Baird 55**

Girls  
Cross Plains 7 22 21 8-58  
Baird 21 11 17 6-55  
Cross Plains - Koenig 13,  
Thomas 10,  
Dickson 10, Estes 10,  
Calloway 8, Gibbs 7.  
Baird - Cogburn 21,  
Waddle 9, Jennings 9,  
Parker 8, Orlando 6.

**Lipan 40, Cross Plains 32**

Cross Plains 3 10 2 17-32  
Lipan 12 12 11 5-40  
Cross Plains - Martinez 11,  
Bennett 6, Phillips 6.  
Lipan - Pendergrass 11,  
Gaston 10.

**Callahan County Commissioners Meet December 11: Leaves Expenses for Cross Plains Fire in Limbo; Approves \$2,500 Limit for Justice Technology Fund, Holidays Assigned for 2007, Annual Report Approved for 2006**

A regular meeting of the Commissioners Court of Callahan County was held at the Courthouse on December 11, 2006 with all Commissioners present but Doris Grider attended in the place of Cliff Kirkham for Pct. 4. The minutes of November 27, 2006 were approved as presented. No public comments were made.

A motion was made to approve the Holidays for 2006 by Commissioner Farmer which was seconded by Commissioner Holland and the motion carried 5-0.

Commissioner Hicks made a motion to approve an Order Restricting the Use of Fireworks in Unincorporated areas and Restricting Aerial Fireworks in Callahan County. Commissioner Grider seconded and the motion carried unanimously. An annual report for 2006 was given by Robert Pritz. Commissioner Grider made a motion to approve the Annual Report for 2006 and on a motion by Commissioner Farmer the motion carried by all officers.

Commissioner Hicks made a motion to approve a set amount of \$2,500.00 limit for Justice Technology Fund to be used by the Justice of Peace without going before the Court each time this is necessary for permission. The motion was seconded by Commissioner Holland and the motion carried 5-0.

The expenses for the Expenses incurred during the Cross Plains Fire less FEMA payment was resubmitted by Constable Bill Young. And Mr. Young stated that he should be paid as a matter of principle. Judge Corn read the Local Government Code 86.021 stating the duties of a Constable. Commissioner Grider made a motion to pay approved bills. The motion died for lack of a second.

All approved bills except the ones submitted by Constable Young were approved for payment by motion of Commissioner Farmer. Commissioner Holland seconded and the motion carried 5-0.

A motion to adjourn was made by Commissioner Farmer and on a second of Commissioner Holland the Commissioners adjourned at 10:10 a.m.

Minutes above were read and approved the 28th Day of December, 2006. Jeanie Bohannon, County Clerk.

**Emergency Farm Loans Applications Being Accepted**

"Applications for emergency farm loans caused by drought, excessive heat and high temperatures on January 1, 2006 and continuing are being accepted at the Farm Service Agency (F.S.A.) office located in Anson, Richard G. Young said today.

"Callahan is one of 17 contiguous counties in Texas recently named by the Secretary of Agriculture eligible for loans to cover part of actual production losses resulting from drought, excessive heat and high temperatures on January 1, 2006 and continuing."

Richard G. Young said, "Farmers may be eligible for

loans of up to 100\$ of their actual losses or the operating loan needed to continue the agricultural business, which ever is less. For farmers unable to obtain credit from private commercial lenders, the interest is 3.75 percent."

"As a general rule, a farmer must have suffered at least a 30 percent loss of production to be eligible for a F.S.A. emergency loan," Richard G. Young said. Farmers participating in the Federal Crop Insurance program will have to figure in proceeds from these programs in determining their loss.

"Applications for loans under the emergency design-

**Callahan County has Reinstated their BURN BAN effective November 20**

**Baird Cemetery Association News**

Directors of the Baird Cemetery Association held their regular monthly meeting on Monday, November 20th. Agreement was reached on the purchase of a "Texas Historical Cemetery" medallion from the Texas State Historical Commission. This medallion, along with a cemetery name and date plaque, will be mounted in the pavilion. These two markers will complement the granite historical marker now being prepared by Grace Monument in Clyde. Discussion was held regarding the possibility of lighting the two flag poles. The American flag should be illuminated if flown at night.

Memorials and donations were noted from Aubrey and Charlotte Lopez, Felix and Barbara Manion, the Sutphen boys, Mack, David and George.

"We are most grateful to all of our supporters for their kindness throughout this year and all earlier years."

Sincere condolences are

extended to the families of Nelda Hunter, Gladys E. Jones, Velma Ola Poindexter, and Olivia Young. These four ladies entered their eternal rest during November and now join their friends and relatives who have gone on before.

Submitted by : Tom Ivey

**American Red Cross Needs Your Help**

With the extreme heat and drought conditions, the American Red Cross has found itself busier than usual responding to a rash of wildfires across the Big Country.

As of August 21, most people are aware that the American Red Cross responds to large disasters such as tornadoes and hurricanes, and that the organization assists with food, clothing and shelter. But fewer people know that the Red Cross is also called on to assist emergency workers such as police and firefighters. Since the wildfires broke out in the Big Country, the American Red Cross has been working hard to provide plenty of bottled water, Gatorade and meals to countless firefighters. Now, the organization needs your help to keep their supplies stocked.

The American Red Cross is asking the community to make financial gifts to the local Disaster Relief Fund. Financial Contributions allow the Red Cross to purchase materials in bulk, stretching

**Continued Inside: Addresses Needed For Baird Ex-Students**

We're listing the students from the classes of 2001 through 2005 that that need updated addresses. If you have any information about any of the following, please contact the Baird Ex-Students' Association, P.O. Box 954, Baird, TX or 854-1947.

**2001-2005:**  
Anthony Dean,  
Candace Ellis,  
Shanna Taylor, Casse Cook,  
Ashley Pugh,  
Matthew Ramirez,  
William Ross,  
Jessica Garnett,

Continued Inside:

**ONLY 10 DAYS TIL CHRISTMAS**  
Remember to Renew Your Paper Subscription

**D.P.S. Report**

DEC. 3RD to Dec. 9, 2006  
Cases Investigated  
WARNINGS- .....127  
COMPLAINTS- 75  
POSSESSION OF MARIJUANA.....1  
ACCIDENTS-There were TWO accidents investigated during this time span

**Drive Carefully**

nations will be accepted until June 11, 2007, but farmers should apply as soon as possible. Delays in applying could create backlogs in processing and possibly over into the new farming season," Richard G. Young said.

F.S.A. is a credit agency of the United States Department of Agriculture. It is authorized to provide disaster emergency loans to recognized farmers who work at and rely on farming for a substantial part of their living Eligibility is extended to individual farmers who meet U.S. citizen requirements

Continued Inside:

Looking for: responsible Paper Route Delivery for Baird, Clyde and Cross Plains. Contract Call 254-629-1707

## SANTA CLAUS BEING HOSTED BY Clyde CHAMBER ON SATURDAY, DECEMBER 16TH

**THE Chamber of Commerce would like to invite the community to join them on Dec. 16th for a Christmas celebration. This event will be held at the Chamber of Commerce at 614 N. 1st St. Activities will begin around 6 p.m.**

**There will food and drink provided by the chamber of Commerce. The Bible Baptist Church "Praising with Puppet" team will provide entertainment along with choirs from the Clyde schools, and the Girls Scouts.**

**The Star of the Show will be Santa Claus. He**

**should arrive around 6:15 p.m. to visit with each child and have his picture taken with them inside Santa's Express.**

**The Chamber of Commerce will be giving away 4 bicycles at the event. Children may register for the bicycles when they arrive. Drawings for the bicycles take place that night.**

**Please plan to join us for a fun night of celebration. For more information, you may contact the Chamber of Commerce at 893-4221.**

## Region 14 Education Service Center's Alternative Certification Program ADDS Certification in the Areas of Math and Science

Applications for the Region 14 Education Service Center's 2007-08 Alternative Certification Program for Math and Science teachers will be accepted until **February 16, 2007**. The program allows college graduates wanting to be Math and/or Science teachers to earn certification as they train and teach full-time, serving as interns with mentor teachers in area school districts.

Participants complete training in the spring and summer prior to entering the classroom. During the internship year, training is continued:

Applicants are selected from those meeting the following admission requirement:

Received bachelor's degree from an accredited institution of higher education.

For additional admission requirements, contact Region 14 E.S.C. Alternative Certification Program.

The teaching certificate enables recipients to teach anywhere in Texas. Reciprocity is available in some other states.

For information on Region 14's Math and/or Science or EC-12 Special Education programs Contact:

J. Stevens-(325) 675-8603  
OR  
Janice Hill (325-675-8605

## Callahan Divide SWC Taking Windbreak Tree Orders

The Callahan Divide Soil & Water Conservation District is now taking orders for their Annual Windbreak Tree Program. Each year the District offers these trees to the general public on a first come first served basis at a very inexpensive price. These windbreak trees come fresh from the Texas Forest Service Nursery out of Lubbock, TX. This year's selection of available trees includes five varieties of evergreens. They are Afganistan Pine, Eastern Red Cedar, Italian Stone Pine, Pinyon Pine and Austrian Pine. These Evergreen Seedlings are being offered for \$15.00 or \$65.00 for a box of 30 per species.

We are sorry to announce that we will not be selling the hardwood trees or the wild-life packets this year due to

the Relocation on the Texas Forest Service Nursery.

Tree orders will be taken until January 26th, 2007 or until supplies run out. Whichever comes first. The trees will be delivered to Baird on Saturday February 17th, 2007, between the hours of 9:00 a.m. and Noon. All Orders are pre-paid with a check or money order. These trees are delivered fresh from the Texas Forest Service Nursery on that date.

For more information on planning, planting and maintenance of windbreak trees or how to purchase these low cost seedlings contact the Natural Resources.

Conservation Service office in Baird, TX or (325) 854-1349, EXT 3.

The office is located in Baird at 141 W. 4th., Suite B.

## Friday Basketball Ticker...

Boys		Cajon 17, Orlando 16	
Roby (ot)	66, Baird 61	Cross Plains 38, AC.H.S. 43	
Roby	14 18 13 12(9)-66	ACHS	17 11 6 9-43
Baird	11 13 12 21(4)-61	Cross Plains	7 11 10 10-3

Roby - P. Williams 20, Gonzalez, 18; Martin 14, Allredge 10.  
Baird - Parker 18,  
Goldwaithe Booster Club Invitational

ACHS- Haught 12, Packwood 8; Tindol 9. Cross Plains- Estes 12, Dickson 8, Gibbs 7.

Girls  
Dyer 15  
Cisco - Walkingstick 5, Caraway, 3; Koenig 5, Ramirez 3, Williams 2, Chrlesman 6, Matthews 15,

Third Place.....  
San Saba 20 21 19 18-78  
Cisco 13 15 7 12-47  
San Saba - Miles 3, Crosby 7, Hardy, 12; Turner 7, Sears 3; Perez 8, Bush 9, Davis 14,

Clyde Lions Club Invitational

Girls  
Ballinger 69, Eastland 39  
Ballinger 19 13 14 23-69  
Eastland 11 6 10 13-39

Baird P.T.O. Fundraiser

Continued from pg. 1

There is even a way for on-

line shopping aficionados to help out when they shop at any of the following stores: Avon, Barnes & Noble.com, Best Buy.com, Blair, Cabela's, Discovery Channel Store, Expedia.com, JC Penney, KB Toys, Kohl's, Land's End, Nordstrom, Office Depot, Office Max.com, Oriental Trading, Pottery Barn, Sears, Target, Terry's Village, and Wal-Mart.

## Obituaries

### Jetta Lea Shewmake

CLYDE-Jetta Lea Shewmake, 86, of Clyde, died Saturday, December 9, 2006 at her home.

Services were to be at 10:00 a.m. Wednesday at the First Baptist Church. Toby Henson officiated, assisted by Bob Bratcher. Burial was to follow at 4:00 p.m. at the Sunset Memorial Gardens in Odessa under the direction of Bailey Funeral Home.

Mrs. Shewmake was born February 4, 1920 in Marlow, Oklahoma to Elmer and Loma (Holt) Lowe. She moved to Odessa in 1954 and to Midland in the late 1970's. She married Elbert Bruce Shewmake in October 1938. She moved to Clyde from

Midland in 2005. Mrs. Shewmake was a retired Apartment Manager and a beautician. She was a member of the First Baptist Church.

Survivors include two sons, Jack Shewmake and wife, Maurine of Clyde and Jim Shewmake and wife Hellen of Katy, Texas; seven grandchildren, eight great-grandchildren; one brother Jack Lowe; one sister, Jewell Triplett and numerous nieces and nephews.

She was preceded in death by her husband, one daughter, Kathy Montgomery; two brothers, Gene Lowe and Boyd Lowe; one sister, Nell Reed and a nephew, Max Reed.

"Love, it has been said, flows downward. The love of parents for their children has always been far more powerful than that of children for their parents; and who among the sons of men ever loved God with a thousandth part of the love that God has manifested to us?" - August W. Hare

"The deepest craving of human nature is the need to be appreciated." - William James

"We must learn to awaken and keep ourselves awake, not by mechanical aid, but by an infinite expectation of the dawn." - Henry David Thoreau

"Your attitude is an expression of your values, beliefs and expectations." - Brian Tracy

Meals on Wheels in Need of Volunteers

The Meals on Wheels program in Baird is in need of volunteers. The need is in need of volunteers to help in the delivery of meals. If this need is not filled, we will have to put a limit on the number of folks that need our help. Please call the Baird Citizens Center at 854-1937 about when and how many days you will be available to deliver. 4,495 meals have been served in the past 11 months to the folks who eat their lunch at the Baird Center.

**CALLAHAN COUNTY BAIRD STAR**  
Publication No. (USPS 085-520)  
©2005 Eastland County Newspapers, Inc.  
(254) 629-1707/ 1-888-227-1708  
211 Market St. Baird, TX 79504  
Periodical Postage Paid at Baird, Texas under Act of Congress in March, 1870.  
Published every Thursday  
Publisher.....H.V. & Gaynell O'Brien  
Editor.....H.V. O'Brien  
POSTMASTER: Send address changes to Callahan County Star, 211 Market St., Baird, TX 79504.  
**SUBSCRIPTION RATES**  
\$16 per year in Callahan County; \$18 per year for Counties Adjoining Callahan \$22 Elsewhere

## Callahan County (Baird) Star Classifieds

### Help Wanted

**HELP WANTED:** Experienced, mature woman for home cleaning; Rainbow vacuum cleaning system knowledge helpful. Needed every other week for multiple in-home tasks. Good references required. Please call 254-629-2413 after 6 p.m. to set interview.

### For Sale

**FOR SALE:** Mostly highway-driven, '90 Oldsmobile Full Tank. Cutlass Supreme - V-6—loaded. 69,000 miles. Computer/gauges—Call 254-629-2413 after 6 p.m. to see.

Web Press Time available call 254-629-1707.

B52

**Family Van For Sale:** Designer Conversion big engine, '91 GMC family van, 90,000 actual miles, white exterior/gray plush interior, pretty wood trim inside, garaged, clean, 4 captains, convertible couch, electric windows, TV/cassette, call 254-629-2413 to see after 6 p.m. \$4995.00 firm.

**Looking for: responsible Paper Route Delivery for Baird, Clyde and Cross Plains. Contract Call 254-629-1707**

## Stay informed, Read the Star Flooring for Sale From Old Gym

Baird Independent School District is in the process of refurbishing the old gymnasium. One of the main objectives is to replace the wooden floor because it is not level. The hardwood floor has been removed in sections of about 30 square feet. These sections

are for sale to the public for \$1 per square foot. Proceeds from the sales of flooring will help defray the cost of updating the gym.

If interested in owning a piece of history you may call Scott Cooper at 854-1400 extension, 320.

## Ann Williams Real Estate

601 Conrad Hilton Cisco www.annwilliamsrealestate.com

254-442-1880

ACREAGE

5 Acres with cabin combine, well, with a bathroom & closet. Water well, shop, creek, oak trees. \$25,000.

10 Acres Lake Cisco paved road access by Lake Cisco, across from public lake access. \$19,000.

12 Acres Lake Comanche gated Mercers Preserve at Lake Comanche, community lake access. \$24,500.

15 Acres with cabin mostly wooded with oak trees, very large hill for home site, creek, drainage, water line, well, 2 bathrooms, Eastland School District, lots of wildlife including deer, turkey, hogs, quail, duck, rabbit, etc. \$46,500.

19 Acres by Lake Leon, creek, hill, paved road frontage, wooded mostly with oaks, overlooks Lake Leon, deer, turkey, hogs, quail.

22 Acres near Cisco, wooded and open, home site potential, \$50,000.

25 Acres with large hill, mostly wooded with red oak and live oak, creek, water line, electricity, excellent home site. Deer, turkey, hogs, dove, quail, owner/broker, agent. \$72,800.

40 Acres +/- partially wooded with oaks, 4 ponds, waterline septic system, electricity, deer, turkey, hogs, dove, quail, duck.

61 Acres mostly wooded with live oaks, pond, one 5-acre field, excellent home site or recreation property. \$115,000. deer, turkey, hogs, dove, quail. \$1,500 per acre.

65 Acres near Lake Cisco mostly wooded with live oak and post oak, two hills overlooking Lake Cisco with a canyon and creek in between the hills, wildlife includes deer, turkey, hogs, dove, quail, \$1,800 per acre.

65 Acres mostly wooded with oak trees, elevation changes from hill top down to lower land, paved road, deer, turkey, hogs, dove, quail, \$1,195 per acre.

83 Acres Stephens County, mostly wooded with live oak & mesquite trees, hills, water line, electricity. \$115,000. parts of Lake Daniels, deer, turkey, hogs, dove, quail, \$1,195 per acre.

98 Acres with 2-story house, 3 BR, 2 1/2 baths, CH/CA, water well, creek, land is wooded with oaks and fields, creek, \$250,000.

108 Acres with house 3 BR, 2 bath frame home, water well, land is mostly oak with coastal and cultivated fields, creek, \$345,000.

120 Acres mostly wooded with mesquite and oaks, 2 ponds, creek, hill, deer, turkey, hogs, dove, duck, quail, \$1,495 per acre.

124 Acres with nice fifth wheel camper, mostly wooded with oak trees, 2 fields, 12 hill and other elevations, deer, turkey, hogs, dove, quail, \$221,555.

130 Acres mostly wooded with mesquite and oaks, pond, hill, deer, turkey, hogs, dove, quail, \$1,495 per acre.

151 Acres to open in fields with coastal and other grasses, 25% wooded with oak trees, 3 ponds, 6 acres, deer, turkey, hogs, dove, quail, \$196,490.

160 Acres, mostly pecan orchard, approximately 80 acres of pecan trees, 60 acres of oak timber, 20 acres of live oak, large ponds in a canyon in the oak timber, water well, deer, turkey, hogs, dove, duck, quail, \$236,000.

191 Acres Stephen Co. wooded with oak & mesquite trees, large hill overlooking canyon, 2 ponds, next to large ranches, deer, turkeys, hogs, dove, quail, \$245,375.

191 Acres mostly wooded with oaks, pond, hill, deer, turkey, hogs, dove, quail, \$1,495 per acre.

250 Acres mostly wooded with mesquite and oaks, pond, creek, 2 hills, deer, turkey, hogs, dove, quail, \$373,750.

275 Acres mostly wooded with oaks and mesquite, hills, creek, 2 ponds, water well, very nice property. \$249,000. deer, turkey, hogs, dove, duck, quail, \$249,000.

281 Acres with home 2-story, 3 BR, 2 1/2 baths, in ground swimming pool, large metal barn with pens. \$249,000. deer, turkey, hogs, dove, duck, quail, \$249,000.

436 Acres Horse ranch with 2002 built 3 BR, 2 bath, extensive shop, barn, livestock pens, wooded with oaks and various improved grass fields, 3 ponds, lots of extras, \$2,000,000.

Downtown building with approx. 5700 sq. ft. plus more sq. footage upstairs for storage. Call for details.

Approx. 3700 sq. ft. building on 2.11 acres with Interstate 20 frontage. 2 CH/A units. Restaurant eqpt. and furniture can remain. Many possibilities for this large commercial bldg. \$85,000.

5 Story building in downtown Cisco on corner of 6th and Conrad Hilton Ave. Lots of potential. Approx. 3200 sq. ft. per floor per CAD. \$93,000.

2 BR, 1 bath home on corner of 6th and Conrad Hilton Ave. Windows, some wood floors, large trees, attached garage. \$49,000.

Large 2 BR, 1 bath home. Could be arranged for a third BR, separate DR, detached garage with ext. deck, oak trees, 1 1/2 lots, Reduced to \$49,000.

2 BR, 1 bath home with CH/A, large shop on slab, RV carport, corner property.

Remodeled 2 BR, 1 bath home, since May 2005, owners have installed CH/A, vinyl siding, soft and facia, double pane tilt sash windows, steel entry doors, interior doors, water heater, floor coverings, rain gutters, bathroom fixtures, rewired, repainted inside. \$38,500.

3 BR, 2 bath home with separate LR, DR and den, WBFP CH/A, carport, garage with attached storage room or workshop and cellar. \$36,000.

Large 5 BR, 2 bath home with 2 family rooms, big front porch, lots of character, large tree shaded lot. Call for details. \$42,900.

4 BR, 1 3/4 bath home with 2 family rooms, CH/A plus woodburning heater, double pane windows, large covered deck, 2 lots, fenced back yard.

3 BR, 1 1/2 bath home with CH/A, large LR and master BR, small office, fenced backyard, large trees, storage building. \$51,000. Owner will pay \$1,000 of buyer's costs.

2 BR, 1 3/4 bath brick veneer home with CH/A, WBFP, storm windows, attached garage, covered deck, \$49,000. detached room with full bath, small shop. \$55,000.

4 BR, 1 3/4 bath home with CH/A, vinyl siding, carport, RV carport, storage bldg., above ground pool, on 4 lots. \$56,000.

Need extra lots for kids or animals? Call about this 3 BR, 2 bath with CH/A on 24 lots. \$51,500.

Very large 5 BR, 2 bath home, separate LR and den, CH/A, WBFP, many cabinets and closets, double garage, storage bldg., oak, apple and pecan trees. \$73,000.

Large 3 BR, 2 bath home, (recently built) with 2 family rooms, CH/A, wooden deck, double carport, 2 storage buildings and shop or game room. Fenced backyard, corner property.

4BR, 2 bath, 2 story home with lots of character and space, separate DR, LR and den, 2 CH/A units, vinyl siding, jacuzzi, double carport, interior doors, water heater, floor coverings, many large oak trees. 151 x 270 lot. Also has mobile home hookups.

3 BR, 2 bath brick veneer home with CH/A, large rooms, office, many nice cabinets, WBFP, triple carport, large trees just outside Cisco city limits.

LAKE CISCO  
1 BR 3/4 bath cabin, 2 storage buildings, dock, many oak trees, lots of water for storage. Call for details.

Must See! Large 4 BR, 1 3/4 bath 2 story home, 2 CH/A units, fireplace, several extra closets, balcony, \$115,000. oak trees, shop, 4 vehicle carport, covered boat dock.

Great view of the lake, unique 2 BR, 1 3/4 bath home surrounded by large oak trees, attached double garage, 2 ponds, 5 lots, yard is landscaped and fenced, covered boat dock with 2 boat slips. Call for details.

Ann Williams, Broker Jimmy Williams

**Remember to Renew Your Subscription**

## Country Cowboy Church

710 N. Seaman Eastland  
254-639-2155

Coffee & Donuts.....10:45 a.m.  
Worship Service.....11:00 a.m.  
Wednesday Night Bible Study...6:30 p.m.

Pastor Chad Gosnell





Veronica Barrett displays oil painting that she has done by holding a brush in her mouth.

### Veronica Barrett Paints Art From The Heart

The December 7th meeting of Artists of Eastland County was called to order by President Joy Conner. The first order of business was to review the success of the first art walk on December 2nd around the courthouse square of Eastland. Then members were treated with a program from

Veronica Barret, a new artist from Ranger.

Veronica explained that she has had a muscular disease since birth, and so she cannot use her hands to paint. She uses her mouth instead! Veronica has been painting for about one year with Eastland County artist Sue Grice. Club members noted that Veronica has had some amazing results in painting with oils. Veronica smiled as she showed several paintings that she has done recently, mentioning that she has received information from a website for painters who have to use their mouth or feet to paint. Veronica says that her husband is going to build her an art studio soon, and it will be suited especially for her needs.

President Joy Conner announced that the next meet-

ing for Artists of Eastland County is tentatively set for January 18, 2007 at 6:30p.m. at the community room of the First Financial Bank in Eastland. For more information call Joy Conner at 629-3290.

### Basketball Results

Third Place....  
 San Saba 20 21 19 18-78  
 Cisco 13 15 7 12-47  
 San Saba - Miles 3, Crosby 7, Hardy, 12; Turner 7, Sears 3; Perez 8, Bush 9, Davis 14, Dyer 15  
 Cisco - Walkingstick Caraway, 3; Koenig Ramirez 3, Williams 2, Chriesman 6, Matthews 15, Durham 2, Gattis 6,  
 Ballinger 69, Eastland 39  
 Ballinger 19 13 14 23-69  
 Eastland 11 6 10 13-39

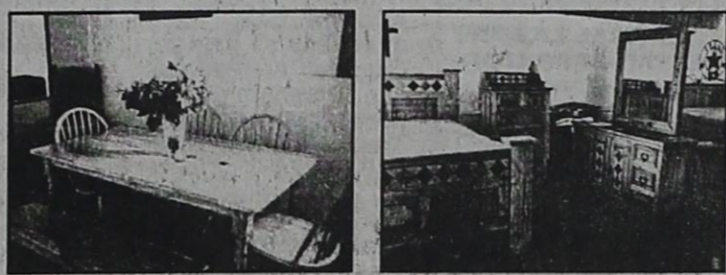
### Angel Food Delivery Saturday

The December Menu of Angel Food Ministry is this coming Saturday, December 16th at the Activity Building, West 8th & Ave F - Cisco from 10:15 a.m. till 11:15 a.m. You may order the January menu at this time also. A great blessing for this area in food relief.

### Sudoku Answers

8	6	5	4	1	2	3	7	9
1	7	2	8	9	3	4	6	5
4	3	9	5	6	7	1	8	2
9	2	8	7	5	4		3	1
6	4	7	2	3	1	5	9	8
3	5	1	6	8	9	7	2	4
2	8	3	1	4	6	9	5	7
7	9	4	3	2	5	8	1	6
5	1	6	9	7	8	2	4	3

### GREAT TIMES FURNITURE WAREHOUSE



Save 10% On Already Low Prices

Quality Furniture For Your Entire Home!

3100 W. Interstate 20 Eastland, Tx 254-629-3921

QUALITY FURNITURE AT LOW PRICES

Ronnie & Cindi Johnson would like to thank those who have supported Great Times Skating Rink for the past 15 years.

### GOOD LUCK CISCO LOBOES!



As your State Farm Agent, I am proud to support your dedication and commitment. Make this a season to remember.

Go Cisco Lobos!

Eddie M. McMillan  
 State Farm Agent  
 Cisco, TX 76437  
 Bus: 254-442-1671  
 eddie.mcmillan.b3v1@statefarm.com

LIKE A GOOD NEIGHBOR,



STATE FARM IS THERE.®

Providing Insurance and Financial Services

statefarm.com®

State Farm Mutual Automobile Insurance Company, State Farm Indemnity Company • Bloomington, IL 5-104

### Never Paint Again!

### VINYL SIDING & WINDOW REPLACEMENT

FREE ESTIMATES • FINANCING AVAILABLE

### FARM & HOME BUILDERS

5206 HICKORY - HICO, TEXAS 76457

1-254-796-4507 OT TOLL FREE 1-866-219-1923

**Mary Youvonne McMillan**  
 Texas Real Estate Broker  
 254-442-3846 254-653-8102 cell  
 NEED NEW HOME & ACREAGE LISTINGS: IF YOU WANT TO SELL WE WILL DO IT FOR YOU. www.mcmillanrealestate.net  
 1300 E. 16th, 1 acre, w/3 BR, 1 bath, office, lvg. utility, central heat. AS IS \$40,000.  
 708 Conrad Hilton, old Bank Bldg., Cisco. 4500 sq ft as is \$35,000.  
 813 Conrad Hilton Ave office bldg. 1311 +/- sf. 65' front x 100' lot. \$18,500.  
 1201 W. 14th, 3 BR, 2 3/4 bath; 1 car garage, + large den/master bedroom - brick home on corner, \$89,000.  
 480 acres @ Galpin in Dickens Co., TX - cultivation; some minerals, \$400 ac (owner/agent).  
 1011 W. 14th - Classic Spanish Home, Cisco - beautiful yard, 2 story, up 3 BR, 1 3/4 bath; down living room/dining room, hardwood floors, fireplace, kitchen w/ builtins, 1/2 bath - total 1900 sq. Guest house bedroom, kitchenette, bath, laundry room, living room w/ 2 car garage. Italian tile roof, plus adjoining near lot. \$208,000.  
 507 W. 7th, Cisco - renovation started, needs finishing, 3 BR, 2 bath, 2 carports, storage shed, 2 lots. \$20,000.  
 28.177 ac, old building, access to electricity and water, one stock tank, no minerals on Hwy. 6 N. of Cisco to right of Country Club Rd., sign on property, \$70,442 firm.  
 4 lots w/ 2 buildings 1000 Block of W. 8th, Cisco. Gas tanks gone. \$24,000.  
 Hunters Delight - Near Kokomo in Eastland Co., TX - 180 +/- acres, 4 game plots, 1 water well, 4 stock tanks with feeder on 2 of them. Electricity to land. Fences mostly good, 1 part time fenced. Wooded enough for game cover around the game plots. No minerals. Priced at \$499,500.

**Photos By Terry Simmons**  
 Commercial \* Passport \* Immigration \* Hand Gun  
 Portraits \* Weddings \* 35MM \* Digital  
 937 E. Main Street 254-631-6894  
 Eastland, TX 76448 254-629-2111  
 www.photosbyterrysimmmons.com

# Ford HOOD KING MOTOR CO.

All prices +TT&L

1308 E. Main Eastland, TX

CALL US (254) 629-1785 OR TOLL FREE (800) 798-5464

### New 2006 Ford F150 Super Cab XLT

V8, Auto, All Power  
 Stk. # 6T1551  
 List Price.....\$29,365  
 Dealer Disc.....-2,870  
 Ford Rebate.....-5,500



Sale Price \$20,995

### New 2006 Ford F150 Super Crew XLT

V8, Auto, All Power  
 Stk. # 6T8524  
 List Price.....\$33,240  
 Dealer Disc.....-3,245  
 Ford Rebate.....-5,500



Sale Price \$24,495

### New 2006 Ford Explorer Eddie Bauer

Loaded, Leather, 3rd Seat, Rear Air  
 Stk. # 6T6813  
 List Price.....\$33,720  
 Dealer Disc.....-2,725  
 Ford Rebate.....-4,000



Sale Price \$26,995

### New 2007 Ford Ranger Reg. Cab

Tilt, Cruise  
 Stk. # 7T3439  
 List Price.....\$16,460  
 Dealer Disc.....-965  
 Ford Rebate.....-2,000



Sale Price \$13,495

### New 2007 Ford F150 Reg. Cab

Stk. # 7T4264  
 List Price.....\$20,485  
 PEP Disc.....-1,095  
 Dealer Disc.....-395  
 Ford Rebate.....-3,000



Sale Price \$15,995

### New 2007 Ford F250 Crew Cab Diesel

XLT, 4x4, Auto  
 Stk. # 7T7193  
 List Price.....\$44,965  
 Dealer Disc.....-4,470  
 Ford Rebate.....-3,000



Sale Price \$37,495

# Good Country Wide Classifieds

Putnam, Carbon, Olden, Morton Valley, Desdemona, Kokomo

Baird Star • Cisco Press • Eastland Telegram • Ranger Times • Rising Star  
Thursday, December 14, 2006

Strawn, Mingus, Gordon, Gorman, Flatwoods

### REAL ESTATE

NEW: Carbon-1997 Clayton 16 x 60, 2-2 bath mfg. home, approx. 3/4 acre. \$25,000.

NEW: Gorman-2 houses/1 lot, 3-1 1/2 brick/frame, 1548', and 1-1 frame 648', several carports & storage buildings, app. 1.1 acres, several large trees, will separate. \$52,900.

17 A W DeLeon, w...  
**SOLD**  
electricity available, some new fence, nice homesite. \$2750 per acre.

NEW: 17.55 A West DeLeon FM 587, m...  
**SOLD**  
country water, nice.

30 A m/l Gorman, water well, elec. barn, coastal, old pond, good fences, 100s of small pecan trees. \$2,500 acre.

100 A west DeLeon, 3-1 1/2-2 older brick, 1444', C-H/A, fireplace, some remodeling, 3 ponds, 35 A coastal, 2 steel corrals, 2 wells, shop building. \$295,000.00.

160 A m/l NW east Gorman on FM 2921: 65 a m/l coastal, 75 a m/l wooded, water well, pond, steel corral. Indications show lots deer, turkey and hogs, mineral rights. \$2,900.00 per acre.

240 a west of DeLeon, 120 a fields, 80 a wooded, 40 a coastal, 2 small ponds, water well, in a great hunting area, lots of deer sign, great place! \$2,250.00 acre. Selling Comanche, Eastland and Brown Counties since 1954 and we WANT to sell yours. We solicit and appreciate your listings.

**COGBURN REAL ESTATE**  
DE LEON OFFICE  
(254) 893-6666  
HOME 893-2642  
758-2401  
www.cogburnreal estate.com  
RS104

IBUY HOUSES, quick cash in closing on house. \$30,000 or less. Call Jim @325-518-8128.  
T104

Home on Small Acreage \$148,000 3 Bdm, 2 Bath, brick on approx. 10 acres. Inground pool with self cleaning system and pool house, nicely landscaped, sprinkler system, metal fencing, stocked tank, horse stalls and tack room. Home has updated kitchen with an open design, laundry room and fireplace. 7 miles outside Eastland off of FM 570. Call for appointment 254-629-8650 owner/agent.  
E99

### HOMES FOR SALE

Clean spacious 2 BR, 1 Bath Modern Brick Home. Nice neighborhood. \$42K, 700 W. 3rd Street in Cisco. For more information please call 254-595-0230.  
E101

FOR SALE: Coach Hood's house in Rising Star 4 BR, 2 Bath, 2 living areas, office space, double wide on 2 lots, carport and storage bldg. 254-776-2416.  
RS104

### MOBILE HOMES

Taking applications on 2 Bedroom, 1 Bath, CH/A mobile home. No pets. Rental & job reference required. 629-1848.  
E104

### HOMES FOR SALE

For Sale in Ranger Newly remodeled Home C/HA, BIG Yard VERY Nice! Evenings 254-629-3159 104

### MOBILE HOMES

**TRINITY HOMES**  
Over 10 Acres of Homes on Display at Exit 292-B  
www.TrinityHomeSales.com  
Abilene, TX RBI 34909  
325-672-1490,  
1-866-672-1499 104

### MOBILE HOMES

New 5 + 3 with acreage, great kitchen, corner breakfast room. \$0 down, \$695 per mo.

FHA, 7%, 360 mos. 817-279-8505 RBI 35823 E105\*

3 + 2 D/wide New, with acreage, \$0 down, \$550 per mo!

FHA, 7%, 360 mos. 817-279-8505 RBI 35823 E105\*

S/Wide/D/wides Close out, New & Repos! Must see! 817-279-8505 RBI 35823 E105\*

New Cedar Home Set on your land or ours!

Rock, F.P., covered porch, island kitchen \$0 down, FHA, 7%, \$695 per mo. 817-279-8505 RBI 35823 E105\*

Large 4 + 2 with acreage, all appliances, Rock F.P., X-large bedrooms. \$0 down, \$650 per mo. FHA, 7%, 360 mos. 817-279-8505 RBI 25823 E105\*

Cash Out Singlewides! 3 16 x 80's to choose from - 3 BR, 2 Bath - all refurbished 2000 American Home Star '99 Crestridge '97 Fleetwood \$21,900 Cash delivered Must Go! 254-647-1950 E104

No More Rent! Own your home 3 or 4 BR your land or ours - New or Used - Financing available 254-647-1950 E104

Need extra Room? New 2000 sq. foot 5/3 - 0% down Land Home financing available 254-647-1950 E104

### APTS FOR RENT

Apt. For Rent: 2 Bedroom, 1 Bath. \$350 per month, \$150 deposit. Available Dec. 15. Call 254-631-1557. E101

**CEDAR RIDGE APARTMENTS**  
Clean Unfurnished Apartments Security Guard on grounds Maintenance Total Electric Laundry Central Heat/Air Near Schools/Hospital No Pets 254-629-2805 E104

**CASHIER**  
Experienced convenience store Cashier wanted in Putnam, TX. Please call 325-662-3328. E104

### APTS FOR RENT

**GHOLSON HOTEL APTS**  
If you are 55 years of age or older, handicapped or disable, and want a nice quiet place to live, come by the Gholson or call Martha at 254-647-1513. R104

### COUNTRY VILLA APTS

1-2 bedrooms, kitchen appliances, Central H/A, W/D, pool. On site security and maintenance. (Behind Pizza Inn) 1099 Lago Vista Blvd. Eastland, Texas. Contact Kim Ramsey, Manager 629-2769. E104

### ROYAL OAKS APARTMENTS

Unfurnished 1 and 2 Bedroom; Carpet, Drapes, & Kitchen Appliances Furnished. Water, Trash Pickup & TV Cable Paid. Also Laundry Room at complex. Choice neighborhood. See and compare at 1304 Royal Lane, Cisco, or call 442-3232. Vacancies not always available. C104

### HELP WANTED

Cisco Sonic is now hiring for Cooks and Carhops. Management opportunities available also. Must apply in person. C104

Looking for a dependable person in Ranger to watch 2 year old Monday through Friday. Call 325-320-6054 or (254) 647-3626 ask for Abby. R100

Taylor Petroleum Co., 11618 I-20, Eastland needs full or part-time. Apply in person or at www.taylorfoodmart.com E103

**HOUSEKEEPING/LAUNDRY HELP:**  
Valley View Healthcare Center seeks FULL TIME employees. Contact Mary Ince at (254) 629-1779, Mon. thru Fri., or apply in person Mon-Fri, 9:00 a.m. to 3:00 p.m. VALLEY VIEW HEALTHCARE CENTER, 700 Ostrom St., Eastland. E101

Certified Pharmacy Technician or Tech Trainee needed. Contact CVS in Brackenridge 254-559-3341. Salary is commensurate with experience. E100

### Pyramid HealthCare Wants You!

Pyramid HealthCare, a leader in the long-term care industry, is looking for qualified candidates to join our progressive team. Due to a recent increase in admissions Heritage Manor of Gorman Currently has the following positions available:  
LVN Relief RN CNA Please apply in person at 600 W. Roosevelt Gorman, TX. Pyramid HealthCare EEOC M/F/D/V E101

**CASHIER**  
Experienced convenience store Cashier wanted in Putnam, TX. Please call 325-662-3328. E104

### HELP WANTED

**Need EXTRA CASH FOR THE HOLIDAYS?**  
Housewives, retirees, work at home, get paid in cash. Contact the Telegram for instructions. Must follow instructions. Come by 215 S. Seaman in Eastland and pick up an application or apply in person.

### TEMP TO DIRECT POSITIONS NOW HIRING

**EQUIPMENT OPERATORS - Frac GENERAL LABOR / EQUIP OPERATOR - Water Transfer**

Clean driving record (no DUI in past 7 years) No Felony past 7 years Drug, Alcohol Free Hs Grad 21 years of age or older Meet physical reqmts for lifting

Phoenix Services, Inc. Phoenix Services is an Equal Opportunity Employer ofrance@asgardglobal.com 817-640-5135

Now hiring Cashiers/Cook apply in person at 18 Wheelers 100 E. I-20 in Cisco. E103

Experienced Welder needed to build oil field storage tanks Stewart Tank Co., Strawn, TX. 254-672-5102. R102

Truck driver needed to haul oil field storage tanks and equipment. Stewart Tank Co., Strawn, TX. 254-672-5102. R102

**JOB OPENING** for person with Web Press Newspaper Experience to fill second slot with small group in Eastland. All applicants subject to drug and alcohol testing. References required. Apply in person by appointment to 254-629-1707. E104

**Part Time Support Aide** needed at the Head Start in Ranger. \$6.48/hr. with paid retirement. Deadline Dec. 27. Also accepting applications for substitutes. Call (325) 625-4167. Central Texas Opportunities, Inc. is an E.O.E. E102

Need a person with former law enforcement experience to do investigations into criminal, family and civil cases, primarily interviewing witnesses. Please send resume to Gary D. Peak, P.O. Box 931, Eastland, Texas 76448. Please do not call. We will review the resumes and schedule appointments as necessary. E104

Eastland County Tire (Goodyear) now hiring for General Automotive Service and Repair Tech. Oil lube filter, automotive tire, industrial tire, brakes and front end, heating and cooling experience a plus. Good driving record mandatory. No phone calls. Apply in person 315 E. Main, Eastland. E2

### HELP WANTED

The City of Ranger has openings for the following positions:  
1. TCLEOSE Certified Police Chief  
2. TCLEOSE Certified Police Officer  
3. Utility/Maintenance Worker  
Applications are available at Ranger City Hall or resumes can be sent to 400 W. Main Street, Ranger, Texas 76470. 254-647-3522.  
4. Certified Firefighter/EMT  
Please contact Fire Chief Darrell Fox at 254-647-1505 for information or application. R104

Part-time Attendants needed to assist elderly and disabled clients with personal care and light housekeeping in Eastland County area. Contact Missy at 877-885-7056. E104

Moylan Construction Company is accepting applications for Operators & Labor Hands. Come by 512 N. Seaman, Eastland to apply. E104

**POSITION OPEN AT RANGER COLLEGE HEAD ATHLETIC TRAINER**  
Begin work March 2007. Complete job description is available at the RC Personnel Office. Master's Degree and L.A.T. required; Salary negotiable; experience training and recruiting at the college level; teaching athletic training courses; related experiences and skills that would benefit a two-year college environment. If interested, send a typed Letter of Interest, resume, Unofficial transcripts to: Ranger College Personnel Office 1100 College Circle Ranger, TX 76470 Applications will be considered until January 15, 2007. RC is an Equal Employment Opportunity Institution and Employer. R100

**HELP WANTED:**  
Experienced mature woman for home cleaning; Rainbow vacuum cleaning system knowledge helpful. Needed every other week for multiple in-home tasks. Good references required. Please call 254-629-2413 after 6 p.m. to set interview. E104

**Karsten Homes** seeking highly motivated individuals wanting to work with a rapidly growing company. We offer Medical, Dental, Vision and company paid life insurance. Paid vacations, holidays and a 401 k plan with 6% company match. Team mates are eligible for Team Profit Sharing after the first 30 days of employment. Applicants must pass a pre-employment drug screen and physical. Interested individuals may apply in person at: Karsten Homes 820 Industrial Loop Brackenridge, TX 76424. E104\*

**RANGER CARE CENTER**  
A Privately Owned, Skilled Nursing Facility Due to recent increase in census, we are accepting applications for the following positions:  
**WEEKEND RN (PT-4 SHIFTS/MONTH)**  
Ranger Care Center offers competitive wages and a friendly, team oriented environment. Apply in person at: 460 W. Main St., Ranger, TX. 76470 For more info, call (254) 647-3111 Equal Opportunity Employer. R104

**Valentino's Italian Restaurant & Pizza** now hiring for the following positions:  
Wait Staff  
Dishwasher  
Cashier  
Apply in person. E104

**CLASSIFIED ADS**  
SHOPPER'S GUIDE TO EVERYTHING

### HELP WANTED

Are you worth more than Minimum wage?  
Are you tired of making \$6-\$7 an hour?  
Than this is the job for you!!!  
Great pay Production bonuses  
Paid vacations  
Quick advancement  
Awesome work atmosphere  
Flexible scheduling  
866-433-9117 104

**VALLEY VIEW HEALTHCARE CENTER**  
Immediate openings!  
LVN: Part time/PRN 10-6 shift, contact CHERYL WILSON, RN for interview.  
CNA: FULL TIME 2-10 shift, contact CHERYL WILSON, RN  
Dietary Aide to assist in kitchen and dining room areas. Contact APRIL ALBERNI. Competitive rates, and full time employees are eligible for company benefits. EOE. Please apply at:  
VALLEY VIEW HEALTH CENTER  
700 S. Ostrom St. Eastland 254-629-1779  
Across the street from the High School track and Elementary School 102

**HELP WANTED**  
Immediate openings!  
LVN: Part time/PRN 10-6 shift, contact CHERYL WILSON, RN for interview.  
CNA: FULL TIME 2-10 shift, contact CHERYL WILSON, RN  
Dietary Aide to assist in kitchen and dining room areas. Contact APRIL ALBERNI. Competitive rates, and full time employees are eligible for company benefits. EOE. Please apply at:  
VALLEY VIEW HEALTH CENTER  
700 S. Ostrom St. Eastland 254-629-1779  
Across the street from the High School track and Elementary School 102

**HELP WANTED**  
Immediate openings!  
LVN: Part time/PRN 10-6 shift, contact CHERYL WILSON, RN for interview.  
CNA: FULL TIME 2-10 shift, contact CHERYL WILSON, RN  
Dietary Aide to assist in kitchen and dining room areas. Contact APRIL ALBERNI. Competitive rates, and full time employees are eligible for company benefits. EOE. Please apply at:  
VALLEY VIEW HEALTH CENTER  
700 S. Ostrom St. Eastland 254-629-1779  
Across the street from the High School track and Elementary School 102

**HELP WANTED**  
Immediate openings!  
LVN: Part time/PRN 10-6 shift, contact CHERYL WILSON, RN for interview.  
CNA: FULL TIME 2-10 shift, contact CHERYL WILSON, RN  
Dietary Aide to assist in kitchen and dining room areas. Contact APRIL ALBERNI. Competitive rates, and full time employees are eligible for company benefits. EOE. Please apply at:  
VALLEY VIEW HEALTH CENTER  
700 S. Ostrom St. Eastland 254-629-1779  
Across the street from the High School track and Elementary School 102

**HELP WANTED**  
Immediate openings!  
LVN: Part time/PRN 10-6 shift, contact CHERYL WILSON, RN for interview.  
CNA: FULL TIME 2-10 shift, contact CHERYL WILSON, RN  
Dietary Aide to assist in kitchen and dining room areas. Contact APRIL ALBERNI. Competitive rates, and full time employees are eligible for company benefits. EOE. Please apply at:  
VALLEY VIEW HEALTH CENTER  
700 S. Ostrom St. Eastland 254-629-1779  
Across the street from the High School track and Elementary School 102

**HELP WANTED**  
Immediate openings!  
LVN: Part time/PRN 10-6 shift, contact CHERYL WILSON, RN for interview.  
CNA: FULL TIME 2-10 shift, contact CHERYL WILSON, RN  
Dietary Aide to assist in kitchen and dining room areas. Contact APRIL ALBERNI. Competitive rates, and full time employees are eligible for company benefits. EOE. Please apply at:  
VALLEY VIEW HEALTH CENTER  
700 S. Ostrom St. Eastland 254-629-1779  
Across the street from the High School track and Elementary School 102

**HELP WANTED**  
Immediate openings!  
LVN: Part time/PRN 10-6 shift, contact CHERYL WILSON, RN for interview.  
CNA: FULL TIME 2-10 shift, contact CHERYL WILSON, RN  
Dietary Aide to assist in kitchen and dining room areas. Contact APRIL ALBERNI. Competitive rates, and full time employees are eligible for company benefits. EOE. Please apply at:  
VALLEY VIEW HEALTH CENTER  
700 S. Ostrom St. Eastland 254-629-1779  
Across the street from the High School track and Elementary School 102

**HELP WANTED**  
Immediate openings!  
LVN: Part time/PRN 10-6 shift, contact CHERYL WILSON, RN for interview.  
CNA: FULL TIME 2-10 shift, contact CHERYL WILSON, RN  
Dietary Aide to assist in kitchen and dining room areas. Contact APRIL ALBERNI. Competitive rates, and full time employees are eligible for company benefits. EOE. Please apply at:  
VALLEY VIEW HEALTH CENTER  
700 S. Ostrom St. Eastland 254-629-1779  
Across the street from the High School track and Elementary School 102

**HELP WANTED**  
Immediate openings!  
LVN: Part time/PRN 10-6 shift, contact CHERYL WILSON, RN for interview.  
CNA: FULL TIME 2-10 shift, contact CHERYL WILSON, RN  
Dietary Aide to assist in kitchen and dining room areas. Contact APRIL ALBERNI. Competitive rates, and full time employees are eligible for company benefits. EOE. Please apply at:  
VALLEY VIEW HEALTH CENTER  
700 S. Ostrom St. Eastland 254-629-1779  
Across the street from the High School track and Elementary School 102

**HELP WANTED**  
Immediate openings!  
LVN: Part time/PRN 10-6 shift, contact CHERYL WILSON, RN for interview.  
CNA: FULL TIME 2-10 shift, contact CHERYL WILSON, RN  
Dietary Aide to assist in kitchen and dining room areas. Contact APRIL ALBERNI. Competitive rates, and full time employees are eligible for company benefits. EOE. Please apply at:  
VALLEY VIEW HEALTH CENTER  
700 S. Ostrom St. Eastland 254-629-1779  
Across the street from the High School track and Elementary School 102

**HELP WANTED**  
Immediate openings!  
LVN: Part time/PRN 10-6 shift, contact CHERYL WILSON, RN for interview.  
CNA: FULL TIME 2-10 shift, contact CHERYL WILSON, RN  
Dietary Aide to assist in kitchen and dining room areas. Contact APRIL ALBERNI. Competitive rates, and full time employees are eligible for company benefits. EOE. Please apply at:  
VALLEY VIEW HEALTH CENTER  
700 S. Ostrom St. Eastland 254-629-1779  
Across the street from the High School track and Elementary School 102

**HELP WANTED**  
Immediate openings!  
LVN: Part time/PRN 10-6 shift, contact CHERYL WILSON, RN for interview.  
CNA: FULL TIME 2-10 shift, contact CHERYL WILSON, RN  
Dietary Aide to assist in kitchen and dining room areas. Contact APRIL ALBERNI. Competitive rates, and full time employees are eligible for company benefits. EOE. Please apply at:  
VALLEY VIEW HEALTH CENTER  
700 S. Ostrom St. Eastland 254-629-1779  
Across the street from the High School track and Elementary School 102

**HELP WANTED**  
Immediate openings!  
LVN: Part time/PRN 10-6 shift, contact CHERYL WILSON, RN for interview.  
CNA: FULL TIME 2-10 shift, contact CHERYL WILSON, RN  
Dietary Aide to assist in kitchen and dining room areas. Contact APRIL ALBERNI. Competitive rates, and full time employees are eligible for company benefits. EOE. Please apply at:  
VALLEY VIEW HEALTH CENTER  
700 S. Ostrom St. Eastland 254-629-1779  
Across the street from the High School track and Elementary School 102

### HELP WANTED

**!!Help!! Wanted**  
NEEDED IMMEDIATELY  
2 pm to 10 pm Cook & Convenience Store Cashier  
Pay Depends on Experience  
Willing to Train  
Hard Working Individuals  
Apply at Red Star Corner of Hwy 6 & I-20 Eastland 104

**VALLEY VIEW HEALTHCARE CENTER**  
Immediate openings!  
LVN: Part time/PRN 10-6 shift, contact CHERYL WILSON, RN for interview.  
CNA: FULL TIME 2-10 shift, contact CHERYL WILSON, RN  
Dietary Aide to assist in kitchen and dining room areas. Contact APRIL ALBERNI. Competitive rates, and full time employees are eligible for company benefits. EOE. Please apply at:  
VALLEY VIEW HEALTH CENTER  
700 S. Ostrom St. Eastland 254-629-1779  
Across the street from the High School track and Elementary School 102

**VALLEY VIEW HEALTHCARE CENTER**  
Immediate openings!  
LVN: Part time/PRN 10-6 shift, contact CHERYL WILSON, RN for interview.  
CNA: FULL TIME 2-10 shift, contact CHERYL WILSON, RN  
Dietary Aide to assist in kitchen and dining room areas. Contact APRIL ALBERNI. Competitive rates, and full time employees are eligible for company benefits. EOE. Please apply at:  
VALLEY VIEW HEALTH CENTER  
700 S. Ostrom St. Eastland 254-629-1779  
Across the street from the High School track and Elementary School 102

**VALLEY VIEW HEALTHCARE CENTER**  
Immediate openings!  
LVN: Part time/PRN 10-6 shift, contact CHERYL WILSON, RN for interview.  
CNA: FULL TIME 2-10 shift, contact CHERYL WILSON, RN  
Dietary Aide to assist in kitchen and dining room areas. Contact APRIL ALBERNI. Competitive rates, and full time employees are eligible for company benefits. EOE. Please apply at:  
VALLEY VIEW HEALTH CENTER  
700 S. Ostrom St. Eastland 254-629-1779  
Across the street from the High School track and Elementary School 102

**VALLEY VIEW HEALTHCARE CENTER**  
Immediate openings!  
LVN: Part time/PRN 10-6 shift, contact CHERYL WILSON, RN for interview.  
CNA: FULL TIME 2-10 shift, contact CHERYL WILSON, RN  
Dietary Aide to assist in kitchen and dining room areas. Contact APRIL ALBERNI. Competitive rates, and full time employees are eligible for company benefits. EOE. Please apply at:  
VALLEY VIEW HEALTH CENTER  
700 S. Ostrom St. Eastland 254-629-1779  
Across the street from the High School track and Elementary School 102

**VALLEY VIEW HEALTHCARE CENTER**  
Immediate openings!  
LVN: Part time/PRN 10-6 shift, contact CHERYL WILSON, RN for interview.  
CNA: FULL TIME 2-10 shift, contact CHERYL WILSON, RN  
Dietary Aide to assist in kitchen and dining room areas. Contact APRIL ALBERNI. Competitive rates, and full time employees are eligible for company benefits. EOE. Please apply at:  
VALLEY VIEW HEALTH CENTER  
700 S. Ostrom St. Eastland 254-629-1779  
Across the street from the High School track and Elementary School 102

**VALLEY VIEW HEALTHCARE CENTER**  
Immediate openings!  
LVN: Part time/PRN 10-6 shift, contact CHERYL WILSON, RN for interview.  
CNA: FULL TIME 2-10 shift, contact CHERYL WILSON, RN  
Dietary Aide to assist in kitchen and dining room areas. Contact APRIL ALBERNI. Competitive rates, and full time employees are eligible for company benefits. EOE. Please apply at:  
VALLEY VIEW HEALTH CENTER  
700 S. Ostrom St. Eastland 254-629-1779  
Across the street from the High School track and Elementary School 102

**VALLEY VIEW HEALTHCARE CENTER**  
Immediate openings!  
LVN: Part time/PRN 10-6 shift, contact CHERYL WILSON, RN for interview.  
CNA: FULL TIME 2-10 shift, contact CHERYL WILSON, RN  
Dietary Aide to assist in kitchen and dining room areas. Contact APRIL ALBERNI. Competitive rates, and full time employees are eligible for company benefits. EOE. Please apply at:  
VALLEY VIEW HEALTH CENTER  
700 S. Ostrom St. Eastland 254-629-1779  
Across the street from the High School track and Elementary School 102

**VALLEY VIEW HEALTHCARE CENTER**  
Immediate openings!  
LVN: Part time/PRN 10-6 shift, contact CHERYL WILSON, RN for interview.  
CNA: FULL TIME 2-10 shift, contact CHERYL WILSON, RN  
Dietary Aide to assist in kitchen and dining room areas. Contact APRIL ALBERNI. Competitive rates, and full time employees are eligible for company benefits. EOE. Please apply at:  
VALLEY VIEW HEALTH CENTER  
700 S. Ostrom St. Eastland 254-629-1779  
Across the street from the High School track and Elementary School 102

**VALLEY VIEW HEALTHCARE CENTER**  
Immediate openings!  
LVN: Part time/PRN 10-6 shift, contact CHERYL WILSON, RN for interview.  
CNA: FULL TIME 2-10 shift, contact CHERYL WILSON, RN  
Dietary Aide to assist in kitchen and dining room areas. Contact APRIL ALBERNI. Competitive rates, and full time employees are eligible for company benefits. EOE. Please apply at:  
VALLEY VIEW HEALTH CENTER  
700 S. Ostrom St. Eastland 254-629-1779  
Across the street from the High School track and Elementary School 102

**VALLEY VIEW HEALTHCARE CENTER**  
Immediate openings!  
LVN: Part time/PRN 10-6 shift, contact CHERYL WILSON, RN for interview.  
CNA: FULL TIME 2-10 shift, contact CHERYL WILSON, RN  
Dietary Aide to assist in kitchen and dining room areas. Contact APRIL ALBERNI. Competitive rates, and full time employees are eligible for company benefits. EOE. Please apply at:  
VALLEY VIEW HEALTH CENTER  
700 S. Ostrom St. Eastland 254-629-1779  
Across the street from the High School track and Elementary School 102

**VALLEY VIEW HEALTHCARE CENTER**  
Immediate openings!  
LVN: Part time/PRN 10-6 shift, contact CHERYL WILSON, RN for interview.  
CNA: FULL TIME 2-10 shift, contact CHERYL WILSON, RN  
Dietary Aide to assist in kitchen and dining room areas. Contact APRIL ALBERNI. Competitive rates, and full time employees are eligible for company benefits. EOE. Please apply at:  
VALLEY VIEW HEALTH CENTER  
700 S. Ostrom St. Eastland 254-629-1779  
Across the street from the High School track and Elementary School 102

**VALLEY VIEW HEALTHCARE CENTER**  
Immediate openings!  
LVN: Part time/PRN 10-6 shift, contact CHERYL WILSON, RN for interview.  
CNA: FULL TIME 2-10 shift, contact CHERYL WILSON, RN  
Dietary Aide to assist in kitchen and dining room areas. Contact APRIL ALBERNI. Competitive rates, and full time employees are eligible for company benefits. EOE. Please apply at:  
VALLEY VIEW HEALTH CENTER  
700 S. Ostrom St. Eastland 254-629-1779  
Across the street from the High School track and Elementary School 102

**VALLEY VIEW HEALTHCARE CENTER**  
Immediate openings!  
LVN: Part time/PRN 10-6 shift, contact CHERYL WILSON, RN for interview.  
CNA: FULL TIME 2-10 shift, contact CHERYL WILSON, RN  
Dietary Aide to assist in kitchen and dining room areas. Contact APRIL ALBERNI. Competitive rates, and full time employees are eligible for company benefits. EOE. Please apply at:  
VALLEY VIEW HEALTH CENTER  
700 S. Ostrom St. Eastland 254-629-1779  
Across the street from the High School track and Elementary School 102

### HELP WANTED

**NOW HIRING!**  
LVNs Full and Part time openings on 6-2 and 10-6 shifts. Requires TEXAS state license. CNAs Full and Part time openings on 6-2 and 2-10 shifts. Requires TEXAS Certification. Dishwasher Day & evening shifts available. Various kitchen duties. Competitive rates, & full time employees are eligible for company benefits incl vacation leave, & holiday pay. EOE. Please apply in person EASTLAND HEALTHCARE CENTER 1405 West Commerce Eastland, TX 100

**BUSINESS SERVICES**  
Ruth Schaefer Stewart, M.Ed. L.P.C.-S, R.P.T.-I Licensed Professional Counselor Working with children & adolescents Women's issues incorporating art, play and sand tray. For appointments call (254) 442-4280 ruth.stewart@att.net C104

**BUSINESS SERVICES**  
Ruth Schaefer Stewart, M.Ed. L.P.C.-S, R.P.T.-I Licensed Professional Counselor Working with children & adolescents Women's issues incorporating art, play and sand tray. For appointments call (254) 442-4280 ruth.stewart@att.net C104

**BUSINESS SERVICES**  
Ruth Schaefer Stewart, M.Ed. L.P.C.-S, R.P.T.-I Licensed Professional Counselor Working with children & adolescents Women's issues incorporating art, play and sand tray. For appointments call (254) 442-4280 ruth.stewart@att.net C104

**BUSINESS SERVICES**  
Ruth Schaefer Stewart, M.Ed. L.P.C.-S, R.P.T.-I Licensed Professional Counselor Working with children & adolescents Women's issues incorporating art, play and sand tray. For appointments call (254) 442-4280 ruth.stewart@att.net C104

# AREA MEDICAL DIRECTORY

## New Lab Mice Pave Way For Novel Studies Of Human Infections

Dallas--A new type of laboratory mouse developed at UT Southwestern Medical Center can fight certain infections the same way humans do, making the rodents very useful for novel studies of human-pathogen interaction and developing disease therapies.

Normal mice are not susceptible to human-specific viruses, such as Epstein Barr virus and HIV, making it hard to study and craft drugs to target the viruses. Epstein Barr is a virus that causes mononucleosis.

So UT Southwestern researchers, working with University of Minnesota collaborators, generated human-mice "chimeras"--mice implanted with human tissues and human stem cells--that developed fully functional human immune systems and infection-fighting cells, such as T cells, throughout their bodies, according to a study published online in *Nature Medicine*.

The T cells in the mice even mounted a potent immune response to toxic shock syndrome and infection by Epstein Barr.

"These human-mice 'chimeras' are susceptible to a variety of human specific viruses that couldn't be easily studied in the past, giving scientists a new way to study, develop and implement novel vaccines and therapeutics to fight human disease like cancer and AIDS," said Dr. J. Victor Garcia, professor of internal medicine at UT Southwestern and the study's senior author.

Investigators have long used mouse models to study human physiology and to test new drugs, but differences in mouse and human immune systems--and the fact that normal mice can't be infected with human-specific pathogens or produce human immune cells needed to fight them--have severely limited this line of research.

To allow these studies, researchers have developed chimeras.

In immune-deficient mice that are unable to reject human cells or tissues, researchers first implant the rodents with human tissues necessary to develop human T cells. Human blood stem cells, known as CD34+ cells, then are transplanted into the mice. CD34+ cells, which give rise to human T cells, B cells and other types of human cells that protect the body against foreign organisms and pathogens, are typically used to treat human cancer and blood and heart disorders.

In this latest study, UT Southwestern researchers and their Minnesota colleagues used this combination approach-- human tissues and stem cells--to try to generate a new type of chimera that can develop T cells the same way as humans.

The resulting mice, known as Bone Marrow Liver Thymic mice (BLT mice), developed a human immune sys-

tem with dramatically high human T cell and other counts in virtually all of their tissues, including the gut and lungs, sites of important immune response to diseases.

UT Southwestern researchers tested the immune system by inducing toxic shock syndrome in the mice or infecting them with Epstein Barr virus, both deadly diseases that are known to cause a proliferation of T cells in humans. The mice produced ample T cells to respond to each disease.

## Immunization Clinic To Be Held December 18

The Department of State Health Services will hold a children's Immunization Clinic Monday, December 18 at First Baptist Church (Multi-Purpose Conference

Room) 405 S. Seaman, Eastland, TX from 9:30 - 12 and 1:30-3:00.

At this time FLU Shots are available. Please call and make an appointment 254-

559-2205.

Please bring SS# and Medicaid if available. Shot

records are required to be brought at time of visit.

For more information call Amelia Valdez at 559-2205.

## Medicare Prescription Drug Coverage Program Dec. 19

Open enrollment for the Medicare Prescription Drug Coverage is Nov. 15-Dec. 31. Many people still have questions about how this coverage works and how they can find the plan that works best for the prescription drugs they take. In efforts to help the public understand this

new benefit, representatives from the Social Security Administration and the West Central Texas Council of Governments will present a program on the Medicare Prescription Drug Coverage at the Daugherty Street Church of Christ, 309 S. Daugherty St. in Eastland on Tuesday, Dec. 19th at 10:30 a.m.

Topics covered will include: How the Plans Work, Enrollment, Exceptions and Appeals, and Getting Help With Your Rx Drug Costs.

All interested individuals are invited.



## United

HOME HEALTH  
an encompass company

**Medicare Certified Home Health Services**

• Skilled Nursing	• Diabetic Care
• Physical Therapy	• Medical Social Work
• Speech Therapy	• Home Health Aides
• Occupational Therapy	• Psychiatric Nursing

1420 East Main Street, Eastland, TX 76448  
866.488.8200 \* 254.629.8200



Left to right: Gwyneth Johnson, LVN; Dianne Andrews, LVN; Darla Davis, LVN; Joy Luther, LVN.

**Avi T. Deshmukh, M.D., F.A.C.S.**

Board Certified in Urology

---

**Frank V. Terrell, M.D.**

General Ophthalmology & Ophthalmic Surgery

**Eastland Memorial Hospital**

For Appointment call  
**(254) 629-2601**

**Girling Health Care is having FLU shot clinics at the following locations:**

**Flu shots: \$15 (cash pay) or Medicare Part B (no charge)**

**November 16** - 10 a.m.-12 p.m. Hillside Village, Apt. 714 E. 10, Cisco

**November 21** - 10 a.m. - 12 p.m., Cisco Chamber of Commerce, 309 Conrad Hilton, Cisco

**405 E. Commerce • Eastland • 629-1268**

Go With The Best

★ ★ **TRI-STAR** ★ ★

**HOME CARE**

Gives Quality Care

---

★ Home Health Care  
★ Primary Care  
★ C.B.A.

---

Cisco, TX 76437  
Telephone (254) 442-4996


**Chiropractor**  
**Jimmy L. Carpenter D.C.**

Office Hours Tues. & Sat.:  
Tues. - 9:00 a.m. till 12:00  
1:30 p.m. till 5:00 p.m.  
(After 5:00  
by appointment only)  
Sat.: 8:00 a.m. till 12:00 Noon

**Massage Therapist**  
**Linda Walls**  
**R.M.T.**

By Appointment:  
Monday thru Saturday

111 W. White in Eastland,  
table 254-629-1667  
1/2 mile north of Courthouse  
(1 block north of the Courthouse)



## B & W CLINIC


*of Eastland*


**Announces the retirement of**  
M.A. Treadwell, M.D.

*Family Physician and Valued Member of the Medical Community, will retire*  
**December 28 2006.**

Patient records will be available upon request.

**B & W Clinic.**  
400 W. Plummer • Eastland, Tx  
254-629-1744  
Office Hours: 8 am to 5 pm  
Monday - Friday





## Gentle Family DENTIST

Accepting New Patients  
**Joe K.Reed, DDS**  
Over 30 years experience  
In Baird Accepts

# MEDICAID

& Most Dental Insurance  
1-866-854-1173 • 325-854-1173

## Did You Know?

Eastland Memorial Hospital is home to the following physician specialties:

- Cardiology
- Family Practice
- General Surgery
- Internal Medicine
- Obstetrics
- Ophthalmology
  - o Eye and cataract specialists
- Oncology
- Orthopedics
- Otolaryngology
  - o Ear, nose and throat specialists
- Podiatry
- Urology

# EASTLAND

## MEMORIAL HOSPITAL

"People You Know Caring for People You Love"

(254) 629-2601      www.eastlandmemorial.com

# Aunt Pearl's "06" Strawn 3rd Saturday Jamboree

By J.B. Johnston  
After reading my article entitled "Up in Arms", someone questioned me as to how many old widow women I knew who had guns for protection. Well, that was hard to remember but I would say a few at the least. Right now I can only think of one, and that is an Arkansas widow of a cousin of Ann's. She is in her 80's and quite well armed with several guns. She also has two security systems. The first is electronic but the best is her little dog that sleeps in the house. The first is for when she isn't at home and the dog is for when she is there. Most people don't realize that a dog is a real good deterrent for thieves. To protect ones self and property, one needs to know when a person is breaking and entering. A dog is about as good an alarm as it gets for this.

a gun will fire when it is needed. Aunt Pearl knew. She is reported to have taken a deer with the old gun, but I never ask or really cared for that matter. I just always made sure that I was properly announced before entering her house. When she was in her nineties and her hearing was somewhat diminished, I really made sure that she knew who I was before entering her house.

It is one thing to own a gun and quite another to be able to use it. There was never a doubt in my mind that Aunt Pearl could and would use hers. The last time I saw her she was in her 90's and told me about her plans for her 100th birthday. She was to borrow a horse from Joe Standfield, who was a local horse owner, and ride down Main Street naked. I never doubted that either. However, Aunt Pearl died at age 98, but she outlived Joe Standfield, and I suspect all his horses. So the next time one of you criminals think about breaking into some old widow woman's house, you best hope it isn't one like Aunt Pearl, or you had better been drinking stop leak.  
(So says the Carbonite).

Strawn 3rd Saturday Jamboree will be held Saturday, December 16 at 6 p.m. Concessions open at 5:30 p.m.

New location 301 E. Housley St. Hwy 16 to downtown, turn East on Hwy 108 (Housley St.) 2 blocks.

Everyone is invited to come and hear a good-fine-up of country, gospel and bluegrass music.

Alcohol and Smoke-free environment.

Free admission, everyone welcome.

For information call Finis Butler at 254-672-5622 or 672-5816.

Come early and visit our downtown shops and restaurants, or visit Lake Tucker Park 5 mi. West of Town for walking, hiking and nature trails, bird-watching, or just enjoy the scenery. Tables and grills available. Visit the home of town's founder, Stephen Bethel Strawn. See display of 'The Texas Giants'.

Aunt Pearl Hodge was another story in itself. She wasn't actually our aunt but just a handle that we hung on her. Our kids even called her Pearly Gates. We loved her. She and mother were fishing partners for several years, so we knew her quite well. Pearl was a big woman that could probably have whipped most of the burglars that we see on TV today, bare handed. She dipped her snuff from a glass jar with what she called her tooth brush, made from a willow limb. But she also had this 30/06 Remington semi-automatic deer rifle that she had won some years before in a raffle. I've been told she also had a pistol but I never saw it. I always suspicioned that she had one and it would be loaded and handy. The old "06" got fired once a year on New Year's Eve. At midnight, she had for years, shot the old gun one time and then gone to bed. This action is not recommended today due to the possibility of accidentally shooting someone.

A lesson here is that it is good to know whether or not

**Guitar Piano Fiddle & Suzuki Violin Lessons Children & Adults**  
Melissa Jackson  
254-629-2721  
Music Degree TCU  
National Guild of Piano Teachers

*Help a child have a good Christmas - bring a toy by Dec. 20th, 2006 and get a 25% discount on your purchase.*

**Come And Join Us For Some Christmas Shopping**  
*Amber's Simple Pleasures*

959 E. Main • Eastland  
254-629-8822  
Open: Mon.-Fri. 10-5; Sat. 10-2

**Comanche Livestock Exchange**  
7456 Hwy 67 E. Comanche, TX 76442  
Sale Day Saturday at 12:00 p.m.

We have hauling, day work, catch, and portable penning service available. We also offer a variety of marketing options for today's livestock producer.

For More Information & Market Reports Log-On To:  
[www.comanchelivestockexchange.com](http://www.comanchelivestockexchange.com)  
Or Give Us A Call At 325-356-5231

**Leon River Cowboy Church**  
"Just Good Folks Trying To Live For The Lord"

Pastor Paul Howie  
254-631-3661

Texas Cattle Exchange

**Front Porch Conversations with Jesus**

9:30 a.m. Coffee/Donuts  
9:45 Adult & Youth Bible Study  
11:00 a.m. Worship

**Remember To Renew Your Subscription**

**Holiday Phone Sale**

**FREE**

Give the gift of style.

**Samsung G417**

Buy One at \$29.99 Get up to 3 FREE

**HAWK** x **cingular**

cellular depot

973 East Main Eastland, TX 76448 (254) 629-3339

## Parents Day Out Saturday In Eastland

Parents Day Out Sponsored by Eastland Ag Boosters Saturday, December 16th from 10 a.m. until 8 p.m. First Baptist Church 405 S. Seaman, Eastland. Kindergarten—6th Grade. \$15.00 includes fun-filled day, plus 2 meals, drinks and 1 snack. Tons of fun, music, movies, basketball, air hockey and MORE! The kids will have a great time and the parents can have the whole day to Christmas shop, decorate and bake for the Holidays OR just relax! Plan on bringing the kids; Saturday, Dec. 16th at First Baptist Church in Eastland, 10 a.m. until 8 p.m. Sponsored by the Eastland Ag Boosters.

If you need more information call Kalli Stacy 254-6171; Lovey Moore 254-631-0619; Renae Carlton 254-433-0211; or Becky Pulis 254-631-6207.

**Beauty Tip**

You're in a hurry and dry shave your legs. Not only can you increase the chance of cuts by dry shaving, you increase the chance of irritation, ingrown hairs, and razor burn. Break the habit of dry shaving and nurture your skin by softening your skin in the shower or bath for 10 minutes. Apply a layer of shaving cream, hair conditioner, or shaving gel. Do not use soap, and break the habit of using soap if you're using it. Soap residue dulls the blade. Shave in long strokes and load on the moisturizer after shaving.

\*Cingular also imposes a monthly Regulatory Cost Recovery Fee of up to \$1.25 to help defray costs incurred in complying with State and Federal telecom regulation. A gross receipts surcharge, and State and Federal Universal Service charges. These are not taxes or government-required charges. Coverage not available in all areas. See coverage map for details. Up to \$35 activation fee applies per line. Phone price and availability may vary by market. Early Termination Fee: None if cancelled in first 30 days, thereafter \$175. Sales tax calculated based on price of activated phone. Price of Samsung G417 is \$399.99 & \$79.99 respectively before \$50 mail-in rebate and \$20 feature discount. Motorola RAZR V3 is \$149.99 before \$50 mail-in rebate, \$20 feature discount and other rebates. Does not apply to the RAZR V3. Phone offers require 2-year service agreement on new main line activations on any rate plan \$35.99 or higher and a minimum \$9.99 data and/or feature purchase, such as MEdia Basic, night at 7:00 pm, roadside assistance, or insurance. Offer expires on 12/25/2006. Must be customer for 30 consecutive days. Rebates must be redeemed by 01/30/07. Allow 10-12 weeks for rebate card. Rebate card not available at all locations. Cingular National Cellular reserves the right to terminate your service if less than 50% of your usage over three consecutive billing cycles is on Cingular Wireless systems. Customer must use phone programmed with Cingular Wireless preferred roaming database. (2) See Cingular website and live while still in effect. Subscription is made. Other conditions and restrictions may apply. See contract for full terms and conditions. ©2006 Cingular Wireless. All rights reserved.

**BI-RITE AUTO** 4th Block E. of Light, Hwy 36  
254-725-7361

**DIESELS**

01 Ford F250 XLT Power Stroke, 6 spd, 4 dr, Super Cab, looks, runs good, Super Duty.....\$9450  
06 Ford F250 Super Duty Power Stroke, 6 spd Crew Cab, runs very good.....\$8495  
97 Ford F250 4x4 Power Stroke, looks, runs good, gold.....\$5850  
99 Ford F250 Super Duty, 185k on Power Stroke, 0 miles on rebuilt.....\$9250  
97 Ford F250 Super Cab, 5 spd, power stroke, cold air, looks, runs good.....\$6250  
95 Ford F350 Power Stroke, diesel, 5 spd, flat bed, cold air, runs good, dual rear.....\$5250  
96 Ford F250 Super Cab, power stroke, auto., cold air, runs good.....\$5250  
94 Ford F350 Power Stroke Crew Cab, auto., cold air, runs good.....\$4250  
94 Ford F250 Turbo Diesel Super Cab, 5 spd, cold air, looks, runs good.....\$3950  
94 Ford F250 Turbo Diesel Super Cab, 5 spd, cold air, runs good.....\$3650

**VANS & SUVs**

99 Ford Explorer Sport V6, loaded, looks & runs very good, red.....\$5450  
94 Ford Explorer 4 dr, V6, auto., runs good, white.....\$3250  
97 Isuzu Rodeo, 4 cyl, auto, looks, runs very good, green.....\$2850  
99 Ford Windstar V6, auto, cold air, 7 pass, looks & runs good, burgandy.....\$4950  
96 Ford Windstar 3.0, V6, recent overhaul, red.....\$2950  
95 Pontiac Transport V6, 7 Pass., cold air, looks & runs good, green.....\$1495  
95 Dodge Grand Caravan V6, 7 Pass., looks & runs good, red.....\$1595  
90 Dodge Conversion Van, very nice interior, rear seat/bed, cold air.....\$1695  
88 Chevy Suburban, dual air, nice inside & out, runs good (blue & silver).....\$1250  
94 Isuzu Rodeo 4x4, automatic, V6, nice in & out, green.....\$2250

**AUTOMOBILES**

00 Lincoln Town Car, fully loaded, leather, cat, nice car.....\$6500  
98 Ford Contour 4 dr V6, looks, runs very good, (silver).....\$2735  
95 Saturn 2 dr, Cpe, 4 cyl., 5 spd., SC2, (tan), moon roof.....\$1850  
99 Mercury Sable V6, auto., O.D., cold air, looks & runs very good, red.....\$3195  
00 Ford Contour 4 dr, V6, cold air, looks & runs good, red, Was \$3450 NOW \$3250  
99 Mercury Tracer 4 cyl., 4 dr, looks & runs super nice (white), auto.....\$2750  
99 Ford Taurus V6, auto., cold air, looks, runs good.....\$3450  
97 Ford Taurus V6, auto., cold air, looks, runs good, light blue.....\$2750  
96 Ford Taurus V6, auto., cold air, looks, runs good (white).....SPECIAL \$1950  
96 Buick Century, V6, over 30 MPG, low miles, runs & look good.....\$1995  
97 Ford Thunderbird 4.6 V8, cold air, clean inside & out, runs good.....\$2650  
97 Lincoln Mark VIII, LSC fully loaded, sun roof, looks, runs good, green.....\$2950  
96 Mercury Cougar XR7 3.9 V6, rear wheel drive, looks & runs good, white.....\$2450  
92 Pontiac Bonneville V6, runs good, cold air, local car.....\$1595

**GAS TRUCKS - ETC.**

01 Dodge Ram 1500 V6 5 spd., local truck, low miles, runs, looks very good.....\$4250  
03 Ford Ranger 4.0 V6, auto., metal lift up bed cover, white.....\$5950  
01 Ford F150 XLT 4 dr, Super Cab, V8, auto., runs good, clean inside & out, Was \$5800.....NOW \$5750  
01 Ford F150 LWB 4.6 V8 auto, looks, runs good.....Was \$4950 SPECIAL \$3790  
01 Ford Ranger Super Cab, 4 dr, 3.0 V6, auto., looks, runs good, silver.....\$5950  
97 Ford F250, Crew Cab, 4 dr, V8, auto., a nice truck for only.....\$3750  
96 Dodge Dakota 4x4, V6, auto., runs good, roll bar.....\$2650  
96 Dodge Dakota, 4 cyl., 5 spd., runs good, white.....\$2595  
93 Chevy 4x4, Ext. Cab, V8, auto., everything works & runs good.....\$2950  
2 Car Hauling Trailer in good condition.....\$3250  
84 Wrecker, Ford F250, 4x4, Super Cab.....\$2250

WE BUY - SELL - TRADE & FINANCE  
OPEN 9:30 TO 8:30, SAT. MON., TUES., WED. & THURS. CLOSED SUNDAYS & FRIDAYS  
Phone: 254-725-7361 Cell: 325-699-0999

## Remember To Renew Your Subscription To The Newspaper

**SEND OUR VERY BEST FOR THE HOLIDAYS**

**Eastland-Callahan County Newspapers**  
254-629-1707  
Fax 254-629-20092  
P. O. Box 29  
Eastland, TX 76448  
CALLAHAN COUNTY STAR  
CISCO PRESS  
EASTLAND TELEGRAM  
RANGER TIMES  
THE RISING STAR

**CALL NOW FOR SPECIAL HOLIDAY RATES 254-629-1707**

Order all 5 at 1/2 Price  
Renew Your Subscription & give a local gift subscription at 1/2 Price or Give a local gift subscription & renew at 1/2 Price  
Toll Free 888-227-1708

**Sudoku**

	5			3	7			
	7		8				6	5
4		9						
				5			3	1
6	4	7			1	5		
								7
				4	6	9		
			3					1
				7		2		

Here's How It Works: Level: Intermediate  
Sudoku puzzles are formatted as a 9x9 grid, broken down into nine 3x3 boxes. To solve a sudoku, the numbers 1 through 9 must fill each row, column and box. Each number can appear only once in each row, column and box. You can figure out the order in which the numbers will appear by using the numeric clues already provided in the boxes. The more numbers you name, the easier it gets to solve the puzzle!

**We Clean The Most Neglected, Unsanitary Part Of Your Home: YOUR AIR DUCT SYSTEM!**

**J & J Air Conditioning, Inc.**  
106 Pogue Eastland, TX  
254-629-2251 TACLB00200C 800-585-2251

# The Idle American

Commentary By Dr. Don Newbury

## Man Laws To The Rescue?...

**Black Friday.** That's how they've labeled the frenzied shopping onslaught on the day after Thanksgiving. Shoppers who'll be singing later about peace on earth, good will toward men bare fangs annually on this day.

Would that this annual madness be compressed to this one calendar day. But no! Its blackness smudges the days until Christmas, when the annual observance chases away the darkness. Christians celebrate the blessed event of long ago when the brilliance of a blessed birth reduced all colors to nothingness.

The observance is a time of gift-giving. And way too many men strike out. As a group, we are pitifully poor shoppers.

Despite promises we make to ourselves to do better next year, we don't. Our blackest day is Christmas Eve. As if held back by magnetic force, we somehow trudge to the malls when shopping hours hit single digits.

Some in stupors, some hypered to the hilt and some whimpering, we slink into stores, the epitome of quiet desperation, hushed in our pleas for help.

Would that riders on white horses could race to the scene, sparing wretched souls the annual failings of gift-giving sameness. (Hey, this might be a chance for those TV guys around the square table who claim to reach consensus on man laws to help out.) It may take more than laws to rescue men in their wimpiest moments.

What, pray tell, should a guy buy for the love of his life?

Sadly, the pattern remains unchanged across the generations. Most men are destined to wimp out again. Whatever creativity in gift-buying we may have had in early marriage has long since drained away, oozing toward empty.

Sizes are forgotten or change new fragrances confound at the perfume counter, and puzzling new styles cause calf-ropes yells. We are overwhelmed, about as creative as department store dummies.

Just like last year, the hordes of us play it safe. We'll yield to temptation to buy GIFT CERTIFICATES again.

Sales people salivate, with certificates stacked high. It's as simple as flashing a charge card and plugging in the gift figure.

Some of them are smug with little gems like, Cutting back this year? Is this how little you love her? Think she'll waste her time coming down to redeem this?

Our sails, already listing, are dead in the water, and we up the figure a bit.

Retail folks smile become fiendish laughter as we exit. They've got us figured to a T, happier than hogs in sunshine that we've again opted for gift certificates.

Retailers know that almost a fourth of them will never be used, and of the ones redeemed, another fourth will not be for the full amount.

The reasons are myriad. Some will be lost, misplaced or stolen. And some will be too small to mess with.

Add the wherefores and whereases to the small print that establishes deadlines, fees and terms of use, and the result is a candy stick world of big profits. Little wonder that gift certificates are pushed.

Uncle Mort, who lives down in the thicket, doesn't get caught up in the hubbub of Christmas. Mostly, he just chuckles his way through life. He notes, though, that Christmas has come early for Coach Bill Parcells Dallas Cowboys.

He called the other night to share some of the ringers he'll submit if they ever resurrect the late Johnny Carson's Carnac, the Magnificent routine.

He offered some dandies. My memory stirred, I pictured Carson donning his swami garb, holding the envelope to his head, offering the answer and then reciting the question found in the envelope.

His first answer was: Gramatica(ly) correct. The question: Did Parcells pick the right field goal kicker?

Mort's next answer: The same as a pig in the Preakness. Question: What are the odds of Baylor ever competing in Big 12 football?

Finally, this answer: Empty staplers. Question: What do Staples delivery trucks brake for?

Mort switched to another favorite topic Cowboy Terrell Owens, a guy he thinks should be shown the door.

He was enraged about Owens night-long birthday party in California, and how he continues to enjoy kid glove treatment.

Reckon Owens comes up with his senseless shenanigans by himself, or has a committee helping out? Mort questioned.

Dr. Newbury is a speaker and author whose weekly column appears in 125 newspapers in six states. He welcomes inquiries and comments. Email: newbury@speakerdoc.com Telephone: 817-447-3872. Website: www.speakerdoc.com



## In The Darkness of Night, A Great Light Appears

Submitted by Wanda Lee Beck Skinner

In that land dwelt many a poor man who were shepherds Their lives must have been difficult even in good weather In the darkness of a very special night these men were chosen

To see a great light and hear the angel's voice, then a multitude sang Great news for all mankind, redemption has been born God and see the Babe in the manger at Bethlehem Then go and tell everyone you see this wondrous news. All who believe will become a child of God.

## 11th Court of Appeals

Eastland, Texas  
Proceedings (En Banc)  
December 6, 2006

### Motions Submitted & Granted

Jesus Albert Carbajal v. State of Texas, Brown. State's motion for extension of time to file brief.

Eloy Pina Magallanes v. State of Texas, Midland. State's motion for extension of time to file brief.

Ceromie Laedward Coleman v. State of Texas, Midland. Appellant's second motion for extension of time to file brief.

Eric Raynall Brown v. State of Texas, Taylor. Appellant's motion for extension of time to file brief.

Irene Quintana v. Ruben Alvarez, Howard. Appellant's motion for extension of time to file brief.

John B. Meadows et al v. Midland Super Block Joint Venture, Midland. Appellant's motion for extension of time to file brief.

### Motions Submitted & Overruled

Bluestar Energy, Inc., and SOIS Operating Company v. Bill W. Murphy Operating Company and Bill Murphy, Scurry. Appellee's motion for rehearing. (Panel consists of: Chief Justice Wright, Justice McCall, and Justice Strange)

Keith Russell Judd v. Karen Y. Corey-Steele, Ector. Appellant's pro se motion for Court to order division of community property and equitable distribution of common-law marital property.

### Motions Submitted & Moot

James Daniel Flores v. State of Texas, Jones. Appellant's motion to deem notice of appeal and motion for new trial timely filed and to proceed with appeal.

**I-20 Pawn Shop**  
212 W. Main St.  
in Eastland  
(254) 629-3333

Jewelry 10% to 20% Off

**OUTDOOR SPECIALTIES**

Extreme Spray-On Bedliners  
Lifetime Warranty  
Free Interest Lay-a-way Special  
Best Motor & ATV Repair  
ATV - Dirt Bike Sales  
Layaway Plans Available

Start Getting Ready For Christmas!

1402 N. I-20 Eastland, TX  
254-629-8877

**Nature's Health Shop**

David Allard - Owner

Herbs, Vitamins, Weight Loss Programs, Ion Cleanse - i.e. Detoxification Cleanse (by appt.), Healthy (Xoçai) Chocolate Products, Health Improvement Programs, And Much More.

967 E. Main • Eastland (254) 629-2020

**MAJESTIC THEATRE**  
629-1322

**FLUSHED AWAY**  
PG  
Animated

Fri. Sat. Sun. Mon.  
All Showings: 7:30 p.m. - \$4.50  
Adults Only Balcony Ticket - \$6.00  
10-Admission Card - \$40.00  
5-Admission Card - \$22.50

Happy Holidays

**Morgan**

**MORGAN FACTORY CLEARANCE CENTER**  
**! HOLIDAY SALE !**  
Get that special someone a spa or building for Christmas.  
It's the gift that keeps giving for years to come.  
We have spas & buildings in stock ready for delivery.

Oceanside Spa: Was \$6556 IS \$3934  
Monaco Spa 850: Was \$13967 IS \$9279  
12x16 Barn: Was \$4316 IS \$3022  
14x24 Peak: Was \$6391 IS \$4474

**MUST HURRY!! LIMITED STOCK!!**  
CALL 254-631-0010 OR  
COME BY 1141 N. SEAMAN IN EASTLAND

**APPLIANCES 4 LESS!**  
**"DON'T PAY MORE"**

Examples

<b>REFRIGERATOR</b> ----- \$399.99 18.3 CU FT GLASS SHELVES HUMIDITY CRISPER, FULL WIDTH FREEZER SHELF, DELI DRAWER, MADE BY FRIGIDAIRE, COMPARE @ 469.99	<b>DISHWASHER</b> ----- \$197.99 WELL FEATURED, NOT STRIPPED DOWN, HOTPOINT BY GE
<b>WASHER</b> MADE BY WHIRPOOL --- \$259.99 SUPER CAPACITY COMPARE @ 319.99	<b>RANGE</b> ----- \$399.99 SEALED BURNER GAS
<b>DRYER</b> ----- \$249.99 WESTINGHOUSE, SUPER CAPACITY, COMPARE @ \$279.99	<b>FREEZER</b> ----- \$349.99 14.8 CU FT, CHEST FREEZER COMPARE @ \$367.99
<b>RANGES</b> ----- \$287.77 GAS OR ELECTRIC, COMPARE @ \$329.99	<b>DISHWASHER</b> ----- \$247.99 FRIGIDAIRE, 24" ELECTRONIC PRECISION SELECT CONTROLS, 5 LEVEL, PRECISION WASH SYS, TALL TUB DESIGN COMPARE @ \$269.99
<b>RANGE GLASS TOP</b> ----- \$399.99 VERY NICE	<b>CHEST FREEZER</b> ----- \$159.99 FRIGIDAIRE 5 CU FT CHEST FREEZER COMPARE @ \$189.99

**"DON'T BE FOOLED, WE SELL APPLIANCES FOR LESS"**  
GE • HOTPOINT • WHIRPOOL • MAYTAG • AMANA • SPEEDQUEEN • ESTATE • SUNBEAM • WESTINGHOUSE • KITCHENAID • JENNAIR • FRIGIDAIRE AND MORE!

**FURNITURE USA • 300 S. SEAMAN - EASTLAND, TX • 254-631-0002**

## Area Lawmen's Appreciation Lunch A Success

Mountain Top Church, Assembly of Yahweh, and the Wilks' Companies came together at the Mountain Top Church in Cisco, in a joint effort to show the community's appreciation for all our area law enforcement staff at all levels and the area firemen. The event was very well attended considering many of those involved in these positions work shift work and just got in from a night shift, or on a shift they could not leave. The invitation was to all of Eastland County, including judges, and those in related offices. Retired County Judge Scott Bailey was present, and always gives a special dignity to an event. He has long been a friend of the lawman, and the Mountain Top Church.

Each individual received a beautifully framed certificate and pin of excellence for a "job well done." MTC Congregational Pastor, Scott Rasco delivered the certificates and pins over the county to those unable to attend. Those attending the

luncheon were served hearty portions of turkey and dressing, jalapeno mashed potatoes, country green beans, roll, and choice of pie or cobbler.

Executive Pastor John C. Jones said, "During this season of Thanksgiving, we wanted to show our appreciation for all your hard work," said Farris Wilks, co-owner of the Wilks' Companies. Dan Wilks, co-owner of Wilks Companies, and Frac Tech encouraged each one to continue striving for excellence in all they do and thanked them departmentally for the excellence they've shown in responding to area emergencies and disasters. "We are safe in our homes at night because of you. These are great communities to live in and raise our children. We are all thankful for each of you." The two churches plan to make this an annual event. During the many years John C. Jones served as Chaplain to the Lawmen's Association the church provided this complimentary banquet to lawman.

## Desdemona News

By Vonnie Guthery

Ladies Monthly Social was held on Monday, December 11 at the Desdemona Community Center School Building. Twenty-five ladies attended this Christmas Luncheon. Ladies attended from Gorman, Stephenville and other area towns. Lots of good food and fellowship was enjoyed by everyone. The tables and entire room was decorated with Christmas decor. Gifts were exchanged followed by Bingo games and dominoes. Hostess was Linda Lindley. Next ladies social will be held on Monday, January 8 at the same location. Visitors are always invited to attend.

Dorothy Roberts is having some health problems at this time. She was in Fort Worth on Monday for a Doctor appointment to have several

tests for her heart problem.

Homer Joe Sparkman of Stephenville will have back surgery this week. Homer Joe and Dorothy were classmates all thru the years and they graduated with the Class of 1946 from Desdemona High School.

Remember these and others in our small community with your cards and prayers. Take time out during this busy "Holiday Season" to visit with the sick and shut-ins --also take gifts to the needy.

"Happy 13th Birthday" to our great-granddaughter, Lorin Kaye from Granny Coon and Granke. Lorin attends school in DeLeon.

Roy and Angela Powledge

## Encourage One Another

### PULLING HARD AGAINST THE STREAM

It's in this world I've gained my knowledge  
And for it I've had to pay  
Although I've never been to College  
Yet I've heard the Poets say  
Life is like a mighty river  
Rolling on from day to day  
And we as ships are launched upon it  
Some get wrecked and cast away

### Refrain

Then do your best for one another  
Make this life a pleasant dream  
Help a weary careworn brother  
Pulling hard against the stream.

--Josiah G. Scurlock

Doc Scurlock, born Jan. 11, 1850, associate of Billy the Kid, poet and in his elder years lived in Eastland. He died July 25, 1929 and was laid to rest in the Eastland Cemetery. This poem of his speaks volumes of how man must live.

hosted a birthday party for their son, Colin at the Bowling Alley in Stephenville on Friday night, December 8. Colin celebrated his 11th birthday with his family and friends. Colin attends school in DeLeon.

Mildred Million attended the Christmas Band Concert last Monday night at the Dublin School Auditorium to

see her great-granddaughter, Halie Million play her instrument.

"Birthday Card Shower" for Roy Lee Whitlock c/o Heritage Manor, Gorman, Texas 76454. He will enjoy hearing from his "Hogtown" friends.

Have a great day, from "Coon".

**STERLING MONUMENT COMPANY**  
2006 - FALL SALE  
UP TO 15% DISCOUNT ON MEMORIALS IN STOCK  
UP TO 10% DISCOUNT ON MEMORIALS WHICH MUST BE ORDERED  
A PERFECT TIME TO SELECT YOUR AT-NEED OR PRE-NEED MEMORIAL.  
SALE BEGINS DECEMBER 1, 2006 THRU DECEMBER 31, 2006.  
2 MILES EAST OF EASTLAND, SOUTH INTERSTATE 20 SERVICE ROAD.  
1-800-588-2363  
**"NEVER A BETTER TIME TO REMEMBER YOUR LOVED ONES OR PLAN AND DESIGN YOUR OWN MEMORIAL, ELIMINATING THE NEED FOR RELATIVE TO MAKE IMPORTANT DECISIONS DURING THEIR TIME OF GRIEF."**

**Introducing all-new John Deere 8 Series Round Balers**

With their abilities to make perfectly sized and shaped bales, these all-new balers really get noticed. Here's how:


- Improved crop flow with a new MegaWide Plus™ pickup with roller baffle
- A smoother ride with an extra-large tire option
- Quick and easy maintenance with standard drop-down lube lines on CoverEdge™-equipped balers
- An increased service life with drive chains and sprockets built heavier, stronger
- More puncture - and tear-resistant belts

Please join us at our store in De Leon on December 19th starting at 1:00 for an in-depth presentation of the brand new 8 series balers. There's going to be plenty to see along with special one day pricing on parts purchases.

**Clark Tractor & Supply**  
Hwy. 6 West  
De Leon, TX 76444  
254-893-2061  
clarktractor.com

**JOHN DEERE**  
Nothing Runs Like A Deere

**Matthews**  
**Seven Six Ranches**



**Registered & Commercial Brahman & Longhorns For Sale!**


Gentle World Champion Riding Longhorns Steers Available to show for special events  
Cattle Located at: Carbon, Cisco, Okra & Rising Star Texas  
Broke and Trained by Laurie & John B. Matthews Jr.  
**254-643-1417**

**Read The Classifieds**

**COODER'S TEXAS CAFE**  
Red Gap Bakery "Now Open"  
Order Early for the Holidays  
203 EAST 8th Street Cisco, Texas  
Monday - Saturday 7am to 8pm  
Closed Sunday  
254-442-2838

**Herniated Disc? Degenerative Disc? Sciatica?**

Free report reveals a new FDA approved non-surgical solution for serious and chronic low back pain. For your free report entitled, "How Space Age Technology Is Solving Back Pain Without Drugs Or Surgery!" Call 1-800-856-7482 (toll free 24 hour recorded message) or go to: [www.911sorediscsecrets.com](http://www.911sorediscsecrets.com)



**Remember To Renew Your Subscription To The Newspaper**

**Crossword Answers**

A	C	T	A	L	R	O	A	M	E	D				
C	O	R	A	T	E	E	N	C	O	D				
G	R	A	N	E	D	S	C	O	R	I	A			
B	R	A	I	D		E	N	A	B	L	E			
B	U	R	L	A	P	S	L	A	B	L	E	W		
C	E	E	S		D	O	W	E	L	S	E	R		
P	L	A	T		T	A	T		I	N	G	E		
Y	O	D	H		A	S		M	A	S	T	E	R	S
M	A	R	O	O		I	S	A	A	C				
T	I	R	A	N	A		R	A	C	E	R	S		
H	A	N	K	E	R		E	X	I	L	E	S		
E	N	S	U	R	E		B	E	L	F	R	Y		
M	Y	A												

**CUSTOM HOME BUILDERS SINCE 1980**

Let Us Build Your New Home or Room Addition  
If You Can Dream It, We Can Build It!

**T. J. CLARK CONSTRUCTION CO., INC.**  
(254) 734-2755  
P. O. Box 176 111 E. Roberts St.  
Gorman, TX 76454

General Building Contractors - All Work Guaranteed  
Custom Homes - Remodeling - Commercial - Industrial - Farm  
Financing - Free Estimates - Design, Engineering & Plan Services

**I-20 MOTORS USED CARS**  
19th & I-20 Cisco, Texas  
Shop (254) 442-4262 Home (254) 442-2578 Mobile (817) 999-5272

- 04 Ford Taurus SES, auto, air, AM/FM/CD, electric windows, locks, seats, cruise, tilt, 61k.....\$7550
- 04 Ford Taurus SE, auto, air, AM/FM/CD, elect. windows, locks, seats, cruise, tilt, 64k.....\$6995
- 03 Dodge Dakota V6, auto, air, AM/FM, 56K.....\$6995
- 03 Ford Windstar auto, air, AM/FM/CD, elect. windows & locks, cruise, tilt, 68k.....\$5995
- 03 Chevy Silverado 6 cyl., 5 sp., AM/FM, air, 70k.....\$6500
- 02 Jayco Travel Trailer, 30 ft. tongue pull.....\$6950
- 01 Ford F150 Sport Shortbed, 6 cyl., 5 sp., air, AM/FM/Cass...\$4995
- 01 Mustang Convertible auto, air, AM/FM/CD, cruise, tilt.....\$6500
- 01 Ford F150 Ext. Cab, auto, air, AM/FM.....\$6950
- 99 Ford Windstar auto, front & rear air, AM/FM/Cass., elect. windows & locks, cruise.....\$3995
- 99 Ford Explorer Sport auto, Air, AM/FM/Cass., 85k.....\$4950

**U.S. GOVERNMENT CARS**

- 01 Dodge Caravan SE auto, air, AM/FM, 66k.....\$5995



# What Will You Give Up?

By Hazel Stone  
1444 Pagewood Ave.  
Odessa, TX 79761  
hazels@grandecom.net

If we look carefully at the many participants in the first Christmas so long ago, we see giving of a different sort. This giving is an act involving the heart and will, not the pocketbook. This giving involved an act of grace.

At the first of the Christmas story, Mary decided to give her heart and body as a gift to God. Without her act of giving, she would not have experienced the joy of nurturing the Son of God. Surely she felt a great compassion and a great compassion and a great deal of fear and pride. Most mothers, holding their babe in their arms, feel much the same as

Mary in that they have great expectations and wonder about what the newborns will grow to be.

Joseph was willing to give up his pride and accept the angel's words that his betrothed was with child because of an act of the Holy Spirit. Joseph must have been very much in love with Mary. He had to accept this child. As far as we know, Joseph was the only one there when Jesus was born, so he must have been the one to help.

Joseph was more than likely a warm and patient man. He must have had much human love and kindness and understanding. Both Mary and Jesus were fortunate to have had him.

As a couple, these two new-laws were willing to give

up the comfort and security of Nazareth and travel to Bethlehem because of civil law and the words of Micah who had prophesied that the Messiah would come from this ancient town.

When Joseph and Mary arrived, they gave up any expectation they had for comfortable accommodations and lodged instead in a stable among livestock.

God willingly gave up His only Son. That Son willingly gave up His Heavenly comforts and submitted Himself to thirst, pain hunger and disappointment.

The shepherds chose to give up their fear and to travel to see the Infant. These shepherds, there on the empty hills watching their sheep during a lonely night, were probably simple country people. They were

not too skeptical to accept the heavenly visitors, the singing angels. They listened and had the faith to believe and the courage to follow. They had to have had a sense of wonder.

Far away in the East, sages left the comfort of their towers and books, and followed the star thousands of miles of difficult travel. They finally found the object of their search and gave gifts from their hearts.

The shepherds got to the stable sooner than the sages, but the Wise Men had a star to follow while the shepherds had angels. Although both stars and angels are celestial phenomena, they are very different ones.

We miss the true meaning of Christmas when we give wrapped presents under a tree. True Christmas involves the grace God expressed to us when He sent Christ. This is the grace of true giving and involves our willingness to give up our pride and our plans in order to participate in God's purposes.

In response to His generous love to you, what gift of grace are you willing to give this Christmas? It might involve your time to serve someone else or it might involve your forgiveness or something else.

On the day school was to let out for the Christmas holidays one year, third-grade students gathered around my desk while I opened my gifts from them. After gifts were opened, one little girl returned with a present wrapped in a brown paper towel. She said "I couldn't

# Poetry Corner

**Memory**  
Memories are a precious gift  
Of a time so long ago.  
Like the passing of a shadow  
Or the closing of a door.  
As I go down memory lane  
I see visions of the past.  
When each day was a plea-

sure  
And now it's just a task.  
As I gaze across the valley  
And see the wild flowers  
blooming there.  
I smell the fragrance of  
their sweetness  
As it is brought to me in the  
air.  
And then I met my Jesus  
As His story to me was  
told.  
He's the Master of yesterday,  
today and tomorrow  
As each day His blessings  
to us unfold.

By Bob Harbin



## Great Local Websites

- Newspaper**  
www.e-cinc.com
- Cities**  
**Main**  
www.eastlandtexas.com  
www.ciscotx.com  
www.ranger-tx.com/index.php  
www.gormantexas.us  
www.risingstartexas.com
- Chamber of Commerce**  
www.eastlandchamber.com  
www.ciscotx.com/chamber.htm  
http://gormantexas.us/6955.html
- Auto**  
www.hoodking.com  
www.fullenmotors.com
- Medical**  
www.eastlandmemorial.com  
www.spinedoctorsdrx.com
- Food**  
www.pizzapro.com
- Photos**  
www.photosbyterrysimmons.com
- Internet**  
**txol.net**
- Real Estate**  
www.unitedcountry.com  
www.tcrealty.net  
www.annwilliamsrealestate.com  
www.rexfieldsagency.com  
www.ross-realestate.com
- For more information on placing your website in this listing call Gary Grady at (254) 629-1707

## Matthews

### Seven Six Ranches





**Ranch Headquarters:**  
Okra, Texas  
**Cattle Also Located At:** Carbon, Cisco, & Rising Star - Texas

John Mathews  
Ranch Headquarters:  
2451 CR 290  
Carbon, Tx 76435-1634  
76ranch@txol.net

**World Champions**  
Riding Longhorn Steers  
Bubba - C.B. - Randolph  
Exibited For Special Events

**Registered & Commercial**  
Brahman, Hereford, F1 & Texas Loghorn Cattle  
**Registered Brahman Cattle**  
From The Legendary Guy Jeanes Herd, Cousin

**Riding Steers Available For Pictures and Special Promotions**

254-643-1417 5-01 Cell 817-999-1552

## Rafter H B-B-Q

901 E. Main Eastland, TX  
254-629-1505

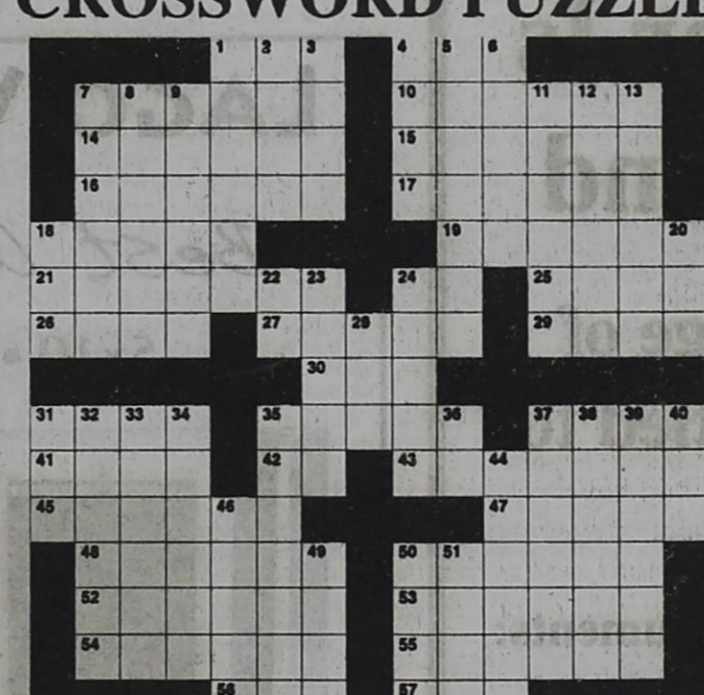
### CHRISTMAS SPECIAL

**SMOKED HAMS**  
1/2 Ham.....\$29.95  
Whole Ham.....\$49.95

**SMOKED TURKEY.....\$24.95**

Orders place no later than Dec. 22.  
Must be picked up by 3:00 on Dec. 24.  
Close at 5 PM on Dec. 24.  
Closed Christmas Day. 5-105\*

## CROSSWORD PUZZLE




**CLUES ACROSS**

1. Bachelor of Laws
4. K. Chesney won their top award (abbr.)
7. A matter of fact
10. Strayed
14. Assistant parish clergyman
15. Encrypt
16. Stretched to see
17. Refuse of rotten metals
18. Type of group
19. Make possible
21. Baggings
24. Louisiana
25. Skid
26. C C C
27. Wooden rod
29. Dried up, withered
30. Half-way point
31. Land plan
35. Art, U.S. jazz pianist
37. German woman's name
41. 10th letter of the Hebrew alphabet
42. To the same degree
43. Maestros
45. Abandon on a desolate island
47. Sir \_\_\_ Newton
48. Albanian city
50. Speedway cars
52. Yearn
53. Banished people
54. Make certain of something
55. Where bells are hung
56. Mood Ring artist
57. Skilled in deception

**CLUES DOWN**

1. Capital of Angola
2. Not on time
3. Lost blood
4. Greek for Mars
5. Prevent from being seen
6. Georgia city
7. Add to periodically
8. Respiratory poison
9. Paths
11. Mire
12. Suitable for use as food
13. A firm engaged in trading
18. London radio station
20. Female sheep
22. Palladium
23. School of Mathematics and Statistics
24. Labrador tea
28. Mental ability
31. John \_\_, English statesman (1584-1643)
32. Abhor
33. Name of 6 Popes
34. Woody spines
35. Hide shop
36. One thousandth of an ampere
37. In its own nature
38. The closer of two
39. With sod cover
40. Portuguese money (abbr.)
44. Mediterranean island
46. Hemp packing fiber
49. Surface within a set of lines
50. Southern fighters (slang)
51. Skating jump

This puzzle sponsored by



877 Eastland, TX 76448

**VFW Post 4136 Meeting Wednesday**

The VFW Post 4136 will hold their monthly meeting on Wednesday, December 13th. The VFW meeting is at 7:00 p.m. Ladies Auxiliary meeting is at 7:30 p.m.

Commander  
Larry Monroe

**Be Apart of Cisco's Antique Section below**

**Contact Gary Grady At 254-629-1707**

## Cisco's Gift & Antique Stores

Experience the timeless fascination of a journey into the past.

Charlie Humphries, store owner of Charlie's Woodshop, spends most of his days building custom wood projects for his customers. Wood crafts include outdoor furniture, desks, children's furniture, bookcases, shelves, etc. If you are looking for other items; some antiques can be found as well as a large selection of refurbished old tools. Charlie's wood shop is open Monday, Wednesday, Friday, and Saturday from 8:00 a.m. to 5:00 p.m.

Charlie's Woodshop  
1306 C.H. Cisco, TX



**Charlie's**  
Antiques and

1306 Conrad Hilton Ave.  
Cisco Texas

**NOTICE**  
Opinions expressed in articles and letters submitted by others do not necessarily reflect the opinions or beliefs of the Owners, Managers, and Staff of Eastland County Newspapers, Inc.

Errors and omissions will be corrected to the extent of the specific error or omission in the next edition when called to the attention of the newspaper or publisher.

Responsibility and Liability: The Eastland County Newspapers assumes no obligation, responsibility or liability for subject matter contained in copy placed by advertisers or their agents. The advertiser agrees that all materials and copy will comply with applicable state and federal laws and regulations. It is also understood the advertiser and/or his agents jointly and separately agree to indemnify the publisher and the newspaper against all expenses, loss or damage incurred or sustained by reason of printing such copy. All advertising copy submitted is subject to approval, revision or rejection by the publisher. To be binding upon the Eastland County Newspapers all instructions relative to the advertisement must be in written form. The Eastland County Newspapers is not bound by any terms or conditions, printed or otherwise, appearing on order blanks, advertising forms, or copy instructions, when the same is in conflict with terms and conditions of the newspapers rate card or policies. The publisher reserves the right to edit or reject advertisements deemed objectionable, illegal or of poor reproduction quality, or because of conditions beyond the newspapers control. All advertising must be on behalf of the advertiser's business or service exclusively. The Eastland County Newspapers reserves the right to insert the word Advertisement above all ads, including all copy ads which might be mistaken for news articles.

Public-Legal Notice Advertising: Rates for any public or legal notice or advertisement required by federal, state or local law or order are in accordance with Texas Revised Statutes. Rates are based upon a 11.5 point typeset lines on a column width of 11.5 picas. Rate: 15c per word, per paper, per time.

**Morton Valley Past & Present**  
*by Don Skinner*

We in Morton Valley need rain. Winter is almost here and every promise of rain just seems to disappear before it falls to the earth. Remember the One who can fill that need. It's been a while since the sounds of lawn mowers has been heard and the tractors seem to have been silenced also.

Lights signifying Christmas are being seen throughout the community. Sunday a.m. and it is too cloudy for me to see the wonderful sight in the sky that a friend called and told me to see as three planets will be closer together than they have been in a long time and it will be another 50 years before they align up exactly that way again. Thanks, Don.

The inspirational part of the service was done by Venita and her article will

follow. Earnest Wall is preaching a series of messages on the foundational basis of Christianity. This week he preached on "A Foretaste of Glory" from Matthew 16:27-28. For the most part we are living in a dark world. The problem can be found in the heart of man. We should love everyone by righteousness. Remember that it is darkest just before the light of dawn. Our hope: the only way to light is through the Son (Jesus) not spelled sun. There will be no peace on earth until the Prince of Peace comes again. We must be ready for that day. Peter, James and John were allowed to view the transfiguration in the mountain. Think of God's timing in creation, He worked 6 days and rested one day. The number 7 is

considered perfection. God rested and so should we. Jesus wanted His message to be told. He told disciples so they could tell others. Moses and Elijah were there representing the law and prophets. Jesus was there because he is Jesus only. Jesus only should be our focus: in creation, in redemption, in Scripture, and in Church. We need to encourage one another regularly. The mystery of the Old Testament and the New Testament are revealed by Him to us through the Holy Spirit. He is incomparable. He wants us to listen to Him.

**Venita's inspirational story: Unfold the Rose**

A young, new preacher was walking with an older, more seasoned preacher in the garden one day. They had become very close and personal friends and could share the most troublesome problems. So one day feeling a bit insecure about what God had for him to do, the younger preacher was asking the older preacher for some advice. The older preacher walked up to a rose bush and handed the young preacher a rosebud and told him to open it without tearing any of the petals.

The young preacher looked in disbelief at the older preacher and was trying to figure out what a rosebud could possibly have to do

with his wanting to know the will of God for his life's ministry. But, because of his great respect for the older preacher, he proceeded to try and unfold the rosebud while keeping every petal intact. It wasn't long before he realized how impossible this was to do. Noticing the young preacher's inability to unfold the rosebud without tearing it, the older preacher began to recite the following poem:

It is only a tiny rosebud  
 A flower of God's design;  
 But I cannot unfold the petals  
 With these clumsy hands of mine.  
 The secret of unfolding flowers  
 Is not known to such as I.  
 God opens this flower so sweetly,  
 Then in my hands, they die.  
 If I cannot unfold a rosebud,  
 The flower of God's design,  
 Then how can I have the wisdom  
 To unfold this life of mine?  
 So, I'll trust in Him for leading  
 Each moment of my day.  
 I will look to Him for His guidance  
 Each step of the Pilgrim's way  
 The pathway that lies before me

Only my Heavenly Father knows.

I'll trust Him to unfold the moments,

Just as He unfolds the rose.

I had a very close dear friend in 1968, Jacqueline Kurman - she was dearer to me than any sister could be. We met as leaders in forming a new troop for Girl Scouts in San Bernardino, California. Our friendship could be described as a rosebud that grew into a beautiful Unfolded Rose. Jackie was Amish and married a wonderful Jewish man! Her clan shunned her and disowned her as she had joined "the outside world culture!" We shared the most wonderful 3 years and then as military moves on so did Jackie with her husband and two daughters Cindy and Amanda.

Jackie, as she had been taught did magnificent hand art work in cross stitch. She gave me a framed wall hanging of cross stitch and roses that has adorned my walls for 38 years. The picture is of two dear friends having tea and

sharing those perfect moments that becomes a lasting friendship of memories.

We kept in touch for many years and then I had word that my very dear friend died a miserable death with cancer. The news was an arrow that pierced my heart and lingered for years - but, still today on my bedroom wall Jackie's framed message reads:


"Venita Smith- Jacqueline Kurman, 1968

*I think so much of you and think of you so much and hope that you and I will always keep in touch."*

They say it takes a minute to find a special person, an hour to appreciate them, a day to love them, and an entire lifetime to forget them. The framed wall hanging reminds me how precious our friendship was and the memories that I will always treasure, because Jacqueline Kurman's friendship and life was to me as an Unfolded Rose.

Written by Venita D. Smith

**Somewhere In Tyme**



Specializing in Turn of Century and Vintage Attire, Antiques and Collectibles. Elegant Glassware & Sorrelli Jewelry. Owner - Patsy Davis - Located on the southeast corner of the Eastland Historical Square (100 W. Commerce) 254-631-0033

**Hardin's BBQ and Outwest Trading Post**  
 Restaurant Hours: 11am - 8pm • 254-629-1227  
 3300 E H I-120 • Eastland Texas  
 (Inside Conoco Station at Exit 343 E H I-20)

**New Arrivals Weekly Stress free Shopping**  
*Fredericksburg Shopping Without the Drive!*  
**What Women Want**  
*"Baby Boutique is Now Open"*  
 306 S. Seaman St. Eastland  
 254-629-2207

**The 2006 Tax Year Is Drawing To An End**

Have you taken advantage of deductions you will be entitled to?  
 - IF NOT -

Please Consider These Permanent Monuments:

- ♦ Eastland County Museum
- ♦ Eastland County Art Gallery & Theater
- ♦ Centennial Memorial Library
- ♦ Community Foundation for Connellee Hotel & Gardens

All Tax Deductible and Commemorative to names of your choice

**Gifts to your choice or choices to:**  
**Foundation**  
 P. O. Box 896  
 Eastland, TX 76448  
 Details 254-629-8547

**LAGO VISTA STORAGE**  
*Best Units in Eastland*  
 5x10 • 10x10 • 10x15 • 10x20



- Paved Driveways
- Lighted
- Insulated Roof
- Outdoor Storage
- Electric Gate & Fenced
- Boat & RV Storage - 'Coming Soon'

Lago Vista Storage • 1075 Lago Vista Blvd  
 Eastland, Texas • 254-631-7762

**Goodyear Holiday VALUE DAYS!**

Quality Service That We'll Stand Behind

- Computerized Front & Rear Alignment
- Oil Change & Lube
- Tire Balancing
- Cooling System
- Brakes
- Shocks
- Tires

**2 wheel BRAKE SERVICE \$99.00** (up to tax)

**COMPLETE RADIATOR SYSTEM FLUSH \$69.00** (up to tax)

**COMPUTERIZED ALIGNMENT PACKAGE \$49.00** & up

**INTRODUCING! GOODYEAR WRANGLER**  
 THE STRONG, SILENT TYPE  
 A layer made with KEVLAR® helps provide strength for rugged toughness. The same layer with KEVLAR® also acts as a barrier to help absorb road noise for a smooth, quiet, comfortable ride.

**IS YOUR CAR READY FOR WINTER?**

- Inspect system & chemically test for leaks
- Flush & chemically clean system
- Refill to correct amount of antifreeze / coolant
- Add oil / lubricant
- Test vehicles. New coolant Dex - cool extra

**Eastland County Tire**  
 254-629-2662

### Promise Helpers Meeting Thursday

The Promise Helpers, all Eastland County ladies, will meet at 7 p.m. Thursday, December 14. The guest speaker, Stephanie Clinton, will be serving. A pot luck dinner will be served. Romania, will be

### BUSINESS SERVICES

### House Leveling & Foundation Repair

By David Lee & Co.  
Professional Work Since 1967

- \*Free Estimates\*
- No Payment Until Work Is Satisfactorily Completed
- Solid Slab • Pier & Beam • Concrete Piers • Block & Pad • Floor Bracing
- Steel Piers To Bedrock
- Work Guaranteed Insurance Claims Licensed & Bonded

254-629-2267 1-888-486-8588  
254-965-5635 915-675-6369  
www.davidleeandco.com

### AQUALITY STEEL

METAL BUILDINGS • STRUCTURAL STEEL  
FABRICATION • BUILDING COMPONENTS  
WELDING SUPPLIES & GASES

Discount on all metal building kits.  
Get your quote today!

700 East I-20 Cisco, TX (254) 442-3036  
Check out our prices updated daily www.aqualitysteel.net

### WESTERN HOUSE LEVELING

Free Estimates To Home Owners  
No Upfront Money - Over 20 Years Experience  
Guaranteed Low Prices & Quality Work

Abilene 325-660-2890  
Brownwood 325-643-3200  
Graham 940-549-2195  
Stephenville 254-968-8300

### EASTLAND COUNTY PET BOARDING

Indoor & Outdoor Facilities  
Daily, Weekly & Long Term Rates  
Pickup & Delivery Available  
Bath & Grooming  
Basic Obedience Training Available  
Inspection Welcome  
Phone for additional information  
254-647-3499  
Cell 254-654-0119

### FOR SALE

#### FAMILY VAN FOR SALE

Designer Conversion big engine '91 GMC family van, 90,000 actual miles, white exterior/gray plush interior, pretty wood trim inside, garaged, clean, 4 captains, convertible couch, electric windows, TV/cassette, Call 254-629-2413 after 6 p.m. to see \$4995 firm.

### Trampoline Lessons

by Coach W. Smith  
254-629-8585

### SQUIRES ROOFING CONTRACTORS

Since 1945

254-653-2397 OLDEN

### THERE'S JUST NO LIMIT

TO HOW FAST YOU CAN GET THINGS DONE IN THE CLASSIFIEDS

Increase your r.p.m. (responses per message) with a well-placed ad today!

Our classified representatives can show you how.

### EASTLAND AA MEETINGS

302 N. College Eastland, TX.

TUESDAY 8:00 p.m. (Closed)  
THURSDAY 6 p.m. (Open)  
Big Book Study

SATURDAY 8:00 p.m. (Open)

442-4462  
Parole/ Probationers Welcome  
Please No Correctional Papers

### FOR SALE

FOR SALE: Copies of any Photo By Terry Simmons in this newspaper are available for purchase. Call 254-629-8389. If no answer please leave a message with your phone number. E104

### cash in with a classified ad...

### FOR SALE

For Sale: Macintosh SE one of the 1st Mac's ever made. Several in stock. Come by the newspaper office to see. E104

### THERE'S JUST NO LIMIT

TO HOW FAST YOU CAN GET THINGS DONE IN THE CLASSIFIEDS

Increase your r.p.m. (responses per message) with a well-placed ad today!

Our classified representatives can show you how.

### FOR SALE

FOR SALE: 21 ft. gooseneck cattle trailer \$2,000; trailer \$600. Call 254-629-8417. E104

### AUTOS

Good 1996 Dodge Mini Van - 88K miles, shiny, clean, cold air, new tires, battery, 5 doors. \$3495. 639-2481. E101

### Eastland County Newspapers

WANT AD

LITTLE AD FOR BIG RESULTS

### FOR SALE

FOR SALE: Cream Puff, '90 Oldsmobile Cutlass Supreme V-6 loaded, 64,000 miles. Call 254-629-2413 after 6 pm to see. \$3995.00. E104

### TRADE DAYS

GRAHAM TRADE DAYS  
December 14, 15, 16 at City Park in Graham  
Come out and shop for unique Christmas gifts. 100s of dollars of merchandise will be given away at 3:00 on the 16th.  
City Park Hwy 67  
E100

### NOTICES

Johnson's Dry Goods in Cross Plains, TX. will be open every Sunday afternoon until Christmas. Free Gift Wrap 254-725-6211. C100  
Web press time available call 254-629-1707. E104

## TEXAS STATEWIDE CLASSIFIED ADVERTISING NETWORK

# TexSCAN

**TexSCAN Week of December 10, 2006**

**ADOPTION**  
Note: It is illegal to be paid for anything beyond medical and legal expenses in Texas adoption.  
PREGNANT? CONSIDERING ADOPTION? Talk with caring people specializing in matching birthmothers with families nationwide. Expenses paid. Toll free 24/7. Abby's One True Gift Adoptions, 1-866-413-6292.

**AUCTIONS**  
GIGANTIC ARCADE AUCTION- 500+ coin-op arcade games and pinballs. Saturday, December 16, 10 a.m. Mesquite Rodeo, Mesquite, TX. Info: 1-714-535-7000. www.superauctions.com. TX-R-Stormant #10931.

**AUTOS WANTED**  
DONATE YOUR CAR to the original 1-800-Charity Cars! Full retail value deduction if we provide your car to a struggling family. Call 1-800-CHARITY (1-800-242-7489) www.800CharityCars.org.

**BUSINESS OPPORTUNITIES**  
ALL CASH CANDY Route: Do you earn \$800 in a day? Your own local candy route. 30 machines and candy. All for \$9,995. 1-888-625-5481. Multi Vend, LLC.

**DRIVERS**  
CDL-A DRIVERS: Expanding Fleet offering Regional/OTR runs. Outstanding pay package, excellent benefits, generous hometime, lease purchase on '07 Peterbills. National Carriers, 1-888-707-7729, www.nationalcarriers.com  
CDL-A DRIVERS: Low cost lease purchase. Regional runs, no hazmat, no forced dispatch. 100% fuel surcharge to you. FFE, 1-888-864-0012.

**DRIVERS-ASAP** 36¢-43¢ cpm/\$1.20 pm. + Sign-on bonus. \$0 lease, new trucks. CDL-A + 3 months OTR. 1-800-635-8669. Melton Truck Lines.

**DRIVERS/DRIVING SCHOOL** graduates wanted. Tuition reimbursement. No waiting for trainees. Passenger policy. NO NYC. Guaranteed hometime. Dedicated and regional available USA Truck. 1-866-483-3413.

**DRIVERS - NEW REGIONAL** & OTR positions available in your area! New equipment, premium pay package, great benefits. Call Oakley Transport, 1-877-882-6537. Get a new start at a great company!

**DRIVERS - PAY INCREASE!** \$1000 sign on for experienced OTR. Dedicated and regional available also. Owner Operators, Teams & CDL grads welcome. USA Truck 1-866-483-3413.

**DRIVERS - \$5 HOLIDAY CASH** \$5000 Sign-on bonus. Only six month obligation, 1 yr. OTR, Class A-CDL. Terms and conditions apply. FFE, 1-800-569-9232.

**O/O DRIVER:** The F/S is higher here! Zero down lease/low payments. \$1.11 average. \$2,600 Referral Bonus. Base Plate provided. FFE, 1-800-569-9298.

**EXAM PREP**  
POST OFFICE NOW HIRING. Average pay \$20/hour or \$57K annually including federal benefits & overtime. Paid training, vacations, P/T/FT. 1-800-709-9754. USWA Ref#P4701. Exam/Fee required.

**HELP WANTED**  
A NATIONAL SPORT and fashion firm has immediate openings for sharp energetic people! Make great money and see the USA! Must be 18. Call 1-877-646-5050.

**HR DIRECTOR-** All aspects of HR. Mfg company-Center, TX. Approximately 275 personnel. BA in related field year! 1-800-727-5865, Ext. 4314. + 8 yrs. Resume, salary to employment@rosewd.com

**LICENSED PLUMBER FOR** Blackmon Mooring with a great compensation package. Background driving check & drug test required. Call 1-866-810-2054 or fax resume to 1-817-334-3460.

**MISCELLANEOUS**  
ATTEND COLLEGE ONLINE from home. Medical, Business, Computer, Finance, Law, etc. Job placement assistance. Computer provided. Financial aid if qualified. 1-866-858-2121. www.OnlineTidewaterTech.com

**\$22,000 LOVE PREGNANCY?** Become a Surrogate! Make dreams come true. Carry someone else's baby who can't without help. Professional agency to support your journey. www.SurrogateWeb.com

**MOBILE HOMES FOR SALE**  
OWNER IN JAIL-Make up 3 back payments on manufactured home. Call for details. Many extras. Call LUV Homes, 1-800-934-9644, RB# 03190.

**ZERO DOWN IF YOU own your** land. Build your own home! Karstin Clayton, LUV Homes-Tape and Texture models. We finance. LUV Homes, 1-800-934-9644, RB# 03190.

**PET SUPPLIES**  
CONTROLHOOK, ROUND, and tapeworms. Rotate Happy Jack tapeworm tablets with Liqui-Vict at Tractor Supply Stores.

**REAL ESTATE - LAND FOR SALE**  
100 ACRES-\$39,900. 1st time offered. Perfect for hunting retreat. Big buck area, plus turkey, dove, quail and more. Very private w/EZ access. Financing available. Texas Land & Ranches, 1-866-899-5263.

**AFFORDABLE HILL COUNTRY** land. Native, exotic game, hogs, owner terms for Texas Vet financing. 1-800-876-9720. www.hillcountryranches.com.

**DEL RIO/BIG BEND AREA:** 169 acres of desert hunting land, \$235/acre, \$2000 down, \$392 monthly/ 20 year note. 1-830-885-4578. www.ranchenterprisesltd.com.

**MASTER PLANNED OCEAN FRONT** Community, homes starting mid-\$300K, Gulf front lots \$595K, on beautiful Mustang Island, near Corpus Christi. 866-551-0347.

**STEAL MY LAND.** 2 acres with private boat dock on 44,752 acre lake. Central water, paved streets, electricity. Steal it today, \$44,900. Call Texas Land & Lakes, 1-888-773-5253

**WHY LEASE WHEN YOU can own?** Hunting ranch, 100 acres \$399 per acre. Trophy deer habitat. Good hwy access, rolling hills, good brush, rock outcroppings. EZ terms. Texas Land & Ranches, 1-877-542-6642.

### THE WINNING TEAM

YOU AND THE CLASSIFIEDS GET YOU WHERE YOU WANT TO GO

### SLOW DOWN

THEY DEPEND ON YOU

### your marketplace the WANT ADS

### CLASSIFIED FILE

USE THE CLASSIFIED FILE SECTION

There's something for everybody in the Classifieds. Everything from auto to room loans.

• BUY • SELL • RENT • TRADE • FIND •

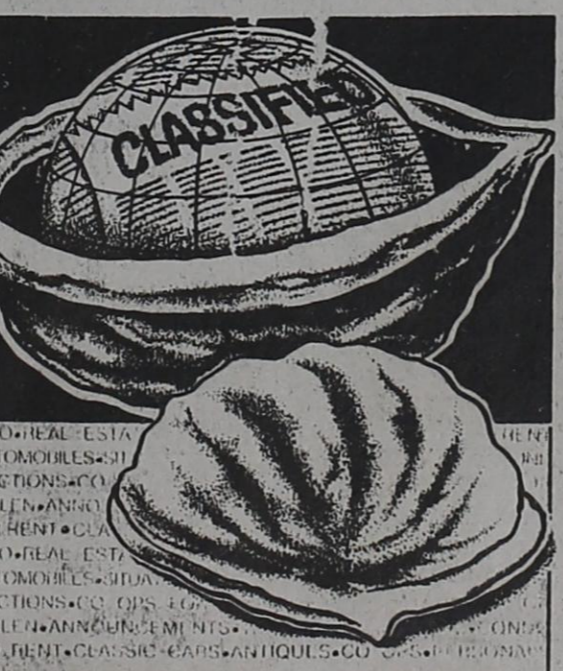
For yourself, your kids, your spouse, anybody at all, the Classifieds will give you a head start on whatever is needed.

So get in on a great thing. Get into the Classifieds.

Eastland County Newspapers

NOTICE: While most advertisers are reputable, we cannot guarantee products or services advertised. We urge readers to use caution and when in doubt, contact the Texas Attorney General at 1-800-621-0508 or the Federal Trade Commission at 1-877-FTC-HELP. The FTC web site is www.ftc.gov/bizop

Extend your advertising reach with TexSCAN, your Statewide Classified Ad Network.



**THE CLASSIFIEDS:**  
A world of opportunity in a nutshell!

### Read the Classifieds

**NOTICE**

Do you like to talk to people? Do you present yourself well? Would you like to earn some extra money? Would you like to be a part of a growing local economy? If you can answer "yes" to all of these, then you might be the commission advertising sales person we are looking for. With the growth of economic activity around here, we need to add to our sales program. This could be ideal for stay-at-home mothers, and others.

Sell yourself, your qualifications and ambitions to us in a letter; no telephone calls. It is commission sales and can be done in person and/or by phone.

The territory is open and controlled by the Advertising Manager.

Mail a brief outline with telephone number of what you can do and will do for a "piece of the pie."

Mail to Advertising, Box 29, Eastland, Texas, 76448.

Not a Pyramid Program

1304 E. Main Eastland 254-629-3363

### Ken's Motorcycle Shop

Christmas Big Sale on all Kids Units, Large selection to choose from FREE HELMET, Plus your chance to win a free trip to Little Sahara ride in 2007 with any Youth ATV purchase. We also have Full size ATV for the Big Kid.

IT PAYS TO ADVERTISE... ADVERTISE WHERE IT PAYS...  
**WANT ADS!**

Small Ads... Big Results! **CLASSIFIED ADS!**

Drinking and driving is not only dangerous to all involved, but foolish when it's so easily avoidable. Before you take the chance again, take a close look at the following stats.

IS IT  
WORTH IT?

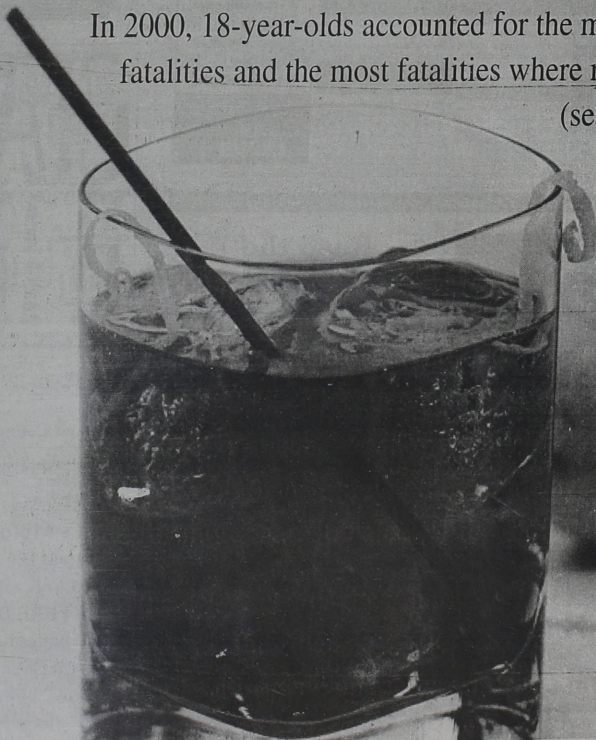
## STATISTICS

In 2000, more 19-year-olds died in alcohol-related traffic crashes than any other age (1,368). The next most fatal ages were 18, 21, 20, 17 and 22, respectively. No other single ages but these six recorded more than 1,000 fatalities.

By a wide margin, 21-year-olds recorded the most alcohol-related fatalities (680) in 2000. The ages with the next highest numbers of fatalities in alcohol-related crashes were 19, 22, 20 and 23, respectively. By comparison, no other single age besides these five accounted for more than 500 alcohol-related fatalities.

In 2000, more 19-year-olds died in lower BAC (between .01 and .09) alcohol-related crashes than any other age. In fact, 19-, 21-, 18-, 20-, 22- and 17-year-olds made up the top six ages (in order) of people who died in these crashes.

In 2000, 18-year-olds accounted for the most alcohol-related fatalities and the most fatalities where no restraint system (seat belts or motorcycle helmets) was used.



**Obituaries**

**Sena Lea Avery**

Clyde- Sena Lea Avery, 72, of Abilene and formerly of Clyde, died Monday, December 4, 2006 at a local hospital.

Services were at 2:00 p.m. on Thursday at Trinity Baptist Church in Abilene with Kevin Kennedy officiating. Burial was to follow in the Eula Cemetery under the direction of Bailey Funeral Home.

Mrs. Avery was born on January 19, 1934 in Callahan County to Robert Lee and

Sena Madris (Ivey) Barton. She grew up and attended Clyde High School. She moved to Abilene from Clyde in the early 1960's. She had retired from Texas Instruments in Quality Control. She was a member of Trinity Baptist Church in Abilene.

Survivors include her son: Dale Curtis Avery and wife Taunya of Abilene; one daughter, Cathy Hancock and husband Sammy of Abilene; three brothers, Robert

From Page One...

**Red Cross Needs Your Help**

contributions to the local disaster relief fund make it possible to help families displaced by house fires and

other disasters, for the Red Cross. To make a gift to the local disaster relief please call 325-677-2622 or mail it

to Big Country Region American Red Cross 1610 N. 2nd Abilene, TX 79601. For free information on how to protect your home from a wildfire, or for tips on stay-

ing safe in extreme heat, please visit the site www.redcross.org.

**John (Johnny) Coleman Wooten**

John (Johnny) Coleman Wooten, age 57, passed away Tuesday, December 5, 2006. Funeral services were at the Higginbotham Chapel at 10 a.m. Friday, December 8, 2006 with Len Smith officiating; burial was to follow in the Cross Plains Cemetery. He was born in Brownwood, TX, to Glenn and Juanita (Hounshell) Wooten on April 21, 1949. Johnny worked as a carpenter after graduating from high school.

He is survived by: his sons, Jerrod Wooten of MO; Levi Wooten of Cisco, TX; Travis Wooten of Abilene; daughter Shayla Hobbs and husband C.R. of Lockhart; step-daughter Becky Foster of Nimrod; mother Jaunita Wooten of Cross Plains; sister Anita Mays and husband David of Baird; nephews Bo Buchanan and Joe Buchanan of Cross Plains; one grandchild Brooklyn Wooten. He was preceded in death by father Glenn and brother Grady Wooten.

The family received friends and relatives at

Higginbotham Funeral

**Mary Allene (Webb) Hays**

CLYDE-MARY ALLENE (Web) Hays, 91 of Midland and formerly of Sterling City, died Saturday in a Midland care facility.

Graveside services were held at 11:00 a.m. Tuesday at the Clyde Cemetery with Dr. John Estes, Jr. officiating under the direction of Bailey Funeral Home.

Mrs. Hays was born December 31, 1914 in Roaring Springs, TX to W.W. and Belle (Ballard) Webb. She moved to Clyde from Roaring Springs at an early age and attended Clyde High School. She was the widow of Mario of Marion Hays, whom she married on August 25, 1932 in Clyde. They moved from Clyde in the mid-1950's to Sterling City. They moved to Midland from Sterling City in 2000. She was a homemaker and a

lifelong member of the Church of Christ. Survivors include two sons, Robert Hays of Grandview and Keelon Hays of Ft. Worth; two daughters, Petty Hay, Norris of Midland and Ann Hays Prather of Sparks, Nevada, NM; fourteen grandchildren and fifteen great-grandchildren.

She was preceded in death by her parents, her husband and one daughter, Helen Carruthers.

**Continued From One... Ole Oplin**

Oplin on December 29th, but we invite everyone to join us on Dec. 31st (New Year's Eve) to ring in the New Year to the tunes of Muddy Creek. Admission to our regular Friday evening dances is still only \$4.00 per person, but admission to our New Year's Eve dance will be \$5.00 per person and our New Year's dance will bein at 8:00 p.m., until shortly after midnight.

**2006-07 Baird Bear and Lady Bear Basketball Schedule**

Date	Opponent	Site	Time	Teams
OCT 28	Rising Star(Scr.)	There	TBA	JVG, VG
OCT 31	Hawley(Scr.)	Home	TBA	JVG, VG
NOV. 7	Santa Anna (49-53)	There	5:30	JVG, VG
NOV. 14	Newcastle	Home	4:00	JVG, JVB, VG, VB
NOV16&		There	TBA	JVG, JVG, VG, VB
NOV. 17	18 Cross Plains JV	Tourney		
NOV. 20	Rotan	There	4:00	JVG, JVB, VG, VB
NOV. 28	Hawley	Home	4:00	JVG, JVB, VG, VB
NOV.31-DEC 2	Rising Star	Home	4:00	JVG, JVB, VG, VB
NOV32.	Roby	Tourney	There	TBA VG, VB
DEC 2	Hawley JV Tourn.	There	TBA	JVG, JVB
DEC. 5	Roby	There	4:00	JVG, JVB, VG, VB
DEC. 7-9				
DEC 12	Cross Plains Tourn.	There	TBA	VG, VB
DEC. 14-16	Trent	There	4:00	JVG, JVB, VG, VB
DEC 14-16	Rule Tourn.	There	TBA	VG, VB
DEC. 16	Jim Ned Tourn.	There	TBA	JVB
DEC. 21	Albany JV. Tourn.	There	TBA	JVG
JAN 2	Hamlin	Home	4:00	JVG, JVB, VG, VB
JAN. 5	Miles	There	4:00	JVG, JVB, VG, VB
JAN. 5	Hamlin	There	5:00	JVB, VB
JAN. 5	*Eula	There	6:00	JVG, VG
JAN. 9	*Cross Plains	Home	4:00	JVG, JVB, VG, VB
JAN 12	*Winters	There	4:00	JVG, JVB, VG, VB
JAN 16	DeLeon	Home	4:00	JVG, JVB, VG, VB
JAN 19	*Albany	Home	4:00	JVG, JVB, VG, VB
JAN 23	*Eula	Home	4:00	JVG, JVB, VG, VB
JAN 26	*Cross Plains	There	4:00	JVG, JVB, VG, VB
JAN 30	*Winters	Home	4:00	JVG, JVB, VG, VB
FEB. 2	Open			
FEB. 6	*Albany	There	4:00	JVG, JVB, VG, VB
FEB. 9	*Eula	There	5:00	JVB, VB

**\*DISTRICT GAMES**

**Baird I.S.D. Lunch Menu**

Thursday, December 14th: Chicken Nuggets or Chili Mac, Tossed Salad, Veggie Sticks, Wacky Cake, Fresh Fruit, Choice of Milk.  
 Friday, December 15th: Bear Burgers or Bear Dogs, or Deli Sandwich, French fries, Lettuce & Tomato, Dessert, Fresh Fruit, Choice of Milk.  
 Monday, December 18th: Corndog or Cheese Pizza, Whole Kernel Corn, Tossed Salad, Peanut Butter Cookie, Fresh Fruit, Choice of Milk.  
 Tuesday December 19th: Roasted Turkey in Gravy w/ Dressing, or Chef Salad, Mashd Potatoes, Green Beans, Sweet Potato Casserole, Pecan Pie, Hot Roll, Fresh Fruit, Choice of Milk.  
 Wednesday, December 20th: Popcorn Chicken w Gravy or BBQ on a Bun, California Mixed Vegetables, Tossed Salad, Pudding, Fresh Fruit, Choice of Milk.  
 Thursday, December 21st: Chicken Nuggets, or Chili

Mac, Tossed Salad, Veggie Sticks, Wacky Cake,

**Baird '48 Study Club Meets for Christmas on Dec. 11, 2006**

The Baird '48 Study Club met for the Christmas meeting on Monday, December 11, 2006 at 7:00 p.m. in the home of Judy Gulley. The meeting was called to order by President Linda Hart. Secretary Dyanne Thompson called the roll and read the minutes from the previous meeting. Joanie Shrader made a motion to approve the minutes. Sally Goldsmith seconded the motion. Correspondence was read by President Linda Hart.

President Linda Hart then asked for new business and old business. Each member brought a gift for the Christmas Mission Project. Irma Crow announced the change of the location of the January meeting. Billie Ann Earp will host the January meeting. Irma will call the members that are not present to tell them about the change in the location of the meeting. The Nursing Home

Fresh Fruit, Choice of Milk.

Birthday celebration was discussed. The next meeting will be January 8, 2006 and the Nursing Home party will be January 17, 2006.

The meeting adjourned for the Christmas dinner that was prepared by the social committee and served by hostesses Judy Gulley and Joanie Shrader. After the dinner a Christmas program was given by hostess Judy Gulley. Each member continued the evening with a hayride in Baird and Christmas caroling to different homes in the community.

Members present were Donna Bell, Barbara Corn, Irma Crow, Billie Ann Sharp, Sally Goldsmith, Judy Gulley, Linda Hart, Pat Holland, Georgie Manion, Debbie McElmurray, Sally MacGregor, Sue McNeil, Joanie Shrader, Joyce Smauley, Dyanne Thompson and Dana Voights.

The Grand Ole Oplin is hosted by the Oplin Community Center located at the intersection of FM 604 S. and FM 2926. Smoking and alcohol is not allowed at any of our

VERY INTERESTING responses to our recent inquiry here about "what would you have done", regarding an incident we had witnessed in which a distraught mother screamed at and actually hit her young child in a public place. We

mentioned options, but acutally did nothing but fume within our self. Dana Storm, an active worker with the Crisis Center, in Eastland, suggested that we might have given more consideration to

So gather the family all of your friends and come on out to the Grand Ole Oplin for an evening of good music and good friends.

the mother. maybe she'd had a bad day, Dana suggested, and a sympathetic Word might have done more good than anything.

Our friend, J.B. Johnston, had similar thoughts and

**Breakfast Menu**

FRIDAY, DECEMBER 15: Cinnamon Roll, Yogurt Plate or Cereal & Toast, Fresh Fruit, Assorted Juices, Choice of Milk.  
 MONDAY, DECEMBER 18: PANCAKES w/ SYRUP, Cinnamon Toast, Yogurt Plate or Cereal & Toast, Fresh Fruit, Assorted Juices, Choice of Milk.  
 TUESDAY, DECEMBER 19: BISCUIT & SAUSAGE w/Gravy, Yogurt Plate, or Cereal & Toast, Fresh Fruit, Assorted

Juices, Choice of Milk.  
 WEDNESDAY, DECEMBER 20TH: BREAKFAST ON A BUN, BREAKFAST TACO, Yogurt Plate or Cereal & Toast, Fresh Fruit, Assorted Juices, Choice of Milk.  
 THURSDAY, DECEMBER 21ST: Biscuit & Sausage w/ Gravy, Yogurt Plate, or Cereal & Toast, Fresh Fruit, Assorted Juices, Choice of Milk.  
 Friday, December 22-Frid. December 29th: Christmas/Winter Break.

**Clyde Basketball Scores**

Lions Invitational Girls  
 Merkel 52, Clyde 39  
 Merkel 14 10 12 16-52  
 Clyde 17 6 3 13-39  
 Merkel--Mounts 25, Dye 13, Gabaldon 6.  
 Clyde - J. Holland 14, Yates 10, Henson 5.  
 Merkel 56-Clyde 37  
 Clyde 51, Abilene High 45  
 Abilene High 18 5 10 10-41  
 Clyde 14 16 14 7-53  
 Clyde- Welch 19, illanueva 12, Yates 7, Harris 5.  
 Abilene High - Wartes 16, Roun 9, Stokes 6, Chastain 4, Sajourner 4.

**Local Area, BASKETBALL**

Eastland 46, Andrews 57  
 Eastland 8 9 8 21-46  
 Andrews 12 9 12 24-57

● **Wouldn't you like to let your customers know that they are welcome to come and visit any time?**  
 ● **Seeing an ad often is like an open invitation to come and see you when they're ready.**

Call or come by and let Gary Grady help you with any Advertising Needs.

254-629-1707

Eastland / Callahan County Newspapers  
 215 South Seaman - Eastland, Tx 76448



**MESOTHELIOMA**

If you or a loved one has been diagnosed with MESOTHELIOMA, please call us today toll free at 1-866-369-3476 to discuss your legal rights.

THE FOX LAW FIRM, P.C.  
 Principal Office-- Dallas, Texas

1-866-FOX-FIRM  
 WWW.FOXFIRM.COM

"Posterity! You will never know how much it cost the present generation to preserve your freedom! I hope you will make good use of it!" - John Adams (1735-1826) Second U.S. President in a letter to Abigail Adams. April 26, 1777

## Obituaries

### Ethel Hughes

BAIRD-Ethel Hughes, age 79, of Baird, TX, passed away Thursday, December 7, 2006 at Hendrick Hospice in Abilene, TX.

Funeral services were held at 2:00 p.m. Saturday, December 9, 2006 at First United Methodist Church directed by Parker Funeral Home. Reverend Sandra Keith was to officiate with burial to follow at Belle Plaine Cemetery.

Ethel was born December 4, 1927 in Gause, Texas to Steve Decatur Beasley and Pearl Favor Beasley. She moved to Callahan Co. in 1939 from Burleson Co, TX then moved to Baird, TX in 1933. She was a homemaker and a member of the First

United Methodist Church, United Methodist Womens Group and was a volunteer with the Kids Club. She married William Earl Hughes at Belle Plaine, TX on Jan. 18, 1948. He preceded her in death Nov. 29, 2005. Survived by : 1 Son, Brian Hughes of Lakewood, CO; 1 Daughter, Phyllis Pancake of Cross Plains, Tx; 6 Grandchildren and 3 Great Grandchildren; 3 sisters, Faye Gilliam of Cottonwood, Tx, Mary Vanderlinden of Clyde, TX, and Pearl Le May of Abilene, TX; 2 Brothers, Roy Lee Beasley of Clyde, TX, and Pete Beasley of Clyde, TX; numerous nieces and nephews.

### City of Clyde Seeking Your Ideas On Centennial Celebration in July 2007

The City of Clyde is planning a Centennial Celebration in July of 2007. We are interested in what the citizens of Clyde would like to see for our celebration. On our Web Site, you will find a poll of different activities. Please check this out and see if there is something you would like to vote on. If there is something different you would like to see, please e-mail me and let me know. This event is for the citizens of Clyde.

We want to make this a

very fun and special event. Your input is very important to us so get involved in these decisions. Our web site is www.clydecityhall.com to take the poll and the email is clydeh2o@clydecityhall.com. If you do not have Internet access, you may also send your requests for this through the U.S. Mail. Our address is City of Clyde, Attn: Centennial Celebration, P.O. Box 1155, Clyde, Texas 79510. We are looking forward to your input.

Submitted by  
Lorrie D. Trammell

### Cowboy Heritage Church Open Team Ropings Underway

The Cowboy Heritage Church in Clyde will be hosting open team roping at the Church located north of Interstate 20.

The open ropings will be held every Saturday beginning November 4th. The roping event will begin at 2:00 p.m. until finished.

The cost is \$20 for the no limit/all you want to rope event.

No alcohol is allowed on the premise.

### Boys High School Basketball

#### Cross Plains Christmas Classic

Cross Plains 66, Novice 26  
Cross Plains 19 18 12 17-66  
Novice 3 3 16 4-26

Cross Plains - Scott 13,  
Douglass, 4; Harris 4;  
Phillips 7, Cook 3, Bennett  
7; Martinez 14; Augustine 2;  
Gary 5; Harrelson 6  
Novice - Briley 3, Holmquest  
4, Arispe 2, Lisneros 3, Watts  
14.

Baird 26, Brookesmith 40  
Brookesmith 3 9 10 18-40  
Baird 5 7 6 8-26

Brookesmith - Goerdez 12,  
Foster 19, Haley 3, Ggardt 6.

Baird - Suarez 10, McDowell  
9, Burns 4, Darnell 3.

Baird, 47; Gustine 16

Baird 12 4 18 3-47

Gustine 2 5 3 6-16

Baird - Suarez 10,  
McDowell 7, Johnson 7,  
Burns 4, Darnell 9, Dugan 8,  
Burns 2

Gustine - Haley 5, Courtney  
6, Tiffany 3.

Baird 76, Brookesmith 62

Baird 13 18 17 28-76

Brookesmith 14 18 15 15-62

Baird - Waddle 3, Orlando 13,  
Whitworth 9, Cogburn 26,  
Jennings 10, Parker 14.

Brookesmith - Cruz 15, Allgood  
8; Pittman 9; Alden 15, Beck 6,  
Kinnibrugh 10

### Clyde Jr. High School Fall Exam Scheduler

Clyde Jr. High School  
Fall Exam Schedule 2006  
Monday, Dec. 28, 2006:  
First Period 8:00 a.m.-  
8:50 a.m.

#### from Pg. One... Custom Map Orders Available

contact the Natural Resource Conservation office located at 141 W. 4th St. Baird, TX or Call (325) 854-1349, EXT 3. Order forms and information may also be obtained at the Albany NRCS at 325-762-2552, EXT. 3.

Second Period: 8:55 a.m.-9:45 a.m.  
Third Period : 9:50 a.m.-10:40  
Fourth Period: 10:45 a.m.-11:35 a.m.  
8th Grade: Lunch: 11:40 a.m.-12:10 p.m.  
Fifth Period (7th Grade): 11:40 a.m.-12:30 p.m.  
Fifth Period (8th Grade): 12:15 p.m.-1:05 p.m.  
Seventh Grade Lunch: 12:35 p.m.-1:05 p.m.  
Sixth Period: 1:10 p.m.-2:00 p.m.  
7th Period (exam): 2:05 p.m.-3:25 p.m.  
Tuesday, December 19, 2006

First Period (Exam): 8:00 a.m.-9:30 a.m.  
Second Period: 9:35 a.m.-10:30 a.m.  
Third Period (Exam): 10:15 a.m.-11:45 a.m.  
Fourth Period (7th Grade): 11:00 a.m.-12:30 p.m.  
8th Grade Lunch : 11:50 a.m. 12:20 p.m.  
7th Grade Lunch: 12:35 p.m.-1:05 p.m.  
4th Period (8th Grade): 12:25 p.m.- 1:05 p.m.  
Fifth Period (Exam): 1:10 p.m.  
2:40 p.m.  
Sixth Period 2:45 p.m.-3:25 p.m.  
also Wednesday, Dec. 20, 2006:

Second Period (Exam 8:00 a.m.-9:20 a.m.  
Fourth Period (Exam): 9:25 a.m.-10:55 a.m.  
All Lunch: 11:00 a.m. - 11:30  
Sixth Period (Exam): 11:55 a.m.-1:00 p.m.

#### Loans Available from F.S.A. in Anson from Pg. One

ships, corporations, or cooperatives in which U.S. Citizenship requirements are met by holding a majority interest.

The F.S.A. office in Anson is open from 8:00 a.m. to 4:30 p.m., Monday through Friday.

### 2006-07 Calendar Baird I.S.D.

next Teacher Development Workday:

December 22  
May 25

Staff Development Day: ends Aug. 11

\*Compensatory Days: November 21-22  
also January 19.

Bad: Weather Day: May 11.  
Students Holidays: Labor Day, September 4

Thanksgiving, November 20-24

Christmas break, December 21-January 7

County Stockshow: January 19.

Spring Break, March 12-16

Easter, April 6

TAKS TESTING days: October 17-20  
February 13-15, April 4, April 17-20,  
May 15

B.H.S. Graduation: May 25, 2007  
\*\*\*Three staff development waiver days required during the summer or weekends to compensate the 3 days in November and January.

### BUS SERVICE MINISTRY, Schedule AT FIRST BAPTIST CHURCH BAIRD, December

You Will Be HAPPY to learn that the adventure will continue through our bus ministry! The bus ministry will serve children age three through senior adults, who live within the Baird city limits, and are needing a ride to our Sunday School (Bible Study) and Worship Serv. beginning at 9:45 each Sunday. If you or a child in your neighborhood have been unable to attend Sunday School and Worship Services due to lack of dependable transportation, here is your opportunity!

With August 20 only a couple of weeks away, we

encourage you to contact the church office at 854-1574 to receive important information pertaining to pick-up times and enrollment for this serv.

We will be eagerly anticipating your calls!

#### SCHEDULE OF EVENTS

Evening Worship 6:00 pm  
Wednesday Prayer Meeting 7:00 pm  
Wednesday YOUTH Fellowship 7:00 pm  
(Nursery provided for all services)

### Go Baird Bears-Go, Fight, Win The Tournament

Cowboy Heritage Church is located north on Hays Rd. approximately 1/2 mile

north of the Interstate 20, Exit 299 mile marker.

### Callahan Divide Soil and Water Conservation District Poster Contest

POSTER ENTRIES shall be on standard poster board, cut to half size 22" X 14". Artwork on poster entries should be produced with materials which do not readily smea, crack or chip. If necessary a fixative or lamination may be used. Poster entry artwork should be flat.

Each poster will need an entry form attached to the back of the poster.

Students may choose one of the two themes for this years contest. #1 "Water Wise."

#2 "Celebrate Conservation". Students will be awarded a ribbon for participation by the district. Area Winners will be presented with a plaque.

A Digital Photograph will be required of each winner from the County competition to be published in the local paper and the SWCD newsletter.

The district will choose three winners from the

Continued from P.1...  
Baird Exe Students

#### CROSS PLAINS 63, Novice 32

Cross Plains 15 7 11 20-53  
Novice 3 8 15 6-32

Cross Plains - Callaway 2,  
Dickson 7, Koenig 18, Vasquez 2,  
Estes 14, Cooper 2, Hopkins 3,  
Wyatt 13, Gibbs 2.

Novice--Liddell 3, Blackshear 6,  
Briley 17, Martinez 6.

Cross Plains 53, Gorman 45

Cross Plains 15 7 11 20-53  
Gorman 11 16 11 6-45

Cross Plains - Callaway 5, Dickson  
10, Koenig 18, Estes 4, Cooper 2,  
Gibbs 14.

Callahan County School Districts 4th, 5th and 6th grades. These posters will be submitted to the Area 5 competition. If one of these posters is selected it will then be sent to the State competition. All posters must be turned into Callahan Divide SWCD no later than January 28, 2006. Please contact Judi Winans at Callahan Divide Soil and Water Conservation District, 141, W. 4th Street, Suite B, Baird, TX 79504. 325-854-1349, Ext 3.

Looking for:  
responsible  
Paper Route  
Delivery for  
Baird, Clyde  
and Cross  
Plains. Con-  
tract Call 254-  
629-1707

Read  
the  
Callahan  
County  
Classifieds  
for  
Your  
Christmas



introducing the versatile HELOC

### HOME EQUITY LINE OF CREDIT

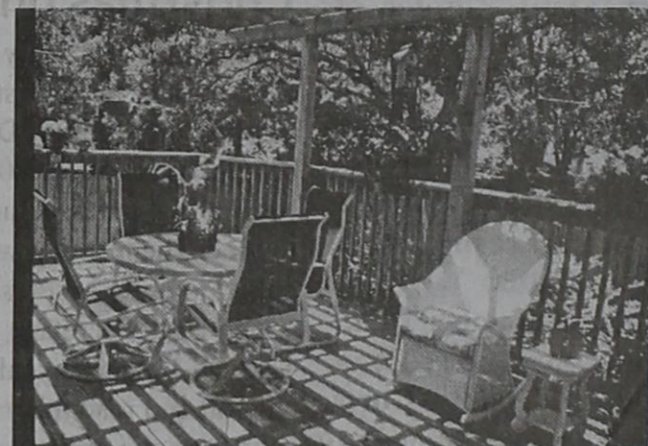
Because...

Rates Are Great  
Here At Home!

Apply now for a great rate Home Equity Line of Credit. It has never been easier to create a convenient credit line to:

- Remodel Your Home • Consolidate Your Debts • Cover Financial Emergencies

Call or come by to find out more about how the equity in your home can work for you. Banking the way it's meant to be. Come see.



8.251%\*  
FIRST 12 MONTHS APR

\*Variable rate. This rate is in effect for the first 12 months of the contract and then the rate adjusts annually to Wall Street Journal Prime Rate + 0%. Maximum possible rate over life of loan is 18%. Certain fees may apply. Closing costs may range between \$300 - \$400. Property insurance is required. Limited time offer. Visit your bank for complete terms and details.

FIRST  
FINANCIAL  
BANK

EASTLAND • RANGER • RISING STAR



201 E. MAIN STREET • EASTLAND • 254-629-6100 • www.ffb-eastland.com