

# The Lockney Beacon



Volume 78 Lockney (Floyd County) Texas 79241 Sunday, September 9, 1979 14 Pages In One Section Number 72

## Longhorns Discover Aerial Attack, Pass Post By 20-6

### WARREN-TO-EVANS PASSING COMBO CLICKS

Lockney Longhorns opened their season with a 20-6 victory over Post Antelope Friday night at the Longhorns' home field. The Longhorns capitalized on a second-quarter interception by Roel Rodriguez in Post territory, and Alaniz scored from five yards for the only touchdown of the game.

The game got more interesting after the Longhorns drove 80 yards in the opening kickoff, and the TD march with another sweep around right end, and a 17-yard Steve Warrento pass, a 15-yard penalty late in the game when the Longhorns picked up the Antelope once when the Antelope had punted, and a couple of late-down pickups by Ford. The Longhorns gave the 'Horns a first on the 11, and three plays later Ford intercepted the contest, retaliating with a 34-yard drive, five of which were big gains—14, 19, and 20—by fullback Barry Wyatt. Alonzo Luna notched the final points to put the 'Lopes back in some trouble handling the game. The stadium clock had 1:00 left when the Longhorns blocked the kick. The stadium clock had 1:00 left when the Longhorns blocked the kick. The stadium clock had 1:00 left when the Longhorns blocked the kick.

The ensuing touchdown drive by the Lockney crew used up most of the final period and iced down the Longhorn victory. The kickoff return went to the Longhorn 16, and the 'Horns took 15 plays to move to the Antelope 17-yard stripe. Acquiring penalty and a two-yard loss set them back to the 34, but right after the penalty Warren connected with Arnold Alaniz on a pass play, and Alaniz hoofed it to the end zone for what proved to be the final TD of the contest. The Horns faked the PAT kick: Bill McCarter, who's played quarterback but is listed as a split end on the Longhorn Roster) wound up with the ball and tossed to Alaniz in the end zone for the two-point conversion.

The airways between quarterback Warren and tight end Evans were busy all night long—the duo combined for five completions and 58 yards during the course of the opening-night contest, and Warren hit Alaniz on the 34-yard TD play. Post's only "completions" were to Longhorn players—Roel Rodriguez picked off that one in the second quarter, setting up the first touchdown, and Jeffrey McCormick grabbed one late in the game, killing the Antelope's hopes for a last-gasp rally. (McCormick went in at quarterback following the final interception.)

Final score: Longhorns 20, Antelope 6 in the season opener for both squads.



ALLEY-OOP! Longhorn tailback Curtis Ford finds himself suddenly airborne at the end of what started out as a ground play. Ford gained seven yards on the first-quarter carry before being upended by the unidentified Post Antelope. (Staff Photo)

LHS	PHS
17	9
130	154
92	0
6-9-0	0-5-2
3-2	2-1
3-30	4-32
6-48	7-85

SCORING	
Lockney: Curtis Ford, five-yard run (kick failed)	
Lockney: Ford, five-yard run (pass failed)	
Post: Alonzo Luna, three-yard run (kick failed)	
Lockney: Arnold Alaniz, 34-yard pass from Steve Warren (Alaniz, pass from Bill McCarter)	

SCORE BY QUARTERS	
Lockney	0 6 6 8-20
Post	0 0 0 0-6

RUSHING	
Lockney:	Ford 25/72 yards, 2 TD; Delgado 10/33; Rodriguez 4/13.
Post:	Wyatt 7/84; Luna 11/56, 1TD.

PASSING	
Lockney:	Warren 6-9-0, 92 yards, 1TD; McCarter 1-1-0 (PAT)

RECEIVING	
Lockney:	Evans 5-58; Alaniz 1-34, 1TD

More football game pictures on page 3

## Mackenzie Representatives Meet With Lockney City Council

Representatives of the Mackenzie Water Authority told the city council Thursday that the Mackenzie project would cost the city \$1.2 million. The Mackenzie project would be a \$1.2 million project that would provide water to the city. The Mackenzie project would be a \$1.2 million project that would provide water to the city. The Mackenzie project would be a \$1.2 million project that would provide water to the city.

Under the measure, a county-wide appraisal district office will prepare a central tax roll that cities, school districts and other local governments will be required to use for levying ad valorem taxes. The various provisions of S.B. 621 will be phased in over a period of 27 months, with the goal of having the new system fully implemented by January 1, 1982.

Under S.B. 621, each appraisal district will be governed by a 5-member board of directors selected by the governing bodies of the taxing units situated in the district. Cities and school districts do participate in the selection of the board; so does the county, if the commissioners court has voted to join the appraisal district. Water districts, levee districts and other special districts do not participate in the selection process.

"The voting strength of each unit will be weighed in proportion to the amount it levies in ad valorem taxes each year..."

(But if three-fourths of the taxing units in the county vote to do so, the representatives may be appointed instead of elected by the method described above, if the representatives are elected according to the amount of taxes levied, Lockney probably will have no representative on the board, because the city taxes here are so low — and the Floydada Independent School District could end up with two representatives on the board.)

City officials at the council meeting Thursday morning were Mayor Claude Brown, Councilmen Thurman Davis, Bobby McCormick, J.D. Copeland, Jerry Perry and Paul Reecer, City Secretary Erma Lee Duckworth, Police Chief Bill McConnell.

AT FLOYD COUNTY FB CONVENTION

### Jackson, Pitts, Gilly Named Farm Bureau Directors

D.K. Jackson and Kenneth Pitts were re-elected to the Floyd County Farm Bureau board of directors, and Craig Gilly was named to a first term on the board, Thursday night during the county Farm Bureau convention in the Lockney Elementary School cafeteria. The Farm Bureau members voted to adopt several resolutions on the county, state and national level.

Farm Bureau members elected eight delegates to the state Farm Bureau convention December 2-5 in McAllen. State delegates chosen Thursday were Buster and Linda Terrell, Warren and Charlotte Mitchell, D.K. and Gayle Jackson, Omar Burleson and Paul Schacht. The members voted to give the board of directors authority to appoint alternate delegates to the state convention should the elected delegates not be able to attend.

Special guest and featured speaker at the county convention was S.M. True, state Farm Bureau director from this district (District 2). True talked about Farm Bureau insurance and service programs, membership, and legislative activities.

High-school students who attended the annual Farm Bureau Citizenship Seminar this summer Waco told the convention crowd about their experiences at the seminar. Mike Allen and Sammy Bradley of Floydada and Melody Wiley and Penny Hight of Lockney returned from the seminar feeling "proud to be Americans."

County Farm Bureau President Kenneth Pitts reported on the actions of the board of directors this year: Dan Smith, secretary-treasurer, read the previous meeting's minutes and gave the financial report for the year; and Billy Don Colston, vice president, gave the membership report.

These resolutions were adopted at the county convention:

1. WE RECOMMEND that the Floyd County Farm Bureau Board of Directors meet with Floyd County Commissioners to discuss cleaning out culverts on county roads in all precincts.
2. WE RECOMMEND that a 4-way stop sign be erected at intersection of Farm Road 378 and Farm Road 784 in Sandhill, Texas.
3. WE RECOMMEND that we re-affirm the need for caution lights to be installed at the Fort Worth-Denver Railroad crossing 5 1/2 miles North of Lockney on Farm Road 378.
4. WE RECOMMEND that since we are increasingly concerned about the growing power of the regulatory agencies in government, we oppose the creation of a Federal Corporation for Developing Energy Resources.
5. WE RECOMMEND that the Consumer protection Agency be abolished.

### Commissioners To Consider Budget

The Floyd County Commissioners will meet in regular session Monday, beginning at 9 a.m. in the county courthouse to discuss county business and to consider a number of special items.

Among the top priorities for the commissioners will be a public hearing on the proposed county budget for 1980, approval of the revenue sharing fund disbursement and consideration of tax discounts.

The public hearing for comment on Judge Choise Smith's proposed budget for next year will be held at 3:30 p.m.

As proposed, the county will expend \$1,267,377, including money from revenue sharing funds. County auditor Olin Watson predicted the county would take in \$501,920 in taxes (assuming a 95 percent collection rate on the 95 cents per \$100 valuation) and another \$496,114 from other sources, including revenue sharing income.

The new budget also includes a seven-and-one-half percent pay raise for county employees.

Prior to the budget hearing, Judge Smith will formally present his revised revenue sharing expenditures budget to the commissioners. The revenue sharing budget was slashed by nearly \$12,000 last week when Federal officials informed the judge that the county check would be less than that amount.

Several county organizations which were anticipating funds had their allocations cut by 50 percent or more from the original proposal. The cut was so large, the judge explained because \$350,000 of the \$376,700 to be received had already been obligated.

The court will also consider allowing a three percent tax discount for taxes paid by Oct. 30. On a sliding scale, the tax credit would be extended to a two percent discount to those paid by the end of November and a one percent discount if paid by the end of December.

In the first item of business Monday morning, the commissioners will meet with Kenneth Bain Jr., the county attorney, to discuss an office change and remodeling the office occupied by the county superintendent secretary.

The court will consider an agreement for the state of Texas to survey, inspect, appraise and inventory bridges on public roads and streets.

Judge Smith and the commissioners will discuss a petition for resurfacing the road extending from Highway 207, at a point two miles north of South Plains, for a distance of five miles to the east.

Jim McNorris, a tax consultant with McNorris and Associates, and Judge Smith will report on a meeting concerning Senate Bill 621. The bill reportedly would standardize taxing procedures across the state, rather than allow local control as is currently practiced in Texas.

An order of interest and a resolution to change the method selecting members of the board of directors of the appraisal district will be considered.

At 10 a.m., the court will receive bids for the purchase of a used IHC tractor.



STATE FARM BUREAU DIRECTOR S.M. True, (left) talked with Warren Mitchell of Lockney after the Floyd County Farm Bureau convention Thursday night. (Staff Photo)

PROPERTY BIDS

Thursday morning, the council held bids for the city property located on the southeast corner of First and Southeast First Streets. The high bid of \$3,785 was made by F.F. Foster for the old building on the property and the new building on the property in 90 days.

Thursday, said he plans to purchase similar to the one he had on the property.

EMERGENCY MEETING

An emergency meeting immediately following the regular council meeting passed a resolution changing the method of selecting the appraisal office. The board of directors for a county-wide appraisal office. The board of directors for a county-wide appraisal office. The board of directors for a county-wide appraisal office.

**2499** REMINGTON  
Limb N' Trim 8  
8" Electric Chain Saw  
Double insulated chain saw cuts trees up to 16" thick. 1 1/2 hp motor delivers 1000 strokes per minute. Speed of 2500 rpm. No kickback. (Model 2453)

**1999**  
Woodsplitter Kit  
Versatile tool has wood-splitter end and sledge hammer end. Kit includes wedge. 605540 8lb

**149**  
44-Qt. Flip-Top Basket  
10" x 14 1/2" x 22" size holds 44 lbs. of groceries. Made of sturdy, CP-144C plastic. 9A

**2488**  
DUSTBUSTER Cordless Vac  
Powerful, cordless, rechargeable vacuum cleaner. Has no hose, no cord, ideal for small areas. (Model 2488)

**Sweet Potatoes 3 Lbs. \$1.99**  
New Crop  
Pepsodent 6 Ounce Family Size  
**Toothpaste 99¢**

**Flour \$3.99** WITH COUPON  
35 POUND GLADIOLA  
Expires 9-12-79  
Good At Buddy's

**Coffee \$2.29** WITH COUPON  
1 POUND CAMELOT  
Expires 9-12-79  
Good At Buddy's

## A Letter to Longhorn Football Fans:

September 6, 1979

To Longhorn Fans: The officers of the Lockney Quarterback Club would like to extend a personal invitation for you to attend the first meeting of the 1979 football season on Monday, September 10 at 8 p.m. at the junior high cafeteria. This would be a good opportunity for you to show your support in the football program and a special interest in the young men of our community.

The Quarterback Club meets each Monday night and the film of the previous Friday night's game will be shown. There will be a short business meeting each time. If you are not already a member, there is a five-dollar membership fee.

We hope to have a very active Quarterback Club this year and would appreciate your involvement in any way possible. We have several fund raising projects planned for this year and everyone's help is needed to make these projects successful.

We will serve refreshments during the meetings. Hope to see you each Friday night at the ballgame and on Monday night at the Quarterback Club meeting.

Sincerely, Byron and Charlotte Brock, president Buck and Glenda Ford, vice president Jerry and Andy Ford, secretary-treasurer



## Floyd County Supports MDA Telethon

Carrie Bertrand, chairman of the Jerry Lewis Labor Day Telethon for Floydada and Lockney, reported today that the 14th annual Telethon to benefit the Muscular Dystrophy Association collected \$1,399 in Floydada and \$420 in Lockney.

Ms. Bertrand said that the local pledge center was located at the Farm Bureau Office in Floydada, manned by volunteers from the Alpha Mu Delta Sorority.

Jerry Lewis, national chairman of the Muscular Dystrophy Association, has underscored the importance of local community participation in the annual fund-raising effort.

"The success of the Telethon," Lewis said, "depends upon thousands of people with a single goal — helping those who desperately need our sup-

port." The 1979 Telethon raised a record \$30 million for MDA's fight against neuro-muscular diseases.

Contributions to the annual Jerry Lewis Labor Day Telethon are used to support MDA's research and medical service programs nationwide and in cities and towns where contributions are made. The national health agency maintains a network of 214 free clinics throughout the U.S. and in Puerto Rico and Guam.

In the South Plains area, MDA funds support for monthly clinics at Methodist Hospital in Lubbock, a summer camp program and adult retreat.

Contributions may still be received at the Muscular Dystrophy Association, 2345 50th Street — #121, Lubbock, TX 79412.

## School Enrollment Down

Following the trend of recent years, enrollment in Lockney public schools is down this year, compared to the

previous year. First-day totals showed 874 students enrolled here this year; there were 920 in school on the first day of school last year

Tuesday, the first day of school, there were 284 enrolled at high school, 214 at junior high, and 376 at elementary school.

By Friday, the enrollment had increased to 893 (285 at high school, 219 at junior high, 389 at elementary. At the end of the first week of school last year, there were 934 Lockney students.

### For Telethon

## Symphony To Broadcast

For the second consecutive year, South Plains television viewers will be able to watch a special one-and-one-half hour performance of the Lubbock Symphony Orchestra, Tuesday at 6:30 p.m.

The special broadcast will be part of a telethon on KCBD-TV, Channel 11 to promote season ticket sales for the symphony.

This year, however, the public will be invited not only to watch on television, but to attend the telethon in person at the Lubbock Civic Center Theater.

Free tickets may be picked up prior to the telethon at First Federal Plaza, 1300 Broadway, the ticket booth at Hemp-hill's in the South Plains Mall, KCBND on Ave. A or Dunlap's in Caprock Center. Some lucky ticketholders will win pairs of season tickets to be given away in a drawing.

KCBD will pay for all telephone calls to the telethon, up to \$1.80, according to Kaye Greer, of the Symphony publicity department.

The telethon number is 747-2700.

## Commentary: Sen. Lloyd Bentsen

### Revolving Door Of Justice

It was near midnight on December 27, 1974.

A U.S. Postal Service truck was rolling along Interstate 20 through the West Texas desert near Pyote. Among other things, it was carrying a Federal Reserve System shipment of more than \$70,000 in cash.

Suddenly, the driver told authorities later, a man dressed like a hitchhiker and wearing a ski mask stepped onto the highway and flagged down the truck. Bandishing a pistol he forced the driver to stay put while two accomplices ran from the side of the road and emptied the truck.

It took several months and some solid investigating by U.S. Postal Inspectors before this daring mail robbery case was solved and three men were arrested and charged in connection with it.

One of the accomplices in this robbery was freed from jail under bail bond to await trial.

It was later charged that while he was free on bail this man assaulted someone, "Beat him within an inch of his life," one of the prosecutors said later. The victim, in fact, was beaten so badly that he was sent to the hospital where he remained in critical condition for a time.

As it turns out the victim was one of the government's witnesses in the robbery case. He was not a crucial witness, but the bandit had no way of knowing that at the time.

Incidents like this, in which defendants are let out of jail on bond, only to commit more crime, are all too frequent within the U.S. criminal justice system these days.

In Washington, D.C., a few years ago a young woman was shot in the back by four robbers. After an operation she still needed a cane to walk and, because of the probability that further surgery would be required, she had to give up her job. She also had to undergo psychiatric treatment.

As for this victim's would-be killers, they were all released from jail without bail to await trial. Since the young woman was not only the victim but the sole witness to their crime she lived for

a long time with the constant fear that they would come back gunning for her.

We need to make some changes in our bail bond system to better protect society from dangerous criminals like these.

A recent study of individuals being prosecuted under the Career Criminals Program in Dallas indicated that more than 36 percent of them were out of jail on bail for previous crimes at the time of their most recent arrests.

I have introduced two bills to reform federal bail bond laws.

One of the Bentsen bills would provide consecutive sentencing for persons convicted of federal crimes while they are free on bail for previous crimes. It would require that in these cases the sentences for the additional crimes would be in addition to — and not run concurrently with — the sentence for the first crime.

Someone in these circumstances convicted of three armed robberies and sentenced to 10 years for each robbery, for example, would serve only 10 years if the sentences ran concurrently. But 30 years would be the total time in prison if the sentences ran consecutively, as I think they should.

The second Bentsen bill allows a federal judge to deny bail for an accused terrorist if the judge determines that the terrorist is a danger to the community. This bill seeks to change a provision in the law that, for practical purposes, permits a judge setting bail to consider only whether the accused will show up for trial. In the case of terrorists, I believe the judge should also be allowed to take into account the safety of society or set him free to roam the streets.

In addition to these two bills, I have also called on the Senate Judiciary Committee to conduct a sweeping review of all federal bail laws. My goal is to provide substantially better protection to the people of this country from these criminals, within the constraints and guarantees of our Constitution.

I want to put a stop to revolving door justice in this country.

## Harvest Festival Slated At Methodist Church

A new event for Lockney in September is a harvest festival, to be conducted by First United Methodist Church.

The festival is scheduled Sept. 29 and will begin at 11:30 a.m. with a turkey dinner. Following will be an auction of items made or donated by men and women of the church. Raymond Akin of Plainview will do auctioneering.

A country store for items under five dollars and a sweet shop will be open in

different areas of the church. Possible items available in the country store are: children's toys, children's books, children's clothing, children's shoes, children's hats, children's shoes, children's clothing, children's shoes, children's hats.

## Dougherty Sponsors GED

The Dougherty Independent School District is sponsoring Basic Adult Education classes designed for adults who have not finished high school.

A high school equivalency certificate will be awarded upon completion of the courses. Instruction will also be offered

in reading, English, arithmetic. The free classes will begin after September 10. Details may be obtained from the school office, 1001 N. Dennington at the Lockney Telephone number 747-2700.

## Youth Beats Energy Crunch

In Lynchburg, Va., a teenager was stopped for speeding by city police. They said the youth was doing 45 mph in a 35 mph zone.

No speeding ticket was issued, but he

got a stiff warning from the police. The youth was riding a skateboard.



SHOULD HAVE USED THE WHOLE HAND — This sign at Floydada High School this week hopefully is out of its proper place. If not, it has bigger plans for the future. Photo by Breck Stapleton.



HAULING IT OUT — Floyd County Sheriff Fred Cardinal and deputy Raymond Hamilton lend a helping hand during the jail remodeling going on at courthouse square. The Sheriff's office moved into Room 107 in the courthouse. (Staff Photo by Breck Stapleton)

### VILLAGE SQUARE

By Chuck Stiles



## Bullock Sends Rep To Floydada

State Comptroller Bob Bullock announced he is sending a representative from his Lubbock office to Floydada on Thursday, Sept. 13, 1979 to assist local taxpayers and answer questions about state taxes.

Bullock said enforcement officer, Gene Cannon will meet with local taxpayers at the Floyd County Courthouse, Room 103 from 10 a.m. to 12 p.m.

"If Floydada-area merchants, or anyone else for that matter, have any questions about state taxes or need help in preparing tax forms, Mr. Cannon will be there to assist them," Bullock said.

"We're trying to cut the red tape in this office and we believe these face-to-face sessions with taxpayers help do just that," Bullock added.

Bullock reminded those taxpayers who are unable to meet with his representative on Thursday, Sept. 13, 1979 that they can still get their questions answered quickly by calling his TOLL-FREE tax information number in Austin. That number is 1-800-252-5555.

The Lubbock office, headed by Vance A. Porfiro, serves Lubbock and surrounding counties.

### Holds Up Checks

Last Friday, Bullock held back Au-

gust paychecks to 150 state employees who have defaulted on state-sponsored student loans.

At the same time, a Texas Employment Commission employee in Kingsville filed a lawsuit in an Austin district court against Bullock and the TEC in an attempt to have his paycheck released.

State law prohibits a person owing the state a debt from receiving state payment of any kind.

"I'm simply following the law," Bullock said, adding, "until these loans are repaid there will be less money available for new loans to the next generation of students."

Collectively, the 150 workers who weren't paid owe the state \$311,072 in overdue student loans. They were identified in a computer cross-check of payroll records.

Bullock originally singled out 641 state employees who owed the state more than \$1.2 million and notified them he wouldn't pay them until they took care of their student loans.

He said 491 of those identified settled up \$896,563 in debts to the Texas College and University Coordinating Board, which last month held loan defaults worth more than \$39.9 million under the Hinson-Hazelwood program from loans to 24,685 former students.



LIKE THIS COACH... The clock has stopped... an official explains the situation. Joe Killer and Steve Culwell.



... Kevin Evans (88) snags one of the interceptions in the Post game Friday night. (Staff Photo)



FRANK BROWN'S GRANDFATHER, S. P. Brown, bought the first Buick sedan in Plainview in 1910.

## Frank Brown F...

Felicia Applewhite... way I can keep chickens is to have them in the lot with my saddle horses and bobcats are not the only things that have to be dealt with. When he is there.

If he is not there, he continues... "My father was a great big owl" that he had and knocks a chicken out of a tree and catches it. Those owls have been over there as big as a Red hen," he says. "They have been over there as long as I can remember. They first land on the telephone pole — to get the telephone pole — then they get them."

"My father was a great big owl" that he had and knocks a chicken out of a tree and catches it. Those owls have been over there as big as a Red hen," he says. "They have been over there as long as I can remember. They first land on the telephone pole — to get the telephone pole — then they get them."

"My father was a great big owl" that he had and knocks a chicken out of a tree and catches it. Those owls have been over there as big as a Red hen," he says. "They have been over there as long as I can remember. They first land on the telephone pole — to get the telephone pole — then they get them."

"My father was a great big owl" that he had and knocks a chicken out of a tree and catches it. Those owls have been over there as big as a Red hen," he says. "They have been over there as long as I can remember. They first land on the telephone pole — to get the telephone pole — then they get them."

"My father was a great big owl" that he had and knocks a chicken out of a tree and catches it. Those owls have been over there as big as a Red hen," he says. "They have been over there as long as I can remember. They first land on the telephone pole — to get the telephone pole — then they get them."

"My father was a great big owl" that he had and knocks a chicken out of a tree and catches it. Those owls have been over there as big as a Red hen," he says. "They have been over there as long as I can remember. They first land on the telephone pole — to get the telephone pole — then they get them."

"My father was a great big owl" that he had and knocks a chicken out of a tree and catches it. Those owls have been over there as big as a Red hen," he says. "They have been over there as long as I can remember. They first land on the telephone pole — to get the telephone pole — then they get them."

"My father was a great big owl" that he had and knocks a chicken out of a tree and catches it. Those owls have been over there as big as a Red hen," he says. "They have been over there as long as I can remember. They first land on the telephone pole — to get the telephone pole — then they get them."

### WEEKEND CROSSWORD

- ACROSS: 1 Beach house, 7 It's capital, 10 "Wuthering Heights" star, 11 Parched, 12 Sahara sight, 13 Vetch, 14 Cheese, 15 Big house keeper, 17 Hanoi holiday, 18 Blondie's dog, 19 Grecian theaters, 21 Antoine de Exupery, 22 Scrawny, 24 Flack, 26 Urge on, 30 Greek island, 31 Add on, 32 Real estate deal, 34 Algerian port, 35 Not include, 36 Jeremiaad, 38 Swelling, 39 Items of business, 40 Way before, 41 Human being.

### TODAY'S ANSWERS



- 1 Wool, 2 Biblican, 3 Quake, 4 Inhabit, 5 Source, 6 Neighbor of Zaire, 7 Take, 8 Fintized brother, 9 Quake, 10 Inhabit, 11 Source, 12 Neighbor of Zaire, 13 Wool, 14 Biblican, 15 Quake, 16 Inhabit, 17 Source, 18 Neighbor of Zaire, 19 Wool, 20 Biblican, 21 Quake, 22 Inhabit, 23 Source, 24 Neighbor of Zaire, 25 Wool, 26 Biblican, 27 Quake, 28 Inhabit, 29 Source, 30 Neighbor of Zaire, 31 Wool, 32 Biblican, 33 Quake, 34 Inhabit, 35 Source, 36 Neighbor of Zaire, 37 Wool, 38 Biblican, 39 Quake, 40 Inhabit, 41 Source, 42 Neighbor of Zaire, 43 Wool, 44 Biblican, 45 Quake, 46 Inhabit, 47 Source, 48 Neighbor of Zaire, 49 Wool, 50 Biblican, 51 Quake, 52 Inhabit, 53 Source, 54 Neighbor of Zaire, 55 Wool, 56 Biblican, 57 Quake, 58 Inhabit, 59 Source, 60 Neighbor of Zaire, 61 Wool, 62 Biblican, 63 Quake, 64 Inhabit, 65 Source, 66 Neighbor of Zaire, 67 Wool, 68 Biblican, 69 Quake, 70 Inhabit, 71 Source, 72 Neighbor of Zaire, 73 Wool, 74 Biblican, 75 Quake, 76 Inhabit, 77 Source, 78 Neighbor of Zaire, 79 Wool, 80 Biblican, 81 Quake, 82 Inhabit, 83 Source, 84 Neighbor of Zaire, 85 Wool, 86 Biblican, 87 Quake, 88 Inhabit, 89 Source, 90 Neighbor of Zaire, 91 Wool, 92 Biblican, 93 Quake, 94 Inhabit, 95 Source, 96 Neighbor of Zaire, 97 Wool, 98 Biblican, 99 Quake, 100 Inhabit, 101 Source, 102 Neighbor of Zaire, 103 Wool, 104 Biblican, 105 Quake, 106 Inhabit, 107 Source, 108 Neighbor of Zaire, 109 Wool, 110 Biblican, 111 Quake, 112 Inhabit, 113 Source, 114 Neighbor of Zaire, 115 Wool, 116 Biblican, 117 Quake, 118 Inhabit, 119 Source, 120 Neighbor of Zaire, 121 Wool, 122 Biblican, 123 Quake, 124 Inhabit, 125 Source, 126 Neighbor of Zaire, 127 Wool, 128 Biblican, 129 Quake, 130 Inhabit, 131 Source, 132 Neighbor of Zaire, 133 Wool, 134 Biblican, 135 Quake, 136 Inhabit, 137 Source, 138 Neighbor of Zaire, 139 Wool, 140 Biblican, 141 Quake, 142 Inhabit, 143 Source, 144 Neighbor of Zaire, 145 Wool, 146 Biblican, 147 Quake, 148 Inhabit, 149 Source, 150 Neighbor of Zaire, 151 Wool, 152 Biblican, 153 Quake, 154 Inhabit, 155 Source, 156 Neighbor of Zaire, 157 Wool, 158 Biblican, 159 Quake, 160 Inhabit, 161 Source, 162 Neighbor of Zaire, 163 Wool, 164 Biblican, 165 Quake, 166 Inhabit, 167 Source, 168 Neighbor of Zaire, 169 Wool, 170 Biblican, 171 Quake, 172 Inhabit, 173 Source, 174 Neighbor of Zaire, 175 Wool, 176 Biblican, 177 Quake, 178 Inhabit, 179 Source, 180 Neighbor of Zaire, 181 Wool, 182 Biblican, 183 Quake, 184 Inhabit, 185 Source, 186 Neighbor of Zaire, 187 Wool, 188 Biblican, 189 Quake, 190 Inhabit, 191 Source, 192 Neighbor of Zaire, 193 Wool, 194 Biblican, 195 Quake, 196 Inhabit, 197 Source, 198 Neighbor of Zaire, 199 Wool, 200 Biblican, 201 Quake, 202 Inhabit, 203 Source, 204 Neighbor of Zaire, 205 Wool, 206 Biblican, 207 Quake, 208 Inhabit, 209 Source, 210 Neighbor of Zaire, 211 Wool, 212 Biblican, 213 Quake, 214 Inhabit, 215 Source, 216 Neighbor of Zaire, 217 Wool, 218 Biblican, 219 Quake, 220 Inhabit, 221 Source, 222 Neighbor of Zaire, 223 Wool, 224 Biblican, 225 Quake, 226 Inhabit, 227 Source, 228 Neighbor of Zaire, 229 Wool, 230 Biblican, 231 Quake, 232 Inhabit, 233 Source, 234 Neighbor of Zaire, 235 Wool, 236 Biblican, 237 Quake, 238 Inhabit, 239 Source, 240 Neighbor of Zaire, 241 Wool, 242 Biblican, 243 Quake, 244 Inhabit, 245 Source, 246 Neighbor of Zaire, 247 Wool, 248 Biblican, 249 Quake, 250 Inhabit, 251 Source, 252 Neighbor of Zaire, 253 Wool, 254 Biblican, 255 Quake, 256 Inhabit, 257 Source, 258 Neighbor of Zaire, 259 Wool, 260 Biblican, 261 Quake, 262 Inhabit, 263 Source, 264 Neighbor of Zaire, 265 Wool, 266 Biblican, 267 Quake, 268 Inhabit, 269 Source, 270 Neighbor of Zaire, 271 Wool, 272 Biblican, 273 Quake, 274 Inhabit, 275 Source, 276 Neighbor of Zaire, 277 Wool, 278 Biblican, 279 Quake, 280 Inhabit, 281 Source, 282 Neighbor of Zaire, 283 Wool, 284 Biblican, 285 Quake, 286 Inhabit, 287 Source, 288 Neighbor of Zaire, 289 Wool, 290 Biblican, 291 Quake, 292 Inhabit, 293 Source, 294 Neighbor of Zaire, 295 Wool, 296 Biblican, 297 Quake, 298 Inhabit, 299 Source, 300 Neighbor of Zaire, 301 Wool, 302 Biblican, 303 Quake, 304 Inhabit, 305 Source, 306 Neighbor of Zaire, 307 Wool, 308 Biblican, 309 Quake, 310 Inhabit, 311 Source, 312 Neighbor of Zaire, 313 Wool, 314 Biblican, 315 Quake, 316 Inhabit, 317 Source, 318 Neighbor of Zaire, 319 Wool, 320 Biblican, 321 Quake, 322 Inhabit, 323 Source, 324 Neighbor of Zaire, 325 Wool, 326 Biblican, 327 Quake, 328 Inhabit, 329 Source, 330 Neighbor of Zaire, 331 Wool, 332 Biblican, 333 Quake, 334 Inhabit, 335 Source, 336 Neighbor of Zaire, 337 Wool, 338 Biblican, 339 Quake, 340 Inhabit, 341 Source, 342 Neighbor of Zaire, 343 Wool, 344 Biblican, 345 Quake, 346 Inhabit, 347 Source, 348 Neighbor of Zaire, 349 Wool, 350 Biblican, 351 Quake, 352 Inhabit, 353 Source, 354 Neighbor of Zaire, 355 Wool, 356 Biblican, 357 Quake, 358 Inhabit, 359 Source, 360 Neighbor of Zaire, 361 Wool, 362 Biblican, 363 Quake, 364 Inhabit, 365 Source, 366 Neighbor of Zaire, 367 Wool, 368 Biblican, 369 Quake, 370 Inhabit, 371 Source, 372 Neighbor of Zaire, 373 Wool, 374 Biblican, 375 Quake, 376 Inhabit, 377 Source, 378 Neighbor of Zaire, 379 Wool, 380 Biblican, 381 Quake, 382 Inhabit, 383 Source, 384 Neighbor of Zaire, 385 Wool, 386 Biblican, 387 Quake, 388 Inhabit, 389 Source, 390 Neighbor of Zaire, 391 Wool, 392 Biblican, 393 Quake, 394 Inhabit, 395 Source, 396 Neighbor of Zaire, 397 Wool, 398 Biblican, 399 Quake, 400 Inhabit, 401 Source, 402 Neighbor of Zaire, 403 Wool, 404 Biblican, 405 Quake, 406 Inhabit, 407 Source, 408 Neighbor of Zaire, 409 Wool, 410 Biblican, 411 Quake, 412 Inhabit, 413 Source, 414 Neighbor of Zaire, 415 Wool, 416 Biblican, 417 Quake, 418 Inhabit, 419 Source, 420 Neighbor of Zaire, 421 Wool, 422 Biblican, 423 Quake, 424 Inhabit, 425 Source, 426 Neighbor of Zaire, 427 Wool, 428 Biblican, 429 Quake, 430 Inhabit, 431 Source, 432 Neighbor of Zaire, 433 Wool, 434 Biblican, 435 Quake, 436 Inhabit, 437 Source, 438 Neighbor of Zaire, 439 Wool, 440 Biblican, 441 Quake, 442 Inhabit, 443 Source, 444 Neighbor of Zaire, 445 Wool, 446 Biblican, 447 Quake, 448 Inhabit, 449 Source, 450 Neighbor of Zaire, 451 Wool, 452 Biblican, 453 Quake, 454 Inhabit, 455 Source, 456 Neighbor of Zaire, 457 Wool, 458 Biblican, 459 Quake, 460 Inhabit, 461 Source, 462 Neighbor of Zaire, 463 Wool, 464 Biblican, 465 Quake, 466 Inhabit, 467 Source, 468 Neighbor of Zaire, 469 Wool, 470 Biblican, 471 Quake, 472 Inhabit, 473 Source, 474 Neighbor of Zaire, 475 Wool, 476 Biblican, 477 Quake, 478 Inhabit, 479 Source, 480 Neighbor of Zaire, 481 Wool, 482 Biblican, 483 Quake, 484 Inhabit, 485 Source, 486 Neighbor of Zaire, 487 Wool, 488 Biblican, 489 Quake, 490 Inhabit, 491 Source, 492 Neighbor of Zaire, 493 Wool, 494 Biblican, 495 Quake, 496 Inhabit, 497 Source, 498 Neighbor of Zaire, 499 Wool, 500 Biblican, 501 Quake, 502 Inhabit, 503 Source, 504 Neighbor of Zaire, 505 Wool, 506 Biblican, 507 Quake, 508 Inhabit, 509 Source, 510 Neighbor of Zaire, 511 Wool, 512 Biblican, 513 Quake, 514 Inhabit, 515 Source, 516 Neighbor of Zaire, 517 Wool, 518 Biblican, 519 Quake, 520 Inhabit, 521 Source, 522 Neighbor of Zaire, 523 Wool, 524 Biblican, 525 Quake, 526 Inhabit, 527 Source, 528 Neighbor of Zaire, 529 Wool, 530 Biblican, 531 Quake, 532 Inhabit, 533 Source, 534 Neighbor of Zaire, 535 Wool, 536 Biblican, 537 Quake, 538 Inhabit, 539 Source, 540 Neighbor of Zaire, 541 Wool, 542 Biblican, 543 Quake, 544 Inhabit, 545 Source, 546 Neighbor of Zaire, 547 Wool, 548 Biblican, 549 Quake, 550 Inhabit, 551 Source, 552 Neighbor of Zaire, 553 Wool, 554 Biblican, 555 Quake, 556 Inhabit, 557 Source, 558 Neighbor of Zaire, 559 Wool, 560 Biblican, 561 Quake, 562 Inhabit, 563 Source, 564 Neighbor of Zaire, 565 Wool, 566 Biblican, 567 Quake, 568 Inhabit, 569 Source, 570 Neighbor of Zaire, 571 Wool, 572 Biblican, 573 Quake, 574 Inhabit, 575 Source, 576 Neighbor of Zaire, 577 Wool, 578 Biblican, 579 Quake, 580 Inhabit, 581 Source, 582 Neighbor of Zaire, 583 Wool, 584 Biblican, 585 Quake, 586 Inhabit, 587 Source, 588 Neighbor of Zaire, 589 Wool, 590 Biblican, 591 Quake, 592 Inhabit, 593 Source, 594 Neighbor of Zaire, 595 Wool, 596 Biblican, 597 Quake, 598 Inhabit, 599 Source, 600 Neighbor of Zaire, 601 Wool, 602 Biblican, 603 Quake, 604 Inhabit, 605 Source, 606 Neighbor of Zaire, 607 Wool, 608 Biblican, 609 Quake, 610 Inhabit, 611 Source, 612 Neighbor of Zaire, 613 Wool, 614 Biblican, 615 Quake, 616 Inhabit, 617 Source, 618 Neighbor of Zaire, 619 Wool, 620 Biblican, 621 Quake, 622 Inhabit, 623 Source, 624 Neighbor of Zaire, 625 Wool, 626 Biblican, 627 Quake, 628 Inhabit, 629 Source, 630 Neighbor of Zaire, 631 Wool, 632 Biblican, 633 Quake, 634 Inhabit, 635 Source, 636 Neighbor of Zaire, 637 Wool, 638 Biblican, 639 Quake, 640 Inhabit, 641 Source, 642 Neighbor of Zaire, 643 Wool, 644 Biblican, 645 Quake, 646 Inhabit, 647 Source, 648 Neighbor of Zaire, 649 Wool, 650 Biblican, 651 Quake, 652 Inhabit, 653 Source, 654 Neighbor of Zaire, 655 Wool, 656 Biblican, 657 Quake, 658 Inhabit, 659 Source, 660 Neighbor of Zaire, 661 Wool, 662 Biblican, 663 Quake, 664 Inhabit, 665 Source, 666 Neighbor of Zaire, 667 Wool, 668 Biblican, 669 Quake, 670 Inhabit, 671 Source, 672 Neighbor of Zaire, 673 Wool, 674 Biblican, 675 Quake, 676 Inhabit, 677 Source, 678 Neighbor of Zaire, 679 Wool, 680 Biblican, 681 Quake, 682 Inhabit, 683 Source, 684 Neighbor of Zaire, 685 Wool, 686 Biblican, 687 Quake, 688 Inhabit, 689 Source, 690 Neighbor of Zaire, 691 Wool, 692 Biblican, 693 Quake, 694 Inhabit, 695 Source, 696 Neighbor of Zaire, 697 Wool, 698 Biblican, 699 Quake, 700 Inhabit, 701 Source, 702 Neighbor of Zaire, 703 Wool, 704 Biblican, 705 Quake, 706 Inhabit, 707 Source, 708 Neighbor of

# Harvest Festival Slated

## Methodist Church

Harvest festival, to be conducted by the Methodist Church, will be held at 11:30 a.m. with a turkey dinner following. An auction of items donated by men and women of the church will follow. Raymond Akin of the church will do auctioneering. The public is invited to the harvest festival, which may be an annual event.

different areas of the county, possible Christmas trees and other small handmade items available in the country store. Tickets for the turkey dinner are available soon. Price will be \$1.00 for children ten and younger, and \$2.00 for everyone else.

## Gherty Sponsors GED Classes

Gherty Independent School is sponsoring Basic Adult classes designed for adults who finished high school. School equivalency certificate is issued upon completion of the program. Instruction will also be offered

in reading, English, writing, arithmetic. The free classes are scheduled to begin after September 15. Details may be obtained from Dennington at the District Office. Telephone number is 983-3031.

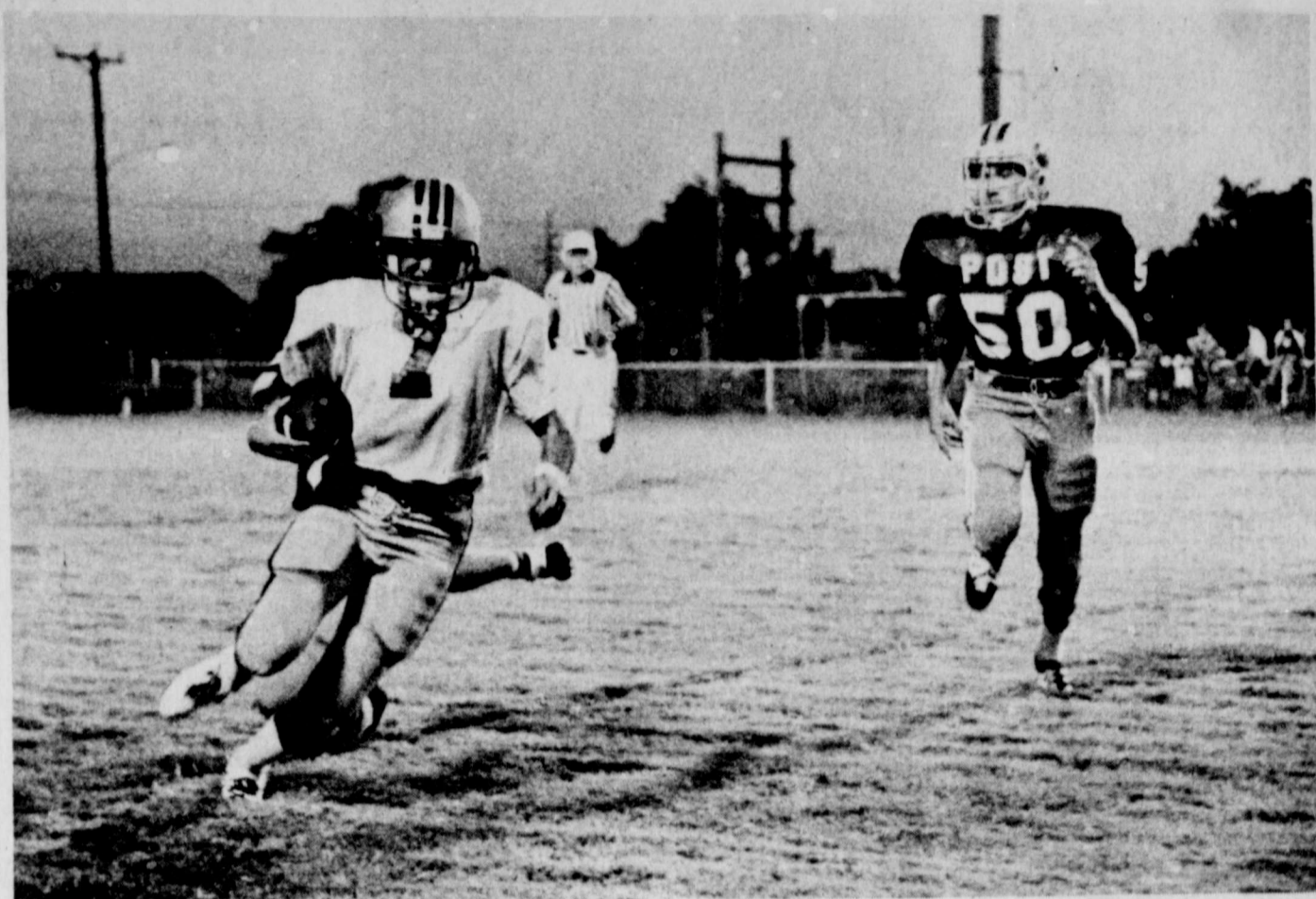
## Car Beats Energy Crunch

Virginia, a teenager was speeding by city police. The youth was doing 45 mph on a road.

got a stiff warning from the stern warning to stay off the road. The youth was riding a skateboard.



THIS COACH... The clock has stopped, but we'll keep you informed of how much an official explains the situation to Longhorn head coach Jim Warren, and Lockney's Joe Killer and Steve Culwell listen in.



CURTIS FORD finds some daylight and picks up short yardage in the Longhorns' victory over Post Friday night.

**GREEN THUMB PROJECT**  
SPONSORED BY NATIONAL FARMERS UNION  
FUNDED THROUGH U.S. DEPT. OF AGRICULTURE

USED THE WHOLE sign at Floydada High school hopefully is out of its proper place. If not, maybe the sign has bigger plans for the future. Photo by Breck Stapleton.



Kevin Evans (88) snags one of his interceptions in the Post game Friday night.



FRANK BROWN'S GRANDFATHER, S. P. Brown, bought the first Buick sedan in Plainview in 1910.

# Class Of '59 Has Reunion

Approximately 25 members of the Lockney High School graduating class of 1959 gathered for the 20th-year reunion on Labor Day weekend. Class Members and their families enjoyed a buffet-style meal, served at the Rebeckah Lodge Hall Saturday Evening at 7:30.

Invocation was given by Larry Elam, and class members were welcomed by Bill Race, class president. The speaker's platform was adorned with a floral arrangement of white gladioli and red carnations. The arrangement was placed in the First United Methodist Church on Sunday, in memory of former class members Don Schacht, Ronnie Harrie, Nancy Nix Hayes and Stephen Handley.

Mrs. G.C. Applegate, class sponsor, shared a brief reminiscence of the days at LHS in '59. Awards (hand painted by Mrs. L.T. (Karen) Cooper) were presented as follows:

Traveled longest distance — Peggy Ford Bickel from Spring, Texas, near Houston.

Changed the least — Lawauna Taylor Wesley.

Least hair — Bill Race.

Most grey hair — Rita Johnson Burleson.

Biggest belly — James Hall Ferguson.

Most children — Ricky Duvall.

Oldest child — Ricky Duvall.

Newest child — Larry Elam.

A Fifteen Style Show was presented by children of class members. Clothes actually worn by some of the class in their high school days were modeled along with new clothing purchased for

the current school term — portraying a full fashion cycle.

Other entertainment for the evening included musical presentations by Karl Race (electric piano), Jeff Auful (electric guitar) and Johnny Rodriguez (drums); followed by a '50's pantomime act of song and dance (a little modern disco for comparison). Pantomime characters were Robin Hardy, Shawnda Brock, Stephanie Bybee, Barbara Moore and Amy Shaw.

Slides taken at graduation and on the senior trip were shown by L.T. Cooper and James Ferguson.

Following the program, class members and guests enjoyed visiting and browsing through annuals, school papers (The Lariat), photo albums and scrap books. The class prophecy (as written in 1959) was read by Weta Kent Loter.

On Sunday Afternoon class members and their families met at the American Legion for a watermelon feast. Mr. and Mrs. Clark Harris treated the group to a special showing of movie film taken of the class in elementary school through graduation. Football films were shown by Duane Griffith.

Present for the reunion were Mr. and Mrs. Lonnie Loter (Ann Griffith), Shannon and Trent; Mr. and Mrs. Ronnie Loter (Weta Kent) and Stacy from Pampa; Mr. and Mrs. Duane Griffith (Pat Ashton), Lori and Kristi from Plainview; Mr. and Mrs. Sam Graham (Nancy Bollman), Scott and Stacy from Floydada; Joe M. Holmes from Richardson; Mary (Martin) Smith Marty and Ricky from Childress; Mr. and Mrs. Wesley (Lawauna Taylor), Tracy, Todd and Terri from Canyon;

Mr. and Mrs. Tommy Bickel (Peggy Ford), Cyndy and Gina from Spring, Texas; Linda (Durham) Adams, Kim and Mark from Chickasha, Oklahoma; Mrs. Johnny Varnell (Janice Hays) from Duncannonville; Mr. and Mrs. David Anderson (Shirley Mitchell) from Seagraves; Mr. and Mrs. Ricky Duvall, Annice, Tonya and Kathy from Aiken;

Mr. and Mrs. Johnny Adams (Pat Anderson), Johnny Wayne, Tammy, Cindy and Tracy; Mr. and Mrs. L.T. Cooper, Chris and Cindy; Mr. and Mrs. Bill Race, Karl and Randy; Mr. and Mrs. James Ferguson and Julie; Mr. and Mrs. Byron Brock, Shawnda, Kyle and Byron; Larry Elam; Mr. and Mrs. John David Turner (Mary Jones), Loretta, Amy, Carolyn and David; Mr. and Mrs. Donice Casey (Sue Adams), Denis, Dena and Dee Lynn; Mr. and Mrs. Roy Kidd (Linda Baxter) and Aaron; Mr. and Mrs. Omar Burleson (Rita Johnson) and Todd; and Mr. and Mrs. Cliff Hardy (Elaine Cooper) and Robin, all of Lockney.

Special guests were Mr. and Mrs. G.C. Applegate, Mr. and Mrs. Clark Harris, Mrs. Eleanor Schacht, Mrs. Henry Bollman, Mr. and Mrs. C.L. Record, Mr. and Mrs. Delvin Bybee, and Mrs. Hall Ferguson, all of Lockney; Mrs. Milton Ashton from Floydada; Mrs. Vicky Varnell from Lubbock; and Mrs. Jack Ford (Vicky Cook) from Leoti, Kansas.

The class expresses special thanks to Mr. and Mrs. Clark Harris for showing the film Sunday afternoon; to Kelton Shaw for providing ice; and to everyone who came and made the reunion an enjoyable occasion.



THE BROWN HOME PLACE — Portions of this adobe house, built by Frank Brown's grandfather in 1925, are still standing six miles east and three miles north of Lockney. The Brown family lived in the house until 1949. The house had three bedrooms, a living room, dining room, and back porch. The walls were 14 inches thick.

# Frank Brown Remembers Early Days; More Wildlife Now, He Says

By Felicia Applegate  
I can keep chickens in the lot with my saddle horses. Frank Brown, who lives six miles east and three north of Lockney, won't let anything come in when he is there.

at the age of two, when his father C.H. Brown moved his family here in a covered wagon. His grandfather had bought the land paying twelve dollars an acre for it — all grassland, unfenced. The dim traces of a dugout could still be seen when they came here, but the space had been filled in and grassed over. Broken glass and posts broken off even with the ground were signs of someone's having lived there.

For a time, they wondered who could have lived there. Finally, Walter Griffith told them. He said that at one time a man had a horse ranch there. The man had as many as 300 head of mares and colts run on the open, unfenced grass land. The horses sometimes drifted as far as where the Lone Star school house is now. Only one owner's name appears on the abstract besides Brown's. Frank has bought the land from his brothers and sisters and has it for his children.

"My father broke out the grassland with a walking sod plow, only 80 acres at first. He planted dryland maize and headed it with a pocket knife as he walked throwing the heads in a wagon. A ton of maize per acre was a good crop and also a good day's work. Planting and cultivating ten acres a day was a day's work." Like any small boy, Frank observed much that went on around the place.

got a horse just as bad in many ways as the one he traded off.

Also, cattle were driven through the Brown place to Lockney to ship on the railroad to market. Farmers with only a few cattle to sell sold to cattle buyers. The buyer went over the country buying cattle. Later he sent cowboys on horses to drive the cattle to Lockney. They began at the Caprock and worked along the way. The Caprock was not far from Frank's home.

"In the summertime, we went to the breaks or canyons about ten miles east of our house for wild plums and grapes. I remember going with a neighbor and his wife in a wagon. The man caught a large turtle and put it in a bucket of water. He was taking the turtle home to make turtle soup. As we were coming home, the woman took her shoes off to rest her feet. The turtle managed to turn the bucket over and get the woman by the toe. It is said that a turtle will not turn loose of anything, once he has a hold of it, until it thunders, but this one did when the woman started screaming."

Frank didn't get to go to town often, but he happened to be there when the first brick was being put down on Main Street. These first brick and the two sidewalks across from east to west "sure helped in muddy weather." At that time, the town was well supplied with hitching posts for horses. There were over one hundred horses tied to hitching posts on Saturday afternoons. There were two wagon yards for men spending the night in town.

During these times, men did their own weather forecasting. "By watching the cows and horses, we could tell when they knew a change in weather was only a few hours away. The sun drawing water early in the morning, a circle around the moon and the sun going down behind a bank in the west were signs that rain was coming. The Indian

sign of cloudy all over and pouring down in the middle was the best sign."

Once when Frank was a quarter mile from home at the lake, he decided to skate. He was wearing some "old rubber boots that were slick on the bottom." Everything was going fine until he skated out on soft ice and it broke in up to his waist. Maybe "the ducks had been swimming in places causing the water to have circles that did not freeze as hard as the rest of the lake." Around these circles, the ice was as hard as a rock. He evidently hit a circle where a duck had been.

"I started to the house with those boots on with ice in them and it was just like walking on glass, so I pulled my boots off and went to the house on my bare feet. It was cold. I lost no time getting to the house."

At another time, when Frank was ten or twelve years old, he rode a horse for the mail about three-fourths of a mile from his house. He dropped some of the mail and stepped off to pick it up, and his foot hung in the stirrup. If the horse had started running there was no way that he could stop him, but he kept pulling on one rein that caused the horse to go around and around.

"For awhile, I was back under the horse's feet as he went around, but I kept pulling his head and jerking until he backed up against a fence. When he backed against the fence, I caught hold of the saddle string and pulled back up in the saddle. My main trouble was that my stirrup was too small. After that, I sure managed for a larger stirrup."

During those early times people didn't have much choice for recreation. About the only place they went was to the breaks. "Any time you had time off, you headed for the breaks east of where South Plains is now." There were two water falls, some pretty cotton wood trees, and creeks that had running water. It was a hard place to get to and hard to get out of.

"The biggest punishment that I had as a kid was because we slipped off to the breaks horseback on April Fool. Everybody in the country was there from Lone Star, Sunset, and Irick. We spent the day there riding horses. When we came back to school, the teacher made us write a five-hundred word theme then memorize it. I wrote mine about what we did that day."

Sometimes they found rattlesnakes, but he remembers he never did see over seven or eight and they were no more than three or four feet long.

Another interest was baseball. They played it the year around. When it was cold, a boy would wear his coat until his time to bat, take his coat off just for batting, then put it back on again. Country baseball was popular because there were not enough boys to make two teams for regular baseball. They had some interesting baseball games. Sometimes "one or two hundred people came to watch."

In country baseball, a boy in the field could go to bat if he caught three flies. He then batted until someone else caught three flies. Three batters rotated in batting. When a batter had to go to the country, the right field was the last place to go.

On days when it was too wet to work in the fields, men and boys met at Mr. Honey's place to ride bucking horses and cows. There was a large corral there to ride in. They tied a rope in the horse or cow's flanks to make him buck harder. As a rule, they pitched hard anyway. The rider rode until he was pitched off or until the animal stopped bucking.

"When I was only six, my father died, leaving three children younger than me. We had to work hard to make a living. We had a horse named Button that we used with another horse to pull a high-wheeled wagon. It took us about three hours to go to Lockney in a wagon. We not only milked cows, we raised

chickens, turkeys, hogs and had a garden. We used it all to make about ninety percent of our living just the way people had done many years on the farm.

"My first work in the field after hoeing was working one horse to a one row walking harrow. I remember how nice I thought it was the first time I worked Button and a mule to a riding, one-row planter. A few years later, farmers started working more horses to their plows and they used two-row farming tools.

The family had never lived in a dugout because the ground was so frozen when they came here that they couldn't put one down. They said it was so cold that they could spit and it would freeze before it hit the ground. Consequently, they had to live in Lockney until they could build a house.

The house that was built was typical of early houses. First they sawed cedar posts into ten or twelve inch blocks and set them up for the house to rest on. The house this high off the ground made a shady place for chickens. It was a boxed and stripped house when finished. There were two rooms with one outside door which was made of boxing plank. The window was small, with four panes.

At first, a bachelor stove was used, but later a cooking range with a water heater attached to one side and a warming closet above was bought. This stove had a baking oven below.

"We came in when our feet were cold and warmed them in the oven. The kitchen was the most used of the two rooms. The children sat around the kitchen to study at night. This table was used as a dining table, too. In cold weather, washing was done in the kitchen. Ironing was always done in the kitchen near the cookstove where the irons were heated. Family bathing was in the kitchen in a number tow washtub.

## WEEKEND CROSSWORD

DOWN  
1 Active  
2 Dwelled  
3 Upbraided  
4 My Name  
5 Old-time ale  
6 Once more  
7 Type of wire  
8 Take  
9 Prisoner  
10 Pint-sized  
11 In desperate  
12 Moslem prayer call  
13 Start  
14 Trouble

ACROSS  
10 Recover  
11 Dwell  
12 Braided  
13 My Name  
14 Old-time ale  
15 Once more  
16 Type of wire  
17 Take  
18 Prisoner  
19 Pint-sized  
20 In desperate  
21 Moslem prayer call  
22 Start  
23 Trouble

## TODAY'S ANSWER

1 Active  
2 Dwelled  
3 Upbraided  
4 My Name  
5 Old-time ale  
6 Once more  
7 Type of wire  
8 Take  
9 Prisoner  
10 Pint-sized  
11 In desperate  
12 Moslem prayer call  
13 Start  
14 Trouble  
15 Recover  
16 Dwell  
17 Braided  
18 My Name  
19 Old-time ale  
20 Once more  
21 Type of wire  
22 Take  
23 Prisoner  
24 Pint-sized  
25 In desperate  
26 Moslem prayer call  
27 Start  
28 Trouble

1	2	3	4	5	6	7	8	9	10
11	12	13	14	15	16	17	18	19	20
21	22	23	24	25	26	27	28	29	30
31	32	33	34	35	36	37	38	39	40

LOCKNEY AREA CHURCH PAGE

# time out for GOD

**MAIN STREET CHURCH OF CHRIST**  
 Jerry Klein, minister  
 Bible Study . . . . . 9:30  
 Morning Worship . . . . . 10:30  
 Evening Worship . . . . . 6:00  
**WEDNESDAY**  
 Ladies Bible Class . . . . . 9:30  
 Bible Study . . . . . 8:00

**EVANS CHAPEL BAPTIST CHURCH**  
 Rev. Bonnie Anderson, Pastor  
 Sunday School . . . . . 10 a.m.  
 Morning Worship . . . . . 11 a.m.  
 Training Union . . . . . 6 p.m.  
 Evening Worship . . . . . 7 p.m.  
 Wednesday Prayer Meeting . . . . . 7 p.m.  
 Sunday afternoon worship . . . . . 2:00

**FIRST UNITED METHODIST CHURCH**  
 Rev. Dewitt Seago  
**SUNDAY**  
 Sunday School . . . . . 9:45  
 Worship Service . . . . . 10:55  
 UMY . . . . . 8:00  
 Evening Worship . . . . . 7:00  
 United Methodist Women . . . . .  
 . . . . . First Tuesday of Month  
 Circles . . . . . Monday (2nd & 4th  
 Monday nights) Tuesday &  
 Wednesday mornings.

**TRINITY LUTHERAN CHURCH**  
 Providence Community  
 Andrew Mild  
 Sunday School & Adult  
 Bible Class . . . . . 10:00  
 Divine Worship Service . . . . . 11:00

**ASSEMBLY OF GOD CHURCH**  
 Sunday School . . . . . 10:00  
 Morning Worship . . . . . 11:00  
 Evening Worship . . . . . 7:00  
 Prayer Service Wed. . . . . 7:00  
 Rev. Bob Wright, Pastor

**TEMPLO BAPTISTA SALEM**  
 Manuel Alaniz, Pastor  
 Sunday School . . . . . 9:45  
 Worship Service . . . . . 11:00  
 Christian Training Time . . . . .  
 . . . . . 5:00  
 Evening Worship . . . . . 6:00  
 Wednesday Prayer Meeting  
 & Choir Practice . . . . . 7:30

**AIKEN BAPTIST CHURCH**  
 James Kalen, Pastor  
 Sunday School . . . . . 10:00  
 Morning Worship . . . . . 11:00  
 Training Union . . . . . 6:00  
 Evening Worship . . . . . 7:00  
 Prayer Service Wed. . . . . 7:30  
 Brotherhood, W.M.U. And  
 Auxiliary Wednesday . . . . . 7:30

**SAN JOSE CATHOLIC CHURCH**  
 Father Joe Bienenman  
 Sunday morning Mass  
 9 a.m.  
 Saturday Evening Mass 8  
 p.m.  
 Wednesday Evening . . . . . 8 p.m.  
 Friday Evening . . . . . 8 p.m.  
 Confessions Saturday . . . . .  
 . . . . . 6:30 p.m.



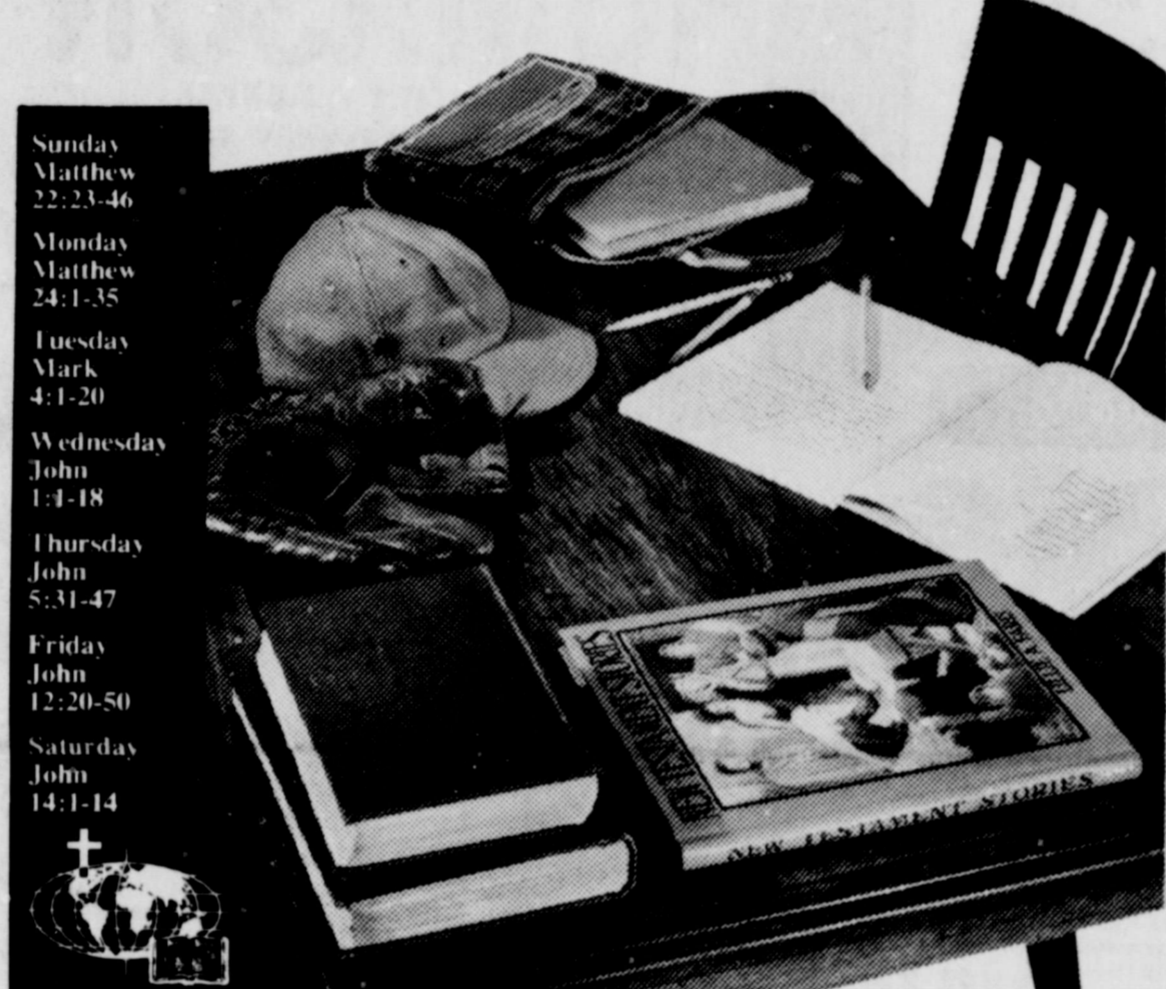
## The Busy Life

Is there anyone so busy as a ten-year-old? Our Joey isn't in this picture. Called to the phone, you know! Something extremely important like the Cub Scout picnic or the Little League meeting. Decisions that can't wait . . . even for homework. Or so we are told!

But if you'll note the items on Joey's desk you'll see that FAITH hasn't been crowded out of our boy's busy life. Sunday School is just one of his pressing weekly "appointments." But it is one that has as prominent place in his growing up as it has on his desk.

And don't think it is merely parental pride when I tell you that Joey is already revealing some fine traits of Christian character in his attitude toward responsibilities — and toward people. His mother and I planned it that way when we made the Church an important part of our own lives.

Scriptures selected by The American Bible Society  
 Copyright 1979 Keister Advertising Service, Strasburg, Virginia



Sunday  
 Matthew 22:23-46  
 Monday  
 Matthew 24:1-35  
 Tuesday  
 Mark 4:1-20  
 Wednesday  
 John 1:1-18  
 Thursday  
 John 5:31-47  
 Friday  
 John 12:20-50  
 Saturday  
 John 14:1-14

## This Inspirational Message Sponsored By The Following . . . . .

- Plains Electric**  
Electrical Irrigation Installation
- Brown's Department Store**  
Ready-to-wear-Quality Cleaning
- Davis Lumber Company**  
Lumber and Building Supplies
- Baccus Motor Company**  
"Where To Buy Them"
- The Longhorn Inn**  
The Glen Cooper Family
- Byrd Pharmacy**  
Fred D. Byrd, Pharmacist
- Jackson Tire Company**  
Shamrock Products - National Tire
- Consumers Fuel Association**  
Everything For The Farmers
- Moore-Rose Funeral Home**  
Phone 652-2211
- Patterson Grain Company**  
Lockney
- Schacht Jewelry & Floral**  
"It's Our Pleasure To Serve You"
- Lockney Lumber & Supply**  
We Appreciate Your Business
- Lockney Beacon**  
Your Hometown Newspaper
- Sun-Vue Fertilizers**  
Your Smith-Douglas Dealer
- Page's Thriftway**  
Friendly Service Every Day of the Week
- Dan's Auto Service**  
Repair Specialists
- Perry Implement Company**  
Lockney's John Deere Dealer
- Lockney Co-Op Gin & Elevator**  
Serving Yourself thru Ownership

**FIRST BAPTIST CHURCH**  
 John C. Jenkins, Pastor  
 Monte Richards, Music director  
 Sunday School 9:45 a.m.  
 Morning Worship 11:00 a.m.  
 Church Training 6:00 p.m.  
 Evening Worship 7:00 p.m.  
 Prayer Meeting Wednesday 7:00 p.m.  
 Adult Choir Wednesday 8:00 p.m.  
 High School Youth (B.Y.F.) Wednesday 7:00 p.m.  
 G.A. and Mission Friends Wednesday 4:00 p.m.  
 Youth Choirs Sunday 5:00 p.m.  
 Sunday R.A.'s Sunday 5:00 p.m.

**PRIMERA IGLESIA BAPTISTA**  
 Rev. Glenn Smith, pastor  
 Sunday School . . . . . 9:45 a.m.  
 Morning Worship . . . . . 11 a.m.  
 Training Union . . . . . 5 p.m.  
 Evening Worship . . . . . 6 p.m.  
 WMU, Brotherhood, Choir Practice 7:30 p.m.  
 Monday Prayer Service Wednesday at . . . . . 7:30

RA's, GA's and Acteens  
 Wednesday 7:30 p.m.

**LATIN AMERICAN CHURCH OF CHRIST**  
 Bible School . . . . . 9:45  
 Morning Worship . . . . . 10:45  
 Evening Worship . . . . . 8:00  
 Wednesday Service . . . . . 8:00

**LOCKNEY LATIN ASSEMBLY OF GOD**  
 Manuel Rendon, Pastor  
 Sunday School . . . . . 9:45  
 Morning Worship . . . . . 11:00  
 Evening Worship . . . . . 7:30  
 Men's Fellowship Tuesday Evening . . . . . 8:00  
 W.M.C. Thursday . . . . . 8:00  
 Christ's Ambassadors Saturday Evening . . . . . 7:30

**WEST COLLEGE CHURCH OF CHRIST**  
 West College and Third  
 Frank Duckworth, Evangelist  
 Sunday Morning Worship Services . . . . . 10:30  
 Sunday Evening Worship Services . . . . . 6:00  
 Wednesday Evening Prayer Services . . . . . 8:00

**LONE STAR BAPTIST CHURCH**  
 Frank Lorillard Jr.  
 Sunday School . . . . . 10:00  
 Morning Worship . . . . . 11:00  
 Training Union . . . . . 5:00  
 Evening Worship . . . . . 6:00  
 Prayer Service Wednesday Evening . . . . . 6:30  
 Brotherhood, First Saturday Morning of Every Month.

**CEDAR HILL BAPTIST CHURCH**  
 Sunday School . . . . . 10:00  
 Morning Worship . . . . . 11:00  
 Evening Worship . . . . . 6:30  
 Prayer Service Wednesday at . . . . . 6:30 p.m.

Happy Birthdays

Sept. 9 — Andy  
 Sept. 10 — Ragland, Joe  
 Cormick, Steve  
 man, Rebecca  
 Sept. 11 — Sue, Burl  
 Hubert Davis  
 Sept. 12 — McAda, Justin  
 Mario Hernandez  
 Luis Luna  
 Sutterfield  
 Sept. 14 — Mangum, Dyrine  
 Boo Lane, Douglas  
 Sept. 15 — Sylvania Salinas  
 Marie Perez  
 Hayes, Rodolfo

**NEW VS. V**  
 SEPT

Happy Anniversaries

Sept. 9 —  
 Sept. 10 —  
 Sept. 13 —  
 Sept. 14 —

**SHelf SPECIALS**

FLAVORS  
**MAIAN PUNCH** 46 OZ. 6  
 MIX PORK/CHICK/CORN BREAD CAN  
**VE TOP** 6 OZ. 7  
 BOX  
 DISPOSABLE BUTANE LIGHTERS  
 BY GILLETTE  
**CRICKETS**  
 3 \$1.29 FOR

Lockney  
 Lockney

Bell Quality Checkd

**Ice Cream**

1/2 Gallon Square Ctn. **99¢**

**BOXED BEEF SALE**

ALL PRICES INCLUDE CUT & WRAP AT NO ADDITIONAL CHARGE!

**BEEF CHUCKS** \$1  
**PRIME RIBS** \$1  
**BEEF LOINS** \$2  
**BEEF ROUNDS** \$1

13¢ OFF LABEL GIANT

**CASCA**

ASSORTED/WHITE  
**KLEE**

James Cox  
 Promoted  
 Transfer

SHURFINE IN PAPER BAG  
**FLOUR**

**59**

5 LB BAG

**PA**

Happy Birthday

**BAPTIST CHURCH**  
Pastor  
Director  
9:45 a.m.  
11:00 a.m.  
6:00 p.m.  
7:00 p.m.  
7:00 p.m.  
8:00 p.m.  
7:00 p.m.  
4:00 p.m.  
5:00 p.m.  
5:00 p.m.

**W. IGLESIA**  
Pastor  
9:45 a.m.  
11:00 a.m.  
5:00 p.m.  
6:00 p.m.  
7:30 p.m.  
Monday  
Wednesday 7:30  
and Acteens  
Wednesday 7:30 p.m.

**AMERICAN**  
OF CHRIST  
9:45  
10:45  
6:00  
8:00

**COLLEGE**  
OF CHRIST  
And Third  
Worship  
10:30  
Worship  
6:00  
Evening Prayer  
8:00

**BAPTIST**  
CH  
10:00  
11:00  
5:00  
6:00  
Wednesday  
6:30  
Saturday  
7:00

**BAPTIST**  
CH  
10:00  
11:00  
6:30  
Wednesday  
6:30 p.m.

**James Cox**  
Promoted  
Transferred

James Cox, soil conservationist for the Floyd County office, has been promoted and transferred to the Morton office, Texas, as a soil conservationist in that office.

Cox and his family moved to the Morton office, Texas, so he could begin his duties as a soil conservationist. A native of Texas, Cox had been with the SCS office since Aug. 28, 1977.



# THRIFTWAY INVITES YOU TO WATCH MONDAY NIGHT FOOTBALL AND PLAY TOUCHDOWN DOLLARS!

WE RESERVE THE RIGHT TO LIMIT

**WEEK'S NAME**  
**NEW YORK GIANTS VS. WASHINGTON**  
SEPTEMBER 17, 1979

Odds

PRIZE VALUE	NO OF PRIZES	ODDS FOR EACH ONE TICKET	ODDS FOR EACH TWO TICKETS
\$1000.00	2	75,000 to 1	37,500 to 1
\$100.00	15	10,000 to 1	5,000 to 1
\$10.00	40	2,500 to 1	1,250 to 1
\$5.00	70	1,400 to 1	700 to 1
\$1.00	1,373	100 to 1	50 to 1
TOTAL	1,500	100 to 1	50 to 1

**\$1,000**

PICK UP A TICKET EACH TIME YOU SHOP THRIFTWAY!

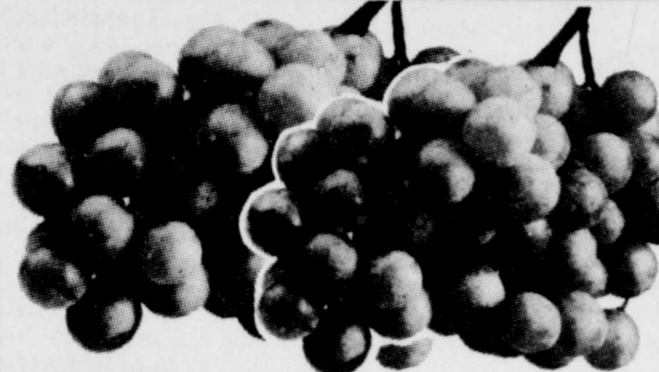
**SNELF SPECIALS**

MAIAN PUNCH 46 OZ. CAN **69¢**

LOVE TOP 6 OZ. BOX **79¢**

DISPOSABLE BUTANE LIGHTERS BY GILLETTE

**CRICKETS 3 FOR \$1.29**



**SEEDLESS GRAPES LB. 69¢**

NICE LARGE SIZE CANTALOUPE LB. **25¢**

PERSIAN LIMES LB. **79¢**

COLORADO EAR CORN 3 FOR **39¢**

NICE GREEN CRISP CABBAGE LB. **12¢**

EAST TEXAS PUERTO RICAN YAMS LB. **39¢**

CALIFORNIA VINE RIPENED TOMATOES LB. **49¢**

Bell Quality Checkd

**Ice Cream 99¢**

1/2 Gallon Square Ctn.

PURE VEGETABLE SHORTENING

**CRISCO 3 LB. CAN \$1.99**

**TOTAL GROCERY SAVERS**

INSTANT MAXWELL HOUSE COFFEE 10 OZ. JAR **\$4.79**

MAXWELL HOUSE ALL GRINDS COFFEE 1 LB. CAN **\$2.69**

NABISCO'S VANILLA NILLA WAFERS 12 OZ. BOX **79¢**

NEW! COOKING TRADITIONAL SAVORY/HERB DELICATE RAGU SAUCE 16 OZ. JAR **89¢**

GREEN DRAGON SLICED OR WHOLE JALAPENOS 12 OZ. JAR **79¢**

SKINNERS SHORT CUT ELBO MACARONI 12 OZ. PKG. **39¢**

REGULAR & WATER PAK CHUNK LIGHT

**STARKIST TUNA 6 1/2 OZ. CAN 69¢**

**BOXED BEEF SALE**

ALL PRICES INCLUDE CUT & WRAPPED AT NO ADDITIONAL CHARGE!

3 LB. BEEF CHUCKS **\$1.29**

3 LB. BEEF PRIME RIBS **\$1.89**

3 LB. BEEF LOINS **\$2.19**

3 LB. BEEF ROUNDS **\$1.79**

FROM HORMEL BLACK LABEL BACON "THE SUNDAY BACON" LB. **\$1.39**

HEAVY GRAIN FED BEEF TENDERIZED CUTLETS LB. **\$2.39**

10-12 LB. Avg. **Beef Briskets LB. \$1.19**

HEAVY GRAIN FED BEEF SIRLOIN TIP STEAK LB. **\$2.39**

HEAVY GRAIN FED BEEF LEAN SIRLOIN TIP ROAST LB. **\$2.39**

Owens 2 Lb. Bag Sausage **\$1.98**

RUDY FARM PORK REG./HOT WHOLE HOG SAUSAGE 2 LB. ROLL **\$2.79**

13¢ OFF LABEL GIANT

**CASCADE 35 OZ. BOX \$1.09**

ASSORTED/WHITE FACIAL TISSUE

**KLEENEX 200 CT. BOX 59¢**

**FROZEN FOODS**

MORTON FR. CHICK./TURKEY/MEAT LOAF DINNERS 11 OZ. BOX **79¢**

ORE-IDA SOUTHERN STYLE HASH BROWNS 2 LB. BAG **79¢**

CLASSIC COMBINATION TOTINO PIZZA 20 OZ. BOX **\$2.39**

**HEALTH & BEAUTY AID SAVINGS**

VASELINE INT. CARE REG./HERBAL LOTION 10 OZ. BTL. **99¢**

Q-TIPS COTTON SWABS 170 CT. BOX **89¢**

SHURFINE IN PAPER BAG FLOUR

**5 LB. BAG 59¢**

32 Ounce 6 Pack

**Coca Cola \$1.19**

Plus Deposit

**DAIRY VALUES**

BLUE BONNET QUARTERS MARGARINE 1 LB. BOX **59¢**

DELUXE CHOICE AMERICAN PIMENTO KRAFT SLICES 12 OZ. PKG. **\$1.39**

PILLSBURY CINNAMON WITH ICING ROLLS 9 1/2 OZ. CAN **79¢**

EKCO-ETERNA STAINLESS STEEL MIXING BOWLS 2 QT. SIZE **\$2.49**

VASELINE PURE PETROLEUM JELLY 7 1/2 OZ. JAR **89¢**

CUTEX 4 OZ. POLISH REMOVER BTL. **49¢**

VASELINE INTENSIVE CARE BATH BEADS 15 OZ. BOX **\$1.19**

TRAC II GILLETTE RAZORS 5 CT. PKG. **\$1.29**

# FOOTBALL CONTEST

PICK THE WINNING TEAMS!

**WIN** FIRST PRIZE..... \$10<sup>00</sup>  
SECOND PRIZE..... \$6<sup>00</sup>  
THIRD PRIZE..... \$4<sup>00</sup>

**GO,  
FIGHT, WIN!!!**



**GO  
LONGHORN  
GO**



## RAGIN' RED

**MARR INSULATION**  
Tom Marr, Owner  
Lockney, Texas  
1. Canyon vs. 2. Tulla

**Baccus Motor Co.**  
321 SO. MAIN ST.  
LOCKNEY  
3. Levelland vs. 4. Littlefield

**Page's Thriftway No. 3**  
"A Better Way To Save"  
5. Dumas vs. 6. Pampa

**Wilson Photography**  
LOCKNEY, TEXAS  
7. Andrews vs. 8. Lamesa

**Providence Farm Supply and Grain Co.**  
9. Monahans vs. 10. Snyder

**Byrd Pharmacy**  
"Accurate Prescription Service"  
11. Dimmitt vs. 12. Slaton

**Davis Lumber Co.**  
"Where Customers Send Their Friends"  
13. Olton vs. 14. Abernathy

**Moore-Rose Funeral Home**  
Lockney Tx.  
15. Morton vs. 16. Farwell

**The Cowboy Closet**  
Come In And Visit  
Oddie Probasco Owner  
Ronnie Elrod Manager  
17. Muleshoe vs. 18. Floydada

**Mize Pharmacy & TV**  
Your Complete Family Drug Store  
Gift Headquarters ★ RCA Television  
LOCKNEY, TEXAS  
19. Colorado City vs. 20. Sweetwater

**The Lockney Beacon**  
21. Hart vs. 22. Shallowater

### CONTEST RULES

Circle on the official entry blank the number of the team you think will win each game. Circle the winner and indicate the total score in the tie-breaker game. Contestants may mail their entries or bring them to the Beacon Office, 220 South Main. Mail entries must be postmarked no later than 5 p.m., Friday, and in-person entries must be at the office by the same time. Mail entry address is Box 187, Lockney 79241. One winner per family per week please.

### OFFICIAL ENTRY FORM

NAME \_\_\_\_\_ ADDRESS \_\_\_\_\_  
CITY \_\_\_\_\_

1-2 3-4 5-6 7-8 9-10 11-12 13-14 15-16 17-18 19-20 21-22 23-24  
25-26 27-28 29-30 31-32 33-34 35-36 37-38 39-40 41-42

TIE BREAKER **Lockney vs. Friona** TOTAL SCORE.....

See You At The Game

### COURTHOUSE NEWS

of W. 1/2 Sec. 3, Blk. D.  
Joe Keeter to John  
Page part of J.D. Bur  
Survey.  
James R. Stanley to A  
E. Baker L.14, part of  
Blk.91, Floydada.  
Sheryl J. Derryberry  
to Bobby Gilliland et  
L.11, 12 Blk.6, New  
add. Floydada.  
Leroy Burns et ux, par  
L.5.6, Blk2, Caprock  
Floydada.  
Carl M. Crider et al  
John O. Dawdy et ux,  
acres (W. 1/2) Survey 44,  
D. Frank Barrow et ux  
John E. Perry et ux, L.  
Blk11, Texas add. Floy  
Beulah M. Peek to  
Mott, L.4,5,6, Blk3, M  
add., Lockney.  
Johnny D. Loyd to  
Mitchell Loyd NE/4 of  
vey 95, Blk1, NW/4 of  
vey 96, Blk1.  
1/2, Sec. 3,  
Charles Schuler, Jr.,  
to Charles D. Schuler M  
of Sec. 33, Blk.K.

Floyd County And Save Gas I

Announcing  
The Opening Of The Clinic  
The Practice Of Medicine  
Petersburg, Texas  
Dr. Mok Parmar, M.D.  
Beginning, Monday  
September 10  
Office Hours  
Monday - Saturday 9 p.m. to 5 p.m.  
Tuesday - Wednesday 9 p.m. to 12 p.m.  
Thursday - Saturday 9 p.m. to 12 p.m.

Please Jo  
FLOYDADA  
GIN  
SIXTH ANNUAL ST  
TU  
SEPTEMBER  
7:3  
MASSIE A  
★ BUSINESS  
★ DIVIDEND  
PRIZES &

# At The Game



## GO LONGHORN GO



Perry Implement Comp

John Deere Implements

- 31. Lubbock Monterey vs.
- 32. Wichita Falls Ry

Strickland's Restaurant

- 33. Hereford vs. 34. Palo Duro

Thomason Grocery  
LOCKNEY, TEXAS

- 35. Cooper vs. 36. Lorenzo

The Tye Company  
On The Plainview Highway

- 37. Frenship vs. 38. Spearman

Longhorn Inn

"Where School Friends Meet To Eat"

- 39. Texas Tech vs. 40. New Mexico

Brown's Department Store  
LOCKNEY, TEXAS

- 41. Motley Co. vs. 42. Rochester

## COURTHOUSE NEWS

of W. 1/2 Sec. 3, Blk. D-5. Joe Keeter to John R. Page part of J.D. Burleson Survey.

James R. Stanley to Agnes E. Baker L.14, part of L.15, Blk.91, Floydada.

Sheryl J. Derryberry etvir. to Bobby Gilliland et ux, L.11, 12 Blk.6, New Home add. Floydada.

Leroy Burns et ux to Dale Derryberry et ux, part of L.5,6, Blk2, Caprock add. Floydada.

Carl M. Crider etal, to John O. Dawdy et ux, 320 acres (W. 1/4) Survey 44, B.G. D. Frank Barrow et ux, to John E. Perry et ux, L.17,18 Blk11, Texas add. Floydada.

Beulah M. Peek to Patsy Mott, L.4,5,6, Blk3, Muncy add., Lockney.

Johnny D. Loyd to John Mitchell Loyd NE/4 of Survey 95, Blk1, NW/4 of Survey 96, Blk1.

Charles Schuler, Jr. et ux to Charles D. Schuler NW/4 of Sec. 33, Blk.K.

Floyd County And Save Gas!

### Announcing

The Opening Of The Clinic  
The Practice Of Medicine  
Petersburg, Texas

Book Parmar, M. D.

Beginning, Monday  
September 10  
Office Hours

Monday - Saturday 9 p.m. to 5 p.m.

Wednesday 9 p.m. to 12 p.m.

Saturday 9 p.m. to 12 p.m.

## NEWS 'N' NOTES

(by Sharon Hillis)

Some people get the "crazies" when they shop — then their budget goes "crazy," too.

Some of those people are me and you.

Experts have "names" for these shoppers — the "bargain buyers," the "depressed shopper," the "spitful buyer," the "status" buyer and the "wishful" buyer.

These "names" describe several spending personalities.

Study their symptoms below, and if any are yours, then fight the "crazies" and save more money than you ever dreamed of.

**BARGAIN BUYERS** — get pleasure from imagining they are outwitting the seller.

Accumulating bargains becomes a game more important than the products.

Not paying the original price is — for some people — a way of asserting superiority and independence.

**DEPRESSED SHOPPERS** — use buying to compensate for frustration and gloom.

It's a way to "boost the spirits," they think.

But, of course, it's also a way to fritter away cash.

Once in awhile, a "fling" may be emotionally healthy, but when it becomes a habit, or the items are expensive, new ways of solving depression would be more economical.

**SPITEFUL BUYERS** — THEY "work so hard and get so little attention" that they just go out and buy something to get back.

Unfortunately a buying spree rarely relieves the feeling of neglect for very long, and, worse yet, the purchase is rarely something they feel good about later.

**STATUS BUYER** — will fall for anything that makes them stand out in a crowd.

Sellers know people are willing to pay more for a product that reflects luxury.

For example, cars feature options that have nothing to do with safety or economy.

These luxury options simply appeal to status buyers.

**WISHFUL BUYERS** — spend money on products that promise a "wish come true" — young, slim, smooth skinned.

Did you make a wishful purchase today? or any other "crazy" purchase? We hope not.

### Amarillo Tri-State Fair Slated

For September 17-22

The 1979 Amarillo Tri State Fair, scheduled for September 17-22, will have displays of photographs by some of the top professional photographers in the Texas and Oklahoma Panhandle, according to Ray Wagner, superintendent of the photography show.

"Better Lighting and remodeling of the physical space occupied by the department will enhance the prospects for the best display ever," says Wagner.

The Panhandle Photographers Association, which sanctions the show, is affiliated with the Professional Photographers of America.

The Panhandle group is one of the oldest in the state of Texas.

### FLOYD DATA

Lance and Melissa Barrow attended the Abilene Christian-Western New Mexico football game in Abilene Saturday night. They are members of the Wildcat Club, a booster organization for the athletic program at Abilene Christian College.

# BUDDY'S

220 S. 2ND  
Store Hours  
Mon.-Sat. 8 a.m. to 9 p.m. Sun., 9 a.m. to 8 p.m.  
Values In This Adv Effective Through Wednesday September 12, 1979  
We Reserve The Right To Limit Quantities

<p>Jumbo Roll Kleenex</p>	<p>100 Count Kleenex</p>
<p>Paper Towels <b>2/99¢</b> 73¢ Value</p>	<p>Facial Tissue <b>3/\$1.00</b> 50¢ Value</p>
<p>32 Ounce White Swan Catsup <b>69¢</b> \$1.09 Value</p>	<p>6 - 32 Ounce Regular Or Diet Dr Pepper <b>\$1.49</b> Plus Deposit \$2.29 Value</p>

### VALUES IN THIS AD IN ADDITION TO OUR THURSDAY AD

<p>32 Ounce White Swan Salad Dressing <b>69¢</b> 99¢ Value</p>	<p>Giant 49 Ounce Tide <b>\$1.39</b> \$1.89 Value</p>
--	---

<p>2 Pound Kraft Velvetta Cheese <b>\$3.29</b></p>	<p>Red Delicious Apples 3 Lbs. <b>\$1.00</b></p>
<p>12 Ounces Swifts Sizzlean <b>\$1.39</b></p>	<p>Bartlett Pears 3 Lbs. <b>\$1.00</b></p>

<p>2 Pound Mortons Fried Chicken <b>\$2.49</b></p>	<p>Red Beauty Plums 3 Lbs. <b>\$1.00</b></p>
<p>USDA Ground Beef <b>\$1.49 Lb.</b></p>	<p>New Crop Sweet Potatoes 3 Lbs. <b>\$1.00</b></p>

<p>4 Ounce Schilling Black Pepper <b>78¢</b> \$1.13 Value</p>	<p>Gallon Buddy's Milk <b>\$2.09</b></p>
<p>3 Ounce Schilling Bacon Bits <b>77¢</b> 99¢ Value</p>	<p>12 Ounce Keebler Vanilla Wafers <b>2/\$1.29</b> 89¢ Value</p>

<p>3 Ounce Schilling Salad Toppings <b>77¢</b> 95¢ Value</p>	<p>29 Ounce Glen Park Bartlett Pears <b>69¢</b> 87¢ Value</p>
<p>3 Ounce Schilling Bacon Chips <b>77¢</b> 99¢ Value</p>	<p>25 POUND GLADIOLA Flour <b>\$3.99</b> With Coupon <b>\$4.49</b> Without Coupon Good at Buddy's EXPIRES 9-12-79</p>

<p>"Pouch" Sloppy Joe Or Taco Mix <b>3/89¢</b> 39¢ Value</p>	<p>1 POUND CAMELOT Coffee <b>\$2.29</b> With Coupon <b>\$2.79</b> Without Coupon Good at Buddy's EXPIRES 9-12-79</p>
--	--

Please Join The Folks At

# FLOYDADA COOPERATIVE GINS INC.

SIXTH ANNUAL STOCKHOLDERS MEETING

## TUESDAY

### SEPTEMBER 11, 1979

#### 7:30 p.m.

### MASSIE ACTIVITY CENTER

★ BUSINESS MEETING — Elect Two Directors

★ DIVIDEND CHECKS, DOOR PRIZES & REFRESHMENTS

# FARM & RANCH NEWS

## Venezuelans Inspect ACCO Research Plots

David Anderson, manager of ACCO Seed's international sales, was at the Aiken farm recently with two Venezuelans to inspect the grain sorghum research plots.

Anderson works out of the ACCO international headquarters at Belmont, Iowa. He is seeking new representatives for ACCO in Latin America where the company's sorghums are suitable to be grown.

He said that more sorghum is grown in Latin America than in the whole of the United States. In those countries, sorghum is used almost exclusively as livestock feed. Anderson added that most corn grown in Latin America is used for human consumption.

The international sales manager recognized Texas as being the provider of high quality sorghum seed, particularly since the amount of water needed could be added by irrigation.

Anderson explained that before a certain country, that recommendation must be valid. "We are interested in getting business year after year in these countries."

Presently the company markets sorghum seed in several Latin American countries. In addition, forage type products are sold for use in Japan and Europe.

Speaking for ACCO, Anderson said that the company believes that when it recommends specific hybrids for a certain country, that recommendation must be valid. "We are interested in getting business year after year in these countries."

Presently the company markets sorghum seed in several Latin American countries. In addition, forage type products are sold for use in Japan and Europe.



DR. NICK KRAMER, left, and Bill Nance, right, visit with Carlos Agudelo (next to Kramer) and Fausto Miranda (next to Nance) before showing the two Venezuelans the sorghum test plots at ACCO Seed farm near Aiken. With them is David Anderson, international sales manager for ACCO from Belmont, Iowa.

## Pest Management Newsletter

By Paul Treptow III

**BOLLWORM** activity has increased greatly over the last ten days. Fields with bollworm numbers that have reached the economic threshold (treatment level) have been found in many parts of the two-county area. Most cotton fields that are being scouted as part of the Crosby-Floyd pest management program in both the South Plains community of northern Floyd County and Cone — Big 4 areas of Crosby county have required insecticidal treatment. Generally bollworm numbers have been running 15 to 90 per 100 plants. These numbers of bollworms could cause severe yield reduction if gone undetected.

Producers are urged to make whole plant counts in order to detect bollworms at this time. The typical pattern of eggs in the terminals has not held true in many cases this year. We feel this is possibly due to the cotton aphid

which has infested the top portion of many plants and made it unattractive for egg laying. These aphids also make it more difficult in many cases to detect eggs and small worms in among the aphids. Bollworm eggs and small larvae have been found on all parts of the plant in many cases.

At this time few white eggs are being detected which means we may be finished with this cycle of adult more activity. The Computer prediction, which proved accurate for the last egg lay, says that we can expect some more activity by the 12th of September.

Most of the infestations that have been detected have called for application of harsh chemicals. Methyl parathion has proved effective in fields that I have observed that were treated with recommended rates: 1 1/2 to 2 quarts per acre. The price for this material cannot be beaten.



The 70th Annual Field Day of the Texas Agricultural Experiment Station (TAES) will be held at 1:00 p.m. Tuesday, September 11, at the Texas A&M Research and Extension Center, three miles north of Lubbock International Airport on FM 1294.

The following two days, September 12 and 13, the West Texas Agricultural Chemicals Conference is scheduled at Lubbock Memorial Civic Center, and officials of Plains Cotton Growers, Inc., Lubbock, are urging High Plains farmers to attend as many of the Field Day and Conference activities as possible.

The TAES Field Day will provide farmers with the latest research information on weed control, soil fertility, cotton breeding, water use efficiency and grain sorghum breeding. Grape vineyard tours and soybean research will be among added attractions.

Registration for the Chemicals Conference begins at 8:00 a.m. Wednesday, September 12, and the program begins at 1:15 p.m. Theme of the Conference is "Living with Legality." Both state and federal regulations which concern producers and agricultural chemical manufacturers will be examined.

Two awards for outstanding contributions to West Texas agriculture will be presented at an awards banquet beginning at 7:00 p.m. September 12. Speaker for the banquet will be humorist Justin Wilson of Baton Rouge, Louisiana.

Weed and insect controls, the integrated pest management concept, cotton scouting, soil testing and leaf petiole analysis are among other topics to be covered in the Conference.

"Many of the research achievements over the past 25 years, including those of chemical research, were made with the help of cotton producer money and guidance through PCG," notes PCG President Joe D. Unfred of New Home.

"So I am more than glad," he adds, "to join the sponsors of the Field Day and the Conference in urging producers to take advantage of the opportunities they offer, because maximum benefits from research can be realized only if producers keep informed about and utilize the latest developments."

The annual TAES Field Day is a presentation of the Experiment Station, High Plains Research Foundation, USDA, TAES and the National Weather Service Agricultural Meteorology Office.

The Chemicals Conference is sponsored each year by the West Texas Agricultural Chemicals Institute.

**Around the County**  
County Agent's Column

By Stephen R. Herber  
Floyd County Extension Agent

**FLOYD COUNTY FARM TOUR**

The Floyd County Farm tour will be held next Thursday, September 13. The tour will leave the Agricultural Building on the courthouse square at 9:00 p.m. Points of interest will include a variety of demonstrations on cotton, corn, and soybeans. Major emphasis will also be placed on irrigation systems and efficiency. Look for a schedule of the tour in next Thursday's paper. The tour will be sponsored by the Floyd County Crops Committee and the Soil Conservation Service.

**EXPERIMENT STATION FIELD DAY**

The 70th Annual Field Day at the Texas Agricultural Experiment Station

in Lubbock will be held Tuesday, September 11 from 1:00 to 5:00 p.m. The field day is opened to all who wish to attend and should prove to be very educational.

**LANDSCAPE HORTICULTURE CLINIC**

A landscape horticulture clinic will be held Friday, September 14, at Light-house Electric in Floydada. The program will start at 9:00 a.m. and will be concluded by noon. Everett Janne, Landscape Horticulturist from Texas A&M will conduct the clinic. He will talk about planning and maintaining the home landscape, pruning and energy saving tips in home landscaping. The clinic is open to anyone who wishes to attend.

**Sponsored by the Following Interested Firms**

First National Bank Floydada	Collins Implement Co. Floydada	Floyd County Farm Bureau
Case Power & Equipment Floydada	Russell's Equipment & Supply Floydada	Perry Implement Lockney
Floydada Cooperative Gins	Plainview Savings & Loan Association Floydada	Ansley & Son Lockney
McDonald Implement Co. Floydada	The Floyd County Hesperian	Floydada Implement Co.
Federal Land Bank Association Of Floydada	Consumers Fuel Association Lockney	Floydada Implement Co.
	Wilson Electric Floydada	The Lockney Beacon

## Farm Bureau News Summary

**COTTON BALE WEIGHT PENALTY**

It appears that some cotton producers have been convinced for a number of years that there is a state or national law establishing cotton bale weight penalties for overweight and underweight bales. There is no law establishing bale weight penalties. If producers want such a law, or if they want a law outlawing bale weight penalties, it would be necessary to express their desires through the normal resolution process. Current policy is reproduced here for your information:

We recommend that Farm Bureau work with Texas Cotton Association to lower penalties on off-weight bales of cotton and to achieve producer input in the setting of rules governing marketing of cotton. (State Policies of the Texas Farm Bureau, 1979.)

There is a state law designed to prevent the buyers of spot cotton from deducting penalties within certain categories. This was discussed in Facts For You on page 182, August 3, 1979.

The Texas Attorney General took action to stop the Texas Cotton Association from requiring that their members apply a standard bale weight penalty. This item was discussed on page 188 of Facts For You, August 10, 1979.

As the situation stands today, if there is to be a bale weight penalty, it is to be negotiated between the buyer and the seller. The state law referred to above is still in effect, and it permits a buyer of spot cotton to charge a \$1.00 per bale penalty if the bale weighs less than 400 pounds. The state law also allows the producer-seller, or grower, to recover from the buyer or ginner twice the amount of deductions or charges through a civil lawsuit, if these charges are made contrary to the state law.

**COTTON LOAN PROGRAM REGULATIONS**

United States Department of Agriculture has proposed some rule changes with regard to the cotton price support program. The following summary indicates the important changes:

**SUMMARY:** The purpose of this rule is to add another eligibility requirement to the cotton price support program. This rule would amend the program regulations governing warehouse stored cotton loans to limit excessive sampling of cotton effective for the 1980 and subsequent crops. This proposed rule is necessary in order to prevent contamination of the cotton from outside sources and to prevent excessive quantities of cotton from being removed from bales. This notice invites comments on the proposed amendment.

Comments with regard to this program should be addressed to the Director, Price Support and Loan Division, ASCS, USDA, P.O. Box 2415, Washington, D.C. 20013. Comments written should be mailed in time to reach Washington, D.C. on or before October 9, 1979. Copies of the proposal are available in this office.

**COTTON PROGRAM 1980**

USDA has announced its intention to make certain basic determinations with regard to the 1980 upland and extra long-staple and upland cotton programs. The Department released the following summary regarding these proposals:

- Loan level for upland lint cotton.
- Loan level and payment rate for ELS lint cotton.
- Specifications for bale packaging materials.
- Premiums and discounts for grade staple, and micronaire, and base loan rates by warehouse location for the 1980-crop loan program.
- Ease policy on cotton owned by the Commodity Credit Corporation.
- Whether a seed cotton loan program should be offered and, if so, the loan levels for such seed cotton.

The above determinations are authorized by the Agricultural Act of 1949, as amended, and the Commodity Credit Corporation Charter Act, as amended. This notice invites written comments on these proposed determinations.

Anyone wishing to comment regarding these regulations should address their communication to Jeffress A. Wells, Director, Production Adjustment Division, ASCS, USDA, Room 3630 South Building, P.O. Box 2415, Washington, D.C. 20013. Comments should be mailed in time to reach Washington on or before October 15, 1979. Copies of the entire proposal are available from this office.

**WHEAT, BARLEY AND RYE PROGRAMS 1980**

USDA has announced the 1980 crop program for wheat, barley, oats and rye.

The national program acreage for the 1980 crop of wheat is established at 70 million acres, based on the following data:

(a) Estimated domestic consumption 1980-81 (million bushels)...884.0

**REGULATIONS**

United States Department of Agriculture has proposed some rule changes with regard to the cotton price support program. The following summary indicates the important changes:

**SUMMARY:** The purpose of this rule is to add another eligibility requirement to the cotton price support program. This rule would amend the program regulations governing warehouse stored cotton loans to limit excessive sampling of cotton effective for the 1980 and subsequent crops. This proposed rule is necessary in order to prevent contamination of the cotton from outside sources and to prevent excessive quantities of cotton from being removed from bales. This notice invites comments on the proposed amendment.

Comments with regard to this program should be addressed to the Director, Price Support and Loan Division, ASCS, USDA, P.O. Box 2415, Washington, D.C. 20013. Comments written should be mailed in time to reach Washington, D.C. on or before October 9, 1979. Copies of the proposal are available in this office.

**COTTON PROGRAM 1980**

USDA has announced its intention to make certain basic determinations with regard to the 1980 upland and extra long-staple and upland cotton programs. The Department released the following summary regarding these proposals:

- Loan level for upland lint cotton.
- Loan level and payment rate for ELS lint cotton.
- Specifications for bale packaging materials.
- Premiums and discounts for grade staple, and micronaire, and base loan rates by warehouse location for the 1980-crop loan program.
- Ease policy on cotton owned by the Commodity Credit Corporation.
- Whether a seed cotton loan program should be offered and, if so, the loan levels for such seed cotton.

The above determinations are authorized by the Agricultural Act of 1949, as amended, and the Commodity Credit Corporation Charter Act, as amended. This notice invites written comments on these proposed determinations.

Anyone wishing to comment regarding these regulations should address their communication to Jeffress A. Wells, Director, Production Adjustment Division, ASCS, USDA, Room 3630 South Building, P.O. Box 2415, Washington, D.C. 20013. Comments should be mailed in time to reach Washington on or before October 15, 1979. Copies of the entire proposal are available from this office.

**REGULATIONS**

United States Department of Agriculture has proposed some rule changes with regard to the cotton price support program. The following summary indicates the important changes:

**SUMMARY:** The purpose of this rule is to add another eligibility requirement to the cotton price support program. This rule would amend the program regulations governing warehouse stored cotton loans to limit excessive sampling of cotton effective for the 1980 and subsequent crops. This proposed rule is necessary in order to prevent contamination of the cotton from outside sources and to prevent excessive quantities of cotton from being removed from bales. This notice invites comments on the proposed amendment.

Comments with regard to this program should be addressed to the Director, Price Support and Loan Division, ASCS, USDA, P.O. Box 2415, Washington, D.C. 20013. Comments written should be mailed in time to reach Washington, D.C. on or before October 9, 1979. Copies of the proposal are available in this office.

**COTTON PROGRAM 1980**

USDA has announced its intention to make certain basic determinations with regard to the 1980 upland and extra long-staple and upland cotton programs. The Department released the following summary regarding these proposals:

- Loan level for upland lint cotton.
- Loan level and payment rate for ELS lint cotton.
- Specifications for bale packaging materials.
- Premiums and discounts for grade staple, and micronaire, and base loan rates by warehouse location for the 1980-crop loan program.
- Ease policy on cotton owned by the Commodity Credit Corporation.
- Whether a seed cotton loan program should be offered and, if so, the loan levels for such seed cotton.

The above determinations are authorized by the Agricultural Act of 1949, as amended, and the Commodity Credit Corporation Charter Act, as amended. This notice invites written comments on these proposed determinations.

Anyone wishing to comment regarding these regulations should address their communication to Jeffress A. Wells, Director, Production Adjustment Division, ASCS, USDA, Room 3630 South Building, P.O. Box 2415, Washington, D.C. 20013. Comments should be mailed in time to reach Washington on or before October 15, 1979. Copies of the entire proposal are available from this office.

**REGULATIONS**

United States Department of Agriculture has proposed some rule changes with regard to the cotton price support program. The following summary indicates the important changes:

**SUMMARY:** The purpose of this rule is to add another eligibility requirement to the cotton price support program. This rule would amend the program regulations governing warehouse stored cotton loans to limit excessive sampling of cotton effective for the 1980 and subsequent crops. This proposed rule is necessary in order to prevent contamination of the cotton from outside sources and to prevent excessive quantities of cotton from being removed from bales. This notice invites comments on the proposed amendment.

Comments with regard to this program should be addressed to the Director, Price Support and Loan Division, ASCS, USDA, P.O. Box 2415, Washington, D.C. 20013. Comments written should be mailed in time to reach Washington, D.C. on or before October 9, 1979. Copies of the proposal are available in this office.

**LOCKNEY MEAT CO.**  
652-3305

WTBS CH. 17 Atlanta	KTX CH. 5 Lubbock	PTL CH. 6 Charlotte	KN CH. 11 Lubbock
No Programs	No Programs	Kenneth Copeland	Praise Lord
		Voice of Victory Oral Roberts and You	Jimmy Swaggart
		Jerry Falwell	Love
		PTL Club	Mary T. Moore
			Best of Donald
			Baptist Church
No Programs	Calvary Temple		Direct
		Amazing Grace Bible Class	Major Base
		Music Celebration	ABC
		Abundant Living James Robison	
	Firing Line	Club PTL	West
	Advocates	Amazing Grace Bible Class	Pop
			Count

WTBS CH. 17 Atlanta	KTX CH. 5 Lubbock	PTL CH. 6 Charlotte	KN CH. 11 Lubbock
Best of Donny and Marie	Japan: Living Tradition	Music Celebration	Out of Blue
	Evening at Pops: Stephen Grappelli	Abundant Living James Robison	Mark
	Masterpiece Theatre: Kean	PTL Club	Emmy Awards
Between the Wars	Growing Years		
Open Up	Footsteps	Larry Jones Ministry PTL Club	Texas Foot
	Sign Off		Prairie Lord
			ABC Sign

WTBS CH. 17 Atlanta	KTX CH. 5 Lubbock	PTL CH. 6 Charlotte	KN CH. 11 Lubbock
Leave it to Beaver	No Programs	Varied Programs	Good Am
Lucy Show	Sesame Street		
Green Acres			
Movie	Mister Rogers Neighborhood		Phil
	Preservation		
	Varied Programs	PTL Club	Larry
Love, American Style	Over Easy		\$20
Movie	MacNeil-Lehrer Rept.		Mo
	Dick Cavett Show	Varied Programs	All
			CH
	Lilies, Yoga And You		
	Alegre		
	Sesame Street		
My Three Sons	Mister Rogers Neighborhood		
Dream of Jeanie	Electric Company		
Carol Burnett and Friends	Once Upon a Classic	Herold of Truth	
Bob Newhart	Varied Programs	Christopher Close-Up	



WESTON MILK BALLON \$1.90
USDA Inspected Plant Custom Processing, Wholesale and Retail Meats, Cut, Wrapped, Frozen, and Fully Guaranteed. Financing Available On Freezer Beef.
Lockney Meat Co.
652-3305 Lockney, Texas

BIG SUMMER CLEARANCE!
MANY ITEMS 1/2 PRICE
ROYE'S
Merle Norman Cosmetics

CALL CABLE TV OF FLOYDADA 983-2911 TODAY FOR MORE AND BETTER TV!

Farm Bureau News Summary

SALE WEIGHT PENALTY
that some cotton producers convinced for a number of years is a state or national law on cotton bale weight penalties...

(b) Plus estimated exports (million bushels)...1,250.0
(c) Minus estimated imports (million bushels)...2.0
(d) Plus adjustment to increase to desired level (million bushels)...157.0
(e) Divided by estimated weighed average farm program (bushels/acre)...32.7
(f) Equals: Preliminary 1980 program acreage (million acres)...

With regard to land diversion, the Department has determined there will be no set-aside for crop of wheat.

With regard to land diversion from the 1979 wheat crop, the Department has determined that the 1980 target price is to be \$3.07 per bushel.

The Department has also determined that the 1980 crop wheat purchase level will be \$2.50 per bushel higher than the 1979 level.

The Department has also determined that the 1980 crop wheat purchase level will be \$2.50 per bushel higher than the 1979 level.

The Department has also determined that the 1980 crop wheat purchase level will be \$2.50 per bushel higher than the 1979 level.

The Department has also determined that the 1980 crop wheat purchase level will be \$2.50 per bushel higher than the 1979 level.

The Department has also determined that the 1980 crop wheat purchase level will be \$2.50 per bushel higher than the 1979 level.

The Department has also determined that the 1980 crop wheat purchase level will be \$2.50 per bushel higher than the 1979 level.

The Department has also determined that the 1980 crop wheat purchase level will be \$2.50 per bushel higher than the 1979 level.

The Department has also determined that the 1980 crop wheat purchase level will be \$2.50 per bushel higher than the 1979 level.

The Department has also determined that the 1980 crop wheat purchase level will be \$2.50 per bushel higher than the 1979 level.

The Department has also determined that the 1980 crop wheat purchase level will be \$2.50 per bushel higher than the 1979 level.

The Department has also determined that the 1980 crop wheat purchase level will be \$2.50 per bushel higher than the 1979 level.

The Department has also determined that the 1980 crop wheat purchase level will be \$2.50 per bushel higher than the 1979 level.

The Department has also determined that the 1980 crop wheat purchase level will be \$2.50 per bushel higher than the 1979 level.

Table with 12 columns (WTBS, KTXT, PTL, KMCC, WGN, KTV, KCBD, KLBK, CBN) and 12 rows of program listings for Monday, 09/09/79.

Table with 12 columns (WTBS, KTXT, PTL, KMCC, WGN, KTV, KCBD, KLBK, CBN) and 12 rows of program listings for Tuesday, 09/10/79.

Table with 12 columns (WTBS, KTXT, PTL, KMCC, WGN, KTV, KCBD, KLBK, CBN) and 12 rows of program listings for Wednesday, 09/12/79.

Table with 12 columns (WTBS, KTXT, PTL, KMCC, WGN, KTV, KCBD, KLBK, CBN) and 12 rows of program listings for Thursday, 09/13/79.

Table with 12 columns (CABLE, WTBS, KTXT, PTL, KMCC, WGN, KTV, KCBD, KLBK, CBN) and 12 rows of program listings for Monday, 09/10/79.

Table with 12 columns (CABLE, WTBS, KTXT, PTL, KMCC, WGN, KTV, KCBD, KLBK, CBN) and 12 rows of program listings for Tuesday, 09/11/79.

Table with 12 columns (CABLE, WTBS, KTXT, PTL, KMCC, WGN, KTV, KCBD, KLBK, CBN) and 12 rows of program listings for Wednesday, 09/12/79.

Table with 12 columns (CABLE, WTBS, KTXT, PTL, KMCC, WGN, KTV, KCBD, KLBK, CBN) and 12 rows of program listings for Thursday, 09/13/79.

## These Floydada And Lockney Merchants Sponsor The T.V. Schedule For You Each Week . . . . .

FRIDAY 09/14/79

CABLE	4	5	6	7	9	10	11	13	2
PM	WTBS CH. 17 Atlanta	KTXN CH. 5 Lubbock	PTL CH. 6 Charlotte	KMCC CH. 28 Lubbock	WGN CH. 9 Chicago	KTV CH. 10 Oakland	KCBD CH. 11 Lubbock	KLBK CH. 13 Lubbock	CBN CH. 2 Virginia Bch
6:00	Sanford and Son	Footsteps	At Home with the Bible	News	Dick Van Dyke	T.V. Powww with Tom and Jerry	News	News	Bible Story
6:30	My Three Sons	MacNeil-Lehrer Rept.	Jimmy Swaggart	Happy Days Again	Road Atlanta		Sanford and Son	Joker's Wild	Lesson
7:00	Movie: 'Curse of the Voodoo'	Wash. Week in Review	Westbrook Hospital	Fantasy Island	Major League Baseball: Chicago at Philadelphia	Captain Cosmic Bewitched	Diffrent Strokes	Incredible Hulk	Intouch
7:30		Wall Street Week					Facts of Life		
8:00		Evening at Pops	PTL Club	Movie: 'Bad News Bears in Breaking Training'		Six Million Dollar Man	Rockford Files	Dukes of Hazzard	700 Club
8:30		Stephane Grappelli							
9:00	Major League Baseball: Atlanta at San Diego	Upstairs, Downstairs				Odd Couple		Dallas	
9:30						Dating Game			Richard Hague
10:00		Dick Cavett	Richard Hague	News	News	Movie: 'The Barefoot Contessa'	News	News	Dan Griffin Show
10:30		Captioned ABC News	PTL Club	Bob Newhart	Movie: 'Way Way'		Tonight Show	The Night Stalker	Ross Bagley
11:00		Sign Off		Alan King Goes Nashville	Out			Movie: 'Cannonball'	Relig Prgrms Cont'd
11:30	Movie: 'Mr. Ace'								
12:30					Nightbeat		Midnight Special		

SATURDAY 09/15/79

CABLE	4	5	6	7	9	10	11	13	2
AM	WTBS CH. 17 Atlanta	KTXN CH. 5 Lubbock	PTL CH. 6 Charlotte	KMCC CH. 28 Lubbock	WGN CH. 9 Chicago	KTV CH. 10 Oakland	KCBD CH. 11 Lubbock	KLBK CH. 13 Lubbock	CBN CH. 2 Virginia Bch
7:00	Ultraman	No Programs	Maranatha Concerts	The Best of Superfriends	U. S. Farm Report	Daffy Duck Show	Adventures of Mighty Mouse and Heckle & Jeckle	Ever Increasing Faith	
7:30	Partridge Family				Daniel Boone				
8:00	Maverick		To Be Announced	Plasticman Saturday Preview	Movie: 'Looking for'	Fred and Barney Show	Bugs Bunny/Road Runner Show	Life in the Spirit Rock	
8:30			Jamboree						
9:00	Movie: 'Bride of San Luis Rey'		Bible Bowl	Out of the Blue Special	Danger	No Programs	Globetrotters /Dynamutt Hour	Wanna	
9:30			Pirate Adventures				All-New Popeye Hour	Lesson	
10:00			PTL Club	Kids Are People Too	Movie: 'The Magic of the Kite'	Voice of Agriculture Black Forum	Adventures of Flash Gordon Godzill	Circle Square	
10:30							New Fat Albert Show	Backyard	
11:00	Movie: 'Captain Scarlett'			ABC Weekend Special To Be Announced	Charlando	Asians Now	Jonny Quest	Jason of Star Command	Puppet Tree
11:30						Revista de la Semana	Hong Kong Phooey	Tarzan and The Super	Bible Bowl
12:00			Richard Hague	Football SWC Style	See Hunt	Our Men in the Capital World Tomorrow	U.S. Farm Report	Seven	Best of 700 Club
12:30	Movie: 'The Big Heat'		Evangel Football	Wide World of Sports	This Week in Baseball		Eleven Questions	Sunshine Sally	
1:00			Hillies		Movie: 'Tobor The Great'	Discovery	Marcus Welby, M. D.	Movie: 'Walk'	Through Death to Life
1:30			Larry Jones Ministry			Soul Train			
2:00			Jacobs Brothers	NCAA Football: Michigan at	Movie: 'Keep Em Flying'	Movie: 'Creature of'	SportsWorld	Don't Run'	Rays of Hope
2:30	Mission Impossible	Soccer Made in Germany	Adventure						Story
3:00			Maranatha Concerts	Notre Dame		Destruction'	Pre-game Show		Believers Voice of Victory
3:30	This Week in Baseball						Major League Baseball: Cincinnati	CBS Sports Spectacular	
4:00	American Lifestyle Love, American Style	Soccer Made in Germany	Richard Hague		Soul Train	Movie: 'Omar Khayyam'	at L.A.		Celebration
4:30			Evangel Football						Ross Bagley
5:00	Championship Wrestling	Footsteps	Program Cont'd		Sgt. Bilko	Movie Cont'd		Ruff House	Program Cont'd
5:30			Larry Jones Ministry	Mary Tyler Moore	My Three Sons			CBS News	

SATURDAY 09/15/79

CABLE	4	5	6	7	9	10	11	13	2
PM	WTBS CH. 17 Atlanta	KTXN CH. 5 Lubbock	PTL CH. 6 Charlotte	KMCC CH. 28 Lubbock	WGN CH. 9 Chicago	KTV CH. 10 Oakland	KCBD CH. 11 Lubbock	KLBK CH. 13 Lubbock	CBN CH. 2 Virginia Bch
6:00		Consumer Survival Kit	Club PTL	Family Affair	Dick Van Dyke	Hee Haw	Lawrence Walk	Hee Haw	Insight
6:30		Here's to Your Health		Happy Days Again	Major League Baseball				Jesus Festival
7:00	Pop! Goes the Country Nashville Music	Meeting of Minds	Jacobs Brothers High Adventure	The Ropers	Chicago at Philadelphia	Movie: 'Up In Arms'	Chips	Working Stiffs	Best of 700 Club
7:30				Detective School				The Bad News Bears	
8:00	Maverick	Sailing, Sailing	PTL Club	The Love Boat			Movie: 'The Eiger Sanction'	Movie: 'The Paradise Connection'	Lesson
8:30	Major League Baseball	Damien: We Lepers							
9:00	Atlanta at San Diego					Dance Fever			Rock Church
9:30					Nashville Music	Dancing Disco			
10:00		Sign Off	Maranatha Concerts	News	News	Movie: 'Werlock Moon'	News	News	Zola Levitt
10:30				M*A*S*H	Movie: 'Return of'		Saturday Night Live	Movie: 'Mysterious'	Ross Bagley
11:00			Club PTL	Movie: 'Carmen Jones'	the Fly			Island	
11:30	Rat Patrol								Relig Prgrms Cont'd
12:00					Nightbeat		To Be Announced		
12:30					Movie:		Sign Off		

## WHOZITS . . .



This week's Floydada Whozit is another sibling pair. The boy on the left, pictured at age 4, could be described as a visionary, while his six-year-old brother is a farmer with a head for math. Identifying the cat is optional.



The Lockney Whozit personality last Sunday was W.H. Hallmark. G.B. Johnston, Sue Casey and Amy Koonsman correctly identified the dimpled little boy who grew up to be the dimpled man who'd "rather be fishing."

### Last Week's Whozit

Carolyn Marble, Ann Reddy, Adam E. Smith and George Smith all correctly guessed last week's Floydada Whozit brother and sister Earl and Eubanks.



LOCKNEY WHOZIT - This week's Lockney Whozit is a former resident of who now lives in Tulsa. Many Lockneyites should be able to identify him. Call The Beacon, 652-3318, if you think you know who it is.

### Pharr Joins Southwestern Public Service

Berl Springer, president and chief operating officer of Southwestern Public Service Company this week announced the appointment of former Plainview city manager Marshall Pharr as manager of governmental relations for the electric company. Commenting on the addition of Pharr to the public affairs staff at SPS, Springer said, "We are very pleased to have a man of Pharr's experience and background. We feel he will be able to provide the management of Southwestern additional insight in our relationships with government at all levels." Pharr has been serving as an administrative assistant to United States Congressman

Kent Hance for the past year. He is a native of Lubbock and a graduate of Texas Tech University where he earned a bachelor of business administration degree in 1955. Before joining Congressman Hance, Pharr served as the city manager of Plainview for fifteen years. Prior to that he was the city manager at Andrews and an administrative intern for the City of Lubbock. He served in the United States Navy from 1955 to 1957 and was a member of the U.S. Naval Reserve for 21 years. While in Plainview, Pharr was active in civic affairs and was a director of the Plainview Industrial Foundation. He was president of the Texas City Management Association in 1976 and served on the government affairs committee of the Plainview Chamber of Commerce. Pharr also served as a district chairman and vice president for the Boy Scouts of America.

Larry Milner, newly appointed director of communications and public affairs, said that Pharr would represent SPS in Washington and also in Austin when the Texas Legislature is in session.

**Lockney Dental Clinic**  
217 NORTH MAIN  
ANNOUNCES THE ASSOCIATION OF  
**Gerald C. Bevers D.D.S.**  
**Donald W. Andress D.D.S.-M.S.D.**  
ORTHODONTICS  
HOURS BY APPOINTMENT ONLY  
652-3339 LOCKNEY

**Announcing**  
*The Opening Of The Clinic*  
**For The Practice Of Medicine**  
*Petersburg, Texas*  
**Ashok Parmar, M. D.**  
*Beginning, Monday*  
**September 10**  
*Office Hours*  
**Monday - Saturday 9 p.m. to 5 p.m.**  
**Wednesday 9 p.m. to 12 p.m.**  
**Saturday 9 p.m. to 12 p.m.**

**Now Open**  
**For Business**

**★**  
**Plainview**  
**Overhead Doors**  
**★**

We Are Now Open To Serve  
Your Area,  
We Offer  
Sales And Service  
Of Commercial And Residential  
Overhead Doors And Operators

**Genie**  
GARAGE DOOR SYSTEMS

**Don W. Terrell, MGR.**  
3014 DIMMITT RD.  
CALL 293-8517  
DAY OR NIGHT

## CLAS

**Real Estate**

FOR SALE: Three bedroom, living room, two bath. All carpeted; storage building and shed. 983-3994.

FOR SALE: Two rooms carpeted. 618 S. Main, Lockney. Call after 6 - 652-2201.

3-BEDROOM BRICK home, Lockney. 2-car garage, basement. James Rae 652-2324 or 995-3367. L9-1

HOUSE FOR SALE: 2 bedroom newly redecorated. 652-3179, Delvin Bybee.

PRICE REDUCED FOR QUICK SALE-Living dining room carpeted, 2 carpets bedrooms, possible 3rd bedroom or shop. Large lot. 70 W. Plainview Highway. Call 652-2737.

Shop  
Floyd  
County  
FIRST!

**We Have**

- Eraser Mate
- Erasable Ink Pens
- The Only Pen That Erases Mistakes
- \$1.69 plus tax
- The Lockney Beacon
- Farm Items

FOR SALE OR TRADE Massey Harris Combine 14 ft. Good condition. 2595.

LET US DO YOUR HERBICIDES and Insecticide Spraying. have two ground rigs and airplane available. Lone Star Chemical.

Lone Star Chemical, Inc.  
Office: 652-2761  
Deanie Henderson: 652-3434

**NO . . .**  
**WE AREN'T IN**  
**THE**  
**PHOTOGRAPH**  
**BUSINESS**  
**BUT**

WE WILL REPRINT PICTURES THAT WE HAVE SHOT AND PUBLISHED IN THIS NEWSPAPER

**7 Gloss Finish**  
**\$200**

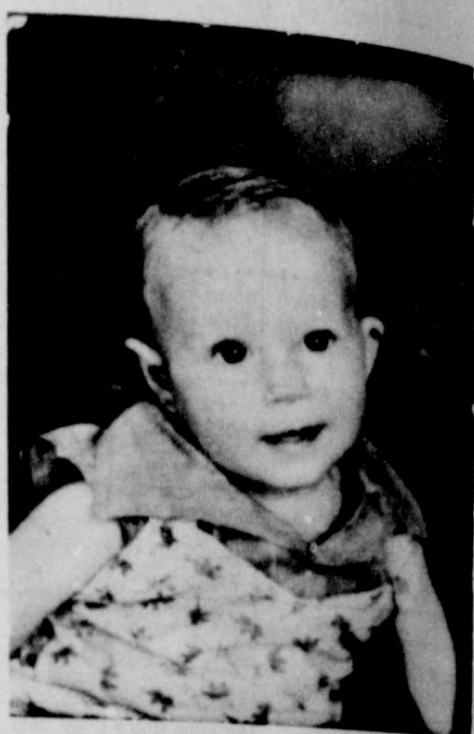
**FLOYD COUNTY**  
**HESPERIAN**  
**&**  
**LOCKNEY BEACON**

# CLASSIFIED ADS sure to get results

WHIZITS...

## Last Week's Whozit

Carolyn Marble, Ann Reddy, Robert E. Smith and George Smith all correctly guessed last week's Floydada Whozit, brother and sister Earl and Aurie Eubanks.



**LOCKNEY WHOZIT** - This week's Lockney Whozit is a former resident of who now lives in Tulsa. Many Lockneyites should be able to identify him. Call The Beacon, 652-3318, if you think you know who it is.

## Public Service

Texas City Management Association in 1976 and served on the government affairs committee of the Plainview Chamber of Commerce. Pharr also served as a district chairman and vice president for the Boy Scouts of America.

Larry Milner, newly appointed director of communications and public affairs, said that Pharr would represent SPS in Washington and also in Austin when the Texas Legislature is in session.

**Now Open For Business!**

**Plainview Overhead Door**

We Are Now Open To Serve Your Area, We Offer Sales And Service Of Commercial And Residential Overhead Doors And Operators

**Genie**

Don W. Terrell, MGR.

3014 DIMMITT RD. CALL 293-8577 DAY OR NIGHT

**Real Estate**  
FOR SALE: Three bedroom, den, livingroom, two baths; All carpeted; storage building and shed. 983-3994. tfc  
FOR SALE: Two rooms good carpet. 618 S. Main, Lockney. Call after 6 - 652-2201. Ltfc  
3-BEDROOM BRICK home, Lockney. 2-car garage, basement. James Race. 652-2324 or 995-3367. L9-13c

HOUSE FOR SALE: 2 bedroom newly redecorated. Call 652-3179, Delvin Bybee. Ltfc  
PRICE REDUCED FOR QUICK SALE-Living dining room carpeted. 2 carpets 2 bedrooms, possible 3rd bedroom or shop. Large lot. 702 W. Plainview Highway. Call 652-2737. Ltfc

**Shop Floyd County FIRST!**

We Have Eraser Mate Erasable Ink Pens The Only Pen That Erases Mistakes \$1.69 plus tax The Lockney Beacon

**Farm Items**  
FOR SALE OR TRADE: Massey Harris Combine 82 14 ft. Good condition. 983-2595. 9-9c

**LET US DO YOUR HERBICIDE**  
and Insecticide Spraying. We have two ground rigs and an airplane available. Lone Star Chemical.  
Lone Star Chemical, Inc. Office: 652-2761 Deanie Henderson: 652-3434 LTFc

**NO... WE AREN'T IN THE PHOTOGRAPHY BUSINESS BUT**

WE WILL REPRINT PICTURES THAT WE HAVE SHOT AND PUBLISHED IN THIS NEWSPAPER  
5x7 Gloss Finish \$200  
FLOYD COUNTY HESPERIAN & LOCKNEY BEACON

**Announcements**  
WILL DO ALL Types of carpenter work. Call 983-5201 after 5:30. tfc  
INSULATION can help save your dollars. For information call 983-2601.  
INSULATION Fire-Resistant. Installed and Guaranteed. MARR Insulation Co. Lockney 652-3593. Ltfc

WE DO Painting, floor leveling, house blocking, roofing and remodeling. We are now working Floydada Area. Contact Childress Bro. Collect 352-9563 tfc  
Minor repairs and tune up service on lawn mowers. Call Whites Home and Auto, 652-2145. Ltfc

ENROLL NOW: Piano, Guitar, Organ, and Piano Accordion Lessons. Certified and member of National Guild of Piano teachers, Lockney. Mrs. Charles L. Record. Call 652-2364, 801 or 807 W. Willow. Ltfc

"Carpet Need Cleaning?" Let me do the work for you. Dry foam, 10 cents sq. foot. Call Jack Moore 983-3033 after 5 p.m. tfc  
INTERIOR PAINTING WALL PAINTING Call Rena Turner, 983-5130. Sftc

WILL DO yard and garden spots. Hand tilled. Call 983-5606. 9-27c  
SITUATION WANTED  
WANT TO BUY 10 speed bicycle 983-2783. tfp

**STOP PAINTING**  
Cover all outside walls and overhang with U.S. Steel Products  
FREE ESTIMATES  
Stan-By Steel Siding 1501 N. Columbia Plainview, Texas Phone: 293-9330 L9-30p

**Fireplaces**  
BY MAJESTIC BUILT-IN OR FREE-STANDING CALL OR COME BY AUDRY MCCORMICK 107 WILLOW LOCKNEY 652-2372 L TFC  
Can You Use Some Extra Money Let Us Help!!!!  
WE BUY SCRAP IRON, OLD JUNKERS, AND FREE PICKUP  
Call 983-5277

**STORAGE SPACE**  
BOATS, FURNITURE, ANYTHING, ETC. BY THE MONTH OR SIX MONTH 10% DISCOUNT.  
WEST TEXAS MINI STORAGE  
983-9573 OR 983-2151

**Ready-Mix Concrete**  
Forming & Finishing  
Rock Gravel Sand  
FIERROS & SONS 652-2224 Lockney LTFc



I was joggin down the road and I looked down to see if I was losin any weight and run into a telephone pole.

THIS FEATURE SPONSORED BY Floydada Real Estate & Insurance Agency AUTO, FIRE & FARM INSURANCE Jim Word --- Phone 983-2360

**Diamond Industrial Supply Co., inc.**  
Phone Days 296-7418 Nights 296-1260 or 296-7-28  
1014 Broadway Plainview, Texas  
Chain Sprockets U-joints  
V belts Oil Seals  
Sheaves O-rings  
SKF BCA Timken Bower Cotton Stripper Brushes & Bats  
"We Appreciate Your Business More" L-tfc

**FARMS-RANCHES-CITY PROPERTIES- BUSINESS LEASES-LOANS**  
**B. B. WILKES BROKER REAL ESTATE**  
100 S Main, Lockney Barry Barker, Solicitor  
Barker Insurance Agency-652-2642  
IF IT IS INSURANCE -SEE-  
**BARKER INSURANCE AGENCY**  
LIFE-FIRE-CASUALTY-HOSPITAL

**TURNER REAL ESTATE**  
983-2635 Farms Ranches Floydada, Texas

## Public Notices

Plainview Schools will accept bids for: Air-Conditioning of Ash Elementary  
Bids will be accepted until 4:00 p.m. on Thursday, September 13, 1979.  
Bids should be sent to or delivered to the Administration Building, 912 Portland, Plainview, Texas 79072.  
Bids will be opened and will be awarded or rejected at the meeting of the Board in the Administration Building, 912 Portland, 8:00 p.m., September 13, 1979.  
Information and specifications concerning the bids may be obtained from the School Business Office, 912 Portland, Plainview, Texas.  
This is a solicitation for bids and is not an offer. The school reserves the right to accept or reject any and all bids and to waive informalities.  
John O. Peck Assistant Superintendent

**GO WINDS**  
Ralph V. Graham 504 Joliet - 293-4246  
305.9 acres ALL IN CULTIVATION. 2 wells, fairly Good Water. Near Lockney.  
Nice 3-1-2, Corner Lot, Central Heat and Ref. Air - 420 So. Main, Lockney  
Near Schools 3-1-2, carpet, concrete cellar, fenced back yard. Nice Home for someone.  
CALL ME TODAY  
J.H. Workman 652-3619

**Auto Accidents DO Happen...**  
If one happens to you, be protected. Our car insurance offers coverage to meet your special needs - repairs to personal liability.  
**BAKER Insurance Agency**  
127 W. Calif. Ph. 983-3270  
**your marketplace the WANT ADS**

**For Sale**  
FOR SALE. 1979 Yamaha, 750 Special 1,000 miles, still under warranty, three rail motorcycle trailer. Call 652-2776 after 5 p.m. 9-12c  
FOR SALE: 12' chest freezer. 983-3998. 9-16p  
FOR SALE: Good used T.V. antenna \$50.00. Mrs. H.O. Cline, 702 W. Missouri. 983-3591. tfc  
FOR SALE: 10x12 gold rug with pad; 7x12 green rug; 35 1/2" x 80" screen door; 47" x 82" folding door; 983-5193 or 983-3579. 9-23c  
FOR SALE: Blackeyed peas, squash at the Edmund Brown farm. 983-3002. tfc  
FOR SALE: Grandfather Clocks. 983-2417, Henry Willis. 9-9p  
FOR SALE: Four 15 inch deep dish disk cars. 983-2783. tfp  
FOR SALE: Four five-lug mag wheels, 14-inch. Fits most Chevy and Dodge cars. Call 652-3122. tfc  
FOR SALE: Bach Stradivarius Silver Trumpet/case. \$400. Excellent condition. 983-5003 or 983-5455. tfc  
FOR SALE: Carpet, Edith Cooper, 618 So. Main, Lockney. 652-2201.  
FOR SALE: Conn Cornet. One owner, used two years. \$95. 983-2937. 9-16c  
FOR SALE: One Ditto Spirit fluid duplicator, one bull fiddle. Phone 983-3692. tfc  
FOR SALE: Black-eyed peas, green beans, tomatoes, okra, squash. 313 E. Houston, 983-5004. Crutchfields. 9-20c  
CONCORD GRAPES for sale. Just right for juice. G.C. Applewhite, one-half mile north of Lone Star school, 652-3472. L9-9c  
FRESH BLACKEYED PEAS You pick, on city limits. Call White's Auto Store, Floydada. 983-3514 9-9c  
FOR SALE: Diningroom table, \$50. W.B. Cates, 983-3956. 9-16p  
FOR SALE: Upright piano, antique finish, \$125. Call 983-2205 after 5:30 or 983-3554. 9-9c  
FOR SALE: Couch, bathnette, stroller. 983-3726. tpc  
FOR SALE: Naugahyde sofa, three piece bedroom suit, cotton mattress and spring. Call 983-3828. 9-9c  
PIANO IN STORAGE - 1978 Model Spinnet Piano in storage. Responsible party can assume low payment balance. Write: Credit Dept., National Keyboard Inc. 6611 N. Lamar, Austin TX 78752 T9-13p  
FOR SALE: 4 five-lug mag wheels. Fits most Chevy and Dodge cars. Call 652-3122. L-tfc  
FOR SALE: Two Amana heat/cool model window units, 1800 BTU, two years old. \$350 each. Call 983-5435. 9-20p  
FOR SALE: Country Club share, dues are paid through September. Contact Jack Moore at 983-3033. 9-20c

**Help Wanted**  
WANTED ELECTRIC power plant operator. Will train. Contact city power plant. 983-2834 from 8 to 5 and 983-2343 after five p.m. tfc  
WANTED: responsible driver to transport 7 year old boy from Don Bean farm residence to Lockney bus line on school mornings. Call after 6 p.m. 983-3629. 9-9c  
WANTED: Registered nurse for Director of nursing at Floydada Nursing Home. Contact Paul Westbrook at 983-3704. Good salary with fringe benefits. tfc  
FOR RENT: In Lockney one-bedroom apartment. Come by 108 N. Main or call 652-3813. Ltfc

**Autos For Sale**  
4 shocks for the price of 3. Free installation. 123 W. Calif. tfc  
FOR SALE: 1971 Chevrolet Caprice. Power steering and brakes, air conditioning, tilt wheel, 68,000 miles. Call 983-5130. 9-25c  
FOR SALE: 1977 '88' Oldsmobile, 36,000 miles Phone 983-3002. tfc  
1979 GMC SIERRA 1/2 ton, clean, dual tanks, PS-PB, air, AM-FM 8-track, tool box, GOOD GAS MILEAGE, call 983-5477 after 5 p.m. tfc  
FOR SALE: 1972 Chevy Wagon. 15 mpg. Loaded. Perfect for families and/or loads. Call 983-3883. Best offer wins! tfc  
FOR SALE: Good '62 Chevy Truck with grain bed; six-cylinder, two-speed axle, 16-foot bed. Joe Cunyus, 652-3646. Ltfc  
FOR SALE: 1977 GMC Jimmy. 4-wheel drive. 983-3466, 415 W. California, Floydada. 9-16p  
FOR SALE: 1965 Convertible Buick Wildcat. Call 652-2262. L9-16c

**Lots and Acreage**  
FOR SALE: 140 acre tract dryland and 70 acre tract dryland N.E. of Floydada. Turner Real Estate 983-2635. 9-16c  
WANTED TO BUY irrigated or dryland farm in Floyd or surrounding area. Write Box XRO, c/o Hesperian, Box 700, Floydada. tfe  
WANTED TO RENT-300 to 700 acres of land P.O. Box 1361 Plainview 79072. L10-7p

**LOST & FOUND**  
FOUND: One paint horse, located two miles north of Barwise Elevator. Owner pay for ad. Contact Eddie Foster. 652-3540. 9-9c  
BLACK CHOW puppy around 222 W. Miss. Reward offered. 983-2601. tfc

**BUSINESS OPPORTUNITIES**  
HAVE A highly profitable and beautiful Jean Shop of your own. Featuring the latest in Jeans, Denims and Sportswear. \$15,500.00 includes beginning inventory, fixtures and training. You may have your store open in as little as 15 days. Call any time for Mr. Loughlin (612) 835-1304. 9-9c  
FOR SALE: Young female boxer, AKC Registered. 983-2770. 9-13c  
FOR SALE: Pure bred registered Airdale male. Two years old, good watch dog, hunting dog or for breeding. \$50.00. 983-2922. 9-13p

**SLEEP WHILE YOU WANT ADS WORK**  
The family of Charlie Cross gratefully acknowledge the cards, visits and food sent to us during our loss. Friends and neighbors are so wonderful. We also appreciate the kind consideration shown us by the Moore-Rose Funeral Home. Gladys and family 9-9p

**SAVE MONEY on your FALL HARVEST**  
Two combines available now! 15 years experience! Reasonable rates!  
JOHN DEERE CORN SOYBEANS  
TURBO 7700's MILO SUNFLOWERS  
**R & R HARVESTING**  
Call 983-2825 Room 12  
Your satisfaction is our business!

**DAN'S AUTO SERVICE**  
DAN TEUTON, Owner  
Specializing in Automatic Transmission, Motor Tune-Ups, Auto Air Conditioning.  
General Repair We Have A BRAKE LATHE to handle all passenger car brake drums. See us for complete brake service.  
Phone 652-2462

**CLASSIFIED RATES**  
CLASSIFIED ADVERTISING RATE: 15 CENTS PER WORD FIRST INSERTION; 10 CENTS PER WORD EACH SUBSEQUENT INSERTION. MINIMUM CHARGE \$2.00.  
CLASSIFIED DISPLAY RATE: \$1.40 PER COLUMN INCH CARD OF THANKS: \$2.00.

**Autos For Sale**  
4 shocks for the price of 3. Free installation. 123 W. Calif. tfc  
FOR SALE: 1971 Chevrolet Caprice. Power steering and brakes, air conditioning, tilt wheel, 68,000 miles. Call 983-5130. 9-25c  
FOR SALE: 1977 '88' Oldsmobile, 36,000 miles Phone 983-3002. tfc  
1979 GMC SIERRA 1/2 ton, clean, dual tanks, PS-PB, air, AM-FM 8-track, tool box, GOOD GAS MILEAGE, call 983-5477 after 5 p.m. tfc  
FOR SALE: 1972 Chevy Wagon. 15 mpg. Loaded. Perfect for families and/or loads. Call 983-3883. Best offer wins! tfc  
FOR SALE: Good '62 Chevy Truck with grain bed; six-cylinder, two-speed axle, 16-foot bed. Joe Cunyus, 652-3646. Ltfc  
FOR SALE: 1977 GMC Jimmy. 4-wheel drive. 983-3466, 415 W. California, Floydada. 9-16p  
FOR SALE: 1965 Convertible Buick Wildcat. Call 652-2262. L9-16c

**Lots and Acreage**  
FOR SALE: 140 acre tract dryland and 70 acre tract dryland N.E. of Floydada. Turner Real Estate 983-2635. 9-16c  
WANTED TO BUY irrigated or dryland farm in Floyd or surrounding area. Write Box XRO, c/o Hesperian, Box 700, Floydada. tfe  
WANTED TO RENT-300 to 700 acres of land P.O. Box 1361 Plainview 79072. L10-7p

**LOST & FOUND**  
FOUND: One paint horse, located two miles north of Barwise Elevator. Owner pay for ad. Contact Eddie Foster. 652-3540. 9-9c  
BLACK CHOW puppy around 222 W. Miss. Reward offered. 983-2601. tfc

**BUSINESS OPPORTUNITIES**  
HAVE A highly profitable and beautiful Jean Shop of your own. Featuring the latest in Jeans, Denims and Sportswear. \$15,500.00 includes beginning inventory, fixtures and training. You may have your store open in as little as 15 days. Call any time for Mr. Loughlin (612) 835-1304. 9-9c  
FOR SALE: Young female boxer, AKC Registered. 983-2770. 9-13c  
FOR SALE: Pure bred registered Airdale male. Two years old, good watch dog, hunting dog or for breeding. \$50.00. 983-2922. 9-13p

**SLEEP WHILE YOU WANT ADS WORK**  
The family of Charlie Cross gratefully acknowledge the cards, visits and food sent to us during our loss. Friends and neighbors are so wonderful. We also appreciate the kind consideration shown us by the Moore-Rose Funeral Home. Gladys and family 9-9p

**SAVE MONEY on your FALL HARVEST**  
Two combines available now! 15 years experience! Reasonable rates!  
JOHN DEERE CORN SOYBEANS  
TURBO 7700's MILO SUNFLOWERS  
**R & R HARVESTING**  
Call 983-2825 Room 12  
Your satisfaction is our business!

**DAN'S AUTO SERVICE**  
DAN TEUTON, Owner  
Specializing in Automatic Transmission, Motor Tune-Ups, Auto Air Conditioning.  
General Repair We Have A BRAKE LATHE to handle all passenger car brake drums. See us for complete brake service.  
Phone 652-2462

## Fiddlers To Compete In Panhandle South Plains Fair September 22

Fiddlers competing in four age groups will be vying for \$2,000 in prize money at the 12th annual old time fiddlers' contest scheduled on opening day of the Panhandle South Plains Fair, Sept. 22. The contest is approved by the Texas Old Time Fiddlers' Association and standard contest rules of the association will apply, according to Steve L. Lewis, general manager.

Homer E. Hunt will serve as contest chairman.

Fiddlers will compete in the 65 and over, under 20, 21 to 49 and 50 to 64 age brackets. Winners in each division will receive \$110 and a trophy. Second place is worth \$90, third \$70, fourth \$50 and fifth place, \$40.

In addition, the grand champion fiddler will receive \$140 and a plaque. Cash awards also are earmarked for first, second and third runners-up, the best guitar accompanist and first runner-up and the oldest fiddler.

Membership in the Texas Old Time Fiddlers Association is required of all contest who live outside Lubbock County. County residents are not required to be members. Competition is scheduled to begin at 1 p.m. on opening

day of the eight-day fair. The contest will be held in Fair Park Coliseum and admission is free.

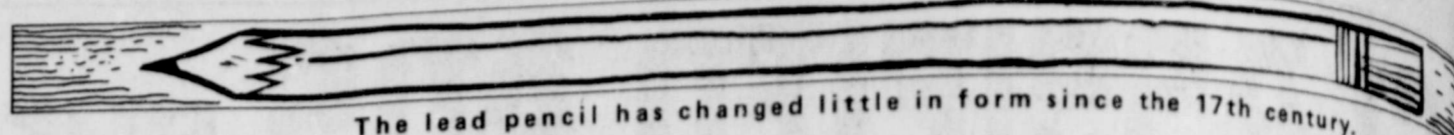
Several other free attractions are scheduled on the outdoor stage throughout the engagement.

In addition, an all-star lineup has been booked for the coliseum stage, including:

The Charley Pride show at 5 p.m. and 8 p.m. on Sept. 23; the Statler Brothers show, with Barbara Mandrell, 5 p.m. and 8 p.m. Sept. 24; the Eddie Rabbit show, with Janie Fricke, 8 p.m. only Sept. 25; the Dave and Sugar show, with John Con-

lee, 8 p.m. only Sept. 26; "The Golden Years of Country Music," to be presented by South Plains College, 7 p.m. only Sept. 27; the Tom T. Hall show, with Charly McClain, 8 p.m. only Sept. 28; and the Tammy Wynette show, with Rex Allen Jr. and George "Goober" Lindsey, 5 p.m. and 8 p.m. Sept. 29.

All seats are reserved and tickets are \$4, \$5 and \$6 except for the SPC show, which are \$2 and \$3. Tickets may be purchased at the fair offices, Dunlap's, Sears and Hemphill-Well's stores in South Plains Mall, Luskey's Western Wear and Ed's Wagon Wheel.



### THELMA THWARTUM -- By Alex



Copyright © 1979 by the National Retired Teachers Association and the American Association of Retired Teachers.

20¢ Per Copy

Volume 78



AUXILIARY OFFICERS, installed Thursday after Auxiliary's organization (from left) Wynona Allister; Donna Winters, president-elect; and Amelia...

### Caprock Hospital Census

- Patient Census 9-31
- Vera M. Coward Adm. 8-23, Dis. 9-1.
  - Lorene T. Reves Adm. 8-26, Dis. 9-5.
  - Sally Ann Rogers Adm. 8-27, Dis. 9-1.
  - Ruby Lena Holcomb Adm. 8-28, Dis. 9-4.
  - Bob Turner Adm. 8-29, Dis. 9-1.
  - Maggie B. King Adm. 8-29, Dis. 9-2.
  - Olga V. Pena Adm. 8-30, Dis. 9-1.
  - Thomas L. Fawver Adm. 9-1, Dis. 9-5.
  - Fred E. Robertson Adm. 9-2.
  - Charley T. Warren Adm. 9-2.
  - Sue E. Kirksey Adm. 9-2.
  - Judy Kay Golden Adm. 9-2, Dis. 9-4.
  - Vada L. Meredith Adm. 9-2, Dis. 9-5.
  - Vastie Y. Sanchez Adm. 9-2, Dis. 9-6.
  - Eula Mae Meredith Adm. 9-3.
  - Larry Don Ogden Adm. 9-3, Dis. 9-5.
  - Oliver W. Denning Adm. 9-4.
  - Thomas S. Brown Adm. 9-5.

### Deaths

#### Mrs. Carrie Cason Dies In Fort Worth

Mrs. Carrie L. Cason, 64, died at her home August 25. She was reared at Lockney and had been a resident of Fort Worth for 43 years.

She is survived by one son, Jimmy Cason of Fort Worth; two daughters, Mrs. Edna Laurence and Mrs. Tony Frost of Arlington; one sister, Mrs. O.A. (Anna) Casity of Borger; four brothers, O.T. Prickett of Grand Prairie, Buck Prickett of Odessa, Gene Prickett of Lubbock, and Charlie Prickett of Panhandle; seven grandchildren and two great-grandchildren.

Services were at 10 a.m. Monday at Owens-Brumley Chapel in Fort Worth. Graveside services were held at Wesley Chapel Cemetery at Grandbury.

REMEMBER your loved ones with a living memorial to the Caprock Hospital Auxiliary Memorial Fund. Mrs. Ben Whitaker, treasurer.

Remember your loved ones and friends with a memorial to Lockney General Hospital Memorial Fund. These memorials go toward equipment to help serve our community in the best way possible.

<p>Piggly Wiggly</p> <p><b>Low Fat Milk</b></p> <p>1-gal. bit. <b>\$1.58</b></p>	<p>Kraft Cheese</p> <p><b>Velveeta</b></p> <p><b>\$2.48</b></p> <p>2 Lb. Box</p>	<p>Whole Sun Frozen</p> <p><b>Orange Juice</b></p> <p>3/\$1.00</p> <p>6 oz. Can</p>
--	--	---

**SEPTEMBER SAVINGS**

TRIPLE THE DIFFERENCE

Each of these advertised items is required to be readily available for sale at or below the advertised price in each store, except as specifically noted in this ad. We reserve the right to limit quantities. None sold to dealers.

<p>10 Pork Chops: 6 Center Cuts 4 End Cuts</p> <p>Combination</p> <p><b>Pork Chops</b></p> <p><b>\$1.25</b></p> <p>lb.</p>	<p>U.S.D.A. Grade A</p> <p><b>Fryer Breasts Or Legs</b></p> <p><b>57¢</b></p> <p>Lb.</p> <p><b>Rib or Loin Center Cut Pork Chops</b></p> <p><b>1.88</b></p> <p>lb.</p>	<p>Mrs. Paul's Supreme</p> <p>Light Batter 7 1/4 Ounces</p> <p><b>Fish Fillets</b></p> <p><b>99¢</b></p>
--	--	--

<p>Wolf Plain 19 Ounce</p> <p><b>Chili</b></p> <p><b>98¢</b></p>	<p>Kraft 32 Ounce</p> <p><b>Mayonnaise</b></p> <p><b>\$1.26</b></p>	<p>Assorted Can Drinks</p> <p><b>Shasta</b></p> <p>6 Cans For <b>\$1.00</b></p>
--	---	---

<p>White Seedless</p> <p><b>Grapes</b></p> <p><b>68¢</b></p> <p>lb.</p>	<p>Red Ripe</p> <p><b>Tomatoes</b></p> <p><b>38¢</b></p> <p>lb.</p>	<p>Fresh Green</p> <p><b>Cabbage</b></p> <p><b>10¢</b></p> <p>Lb.</p>
---	---	---

### Longhorns 'Wo'

Longhorns throughout the Lubbock area are experiencing unusually early season infestations of cotton bollworms. These late season breakers are the worst in 20 years, according to a band 30 miles wide from Swisher to Briscoe, Texas, and Crosby counties.

The Texas A&M extension service should also be checking their fields in Mot-

### Longhorns Host

Lockney Longhorns will be the number two of the young season Friday night when they host the Friona Chieftains. The Longhorns are looking for their first victory — they lost their season opener last Friday while outscoring Post 20-6.

Game starts at 8 p.m. at Hammerman Field, and Head Coach Warren is asking for a big effort dressed in red, to cheer us to victory.

### BEACON LIGHTS

OUR PICTURE or story didn't get here somewhere. The Beacon Saturday morning was none yours truly; so we were about late getting to press, and not telling what those stories say we had the nerve to look yet).

### Op Returns

Millionth

### Dividend Dollar

Carthel was the recipient of the millionth dividend dollar received by the Lockney Electric Co., Inc. It was announced at the Saturday night at the cooperative stockholders' meeting, received in plaque commemorative.

Daniels was re-elected to a second year on the board of directors. The annual audit was conducted by Edwin E. Merriman of Lubbock, and the manager's report was given by Gail Krings.

The winners were as follows: Joe Neill Rexrode, chairman; J.A. Bobbitt, trips to the Belt, trash compactor; Taylor, microwave oven; A.L. Rexrode, clock; Jim Pinner, bath; Mamie Woods, lug nut; grass trimmer.

entertained the crowd of