

Lost, Stol- 54 min. Col- Educational... The Gruesome Gray Monster. 9 min. Color. 1976. Cor- onet Pre-El

The Happy Prince. 27 min. Color. 1974. Pyramid Films. El-A... An animated adaptation of Oscar Wilde's story of self- lessness and friendship.

Identity. 6 films. 4 min. each. Color. 1975. Encyclo- pedia Britannica. Pre-El... Contents: 1. I'm the only me! 2. Where are you in your family. 3. How do we look? 4. What do you think you want to be? 5. Every family is special. 6. The most important person. (Most Important Person Series)

Indian Art Of The Pueblos. 13 min. Color. 1976. Encyclo- pedia Britannica. El-A... Stresses the continuity of life-style and art of the pueblos of Southwest Indians. Painting, kachinas, basketry, hand weaving, and ritual dancing of Pueblo Indian tribes are displayed.

The Legend Of Mark Twain. 32 min. Color. 1969... A quiet view of the strong ties to these people.

ATTEND THE SIXTH ANNUAL Running Water Draw Arts and Crafts Festival October 17-19, 1980 Hale County Agricultural Station Plainview, Texas

WORKS OF 125 CRAFTSMEN... "Buy Something Original This Year"



things said about the pump are true. Find more about the heat pump. It can save for you.



Base Dockbinding P.O. Box 2550 Amarillo, Tex. 79105

# Jaws Of Life Drive Begins

Death of a Hale Center patient pulled into a corn header and to remain entrapped for 45 minutes because rescuers were unable to cut through the corn.

According to reports from Hale Center, Joe Schwartz, 29, was apparently trying to kick out something that was lodged in the header of the combine.

When the item dislodged, the header immediately started running and jerked Schwartz into the combine and pulled him as far as it could pull. A Jaws of Life unit was summoned from Plainview to extricate him, but it did not reach the field until 30 to 45 minutes later. Schwartz was dead on arrival at Lubbock General Hospital in Lubbock.

Because of the severity of Schwartz's injuries, rescuers are not certain that getting him to the hospital sooner would have saved his life, but they did express the hope to have had the extra 45 minutes. Immediate access to the

Life unit was summoned from Plainview to extricate him, but it did not reach the field until 30 to 45 minutes later. Schwartz was dead on arrival at Lubbock General Hospital in Lubbock.

Because of the severity of Schwartz's injuries, rescuers are not certain that getting him to the hospital sooner would have saved his life, but they did express the hope to have had the extra 45 minutes. Immediate access to the

Life unit was summoned from Plainview to extricate him, but it did not reach the field until 30 to 45 minutes later. Schwartz was dead on arrival at Lubbock General Hospital in Lubbock.

Because of the severity of Schwartz's injuries, rescuers are not certain that getting him to the hospital sooner would have saved his life, but they did express the hope to have had the extra 45 minutes. Immediate access to the

Life unit was summoned from Plainview to extricate him, but it did not reach the field until 30 to 45 minutes later. Schwartz was dead on arrival at Lubbock General Hospital in Lubbock.

Because of the severity of Schwartz's injuries, rescuers are not certain that getting him to the hospital sooner would have saved his life, but they did express the hope to have had the extra 45 minutes. Immediate access to the

Life unit was summoned from Plainview to extricate him, but it did not reach the field until 30 to 45 minutes later. Schwartz was dead on arrival at Lubbock General Hospital in Lubbock.

Because of the severity of Schwartz's injuries, rescuers are not certain that getting him to the hospital sooner would have saved his life, but they did express the hope to have had the extra 45 minutes. Immediate access to the

Life unit was summoned from Plainview to extricate him, but it did not reach the field until 30 to 45 minutes later. Schwartz was dead on arrival at Lubbock General Hospital in Lubbock.

Because of the severity of Schwartz's injuries, rescuers are not certain that getting him to the hospital sooner would have saved his life, but they did express the hope to have had the extra 45 minutes. Immediate access to the

Life unit was summoned from Plainview to extricate him, but it did not reach the field until 30 to 45 minutes later. Schwartz was dead on arrival at Lubbock General Hospital in Lubbock.

Because of the severity of Schwartz's injuries, rescuers are not certain that getting him to the hospital sooner would have saved his life, but they did express the hope to have had the extra 45 minutes. Immediate access to the

Life unit was summoned from Plainview to extricate him, but it did not reach the field until 30 to 45 minutes later. Schwartz was dead on arrival at Lubbock General Hospital in Lubbock.

Because of the severity of Schwartz's injuries, rescuers are not certain that getting him to the hospital sooner would have saved his life, but they did express the hope to have had the extra 45 minutes. Immediate access to the

Life unit was summoned from Plainview to extricate him, but it did not reach the field until 30 to 45 minutes later. Schwartz was dead on arrival at Lubbock General Hospital in Lubbock.

Because of the severity of Schwartz's injuries, rescuers are not certain that getting him to the hospital sooner would have saved his life, but they did express the hope to have had the extra 45 minutes. Immediate access to the

Life unit was summoned from Plainview to extricate him, but it did not reach the field until 30 to 45 minutes later. Schwartz was dead on arrival at Lubbock General Hospital in Lubbock.

Because of the severity of Schwartz's injuries, rescuers are not certain that getting him to the hospital sooner would have saved his life, but they did express the hope to have had the extra 45 minutes. Immediate access to the

Life unit was summoned from Plainview to extricate him, but it did not reach the field until 30 to 45 minutes later. Schwartz was dead on arrival at Lubbock General Hospital in Lubbock.

Because of the severity of Schwartz's injuries, rescuers are not certain that getting him to the hospital sooner would have saved his life, but they did express the hope to have had the extra 45 minutes. Immediate access to the

Life unit was summoned from Plainview to extricate him, but it did not reach the field until 30 to 45 minutes later. Schwartz was dead on arrival at Lubbock General Hospital in Lubbock.

Because of the severity of Schwartz's injuries, rescuers are not certain that getting him to the hospital sooner would have saved his life, but they did express the hope to have had the extra 45 minutes. Immediate access to the

Life unit was summoned from Plainview to extricate him, but it did not reach the field until 30 to 45 minutes later. Schwartz was dead on arrival at Lubbock General Hospital in Lubbock.

Because of the severity of Schwartz's injuries, rescuers are not certain that getting him to the hospital sooner would have saved his life, but they did express the hope to have had the extra 45 minutes. Immediate access to the

Life unit was summoned from Plainview to extricate him, but it did not reach the field until 30 to 45 minutes later. Schwartz was dead on arrival at Lubbock General Hospital in Lubbock.

Because of the severity of Schwartz's injuries, rescuers are not certain that getting him to the hospital sooner would have saved his life, but they did express the hope to have had the extra 45 minutes. Immediate access to the

Life unit was summoned from Plainview to extricate him, but it did not reach the field until 30 to 45 minutes later. Schwartz was dead on arrival at Lubbock General Hospital in Lubbock.

Because of the severity of Schwartz's injuries, rescuers are not certain that getting him to the hospital sooner would have saved his life, but they did express the hope to have had the extra 45 minutes. Immediate access to the

Life unit was summoned from Plainview to extricate him, but it did not reach the field until 30 to 45 minutes later. Schwartz was dead on arrival at Lubbock General Hospital in Lubbock.

Life unit was summoned from Plainview to extricate him, but it did not reach the field until 30 to 45 minutes later. Schwartz was dead on arrival at Lubbock General Hospital in Lubbock.

Because of the severity of Schwartz's injuries, rescuers are not certain that getting him to the hospital sooner would have saved his life, but they did express the hope to have had the extra 45 minutes. Immediate access to the

Life unit was summoned from Plainview to extricate him, but it did not reach the field until 30 to 45 minutes later. Schwartz was dead on arrival at Lubbock General Hospital in Lubbock.

Because of the severity of Schwartz's injuries, rescuers are not certain that getting him to the hospital sooner would have saved his life, but they did express the hope to have had the extra 45 minutes. Immediate access to the

Life unit was summoned from Plainview to extricate him, but it did not reach the field until 30 to 45 minutes later. Schwartz was dead on arrival at Lubbock General Hospital in Lubbock.

Because of the severity of Schwartz's injuries, rescuers are not certain that getting him to the hospital sooner would have saved his life, but they did express the hope to have had the extra 45 minutes. Immediate access to the

Life unit was summoned from Plainview to extricate him, but it did not reach the field until 30 to 45 minutes later. Schwartz was dead on arrival at Lubbock General Hospital in Lubbock.

Because of the severity of Schwartz's injuries, rescuers are not certain that getting him to the hospital sooner would have saved his life, but they did express the hope to have had the extra 45 minutes. Immediate access to the

Life unit was summoned from Plainview to extricate him, but it did not reach the field until 30 to 45 minutes later. Schwartz was dead on arrival at Lubbock General Hospital in Lubbock.

Because of the severity of Schwartz's injuries, rescuers are not certain that getting him to the hospital sooner would have saved his life, but they did express the hope to have had the extra 45 minutes. Immediate access to the

Life unit was summoned from Plainview to extricate him, but it did not reach the field until 30 to 45 minutes later. Schwartz was dead on arrival at Lubbock General Hospital in Lubbock.

Because of the severity of Schwartz's injuries, rescuers are not certain that getting him to the hospital sooner would have saved his life, but they did express the hope to have had the extra 45 minutes. Immediate access to the

Life unit was summoned from Plainview to extricate him, but it did not reach the field until 30 to 45 minutes later. Schwartz was dead on arrival at Lubbock General Hospital in Lubbock.

Because of the severity of Schwartz's injuries, rescuers are not certain that getting him to the hospital sooner would have saved his life, but they did express the hope to have had the extra 45 minutes. Immediate access to the

Life unit was summoned from Plainview to extricate him, but it did not reach the field until 30 to 45 minutes later. Schwartz was dead on arrival at Lubbock General Hospital in Lubbock.

Because of the severity of Schwartz's injuries, rescuers are not certain that getting him to the hospital sooner would have saved his life, but they did express the hope to have had the extra 45 minutes. Immediate access to the

Life unit was summoned from Plainview to extricate him, but it did not reach the field until 30 to 45 minutes later. Schwartz was dead on arrival at Lubbock General Hospital in Lubbock.

Because of the severity of Schwartz's injuries, rescuers are not certain that getting him to the hospital sooner would have saved his life, but they did express the hope to have had the extra 45 minutes. Immediate access to the

Life unit was summoned from Plainview to extricate him, but it did not reach the field until 30 to 45 minutes later. Schwartz was dead on arrival at Lubbock General Hospital in Lubbock.

Because of the severity of Schwartz's injuries, rescuers are not certain that getting him to the hospital sooner would have saved his life, but they did express the hope to have had the extra 45 minutes. Immediate access to the

Life unit was summoned from Plainview to extricate him, but it did not reach the field until 30 to 45 minutes later. Schwartz was dead on arrival at Lubbock General Hospital in Lubbock.

Because of the severity of Schwartz's injuries, rescuers are not certain that getting him to the hospital sooner would have saved his life, but they did express the hope to have had the extra 45 minutes. Immediate access to the

Life unit was summoned from Plainview to extricate him, but it did not reach the field until 30 to 45 minutes later. Schwartz was dead on arrival at Lubbock General Hospital in Lubbock.

Because of the severity of Schwartz's injuries, rescuers are not certain that getting him to the hospital sooner would have saved his life, but they did express the hope to have had the extra 45 minutes. Immediate access to the

Life unit was summoned from Plainview to extricate him, but it did not reach the field until 30 to 45 minutes later. Schwartz was dead on arrival at Lubbock General Hospital in Lubbock.

Because of the severity of Schwartz's injuries, rescuers are not certain that getting him to the hospital sooner would have saved his life, but they did express the hope to have had the extra 45 minutes. Immediate access to the

Life unit was summoned from Plainview to extricate him, but it did not reach the field until 30 to 45 minutes later. Schwartz was dead on arrival at Lubbock General Hospital in Lubbock.

Because of the severity of Schwartz's injuries, rescuers are not certain that getting him to the hospital sooner would have saved his life, but they did express the hope to have had the extra 45 minutes. Immediate access to the

Life unit was summoned from Plainview to extricate him, but it did not reach the field until 30 to 45 minutes later. Schwartz was dead on arrival at Lubbock General Hospital in Lubbock.

Jaws of Life unit might have made that possible. Hale Center has started a collection to purchase a unit.

"It is too bad that this accident happened in Hale Center but it has made us more aware of the possibility of it. The same situation could arise in Lockney," said fire chief Jerry Johnson.

"I talked to the Hale Center fire chief, Lee Dent, and he said that there was nothing they could do but walk around the combine for 45 minutes waiting on the unit to arrive. It's a

frustrating experience to have this happen. We had to wait on a unit from Plainview once at a car wreck. Having the unit on hand could save lives."

Citizens are urged to get their contributions in as soon as possible because the cost of the unit will increase 15% on the first of November.

Contributions can be made at the First National Bank in the Jaws of Life Fund or the local firemen will take donations.

25¢

# The Lockney Beacon

Volume 79

Number 68

Lockney, Floyd County, Texas 79241

Thursday

October 23, 1980

20 Pages in Two Sections

THE LOCKNEY BEACON (ISSN 317-220) is published weekly, except the last issue which is published bi-weekly. It is published by the Lockney Beacon Publishing Co., 220 South Main Street, Lockney, Texas 79241. Second-class postage paid at Lockney, Texas 79241. Subscription rates: \$11.50 per year in advance. Single copies \$1.00. POSTMASTER: Send address changes to THE LOCKNEY BEACON, P.O. Box 187, Lockney, TX 79241.

## Winds, Winds Single Friday

Next time of year again the annual battle for the championship of Floyd County winds. This year the Longhorns will be competing for the county seat of the Whirlwinds. The Whirlwinds are coming off a loss to state ranked last week and are trying to get back to winning ways after being defeated by Tulia. Tulia has an identical record as Lockney, but both teams will be better than record to win the county

game will be at Westfield in Floydada and time is at 8:00 p.m. station KATX in Plainview will broadcast the game. Winds are lead by Mike Self and Todd Beedy.

Offense: Ronnie Minter, Carl End, Carlos Rainwater, Norman Allen, Robert Nixon, Bryan Emerit, Ricky Heflin, Jimmy Seymour, Kelly Sue or Tim Radloff, Mike Self, Jeff Rainey, Todd Beedy, Moody Younger.

Defense: Kevin Noland, Tim Radloff, Robert Nixon, Mark Nutt, Moody Younger, Norman Allen, Carl End, Carlos Rainwater, Ronnie Minter, Todd Beedy.



LUBBOCK FIREMAN JOE CRABTREE shows a Jaws of Life unit. A demonstration was held at the Lockney Fire Station Friday night.

## White to be At Floydada

National Democratic Chairman John White will make a stop over visit to Floydada Thursday, October 23. White is expected to arrive at the airport at 3 p.m. A meeting is scheduled for 3:15 p.m. at Lighthouse Electric with the public invited. White is Commissioner of Agriculture for the state of Texas for a number of years. He was appointed by President Carter as assistant Secretary of Agriculture. He is now campaigning for the Carter-Mondale ticket. The meeting will only last 35 to 40 minutes. It will consist of a question and answer session. Coffee and refreshments will be served.

## Mackenzie Lake meeting kicks-off bond election

SILVERTON — A supper meeting was hosted at Lake Mackenzie Tuesday by the directors of Mackenzie Municipal Water Authority for city councils and news media in Lockney, Floydada, Silvertown and Tulia, during which Joe Smith, bonding attorney, First Southwest Company, Abilene, presented a financial report and the latest information on the Mackenzie bond election to be held in the four cities Nov. 22. Lon Davis of Floydada presided over the meeting.

"The purpose of the Mackenzie Municipal Water Authority," Smith said, "is, and always has been, to construct a reservoir on Tule Creek in order to provide a surface water supply for the cities of Floydada, Lockney, Silvertown and Tulia. The authority must also construct treatment and transmission facilities to deliver water to these cities."

THE AUTHORITY has constructed the reservoir on Tule Creek. Cost of the reservoir construction and land was approximately \$3.3 million, financed by the issuance of general obligation bonds which were sold to the Texas Water Development Board in 1970 and 1972. Elements required to complete the project so that water can be delivered to the member cities include a raw water pump station at Mackenzie Reservoir; a raw water supply line to the treatment plant near the reservoir; a 4.6 million gallons per day treatment plant with overload capacity up to six MGD during peak demand periods and a treated water pump station; a 24 inch by approximately 25,000 foot water supply

main to transmit treated water to a junction point near State Highway 86; and a 2 million gallon water storage reservoir at this junction. From this junction, three transmission systems are required: Tulia, Silvertown, and Lockney-Floydada transmission systems, together with the pump units and ground storage.

THE ESTIMATED cost of the supply portion of the system which includes the raw water delivery system, the treatment plant, and treated water pump station, the water supply line to the junction point and the treated water storage reservoir at the junction, is \$4.4 million.

Estimated cost of each of the three transmission systems is: Silvertown system — \$1,065,000 (transmission pump station at junction and approximately 44,000 feet of 12 inch supply line); Tulia system — \$3,830,000 (transmission pump station at junction; approximately 100,000 feet of 20-inch supply line; ground storage and pump station at Tulia); Lockney — Floydada system — \$6,431,000 (transmission pump station at junction; approximately 126,000 feet of 18-inch supply line to a ground storage and pump station near Lockney; approximately 5,000 feet of 12-inch supply line from ground storage to Lockney; approximately 61,000 feet of 14-inch water supply line from ground storage to Floydada).

THE AUTHORITY has made application to the Farmers Home Administration, for long-term loans to finance a major portion of the cost. In addition, the authority has applied for a \$1 million grant from FmHA to help fund the supply facilities. At this point, the authority has received no commitment from FmHA that the loans or grant will be approved other than an acknowledgement that the project is eligible for consideration. IF THE voters in all of the four cities do not approve the Mackenzie bond issue, it will be necessary for Silvertown to purchase land outside the city for water rights and add underground pipe. This would be costly since it would have to be done by Silvertown alone. Silvertown faced a serious water shortage situation this summer even with water rationing. Each city, if the bonds are approved, would be entitled to receive an adequate supply of water from the Mackenzie Reservoir, and might be able to make arrangements to sell some of its allotted water to help finance its part of the cost. CONTINUATION OF reliance on ground water supplies, primarily the Ogallala formation and possibly the Santa Rosa formation is not practical. Studies indicate that the Ogallala formation is being depleted with little or no recharge. Water from the Santa Rosa formation has been used by Tulia, but water from this formation is often of unsuitable quality and quantity. Already Silvertown has had experience with locating a supply of water in the Santa Rosa formation. The State Department of Health would not allow this water to be used because of a high iron content. Monthly water rate structures have been projected as follows. These rates are not recommendations, but are intended for guidance.

Tulia — First 3M gallons, \$9 (minimum); next 7M gallons, \$1.50; next 10M gallons, \$1.25; all over 20M gallons \$1.

Silvertown — First 2M gallons, \$13 (minimum); next 3M gallons, \$1.50; next 10M gallons, \$1.25; all over 15M gallons, \$1.

Lockney — First 2M gallons, \$11 (minimum); next 8M gallons, \$1.50; next 10M gallons, \$1.25; all over 20M gallons, \$1.

Floydada — First 2M gallons, \$10.50 (minimum); next 8M gallons, \$1.50; next 10M gallons, \$1.25; all over 20M gallons, \$1.

THESE ESTIMATED water rates vary since the cost of water delivery differs depending on the distance from the transmission station; amount of water delivered and cost of the separate transmission systems. There will be only one proposition on the ballot: to authorize the authority to issue \$2,150,000 general obligation bonds. The election must carry in each city for the bonds to be authorized. If the election is successful, the board will continue to pursue construction of the entire project as outlined. Any resident of Tulia, Silvertown, Lockney or Floydada who has been a registered voter for at least 30 days prior to the election is qualified to vote.

ABSENTEE voting will be conducted Nov. 3-18. Residents of each city may vote absentee by personal appearance before the city secretary in their respective cities. Requests by mail for absentee ballots must be addressed to Mrs. Barbara Cabe, City Hall, 201 N. Maxwell St., Tulia, Texas 79088.

## Love Fund started for Thomason

Concerned citizens have opened an account at Lockney First National Bank for Charles Thomason, who has often been a patient at M.D. Anderson Hospital and Lockney General Hospital. He has not been able to work in more than a year. Any contributions will be appreciated.

## Halloween Carnival At Fair Building

There will be a Halloween Carnival October 28 from 6-10 p.m. at the Fair Building. It is sponsored by the FHA/HERO chapter. Other clubs in town and in school will be participating. There will be booths for all ages. A costume contest will be held for all children under 12. Any organizations interested in having a booth may contact Cindy Ford or Treena Aston at 652-3325. There will be an admission charge of 25 cents for under 12 and 50 cents over 12.

## Watch kids Halloween

On Friday, October 31, children all over will be celebrating one of their favorite holidays, Halloween. This being so, scores of miniature "monsters" will scamper through the neighborhoods of Texas. For many of them, "trick or treat" may well turn into tragedy.

Major C.W. Bell, Regional Commander for the Texas Department of Public Safety, Lubbock, suggests that a few precautions on the part of the motorists and parents could prevent such disasters this Halloween.

If your children go trick or treating, one of the parents should go with them to insure their safety. If you buy or make your child a costume, it should be of white or light colored material so it can be easily seen at night by motorists. You should also have your child carry a flashlight to serve as a warning to motorists and as an added safety measure on poorly lighted streets and children should be instructed to use sidewalks whenever possible and the motorists, on their part, should be especially careful when driving the neighborhood streets as many of the youngsters will be crossing the streets haphazardly as they go from house to

## Major Bell also stated that because Halloween falls on a Friday there will be added traffic as most area high schools will be having a football game. If the parents and motorists will join together and think of the children's safety, we can turn this potentially dangerous evening into a safe and enjoyable one.

Major C.W. Bell, Regional Commander for the Texas Department of Public Safety, Lubbock, suggests that a few precautions on the part of the motorists and parents could prevent such disasters this Halloween.

## Town Crier

### Contest Winners

This week's contest winners are Betty Stephens, 1st; Homer Ragland, 2nd; and Boyd Lee, 3rd.

A Gospel Singing will be held at the Assembly of God Church in Lockney on Friday, October 24, at 7:30. The featured singers will be the Singing Harris Family. Everyone is invited to attend the evening of worship in music.



JEFF REECER, MACK SHERMAN, AND MELISSA JOHNSON hold a poster advertising the Halloween Carnival October 28, sponsored by FHA.

## Time for The World' Easiest Quiz

By Thomas Ward  
AUSTIN — Sharpen your pencils. Taken all the time you need. Relax. And good luck.  
It's time to take the world's easiest quiz.

Number 1: How long did the Hundred Years War last?

Answer: 116 years.

Number 2: In which country are Panama hats made?

Answer: Ecuador

Number 3: Where do we get catgut?

Answer: sheep and horses, or course

Number 4: Louis XVIII was the last one, but how many previous kings of France were called Louis?

Answer: 16

Number 5: What are moleskin trousers made of?

Answer: cotton

Number 6: What kind of creatures were the Canary Isles named after?

Answer: a large breed of dogs or canines

Number 7: What was King George VI's first name?

Answer: Albert

Number 8: What color is a purple Finch?

Answer: crimson

Number 9: What is a camel's hair brush made of?

Answer: Well, first of all, camels don't use hair brushes. Secondly, squirrel hair is used in a camel's hair brush.

Number 10: How long did the Thirty Years War last?

Answer: What else: 30 years

Number 11: How can you tell when it's going to be a lousy day?

Answer: (Full credit given to any of the following...)

You wake up face down on the pavement.

You call Suicide Prevention and they put you on hold.

You see a "60 Minutes" news team waiting in your office.

Your birthday cake collapses from the weight of the candles.

Your son tells you he wished Anita Bryant would mind her own business.

You turn on the news and they're showing emergency routes out of the city.

Your twin sister forgot your birthday.

Your car horn goes off accidentally and remains stuck as you follow a group of Hell's Angels on the freeway.

Your boss tells you not to bother to take your coat off.

The bird singing outside your window is a buzzard.

You wake up and your braces are locked together.

You walk to work and find your dress stuck in the back of your pantyhose.

You call your answering service and they tell you it's none of your business.

Your blind date turns out to be your ex-wife.

Your income tax check bounces.

You put both contact lenses in the same eye.

Your pet rock snaps at you.

Your wife says, "Good morning, Bill" and your name is George.

Number 12: Complete this and the cliches in the remaining questions as a first-grade student would:

"Don't count your chickens before..."

Answer: (From Alexander Elementary students in Duncanville, Texas...)

"Don't count your chickens before you cook them..."

Number 13: "Don't put all your eggs in..."

Answer: "Don't put all your eggs in the microwave..."

Number 14: "People who live in glass houses..."

Answer: "People who live in glass houses better not take their clothes off..."

Number 15: "If at first you don't succeed..."

Answer: "If at first you don't succeed, go play..."

Number 16: "All work and no play..."

Answer: "All work and no play is disgusting..."

Number 17: "Eat, drink..."

Answer: "Eat, drink and go to the bathroom..."

Number 18: "He who laughs last..."

Answer: "He who laughs last did not understand the joke..."

## Schepke to speak at Friends of the Library meeting, October 28

Jim Schepke will present the program for the Friends of the Library at their regular meeting October 28 at 5:00 in the Library.

Jim is the new Coordinator for the West Texas Library System and he comes to the job from a varied background in librarianship and book-selling. Until recently he had been the Administrative Assistant for the Lubbock City-County Library.

Included in his program will be information about current legislation concerning Texas libraries. Texas ranks 46th from the top in state support among the 50 states.

The WTLS serves 29 area counties and is one of ten systems of public libraries in Texas. Cooperative efforts

often make possible programs and services not feasible through individual effort. Systems of public libraries allow their members to share resources - materials, services, and the expertise of members.

Working together, member libraries hope to improve library services in their communities and their regions.

Some of the services include: Inter-library loan, 16 mm film program, collection development program, young adult book circuit, continuing education program, consulting services, public relations program, and filmstrip program.

Members and guests are invited to come by and meet Jim and ask any questions they may have about WTLS.

## Texas 4-H Center to host Harvest Happening-'80, November 4-7

Harvest Happening - '80, a camp for mature men and women, will take place at the Texas 4-H Center in Brownwood from Tuesday, November 4th through Friday, November 7th. Participants are advised to cast their vote for their favorite candidate on Tuesday morning and then to come to camp and watch the results come in at our Election '80 Campaign Countdown.

Freedom of Choice is the motto for the remainder of the camp as campers will be able to participate in four skill areas: Lapidary, Needlecraft, Ceramics and Basketweaving. Eight special features will be presented and recreation will be held every evening. Singing, good eating and fellowship will abound as campers choose their own activities.

For those inclined to dominoes, cards or shuffleboard, space has been set aside for these activities at all times.

The 1.7 million dollar facilities of the Texas 4-H Center provide a resort-type atmosphere for Harvest Happening -

'80 participants. Ten lodges will house five men or five women to a sleeping area. Each has adjoining bathroom facilities.

To insure your comfort and convenience, only 100 registrations will be accepted.

For more information about Harvest Happening - '80, contact the Floyd County Extension office, 983-2806.



Buttons have been found in the tombs of Egypt and Greece, dating back 2,500 to 4,000 years. It wasn't until the 15th or 16th century, however, that the button-hole was invented.

J.P. Doodles

WHAT HAPPENED?..



I JUST TOLD HIM HIS SOUND AS A DOLLAR

## Methodists to hold Old Fashioned Church Bazaar

Do your Christmas shopping now! If you're looking for a unique, special gift for that unique special person, the place to be is the First Methodist Church on Saturday, November 1.

Numerous and varying handmade items will be donated by members and will be sold at the Bazaar. Besides being lots and lots of crafts for sale, there will also be lots of baked goods and canned goods. It will begin at 9:00 a.m. and continue until 12:00.

At 11:30 - 1:00 a Thanksgiving style meal will be served, buffet style. Tickets for the dinner are on sale in the church office. Tickets can be bought at the door the day of the Bazaar, but it helps us to know approximately how many to prepare for if you buy ahead of time. Why don't you treat some friends to a delicious dinner, and buy some extra tickets? Price of tickets are \$3.50 for adults and \$2.00 for children age 12 and under. "Take Out" meals will be available also.

At 12:30 there will be an auction of all items that haven't sold previously and the "extra big and special" items. Door prizes will be given away after the auction.

Get your Christmas shopping done early and at the same time benefit the Methodist Church as it uses half of the money earned on various projects with in the church and the other half going out to the field of missions. Hope to see you there!!!



75% of the nation's wheat is grown on farms of electric cooperatives. But rural electrification provides a myriad other services.

Rural electricity provides irrigation water for more nutritious foods. You'll find rural electric providing power for processing plants, poultry freezer plants, cotton gins, packing houses, grain elevators and feed lots, to name a few. Electric cooperative in helping to produce our food provides enormous benefits to its members in America.

Lighthouse Electric Cooperative

## New Light Total open

Lighthouse Electric Cooperative, Inc. announced today that a new headquarters warehouse and service building will be built by the utility at the location of State Highway 207 and east of Floydada. The announcement was made by Alton Higley, General Manager of the cooperative.

The new, modern facility will enable the cooperative to combine its operations from the Floydada office at one location. In the past, office and warehouse facilities were in separate locations.

for the entire area will be the latest and most efficient building concepts, with full insulation, and an earthen berm to surround the building. Heat pumps and cooling will be specifically installed for each area for the most efficient and will have automatic controls to regulate the system when it is not in use. Electric service for the new office will be provided by the cooperative.

A transformer and oil tank repair shop will allow the cooperative to perform routine maintenance, rather than sending out of town for extended periods.

Save Time & Money Try Shopping At Home

# Welcome To The New Teachers

## Sue's Gifts & Accessories

Phone 983-5312

126 W. California Floydada

## CITY AUTO INC.

Buick-Pontiac-GMC

Floydada



DAN PAIR

Dan Pair is one of the new Jr. High coaches. He graduated from Tarleton State University in August of '80 with a B.S. in physical education.

Dan comes from Dublin, Texas which is 12 miles south of Stephenville.

"Living in Floydada is quite an experience for me," Dan said, "it's the first time in my life I've lived in town."

Dan's family works a 6000 acre ranch and farming business located 20 miles from town. The also have a feedlot.

"My main job was running the feedlot," Dan said, "I love the farm and ranch business, but athletics is what drew me into teaching."

Please Get Acquainted With These Fine Merchants...

## Stitchin Pretty

983-3809  
118 West California  
Floydada



DAVID CATES  
INSURANCE AGENT  
FLOYD COUNTY FARM BUREAU

OFFICE 983-3777  
HOME 983-3273  
LOCKNEY 652-2242

## Cornelius Conoco

FLOYDADA, TEXAS



## Piggly Wiggly

303 South Wall - Floydada

983 2184

## Oden

CHEVROLET - OLDS., INC.

983-3787 221 S. Main Floydada

## Ponderosa Meats Company

807 East Missouri Floydada, Tex.

## Producers Cooperative Elevators

Phone 983-2821

## Martin And Co.

216 S. Main - Floydada - 983-3713

## Gene's Cleaners

103 North Main Floydada

## GILBREATH EX...

101 N. 2ND

## Counsumers Fuel Assn.

404 East Missouri - Floydada  
983-3394

## Floyd County Hesperian

## Quality Body Shop

121 East Missouri 983-5032 Floydada

## Floyd County Imp...

Ralls Highway - Floydada

**THOMPSON**  
Rexall PHARMACY  
200 SO. MAIN FLOYDADA, TEXAS  
Phone 983-5111

## Hale Ins. & Real Estate

983-3261 106 S. MAIN FLOYDADA

## Reed Ford Mercury Sales

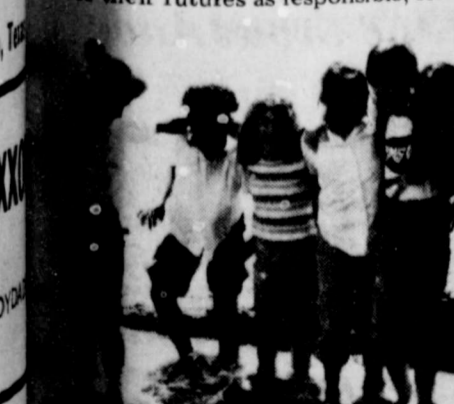
Ralls Highway - Floydada

## WOMEN'S CLUB

the oldest organization for girls, an old hand people grow, has grown in some new that benefit girls and boys - and adults.



Back in 1910 Charlotte and Leola of the Camp Fire Girls and set it in its own right, individualism and warm company make it unique. In those first days were aggressive and progressive. The girls were given the opportunity to develop, to have fun in ways that were limited to boys. Camp Fire programs help for their futures as responsible, self-directed.



Camp Fire, Inc., is determined to help young people, both boys and girls, into achieving adults who feel responsible to other human beings, who can function successfully and who can help that affect their own lives. It's an organization of young people, starting at age four. Camp Fire Club members, who are old and young, enjoy the activities suited to their ages. Various programs include club programs, outdoor programs dealing with the needs of the handicapped, employment for older youths, sex education, abuse and safety, special tutoring, and more. The organization knows growing up takes time. 70 years Camp Fire has been growing in the growing, too. Contact your council or Camp Fire, Inc. headquarters, Kansas City, Mo. 64112.



October 23, 1980  
by Barry McWilliams



**OUR DAILY BREAD**

50% of the nation's wheat is grown on farms served by electric cooperatives. But rural electrification performs a myriad of other services.

Rural electricity provides irrigation water to produce more nutritious foods. You'll find rural electric systems providing power for processing plants, poultry pickers, freezer plants, cotton gins, packing houses, compressors, grain elevators and feed lots, to name a few. The rural electric cooperative in helping to produce our daily bread provides enormous benefits to its members and all of America.

**Lighthouse Electric Cooperative**

Please Get Acquainted With These Fine Merchants...

**Stitchin Pretty**  
983-3809  
118 West California, Floydada



**DAVID CATES**  
INSURANCE AGENCY MANAGER  
FLOYD COUNTY FARM BUREAU  
OFFICE 983-3777 HOME 983-3273 LOCKNEY 652-2242

**Ponderosa Meat Company**  
807 East Missouri Floydada, Texas

**GILBREATH EXXON**  
101 N. 2ND FLOYDADA

**Floyd County Impl**  
Ralls Highway - Floydada

**Reed Ford-Mercury Sales**  
Ralls Highway - Floydada 983-3780

# New Lighthouse Electric facility to house total operations

Lighthouse Electric Cooperative, Inc. today that a new headquarters, warehouse and service building will be built by the utility at the intersection of State Highway 207 and east of Floydada. The announcement was made by Alton Higgins, General Manager of the cooperative.

The modern facility will enable the cooperative to combine its operations at the Floydada office at one location. In the past, office and warehouse facilities were in separate locations.

The new facility for the entire area will feature the latest and most efficient building concepts, with full insulation, air conditioning, and an earthen berm to shield the building. Heat pumps and cooling will be specified into each area for the most efficient and will have automatic controls.

The new facility will regulate the system when the area is not in use. Electric power to the new office will be supplied by the Cooperative.

The expanded transformer and oil cooler repair shop will allow the cooperative to perform routine maintenance locally, rather than sending equipment out of town for extended periods.

The transformer repair area is also coordinated with a vehicle maintenance area for maximum utilization of equipment and labor.

In 1978, Lighthouse consolidated with Hall County Electric Cooperative, Memphis, to form one of the largest rural electric systems in Texas. Lighthouse has 44 employees based in Floydada and six at the branch office in Memphis.

Cecil Baxter of Floydada is President of the Board of Directors, Tom Porter of Floydada is Vice-President and Henry Scarborough of Petersburg is Secretary. Other directors are J.W. Jackson, Crosbyton; Louis Lloyd, Floydada; Wayne Hunter, Flonot; James Richburg, Lakeview; Harold Burk, Estelline; and L.B. Brandes, Providence.

"This move is a reflection of our confidence in the area we service and its future," said Higginbotham. "Lighthouse has experienced rapid growth each of the last several years, and our projections indicate this trend will continue. Since occupying our present offices in 1949, total number of members has increased from 2,000 to 7,100 miles of line has tripled from 1,200 to 3,700, and KWH sales are 400 times more in 1980 than in 1950."



**Bean Salad Has Middle Eastern Flavor**



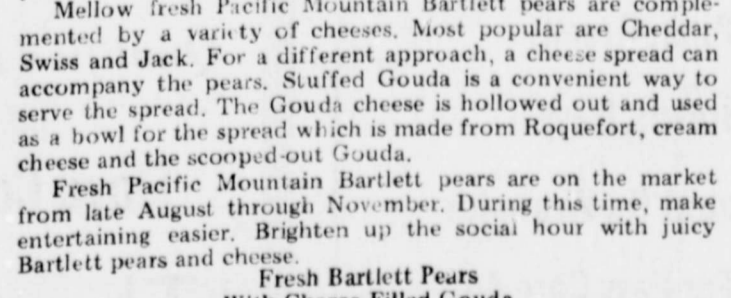
Subtle seasonings of Middle Eastern cuisine flavor this tempting salad of kidney beans, either home-cooked or canned, onion, tomato and cucumber. Chopped parsley and mint add bright specks of color and, in combination with olive oil and lemon juice, give this salad its distinctive flavor.

Include this tasty marinated bean salad in a picnic or barbecue menu of grilled steak, hamburger or chicken. It could easily accompany an exotic lamb or poultry entree throughout the year.

**Middle Eastern Bean Salad**  
3 cups cooked or canned kidney beans, 1 tablespoon chopped fresh mint or 2 teaspoons dried mint  
1 medium onion, coarsely chopped, 1/4 cup olive oil  
1 large tomato, diced, 1/4 cup lemon juice  
1 cucumber, peeled and diced, 1/2 teaspoon salt  
1/2 cup chopped parsley, 1/8 teaspoon pepper  
Romaine

Drain beans; combine with onion, tomato, cucumber, parsley and mint. Beat together olive oil, lemon juice, salt and pepper. Pour over salad and toss to coat thoroughly. Chill 2 hours. Mix and serve in bowl lined with romaine. Makes 6 servings.

**Fresh Bartletts And Cheese**



The busy host or hostess is always searching for new ideas that keep kitchen time to a minimum. Here's a delightful appetizer, fresh Bartlett pears and cheese, elegantly flavored yet requiring little preparation.

Mellow fresh Pacific Mountain Bartlett pears are complemented by a variety of cheeses. Most popular are Cheddar, Swiss and Jack. For a different approach, a cheese spread can accompany the pears. Stuffed Gouda is a convenient way to serve the spread. The Gouda cheese is hollowed out and used as a bowl for the spread which is made from Roquefort, cream cheese and the scooped-out Gouda.

Fresh Pacific Mountain Bartlett pears are on the market from late August through November. During this time, make entertaining easier. Brighten up the social hour with juicy Bartlett pears and cheese.

**Fresh Bartlett Pears With Cheese-Filled Gouda**  
Fresh Pacific Mountain 2 ounces Roquefort or blue cheese  
Bartlett pears 1 package (3 oz.) cream cheese  
1 (8 to 10 oz.) round Gouda cheese 3 tablespoons dry sherry

Use fully ripe pears. Have cheeses at room temperature. Cut thin slice from top of Gouda. Scoop out center, leaving 1/4-inch shell. Blend scooped-out Gouda cheese with Roquefort, cream cheese and sherry with electric mixer. Fill Gouda shell with cheese spread. Use remaining spread to refill shell or reserve for later use. Chill to blend flavors. Remove spread from refrigerator about 1 hour before serving to soften to spreading consistency. Serve with freshly sliced pears and crackers. Makes about 1-1/2 cups spread.



LOCKNEY STUDENTS PREPARE for the FHA sponsored Halloween carnival on October 28 at the Fair Building.

Lays **Potato Chips 69¢**

**ALLSUP'S CONVENIENCE STORES** LOCKNEY

WE RESERVE THE RIGHT TO LIMIT PRICES EFFECTIVE OCTOBER 23-25, 1980  
SPECIALS GOOD WHILE SUPPLY LASTS - LIMITED SUPPLY

16 OZ. NON-RETURNABLE BOTTLE  
**PEPSI-COLA \$1.39**

6 PACK

**SHOP ALLSUP'S FOR TRICK OR TREATS**  
WE HAVE THE LARGEST SELECTION OF CANDY IN TOWN

**BORDEN'S ASSTD. FRUIT DRINK 89¢ GAL.**  
**BORDEN'S COTTAGE CHEESE 79¢ 12 OZ. CTN.**

**10-30 LBS. YOUR CHOICE PUMPKINS \$2.39 EACH**

**Burritos, Taco Rolls 3/\$1.00**

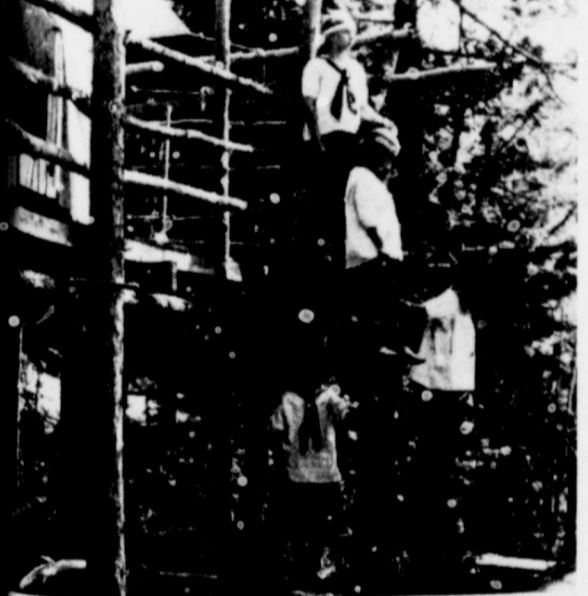
**Fish Sandwich 89¢**

**ALLSUP'S ASSORTED ICE CREAM \$1.39 1/2 GAL. NO. CTN.**  
**LARGE REUSABLE TIFFANY STYLE TUMBLER FILLED WITH FOUNTAIN COCA-COLA 49¢ EACH**

**BATH PURE PORK SAUSAGE 79¢ 1 LB. ROLL**  
**14 oz. Kraft Carmels \$1.29**  
**Red Delicious Apples 2 lbs/\$1.00**

**HEBEN and NOW!**

oldest organization for girls, an old hand at helping people grow, has grown in some new ways itself that benefit girls and boys—and adults, too.



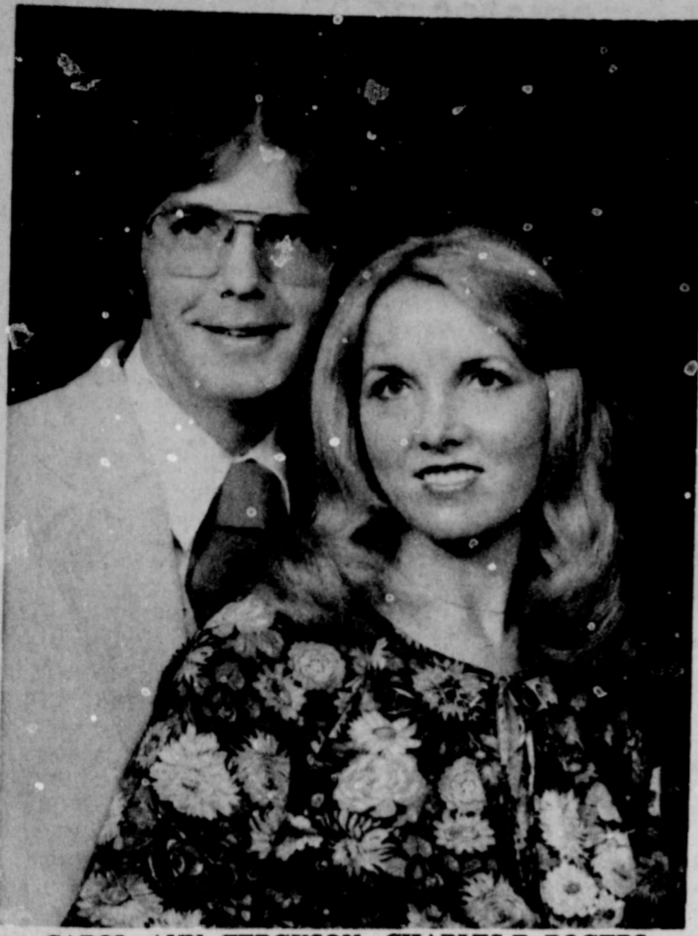
HEBEN: Back in 1910 Charlotte and Luther Gulick led the Camp Fire Girls and set it in its traditions of ship, individualism and warm companionship that helped make it unique. In those first years, its members were aggressive and progressive. The fashionable dress was discarded in favor of practical clothes for work. Girls were given the opportunity to explore, to develop, to have fun in ways that previously limited to boys. Camp Fire programs helped prepare for their futures as responsible, self-directed women.



Camp Fire, Inc., is determined to continue this tradition of helping young people, both boys and girls, grow into achieving adults who feel responsible to their community and to other human beings, who have the skills and confidence to function successfully and who can influence the world that affect their own lives. It's an organization that helps young people, starting at age four and five on up. Horizon Club members, who are older teenagers, help the younger girls and boys develop their skills and enjoy the activities suitable to their age groups.

The various programs include club programs, recreation and outdoor programs dealing with the physical and emotional needs of the handicapped, employment programs for older youths, sex education, information about abuse and safety, special tutoring, and self-awareness courses.

The organization knows growing up takes a lifetime. For the 70 years Camp Fire has been growing with young people. Join in the growing, too. Contact your local Camp Fire council or Camp Fire, Inc. headquarters at 1201 Madison Ave., Kansas City, Mo. 64112.



CAROL ANN FERGUSON, CHARLES F. ROGERS

## Ferguson-Rogers to exchange wedding vows, November 22

Mr. and Mrs. Billy Ferguson of Floyd, Arkansas and Mr. and Mrs. L.H. Rogers of Vinity, Arkansas announce the engagement and approaching marriage of their children, Carol Ann and Charles F. Rogers.

Mr. and Mrs. Ferguson and family were residents of Floydada for several years. Carol is the grand daughter of Mrs. Maurine Gregg of Route 3 in Floydada.

Carol attended Bethany Nazarene College in Bethany, Oklahoma. She received a B.S.E. degree in Speech Pathology and Special Education from the University of

Central Arkansas where she is employed by the Beebe Public School system as a speech therapist.

Charles is a resident of Vinity, Arkansas. He is a graduate of Beebe High School and has attended Arkansas State University-Beebe Branch and the University of Central Arkansas in Conway. He is presently employed by Richardson Paint Company of Little Rock.

The couple will exchange marriage vows at the First Church of the Nazarene in Beebe on November 22, 1980 at 8:00 p.m.

## December wedding plans announced by Thomas-Cumbie

Mr. and Mrs. John W. Thomas of Arlington, Texas, with to announce the engagement and approaching marriage of their daughter, Mary Melony to Clayton Earl Cumbie, son of Mr. and Mrs. Drue Cumbie of Crosbyton, Texas.

The wedding is planned for 3:00 p.m. at Oak Knoll Baptist Church in Fort Worth on December 13.

Melony is a graduate of

Dallas Baptist College and Southwestern Theological Seminary. She is employed presently as director of child development at First Baptist church in Winston-Salem, North Carolina.

Earl is a graduate of Hardin-Simmons University and Southwestern Theological Seminary. He serves as minister of education at Oak Knoll Baptist Church in Fort Worth.

## Alpha Sigma Upsilon Chapter make plans for Halloween social

Members of Alpha Sigma Upsilon Chapter of Beta Sigma Phi met October 7 in the home of Rhonda Guthrie.

Mary Emert gave the treasurers report.

We will have a Halloween Social for our children October 31 at Lighthouse.

The next meeting will be October 21 at Ilene Kendrick's. The meeting will be a Hobo Supper with guests invited.

Mary Emert reported each member will make hand-made items for the Lions Club Festival. Tickets for the quilt members are making will be \$1.00. The quilt will be given away at the festival. The meeting was adjourned and members continued

working on the quilt while hostess, Rhonda Guthrie served refreshments of chips, dips, cheese log, summer sausage and cola.

Members present were Ilene Kendrick, Donna Lipham, Mary Emert, June McGaugh, Pat Rowan, Pat Franklin, Rhonda Guthrie, Vikki Yearly, Iantha Smith and guest, Barbara Cocanougher.

Kindness in words creates confidence, Kindness in thinking creates profoundness, Kindness in giving creates love.

LAO-TSE

THRILL HER WITH A "Floydada-Homecoming-MUM" for the Floydada-Olton Game!

**BIG FLUFFY WHITE MUMS**

GREEN "F" - GOLD FOOTBALLS  
"Floydada" Ribbons-Cellophane Wrapped.  
PLEASE ORDER EARLY!

**PARK FLORIST**  
983-2867 FLOYDADA 983-2868

# Society

## Mrs. Jewel Martin hostess to Wesley Anns

Mrs. Jewel Martin was hostess to the Wesley Ann group of the First United Methodist Church Monday night, October 20.

Several members were absent because of personal illness or illness in the family.

Mrs. Diana Glover gave a very interesting report on "Ideas of Women on Prayer." "We sometimes get

neglectful in prayer until something comes up when we feel the need of prayer to solve our problems."

Those enjoying refreshments were Madames Elizabeth Armstrong, Julia Baker, Margie Fowler, Diana Glover, Bennie Leibfried, Lorena McKinney, Helen Solomon, and the hostess, Jewel Martin.

## 62 Attend Senior Citizens luncheon on October 16

The Senior Citizens met October 16 for their regular luncheon with 62 present. We had a bountiful meal and several visitors. Mrs. O.T. Cummings and daughter, Lovetta, from Weatherford, Texas visited with us.

Mrs. Eldie Bryant, one of our regular members and quilters had the misfortune of falling and breaking her left hip and left arm. She is a patient in Caprock Hospital and doing as well as she can.

We have a film to be shown the 28th of October

at 2 o'clock. It will be the Grand Canyon. Mrs. Doyle Walls will show it.

There were 15 who enjoyed the film on China last Tuesday evening.

Bingo Monday night 7:00 and 42 and 84 Thursday night at 7:00.

Rev. Perry Zumwalt of the City Park Church of Christ, will show slides on the Holy Land at 2:30 on November 4 and will continue showing them on November 11 at 7 p.m.

## Homemakers Clubs hold meeting in San Antonio

The State Extension Homemakers Clubs of Texas met in San Antonio, October 14-16, in the El Tropicana Hotel. The presiding officer was Mrs. Charles Warminski. Msgr. Elmond Carmody gave the invocation and devotional. An address, "Look Like Yourself and Love It" was given by Jane Segerstrom.

Workshops on Health, Citizenship, Family Life, Cultural Arts and Recreation and Safety were held during the convention.

Resolutions and recommendations were read and approved for the coming year.

Those attending from Floyd County as voting delegates were Lillian Smith, Elvira Stewart, Bess Carr and a guest, Syble Teepie.

Resolutions and recommendations were read and approved for the coming year.

Those attending from Floyd County as voting delegates were Lillian Smith, Elvira Stewart, Bess Carr and a guest, Syble Teepie.

Those attending from Floyd County as voting delegates were Lillian Smith, Elvira Stewart, Bess Carr and a guest, Syble Teepie.

Those attending from Floyd County as voting delegates were Lillian Smith, Elvira Stewart, Bess Carr and a guest, Syble Teepie.

Those attending from Floyd County as voting delegates were Lillian Smith, Elvira Stewart, Bess Carr and a guest, Syble Teepie.

Those attending from Floyd County as voting delegates were Lillian Smith, Elvira Stewart, Bess Carr and a guest, Syble Teepie.

Those attending from Floyd County as voting delegates were Lillian Smith, Elvira Stewart, Bess Carr and a guest, Syble Teepie.

Those attending from Floyd County as voting delegates were Lillian Smith, Elvira Stewart, Bess Carr and a guest, Syble Teepie.

Those attending from Floyd County as voting delegates were Lillian Smith, Elvira Stewart, Bess Carr and a guest, Syble Teepie.

Those attending from Floyd County as voting delegates were Lillian Smith, Elvira Stewart, Bess Carr and a guest, Syble Teepie.

Those attending from Floyd County as voting delegates were Lillian Smith, Elvira Stewart, Bess Carr and a guest, Syble Teepie.

Those attending from Floyd County as voting delegates were Lillian Smith, Elvira Stewart, Bess Carr and a guest, Syble Teepie.

Those attending from Floyd County as voting delegates were Lillian Smith, Elvira Stewart, Bess Carr and a guest, Syble Teepie.

Those attending from Floyd County as voting delegates were Lillian Smith, Elvira Stewart, Bess Carr and a guest, Syble Teepie.

Those attending from Floyd County as voting delegates were Lillian Smith, Elvira Stewart, Bess Carr and a guest, Syble Teepie.

Those attending from Floyd County as voting delegates were Lillian Smith, Elvira Stewart, Bess Carr and a guest, Syble Teepie.

Those attending from Floyd County as voting delegates were Lillian Smith, Elvira Stewart, Bess Carr and a guest, Syble Teepie.

Those attending from Floyd County as voting delegates were Lillian Smith, Elvira Stewart, Bess Carr and a guest, Syble Teepie.

Those attending from Floyd County as voting delegates were Lillian Smith, Elvira Stewart, Bess Carr and a guest, Syble Teepie.

Those attending from Floyd County as voting delegates were Lillian Smith, Elvira Stewart, Bess Carr and a guest, Syble Teepie.

Those attending from Floyd County as voting delegates were Lillian Smith, Elvira Stewart, Bess Carr and a guest, Syble Teepie.



NESA JACKSON

## BIRTHS

and Bonnie Graham of the Muncy Community and Mrs. Mary Henderson of Floydada.

Emma Newman of Amarillo is the great grandmother. Mrs. Willie Henderson of Paducah, is also the great grandmother.

### BYBEE

Cindy and Monty Bybee are parents of a baby boy, Alton Charles, born Wednesday, October 15, at Central Plains Hospital. He weighed nine pounds, 3/4 ounces and was 20 inches long. He has a three year old brother, Monty Wayne. Grandparents are June Bybee of Lockney and Mr. and Mrs. Vernie C. Bare of Plainview.

### GAMMAGE

Ron and Shelly Gammage of Plainview are pleased to announce the birth of their daughter, Shannon Diane. Shannon was born at 7:45 a.m. on Friday, October 17, and weighed six pounds and eight ounces. Grandparents are Mrs. Gene Collins and Mr. and Mrs. N.H. Gammage, all of Lockney.

### HOWARD

Terry and Carrie Howard of Strathcona, Minnesota are the proud parents of a son, Justin Glen, born October 14. Justin weighed nine pounds, nine ounces. He has one brother, Joel, 21 months old. Grandparents are Mr. and Mrs. Mack Howard of Lockney and Mr. and Mrs. Mowery Eckman of Sioux Falls, South Dakota. Great-grandmother is Freda Shaffner of Lubbock and great-grandfather is Jay Howard of Lockney. Maternal grandparents are Mr. and Mrs. Glen Elrud of Blunt, South Dakota.

Mrs. Ross is the former Kathy Graham. Grandparents are Herman Dorcas Sunday School Class meets

### SANDERS

Brent and Sarah Sanders announce the homecoming of their daughter, Katie Rebecca on Friday, October 17. Katie was born Thursday, September 11 and weighed five pounds, 14 ounces. Grandparents are Mr. and Mrs. S.E. Puckett of Ruidoso, New Mexico and Mr. and Mrs. M.L. Simpson of Dimmitt.

### PECKENPAUGH

Mr. and Mrs. David Peckenpaugh of Farnsworth welcomed the birth of their first child October 15. Melanie Beth weighed eight pounds, one ounce at birth in Perryton Hospital. She is the first child for the couple.

Her mother is the former Lisa Scheele of Providence. Grandparents are Wendell and Pat Peckenpaugh of Farnsworth and Albert and Otero Scheele of Providence.

Great-grandparents include Mrs. Hattie Scheele of Providence, Ralph and Hettie Brown of Edmonson.

### GREEN

Mr. and Mrs. Sam Green are proud to announce the arrival of their little daughter, Amanda Michelle, born Saturday, October 18, at Central Plains Hospital in Plainview. She weighed six pounds and 9/4 ounces and was 19 inches long. Grandparents are Alice and Charles Hooibood of Plainview and Valaie Green of Floydada.

### ROSS

Mr. and Mrs. Dennis Ross of Plainview are the proud parents of a son, Paul Andrew, who was born October 19 at 10:58 a.m. in Central Plains Hospital.

The new son weighed seven pounds, five ounces and was 19 inches long. He has an older sister, Brandi, age 4.

Mrs. Ross is the former Kathy Graham. Grandparents are Herman

Dorcas Sunday School Class meets

Mrs. Mamie Bradshaw and Bernice Walters recently entertained the Dorcas Sunday School Class of First Baptist Church with a social meeting and a short program.

After the program the group enjoyed visiting and refreshments were served to ten members and three guests including: Mmes. Lois Durham, Valree Turner, Ethel Warren, Cleo Goins, Carrie Cline, Beulah Denison, May Garrett, Myrtice Rainer, Vada Meredith, and Mamie Bradshaw.

Guests were Nettie Adams, Iva Benson and Bernice Walters.

Treat Your Wardrobe To Comfortable Wrangler Corduroy Jeans For The Fall. Variety Of Colors- Choose From A Blue, Pink, Green, Tan, Brown, Navy Or Grey. Count On Wrangler Corduroy For Easy Care And Great Fit And Style.

**THE LOFT**

517 East Houston 983-2235

**VERY INTERESTING!**

INTEREST Is Added: To Your Savings

It Builds: It Grows And Grows And Grows, Interested?

Contact One Of Our Friendly, Qualified Financial Consultants Today

Floyd County's Progressive Bank

**The First National Bank**

Member F.D.I.C. In Lockney

400 Jolie

Change Oil & A-C Oil Filter Most GM Cars & Parts

Tune-Up (H) Most GM Cars & Parts Includes Plugs-Capacitor Parts And Labor

Disc. Brake Most GM Cars & Parts Includes Disc Parts

Specials Good Until November 15

**City Auto Inc.**

Buick, Pontiac & Oldsmobile

GM QUALITY SERVICE PLAN GENERAL MOTORS PREFERRED

983-3767

## Nesa Jackson selected Fashion Board at Tuesday Honorees

The Fashion Board of Texas Tech University recently completed Rush for new members for the Fall and Spring of 1980-81. Miss Nesa Jackson, a senior Home Economics Education major made to the board. A total of 200 young ladies went through the busy week and only 60 girls were selected to serve on the board.

Fashion Board is a very active organization. Fashion shows, workshops, and personal grooming seminars for younger girls are among the activities. Working with campus service groups and com-

## Harmony Homemakers Club luncheon for other Extension

The Harmony Extension Homemaker Club hosted the other Extension Clubs in the county, Lone Star, Homebuilders and Dougherty with a luncheon at the Lighthouse Electric.

After lunch Mrs. Margaret Gregory gave a demonstration on Glass Painting. This was an interesting and fascinating demonstration.

Mrs. Lee Battey, R.N., Director of Nurses at the Visiting Nurse Service, Inc., gave an interesting and informative talk on how to obtain these services.

Those attending were Lela Mae Burns, Elvira Stewart, Mrs. C.W. Denison Jr. of Georgetown returned home Monday after spending several days with his parents, Mr. and Mrs. Carl Denison.

Others present at the Denison's home Sunday for a family get-together were their son, Mr. and Mrs. Gilmer Denison of Lubbock; a brother, Dr. and Mrs. Dallas Denison of Brownfield; a sister, Mr. and Mrs. W.B. Parrack.

Denison's grandchildren and great grandsons were Mr. and Mrs. Bob Teaff and sons, Trent and Ty; Mr. and Mrs. Keith Denison, and Mr. and Mrs. Matthew McLarty and daughter, Sierra. Several members of the family had birthdays in October for the celebration and also to be with Mr. Denison

## Tuesday Honorees

A VERY dainty Who loves to hand.

Mrs. Iris Colton Knows how to v And friends she So stop and ch

Lets serenade th With the good Song... So everybody jo And sing out strong.

Thursday aft time for the birthday party the City Park Christ hosting t The Hesperian d did the picture to the party.

Honorees and ushered into the where the ho seated at a sp their places be with individual c The table was a white cloth ar with a floral ar autumn colors.

The poem was joined in singing song. A special

while he re surgery at Hospital

Mike son of M Carroll is a weeks ago has been positive Plaintiff's meet. Brock of Lubbock is of Lubbock visited with Morris' end.

Mike son of M Carroll is a weeks ago has been positive Plaintiff's meet. Brock of Lubbock is of Lubbock visited with Morris' end.

Mike son of M Carroll is a weeks ago has been positive Plaintiff's meet. Brock of Lubbock is of Lubbock visited with Morris' end.

Mike son of M Carroll is a weeks ago has been positive Plaintiff's meet. Brock of Lubbock is of Lubbock visited with Morris' end.

WE SEE US! Florida Real Estate & Insurance Agency FIRE, FARM, AND MARINE INSURANCE Jim Word Phone 983-2360

Change Oil & A-C Oil Filter Most GM Cars & Parts

Tune-Up (H) Most GM Cars & Parts Includes Plugs-Capacitor Parts And Labor

Disc. Brake Most GM Cars & Parts Includes Disc Parts

Specials Good Until November 15

**City Auto Inc.**

Buick, Pontiac & Oldsmobile

GM QUALITY SERVICE PLAN GENERAL MOTORS PREFERRED

983-3767



## LOCKNEY Care Center Happenings

by Vickie Hutton  
This past week might be called domino week. Our domino players are Bill Holt, Sally Carpenter, Myrtle Payne, Albert Poole, Bill Payne, Louis Roberts, and Alpha Kitchens. Mrs. Vera Rogers comes in and plays dominoes with the residents. Tuesday afternoon we played bingo. The big bingo winner was Bill Holt who won 5 games. Our blackout

winner was John Turner. Other winners were Vera Rogers, Lavell Edwards, Sally Carpenter, Richard Lanham, and Myrtle Burke. Myrtle Burke left Wednesday to visit with her daughter Geneva Stansell and family, of Lockney. We missed her very much. She is a special friend to all of us. We would like to thank all the area churches who come and hold services for the residents.

## Lockney Hospital Report

**October 15-22**  
Sudie Thomas, Floydada, adm. 10-2, transferred 10-16  
Rebecca Truitt, Lockney, adm. 10-9, dis. 10-18  
Leona Vardell, Silverton, adm. 10-12, dis. 10-18  
Steve Hill, Roaring Springs, adm. 10-13, dis. 10-18  
Violet Jones, Plainview, adm. 10-15, dis. 10-17  
Lewis Blum, Floydada, adm. 10-14, continues care  
Delia A. Hernandez, Floydada, adm. 10-14, baby girl, Antonia, born 10-14, dis. 10-16  
Johnny Martin, Lockney, adm. 10-15, dis. 10-17  
Mario Arellano, Lockney, adm. 10-16, dis. 10-17  
Sam Graham, Floydada, adm. 10-16, transferred 10-16  
Gwinda Emert, Lockney, adm. 10-16, dis. 10-20  
Arthur Perkins, Silverton, adm. 10-16, continues care  
Wanda Bullion, Plainview, adm. 10-17, dis. 10-20  
George Gordon Bain, Turkey, adm. 10-17, continues care  
Hattie Steele, Silverton, adm. 10-18, continues care

A.L. Bigham, Lockney, adm. 10-18, dis. 10-20  
Steve Hill, Roaring Springs, adm. 10-13, dis. 10-18  
Rosalia Hernandez, Lockney, adm. 10-19, baby boy, Octabiano Jr., born 10-19, dis. 10-21  
B.D. Jones, Lockney, adm. 10-18, continues care  
Maria Rebecca Flores, Plainview, adm. 10-19, dis. 10-21  
Urnita Patel, Lockney, adm. 10-20, baby boy, Sameer, born 10-20, dis. 10-22  
Lottie McGee, Lockney, adm. 10-20, continues care  
Bertha Martinez, Plainview, adm. 10-20, baby boy, Petronilo, born 10-20, dis. 10-22  
Oma Cummings, Lockney, adm. 10-20, continues care  
Faye Lynn Mariel, Silverton, adm. 10-21, continues care  
Ester Muniz, Plainview, adm. 10-21, continues care  
William Ray Edwards, Floydada, adm. 10-21, continues care  
Oralia Alvarez, Plainview, adm. 10-19, dis. 10-21

## Lockney Long Ago

**October 27, 1960**  
Cal Farley, founder of Boys Ranch, was the speaker at the annual Teacher Appreciation Banquet held last week. Over 200 attended. Floyd County 4-Hers placing at the State Fair in Dallas last week were Bob Kropp, Jim Kropp, Paulette Kropp, Randy Laceywell, Lauretta Laceywell, Stanley Abbott and Steve Belt.  
Between 250 and 300 Floyd County farmers met Tuesday to form a Floyd County Sugar Beet Association. Owen Thornton of Lockney was named as vice-president.

223 ex students registered at the 1960 Homecoming.  
**October 27, 1950**  
Supert. Sidney Reeves announced that school will be dismissed at 2:15 each day starting on Monday to allow students to aid in the harvest of cotton.  
M.W. Wiley, president of the First National Bank, will be interviewed by KGNC radio on the subject of the cotton export restrictions.  
Several petitions are being circulated in Lockney to determine the actual sentiment of the people on the proposed installation of a dial telephone system.

## LOCKNEY School Menu

**October 27-30**  
**Monday:**  
Breakfast — Toast, apple juice, milk  
Lunch — Hamburger, corn on the cob, tomatoes sliced, oatmeal cookie, pickle, mustard  
**Tuesday:**  
Breakfast — Rice, milk, French fried potatoes  
Lunch — Fried chicken, gravy, milk, creamed potatoes, buttered greens, hot rolls

**Wednesday:**  
Breakfast — Cinnamon rolls, milk, orange juice  
Lunch — Macaroni and cheese, green beans, tossed salad, milk, pineapple chunks in gelatin, hot rolls  
**Thursday:**  
Breakfast — Toast, egg, milk, apple juice  
Lunch — Fish stick, cheese and crackers, cole slaw, potato rounds, hot rolls, milk, peanut butter candy.

## Happy Birthday

**October 26** — Clifford Moseley, Pearl Hooten, Auarista Luna  
**October 27** — Tina Texrode, Margaret Pitchford, Elizabeth Riley, Glen Cooper, M.C. Cook Jr.  
**October 28** — Erma Lee Duckworth  
**October 29** — Gloria Saenz, Randy Webb, Kathleen Thornton, Jimmie Don Bradley  
**October 30** — Lupe Luna, Ann Lee, Silvester Garcia, Callie Wilson  
**October 31** — Javier Vela, Dart Carthel, Glen Watson  
**November 1** — Manuel Banda

## Happy Anniversary

**October 26** — Dr. Gary and Brenda Mangold  
**October 27** — Jack and Ann Gaskins  
**October 29** — Bill and Wanda Mouts  
**October 30** — Ray and Margie McCormick  
**October 31** — Jimmy and Judy Fitzgerald

## LOCKNEY LOCALS

Mrs. Hugh Carroll spent a week visiting with her son and daughter-in-law, Glyn and Bena Carroll, in Dumas. She returned home Monday. Mrs. Trudie (J.P. Taylor had surgery Monday the 13th

at Methodist Hospital in Lubbock. She was able to return home Wednesday. Kitty (Ford) Owens, daughter of Raz Ford, is in the hospital in Houston for tests that should be completed within a week.

## Schacht Named

### Runner-up NCO Of The Year

Sgt. 1st Class Edward M. Eckley of the 4159th USAR School, Fort Worth, has been selected as the Peenlistment NCO of the Year for the 90th U.S. Army Reserve Command, headquartered in San Antonio.

Runner-up for the award was Spec. 5 Otto B. Schacht of the 4166th USAR School, Lubbock. He is an assistant professor of agricultural engineering and technology at Texas Tech University.

Schacht is a graduate of Lockney High School. His mother, Mrs. Eleanor Schacht resides in Lockney, and his wife's parents, Mr. and Mrs. Durward N. Jack, Rt. M.

As a result of his selection, Eckley will compete October 18 in the Readiness Region VII contest.

A native of Philipsburg, Pennsylvania Eckley joined the Army in 1954. He has served with the USAR School as an instructor since 1977. Before joining the Army Reserve, he was a member of the Texas National Guard.

Eckley's commander, Lt. Col. Ralph O. Doughty, commander of the USAR School, said Eckley "is never too busy to inquire about one's family, job, or other interests. He is an excellent example of a self-starter, and it is through his knowledge and concern for others that the entire school is aware of what an environment should be for retention to work well."

A meat cutter in civilian life, Eckley is credited with retaining almost 100 per cent of those eligible to reenlist in his unit.

## The Floyd Philosopher

Editor's note: The Floyd Philosopher on his Johnson grass farm comes up with some new proposals this week, perhaps.

Dear editor:  
I have been keeping notes on the number of ways TV commercials claim you can save gasoline.

One claim says if you'll buy its brand of oil you can save gasoline. Another says its tires will save gas. Another says if gasoline will save gas. Another says the shape of the car's hood will save gas. Another says its parkplugs will do the job. Even the telephone company has a system for some big firms that'll save energy.

On the assumption that a certain percent of the population acts on these claims, I'm about to come out with an invention of mine that'll save gasoline. It's a gas-saving windshield wiper. Don't ask me how a windshield wiper can save gas, it's a trade secret, but if I can get a million car drivers to try it out at \$10 apiece before the

government gets around to testing it, you can see the high price of gasoline won't bother me.

Or the subject of saving, I've figured out a way to make political promises of tax cuts come true. Like it is, there's an un-bridged gap between pre-election tax cut promises and post-election forgetfulness.

The answer to this absent-mindedness is bonded promises. If we can let a man get out of jail on bond, why can't we require a candidate to get into office on one?

For example, if a candidate promises a 20 percent tax cut, bond him for 20 percent of his salary. For every month he fails to deliver, his bond is forfeited. If a whole party comes out for a tax cut, bond it for the amount of promised cuts. That way we get a tax cut, whichever way the vote goes. If we're going to let criminals out on bond, it seems only fair we let Congressmen in on the same terms.  
Yours faithfully,  
J.A.

## FFA Annual Fruit Sale Begins

The Lockney Chapter of the Future Farmers of America are selling fruit for a money making project. Oranges, apples, and grapefruit are being sold this year.

Prices for oranges are 20 pounds for \$7.00 and 40 pounds for \$13.00. Apples are 30 apples for \$7.00 and 60 apples for \$14.00. Grapefruit is priced at 20 pounds for \$7.00 and 40 pounds for \$13.00.

These fruits are from the

Sunny Citrus Fruit Company. Anyone wishing to buy fruit please contact any FFA member.

Show pigs are being bought for the winter stock shows. Ag teachers Mike Glenn and Elvin Lyons have been buying pigs at area sales.

The FFA stock pens are being painted red. Ag classes have been doing the painting with ag teachers supervising.

## VETERANS. RE-UP PART-TIME FOR AN EXTRA INCOME.

Could you use an extra \$1,300 a year? That's how much you can earn as an E-4 with 3 years experience, when you join your local Army Reserve unit. All it takes is a weekend a month and a couple of weeks a year. Limited PX privileges and other service benefits can be yours again, too. For details, call your Army Reserve representative, in the Yellow Pages under "Recruiting."



## MEET TODAY'S ARMY RESERVE.

The First Assembly of God in Lockney would like to extend an invitation to all those who have not a church home, to come and worship with us

**SUNDAY:**  
10:00 & 11:00  
5:00  
6:00  
7:00  
**Morning Worship**  
**Young Peoples Service**  
**Evening Worship**  
**Wednesday Evening Service**  
Pastor: Eddie Kendall 652-2219

**Football**  
**Continues**  
**WIN**  
1st Prize.....  
2nd Prize.....  
3rd Prize.....  
Circle on the official entry form the team you think will win each game and indicate the total score.  
Contestants may mail their entries to the Beacon Office, 220 South Main, Lockney, Texas 79241. One winner per family per year.

## RAGIN' RED

Moore-Rose Funeral Home  
Lockney, Texas

1. Notre Dame vs. 2. Arizona St.

Davis Lumber &  
True Value Hardware  
Lockney, Texas

5. Texas vs. 6. SMU

Bob Miller  
Ins. & Real Estate  
Lockney, Texas

9. Tulsa vs. 10. WTSU

Lee's White Auto Store  
Lockney, Texas

13. Coronado vs. 14. Lubbock

Thomason's Grocery  
Lockney, Texas

17. Dimmitt vs. 18. Littlefield

Providence  
Farm Supply & Grain Co.

21. Childress vs. 22. Idalou

Wilson Photography  
North of Lockney

25. Roosevelt vs. 26. Post

Lockney Meat  
Plainview Highway-Lockney

3. Rice vs. 4. Texas A&M

Schacht  
Flowers, Jewelry  
Lockney, Texas

7. TCU vs. 8. Baylor

Four R  
Western Wear & Irrigation  
Lockney, Texas

11. Amarillo Tascosa vs. 12. Dalhart

Byrd Pharmacy  
Lockney, Texas

15. Canyon vs. 16. Borger

The Tye Company  
Plainview Highway-Lockney

19. Olton vs. 20. Malakoff

Fierros & Sons  
Reddy Mix Concrete  
Lockney, Texas

23. Slaton vs. 24. Cooper

The Lockney Beacon  
Lockney, Texas

27. Tahoka vs. 28. Freeland

## OFFICIAL ENTRY FORM

Name..... Address.....  
City.....

1-2 3-4 5-6 7-8 9-10 11-12 13-14  
15-16 17-18 19-20 21-22 23-24 25-26 27-28

Tie Breaker: LOCKNEY VS FLOYDADA Total Score.....

## Hornets

Hornets gained yards than the and had 3 less than Lockney but advantage of seven mistakes and in Friday nights with a score of 21-7. The first game of the season for the Hornets now stands at 5-1. Lockney has a 2-4 season.

lock the opening from the Hornets on and marched up making 5 first scoring with 6 left in the first with a 19 yard run by Tullia's leading for the night. The was good and the

CONTESTANTS... Circle on the official entry form the team you think will win each game and indicate the total score. Contestants may mail their entries to the Beacon Office, 220 South Main, Lockney, Texas 79241. One winner per family per year.

Lockney	F
102	Y
87	Y
189	T
6-24	Pass
3-30	Pen
7-30	Pen
3	Fu
0	Int

On Tullia's downs, John F. their quarterback the field, and a fumble. Lockney but their drive by a pass into first half end score 14-0. Lockney began



POPTENBERRY grabs a Tullia Hornet...  
FALL CLASSIC RUNS  
SPONSORED BY:  
PLAINVIEW Y TORNADO RUNNING  
PLAINVIEW ATHLETICS  
CAUTION: Plainview (on paved streets) - 16th and Ennis  
SAT: Saturday, October 25, 1980  
1 mile  
FEE: \$5.00 (includes T-shirt)  
AWARDS: 1st, 2nd, 3rd place in each division  
REGISTRATION APPRECIATED!!!  
Plainview, Box 37, Plainview, Texas 79241  
you are 18 and under we need your parents' permission  
starting and finishing location will be at 16th and Ennis  
room facilities available  
runs will be on the paved streets of  
and join us for some fun and excitement  
to seeing you!!! Saturday, October 25, 1980  
ADDRESS: DIVISION  
FEE PAID: PHONE

1980 FALL CLASSIC RUNS  
SPONSORED BY:  
PLAINVIEW Y TORNADO RUNNING  
PLAINVIEW ATHLETICS  
CAUTION: Plainview (on paved streets) - 16th and Ennis  
SAT: Saturday, October 25, 1980  
1 mile  
FEE: \$5.00 (includes T-shirt)  
AWARDS: 1st, 2nd, 3rd place in each division  
REGISTRATION APPRECIATED!!!  
Plainview, Box 37, Plainview, Texas 79241  
you are 18 and under we need your parents' permission  
starting and finishing location will be at 16th and Ennis  
room facilities available  
runs will be on the paved streets of  
and join us for some fun and excitement  
to seeing you!!! Saturday, October 25, 1980  
ADDRESS: DIVISION  
FEE PAID: PHONE

1980 FALL CLASSIC RUNS  
SPONSORED BY:  
PLAINVIEW Y TORNADO RUNNING  
PLAINVIEW ATHLETICS  
CAUTION: Plainview (on paved streets) - 16th and Ennis  
SAT: Saturday, October 25, 1980  
1 mile  
FEE: \$5.00 (includes T-shirt)  
AWARDS: 1st, 2nd, 3rd place in each division  
REGISTRATION APPRECIATED!!!  
Plainview, Box 37, Plainview, Texas 79241  
you are 18 and under we need your parents' permission  
starting and finishing location will be at 16th and Ennis  
room facilities available  
runs will be on the paved streets of  
and join us for some fun and excitement  
to seeing you!!! Saturday, October 25, 1980  
ADDRESS: DIVISION  
FEE PAID: PHONE

1980 FALL CLASSIC RUNS  
SPONSORED BY:  
PLAINVIEW Y TORNADO RUNNING  
PLAINVIEW ATHLETICS  
CAUTION: Plainview (on paved streets) - 16th and Ennis  
SAT: Saturday, October 25, 1980  
1 mile  
FEE: \$5.00 (includes T-shirt)  
AWARDS: 1st, 2nd, 3rd place in each division  
REGISTRATION APPRECIATED!!!  
Plainview, Box 37, Plainview, Texas 79241  
you are 18 and under we need your parents' permission  
starting and finishing location will be at 16th and Ennis  
room facilities available  
runs will be on the paved streets of  
and join us for some fun and excitement  
to seeing you!!! Saturday, October 25, 1980  
ADDRESS: DIVISION  
FEE PAID: PHONE

1980 FALL CLASSIC RUNS  
SPONSORED BY:  
PLAINVIEW Y TORNADO RUNNING  
PLAINVIEW ATHLETICS  
CAUTION: Plainview (on paved streets) - 16th and Ennis  
SAT: Saturday, October 25, 1980  
1 mile  
FEE: \$5.00 (includes T-shirt)  
AWARDS: 1st, 2nd, 3rd place in each division  
REGISTRATION APPRECIATED!!!  
Plainview, Box 37, Plainview, Texas 79241  
you are 18 and under we need your parents' permission  
starting and finishing location will be at 16th and Ennis  
room facilities available  
runs will be on the paved streets of  
and join us for some fun and excitement  
to seeing you!!! Saturday, October 25, 1980  
ADDRESS: DIVISION  
FEE PAID: PHONE

1980 FALL CLASSIC RUNS  
SPONSORED BY:  
PLAINVIEW Y TORNADO RUNNING  
PLAINVIEW ATHLETICS  
CAUTION: Plainview (on paved streets) - 16th and Ennis  
SAT: Saturday, October 25, 1980  
1 mile  
FEE: \$5.00 (includes T-shirt)  
AWARDS: 1st, 2nd, 3rd place in each division  
REGISTRATION APPRECIATED!!!  
Plainview, Box 37, Plainview, Texas 79241  
you are 18 and under we need your parents' permission  
starting and finishing location will be at 16th and Ennis  
room facilities available  
runs will be on the paved streets of  
and join us for some fun and excitement  
to seeing you!!! Saturday, October 25, 1980  
ADDRESS: DIVISION  
FEE PAID: PHONE

1980 FALL CLASSIC RUNS  
SPONSORED BY:  
PLAINVIEW Y TORNADO RUNNING  
PLAINVIEW ATHLETICS  
CAUTION: Plainview (on paved streets) - 16th and Ennis  
SAT: Saturday, October 25, 1980  
1 mile  
FEE: \$5.00 (includes T-shirt)  
AWARDS: 1st, 2nd, 3rd place in each division  
REGISTRATION APPRECIATED!!!  
Plainview, Box 37, Plainview, Texas 79241  
you are 18 and under we need your parents' permission  
starting and finishing location will be at 16th and Ennis  
room facilities available  
runs will be on the paved streets of  
and join us for some fun and excitement  
to seeing you!!! Saturday, October 25, 1980  
ADDRESS: DIVISION  
FEE PAID: PHONE

1980 FALL CLASSIC RUNS  
SPONSORED BY:  
PLAINVIEW Y TORNADO RUNNING  
PLAINVIEW ATHLETICS  
CAUTION: Plainview (on paved streets) - 16th and Ennis  
SAT: Saturday, October 25, 1980  
1 mile  
FEE: \$5.00 (includes T-shirt)  
AWARDS: 1st, 2nd, 3rd place in each division  
REGISTRATION APPRECIATED!!!  
Plainview, Box 37, Plainview, Texas 79241  
you are 18 and under we need your parents' permission  
starting and finishing location will be at 16th and Ennis  
room facilities available  
runs will be on the paved streets of  
and join us for some fun and excitement  
to seeing you!!! Saturday, October 25, 1980  
ADDRESS: DIVISION  
FEE PAID: PHONE

1980 FALL CLASSIC RUNS  
SPONSORED BY:  
PLAINVIEW Y TORNADO RUNNING  
PLAINVIEW ATHLETICS  
CAUTION: Plainview (on paved streets) - 16th and Ennis  
SAT: Saturday, October 25, 1980  
1 mile  
FEE: \$5.00 (includes T-shirt)  
AWARDS: 1st, 2nd, 3rd place in each division  
REGISTRATION APPRECIATED!!!  
Plainview, Box 37, Plainview, Texas 79241  
you are 18 and under we need your parents' permission  
starting and finishing location will be at 16th and Ennis  
room facilities available  
runs will be on the paved streets of  
and join us for some fun and excitement  
to seeing you!!! Saturday, October 25, 1980  
ADDRESS: DIVISION  
FEE PAID: PHONE

1980 FALL CLASSIC RUNS  
SPONSORED BY:  
PLAINVIEW Y TORNADO RUNNING  
PLAINVIEW ATHLETICS  
CAUTION: Plainview (on paved streets) - 16th and Ennis  
SAT: Saturday, October 25, 1980  
1 mile  
FEE: \$5.00 (includes T-shirt)  
AWARDS: 1st, 2nd, 3rd place in each division  
REGISTRATION APPRECIATED!!!  
Plainview, Box 37, Plainview, Texas 79241  
you are 18 and under we need your parents' permission  
starting and finishing location will be at 16th and Ennis  
room facilities available  
runs will be on the paved streets of  
and join us for some fun and excitement  
to seeing you!!! Saturday, October 25, 1980  
ADDRESS: DIVISION  
FEE PAID: PHONE

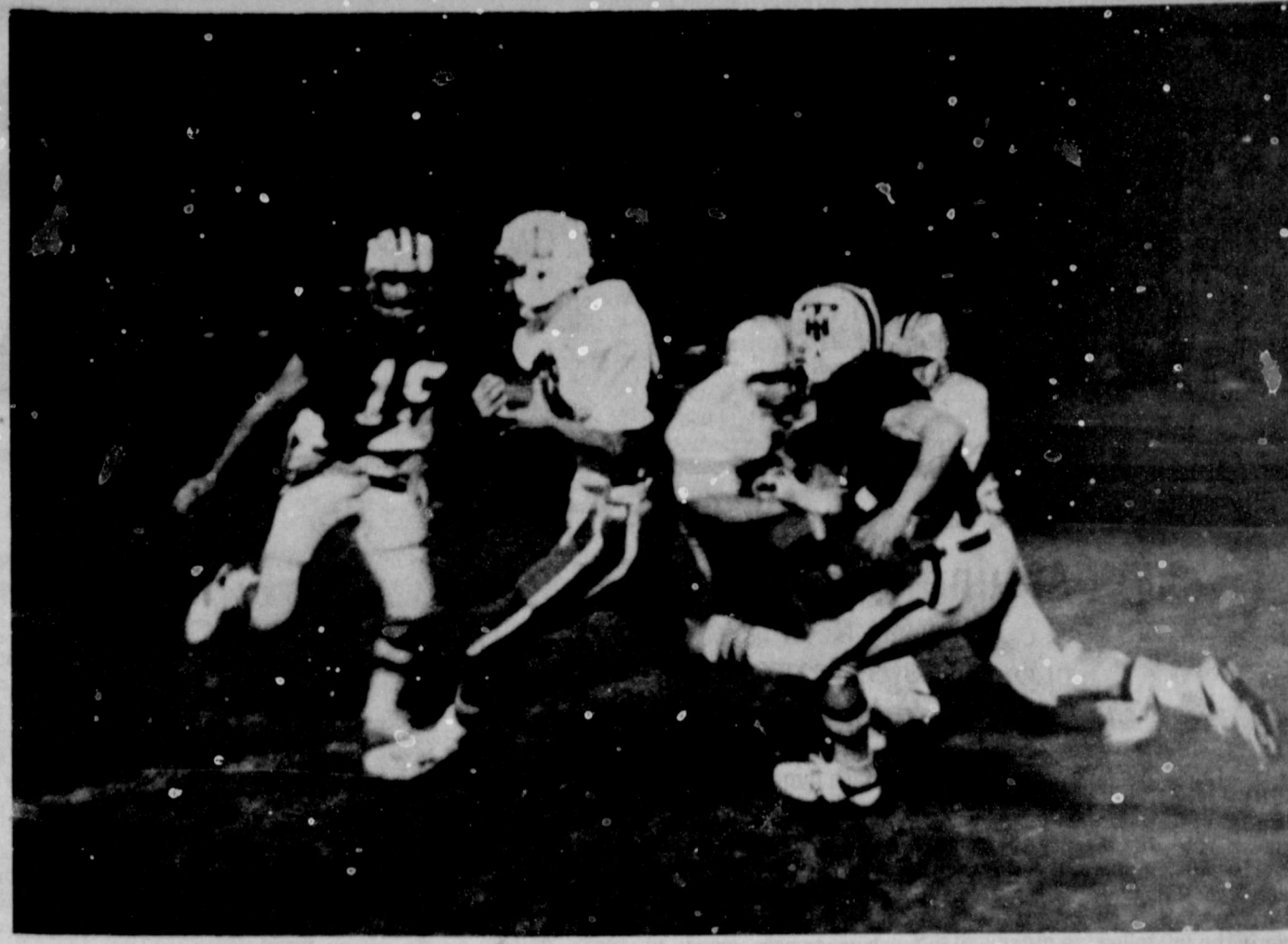
# Hornets Sting Horns

Hornets gained yards than the and had 3 less than Lockney but advantage of seven mistakes and in Friday nights score of 21-7.

pitched out to running back Junior McDonald but the ball bounced off of McDonald's shoulder and into the hands of Hornet Roland Powell. Powell had a clear field ahead of him and he carried the ball into the end zone with 3:31 left in the first quarter. The PAT was good. Lockney took Tullia's kickoff and moved to the Tullia 26, aided by some good running by John Cummings, at quarterback and Jeffery McCormick at runningback. The attack was stalled and Lockney had to settle for a field goal attempt that failed. A few minutes later, Lockney tried another field goal with the same results.

halt with bad field position, after Tullia's kickoff went to the Lockney 2 yard line. The Hornets fumbled the ball on a handoff and Tullia recovered on the Lockney 1 yard line. Littlefield carried the ball over for the Hornets making the score 20-0 with 10:12 left in the third quarter. The extra point was good and the score was 21-0.

Horns. Despite some good running by McCormick and some completed passes from Cummings to Mario Gonzales, the Horns gave up the ball several times to pass interceptions and to fumbles. They were also the victims of several penalties at crucial times. The game ended with the final score of 21-7.



JOHN CUMMINGS carries for yardage Friday night in Lockney's 21-7 loss to Tullia.

the opening the Horns on and marched up making 5 first scoring with 6 ft in the first a 19 yard run by Tullia's leading the night. The was good and the took the kickoff on the Horns 30 to travel up the up one first first and ten on 0, Lockney quar- McCormick.

On Tullia's next series of downs, John Fortenberry hit their quarterback, Wade Littlefield, and caused him to fumble. Lockney recovered but their drive was stopped by a pass interception. The first half ended with the score 14-0. Lockney began the second

The teams exchanged punts and with Tullia on their own 37 with a second and ten, the Hornets fumbled and Lockney came up with the ball.

This week we'll see the Horns at Floydada for a game for the county-championship against the Whirlwinds who were defeated by a very tough Childress Bobcat team by a score of 14-3. Childress is ranked 10th in the state. Floydada has an identical 2-4 record going into the contest.

Lockney		Tullia
16	First Downs	13
102	Yards Rushing	185
87	Yards Passing	7
189	Total Yards	192
6-24	Passes Comp/Att	1-3
3-30	Punts-Average	5-36
7-20	Penalties-Yards	12-130
3	Fumbles Lost	2
0	Intercepted By	4



FORTENBERRY grabs a Tullia Hornet and throws him for a loss. He is assisted by an official Longhorn.

## Beat Floydada

**BIG TIRE SALE**  
 Steel Belted Radials  
 Fiber Glass Belted  
 Any Size 14 in. or 15 in.  
**\$40<sup>00</sup> Each**  
 Mounting & Balancing Free  
**Rucker's OK Tire Store**  
 308 So. Main Floydada

**1980 FALL CLASSIC RUNS**  
 SPONSORED BY:  
 PLAINVIEW Y TORNADO RUNNING CLUB  
 PLAINVIEW ATHLETICS

LOCATION: Plainview (on paved streets)—16th Street  
 16th and Ennis

Saturday, October 25, 1980

1 mile 9:00 a.m.  
 5 mile 9:30 a.m.

ENTRY FEE: \$5.00 (includes T-shirt)

AWARDS: 1st, 2nd, 3rd place in each division

REGISTRATION: 1 mile Womens 19 and under 20-above  
 5 Mile Womens 19 and under 20-29 30-above

REGISTRATION APPRECIATED!!!! Mail form to  
 P.A. Plainview, Box 37, Plainview, Texas 79072.  
 If you are 18 and under we need your parent's signature along  
 with yours.

The starting and finishing location will be 16th Street Park  
 located at 16th and Ennis  
 Restroom facilities available  
 All runs will be on the paved streets of Plainview  
 Come and join us for some fun and excitement!! We look  
 forward to seeing you!!! Saturday, October 25, 1980

NAME: ADDRESS: DIVISION:  
 SEX: MALE or FEMALE 1 mile run 5 mile run  
 ENTRY FEE PAID: PHONE:  
 I accept all and full responsibility for any injury or accident to  
 myself and also waive any and all claims for myself against  
 anyone, YMCA, the officials or sponsors of this event.  
 Parent or Guardian

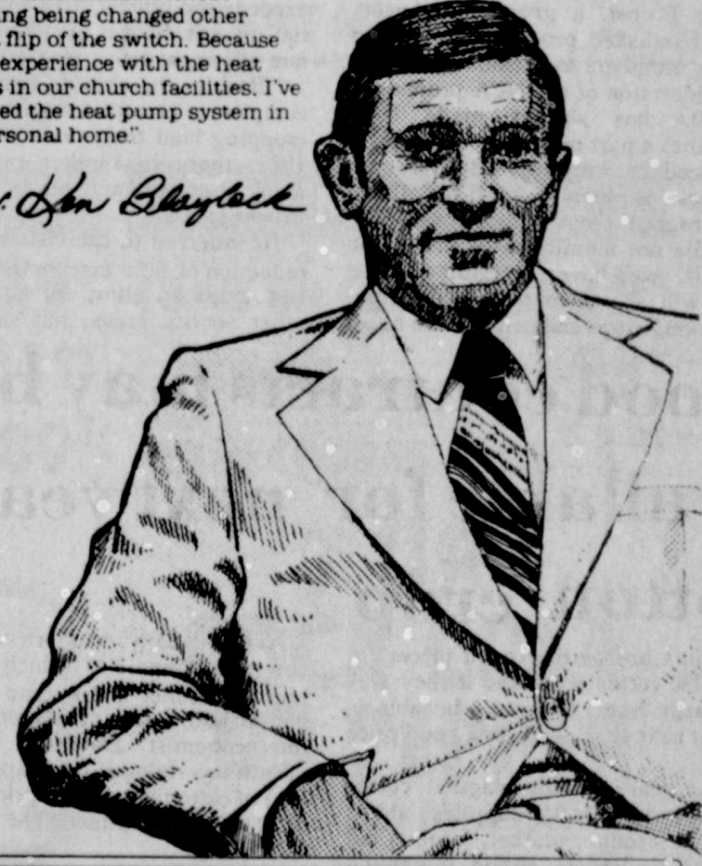
## Go Horns Whip The Winds

**LUBBOCK GUN SHOW**  
 Lubbock Civic Center  
 6th & N  
**October 25-26, 1980**  
 Saturday 8a.m.-6p.m. Sunday 8a.m.-6p.m.  
**BUY-SELL-SWAP or JUST LOOK**  
**DOOR PRIZE—BONE KNIFE**  
 (One Awarded Each Day)  
**Admission \$1.00**

## It's True.

"We installed the heat pump in our church over two years ago. The heat pump system has been very economical for us and they are able to keep our facilities much cleaner than we really expected. The statements concerning heat pumps being economical and clean have certainly proven to be true. Another feature that I like is that a heat pump can be used both summer and winter without anything being changed other than a flip of the switch. Because of our experience with the heat pumps in our church facilities, I've installed the heat pump system in my personal home."

*Rev. John Blaylock*



The things said about the heat pump are true. Find out more about the heat pump. It can save for you.



SOUTHWESTERN PUBLIC SERVICE

**WIN**  
 1st Prize.....  
 2nd Prize.....  
 3rd Prize.....

**CONTEST RULES**  
 Circle on the official entry blank the team you think will win each game. Write the name of the team and indicate the total score in the game.  
 Contestants may mail their entries or take them to the Beacon Office, 220 South Main, Lockney, Texas, and in-person entries must be at the office at the same time. Mail entry address is Box 187, Lockney, Texas 79241. One winner per family per week.

**IN' RED**

Lockney Meat Co.  
 Plainview Highway-Lockney  
 3. Rice vs. 4. Texas A&M

Schacht  
 Flowers, Jewelry & Gifts  
 Lockney, Texas  
 7. TCU vs. 8. Baylor

Four R  
 Western Wear & Irrigation  
 Lockney, Texas  
 11. Amarillo Tascosa vs. 12. Pampa

Byrd Pharmacy  
 Lockney, Texas  
 15. Canyon vs. 16. Borger

The Tye Company  
 Plainview Highway-Lockney  
 19. Olton vs. 20. Muleshoe

Fierros & Sons  
 Reddy Mix Concrete  
 Lockney, Texas  
 23. Slaton vs. 24. Cooper

The Lockney Beacon  
 Lockney, Texas  
 27. Tahoka vs. 28. Friendship

**OFFICIAL ENTRY FORM**  
 Address.....  
 6 7-8 9-10 11-12 13-14  
 19-20 21-22 23-24 25-26 27-28  
 FLOYDADA Total Score



# FARM & RANCH NEWS



## Around The County

By Jett Major

FLOYD COUNTY EXTENSION AGENT

### CRICKETS, CRICKETS EVERYWHERE

Hordes of field crickets have invaded parts of Floyd County, creating a nuisance in some areas and causing minor plant damage.

Large numbers of crickets usually occur in the fall following prolonged dry weather in the spring and summer. Cooler fall temperatures and rains often trigger cricket migrations to lighted areas around buildings.

Field crickets can damage ornamental and garden plants. Inside homes and other buildings they become a nuisance and may occasionally feed on fabrics, especially clothing stained with perspiration or food.

Cleaning the yard and garden areas will reduce cricket feeding and breeding sites. This includes destroying weeds and dense vegetation around homes and other buildings and removing piles of bricks, stones, wood and other debris

where crickets may hide. Also clean out trash dumps.

Eliminating outside lights at night also helps keep crickets away from buildings, and making sure that all screens and doors fit tightly will help keep the pests out of the home.

As far as insecticides are concerned, homeowners need to spray outside around foundation walls, window and door facings, crawl spaces, door thresholds, and in and around garbage cans and wood piles to keep crickets from moving indoors. Effective insecticides for outdoor use include chlorpyrifos (Dursban), diazinon, malathion, propoxur (Baygon), resmethrin, carbaryl (Sevin) and methaldethyde, the latter two as baits. Sprays and baits used on the inside need to be applied only to baseboards, under sinks, and around doorways and care should be taken not to contaminate food or water and not to stain walls or carpets with the insecticides.

### Windbreak Tree Seedling price lists

available at Floydada SCS Office

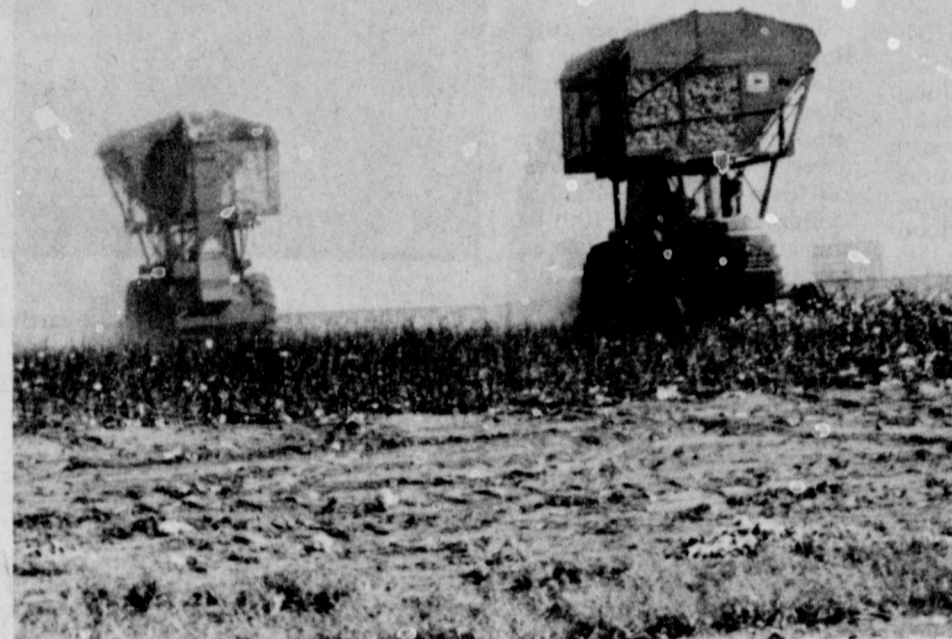
The Soil Conservation Service in Floydada has received the new price list and application forms for windbreak tree seedlings from the Texas Forest Service. The species of bare root hardwood seedlings available are Honeylocust, Mulberry, Native Plum, Russian Olive, and Sawtooth Oak, which must be ordered in quantities of 100 or more and in multiples of 50 of any one species. All orders must be accompanied by full payment (check or money order) and received by February 9, 1981. Shipments will be made by either Parcel Post or Motor Freight, whichever is less expensive.

This year conifers, available in a container, are Austrian Pine, Arizona Cypress, Ponderosa Pine, and Red Cedar. Conifer trees are mostly evergreen trees which bear some type of a cone. Conifer orders must be for a

minimum of 30 trees in multiples of 30. Since the styrofoam containers are fragile they will not be shipped. For Floyd County residents they should pick up their trees at the Texas Agricultural Experiment Station on FM 1294 in Lubbock on March 17, 1981 between 8-5 p.m. with your receipt.

Orders are filled on a first come first serve basis and acceptance of these orders are subject to prior sales as the quantity of some species are limited. Persons purchasing trees agree not to use or let others use these seedlings for landscaping or ornamental purposes.

For more information, price list or application forms contact the Soil Conservation Service at 208 S. Wall St. in Floydada or phone 983-2352. All programs and services of the USDA and SCS are available to everyone without regard to race, color, creed, sex or national origin.



STRIPPERS were able to get back in the field this week after recent rains.

## Pioneer Hi-Bred International honored Lockney Cooperatives, Warren Farms

Pioneer Hi-Bred International, Inc., recently honored Lockney Cooperatives, Inc., of Lockney and Warren Farms of Floydada for outstanding sales achievement in 1980 as a dealer for PIONEER brand seeds. They were presented a specially designed Silver Dollar Award for their accomplishments by Pioneer district sales manager Barry Love.

Jim Lindsey, president of the Southwestern Division of Pioneer, announced this year's recipients and said that all the award winners should be proud of their achievement.

"A lot of time, energy and hard work is necessary for a dealer to qualify for the Silver Dollar Awards," Lindsey

said. "I want to personally congratulate everyone with Lockney Cooperatives, Inc., and Warren Farms, for receiving this award and for serving the agriculture industry so well in their area."

The Southwestern Division of Pioneer is located in Plainview, and markets agricultural seed in Texas, Oklahoma and New Mexico, through approximately 850 dealers.

"Our dealers, just like our extensive research program, are a very important part of Pioneer. We appreciate the work the people of Lockney Cooperatives, Inc. and Warren Farms, have done, and know the farmers around Lockney and Floydada do too," Lindsey concluded.

## MARKET REPORT

Cotton harvest is in full swing over most of the county with the exception of a few areas where it is still too wet following the recent rains. The hail damage is really beginning to show up with many fields are showing a 40-50% loss.

The cotton market is climbing again and the contracts are at 3400 points over the 1980 loan. Local cotton is selling in the high 70's and low 80's. The grades are varied but much is grading SLM light and the staples are around 1". Wheat sowing is picking up since the

last rain. There is no planting in the area.

Wednesday afternoon were:  
Corn/cwt. — 4.20  
Wheat/bu. — 4.35  
Milo/cwt. — 5.80  
Soybeans/bu. — 11.00

The Floydada Livestock Market had a sale of animals Wednesday. They had a sale of fall stocker calves, good pairs.

## WANT TO HEAR FROM FARMERS? THE WEATHER

THE FEDERAL CROP INSURANCE CORPORATION, an agency of the Department of Agriculture, would

interview potential Sales representatives and Contract Loss Adjusters for the Risk Crop Insurance program in the following counties:

Childress, Cottle, Fisher, Floyd, Haskell, Jones, Knox, Stonewall and Wilbarger.

Prefer Experience

Commission Sales

Insurance

Farming

Ag Related Business

Contact:

Jakie M. Harris, District Director

Box 1626

Plainview, Texas 79072

Phone: (806) 293-4777



An Equal Opportunity Employer

## Cotton growers may be eligible for 1981 upland cotton program benefits

Cotton growers have a high stake in the U.S. Department of Agriculture's proposal to require growers to plant within their normal crop acreage (NCA) to be eligible for 1981 upland cotton program benefits.

USDA announced the proposal in the Federal Register October 3. National Cotton Council President Herman Probst, a grower of Anson, Texas, has asked producers and other industry members to petition USDA for re-consideration of the NCA proposal.

"USDA has already made NCA compliance a part of the wheat program announced in August, and there are indications it plans to do so for all the other program crops," Probst said.

"While not mentioned in the cotton proposal, we have determined that USDA will also demand cross-compliance among crops and compliance on all

farms owned and/or operated by a grower on which a program crop is planted," he explained.

Probst said the NCA requirement discriminates against cotton producers because crop acreage is a much higher percentage of the NCA in the Cotton Belt than in most other regions. In most cotton states, present crop acreage exceeds the official NCA by a substantial amount. NCA is the total of all major non-allotment crops planted in 1977.

"Besides the obvious problems NCA compliance creates for a farmer who is cropping land that was not in crops in 1977, there is another problem that many producers may not be aware of," Probst said.

He referred to the customary USDA reduction of field acreage in measuring row crops to allow for turnrows and other service areas, but said no such

allowance is given for close-planted crops such as small grains.

"Growers who plant wheat or barley behind row crops this fall to a greater extent than in 1977 may find themselves out of compliance with 1981 NCA unless the same amount of turnrow acreage is idled," Probst explained.

He added that Council delegates this year went on record opposed to letting the Secretary of Agriculture require farmers to plant within the NCA if there is no set-aside program, and USDA has indicated there is not likely to be a set-aside for 1981.

Until this year, farm law prohibited the NCA requirement in any year when set-aside was not in effect.

Probst said he is urging Council members with an interest in the acreage rules to write USDA-ASCS, Room 3630 South Building, Box 2415, Washington, D.C. 20013.

## Good contracts may be available for next year's cotton crop

Farmers are getting good prices for their 1980 cotton crop, and if they play their cards right, they may be able to contract next year's crop at a good price as well.

"This year's drought-plagued cotton crop has left U.S. supplies short, causing a stronger market," points out Dr. Carl Anderson, cotton marketing specialist with the Texas Agricultural Extension Service, Texas A&M University System. "However, demand generally has been short, with U.S. textile mills considering more polyester in cotton-polyester blends."

As of September 1, the U.S. cotton crop was estimated at 11.7 million bales, down from 14.6 million last year. And the Texas crop was pegged at 3.6 million bales compared to 5.5 million a year ago.

The world crop at 63.4 million bales means a drop of about 2.1 million from 1979 levels. Both Russia and China have somewhat better cotton crops this year.

"While most producers are currently enjoying stronger cotton prices, the market's strength may soften once cotton users adjust their demand to higher price levels," says Anderson. "Some mills are already building up excessive inventories of unsold goods and have cut work weeks to three or four days."

Average daily spot prices for Strict Low Middling 1-1/16-inch cotton in mid-September were some 30 cents a pound above last year's prices, notes the economist. However, this year's drought has reduced the staple length of a lot of cotton, leading to price discounts of 10 to 20 cents under SLM 1-1/16-inch cotton.

While domestic use of cotton is expected to be off about a half million bales this year, exports may drop more than three million. This will put domestic use as well as exports at some six million bales each for a total disappearance of 12 million bales. U.S. cotton exports of 9.2 million bales during the 1979-80 season were the largest in 53 years.

With this year's expected crop of 11.7 million bales or less, carryover next August may be substantially under the three million bales remaining after the 1979 crop.

"Despite some slackening in the demand for cotton both at home and abroad, the market should remain strong for at least a few months," believes Anderson.

He urges producers to stay abreast of market developments and to try to anticipate future prices as influenced by changes in supply, mill use, export demands, farm programs and international trade developments.

**Case** Fully Reconditioned Used Farm Equipment

At Case Power and Equipment, we take great pride in offering you only the finest reconditioned used farm equipment available. When we trade for used farm equipment, we don't just clean it up and make it look nice, we go over it from top to bottom, replacing any worn or worn-out parts before we offer our equipment for sale. Come to Case Power and Equipment today and look over our large selection of used farm equipment. You'll be glad you did.

**Lubbock Farm Tractors**

1965 930 Cab	\$4,500.00
AC 190 XT Series 3 Cab	\$7,900.00
1 HC 1066 with Cab and Air	\$11,900.00
1979 2090 Cab, Air, 223 hrs	\$24,400.00
1979 2390 Cab, Air, 895 hrs	\$28,800.00
1976 2670 Cab, Air, PTO	\$29,000.00
1971 1070 Cab	\$9,800.00
1978 990 D.B. only 321 hours	\$8,000.00

**Floydada**

1976 2670 Cab, Air, PTO	\$29,900.00
Case 1370 Cab, Air	\$15,400.00
Case 1175 Cab, Air	\$12,800.00
Case 1175 with 70 Loader	\$8,900.00
Case 1175 with Cab	\$9,900.00
Ag Gator Sprayer	\$3,450.00
AT 4 1600 White 4-wheel dr P.D.J. Cab and Air	\$12,500.00

**Lamesa**

Case 830 LP	\$4,200.00
1170 Cab and Factory Duals	\$9,900.00
1370 Case Cab, Air	\$16,900.00
1570 Case Cab, Air	\$21,500.00
1 HC 1466 Cab, Air	\$17,700.00

**Case Power and Equipment**

Lubbock • 3302 Slaton Hwy. 745-4451  
Lamesa • 902 S. Dallas 872-5861  
Floydada • 101 South 12th 983-2836

Sponsored by the Following Interested Firms

First National Bank Floydada	Case Power & Equipment Floydada	Russell's Equipment & Supply Floydada	Floyd County Farm Bureau
Floydada Cooperative Gins	The Floyd County Hesperian	Consumers Fuel Association Lockney	Perry Implement Lockney
Federal Land Bank Association Of Floydada	Martin And Company Floydada	Plainview Savings & Loan Association Floydada	Ansley & Sons Lockney
			Floydada Implement Co.

## OBITUARY

**WARRISON**  
Ocie Bell Morrison of Floydada was Tuesday in Calvary Cemetery with the Rev. Neale Rich-  
pastor, officiating. Mrs. Morrison died Sunday in Central Plains Hospital after an

**ARMORE**  
Oklahoma, moved to Floyd County Crosby County in was a member of Baptist Church. Allen of Floydada; a son, Guanema Fancher; her mother, Mrs. Childs of Floydada; her father, Elvis Childs of and Buddy Childs of and two grand-

**GARCIA**  
Garcia, 74, of Odem, died Wednesday, Oct. 14, 1980. Services were held at 10 o'clock Friday at Sacred Heart Church in Odem, with the Rev. Alvarado officiating.

**DELA CRUZ**  
Mary DeLaCruz, 58, of Floydada was at St. Mary's Catholic Church in Floydada under direction of the Rev. DeLaCruz died about 10 p.m. Saturday in Capitan Hospital after a short illness.

**DELA CRUZ**  
Mary DeLaCruz, 58, of Floydada was at St. Mary's Catholic Church in Floydada under direction of the Rev. DeLaCruz died about 10 p.m. Saturday in Capitan Hospital after a short illness.

**DELA CRUZ**  
Mary DeLaCruz, 58, of Floydada was at St. Mary's Catholic Church in Floydada under direction of the Rev. DeLaCruz died about 10 p.m. Saturday in Capitan Hospital after a short illness.

**DELA CRUZ**  
Mary DeLaCruz, 58, of Floydada was at St. Mary's Catholic Church in Floydada under direction of the Rev. DeLaCruz died about 10 p.m. Saturday in Capitan Hospital after a short illness.

**DELA CRUZ**  
Mary DeLaCruz, 58, of Floydada was at St. Mary's Catholic Church in Floydada under direction of the Rev. DeLaCruz died about 10 p.m. Saturday in Capitan Hospital after a short illness.

**DELA CRUZ**  
Mary DeLaCruz, 58, of Floydada was at St. Mary's Catholic Church in Floydada under direction of the Rev. DeLaCruz died about 10 p.m. Saturday in Capitan Hospital after a short illness.

**DELA CRUZ**  
Mary DeLaCruz, 58, of Floydada was at St. Mary's Catholic Church in Floydada under direction of the Rev. DeLaCruz died about 10 p.m. Saturday in Capitan Hospital after a short illness.

**DELA CRUZ**  
Mary DeLaCruz, 58, of Floydada was at St. Mary's Catholic Church in Floydada under direction of the Rev. DeLaCruz died about 10 p.m. Saturday in Capitan Hospital after a short illness.





# LEGAL NOTICE

**AVISO DE ELECCION PARA BONOS**  
**EL ESTADO DE TEXAS**  
**CONDADOS DE SWISHER, BRISCOE Y FLOYD**  
**AUTORIZADA DE AGUAS MUNICIPALES DE MACKENZIE**  
**A LOS RESIDENTES CON DERECHO DE VOTAR**  
**DE LA AUTORIDAD DE AGUAS MUNICIPALES DE MACKENZIE:**

AVISO de que una eleccion tendra lugar a la Autoridad de Aguas Municipales de Mackenzie el dia 22 de noviembre de 1980, en cumplimiento de una resolucio debidamente presentado por la Junta Directiva, la cual se acompaia y se hace parte de este Aviso para todo objeto practico.

**DAMOS TESTIMONIO DE NUESTRAS FIRMAS Y DEL SELLO DE DICHO AUTORIDAD,** este dia 14 de octubre de 1980.

Lon M. Davis Jr.  
 Presidente, Junta Directiva Autoridad de Aguas Municipales de Mackenzie

ATESTIGUA:  
 Boyd W. Vaughn  
 Secretario, Junta Directiva Autoridad de Aguas Municipales de Mackenzie (Sello de la Autoridad)

UNA RESOLUCION por la Junta Directiva de la Autoridad de Aguas Municipales de Mackenzie, declarando una eleccion para bonos.

VISTO QUE, se ha preparado y presentado un revisado reporte de ingenieria a la Junta Directiva de la Autoridad de Aguas Municipales de Mackenzie cubriendo la construccion e instalacion de purificacion de aguas, facilidades para abastecimiento y transmision para el proveer de aguas purificadas del tanque de Mackenzie a las otras ciudades socias de la Autoridad; y

VISTO QUE, basado en tal revisado reporte de ingenieria, se hace un resumen del costo de construir e instalar las facilidades y el derivar de pagar el costo de esto como sigue:

Costo aproximado:  
 Estacion de Bombeo de Aguas en depuro y canos de abastecimiento...\$ 300,000  
 Planta para purificar las Aguas ..... \$1,800,000  
 Cano principal de Abastecimiento..... 650,000  
 Deposito de Aguas Puras..... 275,000  
 Estacion de Bombeo de Aguas Puras ..... 89,000  
 Terreno y Derecho de Paso ..... 23,000  
 Acceso a la Planta de Purificacion y Estacion de Bombeo ..... 150,000  
 Ingenieria ..... 263,000  
 Costo Legal, Fiscal, de Administracion y Ademas 63,000  
 Contingencia ..... 792,000  
 Total de Costo Revisado...\$4,405,000  
 Derivacion de Fondos:  
 Datividad del Gobierno de los U. S.....\$1,000,000  
 \*Bonos de la Autoridad 3,405,000  
 Total.....\$4,405,000

\*\$1,255,000 en cantidad principal de bonos aprobados en la eleccion del 5 de septiembre de 1969 que da no emite.

Visto Que, la Junta Directiva por este medio encuentra y determina que una eleccion para bonos debera tener lugar sobre la cuestion de la emision de bonos para financiar el costo del dicho proyecto como revisado; ahora, por consiguiente,

**QUE SEA RESUELVE POR LA JUNTA DIRECTIVA DE LA AUTORIDAD DE AGUAS MUNICIPALES DE MACKENZIE:**

SECCION 1: Que una eleccion tenga lugar el dia 22 de noviembre de 1980 en la Autoridad de Aguas Municipales de Mackenzie, con el fin de presentar a todos los residentes calificados y electores de la Autoridad la siguiente proposicion:

"DEBERA la Junta Directiva de la Autoridad de Aguas Municipales de Mackenzie ser autorizada a emitir bonos de la Autoridad en la cantidad principal maxima de \$2,150,000 con el fin de proveer una derivacion de abastecimiento de aguas para las ciudades socias de la Autoridad y otros consumidores con propositos municipal, domestico, industrial y otros propositos utiles permitidos por la ley por medio de la construccion de una estacion de bombeo de aguas en depuro y canos de abastecimiento, planta para puri-

ficar las aguas cano principal de abastecimiento de aguas puras, deposito estacion de bombeo de aguas puras, dichos bonos a ser emitidos en una o mas cuotas, a vencer en forma escalonada o de otra manera no mas que CUARENTA (40) anos de su fecha, a ser vendidos al precio o precios y a devengar interes al porcentaje o porcentajes (con tal que el porcentaje del interes neto vigente de cualquier emision o serie no sobrepase el diez por ciento (10% al ano, como estipulado por el Articulo 717k-2, V.A.T.C.S.) como sea determinado a voluntad de la Junta Directiva al ser emitido; y para proveer el pago del principal e interes de dichos bonos cuando los mismos vengan por el gravamen de un impuesto ad valorem, suficiente sin limite en cuanto al porcentaje o cantidad, a toda propiedad imponible dentro de la Autoridad?"

SECCION 2: Que se usen balotas electorales de papel en dicha eleccion y que se preparen las cuales balotas de acuerdo con el Codigo Electoral V.A.T.S., de manera de permitir a los electores votar "EN PRO" o "EN CONTRA" a la antedicha proposicion que se presentara basicamente de la siguiente manera:  
 "LA EMISION DE BONOS POR UN TOTAL DE \$2,150,000 Y EL GRAVAMEN DE LOS IMPUESTOS EN PAGO DE LOS BONOS"  
 Se pondran las palabras "EN PRO" y bajo ellas las palabras "EN CONTRA" a la izquierda de la proposicion se dibujara un cuadrado a la izquierda de las palabras "EN PRO" y "EN CONTRA" y cada votador pondra una "X" en el cuadro al lado de la proposicion indicando como desea votar.

SECCION 3: Que los limites incorporados de cada una de las ciudades socias de la Autoridad constituyan un recinto electoral separado para votar para cada uno de dichos recintos electorales y las personas por este medio nombradas para servir el cargo de Juez Actuante en cada uno de dichos lugares para votar seran los siguientes:  
 Recinto Electoral Ciudad de Tullia. Lugar Para Votar Casa Municipal, Juez Actuante Daphne Hale.  
 Recinto Electoral Ciudad de Silvertown, Lugar Para Votar Casa Municipal, Juez Actuante Sra. Wayne Nance.  
 Recinto Electoral Ciudad de Lockney, Lugar Para Votar Casa Municipal, Juez Actuante Kelton Shaw.  
 Recinto Electoral Ciudad de Floydada, Lugar Para Votar Casa Municipal, Juez Actuante John K. West.

El Juez Actuante de cada lugar para votar nombrara un Juez Actuante Suplente y no menos que dos (2) ni mas que tres (3) escribientes calificados para ayudar y atender en llevar a cabo dicha eleccion.  
 Durante el dia de eleccion cada lugar para votar estara abierto desde las 7:00 de la manana hasta las 7:00 de la noche.

SECCION 4: La oficina principal para dar votos en ausencia para esta eleccion, sucursales por este medio autorizadas a ser establecidos para dirigir votos en ausencia hedios en persona y las personas por este medio nombradas como escribientes y escribientes suplentes para los votos en ausencia seran los siguientes:  
 Oficina Principal: Casa Municipal, 201 N. Maxwell, Tullia, Texas 79088.  
 Escribiente: Sra. Barbara Cabe.  
 Sucursales: Casa Municipal, 114 W. Virginia St., Floydada, Texas.  
 Escribiente Suplente: Senoria Jimmie Lou Stewart.  
 Casa Municipal, 215 Locust St., Lockney, Texas.  
 Escribiente Suplente: SRA. Erma Lee Duckworth.  
 Casa Municipal, 505 Broadway, Silvertown, Texas.  
 Escribiente Suplente: Jerry Patton.

Las horas nombradas para los votos en ausencia hechos en persona seran desde las 8:00 de la manana hasta las 5:00 de la tarde en la oficina principal y desde las 8:00 de la manana hasta las 5:00 de la tarde, en los sucursales todos los dias, con la excepcion de los sabados, domingos y dias de feria oficiales del estado, durante el periodo en que se pueda

votar en ausencia permitido por la ley.

SECCION 5: Que todos los residentes con derecho de votar de la Autoridad sean autorizados a votar en dicha eleccion y que esta eleccion sea dirigida y tenga lugar de acuerdo con las estipulaciones del Codigo Electoral de Texas, excepto como modificado por las estipulaciones del Capitulo 277, Actas de la 59 Legislatura, Sesion Regular, 1965, y como sea requerido por la ley, todo material y procedimiento para esta eleccion sea impreso tanto en ingles como en espanol.

SECCION 6: Que una copia fidedigna de esta resolucio sirva como aviso adecuado de esta eleccion y que dicho aviso, incluyendo una traduccion al espanol de esto sea publicado, una vez a la semana de dos semanas consecutivas, en cada uno de los periodicos publicados en la Autoridad, que la fecha de la primera publicacion de dicho aviso en cada uno de dichos periodicos sea a lo menos veinte y un (21) dias antes de la fecha de la eleccion.

ACEPTADO Y aprobado, este dia 14 de octubre de 1980.

Lon M. Davis Jr.  
 Presidente, Junta Directiva Autoridad de Aguas Municipales de Mackenzie

ATESTIGUA:  
 Boyd W. Vaughn  
 Secretario, Junta Directiva Autoridad de Aguas Municipales de Mackenzie (Sello de la Autoridad) 43-2c

## NOTICE OF BOND ELECTION

THE STATE OF TEXAS  
 MACKENZIE MUNICIPAL WATER AUTHORITY  
 COUNTIES OF SWISHER, BRISCOE AND FLOYD

TO THE RESIDENT QUALIFIED ELECTORS OF THE MACKENZIE MUNICIPAL WATER AUTHORITY:

TAKE NOTICE that an election will be held in the Mackenzie Municipal Water Authority on the 22nd day of November, 1980, in accordance with a resolution duly entered by the Board of Directors of said Authority, which is attached hereto and made a part of this Notice for all intents and purposes.

WITNESS MY HAND AND THE SEAL OF SAID AUTHORITY, this 14th day of October, 1980.

Lon M. Davis, Jr.  
 President, Board of Directors Mackenzie Municipal Water Authority

ATEST: Boyd W. Vaughn  
 Secretary, Board of Directors Mackenzie Municipal Water Authority

(Authority Seal)

A RESOLUTION by the Board of Directors of the Mackenzie Municipal Water Authority calling a bond election.

WHEREAS, a revised engineering report has been prepared and submitted to the Board of Directors of the Mackenzie Municipal Water Authority covering the construction and installation of water treatment, supply and transmission facilities for the furnishing of treated water from the Mackenzie Reservoir to the Authority's member cities; and

WHEREAS, based on such revised engineering report, the costs of constructing and installing the facilities and sources of paying the costs thereof are summarized as follows:

Estimated Costs:  
 Raw Water Pump Station and Supply Line — \$ 300,000  
 Water Treatment Plant 1,800,000  
 Water Supply Main 650,000  
 Treated Water Storage 275,000  
 Treated Water Pump Station 89,000  
 Land and Right of Way 23,000  
 Access to Treatment Plant and Pump Station 150,000  
 Engineering 263,000  
 Legal, Fiscal, Administration & Other Costs 63,000  
 Contingencies 792,000  
 Total Revised Costs \$4,405,000

## Many Hearing Problems Can Be Helped

Chicago, Ill.—A free offer of special interest to those who hear but do not understand words has been announced by Beltone. A non-operating model of the smallest Beltone aid of its kind will be given absolutely free to anyone requesting it.

True, all hearing problems are not alike... and some cannot be helped by a hearing aid. But audiologists report that many can. So, send for this free model now, and wear it in the privacy of your own home. It is not a real hearing aid, but it will show you how tiny hearing help can be. It's yours to keep, free. The actual aid weighs less than a third of an ounce, and it's all at ear level, in one unit.

These models are free, so we suggest you write for yours now. Again, we repeat, there is no cost, and certainly no obligation. Thousands have already been mailed, so write today to Dept. 62121 Beltone Electronics, 4201 W. Victoria, Chicago, Ill. 60646.

The word "FOR" and beneath it the word "AGAINST" shall be made to appear on the left of said proposition. A square shall be printed on the left of each of the words "FOR" and "AGAINST" and each elector shall place an "X" in the square beside the statement indicating their vote.

SECTION 3: That the corporate boundaries of each of the Authority's member cities shall constitute a separate election precinct for this election and the polling places for each of said election precincts and the persons hereby appointed to serve as presiding judge at each of such polling places shall be as follows:

Election Precinct, Polling Place, Presiding Judge  
 City Of Tullia, City Hall, Daphne Hale  
 City of Silvertown, City Hall, Mrs. Wayne Nance  
 City of Lockney, City Hall, Kelton Shaw  
 City of Floydada, City Hall, John K. West

The Presiding Judge of each polling place shall appoint one assistant judge and not less than two (2) nor more than three (3) qualified clerks to serve and assist in the holding of said election.

On election day each of said polling places shall be open between the hours of 7:00 A.M. and 7:00 P.M.

SECTION 4: The main office for absentee voting for this election, branch offices hereby authorized to be established for conducting absentee voting by personal appearance and the persons hereby appointed Clerks and Deputy Clerks for absentee voting shall be as follows:

Main Office: City Hall, 201 N. Maxwell, Tullia, Texas 79088  
 Clerk: Mrs. Barbara Cabe  
 Branch Offices: City Hall, 114 W. Virginia St., Floydada, Texas  
 Deputy Clerk: Miss Jimmie Lou Stewart  
 City Hall, 215 E. Locust St., Lockney, Texas  
 Deputy Clerk: Mrs. Emma Lee Duckworth  
 City Hall, 505 Broadway, Silvertown, Texas  
 Deputy Clerk: Jerry Patton

The hours designated for absentee voting by personal appearance shall be from 8:00 A.M. to 5:00 P.M. at the main office and from 8:00 A.M. to 5:00 P.M. at each branch office each day, except Saturdays, Sundays and official State holidays, during the period absentee voting is permitted by law to be held.

SECTION 5: That all resident qualified electors of the Authority are authorized to vote in said election, and this election shall be conducted and held in accordance with the provisions of the Texas Election Code, except as modified by the provisions of Chapter 277, Acts of the 59th Legislature, Regular Session, 1965, and, as may be required by law, all election materials and proceedings for this election shall be printed in both English and Spanish.

SECTION 6: That a substantial copy of this resolution shall serve as proper

**Agri-Facts**  
 By Jerry Perry

One way to get rid of the boll weevil may be to beat him with a tree. Actually, it's a product of the tree. The Tung tree. Deterrent 1 is the name of the product which is derived from tung oil. Tung oil is relatively easy to extract from the trees and the trees grow well nearly anywhere with a warm climate. Now back to the boll weevil. USDA scientists, determined to get rid of the expensive pest, started working with tung oil nearly 20 years ago and finally have discovered a mixture that works. They say you can dip a plump-and-juicy cotton boll (that's how it looks to the weevil) in Deterrent 1 and drop it in front of some nearby starved weevils. Hardly any of them will take even a second look. If all goes well, it should be available soon.

notice of this election, and said notice, including a Spanish translation thereof, shall be published once a week for two consecutive weeks, in each of the newspapers published in the cities contained in the Authority, the date of the first publication of such notice in each of such newspapers to be at least twenty-one (21) days prior to the date of the election.

PASSED AND APPROVED, this the 14th day of October, 1980.

Lon M. Davis, Jr.  
 President, Board of Directors Mackenzie Municipal Water Authority

ATEST: Boyd W. Vaughn  
 Secretary, Board of Directors Mackenzie Municipal Water Authority

(Authority Seal)

FINANCIAL STATEMENT of the South Plains Water Authority

1. Tax Rate 1979 \$1.15 per \$100 of assessed valuation of District  
 11. Assessed Valuation of District for 1979 - 1980  
 111. Budget for 1979 - 1980

Balance on hand Sept. 1, 1979

State Funds

Local Taxes - Maintenance

County Available

Other Non-Revenue Receipts

Accounts Receivable

Total Receipts

Less Contingency Balance

EXPENDITURES

Instruction & Administration

Operation of Plant

Maintenance of Plant

Transportation & Lunchroom

Fixed Charges (Ins. & Interest)

Out Going Transfers

Capital Outlay

Tax Collection-Evaluation Discounts

Accounts Payable-Prior year

Accounts Payable-Current year

Total Disbursements

SCHOOL DISTRICT

FINANCIAL STATEMENT of the Dougherty Water Authority

1. Tax Rate 1979 \$1.15 per \$100 of assessed valuation of District  
 11. Assessed Valuation of District for 1979 - 1980  
 111. Budget for 1979 - 1980

Balance on hand Sept. 1, 1979

State Funds

Local Taxes - Maintenance

County Available

Other Non-Revenue Receipts

Accounts Receivable

Total Receipts

Less Contingency Balance

EXPENDITURES

Instruction & Administration

Operation of Plant

Maintenance of Plant

Transportation & Lunchroom

Fixed Charges (Ins. & Interest)

Out Going Transfers

Capital Outlay

Tax Collection-Evaluation Discounts

Accounts Payable-Prior year

Accounts Payable-Current year

Total Disbursements

SCHOOL DISTRICT

FINANCIAL STATEMENT of the Dougherty Water Authority

1. Tax Rate 1979 \$1.15 per \$100 of assessed valuation of District  
 11. Assessed Valuation of District for 1979 - 1980  
 111. Budget for 1979 - 1980

Balance on hand Sept. 1, 1979

State Funds

Local Taxes - Maintenance

County Available

Other Non-Revenue Receipts

Accounts Receivable

Total Receipts

Less Contingency Balance

EXPENDITURES

Instruction & Administration

Operation of Plant

Maintenance of Plant

Transportation & Lunchroom

Fixed Charges (Ins. & Interest)

Out Going Transfers

Capital Outlay

Tax Collection-Evaluation Discounts

Accounts Payable-Prior year

Accounts Payable-Current year

Total Disbursements

SCHOOL DISTRICT

FINANCIAL STATEMENT of the Dougherty Water Authority

1. Tax Rate 1979 \$1.15 per \$100 of assessed valuation of District  
 11. Assessed Valuation of District for 1979 - 1980  
 111. Budget for 1979 - 1980

Balance on hand Sept. 1, 1979

State Funds

Local Taxes - Maintenance

County Available

Other Non-Revenue Receipts

Accounts Receivable

Total Receipts

Less Contingency Balance

EXPENDITURES

Instruction & Administration

Operation of Plant

Maintenance of Plant

Transportation & Lunchroom

Fixed Charges (Ins. & Interest)

Out Going Transfers

Capital Outlay

Tax Collection-Evaluation Discounts

Accounts Payable-Prior year

Accounts Payable-Current year

Total Disbursements

SCHOOL DISTRICT

FINANCIAL STATEMENT of the Dougherty Water Authority

1. Tax Rate 1979 \$1.15 per \$100 of assessed valuation of District  
 11. Assessed Valuation of District for 1979 - 1980  
 111. Budget for 1979 - 1980

Balance on hand Sept. 1, 1979

State Funds

Local Taxes - Maintenance

County Available

Other Non-Revenue Receipts

Accounts Receivable

Total Receipts

Less Contingency Balance

EXPENDITURES

Instruction & Administration

Operation of Plant

Maintenance of Plant

Transportation & Lunchroom

Fixed Charges (Ins. & Interest)

Out Going Transfers

Capital Outlay

Tax Collection-Evaluation Discounts

Accounts Payable-Prior year

Accounts Payable-Current year

Total Disbursements

SCHOOL DISTRICT

FINANCIAL STATEMENT of the Dougherty Water Authority

1. Tax Rate 1979 \$1.15 per \$100 of assessed valuation of District  
 11. Assessed Valuation of District for 1979 - 1980  
 111. Budget for 1979 - 1980

Balance on hand Sept. 1, 1979

State Funds

Local Taxes - Maintenance

County Available

Other Non-Revenue Receipts

Accounts Receivable

Total Receipts

Less Contingency Balance

EXPENDITURES

Instruction & Administration

Operation of Plant

Maintenance of Plant

Transportation & Lunchroom

Fixed Charges (Ins. & Interest)

Out Going Transfers

Capital Outlay

Financial Statement of the South Plains... RECEIPTS: Balance on hand Sept. 1, 1979... EXPENDITURES: Instruction & Administration... Total Disbursements...

Financial Statement of the Dougherty... RECEIPTS: Balance on hand Sept. 1, 1979... EXPENDITURES: Instruction & Administration... Total Disbursements...

AUCTION 10 A.M. SATURDAY OCT. 25, 1980 West of I-27 On Olton Highway PLAINVIEW, TEXAS

- TIRES & WHEELS: 47-Truck Tires, 20-New 8.25 X 20 Truck Tires... PAINT EQUIPMENT: 1-2 1/2 gal. Paint Pot... GARAGE SALE: 1-1982 Ferguson 20... FARM SERVICES: Land Leveling, terraces, bench leveling...

It's Results You Want-It's CLASSIFIED ADS You Need

REAL ESTATE

Farms & Acre: FOR SALE: Large brick home 7 miles southwest of Floydada on 4 1/2 acres... FOR SALE: Farm located West of Muncy, 216 acres cultivated, 40 acres grazing land...

WANTED: WOULD LIKE TO BUY small building, for storage and hobby workshop building... WANT TO BUY 20 inch used girls bicycle...

FOR RENT: FOR RENT: Small 2 bedroom house, available November 1... FOR RENT: Furnished 2 bedroom mobile home...

FOR RENT: In Lockney, one one-bedroom apartment. Come by 108 N. Main or call 652-3813.

FOR SALE: In Lockney brick, 1 1/2 bedroom garage, base-cornet lot. Excellent location. Assumed 5% down. Contact Paul R. 1, Box 152, Rt. 1, Box 152, 76457 or call 6526.

FOR SALE: 613 South Lockney, Wednesday, Friday and Saturday. Cash file cabinets, anti-counter, collect misc. 652-2201. L10-23p

FAMILY GARAGE: 423 W. Mississippi, CB radio, children clothes, picket plane. L10-23c

FOR SALE: at 706 South Thursday 1 p.m. to 6 Friday 9 a.m. to 6 Saturday 9 a.m. to 1 p.m. There will be furniture, and misc.

THANKS: Friends and neighbors for the cards, visits, flowers and food and prayers we are grateful. Family of W.R. McDonald. Mrs. J.R. McDonald, Rosemary Salzmann Martell Stewart, Marie Dillard Hiram McDonald L10-23c

BUSINESS SERVICES

REPAIR WORK done on evaporative air conditioners. Collins Appliance. 983-5702. tfc

Adams Well Service Complete Irrigation Service. All sizes submergible pumps in stock. One day service. 983-5003. tfc

INSULATION: Fire-Resistant. Installed and Guaranteed. MARR Insulation Co. Lockney 652-3593 L10-23c

JACKSON ELECTRIC Residential & Commercial Servicing Rural Communities At 652-2737 L10-23c

INTERIOR PAINTING WALL PAPERING: Call Rena Turner or Nancy Mayo, 983-5130 or 983-2667. tfc

"Carpet Need Cleaning?" Let us do the work for you. Dry foam, 10 cents sq. foot. Also home and auto upholstery. Call Jack Moore 983-3033, after 5 p.m. tfc

For Interior Painting and Wallpapering Call Sue Casey 652-3414

INSTRUCTION: Artists, aspiring artists. Oil painting classes can be arranged on Wednesdays, Fridays. Write, indicate interest in day, nite, beginning, advanced. 5-four hour lessons \$45. Melba Mabry 2122 69th, Lubbock 79412. 10-30p

POOL SERVICE AND RADIATOR SHOP: Irrigation, domestic, and windmill service. 407 E. Houston, 983-5610 or 983-2285. tfc

FARM SERVICES: Land Leveling, terraces, bench leveling, and pump pits, all types of dirt work for soil and water conservation. Dewie Parsons 983-2646. Fred Parsons, 983-2074. tfc

LOST: Elderly couples miniature collie. Very friendly. Answers to name of Brandy. Reward. 115 W. Crockett. Call Jim Fitzgerald, 983-2549. 10-23p

LOST GLASSES: Grey plastic frames. Bifocals. Call 983-5256 day or 983-3695 night. 10-30c

Seed Wheat Cleaning: Bulk or Bag, Double Treated. Producers Cooperative Elevators

Can You Use Some Extra Money Let Us Help!!!! WE BUY SCRAP IRON, OLD JUNKERS, AND FREE PICKUP Call 983-5277

LOCKNEY PRINTING: ALL TYPES COMMERCIAL PRINTING Phone 652-2184 We Appreciate Your Business.

BAKER Insurance Agency: W. Calif. Ph. 983-3270

Supervision and direct patient care in a 50 nursing facility. Benefits include: Sick pay, Holiday vacation pay, and paid house insurance. 2-45-11:15 Full time or part time. \$5.40 per hour. Call Beverly 2M. 652-2502. Under New Administration.

Public Notices

NOTICE OF MEETINGS: Notice is hereby given that said meetings with McMorris & Company and Board of Equalization will be at the following places, on following dates and time.

MEETING DATES FOR HEARINGS: FLOYDADA at County Court Room Oct. 21 - Prehearing at 9 a.m.-4 p.m. Oct. 22 - Prehearing at 9 a.m.-4 p.m. Oct. 23 - Prehearing at 9 a.m.-4 p.m. Oct. 24 - Prehearing at 9 a.m.-4 p.m. Oct. 27 - Board of Equalization 9 a.m.-4 p.m. Oct. 28 - Board of Equalization 9 a.m.-4 p.m.

LOCKNEY at City Hall Meeting Room Oct. 29 - Prehearing 9 a.m.-4 p.m. Oct. 30 - Prehearing 9 a.m.-4 p.m. Oct. 31 - Board of Equalization 9 a.m.-4 p.m.

Any and all persons interested or having business with said Board meetings are hereby notified to be present. Secretary, Tom Duval 10-23c

NOTICE TO ALL PERSONS HAVING CLAIMS AGAINST THE ESTATE OF ED WHITFILL, DECEASED: Notice is hereby given that original Letters Testamentary for the Estate of ED WHITFILL were issued on the 15th day of October, 1980, in Cause No. 4484, pending in the County Court of Floyd County, Texas, to:

EVA WHITFILL The residence of such Executor is Floyd County, Texas. The post office address is c/o John R. Hollums, Attorney 101 North Main Floydada, Texas 79235

All persons having claims against this Estate which is currently being administered are required to present them within the time and in the manner prescribed by law. DATED the 15th day of October, 1980. John R. Hollums Attorney for the Estate

REAL ESTATE FOR SALE: Looking for something special? Beautifully landscaped, 2 living areas with fireplaces. Lots of Extras. Starter home just right for that young couple. 3 bedroom, 1 bath, car port. Call today about this lovely almost new 3 bedroom, 2 bath, in quiet neighborhood.

Farm Land-144.6 Acres Irrigated Farm about 9 1/2 miles west of Floydada on paved F.M. road. Contact us for details. Call Sam Hale at 983-3261 HALE INS. & REAL ESTATE.

Custom Spraying: Application of Herbicides and Insecticides Bruce Williams Day 652-2462 Night 652-3129

Hollis R. Bond Real Estate: PHONE 983-2151 107 S. 5th FLOYDADA

Diamond Industrial Supply Co., Inc.: Phone Days 296-7418 Nights 296-1200 or 296-7828 1014 Broadway Plainview, Texas U joints Oil Seals O rings Wisconsin SKF BCA Timken Bower Cotton Stripper Brushes & Bats "We Appreciate Your Business More!"

TURNER REAL ESTATE: 983-2635 Farms Ranches Floydada, Texas

J. P. WILLIAMS: Ph. 652-2326 WEED CONTROL ON LAWNS INSECT CONTROL ON TREES AND SHRUBS CONTROL OF BINDWEED, RAGWEED, BLUEWEED & JOHNSON GRASS ON FARMS C. A. LIC. NO. 22453 BUS. LIC. NO. 3106 L10-23c

Darden Machine & Welding: 1 Day Service Radiator and Gear Head Repair From Floydada, 6 miles North on Plainview highway, turn West at Muncy Elevator 1/2 mile and 1/2 mile South Day or Night Phone 652-3743

Addressers wanted immediately! Work at home, no experience necessary, excellent pay. Write: National Service, 9041 Mansfield, Suite 2004, Shreveport, Louisiana 71118 10-23c

Own your own Jean Shop; go direct - no middle man, no salesman's fee. Offering all the nationally known brands such as Jordache, Vanderbilt, Calvin Klein, Sedgefield, Levi and over 70 other brands. \$14,500.00 includes beginning inventory, airfare for 1 to our national warehouse, training, fixtures and Grand Opening Promotions. Call Mr. Wilkerson at Mademoiselle Fashions 214-631-4022. 10-23p

STOP PAINTING: Cover all outside walls and overhang with U.S. Steel Products. FREE ESTIMATES Stan By Steel Siding 1501 N. Columbia Plainview, Texas Phone: 293-9330 L10-23c

WEST TEXAS MINI STORAGE: 983-3573 OR 983-2151

FARM SIZE ALCOHOL STILLS DEALERSHIP AVAILABLE: Call or Write INTERNATIONAL FUEL SYSTEMS, INC. 2348 FM 1960, West Houston, TX 77068 (713) 537-6158

FOR SALE

RELATIVES COMING FOR THANKSGIVING? Microwave Ovens Now On Sale. Call Mary Lewis Sales Representative for Montgomery Ward. 983-2196.

We have a full line of carpet and floor covering. Will install for you. Call for free estimate. Call 983-2862. Sears, Floydada. tfc

AMWAY PRODUCTS means quality and personal service. Contact Joann or Randy Rogers at 652-3825 or 652-2121. L10-23p

FOR SALE: Twenty-five hundred ft., 2 inch, steel gas line. Call 652-3613. L10-23p

FOR SALE: Sweet potatoes, 6 miles north of Floydada on Farm Road 599. Call Joe Edd Helms, (806) 469-5387. L23-c

Nice couch for sale. Call 983-5147 or see at 601 W. Grover. 10-23p

FOR SALE: Hot tamales and Spanish barbecue every Friday and Saturday. Call your order Thursday or Friday. 983-2630 or 983-5041. 10-23p

FOR SALE: Olympic size trampoline. \$275.00. A 3 speed mens bicycle for \$25.00. TV antenna and 25 ft. pole for \$20.00. Call 983-2107. 10-23p

22 ft. Coachman travel trailer for sale. 1979, like new. Call 983-2285, after 6 call 983-5610. tfc

Maple bunk bed, mattress and box springs and gas range. Call Delvin Bybee, 652-3179. L10-23c

AMWAY PRODUCTS means quality and personal service. Try us and see. Phone Melissa Gleason at 983-5750 after 5 p.m. tfc

"WE SELL SLEEP" Direct Mattress Co. New or renovated, for appointment call City Trim Shop, 983-2332, Floydada. tfc

FOR SALE: Three platform rockers. Two wingback straight chairs. Mrs. Harold Brock. Call 652-2665 p.m., 652-2193, a.m. L10-30c

FOR SALE: King size mattress and box springs. Good condition. Best offer. 983-3635. 10-23p

AIRELOOM Ceiling fans. 3 speed 5 yr. warranty. 10 to 15% discount. Grady Dunavant 983-3609

Check with us for LIQUID FERTILIZER ANHYDROUS HERBICIDES Rigs available for application LONE STAR CHEMICAL INC. Office: 652-2761 Deanie Henderson: 652-4334 L10-23c

Addressers wanted immediately! Work at home, no experience necessary, excellent pay. Write: National Service, 9041 Mansfield, Suite 2004, Shreveport, Louisiana 71118 10-23c

Own your own Jean Shop; go direct - no middle man, no salesman's fee. Offering all the nationally known brands such as Jordache, Vanderbilt, Calvin Klein, Sedgefield, Levi and over 70 other brands. \$14,500.00 includes beginning inventory, airfare for 1 to our national warehouse, training, fixtures and Grand Opening Promotions. Call Mr. Wilkerson at Mademoiselle Fashions 214-631-4022. 10-23p

Addressers wanted immediately! Work at home, no experience necessary, excellent pay. Write: National Service, 9041 Mansfield, Suite 2004, Shreveport, Louisiana 71118 10-23c

For Sale

Markdown - Slightly damaged standard capacity, heavy duty washer. Was 299.95. Now 229.95. Sears, Floydada, 983-2862.

Markdown - Vacuum with Powermate was 209.95, now 159.95. Sears, Floydada, 983-2862.

Markdown - Gold dishwasher, slightly damaged. Was 459.95, Now 339.95. Sears, Floydada, 983-2862.

FOR SALE: Twenty-five hundred ft. 2 inch steel gas line. Call 652-3613. L10-23p

FOR SALE: 8 cotton trailers, 6 wood and wire, 24 ft. cobs, 2 expanded metal 24 ft. Big 12. Good Shape. Call 983-2922. 10-24p

CONCERNED about hard water scale damage to pipes and appliances? We have an economical way to solve your problem. Write Aqua Products Co., Box 1, Floydada, Texas 79235.

1971 Cadillac transmission, completely rebuilt, about 2,000 miles. Call Jack Moore 983-3033. 10-30c

4 shocks for the price of 3. Free installation. 123 W. California. tfc

CUSTOM EXHAUST WORK: Bruce Williams Specializing in Glass Packs And Turbo Mufflers At DAN'S AUTO SERVICE Lockney 652-7457

DAN'S AUTO SERVICE: DAN TEUTON, Owner Specializing in Automatic Transmission, Motor Tune Ups, Auto Air Conditioning. General Repair We Have A BRAKE LATHE to handle all passenger car brake drums. See us for complete brake service. Phone 652-2462

STOP PAINTING: Cover all outside walls and overhang with U.S. Steel Products. FREE ESTIMATES Stan By Steel Siding 1501 N. Columbia Plainview, Texas Phone: 293-9330 L10-23c

WEST TEXAS MINI STORAGE: 983-3573 OR 983-2151

FARM SIZE ALCOHOL STILLS DEALERSHIP AVAILABLE: Call or Write INTERNATIONAL FUEL SYSTEMS, INC. 2348 FM 1960, West Houston, TX 77068 (713) 537-6158

Addressers wanted immediately! Work at home, no experience necessary, excellent pay. Write: National Service, 9041 Mansfield, Suite 2004, Shreveport, Louisiana 71118 10-23c

Addressers wanted immediately! Work at home, no experience necessary, excellent pay. Write: National Service, 9041 Mansfield, Suite 2004, Shreveport, Louisiana 71118 10-23c

Addressers wanted immediately! Work at home, no experience necessary, excellent pay. Write: National Service, 9041 Mansfield, Suite 2004, Shreveport, Louisiana 71118 10-23c

Addressers wanted immediately! Work at home, no experience necessary, excellent pay. Write: National Service, 9041 Mansfield, Suite 2004, Shreveport, Louisiana 71118 10-23c

Addressers wanted immediately! Work at home, no experience necessary, excellent pay. Write: National Service, 9041 Mansfield, Suite 2004, Shreveport, Louisiana 71118 10-23c

Addressers wanted immediately! Work at home, no experience necessary, excellent pay. Write: National Service, 9041 Mansfield, Suite 2004, Shreveport, Louisiana 71118 10-23c

AUTOMOTIVE

FOR SALE: A '77 Pontiac, power and air, steel belted tires, good on gas, uses no oil-First \$1,795.00 Gets 11. Call Tom Marr 652-3593. tfc

1974 Chevrolet 350, 4 bolt main engine. Complete engine just overhauled. \$550.00 Call Juan 983-5368 after 8:00 p.m. 10-30p

FOR SALE: 1976 Impala Chevrolet. 37.270 miles. Also 1,000 gallon propane tank. 983-2941 L10-30c

SURPLUS JEEP value \$3,196.00, sold for \$44.00. Call 312-742-1142 extension 269 for information on how to purchase bargains like this. 11-13c

FOR SALE: 1961 Chevrolet Bel-Air, 4-door. Good. Guy Ginn 983-2593. tfc

JEeps, CARs, TRUCKs available thru Government Agencies. May sell for under \$200.00. Call (602) 841-8014 Ext. #505 for your directory on how to purchase. 11-6c

FOR SALE: 1970 2-door Ford Fairlane 500. Best offer. 983-2271 after 5 p.m. 10-30c

SEXUAL ABUSE OF CHILDREN, NOT TALKING ABOUT IT WON'T MAKE IT GO AWAY. It's real. Tens of thousands of children are sexually molested each year. Generally by a close friend, neighbor, parent or other member of the family. The abuse of children, whether it be sexual, physical, emotional or a form of neglect, damages young personalities, and oftentimes results in death. An estimated one million children suffered from child abuse in America last year. It can be prevented. But not talking about it won't help. Abused children are helpless. Unless you help.

WIRE: National Committee for Prevention of Child Abuse, Box 2869, Chicago, IL 60690 A Public Service of This Newspaper & The Advertising Council

Classified Rates: CLASSIFIED ADVERTISING RATE: 15 CENTS PER WORD FIRST INSERTION; 10 CENTS PER WORD EACH SUBSEQUENT INSERTION. MINIMUM CHARGE: 2.00. CLASSIFIED DISPLAY RATE: \$1.54 PER COLUMN INCH CARD OF THANKS: 2.00.

JOHNSTON'S ENTERPRISES: Pawn Shop, Guns-Ammo Health Foods, Farm Supplies Canned Goods Route 2, Box 181, 1 1/4 miles W. Hwy. 82, Crosbyton, Texas 79322. Phone (806) 675-2420.

Swifty: 200 proof fuel alcohol (Ethanol) for sale. Any quantities. Contact Lyndell Roberts or Arthur Wylie, 806-833-3721

SHOP: Shop Floyd County FIRST!

STORAGE SPACE: BOATs, FURNITURE, ANYTHING, ETC. BY THE MONTH OR SIX MONTH 10% DISCOUNT. WEST TEXAS MINI STORAGE 983-3573 OR 983-2151

Addressers wanted immediately! Work at home, no experience necessary, excellent pay. Write: National Service, 9041 Mansfield, Suite 2004, Shreveport, Louisiana 71118 10-23c

Addressers wanted immediately! Work at home, no experience necessary, excellent pay. Write: National Service, 9041 Mansfield, Suite 2004, Shreveport, Louisiana 71118 10-23c

Addressers wanted immediately! Work at home, no experience necessary, excellent pay. Write: National Service, 9041 Mansfield, Suite 2004, Shreveport, Louisiana 71118 10-23c

Addressers wanted immediately! Work at home, no experience necessary, excellent pay. Write: National Service, 9041 Mansfield, Suite 2004, Shreveport, Louisiana 71118 10-23c

Addressers wanted immediately! Work at home, no experience necessary, excellent pay. Write: National Service, 9041 Mansfield, Suite 2004, Shreveport, Louisiana 71118 10-23c

Addressers wanted immediately! Work at home, no experience necessary, excellent pay. Write: National Service, 9041 Mansfield, Suite 2004, Shreveport, Louisiana 71118 10-23c



**ROUND STEAK**  
**FULL CUT**  
 Western Select Beef.  
**\$1.89**  
 lb.

**Sliced Bologna** Payton's Del Norte. 12-oz. pkg. **\$1.29**  
**Franks** Payton's Del Norte. 12-oz. pkg. **\$1.19**  
**Sliced Bacon** Payton's Del Norte. 12-oz. pkg. **\$1.29**

**Hot Links** Glover's Bulk. lb. **95¢**  
**Chorizo** Payton's Del Norte. 8-oz. pkg. **89¢**

**Queso Blanco** Let's to Laka. 9-oz. pkg. **\$1.59**  
**Breaded Shrimp** Treasure Isle. 16-oz. pkg. **\$5.39**



**PORK ROAST**  
**Boston Butt**  
 Bone-In.  
**\$1.79**  
 lb.

**BONELESS ROUND STEAK**  
 Tender Western Beef. lb. **\$1.99**

**CHICKEN LEGS OR THIGHS**  
 Breasts \$1.19 lb. **\$1.09**  
 USDA-Grade A lb.



**PIGGLY WIGGLY**

**Fall's Finest Food Values**

Prices Good Thursday Thru Wednesday, Oct. 23-29, 1980.  
 U.S.D.A. Food Stamps & W.I.C. Checks Welcome

**CRISCO**  
 3-lb. can **\$2.19**  
 with coupon  
 Limit one 3-lb. can per coupon. One coupon per customer. Thereafter \$2.59.

**Trappay's Pinto Beans** 49¢  
 With Jalapeno. #300 can  
**Wolf Chili** 79¢  
 With Beans. 15-oz. can

All Ass't. Coffee Grinds  
**Maxwell House**  
 1-lb. can **\$2.49**

**Instant Coffee** 30¢  
 Maxwell House. 6-oz. jar  
**Instant Coffee** 45¢  
 Maxwell House. 10-oz. jar

White Cloud. White & Colors  
**Bath Tissue**  
 4-roll pkg. **98¢**

**Zee Napkins** \$1.69  
 Family Pac. 360-ct. pkg.  
**Trash Bags** \$2.79  
 Hefty. 20-ct. pkg.

Fav-R-Pac. Frozen  
**Orange Juice**  
 6-oz. cans **97¢**  
 3 Cans

**CRANBERRY SAUCE**  
 Ocean Spray. Whole or Jellied.  
**1¢**  
 16-oz. can  
 With One Filled Bonus Special Booklet.

**GOLD MEDAL FLOUR**  
 5-lb. bag. **49¢**  
 With One Filled Bonus Special Booklet.

**TOMATO JUICE**  
 Del Monte. 46-oz. can. **19¢**  
 With One Filled Bonus Special Booklet.

**LIBBY PUMPKIN**  
 16-oz. can **1¢**  
 With One Filled Bonus Special Booklet.

**LIPTON TEA**  
 Bags. 28-ct. **69¢**  
 With One Filled Bonus Special Booklet.



**APPLE DAYS ARE HERE.**  
**WASHINGTON**  
**FINEST Extra Fancy Quality Apple SALE**

**GOLDEN DELICIOUS APPLES**  
 Lunch Box Size. Extra Fancy. Washington State. **4 lbs. \$1**

**RED DELICIOUS APPLES**  
 Lunch Box Size. Extra Fancy. Washington State. **3 lbs. \$1**

**Red Delicious Apples** 58¢  
 100-113 Size. Extra Fancy. Washington State. lb.  
**Golden Delicious Apples** 58¢  
 100-113 Size. Extra Fancy. Washington State. lb.

**Rome Beauty Apples** 58¢  
 Premier Bakers. Extra Fancy. lb.  
**Jonathan Apples** 58¢  
 Excellent For Candy Apples. Extra Fancy. lb.

**Red Delicious Apples** 68¢  
 64-72 Extra Large. Extra Fancy. Washington State. lb.  
**Golden Delicious Apples** 68¢  
 64-72 Extra Large. Extra Fancy. Washington State. lb.

**Halloween Squash and Pumpkin Festival...**  
**Jack-O-Lantern, Face Carving Pumpkins lb. 15¢**  
**Small, Pie Pumpkins 28¢**  
 Excellent For Pies and Cooking. lb.  
**ACORN SQUASH - BUTTERNUT SQUASH - TURBIN SQUASH - SPAGHETTI SQUASH**  
 MIX or MATCH lb. **28¢**

**Mr. P's PIZZA**  
 Ass't. Varieties **79¢**  
 11 1/2-oz. pkg.

**Luvs Diapers** \$2.69  
 24-ct. Small. 18-ct. Med. or 12-ct. Lg.  
**Tomatoes** 79¢  
 Whole White Swan. 1 1/4-oz.  
**Baking Soda** 49¢  
 Arm & Hammer. 16-oz. pkg.

**Evaporated Milk** 2 89¢  
 Carnation. 13-oz. can

**LIPTON TEA** 69¢  
 Bags. 28-ct.   
 With One Filled Bonus Special Booklet.

**Betty Crocker Super CAKE MIX**  
 Ass't. Varieties  
**perMoist** Ass't. Varieties  
**GET ON FREE**

**Margarine** 14¢  
 White Swan. Otrs.  
**Vegetable Oil** 24¢  
 White Swan.  
**Betty Crocker Ass't. Frosting** 16 1/2¢  
**Ready To Serve Frosting** \$1.19  
**Creamy Deluxe Frosting**

**Arm & Hammer Baking Soda** 14¢  
**Apple Cider** 84¢  
 Tree Top.  
**Mouse Gruf** 14¢  
 D. Can.

**Caramel Apples - Why Not?**  
**Kraft Caramels** \$1.39  
 24-oz. pkg. Vanilla

**Fabric Softener** 14¢  
 White Swan.  
**Liquid Bleach** 14¢  
 White Swan.

**Loyda**

road side area in where visitors stating the name town and the signs. Loretta and Joyce and a month-long They went by the Alaskan

used a tourist called "Sign gives full details filling stations interest along Highway. about tour their home- the Burns' took a sign and with the others at

sign Posts at the lake during the building of Highway in 1942 homesick G.I. erecting the mileage hometown. Others

the signs stretch for Loretta Burns said they put up a post, the sign and then

breakfast. When back about 30 later two other signs had been their post. August 5. north through: Wyoming; Montana; Alberta, Dawson Creek, where the

signifies the of the Alaskan way was cons- the Canadian and Military during "Traveling it's 1523 air-liners is a most experience." Lo- "the scenic high- lded by beautiful rivers and glaci-

most spectacular of the Columbia, Alaska's largest. It is wide and 40 miles 500 feet above and another 3500 hidden beneath the

A SIGN GIVING (L-r, Neil and

**HARV BAK**

Boneless Fryer Breast \$1.69  
 Wilson's Smo Saus

**Evaporated Milk** 2 89¢  
 Carnation. 13-oz. can



**PORK ROAST**  
**Ston Butt** \$1.38  
 lb.

**Good Values**

**Betty Crocker Super Moist CAKE MIX**  
 Ass't. Varieties, 18 1/2-oz. pkgs.  
 Buy 2 At Regular Price GET ONE FREE

**Margarine** White Swan, Qtrs. 1-lb. pkg.  
**Vegetable Oil** White Swan, 24-oz. bl.

**Ready To Serve Frosting**  
 Creamy Deluxe \$1.19  
 16 1/2-oz. can

**Arm & Hammer Baking Soda** 16-oz. pkg. 49¢  
**Apple Cider** Tree Top, 64-oz. bl. 99¢  
**Mouse Gruf** D-Can, 1-oz. pkg. 49¢

**Kraft Caramels** 24-oz. pkg. Vanilla \$1.39

**Fabric Softener** White Swan, 1-gal. jug \$1.79  
**Liquid Bleach** White Swan, 1-gal. jug 79¢

**Evaporated Milk** Carnation 13-oz. can 2 88¢

**LIPTON TEA** Bags, 28-ct. pkg. 69¢

**With One Filled Bonus Special Booklet**

# Floydada sign posted in the Yukon

side area in where visitors ating the name town and the at town. Floy those signs. t Loretta and and Joyce and k a month-long They went by the Alaskan

used a tourist called "Sign gives full details of filling stations of interest along Highway. told about our- up their home- the Burns" took ydada sign and h the others at

Posts at the lake ng the building of Highway in 1942 esick G.I. erect- ing the mileage etown. Others

signs stretch for etta Burns said ut up a post, e sign and then

breakfast. When ack about 30 er two other signs had been air post.

es left August 5, orth through: Wyoming; Mon- on; Alberta, Dawson Creek, mbia, where the

er signifies the of the Alaskan

hway was cons- the Canadian and es Military during raveling it's 1523 rbanks is a most experience." Lo- "the scenic high- ivers and glaci-

at spectacular of is the Columbia, ka's largest. It is ide and 40 miles es 500 feet above and another 3500 den beneath the

"People had told us about it, but when we did see it we just couldn't believe it," Loretta said. The Portage Glacier was another that stands out in Loretta's memory. It is seen by train. And there's a story to that. The moral of the story is that when you travel Alaska dur-

ing the tourist season you need to make reservations ahead of time. The Burns' and Smith's didn't. There is a train that goes from Portage to Whittier. It carries passenger cars and also flat bed cars for automobiles, you drive up on the railway car. Stay in your automobile and are whisked

through the country side on the train. This looked like a great idea to the local couples, but they were told that without reservations they would have to wait in a stand-by lane. They decided to wait for awhile just to see what would happen. They didn't have much

hope of getting on the train since many people in line had been there for hours. But it seems that automobiles are loaded on to the train to fit the space available and the van was the exact length the loaders needed to fill up the last car. So the local couples were boarded ahead of people who had been waiting all night. The 30 minute train ride included going through a tunnel. Suddenly the darkness of the tunnel was broken by the gleaming ice front of the Portage Glacier, a blue sparkling lake lay at its feet. The train turned a curve and in moments the view was gone, but that short glimpse stands out in Loretta's memory.

After the train ride it was necessary to catch the Barlet Ferry to continue the trip. Again no reservations. Again the van was the exact needed length and the couples were on their way with only a 25 minute wait. Loretta remembers the water fall cascading down into the bay and towering mountains surrounding them. Fishing is Portage's main industry and the docks were filled with people busily loading and unloading fish. During the ferry rides, and there were many, the couples saw "all kinds of sea life while we were on the boat." There were porpoise, sharks, whales and killer whales, their water spouts making fountains in the lake. Alaskan's call Texas their little brother. Natives refer to it that way as do the brochure books. Most of the lodging was very reasonable for what you

got Loretta said, but there was one very run of the mill hotel that was \$72 for a room for two. There are mile markers along the highway and both food and lodging are reasonable at these points. "Places in between can get very expensive," she said. Gas prices ranged from \$1.35 in the cities to \$2.00 a gallon along the highway. Part of the Highway is paved, but many chuck holes make it rougher to drive than the gravelled part. Quite a bit of the road was under construction. They drove from 15 mph to 70 mph depending on road conditions. "Part of the land is very swampy," Loretta said, "We couldn't believe there weren't alligators in it. There are no snakes in Alaska either," she added. Temperatures ranged from below zero around the glaciers to one balmy day of 89 degrees. Though it wasn't the rainy season, there was rain almost every day they were there. In Ketchikan the average rainfall is 150.98 inches a year. The cities were very mo-

der. People dressed casual- ly. They did dress up at nice restaurants and clubs, but otherwise wore jeans. July is the biggest tourist month. Many couples and families were traveling alone. Many, many elderly people were on the highway. And many people were camping out. Everyone was very friendly particularly those who lived there. "Some of the places along the highway, the owners would talk until you just had to get up and leave," Loretta said, "they acted like it was a privilege to talk to you."

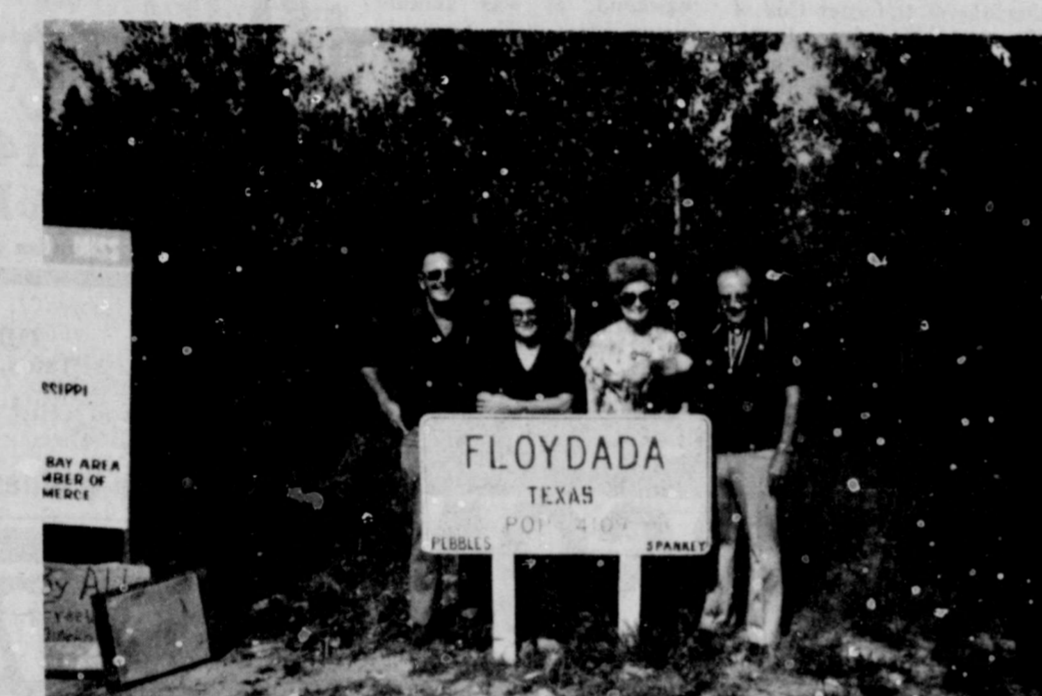
Early Birds Gets The Worm Shop Now For Xmas Call Mary Lewis Sales Rep Montgomery Ward Phone 983-2196 Day Or Night

**Antifreeze**  
 1 Gallon Plastic Containers \$3.99 Per Gallon  
 Buy The Best And Buy Early  
**Hwy 70 Texaco**  
 Hwy 70 West Phone 652-8895  
 Open 7 days 7:00 am - 9:00pm

**The Land Bank**  
 Long-term farm real estate loans are available for much more than just buying land.  
 See us:  
**Federal Land Bank**  
 Federal Land Bank Assn Of Floydada  
 105 S. WALL 983-2477



BLOCKS OF HOMETOWN MILEAGE SIGNS border the Alaskan Highway at Watson Lake, Yukon.



A SIGN GIVING THE 2938 MILEAGE TO FLOYDADA was added to the others this summer by (l-r), Neil and Joyce Smith, and Loretta and Leroy Burns.

## HARVEST DAY BARGAINS

Boneless Fryer Breast \$1.69 lb	Nice-N-Lean Hamburger \$1.29 lb	Wilson's Smoked Sausage \$1.29 lb	Club Steaks \$1.98 lb	4 Roll Delsey Bathroom Tissue 89¢
Dari-Maid Milk \$1.89 jug	32 oz 6 Btl Ctn Coca Cola \$1.49	Convenience Pak Pampers \$6.79	Avocados 5/\$1.00	Large Roll Bounty Paper Towels 69¢
White Swan Sweetmilk or Buttermilk Biscuits 6/\$1.00	Grade A Extra Large Eggs 79¢ doz	Extra Fancy Golden Delicious Apples 3/\$1.00	Tomatoes 39¢ lb	49 oz Box Tide \$1.59
Velvet Spread 2 lb Tub Oleo 79¢		10 lb Bag Potatoes \$1.39		



**KEETERS GROCERY** 652-2191  
 East Edge of Lockney 7 a.m. - 8 p.m.  
 We Give Gold Bond Stamps Double On Wed.  
 We Redeem Food Stamps & WIC Cards  
 We Reserve The Right To Limit Quantities

# COURTHOUSE NEWS

**Deeds**

Hazel Johnson to Jerry Mack Johnson, part of J.D. Burleson Sur.

Debra Ann Griffith to Jerry R. Perry Lots 9&10, Blk. 6, Pickel Add'n, Lockney.

Ben Galloway to William B. Eakin W/10 ft. of Lot 5 and all Lts. 6&7 Blk. 10, Western Add'n Annex, Floydada.

Elmer B. Griffith to Jerry R. Perry Lots 9-10, Blk. 6, Pickel Annex, Lockney.

Eldon Eberhart to Weldon Fannon Blk. 17, Farris and Childers Add'n, Floydada Plains Service Corp. to Randy D. Miller 1 acre of sur. 42, Blk. D-6.

Ralph C. Fawver to Terian's Land Board of Texas, 73.85 acres, sur. 89 Blk. 1, A.B.&M.

Tom Maurer to Reyes Peralez Lot 6, Blk. 26, orig. Floydada.

Maggie E. Goodson to Dan W. Goodson, Lt. 10, W/1/2 of 15, Blk. 91 orig. Floydada.

Frontier Savings Inc. to Reed Ford Sales Inc. 3.97 acres sur. 93, Blk. 1 A.B.&M Medlock Co. Inc. to John D. VanHoose, Lt. 13, Blk. 96, orig. Floydada.

Paul Westbrook to Malcolm E. Williamson 56.7 acres, sur. 20 J.V. Massey survey.

Ella Belle Lemons to Veterans Land Board, 80 acres sur. 30 Blk. D-3.

Lucille Sisson to George Ray Finley Blks 21&24, Farris & Childers Add'n, Floydada.

Ella Cummings to Nicholas Garcia, Lot 8, Blk. D, Andrews Add'n., Floydada.

Michael Ray Carthel to Freda M. Carthel, various lots in Blk. 5 Muncy Add'n, Lockney.

Stephen F. Trowbridge to David Vaughn, 25 acres, SW pt. of sur. 21 Blk. K.

Manuel Suarez to R.L. Giesecke Lot 9 Blk. 8 Honernea Add'n., Floydada.

W.D. Brownlow to Servando Charles Lot 14 Blk. 126, orig. Floydada.

Fl. Worth and Denver Railway Co. to Joe Neil Rexrode N/2, Abstract 195 Sec. 3 Blk D-1.

Earvin Butler to Sylvester Mitchell Lot 8 Blk. 33, Floydada.

Dr. Ted J. Crager to Keith Emert Lot 2 Blk. 2 Lockney.

David B. Cates to Tommy S. Cathey E/2 Lot 8 all Lt. 9-10 Blk 9 Texas Add'n. Floydada.

Darty Gin Inc. to Randy Rainwater Lots 1-5 Blk. 7, Dougherty.

W.D. Nance Jr., et al. Executors, to Sam Lewis 160 acres out of Sec. 28 Blk B-4 and 2 acres out of SW 1/4 sec. 25 Blk B-4.

W.D. Nance Jr., et al. Executors, to W.D. Nance Jr. SW 1/4 Sec. 25 Blk B-4.

Tempest Phillips to Almeda Phillips S 20 ft. Lt. 9 all of 10 Blk 3 Brewster Add'n #3, Lockney.

Lydia Kelley to Vera F. Rimmer Lt. 6 Blk. 3 West Side Hghts. Add'n Floydada.

A.V. Stewart to Lewis A.

McDaniel Lots 2&3B 62, orig. Floydada.

Vida Mae Day Culpepper to Johnny L. Harris Jr., Lot 9 and W/2 of Lt. 10 Blk. 1 Barker Add'n Floydada.

Robert F. Day estate to Quanal Cotton Oil Co. Lt 14 Blk 52 orig. Floydada.

Peggy Jean O'Neal to Royace H. O'Neal 194 acres J.C. Warden sur. and 84 acres S.A. Shirley sur.

Hallie J. King to Herman R. King various Lts. Blk. 2 Guest & Ramsey Annex, Lockney.

Tony A. Hesson to Keith Gross Lt. 11 Blk. 44 orig. Floydada.

Robert F. Day Estate to Oscar Garza Lts. 5-6 Blk. 65 orig. Floydada.

Robert Delgado to John B. Mercer .162 acres out of D.F. Davis Sur.

Jack D. Barnes to Weldon W. Becker S/2 of sur. 5 B&B sur.

Wilfred Stoerner to Martin Stoerner et al. 10 acres sect. 119 Blk D-2.

Robert Delgado to H.A. Dudley 1/4 acre out of D.F. Davis sur.

Roman Gatica to John R. Juarez Lts. 12&13 Blk. 2 Wilson Add'n #2 Lockney, Leslie Surginer to J.R. Foster Lts. 7 B-138 orig. Floydada.

C.J. Eastham Jr. to Mike Rainwater Lts 1&2 Blk. 19 Dougherty.

## Oh where, oh where should we put our trash

Editor's note: The Floyd Philosopher ca his Johnson grass farm tackles the garbage problem this week and has a solution, if you don't live in Alaska.

Dear editor:

This hasn't got anything to do with the international situation or inflation or politics. It's about what to do with the nation's trash. Where're we gonna put it? Early day American Indians solved the problem easily. When a camp site became too littered, they stepped carefully out and moved to another site. This is impractical today. Sure, if Washington say produced more trash than it could walk through, the city could up and move some place else.

But where? It's one thing to have a new shopping center spring up near your town, but what town would want Washington out there too? Bringing in Congress and all that... you know what it'd do to land values.

One solution has been the Sanitary Land Fill, more accurately called the Unsantary Land Fill, but nobody wants one near his house. I've never seen a Land Fill that shouldn't have been some place else. And no fence has ever been built around one high enough to keep paper from being blown over the countryside.

But there is a solution, not only for where to dump our household trash and garbage but also the nation's nuclear waste, obsolete warheads, barrels of poisoned chemicals and other necessities of the modern world.

As I understand it, the government has set aside 100 million acres of wilderness in Alaska to be maintained in its original condition... no mining, no drilling for oil, no lumbering, no roads, no tourist lodges, no hunting, no camping. Just no trespassing.

In other words, the 100

million acres are to be enjoyed in your mind only. A city dweller can sit in his apartment and glow over the fact there are 100 million acres of land up there in Alaska untouched by human hands.

Here's the trash problem solution: swap 50 million of those 100 million acres for an equal number of acres on the moon and set aside those moon acres for the mental enjoyment of people who go in for that sort of enjoyment. Then use the borrowed 50 million Alaskan acres for the Supreme National Dumping Ground for the entire United States. Alaska is so far away the odor from the dump would never reach the rest of us.

Alaskans may complain, as well they should, but how many votes does Alaska have?

Your faithfully,  
J.A.

## Deadline nearing for quarter reports

October 31 is the date by which employers must report on Form 941 Social Security and withheld Federal income taxes for the 3rd quarter of 1980 and pay any taxes due, the Internal Revenue Service says. If the quarterly liability (reduced by any deposit during the quarter) is \$200 or more, the unpaid balance must be deposited.

This deadline does not apply to those employers who make timely deposits of the full amount of tax due in Federal Reserve or approved commercial banks. They are allowed until November 10 to file Form 941, "Employer's Quarterly Federal Tax Return."

If employers have not received Form 941 by mail, they can obtain one from local IRS offices. IRS Publication 15, "Circular E—Employer's Tax Guide," is also available at local offices.

## New Case ONE-TWO Farm Tractor Offer

**1. PLUS 2.**

**CASH REBATES up to \$3200**

**WAIVER OF FINANCE CHARGES UNTIL MARCH 1, 1981**

If you buy one of our new Case farm tractors listed in this ad between Aug. 1, 1980 and Oct. 31, 1980, Case will send you a check for the dollar amount shown opposite the Case model you buy, or you can apply the rebate towards your down payment. NOTE: Government Agencies/Departments do not qualify for rebate.

Engine Models	Cash Rebate	Engine Models	Cash Rebate
885	\$ 500	2290	\$1900
990	\$ 700	2390	\$2100
995	\$ 700	2590	\$2200
1210	\$ 800	4490	\$2300
1410	\$ 900	4690	\$3000
2090	\$1500	4890	\$3200

*Purchase date extended thru October 31, 1980! See us now and save!*

Lubbock 3302 Station Hwy. 745-4451  
Lamesa 903 S. Dallas 872-5861  
Floydada 101 South 12th 983-2836

**case**

# South Plains News

**Mrs. Murry Julian**

The auction sale of the Taylor Bros. which was to be last week was postponed until this past Thursday, October 16, due to the muddy condition of roads in their area. The sale began at 10:00 a.m. Thursday morning.

Congratulations and best wishes to Mr. and Mrs. Jerry Calahan of Canyon, and their parents here, Mr. and Mrs. Herman and Bonnie Graham of Muncy, and Mr. and Mrs. Shelby Calahan. The Jerry Calahans became parents to their first child, a son, Michael David, born October 13, at the High Plains Hospital in Amarillo.

Mr. and Mrs. Hansel Sanders went to Lubbock on Friday afternoon to visit in the home of their son, Mr. and Mrs. Gary Sanders and daughter.

Eddie Branch of Irving has been back in the Baylor Hospital in Dallas the past week, and we hope by now he is home and doing fine. He is the brother-in-law of Mr. and Mrs. Frank McClure.

Mr. and Mrs. L.N. Johnson, and Mrs. Ruby Higginbotham went with Mrs. La Von Smith of Fort Worth to the funeral of Lester Cox of Olton, with the funeral services being at 2:30 p.m. Wednesday afternoon at the First Baptist Church of Halfway.

Several from South Plains visited at the Methodist Hospital with Mrs. Trudie Taylor who was convalescing from major surgery on Monday of last week. She is reported to be getting along fine. Saturday Mrs. Mamie Wood and Mrs. Gertrude Smitherman were visitors at the Methodist Hospital seeing Mrs. Taylor.

Mr. and Mrs. Brent Sanders are the proud parents of a baby daughter, born September 16, and has been named Katie Rebecca. Maternal grandparents are Mr. and Mrs. Sam Puckett of Floydada and great grandparents here in South Plains are Mr. and Mrs. Jack Smitherman. We extend congratulations to the families and to the baby daughter.

Thursday evening Mr. and Mrs. Raymond Upton and Mrs. Ruby Higginbotham went to Spur where they attended the Caprock Baptist Association Meeting which was held at the First Baptist Church.

The home of Mr. and Mrs. Sylvain Kinnibrugh was the scene of a Sunday dinner with 14 guests present for the gathering, with some of them being here for the weekend. Mrs. Kinnibrugh's sister, Mrs. W.H. Smith of Odessa was there over the weekend, as was another sister, Mrs. W.H. Simmons of Gilliland, and her daughter-in-law, Mrs. Ronnie Simmons and children, Shane, Jason and Kristin also of Gilliland. A sister of Mrs. Kinnibrugh's, Mr. and Mrs. Ray Dillard of Lockney, the Kinnibrugh's daughters, Mrs. Teddy Horne and Me-

**PLAINVIEW Overhead Door Garage Door Genie**

3014 D Hwy. Plains

**WE RESERVE THE RIGHT TO LIMIT QUANTITIES**

**THOMASON VENTURE GROCERY & MARKET**

PHONE 652-3346 220 South Main Lockney

WRIGHT'S HICKORY SMOKED SLAB Sliced Bacon \$1.09	HORMEL'S SUPER SELECT FRESH PORK QUARTER LOINS OR FAMILY PAK
	<b>Pork Chops \$1.39</b>
8-11 ASSORTED CHOPS	
SUPER SELECT PORK RIB or LOIN CHOPS LB \$1.59	SUPER SELECT FRESH PORK BUTT ROAST LB \$1.19
LOTS OF MEAT COUNTRY STYLE SPARE RIBS LB \$1.39	WRIGHTS HICKORY SMOKED BACON End-Pieces 3 lb Box \$1.49
	FRESH PORK STEAK LB \$1.29
	HOMEMADE SAUSAGE LB 99¢

**Poly-Brite™ 2 Polymer Sealant**

**NOT A WAX**

Poly-Brite 2 is a unique polymer formulation that fuses to your car's finish and brightwork by molecular action. It leaves a clear, hard protective gloss that locks in showroom shine on cars, trucks, boats, planes and more. It actually bonds to the surface for lasting protection from the elements.

**EASY TO APPLY**

Poly-Brite 2 may be applied in the sun or shade. Simply wash the car, wipe on Poly-Brite 2 with a damp sponge. Let dry, and wipe it off. Unlike other products, Poly-Brite 2 leaves no film or chalky powder to deal with as you shine. No buffing or polishing is required.

**CLEANS, SHINES, PROTECTS**

Poly-Brite 2 seals and protects chrome and paint against oxidation, smog, tree sap, soot, salt spray, road tar, bird droppings, — even retards fading. One easy application leaves your car with a lustrous shine and year round protection. One bottle protects 2 average cars.

**3 YEAR GUARANTEE**

We guarantee that Poly-Brite 2 will protect finish and chrome of new cars for 3 years, used cars for 1 year. If not satisfied, send sales receipt to manufacturer for replacement or refund.

**We Have Koozie Thermal Coaster \$2.95 each**

Lockney Longhorn and Others

**U.S. No. 1 POTATOES 5 lb Bag**

**Watch For Big Two Week Sale Beginning Monday, October 27th, 1980**

**7-Up, Coke, Dr Pepper \$1.75 plus tax**

**Center By J.E.**

in the Thomas Mrs. Mize Vera Meredith and Sunday. Clay Muncy ca The Revivalist Church of nite with recou results.

Mr. and Mrs. Green home were on their shoe to visit husband, Inez

**Young Month**

On Thursday Silvertown You met at the School vocation department for business meeting. Bill Reid pres meeting. The having the ar shoot and vote for it due to the prizes and the club will the elementary ground. Rain day, earlier. Halloween ca

**Cedar Hill by Grace**

received from .40 to was a high cha Those from here ed were Ruth Mary Ann Tucke el, Grace Lemons el, Leah L. Gene Forten Vance Mitchell, Hinkle, Edna G Taylor, Trudi G Gilly.

Willie D. Stral erford and Mr. Dale Strain of M visited in the and Mrs. J.A. Mrs. Pea Kelly day.

Patsy Boone visited her pare Mrs. Tom Fort Mrs. Fortenber tied her back to see a doctor. N berry has been i We want to Fortenberry Hag

**ydada Nursing H**

would like to thank changed quite enjoying the Simpson, Vict Emmitt Lawrence McSwain.

Our Mr. Emn who is 91 year completed his Plaque. It is hanging in ou everyone to see party given in the lobby The noon. He was certificate of app his dedicated and crafts.

We would several of the First Christian the beautiful made for our sure look nice, dents are re them.

We apprecia tors for the included: Imog don Gray, Wor Howard, J.W.

**"Nobody Doe Paducah Im announces hu**

**SPERRY NEW H Hay Equipn**

You can get the Best Deal of the year, Now-on Everything from

**Round Bailers to free financing till March**

Ask Us About Our Factory Paducah Im Phone 800

Gibbs Night 492-3159

is reported to...  
ing fine. Satur-  
mie Wood and  
e Smitherman  
at the Method-  
ing Mrs. Tay-  
...  
lissa and Mrs. Beth Dickens  
and Latham from Plainview  
were all present for the  
Sunday dinner and gather-  
ing.  
The Baptist Women's  
Meeting for October was  
held this Monday afternoon,  
at 2:00 p.m. at the South  
study on Baptist Missionar-  
ies from around the country,  
and an especial study of  
the Don Anders family stud-  
ied during the afternoon.  
Mrs. Manie Wood presided  
at the election of officers for  
members are Mrs. Richard  
Sanders, and Mrs. Richard  
Mulder. President of Baptist  
Women is Mrs. Doris Powell,  
Mrs. Manie Wood is secre-  
tary and treasurer, Mission  
Action is Mrs. Letha Mulder,  
Mission Support is Mrs.  
Cecil Osborne and Mission  
Study director is Mrs. Bonnie  
Julian, November 3, is World  
Day of Prayer for the  
Plains. Women  
will be held at  
the home of  
Mrs. Letha Mulder  
and Mrs. Manie  
Osborne.  
Mrs. Manie  
Lockney was  
present in  
Mrs. Louella  
Nathan Johnson  
painted the  
week.  
Remember to  
clocks back one  
day night, so that  
correct time  
will be back on  
Monday.  
Mrs. Manie  
Lockney was  
present in  
Mrs. Louella  
Nathan Johnson  
painted the  
week.  
Remember to  
clocks back one  
day night, so that  
correct time  
will be back on  
Monday.  
Mrs. Manie  
Lockney was  
present in  
Mrs. Louella  
Nathan Johnson  
painted the  
week.  
Remember to  
clocks back one  
day night, so that  
correct time  
will be back on  
Monday.

**PLAINVIEW**  
**Overhead Door**  
**Garage Door**  
**Genie**  
3014 Dimmitt  
Hwy. Plainview

**W**  
THESE SPECIALS  
Thurs.-Fri.-Sat. Oct. 23-25

**Double Stamps On Wednesday**  
**Ventura**  
**FOODS**

**SELECT FRESH PORK**  
**CHOPS OR FAMILY PAK**  
**Pork**  
**Chops**  
\$1.39

**MEMADE**  
**USAGE**  
LB 99¢

**Watch For**  
**Big Two Week Sale**  
**Beginning**  
**October 27th, 1980**  
6-32 oz. Bottle Carton  
**7-Up, Coke**  
**Dr Pepper**  
**\$1.79**  
plus tax and delivery

**Center News**  
By J.E. Green

Edelson. Inez has been ill at her home for several days.  
Mrs. Byron Kendrick entertained with a Home Interiors party in her home Saturday.  
Mr. and Mrs. Jerry Bob Harrison and Amy, came over from Lubbock for the Floydada High School Homecoming and stayed at his parents, Mr. and Mrs. Don Harrison.  
Last Thursday, Don and Ruth Harrison visited their son and family, Mr. and Mrs. Jerry Bob Harrison, and their daughter, Mrs. Kay McPherson of San Angelo. Kay's husband coaches at the John Glenn School in San Angelo.  
Saturday guests of Don and Ruth Harrison included Ruth's brother, Mr. and Mrs. Roy Smith of Plainview, Mr. and Mrs. Foy Smith of Levelland and the Harrison's son and family, Mr. and Mrs. Max Harrison and Tracy, of Floydada. Their daughter, Debbie, is attending South Plains College at Levelland this year.  
Mrs. Robert Pyle and son, Brynn, attended the Running Water Draw Arts and Crafts Festival in Plainview.  
Mrs. Larry Glasscock sold her wood craft and art wares at a booth at the Festival. She and her father, Weldon Hammonds, create the wood objects and Ann paints or stains them.  
Mr. and Mrs. Smokey Quilantan sat with their little granddaughter, Tory Santos, while her parents, Oscar and Janie Santos, attended the

**Young Farmers Hold Monthly Meeting**

On Thursday October 10 Silverton Young Farmers met at the Silverton High School vocational agriculture department for their monthly business meeting.  
Bill Reid presided over the meeting. The club discussed having the annual turkey shoot and voted not to sponsor it due to the high cost of the prizes and location.  
The club will place tires on the elementary school playground. Rain had delayed doing it earlier.  
Halloween carnival booths were discussed. Members voted to have at least one booth, that being a money slide.  
Members will be honored with a cook-out on Saturday October 10 with steak and all the trimmings.  
Those attending were Reid, Clinton Dickerson, Rene Garcia, Tommy Bullock, Fred Brannon, Donnie Perkins, Tolle Riddell, Joe Garcia, Manuel Aguilar, Rodney Bullock, G.W. Chappell, Wayland Fitzgerald, Gary Weak, and Wayne Stephens.

**Cedar Hill News**  
by Grace Lemons

Friday the 24th and Gladys Fortenberry Happy Birthday Tuesday the 20th.  
Mr. and Mrs. Carl F. Lemons visited their daughter-in-law, Jane Lemons of Seagraves, who was a patient in the Methodist Hospital last Tuesday. She was much improved and was expected to go home Friday.  
Mary and Robert Jones of Dallas were dinner guests in the home of Mr. and Mrs. Durrell Fortenberry Monday.  
Grace Lemons visited Temp Phillips in the Locketey Care Center Saturday.  
There was a large crowd attending the Arts and Crafts show in Plainview Saturday. There were many exciting booths exhibiting many talents. Mrs. Carl F. Lemons was among those attending Saturday.  
Willie D. Strain of Weatherford and Mr. and Mrs. Dale Strain of Mineral Wells visited in the home of Mr. and Mrs. J.A. Welch and Mrs. Peat Kelley Wednesday.  
Patsy Boone of Lubbock visited her parents, Mr. and Mrs. Tom Fortenberry and Mrs. Fortenberry accompanied her back to Lubbock to see a doctor. Mrs. Fortenberry has been ill this week.  
We want to wish Ruth Fortenberry Happy Birthday

**Floydada Nursing Home Happenings**

changed quite a bit. Others enjoying the trip were Iva Simpson, Victoria Asher, Emmitt Lawrence and Verna McSwain.  
Our Mr. Emmitt Lawrence who is 91 years of age has completed his 100th Owl Plaque. It is framed and hanging in our lobby for everyone to see. There was a party given in his honor in the lobby Thursday afternoon. He was presented a certificate of appreciation for his dedicated work in arts and crafts.  
We would like to thank several of the ladies of the First Christian Church for the beautiful lap robes they made for our residents. They are look nice and the residents are really enjoying them.  
We appreciate all our visitors for the week which included: Imogene and Gordon Gray, Worth Gwendolyn Howard, J.W. Adams, Mr. and Mrs. M.H. Hartness, Merlene Breeding, Deecota Odam  
Beady Owens, O'Beva Biggenstaff, Mary Helen Wilson, Charley L. Berry, Sr., Mr. and Mrs. Fay Hart, Mr. and Mrs. Roncid McPeak, Goldie Cyper, Mr. and Mrs. Elvis Childs, Dorothy Ledbetter, Dick Furrow  
Helen Johnson, Lois Jones, Will and Beatrice Martin, Mr. and Mrs. Otis Ellis, Kim and Joe Lee, Charley L. Berry, Sr., T.S. Brown, Josephine Bursiagio, Voncel Colston, Sherry Colston, Christine Robertson, Burnah Probasco, Willie D. Hill, Mr. and Mrs. Givens Lawrence, Dena Myrick  
Esther Collins McIlrath, Mrs. Ethel Lee, Ruth Noiland, Mr. and Mrs. Vernon B. McNeely, Doris Snodgrass, Mrs. Pierce King, Ethel Sawyer, Marie Baxter, Evelyn and Jack Crull and Joan and Jewell Lawrence.

**"Nobody Does It Better"**  
**Paducah Implement Co.**  
announces huge savings on  
**SPERRY NEW HOLLAND**  
**Hay Equipment**  
You can get the Best  
deal of the year,  
Now on  
everything from  
**Round Bailers to Bail Wagons!**  
free financing till March 1st & reduced finance charges.  
Ask Us About Our Factory Rebates Until December 1980  
**Paducah Implement Co.**  
Phone 806-492-3551  
David Gibbs Night 492-2038

**LAKEVIEW NEWS**  
by Mrs. Joyce Williams

Floydada-Childress football game. Mary Lou Quilantan traveled with the band to the game.  
David Pyle came home from his grandmother Hammond's funeral last month and went straight to Central Plains Hospital where he underwent an emergency appendectomy.  
The following week, David's mother, Mrs. Louis Pyle had surgery at St. Mary's Hospital in Lubbock. Both were up and around in no time.  
Mrs. Gene Mitchell and children, Laqueta, age 14, and Chipper, age 10, of Crosbyton, visited her parents, Mr. and Mrs. Charley Wright, Saturday afternoon.  
Mr. and Mrs. Don Martin and sons, Terry and Charley, visited her parents, Mr. and Mrs. Charley Wright, last Sunday after attending the Primitive Baptist Church ordination services for Tom Porter and Gaël McPherson. Last summer Charlene and Don and their boys enjoyed a vacation at Cortez, Colorado where they met Charley and Mary and two other families. All had their campers and enjoyed the outdoors together. The Martin boys visited their grandparents several times in Floydada during the summer.  
Don Harrison three sisters have visited here the past three weeks. First, Mr. and Mrs. Dick Furrow arrived from San Diego, California, then Mrs. J.R. Evers of Miami, Florida arrived. They

were joined by their sister, Mrs. Vivian Hall of Amarillo.  
Last Sunday, Mr. and Mrs. Dick Furrow, and Mr. and Mrs. Don Harrison went to Lake Stamford for the Harrison's reunion. Don grew up around Rotan.  
Dick Furrow's brother, S.J. Furrow of Kansas, came to Floydada to visit while Dick was here, and both brothers attended a Furrow's family reunion at Lubbock in the home of another brother, R.T. Furrow.  
Mrs. Billy Kendrick visited her mother, Mrs. Verna McSwain for the latter's birthday party Thursday at the Floydada Care Center. Mrs. Q.D. Williams was one of the hostesses from the City Park Church of Christ who served cake, ice cream and punch to the honorees and guests.  
Mrs. Dayne Golightly is keeping books at the Lakeview Inn.  
Mr. and Mrs. Duane McClintock went fishing at Lake Falcon before ginning season got started. They were accompanied by Duane's brother and wife, Mr. and Mrs. Durwood McClintock. It rained while they were at Falcon, but everyone caught lots of fish for their home freezers.  
The late Mrs. R.C. Smith's house has been rented by her estate to Mr. and Mrs. Dee Moses and son, Jeremy. They moved here recently from Dallas, Jeremy is in kindergarten. Welcome to our community.  
Little Miss Joanie Dee

Wesley of Morton, who visits the Q.D. Williams' several times a year, showed a Black Poland pig at the State Fair at Dallas and won 10th place. She acquired the pig when the owner forgot and left it at Morton after a pig show, having a trailer load of show pigs. When Mr. Wesley contacted the owner he said he didn't want to drive back for it and they could keep it. So Joanie fed it and showed it and carried home the tenth place prize.

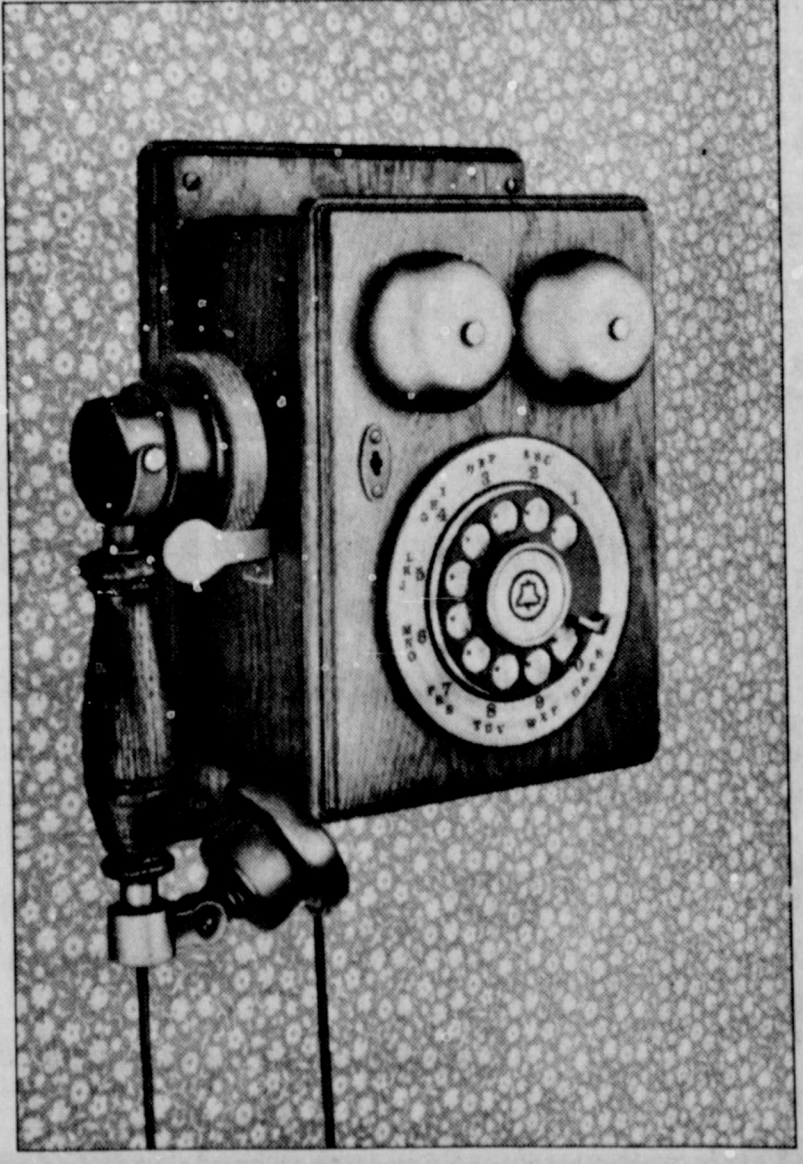


A wall or fence six feet or higher can help block cold winds from your house and cut heating costs.

**Learn To Fly**  
**Solo Course**  
**\$299.00**  
  
**Sandene Aviation**  
510 Quirt St. Lubbock TX  
806-745-4435

**Woodrow Wilson.**  
**Ragtime.**  
**The Great Houdini.**  
**The year is 1913 and**  
**a new Bell telephone**  
**begins ringing**  
**throughout the land.**  
**Ah, those were**  
**the days...**

Now you can relive those days with Southwestern Bell's new Country Junction\* telephone — a happy blend of yesterday's spirit with today's technology.  
Lovingly handcrafted in natural oak and antiqued nickel trim, the Country Junction phone is a classic that blends with period settings and makes an attractive statement with the crisp, cool lines of contemporary taste.  
No matter where the telephone is placed — kitchen, den, family room, living area — this is a phone that will be seen and admired. Because it has modular components, installing it is as easy as hanging a picture.  
In a busy, bustling world, the Country Junction telephone is a pleasant reminder of those times when all phone conversations began with the voice that smiled.



**Southwestern Bell**  
\*Trademark of AT&T Co.  
Working parts remain the property of the telephone company.













**JUDGES ATTEND SEMINAR**—Ninety-six justices of the peace attended a 20-hour Texas Justice of the Peace Training Seminar September 16-17 in Amarillo. The training center is based at Southwest Texas State University in San Marcos. The seminars are held in compliance with article 5872, Section B, of the Texas Revised Civil Statutes. Among the

judges attending were, left to right, R.H. Ford of Lockney, Floyd County, Precinct 2; Walter Hollums of Floydada, Floyd County, Precinct 1-4; Roy Smith of Matador, Motley County, Precinct 1; Jeanne Marr of Abernathy, Hale County, Precinct 3, and Glenn Stone of Plainview, Hale County, Precinct 1.

## Floyd County Library News

**16 MM Films October 1980**  
**Paul Bunyan**, 17 min. Color, 1970. Walt Disney. E1-JH  
 A tall tale of American folklore. Paul Bunyan, even as a baby, was ten axe handles high. Growing to gigantic proportions, Paul and his partner, Babe, the blue ox, became the greatest logging team in folk history. They cut a wide swath through the woods from Maine to the West.  
**Right On/3e Free**, 16 min. Color, 971. FilmFair Communications. JH-A  
 Presents the 1970's explosion of Black American artistic expression through examples of painting, music, poetry, and dance. Discusses artist's responsibility to cultural development.

**Wetback Hound**, 18 min. Color, 1960. Macmillan Films. All ages  
 Presents the story of a confused hound dog whose search for a home takes him many miles from Mexico to Arizona.  
**35 MM Filmstrips**  
 1. Colores en cuentos; El carrito rojo (Stories about colors)  
 2. The Crystal apple (Tales from Aesop)  
 4. Grand Canyon  
 5. Hansel and Gretel (tales from Brothers Grimm)  
 6. The Laura Ingalls Wilder Story  
 7. The Mulberry Bush (songs from childhood)  
 8. The Sound of Thunder  
 9. Three Billy Goats graff  
 10. The Trumpeter of Krakow

## FLOYDADA School Menu

October 27-31

**Monday:**  
 Breakfast: Hot rice, butter, toast, juice, milk  
 Lunch: Meat balls in brown gravy, mashed potatoes, cheese sauce broccoli, peanut reese cup, hot rolls, milk  
**Tuesday:**  
 Breakfast: Fruit or juice, biscuit, butter, jelly, milk  
 Lunch: Beef tacos with cheese, pinto beans, chilled tomatoes, raisin sugar cookie, cornbreak, milk  
**Wednesday:**  
 Breakfast: Applesauce, eggs, toast, sausage, milk  
 Lunch: Chicken pot pie, creamed English peas, tossed salad or tomatoes, wheat rolls, pear half milk

**Thursday:**  
 Breakfast: Hot oatmeal, toast, butter, milk, juice  
 Lunch: Char burger on bun with mustard, tomato, lettuce, dill pickle, French fries, apricot cobbler, milk  
**Friday:**  
 Breakfast: Cowboy bread, bacon, milk, raisins, or juice  
 Lunch: Barbecue on buns, buttered corn, dill pickle spears, chocolate pudding with wafers, milk

## FAIRVIEW NEWS

by Mrs. Clyde Bagwell

October 20:  
 We are having some real fall weather, very cool, at times and last mid-week we had around 1/2 inch of rain over most of the entire area, and this Monday we have a cool cloudy day.

Our heartfelt sympathy goes out to the Harvey Allen family on the death of his mother, Ocie Morrison. Harvey and Judy have been going back and forth all week to Plainview to be at the bedside of his mother who was in the hospital in Plainview and she passed away Sunday night.

In our news last week we reported a salad supper given by Mrs. Flora Warren for members of the Warren family and Mrs. Ethel Warren and Mrs. Leona Warren were also present for this get-together and their names were left off.

Also Mrs. Mattie Mulkeys name was left off when the brothers and sisters of Mrs. C.H. Wise were at the Wise home to celebrate his birthday.

Mr. and Mrs. Bill Beedy and Charles Beedy and Mr. and Mrs. Bill Tye spent the weekend at Lake Kemp with Mr. and Mrs. Bradford Beedy.

L.H. Blum is expected to come home in a day or so from Lockney General Hospital where he has been for a week. He entered the hospital for a check-up and tests.

Mrs. Flora Warren and Mrs. Leona Warren visited Mrs. Bud Warren Saturday

afternoon.  
 Sunday Mr. and Mrs. Hubert Davis visited Mr. and Mrs. Bud Warren.  
 Mr. and Mrs. Ollie Meek visited Sunday afternoon with Mr. and Mrs. C.H. Wise.

Mrs. Ray Cook visited Saturday with Lee Burton and daughter, Carolyn.  
 Bill DuBois visited Wednesday with Mr. and Mrs. A. S. Mize.

Friday Mrs. Ella Cummings of Weatherford visited Mrs. Kate Crabtree.  
 Mrs. Kay Crabtree visited and on Tuesday Mrs. Bertha Lee Finley of Plainview visited Mrs. Kate Crabtree.

Mrs. Ray Cook came by Monday for a short visit with Mrs. Clyde Bagwell.  
 Becky Crabtree of Texas Tech spent the weekend home and on Sunday she along with her parents and brother and sister, Mr. and Mrs. Kay Crabtree, Sam and Anissa, were dinner guests of Mrs. Kate Crabtree.

Early Sunday morning Mrs. Ethel Graham and Mrs. Jewell Teague drove over to Clovis, New Mexico and spent the day with their cousins, Mrs. Mertie Wall and Mrs. Hardy Rutherford.

Dona Reed visited Mrs. Jewell Teague one day last week.  
 Marc Caffee of St. Louis, Missouri, called his grandparents, Mr. and Mrs. C.H. Wise, Sunday afternoon.

Marc is a part time student and part time teacher at the college there.

Richard R. Stafford, Ph.D

PSYCHOLOGIST  
 Announces The Opening Of His Full-Time Private Practice In Counseling For Individuals, Couples, Children and Families

STRICTLY CONFIDENTIAL  
 Hours By Appointment (806) 293-8848



The Galapagos Islands west of the Galapagos, Spanish for the 200-pound tortoises found the weight of a man.

Thursday, October 24

99¢  
 KING SIZE WALLET CREATIVE COLOR PORTRAITS FOR ONLY

Kodak paper. For a Good Life of Your Life.

SEND OUR PICTURES IN CHRISTMAS CARDS



Extra Charge for GROUPS

GET PICTURES MADE IN GALAPAGOS. CASH ONLY. 30¢ PER HOUR AND ALL THE LITTLE ONES AT THESE SAME LOW PRICES.

Shugart's COLOR PHOTOS

THOMPSON PHARMACY  
 200 SO. MAIN FLOYDADA



# Piggly Wiggly Puts Magic In Your Holiday Shopping

# 3,000 EXTRA GOLD BOND STAMPS

## Holiday Magic - 6 Big Weeks of BONUS COUPONS . . .

### Redeem These Coupons During The Next 2 Weeks!

Coupons Below May Be Redeemed Between Oct. 30 & Nov. 5, 1980.

<p style="text-align: center;"><b>100 EXTRA STAMPS</b></p> <p style="text-align: center;">With This Coupon And \$10 Purchase or More (excluding items prohibited by law). Limit one coupon per family.</p> <p style="text-align: center;">Coupon Good Oct. 30 Thru Nov. 5, 1980</p>	<p style="text-align: center;"><b>100 EXTRA STAMPS</b></p> <p style="text-align: center;">With This Coupon and Purchase of 12-oz. can <b>SPAM LUNCHEON</b></p> <p style="text-align: center;">Coupon Good Oct. 30 Thru Nov. 5, 1980</p>	<p style="text-align: center;"><b>100 EXTRA STAMPS</b></p> <p style="text-align: center;">With This Coupon and Purchase of 32-oz. keg bli. <b>HEINZ KETCHUP</b></p> <p style="text-align: center;">Coupon Good Oct. 30 Thru Nov. 5, 1980</p>	<p style="text-align: center;"><b>50 EXTRA STAMPS</b></p> <p style="text-align: center;">With This Coupon and Purchase of 4-roll pkg. <b>CHARMIN TISSUE</b></p> <p style="text-align: center;">Coupon Good Oct. 30 Thru Nov. 5, 1980</p>	<p style="text-align: center;"><b>50 EXTRA STAMPS</b></p> <p style="text-align: center;">With This Coupon and Purchase of 12-oz. pkg., <b>COOL WHIP</b></p> <p style="text-align: center;">Coupon Good Oct. 30 Thru Nov. 5, 1980</p>	<p style="text-align: center;"><b>100 EXTRA STAMPS</b></p> <p style="text-align: center;">With This Coupon and Purchase of 3-lb. can <b>CRISCO SHORTENING</b></p> <p style="text-align: center;">Coupon Good Oct. 30 Thru Nov. 5, 1980</p>
---	---	--	--	--	--

Coupons Below May Be Redeemed Between Oct. 23 and Oct. 29, 1980

<p style="text-align: center;"><b>100 EXTRA STAMPS</b></p> <p style="text-align: center;">With This Coupon And \$10 Purchase or More (excluding items prohibited by law). Limit one coupon per family.</p> <p style="text-align: center;">Coupon Good Oct. 23 Thru Oct. 29, 1980</p>	<p style="text-align: center;"><b>100 EXTRA STAMPS</b></p> <p style="text-align: center;">With This Coupon and Purchase of 20-oz. can, <b>CHERRY PIE FILLING</b></p> <p style="text-align: center;">Coupon Good Oct. 23 Thru Oct. 29, 1980</p>	<p style="text-align: center;"><b>100 EXTRA STAMPS</b></p> <p style="text-align: center;">With This Coupon and Purchase of 32-oz. jar <b>KRAFT MAYONNAISE</b></p> <p style="text-align: center;">Coupon Good Oct. 23 Thru Oct. 29, 1980</p>	<p style="text-align: center;"><b>50 EXTRA STAMPS</b></p> <p style="text-align: center;">With This Coupon and Purchase of 30-oz. can, <b>FRUIT COCKTAIL</b></p> <p style="text-align: center;">Coupon Good Oct. 23 Thru Oct. 29, 1980</p>	<p style="text-align: center;"><b>50 EXTRA STAMPS</b></p> <p style="text-align: center;">With This Coupon and Purchase of 1-lb. pkg., <b>PREMIUM SALTINES</b></p> <p style="text-align: center;">Coupon Good Oct. 23 Thru Oct. 29, 1980</p>	<p style="text-align: center;"><b>100 EXTRA STAMPS</b></p> <p style="text-align: center;">With This Coupon and Purchase of 16-oz. jar, <b>COFFEE MATE</b></p> <p style="text-align: center;">Coupon Good Oct. 23 Thru Oct. 29, 1980</p>
--	--	---	---	---	---

### Extra Stamps Fill Books & Booklets Faster . . . Redeem for Food or Gifts!

CRIME CALL 3-5200

Volume 79 Number

residential  
 s genera

books to Texas and from New California, millions of United States will visit the polling sites today, November 4, to elect a man to serve the nation for four years.

presidential vice presidential candidates are listed on the ballot. The error is that Anderson and Patrick J. Lucy as his name was registered as the son of Lucy's.

There are no local races this year. The presidential election is expected to be held on Friday, October 31, 5 p.m. Final hour on absentee voting ballots must be postmarked by midnight Friday and must

own Crier

REMINDER  
 funds for the Jews of the 1st of \$5 increase in the cost will go into effect at that time. You want to donate to the fund, call it up at the First National to receive funds and any fireman take your donations.

NOTICE  
 Lockney Lady Horns will travel to Plainview on Saturday to scrimmage the Plainview teams in a warm-up.

NOTICE  
 There will be no school on Friday, Oct. 31. Teachers will have an early day.



week's football contest winners are Stapp and Smith and Pyle for 1st place; W.L. Carbel, and Boyd Lee was the 3rd place

Loughorn Band will compete Friday, November 5, in the Region 7 Marching Contest to be held in Jones Stadium on the Texas University campus. The local band performing at 9:30. The public is

will be a booster bus going to the football game Friday 7. Cost will be \$2.00 per person or more depending on the going.

will be an adult bus, children accompanied by an adult. Some is asked to bring a sack

For information contact, Karen 652-2373; Lucy Dean Record 654 or Kim Murdock at 652-