

WE GIVE WE GIVE WE GIVE WE GIVE WE GIVE WE GIVE

November 27, 1980

6-32 oz

# Tab or Coke

\$1.49

Plus Deposit

220 South 2nd  
983-3149

STORE HOURS  
Mon-Sat. 8 am - 9 pm Sunday 9 am - 9 pm

Values In This Ad  
Effective Thru Wednesday  
December 3, 1980

Exercise The Right To Limit Quantities

WE GIVE WE GIVE WE GIVE WE GIVE WE GIVE WE GIVE

2 lb Nestle's Chocolate

# Quik

\$2.69

16 oz Snack Size Snickers, 3 Musketeers Milkyway

# Candy Bar

\$1.99

WE GIVE WE GIVE WE GIVE WE GIVE WE GIVE WE GIVE

New Crop Navel

# Oranges

3 1/2 lb \$1.00

Red Delicious

# Apples

39¢ lb

California

# Avocados

5/\$1.00

Golden Rip

# Bananas

3 1/2 lb \$1.00

Snow White

# Cauliflower

\$1.09

10 lb All Purpose

# Potatoes

\$1.99

WE GIVE WE GIVE WE GIVE WE GIVE WE GIVE WE GIVE

WATCH FOR YOUR LUCKY STAR

If You Have a Lucky Star On Your Cash Register Tape You Have Won the Following:

- GOLD STARS
- SILVER STARS
- RED STARS
- GREEN STARS
- BLUE STARS

1200 S. E. N. Green Street, (1st Floor)  
607 S.W. Green Street

**Juanita DeHoyos**  
WINNER

25 WINNERS EACH WEEK

WE GIVE WE GIVE WE GIVE WE GIVE WE GIVE WE GIVE

Local businesses give

## Seventeen turkeys

Seventeen turkeys were won in drawings at Lockney businesses last week. The contest was sponsored by local Lockney businesses.

The businesses participating in the contest and their winners were: Rosa's Chateau; G.A. McAda; Miller Insurance and Real Estate; Kathleen Schacht's Flowers; Clyde Byrd Pharmacy; Mary Lovell's Byrd Pharmacy; Clyde Stowe; Rex Insurance; Kenneth Wofford; Rex Pharmacy and T.V.; Wayne Hamlett; Shadow Box; Phyllis Lopez; Rex's Cleaners; Minnie Wright; Jackson Tire Co.; Reed Lawson; Davis Rubber Co.; Belinda Mariscal; White Store; Mrs. Igele Davis; Brown's Department Store; Leona Stowe; Parker Appliance and Furniture; Nancy Clark's Page's Thriftway; Gerald Sams and Jerry Implement; Belinda Mariscal.

Deze Lockbinding  
P.O. Box 2550  
Amarillo, Tex. 79105

# The Lockney Beacon

Volume 79 Number 74 Lockney, Floyd County, Texas 79241 Thursday December 4, 1980 18 Pages In Two Sections 25c

## Council may make CATV decision today

The Lockney City Council meets today and it may make a final decision on awarding a new cable television franchise for the city.

The council is to meet today with officials of the Big Springs Cable Television Co., one of the two applicants for the franchise. Big Springs recently bought Floydada Cable Television which had held the Lockney franchise but let it expire when projections showed costs might be too high for the number of subscribers that could be signed-up in Lockney.

The other applicant is Jerry Ford, who had been manager of the Floydada system but was reassigned to another job when Big Springs bought the Floydada company.

Ford, who made his presentation to the council Monday night, says if he gets the franchise his system could be operational around the first of May if weather conditions permit.

Ford says his cable system would offer 12 channels:

Channel 2: Home Box Office or Showtime would be available as an option at an additional cost of \$10 per month.

Channel 3: 24-hour weather channel.

Channel 4: WTBS, Atlanta, Georgia.

Channel 5: KTXB, Lubbock, Public Broadcasting System.

Channel 6: to be announced later but it might be used by a local church.

Channel 7: KMAC, Lubbock.

Channel 8: Christian Broadcasting Network.

Channel 9: WGN, Chicago.

Channel 10: WOR, New York City.

Channel 11: KCBT, Lubbock.

Channel 12: to be announced.

Channel 13: KLBK, Lubbock.

Ford says it is also possible that in the future the schools could use the cable system and a storm alert system might be established in conjunction with the police department.

Ford says his cable system would cost \$11 per month for one television with a one-time hookup charge of \$10. It would cost \$1.50 per month for each additional outlet in a house plus a one-time charge of \$12.50 for each additional hookup.

Ford says he has reached agreement with First National Bank of Lockney on financing if he receives the cable franchise.

He also says that he has reached an agreement with Southwestern Public Service Company to use their utility poles for the cable system.

Use of the Southwestern poles might be a problem if Big Springs gets the franchise since Big Springs and Southwestern are involved in a lawsuit.

Ford says he plans to live in Lockney if he gets the franchise and that, he says, would mean better service for Lockney. Ford says he would also do as much hiring and buying locally, as possible.



JERRY FORD explained his plans for a cable television system for Lockney earlier this week at a meeting of the city council. Ford is one of two applicants for the new cable franchise which may be awarded today.

## City seeks block funds

Lockney City Council has unanimously passed a resolution authorizing a consulting firm to apply to the Department of Housing and Urban Development for \$765,000 in city Development Block Grant funds for the city.

The money came at the end of the third annual public hearing and the final application. There were no citizen objections voiced at the hearings.

The proposed program was explained to the English speaking people in the community through an interpreter at a hearing by Barbara Ellis of R.L. Smith and Cooper Inc., of an engineering, architectural planning firm.

Ellis says HUD has designated \$6 million in CDBG funds for the northern part of Texas and she says the City of Lockney has done everything it can to receive its share of the funds.

Ellis says HUD has designated \$6 million in CDBG funds for the northern part of Texas and she says the City of Lockney has done everything it can to receive its share of the funds.

The other money sought would be used for street and drainage improvements.

- \$120,000 for sewer improvements.
- \$65,000 for water improvements.
- \$25,000 for clearance and demolition.
- \$30,000 for code enforcement.
- \$36,000 for administration.

Ellis also points out that because \$36,000 is being sought for administration costs, if the program is approved, it will not require any tax money to manage the program.

## Tax hike appears near For Lockney schools

Only five people turned out for a Lockney School Board public hearing on a proposed 33.3 percent tax increase Monday night.

Superintendent Dub Hallmark spent most of the three hours the hearing lasted explaining why the tax increase is needed.

The present tax levy is 54-cents per hundred-dollars assessed valuation. The proposed increase would raise that levy to 72-cents.

The tax boost is needed, Hallmark says, to cover a \$156,000 increase in the school budget for the 1980-81 school year. The total proposed budget is over \$1.4 million.

Hallmark explained at the hearing that the need for the increase stems from the state-wide property re-evaluation, during which property in the Lockney Independent School District was reassessed upward from \$70 million to over \$100 million.

While the reassessment was aimed at providing tax relief state-wide, Hallmark says, it actually wound up costing the Lockney schools \$79,000 for the current school year.

In an effort to make up for the lost revenue, four teachers were not replaced, three bus routes were eliminated, and tuition was started for out-of-district students. However, the cuts were not enough to make up for the lost revenues, especially with rising costs.

The board is expected to adopt the \$1.4 million budget at its regular meeting next Tuesday at 6 p.m. A special meeting will be held at 7:30 p.m. following the regular meeting to officially set the tax rate.

Hallmark says he does not anticipate that the board will make any substantial changes in the budget or tax rate before they are finalized.

## Large reward offered in Lockney gun theft case

The largest dollar amount reward for Crime Call information has been offered this week in the robbery of a gun collection.

The reward has been set at \$850 for information leading to the arrest of the person or persons who broke into the R.H. Ford home and stole 28 Stevens collectors guns. Value of the collection is almost \$6000.

Judge Ford, who lives about five miles from Lockney, had only been gone from the house about an hour. The theft occurred during that time on November 17.

The informant does not have to give their name or any identification. They may call 983-5200 collect and give "Crime Call" as their name to the operator.

After they have given the information they will be told when to call back. After the arrest has been made, the informant calls back and is told where to pick up their reward money.

Another reward of \$200 has been offered in the theft of the Lee Burton residence in the Fairview Community. The couple left their home about 1:30 p.m. on November 12 to go to a funeral.

When they returned at 5 p.m. they discovered their house had been broken into and several hundred dollars worth of personal goods had been taken. The criminals had gained entry to the house by kicking out a front door panel.

Again a rural Lockney residence was robbed, this time of a pick-up parked in a carport. The thieves pushed the 1974 Chevrolet pick up out of the yard during the night while the J.G. Landtroop family slept.

**CRIME CALL**  
983- 5200

## Miss Claus coming to Lockney Saturday

Miss Claus is coming to town. Through arrangements with Lockney Chamber of Commerce, she will be arriving at two o'clock Saturday morning, December 13.

Miss Claus will be entering town from the south on a fire truck. He'll ride down Main Street to Locust where he'll be out candy and listening to requests from 2 p.m. to 5 p.m. on the sidewalk between Brown's Department Store and Rowell's This Rite Store.

## Mr. and Miss LHS chosen by students

Most athletic sophomores: Kyle Brock and Connie Coffman.

Most athletic freshmen: Robert Rendon and Shawnda Brock.

Most studious seniors: Adrian Ramirez and Jill Whitfill.

Most studious junior: Caris Carthel and Elma Molina.

Most studious sophomore: Marcus Schacht and Maribel Torres.

Most studious freshman: Paul Castro and Aurora Garcia.

Senior class clowns: Dwight Jackson and Cynthia Salinas.

Junior class clowns: Freddie Alaniz and Kelly Clark.

Sophomore class clowns: Julie Reece and Freddy Salinas.

Freshmen class clowns: Carmea Rodriguez and Refugio Vasquez.

Most dependable seniors: Monty Smithy and Ester Martinez.

Most dependable juniors: Melanie Foster and Ralph Scheele.

Most courteous seniors: Irene Araujo, Sharon Spencer and David Balderas.

Seniors John Fortenberry and Julie Ferguson were named Mr. and Miss LHS at a dance at Lockney High School November 22.

Monty Smith and Julie Frizzell were first runner-up for Mr. and Miss LHS in voting by the students.

Those chosen, on other categories were:

Senior favorites: Monty Smith and Roxanne Ford.

Junior favorites: Jeffrey McCormick and Melanie Foster.

Sophomore favorites: Tim Winters and Karen Mathis.

Freshman favorites: Jackie Cunyus and Libby Williams.

Most attractive seniors: John Cummings and Julie Frizzell.

Most attractive juniors: Ernest Galvan and Dena Casey.

Most attractive sophomores: Michael Carthel and Robin Carthel.

Most attractive freshmen: Refugio Vasquez and Libby Williams.

Most athletic seniors: Byron Brock and Rebecca Evans.

Most athletic juniors: Junior McDonald and Anomia Luna.



John Fortenberry and Julie Ferguson

## Chamber says no To lending suit

The Lockney Chamber of Commerce has decided to restrict the use of its Santa Claus suit.

The chamber voted at its monthly meeting to limit use of the suit to the hospital, nursing home and churches.

The restrictions are aimed at saving wear and tear on the suit which cost about \$100.



# FARM & RANCH NEWS



**COTTON INCORPORATED** president Dukes Wooters, second from left, explains some key features of the company's new fiber processing line to directors Morgan Nelson, left, Roswell, New Mexico, Don Marble, second from right, from South Plains, and C. Penn Owen, Jr., right, of Tunica, Mississippi.

## Company unveils new fiber process

Cotton Incorporated Board Chairman L.C. Unfred of Tahoka, calls it a "great breakthrough."  
The object of his praise is a new fiber processing line developed by Cotton Incorporated to make cotton more competitive with synthetics in the non-woven market.  
In addition to making cotton more competitive in the large non-woven market, spin-off technology developed during the research project is already making cotton more attractive to textile mills in other product areas, says company president Dukes Wooters.  
Side benefits include new technology for cleaning cotton and possible use of the system to help textile mills comply

with federal cotton dust standards.  
The new line, called a continuous action scouring and bleaching line, was unveiled in Greenville, South Carolina, recently to the executive committee of the Cotton Incorporated board of directors, including several directors from the Southwest, including Don Marble of South Plains, Texas.  
Cotton Incorporated, the fiber company of American cotton producers, conducts research and marketing programs using producers' per-bale assessments. It works to reduce production costs and increase cotton consumption. Its board is made up of 37 cotton producers elected by cotton producer organizations.

Cotton Board Chairman Murray Williams of Altus, Oklahoma, who also attended the meeting, said, "It's unbelievable the kind of cotton they can put in that machine and the way it comes out."  
The scouring and bleaching line takes raw cotton fiber from the gin and converts it into a pristine white fiber suitable for surgical sponges, sanitary napkins, cosmetic wipes, and other uses, explains Wooters.  
Cotton Incorporated has been awarded six patents for new technology and equipment created in the development of the process, says Wooters.

## New weapons to control many grasses

Grain sorghum producers now have efficient weapons to control grasses, as well as broadleaf weeds, in their sorghum crop.  
These weapons are new broad-spectrum herbicides and sorghum seed treated with a chemical safener to protect it from the herbicides that kill both broadleaf weeds and grasses.  
Controlling grasses in sorghum is a problem because sorghum also is a grass. Surveys show that grasses are a serious problem in almost half of the 16 million grain sorghum acres in the United States.  
Researchers with DeKalb AgResearch, Inc. have been studying the results of safened seed trials throughout the sorghum belt.  
Bill Burrow, southern-western area sales manager for DeKalb says, "It appears that the safened seed, in plots that we observed this year, had good germination and vigor. Good grass control was achieved where the appropriate herbicide was used."

For the 1981 planting season, DeKalb will make available herbicide safened sorghum seed to farmers in the sorghum belt.  
Sorghum seed treated with ConcepR, an effective, consistent chemical safener, can withstand an early herbicide treatment to combat grasses and broadleaves while the seed is in the ground and after emergence.  
Broadleaf herbicides for sorghum have been available for some time, but herbicides that kill both grasses and broadleaves in sorghum are a fairly new development.  
These new herbicides are not specific to grasses and broadleaf weeds, however, and can injure sorghum just as readily as they kill its competitors.  
The chemical safener applied to sorghum seed protects the young plants from the new herbicides' active ingredient. It effectively protects sorghum until it is about four inches high.  
For the 1981 planting season, DeKalb offers four safened sorghum hybrids. These varieties are B-381, D-42a,

DK-57 and E-591. The hybrids will be available in the major sorghum producing areas of the United States where the broad spectrum herbicides are marketed.  
"DeKalb is pleased that we can offer the farmer safened seed," says Burrow. "We feel that Concep is a giant step forward in helping farmers control problem grasses."  
Concep protects the young plants only against products containing metolachlor, the active ingredient in the new broad-spectrum herbicides. It does not protect the plants from other active ingredients and should only be used with those herbicides specified on the seed label.  
The Environmental Protection Agency permits use of safened seed only with BicepR, MilocepR, DualR and combinations of Dual with IgranR, MilogranR and AAtrexR.  
DeKalb dealers have complete information on the use of Concep safened seed and its applicability to different locations and planting situations.

## A look at 1981

# Farmers face financial troubles

In 1980 farmers were faced with major financial problems brought about by high interest rates and tight credit in the spring and widespread drought. Farmers in drought-stricken areas will enter 1981 heavily burdened with debt because of the need to obtain extensions and renewals of existing debts. Farmers not affected by the adverse weather should be in a stronger financial situation. Interest rates are expected to remain high in 1981, however, they are expected to be lower, on average, than his year's rates.

Net farm income will be between \$23 and \$25 billion in 1980, down from \$31 billion in 1979. However, projected higher farm prices, lower interest rates, and a decline in the rate of increase in production expenses should contribute to increased net farm income in 1981—currently forecast from \$27 to \$32 billion. The higher farm prices forecast for 1981 are due to a substantial drop in

supplies of commodities as well as expectations of strong export demand. Cash income from both farm and nonfarm sources rose slightly in 1980 and is expected to take a substantial jump in 1981.  
As a whole, farmers are likely to be in an improved financial position by the end of 1981. However, hog and poultry producers' incomes are expected to improve only marginally while producers of vegetables, fruits, and nuts are forecast to have lower incomes in 1981.

Gross investment in 1980 is forecast at almost \$12 billion, down from \$21.6 billion in 1979 and considerably below the nearly \$41 billion projected for 1981.  
Low net farm income, high interest rates, and conditions related to real estate market are expected to be the percent in 1980. The 15-percent increase in

Delayed capital purchases and refinancing of short-term debt resulted in a decline in the growth of nonreal estate debt. Higher farm incomes in 1981 may slow the rate of increase in real estate

## South Plains 4-H'ers receive honors

Forty outstanding members of 4-H Clubs in the South Plains were honored in Lubbock Monday night, November 24.

In addition to receiving the Gold Star Award, highest honor presented at the county level, the youths were challenged by State Senator E.L. Short of Tahoka to continue throughout life to pursue the 4-H Club motto, "To make the best better."

Joining the youths at the awards banquet at Coronado High School were parents, government officials, Extension leaders, fellow 4-H'ers and other community leaders.

Honored from Floyd County were Melanie and Karyn Foster, daughters of Mr. and Mrs. Eddie Joe Foster of Lockney.

Short told the 4-H'ers they are part of a "dynamic and positive" organization and are "providing leadership to do something about our problems." Among specific challenges already being met by 4-H'ers, Short said, are conservation of our natural resources and improving health and nutrition habits.

Guests were welcomed by James Eiland, general manager of Caprock Electric Cooperative, one of the 12 electric cooperatives which sponsored

the banquet. The others were Bailey County, Deaf Smith, Dickens County, Lamb County, Lea County, Lighthouse, Lone Wolf, Lyntegar, Midwest, South Plains and Swisher electric cooperatives.

Television personality Bob Nash of KAMC-TV was master of ceremonies.

Dr. John Pelham of College Station, state 4-H and youth leader, narrated the awards presentations, made by Dr. Catherine Crawford and Billy C. Gunter, district Extension directors.

Dinner music was by 4-H'er Donna

Beth Lide of Pecos entertained with a singing, a women's group and a play. Also on the 4-H'ers Show Band were Belinda Whitlock and Scott Simpson of

Whitlock and children, Kristie and Brad Tabaka, and son, Christopher; Disie and Tom; and children, Steve, Janna, Jerry and Andy; Ronnie and Kelly Ford; Ray Lyn, Kav and Kristina Owens, of Sunnyside.

Dinner guests of Bill and Dee Whitlock, and their children, Rhonda and Richard Hardin, of Plainview; George Whitlock and Phineas Holmes of Seminole.

Dinner guest of Olan and Phyllis Poteet, Thanksgiving were their daughter, Beverly Poteet and Pat (Poteet) and Robert Turner, and

MELANIE FOSTER, left, and sister KARYN, of Lockney, receive their 4-H honor awards at a 4-H banquet in Lubbock last week. The Gold Star Award is the highest 4-H honor presented at the county level. The sisters are the daughters of Mr. and Mrs. Eddie Joe Foster.

MELANIE FOSTER, left, and sister KARYN, of Lockney, receive their 4-H honor awards at a 4-H banquet in Lubbock last week. The Gold Star Award is the highest 4-H honor presented at the county level. The sisters are the daughters of Mr. and Mrs. Eddie Joe Foster.



**AUCTION**  
TRUCKLOAD SALE OF NEW TOOLS  
Friday December 5th 7:00 PM  
American Legion Hall  
Lockney Texas

NOTICE: We will offer for sale at public auction, thousands of dollars worth of new brand name heavy duty industrial tools. There will be many job-lots sold. So all dealers, wholesalers and salvage buyers, be sure to attend. RODAC - CP - Chicago ROCKWELL - WEN - MILLER FALLS - SHOPMATE - S&K - HERBRAND - TRU CRAFT - JET - BLUE LINE - EMERSON - BUFFALO - VISE GRIP - CHANNELLOCK CUMMINS.

SHOP TOOLS, POWER TOOLS, AIR TOOLS, FARM SUPPLIES

3 - 1 1/2 H.P. Air Compressors, 1 - 3 H.P. Air Compressor, 30 - Heavy Duty 4", 5" and 6" Vises, 39 - Channellock Pliers, 2 - Porta-Powers, 16 - Hand Saws, 15 - Drill Press Vices, 2 - Large Machinist Chests, 35 - Vice Grip Pliers, 3 - Bench Model Drill Presses, 40 - 12 pc. Punch & Chisel Sets, 13 - Hydraulic Jacks, 2-20 Ton, 2 - Floor Model Drill Presses, 46 - 4 pc Crescent Wrench Sets, 18 - 2 Ton Com-A-Longs, 12 - 3/4" 21 pc. Socket Sets, 10 - Air Chisels, 20 - Steel 100' Measuring Tapes, 19 - 4 pc. Grooved Plier Sets, 50 - Garden Hoses, 3 - Orbital Sanders, 8 - Air Drills, 11 - Air Hammers, 9 - 1/2" Deep Well Impact Socket, 25 - 3/4" Impact Drivers, 12 - Heavy Duty Grinders (1/2 to 2 H.P.), 26 - 100' Power Cable H.D., 27 - Booster Cables, 30 - Trouble Lights, 43 - 7 pc. Screwdriver Sets, 6 - Circular Saws (7 1/2"), 2 - Gas Air Compressors, 12 - 1/2" Socket Sets, 25 pc, 14 - Box End Wrench Sets, 17 - Angle Air Ratchets, 11 - Air Grinders, 2 - Battery Chargers, 2 - Floor Jacks Heavy Duty, 8 - 3/4" Impact Socket Sets, 10 - Heavy Truck Tarps, 33 - Air Hoses, 2 - 3/4" Air Impact, 10 - Gear Pullers, 2 - Power Hack Saws, 2 - 1/2" & 3/4" Air, Impact Wrenches, 38 - 8 pc. Deepwell Socket Sets, Many Bundles of Electrical Tape, 60 - Allen Wrenches, 13 - Sets Welding Hoses, 17 - 3/4" & 1/2" Electric Drills, 9 - 1/2" Flex Ratchets, 41 - 14 pc. Tap & Die Sets, 18 - 4 pc. Pipe Wrench Sets, 10 - 29 pc. Hi Speed Drill Bits, 50 - 11 pc. Wrench Sets, 6 - 2 Drawer Tool Boxes, 19 - 1/2" & 3/4" Impact Socket Sets, 42 - Hack Saws and Blades, 23 - 40 pc. Socket Sets. MANY OTHER MISCELLANEOUS ITEMS!

**AUCTIONEER: Texas Auction Company, TXS-1100378, Phil Nichols**

TERMS: Cash or Accepted Check. Sale to be held, Rain or Shine. All tools guaranteed. This is a partial list all subject to prior sale.

**AUCTIONEER'S NOTE:** This will be one of the largest sales of big industrial hand tools, power tools and shop tools ever held in this area. Merchandise can be inspected day of sale. Don't miss this auction. Tools and Merchandise Furnished by G. Woodring Auction Co., Davenport, Nebraska. Not responsible for accidents.

**Sponsored by the Following Interested Firms**

**First National Bank**  
Floydada

**Case Power & Equipment**  
Floydada

**Floydada Cooperative**  
Gins

**Russell's Equipment & Supply**  
Floydada

**The Floyd County Hesperian**

**Federal Land Bank**  
Association of Floydada

**Consumers Fuel Association**  
Lockney

**Martin And Company**

**Floyd County Farm Bureau**

**Ansley & Sons**  
Lockney

**Floydada Imp...**  
Co.

**Plainview Savings**  
Association

## Lockney I

**BOTTIE STANSELL**, friend of Nance of Lubbock, from Tuesday till Sunday her parents Joe and Nance and sister, Amy, and Dottie Stansell, Thanksgiving dinner of their daughter, Sue Lockney Rigby and Jon Lockney in Lubbock. Other guests were her brothers, and Julie Stansell and Stansell, of Lubbock, her grandmother, Mrs. Asher of Snyder, and Young of Dallas.

Wiggington, of Plainview, arrived Wednesday to the holidays with his wife, James and Ruby Stansell. The value of the forecast for 1981 is projected to rise 15 percent. Total farm debt is forecast to rise 15 percent. The value of the forecast for 1981 is projected to rise 15 percent. Total farm debt is forecast to rise 15 percent.

Low net farm income, high interest rates, and conditions related to real estate market are expected to be the percent in 1980. The 15-percent increase in... Copies of Agriculture look (AFO-31) will be week to 10 days. For information, contact Steve... 7340.

Dr. John Pelham of College Station, state 4-H and youth leader, narrated the awards presentations, made by Dr. Catherine Crawford and Billy C. Gunter, district Extension directors.

MELANIE FOSTER, left, and sister KARYN, of Lockney, receive their 4-H honor awards at a 4-H banquet in Lubbock last week. The Gold Star Award is the highest 4-H honor presented at the county level. The sisters are the daughters of Mr. and Mrs. Eddie Joe Foster.

**COLOR**  
8" X 10"  
when you buy  
1-64 oz.  
Downy Fo

**Buddy's Foo**  
220 South 2nd  
Floydada, Texas 79  
64 C



## Lockney Locals

**DOTTIE STANSELL**, wife of Nance of Lubbock, from Tuesday till Sunday with her parents **Joe and Nancy** and sister, **Amy**, and **Dottie Stansell**, Thanksgiving dinner of their daughter, **Sue** and **John** in Lubbock. Other were her brothers, **Julie Stansell** and **Stansell**, of Lubbock, her grandmother, **Mrs. Asher of Snyder**, and **Wigington**, of Plainview, arrived Wednesday to the holidays with his **James and Ruby** and **Kathy Sissney** children, **Stephanie** and **Lance**, of Austin, **Ray and Virginia**. They also visited the **Easton Blendons** and **Pat Stansell's**, **Carol Clark** and **Amber**, visited **Carol's grandmother**, **R.C. Mooneyham**, in **Over the holidays**, **Stansell's** dinner guest **Mrs. J.C. (Condo)** were their children **John** and **Lori Ann**; **Sue** and **Larry Birge** and **son**, all of **Wichita Falls**, **Turner** and **son**, **Lane**, **Stephen**, **Theta** and **Jr.** and **children**, **da**, **Ricky** and **Renee**; and **Bill Strickland**, son, **Jayne** and **Teresa** and **Demetri of Amarillo**, dinner guests of **Helen Billy Dollar**. **Th** were their children, **Donna Dollar**, and **Robert and San-** **dollar** and children, **and Valerie**; and **Nita** and children, **Kellie** and **Stansell**, Thanksgiving dinner of **Raz and Georgia** were **Kristie** and **Brad** and **son**, **Christopher** and **children**, **Steve**, **asa**, **Jerry** and **Andy**, **Ronnie** and **Kelly Ford**, **Lyn**, **Kay** and **Kris-** **wens**, of **Sunnyside**, dinner guests of **Bill and Dee Whitlock**, Thanksgiving were their **Ren**, **Rhonda** and **Rich-** **Hardin**, of **Plainview**, **Whitlock** and **Phineas** of **Seminole**, dinner guest of **Olan and Elaine Poteet**, Thanksgiving were their daughter, **Elly Poteet** and **Pat** (Po- **and Robert Turner**, and

## Lubbock trial moved to Floyd County

BY SHELLY HARRIS

A Lubbock criminal case is being tried in the 110th District Court at Floydada on a change of venue. Judge George Miller is presiding. Approximately 85 county residents were called up for jury duty Tuesday morning.

Selection of 12 jurors, eight men and four women, was made at about 2 p.m. The case of the State of Texas against Lloyd Dale "Skip" Ready began shortly thereafter.

Charges included kidnapping and restraint of freedom of John T. Cameron, 31, by threatening to do bodily harm, attempt to terrorize, and of not releasing him in a safe place. Gerald Anderson, Lubbock, is the defense attorney.

Lubbock first assistant criminal district attorney Jim Darnell is the prosecuting attorney assisted by felony chief Rick Howell.

The case received a large media coverage in Lubbock since two sacks, containing 12 rattlesnakes, were used as part of the assault against Cameron. Cameron, a dapper, soft spoken man, who has done modeling, was the first witness called. In his description of the events beginning with April 8 and leading up to the abduction on April 10, Cameron was at times emotional. When he recalled being bound with his hands behind him, and a sack of snakes placed on his chest he broke into loud sobs.

Court was recessed for a short time while he composed himself.

Cameron testified he and his stepsons Damon, 17, and L.D., 18, were bound and held at gunpoint in an upstairs bedroom of their town house apartment. When Cameron's wife, Betty, returned to the home about 4 a.m. she, too, was held at gun point by Skip Ready and his wife, Brenda Jean.

Cameron further testified that Ready, urged on by his wife, was preparing to kill the four-member family. As Ready was about to untie the sack of snakes, Cameron said he jumped the defendant. They wrestled in a closet and Ready was shot. Cameron then ran to a telephone across the street and called the police. He said that he did not shoot Ready.

Early in the trial, before Cameron began his testimony, the jury was dismissed. Attorneys and the judge discussed what testimony was admissible before the jury on the charge of murder which is pending against Ready at this time.

Defense attorney Anderson objected several times when references were made to that other crime.

Prosecuting attorney Darnell also objected when cross examination went too deeply into the armed robbery conviction that sent Cameron to prison for over three years. The same objection came up about the aggravated assault

charges that are now pending against Cameron in Lubbock.

Cameron was indicted this fall in the shooting of another Lubbock man and for assault in an attack on a Lubbock County Sheriff's Deputy.

Cameron said that he had never seen Ready before he came to the apartment on April 8, but that he had met Brenda. Cameron's wife, Betty, who is several years older than he is, knew the Ready's from association at the Lubbock Mental Health-Mental Retardation Center where she is undergoing treatment for drug addiction.

Court recessed at 5 p.m. Tuesday and reconvened at 10 a.m. Wednesday with Cameron still on the stand being cross-examined.

Anderson, who sits lazily slumped in his chair, drew out a repetitious questioning throughout Wednesday morning.

At press time Cameron was still on the stand. Speculation is that what was to have been a two day trial may drag on through the week.

Local jurors are: George H. Willis, Anna L. Smith, Robert C. Webb, Pat Frizzell, Rance Young, Nettie Ruth Whittle, Elmer D. Williams, Robert O. Turner, Dana Kay Woody, Kelly Ann Fortenberry, Earl Ray Rowan, and H. Dean Stewart.

## Baptists sponsor adult party

The Baptist Young Women of First Baptist Church in Lockney will hold their annual senior adult Christmas party at 5 p.m. Monday at the church's fellowship hall. The party is open to the public. Transportation may be arranged by calling the church office at 652-2251.

**New Tool AUCTION**  
Fri. Dec. 5th  
7:00 P.M.  
American Legion  
Lockney TX  
SEE PAGE 2 FOR COMPLETE LISTING!

**Schachts Flowers, Jewelry & Gifts**  
for gifts to be treasured for all ages.



Personalized Ornaments, Plaques, Bilifolds and Napkins.

Fresh or Permanent Holiday Arrangements. Green or Silk Plants

**SCHACHT**  
Flowers, Jewelry & Gifts  
"Our Pleasure Is To Serve You"

## financial trouble

of commodities as well as of strong export demand. Prices from both farm and nonfarm sources rose slightly in 1980 and are expected to take a substantial

1981. However, hog and poultry

incomes are expected to be marginally while production of fruits, and nuts are expected to be lower incomes in 1981.

in 1980 is forecast at \$2.2 billion, down from \$2.6 billion in 1979 and considerably below \$3 billion projected for 1981.

in 1980 reflects wide-spread reduction of purchases because of high interest rates.

al purchases and refinancing of farm debt resulted in a growth of nonreal estate farm incomes in 1981 may be 15 percent increase in real estate

lending while nonreal estate income accelerates to finance delayed purchases of machinery and equipment.

The value of farm assets is expected to rise almost 9 percent in 1981, the smallest increase in both absolute and percentage terms since 1977.

Total farm debt is projected to rise almost 15 percent in 1980 and an additional 15 percent in 1981. The value of total farm debt owned by the Farm Credit System and Farmers Home Administration is expected to rise during the 1980's.

Low net farm income, together with high interest rates and tight credit conditions reduced activity in the real estate market. Real estate prices are expected to rise between 1 percent in 1980 and between 11 and 15-percent increase in 1981.

Copies of Agricultural Finance Outlook (AFO-21) will be available week to 10 days. For further information, contact Steve Galt, (214) 734-0340.

## ers receive honors

ham of College Station, youth leader, narrated the presentations, made by Dr. Crawford and Billy C. Gunter, extension directors.

ic was by 4-H'er Donna

Beth Lide of Parmer County, entertainment was by the Light Singers, a women's gospel quartet from Tahoka. Also on the program were 4-H'ers Shain Rhodes of Parmer County, Belinda Wheeler of Baylor County and Scott Simpson of Castro



TER, left, and sister KARYN, of Lockney, received Gold Star awards at a banquet in Lubbock last week. The Gold Star award is the highest honor at the county level. The sisters are the daughters of the late Foster.

## Interested Firms

Floyd County Farm Bureau

ment

Ansley & Son  
Lockney

erian Floydada Implement Co.

ation

Plainview Savings & Loan Association  
Floydada



**FREE**  
**COLOR PORTRAIT**  
8" X 10" | 11" X 14"  
when you buy **o** when you buy  
1-64 oz. | 2-64 oz.  
**Downy Fabric Softener**

THIS FREE PORTRAIT OFFER IS OUR WAY OF SAYING "THANK YOU" FOR BEING A VALUED CUSTOMER

**Buddy's Food No. 2**  
220 South 2nd  
Floydada, Texas 79235  
64 OZ. DOWNY



To make an appointment for your free portrait sitting, see our store display for details and special "free portrait" appointment card. Portraits will be taken by professional Olan Mills photographers in one of their studios.

## Town Crier

The Adult Singles Club, of Lockney, will meet Saturday night at 6:00 p.m. December 6, in the Rebekah Lodge Hall, for a salad supper.

You are invited to visit my booth at the **Floydada Lions Club Arts & Crafts Show** at the **Massie Center 10-5, Dec. 6**  
**JO GOEN**  
New Turkey Painting

## LOCKNEY BEACON

(USPS 317-220)

Published weekly each Thursday by Floyd County Publishing Co., 220 South Main St., Lockney, Texas 79241. Second class postage paid at Lockney, Texas. Subscription rates: local \$10.50 per year, out of state area, \$11.50 per year. POSTMASTER: send address changes to the Lockney Beacon, P.O. Box 187, Lockney, Texas 79241.

Shelly Harris, Publisher; Patrick Clark, Managing Editor; Tom Burns, Advertising Manager.

Any erroneous reflection upon the character, standing or reputation of any person, firm or corporation will gladly be corrected when such occurs in the columns of this newspaper and are brought to the attention of the management.

The Publisher is not responsible for copy omission, typographical errors, or any unintentional error that may occur other than to make corrections after being brought to attention. Advertising accepted on this basis only.

300 Count Box Kleenex  
**Facial Tissue 89¢**

Large Roll Scott  
**Paper Towel 59¢**

5 lb Bag Gold Medal  
**Flour 89¢**

2 lb Bowl Velvet Spread  
**Oleo 89¢**

6 Pak 32 oz  
**Cokes \$1.59**  
Plus Deposit

4 lb Bag  
**Pinto Beans \$1.49**

3 lb Bag Red Delicious  
**Apples 99¢**

Green  
**Onions 5/\$1.00**

**Avocado's 5/89¢**  
No. 2 10 lb Bag  
**Potato's \$1.39**

1 lb PKG White Swan Premium  
**Bacon \$1.29**

303 Can Ranch Style  
**Beans 2/79¢**

Nice-N-Lean  
**Hamburger \$1.39**  
lb

Calf  
**Livers 39¢**

Grade A  
**Fryers 63¢**  
lb

**KEETERS** 652-2191  
East Edge of Lockney  
**GROcery**  
7 a.m. - 8 p.m.  
We Redeem Food Stamps & WIC Cards  
We Reserve The Right To Limit Quantities



MRS. J. DON JONES

### Meeks, Jones united in double-ring ceremony

Mickie Meeks and J. Don Jones were united in a double-ring ceremony on November 28 at 7:30 p.m. in the home of the bride's grandmother, Mrs. Lucy Bingham in Wolfforth.

Eugene Sanders, minister of the First Nazarene Church, officiated.

The bride is the daughter of Mrs. Margaret Mauzey of Wolfforth and Mr. Allen Doyle Meeks of Lubbock.

The groom is the son of Mr. and Mrs. Joe Jones.

Sandy Rasberry registered the guests and also served as candlelighter before the ceremony.

The wedding was performed in front of a big picture window with brass candelabra and apricot candles on each side to make an archway. In front of the candelabra were bouquets of apricot gladiolus with white spider mums and white carnations accented with baby's breath.

Her brother, Billy Meeks of Midland, escorted the bride down the aisle and her mother gave her away.

The bride chose a formal length gown of white organza fashion with a Queen Anne neckline. The fitted bodice had an overlay of Chantilly lace and seeded pearls. The full Bishop sleeves had deep cuffs that extended into petal points. The full skirt had tiers of lace edged ruffles that cascaded into a cathedral length train and to complete the picture the bride wore a Juliet headpiece of matching lace holding tiers of lace edged illusions.

The bride carried a Bible atop with a cascaded bouquet of white silk roses accented with baby's breath made by her mother.

Matron of honor was Dena Meeks of Midland, sister-in-law of the bride. Her dress was a floor length gown of shrimp color chiffon the fitted bodice had a caplet encircling the shoulders of pleated chiffon, the full skirt was of permanent pleats with hemline. A wide sash of matching fabric wrap to make the cummerbund at the waist. She carried a bouquet of deep apricot silk roses accented with baby's breath.

The groom was dressed in a black suit and white shirt. Best man was Kary Helms and he wore a tan colored suit.

Wedding music was provided by organist John Nane. Vocalist was Lisa Wood. Songs featured were "I Walk With God," "The Lord's Prayer," and "The Wedding

March."

For the traditional something old the bride wore a drop diamond necklace. Something new was her wedding attire. A handkerchief, belonging to her grandmother Bingham, was something borrowed and something blue was her garter.

The bride wore a penny in her shoe bearing the date of her birth.

**RECEPTION**

Following the ceremony a reception was hosted by the bride's mother.

The table was laid with a white satin tablecloth. The centerpiece was a silver bowl on a pedestal with four candelabras attached to it.

The flower arrangement was of deep apricot silk roses accented with baby's breath. The candles were an apricot color.

The three-tiered wedding cake was decorated with apricot roses. The punch was served in a silver punch bowl also along with apricot color mints and mixed nuts.

Serving at the reception were Opal Holbert, Mildred Johnson, Juanita Taylor, aunt's of the bride; Cecilia Jones, aunt of the groom; and Jerry Pearson, friend of both bride and groom.

For the bride's going away attire she wore a plaid pleated skirt, taupe blouse, green velvet vest and taupe color shoes.

The couple is making their home in Lubbock.

**FLOYD DATA**

Visiting in the home of Mr. and Mrs. C.B. Lyles over the Thanksgiving weekend were Mr. and Mrs. Marvin Lyles and Jacque of Bentonville, Arkansas who had been visiting their son, Mr. and Mrs. Ronnie Lyles and Tricia Nicole of Carlsbad, New Mexico.

Others visiting were Mr. and Mrs. John Lyles and Nada, Hale Center; Mrs. Linda James and Krystal, Hale Center; Don Lyles, Plainview; Mr. and Mrs. C.O. Lyles, Lori and Kay Lynn Rainer; Mr. and Mrs. Earl Beck, Dumas and Mr. and Mrs. Bud Sparks.

Mr. and Mrs. Marvin Lyles returned home Sunday.

## Society and Features

### Candlelight ceremony setting of Connie Bradford, David Lee wedding

First Baptist Church was scene of the Saturday evening wedding of Connie Dean Bradford and David William Lee. The Rev. Bill Sessom, pastor of First Baptist Church, of Fort Sumner, New Mexico, and formerly of Aiken, officiated.

Mr. and Mrs. Charles H. Bradford, and Mr. and Mrs. William J. Lee of Lockney are parents of the couple.

Music was provided by Mrs. Hollis Payne, pianist, and Roberta Hadin, organist. Soloists were Bobbie Miller and Tammy Payne.

Lisa Payne of Lubbock was maid of honor. Bridesmaids were Mrs. Jackie Noel of Plainview and Mrs. Char-

les Bradford Jr., sister-in-law of the bride. Jennifer Mangum of Lockney, the groom's niece, was flower girl.

The ceremony was performed before a background featuring palms, brass candelabra trimmed with greenery, large satin bows and flanked by two candelabras with matching trim. A white unity candle decorated with yellow flowers in an arrangement of greenery, with a small white candle at each side complemented the decor.

Given in marriage by her father, the bride chose a traditional white gown of Chantilly lace. The split

neckline and bodice were trimmed with pearls and Venise lace, the bishop sleeves were of Chantilly lace. Matching lace formed a polonaise effect over the organza skirt. Chantilly lace also was used to edge the skirt and chapel train. The Juliet cap with fingertip veil was trimmed with Venise lace.

She carried a large cascade of cinnamon-colored rosebuds and yellow sweetheart rosebuds, with white satin streamers, atop a Bible given to her by her father.

Something old was cameo necklace with teardrop opal worn by her grandmother, Ethel Sheddock of Dallas, in her wedding. She

borrowed an opal stickpin belonging to the groom's family and added the traditional touch of blue.

The attendants were attired in identical gowns of maize luster. The bodices, with spaghetti straps, were accented with draped jackets. A-line skirts and empire waists complimented the gowns.

Each attendant carried a long stemmed yellow rose adorned with greenery and tied with a yellow satin bow accented with streamers.

Attending the bridegroom as best man was Billy Sessom of Canyon. Charles Bradford, brother of the bride, and Chris Cummings of Hale Center were groomsmen.

Ushers were Kevin Stennett, Lubbock, Robert Moore, Tulla, cousin of the groom, and Dale Kiss, Canyon.

### Fortenberry honoree of bridal shower

Miss Marcia Fortenberry, bride-elect of Keith Phillips, both of Lockney, was honoree at a bridal shower given Saturday, November 29, in the home of Mrs. Donnie Bybee.

Receiving guests were Mrs. Donnie Bybee, Marcia, Mrs. D.J. Phillips, Mrs. Eddie Fortenberry, Mrs. W.H. Workman, and Mrs. L.K. Sherman. Corsages of pink and burgundy carnations with baby's breath were worn.

Special guests were Mrs. W.H. Workman and Mrs. L.K. Sherman.

Guests were registered by Jennifer Fortenberry.

The serving table was adorned with a lace tablecloth over a burgundy cloth, and a pink and burgundy silk flower centerpiece. A silver service and crystal punch bowl were used.

Serving were Mrs. Kelly Prater, Mrs. Sam Fortenberry and Miss Stephanie Turner.

Attending the gift room were Mrs. Ronny Laceywell, Mrs. Paul Glasson, Mrs. Tommy Sherman, and Mrs. Bill Sherman.

The hostesses, Mrs. Bill Turner, Mrs. Donald Reecer, Mrs. Ronnie Thornton, Mrs. Joe Taylor, Mrs. Bob Lane, Mrs. Bobby Carthel, Mrs. Jimmy Stennett, Mrs. W.L. Thomas, Jr., Mrs. Denny Quisenberry, Mrs. Alton Barnes, Mrs. Max Smith, Mrs. Gale McPherson, Mrs. Joe Cunyus, Mrs. Bill Strickland, Harold Brock, Mrs. Pat Fritzell, Mrs. Dub Dickey, Mrs. Tommy Montandon, Mrs. G.E. Kellison, Mrs. Claude Brown, Mrs. Steve McPherson and Mrs. Donnie Bybee, presented the honoree with a stainless steel mixer.

Miss Fortenberry and Mr. Phillips plan a January 17, 1981 wedding in the home of Mr. and Mrs. Bill Sherman in the Lone Star Community.



MR. AND MRS. MIKE DIETRICH

### Jo Beth Stalling, Mike Dietrich wed

Jo Beth Stallings and Mike Dietrich were united in marriage November 6, at 6 p.m. at the First Baptist Church in Lockney. Rev. John Jenkins performed the ceremony.

The bride is the daughter of Mr. and Mrs. Claude Stallings and the groom is the son of Sue Dietrich of Plainview and Arnold Dietrich of Providence Community.

Two candelabra with greenery and blue bows were lighted by the bride's brother, Allen Stallings, Jim Dietrich, Allen Stallings, and Randy Skinner, brother-in-law of the bride, ushered guests.

Lou Skinner, sister of the bride, registered guests.

The "Wedding March" was sung by Tim Carter of Plainview and the recessional by Daryl Carter of Plainview.

The bride presented in marriage by her father wore a bridal gown of polyester lace trim, high banded neckline, an embroidered cameo effect on the bodice and a lace circled veil with pearls.

She carried a bouquet of brown and blue silk daisies with baby's breath and tied with long ribbon streamers.

Following tradition, the bride wore her new wedding

attire, carried an old handkerchief, belonging to her grandmother, Mrs. Beatrice Lee of Potosboro, Texas.

Janet Houghtaling, Artesia, New Mexico, served as Maid of Honor and was attired in a blue crepe street length dress and carried a single blue silk rose.

Jim Dietrich served as best man.

**RECEPTION**

A reception following the ceremony was held at the church hall.

A table was covered with a white linen cloth and overlaid with white net. A crystal bowl with blue and brown silk flowers centered the table.

Serving a three-tier cake, decorated with blue bows and daisies, punch, mints and nuts were Jody Nance, Lubbock and Tonya Nance of Lockney.

Amy Nance distributed blue rice bags, following the ceremony.

Following a wedding trip to Carlsbad, New Mexico, the couple will be at home in Lockney.

The bride is Supervisor of the Physical Therapy department at Central Plains Hospital in Plainview and the groom is employed by the Tye Company in Lockney.



MRS. DAVID W. LEE

### Parker, Covington pledge vows

Tanya and Jack Covington of Floydada and Alice and Wayne Parker, of Ralls, announce the marriage of their children, Monte Daniel and Scarlet Leigh on Thursday, November 20. The ceremony was held in the First Assembly of God Church in Floydada for family and close friends. Pastor Jim Guesz officiated.

Sally Dyer provided many. Lisa and the bride attended. Ralls who engaged in home schools and attended school.

Johnnie Mitchell and May Mitchell, all of Ralls, Arkansas. The bride is the daughter of Mrs. Douglas Rhea of the late Garland Rhea, of Hillsville, and Mr. and Mrs. Cecil P. Mitchell.

### 1929 Study Club meet

The 1929 Study Club met at the Floyd County Historical Museum for their November meeting, with Miss Sue Swepton as hostess.

Club members brought covered dishes of food to share at the luncheon at noon. The tables were covered with room hand embroidered apron cloths and centered with candles, fall flowers and greenery.

During the business meeting, members were reminded to bring children's toys to exchange and later present to the Community Action Center for distribution on Christmas Eve to needy children.

S.W. Ross, former mayor of Floydada, was invited to give the invocation. He came here as a lad, on a train, with his parents.

Mrs. Q.D. Williams related the evening that will be years ago in the Spring of 1961, when the Floyd County Museum was organized for chartering. She was charter member she was on the board of directors of the Surginer family profit, chartered organization.

Mrs. Alma Ross and other charter members looked over area museums for ideas on raising money. They liked the Pioneer Memorial Wall the Crosbyton Museum, and put up the memorial wall. That summer, a man expert came from Austin to advise the group. Seeing the Pioneer Memorial Wall the expert told them they had done the right thing and should have invited people in Austin. The Floyd County man replied that out here in West Texas we didn't do any better, didn't know

**SOLOMON JEWELRY**

102 S. Main 983-3240

For that special seamstress a gift certificate from

**Stitchin Pretty this Christmas.**

Shop for these specials from 6:00 to 8:00 p.m. this Thursday night only!

VELVETEEN - reg. \$12.90 now \$7.50

VELOURS - reg. \$12.98 now \$7.79

SWEATER KNIT & POODLE CLOTH - reg. \$8.79 now \$5.29

**Stitchin Pretty**

983-3240

118 West Calhoun

Floydada

**The Land Bank**

Long-term farm real estate loans are available for much more than just buying land.

See us:

**Federal LAND BANK Association**

Federal Land Bank Assn Of Floydada

108 S. W. L.L. 983-2411

It's time to send our FTD Holiday Glow Bouquet

Brighten up the season With our festive arrangement of fresh flowers and greens in an exclusive FTD Snowflake Hurricane Lamp

**Order Early!** Call or visit us now.

**SCHACHT Flowers, Jewelry & Gifts**

"Our Pleasure Is To Serve You"

112 W. Ponder - Lockney - 657-2385

Helping you say it right.

Child's name \_\_\_\_\_

Age \_\_\_\_\_

Address \_\_\_\_\_

3 items your child wants for Christmas

1. \_\_\_\_\_

2. \_\_\_\_\_

3. \_\_\_\_\_

Best time for delivery of Santagram

Friday \_\_\_\_\_ Saturday \_\_\_\_\_

Mail this form to: Santagram

909 W. Houston Floydada, Tx. 79235

Delivery in town only (Santagram can be mailed to children living outside the city limits.)

For that special seamstress a gift certificate from

**Stitchin Pretty this Christmas.**

Shop for these specials from 6:00 to 8:00 p.m. this Thursday night only!

VELVETEEN - reg. \$12.90 now \$7.50

VELOURS - reg. \$12.98 now \$7.79

SWEATER KNIT & POODLE CLOTH - reg. \$8.79 now \$5.29

**Stitchin Pretty**

983-3240

118 West Calhoun

Floydada

**YOUR MOVE**

COME SEE US!

Floydada Real Estate & Insurance Agency

FIRE, FARM, AND COMMERCIAL INSURANCE

Jim Word

Phone 983-2360



MRS. DAVID W. LEE

## Parker, Covington pledge vows

Tanya and Jack Covington of Floydada and Alice and Wayne Parker, of Ralls, announce the marriage of their children, Monte Daniel and Scarlett Leigh on Thursday, November 20. The ceremony was held in the First Assembly of God Church in Floydada for family and close friends. Pastor Jim Guess officiated.

Sally Day of Floydada provided music for the ceremony. Lisa and Rex Ross of Ralls were the bride and groom attendants. The couple is at home in Ralls where the bride attended school in Floydada.



TERESA LYN MITCHELL

## Mitchell, Pinner announce November wedding plans

Mrs. James Mitchell and Cecil Pinner of Lockney, Miss Mitchell, a 1980 graduate of Magnolia High School is presently employed as a legal secretary for William T. Finnegan Law firm.

Pinner is a 1980 graduate of Magnolia High School, presently attending Red River Vocational Technical School and employed by Krogers. The wedding will be, Friday evening December 19, at 7:00 at the home of the brides parents.

## Stovall hosts for the 1929 Study Club meeting

The 1929 Study Club met at the Floyd County Historical Museum for their November meeting, with Miss Stovall as hostess. Members brought covishies of food to share luncheon at noon. The room was decorated with hand embroidered cloths and centered candles, fall flowers and

we couldn't do it, and in our ignorance had gone ahead and raised over ten thousand dollars not knowing it was impossible, as the expert said. The expert returned to Austin, shaking his head at what had been accomplished without Federal or state funds. Mrs. Georgia Finley, curator, told of the groups of school children from over the county that tour the museum every year, and the upkeep that is donated by the Green Thumb program. She pointed out that the folding chairs the club members were seated in had been purchased with money given by the 1922 club. Recent donations have included a large wood-burning parlor stove given by Mrs. Joy Smithman, and an old wooden ice box given by the family of the late Mrs. Annie Neff.

Club members took turns telling how and when they came to Floyd County. These recollections will be reported in another edition. They discussed a reprinting of the book on Floyd County Court-house, written by 1929 club member, Mrs. Duss Ross. The Club next meets December 4, with Mrs. S.W. Ross.

Club members took turns telling how and when they came to Floyd County. These recollections will be reported in another edition. They discussed a reprinting of the book on Floyd County Court-house, written by 1929 club member, Mrs. Duss Ross. The Club next meets December 4, with Mrs. S.W. Ross.

Dusty shades, reflectors and glass fixtures can absorb as much as one-fourth of a bulb's light.

## Today's Lifestyles

By Marilyn Tate  
County Extension Agent



### SENIOR CITIZENS STUDY INSURANCE BEFORE BUYING

Senior citizens, study any insurance you're thinking of buying before you actually purchase it. Many senior citizens carry additional health insurance to "fill the gaps" not covered by Medicare, because Medicare was never intended to cover all the health-care bills of people over 65.

Some senior citizens are able to pay for health costs out of their savings, but it's really not a good idea to rely on savings to pay for everything Medicare won't cover, since it's often impossible to know in advance how large one's medical bill will be.

Another idea is to carry over the health insurance you had before age 65, if that choice is available to you, but, of course, not all previously employed persons qualify for this carry over.

As another choice, you may be able to get a major medical policy which gives broad coverage of most medical expenses. With this choice, you still pay a certain amount of your bills yourself (perhaps \$50 or \$100), but after the deductible, many major-medical policies will pay 80 percent of almost all your health-care expenses.

The most important thing to look for in a policy is the catastrophic-coverage feature. Be sure the policy will pay for a long, serious illness.

If you are shopping for a health-insurance policy -- or "medigap" policy -- there are several "be-careful" steps you should take:

1. Try to cover yourself with one policy. Because of fear or due to unscrupulous salesmanship, some senior citizens buy several health-insurance policies. Most policies will not duplicate benefits paid by other policies, so the money you pay on extra policies is wasted money. One study has found that 25 percent of the people with "medigap" policies have overlapping coverages. That is a waste of money.

2. Avoid single-illness policies -- policies that cover only one type of illness. Instead, look for policies that will cover any illness. More insurance protection usually is afforded by policies that will cover any illness. Don't be misled by salesmen selling cancer insurance, for example. A report by the House Committee on Aging concluded that some salesmen prey on the fears of older people to sell cancer insurance -- the fastest growing and most profitable type of insurance for those companies.

3. Shop carefully before you buy, since health-insurance policies differ widely as to coverage and cost. Also, remember that companies differ as to service.

4. Check policy limitations concerning "pre-existing condition exclusions." Do not be misled by the phrase "no medical examination re-

quired." A policy may not require a medical examination, but, also, it may not cover the illness you develop.

5. Beware of replacing coverage you already have with something new. Make sure you know all the facts before doing that.

6. Understand maximum benefits. Most policies have some type of limit on benefits -- this may be stated in "dollars payable" or in "number of days" for which payment will be made.

7. Check your renewal privileges. Beware of policies that let the company refuse to renew your policy on an individual basis.

8. Know who you are doing business with. Agents must be licensed by the State of Texas to do insurance business here.

9. Keep a complete listing of agent and company names, addresses and telephone numbers.

10. Take your time in purchasing a policy. Do not let a short-term enrollment period high-pressure you. Remember, if a salesman is really a professional, he will not insist that you rush your decision.

11. Pay only by check, money order or bank draft made payable to the insurance company -- not to the agent or anyone else.

12. Finally, remember that insurance to supplement Medicare is not sold by the government or serviced by the government. Do not believe advertising or agents who suggest that insurance to supplement Medicare is a government-sponsored program.

### Stovall honored with baby shower

A baby shower honoring Mrs. Larry Stovall was held November 1 in the home of Mrs. Don Hardy.

Special guests were the prospective grandmothers, Mrs. Harold Wayne Bennett and Mrs. Lawrence Stovall.

Other special guests were the prospective great-grandmothers, Mrs. Wayne Bennett and Mrs. Ruth Trapp.

The honoree wore a yellow ribbon toile corsage with a baby under an umbrella. The grandmothers wore a yellow ribbon toile corsage with a baby and diaper pins.

Guests were served coffee and hot tange, cookies, nuts and mints in pink diapers. A blue rose centerpiece also decorated the table.

The hostess gift was a playpen. Hostesses were Mrs. Emory Roberson, John McCandless, David Lewis, Kevin Nelson, Tom Pearson, Randy Duke, Phyllis Johnson, Bruce Kinast, Baine Bean, Bob Vickers and Don Hardy.

## Triple wedding vows pledged

First Baptist Church in Lockney, was the setting for the November 28 triple wedding of the sons of Mr. and Mrs. Billy Hill of Lockney.

Billy Joe was married to Elenita Clark, daughter of Mr. and Mrs. Early Ray Clark of Lockney.

Charles was married to Sheila Bishop of Lubbock. Michael was married to Rose Mary Barnes, daughter of Mrs. Aslee and the late Mr. Leon Barnes.

Rev. Bennie Anderson officiated the ceremony.

The ceremony was performed before a background featuring brass candelabras trimmed with greenery and large satin bouquets, flanked by two candelabras with matching trim.

Selected music was presented by Cynthia Salinas, pianist, and Yolanda Rodriguez, soloist, who sang "First Time Every I Saw Your Face," "Still," and "Three Times a Lady."

The brides wore identical gowns of polyester organza, fashioned with a high Victorian neckline edged in Val lace. The fitted bodice had an embroidered cameo effect. The A-line skirt was accented with Val lace in front and enchanted with matching lace at the hemline.

They wore matching picture hats of white polypropylene. Their waist-length veils were secured at the back with a single white rose. Their bridal bouquets of white silk roses completed the attire.

Bridesmaids were Sheris Clark, Rosalind Hill, and Tonda Jenkins. They wore floor-length gowns of China

with a white lace cloth, featured a three-tiered cake decorated with China frost colored roses and was a dorned with a top piece of satin bells and luv doves.

The grooms' table, covered with a white linen cloth, featured three chocolate cakes.

Honor guests for the occasion were the grooms' grandmother, Mrs. Letha Moore and aunts, Mrs. Rubye Ellis, Mrs. Sandra King, Mr. and Mrs. Lonnie Moore, Mr. and Mrs. C.D. Moore, Roy and L.J. Moore, all of Paris, Texas.

Other out-of-town guests were Mr. and Mrs. Harvey Demerson, Lubbock; Mrs. Billie Ruth Johnson, Pampa; Mrs. Lena Whitfield of Lubbock; and Mr. and Mrs. T.J. Clark of Petersburg.

Billy, Elenita, Charles, and Michael are all graduates of Lockney High School. Sheila is a graduate of Lubbock High School and Rose Mary is a graduate of Floydada High School.

Following a short wedding trip, the couple's are at home in Plainview and Lubbock.

Ushers were Roland Bennett and Eddie Moore.

A RECEPTION was held in the Fellowship Hall following the ceremony. The brides' table, covered

FLOYD DATA Mr. and Mrs. Lloyd Allen had all of their children home this Thanksgiving for the first time in 10 years.

Attending were the Ed Allen family, Perryton, Texas; Mr. and Mrs. Van Lippo and family, Farmington, New Mexico; Mr. and Mrs. Erich Johnson and family, Farmington, New Mexico; Mr. and Mrs. Jerry Bailey and family from Floydada and Debra Allen from Floydada.

FLOYD DATA Mr. and Mrs. J.W. Day Jr. spent the Thanksgiving holidays in Lubbock with their daughter, Miss Cindy Day. Other guests for the Thanksgiving dinner on Thursday were Mr. and Mrs. M.J. McNeill and Mr. and Mrs. Roland Adams and Mr. and Mrs. Larry William, both of Lubbock.

### Order of Eastern Star attends School of Instruction

Those from Floydada chapter #31, Order of Eastern Star attending the School of Instructions for District 2, Section 3, in Plainview recently were Mr. and Mrs. Wayne Russell who represented this chapter as Worthy Matron, Mrs. Verla Mae Williams of Plainview. All members and families are invited and urged to attend this festive occasion at the Masonic Hall.

Also in the recent meeting \$25.00 was given to the heart monitor fund, which is being sponsored by the Women's Auxiliary at the Caprock Hospital. This gift was given as a memorial to Mr. Mark H. Martin in appreciation of his many acts of kindness through the years.

In a recent meeting of Floydada Chapter #31, plans

Shower Selections for Martha Hammock bride elect of Grant Hambricht available at THOMPSON PHARMACY 200 SO. MAIN FLOYDADA, TEXAS

You will find that special something for that special someone at Thacker Jewelry in Roaring Springs. Call toll Free 800-692-4249 now while selections are good! Thacker Jewelry Roaring Springs Box 282 79256

## BIRTHS

STOVALL Mr. and Mrs. Larry Stovall are proud to announce the arrival of their first child, Cody Dean, born Tuesday, November 25, at 6:05 p.m. at Lockney General Hospital.

Cody Dean weighed seven pounds, 10 ounces and was 21 inches long.

Grandparents are Mr. and Mrs. Harold Bennett of Floydada and Mr. and Mrs. Lawrence Stovall of San Angelo.

LOCKNEY LOCAL Relatives attending Estelle Blount's funeral in Tulla Sunday were Opal Blount, Johns and Vera Cox, Mel and Marjori Holcomb, Bettie Counts, Hilburn and Doris Casey, and Johnnie Newman of Lubbock. Also attending were Don and Nina Tueton of Lockney and David and Sarah Stowe of Plains. Dan and David were pallbearers.

Mrs. Blount was a sister-in-law of Opal Blount and Johnnie Newman.

Brotherton A boy was born Friday at 9:23 p.m. in Lockney General Hospital to David and Lana Brandon Robert. The baby weighed eight pounds, 6 1/4 ounces at birth. He is the couple's first child.

Grandparents are Max and Marty Smith and Mike and Merle Moore, all of Lockney.

Great-grandmothers are Mrs. Olive Myers of Lockney and Mrs. Harry Mann of Levelland.

Audrey's Hair Styles Announces New Christmas Hours Tues.-Fri. 9:00 a.m. - 11:30 a.m. 1:30 p.m. - 5:30 p.m.

Look Over New Selection Of Christmas Gift Ideas

Audrey's Hair Styles Blanco Com. 983-3649

Come In And Look Over The Loft's Christmas List Of Gift Ideas...

Wrangler Jeans Mens Western Shirts Resistol Hats Boots Tony Lama Buckles And Billfolds Tony Lama Belts Wrangler Blouses Tops Cords And Jeans For Women Plus Many Other Great Gift Ideas

THE LOFT 517 East Houston 983-2235

Get the Christmas Spirit We have a nice selection of gifts for every member of the family, such as Seiko Watches, 14kt and Gold Filled Jewelry and Diamond Pendants & Ear Screws SOLOMON JEWELRY 102 S. Main 983-3240

special seamstress, give certificate from Stitchin Pretty this Christmas. Specials from 6:00 to midnight this Thursday night only! Sweater reg. \$12.50 now \$7.50 Knit & Poodle Cloth reg. \$8.79 now \$5.29 Stitchin Pretty 983-3809 118 West California, Floydada

YOUR MOVE. COME SEE US! Floydada Real Estate & Insurance Agency AUTO, FIRE, FARM, AND COMMERCIAL INSURANCE Jim Word Phone 983-2360

For Your Shopping Convenience, We Will Be Open Late Every Thursday till Christmas plus If You Place An Order From 5:30 - 8:00 p.m., You Will Receive A Special Gift. BRASS ITEMS 20% off Many Unadvertised Specials Satisfaction Guaranteed or Your Money Back Sears Sue Williams 100 S Main Phone 983-2862

**Holiday ideas to be presented December 11**

A variety of Christmas programs packed with ideas for the holidays will be presented Thursday, December 11 at "Holiday Happening" beginning at 9:30 a.m. at Lighthouse Electric in Floydada. The program is being sponsored by the Floyd County Living Committee and is open to everyone regardless of socioeconomic level, race, color, sex, religion or national origin.

Programs will include:  
 Gift 'Wrap-sody'-by Marilyn Tate, Floyd County Extension Agent.  
 Festive Foods for Christmas--by Joy Parnell, Southwestern Public Service.  
 Home for the Holiday--by Laura Jacobs, Farmer County Extension Agent.  
 Christmas Candies--by Paula Pitt, Swisher County Extension Agent.  
 Christmas Wreaths and Special Decorations--by Marilyn Tate, Floyd County Extension Agent.

There will be a short break between programs for lunch. Everyone is invited to bring a salad and have lunch together.

**Winners of 4-H Food Show announced**

Eight winners were named in the Floyd County 4-H Food Show Tuesday at Lighthouse Electric in Floydada.

Junior winners were Christy Coffman—Main Dish Division, Angie Hinsley—Snacks and Beverages Division, Sherre Kinard—Breads and Desserts Division and Lisa Terrell—Side Dish Division.

Senior winners were Keith Hight—Side Dish Division, Scott McCarty—Snacks and Beverages Division, Earl Broesch—Breads and Desserts Division and Jill Whitfill—Main Dish Division.

These winners will represent Floyd County in district competition at the South Plains 4-H Food Show December 13 in Lubbock. Alternates to the District Show are Stacey Smith, Joel Mitchell, Matt Mitchell, Andra Smith and Jodie Smith.

Other special awards given were the "Best Rookie" which was won by Donna Vernon and the "Best Chef" which was won by Matt Mitchell.



"NUTCRACKER SUITE" PERFORMERS are (left to right), Anna Leta Bradshaw, Shawnda Sanders, Treva Hambright, Kay Lyn Rainer, Greg Thompson, Misty Orman, Rusty Simpson and center at the piano, Terri Lloyd.

**District PAC meeting re-scheduled for Monday**

Because of the bad weather, the District Parent Advisory Committee for Title I/Title II Migrant Programs of the Floydada Independent School District has been re-scheduled for Monday, December 8, at 7:00 p.m. in the A.B. Duncan Cafeteria. Parents of children who are enrolled in the 'Title I Math', Title I Reading, and Title I Migrant classes in A.B. Duncan School, Andrews Ward School, and Junior High

School are encouraged to be present for this meeting.

Por consecuencia del mal tiempo, la junta de la comision de Concilio de Padres del Distrito de los programas Titulo I/Titulo II Migrantes del Distrito Escolar de Floydada, cancelo su junta del martes 25 de noviembre la fecha nueva para la junta sera el lunes 8 de diciembre de 1980.

**KMAC to host Christmas for the kids concert**

KAMC-TV in Lubbock is sponsoring a Christmas for the Kids Concert to help raise money for needy children in the area. The concert will be held this Saturday, December 6, at 8:00 p.m. in the Lubbock Civic Center Exhibit Hall.

KAMC will video-tape the concert and broadcast it from their studio on Christmas Eve. The public, however, is encouraged to attend the concert live Saturday and help this very worthy cause.

Tickets are priced at \$3.00. All money received will go to provide Christmas presents for the children of Buckner's Children Home, Childrens Home of Lubbock, Texas Boys Ranch, and Girls Town, U.S.A.

Approximately 600 band students from 35 high school bands will rehearse on music all afternoon Saturday and then perform in one huge concert band that night. Floydada High School will be represented by 20 band students who are giving up their Saturday to participate.

**Santa's Schedule For Floydada**  
 December 4: Santa will arrive on the firetruck for the Christmas Tree Lighting.  
 December 11: Chamber office from 5:30 p.m. to 8 p.m.  
 December 12: Lighthouse Electric from 9-11:30 a.m. and 2-4:30 p.m.  
 December 18: Courthouse Square.

**"The Nutcracker Suite" to premiere in Floydada December 6**

Piano students of Mrs. Dell Gray will be featured in a colorful Christmas recital on Saturday, December 6. Open to the public at no admission charge, the program will start at 7:30 p.m. in the Floydada High School auditorium. "Sounds of the Season" is the theme of the opening segment and will include Deanna Watson, Tamela Farris, McMori Assler, Mindy Matsler, Julie Sawyer, Shayla Moore, Shane Orman, Julie Smith, Mark Thompson, Paige Cannon, Jeannie Jackson, Sue Hong, Amanda McDaniels, Jason Sawyer, Joey Thayer, Jill Smith, Daralyn Williams, Ruth Elaine Wilson, Jeff Matsler, and Mary Ann Rainer. Following a brief intermission, the festive music of Tchaikovsky's "The Nutcracker Suite" will be presented.

In the "Nutcracker" story, two children, Fritz and Clara, are given a Christmas party, to which a magician named Drosselmeyer brings an assortment of amazing toys, including dolls that dance. Clara is given a nutcracker by the magician, and she and Fritz quarrel over it. It is later thrown aside when the children go to bed, but Clara cannot sleep for thinking of her prized toy. Sneaking downstairs, she discovers the nutcracker leading a troop of toy soldiers against an army of mice. Clara hits the king of the mice with her slipper, the toy soldiers win the battle, and the nutcracker is transformed into a handsome prince.

Clara is rewarded for her help by being escorted to the kingdom of the sweets by the prince. During their trek, they see dancing snowflakes and other dancing characters. After a dance by the Sugar-plum Fairy, the music ends with the famous "Waltz of the Flowers."  
 Students participation in the selections from "The Nutcracker" are: Terri Lloyd ("Miniature Overture"), Treva Hambright ("March"), Rusty Simpson ("Dance of the Candy King"), Anna Leta Bradshaw ("Russian Dance"),

Kay Lyn Rainer ("Chinese Dance"), Shawnda Sanders ("Dance of the Flowers"), and Greg Thompson ("The Seasons of the Nutcracker"). The second annual Christmas concert is moving to Floydada in 1979.

**ORDER OF MORNING WORSHIP**  
 December 7, 1980

This Sunday the double doors under the steeple open to welcome the people of our community to

ORGAN PRELUDE  
 CALL TO WORSHIP: "The Magnificent"  
 PRAYER OF INVOCATION:  
 HYMN OF PRAISE: "Angels We Have Heard on High"  
 ACTS OF PRAISE: "Blessed Be The Lord God of Israel"  
 GLORIA PATRI:  
 HANGING OF THE CRISMONS: Chrismos are white and gold. They were the only symbols of our faith on the Christmas tree in our sanctuary in the past.

THE CALL TO PRAYER:  
 Prayer of General Confession  
 Silent Prayer for Christian Unity  
 Pastoral Prayer  
 The Lord's Prayer

SPECIAL MUSIC:  
 LIGHTING OF THE ADVENT CANDLE:  
 OFFERING OF TITHES AND GIFTS:  
 ANTHEM:  
 CLOSING HYMN: "What Child Is This"

BENEDICTION:  
 Organist: Penny Bertrand  
 Pianist: Dell Gray

**Live Broadcast Cable T.V. Channel 1**  
 Our sanctuary has been beautifully decorated for the Advent season with special banners, candles, and a Chrismos Tree. We welcome you to see the decorations and enjoy a worship service with us.

"Welcome"  
**First United Methodist Church**  
 203 East Kentucky - Floydada, Texas

**Lockney FFA banquet held Monday**

The District Future Farmers Association Banquet was held Monday night at Tullia. Attending were ag. teachers Mike Glenn and Elvin Lyon.

Members attending were Tim Winters, Marcus Schacht, Kyle Brock, Earl Broesch, Margie Araujo, Becky Pitchford, Byron Brock, Lane Turner, Daron Widener, Gary Bigham, Steven Johnson, Jeffrey Prisk, Ricky Prisk, Jay King and Hugo Araujo.

Roxanne Ford the FFA Sweetheart competed in the district sweetheart contest. Mr. and Mrs. Ray Ford attended the banquet.

The fruit will be in next week and will be delivered as soon as it arrives.

**Welcome To The New Teachers**

<p><b>Sue's Gifts &amp; Accessories</b>                  Phone 983-5312                  126 W. California Floydada</p>	 <p>GLOPIA FLANNON</p>	<p>Gloria Flannon is one of the new second grade teachers at Duncan Elementary. She has taught first grade in the Oklahoma City school system for the past twelve years. Originally from Gale, Texas, she received her degree from South Eastern State Teachers College in Durant Oklahoma. Her second grade class is busy working on a Christmas play to be given for parents on the morning of December 12. She is married to Weidon Fannon, custodian at Andrews Ward. They have two children Janes, who is in sixth grade and Lana in eighth grade.</p>	<p>Please Get Acquainted With These Fine Merchants...</p> <p><b>Stitchin Pretty</b>                  983-3809                  118 West California Floydada</p>
<p><b>CITY AUTO INC.</b>                  Buick-Pontiac-GMC                  Floydada</p>	<p><b>Piggly Wiggly</b>                  983-2184</p>	<p><b>Oden</b>                  CHEVROLET - OLDS., INC.                  983-3787 221 S. Main Floydada</p>	<p><b>DAVID CATES</b>                  INSURANCE AGENCY MANAGER                  FLOYD COUNTY FARM BUREAU                  OFFICE 983-3777                  HOME 983-3273                  LOCKNEY 652-2242</p>
<p><b>Cornelius Conoco</b>                  FLOYDADA, TEXAS</p>	<p><b>Martin And Co.</b>                  216 S. Main - Floydada - 983-3713</p>	<p><b>Gene's Cleaners</b>                  103 North Main Floydada</p>	<p><b>Ponderosa Meats Company</b>                  807 East Missouri Floydada, Texas</p>
<p><b>Counsumers Fuel Assn.</b>                  404 East Missouri - Floydada                  983-3394</p>	<p><b>Floyd County Hesperian</b></p>	<p><b>Quality Body Shop</b>                  121 East Missouri 983-5032 Floydada</p>	<p><b>Brown's Implement</b>                  Ralls Highway                  983-2281</p>
<p><b>THOMPSON</b>                  Rexall PHARMACY                  260 SO. MAIN FLOYDADA, TEXAS                  Phone 983-5111</p>	<p><b>Hale Ins. &amp; Real Estate</b>                  983-3261 105 S. MAIN FLOYDADA</p>	<p><b>Reed Ford Mercury Sales</b>                  210 West Houston                  Business Ph. 983-5220 Home Ph. 983-3649</p>	<p><b>Floyd County</b>                  Ralls Highway - Floydada</p>

**by Horns over Center**

overcame cold... the Lockney Lady... Tuesday night... Horis rolled to a... quarter lead and... at halftime... led 32-26 after... but Hale Cen... quarter, sinking... but couldn't close... the Lady Horns... for the 43-31 win... against three... season.

played good de... Coach Marsha Sharp... weren't shoot... well. But it was good... defense overcome... shooting. The girls... with a lot of hustle... termination, especi... they had such a... "end." in the Plain... Classic.

Hayes led the... with 15 points while... Sterling added 11... They were the only... horns to score in... games.

Lady Horns take on... at 4 p.m. this... in the opening... the Tullia Tourna... The Lockney girls are... ment's defending... team.

**REBECCA LHS. The**

**HS girls d**

Deal Lions com... minated the Lady... Lockney with a... to capture the... championship in... school division of the... Queens Classic at... son Center.

Deal jumped off to a... quarter lead and... at the half. The... led 44-26 after three... as the Lady 'Horns... themselves unable to... the winning track.

they won its only game... tournament in the... semifinals as the... stopped Dur-as.

Julie Frizzell... hands of a one-and... throw opportunity... just 19 seconds to go in... game to ice the victory... the Lady 'Horns... had slashed an 11

**KRAFT DIPS**

**BORDEN'S ICE CREAM**  
 \$1.59  
 1/2 GAL. 4 OZ. CTN.

**WHIP** 8 oz. 89¢  
**BLACK PEPPER** 4 OZ. CAN \$1.49

**GLADIOLA YELLOW/WHITE CORNBREAD MIXES**  
 2 YOUR CHOICE 89¢

**DISC**  
 LARGE NORTH BLUE  
 FARM  
 PURCH 4 TO \$1

# er Suite" to premier December 6

ra is rewarded for her help by escorted to the kingdom of the by the prince. During their trek, dancing snowflakes and other characters. After a dance by garplum Fairy, the music ends the famous "Waltz of the Flow-

## ORDER OF MORNING WORSHIP

December 7, 1980

Monday the double doors under the steeple open to worship and the of placing chrismsons on our Christmas tree. At 10:50 a.m. we will of our community to

PRELUDE  
WORSHIP:

OF INVOCATION: "The Magnificent"

OF PRAISE: "Angels We Have Heard on High"

PATRI: "Blessed Be The Lord God of Israel"

OF THE CRISMONS: Chrismsons are white and gold symbols of throughout history by Christian. We will join together in placing of our faith on the Christmas tree in our sanctuary as we sing

LL TO PRAYER:  
of General Confession  
Prayer for Christian Unity  
Prayer  
rd's Prayer

MUSIC:  
OF THE ADVENT CANDLE:  
OF TITHES AND GIFTS:

What Child Is This"

Choral Director: Bobby  
Special Music: Handbells and

Live Broadcast Cable T.V. Channel 3

ary has been beautifully decorated for the Advent-Christmas banners, candles, and a Chrismson Tree. We welcome our decorations and enjoy a worship service with us.

"Welcome"

First United Methodist Church  
203 East Kentucky - Floydada, Texas

Please Get Acquainted  
With These Fine Merchants...

Stitchin  
Pretty  
983-3809  
118 West California,  
Floydada

DAVID CATES  
INSURANCE AGENCY MANAGER  
FLOYD COUNTY FARM BUREAU

OFFICE 983-3777  
HOME 983-3273  
LOCKNEY 652-2242

101 S. WALL  
FLOYDADA, TEXAS 79232

Ponderosa Meat  
Company  
807 East Missouri Floydada, Texas

Brown's Implement Inc.  
Ralls Highway  
983-2281

Floyd County Impl  
Ralls Highway - Floydada

Reed Ford-  
Mercury Sales  
983-3761

## Horns over Center

overcame cold  
the Lockney Lady  
Hale Center,  
Tuesday night.  
Horns rolled to a  
quarter lead and  
half-time.  
led 32-20 after  
Hale Cen-  
s its best scoring  
quarter, sinking  
it couldn't close  
the Lady Horns  
the 43-31 win,  
against three  
season.  
ed good de-  
fense Marsha Sharp  
weren't shoot-  
ing. But it was good  
defense overcome  
ooting. The girls  
a lot of hustle  
mination, especi-  
ally had such a  
and." in the Plain-  
s Classic.  
Hayes led the  
15 points while  
erling added 11  
were the only  
Horns to score in  
eres.  
y Horns take on  
at 4 p.m. this  
in the opening  
the Tullia Tourna-  
ment.  
Lockney girls are  
ment's defending



REBECCA EVANS goes up for a shot during the Lockney Lady Horns' game with Hale Center at LHS. The Horns won the game, 43 to 31 to improve their season record to 4-3.

## IS girls drop two in Classic

Deal Lions com-  
nated the Lady  
Lockney with a  
try to capture the  
championship in  
school division of the  
Queens Classic at  
Center.  
al jumped off to a  
quarter lead and  
at the half. The  
44-26 after three  
s the Lady 'Horns  
mselves unable to  
winning track.  
won its only game  
urnament in the  
semifinals in the  
stopped Dumas,  
s Julie Frizzell  
ends of a one-and-  
drow opportunity  
9 seconds to go in  
to ice the victory  
y 'Horns.  
had slashed an 11

tion Lockney lead to 51-48 with less than 30 seconds left in the game before Frizzell knocked her two free throws.  
Lockney's Connie Coffman was the game's top scorer, with 18 points.  
In the opening game of the

Player	FG-A	FT-A	R	P	TP
New Deal (57)	0-0	0-0	0	0	0
Teeter	0-0	0-0	0	0	0
Bigham	0-0	0-0	0	0	0
Emerz	0-0	0-0	0	0	0
Mayo	0-0	0-0	0	0	0
Hale	0-0	0-0	0	0	0
Looney	0-0	0-0	0	0	0
Walker	0-0	0-0	0	0	0
Abercrombie	0-0	0-0	0	0	0
Teal	0-0	0-0	0	0	0
McNew	0-0	0-0	0	0	0
TOTALS	0-0	0-0	0	0	0

tournament, four-time state champion Nazareth rolled to an easy 51-30 victory over the Lady 'Horns who hit just 25 percent of their field goal attempts.  
By the end of the first half, Nazareth had all the points it needed as the Swiftettes led

Player	FG-A	FT-A	R	P	TP
Lockney (57)	0-0	0-0	0	0	0
Evans	0-0	0-0	0	0	0
Stirling	0-0	0-0	0	0	0
Hayes	0-0	0-0	0	0	0
Frizzell	0-0	0-0	0	0	0
Coffman	0-0	0-0	0	0	0
Ferguson	0-0	0-0	0	0	0
Hill	0-0	0-0	0	0	0
Clark	0-0	0-0	0	0	0
Brook	0-0	0-0	0	0	0
TOTALS	0-0	0-0	0	0	0

31-13 at intermission.  
Lori Gerber was Nazareth's top scorer with 14 points.  
Rebecca Evans was the only Lockney player to reach double figures with 12 points. Connie Evans had eight.

Player	FG-A	FT-A	R	P	TP
Dumas (48)	0-0	0-0	0	0	0
Frizche	0-0	0-0	0	0	0
Stevens	0-0	0-0	0	0	0
Clark	0-0	0-0	0	0	0
Reid	0-0	0-0	0	0	0
McReynolds	0-0	0-0	0	0	0
Ramsay	0-0	0-0	0	0	0
Sartain	0-0	0-0	0	0	0
Taylor	0-0	0-0	0	0	0
Milli	0-0	0-0	0	0	0
TOTALS	0-0	0-0	0	0	0

## Pheasant season looking good

BY J.D. FEER  
The annual ring-necked pheasant season opens December 13 in the Texas Panhandle and reports from the field indicate a better than average season despite the drought experienced last summer.  
"The Panhandle counties north of the Canadian river should have a good bird population for this week season," said David Dvorak, Texas Parks and Wildlife Department wildlife biologist.

"Several of the counties in the southern Panhandle area are down from last year's bird survey count but there should be plenty of birds for the hunters," Dvorak continued.  
**Walleye up at Mackenzie Lake**

A recent walleye survey at Lack Mackenzie near Silverton turned up walleye in nearly every net set by the Texas Parks and Wildlife Department fisheries crew.  
"We picked up 23 walleye from two-to-five-pounds all over the lake," said Joe Kraai, fisheries biologist.  
"The walleye are feeding on gizzard shad and anglers have a chance right now to catch these excellent eating fish," Kraai continued.  
Kraai continued to say that now is the best time to catch walleye. The best time is right after the walleye spawn in early spring.

The traditional pheasant hunting areas in the Hereford-Dimmitt-Friona area will be as good as usual and that area will most likely have most of the hunters, too.  
Dallam and Hartley counties in the northern Panhandle are reporting good to excellent pheasant populations and sportsmen hunting those areas will find fewer pheasant hunters in the field.  
The pheasant season will continue through December 28. The daily bag limit will be two cock (male) birds per day in all the open counties.

According to the P&WD and sportsmen, the opening weekend accounts for most of the bagged pheasants. The first two days also finds nearly every corn or maize field full of hunters.  
Several sportsmen have found better hunting with less competition with other hunters later in the season or during the middle of the week.

Many of the grain stubble fields are so large that the best results are obtained by conducting a pheasant drive. This is where several hunters (10-15) move slowly across the stubble driving the running pheasants to the stationary hunters (blockers) at the other end of the field.  
One, two or three man hunting parties usually have the best results hunting the narrow stubble fields, heavy

fencerows and the irrigation tail-water pits.  
It is advisable to use a good hunting dog such as a retriever, as pheasants are easy to hit but hard to kill or find in the heavy cover. Many birds are wounded each fall and furnish dinner for predators and not the hunter.  
Hunters are reminded to get permission before hunting. One of the most frustrating situations for the landowner is to have hunters trespass on their property without permission. These landowners furnish the food and the land for the wildlife and many of them hunt right along with their families and friends. Many of these landowners will allow pheasant hunters on their property after the first weekend.  
The continued violation of this trespass land will only mean more "NO HUNTING" signs and less and less land for the legal Texas sportsman.

### Hearing Loss Is Not A Sign Of Old Age

Chicago, Ill.—A free offer of special interest to those who hear but do not understand words has been announced by Beltone. A non-operating model of one of the smallest Beltone aids of its kind will be given absolutely free to anyone requesting it.  
True, all hearing problems are not alike... and some cannot be helped by a hearing aid. But audiologists report that many can. So, send for this free model now, and wear it in the privacy of your own home. It is not a real hearing aid, but it will show you how tiny hearing help can be. It's yours to keep, free. The actual aid weighs less than a fourth of an ounce, and it's all at ear level, in one unit.  
These models are free, so we suggest you write for yours now. Again, we repeat, there is no cost, and certainly no obligation. Thousands have already been mailed, so write today to Dept. 72340 Beltone Electronics, 4201 W. Victoria, Chicago, Ill. 60646.

All Lettering And Set

This Beautiful Companion Memorial  
Only \$495.00  
CLINE MONUMENT CO.  
400 Joliet Phone 296-2953 Plainview, Tx. 79072  
Save Sales Agents Commission In Plainview

2nd Notice--Meeting to Adopt Tax Rate  
**NOTICE OF TAX INCREASE**  
The Lockney ISD proposes to increase your property taxes by 33.3 percent.

A public meeting to vote on the increase will be held on December 9, 1980, at 7:30 p.m. in Board Room of Lockney ISD.

The Lockney ISD School Board has considered the proposal and voted in a public hearing on the tax increase as follows:

For: Tom Duvall, President of Lockney ISD School Board  
Kenneth Broseh, Member of Lockney ISD School Board  
Eddie Joe Foster, Member of Lockney ISD School Board  
Bill Race, Member of Lockney ISD School Board  
Kelton Shaw, Member of Lockney ISD School Board  
Eugene Tannahill, Member of Lockney ISD School Board  
Eddie Teeter, Member of Lockney ISD School Board

Against: None  
Absent and not voting: None

AVOCADO/FRENCH ONION/GREEN ONION/JALAPENO  
**KRAFT DIPS**  
2 \$1.00  
8 OZ. CTNS.

ASSORTED FLAVORS  
**BORDEN'S ICE CREAM**  
\$1.59  
1/2 GAL. HD. CTN.

PRICES EFFECTIVE DEC. 4 THRU 6, 1980  
OPEN 365 DAYS A YEAR  
OPEN 24 HOURS A DAY

Asstd. Flavors  
**PIES**  
99¢

REGULAR'S APPLE/ MIXED FRUIT/ ORANGE JUICES... YOUR CHOICE \$1.00

ALL PURPOSE  
**MR. CLEAN**  
99¢  
15 OZ. BTL.

ASSORTED FLAVORS  
**BORDEN'S CHOCOLATE MILK**  
69¢  
QT.

GLADIOLA YELLOW/WHITE  
**CORNBREAD MIXES**  
2 89¢  
YOUR CHOICE

**ALLSUP'S CONVENIENCE STORES**  
"THERE'S ONE NEAR YOU"

**DISCOUNT CHRISTMAS TREES**  
LARGE SELECTION  
NORTHERN NEW MEXICO  
BLUE SPRUCE/FIRS/BALSAM YOUR CHOICE \$10.99

FARM GROWN IN MICHIGAN - SCOTCH PINES  
PURPLE TAG 4 TO 5 FOOT \$14.99  
ORANGE TAG 5 TO 6 FOOT \$17.99  
GREEN/WHITE TAG 6 FOOT AND UP \$21.99  
NEW SHIPMENT-JUST ARRIVED

## Lockney Locals

BY DOTTIE STANSELL  
PART TWO

Saturday afternoon, September 20th, we went to the hospital, to take the babies home, after Tibor had paid the bill which was \$2400 for their six weeks stay, in the hospital, the doctors charges \$300 for each baby, the surgical charges \$300, and the anesthetic charges were \$135. We checked them out and took them back to the apartment until the Embassy cars came to pick us up and take us to the airport.

We flew in an old two engine plane, like the old Pioneer planes. It had two seats on each side. It took us about 45 minutes to reach Lusaka. Again the Embassy had made all the arrangements for me, as I did not have a visa to get into Lusaka.

Lusaka, seems like a closed in place. It has over 400,000 population, but cannot be seen because of the fences or high walls. Natives build their huts out of mud bricks with straw roofs, that melt during the rainy season. The houses have no heat as the winter season is short, about 3 months, and it isn't very cold. It is hot there in the Summer, but cool in the houses. The nicer houses are made of concrete blocks. The Embassy homes have iron grill bars on all the windows and doors. Tall (10' to 12') solid concrete block fences are around Jane and Tibor's house with barbed wire on top of the fence. They have security guards on duty all the time. The gate must be opened by them, to come or go. The whole town of Lusaka seems closed in.

The dry season is seven months long, from March to September, they have no rain. The rainy season is from October to April, and averages 14" a year. The thunderstorms come sometime at night, and they are worse then we have here in Texas, but usually it rains at noon, and really pours for about an hour. June, July and August are the cold months. The low temperature is about 40 degrees and the higher temperature is 65 to 75 degrees.

I was surprised that most of the people of Lusaka were Protestants, and they have small churches...When we would drive to the Embassy, I noticed that the people would be milling around up and down the streets, or walking down town, there are very few cars, and the

native women carry things on their heads. They carry their babies strapped on their backs, or in a sling in the front.

Only the rich drive cars, and they drive on the left side of the street. They drive like maniacs, and have lots of dented fenders. While I was there, two motorists were stoned to death by an instant justice mob. The paper reported that a truck driver was taken out of the truck, and the people pounced on him and he was pelted with sticks, fist and stones by a instant justice mob, after he knocked down a young girl that stepped out of a bus. A passenger in the truck was also beaten up, but I don't know if he was killed.

The people wear brightly colored clothes, the brighter the better. They wear long skirts and a sarong type skirt and mini skirts, and about half the people wear shoes. The people are more sociable and informal there. They are very open about discussing world affairs, and seem to know about things going on all over the world, and have their own opinion about these world affairs.

Zimbaw, has learned to grow, build or make anything they need. Zambia, is still backward, and most of the people are uneducated, with two classes of people, the rich and the poor, but few middle class people.

The Salisbury stores are more open and modern than Lusaka, but they do not have stores like we have here in the States. Both places had a few American products, like SMA baby formula, Johnson & Johnson baby products and canned baby food, but only one or two brands. They have no homogenized or Pet milk.

In Salisbury they have the "bottle" stores, where all bottles cokes, shampoo or anything that is sold in bottles are returned to the stores to be refilled. I noticed that Salisbury or Lusaka, did not have a litter problem, like we have here. They do not use disposable diapers, they are only bought by the rich, and then only for training.

Not many people have T.V. and if they did, they only come on for a short time in the evening with the news. They don't have many shows, but there like London, everyone knows about J.R. and the Dallas show.

usually have their dead cremated and returned to their home country, and it is very expensive.

We would see the native children in the morning going to school. They all wear a type of uniform, all the girls wore dresses, that looked like they were all made from the same bolt of material and by the same pattern. One school might wear a brown dress and the boys would wear a brown shirt. The boys and girls went to the same school, and they were lucky if they went past the 3rd grade, if they were the native children. They just didn't have enough schools. They had the church mission schools, and they had the International schools, where they went thru all the grades. The Embassy children go to the International schools or private schools, and seem to be better educated and more respectful than American children. They go to school from 7:30-12:30, and in the afternoon they have riding classes, drama arts and crafts and swimming.

The people are more sociable and informal there. They are very open about discussing world affairs, and seem to know about things going on all over the world, and have their own opinion about these world affairs.

Zimbaw, has learned to grow, build or make anything they need. Zambia, is still backward, and most of the people are uneducated, with two classes of people, the rich and the poor, but few middle class people.

In Salisbury they have the "bottle" stores, where all bottles cokes, shampoo or anything that is sold in bottles are returned to the stores to be refilled. I noticed that Salisbury or Lusaka, did not have a litter problem, like we have here. They do not use disposable diapers, they are only bought by the rich, and then only for training.

Not many people have T.V. and if they did, they only come on for a short time in the evening with the news. They don't have many shows, but there like London, everyone knows about J.R. and the Dallas show.

### MORE NEXT WEEK

Store dishwasher detergent in a cool, dry area -- not under the kitchen sink -- since it readily absorbs moisture and carbon dioxide from the atmosphere, becoming lumpy and less effective, says a family resource management specialist, Linda McCormack. All this prevents it from dissolving properly, she explains. Mrs. McCormack is with the Texas Agricultural Extension Service, The Texas A&M University System.



FIVE YEARS AGO MONDAY Sheriff Fred Cardinal and Deputy Olan Poteet were sworn in on the same day. The day before the Petersburg Bank was robbed. Pressed into service a day early they were sworn in in the car as they headed west to set up a roadblock. They had only one gun and two bullets between them. Fortunately for them the bank robbers headed north for their shootout with law enforcement officers.

## Local DQ employees honored Chickie

Three Lockney Dairy Queen employees have won cash prizes in a contest conducted to coincide with the introduction of Hollis Jones Dairy Queen Restaurants' new "Chicken Delites" sandwich at the company's 26 DQs in Texas. Lockney winners, as the

three local DQ employees selling the most "Chicken Delites" during the sandwich's introductory period, were: First, David Balderas, who sold 74 of the sandwiches during the contest and won \$25; second, Anita Gutierrez, winning \$15 for selling 62; and third, Brenda Martin, who won \$10 with 39 sales.

## LOCKNEY School Menu

December 8-12

**Monday:** Breakfast — Toast, sausage, milk, apple juice.  
Lunch — Taco burger, French fried potatoes, lettuce and tomatoes, apricot cobbler, milk.  
**Tuesday:** Breakfast — Rice, pears, milk.  
Lunch — Creamed turkey and rice, buttered spinach, mashed potatoes, cranberry orange salad, bread, milk.  
**Wednesday:** Breakfast — Cinnamon roll, applesauce, milk.  
Lunch — Cheesy frankfur-

ter croquettes w/mustard sauce, buttered cabbage, carrot stick, milk, apples, hot rolls.  
**Thursday:** Breakfast — Toast, egg, milk, juice.  
Lunch — Salisbury steak, creamed potatoes, green beans, milk, orange, hot rolls.  
**Friday:** Breakfast — Pancakes, milk, syrup, juice.  
Lunch — Hamburgers, French fried potatoes, lettuce and tomatoes, milk, oatmeal cookies, fruit cocktail.

## FLOYDADA School Menu

December 8-12

**Monday:** Breakfast—Toast, hot cereal, juice, milk.  
Lunch—Beef stew, tater tots, cornbread, apple sauce, milk.  
**Tuesday:** Breakfast—Cinnamon toast, raisins, juice, milk.  
Lunch—Pinto beans and ham, fried okra, stewed tomatoes, cornbread, pineapple slices, milk.  
**Wednesday:** Breakfast—Long Johns,

fruit, milk.  
Lunch—Spaghetti with meat sauce, fried squash, tossed salad, hot rolls, peanut butter cookies, milk.  
**Thursday:** Breakfast—Pancakes, syrup, raisins, milk.  
Lunch—Bar-B-Q on bun, baked beans, buttered carrots, gingerbread and applesauce, milk.  
**Friday:** Breakfast—Hot rolls, bacon, jelly, juice, milk.  
Lunch—Char-burgers on bun, tomato, lettuce, pickles, French fries, cobbler, milk.

## Be prepared

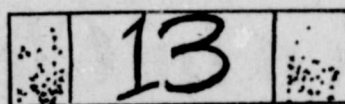
Weathermen are forecasting a bad 1980-81 winter and increased heating costs. To combat larger fuel bills, insulate. The best place to start is in the attic. An energy, letting heated air through the roof in winter and acting as a giant solar collector in summer. R-values measure the resistance of the flow of heat. The greater the R-value, the less energy lost. R-values of R-30 - R-35 are considered ideal for our winter climate. However it may not be economically feasible to get over R-20. To be an acceptable goal. Without

## OBITUARY

Class, the Locomotive the Oddfellows Survivors three daughters, nieces, and granddaughters. Mrs. J. H. Lubbock, former teacher in Swisher and Hale Counties, died at the University of Texas at Austin on November 2, 1980, at the age of 82. She was born in Dallas, Texas, and was a member of the Oddfellows and the Locomotive. She is survived by her husband, J. H. Lubbock, and three daughters, Mrs. J. H. Lubbock, Mrs. J. H. Lubbock, and Mrs. J. H. Lubbock. She was a member of the Oddfellows and the Locomotive. She is survived by her husband, J. H. Lubbock, and three daughters, Mrs. J. H. Lubbock, Mrs. J. H. Lubbock, and Mrs. J. H. Lubbock.

## FINA NOW FOR YOUR CONVENIENCE

401 South Street  
Come In and Acquainted and a FREE Gift  
Frank Copen



Tradition has it that it is bad luck to move on a Friday.



Children from the ages of six months to six years outgrow their shoes on an average of once every fifty-six days.



GIVE A FLOYDADA HISTORY Museum Christmas Museum And Mail it \$37\* includes & Tax Contact FLOYDADA HISTORICAL



MYRTLE BURKE, left, was named resident of the month at the Lockney Care Center. Mrs. Burke, 70, has lived at the center for several years. Vicki Hutton is activities director for the center.

Tress Setting Trend Setters  
**Allercreme Hypo-Allergenic Hair Sprays**  
These are the hypo-allergenic hair sprays that became industry leaders because YOU liked them!  
• Lacquer and Lotion free  
• Non-sticky and non-flaking  
• Water soluble  
• Shampoos out easily  
• Two formulas: Hard-to-Hold for firm control and Regular Hold for dry hair  
\$2.69  
Byrd Pharmacy  
320 N. Main - Lockney  
652-3353

## Brooks Oil Co.

(Formerly Carthel Oil Co.)

Invites everyone in to get acquainted with the new owners Ray & Carol Brooks, be sure to register for free gas & other merchandise to be drawn Dec. 18 th

3rd Prize F.F.A. ham 18 lb average	2nd Prize 1 case 10-40 Trop Artic Oil	1st Prize \$100.00 free gas
4th Prize F.F.A. turkey		

Brooks Oil Co.  
902 N. 2nd 983-3366

## NOTICE

### Floydada Cable TV Subscribers

The Floydada System has been purchased by Big Spring Cable TV. The only change you will notice about your purchase is that the coupon booklet will no longer be used for monthly payments, instead each subscriber will receive a bill for two (2) months in advance through the mail to be used in paying for the service.

Philip McWilliam, 21 years old, son of Mrs. J. H. Lubbock, died at his home in Dallas, Texas, on November 2, 1980, at the age of 21. He was a member of the First Baptist Church in Dallas. He is survived by his parents, J. H. Lubbock and Mrs. J. H. Lubbock, and three daughters, Mrs. J. H. Lubbock, Mrs. J. H. Lubbock, and Mrs. J. H. Lubbock. He was a member of the First Baptist Church in Dallas. He is survived by his parents, J. H. Lubbock and Mrs. J. H. Lubbock, and three daughters, Mrs. J. H. Lubbock, Mrs. J. H. Lubbock, and Mrs. J. H. Lubbock.



## Be prepared

Weathermen are forecasting a bad 1980-81 winter and increased heating costs. To combat larger fuel bills, start in the attic. An energy, letting heated air through the roof in winter and acting as a giant solar collector in summer. R-values measure the resistance of the flow of heat. The greater the R-value, the less energy lost. R-values of R-30 - R-35 are considered ideal for our winter climate. However it may not be economically considered to be an acceptable goal. Without

compressing...  
attic's...  
Most...  
used...  
blanks...  
inch...  
if your...  
these...  
ticks...  
attic is...  
lower...  
than...

Shop Floor  
AUCTION  
Fri. Dec. 5  
7:00 P.M.  
American Legion  
Lockney TX  
SEE PAGE 2 FOR  
COMPLETE LISTING

ere sworn in on  
vice a day early  
and only one gun  
north for their

00 employees  
most "Chicken  
ing the sand-  
factory period,  
avid Balders,  
the sandwiches  
test and won  
Anita Gutter-  
15 for selling  
Brenda Mar-  
\$10 with 39

3  
that it is bad  
on a Friday.  
the ages  
to six  
of shoes  
of once  
days.



GIVE A FLOYD COUNTY  
HISTORY BOOK For  
Christmas This Year  
Museum Will Package  
And Mail It For You  
\$37.50 includes Postage  
& Tax  
Contact THE  
FLOYD COUNTY  
HISTORICAL MUSEUM

## NOTICE

Floydada  
able TV Subscribers  
Floydada System has been  
sed by Big Spring Cable TV Inc.  
change you will notice about the  
s that the coupon booklet will  
nger be used for monthly  
s, instead each subscriber will  
ill for two (2) months in advance  
ugh the mail to be used in  
paying for the service.

## OBITUARIES

Class, the Brotherhood of Locomotive Engineers and the Oddfellows Lodge.  
Survivors include his wife; three daughters, Mrs. Connie Eckles, Loveta Pritchard and Jane McCarty, all of Lubbock; a brother, Willard of Hale Center; two half brothers, Lennard Shook of Midland and Ray Shook of Dallas; five sisters, Georgia Hooper of Lubbock, Lena Green and Daisy King of Ralls, Otis Duitert of Midland, Ila White of Floydada; eight grandchildren; and two great-grandchildren.

Ray Smith, 86, of Lubbock, former teacher in Swisher and Hale Counties, died in University of Texas Hospital at Austin on December 2, 2 p.m. He was a member of the First Baptist Church in Lubbock and the First Baptist Church in Resthaven. Burial was in Resthaven Cemetery. Sanders Funeral Home is handling arrangements.

an Arkansas resident had been a resident of the past four years. He came here from Mexico, where he had lived for 30 years before he came here from Mexico.

Services were at 2 p.m. in the First Baptist Church in Lubbock. The Rev. J. T. Davis, pastor of the church, officiated. Burial was in Resthaven Cemetery. Sanders Funeral Home is handling arrangements.

the former husband of Johnson died in August 1975. He was a member of the First Baptist Church in Lubbock and the First Baptist Church in Resthaven. Burial was in Resthaven Cemetery. Sanders Funeral Home is handling arrangements.

for Homer N. died on December 2, 1980 at 12 p.m. Friday in the Memorial Chapel at the First Baptist Church. He was a member of the First Baptist Church in Resthaven. Burial was in Resthaven Cemetery. Sanders Funeral Home is handling arrangements.

in Henrietta, he moved to Big Spring in 1916. He died in Lubbock in 1925. He was a retired railroad worker. Burial was in Resthaven Cemetery. Sanders Funeral Home is handling arrangements.

Got Heating or Plumbing Problems? Call Holmes Plumbing. Austin Or Steve 983-2251. Call Day Or Night

## an active member of the Tundra Baptist Church, Canton, Texas.

Surviving are: two sisters, Mrs. Jolene Cummings, of South Plains and Miss Pamela McWilliams, Tyler; three brothers, Ronnie, Tyler, Jackie, and Fayetteville, Arkansas and Billy George, Ardmore, Oklahoma.  
Relatives attending the funeral were Mr. and Mrs. Kelvin Cummings of South Plains, Mrs. Dena Myrick, Mr. and Mrs. Cecil Jackson, and children, Mr. and Mrs. Julian Liphom and children, and Eric Cornelius, all of Floydada, and Mr. and Mrs. Richard Nelson and children of Aiken. Also Mrs. Loweida Bunnell of Ingleswood, California and Mr. and Mrs. Rosse Myrick, of San Jose, California.

## Estelle Blount

Mrs. Raymond Blount, 79, of Tulia, died at 12:25 p.m. Friday in the La Casa Canyon Nursing home in Canyon after an illness. She had been in the nursing home since July 6, 1974.  
Services were at 2:30 p.m. Sunday in the Wallace Funeral Chapel in Tulia with the Rev. Roland Moore, pastor of the Vigo Park United Methodist Church and Rev. Bruce Parks, Tulia First United Methodist Church, officiating.  
Burial was in Rose Hill Cemetery in Tulia under the direction of Wallace Funeral Home.  
Born Estelle Umberson on August 4, 1901, in China Spring, she moved to the plains in 1916, settling in the Sunset community north of Lockney. That community is now known as South Plains. She married Raymond Blount on December 18, 1920, in Floydada and moved to Swisher County in 1939 from Lockney. Mr. Blount died November 2, 1956. She was a Methodist.

Survivors include a daughter, Mrs. Gail (Dorothy Jean) Wright of Stratford; two sons, Wayne and Kenneth (Buster), both of Tulia; three brothers, Ken Umberson of San Angelo, Frank Umberson of Stephenville and Joe Umberson of Truth or Consequences, New Mexico, six

Elva Cantrell, 79, of Tulia died at 5:37 p.m. Sunday in Caprock Hospital in Floydada where she was admitted October 21.  
The former Elva Venice Huckabay was born October 27, 1901 in Brady. She married Roy Lee Cantrell June 5, 1927 in Lubbock and

## grandchildren and five great-grandchildren.

Survivors include C.C. (Pap) Reed, James Lawson, Don Sanders, Dan Teuton, David Stowe and Dayne Norris.  
The family suggests memorials be made to the Tulia Cemetery Association or a favorite charity.

## Mattie McGowen

Services were held at 10 a.m. Friday in Lemons Memorial Chapel for Mattie B. McGowen, 77, who died at 6:53 p.m. Wednesday in Nichols Hospital.  
Officiating was the Rev. Robert Copeland, pastor of Southside Assembly of God Church. Burial was in Plainview Cemetery directed by Lemons Funeral Home.  
The former Mattie Bertie Fuller was born April 17, 1902 in Clay County, Texas and grew up in Buffalo Springs. She married Samuel A. McGowen June 23, 1918 in Clay County.  
They lived in Clay County until 1926 when they moved to Paducah. The couple owned and operated restaurants in Paducah and Aiken. They came to Plainview in 1974.  
Mrs. McGowen died November 19, 1979 in Plainview. Mrs. McGowen was a member of South Side Assembly of God Church. She resided at 1406 W. Eighth.

Surviving are three daughters, Mrs. Mack (Juanita) Taylor and Louise Weathers, both of Plainview, and Mrs. S.E. (Lora) Thomson of Lubbock; one son, J.A. McGowen of Perryton; 10 grandchildren and 15 great-grandchildren.

## Elva Cantrell

Elva Cantrell, 79, of Tulia died at 5:37 p.m. Sunday in Caprock Hospital in Floydada where she was admitted October 21.  
The former Elva Venice Huckabay was born October 27, 1901 in Brady. She married Roy Lee Cantrell June 5, 1927 in Lubbock and

## moved to Tulia in 1927 from Slaton. Mr. Cantrell died August 4, 1979.

Mrs. Cantrell had attended Sul Ross University in Alpine and West Texas State University in Canyon and taught school four years near Slaton and at Oklahoma Lane near Bovina. She was a member of the Central Church of Christ in Tulia.  
Surviving are two daughters, Mrs. Jack (Billie Jo) Jordan of Floydada and Mrs. Doug (Pat) Ferguson of Decatur, Georgia; one brother, William Lane Huckabay III of Old Lyme, Connecticut; and five grandchildren.

Services will be at 2 p.m. today in Central Church of Christ with the minister, Weldon McKinney, officiating. Burial will be in Rose Hill Cemetery directed by Wallace Funeral Home.  
Pallbearers will be Ralph Bates, Bill Cox, George Jennings Jr., Wayne Flint, John Toke, and Jack Sturman.

In determining wash-water temperature for laundry, remember that hot-water temperatures will average 10 degrees below the hot-water heater temperature setting due to the cooling effects from the washer itself and garments, says Becky Saunders, a clothing specialist.  
Mrs. Saunders is on the home economics staff of the Texas Agricultural Extension Service, The Texas A&M University System.

REMEMBER your loved ones with a living memorial to the Caprock Hospital Auxiliary Memorial Fund. Mrs. Ben Whitaker, Treasurer. T ttc

## COW POKES

By Ace Reid



"Now, it ain't the rollin'. It's puttin' in them filters that throws me."

## More educators studying in MBA programs

COLLEGE STATION — A profile of students entering the graduate business program at Texas A&M University this fall shows an eight-fold increase in the enrollment of former school teachers, counselors, and those with education backgrounds but no work experience, say college officials.  
At least 50 percent of those entering the graduate business school have undergraduate degrees in areas other than business administration. Among these 16 percent have education degrees, 19 percent come with liberal arts backgrounds, eight percent from engineering or technology and seven percent from science. And at least 40 percent of the students this fall are women, officials say.

New Tool AUCTION  
Fri. Dec. 5th  
7:00 P.M.  
American Legion  
Lockney TX  
SEE PAGE 2 FOR COMPLETE LISTING!

ATTENTION HUNTERS AND TRAPPERS  
Fur buyer will be in Lockney at Luna Gulf each Friday from 1:45 p.m. till 2:30 p.m. beginning December 5.  
We buy green and dry furs of all kinds. Skin case all fur (like Opossum), not open up the middle. We also buy deer hides and RATTLESNAKE SKINS. Well handled furs bring TOP PRICES!!  
Northwestern Fur Company  
241 Walnut Street  
Colorado City, Texas 79512  
Phone 915-728-2295  
L12-180

### Christmas Savings

<p><b>QUILTED VEST</b> Tear-free quilted vest. New western styling. 100% nylon with 8" x 2" Dacron® hollowfill. 808 Snap front. 2 large pockets. S, M, L, XL. Made in U.S.A. Save Gas! Tune up with Champion Spark Plugs!</p> <p><b>16.66</b> LIMITED QUANTITIES</p>	<p><b>AUDIOVOX AM-FM STEREO RADIO &amp; CASSETTE</b> FOR IMPORTS &amp; GM X-BODY CARS Both vertical and horizontal mount. 4.5" deep chassis. In dash installation.</p> <p><b>98.88</b></p>
<p><b>CHILTON MANUALS</b> IMPORT AUTO REPAIR MANUAL Covers repairs for many popular 1977-79 import cars light trucks.</p> <p><b>1981 AUTO REPAIR MANUAL</b> Step by step instructions for repairing U.S. cars since 1974. Thousands of step clear illustrations. Sug. list \$15.95.</p>	<p><b>SUNTUNE TACH</b> Solid state. For all ignition systems. Std. or electronic. 4, 6, or 8 cyl. and rotary engines. Lighted. Mounts on or under dash.</p>
<p><b>RUBBER QUEEN TEXTURA CAR MATS</b> Carpet textured rubber mats fit std. and intermediate cars in black, blue, gold, grey, green, red.</p>	<p><b>GARRITY LIFE/LITE DISPOSABLE FLASHLIGHT</b> High intensity beam from 3 batteries. Lasts 45 hours. Sealed. No impact case. Choice of colors.</p>
<p><b>WAGNER NIGHT FIGHTERS HALOGEN HEADLIGHTS</b> New! Reach 40% farther down the road. Let you read road signs easier. Give you more time to avoid accidents.</p>	<p><b>WAGNER NIGHT FIGHTERS HALOGEN HEADLIGHTS</b> Sug. list \$19.88</p>

**CARQUEST RAINCHECK POLICY** Every CARQUEST special is a bona fide offer. If we sell out of an advertised item or fail to receive the merchandise, we will issue a "raincheck" entitling you to the same price. Rainchecks do not apply to items stated as being in limited quantity. We reserve the right to substitute items of equal or better value in the event that our stocks of advertised specials become depleted.

WE KNOW WHAT YOU MEAN WHEN YOU'RE TALKING PARTS

**Caprock Motor Parts & Hardware, Inc.**  
114 W. California Street  
Floydada 983-2865

Good at participating CARQUEST Auto Parts Stores through Dec. 31, 1980.

## Open House

Saturday, December 6, 1980 7:00 a.m. to 9:00 p.m.

Located on Highway 86, one block west of the Court House, on the South Side of the Highway. Register for Gift Certificates to be given away December 6. Free Balloons and Candy for the kiddies. Come by for coffee and doughnuts.

\$1,000 in Door Prizes

Phone 806-823-2376

### LONE STAR CHEMICAL, INC.

Liquid Fertilizer	Farm Chemicals
Complete Farm Store	
Aerial Spraying	Ground Spraying
Fertilizer Application	Seed
Garden Supplies	Livestock Supplies

-- Free Soil Test --

We have been in the fertilizer and spray business in this area since 1954.

Serving you is our business-- our only business.

Deanie Henderson

Phone 806-823-2119

### NITA'S

Gifts Antiques Collectables

I have opened a Gift Shop in Silvertown, Texas.

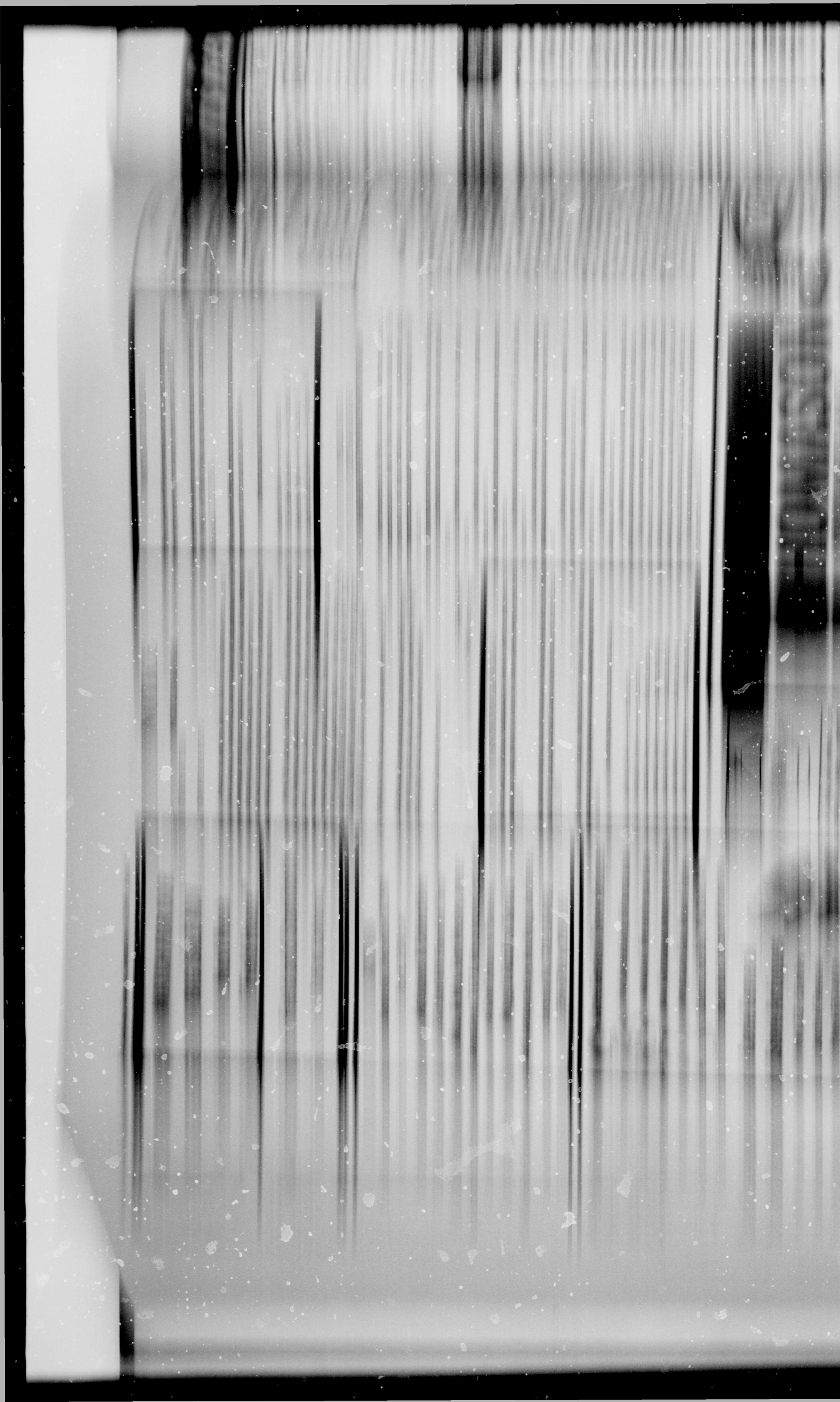
I am receiving merchandise daily. Some of the items are:

Copies of Old Tiffany Glass Leaded Hanging Lamp Shades; Glassware and Lamps by L.G. Wright; Brass Oil Lamps by Victorian Oil Lighting; Armetale Dinnerware and Flatware by Wilton; Grandfather Clock and other clocks by Seth Thomas; Silk Flower Arrangements; Decorative Pillows; Julie-Art Lamps; Pink Vista by Mason; Western and other sculpture; Tablecloths; Place Mats and Napkins; Cookware by Axta; Plain White Dinnerware that can be China Painted; Child's Table and Benches and Doll Cradle; Small Pewter Items; Baskets; T-Fal Cookware.

I have some pretty and unusual hand-made items by Ginger Mathis and Belinda Matlock.

-- Bridal Selections Are Welcome --

Mrs. Deanie (Nita) Henderson





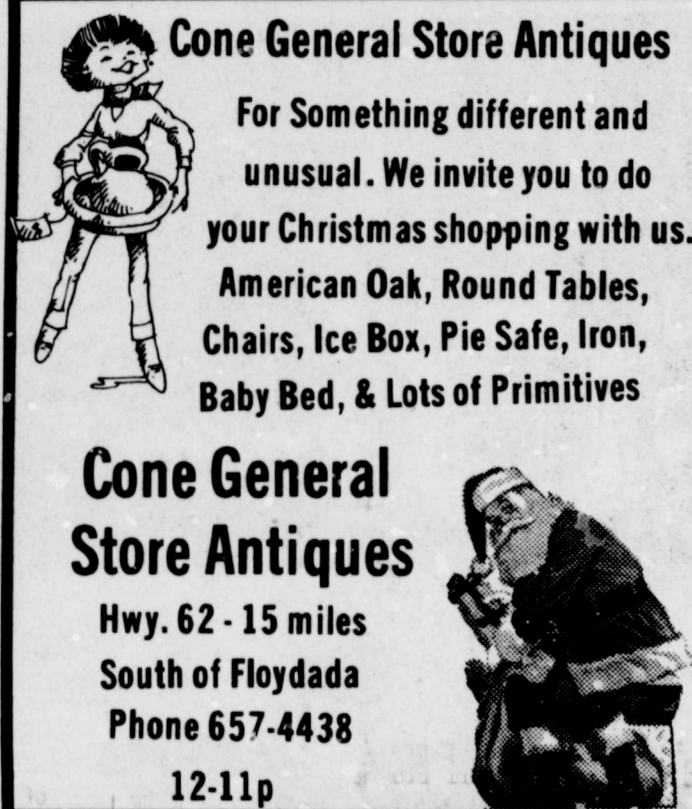
**WATCH FOR OUR  
BIG SALE ADV  
Next Week  
"Field House"**

Field and Staniforth  
716 W. California

**AUCTION**  
Saturday, December 6, 1980  
Time: 1:00 p.m.  
**Antiques & Collectibles**  
117 East 6th Plainview, Texas  
**Mrs. & Mrs. Gus Wesley, owner**  
Directions: 117 E. 6th is located just north  
of Court House in Plainview.  
**Mogg's Auction Service**  
Self Conducted by Rex Mogg, Auctioneer,  
License No. TXS-110-0902  
296-5787 or 293-9106

**Cone General Store Antiques**  
For Something different and  
unusual. We invite you to do  
your Christmas shopping with us.  
American Oak, Round Tables,  
Chairs, Ice Box, Pie Safe, Iron,  
Baby Bed, & Lots of Primitives

**Cone General  
Store Antiques**  
Hwy. 62 - 15 miles  
South of Floydada  
Phone 657-4438  
12-11p



**S.S. News**

**QUESTION:**  
How old do I have to be to get a Social Security number?  
**ANSWER:**  
There is no age limit on having a Social Security number, however, the requirement is to furnish your birth certificate and identification, such as report card, drivers license, shot records, etc.  
Teleservice will save you time, energy and money! To file a claim for Social Security or Supplemental Security Income payments call collect, 806-293-4371. For assistance with other social security matters or Medicare call toll free 1-800-392-1603.

**Time to get it  
together for  
income tax day**

Taxpayers, especially those who itemize, should begin getting their receipts and other records together to support claims on their Federal income tax returns, the Internal Revenue Service says. Taxpayers may use any form of recordkeeping they prefer, as long as they have proper records to verify the income, deductions, credits and other items shown on the tax return. Good records can also enable the taxpayer to quickly and accurately list his or her deductions, the IRS points out.

It would be a good idea, the IRS adds, to sort records into the same categories listed on Schedule A of the Form 1040 — medical or dental expenses, state or local taxes, interest payments, contributions to charity, casualty or theft losses and miscellaneous deductions.

Good records and supporting documents can be in the form of cancelled checks, paid bills, pay stubs, receipts or in some cases, a diary of daily expenses. Generally, cancelled checks or receipts should not be attached to the return for an individual, but explanatory documentation is required for a contribution of property.

**INSUR-MATION**  
Floyd County  
Insurance Agency Jerry Cooper  
LOCKNEY

I'm in my 30s and own a small business. Because of the economy, etc., I think I'd better start now to plan for retirement funds. Is there a way to begin a plan for myself now and when the business gets healthier start pension plans for my employees as an added benefit?  
If not covered by a qualified pension plan you should consider an IRA (Individual Retirement Account). You need not include your employees. They may start their own IRAs or you can sponsor or fund an IRA for selected employees later. Yearly contributions of up to \$1,500 or 15%, whichever is less, are tax deferred until you use the account. \$1,500 invested every year for 30 years and compounded at 7% turns into \$141,700. An additional advantage with IRA is being able to "roll into" a more sophisticated plan when you are better able to do so.

Shop Your Local Merchants First Then...

For Your Holiday Shopping  
Convenience...

**Downtown Plainview**

(The Area's Largest And Friendliest  
Shopping Center)

Will Be Open Until 9 p.m. Each  
Thursday Until Christmas

- |                                 |                             |
|---------------------------------|-----------------------------|
| Anthony's                       | Payne's Gifts & Jewelry     |
| Bayley's Army & Navy Store      | Penny's                     |
| Boelterie                       | Perry's                     |
| Copper Kettle                   | Plainview Athletics         |
| Dargan's                        | Regland's Western Wear      |
| Dixie Shop                      | Ramsower's                  |
| Gebro's                         | Sears                       |
| Heath Furniture                 | Skibell's                   |
| Joy Spring                      | Snack Shack                 |
| K's Thrift Center               | TG&Y                        |
| Kristl's                        | Vanderpool's                |
| Marse & Son                     | Warrick's Furniture & Gifts |
| Masso's                         | West's Pharmacy             |
| Mingo's                         | Zales                       |
| Model Boot Shop                 | Ziegler Music Co.           |
| Oswald Printing & Office Supply |                             |

Downtown plainview  
Has It All For you!

**NOTICE**

**NOTICE TO BIDDERS**

STATE OF TEXAS  
COUNTY OF FLOYD

Notice is hereby given that the Commissioners Court of Floyd County, Texas will receive bids for the purchase of the following described equipment until 10:00 A.M., Monday, December 8, 1980, being the regular December Term, 1980, of said Court; at which time all bids will be opened and read aloud: said bids for purchase of the equipment as follows;

New 1981 truck - Chevrolet, Ford, of GMC equipped with the following equipment: Advance price sheet, Fleetside pickup, Rear axle-3.08 ratio, Heavy duty rear springs, Vacuum power brakes, 4.1 liter (250 CID 2 BBL) L6 Engine, 4-Speed manual transmission, Standard Emission system, Power Steering, Cigarette lighter, AM radio, Heavy duty radiator, P225/75R15 TBL HWY S/B RAD B/W, P225/75R25 TBL HWY S/B RAD B/W, P225/75R25 TBL HWY S/B RAD B/W, GAGES - Volt-meter, Oil, and Temp.

Payment will be made in cash upon approval of truck.

All bids shall be sealed when presented and will be opened at the above time and date. The Court reserves the right to reject any and all bids, and waive all formalities.

This the 21st day of November, 1980.

Choise Smith  
Floyd County Judge

**NOTICE OF TAX INCREASE**

The South Plains Independent School District proposes to increase your property taxes by three point twenty per cent (3.20%)

A public meeting on the increase will be held on Dec. 8, 1980, at 8:00 P.M. at the South Plains School House in South Plains, Tx., 79258

The South Plains Independent School District board has considered the proposal and voted in a meeting of same board as follows

For the proposal to increase tax rate:

- |                 |              |
|-----------------|--------------|
| Oliver Clark    | President    |
| Dwight Teeple   | Secretary    |
| Kendis Julian   | Board member |
| Howard Staple   | Board member |
| Nathan Mulder   | Board member |
| Ira Henderson   | Board member |
| Kelvin Cummings | Board member |



A cup of vinegar can absorb cigar, cigarette and pipe odors.

**NOTICE OF TAX INCREASE**

The County of Floyd proposes to increase your property taxes by sixty-nine point twenty three per cent (69.23%)

A public meeting to vote on the increase will be held on Dec. 8, 1980, at 5:00 P.M. in the County Courtroom #106 in Floydada, TX., 79235

The County of Floyd had considered the proposal and voted in a meeting of the same board as follows

For the proposal to increase tax rate:

- |                    |          |
|--------------------|----------|
| Aaron Carthel      | Comm. #1 |
| C.E. (Bob) Jarrett | Comm. #2 |
| Grigsby Milton     | Comm. #3 |
| James Jack Lackey  | Comm. #4 |

**PUBLIC NOTICE**  
CITY OF LOCKNEY  
FAIR HOUSING ENFORCEMENT PROGRAM

On November 6, 1980, the City of Lockney enacted a comprehensive local Fair Housing Ordinance. The purpose of this ordinance is to guarantee equal opportunity in housing to all persons residing in the City of Lockney.

The major provisions of this Ordinance are as follows:

1. Prohibits discrimination in the sale or rental of housing.
2. Prohibits discrimination in the financing of housing.
3. Prohibits discrimination in the provision of brokerage services.
4. Provides for specific exemptions and exclusions to the ordinance.
5. Provides for designation of a City Fair Housing Administrator.
6. Sets out complaint handling and investigation procedures and defines financial penalties for non-compliance.
7. Provides for free administrative counsel by the City to persons wishing to file law suits.
8. Prohibits unlawful intimidation of complainants under the ordinance.
9. Provides for cooperation with the Secretary of Housing and Urban Development.
10. Authorizes the City to conduct educational and public information program concerning the ordinance.

The City has developed specific Complaint Handling Procedures in connection with the Fair Housing Ordinance. Copies of both the Ordinance and Complaint Handling Procedures are available to the public, upon request, at the Lockney City Hall, 215 E. Locust Street. For further information, contact Erma Lee Duckworth, City Secretary at 652-2355.

**NOTICE OF TAX INCREASE**

The Dougherty Independent School District proposes to increase your property taxes by 45.24%

A public meeting on the increase will be held on Dec. 8, 1980, at 8:00 P.M. at the Dougherty School House in TX.

The Dougherty Independent School District board has considered the proposal and voted in a meeting of same board as follows

For the proposal to increase tax rate:

- |                   |              |
|-------------------|--------------|
| Billy D. Colston  | Board member |
| Wes Campbell      | Board member |
| Rickie Pernell    | Board member |
| Lance Poole       | Board member |
| Kenneth Robertson | Board member |
| Don Smith         | Board member |

**PUBLIC NOTICE**  
CITY OF LOCKNEY  
HOUSING AND COMMUNITY DEVELOPMENT PROGRAM

The City of Lockney is applying for a grant from the U.S. Department of Housing and Urban Development (HUD) Block Grant (CDBG) funds.

The City has scheduled a public hearing on the proposed CDBG program to give the public an opportunity to voice suggestions on the City's needs and performance in providing housing and community development programs.

This public hearing will be held on Monday, December 1, 1980 at 8:00 P.M. at the City Hall, 215 E. Locust Street.

Interested citizens and citizens who attend this important public hearing will be invited to comment on the program and to assist in the development of housing and community development programs. Written proposals and comments will be accepted and considered by the City in its final public hearing.

Handicapped individuals who wish to attend this public hearing should contact the City Hall to arrange for special services. For further information, contact the City Secretary at 652-2355.

**THOMASON**  
VENTURE GROCERY & MARKET  
PHONE 652-3346 220 South Main Lockney

**VENTURE FOODS**  
Open Monday-Saturday  
Sunday & Holidays  
We Accept Food Stamps

We Reserve The Right To Limit

**HEAVY GRAIN FED BEEF BONELESS**

**Chuck Roast**

**Ground Beef** \$1.29 LB.

**Chuck Steak** \$1.69 LB.

**MEAT SPECIALS**

HEAVY GRAIN FED BEEF EXTRA LEAN **Stew Cubes** \$1.99 LB.

OSCAR MAYER'S SLI MEAT/BEEF **Bologna** 8 OZ. \$1.19

**SHELL SPECIALS**

SHURFINE CUT GREEN **Beans** 2 16 OZ. CANS \$1.69

COMPARTMENT PLATES **Chinot** 15 CT. PKG. \$1.19

SCHILLING GROUND **Cinnamon** 1 1/8 OZ. CAN \$1.59

**DAIRY SPECIALS**

SOFT MARGARINE **Parkay** 2.8 OZ. CUPS \$1.89

KRAFT AMER/SWISS/PIM. **Singles** 12 OZ. PKG. \$1.69

**CALIFORNIA GREEN SKIN**

**Avocados** 5 \$1 FOR PRODUCE SPECIALS

CENTRAL AMERICAN **Bananas** 3 \$1 LB.

IDAHO BAKERS **Potatoes** LB. 29¢

TEXAS RUBY RED **Grapefruit** \$1.09

OR TEXAS FULL OF JUICE **Oranges** \$1.09

**Mayonnaise** \$1.69 32 OZ. JAR

**Creme** 49¢ 7 OZ. JAR

**BATHROOM**

**Charmin Tissue** 4 ROLL PKG.

Dinty Moore 24 oz. can **BEEF STEW** \$1.49

**CHILI with Beans** \$1.29

**SHORTENING**

**Bake-Rite** 3 LB. CAN

Thank You 1 quart <b>APPLE JUICE</b> 69¢	6-32 oz. Bottle Carton <b>COKE</b> \$1.79 plus deposit	29 oz Box <b>Cheer</b>
<b>Peaches</b> 79¢	Del Monte 29 oz Can	<b>Potato Chips</b>

**If It's Real REAL ESTATE**

**FOR SALE:** 1 bath, single garage. A single brick. 1 1/2 Double garage. Both central heat and air. Anderson. 906 W. Bond Real Estate Bond. 983-2151 tfe

**FOR SALE:** Cabin at White Mountain, carpeted, finished. Call 983-3932 tfe

**FOR SALE:** Three bedroom, large lot. Call 983-3767. tfe

**FOR SALE:** Several good two bedroom houses. Contact Estate. Call 983-2151 tfe

**FOR SALE:** Five room house, good location. Call 983-2285. tfe

**FOR SALE:** Five room house, good location. Call 983-3562. tfe

**FOR SALE:** Two bedroom house. Call 983-3709. 12-18c

**FOR SALE:** 3 bedroom house. Call for price. 908 W. George. 983-2325. J.E. Per. 12-4p

**MOBILE HOMES**

**ER HOUSE** for sale. Two bedroom, lot. 652-3452, nights 12-4c

**WANTED**

Daily News has an opening for a Discontinued part time job. Call Lockney at 652-3341. tfe

Land to farm, Pleasant Valley, or Barwise areas. Montandon. 652-12-4c

**TO BUY** irrigated farmland in Floyd or Plainview area. Write Box 1000 to Herperian. Box 1000, Floydada, TX.

**OF THANKS**

C. Wisdom family would like to thank our friends for the sympathy and love shown to us in our recent loss. Also we would like to thank the Lockney Volunteer Fire Department for their kind help. 112-4c

Thank everyone who was kind during the loss of my loved one, Mary Ann Matthews, for their sympathy, calls, flowers, cards, and memorial services. The Lord bless you all.

Ersel Matthews, Kent Matthews, Betty & Carol Dennis, Pat Matthews, & Chris Walter Collins & Norma Collins & Family

Special thanks to Kay Crabtree, Father Deacon Robert Corbett, and all who gave us every step of the way without their help. Bless each of you. Fidel Villa Brothers & sisters & Mary Salazar

To good boys kittens. (2) Just in time. Call 983-3767.

**LOST**

LOST—Black poodle. Call

NOTICE OF TAX INCREASE

The Dougherty Independent School District is increasing its property taxes by forty-four percent (44.24%) per cent (45.24%)

A public meeting on the increase will be held on Tuesday, November 18, 1980, at 8:00 P.M. at the Dougherty School Building, 1101 E. Locust Street, Lockney, Texas.

The Dougherty Independent School District considered the proposal and voted in a meeting as follows:

For the proposal to increase taxes:

Billy D. Colston ..... President  
 Wes Campbell ..... Secretary  
 Rickie Pernel ..... Board member  
 Lance Foole ..... Board member  
 Kenneth Robertson ..... Board member  
 Don Smith ..... Board member

**PUBLIC NOTICE**  
**CITY OF LOCKNEY HOUSING AND COMMUNITY DEVELOPMENT PROGRAM**

The City of Lockney is planning a pre-application to the U.S. Department of Urban Development (HUD) for a Community Block Grant (CDBG) funds. This pre-application was submitted on or about January 5, 1980. The City has scheduled a final public hearing on the HUD application to give citizens an opportunity to review the application and make suggestions on the City's needs and priorities. This public hearing will also be invited to comment on the performance in providing housing and community development programs.

This public hearing will be held at 7:00 P.M. on Monday, December 1, 1980 in the City Council Chambers, 1101 E. Locust Street.

Interested citizens and citizens groups are encouraged to attend this important public hearing and voice their views and comments on the City's pre-application to HUD and its community development program and to assist in evaluating the City's housing and community development needs. Written proposals and comments from citizens accepted and considered by the City upon this final public hearing.

Handicapped individuals who may have difficulty attending this public hearing should contact the City Hall to arrange for special assistance. For further information, contact Erma Lee, City Secretary at 652-2355.

**VENTURE FOODS**

Open Monday - Saturday 8:00 a.m. - 4:00 p.m.  
 Sunday 8:00 a.m. - 5:00 p.m.

We Accept Food Stamps and WIC Cards

**WE RESERVE THE RIGHT TO LIMIT QUANTITIES**



**ONELESS**

OSCAR MAYER SLOTTED HAM \$7.19  
 8oz PKG.

**FRANIA GREEN SKIN**  
**Avocados** \$5  
**FOR PRODUCE SPECIALS**

**Charmin** 4 ROLL PKG. \$1.39

**WAX** \$1.09

**Charmin Soft** 4 ROLL PKG. \$1.39

**Cheer** 3 LB. CAN

**Doritos** Ruffles Reg 1 1/2 lbs \$7.99

**Potato Chips**

# It's Results You Want-It's CLASSIFIED ADS You Need

## REAL ESTATE

**Farms & Acre**

**FOR SALE:** Farm located West of Muncy, 216 acres cultivated, 40 acres grazing land, two irrigation wells, Bond Real Estate, Wilson G. Bond, 983-2151 or 983-3573. tfc

160 acres land in Cedar Hill community, 3 bedroom house, Submergible domestic well, 1 irrigation well, \$650 per acre. Call 983-5607. L12-4

3 bedroom, 1 1/2 bath, brick, 1 1/2 garage, Both heat and air. 906 W. 905. tfc

Cabin at White, carpeted, Call 983-3932 tfc

3 bedroom, 1 1/2 bath, brick, 1 1/2 garage, Call 983-3767. tfc

2 bedroom, 1 bath, brick home unit on large lot. Call The First Bank of Floydada, tfc

2 bedroom, 1 bath, dining room, Call 983-2285. tfc

2 bedroom house, good location, large lot, Call 983-3562. tfc

2 bedroom home, Central heat and air, Dean 711 or 983-3235. 12-25c

Two bedroom Call 983-3709. 12-18c

**FOR SALE:** 3 bedroom, 908 W. George, 2325, J.E. Per 12-4p

## BUSINESS OPPORTUNITIES

**TOWN & COUNTRY FOOD STORES**

is seeking individuals for full-time positions as clerks, assistant managers and manager trainees. Town & Country is the fastest growing convenience store chain in the Lubbock and South Plains area. Our benefits and opportunities for career development and advancement are excellent. We offer paid vacations, hospitalization, life insurance and sick leave. If you are career minded, aggressive and willing to work, learn and contribute, apply in person at 3910 Ave. A, Lubbock 747-8603, 102 S. 2nd Floydada, Texas 983-2105

An OHIO OIL CO. offers PLENTY OF MONEY plus cash bonuses, fringe benefits to mature individual in Lockney area. Regardless of experience, write C.C. Read, Pres., American Lubricants Co., Box 696, Dayton, O. 45401. L12-4p

**FARM SERVICES**

Land Leveling, terraces, bench leveling, and pump pits, all types of dirt work for soil and water conservation. Dewie Parson 983-2646, Fred Parson 983-2074. tfc

**CUSTOM Application of Herbicides.** Bill Wisdom 652-3541, John Wisdom 652-3544. tfc

**Portable disc rolling** Law... Farm Supply and Equipment Floydada, 983-3940 tfc

## WANTED

Daily News has an opening for a Dish... part time job, call Lockney #4 at 652-3341. tfc

Land to farm, Pleasant Valley, Barwise areas, Montandon, 652-12-4c

TO BUY irrigated farm in Floyd or Mag area. Write Box # Hesperiar, Box #4. tfc

Wisdom family... to thank our sympathy to use in our recent loved one. Also we... the Lockney Volunteer Department for their kind help. L12-4c

To thank everyone so kind during the... loved one. Mary... Collins Matthews, for... calls, flowers, food and memorial... the Lord bless... Ersel Matthews, Kent Matthews, Gary & Carol Demman, & Pat Matthews, & Chris... Walter Collins & Norma Collins & Family

## PETS

**FREE**

To good homes, 3 beautiful kittens, (2 white and 1 gray) Just in time for Christmas! Call 983-3736.

LOST

LOST—Black miniature male poodle. Call 652-2556. L12-4c

## BUSINESS SERVICES

**REPAIR WORK** done on evaporative air conditioners. Collins Appliance, 983-5702. tfc

Adams Well Service Complete Irrigation Service. All sizes submergible pumps in stock. One day service, 983-5003. tfc

**INSULATION** Fire-Resistant. Installed and Guaranteed. MARR Insulation Co. Lockney 652-3593. L12c

**JACKSON ELECTRIC** Residential & Commercial Serving Rural Communities At 652-2737 tfc

**INTERIOR PAINTING WALL PAPERING** Call Rena Turner or Nancy Mayo, 983-5130 or 983-2667. tfc

## REAL ESTATE FOR SALE

**NEW LISTING...** Charming 3 bedroom, 1 bath, brick in excellent condition. Close to schools.

**GATHER 'ROUND THE FIRE** for popping corn and watching T.V. Extra nice, 3 bedroom, 2 bath, beautiful yard.

**CONVENIENT LOCATION TO DOWNTOWN...** Small 2 bedroom.

**PRESTIGIOUS OLDER HOME...** 3 bedroom, 2 bath, guest house or rental property in back will help make payments.

**GOOD STARTER HOME...** 2 bedroom, good location.

**WANT TO GET AWAY FROM THE HUSTLE & BUSTLE OF CITY LIVING?** Let me show you how much home you can buy just a hop and skip outside the city limits. 3 bedroom, 2 bath.

**INVESTMENT PROPERTY...** 7 apartments plus house for manager. Good monthly income.

Call Sam Hale at 983-3261  
 Hale Insurance & Real Estate, Floydada tfc

## FOR SALE

22 ft. Coachman travel trailer for sale, 1979, like new. Call 983-2285, after 6 call 983-5610. tfc

**SHELLED PECANS.** Locally grown by Bill Sherman. Sold by 4-H, 3 pound box, \$11.00. Call 983-2806 or 652-3540. tfc

**FOR SALE:** Crocheted round tableclothes. Call 983-3041. 12-4-p

**Good Sears Spyder 20"** bicycle. \$15.00. Mangus Electric Chord Organ-\$22.50. Call 983-2211 12-4c

**FOR SALE:** One register Durak bore. 983-3864. 12-4p

**HANDMADE AFGHANS.** Ideal Christmas gifts. See at Gene's Cleaners, 103 N. Main. 12-18c

**GIVE HIGHLIGHTS FOR CHILDREN** magazine for Christmas. The perfect gifts that gives throughout the year. Recommended by teachers and educators for children through 12. Call Dean Drummond 983-5019. 12-18c

Go-cart. 5H-P engine. Automatic clutch. Friction brakes. 916 Leonard. Floydada 983-3994. TFC

Childs rocker. Call 983-5147.

**ROCK FOR SALE:** Three types. George Martin, Rt. Tolia, Silverton, Texas 79257, 806-847-2270. 12-25p

**FOR SALE:** Chihuahua puppies. Very cute and playful. 983-5115. tfc

## FOR RENT

Shop

Floyd

County

FIRST!

**FOR RENT**

**MOBILE HOME:** Rent reasonable. Gas, water paid. Call before 8 a.m. or after 6 p.m. 983-3504. 12-4c

## GARAGE SALE

**HOUSEHOLD FURNISHING SALE:** Friday and Saturday. We have furniture, cookstove, refrigerator, washer and dryer, etc. 610 W. Ross. 12-4c

## REPAIR WORK

REPAIR WORK done on evaporative air conditioners. Collins Appliance, 983-5702. tfc

Adams Well Service Complete Irrigation Service. All sizes submergible pumps in stock. One day service, 983-5003. tfc

**INSULATION** Fire-Resistant. Installed and Guaranteed. MARR Insulation Co. Lockney 652-3593. L12c

**JACKSON ELECTRIC** Residential & Commercial Serving Rural Communities At 652-2737 tfc

**INTERIOR PAINTING WALL PAPERING** Call Rena Turner or Nancy Mayo, 983-5130 or 983-2667. tfc

## QUANAH CAKE

**Producers Cooperative Elevators**

## AVOID THE RUSH ORDER BY MAIL CALL

**Montgomery Wards, Sales Representative**

Mary Lewis 983-2196

## UNIQUE AND PRACTICAL CHRISTMAS GIFT!

**Automatic Dialer Telephone, Cordless Telephones And Telephone Answering Systems.**

Call Bob Marler 983-3276 After 6:00 p.m.

## NEW TOOL AUCTION

**Fri. Dec. 5th 7:00 P.M. American Legion Lockney TX**

SEE PAGE 2 FOR COMPLETE LISTING!

## CUSTOM SPRAYING

**Application of Herbicides and Insecticides**

**Bruce Williams**

Day 652-2462 Night 652-3129

## HOLLIS R. BOND REAL ESTATE

PHONE 983-2151

107 S. 5th FLOYDADA

## DIAMOND INDUSTRIAL SUPPLY CO., INC.

Phone Days 296-7418

Nights 296-1200 or 296-7828

1014 Broadway Plainview, Texas U joints Oil Seals O rings Wisconsin

**"We Appreciate Your Business More"**

## TURNER REAL ESTATE

983-2635 Farms Ranches Floydada, Texas

## FARM MACHINERY

## CASE

**Fully Reconditioned Used Farm Equipment**

**LUBBOCK FARM TRACTORS**

Case 2670 Cab, Air PTO..... \$22,500.00  
 Case 2670 Cab, Air PTO..... \$28,500.00  
 Case 2670 Cab, Air PTO..... \$24,500.00  
 1979 Case 239 Cab, Air..... \$30,000.00  
 IHC 1026 Cab..... \$9,000.00  
 AC 190XT Cab..... \$7,900.00  
 Case 1070 Cab..... \$8,900.00  
 Case 830..... \$2,500.00  
 Case 830..... \$8,000.00  
 990 David Brown 321 Hrs..... \$ 500.00  
 John Deere 262 Stripper..... \$12,500.00  
 Case 210 Garden 1978 Tractor, Mower & Tiller..... \$ 1,600.00  
 3 P.I. Hitch 6 foot blade..... \$ 100.00  
 Case 800 New GB Highlift Loader..... \$ 4,500.00

**LAMESA**

Case 513 Ripper Blow 11 Shank..... \$ 1,400.00  
 Case 224 Garden Tractor..... \$ 750.00  
 Heston 1978 3000 Stripper..... \$12,500.00  
 Case 1175 Cab & Dual A/C..... \$ 7,500.00  
 IHC 1466 Cab & Air..... Was \$18,000. Now \$15,000.00  
 Case 1030 Cab..... \$ 9,900.00  
 Case 1370 Cab A/C..... \$16,000.00  
 Case 1370 Cab A/C..... \$17,000.00  
 Case 15" Cab A/C..... \$22,500.00  
 Case 1170 Cab & Duals..... \$ 9,000.00

**FLOYDADA**

Case 513 Ripper Blow 9 Shank..... \$ 1,500.00  
 White A 4T 1600 Cab AC PTO..... \$12,500.00  
 Case 1370 Cab A/C..... \$13,500.00  
 Case 1175 Cab A/C..... \$12,500.00  
 Case 1175 Cab A/C..... \$ 6,000.00

Case Power and Equipment Lubbock 3302 Slaton Hwy 745-4451  
 Lamesa 902 S Dallas 872-5861  
 Floydada 101 South 12th 983-2838

## AMWAY PRODUCTS

AMWAY PRODUCTS means quality and personal service. Try us and see. Phone Melissa Gleason at 983-5750 after 5 p.m. tfc

**"WE SELL SLEEP"** Direct Mattress Co. New or renovated, for appointment call City Trim Shop. 983-2332, Floydada. tfc

AMWAY PRODUCTS means quality and personal service. Contact Joann or Randy Rogers at 652-3825 or 652-2121. L12c

**CARPET—Silver green.** Real good. \$3.00 a yard. Gold, \$2.00 a yard. Multi-color. A gold or cream 90 inch couch and orange plastic Early American rocker. Call 983-3737 or 652-3637.

**FOR SALE:** G.E. refrigerator, 1021 S. Main, Floydada. 12-4c

Pot-bellied wood stove with galvanized pipe, damper, wall thimble, rain cap. \$100.00. 983-3542. 12-11p

**FOR SALE:** Couch and chair, 310 W. Mississippi. 12-4c

**1979 Bonneville.** Radial tires. Low mileage. Call Warren Mitchell. 652-3613 L12-4c

**1975 Buick Electra-4 door.** hardtop. Low mileage, very good condition. 983-2040 12-4p

**4 shocks for the price of 3.** Free installation. 123 W. California. tfc

## OAK FIREWOOD

**Producers Cooperative Elevator**

## AIRELOOM CEILING FANS

3 speed 5 yr. warranty. 10 to 15% discount. Grady Dunavant 983-3609

## CONCERNED ABOUT HARD WATER SCALE DAMAGE TO PIPES AND APPLIANCES?

We have an economical way to solve your problem. Write Aqua Products Co., Box L, Floydada, Texas 79235.

## BARKER'S JEWEL BOX

now renting MINI-WAREHOUSE STORAGE Your Lock-Your Key 652-2642 Lockney. Life

## DAN'S AUTO SERVICE

LOCKNEY PRINTING

ALL TYPES COMMERCIAL PRINTING

Phone 652-2184

**We Appreciate Your Business.**

## STORAGE SPACE

BOATS, FURNITURE, ANYTHING, ETC. BY THE MONTH OR SIX MONTH 10% DISCOUNT.

**WEST TEXAS MINI STORAGE**

983-3513 OR 983-2151

## STOP PAINTING

Cover all outside walls and overhang with U.S. Steel Products

**FREE ESTIMATES**

Stan-By Steel Siding 1501 N. Columbia Plainview, Texas Phone: 293-9330 tfc

## MR FARMER

**May We Help You?**

Agri-Services, Inc. 806-983-2106

Please Phone Early or Late

**Specialist In SBA Loan Packages**

## AUTOMOTIVE

**FOR SALE:** 1977 Silverado Suburban. Good condition. Loaded. Call 983-5610 or 983-2285. tfc

**FOR SALE:** 1975 Ford pickup, 3/4 ton, V-8, 8 ply tires. Call 983-2761. tfc

**ONE OWNER:** 1979 Black Jimmy Sierra. 4x4 with lock out hubs, AM FM stereo and tape deck, power and air. Loaded. 21,000 miles. 469-5337. tfc

**1974 MALIBU,** radial tires. A1. 1972 pickup, new tires. A1. 1974 Oldsmobile 88. A1. to trade for pickup. 983-2941. 12-11p

**FOR SALE:** 1973 Ford 2 door LTD only 39,000 miles. nearly new tires. Excellent condition. R.C. Mitchell 652-3446 12-4c

1979 Bonneville. Radial tires. Low mileage. Call Warren Mitchell. 652-3613 L12-4c

1975 Buick Electra-4 door hardtop. Low mileage, very good condition. 983-2040 12-4p

## Garage Sale

**GARAGE SALE:** Saturday Nov. 29, 8:30 to 5:00, 504 S. White. Clothes, Christmas paper and misc. 11-27c

## AUTO PARTS & ACCESSORIES

DAN TELTON, Owner Specializing in Automotive Transmission, Motor Tune Ups, Auto Air Conditioning.

General Repair We Have A BRAKE LATHE to handle all passenger car brake drums. See us for complete brake service. Phone 652-2462

## JOHNSTON'S ENTERPRISES

Pawn Shop, Guns-Ammo Health Foods, Farm Supplies Canned Goods

Route 2, Box 181, 1 1/4 miles W. Hwy. 82, Crosbyton, Texas 79322. Phone (806) 675-2420.

## BAKER Insurance Agency

Insurance Agency 101 W. Calif. Ph. 983-3270

## Auto Accidents DO Happen

If one happens to you, be protected. Our car insurance offers coverage to meet your special needs - repairs to personal liability.

## LAKEVIEW NEWS

By Joyce Williams

Mr. and Mrs. Gary Hill and son Jeremy, of Lockney, visited last Wednesday afternoon with their grandmother, Mrs. J.C. Odam, and went to church with her that night.

On Sunday afternoon, Mrs. Odam's granddaughter and her husband, Mr. and Mrs. Terry Seiwert, came by on their way to Crowell.

Mrs. Buell Neff was a Thanksgiving dinner guest in the home of Mr. and Mrs. Edwin Neff and Angie. Shority and Leona Neff were also there for dinner. Mr. and Mrs. Bill Smith (Pat Neff) and daughter, Sherrill and Becky, came over from Littlefield and ate dinner with Bill's parents, Mr. and Mrs. Ray Smith. The Smith's then went by and picked up Ona Ruth and visited the Gallows girls, Tammy and Sherrill at Mrs. Lee Neff's. Sherrill Smith recently accompanied the Littlefield High School band to Austin where they marched in pouring rain and still won second place. They traveled home in last Monday's snow storm.

Mr. and Mrs. Bob Kendrick attended an Eastern Star school of instruction in Plainview at the Masonic Lodge all day and evening last Monday.

Mr. and Mrs. Wayne McHam and sons, Andy and Bruce, joined Susan's family at the home of grandmother, Mrs. H.R. Patterson in Floydada, for Thanksgiving day dinner.

On Sunday, all the McHams got together at Mr. and Mrs. Alvie McHam. Those present included, Mr. and Mrs. Wayne McHam and sons; Mr. and Mrs. Dennis McHam; Mr. and Mrs. Ronnie McHam of Amarillo; Mr. and Mrs. Tommy McHam and children, James, Jessica, and Stacy; Mr. and Mrs. Wesley Geyer (Peggy McHam) and Miss Barbara McHam.

Mr. and Mrs. Wayne Appling went to Tulia Sunday for Thanksgiving dinner in the home of Mr. and Mrs. Roy Miller. Mr. and Mrs. Joe Appling and children, Mark, David, and Robbie were there with the head of the

clan, Mrs. S.G. Appling.

Mrs. Joe Dunn talked over the phone with her sister, Mrs. Hubert Scott, in Amarillo, and reports their mother, Mrs. Hattie Fuqua, is doing very well. Mr. and Mrs. Dunn were in Lubbock for Christmas shopping on Monday.

Kathy and Jerry Green and Todd Hambright spent Thanksgiving with their parents, Mr. and Mrs. Billy Joe Hambright. Jerry went back to Lubbock Friday and Kathy stayed out the weekend, relaxing before returning to school teaching on Monday.

Mr. and Mrs. Duane McClintock were Thanksgiving dinner guests at the home of their daughter, Mrs. Dayne Golightly and family. Little Rance and Lacy Golightly enjoyed having the grownups take a few days off from the ginning during the snows of the past two weeks.

Mrs. Roy Fawver enjoyed brunch on Thanksgiving day with Mr. and Mrs. Carlton

Fawver, then shared a late Thanksgiving dinner in the afternoon at the home of Mr. and Mrs. Leslie Fawver.

Last Saturday, little Miss Amanda Watson, daughter of Mr. and Mrs. Dean Watson, came down the aisle as flower girl again, this time for the wedding of her cousin, Miss Ramona Paul, in the Westwood Baptist Church at Odessa. Other family members there for the ceremony included Mr. and Mrs. Millard Watson, and Mr. and Mrs. Ken Robinson of Lubbock whose little son, Kris, was ring bearer.

2nd Lt. Monte Williams and wife, Kellie, of Ft. Sill, Oklahoma, visited his parents, Mr. and Mrs. O.D. Williams Friday. Kellie and Monte also visited in Lubbock Saturday and Sunday with her grandparents, Mr. and Mrs. Pete Calloway, and her parents, Lt. Col. and Mrs. Elton Brian who came from San Angelo for the holiday. The men all came to

Floydada to hunt deer and turkey over the weekend.

Mr. and Mrs. Don Dey and sons, Dee and Charley, of Marison, Alabama, were holiday houseguests of Mr. and Mrs. Carl Mooseberg. Thanksgiving dinner guests in the Mooseberg home included their daughter and family, Alice, of Perryton; June and Tommy Sherman of Lockney; Carla and Donnie Winslow of Duncan, Oklahoma.

On Friday the group met at Lubbock with Donnie's mother, Mrs. W.G. Winslow of Midland, and her sister, Mrs. Barney Huston and son Kenneth of Stanton. All enjoyed dining together at a restaurant in Lubbock.

Mr. and Mrs. Donald Neff called his mother, Mrs. Buell Neff, Saturday evening and said they were coming over from Lubbock to take her out for supper. After a pleasant evening of dining they returned to her house for visiting.

Mr. and Mrs. Bob Kendrick left last Wednesday for Houston, where they spent Thanksgiving day with his aunt and family. Mr. and Mrs. F.E. Harrell, also with Bob's sister, Mrs. Billy Blackwood. They returned home by way of Kerrville and visited with their daughter, Katherine, and Warren McDougle, and their children, Dina and Jason.

The Kendricks' then traveled to Eldorado to visit their daughter, Becky, and Richard Sterling, and their three daughters, Ginger, Jana, and Andrea.

Jean and Bobby Kendrick returned home Sunday evening.

Galen, a Physician in ancient Rome, prepared a cosmetic almost identical to modern cold cream.

## Lockney Care Center

BY VICKIE HUTTON

We really had an exciting Bingo game this past week. We had three blackout winners. Lovella Edwards, Alpha Kitchens, and Sally Carpenter. Our overall bingo winner was Lovella Edwards. We would like to thank DeLinda Glasson for calling bingo.

The residents of the Lockney Care Center will have a bake sale Saturday December 13 at 9:30 a.m. at the home. The bake sale will be all day or until sold out. Anyone wishing to place a special order may call Vickie Hutton at the Lockney Care Center, 652-2209 or after 4 p.m., 652-2239.

We would like to thank Margaret and Elinor Schacht for bringing the beautiful flowers last week. We all enjoyed them very much.

Visitors at our popcorn party Friday afternoon were Linda Cumbie and daughter, Kim, and Vera Rogers.

Visitors this week were DeLinda Glasson, Gerrod

Glasson, Linda Cumbie, Kim Cumbie, Vera Rogers, Gladys Ferguson, Myrl Wolf, Zuzie, John Clymer, Rose West, Earl Cartwell, Margie Turner, Eula Bramlet, Lizzy Jack, De Seago, G.A. McCarty, Roberta Seago, Ann McCarty, June Jackson, Gene Kingston, Dorothy Johnson, Cye and May Davis, Ronnie Minner, Wanda Payne, Ernestine Payne, Ray Beth Clay, Lina Clay, Julie Clay, Cindy Shorter, and



JIMMY PARKER

Jimmy Parker ad college posit

Parker has been collection in the same as Director of Fin- d by Western Texas Snyder. In his new he will be in charge of government financial aid programs, state grants and scholarships for students at TC. Parker graduated from Floydada High School in WTSU in 1978. During senior year at WTSU he was in the financial aid department as student loan

Kirk awarded G Plowhare Award

Trueman Kirk, a long- Shell employee, was awarded a Distinguished Golden Plowshare by Shell Chemical Company President J.B. Anderson at a recent ceremony held at Columbia Lakes in Houston. Kirk, who has held several management positions in manufacturing and marketing for the past 10 years, has for the past 10 years directed a program of interpersonal communications to Shell employ-

1977 he has served Agricultural Chemist by offering his seminars to contributors throughout Tuesday, the home Newberry Simpson. The \$200.00 fund. Al \$1.00 per

agri- facts Perry

Twelve billion dollars worth of wheat exports in one year! That's the bottom line of one of the most comprehensive agricultural economic forecasts prepared for the year 1990. The program behind the forecasts is Dr. Lester H. Myers, chief economic predictor for Chase Econometrics (owned by Chase Manhattan Bank). Myers says that by the end of this decade wheat farmers will have to be able to produce enough wheat to sell for a billion bushels a year. He predicts 1990 market prices to be the equivalent of six dollars in 1980 values. This is the kind of forecast that presents a challenge and a hope. It's a challenge to put forth extraordinary effort to meet demand and the hope of a fair profit while



Lon Davis

Carrie Bertrand

Louis Bearden

Jimmy Cervantes

Don Green

# Old Fashioned Christmas Dance

## The Davis Farm Supply And The Loft Western Wear Invite

Their Friends To An Evening Of Entertainment Featuring The Music Of

Tom Shaw And The Shawness Of Fort Worth

We Welcome All Of You To Attend This Occasion And Enjoy An Evening Of Dancing Or Just Listening To Great County Western Music. Dress Casual

Friday December 12, From 9 Until 1:00 a.m. At The Massie Activity Center, Floydada

**ASSTD. BATHROOM**  
**DELSEY TISSUE**  
**99¢**  
 4 ROLL PKG.

**VAC PAK SHURFINE COFFEE**  
**\$2.19**  
 16 OZ. CAN

**THRIFT KING CUT GREEN BEANS**  
**3 79¢**  
 16 OZ. CANS

**Heavy Grain 73% Lean Ground Beef** lb **\$1.29**

**GOUCH'S GERMAN BRAND SMOKED SAUSAGE** 12 OZ PKG. **\$1.59**

**EVAPORATED PET MILK**  
 TALL CAN **49¢**

**CONTADINA TOMATO SAUCE**  
**489¢**  
 8 OZ. CANS

**HEAVY GRAIN FED BEEF**  
**ROUND STEAK**  
**\$1.99**  
 LB.

YOUR THRIFTWAY STORES SELL & FEATURE ONLY FINE QUALITY AMERICAN GROWN GRAIN FED BEEF, FRESH PORK & QUALITY POULTRY.

**HEAVY GRAIN FED BEEF SIRLOIN STEAK**  
**\$2.49**  
 LB.

**WRIGHT'S HICKORY SMOKED SLAB BACON**  
**\$1.29**  
 LB.

**HARVEST THESE DELICIOUS RED APPLES**  
**99¢**  
 3 LB. BAG

**CALIFORNIA GREEN SKIN AVOCADOS** 5 FOR \$1.00

LOCKNEY - 1200 S. DATE - 809 E. 24th

**PAGE'S THRIFTWAY**

FLOYD COUNTY IMPLEMENT FLOYDADA

**Lockney Care Center News**  
BY VICKIE HUITON

had an exciting  
his past week.  
blackout with  
Edwards, Al-  
and Sally Car-  
overall bingo  
wella Edwards.  
like to thank  
son for calling

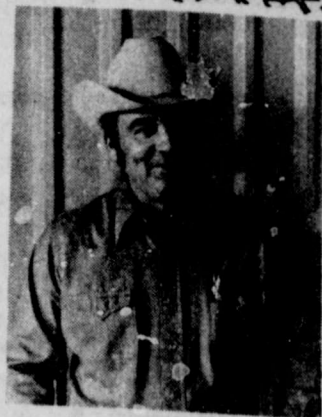
ts of the Lock-  
ter will have a  
aturday Decem-  
0 a.m. at the  
ce sale will be  
ntil sold out.  
ng to place a  
ay call Vickie  
Lockney Care  
01 or after 4

like to thank  
Ellnor Schacht  
the beautiful  
week. We all  
very much.  
our popcorn  
ternoon were  
nd daughter,  
Rogers.  
week were  
on, Gerrod

Glasson, Linda Cumbie, Kim  
Cumbie, Vera Rogers, Kim  
dys Ferguson, Myrl Wof-  
ford, Lloyd Wofford, Koscy  
Zuzzie, John Clymer, Ruth  
Turner, Eula Bramlet, Lizzie  
Jack, De Seago, G.A. Mc-  
Ada, Roberta Seago, Ann  
McCartwick, June Jackson,  
Gene Kingston, Dorothy  
Johnson, Cye and May De-  
vis, Ronnie Minner, Wanda  
Payne, Ernestine Payne, Ray  
Payne, Olivia Stockton, Anna  
Beth Clay, Lina Clay, Julie  
Clay, Cindy Shorter, and

Prissy B...  
Drawing...  
Free Ca...  
Admi...  
at the 198...  
County Fair...  
PRIZE ON...  
CANGR...  
CANGR...

**Holiday Wr...**  
original design  
Frances Stan...  
Christmas Des...  
A Specialty  
Call 983-2070



Don Green



Lois Forth

**as Dance**  
**ern Wear Invite**

usic Of

Great County Western Music. Dress Casual!

Center, Floydada

D BEEF

**STEAK**



WRIGHT'S HICKORY SMOKED SLICED  
**SLAB BACON**  
\$1.29  
LB.

HARVEST THESE DELICIOUS  
**ED APPLES**  
**99¢**  
3 LB. BAG

**ADOS 5** FOR \$1.00

**Y**  
PRICES EFFECTIVE  
DEC. 1-DEC. 6, 1980



JIMMY PARKER

**Jimmy Parker accepts college position**

Parker has been named as Director of Financial Services at Western Texas State University in Snyder. In his new position, he will be in charge of management financial aid, state grants and scholarships for students at Western Texas State. He graduated from Floydada High School in 1974 and received his BBA from WTSU in 1978. During the past year at WTSU he has been in the financial aid department as student loan



PATSY PARKER

**Patsy Parker named as new director**

Patsy Parker has assumed duty as Director of Nursing Services at Danforth Memorial Hospital in Texas City. Miss Parker graduated from Floydada High School and WTSU in Canyon. She received her RN from Northwest Texas School of Nursing in Amarillo. She worked as an RN for one year at Northwest Texas Hospital and two years as Assistant Director of Nursing. For the past five years, Miss Parker has been the Assistant Director of Nursing Services at St. Pauls Hospital, in Dallas. While in Dallas she completed work for a Masters. Upon attaining her Masters, she was eligible for a directorship and was immediately hired by Danforth Memorial. Miss Parker travels extensively as a representative of Danforth in work seminars on nursing services in the Houston, Dallas and New Orleans areas. Miss Parker is the daughter of Mr. and Mrs. Vernon A. Parker of Floydada.

**...k awarded Golden Plowshare Award**

rueman Kirk, a long-time Shell employee, was named a Distinguished Golden Plowshare by Shell Chemical Company President J.B. Simpson at a recent ceremony at Columbia Lakes in Houston. Kirk, who has been with Shell for 38 years. His brother, David Kirk, still resides in Floydada where he runs the family furniture and hardware business.

ed Service award winner. The Golden Plowshare Society was originated in 1974. Kirk and his wife Dorothy Lee reside in Houston. Originally from Floydada, he has been with Shell for 38 years. His brother, David Kirk, still resides in Floydada where he runs the family furniture and hardware business.

"Common sense is genius in homespun."  
Alfred North Whitehead

**Simpson accepts position of Executive Director of Meals on Wheels**



CINDY SIMPSON

Cindy Simpson, Lubbock, has recently accepted the position of Executive Director of Meals on Wheels in Lubbock.

She received a Masters degree from Texas Tech in May in Home Economics Education. She graduated from Floydada High School in 1973 and received a B.S. degree from Tech in May of 1977.

Cindy minored in clothing and textiles. She is the daughter of Mr. and Mrs. W.H. Simpson Jr. of Floydada.

**Newberry hosts 1934 Study Club**

The 1934 Study Club met Tuesday, November 18, in the home of Mrs. W.L. Newberry with Mrs. L.D. Simpson as co-hostess. The club voted to donate \$200.00 to the Jaws of Life fund. Also a donation of \$1.00 per member will be

sent to the Wichita Falls State Hospital Christmas fund. The program was given by Mrs. Allen Benson on "Who are the Muslims?" Those present were Mrs. Dennis Dempsey, Clarence Ashton, Allen Bingham, Wil-

son Bond, W.H. Bunch, W.L. Davis, L.D. Simpson, W.W. Trapp, G.W. Switzer, Effie Foster, Kyle Glover, J.S. Hale, Anthony Latta, Floyd Lawson, Vernon Parker, L.B. Stewart and Newberry.

**case** Interest Free Financing Until March, 1981

**ANNOUNCING ONE OF THE BIGGEST YEAR END CLEARANCE SALES EVER OFFERED ON NEW CASE TRACTORS AND TILLAGE EQUIPMENT**

**20% OFF NOW THROUGH DECEMBER 31st**



Low Profile Models 5 Models, 43 to 80 PTO HP



90 Series 4 WD's To 300 Engine HP

Save 20% on the New Case Tractor of Your Choice.

\* Now through December 31st Case Power & Equipment is having their year end clearance sale. All Case tractors and tillage equipment will be discounted 20% in addition their will be interest free financing until March, 1981.

\* Be sure and take advantage of all the great savings now through December 31st. For more information contact: Dan Richardson, Grady Jackson, or Rodney Bishop in Lubbock, 3302 Slaton Highway, 745-4451. Floyd Easter in Floydada, 101 South 12th 938-2833. Hoss Stone, Jack Write in Lamesa, 902 S. Dallas 872-5861.



90 Series 2 WD's 4 Models, up to 180 Pto HP

Lubbock 3302 Slaton Highway 745-4451

Floydada 101 South 12th 983-2836

Lamesa 902 S. Dallas 872-5861

FLOYD COUNTY IMPLEMENT FLOYDADA

**gifts** that bring Christmas Cheer

for HIM for HER

Superb Tailoring in Suits Sportcoats

Trousers By HAGGAR, CURLEE, SEWELL, H.I.S., SANSABELT SLACKS

FASHION JEANS FOR MEN Levi, Wrangler, Sedgfield Mens, Boys & Student Sizes



LINGERIE

Gowns Pajamas Baby-Dolls Robes Slips Panties Bikinis Hosiery... Miss Elaine, Henson Kickernick



SPORTSWEAR

Pantsuits, Coordinates Sweaters, Pants Blouses, Skirts, Jackets, Jeans Mix Your Own Lady Wrangler, Bobbie Brooks, Garland, Jo Hardin, Campus Casuals, Donovan-Galvani, Mr. Beau, Sunny South



Everyone's favorite

Dress & Sport SHIRTS

By Van Heusen, Campus

A good Selection Of Colors, Styles To Choose From including Velour Shirts



LADIES APPAREL

Coats Blouses Skirts Shoes Dresses Pants

Vicky Vaughn, Lillian Russell, Teni Todd, Butte, P.B.J.



OTHER GIFT SUGGESTIONS:

FOR HIM Socks Belts Ties Cologne

FREE GIFT WRAPPING



FOR HER Houseshoes Handbags Candles Colognes Jewelry Scarves Blouses Linens

**Brown's** DEPARTMENT STORE 106 NORTH MAIN LOCKNEY, TX.



**Sliced Bacon** \$1 39  
Old Fashioned. Market Style Glovers lb.

**Taco Filling** \$1 79  
Jimmy Dean. Zesty Taste 16-oz. pkg.

**Fish Portions** \$1 99  
Booths. Beer Batter 11 1/4-oz. pkg.

**PORK CHOPS** \$1 19  
4 End, 6 Center Cuts Per Combination Package lb.

**Boneless Bottom Round Roast** \$1 99

**Franks** 59¢  
Picnic Pal 12-oz.

**Bologna** \$1 19  
Farmer Jones 12-oz.

**FRYER LEGS OR THIGHS** 99¢  
U.S.D.A. Grade A lb.

**BOX-O-CHICKEN GRADE A** 49¢  
Fresh Fryers lb.



**GROUND BEEF** \$1 29  
Fresh, Regular Grind. Not Less than 70% Lean. 3-lbs. or more. lb.

**Boneless Rump Roast**

# A CHANCE TO WIN \$1,000.



**PIGGLY WIGGLY**

**PLAY WINNING DEAL... IT COULD BE A BIG DEAL FOR YOU!**  
WIN \$1,000, \$100, \$10, \$5, \$2, \$1 OR \$25 IN GROCERIES!

**ODDS TO WIN**  
Odds vary depending on the number of Game Tickets you obtain. The more tickets you collect the better your chances of winning.  
WINNING DEAL Series # WD15 is being played in 5 participating Shop Rite Food Stores located in Bates and Grimes, New Mexico and Muleshoe, Tulsa and Mocona, Oklahoma, Gallop, Espanola, Roswell, Clovis, Turin or Mexico and Floydada, and Seminole, Texas.  
Scheduled termination date of this promotion is February 18, 1981; however, WINNING DEAL officially ends when all Game Tickets are distributed.  
Copyright 1980 Wallace Games, Inc.  
Game program may be repeated by special demand.  
The total number and worth of prizes to be awarded will depend upon the number of winning tickets actually redeemed.

Prices Good Thurs. Thru Wed., Dec. 4-10, 1980.

Game Tickets and Collector Card Available at the Checkout Counter or Store Office. No Purchase Necessary.

**Heinz Ketchup** 54¢  
Rich Flavor 14-oz. btl.

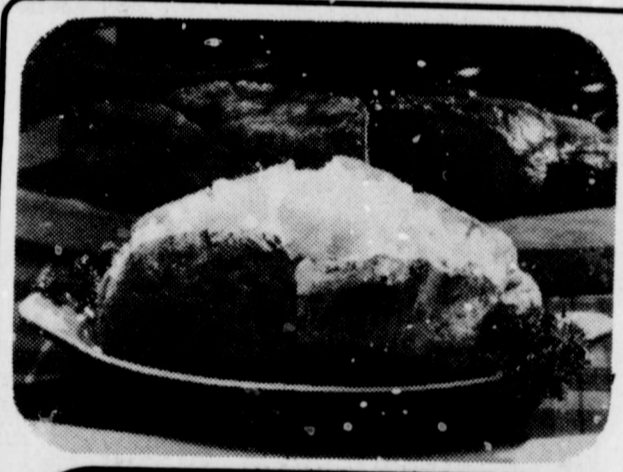
**Frito Lay Chips** \$1 19  
Tostitos, Original Corn or Nacho 10 or 11 1/2-oz. pkg.

**Del Monte Tomato Sauce** 5 88¢  
8-oz. cans

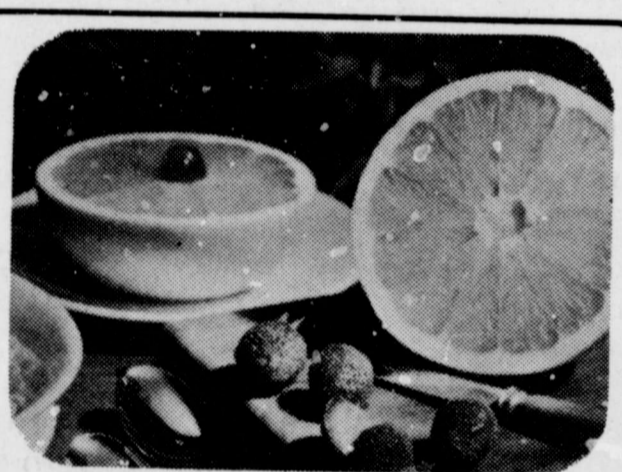
**Viva Towels** 79¢  
Decorated. jumbo roll

**Tator Tots** 93¢  
Ore-Ida. 2-lb. pkg.

**Austex Chili** 69¢  
With Beans 15-oz. can



**RUSSET POTATOES** \$1 49  
All Purpose 10 lb. bag



**RUBY RED GRAPEFRUIT** 3 69¢  
Sweet 'N' Juicy 3 for

**Delicious Apples** 39¢  
Red or Golden lb.

**Fresh Broccoli** 59¢  
Dark Green. Icy Crisp. lb.

**Juice Oranges** \$1 39  
Texas Sweet. 5 lb. bag

**Yellow Onions** 3 49¢  
Stew Weather Favorite. lbs.

**7-UP** \$1 69  
6-pack. 32-oz. returnable btl.

**BATH TISS** 89¢  
Nice 'N' Soft  
White and Ass't. Pastel Colors  
4-roll pkg.

**Maryland Club Coffee** \$2 39  
All Ass't. Coffee Grinds 1-lb. can

**Bakerite Shortening** \$1 19  
Bakin' Season Is Here! 42-oz. can

**Patio Mexican Dinners** 89¢  
Ass't. Varieties 11 1/2 to 13-oz. pkg.

**Green Chili** 49¢  
Old El Paso Chopped. 4-oz. can

**ORANGE JUICE** 89¢  
White Swan Frozen. 6-oz. cans 3 cans

**PREMIUM SALTINES** 69¢  
Nabisco. 1-lb. pkg.

**TOMATO SOUP** 88¢  
10 3/4-oz. cans 4 cans

**PARKAY MARGARINE** 55¢  
1-lb. pkg. quarters

YOU...  
BOB...  
M.A...  
WEL...  
WOC...  
NBC...  
CBS...  
THRU WED...  
MORNING...  
5:55...  
6:00...  
STATION FUN TIME...  
PROGRAM...  
INTERNATIONAL BYLINE...  
CAPTAIN KANGAROO...  
6:30...  
WINKLE...  
TOWN...  
Arizona Stage...  
Villain Still Pursued...  
Sister of Isabella (MON)...  
(TUE)...  
Hook, Line and...  
7:00...  
RELIGIOUS PROGRAMMING...  
LUCY...  
HOGUE (EXC. FRI)...  
MORNING AMERICA...  
RAYNER AND HIS...  
8:00...  
SHOW...  
HOPE (MON, E)...  
JEANIE...  
RELIGIOUS PROGRAMMING...  
7:45...  
WEATHER...  
8:00...  
RELIGIOUS PROGRAMMING...  
UP...  
Closed...  
MORNING...  
comical...  
assemble...  
right over...  
MOVIE...  
dominant...  
Eden, Dan...  
savings of...  
dominium...  
and corrup...  
10 SIX...  
GAMES...  
Colorado...  
competit...  
student's...  
year-ida...  
competit...  
Hart, O...  
min.)...  
THE...  
JACK...  
FROM...  
great Ste...  
Brown, Jr...  
music (CM...  
BO...  
sweepst...  
Henry, dis...  
caught wh...  
happens...  
HBO MO...  
Just: Yo...  
George, v...  
vaudeville...  
his ideal...  
min.)...  
7:00...  
SNE...  
G...  
PIL...  
AD...  
SPECIAL...  
coverage...  
the House...  
10...  
FRANC...  
THU...  
MOVIES...  
Even 198...  
Georgia...  
sewies...  
accesses...  
way talent...  
promising...  
1981...  
CRYST...  
joined by...  
Charlie De...  
Dione We...  
10...  
THIS...  
with the...  
capedes...  
ing...  
(Closed...  
TBS...  
TBS...  
ESP...  
NEW...  
10 YO...  
animat...  
dary Yogi...  
Hucklebe...  
Shagleg...  
and Sand...  
KNO...  
reformed...  
for Earl T...  
and find...  
a deep...  
1:30...  
RELIGIOUS...  
PROGRAMMING...  
DICK CAVETT SHOW...  
THE NEW DAY...  
ANOTHER WORLD...  
1:50...  
SUPER STATION FUN TIME...  
2:00...  
AS WE...  
GENERAL HOSPITAL...  
LOVE AMERICAN STYLE...  
VALLEY...  
GUIDING LIGHT...  
2:30...  
SPACE GIANTS...  
VELLA ALFRE...  
BOBBY DOO...  
TEXAS...  
3:00...  
PLINTSTONES...  
BECAME STREET...  
EDGE OF NIGHT...  
BUGS BUNNY AND FRIENDS...  
MOVIE: Circus World Pt. I (THUR)...  
Circus World Pt. II (FRI)...  
Innocent...  
Sons (MON)...  
Pursuit to Algiers...  
The Caine Mutiny Pt. I (WED)...  
ONE DAY AT A TIME...  
3:30...  
RELIGIOUS...  
PROGRAMMING...  
MAGAN'S ISLAND...  
TAC DOUGH...  
BOBBY DOO...  
MORFORD AND SON...  
THEY MAKE A DEAL...  
4:00...  
RELIGIOUS...  
PROGRAMMING...  
BUNCH...  
ROGERS...  
SPECIAL...  
Mary Tyne Moore (EXC. WED)...  
MAGAN'S ISLAND...  
PERSONS...  
4:30...  
BAGLEY SHOW...  
MERYL HILLBILLIES...  
RELIGIOUS PROGRAMMING...  
TIME OF DELIVERANCE...  
5:00...  
ROSS BAGLEY Show...  
HAPPY DAYS AGAIN...  
MAGAN'S ISLAND...  
AGENCY ONE...  
LSLYE...  
5:00...  
CAROL BURNETT AND...  
RELIGIOUS PROGRAMMING...  
NEWS...  
AND TIMES...  
BOBBY DOO...  
2) K...  
10) K...





child hating Englishman agrees to take two kids back to England with him. (60 mins.)

4:00  
**(2) WIDE WORLD OF TRUTH CONNECTIONS** Yesterday, Tomorrow and You Narrator James Burke, through the use of eight arctic tracings, traces the great leaps that man has made in tackling his environment. (Closed-Captioned, U.S.A.) (60 mins.)

6:00  
**(1) POWER OF PENTECOST**  
**(2) WORLD CLASS FISHING** HBO MOVIE-(DRAMA) \* "Hide in Plain Sight" 1980 James Caan, Jill Eikenberry. True story of a father's eight-year search for his children after his ex-wife marries a man who's identity was changed by the Witness Relocation Program. (Rated PG) (90 mins.)

8:30  
**(1) JERRY FALWELL**  
**(2) LOVE AMERICAN STYLE**  
**(3) WESTERN OUTDOORSMAN** 5:00

6:00  
**(4) GROWING YEARS**  
**(5) SIMPLE GIFTS: SIX EPISODES**

6:00  
**(6) CHRISTMAS STORIES** Animated holiday season as perceived by famous writers and artists, including Maurice Sendak, Moss Hart and Virginia Woolf. (60 mins.)

9:00  
**(7) A CHRISTMAS STORY** Animated holiday season as perceived by famous writers and artists, including Maurice Sendak, Moss Hart and Virginia Woolf. (60 mins.)

9:30  
**(8) NUMBER 95** Nervous new divorcee Roger Busby finds that neighborhood has new meaning at 95 Pacific Way. (Season-Premiere, 60 mins.)

9:30  
**(9) TBS NEWS**  
**(10) TAXI** Alex and Tony's romantic love play Cupid by linking up Elaine with a Klu Klux Klan member. (60 mins.)

9:30  
**(11) M.A.S.H.**  
**(12) BARNEY MILLER** 10:00

9:30  
**(13) ROSS BAGLEY SHOW**  
**(14) A&C CAPTIONED NEWS**  
**(15) PTL PROGRAM**

9:30  
**(16) THE TONIGHT SHOW** Guests: Jane Fonda, John Byner. (60 mins.)

10:00  
**(17) GROWING YEARS**  
**(18) BOB NEWHART SHOW**  
**(19) MOVIE-(DRAMA) \* "Testimony of Two Men Part III."** 1979 David Byrne, Barbara Parkins. A massive tale of the citizens of Pennsylvania town spanning from the end of the Civil War to the turn of the century. (2 hrs.)

11:15  
**(20) LOVE AMERICAN STYLE** 11:30

11:30  
**(21) TOMORROW** Host: Tom Snyder. Guest: Michael Sall. (60 mins.)

11:45  
**(22) ABC NEWS NIGHTLINE** 12:00

12:00  
**(23) D. JAMES KENNEDY** 12:00

12:00  
**(24) HBS MOVIE-(SCIENCE-FICTION)** "Mad Max" 1980 Motorcycle gang of the future terrorizes Australian citizens. (Rated R) (90 mins.)

12:00  
**(25) MOVIE-(DRAMA) \* "Black Sun"** 1967 Michele Mercier, Daniel Gelin. An ex-con swears to get even with the detective who nailed him. (95 mins.)

1:30  
**(26) NEWS** 2:00

2:00  
**(27) NIGHTMARE**  
**(28) MOVIE-(DRAMA) JOINED IN PROGRESS** "Sweet Movement" 1968 Sandy Dennis, Anthony Newley. (Rated R) (90 mins.)

2:30  
**(29) CROMIE CIRCLE** 2:55

2:55  
**(30) MOVIE-(MUSICAL) \* "Footlight Parade"** 1933 James Cagney, Joan Blondell. A musical comedy director tries to make a comeback in a new show but finds someone is stealing his ideas as he puts them in the show. (2 hrs., 5 mins.)

4:00  
**(31) NEWS** 4:05

4:05  
**(32) F.B.I.** 4:30

4:30  
**(33) ALL NIGHT AT THE MOVIES** (Joined In Progress) "Bondage Of Fear" 5:00

5:00  
**(34) WORLD AT LARGE** 5:05

5:05  
**(35) TWILIGHT ZONE** 5:30

5:30  
**(36) ROSS BAGLEY SHOW** 4:00

4:00  
**(37) FAMILY AFFAIR** 4:30

4:30  
**(38) MONDAY** DEC. 8, 1980

6:00  
**(39) AGAINST THE WIND** Sweeping drama of three people who try to make a better life for themselves in the rugged, harsh land of Australia during its early colonial days.

6:00  
**(40) COSMOS** Persistence of Memory Dr. Carl Sagan explores the human brain and nervous system in an effort to understand what constitutes intelligent life.

6:00  
**(41) CHARLIE'S ANGELS** "Scuba" diving expedition with her beautiful friend off Hawaii's exotic and dangerous coral reefs turns into an explosive game of double-crossing when they discover a mysterious sunken ship holding a cargo worth millions that Hawaii's most ruthless criminals are battling over. (60 mins.)

6:00  
**(42) DANCE FEVER CHRISTMAS SPECIAL**  
**(43) CHIPS** A huge boulder, perched precariously over the Pacific Coast Highway, actually inspires Ponch's idea to have a huge star-studded charity bash. (Season-Premiere, 2 hrs.)

6:00  
**(44) ARCHIE BUNKER'S PLACE** HBO MOVIE-(COMEDY) \* "Muppet Movie" 1979 Kermit the Frog, Miss Piggy. The amazing life-like puppet creations of Jim Henson take an adventurous look at Hollywood, while spoofing every cliché from the shoot-out to the love scene. (90 mins.)

7:30  
**(45) ONE DAY AT A TIME** Ann and Barbara return from a trip to find their apartment far more spacious than when they left. Schneider unwittingly helped a clever set of thieves make off with every stick of furniture in the place.

7:30  
**(46) 700 CLUB** 8:00

8:00  
**(47) MASTERPIECE THEATRE** "Testament of Youth" Episode II. Roland's vivid accounts of the fighting in France inspire Vera to become a war nurse. She survives the drudgery of her training and looks forward to a Christmas reunion with Roland. (Closed-Captioned, U.S.A.) (60 mins.)

8:00  
**(48) PTL PROGRAM**  
**(49) SUNDAY NIGHT MOVIE** Fighting Back" 1980 Robert Urich, Art Carney. An inspiring drama of human courage, a sensitive love story and scenes of hand-buffing football action are combined in the triumphant tale of Rocky Bleiler, who overcame near crippling war injuries to star with the Super Bowl champion Pittsburgh Steelers. (2 hrs.)

8:00  
**(50) LAWRENCE WELK SHOW** 10:00

10:00  
**(51) NBA BASKETBALL** Golden State Warriors vs Phoenix Suns. (2 hrs.)

10:00  
**(52) AMERICA**  
**(53) MASTERPIECE THEATRE** "Testament of Youth" Episode II. Roland's vivid accounts of the fighting in France inspire Vera to become a war nurse. She survives the drudgery of her training and looks forward to a Christmas reunion with Roland. (Closed-Captioned, U.S.A.) (60 mins.)

10:00  
**(54) PTL PROGRAM**  
**(55) SUNDAY NIGHT MOVIE** Fighting Back" 1980 Robert Urich, Art Carney. An inspiring drama of human courage, a sensitive love story and scenes of hand-buffing football action are combined in the triumphant tale of Rocky Bleiler, who overcame near crippling war injuries to star with the Super Bowl champion Pittsburgh Steelers. (2 hrs.)

10:00  
**(56) LAWRENCE WELK SHOW** 10:30

10:30  
**(57) GROWING YEARS** 11:00

11:00  
**(58) THE JEFFERSONS** 9:30

9:30  
**(59) KENNETH COPELAND** 9:30

9:30  
**(60) TBS NEWS**  
**(61) GROWING YEARS**  
**(62) NEWS**  
**(63) CILPEPPER** A former policeman, who runs a security business, becomes involved in a plot to extort a million dollars from an aircraft tycoon by trading him evidence of his daughter's indiscretions. (60 mins.)

9:30  
**(64) TRAPPER JOHN M.D.** Gonzo Gates is overcome with fury for a fellow physician after he has a reunion with a friend from his childhood. (60 mins.)

9:30  
**(65) ROCKY II** 1979 Sylvester Stallone, Talia Shire. Married, with a baby on the way and disillusioned by vanishing fame and fortune, Rocky returns to the ring to prove he was much more than a one-shot slugger. (Rated PG) (hrs., 15 mins.)

9:30  
**(66) GROWING YEARS** 10:00

10:00  
**(67) NEWSIGHT** 9:00

9:00  
**(68) RUFF HOUSE**  
**(69) FOOTSTEPS**  
**(70) NEWSIGHT**  
**(71) NEWS**  
**(72) MORECAMBE AND WISE** 10:00

10:00  
**(73) MOVIE-(COMEDY) \* "A Thousand Clowns"** 1955 Jason Robards, Barbara Harris. The writer of a children's T.V. show quits his job and makes no effort to find another job until he is visited by two social workers who try to help his eleven-year-old nephew take away from him. (2 hrs.)

10:00  
**(74) THE KING IS COMING** 10:30

10:30  
**(75) OPEN UP**  
**(76) FOOTSTEPS**  
**(77) POP GOES THE COUNTRY**  
**(78) MOVIE-(TITLE UNANNOUNCED)** (3 hrs.)

10:00  
**(79) NBC LATE NIGHT MOVIE** "Ode to Billy Joe" 1977 Stars: Glynn O'Connor, Robby Benson. A young romance flurries briefly and ends in disaster on a sleepy summer afternoon on the Alabama Bridge. (Repeat, 2 hrs.)

10:00  
**(80) MOVIE-(ADVENTURE) \* "The Frogmen"** 1951 Richard Widmark, Dana Andrews. The story of underwater commandos who rescue a ship in the Pacific during World War II. (2 hrs.)

10:00  
**(81) ABC CAPTIONED NEWS**  
**(82) THE TONIGHT SHOW** "The Beat of Power" Guests: Mary Tyler Moore, Dick Van Dyke, Dick Van Patton. (Repeat, 60 mins.)

10:00  
**(83) CBS LATE MOVIE** "QUINCY" A Question Of Time Quincy wants to learn the truth about an alleged accidental death of his mother who was a part of the health club's lawyer. (Repeat) "THE NEW AVENGERS: Drier By The Dozen" An officer of the British Army is given the dregs of the armed forces and forges his own formidable fighting machine. (Repeat)

10:00  
**(84) MOVIE-(DRAMA) \* "Walk Softly, Stranger"** 1950 Joseph Cotton, Valli. A petty crook sees the error of his ways through his love for a crippled girl. (110 mins.)

11:30  
**(85) CELEBRATION**  
**(86) PTL PROGRAM**  
**(87) OKLAHOMA FOOTBALL** 12:00

12:00  
**(88) LARRY JONES** 11:00

11:00  
**(89) AMERICAN SHORT STORY** 11:00

11:00  
**(90) MOVIE-(DRAMA) \* "Testimony of Two Men Part I."** 1979 David Byrne, Barbara Parkins. A massive tale of the citizens of Pennsylvania town spanning from the end of the Civil War to the turn of the century. (2 hrs.)

11:15  
**(91) LOVE AMERICAN STYLE** 11:30

11:30  
**(92) TOMORROW** Host: Tom Snyder. Guest: Michael Sall. (60 mins.)

11:45  
**(93) ABC NEWS NIGHTLINE** 12:00

12:00  
**(94) D. JAMES KENNEDY** 12:00

12:00  
**(95) HBS MOVIE-(SCIENCE-FICTION)** "Mad Max" 1980 Motorcycle gang of the future terrorizes Australian citizens. (Rated R) (90 mins.)

12:00  
**(96) MOVIE-(DRAMA) \* "Black Sun"** 1967 Michele Mercier, Daniel Gelin. An ex-con swears to get even with the detective who nailed him. (95 mins.)

1:30  
**(97) NEWS** 2:00

2:00  
**(98) NIGHTMARE**  
**(99) MOVIE-(DRAMA) JOINED IN PROGRESS** "Sweet Movement" 1968 Sandy Dennis, Anthony Newley. (Rated R) (90 mins.)

2:30  
**(100) CROMIE CIRCLE** 2:55

2:55  
**(101) MOVIE-(MUSICAL) \* "Footlight Parade"** 1933 James Cagney, Joan Blondell. A musical comedy director tries to make a comeback in a new show but finds someone is stealing his ideas as he puts them in the show. (2 hrs., 5 mins.)

4:00  
**(102) NEWS** 4:05

4:05  
**(103) F.B.I.** 4:30

4:30  
**(104) ALL NIGHT AT THE MOVIES** (Joined In Progress) "Bondage Of Fear" 5:00

5:00  
**(105) WORLD AT LARGE** 5:05

5:05  
**(106) TWILIGHT ZONE** 5:30

5:30  
**(107) ROSS BAGLEY SHOW** 4:00

4:00  
**(108) FAMILY AFFAIR** 4:30

4:30  
**(109) MONDAY** DEC. 8, 1980

6:00  
**(110) AGAINST THE WIND** Sweeping drama of three people who try to make a better life for themselves in the rugged, harsh land of Australia during its early colonial days.

6:00  
**(111) COSMOS** Persistence of Memory Dr. Carl Sagan explores the human brain and nervous system in an effort to understand what constitutes intelligent life.

6:00  
**(112) CHARLIE'S ANGELS** "Scuba" diving expedition with her beautiful friend off Hawaii's exotic and dangerous coral reefs turns into an explosive game of double-crossing when they discover a mysterious sunken ship holding a cargo worth millions that Hawaii's most ruthless criminals are battling over. (60 mins.)

6:00  
**(113) DANCE FEVER CHRISTMAS SPECIAL**  
**(114) CHIPS** A huge boulder, perched precariously over the Pacific Coast Highway, actually inspires Ponch's idea to have a huge star-studded charity bash. (Season-Premiere, 2 hrs.)

6:00  
**(115) ARCHIE BUNKER'S PLACE** HBO MOVIE-(COMEDY) \* "Muppet Movie" 1979 Kermit the Frog, Miss Piggy. The amazing life-like puppet creations of Jim Henson take an adventurous look at Hollywood, while spoofing every cliché from the shoot-out to the love scene. (90 mins.)

7:30  
**(116) ONE DAY AT A TIME** Ann and Barbara return from a trip to find their apartment far more spacious than when they left. Schneider unwittingly helped a clever set of thieves make off with every stick of furniture in the place.

7:30  
**(117) 700 CLUB** 8:00

8:00  
**(118) MASTERPIECE THEATRE** "Testament of Youth" Episode II. Roland's vivid accounts of the fighting in France inspire Vera to become a war nurse. She survives the drudgery of her training and looks forward to a Christmas reunion with Roland. (Closed-Captioned, U.S.A.) (60 mins.)

8:00  
**(119) PTL PROGRAM**  
**(120) SUNDAY NIGHT MOVIE** Fighting Back" 1980 Robert Urich, Art Carney. An inspiring drama of human courage, a sensitive love story and scenes of hand-buffing football action are combined in the triumphant tale of Rocky Bleiler, who overcame near crippling war injuries to star with the Super Bowl champion Pittsburgh Steelers. (2 hrs.)

8:00  
**(121) LAWRENCE WELK SHOW** 10:00

10:00  
**(122) NBA BASKETBALL** Golden State Warriors vs Phoenix Suns. (2 hrs.)

10:00  
**(123) AMERICA**  
**(124) MASTERPIECE THEATRE** "Testament of Youth" Episode II. Roland's vivid accounts of the fighting in France inspire Vera to become a war nurse. She survives the drudgery of her training and looks forward to a Christmas reunion with Roland. (Closed-Captioned, U.S.A.) (60 mins.)

10:00  
**(125) PTL PROGRAM**  
**(126) SUNDAY NIGHT MOVIE** Fighting Back" 1980 Robert Urich, Art Carney. An inspiring drama of human courage, a sensitive love story and scenes of hand-buffing football action are combined in the triumphant tale of Rocky Bleiler, who overcame near crippling war injuries to star with the Super Bowl champion Pittsburgh Steelers. (2 hrs.)

10:00  
**(127) LAWRENCE WELK SHOW** 10:30

10:30  
**(128) GROWING YEARS** 11:00

11:00  
**(129) THE JEFFERSONS** 9:30

9:30  
**(130) KENNETH COPELAND** 9:30

9:30  
**(131) TBS NEWS**  
**(132) GROWING YEARS**  
**(133) NEWS**  
**(134) CILPEPPER** A former policeman, who runs a security business, becomes involved in a plot to extort a million dollars from an aircraft tycoon by trading him evidence of his daughter's indiscretions. (60 mins.)

9:30  
**(135) TRAPPER JOHN M.D.** Gonzo Gates is overcome with fury for a fellow physician after he has a reunion with a friend from his childhood. (60 mins.)

9:30  
**(136) ROCKY II** 1979 Sylvester Stallone, Talia Shire. Married, with a baby on the way and disillusioned by vanishing fame and fortune, Rocky returns to the ring to prove he was much more than a one-shot slugger. (Rated PG) (hrs., 15 mins.)

9:30  
**(137) GROWING YEARS** 10:00

10:00  
**(138) NEWSIGHT** 9:00

9:00  
**(139) RUFF HOUSE**  
**(140) FOOTSTEPS**  
**(141) NEWSIGHT**  
**(142) NEWS**  
**(143) MORECAMBE AND WISE** 10:00

10:00  
**(144) MOVIE-(COMEDY) \* "A Thousand Clowns"** 1955 Jason Robards, Barbara Harris. The writer of a children's T.V. show quits his job and makes no effort to find another job until he is visited by two social workers who try to help his eleven-year-old nephew take away from him. (2 hrs.)

10:00  
**(145) THE KING IS COMING** 10:30

10:30  
**(146) OPEN UP**  
**(147) FOOTSTEPS**  
**(148) POP GOES THE COUNTRY**  
**(149) MOVIE-(TITLE UNANNOUNCED)** (3 hrs.)

10:00  
**(150) ROSS BAGLEY SHOW** 4:00

4:00  
**(151) MOVIE-(ADVENTURE) \* "The Frogmen"** 1951 Richard Widmark, Dana Andrews. The story of underwater commandos who rescue a ship in the Pacific during World War II. (2 hrs.)

10:00  
**(152) ABC CAPTIONED NEWS**  
**(153) THE TONIGHT SHOW** "The Beat of Power" Guests: Mary Tyler Moore, Dick Van Dyke, Dick Van Patton. (Repeat, 60 mins.)

10:00  
**(154) CBS LATE MOVIE** "QUINCY" A Question Of Time Quincy wants to learn the truth about an alleged accidental death of his mother who was a part of the health club's lawyer. (Repeat)

10:00  
**(155) MOVIE-(DRAMA) \* "Walk Softly, Stranger"** 1950 Joseph Cotton, Valli. A petty crook sees the error of his ways through his love for a crippled girl. (110 mins.)

11:30  
**(156) CELEBRATION**  
**(157) PTL PROGRAM**  
**(158) OKLAHOMA FOOTBALL** 12:00

12:00  
**(159) LARRY JONES** 11:00

11:00  
**(160) AMERICAN SHORT STORY** 11:00

11:00  
**(161) MOVIE-(DRAMA) \* "Testimony of Two Men Part I."** 1979 David Byrne, Barbara Parkins. A massive tale of the citizens of Pennsylvania town spanning from the end of the Civil War to the turn of the century. (2 hrs.)

11:15  
**(162) LOVE AMERICAN STYLE** 11:30

11:30  
**(163) TOMORROW** Host: Tom Snyder. Guest: Michael Sall. (60 mins.)

11:45  
**(164) ABC NEWS NIGHTLINE** 12:00

12:00  
**(165) D. JAMES KENNEDY** 12:00

12:00  
**(166) HBS MOVIE-(SCIENCE-FICTION)** "Mad Max" 1980 Motorcycle gang of the future terrorizes Australian citizens. (Rated R) (90 mins.)

12:00  
**(167) MOVIE-(DRAMA) \* "Black Sun"** 1967 Michele Mercier, Daniel Gelin. An ex-con swears to get even with the detective who nailed him. (95 mins.)

1:30  
**(168) NEWS** 2:00

2:00  
**(169) NIGHTMARE**  
**(170) MOVIE-(DRAMA) JOINED IN PROGRESS** "Sweet Movement" 1968 Sandy Dennis, Anthony Newley. (Rated R) (90 mins.)

2:30  
**(171) CROMIE CIRCLE** 2:55

2:55  
**(172) MOVIE-(MUSICAL) \* "Footlight Parade"** 1933 James Cagney, Joan Blondell. A musical comedy director tries to make a comeback in a new show but finds someone is stealing his ideas as he puts them in the show. (2 hrs., 5 mins.)

4:00  
**(173) NEWS** 4:05

4:05  
**(174) F.B.I.** 4:30

4:30  
**(175) ALL NIGHT AT THE MOVIES** (Joined In Progress) "Bondage Of Fear" 5:00

5:00  
**(176) WORLD AT LARGE** 5:05

5:05  
**(177) TWILIGHT ZONE** 5:30

5:30  
**(178) ROSS BAGLEY SHOW** 4:00

4:00  
**(179) FAMILY AFFAIR** 4:30

4:30  
**(180) MONDAY** DEC. 8, 1980

6:00  
**(181) AGAINST THE WIND** Sweeping drama of three people who try to make a better life for themselves in the rugged, harsh land of Australia during its early colonial days.

6:00  
**(182) COSMOS** Persistence of Memory Dr. Carl Sagan explores the human brain and nervous system in an effort to understand what constitutes intelligent life.

6:00  
**(183) CHARLIE'S ANGELS** "Scuba" diving expedition with her beautiful friend off Hawaii's exotic and dangerous coral reefs turns into an explosive game of double-crossing when they discover a mysterious sunken ship holding a cargo worth millions that Hawaii's most ruthless criminals are battling over. (60 mins.)

6:00  
**(184) DANCE FEVER CHRISTMAS SPECIAL**  
**(185) CHIPS** A huge boulder, perched precariously over the Pacific Coast Highway, actually inspires Ponch's idea to have a huge star-studded charity bash. (Season-Premiere, 2 hrs.)

6:00  
**(186) ARCHIE BUNKER'S PLACE** HBO MOVIE-(COMEDY) \* "Muppet Movie" 1979 Kermit the Frog, Miss Piggy. The amazing life-like puppet creations of Jim Henson take an adventurous look at Hollywood, while spoofing every cliché from the shoot-out to the love scene. (90 mins.)

7:30  
**(187) ONE DAY AT A TIME** Ann and Barbara return from a trip to find their apartment far more spacious than when they left. Schneider unwittingly helped a clever set of thieves make off with every stick of furniture in the place.

7:30  
**(188) 700 CLUB** 8:00

8:00  
**(189) MASTERPIECE THEATRE** "Testament of Youth" Episode II. Roland's vivid accounts of the fighting in France inspire Vera to become a war nurse. She survives the drudgery of her training and looks forward to a Christmas reunion

# The Floyd Philosopher

Editor's note: The Floyd Philosopher on his Johnson grass farm tries to straighten out the experts this week on the tax situation.

Dear editor:  
Some professionals had some embarrassing trouble understanding the mood of the voters before they voted in the Presidential election, and some are even having trouble understanding it after the election.

For instance, at a Governor's convention the other day one Governor said "I would like to see the federal government not soak up most of the taxing power in the next few years. I would like to see them leave most of it for us."  
I'm not sure that's what the voters had in mind when they said they wanted the government off their backs.

What's gained by getting the federal government off your back if the state government jumps on instead? If you're staggering under the

load, what difference does it make who put it there?  
You reckon voters, when they said they're tired of being taxed by Washington, meant to say let Austin do it now?

Speaking of taxes, I don't know how much it had cost to send Voyager I sailing one billion miles out in space to take pictures of Saturn, a frigid pile of nothing, but at only a dollar a mile that comes to a billion dollars.

For a billion or so more, scientists say they can explore even further out into the vastness of the universe. How far out do you suppose they'll have to go before they find out there's nothing useable out there?

Exploring outer space is a fascinating hobby but maybe it should be postponed till we get out earthly life in a little better shape. Spending billions of tax money now to explore space is like getting an air-conditioner for an un-chinked log cabin.

Yours faithfully,  
J.A.

## 4-H'ers hold meeting

A 4-H meeting was called to order and held Tuesday night, November 18, at the Ag building. The Food Show was discussed which will be December 2 at Floydada. Also for the December meeting we talked about a four county dance that will be at Plainview December 6. The program was given by the county agents, Jett Major and Ken Langley. It was a film strip entitled "Money Grows Here."

There were 17 members and 13 adults present. They were: Chrisy Coff-

man, Sherre Kinard, Donna Vernon, Ruth Elaine Wilson, Matt Mitchell, Joel Mitchell, Tracy Carlton, Heath Rexrode, Keith Hight, Scott McCarthy, Melanie Foster, Earl Broseh, Jill Whitfill, Wyman Rexrode, Phillip Glasson, Karyn Foster, and Gwen Lane.

Adults present were: Billy Ed and Marlene Whitfill, Paul Glasson, Kenneth and Juanita Broseh, G.L. and Adalis Hight, Warren Mitchell, Sonny Carlton, Eddie Foster, Mr. Rexrode and county agents, Jett Major and Ken Langley.

## Il Penseroso Jr. Study Club meets

Members of Il Penseroso Jr. Study Club met recently in the home of Janette Workman. Virginia Taylor, a member of the Floyd County Museum presented a program on tracing your roots. Several ideas were exchanged on how to find your past ancestors.

Allsup's to help in the fight against Cerebral Palsy

Members of the United Cerebral Palsy Telethon With the Stars, will conduct pre-telethon activities during the month of December according to Kurt Verlei, Director of Public Relations.

According to Verlei, the company will display collection canisters in all their stores to allow patrons to make contributions. "This is a very important part of the fund raising prior to the telethon," stated Verlei. "United Cerebral Palsy is an injury to the brain that can never be cured, however, we feel that money raised will go a long way in helping the cerebral palsied lead a more normal life. We hope that our customers will help us make this telethon more successful than any before."

The United Cerebral Palsy Week-end With the Stars will be conducted January 17 and 18, 1981.



Thanksgiving meeting. Rev. Hollis is Pastor of Calvary Baptist Church in Floydada.

## HOSPITAL NOTES

**ROCK HOSPITAL**  
Sims, Floydada, 11-25, baby girl, 11-27.  
Casarez, Cone, adm., 11-26, Hong Cantrell, Tulia, adm., 11-25, Hong Colston, Floydada, 11-20, dis. 11-28, Jorhal.  
Bagwell, Floydada, 11-21, continues Brandon.  
Benson, Floydada, 11-23, dis. 11-26, Hong Dumais, Floydada, 11-25, dis. 11-27, Hong Martinez, Floydada, 11-27, continues care.  
Martinez, Lockney, 11-29, continues Jordan.  
Cornelius, Floydada, 11-29, continues Rissler, Matador, 11-29, dis. 12-1, Hong Rissler, "Kaci", 11-29, dis. 12-1, Hong Orman, Floydada, 11-30, continues care.  
Enedelia Rodriguez, Plainview, adm., 12-1, continues care.

**WILLIAMS COMPLETES ARTILLERY COURSE**  
Second Lieutenant Thomas M. Williams, son of Mr. and Mrs. Q.D. Williams of Route 2, Floydada, recently completed a field artillery officer basic course at the U.S. Army Field Artillery School, Fort Sill, Oklahoma.

During the course, students gain proficiency in artillery techniques and are introduced to new weapons and doctrine.

"A hog in armor is still a hog."  
Thomas Fuller

**PROPERTY TAXES BY 29 PERCENT**  
The Council of the City of Floydada is meeting to vote on the increase on property taxes by 29 percent. The meeting will be held on December 9, 1980 at 7:30 p. m. in the City Office, Floydada, Texas.

The Council of the City of Floydada has also voted in a public hearing to increase tax rate:

Russell, Councilman  
Councilman  
Councilman  
Councilman  
Councilman  
Councilman

## Listen To The Hum

It's the sound of growth, prosperity and progress in the Southwest. It's the sound of the Southwest making a bigger and bigger contribution to our nation's economy. It's the sound of electricity. Electricity that surrounds us with opportunities and jobs, pride and security. And with proper use of our resources, and new power plants using efficient, reliable fuels like coal, that sound is going to keep right on humming.

**SPS**  
SOUTHWESTERN PUBLIC SERVICE

9301

## Christmas is... having a warm puppy to talk to.



The SNOOPY & WOODSTOCK Phone. T. To-cho-tone or rotary dial. Housing manufactured by American Telecommunications Corp. PEANUTS Characters © 1958, 1965 United Feature Syndicate, Inc. Trademark of AT&T Co.

This Christmas, give the puppy with that big ear-to-ear grin. Surprise someone special with The SNOOPY & WOODSTOCK Phone from your Southwestern Bell Business Office.

We've got a gift for everyone on your list. Handsome desk sets, ornate phones, "fun" phones, even phones that'll dial the number for you.

Looking for a gift with "character"? We've got a couple of characters that'll warm your heart every time you make a call!

Or select a "Big Hello" gift certificate — available in three gift sizes of \$20, \$25 and \$100.

**Southwestern Bell**

**YOUR TURN: LETTERS TO CBS**  
**HBO STANDING ROOM ONLY:** Paris Cabaret French...  
**MOVIE (SUSPENSE-DRAMA)** "Shattered Rooms" 1967...  
**GROWING YEARS** ABC News Nightline...  
**TOMORROW SHOW** Host: Tom Snyder...  
**MONTE CARLO SHOW** Doc Severinsen...  
**CBS LATE MOVIE** "The Innocence" 1976...  
**GROWING YEARS** ABC News Nightline...  
**TOMORROW SHOW** Host: Tom Snyder...  
**MONTE CARLO SHOW** Doc Severinsen...  
**CBS LATE MOVIE** "The Innocence" 1976...  
**GROWING YEARS** ABC News Nightline...  
**TOMORROW SHOW** Host: Tom Snyder...  
**MONTE CARLO SHOW** Doc Severinsen...  
**CBS LATE MOVIE** "The Innocence" 1976...

## tips for sledding

Be sure traffic going up and down slope is orderly. People walking up the slope should follow the same path, right or left of people sledding down, to avoid people being hit by speeding sleds.

If there are humps or other high spots on the course, find a more suitable location. Such hazards can send sleds airborne, causing serious injury, especially to the spine. Never build ramps or other structures to make a sled leave the ground.

Check the slope's steepness. Ideally, the hillside should slope 10 to 20 percent so you can descend 10 to 20 feet for every 100 feet of horizontal travel for a long, safe and exciting ride.

Make sure there's enough room at the slope's bottom to stop gradually. If a slope with a gradual incline at its end isn't available,

## TAX INCREASE

The Council of the City of Floydada is meeting to vote on the increase on property taxes by 29 percent. The meeting will be held on December 9, 1980 at 7:30 p. m. in the City Office, Floydada, Texas.

The Council of the City of Floydada has also voted in a public hearing to increase tax rate:

Russell, Councilman  
Councilman  
Councilman  
Councilman  
Councilman  
Councilman

**DAVIS Lumber Company**

8 oz Dromedary Chopped or Pitted

Dates 99¢

49 oz Giant



Oxydol \$1.69

3 oz White Swan Instant



Tea \$1.39

16 oz Del Monte French



Green Beans 2/79¢

32 oz King Size



Joy \$1.39

15 oz Del Monte "In Juice"



Pineapple 2/99¢

17 oz Princella Cut

Yams 2/89¢

Gallon Buddy's

Milk \$2.19

Nabisco Bag



Snacks 69¢

12 oz Deckers



Franks \$1.39

12 oz Deckers



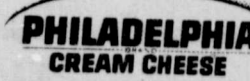
Bologna \$1.29

Deckers Boneless

Ham \$2.29 lb

8 oz Philadelphia

Cream Cheese 89¢



6-32 oz



Dr Pepper or 7 UP \$1.59 Plus Deposit

6 oz Planters

Cashew Halves \$1.29

5 lb Bonus Pack Purina



Cat Chow \$2.19

Bath Size Jergens

Soap 3/\$1.00

1 lb Zesta

Crackers 69¢

1 lb Maxwell House



Coffee \$2.29

5 lb Gladiola



Flour 99¢

2 lb Casserole

Pinto Beans 79¢

16 oz White Swan Fruit



Cocktail 53¢

15 oz Cinch Cornbread



Mix 3/\$1.00

12 oz Bakers Chocolate



Chips

10 lb 11 oz Family Size



Bold

Volume 79

### Council sets rate; Increase

Lockney Council has set the tax rate for 1980 at 19.25 cents per hundred dollars assessed value. The council also voted to raise the tax rate for 1981 to 19.50 cents per hundred dollars assessed value.

The council's decision was based on a study by the city engineer, Claude Brown, who believes that the current rate is the only one that will allow the city to pay for its services without raising the tax rate.

The council also voted to raise the tax rate for 1982 to 19.75 cents per hundred dollars assessed value. The council also voted to raise the tax rate for 1983 to 20.00 cents per hundred dollars assessed value.

The council also voted to raise the tax rate for 1984 to 20.25 cents per hundred dollars assessed value. The council also voted to raise the tax rate for 1985 to 20.50 cents per hundred dollars assessed value.

### Planning Board elects directors

The Lockney Planning Board has elected five directors for the coming year. The directors are: Claude Brown, Carroll Frizzell, Jim Huggins, Pat Frizzell, and Jim Huggins.

### Boys accused of vandalism

Fourteen-year-old boys were taken into custody in connection with the spray painting of over a dozen cars and buildings in Lockney.

The boys were released to the custody of their parents and Lockney Police Officer Bill McConnell says other suspects are being questioned and the investigation is continuing.

### Rotary will host driving course

The Lockney Rotary Club will sponsor a defensive driving course in March. The course will be taught in Lockney by Sinclair of the Texas Department of Public Safety.

The course will be offered at 7 p.m. on March 24 and 26 at the Rebekah Lodge. The course costs \$5 per person and is open to the public. You must be a member of the Rotary Club to take the course.

The course will be offered at 7 p.m. on March 24 and 26 at the Rebekah Lodge. The course costs \$5 per person and is open to the public. You must be a member of the Rotary Club to take the course.



Double S&H Green Stamps Thursday, Friday, and Saturday If You Do Not Receive Our Mail Out Ad Please Come By Our Store For A Free Copy.



We Give S&H GREEN STAMPS DOUBLE ON WEDNESDAY

# buddy's SUPERMARKET

220 South 2nd 983-3149

STORE HOURS

Mon. Thru Sat. 8 am - 9 pm Sunday 9 am - 9 pm

Values In This Ad

Effective Thru Saturday

December 6, 1980

We Reserve The Right To Limit Quantities

