

By Mail

\$2.50 Per Year
In Cochran and Adjoining
Counties, \$3.00 Elsewhere
On Sale at Newsstands
Five Cents per COPY

Morton Tribune

See Us For

Complete
Insurance Service
WILLIAMSON
Insurance Agency
OFFICE HOURS 8 - 5
PHONE 5691 MORTON

VOLUME NUMBER NINETEEN

MORTON, TEXAS, THURSDAY, OCTOBER 1, 1959

NUMBER THIRTY - TWO

2 DIE IN CRASH FLOWER SHOW SET HERE SATURDAY

Two South Texas men, custom combine operators working out of Morton, were killed and a third was seriously injured, at 7:20 p. m. last night (Wednesday) in the jarring collision of two pickup trucks, at the intersection of State Highway 116 and Farm-to-Market Road 555, 16 miles west of Morton.

Rites for Father Held Wednesday At Slaton

Funeral services were held at 3:30 p. m., Wednesday in the Grace Lutheran Church at Slaton, for 77-year-old Edward Leske, Southland, father of Mrs. Jennings Waltrip of Morton.

Mexican Dinner To Be Served

A Mexican style dinner will be served Sunday evening, Oct. 4, at 6 o'clock in the County Activities Building by members of the Guadalupe Society of St. Anne's Catholic Church, Morton.

Capture 2nd In New Mexico State Fair Parade

The Cochran County Sheriff Posse has been closing out its season in a blaze of glory the last two weeks.

To Fill Pulpit At First Baptist 'Til Pastor Called

Rev. J. E. Moore, now retired area Baptist minister, now living in Bailey County, near Muleshoe, has consented to fill the pulpit at the First Baptist Church in Morton until the Pulpit Committee names a new pastor, it was announced this past weekend.

The FTW Road runs from Bledsoe to Oasis. The driver of the other pickup, a 1957 red Ford, was Harvey Lee Balko, 31, of Lingo, N. Mex., said to be in good condition at the Cochran County Hospital.

Area Ministers Meet Wednesday

Cochran County area ministers will meet Wednesday for their regular monthly meeting at the Methodist Church, Maple.

Bake Sale Tuesday Announced By WMC Ladies

Doss Food Store will be the scene Tuesday of a bake sale sponsored by the WMC Ladies of the Morton Assembly of God Church, it was announced this week.

Catch Crow Is Lost In Shuffle By The Walkers

Rev. Houston Walker reported this week he had lost the family's pet crow.

Deadline For Reserve Program Is Extended

The date for offering land for Conservation Reserve in 1960 has been extended to Oct. 9, 1959.

The two dead men, and their injured companion, were staying at the Patterson Courts in Morton, with two other men, all from the same part of the state.

Bula - Nazareth Game Is Set For Littlefield

The Bula - Nazareth football game, which could well decide the district six-man championship, will be played at Littlefield Friday night at 8:00 o'clock.

Levelland Rites For C. W. Knick

Funeral services were held Tuesday at the Fifth Street Baptist Church, Levelland, for C. W. Knick, Sr. of Levelland who died Monday of a heart attack.

Shop Morton's Dollar Day Monday

However, the fact that they held rugged Sundown to a 28-6 triumph in the season opener for both teams, is an indication that they will be tough to reckon with.

ASC Committee Is Elected Here

The following persons were elected as County ASC Committee members for 1960:

The Cochran County Farm Bureau and the Frontier Farm Labor Association will hold their annual meeting, Thursday, October 8, at 8:00 p. m., in the County Activities Building.

1960 Oldsmobile Is On Display In Morton, Today

The 1960 Oldsmobiles are here today, Thursday, they make their appearance in the showroom at Hawkins Oldsmobile Company, 111 East Washington Street, Morton.

Pet Crow Is Lost In Shuffle By The Walkers

Rev. Houston Walker reported this week he had lost the family's pet crow.

INDIANS SEEKING VICTORY TRAIL AT IDALOU, FRI.

The Morton Indians journey to Idalou Friday night in another of the rugged, back-breaking Class A games with which the Indians have been preparing themselves for Class AA play.

Levelland Rites For C. W. Knick

Funeral services were held Tuesday at the Fifth Street Baptist Church, Levelland, for C. W. Knick, Sr. of Levelland who died Monday of a heart attack.

Admission is free, to attend or enter, with the list of 14 rules governing the show. Those interested in entering should contact Mrs. A. E. Sanders, co-chairman and chairman in charge of entries, for a complete list of rules.

Chevrolet Shows New Models At Allsup's

American's first modern rear engine car - the 1960 Corvair by Chevrolet will go on display, along with other 1960 Chevrolet products, Friday, Oct. 2, at Allsup Chevrolet Company, 113 East Washington, Morton.

Saturday Is Hobo Day for Girls of FHA

The Morton High School Future Homemakers of America are holding their annual "Hobo Day", Oct. 3, from 8 a. m. until 4:30 p. m.

Cub Pack Sets Monday Meeting

There will be a Cub Pack meeting, Monday night, October 5th, at 7:00 o'clock at the Banquet Room of the County Activities Building, it was announced this week.

Will Be Pastor of Church in Nevada

Rev. A. R. Coleman has accepted the post as pastor of a Nevada Baptist Church.

Each person is limited to one entry in each class, the entry must be correctly labeled, & judging is to be by the scale in the National Council Handbook. Judges decision is final.

Band Boosters Set Rummage Sale For Saturday

The Morton Band Boosters are sponsoring their annual Rummage Sale, to be held Saturday, October 3rd, on the North side of the square, Morton.

Chevrolet Shows New Models At Allsup's

American's first modern rear engine car - the 1960 Corvair by Chevrolet will go on display, along with other 1960 Chevrolet products, Friday, Oct. 2, at Allsup Chevrolet Company, 113 East Washington, Morton.

Saturday Is Hobo Day for Girls of FHA

The Morton High School Future Homemakers of America are holding their annual "Hobo Day", Oct. 3, from 8 a. m. until 4:30 p. m.

Cub Pack Sets Monday Meeting

There will be a Cub Pack meeting, Monday night, October 5th, at 7:00 o'clock at the Banquet Room of the County Activities Building, it was announced this week.

Admission is free, to attend or enter, with the list of 14 rules governing the show. Those interested in entering should contact Mrs. A. E. Sanders, co-chairman and chairman in charge of entries, for a complete list of rules.

Band Boosters Set Rummage Sale For Saturday

The Morton Band Boosters are sponsoring their annual Rummage Sale, to be held Saturday, October 3rd, on the North side of the square, Morton.

Chevrolet Shows New Models At Allsup's

American's first modern rear engine car - the 1960 Corvair by Chevrolet will go on display, along with other 1960 Chevrolet products, Friday, Oct. 2, at Allsup Chevrolet Company, 113 East Washington, Morton.

Saturday Is Hobo Day for Girls of FHA

The Morton High School Future Homemakers of America are holding their annual "Hobo Day", Oct. 3, from 8 a. m. until 4:30 p. m.

Cub Pack Sets Monday Meeting

There will be a Cub Pack meeting, Monday night, October 5th, at 7:00 o'clock at the Banquet Room of the County Activities Building, it was announced this week.

Each person is limited to one entry in each class, the entry must be correctly labeled, & judging is to be by the scale in the National Council Handbook. Judges decision is final.

Band Boosters Set Rummage Sale For Saturday

The Morton Band Boosters are sponsoring their annual Rummage Sale, to be held Saturday, October 3rd, on the North side of the square, Morton.

Chevrolet Shows New Models At Allsup's

American's first modern rear engine car - the 1960 Corvair by Chevrolet will go on display, along with other 1960 Chevrolet products, Friday, Oct. 2, at Allsup Chevrolet Company, 113 East Washington, Morton.

Saturday Is Hobo Day for Girls of FHA

The Morton High School Future Homemakers of America are holding their annual "Hobo Day", Oct. 3, from 8 a. m. until 4:30 p. m.

Cub Pack Sets Monday Meeting

There will be a Cub Pack meeting, Monday night, October 5th, at 7:00 o'clock at the Banquet Room of the County Activities Building, it was announced this week.

Admission is free, to attend or enter, with the list of 14 rules governing the show. Those interested in entering should contact Mrs. A. E. Sanders, co-chairman and chairman in charge of entries, for a complete list of rules.

Band Boosters Set Rummage Sale For Saturday

The Morton Band Boosters are sponsoring their annual Rummage Sale, to be held Saturday, October 3rd, on the North side of the square, Morton.

Chevrolet Shows New Models At Allsup's

American's first modern rear engine car - the 1960 Corvair by Chevrolet will go on display, along with other 1960 Chevrolet products, Friday, Oct. 2, at Allsup Chevrolet Company, 113 East Washington, Morton.

Saturday Is Hobo Day for Girls of FHA

The Morton High School Future Homemakers of America are holding their annual "Hobo Day", Oct. 3, from 8 a. m. until 4:30 p. m.

Cub Pack Sets Monday Meeting

There will be a Cub Pack meeting, Monday night, October 5th, at 7:00 o'clock at the Banquet Room of the County Activities Building, it was announced this week.

SOCIETY

200 CONGRATULATE COOPERS ON 50TH WEDDING OBSERVANCE

Around 200 people called during the afternoon and registered in a master guest book, August 30, when Mr. and Mrs. G. F. (Floyd) Cooper were honored after 50 years of marriage, at the home of a son, Junior Cooper, from 2 until 5 p. m.

Grand-daughters, Mr. and Mrs. Joe Gresham of Brownfield and Mrs. Bob Wallace of Levelland registered the guests during the afternoon affair. Coffee and punch were served from a glass punch bowl. A tiered anniversary cake centered the table and on it was written, "50th Anniversary", with a bride and a groom atop the cake.

All of the children of the couple, all but two of the 19 grand-children and all but one of the 8 great-grandchildren were on hand to help the couple observe the day... one they'll long remember.

One of the highlights of the day was the attending of the First Missionary Baptist Church by Mr. and Mrs. Cooper and all of their heirs, in a group, Sunday morning. The group filled up six rows of pews in the church.

Another highlight, of course, was the family dinner Sunday, and the taking of pictures all during the day.

During the afternoon a trio of the grandchildren sang songs accompanied by Mrs. Charles Taylor on the piano.

Out of town guests on hand for the event included:

Mrs. Alex Nance, Calvert, Tex.; Mr. and Mrs. Cliff Diggs, Levelland; Mr. and Mrs. Joe Gresham, Brownfield; Mr. and Mrs. Bob Wallace, Levelland; Mr. and Mrs. Delmer Hutts, Tulla; Mr. and Mrs. Gage Knox, Friona; Mrs. Angilar Cooper, Odessa; Mr. and Mrs. T. W. Moore, Levelland; Mrs. J. A. Monroe and Billie Ann, Lubbock; Mr. and Mrs. Jessie Drake, Littlefield; Mr. and Mrs. J. P. Malone, Clovis, N. M.; Mr. and Mrs. Luther Malone, Rails; Mr. and Mrs. J. B. Willis and boys Fort Sumner, N. M.; Mr. and Mrs. Hiram Nance, Lubbock; Mr. and Mrs. Ray Fullerton, Canyon; Mr. and Mrs. Billie Willis, Lubbock.

The couple were wed August 29, 1909 in Haskell County, moving to Morton on January 2, 1924. They have farmed the same place two miles north and one mile east of Morton, since moving here.

CLINTON WEBB WILL MARRY IN CALIFORNIA

Word was received in Morton this week that Clinton Orville Webb, formerly of Morton and now of El Monte, Calif., will be married to Miss Patricia McGee, of El Monte.

He is the nephew of Lowell Webb of Morton and his bride-to-be is the daughter of Mr. and Mrs. R. C. McGee of El Monte.

GRADUATES FROM FIELD MEDICAL TRAINING RECENTLY

CAMP PENDLETON, Calif. (FH TNC) — Tommy L. Sullivan, hospitalman, USN, son of Mr. and Mrs. A. E. Sullivan of West Fifth Street, Morton, Tex., graduated Sept. from the Field Medical Service School at Camp Pendleton, California.

BORGER MAN APPOINTED TO CENSUS POST

Appointment of Clyde Cook of Borger, as a field assistant for the 1959 census of agriculture, was announced today by the Bureau of the census, Department of Commerce.

Cook will direct a force of 17 crew leaders and 219 Census takers in a 53-County area, in the Panhandle - South Plains section of Texas, including Cochran Co.

Entering duty on Sept. 23, Cook immediately went into training, will recruit his crew leaders on October 26, and then they in turn will recruit census takers on November 18.

ARMY NOW HAS GUARANTEED OVERSEA TRAIN'G

Information has been received by Army Recruiter M/Sgt. Forrest Pesch that the Army has several vacancies for guaranteed assignments overseas to either Europe or Far East. These vacancies exist in "A Man's Outfit", The Infantry.

Today's Infantryman is a product of the industrial age. He is trained to operate and repair the most modern weapons that the world's number one industrial power can produce - every thing from a pistol to a rocket launcher. And his training, keyed to the concepts of atomic warfare, makes the Infantryman the best peace-time soldier in history.

When a young man gains the privilege of wearing the "Crossed Rifles" of an Infantryman he inherits the tradition of a proud organization that is known as the "Queen of Battle." He becomes a part of history that began when the Minutemen rallied to win our Nation's freedom. The thrilling chapters that followed proved the American Infantrymen is a match for any enemy in the world.

For the young men who are interested, contact the Army Recruiter the next time he is in town or at the Army Recruiting Office, 1110 Texas Avenue, Lubbock or phone collect Porter 5 - 2821, Lubbock.

Added Comfort and Increased Economy Are Highlight of 1960 V-8 Chevrolet, on Display in Morton, Friday

The Chevrolet Motor Division, which earlier released details of its highly original Corvair, announced the rest of its 1960 passenger car line today.

A distinctive new appearance, added comfort and increased economy of the most popular V8 engine are among the outstanding

features. Nineteen models (including the sports car) will be included in the Corvair and the spirited Corvette first public showing by Chevrolet dealers on October 2.

All passenger car series have been completely restyled. There is a fresh new appearance to the

exteriors. The interiors are roomier and offer new elegance of upholstery and sidewall treatment.

The most notable design changes occur in frontal and rear areas. An oval shaped grille spans the hood and encloses widely spaced twin headlamps at the outer



Distinctively fresh styling, increased comfort and chassis advances that promise improved operating economy keynote the conventional line of 1960 Chevrolets. More luxuriously equipped than any previous models, the presentation includes four Impalas, four Bel Airs (four-door sedan shown above), three Biscaynes and five Station Wagons. In addition, the Chevrolet display at dealer showrooms will introduce the revolutionary, compact six-passenger Corvair.

edges. The wing overhang at the rear has been revamped to widen the trunk opening and lower the loading sill. An ensemble of circular tail lamps replaces the former tear configuration.

Side trim moldings establish distinctive appearances for the Impala, Bel Air and Biscayne series.

The front compartment transmission tunnel has been significantly reduced in width and height to benefit roominess. The frame has been reinforced and new rubber-insulated body mounts give a quieter ride.

In addition to the new economy in the Turbo Fire V8, the power packages include a six and six other V8 choices. To improve over all economy and engine performance in the normal driving ranges, a low-lift camshaft with reduced valve overlap, and recalibrated carburetor are featured on the new economy Turbo Fire V8.

New tires are more durable. Tread life has been increased 12 per cent by new synthetic rubber and a change in the proportion of synthetic and natural rubber.

Dr. L. J. Morrison, D. C. CHIROPRACTOR

PHONE 2546
606 W. Wash on Portales Hwy
Office Hours: 8 a.m. to 6:30 p.m.,
Mondays through Fridays
8 a.m. to Noon, Saturdays
MORTON, TEXAS

The higher energy-absorbing tread material also promises less impact on bumps, reduced tire squeal on turns and surer traction.

Brakes have been improved and require less pedal pressure. The parking brake now carries a pop-out release lever.

Color choices in the 1960 conventional passenger car line include 13 solids and 10 two-tone wood.

combinations. Body types offered include: Impala: four-door sedan and sport sedan; sport coupe and convertible. Bel Air: two and four-door sedans; sport coupe and sport sedan. Biscayne: two-door and four-door sedans and a utility sedan. Station Wagons: Nomad, Parkwood, Kingswood and two choices of Brook.



Roy Gentry — manager

SEE us NOW for cotton and grain TRAILERS

Phone 3351

Morton

WESTERN ABSTRACT CO.

Mr. and Mrs. W. M. Butler, Jr.

REAL ESTATE - OIL PROPERTIES

FEDERAL LAND BANK LOANS

Phone 2206 or 3151

Title Insurance

Eastside Square

Morton, Texas

Here Friday from Chevrolet . . .



Elegant Impala 4-Door Sport Sedan—one of 16 spanking new Chevrolets you can choose from.

THE SUPERLATIVE '60 CHEVY

This is the one that says '60 like no other car. From its clean-thrusting grille to its dapper rear deck, there's so much that's new and different about this superlative Chevrolet it stands out from the rest like a fresh-minted coin. And you'll be just as wide-eyed over what's inside—the relaxing roominess, tasteful trim, hushed elegance of its new Body by Fisher, all comfortably cradled by Full Coil springs at all four wheels. Yet, sumptuous as this new Chevy is, it's got all the thrifty virtues that make it unmistakably a Chevrolet—with new economy of operation, new dependability, new longer life. Here, then, we're confident both you and your budget will joyously agree, is the nearest to perfection a low-priced car ever came!

Here's the car that introduces a whole new decade of design—with so much that's new and different the others can only hope to come close.

It's the superlative '60 Chevrolet—with new space inside, new spirit under the hood, new splendor in every clean-etched line.

Freshly shaped contours rake back from the unified new grille to the jaunty rear deck, fitted with craftsmanship you'd expect only on the most expensive makes. Inside, the solidly built new Body by Fisher surrounds you with finely tailored fabrics and spacious

elegance. There's room to sprawl in, room to sit tall in—generously provided by Chevy's sofa-wide seats and extra margin of hat space. And there's even more leg room for the man in the middle—thanks to the way Chevrolet engineers have shaved down the transmission tunnel.

Out on the road, as Chevy's Full Coil ride will persuade you most gently, there's not a car near the price that comes close to the hushed comfort of this one. Adding to your sense of silence and solidity are thicker, newly designed rubber body mounts that

do an even more efficient job of isolating road shock and noise.

Quiet, quick-responding power is provided by a choice of two standard engines—Chevy's famed Hi-Thrift 6 and a new Economy Turbo-Fire V8 that gets up to 10% more miles out of a gallon of regular while delivering greater engine torque at normal speeds. There's also a choice of five other V8's and five transmissions, to assure the exact power combination to satisfy the itch in your driving foot. Chevy's accent on comfort and convenience even extends back to its easier-

to-load luggage compartment. You'll also find a convenient new parking brake that automatically returns to normal height after application, a new clutch linkage that filters out engine impulses more effectively than ever and new two-toning motif available on all 16 fresh-minted models.

But, impressive as all this may look in print, there's really only one way to tell how near to perfection this superlative '60 Chevrolet actually comes . . . and that's to drop in on your dealer and drive one!



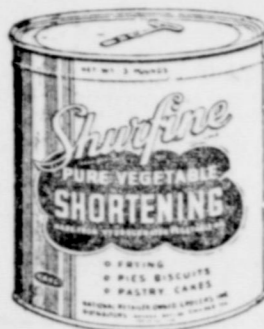
See your local authorized Chevrolet dealer

ALLSUP CHEVROLET COMPANY

113 EAST WASHINGTON

MORTON

PHONE 3361 or 2311



Get it at your FAVORITE GROCERY MARKET



Their Appearance Reflects Your Own Good Taste!

They will always look their best in their Freshly SANITONE Dry-Cleaned School Clothes!

You can be proud of the way your youngsters look, and still economize on new clothes. Just sort out and let us have all their wearable school clothes NOW. They'll be back in no time looking as store-fresh as the day you bought them with even the feel of newness fully restored. Beat the rush . . . do it now!



STRICKLANDS

"We Appreciate Your Business" 220 West Washington Morton

DRIVE CAREFULLY Kids Don't Always Think!

PHILLIPS 66

ANTI-FREEZE

- Permanent
- Anti - Rust
- Ethylene Glycol Base

per gallon 170

WINDOM OIL & BUTANE

North on the Enochs Hi-way Phone 3141 MORTON

CORDING TO ONE POSSE MEMBER, AND COCHRAN COUNTY'S 20 RIDERS JUST WEREN'T ENOUGH. When judging was announced,

NEW MEXICO STATE FAIR OFFICIALS OBSERVED THAT ONCE AGAIN "TEXAS IS TAKING HOME THE TROPHIES." THEY PLACED PLAINVIEW AS WINNER AND ONCE AGAIN COCHRAN COUNTY SHERIFF POSSE WAS SECOND.

ROB RICHARDS, PRESIDENT OF THE COCHRAN POSSE SAID THE LOCAL GROUP WOULD PASS UP THE "ASPENCADE" AT RIUDOSO THIS YEAR, AND THAT THE STATE FAIR APPEARANCE AT ALBUQUERQUE WOULD BE THE FINAL RIDE OF THE SEASON FOR THE COCHRAN COUNTIANS.

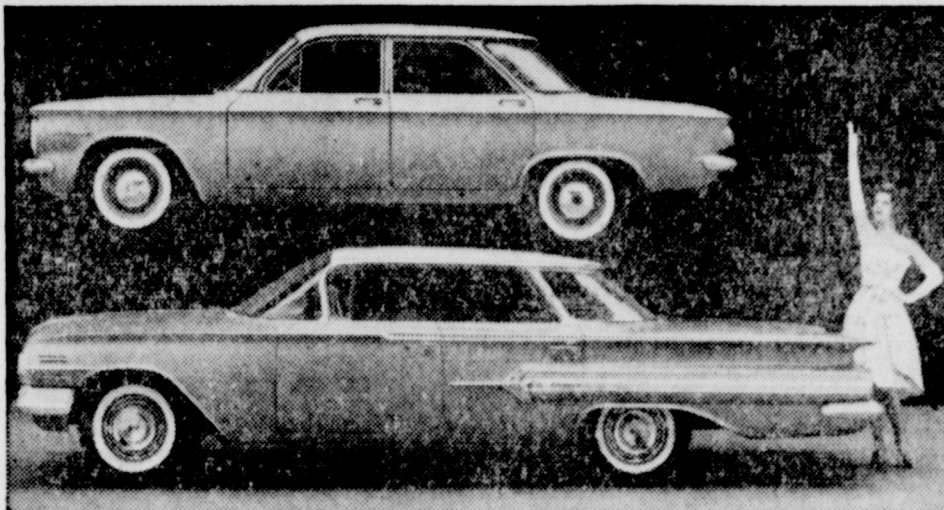
NEXT MONTH, THE POSSE WILL HOLD ITS ANNUAL ELECTION OF OFFICERS AND THE NEXT CONTEMPLATED RIDE WILL OPEN IN ODESSA IN JANUARY, AN ANNUAL RIDING VENTURE FOR COCHRAN COUNTY.

THE COCHRAN POSSE IS GOING TO HAVE TO CONSTRUCT A NEW TROPHY CASE SOON. THE PRESENT TROPHY CASE IN THE BANQUET ROOM OF THE COUNTY ACTIVITY BUILDING HAS BEEN FULL FOR MORE THAN A YEAR. NOW, RICHARDS IS RUNNING OUT OF SHELF SPACE AT THE MALT SHOP FOR DISPLAY OF THE TROPHIES. THE LOCAL HORSEMEN HAVE A TOTAL OF 15 TROPHIES TO PUT IN A NEW CASE, AND AT THIS TIME, MAY WELL BE ABLE TO BOAST THE LARGEST NUMBER OF RIDING TROPHIES OF ANY GROUP ON THE SOUTH PLAINS. ALTHOUGH STARTING TO RIDE ABOUT A YEAR LATER THAN MANY OF THE OTHER PLAINS UNITS COCHRAN'S POSSE HAS HAD NO PEER IN CONSISTENCY OF TROPHY WINNING OVER THE SEVEN YEAR STRETCH SINCE THEY MADE THEIR FIRST RIDE.

CHEVROLET INTRODUCES THE NEW CORVAIR ...

CHEVROLET'S IMAGINATIVE CORVAIR, A CAR THAT HAS CRUISED MORE EXCITEMENT IN AUTOMOTIVE RANKS THAN ANY DEVELOPMENT IN THE PAST 25 YEARS, WILL BE UNVEILED THIS WEEK. THE COMPACT, SIX-PASSENGER SEDAN, WHICH OFFERS A HOST OF FEATURES NEW IN AMERICAN-MADE AUTOMOBILES, WILL GO ON PUBLIC DISPLAY AT CHEVROLET DEALERS ON OCTOBER 2.

Related in name and good looks—the new COMPACT CORVAIR and CHEVROLET



A strong family resemblance between the all-new Corvair and Chevrolet's conventional line of passenger cars for 1960 is evident in this unusual profile view. At 180 inches, however, the Corvair is more than two and one-half feet shorter, while its 108-inch wheelbase compares with 119 on the Impala Sport Sedan with which it appears.

dealers will offer a new conventional size 1960 passenger line, details to be released later.

The Corvair is the product of a nine-year research and development program aimed at designing a compact car which is low in initial cost, economical to operate, roomy, easy to handle and provides American standards of comfort, convenience, safety and performance. Special features include:

1. Power train at the rear of the car. A light-weight six-cylinder "pancake" engine which uses a considerable amount of aluminum. Independent suspension of all four wheels including a "swing" rear axle. Utilized body construction. Luggage compartment under the hood. Optional folding rear seat - back to provide more luggage space. Low center of gravity. Long cord tires. Airy superstructure. Airplane-type gasoline heater that gives almost instant passenger compartment warmth.

Among the many advantages are:

1. The rear engine provides a fore and aft balance in weight that is not practical in front powered cars on a short wheelbase. Traction, braking and steering thereby benefit.
 2. The usual driveline tunnel is eliminated by coupling the transmission to the engine at the rear. This permits a virtually flat passenger compartment floor and modish profile without sacrifice in headroom.
 3. Comprehensive design and use of light weight aluminum has resulted in an engine of superior efficiency. The engine is 40 per cent lighter than others of similar horsepower and gets from 25 to 40 per cent more miles on a gallon of gasoline than a regular six cylinder engine.
 4. Weight savings are manifest throughout. Air cooling eliminates the need for a radiator and water system accessories. (No anti-freeze is necessary and boiling is not a problem.)
 5. Unitized body construction offers a 30 per cent gain in torsional rigidity and a saving of approximately 60 per cent of the weight of a separate frame.
 6. Suspension systems were designed to take maximum advantage of weight distribution. Unsprung weight has been reduced, particularly at the rear where a swing-type axle is used.
 7. The flat engine design, with accessories at easy reach, may be readily serviced. Another asset to owners is the availability of 7,200 franchised Chevrolet dealers who will stock parts and accessories.
 8. An optional automatic transmission and other convenient items are likewise directed to American taste.
- Around these achievements of a fresh engineering approach, Chevrolet has built a body with maximum interior room and minimum exterior bulk. The result is a four door sedan with six passenger comfort with these dimensions:

Wheelbase, 108 inches. Overall length, 180 inches. Height, four feet, three inches. Width, 66.9 inches. Weight, 2340 pounds, almost 1,300 pounds less than conventional sized cars. The unique six cylinder engine develops 80 horsepower at 4400 rpm. Bore and stroke are 3.28x2.6 and the displacement is 156 cubic inches. Compression ratio is 8 to 1 and regular grade gasoline is recommended.

In addition to the standard model, a deluxe version is offered in the Corvair 700. The "700" features special bright metal trim and three color keyed choices in upholstery fabrics. Exterior colors in either model include nacrols and seven two-tones, all in the long-gleaming acrylic lacquers introduced in 1959 Chevrolet.

The 11 gallon gasoline tank is located forward of the passenger compartment, below the floor, and is protected by front suspension massive crossmember. Oil capacity is four quarts. In appearance, the Corvair carries the little, flow-lines of approved contemporary styling. The flat roof slightly overhangs the rear window. Hood and rear deck slope slightly downward. Sheet metal rounds inward below the bumper and along the sides to impart a modern "tailored" look. Due to the unique cooling system, no grille is necessary at the front, where embellishments include chrome bordered dual headlights and the Corvair emblem. The rear deck is vented for engine air intake and a screened exhaust at the rear provides an outlet.

Interiors are ample for six passengers. Headroom from the passenger-depressed seat cushions, front and rear, measures a full 38.7 inches. Extension of the toppan forward gives almost 43 inches of legroom in the front compartment. Importance of adequate luggage space has been recognized. Compartments under the hood and behind the rear seat provide more than 15.6 cubic feet of space. An optional folding rear seat brings the storage area up to 28.9 feet, about one foot less than the conventional size Chevrolet.

Safety features range from the excellent steering, braking and directional stability to the broad expanse of safety plate glass and rotary safety door latches. Front quarters are bulkward for structural strength. As an indication of exceptional vision, the windshield contributes 1,106 square inches to the total glass area of 3,381 square inches. The 16 inch steering wheel, with slender spokes and recessed hub, is mounted well below driving vision. Quick, tight instruments are hooded behind a single lens. The heavier rear end helps traction and aids control in the event of a skid. The 23 square inches of braking surface amounts to one square inch of lining to each 20 pounds of weight, a ratio unequalled in many larger cars.

as different as night and day!

THE REVOLUTIONARY Corvair BY CHEVROLET



There's nothing like a new car—and no compact car like this de luxe Corvair 700.

Here's the car created to conquer a new field—Chevrolet's low-priced compact Corvair. The product of nine years of research and development, it's America's first truly compact car that retains the ride and 6-passenger comfort you're used to in a big one.

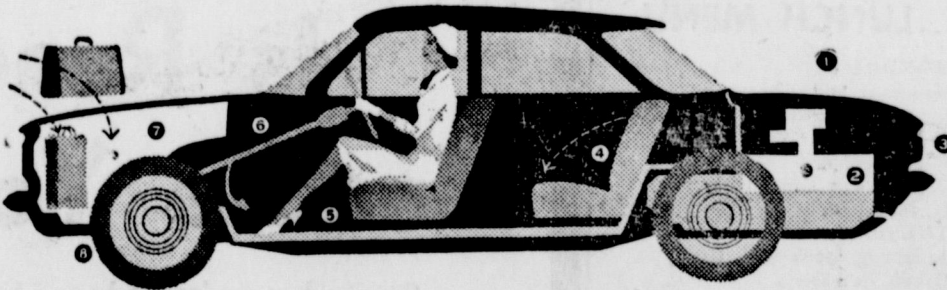
The key to this small miracle: America's only rear-mounted aluminum engine—a lightweight 6 that's so revolutionary it can be packaged with the transmission and drive gears as one compact unit.

With the engine in the rear, the Corvair's floor is virtually flat, front and rear, so there's plenty of foot room for everybody. Combined with Corvair's unique body-frame construction by Fisher, this provides interior spaciousness comparable to many postwar conventional-sized cars.

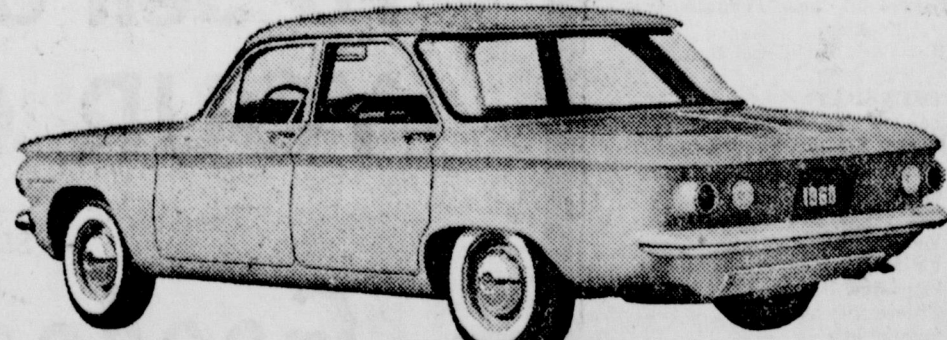
Shifting engine weight to the rear also makes for easier compact car handling and gives glued-to-the-road traction on ice, mud or snow. And with independent suspension at all 4 wheels—an advance comparable to the independent suspension of front wheels years ago—you get a poised, unruffled ride that rivals even the costliest cars.

These are all things no front-engine compact car can give you. And with them you get outstanding economy and practicality that would never have been possible if Chevrolet engineers had been content to make the Corvair merely a sawed-off version of a big car. Corvair's size—some 5 inches lower, 2 1/4 feet shorter and 1,300 pounds lighter than conventional sedans—makes it a joy to jockey through busy streets, a pleasure to park (no need for power assists). Its revolutionary Turbo-Air 6 gets up to 30% more miles on a gallon of regular. And, because the engine's air cooled, you never have to fuss with antifreeze, you get quicker warmup (even heat for passengers comes—almost instantly—from an airplane-type heater*). Wonderfully practical, yes. But you'll find the most practical thing of all about Corvair is its remarkably low price. Your dealer's the man to see for all the short, sweet details.

- America's only car with an airplane type horizontal engine!
- America's only car with independent suspension at all 4 wheels!
- America's only car with an air-cooled aluminum engine!



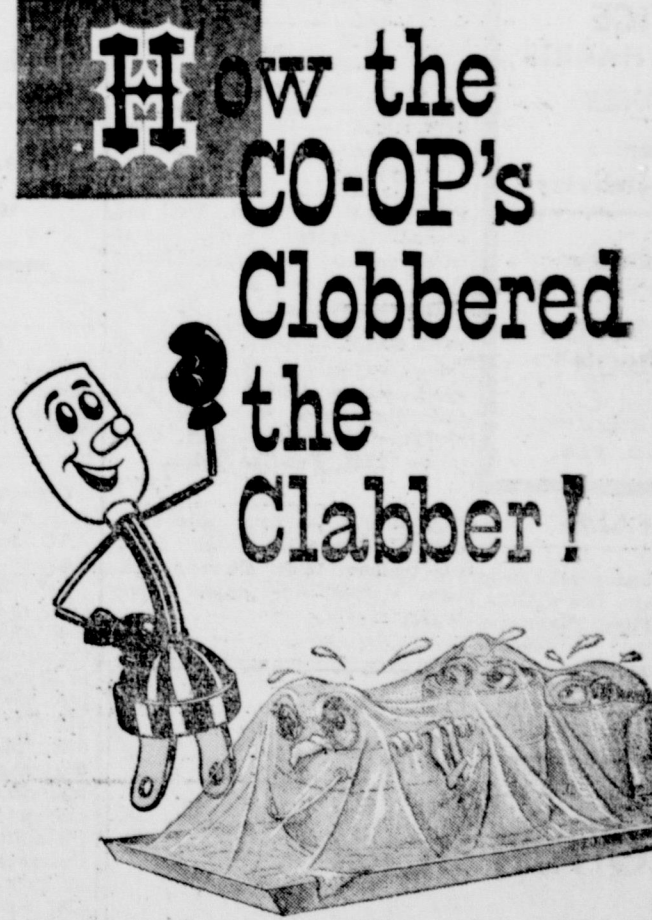
The engine's in the rear where it belongs in a compact car!



You have your choice of two Corvairs—this one's the standard model. See your local authorized Chevrolet dealer

- 1 REVOLUTIONARY TURBO-AIR 6 Gets up to 30% more miles on a gallon, needs no antifreeze, provides quicker warmup with less wear on parts. It's the world's first production 6 with the ultra-smooth, space-saving power of horizontally opposed (not vertical or V-stroke) pistons.
- 2 ONE-PACKAGE POWER TEAM Wraps rear engine, transmission and differential into one compact unit. Takes less room, leaves you more.
- 3 STYLING—PURE AND SIMPLE Clean, uncluttered lines shape both 4-door models—the de luxe Corvair 700 and the standard Corvair. Each has its own distinctive trim, and you get more visibility area than in many full-sized cars.
- 4 FOLD-DOWN REAR SEAT* Works instantly, adding to Corvair's versatility by enlarging rear seat cargo space to 17.6 cu. ft.
- 5 FLAT FLOOR Corvair is America's only compact car with a practically flat floor, the only one with the kind of relaxing room that U.S. motorists are used to.
- 6 UNISTRUT BODY BY FISHER Does away with conventional frame, incorporating all structure into a rigid body-frame unit that gives you more inside room with less weight.
- 7 UNDER-HOOD LUGGAGE COMPARTMENT Trunk's up front (like an elephant's) where it's convenient for groceries, shopping bags, luggage.
- 8 4-WHEEL INDEPENDENT SUSPENSION There's no conventional axle—front or rear. Wheels, cushioned by coil springs, take bumps independently of each other, for smooth, road-hugging ride.

Corvair BY CHEVROLET



How the CO-OP'S Clobbered the Clabber!

Yesterday... it seems there was an abundance of clabber on the farm not always produced through choice. The Independent Rural Electric Cooperatives changed all that and many other things as well. Today... with almost a quarter century's experience... The Electric Cooperative serving your area stands as a tried and proven specialist in Rural Electrification owned and operated by those they serve. Tomorrow... as Texas continues to grow and our rural economy expands, it is imperative that our electric cooperatives remain free and unfettered that they may sustain the noble purpose that brought them into being: a dependable electric service to our rural areas.

BAILEY COUNTY ELECTRIC COOPERATIVE ASSOCIATION Muleshoe

Top entertainment—The Dinah Shore Chevy Show—Sundays NBC-TV and the Pat Boone Chevy Showroom—Weekly on ABC-TV—Red Skelton Chevy Special Friday, October 9, CBS-TV. ALLSUP CHEVROLET COMPANY MORTON PHONE 3361 or 2311 13 EAST WASHINGTON

TRIBUNE SOCIETY . . . NEWS - FOR - AND - ABOUT - WOMEN - AND - CLUBS

Home Demonstration Agent

By Leila Petty

CLUB MEETINGS
Home Demonstration Clubs met this week are Half Way on Friday and Friendly Circle on Saturday.

Last week the Lehman Club met Wednesday and the White Club Thursday. The F. O. R. meets the following Wednesday, October 14.

Clubs are making plans for annual Achievement Day Program on October 13.

COST OF LIVING

JUST OF LIVING HIGH?

Is a rare family that really is where those dollars are. At the end of the year checks show what has been on many fixed expenses. There are still many myriads of an account system has washed out. To reckon more wisely with realities, it pays to write down every expenditure perhaps two or three months, as the various phases of life costs are totaled and compared. Practical planning can be made. Changes can be made where necessary to stretch the pay check to meet everyday expenses.

When in very tight budgets, flexibilities can be found in food, household expenses, family allowances and recreation. Plan for regular savings usually be worked out even when this may be small.

The family spending plan is one of the best tools for improved management. No one plan best. Help for developing a plan are given in the bulletin "MONEY FAMILY STRETCHER." Copies are available from the office.

FRESHEN UP

RED FELT HATS

If you can't afford a new fall hat, give the old one a new look with careful brushing and cleaning.

WATERMELON RIND SWEET PICKLES

7 pounds or one gallon of watermelon rind; 10 cups sugar; 1 quart white distilled vinegar; few white cloves; 1 stick cinnamon.

Select a thick rind, firm melon. Cut green skin and pink flesh from rind of melon. Cut into cubes of desired shapes and sizes.

Soak several hours or overnight in cold water - better in the refrigerator. Boil in water 10 minutes, pour off water and drain. Boil vinegar, sugar and spices tied loosely in cheesecloth, to form a thick syrup. Drop rind into thick syrup and cook until clear.

Let cool and pack in hot sterilized containers. If syrup is not thick when rind is clear, drain off syrup and boil until thick. Add rind and cool as above.

PEPPER ONION RELISH

1 quart finely chopped onion
2 cups finely chopped sweet red pepper
2 cups finely chopped green pepper
1 cup sugar
1 quart vinegar
4 teaspoons salt

Combine all ingredients and bring slowly to boil. Cook until slightly thickened. Pour into clean, hot sterilized jars. Fill jars to top; seal tightly.

Y. M. JR. STUDY CLUB HOSTS PRESIDENT IN DINNER AT SAN ANDRES HOTEL

The YM Jr Study Club met September 24 for their annual President's Dinner. The Dinner was held at the San Andres Hotel in Levelland. Hostesses for the occasion were: Mesdames Kenneth W. Watts, Sammie Levritt, Bob Allen and Weldon Hill. Mrs. Bob Mahon was the honoree. Mrs. Bob Allen led the invocation. After the dinner Mrs. Mahon gave the message using as her background the theme of the year "Christianity". She presented some very inspiring points and encouraged each member to make the best of the opportunities of the coming year.

Mrs. Weldon Hill presented the members with the new year books, explaining them as she did so. Mrs. Jerry Winder brought the program entitled "Your Christian Attitude as a Club Woman". She read the club collect and broke it down into parts, explaining each part as she went.

A short business meeting was held in which the club voted to continue their work with the Nurses Auxiliary. Mrs. Mahon reported on the Seventh District workshop and Board Meeting which she and Mrs. Paul Gunter attended in Friona.

The next meeting will be on October 8 in the home of Mrs. Lowell Webb. All of the club members attended.

FRIENDLY CIRCLE HD CLUB MET IN SELF HOME

The Friendly Circle H.D. Club met September 11 in the home of Mrs. Woodrow Self with four members, Miss Petty, and Mrs. Elmer Gardner (a guest) present.

Roll Call was answered with "New Fabrics I Would Like." A Council report was given and it was announced the Yearbook Committee was to meet Sept. 22.

Achievement Day for club members is to be October 13.

Miss Petty brought the program on Food Facts and Fancies. The next meeting was announced for Sept. 25 in the home of Mrs. Jake Reid.

Members present were Mrs. Horace Gardner, Mrs. Jake Reid, Mrs. Dexter Nebhut and Mrs. Seif.



LA NORMA—Beautiful troupe artist will be seen among the various acts scheduled with CASTLE'S J.RING CIRCUS at the Penhandle South Plains Fair in Lubbock, Sept. 28-Oct. 3.

THE WAY IN AFRICA IS CURRENT STUDY OF THE WESLEYAN SERVICE GUILD

The Wesleyan Service Guild met Monday night at the First Methodist Church with Mrs. Bill Wood as hostess.

Miss Leila Petty, president, conducted a short business meeting reminded the group of the District Guild meeting to be held here Sunday October 4. Approximately 50 out-of-town guests are expected to attend her morning services at the First Methodist Church, with a luncheon at 12:45 in the Fellowship Hall.

A training school will be conducted in the afternoon. All Guild members are urged to be present.

Mrs. Joe Seagler was in charge of the devotionals with Mrs. E. O. Willingham conducting a very impressive pledge service: Lighting the Colors of the Rainbow.

"The Way in Africa," will be first program topic for the year. The study by reviewing the book Mrs. Raymond Ross introduced "Cry, My Beloved Country," a story of the hardships of the black men in Africa.

Refreshments were served to nineteen members. Those attending were Mesdames E. O. Willingham, John L. McGee, Don Hofman, F. E. Baldrige, Carl England, Raymond Ross, J. W. Nichols, Bea Yarbrough, Ethel Rainey, Johnnie Green, W. G. Freeland, J. E. Harrell, Joe Seagler, J. W. Cunningham, Hardy Rhyme, and Hattie B. Spots, Lenora Jackson, Leila Petty and hostess Mrs. Bill Wood.

F. O. R. HD CLUB HAS PROGRAM ON NUTRITION, BY HD AGENT

The F.O.R. Home Demonstration Club met in regular session on Sept. 9 in the home of Mrs. J. Frank Bennet. Mrs. A. C. Jones, vice-president, presided over the business meeting. The agent, Miss Petty, eight members and two visitors, Mrs. Dick Kimberlow, and Mrs. Watson were present.

Members answered roll call by describing a new fabric they would like. The majority seemed to favor fabric types that would require no ironing.

Mrs. Bennet gave the devotional reading from the 5th chapter of Romans, verses 1 through 4.

After adjourning the luncheon served orange sherbert, cake and coffee.

The next meeting will be on Sept. 23, and Mrs. Opal Coffey was to be the hostess.

WESLEYAN GUILD WILL HOST 11 DISTRICT GUILDS

The Wesleyan Service Guild of the First Methodist Church will be host to the eleven Guilds in the Brownfield District Sunday at the annual Coaching Conference.

The meeting will begin with a luncheon at noon in Fellowship Hall of the church. During the devotional period after lunch special music will be given by Mrs. Don Lynskey, accompanied by Mrs. Pegues Houston.

The four studies of the year will be presented by selected members over the district. Studies for the year are the Gospel of St. Luke; Africa; The Churches' Mission in Town and Country, and The U. N. in World Affairs.

Miss Helen Martin, Seminole, will head the coaching conference on Spiritual Life; Miss Lucille Flowers, Plainview, will conduct the conference on Missionary Education; Miss Catherine Royalty, Lubbock will direct the conference on Christian Social Relations.

Guilds in the district are Brownfield, O'Donnell, Anton, Denver City, Levelland, Littlefield, Seagraves, Seminole, Sundown, Tahoka and Morton.

Mrs. Neil Brown, Levelland, District Secretary, will preside at Sunday's meeting.

Following the business meeting Miss Petty presented a program on nutrition, based on the studies of Dr. W. H. Jones, Birmingham, Alabama, Professor Stone, head of the Nutrition Dept. of Harvard University, Captain Houser and Nickerson. It was a very interesting and profitable program for all.

We are glad to report that Gerald Wayne Chubb has been released from a Lubbock hospital after a serious illness and is doing very well. Gerald is the son of Mr. and Mrs. J. D. Chubb and Mrs. Chubb is one of our most recent club members.

After adjourning the luncheon served orange sherbert, cake and coffee.

The next meeting will be on Sept. 23, and Mrs. Opal Coffey was to be the hostess.

VISIT IN SEAGRAVES

Mr. and Mrs. A. B. Young, Sue and Peggy, visited in Seagraves with Mrs. Sammie Leavitt and sister, Mr. and Mrs. J. D. Lisenbee and Mr. and Mrs. H. P. Pettie. Miss Helen Martin, Seminole, other sister, who has been visiting the Rainey's, stopped in Seagraves for an extended visit with her relatives.

VISITORS FROM TARRANT

Mr. and Mrs. C. G. Robinson and Jack, Mrs. E. G. Lonsdale Jr., Rama Lynn, Mrs. Laree Ann, Mrs. F. B. Wilson, Freddie and Leta, Mrs. J. H. Hamrick, N. M., and Mr. H. H. Hancock of Fort Worth, visited in Tarrant on Sept. 12. Mr. and Mrs. H. A. Richardson, and Mr. and Mrs. Johnny Silver also were present.

Shop in ~~Morton~~
DOLLAR DAY MONDAY

— YOU'LL WANT TO SEE the MORTON - IDALOU GAME at IDALOU FRIDAY NIGHT

Over 1500 nationally famous products

— SAVE NOW for CHRISTMAS

HERE'S HOW TO SAVE

IN ONE EASY LESSON

— SPECIALS for FRIDAY and SATURDAY

NEW TV SCHEDULES JUST ARRIVED, Get One FREE

<p>SWANSDOWN Cake Mix 25c</p> <p>TAMALES AUSTEX NO. 300 CAN 25c Chili BEANS AUSTEX NO. 300 CAN 10c CHILI IRELAND'S NO. 1 CAN 35c CATSUP SNIDER'S bottle 15c</p> <p>KRAFT'S SALAD BOWL FULL QUART Salad Dressin' 39c</p> <p>Peanut BUTTER SCHOOL DAYS 18 oz. 49c APPLES JONATHAN lb. 12½c</p> <p>KOUNTY KIST 12 OZ. CAN Corn 15c</p>	<p>CHIPAROONS NABISCO bag 49c Sweet POTATOES HOME GROWN lb. 10c Pineapple JUICE DOLE'S BIG 46 OZ. CAN 33c</p> <p align="center">DOUBLE GREEN STAMPS TUES. WITH \$2.50 PURCHASE OR MORE</p> <p align="center"> Piggly Wiggly</p> <p align="center">See our RECORD Selection!</p> <p align="center">MORTON, TEXAS</p>	<p>FROZEN — Fisher Boy PACKAGE</p> <p>Fish Sticks 19c</p> <p>Notebook PAPER HANDY 100 SIZE 2 pkgs. 15c ENERGY NEW DETERGENT box 25c HAIR TONIC VASELINE LARGE 76c SIZE 49c CAR JOY IT'S NEW! bottle 79c</p> <p>MODART 4 OZ. JAR</p> <p>Shampoo 39c</p> <p>FRANKS CELLO PKG. lb. 49c FRYERS GRADE "A" lb. 39c</p> <p>CLOTH BAG POUND</p> <p>Pork Sausage 35c</p>
---	---	--

SHOP MORTON'S Dollar Day MONDAY

Local Boy Has 5th Place Boar In Sears Show

Rodger Jeffcoat's boar placed 5th in the boar division of the Sears Show in Lubbock Sat.

all 4-H boys, their parents, and County Agents. At the luncheon following the show those present heard W. C. O'Mara, manager of Sears in Lubbock, explain the aims of the program.

With Your... COUNTY AGENT

By Homer E. Thompson

CHANGES MADE BY THE 56th LEGISLATURE IN THE TEXAS EGG LAW

The following changes have been made in the Texas Egg Labeling Law. (Section 9) All containers in which eggs for human consumption are offered for sale to food purveyors or consumers must: Paragraph (e) not be labeled 'fresh' if the eggs offered for sale have been held under refrigeration for a period of sixty (60) days or more.

to start your swine demonstration it might be well that you attend his sale.

There will also be a pig sale at Seagraves on Saturday, Oct. 31, starting at 1:30 p. m. They have 150 barrows for sale and the breeds will be mostly Hampshire and Poland Chinas, but will also have some Durocs, Spotted Fandans, and Berkshires. This sale will be at the county maintenance barn, just west of the football field.

SOCIAL SECURITY

Present information on farmers employing crew leaders is given below for your information.

FARM CREW LEADERS - The farm crew leader is the employer of the crew members if he both furnishes them to the farmer and pays them (regardless of whether he pays them on his behalf or for the farmer), unless the crew leader and the farmer have a written agreement which shows that the crew leader is the farmer's employee.

If the farmer and the crew leader have a written agreement which shows that the crew leader is the farmer's employee, then the crew members are also the farmer's employees.

If there is no such written agreement and the crew leader does not pay the crew members, then whoever has the final authority to control the employees in the performance of work is their employer.

The following is an example of an acceptable agreement for establishing the farmer as the employer of the "Crew Leader".

der consideration by the Department of Agriculture... the legal aspects pose headaches that probably have no easy cure.

Market Problems Greatest excitement in the program has centered around cotton being moved to areas outside the local area of production... this has disturbed the movement of cotton through normal channels of trade... many of the merchants, especially country buyers, see this as a loss of livelihood... the producers are concerned because if the merchants in the local areas of production are bypassed in any manner, it means less of competition in bidding for cotton... this will mean less money in the future... it has long been recognized in the trade that the merchant prospers as the farmer prospers... now it is quite evident also that the farmer prospers as the merchant prospers... the more there are of merchants actually engaged in moving cotton to market, the more competition and the higher the prices the farmer will be paid... far-sighted producers are greatly concerned about how the crop will be marketed a couple of years from now and are going to bat to help the merchant preserve the normal manner of moving cotton to the mills so far as the law will allow.



Lots of confusion and widely different opinions mark the opening situation of the new cotton season... many producers do not understand even yet, how "A" and "B" cotton differ... some cottonmen say the Choice "A" program isn't working at all when it comes to moving the cotton to market... others say it is working fine... but all agree that the regulations are loaded with red tape and are certainly another cross for the harassed cotton trader in Texas.

There have been some changes in the regulations already, and there will probably be more... producers have just obtained some relief in not having to get warehouse certification before sale of "A" cotton... several other items are working hardships and are an

SOIL CONSERVATION DISTRICT NEWS



This example has received the approval of the Internal Revenue Service. "It is hereby agreed by and between... and... that, in consideration of the amounts to be paid to... by... as separately agreed upon, said... shall recruit and furnish (number)... individuals to perform agricultural labor for said... at (Location of farm)... from... to...; that said... is to perform such services as an employee of said... and that said... is responsible for reporting and paying the social security taxes due on the wages of said... and the individuals recruited and furnished by said... to perform agricultural labor for said..."

Signature of farmer Signature of crew leader Date

FIELD DAY

(Continued from Page One)

out cotton, grain sorghums planted in 20 inch rows, and brush control of shinnery oak with chemicals and range reseeding on native range land.

A Soil Conservation District is a legal subdivision of State Government, such as your local school board, except that it doesn't have the power to levy taxes. The District is divided into five zones, and each zone is represented by one landowner who is elected by landowners who live in that zone.

Mr. Lasater was a supervisor in Zone 2, which has the same boundaries as Precinct 2 in Cochran County. Those landowners who live in that area, be thinking of someone who is a landowner and who will do a good job of representing you.

On the 6th of October we will have the regular Supervisor's election in Zone 1. Zone 1 consists of the area north of the northern boundary of Precinct 2, north of the highway from Morton to Whiteface to where it intersects the northern boundary of Precinct 2, and east of the Muleshoe highway from Morton north to the Cochran County line.

The program will consist of a field tour beginning at 10:30 a. m. just north of Morton at Merlin Robert's farm and barbecue hamburgers at noon at the Country Club furnished by the First State Bank of Morton.

The election will be conducted during the noon hour. The tour will continue in the northeastern portion of the county that afternoon.

Shortens Hours On Fair Day

BLEDSOE (spl.) - Bledsoe schools operated on a short schedule Monday in cooperation with the Panhandle South Plains Fair School's Day, but the school buses did not take the children to Lubbock for the Fair.

Supt. Otis Parr said they had to hold school for half a day to maintain their attendance (ADA) but school was dismissed in time for those parents who wished to take their children to the fair.

R. Z. Dewbre is rapidly applying conservation practices on his 354 acre livestock farm in Cochran County, approximately 10 miles northwest of Morton.

This farm is the first operating unit to be associated with the Great Plains Conservation Program in the Cochran Soil Conservation District. A contract was signed by the producer in January, 1958 in order that funds could be set aside for applying conservation practices in the future.

Dewbre has established 98 acres of Blackwell Switch grass, which is being used as irrigated pasture. While properly grazing the grass and watering at needed intervals, approximately one animal unit per acre is being carried on the improved pasture. Irrigated alfalfa has been established and totals 13 acres. Ad-equate hay is produced for wintering the animals. Rye which will be planted in the cotton middles will not only afford soil improvement and protection from blowing, but will make available winter pasture for all the livestock.

A sprinkler irrigation system has been installed with the addition of underground pipe. Water will be applied to maintain the highest production of grass, alfalfa and cotton while efficiently providing the needs of the soils and crops.

Dewbre is one of many farmers and ranchers in the Cochran Soil Conservation District who are applying conservation practices through the Great Plains Conservation Program and the Agricultural Conservation Program to make needed land use changes and changes in operation practices.

School News PRINCIPAL ANNOUNCES NAMES OF MHS STUDENT COUNCIL MEMBERS

Tom Pate, Jr., Morton high school principal, last week announced the completion of the naming of the Student Council, governing body of the school.

Three representatives of each class and one representative of each recognized school organization make up the Council.

Representing the Senior class on the council are Mary Ledbetter, Butch Nairn and George Cooper.

Junior representatives are Pat Amyx, Vivian Ledbetter and Leon Jeffcoat. Sophomores elected Mike Houston, Dorothy and Jerry Taylor.

Other representatives and the organizations they represent include: Joyce Edwards, band; Viola Smith, National Honor Society; Sherry Grantham, cheer; Steve Middleton, science club; Shirley Miller, Future Teachers Association.

The Future Homemakers and Future Farmers will name their representatives this week.

Bledsoe 4-H Officers, Leaders Are Named

BLEDSOE (spl.) - Four adult leaders have been named to sponsor the Boy's 4-H Club of Bledsoe, it was announced following a September 25 organizational meeting.

James Webb was elected president of the group and Bobby Hoyle is vice-president. Secretary is Johnny Ness. The adult leaders named were: Messrs. Webb, Reason, Parr and McCormack.

Twenty six attended the first meeting and a meeting date was set for the third Thursday of each month. At the next meeting a rifle safety talk by Clovis Hobbard and Bobby Hoyle has been scheduled.

Shortens Hours On Fair Day

BLEDSOE (spl.) - Bledsoe schools operated on a short schedule Monday in cooperation with the Panhandle South Plains Fair School's Day, but the school buses did not take the children to Lubbock for the Fair.

Supt. Otis Parr said they had to hold school for half a day to maintain their attendance (ADA) but school was dismissed in time for those parents who wished to take their children to the fair.

Shortens Hours On Fair Day

BLEDSOE (spl.) - Bledsoe schools operated on a short schedule Monday in cooperation with the Panhandle South Plains Fair School's Day, but the school buses did not take the children to Lubbock for the Fair.

Supt. Otis Parr said they had to hold school for half a day to maintain their attendance (ADA) but school was dismissed in time for those parents who wished to take their children to the fair.

Table with 2 columns: Time and Program Name. Includes shows like 'Richard Hottel News', 'Take Five - Mark Stevens', 'Captain Kangaroo', etc.

Table with 2 columns: Time and Program Name. Includes shows like 'The Edge of Night', 'Names in The News', 'Take Five With Mark', etc.

Table with 2 columns: Time and Program Name. Includes shows like 'World Series Warmup', 'World Series', 'NCAA Football', etc.

Table with 2 columns: Time and Program Name. Includes shows like 'Tales of Wells Fargo', '20th Century', 'Imagination', etc.

Table with 2 columns: Time and Program Name. Includes shows like 'Wanted, Dead or Alive', 'Whirlybirds', 'Keep Talking', etc.

Table with 2 columns: Time and Program Name. Includes shows like 'Richard Hottel News', 'Take Five - Mark Stevens', 'Captain Kangaroo', etc.

Table with 2 columns: Time and Program Name. Includes shows like 'The Edge of Night', 'Names in The News', 'Take Five With Mark', etc.

Table with 2 columns: Time and Program Name. Includes shows like 'World Series Warmup', 'World Series', 'NCAA Football', etc.

Table with 2 columns: Time and Program Name. Includes shows like 'Dough - Re - Mi', 'Treasure Hunt', 'The Price Is Right', etc.

Table with 2 columns: Time and Program Name. Includes shows like 'Test Pattern', 'Dough - Re - Mi', 'Treasure Hunt', etc.

Table with 2 columns: Time and Program Name. Includes shows like 'Test Pattern', 'Dough - Re - Mi', 'Treasure Hunt', etc.

Table with 2 columns: Time and Program Name. Includes shows like 'Concentration', 'Tic Tac Dough', 'It Could Be You', etc.

Table with 2 columns: Time and Program Name. Includes shows like 'World Series Warmup', 'World Series', 'Bible Forum', etc.

Table with 2 columns: Time and Program Name. Includes shows like 'Dough - Re - Mi', 'Treasure Hunt', 'The Price Is Right', etc.

Table with 2 columns: Time and Program Name. Includes shows like 'Test Pattern', 'Dough - Re - Mi', 'Treasure Hunt', etc.

Table with 2 columns: Time and Program Name. Includes shows like 'Test Pattern', 'Dough - Re - Mi', 'Treasure Hunt', etc.

Table with 2 columns: Time and Program Name. Includes shows like 'TV Den', 'Howdy Doody', 'Ruff and Reddy', etc.

Table with 2 columns: Time and Program Name. Includes shows like 'World Series Warmup', 'World Series', 'Bible Forum', etc.

Table with 2 columns: Time and Program Name. Includes shows like 'Dough - Re - Mi', 'Treasure Hunt', 'The Price Is Right', etc.

Table with 2 columns: Time and Program Name. Includes shows like 'Test Pattern', 'Dough - Re - Mi', 'Treasure Hunt', etc.

Advertisement for RCA-VICTOR for '60 at ROSE AUTO & APPLIANCE. SEE the RCA-VICTOR for '60 at ROSE AUTO & APPLIANCE.



IT'S A GREAT GAME . . .
and FRIDAY NIGHT IT WILL BE
Morton vs Idalou

at IDALOU

These friendly businesses urge you one and all to make plans to attend . . . Idalou is another top area team and it'll be a tip-top area game . . . let's go, let's yell for the Morton Indians . . .

- Derwood's Texaco
Southeast Corner Square
- Herb's Gulf Service
North on the Enochs Hi-way
- Evans Investment Co.
Lloyd Evans
- Leon's Texaco Service
Lason Harmonson, owner
- St. Clair's Department
and St. Clair's Variety Store
- Rays Hardware
and Furniture Co.**

BULA BULLDOGS (6-Man)

BULA 18	ROARING SPRINGS 48
BULA 26	PETTIT 0
BULA 24	THREE WAY 21
BULA 41	SPADE 4

Friday, Oct. 2 —
— NAZARETH at Bula

Oct. 9	COTTON CENTER
Oct. 16	Open Date
Oct. 23	THREE WAY
Oct. 31	SPADE
Nov. 6	at NAZARETH
Nov. 13	at COTTON CENTER

- Mrs. Otha Denny
Tax Assessor - Collector
- Tarver Furniture Company
"your home should come first"
- Burleson Paint & Supply
featuring Cook's paints
- Lindsey Feed & Seed
at the Sign of the Checkerboard
- Woolam Implement Co.
Your CASE Implement Dealer
- Gardner-Ross
Your IH Dealer
- Allsup Chevrolet Co.
Home of the sensational Impala
- Wallace Theatres
Burnie Haley, Mgr.
- Great Plains Natural Gas
Co., Inc.
- Producers Warehouse, Inc.
Fred Payne, Mgr.
- Barton's Shamrock Service
Gtt Barton
- Morton Lions Club
- M. C. Ledbetter
- Baty's Battery and Electric
South of the Signal Light

- Child's Men's Store
& Minnie's Shop
- Reynolds Tire & Service Station
featuring CONOCO products
- Morton Spraying and
Fertilizing, Inc.
West of the Square on the Portales Hi-way
- Morton Tribune
& Dollar Day Special
- Sheriff Hazel Hancock and Staff
We're here for Your protection —Please drive
CAREFULLY
- Cobb's Department Store
"the house of famous brands"
- P & B Automotive
W. G. Baker and Tom Rowden
- Danez Beauty Shop
West of the Malt Shop
- Collins Packing Co.
on the Country Club Road
- Morton Electrical Supply
Mr. and Mrs. Fred Morrison
- Standard Abstract
Mr. and Mrs. Grover D. Edgar

MORTON INDIANS (2-AA)

MORTON 7	SUDAN 6
MORTON 27	WHITEFACE 6
MORTON 0	PLAINS 18
MORTON 6	FARWELL 16

Friday, Oct. 2 —
— at IDALOU

Oct. 9	SUNDOWN
Oct. 16	ABERNATHY
Oct. 23	at OLTON
Oct. 30	MULESHOE
Nov. 6	Open Date
Nov. 13	at LOCKNEY

- Morton Auto Parts
Amos Taylor
- Doss Super Food Store
Double Frontier Stamps on Tuesday
- Loran-Tatham Co.
headquarters for irrigation equipment
- First State Bank
Member Federal Deposit Insurance Corporation
- Smith's Furniture & Appliance
We Give and Redeem Big Chief Stamps
- Morton Jaycees
Mondays at Noon
- Seaney's Grocery & Market
for the BEST in meats
- Modern Motor Service
Jack Jones and John Duke
- Truett's Food Store
we give and redeem MORTON stamps

- Burl's 66 Service
Burl McDowra, owner
- McMaster Tractor Co.
Ford Tractor dealers for you
- McAlister - Huggins
John Deere Implement Dealer
- McDermott Liquefied Gas
on the Muleshoe Highway
- Morton Co-operative Gin
On North Main
- Buck's "66" Service
Buck Tyson, owner
- Morton Malt Shop
Mr. and Mrs. Rob Richards
- J and B Grocery & Market
Mr. and Mrs. Joe Mohmood
- Luper Tire Service
C. E. Luper
- Western Abstract Co.
Mr. and Mrs. W. M. Butler
- Country Club Gin
Jerry Tucker, Manager
- Piggly Wiggly
where you get S and H Green Stamps
- Williamson Insurance Agency
Located in the First State Bank Building
- Morton Floral & Greenhouse
Mr. and Mrs. Lem Chesher

3-WAY EAGLES (6-Man)

THREE WAY 14	COTTON CENTER 0
THREE WAY 21	BULA 24
THREE WAY 18	SMYER 14

Friday, Oct. 2 —
— at SPADE

Oct. 2	at SPADE
Oct. 10	NAZARETH at Hart
Oct. 16	at COTTON CENTER
Oct. 23	at BULA
Nov. 6	SPADE
Nov. 13	NAZARETH

- Cochran Power & Light
"serving the last frontier"
- City Flower Shop
Mr. and Mrs. J. T. Holloman
- Higginbotham - Bartlett Co.
"Good Lumber"
- The Ideal Gift Shop
Mr. and Mrs. Truman Anglin
- Silvers Butane Co.
East on the Levelland Highway
- Windom Oil and L. P. Gas Co.
Phillips 66 Wholesale

- Roy Weekes Insurance Agency
& Dorthea's Beauty Salon
- Morton Gin Co., Inc.
Mark Kennedy, Manager
- Connie's Gulf Service
your Good Gulf dealer
- Eastside Cafe and Pastries
Mr. and Mrs. O. D. Vernon
- Clarke's Dry Goods
Eastside of Square
- Willingham Farm & Ranch Store
Paymaster Feeds and Seeds
- Butler Motor Company
Skinner Butler
- Glenn W. Thompson
Cochran County Judge
- Hawkins Oldsmobile Co.
home of the fabulous new OLDS
- Ramsey Shoe Shop
Mr. and Mrs. S. A. Ramsey
- Willis Food Store
we give BUCCANEER Saving Stamps
- Bailey County Electric
Co-operative Assn.
- Lessye Silvers
Cochran County Clerk
- Rose Auto and Appliance
Neal H. Rose
- Bedwell Implement Co.
Your M-M dealer

WHITEFACE ANTELOPES (3-B)

WHITEFACE 40	TATUM, N. M. 16
WHITEFACE 6	MORTON 27
WHITEFACE 20	COOPER 14
WHITEFACE 26	ANTON 20

Friday, Oct. 2 —
— PLAINS at Whiteface

Oct. 9	Open Date
Oct. 16	ROPES
Oct. 23	at WHITHARRAL
Oct. 30	Open Date
Nov. 6	MEADOW
Nov. 13	at AMHERST

- Strickland's Cleaners
Mr. and Mrs. R. C. Strickland
- Morton Flash - O - Gas
Butane, Propane, and Conversion
Tommy Lynch
- Merritt L.P. Gas Co.
Magnolia Consignee

Whiteface Comes From Behind To Topple Anton Eleven, 26 to 20

In what may well be their most thrilling performance of the season, Whiteface scored a come from behind victory Friday night over the strongly rated Anton Bulldogs in a game played on the Anton field.

Anton took an early 6 to 0 lead on a 67 yard run by Oren McGrew. Whiteface worked hard to even it up, and it was Jimmy Collins who did the trick on an 18 yard run in the second quarter. But Anton's Raul Moreno took the kick and raced 65 yards to put an end to Whiteface's short lived tie. McGrew ran for the two points and it was 14 to 6 at the half way mark.

Odis Summers capped a Whiteface third period drive with a one yard plunge that pulled the Lopes within two points, 14 to 12, but the run for two points failed and it looked as though Whiteface was stymied again. McGrew grabbed an aerial from

Jan Crews and this 61 yard scoring play put Anton ahead 20-12. The point failed and Whiteface was still within a touchdown and extra point run of tying.

Collins shook loose for a 40 yard burst in the fourth quarter and Eldon May dashed around end to pull the panting Antelopes in to a 20-20 tie with still about 9 minutes to play.

Then came the thrilling finale. The Antelopes got the ball again and with only three minutes showing on the clock, they capped a drive with Odell Scribner racing from three yards to post their first lead on the board, 26-20.

Anton refused to "yell uncle" McGrew ran the kickoff back 50 yards and into Whiteface territory as the seconds ticked off the clock. On the next play he picked up 22 yards and it looked like Anton would come back to score, but McGrew was injured on the play, going out of the game with a bruised leg, and that ended the Anton threat.

Sports News

Three First Half Touchdowns Pace Narrow 18 to 14 Three Way Victory

The Three Way Eagles roared back on the winner's trail Friday night by posting three first half touchdowns and an 18-0 lead, and then "sweating out" a last half Smyer run's for an 18 to 14 triumph.

Coach Bill Wood's Eagles split the scoring with James Tarleton gathering in a 30 yard pass from quarter back Mike Flanken for the first score; Bailey Griffith rambling 25 yards for

the second period TD, and Virgil Thomas bulging over center for two yards and the third score. All tries for the point failed.

Smyer passed 15 yards for a score early in the second half and tallied on a 12 yard run before the third period ended, but the Eagles were able to maintain their margin through the hectic fourth quarter for the victory.

Three Way's hopes for a conference championship rest with their efforts to even the count with Bula in their return game at Bula later this season.

INDIAN FOES COMPILING GOOD GRID RECORDS

Here's how Morton's this year's opponents handled themselves in football play this past Friday:

Dimmit 48, Abernathy 22
Lockney 14, Falls 6
Muleshoe 16, Springlake 6
Olton 27, Hale Center 6
Sundown 52, Sudan 14
Whiteface 26, Anton 20
Idalou 64, New Deal 0
Plains 7, Jal. (N. Mex.) 0

SPECIAL . . .

PRESTONE gal. **185**

ZEREX gal. **185**

See us for GATES TIRES

We've plenty of good, used Trailer Tires
Barton's Shamrock Service

North on the Muleshoe Hi-way
Phone 2196 Morton



FINAL CLOSE OUT of '59 FORDS at a

BARGAIN!

MAHAN MOTOR COMPANY
Your Friendly FORD Dealer

Phone 4431 Morton

5 CALLED BACK — ROBERTS SCORES ELEVEN TIMES IN BULA ROMP

Speedy little Norvell Roberts, Bula's dynamic dashman, outran Spade's defenders eleven times, Saturday night to spoil the Longhorn's Homecoming, but there was one ray of cheer for the homeowners, five of the eleven touchdowns were called back for penalties, thus holding the score to 44-4.

In statistics . . . that count . . . Norvell was credited with six touchdowns and three extra point runs, for a total of 42 points. Donnie McCall cashed in the other two points of a 44-4 rout by running around end.

Spade also had another unusual distinction. They recovered 2 Bula fumbles behind the Bula goal line, in the first period and one in the third quarter, for two safeties.

Norvell opened the scoring in the first quarter by running back a punt from his own 10 yard line for a 70 yard trek to paydirt. He also scored on runs of 65, 60, 50, 40 and 35. Runs of 70 and 60 yards were among the five called back for penalties.

The Bulldogs, riding well up in the six-man conference, will face Nazareth this weekend in a game that could go a long way toward deciding the championship.

Lillian Silvers Is Golf Champion

Mrs. Lillian Silvers copped medalist honors and then went on to win the championship among Morton women golfers in the recent golf tourney.

Runner-up in the Championship flight was Mrs. Lavern McMasters. Consolation winner was Mrs. Shirley Tarver and winner of the 9 hole flight was Mrs. Eva Crum.

Boosters Will Escort the Team Onto the Field

The members of the Morton Athletic Boosters, at their meeting Monday night, voted to help escort the football team off the field each Friday night, in hopes to help give a better morale lift to the team.

Boosters were also invited to attend the school's Pep Rally each Friday morning at the high school, by Coach J. P. Jones who added, "we'd like to see you there, and we'd like for you to bring these boys' mothers."

Also coming up is Dad's night at the first conference game, with Abernathy. Dads of the players will be asked to sit on the sidelines with the boys. Dads will have the boy's number pinned on their back. "Please try to get as many of the dads out as possible," the coach asked the Boosters.

Films of last Friday's game were shown and a short discussion was held on the relative merits of Plains and Farwell. Members were urged to sell the club memberships at \$5 each and turn in the money to Hub Cadenhead, membership chairman.

SHOP
MORTON'S
DOLLAR
DAY
MONDAY

DISCOVER



Supp-hose by MOJUD

Supp-hose by \$4.95 only 4 pr. every woman on her feet a lot! Housewives, expectant mothers, working women, women with mild varicose veins . . . have been wearing Supp-hose and reporting wonderful results!

- Costs just one-third what you'd expect to pay!
- Outwears other nylons by far!
- All nylon, contains no rubber!
- Washes like any other fine sheer!

MINNIE'S
Your Fashion Center for Women, Children, and Infants

Goodpasture Grain & Milling Co., Inc.

LEHMAN, TEXAS
Formerly B & B GRAIN CO.

Is Ready to Handle Your Grain

Cut it when you're ready and bring your grain to us.

To Sell or Store YOUR GRAIN

— SEE —

Goodpasture
Grain & Milling Co., Inc.

LEHMAN, TEXAS

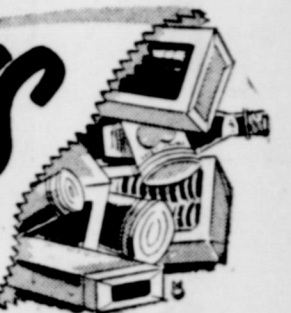
— See the MORTON - IDALOU GAME FRIDAY NIGHT at IDALOU . . .

Check these food buys and Check out with savings!



PLUS MORTON SAVING STAMPS,
DOUBLE EACH TUESDAY
on ALL CASH PURCHASES

BAG THESE BUYS
IN QUALITY FOODS



GIANT CHEER
7¢ off 72¢

WILSON'S CORN KING
BACON lb. **55¢**
JUMBO PACKAGE
FRANKS 3 lbs. **98¢**

FOLGER'S
COFFEE
lb. can **69¢**

ARMOUR'S LUNCHEON MEAT
TREET can **49¢**
CAMPBELL'S
TOMATO SOUP . . . 2 cans **25¢**

SUN SPUN - PIE NO. 303 CAN
CHERRIES **19c**

Fancy PRODUCE
FIRM HEADS
CABBAGE lb. **3¢**
CELLO BAGS
CARROTS 2 bags **15¢**
GOOD EATING
Delicious **APPLES** lb. **15¢**

WONDERFUL
SNOWDRIFT
3 lb. can . . . **79¢**

OUR VALUE PRESERVES, 18 oz. glasses
Red Plum or Peach . . . 3 glasses **100**

WELCHADE QUART CANS
Grape Drink 3 cans **100**

CENTER CUTS
PORK CHOPS lb. **59¢**
LEAN
PORK STEAK lb. **49¢**

FlavorLok
DAIRY FOODS
MELLORINE
1/2 gallons **49¢**

WILSON'S
CHILI big 24 oz. can **49¢**
BR'ER RABBIT — Brown Label
SYRUP 24 oz. bottle **49¢**

SUN SPUN 10 PER CAN
BISCUITS 3 cans **25c**

Frozen Foods
BREADED
SHRIMP 10 oz. pkg. **55¢**
LIBBY'S
Pink LEMONADE . . . 6 oz. can **15¢**
SILVERDALE
BROCCOLI 10 oz. pkg. **15¢**

NORTHERN - TOILET
TISSUE 3 ROLLS **25c**

DOESKIN
FACIAL TISSUE . . . 400's **23¢**

WE DELIVER **TRUETT'S FOOD STORE** MORTON, TEXAS
Truett McCuistion Owner, Manager Phone 4871

WEEKEND FISHING
 Mr. and Mrs. John Silhan and Mr. and Mrs. Herman Brown spent last weekend fishing at Lake ...

RETURN NO RISE
 ... returned to ... Washington after

a 10 day visit with his parents and other relatives.

VISITS HUSBAND AT CAMP CARSON, COLORADO
 Mrs. Gerald Ramsey, of Morton, spent the weekend at Camp Carson, Colorado, visiting with her husband who is undergoing basic training in the Army.

HAPPENINGS OF INTEREST . . .

FROM THE ENOCHS AREA

By Mrs. JEROME CASH
AT BEDSIDE OF MOTHER
 Mrs. T. A. Thomas is in Slaton at the bedside of her very sick mother, Mrs. W. E. Tucker.

VISITS PARENTS SUNDAY
 Mr. and Mrs. Ronnie Etheridge of Maleshoe visited her parents Sunday, and attended church at the Dula Church of Christ.

WAS IN HOSPITAL
 Mr. C. S. Vandeventer spent a night and a day in the Morton Hospital. He is reported better at this time.

VISIT IN LUBBOCK
 Mrs. R. P. McCall and daughter Mrs. Barley Roberts visited in

Lubbock Thursday with Mrs. Don Bridges and new baby boy. Mrs. Bridges is a sister of Mrs. R. P. McCall, and will be remembered as Mattie Lou Crockett of Morton.

SPEND WEEKEND WITH PARENTS
 Mr. and Mrs. Robert George of Lubbock spent the weekend with her parents, Mr. and Mrs. E. N. McCall.

CLASS PARTY HELD
 A class party was held by the T. E. L. Sunday School Class on September 22, at the home of Mrs. Alton Maze. Exchange of gifts, class business and games were features of the party. Refreshments of punch and cake were served by Mrs. Maze and Mrs. Phillips.

HAS PARTY FRIDAY NIGHT
 Members of the Junior Class of Sunday School attended a party in the Recreation Room at the Enochs Baptist Church Friday night with Mrs. Buford Peterson as sponsor.

TO HOLD SERVICES SUNDAY
 Bro. Lowell Palmer of Littlefield is to have charge of preaching services at Enochs Baptist Church on October 4 in the absence of the pastor, Bro. Terry.

TO LEAD PRAYER SERVICE
 Donald Grusendorf will lead in Wednesday night's prayer services.

RETURNS FROM DALLAS
 Mrs. D. S. Fowler has just returned from Dallas. She has been taking care of her new grandson, Michael Don, son of Mr. and Mrs. Don Morgan.

TO GARY, INDIANA
 Bro. and Mrs. Terry left Monday morning for Gary, Indiana for a 12 to 15 day vacation. They are to visit their son and family. He has been in the service until recently.

MISSIONARY UNION MEETS
 The Women's Missionary Union met at 2 p. m. September 23 for a business meeting. 7 ladies were present, plans were announced for a social for all ladies of the church, to be held Wednesday September 26, in the home of Mrs. G. R. Newman, Mrs. E. N. McCall will be in charge of the days activities.

MOTHER IS IMPROVED
 Word was received Sunday that Mrs. Clara McGinnis, mother of Mrs. Carl Hall was slightly improved again after more surgery early in this week. She is in the West Texas Hospital in Lubbock. For those who have requested her address it is Mrs. U. McGinnis care of J. P. McGinnis, Rt. 5 Lubbock Texas. Mrs. Hall has been at her bedside for the past several days.



Shown above are John Wayne diars" showing at the Theatre, Morton, Sunday evening scene from "The Horse Sol. Monday, October 4th and 5th.

EXCELLENT MONTHLY SPARE TIME INCOME

Man or woman to refill and collect money from our New Premier Sport Card and Candy Machines in this area. No selling. To qualify must have car, reference, \$25.00 cash secured by inventory.

Profitable opportunity, devoting 4 - 6 hours spare time weekly. Your end of percentage of collections can net up to \$165.00 monthly with good possibilities of taking over full time.

Income increasing accordingly. For interview, include phone number in application. Write P.O. Box 2761, Amarillo, Texas.

DON'T MISS the MORTON — IDALOU GAME, FRIDAY NIGHT at IDALOU

BIG SAVINGS GREAT VALUES EVERY DAY!

SS FOOD STORE
 FROZEN FOOD LOCKERS

— DOUBLE FRONTIER STAMPS EACH TUESDAY

HUNT'S
 Tomato JUICE
 46 oz. can 25¢

AUSTEX, NO. 300 CANS
 Lima Beans & Ham... 2 cans 69¢

SHURFINE
 MILK
 TALL CANS
 8 cans 1.00

AUSTEX
 CHILI BEANS
 NO. 300 CANS
 2 cans 25¢

AUSTEX
 TAMALES
 NO. 300 CANS
 3 cans 59¢

SOFLIN
 FACIAL TISSUES
 400 COUNT
 5 boxes 1.00

Quality MEATS

Wright's, Hickory Smoked (10-12 lbs.)
HAMS, whole lb. 49¢

FIRST GRADE, SLICED
BACON 2 lb. pkg. 89¢

ALL MEAT
BOLOGNA lb. 49¢

Shurfine
 CHEESE SPREAD
 2 lb. box 69¢

FOR SMOKELESS FRYING
USE JEWEL SHORTENING
 YOUR BEST SHORTENING BUY
SHORTENING
 3 lb. can 69¢

Pineapple Sweet Treat
 Crushed, No. 300 Can **5 CANS 1.00**

VEGETABLES

FRESH
 CUCUMBERS lb. 10¢

DELICIOUS
 YELLOW SQUASH lb. 7½¢

NEW CROP
 YAMS lb. 10¢

TENDER
 CARROTS cello bag 10¢

SMALL NOSE
 BELL PEPPERS lb. 12½¢

JONATHAN
 APPLES lb. 12½¢

Shurfine
 PEACHES
 BIG NO. 2½ CAN
 27¢

SOFLIN
 NAPKINS
 60 COUNT
 2 cello bags 25¢

FOLGER'S
 COFFEE
 lb. can 69¢

SAVE
 on frozen food!

UNDERWOOD'S
 BAR - B - Q BEEF lb. box 79¢

BOOTH
 OCEAN PERCH lb. 39¢

SARA LEE, All Butter, Frozen
 BROWNIES 14 oz. pkg. 79¢

DIVISIONS, CLASSIFICATIONS LISTED ON GARDEN CLUB FLOWER SHOW

The following is a list of Divisions, Classifications and flowers which will make up the Cochran County Garden Club's annual Flower Show, scheduled for Saturday, October 20, at the County Activity Building.

DIVISION I
 Class 1. "Texas Bounty" — arrangement using fruits and vegetables.

DIVISION II "Weathercast"
 Class 2. Heatwave — using warm colors.
 Class 3. Storm Warning — using cool colors.
 Class 4. Gentle Breeze — stressing rhythm.
 Class 5. Clearing Skies — suggesting brightness.

DIVISION III
 Class 6. "Texas in a Nutshell" — miniature arrangements.

DIVISION IV
 Class 7. "Texas Brags" — using container or material.

DIVISION V
 Class 8. "Y'all Come" — a table arrangement suitable for a patio party or an informal dinner.

DIVISION VI
 Class 9. "The Dude" — novice class.

DIVISION VII "Vacation Time"
 Class 10. "At the Seashore"
 Class 11. "Camping in the Big Parks."
 Class 12. "Sightseeing in the Big Bend."

DIVISION VIII
 Class 13. "Texas in Review" — composition suggesting any industry in Texas.

DIVISION IX
 Class 14. "Revival Time" — Composition with a religious theme dramatizing white.

DIVISION X
 Class 15. "Texas Birds" — using bird figurines with arrangements.

MATERIALS: Fresh, dry or combination. Accessories permitted in every class.

DIVISION XI
 Horticultural Classes
 Section A — Specimens
 House Plants
 Class 1. Blooming plant
 Class 2. Foliage plant
 Class 3. Cacti (May be a collection.)
 Class 4. Succulents
 Class 5. Unscheduled

Section B — Specimens
 Bulbous Class (including corms, tubers, and rhizomes.)
 Class 6. Cannas (one stalk, any color.)
 Class 7. Gladioli (one stalk, any color.)
 Class 8. Day Lilies (one stalk)
 Class 9. Any other UNSCHEDULED specimen

Section C — Specimens
 Annuals
 Class 10. Asters (one bloom)
 Class 11. Marigolds (one bloom)
 A. Small
 B. Large
 Class 12. Celosia (Princess Feather - one stalk)
 Class 13. Celosia (Coxcomb - one stalk)
 Class 14. Petunias, single (one bloom)
 Class 15. Petunias, double (one bloom)
 Class 16. Petunias, Fluffy-Ruffie (one bloom)
 Class 17. Zinnias, any variety (one bloom)
 Class 18. Vincas (Periwinkle), any color (one bloom)
 Class 19. Cosmos, any color (one bloom)
 Class 20. Nasturtium (one bloom)
 Class 21. Phlox (one bloom)
 Class 22. Bells of Ireland (one stalk)
 Class 23. Salvia (Sage - one stem)
 Class 24. Sloeheadifolis (African Daisy) (one bloom)
 Class 25. Centaurea (Corn Flower - one bloom)
 Class 26. Centaurea (Sweet Sultan - one bloom)
 Class 27. Unscheduled Calendula

Section D — Specimens
 Perennials
 Class 28. Daisy (one bloom)
 Class 29. Verbena (one bloom)
 Class 30. Snapdragon (one stem)
 Class 31. Gaillardia (one bloom)
 Class 32. Any other UNSCHEDULED specimen

Section E — Specimens
 Roses
 Class 33. Hybrid Tea — one bloom class
 a. Red
 b. Pink
 c. Yellow
 d. White
 e. Ivory
 f. Peach
 g. Two-toned
 Class 34. Flabunda, any color (one spray)
 Class 35. Polyanthias, any color (one bloom)
 Class 36. Climbing roses, any color (one spray, not over two feet long)
 Class 37. Any other UNSCHEDULED specimen

Section F — Specimens
 Dahlias
 Class 38. Cactus, or semi-cactus type (one bloom)
 Class 39. Decorative (one bloom)
 Class 40. Pom Pom (one bloom)

Section G — Specimens
 Chrysanthemums
 Class 41. Miniature (one bloom)
 Class 42. Any other UNSCHEDULED specimen

Section H — Specimens
 Berried of Fruit
 Trees, Shrubs, and Vines
 Class 43. One bloom — any color
 Class 44. Three blooms (one color)
 Class 45. Five blooms
 Class 46. Pom Pom
 a. Three blooms
 b. Five blooms
 c. Seven blooms

Section I — Specimens
 Trees, Shrubs, and Vines
 Class 47. Tree — one specimen each variety, not over two feet long.
 Class 48. Shrub — one specimen each variety, worthwhile both spring blossom and color or fruit — one specimen each variety, not over three feet long.
 Class 49. Vine — One specimen each variety, not over three feet long.

ROSE THEATRE
 "THIS WEEK'S ENTERTAINMENT"

FRI. — SAT. OCTOBER 2 — 3

The Sad Horse
 DAVID LADD - CHILL WILLS

— PLUS —
 "THE LIVING SWAMP"

LATE SHOW SAT. NITE, 11:00 P.M.
 "...a frolic in sensuality!"
 —N.Y. World-Tele-Sun

"and God created woman"
 ... but the devil invented
Brigitte Bardot
 IN CINEMAXCOPE AND EASTMAN KODAK
 A KODAK INTERNATIONAL PICTURE
 "... a strawberry blonde bundle of curves...
 and nerves — 90 minutes of uninhibited sex."

SUN. — MON. OCTOBER 4 — 5

JOHN WAYNE WILLIAM HOLDEN

THE HORSE SOLDIERS
 RIDES WHERE ONLY THE GREAT ONES GO
 JOHN FORD'S THUNDERING SPECTACLE! - COLOR by DeLuxe - Released by UNITED ARTISTS

TUESDAY — ONE DAY — OCT. 6

REIGN OF TERROR FROM EARTH!
The Woman Eater
 A FORTRESS FILM PRODUCTION
 A COLUMBIA PICTURES RELEASE

WED. — THUR. OCTOBER 7 — 8

THE MOST INCREDIBLE MAN YOU NEVER SAW!
THE H
 A COLUMBIA PICTURES EASTMAN COLOR