

# Morton Tribune

Volume 31 — Number 16

Morton, Texas, Thursday, February 4, 1971

## 1971 price support drop seen

Cochran county farmers may find the rows a little harder to hoe in the 1971 crop year than it has been in the recent past, according to facts and figures released by the ASCS office in Morton Tuesday.

And, depending upon his interpretation of the figures and his utilization of the provisions of the price support program, to which the facts and figures refer, he may well find the very opposite to be true.

The meat of the whole matter is that farm price support payments in the county this year are expected to total approximately \$1 million less than that paid for the 1970 crop year. This is due to the drop in cotton price support payments of from 16.8 cents down to 15 cents per pound in 1971 and the loss of diverted acre payments on feed grain and wheat.

On the other hand, the limit has been taken off of how many acres the farmer can plant, and John Hall, county ASCS Executive Director, expressed the opinion that many farmers will make up the difference in the price support payments by planting more acreage. The provisions are in the program for doing this and each producer must make his own interpretation as to what is best for him, Hall said.

Price support payments in Cochran county for the 1970 crop year totaled \$5,746,547. Of this total, \$3,955,975 was paid for cotton, \$1,757,212 was paid for feed grain, \$32,711 was paid for wheat and \$649 was paid for the corn crop.

The number of farms in the county and the planted acreage participating in the price support program included, Feed Grain, 558 farms with a total planted acreage of 63,118; Cotton, 542 farms with a total planted acreage of 74,572; Wheat, 149 farms with a total planted acreage of 1,140 and Corn, unknown number of farms with 40 planted acres.

The national allotment for cotton has been cut from a total in 1970 of 16.5 million acres to 11.5 million acres for 1971, Hall stated. This means a cut in allotment for each individual farm of 32.5 percent.

The new farm program has caused considerable change in the price support program and makes it more complicated and harder for the producer to understand, Hall said. He urges farmers to come in to the ASCS office where they will receive any help needed in figuring out their production program for the coming year.

The signup period for the 1971 crop year price support program will begin March 1 and end April 9, Hall stated.



EXPERTS ON CONSERVATION . . .

THE ABOVE GROUP OF OFFICIALS was photographed as they attended a joint meeting of 14 soil and water conservation districts hosted by the Cochran County district in Morton Tuesday. The meeting included talks by experts in various fields of conservation and panel discussions with the overall theme of water quality. Left to right

are Raymond Mittel, Texas Water Quality Board, Lubbock; Doyle Hutcheson, president, Texas Soil and Water Conservation District; A. L. Black, Area One director; Eddie Silhan, chairman Cochran County SWCD; Dick McGinty, chairman, South Plains SWCD, Plains and J. Frank Gray, State Soil and Water Conservation Board member, Lubbock.

## Conservation officials meet here

BY WAYNE WILCOX — SC5

Fifty-eight officials from fourteen Soil and Water Conservation Districts were guests of the Cochran Soil and Water Conservation District in Morton Tuesday. The occasion was the bi-annual meeting of the South Plains Association of Soil and Water Conservation Districts, whose theme for the conclave was "Water Quality."

The Association Chairman, Dick McGinty of Plains, acted as coordinator for the meeting and Eddie Silhan, Chairman of the Cochran SWCD, welcomed the out-of-town guests.

Raymond Mittel, of the Texas Water Quality Board, led off the speakers roster with a talk and film on our most essential natural resource — water. In his presentation the group was told, "There is the same amount of water on the earth as there ever was because water can't be destroyed. However, it can be polluted and moved to locations where much of its usefulness is lost."

The film stated that industry in the United States uses about eleven billion gallons of water per day. Moreover, most of the water used by industry is used only one time and then becomes a pollutant of our streams. One recommended solution to the problem is treating this water and making it safe and desirable for re-use by man.

Doyle Hutcheson, President of the State Association of Soil and Water Conservation Districts, spoke next on budget matters. Doyle who resides at Weatherford, reported that the state budget committee had left the districts out of the state budget. He stated that the reason given by the committee for the action was so that more money could go for pollution control. Hutcheson and his delegation explained to the committee that districts had been fighting pollution ever since districts were organized, explaining that sound land treatment helped keep soil out

of the air and the streams. Hutcheson encouraged everyone present at the Morton meeting to go back home and write his state official encouraging him to put the matching funds appropriation back in the budget.

A. L. Black, Area I Director, the next speaker, emphasized the importance of keeping state officials informed. He said "Let people know that you exist. Rural areas are looked to for a source of water."

See CONSERVATION, Page 4a

### ★ Cotton special

The Plains Cotton Television Special, shown on KCBD Channel 11, in December received such a heavy response that it will be aired again Saturday, February 6, at 4 p.m. on the same channel.

Those who are basketball fans may stay tuned to channel 11 immediately after the Texas Tech-Rice game which it will follow.

The special is produced by Walt Olivo, KCBD farm editor, sponsored by the ELANCO Products Company.

## Don Workman joins local bank's board of directors

Don Workman, presently vice president, commercial loan Department of the First National Bank of Lubbock, has been elected to the board of directors of the First State Bank of Morton, it was announced here Tuesday.

Workman had previously served as vice president and director of First State Bank before leaving Morton to accept the position with the Lubbock bank.

"We are extremely pleased to have Don back with us and we are sure that he will play a leading role in the future progress of the bank," Gene Benham, president of First State Bank, said in making the announcement.

Workman is a native West Texan, having been born and reared on a farm and ranch near Olton. He graduated from Olton High School in 1954 and received his higher education in Texas universities. He holds a B.S. degree in Agricultural Education from Texas Tech, an M.S. in Agricultural Economics from Texas A&M and graduated from the Southwestern Graduate School of Banking in 1967.

He has held an assistant professorship at Texas A&M in 1962-63; was a state

ranch economist for the state of Texas in 1963-64; served as vice president and director, First State Bank of Morton, 1964-66 and has since been serving as vice president, commercial loan Department, First National Bank of Lubbock.

Cattle feeding, farming and ranching are presently included in his business activities.

Workman is highly active in civic and service affairs and is holding, or has held, the following positions:

Director of West Texas Chamber of Commerce, Steering Committee of the Agricultural Committee 70, West Texas Health Planning Council, Board of Governors for ABC Clubs of America, Chairman of Annual ABC Rodeo for 1971, Member of Governor's Traffic Safety Committee, Director of West Texas Water Institute, Chairman of the Ranch Headquarters Association Annual Meeting, Speakers Bureau — Airport Bonds and Civic Center Bonds and Captain, United Fund Commercial Division.

The rest of the Workman family consists of wife, "Skeet" and two boys whose ages are five and two.



RAINBOW OFFICERS INSTALLED . . .

MISS BECKY GREENE, center, was installed as Worthy Adviser in ceremonies held by the Morton Rainbow Assembly No. 293 in Morton Saturday night. Other officers installed to serve with Miss Greene above include, left to right, Mikela Windom, daughter of Mr. and Mrs. C. D. Windom, Hope; Susan Rouden, daughter of Mr. and Mrs. Wayne Rouden, Faith; Miss Greene, Ann Winder, daughter of Mr. and Mrs. Jerry Winder, Worthy Associate Adviser and Vicki Hodges, daughter of Mr. and Mrs. T. C. Hodges, Charity.

## Tribune holds second half pace; down Olton's Horses 74-60

The Morton Indians overcame a frigid quarter with impressive defensive play and roared from behind to take an important 74-60 district win over the visiting Olton Mustangs Tuesday night. Keith Barry, the Indians' fleet-handed ball hawk, forced four straight turnovers in the second period to lead the Tribe to a 30-28 halftime advantage.

The Indians travel to battle the Lockhart Longhorns Friday night a team that is winless in second round action. Then comes the second big show-down game of the season, a home match with the upcoming Dimmitt Bobcats. Dimmitt has lost since falling to the Indians, 60-38, at home. That loss was the Bobcats' home loss in four seasons, and their home district play loss in ten years.

Morton fans are urged to come early to the game as they expect to get a seat for next Friday's game as the crucial clash will attract the largest crowd in recent years at the Indian gym. A standing-room-only crowd viewed the first contest in Dimmitt.

The Indians' big win over Olton Tuesday was a victory number 25 and tenth in a row, and once again revealed the poise of the Tribe varsity as it overcame Ol-

ton's lead. Morton trailed, 12-4, and did not collect its second field goal until late in the first period. Morton trailed, 16-11, after the first quarter.

Terry Harvey dumped in three of four free throws to narrow the margin to 16-14 to open the second period, and then two field goals by Elton Patton put the Tribe

See INDIANS, Page 4a

## Glenn W. Thompson will head county's Easter Seal Appeal

Glenn W. Thompson will head the 1971 Easter Seal Appeal in Cochran County, it was announced by P. O. Settle, Jr., of Fort Worth, President of the Easter Seal Society for Crippled Children and Adults of Texas.

Residents of Cochran County will receive the annual Easter Seal Appeal letters in the mail beginning March 1. The Easter Seal Appeal, conducted yearly to provide disabled persons and their families treatment and services, will continue through Easter Sunday, April 11.

Thompson is one of 223 men and women throughout Texas who are serving in this capacity. The cost of the statewide Easter Seal program is over one million dollars, financed mainly by the Easter Seal Appeal. Almost 90 percent of all funds raised by the Easter Seal Appeal remain in Texas to support the growing needs of the disabled in the state.

Special emphasis is being given in the 1971 Easter Seal Appeal to the disabled citizen or his family in Cochran County who may need assistance and not know where to obtain it. Any disabled person can contact him at the First State Bank, Morton, who will refer the request for services to the Easter Seal Society.

A determination of the extent and type of assistance needed and the most efficient means of obtaining that assistance will be made. Arrangements for needed treatment or service will be made by the Easter Seal Society.

## Vehicle registration underway in county

Cochran county drivers are reminded that vehicle registration is now underway and license tags are being issued at the county tax assessor/collector's office in the courthouse.

Procedures for registering for 1971 plates are the same as were in effect last year and drivers are requested to bring the registration application that they received earlier through the mail to the tax office for the issuance of license tags.

A steady flow of applications have been processed since the registration period opened Monday, February 1, according to tax office personnel. A total of 6,127 license plates were received for issue in the county. The regulation plate is of reflective material with a white background and black letters. The personalized plates have a white background with red letters.

March 31 is the deadline for registration, with anyone displaying 1970 plates being subject to arrest beginning April 1.

## Morton girls to vie for homecoming queen

Five Morton students are among a total of 28 South Plains College coeds who have been named Homecoming Queen candidates for this year's event Friday, Feb. 6.

Five finalists will be chosen from the group, announced Tom Selman, Student Activity Director. The Queen and four runners-up will be named during half-time of the game between SPC and New Mexico Military Institute.

Following is a list of the candidates: Patsy Gunn, Patrice Stroud, Candace Rich, Debra Grant, Levelland; Patsy Ellis, Debbie Kuehler, Helen Lynch, Della Nebhut, Carol Ann Freeland, Morton; Kathy Decker, Pep; Donna Ketchum, Bonnie Caldwell, Whitharral; Kathline Brown, Olton; Ava Ann Jones, San Saba; Jane Fitzgerald, Plains; Kathy Newsom, Ober; Jo Ann Loanman, Kress; Laquita McGroove, Carlsbad, New Mexico; Ann Sawyer, Floydada; Annette Simon, Tulia; Sharon Neff, McAdoo; Nancy Hart, Post; Ann Shive, Hart; Terry Welch, Lubbock; Ginger Inman, El Paso; Pam Cox, Littlefield; Coleen Spence, Hawaii.

## Disaster Area

The Secretary of Agriculture has declared Cochran and Yoakum counties as disaster areas due to the protracted drought and early freeze during the 1970 growing season, a telegram from Congressman George Ma-gram informed the Tribune by telegram Monday.

Farmers in the two counties are eligible for emergency government loans which may be obtained from the Farm Home Administration. Application must be made to the county FHA office before June 30, 1971, the telegram stated.



Don Workman

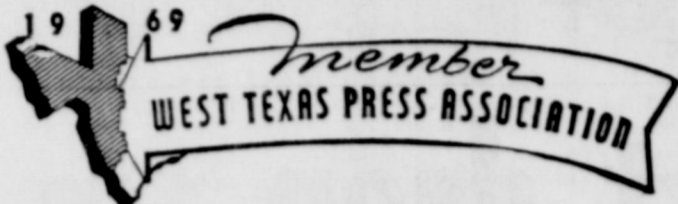
# Morton Tribune

OFFICIAL NEWSPAPER OF COCHRAN COUNTY  
"TEXAS' LAST FRONTIER"

Published Every Thursday Morning at 106 N. Main St., Morton, Texas 79544

BILL SAYERS, Editor and Publisher

Entered as second class matter at the post office at Morton, Texas, under the Act of Congress of March 3, 1879.



Subscription rates — In Cochran County and adjoining counties: Per year, \$3.50, six months, \$2.00; three months, \$1.25. Outside Cochran County: Per year, \$4.50; six months, \$2.50; three months, \$1.75. To insure proper service, subscribers will please notify us promptly of change of address

## Classifieds

### CLASSIFIED RATES

5c per word first insertion  
4c per word thereafter  
75c Minimum

### 1—FOR SALE

**FOR SALE:** Antique clocks and phonographs, all restored and in perfect working condition. C. E. Buchanan, Rt. 1, Morton or call 525-4122. tfn-11-c

**TAKE OVER** payments on 1968 Singer sewing machine in walnut console. Will zig-zag, blind hem, fancy patterns, etc. Assume 3 payments at \$7.96. Write Credit Manager, 1114 19th Street, Lubbock, Texas. tfn-54-c

**FOR BETTER** cleaning, to keep colors gleaming, use Blue Lustre carpet cleaner. Rent electric shampooer \$1. Taylor and Son Furniture. 1-4-c

**FOR SALE:** Used Trimatic, one fourth mile, like new with 2 drags, 4 inch sprinkler line. Call 927-3655. 4-tfn-c

**DEEP BREAKING,** land leveling, Bob Harlan, 601 SW 17, Seminole, Texas, phone 915-758-5650. 10-2-p

**FOR SALE:** Aluminum pipe 6", 2600 ft., mainline pipe. Bedwell Implement, call 266-5306. tfn-2-c

**FOR SALE:** Good used aluminum pipe in sizes from 4" through 8". Also a good assortment of all kinds of used fittings—New systems of all types. We will buy or trade for your used aluminum pipe. State Line Irrigation, Littlefield and Muleshoe. tfn-34-c

**MUST PICK** up small piano and Hammond Organ by February 25, will allow person with good credit rating to resume payment on either piano or both. Call or write American Music Company, 207 E. 8th, Odessa, Texas Phone 332-2711. 5-2-c

**FOR SALE:** 3 bedroom, 2 bath, large living room and kitchen, patio, carport, 10 acres, highway frontage, 20 by 40 shop, barn, well house, small irrigation well, one house well. Contact R. P. McCall or call 927-3752. 2-3-c

## Rites held Wednesday for Mrs. Anna Cox

Funeral services for Mrs. Anna Cox were held Wednesday at 2:30 p.m. in the First United Methodist Church. The Rev. Rex Mauldin officiated.

Burial was in Morton Cemetery under direction of Singleton Funeral Home.

Mrs. Cox died Tuesday at 10:10 a.m. in Cochran Memorial Hospital following a lengthy illness. She was born in Kentucky May 26, 1887 and was married there April 15, 1919. She and her husband later moved to Hamlin and to Cochran County in 1946.

Survivors include her husband, E. L., one sister, Mrs. Gladys Campbell of Birmingham, Alabama and several nieces and nephews including Mrs. L. B. Childs of Morton.

Pallbearers were: Olin Ray, Virgil Woolam, Amos Taylor, J. C. Reynolds, Willard Henry and W. E. Childs.

**FOR SALE,** rent, lease or trade: Building at 306 East Washington, originally City Flower Shop. Call Maurice Lewallen 266-5549. 4-4-c

**HOLIDAY MAGIC** cosmetics. Mrs. T. M. Tanner, Star Rt. 2, Morton. Call 927-3542. 2-3-c

**FOR SALE:** desk, china closet, round table, encyclopedias, old dishes, old and used valentine cards and other things. Mrs. Petree, 413 SW 1st. 1-4-c

### 3—BUSINESS SERVICES

**CUSTOM BALING** and swathing. Call or contact Wayne Bracken 266-5958, 804 W. Garfield. 35-tfn-c

**COCKROACHES,** rats, mice, termites, golphers, and other household pest exterminated. Guaranteed. 15 years experience. 894-3824, Levelland, Texas. Davidson Pest Control. Reasonable rates. rtfn-31-c

**CUSTOM LISTING** 7 row. Call J. F. Cooper 266-8933 nights. 1-4-p

**CUSTOM HAULING:** Small loads with gooseneck trailer, 10,000 pound capacity. Dennis Lieb, phone 266-8967. 4-4-c

### 4—WANTED

**WANTED:** Welder's helper to work in Morton. S&H Refrigeration, 1809 Ave. F., Lubbock, call collect 744-2582. 2tfn-c

### CARD OF THANKS —

#### CARD OF THANKS

We would like to thank our many friends and neighbors for the lovely cards, flowers, food and our thanks to the ladies who served lunch during the loss of our mother. May we extend to you our heartfelt thanks and may God bless each of you.

Mrs. Grace Abbe  
Mr. and Mrs. E. M. Lebow  
Mr. and Mrs. Jack Baker  
Mr. and Mrs. Bill Lebow  
Mr. and Mrs. Floyd Lebow  
Mr. and Mrs. Austin Blackburn

#### CARD OF THANKS

I would like to thank everyone who donated money to the John Mills Memorial Fund and the ones who brought donations to my house. Thank you all so very much.  
Mrs. John Mills

### NOTICE —

#### THE STATE OF TEXAS COUNTY OF COCHRAN

Notice is hereby given that Cochran County Commissioners Court will receive bids for the purchase of a Mobile Two Way Radio to be used by Cochran County. Bids will be opened at 10:00 A.M. on February 5, 1971 in the Cochran County Commissioners Court Room.

The Court reserves the right to reject any and all bids.  
Specifications can be picked up in the office of the County Judge.

This the 27th day of January, A.D. 1971.  
Glenn W. Thompson, County Judge  
Published in the Morton Tribune January 28 and February 4, 1971.

#### NOTICE

The Board of Trustees of Bledsoe Independent School District is advertising for bids for the sale of 1 1963 Ford Econoline 1/2 ton pick-up. Said bids will be opened at the regular meeting of the Board of Trustees February 11, 1971. Said Trustees reserve the right to refuse any or all bids. This vehicle may be seen at the school garage between the hours of 9 a.m. and 3 p.m.

Don M. Weaver, Superintendent  
Published in the Morton Tribune January 21, 28 and February 4, 1971.

#### Texas Oil Company

needs good man over 40 for short trips surrounding Morton. Contact customers. We train. Air Mail R. B. Dickerson, Pres., Southwestern Petroleum Corp., Ft. Worth, Tex.



Recommendations made by the Governor's Advisory Panel on Use of Agricultural Chemicals can lead to the development and use of scientific fact as opposed to random opinion in regulating the use of pesticides by agriculture, according to Donald Johnson, Executive Vice President of Plains Cotton Growers, Inc.

The panel, chaired by Dr. Perry Adkisson, head of the Entomology Department at Texas A&M, was appointed at the request of the Texas Association of Cotton Producers Organizations. Johnson, is to obtain maximum usage of pesticides, herbicides and other chemicals in agriculture with minimum effects on the environment and non-target organisms, including man.

The panel's report states that without pesticidal chemicals "it is doubtful that all other technology combined would be sufficient to provide the yield increases needed to feed and clothe the world's exploding human population."

But it is recognized that the entry of pesticidal chemicals into the environment may have adverse side effects through contamination of crops with excess residues, by presenting hazards to applicators, and by contributing to the decline of certain species of fish and wildlife. The panel therefore recommends more, but sensible, regulation and control.

Insufficient facts and figures concerning farm use of pesticides and other chemicals is one of the big stumbling blocks encountered by agriculture in efforts to counteract the sometimes emotional adverse effect claims of environmental purists. To correct this deficiency Adkisson's panel suggests "Legislation to provide for agency responsibility and financial support to the Texas Department of Agriculture for developing statistical procedures for collecting data on the sales and uses of pesticides in the State, and that agents selling and/or dispensing pesticides be required to maintain accurate and complete records of sales with these records to be made available to the TDA."

The panel also recommends that standards and procedures be established and legislation passed for the registration and licensing of pest control agents, including airplane operators, commercial ground machine operators and sales agents.

Other recommendations of the panel include proper disposal of pesticide con-

tainers, monitoring of residues in or on foods and wildlife, elimination of the present provision for registration of pesticides under protest, and expanded research activities.

To carry out needed research it is suggested that a "Texas Center for Pesticide Research" be established and given the basic responsibility for (1) the development of new methods of pest control which will minimize the use of chemical pesticides, (2) the determination of the long-term impact of pesticides on the total environment, and (3) the development of instruments, methods and educational programs necessary to insure competent pest control analysis and service the needs of other State agencies involved in monitoring of pesticides.

Research to develop new and safe pest control methods, the report says, should include the developing and testing of non-persistent, bio-degradable chemicals, biological controls, insect resistant crop varieties, insect sterility and other cultural and mechanical control systems.

Johnson termed the overall report as "excellent," and said "through its implementation agriculture can adequately respond to the legitimate concerns of the public and at the same time protect itself and the public against the loss of valuable production tools as the result of emotional, unfounded claims."

### Look who's new

Leticia Suzanna, daughter of Mr. and Mrs. Rafael Salazar. She arrived at Cochran Memorial Hospital Jan. 28 at 2:30 p.m. and weighed 8 pounds and three ounces.

Laura Alice, daughter of Mr. and Mrs. Harold Clark of Muleshoe. Laura arrived at Cochran Memorial Hospital Jan. 30 at 4:30 a.m. and weighed 7 pounds and 2 ounces.

Norma, daughter of Mr. and Mrs. Leopoldo Anguiano of Goodland. Norma arrived at Cochran Memorial Hospital Feb. 1 at 4:25 p.m. and weighed 6 pounds 12 1/2 ounces.

Ernesto, son of Mr. and Mrs. Leo Rubalcava of Goodland. He arrived at Cochran Memorial Hospital Feb. 2 at 3:05 p.m. and weighed 7 pounds 3/4 ounces.

## Rebekah Lodge holds instruction school

Thirteen members were present Thursday night, January 28 for the regular meeting of the Morton Rebekah Lodge No. 39.

A school of instructions was held by Mrs. Eunice Hancock, Lodge Deputy. Questions concerning lodge rules and bylaws were asked, and after discussion the proper answer was given and explained.

It was announced that a meeting of the Rebekah Lodge Secretary and Scribes will be held February 14 at Lockney.

Four members, Mesdames Bertie Pyburn, Juanice Cook, Faydel Turney and Lennie Doyle reported on a visit to the Rebekah Lodge at Levelland on Tuesday night, January 26.

Mrs. Bertie Pyburn was elected to serve as captain of a drill team for the year of 1971. Several ideas were discussed that might be incorporated in use of the team.

After closing of the meeting a social hour and salad supper was enjoyed by Mesdames Lottie Reeves, Hancock, Myrtle Williams, Juanice Cook, Dorothy Egan, Louise Talley, Pyburn, Doyle, Thelma Turney, Mildred Akin, Carrie Scott, Lorne Crockett, and Miss Shirley Turney.

If past trends continue, nearly half of the national population will be living in the suburban parts of our metropolitan areas in 1985; only one-fourth will be living in central cities, according to Dr. George H. Brown Director of the Bureau of the Census.

## Cotton Allotments

For Sale and Lease  
For Best Prices  
and  
Dependable Service

contact  
Agri-Business Services  
Box 729  
Abernathy, Texas 79311  
Phone 806-298-2264  
The Most Experienced Allotment Brokers

## Business and Professional Directory

### AUTOMOBILE DEALERS—

**GWATNEY-WELLS**  
Chevrolet-Oldsmobile Co.  
Your Home-Town Dealer  
Serving You With Full  
Line of Cars and Trucks

### DIRT WORK—

**C. M. MOBLEY**  
Deep Breaking  
Land Leveling  
Grubbing & Dozing  
P. O. Box 992  
Phone 592-3090  
Denver City, Texas

### ROYAL BERKGRN

208 W. Lincoln  
Morton, Texas

Earth Moving  
Motor Grader — Scraper Work  
Parallel Trenches—Diversions—Waterways  
Phone 266-5144

### CHEMICALS—

**SANDERS FERTILIZER  
& CHEMICALS**  
Fertilizers and  
Farm Chemicals  
Golden Uran

### UPHOLSTERY

Dooley's Upholstery & Carpet  
701 Houston — Levelland  
Everything for the home  
in Upholstery & Carpet  
PHONE 894-3321

### ELECTRONICS

See Us For  
**RCA Electronics**  
Television, Radios, Etc.  
SALES AND SERVICE  
**Rose Auto & Appliance**  
Phone 266-5959 Morton

### APPLIANCES

**Whirlpool Appliances**  
Automatic Washers, Dryers,  
Refrigerators, Dishwashers  
SALES AND SERVICE  
**Rose Auto & Appliance**  
Phone 266-5959 Morton

### PUMPS—

**CAUSEY PUMP CO.**  
Causey, New Mexico  
House Well (Domestic) and  
Irrigation Well Work  
Maple 927-3123 Causey 273-8717  
Jerry Strickland

To Report A Fire  
266-5111

For An Ambulance  
266-5611

Sheriff's Office  
266-5700

City Police  
266-5966

## Distinctive PRINTING

Make Us Your  
"One Stop"  
Press Center



We have the complete facilities and know how to successfully serve your every printing need. Letterpress, offset, engraving are all part of our service. We print color or black and white. Call us, compare our quality and prices.

- Stationery
- Business Forms
- Announcements
- Catalogs
- Envelopes
- Advertising

# Morton Tribune

# About local folks . . .

**W. L. Miller returned Saturday** after spending several days with his daughter and family, Mr. and Mrs. Wendell Watson. The Watsons visited in Morton with Mrs. Miller, to her returning home with them.

**Bob Cook left Monday for Seymour** and the funeral of her cousin, Jack . . . Services were scheduled to be Tuesday.

**Mrs. Henry Bedwell, in com-** with Mr. and Mrs. Earl Sybert, the week-end in Clarendon and Grady Lakes.

**Mrs. G. G. Nesbitt, Mrs. Louise** and sons, Louis and Lee, visited with relatives, Mr. and Mrs. Shields and family in Idalou. They visited in Lubbock with Mr. and Mrs. Miller.

**Mrs. R. L. DeBusk of Clovis** in Morton Sunday. They were dinner of Mrs. Ralph De Bord and en- visiting with their daughter and Mr. and Mrs. Dale DeBord and Midland. They attended the New- Reynolds anniversary reception and visited with Mr. and Mrs. Charles and other friends.

**and Mrs. Elmer Gardner, Mr. and** Horace Gardner, Mr. and Mrs. Val- ley and Mr. and Mrs. Pete Tarle- of Maple, were in Gatesville to at-

tend the funeral of their sister and aunt, Mrs. R. O. Posten, who passed away January 23. Services were held Monday, January 25. Another sister, Mrs. Bert Wyle of Denver, Colo. joined her brothers and sisters in Lubbock for the trip.

An all day family get-together of the Gardner's was enjoyed in the home of Mr. and Mrs. R. E. Gardner. The gathering was held January 30. Luncheon and dinner were enjoyed by the following: Mr. and Mrs. Horace Gardner, Mr. and Mrs. Bert Wyle of Denver, Mr. and Mrs. Valley Gandy, Mrs. W. B. Hucks of Spring- lake, Mrs. Jim Winder and children, Char- les and Renee, of Springlake, Mr. and Mrs. Pete Tarleton of Maple, Mr. and Mrs. Leonard Gandy, Mrs. John Hodges and daughter, Vicki, and Mr. and Mrs. Gene Gardner all of Morton.

Mr. and Mrs. Larry James, Jerry and Jay of Lubbock visited Sunday in the home of the Bill Sayers.

## Hospital Auxiliary review 1970 projects

The Cochran Memorial Ladies Hospi- tal Auxiliary met January 25 in the hospi- tal lobby and reviewed projects accom- plished the past year.

Mrs. Bess Tilger opened the meeting with the Auxiliary prayer and a report from each committee for 1970 was given. Projects completed for the year were: rails on the steps of the front entrance of the hospital; a letter board in the lobby containing the Doctor's and Board Mem- ber's names, a bulletin board in the hall- ways and the auxiliary room for patients and families was painted and pictures were hung.

Following the reports, the nominating committee presented the slate of officers for 1971. Those presented were: Mrs. Vi Henry, president; Mrs. Katherine Miller, 1st vice president; Mrs. Cammie Jackson, 2nd vice president; Mrs. Kate Hargrove, treasurer; Mrs. Tennie Wall, recording secretary; Mrs. Pat Mullinax, correspond- ing secretary and Mrs. Tilger, publicity. The slate was unanimously elected.

Members present were: Mesdames Til- ger, Eunice McDermett, Eltha Russell, Henry, Beth Coleman, Nellie Fincher, Mul- linax, Miller and Jackson.



Weather is important to some fisher- men, unimportant to others.

Some anglers will go out only when the temperature is a comfortably cool 58 de- grees. Others don't care whether it's 28 or 98.

Anglers who feel that conditions must be "just right" do catch fish . . . and the "I don't care" fellows do, too. So what's the answer?

I don't know the right answer; nor do I think many other anglers do either. But I'm inclined to agree that the best time to go fishing is right now. So, if you want to fish, get gone, regardless of rain, sunshine, heat or cold.

Fish, wherever they are, whatever kind they be — fresh water, salt water — perch, bass, stream trout, Gulf trout, king, ling, redds, whites, red snapper — every living one of them has to eat.

And that's when they hit your bait, be the "food" live shrimp or dead squid, live minnows or plastic ones, or artifi- cials — like plastic worms, top-waters, spinners or such hardwares as spoons . . . large and small.

Get with it, if you want to fish, and just disregard the weather.

We've had great success in below-freez- ing temperatures. Many times when we went after "whites" below the dam we had to break the ice that formed in the line guides, time and time again as the line froze solid in the rings.

On the other hand, we've had great success on the hottest days catching black bass in a blazing sun on lakes and on ponds. Also, we've taken salt water fish on the hottest of days in the bays as well as far off shore in the Gulf of Mexico.

Furthermore, we've had great success trout fishing in the mid-day heat in sum- mertime Wyoming, Montana and Colorado where it was supposed to be "cool" to be good.

It's not unusual for anglers in the cold climates to cut holes in the ice to do their fishing.

We repeat — fish have to eat! Your first job is to find the fish, then serve them the "food" of their choice for that day, that hour, maybe even for just that minute.

We've had wonderful success when it

was so cold, even with gloves on, that we could hardly hold the rod; and when it was so doggone hot we had to mop the brow after every cast.

And we're just a common, ordinary fisherman who loves the outdoors and likes the challenge of angling.

Nope, we don't have "tremendous suc- cess" every day out. No siree! We've had our share of "dry runs." These, too, happen to most everyone. But there is fun in fishing! It's relaxing, it's nerve settling. And, when you do land a few of those flitails it's a great thrill.

Then along comes a lunker and takes your bait — and whether or not there will ever be another day, that day was great.

## Accent on health

Medical historians have generally a- greed that what once was the most dread- ed disease known to man — leprosy — is one of the oldest diseases of mankind. Now known as Hansen's Disease, it is believed to have originated in Asia more than 3,000 years ago.

What most people know — or think they know — about leprosy today has been read from the Bible. Deep-seated fears of the disease find their emotional basis in Scriptural phrases declaring lepers "un- clean" and attaching an emotional, so- cial, and psychological stigma to the dis- ease.

There are roughly 15 million cases of Hansen's Disease in the world, 2,500 known cases in the United States, and in excess of 500 known cases in Texas. Dr. M. S. Dickerson, a Texas Health Depart- ment official, says that although cases of Hansen's Disease are scattered through- out Texas, the specific endemic area is located in a belt of 55 counties along the Gulf Coast and Rio Grande south of a line from Orange to San Antonio to Del Rio. The greatest possibility for contact with leprosy lies in this area.

Leprosy is a chronic, mildly communi- cable disease. Although skin to skin con- tact with an infected case seems to be the accepted method of transmission, strong evidence also points to the digestive and respiratory tracts as portals of entry. Al- though probably the most chronic of com- municable diseases, an open case of Han- sen's Disease is less dangerous to the community than an open case of tuber- culosis.

If diagnosed early, the disease can be treated successfully with sulfone medica- tion, and deformities need not occur if the disease is diagnosed before the defor- mities begin.

Leprosy is not a hereditary disease. No child is born with it. It is estimated that

## Land Bank Association head announces reduced interest

Joe Breed, Manager of the Federal Land Bank Association of Levelland, received word today that The Federal Land Bank of Houston has reduced the interest billing rate on variable rate loans to 8%. "This reduction affects more than 90 million dollars of variable rate loans to more than 2800 farmers and ranchers through- out Texas," Mr. Breed stated.

The variable rate loan plan which was introduced by the Houston Bank in July 1969 lets the interest rate "float" over the variations in the money market. In large measure, therefore, the rate in any specific year will reflect the changes in prices which the Bank must pay for the money it makes available for farm mortgage loans.

Breed pointed out that this action is in line with the Bank's policy in providing farmers and ranchers credit at the lowest possible cost consistent with sound busi-

ness practices.

The Federal Land Bank of Houston mak- es long term real estate loans on farm and ranch lands throughout Texas. On January 1 of this year, the Bank had over \$529 million in volume of loans out- standing.

The local association makes and ser- vices loans in Cochran, Hockley, Terry and Yoakum Counties. Members of the local board of directors are: L. F. Schoen- rock, Leon Lawson, J. F. Steele, all of Levelland; G. I. Sims of Brownfield, and Hugh Hansen of Morton.

## County highway toll high for December

The Texas Highway Patrol investigated 7 accidents on rural highways in Coch- ran County during the month of Decem- ber, according to Sergeant H. E. Pirtle, Highway Patrol supervisor of this area.

These crashes resulted in one person killed, four persons injured, and an es- timated property damage of \$3,975.00.

The rural accident summary for this county during the calendar year of 1970 shows a total of 40 accidents resulting in three persons killed, 26 persons injured, and an estimated property damage of \$22,- 709.00.

"Operation Motorcade" which was in effect during the Christmas and New Year's holidays recorded 101 traffic deaths as compared to the estimated 87. Ten of these traffic fatalities occurred in the Lubbock Region in the following coun- ties: Cochran, Crosby, Parmer, Swisher, Wichita and Wise which had one fatality each with Dallam and Potter Counties having two fatalities each.

The Patrol Supervisor reminded all motorists to think about the more than 30,000 people that have been killed in Texas traffic accidents during the last 10 years, and to join the drive to reverse this alarming trend of traffic deaths by strict observance of traffic laws and rules of defensive driving.

**COTTON ACRE LEASES**

See or Call

**C. E. WILLIAMS**  
7 S. 5th St. 637-2422  
Brownfield, Texas

**SEE THE DIFFERENCE AT THE CASH REGISTER**

PRICES GOOD FRIDAY, FEBRUARY 5 through THURSDAY, FEBRUARY 11

Bounty <b>CHICKEN STEW</b> 19-Oz. <b>2 FOR 1<sup>00</sup></b>	Arko <b>CUT GREEN BEANS</b> No. 303 Can <b>5 FOR 89<sup>c</sup></b>	Kim <b>NEW POTATOES</b> No. 303 Can <b>4 FOR 73<sup>c</sup></b>
--	--	--

**Spaghetti & Meat Balls** Austex No. 300 Can ..... **3 FOR \$1**

OUR DARLING <b>CORN</b> NO. 303 CAN <b>2 FOR 49<sup>c</sup></b>	DIAMOND <b>SPAGHETTI</b> NO. 300 CAN <b>4 FOR 79<sup>c</sup></b>	ELLIS <b>TAMALES</b> NO. 2 1/2 CAN <b>2 FOR 79<sup>c</sup></b>
--	---	---

KIM <b>TURNIP GREENS</b> NO. 303 CAN <b>4 FOR 69<sup>c</sup></b>	<b>BACON</b> Decker's First Quality—1 Lb. Pkg. .... <b>69<sup>c</sup></b>
<b>Kim FLOUR</b> 10-Lb. Bag <b>89<sup>c</sup></b>	<b>PORK ROAST</b> Lean—Lb. .... <b>59<sup>c</sup></b>
	<b>FRANKS</b> Decker's Jumbo 16-oz. Pkg. .... <b>69<sup>c</sup></b>
	<b>BACK BONE</b> Meaty—Lb. .... <b>59<sup>c</sup></b>
	<b>SAUSAGE</b> German or Polish—Lb. .... <b>89<sup>c</sup></b>

# TRUETT'S Food Store

**CAUSEY PUMP COMPANY**

House Well (Domestic) and Irrigation Well Work

Phone Maple 927-3123 Phone Causey 273-8717

**Jerry Strickland**

**COCHRAN COUNTY TREASURER'S 4TH QUARTERLY REPORT**

October, November and December, 1970

	Balance 10-1-1970	Receipts 4th Quarter 1970	Disbursements 4th Quarter 1970	Balance 12-31-70
Officers Salary	8,507.56	32,567.08	36,088.96	4,985.68
General Fund	14,004.43	118,610.30	29,701.47	102,913.26
R & B No. 1	19,959.25	3,739.30	8,830.39	14,868.16
R & B No. 2	1,655.32	3,755.30	6,070.72	(660.10)
R & B No. 3	12,403.79	3,759.30	6,052.30	10,110.79
R & B No. 4	26,553.65	3,935.31	5,310.18	25,178.78
R & B No. 5	364.47	27,500.22	11,212.17	16,652.52
Jury	4,798.39	10,998.41	1,614.18	14,182.62
C & J	22,423.78	35,774.44	23,188.38	35,009.84
Special Ad Valorem Tax	5,475.37	78,991.58	5,484.48	78,982.47
Lateral Road	11,356.58	.00	10.00	11,346.58
Car License	4,934.87	4,679.86	9,614.73	.00
Social Security	3,094.51	6,097.62	4,609.81	4,582.32
Withholding Tax	3.37	6,269.60	4,702.20	1,570.77
Group Insurance	706.83	3,582.19	2,648.61	1,640.41
Law Library	396.16	232.00	161.50	466.66
C & J Sinking	2,851.57	24,247.17	.00	27,098.74
<b>TOTAL</b>	<b>\$139,489.90</b>	<b>\$364,739.68</b>	<b>\$155,300.08</b>	<b>\$348,929.50</b>

I, Bill A. Crone, Treasurer, Cochran County, Texas, certify that this report reflects condition of Receipts, Disbursements and Balances for the Fourth Quarter: October, November and December, 1970.

Signed: /s/ BILL A. CRONE  
Treasurer, Cochran County, Texas

Examined and Approved: Jan. 25, 1971

/s/ ROBERT H. GEORGE  
Notary Public, Cochran County, Texas

/s/ J. B. NICEWARNER  
County Auditor

/s/ E. J. McKissack  
Commissioner, Precinct No. 2

/s/ Glenn W. Thompson  
County Judge

/s/ HARRAL RAWLS  
Commissioner, Precinct No. 3

/s/ LEONARD O. COLEMAN  
Commissioner, Precinct No. 1

/s/ U. F. WELLS  
Commissioner, Precinct No. 4

# Rep. George Mahon to address West Texas Water Conference

Congressman George H. Mahon will be the luncheon speaker for the ninth annual West Texas Water Conference Friday, February 5, at the Red Raider Convention Center in Lubbock. Program Chairman James Osborn of the Texas Tech agricultural economics faculty, made the announcement.

Registration for the conference will begin at 8 a.m.

Rep. Mahon will discuss the status of water related appropriation proposals now before Congress. He has been chairman of the House Appropriations Committee since 1964.

At the same meeting four new members of the West Texas Water Institute will be introduced to the membership who

elected them by ballot. They are: Bill Clayton, executive director of Water, Inc. Dr. George McBee, resident director of research, Texas A&M University Research and Extension Center, Lubbock; Bill Waddle, manager, Texas Water Conservation Association; and C. Palmer Norton, founder of Irrigation Age magazine.

The institute will hold its annual meeting on Thursday, Feb. 4. It is sponsored by about 30 organizations which have a special interest in water resources, and it plans and presents the annual conference.

In addition to reports from research specialists and Mahon's address, conference speakers will include Peter J. Reynolds, head of the General Studies Section, Water Planning and Operations Branch, Government of Canada, discussing the "Canada Water Act: A Vehicle for Action," and Fred H. Bayley, III, U. S. Army Corps of Engineers, discussing water planning in the Mississippi River Basin.

## Conservation . . .

from page one

Seventy percent of the water in Texas is on, or falls on, privately owned lands. Rural areas are also looked to as disposal sites for city waste and garbage," Black stated, adding that "Districts need to work with city as well as rural people."

Frank Gray, state soil and water conservation board member, encouraged the district directors to offer their assistance to such agencies as the Texas Water Quality Board. He suggested, too, that districts make full use of the help available from this and other agencies in their districts.

Gray's discussion of the portion of the new farm bill that deals with set-aside policy led to the appointment of a resolution committee. The committee was instructed to draw up a resolution stating the South Plains Association of SWCD's opposition to the set-aside requirement.

During the meeting a plaque was presented to Joe Robbin of Lubbock television station KCBD that the South Plains Association had awarded to Channel 11 Farm Editor Walt Olivo. Robbin accepted the award for Olivo who was in Central Texas and unable to attend the meeting.

Election of officers for the coming year completed the meeting's business. Gilbert Fowler was elected chairman and Roy Wick was chosen vice-chairman.

## Indians . . .

from page one

ahead for the first time, 18-16.

Embry's steals prompted a ten-point flurry that kept the Indians out in front until the halftime intermission. Morton hit five of 17 attempts during the initial period, but improved during the second with seven strikes of 14 tries. The Tribe was six out of seven from the charity line in the opening half.

Morton maintained its lead in the opening minutes of the third period, and then widened the gap as the quarter drew to a close. Leading 44-41, the Tribe methodically pumped in basket after basket and outscored the visitors, 14-0, before Olton could collect any points in the opening seconds of the final quarter.

Stan Coffman, high man for the Indians with 18 points, hit 11 in a row to widen the Tribe lead to 70-50 before Olton's Steve Stockdale narrowed the margin with accurate shooting. Stockdale, nephew of Indian band director John Stockdale, collected 13 for the game.

Olton's Mike Parsons took high point



## AMBITIOUS PROGRAM INAUGERATED . . .

COCHRAN COUNTY JUDGE GLENN W. THOMPSON is shown above as he signed a document proclaiming the week of January 25-29 at "3.76 In '76 Week in Cochran County." The observance was in conjunction with a long range program to raise the total cash receipts for agricultural products in Texas to \$3.76 billion by the end of the 1976 crop year. Taking part in the ceremony were county agent Roy McClung, left, and Earl Polvado, County Agriculture Program Building Committee chairman.

honors with 29 tallies.

George Pritchett, averaging over 16 points per game in district play, hit 17. Terry Harvey contributed 14, and Elton Patton scored 10.

The Indians turned in their best night of the season at the free throw line, collecting 12 of 14 attempts. Morton hit 41 per cent from the field for the game.

With only four games remaining in the regular season play, the Indians are assured of their best season in recent years. Last year, Morton was 28-8 for the year in advancing to the state tournament in Austin. The Tribe has lost just two games since losing to Taft last March at the State tourney.

# Texas law allows leeway to pedestrian in lawsuits

Trudging absentmindedly along the sidewalk, George failed to notice a car backing down a driveway. Result: he stepped in the path of the car and was injured. In short order he sued the motorist for damages, blaming him for driving across a sidewalk without looking.

But at the trial, the motorist said: "I wasn't looking, but neither was he. If I was negligent, he was too."

However, the court found no negligence on George's part and granted his claim. The judge said:

"It is the common experience of tired humanity to become immersed in thought and oblivious to one's surroundings, when travelling in a place of known safety. Therein lies no want of ordinary care."

Not every court would be so tolerant of a pedestrian's day-dreaming. But it is

true that the law does, by and large, look kindly on the pedestrian. It does not expect the same level of alertness from him as it demands from the motorist.

Nor are motorists the only ones who must keep a lookout for the pedestrian's safety. For example:

A baseball team was held liable when a home run cleared a low fence and struck a passing pedestrian on the head. And the owner of a building was held liable when a loose brick fell out of the parapet and landed on a passerby.

Still, even a pedestrian may sometimes be found guilty of negligence. A woman shopper, walking home, fell down hard when her heel caught in a large crack in the sidewalk. Claiming compensation from the city, she charged that the sidewalk had been left in an unsafe condition.

But she also admitted that she had seen the crack in time to step over it. To the court, this meant that she had simply misjudged the length of her step. Dismissing the case, the judge said she had no one to blame but herself.

A public service feature of the American Bar Association and the State Bar of Texas. Written by Will Bernard.

## Rites for J. R. Fouts Tuesday in Haskell

Funeral services for J. R. Fouts of Haskell, and father of Mrs. James St. Clair of Morton, were held Tuesday at 2 p.m. in the Haskell First Baptist Church.

Burial was in Haskell Cemetery. Fout, 84, a resident of Haskell County since 1910, died at approximately 11 a.m. Monday in Haskell Hospital following a short illness. He was a retired farmer and rancher.

Survivors include his wife, Edna; two daughters, Mrs. St. Clair and Mrs. Harold Spain of Haskell; seven grandchildren and five great-grandchildren.

## Roe Crone enrolled in Lubbock college

Roe Crone, son of Mr. and Mrs. Murray Crone of 704 S. Main, has enrolled for the spring semester at Lubbock Christian College.

Crone is a 1970 graduate of Morton High School. He is a freshman majoring in Medical Technology.

Lubbock Christian College is a small, private, senior college offering BA and BS degrees in 16 majors.

Phone Your News to 266-5576

**LOOK!**

**Special Closeout**

50 Louvered Window Shudders

**49¢** Each

**ST. ANN'S CATHOLIC CHURCH**  
The Rev. David Greka, Pastor  
8th and Washington Streets

Mass schedule—  
Sunday \_\_\_\_\_ 9:00 and 11:15 a.m.  
Monday \_\_\_\_\_ 7:30 p.m.  
Tuesday \_\_\_\_\_ 7:30 a.m.  
Wednesday \_\_\_\_\_ 7:30 p.m.  
Thursday \_\_\_\_\_ 7:30 a.m.  
Friday (1st of month) \_\_\_\_\_ 7:30 a.m.  
Friday (2nd, 3rd, 4th) \_\_\_\_\_ 7:30 a.m.  
Saturday \_\_\_\_\_ 8:00 a.m.

Sunday—Catechism Class,  
10:00 - 11:00 a.m.

Confessions—Sunday  
Half hour before Mass.

Baptisms \_\_\_\_\_ 12 noon Sunday  
and by appointment.

★ ★ ★

**FIRST BAPTIST MEXICAN MISSION**

Sundays—  
Sunday School \_\_\_\_\_ 10:00 a.m.  
Training Union \_\_\_\_\_ 6:30 p.m.  
Evening Worship \_\_\_\_\_ 7:30 p.m.

Wednesdays—  
Prayer Service \_\_\_\_\_ 7:30 p.m.

★ ★ ★

**NEW TRINITY BAPTIST CHURCH**  
Rev. Willie Johnson  
3rd and Jackson

Sundays—  
Sunday School \_\_\_\_\_ 9:45 a.m.  
Morning Worship Second  
and Fourth Sundays \_\_\_\_\_ 11:00 a.m.  
H.M.S. \_\_\_\_\_ 4:00 p.m.

Wednesdays—  
Prayer Service \_\_\_\_\_ 7:00 p.m.

**CHURCH OF CHRIST**  
F. J. Collins, Preacher  
S.W. 2nd and Taylor

Sundays—  
Bible Class \_\_\_\_\_ 10:00 a.m.  
Worship \_\_\_\_\_ 10:45 a.m.  
Evening Worship \_\_\_\_\_ 7:00 p.m.

Wednesdays—  
Midweek Bible Class \_\_\_\_\_ 8:00 p.m.

★ ★ ★

**FIRST METHODIST CHURCH**  
Rex Mauldin, Minister  
411 West Taylor

Sundays—  
Church School Session \_\_\_\_\_ 9:45 a.m.  
Morning Worship Service \_\_\_\_\_ 10:55 a.m.  
Evening Fellowship Program \_\_\_\_\_ 5:00 p.m.  
Evening Worship \_\_\_\_\_ 6:00 p.m.

Second and Fourth Monday  
Wesleyan Service Guild \_\_\_\_\_ 7:30 p.m.

Tuesdays—  
Women's Society of Christian  
Service \_\_\_\_\_ 9:30 a.m.

Each Second Saturday,  
Methodist Men's Breakfast \_\_\_\_\_ 7:00 a.m.



**ASSEMBLY OF GOD CHURCH**  
G. A. Van Hoose  
Jefferson and Third

Sundays—  
Sunday School \_\_\_\_\_ 9:45 a.m.  
Morning Worship \_\_\_\_\_ 11:00 a.m.  
Evening Evangelistic Service \_\_\_\_\_ 7:00 p.m.

Wednesdays—  
Night Prayer Meeting and  
Christ's Ambassadors  
Convene Together \_\_\_\_\_ 7:30 p.m.

Thursdays—  
Every 1st and 3rd, Women's  
Missionary Council \_\_\_\_\_ 2:30 p.m.  
Every 2nd and 4th, Girls'  
Missionette Club \_\_\_\_\_ 4:30 p.m.

★ ★ ★

**FIRST MISSIONARY BAPTIST CHURCH**  
Rev. Merle Moore, Pastor  
Main and Taylor

Sunday School \_\_\_\_\_ 9:45 a.m.  
Morning Worship \_\_\_\_\_ 10:45 a.m.  
Training Service \_\_\_\_\_ 7:00 p.m.  
Evening Worship \_\_\_\_\_ 7:45 p.m.

★ ★ ★

**WMA Circles**

Monday—  
Night Circle \_\_\_\_\_ 7:30 p.m.

Tuesday—  
Mary Martha \_\_\_\_\_ 2:30 p.m.  
G.M.A. \_\_\_\_\_ 4:00 p.m.

Wednesday—  
Midweek Service \_\_\_\_\_ 7:30 p.m.  
Edna Bullard \_\_\_\_\_ 9:30 a.m.

**FIRST BAPTIST CHURCH**  
Paul McClung, Pastor  
202 S. E. First

Sundays—  
Sunday School \_\_\_\_\_ 9:45 a.m.  
Morning Worship \_\_\_\_\_ 10:55 a.m.  
Morning Service KRAN \_\_\_\_\_ 11:00 a.m.  
Training Union \_\_\_\_\_ 6:00 p.m.  
Evening Worship \_\_\_\_\_ 7:00 p.m.

Tuesdays—  
Heleen Nixon W.N.U. \_\_\_\_\_ 9:30 a.m.

Wednesdays—  
Graded Choirs \_\_\_\_\_ 7:30 p.m.  
Prayer Service \_\_\_\_\_ 7:30 p.m.  
Church Choir Rehearsal \_\_\_\_\_ 8:30 p.m.

★ ★ ★

**SPANISH ASSEMBLY OF GOD CHURCH**  
Gilbert Gonzales  
N. E. Fifth and Wilson

Sundays—  
Sunday School \_\_\_\_\_ 10:00 a.m.  
Morning Worship \_\_\_\_\_ 11:00 a.m.  
Evening Evangelistic Service \_\_\_\_\_ 7:30 p.m.

Tuesdays—  
Evening Bible Study \_\_\_\_\_ 8:00 p.m.

Thursdays—  
Evening Prayer Meeting \_\_\_\_\_ 8:00 p.m.

★ ★ ★

**EAST SIDE CHURCH OF CHRIST**  
Russell Dameron, Minister  
704 East Taylor

Sundays—  
Bible Study \_\_\_\_\_ 10:00 a.m.  
Worship \_\_\_\_\_ 10:45 a.m.  
Worship \_\_\_\_\_ 6:30 p.m.

Tuesdays—  
Ladies' Bible Class \_\_\_\_\_ 4:15 p.m.

Wednesdays—  
Midweek Service \_\_\_\_\_ 7:30 p.m.

**This Feature Is Published With The Hope of Getting More People To Church By The Undersigned City Business and Professional People:**

Merritt Gas Company  
Red Horse Service Station  
Mobil Products — 266-5108

Compliments of  
Carl Griffith Gin and G & C Gin

Luper Tire and Supply  
108 E. Washington — 266-5330

Doss Thriftway  
400 S. Main — 266-5375

Burleson Paint & Supply  
Northside Square — 266-5888

Bedwell Implement  
219 E. Jefferson — 266-5306

St. Clair Department Store  
115 N. W. 1st — Phone 266-5223

Truett's Food Store  
Earl Stowe, Owner  
210 South Main

First State Bank  
107 W. Taylor — 266-5511

Morton Tribune  
Printers — Publishers

# Tribe pass 3-AA second half milestone, tip 'winds 68-57'

Morton's basketball express crossed another big bridge Friday night by downing suborn Floydada Whirlwinds, 68-57, the second time this season.

The win was the second in second round for the Tribe and their 24th of the Floydada dropped to 0-2 in second round of 3-AA play.

The Indians looked impressive as they won their ninth win in a row. Paced by strong second half attack led by Pritchett and Terry Harvey, the quintet clipped in 45 per cent from the field and staved off a 24-point performance by the Whirlwind standout, Char Jackson. Stan Coffman hit 10 for the Tribe to also score in double figures.

The Tribe led 15-14 at the end of the first period, but jumped out in front, 31-23, at the second eight minutes as the defense tightened. The Indians won without committing a foul for the

first twelve minutes of the game.

The Indian lead was stretched to 19 during the third period as Harvey drove for several layups to score ten points following the halftime intermission. But the minute rest at the quarter mark seemed to put new life in the Whirlwinds, for following Elton Patton's basket to open the fourth, the visitors began a torrid scoring pace that cut the Tribe's lead from 55-36 to 55-46 in less than a minute.

But the Indians did not lose their poise and quickly scored ten points on baskets by Bryant Lewis and George Pritchett. Pritchett hit ten in a row in the final five minutes of play. M. C. Collins' bucket with a minute left closed out Morton scoring.

Morton defeated Floydada, 63-59, in the previous game, a contest that saw the Tribe roar from behind to pull out the victory.

## Taxpayers Ask IRS

This column of questions and answers on federal tax matters is provided by the local office of the U.S. Internal Revenue Service and is published as a public service to taxpayers. The column answers questions most frequently asked by taxpayers.

**Q) This was the first year I earned any money. How do I get my tax forms? Must I go to the IRS for them?**

**A)** If you did not file a return for 1969, then you can pick up tax forms and instructions at any IRS office, bank, or post office.

Tax forms are sent to every taxpayer who filed a return the previous year. To avoid sending taxpayers more forms than they may need, the IRS may send a taxpayer one of three different tax packages.

Most taxpayers will receive the basic package, which contains copies of the Form 1040 and the schedules used to itemize deductions and report income from dividends and interest.

Taxpayers who had retirement income, capital gains, or income from certain other sources the previous year will receive a tax package containing the forms for these items, in addition to those in the basic package. Farmers and businessmen will receive a third type of package, which contains the forms in the first two packages plus those needed for their particular situation.

Forms will be mailed late in December and taxpayers should have them by the first week in January.

**Q) Are the tax rates on 1970 income any lower than last year's?**

**A)** Several changes will lower taxes for millions of people when they file their 1970 returns.

First, the income tax surcharge is 2 1/2 percent for 1970 compared to 10 percent in 1969. Second, the amount that may be claimed for each exemption is \$625 on 1970 returns, up from \$600 a year ago.

These two changes will reduce taxes on millions of 1970 returns.

In addition, an estimated six million taxpayers will not have to file a return, as they had been required to do in 1969. In this group are part-time workers, students and others with low income.

Single persons under 65 years of age will not have to file returns until their income reaches \$1,700 (\$2,300 if 65 or older). Returns previously had to be filed when income reached \$600. Married persons from the same household entitled to file a joint return do not have to file until their income reaches \$2,300 under the new tax laws (\$2,900 if one spouse is 65 or older, \$3,500 if both are 65 or older).

But anyone who has a refund coming because taxes were withheld will have to file a return to obtain it.

**Q) Is the cost of fixing up my barn deductible?**

**A)** Repair and maintenance to buildings and equipment used in farming are deductible business expenses. However, when expenses of this nature materially add to the value of the property or appreciably extend its life, they must be capitalized.

For example, if you repair the roof of your barn, the expense is deductible. If you replace the roof, the cost must be capitalized.

**Q) My daughter has taken a part-time job for the holidays. Is there a limit on how much she can make without costing me the exemption I claim for her?**

**A)** If your daughter is under 19 at the end of the year or qualifies as a full-time student, the amount of her earnings will not affect the exemption you claim for her. The other dependency tests must continue to be met, however.

**Q) My company is sending me to Europe for a few months starting in January. Does the IRS have any overseas offices where I can get tax help?**

**A)** Yes, there are several overseas offices of the IRS to help U. S. taxpayers abroad. In addition, the IRS sends teams of taxpayer service personnel abroad each year to visit major cities to provide tax help.

Check with your U. S. Embassy or Consulate office for details. You can also obtain tax forms from these offices if you need them.

Keep in mind that taxpayers out of the country April 15 have an automatic extension until June 15 to file their returns. For additional information, send a post card to your District Director and ask for a copy of Publication 54, Tax Guide for U. S. Citizens Abroad.

**Q) Our second child was born in September. Does that mean I get a \$650 exemption for him?**

**A)** No, the amount allowed for personal exemptions on income tax returns for the 1970 tax year is \$625. For withholding purposes, exemptions were \$600 for the first half of 1970 and are \$650 for the second half of the year.

Exemptions are not prorated so you are entitled to the full \$625 no matter when in the year your child was born.

**Q) Can you count groceries given to a church Thanksgiving benefit as a charitable contribution?**

**A)** Yes, food, clothing and other items given to a charitable organization are deductible contributions. Use the fair market value of the items to determine the amount of the deduction.

Note that food or clothing given to an individual is not a charitable contribution under our tax laws. Only when the gift goes to a qualified charitable or other tax exempt group is the contribution a tax deduction.

### Rep. Clayton named to chairmanship of committee on counties

House Speaker Gus F. Mutscher today announced the appointment of State Representative Bill Clayton of Springlake as Chairman of the House Committee on Counties.

The Springlake Representative is one of only five House Members who will serve as both a Chairman and a Vice Chairman of House Standing Committees. The Committee on Banks and Banking will have Clayton as its Vice Chairman. Mutscher said that 8-year veteran member will return to two committees on which he served last session: State Affairs and Conservation and Reclamation. He has also been asked to serve on the Rules Committee.

The 21-member Counties Committee has jurisdiction over all matters relating to Counties, their creation, organization, boundaries, government and finances, and the compensation and duties of their officers.

"The Committee system is the heartbeat of the Legislative process. It is at this level that the citizens of Texas have an opportunity to express themselves concerning legislation," Mutscher said. "This 62nd Legislature will be faced with many difficult challenges and I feel fortunate to have Mr. Clayton in the leadership of these two important House Committees."

Mutscher was recently re-elected unanimously to the Speakership, and he is one of only five Texans to be so honored with a second consecutive term.

Nearly 5.6 million families in the United States are headed by women, or more than 1 family in 10. At least 2 million of these families live in poverty, according to the latest Bureau of Labor Statistics estimates for March 1970.

About five percent of all police officers are women. Almost all are employed by large city police departments where their work frequently involves handling cases dealing with juveniles and women.

## TV 'Asset or Liability' topic for L'Allegro Study Club

"Asset or Liability" was the topic of the program for the L'Allegro Study Club Thursday, January 21. The program dealt with television and was sub-titled "Time to Evaluate Our Time," in keeping with the years theme "What Time Is It?"

Mrs. Tom Rowden and Mrs. J. C. Reynolds were in charge of the program. They passed out television questionnaires to the members. In answer to the question which network do you watch most, nine said channel 11, 2 watched channel 13 most and 1 watched channel 28. Type of program enjoyed most were: three liked weekly variety, 2 weekly situation comedy, 6 enjoyed sports most, 8 preferred news, 4 gave movies as their preference, one indicated that soap operas were her favorite and 4 said they enjoyed news specials most. Other named as favorites were the Today Show and Family Shows. The time of day most watched by the group was from 6 til mid-night. The average number of hours spent in front of the TV was 28 in a weeks time. The highest individual's hours for the week was 48 and the lowest was 6.

Mrs. Reynolds and Mrs. Rowden then led a group discussion of world news on TV and pointed out that usually we do get a slanted picture of the news around the world since the United States is editing what we see. Television and politics were discussed at length and television journalism was also discussed.

In the business meeting following the program it was announced that the first

round of play in the bridge marathon tournament is now underway and will be completed February 6. A new round will begin February 8. Forty couples have entered the marathon. The Box for Big Spring State Hospital is being prepared at Doss Thriftway and members were urged to send a gift item for Valentine to be placed in the box. The Federation Fashions for Fun Contest has been entered by Mrs. Bud Thomas and Mrs. Elwood Harris announced that the club had submitted their entry to the Shell Oil Company's Environmental Responsibility program. Mrs. Reynolds announced that she was contacting local artists to see if they would be willing to put their paintings on display in the school cafeteria.

Mrs. Thomas was hostess for the meeting and served a salad plate to the following members: MesJames E. W. Willingham, Jack Wallace, Rowden, Reynolds, Al Mullinax, James McClure, Harris, Van Greene, Harold Drennan, Truman Doss and H. B. Barker.

## School menu

Monday, February 8 — Macaroni & cheese, pineapple & cabbage salad, buttered green beans, chocolate pudding, hot rolls, milk.

Tuesday, February 9 — Pork sausage, seasoned sweet potatoes, buttered corn, applesauce, wheat rolls, milk.

Wednesday, February 10 — Turkey pot pie, mashed potatoes, cabbage slaw, cranberry salad, cheese rolls, milk.

Thursday, February 11 — Baked meat loaf, buttered June peas, corn salad, brownies, rolls, milk.

Friday, February 12 — Pinto beans, mixed greens, carrots & egg salad, apple sauce cake, cornbread, chocolate milk.

### ANAEROBICUL

FOR

#### Septic Tanks — Lagoons

THE MOST VALUABLE PART OF YOUR BACTERIA IS GONE WHEN YOU HAVE IT PUMPED

This is important! When someone calls at your home with a truck and tells you your tank is almost full, that is correct. It has to be full to be filtering properly, and the most harmful thing you could do would be to have it pumped, for pumping destroys the most valuable part of your bacteria. Pumping doesn't clean your lines or eliminate odors and you pay an enormous price for the harm done.

#### ANAEROBICUL

STARTS Septic Tank and Grease Trap Action  
STOPS Grease Trap and Septic Tank Odors  
CLEANS Clogged Drain Field Lines  
CLEANS Clogged Carbage Grinders

SOLD AT \$3.95 UNDER MONEY-BACK GUARANTEE

YOUR DEALER IS:

**NORTHERN PROPANE GAS**  
Box 993  
Morton, Texas 79746 Ph. 266-5933

### Wrap Your Love In A "Love Bundle"



And put a Love Bug next to her heart. Got a lotta love? Wrap it in an FTA Love Bundle. With a lift out Love Bug corsage to wear on Valentine's Day.

A special bouquet, at a special price

Order it to arrive early.

Delivered almost anywhere in the country.

Send the FTD "Love Bundle" For Valentine's Week or Candy from our Valentine Selection.

## MORTON FLORAL

305 E. Lincoln

266-8816

## The First State Bank of Morton

takes pleasure in announcing that

### DON WORKMAN

of Lubbock has joined our bank as a

## Member of the Board of Directors



A former vice-president and director of this bank, Workman is presently vice-president, Commercial Loan Department, First National Bank, Lubbock.

We are delighted to have Don's managerial skills and banking knowledge back with us. His capabilities as a financial adviser and manager will greatly enhance the services that we offer to our customers.

Workman's diversified education and working experience in the fields of Agricultural and Ranching economics have furnished him a keen insight into the problems faced by the West Texas farmer and rancher today.

We invite our friends and customers to drop into the bank and renew old acquaintances with Don during his frequent business visits in Morton.

### WE NOW HAVE...

**Chevrolet Impalas and Olds 88's and 98's**

**IN STOCK**

With A Big Supply Coming

### WE ALSO HAVE...

**Several 1971 Chevrolet Pickups On Hand**

With Many More On the Way

**See Gwatney-Wells for the Best Buy In A Chevrolet or Oldsmobile**

**Be sure to attend our Grand Opening February 12, 13 & 14! A large variety of makes and models will be on display.**

## Gwatney-Wells Chev.-Olds

113 E. Washington

Phone 266-5532

For **COLDS** take **666**

# STATE Capital NEWS

By VERN SANFORD

AUSTIN, Tex. — Legislators face a week of major decisions.

Before the House are key portions of Gov. Preston Smith's finance plan. House followed the Senate in hurrying to a vote the proposal to lift the \$80 million a year welfare spending lid.

An emergency \$48.4 million deficit spending bill to avert a welfare crisis is perhaps their biggest problem today.

A four-fifth vote of both houses is required to suspend the Texas constitution's "pay as you go" requirement and permit lawmakers to go into the red for the balance of this fiscal year . . . which ends in August.

If legislators decline to take this route, they must pass a tax bill to raise the money by March 1. To place a revenue-raising measure into immediate effect would require passage by a two-thirds majority.

Alternative is reduction in welfare benefits by early spring.

Another matter being moved to an early showdown is Governor Smith's proposal to float a \$450 million state bond issue secured by income from permanent school fund revenue diversion. Both bond

issue and tapping of school land lease money would require constitutional amendments.

Regardless of the House vote on the bond issue, Lt. Gov. Ben Barnes sizes up Senate sentiment toward it as cold.

Mood of both houses appears to favor early passage of code of ethics legislation.

If Governor Smith's finance program doesn't fare better than he anticipates, Barnes says, he will ask House Speaker Gus Mutsaers to join him in urging the Governor to submit some alternatives.

**COURTS SPEAK** — Third Court of Civil Appeals here turned down the plan of the Fredericksburg Community Savings and Loan Association to provide mobile service to Burnet, Bandera, Kimble, Llano and Mason counties via trailer.

Third Court also affirmed the savings and loan commissioner's decision to grant a charter to Matagorda County Savings and Loan Association in Bay City.

An April 7 hearing is set in the Third Court on the Sharpstown Bank of Houston dispute with an insurance company over a performance bond to insure repayment of a loan.

Mustang Island park purchase — wheth-

er State Parks and Wildlife Commission has authority to spend \$4.2 million in state and federal funds for the property — has been the subject of a lengthy hearing in the federal district court at Austin for two weeks.

**NEW CAR INSURANCE PLAN OFFERED** — Auto insurance agents in a hearing before the Insurance Board proposed "a much better insurance package" at reduced cost.

But a spokesman acknowledged no actuarial studies have been made to back up their claim.

While their plan keeps present liability coverage, it also would extend unlimited medical expense benefits to the insured regardless of who is at fault in accidents. It would replace up to 60 per cent of wages lost due to accident injuries to maximum of \$250 a week, and provide death and dismemberment coverage.

Although all of the above (proposed as mandatory coverage in each policy) would increase costs, agents claimed the overall premium would be reduced if \$150 deductible damage coverage was substituted for \$50 and \$100 deductible.

**AG OPINIONS** — A Justice of the Peace is not authorized or required to present the state's case, or undertake representation of the state's interest, in any matter before him, Atty. Gen. Crawford C. Martin has held.

In another recent opinion, Martin concluded that the El Paso county treasurer is duty bound to countersign checks signed by the county auditor when the commissioners court orders money transferred from the general fund to a special bank account for disbursement by check to welfare recipients. However, said Martin, the treasurer may refer checks to

the commissioners court for direction.

Martin obtained a \$1,000 judgement against Proler Steel Corporation of El Paso as the result of an air pollution suit.

**FEDERAL HELP LAUDED** — Word that the Secretary of Interior has announced the availability of more than \$2 million to the State of Texas for fish and wildlife research in 1971 was greeted with enthusiasm by E. A. (Gene) Walker, director of Wildlife Services for the State.

Texas has participated in the Federal-State wildlife program since 1937 and the Sport Fish restoration project since 1950.

"This is the backbone of the work program in Wildlife and Fisheries," said Walker, "and the results of this basic research has provided tremendous increases in hunting and fishing opportunities for the people of this state."

As an example Walker cited the fact that Texas has more deer than any other state; larger bag limits and longer seasons on quail . . . just to mention a few of the benefits made possible by Federal financial assistance.

The Lone Star State will receive \$1,538,500 in wildlife funds and \$653,750 for fish restoration.

Money for wildlife research is derived from the 11 per cent excise tax on sporting arms and ammunition. Funds for fish projects come from a levy of 10 per cent on sport fishing equipment.

Appropriation is made available through the Interior's Bureau of Sport Fisheries and Wildlife. Formula for appropriating hinges on the number of hunting and fishing licenses issued in the State.

Money also can be used for purchase of land and water for wildlife and public use.

**TREASURE DISPLAY URGED** — An interim committee advised the Legislature in a written report to direct permanent display of treasure recovered from ancient Spanish galleons off Padre Island.

Actual ownership still is the subject of a dispute in court. Platoro Inc. of Gary, Ind., which recovered the artifacts, won a decision in the Fifth Circuit Court of Appeals that it had a valid contract with the state for a 50-50 share of the treasure.

House interim committee on housing the treasure concluded it should become the property of the permanent school fund, and transferred around the state in a mobile unit occasionally, so school children can see it in their own communities.

**REGISTRATION EXTENSION VOTED** — A bill to extend voter registration through February sailed through the Senate 27-1 but ran into a delay in the House.

Another Senate bill passed to the House would provide for precinct-by-precinct reporting of statewide election returns to the secretary of state.

Still another would change the name of Pan American College, Edinburg, to Pan American University.

**SHORT SNORTS** — A new Senate bill would require advance permits and strict security and health standards for rock festivals in rural areas where more than 5,000 people are expected to remain 12 hours or longer.

Charles G. Scruggs of Dallas was nominated for the Texas Tech University board of regents.

A Senate study committee recommended a state open housing law.

Bills call for establishment of a University of South Texas at Corpus Christi and a University of Houston branch at

Clear Lake.

Top state leaders will address the third biennial legislative forum on United Community Services here on February 8. Texas is recovering from the credit crunch (tight money) of 1968-70, according to a University of Texas Bureau of Business Research study.

## Hospital notes

Patients admitted to Cochran Memorial Hospital January 26 through February 2 were: Ray Tarlton, Lillian Fort, Kate Garvin, Rodrigo Carrasco, D. H. Tarwick, Sybil Petree, Van Greene, Oren Cox, Roger Posey, Fannie Stokes, Carolyn Jones, Johnny Resendez, Felicia Evans, Mrs. Willie Rae Rozell, Estaline Merrett, Mrs. Mamie Salazar and Jimmie Ruth Wesley.

## Tops club hold weekly meeting

Donelet Chesshir recorded the most weight loss at the meeting of the Lighter Later Tops Club Wednesday, January 27. Marie Adams called the roll and the Tops pledge was repeated. Mrs. Gene Bridges informed the group of the possibility of an exercise clinic being established. Jimmie Ruth Wesley's name was drawn for the weekly prize, however, she was ineligible to win as she was not present. Thought for the day was "Be sure your conscience joins Tops Club too!"

### This Page Sponsored By The Following Indian Supporters

- Texaco Products — Ray Hudson
- Proctor-Walker Insurance Agency
- Morton Insurance Agency
- G & C Gin
- New York Store
- St. Clair's Department Store
- Shop-Rite Shoes
- Wiley's Humble Service
- First State Bank
- Coker's Gulf
- Malt Shop
- Silver's Butane
- Higginbotham-Barlett Co.
- Gwatney-Wells Chevrolet Olds.
- Bailey County Electric Co-op Assoc.
- Morton Packing Co.
- Sanders Fertilizer & Chemical
- Morton Delinting Co.
- Luper Tire & Supply
- Lackey's Grocery
- Great Plains Natural Gas
- Windom Oil & Butane Co.
- Ike's Farm Store
- Reynolds Texaco
- Forrest Lumber Co.
- Rose Auto & Appliance
- Bedwell Implement Co.
- Burleson Paint & Supply
- Strickland Cleaners
- Morton Tribune

# BASKETBALL

## MORTON INDIANS

### 1970-1971 BASKETBALL SCHEDULE

- NOVEMBER 20 — LCHS . . . . . here
- NOVEMBER 23 — Farwell . . . . . there
- NOVEMBER 24 — Plains . . . . . here
- NOVEMBER 30 — Farwell . . . . . here
- DECEMBER 1 — Ralls . . . . . here
- DECEMBER 3-5 — Friona Tournament
- DECEMBER 8 — Lovington . . . . . there
- DECEMBER 11 — Dora . . . . . here
- DECEMBER 15 — Abernathy . . . . . here
- DECEMBER 17-19 — Denver City Tournament
- DECEMBER 22 — LCHS . . . . . there
- DECEMBER 28-30 — Caprock Holiday Tournament
- JANUARY 2 — Open

DISTRICT GAMES

- JANUARY 5 — Floydada . . . . . there
- JANUARY 8 — Olton . . . . . there
- JANUARY 12 — Lockney . . . . . here
- JANUARY 15 — Dimmitt . . . . . there
- JANUARY 19 — Littlefield . . . . . there
- JANUARY 22 — Friona . . . . . here
- JANUARY 26 — Abernathy . . . . . there
- JANUARY 29 — Floydada . . . . . here
- FEBRUARY 2 — Olton . . . . . here
- FEBRUARY 5 — Lockney . . . . . there
- FEBRUARY 9 — Dimmitt . . . . . here
- FEBRUARY 12 — Littlefield . . . . . here
- FEBRUARY 16 — Friona . . . . . there

Results This Week	
Morton 68	Floydada 57
Morton 74	Olton 60

GO,  
BIG  
INDIANS  
+  
YOU  
CAN  
DO IT!



# News from Bula-Enochs area

and Mrs. Duane Clem visited in community Saturday afternoon, and attended Tom Byars and Patsy Smith shower at the Glenn Lowe home. She spent the night with her daughter, Mrs. Blanche Cash of Muleshoe, and Mrs. Dean Waltrip.

L. E. Nichols drove to Lubbock and spent the night with her daughter, Myrielle Nichols, and returned Wednesday.

Enochs Baptist Women met at 9:30 Tuesday with Mrs. Harold Layton as the business meeting. Mrs. Nichols brought the devotional on Professional Women of the Bible. A prayer was given by Mrs. J. O. Dane. Rose Nichols read the minutes and the report and Mrs. Nichols gave all to prayer and dismissed in prayer.

There were 10 present: Mesdames Harold Layton, J. O. Dane, J. W. Layton, J. B. Sandingham, H. B. King, C. R. Seagler, Rose Nichols, J. D. Bayless, W. M. E. Nichols.

D. Bayless celebrated his 66th birthday January 31, at the beginning of song services at the Enochs Baptist Church the song leader Chester Pettree there was a guy having a birthday that wasn't as young as he used to be, would ever one stand and sing Birthday to J. D. Bayless.

Mrs. Kenneth Petree of Lubbock are the parents of a baby daughter, Deneese. She was born Wednesday, 27, in the West Plains Hospital Muleshoe, and weighed 6 pounds and 10 ounces. This is the first child for the Enochs. Her grandparents are Mr. and Mrs. Gordon Fields of Clovis, N.M. and Mrs. Chester Petree of Enochs. This is the first granddaughter for the Enochs.

Mrs. C. L. Davis of Levelland Saturday night and Sunday with her daughter, Mrs. Joe Millsap.

Mrs. Curtis Snitker and children Hart attended church Sunday morning at the Enochs Baptist Church and dinner guests in the home of his

parents, Mr. and Mrs. C. C. Snitker. Chris Rowden of Lubbock celebrated his second birthday Saturday Jan. 30, at the home of his grandparents, Mr. and Mrs. E. N. McCall. He received many gifts and a birthday cake. Mr. and Mrs. Rusty Rowden and Chris spent Saturday and Sunday with her parents. Other guests Sunday were Mr. and Mrs. Robert George and children of Lubbock. Mr. and Mrs. Rowden and Chris attended church at the Enochs Baptist Church Sunday morning.

Kathy Whitner of Three Way spent Thursday night with Ann Blackstone.

Mr. and Mrs. Harvey Blackstone attended the funeral services of Mrs. Charlie Buchanan's father, J. D. Bullard, at 11 a.m. Monday at Anton. Burial was in the Littlefield Cemetery.

Mrs. Edd Autry was able to return home from the Littlefield hospital last Monday where she had been a patient the past 10 days.

Mr. and Mrs. Terry Turner and children of Las Cruces, N.M. spent Saturday night with her parents, Mr. and Mrs. C. R. Seagler.

Mrs. G. R. Newman was a hostess to the World War I Veteran's of this area last Thursday with a dinner at their home. The table was covered with a linen cloth decorated with two flags and a yellow rose to represent the yellow rose of Texas. Mrs. W. R. Adams helped with the serving. The veteran's present were W. R. Adams, W. A. Woods of Morton, J. J. Watts of Morton, R. J. Parkinson of Portales, N.M. and G. R. Newman. The men visited and talked of their experience and played several games of 42 and dominoes. Coffee, cake and ice cream were served to the guests in the afternoon. It is a possibility that they will meet once a month if enough of the World War I veterans are interested. Those that are interested please notify Mrs. G. R. Newman at Enochs.

Miss Deanna Coats of Clovis spent the week-end with her parents, Mr. and Mrs. Kenneth Coats.

Mr. and Mrs. James Pearson and children of Muleshoe were guests in the home of his parents, Mr. and Mrs. Carrell Pearson, Sunday and attended church at the Enochs Baptist Church.

Ann Blackstone spent Friday night with her brother and wife, Mr. and Mrs. Dale Blackstone, at Lubbock. The Blackstones, Ann and Gary Johnson went out to Buffalo Lake Saturday for a picnic.

A bridal shower was given in honor of Patsy Smith, bride-elect of Tom Byars, Saturday Jan. 30, from 2:30-4:00 p.m. at the Glenn Lowe home. Mrs. Nadene Parr registered the guests, Mrs. Karen Keating, sister of the bride-elect, registered the gifts as they were opened by the honoree. The refreshment table was covered with a beige lace cloth with a brown ribbon across the table with the names Tom and Patsy in glitter. The center piece was a spring bouquet of garden flowers. Pink punch, white cake squares, peanuts and mints were served by Mrs. C. P. Price. Guests were: Mesdames Nadene Parr, Cindy and Pat, A. M. McBe, Guy Sanders, Louise McCall, L. E. Nichols, Louise Newton, J. D. Bayless, J. O. Dane, Loyd Warren, Mrs. Henry Hardaway, Jerry and Kelly, Alta Clem, Caren Pruitt, W. A. Hughes, W. C. Cook, W. L. Welch, Wilma Petree, Gladys Lowe and the honoree Patsy Smith. Hostess gift was a 4 piece orange glass canister set. Hostesses were Mrs. Troy Price, Mrs. C. R. Seagler, Mrs. Francis Price, Mrs. Alma Altman, Mrs. Glynn Price, Mrs. Glenn Lowe, Mrs. Mattie Tucker, Paulene McCall, Mrs. G. R. Newman and Mrs. Treva Autry.

An Autograph Party sponsored by the Fifth and Sixth grades of the Bula School honoring Mairon McDaniel on the publication of his second volume of Poetry, "Leveling Off" was held Jan. 28 from 2-4 in the school auditorium. Mr. McDaniel presented Mrs. W. C. Risinger a volume of his book and one to Mrs. W. M. Bryant and one for the Enochs Baptist Church Library.

Four national forests in Texas have a total net acreage of 638,023 and cover part of eleven East Texas counties.



Airman Roger Sandefer

## Sandefer completes Air Force training

Airman Roger A. Sandefer, brother of Walter G. Sandefer of 512 S. W. Second, Morton, has completed basic training at Lackland AFB, Tex. He has been assigned to Lowry AFB, Colo. for training in the missile electronics field. Airman Sandefer is a 1970 graduate of Morton High School.

## Students from Persia speak to study club

Mahmoud Aslani and Mahmoud Amarlou, both South Plains College students from Persia, spoke at the January 21 meeting of the Whiteface Study Club in the High School Homemaking Department.

The students spoke on "Customs of Foreign Lands" and talked about their lives and families in Persia. They answered questions, comparing life and customs in their country as opposed to the United States.

Mrs. Darwood Marshall, hostess, opened the meeting with a prayer and Mrs. Royce Elam, president, presided over the business session.

Doughnuts and coffee were served to Mesdames Dunlap, Fietz, Bills, Lasater, Rankin, Cooper, Smith, Elam, Henson and two guests.

# Freshmen cagers top junior Lobos; streak now 21 straight

Morton's freshmen preserved their undefeated 21-game win streak with a thrilling 45-43 win over Levelland Monday night. The Indians' Tommy Collins scored a tie-breaking basket with one second left to pull the Indian fish out without having to go into overtime. Larry Thompson hit 18 for Morton.

Last Thursday, the frosh downed Brownfield, 46-38, as Mark Fluitt scored 17. Morton's B team also picked up two wins in play last week by stomping Olton and barely eking by Floydada. Now 18-1 for the season and undefeated in ten straight games, the B squad sneaked by a tough Floydada team, 54-53. Morton missed eight field goals and four free throws in the final two minutes of play, but the visiting Whirlwinds then missed three field goal attempts in the last 11 seconds and the Tribe hung on for the win. Ted Thomas scored 18 and Willie Harrison hit 14. Willie B. Holland, versatile Morton junior, was unable to play.

The B team took a 87-53 win over Olton as Thomas hit 18 for the second game in a row. Jimmy Harvey scored 17, and Willie Harrison and William Grant banged in 10 each.

In junior high action, the seventh grade

dropped two games to Brownfield and Levelland. Brownfield pulled out a 48-47 double overtime win Thursday as Kenneth Standmire scored 14 for Morton. L. B. Hall hit 11 as Levelland dropped the seventh grade to a 15-4 mark by a 32-27 margin Monday night.

Morton's eighth grade lost to Brownfield, 29-22, in spite of a 13-point performance by Jimmy Hargis. The eighth grade lost to Levelland's top-rated squad Monday, 43-28. Morton's eighth is now 8-13 for the season.

The seventh and eighth grades host Clovis today at 5 p.m. for a pair of games, and then all three teams will be in action at Littlefield Monday.

## Speech students plan Children's theater presentation Feb. 11

Final preparations are underway this week by the Morton High School Speech Department for its children's theatre presentation, "Jack and the Giant." The one-act play will be presented Thursday February 11, at 9 and 10 a.m. at the county auditorium for area elementary students.

The play, similar in style to the "Cinderella" production of two years ago, features audience participation and a stage-struck cow that will delight young and old alike.

The traditional story of Jack and the Beanstalk forms the basis of the children's play, but new delights are added as clowns and other new characters add excitement to the traditional story.

The play will feature Morton seniors Shelby Race, Sue Winder, Vicki Kennedy, Becky Greene, Susan Reyes, Bob Rutard, Dwight Horton, and the entire speech class. Several hours of work have gone into the creation of stage props and special effects.

A nominal fee will be charged students for seeing the play and the proceeds will be used in speech activities. Tentative plans also call for an evening performance so that parents may bring their children to see the play.

The MHS speech department will soon begin rehearsals for the 1971 contest one-act play, to be presented March 19, in Dimmitt. This year's play will be a delightful comedy, "Yes Means No." Director of the Speech plays is David Murrach, MHS history and speech instructor.

## Three Way news

BY MRS. H. W. GARVIN

Rev. and Mrs. James Gillentine and boys from Lubbock visited her parents, the H. W. Garvins, Saturday evening.

Mr. and Mrs. Rodney Wheeler, from Amarillo, spent Sunday visiting the Johnnie Wheelers.

Mr. and Mrs. Billy Sokoro, of Lubbock, spent the week-end with her parents, the Rayford Mastens.

Three Way High School basketball teams played Bula on the home court Friday night with the boys winning and the girls losing. The boys and girls both won their games with Bledsoe.

Mrs. P. L. Fort was a patient in Cochran Memorial hospital last week. She had fallen and broken her arm.

Mrs. H. W. Garvin was a medical patient in Cochran Memorial Hospital last week.

Allen Davis underwent knee surgery in Methodist Hospital in Lubbock Monday.

Mr. and Mrs. Jimmy Emerson from Wilcox, Ariz. are visiting her parents, the Fred Kelleys and his sisters, Mrs. Adolph Wittner and Mrs. Ed Neutzler. Mrs. George Tyson was in Lubbock Friday on business.

T. D. Davis was in Stamford last week on business.

E. T. Batteas spent the week-end in Parpa visiting his brother who is ill.

Mrs. Dutch Powell and Lanita were in Lubbock Friday on business.

## Bookmobile schedule

The High Plains Bookmobile will be in your area on the following dates.

Wednesday February 10. Circleback — 8:45-9:45; Bula No. 1 — 10:15-11:15; Bula No. 2 — 12:00-1:00.

Tuesday February 9, Morton — 9:30-11:45.

# GRAND OPENING

## BEN FRANKLIN FABRIC CENTER

One Group TRIMS

1/2 Price

100% Cotton and Cotton Blends

59¢ Yard

Large Selection Zippers & Thread

3¢ Each

Dacron & Cotton Blends

98¢ Yard

100% POLYESTER

DOUBLE KNIT 58"-60" WIDE

\$4.98 A Yard

Washable. All first quality. Large selection of weaves and colors for all seasons. Jacquard and Stripes

WASHABLE 100% POLYESTER DOUBLE KNIT 58"-60" WIDE

Full bolts. All first quality. Large selection of weaves and colors for all seasons.

\$3.88 A Yard

## MEN NEEDED In this area to train as LIVESTOCK BUYERS

LEARN TO BUY CATTLE, HOGS AND SHEEP at sale barns, feed lots and ranches. We prefer to train men 21 to 55 with livestock experience. For local interview, write age, phone, address and background to: NATIONAL MEAT PACKERS TRAINING 3435 Broadway Dept. B-119 Kansas City, Mo. 64111

## COW POKES

By Ace Reid



"Good fence boys, except I said to fence the south end of the north pasture, not the north end of the south pasture."

To help you get things done will be our main goal this entire year. We await the opportunity to be of service to you. Investigate all the many services we have to offer. Strive to make the First State Bank the one in 1971!

## First State Bank

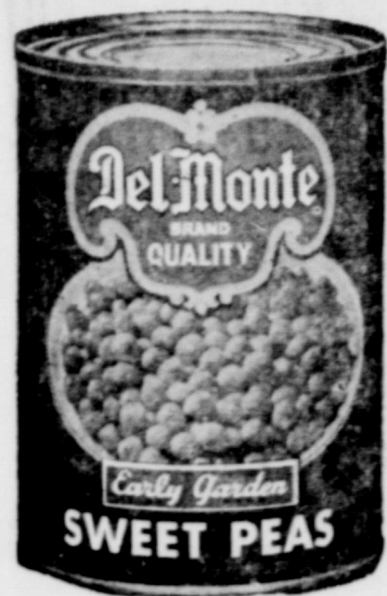
MEMBER F.D.I.C.

You Want Proof that Our Prices Are Lower?

**HERE IT IS!**

Specials Good Friday, February 5 through Thursday, February 11

Double Gold Bond Stamps Wednesday With Purchase of \$2.50 or More



303 CAN

**3 FOR 69¢**

DEL MONTE  
**SPINACH**  
NO. 303 CAN  
**5 FOR 1<sup>00</sup>**

Extra Fluffy  
**Comet Rice**  
28-oz. Box  
**49¢**

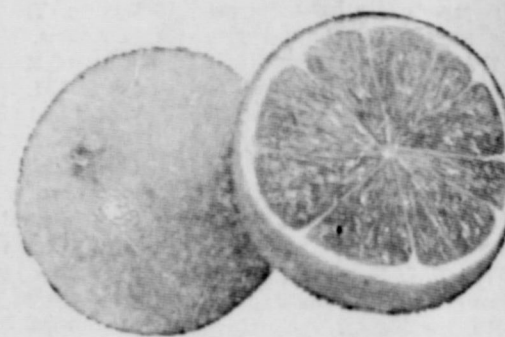
KRAFT VANILLA  
**CARMELS**  
14-OZ. BAG  
**39¢**

Shurfine  
**Apple Butter**  
28-oz. Jar  
**37¢**



**Pineapples** Fresh From Hawaii - LB. .... **19¢**

**GREEN ONIONS**  
Bunch **10¢**



California Navel  
**ORANGES** LB. **19¢**

Lucky Leaf  
**Cherry Pie Mix**  
NO. 2 CAN  
**49¢**

Lucky Leaf  
**Peach Pie Mix**  
NO. 2 CAN  
**49¢**

**BAKE-RITE**  
**SHORTENING**  
3-LB. CAN  
**69¢**



KRAFT MACARONI  
**DINNER**  
7 1/2-oz. Box  
**3 FOR 69¢**

Kraft Jet  
**Marshmallows**  
10-oz. Bag  
**3 FOR 69¢**

SHURFINE  
**TOMATO SOUP**  
NO. 1 CAN  
**10¢**

Kraft  
**1,000 ISLAND DRESSING**  
16-oz. Bottle  
**59¢**

Bell, Borden's or Cloverlake  
**BUTTERMILK**  
1/2 Gallon  
**49¢**

FROZEN FOODS

**ORANGE JUICE** Shurfine 12-oz. Can ..... **3 FOR 1<sup>00</sup>**

Morton  
**DINNERS** Each ..... **39¢**



Fried Chicken, Fish & Chip, Meat Loaf, Salisbury Steak, Turkey

**Hot Links** Oscar Mayer LB. .... **65¢**

**VELVEETA** CHEESE SPREAD 2-Lb. Box ..... **1<sup>19</sup>**

**SOFT PARKAY** 1-Lb. Carton ..... **2 FOR 89¢**

**Beef Ribs** - **4 LBS 1<sup>00</sup>**

Shurfine Whole  
**Irish Potatoes**  
No. 303 Can

**3 FOR 49¢**

DOSS THRIFTWAY  
THIS COUPON IS WORTH 10¢  
When you buy a ONE pound Can of Maryland Club Coffee  
79¢ with coupon  
Cash value 1/20¢. Limit one per customer  
Expires 3/6/71

**You're Doing GREAT, INDIANS!**  
**We're Backing You 100%**

AN EXTRA BONUS  
SHURFRESH COUPONS  
SAVE TENDERCRUST COUPONS FOR VALUABLE PRIZES ABSOLUTELY FREE

Save TenderCrust COUPONS FOR VALUABLE PRIZES ABSOLUTELY FREE



**DOSS THRIFTWAY** We Reserve The Right To Limit Quantities

**SUPER MARKET**  
400 SO. MAIN - MORTON, TEXAS