

Win free money! Shop for fantastic bargains during Morton 'Crazy Day'

"Helping To Develop Industry

and Agriculture in West Texas"

Morton Tribune

Volume 31 — Number 37

Morton, Texas, Thursday, June 24, 1971

Prairieland begins operation

The Prairieland Packing Company is now in business.

The new meat packing facility, located approximately six miles southeast of Morton near the Levelland highway, began operation last Thursday as the first beef cattle were processed on a trial run designed to test both personnel and equipment and work out any "bugs" that would obstruct efficient operation. A fairly large audience of company officials and local businessmen watched as the "kinks" were worked out of the ultra-modern equipment and the many packing plant employees familiarized themselves with the processing system.

Animals for the trial run were drawn from the nearby Owen Brothers Custom Feeding Company lots. An unlikely coincidence occurred when the first calf to be slaughtered, a Hereford heifer picked at random from the feed lot, turned out to be one owned by Mr. Ed Kaestner, president of the Cincinnati Livestock Corporation, who has an interest in the new plant. Kaestner is presently feeding some 4,000 cattle on the High Plains, approximately 2,000 of which are in the Owen Brothers lots.

Joe Rice, formerly manager of the Morton By-Products Company, was recently named general manager of the plant, and Joe Flores, of Levelland, is the floor supervisor. Gus Juengling, president of Prairieland Packing Company, was on hand to observe the operation during the first run-through. Dr. Robert Allison, DVM, was in charge of meat and sanitary inspection during the run-through.

The history of the formation of Prairieland and the decision to locate its plant here goes back approximately two years, when the discussion stage began between officials of the Morton Industrial Foundation and meat packing companies and food wholesalers located in Cincinnati, Ohio. Official announcement that the plant would locate here came in late July, 1970 and ground-breaking ceremonies for the new plant took place October 2, 1970.

The original date for the plant to be in operation was February, 1971, but a series of delays in receiving supplies and

See PACKING CO., Page 3a



AFTER LIGHTNING STRUCK . . .

WORKMEN READY AN OIL Storage Tank, that was struck by lightning Saturday night near Whiteface, for transport to a disposal area. The photo was taken Monday afternoon after another similar tank had already been disposed of. The lightning struck the tanks, which contained an estimated 375 barrels of oil, at 9 p.m. and it took firemen from White-

face and Levelland until 2 a.m. to douse the blaze. As the tanks blew up, burning oil ran down the roads, spreading the fire over a wide area. The loss was estimated by Griff Pittman, Mobil Oil production foreman at Whiteface, to be \$3,500. The tanks had been active since 1945.

Board sets semi-closed campus

A semi-closed campus policy will go into effect with the beginning of the 1971-72 school year in Morton.

The decision to adopt this system was made by unanimous vote of the members of the board of education at the regular

meeting Monday night.

As explained to the Tribune by Superintendent Bob E. Travis and by board president Don Lynskey, the system will be only semi-closed due to the fact that students will be allowed to leave the campus during the lunch break if they have the written permission of their parents filed with their respective school officials.

In the unanimously-passed motion, the board cut the school lunch period to 30 minutes, with staggered periods for junior high and high school students in order to more properly accommodate them in the lunch room.

Supt. Travis explained that students desiring to leave the campus during the lunch hour may file written permission from their parents with their respective principals and the one permit will be valid for the entire year, or until the parent recinds it.

In other business, the board approved the payment of bills for the month of June in the amount of \$65,866.47.

Supt. Travis was authorized by the board to utilize labor from the Neighborhood Youth Corporation for the purpose of getting the school grounds and buildings in good condition for the coming school year.

Approval by the state board of education for an additional auto mechanics teacher and one more agricultural teacher was announced to the board by Travis, who stated that he will begin efforts immediately for their recruitment.

Changing the date of the next meeting from Monday, July 19 to Thursday, July 22, completed the meeting's agenda.

Calhoun obseves 30th year with Skelly Oil

James G. Calhoun, pumper in Skelly Oil Company's exploration and production department here, observed his 30th anniversary with the firm June 23, and was to be presented a diamond-studded pin as a service award.

Calhoun joined Skelly in 1941 and worked in Illinois, Colorado and Nebraska before being transferred here in 1969.

He attended Varnum (Okla.) High School and is a member of the Masonic Lodge and the Baptist Church. He enjoys hunting and fishing in his leisure.

Calhoun and his wife, Belle, live at 802 S. W. 4th St. here. They have two sons, J. D. Calhoun and Arthur Ray Calhoun.

Know the drug threat

(Third in a Series)

Today's Subject: Some Other Drugs Most Commonly Abused

Today we will go over some of the drugs most commonly used and abused so we will all be familiar with terms and types for later discussion.

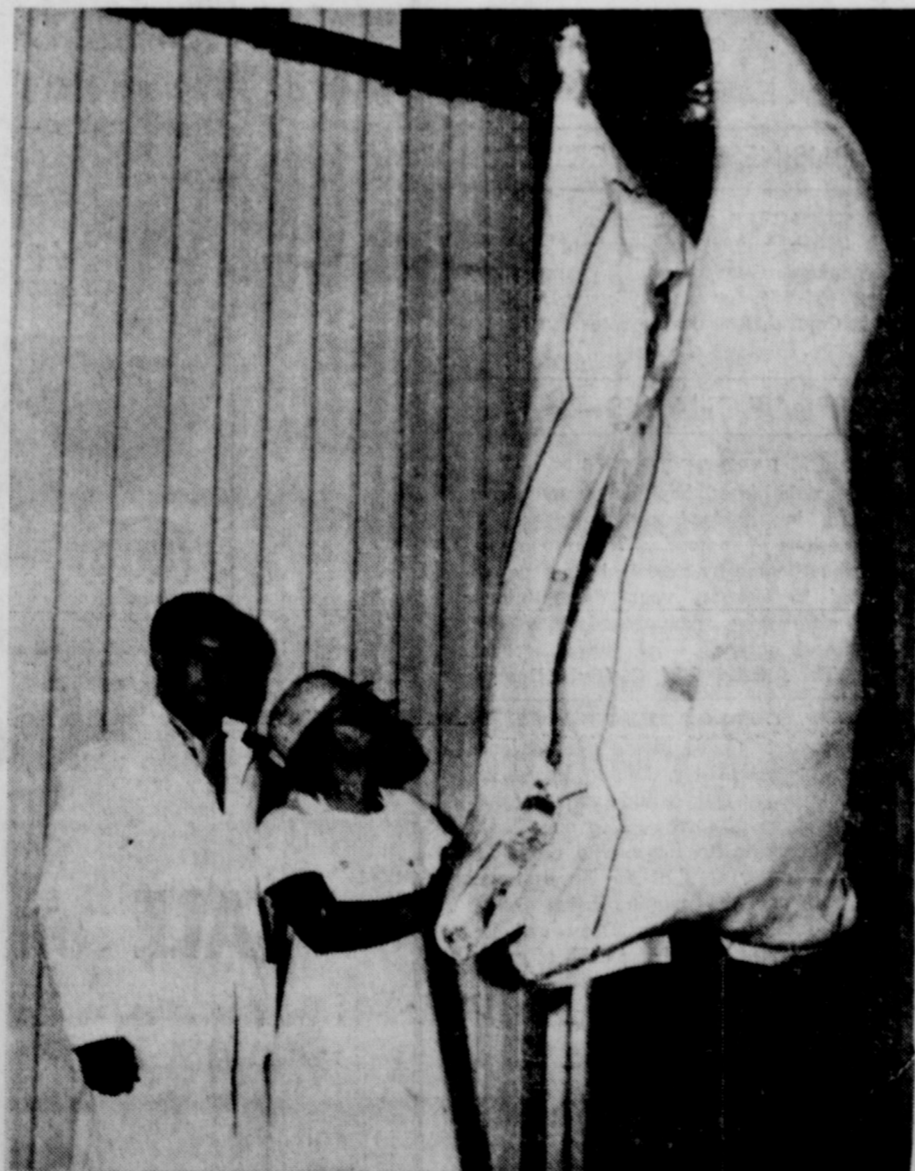
ORAL AMPHETAMINES: These are stimulants. On the street they are referred to as "Bennies," "Whites" (round and white). Also in this category are "Dexies" (green and white capsules) and "Hearts" (green, heart-shaped tablets). These are what are commonly called "pep pills" or diet pills. Taken orally, Amphetamines stimulate the central nervous system, the brain and spinal column. Users, under the influence of these drugs, will usually be argumentative, overactive, unusually talkative, generally unable to eat much, unable to sleep, and show a mark-

ed release of inhibitions. (It is not unusual for one under the influence of these drugs to suddenly remove his clothing for no reason.)

Users usually demonstrate mental confusion, unpredictable and irrational behavior, even violent behavior may result. Use is biologically harmful too because it destroys body reserves and makes the user extremely vulnerable to disease. These are illegally available on the "street market" (about \$-10 for \$1) yet many youngsters obtain oral Amphetamines from the home medicine chest (parents' pep or diet pills).

Note: Most "street market" (black market) Amphetamines are made by illegal laboratories, often by experimenting amateurs, using imbalanced chemicals in unsterile surroundings.

INJECTED METHAMPHETAMINES
See DRUG THREAT, Page 3a



FINISHED PRODUCT . . .

APPROXIMATELY 40 MINUTES after entering the killing pen as a lively young calf, this animal has been processed into two sides of high quality beef. This being the first animal through, the time for processing was exceptionally long as plant personnel were learning their new procedures and working the "bugs" out of the equipment. As crews become more proficient and the equipment operates smoothly, the time for processing a single animal will drop drastically.

BEST OF THE MANY . . .

THE FIRST CALF to enter the processing line as the Prairieland Packing Company began operation of its new plant southeast of Morton casts a suspicious eye upon what awaits her as she enters the killing chute. Her suspicions were well founded as only a few short seconds later she was converted to a beef carcass making its way around the ultra modern processing circuit. Forty minutes later the Hereford heifer, owned by Ed Kaestner, president of Cincinnati Livestock Corporation, was hanging in the chill room as two finished sides of beef.

Top money drawings, new features spark 'Crazy Day'

The highest free money drawing to date at a flea market and swap shop offers a large variety of super bargains. The two added features which should make Saturday's Jamboree-Crazy Day the largest yet held here.

The drawings, which will again take place at 2 p.m., 3 p.m. and 4 p.m., will offer \$100, \$25 and \$10. There is no set price as to the amount drawn for at any of those times, but is determined by a preliminary drawing each hour to what amount will be drawn for.

The \$100 drawing will be double the regular first prize of \$50 because it was not claimed in the May drawing and the same is true for the regular third prize of \$5.

The flea market and swap shop will be held in the former Ideal Gift Shop building on the northwest corner of the square from 8 a.m. to 5 p.m. It will take place of the auction that was scheduled during the May event. Anyone interested and who has something to sell or swap is invited to participate. Bring a little or a lot, is the philosophy of the event.

Following the day's activities, another big country and western jamboree will be reeled off in the county activities building with a "really big" cast of entertainers scheduled to perform. Hours for the jamboree have been changed from 8-11 p.m. to 9-12 p.m.

Morton woman's son killed in accident; bodies held in Paris

Rayne Arch Hull, of Sherman and Mrs. M. H. Wiseley of Morton, accidentally killed Thursday, June 23, while working on power line near

Hull was dead on arrival at a Sherman hospital at 4:10 p.m. He came in contact with high voltage while working with a crew of four other men and was coming to a job to provide lights at the Little League softball field in Howe. He had been employed by the Texas Power and Light Company of Sherman as a lineman for the past three years.

Services were held Saturday, June 5, at 11 a.m. in the Leverett & Steele Funeral Home Chapel in Paris, Jessie Brookshire, pastor of Christ minister of Texarkana, officiated. Interment was at Hopewell cemetery.

Hull was a 1962 graduate of Morton High School. He and the former Paula Mack of Whiteface were married in 1960. The couple have one son, Timothy. Other survivors are two half-brothers, Ray Wiseley and Jerry Don Wiseley of Morton.

Bearers were: V. B. Shaw, Bart Tommy Roland all of Sherman, Ray Mullinax, Bobby Whiteney and Gene Whitney all of Morton.

Post office will fete new service with open house

The inauguration of the new United States Postal Service on July 1, will be celebrated in Washington, D. C., and in every post office across the country.

Postmaster Murry Crone has announced that all members of the Morton community are invited to visit their local post office on July 1 and enjoy the hospitality of the men and women who comprise the new U. S. Postal Service.

Dedication ceremonies in Washington will be hosted by Postmaster General Blount. Honored guests at the dedication will include members of Congress, Former Postmasters General, the Board of Governors of the new Postal Service and

See POST OFFICE, Page 3a

TUC service slated here each Wednesday

Texas Unemployment Commission manager in Lubbock, Bert P. Darden, has announced that Morton will be served on Wednesday of each week by a Commission Representative from the Levelland office.

D. L. Bandy, Manager of the Levelland office, will be in the County Court Room, Cochran County Courthouse, all day each Wednesday. Bandy will register applicants for employment, and will take orders for workers from employers. He will serve both agricultural and non-agricultural employers and applicants. This will be the first such service on an itinerant basis tried in the Lubbock area.

Employers seeking workers, and applicants seeking work, are requested to visit with Bandy each Wednesday while he is in Morton. In explaining the one day a week employment service to Morton

See UNEMPLOYMENT, Page 3a

Tribune will not be published next week

The Morton Tribune will not be published on Thursday, July 1, in order to afford staff the opportunity for a long-overdue (we feel) vacation.

The next publishing date will be Thursday, July 8. The Tribune office and office store will be open at its regular hours of 8 a.m. to 5 p.m. Monday, Tuesday, Thursday and Friday. It will be closed as usual on Wednesday afternoon.

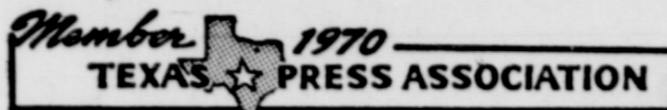
We will accept all types of material for publication during this period. We sincerely thank all our subscribers and advertisers for their patience during this

Morton Tribune

OFFICIAL NEWSPAPER OF COCHRAN COUNTY
"TEXAS' LAST FRONTIER"

Published Every Thursday Morning at 106 N. Main St., Morton, Texas 79346
BILL SAYERS, Editor and Publisher

Entered as second class matter at the post office in Morton, Texas, under the Act of Congress of March 8, 1879.



Subscription rates — In Cochran County and adjoining counties: Per year, \$3.50; six months, \$2.00; three months, \$1.25. Outside Cochran County: Per year, \$4.50; six months, \$2.50; three months, \$1.75. To insure proper service, subscribers will please notify us promptly of change of address

Business and Professional Directory

AUTOMOBILE DEALERS—

GWATNEY-WELLS
Chevrolet-Oldsmobile Co.
Your Home-Town Dealer
Serving You With Full Line of Cars and Trucks

COURTESY MOTOR CO.

First In Quality
New and Used Cars and Pick-ups.
CAMPSITE CAMPERS
Covers and Trailers
901 Ave. H. Phone 894-5148
Levelland 894-4705

DIRT WORK—

C. M. MOBLEY

Deep Breaking
Land Leveling
Grubbing & Dozing
P. O. Box 992
Phone 592-3090
Denver City, Texas

ROYAL BERKGREN

208 W. Lincoln
Morton, Texas
Earth Moving
Motor Grader — Backhoe Work
Parallel Terraces—Diversions—Waterways
Phone 266-5144

CHEMICALS—

SANDERS FERTILIZER & CHEMICALS

Fertilizers and
Farm Chemicals
Golden Uran

JEWELRY—

Atchison Jewelry

Levelland
Phone 894-3450 617 Ave. G
WATCH REPAIR
DIAMOND SETTING
CUSTOM MOUNTINGS

ANIMAL REMOVAL —

Morton Bi-Products, Inc.

Dead Cattle Removed
Day or Night
Phone 266-8621
Nights 266-5052

SERVICE STATION—

Charley Ellis Gulf

310 E. Washington Morton
GULF PRODUCTS
Pickup and Delivery
SERVICE CALLS
Phone 266-8813, Nights 266-5145

REFRIGERATION—

Morton Air Conditioning
Refrigeration & Plumbing
(General Plumbing)

—Richard DeVoge
—Phone 266-8814
—306 E. Washington
—Morton, Texas, 79346

UPHOLSTERY

Dooley's Upholstery & Carpet
701 Houston — Levelland
Everything for the home
in Upholstery & Carpet
PHONE 894-3321

ELECTRONICS

See Us For

RCA Electronics
Television, Radios, Etc.
SALES AND SERVICE

Rose Auto & Appliance
Phone 266-5959 Morton

APPLIANCES

Whirlpool Appliances

Automatic Washers, Dryers,
Refrigerators, Dishwashers
SALES AND SERVICE

Rose Auto & Appliance
Phone 266-5959 Morton

PUMPS—

Domestic Irrigation Well Work
High Speed Bailing
Electric Perforating

MAPLE PUMP & MACHINE COMPANY
J. D. Strickland 927-3123
Maple, Texas

Irrigation Pump Service—

We sell LOTCO irrigation pumps and all sizes SUBMERSIBLE house well and irrigation pumps.
16 years experience

C. G. Richards
513 NW 1st Street 266-8834
Morton

PIPE SALES —

We sell Gifford Hill PVC Pipe

Repairs and installation on barb wire fencing, stock watering tanks, plastic pipe, gas lines, cement pipe, water lines and ditching work.

Jesse Simr Whiteface, Texas
P.O. Box 311
Phone 3171

PEST CONTROL —

AAA PEST CONTROL
112 Ave. L Phone 894-7284
Levelland, Texas

RATS, ROACHES, FLEAS
TREES and LAWNS

To Report A Fire
266-5111

For An Ambulance
266-5611

Sheriff's Office
266-5700

City Police
266-5966

Classifieds

CLASSIFIED RATES

5c per word first insertion
4c per word thereafter
75c Minimum

1--FOR SALE

FOR SALE: 9 by 9 foot tent, like new, \$25. Call 266-8681, or see Cecil Barker. 1-24-c

TO PARTY with good credit, late model Singer sewing machine. Winds bobbin through the needle. Will blind hem, zig-zag, stretch stitch, etc. Assume 4 payments at \$7.50 or will discount for cash. Write Credit Department, 1116 19th Street, Lubbock, Texas. tfn-181c

WELL KEPT carpets show the results of Blue Lustre spot cleaning. Rent electric shampooer \$1. Taylor and Son Furniture. 1-24-c

FOR SALE: Used and new Trimatic, Pierce side rolls, some used pipe, Wagner end rolls, OLSON PILOT systems. Call 927-3775. tfn-21-c

FOR SALE: Good used aluminum pipe in sizes from 4" through 8". Also a good assortment of all kinds of used fittings—New systems of all types. We will buy or trade for your used aluminum pipe. State Line Irrigation, Littlefield and Muleshoe. tfn-34-c

FOR SALE: 5c Peanut and candy vending machine business in Morton. Man or woman. Collecting and restocking only. Good income. Requires car, 6 to 8 hours per week and \$938.00 cash investment. Write Texas Kandy Company, 1135 Basse Rr., San Antonio, Texas 78212. Include phone number. 4-23-ts-p

ATTRACTIVE, inexpensive desk nameplates. See samples at Morton Tribune.

FOR SALE: Aluminum pipe, 28 joints, 7 inch main line Pierce Coupler, 50 joints of sprinkler pipe, used very little, Pierce Coupler, T's and valves, 5 joints of 5 inch main line with risers also Pierce. Call 946-2348. tfn-14-c

FOR SALE: 2 bedroom house, plumbed for washer and dryer, good condition. 215 SW 7th. Call 266-5492. 3-24-p

HOUSE FOR SALE: 3 bedrooms, 1/2 acre, barn, corner lots. Will take trailer house in trade. Terms if desired. Call Barker Real Estate, 109 S. Main, phone 266-8681. tfn-22-c

FOR SALE: Antique clocks and photographs, all restored and in perfect working condition. Selection of old books, bottles, glassware, watches and art work. C. E. Buchanan, Rt. 1, Morton or call 525-4122. tfn-5-c

FOR SALE: 3 bedroom brick, 1 1/2 baths, carpet, den-dining combination, central heat and air. Equity 801 E. Hayes, call 266-8641. tfn-21-c

FOR SALE: 3-bedroom brick, living room, den, bath and 1/2 kitchen with bar, carpet and double garage. Call 266-8677 or 266-5411. tfn-13-c

2--FOR RENT

FOR RENT: Two bedroom furnished house, 705 W. Grant. Call G. G. Nesbitt, 266-5134. tfn-24-c

3--BUSINESS SERVICES

COCKROACHES, rats, mice, termites, gophers, and other household pest exterminated. Guaranteed. 15 years experience. 894-3824, Levelland, Texas. Davidson Pest Control. Reasonable rates. rfn-31-c

CARD OF THANKS —

CARD OF THANKS

We would like to thank our many friends for the flowers, food, cards, prayers and expressions of sympathy. To those of you who have come by or called since we returned to Morton, your thoughtfulness will always be remembered. May God bless each of you.

The family of W. C. (Dub) Dawson

CARD OF THANKS

We want to thank all the many friends of our beloved sister, Lucille Rossettini, for their tokens of love and sympathy during this time of sorrow. Also our thanks and appreciation to those who cared for her during her stay at the hospital and the staff at the nursing home. Many thanks especially to Dr. Dean and Dr. Snead. May the Lord bless each of you.

George Baker
Clara Franks
Alma Drachenberg
Mae Wood
Pauline Shaw
Ruth Goldston

NOTICE —

THE STATE OF TEXAS

To any Sheriff or any Constable within the State of Texas — GREETING:
You are hereby commanded to cause to be published once each week for four

consecutive weeks, the first publication to be at least twenty-eight days before the return day thereof, in a newspaper printed in COCHRAN County, Texas, the accompanying citation, of which the herein below following is a true copy.

CITATION BY PUBLICATION

TO: JOHNNIE KING, Defendant, Greeting:

YOU ARE HEREBY COMMANDED to appear before the Honorable 121 District Court of Cochran County at the Courthouse thereof, in Morton, Texas, by filing a written answer at or before 10 o'clock A.M. of the first Monday next after the expiration of forty-two days from the date of the issuance of this citation, same being the 2 day of August A.D. 1971, to Plaintiff's Petition filed in said court, on the 24 day of March A.D. 1971, in this cause, numbered 1922 on the docket of said court and styled IN THE MATTER OF THE MARRIAGE OF JUDY KING AND JOHNNIE KING.

A brief statement of the nature of this suit is as follows, to-wit:

DIVORCE SUIT MORE FULLY DESCRIBED IN PLAINTIFF'S PETITION ON FILE IN THIS OFFICE.

as is more fully shown by Plaintiff's Petition on file in this suit.

If this citation is not served within ninety days after the date of its issuance, it shall be returned unserved.

The officer executing this writ shall promptly serve the same according to requirements of law, and the mandates hereof, and make due return, as the law directs.

Issued and given under my hand and the seal of said court at MORTON, Texas, this 15 day of June A.D. 1971.

Attest: R. J. Vinson Clerk,
121 District Court
Cochran County, Texas
By Eunice Mazon, Deputy.

Published in Morton Tribune June 17, 24, July 1, 1971.

Minerva was the goddess of Wisdom.

LEGAL NOTICE

I will no longer be responsible for any debts incurred by anyone other than myself.

Lawrence T. Smith
Box 96
Maple, Texas

NOTICE OF BUDGET HEARING

Cochran Memorial Hospital District will hold a budget hearing July 27, 1971 from 6 p.m. until 8 p.m. in the staff dining room of the hospital.

/s/ Elmer Gardner
Secretary Board of Directors
Cochran Memorial Hospital
District

Published in the Morton Tribune June 24, July 8, 1971.

NOTICE OF BOARD OF EQUALIZATION MEETING

In obedience to the order of the Board of Equalization, regularly convened and sitting, notice is hereby given that said Board of Equalization will be in Session at its regular meeting place in the Court

House in the town of Morton, Cochran County, Texas, at 10 o'clock A.M. on Friday the 7th day of July, 1971, for the purpose of valuing, fixing and equalizing the value of any and all taxable property in Cochran County, Texas, for the purposes for the year 1971, and all persons interested or having business with said Board are hereby notified to be present.

R. J. Vinson
County Clerk
Cochran County, Texas

Cochran County
Morton, Texas
22 day of June, 1971
Published in the Morton Tribune June 24, 1971.

Commercially speaking, the Day is more valuable than any other.

William Tell was a Swiss patriot who lived in the 14th century.

ONE WEEK SALE on Hallmark Stationery

Buy One Box Hallmark Stationery or Notes at Regular Price — and Get a Second Box For

ONLY **1c**

Morton Drug

THE DEAL OF THE CENTURY!

4 for \$82.80

FREE tire safety kit



Century 78 whitewalls

- 4 heavy strength Nylon plies
- Tough Polybutadiene rubber
- Wrap-around tread
- Handsome Dual Stripe Whitewalls

Size	Suggested Exchange Price - 4 White Sidewalls	Plus P.E.T. Each
E78-14	\$78.20	\$2.21
F78-14	\$82.80	\$2.38
G78-14	\$90.80	\$2.55
H78-14	\$96.40	\$2.74
J78-14	\$113.00	\$3.91
F78-15	\$82.80	\$2.42
G78-15	\$90.80	\$2.64
H78-15	\$96.40	\$2.80
J78-15	\$113.00	\$3.96
L78-15	\$117.00	\$3.19



At participating Co-ops where you'll get the BEST DEAL IN THE COUNTRY!

State Line Butane Co-Op Assn

MAPLE and NEEDMORE

SALE on GREASE, OIL and TIRES

JUNE 23-24-25

Come In and Visit Us and

Register For Pickup Tool Box

To Be Given Away on June 25 at 6 p.m.

Drug threat . . .

These are referred to, among other terms as "Speed" or "Meth" and are far more potent, faster acting and, of course, extremely harmful. Users on injected (intravenously) Methamphetamines are usually extremely confused, very unpredictable and irrational. Violent behavior is common and toxic psychosis (sick and insane) may result. Sometimes users get a "Speed" or "Meth" run. A "run" is an intravenous injection as often as every 4 hours for 3 to 6 days, with no eating and no sleeping. During these periods the user is extremely overstimulated and out of control, or in terms of the street he is "strung-out" or "up-tight." He will show acute signs of paranoia — he sometimes collects weapons because he is convinced that people are plotting his death. On occasion a user gets the feeling he must "kill or be killed." A common lens effect of the eyes (like a camera zoom lens) makes the user even more paranoid because objects and people loom up before him, disappear and alarmingly reappear.

When injections are stopped after a "run," the user "crashes" — this means

he goes into a period of hallucinations and deep sleep coma lasting from 18 to 48 hours. He awakens famished, eats huge amounts of food, particularly sweets and liquids. He is extremely fatigued, very susceptible to disease and deeply depressed. At this point, many users will take an oral Amphetamine to get going again. "Speed" is available on the "street market" in papers, a small paper package, at about \$3 to \$5. It sells for about \$100 an ounce. Speed aggravates any heart condition and can cause strokes in susceptible people. It is toxic to any healthy heart and also to the blood vessels as it increases heart rates, blood pressure and can cause shock and death!

Another powerful stimulant is Cocaine. Its effects on the body and mind may even exceed those of Speed. Cocaine, an extremely hazardous drug, is being imported in increasing volume from South America and Cuba and is being used at alarming rates by young people. (A gram costs \$40 to \$50 and makes 10 capsules.) Let's go further into drugs next time. We have more information to cover on the subject that will be beneficial for you to know. If you already know this data, it will be helpful to brush up on it.

Although delicious "straight," milk blends well with many different flavors.

Rites held Monday in Baptist church for W.E. Bertram

Services for William Ernest Bertram, 41, were held at 3 p.m. Monday in First Missionary Baptist Church. The Rev. Mearl Moore, pastor, officiated.

Burial was in Morton Memorial Cemetery under direction of Singleton Funeral Home.

Bertram, a Cochran County resident 37 years, died about 3:30 a.m. Saturday at Methodist Hospital in Lubbock. He was married to the former Wynona Galt in 1961 and was engaged in farming.

Survivors include his wife; two sons, Charles and John, both of the home; and two sisters, Mrs. Ted Williamson and Mrs. Earl Parkinson, both of Milnesand, N.M.

Pallbearers were: Kenneth Coats, R. A. Stevens, N. H. Steed, Ronald Coleman, Ralph Gardner, W. D. Ford and T. J. Stevens.

Post office . . .

their wives, as well as Assistant Postmaster and other dignitaries.

Visitors to the post office will be given a souvenir envelope imprinted with the old and new insignia of the Postal Service. This envelope will also be made available in limited numbers as a first day cancellation — for just the cost of an 8 cent stamp — by stamping and cancelling half of the souvenir envelopes in advance. This will be the first time First Day Covers have been available in all U. S. Post Offices.

A photographic display of modern Postal Service jobs and functions will help visitors learn more about the men and women of the Postal Service and how each mail user can help them to serve the community better.

There will also be available a booklet designed to give the Postal Service Customer a clearer idea of what the United States Postal Service is, how it plans to serve the public better, and what each person can do to help the Postal Service do its job.

Bamboo is a grass which grows a height of 50 or 60 feet.

About local folks . . .

Mrs. Herman Carruth of Amarillo visited with her parents, Mr. and Mrs. Oscar Coat and other relatives during the weekend.

Mr. and Mrs. Richard Young and children are spending a few days in Dix, Nebraska. The Youngs formerly lived there.

Mr. and Mrs. Fred Morrison are enjoying their granddaughter, Kim Hamilton, of Seminole in their home this week.

W. C. (Bill) Harris returned Saturday from Houston after under going a routine check up. He brought back good news.

Mr. and Mrs. Fred Morrison will spend the weekend in Chillicothe visiting with parents and other relatives. They will be met by Rocky and Traci Hamilton, grandchildren, who will return to Morton with them. Miss Kim will return to Seminole.

Dale Thornton, Missionary to Taiwan now on furlough, will be preaching during the 11 o'clock services Sunday, June 27, at First Missionary Baptist Church. His wife will accompany him to Morton.

Mr. Fred R. Byas and children, Roy, Terry, Lynn and Kristi, of Woodbury, New Jersey are house guests of their mother and grandmother, Mrs. Evelyn Smith. Mr. Byas will join her husband at Grapevine Friday where other grandparents and relatives live. She will be remembered as Sue Smith, a former resident of Morton.

Mrs. W. L. Miller enjoyed having several of her children and grandchildren recently to help her celebrate her birthday. At different times during the day those visiting with her were her daughters and families Mr. and Mrs. Wendell Watson, Pampa, Mr. and Mrs. E. L. Willis, Lubbock and Mr. and Mrs. Aldon Mullinax of Morton.

Mr. and Mrs. Leo Guffy or Munday, former residents of Morton, are spending several days in Morton visiting with friends and assisting merchants where necessary. At present Leo is at Truett's Food Store.

Mr. and Mrs. Elton Mathis have recently moved to Stratford where he will be connected with a fertilizing plant.

Mr. and Mrs. Johnny Howten and children of Houston have been visiting with her parents, Mr. and Mrs. C. F. Winder, and other relatives.

Packing Co. . . .

equipment and other difficulties set the opening back to last Thursday's date of June 17. The facility is designed to process a maximum of 1,500 head of cattle per week. Feed lots within a radius of 150 miles will be drawn upon to furnish the necessary cattle, with the Owens Brothers lots furnishing a large portion of them.

Following a period of training and gradual acceleration of operations, company officials have indicated they will hold an open house for the purpose of acquainting the people of this area with all aspects of the plant's operation. The open house was tentatively set for approximately 60 days after the first cattle were processed.

COUNTY AGENT NEWS

From the Office of Roy L. McClung, Jr.

(Editor's Note: This is the fifth in a series of news articles on narrow-row cotton.

Initial research shows that cotton produced in narrow-rows may have the edge over cotton in conventional 40-inch rows as far as disease losses are concerned.

"Losses from both seedling disease and Verticillium wilt may be minimized in narrow-row cotton production," believe Dr. Earl Minton, USDA plant pathologist at the Texas A&M University Agricultural Research and Extension Center at Lubbock.

"Since narrow-row production is aimed at shortening the growing season, cotton can generally be planted a couple of weeks later than the conventional method of production," he points out. "This allows for better environmental conditions at planting so that seed germination and seedling growth will be improved. A healthy, vigorous seedling is less susceptible rate of four to six seed per foot of row will allow plants to be spaced further apart in the row. The wide spacing will reduce the spread of seedling disease from plant to plant."

Narrow-row production also features cotton plants that are short in stature with medium or light boll loads. Early maturing varieties that have shorter fruiting periods and less fruit per plant should reduce losses from Verticillium wilt, explains the pathologist.

In soils where wilt is a serious problem, Minton feels that narrow-row cotton can "get the jump" on the disease. "Wilt is usually mild during the summer months at which time narrow-row cotton is making rapid growth. The crop should therefore reach maturity before wilt sets in."

In narrow-row cotton studies last year,

the incidence of Verticillium wilt was a key item under investigation. A highly susceptible cotton variety was planted in 8 and 16-inch rows. Wilt infection increased as soil moisture levels were increased. However, increasing plant populations from 10,000 to 70,000 plants per acre or increasing the nitrogen application from 80 to 320 pounds per acre had little effect on the incidence of wilt.

"We think a big plus for the production of cotton in narrow rows could be the wilt," points out Minton. "Of course, we are continuing an extensive research program to study this particular area of production more fully."

Unemployment . . .

ton, Darden stated "The TEC has attempted to serve Morton from our Levelland office but due to the distance involved, the service has been less than desired. We feel that we can provide better employment service to employers and workers by being in Morton one day each week than we were able to provide from Levelland."

The service of the Texas Employment Commission is free of charge to workers and employers and the TEC refers workers to job openings without regard to race, religion or national origin.

To "eat like a bird" would mean to eat one's own weight in food every day.

Norway, Sweden, Denmark and Iceland comprise the Scandinavian countries.

CRAZY DAY

SATURDAY, JUNE 26 ONLY

All Baseball Gloves

1/2 PRICE

Rose Auto and Appliance

107 E. Wilson

266-5959

Check out with highest Quality **at Lowest Prices**

Prices Good Friday, June 30 through Thursday, July 1

Dr. Pepper
6-Bottle Carton
79¢

SATURDAY ONLY -- CRAZY DAY
Bananas LB. **8¢**
Towels Kimbell Large Roll **29¢**

Mission Cut GREEN BEANS No. 303 Can
5 FOR 1⁰⁰

Kim SLICED CARROTS No. 303 Can
2 FOR 37¢

Mission CORN No. 303 Can
5 FOR 1⁰⁰

Morton Pot Pies **5 FOR \$1** Morton Dinners **2 FOR \$1**

Kim TOILET TISSUE
4 Rolls 39¢

Kim TURNIP GREENS & DICED TURNIPS 303 Cans
5 FOR 1⁰⁰

Kim TOWELS Large Roll
39¢

Kim KRAUT No. 303 Can
2 FOR 39¢

Kim INSTANT COFFEE 6-oz. Jar
99¢

TRUETT'S Food Store

You must See . . .

Our Large Display of Antiques and Collector's Items

at the Crazy Day Flea Market and Swap Shop to be held in Morton Saturday, June 26 in the former Ideal Gift Shop building on the northeast corner of the square.

We will have a large assortment of items on display and for sale, including the following:

- Antique Grandfather Clocks
- Edison Cylinder Phonograph, dating from 1908
- Canteen carried in Africa on the search for Dr. Livingston
- And many more interesting and valuable items.

Let us help you fill out your collection

C. E. Buchanan, Collector



Ladies' DRESSES

Values to \$8.00

1⁹⁹

Children's SANDALS

88¢

Drop In and See These and Many, Many More Items at Greatly Reduced Prices

CRAZY DAY SPECIALS AT REAL CRAZY PRICES

The Ben Franklin Store is having an Odds and Ends Sale to clean up left-over stock in their old location north of St. Clair's Department Store.

A large stock of valuable items of all kinds will be offered on Crazy Day, Saturday, June 26, at prices that will convince you they have really gone crazy.

A few examples of the large stock of items offered for this one day only, are listed here.

CHILDREN'S BLOUSES

Values to 2.99

99¢

ARTIFICIAL FLOWERS

8¢ Each



A Few "Crazy" Bargains Will Send You Away Laughing

BEN FRANKLIN

Congratulations

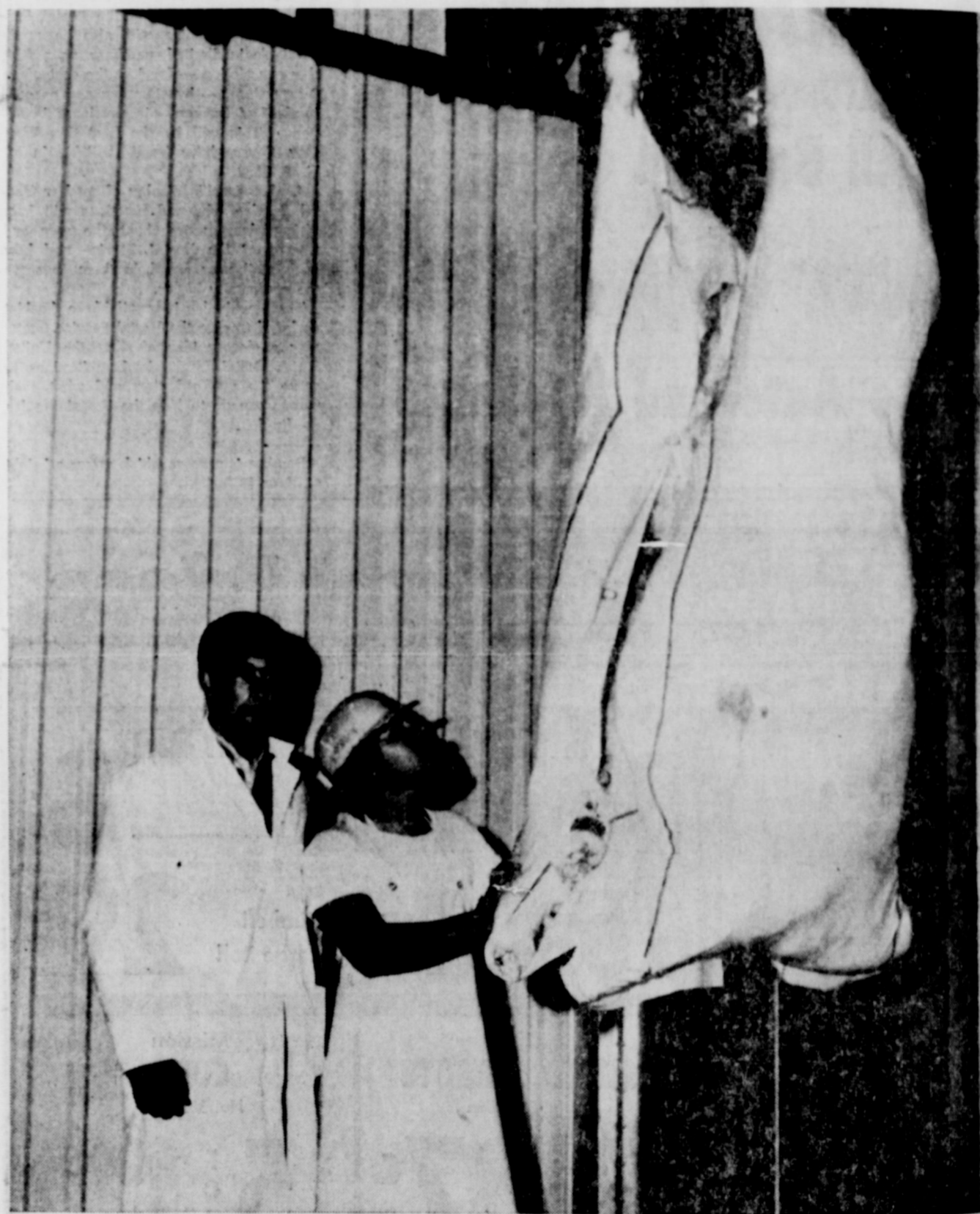
Your Cochran County Neighbors Congratulate

PRAIRIELAND PACKING COMPANY

on the occasion of your processing the first beef cattle through your plant.

We are also highly impressed with your modern, efficient plant and with your highly skilled personnel.

We are confident that your opening of operations marks the beginning of a long and happy association with the people of this community which will be of great mutual benefit. May your stay among us be a long and happy one.



This message is sponsored by the following progressive merchants, businessmen and individuals of Cochran County:

- | | | | |
|---------------------------------|-------------------------------------|--|-------------------------|
| New York Store | Luper Tire & Supply | Morton Insurance Agency | McDermott Liquefied Gas |
| The Chaparral | Cochran County Farm Bureau | Sanders Fertilizer and Chemical | Silver's Butane |
| St. Clairs' Department Store | First State Bank | Beseda & Son Elevators | Charley Ellis Gulf |
| Child's Men Store-Minnie's Shop | Levelland Savings & Loan | Proctor-Walker Insurance Agency | Reynold's Texaco |
| Higginbotham-Bartlett Company | Great Plains Natural Gas | Gwatney Well Chev. and Olds | Windom Oil & Butane |
| Forrest Lumber Company | Cochran Power & Light | Rose Auto & Appliance | G & C Gin |
| Griffith Equipment | Cochran Electric Service & Supply | John's Welding & Supply | Glenn Thompson |
| Lewis Farm and Ranch Store | Bailey County Electric Co-op Assoc. | Morton Tribune | Truett's Food |
| | | Frontier Oil Co - Red Horse Serv. Sta. | Cox Auto Supply |

News from Threeway

Mrs. Bud Huff, Mrs. Fort and Beanie Long were in Lubbock Wednesday on business.

Mrs. Johnnie Wheeler was in Floydada Wednesday visiting her son, the Joe Wheeler family.

Several of the men in the community spent last week at Conchas Lake fishing. Mr. and Mrs. Robert Lumsdon from Muleshoe spent the weekend in the Nelson Carlisle home.

Mr. and Mrs. Tommy Durham and children spent Saturday night in the home of her parents, the George Tysons.

Mr. and Mrs. Elmer Lee and children were in Portales Sunday to help celebrate the Golden Wedding anniversary of his parents.

Mr. and Mrs. H. W. Garvin were dinner guests in the George Tyson home Sunday. W. C. McElvey returned home Saturday.

The Three Way FHA are having a two week work shop at the school. Last Thursday and Friday the FHA officers attended a workshop in Lubbock. Those going were Mrs. Darrell Corkery, Reena Sledge, Vanessa Powell, Sheryl Abbe.

Sandra Simpson, Kay Fine, Ann Warren, Dovie Miller and Nancy Blackstone.

Christene Powell spent two days visiting Karen Chun at Causey, N.M.

Mr. and Mrs. D. A. Williams and son from Sadaa visited her parents, the George Tysons Sunday afternoon.

Bill Roberts from Lubbock was in the community Thursday looking after farming and ranching interests.

Chocolate milk is a glamorous refresher when served in frosted glasses with a whipped cream garnish. To frost glasses, dip rim of chilled glasses into unbeaten egg whites, then into confectioner's sugar.

Two slices of fresh apple put together with a layer of cream cheese or slices of Cheddar cheese makes a hearty and substantial snack. Remember overly sweet snacks reduce appetites for the next meal and promote tooth decay, since immediate brushing of teeth may not be possible.

Cheese is a concentrated form of milk. A medium slice or 1-ounce cube of Cheddar-type cheese equals about three-fourths of a glass of milk in calcium.



Mr. and Mrs. Tom L. McAlister

McAlisters celebrating 50th anniversary Sunday

Mr. and Mrs. Tom L. McAlister will be honored with an open house on their 50th wedding anniversary Sunday, June 27, from 2 until 5 p.m. at their home, 620 South Main.

Hosts for the occasion will be their son, W. A. of Austin, and their daughters, Mrs. Joe B. Nunley of Lubbock and Mrs. Elwood J. Harris of Morton, and their families.

Crystal appointments will be used on the serving table with a centerpiece of daisies and iris and a three-tiered wedding cake. Granddaughter of the honored couple, Mrs. Steve Ray of Lubbock, Miss Debbie McAlister and Miss Sandra Mc-

Alister of Austin will serve. Assisting will be McAlister's sisters, Mrs. John E. Kay of Lubbock and Mr. Lewis H. Taylor of San Angelo and his sister-in-law Mrs. R. B. McAlister of Lubbock.

McAlister and the former Martha Beatrice Bowden were married June 28, 1921, in Montgomery, Alabama where he was stationed with the Army Air Corps. They moved to Lubbock from Alabama in 1925 and to Morton in 1943 where he was a partner in McAlister-Huggins Implement Company until his retirement.

The couple now maintain a home in Cochran, Colo., and in Morton. They have 8 grandchildren and two great-grandchildren.

Friends are cordially invited to attend.

More Cochran countians buying their own homes

Many Cochran County families who were living in rented quarters a few years back have found it possible since then to satisfy their dream of owning their own home.

As a result, the proportion of local homes that are now owned by their occupants is high and stands comparison with the ownership rate in many parts of the country.

According to the best finding, some 51.8 percent of all dwellings in the local area are now owner occupied.

By way of comparison, the home ownership rate in 1960 was only 49.6 percent.

Much of the progress in this direction was made before the sharp decline in building that occurred in the last few years.

If no buying became possible for many families during the period because of better incomes and because mortgage money was readily obtainable at reasonable rates.

The figures on home ownership, released by the Department of Commerce, are based upon data gathered during the recent Census of Housing.

They show that out of a total of 1,876 year-end housing units in Cochran County, 961 are now owned by their occupants.

The sharp increase in residential construction in the past 10 years is indicated in the official figures. They show an increase of only 0.5 percent in owner-occupied units in the period, although the national population rose 11 percent.

Most of the new construction that did take place was multiple housing — to accommodate two or more families.

Families that were unable to acquire houses in recent years because of the shortage or because of the high prices asked, are likely to see the end of their long period of present homelessness. Nearly \$5 billion was spent for such mortgage commitments in the past year, the government reports.

The value of homes in Cochran County rose sharply in the last few years; the figures show. The median value of new homes in 1969 was \$13,000, compared with only \$12,360 in 1968.

The overall worth of local homes, on that basis, came to \$7,912,000, considerably more than in 1968.

Our Crazy Day Special

Is Set To Music

Stereo, LP, Glen Campbell Album Music, that is yes, we still have a limited number of these "super cool" albums in stock and will let them go for a song.

1.79

In Tune With Crazy Day Price

Gwatney - Wells Chev.-Olds.

113 E. Broadway

Morton

Small canteen with historical background to go on display

One of the most interesting items that will be on display at the flea market and swap shop to be held in Morton on Crazy Day, Saturday, will be a plain appearing, simply-constructed water canteen.

The small vessel, purchased recently at another area flea market, carries with it a story of historical importance concerning the Stanley and Livingstone expeditions of the nineteenth century.

The canteen is owned by C. E. Buchanan of Morton and the story passed along with it places the canteen on an African safari as part of a British soldier's equipment.

The canteen was handed down from the Britisher's grandfather, who had made a trip to Africa as a member of a search party hunting for Dr. Livingstone.

Buchanan brought the canteen to Lubbock from a minister who obtained it from a WWI veteran in Oklahoma. During WWI, the Oklahoman saved the life of a British soldier and, in return, was given the canteen. Buchanan said the item was purchased by the soldier's father.

The canteen measures 8 inches tall, not including the stopper, is 3 1/2 inches at the widest point and 2 inches thick.

The small size of the container would lend itself to easy carrying in the hot African sun — however, it can be proved by all who view it, that the water holes would have to be very close together for a man to exist on the small amount of water that this small container could provide.

This is only one of the large number of interesting items to be displayed by the Buchanans and many others Saturday, which should make the flea market and swap shop a valuable addition to Crazy Day activities.



Mrs. Freehand named to TTU Honor List

Billy Bob Freehand was recently named to the Dean's Honor List at Texas Technological University. The list is composed of those students who attained a grade point of 3.2 or more.

The son of Mr. and Mrs. W. G. Freehand, Billy is a May graduate of Tech and holds a Bachelor's Degree in Food Technology. He and his wife, Phyllis, re-

One-half cup of cottage cheese supplies as much high-quality protein as one serving of meat. It makes delicious meat dishes, whole meal salads and desserts.

A crab's teeth are in its stomach.

Tops club hold weekly meeting

The Lighter Lazer Tops Club met June 16 in Fellowship Hall of the First United Methodist Church.

Rita Thomas, leader, called the meeting to order and Marie Adams and Donlei Chesshir answered the roll call with the best weight loss for the week.

Thought for the day was "Everybody wants to get what's coming to him without getting what he deserves."

It was announced the weighing in would be changed from 8:45 a.m. until 9 a.m. and a new partner contest would be started.

Attending were: Rita Thomas, Marie Adams, Gene Bridges, Ruby Davis, Brenda Gardner, Mildred Oden, Jane Sinclair, Donlei Chesshir and Nellie Fincher. Visitors and new members are always tention may call Mrs. Thomas at 927-3676.

Distinctive PRINTING

Make Us Your "One Stop" Press Center

We have the complete facilities and know how to successfully serve your every printing need. Letterpress, offset, engraving are all part of our service. We print color or black and white. Call us, compare our quality and prices.

- Stationery
- Business Forms
- Announcements
- Catalogs
- Envelopes
- Advertising

Morton Tribune

THE LAND

THE LAND is one of man's most valuable assets — we think it is prime collateral. In the past 54 years the Federal Land Bank of Houston has made almost 200,000 loans on Texas farms and ranches.

In other words, we specialize in making farm and ranch real estate loans — long term loans with prepayment privileges.

See us today for full details, no obligation of course.

JOE BREED, Manager
Association of Levelland
Federal Land Bank
East Side of Square

COW POKES

By Ace Reed

"Hurry up, Maw, or we're gonna git stuck!"

The Morton Industrial Foundation is happy to welcome Prairieland Packing Corp. To everyone that helped in any way, it is most grateful. The work of this organization is not nearly completed. You are urged to back and support this organization for a better community!

First State Bank

MEMBER F.D.I.C.

June Dairy Month Features

**T
H
R
I
F
T
W
A
Y**

SHOP DOSS
CRAZY DAY SPECIALS
AND SAVE

EGGS GRADE "A" LARGE DOZ. **39¢**




KRAFT SINGLES American or Pimento SLICED CHEESE 12-oz. PKG. **69¢**

KRAFT'S PHILADELPHIA CREAM CHEESE 8-oz. PKG. **39¢**

KRAFT ASS'T. SQUEEZE-A-SNACK Sharp, hickory, garlic pimento, bacon, Jalapeno. 6-oz. PKGS. **2/89¢**

Del Monte CORN 4 303 cans **\$1**

Watch For Circular! Sale Starting Mon. 6-28-71

BEEF RIBS 3 Lbs. **\$1**

Shurfine Red Alaska SALMON 16-oz. can **99¢**

RANCH STYLE STEAK LB. **69¢**

7-BONE ROAST LB. **79¢**

KLEENEX WHITE OR ASS'T. COLORS 200-ct. 2-Ply FACIAL TISSUE **4 BOXES \$1.00**

KOTEX REGULAR OR SUPER BOX OF 12 **43¢**

CHEEZ WHIZ Plain, Pimento, or Jalapeno 8-oz. JAR **49¢**

HEN TURKEYS 10 to 14 LB. AVG. **43¢ lb.**

Buy It By The Gallon **Dr. Pepper - 8** Bottle Carton **49¢ plus Dep.**

Frozen Foods Specials

Awake ORANGE DRINK 9-oz. Can 3 for 1.00	Patio Mexican Style DINNER ... Each 49¢
Weight Watchers Sirloin of Beef Dinners ... 1-Lb. Pkg. 1.69	Patio Cheese Enchilada Dinner ... Each 49¢
Patio Beef ENCHILADAS 10 1/2-oz. Pkg. 39¢	Patio CHEESE ENCHILADAS 8-oz. Pkg. 39¢

"GREAT FOR SALADS"

Avocados

Each **3 FOR 29¢**



FRUITS VEGETABLES

Florida LIMES — Lb.	49¢
Calif. APRICOTS — Lb.	29¢
Burmese PLUMS — Lb.	29¢
Calif. PEACHES — Lb.	39¢

BANANAS LB. **10¢**

HEALTH & BEAUTY AIDS

CLOSE-UP TOOTHPASTE RED OR NEW MINT 6.2-oz. FAMILY SIZE **69¢**

SEA AND SKI **Suntan Lotion**, 4-oz. Bottle 1.19

GILLETTE FOAMY RAS. or MENTHOL **SHAVE CREAM**, 11-oz Can 89¢

SHURFINE **CREAM RINSE**, 16-oz. Bottle 49¢

BAYER 100 Count Bottle **Aspirin** 79¢

RESOLVE SALTZLER TABLETS **39¢ Size** 19¢

POTTED MEAT ARMOUR'S 2 3 1/2-oz. CANS **29¢**

Vienna Sausage ARMOUR'S 3 5-oz. CANS **69¢**

ARMOUR'S TREET 12-oz. CAN **49¢**

WE RESERVE THE RIGHT TO LIMIT QUANTITIES

BUY SHURFRESH MILK And Save



DOSS THRIFTWAY These Prices Good June 25th & 26th Only

AFFILIATED FOOD STORES



Buy Tender Crust BREAD And Save!



MEMBER **AFFILIATED FOOD STORES**

SUPER MARKET
400 SO. MAIN - MORTON, TEXAS.



About local folks . . .

Mr. Sandy Asbill has returned from visit with relatives and friends in Sterling City and Center. Her sister, Eva Carol, of Fort Stockton returned with her and spent a week in Morton.

Mrs. R. D. Butts returned from South Plains Hospital after a three week stay and is feeling much better.

Mr. Nile Weed is visiting in the home of her daughter and family the Duke Merritts. Mrs. Weed is a former Mortonite from St. Jo.

Mrs. Don Lynskey and Mrs. Jim Pat Clutch and children recently spent several days in Dallas sightseeing and visiting the Flags.

Mrs. W. R. Jeffries from Siaton was in Morton Friday.

Mrs. S. A. Ramsey and Miss Rhoda Lambree, their brother, Joe Lienbee of Newberry and their sister, Mrs. Katie Ashby of Lamesa attended the Vines' Family Reunion in San Angelo Sunday.

Rev. and Mrs. Burlie Taylor and children from Tusculum, Ala., are in Morton visiting with their parents, Mrs. S. A. Ramsey and Mr. Lee Taylor.

Mr. and Mrs. Earnest Barkley have moved to Levelland where they will be attending South Plains College. Rita has been attending South Plains College while

Earnest was serving his country in Vietnam.

It's always fun to visit new places but also nice to be back in the best place of all, Morton. Our last three weeks have been spent attending a 60th wedding anniversary in Dallas, then on to San Antonio to see our grandson, Mark Gipson, graduate from high school and from there to Houston to be with our granddaughter, Jo Neavitt, at her graduation. We accompanied our son, Joe B., back to his home in Fort Knox, Ky., for a visit and a lot of sightseeing. Among the places we visited with he and wife, Shirley, were the birthplace of Abraham Lincoln, boyhood home of Thomas Lincoln, Bernheim Forest, My Old Kentucky Home Park and Rowan Mansion, where Foster was visiting when the song was written. Other places we enjoyed seeing was Mammoth Cave, Shaker town, a restored village of some 26 homes, the Henry Clay mansion, the museum of Ky. and of course, the race tracks, which have made the state famous. We had a birdseye view of Calumet Farms and saw the statue of War Horse. Now that we are home and our wandering is over, hope you read us each week and we'll keep you posted on what's happening with the Local Folks!



Mr. and Mrs. Zandy Goode

Announcing the Opening of Morton Air Conditioning Refrigeration & Plumbing

(General Plumbing)

FREE ESTIMATES ON NEW SERVICE

Richard De Voge 306 E. Washington
Phone 266-8814 Morton, Texas

Garden club hears Japanese program

The Whiteface Garden Club met in regular session Monday, June 7, in the Home Economic Room, Mrs. R. D. Hensley Sr. was hostess.

Mrs. Jerry Marks, president, presided over the business meeting. Roll call was answered with "Something new I grew this year." Hostess duties for the coming year was completed for the new year books. Mrs. G. C. Keith reported he was to buy roses and shrubs for the Girl-ton's flower bed on Tuesday. A work

day was set for Thursday at 4:30 p.m. Four more books of stamps were donated for the chairs at Community Center. The program, "In the Manner of Japanese with the Nageire exhibited" was explained by Mrs. G. C. Keith. The Moribana was given by Mrs. Jerry Marks with two exhibits.

Eight members present included: Mesdames Jerry Marks, J. W. Smith, D. F. Burris, J. J. Stocks, G. C. Keith, Ed Jennings, S. J. Bills and hostess Mrs. R. D. Hensley Sr. The next regular meeting will be July 19. The program will be on "Preserving Natures Gifts."

Rites held Sunday for Mrs. Rosetti

Services were held at 2:30 p.m. Sunday in Singleton Funeral Chapel for Mrs. Emma Lucille Rosetti. The Rev. Mearl Moore, pastor of First Missionary Baptist Church, officiated.

Burial was in Abernathy Cemetery.

Mrs. Rosetti, 72, died about 10:30 p.m. Friday in Levelland Clinic and Hospital. She had been a resident of Cochran County for seven years.

Survivors include five sisters, Mrs. S. C. Franks and Mrs. Carrie Mae Wood, both of Fort Worth, Mrs. F. J. Drachenberg of Lubbock, Mrs. Gaylor Shaw of Canyon and Mrs. Bill Godston of Petersburg; and a brother, G. R. Baker of Desert Hot Springs, Calif.

NATIONAL MOTOR CLUB SERVICE

WELCOMES

ESTELLINE MERRITT
AS A
SPECIAL REPRESENTATIVE

National Motor Club, founded in 1956, is the nation's most respected and progressive motor club. Its excellent services and benefits are offered to responsible drivers only. These services and benefits include bail bond and cash appearance bonds in accident and traffic violation situations; personal legal fees; stolen car reward; cash income when hospitalized as the result of a traffic mishap; personalized touring service and many other benefits. If you qualify as a responsible driver, call or write:

NATIONAL MOTOR CLUB
605 E. Hayes — Phone 266-5793
Executive Offices: Dallas, Texas

Morton Tribune

MORTON, TEXAS, THURSDAY, JUNE 24, 1971

Miss Bennett, Mr. Goode wed in candlelight rites

Miss Carol Bennett became the bride of Zandy Dee Goode in a candlelight ceremony in the Church of Christ in Clifton at 7:30 p.m. May 15. Luke Shira, minister of the Vidor Church of Christ, officiated the double ring ceremony.

The bride is the daughter of Mr. and Mrs. Joseph H. Bennett, Sr., of Clifton and the granddaughter of Mr. and Mrs. T. G. Brown, Sr., of Morton. Goode is the son of Mr. and Mrs. DeVert-Goode of Brownwood, formerly of Lamesa.

The alter was decorated with candelabras filled with lighted white tapers entwined with English ivy and commador, flanked by palm trees. Pews were marked with hurricane lanterns holding lighted white tapers and greenery.

Prior to the ceremony, an acapella choir sang "My Lord" and "The Wonder of You." As the wedding party entered the church they sang "The Bridal Chorus" and at the end of the ceremony, "We've Only Just Begun" and "The Wedding March."

Given in marriage by her father, the bride wore a formal length gown of candlelight satin and crepe which she designed and made. The bodice featured a high fitted neckline, bishop sleeves with fitted wrist bands with small mother of pearl buttons both at the wrists and the neckline. Her court train fell from midback and the veil of silk illusion extended beyond the train and featured a border of hand applied satin. She carried a nosegay of pink sweetheart roses, baby's breath, lily of the valley, purple wild orchids and feathered carnations in white, pink and purple.

Mrs. Richard Spitzer, sister of the bride, was matron of honor. She wore a floor length gown of pink crepe featuring a round neckline and semi-empire waistline. Miss Jennifer Womack of Dallas was maid of honor and she wore a gown of deep purple crepe in the same design as the matron of honor. They carried nosegays of sweetheart roses and purple wild orchids and feathered carnations.

Miss Lana Greeson was flower girl. She wore a dress of white candlelight crepe and carried a basket of rose petals. Danny Lightfoot of Bartlesville, Okla-

homa served as bestman and Gregg Goode, brother of the groom, was groomsman. Robert Bennett, brother of the bride, was ring bearer. Ushers were Mike Gann of Lubbock and Jay Bennett, brother of the bride.

Following the ceremony a reception was held in the Church Fellowship Hall.

For a wedding trip to Colorado and New Mexico, the bride chose a beige dress with beige and tan accessories and she wore a corsage of pink sweetheart roses.

The bride is a graduate of Clifton High School and is a senior home economics major at Texas Tech University. The groom graduated from Dawson High School, received his B.B.A. degree from Texas Tech and is presently working on a Master's degree in Range Management at Tech.

The couple are residing in Lubbock.

Pre-teen club meets Friday

The Pre-teen Sewing Club met Friday, June 18, at 3 p.m. in the Cochran County Activity Building.

A discussion was held on materials, both dry and wet and comparisons were made. Mickie Dewore demonstrated the care of the hands.

Refreshments were served to the leaders and the following members: Mickie Dewore, Martie Dewore, Karen Clark, Rayma Hall and Rhonda Abbe.

Rev. Mearl Moore, pastor of the First Missionary Baptist Church, left Tuesday morning for Garland where he will be in revival at Lakewood Baptist Church.

Expected house guests of Mrs. Charles Taylor for several days will be her daughter and husband, Mr. and Mrs. James Porter of Houston.

Mr. and Mrs. Charles McDermott and granddaughter, Suzie, enjoyed a Father's Day get together honoring her father, J. E. Walker, at her sister's home in Hobbs, N.M. Sunday.

ST. CLAIR'S CRAZY DAYS SALE

Prices Good Saturday, June 26 Only!



Men's and Boys' Shorts

Prepare now for hot days ahead. Entire stock of men's and boys' walk shorts reduced to clear.

1/4 Off
Regular Price

CANVAS SHOES

One Table Broken Sizes Slip-ons and Ties

2²²

Summer SHOES

One table of Ladies' Summer Shoes. All new styles and colors. Values to 15.00. A real value for Saturday only.

9⁹⁹

Children's WEAR

One rack of children's sport sets, swim suits and others.

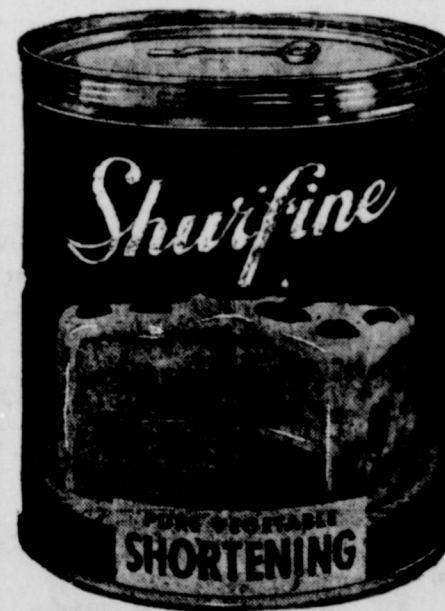
SAT. ONLY — **1/4 Off**
Reg. Price



St. Clair's
DEPARTMENT STORE

get your share OF OUR GREAT FOOD VALUES

Prices Good Saturday, June 26 through Tuesday, June 29



Shurfine Pure Vegetable **SHORTENING**

3-lb. Can **79^c**

DAIRY PRODUCTS

Half & Half, 1/2 pt. 29c

Sour Cream, 1/2 pt. 29c

11-oz. pkg. **VANILLA WAFERS . . . 55c**

SHURFINE COFFEE

All Grinds **75^c**
1-lb. Can



Double Gold Bond Stamps Saturday

WAYNES' MARKET
Bledsoe, Texas

STATE Capital NEWS

By VERN SANFORD

AUSTIN, Tex. — Texas 1972 political campaigns jumped off to an early start last week amid earthquake-proportioned new rumblings in the long-running Securities and Exchange Commission stock manipulation case.

Lt. Gov. Ben Barnes announced he will run for governor, and called "loss of faith and confidence in state government" the No. 1 political issue.

Barnes termed the shadows cast by SEC's inquiry into stock trading of state officials one of the reasons for lost confidence by the public.

"I visualize the role of the governor as a much more-aggressive role than it has been in the past," he said. Barnes, who is 33, added "a young governor with progressive ideas would be an asset" to Texas.

Barnes said he would aim to make the state Democratic party an "energetic force for sound government, not just a political tool to be used briefly every two years and then discarded. I want Texas to be strong in national affairs."

Atty. Gen. Crawford C. Martin, recovered from a March heart attack, announced he will file as a candidate for a fourth term.

"In the light of the scandals that have rocked our state government this spring — and the resulting investigation which my office has begun at the request of the Legislature — I feel it a question of duty to Texans to make the race," said Martin.

Dolph Briscoe of Uvalde reportedly retains interest in the governor's race.

Gov. Preston Smith still hints he may run again, brands federal handling of the stock case "political harassment."

OIL ALLOWABLE CUT — Statewide oil production allowable for July has been slashed 260,815 barrels a day from June.

New allowable was set by the Railroad Commission at 68.7 per cent of potential or a decrease of 6.7 per cent. Reduction is the third straight.

Market demand factor for the coming

month is the lowest since 62.9 per cent allowable was set during part of August, 1970.

Maximum production is estimated at 3,367,115 barrels daily, but actual production will be closer to 3,273,750 barrels — slightly more than major buyers requested.

Eight of 14 major crude purchasers asked the same allowable for July, four sought less and two requested more.

Crude oil stock were estimated at 108.4 million barrels, an increase of 1.1 million over the 1970 period.

CRIME FIGHT FUNDS APPROVED — Nearly \$4 million in grants to aid criminal justice projects received Criminal Justice Council Approval.

CJC will fund \$2.5 million from federal aid money, with local governments contributing another \$1.5 million.

Houston-Gulf Coast Building Trades Council got the biggest state grant of \$191,800 for New Waverly delinquency prevention program.

Other grants went to Texarkana Ark-Tex Council of Governments; East Texas COG, Kilgore; Waco; Alamo Area COG, San Antonio; Wichita County; McLennan County; Bexar County; Austin-Travis County; Harris County Mental Health-Mental Retardation Center; Central Tex COG, Belton; Grayson County; Lower Rio Grande Valley Development Council, McAllen; Edinburg; Waco Police Department; Fort Worth; Travis County juvenile defender project; Eagle Pass; Lubbock County; City of Dallas; El Paso; Cleveland; regional law enforcement radio communications system; Coastal Bend Regional Planning Commission; Texoma RPC; Heart of Texas COG; Aldine and Midland Independent School Districts.

COURTS SPEAK Supreme Court upheld a Tyler court verdict awarding \$5,000 accidental death policy recovery to a widow whose husband was shot to death allegedly after committing adultery with the wife of another man.

High Court set July 14 arguments in a

Dallas woman's damage suit claiming negligence by a private plane pilot in an accident which killed her husband four years ago.

Court of Criminal Appeals affirmed the life sentence in a Beaumont rape case. Austin Court of Civil Appeals reversed a Houston trial court and upheld State Board of Examiners of Psychologists' decision denying Houstonian Joseph D. Farrar a license to practice psychology because his master's degree was not primarily psychological but educational.

AG OPINIONS — Minors can be tried for liquor law violations without notification to parents if court is unable to locate parents or guardians, Atty. Gen. Crawford C. Martin has said.

In other recent opinions, Martin concluded that:

A trial judge has discretion to grant of the public and the defendant will be probation when satisfied the best interests served, and the defendant is not under burden to show eligibility for probation, though the judge may require appropriate proof.

Board of Private Detectives, Private Investigators, Private Patrolmen, Private Guards and Managers has discretion to decide whether or not license of those within its jurisdiction will be denied because of a conviction for felony.

Whether Parks and Wildlife Department executive can retire as a "commissioned peace officer" is a fact question to be determined by PWD on the basis of whether he was engaged primarily in criminal law enforcement activities of the department during 10 years.

APPOINTMENTS — Raymond Vowell of Austin will succeed Burton G. Hackney as Texas Public Welfare Commissioner.

Governor Smith named W. A. Hughes of Decatur 235th district judge, Harry Hopkins of Weatherford 43rd district judge, and William B. Sullivant of Gainesville 235th district attorney.

Smith appointed Hugh O. Wolfe of Stephenville to North Texas State University Board of Regents.

LAND SALE SET — School Land Board will offer 594,132 acres of land in 869 tracts for July 6 lease sale.

For the first time, said Land Commissioner Bob Armstrong, the Land Board has coordinated environmental planning with the Parks and Wildlife Department on all bays and inlets included.

PWD reviewed tracts in lease and reported any possible hazard to the environment if drilling is permitted. Proposed restrictions will be considered by the Land

Protein feeding program may counteract cattle forage loss

Where drought conditions have severely reduced the amount of forage available, ranchers may need to take a second look at nutritional programs to avoid protein deficiencies in their livestock.

Inadequate protein in a cow's ration can cause reduced forage consumption and reduced availability of all nutrients to the animal — a serious problem under normal conditions, but especially so under drought conditions.

Decisions on feeding grain and oil seed mixtures, using urea as an alternative

Board.

Other tracts included are submerged lands in the Gulf of Mexico cancelled from the May sale list due to U.S. Army Corps of Engineers' halting drilling on such tracts temporarily. Submerged land acreage is the largest offered for lease since June, 1965, when the state received more than \$17 million for sale of leases.

CONVICTION "TAX" LEVIED — Cost of moving traffic violations and other convictions will go up under a bill signed into law and designed to provide funds for projects to improve the criminal justice system.

In addition to other taxable court costs, \$2.50 will be charged in each misdemeanor conviction in justice of the peace or municipal court. County misdemeanor convictions will be charged an additional \$5 in court costs, and felony convictions, \$10.

SHORT SNORTS — Texas' first bale of 1971 cotton was produced on the Crispin Gamaz farm near Pharr in the Rio Grande Valley.

An additional 400,000 workers and 100,000 employers will become subject to unemployment insurance program and tax for the first time on January 1.

Attorney General Martin warns consumers to beware of phony travel promoters who may take their money and run.

Reps. Rayford Price of Palestine, Price Daniel Jr. of Liberty and David Finney of Fort Worth are challenging House Speaker Gus Mutscher for re-election.

Texas will have 7.2 million registered motor vehicles this year, second only to California according to Texas Automobile Dealers Association.

for protein, and limiting feed consumption face the rancher.

Several oil seed protei meals such as cottonseed, guar, peanut, soybean, and linseed, when equal in percentage of crude protein, can provide about the same feeding value in cattle maintenance feeding, L. A. Maddox, Jr., Extension beef cattle specialist explains.

Most oil seeds have 80 percent digestible protein compared to about 50 percent in dry roughages. Mixtures of different meals would have no advantage over a single protein source because the ruminants balance dietary protein through ruminal amino acid synthesis.

Ranchers need to keep in mind labor and equipment costs when deciding on which form of protein supplement to feed.

Some stockmen may consider using urea in their protein feed as another means of lowering costs. The nitrogenous compound can be converted to protein in the presence of sufficient carbohydrates by bacterial action in the rumen.

Maddox reminds ranchers that urea contains no energy and that the feed grade or fertilizer grade should be feed. Mixtures containing urea should be thoroughly mixed with molasses and ground grain, and the grain to urea ratio may be no less than eight pounds grain to one pound urea.

Cattle should be allowed an adjustment period when they are started on feeds containing urea. For instance, if four pounds of urea containing supplement are to be fed daily, then feed two pounds daily for the first week and begin the four pound ration at the beginning of the second week, Maddox advises.

Toxic symptoms may show up when feeds containing urea are fed to starved animals or fed to animals too rapidly. Urea toxicity causes a staggering or wobbly gait in the animal.

In protein feeding, salt or gypsum may be used to limit feed consumption, reduce some labor costs, and help permit each animal a more equal share.

With combinations of grain and/or oil seed meals, Maddox advises feeding stocker cattle a mixture of 90 percent concentrates and 10 percent salt to control the intake to one percent of body weight permitting growth and gain on fair pasture.

Salt feed mixtures may range from 10

Charges to be higher for Medicare signees with doctor insurance

Monthly social security checks for beneficiaries 65 and over who have signed up for Medicare's doctor bill insurance will be increased by 30 cents in July, John G. Hutton, social security manager in Lubbock, said today.

The checks scheduled for delivery on July 3 will have \$5.60 deducted for each beneficiary to pay the increased monthly voluntary medical insurance premium. The rate for the past year was \$5.30 for each beneficiary, Hutton said.

The increase was announced by the Department of Health, Education, and Welfare in December in accordance with a requirement in the Medicare law that makes an annual review of the costs of the medical insurance program mandatory. The law requires that the monthly premium rate be set at a point estimated to be sufficient to cover all expenses incurred during each premium period, with an allowance for contingencies.

Hutton said that the medical insurance program supplements the basic hospital insurance part of Medicare by helping to pay doctor bills and a wide variety of other medical expenses in and out of the hospital. About 19.5 million people 65 and over have enrolled for this supplementary monthly premiums cover half the cost of their protection. The other half comes from general Federal revenues.

to 30 percent salt and there is little chance for harmful results with ample water and adequate forage.

While the salt amount in the mixture regulates consumption levels, consumption will be lessened when there is sufficient high quality forage available. Mixtures of grains, meals and urea are influenced by the price of each part of the mixture and pasture conditions.

With an ample supply of low priced fair energy forage, stockmen can feed salt and oil seed meals. However, when forage is low in both protein and energy and in short supply, grains should be used added to the meal and salt mixture as supplemental feeding is increased.

In using feed-grade gypsum (calcium sulfate) a ratio of six parts feed to one part gypsum is suggested for mature cattle while yearling cattle can be fed at eight-to-one ratio.

ST. ANN'S CATHOLIC CHURCH
The Rev. David Greka, Pastor
8th and Washington Streets

Mass schedule—
Sunday 9:00 and 11:15 a.m.
Monday 7:30 p.m.
Tuesday 7:30 a.m.
Wednesday 7:30 p.m.
Thursday 7:30 a.m.
Friday (1st of month) 7:30 p.m.
Friday (2nd, 3rd, 4th) 7:30 a.m.
Saturday 8:00 a.m.

Sunday—Catechism Class,
10:00 - 11:00 a.m.
Confessions—Sunday
Half hour before Mass.
Baptisms—12 noon Sunday
and by appointment.

FIRST BAPTIST MEXICAN MISSION

Sundays—
Sunday School 10:00 a.m.
Training Union 6:30 p.m.
Evening Worship 7:30 p.m.
Wednesdays—
Prayer Service 7:30 p.m.

NEW TRINITY BAPTIST CHURCH
Rev. W. D. Anderson
3rd and Jackson

Sundays—
Sunday School 9:45 a.m.
Morning Worship Second
and Fourth Sundays 11:00 a.m.
H.M.S. 4:00 p.m.
Wednesdays—
Prayer Service 7:00 p.m.

CHURCH OF CHRIST
Van Cash, Preacher
S.W. 2nd and Taylor

Sundays—
Bible Class 10:00 a.m.
Worship 10:45 a.m.
Evening Worship 7:00 p.m.
Wednesdays—
Midweek Bible Class 8:00 p.m.

FIRST METHODIST CHURCH
Rex Mauldin, Minister
411 West Taylor

Sundays—
Church School Session 9:45 a.m.
Morning Worship Service 10:55 a.m.
Evening Fellowship Program 5:00 p.m.
Evening Worship 6:00 p.m.

Second and Fourth Monday
Wesleyan Service Guild 7:30 p.m.
Tuesdays—
Women's Society of Christian Service 9:30 a.m.
Each Second Saturday,
Methodist Men's Breakfast 7:00 a.m.



ASSEMBLY OF GOD CHURCH
G. A. Van Hoose
Jefferson and Third

Sundays—
Sunday School 9:45 a.m.
Morning Worship 11:00 a.m.
Evening Evangelistic Service 7:00 p.m.
Wednesdays—
Night Prayer Meeting and
Christ's Ambassadors
Convene Together 7:30 p.m.
Thursdays—
Every 1st and 3rd, Women's
Missionary Council 2:30 p.m.
Every 2nd and 4th, Girls'
Missionette Club 4:30 p.m.

FIRST MISSIONARY BAPTIST CHURCH
Rev. Merle Moore, Pastor
Main and Taylor

Sunday School 9:45 a.m.
Morning Worship 10:45 a.m.
Training Service 7:00 p.m.
Evening Worship 7:45 p.m.

WMA Circles

Monday—
Night Circle 7:30 p.m.
Tuesday—
Mary Martha 2:30 p.m.
G.M.A. 4:00 p.m.
Wednesday—
Midweek Service 7:30 p.m.
Edna Bullard 9:30 a.m.

FIRST BAPTIST CHURCH
Paul McClung, Pastor
202 S. E. First

Sundays—
Sunday School 9:45 a.m.
Morning Worship 10:55 a.m.
Morning Service KRAN 11:00 a.m.
Training Union 6:00 p.m.
Evening Worship 7:00 p.m.
Tuesdays—
Helen Nixon W.N.U. 9:30 a.m.
Wednesdays—
Graded Choirs 7:30 p.m.
Prayer Service 7:30 p.m.
Church Choir Rehearsal 8:30 p.m.

SPANISH ASSEMBLY OF GOD CHURCH
Gilbert Gonzales
N. E. Fifth and Wilson

Sundays—
Sunday School 10:00 a.m.
Morning Worship 11:00 a.m.
Evening Evangelistic Service 7:30 p.m.
Tuesdays—
Evening Bible Study 8:00 p.m.
Thursdays—
Evening Prayer Meeting 8:00 p.m.

EAST SIDE CHURCH OF CHRIST
Fred White, Minister
704 East Taylor

Sundays—
Bible Study 10:00 a.m.
Worship 10:45 a.m.
Worship 7:30 p.m.
Wednesdays—
Midweek Service 8 p.m.

This Feature Is Published With The Hope of Getting More People To Church By The Undersigned City Business and Professional People:

Compliments of

Frontier Oil Company
Red Horse Service Station
Mobil Products — 266-5108

Truett's Food Store
Earl Stowe, Owner
210 South Main

Carl Griffith Gin and G & C Gin

Burleson Paint & Supply
Northside Square — 266-5888

First State Bank
107 W. Taylor — 266-5511

Luper Tire and Supply
108 E. Washington — 266-5330

Bedwell Implement
219 E. Jefferson — 266-5306

Morton Tribune
Printers — Publishers

Doss Thriftway
400 S. Main — 266-5375

St. Clair Department Store
115 N. W. 1st — Phone 266-5223

News from Bula-Enochs area

Guests in the home of Mr. and Mrs. G. R. Newman last Wednesday were Mrs. W. A. Woods of Morton, Justine Montgomery and Teresa Plamview spent Thursday with her parents, Mr. and Mrs. W. M. Bryant. Mr. and Mrs. J. D. Bayess took their children, Larry and Linda, fishing in the Lazbuddie area Thursday. Mrs. and Mrs. Tony McKinney and Mrs. returned home Sunday afternoon on a vacation in the Vegas Mountains. Mrs. Bayess is in the home of Mr. and Mrs. B. Peterson Saturday night and Sunday. Mrs. Bayess is the daughter, Rev. and Mrs. Abney of Plainview. Mrs. Myrielle Nichols of Lubbock was in Saturday night and Sunday for a visit with her mother, Mrs. L. E. Nichols, and other relatives, Donnie, Paula, Richard and Mike Nichols returned home with their mother on Sunday. They visited in the home of Mrs. J. D. Hawthorne and Mrs. Junior Austin and sons on Sunday. Mr. and Mrs. Orphus and children, at Mobbett Sunday. Mrs. and Mrs. King home Tuesday night were Mrs. J. D. Hawthorne and Mrs. J. D. Hawthorne in Livingston, N.M. Mrs. Finley was a dinner guest in the home of Mrs. Marion McDaniel and Larry Bayless home Sunday and Mrs. Linda returned home with their father. Mrs. guests in the E. N. McCall home Sunday were Mr. and Mrs. Robert Brent and Marthan, Mr. and Mrs. Rowden and Chris all of Lubbock

and Mrs. Eva Rowden and Susan of Morton. Mr. and Mrs. G. R. Newman were dinner guests in the home of their son, Mr. and Mrs. Bobbie Joe Newman, May 17, to help Bobbie Joe and daughter, Judy, celebrate their birthdays. Mrs. W. M. Bryant gave a Tea in honor of Mrs. May's Pool from Santa Clara, Calif. who is here for a visit with her son, Mr. and Mrs. John Pool at Morton. Mrs. Pool is a former resident of Enochs. Friends attending were Mrs. Inez Sanders, Mrs. Louise McCall, Mrs. Etta Layton, Mrs. Dovie Dane, Mrs. G. R. Newman, Mrs. Essie Seagler, Mrs. L. E. Nichols, Mrs. Olive Angel, Mrs. Alma Altman, Mrs. Ellen Bayless, Linda Finney, Mrs. Pool and Mrs. Bryant. Ann Blackston is home after a three week visit with her sister, Mr. and Mrs. Lee McDonald, at Memphis. Nancy Blackstone has gone for a visit with the McDonalds. Kathy Whitner and Ann Blackstone will be in Atlanta, Georgia July 3 until August 13 to attend Massey Junior College, studying Modeling and Interior Decorating. The T.E.L. Sunday School class met at the home of Mrs. Marion McDaniel for their class party Tuesday night, and presented her with a pin from the class. Those present were Mrs. Rose Nichol, Mrs. Welma Petree, Mrs. La Joyce Pierce, Mr. Olive Angel and Mr. Margie Peterson.

Shonnye and Cindy Snitker of Amarillo visited their grandparents, Mr. and Mrs. C. C. Snitker, for several days. Henry Hardaway of Littlefield, the son-in-law of the C. H. Byars, was unloading cattle out of a two decker truck Friday and slipped and fell and broke both wrists. Mrs. Hardaway his wife, his father, Ray Hardaway, and Mrs. C. H. Byars went to El Paso Friday afternoon to be with him at the Yeseta hospital. They brought him home Sunday. Mr. and Mrs. Jim Byars of Odessa spent Saturday night with Mr. and Mrs. Glenn Lowe and visited at the C. H. Byars home Sunday. Kelley Hardaway returned home with them for a visit. Bro. W. B. Peterson preached both services at the Enochs Baptist Church Sunday. Following services Sunday night, there was a fellowship for the Marion McDaniel family as they will be moving this week-end to Comanche. The church presented them with a bed spread and towels. The refreshment table was covered with a white lace cloth over white, centered with a rose colored flower arrangement. Pink punch, coffee and doughnuts were served to the group. Bro. and Mrs. Fred White of Morton were guests in the home of Mr. and Mrs. Harvey Blackstone Sunday. Supper guests were Mr. and Mrs. Mitchel Abbe of Morton. Mr. and Mrs. J. W. Hardin of Littlefield visited in the home of their sister-in-law, Mrs. L. E. Nichols, Sunday afternoon. Mr. and Mrs. Burley Roberts and children and Mr. and Mrs. Arnold Archer visited in Plainview Sunday with his brother, Mr. and Mrs. Norvil Roberts, and son Randy. Randy came home with them to spend the week with the Archers. Mr. and Mrs. G. M. Knipe and Debbie from Great Bend, Kansas visited her parents, Mr. and Mrs. T. A. Thomas, recently. Mrs. E. E. Nichols, Mrs. Rowena Richardson of Miss Vina Tugman spent Friday in Plainview. Mrs. Nichols visited with her son, Mr. and Mrs. Sammie Nichols and Mrs. Richardson and Miss Tugman visited Mr. and Mrs. Donald Grusendorf.



IN PARIS FOR SHOW . . .
DONALD A. JOHNSON, Executive Vice President of Plains Cotton Growers, Inc., Lubbock, is in Paris this week representing producers of cotton on the High Plains at the International Textile Machinery Exhibition.

Texas Tech coach seeking applicants to basketball camp

Applications are still available for the Gerald Myers Basketball Camp, the first of its kind in the Lubbock and South Plain area. Myers, head coach at Texas Tech, has scheduled a day camp to run July 5th-9th and July 19-23rd. The camp is for elementary and junior high school boys who have not graduated from the ninth grade. The camp is structured to help the advanced player as well as the beginner. Myers will give individual attention to each boy to insure understanding and development of basketball skills. "No one will be lost in the crowd," Myers said. "I think it is important that boys interested in basketball get a chance to learn the fundamentals of the game at an early age."

Location of the camp will be the gymnasium in the Texas National Guard Armory. The cost of the camp is \$50 per camper and each boy must have a statement signed by a doctor stating he is in good physical condition. Myers, who took over the job as Texas Tech head coach last year, is a former All-Southwest Conference player at Tech. He made the all-SWC team in 1958, his junior year as a Red Raider. He was head coach at Monterey High School, where he compiled a 150-50 record. Myers moved to Houston Baptist for a three-year stint there as head coach, before he came back to Tech as an assistant basketball coach in 1970. Applications for the camp may be obtained by writing Gerald Myers, Box 4290, Texas Tech, Lubbock 79405.



Donald Johnson, Executive Vice President of Lubbock-based Plains Cotton Growers, Inc., is representing cotton producers of the Texas High Plains June 22 through July 1 at the International Textile Machinery Exhibition in Paris, France. More than 1,000 textile manufacturers from the U. S. and 24 other countries are listed as exhibitors. They are showing and innovative machine for converting raw fiber into finished fabric. The last International Exhibition, held in Basel, Switzerland in 1967, attracted an estimated 110,000 people in all walks of textile life from all over the world. No less than 150,000 were expected for this year's show.

In addition to viewing technical developments in textile processing Johnson is also making contacts with textile leaders from many countries, exploring the possibilities for increasing sale of High Plains cotton. He points out that while the domestic textile industry is expected to increase cotton use in the next decade by no more than 10 million bales, demand for textile fibers in the rest of the world will likely double over the next 20 or 25 years.

Before leaving Lubbock June 21 Johnson said "Textile machinery is for cotton what smelters and steel mills are for iron ore — the means whereby cotton becomes of value. Practically, speaking, every bale of cotton produced here or elsewhere in the world must move through textile processing equipment before it can be sold to the consuming public. Therefore our continued competitive position in world fiber markets is dependent upon our keeping abreast of new and different fiber characteristics that may be demanded by new machines, new processing techniques and new fabric constructions."

"This means that if cotton managers to hold its present share of the total fiber market during this period, worldwide consumption of cotton would rise another 50 million bales by 1990 or 1995, and most cotton producing countries outside the U.S. would be hard pressed to meet such a demand," he said.

The trick, of course, is for cotton to maintain its present share of the market. But Johnson believes it can be done. "If we are wise enough and aggressive enough to keep in step with the textile times."

LCC special program to educate Mexicans

Gerardo Garro is heading up a new special guidance and scholarship program for Mexicans at Lubbock Christian College.

The Mexican community needs leadership and leaders need education beyond the high school level, but the percentage of Mexicans in colleges and universities in Texas is very low.

LCC recognizes this need and has committed itself to educate 25 to 50 needy members of this minority group each year. Each student, under special guidance and counseling, will work on a major course of study of his own choice.

Please contact Mr. Garro at the LCC admissions office if you know of a young Mexican man or woman that is college material and is not attending college because of financial difficulties or if you would like to become involved in the LCC Mexican Scholarship Fund.

Garro is a naturalized citizen of the U.S. who left Cuba in 1959. He holds the Bachelor's degree from Abilene Christian College and a Masters in guidance and counseling from Texas Tech University. Mr. Garro will be glad to visit any congregation that would be interested in more information concerning this program.

SWIMMING LESSONS

June 28 - July 9
(classes start at 10 a.m.)

If you are interested in swimming lessons, fill out the form below and mail to:

John Stockdale, Box 771, Morton Texas
or
register at pool

NAME _____
AGE _____ Pho. No. _____
Address _____
 Check here if you would be interested in an adult beginners class

Bookmobile schedule

The High Plains Bookmobile Library will be in your area on the following dates:
Wednesday June 30, Needmore — 10:00-11:30; Stegall — 12:00-1:00; Enochs — 1:30-2:30.

Phone Your News to 266-5576

WHICH WOULD YOU RATHER BE?

CROP HAIL INSURANCE

LET US TELL YOU ABOUT RANGER'S;

- "EXTRA HARVEST EXPENSE ALLOWANCE" feature at no extra cost to you made available only through RANGER INSURANCE EXCHANGE.
- GUARANTEED premium savings at time of purchase rather than be promised that MAYBE a dividend will be paid at the end of the season.
- Large variety of policy forms to choose from best suited to your individual needs.

This policy provides 100% coverage after 48 hours. After July 1, 1971 your cost can be as low as \$8 down to \$5 per \$100 insurance, depending on the location of your farm.

Available from Don Whittenburg — Morton Gin Co., Inc.

266-8615 or 266-5196

Phone your NEWS to 266-5576

SAVE LIKE CRAZZZLEEE!

On These Crazy Day Specials at the New York Store!

FREE BEDSPREAD With Every Purchase of \$50 or More	Girls' 2-piece Stretch Set Shorts and Top — REG. 4.00 ONLY 2⁹⁷
Ladies' Double Knit 2-piece Set Shorts and Top REG. 6.00 VALUE ONLY 3⁹⁷	400 Ladies' Dresses 4⁰⁰ Reg. 12.00 — Going For Only
MEN'S SHIRTS Permanent Press Long Sleeve REG. 4.00 VALUE 2 FOR 5⁰⁰	BOYS' SHIRTS Permanent Press Short Sleeve REG. 2.99 VALUE 3 FOR 5⁰⁰
Ladies' Peasant Blouses 3⁹⁷ Assorted Colors. REG. 6.00	Ladies' PANT SUIT SET Double Knit Many Colors and Sizes REG. 12.00 VALUE 6⁹⁷
Boys' High Top Work Boots 3⁹⁷ Sizes 3½ to 7. REG. 7.98	

REGISTER FOR FREE WATCH

Hundreds of Items Are Not Listed — Come and See For Yourself
One-stop Shopping For the Entire Family — Where You Buy the Best for Less

NEW YORK STORE

North Side Square Morton

*you get more
for your money
at home*

*Dependable
Quality*

*Better
Service*



Strong Claims backed by facts

Our local business firms are in good shape to back up strong claims of giving you **MORE VALUE FOR YOUR MONEY.**

Because . . . it's a simple fact of economic life that home merchants have about a 30% head start on their out-of-town competitors in the run for our money.

This is true because near 30% of every dollar spent at retail goes to support and to build up the prosperity of the community in which it is spent . . . and you benefit from the work done by that part of your money **ONLY** when you live and do business in that community.

Where goods, service and price offered by home stores and by the out-of-town stores are otherwise equal . . . the **HOME DEAL** is still close to one-third better . . . and may be many times better for you . . . as bigger trade volume at home prospers the area where **YOU** live . . . and make your living.

**It Pays to Buy
where You Live**

Trade At Home Where Your Money Benefits You

*These Firms Are Genuinely Interested in The Future Of Our
Community And Your Welfare*

Gwatney-Wells Chevrolet-Olds
Chevrolet & Olds Dealer for Cochran County

AGRICULTURAL CHEMICALS
Sanders Fertilizer & Chemicals
266-5000 805 N. Main

St. Clair's Department Store
"Where All The Family Shops"

Minnie's Shop-Child's Men Store
High Quality Clothing for Men and Women
266-8602 266-8840

Luper Tire & Supply
"A Tire for Every Purpose"

Higginbotham-Bartlett Lbr. Co.
Your Local Jones-Blair Dealer

INSURANCE
MORTON INSURANCE AGENCY
Fire — Auto — Liability
Life Insurance — Bonds

Headquarters For Your
BUILDING NEEDS — PAINT — LUMBER
FORREST LUMBER COMPANY
311 NW 1st 266-5444

MORTON PACKING CO.
Ralph Soliz
YOUR BUSINESS APPRECIATED

Featuring Your Favorite Foods . . .
At Budget Prices
TRUETT'S FOOD STORE

CHAMBER OF COMMERCE
MORTON AREA

GENERAL INSURANCE
Proctor-Walker Insurance Acy.
South Side of the Square Phone 266-5061

For Twenty-five Years . . .
With Modern Banking Service
FIRST STATE BANK

New York Store
Clothing and Shoes for the Whole Family
Prices to Fit Your Budget

MALT SHOP
Rob & Loma Richards

Levis Farm & Ranch Store
Field & Garden Seed — Custom Grinding & Mixing
Phone 266-5461 310 N.W. 1st

ROSE AUTO & APPLIANCE
TV SALES & SERVICE
Phone 266-4671 Box 1096

BURKETT TRADE LOT
Irrigation Equipment — Farm Machinery

SHOP IN MORTON WHERE THERE IS NO CITY SALES TAX!