

Morton Tribune

VOLUME 33

MORTON, TEXAS THURSDAY, FEBRUARY 22, 1973

NUMBER 19

Victorious Tribe heads for regional



"NOTHING TO THIS REBOUNDING"—Morton's Jerry Silhan seems almost nonchalant as he picks off one of his many rebounds. Silhan scored 13 points in last night's bi-district game to down the previously undefeated Abernathy Antelopes, 70-62. The Abernathy player is Larry Lutrick. A capacity crowd of approximately 5,200 packed into the Dome.

The Morton Indian basketball team took the first of five giant steps toward a second state championship Tuesday night by defeating the Abernathy Antelopes in bi-district play 70-62.

The Antelopes had enjoyed a perfect season until the big confrontation with the Indians, but this put them to rest for the season with a 29-1 record and the Indians go on to play in the regional tournament in Lubbock this weekend. The Indians are due to play Stratford tomorrow in the Coliseum at 7:30 p.m., and winning there will play in the regional finals at 1:00 p.m. Saturday. Those two steps, if successful, will move the Indians to Austin for the final two steps, the semi-final and final games for all the marbles and their second consecutive championship.

BULLETIN

Morton has been designated the visiting team in the game against Stratford Friday night and all local fans are asked to sit on the east side of the Coliseum. If the Indians win this game they will play for the regional championship at 1 p.m. Saturday against the winner of the Hamlin-Cochoma game that will be played at 9 p.m. Friday.

For the Indians, the bi-district win brought their record for the year to a 25-5 mark, which might not look too good until it is considered that all of the losses were to teams of higher classifications. The Tribe has not lost to an AA team since the 1971 Caprock Tournament.

The Antelopes were full of confidence as they came into this game because of their superior record and greater height, but as it turned out, neither were sufficient to alter the final score. The Indians trailed through the first half, took over to go ahead in the third quarter, then wrapped the game up for good in the final segment of play.

The coolness of the Indians under fire was evident as they trailed the Antelopes by as much as seven points during much of the second quarter. The Antelopes couldn't make their lead stick as the Indians pulled up and went ahead several times, but neither could the Indians mount any kind of a lead that lasted during the initial two quarters. The advantage of height certainly counted a lot for the Antelopes through much of the early going, but it was not enough to offset the Indian attack as the teams moved to head down to the wire.

After trailing by 16-19 at the quarter, the Indians trailed by five points at the half, 29-34. Six foot, seven inch Dick Rogers and six foot Kent Snodgrass each had eleven for the Antelopes during that first half, Jerry Silhan was high for the Indians with nine.

Jimmy Harvey and Mike Hunter got busy during the third quarter and hit for eight points and six points respectively to take a large hand in putting the Indians ahead at the three-quarter mark, 49-44.

See **TRIBE** Page 5



MORTON FOURTH GRADER GAYLA MULLINAX is justifiably proud of her poster which took first place in a recent county-wide soil and water conservation poster contest sponsored by the district conservation office here. Presenting her with the first prize of a \$25 savings bond is conservation district chairman George Martin as Mrs. Evelyn Seagler, Gayla's art instructor, looks on. Gayla, who is the daughter of Mr. and Mrs. Jimmy Mullinax, appeared on Television station KSEL February 12 with several other contestants who placed high. Second place was won by Valinda Davis, Bledsoe fifth grader.

County counts tax blessings

Bread cast upon the waters during the past year by Cochran County residents in the form of charitable donations are now returning as blessings.

So are various other expenditures made by them, such as for local and state taxes, for doctors' bills and the like.

To people who are going over their financial figures, preliminary to working up their income tax returns, the outlays of yesterday are the tax deductions of today.

How much do these deductions amount to normally? What have other people who itemize their deductions and are in similar income brackets been listing for charities, medical expenses and such?

Answers to these questions, based upon information provided by the Internal Revenue Service, have been prepared by

See **TAX** Page 5

Seal drive begins Mar 1

The 1973 Easter Seal Appeal will open in Cochran County on Thursday, March 1, 1973 according to Glen Thompson who serves as Easter Seal Representative for the county.

Thompson said that Easter Seal Appeal letters would begin arriving at homes in the county about March 1.

As Easter Seal Representative, Thompson is the person to contact to request services from the Easter Seal Society for Crippled Children and Adults of Texas. These services include physical and occupational therapy, speech and hearing programs and special information services to help solve the many problems faced by the families of handicapped children and adults.

Last year 16,572 handicapped people received help from the Texas Easter Seal Society. With the costs of providing expert professional care rising, more money than ever will be needed.

Funds help support 18 centers in Texas, where crippled children and adults are treated, regardless of their ability to pay. Providing walkers and wheelchairs is an example of the services provided to those who cannot provide for themselves and who do not qualify for help from any other source.

"The people of Texas have always responded generously to helping the handicapped, and I feel certain they will make it possible to increase Easter Seal services to crippled Texans throughout the coming year," Thompson said.

School supervisors contracts approved

The setting of the date for a school trustee election and the renewal of

contracts for supervisory personnel were the main orders of business at the regular meeting of the Morton school board Monday night.

Date for the trustee election was set for April 7 and L. T. Lemons was appointed as election judge.

Supervisory personnel, all of whose contracts were extended for one year include: Kenneth Baker, high school principal; Jim Middleton, junior high principal; Harold Drennan, Elementary school principal; Lenave Freeland, counselor; Dorothy Rose, curriculum coordinator and William J. Hodge, business manager. The contract of Bob E. Travis as school superintendent was extended one year at the January meeting and all classroom teacher contracts will be considered at the March meeting.

School board members whose terms are expiring and which the election has been called to fill are those of Bill Foust and Ronald Coleman. Both are regular three year terms and the election will be

See **SCHOOL** Page 5

Stock show set for March 5-6

The youth in every nook and cranny in Cochran county have been feverishly at work preparing for the annual 4-H and FFA stock show to be presented here March 5 and 6.

It looks like we will set a record for numbers of entries this year," County Agent Roy McClung informed the Tribune, and added "if the quality equals the quantity, and it looks like it will, we will have a truly outstanding show."

Judges for this year's show include Jesse Holloway, instructor in animal husbandry at Lubbock Christian College, breeders and nationally known swine breeder and vocational agriculture teacher at Hart, Lanny Tucker, for the sheep and swine.

It looks now like we will have over 40 classes, over 90 lambs and 100-124 swine, McClung said. The show will open with lamb judging at 8 a.m. Tuesday, March 6 and will be followed by swine judging at 1 p.m. The judging of other classes will begin as soon as the lambs are finished, which should be around 2 p.m., he stated.

The show barns will open at 10 a.m. Monday for receiving the livestock and weigh-in and registering will continue all day.

Eugene Bentley, president of the Cochran County Livestock Improvement Association, which sponsors the show, has announced that Bobby Neal of Whiteface will repeat as general superintendent again this year.

A welcome addition to this year's show will be a contest to name a stock show queen, McClung said. Method of selecting the queen, will be the sale of membership tickets to the association. Each dollar donated will count as one vote.

The queen candidates will be nominated by the various 4-H and FFA clubs and chapters and will sell their own tickets. The one with the most tickets sold will be queen, prior to the opening of the show and will reign over the show with all other candidates making up her court. Names of the packer buyers and the

floor price for the sale had not been announced at press time Wednesday.

Cotton Harvest 90% complete

Ideal weather conditions enabled South Plains farmers to resume the cotton harvest and approximately 90 percent of the crop is now out of the fields, according to W. K. Palmer, in charge of the U.S.D.A. Cotton Classing Office in Lubbock.

Samples from 102,000 bales were tested and classed at the South Plains U.S.D.A. cotton classing offices at Lubbock, Brownfield and Lamesa during the week ending Friday, February 16th. This brought the total classed for the season to 1,666,000 bales.

Grades of cotton classed at Lubbock

Screwworm lull appears over

Officials of the Southwest Screwworm Eradication Project announced Monday (Feb. 12) that two samples received over the weekend from Rio Grande Valley locations had been identified as the feared flesh-eating worms.

They were the first positive samples received since January 22 and eliminated any hope by livestock producers that cold weather had killed them off in South Texas.

One was from a cow east of San Manuel in Hidalgo County while the second was discovered in a dog on a ranch east of Raymondville in Willacy County.

"These cases point up the fact that we still have screwworms in South Texas

remained about the same as the previous week. Strict Low Middling Light Spotted (42) was the predominant grade, making up 19 percent of all cotton classed. Strict Low Middling (41) made up 11 percent, Strict Low Middling Spotted (43) 13 percent and Strict Low Middling Tinged (44) 13 percent.

Average staple length was also about the same as the previous week. Staples were predominantly 29 to 32. Fourteen percent had a staple length of 29, 41

See **COTTON** Page 5



A JUBILANT BAND OF INDIANS whoop it up in the dressing room immediately following their bi-district triumph over the Abernathy Antelopes Tuesday night in the Texan Dome in Levelland. The battle, featuring the defending state AA champion Indians and the undefeated Antelopes who came into the game with a 29-0 record,

drew the largest crowd ever to pack into the dome for any event—an estimated 5,200 persons. The 70-62 win puts the Tribe in the regional tournament in Lubbock Friday where they will take on I-AA champion Stratford at 7:30 p.m.

Morton Tribune

Published Every Thursday Morning at 106 N. Main St., Morton, Texas 79344

OFFICIAL NEWSPAPER OF COCHRAN COUNTY
"TEXAS' LAST FRONTIER"

BILL SAYERS, Editor and Publisher

Entered as second class matter at the post office in Morton, Texas, under the Act of Congress on March 8, 1879.

Subscription rates—In Cochran County and adjoining counties: Per year, \$3.50, six months, \$2.00; three months, \$1.25. Outside Cochran County: Per year \$4.50, six months, \$2.50, three months, \$1.75. To insure proper service, subscribers will please notify us promptly of change of address.

Classifieds

CLASSIFIED RATES
5c per word first insertion
4c per word thereafter
75c Minimum

1-FOR SALE

PORCH SALE: Saturday and Monday, 612 SE 7th. Odds and ends, bridge chairs, tables, junk, twin cabin craft bedspreads. 1-20-p

FOR SALE: Spinet Piano, like new. Individual with good credit may assume balance in small monthly payments, also have spinet organ available. Write J&B Collection Agency, Box 3321, Lubbock, Texas 79410. 2-20-pts

FOR SALE: Station Wagon, Mattress, 4 bar stools, Antique High Chair, Duncan Phyle Couch and Table, Stauffer, cheap chairs, Books and tools. Call 266-8975. 2-19-p

FOR SALE: Registered Angus cows and calves. Registered Angus bulls, heifers, J. Deere 3 bottom 16" breaking plow with back packer, Ammo Phos Fertilizer, Mal-Mix protein molasses and grain bed for truck, Tandem disc plow with Treflan rig. Contact J.W. McDermott at 266-5251. tfn-20-c

FOR SALE OR RENT: 4 bedroom, 2 bath house in Bledsoe. Call 266-8684 after 4 p.m. weekdays. 2-19-p

FOR SALE: Good credit Singer Golden Touch and Sew, just 6 payments left. Also 3 late model Singers for less than \$25, discount for cash. To try in your home call 266-8983. tfn-19-c

FOR SALE: Good Alfalfa hay. Call Bobby Neal at 4431-Whiteface or come by 1 mile East of Whiteface. 3-19-c

FOR SALE: 15x16 bedroom rug, light beige. call 266-5731, 103 E. Hayes. 2-19-c

FOR SALE: 3 bedroom house, 606 SE 1st, call 266-5672. 7-15-p

SAVE-SAVE-SAVE PVC Plastic Pipe and fittings in sizes from 1/4" to 12". All pipe meets or exceeds SCS specification. Save money by installing your own. See STATE LINE IRRIGATION in Littlefield, and Muleshoe. tfn-44-c

FOR SALE: 640 Acres in Lea County, New Mexico. 600 acres in cultivation, by owner. Call R.E. Hardberger or Russell Smylie, Beaver, Oklahoma, 625-3391. 4-18-c

2-FOR RENT

HANNAH'S husband Hector hates hard work so he cleans the rugs with Blue Lustre. Rent electric shampooer \$1. Taylor and Son Furniture. 1-20-c

FOR RENT: 3 bedroom, bath and half, attached garage, new carpet, central heat, vented air conditioning, \$100. per month. Call 266-5814. Located 208 W. Lincoln. tfn-20-c

3-BUSINESS SERVICES

MATTRESSES—RENOVATED also new King and Queen size. Pick up Mondays. Call Butler Body Shop 266-5925, nights 266-5127. tfn-20-c

COCKROACHES, rats, mice, termites, golphers, and other household pest exterminated. Guaranteed. 15 years experience. 894-3824, Levelland, Texas. Davidson Pest Control. Reasonable rates. rtfn-31-c

4-WANTED

TA WAN KA Horizon Club members would like to do house work to earn money for camp. Call 266-5986. 2-20-c

WANTED: Sewing in my home. Fast Service. Call 266-5469, 110 NE 5th. 1-20-c

WANTED IMMEDIATELY: Man or woman to supply consumers in your area with Rawleigh products. Can earn \$50. weekly part time-\$100 up full time. Call collect 908-396-0075 or write PO Box 16121, Memphis, Tenn. 2-19-c

HELP WANTED

NEEDED: R.N.—full or part time. Apply at Cochran Memorial Hospital, 201 E. Grant, Morton, Texas 79346 or call (806) 266-5565. 4-18-c

PIGGY BANK EMPTY? AVON can help you fill it with extra cash you can earn as an AVON Representative. Make money for new clothes, a dishwasher, color TV. Call 296-2526 collect after 6 p.m. or write Box 98, Plainview, Texas. 1-19-p

5-CARD OF THANKS

CARD OF THANKS: I would like to thank all of the merchants and Morton people who made the drawing of the beautiful pick-up possible for me. I still can't believe it.
Thank you very much
Mrs. B.C. Butler

NOTICE

ALL NEW NURSING HOME now open. Good patient care our objective. Near hospitals, easy to reach. QUAKER MANOR, 74th and Quaker, one blk. south of Loop 289 on Quaker. Phone 795-0668. Lubbock 2-19-c

SEWING repair special, one week only—delint, oil, adjust upper and lower tension. \$2. Call 266-8983. tfn-19-c

Have fully grown White Male German Shepherd who needs a good home. Call 266-5902 after 5 P.M. 1-20-c

NOTICE OF INTENTION TO ENGAGE IN WEATHER MODIFICATION ACTIVITIES

Notice is hereby given that Atmospherics Incorporated of 5652 East Dayton Avenue, Fresno, California 93727, who holds License Number 2 of the State of Texas, intends to engage in a weather modification operation designed to decrease hailfall and augment rainfall, for and on behalf of Better Weather Incorporated, Littlefield, Texas, and will conduct such a program by means of aerial application of artificial nuclei as follows:

1. The area over or within which equipment may be operated shall include portions of the counties of Lamb, Parmer, Castro, Swisher, Bailey, Hale, Cochran, Hockley and Lubbock.

2. The target area, within which hailfall is intended to be decreased and rainfall augmented, can be described as follows:

The boundaries of the target area shall be a line beginning at a point of origin at Littlefield in Lamb County, Texas, and running northwest along Highway 84 at a point 4 miles southeast of Sudan, thence due west to Needmore, thence due north along Road 214 to its intersection with Road 145 in Parmer County; thence due east along Road 145 to Hart, Lamb County; thence south to the northeast corner of Lamb County; thence continuing south along the east boundary of Lamb County to its intersection with the northeast boundary of Hockley County; thence westerly along the north border of Hockley County to its intersection with Highway 84; thence northwesterly to the point of origin at Littlefield, Texas.

3. The equipment, materials and methods to be used in conducting an operation within this area of approximately 1,000 square miles, include a 3 cm radar system, cloud seeding aircraft, and the application of silver iodide to ice nuclei, hygroscopic nuclei or other nuclei considered appropriate to the artificial nucleation of clouds or weather systems.

4. The person in charge of this program shall be Thomas J. Henderson, Atmospherics Incorporated, Fresno, California.

5. The program may be operational at various times throughout the period from May 1, 1973 through October 30, 1973.

6. Any person who feels they may be affected in some adverse way by this program may file a formal complaint to the Texas Water Development Board, Post Office Box 12386, Austin, Texas, 78711.
Signed Thomas J. Henderson, President
Atmospherics Incorporated

Published in the Morton Tribune February 15, 22, March 1, 1973

Legal Notice Probate File No. 558

NOTICE TO ALL PERSONS HAVING CLAIMS AGAINST THE ESTATE OF EULA B. ROGERS

Notice is hereby given that original letters of administration upon the Estate of Eula B. Rogers, deceased, were issued to us, the undersigned, on the 19th day of February, 1973, in the proceeding indicated below our signatures hereto, which is still pending, and that we now hold such letters. All persons having claims against said estate, which is being administered in Cochran County, Texas are hereby required to present the same to us, respectively at the address below given of my attorney, before suit upon same are barred by the general statutes of limitation, before such estate is closed, and within the time prescribed by law. Claims may be presented at room 201 of the Courthouse, Morton, Texas, 73946.
Billie Don Crawford
Rex Crawford
Co-Executors of the Estate of Eula B. Rogers, No. 558 in the County Court of Cochran County, Texas.

Published in the Morton Tribune February 22, 1973

NOTICE TO BIDDERS THE STATE OF TEXAS COUNTY OF COCHRAN

Notice is hereby given that the Commissioners Court of Cochran County, Texas will open bids on March 12, 1973 for deposits for County Administration School Fund. All bids shall be presented to the Commissioner's

Court not later than March 12, 1973 at 10:00 A.M. Bids shall be sealed, presented and will be opened in the Commissioners Courtroom, Courthouse, Morton, Texas.

BY ORDER OF THE COMMISSIONERS COURT:

Glenn W. Thompson, County Clerk
Published in the Morton Tribune February 22, March 1, 8, 1973.

Legal Notice Probate File No. 560

NOTICE TO ALL PERSONS HAVING CLAIMS AGAINST THE ESTATE OF ESCULAPIUS LAPE COX

Notice is hereby given that original letters of administration upon the Estate of Esculapius Lape Cox, deceased, were issued to me, the undersigned, on the 14th day of February, 1973, in the proceeding indicated below my signature hereto, which is still pending, and that I now hold such letters. All persons having claims against said estate, which is being administered in Cochran County, Texas are hereby required to present the same to me, respectively at the address below given of my attorney, before suit upon same are barred by the general statutes of limitation, before such estate is closed, and within the time prescribed by law. Claims may be presented at Room 2, Box 91, Morton, Texas 79346.
Willard Henry
Executor of the Estate of Esculapius Lape Cox, No. 560 in the County Court of Cochran County, Texas.

Published in the Morton Tribune February 22, 1973

BUSINESS and PROFESSIONAL DIRECTORY

AUTOMOBILE DEALERS

GWATNEY-WELLS
CHEVROLET-OLDSMOBILE CO.
Your Home-Town Dealer
Serving You With Full Line of Cars and Trucks

SEED

HARPOOL SEED-MORTON INC.
Specializing in High Quality Seed
Wholesale and Processing Only
See Us for Contract Production
Sandy Asbill, Mgr. — 266-5742

DIRT WORK

ROYAL BERKGREN
504 E. Pierce
Morton, Texas
Earth Moving
Motor Grader — Scraper Work
Parallel Terraces—Diversions—
Waterways
Phone 266-5144

PUMP SERVICES

CROCKET PUMP SERVICE
Irrigation Sales & Service
& Domestic
215 N.W. 1st, Morton
Distributors of Simmons,
HPC & Goulds
Phone
Mobile: 927-3820 Office: 266-8610

JEWELRY

ATCHISON JEWELRY
Levelland
Phone 894-3450 617 Ave. G
WATCH REPAIR
DIAMOND SETTING
CUSTOM MOUNTINGS

ANIMAL REMOVAL

MORTON BI-PRODUCTS, INC.
Dead Cattle Removed
Day or Night
Phone 266-8621
Nights 266-5052

REAL ESTATE

GLEN McDANIEL
Buying or selling farms or city property
Your Home-Town Dealer

WESTERN ABSTRACT

Call 266-5185 nites 266-5103

REAL ESTATE, LIFE INSURANCE and HOSPITALIZATION
See
BOB CROSS

Phone 266-5730

TIRE SUPPLY

LUPER TIRE & SUPPLY

COMPLETE TIRE SALES,
SERVICE AND REPAIR
Road & Farm Pit Stop Service
108 East Washington
P.O. Box 1074—Phone 266-5330
Morton, Texas

INSURANCE

NATIONAL FARMERS UNION INSURANCE

JOHN HUBBARD
Agent for Bailey & Cochran Co.
Life-Health-Casualty-Fire
Real Estate
108 SE 2nd, Morton-Ph. 266-5710
Bula — office 933-2392
Home 933-2321

SOUTHERN FARM BUREAU LIFE

Charles Palmer — Manager
Jerry Steed — Special Agent

Fire & Casualty, Life,
Health & Accident

KIRBY VACUUM CLEANERS

We mail parts and supplies
Call or Write
Ralph Harvey
KIRBY CO. OF PORTALES
P.O. Box 518 Portales, N.M.
Call (505) 356-3091

OPTOMETRIST

DR. WILLIAM R. GRUBBS
Optometrist
Office hours in Morton
Wednesday and Thursday
9 a.m. to 5:30 p.m.
Morton Professional Building
Phone 266-5529

ELECTRONICS

See Us For
RCA Electronics
Television, Radios, Etc.

SALES AND SERVICE

ROSE AUTO & APPLIANCES
Phone 266-5959 Morton

APPLIANCES

WHIRLPOOL APPLIANCES
Automatic Washers, Dryers,
Refrigerators, Dishwashers

ROSE AUTO & APPLIANCE
Phone 266-5959 Morton

SEWING MACHINE SALES AND SERVICE

Factory authorized PFAFF dealer
We service all makes machines
all work GUARANTEED

SEWING CENTER & FABRIC MART

Southwest corner of square
Levelland, Texas Call 894-4250

AUTO PARTS & SUPPLY

MORTON AUTO SUPPLY

All the best brands in Auto
Parts and Supplies
Kim Hanlin, Owner-Operator
120 W. Wilson-Phone 266-8877

FOR CLASSIFIED ADS

CALL 266-5576

For effective classified

ads call 266-5576

SEMI-DRIVERS NEEDED

Local companies need Certified Semi-Drivers. Earn \$300-\$400 per week. No experience necessary, will train. For application call 317-636-2675, or write Coastway American Systems, P.O. Box 11125 Indianapolis, Indiana 46201. 30-17-c



LOOK FOR RED JACKET WINNERS in your area

Farmers whose yield of Pioneer brand hybrids equaled or exceeded their county average will be wearing bright red jackets awarded by the local Pioneer dealer and Pioneer Hybrid Company.
When you see a man with a RED JACKET displaying the Pioneer symbol, you'll know that he combined good crop management and lots of hard work to earn the jacket he's wearing.

PIONEER BRAND 846--WILLARD HENRY 6213, RICHARD GREER 2241

TOM GREER 4448 8417--BUSTER ROBERTS 5100, JOE ROBERTS 6000



FIRST STATE BANK ANNOUNCES

A CHANGE IN POLICY IN OUR SUPPORT FOR THE STOCK SHOW

It has been our policy in the past to purchase on or more championship animals and consider a generous purchase price as our contribution to the show's financial success.

In concentrating our contribution on only one or two deserving youngsters, we have alienated many other youngsters just as deserving.

Our board of directors, after careful consideration, have come up with a solution, which will allow us to support this fine youth activity equally well and avoid angering many friends and customers of the banks:

WE WILL NOT BID THIS YEAR

Instead The Bank Will Make A Generous Cash Contribution.

The contribution will be made to the show in general and will approximate the amount we have paid for animals in the past. Our directors feel that this will benefit a much larger number of youngsters and at the same time keep us in good standing with the many fine friends and customers whose children are participating in the show.

WE APPRECIATE OUR LOCAL CUSTOMERS

And hope this solution to our dilemma meets with your approval.
We wish our 4-H'ers and FFA members the best of luck in the 1973 show.

FIRST STATE BANK

107 W. TAYLOR

MORTON

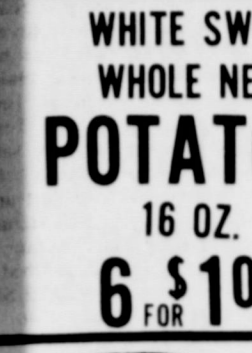
THE
25
LAUND
KING SIZE BOX
P
GIANT BOX
20
AJA
32-oz. BTL.
3c
CLE
14-oz CAN
A MAF
1-LB. CAN
A MAF
2-LB. CAN
A MAF
3-LB. CAN



WHITE SWAN
CUT OR FRENCH STYLE
GREEN BEANS
15 1/2 OZ.
5 \$1.00



WHITE SWAN
CORN 17 OZ. **5 \$1**



WHITE SWAN
WHOLE NEW
POTATOES
16 OZ.
6 \$1.00



WHITE SWAN
CANNED
MILK
TALL CAN
6 \$1



WHITE SWAN SOFT
MARGARINE
1 LB. TUB
3 \$1.00



PORK & BEANS
WHITE SWAN
16 OZ. **6 \$1.00**



MIXED VEGETABLES
WHITE SWAN
15 OZ. **5 \$1.00**



LUNCHEON PEAS
WHITE SWAN
17 OZ. **5 \$1.00**



FRUIT COCKTAIL
WHITE SWAN
303 can **4 \$1.00**



BACON
89c

WHITE SWAN
PEACHES
NO. 2 1/2 CAN
3 \$1.00

SIRLOIN STEAK
LB. **\$1.19**



AQUA NET
HAIR SPRAY
13 OZ. **53c**



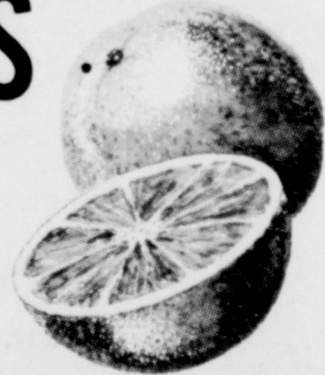
CHEESE
SAMMY PRIDE
12 OZ. **69c**

JERGENS
LOTION
20 OZ. **\$1.25**

RIGHT GUARD
DEODORANT
40Z. **87c**

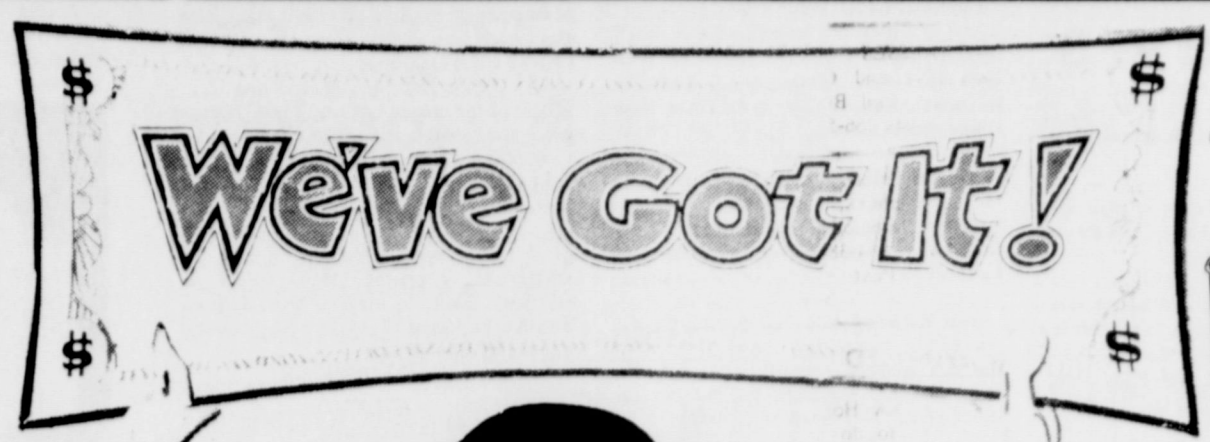


ORANGES
5 LB. BAG
59c



TOMATOES
FRESH LB. **39c**

POTATOES
SWEET LB. **10c**



A BIGGER THAN EVER
WHITE SWAN
SALE

DOUBLE GOLD BOND STAMPS
TUESDAY AND WEDNESDAY

GRAPEFRUIT JUICE



WHITE SWAN
46 OZ. CAN **47c**

APPLE JUICE

WHITE SWAN
32 OZ. **39c**

WHITE SWAN
MIXED GREENS 15 OZ. **6 \$1**

WHITE SWAN
CATSUP 32 OZ. **49c**

SOFT N LITE
FLOUR 5 LBS. **49c**

WHITE SWAN
SPINACH 15 OZ. **6 \$1**

VEGETABLE
SOUP
WHITE SWAN
NO. 1 CAN
8 \$1.00



WHITE SWAN SLICED OR WHOLE
BEETS 16 OZ. **6 \$1**

TOMATO SOUP
WHITE SWAN
NO. 1 CAN **10 \$1**

STRAWBERRIES
TROPHY
10 OZ. **4 \$1.00**

ORANGE JUICE
FLAVOR-PAC
6 OZ. **5 \$1.00**

W-P
DETERGENT
59c



WHITE SWAN
SHORTENING
3 LB. CAN
69c

GIANT
DOG FOOD
15 OZ.
12 \$1.00

WHITE SWAN
SALAD
DRESSING
QT. **39c**

RAMSEY'S FOOD STORE

Enochs - Bula News

Mr. and Mrs. Jess Hardin of Corpus Christi, visited his mother Mrs. Mary Hardin, recently. Also his sister Mr. and Mrs. Guy Sanders.

Mr. and Mrs. Allen Jones and daughter of Friona were supper guests in the home of his grandparents, Mr. and Mrs. Edd Autry, Tuesday night.

Mr. and Mrs. Tom Byars of Friona were dinner guests in the home of his parents the Charlie Byars, last Sunday.

Harold Layton visited his sister, Mr. and Mrs. Earnest Ellison, in Lubbock Tuesday afternoon and had supper with them.

Mrs. Clara Childers of Dumas spent a week with her daughter, Mr. and Mrs. H.B. King. She returned home last Sunday.

Mrs. Lorella Jones spent Wednesday night with her daughter, Mrs. Sarah Ann

Jones, at Whitharral and returned home Thursday afternoon.

Mr. and Mrs. Keith Price visited his uncle and aunt, Mr. and Mrs. Cliff Price at Hereford Wednesday night.

Mr. and Mrs. W.M. Bryant spent last weekend in Quanah to visit his brother Mr. and Mrs. Jewel Bryant, they also visited with a niece Mr. and Mrs. Dale Jerred and family.

Edd Autry was dismissed from the Littlefield Hospital Monday.

Mr. and Mrs. John Blackman were in Hereford Friday afternoon to visit Mrs. Julia Selliff who is very ill in a Hereford Hospital.

Mr. and Mrs. W.T. Thomas received word that their grandson, Gary Kessler, has joined the Air Force and will be sent to San Antonio for basic training. Gary has been studying to be a nurse and he will

continue with his study in the Air Force. His wife will join him as soon as he has finished basic training. They are both working as nurses at Doctors Community Hospital in Euless. Gary is a former Bula High School student.

Visiting recently with their mother, Mrs. Pearl Walden, were Mr. and Mrs. Clifford Walden and grandson, Wade of Ruidosa, and Mrs. Golden Nixon of Lubbock.

Ted Hubbard of Long Beach, Calif., visited his brother Mr. and Mrs. John Hubbard, and other relatives recently. He came for the funeral of his brother-in-law, Tommy Thompson of Amarillo.

John Walker a student of Lubbock Christian College was guest speaker at the Bula Christian Church Sunday in the absence of the minister, Mark Short who had gone to Michigan.

Mrs. Earnest Ellison of Lubbock visited her parents, the J.W. Laytons the last of the week.

Mr. and Mrs. Gene Bryan visited the Otis Neels at Friona last Sunday and they drove on to Hereford to visit Mrs. Julia Selliff, at a hospital there.

Mr. and Mrs. John Blackman were in Houston Sunday and Wednesday to attend the Federation of Cooperatives.

We wish to express our sympathy to the families of Mr. M.C. Street who died in the Medical Arts Hospital in Littlefield Wednesday morning. He was a former resident of Enoch's community.

Funeral services for Street, 83, and a retired Littlefield farmer were conducted Wednesday afternoon in the First United Methodist Church of Littlefield.

Burial was in the Littlefield Memorial Park with Hammonds Funeral Home in charge of arrangements.

Rev. David Hamblin, pastor and Rev. J.B. Fowler, pastor of the First United Methodist of Muleshoe officiated.

Survivors included are his wife, Hattie, a son Murpha Clarence Street, Jr., of Muleshoe, three daughters, Mrs. Wenona Gibson of Muleshoe, Mrs. Mildred Welch of Littlefield, a brother W.L. Street of Berhans, Okla., a sister, Mrs. Juanita Smith of McLean, 12 grandchildren and 10 great grandchildren.

Grandsons were pallbearers.

Congratulations to the Bula school boys and girls. They were winners in the Junior Livestock Show in Muleshoe last week. Jarrol Layton won first place (Class I) Heifers.

(Class IV) Steers: Keith Claunch, first; Steers (Class V) Sherri Claunch, fifth; and sixth: Jerry Sowder, tenth; Keith Claunch, eleventh; Steers (Class VI) Steven Newton, eleventh.

Crossbreed Barrow (Light weight) John Bruton, fourth.

Lamb: Fine wool (Class I) James Snitker, eighth.

Hampshire, Medium wool: (Heavy weight, Class VI) Cathy Snitker.

Hospital Notes

Patients admitted to Cochran Memorial Hospital February 14 through February 20 were: Tommy Ortez, Rupert Hook, Randall Tanner, Marie Martinez, W.A. Cheek, Antonio Alavez, Jack Baker, Rebecca Trevino, John Cooper, Fernando Enriquez, Jr., Isodar Hernandez, Diane Bickett, Donna Doughty, Salvador Chapa and Roy Blair.

LOCK OUT
A tourist who accidentally locked his keys in his car refused to pay the \$3 fee charged by the garage me-

chanic at a Naples, Fla., station, so the mechanic, who had opened the door with a wire, locked it again and walked away.

NUMBER ONE DEALER! NUMBER ONE DEAL!!

- 70 Ford Galaxie 500 4Dr., Green \$2095
- 69 Ford XL 2 Dr., White \$1995
- 72 Maverick 6 Cyl. 3 Sp., Blue \$2095
- 68 Ford Fairlane 2 Dr., Green \$1695
- 71 Ford LTD 4 Dr. Broughan, Green \$1995

WE HAVE A USED CAR TO SUIT YOU
CALL US AT
ERNEST GENTRY FORD
894-3191 Levelland 1407 Ave.

IT'S PLOWING TIME
NICHOLS BREAKING PLOW POINTS TO FIT:
JOHN DEERE-INTERNATIONAL-CASE
SOLID BUSTERS NICHOLS BUSTERS - HAMEY CHISELS & SWEEPS A COMPLETE LINE OF TILLAGE TOOLS
BE SURE TO REGISTER FOR \$25. HAT
EACH TIME YOU PURCHASE TILLAGE TOOLS
LEWIS FARM & RANCH
310 NW 1st 266-5461

- This Page Sponsored
By The Following
Indian Supporters
- Mobil Oil Corp. - Red Horse Station
 - Liner's Pharmacy
 - Morton Insurance Agency
 - The Morton Gourmet
 - Silvers Butane Co.
 - Fralin Pharmacy
 - McMaster Tractor Co.
 - John's Welding & Repair
 - Morton Bi-Products
 - Cochran Power & Light
 - Morton Packing Co.
 - G. & C. Gin
 - Morton Floral & Gift Shop
 - Great Plains Natural Gas Co.
 - Karl Griffith Gin Company
 - Cochran Electric Service & Supply
 - Gwatney-Wells - Chev.-Olds.
 - Bailey Co. - Electric Co-op Assoc.
 - The New York Store
 - Beseda & Son Elevators
 - Luper Tire & Supply
 - Forrest Lumber Co.
 - St. Clair's Department Store
 - Higginbotham-Bartlett Co.
 - Rose Auto & Appliance
 - First State Bank
 - Morton Tribune
 - Taylor & Son Furniture
 - Levelland Savings & Loan
 - L & B Supply
 - Bill's Food Store
 - Judge Glenn Thompson
 - Prairieland Packing Company
 - Windom Oil & Butane

BASKETBALL

MORTON INDIANS

1973 BASKETBALL SCHEDULE

SCORE IN BI-DISTRICT

MORTON 70.....ABERNATHY 62

CONGRATULATIONS INDIANS!
ON YOUR BI-DISTRICT CHAMPIONSHIP
GOOD LUCK IN THE
REGIONAL TOURNAMENT FRIDAY

YOU ARE NO. 1 IN STATE
LET'S KEEP IT THAT WAY

SEE YOU IN AUSTIN

BIG INDIANS



YOU CAN DO IT!

25
LAUND
KING SIZE BOX
GIANT BOX
32-oz. BTL.
3-oz.
CLE
14-oz CAN
1-LB. CAN
2-LB. CAN
3-LB. CAN

Parental Advisory committee meets

Parental Advisory Committee of Morton Schools held its regular meeting February 14 in the home of Wayne Wilcox at 702 W. Hayes. Wilcox teaches in the Junior High Migrant program, and some of her served as hostesses for the meeting. Pupils serving were: Margaret, Mary Ruiz, Mary Orona, David, Yvonne Gomez, Carmen Viera, Alvarado, and Ricky Mendez. The business meeting was called to order by the Chairman, Mrs. Cecil Freeland. Mrs. Freeland answered questions about the closing of parts of the Community Action Center and of the six self Basic Education Classes which will be offered soon. Harold Drennan discussed the closing of the Headstart program the last of February and asked the mothers that the children be required to have certain relations before school starts next year.

It was not business on this Valentine's Day as the large group enjoyed visiting and exchanging presents. Those present were: James Francis Moncado, Irene Mendez, Benny Aragon, Raymond, Olivia Casarez, James Joyce, Reyes, Dolores Mullinax, Cecil, Bess Wilcox, Carolyn Hamilton, Stockdale, Iva Williams, Cassie Benham, Dorothy Rose, Lenave Land, Mary Fuentes, Juan Guajardo, Ramon, Dorothy Patton, Lorenzo, Dorothy Enos, Dolores Garcia, Guajardo, Connie Kneiss, Joe, Misses Margie Berlanga, Kay, Juanita Berlanga, Charlene Hauk Drennan. The next meeting will be held March 7.

at 3 P.M. in the Migrant classroom of Mrs. Carolyn Hamilton.

"Busy Bakers" elects officers

The Busy Bakers, 4-H group, met February 5 and 12 in the home of Mrs. Floyd Rowland to elect officers. Darlene Coffey was named president and Sylvia Dutchover was elected vice president. Other officers elected were Robin Rowland, secretary, Suzanne Gillespie, reporter and Janet Gattis, treasurer. Members made milk drinks and meat dishes. The club will meet every Monday at 4 p.m. Members attending were: Cynthia Dutchover, Sylvia Dutchover, Darlene Coffey, Robins, Joy and Christy Rowland, Janet Gattis, Tammy Gresham and Suzanne Gillespie.

Club plans for summer camp

The Ta Wa Ten Ya Campfire girls met February 14 in the home of Mrs. Keith Price to discuss plans to attend summer camp. Members attending were: Mitzi Baker, Jaye Linn Greer, Shelly Travis, Rebecca Holiday, Trina Maberry, Martie Dewbre, Suzanne Gillespie, Peggy Bennett, Tammy Mullinax, Annette Willingham, Mary Kay Smith, Vera Holland, Carolyn Cobbs, Toni Norman, Melanie Polvado, Brigitte Blackstock, and the leader, Mrs. James Dewbre.

TAX FROM PAGE ONE

the Commerce Clearing House, specialist in tax law. They show that most families in the United States that have earnings of the size reported by the average family living in Cochran County list deductions of \$2,640, equal to 18 percent of their income. In general, it is found, it ranges from 16 to 25 percent of adjusted gross income. The percentage is higher among those in the lower brackets and lower for those with large incomes. Local families with an income of \$7,000 to \$8,000 for example, would have a deduction of 23 percent if they conformed to the average, whereas those at the \$15,000 to \$20,000 level would be taking 17 percent. Nationally, for those with earnings equal to the average prevailing in Cochran County, the amount normally listed for charitable deductions is \$350, for interest paid on loans and installment debt, \$880, for local and state taxes, \$990, and for medical and dental costs, \$420. If a family's deductions run higher than those taken by most others, it does not mean that they will be disallowed. Nor does conforming mean that they will be automatically approved, it is pointed out. The IRS requires that all items listed as deductions be properly documented and that records be available to back up the claims.

Mrs. Miller reviews book for 1936 Club

Mrs. Lloyd Miller reviewed a book by David Graces "Littlefield Land Companys" for members of the 1936 Study Club Wednesday, February 7. Mrs. Joe Nicewarner was hostess for the afternoon meeting. The book reviewed gave the history of the Littlefield Land Companys and told how Major George Littlefield bought the land after the Civil War. When it was cleared of Indians it was taken over by cattlemen. In 1908 316,000 acres were opened for public sale with encouragement that it be

sold to individuals for colonization rather than for speculation. Mrs. Miller stated that between 1907 and 1912 there were seventeen towns established in the area and by 1920, 42 percent of the 325 land sales completed had been paid for. "The town of Littlefield

was the major development because of the routing of the Santa Fe Railroad. The train passed through the town going north to Farwell on Monday, Wednesday and Friday and returned going south on Tuesday, Thursday and Saturday," she said. In conclusion she told about the Yellow House ranch being a part of the original Land Companys and that it was never divided and remained in the possession of the family until very recently.

In the business meeting, reports were made of the District meeting and plans for the District Convention in Lubbock were

discussed. It was announced that the 1936 Study Club would host a reception before the convention banquet.

Mrs. Miller and Mrs. D.E. Benham were appointed as trustees to the Scholar ship committee which administers the Student Loan Fund of the Area Federation of Women's Clubs.

Members present were: Mmes. Iva Williams, J.L. McGee, John Crowder, W.C. Benham, Billy Sayers, James St. Clair, James Price, Lessey Silvers, Joe Gipson, G.H. Tucker, Glenn Thompson, D.E. Benham, Miller, Nicewarner and M.C. Ledbetter.

COTTON FROM PAGE ONE

percent stapled 30, 25 percent stapled 31 and 14 percent was 32. Micronaire readings remained steady. Only 10 percent of all cotton classed at Lubbock had micronaire readings in the premium range of 3.5 through 4.9, 8 percent "miked" 3.3 through 3.4, 28 percent was 3.0 through 3.2, 34 percent 2.7 through 2.9 and 20 percent was 2.6 and below.

The Agricultural Marketing Service of the U.S.D.A. reported active trading on the Lubbock market. Prices were \$2.50 to \$5.00 per bale higher on most qualities. Prices ranged from \$2.50 per bale over the loan for low grade, low micronaire cotton up to \$5.00 per bale over the loan for high grade, premium micronaire cotton.

Average prices paid for the most predominant qualities in the 3.5 to 4.9 premium micronaire range were: Strict Low Middling Light Spotted (42) staple 30 - 27.50 cents per pound, Strict Low Middling Light Spotted (42) staple 31 - 27.90, Strict Low Middling Spotted (43) staple 30 - 22.75, Strict Low Middling Spotted (43) staple 31 - 23.05, Strict Low Middling Tinged (44) staple 30 - 18.60 and Strict Low Middling Tinged (44) staple 31 - 18.70.

Cottonseed prices were steady and farmers received \$46 to \$56 per ton for their cottonseed at gins.

TRIBE FROM PAGE ONE

None of the Antelopes were particularly effective during that third period as the Indians were out-scoring them by 20-10. The big boys, Rogers and Evans, cooled considerably the last half getting only two points each over the stretch.

Harvey continued his scoring ways for the Indians during that fourth quarter by dropping in seven points, but was aided and abetted by Ted Thomas who contributed six points to the proposition of keeping the Indians in command of the game.

Kent Snodgrass, not to be denied, tossed in eight points for the Antelopes as the highest scorer of the quarter. However, as the moments continued to tick by with the Indians maintaining their lead, it became apparent that this was going to be an Indian victory and an Antelope loss with the Indians coolly running out the clock for the final score.

Harvey was high for the Indians with 19 closely followed by Mike Hunter with 18, Jerry Silhan had 13, Larry Thompson had 12, Ted Thomas 6, and Mike Gilliam, back after several weeks of inaction due to ankle injuries, hit for 2 to round out the scoring.

The Indians had good success at the freethrow line, hitting on 14 of 19 attempts for a 74 percent mark in that department.

High for the Antelopes and in the game was Kent Snodgrass with 21 points, Dick Rogers had 13, and Ray Martin had 10 to lead in scoring for their team. The Antelopes were successful on 12 of 18 shots for a 67 percent mark in free throws.

SCHOOL FROM PAGE ONE

for three year terms. Supt. Travis emphasizes that March 7 has been set by the Texas Election Law as the last day upon which candidates can file written applications for placing their names on the ballot. The application must be in writing and must be filed in his office prior to 5 p.m. on March 7.

Drawing for orders of names on the ballot will be held in the schools administrative office on March 9, 1973. Absentee voting in person or by mail begins March 18 and continues until 5 p.m. on April 3.

In other business, the board approved the paying of bills for the month of February in the amount of \$95,510.79.

A motion to order one new 48 passenger school bus to be in place in time for the opening of the fall semester in 1973 was approved. A motion to advertise for bids for disposal of a 1964 Chevrolet school bus was also approved.

The possibility of changing the mandatory 65 year age retirement policy presently in force was discussed and Supt. Travis advised the board that he feels that teachers are sometimes retired by this policy even though they may have several effective years left to offer the school system. A motion by Lynskey and seconded by Foust was approved that would change the policy to conform to the following:

RETIREMENT—When a teacher in the Morton Public Schools reaches the age of 65, he is subject to retirement. It is the expressed hope of the school board that an employee who is eligible for retirement will voluntarily offer his resignation so that further teaching, if any, may be on the invitation of the School Board and Administration, and then only on a temporary-terminable basis. This plan should prevent any employee's ending a long life of service with a feeling of bitterness or unpleasantness.

AT LINER'S WE SPECIALIZE

SPECIALTY NO. 1

HIGHEST QUALITY PRESCRIPTIONS

ONLY THE HIGHEST QUALITY INGREDIENTS USED

SPECIALTY NO. 2

LOWEST POSSIBLE PRICES

WE CAN BEAT THE PRICE OF ANY PRESCRIPTION IN THIS AREA

SPECIALTY NO. 3

PERSONAL SERVICE

EACH INDIVIDUAL AND EACH PRESCRIPTION RECEIVES OUR UNDIVIDED PERSONAL ATTENTION

SPECIALTY NO. 4

RECORDS KEEPING

WE KEEP A FREE COMPLETE FAMILY RECORD OF YOUR PRESCRIPTIONS IN CASE OF LOSS AND FOR INCOME TAX PURPOSES.

OUR SMALL BUT EFFICIENT STAFF AND LOW OVERHEAD ENABLES US TO KEEP COSTS DOWN AND TO PASS THE SAVINGS ON TO OUR CUSTOMERS.

BRING YOUR PRESCRIPTION IN

AND LET US SHOW YOU HOW WE CAN SAVE YOU MONEY WITH NO LOSS IN QUALITY.

ON THE SOUTH PLAINS, WE ARE NO. 1 IN LOW PRESCRIPTION PRICES

SUPER SPECIALS THIS WEEK

VITAMIN C

BIG 250 COUNT

500 MG.

\$269

DIAL ANTI PERSPERANT

REG. \$1.29

NOW

99c

VAPORIZERS

REG. \$7.98

NOW

\$499

GILLETTE FOAMY

SHAVE CREAM

REGULAR OR

LEMON LIME

REG. 89c

NOW

69c

VISINE EYE DROPS

REG. \$1.65

NOW

99c

SCHICK INJECTOR SYSTEM

REG. \$2.10

NOW

\$149



GOLD BOND STAMPS WITH EVERY PURCHASE

LINER'S PHARMACY

DAY 266-8965

PRESCRIPTION PHONE

NITE 266-5007

Cochran County Treasurer's 4th Quarterly Report
October, November and December, 1972

	Balance 10-1-1972	Receipts 4th Quarter 1972	Disbursements 4th Quarter 1972	Balance 12-31-1972
Officers Salary	9,135.88	38,998.91	39,212.84	8,921.95
General Welfare	17,139.93	148,358.76	58,138.51	107,360.18
R & B No. 1	620.46	1,758.01	2,253.97	124.50
R & B No. 2	12,465.20	3,530.38	6,118.60	9,876.98
R & B No. 3	3,426.11	3,530.39	6,681.16	275.34
R & B No. 4	12,693.90	3,733.38	6,845.77	9,581.51
R & B No. 5	30,455.89	3,530.38	4,888.69	29,097.58
Jury	(4,083.62)	32,051.46	12,490.47	15,477.37
C & J	6,460.61	8,634.03	3,017.01	12,077.63
Special Ad Valorem	6,052.98	38,288.69	13,792.21	30,549.46
Lateral Road	21,054.54	87,040.74	21,054.54	87,040.74
Car License	(10,691.88)	14,695.90	2,946.79	1,057.23
Social Security	7,475.62	6,780.91	14,256.53	.00
Withholding Tax	3,726.47	7,320.14	5,537.58	5,509.03
Group Insurance	3.37	6,642.80	6,642.80	3.37
Law Library	712.33	4,115.29	2,960.08	1,867.54
C & J Sinking	143.54	779.00	472.25	450.29
C. J. Planning	6,887.86	25,827.10	.00	32,714.96
Workman Compensation	597.50	720.00	597.50	720.00
Criminal Justice Grant	New Fund	1,000.00	327.50	672.50
Revenue Sharing Plan	New Fund	3,306.00	1,473.31	1,832.69
	New Fund	47,500.00	41,026.90	6,473.10
TOTAL	\$124,276.69	\$488,142.27	\$250,735.01	\$361,683.95

I, Bill A. Crone, Treasurer, Cochran County, Texas certify that this report reflects condition of Receipts, Disbursements and Balances for the Fourth Quarter: October, November and December, 1972.

Bill A. Crone, Treasurer
Cochran County, Texas

February 19, 1973

Examined and Approved:

S-J. B. Nicewarmer
County Auditor

S-Glenn W. Thompson
County Judge

S-Mike Walden
Commissioner, Precinct No. 1

S-Robert H. George
Notary Public, Cochran County, Texas

S-E. J. McKissack
Commissioner, Precinct No. 2

S-H. H. Rosson
Commissioner, Precinct No. 3

S-U. F. Wells
Commissioner, Precinct No. 4

COW POKES

By Ace Reid



"Now, I didn't say he'd pitch, but I forgot to tell you, the feller I got 'im off of said he might!"

If it's financial security you are looking for, there is no better way to assure it than to establish a sound savings plan with First State Bank. Begin at any level—but begin it today. Then sit back and watch it grow, safe in the knowledge that your future is being taken care of.

First State Bank

MEMBER FDIC

Three Way News

By Mrs. H.W. Garvin

Mrs. Beadie Powell and Mrs. Dutch Powell were in Lubbock Tuesday.

Mr. and Mrs. S.G. Long were in Amarillo last week end visiting her children.

Mrs. Nelson Carlisle underwent surgery in University Hospital in Lubbock last Monday. At this time she is doing fine.

The Three Way basketball girls played Cotton Center for Bi-District last Tuesday night with Three Way winning the game. Friday night Three Way basketball girls played Ft. Davis in the Texas Dome in Levelland for Regional with Three Way losing the game by 3 points.

We wish to express our sympathy to Mr. and Mrs. W.L. Welch on the loss of

her father, Mr. M.C. Street, who was buried Wednesday in Littlefield.

Mr. and Mrs. J.H. House were dinner guests of the H.W. Garvins.

Mr. and Mrs. James Fowler and son from Lubbock and Ray Fowler and children from Lubbock spent the weekend with the D.S. Fowlers.

The community received a good snow Saturday which will stop the cotton and grain harvest for a few days.

Mrs. Dutch Powell had lunch Wednesday in Morton with Mrs. Lenord Coleman.

Mr. and Mrs. Lamar Pollard and son from Levelland spent Sunday visiting with her parents the Rayford Mastens.

Shower honors Mrs. Gage

Mrs. Larry Gage, the former Vicki Kennedy, was honored with a bridal shower Saturday morning, February 3, in the home of Mrs. Kermit Ward.

Special guests were the honoree's mother, Mrs. Keith Kennedy, her mother-in-law, Mrs. Jack Gage, and her sister in law Mrs. Mike Gainer.

The serving table was covered with a white lace cloth over a blue underlay. Centering the table was a candelabra with blue and white candles and flowers. Mrs. Danny Barker served.

Mr. and Mrs. W.L. Welch visited the Roy Tunnels in Levelland Sunday afternoon.

Mrs. Scott Reed from Lubbock spent part of last week visiting her parents, the Elmer Lees.

Mr. and Mrs. do⁺ Tyson visited the Tommys Durhams in Lubbock Sunday.

Priddy rites in New Mexico

Services for Jack Ben Priddy, brother of Leland Priddy, who died Saturday in Memorial Hospital in Clovis, New Mex., were held Monday at 2:30 p.m. in Steed Memorial Chapel. Priddy was 68 years old.

Officiating was the Rev. Gerald Woods, pastor of the First Church of the Nazarene, assisted by Fred Brewton of the First Presbyterian Church in Clovis.

Burial was in Lawn Haven Cemetery under the direction of Steed-Todd Funeral Home.

Born in Baird, Priddy had lived in Clovis since 1951. He was a former resident of Olton. Priddy was a truck driver.

Survivors include his wife, Evelene; a daughter, Mrs. Vera Lou Barnett of Houston; a brother, Leland Priddy of here; four sisters, Mrs. Lucille Cook of Amherst, Mrs. Buthell Daugherty of Clovis, Mrs. Jane Garrison of Dallas and Mrs. Joan Crosby of Amherst; and five grandchildren.

Co-hostesses were: Mmes. Bill Crone, Weldon Avers, Jack Gunneis, Robert George, Robert Henry, Winston Jerden, W.M. Butler, C.E. Dolle, H.B. Barker, Kenneth Watts and Harold Drennan.

Hostess gift was stainless steel cookware.

Ta wan ka club meets

The Ta wan ka Horizon Club met Wednesday, February 14, in the home of Mrs. Dovie Webb.

Plans were discussed for the Father-Daughter Banquet and members voted to clean house to raise money to attend summer camp.

Members present were: Verna Richards, Malinda Webb, Debbie Adams, Jeanie Coker, Debbie Berggren, and leaders, Mrs. Webb and Mrs. Rosal Berggren.

Former resident services held

Services for Mrs. W.R. (Pat) Hatcher of Venita, Okla., were held Saturday at 10 a.m. in the First Baptist Church in Venita and at 2 p.m. Saturday at Hawkins Funeral Home in Henrietta, Texas. Burial was in Henrietta.

Mrs. Hatcher died Wednesday night in a Venita Hospital. She was born August 1, 1902 in Belview and was a graduate of Texas Tech University.

The former Connie B. Mayfield and Hatcher were married December 11, 1927 and resided in Cochran County from 1930 until 1960 when they moved to Venita. She taught in the Morton schools for many years and was a former member of the 1936 Study Club.

Survivors include her husband; one son, Lowell of Venita; a sister, Mrs. Jewel Slaughter of Henrietta; a brother, Charles Mayfield of Joy and two granddaughters.

Bledsoe television show set at school

Tonight at 8 p.m. the TV show, written and played by Bledsoe students, will be shown in the Bledsoe School. Tony Guest, of KTXB TV in Lubbock, will show the video tape, which was featured on Channel 5 recently.

A pancake supper will be served starting at 6:30 p.m. Tickets for the supper are \$1.50 for adults and 75 cents for children. There is no charge for the film.

An invitation is extended to all interested persons in the area to attend.

Former resident rites pending

Services for Mrs. Bill Pledger Sherman, formerly of Morton, pending at Sherman.

Mrs. Pledger died Tuesday morning at a Sherman Hospital. She is the sister-in-law of Mrs. Lennie Doyle, Mrs. C. Kirk and the late Mrs. Charley Ellis Morton.

HERE'S TO YOUR HEALTH

from



Most pills should be washed down with a full glass of water to fully dissolve them and aid their absorption into the body. Many pills with an acid base, such as aspirin, can irritate the stomach to the point of actual bleeding if taken dry or with insufficient water. Carefully follow your doctor's and pharmacist's instructions in dosage.

FRALIN'S PHARMACY

Cochran County's Exclusive Professional Prescription Shop
DIAL 266-5521 MORTON, TEXAS
R.C., Night 266-5148 A. A. Sr., Night 266-5847

SALE OF SALES

STEEL BELTED TIRES—1st LINE — PREMIUM FULLY GUARANTEED AND ADJUSTED BY US.

	LIST	SALE PRICE
G78 x 15	\$44.50	\$29.50
H78 x 15	\$46.75	\$30.00
L78 x 15	\$49.95	\$33.50

*PLUS APPLICABLE TAX

LEWIS FARM & RANCH

266-5461

SHOPPING AT HOME HELPS TO MAKE MORTON A BETTER PLACE TO TRADE

Every time you spend a dollar at home for goods and service, a substantial part of that dollar automatically becomes an investment in an enriched social and business life for you and your family and friends.

Plus... SERVICE you can get only from concerned and interested friends and neighbors.

Plus much more: The convenience — and sometimes the importance of quick availability of service and supply, and better jobs, higher property values, and more opportunities for our young people to establish their homes among us to enrich our lives and our towns.

IT PAYS TO TRADE WHERE YOU LIVE

These Firms Are Genuinely interested in the Future Of Our Community And Your Welfare



You're Way Ahead... Shopping At Home

GWATNEY-WELLS CHEVROLET-OLDS

Chevrolet & Olds Dealer for Cochran County

HIGGINBOTHAM-BARTLETT LBR. CO.

Your Local Jones-Blair Dealer

MINNIE'S SHOP-CHILD'S MEN STORE

High Quality Clothing For Men and Women 266-8602 266-8840

MORTON INSURANCE AGENCY

INSURANCE
Life Insurance — Bonds
Fire — Auto — Liability

RAMSEY'S FOOD STORE

Featuring Your Favorite Foods... At Budget Prices

Headquarters for Your BUILDING NEEDS — PAINT — LUMBER
FORREST LUMBER COMPANY

311NW 1st 266-5444

ROSE AUTO & APPLIANCE

TV SALES & SERVICE

LUPER TIRE & SUPPLY

"A Tire for Every Purpose"

For Twenty-five Years... With Modern Banking Service
FIRST STATE BANK

Phone 266-4671 Box 1096

LEWIS FARM & RANCH STORE

Field & Garden Seed — Custom Grinding & Mixing
Phone 266-5461 310 N.W. 1st

ST. CLAIR'S DEPARTMENT STORE

"Where All The Family Shops"

MORTON PACKING CO.

Ralph Soliz
YOUR BUSINESS APPRECIATED

MORTON AREA CHAMBER OF COMMERCE

ABOUT LOCAL FOLKS

by Dutch Gipson

and Mrs. Gene Benham, Mr. and Mrs. B.H. Tucker, Mr. and Mrs. Ray and daughter, and Jimmy St. Clair had funeral services for Mrs. W.R. of Venita, Okla. at 2 p.m. Friday in Henrietta. Former rites who attended were: Mr. and J.D. Hawthorne of Lovington, N.M., J.D. Tipson and her daughter, Mrs. Bolton, of Denning, N.M., Dick of Odessa, Mr. and Mrs. Fred of Ardmore, Okla., Mrs. Reed, the former Mrs. Jesse Burns, of and Mr. and Mrs. Bill Glasford Henrietta.

with her daughter and family, Mr. and Mrs. J.T. Porter, of Pasadena.

Mr. and Mrs. Tommy Rush and daughter, Tommy, spent the weekend with her parents, Mr. and Mrs. Doc Bryant of Stanton.

Mrs. Jimmy St. Clair and boys visited with her parents, Mr. and Mrs. Frank Jones of Odessa, while Jimmy attended the funeral of Mrs. Connie Hatcher.

Antelope Lodge 1245 enjoyed its annual George Washington open supper for all Masons and their families Saturday night at the County Activity Building. After a bountiful feed, poems depicting the character of George Washington was read by Lanita Shelton, daughter of Mr. and Mrs. Carol Shelton. Copies of letters written to George Washington and his replies were also depicted in reading by Joe Gipson. About 50 persons attended. Carol Shelton, master of Lodge presided

Mrs. Boteler rites held

Services for Mrs. Josie Boteler were held at 3 p.m. Wednesday in the First Missionary Baptist Church. The Rev. Jessie Allen, pastor of the Arch, N.M. Baptist Church, officiated, assisted by the Rev. Rois Standifer, pastor.

Interment was in Causey, N.M. cemetery.

Mrs. Boteler, 97, died at 7:30 p.m. Monday in Cochran Memorial Hospital. She was a native of Arkansas. She and her husband homesteaded at Lingo, N.M. and moved to Cochran County in 1949.

Survivors are: one son, Roy Boteler of Lodi, California; three daughters, Mrs. Altie Corder of Morton, Mrs. Myrtle Corder of Lingo, N.M. and Leona Massey of Tahlequah, Okla.; 14 grandchildren, 30 great-grandchildren and 20 great-great-grandchildren.

during the evening.

Mrs. Grady Hill of Las Cruces was a house guest of Mr. and Mrs. J.H. Machen over the weekend.

Mrs. L.L. Rountree has just returned home after spending a week with her grandchildren in Seminole, while her daughter and husband, Mr. and Mrs. C.D. Wickson have been vacationing in Hawaii.

School Menu

Monday, February 26, 1973
Frito pie, Mexican salad, pork and beans, baked apples, cornbread, milk.

Tuesday, February 27, 1973
Sauerkraut and wieners, seasoned corn, Waldorf salad, peanut butter strips, rolls, milk.

Wednesday, February 28, 1973
Cheeseburger on bun, lettuce and tomatoes, French fries, creamed cherries with topping, relish, milk.

Thursday, March 1, 1973
Burritos, celery sticks, green beans, fruit salad, cookies, milk.

Friday, March 2, 1973
Salmon cakes, candied carrots, spinach with lemon wedge, chocolate pudding, cornbread, milk.

Bookmobile schedule

The High Plains Bookmobile will be in your area on the following dates:
Wednesday, February 28—Needmore, 9:00-10:00; Stealf, 10:30-11:30; Threeways, 12:00-1:00; Enochs, 1:30-2:30.

Phil Brummett rites in Lubbock Thursday

Memorial services for Phil Brummett, 30, a Lubbock attorney, were held at 4 p.m. Thursday at Trinity Church in Lubbock. The Rev. Morris Sheats, pastor, officiated.

Private burial services were conducted under the direction of Sanders Funeral Home.

Brummett died at 1:12 a.m. Wednesday in St. Mary's Hospital after an extended illness.

He graduated in 1968 from the University of Houston School of Law, where he was on the Law Review, senior class president, a member of Phi Delta Phi Fraternity, and an honor student. He served as an assistant Lubbock County attorney and later was associated with his father, Winston P. Brummett, in private

practice. He was married to the former Jane Luper of Morton.

Among his affiliations were the Lubbock County Bar Association, South Plains Trial Lawyers Association, the State Bar of Texas, American Bar Association and the Order of the Eagles. Also, he had been admitted to practice before the U.S. Supreme Court.

Survivors include his wife, two sons, Kevin, 5; and Coy, 3; his parents, Mr. and Mrs. Winston P. Brummett of Lubbock; two brothers, Craig also a member of the Brummett law firm, and Ray, a Texas Tech student; and a sister, Mrs. Larry Isom of Dallas.

Pallbearers were Robert Gonzales, Jim Gerdeman, Charles Baylor, Kenneth Marshall, Harvey Kooz, and Ken Wilson, all of Lubbock.

COTTON ALLOTMENTS

LEASE OR SALE - COMPETITIVE PRICES

CALL JOHN T. GREGG, RES. PHONE 795-1167 OR
LOWELL D. RICHARDSON, RES. PHONE 799-1707 at

GREGG-RICHARDSON AGENCY

PHONE 792-3570


2333 - 50th ST. LUBBOCK, TEXAS

- ASSEMBLY OF GOD CHURCH, Whiteface**
Pastor, Rev. Billy Pierson
Sunday Services—
Sunday School 9:45 a.m.
Morning Worship 11 a.m.
Evening Worship 6 p.m.
Midweek Bible Study 6:30 p.m.
- ST. ANN'S CATHOLIC CHURCH**
The Rev. Allen Tighe Administrator
8th and Washington Streets
Mass schedule—
Sunday 9:00 and 11:00 a.m.
Tuesday 8:30 a.m.
Wednesday 8:30 a.m.
Thursday 8:00 p.m.
Friday 8:30 a.m.
Saturday 8:30 a.m.
Holy Day Mass 7:30 a.m. & 7:30 p.m.
Sunday—Catechism Class
10:00-11:00 a.m.
Confessions—Sunday
20 minutes before Mass
Baptisms—Funerals—Weddings
By appointments—266-8693
- FIRST BAPTIST MEXICAN MISSION**
Sundays—
Sunday School 10:00 a.m.
Training Union 6:30 p.m.
Evening Worship 7:30 p.m.
Wednesdays—
Prayer Service 7:30 p.m.
- NEW TRINITY BAPTIST CHURCH**
Rev. W. D. Anderson
3rd and Jackson
Sundays—
Sunday School 9:45 a.m.
Morning Worship Second
and Fourth Sundays 11:00 a.m.
H.M.S. 4:00 p.m.
Wednesdays—
Prayer Service 7:00 p.m.
- FIRST BAPTIST CHURCH, ENOCHS**
Rev. Charley Shaw
Sunday School 10 a.m.
Morning Services 11 a.m.
Training Union 7 p.m.
Evening Services 8 p.m.

- BLED SOE BAPTIST CHURCH**
Bro. Herbert Row
Sunday Service 9:45 a.m.
Worship Service 11 a.m.
Training Union 6 p.m.
Evening Worship 7 p.m.
Wednesday Night Service 8 p.m.
- CHURCH OF CHRIST**
S.W. 2nd and Taylor
C.R. Mansfield, Preacher
Sundays—
Bible Class 10:00 a.m.
Worship 10:45 a.m.
Evening Worship 6:00 p.m.
Wednesdays—
Midweek Bible Class 8:00 p.m.
- FIRST METHODIST CHURCH**
James E. Price, Pastor
411 West Taylor
Sundays—
Church School Session 9:45 a.m.
Morning Worship Service 11:55 a.m.
Evening Fellowship
Program 5:00 p.m.
Evening Worship 6:00 p.m.
- WHITEFACE, CHURCH OF CHRIST**
Dick Biggs, Minister
300 Tyler Street
Sunday—
Bible Classes for all ages 10:00 a.m.
Worship and Communion 10:55 a.m.
Evening Bible Classes 6:30 p.m.
Evening Worship 7:00 p.m.
Wednesday—
Bible Study & Prayer 8:00 p.m.
Sister Pearl's Gospel Singing House
Purity Sunday School
Class 8:45 a.m.
Teacher—Pearl Swindle Williams
511 E. Jackson
- UNITED METHODIST CHURCH, ENOCHS**
Rev. Hazel House
Services held 1st and 3rd Sundays
Sunday School 10 a.m.
Morning Services 11 a.m.
Evening Services 7 p.m.
4th Wednesday—Fellowship 7 p.m.

HERE IS THE PATH

"Thou wilt show me the path of life,
in thy presence is fulness of joy..."
PSALM 16:11



Should love the Lord thy God with all
thy heart, and with all thy soul,
and with all thy strength,
and with all thy mind,
and thy neighbor as thyself.
Luke 10:27

The basis of God's first and great-
est commandment is love. God
gave man the freedom to choose
... and therefore will not force
his love on anyone. God took the
first step and is always ready to
receive any who would come to
Him.

The Church is God's appointed agency in this world
for spreading the knowledge of His love for man and
of His demand for man to respond to that love by
loving his neighbor. Without this grounding in the
love of God, no government or society or way of life
will long survive and the freedom which we hold
so dear will inevitably perish. Therefore, even from
a selfish point of view, one should support the Church
for the sake of the welfare of himself and his family.
Beyond that, however, every person should uphold
and participate in the Church because it tells the truth
about man's life, death and destiny; the truth which
alone will set him free to live as a child of God.

**EVERYONE IN THE CHURCH
IS THE CHURCH IN EVERYONE**

- HICK'S CHAPEL BAPTIST CHURCH**
Rev. H. O. Huff, Jr.
Sunday School 10 a.m.
Morning Services 11 a.m.
Training Union 6 p.m.
Evening Services 7 p.m.
- FIRST BAPTIST CHURCH, Whiteface**
Harold Harrison, Pastor
Sunday School 9:45 a.m.
Morning Worship 11 a.m.
Church Training 6 p.m.
Evening Worship 7 p.m.
Wednesday Prayer Meeting 7:30 p.m.
- FIRST BAPTIST CHURCH**
Paul McClung, Pastor
202 S.E. First
Sunday School 9:45 a.m.
Morning Worship 10:55 a.m.
Morning Service KRAN 11:00 a.m.
Training Union 6:00 p.m.
Evening Worship 7:00 p.m.
Tuesdays—
Helen Nixon W.M.U. 9:30 a.m.
Wednesdays—
Graded Chorus 7:30 p.m.
Prayer Service 7:30 p.m.
Church Choir Rehearsal 8:30 p.m.
- SPANISH ASSEMBLY OF GOD CHURCH**
Rev. Ignacio Ruiz
N.E. Fifth and Wilson
Sundays—
Sunday School 10:00 a.m.
Morning Worship 11:00 a.m.
Evening Evangelistic
Service 7:00 p.m.
Wednesdays—
Young people service 7:30 p.m.
- EAST SIDE CHURCH OF CHRIST**
704 East Taylor
Sundays—
Bible Study 10:00 a.m.
Worship 10:45 a.m.
Worship 7:30 p.m.
Wednesdays—
Midweek Service 8:00 p.m.
- CHURCH OF CHRIST, MAPLE**
Dannie Mize, Preacher
Bible Study 10 a.m.
Worship 11 a.m.
Night Worship 6 p.m.
Wednesday Night Services 8:30 p.m.
- UNITED METHODIST CHURCH, BULA**
Rev. Hazel House
Services 2nd and 4th Sundays
Sunday School 10 a.m.
Morning Service 11 a.m.
Evening Service 7 p.m.
- THREE WAY BAPTIST CHURCH**
Rev. Preston Harrison
Sunday School 10 a.m.
Morning Worship 11 a.m.
Training Union 6 p.m.
Evening Services 7 p.m.
- ASSEMBLY OF GOD CHURCH**
G.A. Van Hoose
Jefferson and Third
Sundays—
Sunday School 9:45 a.m.
Morning Worship 11:00 a.m.
Evening Evangelistic
Service 6:00 p.m.
Wednesdays—
Night Prayer Meeting and
Christ's Ambassadors
Convene Together 7:30 p.m.
- THURSDAYS—**
Every 1st and 3rd, Women's
Missionary Council 2:30 p.m.
Every 2nd and 4th, Girls'
Missionette Club 4:30 p.m.
- FIRST MISSIONARY BAPTIST CHURCH**
Rois Standifer, Pastor
Main and Taylor
Sunday School 9:45 a.m.
Morning Worship 10:45 a.m.
Training Service 6:00 p.m.
Evening Worship 6:45 p.m.
- WMA Circles**
Monday—
Night Circle 7:30 p.m.
Tuesday—
W.M.A. 2:00 p.m.
G.M.A. 4:00 p.m.
Wednesday—
Midweek Service 7:30 p.m.
Edna Bullard 9:30 a.m.

This Feature Is Published With The Hope of Getting More People To Church By The Undersigned City Business and Professional People:

<p>Beseda Grain Co.</p> <p>Mobil Oil Corp. Mobil Products — 266-5108</p> <p>Bailey County Electric</p> <p>Co-op Association Phone 266-8600 — Whiteface Hwy.</p> <p>Bedwell Implement 219 E. Jefferson — 266-5306</p> <p>Rose Auto and Appliance 107 E. Wilson — Phone 266-5959</p> <p>Star Route Co-op Gin St. Rt. 1 — Phone 927-3416</p>	<p>Ramby Pharmacy 104 W. Wilson Phone 266-5093</p> <p style="text-align: center;">Compliments of</p> <p>Carl Griffith Gin and G & C Gin</p> <p style="text-align: center;">Judge Glenn Thompson</p> <p>L & B Supply N. Main — Phone 266-5110</p> <p>Cochran Electric Service & Supply 317 W. Washington Phone 266-5545</p> <p>Gwatney-Wells Chevrolet-Olds 113 E. Washington — Phone 266-5532</p> <p>Farmer's Co-op Gin of Enochs Enochs 927-3444</p> <p style="text-align: center;">Claunch Gin Bula</p>	<p>First State Bank 107 W. Taylor — 266-5511</p> <p>Griffith Equipment Company 120 N. W. 3rd — Phone 266-5555</p> <p>Luper Tire and Supply 108 E. Washington — 266-5330</p> <p>Allsup's 7 till 11 602 Main — Phone 266-8001</p> <p>Ramsey's Food Store Gerald Ramsey, Owner 210 South Main</p> <p>State Line Butane Maple 927-3231 Needmore 946-2577</p> <p>Design Studio 106 E. Buchanan Phone 266-8949</p>	<p>Bledsoe Grain Market Bledsoe Phone 525-4481</p> <p>Higginbotham-Bartlett 201 W. Wilson Avenue — Phone 266-5255</p> <p>Tic Toc Restaurant Loma and Rob Richards Leveland Highway — Phone 266-5223</p> <p>St. Clair Department Store Maple, Texas — Phone 927-3191</p> <p>Maple Co-op Gin</p> <p>R.J. Vinson Cochran County Clerk</p> <p>Smith Seed and Implement Maple, Texas Phone 927-3302</p> <p>Larry Beseda Fertilizer & Chem. Whiteface, Texas Phone 525-3831</p>
----------------------------------------------------------------------------------------------------------------------------------------------------------------------------------------------------------------------------------------------------------------------------------------------------------------------------------------------------------------------------------------------------------------	-----------------------------------------------------------------------------------------------------------------------------------------------------------------------------------------------------------------------------------------------------------------------------------------------------------------------------------------------------------------------------------------------------------------------------------------------------------------------------------------------------------------------------------------------------------------------------------------	-----------------------------------------------------------------------------------------------------------------------------------------------------------------------------------------------------------------------------------------------------------------------------------------------------------------------------------------------------------------------------------------------------------------------------------------------------------------------------------------------	-----------------------------------------------------------------------------------------------------------------------------------------------------------------------------------------------------------------------------------------------------------------------------------------------------------------------------------------------------------------------------------------------------------------------------------------------------------------------------------------------------------------------------------------------------------------------



DETERGENT
IVORY LIQUID
32-oz. BTL. **69c**

TABLETS
EXCEDRIN
BTL. OF 36 **79c**

BALM BARR
HAND CREAM
4 1/2-oz. JAR **89c**

COMET LONG GRAIN RICE
42-oz. BOX **49c**

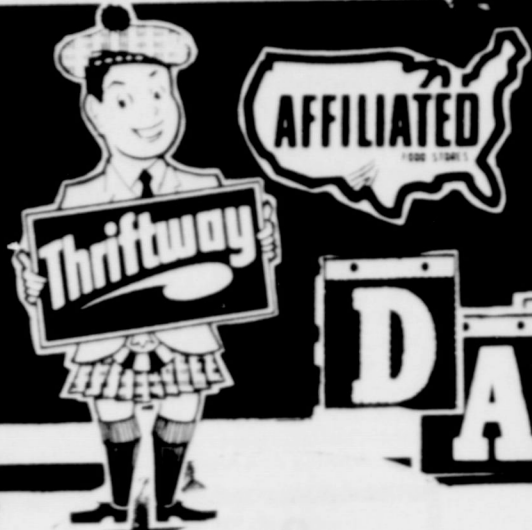
REGULAR **KOTEX TAMPONS**
BOX OF 40 **\$1.29**

Imported **GOURMET COOKWARE**
On Sale This Week
FIESTA OR RED TOLEDO **FRENCH SKILLET**

\$4.99
WITH A \$5.00 PUR. OR MORE



DETERGENT **TIDE**
GT. BOX **87c**



AFFILIATED

THRIFTWAY

DAILY FOOD VALUES



T-BONE STEAK POUND **\$1.39**

WILSON, OLIVE LOAF, PICKLE LOAF, MACARONI & CHEESE LOAF, & BOLOGNA
SLICED LUNCHEON MEATS 6-oz. PKG. **39c**

OSCAR MAYER VARIETY PACK LUNCH MEAT ROUND OR SQUARE 12-oz. VAC PAC **\$1.19**

USDA CHOICE **ROUND STEAK**
LB. **\$1.49**

HAMBURGER MEAT
FRESH GROUND POUND **69c**

GARY **CORN DOGS**
8 FOR \$1

OLE SOUTH FROZEN FRUIT COBBLERS
32-oz. SIZE **79c**

SHURFINE FROZEN ORANGE JUICE
5 6 OZ CANS **\$1.00**

MORTON FROZEN ECON. OR REG. DINNERS EXCLUDING BEEF & HAM EA. **39c**

WOW!

KLEENEX DESIGNER TOWELS
JUMBO ROLL **33c**

WITH COUPON **MAXWELL HOUSE COFFEE**
15% OFF WITH COUPON BELOW
1-LB. CAN **93c**

AS SEEN IN TV GUIDE
Special OF THE WEEK
CLOROX BLEACH
FIRST 1/2-GAL. **29c**
WITH A \$5.00 PURCHASE OR MORE EXCLUDING CIGARETTES

NEW FREEDOM **SANITARY NAPKINS** 12-CT. BOX **33c**
FAMILY SCOTT ASSORTED **BATHROOM TISSUE** 4-ROLL PACK **45c**
KAL KAN TUNA LIVER...TUNA/KIDNEY **CAT FOOD** 2 6 1/2-oz. CANS **29c**
FOLGER'S **COFFEE** 2 1-LB. CAN **\$2.15**

PRODUCE at Pleasing Prices

AT THRIFTWAY

WE NOW HAVE SEED POTATOES, ONION SETS FOR YOUR GARDEN

CALIF. ZIPPER SKIN TANGERINES LB. 25c	CALIFORNIA GREEN AVOCADOS 2 FOR 33c	YELLOW OR WHITE ONIONS LB. 19c
--------------------------------------------------------	------------------------------------------------------	-------------------------------------------------

RED ROME APPLES
LB. **23c**



COFFEE **FOLGER'S** 3
COFFEE **MAXWELL HOUSE** 2
JELLO **CHEESE CAKE**
SHURFINE MIXED **VEGETABLES**
HOLSUM THROWN STUFFED **MANZ OLIVES**

VALUABLE COUPON
40c OFF **MAXWELL HOUSE INSTANT COFFEE**
WITH THIS COUPON **\$1.29**
10-oz. JAR
EXPIRES FEB. 24, 1973

VALUABLE COUPON
15c OFF **MAXWELL HOUSE COFFEE**
WITH THIS COUPON
1-LB. CAN **93c**
EXPIRES FEB. 24, 1973

VALUABLE COUPON
10c OFF **FOLGERS COFFEE**
WITH THIS COUPON
1-LB. CAN **95c**
EXPIRES FEB. 24, 1973

WATCH FOR OUR "GARDEN OF GOODNESS" CIRCULAR IN YOUR MAIL BOX MONDAY.

PRICES EFFECTIVE FEB. 23 AND FEB. 24, 1973 only
RIGHT TO LIMIT, NONE SOLD TO DEALERS

GOLD BOND STAMPS
Double on Wednesday With \$2.50 Purchase or More
DOSS THRIFTWAY

TOWIE SALAD
RED CHERRIES 9-oz. JAR **39c**
SUNSHINE **VANILLA WAFERS** 11-oz. BOX **39c**
KEEPLER ZESTA SALTINE **CRACKERS** LB. BOX **39c**
SCHILLING **BLACK PEPPER** 4-oz. CAN **39c**
GRIFFITH **SYRUP** 24-oz. BTL. **49c**

THEIR CALI... Morton India... few moment... championsh...
St...
The large num... ies shows pro... and 4-H Live... best ever in... is off here Mor... grand total o... erred when th... ched at 5 p.m...
20...
DESERVING... Susan Dome... monthly Antel... mail tourna... the state tour...