

Morton Tribune

VOLUME 34 NUMBER 22

MORTON, TEXAS THURSDAY, APRIL 4, 1974

PRICE FIFTEEN CENTS

City, school election Saturday



JUNIOR PLAY CAST was in a jovial mood as they were caught by the camera during the rehearsal Monday night. The three act comedy "The Magic Touch" will be presented in the City Activities Building Auditorium at 7 p.m. Thursday, April 11. It was originally scheduled for April 5, but the date had to be changed due to conflicts with other events.

Members of the cast include: Rex Coffman, Sherita Flutt, Vickie Hall, Melody Crone, Gail Basted, Tommy McClintock, Greg Bell, Larry Silhan, Sabrina Wells, Rodney Cox, Sue Watts, Beverly Bridges, Robbie Sanders, Yvonna Vanstory, Kirk Collier, Kathy Mason, Cindy Tanner, Diana Stevens, Malinda Webb, Debra Wells and Doretha Patton.

Light voter turnout seen

A light voter turnout has been predicted here by election officials as Morton and Cochran county citizens go to the polls Saturday to make their choices known for city official and school trustee positions.

An apparent lack of interest on the part of the public has been indicated by the very light absentee vote registered here. Only four absentee votes had been cast in the city election and two in the school race as the absentee voting deadline approached at 5 p.m. Tuesday.

The municipal race is for two city council seats and for the Mayor's chair.

Neal Rose is the sole opponent of incumbent Mayor Marshall Leitzell, who is running to succeed himself. Rose announced early for the post, soon after the filing period began, and Leitzell made it plain at a fairly early date that he would like to spend two more years in the Mayor's seat.

Candidates for city councilman in Place I are Roy L. Brown and C.D. Ray.

Jerry Iley was the lone filer for the Place II seat and is unopposed.

Three school board posts will be contested for, all three of which are for three year terms. Candidates for the board of trustees do not have places—the three candidates

See ELECTION Page 11



IRENE GUAJARDO, Whiteface student was the winner in the Cochran County Spelling Bee held Wednesday, March 27, in the County Courtroom. Pictured is Judge Glenn Thompson presenting Miss Guajardo with a plaque. The 13-year-old seventh grader, is the daughter of Mr. and Mrs. Robert Guajardo of Route 2, Morton.

Local clubs, clubwomen receive district awards

Mrs. Dorothy Rose, chairman of the selection committee of the Caprock District Texas Federation of

Women's Clubs, presented Mrs. Frances Watkins of Levelland as outstanding club woman for the year.

Convention theme was "American Youth." Keynote speaker was Dr. C.L. Kay of Lubbock who spoke of "What's

See AWARDS Page 11

Energy budget hard to handle

How much does the average citizen in Cochran County pay for the electricity, gas, oil and other kinds of fuel it consumes in the home each year?

How much fuel does it take annually for cooking, conditioning, car operation, home heating, and for its various electrical gadgets and appliances?

How close was when a family budgeted fairly closely

what its energy costs would be for the ensuing year and could budget accordingly.

Not any more. What with the fuel shortage, the price of fuel has risen sharply. See ENERGY Page 11

McMurry University band to play at MHS

The McMurry College Band will begin its annual invasion of West Texas and New Mexico next Thursday.

Director Roger Rush will take his 71 musicians to Sweetwater, Amarillo, and Morton in Texas, to Hobbs,

Artesia, Roswell, Ruidosa, and Albuquerque in New Mexico.

The McMurry Band stays in step with the times. Along with the usual horns, clarinets, and euphoniums, packed in the trunk. See BAND Page 11

LL registration

Registration will be held Saturday, April 13 and 20 for Little League and Minor League players between the hours of 9 a.m. and 3 p.m. in Room B-2 of the basement of the Courthouse.

Players must bring their birth certificates and be accompanied by both parents or guardian.

Those who have played in Little League prior to this year must register!

Specialist notes cattle price drop

Feeder cattle prices have dropped considerably in recent weeks, and Dr. Ed Uvacek, livestock marketing specialist for the Texas Agricultural Extension Service, gives several reasons for the declining market.

"First of all, feeder animals were over-priced compared to fat cattle. The feedlots could no longer pay \$10 per hundredweight more

See CATTLE Page 11

Play date changed

Due to a conflict with other local events, the date of the Morton High School Junior Play has been changed.

The new date and time are 7:30 p.m., Thursday, April 11 in the county activities building auditorium.

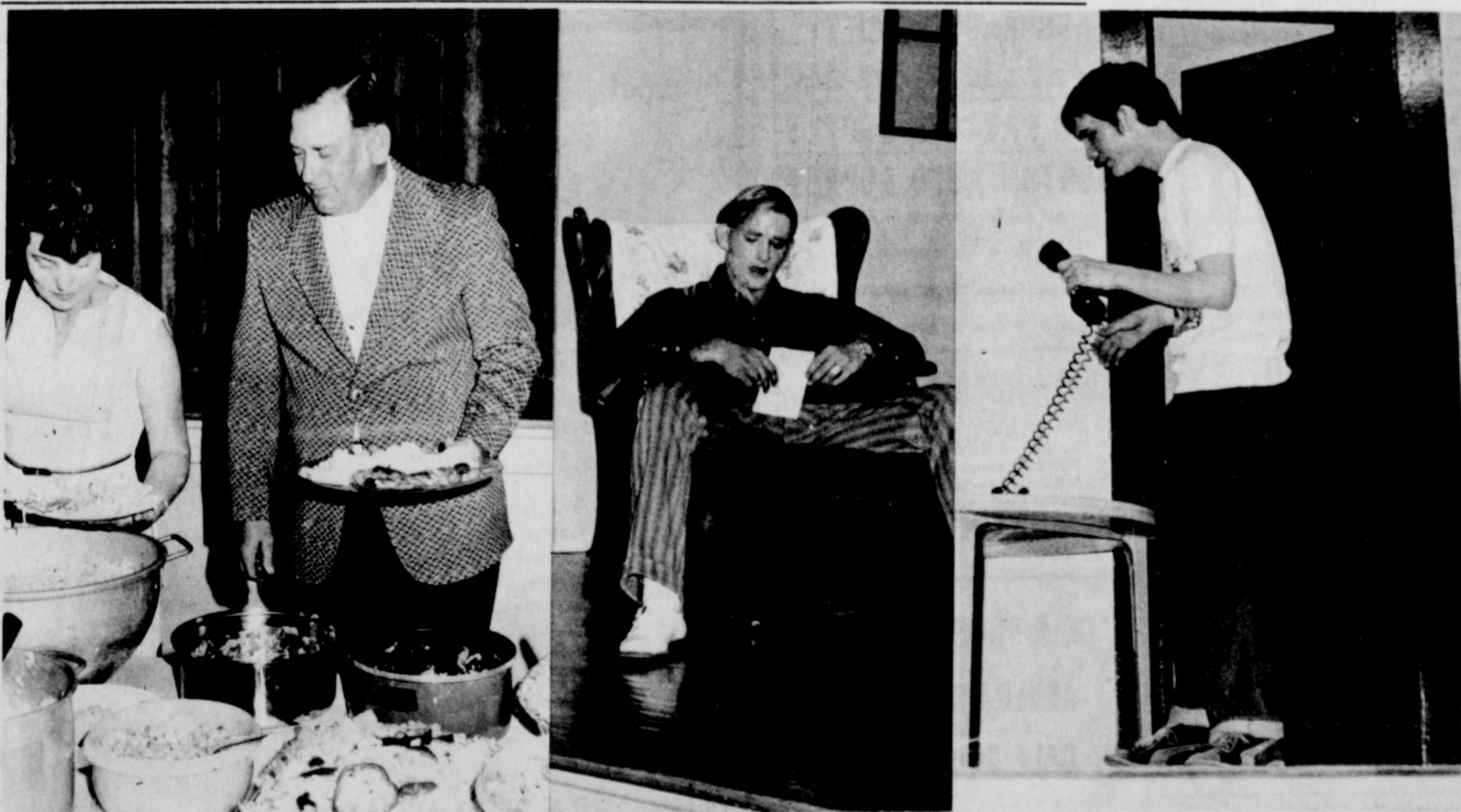
The original date was Friday, April 4. The date change was relayed to the Tribune by High School Principal Kenneth Baker.



Eugene Dermett promoted

Eugene Dermett of Hobbs, N.M. has been elected president of New Mexico Trust Co., in Hobbs, N.M. to Leon G. Harmon, president and chief executive

Dermett was born in Hobbs, N.M. and is a graduate of Morton High School and Texas Tech University with a degree in Business Administration. He has been with New Mexico Trust Co. since 1958. He has been with Furr's Inc. since 1962. Dermett was promoted to manager at Morton. See DERMETT Page 11



THE DINNER THEATER presented by Whiteface High School Junior Class Friday night, drew a crowd of over 200 persons. When the paper plates ran short temporarily, Eugene Bentley improvised with a serving platter, (first photo). In the one act play, entitled "Shock of His Life," Papa Maxwell, played by Leslie Bills, reads a note pad informing him that his "Heart is about

gone," (second photo). Son, Wilbur Maxwell, played by Allen Cooper, takes messages over the telephone, jots them down on a pad, and causes a day of total chaos in the Maxwell home, (third photo). The Junior Dinner Theater was unique, the food was good and the cast and assistants did a great job. (Photos by Nelda Stogsdill)

Whiteface High School dinner theater a 'ball'

By Nelda Stogsdill
The Whiteface Junior class presented a "Dinner Theater" Friday night, in the Elementary auditorium. Reservations were made for 199 persons. Approximately 220 came for the buffet style salad supper. Salads were furnished by the parents of the juniors.

The food was delicious and the performers were really great. A run down on the play entitled "Shock of His Life" tells why the audience was "rolling with laughter."

If you knew this were your last hour on earth, what would you do? Would you go on a spree? Would you call your family about you? Would you wait quietly for the final moment? Papa Maxwell has

See DINNER Page 11

Babe Ruth meet

The Babe Ruth Baseball League will meet tonight at 8 p.m. in the Morton Branch of Levelland Savings and Loan Building.

Babe Ruth players, ages 13 through 15, and their parents are urged to attend. Help is needed to keep the League operational.

Morton Tribune

Published Every Thursday Morning at 113 W. Washington St., Morton, Texas 79344

OFFICIAL NEWSPAPER OF COCHRAN COUNTY
"TEXAS' LAST FRONTIER"

BILL SAYERS, Editor and Publisher

Entered as second class matter at the post office in Morton, Texas, under the Act of Congress on March 8, 1879

Subscription rates—In Cochran County and adjoining counties: Per year, \$4.50, six months, \$3.00. Outside Cochran County: Per year \$6.00, six months, \$3.50. To insure proper service, subscribers will please notify us promptly of change of address.

Member 1974
TEXAS PRESS ASSOCIATION

Classifieds

CLASSIFIED RATES

5c per word first insertion
4c per word thereafter
\$1.00 Minimum

FOR SALE

FOR SALE: 185 joints of 4 inch sprinkler line and 30 5-inch joints, including swingline at 55 cents a foot. McDowell Pipe, Vernon Blackley, Phone 525-4385 or Ronald Coleman at 266-5050.

FOR SALE: 24" Black & White, console TV. Call 266-5726.

FOR SALE: Well located lots south of school, sewer and water. Will consider trade or small down payment with monthly payments. All Brokers invited. Call (806) 765-8825, nites 795-3265. The McPherson 1968 Trust.

FOR SALE CHEAP: Clean 1968 98 Olds, with good tires. May be seen at 204 E. Garfield or call 266-5754.

FOR SALE: 1965 Buick Special, 4 dr., radio, heater, automatic, \$350. Contact James St. Clair at Ben Franklins.

FOR SALE: Sancap, Igran, Milogard, Treflan, Sodium Chlorate, Ansar, etc. See Leonard Groves at the Red Barn. Phone 266-5677.

FOR SALE: Three bedroom, one bath house, 507 SE 8th, Morton. Call Whiteface 3941.

FOR SALE: 3 bedroom, 1/2 bath, large den, carpet, garage, 504 SE 9th, call 266-5936.

BUSINESS SERVICES

MATTRESSES RENOVATED also new King and Queen Size. Pick up Mondays. Call Morton Tribune 266-5576.

SPOTS before your eyes—on your new carpet—remove them with Blue Lustre. Rent electric shampooer St. Taylor and Son Furniture.

COCKROACHES, rats, mice, termites, golphers, and other household pest exterminated. Guaranteed. 15 years experience. 894-3824, Levelland, Texas. Davidson Pest Control. Reasonable rates.

NOTICE

Pregnant and Unmarried? Free medical services available; confidential care; counseling; continuing education; licensed adoption agency. Call collect. (512) 696-2410.

WANT TO BUY—Used baby bed, high chair, and car seat. One or all. Call 927-3652.

HELP WANTED

HELP WANTED: Neat, slender attractive women for work in figure salon. Apply in person Thursday, 3-5 p.m. at 310 Washington Ave.

HELP WANTED: Allsup's 7 till 11 grocery store needs man for close-up shift. Apply at store.

CARD OF THANKS

CARD OF THANKS—We would like to express our sincere appreciation to all of our friends who were so thoughtful during the illness and loss of our loved one. Your visits and prayers mean so much at this time. All of the flowers, memorials, and food are deeply appreciated. May God bless you. The Family of Mrs. John F. Cooper

CARD OF THANKS: To our many friends in and around Morton, we just want to say thank you from the bottom of our hearts to each one of you for all the kindnesses, food, flowers, cards, calls, visits and your prayers. Come to see us at South Hills Manor at Dimmitt.

Mr. and Mrs. R.K. Lindsey
Mr. and Mrs. Ross Latham
Mr. and Mrs. Dennis R. Latham

PUBLIC NOTICES

NOTICE TO BIDDERS: The Commissioners Court of Cochran County will receive bids until April 8, 1974, for purchase of a new 1974 car for the use of the Sheriff's Office, according to the following specifications:
Four-Door Sedan
Engine—Not less than 350 cubic inch
Color—Any light, moderate shade
Windshield—Tinted
Mirrors—Rear View and Left-hand Outside
Spotlight
Battery—70 amp. Heavy Duty
Axle—Gear Ratio 3-1
Wheels—15 inch
Push Button Radio
Carburetor—2 Barrel
Factory Air-Conditioning
Alternator—40 amp.

Cochran County will offer in trade a 1971, 4-Door Chevrolet. Bids on the above described equipment will be opened on April 8, 1974 in the Commissioners Court Room, Cochran County, Morton, Texas. The Court Reserves the right to reject any and all bids. Specifications and any other information on this equipment may be obtained at the office of the County Judge, Morton, Texas. Dated this 22nd day of March, 1974.

Glenn W. Thompson,
Cochran County Judge

LOSE UGLY FAT
Start losing weight today or money back. MONADEX is a tiny tablet and easy to take. MONADEX will help curb your desire for excess food. Eat less—weigh less. Contains no dangerous drugs and will not make you nervous. No strenuous exercise. Change your life... start today. MONADEX cost \$3.00 for a 20 day supply. Large economy size is \$5.00. Also try AQUATABS: they work gently to help you lose water-bloat. AQUATABS—a "water pill" that works—\$3.00. Both guaranteed and sold by:

LINER'S PHARMACY
118 S.W. 1st—
Mail Orders Filled

PUBLIC NOTICE

The State of Texas
County of Cochran

On this the 14th day of March, 1974, the Board of Trustees of Bledsoe Independent School District convened in Regular session, open to the public, with the following members present, to wit: V.H. Funk, president, Rex Griffiths, Edsel Young, Harlie Adams, M.C. Hall, Ernest Trull, Doug Dunn, constituting a quorum, and among other proceedings had by said Board of Trustees was the following:

WHEREAS this school district has less than 150 scholastics and is subject to the terms and provisions of Chapter 22 Texas Education Code.

WHEREAS on the first Saturday in April, 1974, being April 6th, 1974, a trustee election will be held in said School District for the purpose of electing three (3) members to the Board of Trustees of said School District:

THEREFORE, BE IT ORDERED BY THE BOARD OF TRUSTEES OF BLEDSOE INDEPENDENT SCHOOL DISTRICT:

That an election be held in said School District on April 6th, 1974 for the purpose of electing three (3) members to the Board of Trustees of said District.

That all requests by candidates to have their names placed upon the ballot for the above mentioned election shall be in writing and filed with the County Judge of the county in which the district is located not later than 30 days prior to date of said election.

That said election shall be held at the following place and the following named persons are hereby appointed officers for said election.

At County Barn Building, in Bledsoe, Texas, in said School District with Mary Lois Sutton as Presiding Judge, and Linda McCormick and Peggy Hinderliter as clerks.

Don M. Weaver is hereby appointed Clerk for absentee voting, and Jan A. Weaver is hereby appointed Deputy Clerk for absentee voting. The absentee voting for the above designated election shall be held at Bledsoe Schools Tax Office within the boundaries of the above named District and said place of absentee voting shall remain open for at least eight hours on each day for absentee voting which is not a Saturday, a Sunday, or an official State holiday, beginning on the 20th day and continuing through the 4th day preceding the date of said election. Said place of voting shall remain open between the hours of 8:00 a.m. and 5 p.m. on each day for said absentee voting. The above described place for absentee voting is also the absentee clerk's mailing address to which ballot applications and ballots voted by mail may be sent.

The above order being read, it was moved and seconded that same do pass. There upon, the question being called for the following members of the Board voted AYE: V.H. Funk, Rex Griffiths, Edsel Young, Harlie Adams, M.C. Hall, Ernest Trull, Doug Dunn, and the following voted NO: None.

V.H. Funk
President, Board of Trustees.

ATTEST:
Harlie Adams
Secretary, Board of Trustees

Published in the Morton Tribune March 28, April 4, 1974

NOTICE TO BIDDERS
The Morton Independent School District will consider bids for the heating of the Junior High Building at the regular meeting of the board on April 11, 1974.

All bids should be submitted to the Superintendent of Schools, 500 W. Buchanan, Morton, Texas.

Published in the Morton Tribune April 4, 11, 1974.

LEGAL NOTICE

NOTICE OF SALE
Cochran County has one (1) Chevrolet Dump truck for sale. Interested parties may obtain information through the Cochran County Judge's office located in the Court Room at Morton, Texas.

Published in the Morton Tribune March 28, April 4, 11, 18, 1974.

PUBLIC NOTICE

INVITATION TO BIDDERS
Cochran County will accept bids for 10:00 a.m. on April 15, 1974, Commissioners Courtroom, on a Kohler 4 cylinder gasoline engine unit mounts in a pickup for 500 gallon Asphalt Heating and Cooling Unit, that is mounted on a trailer, and is equipped with a Wisconsin HV 1001 engine. Equipment can be seen by contacting County Judge's Office at Morton, (806-266-5100). Cochran County reserves the right to reject any and all bids.

Published in Morton Tribune April 11, 1974.

PUBLIC NOTICE

INVITATION FOR BIDS
COCHRAN COUNTY, TEXAS, receive bids for Crushing, Screening and Shooting Asphalt Loading, Hauling and Aggregate for county road construction. Bids will be received until 10:00 a.m. on April 15, 1974 at the office of the County Judge, Morton, Texas. Plans, Specifications and Documents may be secured by office of the county judge. A certified check or bid bond for the amount bid shall be submitted with each bid, as a guarantee of the bidder's intent to enter into a contract and acceptable bond if awarded the contract. The County reserves the right to accept any or all bids and to waive information.

COCHRAN COUNTY, TEXAS
BY GLENN W. THOMPSON
COUNTY JUDGE

Published in Morton Tribune April 11, 1974.

VA offers v tax return

The Veterans Administration offers tips for recipients of benefits in preparing their income tax returns.

Officials noted that, in veterans' benefits are exempt from taxation, and need not be reported on income tax returns.

Interest on government life insurance dividends left on deposit or credited is an exception. Since this interest is considered income, it must be reported on the tax return.

Dividends and proceeds from government life insurance policies exempt from federal income tax proceeds are subject to federal income tax.

Compensation, pension, GI Bill, other educational assistance, subsistence payments to rehabilitation trainees, and other major tax-exempt VA benefits.

Extra exempt grants to disabled veterans eligible for adapted homes and cars, and allowances for those whose prosthetic devices tend to wear out or become obsolete. VA officials advised.

AVON asks...

PRICES ARE GOING UP. SHOULD'N'T YOUR INCOME? You can help by getting extra money as an Avon Representative. Part-time or full-time. Either way, I'll train you. Let's discuss it. Call Call Norma McGrath 296-6904, or 2509 57th, Lubbock, Tex. 794

BUSINESS and PROFESSIONAL DIRECTORY

AUTOMOBILE DEALERS GWATNEY-WELLS CHEVROLET-OLDSMOBILE CO. Your Home-Town Dealer Serving You With Full Line of Cars and Trucks	REAL ESTATE GLEN McDANIEL Buying or selling farms or city property Your Home-Town Dealer WESTERN ABSTRACT Call 266-5185 nites 266-5103	ELECTRONICS See Us For RCA Electronics Television, Radios, Etc. SALES AND SERVICE ROSE AUTO & APPLIANCE Phone 266-5959 Morton
SEED HARPOOL SEED-MORTON INC Specializing in High Quality Seed Wholesale and Processing Only See Us for Contract Production Sandy Aabill, Mgr.—266-5742	BOB CROSS Real Estate, Life Ins and Hospitalization FARM AND RANCH LOANS Now Available Phone 266-5730	APPLIANCES WHIRLPOOL APPLIANCES Automatic Washers, Dryers, Refrigerators, Dishwashers ROSE AUTO & APPLIANCE Phone 266-5959 Morton
DENTIST DR. GLENN G. THOMASON General Dentistry Office Hours in Morton Monday and Wednesday 9 a.m. to 5 p.m. Cochran Memorial Hospital Phone 266-5565	TIRE SUPPLY LUPER TIRE & SUPPLY COMPLETE TIRE SALES, SERVICE AND REPAIR Road & Farm Pit Stop Service 108 East Washington P.O. Box 1074 — Phone 266-5330 Morton, Texas	SEWING MACHINE SALES AND SERVICE Factory authorized PFAFF dealer We service all makes machines all work GUARANTEED SEWING CENTER & FABRIC MART Southwest corner of square Levelland, Texas Call 894-4250
PUMP SERVICES CROCKET PUMP SERVICE Irrigation Sales & Service & Domestic 215 N.W. 1st, Morton Distributors of Simmons, HPC & Goulds Phone Mobile: 927-3820 Office: 266-8610	INSURANCE NATIONAL FARMERS UNION INSURANCE JOHN HUBBARD Agent for Bailey & Cochran Co. Life-Health-Casualty-Fire Real Estate 110 E. Madison, Morton-Ph. 266-8677 Bula—office 933-2392 Home 933-2321	REAL ESTATE LOANS WESTERN ABSTRACT CO. We can meet your needs with low cost farm and ranch loans. Your inquiry will be appreciated. THE EQUITABLE LIFE ASSURANCE SOCIETY CALL 266-5185 266-5602
JEWELRY ATCHISON JEWELRY Levelland Phone 894-3450 617 Ave. G WATCH REPAIR DIAMOND SETTING CUSTOM MOUNTINGS	BEAR SAFETY SERVICE Bear Front End Service	AUTO PARTS & SUPPLY MORTON AUTO SUPPLY All the best brands in Auto Parts and Supplies Kim Hanlia, Owner-Operator 120 W. Wilson—Phone 266-8877
DITCHING SERVICE SOUTH PLAINS DITCHING SERVICE We sell, install and repair all types of plastic pipe, gas lines, irrigation lines, steel lines. Give us a call for a competitive bid. Jearold and Larry Kelly Box 348 Levelland, Texas 79336 Call 894-7634 894-3629	IRRIGATION MOTORS AMERICAN MOTORS 258-6 cyl 401-V8 6 months factory warranty JAY'S GARAGE Phone 266-5741 110 SE 1st	KIRBY REPAIR SERVICE All work guaranteed Parts and Service We sell re-built Kirbys Call 266-5954 Tom's Barber Shop
ANIMAL REMOVAL MORTON BI-PRODUCTS, INC. Dead Cattle Removed Day or Night Phone 266-8621 Nights 266-5052	MORTON INSURANCE AGENCY Life-Health-Casualty-Fire "Your Independent Agent" Chris Bell, Owner Office 266-5561 Home 266-5918 120 SE 1st Street	BE A PROFESSIONAL ADVERTISE HERE CALL 266-5576
RICK'S TV & RADIO SALES & SERVICE Servicing all makes & models Rick Gault, owner Phone 927-3150 Star Route, Goodland, Texas 79327	HAVE YOUR ATTORNEY DRAW YOUR WILL NAME FIRST STATE BANK EXECUTOR AND TRUSTEE FIRST STATE BANK MORTON, TEXAS	WALT'S ELECTRIC CONTRACTING, RESIDENTIAL, COMMERCIAL REPAIRING-WIRING 313 W. WASHINGTON 266-8941

This Easter, send a touch of springtime.

The FTD HappyNest™

YOUR EXTRA TOUCH FLOREST

The HappyNest—a quaint rattan basket filled with lovely spring flowers or fresh green plants. The basket comes with matching rattan handle and chain. So it can either be set on a table or hung in a window. Either way... what nicer way to say Happy Easter? Call or visit us today. We can send your gift almost anywhere.

EASTER IS APRIL 14

MORTON FLORAL AND GIFT SHOP

605 E. LINCOLN 266-8816

THD survey proves tourism big business

Texas Highway Department tourist survey figures released recently show that 15,975,000 auto visitors from other states and nations toured Texas during 1973. They spent a total of \$1,500,665,000 including \$133,560,000 paid directly to state taxes.

The Highway Department has made no survey of the number of visitors to Texas who came by commercial carrier; however, recent surveys conducted by the U.S. Bureau of the Census, American Automobile Association, and the 3M National Advertising Company show that minimum of 86 percent of all travel is by auto and 14 percent is by airplane, bus, train, etc. Using these percentages, an estimated 2.6 million additional visitors came to Texas in 1973 by commercial carrier, for a total out-of-state visitor figure of 18,575,000.

Although no interviews have been conducted on those who came by commercial carrier, it can be figured conservatively that they spent at least as much proportionately as auto visitors, or \$244.8 million. This means out-of-state visitors in 1973 spent in Texas some \$1,745,465,000.

A summer of fuel uncertainty and a winter of energy crisis headlines were reflected in the fact that the total number of auto visitors in 1973 decreased 3.9 percent from the all-time high set the previous year. The visitor spending that totaled more than \$1.5 billion, while

representing an immensely valuable addition to the Texas economy, was a decline of 5.6 percent compared to the previous year. It resulted from a combination of three factors — fewer visitors, smaller tourist parties, and a shorter average length of stay.

The average auto visitor party to Texas during 1973 consisted of 2.74 persons, down from 2.83 in 1972. Likewise, the average visitor stay, an even 6 days in 1972, declined to 5.7 days last year. On the other hand, the visitors drove farther in Texas last year, an average of 1,294 miles compared to 1,222 miles in 1972.

As they have for decades, the three primary essentials in modern auto travel — food, lodging and auto expenses — consumed nearly three fourths of the average travel dollar. Food took the largest portion, 26 percent, while lodging accounted for 25 percent of the travel dollar, and auto expenses another 22 percent. Out-of-state visitors spent 10 cents of each travel dollar on entertainment and 17 cents on miscellaneous items.

Pure vacationing continues to bring slightly more than half, 51 percent, of all auto visitors to Texas, but the sum of business, conventions, and combination business-vacation trips adds to a very impressive 43 percent. Another 2 percent of out-of-state visitors came to visit friends and relatives, and 4 percent were moving to Texas.

According to the Highway Department survey, motels are the most favored accommodations among Texas auto travelers, hosting 45 percent of them during 1973. Another third, 33 percent,

either camped or stayed in a trailer, while 14 percent used hotels. Private homes had 4 percent and "other" accommodations accounted for another 4 percent of visitor stays.

Credit Bureau explains rights

"Your record at the credit bureau is open for your inspection any time you want to know what is in your file," Mrs. Lennie Wall of the Credit Bureau of Morton, said recently in response to President Nixon's weekend message on the Right to Privacy.

According to John L. Spafford, president of Associated Credit Bureaus, Inc., the problem with the publicity given to the issue of privacy and computers is the "broad brush" approach and over-generalization by the media and government officials to this complex issue.

"For example," Spafford said, "the statement that consumers cannot learn what is in their credit file is false. The law requires credit bureaus to disclose everything in your file and, as a matter of fact, over 1,700,000 disclosures were made by ACB members in 1973.

"The statement," Spafford said, "that credit bureaus collect and disseminate personal information about consumers' morals, characteristics and personal

habits is false. Investigative consumer reporting agencies gather that type of information for insurance companies, but your local credit bureau does not. And it is high time the media and government officials get that point straight."

Spafford said the 2,100 credit bureaus represented by ACB have been "abused by and confused with" investigative reporting ever since the privacy issue began making headlines. Credit bureaus, according to Spafford, make full disclosure of sources of information but investigative agencies are not required to disclose sources.

"Your local credit bureau is now and has been operating under a strict federal law since April, 1971 that protects consumer privacy and affords you the right to know what is in your file and to correct or place a statement in your file. If government officials are concerned with personal privacy," Spafford said, "they should turn to other alleged invaders and bring them up to the standards of the local credit bureau."

22 million construction budget announced by GTE

Telephone Company of the announced a \$122 million budget for 1974 to expand and improve facilities in the operations in Texas, New Mexico and Arkansas.

Beck, president, explained the 1974 construction program of \$122 million earmarked for equipment. This amount includes One Plus and-or Zero to 54 exchanges. Five receive automatic number of long distance calls for

under this part of the projects to meet growth or long distance equipment. Another major outlay in the equipment portion of the addition of electronic switching facilities to the offices. The electronic capable of processing large calls at a high speed,

flexibility in adjusting communication needs and a variety of new services. These offices perform self-checking point trouble or potential normally go unnoticed until

major portion of the budget \$35.6 million to cover outside the central amount, \$25.9 million is

designated for growth and modernization. Other costs under outside plant include expansion and modernization of toll and extended area service facilities, and buried and underground cable.

Beck continued: "\$4.3 million is scheduled for land purchases and construction of new buildings and building additions. This includes the completion of three buildings presently under construction, start and completion of 13 additions, and the starting of six additions that will complete in 1975."

Other items in the total construction budget total \$40 million and include private automatic branch exchange (PABX) equipment, telephones, labor and materials to connect the customer's telephone to service lines, vehicles, furniture and fixtures, and tools and work equipment.

The company president said a gain of 84,000 telephones is expected during 1974, bringing the estimated year-end total to 1,136,000.

Beck also said the company will continue its program to apply, through appropriate regulatory authorities, for increased rates where earnings on investment are not satisfactory. "We must stay financially healthy in order to attract new investors and new capital under the most favorable rates and conditions," Beck explained, "so it is important to customers and company alike that our earnings stay at an acceptable level."

Hugh Hansen attends Federal Land Bank meeting

Hugh Hansen of Morton, Texas, has from Houston where he the Federal Land Bank of Levelland at the annual Meeting of the Federal Land Bank of Texas. The meeting, held at the Oaks Hotel, was attended by 66 Federal Land Bank directors in Texas. There were 100 persons in attendance at

and guests heard George W. Cunningham annual report to the which he reported that in million dollars in loans most credit ever extended to ranchers in a single year's 57-year history. Also, heard addresses by Dr. James Briscoe and Dr. James Smith, First International Bank of Dallas, Texas.

Land Bank of Houston loans on farm and ranch

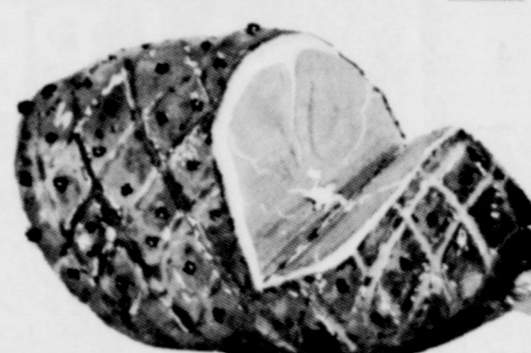
property throughout Texas and is currently servicing over 35,000 loans for more than \$67 million dollars. The Federal Land Bank Association of Levelland is presently servicing 580 loans for approximately \$1/2 million dollars.

The Federal Land Bank Association of Levelland makes and services loans in this area. Members of the Board of Directors are: L.F. Schoenrock, President; Leon Lawson, Vice-President; J.F. Steele, all of Levelland; Hugh Hansen, of Morton; and G.I. Sims of Brownfield.

Others attending the meeting from this area were: Jack Williams, Manager; Chris Roberts, Assistant Manager; Mr. and Mrs. J.F. Steele, and Mrs. Hugh Hansen.

BOSTON EVACUATED
The British under Gen. Howe evacuated Boston on March 17, 1776.

Easter Foods




FOR HAPPY FEASTING

SPECIALS GOOD APRIL 5th THRU APRIL 11

<p>DECKER SMOKED HAM CENTER CUTS SLICED OFF</p> <p>WHOLE LB. 79c SHANK LB. 59c BUTT LB. 69c</p> <p>ARM ROAST LB. \$1.29</p> <p>COME IN AND VISIT WITH US AND COMPARE OUR MEAT PRICES</p> <p>EGGS GRADE A SMALL DOZ. 49c</p> <p>BORDENS BUTTERMILK 1/2 GALLON 69c KRAFT JET PUFFED MARSHMALLOWS 10 OZ. 25c BETTY CROCKER CAKE MIXES 49c GOLDEN CRUST BROWN & SERVE ROLLS 3/\$1</p> <p>CELERY LB. 15c TOMATOES CELLO 39c SWEET POTATOES LB. 17c</p>	<p>SLICED BULK BACON LB. \$1.09</p> <p>CHUCK ROAST LB. 79c</p> <p>RIB STEAK LB. \$1.19</p> <p>SEVEN BONE ROAST LB. \$1.09</p> <p>KRAFT LOW CALORIE FRENCH DRESSING 8 OZ. 35c DEL MONTE CUT GREEN BEANS 16 OZ. 2/59c WHITE SWAN PEARS 16 OZ. 2/69c KEEBLER PECAN SANDIES OR CHOCOLATE DROP COOKIES 14 OZ. 69c</p> <p>PAPER PLATES LILY 100 COUNT 79c</p> <p>PROTEIN 21 SHAMPOO 7 OZ. \$1.39</p> <p>GILLETTE FOAMY SHAVE CREAM 11 OZ. 89c</p>
---	--

JEWEL SHORTENING
3 LBS. \$1.29

RAMSEY'S FOOD STORE



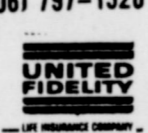
W. TAYLOR
AVE. Q
Texas 79408

+ LIFE + HEALTH + ACCIDENT

Ask me about United Fidelity's CANCELS INDEMNITY Policy. It provides unlimited extended benefits and pays in addition to any other insurance you may have.

For a small additional premium it will pay full benefits in addition to Medicare. Family \$45.00 annual premium Individual \$30.00 annual premium

BUS. (806) 762-0851
RES. (806) 797-1520



DO NOT BE MISLED ABOUT CHEAP SEED

WIS FARM & RANCH

PHONE 266-5461 LOCALLY OPERATED

Convention tentatively approves two articles

The Texas Constitutional Convention finished its preliminary work on the articles on the Executive Branch and on Methods of Amending the Constitution last week, reported Convention Delegate Bill Clayton. The Executive Article draft, which maintains most of the traditional powers of the Governor, prompted extensive debate on many provisions. The article dealing with methods of amending the new Constitution required only a majority vote for amendments, but delegates later changed the section to require a two-thirds vote of a convention to submit a new document or amendments to the voters.

One of the major changes made in the Executive Article was the deletion of the Railroad Commission from its current constitutional status, leaving its operation up to legislative scrutiny should the new Constitution be adopted. The Executive Article and Article on Amendments, like all other articles in the proposed new document, must now gain a majority vote on their third and final reading and then be approved with all the other new articles by a two-thirds vote before they can be sent to the voters of the

state for their approval or disapproval. The Convention then began work on the new Constitution's Finance Article. Rep. Clayton stated that he thought that debate on the Finance Article would be quite extensive, with delegates aligned behind differing theories of taxation and revenue. In further activities last week, Convention President Price Daniel, Jr., announced that he now believes it will be impossible for the delegates to finish work on the Constitution within their original 90 day time limitation. Clayton, who predicted at the beginning of the convention that 90 days would not be sufficient, stated that he hoped the delegates would finish with at least the second vote on all articles before they recess in April for 30 days. Unless such preliminary work is finished by that time, the delegates, who plan to come back into session after the May primaries, will have a difficult time completing work on the document before the maximum 60 day extension of time expires, Clayton stated. Area residents may still record their preferences on any of the issues of the convention by calling the convention's toll-free number, 1-800-292-9600.

ENMU 'Spark '74' invites HS juniors

High school students from the class of 1975 have until April 20 to apply for participation in "Spark '74," a summer college participation program being sponsored by Eastern New Mexico University. Eastern will invite a limited number of qualified high school students who have just completed their junior year to participate in a summer of advanced study and research in 17 different academic areas, according to Dr. David Yos, professor in biology and director of the new program. "This program has been designed for the more capable, industrious and highly motivated student who would like to delve more deeply into learning than is possible in the average high school curriculum," Dr. Yos explained.

Selection of students for the program, scheduled to be conducted between June 9 and August 2, will be passed upon academic record, letters of recommendation, an essay outlining the reasons why the applicant wants to participate and a personal interview. All participants will be housed at no cost in university residence halls. They will, however, be expected to take their meals in the university cafeteria and to bear the costs of books, supplies, and incidental expenses. No tuition, laboratory or special room use fees will be charged except in those cases where the student desires to earn university credit. Spark '74 will allow the participating high school students the option to take some courses for regular college level academic credit. The students, if they choose this option, will be admitted to the university with special student status. If students choose, they may register for up to six credit hours in regular university courses. Credit for these courses will be validated by regular admission to Eastern after their high school work is completed. Students registering for credit will be subject to regular university tuition and fee charges.

Each participant in Spark '74 will join in "scholarly activity" with the faculty member of his or her choice. The Eastern faculty taking part in the program are voluntarily devoting their time. Subject areas in which students may participate include art, biology, chemistry, communications, computer science, education, geology, history of science, law, mathematics, music, physical education and sports, political science, religion, speech and hearing, theatre and university advisement. Those high school juniors desiring to take advantage of an early start in college level work may contact their high school counselors or Dr. David Yos, director of Spark '74, at Box 2298, ENMU, Portales, 88130, for further information.

15th annual festival in Lubbock

The Buttons and Bows Square Dance Club of Morton will be participating when the Lubbock Area Square and Round Dance Federation presents the 15th Annual Festival Friday and Saturday at Fair Park Coliseum in Lubbock. Ken Bower of Hemet, California and Jerry Haag from Cheyenne, Wyoming will call the square dancing and Manning and Nita Smith of College Station will direct the round dancing. The festival will begin with request round dancing at 7:30 p.m. Friday and the Grand March will begin at 8 p.m. Lubbock Area Square and Round Dance Federation is composed of 25 square dance and round dance clubs in West Texas and Eastern New Mexico. Approximately 1500 dancers from Texas, New Mexico, Oklahoma and other neighboring states are expected to attend.

Homer gardening booms as budget supplement

Almost everywhere you look, homeowners are tilling in their back yards or wherever they can find space to put in a spring garden. "Home gardening is definitely booming, and in Texas gardeners can produce tasty, nutritious vegetables the year round," says Sam Cotner, vegetable specialist for the Texas Agricultural Extension Service. To have a successful home garden, a number of important factors enter into the picture, notes the Texas A&M University System specialist. First of all, a site that has well-drained, fertile soil is best. However, homeowners often have little choice on the garden location. The location should also receive plenty of sunlight, but certain crops can be grown in partially shaded areas. Cotner lists the selection of proper varieties of crops as a key item in successful gardens. Different varieties are suited to different areas of the state,

so county Extension offices should be contacted concerning which crops are best adapted to specific locations. "Proper seedbed preparation is another important element for a good garden," points out Cotner. "If the garden site has heavy, tight clay soil, add one to two inches of sand and two to three inches of organic matter and then work these materials into the soil. Gypsum at the rate of six to eight pounds per 100 square feet also helps improve tight clay soils." Before planting, apply a complete fertilizer such as 12-12-12 at the rate of two to three pounds per 100 square feet. Work the fertilizer into the soil and then form the beds for planting. "Use transplants whenever possible to get a crop off to a head start," advises the specialist. Once crops are up, water them sufficiently and regularly so that the water penetrates the soil to a depth of at least six inches. Light sandy soils may

require more frequent watering. Cotner suggests watering in the morning or at least not later than mid-afternoon so that plants will dry before night. This helps prevent foliage diseases. Use of a long-handled hoe is still the best means for controlling weeds. However, adding a mulch of straw, leaves, grass, bark, gin trash, sawdust, peat moss or other organic material around plants helps control weeds and

also reduces soil temperature and moisture losses. "Keep a close check on your soil as they begin to approach harvest," advises the specialist. "Harvest them only at full maturity because that's when vegetables have maximum flavor and nutritional value." "Growing your own vegetables is fun and it helps reduce the grocery bill," Cotner concludes. "So, Happy Gardening."

Moncada enlists in US Air Force

Juan Moncada, son of Mr. and Mrs. Ambrosio Moncada, enlisted in the United States Air Force, according to Sergeant Sonny Smith, Air Force Recruiter for the Morton area. Moncada is at Lackland Air Force Base

undergoing six weeks of basic training. He selected Aircraft Electronics as his guaranteed job. Anyone wishing information on the Air Force may call Sgt. Smith at 762-2000 in Clovis, N.M.

SANCAP. BECAUSE YOU HAVE ENOUGH SOIL PROBLEMS ALREADY.



If the soil in West Texas was the same as the soil everywhere else maybe the herbicides they use would be good enough for you. But you've got different soil. Sandy soil. And different problems. You need an herbicide specifically made for sand, loamy sands and fine sandy loam soils. You need Sancap. If you used it when we introduced it last season, you know what it can do. STOP CARELESSWEED AND RUSSIAN THISTLE COLD. Without hurting your cotton. With just ordinary rainfall or irrigation. And all you have to do is broadcast Sancap over your field at planting or within two days after. No incorporation, either. Sancap. The only herbicide made for sandy soil. We made it especially for your soil and problems. And not anybody else's. Agricultural Division, CIBA-GEIGY Corporation, P. O. Box 11422, Greensboro, NC 27409. CIBA-GEIGY



The only herbicide made for sandy soil. YOU DON'T HAVE TO USE A COTTON HERBICIDE MADE FOR SOMEONE ELSE'S SOIL.

FOR PEOPLE WHO THINK

In the last article we noted that the apostles were commanded to teach the Christians WHAT to observe—Matthew 28:18-20. We need to examine this text in its own context, and its relationship to the whole of the New Testament. The paragraph begins with verse 16 (Matt. 28) and continues to the end of the chapter. Note first that Jesus had previously made this appointment for the disciples (in this case the disciples were the apostles). There were only eleven of them for Judas was already dead (read Chapter 27: 3-10), and Matthias had not yet been chosen (read Acts 1:15-26). There is not the slightest indication that other people were at this meeting. What Christ said, therefore, was said to these eleven—and NO MORE. Note next that all the power (or authority) in heaven and earth had been given to Jesus—verse 18—in this connection one should read 1 Cor. 15:24-28 to learn what shall happen at the final day). What Jesus said, therefore, carries all the authority of heaven and earth. There can be NO APPEAL from his commandment to these apostles. This is the FINAL verdict on this matter. Matthias was chosen later to take the place of Judas—and Paul was later chosen and made an apostle—read Galatians 1:13-17. These are ALL to whom the Holy Spirit was promised—to guide them into ALL TRUTH—enabling them to REMEMBER all that Jesus had commanded them—read John 14:26; 15:26; 16:7-13; Acts 1:1-9. It was, therefore, to the APOSTLES that Jesus said what is recorded in verses 19 and 20 of our text in chapter 28 of Matthew. It was, moreover, those who had been baptized that the apostles were told to tell WHAT these were to OBSERVE. In this that Jesus commanded the apostles to reveal—Jesus told the apostles that "...I am with you always, even unto the end of the world." If, therefore we can learn from the words and actions of the apostles WHAT the early Christians DID that the apostles approved—we know what they were taught. But they were taught what Jesus COMMANDED—verse 20. They were taught to "abide IN" this teaching (doctrine) of Christ—read 2 John v. 9. They were taught (commanded) not to "go beyond" the things written—read 1 Cor. 4:6. More to follow. Please remember your welcome to attend the assemblies at Taylor and SW 2nd Sts. C.R. MANSF

C.R. MANSFIELD, Evangelist CHURCH OF CHRIST.

South Plains fashions' featured in SPC show

Models for the show include Miss Paula Bell, Margaret Ingraham, Frank Gonzales and Mrs. Polly Parmer, all members of the faculty at SPC. Mrs. Ruthie Daniel, a secretary in the dean's office at the College, and fashion-merchandising students Ray Smith and Dee Ann Martin, both of Levelland, Leola Killough of Fort Sumner, N.M., Danna Little of Houston, Linda Villegas of Abilene, Melvena Stewart of Post, Linda Horn and Cheryl Carter, both of Littlefield, Nancy Bass of Spur, Rosemary Bailey of Petersburg, Pam Knighton of Lubbock and Frank Bush of Caldwell.

Trackmen impressive District 3-AA meet

High School track team showing in the District 3 meet in Odessa last week. Several qualified for the Regional meet held in Odessa April 19 and of the District meet are as follows: Tandy Kuehler also qualified for regional with a 2:09.5 880 clocking, somewhat off of his 2:05.9 time of two weeks earlier.

The community will be represented by Mrs. Tommie Beavers, Jim Godley and Mrs. Mickey McCullough. Modeling fashions for the younger set will be Brent Bush, son of Mr. and Mrs. Jerry Rush, Chad Young, son of Mr. and Mrs. Delton Young, Mika Courtney, daughter of Mr. and Mrs. Eddie Courtney, and Angie and Amy Everts, daughters of Mr. and Mrs. Michael Everts, all of Levelland.

Paper drive

The paper drive being conducted by Miss Lovett is continuing. Papers, if tied, will be picked up by the City of Morton Saturday morning, if calls are received by Friday afternoon.

Bookmobile schedule

The High Plains Bookmobile will be in your area on the following dates: Tuesday, April 9—Morton, 9:30-12:00; Wednesday, April 10—Circleback, 8:45-9:45; Bula No. 1, 10:15-11:15; Bula No. 2, 12:00-1:00.

England and EEC

France announced a referendum on the entry of England into the Common Market on March 16, 1972.

Bledsoe News

The School Trustee election will be held this coming Saturday April 6, at the County Barn, in Bledsoe. Cleon Davis, V.H. Funk, Mike Langrill, Edsel Young, and Charles McCormack are candidates for the three (3) positions to be filled on the school board.

Thompson urges further Easter Seal support

A further request for support of the Easter Seal Society for Crippled Children and Adults and its program of services to the handicapped was issued today by Glenn Thompson, who is Easter Seal Representative in Cochran County.

The Society is carrying out a continuing program to seek out the disabled who are doing without services and see that they receive the help they need. As Easter Seal Representative, Thompson is the person to contact for services from the Easter Seal Society.

Know tornado safety rules and 'live' through season

With the return of spring-like weather, residents are reminded that tornado season is here. The following information is to help readers 'live' with the storms. 'Tornado Watch' means tornadoes are expected to develop. 'Tornado Warning' means a tornado has been sighted either visually or by weather radar.

or reinforced concert building. Stay away from windows. In office buildings, stand in an interior hallway, on a lower floor, preferably in the basement.

Evacuate in a mobile home. If caught in the open, lie flat in a depression such as a ditch or ravine. If in a car, leave the car and seek cover in a reinforced building if time permits or else lie face down in the deepest depression available.

Resident's brother rites in Graham

Services for Ervin Lewis Blackley of Graham, brother of Vernon Blackley of Morton were held Friday, March 29 at Memorial Christian Church in Graham.

1970 and was commended by the committee for his police work and studies. Blackley had worked actively with Graham youth in Boy Scouts and other youth groups and was a member of Memorial Christian Church.

Blackley, 50, was killed instantly in a motorcycle-truck collision in Graham Wednesday, March 27. He was 50 years of age. He attended Anson schools and served as a corporal, flight engineer, in the Army Air Corps during World War II, serving in both Europe and Asia.

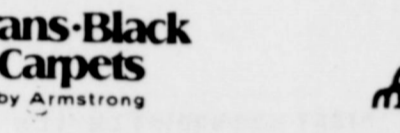
Area persons attending the services were: Mr. and Mrs. Vernon Blackley, Mrs. Ronald Coleman, J.C. Reynolds, Mrs. Wayne Walthall of Hobbs, N.M., Mrs. Cecil Ellis of Midland and Virgil Riley of Littlefield.

WAR DECLARED On March 17, 1972, Britain declared war on Holland and attacked Dutch ships in the Atlantic.

Our reputation is in the carpet we sell you.

Carpet shopping can be frustrating because a lot of people will sell you a carpet without knowing your needs. They'll confront you with a bewildering assortment of fabrics, fibers and brand names that will leave you confused and frustrated.

So, don't let carpet lingo and off-brand names confuse you! Visit us and be assured that you'll purchase the highest quality carpet suited to your individual needs. That's because we only sell what we recommend and we recommend and sell Evans-Black Carpets.



Today's newest, brightest, super-luxurious nylon shag-plush carpet.



There's Dramatic Textured Elegance in this Luxurious Nylon Pattern Shag Regal Row

Dramatic textured elegance is captured in Regal Row from Evans-Black, a beautiful two-level pattern shag whose subtle colorations and discreetly scaled design will add formal richness to any decor.

- * Luxurious low-pile pattern shag creates dramatic textured elegance
* Discreetly scaled design is richly formal
* Choose from 20 shimmering tone-on-tone colorations
* 100% nylon fiber pile offers easy care and long wear

Its 20, subtle, tone-on-tone colorations and unique two-level texture will add warmth and beauty to any room in your home. Luxuriously rich, Regal Row blends perfectly with any decor, from high fashion contemporary and Mediterranean to traditional.

Regal Row's extra thick, low pile construction and 100% nylon fiber mean superior performance and easy care with minimum attention.

An Outstanding Value At Only \$12.95 square yard Installed



Blinda Ray receives honors science fair

Way High School freshman Blinda Ray, daughter of Mr. and Mrs. David Ray, entered her exhibit "The Sodium Chloride Effects of Radioactive Nuclei" and received the first place award in the Zoology Division of the Science Fair.

ROLL-A-CONE TOOL CARRIERS

Pieces of Equipment on one Bar-Cultivator-Kulfer-Hamey and Deer Ripper. Buy Roll-A-Cone & Own The Best! 4 to 13 rows, 4x7 Tool Carriers for the big Horse.

BURKETT TRADE LOT PHONE 266-5569 NITE 266-5976 MGR. M.P. COFFMAN USE US WHILE WE LIVE!

JAKARTA

- * LUXURIOSLY THICK, extra-dense 100% DuPont continuous filament nylon fiber pile
* THE 'NOW LOOK' in the new generation of high-style, low-pile shaggy-plush carpet textures.
* SOPHISTICATED COLOR STYLING brings a unique new multi-color look to your decor. You've never seen anything like it!
* CARE-FREE TEXTURE of a thick, bouncy "low-profile" shag; stays rich and new looking with minimum care. Throw out the shag rake; Jakarta doesn't need pampering!

* EXTRA-DURABILITY of all-nylon construction, rugged performance, excellent resistance to wear, piling, and fuzzing.

* DELIGHTFULLY SOFT AND SILKY to the touch for exciting elegance underfoot.

* DELICIOUS COLOR ASSORTMENT of 25 different lustrous multi-hued effects, choose from Blues, Greens, Golds, Reds, Rust Tones, Subtle Pastels.

a beautiful value at only \$12.95 square yard Installed

Enochs-Bula News

Billy Simpson was dismissed from the Littlefield Hospital Tuesday.

Mr. and Mrs. Jack Reasoner from Hobbs, N.M. visited her parents the G.R. Newman's Saturday.

Brent and Marthan George of Lubbock spent their spring break from school with their grandparents Mr. and Mrs. E.N. McCall. Their mother came Saturday for the weekend and attended church with them Sunday morning.

Mrs. Charlie Shaw was admitted to the Littlefield Hospital Wednesday night she was scheduled to have surgery Tuesday.

Mrs. Lawrence Hall from California came to Lubbock by plane Thursday night, to be with her father and mother, Mr. and Mrs. John Vanlandingham who are still patients in the Methodist Hospital. Uncle John has been in the hospital for two months.

Mrs. Kenneth Petree and Beckie of Clovis, N.M. spent Sunday night till Wednesday with her husband's parents the Chester Petrees.

Mr. and Mrs. W.B. Peterson, Mr. and Mrs. C.C. Snitker, Mr. and Mrs. G.O. Smith, Mrs. Bill Key and son Sid, and Mr. and Mrs. Dale Nichols went to Dimmitt Monday for the James

Robison One-Night Rally sponsored by Llanos Alton Ass'n at Dimmitt High School Auditorium.

Enochs Baptist Women met at 10 a.m. Tuesday for their business meeting, with Wanda Layton in charge. Mrs. Etta Layton led the opening prayer. Mrs. Alberta Bryant brought the devotional. "The necessity of Prayer" The time to meet was changed from 10 to 9:30 a.m. Etta Layton gave the call to prayer, Mrs. Rose Nichols offered the closing prayer. Those present were: Mmes Dicie Snitker, Wanda Layton, Ellen Bayless, Rose Nichols, Etta Layton, Alberta Bryant and Wanda Layton.

Mrs. Mary Hardin was honored with a birthday dinner at the home of a daughter Mr. and Mrs. A.M. Phillips, Sunday March 24. Her 88th birthday was March 20. Those present were Mr. and Mrs. Guy Sanders, Mr. and Mrs. Dorwin McBee and children, Robbie, Malinda and Missie, Mr. and Mrs. Ralph Beasley and children, Ronald and Renee, Mr. and Mrs. Jerry Cox and children Wayne Phillips and a girl friend and Mrs. A.M. McBee.

Mrs. Dicie Snitker was admitted to the West Plains Hospital in Muleshoe Friday for tests.

Tod Pool spent the week with his grandmother Mrs. Ted Hall.

Mrs. Blanche Cash of Muleshoe visited with Mrs. Olive Cox Saturday and also visited her daughter, Mrs. Ruby Waltrip and family.

Mr. and Mrs. J.D. Bayless were in Morton Saturday morning and visited in the home of her brother, Mr. and Mrs. Clyde Coffman.

Miss Agnes Toews from Kansas, is here for an extended visit with her sister Mrs. Alma Altman.

Mr. and Mrs. Ray Seagler camped at Palo Duro March 22 to do some fishing. Her sisters Mrs. Bessie McCallister of Anton, Mrs. Verna Eubanks of Odessa, and three brothers Melvin, Martin and George Smith visited with them while they were there. They returned home Saturday afternoon.

Mr. and Mrs. Harold Layton and children Mr. and Mrs. Mark Derrington, Susan and Robert and a friend Lisa Risinger, met their other daughter Mr. and Mrs. David McDaniel at Lake Brownwood for several days of visiting and fishing.

G.R. Newman was admitted to the Cochran Memorial Hospital early Sunday morning.

Bula school trustee election will be held April 6, at the school. Two places are to be filled on the board. The terms of J.E. Layton and R.T. Newton expires. Newton does not wish to run again. Layton is running again and Burley Roberts is a candidate.

Hospital notes

Patients admitted to Cochran Memorial Hospital from March 26 through April 2 were: Alice Neely, C.C. Benham, Joe Coker, A.B. Camp, Ed Latimer, M.A. Tanner, Angel Olguin, Edward Castro, Ray Griffith, Clara Bates, Silevia Gomez, Felix Guzman, G.R. Newman, Raymon Shelton, Mary Ledbetter, Zona Woods, Marie Rodriguez, Craig Denny, Janice Bates, C.A. Petree, Lydia Alvarado, Ada Long, Jessie Vasquez, Jr., Oralia Fuentes, Francis Hall, Johnny Reeves and Rosa Sandoval.

Love is...



... knowing you are responsible for the stars in her eyes.

Three Way News

By Mrs. H.W. Garvin

Capt. James Long, who is serving with the USAF in Germany, spent the past week visiting relatives in the community.

Mr. and Mrs. George Tyson visited over the weekend in Lubbock with their daughter, the Tommy Durhams.

Mr. and Mrs. Troy Kelley from Dallas spent the weekend with his parents the Fred Kelleys.

Jimmy Gillentine and Debbie both of Lubbock visited with the Garvins Saturday.

Mr. and Mrs. Dutch Powell of Lubbock Friday.

Mr. and Mrs. T.D. Davis visited the weekend in Stamford with mother.

Mr. and Mrs. Frank Fize visited her parents the Bill in Marble Falls last week.

Mr. and Mrs. Jack Furgerson their daughter the Jim Green, N.M. Sunday.

Mr. and Mrs. D.S. Fowler weekend in Lubbock with the James and Ray Fowler and his sister, the Troy Fowler.

Johnny Furgerson, TTU student Friday night with his parents.

Mr. and Mrs. Dutch Powell of their children home Sunday.

School menu

Monday, April 8, 1974
Gaulash, June peas, whippotatoes, plum cobbler, roll, milk.

Tuesday, April 9, 1974
Franks with tomato sauce, mixed greens, cookie, chilled pineapple, milk.

Wednesday, April 10, 1974
Sloppy Joes, mixed vegetables, Cheese salad, peanut butter brownie, milk.

Thursday, April 11, 1974
Barbeque chicken, whipp potatoes, green beans, cranberry sauce, roll, milk.

Friday, April 12, 1974
Pinto beans, tomato salad, spinach, cake cornbread, milk.

ASSEMBLY OF GOD CHURCH
Whiteface
Pastor, Rev. Billy Pierson
Sunday Services—
Sunday School 9:45 a.m.
Morning Worship 11 a.m.
Evening Worship 6 p.m.
Midweek Bible Study 6:30 p.m.

ST. ANN'S CATHOLIC CHURCH
Pastor Nicholas Schneiders C.P.
Mass Schedule:
Sunday 9:00-11:15 a.m.
Weekdays 7:30 a.m.
Wednesday Evenings 8:30 p.m.
First Fridays each Month 8 a.m.
8:30 p.m.
Sunday School 10-11 a.m.

NEW TRINITY BAPTIST CHURCH
Rev. W.D. Anderson
3rd and Jackson
Sundays—
Sunday School 9:45 a.m.
Morning Worship Second and Fourth Sundays 11:00 a.m.
H.M.S. 4:00 p.m.

Wednesdays—
Prayer Service 7:00 p.m.

FIRST BAPTIST MEXICAN MISSION
Sundays—
Sunday School 10:00 a.m.
Training Union 6:30 p.m.
Evening Worship 7:30 p.m.

Wednesdays—
Prayer Service 7:30 p.m.

FIRST BAPTIST CHURCH, ENOCHS
Rev. Charley Shaw
Sunday School 10 a.m.
Morning Services 11 a.m.
Training Union 7 p.m.
Evening Services 8 p.m.

BLED SOE BAPTIST CHURCH
Rev. Henry Rhynes
Sunday Service 9:45 a.m.
Worship Service 11 a.m.
Training Union 6 p.m.
Evening Worship 7 p.m.
Wednesday Night Service 8 p.m.

CHURCH OF CHRIST
S.W. 2nd and Taylor
C.R. Mansfield, Preacher
Sundays—
Bible Class 10:00 a.m.
Worship 10:45 a.m.
Evening Worship 6:00 p.m.

Wednesdays—
Midweek Bible Class 8:00 p.m.

FIRST METHODIST CHURCH
James E. Price, Pastor
411 West Taylor
Sundays—
Church School Session 9:45 a.m.
Morning Worship Service 10:55 a.m.
Evening Fellowship Program 5:00 p.m.
Evening Worship 6:00 p.m.

Wednesdays—
Prayer Service 7:30 p.m.

WHITEFACE CHURCH OF CHRIST
Dick Biggs, Minister
300 Tyler Street
Sundays—
Bible Classes for all ages 10 a.m.
Worship and Communion 10:55 a.m.
Evening Worship 7:00 p.m.

Wednesdays—
Bible Study & Prayer 8:00 p.m.

Sister Pearl's Gospel Singing House
Purity Sunday School
Class 8:45 a.m.
Teacher—Pearl Swindie Williams
511 E. Jackson

UNITED METHODIST CHURCH, ENOCHS
Rev. Grady Adcock, Pastor
Services held 1st and 3rd Sundays
Sunday School 10 a.m.
Morning Services 11 a.m.
Evening Services 7 p.m.
4th Wednesday—Fellowship 7 p.m.

"They will show me the path of life, in thy presence is fulness of joy..."
PSALM 16:11

HERE IS THE PATH

shall love the Lord thy God with all thy heart, and with all thy soul, and with all thy strength, and with all thy mind, and thy neighbor as thyself.
Luke 10:27

The basis of God's first and greatest commandment is love. God gave man the freedom to choose... and therefore will not force his love on anyone. God took the first step and is always ready to receive any who would come to Him.

The Church is God's appointed agency in this world for spreading the knowledge of His love for man and of His demand for man to respond to that love by loving his neighbor. Without this granting in the love of God, no government or society as we know it will long survive and the leaders which we hold so dear will inevitably perish. Therefore, even from a selfish point of view, one should support the Church for the sake of the welfare of himself and his family. Beyond that, however, every person should uphold and participate in the Church because it tells the truth about man's life, death and destiny; the truth which alone will set him free to live as a child of God.

EVERYONE IN THE CHURCH IS INVITED

UNITED METHODIST CHURCH, BULA
Services 2nd and 4th Sundays
Sunday School 10 a.m.
Morning Service 11 a.m.
Prayer Service 7 p.m.

THREE WAY BAPTIST CHURCH
Rev. Jack Dewitt
Sunday School 10 a.m.
Morning Worship 11 a.m.
Training Union 6 p.m.
Evening Services 7 p.m.

ASSEMBLY OF GOD CHURCH
Rev. Wilbur L. Stanley
Sundays—
Sunday School 9:45 a.m.
Morning Worship 11:00 a.m.
C.A. Service 6:00 p.m.
Evangelistic Service 7:00 p.m.
Wednesdays—
Wednesday Services 7:30 p.m.

FIRST MISSIONARY BAPTIST CHURCH
Rois Standifer, Pastor
Main and Taylor
Sunday School 9:45 a.m.
Morning Worship 10:45 a.m.
Training Service 6:00 p.m.
Evening Worship 6:45 p.m.

WMA Circles
Monday—
Night Circle 7:30 p.m.
Tuesday—
W.M.A. 2:00 p.m.
G.M.A. 4:00 p.m.
Wednesday—
Midweek Service 7:30 p.m.
Edna Bullard 9:30 a.m.

HICK'S CHAPEL BAPTIST CHURCH
Rev. Hugh Montgomery
Sunday School 10:45 a.m.
Morning Services 11:45 a.m.
Training Union 6:30 p.m.
Evening Services 7:30 p.m.

FIRST BAPTIST CHURCH WHITEFACE
@Gold Harrison, Pastor
Sunday School 9:45 a.m.
Morning Worship 11:45 a.m.
Church Training 6:30 p.m.
Evening Worship 7:30 p.m.
Wednesday Prayer Meeting 7:30 p.m.

FIRST BAPTIST CHURCH
Paul McClung, Pastor
202 S.E. First
Sunday School 9:45 a.m.
Morning Worship 10:55 a.m.
Morning Service KRAN 11:00 a.m.
Training Union 6:00 p.m.
Evening Worship 7:00 p.m.

Tuesdays—
Helen Nixon W.M.U. 9:30 a.m.
Wednesdays—
Graded Choirs 7:30 p.m.
Prayer Service 7:30 p.m.
Church Choir Rehearsal 8:30 p.m.

SPANISH ASSEMBLY OF GOD CHURCH
Rev. Ignacio Ruiz
N.E. Fifth and Wilson
Sundays—
Sunday School 10:00 a.m.
Morning Worship 11:00 a.m.
Evening Evangelistic Service 7:00 p.m.

Wednesdays—
Young people service 7:30 p.m.

EAST SIDE CHURCH OF CHRIST
Jammie Paden, Minister
704 East Taylor
Sundays—
Bible Study 10:00 a.m.
Worship 10:45 a.m.
Worship 6:00 p.m.

Wednesdays—
Midweek Service 8:00 p.m.

CHURCH OF CHRIST, MAPLE
Dannie Mize, Preacher
Bible Study 10:45 a.m.
Worship 11:45 a.m.
Night Worship 6:30 p.m.
Wednesday Night Services 8:30 p.m.

This Feature Is Published With The Hope of Getting More More People To Church By The Undersigned City Business And Professional People.

<p>Claunch Gin Bula</p> <p>Bailey County Electric Co-Op Association Phone 266-8600-Whiteface Hwy.</p> <p>Bedwell Implement 219 E. Jefferson-266-5306</p> <p>Rose Auto and Appliance 107 E. Wilson-266-5059</p> <p>Bill's Furniture & Appliance Bill Smith 108 SW 1st 266-5201</p>	<p>Compliments of Carl Griffith Gin and G & C Gin</p> <p>Judge Glenn Thompson</p> <p>L & B Supply N. Main-Phone 266-5110</p> <p>Cochran Electric Service - Supply 317 W. Washington Phone 266-5455</p> <p>Gwatney-Wells Chev.-Olds. 133 E. Washington Morton, Texas</p> <p>Farmer's Co-op Gin of Enochs Enochs 927-3444</p> <p>First State Bank 107 W. Taylor-266-5511</p>	<p>Beseda Grain Co.</p> <p>Griffith Equipment Company 120 N.W. 3rd-Phone 266-5330</p> <p>Luper Tire and Supply 602 Main-Phone 266-8001</p> <p>Allsup's 7 till 11 113 E. Washington-Phone 266-5532</p> <p>Ramsey's Food Store Gerald Ramsey, Owner 210 South Main</p> <p>State Line Butane</p> <p>West Texas Seed Co. Roy Oxford, Mgr. Dora Hwy. 266-5557</p>	<p>Star Route Co-op Gin St. Rt. 1-Phone 927-3416</p> <p>Higginbotham-Bartlett</p> <p>Maple Co-op Gin</p> <p>Tic Toc Restaurant Loma and Rob Richards Levelland Highway-Phone 266-88</p> <p>St. Clair's Department Store Morton 266-5223</p> <p>Liner's Pharmacy Mike and Donna Liner</p>
--	---	---	--

Cotton market activity shows weekly slowdown

Activity in Western Region cotton markets was slow this week, according to the Agricultural Marketing Service, USDA. Demand was described as weak, although both domestic and foreign mills made small purchases for fill-in needs.

Growers, with only a limited volume on hand, appeared in no hurry to sell at prevailing price levels. Merchants were not aggressive seekers of additional supplies. Merchants and shippers continued to devote considerable time to filling sales made earlier in the year.

Contracting of the 1974 crop was at a standstill. Apparently neither growers nor buyers were actively seeking to contract.

Planting made good progress in the South Texas-Coastal Bend area and was nearing completion in many locations. Varying amounts of rain fell over the Coastal Bend area during the week, delaying planting efforts but bringing needed moisture to many locations.

Planting efforts were slowly moving northward into the Austin territory by the end of the week. Elsewhere, growers were in the process of pre-planting irrigations and other preparations for the new crop. Much of the Texas Plains, West Texas, and New Mexico continue to need moisture prior to planting time.

Prices quoted for selected qualities, 3.5 to 4.9 mike, in the six Western Region

spot markets are as follows:
 Dallas, this week, 41.75; last week 47.25; Strict Low Middling Light Spotted (42) Staple 31.
 Houston, this week, 57.00; last week, 57.00; Middling Light Spotted (32) Staple 34.
 Lubbock, this week, 42.70; last week, 42.70; Strict Low Middling (41) Staple 30.
 El Paso, this week, 69.25; last week, 65.50; Strict Low Middling (41) Staple 36.
 Fresno, this week, 70.85; last week, 67.00; Middling (31) Staple 35.
 Phoenix, this week, 60.45; last week, 57.60; Strict Low Middling (41) Staple 35.



CHILDREN IN MRS. SHAW'S 2nd grade room combine the skill of writing with the experience of buying a stamp and mailing letter. They learn more about the work of the Post Office employees.

Texas Tech collegiate rodeo set April 18-20

Texas Tech University's "world's largest indoor collegiate rodeo" will be presented in three performances in the Lubbock Municipal Coliseum April 18-20. The top professional rodeo stock and professional entertainers will combine with the best collegiate rodeo contestants of the area for the performances sponsored by the Texas Tech Collegiate Rodeo Association.

Whiteface News

Whiteface Dinner Theater was a success as the Junior Class presented the one act play to a full house. Approximately 220 guests came for the buffet salad reception and play. Salads were furnished by the parents of the juniors, and the food was delicious and the performers were excellent! Proceeds will go to help pay for the Junior-Senior Banquet.

19, and Jeannie Seely and Jack Greene April 20. They also will perform and provide music for a dance at the National Guard Armory following each 8 p.m. rodeo performance, according to Beverly Carter and Jack Birdwell, publicity co-chairmen for the rodeo.

Stock for this year's performances, as in years past, will be provided by Harry Vold Rodeo Company of Fowler, Colo., and Quail Dobbs and Bob Romer will serve as clowns. Hadley Barrett, a nationally-known rodeo announcer, will handle the announcing assignment.

Rodeo contestants from 15 colleges and universities in Texas, New Mexico, and Oklahoma will compete for the prizes in calf roping, barrel racing and goat tying. A rodeo queen's contest will be conducted in conjunction with the rodeo and the entries will be judged on personality, appearance and riding ability. The candidates must be Texas Tech students next year.

Farm Exports Bring Nation Trade Surplus

Sale of U.S. farm products abroad during 1973 gave the nation its first trade surplus since 1970. The surplus was built by the sale of \$17.7 billion worth of American agricultural products, as compared to foreign food imports of \$8.4 billion. This left a \$9.3 billion agricultural trade surplus which wiped out a \$7.6 billion deficit in non-agricultural trade, and resulted in a \$1.7 billion overall trade surplus. Commenting on the trade balance, Agriculture Secretary Earl Buttz says the agricultural trade surplus is making a vital contribution to the nation and to every consumer. It's stabilizing the dollar, strengthening our international posture, and helping pay for much-needed oil and consumer goods that add to our level of living affluence.

POLITICAL CALENDAR

Democratic Primary
 May 6, 1974
 General Election
 Nov. 7, 1974

For County Judge:
 Glenn W. Thompson
 For County Commissioner:
 Precinct 2:
 E.J. McKissack
 Precinct 4:
 Jimmy Millar
 W.R. Key
 George (Ike) Williams, Jr.
 For Justice of Peace:
 Precinct 1:
 Lena B. Gipson

Printed by the Morton Tribune
 Paid for by candidates whose names appear in this ad.

Green Thumb Tips

Beginner gardeners often wonder what is meant by "mulching" and what purpose it serves. Mulch is a covering of material such as straw, grass clippings or shredded leaves placed on the ground around plants, to serve several useful functions. First it smother weeds. Second it prevents moisture in the soil from evaporating. Third, it warms the soil and keeps it an even temperature for roots to grow better, and fourth it helps to keep fruit clean such as beans and tomatoes.

Flowers for partial shade are in big demand, and the following is a list of recommended varieties: begonias, coleus, impatiens, vinca and torenia. Of course, there are different kinds of shade, and deep shade where no sun can penetrate is generally unsuitable for all flowering plants.

LOW CALORIE PUNCH & DIET COOKIES FIGURE CONTROL SALON EXERCISE-- THE REAL THING "1"

MON.-FRI. APRIL 8-12 9 A.M.-7 P.M.

SPECIAL OPENING PRICE FROM TODAY THRU APRIL 13th COMPLETE 4-MO. PROGRAM ONLY \$1000 PER MONTH



JOIN THE EASTER PARADE OF LOSERS
 310 W. WASHINGTON
 CALL 266-5011

Pre Easter Sale At St. Clair's



Special Purchase
 Mens Knit
 Sport Coats

Regular & Longs
 Solids & Fancies
 Values to \$45.00

Your Choice
\$3000

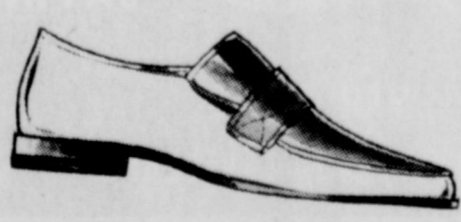


Mens Shoes

1 Table Mens 2 Tone Oxfords

Broken Sizes

Your Choice
\$1000



Ladies
 Pant
 Suits

One Rack Ladies

Pant Suits

All Reduced To Clear

Real Savings On

These Numbers



Ladies
 Blouses

1 Rack Ladies Blouses,

Assorted Styles, Colors.

Your Choice

1/2 PRICE



PHONE 266-5011 120 S W THIRD
 recurring role of police lieutenant Art Malcom. Larry currently starred in the Los Angeles production of a London rock musical, "The Rocky Horror Show."
 Storch and Robyn Millan guest star in the opening episode.

About Local Folks

By Dutch Gipson

Mr. and Mrs. Jess Marks attended the funeral services for his brother, Richard Stigler, in Oklahoma Monday, March 25. Other area relatives attending were: Wayne Porter of Hereford, Jimmy Marks and Ed Marks of Rotan, Shirley Nock of Levelland and Dorothy Gunter and Jerry Marks of Morton.

Mr. and Mrs. Bill Wells spent the weekend in Arkansas on business.

Members of the Y.M. Study Club who attended the Caprock District TFWC convention held in Lubbock were: Mmes. James Bell, Douglas Betts, Max Clark, John Hall, Robbie Key, Truman Murdock, Dexter Nebhut, Dalton Redman and Eugene Vanstory.

Mr. and Mrs. Gary Embry, accompanied by Keith Embry and Miss Nancy Corder of Clarendon were in Lexington, Okla. over the weekend due to the death of Gary and Keith's grandmother, Mrs. Ollie Ann Musley, 90.

Mrs. Mosley's services were held Monday. She is survived by one daughter, two sons, 23 grandchildren, 43 great-grandchildren and seven great-great grandchildren.

The George Trejo family and Miss Janie Mendoza visited Sunday in Roswell with the E.G. Perez family, former residents of the Three Way community.

Mark Gipson of Austin spent the first part of the week visiting with his grandmother, Mrs. Joe Gipson, while on Spring break from the University of Texas. Jo Neavitt of Lubbock also visited with her grandmother before re-entering Texas Tech after the Spring break.

The O.E.S. Chapter No. 841 met in regular session Tuesday night for a salad supper honoring the Deputy Grand Matron, Polly Oldham, of Lubbock Chapter No. 76.

Mrs. James St. Clair is presently attending market in Dallas.

Easter Seal Appeal claimed going well

Cochran County's Easter Seal Representative reported today that the 1974 Easter Seal Appeal of the Easter Seal Society for Crippled Children and Adults is going well. Glenn Thompson of Morton, serves as Easter Seal Appeal Treasurer for Cochran County.

The 1974 Easter Seal Appeal will finance the Easter Seal Society's rehabilitation program for crippled children and adults in Texas. Last year the Society helped 20,570 disabled persons through its program of assistance in finding and making effective use of services for the disabled and their families.

The Easter Seal Society helps support 18 treatment facilities in Texas where children and adults not eligible for other assistance are treated. These centers offer physical therapy, medical diagnosis, speech and hearing programs

and related services to help the disabled build happier and more useful lives.

As Easter Seal Representative, Glenn Thompson is the person to contact for services from the Easter Seal Society. He can be contacted at First State Bank.

When contacted for services, Mr. Thompson will provide the request form to be sent to the Texas Easter Seal Society in Dallas to determine the needs of the disabled person. The Society will provide the service where possible or will advise the handicapped person of the best resources available to help him.

Mr. Thompson added that contributions to the Easter Seal Appeal should be sent to him as soon as possible.

Look well to the hearthstone; therein all hope for America lies. — Calvin Coolidge, 30th U.S. President.



after you see your doctor.

bring your prescription to

Liner's PHARMACY
MORTON PH 266 8965

PICK UP YOUR NEW TV GUIDE HERE EACH WEEK

Decorating Tips

By Linda Forrest
Designer
Hardwood Institute

FTC ZEROES IN ON FURNITURE

How long have you loved the gleaming lustre of your mother's or grandmother's dining room table? The warm, natural beauty of her sideboard or breakfast table? Now with the trend toward traditional or Americana styles so strong, how much do you want to have the same quality look to your own home? And how often have you gone shopping for reproductions of these handsome styles and come away with the feeling that something is missing?

Well, perhaps something is. Perhaps without your knowing it, authenticity was missing—not in adherence to style lines, but in the material used. Now, though, effective March 21, 1974, the FTC has taken steps to put you in the position of knowing for certain what's missing and what's not missing. Now, through the passage of new FTC Guides for the Household Furniture Industry, the consumer has the right to see labels on every piece of furniture she buys—labels which make affirmative disclosures of what material the piece is made of. If it is constructed of a material that is designed to resemble a genuine hardwood, the label must say so. The label must state what the material really is (genuine hardwood, rigid urethane, high impact styrene, wood grained vinyl veneer over hardboard) or what it is not (simulated maple, imitation mahogany).

Old world standards for fine cabinetmaking dictated the use of genuine hardwoods, for their workability into intricate styles, for their fine low-lustre shine which improves with age, for their dependability in handcrafted joinery and in

holding screws and nails. Today, the best reproductions are still built of these same genuine hardwoods of our heritage—gleaming mahogany and cherry, mellow maple and pecan, sturdy and strong oak.

Unfortunately, there are products on the market which try to imitate the appearance of genuine hardwoods, and sometimes a shopper can't tell at first glance if the furniture is genuine hardwood or a plastic imitation. Sometimes, she has to live with it a while before she realizes her furniture isn't performing the way her mother's had—and only then does she begin to discern the "molded overlays," the "maple grained" panels.

The Guides (which also hold true for furniture advertisements) can be enforced under the Federal Trade Commission Act. For copies of the Guides, contact the Bureau of Consumer Protection, Federal Trade Commission, Washington, D.C. 20580.

And don't buy furniture until you know what material it is made of.

Any questions on hardwood? Write to Linda Forrest, Hardwood Institute, Suite 1422, 551 Fifth Ave., New York, N.Y. 10017.

STOCK UP AT MARINA'S MINI MART

IN THE MEAT DEPARTMENT
GOVERNMENT INSPECTED

BEEF RIBS POUND 39c
CLUB STEAK POUND 99c
ARM ROAST POUND \$1.09
7-BONE ROAST POUND 99c

GRADE A SMALL

EGGS

DOZ.

69c



GLOVER SAUSAGE
2 LB. BAG
\$1.79



WE WELCOME

USDA
FOOD
STAMPS

FREE SLUSH FOR EVERYONE
NO PURCHASE REQUIRED

WHITE SWAN

ASPARAGUS

14.5 OZ. CAN

49c

WHITE SWAN

PEARS

16 OZ. CAN

3/\$1.00

IN THE DELICATESSEN

WE NOW HAVE A FULL LINE OF
STEWART SANDWICHES

SPARERIBS POUND \$1.69
BAR-B-Q-BEEF POUND \$1.69
BURRITOS 3/\$1.00

STRETCH YOUR FOOD STAMP DOLLARS AT

MARINA'S MINI-MART

219 N. MAIN AVE.

MORTON, TEXAS

OPEN 7 DAYS A WEEK FOR YOUR SHOPPING CONVENIENCE

YOU CAN EARN UP TO

7 1/2 %

SAVINGS PLANS

1. 7 1/2 percent—4 year Savings Certificate*
2. 6 3/4 percent—2 1/2 year Savings Certificate*
3. 6 1/2 percent—1 year Savings Certificate*
4. 5 3/4 percent—90 day Savings Certificate
5. 5 1/4 percent—Regular Passbook Account

Account Features:

Deposits in by 10th of month, earn from 1st
Interest paid quarterly
Each account insured to \$20,000 by FSLIC
* Early withdrawal penalty applicable on
certificate accounts.

Levelland
SAVINGS & LOAN ASSOCIATION

MAIN OFFICE

1102 AUSTIN-LEVELLAND

BRANCH OFFICE

318 SOUTH MAIN-MORTON



GUAJARDO of Whiteface, winner in the County Spelling Bee is shown with his wife, Robin Polvado, Jaye Linn Greer, McHam and Todd Willingham. Judging contest were Erma Faye McSpadden of

Morton, Lee Purcell of Bledsoe and Mrs. Alice Rankin of Whiteface. Roger Posey was pronouncer. Finals will be held April 13 at 1:30 p.m. at Smylie Wilson Junior High School in Lubbock.

Stamp club dates show April 5, 6, 7

The Plains Stamp Club and the Regional Philatelic Society are happy to announce once again the Soplex-Hiplex time is here. The stamp show has been scheduled for Saturday, and Sunday, April 5, 6, 7, at the Municipal Garden and Arts Center, Lubbock, Texas. Hundreds of beautiful stamps from all over the world will be on display for viewing by the club members. Over twenty-five beautiful stamps will be on display at the show. The winners of the Awards Banquet will be given to lucky winners at the Gridiron Restaurant in Lubbock. There will also be a literature display.

competition to award prizes to those who have excelled in the field of philatelic writing.

The United States Postal Service will have a Postal Substation at the show all three days. In conjunction with the Postal Service, a special Cacheted Souvenir Cover and special show cancellation will be available for outgoing mail.

Ten dealers will be present for stamp collectors wishing to purchase those hard-to-get items they've been looking for. All in all, it totals up to be a lot of fun for stamp collectors and an interesting and enjoyable experience for all who attend. There's no admission so come on out and see us at the Municipal Garden and Arts Center at 42nd and University in Lubbock.

Show hours are Friday 1:00 p.m. till 10:00 p.m., Saturday 10:00 a.m. till 10:00 p.m., and Sunday 10:00 a.m. till 5:00 p.m. So gather up all of your friends and come to see us at Soplex-Hiplex '74.

COLUMBUS RETURNS

On March 15, 1493, Christopher Columbus returned home to Palos, Spain, after his first western voyage of discovery.

Thoughts

From The Living Bible

Don't be teamed with those who do not love the Lord, for what do the people of God have in common with the people of sin? How can light live with darkness? And what harmony can there be between Christ and the devil? How can a Christian be a partner with one who doesn't believe? And what union can there be between God's temple and idols? For you are God's temple, the home of the living God, and God has said of you, "I will live in them and walk among them and I will be their God and they shall be my people."

II Corinthians 6:14-16
Religious Heritage of America



The Consumer Alert

by John L. Hill
Attorney General

AUSTIN — Recently I returned from a meeting of the National Association of Attorneys General's Consumer Protection Committee, of which I am chairman.

Discussions there pointed up the fact that dissatisfaction with auto repair jobs is a major source of consumer complaints in almost every state.

My Consumer Protection Division has on file a number of complaints about car repairs and car servicing. Some of these may involve possible violations of the Deceptive Trade Practices—Consumer Protection Act.

But, in some instances in which a consumer complains about car repairs or servicing, he himself may be partly to blame for the necessity of such work.

Experts from Texas State Technical Institute tell me that today's car is a very different vehicle from those of the past. In 1968, with the advent of emission control devices designed to reduce pollution, cars began running about 70 degrees hotter than previously.

In addition, consumer demand for optional equipment such as air conditioning, automatic windows, and other popular devices also make cars run hotter.

Many new car owners or purchasers of recent models of used cars make the mistake of failing to read their owner's manual to learn how really different their vehicle has become. They continue to follow their customary routine maintenance habits, with the result that their cars may not perform at peak capacity—may even eventually need costly repairs that could have been avoided.

For instance, antifreeze (now referred to as "coolant") is a virtual necessity year-round in most newer cars. Not only that, the percentage of ethylene glycol (the cooling factor in most coolants) must be much higher for newer cars.

Texas State Technical Institute experts say that failure to cool the car engine properly can result in boil-over or possibly the expense of rebuilding a burned engine.

So when a service station attendant tells you your car's problem could be solved by adding three gallons of coolant to the engine, he's not necessarily trying

to sell you something you don't need—in fact he could be saving you a repair bill.

Motor oils required by newer cars also are different from those used in earlier model cars. The old "multiple viscosity" oils in general are unsuited to new cars with their higher operating temperatures. In fact, attorneys in my Consumer Protection Division have had reports of instances where the motor oil has thickened to a molasses-like sludge.

Proper lubrication of an engine would be impossible under such conditions, and

extensive engine damage could result. In this case, an entire new classification of motor oil—the SE grade—has been created to withstand the new car's higher operating temperatures. Owners who ignore the need for such new oils are taking considerable risk.

Brake fluids have changed, too. The popularity of disc brakes or disc-drum combination brakes required the development of high heat brake fluid, since disc brakes operate at higher temperatures than drum brakes. Because these high heat brake fluids attract moisture from the atmosphere, experts advise that consumers never buy large containers of it for convenience or savings.

If brake fluid containing moisture is used, damage from rust in the master cylinder, lines, and cylinders could result. Again, consumer dissatisfaction might be due not to an unsatisfactory product but lack of information on how to use it.

By reading their owner's manual and learning about products especially designed for newer car engines, consumers who purchase a late model car perhaps can avoid problems with poor car performance, engine damage, or costly repair bills.

Constitutional Convention report

The newly approved Finance Article will direct the Legislature by general law to provide for separate formulas for the appraisal of open space land devoted to farm and ranch purposes and for forest land devoted to timber production.

The Finance Article tentatively approved the morning of March 28 by a vote of 93 to 67 withstood a six-day barrage of 98 amendments. Only two were passed against the Finance Committee's objections.

One amendment, introduced by Delegate D. Roy Harrington of Port Arthur, provided a mandatory \$3,000 homestead exemption for those over 65.

The other, by E.L. Short of Tahoka, directed that no public funds or credit shall be used to influence the election of a public official.

The Convention did approve a provision that the voters decide separately if increases in the gasoline tax should go into the highway fund or into the general revenue.

The major deletion from the present Constitution is the present constitutional ceiling for welfare spending.

There were two attempts to add provisions not in the present Constitution that came close to being adopted. One would have prohibited the adoption at any time of a state personal income tax. The other would have set a ceiling on state taxation.

The debate against the proposals pointed out the state has operated 100 years without these constitutional prohibitions and had not passed an income tax and Texas taxes rank 44th in the Nation. It was also pointed out that the reason for constitutional revision was to remove limits made in other times without knowing what needs the state would have in the future.

The Convention moved quickly Thursday and Friday on the Local Government Article. The major change from the present Constitution is that by vote of the local voters, county commissions may be given the authority to pass county ordinances. These ordinances could not conflict with city ordinances or general law.

County home rule is expected to be presented to voters as a separate issue.

The Convention leadership expected to finish the Local Government Article Monday afternoon, April 1, and begin work on the Legislative Article. Convention President, Price Daniel, Jr., hoped the Legislative Article will be passed to second reading by the proposed April 5th recess.

The Convention voted to recess from April 5th to May 6th in order to permit the Delegates to return to their districts and also allow Committees like Style and Drafting to catch up with the Conventions action. It is expected that the Judiciary Committee and the General Provisions Committee will finish their Committee reports during the recess if they are not finished by April 5th.

ATTENTION GRAIN PRODUCERS:

PLANTING TIME IS JUST AROUND THE CORNER AND WEST TEXAS SEED COMPANY IS LOOKING FORWARD TO WORKING WITH YOU AGAIN IN 1974

WE CAN FULFILL ALL YOUR HYBRID SEED NEEDS

WE FEATURE

GRAINMAKER 200

WITH NO PRICE RISE FOR FIVE YEARS

GRAINMAKER 200 HAS BEEN A LEADER IN YIELDS IN THIS AREA FOR THE PAST SEVERAL YEARS.

*GOOD STANDABILITY

*GOOD DROUGHT TOLERANCE

*SHORT STALK AIDS SPRINKLER MOVEMENT

WE HANDLE MOST BRANDS OF HYBRID SEEDS

SEE WEST TEXAS SEED COMPANY FOR THESE

AREA DEALERS FOR GRAINMAKER 200:

MAPLE FERTILIZER, MAPLE

MORTON COOP GIN

BLED SOE SEED STORE

BESEDA GRAIN, WHITEFACE

FARMER'S COOP ELEVATOR, LEVELLAND

WEST TEXAS SEED

DORA HIGHWAY

WEST OF TOWN

PHONE 266-5557

MORTON

IT'S CLEAN UP AT LUPERS

WEEK OF APRIL 4 THRU 11

FEATURING THESE OUTSTANDING BARGAINS!

SERVICEABLE REAR TRACTOR TIRES—FREE

ELECTRICAL TAPE 3/4" x 66' 29c EACH

AUTO LITE—CHAMPION PLUGS

REGULAR ONLY 49c RESISTOR TYPE 69c

QUAKER STATE OIL

& HIGH DETERGENT \$11.75 CASE SUPER BLEND \$12.95 CASE

GOULD NATIONAL OIL FILTERS — 99c EACH

FOR MONTH OF APRIL WE OFFER

CASH DISCOUNT ON ALL GOODS & SERVICES EXCEPT FARM BUREAU PRODUCTS, TERMS: CASH IN FULL AT

TIME OF DELIVERY TO QUALIFY FOR DISCOUNT

ANNOUNCE NEW HOURS OF OPERATION:

MONDAY—FRIDAY 8 A.M.—6:30 P.M. SATURDAY 8 A.M.—1 P.M.

ABOUT OUR SPECIAL FARMERS DISCOUNT ON CASE LOTS OF A-C OIL—FUEL AND AIR FILTERS

LUPER TIRE & SUPPLY

WASHINGTON

MORTON



Plains Cotton Growers, Inc., speaking on behalf of 23,000 High Plains cotton producers, is urging President Richard Nixon to repeat his 1973 veto of the "ill conceived" minimum wage legislation reported out of the Senate-House Conference Committee this week and subsequently passed, in rapid succession, by both Houses of Congress.

"All efforts in the two Houses to prevent passage of or to meaningfully amend this legislation failed by wide margins," notes Donald A. Johnson, PCG Executive Vice President, "and the President is the last chance for abiding rapidly increasing agricultural wage rates and a serious eroding of seasonal overtime exemptions for agricultural processing industries."

Under this new legislation, workers who were covered by the minimum before 1966 will have a wage floor of \$2.00 per hour beginning May 1 this year, and increase to \$2.30 by January 1, 1976.

Workers brought under coverage for the first time in 1966 and those newly covered under the present legislation will draw \$1.90 by May 1 this year, increase to \$2.00 on January 1, 1975 and escalate each year to \$2.30 by January of 1977.

The minimum for farm workers now drawing \$1.30 will increase to \$1.60 on May 1, 1974 and increase in 20-cent increments each year to \$2.30 on January 1, 1978.

In addition to the increases in wage rates, there will be an almost complete erosion, by the end of 1976, of all overtime exemptions so vital to agricultural operation.

For example overtime exemptions for cottonseed oil mills will be completely phased out in four steps, ending December 31, 1976. Compress and

warehouse exemptions will be in effect 14 weeks per year during which workers can work a maximum of 48 hours per week, 10 hours per day.

Ginners in 1974 will have a six week period during which they can offer employment of 72 hours per week without paying overtime, a four week period with 64-hour exemption and a 48-hour exemption for the remainder of the year. For 1975 the corresponding figures will be six weeks and 66 hours, four weeks and 60 hours, two weeks and 50 hours, and an additional two weeks with 46 hours, and a 44-hour exemption the rest of the year. By 1976 the exemption will be cut to six weeks with 60 hours, four weeks with 56 hours, two weeks with 48 hours, two weeks with 44 hours, and no exemption at all for the balance of the year.

Another important provision of the bill will allow the employment of students at 85 percent of the establishment minimum provided they work no more than 20 hours per week. No more than 10 percent of the work force of an establishment can be made up of students at the 85-percent wage rate unless it has a previously established practice of student employment as a higher percentage of the total.

If this bill is not vetoed, Johnson concluded, "Badly needed agricultural production will be hampered by an addition to already sky-high production costs and another crucial battle will have been lost in the war against inflation. But judging from the rapidity of action by both Houses and the overwhelming majority vote favoring the bill, chances for a Presidential veto seem rather remote at this time."

Looking Back

26 Years Ago

Thirty times as many bales of cotton were ginned in Cochran County from the 1947 crop as compared with the previous year, according to W.W. Smith, special agent for the Department of Commerce Bureau of the Census. The crop of 1946 produced 1,023 bales and the 1947 crop totaled 34,247 bales ginned before March 15.

Wayland College Choir of Plainview will appear in concert here at the high school auditorium on Friday April 9.

Names of the new officers for Morton's Chamber of Commerce were announced at the regular meeting held in the county court room on March 9. They are: James St. Clair, president; Lloyd Evans, vice-president; Raymond Ross, treasurer; and Roy Hickman, secretary.

The Senior Class of Morton will present their class play "High Pressure Homer" two nights, April 1, and 2, in the high school auditorium.

B.H. Odum and sons have bought out the Boy's Service Station, located on the southwest corner of the square.

The "Family Party" E.L. Banks Company's entertainment fete, was presented to a crowd of 400 in the local high school auditorium Monday night.

Joe Gipson has authorized the Tribune to announce his candidacy for Sheriff, Tax-Assessor-Collector of Cochran County.

A large crown is expected to be in Morton, Monday, April 5, for the first dollar day ever to be held here.

15 Years Ago

The M.C. Ledbetter family, who last year were named the District Methodist family of the year, have been accorded

another honor as a family unit, this week, with the word that they have been named "Federation Family of 1959" by the Seventh District, Texas, Federated Women's Clubs.

A 16-year-old Morton High School senior, Miss Myrlan Cox, daughter of Mr. and Mrs. W.B. (Willard) Cox of Morton, has been notified by the Seventh District Federation of Women's Clubs that she has been selected as the student of the year for the district.

Mike Walden, a resident here since 1931, announced this week the purchase of Hoffman's Welding Shop on North Main, Morton.

Mrs. M.J. Woolam of Morton, accompanied by her son and family Mr. and Mrs. Otis Woolam of Portales, attended a birthday celebration for Mrs. Woolam's mother Mrs. T.H. Hardiman, Sunday in Pond Creek, Oklahoma. The celebration marked the first time in twelve years the family had all been together.

St. Clair's Department Store and St. Clair's Variety store on the west side of the square have blossomed out in the spring-time with a new paint-up, clean-up and fix-up campaign.

Farm-facts

Compiled From Sources Of The Texas Department of Agriculture
John C. White, Commissioner

Cotton In West, Sorghum in East...Turkey Income Hits New High...Texas Farm Worker Numbers Decline...Cattle Placements nosedive.

Most major crops in Texas will see an increase in acres this year. Only oats, soybeans, and peanut acreages are expected to be under 1973 levels, the Texas Crop and Livestock Reporting Service notes.

Cotton acres in Texas will be up 500,000 acres this year from last year. Grain sorghum acres in the state will be up 100,000 acres this year. Wheat acreage is up 1,000,000 acres this year compared to 1973.

Some interesting figures are revealed in the location of those extra cotton and grain sorghum acres. Of the 500,000 acre cotton increase in Texas this year, only 13,000 acres will be planted in the eastern part of the state. The remainder—487,000 acres—will be planted in the western half including the High Plains.

Grain Sorghum acres this year will decrease in the western part of the state from last year. In 1973, a total of 4,542,000 acres of sorghum was planted in the western part of the state. This year, there will be 212,000 fewer acres of grain sorghum in that part of Texas.

For the eastern part of the state —

acres on the Blacklands on east — sorghum acres are expected to total 3,800,000. This is an increase of 322,000 acres from the 1973 plantings in the eastern section of Texas.

Wheat acres will be up 1,000,000 acres in 1974 throughout the state, yet the crop will be about half that of 1973 because of drought in West Texas and the Amarillo area. All sections of Texas report increases in wheat acres this year compared to 1973.

Soybean acreage in Texas is down 50,000 acres compared to 1973; the acreage is down 200,000 acres from 1972; peanut acres this year will be 100,000 acres fewer than in 1973.

TURKEY income in Texas for 1973 grossed a record \$70,500,000. Texas ranks fifth in the number of turkeys raised and is in fourth place in gross income. Production in 1973 totaled 8,900,000 birds; this is 13 per cent higher than last year. The average price per turkey in 1973 was 39.7 cents per pound, the total gross and price per pound about double a year earlier.

Texas continues to be the number one cattle feeding state in the nation with 2,318,000 head of cattle and calves on feed for slaughter as of March 1. This is 2 per cent below a month ago, but is six per cent above a year ago.

TELL ME

WHICH IS THE LARGEST LAKE IN THE WORLD?

LAKE SUPERIOR, 32,000 SQUARE MILES IN EXTENT, 1,000 FT. DEEP IS THE WORLD'S LARGEST LAKE!

CAN A PERSON WITH TWO SEPARATE HEARTS SURVIVE?

YES! IN 1894 A RESIDENT OF NAPLES, ITALY WHO HAD 2 DISTINCT HEARTS SOLD HIS BODY TO A LONDON MEDICAL ACADEMY FOR \$15,000!

HOW IS LIMESTONE FORMED?

LIMESTONE IS COMPOSED CHIEFLY OF ANCIENT SHELLS AND CORALS, SMALL STONES AND MINERALS... ALL CARRIED DOWN BY RIVERS AND IN TIME HARDENED INTO SOLID ROCK!

WHAT DID THE EARLIEST KNOWN METAL CURRENCY LOOK LIKE?

THE SPADE SHAPED METAL COINS OF CHINA MADE ABOUT THE YEAR 2000 B.C. ARE CONSIDERED THE OLDEST METAL MONEY KNOWN!

DOLPH BRISCOE PROMISED TO RESTORE INTEGRITY TO TEXAS POLITICS. HE KEPT THE PROMISE.



LET'S KEEP GOVERNOR BRISCOE

Political advertising. Paid for by the Briscoe '74 Campaign Committee. David A. Dean, Campaign Manager, 1212 Guadalupe, Austin, Texas.

Morton Tribune 113 W. Washington, Morton, Texas

A Message From Senator H.J. "Doc" Blanchard



H. J. "DOC" BLANCHARD
STATE SENATOR

26th Senatorial District Counties: Andrews, Burden, Cochran, Crosby, Dawson, Ector, Garza, Lynn, Lubbock, Martin, Terry, Yoakum

Dear West Texan:

As your State Senator, I have been serving as a delegate to the Texas Constitutional Convention for the past three months. My duties as your representative in Austin have limited the time that I have been able to spend at home working with the people of our district.

Now that the convention has recessed, I will be able to spend my time visiting in every county of the district.

I plan to be seeing you soon to report to you on the actions of the Constitutional Convention and to seek your help in our effort to build a better West Texas.

Sincerely,

Doc Blanchard

H.J. "Doc" Blanchard

HJB:abr

Doc Blanchard . . . A Good Man
Doing A Good Job For West Texas!

Pol. Ad. Pd. for by The Blanchard Camp., H.J. Blanchard, Camp. Mgr.
Morton Tribune 113 W. Washington, Morton, Texas

BILL'S FURNITURE AND APPLIANCE ANNIVERSARY SALE

IS CELEBRATING IT'S FIRST ANNIVERSARY REGISTER FOR THREE VALUABLE PRIZES!

1. DELL PEEPLES BOX SPRINGS AND MATTRESS
 2. SEVEN PIECE DINETTE SET
 3. ZENITH CLOCK RADIO
- WITH EVERY PURCHASE YOU MAY BUST ONE OF OUR BALLOONS FOR PRIZES FROM \$25.00 TO APRIL FOOL

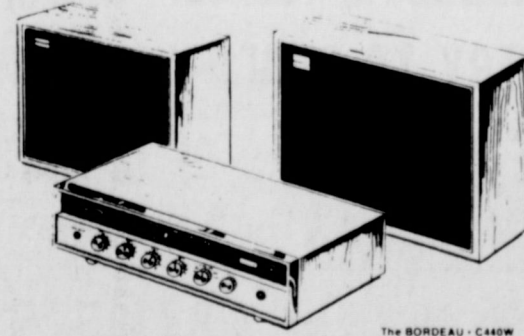
SAVE \$50.00 during our ZENITH MODULAR SPECTACULAR

HURRY! LIMITED TIME ONLY!

Regular Value WITH ACCESSORIES \$188.70

SALE PRICE WITH ACCESSORIES \$138.70

Modular Unit \$99.95
Headphones 9.95
3-Track Tape 13.85
8-Track Tape Player 64.95
TOTAL VALUE \$188.70



THE BORDAU-CASIM

20 Watt peak power output solid state amplifier and FM-AM Stereo FM Tuner. Matching speaker units, rack for Zenith optional tape recorder, headphones and record changer. Grained Walnut wood veneer.



PRO-2 Stereo Headphones



Three-Track Tape Cartridges featuring top speed and instrumental clarity



8-Track Stereo 8-Track Tape Cartridge Player gives you an added dimension in sound enjoyment.

We Have A Large Stock Of Zenith Color Console Sets In Stock

BILL'S FURNITURE & APPLIANCE

102 S.W. 1st

MORTON

DRISTAN
VAPOR SPRAY
\$1.09

REGULAR TINTED
CLEARASIL MEDICATION
.65-oz. TUBE
79c

VITALIS
HAIR TONIC
LARGE 7-oz. BTL.
\$1.09

REG. - OILY - EXTRA HOLD
HAIR CONTROL
DRY LOOK
7-oz. CAN
\$1.09

Excedrin
THE EXTRA-STRENGTH PAIN RELIEVER
REGULAR CAP ANAESTHETIC TABLETS
TABLETS BTL. OF 36
66c

DEODORANT
BAN ROLL-ON
1 oz. BTL.
79c

KLEENITE
DENTURE CLEANER
3oz. SIZE
39c

FASTEETH
DENTURE ADHESIVE
2-oz. SIZE
79c

FIXODENT
DENTURE ADHESIVE
1 1/2-oz. SIZE
79c

REGULAR - UNSCENTED OR POWDER DEODORANT
ULTRA BAN
5-oz. SPRAY CAN
88c

CUT YOUR COST ON QUALITY FOODS....

THRIFTWAY A BETTER WAY TO SAVE

PRICES EFFECTIVE APRIL 5-6 - 1974 WE RESERVE THE RIGHT TO LIMIT QUANTITIES.



GOVT. INSPECTED USDA GRADE "A"
FRESH WHOLE FRYERS
LB. 43c

FRESH 16 CHOICE PIECES
BEST-O-CHICKEN
INCLUDES BREASTS WINGS THIGHS DRUMSTICKS
LB. 69c

- FRESH WHOLE OR SPLIT
CHICKEN BREASTS LB. **79c**
FRESH CHICKEN DRUMSTICKS LB. **69c**
FRESH CHICKEN THIGHS LB. **69c**
FRESH SM. 3-4 LB. ROASTING CHICKENS FOR CHICKEN SOUP LB. **49c**
BACKS & NECKS LB. **19c**

WITH HTPV
GROUND BEEF
FRESH
LB. 79c

(HALIBUT) TURBOT
FISH FILLETS
FRESH
LB. 89c

- CHUCK WAGON BRAND SLICED **BACON** LB. **79c**
CUDAHY BAR-S STORE SLICED **BOLOGNA** BY THE PIECE **79c**
WISLONS CERTIFIED - BY THE PIECE **BRAUNSCHWEIGER** LB. **79c**
LITTLE BOY BLUE **CORN DOGS** LB. **89c**
GLOVER'S MEXICAN STYLE **CHORIZZOS** LB. **79c**
GLOVER'S **HOT LINKS** LB. **89c**

NOTICE TO OUR CUSTOMERS
We Need You

Paper bags are in short supply due to critical paper shortage. We ask all our customers to help us. Please bring your own bags and place in your shopping cart to be used with your own order. Please take boxes possible.

Thank You For Your Cooperation.

SHURFINE VAC PAC
COFFEE
1-LB. CAN
89c

WITH .50c IN AD COUPON
FOLGER'S INSTANT **COFFEE CRYSTALS** 10-oz. JAR **\$1.95**

ASSORTED FLAVORS CARNATION **SLENDER** 10-oz. CANS **\$1.00**
12-CANS TO A CASE **\$1.99**

INSTANT TEA
NESTEA
3-oz. JAR
\$1.29

Check & Rated

MINUTE MAID FROZEN ORANGE JUICE 6 oz. **3 / 89c**
MORTON REG. FROZEN DINNERS FRIED CHICKEN, FISH & CHIPS, MEAT LOAF, SALISBURY STEAK, TURKEY DINNER EACH CTN. **49c**
REG. OR DIET - ASST. FLAVORS SHASTA DRINK 10 12-oz. CANS **\$1.00**
SHURFINE CHUNK STYLE TUNA 6 1/2-oz. CAN **49c**

WHITER CLOTHES **PUREX BLEACH** 1 1/2-GAL. JUG **29c**
GRAVY TRAIN **DOG FOOD** 25-LB. BAG **\$4.49**
SHURFINE **SALAD DRESSING** 32-oz. JAR **79c**

WATCH FOR OUR EASTER CIRCULAR IN THE MAIL MONDAY!
IF YOU DO NOT RECEIVE ONE, PLEASE PICK UP ONE IN OUR STORE

THRIFTWAY'S FARM FRESH PRODUCE

LARGE BELL PEPPERS LB. **29c**
CENTRAL AMERICAN BANANAS 2 LB. **25c**
LARGE SIZE CANTALOUPE 3 FOR **\$1.00**
CELLO BAG CARROTS 2 1-LB. BAGS **29c**
LONG GREEN SLICERS CUCUMBERS LB. **27c**

TEXAS RUBY RED **GRAPEFRUIT** 5 LB. BAG **59c**

SHURFRESH SOFT
MARGARINE
(DOUBLES)
8-oz. TUBS **49c**

SHURFINE ASSORTED DRINKS
46 OZ.
3 FOR 89c

- SHURFINE FROZEN PRE-COOKED FISH STICKS 8-oz. PKG. **69c**
- KLEENEX DESIGNER OR BOUTIQUE TOWELS JUMBO ROLL **39c**
PINE-SOL FOAM BATHROOM CLEANER 17-oz. AERO. CAN **83c**
FOLGER'S MOUNTAIN GROWN COFFEE 16-oz. CAN **\$1.19**
FOLGER'S MOUNTAIN GROWN COFFEE 2-LB. CAN **\$2.37**
AMERICAN BEAUTY ELBO ROMI 10-oz. POLY BAG **35c**
KRAFT ROKA DRESSING 8-oz. BTL. **55c**

CHOCOLATE CHIP, PEANUT BUTTER AND SUGAR
Pillsbury Cookies
PER ROLL **75c**

32 oz. **COKES**
6 BOTTLE CTN. **\$1.39**
+ DEPOSIT

DETECTO **BATHROOM SCALES**
EA. **\$2.99**

DO-IT YOURSELF **BAR STOOL KIT**
2-STOOLS PER KIT
\$5.95

WOOD WIND **SALAD FORK**
EA. **39c**
WITH \$5.00 PURCHASE

DOSS THRIFTWAY
"A BETTER WAY TO SAVE"
DOUBLE GOLD BOND STAMPS WED.
WITH \$2.50 PURCHASE OR MORE

15c VALUABLE COUPON NO. 50812
CEREAL **CHEERIOS** 10-oz. BOX **49c**

WITH THIS COUPON THRIFTWAY FOOD STORES VOID AFTER APRIL 7, 1974

50c VALUABLE COUPON
FOLGER'S INSTANT **COFFEE CRYSTALS** 10-oz. JAR **\$1.95**
WITH THIS COUPON THRIFTWAY FOOD STORES VOID AFTER APRIL 7, 1974