

## Local girls in district 2-T-2 Lions queen contest

Four area Lions Queens will be representing their clubs in the District 2T-2 Lions Queens contest in Plainview Friday and Saturday.

Vickie Hall, 17 year old daughter of Mr. and Mrs. John Wayne Hall, will represent the Morton Club and Gwendolyn Harriett, 18 year old daughter of Mr. and Mrs. Harold Pollard of Enochs, will represent the Bula-Enochs Lions Club. Competing for the

District title from Three Way will be Debra Burkett, 16 year old daughter of Mr. and Mrs. Jake Burkett, and Kim Layvonne Peters, 17 year old daughter of Mr. and Mrs. Wendall Peters. Whiteface Lions Queen will be representing her club in the competition.

Fourth-five other South Plains coeds will be vying for the crown. They will make several appearances at  
See CONTEST Page 4



GWEN POLLARD



VICKIE HALL



KIM PETERS



DEBRA BURKETT

# Morton Tribune

VOLUME 34 NUMBER 25

MORTON, TEXAS THURSDAY APRIL 25, 1974

PRICE FIFTEEN CENTS

## School hour schedule changed

### Classes open, dismiss earlier

The rescheduling of school hours was the first order of business of the Morton Independent School District Board of Education following the swearing-in of members and election of a slate of officers Monday

The class opening time was back to its original time of 8 a.m. and class dismissal to 3:31 p.m. Dismissal for kindergarten and second grades was at 2:45 p.m. Teacher duty hours were set at 8 a.m. to 3:45

Following the opening ceremony, one new member and incumbents took the oath of office administered by business manager William J. Robbie. Key is the new member elected in the April 6 election and Dexter Nebhut and Kuehler are the incumbents.

Nebhut, who finished a year as president of the board, was again elected to the post by acclamation. Kuehler was elected vice-president, also by acclamation. Mrs. Beth Mason was elected as secretary to the board.

The full daily school hour schedule is set as follows: 1st period; 9:13-10:00; 2nd period; 10:11-11:06; 3rd period; 11:09-12:04; 4th period; 12:04-12:40; lunch; 1:35-1:50; 5th period; 1:38-2:23; 6th period and 2:33-3:31; 7th period.

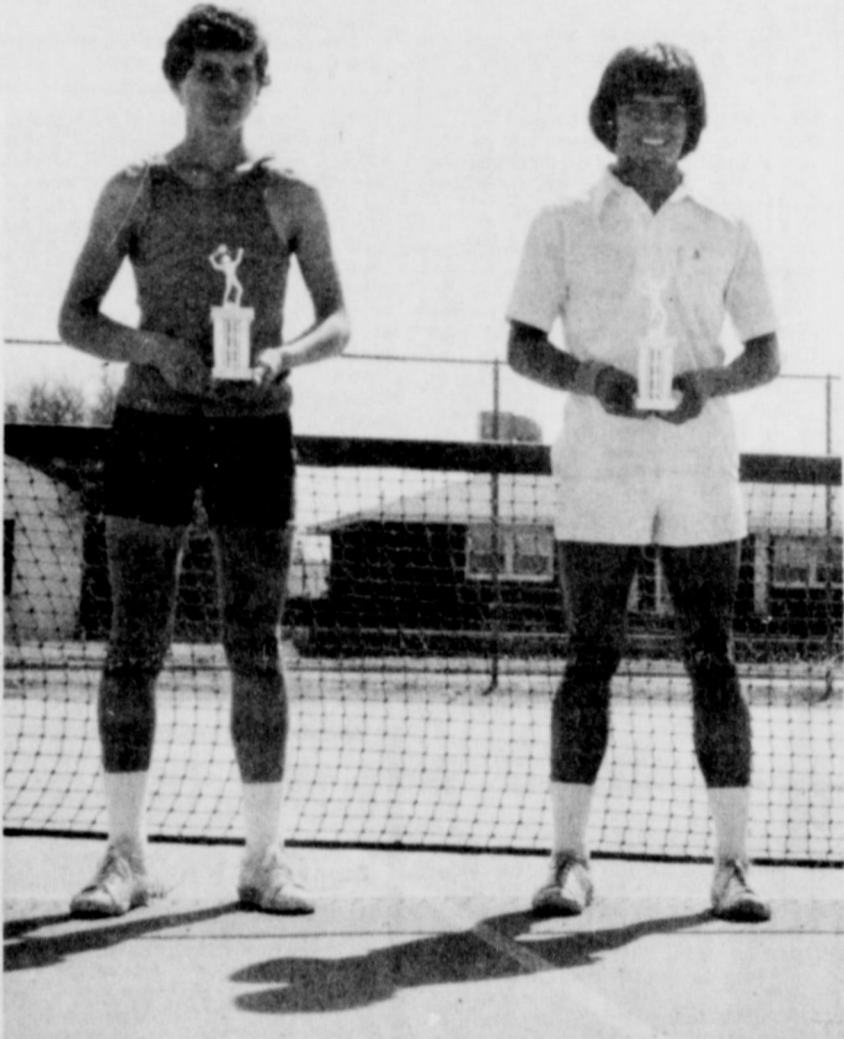
Other business, the board appointed a board of education to consider tax matters during the 1975 school year consisting of members Joe Beseda, St. Clair and C.E.

Approval was given for the revised school calendar for the coming school year. The calendar will be ready for adoption by next week, according to Superintendent Travis.

Travis advised the board that the drop in average daily attendance is

### Tornado drill

Members of the National Honor Society and MHS in cooperation with the Morton Civil Defense will conduct a school-wide tornado drill Wednesday, May 1, approximately 9:15 a.m. The tornado warning signal will be sounded and the public is advised that this is a practice drill only. Check-out sheets will be sent home by the students who will be participating. The city of Morton signal is one continuous blast.



**THE MEN'S DOUBLES** tennis team of Ralph Mason, left, and David Barrera, right, brought home the bacon Saturday in the form of the regional championship, the first time in history that MHS has won the crown. They qualified to advance to the state tournament in Austin for a shot at all the marbles in state AA competition. Both are seniors who will close out their high school competition with the state tournament.

## Mason, Barrera win regional tennis title

The Morton High School tennis doubles team of Ralph Mason and David Barrera brought home the regional championship trophy Saturday for the first time in the school's history.

Now it's "on to state," where the sparkling net duo hopes to once again pick up all the marbles.

It wasn't easy, according to their coach, Bill Johnson, as the competition at the regional level this year was especially strong. The Indians had to face strong combinations from Floydada, Coahoma and Spearman before the job was done.

They defeated Floydada 8-6, 8-4; Coahoma in the semi-finals, 6-2, 6-1 and Spearman in the finals by the identical scores of 6-2, 6-1.

The regional spurge brought their season record to 22 wins and 4 losses in tournament competition, with several trophies to show for their efforts.

Their standings and records in various tournaments include 3-1 at Brownfield; 3rd place and 3-1 at Denver City; 2nd place and 3-1 at Amarillo; 2nd place and 3-1 at Lubbock; 1st place and 4-

## Tribune slates 50th anniversary edition May 2

May 7, 1974 marks the 50th anniversary of the formation of Cochran county.

On May 7, 1924, following an election of county officers conducted by Hockley county officials, the vote was declared valid and legal and Cochran county was born, and Morton was declared the county seat.

This was the culmination of long and strenuous efforts on the part of many residents in the former territory, and was not without a great deal of turmoil and heated debate between factions that favored locating the county seat elsewhere.

These struggles and the early history of the county's formative years will be brought vividly to life in next week's Morton Tribune when a 50th anniversary edition will be published. Tribune personnel have been busy for many weeks gathering material for this special publication.

Substantial contributions have been made by many sources. Elvis Fleming, former Morton history teacher and now a history professor at Eastern New Mexico University at Roswell, has contributed several interesting and valuable articles. David Murrah, former Morton teacher and now custodian of the Southwestern Collection at Texas Tech, has made substantial contributions.

See EDITION Page 4

## Kindergarten Registration

Children living in the Morton ISD, who will be 5 yrs. of age on or before Sept. 1, 1974, must register Wednesday, May 1, 1974, at the Eastside Elementary School. Parents are urged to register their children for the coming school year between 3-4 p.m. in the afternoon.

Information as to shots, materials, and general directions will be given at this time.

Any boy or girl who did not attend Kindergarten this year and who will be 6 yrs. old on or before Sept. 1, 1974, may register for the first grade.

Boys and girls who are now in Kindergarten will be pre-registered for the 1st grade through their Kindergarten Home Rooms.



MICHAEL E. STANTON

Mark Wyatt, Executive Vice-President of Levelland Savings and Loan Association, has announced the appointment of Michael E. Stanton as Assistant Vice-President and Branch Manager of its Morton office. Mr. Stanton assumed his duties in Morton April 9, 1974.

Mr. Stanton is a graduate of Texas Tech University and was associated with Plains National Bank of Lubbock for five years. Mike and his wife, Mary, came to Morton from Shawnee, Oklahoma, where he was the head cashier of the First State Bank of Shawnee. Mr. Stanton is a member of the Lions Club in Morton.

## TV cable guide begins next week

The Morton Tribune will offer its readers a major new service beginning with the May 2 edition. A cable television guide will become a regular part of the Tribune beginning with that issue.

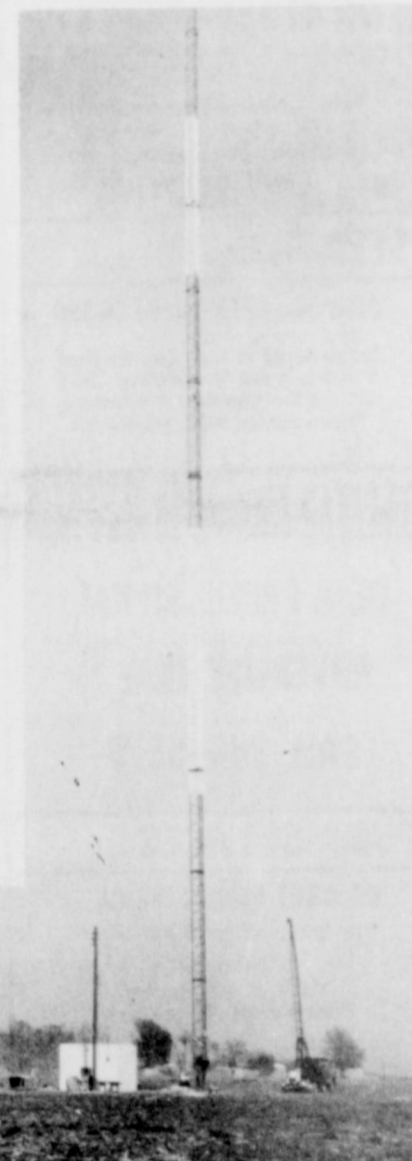
The guide will consist of eight tabloid-size pages which will feature a variety of items of interest to the entire family, as well as the full weekly schedule of television programs presented on the cable.

The Community Cable Company has been hard at work for the past two months installing all of the equipment necessary to bring cable TV to Morton and expects to be in full operation within the next two weeks.

The last piece of equipment needed was the television receiving tower that was erected last week on the southwest outskirts of the city. Cable hookups for customer services are expected to begin next week, according to Harold Thomas, assistant general manager, of Levelland.

The television stations originally scheduled for cable outlet in Morton include the three commercial channels

and the educational channel from Lubbock, a commercial  
See GUIDE Page 4



A NEW FEATURE thrust itself into the Morton skyline as the cable television receiving tower was erected on the southwest outskirts of town. The tower, which consists of 20 sections, each of which are 21 feet in length, for a total height of 420 feet. Though construction had to be halted due to high winds several times, the tower went up amazingly fast. It will receive signals from stations in Lubbock, Roswell and Clovis, New Mexico and possibly from Dallas and Fort Worth at a later date. Service is expected to begin within a few days.

## County living standard higher than US average

How high is the standard of living in Cochran County?

How much have local residents been spending annually for big-ticket items such as cars, washing machines, dishwashers, furniture, carpeting and the like?

Some idea of the amount of money that has been going for such equipment may be gleaned from a new government study.

It is based upon data gathered from all areas of the country through a sampling survey conducted by the Department of Commerce.

The purpose was to determine just how much of the average family's income, locally and elsewhere, went

for such durables in the five years ending January, 1973.

In Cochran County, according to these and other figures, it was a period of rising incomes and bigger spending. Families were

See LIVING Page 4

## School hours

Effective Monday, April 27, the Morton Schools will begin classes at 8:15 a.m. and will be dismissed at 3:31 p.m. Kindergarten, 1st and 2nd grades will dismiss at 2:45 p.m.

PHONE 266-5615 120 S.W. THIRD

currently starred in the Los Angeles production of a London rock musical, "The Rocky Horror Show."



# Convention Report

General Provisions Committee to Austin this past week to work on a 25-section article which includes controversial items from right-to-work to a repeal of the present constitutional prohibition on banks. The completed article will be ready for delegates on their return to the Constitutional Convention in May.

The committee voted to continue to provide protection and to add to the original home mortgage law to allow a cash in excess of the \$10,000 without losing protection of the homestead.

Homesteads can be used only for home improvement without losing the homestead against forced sale.

Work section puts present law which forbids compulsory membership as a job qualification in the Constitution of 1974.

On branch banking and bank holding companies, the present prohibition against banks holding more than one major bank office in a county is being considered by the Legislature.

The committee voted to add to its proposal to enable the state to issue credit for bonds for use in the construction of a deepwater port and to provide for the elderly.

The committee reversed an earlier proposal to provide for separate voting to voters of a prohibition of gambling. The committee opted to adopt language continuing the constitutional directive that the state prohibit lotteries and gift certificates.

The proposal would allow the state to exempt from the church bingo games and other conducted by non-profit organizations.

The committee adopted a section which provides for equal rights for the physically handicapped.

The proposal was a right of privacy which prohibits both public and private persons from the privacy of an individual.

The Drafting Committee. The members assigned the chore of drafting the articles thus far put them in proper style.

The committee is also assigned the chore of word in each article may be subjected to the courts.

With rage, the Delegates Convention floor and in a heated argument, demanded: "Is this subject?"

It was P. R. Scott of Cass County who introduced the Constitutional Article. His inquiry concerned the Education Article.

He had well been speaking in the Constitutional Article.

He had well been speaking in the Constitutional Article.

He had well been speaking in the Constitutional Article.

He had well been speaking in the Constitutional Article.

Convention of 1875 and 13 partial-days in the 1974 Convention.

Though Delegates to both Conventions devoted lengthy debate to the State's education system, the problems faced by the 82 Delegates to the 1875 Convention and the 181 Delegates to the 1974 Convention were nothing alike.

Debate on the Education Article in 1875 centered around the need for a system of free public schools, and how Texas was to support them.

Delegates to the 1974 Convention had funding problems to cope with also. The difference in 1974, however, was more one of abundance than of scarcity.

At issue in 1974 was the Permanent University Fund (PUF), founded on some two million acres of oil-rich land.

Many Delegates to the 1974 Convention questioned whether the fund, which provides investment income to the Available University Fund (AUF), should continue to benefit only the University of Texas System and Texas A&M University System.

Some Delegates in the 1974 Convention attempted unsuccessfully to break up the PUF income to be split up among all state-supported colleges and universities.

Instead of spreading PUF among the state's colleges and universities, Delegates voted to retain it for the benefit of the Texas and Texas A&M systems.

Added to the proposed Constitution of 1974 was a new provision for a State Higher Education Assistance Fund (SHEAF). The fund would assure the State's other 20-odd colleges and universities and annual appropriation of at least \$32 million, equal to the spendable AUF.

Any bonds issued to be serviced by SHEAF would mature within 30 years. A fixed bond debt ceiling was also imposed at 50 percent of PUF's total value—currently about \$680 million.

SHEAF could be used for construction, land acquisition, permanent improvements, repairs and rehabilitation of existing buildings, acquisition of library books and materials and capital equipment.

Various Delegates to the 1875 Convention gloomily argued in opposition to public schools that the State had no right to take the "bright-eyed child from the parents and turn him over to the State."

Another argument advanced against public schools in 1875 was that the country was too sparsely settled to maintain a system of free public schools.

Delegate Sterling C. Robertson of Bell County went so far as to say in 1875 he wanted "to build a wall so high no one could come into the State if they were going to have regular educational government supported by the taxes of the people."

Delegates to the 1974 Convention spent two days in bitter debate over a section dealing with equal educational opportunity for Texans.

The compromise for the section, as finally adopted by Delegates, states it is the duty of the Legislature to establish and make provisions for "equitable support and maintenance of an efficient system of free public schools below the college level that will furnish each individual an equal educational opportunity."

In 1875, Delegate Henry Cline of Harris County acknowledged the great poverty of Texas citizens but urged State support of free schools.

"The argument that we cannot stand the tax is an argument in favor of it, for we all have to educate our children, and to do that at private schools costs more than to educate our own and all the orphans and indigent children in the State."

The majority report as proposed by the Education Committee of 1875 and finally approved by the Convention that year simply stated that the Legislature had the duty to provide a system of free public schools, "a general diffusion of knowledge being essential to the preservation of the liberties and rights of the people."

School taxes in the 1875 report were those derived from "one-fourth of the revenue from State occupation taxes and poll tax of one dollar on every inhabitant of the State between the ages of 21 and 60."

Colonel W. L. Crawford of Marion County called the proposed 1875 Article a "sugar-coated, stupendous fraud."

Judge W. P. Ballinger of Galveston County termed the article "a complete surrender."

On the 48th day of the Convention of 1875 and after seven days of debate, the Education Article was adopted by a vote of 55 to 25.

Chairman of the 1875 Education Committee, General J. W. Whitfield of Lavaca County, marked the approved article with the epitaph that it was similar "to the old system which had been established by the Constitution of 1869, that had proved to be a total failure; so much so that a majority of the people have become disgusted with such a system."

"We made a commitment to higher education and we did away with the horrendous ad valorem tax," he added.

The Education Article, 1974 version, was adopted by a vote of 98 to 71.



The Board of Directors of Lubbock-based Plains Cotton Growers, Inc., meeting in Lubbock April 18, elected five cotton producers and one well-known cotton-oriented businessman to its Executive Committee.

In addition the Board adopted a resolution opposing what was described as "inequitable" regulations handed down from Washington by the U.S. Department of Agriculture concerning disaster payments under the current farm program, and another calling for public hearings on farm machinery safety requirements proposed by the Occupational Safety and Health Administration (OSHA).

PCG represents the interests of cotton producers in a 25 county area surrounding Lubbock, seeking to better the producer's lot through production and utilization research, by representing them in legislative matters, promoting area cotton for use in the world textile industry, and providing a variety of other services.

The 25 counties are divided into six districts with comparable production volumes, and one member of the Board is elected from each of the six districts to serve on the Executive Committee along

with the organization's officers and past presidents.

W. L. "Preach" Edelman, cotton grower from Friona, was elected to represent Parmer, Deaf Smith, Castro, Swisher and Briscoe Counties.

Paul Bennett, a former ginner at Amherst and now in the seed business at Littlefield, was chosen to serve on the Executive Committee from Lamb, Hale, Floyd and Motley Counties.

Gary Ivey, Crosbyton producer, was named to the Executive Committee to represent Crosby, Dickens and Lubbock Counties.

Joe D. Unfried, cotton producer and businessman of New Home, was selected from Lynn, Yoakum, Terry and Garza Counties, and

Marion Bowers, a Gaines County producer from Seminole, was elected to serve his county plus Dawson, Borden, Martin, Howard and Midland Counties.

The PCG Board contends in its resolution opposing recently issued disaster payment regulations that USDA is attempting to subvert the intent of Congress when the Agriculture and Consumer Protection Act of 1973 was passed by:

(1) limiting the amount of some

producer allotments eligible for disaster payments although allotments were acquired by lease or purchase in good faith, some of them acquired prior to the insurance of those instructions.

(2) reducing the acreage in permanently acquired allotments if the producer increases his established yield for payment purposes on those allotments by more than ten percent, and

(3) setting up a yield calculation formula, for determining a producer's eligibility for disaster payment, inequitably different from the formula used to calculate yields for other purposes under the program.

With regard to OSHA proposals, which would require that protective devices for power transmission, electrical and other farm machinery components be installed on all farm equipment, the Board resolved:

"That the safety measures proposed by OSHA be thoroughly reviewed in public hearings to determine both the desirability and practicality of such measures, and that those measures determined to be practical and desirable in such hearings be required only on new machinery manufactured subsequent to final adoption of the regulations."

Also discussed at the meeting were the newly adopted Texas Cotton Association rules which call for a \$5 per bale penalty on cotton not pressed at the gin to the 24 inch width necessary for the Universal Density bale, but no official position was taken pending further study by the PCG Executive Committee.

The new minimum wage bill signed into law April 8 by President Richard Nixon can only be called "planned inflation" according to PCG President Don Marble of South Plains, "as is any forced wage increase which is unrelated to increased productivity."

The law, enacted over PCG objections, increases minimum wages for various groups of workers from 19 percent to 38 percent beginning May 1 of this year. By 1978 the percentage increase over 1973 minimums grows to from a low of 54 percent to a high of 77 percent under the statute.

Farm labor, Marble points out, will register the biggest increases, going from a current \$1.30 an hour to \$1.60 on May 1, to \$1.80 for all of 1975, to \$2.00 in 1976, \$2.20 in 1977 and \$2.30 in 1978. Farm workers covered, as under previous law, include those employed on farms using 500 or more man days in any calendar quarter of the previous year.

A "man day" is defined in the law as any day on which an employee performs as much as one hour of agricultural labor.

The minimum for all non-agricultural workers covered by minimum wage laws prior to 1966, will jump from \$1.60 an hour to \$1.90 beginning May 1, go to \$2.10 in 1975 and \$2.30 in 1976.

Cotton ginner, whose workers were first covered by the minimum wage law of 1966, will be hit by both an increased minimum and a reduced overtime exemption. The minimum wage for gin workers on May 1 will be raised from \$1.60 to \$1.90, then to \$2.00, \$2.20 and \$2.30 in the next three years.

## feed your family better FOR LESS

SPECIALS GOOD APRIL 26 THRU MAY 2

<p><b>7-BONE ROAST</b> LB. 95c</p> <p><b>CLUB STEAK</b> LB. \$1.09</p> <p><b>LOIN ENDS</b> LB. 79c</p> <p><b>HOME MADE PORK SAUSAGE</b> LB. 89c</p> <p><b>KLEENEX</b> 200 COUNT BOX 2/69c</p> <p><b>CORAL BAY COCONUT</b> 14 OZ. 69c</p> <p><b>LYSOL LIQUID CLEANER</b> 15 OZ. BOTTLE 49c</p> <p><b>PANTY HOSE</b> SOFT TOUCH 69c</p> <p><b>GLEEM TOOTHPASTE</b> 5 OZ. TUBE 69c</p>	<p><b>WHITE SWAN BLACKEYE PEAS</b> 4 FOR 89c</p> <p><b>WHITE SWAN FRUIT COCKTAIL</b> 303 CAN 2/69c</p> <p><b>WHITE SWAN CORN</b> 17 OZ. CAN 4/\$1.00</p> <p><b>WHITE SWAN HOMINY</b> 15 OZ. CAN 2/29c</p> <p><b>WHITE SWAN COFFEE</b> 1 LB. CAN 99c</p> <p><b>W-P DETERGENT</b> GIANT BOX 69c</p> <p><b>LIQUIPRIN</b> FOR CHILDREN 1 2/3 OZ. BOTTLE 89c</p> <p><b>COPPERTONE SUNTAN LOTION</b> 4 OZ. BOTTLE \$1.49</p>
---	--

*Spring Produce*

**BANANAS** LB. 12c

**TURNIPS** LB. 10c

**GRAPEFRUIT** LB. 19c

**RADISHES OR GREEN ONIONS** BUNCH 10c

# RAMSEY'S FOOD STORE

**La Mentry**

WHICH IS THE OLDEST STATE?

"Coldest" Day In A Life, Is The Day A PERIL DESTROYS OUR WELL MOTOR AND SYSTEM And He Does OUR EQUIPMENT That Provides "ALL-WEATHER!" The state is

Morton Insurance Agency

266-5561

200 FIRST STREET

Your present County Treasurer and served you in that capacity the past 18 years. Although I have no opponent in the upcoming election, I would like to take this opportunity to thank you for your support and confidence you have placed in me and I would like to continue to serve you to the best of my ability. It has been impossible for me to see you as your present Treasurer, but I would like to sincerely solicit your Vote and Support in the May 4th, election.

**BILL CORNE**

recurring role of police lieutenant Art Malcom. Larry currently starred in the Los Angeles production of a London

### CONTEST FROM PAGE ONE

District convention activities in Plainview and one of the highlights in the Queens Pageant to be staged at Haral Auditorium on the campus of Wayland Baptist College Friday at 8 p.m. The public is invited to attend this program along with the Lions delegates and their wives.

Featured performer in the pageant program will be the reigning Miss Texas, Judy Mallet of Richland. Featured speaker at this year's convention is International Director John Eldridge of Salt Lake City, Utah who will address the Saturday noon luncheon.

Other convention highlights include a luncheon honoring Queen contestants Friday, a District Lions Golf Tournament the same day, the Governor's banquet and ball Saturday, honoring Governor Kip Cutshall of Littlefield. Lions will also ballot on proposals to establish an eye bank in this region, to begin a summer youth camp near Floydada, to establish a new position of Lt. Governor on the district cabinet and to discuss plans for this summer Coaches All-America football game in Lubbock.

Leading the area delegations to Plainview will be Jimmy St. Clair, Jr., president of the Morton Club, Ed E. Jennins, president of the Whiteface club, and William C. Smith president of the Three Way club and James Sinclair president of the Bula-Enoch's Club.

### LIVING FROM PAGE ONE

upgrading their way of life, buying better homes, more expensive cars and spending more for household equipment and leisure-time pursuits than ever before.

With the purchasing power at their command, their outlay for durable goods in the five years averaged approximately \$4,872 per household, based upon the overall survey findings and upon local income and spending data.

This compares with \$4,319 per family in the United States and with \$4,125 in the Southern States.

Of the total, some \$3,413 was spent for new and used cars.

Furniture took another \$445 per local family, color television sets, \$210, and refrigerators and freezers, \$113.

The rest went for air conditioners, washing machines, clothes dryers,

kitchen ranges, dishwashers and the like.

The enormity of the car market is indicated by the figures in the government report, which show that families throughout the United States spent no less than \$125 billion in the five years in the purchase of \$40 million new cars and another \$67 billion for 68 million used cars.

By way of comparison, all the 13 other kinds of durables covered in the survey totaled only \$83 billion.

Annually, on the average, one family out of eight bought a new car during the period and slightly more than one out of five bought a used car.

### TITLE FROM PAGE ONE

3-0 in the district tournament at Olton and 1st place and 3-0 at the Odessa regionals.

Both are seniors and the state tournament will wind up their high school tennis careers. David is the son of Mr. and Mrs. Ed Chavez of Morton and Ralph is the son of Mr. and Mrs. Wendell Mason, of Star Route 2, Morton.

### CLASSES FROM PAGE ONE

attendance will cause the system to lose three classroom teachers for the 1974-75 school year.

Supt. Travis presented an overview of the school system's needs and as it relates to the increased cost of operation. He further described ways in which the present instructional program can be altered in efforts to cut down on these expenses. There was no immediate actions made on this matter.

The board accepted the bid of \$8,910 by Harris Plumbing Company for installation of a new nine unit heating system in the junior high school building.

Approval for payment of bills for the month of April in the amount of \$98,528. completed the agenda.

### GUIDE FROM PAGE ONE

channel from Roswell, New Mexico and one commercial channel from Clovis, New Mexico.

The Tribune TV guide will also carry the schedule from one station in Fort Worth and one from Dallas, although they will not be on the local cable at the start. They are expected to outlet hear in the near future and it was decided to include them in the package.

A decided advantage of this TV guide is the fact that the schedule will be published on

Thursday for the week's viewing beginning the following Sunday. (The original schedule published on May 2 will be for the week beginning May 5). This enables the customer to plan his viewing ahead (and get the family wars over before the schedule begins).

It also assures advertisers in the guide that their advertising will be before the public a full 10 days. Also duplicate programs coming from New Mexico will allow viewers an hours difference in choosing the time he wishes to watch, due to the time zone difference.

love is...



... showing interest in her.



## The Consumer Alert

by John L. Hill  
Attorney General

AUSTIN—Consumers shopping for furniture may have encountered some confusion in the past few years, what with plastics that seem to be wood, vinyl that appears to be leather, and marble dust that looks like slate.

In addition, there's pressure-sensitive paper that simulates just about anything. All of these have given consumers a wide range of choices between natural and synthetic furniture materials, but sometimes it has been difficult to tell at a glance exactly what you're getting for your money.

Some unscrupulous dealers have taken advantage of the proliferation of terms for furniture materials to deliberately mislead the public.

For example, attorneys in our Consumer Protection Division recently settled a complaint from a woman who purchased a bedroom suite advertised as "all wood" only to find out when it was delivered that just the visible parts were constructed of wood. The rest were of glazed fiberboard.

But furniture-buying consumers should find it less confusing to shop for what they want since new Federal Trade Commission guidelines for the furniture industry went into effect in March.

Advances in technology have greatly changed the types of materials used by furniture manufacturers since the previous FTC guidelines were set out in 1963. This, plus what the FTC terms "misleading advertising and other deceptive practices" among a few members of the furniture industry were the reasons for the revision of the guidelines.

One major change is that "affirmative disclosure" is required. My assistants say this means when any material is used to simulate a more expensive one it now must be identified on furniture tags and in catalogs, brochures, and advertising.

And if furniture has a "vener" the term used when a more expensive wood is glued to another type of wood, this fact must also be disclosed. So now if you buy a "maple captain's chair" you can be sure it's maple through and through, not maple veneer on oak or some other wood.

Terms such as "French (or Italian) Provincial" or "Mediterranean" can still be used, since most people realize such phrases describe the style of the furniture, rather than its origin. But terms such as "Danish" or "Spanish" cannot be used to indicate style. Instead, "Spanish style" or "Danish design" or some other phrase must be used if the item doesn't actually come from that particular country.

The new guidelines tend to discourage the widespread practice many retail furniture stores followed of removing the manufacturer's tags and substituting their own. Now, if the manufacturer's tag is removed, it must be replaced with one that provides the same information about materials and construction.

FTC guidelines also state that results of tests made on upholstery fabrics must be clearly disclosed in language the lay person can understand.

Our Consumer Protection attorneys say that while these guidelines will not prevent every misleading or deceptive trade practice encountered in shopping for furniture, they will be of great assistance not only to consumers but to the large majority of reputable furniture manufacturers and retailers.

They remind mobile home purchasers that furniture sold with mobile homes should also carry labels that give information about its construction and composition.

And they suggest that consumers always ask to see product labels, that they check carefully on warranties, and that they inquire about how to care for the fabric on any upholstered furniture they purchase. In this way, they may avoid consumer problems later.

For assistance with consumer complaints call our Consumer Protection Division, your county or district attorney, or your local Better Business Bureau.

## TELL ME

WHEN AND WHERE WERE THE FIRST GLASS MIRRORS MADE?  
GLASS MIRRORS WERE INTRODUCED TO THE WEST THROUGH CONSTANTINOPLE IN THE 12TH CENTURY! THESE MIRRORS REPLACED METAL DISCS FORMERLY USED!

WHAT IS THE DIFFERENCE BETWEEN ROCKS AND MINERALS?  
ROCKS CONSIST OF 2 OR MORE MINERALS AND COMPRISE THE MATERIAL OF WHICH THE EARTH IS MADE. MINERALS ARE THE INDIVIDUAL SUBSTANCES THAT TOGETHER FORM THE ROCKS.

WHICH IS MORE VALUABLE... A BARREL OF DIMES OR A BARREL OF QUARTERS?  
THE DIMES! A BARREL 4 FT. HIGH, 2 FT. IN DIAMETER, FILLED WITH QUARTERS IS WORTH \$87,975.00... WITH DIMES... \$96,536.00!

IS CORAL... ANIMAL, MINERAL OR VEGETABLE?  
CORAL IS OF ANIMAL ORIGIN!

### EDITION FROM PAGE ONE

Mrs. Morton J. Smith, for whose late husband Morton was named, has furnished

early newspaper clippings and photographs.

Interviews with old-timers who were here to see it all add spice to the material.

Anyone wishing to contribute early day pictures, newspaper clippings or other articles are invited to do so. Each will be handled with care and returned in the same shape as received.

There will be several hundred extra copies of this edition printed which will be sold as souvenir copies. Arrangements have been made to print the front page in gold

ink—to signify the anniversary—and all stand copies will sell for cents. All subscribers receive their regular regular price.

We regret the necessary raise the copy price—can rest assured the necessary if Morton Cochran county are to receive the high souvenir additional deserve.

Make plans to receive this edition and send some to your friends.

### FOR PEOPLE WHO THINK

From the Christians who assemble at Taylor and SW 2nd Sts.—Greetings:

Continuing from last week's article when we learned that the apostles taught those baptized on Pentecost during the days following WHAT TO DO and HOW TO DO the will of God during the circumstances that existed there, Jerusalem resulted in the actions recorded in verses 47 of Acts chapter two. The day of Pentecost came on the day AFTER the seventh sabbath after the Passover—read Leviticus chapter 23:5 and 15-21. The Sabbath God designated to the Jews was on the seventh day of the week. The day AFTER the Sabbath is the FIRST day of the week (our Sunday). There being in Jerusalem Jews, devout men, out of every nation under heaven (Acts 2:5-11)—it is self-evident that great numbers of Jews having journeyed to Jerusalem for the Passover stayed for Pentecost—seven Sabbaths and one day (Acts 2:12) later. The number of saved people grew daily and were added to the number BY THE LORD (Acts 2:41).

In this great number of people (about 3,000) Pentecost alone—v. 41) many were, or came to be in the of daily necessities of life—read verses 42-47. Now—WHAT was to be done in such a situation with some of the saved (their brethren in the Lord) were need? As we read these verses we MUST remember it was the apostles who were to teach the baptized WHO TO OBSERVE—Matt. 28:19, 20. Can anyone doubt, therefore, that WHAT they did—they did it under the instructions of the apostles who were present—or did the apostles taught the commandments of Christ? Certainly not! In verses 44, 45 we learn WHAT they did. Therefore, under like conditions, or any situation where brethren in Christ are in actual need—we KNOW what commandments of Christ are.

All who claim to have hope in Christ, therefore, practice what those that were instructed by the apostles DID in such situations to the very extent of their ability. More on this and other situations is to follow. Please remember your welcome to attend the assemblies at Taylor and SW 2nd Sts.

C.R. MANSFIELD, Evangelist  
CHURCH OF CHRIST



ROBERT W. TAYLOR  
2107 AVE. Q  
Lubbock, Texas 79408

## TOTAL NEEDS PLANNING LIFE-HEALTH ACCIDENT

BUS. (806) 762-0851  
RES. (806) 797-1520



## ROLL-A-CONE TOOL CARRIERS

Five Pieces of Equipment on one Bar-Cultivator—  
Lister—Knifer—Hamey and Deer Ripper.

Buy Roll-A-Cone & Own The Best!  
From 4 to 13 rows, 4x7 Tool Carriers for the big Horse  
Tractor. Shanks—Clamps—Tool Bars—Busters—  
Chisels—Folding Markers—And gage Wheels.

## BURKETT TRADE LOT

DAY PHONE 266-5569 NITE 266-5976 MGR. M.P. COFFMAN  
"USE US WHILE WE LIVE"

Let's Keep a Strong Voice in the Senate,

## RE-ELECT

# SENATOR H.J. "DOC" BLANCHARD

He Stands Firm Against A  
Personal Income Tax!

A good man,  
doing a good job  
for West Texas



Pub. Ad. for The Blanchard Camp, H.J. Blanchard Camp, Inc.  
Paid for by Buckner, Craig & Armstrong Advs. Agency, Inc.

# Three Way News

By Mrs. H.W. Garvin

Vinson from Morton and her Mrs. Merlin Roberts, from visited her mother, Mrs. Bula Wednesday.

Mrs. T. Terrell are in this week attending a Lay Mission. Mrs. B. Dupler and them and took care of her children, children of Mr. and Mrs. who also attended.

Carl Griffith and Mrs. Eva Mac Morton visited Mrs. Sally Wednesday.

will be a Youth Rally April 26-27 Three Way Baptist Church, Wayland College will lead

Bill Welch flew to her funeral Saturday.

Mrs. Bill Simpson's small son in a Littlefield hospital.

Garvin is a patient at Cochran Hospital.

Mrs. Fred Kelly visited their Mr. and Mrs. Grady Cranford, Lovington, N.M.

George Tysons entertained the citizens at Amherst Tuesday

Mr. and Mrs. W.L. Welch and sons visited his mother in Phoenix, Arizona over Easter.

Mr. and Mrs. Regy Self and girls from Arkansas visited her parents, the H.C. Toombs.

## W.J. Chavez rites held

Services were held Saturday at 10 a.m. in St. Ann's Catholic Church for William James Chavez, 27, who died Thursday in a shooting incident.

Justice of the Peace Lena B. Gipson pronounced Chavez dead at 8 a.m. Thursday and ruled death by self-inflicted gunshot wounds.

He is survived by his wife, Ramona; three daughters, Melisa, Mary Jane and Melinda, all of the home; his parents Mr. and Mrs. Augustine Chavez of Bledsoe; two sisters, Julia Lemley of Seminole and Mrs. Mary Lou Moralez of Morton; five brothers, Dick, Roger, Jerry and Paul all of Bledsoe and John of Morton.

## Hobgood rites in California

Services for Clarence W. Hobgood, Sr. of Ontario, Calif., father of Mrs. Shirley Woolam of Morton, were held April 17 in Draper Mortuary in Ontario.

Hobgood, 59, former Morton area resident, died April 14 as the result of a tractor accident. He was a farmer.

Survivors are his wife, Opal; four sons, Clarence W. Jr. of Lubbock, Dwayne of Montclair, Calif., Clovis Dee of Fort Walton Beach, Fla., and Claude of Ontario, Calif.; three daughters including Mrs. Woolam, Mrs. Margaret Castle of Hurlwood and Mrs. Anita Berg of Odessa; and two brothers, Clovis Eugene and Samuel, both of Oklahoma; four sisters, Mrs. Marie Erwin and Mrs. Earlene Montgomery, both of Oklahoma, Mrs. Doris Johnson of Florida and Mrs. Agnes Gresham of Vernon; and 16 grandchildren.

## Mrs. Adam hosts club

The Enochs Home Demonstration Club met Tuesday at 2:30 p.m. in the home of Mrs. W.R. Adams.

Mrs. Robin Taylor, Bailey County Extension Agent, presented the program on sewing. She demonstrated applying a pocket with no visible outside seams.

Mrs. Winne Byars, and Mrs. Taylor reported on the District II meeting held in Big Spring.

It was announced that the club would meet May 14 at the Needmore Community Center at 10 a.m. for an all day meeting. The meeting will be open and visitors are welcome to come and bring a salad for the luncheon.

Five members and three guests Mrs. Bobby Adams, Mrs. A. P. Fred and Mrs. C.C. Snicker attended.

## Former resident rites in Etter

Services for Mrs. Eva Mae Willoughby of Dumas, former Morton resident, were held Tuesday at 2 p.m. in Etter Baptist Church in Etter. Burial was in Dumas Cemetery under direction of Morrison Funeral Directors.

Mrs. Willoughby, 47, died Saturday in Dumas Memorial Hospital after a lengthy illness.

She and her husband, Curtis, formerly lived here where he managed a cotton gin. She was a member of the Morton First Baptist Church.

Survivors include her husband; two daughters, Mrs. Charles Bennett of Amarillo and Mrs. Peggy Kuehler of Dallas; a son, Bob of Sayre, Okla.; her mother, Mrs. Freida Turner of Wellington; five sisters, Mrs. W.F. Minitrea of Wellington, Mrs. Bill Fox of Altus, Okla. Mrs. Dan Bingham of Akron, Ohio, Mrs. Ross Royal of Lubbock and Mrs. David Simpson of Vancouver, Wash.; a brother, Garland Turner of San Diego, Calif., and six grandchildren.

Among those who attended the services from Morton were: Mrs. Joe Gipson, Mr. and Mrs. W. L. Foust, Mr. and Mrs. Jack Baker and Mr. and Mrs. R. W. Hill.

## Clayton releases start-up training program results

State Rep. Bill Clayton (D-Springlake) today released the results of the Texas Industrial Start-Up Training Program which train people for specific jobs to meet industry's needs.

Clayton reported that an analysis completed by the Texas Industrial Commission showed that over 96000 direct and indirect jobs have been created in the industries as a result of the Start-Up Program. Clayton pointed out that in one of his districts' counties alone, 85 different employment positions have been generated due to the program.

The survey showed that the new employment has resulted in an annual increase of over two million dollars in new state and local taxes. Clayton highly praised the Start-Up Program, which satisfies the requirements of industry for their work force and are conducted through junior colleges, Texas State Technical Institute and independent school districts.

The program is coordinated by the Texas Industrial Commission in cooperation with the Texas Education Agency.

## Pairieland, Moore receive stop order

WASHINGTON, April 16—Warren Moore, now of Hollywood, Fla., and Pairieland Packing Corporation, of Morton, Tex., have been ordered to stop violating payment requirements of the Packers and Stockyards Act, the U.S. Department of Agriculture (USDA) said today.

The respondents formerly purchased cattle for slaughter purposes throughout West Texas and eastern New Mexico. The firm is not operating at present.

The respondents consented to issuance of the order and waived oral hearing. They neither admitted or denied the charges contained in an administrative complaint filed by USDA's Packers and Stockyards Administration.

USDA Administrative Law Judge William J. Weber ordered both respondents to cease and desist from:

Issuing insufficient fund checks or drafts in payment of livestock; and

Failing to pay, when due, the full purchase price of livestock and meat.

Mr. Moore was, in addition, ordered to cease and desist from causing any corporation or partnership to fail to pay,

## 'Celebration' topic for study club met

Mrs. John Crowder presented "Celebration" as the program for the 1936 Study Club at their April 17 meeting in the home of Mrs. M.C. Ledbetter.

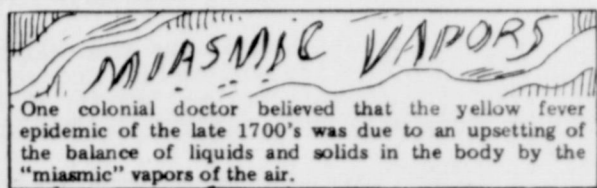
Beginning with "Alleluia," a word straight from pre-Christian Hebrew, an untranslatable cry of joy, she traced how a small handful of people took their faith in a resurrected Christ and influenced the course of Western civilization.

Mrs. Gerhome Holloway presided at the business meeting. Members were invited to be in Lubbock when the Governor of Texas presented a

Proclamation of Congratulations to Cochran County on the 50th anniversary of its organization. An invitation was also issued to attend the April 28 annual Open House at Grilstown.

The club voted to donate \$25. to send a student from the Morton schools to the State Olympics for Plan A children.

Others present were: Mmes. D.E. Benham, Joe Gipson, Gage Knox, Maurice Lewallen, Bill Sayers, James St. Clair, Glenn Thompson, James Price and one guest, Mrs. Paul Lawlis.



One colonial doctor believed that the yellow fever epidemic of the late 1700's was due to an upsetting of the balance of liquids and solids in the body by the "miasmatic" vapors of the air.

when due, the full purchase price of livestock and meat.

The cease and desist order—like a permanent injunction—was issued to insure future compliance with the Packers and Stockyards Act.

The P&S Act is a fair trade practices law. It promotes and maintains fair and open competition in the marketing of livestock, poultry and meat. The Act is administered on a nondiscriminatory basis.

The record in this case is open to the public. Copies of this complaint, P&S Docket 4886 may be obtained from the Information Office, Packers and Stockyards Administration, USDA, Washington, D.C. 20250.

### COTTON TALKS

Traditional overtime exemptions for cottonseed oil mills will be completely phased out in four steps, ending December 31, 1976. Compress and warehouse exemptions will be in effect 14 weeks in which workers can work a maximum of 48 hours per week, 10 hours per day. In 1973 this was 50 hours per week, 10 hours per day.

Preliminary calculations of PCG indicate that the cost of producing cotton under the new wage minimum will go up about \$2.00 a bale, and that inflated ginning and other processing costs will bring the total increase to the neighborhood of \$3.00 per bale.

**ELECT KENT HANCE**

**STATE SENATOR**

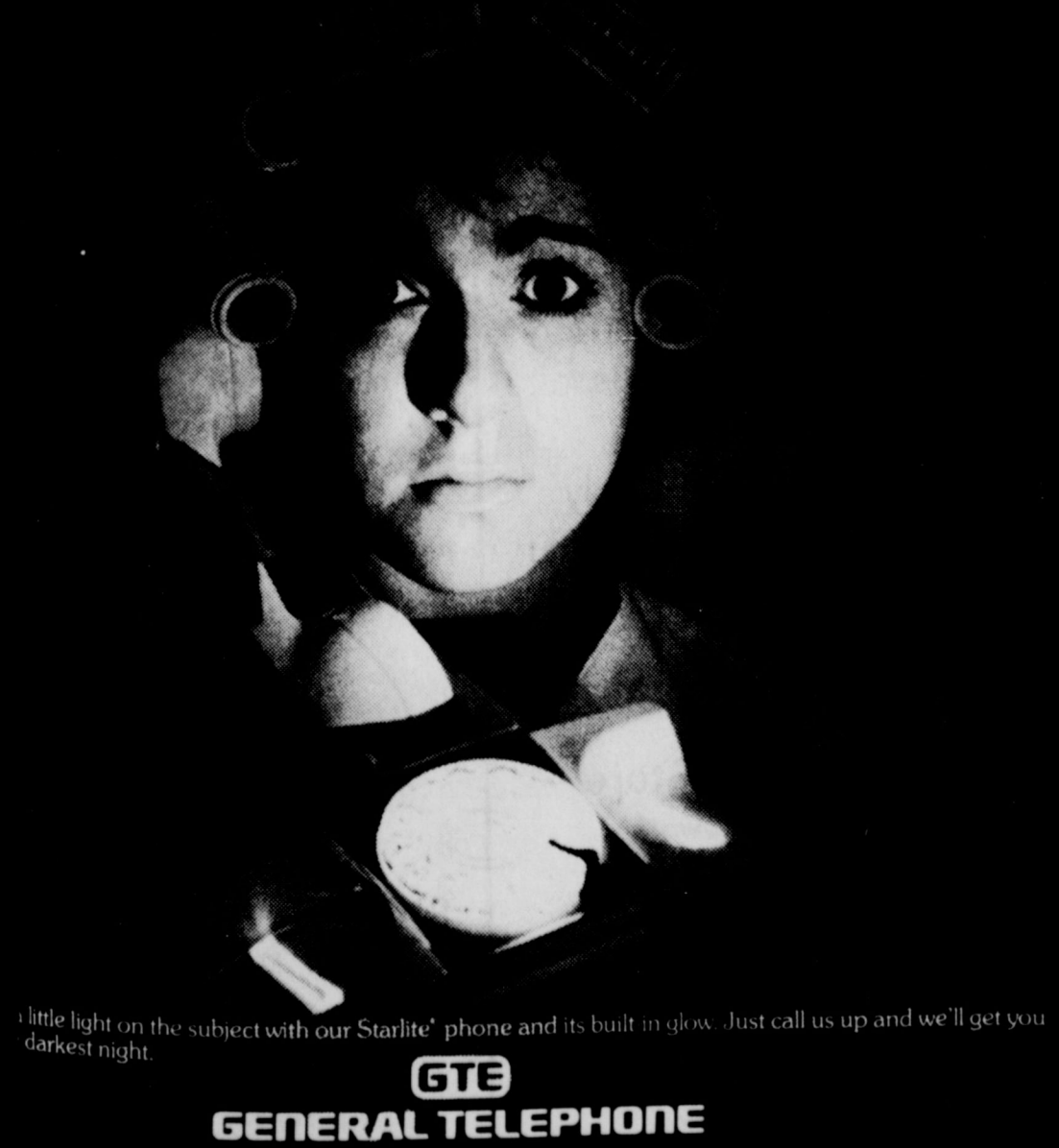
**28TH DISTRICT**



FOR A VOTE IN THE STATE SENATE.  
FOR A SENATOR THAT WILL RETURN TO HOCHRAN COUNTY AFTER ELECTION.  
FOR HONEST, EFFECTIVE, ENERGETIC LEADERSHIP IN THE SENATE.

**NOTE FOR KENT HANCE MAY 4**  
PRINTED BY MORTON TRIBUNE  
PAID FOR BY COMMITTEE TO ELECT KENT HANCE,  
RANDY THOMAS, CHAIRMAN

# See what you're talking about.



little light on the subject with our Starlite phone and its built in glow. Just call us up and we'll get you darkest night.

**GTE**  
**GENERAL TELEPHONE**

**OVERWEIGHT**

No Drugs  
No Starvation  
Diets

No Exercises  
No Hunger Pains

Provides most needed daily nutrients  
Helps tighten skin  
Promotes better nerve condition  
Helps increase energy  
Exclusive  
If I am not in on your first call, please try again

**GET SLIMING.**  
CALL, WRITE, OR COME BY & SEE  
Your Get Slim

Representative **MABLE WOOD, 219 Slate St.**  
**Sundan, Texas, 227-6161**

**WALGREEN VITAMINS**  
CHOICE OF  
**NBA PLAYERS Association**  
FEEL YOUR BEST!

Be certain of your daily quota of vitamins. Do as NBA stars do... fortify your diet with vitamins from Walgreen Laboratories, to help you keep fit.

**Walgreens**

**SUPER AYTINAL**  
All Star Formula Vitamins with Minerals

**50 FREE**  
(When You Buy a Bottle of 100)

The Wide Range "Super Formula", More Vitamins. More "Minerals! More." Potency!

**150 Tablets In All**  
**\$9.67 Value**  
**ONLY 5.98**

**Super Aytinal "All Star" Formula vs. Super Plenamins**

SUPER AYTINAL	SUPER PLENAMIN
Vitamin A . . . . . 8,000 USP Units	Vitamin A . . . . . 8,000 USP Units
Vitamin B1 . . . . . 10 mg.	Vitamin B1 . . . . . 2.5 mg.
Vitamin B2 . . . . . 5 mg.	Vitamin B2 . . . . . 2.5 mg.
Vitamin B6 . . . . . 2 mg.	Vitamin B6 . . . . . 1 mg.
Vitamin B12 . . . . . 5 mcg.	Vitamin B12 . . . . . 3 mcg.
Vitamin C . . . . . 75 mg.	Vitamin C . . . . . 75 mg.
Vitamin D . . . . . 400 USP Units	Vitamin D . . . . . 400 USP Units
Vitamin E . . . . . 15 I.U. (mg.)	Vitamin E . . . . . 1 I.U. (mg.)
Niacinamide . . . . . 50 mg.	Niacinamide . . . . . 20 mg.
Calcium Pantothenate . . . . . 5 mg.	Calcium Pantothenate . . . . . 3 mg.
Whole Liver . . . . . 100 mg.	Whole Liver . . . . . 100 mg.
Iron . . . . . 30 mg.	Iron . . . . . 30 mg.
Calcium . . . . . 75 mg.	Calcium . . . . . 75 mg.
Phosphorus . . . . . 58 mg.	Phosphorus . . . . . 58 mg.
Iodine . . . . . 0.1 mg.	Iodine . . . . . 0.15 mg.
Copper . . . . . 0.5 mg.	Copper . . . . . 0.75 mg.
Biotin . . . . . 25 mcg.	Biotin . . . . . 20 mcg.
Inositol . . . . . 15 mg.	Inositol . . . . . None
Manganese . . . . . 1.25 mg.	Manganese . . . . . 1.25 mg.
Magnesium . . . . . 10 mg.	Magnesium . . . . . 10 mg.
Potassium . . . . . 5 mg.	Potassium . . . . . None
Zinc . . . . . 1 mg.	Zinc . . . . . 1 mg.

**RXLINER'S PHARMACY**  
24 HOUR PRESCRIPTION SERVICE  
DAY 266-8965 PRESCRIPTION PHONE NITE 266-5007

PHONE 266-5615 120 S.W. THIRD

recurring role of police lieutenant Art Malcolim. Larry currently starred in the Los Angeles production of a London rock musical, "The Rocky Horror Show."

# Congressional Resolution Proclaiming April 30, 1974 A National Day of Humiliation, Fasting and Prayer

Whereas, it is the duty of nations, as well as of men to owe their dependence upon the overruling power of God, to confess their sins and transgressions, in humble sorrow, yet with assured hope that genuine repentance will lead to mercy and pardon, and to recognize the sublime truth, announced in the Holy Scriptures and proven by all history, that those nations are blessed whose God is Lord; and

Whereas, we know that we have been the recipients of the choicest bounties of Heaven; we have been preserved these many years in peace and prosperity; we have grown in numbers, wealth and power as no other nation has ever grown; but we have forgotten God; and

Whereas, we have forgotten the gracious hand which preserved us in peace, and multiplied and enriched us; and we have vainly imagined, in the deceitfulness of our hearts, that all these blessings were produced by some superior wisdom and virtue of our own; and

Whereas, intoxicated with unbroken success, we have become too self-sufficient to feel the necessity of redeeming and preserving grace, too proud to pray to the God that made us; and

Whereas, we have made such an idol out of our pursuit of "national security" that we have forgotten that only God can be the ultimate guardian of our true livelihood and safety; and

Whereas, we have failed to respond, personally and collectively, with sacrifice and uncompromised commitment of the unmet needs of our fellow man, both at home and abroad; as a people, we have become so absorbed with the selfish pursuits of pleasure and profit that we have blinded ourselves to God's standard of justice and righteousness for this society; and

Whereas, it therefore behooves us to humble ourselves before Almighty God, to confess our national sins, and to pray for clemency and forgiveness: Now, therefore be it

Resolved by the Senate and House of Representatives of the United States of America in Congress Assembled, that the Congress hereby proclaims that April 30, 1974 be a National Day of Humiliation, Fasting and Prayer; and calls upon the people of our nation to humble ourselves as we see fit, before our Creator to acknowledge our final dependence upon Him and to repent of our national sins.

**Remember to Pray April 30, 1974**

**Pray for our nation**

Pray for national repentance, acknowledging God's mercy and

forgiveness. II Chronicles 7:14

Pray that every person in the U.S. will hear the gospel and that millions will

come to Christ.

Pray that, as individuals, we will realize God's love and draw upon His wisdom and understanding (James 1:5; Proverbs 3:5,6)

Pray for young people and their families, that they may desire and be willing to listen and learn from each other. Colossians 1:10

Pray that Christians will become vital witnesses for Christ through their lives and words. I John 1:9

Pray for the leaders of our country—national, state and local—that they may have wisdom, integrity, protection, guidance and an awareness of God's presence in mind and heart. I Timothy 1:6; Jeremiah 33:3

Pray for those who are prisoners of: drugs, alcohol, immorality, obscenity, pornography, crime, prejudice, unbelief and despair. Matthew 5:44, 45; John 8:36

Pray for the church and church-related organizations—for unity within the body of Christ. John 17:11; Acts 4:29

Pray for the evangelization of our country and of the world, especially for the International Congress on World Evangelization (July 16-25) and EXPLOR '74 (August 13-18, 1974).

Pray for a greater Christian influence in newspapers, magazines, television and

movies.

Colossians 2:2

Pray for the purification of hearts and deeds, that we may be effective channels for God's love, live, work, play and worship. Colossians 1:9-12; Philippians 1:12

If my people will humble themselves, pray, and search for me, and give up their wicked ways, I will hear from heaven and forgive their iniquity and dwell in their land.

I exhort therefore, that, first of all, supplications, prayers, and giving of thanks, be made for Kings, and for all that are in authority; that we may live peaceable and quiet lives in all godliness and holiness.

**Aussies get help to return home**

Australia's Immigration Ministry has announced that unmarried Australian overseas for more than three years can now receive government assistance to return home.

Previously only couples qualified for assistance.

**ASSEMBLY OF GOD CHURCH**  
Whiteface  
Pastor, Rev. Billy Pierson  
Sunday Services—  
Sunday School . . . . . 9:45 a.m.  
Morning Worship . . . . . 11 a.m.  
Evening Worship . . . . . 6 p.m.  
Midweek Bible Study . . . . . 6:30 p.m.

**ST. ANN'S CATHOLIC CHURCH**  
Pastor Nicholas Schneiders C.P.  
Mass Schedule:  
Sunday . . . . . 9:00-11:15 a.m.  
Weekdays . . . . . 7:30 a.m.  
Wednesday Evenings . . . . . 8:30 p.m.  
First Fridays each Month . . . . . 8 a.m.  
Sunday School . . . . . 8:30 a.m.  
Sunday School . . . . . 10-11 a.m.

**NEW TRINITY BAPTIST CHURCH**  
Rev. W.D. Anderson  
3rd and Jackson  
Sundays—  
Sunday School . . . . . 9:45 a.m.  
Morning Worship Second and Fourth Sundays . . . . . 11:00 a.m.  
H.M.S. . . . . 4:00 p.m.  
Wednesdays—  
Prayer Service . . . . . 7:00 p.m.

**FIRST BAPTIST MEXICAN MISSION**  
Sundays—  
Sunday School . . . . . 10:00 a.m.  
Training Union . . . . . 6:30 p.m.  
Evening Worship . . . . . 7:30 p.m.  
Wednesdays—  
Prayer Service . . . . . 7:30 p.m.

**FIRST BAPTIST CHURCH, ENOCHS**  
Rev. Charley Shaw  
Sunday School . . . . . 10 a.m.  
Morning Services . . . . . 11 a.m.  
Training Union . . . . . 7 p.m.  
Evening Services . . . . . 8 p.m.

**BLED SOE BAPTIST CHURCH**  
Rev. Henry Rhynes  
Sunday Service . . . . . 9:45 a.m.  
Worship Service . . . . . 11 a.m.  
Training Union . . . . . 6 p.m.  
Evening Worship . . . . . 7 p.m.  
Wednesday Nigh Service . . . . . 8 p.m.

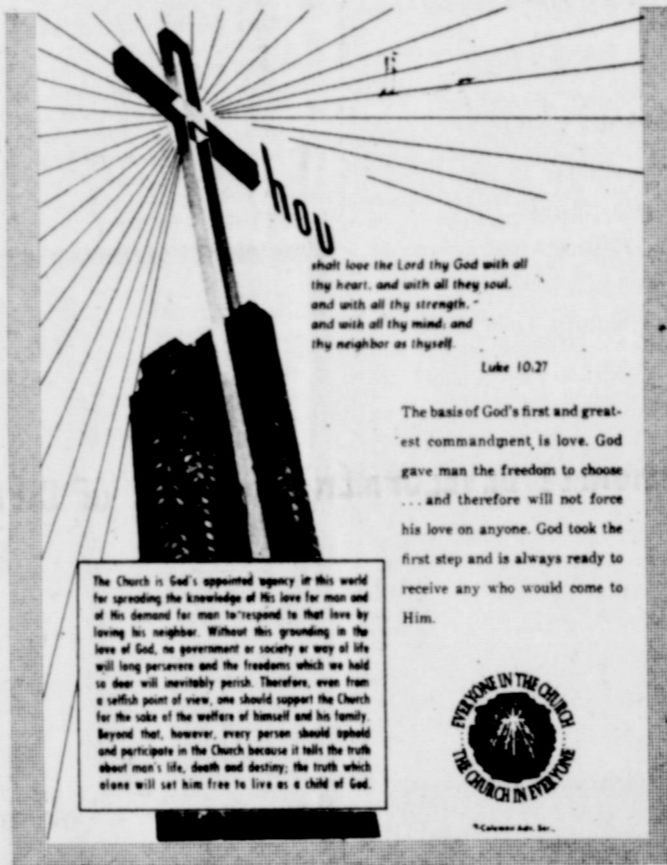
**CHURCH OF CHRIST**  
S.W. 2nd and Taylor  
C.R. Mansfield, Preacher  
Sundays—  
Bible Class . . . . . 10:00 a.m.  
Worship . . . . . 10:45 a.m.  
Evening Worship . . . . . 6:00 p.m.  
Wednesdays—  
Midweek Bible Class . . . . . 8:00 p.m.

**FIRST METHODIST CHURCH**  
James E. Price, Pastor  
411 West Taylor  
Sundays—  
Church School Session . . . . . 9:45 a.m.  
Morning Worship Service . . . . . 10:55 a.m.  
Evening Fellowship Program . . . . . 5:00 p.m.  
Evening Worship . . . . . 6:00 p.m.

**WHITEFACE CHURCH OF CHRIST**  
Dick Biggs, Minister  
300 Tyler Street  
Sundays—  
Bible Classes for all ages . . . . . 10 a.m.  
Worship and Communion . . . . . 10:55 a.m.  
Evening Worship . . . . . 7:00 p.m.

**Sister Pearl's Gospel Singing House**  
Purity Sunday School  
Class . . . . . 8:45 a.m.  
Teacher—Pearl Swindle Williams  
511 E. Jackson

**UNITED METHODIST CHURCH, ENOCHS**  
Rev. Grady Adcock, Pastor  
Services held 1st and 3rd Sundays  
Sunday School . . . . . 10 a.m.  
Morning Services . . . . . 11 a.m.  
Evening Services . . . . . 7 p.m.  
4th Wednesday—Fellowship . . . . . 7 p.m.



**UNITED METHODIST CHURCH, BULA**  
Services 2nd and 4th Sundays  
Sunday School . . . . . 10 a.m.  
Morning Service . . . . . 11 a.m.  
Evening Service . . . . . 7 p.m.

**THREE WAY BAPTIST CHURCH**  
Rev. Jack Dewitt  
Sunday School . . . . . 10 a.m.  
Morning Worship . . . . . 11 a.m.  
Training Union . . . . . 6 p.m.  
Evening Services . . . . . 7 p.m.

**ASSEMBLY OF GOD CHURCH**  
Rev. G. Frank Estes  
Sundays—  
Sunday School . . . . . 9:45 a.m.  
Morning Worship . . . . . 11:00 a.m.  
C.A. Service . . . . . 6:00 p.m.  
Evangelistic Service . . . . . 7:00 p.m.  
Wednesdays—  
Wednesday Services . . . . . 7:30 p.m.

**FIRST MISSIONARY BAPTIST CHURCH**  
Bois Standifer, Pastor  
Main and Taylor  
Sunday School . . . . . 9:45 a.m.  
Morning Worship . . . . . 10:45 a.m.  
Training Service . . . . . 6:00 p.m.  
Evening Service . . . . . 6:45 p.m.  
WMA Circles  
Monday—  
Night Circle . . . . . 7:30 p.m.  
Tuesday—  
W.M.A. . . . . 2:00 p.m.  
G.M.A. . . . . 4:00 p.m.  
Wednesday—  
Midweek Service . . . . . 7:30 p.m.  
Edna Bullard . . . . . 9:30 a.m.

**HICK'S CHAPEL BAPTIST CHURCH**  
Rev. Hugh Montgomery  
Sunday School . . . . .  
Morning Services . . . . .  
Training Union . . . . .  
Evening Services . . . . .

**FIRST BAPTIST CHURCH WHITEFACE**  
@roid Harrison, Pastor  
Sunday School . . . . .  
Morning Worship . . . . .  
Church Training . . . . .  
Evening Worship . . . . .  
Wednesday Prayer Meeting . . . . .

**FIRST BAPTIST CHURCH**  
Paul McClung, Pastor  
202 S.E. First  
Sunday School . . . . .  
Morning Worship . . . . .  
Morning Service KRAN . . . . .  
Training Union . . . . .  
Evening Worship . . . . .

**Tuesdays—**  
Helen Nixon W.M.U. . . . .  
**Wednesdays—**  
Graded Choirs . . . . .  
Prayer Service . . . . .  
Church Choir Rehearsal . . . . .

**SPANISH ASSEMBLY OF GOD CHURCH**  
Rev. Ignacio Ruiz  
N.E. Fifth and Wilson  
Sundays—  
Sunday School . . . . .  
Morning Worship . . . . .  
Evening Evangelistic Service . . . . .

**Wednesdays—**  
Young people service . . . . .

**EAST SIDE CHURCH OF CHRIST**  
Jammie Paden, Minister  
704 East Taylor  
Sundays—  
Bible Study . . . . .  
Worship . . . . .  
Worship . . . . .

**Wednesdays—**  
Midweek Service . . . . .  
**CHURCH OF CHRIST, MAPLE**  
Dannie Mize, Preacher  
Bible Study . . . . .  
Worship . . . . .  
Night Worship . . . . .  
Wednesday Night Services . . . . .

This Feature Is Published With The Hope of Getting More More People To Church By The Undersigned City Business And Professional People.

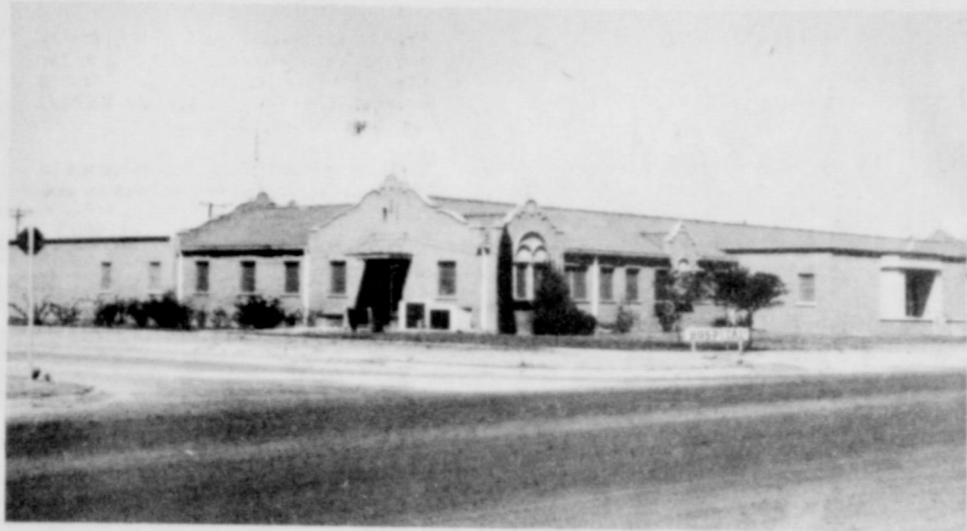
<p>Claunch Gin Bula</p> <p>Bailey County Electric Co-Op Association Phone 266-8600-Whiteface Hwy.</p> <p>Bedwell Implement 219 E. Jefferson-266-5306</p> <p>Rose Auto and Appliance 107 E. Wilson-266-5059</p> <p>Bill's Furniture &amp; Appliance Bill Smith 108 SW 1st 266-5201</p>	<p>Compliments of Carl Griffith Gin and G &amp; C Gin</p> <p>Judge Glenn Thompson</p> <p>L &amp; B Supply N. Main-Phone 266-5110</p> <p>Cochran Electric Service - Supply 317 W. Washington Phone 266-5455</p> <p>Gwatney-Wells Chev.-Olds. 133 E. Washington Morton, Texas</p> <p>Farmer's Co-op Gin of Enochs Enochs 927-3444</p> <p>First State Bank 107 W. Taylor-266-5511</p>	<p>Beseda Grain Co.</p> <p>Griffith Equipment Company 120 N.W. 3rd-Phone 266-5330</p> <p>Luper Tire and Supply 602 Main-Phone 266-8001</p> <p>Allsup's 7 till 11 113 E. Washington-Phone 266-5532</p> <p>Ramsey's Food Store Gerald Ramsey, Owner 210 South Main</p> <p>State Line Butane</p> <p>West Texas Seed Co. Roy Oxford, Mgr. Dora Hwy. 266-5557</p>	<p>Star Route Co-op G St. Rt. 1-Phone 927-3416</p> <p>Higginbotham-Bartle</p> <p>Maple Co-op Gin</p> <p>Tic Toc Restaurant Loma and Rob Richards Levelland Highway-Phone 266-</p> <p>St. Clair's Department S Morton 266-5223</p> <p>Liner's Pharmacy Mike and Donna Liner</p>
---	--	--	--

# PLEDGED TO PROGRESS

## FOR MORTON AND COCHRAN COUNTY

YES, FIRST STATE BANK OF MORTON IS 100% HOME OWNED AND HOME OPERATED AND IS WORKING EVERY DAY TOWARD DEVELOPMENT AND IMPROVEMENT OF OUR COMMUNITY.

WE ARE PROUD TO ANNOUNCE THAT DURING 1973 THE BANK PAID MORE THAN \$8,300 IN LOCAL TAXES IN SUPPORT OF OUR SCHOOLS AND LOCAL GOVERNMENT AGENCIES.



First State Bank proudly salutes Cochran Memorial Hospital District with its excellent facilities and outstanding medical staff. We are proud to have contributed a substantial part in its growth and development — a further sign of a progressive community.

### YES, WE BELIEVE IN MORTON!

AND WE STRONGLY BELIEVE THAT WHEN WE ALL WORK TOGETHER AND EXPEND OUR RESOURCES TOWARD COMMUNITY DEVELOPMENT, PROGRESS IS BOUND TO BE MADE

OUR EMPLOYEES, OFFICERS AND DIRECTORS ARE ACTIVELY ENGAGED IN A LARGE VARIETY OF CIVIC, SOCIAL, AND RELIGIOUS ACTIVITIES THAT SUBSTANTIALLY CONTRIBUTE TO THE BETTERMENT OF OUR COMMUNITY.

### WE URGE YOU TO BANK LOCALLY

LET US BE A PARTNER WITH YOU IN STRENGTHENING MORTON AND COCHRAN COUNTY. WE ASSURE YOU THAT OUR OFFICERS AND DIRECTORS CAN HANDLE YOUR FINANCIAL NEEDS REGARDLESS OF HOW LARGE OR HOW SMALL.



FIRST STATE BANK + MEMBER FDIC

# FIRST STATE BANK

MEMBER FDIC  
MORTON, TEXAS

IF YOU MAKE A MOVE—MOVE TO MORTON!

FIRST STATE BANK  
FINANCIAL INTEGRITY

FIRST STATE BANK  
CUSTOMER SERVICES

PHONE 266-5615 120 S.W. THIRD

recurring role of police lieutenant Art Malcolm. Larry currently starred in the Los Angeles production of a London rock musical, "The Rocky Horror Show". Storch and Robyn Millan guest star in the opening episode.



**MR. AND MRS. RAYMOND HANNA** of Maple announce the engagement of their daughter, Alice Lucindy, to James Partlow, son of Mr. and Mrs. J. T. Partlow of Goodland. Miss Hanna is a May candidate for graduation from Three Way High School. Partlow is a 1973 graduate of Three Way High School and is a student at South Plains College. The couple plans to be married June 8 at 7 p.m. in the Three Way Baptist Church. Friends and relatives are invited to attend.

## Enochs-Bula News

Mrs. J. D. Bayless  
Enochs, Texas

Kelly Hardaway of Littlefield spent the week with her grandmother, Mrs. Winnie Byars.

Mrs. Mildred Reasoner of Hobbs, N.M. spent Wednesday till Friday caring for her Mother, Mrs. G.R. Newman. Mr. and Mrs. Newman have both been on the sick list.

Mr. and Mrs. Edd Autry left last Friday for a visit with her sister, Mrs. Mamie Chambers, at Burkburnett.

Dinner guests in the home of Mr. and Mrs. Goldman Stroud Easter Sunday were their children and grandchildren, Mrs. Bonnie Belliveau and children, Tommie, Anna Maria and Phillip of Lubbock, Mrs. Glynn Stroud, Scott and Stacy of Muleshoe, Mrs. Gene Stroud and Christy of Morton, Mr. and Mrs. Harold Pollard,

Guinn and Stevie and Carolyn Sue of the home, also an Uncle, Haywood Smith of Dimmitt. In the afternoon they all met at the Harold Pollard's wheat field for an Easter egg hunt. Others joining them for the hunt were Mr. and Mrs. Loyd Pollard, their sons, Mr. and Mrs. Larry Pollard and children of Tahoka, and Mr. and Mrs. Lamar Pollard and son Wade of Levelland.

Mr. and Mrs. Dale Nichols, Paula and Donnie, Donald Grusendorf of Plainview and Walt Sanderfer and sons of Morton, fished from Tuesday till Saturday at Lake Palo Pinto. Friday night, the Nichols met his brother, Mr. and Mrs. Sammie Nichols, of Fort Worth at Weatherford for a few hours visiting.

There were 305 who registered for the annual Enoch's Co-op Gin supper at the

Bula gym at 6:30 p.m. Saturday. Bob Newton, manager, was in charge of the business meeting following the dinner. J.E. Layton and W.L. Welch retired as directors and elected to succeed them were Dale Nichols and D.M. McBee.

The Rev. Bob Stone, pastor of the Bula-Enochs Methodist Church has moved into the Bula parsonage. He preached his first sermon at Enoch's Sunday. Brother Stone is attending school at Eastern University in Portales, N.M.

Mr. and Mrs. Tom Bogard took their daughter, Mrs. Opal Roberts and children, Kendon and Rance, to Snyder Sunday where her husband met them. They returned to their home in Junction after spending ten days with her parents.

Mr. and Mrs. Bill Fey visited Mr. and Mrs. Hugh Dendy Tuesday night in Plainview.

Mrs. L.B. Davis and sons of Shallowater spent the weekend with her mother, Mrs. Flo Nichols. Mr. and Mrs. Harold Dean Nichols of Idalou were guests also.

Mr. and Mrs. Royce Lane and children of Midland spent the weekend with her parents, the Ray Seaglers.

Mrs. Clara Childers of Dumas visited a few days with her daughter, Mr. and Mrs. H.B. King.

Mrs. Beverly Turney was a patient in Littlefield Hospital Wednesday until Friday.

Mrs. Deanna Jones of Clovis, N.M. and Mr. and Mrs. Kenny Coats and son of Levelland visited with their parents, the Kenneth Coats, Sunday.

Mrs. Alma Altman and her sister, Agnes Towes, of Inman, Kansas left Amarillo by plane Saturday for Inman. While there, Mrs. Altman attended the wedding of a niece, Deanna, daughter of Abe R. Toews. She returned home Monday.

Mr. and Mrs. Allen Autry from Calif. visited in the home of Mr. and Mrs. Edd Autry recently.

Mr. and Mrs. C.A. Smith from Portland, Oregon visited his sister, Mrs. Ray

Seagler this week. Ray is still a patient in the Littlefield Hospital.

Mrs. H.H. Snow of Muleshoe and Harold Layton were honored with a birthday dinner in the home of Mr. and Mrs. J.W. Layton Sunday. Dinner guests were: Mrs. Grace Spears of Mineral Wells, Mr. and Mrs. H.H. Snow of Muleshoe, Mr. and Mrs. Harold Layton, Susan and Robert, Jerry Nichols, Mr. and Mrs. J.E. Layton, Crume and Bill Snow of Calif., Mrs. Irene Parker, Mrs. Vida Cash and children, Gale and Nita, Chuckie, Jackie Manning all of Hereford and Mr. and Mrs. Mark Derington of Lubbock.

Curt Johnson had a sale the past two weeks, selling all of his household goods. He and his wife are going to a rest home in Littlefield. They have lived in Enoch's for many years.

Mrs. Alice Kester, Lisa Risinger and Susan Layton left Wednesday for Dallas, to attend the State FHA Convention. They will return home Saturday.

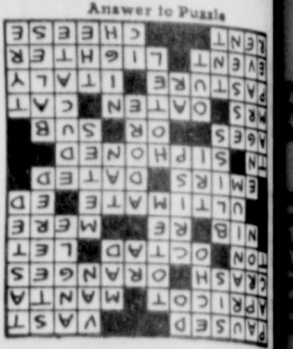
The visiting preacher at the Bula Church of Christ Sunday was Bro. Bill

Day and Debbie from the Sunset School Preaching at Lubbock. They were guests in the home of Mr. and Mrs. Hubbard.

Ann Harlin and her fiancée, Bob Marshall, both students at South Plains College, spent Friday night with parents, Mr. and Mrs. Nolan Harlin.

Mr. and Mrs. Bill Tivis from Pecos visited her sister, Mr. and Mrs. Joe Cox, Sunday afternoon.

Mrs. Sandra Austin was admitted to Littlefield Hospital Friday.



# SANCAP. BECAUSE YOU HAVE ENOUGH SOIL PROBLEMS ALREADY.





**KENT HANCE FOR:**

Economy in government.  
Water importation for west Texas.

---

**AGAINST:**

Sales tax on groceries  
(his opponent voted for a sales tax on these items).

---

**KENT HANCE FOR THE STATE SENATE**

Pol. Ad. paid for by the Kent Hance Campaign, Mike Higgins, Manager Through: Otis Green Associates, 1307 Avenue L, Lubbock

**HELP... GREAT INDOORS**

WINTER NEEDN'T BE ONE LONG HOUSECLEANING SCENE. THERE'S HELP AFOOT--AND IN THE LAUNDRY--WITH SEVERAL TRIED-AND-TRUE AIDS FROM INDEPENDENT DEALERS FOR STANLEY HOME PRODUCTS, INC. OF WESTFIELD, MASS.

**AQUILAUN®** COLD WATER WASH FOR ANY FABRIC THAT REQUIRES COLD-WATER WASHING, ELIMINATES WORK AND WORRY ECONOMICALLY AND SAFELY. IT'S GREAT FOR WASH 'N WEAR MATERIALS, KNITS, STRETCH FABRICS, PERMANENT PRESS, SYNTHETIC WASHABLES, WOOLENS, SYNTHETIC WIGS AND THINK OF THE HOT WATER "AQUILAUN" CAN SAVE THESE "ENERGY CRISIS" DAYS.

**AQUILAUN®** ELIMINATES PRE-SPRINGING FOR SPOTS AND STAINS. USED FULL-STRENGTH, IT MAKES MOST WATER AND GREASE-BASED STAINS DISAPPEAR.

**FOAM RUG SHAMPOO** DEEP CLEANS QUICKLY AND IS IDEAL IN HEAVY TRAFFIC AREAS, SUCH AS CARPETING IN KITCHENS, BATHROOMS AND HALLWAYS. JUST SPRAY IT ON, WORK IT IN WITH "SUNLINE" RUG SHAMPOO BRUSH, THEN VACUUM AWAY DRIED FOAM AND BOIL A FEW HOURS LATER.

THE BRUSH HAS A SPECIAL CENTER SPONGE THAT HOLDS AND HELPS GENERATE FOAM, WHILE THE OUTER BRISTLES SCRUB AND CLEAN THE CARPET FIBERS.



If the soil in West Texas was the same as the soil everywhere else maybe the herbicides they use would be good enough for you. But you've got different soil. Sandy soil. And different problems. You need an herbicide specifically made for sand, loamy sands and fine sandy loam soils. You need Sancap®. If you used it when we introduced it last season, you know what it can do. STOP CARELESS WEED AND RUSSIAN THISTLE COLD. Without hurting your cotton. With just ordinary rainfall or irrigation. And all you have to do is broadcast Sancap over your field at planting or within two days after. No incorporation, either. Sancap. The only herbicide made for sandy soil. We made it especially for your soil and problems. And not anybody else's. Agricultural Division, CIBA-GEIGY Corporation, P. O. Box 11422, Greensboro, NC 27409.



The only herbicide made for sandy soil.  
**YOU DON'T HAVE TO USE A COTTON HERBICIDE MADE FOR SOMEONE ELSE'S SOIL.**

**CIBA-GEIGY**



# Farm-facts

A Weekly Report Of Agri Business News  
Compiled From Sources  
Of The Texas Department of Agriculture  
John C. White, Commissioner



Rev. and Mrs. G. Frank Estes  
**Rev. Estes takes church post here**

The Reverend G. Frank Estes of Abilene has assumed the pastorate at the First Assembly of God Church in Morton. He graduated from Hardin Simmons University with a degree in religion and is an ordained minister with the General Council of the Assemblies of God, headquartered in Springfield, Mo. Rev. Estes has traveled in several countries of South America, Central America, Europe, Russia and the Middle East in his ministry. He returned recently from an Evangelistic mission in Nicaragua. In addition to his work in other countries, he has traveled in eastern states as well as throughout Texas and Oklahoma. He is the son of Rev. and Mrs. W.G. Estes of Abilene. His father is pastor of Bethel Temple Assembly of God in Abilene. Rev. Estes and his wife, Ivalene are making their home at the parsonage at 202 E. Grant.

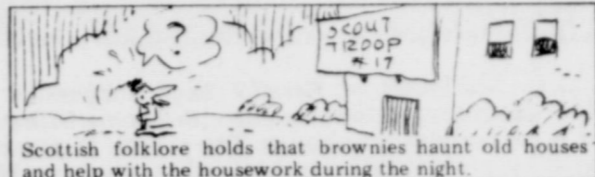
## Obtaining SS number may call for proof

People may be asked to prove their age, identity, and citizenship to get a social security number when applying for the first time, according to Clyde W. James, social security district manager in Lubbock. The proof is required under an amendment to the social security law. "The requirement affects native United States citizens, naturalized citizens, and aliens," James said. People can apply for a social security number by writing or visiting any social security office. Application forms are available at social security offices and post offices. "Age can usually be proved with a birth or baptismal certificate," James said. "Identity can generally be proved with a driver's license, voter's card, or similar evidence—preferably something that carries your signature." People born in the United States can usually establish citizenship with the same papers they use to prove their age and identity, he said. People applying for duplicate social security numbers because they've lost their social security cards or changed their name generally aren't affected by the proof requirement, according to James. The proof requirement is intended to help prevent people from obtaining more than one social security number or obtaining or using a social security card under a false identity, James said. A fine of up to \$1,000 imprisonment or

## Thoughts

From The Living Bible

Then Jacob woke up. "God lives here!" he exclaimed in terror. "I've stumbled into his home! This is the awesome entrance to heaven!" The next morning he got up very early and set his stone headrest upright as a memorial pillar, and poured olive oil over it. He named the place Bethel ("House of God"), though the previous name of the nearest village was Luz. And Jacob vowed this vow to God: "If God will help and protect me on this journey and give me food and clothes, and will bring me back safely to my father, then I will choose Jehovah as my God!" Genesis 28:16-21  
Religious Heritage of America



Scottish folklore holds that brownies haunt old houses and help with the housework during the night.

**Onions on the Way... Poultry Production Down, Income Up... Lamb Increase... More Credit?... Dry in Places.**  
ONION CROP MAY NOT BE A CRISIS, but it's expected to be 18 per cent smaller than last year's crop, reaching 100 million pounds, compared to 120 million in 1973. That's about 175 acres from 21,000 acres. Onions from Texas fields are expected from now until about mid-May. Harvest is in full swing in the Rio Valley, and was expected to begin in an Antonio-Winter Garden area in April, according to the Texas Crop Reporting Service.  
PROFITABLE INCOME IN THE 1973 production of broilers, chickens and turkeys. Income from these three types of poultry business was \$1.1 billion, 54 per cent more than in 1972 marketing year. Total production in 1973 was 2.6 billion down three per cent from 2.7 billion in 1972, but prices were better in 1973 and income was up 56 per cent over 1972.  
PRODUCTION IN TEXAS DURING 1973 was 1.6 million eggs, down seven per cent from 1.7 million in 1972, but income was up 53 per cent over 1972. The average price for eggs was 55.5 cents a dozen compared to 53.5 cents in 1972.  
PRODUCTION OF 10 million head of broilers (excluding broilers) in 1973, compared to 11 million in 1972. Cash from chickens totaled \$5.9 billion, 26 per cent more than a year ago.  
PERSPECTS IN THE poultry business are brighter. Broilers are expected to be better in 1974. Broilers placed in the State during the week ending April 6 totaled 3,872,000 chicks, three per cent fewer than a year ago and two per cent lower than a week earlier. Eggs put in incubators numbered 4,683,000 in the same week, six per cent below the same period in 1973 and two per cent below a week before.  
FOR THE FIRST time since January, the press reported lamb prices increased sharply during the week ending April 11. Texas springers were up to \$41-44 a hundred, and oldcrop lambs in feedlots were up to \$39 a hundred. There were 89,000 sheep and lambs for slaughter on feed in lots with capacity of 2,000 head or more in Texas. That was four per cent fewer than were on feed April 1, 1973. Placement of sheep and lambs during March totaled 31,000 head.  
MORE CREDIT may be available in rural areas under provisions of the Rural Development Act, according to the U.S. Department of Agriculture. Farmers Home Administration is authorized to guarantee private lenders that they will be repaid for up to 90 percent of any loss they take on loans for a variety of rural development purposes. That may increase the flow of rural credit from private banks according to the USDA.  
SOME RAIN fell recently over sections of the State, but it is still dry in many areas. Cotton planting is about 11 per cent complete over the State, but some farmers from the Blacklands south are reported wanting rain before planting. Seedbed preparation is underway on the High Plains. Sorghum planting is reported about 40 per cent complete in the state, compared to about 30 per cent at the same time last year. Peaches are reported developing wells in Gillespie County, and trees are beginning to leaf in Gaines County where a good crop is expected.

## About Local Folks

By Dutch Gipson

**Mrs. Mary Ann Ashbill.**  
Mr. and Mrs. Skinny Edwards of Lubbock were weekend guests of her brother and family Mr. and Mrs. Charles McDermett.  
Mr. and Mrs. C.W. Rowland of Austin are houseguests of his brother and family Mr. and Mrs. T.A. Rowland.  
Mrs. Charles McDermett, accompanied by her father and mother Mr. and Mrs. J.E. Walker of Ralls, and Mrs. Jessi Mize of Ralls, a sister went to Mt. Vernon to attend the funeral of Mildred's uncle, Lem Cason, held in Mt. Vernon last Wednesday.  
Fred Morrison and son, Tommy, of Chillicothe were in Morton the first part of the week taking care of business and visiting with friends.  
Mrs. H.G. Ramby fell Easter Sunday in Houston while she and Mr. and Mrs. Pfeiffer Ramby and David were visiting there. She is still in the hospital and would like to hear from her friends in Morton. Her address is Room 220, Rosewood General Hospital, 9200 Westheimer, Houston, Texas.  
Mrs. W.E. Akin returned this week after visiting her daughter and family Mr. and Mrs. Dannie Petree and son Don Akin in Lubbock and a cousin in San Antonio for the past two weeks.  
Mrs. Nell White visited in San Antonio over the weekend with her son, Bill and his fiancée, Donna Moeher and her family, Mr. and Mrs. Werner Noehr of Fredericksburg.  
Mrs. Mary Elizabeth Irish of Center is spending a few days with her daughter

**Mr. and Mrs. Earl Polvado** spent sightseeing in the mountains. Melonie and April Polvado spent a week with grandparents, Mr. and Mrs. Earl Polvado, and three days sightseeing in Amarillo with Gloriaetta and Earl Gray.  
**Mrs. Connie Gray** flew to Tenn., for a short Easter visit.  
**Stanford** president of District Teachers Association, and that Mrs. Connie Gray would be Cochran County Teachers at an meeting being held in Lubbock.  
**Mrs. Herbert Greener, Stacy** were in Fort Worth last week for a gymnastic meet. Stacy is a member of the Astro Texan team from which participated in the meet.

Cochran County Treasurer's 1st Quarterly Report  
January, February, and March, 1974

	Balance 1-1-1974	Receipts 1st Quarter 1974	Disbursements 1st Quarter 1974	Balance 4-1-1974
Officers Salary	2,814.23	75,623.11	27,197.26	51,240.08
General	118,617.12	16,723.24	90,050.28	45,290.08
Welfare (State)	111.91	-0-	111.91	-0-
R & B #1	17,164.69	20,040.00	4,174.78	33,029.91
R & B #2	12,343.00	20,126.00	5,075.49	27,393.51
R & B #3	22,742.51	20,635.25	4,023.96	39,353.80
R & B #4	34,614.15	20,000.00	3,322.15	51,292.00
R & B #5	17,201.28	4,183.54	8,606.72	12,778.10
Jury	14,565.47	1,079.60	2,010.81	13,634.26
C & J	35,720.94	5,651.62	8,618.44	32,754.12
Special Ad Valorem	94,965.21	10,766.64	80,000.00	25,731.85
Lateral Road	14,046.03	-0-	1,077.15	12,968.88
Car License	-0-	49,412.47	-0-	49,412.47
Social Security	7,225.02	5,030.32	7,168.32	5,087.02
Withholding Tax	-0-	4,022.00	3,905.20	116.80
Group Insurance	1,108.47	2,309.05	3,345.37	72.15
Law Library	323.19	72.00	420.20	(25.01)
C & J Sinking	37,927.76	19,134.17	40,463.92	16,598.01
C. J. Planning	1,105.00	567.50	1,105.00	567.50
Workman's Comp.	4,727.00	6,015.22	3,991.34	6,750.88
Criminal Justice	(433.43)	-0-	4,563.81	(4,997.24)
Federal Revenue Sharing	11,423.50	96,546.90	87,958.97	20,011.43
<b>TOTAL</b>	<b>\$448,313.05</b>	<b>\$377,938.63</b>	<b>\$387,191.08</b>	<b>\$439,060.60</b>

I, Bill A. Crone, County Treasurer, Cochran County, Texas, certify that this report reflects condition of Receipts, Disbursements, and Balances for the First Quarter: January, February, and March, 1974.

April 22 1974  
Examined and Approved:  
D.P. McCraw  
County Auditor  
Chamille Thompson  
County Judge  
Commissioner, Precinct #1  
Bill A. Crone, Treasurer  
Cochran County, Texas  
Notary Public, Cochran County, Texas  
Ed McRissard  
Commissioner, Precinct #2  
H.H. Casson  
Commissioner, Precinct #3  
J.H. Wells  
Commissioner, Precinct #4

## HARVEY FLOYD

DEMOCRAT FOR TEXAS HOUSE OF REPRESENTATIVE 74TH DISTRICT

SUBJECT TO DEMOCRAT PRIMARY MAY 4, 1974

YOUR VOTE & SUPPORT APPRECIATED

PRINTED BY MORTON TRIBUNE PAID FOR BY HARVEY FLOYD, VEGA, TEXAS

## IT'S CLEAN UP AT LUPERS

WEEK OF APRIL 12 THRU 18

FEATURING THESE OUTSTANDING BARGAINS!

UNSERVICEABLE REAR TRACTOR TIRES—FREE

ELECTRICAL TAPE 3/4" x 66' 29c EACH

AUTO LITE—CHAMPION PLUGS  
REGULAR ONLY 49c RESISTOR TYPE 69c

QUAKER STATE OIL

REG. & HIGH DETERGENT \$11.75 CASE SUPER BLEND \$12.95 CASE

GOULD NATIONAL OIL FILTERS — 99c EACH

FOR MONTH OF APRIL WE OFFER

2% CASH DISCOUNT ON ALL GOODS & SERVICES EXCEPT FARM BUREAU PRODUCTS, TERMS: CASH IN FULL AT TIME OF DELIVERY TO QUALIFY FOR DISCOUNT

ANNOUNCE NEW HOURS OF OPERATION:

MONDAY—FRIDAY 8 A.M.—6:30 P.M. SATURDAY 8 A.M.—1 P.M.

## ASK ABOUT OUR SPECIAL FARMERS DISCOUNT ON CASE LOTS OF A-C OIL—FUEL AND AIR FILTERS

### LUPER TIRE & SUPPLY

108 E. WASHINGTON MORTON

PHONE 266-5615 T20 S.W. THIRD  
recurring role of police lieutenant Art Malcolim. Larry Storch and Robyn Millan guest star in the opening episode.



MR. AND MRS. J.C. SNITKER of Enochs have announced the engagement of their daughter, Catherine Jean, to Ronnie Gilbert of Littlefield, son of H.M. Gilbert of Lubbock. The couple is planning a June 22 wedding at 6 p.m. in the Enochs Methodist Church. Miss Snitker is a senior at Bula High School. Gilbert attended Sudan High School and is employed by A.J. Roberts Trucking in Sudan.

## Tech professor claims 'biggest class in West'

When Darold T. Barnum, professor of business administration at Texas Tech University, speaks to his Thursday night class, he is lecturing in the biggest classroom in West Texas.

Barnum's classroom stretches from Borger in the Texas Panhandle east to Wichita Falls and south to Odessa and includes the cities of Amarillo, Plainview, Lubbock, Big Spring and Midland.

The professor doesn't need seven league boots to reach all these cities in one evening. He instead uses modern electronic techniques to appear simultaneously in seven cities via video-tape recorded lessons and telephone conference call hook ups.

The professor teaches a course in Problems in Management for graduate and undergraduate students throughout the area. His students primarily are city

government employees interested in labor relations and collective bargaining.

"Barnum is a relatively new member of the faculty at Texas Tech University. A specialist in the area of labor relations, he brings expertise to the university in this highly topical subject," said D.M. McElroy, director of the Division of Continuing Education at Texas Tech.

"Through the media of video tape and telephone hook ups, he can reach in one semester audiences which otherwise would take eight semesters to service."

The course consists of 15 three-hour meetings on consecutive Thursdays in each of the participating cities. During each meeting, two video taped lessons are played and one hour is devoted to discussion, questions and answers.

Barnum visits a different classroom each week to maintain a personal contact with the students. Conference call

telephone hook ups connect all seven classrooms for the discussion hour.

The course involves much interdepartmental cooperation on the Texas Tech campus, according to McElroy. The lessons are prepared and delivered by the College of Business Administration. They are produced and recorded by the Division of Continuing Education in the television studio facilities of KTXU-TV, the campus station, and they are duplicated in the facilities of the Western Information Network, also on the Texas Tech campus.

The course offers full-time employees an opportunity to further their education and training they might not otherwise be able to have, said McElroy. Each of the students will receive full academic credit for participation in the course.

"Since each city receives a copy of the video tape for each week, two Wichita Falls class members who were hospitalized briefly were able to see the programs in their hospital room and not miss a single lecture," McElroy said.

The course reaches 20 graduate students and 55 undergraduate students from eight cities. Groups from Midland and Big Spring meet together in Midland.

The course was made possible through federal funding provided under Title I of the Higher Education Act of 1965 and administered by the Coordinating Board, Texas College and University System.

"This first venture in video-tape television lectures has been well received by the participating students and is producing the desired results. We hope to be able to expand the course offerings through the Division of Continuing Education in the future," said McElroy.

"Electronic media can well serve the public and help us in our efforts to bring the educational advantages and opportunities of the university to people away from the Texas Tech campus."



The first street mailbox was introduced in 1858 in America.

## Severe crisis said facing cattle feeding industry

The cattle feeding industry is experiencing its most severe financial crisis in history, but while it is losing there is a buyers' market at the meat counter.

April and early May will be the best time in the foreseeable future to take advantages of lower beef and pork prices, according to Texas Tech University agricultural economist Willard F. Williams.

Producers are the heavy losers, Williams said.

"Lower prices in the face of high feed costs and other costs have led to severe losses for cattle feeders, losses ranging from \$50 to as much as \$200 per head," he said.

"The total loss to the industry over the past six months probably ranges between \$700 million and \$1 billion," according to Williams who is a noted market analyst.

The smart shopper, he said, will look for the better cuts of beef and may even find that meat is a better bargain than combination dishes.

"Specials probably will be run on the better cuts of beef," said Williams, "and retail prices should be lower now than at any time during the remainder of the spring and summer."

Specials and general prices will not be as attractive as they were in earlier years, but they will represent advantages over prices which may be expected for much of the remainder of the year, the professor said.

Beef cattle supplies brought about by marketing difficulties, shipping problems and reduced demand for beef have created a temporary surplus which favors current prices, he said.

"The beef industry is one which operates solely on the laws of supply and demand," said Williams.

"Repercussions from the consumer boycott of beef a year ago are still being

felt throughout the beef industry and will continue to be felt for some time."

At the time of the boycott, retail prices had been affected by an earlier sharp rise in demand and a winter which had been extremely severe for cattle producers. A synthetic growth hormone was banned from use, which, combined with the effects of the severe winter, resulted in a temporary shortage of slaughter sized cattle, Williams explained.

Following the boycott, market supplies continued short but wholesale and retail prices were held down by price ceilings. Meat packers were so severely affected that many closed their plants during August. The shutdown occurred at just the time that cattle began to reach market weight, he said.

A huge backlog of cattle on feed developed quickly and met with a decline in consumer demand. Producer prices began trending lower in September and, except for a brief rise early in the year, have continued almost steadily lower since that time.

"The cattle feeding industry now is experiencing the most severe financial crisis in history," he said.

Cattle feeders were beginning to make progress toward reduced supplies of heavy and excessively finished cattle when the trucking strike was called last February. This produced additional surpluses and even lower producer prices, according to Williams.

"Retail beef prices dropped during the fall but not nearly so much as producer prices. They rose sharply again with the upturn in producer prices early in the year and even more during the trucking strike," Williams said.

"More recently, producer prices have been trending lower and should continue lower. A current backlog of cattle on feed is mainly responsible for temporarily better prices which we now can enjoy," he said. "But under the current supply of

## Home loans for veterans made easier

The Veterans Administration recently married home-minded veterans that is now easier to qualify for GI home loans.

Jack Coker, VA Regional Office Director, noted that VA now accords full recognition to incomes and expenses of both veteran and spouse in determining ability to repay loan obligations.

Coker said VA is required by law to determine if contemplated terms of repayment bear a proper relation to the veteran's anticipated income and expenses before approving the loan.

"But while the spouse's income has always been considered," Coker explained, "local rules sometimes had the effect of discontinuing the spouse's income. Now, however, no such local rules are imposed, and the spouse's income is given full consideration."

VA guarantees 60 percent of GI home loans (maximum \$12,500) private lenders make to servicemen, veterans and eligible spouses of World War II, Korea and post-Korean Conflicts and the Vietnam Era.

marketable cattle is a reduced supply of cattle to replace them which again will briefly cause prices to rise from May through much of the summer."

Surplus cattle which meat packers are unable to move causes them to get back on buying. This causes backlogs of feedlots which causes them to cut back on buying. And this causes cattle raisers to cut back on the number of cattle to produce because they cannot sell them, Williams explained.

"Variations in supply and demand have time to level off in beef production," Williams said. "The marketing system is fragile and slow to recover from disruptions."

# Sale of Three Cities

Extraordinary furniture values in Brownfield, Levelland and Littlefield!

A celebration designed to demonstrate the outstanding furniture and carpet values in West Texas. Stacy-Mason's volume buying from the nation's leading manufacturers brings you quality and style furniture and carpet. And now it's all on sale during the "Sale of Three Cities."

### Carpet:

Sale prices listed below are on 125 rolls of carpet.

This is only a partial listing of the carpet qualities in stock at Stacy-Mason's. Ask to see our Jakarta Cloudburst, Nordic Sky, and Bell Carlo qualities.

- 100% nylon, space dyed tweed colors, your choice of high density foam back or 7/16" rebound foam padding, Level Loop design. **Installed \$6.95**
- Printed kitchen carpet by Evans & Black, small geometric pattern for large or small room, looks great in kitchen and den combination, very practical, color choice. **Installed \$8.95**
- Sculptured 100% nylon. New double date by Evans & Black, practical and vertical tweed colors to go into any decor, completely installed over 7/16" rebound padding. **\$8.95**
- Plush shag, Caracus, 100% nylon in exciting tweed colors, durable for any room in your home, carefree and easy to care for, completely installed over 7/16" rebound foam padding. **\$10.95**
- Regal Row, Stacy-Mason's most fashionable sculptured shag, made from 100% long staple nylon, this two color shag is the real thing in luxury look, installed over 7/16" rebound foam pad. **\$12.95**

### Bedding:

Stacy-Mason sells only Sealy Bedding...why? Sealy makes the most comfortable long lasting bedding for your dollar.

1. Sealy Ortho Firm—Bedding quality made at a low, low price.			
Twin Size	Regular Size (each piece)	Queen Size Set	King Size Set
\$49.95	\$65.00	\$169.95	\$219.95
2. Sealy Health Guard—Great comfort at the right price.			
Twin Size	Regular Size	Queen Size Set	King Size Set
\$69.95	\$85.00	\$199.95	\$259.95
3. Sealy Imperial Posturpedic—Truly the world's finest bedding at any price.			
Twin Size	Regular Size	Queen Size	King Size
\$99.95	\$119.95	\$299.95	\$419.95

### Bed Feature Sofas, Sofa Beds, Sleep Sofas:

- Traditional Queen Size Sleeper Sofa—Your choice of Hercules plaids or crush velvet in 6 colors, excellent tailoring, good comfortable bed, long lasting and practical. **\$299.95**
  - Quilted LaFrance Velvet Sleeper—Queen size, excellent used in formal living room to give you an extra bedroom, this sleeper features a fine innerspring mattress. **\$549.95**
  - Spanish Queen Size Sleeper—Quilted print velvet in rich gold, green or orange colors, this soil-hiding fabric will look great in your home, pecan wood trim for the authentic Spanish look. **\$449.95**
- Stacy-Mason has 100 bed feature sofas in stock. If you have had a hard time finding your sleeper-look over the excellent selection during the sale of the three cities.

### Sofas:

- Riverside Early American Sofas—Tail-comfortable backs, maple wood trim, your choice of velvet or tweed fabrics, famous Riverside quality. **\$349.95**
  - Jackson Pub Sofa—This classic design made strictly for your comfort, big puffy tall back, this best selling sofa features a beautiful Hercules plaid fabric in oranges-golds-browns-and-green. Matching chair, ottoman and love seat available. **\$349.95**
  - Condren Sofa—Your choice of crush velvet or Hercules Plaid, this 3 cushion sofa is built to smaller scale for the smaller room, all quality features are included in this excellent sofa. **\$259.95**
  - Bruington Sofas—Our newest line out of the Carolinas, coil spring construction, excellent fabric hardwood frames made to last, all this plus great values. For example 86" sofa with all the feature in beautiful Hercules fabric. **\$299.95**
- Stacy-Mason has the largest selection of quality sofas in town. All are stylish-need to be in someone's home. During this sale you can save up to 50% on beautiful sofas.

### Chairs, Rockers, La-Z-Boys:

- High style La-Z-Boys, a new selection in beautiful velvet fabrics, you get the usual comfort of La-Z-Boy plus a new stylish look, this group in limited supply. **\$249.95**
- Riverside Swivel Rockers, in your choice of gold-green or orange crush velvet, extra tall back for added comfort. **\$169.95**
- Jackson Pub chair and ottoman, designed to give chair lovers the ultimate in comfort, featured in our most practical Hercules plaid fabric, be sure to try this one. **\$249.95**
- Condren Swivel Rockers, our most popular rockers, good choice of colors, this rocker is styled design to go with a number of different looks, great value. **\$139.95**
- Early American Rockers, lots of exposed wood turnings, rich maple finish, scotchguard print skirts, seat and back pads, high back style. **\$59.95**

### Bed Room Suites:

- 3 piece Bed Room Suites, plate glass mirror, double dresser, regular or queen size bed, your choice of Early American maple, Spanish oak or white French Provincial, all dressers have high pressure plastic tops. **\$219.95**
- Harrison Oak, 100% solid wood in rural styling, very durable, stylish dark finish, triple dresser, landscape mirror, spindle headboard and footboard. **\$440.00**
- Thomasville "Litchfield", colonial styling, rich oak finish, we have all the pieces in this quality made group, king triple dresser with two vertical mirrors, door chest, two nite stands, king size headboard. **\$1,139.00**

Stacy-Mason has a complete selection of bedroom furniture in all styles and price ranges. You owe it to yourself to see all of these beautiful suites. All priced at real Sale Prices.



## PEST CONTROL

### AAA PEST CONTROL

RATS, ROACHES, FLEAS TREES AND LAWNS

ALVIN STOVALL

112 AVE. L PHO. 894-7284 LEVELLAND, TEXAS

## MORTON CO-OP GIN

will hold its annual

### Stockholders Meeting

## APRIL 26

AT THE

### County Activity Building

MORTON, TEXAS

The meal will be served from 6 until 8 p.m. with business meeting starting at 8 p.m.

Please Bring Your Tickets for Prizes and Ballot for Voting

## PLEASE COME!

AND PLEASE BE ON TIME!

loans  
terans  
easier

Administration remains  
d veterans that it  
for GI home loans.  
Regional Office  
A new accord for  
es and expenses of  
use in determining  
bligations.  
required by law to  
mulated terms of  
per relation to be  
ed income to be  
oving the loan.  
ouse's income be  
sidered." Cases  
les sometimes be  
ning the spouse's  
er, no such loan  
and the spouse's  
nsideration."  
percent of GI home  
(50) private lenders  
en, veterans and  
rld War II, Korea  
cts and the Vietnam

a reduced supply  
n which again will  
to rise from May  
ummer."  
ch meat packers  
causes them to cut  
causes backlog to  
them to cut back on  
es cattle raisers to  
ber of cattle they  
cannot sell them.

ily and demand for  
beef production.  
marketing systems  
to recover from

\$299  
\$499  
\$449  
\$349  
\$259  
\$299  
\$249  
\$169  
\$249  
\$139  
\$59  
\$219  
\$440  
\$1,139



**MRS. WERNER MOEHR** of Fredericksburg announce the birth of their daughter, Donna Marie, to Bill White, son of White and the late T.B. White of Morton. Miss Moehr is a graduate of Fredericksburg High School and a 1972 graduate of Austin State University. She is a teacher in the Southwest District in San Antonio. White is a 1963 graduate of Morton High School and a 1969 graduate of Abilene College. He is employed by Harlandale Independent School District as a Biology teacher and varsity backfield coach at Harlandale High School in San Antonio. The couple is planning a wedding in Holy Ghost Lutheran Church in Fredericksburg.

**School Menu**

**THURSDAY** Chicken casserole, whip potatoes, mixed vegetable, butterscotch pudding, hot rolls, milk.  
**FRIDAY:** Vienna Sausage, sauerkraut, tomato and macaroni, plum cobbler, hot roll and milk.

**TRY A TUNE-UP**  
A good tune-up will add an average of 8 to 10 per cent to gas mileage if your car is due for a tune-up, according to the Car Care Council.

**Whiteface News**

by Jean Bates

Rube Hudgens, who suffered a stroke, is still in West Texas Hospital in Lubbock. He is reported to be doing fine at this time.

Odell Scribner, formerly of Whiteface now living in Levelland, suffered an apparent heart attack and is in Cook Memorial Hospital.

Mr. and Mrs. Dayton White visited with their son and family in Cleburne. From there they went to Electra to visit with two of Lela's sisters.

Mrs. Ben Brown is home from Methodist Hospital in Lubbock. He had heart surgery a few months ago.

Sherri Jackson, daughter of Mr. and Mrs. Charles Jackson, is in a Galveston hospital where she has been for over a month. Her grandfather, E.J. Jackson, reports she is doing much better. She is in leg braces and a wheel chair and it is possible that she will be home soon.

Jay Maze and his wife, Sally, of Steamboat Springs, Colo., visited with their grandmother, Dessie Bowden, last week.

Mr. and Mrs. Charles Sanders and Gail attended a pink and blue shower for their daughter, Chrystie Love, in Lamesa last Saturday.

**Enochs-Bula News**

Mrs. Robbin Taylor of Muleshoe and Mrs. WINNIE Byars attended the Home Demonstration meeting at the First Methodist Church in Big Spring Tuesday.

Mr. and Mrs. J.D. Bayless enjoyed a fish fry at the home of his brother, Roy Bayless, Thursday night. Other relatives present were: Mrs. Billy Bayless and daughters, Kelly and Kala of Muleshoe and Mrs. Jinnie Lee Fields and children from Kansas City, Mo. Mrs. Kay Bynum and Mike of Muleshoe, Mr. and Mrs. Eddie Bynum from Lubbock and several of Roy's friends were also present.

**Bookmobile Schedule**

The High Plains Bookmobile will be in your area on the following dates:  
Tuesday, April 30: Morton, 9:30-11:45.  
Wednesday, May 1: Circleback, 9:00-10:00; Bula No. 1, 10:15-11:15; Bula No. 2, 12:00-1:00.

Mr. and Mrs. John L. McCoy of Fort Worth visited over Easter weekend with her parents, the E.E. Hemmings.

Mary and Blanche Lasater of Paris, Texas visited last week in the homes of their brothers, Fred and Marvin Lasater.

Mrs. Eula McCoy of Odessa visited in the home of the Lee Smiths over Easter weekend.

Pat and Larry Flowers of Odessa visited her parents, the Marvin Lasaters during Easter vacation.

Mr. and Mrs. J.R. Hagins of Post visited in the home of their daughter and family, the Richard Souters, a week ago Sunday.

The Junior class won the Intramural track meet last Friday.

**Minor League**

Registration has been extended for Minor Baseball League. All boys ages 7, 8, and 9 who wish to play may call Mrs. Kenneth Williams at 266-5002 or Mrs. Don Lynskey at 266-5242 for further information.

Let's Keep a Strong Voice in the Senate,

RE-ELECT

**SENATOR  
H.J. "DOC"  
BLANCHARD**

He Stands For Equal Education  
For All Of Our Children!

A good man,  
doing a good job  
for West Texas



**BEN FRANKLIN**

Have **FUN** IN THE **SUN**

**Return-A-Ball**  
37 sq. in. steel tubular frame, nylon net. Rustproof. **5.99**

**Baseball Specials!**

**"ALL STAR" BASEBALL BATS**  
Black finish, gold branding. 31-36-in. lengths. Slight irreg. **1.97**

**ALUMINUM SOFTBALL BATS**  
Louisville slugger -- for extra base hits! **7.77**

**GLOVE & BALL SET**  
Full size, non-tear vinyl glove; solid rubber baseball. **2.66**

**Youth's Fielder's Glove**  
Top grained cowhide, leather lined. Finger-tip control. **6.99**

**Adult Fielder's Glove**  
Top grain cowhide, leather lined; deep pocket. Interlock webbing. **12.88**

**Regulation Softball**  
12-in., reg. size with cork; genuine cowhide cover. **1.28**

**Solid Rubber Ball**  
Official size baseball. Perfect for young "rookies". **99¢**

**HUFFY**  
**26-In. 10-SPEED BIKE**  
Light and fast! Padded blue saddle, blue taped handlebars. Wide ratio gears. **73.88**

**26-In., 3-Speed**  
**LIGHTWEIGHT BIKE**  
Deluxe Shimano brand! Twist grip gear; vinyl saddle; front & rear caliper brakes. **54.88**

**20-In. Hi-Riser Bike**  
Smooth coaster brake. Red and blue metallic colors, chrome fender trim. **42.99**

**ATTENTION GRAIN PRODUCERS:**  
PLANTING TIME IS JUST AROUND THE CORNER AND WEST TEXAS SEED COMPANY IS LOOKING FORWARD TO WORKING WITH YOU AGAIN IN 1974  
WE CAN FULFILL ALL YOUR HYBRID SEED NEEDS  
WE FEATURE  
**GRAINMAKER 200**  
WITH NO PRICE RISE FOR FIVE YEARS  
GRAINMAKER 200 HAS BEEN A LEADER IN YIELDS IN THIS AREA FOR THE PAST SEVERAL YEARS.  
\*GOOD STANDABILITY  
\*GOOD DROUGHT TOLERANCE  
\*SHORT STALK AIDS SPRINKLER MOVEMENT  
WE HANDLE MOST BRANDS OF HYBRID SEEDS  
SEE WEST TEXAS SEED COMPANY FOR THESE AREA DEALERS FOR GRAINMAKER 200:  
MAPLE FERTILIZER, MAPLE MORTON COOP GIN  
BLEDSOE SEED STORE BESEDA GRAIN, WHITEFACE  
FARMER'S COOP ELEVATOR, LEVELLAND  
**WEST TEXAS SEED DORA HIGHWAY**  
EAST OF TOWN PHONE 266-5557 MORTON

recruiting role of police lieutenant Art Malcolm. Larry currently starred in the Los Angeles production of a London... Church and Dave Millan must star in this motion picture.

**NOTICE TO OUR CUSTOMERS**  
 WE NEED YOUR HELP!!  
 Paper bags are in short supply due to the critical paper shortage. We ask all our customers to help us. Please bring your bags with you and place in your shopping cart to be used with your own order. Please take boxes when possible.  
 Thank You For Your Cooperation.



# THRIFTWAY

**A BETTER WAY TO SAVE**

PRIZES PRICES EFFECTIVE APRIL 26th TO MAY 2nd RIGHT TO LIMIT QUANTITIES.



**COMET CLEANSER**  
 21 OZ. CAN **27c**

**5¢ OFF LABEL PALMOLIVE LIQUID DETERGENT**  
 12-oz. BTL. **33c**

**MR. CLEAN**  
 28-oz. BTL. **79c**

**HEALTH & BEAUTY AID SPECIALS**  
**GILLETTE TECHMATIC ADJUSTABLE BANDS**  
 10 — BANDS **\$1.49**

**PERTUSSIS 8 HOUR COUGH SYRUP**  
 3-oz. BTL. **\$1.09**  
**VASELINE HAIR TONIC**  
 3 1/2-oz. BTL. **79c**

**BRECK SHAMPOO**  
 FOR DRY, NORMAL FOR OILY HAIR  
**\$1.09**  
 7-oz BTL.

**KOTEX TAMPONS**  
 REGULAR OR SUPER  
 BOX OF 40 **\$1.39**

**WILSON CERTIFIED SLICED BACON**  
 TOP QUALITY LB. **99c**

**CHICKEN BREAST FROZEN**  
 5 LB. BOX **\$3.49**

**WILSON'S CERTIFIED SUMMER SAUSAGE**  
 LB. **\$1.19**

**RATH'S PURE PORK SAUSAGE**  
 1-LB. ROLL **59c**

**QUARTER PORK LOIN**  
 SLICED  
 9 TO 11 CHOPS PER PACKAGE  
 LB. **89c**

**RIB PORK CHOPS**  
 CENTER CUT LB. **\$1.09**

**LOIN PORK CHOPS**  
 CENTER CUT LB. **\$1.19**

**WILSON'S CERTIFIED FRANKS** 12-oz. PKG. **69c**  
**CHORIZO** 1 LB. **79c**  
 (SKINNED AND DEVEINED) SELECT  
**SLICED BEEF LIVER** LB. **89c**  
 WILSON'S CERTIFIED RING BOLOGNA OR  
**GARLIC BOLOGNA** LB. **\$1.09**  
**LUNCHEON MEAT** SHURFRESH YOUR CHOICE... 2/ **89c**  
 COUNTRY STYLE  
**SPARE RIBS**..... LB. **89c**

## BABY WEEK

**READY TO USE SMA ENFAMIL OR SIMILAC**  
 32-oz. CAN **69c**  
 CASE OF 6 32-oz. CANS **\$3.99**

**DOWNY FABRIC SOFTENER** 33-oz. BTL. **79c**  
**GERBER'S STRAINED FRUITS AND VEGETABLES BABY FOOD** 4 1/2-oz. JAR **11c**  
**GERBER'S — FOR BABIES FRUIT JUICES** CAN **11c**  
**OVERNIGHT DISPOSABLE PINLESS SOFLIN DIAPERS** 12-CT. PKG. **79c**  
**DAYTIME DISPOSABLE PINLESS DIAPERS** 30-CT. PKG. **\$1.49**  
**SOFLIN DIAPERS** 30-CT. PKG. **\$1.59**  
**NEWBORN DISPOSABLE DIAPERS** 30-CT. BOX **\$1.59**

**VASELINE INTENSIVE CARE WIPE-N DIPE** BOX OF 50 **79c**

**Q-TIPS COTTON SWABS** BOX OF 170 **79c**

**TEXIZE FANTASTIC**  
 TRIGGER SPRAY CLEANER  
 NEW EASY SPRAY  
 22-oz. BTL. **79c**

Since this is National Baby Week Thriftway takes this opportunity to invite all the mothers to come in and make exceptional savings on their budget and provide their babies with the finest of food products. Our congratulations to both of you!!  
 Your Friendly Thriftway Manager

**SHURFINE KETCHUP**... 14 OZ. **3/89c**

**MILD BANANA TOWIE PEPPERS**... 15-oz. JAR **49c**

**SUNSHINE BUSTER COOKIES** **49c**

**MINUTE MAID FROZEN ORANGE JUICE**  
 3 6-oz. CANS **\$1**

**MORTON FROZEN MEAT POT PIES**  
 BEEF, CHICKEN, TURKEY  
 4 8-oz. CTNS. **\$1**

**KOTEX FEMININE NAPKINS**  
 BOX OF 12 **47c**

**BETTY CROCKER LAYER CAKEMIXES**  
 ASST. FLAVORS BOX **47c**

**SHURFINE FLOUR**  
 ENRICHED  
 5-LB. BAG **89c**

**FARM FRESH! PRODUCE SPECIALS**  
 CALIFORNIA RED RIPE STRAWBERRIES 3 BASKETS **\$1**  
 CABBAGE GREEN LB. **9c**  
 CARROTS CALIFORNIA 1-LB. CELLO PKG. 2 FOR **29c**  
 LEMONS CALIFORNIA SUNNIST LB. **29c**  
 PEARS WASHINGTON D'ANOU LB. **33c**  
**U.S. NO. 1 RUSSET POTATOES**  
 5-LB. POLY BAG **89c**

**PAPER TOWELS** 3 JUMBO ROLLS **\$1.00**  
**FOOD KING SHORTENING** 3-LB. CAN **\$1.29**  
**ROXEY — MAKES GRAVY** 5-LB. BAG **99c**  
**DRY DOG FOOD** 5-LB. BAG **99c**  
**AUNT JEMIMA COMPLETE PANCAKE MIX** 2-LB. BOX **79c**  
**ORANGE OR LEMON LIME STOKELY GATORADE** 32-oz. BTL. **43c**  
**SHURFINE TOMATO SAUCE** 2 8-oz. CANS **29c**  
 WITH CHEESE CHUNKS OR SPAM SMOKED FLAVOR  
**SPAM** 12-oz. CAN **99c**  
**ARMOUR VIENNA SAUSAGE** 5 OZ. **39c**

**WOODWIND TEASPOON** EA. **3**  
 WITH \$5.00 PURCHASE

**HARDWOOD DIRECORS CHAIR**  
 GREEN OR ORANGE  
**\$14.88**

**DO-IT-YOURSELF BAR STOOL**  
 30" STOOLS  
 2-PER KIT **\$5.95**

**DOSS THRIFTWAY**  
 "A BETTER WAY TO SAVE"  
 DOUBLE GOLD BOND STAMPS WED.  
 WITH \$2.50 PURCHASE OR MORE

**VALUABLE COUPON**  
 NO. 5387-5  
 MAXWELL HOUSE  
**COFFEE** 1-LB. CAN **99c**  
 WITH THIS COUPON  
 THRIFTWAY FOOD STORE  
 VOID AFTER MAY 2, 1974