

# Floydada Appearance Program Begins Monday

segment of Floydada's appearance program will be cooperating in the appearance program. There will be two solid appearances, one from local homeowners and one from local businessmen, school system, clubs and youth groups, and of course the general public.

## CITY SERVICES

The City of Floydada will furnish a trailer to residents who have large garbage items. The sanitation department will make special pick-ups of full garbage dumpsters before 12:00 noon and 5:00 p. m. each day from April 19 to April 30. The City will also contract to demolish old houses with signed

permission at no cost to owner. These services are available without charge by calling 983-2834.

## ORGANIZATION SUPPORT

Twelve local clubs and youth groups have pledged to participate or plan special projects during the program. Those organizations involved include the 1950 Study Club, Women's Division of the Chamber, Lions Club, 1929

Study Club, boy Scout Troop #355, Rotary Club, Beta Sigma Phi, Rotary Club, 1956 Jr. Study Club, Young Homemakers, Home Builders Demonstration Club, and Girl Scouts.

## SCHOOL PROJECTS

A coordinated effort with various projects among the Floydada schools will be an additional feature of the 1976 program. A paper drive, essay contest, school grounds litter clean-up, and

check lists for the home will be the activities planned for all five schools.

## APPEAL TO RESIDENTS

The Chamber of Commerce is urging all citizens to take extra pride in their own property by clearing away all brush, rubbish, and objectionable material. Everyone is reminded that city services are available to help in hauling away loads of garbage.



## MAYOR PROCLAIMS OBSERVANCE, April 19-May 1 PROCLAMATION

WHEREAS - The economic prosperity of Floydada is directly affected by the physical appearance and the environmental condition of the community; and,

WHEREAS - The health, safety, and welfare of the city must be maintained to a high degree by the recognition and concern of its inhabitants; and,

WHEREAS - An attractive and well maintained community will provide a more pleasant and desirable place in which to live and raise a family; and,

WHEREAS - City Ordinance # 396 provides for the establishment of an annual clean-up campaign for the purpose of clearing weeds, removing trash and refuse from lots within the City of Floydada; and,

WHEREAS - It is the special interest and desire of the City of Floydada and the Floydada Chamber of Commerce to encourage local businesses and residential homeowners to improve and beautify their property,

NOW THEREFORE, I, Parnell Powell, Mayor of the City of Floydada, Texas, do hereby declare April 19 - May 1 as a time for special attention to be made to the appearance and beautification of Floydada, Texas.

/s/ Parnell Powell, Mayor



DED BY BEAUTY AND EASTER FINERY...little Rance, 6 month old son of Mr. and Mrs. Dayne Golightly, seems to be having a great time with his Easter bunny that the cute young ladies at the Easter show in their Sunday 'best' is Christy Kendrick, left, 4, Mr. and Mrs. Bobby Kendrick and Jennifer Crow, 3, Mr. and Mrs. Byron Kendrick and Jennifer Crow, 2, given away by Perry's Variety. The winner will be announced next week. (Staff Photo)

# Floyd County Hesperian

15¢ Per Copy



12 PAGES IN ONE SECTION

VOLUME 81 FLOYDADA, FLOYD COUNTY, TEXAS 79235 SUNDAY, APRIL 18, 1976 NUMBER 32

## Appliance Show Set

A consumer information program and exhibits on buying and using appliances will be presented at the Massie Activity Center Tuesday, April 20th. The program is being sponsored by Texas Agricultural Extension Service and Floyd County Family Living Committees. It will feature appliance specialist from the Extension Service, Education Institution, Utility Companies and Appliance Manufacturers. The group will demonstrate microwave ovens and other range revolutions, laundry equipment and kitchen clean-up appliances. Sharon Hillis, County Extension Agent, will be in charge.

Presentations will be given from 9:15 a.m. to 11:30 and from 1:15 p.m. until

2:30 p.m. A lunch break will be from 11:30 a.m. until 1 p.m.

Exhibits by participating Floyd County merchants will include those from Kirk and Sons, White Auto Store, Bishop's Appliance and Mize TV in Floydada and White Auto Store, Parker Furniture & Appliance and Mize Pharmacy and TV of Lockney.

Door prizes will be furnished by Southwestern Public Service, Lighthouse Electric, White Auto Store, Kirk and Sons Hardware, Caprock Hardware and Montgomery Ward of Floydada; and Boot Hill, Byrd Pharmacy, Brown's Department Store, Lockney Variety, The Outlet and Davis Lumber of Lockney.

On the program will be Mrs. Martha M. Logan, Associate Professor Home Management at Texas Tech; Lynn Bourland, Extension Family Resource Management Specialist, College Station; Kathy Burk, Home Service Advisor at Lighthouse Electric, Floydada; and A. D. Boon, Regional Manager of The Maytag Co., Lubbock.

Mrs. Logan who will present, "Clean-Up Crew", spent three years at the Penn State University as Assistant Professor in Consumer Service and Household Equipment; one summer teaching classes at the University of Wyoming; held assistant-ships in teaching household equipment and home management at Ohio State; two years high school teaching in Virginia; served as information specialist in Food Marketing Information for Consumers at the University of Kentucky and has traveled extensively to present cooking schools, demonstrations and various classes.

Miss Bourland will speak on "Range Revolutions." She received her home economics education at Texas Tech and has served as Home Economics Education Research Assistant at Tech and taught home economics at Clarendon High School until becoming Extension Home Management Specialist at College Station in 1972. She has specialized in home management and consumer subject-matter educational and informational programs for adults and youth. Miss Bourland was the first State Young Homemaker Little Sister. Miss Burk, who has been employed

at Lighthouse Electric for some two years will present "New Waves in Cooking." She graduated from Texas Tech with a B.S. in Home Economics. She has specialized in Home Management which includes studies in Housing Design, Consumer Education and Household Equipment.

Boon will give demonstrations on washers and dryers.

## Families Stake In Social Security

Apr. 10 - How large an investment do residents of Floyd have in the Social Security

of the money that has been paid out in the form of weekly paychecks to provide for their retirement at the present time? General concern throughout the county about the condition of the Social Security trust fund, which is providing income for 32 million people, not to mention 100 million more who are looking forward to when they retire, has caused the Department of Social Security and Welfare show fund now has some \$44 billion less than is normally expected.

further this year, to approximately \$39 1/2 billion, because money is going out faster than it is coming in.

If it were to continue declining at that rate and nothing were done to replenish it, it could be exhausted by 1982 or so. That will not be allowed to happen, however.

The stake that State of Texas residents have in the reserve fund, as it now stands, is estimated at \$2,260,000,000, based upon their contributions to it. Floyd County's interest in it figures out to \$1,835,000.

The drain on the retirement system's finances, it is pointed out, has been due to the recent recession and to the fact that there have been more than eight million people out of work, making no contributions to the funds.

Recession or no recession, the distribution of benefits to retirees had to continue, however. In fact, the figures show, the total payout increased, as many workers, unable to get jobs, retired earlier than expected.

President Ford's proposal to shore up the trust fund by raising the payroll tax has been turned down by Congress. It felt that this was not a good time to increase taxes.

Now, with the economy improving and more workers getting back on payrolls, it is expected that more money will soon be flowing into the trust fund.

If not, other means will be found to build it up. In any event, no one is in any danger of losing his pension because of the temporary situation.

## Funeral Sunday For Dalhart Wreck Victim

Thurston, 24 year old resident of Floydada, was killed instantly about 3:50 p.m. April 15, some five miles west of Dalhart in a

collision of two pick-ups. Services for Thurston will be conducted Sunday afternoon, April 18th, at 2:30 in Floydada. Rites are tentatively set at the City Park Church

of Christ. Moore-Rose Funeral Home will be in charge of arrangements.

According to a report from a spokesman of the Dalhart Texan newspaper, Thurston, who was a farm and ranch employee of Curtis Chrisham of Dalhart, was crossing South Sedan Road, a farm to market paved road from a dirt road, to service an irrigation well. Thurston was thrown from his pick-up and pronounced dead at the scene by an official.

The spokesman said occupants of the other vehicle traveling on the Farm to Market road were Mr. and Mrs. George Reeves of Dalhart. Both remain in Coon Memorial Hospital in Dalhart for treatment of cuts, bruises and lacerations.

Thurston was born in Floydada January 7, 1952. He was graduated from Floydada High School in 1970 and from Lubbock Christian College in 1974. He and the former Iris Jo Hanna of Nacogdoches were married in Lubbock, June 27, 1975.

Survivors include his parents, Mr. and Mrs. Joe Thurston southeast of Floydada and four sisters, Mrs. Joe (Anella) Andrews of Lovington, New Mexico, Mrs. Ken (Lynda) Wise of the Philippine Islands, Mrs. Rob (Sandy) Core of Lubbock and Miss Johnnie Thurston of Abilene and a grandmother, Mrs. Henry Hall of Rio Vista, Texas.

## Baseball Meeting Set Monday

A meeting of the Youth Baseball League will be held Monday night, April 19, at Lighthouse Electric. Adults interested in the league are asked to meet at the door on the east side. The president of youth baseball is all adults who would be

interested in working with the groups this year to please attend the meeting. Plans will be made at the meeting for all baseball leagues.

Sign-up dates for youth will be April 27th.

## Citizens To Vote In Ag Building

Ballot boxes will be placed in the May 1 primary election in the Ag Building in the northern part of Floydada. The ballot boxes will be placed in the Lockney school. David Batter Jr., president of the school board for Floydada and the north part of the county will be found inside

this newspaper. District delegates on the ballot represent specific presidential candidates.

Absentee voting in the May 1 primaries began this Monday and April 27.

Absentee ballots may be cast at the county clerk's office.

## SCHOOL CLASSES TO RESUME MONDAY AFTER EASTER HOLIDAY BREAK.

ATTENTION EVERYONE: Those connected with Comedy Capers please be at the High School auditorium at 7:30 Friday night, April 23 for the first rehearsal.

## Band Booster

### Meet Monday Night

Floydada Band Boosters will hold an important meeting Monday night, April 19th beginning at 7:30 in the community room at Lighthouse Electric. All band parents are urged to attend and get acquainted with the new slate of officers.



EASTER EGG HUNT AT CAPROCK HOSPITAL...youngsters of all ages enjoyed an Easter egg hunt Thursday morning. Night supervisor, Julia Whiteleather thought up the idea for the gala occasion, sponsored by the hospital. Nila Bryant is the Easter bunny and hands out prizes to Teresa and Carmen Garza for finding the most eggs. The two are children of Mr. and Mrs. Richard Garza. David Walding, held by Nila, received a rabbit for finding the prize egg. (Staff Photo)

Let us Worship Together at Easter



# HELP YOURSELF TO THESE "TOTAL SAVINGS"



**PORK ROAST**  
**89¢**  
LB.



10 LB. BAG ALL PURPOSE  
**RUSSET POTATOES**  
**89¢**

GRAIN FED BEEF BONELESS  
**CHUCK ROAST** LB. **99¢**

FRESH-NOT LESS THAN 80% LEAN  
**GROUND BEEF** LB. **89¢**

GRAIN FED BEEF-CENTER CUT  
**Pork Steak** LB. **98¢**

RUDY'S FARM-HOT OR MILD  
**Pork Sausage** 1 LB. ROLL **\$1.49**

OSCAR MAYER-ROUND-SQUARE-ALL BEEF-GARLIC  
**Sliced Bologna** 8 OZ. PKG. **79¢**

RUDY'S FARM-HOT OR MILD  
**Pork Sausage** 2 LB. ROLL **\$2.97**

OSCAR MAYER  
**Variety Pak** 12 OZ. PKG. **\$1.69**

MARKET CUT-KRAFT ELKHORN OR WISCONSIN  
**Longhorn Cheese** LB. **\$1.49**

TENDERIZED  
**Boneless Cutlets** LB. **\$1.69**

GOOCH GERMAN  
**Smoked Sausage** 12 OZ. PKG. **\$1.19**

CALIFORNIA  
**Carrots** 1 LB. BAG **17¢**

CALIFORNIA  
**Sunkist Lemons** 5 LB. **59¢**

GARDEN FRESH  
**Cherry Tomatoes** BASKET **39¢**

CALIFORNIA SUNKIST  
**Navel Oranges** 5 LB. **59¢**



DETERGENT 15¢ OFF LABEL  
**COLD POWER**

**99¢**  
GIANT BOX



SALAD DRESSING  
**MIRACLE WHIP**

**89¢**  
QUART JAR



BARONET YELLOW CLING  
**SLICED PEACHES**

**39¢**  
29 OZ. CAN



HI DRI  
**PAPER TOWELS**

**39¢**  
JUMBO ROLL



FOLGER'S MOUNTAIN GROWN  
**COFFEE**

1 LB. CAN **\$1.39**



SHURFINE  
**ENRICHED FLOUR**

5 LB. BAG **69¢**



CRISCO PURE VEGETABLE  
**COOKING OIL**

24 OZ. BTL. **75¢**

**TOTAL FROZEN FOOD SAVINGS**

CHEESE-SAUSAGE-PEPPERONI-HAMBURGER  
**Jeno's Pizzas** 13 1/2 OZ. CTN. **79¢**

MORTON FROZEN  
**Regular Dinners** 11 OZ. CTN. **59¢**

**TOTAL GROCERY SAVINGS**

NABISCO  
**Triscuit** 9 1/2 OZ. BOX **69¢**

FOLGERS  
**Coffee** 2 LB. CAN **\$2.99**

FOLGERS  
**Coffee** 3 LB. CAN **\$4.49**

SUNSHINE  
**Cheez-it** 10 OZ. BOX **55¢**

SKINNERS THIN  
**Spaghetti** 12 OZ. PKG. **39¢**

HEINZ-ASSORTED  
**Barbecue Sauce** 16 OZ. BTL. **59¢**

NEW FREEDOM  
**Kotex Mini Pads** 30 CT. BOX **\$1.29**

NEW FREEDOM  
**Kotex Maxi Pads** 30 CT. BOX **\$1.79**

CLOVERLAKE ORANGE LIME OR PINEAPPLE  
**SHERBET**

**99¢**  
1/2 GAL CTN

32 OZ.-6 PAK  
**COKE**

**\$1.39**  
PLUS DEPOSIT

**TOTAL DAIRY FOOD SAVINGS**

BORDEN LITE LINE  
**CHEESE**

8 OZ. PKG. **79¢**

CLOVERLAKE  
**COTTAGE CHEESE**

24 OZ. TUB **89¢**

FOOD KING  
**SOLID OLEO**

1 LB. PKG. **29¢**

WILSON VIENNA  
**SAUSAGE**

3 5 OZ. CANS **\$1.00**

WILSON POTTED  
**MEAT**

5 3 OZ. CANS **\$1.00**

**HEALTH AND BEAUTY AID ITEMS**

LISTERINE ANTISEPTIC  
**MOUTH WASH** 7 OZ. BTL. **59¢**

SPRAY POWDER  
**DESENEK FOOT CARE** 6 OZ. CAN **\$1.19**

**ALLEREST TABLETS** 24 CT. BTL. **\$1.19**

BAND-AID plastic strips 60 family pack **\$1.19**

BAND-AID BRAND Plastic Strips 60 CT. BOX **79¢**

NON-AEROSOL A/P DEODORANT  
**BAN BASIC** 3 OZ. BTL. **\$1.19**

SUPER II-WITH FREE EDGE SHAVE GEL  
**Schick Blades** 4 CT. PKG. **79¢**

SUPER II  
**Schick Razor** 1 EA. **79¢**

SINE-OFF  
**Sinus Tablets** 24 CT. PKG. **79¢**

JOHNSON'S  
**Baby Powder** 9 OZ. BTL. **79¢**

## PAGES THRIFTWAY

SPECIALS GOOD APRIL 19-24, 1976

# CANCER Answerline

American Cancer Society

## cancer warning signal - LUCKY FOR PERSON WHO PAYS ATTENTION

A high school senior wants to know: "Does cancer strike people all over the world the same way?" ANSWERline: Cancer, in its various forms, strikes in every country of the world. However, some forms of cancer occur more frequently in one country than another. For example, in El Paso, Texas, eight out of every 100,000 males will develop gastric cancer while in Japan the rate of gastric cancer is 95 per 100,000 among males. Scientists are studying diet and living habits to find a clue to this mysterious difference.

A concerned reader asks: "Is it true that I will gain weight if I give up cigarettes? I am worried about my health, but my figure is important to me." ANSWERline: A possible weight gain depends on the individual. Without the deadening effect of cigarette smoke some people find that their taste buds reawaken and food tastes better. The American Cancer Society suggests that carrot sticks and chewing gum, fresh air and exercise, will help you through the quitting time in fine shape. A small, temporary gain can always be controlled—lung cancer is harder to handle. Ask your local ACS Unit for a leaflet of helpful tips on quitting.

Question: "Are cancer drugs really dangerous?" ANSWERline: Administered by physician-specialists, such drugs can kill cancer cells with a minimum effect on normal cells.

A West Texas man explains: I've had a wart on my hand since I was a kid, and I've always considered it a lucky sign. Lately, it has been looking funny but I don't want to do anything about it. My luck might change."

ANSWERline: Your luck might change if you don't pay attention to a change in a wart or mole. Have a doctor look at it. It might not mean anything. But, it could be serious. Leave the diagnosis to a professional and remember that a cancer warning signal is always lucky for the person who pays attention to it.

Saturday, July 10. The current title holder is Miss Ana Smith of Newton, who was moved into the winner's spot when the state title holder for Texas, Dee Wheelless, of San Antonio, went on to the National Finals. The state winner for 1976 will go on to the National Finals in "Old Chicago" in Bolingbrook, Illinois on August 12-14, 1976.

The entire theme will be based on the Bicentennial year. Miss Texas Teen Ager contestants are also judged for their 100 word essay "Why I am Proud to be an American."

Applications may be obtained for these events by sending a large, self-addressed stamped envelope to Certification Headquarters, P.O. Box 406, Rockton, Illinois 61072. Please specify age category. Deadline for entry is May 15, 1976.

The National title holder for Little Miss Nationwide Talent is Malika Souiri of Las Vegas, Nevada.

The aisle is short, but the march down it is remembered for a lifetime. The journey ends in a bit of gold—a band for the bride, a ribbon embracing a diploma for the graduate—and the occasion is heralded with fanfare and gifts.

LAUGHTER: "Medicine to weary bones." Carl Sandburg

LIFE IS A JOURNEY NOT A DESTINATION!

## What's Cooking At FLOYDADA SCHOOLS MONDAY

- Fish Portions with Tarter Sauce
- Buttered Squash
- Tossed Vegetable Salad with French Dressing
- Peanut Butter Cake with Peanut Butter Icing
- Hot Rolls
- 1/2 pint milk
- TUESDAY
- Green Chili Pie
- Seasoned Whole Kernal Corn
- Seet N Sour Spinach
- Oatmeal Cookie
- Hot Rolls
- 1/2 pint milk
- WEDNESDAY
- Sour Kraut & Wieners
- Seasoned Pinto Beans
- Buttered Carrots
- Chocolate Pudding with Whipped Topping
- Hot Corn Bread Squares
- 1/2 pint milk
- THURSDAY
- Chicken & Noodles
- Cafeteria Cut Green Beans
- Apple & Cabbage Salad with Dressing
- Wild Cherry Cake
- Hot Rolls
- 1/2 pint milk
- FRIDAY
- Hamburgers on Home Made Buns
- Tomato, Lettuce & Dill Pickles
- Potato Chips
- Apricot Cobbler
- 1/2 pint milk.

WORLD'S LARGEST BRITT GREGORY 112 W. MO. 983-3125

## Unique Cookbook Emphasizes American Heritage

A unique cookbook has just been published that combines more than 500 of America's favorite recipes with a not-entirely-heretofore history of eating in America. But the crowning touch to the book, *The Saturday Evening Post All American Cookbook*, is forty full-color, full-page illustrations, most of which are reproduced from Post covers. The cookbook is published by Thomas Nelson and costs \$14.95. It contains 320 large 8" X 10" pages.

Here are many classic Norman Rockwell paintings, such as "Freedom from Want," as well as paintings by J. C. Leyendecker, Steve Dohanos, Mead Schaeffer, and others. Delightful cartoons from the Post are mixed with old advertisements, amusing cooking hints reproduced directly from a 1775 cookbook, and drawings of early America.

The recipes reflect the rich and varied heritage of American cooking tradition. Included are the homely staples of Colonial and pioneer days—Hoe Cake, pokeweed, dandelion greens, and sourdough bread—along with such regional specialties as Down East Hake, Carolina Fish Muddle, and Vermont Red Flannel Hash. There are down-to-earth basics for the beginning cook and festive extras that will delight the expert. The recipes have been compiled by Charlotte Turgeon, food editor, author, and graduate of the Cordon Bleu.

The historical commentary includes George Washington's favorite cake, Thomas Jefferson's directions for making ice cream and Dwight Eisenhower's for making vegetable soup. The book also gives a recipe for a beer layer cake although the creator is unknown. One special section chronicles the history of wine-making in America. Warm, witty, and wise, Frederic A. Birmingham, managing editor of *The Saturday Evening Post*, provides a trenchant, man's-eye-view of the American experience.

Birmingham writes in the introduction, "Food—not metal, not guns, not oil—is the answer to peace and well-being in the world... [and] our American food is magnificent." Here is a book that is a grand hymn of praise and thanksgiving, from sea to shining sea.

Question: "Is there going to be one big answer to cancer?"

ANSWERline: Probably not, although we won't know until many parts of the cancer puzzle are solved. Many scientists today feel that there will be several answers to cancer. For example, some forms can be successfully treated today; other forms can be prevented; still other forms resist all approaches. Cancer is a term that covers over 100 forms of the disease.

Question: "Who is more likely to go for a physical check-up—a man or a woman?"

ANSWERline: Women are the winners on this point. Because they are more likely to observe this health safeguard, women stand a better chance of spotting anything unusual and having it checked before it develops into something serious.

## TURQUOISE SHOW & SALE

RINGS ★ BRACELETS  
★ NECKLACES ★ HESHI BEADS

AT  
**STRICKLAND'S RESTAURANT**  
In Lockney

MONDAY, APRIL 19 4 p.m. - 8 p.m.  
BY COLBERT FAILS

## AUCTION SALE

Tuesday, April 20, 1976  
SALE STARTS AT 1:00 p.m.  
LOCATION - 3 Miles West of Floydada, Texas on Sandhill Highway FM 784

SINCE I HAVE RENTED MY FARM THE FOLLOWING WILL BE SOLD AT PUBLIC AUCTION

<b>TRACTORS</b> 1-1962 John Deere 4010, diesel, good rubber, weights, clean 1-1962 Massey Ferguson 65 dieselmatic, multi-power, good rubber, weights, high clearance, clean <b>EQUIPMENT</b> 1-16-10 JHC wheel drill model 510, 11th wheel, press wheels, like new 1-Phares-Wilkes 8-row sand lighter, sealed bearings, 3 pt. like new 1-5-row lister, 4" x 7" bar, John Deere Shanks, Guage wheels, 3-point 1-Dempster 21 drill, 8 shanks 1-Johnson V-ditcher, 3 pt. 1-4-row Massey-Ferguson knife planter No. 37 units. 1-Clover 3 - 18" roll-over typping plow 1-4-row Hamby PTO rod weeder, DTB Guage wheels, Hamby 5/8"x3" shanks, 3 pt. 1-4-row back-end cultivator, (two Dearborns) 1-Model 60 Service Shredder, 3 pt. 1-9-shank Graham plow, high clearance, Cylinder controlled, drag type 1-4-section John Deere harrow 1-4-row Windpower Gang hoe, 3 pt.	1-Big Beaver, 3 pt hoist 1-4-row bed roller, 3 pt. 1-Myers V-ditcher, drag type 1-4-row Crutshaker, 3 pt. 1-4-row M & M gang hoe, drag type 1-Eatonson 10 ft. float 1-9-row sand/lighter, sealed bearings, drag type 1-4-row M & M row markers 1-10 ft. tool bar, 3 pt., with 3 heavy shanks 1-set of Roll-a-Cone markers, 4 or 6 row 2-Guage wheels 1-4-row stalk cutter, drag type 1-3 pt. blade 1-4-row packer wheels 8-Row buffers	<b>MISCELLANEOUS:</b> 1-Measuring Wheel 1-2 hole hog leader 1-or-sweeps, points, chisels, forks 2-Buggy Taps 1-Canhart cover for 4010 John Deere. 1-Canhart cover for 65 Massey Ferguson 1-pair wheel spreaders 1-Case of Texaco IA-3 motor oil, SAE 30, in quarts 4-John Deere inside planter boxes 2-hydraulic cylinders 2-Dyson planter applicators 4 planter drums with seed packing wheels 1-electric tank heater 15-gallons of Essentiale 2-Rubber tubs 2-12 ft culverts, 15" 1-24 ft. of 18" culvert. 1-6 ft of 21" culvert
---	--	--

**IRRIGATION EQUIPMENT**  
 1-German Rupp 4x6 PTO Lake Pump  
 1-2-mile of 6" flow line  
 1-2 wheel pipe trailer  
 116-1 1/2" tubes  
 53-1" tubes  
 4-metal dams  
 4-break-down sticks for irrigation dams  
 4-6" L's  
 1-6" T  
 1-6" end plug  
 1-6" to 4" reducer

**TRAILERS**  
 1-BIG 12, 8x20 cotton trailer, wood, box front  
 1-BIG 12, 8x20 cotton trailer, wood, box front  
 1-8x11E, wood and wire, box front  
 1-Brody, 8x21B wood/wire  
 1-John Deere 4-wheel chassis  
 1-Brody 4-wheel chassis

Owner: **JIM PRICE**  
 PLEASE BRING OWN CHECKBOOK NOT RESPONSIBLE FOR ACCIDENTS YOUR BUSINESS APPRECIATED  
 TERMS OF SALE CASH ALL ACCOUNTS SETTLED DAY OF SALE

### Faulkenberry Auction Service

Scott Faulkenberry (TXOC-76-0026)  
(806) 983-2736  
FLOYDADA, TEXAS 79235

Don Faulkenberry (TXOC-76-0027)  
(806) 983-2704  
FLOYDADA, TEXAS 79235

energy policy, saying it was time for the government to "stop playing political football with energy and the oil industry." Smith said the Federal bureaucracy should be concerned with a long-term energy program, rather than worrying about the size and growth of major oil companies.

C. J. "Pete" Morrison of Bartlesville, Okla., vice-president for marketing for the Phillips Petroleum Company said extended petroleum price controls and government over-regulation were the two major things that encouraged a greater use of petroleum by consumers, discouraged exploration and production and set the U.S. on a course that will increase dependence on other oil producing country.

Government plans to require vacuum-assisted vapor recovery devices on gasoline pump as a clean air measure came in for criticism, marketers contending that it would cost \$20,000 a station to install them and that the amount of vapors recovered would not warrant the expense. Roger Strelow of Washington, D. C., assistant administrator for air and waste management of the Environmental Protection Agency, was a convention speaker and explained vapor recovery regulations and plans, especially for acute areas around Houston, San Antonio and Dallas.

Besides Smith, new officers elected were: Bill Wright of Abilene, senior vice-president; George Lokoy of Amarillo, second vice-president; Truman Arnold of Texarkana, secretary-treasurer, and the following regional vice-presidents: Willis Reed of Beaumont, Jerry Bolin of McKinney, Bill Burns of Sweetwater and G. N. Forbess of Lubbock.

## Lockney Care Center Capers

By Linda Cumbie

Here we are at the end of another busy week at the center.

We have had many local and out-of-town visitors this week. We always appreciate your visiting with us.

The beautiful flowers were shared with us this week by the family of Virgil Thomas and Eleanor and Margaret Schacht.

We worked on the quilt and owls on Friday and Monday. Several worked with us.

Tuesday we went on our bus trip. Thanks to Mable Foster and Edna Phillips for their services. We rode over to Floydada and viewed all the green scenery. We stopped for ice cream on the way home. Those making the trip were Myrtle Burke, Mr. and Mrs. D. W. Burke, Anna Dietrich, Mary Reeves, Juan Garcia and our aide Virginia Mathis. A swell time was had by all.

Wednesday, we colored eggs for our party on Friday.

Thursday, we played Bingo. Myrtle Burke helped us call out the numbers. Our top-prize winner was Annie Aulick. She won a bag of candy Easter eggs.

Our devotionals have been just great as usual. Esther Brasher played the piano for us on Tuesday morning. We are sorry to hear that the West Side Church of Christ will no longer be with us on Monday mornings starting around May 3rd. We have thoroughly enjoyed their coming and sharing with us. They have all been so faithful in their service. We will miss them and their smiling faces. We hope they will visit with us from time to time. If any of the churches in the community would like to help us out with the devotionals on Monday mornings, please let us know. We would greatly appreciate any suggestions you might have.

Our aide, Jean Hearon is in the hospital at Plainview. We hope she will soon be well and back with us before

## Texas Youth Festival Set

The Texas Youth Festival, commemorating the Bicentennial year of our nation, will be held in San Antonio at the St. Anthony Hotel on July 9-10, 1976.

The program will commence on Friday, July 9, with the Little Miss Nationwide Talent program, which is for talented little girls from 5 through 12, with judging in five categories on talent-baton, instrumental, vocal, dance and variety.

A program for talented boys, Talent Town USA, will also be held on Friday, July 9. This is for boys 5 - 12, in the following categories—instrumental, vocal and gymnastics.

The Little Miss Talent is Kelly Benson of Pearland.

The 5th Miss Texas Teen Ager Pageant will be held on

## COLD CUTS

WILSON'S CERTIFIED

COOKED HAM .. \$1.19  
 CHOPPED PORK... 79¢  
 PORK CHOPS... \$1.39  
 SALAMI..... 69¢

WILSON'S CERTIFIED

### BOZZ BEEF FRANKS

59¢

**addy's Food**  
 South Second Floydada, Texas

# Re-elect L.L. "Bud" Rainey Sheriff of Floyd County

We feel that Bud has served the people of Floyd County well in this, his first term in office. We feel that he is the best for the job by virtue of his training and years of experience in law enforcement. He wants to continue to serve you, make his home here, and be a vital part of this community and county life.

## RE-ELECT L.L. "BUD" Rainey Sheriff

(Political advertisement. Paid for by friends of Bud Rainey.)  
 Bud Rainey, Sec.-Treasurer  
 718 W. Georgia  
 Floydada, Texas

Systems  
Attend  
MA  
vention  
and Lynsell  
th with Swifty  
Floydada, have  
ne after attend  
convention of  
Oil Marketers  
in San Antonio.  
ted that major  
re! on price  
ernment over  
the oil industry  
stable gasoline  
rules.  
ord crowd of  
9 oil jobbers,  
roducts market-  
tioned agents  
were on hand.  
eeler of Mid-  
resident of  
tion, told the  
at government-  
over gasoline  
their purpose  
e put in moth  
reported. He  
the "massive  
burden impos-  
industry" was  
mobile drivers  
cents a gallon.  
h of Austin.  
ident, called  
the national

# Society

Look  
Who's  
Here

## Engagement Announced

Mr. and Mrs. Larry L. Jarrett, Silvertown, announce the engagement and approaching marriage of her daughter, Susan Lynn Northcutt, to Harold David McCoy, son of Mr. and Mrs. Hurl David McCoy of Lockney. Miss Northcutt is also the daughter of Pat L. Northcutt of Dalhart, Texas.

Miss Northcutt is a senior in Silvertown High School. McCoy is a graduate of Silvertown High School and is employed with the Tye Co. in Lockney. The wedding will take place June 25th in the First United Methodist Church in Silvertown.

## Mrs. Whitehead Hostess For Dorcas Class

The Dorcas Sunday school class of First Baptist Church, Floydada, met Tuesday p.m. with Mrs. J. B. Whitehead as hostess.

The meeting opened with prayer by Mrs. C. M. Meredith. Mrs. Robert Garrett, teacher of the class gave some interesting thoughts and comments on

the life and home of our 3rd president, Thomas Jefferson since it was his birthday. Mrs. Garrett also directed a Bible quiz followed by Mrs. Mabel Epperson reading several poems.

Mrs. A. C. Rainer showed beautiful scenes and some souvenirs she collected on their recent tour to Hawaii. The hostess served sandwiches, a lovely cake, a variety of other goodies, and punch and coffee to Mmes. R. E. Young, Robert Garrett, Valree Turner, Mabel Epperson, Henry Willis, H. O. Cline, Ethel

**FLOYD DATA**  
Mr. and Mrs. Russell Peck and daughter of Levelland visited in Floydada with the Pecks Saturday. Sunday visitors included Mr. and Mrs. Verlan Leavelle and children, James, Cindy and Kenneth of Brownfield. Kenneth is spending the Easter holidays in Floydada. Mrs. Leavelle is a niece of the Pecks and Russell Peck is their nephew.

Warren, C. W. Denison, Leonard Smith, C. M. Meredith, E. I. Durham, Clarence Goins, A. C. Rainer, Grace Riggle, J. B. Whitehead, and guest Peggy Young.



Potatoes should be smooth and clean when bought. Do not buy any that show the slightest amount of green; they are likely to be bitter.

I've come to make a few changes in the home of Larry and Marlene Cross of Gadsden, Alabama. My name is Landria Mychelle and I was born April 14th, weighing 6 pounds 9 ounces. My father is a court reporter.

My grandparents are Mrs. Ethel Cross of Floydada and Mr. and Mrs. Cy Ramsey of Plainview.

Mr. and Mrs. Gary Faries of Spearman welcomed the birth Friday, April 9, of their first child.

The 6 pound 10 ounce girl was named Kara Kay. She was born in North Plains Hospital, Borger.

Mrs. Faries is the former Dara Bybee, daughter of Mr. and Mrs. Don Bybee of Providence. Great-grandparents are Mr. and Mrs. Joe Rogers and Mrs. Delbert Bybee, all of Lockney.

Mr. and Mrs. Dan Faries of Spearman are the paternal grandparents.

Faries is employed by Skelly Oil in Spearman.

## Appliance Show Specialists



MARTHA LOGAN  
Assoc. Professor  
Home Management



LYNN BOURLAND  
Extension Family  
Resource Management



A. D. BOON  
Maytag Regional Manager



KATHY BURK  
Home Service Advisor

**NEW DIMENSIONS IN APPLIANCE SHOWS**  
WHAT: New Dimensions in Appliance Show Specialists conducted by the Texas Agricultural Experiment Station, Floyd County Family Living Center, 515 West Georgia, Floyd County Extension Agent in charge.  
**AGENDA:**  
9:00 - 9:15 -- Registration. View exhibits.  
9:15 - 9:25 -- Welcome.  
9:25 - 9:55 -- "Range Revolution" by Extension Family Resource Management Station...The contrast between conventional ovens, components of the smooth-top design features of ranges will be shown.  
10:00 - 10:30 -- "Clean-up Crew" by associate professor Home Management from an energy and ecology saving perspective and use them to get the most emphasized.  
10:30 - 10:45 -- Break. View exhibits.  
10:45 - 11:30 -- "New Waves in Cooking" by Burk, Home Economist, Lighthouse Station...Will show how microwave ovens work and cannot be used and a comparison of various models.  
11:30 - 1:00 -- Lunch Break  
1:00 - 1:15 -- Registration. View exhibits.  
1:20 - 2:10 -- "New Waves in Cooking" by Burk, Home Economist, Lighthouse Station...Will demonstrate how microwave ovens make in meal preparation procedures successful microwave cooking.  
2:10 - 2:25 -- Break. View exhibits.  
2:25 - 2:55 -- "From Wash Day Blues to Clean" by A. D. Boon, Regional Manager. Guidelines for buying and using laundry energy and money and get the best for your money.  
3:00 - 3:30 -- "Keep Your Cool and Clean" by Specialist, College Station. How to solve appliance problems yourself. Special sources of help will be emphasized.  
**PUBLIC VIEW EXHIBITS BY LOCKNEY QUESTION PROGRAM PARTICIPANTS OR SEVERAL PROGRAMS OR STATE INTERESTED PERSONS ARE EXTENDED ATTEND. THE PROGRAM FREE OF CHARGE.**

## Crepe Myrtles Being Sold By Women's Division

### Chamber of Commerce Will Be Here Wednesday

Crepe myrtles, being sold by the Women's Division of the Floydada Chamber of Commerce, will be in Wednesday, April 21, and may be picked up at the Clay Henry home, 229 West Mississippi.

Selling of the crepe

myrtles by the Women's Division, is the beginning of their participation in the Floydada Appearance Program which starts Monday.

Persons who ordered their crepe myrtles earlier and paid for same are to also

pick theirs up Wednesday at the Henry home.

There will be plenty of the crepe myrtles for sale Wednesday at \$2.50 each. Those wishing to select a plant are invited to come by the Henry home Wednesday.

## Homemaking Hints

Conserving time is a major concern of today's busy homemakers. One way to keep house cleaning simple is to do little jobs more often!

Food spills on stove and counter tops, for example, can be cleaned more simply if you grab a sponge and wipe them right away. Once a spill has hardened, it often takes real muscle to get rid of it. Baked-on foods and dirty cooking utensils, when soaked immediately, also become a cinch to clean up later.

## Women's Division

The new president, Laverne Christian, will preside at the meeting of Lockney Chamber of Commerce Women's Division, Monday night, April 19, 7:30 p.m. at the top of Government.

## HELPFUL TIPS ON FOOD

By Sara Eason  
Consumer Service Manager  
Wilson & Co., Inc.

Few researchers in nutrition agree on the perfect diet, but they all insist on one thing: You must have plenty of body-building protein. Not just from costly steaks and chops, but from delicious sources such as cheese, fish, poultry, eggs--and franks!

Some people believe that if you play a fiddle while you fish it will improve your luck.

with prayer followed by a brief business session.

Mrs. Quisenberry brought the devotional on "The Life of Dorcas." Afterward a Bible Quiz was held.

Mrs. Emmitt Clampitt dismissed in prayer after which Mrs. Quisenberry served refreshments to Mmes. David Hale, Clampitt, Allen Cochran, Wayne Fuller, and Miss Kathy Clampitt.

**• NOTICE •**

We have recently purchased Hemphill Wells Appliance Center. We have complete parts and service for Frigidaire Appliances to the people in your area. Our prices include DELIVERY and SERVICE. We appreciate the business we have received from you in the past and hope with our new service dept. to give you the fast dependable service that you need.

Thanks  
*G. E. Byrd*  
G. E. Byrd, owner



**Frigidaire**  
15.3-cu-ft Freezer  
Ample capacity, low priced. Two ways to help you fight food costs, from Frigidaire. This 15.3-cu-ft chest freezer helps you keep plenty of food on hand. Its magnetic lid seal helps keep in the cold; its Slide-Aside Basket helps you keep small packages organized.

**only 299<sup>95</sup>**



**WC/DEC**

Get full 18-lb capacity and tender care for all of today's fabrics from this Frigidaire Heavy Duty Washer and Flowing Heat Dryer.

**PRICES ON WASHERS START AT 249<sup>95</sup>**

**DRYERS AT 199<sup>95</sup>**



**MODEL FP1206T**

- Biggest top-freezer refrigerator-freezer Frigidaire makes!
- 20.6-cu-ft total refrigerated volume
- 5.94-cu-ft freezer compartment
- Twin Vegetable Hydrators
- Automatic Ice Maker, available at extra charge

**SAVE 100.00**

**Now Only 449<sup>95</sup>**

**EARLY BIRD SPECIAL**

**10% OFF ALL ROOM AIR COND. IN STOCK**

**NOTICE**

CHOOSE FROM THE LARGEST DISPLAY OF FRIGIDAIRE IN WEST TEXAS. WE BUY DIRECT FROM THE FACTORY IN QUANTITY TO PASS OUR SAVINGS ON TO OUR CUSTOMERS. YOUR TRADE-INS ARE WORTH MORE AT OUR STORE.

FORMERLY HEMPHILL-WELLS APPLIANCE CENTER

## Good Housekeeping

**APPLIANCE CENTER**  
2802 50TH STREET LUBBOCK

SALES  
**797-3301**

SERVICE  
**747-3179**

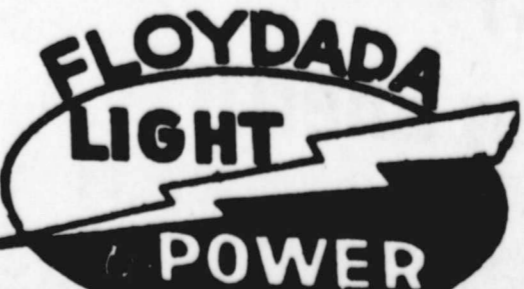
OPEN TIL 9 P.M. THURSDAY




# EASTER

## May Its Glory Fill All With Peace

Christ has risen. Come let us rejoice together. Through the miracle of His rebirth grows hope for inner peace. Finding peace within ourselves helps create the atmosphere for the flowering of peace and brotherhood throughout the world. Let's put our hearts together in love.



**FLOYDADA LIGHT POWER**



**C Con**  
...UP" a nation  
...to be subject o  
...the 7th Annu  
...of the Tex  
...of Wome  
...South Park I  
...April 27-3  
...TFWC Preside  
...Willard Whatl  
...Director  
...Texas Crime P  
...Southwest  
...University at  
...Whorter, Regio  
...South Plai  
...of Government  
...the semina  
...will assi  
...atives of clu  
...out the state  
...Hands U  
...production camp  
...unities.  
...is a cooper  
...between tl  
...of Federatio  
...and the La  
...Assistan  
...of Justice. U.S. D  
...member of GF  
...the largest organiz  
...women, the Tex  
...has a broad  
...related exten  
...and support  
...onal campaign.  
...speaker of tl  
...will be Sar  
...noted Washin  
...representat  
...He will addre  
...Thursday (Apr  
...on, on the top  
...Government.  
...L. Shide, Nort  
...TFWC Second Vi  
...will speak  
...and Mrs. W  
...West Virgini  
...Chairman of Alcoh  
...Drug Abuse, w  
...shop on Feder  
...projects f  
...this problem.  
...making outstand  
...in their loc  
...remonies Wedne  
...at 9 p.m. :  
...West of the Sou  
...Community In  
...Project conte  
...will be announce  
...Claude Rile  
...and the awar  
...by George Gra  
...Start Territor  
...for Sears' Sout  
...Territory, Mrs. V  
...Albany, wi  
...of the  
...mental conte  
...President  
...Shay Oil Co  
...present th  
...CITGO Bus  
...county conte  
...will be announce  
...Howard Wean  
...and presented b  
...Hartwell, Gene  
...Exploration an  
...Division, Citie  
...Midland.  
...Shumper  
...will announce th  
...the TFWC Ou  
...Clubwoman an  
...Discount Center  
...check for \$500.0  
...for the Outstan  
...women must d  
...ate leadership abili

FLOYD COUNTY  
HESPERIAN  
...each Sunday an  
...at 11 E. Mo. St  
...Texas 79235. Se  
...ness postage paid  
...Texas 79235. Wer  
...editor. Subscrip  
...Local \$8.50 a yea  
...area: \$9.50.

...sent  
...ldrei  
...east...  
...insurance.  
...something  
...need.  
...ny.  
...a good  
...hbor,  
...the Farm  
...ere.  
...Britt  
...Gregory  
...112 W.  
...Mo.  
...83-3125  
...LIFE  
...company

**WC Convention Slated**

and lead a successful project during the two-year administration. Executive Committee members, presidents of the Federation's 14 districts and chairmen of the organization's departments, divisions and projects will give reports and exchange ideas during the meeting. Officers for the upcoming two years will be elected Thursday and The Honorable Jim Denton, Associate Justice, Austin, will install President-elect. Attending from Floydada will be Mrs. Allen Bingham and delegates from the 1929 Study Club, the 1934 Study Club, the 1959 Study Club and the 1956 Study club. Brown's witness in song and music while lunch was served. Rev. Ron Pingleton's devotional was on thoughts of joy or the absence of joy in our lives. During the business session a special vote of thanks was voiced for John Brown and all young people who have furnished music for the Senior Citizens. Miss Mary Pearl Cowan Menard Field reported \$82.97 in treasury. Games of 42 were played in the afternoon. Next meeting will be May 12. told about the speakers for next meeting, Mr. and Mrs. Earl Davis of Lubbock, who have retired from teaching on an Indian Reservation. They will tell some of their experiences.

UP," a national effort to halt the subject of a 79th Annual of Women's South Park Inn April 27-30. FWC President Clifford Whately

Mrs. Robert N. Tipps and the 1976-78 FWC Executive Committee Friday evening.

**Senior Citizens Hold Luncheon**

The Senior Citizens met Wednesday, April 14 at Lighthouse Electric for lunch. 24 members and 4 guests enjoyed John

Study Club, the 1934 Study Club, the 1959 Study Club and the 1956 Study club.

Brown's witness in song and music while lunch was served.

During the business session a special vote of thanks was voiced for John Brown and all young people who have furnished music for the Senior Citizens. Miss Mary Pearl Cowan

Menard Field reported \$82.97 in treasury.

Games of 42 were played in the afternoon. Next meeting will be May 12.

told about the speakers for next meeting, Mr. and Mrs. Earl Davis of Lubbock, who have retired from teaching on an Indian Reservation. They will tell some of their experiences.

**MR. FARMER:**

Yes, R. C. Mitchell has greenbug-tolerant grain sorghum seed - STANDKING Y - G. Try a few bags along with our other proven varieties. None better - priced reasonably. Contact your dealer or

**R. C. MITCHELL SEED**  
Lockney - 652-3446

**Buddy's Food**

Buddy Widener, Owner - Forrest Shannon, Mgr. in Floydada, 220 South Second

NEW STORE HOURS  
MONDAY - SATURDAY 8 AM - 8 PM  
SUNDAY 9 AM - 7 PM



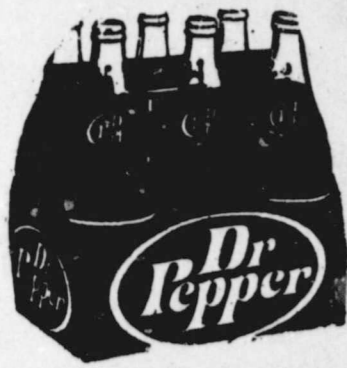
Double Stamps Wednesday

VALUE GOOD MONDAY, APRIL 19, THRU SATURDAY, APRIL 24.



We Reserve The Right To Limit Quantities

DIET OR REG.



6-32 oz. Bottle carton

**\$1.39**  
plus deposit

5 OZ SUGAR STICK 59¢ VALUE



**CANDY 2/89¢**

**ROMAN MEAL 2/89¢**

13 OZ SPRAY \$1.69 VALUE

**PAM \$1.19**

4 ROLL NORTHERN 99¢ VALUE

**BATHROOM TISSUE 77¢**

12. OZ MINUTE MAID 83¢ VALUE

**ORANGE JUICE 59¢**

32 OZ PARAMOUNT HAMBURGER DILL SLICE \$1.29 VALUE

**PICKLES 89¢**



5 LB BAG **SUGAR 69¢**

WITH PURCHASE OF FOUR LIGHT BULBS

CALIFORNIA FRESH RIPE



**TOMATOES 3 LBS \$1.00**

**ROMAINE LETTUCE 29¢**

TEXAS LARGE FIRM HEADS **CABBAGE 7¢** LB



1 LB MARYLAND CLUB \$1.77 VALUE **COFFEE \$1.37**

CRYSTAL CLEAR PINT BOTTLE

**ALCHOL 3/\$1.00**

**MAGIC FINGERS**



\$10.79

**SHELLER**

Shells all peas and beans in the fresh green shell state.

**QUICK**  
Shells up to two bushels an hour.

**EASY**

No sore or stained fingers.

**SAFE**

Cannot harm fingers or hands.

**DURABLE**

Long-life rollers and tough plastic body.

**\$13.97 value**

MAGIC FINGERS MAKES SHELLING FUN.

**A GREAT GIFT FOR MOTHERS DAY MAY 9th**

1 LB TALL KORN

**BACON \$1.39**

USDA

swiss steak **\$1.39** LB

USDA

**ARM ROAST 99¢** LB

SLICED

**PICNIC 79¢** LB

USDA

**RANCH STEAK 89¢** LB

**ECKRICH SMOKED SAUSAGE \$1.39** LB

6 OZ WILSON'S **COOKED HAM \$1.19**

**WILSONS SALAMI 69¢** 6 OZ

BATH SIZE TONE 43¢ VALUE

**SOAP 3/\$1.00**



17 OZ WHITE SWAN WHOLE KERNEL

**CORN 4/\$1.00**

34¢ VALUE

5 LB BAG

**SUGAR 69¢**

NEW TRIAL SIZE 2-15¢ BARS, PKG.

**GRANOLA BARS 8/\$1.00**

FRITO 10 1/2 OZ

**BEAN DIP 2/99¢**

1/2 GALLON

**MELLORINE 79¢**

\$1.05 VALUE

7.5 OZ CARNATION 99¢ VALUE

**SPREADABLES 69¢**

25 LB. GOLD MEDAL



**FLOUR \$3.29**

WITH COUPON

\$3.99 WITHOUT COUPON

GOOD ONLY AT BUDDY'S EXPIRES 4-24-76



GIANT

**BREEZE \$1.29**

WITH COUPON

\$1.49 WITHOUT COUPON

GOOD ONLY AT BUDDY'S EXPIRES 4-24-76

20 OZ. KEEBLER 100'S

**COOKIES 79¢**

WITH COUPON

99¢ WITHOUT COUPON

EXPIRES 4-24-76 GOOD ONLY AT BUDDY'S

present children least... insurance. something ally need. why. Like a good neighbor, State Farm is there. Britt Gregory 112 W. Mo. 983-3125 THE FARM LIFE

# News & Reviews

## NEWS & REVIEWS First Baptist Church Library

Have you ever felt inferior and inadequate? Do you see these same feelings reflected in your children? If your answer is yes, you will be interested in the book HIDE OR SEEK by Dr. James Dobson, Assistant Professor of Pediatrics, University of Southern California School of Medicine.

Dr. Dobson exposes the false value system of our society, which reserves respect and esteem for only a select few, and presents ten comprehensive strategies through which parents and teachers can cultivate self-esteem in every child. Specific suggestions are made toward these goals: teaching children to respect themselves; shaping the will without breaking the spirit; applying the most powerful tools for building self-esteem; avoiding overprotection and dependency; maximizing educational potential and preparing for adolescence. Each of these is followed by a question and answer section. One of the questions under strategy for self-esteem is "My child is often ridiculed and hurt by the other children on our block, and I don't know how to handle the situation...How should I respond when this happens?"

"HIDE OR SEEK" culminates in a discussion of the values which parents should impart to their children in place of the false concepts of society. Dr. Dobson asserts that only Christian values free us from the tyranny of the 'self' and offer dignity and respect to every human being on earth. Parents who implement this 'better way' will give their children the courage to seek the best from their world rather than hide in fear and sorrow."

ADAPTING AMERICAN ANTIQUES by Dorothy Warner is a book that the collector who enjoys adapting and restoring antiques will enjoy. It includes directions for cleaning and restoring antiques, as well as suggestions for use and display of various pieces. How is pewter restored? What can be done with an unusual old trunk? Mrs. Warner provides the answers to these and hundreds of other questions. Included are tips on finding valuable antiques at auctions, in shops, and even at salvage yards. There are detailed instructions and photographs for the do-it-yourself enthusiast. We believe you will find some good ideas in this beautiful book.

One of the most readable books on Bible characters that we have found is ARMED WITH LOVE, STORIES OF THE DISCIPLES by Gerald Battle. This would make an excellent book to read a chapter in each day for the family with children. Of these stories the author says, "This is not a book about saints. This is a book about men. Men who were ambitious, afraid, self-doubting, and often slow to understand. The story is how they found the resources within themselves to, in the end, overcome their human faults and weaknesses and become the instruments Jesus had chosen them to be."

Mr. Battle is retail marketing manager for Cokesbury Bookstores and a serious student of the Bible. He has done a good job of reminding us how, armed with love and their new message, these eleven men, and a few others, went forth in all directions from Jerusalem...and changed the world.

THOUGHT FOR THE WEEK: "The man who does not read good books has no advantage over the man who can't read them." Mark Twain

### Social Security

Representative  
Q. My husband will need to be hospitalized next month. What is the current Medicare hospital insurance deductible?

A. For benefit periods beginning on or after January 1, 1976, the hospital insurance deductible under Medicare is \$104. The deductible is comparable to the national average cost of one day's stay in a hospital.

# Easter

**A joyful holiday season unfolds**

*As the proud Easter lilies raise their majestic heads, they herald this most solemn and joyful time.*

*Let us celebrate the Miracle of Easter together with reverence and love. May the flowering of this blessed season bring you and yours comfort and peace.*

*The bonds of brotherhood are renewed as we experience the miracle and joy of Easter time.*

Buddy Lutrick  
**Production Credit Association**

# Come to



# Church

# Floydada Community Houses Of Worship



Calvary Bapt. Church



**BIBLE BAPTIST CHURCH**  
Lloyd Hamilton, Pastor  
Sunday School ..... 9:50 a.m.  
Morning Worship ..... 10:45 a.m.  
Sunday Evening  
Prayer Meeting ..... 6:00 p.m.  
Sunday Evening  
Services ..... 6:30 p.m.  
Wednesday Evening  
Services ..... 8:00 p.m.

**NEW HOPE PRIMITIVE BAPTIST CHURCH**  
Beathel Jeffrey, Pastor  
2nd Sunday  
Morning Worship ..... 11:00 a.m.  
2nd Saturday afternoon ..... 2:00 p.m.  
2nd Saturday  
Evening Worship ..... 7:00 p.m.

**CEDAR HILL ASSEMBLY OF GOD CHURCH**  
Sunday School ..... 10:00 a.m.  
Morning Worship ..... 11:00 a.m.  
Evangelistic Service ..... 6:30 p.m.

**FIRST BAPTIST CHURCH**  
F. C. Bradley, Pastor  
Sunday School ..... 9:45 a.m.  
Morning Worship ..... 11:00 a.m.  
Church Training ..... 6:00 p.m.  
Evening Worship ..... 7:00 p.m.

**WALL STREET CHURCH OF CHRIST**  
Newell Burk, Elder  
Sunday ..... Communion  
and Morning Worship ..... 10:30 a.m.  
Evening Worship ..... 6:00 p.m.

**SOUTH PLAINS BAPTIST CHURCH**  
Rev. Fred Blake  
Sunday School ..... 10:00 a.m.  
Morning Worship ..... 11:00 a.m.  
Training Union ..... 6:00 p.m.  
Evening Worship ..... 7:00 p.m.

**CARR'S CHAPEL**  
Rev. Lee Crouch,  
Petersburg, Pastor  
Services Every Sunday  
Morning Worship ..... 9:30 a.m.  
Sunday School ..... 10:30 a.m.  
No Evening Services

**VICTORY BAPTIST CHURCH**  
Emmett Clampitt, Pastor  
Sunday School ..... 10:00 a.m.  
Morning Worship ..... 11:00 a.m.  
Evening Worship ..... 7:00 p.m.  
Wednesday Services ..... 7:30 p.m.

**NEW SALEM PRIMITIVE BAPTIST CHURCH**  
Joe M. Jackson  
Sunday Congregational  
Singing ..... 10:00 a.m.  
Morning Worship ..... 10:30 a.m.  
Evening Worship ..... 6:30 p.m.

**SPANISH BAPTIST MISSION**  
Sunday School ..... 9:45 a.m.  
Morning Worship ..... 11:00 a.m.  
Training Union ..... 6:00 p.m.  
Evening Worship ..... 7:00 p.m.

**CALVARY BAPTIST**  
Hollis Payne, Pastor  
Sunday School ..... 9:45 a.m.  
Morning Worship ..... 11:00 a.m.  
Bible Study ..... 6:00 p.m.  
Evening Worship ..... 7:00 p.m.  
Wednesday Evening ..... 7:00 p.m.

**ST. MARY MAGDALEN CATHOLIC CHURCH**  
Richard Cassey, Priest  
SUNDAY:  
Mass ..... 11:15 a.m.

MONDAY:  
Religion Classes  
Grades 1-6 ..... 4:00 p.m.  
Mass and Prayer  
Service ..... 8:30 p.m.

**WEST SIDE CHURCH OF CHRIST**  
Sunday Morning  
Worship ..... 10:30 a.m.  
Sunday Evening ..... 5:00 p.m.  
Wednesday Evening ..... 7:30 p.m.

**FIRST UNITED METHODIST CHURCH**  
James Tidwell, Pastor  
Sunday School ..... 9:45 a.m.  
Morning Worship ..... 11:00 a.m.  
Youth Fellowship ..... 6:00 p.m.  
Sunday Evening  
Worship ..... 6:00 p.m.

**FIRST CHRISTIAN CHURCH**  
Ron Pingelton, Pastor  
Sunday School ..... 9:45 a.m.  
Morning Worship ..... 11:00 a.m.  
Youth Meeting ..... 6:00 p.m.  
Evening Worship ..... 6:00 p.m.

**FIRST ASSEMBLY OF GOD CHURCH**  
Pastor: Gary L. Cook  
Sunday Morning ..... 9:45 a.m.  
Sunday Youth Service ..... 5:00 p.m.  
Sunday Evening  
Evangelistic ..... 6:00 p.m.  
Wednesday Night  
Service ..... 7:00 p.m.  
Thursday Women's  
Missionary ..... 9:00 a.m.

This Inspirational Message Is Sponsored By The Following Firms.....

- Nichols Oil Co.
- Russell's Equipment & Supply
- Floydada Real Estate & Insurance
- McDonald Implements
- Gilbreath Exxon
- Production Credit Assoc.
- Edmiston Plumbing
- City Auto Inc.
- Parker Furniture
- Hale Insurance
- Floydada Co-Op Gins
- Collins Implement Co.
- Hesperian Office
- Ponderosa Meat Co.
- Producer's Cooperative Elevators
- Bishop-Ramsey Pharmacy
- Reed Ford Sales
- Martin & Company
- Norrell Tractor Parts Co.
- Adams Well
- Consumers
- Babe's Ser
- Thompson
- Solomon
- Floydada

ENFORCEMENT  
and Charles Ke  
mouth to mo  
held in Floyd

Bo  
ent report meet  
outh Plains Cour  
outs of Amer  
ning Members

PROFESSIONAL  
AERIAL  
APPLICATION

icides • Insecticide  
Fungicides  
ding • Fertilizing

mo's Aerial  
Spraying

Rt. 2  
Plainview  
(806) 895-4

ALDERSON  
UNITED METHODIST  
Now meeting  
Methodist Church  
Thursday  
Bible Study

CEDAR HILL  
BAPTIST CHURCH  
Sunday School  
Morning Worship  
Evening Worship

FOUR SQUARE  
CHURCH  
Rev. Gene  
Sunday School  
Bible Study

THE CHURCH  
OF THE NA  
Tom Br  
Sunday School  
Morning Worship  
Evening Service  
Sunday Night

CUMBERLAND  
PRESBYTERIAN  
Sunday School  
Bible Study

DOUGHERTY  
CHURCH  
Jim DeW  
Sunday Service  
Morning Worship  
Evening Worship

CITY PARK  
CHURCH  
Molva Br  
Sunday Bible Study  
Morning Worship  
Evening Worship  
Wednesday Bible  
Study  
Ladies Bible Study  
Wednesday  
Youth Ladies  
Friday

WE'  
IF YO

If you  
of an ol  
of the  
at

City Hall  
983-2834

Floydada

## Keener Wins Photo Contest

Ray Keener topped high honors in the Pioneer Natural Gas Photography contest featured yearly in the company's magazine, "The Gas Jet." This was the third for Pioneer's Annual Great Photo Contest. There were 277 entries received in the eight categories.

On the cover of the magazine was his prize winning photograph of Jennifer Fortenberry, daughter of Sam and Kelly Fortenberry. This award won him "Grand Prize" and a \$75. Savings bond. This was in the Color-Portrait category.

Also in second place in the Color-Portrait was a picture of Carl Van Hoose, son of Mr. and Mrs. Van Hoose of Lockney.

A close shot of lilacs were taken to also win second place honors in the Creative

color division. Ray also won a 4th with a flag pictured against the Gulf and seagulls surrounding it.

All the honors netted him a total of \$125 in savings bonds.

Ray has worked for Pioneer for three years. He previously worked in Floydada and has been in the Lockney office almost two years.



**PRIZE WINNING PORTRAIT** --Miss Jennifer Fortenberry, daughter of Mr. and Mrs. Sam Fortenberry, was taken by Ray Keener and won Grand Prize award in the Pioneer Photography contest.



**RESCUE INSTRUCTOR FOR TEXAS A&M.** Stewart Dickson, Charles Kenner (right) supervise area lawmen as they practice life support to mouth resuscitation during a six weeks school of instruction in Floydada.

## Boy Scouts To Reach Goal

report meeting Plains Council, of America, Membership

Steering committee, brought the total of the goal now reached to \$177,000, reported Dr. John Bradford, Chairman.

Several deviations over their goal and it is anticipated that the Council will reach its total goal by April 26th.

Plans are being made for a Victory Dinner to be held on Tuesday, April 27th. Most encouraging reports are coming in every day and we are confident that our Council goal will be reached on our report date so that we may celebrate a great success of April 27th, Bradford stated.

Max Tidmore, Council President, stated that it is most gratifying to see the great number of people who have worked so enthusiastically to make this membership enrollment successful. Thousands of our youth and Scout leaders will benefit from this successful venture

with the help, program and facilities made available to enrollment, Tidmore stated.

## What's Cooking

At  
LOCKNEY  
SCHOOLS

**LOCKNEY SCHOOL MENU**  
April 19-23

**MONDAY**  
Barbequed Vienna Sausage  
Buttered Spinach  
Tossed Salad  
French bread  
Milk - Cherry cobbler

**TUESDAY**  
Enchiladas  
Pickled beets  
Red Beans  
Sopapillas - Milk  
Honey - Peaches in Strawberry Geletin

**WEDNESDAY**  
Tuna salad  
Orange juice  
Baked potatoes  
Sliced bread  
Applesauce - Milk

**THURSDAY**  
Sliced ham  
French fried potatoes  
Green beans  
Carrot stick  
Rolls  
Strawberry cake - Milk

**FRIDAY**  
Hamburger  
Fried Cauliflower  
Lettuce - tomatoes  
Lime gelatin w/Pear halves  
Brownie - Milk



## The Consumer Alert

by John L. Hill  
Attorney General

**AUSTIN**—Credit card abuse is a major problem all across the country, according to law enforcement experts. Millions of cards are lost or stolen each year, and millions of dollars of unauthorized purchases are made on these cards.

Our Attorney General's Crime Prevention Division and the Texas District and County Attorneys Association note that under the Texas Penal Code, credit card abuse is a third degree felony, punishable by 2 to 10 years in the penitentiary and a possible fine of up to \$5,000.

The Penal Code lists a variety of credit card abuses, including stealing, buying, or selling credit cards; forging signatures on cards; knowingly using an expired card; using a card without the consent of the holder; receiving a stolen credit card; inducing a credit card holder to buy items which he can't pay for; and others.

Best available estimates indicate that approximately 60% of all credit card losses involve cards that were lost by cardholders or stolen from them. Statistics indicate that cards are lost or stolen most often in hotels, motels, bars, and restaurants. They are also stolen by pickpockets, stolen from automobiles, and lost or stolen in the mail.

Consumers are protected in such situations by the Truth in Lending Act, which provides that the maximum liability of a cardholder is \$50 for unauthorized charges made in such cases. The credit card issuer must inform you of this liability and must supply you with a self-addressed, stamped notice to use if a card is lost or stolen. If the issuer fails to observe these requirements, the cardholder is protected from all liability. The law also requires that all cards have your signature, photo, or some

other means of identification. Of course, it's best to avoid the inconvenience and possible money damage of credit card abuse if at all possible. One of the best ways to protect yourself is to cut up and throw away all cards you don't need or use, since you could be required to pay \$50 on each lost card, if your wallet is lost or stolen.

Also, when you receive a new card, sign it right away. Never loan a credit card to anyone who hasn't been authorized to use it by the issuer. Keep a list at home of all your cards, with account numbers, names, and addresses of issuers. Compare this list with your cards every week or so, and always telephone the issuer immediately if any card is missing. Follow up that notification with a registered letter or a telegram. And be sure your card is returned to you after every credit transaction.

You should be alert, too, to signs of possible credit card

theft or abuse: A customary monthly bill doesn't arrive, indicating someone may have stolen your card and sent an address change. A renewal card doesn't arrive before the expiration date on your current card. Or perhaps a monthly bill is larger than the total of individual charge slips

would indicate, or includes a purchase for which there is no individual charge slip.

If you suspect credit card abuse, contact your district or county attorney. For more information about credit card fraud, call the Attorney General's Crime Prevention Division.

## PROFESSIONAL AERIAL EDUCATION

Insecticides  
Fertilizing  
Aerial spraying  
Rt. 2  
Plainview  
(936) 895-4478



**Elaine Giesecke**  
Congratulations  
on winning  
**OUTSTANDING STUDENT**  
of  
**IECA Gold Chapter**  
White Auto Store  
17 W. Calif 983-3514

## Letter To The Editor

Editor the Beacon:

I have not missed a copy of the BEACON since 1929. We still enjoy the personal items from the various communities of the County. We find reports from many of our old friends there from time to time. You are doing a good job! We have liked your special items on the Bicentennial Programs from time to time.

We send clippings quite often to our son who is now DEPUTY COMMANDING GENERAL OF THE US MISSILE COMMAND at Red Stone Arsenal Alabama. He, too, appreciates the personal reports of old friends whom he well remembers in the County.

D. D. Tate

Editor the Beacon  
We would like to take this means of expressing our appreciation to the fire department and those very efficient firemen for their services in putting out the fire at the Lockney Motel. Without them, and their promptness, we would have suffered a much greater loss. The fire truck was on its way before the fire whistle stopped blowing. That kind of service from a volunteer department cannot be excelled. We would also like to thank those who helped who are not members of the fire department, especially the law enforcement officers who directed traffic.

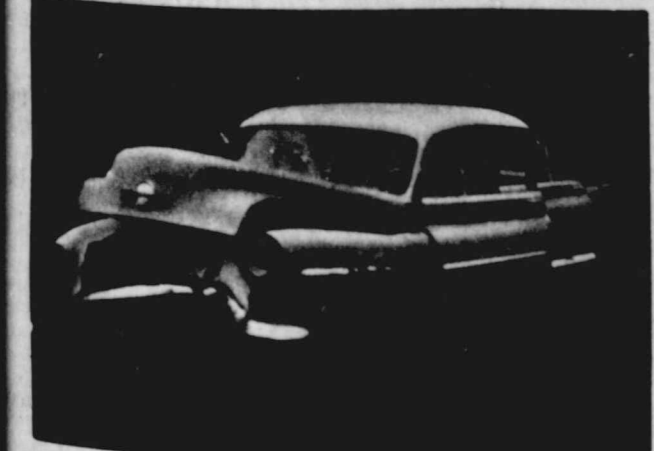
We would recommend that sight-seers stay away; as the traffic hampers the efficiency and can keep an emergency vehicle from being able to go to the place it is needed. This is not confined to fire calls, but ambulance calls as well.

Again, a great big THANK YOU to the fire boys.

Lynn & Irene Miller

Albert H. Jones, 71, died at Lockney Care Center Thursday. Jones was born December 20, 1905 in Palestine, Texas. He was a retired plumber. Services are pending until the arrival of his widow from California.

## WE'LL REMOVE IT... IF YOU'LL REPORT IT!



If you live in Floydada and want to get rid of an old junked automobile, just call one of the numbers listed below and we'll arrange for it to be picked up.

CALL:

Floydada Chamber  
of Commerce 983-3434

No 350

## Sample Ballot Boleta Sample

REPUBLICAN PARTY  
PARTIDO REPUBLICANO

Vote for the candidate of your choice in each race by placing an "X" in the square beside the candidate's name.

Vote por el candidato de su preferencia para cada candidatura marcando con una "X" el cuadro junto al nombre del candidato.

I am a Republican and pledge myself to support the nominees of this primary.  
Yo soy Republicano y me comprometo a apoyar a los candidatos nombrados de esta Primaria.

DELEGATES TO NATIONAL PRESIDENTIAL NOMINATING CONVENTION  
DELEGADOS A LA CONVENCION NACIONAL QUE NOMBRARA EL CANDIDATO PRESIDENCIAL

VOTE FOR ANY 4 DELEGATES

VOTE POR CUALESQUIER 4 DELEGADOS

DELEGATE CANDIDATE CANDIDATO DELEGADO	PRESIDENTIAL CANDIDATE CANDIDATO PRESIDENCIAL
<input type="checkbox"/> W. J. SHEPPARD delegate for (delegado a favor de)	RONALD REAGAN
<input type="checkbox"/> J. MARCUS ANDERSON delegate for (delegado a favor de)	RONALD REAGAN
<input type="checkbox"/> J. D. WEBSTER delegate for (delegado a favor de)	RONALD REAGAN
<input type="checkbox"/> AL V. SCOTT delegate for (delegado a favor de)	RONALD REAGAN
<input type="checkbox"/> JACK L. EIDSON delegate for (delegado a favor de)	GERALD FORD
<input type="checkbox"/> HERBERT L. BUTRUM delegate (delegado a favor de)	GERALD FORD
<input type="checkbox"/> DOUGLAS B. BRODIE delegate for (delegado a favor de)	GERALD FORD
<input type="checkbox"/> DUNMAN PERRY delegate for (delegado a favor de)	GERALD FORD

Vote for the candidate of your choice in each race by placing an "X" in the square beside the candidate's name.

Vote por el candidato de su preferencia para cada candidatura marcando con una "X" el cuadro junto al nombre del candidato.

UNITED STATES SENATOR PARA SENADOR DE LOS ESTADOS UNIDOS	RAILROAD COMMISSIONER PARA COMISIONADO DE FERROCARRILLES
<input type="checkbox"/> LOUIS LEMAN	<input type="checkbox"/> WALTER WENDLANDT
<input type="checkbox"/> HUGH SWEENEY	<b>COUNTY CHAIRMAN PARA PRESIDENTE DEL CONDADO</b>
<input type="checkbox"/> ALAN STEELMAN	<input type="checkbox"/> JOHN N. FARRIS

THESE PROPOSITIONS NOT BINDING

- |   |  |                   |
|---|--|-------------------|
| <input type="checkbox"/> FOR<br>A FAVOR       | Do you favor a constitutional amendment or legislation to deny release or bail to repeat felons who are awaiting trial?  | PROPOSITION NO. 1 |
| <input type="checkbox"/> AGAINST<br>EN CONTRA | Apoyaria usted una enmienda constitucional o legislacion que les negaria liberacion o fianza criminales repetidores?   | PROPOSICION No 1  |
| <input type="checkbox"/> FOR<br>A FAVOR       | Do you favor legislation which would require mandatory, non-parolable prison sentences for felony offenses involving the use of deadly weapons or resulting in bodily injury?            | PROPOSITION NO. 2 |
| <input type="checkbox"/> AGAINST<br>EN CONTRA | Apoyaria usted legislacion que requeriria sentencias mandatorias y sin liberacion condicional para delitos criminales en que se usan armas mortiferas a que resultan en lesion corporal? | PROPOSICION No 2  |
| <input type="checkbox"/> FOR<br>A FAVOR       | Would you favor a constitutional amendment or legislation which would allow the use of oral confessions in a trial?  | PROPOSITION NO. 3 |
| <input type="checkbox"/> AGAINST<br>EN CONTRA | Apoyaria usted una enmienda constitucional o legislacion que permitiera el uso de confesiones orales durante el juicio?  | PROPOSICION No 3  |
| <input type="checkbox"/> FOR<br>A FAVOR       | Do you favor a constitutional amendment allowing the use of electronic surveillance to fight organized crime?  | PROPOSITION NO. 4 |
| <input type="checkbox"/> AGAINST<br>EN CONTRA | Apoyaria usted una enmienda constitucional que permitiera el uso de vigilancia electronica para combatir el crimen organizado?   | PROPOSICION No 4  |
| <input type="checkbox"/> FOR<br>A FAVOR       | Would you favor a constitutional amendment or legislation banning the use of forced busing of school children for the purpose of achieving racial balance?                               | PROPOSITION NO. 5 |
| <input type="checkbox"/> AGAINST<br>EN CONTRA | Apoyaria usted una enmienda constitucional o legislacion que prohibiria el uso de transportacion mandatoria de ninos escolares con el proposito de lograr el equilibrio de las razas?    | PROPOSICION No. 5 |

LOCKNEY AREA CHURCH PAGE

Lockney Locals

Joe Cunyus and Rainey Davis and John Bickley of Lockney attended the All-Sports Banquet at Texas Tech. The banquet is sponsored yearly by the Red Raider Club.

Bob Knight, coach of the Indiana basketball team which made the NCAA playoffs, was the main speaker.

Larry Cunyus of Tech was one of the three Saddle Tramps representing their organization at the banquet.

Mrs. Floyd Douglas of Liberal, Kansas spent the weekend with her sister Mrs. Fritz Schacht.

Mrs. Fritz Schacht attended an Eagle Scout award presentation at the Monterey Church of Christ in Lubbock Monday evening. Bart Castle, a great nephew of Mrs. Schacht, received the award.

Mrs. Alton Barnes, Mrs. Robert Daniel, Mrs. W. L. Thomas, Sandra Thompson and Margaret Schacht attended a bowling tournament in Longview last weekend.

Mrs. Ethel Carroll had two of her children as guests this past weekend. They were her daughter, Mrs. James (Mary Dean) Crane from Muleshoe; also, a son, James Carroll from Garland, and his daughter, Mr. and Mrs. Greg Miller and their baby from Ft. Worth.

Mrs. June Bybee and Mrs. Bill Fewell visited their brother, O. A. Thornton of Lubbock, a patient in Methodist Hospital, this past Sunday. They were accompanied by Mr. Fewell. Thornton had surgery this past Tuesday, April 13th, and is reported to be recovering satisfactorily.

Mrs. James D. [Rosemary] Salzmann of Dallas, and her two daughters, Becky and Elizabeth, arrived Wednesday for a visit of several days with their mother and grandmother, Mrs. J. R. McDonald.

Mrs. W. A. Cunningham accompanied her daughter and son-in-law, Mr. and Mrs. Clyde Hill to Duncan, Oklahoma where they attended funeral services for Mrs. Hill's cousin's husband on Saturday. Before returning home, they visited in Henrietta, Oklahoma with their granddaughter and niece, Joni Cunningham (a former Lockney resident). On Sunday, they visited with Mrs. Cunningham's cousin in Wichita Falls.

Mr. and Mrs. George Worsham were visited Sunday by his niece and her husband, Mr. and Mrs. L. G. Pierce; also, his sister and her husband, Mr. and Mrs. E.W. Turner, all of Lubbock.

A group of eleven boys and their sponsors representing the First Baptist Church left Thursday morning for San Antonio to attend a statewide Royal Ambassadors' Congress. Several local boys who have qualified will participate in a track meet. R.A.s going from here are: Eddie Broussard, Karl Race, Jeff Race, Scott McCarty, Keith Owens, Russell Ford, Randy Ford, Doug Sparkman, Trent Gant, Mark Mangum and Curtis Ford. Adults accompanying them are: Kenneth Holt, Ray Ford and James Race. They plan to return on Saturday.

Mrs. Wilbur Miller is hospitalized in Central Plains Hospital, Plainview.

TWO MINUTES WITH THE BIBLE BY CORNELIUS R. STAM, PRES. BEREAN BIBLE SOCIETY, CHICAGO, ILLINOIS 60633

"WHAT IS A CHURCH"

Do you know that most people, even the great majority of religious people, do not even know what a church is? Ask the average man on the street what a church is and he will probably reply: "A church? Well, anybody knows that! A church is a building where people go to worship!" But this is not correct. The word translated "church" in our Bibles, simply means assembly, so a church is not a building, but the assembly of people who meet in the building. And a church is not necessarily a gathering of worshippers. The riotous mob that had gathered at Ephesus in Paul's day is called a "church" (Gr. ekklesia) in Acts 19:32, and this passage states that this assembly, or church, was "confused, and most of them did not know wherefore they were come together." So a church is simply an assembly, not a building. The church of which the Bible has most to say is "the Church of God, which He hath purchased with His own blood" (Acts 20:28). St. Paul calls this church, again and

again, "the Body of Christ," or "the Church which is His Body." We do not join this Church by water baptism or any other religious rite; we join it by faith in the Lord Jesus Christ. Referring to believers in Christ, Paul declares: "By one Spirit are we all baptized into one Body" (I Cor. 12:13), and in Rom. 12:5 he says "Ye being many are one Body in Christ." Many sincere people have had their names on the rolls of religious organizations for years before learning this great truth, that the true Church, the Church of God, the Body of Christ, is not a building, but the company of those who have come to trust in Christ as their Savior. We sincerely hope the reader belongs to this one true Bible Church—and also attends a local church, an assembly of believers in Christ who love and study the Word of God, so as to "grow in grace and in the knowledge of our Lord and Savior Jesus Christ" (II Pet. 3:18).

RE-ELECT Bud Rainey - Sheriff of Floyd County. The Sheriffs' Office under the able leadership of Bud Rainey has served all of Floyd County and all of its people with efficient and considerate law enforcement. His experience as a law enforcement officer makes him well qualified to continue as our Sheriff. Re-election of Bud will assure a continuation of good cooperation and relations of all law enforcement agencies of Floyd County. Your vote for Bud Rainey is a vote for efficient and just services from the Floyd County Sheriffs' Office. Cast your vote for Bud Rainey for Sheriff. Stand behind your law enforcement and help make Floyd County a better place to live... (political adv paid for by friends of Bud Rainey. Bud Rainey, Sec. Treas. 718 W. Georgia Floydada, Texas.)

time out for GO

"LIBERTY... and that junk"



Not everyone has caught the spirit of this Bicentennial Year. There's a cynic in town who is already complaining about our emphasis on "liberty — and that junk." He's the same cynic, incidentally, who has been heard to berate "religion — and that garbage." But the shouting of cynics cannot change the fact that these two hundred years of American history stand on the foundations of freedom and faith. This is the heritage we carry forward into our third century. Always remember that there are those who wish they were free to worship with us in our churches every Sunday!

MAIN STREET CHURCH OF CHRIST

Bible Study . . . . . 9:30 Morning Worship . . . . . 10:30 Evening Worship . . . . . 6:00 WEDNESDAY Ladies Bible Class . . . . . 9:30 Bible Study . . . . . 8:00

EVANS CHAPEL BAPTIST CHURCH Rev. Bennie Anderson, Pastor Sunday School . . . . . 10 a.m. Morning Worship . . . . . 11 a.m. Training Union . . . . . 6 p.m. Evening Worship . . . . . 7 p.m. Wednesday Prayer Meeting . . . . . 7 p.m. Sunday afternoon worship . . . . . 2:00

FIRST UNITED METHODIST CHURCH Hugh Daniel, Pastor SUNDAY Sunday School . . . . . 9:45 Worship Service . . . . . 10:55 UMY . . . . . 6:00 Evening Worship . . . . . 7:00 United Methodist Women . . . . . First Tuesday of Month Circles . . . . . Monday (2nd & 4th Monday nights) Tuesday & Wednesday mornings.

TRINITY LUTHERAN CHURCH Providence Community Andrew Mills Sunday School & Adult Bible Class . . . . . 10:00 Divine Worship Service . . . . . 11:00

ASSEMBLY OF GOD CHURCH Sunday School . . . . . 10:00 Morning Worship . . . . . 11:00 Evening Worship . . . . . 7:00 Prayer Service Wed. . . . . 7:00 Rev. Bob Wright, Pastor

TEMPLIO BAUTISTAS SALEM Frank Ramos, Pastor Sunday School . . . . . 9:45 Worship Service . . . . . 11:00 Christian Training Time . . . . . 5:00 Evening Worship . . . . . 6:00 Wednesday Prayer Meeting & Choir Practice . . . . . 7:30

AIKEN BAPTIST CHURCH Bill Sessom, Pastor Sunday School . . . . . 10:00 Morning Worship . . . . . 11:00 Training Union . . . . . 6:00 Evening Worship . . . . . 7:00 Prayer Service Wed. . . . . 7:30 Brotherhood, W.M.U. And Auxiliary Wednesday . . . . . 7:30

SAN JOSE CATHOLIC CHURCH Father Richard Thomas Casey Sunday Morning Mass 8:30 Saturday Evening . . . . . 8:30 Wednesday Evening . . . . . 8:30 Each Service Preceded By Confessions Baptism - 1st Sunday of the month at . . . . . 9 a.m. Church Council - Meets 1st Sunday of month at . . . . . 3 p.m.

Table with columns for Sunday through Saturday and corresponding Bible verses: Sunday Titus 1:15, Monday Luke 5:17-19, Tuesday Luke 5:20-23, Wednesday Luke 5:24-26, Thursday Matthew 25:6-13, Friday I Thessalonians 5:15-18, Saturday II Timothy 4:6-8

This Inspirational Message Sponsored By The Following . . . . .

Advertisement for local businesses including Plains Electric, Brown's Department Store, Jackson Tire Company, Davis Lumber Company, Baccus Motor Company, Sun-Vue Fertilizer, The Longhorn Inn, Byrd Pharmacy, Consumers Fuel Association, Mize Pharmacy, Patterson Grain Company, Perry Implement, Carter Funeral Home, Schacht Jewelry & Floral, Lockney Lumber & Supply, Lockney Beacon, and Lockney Co-Op & Elevator.

Vertical text on the right edge of the page, including "ring O to Hit", "spring will have a preliminary", "Texas spring forecast at red weight", "49", "over only", "and 11", "the previous", "on cwt. set", "Agriculture", "in C. White", "average is", "700, up 41", "the 17,000", "last year", "expected to", "6 percent", "icides", "Use", "To many", "thing about", "in their", "gardens but", "a necessary", "gardening", "Commissioner", "White cautions", "to remember that", "are toxic poisons", "if applied", "relessly", "White", "following", "for pesticide", "Before using a", "to be sure that a", "If in doubt,", "local county", "professional", "pest control", "tain you use", "icide.", "ost", "EM", "discour", "Mitogar", "Atrex", "Simezin", "Caparo", "WE", "superior su", "and nutrient re", "Darrell", "Star Route", "5 mi. S. 5", "alls, Texa", "806-649", "HEN YOU", "BUILD", "OK", "IS", "for some time", "of ENERGY", "in the past mar", "such a home w", "it becomes mo", "ery bit of energy", "EFFICIENT H", "results in savings of", "when compared", "of electric const", "ing more about th", "If you're consid", "let us work wit", "ensure that your n", "imum comfort and", "AL ELECTRIC EN", "ver 40% O", "ooling Cost", "IT DOES SO MUCH GOOD", "The", "Company", "SO MANY PEOPLE", "CALL US!", "employer



## Spring Onion Harvest Set to Hit All-time High

Texas spring onions will have a bumper crop this year, according to preliminary reports.

Texas spring onion production is forecast at 4.4 million cwt. for 1976, up from 3.6 million cwt. in 1975. The increase is due to a larger area being planted and a longer growing season.

The bulk of the onions will come from the Lower Rio Grande Valley, where production is estimated at 3,667,000 cwt. from 19,300 acres. The crop, about two weeks early, is healthy and shows virtually no sign of blight. Mild temperatures and low humidity have resulted in a near-perfect growing season.

Remainder of the onions will come from the Winter Garden, with 593,000 cwt. being harvested from 3,800 acres, and the Laredo area, with 180,000 cwt. being harvested from 900 acres.



**RECORD 1976 SPRING ONION CROP FORECAST**—A bumper crop of Texas spring onions is expected this year. Growers planted 41 percent more acres in onions this year than they did last year, and production is expected to be 4,440,000 cwt., a 49 percent increase over the 1975 crop, according to Agriculture Commissioner John C. White. Spring onions are grown in the Lower Rio Grande Valley, Winter Garden and Laredo area.

## Pesticides Require Safe Use, Disposal

To many people, the best thing about working in their gardens is that it is a necessary part of gardening. However, pesticides can be dangerous if not used and disposed of properly.

- Use exactly the amount prescribed on the label. The recommended dosage is time-tested and certified effective.
- Apply pesticide only in areas where needed.
- Water used to wash and rinse the application equipment is contaminated. It should be discarded only in areas where pest control is desired.
- Empty containers or small amounts of surplus pesticide should not be discarded in sewers, in toilet bowls or down household drains.
- Homeowners should dispose of empty containers by wrapping them in several thick layers of newspaper, then crushing or breaking the empty containers and placing them in a garbage can for pick-up.

them in a garbage can for pick-up.

8. Where there is no garbage collection, the containers should be wrapped and crushed, then buried between 18 and 24 inches deep in clay or loam soil. Caution should be exercised to keep the containers at least 500 feet from livestock or water sources.

## Texas Broiler Production Down While Gross Income Increases

AUSTIN--Although placements of commercial broilers in Texas declined three per cent in 1975, gross income increased to \$167,424,000 from only \$140,502,000 in 1974, according to Agriculture Commissioner John C. White.

The number of broilers produced declined to 162,769,000 from 173,588,000 the previous year. Texas again ranked seventh in the nation in production of broilers, White noted.

Average price received by Texas producers was 27.8 cents per pound liveweight compared with only 21.3 cents per pound for 1974. This price was slightly above the nationwide average price of 26.2 cents per pound. Average weight per broiler was 3.7 pounds, down slightly from 1974.

## Most Farm CHEMICALS at discount prices

- Milogard \$2.65
- Atrex \$2.65
- Simezine \$3.10
- Caparol \$2.85

## WEX The superior surfactant and solid nutrient release agent.

Darrell Dunn  
Star Route Box 166  
5 mi. S. 5 mi. W.  
Ralls, Texas 79357  
806-649-2578

## Texas Feedlots Begin 1976 With 42% More Livestock

AUSTIN--Texas feedlots started out the New Year with 1,882,000 head on hand, a 42 percent increase over the depressed situation a year ago, Agriculture Commissioner John C. White said.

However, sheep and lambs on feed in Texas totaled only 188,000 head, down eight percent from a year ago and the smallest number on feed for January 1 since 1966. "While the decrease in sheep and lamb feeding reflects the general decline in their numbers in the state, the cattle situation points up the abundance of beef animals in Texas and the move to feed out more of them now that grain prices have stabilized," White said.

He added that some increases in feeding at the beginning of the year may be

due to lack of winter pasture due to extremely dry weather conditions in many parts of the state.

Even though feeding of cattle has increased over a year ago, the large feedlots—those with a minimum capacity of 1,000 head—were still only 70 percent occupied.

According to the Texas Crop and Livestock Reporting Service, 179 large lots marketed some cattle during 1975, compared with 199 in 1974.

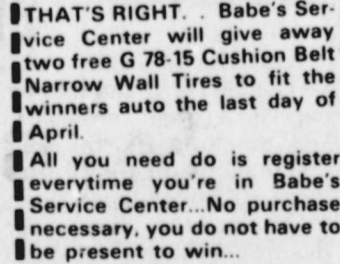
Fourteen percent of the large lots were vacant on January 1, 1976. Placements of cattle into feedlots from October 1 to January 1 were also up in Texas by 65 percent over a year ago. Feedlot operators reported intentions to market 1,050,000 cattle between January 1 and March 31, 56 percent of the number on feed January 1 and 20 percent higher than marketed during the same quarter last year.

Sheep and lambs on feed during November and December have shown an increase, up 30 percent from the previous year, to 136,000. Marketings of fed sheep during this period, estimated at 118,000 head, are 24 percent above the same period a year earlier.

## SPS Survey Indicates Growth

Industrial growth and job opportunities should continue to bolster the economy of the Southwestern Public Service Company service area, an existing industry survey conducted by the electric company reveals.

53% of the 280 industries responding to the survey



THAT'S RIGHT. Babe's Service Center will give away two free G 78-15 Cushion Belt Narrow Wall Tires to fit the winners auto the last day of April.

- ★ FRONTEND WORK
- ★ MUFFLER, BRAKE WORK
- ★ STICKERS FOR YOUR WINDSHIELD
- ★ MINOR TUNE-UPS
- ★ WHEEL BALANCING

YES!  
WE HAVE TIRES FOR  
★ TRACTORS  
★ TRUCKS  
★ PICKUPS  
★ AUTOS  
**BABE'S SERVICE CENTER**  
405 1/2 Missouri Phone 983-5042

## New OSHA Safety Standards Issued for Farm Equipment

AUSTIN--Farmers should be aware that new job safety standards have been issued for farm equipment by the Occupational Safety and Health Administration (OSHA), Agriculture Commissioner John C. White advises.

White urged farmers to become familiar with the OSHA guidelines, especially if they employ workers, pointing out that agriculture is among the nation's most hazardous industries.

"Statistics for the period between 1969 and 1972 show that, on the average, farm workers lost 18.7 days of work from injuries resulting from being caught in machinery, at an average medical cost of \$228," White said.

New requirements regarding machinery are that the power take-off drive be

guarded on all farm equipment, regardless of date of manufacture, and that nip-point guarding (areas where gears mesh or belts run onto pulleys, for example) be provided on all power transmission and functioning components of new farm equipment manufactured.

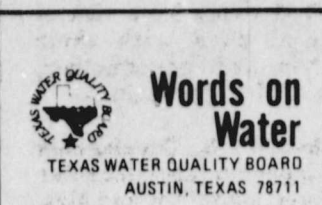
New regulations also stipulate that farm workers be taught how to safely operate and maintain equipment they work with. In addition, safeguards to prevent accidental application of electrical power to farm equipment being serviced should be provided.

The new safety rules also provide that the functioning and power transmission parts of cotton gins be guarded by June 30, 1977.

## Farm News

**AVOID UNSAFE PRACTICES ON FARMS**—Texas farm and ranch accidents claim more than 200 lives each year. Most farm and ranch accidents are related to falls, use of tractors and other machinery, drown-

ings, electrocutions, fire arms and motor vehicles used in work activities. About 30 percent of all injuries on farms and ranches result from falls. Tractor turnovers cause the most fatalities among farm machinery related accidents.



## ALL TO TAKE A RIVER'S PULSE

In Texas there are more than 3,500 rivers and streams with a combined length of about 80,000 miles. So think how busy the TWQB field people were back in 1967 when there were only 20

Water sampling is done on all 15 of the state's rivers and their tributaries every three months, except for the densely populated areas such as Houston, Dallas and San Antonio where sampling is done more frequently.

Then there are the 92 reservoirs in Texas whose health also must be guarded and where sampling is done by TWQB field personnel on a quarterly basis. The quality of the water in Texas reservoirs (nearly all of which are man-made) is considered very good.

In addition to the scientific factors (pH, oxygen, etc.), the biologists, chemists and other scientific types who do the water sampling, take note of the fish species in the streams, as well as plant and animal life growing along the river beds, to provide still another indication of the health of the water in which they're found.

Then, added to regular sampling activities, Intensive Monitoring Surveys are being conducted throughout the state, taking the rivers and streams, segment by segment for really detailed studies of the state's waters. Reports on the surveys are printed as they are completed and become a permanent record of the improving condition of our rivers and streams.

So, if you see two or three people in hip boots wading in a stream, checking additional samples are taken and sent to authorized labs to provide still more scientific information regarding the health of Texas streams.

## INSUR-MATION

DAVID CATES 983-3273  
JAMES RACE 652-3869

**We are going to purchase a new mobile home. What insurance coverage will we need?**

Insurance for mobile homes is placed in the automobile category and basically is rated the same for physical damage as your car under your Automobile Policy. Any unit with dimensions over 8 feet wide and 32 feet long is considered a mobile home rather than a travel trailer. Due to the size involved most units considered mobile homes are stationary in location... eliminating any reason for collision insurance. Therefore, only Comprehensive coverage is needed. Most policies are written on an all-risk basis and deductibles are available... much the same as for automobiles. In the event the mobile home is to be relocated, short-term collision coverage can be purchased at a minimal cost.

## FARM BUREAU INSURANCE

OFFICE PHONE 983-3777 FLOYDADA, TEXAS

## WHEN YOU BUY BUILD A NEW HOME LOOK FOR THIS SIGN

It is known for some time that methods existed to building ENERGY EFFICIENT HOMES. But energy in the past made it logical to ignore the energy such a home would require. Now with rising energy costs, it becomes more and more important to conserve every bit of energy we consume. The TOTAL ENERGY EFFICIENT HOME has construction costs when compared to previously accepted energy efficient construction. It is estimated that the ENERGY EFFICIENT HOME will result in savings of 40% or more on heating and cooling costs when compared to previously accepted energy efficient construction.



Learn more about the ENERGY EFFICIENT HOME. If you're considering a new home, let us work with you and we can assure that your new home is maximum comfort and energy efficient.

Save Over 40% On Heating & Cooling Costs

Call us today!  
THE ELECTRIC COMPANY  
FOR LA HABRA PEOPLE  
CALL US!

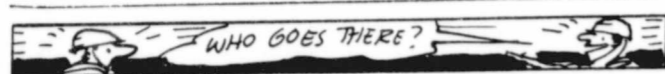
## THINK Of The Advantages Of A Gooseneck!

PRODUCERS  
COOPERATIVE ELEVATORS

## Cystic Fibrosis Fund Campaign Starts Monday



JUNIOR SAMPLES...asks are you in the market for a good used car? Then don't miss Comedy Capers II April 30 and May 1 at 8 p.m. in the Floydada High School. Junior may make a spiel for a steal of a deal!



The expression "on the qui vive" comes from the French sentry's challenge, *Qui vive*, "who goes there," and means being as alert as a sentinel.

Members of the Alpha Mu Delta Chapter of Beta Sigma Phi will start their fund drive for Cystic Fibrosis "Breath of Life" in Floyd County, Monday, April 19-26. They will be knocking on doors, visiting businesses, and covering the rural areas to raise money to finance research, care and educational programs for the National Cystic Fibrosis Research Foundation. Members of the Il Penseroso club will be working in Lockney and surrounding communities to help fight cystic fibrosis and other lung-damaging diseases.

It is hoped that someday research will conquer children's lung-damaging diseases, which each year kill more children than any other disease except cancer. When that "someday" arrives, friends in Floyd County will have helped make it possible.

More than 6,000,000 American children suffer from diseases affecting their breathing. The most serious of these diseases is cystic fibrosis, striking one in every 1,500 newborns; it is inherited if both parents carry the recessive gene. Early diagnosis and treatment prolong life and increase productivity, but there is no known cure. Children with other lung-damaging diseases such as chronic bronchitis, severe asthma, bronchiectasis, and a condition resembling emphysema in adults can benefit greatly from the treatment used for C/F patients.

Cystic fibrosis does its mischief in infants and children in three ways: first, it changes the mucus secretions in the lungs into a thick, sticky substance, clogging the air passages and causing chronic infection, often fatally. SECOND, it produces the same kind of extremely thick and sticky secretions in the pancreas, blocking the flow of vital digestive juices to the small intestine, thus seriously upsetting normal digestion and elimination. THIRD, it produces an abnormally high concentration of salt in the sweat of the C/F patient, weakening the child and making him prone to heat prostration.

Why is this information important to you? Because someone you know - perhaps YOU - may be one of the estimated 10 million C/F gene carriers in the U.S. You may have or know a child with a chronic respiratory problem who could greatly benefit from prompt diagnosis and expert treatment. It is important because there are millions of children struggling for the breath of life, and they need you. Research offers us the only hope of controlling cystic fibrosis. YOU CAN HELP by caring enough to DO something.

### As It Looks From Here

WASHINGTON, D. C. - NUMEROUS PROJECTS AND SCHEMES OF ONE SORT and another are being promoted under the auspices of our Bicentennial. As any observer will note, many commercial objects relating to the historic year are on sale and more and more will no doubt appear.

LAUDABLE PROJECTS ARE BEING PUSHED AS a part of the celebration. One is the raising of the ships of Lord Cornwallis now lying at the bottom of the York River at Yorktown, Virginia.

CORNWALLIS GAVE IT ALL UP in that battle at Yorktown, in effect ending the business of King George III in this part of the world. His wooden vessels were bottled up in the river with no place to escape. The Lord's ships were scuttled, burned and sunk, but he could have a derisive laugh if large sums of taxpayers' money should be spent to raise those old hulks buried in the mud of the placid York, as an American Bicentennial project.

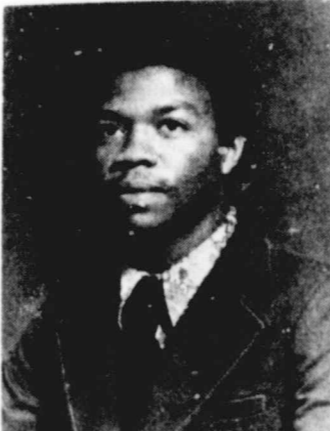
ARCHEOLOGISTS ARE INTERESTING and archeology is a great profession and this appears to be a fascinating project. But these are pretty tough times to be spending money for this sort of thing which could hardly be done before we were in the first decade of our third century.

THE STATE OF VIRGINIA, WITH SOME FEDERAL FINANCING, is continuing efforts to pinpoint the location of the sunken ships. The hope is to be able to lift a craft out of the River's rubble almost intact and restore it to its original condition. The vessel on



A & M OFFICIALS were in Floydada last week working out plans for the big Field Day they are pictured working with Floydada people as plans progress.

### Three Floyd County Wayland Students To Receive Degrees



Langston Williams to graduate.

Three Floyd County students at Wayland Baptist College will receive degrees during commencement exercises May 15.

Langston Williams, son of Mr. and Mrs. Langston Williams of 203 N. 12th, will receive a B.S. degree in physical education during exercises.

He received the honor as junior class favorite and was

nominated to Who's Who Among American College's and Universities. Langston has held membership in Sigma Phi Omega, Pioneer's Varsity Basketball Team, Student Union Board, and Fellowship of Christian Athletes.

Kerry Reeves, son of Mr. and Mrs. Robert Reeves of Floydada, will receive a B.S. degree in math from Wayland.

display at the Yorktown battlefield park would be interesting to visitors at that historic site and a further incentive for people to go there from nearby Williamsburg.

ALL THIS, HOWEVER, MUST BE WEIGHED AGAINST the costs of such a venture. Promoters of the project seemingly have only vague ideas of the expense involved but have referred to "a few million," while others have estimated in terms of "several hundred thousand dollars at least."

BEING IN TUNE WITH AND RESPECTFUL OF OUR BICENTENNIAL doesn't necessarily mean that large outlays of public funds should be used to recover scads of Revolutionary relics. There are already large displays of these in a lot of places. A more difficult task and one certainly worthy of our greatest devotion, is to recapture the inspirational momentum of

our heritage, while trying to keep to the essentials as to what we can afford. The past is in better shape than the future. As desirable as raising Cornwallis' ships may be, it is doubtful such an undertaking might qualify as a high priority.

WILLIAMSBURG WAS RESTORED BY FUNDS from the Rockefeller Foundation. In time, private funds might surface the ships of King George the III to remind us that his rule of America had its beginning of the end at Yorktown.

### FLOYD COUNTY LIBRARY NEW BOOKS

Mrs. Nita Hull announced this week that these new books are available in the county libraries for Floyd County readers:

- "Ragtime" by E. L. Doctorow
- "Boys from Brazil" by Ira Levin
- "Bring on the Empty Horses" by David Niven
- "Prometheus Crisis" by Thomas Scortia
- "Smoldering Fires" by Anya Seton
- "Nightwork" by Irwin Shaw
- "The Gulag Archipelago" by Alex Solzhenitsyn
- "Greek Treasure" by Irwin Stone
- "Trinity" by Leon Uris.

## FOOD VALUES ARE plentiful HERE!

BORDEN 1/2 GALLON  
**ICE CREAM \$1.09**

BORDEN 24 OZ  
**COTTAGE CHEESE 89¢**

BORDEN  
 N FTEE BARS, POPSICLES, FUDGESICLES  
**NOVELTIES 59¢**

BORDEN QT.  
**CHOCOLATE MILK 49¢**

**COKE** 32 OZ 6-BOTTLE CARTON **\$1.39**

**ERA** LIQUID DETERGENT 1/2 GALLON **\$1.99**

**PEACHES** HEART'S DELITE 29 OZ. CAN **49¢**

**EGGS** GRADE 'A' LARGE DOZEN **69¢**

**POTATOES** RUSSETT 10 LB. BAG **79¢**

**BANANAS** POUND **15¢**

**CABBAGE** POUND **9¢**

**GROUND BEEF** 100% PURE LB **69¢**

**CHUCK ROAST** USDA CHOICE LB **79¢**

**FRYERS** GRADE 'A' LB **47¢**

**BUTTERMILK** BORDEN 1/2 GALLON **67¢**

**Don's Thrifty Supermarket**

STORE HOURS  
 MON-SAT CLOSED  
 8AM-7PM SUNDAY

ON THE WYE IN FLOYDADA

WE ACCEPT FOOD STAMPS OR WIC CARDS

**The Notion Hut**  
 T-Shirt Fabric  
 T-Shirt Ribbing  
 Kwik-Sew Patterns

HOURS  
 MONDAY - FRIDAY  
 9:30-12:00-1:00-5:00  
 SATURDAY  
 9:30-12:00-1:00-4:00

**The Notion Hut**  
 Wanda Akin  
 1610 Main St. Petersburg, Texas

**VALUES GALORE**

**TRUCK LOAD SALE**

These refrigerators and ranges are 1975 models and are selling to make room for a larger stock of 1976 appliances.

These discount prices apply only to the appliances and no special orders can be accepted at these prices.

YOU TO KNOW - kinds of Goodyear tractor, auto, good ser- in West Tex- and hauling SERVICE

Reg. Price \$369.50  
 Sale Price \$279.50 w/trade

Model J426R

- Deluxe Fully Automatic 40-Inch Range with Big Meal Capacity**
- Accurate Pushbutton Controls for Hi-Speed Automatic Surface Units
  - Automatic Oven Timer, Clock and Signal Buzzer
  - Full Length Fluorescent Cooktop Light
  - Convenient Electrical Outlet
  - Divided Surface Units Allows Extra Work Surface Area
  - Aluminum Surface Unit Reflector Pans... Removable for Easy Cleaning
  - Picture Window Door Removable for Easier Oven Cleaning
  - Exterior Switch for Oven Light
  - Three Removable Storage Drawers
  - Porcelain-Enamel Broiler Pan and Chrome-Plated Rack
  - Tilt-Lock Calrod® Surface Units and Removable Trim Rings - Two 6" and Two 8"

16Cu. Ft Size  
 Reg. Priced \$369.50  
 Sale Price \$289.50 w/trade

**PARKER HOME FURNISHINGS**

110 S. Main Lockney 652-3315

ST.

ATE

for sale Virginia. Call t/c

eed Store rinder and t/c

and three for sale. Call 652-2611. t/c

se, double well im- 3673 t/c

lots in t/c

ully home in Lockney t/c

1% baths. t/c

ected, double garage. t/c

iller, 1 room house. t/c

ental shop included. 4 t/c

14 miles Southeast t/c

James Nichols day t/c

night. 652-2626. t/c

room house, carpeted t/c

odeled. Bond Real t/c

Wilson Bond 983-2151 t/c

873. t/c

50 office building, t/c

pureled. James t/c

983-3144 night t/c

Two bedroom and t/c

verage house. 212 t/c

John Dorman t/c

YOU TO KNOW - t/c

kinds of Goodyear t/c

tractor, auto, t/c

ood ser- t/c

in West Tex- t/c

and hauling t/c

SERVICE t/c

UDA. t/c

om t/c

ication t/c

icals t/c

tion t/c

Corn t/c

Milo t/c

Bill Wisdom t/c

652-3541 t/c

Darryl Dennis t/c

652-2616 t/c

ICAL t/c

DER t/c

to the t/c

Democrat- t/c

ary in t/c

County. t/c

gress t/c

BURLESON t/c

McKAY t/c

RAINEY t/c

CARDINAL t/c

ct 1 t/c

N CARTEL t/c

isioner t/c

ct 3 t/c

SEY MILTON t/c

essor and t/c

FAWVER t/c

# FAST ACTION use the

# WANT ADS

### ESTATE

house for sale  
W. Virginia. Call  
tfc

Feed Store  
grinder and  
93-281 tfc

two and three  
acres for sale  
arranged. Call  
at 983-3261. tfc

house, double  
acres, well  
east of town  
983-3673. tfc

vacant lots in  
Dorsey Baker,  
L-tfc

### BUSINESS SERVICES

PIANO TUNING. Edward C. Lain  
25 years experience. Write Box  
425 Silverton or call 823-2151 or  
823-205 L-tfc

CARPET shampoo and shampoo-  
er. Rent the shampooer for \$1  
day with purchase of shampoo.  
Davis Lumber Company,  
Lockney. L-tfc

IF IT'S metal, we can sharpen it...  
scissors, saws, chain saws,  
knives Carmack Feed & Seed,  
983-3404 tfc

### WANTED

WANTED TO BUY irrigated or  
dryland farm in Floyd or  
surrounding area. Write Box  
390, c/o Hesperian, Box 700,  
Floydada. tfc

ROTO-tiller work, free  
estimates, \$7.50 minimum  
983-2347. tfc

YOU HAVE a lot of money in  
your corn crop already. Why  
not insure it with Dale Goen?  
5-2c

STROUD Crop Insurance is the  
biggest writer of corn insur-  
ance in Texas. Represented  
locally by Goen & Goen. 5-2c

WE WANT 12 persons to make  
reservations for a Scandana-  
vian Tour out of Dallas June  
4-18. Tour includes Brussels,  
Amsterdam, Hamburg, Co-  
penhagen, Stockholm, Kar-  
stad, Oslo, Bergen, and Lon-  
don. \$1299 covers everything  
out of Dallas. Contact Mrs.  
Luther Kirk, 3005 59th Street  
in Lubbock, Phone 799-6585.  
tfc

### FARM & RANCHES

FOR SALE: short quarter, west  
central Floyd county, red bed  
396 ft. on pavement. \$600  
acres, cash or terms. Plainview  
293-5448. tfc

80 ACRES for sale, 2 wells, under-  
ground tile. 983-3521 tfc

### FARM SERVICES

CUSTOM FARMING Breaking  
listing, planting, crosscut,  
spraying, tandem and chisel.  
293-2578. L-tfc

MR. FARMER we have baling  
Wire now - Babe's Service  
Center. tfc

NORRELL TRACTOR PARTS  
For Tractor and Irrigation  
Supplies and Accessories. tfc

### FARM MACHINERY

FOR SALE: New 4" green pump  
250 ft setting, all complete  
gearhead etc. Several joints  
irrigation pipe. Two platform  
scales, different sizes. Dorsey  
Baker. 652-2363. tfc

2 M. F. 510 combines with 20 ft.  
headers, cab, and air. E. A.  
Noland 806-652-3144. 5-6p

### AUTOMOBILES

FOR SALE: 1974 Mustang II,  
\$3,350. Lisa Nichols, 983-3564  
tfc

FOR SALE: 1975 Honda XL  
175 Only 1100 miles. Like  
new with a clean engine  
and body. Only \$795.  
Phone 983-2783 after  
5 p.m. on weekdays. tfc

FOR SALE: extra clean 1970  
Honda Trail 70 cycle. Phone  
983-3888. 4-18c

FOR SALE OR TRADE: 1972  
Grand Prix, PS, PB, AC, tape  
deck, and 1973 Monte Carlo  
350 4 Barrel, PS, PB, AC, tape  
deck. Contact classified Ads -  
Hesperian, 983-3737. tfc



TRACTORS  
for RENT or LEASE  
Call 983-2836  
**CASE POWER  
& EQUIPMENT**  
Floydada, Texas

### COW POKES

By Ace Reid



"Jake, I can't tell how much it's rained—the gauge is running over!"

THIS FEATURE SPONSORED BY  
**AUTO, FIRE & FARM INSURANCE**  
Floydada Real Estate & Insurance Agency  
Jim Word — — — Phone 983-2360

### HELP WANTED

HELP WANTED: someone to  
live-in with elderly couple.  
983-2678. 4-25c

TAKING APPLICATIONS for  
aides and house keeper.  
Lockney Care Center 652-  
2502. L4-18c

EVENING COOK and dish-  
washer needed. Roger's Cafe  
652-8893. L-tfc

### NOTICE

TO GIVE away trees for fire-  
wood. Johnny Adams 652-  
3869. L4-18-c

Inventory Reduction  
20% Discount  
Shop & Save  
Dougherty Grocery  
tfc

**BOOK A PARTY** 422  
for  
Tri-Chem Liquid Embroidery  
Free Hostess Gifts  
or  
Call for information, supplies  
Nellie Webb 652-2524

A NICE way to remember your  
friends and loved ones is with  
a Memorial Gift to the Ameri-  
can Heart Association. A card  
will be sent to the family ac-  
knowledging your gift. Contact  
Olin Watson, Memorial  
Chairman at 983-2191.

A NICE way to remember your  
friends and loved ones is with  
a Memorial Gift to the Ameri-  
can Heart Association. A card  
will be sent to the family ac-  
knowledging your gift. Contact  
June Bybee, Memor-  
ial Chairman at Lockney,  
652-3355. L-tfc

### FOR SALE

FOR SALE: Brand new Grand-  
father clocks. See at 804 W.  
Grover, Phone 983-2417. tfc

FOR SALE: Registered Polled  
Hereford bulls. Excellent  
quality and pedigrees. David  
Battley, 983-3021. tfc

WE carry Marvick Sportswear -  
Betty's Place, 604 South 2nd  
Street. tfc

FOR SALE: I have several  
hundred feet of good four and  
five inch aluminum pipe. 40  
cents per foot. Phone 983-3982  
tfc

FOR SALE, 611 Lanker Cotton  
Seed. Call 652-3695. L4-22p

FOR SALE, good used carpet.  
Lockney, 652-3812. L4-22c

BEAUTIFY your carpet with  
CAMPOO rug shampoo that  
revives colors. Rent electric  
shampooer \$1.00 and \$2.00.  
Parker Home Furnishings,  
Lockney. L4-18

### FOR SALE

FOR SALE: 413 Chrysler Irriga-  
tion motor, new valve job,  
983-3610, nights. tfc

WANT to sell push button Ford  
radio. Excellent condition.  
\$35.00 Phone 983-3982. tfc

"Venus Cosmetics"  
The best money can buy. With  
Stabilized Aloe Vera. Please  
call after 6 or weekends.  
Dewanda Blenden, 652-2563.  
L-tfc

WE SELL new and rebuilt Kirby  
Vacuum Cleaners and parts  
Parker Furniture, Floydada. tfc

FOR SALE -200, 2" irrigation  
tubes. Ten metal gates. Lock-  
ney 652-3128. L4-18c

Inventory Reduction  
20% Discount  
Shop & Save  
Dougherty Grocery  
tfc

LOSE WEIGHT W/New Shape  
Capsules and Hydres Water  
Pills at Byrd Pharmacy.  
L4-15-4-22p

NOW we have in stock electron-  
ic printing calculators at ad-  
ding machine prices. \$129.95  
with year guarantee. Hes-  
perian Office Supply, Beacon  
Office Supply. tfc

WE have the Spanish Farm &  
Ranch book. Hesperian Office  
Supply. tfc

### CLASSIFIED AD SALE

CLASSIFIED ADVERTISING  
RATE: 7 CENTS PER WORD  
FIRST INSERTION; 5 CENTS  
PER WORD EACH SUBSE-  
QUENT INSERTION. MINI-  
MUM CHARGE: \$1.00.

CLASSIFIED DISPLAY RATE:  
\$1.15 PER COLUMN INCH.  
CARDS OF THANKS: \$1.00.

COPY DEADLINES: 5 P.M.  
TUESDAYS FOR THURSDAY  
EDITION; 10:00 A.M. FRI-  
DAYS FOR SUNDAY EDITION.  
Call 983-3737 in Floydada  
or  
652-3318 in Lockney

### FOR SALE

COUNTRY CLUB membership  
for sale. Contact Charles  
Hamilton. 4-25c

WE HAVE IN STOCK the new  
revised 1975 76 336 page U. S.  
Zip Code Directories. \$3.95 each  
Hesperian Office Supply and  
Beacon Office Supply. tfc

FOR SALE: The 1976 Texas  
Almanacs are here! Beacon  
Office Supply - Hesperian  
Office Supply. tfc

### CARD OF THANKS

WITHOUT THE LOVE and  
support of our many friends our  
loss would be unbearable. We  
thank you for the beautiful  
flowers, the memorial contribu-  
tions, the lovely cards, and all  
the wonderful food. There were  
many dishes brought that were  
not recorded which regrettably  
we cannot acknowledge indi-  
vidually. All of these thoughtful  
expressions of your concern are  
deeply appreciated. May God  
bless each of you.  
The family of John P. Moss

### SALES

GARAGE SALE Four miles  
east of Radio tower on Lane  
Star Hiway. Childrens  
clothes, all sizes. Hair dryer,  
car seat, record player and  
misc. From the 17th thru 23rd.  
L4-18c

### PETS

FREE PUPPIES mixed breed,  
call 983-5128. 4-18c

### Mr. Cotton Producer...

When you think of cot-  
ton, think of



COTTON SEEDS

There is a variety for you  
regardless of your soil  
and water conditions,  
even if Vert Wilt is your  
problem. Order some of  
this high germinating  
SEED today from your  
Ginner of Seed Dealer  
or Call

**MACHA  
SEED FARMS**  
Box 248, 385-6094  
Littlefield, Texas  
4-18c



### Bedding Plants

flowers & vegetables  
available now

**SCHACHTS FLOWERS,  
JEWELRY & GIFT  
SHOP**  
112 W. POPLAR  
tfc

**HOUSE FOR SALE**  
3 BEDROOM GOOD LOCATION  
CALL 983-3992

Heating Air Conditioning Installation  
**TINO GOMEZ**  
Phone 983-5279 501 S. Main  
Floydada

Diamond Industrial Supply Co., Inc.  
Phone Days 296-7418 Nights 296-1200  
or 296-7828  
1014 Broadway  
Plainview, Texas

Chain U-joints  
Sprockets Oil Seals  
V-belts O-rings  
Sheaves Wisconsin  
SKF BCA Timken Bower  
Cotton Striper Brushes & Bats

"We Appreciate Your Business More"  
L-TFC

Free Estimates Satisfaction Guaranteed  
**PAINTER**  
Interior Exterior Residential Commercial  
983-2503 983-3512  
Floydada, Texas tfc

2 OR 3 BEDROOM HOUSE, 812 WEST  
LEE ST. SEVERAL OTHER 2 AND 3  
BEDROOM HOMES IN GOOD LOCATION.  
160 ACRES IRRIGATED FARM 2 MILE  
NORTH OF LOCKNEY. PRICED WORTH  
THE MONEY. LOW DOWN PAYMENT.

**CAPROCK INSURANCE AND  
REAL ESTATE** Phone 983-3284  
Aldine Williams-983-2366  
Randell King-983-5028  
Scott Faulkenberry-983-2756  
tfc

**FLOYD COUNTY  
ABSTRACT CO.**  
Abstracts  
Of Title  
Title Insurance  
Verna L. Stewart  
Owner, Manager  
217 W. California  
983-3728  
Floydada, Texas

**E-59**  
Big Bronze Leader  
Greenbug Resistance Bonus  
PRODUCERS  
COOPERATIVE  
ELEVATOR

IF IT IS INSURANCE  
-- SEE --  
**Barker Insurance  
Agency**  
LOCKNEY  
Life - Fire - Casualty - Hospital  
**B. B. Wilkes,  
Real Estate**  
LOCKNEY  
Farms - Ranches - City Properties  
Business Leases - Loans

Round Trip  
From Lubbock  
INCLUDING HOTEL  
**HAWAII**  
2 ISLANDS \$483  
**\$379**  
**W.M. Tooley**  
Box 700  
Floydada, Texas 79235  
Phone 983-3737

**QUALITY SHAMROCK  
PRODUCTS**  
Always Make A Good Deal On  
SONIC TIRES and SOUTHLAND BATTERIES  
Dial 652-3366  
**JACKSON TIRE COMPANY**  
Richard Wiley



**Auto Accidents  
DO Happen ...**  
If one happens to  
you, be protected.  
Our car insurance  
offers coverage to  
meet your special  
needs - repairs to  
personal liability.

**BAKER  
Insurance Agency**  
127 W. Calif.  
Ph. 983-3270

Lightweight ALUMINUM  
**CANES & CRUTCHES**

Sturdy  
Dependable  
Attractive  
Wide selection for every  
prescribed need  
Forearm and underarm  
crutches  
Adjustable telescopic canes  
Four legged canes  
Seat Canes

**BISHOP-RAMSEY  
PHARMACY**  
208 West Houston  
983-3174  
FLOYDADA

**DAN'S AUTO  
SERVICE**  
DAN TEUTON, Owner  
Specializing in Auto-  
matic Transmission,  
Motor Tune-Ups, Auto  
Air Conditioning.  
General Repair  
We Have A  
BRAKE LATHE  
to handle all passenger  
car brake drums. See us  
for complete brake  
service.  
Phone 652-2462

### RELIGIOUS BOOK SALE

- Angels: God's Secret Agents**  
**The Beloved Invader**  
**Amazing Grace**  
**Two From Galilee**  
**All Things Are Possible**  
**Through Prayer**  
**The Burden Is Light!**  
**In The Presence Of Mine Enemies**  
**Miracle Of Seed Faith**  
**The Full Blessing Of Pentecost**  
**Beyond Our Selves**  
**Nine O'clock In The Morning**  
**Healing Adventure**  
**Since Jesus Passed By**  
**Adventures In Prayer**  
**Tramp For The Lord**  
**Twice Seven Words**  
**None Of These Diseases**  
**Amazing Saints**  
**Goodbye Mr. President**  
**The Hiding Place**
- One Thousand Time Out, Ladies**  
**Christy To Live Again**  
**A New Song Divine Healing**  
**Sealed Orders Praise Works!**  
**The Lonely Now Where He Leads**

**HESPERIAN  
OFFICE SUPPLY**

Field Day here

ive Degree

He received  
tic's Award,  
nominated in  
Among Ameri-  
and Universi-  
held membe-  
math club, and

Kay Smith  
will receive a  
elementary  
Wayland Bay-  
during commo-  
cises May 15.

50 office build-  
paneled James  
983-3144 night  
tfc

bedroom and  
garage house, 212  
John Dorman  
L-tfc

models that  
cock of freeze

appliances sho-  
t these low p-

ustom  
ication  
of  
micals  
or  
ton  
orn  
ilo  
ll Wisdom  
Reg. P  
-3541  
419  
ryl Dennis  
Sale P  
-2616  
319  
w/

14 Cu. Ft.  
Reg. P  
338  
Sale P  
297  
w/

14 Cu. Ft.  
Reg. P  
338  
Sale P  
297  
w/

ARDINAL  
oner  
1  
ARTHEL  
oner  
3  
MILTON  
sor and  
FAWVER

ME  
GS



Suzanne Guthrie Trautman

### Suzanne Guthrie Trautman Named SMU Girl's Basketball Coach

Suzanne Guthrie Trautman, who compiled a five-year record of 98-26 at Bishop Lynch High School, has been named women's basketball coach at SMU. Mrs. Trautmann, 25, becomes the first full time women's basketball coach for the Mustangs. She will be in charge of all facets of the women's cage program. She coached and taught at Bishop Lynch from 1969-74 and during that time was district runnerup twice and district champ in 1972-73 when the team finished third in the state Texas Catholic Interscholastic League playoffs.

The women's basketball team will receive three scholarships according to assistant athletic director Barbara Camp. The team now consists of only volunteers. Mrs. Trautmann, a graduate of FHS, graduated from SMU in 1975 and played on the 1969-70 SMU girls team. She is from Floydada, where she made all-district as a freshman and was a four year starter on the varsity. She is the daughter of Dr. and Mrs. A. E. Guthrie. "We're getting a late start and we've got to get to work on recruiting and try to get some good players here," Mrs. Trautmann said about her new job which begins immediately. "We can start to build a good program and

within a couple of years we'll be able to compete with anybody." The SMU women's program includes four sports on an intercollegiate level—basketball, swimming, golf, and tennis. "Suzanne will be a fine addition to our program," said Camp. "Our coaches are the finest in the state and she is going to be a great addition to it. She's an excellent teacher and coach and a real asset to SMU."

Happiness Is . . .  
LIKE A KISS  
YOU DON'T  
GET ANYTHING  
OUT OF IT  
UNLESS YOU  
GIVE IT TO  
SOMEBODY!!!

"If you're not now under a retirement plan, you owe yourself an IRA. Save dollars now and enjoy them later."

Let's talk IRA. Person to person.



TOMMY ASSEL  
PHONE 983-2222  
FLOYDADA, TEXAS  
Southwestern Life  
Helping people - person to person.



# Piggly Wiggly LOW PRICE

Prices good thru April 21, 1976. We reserve the right to limit quantities. None sold to dealers.



Piggly Wiggly  
Welcomes  
Stamp Customers



Piggly Wiggly, Pure  
**VEGETABLE  
SHORTENING**  
**99¢**  
3-Lb. Can

Piggly Wiggly  
**Pork & Beans** 16-oz. Can **25¢**

Heinz, Strained  
**Baby Food** 4 1/2-oz. Jars **8 \$1**

Piggly Wiggly  
**Daytime Diapers** 30-Ct. Box **\$1.79**

Sparetime  
Beef, Chicken or Turkey

**POT  
PIES**  
**5 \$1**  
6-oz. Pkgs.



Fresh Cut, 3 Breast, 3 Leg  
Quarters, 3 Wings & 3 Giblets

**TUB-O-  
CHICKEN**  
**43¢**

Farmer Jones  
**Sliced Bologna** 12-oz. Pkg. **79¢**

Skinned & Deveined  
**Beef Liver** Lb. **59¢**

**DOUBLE YOUR MONEY BACK MEAT GUARANTEE**  
At Piggly Wiggly, we are so confident of the superior quality of our fresh meats that we proudly offer an unconditional guarantee that gives you double your money back on any fresh meat purchase which does not completely please you.



3-Lbs. or More, Fresh  
**GROUND  
BEEF**  
**79¢**  
Lb.

Fresh Cut, Thighs or  
**Fryer Drums** Lb. **79¢**

Fisherboy  
**Fish Sticks** 8-oz. Pkg. **39¢**

So, if the meat you buy does not completely satisfy you, see our store manager and the purchase price will be refunded, double!



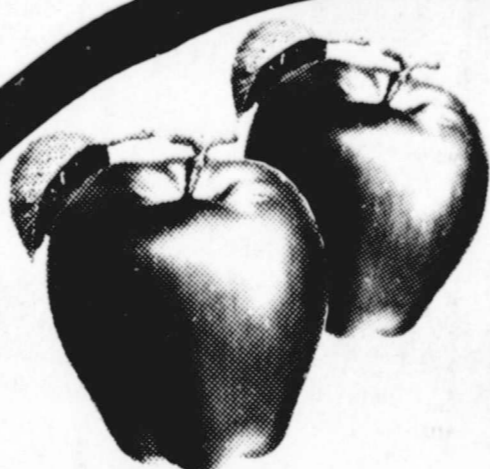
Sunshine's  
**KRISP  
CRACKERS**  
1-Lb. Box **39¢**

Piggly Wiggly  
**Liquid Bleach** 1/2-Gal. Btl. **29¢**

Tide's In...Dirt's Out  
**Tide Detergent** 49-oz. Box **\$1.49**

100-Ct. Bottle  
**Tylenol Tablets** Ea. **69¢**

Regular Quarter  
**PARK  
MARGAR**  
**39¢**  
1-Lb. Pkg.



Washington, Extra Fancy, Red  
**Delicious Apples** 3 Lbs. **\$1**

Fresh Florida  
**Sweet Corn** 8 Ears **\$1.00**



Premium Baker  
**Russet Potatoes** Lb. **19¢**

California Sweet  
**Oranges** Lb. **25¢**