

The Floyd County Hesperian



15¢ Per Copy

VOLUME 81

FLOYDADA, FLOYD COUNTY, TEXAS 79235

Thursday, April 7, 1977

16 Pages In One Section

Number 28

WOMEN ON BOARD!

Helms, Farris, Holmes Elected To School Board

The electing school board meeting as two women were elected to the board, the third person elected by only seven votes, was an unbelievable 70 percent of the vote.

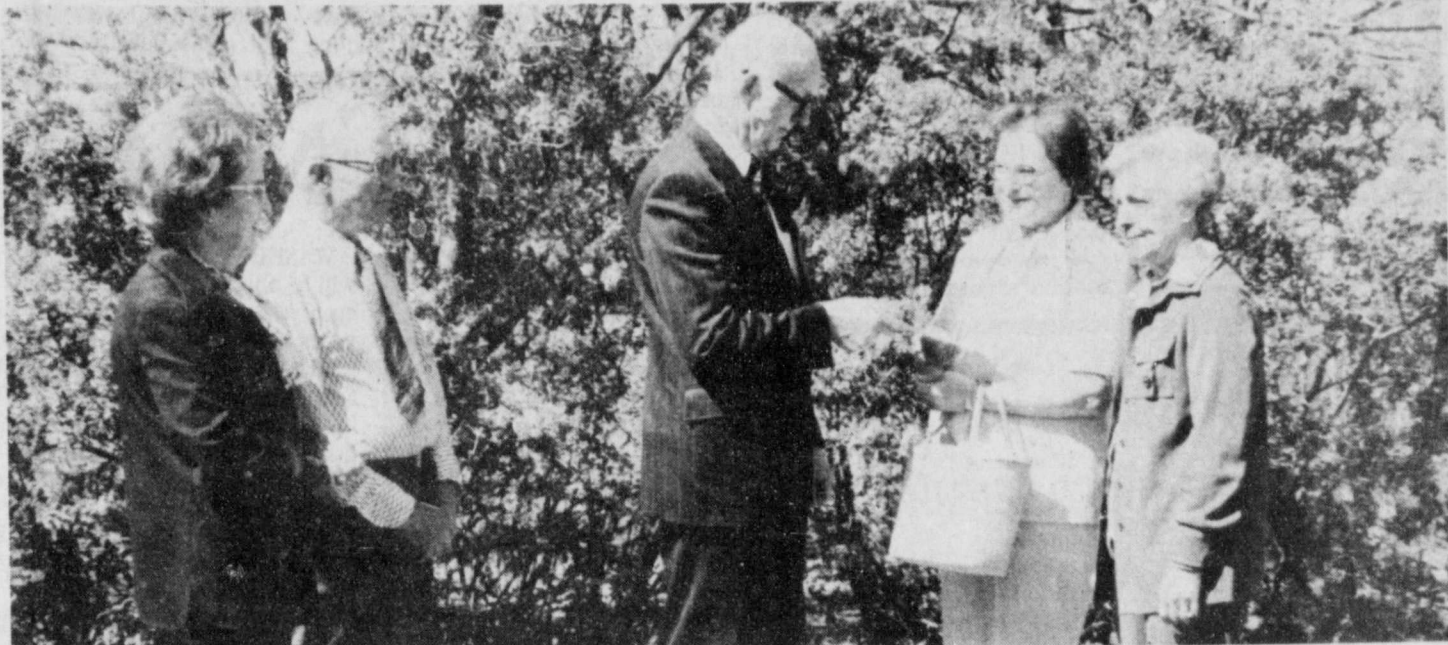
Farmer Adrain Helms led the race with a strong tally of 355 votes. In second place was homemaker Martha Farris with 255 votes and in third place Betty Holmes was re-elected with 214 votes.

Homemaker Gail Hickerson received 70 write-in votes.

Adrain, Martha and Betty will each serve a three year term. Adrain and Martha take the places of Thomas Warren and Jerrold Vinson on the board.

Almost elected to serve was Robert Stovall with 207 votes. Eugene (Button) Beedy received 131 votes.

The new board members enter their first board meeting Monday night.



WITH A BACKGROUND OF BEAUTIFUL flowering shrubs, Mayor Parnell Powell proclaims the Crepe Myrtle as Floydada's official flower. The ceremony was held Tuesday in the yard of Mr. and Mrs. S. W. Ross, pictured at left. Mayor Powell presents the proclamation to Mrs. Clarence Denton, who is chairman of the crepe myrtle project for the Women's Division of the Chamber of Commerce, sponsors of the crepe myrtle selling campaign. Both Mr. and Mrs. Ross are members of the Chamber. At right is president of the organization, Mrs. Jimmie Willson. Townspeople are urged to plant the city's official flower and to purchase a crepe myrtle for their yard from the Women's Chamber of commerce. Call Mrs. Denton or any other member of the women's division. They will be happy to take your order. Delivery date is approximately April 15th. (Staff Photo)

Elected To Council, Hospital Board

A good voter turn-out for the elections Saturday of the city council and hospital board members.

Laron Fulton was re-elected with a vote of 302. There were five write-ins: Weems Norman, Mack Hickerson, Bill Hardin, Robert Stovall, and retiring president of the board Dallas Ramsey received seven votes.

CITY COUNCIL
Mayor Parnell Powell received 124 votes, councilmen Jerry Thompson received 124 and Wayne Russell 123 votes.

Fill The Boot Day

Volunteer Firemen will be filling their boots with money for the boots with money for the fire department fund.

Fire departments all over the nation will be working on similar drives with the money going to help the many children afflicted with muscular dystrophy.

Easter Egg Hunt

There will be an Easter egg hunt for all pre-schoolers in Floydada Saturday at Floydada Park across the street from High School. The event is being sponsored by the 1956 Jr. Study club and it begins at 10:30 a.m.

Cost will be \$1 per child with proceeds going to the park improvement funds.

Prizes of silver dollars will be given for the top four winners. All pre-schoolers are invited to attend.

Bank Deposits Up Again

"A profitable cotton crop, which has mostly been marketed by this time," was the reason one Floyd banker gave for bank deposits being up over this same time last year.

Floyd County's two First National Banks were up over two and a half million dollars in deposits as of the March 31, bank call.

"...and there is no telling how much wheat and grain sorghum remains unsold in storage, while the farmer hopes the price will come up," the banker continued.

The Floydada bank showed a very good increase in deposits of 12 percent ...up from last year's \$20,651,222.10 to this year's \$23,139,276.44. The bank's loans were also up from \$6,543,322.06 to \$8,615,709.79.

Lockney's bank was up in deposits from \$13,093,831.25 to \$13,373,202.01. Loans were up from \$5,076,706.18 to \$5,946,658.35.



April Is Cancer Control Month

April has been designated Cancer Control Month by the President of the United States, the Governor of Texas and Mayor Parnell Powell of Floydada. Mayor Powell signed the proclamation Monday and the crusade in Floydada will begin April 11 with a business drive.

Kick-off day is at 2 p.m. Sunday, April 17th, when the house to house canvassing will start.

Margie Fowler is Cancer Crusade chairman; Nancy Hagood, co-chairman; Nancy Hagood, neighborhood chairman; Edell Moore, business chairman, and Norma Welch, community chairman.

The proclamation follows:

MONTH OF APRIL DESIGNATED CANCER CONTROL MONTH... by Mayor Parnell Powell. Friday is coffee day for cancer; April 11th is business drive day, and April 17th is official kick-off day for the cancer drive beginning at 2 p.m. with the house to house drive. Pictured with Mayor Powell as he signs the proclamation are left to right, Margie Womack, co-chairman; Nancy Hagood, neighborhood chairman; Margie Fowler, Crusade chairman, and Edell Moore, business chairman. Not pictured is Norma Welch, community chairman. (Staff Photo)

PROCLAMATION "April Cancer Control Month"

Whereas the President of the United States designates April as "Cancer Control Month"

Whereas the Governor of Texas designates April as "Cancer Control Month"

Whereas one out of every four people are affected by dreaded disease of Cancer. The American Cancer Society asks for your support for its program of research, education and service to Cancer patients.

Therefore, I, Parnell Powell, Honorable Mayor of the City of Floydada, Floyd County, do proclaim April as "Cancer Control Month" and April 17th as "Cancer Control Day."

Parnell Powell

Mayor



COULD WE BORROW THE RADIO STATION, HUH? Lions Ratzlaff, McDonald and Copeland are officially requesting the use of KFLP radio station for Saturday, April 9, for Lions radio day. The "Requestee" is Lion Jim Sechrist, radio station production manager.

Sponsoring Crime Prevention Program

Clubs of Floydada, including the 1956 Jr., are sponsoring a crime prevention program for the public Tuesday in the chapel of the church, beginning at 7 p.m. The program is of special benefit to the older people. Women are cordially invited.

J. C. Coats of Lubbock, who is in the office of Texas Crime Prevention, will bring a film pertaining to the program and will also give a lecture. A question and answer session will be held concerning "dos and don'ts" in preventing crimes.

Sheriff Fred Cardinal and City Police Chief Tom Hopper are also expected to be present for a portion of the program.

Coffee For Cancer Fund Friday

A day of coffee money to help the cancer fund will go to the American Cancer Society from participating restaurants in Floydada, according to

Crusade chairman, Margie Fowler. Participating restaurants includes the Travel Center, Azteca, Leonards and Kings.

Rock Chat

By Wendell Tooley

THE CREPE MYRTLE flower, you may have seen it in the Chamber of Commerce. The price is \$2.50 per bush. Call 983-3163 or 983-3164 for more information. Some of these plants are available this year. April 15 is

brush pickup service in Floydada. I called the city manager and he said that the city furnished the brush trailer, pulls it to the residence, pulls it away from the residence, but did not do the loading of the brush on the trailer. Some neighbors help out the elderly in situations like this, and some hire school children to load the brush on the trailer.

WORKING OUT PRIORITIES...this seems to be the key to the county commissioners problems and might also solve what is ahead of the Floydada school board.

In the next three or four years the commissioners will have around a half million dollars worth of revenue money. It seems to me that they could satisfy most of the people, if they would work out a four year plan of priorities.

It is quite possible that a jail, library, agriculture building repair, new trucks for the precinct could be used with the money, and the commissioners would still have a little revenue money for road grading equipment and expenses.

We still maintain that revenue money should not be used for grading roads...this should come from tax money.

The school board could very well solve its problem by establishing priorities of what is most important for the school system. The academic changes do not require a lot of money, but repairs at Andrews Ward school, and the other schools should come next.

The run-down tennis courts, athletic department repairs should come next. No doubt, moving the stadium should be the last consideration on the priority list.

CONSUMERS MEET TONIGHT

All stockholders of Consumers Fuel Assn. in Floydada are reminded about the annual meeting Thursday, April 7 in the Massie Activity Center.

The meeting will begin at 7:30 p.m. There will be an audit report and the election of two directors. There will also be entertainment and refreshments.

Win In Wayland History Fair

Several Floydada seventh graders were winners in the annual regional History Fair held at Wayland College March 31, April 2. Lisa Ware received the Claude Hutcherson merit award and first place ribbon.

Other winners included:
1st Place: Rande Poage, Bryant Higginbotham, D'Lee Marble.
2nd Place: Brent Duke, Suzie Ehler and Stacy Graham, Joey Hale and Bobby Tinsley.

3rd Place: Wesley Day, Barbara Martinez, Susan Turner and Carmen Powell.
4th Place: Kyle Stapleton and Terry Westbrook, Kelli Ferguson, Deen Dickson.
5th Place: Treva Hambricht.
Honorable Mention: Norman Allen.

Band Boosters Meet

Floydada Band Boosters will hold a covered dish supper meeting Monday night, April 11 beginning at 7 o'clock at Lighthouse Electric. Those attending are asked to bring a covered dish and all band boosters are urged to attend.

Don Chesshir, president, said new officers for 1977-78 will be elected at this time, and new projects for the year will be presented.

Baseball Meeting

Friday Night

Floydada baseball season is almost here and all adults interested in working in the youth baseball program should attend a meeting at the Southwestern Public Service office Friday night at 7:30.

Last year's president Jackie Duke will preside over the meeting. Officers are to be elected and organization of this year's program is also on the agenda.

Swine Division

Meet Tonight

All members of the swine division of the Floyd County Fat Stock show are urged to attend a meeting tonight at Lighthouse Electric.

The meeting, which is called to discuss new swine division rules, will begin at 7:30.

Conservation News

Jon J. La Baume, District Conservationist for the Floyd County Soil Conservation Service stated this week that several area farmers had reported that they were being charged a financial charge on services performed by contractors. La Baume stated that one should read all details of any contract for signing for any services before signing the contract. It is the practice of many businesses to charge a financial charge to the purchaser of goods on the unpaid balance after 30 days, however the Soil Conservation Service nor the Agriculture Stabilization and Conservation Service (ASCS) offices accept any responsibility of any financial charges nor can the SCS or the ASCS require the contractors not to charge the financial charges.

It is the policy of the SCS and the ASCS offices to provide assistance as soon as possible whereby the conservation practice can be checked out according to specifications and whereby cost share payments can be made to the farmer, however, it is impossible to complete all jobs and all applications within a 30 day period.

The SCS requires a copy of the irrigation pipeline guarantee before they can check and measure and certify the pipeline being installed according to specifications. These guarantees are dated as they are received by the SCS and at the present time pipelines are being measured and checked out according to the dates on the guarantees. A pipeline company cannot send a guarantee unless all specifications are met which includes water piking and back-filling the pipeline. The ASCS office also requires a bill with all charges on it before payment can be made.

The SCS and the ASCS offices will continue to provide the fastest service possible for farmers to receive cost share payments, but the farmer must do certain things to receive the payments, the contractors must do certain things before the SCS and the ASCS can certify payment, normally this will be more than 30 days because the agencies could be handling over 100 applications at one time.

Part of the financial charges could be avoided if the farmer would pay his part of the practice when the bill is received or the farmer could request that the contractor, not receive a purchase order and the farmer pay the entire bill when it is received and then cost share payment will be made to the farmer for all the work performed, but this cost share payment would not be made to the farmer until after October 1st.

La Baume stated that his agency (Soil Conservation Service) since January 1, 1977 has designed, measured, checked out and certified 63,916 feet (Over 12 miles) of irrigation pipeline for payment and the SCS has designed, staked, checked out and measured 61,072

feet (11.5 miles) of parallel terraces for payment. The SCS also during this period designed and worked on an additional 36 applications for irrigation pipeline for thousands of feet.

La Baume also stated that many landowners during this period of time requested ditch lines, contour rows, land leveling, waterways and other conservation work.

The SCS and the ASCS would like to request the farmers understanding during this heavy workload period of time for both agencies and the check out of conservation practices for cost share payment will be done as fast as possible.

Floyd 4-'Ers In Livestock Judging Contest

Eight Floyd County 4-H'ers competed in the livestock judging division at the Abilene Christian College Judging contest held in Abilene April 4, 1977. 4-H and FFBA teams from throughout the state competed in the judging contest making it very competitive. The Floyd County teams did an excellent job and represented their county well.

High individual for the contest was Lockney 4-H member Ty Williams. Ty had a total score of 435 points out of a possible 450. Floyd County 4-H team I members were made up of Greg Jones and Greg Pruitt of Floydada and Jody Foster and Byron Brock of Lockney. Team I was seventh high team in the contest. Floyd County 4-H Team II was made up of Ty Williams, Kyle Brock both from Lockney and Mark Beedy and Todd Beedy from

Floydada. Team II placed eleventh over the entire contest.

The livestock contest was made up of 2 steer classes, 1 breeding heifer class, 2 lamb classes, 1 breeding ewe class, 2 market barrow classes and 1 gilt class.

FLOYD DATA

Roe Jones, a patient in Lubbock Methodist Hospital since last mid-week, was reported to be slightly improved Tuesday. With him during this time other than his wife, have been their four daughters, Helen Mel-


FLOYD DATA

Earl Baker is a medical patient in Lubbock Methodist Hospital. He was reported about the same Tuesday.

Mac's Backhoe Service
Call Harvey McJimsen
Silverton, Texas

GET READY FOR BOB WILLS DAY AND THE RODEO SEASON SPECIALS EVERY DAY AT BOOT HILL WESTERN STORE
ON MAIN STREET IN LOCKNEY

THANKS FOR SHOPPING



In Lockney

Sidewalk Sale Every Saturday (Weather Permitting)

New grain reserve program

WASHINGTON (AP) — Farmers will be able to store some of their 1976 crop wheat and rice for up to three years under a new grain reserve program described by Agriculture Secretary Bob Bergland as having a "leavening effect" on wide springs in market prices.

The reserve plan and increases in the government's price support loan rate for 1977 corn, soybeans and other livestock feed grains were announced by Bergland on Monday.

"The reserve mechanism should have only marginal impact, if any, on consumer prices," Bergland said. "In-

deed, in the long haul it'll be the best thing that consumers could get."

Although the reserve plan includes rice, officials said relatively little rice is expected in the program. But about 300 million bushels of wheat may be in the food reserve.

WHEAT FARMERS produced a record crop of more than 2.1 billion bushels last year, the second bumper harvest in a row. Consequently, wheat prices are down sharply and stock piles are huge. About 1.1 billion bushels will be on hand June 1 when the new harvest is ready.

Price support loan rates were not changed from the \$2.25 a bushel announced last fall for the 1977 crop. That is how much farmers can borrow from USDA using their grain as collateral. Loans for 1977 corn were raised to \$1.75 a bushel from the \$1.50 announced previously. Soybeans were boosted to \$3.50 from \$2.50 while other feed grains were raised proportionately.

Under the reserve plan, farmers can "reseed" or continue their grain placed under loan for up to three years, compared with the usual one year. A trigger mechanism will allow farmers to pay off loans and sell their grain if

Cedar Hill News

By Grace Lemons

CENTER: April 4 - It is still windy and cold, and clouds dissolved without leaving us any rain. I guess we are all ready for April showers.

Sunday was a nice day for a visit with out of town relatives you don't get to see often. My children, Vic and Sue Green of Plainview and I had a pleasant trip to visit in the J. B. Massingill home in Phillips. Sunday and at the Magic Plains Nursing Home, Borger. We drove up on Highway 207, through Palo Duro Canyon, and through the north plains and the beautiful wheat fields. Fields are ready to plant, nearly furrows flooded, beautiful country homes, and we must not neglect to mention the bountiful dinner and fellowship of the assembled relatives. We got there too late for church.

The C. O. Spences and the Adriel Spences were out of town over the weekend, Friday on Monday. At Sherman, with the other son, Orville, and family - all assembled for the Sunday noon meal after attending church. Later the C. O. Spences visited in the beautiful new home of Mr. and Mrs. Henry Self and daughter where Adriel and Audrey were also guests.

Mr. and Mrs. Jo Conway and Mr. and Mrs. Boone Hall of Plainview visited Mr. and Mrs. Claud Carpenter Saturday.

Dr. Bradley visited Mr. and Mrs. C. O. Spence Tuesday p.m.

Mrs. Clarence Ashten visited Mrs. Frank Dunn one p.m. last week.

Mr. and Mrs. Joe Lee Dunn and boys of Houston are in this area visiting relatives.

Mrs. O. C. Vinson who spends the cold winter months visiting daughters in Harlingen arrived home

Friday.

Mrs. Green visited friends in Caprock Nursing and Floydada Hospital home Friday p.m.

Roe Jones has been several days in Methodist Hospital. We hope he will soon be better.

J. D. Welborn returned home Saturday from a week's stay in Caprock Hospital.

Mrs. Hal Thomas who had more surgery one day last week in Methodist Hospital is reported convalescing nicely.

Mrs. Norma Roberson and children of Denver who visited her mother last week left early Saturday for home. One night last week Mrs. Ross and Norma and family spent one night with another daughter and husband, Mr. and Mrs. Buck Ragsdale of Baileyboro.

Mrs. Elmer Warren and Mrs. Leo Frizzell visited in

WHAT NICER WAY TO SAY ' I LOVE YOU ' FOR EASTER... LITTON MICROWAVE

"When we moved I decided I wanted a versatile new range."



Model 650

Litton gives you a better way to cook—microwave speed, conventional oven or both at once.

It's three ovens in one. The Combination range cooks with a combination of microwave speed and conventional heat in one oven, at the same time. Or, with microwave only. Or conventional heat only. You decide which is best for each food.

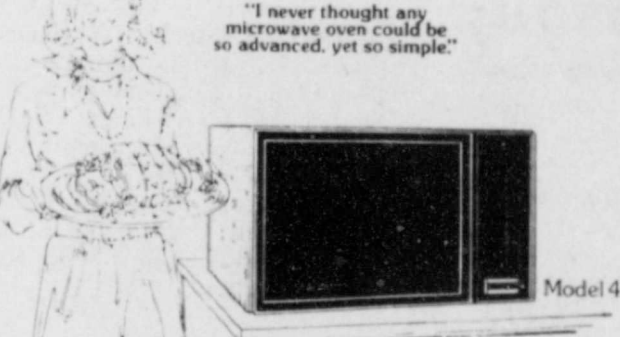
- Other advanced features from Litton.
- Smoothtop cooking surface with one fast-heat element.
 - Self-cleaning oven.
 - Step-Saver Timer™
 - Automatic Defrost.
 - Mini-Food Shelf.
 - 208-pg. Combination Microwave Range cookbook.

Just part of Litton's complete line of energy-saving microwave ovens and ranges. Model 650, suggested retail price, \$999.95

Dealer Cost Sale Price \$795.00



"I never thought any microwave oven could be so advanced, yet so simple."



Model 420

Cook up the results you want, automatically with Litton's new Memorymatic™ Microwave Program Cooking.

Memorymatic does whatever a microwave oven can do, plus computer-like memory control lets you program time and cooking at the touch of a finger. Then speed to the other—automatic control versatility of conventional microwave oven—for slow-cooking at microwave speeds.

- Other advanced features from Litton.
- 99-minute digital display.
 - Vari-Cook™ control.
 - Minuteminder timer.
 - 180-page Vari-Cook microwave cookbook.

Just part of Litton's complete line of energy-saving microwave ovens and ranges. Model 420, suggested retail price, \$579.95

Dealer Cost Sale Price \$449.00

"Everything in my compact kitchen has to be super efficient."



Model 102

Litton's 102 microwave oven is compact, yet roomy, with conveniences including Automatic Defrost.

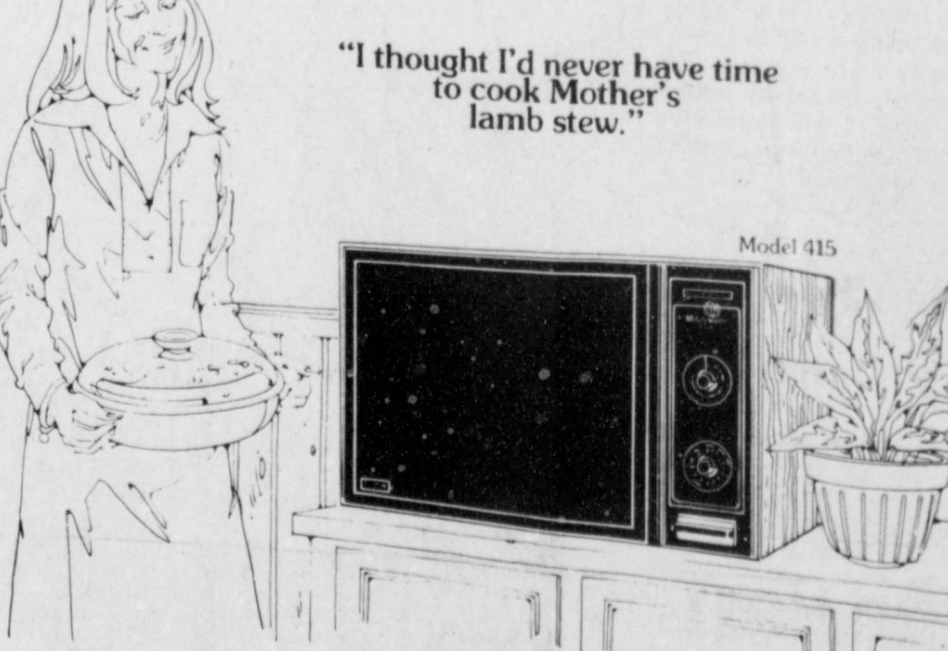
- You can cook entire meals. The interior is large enough to handle most everyday cooking needs. And with Automatic Defrost you can even make last-minute meal decisions.
- Other advanced features from Litton.
- Large easy-clean acrylic .75 cu. ft. interior.
 - Removable glass shelf.
 - 20-minute timer.
 - 160-pg. "Exciting World of Microwave Cooking" cookbook.

Just part of Litton's complete line of energy-saving microwave ovens and ranges. Model 102, suggested retail price, \$299.95

Dealer Cost Sale Price \$239.00



"I thought I'd never have time to cook Mother's lamb stew."



Model 415

Litton...changing the way America Cooks.

Get old-fashioned slow-cooked goodness at microwave speeds, with Litton Vari-Cook® oven cooking.

Change speeds as you change foods. Vari-Cook oven control lets you set your own microwave speed for each kind of food. Cook, reheat, roast, simmer, defrost or any setting in between. So your specialties will taste special.

- Other advanced features from Litton.
- 45-minute push-to-turn timer.
 - Extra-large easy-clean acrylic 1.2 cu. ft. interior.
 - 100-650 watts.
 - Defrost-in ceramic shelf.
 - 180-pg. Vari-Cook microwave cookbook.

Just part of Litton's complete line of energy-saving microwave ovens and ranges. Model 415, suggested retail price, \$439.95

Dealer Cost Sale Price \$349.00



MIZE PHARMACY & TV

LOCKNEY TEX.

OBITUARIES

Wiley
 member of the Church of Christ, VFW and a veteran of World War II.
 Survivors include his wife; a son, John F. of Tyler; two brothers, J. T. of Frisco and Orwin of Girard; two sisters, Mrs. Bradley of Dougherty and Mrs. Wilda Millican of Friona; and two grandchildren.

R. R. Pyle

Services for R. Ray Pyle, 83 year old retired carpenter and farmer, and father of Louis Pyle of Floydada, were held in Sullivan Funeral Home Chapel in Vernon March 30. Mr. Pyle, who resided at 3604 Indian St. in Vernon, died early Monday morning, March 28 in a Vernon hospital after a lengthy illness.
 Officiating at the rites was Rev. Ron Fox, pastor of the Calvary Baptist Church in Vernon where Mr. Pyle was a member. Burial was in Wilbarger Memorial Park.
 Son of the late Mr. and Mrs. R. M. Pyle, Mr. Pyle was born December 28, 1893 in Bonham. He married the former Clara Shultz in Crowell in 1918. She preceded him in death in 1929.
 Survivors include his wife, Irma, and four sons, Reid of Rule, Louis of Floydada, James of Fort Worth and Joe of Hawaii; a daughter, Mrs. Iona Adkins of Crowell; 14 grandchildren; and 13 great grandchildren.
 Pallbearers were grandsons, Gerald Pyle, Gary Pyle, Robert Pyle, Randy Adkins, Victor Pyle and Gene Smith.

Try to accept others as they are. Learn to recognize and appreciate people's strengths and unique qualities, advises Mrs. Ilene Miller, family life education specialist with the Texas Agricultural Extension Service, The Texas A&M University System.

EVERYTHING'S COMING UP



SPRING



THE FASHIONS OF easter

Have A New And Knit Season... Classic Dresses

\$18⁰⁰ to \$38⁰⁰

Reduced 20% Off



After just one look, you'll know these to be very special dresses and at a remarkable price. Crisp polyester, silk or poly/cotton blends in ravishing designs. Machine wash, never need ironing. Cool spring colors. 8-18.

Bealls

Shop Our Easter Specials

As Carefree As Easter's Child-
 Youngland Washable Dresses **Now Reduced 30% Off**
 \$9⁹⁹ to \$25⁰⁰

What a pretty way to bring on a smile... choice of soft polyester cotton blends, full skirted in laced yellow print or puffed sleeves and sailor styling in bright red and white. Never needs ironing. Sizes 4-6x-7-14.



All Dressed Up For Easter In Gleaming Patent...



Reg. \$13⁰⁰ Values **Now \$9⁸⁸**

When it comes to an occasion that calls for something special, this little wedge fits the bill. Open shank sabot with wood look wedge. Black or white. Sizes 8 1/2-4c.

4-PIECE SUITS

Reg. \$127⁵⁰ **Now \$94⁸⁸**

3-PIECE SUITS **Now 74⁸⁸**
 Reg. \$110⁰⁰ Values

Bealls has vested suits with the look, the fit, the flair. It's never been done better than these handsome suits set off by neat matching vest. 100% polyester knits, 100% comfort. Spring solids. Regulars or longs.

EASTER SPECIAL

BOYS SUITS

Leisure or Dress

Values From \$16⁹⁹ to \$45⁹⁹

Now **Reduced 20% Off** Reg. Price

EASTER SPECIAL ON LADIES DRESS SHOES

Reg. \$15⁰⁰ to \$20⁰⁰ Values

Now **\$13⁸⁸** A Pr.

EASTER SPECIAL ON BOYS DRESS SHOES

REG. \$12⁰⁰ TO \$14⁰⁰ VALUES

REDUCED 20% OFF



The Vest Has Fashion In Check-Mate

NOW THERE ARE THREE WAYS TO CHARGE!



BeautyMist
Heat Leg Put-On

BIG SAVINGS ON ALL BEAUTYMIST STYLES

Don't want to miss this opportunity to get BeautyMist favorites at specially reduced prices. For a limited time only!

	Regularly	NOW
3-pr pack	\$ 1.00	\$.85
3-pr pack	2.69	2.19
	1.50	1.20
	1.69	1.39
	2.00	1.65
	3.95	3.25
3-pr pack	11.85	9.75

...in our Department...
Bealls
 April 7-23, 1977

Sherry Willis, Jerry Dean Osborn Wed In Home Ceremony March 25th



Mr. and Mrs. Osborn

Sherry Lynn Willis and Jerry Dean Osborn were married in a simple but impressive ceremony March 25 in the home of the bride's parents, Mr. and Mrs. Emmett Willis of Floydada. The groom is the son of Mrs. Betty Bearden of Matador. Judge J. K. Holmes performed the single ring ceremony at 3 o'clock p.m. before family members and close friends.

Attending the couple were Miss Patty Willis, sister of the bride, and her brother-in-law, Bill Carr of Petersburg.

Presented in marriage by her father, the bride wore a white linen dress fashioned with lattice sleeves cuffed at the wrists. The shirt waist design was accented with a self collar and belt which tied in the front. She wore an orchid corsage surrounded with rosebuds.

Immediately following the wedding a reception honoring the couple was held in the Willis home. The wedding cake was made by the bride's sister, Mrs. Darlene Carr, which was served with punch.

After a brief wedding trip the couple returned to Roaring Springs where they are making their home.

The bride is a graduate of Floydada High School and was employed in the office of the City of Floydada prior to her marriage. The groom, a graduate of Matador High School, is engaged in farming and is also a windmill.

SHOWER

Mrs. Osborn was feted with a pre-nuptial shower in the C.E. Leatherman home in March. Refreshments were served by Mrs. Gertrude Carr and Mrs. Jerry Leatherman. Guests were registered by Miss Patty Willis.

Hostesses included Mmes. C. E. Leatherman, Gertrude Carr, Bennie Locke, Wayne Fuller, Dorcie Warren, Ethel Cross, Floyd Anderson, Jerry Leatherman, Steve Barton, Elva Reeves, Adrian West and Miss Jimmie Lou Stewart.

Their gifts to the honoree included stainless steel flat-

Society



ENGAGEMENT ANNOUNCED...The engagement and approaching marriage of Annette Jordan to Tommy Keith Bonds, is being announced by the bride-elect's parents, Dr. and Mrs. Jack G. Jordan of Floydada. Parents of the prospective groom are Mr. and Mrs. Tom Bonds of Bovina. Miss Jordan and her fiance have set June 18th as their wedding date. Vows will be read in the First United Methodist Church in Floydada.

Both Miss Jordan and her fiance are 1976 graduates of West Texas State University in Canyon. She is presently employed in Dallas at Balfour-Caudle Co. Bonds is employed in Bovina with Bonds Oil Co.

FLOYD DATA

Visitors in the home of Mr. and Mrs. Q. D. Williams Friday and Saturday were their son and his family, Mr. and Mrs. James Williams and Austin of Midland.

ware, a bedspread and the centerpiece used on the serving table.



Mr. and Mrs. David Ware of Floydada are parents of their first child, a daughter, Regina Brook, who was born April 3rd in Central Plains Hospital. The baby weighed 6 pounds 12 1/2 ounces. The mother is the former Vicki Smith. The father is employed at Cornelius's Conoco.

Grandparents are Mr. and Mrs. Neal Smith of Floydada and Mr. and Mrs. Freddie Ware of Lorenzo. Great grandparents are Mr. and Mrs. A. T. Freeze of Estelina and Mrs. Ray Ware of Lovington, New Mexico. Mrs. B. B. Osborn of Estelina is a great great grandmother.

Mr. and Mrs. Bill Howard of Tulsa are parents of a daughter, Heather D'Ann, who was born in Central Plains Hospital in Plainview on April 1st. The baby weighed 6 pounds 7 ounces at birth. The mother is the former Gail Harrison.

Grandparents are Mr. and Mrs. Harley Howard of Lockney and Mr. and Mrs. Milton Harrison of Floydada. Great grandparents are Mr. and Mrs. W. F. "Cap" Carthel and J. B. Howard of Lockney and Mrs. R. C. Smith of Floydada.

Dr. and Mrs. Tom E. Watts of Blue Earth, Minn., are parents of a daughter named Casey Marie, who was born April 4, weighing 6 pounds 4 ounces. The baby has an older brother, Alex, who is 2 1/2. Dr. Watts is general practitioner at Blue Earth Medical Center.

Grandparents are Mr. and Mrs. H. G. "Red" Watts of Floydada and Mr. and Mrs. Arthur Flatau Jr., of Tampa, Florida.

FLOYD DATA

Mrs. Jack Henry Left Lubbock by plane yesterday to spend several days at San Antonio with her son, Dr. Jack H. Henry and family.

Floyd County HD Council Meets

Floyd County H.D. council met March 30th with eight members and the extension agent present. Business was conducted by chairman, Mrs. J. P. Taylor.

All delegates and members were urged to go to the district meeting in Levelland April 7th. Delegates from the council are Lillian Smith, Elvira Stewart, and Merle Kelly.

There will be a leader training meeting on "Wall Fastners" April 27. Two members from each club should take the training to present to their clubs.

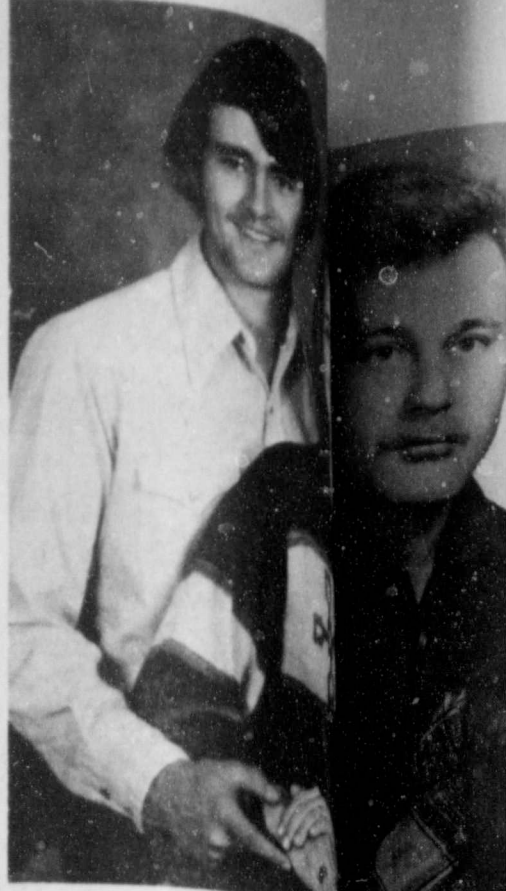
The council finance committee will have charge of a lunch in the council room on Old Settlers Day, May 28.

Clubs are to elect nominees for TWDA chairman for the State meeting, to be held in Galveston on September 21 and 22, and presented to council.

The Floyd County Family Living committee will have charge of the commissioner's dinner on April 28. H.D. clubs representatives are asked to bring a salad for the dinner and report on H.D. work.

Yearbook suggestions should be in the agent's office by April 11.

Next council meeting is April 27.



PLAN MAY 21st WEST... engagement and approval... daughter, Jodie Lou, to Jerry... of Rev. and Mrs. James E... marriage... Lee Creek... of Amaril... in the Gu... graduates of Floydada... presently enrolled in... Levelland where she is a... May 13th, from the School... McGuire is engaged in... Community.

The couple is planning a... First United Methodist Church... O.W. Denning

O.W. Denning

Sunday, Mr. and Mrs. Clinton Denning were host to relatives and close family friends that were here for the celebration of his father, O. W. Denning's 90th birthday on Saturday, April 2. Some of the relatives who returned to their homes on Saturday and others left Sunday morning.

Here for the family dinner Sunday were O. W. Denning, Doug Denning, Wayne Mankins, Corine Mankins all of Floydada; Mrs. Katie Graham and Mrs. Marguerite King of Walkers; Mr. and Mrs. Trevis Walker and daughters of Shallowater; Mr. and Mrs. George Cullers of Albuquerque, N.M.; Mrs. Ollie Sullivan and Mr. and Mrs. Wallace Denning and Kim of El Paso; Mr. and Mrs. Glenn Hunt and Kevin of Dallas; Mrs. Doris Hillin of Houston; Mr. and Mrs. Charles Denning of Gustine, Mr. Kenneth Mankins and

Friendship Club Holds Supper

Friendship Social Club met Friday night in the home of Jewel Price. The dining table was elegantly laid with cut glass and silver appointments for the evening meal. Assisting Mrs. Price with hosting duties were Foy Gooch and Valree Turner.

Other members present included Ora King, Ethel Sawyer, Pauline Faulkenberry, Artie Webb of Floydada and Elvira Stewart, Lillie Savage and Francis Graves of Lockney and a visitor, Mable Price of Floydada.

Next meeting will be May 6th in IOOF Lodge Hall.

May The Beauty Of The

Easter Lillies

Surround You.

Hyacinth Plants Plus A Good Assortment Of Blooming & Green Plants



C & J

Floral

"We Specialize In Expressions Of Love"

319 So. 2 Floydada, tx. 983-3964

EASTER VALUES

SEERSUCKER CLOTH

65% Polyester

35% Cotton

Reg. \$2.98 yd.

Now \$1.98

Cotton & Polyester

Floral Patterns

Reg. \$1.49 yd.

Now \$1.00

DENIM Polyester And Cotton

Reg. \$3.49 yd.

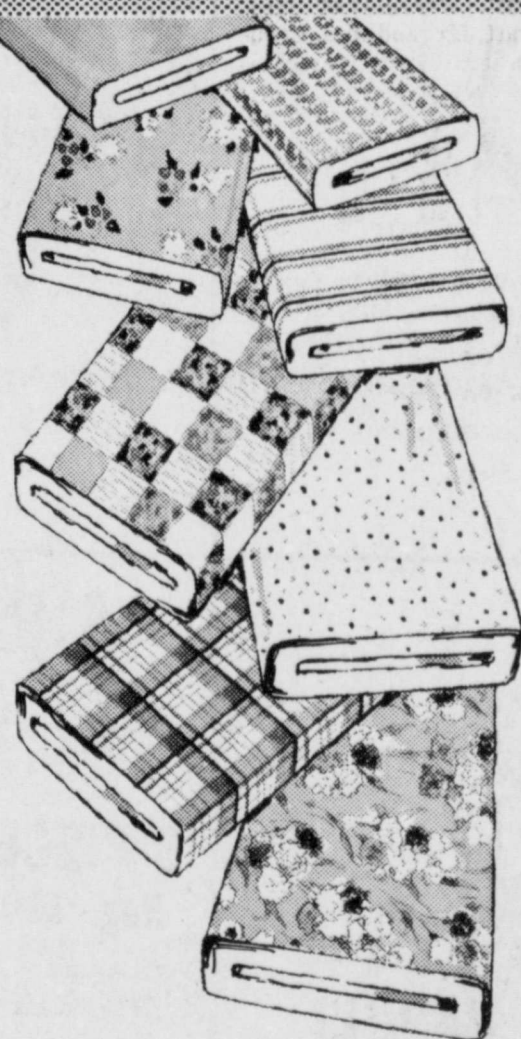
NOW \$3.00

BETTY'S PLACE

OF

FASHION & FABRICS

ON THE WYE IN FLOYDADA TX.



Suiting right is what counts

If any suits could be called "man" these suits are. They're for the young at heart! All fine lightweight fabrics. Cool, comfortable, flattering. Mostly New York effects checks, solids. Lots of new and traditional colorings. Good wear - more than just a hat that keeps on paying dividends.

QUALITY BY Curlee.



104-06 North Main

Lo... north Main

Peggy's Meddlin's

BY PEGGY MEDLEY

SINCE the crepe myrtle has been designated as the flower of Floydada, you'll be wanting to contact Joy Denton or any other member of the Women's division of the Chamber of Commerce, to purchase your shrubs. Some of these bushes would sure be pretty in the corners of the court house square.

UPSET when he learned of the personal nature questions on the Census Bureau forms, a Representative made this statement to the House: "Mr. Speaker, when I'm forced under threat of fine or imprisonment to state with whom I share my shower, it dampens my outlook."

THIS month our time changes! Spring forward one hour I believe it is. For most it will pose problems and for a few it's fine. I've never understood tho why something that changes the time table for everyone couldn't be voted on by the people it affects. It's kinda like the speeding limit. It's the law but you didn't vote on it!

THERE'S a recipe in this month's Flame Room I must try, Sauerkraut Cake. The note says it's a very moist cake and does not taste anything like sauerkraut, which I pronounce sourkraut, because it is. Anyway, they say try it, we'll like it. If you happen to make one before I do, I would appreciate your remarks on "just how it tastes."

THE FARMER was having a tough time getting his new mule through the barn door because its ears were too high to fit through the door. So he got a jack from the shed and started to jack up the barn when his cousin wandered by.

"What on earth are you doing?" the cousin asked. "My mule won't fit through the door," replied the farmer, "so I'm trying to raise the door so it'll fit." "You darn fool," said the cousin, "why don't you just dig a hole at the door so the mule can walk under it?" "Because," said the farmer indignantly, "it's his ears that are too long, not his legs."

- dismissed 4-3.
- Tessie Green, admitted 3-28, dismissed 4-5.
- Barbara Meador, admitted 3-30, dismissed 4-1.
- Baby boy Meador, born 3-30, dismissed 4-1.
- Rodger Hernandez, admitted 3-31, dismissed 4-2.
- Jean Logsdon of McAdoo, admitted 4-3. Baby girl born transferred to Lubbock 4-3. expired 4-3.
- Raymond Irby, admitted 4-1, continues treatment.
- Avis Bartley, admitted 4-1, continues treatment.
- Mary Aleman, admitted 4-2, continues treatment.
- Baby boy Aleman, born 4-2, dismissed 4-5.
- Debra Gilbreath, admitted 4-5, continues treatment.
- Baby boy Gilbreath, born 4-5, continues treatment.
- Polly Cardinal, admitted 4-5, continues treatment.
- Stacy McHam, admitted 4-5, continues treatment.



Mr. and Mrs. Tom Davis
Mr. and Mrs. Tom Davis To Celebrate Anniversary

Tom Davis and Letha Cox were married in the home of the Rev. W. H. Giles in Lockney, Texas Saturday April 9, 1927.

Mr. Davis retired from the Santa Fe Railway, after 45 years service, in September, 1967. They bought their home and moved to 400 Norma, Irving, Texas, where their daughters, Gertrude Ogles of Irving and Nola Trewin of Richardson will host an Open House from 2 to 4 p.m. Saturday April 9, 1977, in honor of this golden occasion. Sons Jack Davis of Lubbock and Perry Davis of Arvada, Colorado plan to be there. All their friends are invited to join in the celebration.

Abernathy Hosts Tea For Iota Tau

Iota Tau Chapter of Delta Kappa Gamma International attended a tea hosted by the Abernathy members at the Academic Center in Abernathy last week. The following persons were initiated and welcomed as new members: Mrs. Louise Samsel, Abernathy; Mrs. LaVada Garrett and Mrs. Noma Lou Rainer, Floydada; Mrs. Dorothy Bradley, Miss Patsy Tucker, Mrs. Jeanette Marr, Mrs. Leona Watson, Lockney; and Mrs. Frankie Carter, Plainview.

Mrs. Emily Johnston of Floydada, president, presided at the business session at which time a \$200.00 scholarship was awarded to Mrs. Minera Stovall.

The following members from Floydada attended: Mary Alice Craig, Louise Hamilton, Emily Johnston, Sunny McDonald, and Frances Mitchell.

Mr. and Mrs. Lee Johnson were married in the home of the Rev. W. H. Giles in Lockney, Texas Saturday April 11, 1927.

Mr. Johnson is a 1971 graduate of Floydada High School and West Texas State University and is employed at Mason and Hanger Silas Co., in Amarillo. Her fiance is a 1969 graduate of Palo Duro High School, Amarillo, and is employed in the Marine Corp., and is attending Amarillo College.

FLOYD DATA

Mrs. Dossia Webb and Mrs. Maudena Ester Rhodes have been released from Lockney General Hospital where they received treatment for injuries sustained in a two car collision in Lockney Thursday. The women were in Lockney to visit Mrs. Dud Graham of Floydada, who was dismissed from Lockney Hospital Monday. Mrs. Graham had been receiving medical attention.

Charley Berry spent two days last week in Muleshoe with Mr. and Mrs. Woodrow Surratt. Parents of Mrs. Surratt, Mr. and Mrs. Crouch and their invalid son, all were very ill at the time.

Glenna Mae Orman, Floyd County treasurer, is in College Station this week to attend a convention of county treasurers. Mrs. Orman will return home Friday.

90 Register At Pricer Reception

Some 90 guests registered for the Golden Wedding anniversary reception honoring Mr. and Mrs. Albert Pricer on Sunday, March 27th.

Among friends and relatives registering from out of town were the Pricers' daughter and husband, Mr. and Mrs. Walter Parks, Oklahoma City; their granddaughters, Mr. and Mrs. Charles VanDuker, Morre, Okla. and Vanda Brock of Oklahoma City; brothers and wives of Mrs. Pricer, Mr. and Mrs. W. R. Teal, and Mr. and Mrs. Buford Teal, Amarillo and Mr. and Mrs. Telma Teal of Eads, Colo.; sisters of Mrs. Pricer, Lena Turner of Coleman, Ola Hairston, Idalou and Virginia Timian of Lubbock;

Sisters and brother of Mr. Pricer, Maude Noble of Mesilla Park, New Mexico, Mr. and Mrs. Manuel R. Pricer of Mesilla Park and Mr. and Mrs. Z. T. Pricer of Corpus Christi;

Also Lois Davis, Raymond, Lois Nelle and Sharon and J. W. and Willetta Gooch, all of Lubbock; Mrs. Waylon Pollard of Purcell, Oklahoma; Mr. and Mrs. J. W. Bradberry of Welumka, Oklahoma; Donnie, Joyce and Chris Brock, and Mrs. Lois Johnston of Dalhart; Clara and Jake Brock and Donna Whitsitt of Plainview.

Rebekahs Initiated

In a candlelight ceremony Tuesday night of last week, Floydada Rebekah Lodge initiated new members, Dorothy Westbrook, Kathy Green and Ethel Cross and re-instated Elva Reeves.

Conferring the degrees were Lauless Parkey, Noble Grand; Margaret Paschal, Vice-Grand; Artie Webb, chaplain; Minnie Fay Easter, Past Noble Grand; Jewel Reeves, conductor; and Dorothy Reeves, warden.

Other lodge members also participated in the ceremony after which a delicious supper was served followed with a social hour.

THE FLOYD COUNTY HESPERIAN

Published each Sunday and Thursday at 111 E. Mo. St., Floydada, Texas 79235. Second class postage paid at Floydada, Texas 79235. Wendell Tooley, editor. Subscription rates: Local \$8.50 a year, out of trade area: \$9.50.



Mr. and Mrs. Lee Johnson
Golden Observance Set For Mr. and Mrs. Lee Johnson

A 50th anniversary celebration honoring Mr. and Mrs. Lee Johnson will be hosted by their children, Mr. and Mrs. Lynn Ray Smith, Mr. and Mrs. Bill Johnson and Lyndal Johnson, Sunday, April 10 from 2 to 4 p.m. in the Lynn Ray Smith home, 618 SW Second Street, Lockney.

Mr. and Mrs. Johnson were married April 11, 1927 at Pauls Valley, Oklahoma. They have lived in Lockney since 1947.

All friends and acquaintances of the couple are invited.

First Time At The Loft

Hand Me Down Size 11 Thru 7 Slim

JEANS

From Wrangler Low As \$7.95

See Our New STRAWS From Bradford

Just Arrived Johnny Bull & Santa Fe Style HATS Low As \$9.95

Choose A New Mix & Match SUIT From Wrangler For Easter.

"The Loft" Western Wear

WEDDING PLANNED... Mr. and Mrs. Lupe Plains announce the engagement and marriage of their daughter, Rosie Lee Creek, son of Mr. and Mrs. Ross and her fiance, [Name], of Amarillo. The couple plan a June wedding in the Guadalupe Catholic Church in [Location].

Raising Projects Discussed at Hospital Auxiliary Meeting

Mrs. Ian Moore gave the program on pre-natal care pertaining to Floyd County. Mrs. Moore attended a pre-natal workshop in Lubbock recently where she obtained information from Austin concerning Floyd County. Present for the meeting were Mrs. Ruth Trapp, Mrs. C. B. Carmack, Mrs. Bill Tye, Mrs. Ian Moore, Mrs. Dan Hagood, Mrs. Dallas Ramsey, Mrs. Pedro Ochoa, Mrs. Nancy Noland and Mrs. Bill Smith. Next meeting is Monday, May 2 in the hospital dining room. Any person interested in the auxiliary is invited to attend.

- ADMITTED**
- 3-16, dismissed 4-4.
 - Icy Biggs, admitted 3-17, dismissed 4-1.
 - Jimmy Vickers, admitted 3-21, dismissed 4-4.
 - James D. Welborn, admitted 3-24, dismissed 4-2.
 - Leonard King, admitted 3-25, dismissed 4-2.
 - Nolan Ray, admitted 3-26, dismissed 4-3.
 - Tessie Green, admitted 3-28, dismissed 4-5.
 - Barbara Meador, admitted 3-30, dismissed 4-1.
 - Baby boy Meador, born 3-30, dismissed 4-1.
 - Rodger Hernandez, admitted 3-31, dismissed 4-2.
 - Jean Logsdon of McAdoo, admitted 4-3. Baby girl born transferred to Lubbock 4-3. expired 4-3.
 - Raymond Irby, admitted 4-1, continues treatment.
 - Avis Bartley, admitted 4-1, continues treatment.
 - Mary Aleman, admitted 4-2, continues treatment.
 - Baby boy Aleman, born 4-2, dismissed 4-5.
 - Debra Gilbreath, admitted 4-5, continues treatment.
 - Baby boy Gilbreath, born 4-5, continues treatment.
 - Polly Cardinal, admitted 4-5, continues treatment.
 - Stacy McHam, admitted 4-5, continues treatment.

Personality.

Brown's DEPARTMENT STORE MAN'S SHOP

Lockney, Texas



Gifts For All Occasions.

GRADUATIONS, WEDDINGS, MOTHER'S DAY, ANNIVERSARY'S. GIFTS FOR ALL AGES.

A great line of Party Supplies, Napkins, Table Covers, Plates, Cups, & much more. Including Birthday Accessories, featuring a new line of Wood Letters, and Numbers.

Cozy Corner Gifts

231 WEST CALIFORNIA CALL 983-5312

NARDIS MR. MINCH

We have everything to dress up your family for EASTER

BLEEKER STREET FRITZI HAGGAR PANTS PEACHES & CREAM VAN HEUSEN

Hagood's

FLOYDADA, TEXAS 983-3554

LOCKNEY GENERAL Hospital Report

LOCKNEY HOSPITAL
March 24-31
 Ola Rogers, Lockney, admitted 3-7, dismissed 3-28, readmitted 3-31.
 Bessie Hamilton, Turkey, admitted 3-16, dismissed 3-25.
 Ethel Gilbert, Lockney, admitted 3-18, continues care.

Katherine Cain, Quitaque, admitted 3-18, dismissed 3-28.
 Ruby Muncy, Floydada, admitted 3-21, dismissed 3-28.
 Margaret Conger, Floydada, admitted 3-21, dismissed 3-25.
 Ford Johnson, Floydada, admitted 3-25, continues care.

Barbara Ellison, Lockney, admitted 3-25, dismissed 3-29.
 Morine Bullock, Floydada, admitted 3-25, continues care.
 Jo Ann Nunez, Lockney, admitted 3-25, Baby boy Joe Anthony, born 3-26, dismissed 3-30.
 Hattie Tate, Lockney, admitted 3-27, continues care.
 Amelia Saiz, Lorenzo, admitted 3-27, Baby boy Brent, born 3-28, dismissed 3-30.
 C. H. Schacht, Lockney, admitted 3-29, continues care.
 Floy Graham, Floydada, admitted 3-30, continues care.
 Lillian Johnson, Plainview, admitted 3-28, Baby boy Brent, born 3-28, dismissed 3-30.

Thompson spent Wednesday night and Thursday with Mrs. Thompson's mother, Mrs. Royce Wess, who had major surgery in West Texas Hospital in Lubbock Wednesday morning. She is reported to be improving nicely.
 Dinner guests in the home of Mr. and Mrs. Robin Fortenberry Wednesday were Mr. and Mrs. Eldon Fortenberry of Hereford, Mr. and Mrs. Fred Fortenberry of Lockney, Mr. and Mrs. Cephus Fortenberry and Mr. and Mrs. Garland Tucker.
 Thursday Mr. and Mrs. Garland Tucker visited W. W. Miller in Lockney and also with Mrs. Edna Gill and Louis Roberts in the Lockney Nursing Home.

Johnny and Mary Ann Milligan and Odie Garland, Evelyn Winn was also there.
 Mr. and Mrs. W. T. Cooper of Lockney visited with their daughter, Linda Lemons and Twyla and Traca Thursday evening.
 Mr. and Mrs. Carl F. Lemons visited with Mrs. Lemons's sister and husband, Mr. and Mrs. S. A. Decker in Amarillo Monday.
 Rev. and Mrs. Jackie Thompson were Sunday dinner guests in the home of Mr. and Mrs. Garland Tucker.
 Visitors in the home of Mr. and Mrs. Tom Fortenberry Sunday evening were Mr. and Mrs. Garland Tucker and Rev. and Mrs. Jackie Thompson.
 Beverly Burleson was one of the six girls honored in their First Class Rank ceremony held in the Bible Baptist Church in Floydada Sunday afternoon. Several from here attended the services.
 Wednesday Mr. and Mrs. Tom Fortenberry went to Amarillo and visited with their granddaughter and husband, Paula and Ron Vick. Ron flew to Lubbock in the afternoon by plane and brought Mrs. Patsy Boone to Amarillo and the Fortenberry's took her home that evening and spent the night with Mr. and Mrs. Lafayette Boone and girls.
 Mr. and Mrs. Tom Fortenberry visited Mr. and Mrs. Jimmy Wesley and family in Canyon Wednesday.
 Benny Golightly of Floydada and Thada Fowler of Silverton visited with their parents, Mr. and Mrs. W. E. Laekey Saturday afternoon. Quinn DuBois of Floydada visited with them Sunday afternoon.
 Mr. and Mrs. Gus Wesley of Plainview visited Mrs. Mae Taylor Sunday afternoon. Rev. and Mrs. Jackie Thompson and Mr. and Mrs. Junior Taylor also visited with her.
 Grace Keeter spent Thursday with her mother, Mrs. Mae Taylor while Mr. and Mrs. Guy Davis went to Amarillo on business.
 Mrs. Edna Gilly left Wednesday to visit her daughter and family, Mr. and Mrs. Johnny Harrison in Louisiana.
 Mr. and Mrs. Garland Tucker visited Mrs. Royce Hess and Larence McCain, who are patients in West

Texas Hospital in Lubbock. Both are reported to be doing nicely and McCain was able to return to his home in Lockney Friday.
 Bruce Conner of Lubbock is visiting with his grandparents, Mr. and Mrs. J. R. Conner.

Foster Homes
 The State Department of Public Welfare is looking for foster homes for low-income aged, blind, or disabled

Fairview News

By Mrs. Clyde Bagwell

Fairview, April 4 We have a cold wind blowing today (Monday) and the weather report gives down to 30 degrees for tonight.
 Kristi Julian, Renee Sanders and Barbara Schwertner spent Friday night with Becky Crabtree.
 Mr. and Mrs. Brant Pierce of Carlsbad, New Mexico, spent Saturday with his uncle and aunt, Mr. and Mrs. Clyde Bagwell. They brought Clyde a beautiful birthday cake that she had made.
 Mr. and Mrs. G. C. Goodwin of Lubbock visited Wednesday night with her sister and brother-in-law, Mr. and Mrs. T. L. Perry.
 Quinn DuBois visited his grandparents, Mr. and Mrs. Edell DuBois Sunday and had lunch with them.
 Mrs. Elmer Warren visited Mrs. C. H. Wise Friday afternoon.
 Mr. and Mrs. Bradford Beedy of Spearman spent Saturday night and Sunday with his parents, Mr. and Mrs. Bill Beedy. Others there for Sunday dinner and the afternoon were Mr. and Mrs. Bill Tye.
 Among those attending the meeting of the Light-house Electric Saturday were Mr. and Mrs. Harvey Allen and sons, Mike and Norman and Walton Wilson.
 Colonel and Mrs. James Keith Whitfield and children, Debra and Brian of Arlington spent the weekend here with his mother, Mrs. Ray Cook and Mr. Cook. The Whitfield family left Monday morning and were going to Breckenridge to do some fishing before going on home.
 Mr. and Mrs. Lindsey Graham visited a short time Sunday afternoon with Mr. and Mrs. Ray Cook and then drove on to Quitaque.
 Friday Mrs. Ray Cook visited in Floydada with Mrs. Barker Chunn and

5% DISCOUNT
WEATHERMASTER SEEDS CORN & MILO
GENE BLOYS 983-2969
 March 31-April 15

Cedar Hill News
 CEDAR HILL - We are still having blowing dust and cold nights and no sight of moisture in this area.
 Rev. and Mrs. Jackie

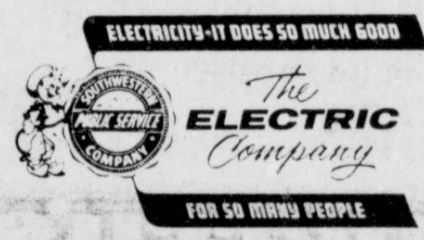
Nine Reasons Why An Electric Ready-Lite Is The Purr...fect Nite Watcher

1. Special price until May 31, 1977
2. Durable... heavy cast aluminum
3. Automatic... on at night - off by day
4. Dependable... of course, it's electric
5. Wise energy user... pennies a night
6. Complete normal installation
7. Safety & security... light where you need it
8. Long-life bulb... 8,000-hour rated
9. Put it on your electric bill...

ONLY \$99.99
 Plus Tax



Offer Expires May 31, 1977



FANTASTIC EASTER SPECIALS

ALL PRICES ARE COMPUTED WITH A QUALIFIED TRADE

SEE OUR WINDOW DISPLAY AT MIZE TV IN FLOYDADA TX, 215 NO. MAIN WE WILL BE OPEN SOON



RCA The Projecta 15 Model EA355
RCA XL-100 color TV with push-button AccuMatic IV control

Only **\$329.95**

- Deluxe RCA XL-100 portable color TV—100% solid state performance and reliability.
- AccuMatic IV—one-button control of color, tint, brightness and contrast.
- Automatic Fine Tuning pinpoints and holds the correct broadcast signal.
- Black matrix picture tube delivers brilliant, high contrast color.
- RCA XL-100 chassis with plug-in AccuCircuit modules to simplify servicing.
- Built-in VHF and UHF antennas.
- Durable plastic cabinet in choice of tan or white finishes, both with a wood-grain top.

15" XL 100's - 2-Only EU 353B Reg. \$348.00 Close out price \$289.95 With Qualified Trade

2-Only EA 355 T&Y Reg. \$409.95 Close out price \$329.95

1 White & (Y) Walnut Case (T) With Qualified Trade



RCA The Projecta 17 Model EA395
Deluxe RCA XL-100 color TV with push-button AccuMatic IV control

Only **\$359.95**

- Here's portable color with deluxe 100% solid state performance and reliability.
- AccuMatic IV—one-button control of color, tint, brightness and contrast.
- Automatic Fine Tuning pinpoints and holds the correct broadcast signal.
- Black matrix picture tube delivers brilliant, high contrast color.
- RCA XL-100 chassis with plug-in AccuCircuit modules to simplify servicing.
- Built-in VHF and UHF antennas.
- Cabinet with deluxe wood-grain finish on durable plastic.

1-Only 17" EA 395W Reg. \$449.95 Close out price \$359.95



RCA The Argosy Model FA475
Deluxe table model RCA ColorTrak TV
 Only **\$425.00**

RCA's most automatic TV ever! Electronically tracks and corrects the TV signal before it becomes a picture on your screen.

- Automatic contrast/color "tracking" circuitry ties brightness, contrast and color together so that all three are balanced simultaneously.
- Automatic color control holds flesh tones and other colors to the settings you select—even when TV signal varies or you change channels.
- Automatic room light picture control adjusts picture brightness as room light changes.
- RCA Super AccuFilter black matrix picture tube has filtered color phosphors that absorb room light. Result: colors appear sharper and more vivid.
- 100% solid state ColorTrak chassis for reliability—no tubes to burn out.
- Choice of cabinet finishes—wood-grain or white with a black top—on rugged plastic. Flexible carrying handle.

19" Specials FA 475 Reg. \$529.95 Close out price \$425.00

19" FA 465B Reg. \$499.95 Close out price \$411.00

19" FA 485 Reg. \$529.95 Close out price \$425.00

19" FA 478 With Remote Reg. \$579.45 Close out price \$464.00

19" FA 495 Reg. \$539.95 Close out Price \$432.00



RCA The Harrison Model GA724
RCA ColorTrak with electronic 20-position tuning

Only **\$599.95**

RCA's most automatic TV ever! Electronically tracks and corrects the TV signal before it becomes a picture on your screen.

- Automatic contrast/color "tracking" circuitry ties brightness, contrast and color together so that all three are balanced simultaneously.
- Automatic color control holds flesh tones and other colors to the settings you select—even when TV signal varies or you change channels.
- 100% solid state ColorTrak chassis for reliability—no tubes to burn out.
- Electronic 20-position tuning control—convenient one-knob selection—tunes up to eight UHF channels.
- Quality sound from a 6" oval speaker.
- Charming Colonial cabinetry with maple-grain finish on selected panels and veneers; simulated wood trim and easy-roll casters.

GA 710W (Swivel) Reg. \$699.95 Close out price \$599.95

GA 793C (Cherry Wood) Reg. \$699.95 Close our price \$599.95

GA 724L (Maple) Reg. \$699.95 Close out price \$599.95

GA 838S (Pecan) Reg. \$699.95 Close out price \$599.95

GA 704L (Maple) Reg. \$699.95 Close out price \$599.95

GA 836 (Country French) Reg. \$699.95 Close out price \$599.95

MIZE PHARMACY & TV

IN DOWNTOWN LOCKNEY

Courthouse NEWS

[Probate Docket]
Application to probate the will of the estate of H. L. Fewell.

[Marriage Licenses]
Thomas E. Campbell and Ella Naomi Terry, March 16.
Frank Luther Stanley and Carolyn Sue Renfro, March 18.
Calvin Ross Hamilton and Phyllis Ann Guffe, March 18.
Jerry Dean Osborn and Sherry Lynn Willis, March 25.
Hilario Teyes and Juana Naranjo, March 18.
Joe Keith Womack and Juli D'Ann Ratheal, March 30.
Bobby Dartland Carthel and Cynthia JoAnn McCormack, April 1.
Freddy Cris Parson and Mellane Ann Gilly, April 1.
Doyle Lee Brown and Velma May Riddell, April 4.

[Warranty Deeds]
Wendell B. Daniel to Kent D. Hale and Mary Katherine Hale, 174.6 acres of land out of the west part of Survey 38 in Block 2 and 320 acres of land out of the north and east parts of Survey 28 in Block 2.

Gary D. Carthel et ux to Ray G. Carthel et ux, Lots 9 and 10 in Block 125 in Floydada, 2.26 acres out of the southwest one-fourth of Survey 62, Block 1, and 1.35 acres out of the northeast corner of Survey 2, Block M.

Aaron Carthel et ux to Gary D. Carthel et ux, Lots 9 and 10 in Block 125 and 2.26 acres out of the southwest one-fourth of Survey 62, Block 1.

Mildred Graham Kielpinski et vir to Jim Simpson et ux, the south 440 acres of land out of Section 104, Block D-3.

John B. Fowler et ux to Lewis Reddy et ux, 160 acres of land being the northeast one-fourth of Survey 203.

Joe B. Jones to Johnnie F. Jones, the north 95 feet of Lots 14, 15 and 16 all in Block 21 in Lockney.

City Park Church of Christ to E. N. Givens et ux, the west one-half of Lot 6, all of Lots 7 and 8 in Block 35 in Floydada.

City Park Church of Christ to Robert Contee, Lot 5 and the east one-half of Lot 6, Block 35 in Floydada.

Jacinto B. Lopez to Celia T. Lopez, Lots 11 and 12 in Block 5, Brewster Addition in Lockney.

William F. Daniel, Jr., et al to Ray Kirkpatrick, Lots 15 and 16 in Block 125 in Floydada.

Antonio Duran et ux to Gilbert Castillo, Lots 15 and 16, Block 5, Brewster Addition in Lockney.

Gilbert Castillo et ux to Jacinto Lopez Barrera, Lots 15 and 16 in Block 5, Brewster Addition in Lockney.

Mamie Lee Yearly to William Cisler, the east one-half of Section 58, Block D-3.

Wm. H. Dougherty, independent executor under the will of F. M. Dougherty and as trustee of the F.M. Dougherty Testamentary Trust to James C. Lackey, Lots 6 and Lot 17 both in Block 26 in Dougherty.

Roy L. Hale and J.S. Hale Jr. independent executors of the will of J. S. Hale, deceased, to Billy M. Fulton et ux, the south 40 feet of Lot 5, and the north 30 feet of Lot 6 both in Block 1, Baker Annex in Floydada.

Alice Elaine Temple et vir to City Auto Inc., Lots 27 and 28 in Block 60 in Floydada.

Marye Bryan Tanner and Frances Bryan Sims to Fred Robertson, Lot 2, Block 44 in Floydada.

E. W. Walter et ux to Oscar V. Barrear Jr., et ux, 2.0 acre tract out of the southwest one-fourth of Section 53 in Block G.

Julian Guzman et ux to Florentina Morales et ux, Lot 14, Block 46 in Floydada.

J. Cephus Fortenberry et ux to Delia Campos, Lot B and the west 17.1 feet of Lot D in Block I, Andrews Addition in Floydada.

DISTRICT COURT
[Cases Filed]
Glen Wood and Pat Wood vs Marble Bros., et al, suit for damages.

State of Texas vs a 1971 Buick automobile, suit to forfeit automobile.

State of Texas vs a 1969 Ford Mustang, suit to forfeit automobile.

State of Texas vs a 1974 Chevrolet station wagon, suit to forfeit automobile.

Manuel Moreno vs Century insurance, a mutual company, appeal from award of

Industrial Accident Board.
Gilbert L. Fawver vs American Service Life Insurance Co., suit on insurance policy.

Farm-facts

Texas Department of Agriculture
Reagan V. Brown, Commissioner

More Pork Chops... Less Milk... Fewer Cattle...
Applicator School... Texas hog producers are

joining with those in the rest of the nation in planning an increase in farrowings later this year.

The Texas Crop and Livestock Reporting Service notes that Texas farmers indicate farrowings of 45,000 sows now through

May. Although this is unchanged from a year ago, intentions for the June-August period project a 6 per cent increase compared to that quarter in 1976.

Nationwide, farrowing intentions in the June to August period are expected to be 5 per cent more than a

year ago and 26 per cent higher than two years ago.

Hog and pig numbers in Texas totaled 850,000 head as of March 1; this is up 10 per cent from a year ago.

Breeding hogs accounted for 16.1 per cent of the total and were up 7,000 head from last March 1.

February changed from 7 per cent to 7 per cent two years ago. Leaders in Texas place their feed on feed and this is 16 year ago and



WE Welcome Federal Food Stamp Customers



Prices good thru April 9, 1977. We reserve the right to limit quantities. None sold to dealers.

Each of these advertised items is required to be readily available for sale at or below the advertised price in each store, except as specifically noted in this ad.

Piggly Wiggly East

Rath's Shank Portion, Water Added

Smoked Hams

89¢ Lb.

Heavy Aged Beef, Chuck

Boneless Roast

98¢ Lb.

California

Fuente Avocado

4 For Doz.

Agar

Canned Ham

3-Lb. Can \$4.89

Heavy Aged Beef "Shoulder Arm Cut"

Swiss Steak

Lb. \$1.08

Large Stalk

Pascal Celery

Sugary New Crop Tender

Sweet Yams Asparagus

BREADED BLUE MORROW

BEEF PATTIES

Lb. \$1.09

Cry-O-Vac, Whole Only, Fresh

Beef Brisket

Lb. 98¢

BAKING Hens

Lb. 69¢

Heavy Aged Beef, Rump

Boneless Roast

Lb. \$1.28

California Choice

Navel Oranges

Lb. 5

Home "Cure 81"

Buffet Ham

Lb. \$2.49

Rath's Whole or Butt Half, Water Added

Smoked Ham

Lb. 98¢

LOIN END

Pork Roast

Lb. 98¢

Fresh Country Style

Spare Fibs

Lb. 98¢

Heavy Aged Beef, Tenderized Bottom

Round Steak

Lb. \$1.58

Clip Top

Crisp Carrots

2-lb. Bag 59¢

Red

Crisp Potatoes

Long 29¢

New

Green Onions

Heavy Aged Beef

Rib Eyes

Lb. \$2.88

SIRLOIN TIP

ROAST

Lb. \$1.69

Soy Mix Added

Frozen Patties, 5 Lb. Box

Chuck Quality, Lean

Ground Beef

Lb. 59¢

Ground Beef

Lb. 98¢

Heavy Aged Beef BONELESS

Sirloin Steaks

Lb. \$1.38

Heavy Aged Beef

T-Bone Steaks

Lb. \$1.78

Farmer Jones

Sliced Bacon

Lb. \$1.29

Farmer Jones Jumbo Size

Franks

Lb. \$1.09

Home

Little Sizzlers

12-oz. Pkg. 99¢

Whiting

Fish Fillets

Lb. 69¢

Black Cod

Fish Fillets

Lb. 79¢

Tasty

Halibut Steaks

Lb. 99¢

Piggly Wiggly Longhorn

Cheese

8-oz. Pkg. 89¢

Kraft's Philadelphia

Cream Cheese

8-oz. Pkg. 69¢

DAIRY SPECIAL

Piggly Wiggly

Butter Milk

1/2-Gal. Ctn. 67¢

PLAINS

Whipping Cream

Piggly Wiggly

Cottage Cheese

New tire guarantees changed

By LOUISE COOK
Associated Press Writer
If you slash your new tires on a broken soda bottle or a pot hole, you will find you're no longer protected by the road

hazard guarantees which used to get you a replacement free or at reduced cost.
The major U.S. tire manufacturers have eliminated those guarantees, along with mileage

guarantees for some types of tires. There are variations in policy from company to company.
Now the warranties include expanded guarantees against

damage due to defects in workmanship or materials.

"We are assuring the quality of the tire, rather than insuring against what might happen to it," said a spokesman for Goodyear, the nation's biggest tire manufacturer.

Note: some companies still offer road hazard guarantees on some of their tires. A spokesman for Michelin, the

French manufacturer, said the company still offered a road hazard guarantee on some models. You will have to read warranties carefully — before you buy — to determine just what you are entitled to.

The road hazard guarantees used to apply when you struck an object in the street, tore open a tire against the curb or damaged it some other way. You paid only for mounting and balancing the replacement.

If you damage a tire now, you must have the tire repaired at your own expense or buy a new one.

The revisions involving workmanship and materials generally provide free replacement of radial tires and free mounting and balancing during the first 25 per cent of tread wear or the first 12 months of ownership, whichever comes first.

Bias-belted and bias-ply tires found defective will be replaced, mounted and balanced free during the first 10 per cent of tread wear.

Previously, the time limit on defects was 180 days for all kinds of tires, with mounting and balancing cost extra.

The changes, which generally took effect Jan. 1, come as the government prepares to implement a program that would require manufacturers to attach to each tire the results of government tests on tread wear, traction and temperature resistance.

The program, proposed by the Department of Transportation, had been stalled by court challenges, but the U.S. Supreme Court ruled last month that the system should not be further delayed. Manufacturers will be required to comply sometime late this year.

The government estimates the plan will cost manufacturers \$46 million a year and add 23 cents to the price of each of the 200 million tires bought every year. The manufacturers say the cost will be closer to \$150 million a year.

Genealogical

Meeting Tuesday

The High Plains Genealogical Society will have its regular monthly meeting Tuesday night at 7:00 p.m. in Unger Memorial Library, 825 Austin St., Plainview. The program will be on antiques, and anyone attending is invited to bring antiques for a "show and tell session."

First 1977

Income Tax

Payment Due

Individuals who do not have enough taxes withheld are required to pay their first installment of estimated 1977 Federal income taxes no later than Friday, April 15, the Internal Revenue Service said today.

Many taxpayers realize that they meet the requirement for filing a tax declaration at this time of year, according to the IRS. Generally, when taxpayers will owe the IRS more than \$100 not covered by withholding, they should file a declaration of estimated tax. A Form 1040-ES voucher must accompany the first installment.

Taxpayers who file a declaration of estimated tax last year should have received an estimated tax package in the mail, which includes four declaration vouchers and preaddressed envelopes for making the 1977 declaration and payments, the IRS said. Also included in the package are a worksheet and instructions.

Taxpayers who are required to file, and did not receive an estimated tax package in the mail, can obtain it from a local IRS office.

IRS Publication 505, "Tax Withholding and Declaration of Estimated Tax," is available free from the IRS and provides more details on the payment of estimated tax.

ALL GAME PIECES PRODUCED FOR OUR BANK VAULT BINGO PROGRAM #483 HAVE BEEN DISTRIBUTED AND THAT PROGRAM HAS OFFICIALLY TERMINATED IN ACCORDANCE WITH F. T. C. REGULATIONS. ALL PRIZE WINNING GAME PIECES FOR PROGRAM #483 MUST BE PRESENTED FOR PAYMENT BY APRIL 9, AND NONE WILL BE ACCEPTED FOR PAYMENT AFTER THAT DATE.



Wiggly Sale

Piggly Wiggly Grade A
MEDIUM Eggs
59c
Doz.



Duncan Hines All Layer Varieties
Cake Mix
48c
17-oz. Box

Plus Deposit
Coca Cola
\$1.29
6 Pack 32-oz. Btls.

LAKE Ice Cream
1/2-Gal. Ctn. **\$1.18**
11-oz. Pkg. **69c**



Golden
Del Monte Corn
4 \$1
17-oz. Cans



Cut
Del Monte Beans
4 \$1
16-oz. Cans

Kraft's
Miracle Whip
89c
Qt. Jar



Del Monte
Green Peas
Mix or Match, Piggly Wiggly 8-Ct. Pkg.
Hamburger Buns, 12-ct. Pkg. Brown & Serve Rolls or
Hot Dog Buns

3 \$1
16-oz. Cans

3 \$1
8-Ct. Pkgs.

PELLETTIZED FOODS

Piggly Wiggly
Pie 4 8-oz. Pkgs. **\$1** Pot Pies 4 8-oz. Pkgs. **\$1**
Waffles 4 5-oz. Pkgs. **\$1**
Broccoli 3 10-oz. Pkgs. **\$1**
Whipped Topping 9-oz. Ctn. **49c**
Pantyhose 6-oz. Cans **4 \$1**
Shampoo 16-oz. Btl. **\$2.49**
Alka-Seltzer 25-Ct. Btl. **69c**
Hair Spray 8-oz. Can **99c**

Kraft's Jet Puffed or Miniature
Marshmallows 10-oz. Pkg. **39c**
Piggly Wiggly
Sweet Potatoes 24-oz. Can **49c**
Hi-Dri, 103-Ct., 2 Ply
Paper Towels 2 1-Roll Pkgs. **89c**
Piggly Wiggly Fancy
Asparagus Spears 14-oz. Can **59c**
Betty Crocker, Stix
Pie Crust Mix 22-oz. Pkg. **79c**
Baker's Flavor
Chocolate Chips 12-oz. Pkg. **79c**
Piggly Wiggly, in Natural Juice
Choice Pineapple 3 15-oz. Cans **\$1**
Piggly Wiggly All Nude
Pantyhose Pkg. **79c**
Wella Balsam
Shampoo 16-oz. Btl. **\$2.49**
For Fast Relief
Alka-Seltzer 25-Ct. Btl. **69c**
Non-Aerosol Consort
Hair Spray 8-oz. Can **99c**

Nabisco
Nilla Wafers 12-oz. Pkg. **59c**
Piggly Wiggly
Tomato Juice 4 3 1/2-oz. Cans **\$1**
Piggly Wiggly Assorted
Paper Napkins 180-ct. Pkg. **59c**
White, 9-in.
Paper Plates 100-ct. Pkg. **89c**
Arm & Hammer
Detergen 70-oz. Box **99c**
RUSTY
Dog Food 7 17-oz. Cans **\$1**
Piggly Wiggly Yellow Cling
Choice Peaches 3 16-oz. Cans **\$1**
Piggly Wiggly
Knee High Hose Ea. **49c**
VO-5
Hair Spray 9-oz. Can **\$1.19**
Shaving Cartridges, Gillette
Trac II 9-Ct. Pkg. **\$1.69**
Cream Rinse
Revlon Flex 12-oz. Btl. **\$1.39**



"APRIL FOOLING"...these Duncan Elementary school teachers really surprised their students Friday as they dressed for April Fool. (l to r) Linda Crader, Sue Crow, Shelia Poole, Jaynette Harrison, Phyllis Smith, Kay Dean Smith, Sherry York. (Staff Photo)

HOLLY ROBERTSON SHOOTS 186 Girl Golfers Fourth At Amarillo

The FHS girl's golfers came out of a sandstorm on Friday...and a fairly nice day Saturday in fourth place at the Amarillo tournament last week. They were playing on the Ross Rogers golf course.

Team Totals - Division II— (36 holes) —1. Amarillo "B" 781; 2. Midland Lee "B" 824; 3. Dalhart #1 847; 4. Floydada 859; 5. Vega 884; 6. Dalhart #2 911.

On Friday 15 teams competed in Division II with the low 6 competing on Saturday for team honors.

Low Individual Scores: Medalist Beverly Winters, Vega, 185 - 36 holes. Runnerup, Holly Robertson, Floydada, 186.

Floydada Individual Scores: 18 holes Friday, 18 holes Saturday, Total, Re-

spectively:
Holly Robertson, 92, 94, 186.

Jayma Lewallen, 111, 103,

214.
Mitzi Hale, 115, 106, 221.
Holly Hartsell, 125, 113, 238.

Ann Campbell, 121, 123,

244.
Shandra Young went as a singles player—only competed on Friday.

Tennis Team Makes Quarterfinals

Picked to win the tennis tournament at Amarillo last Friday and Saturday, the FHS tennis team lost most of its matches in the quarterfinals.

Seated number one, the FHS boys doubles team of Keith Tooley and Alonzo Gonzalez lost to Dalhart in the quarter finals, Morris Keele and Zane Jones lost to Muleshoe in the quarter finals, Tracey Puckett lost to

a Higgins girl in the quarter finals.

Other team members who lost included: Kara Copeland and Tracy Tyer who lost to the number one winners from Morton, Donna Reid lost her second match and Pat Miller lost to Ron Eudy of Valley, who won the tournament.

Other team members who played included Judy Bean and LeAnn Ferguson, and

Mike Bean.
The netters will be in the Abernathy tournament Friday and Saturday.

Jr. High Netters Lose At Lockney

The Jr. High tennis team hit a lot of rough competition with Lockney last week and won only one match.

Winning were Tany Tyer and Esmeralda Gonzalez 8-6. Losing were: Debra Allen, Tommy Myrick, Tracy Graham, Brenda Hicks, Terry

SPORTING EVENTS

Future Whirlettes Get Experience In Little Dribblers Program

Future Floydada Whirlettes have been getting some valuable experience in the challenge and excitement of playing basketball by participating in the Little Dribblers program again this year. Last year was the first time for the girls in Floydada to enter the Little Dribblers program which is sponsored here by the Lions Club.

Former coaches from last year who are coaching again are Elinor Hendrix for the Red Team and Vickie Rainer and Nona Cantrell for the Blue Team.

New to the coaching staff are Julie Cathey and Leora Younger for the Green Team and Faye Dickson and Sandra Rainey for the Gold Team.

The first half of play ended Monday, April 4, with the Red Team in first place and undefeated. Their leading scorers are Rhonda Ratliff and Angie Anderson. Coach Hendrix spoke highly of Marilyn Smith and Carmela Suarez for their great defensive efforts.

Leading scorers for the second place Gold Team are Cindy Burk and Christi Norrell. Myra Ledbetter and Lillian Pollanco were singled out by their coaches for their good work as guards.

The Green Team who is in third place has Pam Cathey and Mysti Younger as their top scoring aces with Sandra Robinson and Sandy Morales providing great support on the defensive side of the court.

Carol Cochran and Terri Marquis lead their Blue Team in scoring with Gracie Rodriguez, Olvivi Bueno and Teresa Spurlock giving tremendous efforts as guards.

Giving of their time to officiate the games which are played on Mondays and

Thursdays are Cliff Stephens and Rollie Rinker of the Floydada coaching staff. There is no admission charge and everyone is invited to the games which are played at the Floydada Junior High Gym with the first game beginning at 5:00.

Whirlettes Place Third In Lorenzo Relays

By Doug Simpson
Clifford Stephens' Floydada Whirlette tracksters, by placing third or better on 9 occasions in 8 events, powered their way to a very respectable third place outcome in Lorenzo's Hornet Relays held last Saturday, with a 95 1/2 point total. The Whirlettes, who will enter Tulia's district competition meet in only two weeks, turned out participants who took 3rd place or better in a total of 4 running events, while taking points also in 4 field events.

The 440 relay squad of Donnette Williams, Ronette Kitchens, Beverly Coleman, and Martha Rendon took second place in that event, with an excellent time of 52.4.

Janie Guest captured second place in the 80-yard low hurdles with an 11.3 clock-

Ninth Tracks Post In Local

By Doug Simpson
The Floydada Whirlwind freshman tracksters were looking for a competitive and confidence-building way to prepare for next week's district meet. Did they ever find it! Coach Daniel Coward's stampede of future hopefuls dominated the Post dual meet at the Floydada track last Thursday, March 31, and in doing so, surprised a few people with their stunning performances, including Coach Coward.

"I was pleased with our effort and we showed a few

'Winds Falter At San Angelo

By Doug Simpson
The varsity Whirlwind tracksters gave up a meeting opportunity in the final event, the mile relay, of the highly-regarded San Angelo Relays last Friday and Saturday, but sagged to a disappointing fourth place finish, and sixth place with a season-low total of just 45 1/2 points. The Winds, who entered the nationally recognized extravaganza with high hopes despite costly injuries to key performers Jay Womack and Mickey Minnett, failed to qualify in significant preliminary events such as the high and low hurdles, the 220-yard dash, and the shot put and discus.

Floydada will journey to Stamford this weekend to compete in its final event prior to the crucial district meet to be hosted by Tulia on April 16th.

The Winds could manage but 14 field event points, as Andy Rainwater captured third place in the high jump with a leap of 5'10", while Steve Westbrook netted 3rd in the pole vault at a height of 13'6". Joe Covington brought a 5th place award with a 12' effort.

With Minnett unable to participate because of an ankle injury, Rick Covington fulfilled the role of anchor in the 4x4 relay, as Womack, Danny Colston and Randy Ratheal also aided in bringing home a 3rd place finish with a timing of 44.6.

Womack landed his third consecutive 100-yard dash victory, with a 10.3 clocking, following a sizzling 9.9 effort in the prelims.

Randy Ratheal captured 2nd place in the 440-yard dash, with a 50.0 time, while Ricky Day brought in seventh place after finishing runner-up spot in the qualifying event.

Jerry Coleman landed a respectable third place ef-

fort in the prelims of the mile run, and eighth place in the final event, with a 5:08.2 clocking.

Finally, Dalhart's mile relay foursome, as true of the day before, crossed the tape in front of the Winds with a blazing finish of 3:24.2, while Floydada's 3:30.1 was only good enough for fifth place. The Winds mile relay squad included sprinters Rick Covington, Ricky Day, Charles Bradford, and Randy Ratheal.

Point totals: Colorado City, 64; Dalhart, 53; Sanora, 52; Denver City, 49 1/2; Breckenridge, 47; Floydada 45 1/2; Kermit, 41; San Angelo JV, 38 1/2; Childress, 38 1/2; Winters, 24; Lockney, 14; Idalou, 12; Coahoma, 9; Balinger, 6; Post, 3.

OPEN 24 HOURS

ALLSUP'S

CONVENIENCE STORES

OPEN 24 HOURS

PRICES GOOD THURSDAY THRU SATURDAY, APRIL 7-9, 1977

	ICEES	BUY ONE ANY SIZE GET ONE SAME SIZE	FREE!
	CRISCO	PURE VEGETABLE SHORTENING	3 LB. CAN \$1.49
	CHEESE	BORDEN'S LITE LINE COTTAGE	16 OZ. CTN. 59¢
	MILK	BORDEN'S HI-PRO	1/2 GAL. CTN. 79¢
	FRANKS	WILSON'S CERTIFIED	12 OZ. PKG. 59¢
	BACON	HE-MAN SLICED	1 LB. PKG. 99¢
	SAUSAGE	RATH'S SAUSAGE	1 LB. ROLL 49¢

HOT COOKED FOODS

- BBQ CHICKEN
- BBQ RIBS
- HOT LINKS
- MILD LINKS
- BURRITOS
- CORN DOGS
- GERMAN SAUSAGE
- BULK BBQ BEEF
- BBQ BEEF SANDWICHES

• 6 BOTTLE CARTON 32 OZ. **COKES \$1.19**

PLUS DEPOSIT

SHOP THE FRIENDLY, CONVENIENT ALLSUP'S STORE NEAR YOU!

102 E. HOUSTON FLOYDADA, TX.

Breezers Fourth At 4-AA Meet

By Doug Simpson
The impressive Tulia Hornets powered their way to the championship of the annual Junior High 4-AA track meet with 203 points to nullify a combined 248-point effort by Idalou, Lockney, and Floydada, at Tulia last Saturday, April 2. The meet proved to be the season finale for the Breezers whose fourth place finish was highlighted by a 50-point performance in the running events.

Tulia's total was followed by the Wildcats at 100 1/2 points. Abernathy at 74, Floydada at 73, and Lockney at 40.

In the field events, Jeff Rainey captured second place in the shot put, followed by Tim Radloff in 4th, while Radloff also placed 5th in the discus throw. It was Jimmy Martinez taking 5th in the long jump and Michael Self second in the pole vault.

The 440 relay foursome of Hector Mercado, Rainey, Self and Martinez netted fourth place in that event with a 51.1 clocking.

Self captured third in the 120-yard low hurdles with a 16.4 performance, while Martinez landed 5th in the 100-yard dash with a time of 11.7.

Andra Ledbetter's 40.8 time in the 330-yard run was good enough for the runner-up spot, as Rainey took 5th with a 52.7 effort.

Martinez also placed 2nd in the 220 with a 25.2 time. The 1320 relay squad of Mercado, Rainey, Self and Martinez landed 4th with a time of 2:54.7.

Chew some dry coffee while holding your nose and you won't taste anything. But take a breath and you will. That's because what you're "tasting" is really an aroma.

Letter To The Editor

In response to the letter from the defense of our local Fire Department, we have the privilege of teaching Emergency classes to a number of our local citizens. These classes are held weekly at the Fire Station. On several occasions fire trucks have been used during a class. Even though some of them, there are also some who must have their own. I can verify that longest response time a call is received at the station is 3-4 minutes. On one occasion they responded to a fire and were back in class in 30 minutes. Our Fire Department is totally manned 24 hours a day. They are available on their own time, and they are available. Certified Emergency Medical Technicians. All of this because they have one service to the citizens and provide a service available.

My family and I are proud of our fire department. It's time some good things are said and done. Would anyone want to trade jobs with us? Hear all the facts before reaching any conclusions. "Good Work" Floydada Fire Department.

save save save

APRIL BUDGET

SAVE \$1,095.00
on this 14 x 80, 3 bdrm, 2 baths
WAS \$12,090.40.....NOW \$10,995.40

SAVE \$ 693.60
on this 14 x 52, 2 bdrm, 1 bath
WAS \$8,692.60.....NOW \$7,999.00

Above Prices Include Delivery and Set Up Within 150 Miles of Plainview, Texas

FHA and Conventional Loans Available
VA - No Down Payment

Tracksters
Local Me...
mpson
Whirlwind
lads were
competitive
guiding way
next week's
d they ever
Daniel Cow-
of future
ed the Post
e Floydada
day, March
so, surpris-
with their
maneuers, in-
ward.
d with our
owed a few

bird
78
iams netted
the 100-yard
effort.
y team of
n, Kitchens,
ended third
53.5 perfor-

ents, Caren
bird place in
ith a leap of
illiams also
in the long
11" effort.
da's power-
nabination of
Paula Ratliff
it particular
respectable
and 357".
took top
scus, with a

Dimmitt,
da, 95 1/2;
ymour, 89;
sevelt, 31;
d Idalou, 3.

ims of the
th place in
ith a 5:08.2

t's mile re-
true of the
ed the tape
inds with a
:24.2, while
l was only
fifth place.
elay squad
s Rick Cov-
y, Charles
Randy

Colorado
53; San-
City, 49 1/4;
Floydada
San Ange-
ress, 38 1/4;
ckney, 14;
ma, 9; Bal-

ter To The Edit
the letter from the lady in
al Fire Department. At the
e of teaching Emergency
number of our local
held weekly at the Fire
al occasions fire calls have
en though some of the fire
also some who must still
ify that longest response
eived at the station and
g is from 3-4 minutes, cer-
is from 3-4 minutes, cer-
responded to a fire at
Floydada and Lockney, ca-
in class in 30 minutes. I de-

rtment is totally volun-
24 hours a day. They at-
, and they are attending
ncy Medical Technicians
se they have one commo-
izens and provide these

Wheat Farmers Plagued By Drought Conditions

WHEAT DOUTHAT
(AP)—Calvin Fowler
Kansas wheat farmer. He
spread homesteaded
back in the 1880s.
home, with its protec-
woodlands and century-
ing. He says he hopes to
omeday.
n't lose it.
he says. "Everytime I
wonder if I've reached

being expressed these
throughout the Mid-
combination of pro-
top and a depressed wheat
ought many farm fami-
se to bankrupt
only have had to bat-
fourth at 1148".
Junior
first place
from \$5 a bushel to
their operating expen-
doubled.

surprised
during the
remained
improving
ing about
week.
Floydada
12 partici-
the Wash-
Nixon, Jay
respectively
45 9/10, re-
The ax-
took three
discuss the
top hono-
heave, in-
1148".
fourth at
Junior
first place
from \$5 a bushel to
their operating expen-
doubled.

The winter wheat farmers of Kansas, Colorado, Oklahoma and Northern Texas tell much the same story as their counterparts who grow winter wheat in the Dakotas. Many say they've been holding their grain and borrowing and reborrowing against it, hoping the market would rebound. But while their debts — and storage fees — have climbed steadily, the market has dropped at the same pace.
Now they are deep in debt and, like the land, their credit is drying up.
"I've been holding some of my wheat for three years," said Fowler. "I've got more than \$3 a bushel borrowed against it, plus a 50 cents a bushel storage fee."
"I've always had to borrow every year but this is the worst since I started farm-

ing back in 1946, after I came home from World War II.
"And my costs are going up everyday. I got a new tractor in 1973. It had air, power steering, the works. I paid \$13,500 for it. I priced that same tractor the other day and the price was \$27,000."
Don Augden also knows about tractors. A farm equipment salesman at Kingman — some 50 miles west of Wichita — he says his business is off by more than half from last year.
"I've had some of these machines since early last spring," he said, gesturing toward a four-wheeled, \$50,000 tractor and a \$40,000 combine. "Wheat farming is cyclic in nature but I've never seen things so depressed. An official at one of our local financial institutions

million of those bushels are still in the grain elevators and silos," says Rod Turnbull, an official with the Kansas City Board of Trade, a large grain exchange. "So, even if we lose half our crop this year, we'll still have enough wheat to meet our needs. The same situation exists in corn, to a lesser degree, but the soybean carryover was nil."
Augden says the surplus can be traced back to the Nixon administration decision to remove all acreage planting restrictions following the wheat shortages of the early '70s.
"The government decided we had to 'feed the world,' and the farmers responded by planting wall-to-wall," he

said. "Now they've created a surplus they can't unload."
"And to make matters worse, they're still planting wall-to-wall. More than half are tenant farmers and the landlords want production, figuring it's better to have 800 bushels at \$2.25 than 400 bushels at the same price."
Fowler and many other farmers say they would like to sit out a year but are afraid to take the chance.
"People ask me: 'Why don't you quit?'" said Clark Sloan, whose farm is just west of Garden City, near the Kansas-Colorado border. "But corn doesn't bring anything these days, and I've got to grow

home parks and cotton gin yards.
Following is the list of cities and communities in the area which do not meet the law's fluoride requirements. Not included with this list are the smaller water systems which do not comply. A complete list of the more than 540 water systems in Texas which have excessive fluorides may be obtained from the Texas Department of Health Resources.
Counties having cities or communities with excessive fluorides are listed in capital letters. Fluoride levels are listed in parentheses after the name of the city or community.

production can be reduced, and manure can be harvested earlier in the spring. The main idea is to keep a minimum quantity of manure and wastewater on hand.

INCLUDES LOCKNEY AND FLOYDADA

57 Too High In Fluorides, Four Over In Nitrate Levels

IN THE AVALANCHE-JOURNAL'S 33-county readership area, water systems in 57 cities and communities in 25 counties have excessive fluoride levels, according to the Safe Drinking Water Act's regulations.
These are part of more than 100 community water systems in the area with above-limit fluorides. A community system, as described in the law's regulations, is any water source from which at least 15 service connections are used year-round by residents or which serves at least 25 persons on a year-round basis.
These include many small water systems such as mobile

ANDREWS — Andrews (4.8)
BAILEY — Muleshoe (1.9)
BRISCOE — Quitaque (4.7), Silverton (4.4)
CASTRO — Dimmitt (2.6), Hart (1.7)
CROSBY — Crosbyton (2.0), Lorenzo (2.8), Ralls (1.8), and the entire White River Municipal Water District (1.9)
DAWSON — Ackerly (4.4), Welch (3.5)
DEAF SMITH — Hereford (2.0)
DICKENS — McAdoo (1.8), Spur (1.7)
ECTOR — Goldsmith (2.0), and all small water systems
FLOYD — Dougherty (3.9), Floydada (3.6), Lockney (2.6)

AGRICULTURAL ENGINEER FOR THE TEXAS AGRICULTURAL EXTENSION SERVICE. WITH CERTAIN MAINTENANCE PRACTICES, FEEDYARDS CAN BE MADE MORE "LIVABLE" FOR CATTLE DURING THE WINTER MONTHS, ODOR

AGRICULTURAL ENGINEER FOR THE TEXAS AGRICULTURAL EXTENSION SERVICE. WITH CERTAIN MAINTENANCE PRACTICES, FEEDYARDS CAN BE MADE MORE "LIVABLE" FOR CATTLE DURING THE WINTER MONTHS, ODOR

AGRICULTURAL ENGINEER FOR THE TEXAS AGRICULTURAL EXTENSION SERVICE. WITH CERTAIN MAINTENANCE PRACTICES, FEEDYARDS CAN BE MADE MORE "LIVABLE" FOR CATTLE DURING THE WINTER MONTHS, ODOR

AGRICULTURAL ENGINEER FOR THE TEXAS AGRICULTURAL EXTENSION SERVICE. WITH CERTAIN MAINTENANCE PRACTICES, FEEDYARDS CAN BE MADE MORE "LIVABLE" FOR CATTLE DURING THE WINTER MONTHS, ODOR

AGRICULTURAL ENGINEER FOR THE TEXAS AGRICULTURAL EXTENSION SERVICE. WITH CERTAIN MAINTENANCE PRACTICES, FEEDYARDS CAN BE MADE MORE "LIVABLE" FOR CATTLE DURING THE WINTER MONTHS, ODOR

AGRICULTURAL ENGINEER FOR THE TEXAS AGRICULTURAL EXTENSION SERVICE. WITH CERTAIN MAINTENANCE PRACTICES, FEEDYARDS CAN BE MADE MORE "LIVABLE" FOR CATTLE DURING THE WINTER MONTHS, ODOR

Dairy Queen
SPECIAL SALE
April 8, 1977
COUNTRY BASKET 99¢
(Regular \$1.69)
FRENCH FRIES GRAVY
TEXAS TOAST
Dairy Queen
OF LOCKNEY
PHONE 652-3761

Only Two More Chances To Hear
Ray Starnes
at 7:30 p.m.
Main Street, Church Of Christ

INCLUDES LOCKNEY AND FLOYDADA

57 Too High In Fluorides, Four Over In Nitrate Levels

IN THE AVALANCHE-JOURNAL'S 33-county readership area, water systems in 57 cities and communities in 25 counties have excessive fluoride levels, according to the Safe Drinking Water Act's regulations.
These are part of more than 100 community water systems in the area with above-limit fluorides. A community system, as described in the law's regulations, is any water source from which at least 15 service connections are used year-round by residents or which serves at least 25 persons on a year-round basis.
These include many small water systems such as mobile home parks and cotton gin yards.
Following is the list of cities and communities in the area which do not meet the law's fluoride requirements. Not included with this list are the smaller water systems which do not comply. A complete list of the more than 540 water systems in Texas which have excessive fluorides may be obtained from the Texas Department of Health Resources.
Counties having cities or communities with excessive fluorides are listed in capital letters. Fluoride levels are listed in parentheses after the name of the city or community.

ANDREWS — Andrews (4.8)	GAINES — Loop (5.0), Seagraves (4.7), Seminole (4.2)	(4.5), Texas Boys Ranch (2.6), and the Yellowhouse Canyon water system (4.3)
BAILEY — Muleshoe (1.9)	GARZA — Post (1.9)	LYNN — Grassland (5.5), New Home (5.3), Wilson (4.3)
BRISCOE — Quitaque (4.7), Silverton (4.4)	HALE — Abernathy (2.3), Cotton Center (2.0), Hale Center (3.2), Petersburg (3.3)	MARTIN — Stanton (3.2)
CASTRO — Dimmitt (2.6), Hart (1.7)	HOCKLEY — Anton (1.7), Ropesville (4.6), Sundown (3.7), Whitharral (4.4)	MITCHELL — Lorraine (2.0)
CROSBY — Crosbyton (2.0), Lorenzo (2.8), Ralls (1.8), and the entire White River Municipal Water District (1.9)	LAMB — Earth (2.0), Littlefield (1.8), Olton (2.5), Spade (2.2), Springlake (2.1)	MOTLEY — Flomot (2.0), Roaring Springs (1.9)
DAWSON — Ackerly (4.4), Welch (3.5)	LUBBOCK — Idalou (2.9), Shallowater (4.3), Wolforth (5.2), and more than 32 small water systems including the Buffalo Springs Lake water conservation district (2.3), Lubbock Christian College	PARMER — Bovina (1.3), Farwell (2.7), Friona (2.1)
DEAF SMITH — Hereford (2.0)		SWISHER — Happy (2.7), Kress (2.0), Tulia (1.7)
DICKENS — McAdoo (1.8), Spur (1.7)		TERRY — Brownfield (3.4), Meadow (4.9), Wellman (4.0)
ECTOR — Goldsmith (2.0), and all small water systems		WINKLER — Wink (2.2)
FLOYD — Dougherty (3.9), Floydada (3.6), Lockney (2.6)		YOAKUM — Denver City (2.3), Plains (3.8)

HAVE YOU TAKEN THE STEPS NECESSARY TO PROTECT YOUR INCOME AND PROPERTY?

MORTGAGE AND FAMILY PROTECTION
Mortgage protection can give your heirs a home free and clear of debt. And a good life insurance plan can give your family a monthly check for living expenses, or your own retirement!

HOMEOWNERS PROTECTION
Be sure your present insurance is sufficient to replace your home if it's destroyed by fire or storm.

INCOME PROTECTION
If you're disabled you still need money for basic living expenses. Disability Income Protection solves the problem.

CONTACT ME SOON ABOUT INCOME AND PROPERTY PROTECTION. DON'T WAIT UNTIL IT'S TOO LATE.

Andy Selman
983-5302
115 S. 5th
Floydada, TX

National Farmers Union Insurance Companies

IT'S TIME TO DO IT AGAIN!!!

(TAKE OVER THE RADIO STATION THAT IS)

ALL DAY SATURDAY, APRIL 9

FLOYDADA LIONS CLUB WILL BE OPERATING

KFLP RADIO — 900

ON YOUR RADIO DIAL

OF NET PROCEEDS TO FLOYDADA LIONS CLUB FLOYDADA PARK DEVELOPMENT

FLOYDADA LIONS CLUB MEMBERS WILL BE MANNING THE STATION FROM SIGN ON TO SIGN OFF.

BRING YOUR OLD EYE GLASSES TO THE RADIO STATION ANY TIME SATURDAY.

save
GET BU
SAVE \$ 903.
on this 14 x 60, 2 bed
WAS \$9,893.80

Lighthouse Electric Sets New Records

FRAME SHOP
Picture frames,
Mexico frames,
Ovals & Custom
made frames.

Ashley's Body Shop
300 West California
983-5073

"Last year was record setting for Lighthouse Electric Cooperative in KWH sales, gross revenues and net margins, with the increase in revenue being almost entirely related to fuel cost expense," manager Alton Higginbotham told the

annual meeting crowd Saturday in the Floydada High School auditorium. Over 1,000 persons attended the free barbecue lunch and some 266 voting members attended the business meeting following.

Lance Morris of Crosbyton served as master of ceremonies, music for the event was "The Duke's Mixture."

Two directors were re-elected, Henry Scarborough and Tom Porter.

The Cooperative now has 2,476 residential customers, 2,532 irrigation service hook-ups and a total of 2,139 miles of line...counting underground line, a total of 2,366 miles.

Cholma Williams of Floydada received the grand prize. He chose a C.B. base station from grand prizes of stereo, trash compactor, microwave oven, dishwasher.

Other prize winners included: (address Floydada unless indicated) Mrs. Raymond Teeple, Silverton; G. C. Seagler, Plainview; R. R. Ferguson; J. W. McClure, formerly of Crosbyton; Delmas McCormick, Mrs. J. W. Day, Jr.; Lee Penka, Petersburg; Harvey Tardy; Mrs. C. T. Hammonds; Tommy Sherman, Lockney; Mrs. W. L. Orman; Mrs. John Will Stewart, Crosbyton; Thelma Alexander; Mrs. Bill Hardin; John W. Redding; J. W. Jackson, Crosbyton; Billy Joe Hambricht; Howard Hickman, McAdoo; Don Bean; Leon Williams; Mrs. Odell Breed; Charlie Harris, McAdoo; Grady Dunavant; Mrs. Dale Widener, Lockney; Mrs. Zant Scott; Albert Stoeber, Lockney; J. E. Summers, Plainview; Barbara McCormick, Richard C. Matthews, Mrs. Clyde Baxter, Lockney;

Doug Galloway; James Cagle; Mrs. Tom Porter; Mrs. J. D. Adams, Petersburg; Phil Morris, McAdoo; C. M. Miller; Guy Ginn; Mrs. A. C. Pratt.

Paula and Becky Porter, daughters of Mr. and Mrs. Teddy Porter drew the numbers.



AT LIGHTHOUSE ELECTRIC COOPERATIVE ANNUAL MEETING...Paula and Becky Porter drawing the winning names, Dwayne Wilson and Harvey Allen were giving away the prizes. Lance Morris of Crosbyton was master of ceremonies.

In lower photo some of the planning committee are pictured. The entire planning committee includes: Mrs. and Mrs. Morris, Randy Bertrand, Leslie N. Jerry Cawley, J. D. Adams and Turner Hunter.

Can You Use Some Extra Money....

Let Us Help!!!

WE BUY SCRAP IRON, OLD JUNKERS, COPPER, BRASS.

CALL 293-5277 OR 293-2503

Help us help keep our country clean.

DO YOU NEED HELP PAYING THE RENT WHERE YOU LIVE NOW? YOU MAY BE ELIGIBLE FOR A RENTAL HOUSING SUBSIDY PROGRAM SPONSORED BY THE FEDERAL GOVERNMENT IF....

1. You and your family live on a low-income OR
2. You are over 62 years of age OR
3. You are handicapped or permanently disabled.

THIS PROGRAM MAY BE ABLE TO HELP YOU FIND A SAFE AND SANITARY HOME FOR 25 PER CENT OR LESS OF YOUR MONTHLY INCOME. THE AMOUNT OF THE RENT THAT IS MORE THAN 25 PER CENT WILL BE PAID BY THE GOVERNMENT. IF YOU NEED HELP AND THINK YOU CAN QUALIFY FOR THE PROGRAM:

The object of the program is to enable you to look in any part of town or in the country for a distance of five miles from the City for a home that suits your family's needs. The program is for families, the elderly and the disabled.

There are rent subsidies available for one-, two-, three-, and four-bedroom units. These can be houses, duplexes, apartments, mobile homes or any other kind of dwelling that meets the standards set by the program.

If you are on a waiting list for any other public housing, your name will not be removed from that list until you find a home.

If you and your family live on a low income, you will probably qualify for this program.

The people in your Housing Authority office are willing to help you now if you will call them. A better place to live could be the result of your effort.

CALL 983-3171 or come by 302 East Tennessee
HOURS 9:00 to 4:30 Monday Thru Friday
9:00 to 12:00 Saturday

Making a habit of using a sewing machine "doodle pad" will save sewing time by insuring that the machine is threaded and adjusted properly before beginning to sew. Use a similar weight, type and thickness of "doodling" fabric if scraps of the fabric are unavailable, suggests Mrs. Becky Culp, area clothing specialist with the Texas Agricultural Extension Service, The Texas A&M University System.

IF YOU GROW CORN FOR PROFIT TRY NS 212

LARRY BARBEE
Seed Sales

I'd like for you to come by The Store and let me show you the story about our full line of Growers Brand seeds. We'll also show you how to save money on the top lines of hybrid corn, sorghums and sunflowers.

Variety	% Moisture when cut	Yld. per/a @15.5
DeKalb NS 212	17.70	10,398 lbs.
DeKalb XL75	20.00	9,938 lbs.
McNair X 194	20.60	9,598 lbs.
Pioneer 3369A	18.10	9,090 lbs.
DeKalb XL77	19.60	9,077 lbs.
ACCO 9351	20.70	9,044 lbs.
ACCO 8801	19.20	8,889 lbs.

Plot Information: Planted April 19, 1976... One pre-water + 5, Fertilizer 200-50-0 + zinc - Plant population 23,000 - Two replications - Harvested October 3, 1976.

Variety	% Moisture when cut	Yld. per/a @15.5
GSA NS 212	20.20	10,472 lbs.
Ring-Around 1501	19.70	9,880 lbs.
Trojan 114	20.60	9,701 lbs.
Pioneer 3369A	20.00	9,258 lbs.
Funk 4507	20.00	9,208 lbs.
DeKalb XL77	20.80	9,160 lbs.
Pioneer 3321	20.50	9,160 lbs.
PAG 520	19.80	8,874 lbs.
Coop 2318	26.30	8,658 lbs.
		7,902 lbs.

Plot Information: Planted April 5, 1976... Harvested September 30, 1976... Fertilizer 260-69-0... One pre-water + 5... 3/4# Aatrix... Sprayed once for armyworms... 25,000 wasps per/a.

Variety	% Moisture when cut	Yld. per/a @15.5
Ring-Around 1501	21.9	9,202 lbs.
Growers NS 212	24.5	8,303 lbs.
Asgrow RX-90	23.4	8,240 lbs.
DeKalb XL77	21.8	8,135 lbs.
NC+ 59	22.5	8,011 lbs.
Pioneer 3321	16.7	7,747 lbs.
Pioneer 3195	23.4	7,749 lbs.
Taylor Evans TE 6968	17.7	7,749 lbs.
McNair X-194	19.1	7,178 lbs.
Funk G-4646	17.3	6,626 lbs.
Taylor Evans TE-6992	17.3	6,347 lbs.
Weather Master EXP 12A	17.9	6,268 lbs.
Trojan TXS-119	28.1	6,197 lbs.

Plot Information: Planted April 2, 1976... Harvested October 5, 1976... Fertilizer 160-41-0... Watered up + 3 irr...

Hybrid	Percent Moisture	Test Weight	Yld. @15.5 lbs.	% Moist. bu.
Growers NS-212	23.8	55.3	9352	167
Pioneer 3369-A	24.0	55.0	9190	164
Asgrow RX-90	25.0	54.0	9135	163
Trojan 115A	25.0	56.6	9074	162
Ring-Around 1502	25.0	54.5	9073	162
DeKalb XL77	25.5	55.0	8569	153
McNair X194	25.5	53.5	8224	147
Funk G4646	24.5	56.5	7644	137

Producers Cooperative Elevator
Floydada, Texas
Bill Cagle, Mgr.

Cranberry juice concentrate probably will be used as a replacement for red dyes in food colorings. It gives a satisfactory coloring for pie fillings, says Mrs. Sally Coble, foods and nutrition specialist with the Texas Agricultural Extension Service, The Texas A&M University System.

"Functionality" is the latest key word from the furniture industry, reports Mrs. Pat Seaman, area housing and home furnishings

EASTER FOOD FESTIVAL

SPECIALS GOOD BEGINNING APRIL 7

6 32 OZ. COKE'S PLUS DEPOSIT	\$1.29	MEDIUM EGGS	
SHURFINE 5 LB. BAG SUGAR	98¢	8 OZ. PHILADELPHIA CREAM CHEESE	
LAY'S 8 OZ. PACKAGE POTATO CHIPS	59¢	REYNOLDS FOIL REGULAR ROLLS	
		4-ROLL PACKAGE PAPER TOWELS	
		KRAFT 10 1 2 OZ. PACKETS MARSHMALLOWS	
		9 OZ. COOL WHIP	
		SHURFINE 3 LB. CAN SHORTENING	
		KRAFT BARBECUE 18 OZ. SAUCE	
		SHURFINE 2 1-POUND OLEO	
		DAIRY BUTTERMILK	
		CLOVERLAKE 24 OZ. CARTON CHEESE	
		BORDEN'S OR CLOVERLAKE WHIPPING CREAM, SOUR CREAM	
		DIPS	
		QUALITY CHEK D SQUARE ICE CREAM	
		KEETE GROCERY	

MEATS

WHOLE FRYERS 49¢ LB.

HAMBURGER 69¢ LB.

KANN BONELESS, FULLY-COOKED HAMS HALF OR WHOLE \$1.69 LB.

MARKET SLICED BACON 89¢ LB.

TURKEYS 59¢ POUND

PRICES PAID ON PRODUCE

BANANAS 2 POUNDS 39¢

DELICIOUS APPLES 3 LBS. \$1.00

ORANGES 4 POUNDS 89¢

We accept WIC Cards and Food Stamps. We give Double Stamps on Tuesday afternoon and Wednesdays.

NEWS 'N' NOTES

(by Sharon Hillis)

QUICKIE APPLIANCE QUIZ

"Knowing" your appliance can cut service calls by one-fourth.

Misinformation, lack of proper information or misuse can lead to unnecessary service calls or dissatisfaction with appliance performance.

A "get-acquainted" quiz below points out problem areas that informed consumers can avoid.

Do you:
-Read the instruction book before using an appliance and refer to it regularly until it is learned?

-Expect an appliance to do something it was not designed to do? Understanding appliance capabilities is one mark of an educated consumer.

-Use only detergents specified for dishwashers and use recommended amounts? -Make certain that dishwasher water temperature is between 140 and 160 degrees F?

-Clean the dryer lint filter after each use?

-Always check the filter below a microwave oven? Soiled or greasy ones can prevent air from cooling the magnetron tube, which may stop operation.

-Check your freezer periodically to make certain it is operating properly and ask a family member, friend or neighbor to check it when you are away for an extended period?

-Clean up excessive liquid grease deposits in the oven

before turning on the fast clean cycle?

-Vacuum the condenser of the refrigerator and/or freezer as frequently as advised in the instruction manual? Failure to do so may cause vibration and noise when running.

-Sort clothing in preparation for the washer according to color, fabric and degree of soil?

-Except for the second question, a "no" answer to any question could lead to an appliance complaint.

CLOTHING SEWING WITH SCARF PRINTS

Scarf print garments give fashion accent to a wardrobe.

This look uses scarf pattern with borders continuously printed side by side within the width of the fabric. They may be large scarf prints or small handkerchief designs.

Garment designs for scarf prints are usually loose and flowing to use the print to its best effect.

Guidelines to follow in working with large scarf designs include three "basics":

-Determine the scarf motif—is it a perfect square, is it slightly rectangular, is it bias?

-Determine what type garment you want to make. For a pointed hem, the scarf pattern must be either square or bias.

-Select a pattern that has a minimum of seams to avoid cutting up the scarf motif.

compensates for the reduction in plant numbers when conditions return to normal."

Deep sands low in organic matter present a special problem, he notes. Ridging or deep furrows to catch the drifting sand help some. The Extension specialist says feedlot waste has been used successfully for controlling blowing sand in Dallam County. Rates from 5 to 20 tons have been used effectively on knolls and slopes that are most subject to erosion.

"These areas will usually respond well to the feedlot waste, so the practice also serves as a source of fertilizer," Petr says. "Surplus crop residue gleaned from other fields can also be applied to blow-spots. The disadvantage of using crop residue is that it may have to be anchored into the soil by cultivation. In terms of its alternative use as livestock feed and cost of stacking, crop residues may be more expensive to use than feedlot waste for erosion control."

He admits these are all short-run temporary measures to alleviate an existing problem. Long range planning is more effective and economical. Petr believes each producer should divide his land into three major categories: land that should not be cultivated due to erosion hazard; land that can be cropped safely with conservation tillage and special erosion control practices; and land that can be conven-

tionally cropped with little or no risk of wind or water erosion.

"Assistance in classifying the soil into such categories can be obtained from the Soil Conservation Service, he adds. "They have information on soil texture, topography, slope and organic matter content which must be considered together in determining wind and water erosion potential."

Petr recommends that

land placed in the first category be retired from cultivation and reseeded to either dryland grasses or irrigated perennial grasses or legumes—depending on the availability of water and preference of the producer.

Land in the second category could be farmed, using minimum tillage or stubble mulch tillage and crops not requiring intensive cultivation, including perennial hay production.



APRIL FOOL...while gassing some prairie dogs Bill Hopper fell into the back of this 1976 model pickup. The shovel caused a hole in the gas tank in the back of the pickup. Hopper was not hurt but his pickup destroyed by fire. (Staff Photo).

Lada Home
...ings
Walters
everyone is over and

maybe April will bring showers.

We have had wonderful devotions this week. Seems the Lord has blessed everyone with his word, and the singing has also been great.

Wednesday we took our field trip. The wheat is pretty and green and looked like nearly everyone was watering.

The residents can hardly wait for planting season.

Taking the trip were Ray Reed, Henry Love, the driver Mr. Freeman, Agnes Anderson, Florence Badgett, Dora Langford, Hope Hammonds and myself.

Thursday we gave a party for Altha Guinn and Delia Campos. It was Altha's last day with us and I know everyone will miss her so much. She is such a kind, good nurse and always ready to help the residents. We are sorry to lose her but she is going to Littlefield so she can be close to her daughter. We hope she will be happy there. There will always be a place in our hearts for her, not only as a good nurse but as a wonderful person.

Delia has bought a house here and everyone wanted to give her a gift as she is such a nice person. We are so glad for her and hope she will be very happy in her new home.

Artie Webb made a cake for the party and it was served with coffee, then a gift was presented to Altha and Delia.

We had time after the party for a little bingo which the residents always enjoy. Top winners were Ray Reed, Agnes Anderson and Hallie Bertrand with 3 games; Clara Williamson won 2 games and Willie Mae Stambough won one game.

We were sorry Hope Hammonds did not feel like playing.

I think Mollie Jones will

Farmers Urged To Protect Against Wind Erosion

AMARILLO—Hurricane-force winds and accompanying dust that swept across the Texas Panhandle in late February and March, although not new to the area, did considerable damage to farmlands. Farmers now are faced with the task of recuperating their losses to field erosion and damaged crops.

"The recent dust storms," says Area Agronomist Dr. Frank C. Petr, "may remind us how important it is to properly manage our soil."

Petr, who is with the Texas Agricultural Extension Service at Amarillo, says wind erosion has always been a hazard on arid and semiarid lands during drought cycles.

"The damage," he says, "not only results in at least a partial loss of the current crop, but reduced productivity in future years as well. Other costs resulting from wind and dust movement include rebuilding fences, removing sand from roadways and borrow pits, leveling drifted soil in fields plus sand damage to adjacent crops and buildings."

Preventing or avoiding wind erosion is, of course, the best answer to these problems, he adds. But what should a farmer do when gale force winds begin to cause movement of topsoil?

"The best procedure is to chisel or work the field, leaving ridges perpendicular to the wind direction," the agronomist recommends. "The implement preferably should bring clods to the surface and not pulverize the soil. Disking should be avoided, since over-use of the offset and one-way disc probably contributed to the problem to begin with."

Petr explains that a deep-tillage implement with alternate sweeps or shanks removed usually does the best job of ridging the soil and leaving large clods on the surface. A field cultivator adjusted or set to kill weeds will not do a good job of arresting soil blowing, he emphasizes. It pulverizes

be ready to play next week as she enjoyed watching this week. We were real glad to have her in our exercise class Thursday.

We have two new residents, Icy Biggs and Sara Jarrett. We are glad to have them and hope they will be happy here.

We appreciate all our visitors this week which included Mrs. Joyce Jackson, J. F. Brown, Otis and Dorothy Anderson, Sue Moore, Hazel Bradley, Kim Bradley, Mrs. Paul E. Wilson, Mrs. L. C. Pruitt, Margaret Biggs, Mr. and Mrs. R. H. Grubbs, Francis Linch, Parnell Powell, and Mr. and Mrs. Hubert Davis from Floydada; and Verdine and Josephine Smith, Lockney; and Pearl Ratzlaff, Lamesa.

WATCH FOR OUR GRAND OPENING ANNOUNCEMENT CAPROCK Appliance Center In Lockney

Come In & Register Many Free Prizes Including A 16" Black & White T.V.

FINANCING AVAILABLE

115 N. Main, Lockney, TX

The Whole Store's Jumpin' with BUNNY-HOPPING FOOD VALUES

THESE VALUES GOOD THROUGH MARCH 9.

DOZEN EGGERS	LB.	49¢
DOZEN ROUND BEEF	LB.	79¢
DOZEN OVERLAKE 1/2 PT. WHIPPING CREAM		3/\$1.00
DOZEN 8 OZ. SOUR CREAM AND CHIP-N-DIP		3/\$1.00
DOZEN OVERLAKE BUTTERMILK	1/2 GAL.	69¢
DOZEN OVERLAKE 24 OZ. STAGG CHEESE		89¢
DOZEN OVERLAKE ROUND CARTON CREAM	1/2 GAL.	\$1.09
DOZEN BANANAS	LB.	25¢
DOZEN WASHINGTON STATE DELICIOUS APPLES	3 LB. BAG	99¢
DOZEN 1/2 BOTTLE CARTON APPLES		\$1.29
DOZEN 10 OZ. PKG. FROZEN GREEN		PLUS DEPOSIT
DOZEN 10 OZ. PKG. FROZEN GREEN	3 FOR	89¢
DOZEN 10 OZ. BOX STRAWBERRIES	2 FOR	\$1.09
DOZEN HEAD BUTTER	EACH	29¢
DOZEN 10 LB. BAG POTATOES		89¢
DOZEN HAIRD'S BROWN & SERVE	2 PKGS.	99¢

Our Home Owned and Home Operated Grocery

L&J FOOD STORE

Give DOUBLE S AND H GREEN STAMPS

ON TUES. AND WED.

116 North 2nd Phone 983-3105

Chelated iron will make your lawn greener!

An ideal basic lawn food

You can trust your lawn to ferti-lome...it works!

ferti-lome

DAVIS FARM SUPPLY

FLOYDADA, TX.

"The more you make, the more you have to protect. Is your life insurance growing with your career?"

Let's talk growth. Professionally."

Tommy Assiter
206 W. California
Phone 806-983-2511

Southwestern Life
Helping people - person to person

EASTER CLOSE-OUT SPECIALS

2-ONLY WHITE BROTHER AM/FM 8-TRACK RECORD PLAYER

STEREO INCLUDING STAND (BR 3) REG. \$229⁹⁵ (WHITE)

CLOSE-OUT PRICE **\$149⁹⁵**

BR8 BROWN IN COLOR

2-ONLY BROTHER AM/FM 8-TRACK RECORD PLAYER

STEREO EXCELLENT QUALITY REG. \$349⁹⁵ #350

CLOSE-OUT PRICE **\$229⁹⁵**

1-ONLY BROTHER AQUATRON TAPE PLAYER

AM/FM 8-TRACK VX-333 REG. \$139⁹⁵ CLOSE-OUT PRICE **\$99⁹⁵**

A.C. BATTERY GO ANY WHERE

Mize Pharmacy & TV

VA News

Veterans with service-connected disabilities of 10 percent or more may be entitled to training under the Veterans Administration's vocational rehabilitation program, Jack Coker, Waco VA Regional Director, reminded today.

Nearly 28,000 disabled veterans received training under the program in fiscal year 1976 and 800,000 veterans have participated since World War II.

Veterans with disability rated 10 percent or more who are found to require rehabilitation can receive up to four years of training. Eligibility for training is usually nine years after discharge and under certain conditions this may be ex-



Rx We Work With Your Doctor

We follow doctor's orders to the letter. Your prescriptions and your health depend on our reliable, accurate service. Call on us.



MR. AND MRS. JAMES MOSS of Memphis, Texas came out of this auto after an almost head-on collision with Fred Marble of South Plains last week with no serious injuries. Marble, who was driving a pickup, was not considered seriously injured. The accident happened near the Lockney cut-off on the Silverton highway. Wreck vehicles are pictured above. (Staff Photo).

tended four years. A new law provides seriously disabled veterans training beyond these termination dates when this is found to be necessary, Coker noted.

Rehabilitation training may be taken at colleges, universities, vocational or technical schools, or by means of job or farm training.

If necessary, training may be taken in special facilities or in the veteran's own home.

Eligible disabled veterans applying for training will receive VA counseling to determine need for such training, and covering the veterans' desires, abilities

and goals in identifying the most advantageous action.

something."

A few farmers, like Jerry Thompson of Craig, a mountain community 200 miles west of Denver, are beginning to sell their wheat in advance, to futures speculators.

"My partners and I contracted last fall to sell 10,000 bushels at better than \$2.60 a bushel," he said. "Now, all we need is some rain so we can grow it."

The weather has improved. There was abundant rain in most of the Midwest in March, and weather officials say the moisture went a long way toward relieving the drought conditions. They say that more rain is needed to replenish water in deeper soil before summer. That moisture may be coming; April's forecast calls for above-average precipitation for much of the region.

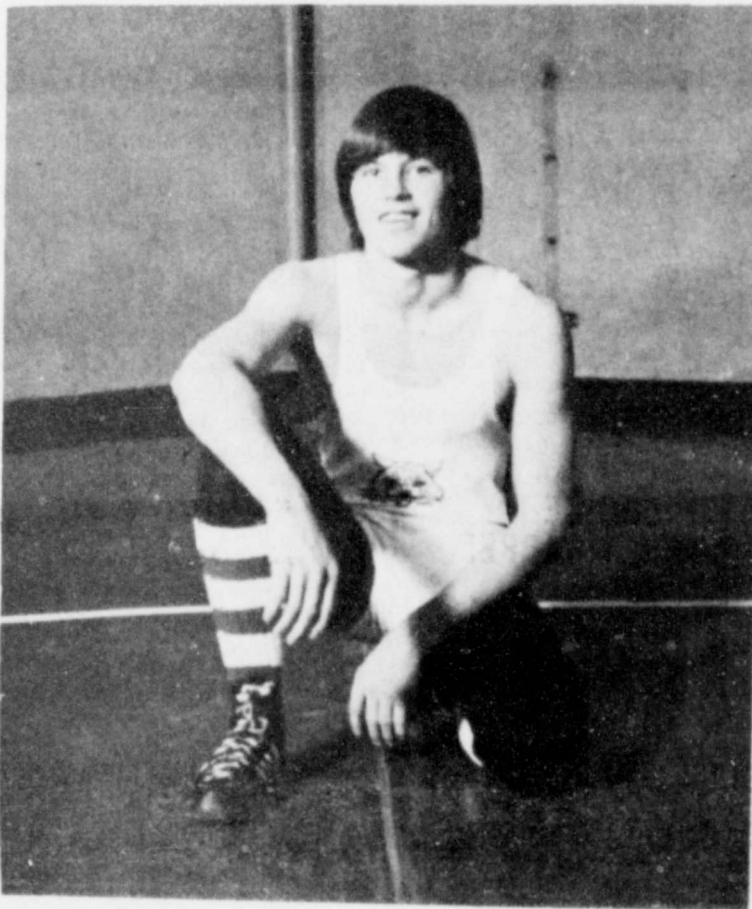
But it's not the drought or the threat of drought that's the real problem. In fact, a

VA pays for tuition, books, and fees. Trainees receive a monthly allowance, and disability compensation also. Monthly checks were recently increased 8 percent, and single veterans training full time in school or college now receive \$226 monthly. Veterans with one dependent receive \$280 per month and those with two dependents draw \$329 monthly. Trainees are paid an additional \$24 a month for each dependent over two.

Veterans participating in VA's work-study program may work a maximum of 250 hours per semester (or other enrollment period) and earn a maximum of \$624. Payment is at the rate of \$2.50 per hour.

Get full details of the rehabilitation programs at the nearest Veterans Administration office, veterans county service office, or at any veterans organization office.

Encourage children to help with housework by designing hand "duster puppets" from old socks. Draw faces on several with marking pens. When dusting is done, the puppet can be



MIKE HAMMIT is Colorado state champion wrestler. Mike won his second state wrestling championship this year at 145 pounds. He pinned Mark Rhoads of Soroco in the finals to finish 24-0 for the season with 21 pins. Time was 3:04. Mike has the opportunity next year to become a three time state champ, an achievement only reached by seven others in class A history and only 16 boys in all classes of Colorado wrestling. He also won outstanding wrestler at the Holly tournament. His fastest pin for the season was 25 seconds. Mike is the son of Mr. and Mrs. Gene Hammit of Holly, Colorado, grandson of Mr. and Mrs. Claude Hammit of Plainview and Mr. and Mrs. Horace Betts of Adrian, Texas.

Spotlight on SNACK FACTS



...AND NOW, DESSERT

Dessert may be last on the menu, but not on the mind! Especially on busy days, it pays to have a file on quick palate-pleasers for family and guests. Home economists for Sunfield Foods, makers of the peanut butter and granola snack bar Crunchola, suggest combining it with other convenience items to add a "dash" of difference:

- * Crumble over pudding, ice cream or ice milk
- * Crumble over apple pie; run under the broiler until just melted
- * Place in blender with milk and ice cream for milk shake
- * Serve with fresh fruit and/or cheeses

A busy day bonus: There's no rule which says that desserts must be elaborate or easy, cold or hot, sweet or savory—just that they provide a pleasant conclusion for a meal. So even these simple desserts can help make sure the family gets a balanced diet.

Newspapers Don't Really Cost — They SAVE You Money

Merely shopping the advertised values on items needed weekly can save you many times over the price of a newspaper. Now and then ad shopping can bring you a savings on a major item far in excess of the total annual price of a newspaper!

Most important, a newspaper keeps you informed — not only on shopping values and business, but more significantly on community activities, government, civic problems and progress. Being informed is a vital first step toward effective good citizenship. In Floyd County most families look to a Floyd County newspaper—

The Floyd County Hesperian & The Lockney Beacon

East Credit Association

For more information contact...

5514 C the green down to

P-A-G 5514 is a greenbug resistant hybrid. 5514 significantly reduces the number of greenbugs thus minimizing the effects. 5514 has very good yield with genetic changes adjust to your growing conditions.

FOR MORE INFORMATION CONTACT...

Ask your P-A-G Dealer about the 1977 REBATE PROGRAM. It will save you money on your P-A-G purchases.

P-A-G SEEDS, BOX 10303, LUBBOCK, TEXAS

AL ESTATE

25 x 50 office floor, paneled. day 983-3144

FOR SALE. 1 bath, refrigerator, 4 x 65 Falco, two lots, landscaped, storage building, possible trip, and would be home for young couple. Located in Lockney, Realtors, 2101 W. 293-4339 or Phyllis

1.74 acres, 1 1/2 mi. on Matada, ndell King Rd.

1974, 14 x 2 bedrooms, 2 bath, air. On lot skirt Double garage and store room. W. 6th Lockney

FOR SALE

NEW— 3 bedrooms, living kitchen, double lot, lots of extras. Immediate

REALTY Listings in Estate

HOUSE, util potential income and Real Estate. 983-2151

Two bedrooms, fully carpeted, room, basement, fruit trees, water and sewerage of town. Call 6 p.m. 652-26

Bedroom, 2 bath, large den, line panelling, Air Conditioning. Call Guy G

brick house, self, central heat, paint job. five or on we

SALE: 110 M 5392 or 983-511

The 3 bedroom b... ft. floor sp... with elec... udes plenty c... wall carpetin... large den... itation with b... fireplace... steak cook... eat and air. U... entry. There i... shop building... by appointm... 818 Mesq... 73.

NEW

FO

room, 1-1

Wall to

Room, K

and Snack

1 Acre La

Shown By

KENN

9

Holli

Re

PH

5th

DAND

ECT CON

BINDWEE

BURRAGI

JOHNSON

J. Pho

ic. No. ;

Person-to-person want ads really work!

ESTATE

50 office paneled. Call 983-3144 tfc

FOR SALE: 65 Falcon two lots, fenced, landscaped, storage building, possible also has triple and young couple. Has 80% loan in Lockney. Call 2101 W. Lockney, 439 or Phyllis Ltfc

1.1 mile on Matador King Real tfc

EMPLOYMENT

DONNIE JACKSON ELECTRIC - Wiring and repair. Residential and commercial. 652-3572. Ltfc

WANTED, experienced farm hand. Must know irrigation and 6 row equipment. Furnish reference. No drinkers need apply. 652-3604. L4-10c

HELP WANTED. Adult help at Ralls Dairy Queen. Must apply in person to manager. Starts at \$2.40 an hour. 4-10c

APPLICATIONS are being accepted for night dispatcher and building custodian. Lighthouse Electric - Equal Opportunity Employer. 4-10c

BUSINESS SERVICES

PIANO TUNING. Edward C. Lain 25 years experience. Write Box 425 Silvertown or call 823-2151. L-tfc

WATCH REPAIR: C. H. Bradford. 216 W. Crockett St. 983-3325. tfc

INSULATION INSTALLED, Marr Insulation Co. Tom Marr Owner, 652-3593. Ltfc

REMODELING - Plumbing-Carpentry-Painting-Roofing-Built-ins-Cabinet Work-Texturing. Call Mike, 983-5103, 1217 E. Lee. 4-28c

COW POKES By Ace Reid



"Jist when are you saddle makers gonna git smart enough to make a saddle that won't rub blisters on a feller's belly?"

THIS FEATURE SPONSORED BY
AUTO, FIRE & FARM INSURANCE
Floydada Real Estate & Insurance Agency
Jim Word --- Phone 983-2360

FARM MACHINERY

NORRELL TRACTOR PARTS for tractor and irrigation supplies and accessories. tfc

FOR SALE: Used Farm Machinery, Lawson Bros., East Missouri Street, Floydada. tfc

FOR YOUR portable disc rolling needs, call Lawson Bros., Welding and Equipment 983-3940, Floydada. tfc

FOR SALE

FOR SALE. Sears best microwave oven, used very little. Call 652-2647. L4-10c

FOR SALE, cross stitch quilt, Baltimore bride pattern. Mary Griffith 652-3471. L4-10c

UNDERGROUND Lawn Sprinkler System Higdon Interprice. Free estimate. 983-2068. 4-28c

FOR SALE: 2-bedroom houses to be moved. Also 990 feet 4-inch sprinkler pipe. Floyd Anderson, 983-3056. 5-19c

AUTOMOTIVE

COLLECTOR'S DREAM, beautiful beigh Mark III Lincoln Continental, excellent condition. White vinyl top. Phone 983-3982.

FOR SALE - 1972 Oldsmobile two-door hardtop. All electric, fully loaded, new tires, extra clean. 652-3866. Ltfc

FOR SALE: 1973 Honda 450 CB: Windshield, Faring, Excellent condition. Price negotiable. Call 983-3353 or 983-2040. 4-7p

FOR SALE. Pickup truck with camper. Phone 983-2453, evenings. 4-7c

FOR SALE. 1975 Nova L.N. 15,500 miles. 6600, and take-up payments. Call 983-2797 after 5. 4-24c

1974 Datsun 610, good condition. Also 1955 Chevy pickup. Call A. L. Pereira, 983-2795. tfc

WANTED

WANTED TO BUY irrigated dryland farm in Floyd or surrounding area. Write Box XRO, c/o Hesperian, Box 700, Floydada. tfc

AVON - Need Money? Avon representative needed for Floydada and surrounding areas. Call (806) 983-3139. tfc

WANTED, carpentry work - all kinds remodeling, home repair. Free estimate. Call 652-2128, Bob Propps. L-tfc

WANT TO RENT: 3 bedroom, house in or around Floydada. Call 652-2435 or 652-2412. tfc

WANTED TO RENT: irrigated farm. Have references. Write to Henry D. Dreyer, Rt. 2, Wilson, Texas 79381. 5-1c

2 NURSES want to rent 2 or 3 bedroom house. Furnished or unfurnished for mid May occupancy. Call Troy Patton at Caprock Hospital. 983-2875. tfc

HOME FOR SALE

FOR SALE - Four-room house to be moved. 652-3754. Ltfc

3 BEDROOM, 2 bath brick, 2 car garage. Good location. Randall King Real Estate. 983-5028. tfc

INSULATION
helps beat the heat!

TEXAS INSULATION SYSTEMS, Box 591 Lockney, Texas 79281 (806) 652-3348

ThermoCon Spray-on for Metal Buildings & Shops
ThermoCon Loose-fill for Residential Application
"Insulation doesn't cost, it pays!"
Please call for a free estimate without obligation.

INSULATION
Fire-Resistant, Installed and Guaranteed
MARR INSULATION CO.
Tom Marr Owner 652-3593

LOCKNEY PRINTING
ALL TYPES COMMERCIAL PRINTING
Phone 652-2184
We Appreciate Your Business.

FARMERS INSURANCE GROUP
Symbol of Superior Service
AUTO - LIFE - FIRE TRUCK - COMMERCIAL
Sam A. Spence
983-2881

CUSTOM APPLICATION
TREFLAN, TOLBAN, PROWL
Billy Wisdom 652-3541
Terry Howard 652-3439

ARTHUR B. DUNCAN ABSTRACT COMPANY
Abstracts - Title Insurance Agents for Stewart Title Guaranty Company.
TELEPHONE 983-3167
Office on South East Corner public square. Corner California and Wall, Floydada, Texas.
"The Oldest Abstract Plant in Floyd County"

BEEF CHOICE CUT & WRAPPED FOR YOUR FREEZER 72¢ LB. YOU CANNOT BUY BETTER BEEF AT ANY PRICE! GOOD - 69¢ LB. Lockney Meat Co. Sam Fortenberry, Mgr. 652-3305 LTFc

DR. O. R. McINTOSH
OPTOMETRIST
316 S. Main Telephone 983-3460
FLOYDADA, TEXAS

BRING NEW LIFE TO YOUR CARPETING
Revive the original beauty of your rugs. Cleaned in your own home by Von Schrader dry-foam method. No muss. No fuss. No odor. Use the same day.
All work guaranteed. Phone for estimate today.
CALL 652-2500
LOCKNEY, TEXAS

CARDS OF THANKS

I WOULD LIKE to take these means of expressing my appreciation to all of my friends who remembered me in any way with prayers, cards, gifts, and visiting calls. I will always remember you for your kindness while I was in the hospital. May God bless each of you in a very special way in my prayers.
Mrs. J. D. Hart

CLASSIFIED RATES

CLASSIFIED ADVERTISING RATE: 7 CENTS PER WORD FIRST INSERTION; 5 CENTS PER WORD EACH SUBSEQUENT INSERTION. MINIMUM CHARGE: \$1.00.

CLASSIFIED DISPLAY RATE: \$1.20 PER COLUMN INCH. CARDS OF THANKS: \$1.00.

COPY DEADLINES: 5 P. M. TUESDAYS FOR THURSDAY EDITION; 10:00 A. M. FRIDAYS FOR SUNDAY EDITION. Call 983-3737 in Floydada



WE WANT YOU TO KNOW - We sell all kinds of Goodyear tires... tractor, auto, truck, a good tire, good service. Best deals in West Texas. Truck winch and hauling service. BABE'S SERVICE CENTER, FLOYDADA. tfc

THRASHER & CO.
Redi-mix Concrete
Sand & Gravel
Excavation
call us:
983-2170
229 E. California TFC

ADAMS WELL SERVICE
Complete Irrigation Service, All Size Domestic Submersible Pumps In Stock, 1 Day Service On Submersibles.
CALL 983-5003
DAY OR NIGHT
FLOYDADA

Kirby
Vacuum cleaners, new and rebuilt 1 yr. guarantee. Parts, sales and service. Prices begin at \$124.50.
Parker Home Furnishings In Lockney. 652-3315 Ltfc

OUR FINEST BEEF FOR YOUR FREEZER HALF OR WHOLE 73¢ lb.
Cut Or Wrapped To Your Specifications
See Your Meat Man
MAX SMITH
PAGE'S THRIFTWAY
Lockney, texas 652-2293

STORAGE SPECIAL
At Wall & Mississippi Street
RENT STORAGE SPACE FOR 6 MONTHS
WE WILL GIVE 10% DISCOUNT.
Wilson Bond
983-2151-983-3573
West Texas Mini-Storage

Ditching and Backhoe Service
Storm Cellars, Basements, Slush Pits, Pit Cleaning, Sewer systems, Custom Trenching, Irrigation and Gas Line Repair, Water, Sewer and Gas Line Installation.
Lockney Lumber & Supply
JERRY WOFFORD
South Main - Lockney Phone 652-3357
Night 652-2185 or 652-2418

MUFFLERS
We Specialize in
Duals-Tailpipes-All Exhaust Systems
Low overhead keeps our prices below the cities
DON'S SMALL ENGINE SERVICE
983-2273
123 W. California tfc

FLOYDADA LIONS CLUB
RADIO DAY
ALL DAY
SATURDAY, APRIL 9
Lions are D.J's, Sales Personnel, Bookkeeper and engineers.
80% of all Net Proceeds go to Floydada Park Development Fund.

NEW HOME FOR SALE
3 room, 1-Full Bath plus 2 Half
Wall to Wall Carpet, Paneled
Fireplace, Living Room,
Kitchen plus Breakfast
Snack Bar, 2 Car Garage.
Acre land. \$21,00 Sq. Ft.
Shown By Appointment Only
KENNETH BLOYS
983-3828

Collis R. Bond Real Estate
PHONE 983-2151
FLOYDADA

DANDELIONS CONTROL
CONTROL-LAWNS & TREES
WINDWEED CONTROL
BURRAGEWEED CONTROL
HANSON GRASS
J. P. Williams
Phone 652-2326
No. 22453 Bus Lic. No. 3106

BUDDY'S FOOD

Buddy Widener, Owner-Forrest Shannon Mgr.
in Floydada, 220 South Second



DOUBLE ON WEDNESDAYS

NEW STORE HOURS
SUNDAY--9 A.M.--7 P.M.

MONDAY SATURDAY 8 A.M.--8 P.M.
THESE SPECIALS GOOD Thursday, April 7
THROUGH SATURDAY APRIL 9, 1977.

We Reserve The Right To Limit Quantities



3 LB. CRISCO
CRISCO

\$1.49 WITHOUT PURCHASE

WITH PURCHASE
OF 2 CUT-UP
FRYERS

99¢

WE WILL BE CLOSED EASTER SUNDAY

12 OZ. DEL MONTE SWEET

PICKLES



79¢ VALUE

2/99¢

17 OZ. WHITE SWAN
LUNCHEON

PEAS

34¢ VALUE
4/\$1.00

17 OZ. WHITE SWAN
GOLDEN

CORN

4/\$1.00



17 OZ. WHITE SWAN
CUT GREEN

BEANS

34¢ VALUE
4/\$1.00

48 oz. Liquid Crystal White

DETERGENT

\$1.09 Value

79¢

12 OZ. NABISCO VANILLA

WAFERS



75¢ VALUE

2/99¢

140 COUNT NORTHERN
NAPKINS

69¢ VALUE

2/99¢



16 OZ SQUEEZE
PARKAY

79¢ VALUE

59¢

JUMBO ROLL HI-DRI PAPER

TOWELS

67¢ VALUE

2/79¢



33 OZ. GIANT
BREEZE

DETERGENT

\$1.39

Value \$1.89

1/2 GAL.

**BUTTER-
MILK**

99¢ VALUE

69¢

ALL BUNTE EASTER

79¢ VALUE

EGGS

2/\$1.19

79¢ SIZE NABISCO SNACK

CRACKERS

2/\$1.19

CALIFORNIA

STRAWBERRIES

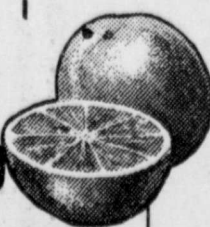
D'Anjou

PEARS

5 LBS. \$1.00

SWEET
POTATOES

5 LBS. \$1.00



SUNKIST
ORANGES

4 LBS. \$1.00

GOLDEN DELICIOUS

APPLES

5 LBS. \$1.00

PASCAL STALK

CELERY

3/\$1.00

GOLDEN RIPE

BANANAS

4/lbs. \$1.00

3 LB. FARMLAND CAN

HAM

\$5.99



TENDERMADE BONELESS

HAM

\$1.89



8 OZ. PHILADELPHIA
CREAM

CHEESE

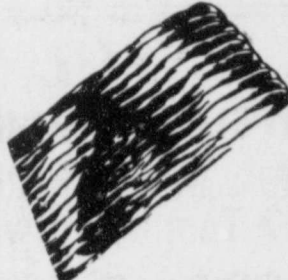
2/\$1.19



12 OZ. DECKERS

BACON

99¢



U.S.D.A. BONELESS ROUND

STEAK

\$1.39



LEAN PORK

STEAK

89¢

U.S.D.A. TENDERIZED

STEAK

\$1.59

U.S.D.A. ARM

ROAST

89¢



LONGHORN
CHEDDAR
CHEESE

\$1.49

LEAN GROUND

BEEF

63¢

TASTE WRITE

HOT LINKS

79¢

SLICED

PICNIC

69¢

U.S.D.A. ENGLISH
CUT

ROAST

89¢

HOT READY

**BAR-
B-Q**

\$1.59

MORRISONS 6 OZ. BIS-KITS OR

CORN KITS

21¢ VALUE

6/\$1.00

RAINBO ANGEL FOOD

CAKE

99¢ VALUE

59¢

11 OZ. GOOD DAY MANDARIAN

ORANGES

53¢ VALUE

3/\$1.00

15 OZ. OCEAN SPRAY CRANBERRY

SAUCE

51¢ VALUE

2/89¢

7 OZ. WHITE SWAN
MACARONI CHEESE

DINNERS

4/\$1.00

4 OZ. ADAMS
VANILLA

\$1.19 VALUE

89¢

18 OZ. DUNCAN
HINES LAYER

**CAKE
MIX**



79¢ VALUE

59¢

8 OZ. WEST PAK

CAULIFLOWER

43¢ VALUE

9 OZ. OLE SOUTH

**PIE
SHELLS**

3/\$1.00

6 OZ. MINUTE MAID

JUICE

49¢ VALUE

9 OZ.

COOL WHIP

59¢

14 OZ. CORAL BAY

COCONUT

\$1.03 VALUE

79¢

26 OZ. MRS. SMITHS
DUTCH APPLE

PIE

49¢ VALUE

5 LB. GOLD MEDAL

FLOUR

GOOD AT BUDDY'S
EXPIRES 4-9-77
79¢ WITHOUT COUPON



WITH
COUPON

59¢

1 LB. HILLS BROS.

COFFEE

EXPIRES 4-9-77
GOOD AT BUDDY'S
WITHOUT COUPON