

H THE FLOYD COUNTY Hesperian

35¢

Thursday, November 26, 1987

©The Floyd County Hesperian

Floydada, Texas 79235

USPS 2026-8000

Volume 91

Number 48

Christmas opening slated next Wednesday



PAIR OF MISS FLOYDADAS — Tiffany Gentry [right] has just been crowned Miss Floydada for the ensuing year by her predecessor, Sharon Smith. The annual pageant was held Saturday night. — Staff photo

A visit by Santa Claus, music by a Children's Choir and switching on of lighting gracing a tree on the courthouse square are open highlights of a Christmas opening in Floydada next Wednesday, Dec. 2. Women's Division of Floydada Chamber of Commerce is coordinating the event.

Local businesses are planning open house, special prices and/or refreshments that day to encourage gift shopping in Floydada. Various merchants announce their intentions for the special day in a greeting advertisement

inside this issue of The Hesperian.

Santa Claus is due to arrive at 4 p.m. He plans to visit with young admirers "all over town" and will have candy canes for young admirers.

Mayor Parnell Powell will extend the welcome at 5:30 under the pavilion on the south side of the courthouse. Bill Smith, minister of music at First Baptist Church, is to direct the children's choir with special music.

The new Miss Floydada, Tiffany Gentry, will have the honor of switching

on lights on the courthouse square Christmas tree "about 6 o'clock."

The Chamber of Commerce is provid-

ing candy canes and arranging for Santa Claus' visit, according to Nettie Ruth Whittle, CofC manager.

Local SPHPO clinic to remain in operation

Local efforts to keep the Floydada clinic of the South Plains Health Provider Organization open have pro-

ven successful.

Meeting in public session on Monday, November 23, in Plainview, board members of the association voted to continue operation of the local clinic "at least until the end of the fiscal year (May 31)", according to a spokesman for the organization.

The clinic will remain open during the six month period while undergoing a review and evaluation to correct problems cited at the Monday evening session.

SPHPO directors reviewed a lengthy petition and heard the comments of several local representatives prior to developing this interim plan for the clinic's future.

A representative of SPHPO informed this newspaper in a telephone conversation Tuesday morning, "There appears to be a problem with personality conflicts between the general public and the clinic personnel. In addition, problems seem to exist at the inter-office level."

'POOR UTILIZATION'

"Poor utilization" was cited as the reason for considering closing the clinic. The average daily patient load is "about seven patients a day" at this time. This low number does not warrant a full time clinic according to the organization.

Misunderstandings are also evident in the public's concept of what services the clinic can provide. Due to this, a major public education program is planned to inform potential users of the SPHPO facility exactly what the organization does and what services and rights the patient can expect.

Continued on Page Ten

*Be Thankful
for Your
Blessings...*

Primaries early

Texans will be looking at different primary election dates in 1988. The first or general primary election, both Democratic and Republican, will be held on Tuesday, March 8, and the second or run-off primary election will be Tuesday, April 12.

Applications to become a candidate for a county or precinct office must be filed with the county Democratic or Republican chairman not sooner than Dec. 3, 1987 nor later than Jan. 4, 1988. Except in the case of county or precinct chairman for which no filing fee is required, applications must be accompanied by the required filing fee of \$600 payable to the Democratic or Republican primary fund.

Forms of application can be obtained from the respective county chairman or from the county clerk.

The presidential primary election is to be held in conjunction with the first or general primary election. Names of the presidential candidates are to appear as the first race on the first or general primary election ballot.

County and precinct offices which will appear on the respective ballots in the first or general primary elections are: county judge (unexpired term); county attorney; sheriff; county tax assessor-collector; county commissioner, Precinct One; county commissioner, Precinct Three; county commissioner, Precinct Four (unexpired term); county Democratic or Republican chairman; precinct Democratic or Republican chairmen.

SCHOOL HOLIDAY

Bell sounding at 2:30 p.m. Wednesday will signal the beginning of the Thanksgiving holidays for Floydada students and school personnel. Classes resume at the regular hour Monday morning.

Monday drawing names winners of 22 turkeys

Names of twenty-one turkey winners were drawn Monday afternoon. The Thanksgiving turkeys are courtesy of local merchants.

In-house drawings were conducted by each of the firms during the annual contest coordinated by The Hesperian.

Following are the donor firms and their winners:

Perry's — Blanche Williams
The Palace — Dixie Smith
Kirk & Son — Lorilla Bradley
W.B. Eakin — M.J. McNeill
Don Green Auto Parts — Leesa Brooks
Oden Chevrolet-Olds — Mae Muncy
Tipton Oil — Bonnie West
Dudley's Market — Elena Hopper

4-H judging team sixth nationally

"We'll take sixth in the nation anytime," a proud Richie Crow, Floyd County Extension agent-ag, said after his livestock judging team has placed sixth overall in the 1987 National 4-H Livestock Judging Contest.

Shannon Barbee, Chad Edwards, Darin Martinez and Matt Williams represented not only their home county but also Texas 4-Hers in the Nov. 17 judging event. It was conducted at the North American International Livestock Exposition in Louisville, Kentucky.

Thirty-four state champion teams vied in the competition.

Crow accompanied his state-winning team to Louisville and coached the team, "with a lot of help from my friends."

Enroute to the national 4-H finals in Louisville, the Floyd County group held practices at Oklahoma State University in Stillwater, Okla.; Fort Scott, Kan.; Richards and Kansas City, Mo.

PLACINGS LISTED

Following are individual and team totals in various

judging categories (top 40 individuals and all 34 teams):

SHEEP — Individuals, Martinez, 14th place, 183 points; Barbee, 15th place, 183 points. Team rankings, Texas, 7th place, 532 points

SWINE — Individuals, Barbee, 15th place, 225 points; Williams, 31st place, 217 points. Team rankings, Texas, 9th place, 646 points

CATTLE — Individuals, Edwards, 5th place, 282 points; Martinez, 23rd place, 271 points; Williams, 24th place, 271 points. Cattle performance team ranking, Texas, 6th place, 269 points. Cattle total team ranking, Texas, 8th place, 801 points

REASONS — Individual rankings, Martinez, 12th place, 128 points; Barbee, 18th place, 125 points; Edwards, 21st place, 124 points; Williams, 35th place, 120 points. Team ranking, Texas, 3rd place, 373 points

OVERALL — Individual rankings, Barbee, 12th place, 667 points; Martinez, 21st place, 658 points; Williams, 29th place, 654 points. Team ranking, Texas, 6th place, 1,979 points.
(Texas listing is Floyd County team.)

TEAM TOTALS

Point totals for the top 10 teams: 1. Kansas, 2,004 points; 2. Indiana, 2,002; 3. Oklahoma, 1,994; 4. Iowa, 1,989; 5. Georgia, 1,988; 6. Texas, 1,979; 7. Illinois, 1,976; 8. Minnesota, 1,969; 9. Ohio, 1,961; and 10. Kentucky, 1,948.

State winning teams from these states also participated (listed by rankings): New Mexico, North Dakota, Maryland, Missouri, Pennsylvania, Tennessee, Colorado, South Dakota, California, North Carolina, Wisconsin, Virginia, Wyoming, Florida, New York, West Virginia, Alabama, Louisiana, Arkansas, Nebraska, Michigan, Mississippi, South Carolina and Oregon.

Williams, son of Mr. and Mrs. Jerry Williams, is a Lockney High School senior and Edwards, son of Mr. and Mrs. Craig Edwards, is a senior at Floydada High School. Barbee, son of Mr. and Mrs. Larry Barbee, and Martinez, son of Mr. and Mrs. Junior Martinez, both are 1987 graduates of Floydada High and are freshmen students at Clarendon Junior College.

Readers asked to share memories of past holidays

★ How do Christmas customs of the 1980s compare with those from yesteryear?

Persons who remember holidays from earlier years are being requested to write their remembrances and submit them to The Hesperian for use in the yule issue. "We would like to have several such articles to share with readers in our annual Christmas issue," say officials of this newspaper.

Seasoned Winds in tough district

With a senior-laden club, Coach Mike Cocanougher has a horn of plenty with his 1987-88 Whirlwinds.

But there is a catch! Other district teams also have a wealth of talent.

Coach Cocanougher says "It's going to be tough" in the District 2-AAA chase. "Dimmitt and Littlefield (the two clubs, which qualified for last year's playoffs) both have everybody back."

However, the veteran Whirlwind mentor adds, "If we come on like I think we will, we'll be in the thick of it."

Five letter winners, including three starters, return from the 1986-87 Green and White squad which posted a strong 20-8 record and placed third in district. Guards Ty Stovall, 5'9", and Chad Parnell, 6', answered the opening whistle last season, along with post Roel Cisneros, 6'2". All three are seniors, with Parnell and Stovall owning two letters and Cisneros having one.

HOST OF SENIORS

A pair of other seniors — Heath Robertson, 5'10", and Randy Enriquez, 6'1" — earned letters during their junior campaign.

Three lads who played on the Whirlwind JV last fall, a transfer and a player off the freshman squad form the remainder of the roster.

Promoted from the JV are Jason Brown, a 6' senior; Dana Cooper, a 6'2" junior and Chad Quisenberry, a 5'9" junior. The sophomore is 5'9" Grant Stovall, Ty's brother.

Johnny Taylor, a standout athlete at Sudan last year, is making the switch from guard to post for the Winds. "We're real pleased with him so far," Cocanougher says. "He is real strong

and has a lot of determination."

Brown missed the opener with an ankle injury.

A disappointment was the injury of another transfer, Corey Bates, who

twisted his knee in an early practice and suffered torn ligaments. A sterling athlete who quarterbacked the football team, Bates played at Port Isabel last year. He is expected to be lost for the

season.

PRESSING TEAM

Parnell, Stovall, Cisneros, Enriquez

Continued on Page Eight



IN QUEST OF PLAYOFF BERTH—Whirlwind boys varsity squad, which includes seven seniors, has as its goal a basketball playoff berth. The squad includes: standing, left to right, Roel Cisneros, Jason Brown, Randy Enriquez, Dana

Cooper, Chad Parnell and Coach Mike Cocanougher; kneeling from left, Ty Stovall, Heath Robertson, Johnny Taylor, Chad Quisenberry and Grant Stovall.

—Staff photo

THE FLOYD COUNTY Hesperian

35¢

Thursday, November 26, 1987

©The Floyd County Hesperian

Floydada, Texas 79235

USPS 2026-8000

Volume 91 Number 48

Christmas opening slated next Wednesday



PAIR OF MISS FLOYDADAS — Tiffany Gentry [right] has just been crowned Miss Floydada for the ensuing year by her predecessor, Sharon Smith. The annual pageant was held Saturday night. — Staff photo

A visit by Santa Claus, music by a Children's Choir and switching on of lighting gracing a tree on the courthouse square are open highlights of a Christmas opening in Floydada next Wednesday, Dec. 2. Women's Division of Floydada Chamber of Commerce is coordinating the event.

Local businesses are planning open house, special prices and/or refreshments that day to encourage gift shopping in Floydada. Various merchants announce their intentions for the special day in a greeting advertisement

inside this issue of The Hesperian. Santa Claus is due to arrive at 4 p.m. He plans to visit with young admirers "all over town" and will have candy canes for young admirers.

Mayor Parnell Powell will extend the welcome at 5:30 under the pavilion on the south side of the courthouse. Bill Smith, minister of music at First Baptist Church, is to direct the children's choir with special music.

The new Miss Floydada, Tiffany Gentry, will have the honor of switching

on lights on the courthouse square Christmas tree "about 6 o'clock."

The Chamber of Commerce is provid-

ing candy canes and arranging for Santa Claus' visit, according to Nettie Ruth Whittle, CofC manager.

Local SPHPO clinic to remain in operation

Local efforts to keep the Floydada clinic of the South Plains Health Provider Organization open have pro-

ven successful. Meeting in public session on Monday, November 23, in Plainview, board members of the association voted to continue operation of the local clinic "at least until the end of the fiscal year (May 31)", according to a spokesman for the organization.

The clinic will remain open during the six month period while undergoing a review and evaluation to correct problems cited at the Monday evening session.

SPHPO directors reviewed a lengthy petition and heard the comments of several local representatives prior to developing this interim plan for the clinic's future.

A representative of SPHPO informed this newspaper in a telephone conversation Tuesday morning, "There appears to be a problem with personality conflicts between the general public and the clinic personnel. In addition, problems seem to exist at the inter-office level."

'POOR UTILIZATION'
"Poor utilization" was cited as the reason for considering closing the clinic. The average daily patient load is "about seven patients a day" at this time. This low number does not warrant a full time clinic according to the organization.

Misunderstandings are also evident in the public's concept of what services the clinic can provide. Due to this, a major public education program is planned to inform potential users of the SPHPO facility exactly what the organization does and what services and rights the patient can expect.

Continued on Page Ten

Tiffany Gentry new Miss Floydada

Miss Floydada for the 1987-88 fiscal year is...Tiffany Gentry.

After 10 contestants appeared before judges and the audience in A.E. Baker Auditorium at Floydada High School, the traditional Miss Floydada Pageant concluded Saturday evening with Sharon Smith, who was ended her reign, crowning her successor, Miss Gentry.

First runner-up as Miss Floydada is Shayla Barbee. Janet Himes received the honor of second runner-up. In addition to being named Miss Floydada, Miss Gentry was selected by her peers as Miss Congeniality.

Others vying for the crown were Shannon Brown, Martha Garcia, Jodi Morrison, Trina Ogden, Kim Perry,

Melissa Strickland and Misty Warren. Judges had interviewed each contestant that afternoon.

The new Miss Floydada, whose first official duty will be switching on lights of the courthouse Christmas tree on Dec. 2, is a daughter of Travis and Geraldine Gentry. She is a 17-year-old junior at Floydada High.

Miss Gentry, who was sponsored in the pageant by Thompson Pharmacy, lists her interests as singing, running, reading and 4-H. She has been a Student Council representative for three years and has received numerous other honors.

The daughter of Larry and Valdonna Barbee, Miss Barbee is a 15-year-old

sophomore in Floydada High. Her interests include traveling, basketball, and FFA. Sponsored by her parents, Miss Barbee is a Student Council representative.

A FHS freshman, Miss Himes is the 14-year-old daughter of S.D. and Kathy Himes. Sponsored by Don Green Auto Parts, she is a 4-H member and is interested in playing tennis, reading and cross-stitching.

Bill Smith, minister of music at First Baptist Church, served as emcee for the pageant, which is sponsored each year by Floydada Chamber of Commerce.

Entertainment was provided by the Floydada School of Baton, under direction of Kelli Whitten.

Primaries early

Texans will be looking at different primary election dates in 1988. The first or general primary election, both Democratic and Republican, will be held on Tuesday, March 8, and the second or run-off primary election will be Tuesday, April 12.

Applications to become a candidate for a county or precinct office must be filed with the county Democratic or Republican chairman not sooner than Dec. 3, 1987 nor later than Jan. 4, 1988. Except in the case of county or precinct chairman for which no filing fee is required, applications must be accompanied by the required filing fee of \$600 payable to the Democratic or Republican primary fund.

Forms of application can be obtained from the respective county chairman or from the county clerk.

The presidential primary election is to be held in conjunction with the first or general primary election. Names of the presidential candidates are to appear as the first race on the first or general primary election ballot.

County and precinct offices which will appear on the respective ballots in the first or general primary elections are: county judge (unexpired term); county attorney; sheriff; county tax assessor-collector; county commissioner, Precinct One; county commissioner, Precinct Three; county commissioner, Precinct Four (unexpired term); county Democratic or Republican chairman; precinct Democratic or Republican chairman.

SCHOOL HOLIDAY

Bell sounding at 2:30 p.m. Wednesday will signal the beginning of the Thanksgiving holidays for Floydada students and school personnel. Classes resume at the regular hour Monday morning.

4-H judging team sixth nationally

"We'll take sixth in the nation anytime," a proud Richie Crow, Floyd County Extension agent-ag, said after his livestock judging team has placed sixth overall in the 1987 National 4-H Livestock Judging Contest.

Shannon Barbee, Chad Edwards, Darin Martinez and Matt Williams represented not only their home county but also Texas 4-Hers in the Nov. 17 judging event. It was conducted at the North American International Livestock Exposition in Louisville, Kentucky.

Thirty-four state champion teams vied in the competition.

Crow accompanied his state-winning team to Louisville and coached the team, "with a lot of help from my friends."

Enroute to the national 4-H finals in Louisville, the Floyd County group held practices at Oklahoma State University in Stillwater, Okla.; Fort Scott, Kan.; Richards and Kansas City, Mo.

PLACINGS LISTED

Following are individual and team totals in various

judging categories (top 40 individuals and all 34 teams):

SHEEP — Individuals, Martinez, 14th place, 183 points; Barbee, 15th place, 183 points. Team rankings, Texas, 7th place, 532 points

SWINE — Individuals, Barbee, 15th place, 225 points; Williams, 31st place, 217 points. Team rankings, Texas, 9th place, 646 points

CATTLE — Individuals, Edwards, 5th place, 282 points; Martinez, 23rd place, 271 points; Williams, 24th place, 271 points. Cattle performance team ranking, Texas, 6th place, 269 points. Cattle total team ranking, Texas, 8th place, 801 points

REASONS — Individual rankings, Martinez, 12th place, 128 points; Barbee, 18th place, 125 points; Edwards, 21st place, 124 points; Williams, 35th place, 120 points. Team ranking, Texas, 3rd place, 373 points

OVERALL — Individual rankings, Barbee, 12th place, 667 points; Martinez, 21st place, 658 points; Williams, 29th place, 654 points. Team ranking, Texas, 6th place, 1,979 points. (Texas listing is Floyd County team.)

TEAM TOTALS

Point totals for the top 10 teams: 1. Kansas, 2,004 points; 2. Indiana, 2,002; 3. Oklahoma, 1,994; 4. Iowa, 1,989; 5. Georgia, 1,988; 6. Texas, 1,979; 7. Illinois, 1,976; 8. Minnesota, 1,969; 9. Ohio, 1,961; and 10. Kentucky, 1,948.

State winning teams from these states also participated (listed by rankings): New Mexico, North Dakota, Maryland, Missouri, Pennsylvania, Tennessee, Colorado, South Dakota, California, North Carolina, Wisconsin, Virginia, Wyoming, Florida, New York, West Virginia, Alabama, Louisiana, Arkansas, Nebraska, Michigan, Mississippi, South Carolina and Oregon.

Williams, son of Mr. and Mrs. Jerry Williams, is a Lockney High School senior and Edwards, son of Mr. and Mrs. Craig Edwards, is a senior at Floydada High School. Barbee, son of Mr. and Mrs. Larry Barbee, and Martinez, son of Mr. and Mrs. Junior Martinez, both are 1987 graduates of Floydada High and are freshmen students at Clarendon Junior College.

Readers asked to share memories of past holidays

★ How do Christmas customs of the 1980s compare with those of yesteryear?

Persons who remember holidays from earlier years are being requested to write their remembrances and submit them to The Hesperian for use in the yule issue.

"We would like to have several such articles to share with readers in our annual Christmas issue," say officials of this newspaper.

Seasoned Winds in tough district

With a senior-laden club, Coach Mike Cocanougher has a horn of plenty with his 1987-88 Whirlwinds.

But there is a catch! Other district teams also have a wealth of talent. Coach Cocanougher says "It's going to be tough" in the District 2-AAA chase. "Dimmitt and Littlefield (the two clubs, which qualified for last year's playoffs) both have everybody back."

However, the veteran Whirlwind mentor adds, "If we come on like I think we will, we'll be in the thick of it." Five letter winners, including three starters, return from the 1986-87 Green and White squad which posted a strong 20-8 record and placed third in district.

Guards Ty Stovall, 5'9", and Chad Pernel, 6', answered the opening whistle last season, along with post Roel Cisneros, 6'2". All three are seniors, with Pernel and Stovall owning two letters and Cisneros having one.

HOST OF SENIORS

A pair of other seniors — Heath Robertson, 5'10", and Randy Enriquez, 6'1" — earned letters during their junior campaign.

Three lads who played on the Whirlwind JV last fall, a transfer and a player off the freshman squad form the remainder of the roster.

Promoted from the JV are Jason Brown, a 6' senior; Dana Cooper, a 6'2" junior and Chad Quisenberry, a 5'9" junior. The sophomore is 5'9" Grant Stovall, Ty's brother.

Johnny Taylor, a standout athlete at Sudan last year, is making the switch from guard to post for the Winds. "We're real pleased with him so far," Cocanougher says. "He is real strong

and has a lot of determination." Brown missed the opener with an ankle injury.

A disappointment was the injury of another transfer, Corey Bates, who

twisted his knee in an early practice and suffered torn ligaments. A sterling athlete who quarterbacked the football team, Bates played at Port Isabel last year. He is expected to be lost for the

season.

PRESSING TEAM

Pernel, Stovall, Cisneros, Enriquez

Continued on Page Eight



IN QUEST OF PLAYOFF BERTH—Whirlwind boys varsity squad, which includes seven seniors, has as its goal a basketball playoff berth. The squad includes: standing, left to right, Roel Cisneros, Jason Brown, Randy Enriquez, Dana

Cooper, Chad Pernel and Coach Mike Cocanougher; kneeling from left, Ty Stovall, Heath Robertson, Johnny Taylor, Chad Quisenberry and Grant Stovall.

—Staff photo

Monday drawing names winners of 22 turkeys

Names of twenty-one turkey winners were drawn Monday afternoon. The Thanksgiving turkeys are courtesy of local merchants.

In-house drawings were conducted by each of the firms during the annual contest coordinated by The Hesperian.

Following are the donor firms and their winners:

Perry's — Blanche Williams
The Palace — Dixie Smith
Kirk & Son — Lorilla Bradley
W.B. Eakin — M.J. McNeill
Don Green Auto Parts — Leesa Brooks
Oden Chevrolet-Olds — Mae Muncy
Tipton Oil — Bonnie West
Dudley's Market — Elena Hopper

Floyd County Hesperian — Josie Lopez
Kid's Kiosket — Mrs. Iva Jewell Bonner

Our Place — Mrs. E.O. Chappell
Pizza Gold — Glenn White
Thompson's Pharmacy — Mrs. Eunice M. Hardy

First National Bank — Joyce Owens

Vivian's Ceramics — Sheree Cannon

Willson & Son Builders Mart — Judy Lloyd

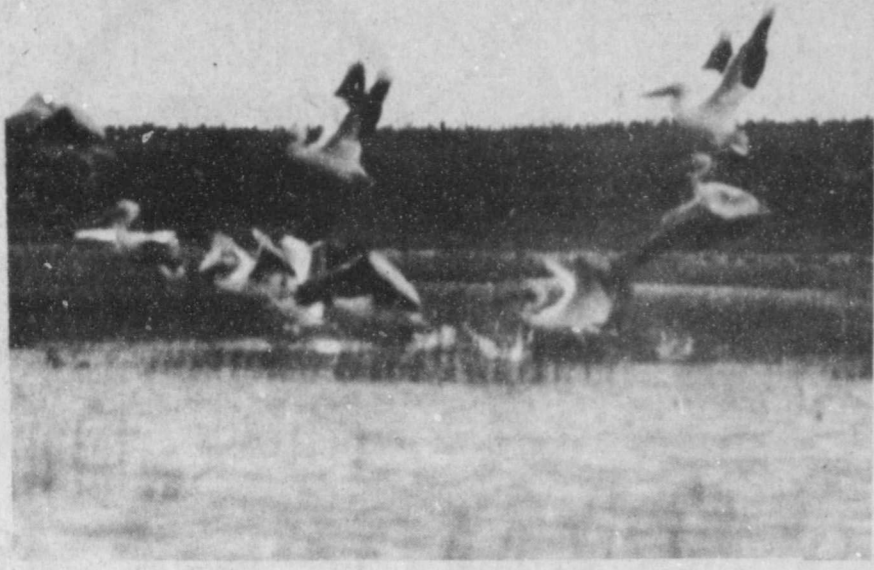
Shop Rite — Laura Nutt

Floydada Co-op Gins — Mabel Redwine

Pay 'n' Save — Valree Turner

City Auto — Kay Tinney

Cornelius Conoco — S.D. Himes



TIME TO GO!—Pelicans which were viewed by Craig and Chad Edwards on a lake near McCoy apparently spotted the men and make a hasty departure. —Photo by Chad Edwards

Pelicans in county!

Making anyone believe you saw a pelican in Floyd County would be about as easy as selling ice in Alaska.

Unless, of course, you produce pictures.

That's just what Chad and Craig did: produced pictures of pelicans at a lake near McCoy!

The father-son are not the first persons to have spotted pelicans in this area, but the birds are a rarity to West Texas.

"They were huge," Craig Edwards explains. "They're a lot bigger than a goose."

He spied 13 birds at a lake. When his son arrived home from school, they loaded their camera and went to the lake. The pelicans were gone.

The pair then drove to what is commonly known as the Albert Jones Lake, one-half mile west of McCoy, and rediscovered the birds. They were about a half mile from the lake on which they were initially seen.

Although daylight was rapidly fading, Chad crawled to within photograph range and made several photos. His father said the pair were within "about 40 yards" of the pelicans.

The older Edwards talked with Cliff Slogner, a Lubbockite who is a member of the Audubon Society. Slogner told the Floyd County farmer-stockman about a single pelican which was observed by "several people" at the Lubbock

Lakes one recent year.

The Audubon Society describes the white pelican as being "very large" and as being "white with black primaries and outer secondaries." It has a yellow pouched bill.

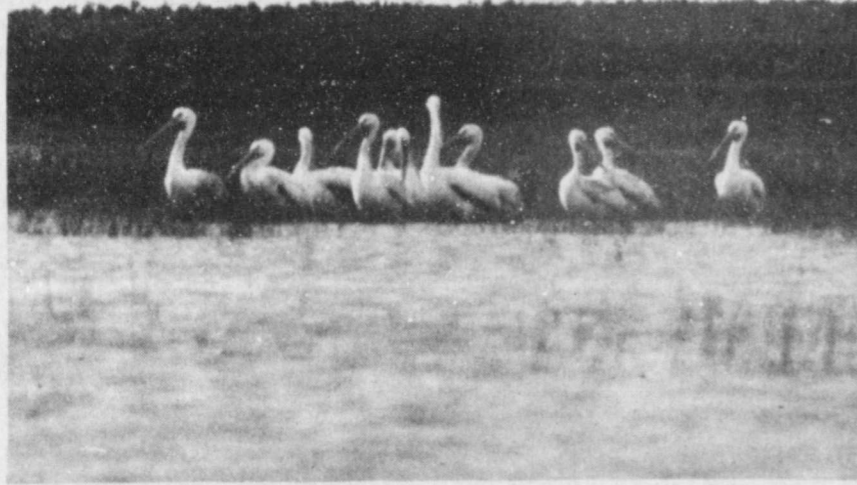
A North American bird, its habitat is "nesting in the prairies and adjacent large Canadian lakes; also in the marshes west of the Rockies. Winters in California and Mexico, on the Gulf Coast and Florida."

An Audubon Society booklet says "White pelicans are a magnificent spectacle as they maneuver in the air, soaring against blue sky on motionless wings, often so low that each black wing feather is visible. Unlike the brown pelican, individual birds do not dive for prey but cooperate with others to surround fish in shallow water, scooping it into their enormous bill pouches. A vanishing species, the white pelican is a victim of insecticide poisoning and shooting by hunters who confuse it with the snow goose.

"Many nesting colonies are decreasing due to careless visitors who scare those birds off at midday, causing the death of many young from overexposure to the sun."

Adults can weigh 20 pounds or more.

The magnificent white pelicans spotted by the Edwards apparently were migrating south for the winter.



OVERNIGHT HEADQUARTERS—A flock of 13 pelicans paddle in "Albert Jones Lake," one-half mile west of McCoy in this photograph taken by Chad Edwards. The black on the birds' wings is much more evident when the pelicans are in flight.

Pampa man throws hat in ring as representative candidate

Warren Chisum, 49, Tuesday announced candidacy for 84th District Texas representative. Chisum, a Democrat, is running for the seat which has been filled by Foster Whaley for the past 10 years. Whaley has announced he will not run for re-election.

Chisum said in his announcement speech in Pampa that his "Chisum Campaign Trail" involves three specific objectives. The first is to work for financial responsibility in state government. Chisum cited the enormous increases in state spending during the past decade and a need to return to a more responsible budget.

The second objective, Chisum said, is to have integrity in dealing with all

concerned. Chisum noted that Foster Whaley has had a tradition of telling his constituents where he stood on a given issue even when his position might not be popular. Chisum pledged to continue that tradition of honesty.

And his third objective is to be responsive to interests of all constituents in the 84th District. He said many issues in state government affect farmers, others affect small businesses and the availability of jobs and still others affect the quality of education available to Texas children. He affirmed his interest in these and other issues important to people in the 84th District.

Chisum was born in Miami, Texas, and graduated from Lefors High School in 1957. He is married to the former Ila Omega Crutcher, and they have two children and two grandchildren. Chisum was president of J.T. Richardson Trucking from 1972 until he sold the business in 1985 and currently is owner of Omega Energy and Chisum & Wilson Inc., an oil and gas exploration firm.



WARREN CHISUM

THE FLOYD COUNTY HESPERIAN

[USPS 2026-8000]

Published weekly each Thursday at 111 East Missouri Street, Floydada, Texas 79235. Second class postage at Floydada, Texas 79235.

SUBSCRIPTION RATES: Floyd, Crosby, Hale, Motley, Swisher and Briscoe counties, \$15.00 per year; other counties, \$17.00; out-of-state, \$18.00 per year.

POSTMASTER: Send address changes to the Floyd County Hesperian, 111 East Missouri, Floydada, Texas 79235.

Ken Towery
Alice Gilroy
Jim Reynolds
Neta Marble
Rosemary Gonzales
Juanita Stepp

Owner
Publisher
Editor
Associate Editor
Production Mgr.
Reporter

Yule decorations contest judging set December 14

Three out-of-town judges are to select winners in the annual Floydada Christmas yule decorations contest on Monday, Dec. 14. Nettie Ruth Whittle, manager of the Chamber of Commerce, will accompany the judges "all over town" to view decor before making their choices.

Entry is automatic "if you have your lights on that night," Mrs. Whittle says.

Prizes of \$25, \$15 and \$10 for first, second and third place winners in both residential and commercial divisions

will be awarded by the Chamber of Commerce, which annually sponsors the event.

Decorations in the downtown area and along the highway are being installed this week. Additional persons are needed to "adopt" yule decorations for a \$15 sponsorship.

"Old Fashion Christmas" at Floyd County Historical Museum is being planned for Sunday, Dec. 6.

KKAP is to furnish Christmas music for shoppers, beginning about the middle of December.

December 6 hot air balloon race to originate at Floydada airport

Community residents will have an opportunity see a "hare and hound" hot air balloon chase on Sunday morning, Dec. 6. Lubbock and Amarillo teams are scheduled to compete.

Liftoff from Floydada Airport is planned "about sunrise" that morning. The balloonists will return "about 10 o'clock" to receive first, second and third place plaques.

The Chamber of Commerce will

provide doughnuts and coffee at the airport for out-of-town guests.

FREE BALLOON RIDE

Registration is underway for a free balloon ride at the conclusion of the Dec. 6 chase. Persons eight years and older are invited to register at the Chamber of Commerce office or at Script Printing.

The drawing is to be held at 3 p.m. on Friday, Dec. 4.

Special attractions set for 'Christmas at the Museum'

A miniature doll house, a nativity scene, music by Rick Sudduth and the Blue Denim Band are among highlights planned for "Christmas at the Museum" on Sunday, Dec. 6. "Everybody" is invited to attend the event from 2 until 4 p.m. that day at the Floyd County Historical Museum.

"It's a family affair so bring the family," according to museum officials.

Ella Biggs Goodwin of Lubbock and formerly of Floydada is to exhibit a miniature doll house she designed. Frances Stanforth will erect a nativity scene to lend to the Christmas spirit.

Sudduth, a resident of McAdoo community, will present "old time fiddle music," as well as having music from his band. The Blue Denim Band consists of Crosbyton and Ralls residents.

Also planned are special exhibits and a Christmas tree. The museum board hopes to have 500 guests during the yule event.

Following are some of the individuals who will assist with the event, according to board president O.M. Watson Jr.

Exhibits, Christmas decoration,

Christmas tree — Nancy Marble, chairperson, Polly Cardinal, Fred Cardinal, Gladys Jones, Jim Word, O.R. McIntosh, O.M. Watson Jr., Layne Kirk, Sam Spence and June Sherman.

Refreshments — Joyce Williams, chairperson, Edwina Hollums, Henry Hinton, Olive Hinton, Emily Johnston, Diana Glover, Norma Welch and Sherry Colston

Montgomery House — J.K. and Madge West, Mr. and Mrs. J.D. Copeland

Bedroom and Maude Hollums fan collection — Mr. and Mrs. Randy Hollums

Micro-reader — Mary Lou Bollman
Front door greeters — Mr. and Mrs. Don Marble, Mr. and Mrs. Fred Cardinal, Mr. and Mrs. Jim Word, Mr. and Mrs. O.M. Watson Jr., Mr. and Mrs. Frank Brown, Mr. and Mrs. Layne Kirk, Mr. and Mrs. Kenneth Brosech

Registration, book and coin sales — June Sherman, chairperson, Mr. and Mrs. Sam Spence, Lila Kendrick, Evelyn Pierce, Frances and Bill Stanforth

Art exhibit and east building — Mr. and Mrs. Kyle Glover, Mr. and Mrs. Travis Jones.

Senior Citizens News

By Thelma Jones

Everyone enjoyed the community church wide Thanksgiving service at the First Baptist Church Sunday night.

Mattie Wester spent Tuesday night with Rev. and Mrs. Hollis Payne at Vigo Park.

Mrs. George Smith and Sue Mahon spent Wednesday and Thursday with their sisters in Petersburg.

Sympathy goes out to the Pierce, Cannon and Smalley family in the loss of their loved one.

Lula Teague returned home Monday after attending the funeral of her grandson in Marble Falls. She also visited in Dallas.

The farmers are taking advantage of this pretty weather harvesting cotton.

Everyone enjoyed the luncheon last Thursday and remember we are having a luncheon Dec. 6, from 12 until 2 o'clock. Tickets for adults are \$5 and for children \$3.00. More information will be in the paper.

Mrs. Mable Price and Cora Hartline visited in Aiken and Plainview Sunday with Mable's cousin, Alvada Lee, who had surgery and at the Heritage Home with Jewel Price, Clyde Frizzell and others.

Ruby Davis is spending the Thanksgiving holidays in Amarillo with relatives.

Mable Price visited with Valere Turner one afternoon last week.

Mrs. Lillian Ross attended the funeral in Plainview for Blanche Scott Rutherford last Thursday.

Mrs. Deetta Odam and Odessa Cage spent last week in Missouri with their brother, Mr. and Mrs. Orville Poore.

Myria Dade visited friends in Mator Sunday afternoon.

Floydada man seeks position on Texas Racing Commission

A Floydada man is among more than 160 persons who have placed their names in the hat for a possible appointment to the Texas Racing Commission, according to an Austin source.

Among the candidates is J. Duane (Pete) Nash, a retired Floydada businessman. He noted that he has plenty of time to devote to the job.

This Week

WEATHER

DATE	Courtesy of Energas	
	HIGH	LOW
Nov. 18	43	25
Nov. 19	65	31
Nov. 20	67	36
Nov. 21	70	42
Nov. 22	72	39
Nov. 23	67	52

GRAIN PRICES

Courtesy of Producers	
Wheat	\$2.35 per bushel
Milo	\$2.90 per hundred weight
Soybeans	\$5.00 per bushel
Corn	\$3.20 per hundred weight

SPONSOR A DECORATION

Floydada Chamber of Commerce still needs individuals, families and businesses to sponsor a Christmas decoration for \$15. Designed as yule trees, candles and canes, the decorations have been made by the city electric department, which volunteers to design and erect them each year. Anyone wishing to sponsor a decoration, which will appear in the downtown area and along the highway, is asked to contact Nettie Ruth Whittle at the Chamber office.

MOTHER'S DAY OUT

The Mother's Day Out program at the First United Methodist Church will be held each Tuesday from 8:30 to 5:00. All children of the community are invited to attend. For more information call 983-3093 or 983-3707.

ADULT EDUCATION CLASSES

Adult education classes are held each Monday and Tuesday from 6:30-9 p.m. at R.C. Andrews Elementary School cafeteria. This is a study for GED tests, written test for driver's license, and citizenship, and to improve basic skills in math, science, social studies, reading and English. Classes are free.

HOLIDAY DINNER

Senior Citizens of Floydada will have a turkey and dressing dinner on Dec. 6 at the center, 301 E. Georgia, from 11:00 til 2:00. Cost for adults is \$5.00 and children under 12, \$3.50.

PTA MEETING

A.B. Duncan PTA meeting will be Nov. 30 at 7:00 p.m. at the Duncan school.

OPEN HOUSE

Floyd County Day Care will be hosting a Christmas open house reception on Tuesday, Dec. 1 from 4:5-5:30 p.m.

A display from Discovery Toys will be available for viewing by the public. Refreshments will be served.

GIFT BASKET RAFFLE

Raffle tickets to a bath/kitchen basket, valued at \$250, are being sold for \$1 each by Alpha Sigma Upsilon Chapter of Beta Sigma Phi. Tickets may be purchased from any member. All proceeds from the raffle go to Paula Porter. For more information, individuals may phone Mary Ann (983-3821) during the day, Karen (983-2929) during the evening or Jan at 983-3822.

YULE OPEN HOUSE

Floydada merchants are planning a Christmas open house, along with the first appearance of Santa Claus, on Wednesday, Dec. 2. Bill Smith will direct the children's choir in presenting numbers. The new Miss Floydada is to switch on the tree lights on the courthouse square late that afternoon.

CHURCH BAZAAR

Trinity Church Bazaar, will be December 5 from 9-3 p.m. The church is located on the Y in Floydada.

BLOOD PRESSURE CLINICS

Caprock Hospital District Home Care Services is sponsoring free blood pressure clinics every Tuesday from 10 a.m. to 12 noon at the First National Bank community room.

Senior Citizens
invites everyone to eat

TURKEY DINNER

Sunday December 6 from 11:00 til 2:00

Adults \$5.⁰⁰ Children \$3.⁵⁰



"Let us be Thankful"



"Helping you change things for the better"

THE FIRST NATIONAL BANK OF FLOYDADA

Member FDIC

Residential burglary loss 'several hundred dollars'

Losses valued at "several hundred dollars" were suffered Thursday in the burglary of a habitation in the 100 block of West Crockett. No total loss was available.

A neighbor heard her dogs barking in her backyard and, when she went to investigate, she "saw somebody" in the neighbor's yard.

The owner returned home Friday morning to find the burglary. The locked back door was "kicked in" to gain entry.

Among the missing merchandise were a Magnavox 25-inch color TV, a 25-power spotting scope, a pocket-type ornate railroad watch, a turquoise and silver men's ring, other watches, a vacuum cleaner and an antique Winchester model 1873 lever-action rifle.

On Saturday morning, a resident of the 200 block of West Houston contacted the Police Department after having found the antique rifle taken in the burglary. The individual had taken trash to a dumpster when the rifle was spotted in weeds. It was recovered "in good shape."

This address is "in the same alley and a block west" of the burglarized house.

A motor vehicle was burglarized at 603 W. Mississippi last Wednesday night. The driver was visiting friends at that address. Taken was a sack containing chewing tobacco and western music tapes. The tapes were later found in the yard where the vehicle had been parked.

MINOR ACCIDENTS

A child suffered minor injuries Tuesday of last week when the van in which she was riding with her mother struck a parked 1973 Oldsmobile.

Police reported that the mother-driver "attempted to restrain the infant and drove into the back" of the Oldsmobile on Georgia Street. The infant "had a bump" but "was alright before leaving the scene."

The Oldsmobile was knocked 15 feet by the impact.

The 17-year-old mother was charged with negligent collision, failure to secure a child, no driver's license and a minor in possession of alcoholic beverages.

A father received a citation last Wednesday for allowing an unlicensed

minor to drive a motor vehicle and the daughter was charged with unsafe backing following a minor accident in the 600 block of South Texas Street.

The 1981 Olds 88 Delta Royale was

backing from an angle space at the curb and struck a 1979 Chevrolet Impala on the right rear quarter as it headed north on Texas.

No injuries were suffered.

Two burglary suspects incarcerated in Tulia

Two men incarcerated early this week in Swisher County Jail in Tulia are suspects in at least one Floyd County burglary of a habitation.

The pair, ages 50 and 24, are Plainview residents.

They are suspects in the Oct. 5 burglary of the C.L. (Mike) Mooney residence, north of Lockney.

In addition to burglary of a habitation in Tulia, the men are suspects in robberies in at least one other county.

Loss at the Mooney residence was placed at \$4,521.20, although there could have been other items stolen.

An older-model Dodge van, allegedly belonging to one of the suspects, is

being held in this county.

OBSERVANT PUBLIC

Christmas time is nearing, and that traditionally is a season of burglaries. The public is encouraged to lock their property and to be observant of neighbors' property, especially when neighbors are away from home.

Anyone observing suspicious activity is asked to contact the sheriff's department immediately.

One Sunday night arrest was made for DWI.

Lawsuit discussed by Commissioners Court

Meeting in special session on Monday, November 23, the Floyd County Commissioners Court briefly discussed a lawsuit recently filed by Helen Hammonds. The suit names the four county



MISS FLOYDADA AND COURT — Tiffany Gentry, who was crowned Saturday evening as Miss Floydada for the next 12 months, receives congratulations from Shayla Barbee (right), first runner-up, and Janet Himes (left), second runner-up. — Staff photo



Grand opening held at Dudley's Market

Grand opening at Dudley's Market was highlighted by a ribbon-cutting ceremony at 10 a.m. Thursday. Floydada Chamber of Commerce conducts ribbon-cutting events for new businesses.

Darrell and Cindy Dudley own the firm at 316 North Second, formerly Kirtley's Market. Dudley is the manager.

Dudley's is now offering finger sandwich, vegetable and meat platters for such events as parties, showers, reunions and for bereaved families. The

platters, which are tailored for individual needs, are plastic sealed and ready-to-serve.

Fresh meat is a specialty at the food market. Dudley personally cuts all meat and supervises the meat market.

Dudley's Market is open from 7:30 a.m. until 7 p.m. Monday through Saturday. Penny Gourdon and Teresa Burns assist Darrell and Cindy Dudley in the operation.

S&H Green Stamps are given with each purchase.

commissioners and the city council of Floydada as defendants in an action to recoup alleged "losses suffered" by the plaintiff in connection with the operation of the city landfill adjacent to her property.

Hammonds claims that the county has aided the city in the operation of the landfill and that the landfill "illegally" allows county residents to utilize the facility.

County Judge Bill Hardin informed the commissioners that the insurance carrier which furnishes the public officials and county liability insurance has been notified and there "is nothing to be done until a decision is reached as to whether or not the insurance company will provide legal representation to the county during this suit."

The county has three weeks to answer the petition.

Among the accounts and bills presented and approved for payment at this meeting was a request for public assistance in paying utility bills by a Floydada resident. The commissioners approved granting aid to the petitioner with the provision that "repayment of the aid be made at the earliest possible date."

EXTENSION COMPUTER
Richie Crow and Mary True of the extension service met with the court to request authorization to spend approximately \$1000 of the department's office supply funds for hardware and supplies which would enable them to secure a computer being offered to extension offices by the state.

The pair stated that it would be "a useful tool and a timesaving device" in dealing with spread sheets, financial statements, word processing, budgets, nutrition and various other ag-extension related functions.

Crow emphasized that "We can provide a service to area farmers who are not in a position to finance the purchases of a computer when they only need to use one part of the machine's

capabilities."


The court approved the expenditure. County residents are reminded that the courthouse will be closed on November 26 and 27, Thursday and Friday, for the Thanksgiving holiday.

Farm work contracts were approved for J.S. Hale Jr., George Taylor and Lanny Glasscock.

Attending the Monday session were Commissioners Sam Spence, Floyd Jackson, Thomas Warren and Kay Crabtree. Also present were Judge Hardin, Glenna Orman, Margaret Herrera and the Hesperian reporter.

Ginnie Mae
9.25%

Backed By The Full Faith & Credit Of The U.S. Gov't.
* Estimated anticipated yield using Government National Mortgage Association standard bond yield tables and corporate bond equivalency. Based on public yield performance and which, while subject to market fluctuations and not guaranteed, offer the above potential.



KEVIN FLATT

Plainview 293-9551
Edward D. Jones & Co.

DUDLEY'S MARKET HOME OWNED



DUDLEY'S GRAND OPENING—Well wishers gathered at Dudley's Market on Thursday, Nov. 19, to wish the Dudleys good luck and to participate in the Chamber of Commerce's ribbon cutting, celebrating Dudley's grand opening. Holding the cut ribbon on the left is Cindy Dudley. Standing next to

Cindy is her husband Darrell, Mayor Powell, Chamber President Eddie Smith, and Penny Ogden. In the back [l-r] is Julianne Cornelius (holding Skyler), J. Royce Bradshaw, Stephen Fyffe, Nettie Ruth Whittle, Monte Williams and Larry Ogden.

'Chainsaw Willie' to visit Lorenzo Flea Market

He's a quiet, unassuming man from an area that produces quiet, unassuming people: Sugar Hill, Texas. W.D. Holt — "Willie Dee" to his friends and known professionally as "Chain Willie" — has been carving figures from wood with a chain saw to the delight of many.

Holt now bills himself as a chain saw artist and is turning an unusual hobby into an art form.

Holt's small shop is filled with squirrels, eagles, unicorns, Indians and a horned toad.

For Holt, each piece is a learning experience. A squirrel, which once took over an hour to carve, now takes 30 minutes to complete.

"Actually it is the pieces that move that people notice first," Holt says. Balls rolling back and forth inside a wooden framework, giant-sized pliers and post hole diggers are among the movable objects that Holt makes.

The designer utilizes color. No, he doesn't paint his pieces, he primarily uses cedar. By visualizing the finished object, Holt manages to carve an eagle with a white beak and a red body or a cotton tail with a red body and white

tail.

Holt now travels to a few small craft shows.

The public is invited to "see Chainsaw Willie" in action at the First Weekend Flea Market in Lorenzo on Dec. 4, 5 and 6. The event will be open from 9 a.m. until 5 p.m. daily.

For booth information in Lorenzo, persons should phone 806/634-5445.

Already, Holt's reputation is well established. Stories about him have appeared as far away as Chicago and one Shreveport, La., television station has done a feature on him.

Thanksgiving

Representing University Fidelity Life

Attention...

If your Medicare supplement premium is too expensive, please call— Gail Ballou

at 806/794-6583, Lubbock for details

Introducing the new MAGNUM 7120



And the first all-new tractors from Case IH

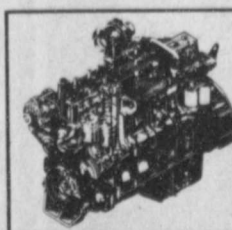
Case IH put more into the new MAGNUM tractor line than any farm tractors developed in over twenty years. Here's why you'll get more out of it:

MAGNUM means more. Outstanding field performance from a new 505 cubic inch turbocharged engine with reserve power. MAGNUM power.

The MAGNUM tractor's powershift puts 18-speeds of shift-on-the-go workpower at your fingertips—standard. And only MAGNUM tractors offer a full powershift creeper transmission with six additional speeds from .5 to 2.1 mph... for more control and performance. MAGNUM performance.

The MAGNUM tractor's new larger cab has 48 square feet of window area... virtually unobstructed visibility... more seating comfort. MAGNUM comfort.

It all adds up: The Case IH MAGNUM 7120 tractor sets new standards for the 150 hp (112 kW) class... and for you. See us for details.



MAGNUM Power. More lugging ability and economy.



MAGNUM Comfort. A more productive environment.



MAGNUM Performance. 18-speed field and road performance.

MAGNUM means more.

Brown's Implement, Inc.

Ralls Highway Floydada, Texas 983-2281



Cedar Hill News

By Carl Lemons

Worry often gives a small thing a large shadow.

Crop comments: Early this week strippers moved back into the cotton fields inside the hail damage belt to probe again for those spots cured out enough for harvest. Saturday and Sunday's high winds and sunny days were made to order for the cotton crop. Three more days like those and by Thanksgiving harvest will begin in earnest, no more sampling. Stripping fence to fence will be the order of the day. Just outside the hail belt, cotton has matured much faster. Sunday afternoon J.R. Belt had three strippers running on the old Fred Brown place and some 20 modules were ready to be hauled to the gin.

This excellent cotton weather is sure rough on the wheat. Pastured fields, that were once a beautiful green, are now turning brown since it is too dry for new growth to replace what the cattle graze.

My dozen stalks of volunteer pinto beans had some large fully developed pods when the freeze came. There were many smaller pods, but all were very green, none showed any yellowing. Men with bean experience promised that the jelly-like substance already in the pods and surrounding the small beans would transpire to the beans and they would continue to develop even after a killing freeze. That is not happening in my beans. I don't think I will have one single bean good enough for market. I sure hope the commercial patches are doing a lot better.

Cephus and Imogene Fortenberry visited Lindsey Lackey in Lubbock's St. Mary's Hospital last Friday. They found Lindsey cheerful and feeling his operation was a success. They also visited Cephus' sister Mary Ann and Garland Tucker.

Lindsey Lackey is scheduled for release from St. Mary's Hospital in Lubbock this Monday. After a series of tests Tuesday and Wednesday of last week it was determined that his problem was caused by artery constriction. The needed correction was done Thursday through use of the balloon

technique. Update Monday 12:00 p.m. Lindsey answered the phone at his house, sounded wonderful, told me his flag was up and flying and Billy Ruth wasn't the one who ran it up.

While freighting cotton seed cake out of Lubbock last Friday Norma Welch and Peat Kelley stopped at Frontier Retirement Home for a visit with Goldie Cybert. Goldie was well and really likes her new surroundings.

On Thursday of last week relatives of Frank Taylor were alerted that he was in critical condition in Jackson County Memorial Hospital in Altus, Oklahoma. He was admitted early in the week because of a nerve disorder in his left arm and elbow. Subsequent tests revealed a malignancy in the lung area and immediate surgery was performed. A resultant swelling of the heart and a cardiac malfunction occurred Thursday. The emergency installation of a pacemaker was performed but doctors held out little hope. By Friday morning his condition was so improved the pacemaker was turned off. The improvement was of short duration and Sunday, due to a relapse, he was back in intensive care. Monday morning: Frank was better, sat up for a while.

Grace Lemons was hospitalized in Mesquite last week with symptoms of a heart attack. Later tests revealed that a stomach disorder rather than heart trouble was the culprit. X-ray and fluoroscopic examinations located a few polyps in the stomach area with others scattered throughout the intestinal tract. The largest and most numerous polyps are located in the lower colon, and Grace is scheduled to have those removed on Tuesday, November 24.

President Reagan and ex-speaker of the house Tip O'Neill, have both had similar operations in the last 30 days. It is considered no big, big deal, but due to the overall situation in Mesquite I may be called to go there for an indefinite period.

If I do go Cedar Hill News by Carl Lemons will cease to be. Even with an early return it would be unwise for me to resume the news. The way I do it, remove a word, insert a word, rephrase a sentence, discard and rewrite a paragraph, it takes me forever to get the

first half written. Then suddenly a deadline is upon me and I hastily throw the last half together in a fashion I am ashamed of. A wild rush to the printer ensues, then once or twice the news wasn't printed until the next week because it arrived 30 minutes or an hour too late. The way I do it, it pays me maybe 15 cents an hour. Of course the paycheck is only one of the rewards. It gives you a good feeling when ex-residents from Arkansas to California send word telling how they appreciate hearing how things are in the old community. Absentee landowners who read Crop Comments get a finer bead on the situation here and can save or put off trips or phone calls. Never the less, I have been stealing time from other more pressing obligations in order to produce the News, and for me it just isn't right.

Gladys Fortenberry and Patsy made a trip to Fort Worth Sunday afternoon. Their schedule calls for them to be back home sometime Tuesday. All of the Tom Fortenberry clan plan to be at Cedar Hill for Thanksgiving.

Oldtimers
Ruth Brown Hall (2-4-1900): First lived in Cedar Hill with her parents and family on the old Lackey place where Jerry Lackey now lives. Around 1910, Ruth's family, Edd, Fred and her sisters moved to the old Rogers place, now owned by Dorothy Lackey Merrell. True to her upbringing Ruth is still a very active church member. She makes her home at 213 E. Roselawn, Plainview, TX 79072.

J.B. (5-1909) and Cecil (10-17-07) Whitehead live at 815 W. Grover, Floydada. J.B. has had a kidney stone removed in '87, while Cecil acquired a pacemaker. Both are now fully recovered and are pleased with the results of their operations, especially Cecil with her pacemaker. In October they visited daughter Helen and Wayne McClure in Nashville, Tennessee. They drove on into Kentucky to visit daughter Sue and her family. Later they spent two weeks in Florida with Helen and Wayne at their second home, a condominium.

Goldie Brown Cybert (10-10-99) moved 30 days ago to room 209, 806-763-9922, Frontier Retirement Home, 21st and Ave. Q, Lubbock, TX 79408. Goldie has fully recovered from her broken hip and is able to drive her car. Friday, Nov. 20, her son Gayle treated her to a drive back to Cedar Hill. She enjoyed passing the old places and got a chance to check the crops on her land. Goldie is very, very pleased with her situation at Frontier Home.

Charlie Starkey (1-1-1900) and Bessie Malone Starkey (1-27-05) still reside at RR 1 three miles west of Flomot, Tx. Charlie is confined to his bed, but Bessie uses a mechanical lift to help in caring for him. One or more of the children try to be there to help out, and extra help is called in from time to time.

Sarah Lackey Beard (9-2-06) lives at 808 Cedar in Floydada. Fortunately Sarah has had no major health problems recently. She drives to some places in town but most of the time she prefers to have someone else do her driving.

Molly Barton Burleson (4-16-16) and W.E. moved to the Woods place four miles north of Cedar in 1937, and moved back to Motley County in 1958. She now lives in Floydada at 903 W. Lee. Molly says she is in excellent health "for a 71 year old, that is." Having what is commonly known as "brittle bones", and having suffered many breaks, Molly moves about with care. "When I fall, I break," are her words. She drives everywhere, California or the corner grocery, it would make no difference.

What counts is not the number of hours you put in, but how much you put into the hours.



NURSING HOME BIRTHDAY CELEBRANTS—November birthdays celebrated Thursday at Floydada Nursing Home were those of Avanelle Wilkerson (standing left) and Una Clark.

Nursing Home Happenings

By Jo Bryant

Well, the time is really passing fast, and I can't believe that Thanksgiving Day is upon us, know that many are looking forward to the day, being with their families and eating that good old turkey and dressing.

Monday, the week started off as usual, we had morning coffee and juice. 10:30, we had the morning devotion. I shared Luke 18:42-43. About the blind beggar being healed. We asked the question, "What can Jesus do for you today?" At 2:00 p.m. the residents had art. They helped make a tree with leaves, stating what they were thankful for and also they put their names on a leaf to put on the tree.

Tuesday Bro. Neeley and the Mrs. came and shared the devotion, from John 4:1-28, "The woman at the well." At 2:00 p.m. Pat Zimmerman came and read a story about Christmas at an Arizona ranch. She is from the Friends of the Library. The theme was "that you do count." She also read another story called, "Little Boy Blue," story of a boy which came to the residents in Chester, Nebraska, about being thankful at Christmas, for our many gifts. At 3 p.m. the ladies from the Companions 'n' Caring came and did manicures for the ladies. That is always a treat. Then afterwards they had a meeting with Jo Bryant to discuss the Thanksgiving party. Those present were: Leona Neff, Ruth McIntosh, Hazel Bradley, Shirley Varner and Ola Smith.

Bro. Blair came Wednesday and shared Acts 3 about "reaching out to Jesus." At 2:00 p.m., the residents played Bingo. Angie came and helped call out the numbers. Brooks Callaway had the first Bingo. The residents playing were: Myra Hall, Maude Gallo-

way, Della Halencak, Opal Morrison, Ola Birchfield, Ruth Benson, Ruth Smitherman, Charles Breeding, Carrie Cline.

Thursday Tim Owens came and shared the word. Deut. 5:7-22. "What is sin?" Also 2 Tim. 3:1-9 and Eph. 5:1-7.

At 2:30 p.m. was our monthly birthday party. The honorees this month were Una Clark and Avanelle Wilkerson. The ladies of the Church of Christ were the hosts. They served cake and punch. Jettie Moss sat with Avanelle and Lucille Daniel was with Mrs. Una Clark. Angie, Reynolds and Tina Verne sat with Myra Hall.

Friday the ladies from the First Baptist Church came and gave the devotion. Nettie Adams told a Thanksgiving story. Mrs. Lillie Ross read Ps. 116. Evelyn Latta played the piano and told a joke and closed with a prayer. Letha Mulder led the singing.

In the evening the residents went to Plainview on the bus ride. It was a beautiful day. We thank Wilma Payne for driving us. The residents going were: Maude Galloway, Iva Wells, Della Halencak, Florence Curry, Brooks Callaway, Charles Breeding, Opal Morrison, Burmah Probasco and Jo Bryant. McDonalds treated them to ice cream.

We wish all the resident's family and friends and all the staff and their families, a very Happy and Blessed Thanksgiving and don't eat too much.

This week's visitors were: Lucille Daniel, Frances Badgett, John and Christine Lyles, Ben Galloway, Bessie Wilson, Alan Benson, Mel and Marjorie Holcomb, Willie Smith, May Sue, Neva Lamberson, Myra Dade, Rudolph and Iva McCarty, Carolyn Holmes, Michael Holmes and Chad Sechrist.

Residents celebrate birthdays

By Lorilla Bradley

November brings the "Ice man" ... With weather getting colder... Now let us have a party Before we get much older. *****

Our Mrs. Clark we're greeting ... Her years are 98... And for a friendly neighbor She's always been "first rate." *****

Let's serenade this lady ... Her name is Avanelle... She is a lovely person And we do wish her well. *****

To cheer these lovely ladies Let's do the "Birthday Song"... So everybody ready... And sing out good and strong. *****

Thursday, Nov. 19, was party time at the Rest Home with ladies of the City Park Church of Christ as hostesses.

The Hesperian photographer came for the "picture taking." After which everyone was ushered into the dining room.

The "honor" table was laid with a white cloth and centered with an arrangement of silk flowers in autumn colors. Places were marked with special cards for the honorees. We are sorry Mrs. Clark was unable to be in the dining room, but seated with Avanelle was her mother Mrs. Jettie Moss. Mrs. Lucille Daniel spent the time in the room with her mother, Mrs. Clark. The ladies wore lovely corsages compliments of Williams Flower and Card Shop.

After the reading of the poem all joined in singing the "birthday song." A delicious refreshment plate of pound cake, angel food cake and a tasty fruit punch was served to the honorees, home residents, guests and employees. Other guests included Angie Reynolds and Tina Verone visiting Mrs. Myra Hall.

The next party will be Thursday, Dec. 17, 2:30 p.m. You are invited to attend.



Gaines County is site of Whirlwind Sams jaunt

By Betty Gilbreath

On Thursday at 1:00 p.m. a group of the Whirlwind Sams met at the Massie Activity Center and departed for Gaines County.

There was Bob and Jean Kendrick, Orval and Lorene Newberry, Claude and Frances Weathersbee, Floyd and Queen Annie Lawson, John Key and Madge West, W.B. and Eula Mae Cates, J.W. and Betty Gilbreath, and Wayne Russell.

We met George and Betty Miller, Milton and Jo Harrison, Blanton and Ruby Hartsell at Lubbock. After we all got our trailers settled, some of us walked around the park. We then ate our supper and went to the rec hall and played games and popped popcorn.

Friday morning Wayne and Hettie Bennett arrived about 9:30 and at lunch time John and Geneva Cockrell arrived. After lunch part of the group (some of the ladies) went to Seminole to Wal-Mart, and the rest of us went to the Ocho Gin for a tour.

The Ocho Gin is a very modern gin that gins 400 bales per day, they have ginned 10,800 bales so far this year and are about one-third through. Bob and Jean's daughter and husband Wayne and Linda Mixon gave us a guided tour which was very interesting. The tour through the computer room was something to see, as we could all tell ginning and record keeping has come a long way. Wayne and Linda are partners in the gin and we all appreciate their

hospitality very much.

Friday evening about five thirty Bill and Del Gray and Roberta Russell arrived in time for us all to go into Seminole to the "Steak Place" for a very nice steak dinner. After returning to the park we all went out to the rec hall and played games of 84, spinner and Rumikub. Bob Kendrick made some divinity candy, then Ruby Hartsell brought out some carmel corn, and Hettie Bennett brought peanut brittle.

Saturday was our famous potluck lunch. In the afternoon some of the men watched football and part of the ladies went back to Seminole. The rest of us played games and visited. We had leftovers for supper then Del Gray played the piano and we sang some gospel songs. We all enjoyed this very much. We appreciate Del bringing her little piano and playing for us.

Sunday morning the men cooked a pancake breakfast for all of us. We had bacon, sausage and juice. After breakfast we had our devotional service. Bill Gray was in charge of this service. The title of the message was "Thanksgiving" and J.W. Gilbreath led the singing. Wayne Russell voiced the opening prayer and John Key West led the closing prayer. The group was dismissed by singing "Happy Trails," then we all departed for our homes.

This is a beautiful county park which we all enjoyed very much. This is our chapter's third year to enjoy their fine facilities.

MH/MR aids disabled persons

Central Plains Comprehensive MH MR Center is responsible for the care and treatment of many developmentally disabled persons, as well as those who are experiencing problems with substance abuse and mental health. "The staff of this center is dedicated to providing these services in a manner which preserves the dignity and basic human rights of every person," officials point out.

Any client, relative of a client or representative of a client who has a

complaint, question or suggestion regarding the health, safety or legal/human rights of a client of the center is encouraged to contact the Public Responsibility Committee in writing: Public Responsibility Committee, P.O. Box 1374, Plainview, Tex. 79072.

Members of this committee are independent of and are not affiliated with the center. Lowell Billbery of Floydada is the Floyd County representative.

Bridal selections available for...
Lori Beckham & Dean Caldwell
THOMPSON PHARMACY
200 SO. MAIN FLOYDADA, TEXAS 79235

Roberts TREE HOUSE NURSERY AND GARDEN CENTER
2503 DIMMITT ROAD • PLAINVIEW, TX.
NEXT TO CENTRAL PLAINS HOSPITAL • 293-2613

CHRISTMAS IS HERE!!
AT ROBERTS TREE HOUSE

FRESH CUT PLANTATION \$14.99
GROWN CHRISTMAS TREES
6' TALL STARTING AT JUST.....

LIVE CHRISTMAS TREES \$19.99
USE THEM FOR CHRISTMAS THEN
PLANT THEM IN YOUR YARD... FROM JUST...

CUSTOM TREE WREATHS, LIGHTS,
FLOCKING AVAILABLE • ORNAMENTS... MUCH MORE!

COME SEE SANTA CLAUS!!
FREE FRIDAY NOV. 27 2:00 - 4:00 P.M.
CANDY CANES SATURDAY NOV. 28

For What It's Worth!

One-Crust Pie [8 or 9"]

1 cup plus 2 tbsp. unsifted Gold Medal flour
1/2 tsp. salt
1/2 cup Mazola Corn Oil
2 tbsp. cold water

Two-Crust Pie [8 or 9"]

1 1/4 cups unsifted Gold Medal Flour
1 tsp. salt
1/2 cup Mazola Corn Oil
3 tbsp. cold water

Heat oven to 450° for one-crust pie, 425° for two-crust pie.

Dip flour from sack with measuring utensils, level with spatula (no sifting). Mix flour, salt. Blend in Mazola thoroughly with fork.

Sprinkle all of water over mixture; mix well. Press dough firmly into ball. If

too dry, add 1 to 2 tbsp. more Mazola.

Rolling and Baking: One-crust Pie. Flatten ball slightly; immediately roll into 12" circle between 2 pieces of waxed paper. (Wipe table with damp cloth to keep paper from slipping.) Peel off top paper, place pastry in pan, paper-side-up. Peel off paper, fit pastry loosely in pan. Trim 1/2" beyond pan edge. Fold under, flute, prick well. Bake 12 to 15 min. To bake filled pie, do not prick; fill and bake according to filling directions.

Rolling and Baking: Two-crust Pie. Divide dough almost in half, roll larger piece and fit bottom pastry into pan as above. Fill then trim even with pan edge. Roll top pastry. Peel off top paper, cut slits, place over filling; peel off paper. Trim 1/2" beyond pan edge, fold under. Seal and flute. Bake 35 to 45 min. (fresh apple 50 to 60 min.).

—Contributed by Worth Howard

30 Color Photos
\$10.99
1-10x13 (Wax Photo) 99¢ Deposit
1- 8x10 10.00 Due at Pick up (plus tax)
2- 5x7
2- 3x5
16-King Size Wallets
8-Regular Size Wallets

GIVE OUR PICTURES FOR CHRISTMAS AT PAY-N-SAVE 220 S. Second DATE: Tues., Dec. 8

WE USE KODAK PAPER
Shugart's inc.
Group charge 99¢ per person
We use Kodak PAPER for a Good Look FOR CREATIVE COLOR PORTRAITS

4-H'ers take honors at food show

The Floyd County 4-H Food Show was held Saturday, November 14 at the Lockney Elementary School cafeteria. The theme for the show was "4-H - The Brand of the Future." Sharon Smith, the emcee for the awards ceremony, explained the theme by saying that 4-H can shape your future because of the limitless opportunities it makes available to 4-H members.

Allen Martin led the Pledge of Allegiance and Chelsea Patridge led the 4-H motto and pledge. Joni Smith gave the inspiration which showed how cooking and nutrition have evolved and how participants in the food show could add to their knowledge of preparation principles and nutrition.

Gwen Lane recognized the Foods and Nutrition Project leaders. They included Julie Hancock, Jane Archer, Charlanne Burson, Kathy Hunter, Ginger Mathis, Lisa Mosley, Kelli LaBaume, Shannon Brown, Chad Edwards, Sarah Hinsley, Sharon Smith, Linda Harbin and Mary True. Gwen thanked these leaders for their time, patience and hard work, and she gave special recognition to Elaine LaBaume, county food show chairman, and the rest of the food show committee.

Bill Hicks from Caprock Meat Company in Floydada provided a chuck wagon he had made as a part of the decorations. It was a miniature replica of a true chuckwagon complete with dutch ovens and ladles as well as a

medicine kit and clock, all carved out of wood and painted. Max Green dismissed the contestants and guests with the 4-H prayer at the conclusion of the show.

Rhanda Hickerson, Mandy Hunter and Kori Kellison called the names of the 4-H members who were participants in the food show and Judge Bill Hardin handed out the awards. Participants included: Pee Wee: Wesley Hunter; Junior 1: Kaci Mathis, Tim Mitchell, Jarod Mosley, Cynthia Martin, Johnnie Mosley, Mandy Hunter, Corbin Kellison, Tamarah Burson, Cody Hayes, Kaleb Prater and Joni Smith; Junior 2: Lila Booker, Max Green, Rhanda Hickerson, Shawn Hill, Allen Martin, Christie Rowan, Charlene Tellez, Kori Kelli-

son, Jenni Anderson; and Senior: Jerry Don Evans, Amy Turner, Tami Vernon.

There were almost 80 4-H'ers signed up for the foods and nutrition project. The county's most popular project has as its main objectives to teach the 4-H'ers about the relationships between health and nutrition and to improve food preparation skills. The 4-H members who enter the food show must prepare their dish and they must also go through an interview where judges ask questions to see the level of knowledge the contestant has about nutrition.

The winners this year were: Junior 1: Main Dish, Tim Mitchell; Fruits and Vegetables, Joni Smith; Nutritious Snacks and Desserts, Mandy Hunter; Breads and Cereals, Johnnie Mosley; Junior 2: Main Dish, Rhanda Hickerson; Fruits and Vegetables, Kori Kellison; Nutritious Snacks and Desserts, Jenni Anderson; Breads and Cereals, Christie Rowan; Senior: Main Dish, Jerry Don Evans; Nutritious Snacks and Desserts, Tami Vernon.

These 10 winners will be competing in the district food show Saturday, December 12 at Texas Tech University. Public viewing will be at 1:30 in the University Center Ballroom and the awards will begin at 2:10 in the University Center Theatre. These activities are open to the public.

Educational programs conducted by the Texas Agricultural Extension Service serve people of all ages regardless of socioeconomic level, race, color, sex, religion, or handicap.



FOOD SHOW WINNERS—Floyd County food show winners were back row, left to right, Tim Mitchell, Mandy Hunter, Rhanda Hickerson, Tami Vernon and Johnnie Mosley; front row, Joni Smith, Jenni Anderson, Kori Kellison, Christie Rowan and Jerry Don Evans. These winners will be competing against other county winners from a 20 county district on Saturday, Dec. 12 at Texas Tech University.

Lakeview News

By Joyce Williams

Nov. 25:

Miss Tiffany Gentry, daughter of Mr. and Mrs. Travis Gentry of our community, was crowned, "Miss Floydada" Saturday evening in a pageant at the Floydada High School auditorium. Miss Gentry, a straight A student, is active in school, 4-H and Primitive Baptist Church youth work. She accepted her crown from the retiring queen, Miss Sharon Smith, daughter of Mr. and Mrs. Dale Smith, who claims many ties to Lakeview through her Lloyd and Smith kin.

Entertainment between costume changes at the Miss Floydada Pageant was provided by baton stars, Misses Amanda and Deanna Watson, junior high and high school daughters of Mr. and Mrs. Dean Watson. Both young ladies twirl for their schools' bands. In the class group number were Miss Ashleigh Williams, daughter of Mr. and Mrs. James Williams, and Miss Amanda Williams, daughter of Mr. and Mrs. Monte Williams. All are students at the Floydada School of Baton.

Week-end visitors in the Joe Thurston home last week were two of their grandchildren, Leah and Lance Ward, children of Jonnie and Jack Ward. Alta and Joe took them home Monday.

Jason Harrison and Zack Adams were on a bicycle tour of the country roads and fishing holes around here Sunday, enjoying the beautiful sunny weather.

The latest fashion fad is the sweat-shirt dresses, made from sewing two sweatshirts together and cutting off the sleeves of one. Mrs. Max Harrison looks good in hers with a bandana scarf to top it off.

Mr. and Mrs. Robert Pyle and son Jason were hosts to Nathan Whittle Friday night. On Saturday the boys went to Plainview with the junior high

band to march in Wayland University's homecoming parade. Both boys spent Saturday night at the Whittle home.

Kathy and Jerry Green and two children, Heather and Zachary (age 2 mo.) of Lubbock spent the week-end here visiting her parents, Mr. and Mrs. Billy Joe Hambricht.

Mrs. Viola Brown enjoys 84 and 42 games at the Floydada Senior Citizens two afternoons a week. She and Mrs. Nettie Adams were Sunday luncheon guests of Mrs. Letha Mulder.

Austin Williams and seven other Boy Scouts camped out for the week-end in Blanco Canyon. The boys had their campfire down in the dry bed, of Blanco River, and their tents in the pasture right about it. Their camp was snug from the wind but where they could hear the coyotes howl. Adult leaders were Bobby Gilliland, Curtis Emert, and Dinks Eckert. Troop 357 hiked lots of miles during their 36 hour camp, making three trips out of the Canyon up to the Williams mailbox.

Mrs. Riley Teague was back in church Sunday evening, after her return home from Marble Falls where she attended funeral services last Sunday for her grandson, Bob Tilson. Bob, who worked at Foley's Dept. Store in San Antonio, failed to show up for work, and friends

found the young man had died in his apartment. He had had the flu. His mother is Sue Teague Tilson Swearingen of Marble Falls. His brothers are Joe Mack Tilson of San Saba and Riley Scott Tilson of Lubbock.

Miss Amber Pyle, daughter of Mr. and Mrs. Robert Pyle, spent Friday night with Miss Tammy Cocanougher. They attended the varsity basketball game at Idalou with Coach and Mrs. Cocanougher.

Cotton strippers are running day and night in Lakeview fields. The dry, sunny days have the cotton farmers smiling. Wheat farmers and cattlemen scan the skies looking for a rain cloud. The high winds keep the windmills turning so water wagons have not been brought into use yet. Cattlemen fear another winter drought is upon us.

Odell Breed says he hopes to spend his Thanksgiving holiday in the fields stripping cotton, a sentiment voiced by nearly every farmer in our community. Gins are running, cotton trailers are rattling through the streets in town, the smell of gin smoke is in the air, all add up to jobs and money for both town and country.

A peaceful, safe and heartfelt Thanksgiving wish is extended to you all at this bountiful harvest time.

Favorite foods recalled by club

South Plains Hobby Club met Thursday, November 19 in the home of Carolyn Marble. The meeting was called to order by president, Carolyn Marble. Dot Cummings read the minutes of the previous meeting and gave the treasurer's report. Roll call was answered with "our favorite holiday food that we cook every year."

Mary True, home economist, gave the program on holiday drinks and

mixes that can be given as gifts.

Members present were Lillie Mae Milton, Jewel Fortenberry, Ruby Lee Higginbotham, Letha Mulder, Navolia Kinslow, Kelli Fisher, Mildred Hamm, Neta Marble, Dot Cummings, Gleyne Earle Cummings and Carolyn Marble.

The next regularly scheduled meeting will be the Christmas party. A luncheon will be held in the home of Neta Marble, December 10, at 11:30.

Alpha Mu Delta has girls day out

Alpha Mu Delta chapter of Beta Sigma Phi had a girls day out Nov. 14. They all went out to lunch, went to the Holiday Happening and then did some shopping. A good time was enjoyed by all who attended.

The 230th meeting of Texas Alpha Mu Delta was held Nov. 17 at Light-house Electric. Various service projects were discussed. The group made donations to the Chamber of Commerce Adopt-A-Decoration fund and also to

aid in medical bills for Paula Porter.

More plans were made for the March of Dimes mother's march the group is doing. "Soon someone may knock on your door for a donation, please help make this a successful campaign," a member says.

Tonia Kitchens then gave her program on hobbies. Various members brought something they had made and they discussed the history of many different hobbies.

FLOYD DATA

Deeota Odum accompanied her sister, Odessa Cage of Lubbock to Springfield, Missouri, for a visit in the home of their brother, Orville and Maurette Poore. Also visiting in the Poore home were their children, C. Dee and Poore, of Florissant, Missouri, and Pansy (Poore) Lasley, Torrance, California.

The group helped Orville and Maurette celebrate their wedding anniversary on Saturday, Nov. 14. They had also observed Pansy's birthday earlier in the week.

Dee and Ann returned home Sunday afternoon. Pansy left on Wednesday, Nov. 18, and Odessa and Deeota returned home last Friday.

Sr. Citizens Menu

Nov. 30-Dec. 4

Monday — BBQ chicken, pinto beans, carrot, cabbage slaw, roll and butter, baked custard or ice cream, milk

Tuesday — Swiss steak with tomatoes, corn pudding, buttered green peas, roll and butter, canned plums, milk

Wednesday — Roast beef, gravy, mashed potatoes, harvard beets, roll and butter, canned apricots, milk

Thursday — Spaghetti with meat sauce, carrots, tossed salad with dressing, Texas toast and butter, cheese cake, pudding, milk

Friday — Baked ham, yams, buttered green beans, roll and butter, apple-sauce cake, milk

Army opens new recruiting station

The U.S. Army has opened a new recruiting station in the Plainview Towne Center to serve Hale and Floyd Counties.

A grand opening and ribbon cutting ceremony was held Saturday, Nov. 21. Special guests were J.B. Wheeler, president of the Plainview Industrial Foundation and veteran of World War II, and Dayna Jones, Plainview High School homecoming queen.

"Let us be Thankful"



Catch The Texas Spirit... On KTVT!



KTVT brings you the best in drama...from exciting series like *Matt Houston* to gripping movies like *Mask*.

You'll enjoy it all - comedy, drama, kids' shows, movies and sports - on KTVT! Channel 16



Beginning November 30th
New office hours: 8:30 - 4:00

We Salute...

HAPPY BIRTHDAY

Thursday, Nov. 26: Dale Smith, Zora Woody, Sylvia Hernandez, Leonor Hernandez

Friday, Nov. 27: Norma Cisneros, Elvia Cisneros, Catalina Jimenez, Bob Lotspeich, Robert Rodriguez Jr.

Saturday, Nov. 28: Holly Beth Farnsworth, DeLinda Jackson, Debra Graham, Stinson Stringer

Sunday, Nov. 29: Jim Covington Monday, Nov. 30: Ila Harris

Tuesday, Dec. 1: LeQuita Davis, Wilma Gowens

Wednesday, Dec. 2: Alfredo Medrano Jr., Judy Lloyd, Analisa Enriquez, Zach Nutt, Francisco Luna Sr.

HAPPY ANNIVERSARY Thursday, Nov. 26: Mr. and Mrs. Antonio DelaFuente

Friday, Nov. 27: Gail and Willie Mae Gregg

Monday, Nov. 30: Mr. and Mrs. Pete Salazar

Tuesday, Dec. 1: Mr. and Mrs. Odell Karr

Christmas Is Upon Us !!

Remember at

THACKER JEWELRY

Quality For Quality

Weight For Weight

Style For Style

We will meet or beat anyone's price... It's that simple.



THACKER JEWELRY

200 BROADWAY ROARING SPRINGS 348-7546

10:00am-5:30pm Mon. thru Fri. 10:00-3:00 Sat.

Visa Mastercard and Bencharge Accepted

Why Buy Anywhere Else?

FLOYDADA, TEXAS 983-3767 LUBBOCK NUMBER 765-6143
CITY AUTO INC.
 201 E. Missouri
 Floydada, Texas 79235
 SERVING THE AREA SINCE 1960
 Mr. Goodenough

Oil & Filter & Chassis Lube \$17.95
 (Most G.M. vehicles)
 Refreshments

KIRK & SONS

Kirsch Mini-Blinds
 40% off thru Christmas

119-121 East Missouri PHONE: 983-3280

Christmas Shop at **HALE'S**

ARIS ISOTONER GLOVES - Regular & Lined
 STERLING SILVER CHAINS - Ropes & Herringbone
 TENNIS BRACELETS - real sparklers - \$7.50 & \$8.00
 NEW SHIPMENT SCARVES
 Lots of specials all over the store
 Free gift wrapping at Hale's
 112 E. California

AZTECA

Special all day -
 *3.00 combination Plate

We will be open 6:00 p.m. to 8:00 p.m.
 113 W. California

PIZZA GOLD

All you can eat buffet with salad bar
 *3.99 plus tax

601 S. Second 983-2781



Invites you to come by for refreshments
 128 W. California 983-5013

PERRY'S

Large assortment of toys -
 1/2 off regular price

114 E. California

R. Photography

Jack and Allison Robertson
 Follos with eight previews \$39.95 with this ad.
 You still have time to have
 previews delivered for Christmas.

120-B West California Call 983-5063
 Floydada for Appointments

**Caprock Motor Parts
 & Hardware**

18 piece Anchor Hocking
 Beverage Set on sale

114 W. California 983-2865



Cheese & Crackers



WE'RE ALL DECKED OUT!

Come join us for ...

**Christmas
 Open House**

in Floydada

Wednesday, Dec. 2

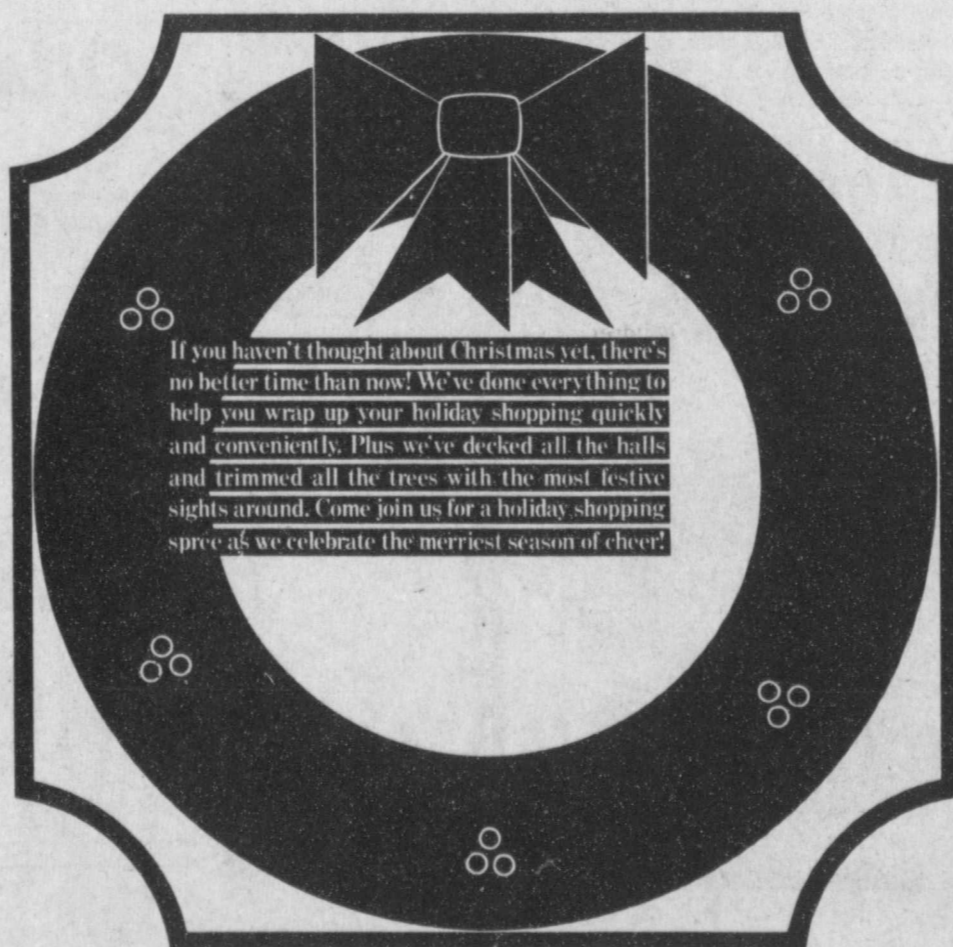
- Santa Claus arrives
- Children's Choir
- Courthouse tree lighting



Refreshments and/or

Merchandise
 Specials

**ATTEND OPEN HOUSE AT THESE
 PARTICIPATING BUSINESSES**



If you haven't thought about Christmas yet, there's no better time than now! We've done everything to help you wrap up your holiday shopping quickly and conveniently. Plus we've decked all the halls and trimmed all the trees with the most festive sights around. Come join us for a holiday shopping spree as we celebrate the merriest season of cheer!

Sponsored by Floydada Chamber of Commerce

**Floyd County
 Insurance**

Refreshments served all day

116 W. California 983-3284

PALACE

Refreshments

There will be in store specials

118 W. California 983-3005

Park Florist

"Happy Thanksgiving"

50% off some Christmas items
 50% off all Country items
 Ideal gifts for Secret Pals, Club Parties,
 Teachers, and "Just Because"

"We love Floydada"

312 West Georgia

983-2867

983-2868

ODEN

Chevrolet - Olds

Free coffee & Doughnuts all day.

Free license plate with any
 new car or truck purchase.

221 S. Main

983-3787

**Sue's Gifts
 and Accessories**

Refreshments

Numerous Christmas items on sale.
 Great gift selections, Great prices.

100 E. California

983-5312

SEARS

Refreshments

Authorized CATALOG SALES MERCHANT

Sue Williams, Owner
 100 S. Main
 Floydada, Texas
 983-2862

There's more for your life at
 Sears

FREE GIFT to anyone ordering
 \$50.00 or more. One day only.

**SCRIPT PRINTING
 &
 OFFICE SUPPLIES**

Refreshments will be served
 from 10:00 a.m. to 3:00 p.m.

108 S. Main

983-5131

Kid's Kloset



15% off
 everything
 in store.

One day only.

102 S. Main
 983-5458

Your Family Movie Store

**FEATURE
 ATTRACTIONS, INC.**

We will be giving away
 FREE POPCORN
 (Limit 1 per person)

211 East Missouri East of City Auto 983-5833

**NIELSON'S
 Restaurant & Catering**

- * Daily Lunch Specials
- * Friday night - T.G.I.F. Fish Fry
- * Sunday noon Buffet
- * Friday noon Mexican Food Buffet - \$3.99
- * Wednesday lunch special Bar-B-Q - \$4.50

304 E. Houston

983-3464

Floyd County
HESPERIAN

*1.00 off on new subscriptions
 (One day only)

Refreshments

111 E. Missouri

983-3737

Floydada
 Chamber of Commerce
 wishes to extend a
**Happy Holiday
 Greeting**
 and urges everyone to shop
 with participating merchants

Floydada and Lockney still ahead in sales tax returns

Floydada and Lockney, two of the 1,039 cities in Texas currently levying a one percent city sales tax, received rebate checks on sales made in September and reported to the state comptroller by October 20. The November checks were less than the comparable periodic payments in 1986, but year to date totals in both cities remain higher than in 1986.

Floydada received a check in the amount of \$10,394.17. The rebate received in November 1986 totaled \$11,368.48. Currently yearly totals stand at \$98,088.66, more than \$8,000 (9.58%) more than the previous year.

Lockney's November check totaled \$4,809.92, a decrease of nearly \$500 from the November payment in 1986. The total rebates for 1987 are \$48,446.92, an increase of 16.17% over the \$41,512.28 total at this time in 1986.

Rebates to other area cities and the

present percent of change are listed below.

Quitaque, \$1,504.40, -10.58%
 Silverton, \$1,989.65, -12.92%
 Crosbyton, \$6,672.78, -16.87%
 Lorenzo, \$2,221.60, -1.89%
 Ralls, \$5,785.39, -8.68%
 Abernathy, \$5,713.02, +1.91%
 Edmonson, \$780.15, -23.08%
 Hale Center, \$3,109.77, +2.79%
 Petersburg, \$2,660.52, +12.13%
 Plainview, \$135,632.45, -0.50%
 Idalou, \$5,129.34, +3.21%
 Lubbock, \$1,477,329.53, -3.30%
 New Deal, \$644.71, +27.84%
 Slaton, \$20,595.72, -18.00%
 Wolfforth, \$2,676.08, -3.70%
 Matador, \$3,535.19, +6.01%
 Roaring Springs, \$1,895.86, +11.96%
 Happy, \$1,009.20, +28.54%
 Kress, \$751.82, -12.20%
 Tulia, \$14,538.23, -6.18%

State savings bonds sales up

United States Savings Bonds sales in Texas for the period October 1986 through August 1987 amounted to \$343,282,292, an increase of \$5.5 million or almost two percent over the same period a year ago, T.J. Morrow, district director for the U.S. Savings Bonds Division in Texas, announced. These sales represent 88.5 percent of the state's 1987 assigned dollar goal of \$388 million.

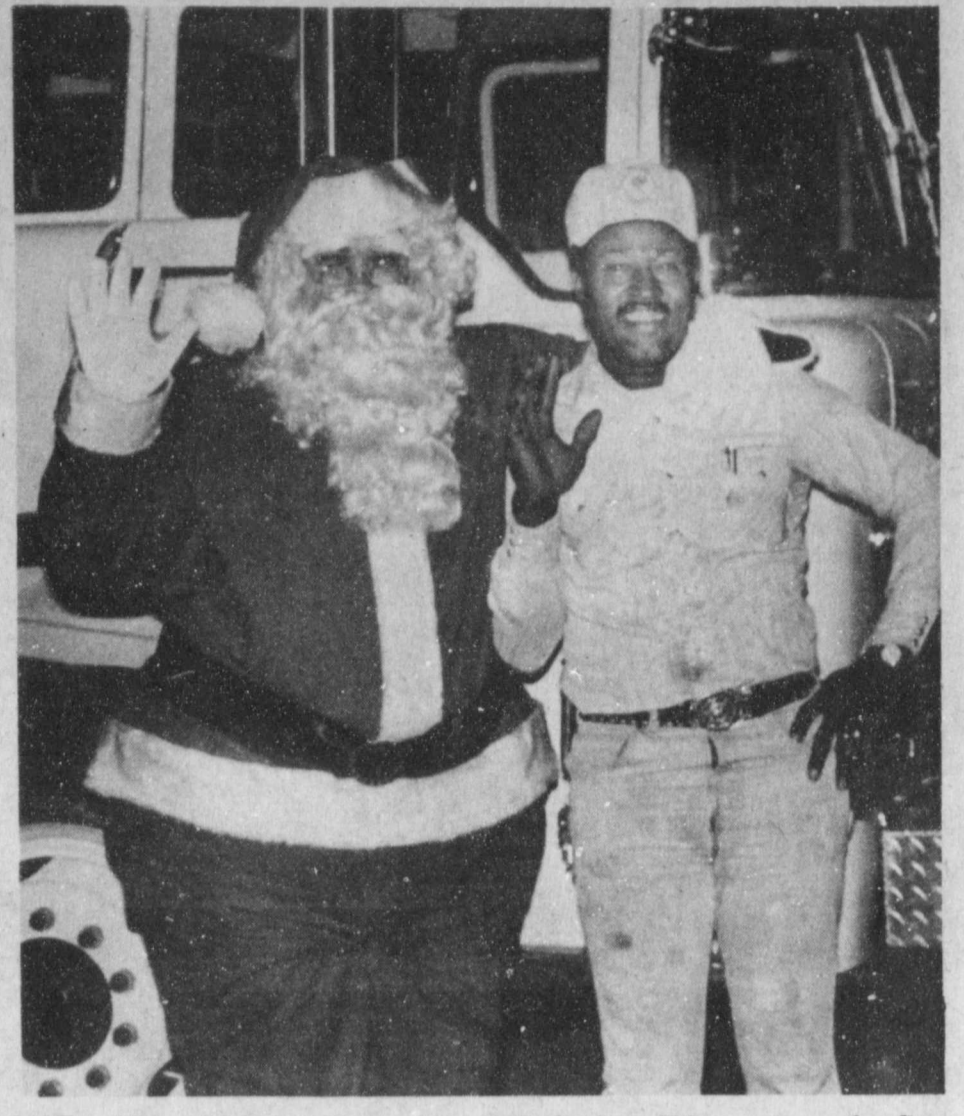
Sales of Series EE Bonds amounted to \$1,799.00 during August 1987 in Floyd County, Lewis McDaniel, volunteer county chairman, said. The October 1986 - August 1987 total for the county was \$126,678.00, which represents 76.7 percent of the county's 1987 assigned dollar goal.

National sales of Series EE Bonds in August totaled \$461 million and brought total sales of U.S. Savings Bonds to \$9.84 billion for fiscal year 1987, an increase of 37 percent over the same period a year ago. The amount outstanding in U.S. Savings Bonds as of August 31, 1987 was \$97.99 billion, up 14 percent over August last year.

For E, EE bonds held for five years or longer, the average rate for the 5-year period, ending October 31, 1987 is 8.75 percent. All Series EE Bonds purchased on or after November 1, 1982 - and held at least five years - will earn 85 percent of the average market yield on Treasury marketable securities. Bonds held less than five years earn interest on a fixed, graduated scale.



A BIT BASHFUL — Ticen Cooper appears to be a bit shy during his conversation with Santa Claus at Sears. — Staff photo



SANTA AND BUDDY — Santa Claus and Cowboy Wiley pose at the fire department before Old Santa was driven to Pay 'N Save by Wiley in a fire truck for Friday night visit with children. — Staff photo

More TV than study time for kids

Children average 25 hours a week watching television and will have spent more time in front of the TV than in the classroom by the time they graduate from high school. Consequently, many parents and teachers rightly worry that excessive viewing is cutting into time that should be spent on homework or other activities and that youngsters are being exposed to too much sex, violence, mindless pap, and commercial toy pitches.

But turning off the TV set is not the answer, according to a new brochure by the Corporation for Public Broadcasting (CPB), titled **TV Tips for Parents: Using Television to Help Your Child Learn**. CPB's Education and Corporate Communications departments have developed this bilingual brochure and related public-service radio campaign to guide parents to a mix of high-quality creative, and educationally tested programs for children as well as to provide ideas on how to turn TV watching and time beforehand and afterward into "quality time."

Available in English and Spanish, **TV Tips for Parents** shows busy parents how television can be an effective and exciting way to teach children and stretch their imaginations in positive ways. The brochure also provides 10 key tips for parents and a list of children's public television programs and resources.

Since its creation 20 years ago by the Public Broadcasting Act of 1967, CPB has made high-quality children's programming a top funding priority—from the long-running *Sesame Street* that has raised a generation of youngsters, to the dynamic, new *Square One* TV series designed to improve math skills. CPB is the largest single funder of children's public television programming with a \$10.5 million commitment for this year.

In short, easily readable text with sketches, **TV Tips for Parents** shows parents and daycare providers:

- *how to plan youngsters' weekly TV schedules
- *how to get involved with children to boost their learning motivation
- *how older and younger children can help each other learn from the same program
- *how public TV can be a "special friend" for latchkey children
- *how to consult teachers and avail-

able resources

- *how to use TV to promote interest in reading and writing
- *how to explore the world on-screen and off
- *how to turn around math anxiety and make math fun and practical
- *how to set your own pace and involvement without pressure.

For single copies of **TV Tips for Parents**, send a self-addressed, stamped (\$3.99) #10 envelope to the Corporation for Public Broadcasting, Box 33039, Washington, D.C. 20033. Please indicate whether you want the English or Spanish version.

The Corporation is also making bulk copies of the brochure available at cost to other interested organizations.

CPB is a private, nonprofit corporation that was authorized by the Public Broadcasting Act of 1967 to develop noncommercial radio and television services for the American people.

Letter to the Editor

Editor,
 Came across enclosed, saw years ago, appropriate published this season.

I am the fleece of the fields,
 The green bodied lambs,
 Sheperded by the sun
 And fed by the sail.
 I am the flowering fiber,
 Clothing the fields in season
 And man in all seasons.
 I am part of the inner garments of God,
 Cast like a charity upon the earth.

My white radiance is a testimony
 And a benediction.
 Behold me in the blessing of my being,
 And clothe thyself in my beauty and usefulness.
 I am cotton.

Smith W. Moseley

Courtroom Activities

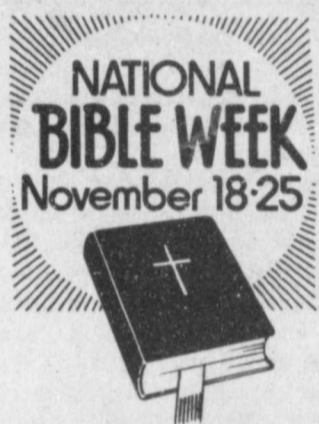
In district court, John Lee Davis, 22, of Woodville, Miss., pled guilty to possession of a controlled substance (methamphetamine). He received 10 years deferred adjudication and a \$200.00 fine.

In J.P. court there were 55 misdemeanor cases filed for the week of 11-17-87 thru 11-23-87.

FOOD LABELS AND FOOD SAFETY

Most products in food stores have dates on them, even though manufacturers are not required to put this information on packaging. "The date stamped on product packages can indicate product freshness and serve as a guide to safe storage time, if you know how to use it," says Marilyn Haggard, a Texas A&M University Agricultural Extension Service nutrition specialist.

She explains that the "sell-by" date is the last day the product should be sold, the "use-by" date indicates how long the product will retain top eating quality after purchase, and the "expiration date" tells the last day the food should be eaten or used.

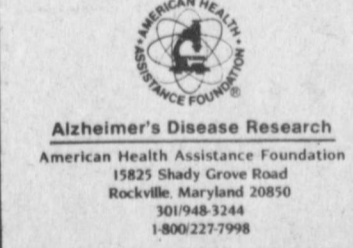


Go Winds

November is Alzheimer's Disease Awareness Month



Support Alzheimer's Disease Research a program of American Health Assistance Foundation



ALIEN?—Sharon Redden, social studies teacher at R.C. Andrews Elementary School, appeared as an alien from another planet seeking information about Texas from her fourth grade social studies classes before the youngsters entered a new area of study. Ms. Redden was referred to by another faculty member as being extremely innovative in making subject matter interesting for her students. —Staff photo

Marine Chuck Rowley in North Carolina

Marine Pvt. Chuck B. Rowley, son of Rhonda Rowley of Floydada recently reported for duty at 2nd Marine Division, Camp Lejeune, NC.

A 1986 graduate of Floydada High School, he joined the Marine Corps in May 1987.

Give Thanks



Have you tried CITY AUTO'S service lately?

Here are some reasons why we believe you should:

Just a partial listing of the GM schools attended by City Auto mechanics:

Specialized Electronics Training

- Electronic Fuel Injection
- Port Fuel Injection
- Electronic Fuel Injection [Advanced]
- Port Fuel Injection Advanced
- Computer Command Control
- 6.2 Diesel Diagnostics
- Powermaster Electric Power Brakes
- Pre-delivery Inspection
- 5-Speed Overdrive Manual Transaxle
- General Transaxle Update
- 700R4 Automatic Overdrive Transmission
- 440-T4 Automatic Transaxle
- 440-T4 Transaxle In-Car Diagnostics
- Teves Electronic Brake Control
- Muncie/Getrag Manual Transmission
- Truck Electrical/Electronics Program Diagnosis
- Vibration Diagnostics
- Muncie Five Speed Transmission
- Fuel Injection Driveability
- Distributorless Ignition System
- Lemans Transaxle Assembly

WINFRED PAYNE - Service Manager

LARRY GUTHRIE - Parts Manager

TOMAS BARRIENTOS - Mechanic

RICKY JARVIS - Service/Make Ready

RANDY PAYNE - Mechanic

MIKE POTEET - Mechanic

We have added 4 major electronic diagnostic units in the past year alone and more equipment is planned in the near future.

FLOYDADA, TEXAS
983-3767

LUBBOCK NUMBER
765-6143

BUICK - PONTIAC - GMC

CITY AUTO INC.

201 E. Missouri
Floydada, Texas 79235

Mr. Goodwrench SERVING THE AREA SINCE 1960



Don Castleberry
895-4613



Max Harrison
983-3044

Before the need... You need your Farm Bureau Insurance Agent.



Retirement Insurance

Retirement should be a time of peace and enjoyment, not stress and financial worries. Will you be financially secure when it's time for your retirement? You can be if you begin to insure your future against retirement money problems.

TEXAS FARM BUREAU INSURANCE

Lockney - 652-2242 Floydada - 983-3777
 101 S. Wall Floydada, Texas, 79235



Clar Schacht
Agency Mgr.
983-2906



Kenneth Holt
652-3456



JUNIOR VARSITY GIRLS — Six sophomores comprise the Whirlwind junior varsity basketball squad. Pictured are, standing left to right, Coach Regina Smith, Libby Anderson, Heather Henderson, Stacy Hadderton and Coach Gail Gregg; standing from left, Shayla Barbee, Kim Perry and Amy McCormick. — Staff photo

SPS files with state for fuel-cost credit

Southwestern Public Service Company (SPS) Tuesday filed with the Public Utility Commission of Texas (PUCT) for approval to credit its Texas retail customers about \$11 million for fuel-cost savings. The "typical" residential customer, based on monthly usage of 600 kilowatt-hours, will receive about a \$10 credit.

The proposed refund includes interest at an annual rate of 11.7 percent. Most SPS customers will receive the one-time credit in their December bills. The remaining consumers will receive their refunds in January.

"Several factors made this refund possible," said Sam Hunter, SPS vice president of rates and economic research. "We purchased coal and natu-

ral gas, which are major costs in generating electricity, at lower prices. Additionally, the mild summer allowed us to operate only our most efficient power plants, and SPS has continued to improve the efficiency of its generating

units." Hunter pointed out SPS recently was cited as seventh best among the 100 largest investor-owned electric utilities in the United States, in terms of generating efficiency.

Dr. Andy Hale re-elected to Baptist Executive Board

A Floydada resident was elected to a major position on one of the Texas Baptist boards during the annual meeting of the 2.4-million-member Baptist General Convention of Texas (BGCT) in Fort Worth, Nov. 10-11.

Samuel Andrew Hale Jr., M.D., was reelected to the 193-member BGCT Executive Board.

The Executive Board, composed of pastors church staff members and laypersons, conducts the business of the BGCT between annual sessions.

Institutions of the BGCT include eight universities, one academy, seven hospitals, four children's homes and four homes for the aging.

The work is supported by the more than 5,000 Texas Baptist churches and missions

School Menu

Nov. 30-Dec. 4

Monday:
Breakfast — Grape juice, cinnamon toast, milk
Lunch — Lasagna casserole, green beans, fried squash, sugar cookie, hot roll, milk

Tuesday:
Breakfast — Orange juice, dry cereal, milk
Lunch — Oven baked chicken, mashed potatoes, buttered broccoli, peach half, hot roll, milk

Wednesday:
Breakfast — Pineapple juice, hot rice cereal, toast, milk
Lunch — Pig in blanket, corn, spinach, pear half, milk

Thursday:
Breakfast — Apple juice, toast, jelly, milk
Lunch — Burritos, Spanish rice, tossed salad, peanut butter cookie, milk

Friday:
Breakfast — Grape juice, pancakes, syrup, milk
Lunch — Chili dogs, French fries, lettuce, tomatoes, apricot cobbler, milk



CANS TO SAVE BATTLESHIP TEXAS — Young Astronauts at R.C. Andrews Elementary School have been collecting cans to be donated to "Save the Battleship of Texas." Donations will provide money for repairs to be made on the battleship, says Mrs. Evans, the group's advisor. Pictured left to right are Aaron Noland, Stacy Meyers, Almee Fondy, Kristy Hinsley, Nathan Davis, Michael Padgett, Randy Gregg and Eric Smith with bags of cans. — Staff photo

Winds in rugged district

Continued from Page One

and Robertson have been pegged as starters, an all-senior lineup. However, players who open games on the bench will see plenty of action.

"We plan to platoon two teams," Coach Cocanougher says. "We hope to give the teams equal time if we can."

The Whirlwind coach continues that "We're going to press a lot and try to get people tired. Our depth is to our advantage."

He lists several attributes as teams strengths: quickness, outside shooting, overall experience and depth.

The main weakness is that "We don't have any real big players, like a 6'4" or 6'5" post man." Dimmitt and Friona both have size at the post position.

The Whirlwinds have another seven weeks to hone their skills before opening district warfare on Jan. 15 against powerhouse Dimmitt here.

THIS WEEK'S GAMES

Monday: Ninth, eighth and seventh grade games vs. Littlefield; girls here, boys there

Tuesday: JV girls, varsity girls and varsity boys at Post; JV game at 5 p.m.

Basketball schedules . . .

VARSITY-JUNIOR VARSITY

Dec. 1, Post, There, 5:00, VB, VG, JVB

Dec. 3-5, Lorenzo Tourney, VB, VG

Dec. 8, Slaton, There, 5:00, VB, VG, JVG, JVB

Dec. 11, Idalou, Here, 5:30, VB, JVG

Dec. 10-12, Reese Tourney, VB, JVB

Dec. 10-12, Silverton Tourney, JVG, JVB

Dec. 15, Hale Center, Here, 5:00, VB, VG, JVB

Dec. 18, Olton, There, VG

Dec. 28-30, Frenship Tourney, VB

Dec. 17-19, Lockney Tourney, JV

Dec. 28-30, Slaton Tourney, VG

Jan. 5, Hale Center, There, 5:00, VB, VG, JVG

Jan. 9, Hart, There, 5:00, VB, VG, JVB

Jan. 9, Floydada Tourney, (Lockney, Lorenzo, Crosbyton), JVG, JVB

Jan. 12, Muleshoe, There, VG, JVG

Jan. 12, Valley, There, 6:00, VB, JVB

Jan. 15, Dimmitt, Here, 4:00, VB, VG, JVG, JVB

Jan. 19, Littlefield, There, 5:00, VB, VG, JVG, JVB

Jan. 22, Friona, Here, 5:00, VB, VG, JVG

Jan. 26, Tulia, Here, 4:00, VB, VG, JVG, JVB

Jan. 29, Muleshoe, Here, 5:00, VB, VG

Feb. 2, Dimmitt, There, 5:00, VB, VG, JVG, JVB

Feb. 5, Littlefield, Here, 4:00, VB, VG, JVG, JVB

Feb. 9, Friona, There, 5:00, VB, VG

Feb. 12, Tulia, There, 5:00, VB, VG, JVG, JVB

Feb. 16, Muleshoe, There, VB, JVB

NINTH, EIGHTH AND SEVENTH GRADES

Nov. 30, Littlefield, boys there, girls here

Dec. 4-5, Floydada Tourney (Eighth Grade)

Dec. 7, Friona, boys here, girls there

Dec. 14, Tulia, boys here, girls there

Jan. 4, Muleshoe, boys here, girls there

Jan. 9, Idalou Tourney (Seventh grade)

Jan. 11, Open

Jan. 18, Dimmitt, boys there, girls here

Jan. 21-23, Christ The King Tourney (Ninth Grade)

Jan. 25, Littlefield, boys here, girls there

there
Feb. 1, Friona, boys here, girls there
Feb. 8, Tulia, boys there, girls here
Feb. 11-13, District Tournaments (VB, Varsity Boys; VG, Varsity Girls; JVB, Junior Varsity Boys; JVG, Junior Varsity Girls)



Kim Zimmerman pledge at Westminster College

Twenty students have been announced as the 1987-88 pledge class for Epsilon Iota Chapter of Kappa Alpha Theta at Westminster College in Fulton, Missouri. The students participate in the recent formal sorority rush for two national women's social sororities at Westminster.

Among the pledges was Kim Zimmerman, daughter of Mr. and Mrs. Fred Zimmerman III of Floydada. She is a Floydada High School graduate.

The Kappa Alpha Theta Pledge Class will be formally initiated in January 1988.

Founded in 1851, Westminster College is a private, liberal arts and preprofessional institution.


Thanks to coaches for assistance

In advance, The Hesperian expresses appreciation to local school coaches who will assist in reporting basketball and spring sports results.

With 10 school basketball teams, some of which play more than one game each week, it would be impossible to secure all the results without the coaches' assistance. Goal of both the coaches and this newspaper is to recognize youngsters.

Coverage again will include box scores and scorers for all games and extended articles about varsity teams. The Hesperian will attempt to publish photos of all 10 teams during the season. An overview of the Whirlwind girls varsity cagers appears in this issue and an overview of the varsity boys is scheduled next week.

A big "thanks" also to coaches for their help during football season.



OILSEED SYSTEMS, INC.

BOX 389
CROSBYTON, TEXAS 79322
806/675-2661

DILUTE SULFURIC ACID DELINTING
(A delinting method that we think is less harmful to the seed)

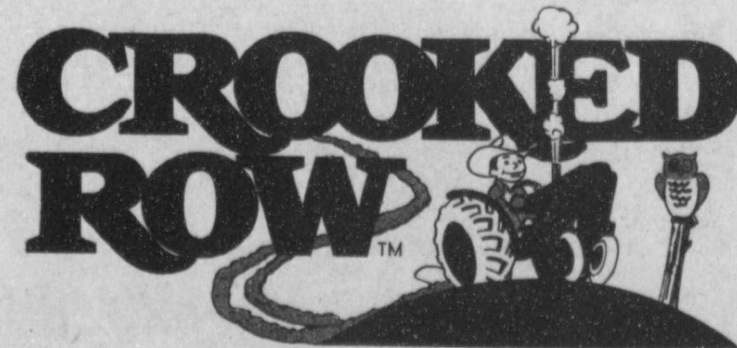
ALL SEED IS THOROUGHLY TESTED BEFORE DELINTING

Each lot of seed delinted will have a vigor test available to the customer.

TRAILERS, BOB-TAIL TRUCKS, AND SEMI-TRUCKS ARE AVAILABLE TO TRANSPORT SEED

Each lot of seed is processed through Carter-Day length-graders to extract cockle-burrs.

WE PRODUCE AND DISTRIBUTE "CROOKED ROW" PLANTING SEED.



CROOKED ROW FARMS
CROSBYTON, TEXAS

A GREAT DEAL ON A SAFE BUY!



\$1395 PLUS TAX

- PUT IT ON YOUR ELECTRIC BILL
- THREE MONTHLY PAYMENTS
- NO INTEREST CHARGES

PORTABLE ELECTRIC HEATERS

You won't find a better bargain than this. This attractive 25-inch Heatlog™ by Toastmaster® is the safe, convenient way to warm up cold spots. Weighing only four pounds, it fits into out-of-the-way places and plugs into any 110-volt outlet. This durable heater has a simulated pecan woodgrain case and grill.

Unlike kerosene heaters, this electric heater eliminates the danger of flammable liquids, odors and fumes. It meets the high safety standards set by Underwriters Laboratories (UL). And, should the heater be accidentally knocked over, it will automatically turn itself off.



PICK IT UP AT ANY SPS OFFICE

... OR ...

IF MORE CONVENIENT, ORDER BY MAIL

Please send me _____ portable electric heater(s).

NAME _____

ADDRESS _____ CITY _____

STATE _____ ZIP _____

Customer Account Number (if available) _____

I agree to pay \$13.95 plus tax and \$1.50 shipping and handling for each heater.

I want to put this on my electric bill and pay for it in three monthly installments.

I want to put this on my electric bill and pay for it in one installment.

I understand I am not paying any interest or carrying charges.

Signed _____

Mail order offer and monthly payout available to SPS customers only.

MAIL TO: Southwestern Public Service Company
P. O. Box 1261
Amarillo, TX 79170
Attn: Dan Redd

CHURCH DIRECTORY



J.C. BAILEY, Minister at the City Park Church of Christ, was born in Lamesa, Texas in 1947. His childhood experience included life on a farm southwest of Lamesa. He attended school at Klondike. His parents, four younger brothers, and one sister moved from the Dawson County farm to Winnaboro, Texas in 1966. That same year he began to attend Abilene Christian College. He attended A.C.C. for four years and in 1971 graduated from the Sunset School of Preaching in Lubbock. In 1970 he married Janis Justus of Crosbyton. They now have four children and have lived for one year in Floydada.

Keep Thyself Pure

Would you stay (by your choice) in a hospital that you knew was lax regarding its standards for purity? Would you maintain and operate expensive equipment with not thought to regularly changing the filters? Would you sneak an old piece of gum (someone else's) from under the table and chew it without even a little twinge of your conscience? We are a purity conscious people - at least regarding some things. Sometimes we practice a double standard regarding purity.

The problem of double standards for purity is an old one. For example, in Matthew 23:25-28, Jesus declared to the teachers of the law and the Pharisees, "You clean the outside of the cup and dish, but inside they are full of greed and self-indulgence. 26. Blind Pharisee! First clean the inside of the cup and dish, and then the outside also will be clean." How many of us would accept as clean our dinner dishes that have been washed only on the outside? Who really cares how clean the outside of a soft drink bottle is if after a couple of hardy gulps he discovers a dead cockroach or some contaminant on the inside of the bottle?

Jesus revealed the flaw in their thinking and practice regarding purity. They were inconsistent. Let man be as concerned about inward or spiritual purity as he is about physical or outward purity. An outward (only) kind of purity resembles a whitewashed tomb. [Matthew 23:27,28]. The only thing that is really clean is the thin coat of whitewash on the exterior. So let our concerns for purity go beyond clean teeth, fresh breath, clean clothes, clean houses, and those kinds of things to a pure heart. The blood of Jesus is available as the cleansing agent. The power of his word is at hand to cleanse and keep clean your heart.

This article is submitted to you in the hope that you will keep your heart clean. The advantages are many. Paul explained to Timothy in II Timothy 2:21. "If a man cleanses himself, he will be an instrument for noble purposes, made holy, useful to the Master and prepared to do any good work." So let our thoughts, deeds, and conversations reflect that we care enough about our own hearts to keep them pure.

—J.C. Bailey

Remarrieds need financial plan

A budget and spending plan can benefit any family, but for remarrieds it may be critical, says a consumer economics specialist. "Finances, children and child-rearing have been identified by researchers as the major problems in many remarriages," says Bonnie Piernot, "with finances often ranking the highest." People entering a remarriage often have assets — and debts — to bring to the new marriage. When couples share this information prior to the wedding, it will make it

easier to develop a financial plan, says the Texas A&M University Agricultural Extension Service home economist.

"Fluctuating income from child support can be a major strain on the new family's budget," Piernot says. One recent study of remarried couples in Kentucky found that when child support was awarded, 36% either never received it, received it irregularly or regularly received it but not in the full amount, she reports.



NO SNAP DECISION — Marisa Barrientos, three, thinks about her decision for a minute before giving Santa Claus her Christmas wishes. Santa and his three-year-old friend met at Sears. — Staff photo

Read food handling instructions

"Reading handling directions can help you make sure food remains safe to eat," says Marilyn Haggard, a nutrition specialist with the Texas Agricultural Extension Service. All perishable products must give handling instructions, such as "keep frozen" or "keep refrigerated," she notes.

Some meat and poultry products may be labeled "ready-to-eat" or "fully cooked," which means no further cooking is necessary. The specialist advises check-

ing the labels of aseptically packaged products, since many will require refrigeration after opening. "Although some product labels carry directions on how long and at what temperature to cook a product, the directions are not required or verified by the U.S. Department of Agriculture," she remarks. "When cooking instructions are not included on the label or you have some doubts about them, the safest course is to cook the product thoroughly," Haggard adds.

CEDAR HILL ASSEMBLY OF GOD
Rev. H.D. Morton Jr., Pastor
Sunday School 10:00 a.m.
Morning Worship 11:00 a.m.
Evangelistic Service 6:00 p.m.
Wednesday Evening Bible Study 8:00 p.m.

LOCKNEY LATIN ASSEMBLY OF GOD
Rev. Juan Herrera
Sunday School 9:45 a.m.
Morning Worship 11:00 a.m.
Evening Worship 5:00 p.m.
Prayer Service - Friday 7:30 p.m.

SPANISH ASSEMBLY OF GOD TEMPLO GETSEMANI
308 Mississippi
Rev. Daniel Herrera
Sunday School 10:00 a.m.
Morning Worship 11:00 a.m.
Evening Evangelistic Service 6:00 p.m.
Wednesday, Family Night 7:30 p.m.

CARR'S CHAPEL
Service Every Sunday
Morning Worship 9:30 a.m.
Sunday School 10:30 a.m.
No Evening Services

FIRST CHRISTIAN CHURCH
Phil Carpenter
Interim Minister
Sunday School 9:45 a.m.
Sunday Worship 11:00 a.m.

"ABUNDANT LIFE FELLOWSHIP"
FIRST ASSEMBLY OF GOD CHURCH
Floydada
Ron Dysart, Pastor
Sunday School 9:45 a.m.
Morning Worship 10:50 a.m.
Sunday Evening Evangelistic 6:00 p.m.
Wednesday Night Service 7:30 p.m.

SAN JOSE CATHOLIC CHURCH
Lockney
Pastor: Fr. Jack Gist
Mon.-Fri. Liturgy 8:00 p.m.
Saturday Vigil Mass of Sunday 7:30 p.m.
Sunday Mass 12:30 p.m.

ST. MARY MAGDALEN CATHOLIC CHURCH
Floydada
Father Terry Burke
Sunday School 10-11:15 a.m.
Sunday Mass 11:30 a.m.
Wednesday Mass 7:00 p.m.
Ultreya 8:00 p.m.
Office Phone 983-5878

WEST SIDE CHURCH OF CHRIST
Floydada
Sunday Morning Worship 10:30 a.m.
Sunday Evening 6:00 p.m.
Wednesday 7:00 p.m.

LATIN AMERICAN CHURCH OF CHRIST
Lockney
Bible School 9:45 a.m.
Morning Worship 10:45 a.m.
Evening Worship 6:00 p.m.
Wednesday Service 8:00 p.m.

CITY PARK CHURCH OF CHRIST
Floydada
J.C. Bailey, Minister
Sunday Bible Study 9:30 a.m.
Morning Worship 10:30 a.m.
Evening Worship 6:00 p.m.
Wednesday Bible Study 7:30 p.m.
Spanish Assembly, Sunday 3:00 p.m.

MAIN STREET CHURCH OF CHRIST
Lockney
George Schuster, Minister
Bible Study 9:30 a.m.
Morning Worship 10:30 a.m.
Evening Worship 6:00 p.m.
Wednesday Ladies Bible Class 9:30 a.m.
Bible Study 7:30 p.m.

WEST COLLEGE CHURCH OF CHRIST
West College & Third, Lockney
Frank Duckworth, Evangelist
Morning Worship 10:30 a.m.
Evening Worship 6:00 p.m.
Wednesday Service 8:00 p.m.

TRINITY LUTHERAN CHURCH
Providence Community
Rev. Bruce Adamson
Sunday School & Adult Bible Class 9:45 a.m.
Worship Service 11:00 a.m.

FIRST UNITED METHODIST CHURCH
Lockney
Rev. Robert Kirk
Sunday School 9:45 a.m.
Worship Service 10:55 a.m.
UMY 5:00 p.m.
Evening Worship 6:00 p.m.
United Methodist Women. First Tuesday of Month Circles. Monday (2nd & 4th Monday nights) Tuesday & Wednesday mornings.

GRANT CHAPEL CHURCH OF GOD IN CHRIST
John Williams, Pastor
Sunday School 10:00 a.m.
Monday Worship 11:00 a.m.
Evening Service 7:30 p.m.
Prayer Service-Tuesday 8:00 p.m.
Service-Wednesday 7:30 p.m.

SOUTH PLAINS BAPTIST CHURCH
Tom Fisher, Pastor
Sunday School 10:00 a.m.
Morning Worship 11:00 a.m.
Evening Service 6:30 p.m.
Wednesday Service 7:00 p.m.

TEMPLO NUEVA VIDA
Rev. Herman Martinez
308 W. Tennessee
Sunday School 10:00 a.m.
Evening Worship 6:00 p.m.
Tuesday Ladies Prayer 2:00 p.m.
Thursday Service 7:30 p.m.

FIRST UNITED METHODIST CHURCH
Floydada
Earl Blair, Pastor
Sunday School 9:45 a.m.
Morning Worship 11:00 a.m.
Youth Fellowship 5:00 p.m.
Sunday Evening Worship 6:00 p.m.

EVANS CHAPEL BAPTIST CHURCH
Rev. Sammy Hollaway
Sunday School 10:00 a.m.
Morning Worship 11:00 a.m.
Training Union 6:00 p.m.
Evening Worship 7:00 p.m.
Wednesday Prayer Meeting 7:00 p.m.
Sunday Afternoon Worship 2:00 p.m.

PRIMER IGLESIA BAUTISTA
Rev. Pedro Reyes
Sunday School 9:45 a.m.
Morning Service 11:00 a.m.
Training Union 6:00 p.m.
Evening Worship 6:00 p.m.
Wednesday Service 7:30 p.m.

TEMPLO BAUTISTA SALEM
Lockney
Tivursio Villarreal
Sunday School 9:45 a.m.
Worship Service 11:00 a.m.
Christian Training Time 5:00 p.m.
Evening Worship 6:00 p.m.
Wednesday Prayer Meeting 7:30 p.m.

BIBLE BAPTIST CHURCH
Floydada
Bob Chapman
Sunday School 10:00 a.m.
Morning Worship 10:45 a.m.
Sunday Evening Prayer Meeting 6:00 p.m.
Sunday Evening Services 6:30 p.m.
Wednesday Evening Services 7:30 p.m.

FIRST BAPTIST CHURCH
Lockney
Sunday School 9:45 a.m.
Morning Worship 10:45 a.m.
R.A.'s 5:00 p.m.
Acteens 4:30 p.m.
Church Training 6:00 p.m.
Evening Worship 7:00 p.m.
Wed. Choir Practice 8:00 p.m.
Wednesday: Prayer Meeting 7:00 p.m.
Our Time (Jr. High and High School) 7:00 p.m.
GA's 6:00 p.m.
Mission Friends (preschool) 7:00 p.m.
Thursday: Baptist Women 1st & 3rd Mondays 3:00 p.m.
Baptist Young Women 2nd Monday 7:00 p.m.

CALVARY BAPTIST
Floydada
Dr. Ricky Johnson
Sunday School 9:45 a.m.
Morning Worship 11:00 a.m.
Bible Study 6:00 p.m.
Evening Worship 6:00 p.m.
Wednesday Evening 7:00 p.m.

MT. ZION BAPTIST CHURCH
Floydada
Rev. Ralph Jackson, Pastor
Sunday School 10:00 a.m.
Morning Worship 11:00 a.m.
BTU 6:00 p.m.
Evening Worship 7:00 p.m.
Mid-Week Prayer Wednesday 7:00 p.m.
Bible Study Thursday 7:00 p.m.

AIKEN BAPTIST CHURCH
Rev. Ray Starnes, Pastor
Sunday School 10:00 a.m.
Morning Worship 11:00 a.m.
Training Union 6:00 p.m.
Evening Worship 6:00 p.m.
Prayer Service Wed. 7:30 p.m.
Brotherhood, W.M.U. and Auxiliary Wednesday 7:30 p.m.

FIRST BAPTIST CHURCH FLOYDADA
Rev. Howell E. Farnsworth, Jr. Pastor
Sunday School 9:45 a.m.
Morning Worship 10:55 a.m.
Church Training 6:00 p.m.
Evening Worship 7:00 p.m.
Wednesday Evening 6:45 p.m.

LONE STAR BAPTIST CHURCH
M.B. Baldwin, Pastor
Sunday School 10:00 a.m.
Morning Worship 11:00 a.m.
Training Union 5:00 p.m.
Evening Worship 6:00 p.m.
Prayer Service, Wednesday Evening 6:30 p.m.
Brotherhood, First Saturday Morning of Every Month.

VICTORY BAPTIST CHURCH
Floydada
Travis Curry, Pastor
Sunday School 10:00 a.m.
Morning Worship 11:00 a.m.
Evening Worship 7:00 p.m.
Wednesday Services 7:00 p.m.

NEW SALEM PRIMITIVE BAPTIST CHURCH
Floydada
Jim Jackson, Pastor
Sunday Congregational Singing 10:30 a.m.
Morning Worship 11:00 a.m.
Evening Worship 6:00 p.m.

SPANISH BAPTIST MISSION
Floydada
Rev. Lupe Rando
Sunday School 9:45 a.m.
Morning Worship 11:00 a.m.
Church Training 5:00 p.m.
Evening Worship 6:00 p.m.
Wednesday Evening 7:00 p.m.

TRINITY CHURCH
Meets at the Y
G.A. Van Hoose, Pastor
Sunday School 9:45 a.m.
Morning Worship 11:00 a.m.
Sunday Evening 6:00 p.m.
Wednesday Night Prayer 7:30 p.m.



This page is being brought to you through the courtesy of:

Brown's Department Store 106 N. Main 652-3831	Moore-Rose Funeral Home 402 S. Main, Lockney 652-2211 329 W. California, Floydada 983-2525
Byrd Pharmacy 320 N Main 652-3353	Nielson's Restaurant 304 E. Houston 983-3464
City Auto 201 E. Missouri 983-3767	Oden Chevrolet-Olds 221 S. Main 983-3787
Sponsor Needed	Pay-N-Save 210 N. Main 652-2293
Davis Lumber 102 E. Shubert 652-3385	Plains Electric Co. 106 S. Main 652-2133
E.X.C.L. Co. Rt. 2, Box 135 Lockney, TX 806-983-3022	Producers Dougherty 983-3020 Booth Spr 983-2716 301 E. Missouri Floydada 983-2821 Cedar Hill 983-2970
Gilbreath Tex-Pack Freight 111-B E. Missouri 983-5487	Schacht Flowers & Jewelry 112 W. Poplar 652-2385
Jackson Tire Co. 101 S. Main 652-3366	Thompson Pharmacy 200 S. Main 983-5111
Lockney Coop Gin. W. of City 652-3377	Lighthouse Electric Cooperative Matador Highway 983-2814
Attend The Church Of Your Choice.	

CARPET • CABINET TOPS • VINYL • TILE • HARDWOOD FLOORS
WOVEN WOODS • MINI BLINDS • CERAMIC TILE
CUSTOM CABINET TOPS • WALLPAPER
VERTICAL BLINDS • BRAIDED RUGS

REAGAN'S FLOOR COVERING
We Give Everything We've Got Every Time
FREE ESTIMATES
PLAINVIEW, TEXAS 293-4453

510 ASH ST.

OBITUARIES

NICKIE NAN LOUDERMILK

Memorial services for Nickie Nan Loudermilk of Quitaque were conducted at 2 p.m. Saturday in the Flomot Baptist Church. Officiating were the Rev. Byron Hardgrove of Flomot and the Rev. Jess Little of Quitaque.

Moore-Rose Funeral Home of Floydada directed arrangements.

The body was donated to Texas Tech University Health Science Center.

Mrs. Loudermilk, 55, was claimed by death at 5:25 p.m. Friday in Lubbock General Hospital following a lengthy illness.

The former Nickie Nan Bilberry was born Feb. 20, 1932 in Afton. Her husband, Jack Loudermilk, preceded

her in death.

A lifelong Quitaque resident, she owned the Sportsman's Restaurant and was a member of First Baptist Church in Quitaque.

Survivors include two sons, Bruce Patrick of Midland and Dave Patrick of Plainview; one daughter, Bena Hester of Silverton; a step-daughter, Pam Fields of Ardmore, Okla.; her mother, Beatrice Bilberry of Lockney; two sisters, Jean Richardson of Snyder and Joyce Speer of Floydada; and several nieces and nephews.

DOROTHY JEAN SMALLEY

Funeral rites for Dorothy Jean Smalley, 52, a resident of Route One,

Petersburg, were at 2 p.m. Monday in First Baptist Church of Petersburg. The Rev. Waymon Swopes, pastor, officiated.

Interment was made in Petersburg Cemetery, under direction of Moore-Rose Funeral Home of Floydada.

Pallbearers were Robby Cook, Teddy Cook, Robby Upchurch, Stacy Swopes, Jimmy Gragorcyk and Darren Green.

Mrs. Smalley was claimed by death at 12:30 a.m. Saturday, Nov. 21, in Methodist Hospital in Lubbock following a brief illness.

Born Jan. 29, 1935 in Floyd County, the former Dorothy Jean Smalley was married to Gerald Smalley on Jan. 12, 1955 in Floydada.

The family moved to Petersburg in 1976 from this county.

A nurse, Mrs. Smalley was a member of First Baptist Church.

Survivors include her husband; two sons, Curtis Smalley of Lubbock and Kelly Smalley of Petersburg; one daughter, Penny Smith of Lubbock; her mother, Willie Pierce of Floydada; two brothers, Tom Pierce and Neil Pierce, both of Floydada; two sisters, Thelma Johnston and Elizabeth Johnston, both of Floydada; and five grandchildren.

Turkey safety a concern

A food safety expert with the Texas A&M University System's Agricultural Extension Service cautions against letting convenience, lack of time or a favorite family recipe get in the way of following safe food handling practices this Thanksgiving.

Because a large frozen turkey can take several days to defrost in the refrigerator, people start to take shortcuts like putting the bird on the kitchen counter to thaw, explains Marilyn Haggard. This practice allows salmonella bacteria to flourish.

"The only safe way to thaw a turkey in a hurry is to use a microwave oven or to thaw in cool water in the sink, changing the water every 30 minutes," she states.

"If you don't want to bother with thawing, you would be better off buying a fresh turkey, which can be kept refrigerated for 1-2 days before cooking."

According to the specialist, both frozen and fresh turkeys should be washed inside and out in cool water and patted dry with a paper towel before stuffing and cooking.

Then wash in hot soapy water all cutting boards, pans and utensils that have come in contact with the raw turkey.

It might seem like a convenience to stuff the turkey in advance, but it could be dangerous, Haggard says.

"When a turkey is stuffed it creates ideal conditions for the growth of bacteria in the cavity. In a home refrigerator, it's very difficult to keep the stuffing inside a pre-stuffed turkey below 40 degrees F, which is cold enough to keep most bacteria from

growing."

For that reason, she says, the U.S. Department of Agriculture advises against buying a pre-stuffed fresh turkey.

Haggard recommends preparing and refrigerating the stuffing in advance and placing it in the turkey right before cooking, or cooking it separately.

If you have a recipe that calls for long cooking at a low temperature, the specialist recommends not using it. At 250 degrees F the turkey and stuffing could take more than 4 hours to reach a high enough temperature to destroy bacteria.

While it's safe to microwave an unstuffed whole turkey, a stuffed bird is too dense to assure thorough cooking, she adds.

Even after the bird is cooked, food borne illness can result when perishable foods are allowed to sit at room temperature. In general, foods should never be left at room temperature for over 2 hours.

That rule applies to leftovers too, emphasizes Haggard. To insure safe turkey sandwiches, play it safe by removing the stuffing from the bird and refrigerating both immediately after dinner. Later in the evening, you can strip the meat from the carcass and store it in meal-sized portions for later use.

"The symptoms of food-borne illness are seldom life-threatening, but can be serious for young children and the elderly. Since nausea, stomach cramps and diarrhea are an unpleasant way for anyone to begin the holiday season, it's best to take food safety precautions," maintains the specialist.



Where's the fire...

By Mike Reeves

A 1984 Chevrolet pickup, belonging to Stan Pierce, was completely destroyed Thursday, Nov. 19, at approximately 6 p.m. The fire, which was believed to have started due to a gas leak, destroyed the interior of the four-door pickup. The fire scene was about 10 miles southwest of Floydada on Farm Road 3111. Nine firefighters and two trucks responded to the call.

A small grass fire one mile west of town was extinguished Saturday afternoon. The fire was on the property of Mrs. Bert Massie. Two trucks and eight men responded.



CAVALRY NEEDS A FEW GOOD MEN AND WOMEN—These members of the 4th Cavalry Memorial Regiment presented a program to interested future members at Lighthouse Electric on Monday, Nov. 12. The 4th Cavalry presented their program to explain what the cavalry does and to recruit members to start a division in Floyd County. Shown here are (left-right) 1st Sgt. Ray Thomas, Private Steve Dowlen, and Captain Ken Olson.

4th Cavalry gives program

The 4th Cavalry Memorial Regiment represented by Sgt. Ray Thomas, Captain Ken Olson and Pvt. Steve Dowlen, presented a program recently, at Lighthouse Electric explaining the organization and how to join.

Those who attended the historical marker dedication near Quitaque will remember the cavalry and their moving tribute to those slain during the Texan Sante Fe Expedition. Dressing in clothing accurately depicting the cavalry under Col. Mackenzie during 1871-1874 and also riding horses equipped with

historically correct tack and supplies, the cavalry wants "people to see what Col. Mackenzie's cavalry looked like and keep history in its proper perspective."

A non-profit organization formed in January 1986, they operate under by-laws and have a board of directors. "We now have 50 members," said Sgt. Ray Thomas.

"To be a mounted member you have to have a certain amount of gear and clothing. It has to be historically correct.

We would rather you not ride dressed just partially accurate."

"This is a family organization," said Thomas. "Possibly half of our members are support members who do not wear uniforms and mount. We welcome ladies to join. If they want to tuck their hair up and ride they are welcome to. Ladies in the past have made dresses of that period, organized occasions and played games from the 1870's."

"We need all kind of support people to help in research, organizing programs and interpretation. It is all volunteer, you only have to put in time that you desire to. Because everyone has other jobs, we try and only schedule events once a month."

"Besides parades we also go to schools and do historical re-enactments. We've even been talked to about doing a movie," said Thomas.

Membership dues are \$30.00 a year for the family the first year and \$25.00 the year after that. Anyone interested in joining should write: Department of Texas 4th Cavalry Regiment, Box 64394, Lubbock, TX 79464.

"We will need to have five to seven people interested to put together a troop in Floyd County," said Thomas.

Local SPHPO clinic

Continued from Page One

Melvin Prado, Director of Health Services, was appointed interim executive director of the organization, replacing Ben Flores who resigned on Monday. Prado will direct the review and evaluation along with Sue Terry, clinic director and the Floydada clinic supervisor, Bryan Springer.

SPHPO wishes to emphasize that Springer, in charge of daily operation of the Floydada facility, is a "family nurse practitioner and is fully qualified and certified" for his position. "Any patient going to SPHPO can be certain that the care they receive will be of the best quality and no one should hesitate to utilize the clinic's service."

PRIMARY CARE

SPHPO was begun in 1973 to provide health care service to low income and migratory residents of rural agriculture areas. The group presently provides primary care for Hale, Floyd, Crosby, Lamb, Castro, Deaf Smith, Bailey and Motley county residents. SPHPO also operates the WIC program in Swisher

and Farmer Counties.

Services provided at the SPHPO clinics include diagnosis and treatment of any medical problem as well as preventative care such as immunizations and well baby services. SPHPO is a vital component in the rural health care system, linking patients to services and specialists in other health care organizations.

Services provided are paid for partially by the patient based on a sliding fee computed from the yearly income and the number of dependents.

Caprock Hospital District

We Care

About you, your family, the total picture of what your needs may be. Personalized care is important. We are specifically designed to care for the needs of the rural communities better with our hospital based Home Care Service.

Services can be paid for by: *Medicare, *Medicaid, Private Insurance, Private Pay, Veterans Administration, Champus.

All billing will be taken care of by Caprock Hospital District Home Care Services.

P.O. Box 540 Floydada, Texas, 79235

For information call: (806) 983-2875, Ext. 101

*Medicare and Medicaid require the patient to be "Homebound"

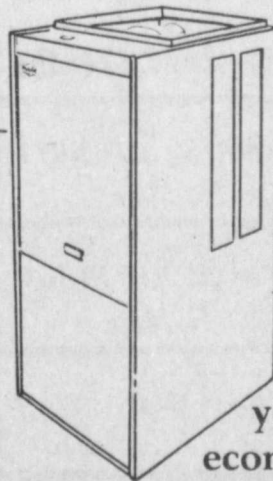
Thanksgiving

Give Thanks



Floyd County Newspapers

Keep your Pulse going when it's cold.



For all the warmth you want in the winter, the Lennox Pulse Furnace can heat your home more economically than ever before. The Pulse produces heat unlike any other furnace, operating at 97% efficiency to squeeze more from your fuel than ever believed possible. This kind of efficiency translates into big savings for you on the bottom line of your heating bill.

We are the independent Lennox dealer that will spend time with you to show you the many advantages of a new PULSE

furnace. You'll also profit from our experience and reliability in doing the job right. Our professional skills and Lennox quality assure you of the best deal you can make on a new heating system.

PULSE

So, call now and find out how to keep your PULSE going when the chill sets in.

HAMMOND SHEET METAL
FLOYDADA, TEXAS
983-2849

LENNOX



HELP WANTED

FLOYDADA NURSING HOME is now accepting applications for qualified LVN's. The positions open now are 11 p.m.-7 a.m. full-time and 6 a.m.-2 p.m. week-end relief. Competitive salary. Please apply in person Monday-Friday, 9 a.m.-5 p.m. Only the best need apply. E.O.E.

tfn

WANTED: Mature, English speaking, woman to care for 2 schoolage children and take care of my home. References preferred. Please send name, phone number, and address to: Floyd County Hesperian, 111 E. Missouri, Floydada, TX 79235. No phone calls, please.

tfn

EASY WORK! Excellent pay! Assemble products at home. Call for information. 504-641-8003 Ext. A-8369.

12-24p

TEXAS MIGRANT COUNCIL is presently accepting applications for the position of health aide. Must have high school diploma or GED and be bilingual. For more information contact Nellie Riojas, 983-5701.

11-26c

TEXAS REFINERY CORP. needs mature person now in Floydada area. Regardless of experience, write A.B. Hopkins, Box 711, Fort Worth, TX 76101.

11-26p

LOST: 22 steers. 22 brand on left rib cage, yellow tag in left ear bearing H.E. Frizzell name. 806-652-3788, Lockney.

dealership log homes

One of America's finest lines, starting at \$13,800. Great earning potential, will not interfere with present employment. Investment fully secured. If you can purchase or mortgage a model home, call Herb Derrick. Toll Free 1-800-346-LOGS.

OLD-TIMER LOG HOMES
442-D METROPLEX DR. NASHVILLE, TN 37211

FARM SERVICES

WE CUSTOM MAKE AND FIT hose for all types of machines.

Brown's Implement
983-2281

tfn

SERVICES

ALL KINDS OF CARPENTER work and roofing. Bill Womack, 983-2760; Joe Womack, 983-3049.

6-25p

PROFESSIONAL PAINTING and wallpaper installation. Quality work, reasonable prices. Holiday special: wallpaper installation \$10.00 per single roll. Janet Hall, 983-5750.

tfn

BABYSITTING IN my home. Monday-Saturday. Up to 6 years old. 983-2448.

12-3p

SEWING - with personalized fit. Hart Fashion Design. 983-5664 after 1 p.m.

tfn

PETS FOR SALE

LAYAWAY NOW for Christmas. AKC German Shepherd puppies. 983-3303 after 7:00 p.m.

11-26p

STAPP BRAKE & ALIGNMENT SHOP
Now Open
120 N. Main
652-2354
Monday-Friday, 8-6.

FRANK'S CABINET SHOP AND REMODELING
1 mile north of town on the Silverton Hwy. First house on left.

"When business is good it pays to advertise; when business is bad you've got to advertise."
Anon.

MISCELLANEOUS

FOR SALE: Used school desks. Call 983-2536.

11-26p

FOR SALE: Full size bed with bookcase headboard, mattress, box springs, dresser. 983-3458.

11-26p

FOR SALE: Antique piano. 983-5771.

12-17p

FOR SALE: Evaporative cooler, used 1 season. Pleasure saddle, 2 bridles, shortbed liner. 983-5818.

11-26p

AUTOMOTIVE

HARD LUCK DRIVERS
Automobile Insurance. Reasonable Rates. Small Down Payment. Monthly Pay...SR22 Filings. Call David Cates. 983-3284 116 W. California

tfn

FOR SALE: 1978 F150 Ford Supercab. 983-3800.

tfn

1970 OLDS CUTLASS Station Wagon, 455 engine, running condition. \$650 cash or best cash offer. Call 652-3318 or 652-3509 after 7:00 p.m.

tfn

MISCELLANEOUS

SPEEDAIRE ELECTRIC: 30 gal., 1 h.p. air compressor. Almost new. Call noon or nights, 983-3816.

LONG DISTANCE SERVICE: Use NTS Communications and save 15%-45%. No service fee if paid promptly. Donna Fullingim, 667-3480 or 667-3661.

tfn

SEE "Chain Saw Willie" in action at the "first weekend flea market" in Lorenzo, TX Dec. 4, 5 and 6, 9 to 5. Booth information: 806-634-5445.

12-3c

MOVING MUST SELL: Kenmore 30 inch electric self-cleaning range, (almond), \$200.00. Two rattan bar stools, used 2 months, \$75.00. 983-5526.

11-26p

FIREWOOD \$110.00/cord or \$60/rick. Delivered and stacked. 983-3051.

11-26p

FOR SALE: Used heaters, all kinds. Open, control heater, and shop heater. LPRNG. Texas Energy Co. 652-2781.

tfn

40 GUNS IN STOCK: Ruger rifles, 22's, 308, 243's, Winchester 30-06; shotguns: pumps, autos, doubles, 12's, 20's, 410's, \$135.00 and up. Pistols: 22's, 38's, 357's, 22 mag. from \$41.95 and up. Norrell Tractor Parts. Buy, sell or trade. (layaway now for Christmas).

11-12c

SHAKLEE DISTRIBUTOR: Nutrition products, environment safe cleaners, cosmetics, and personal care products. Box 404, 79235, 983-5664.

1-8c

Farmers Insurance Sam A. Spence
111 B. East Missouri
983-2881

PAINTING
Sheet Rock Repair
Bed-Tape-Texture
Acoustical, Ceilings
DALE GRIFFIN
983-3915

Deadline for placing classifieds is 3 p.m. on Tuesday. All classified advertising must be paid in advance.

STORAGE SPACE
West Texas Mini Storage
c/o Assiter Insurance
206 W. California
983-2511

CARS TRUCKS
Ken's Car Shop
25 years experience
(806)983-2400
Night: 983-3106
211 S. Wall

CLASSIFIED ADS PAY OFF!

Portable disc rolling
Lawson Farm Supply Inc.
Floydada 983-3940

Windshields up to 40% off and a \$50 rebate on most American made cars and trucks.
Stapp Body Shop
652-2354 or 652-3429

Jack Marley
General Carpentry

REMODELING, PAINTING AND ROOFING
983-2400
1006 S. 4th

Looking For The Perfect Gift?

How about a one year subscription to the Floyd County Hesperian?

Rates:
Floyd and surrounding counties - \$15.00
Other counties: \$17.00
Out of state: \$18.00

BISHOP PEST CONTROL

Institutional and household pest control
Termites: slab or pier and beam structures.
Crickets & Roaches
Fleas & Ticks
Now applying dormant oil.

Mike Bishop, M.S.
(806)983-2198 or 983-2870
TX. Bus. Lic. 5021
TPCL Lic. 26855



Search no more discover it in the **CLASSIFIEDS**
The quick and easy way to buy and sell.

FOR RENT

THREE BEDROOM APARTMENT for rent. Stove and refrigerator furnished. \$125 a month plus deposit. Call Lockney, 652-2435.

tfn

FURNISHED ONE BEDROOM efficiency apartment. Individual only. \$150 a month plus deposit. Call 983-2930.

tfn

THREE BEDROOM house for rent. \$300.00 a month plus deposit. 983-5771.

12-17p

MOBILE HOMES

ABANDONED HOMES. Take over payments on 2 and 3 bedroom homes. Qualify by phone 806-381-1352, call collect.

tfn

PERSONALS

CHOLESTEROL TOO HIGH? Lower it with Heart-Flo fish-oil capsules. Available Thompson Pharmacy.

12-10p

ALTERNATOR & STARTER REPAIRS
Norrell Tractor Parts
215 S. Main 983-3417



Script Printing & Office Supply
*Commercial Printing
*Office supplies & Furniture
*Business Machines
108 S. Main Floydada 983-5131

ECONOMICAL STORAGE TRY BARKER'S
Jewel Box-Mini Storage
and save your time and money.
Phone 652-2642
Corner Main & Locust
Lockney, Texas.
BARKER BUILDING

ARE YOU PUTTING ME ON?
MAKE THE CONNECTION FOR SAFETY!
A MESSAGE FROM THIS NEWSPAPER

BOND LANDS, INC.
107 S. 5th Street
806-983-2151
Dale Goen, Broker
General Land Services, Sales, Leases, and Management

HOUSES

HOUSE FOR SALE: To be moved. Two bedroom, living, dining-kitchen, bath, attached garage. Birch cabinets, hardwood floors. Lots of storage. Very good condition. Call Winona Jackson 983-5324, after 5:30 p.m.

11-26p

3 BEDROOM, 2 BATH, double carport, recently FHA approved, selling below appraised value; \$25,000. Larry S. Jones Real Estate, 983-5553.

11-26p

AFFORDABLE 2 BEDROOM, 1 bath on E. Hallie, fenced yard, \$8,000.00. Larry S. Jones Real Estate, 983-5553.

11-26c

3 BEDROOM, 2 BATH, brick home, paneled den with fireplace, storm shelter; \$50,000. Larry S. Jones Real Estate, 983-5553.

11-26c

2 BEDROOM, 1 BATH in good condition, storm windows; \$10,000. Larry S. Jones Real Estate, 983-5553.

11-26c

JUST PAINTED 2 bedroom with basement on corner lot, excellent location; \$29,950. Larry S. Jones Real Estate, 983-5553.

11-26c

FOR SALE: Roomy, 3 bedroom house near Duncan and jr. high with attached apartment. Call 983-3088 or 983-5112. Priced to sell.

tfn

FOR SALE: 2 bedroom, 1 1/2 bath, concrete cellar. 416 W. Jackson. 983-2756.

10-29p

FOR SALE by owner: Brick home, basement, fireplace, 2 bath, double garage. 652-3392.

tfn

FOR SALE: Exceptionally nice 2 bedroom, 1 bath house on corner lot in good neighborhood. Refrigerated air, gas heat, appliances included with house if desired. 400 sq. ft. combination garage/shop, well kept yard. \$22,000. Shown by appointment only. 983-2401.

11-26c

LANDLEVELING DOESN'T COST. It pays. Landleveling, terracing, pump pits, benching. Call 983-2646 or 983-5465. Dewie Parson.

tfnc

FOR SALE

PRICED REDUCED on completely renovated home at 523 W. Virginia St.; new kitchen cabinets and bookcase; new electric, central air and heat, and utility lines; large screened-in back porch, automatic sprinkler system, privacy fencing, attached garage with electric door. 983-5556, 983-2864, or 983-2388. \$47,500.

ADAMS WELL SERVICE

Complete irrigation service
5 years warranty, domestic pump
720 N. 2nd
983-5003

PUBLIC NOTICES

A regular meeting of the board of directors for Floyd County Central Appraisal District will be held on Thursday, December 3, at 9:00 a.m. in the Appraisal Office Board Room, Room 107, County Courthouse.

11-26c

CITATION
CITY OF FLOYDADA
114 W. VIRGINIA, P.O. BOX 10, FLOYDADA, TEXAS 79235

TO: L.A. (Bob) Campbell

PROPERTY DESCRIPTION
Lot 7-8, Block 54, Original Town of Floydada

Frank Scott Allen

North Part of Lots 23-24-25, Block 71, Original Town of Floydada

Notice is hereby given to the above property owners that it has been determined that the above described property is being kept and maintained in violation of Ordinance No. 622 of the City of Floydada, Texas.

The violations of Ordinance No. 622 found to exist are one or more of the following as relates to the building and structures situated on the premises in that said buildings and structures are:

1. Damaged.
2. Decayed.
3. Delapidated.
4. Unsanitary.
5. Have been disconnected from utilities for more than 60 days and have been unoccupied.

The foregoing matters constitute a serious threat to the well-being of the public of Floyd County, Texas.

Notice is hereby given that a hearing on this citation is set before the City Council on December 8, 1987 at 7:30 P.M. at the City Hall of the City of Floydada, 114 W. Virginia St., Floydada, Texas. At this hearing the property owners will be required to show why they are not in violation of the ordinance as set forth above and whether or not such buildings or structures situated on the premises is vacant and dangerous. The hearing shall be before the City Council, and upon a finding that there is a violation of such ordinance as set forth above and that said buildings or structures are vacant and dangerous, appropriate orders may be entered by the City Council, which may require the demolition and clearing and removing of the buildings and structures from the above specified premises, and that the cost of removing the same may be charged to the property owner and secured by a lien upon the premises in accordance with Ordinance No. 622.

DATED: Nov. 23, 1987

(s) Gary Brown, City Manager
City of Floydada, Texas

11-26, 12-3c



Coca Cola
\$1.49
16 oz. 6 pack No Return Bottles



Tostitos
REG. \$2.69
\$1.79



BORDEN'S WHIPPING Cream
8 OZ. CTNS.
3 \$1
FOR



BETTY CROCKER ASSTD. Cake Mix
18 OZ. BOX
69¢



Pampers
CONVENIENCE BOX
\$9.79



MAXWELL HOUSE Coffee
1 LB. CAN
\$1.99
ALL GRINDS



CRISCO
REG./BUTTER SHORTENING
3 LB. CAN
\$2.09



BIRDSEYE REG./X-CRMY. Cool Whip
8 OZ. CTN.
77¢

GROCERY SPECIALS

50% OFF LABEL
CASCADE LIQUID 60 OZ. BTL. **\$1.99**

40% OFF LABEL-DISH DET.
DAWN LIQUID 22 OZ. BTL. **\$1.07**

HEAVY DUTY
REYNOLDS FOIL 18x37 1/2 ROLL **\$1.07**

30% OFF LABEL
MAZOLA OIL 48 OZ. BTL. **\$2.19**

ALL PURPOSE FLOUR
GOLD MEDAL 10 LB. BAG **\$1.67**

PINK GRAPEFRUIT
TEXSUN JUICE 46 OZ. CAN **\$1.09**

Nestle's BAKING BAR 8 OZ. BAR **\$1.37**

BUTTERSCOTCH/MILK CHOC./CHOC. CHIP
NESTLE'S MORSELS 12 OZ. BAG **\$1.77**

NESTLE'S MK. CH./SEMI SW./PR. WH.
TREASURES 10 OZ. BOX **\$1.97**

NESTLE'S
MINT-MORSELS 10 OZ. BAG **\$1.77**

NESTLE'S
BAKING COCOA 8 OZ. CAN **\$1.37**



LYSOL Disinfectant Deodorizes Cleans

DISINFECTANT
LYSOL SPRAY 6 OZ. CAN **\$1.47**

LYSOL LIQUID 5 OZ. BTL. **87¢**

LYSOL TOILET BOWL CLEANER 16 OZ. BTL. **97¢**

LYSOL TOILET BOWL CLEANER 12 OZ. BTL. **\$1.27**

LYSOL LAUNDRY SANITIZER 16 OZ. BOX **\$1.37**

CALIFORNIA
CRISP CELERY U.S. NO. 1 SWEET STALK **19¢**

POTATOES LB. **19¢**

FRESH OCEAN SPRAY
CRANBERRIES 12 OZ. PKG. **59¢**

CALIFORNIA FRESH
BROCCOLI LB. **59¢**

U.S. NO. 1 SWEET SPANISH
YELLOW ONIONS LB. **19¢**

CALIFORNIA FRESH
GREEN ONIONS 4 BUNCHES **\$1.00**

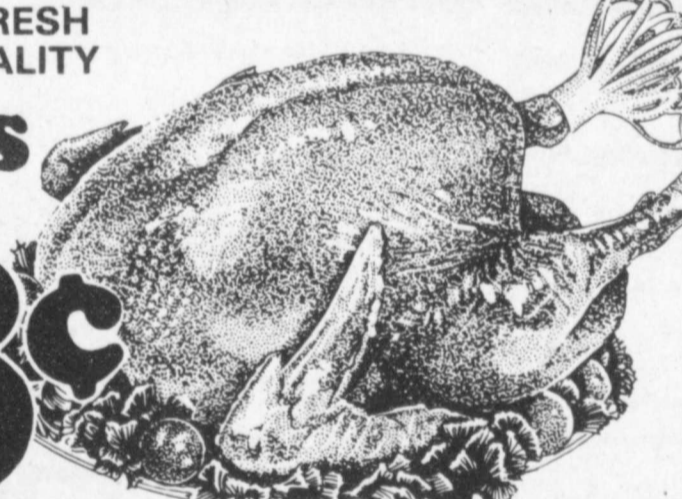
Happy Thanksgiving

SHOP YOUR PAY-N-SAVE FOOD STORE FOR BUTTERBALL TURKEYS, TURKEY BREASTS AND MANY OTHER TRADITIONAL THANKSGIVING NEEDS.


WE WILL NOT INTENTIONALLY SELL ANY GROUND BEEF UNDER 80% LEAN & WE PLEDGE TO MAKE OUR GROUND BEEF AT LEAST TWICE A DAY.

U.S.D.A. GRADE A SHURFRESH SELF-BASTING FINEST QUALITY

Turkeys
16 LBS. AND UP
WITH TENDER TIMER
48¢
LB.



WRIGHT'S HICKORY SMOKED FULLY COOKED
WHOLE HAMS 14 TO 20 LBS. AVERAGE LB. **\$1.49**



MEAT SPECIALS

U.S.D.A. GRADE A SHURFRESH

BAKING HENS 4 TO 6 LBS. AVERAGE LB. **69¢**

WRIGHT'S HICKORY SMOKED SLICED **\$1.49**

HORMEL'S SUPER SELECT FRESH BUTT **\$1.59**

PORK ROAST LEAN TRIM LB. **\$1.59**

FRYER CHICKEN LIVERS OR **69¢**

GIZZARDS LB. **69¢**

SHURFRESH WHOLE HOG REG. OR HOT **\$1.59**

PORK SAUSAGE 2 LB. ROLL 1 LB. ROLL **\$1.59**

WRIGHT'S HICKORY SMOKED HAMS FULLY COOKED **\$1.49**

SHANK PORTION COOKED LB. **\$1.49**

WRIGHT'S HICKORY SMOKED HAMS FULLY COOKED... LB. **\$1.59**

BUTT PORTION COOKED... LB. **\$1.59**

LOUIS RICH FULLY COOKED BONELESS **\$1.89**

TURKEY HAMS 1 1/2 TO 5 LBS. AVERAGE LB. **\$1.29**

FULLY COOKED 10 TO 12 LB. AVG. **\$1.29**

SMOKED TURKEYS... LB. **\$1.29**



DEL MONTE WHOLE GREEN BEANS 16 OZ. CAN **49¢**

DEL MONTE CUT REG./NO SALT GREEN BEANS 2 16 OZ. CANS **87¢**

DEL MONTE FRENCH CUT GREEN BEANS 2 16 OZ. CANS **87¢**

DEL MONTE C.S./W.K. REG./NO SALT GOLDEN CORN 2 17 OZ. CANS **87¢**

DEL MONTE REG./NO SALT SWEET PEAS 2 17 OZ. CANS **87¢**

DEL MONTE REG./NO SALT SPINACH 2 15 OZ. CANS **87¢**

FROZEN FOOD & DAIRY

BORDEN'S EGG NOG 32 OZ. CTN. **95¢**

BORDEN'S HOMO. MILK 1/2 GAL. CTN. **\$1.09**

BORDEN'S ICE CREAM 1/2 GAL. CTN. **\$1.69**

BORDEN'S DIPS AND SOUR CREAM 2 8 OZ. CTN. **\$1.00**

SUNNY DELIGHT FLORIDA
CITRUS DRINK 64 OZ. JUG **\$1.09**

MICROWAVE CRINKLE CUT
ORE IDA POTATOES 12 OZ. BAG **99¢**

BANQUET REGULAR OR HOT & SPICY
FRIED CHICKEN 2 LB. BOX **\$2.79**

VAN DE KAMP'S FISH STICKS 24 OZ. BOX **\$2.99**

MRS. SMITH'S BAKING PUMPKIN PIE 26 OZ. BOX **\$1.67**

HEALTH & BEAUTY

REG. OR NO DROWSINESS
SINAREST TABLETS 20 CT. PKG. **\$2.07**

SINAREST SPRAY 5 OZ. BTL. **\$2.07**

GOLDEN RIPE Bananas 4 LBS. **\$1**

WASHINGTON RED DELICIOUS EX.-FANCY LARGE SIZE Apples 3 LBS. **\$1**



PRICES EFFECTIVE NOVEMBER 23 - 28, 1987
DOUBLE STAMPS ON WEDNESDAY!
(EXCLUDING CIGARETTES)
DOUBLE COUPONS ON SATURDAY!
(RULES POSTED IN STORE)

Pay-n-Save
QUALITY AND SERVICE

WE RESERVE THE RIGHT TO LIMIT QUANTITIES

Floydada Lockney

Betty Blue



1. COMPACT SPACE SAVER™ ELECTRONIC DIGITAL CLOCK RADIO
2. AM/FM STEREO HEADSET RADIO
3. STEREO CASSETTE PLAYER WITH LIGHTWEIGHT HEADPHONES
4. AM/FM PERSONAL PORTABLE RADIO