

Brownfield, Texas

SEAGRAVES BOY ON DUTY IN KOREA

With the 25th Infantry Div. in Korea—Army Pvt. Eddie L. Francis, son of Mrs. Cenle Francis, Seagraves, Texas, recently joined the 25th Infantry Division in Korea. The 25th has been in Korea

longer than any other American division. It entered the fighting in July 1950 shortly after the Communist attack on South Korea. Private Francis was formerly stationed at Fort Hood, Texas. Before entering the Army in January 1952, he attended the Seagraves High School and was employed as a cook.

If Your Diet Is Deficient in Vitamin B
this great new formula can help you build
RICH RED BLOOD
...help you curb diet deficiency symptoms like

- UNDERWEIGHT**
- WEARINESS**
- CONSTIPATION**
- FATIGUE**
- BACKACHE**
- NERVES**

Do you sometimes wonder what in the world can be the matter with you? You know that you have no diseases, no infections... yet you're always "out" on your feet, constantly over-fatigued, nervous, weak, irritable, cheerless. (This is especially true of older people.) Well, scientists have learned that such a condition may be due to the simple fact that you do not get enough B-Vitamins in your diet.

BEXEL SPECIAL FORMULA MAY DO WONDERS FOR YOU
Naturally it is wise to consult your doctor, since such a condition may be due to other causes. But if mild Vitamin-B and Iron deficiencies are the cause of your bodily distress,

then a great new scientific discovery, Bexel Special Formula, may do wonders for you! It may be exactly what you need for glowing, vibrant, good health. Everybody knows the importance of Iron in your diet to help you build RICH, RED BLOOD. Well, just ONE capsule of Bexel Special Formula (that's all you take a day) contains 5 times the minimum daily requirement of both Iron and Vitamin B. Also Choline, Inositol and Liver in supplementary quantities!

YOU MUST FEEL BETTER OR YOUR MONEY BACK!

Try Bexel Special Formula for just 30 days. If you don't feel better... definitely, noticeably better... we'll refund your money without question!

So today, get Bexel Special Formula B-Complex Capsules... product of McKesson & Robbins.

Facts About Cancer
By Mrs. Wayland Parker
Laywoman for Terry County
Cancer Society

The American Cancer Society's program to control cancer is needed, not only because the cause and cure of cancer must be found, but because thousands die needlessly each year. The fact is, that among those who get cancer in a given year: 25% get treatment in time to recover—25% delay treatment too long, and die needlessly—50% die because research has not as yet discovered enough about the cause and cure of cancer to save their lives.

The society sponsors a program of education and service to cancer patients which saves lives.

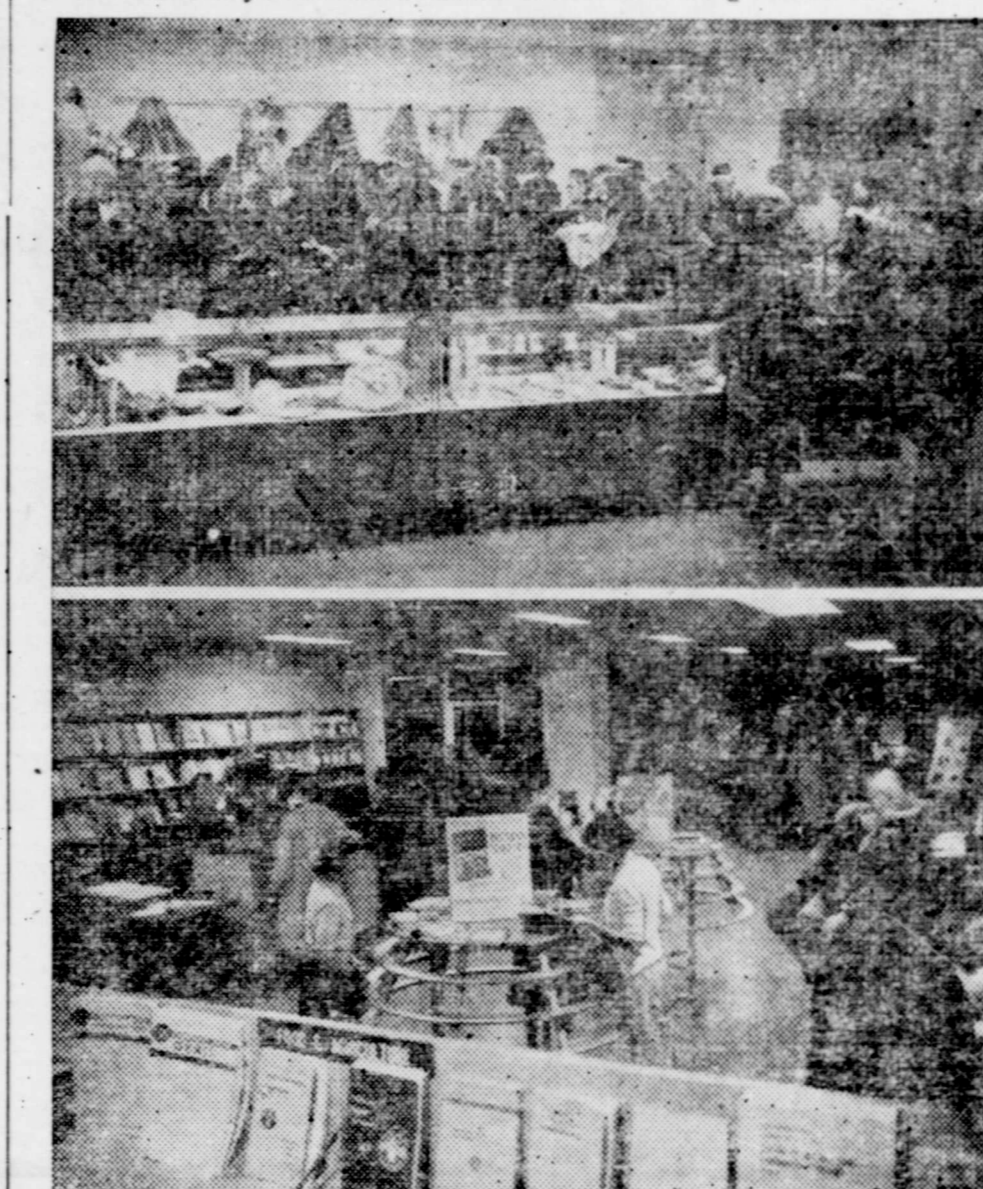
Individuals engaged in the fight against cancer, and everyone is—must realize that it is necessary to

have a physical examination at least once a year, twice a year for women over 35. They must know the danger signals of cancer and go to a doctor immediately should any one of them appear. The danger signals are: 1. Any sore that does not heal. 2. A lump or thickening in the breast or elsewhere. 3. Unusual bleeding or discharge. 4. Any change in a wart or mole. 5. Persistent indigestion or difficulty in swallowing. 6. Persistent hoarseness or cough. 7. Any change in normal bowel habits.

Cancer is an uncontrolled growth of cells and the time to catch the cancer is before the growth has spread. But most important to remember, is that cancer can be cured, if treated in time, by surgery, x-ray or radium.

A modern miracle is that our ancient gadgets work as well as they do.

A Gift Center and a Bookshop at U.N.



The U.N. Gift Shop (above) does a thriving business selling art and handicrafts from Member States all over the world. When it opened it sold a six-week stock in three days. The Book Shop (below) makes available publications of the U.N. and its agencies.

Sport Car Races To Be Held In Austin

Governor Allan Shivers accepts honorary chairmanship of the Lone Star National Sports Car Races from Colonel C. T. Edwinton, Commanding Officer, 42nd Air Division, Bergstrom Air Force Base, Austin, Texas. These unusual sports races, staged by Sports Car Club of America, will be run April 12th on Bergstrom's runways as a benefit for their Airmen Living Improvement Fund.

In accepting the honorary chairmanship, Governor Shivers said: "It is a pleasure to welcome to Texas, to Austin and to Bergstrom Air Force Base the members of the Sports Car Club of America. The presence of their families, guests and fans is also heartily appreciated."

"The fact that profit from these races will go to improve living conditions for Bergstrom airmen and for other worthwhile projects is an added incentive for all of us to support the program."

"I know that all of you—visitors from other states and from other communities in Texas, and our Austin friends as well—will enjoy the thrilling events in store for you at the Lone Star National Sports Car Races," the Governor added.

Cotton Producers Asked To Study Present Situation

College Station—Cotton supplies have now reached the point where if another large crop is produced in 1953, the carry-over could further depress markets and bring back control programs. Cotton producers are, therefore, being urged to study the present situation and plant in accordance with the expected demands for their product.

It appears now, says J. D. Prewit, associate director for the Texas Agricultural Extension Service, that the demand for raw cotton in the United States this season and next will be only slightly less than used last season, however, exports are expected to drop at least 1 1/2 million bales below last season and maybe even lower next season. The carry-over on August 1, 1953, is expected to be, says Prewit, about 4.3 million bales, which will be 1.5 million bales or 55 percent more cotton than was on hand a year earlier.

Cotton advisory groups have met with Secretary of Agriculture Benson and after careful study and consideration of all factors, the Secretary has asked the nation's cotton producers to make an 18 percent reduction in their 1953 plantings as compared with those for last year.

This reduced acreage should produce between 12 and 12.5 million bales of cotton. Such a crop would meet the estimated domestic and export demands and leave enough surplus to take care of the reserve needs, points out Prewit.

Prewit advises Texas cotton producers to think in terms of balancing cotton with other farm crops and pastures. He points out that under the 7-step cotton program, fitting cotton into a balanced farming program is the first recommended step in making production of the fleecy staple more profitable. The present situation, he explains, calls for this balance.

Unusually heavy demands for feed caused primarily by the drought and to some extent by increased livestock numbers, has reduced the amount of feeds and forages to a very low level and the acres left out of cotton this year could be profitably used, says Prewit, for producing grain and forage for rebuilding the supply of these needed feeds.

Consideration, he adds, should also be given to increased plantings of soil improving crops in the areas where spring and summer planted legumes are adapted. Temporary pastures for livestock or for the production of hay crops might also be used on the diverted acres.

It all adds up, says Prewit, to this fact: The nation needs only 12 to 12.5 million bales of cotton this year and the shift to other crops will pay in two ways. A smaller 1953 national crop should bring in more net profit and the grain, forage or soil improving crops grown on the diverted acres will help rebuild depleted feed supplies and the soil building crops will aid in keeping future production high.

Do You Want Roads?

Last week in Austin a dozen different groups appeared before the State Highway Commission and asked for road buildings projects in their communities that would cost millions.

About all the department could do was lend a sympathetic ear.

It's an old story. There just isn't enough money to get the job done. The problem is simple. Too many automobiles are wearing out the highways before new and adequate ones can be built.

The solution is simple, too. Just provide more funds. But that is not as easy as it sounds. In this day when the present tax structure has reached an all time high there is a justified call for reduction. The legislature, in studying its appropriations for the next biennium, has wisely said it will follow the desires of the people and not raise taxes.

Gov. Allan Shivers also has spoken out against any new taxes, except the proposed one cent motor fuel tax for highway work. He feels, as we do, that this is a self-effacing amount. In other words we are now paying for good roads in another way: the wear and tear on automobiles, time loss and even life and property loss with inadequate highways.

This has been the position of the Texas Good Roads Association in calling attention of highway needs to the people of Texas.

What then should the legislature do? There is but one thing it can do. If our people are sincere in their road needs; if they have carefully studied these needs and have them to the minimum, then we should tell our members of the legislature how we feel about it. There should be no pressure, just plain horse sense in the support of a program that will provide the funds necessary to give us the roads we have to have.

COTTON MARKETS DEPENDS ON TWO FACTORS

Austin.—The U. S. cotton market's stability will remain uncertain until the federal government makes more-definite statements regarding enforced cotton planting allotments and foreign policy, Dr. A. B. Cox, University of Texas cotton marketing expert, says.

There is a general feeling in the cotton industry that many farmers would like to reduce cotton acreage this year but are wary of prospective enforced government allotments which would cause excessive 1954 acreage reductions, he points out. The new Administration's evolving foreign policy could change foreign trade prospects, Dr. Cox adds.

Geo. W. Nicholson will leave this weekend for Weatherford for a visit with his brother and sister and to attend a cemetery working out from there a few miles, at Clark, where his parents are buried. He also plans to do some fishing while away.

PMA NEWS

By Loe Miller

Question: When will a decision with respect to 1954 cotton acreage allotments be made?

Answer: The Secretary of Agriculture is required by law to make a decision on 1954 cotton allotments and marketing quotas not later than October 15, 1953.

Question: Will a referendum of cotton farmers be held to determine if they are in favor of or opposed to quotas on the 1954 crop of cotton?

Answer: Yes. If the Secretary finds that the supply of cotton for the 1953-54 marketing year exceeds the normal supply of cotton, he is required by law to proclaim such a fact and call for a referendum of cotton farmers. The referendum for 1954 would be held on or before December 15, 1953.

Question: Who is eligible to vote in this referendum if one is held in the fall of 1953?

Answer: Each person who shared in the production of the crop of cotton or the proceeds thereof during the 1953 calendar year.

Question: Will all farmers be notified of 1954 farm cotton allotments prior to the date of the referendum?

Answer: Yes. It is the policy to

notify all farmers of allotments and quotas in advance of any referendum conducted by the Secretary of Agriculture.

Question: How many farmers must vote in favor of marketing quotas in the 1954 crop of cotton before such quotas would be in effect?

Answer: More than two-thirds of all cotton farmers who vote in the referendum must vote in favor of quotas on the 1954 crop of cotton before the program could be put into effect. Thus, in effect, farmers themselves decide whether or not cotton production shall be reduced to bring the supply more nearly in line with demand.

Question: How will the cotton price support program be affected by the result of the referendum?

Answer: If more than two-thirds of the cotton farmers voting in the referendum favor quotas on the 1954 crop of cotton, the price of the 1954 crop will be supported at 90 percent of the effective parity price to cooperators (those who comply with farm acreage allotments).

If more than one-third of the farmers voting in the referendum oppose quotas, the allotment and marketing quota program would not be in effect for 1954 and the price support would be at a level equal to 56 percent of the effective parity price for cotton.

WELLMAN CHURCH OF CHRIST
S. A. RIBBLE, Minister

Sunday Morning Worship 10:00 A. M.
Evening Services—Bible Study 8:30 P. M.
Evening Worship 7:00 P. M.
Wednesday Night Bible Study 7:00 P. M.

--The churches of Christ salute you. Rom. 16-16

LORD'S DAY SERVICES

Bible Study 9:45 a.m.
Preaching 10:45 a.m.
Lord's Supper 11:45 a.m.
Evening Classes 6:00 p.m.
Evening Worship 7:00 p.m.

OTHER SERVICES

Tuesday Ladies' Class - 10:00 a.m.
Wed., mid-week Service - 8:00 p.m.



The church with no creed but Christ, no book but the Bible.

Southside Church of Christ
701 Old Lamesa Road



New and different!
The '53 Studebaker!

Order a sensational '53 Studebaker now

Excitingly styled sedans, coupes and hard-tops in colors galore! All down to earth in price!

Come in and find out how little it costs to buy a big, distinctive '53 Studebaker. The dramatically styled new Champion is one of America's lowest price cars—and the superbly powered Commander V-8 is also right down to earth in price. Don't wait too long to order. Everyone wants a new Studebaker it seems. All Studebakers are stand-out gas savers.

All models offer Studebaker Automatic Drive or Overdrive—and glare-reducing tinted glass—at extra cost.

WEST TEXAS MOTORS Brownfield, Texas

220 S. 5th

BIG FOOD VALUES

SPECIALS FOR FRI. & SAT. APRIL 10-11

CORN Mayfield—No. 303 Can 15c	Bunch RADISHES 5c
1 lb. Box quarters OLEO 21c	Peerless, 25 lb. Sack FLOUR \$1.55
Tall Can CARNATION MILK 15	Stockton, Bottle CATSUP 15c
Nice Heads LETTUCE lb. 12 1/2 c	SALMON Honeyboy—Tall Can 39c
Round STEAK lb. 89c	Longhorn CHEESE lb. 55c
Nice FRYERS lb. 59c	Cello pkg. FRANKS lb. 59c

MARKET

—DIAL 3161—

HENRY CHISHOLM GROCERY

SOUTH SIDE OF SQUARE WE DELIVER BROWNFIELD, TEXAS

HOW FAR YOUR FOOD DOLLAR GOES HERE!

METROPOLITAN OPERA TO VISIT DALLAS



Above, Rise Stevens and Robert Merrill. Below, Cesare Siepi and Margaret Harshaw

Dallas civic-sponsored presentation of the Metropolitan Opera Company May 8 to 10, in State Fair Auditorium, will offer four performances sung by world-famous artists. The schedule will be: Friday evening, May 8, Mozart's "Don Giovanni," with Cesare Siepi, Regina Resnik, Delia Rigal and Salvatore Baccaloni; Saturday matinee, May 9, Verdi's "Rigoletto," with Robert Merrill, Richard Tucker and Roberta Peters; Saturday evening, May 9, Strauss' "Der Rosenkavalier," with Rise Stevens, Astrid Varnay, Hilde Guden, John Brownlee, Lorenzo Alvaro and Kurt Baum; Sunday matinee, May 10, Wagner's "Tristan and Isolde," with Margaret Harshaw, Blanche Thebom, Ramon Vinay and Sigurd Bjoerling. The Dallas Grand Opera Association has opened offices at 1315 Elm Street for receipt of reservation orders, Arthur L. Kramer, Jr., association president, announced.

Texas Trends

dallas fashion center



Justin McCarty of Dallas gives a gossamer sheer voile a dressy look with rows and rows of fine shirring for the bodice, a full, softly gathered skirt. A nosegay of summer flowers accent the fresh look. Toast, navy, gray, brown, and black. Sizes 8 to 18. To retail about \$28.00.

GOOD HEALTH



Answer to Question No. 1: Health insurance is the method by which millions of Americans protect themselves today against the costs of serious illness or accident. Since most families and individuals are not themselves able to cope with the financial burdens of serious illness which requires hospitalization, surgery or medical care, health insurance spreads the costs (in the manner that automobile or fire and theft insurance do) over many people at rates which most individuals and families afford.

Answer to Question No. 2: Not entirely. Removal of enlarged diseased tonsils reduces the likelihood of infection, and makes sore throat less likely. Removal of such tonsils takes away the already infected area, and lessens mouth-breathing and undesirable later complications.

Answer to Question No. 3: Yes, it is a very valuable food. Pound for pound it has about the same protein and vitamin and calcium value as meat. Pound for pound it has less calories (weight-gaining qualities), because it is low in fat. Salmon has slightly more calories than other fish. Salt-water fish is an excellent source of food iodine. Certain fish oils (such as cod liver oil) are rich in vitamins A and D and are used extensively in medicine.

(Copyright 1953 by Health Information Foundation)

Spring Cleaning For Outboards



If you want your outboard motor in tip-top shape for the first big day afloat, use this rig to test performance after you've completed the off-season overhaul and lubrication. Attach your motor securely to the rim of a sturdy Wheeling ash barrel, full of clean water, and give her a backyard spin to be sure carburetor, plugs and points are set properly for smooth, peak-power operation.

GOOD HEALTH



Answer to Question No. 1: A family doctor is your protection when illness or accident strikes. Caring for the members of your household over the years, he knows your "health history" and his skill is thereby supplemented by personal knowledge of you and your family. He is your best friend and advisor and will respond to your call. A good health measure is for families and individuals to acquire a family or personal doctor if they don't already have one.

Answer to Question No. 2: It is important that the public health service in every community check on the health of food handlers in restaurants, groceries and butcher shops, for food handlers can readily transmit diseases, such as the common cold, and more serious diseases. Besides requiring periodic physical examinations, some communities provide instruction courses in sanitation for workers. These courses help food handlers to protect themselves and their customers against disease, as well as to care for food to prevent spoilage.

Answer to Question No. 3: Yes, many non-profit health insurance plans have arrangements for individuals to join. Commercial companies have available a variety of health insurance policies for individuals. Of course, the premiums for individual policies are higher than those for group plans.

(Copyright 1953 by Health Information Foundation)

Abbott and Costello Go For Mars



Orville (Lou Costello) and his pal Lester (Bud Abbott) land from a space ship to find themselves in a strange new world in this scene from their latest picture, "Abbott and Costello Go To Mars." What are they looking for? Probably a Mars candy bar. This new space comedy motion picture was produced by Universal-International and soon can be seen at your local theatre.

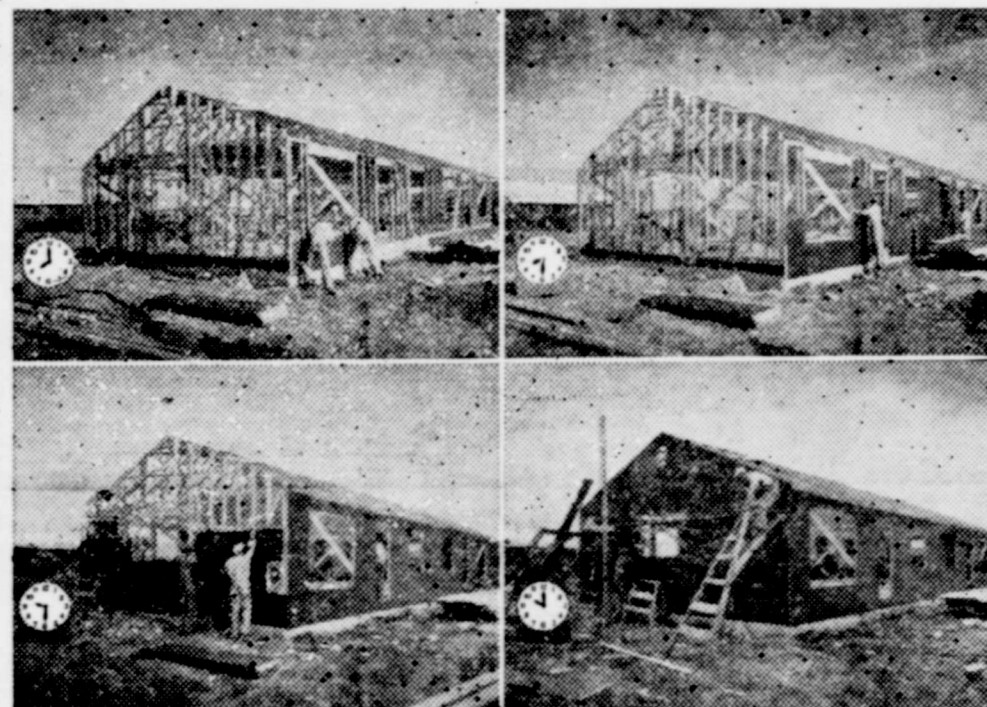
Abbott and Costello were recently cited by the Humor Societies of America for giving the nation the most snickers during the past year. The Snickers Awards were presented to the comedians by the Snickers candy bar, a product of Mars, Inc.

Install Sheathing Yourself

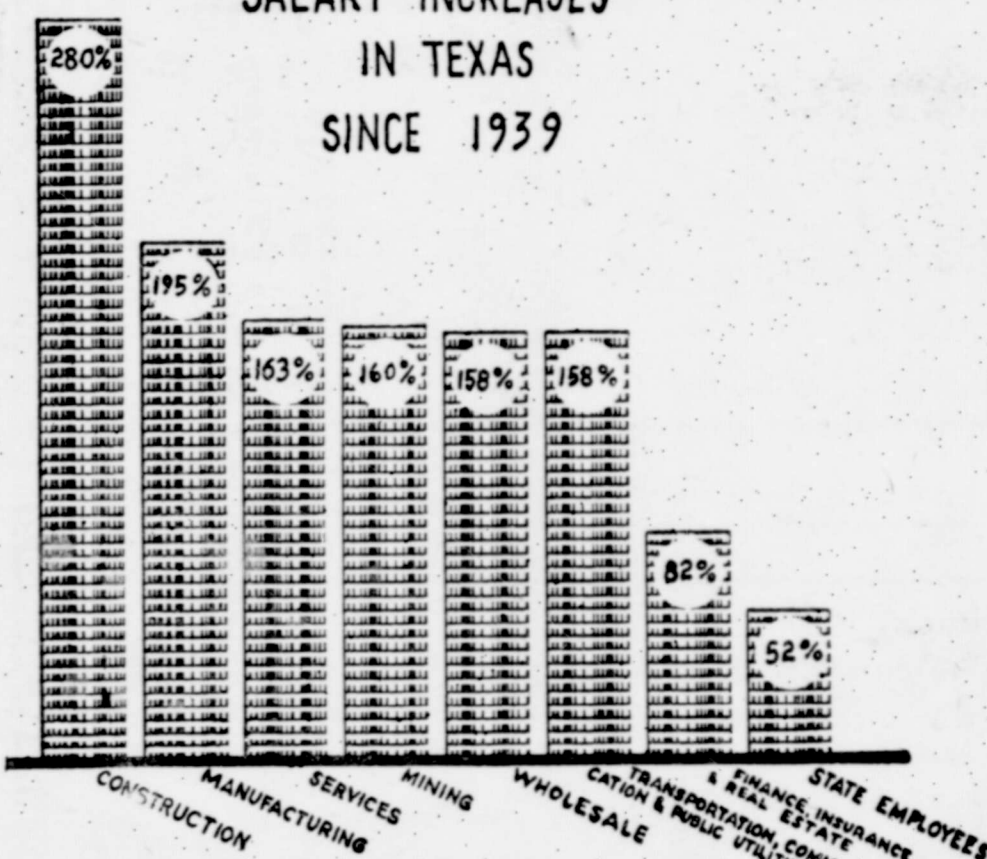
from SMALL HOMES GUIDE

A current trend in American home building is toward the homeowner building part or all of his house himself. This is something for every family who wants their own home but feels they can't afford it to consider.

One thing the homeowner can do easily is install sheet sheathing. Starting at eight in the morning, we follow the progress of a four-man team (two out of sight) for the entire perimeter of a 1-story house. The job is finished and the scaffolding coming down by ten. Material used here was standard gypsum sheathing.

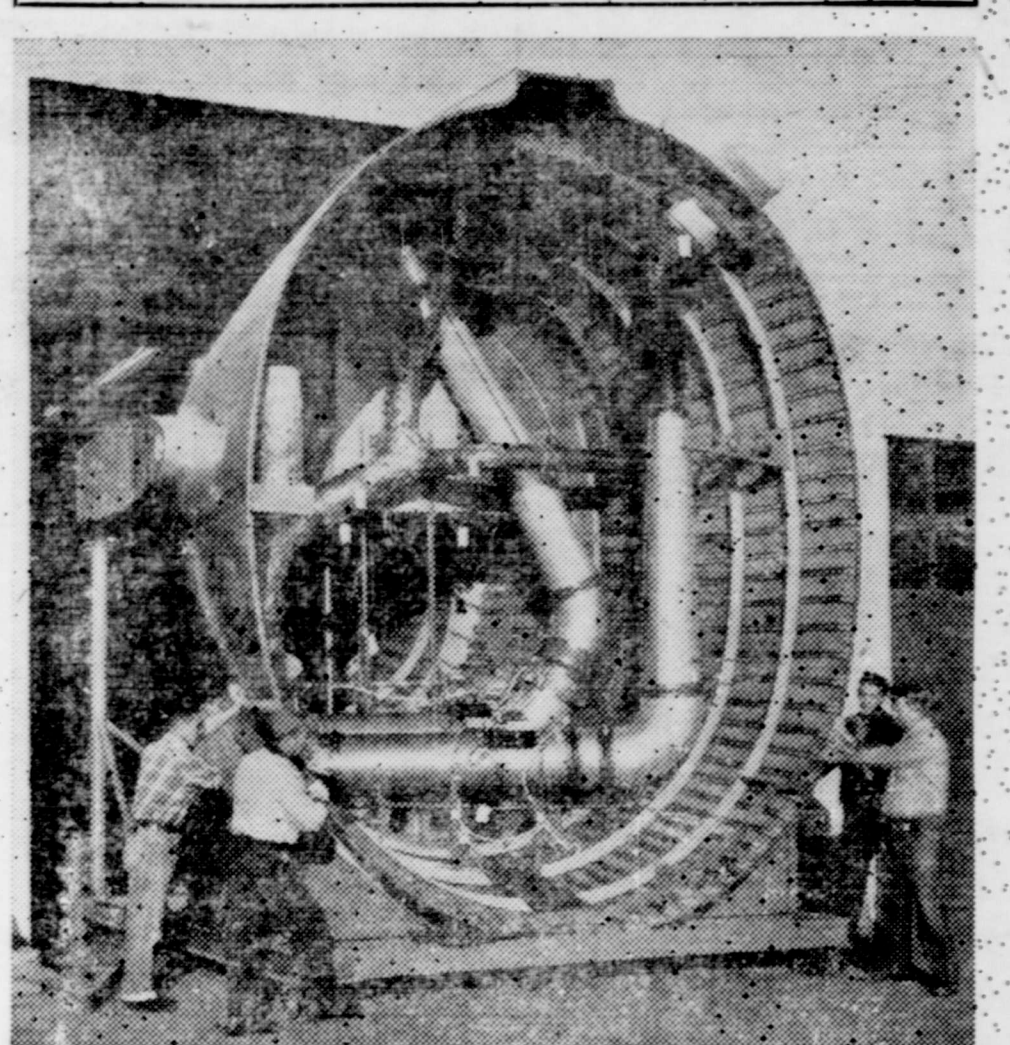


SALARY INCREASES IN TEXAS SINCE 1939



SOURCE: "TEXAS LABOR MARKET" AND STATE COMPTROLLER FOR STATE EMPLOYEES WEIGHTED AVERAGES

GIANT PLANE DE-ICER



Los Angeles—Enough heat to warm a dozen six-room homes is produced in this aircraft tail stub assembly, shown being trundled out of the Chrysler Motors California Plant at Los Angeles for shipment to the Long Beach, Calif., Plant of Douglas Aircraft. The two heaters in this section of the Douglas Globemaster C-124 transport plane de-ice the tail surfaces and warm the interior of the giant craft, which has a capacity of 200 fully equipped troops or 76,000 pounds of cargo. Chrysler Corporation's Los Angeles Plant makes wing, tail and fuselage assemblies which go to Douglas for final assembly.

Versatile House Design From Small Homes Guide



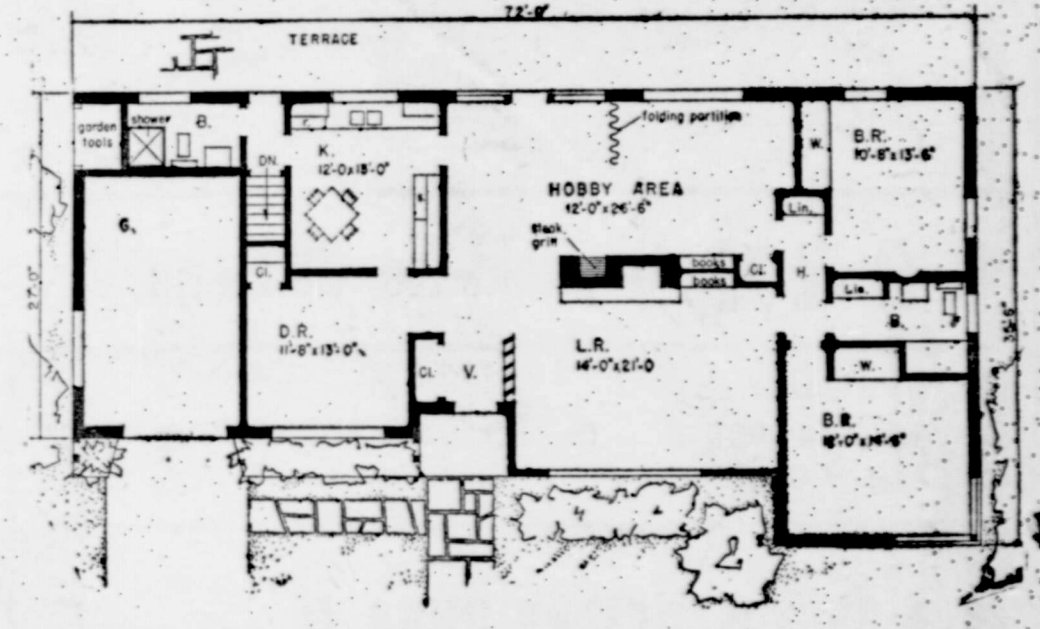
Activities Area

Versatility of plan is one of the main selling features in this house planned for the activities of a large family. The hobby area has limitless possibilities. Assign areas according to the size and interests of the family. It can be a large recreation room, an extra bedroom, even two bedrooms. Part of it can become a library, the other section a combination den and guest room. Steak grill makes the area a good place for casual parties and meals.

Kitchen is large enough for a breakfast table and chairs, while a full dining room is also included in the plan. Bath with shower stall is placed off the back entrance so the children (and adults) can clean up after outdoor play. Two linen closets are built in, one in the bathroom, another in the hall. Closet in dining room can be utilized for table linens, china, or for whatever purpose the housewife sees fit. Note large corner windows in the front bedroom.

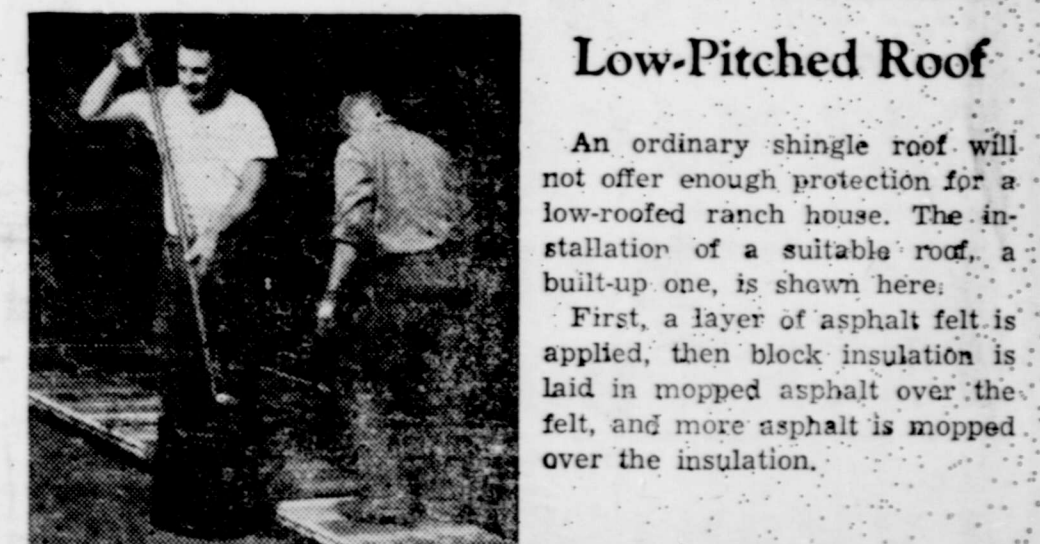
Total area of the house is 1,810 sq. ft. The design by Architect Elmer Gylleck is also available in a basement version. Information on blueprints and their cost can be obtained by writing to Small Homes Guide, 82 W. Washington, Chicago 2, Illinois.

© Small Homes Guide



Roofing for a Ranch House

from SMALL HOMES GUIDE



Low-Pitched Roof

An ordinary shingle roof will not offer enough protection for a low-pitched ranch house. The installation of a suitable roof, a built-up one, is shown here.

First, a layer of asphalt felt is applied, then block insulation is laid in mopped asphalt over the felt, and more asphalt is mopped over the insulation.



At right another layer of felt is laid in the opposite direction over the insulation blocks; more liquid asphalt is mopped over this. Wide lapping of felt edges makes this in effect a double layer. Below, the final layer of roofing is heavy white roll roofing.

Left, each strip is nailed to top edge of preceding row, and folded over to cover the nails. Then roof is mopped with a special white waterproofing compound. This keeps the roofing from drying out, acts as insulation.

Rhine Boatman to Have Social Security



This veteran of the Rhine River boats, shown aboard his cargo carrier, will soon get social security protection under a treaty worked out by the International Labor Organization (ILO). The pact guarantees social security on an international basis to some 45,000 boatmen on the river. It goes into effect in June and has been ratified by five countries on the river—Belgium, France, the Federal Republic of Germany, the Netherlands and Switzerland.

GOOD HEALTH



Answer to Question No. 1: The term is applied to that method by which a hospital and physician receive payment for hospital services not from the patient himself but from an organization such as non-profit health insurance groups (Blue Cross), commercial insurance companies, industrial plans, cooperatives, or government agencies.

Answer to Question No. 2: Before babies are a month old, they are often given, on the advice of a doctor, some form of vitamin D, the sunshine vitamin. Premature babies especially need extra vitamin D since they may not have inherited much from their mothers and because they grow so fast. Many doctors give babies vitamin C in the form of orange juice before they are a month old. Medical science's discovery of the importance of vitamins is one of the outstanding health contributions of the 20th century.

Answer to Question No. 3: In a study of 7700 pupils it was discovered that the common cold was the cause of one-third of all absences. Most persons have one or two colds a year, but some average four or more. In case of frequent colds, it is advisable to consult your physician.

(Copyright 1953 by Health Information Foundation)

CLOSING OUT SALE — EVERY ITEM REDUCED — CLOSING OUT SALE — EVERY ITEM REDUCED

Cut Prices

IN OUR GIANT
CLOSING OUT SALE

Ladies' And Girls'
Western Suits

1/3 OFF

ALL SALES FINAL

GET READY FOR THE RODEO SEASON AT OUR EXPENSE!

ALL BOOTS REDUCED

HAND TOOLED SANDALS
SQUAW BOOTS
MOCCASINS
ALL MARKED DOWN!

BOY'S
"Billy - The - Kid"
LEVI'S
● Safe-Nee
● 8 Oz. Sanforized
● Brass Riveted
\$2.29

BUCKLE SETS
INDIAN JEWELRY
1/3 off

LADIES' and MENS'
Frontier Pants
Some As Much As ...
25% Off

DON'T WAIT - COME IN TODAY!

WESTERN BOOT & SHOE SHOP

417 WEST MAIN

BROWNFIELD, TEXAS

CLOSING OUT SALE — EVERY ITEM REDUCED — CLOSING OUT SALE — EVERY ITEM REDUCED

Stricklinly Speaking

By OLD HE

The Herald has an invitation from the Shell Pipe Line Corporation to have a press representative on hand at Midland, April 17-18 for the opening of the huge new oil pipe line from McCamey to the Gulf, and called the Rancho Pipe Line System. On the evening of the 17th, there will be cocktails and a dinner.

It seems that next day is when the valves will be loosened and some 210,000 barrels of crude from west Texas, will pour into the Texas Gulf coast to make them grow rich in money and with more and more people, while we drain our huge oil fields to help them. About the most refining we have in this section, is taking the casing-head from the wet natural gas. Most companies say we are too far on the interior to have crude refineries.

Seeing that they have refineries all over south and east Texas, we wonder if the majors expect the Gulf of Mexico to settle up with people to sell gasoline and refined oil to?

We appreciate the Shell invitation, but at this time we hardly expect that the Herald will have an eater, seer or drinker present.

We have noted quite a lot of different spellings of Rippertoe Street of late, especially since the street has been extended eastward across what used to be Dick Brownfield's horse pasture. It seems that people are inclined to shorten the name, which is OK by us. But it appears that some want to use an "e" instead of an "i" in the rip part of the name.

It just so happens that the old gentleman for whom the street was named was still hereabout when this writer arrived on the scene some 44 years ago. In fact, he was a Herald subscriber, and his trade was a carpenter.

In those good old days before mailing machinery was available to the small paper, we had a subscription ledger, and we had to write all the names of readers on the paper or wrappers if they went out any distance — all 350 of them. And we shortened the old gentleman's name, too, but he called our hand the next time he renewed. "Spell it the longest way you can think of," says he, "and that is Rip-per-toe. His body rests with many other old timers over in the old cemetery. We do not recall now whether or not Mr. Buckley, for whom that street was named ever lived here or not, but he was in and out in the early days. Other streets named for either old timers or town promoters, was Tate, Cardwell, Small (now Broadway), Hardin (now Main), Hill and Powell.

The persons for whom the streets running east and west were named, are now presumably gone on before, unless it be Mr. Small and Mr. Tate. The other streets running north and south were numbered 1 to 10.

We note that the Jaycees are going to meet in their annual pow-wow down at Corpus Christi, which simply means "Body of Christ" in Spanish. Just why such a name was "thunk" up is beyond us, but we are not an early day Spaniard. Name aside, however, Old Corpus is a nicknailing good place for a convention, especially to us interiorites. It gives us a good view of a huge bunch of water.

In 1932, we enjoyed one of our most appreciated attendances at the State Press Association there. There was so much for us to see and hear, that was new to us, even though 52 years of age at the time. That, coupled with a side trip to the lower valley, and across the Rio to old Mexico's Reynosa and Matamoras. You know, Texas was supposed to be "dry" then.

But C. C. is far from dry now, and the Jaycees are to be regaled with a big Shrimp Fry (ugh! those worms) and a big barbecue out at the famous King ranch. But the boys from here better pay up some back dues if they wish to do any voting. According to the literature we received, they are three quarters behind with their dues.

Now that the Easter period is over, and most everyone celebrated or did not, just as they wished, we might say that Easter is becoming very much like Christmas — commercialized. In the larger cities, particularly, there are big fashion parades, which it seems to us could be just as far away from the ideals of the lowly Nazarene as it is possible to get. As far as that goes, man sets

the date of Christ's birth as December 25th, when Bible scholars believe it was nearer Spring. If people were expected to celebrate his birth, the exact date would have been given. As for the date of His resurrection, that sometimes falls in March, mostly various dates in April. So, we find early Christians meeting for worship on the first day of the week — Sunday.

Presently we have a lot of 'days' even before Easter arrives, such as Palm Sunday, Good Friday and others. Easter was used one time in the old King James version, and corrected in the footnotes to "Pass-over." No late versions use it. In fact, the word Easter in English, was derived from a heathen god of Spring. One New Testament writer asked if the temple of God should be associated with heathen idols?

It seems that some of the Christians, even while some of the Apostles still lived, were letting out their belts to add new days, moons, etc. In Galatians 4: 10-11, Paul has something to say about this. Read it.

Probably would not have had anything to say about the matter,

if Editor Eee Eye Hill over at Tahoka, had not come out so strong for Easter last week. But if Colonel Hill wants to contend, let him contend still, as this is a free country. Maybe he had just bought a new suit, shirt, tie and shoes and wanted to parade 'em in Tahoka.

The twaddlers get a great kick out of both Easter and Christmas. They dearly love to attend egg hunts, and to display their baskets of gaily painted eggs. We don't have the least idea how eggs ever got mixed up with Easter.

Then we remember back to our childhood about those eggs, all hen fruit, as the candy folks had not imitated eggs up to that time, that we remember. And jolly old Santa Claus was just about the height of the childhood imagination.

It was just about the greatest letdown in our young life, on one Christmas day when we were about 7, and playing with our toy, that we were told, without apology, that there was no such thing as _____! we were lower than a snake's tummy the rest of the holiday.

If a husband smiles, his wife wants to know why.

Senior Class Play Is In Rehearsal

Tickets have gone on sale for the annual Senior Class Play and mystery stage production has gone into rehearsal. "Valley of Ghosts" is the title of the drama to be presented April 24, beginning at 8 p. m. in the high school auditorium.

In the cast are Joanne Short, Betty Payne, Parilee Nelson, Georgia Martin, Marilyn Willis, Joanne Shelton, Herbie Kendrick, Ronny Daniell, Jimmie Warren, Max Black, Fred Salmon and Johnny Montgomery.

Members of the sponsoring class are selling tickets for 50 cents each. Proceeds of the play will help finance the Senior trip. The students are hoping to visit New Orleans. This will be the last Senior class trip sponsored by the school.

Nearly everyone will lend a helping hand if approached at an appropriate time.

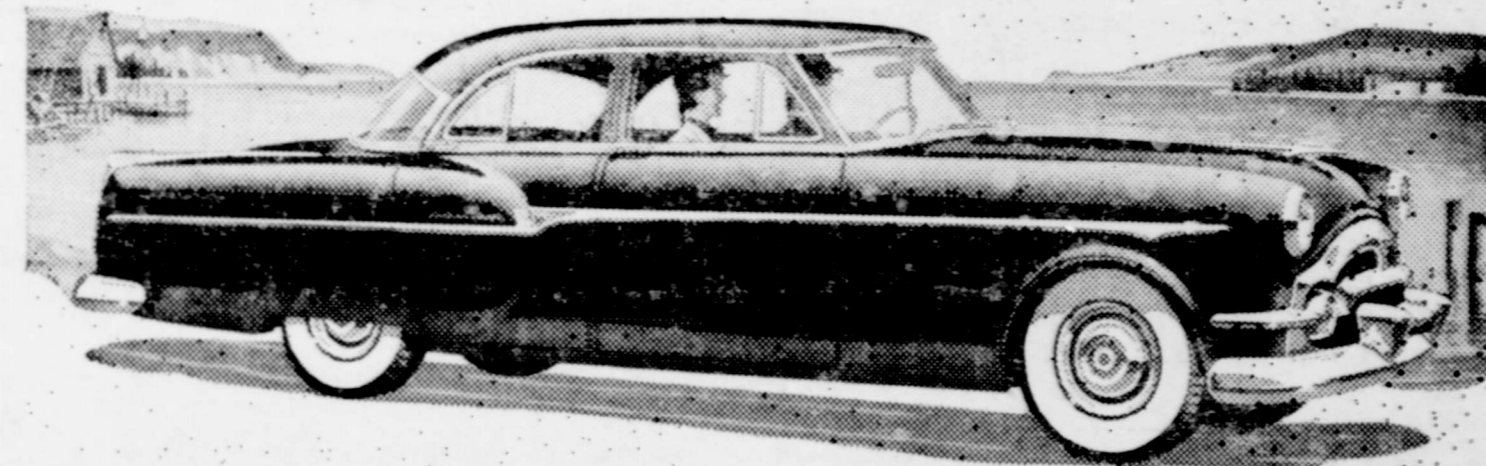
Read the Herald Ads and save.

Setting the Pace in Automotive Luxury



Know-how of the American automobile industry, world's most enterprising, now makes the features of custom cars, once only possible for royalty, available to nearly all American families. This new 8-passenger Packard custom limousine, with the largest wheelbase in the industry, 149 inches, is now making its appearance. It has all the innovations for easier, more enjoyable motoring and these features can be had in Packard Clippers, large cars at medium prices, or the standard luxury Packards, new choice in fine automobiles. Return to production of custom cars is part of the revitalized program. Once the major quality car producer, Packard is now building two complete lines. Prices range from just above the least expensive cars to custom models like the limousine being admired above by Rhonda Sherwood and Betty Thomas.

Here's Packard's new medium-priced car!



The New Packard CLIPPER

Here's your opportunity to own and drive a really fine automobile at only a few hundred dollars more than you'd pay for a car in the lowest-price field!

IN ALL TRUTH, the new Packard CLIPPER is enjoying public response—far beyond expectations.

Because the value is there, the price right.

How can Packard deliver so much big-car value and performance at medium-car prices?

FIRST: It's Packard engineering—traditionally fine, historically dependable. Packard, you remember, is the oldest maker of fine quality cars in America.

SECOND: Packard occupies a unique manufacturing position, for Packard alone with 54 years' experience in fine car building, combines craftsmanship of the highest character and modern mass production techniques to produce greater values.

In addition to greater values, you get Packard's contour styling that is setting the new trend in automotive design. You get the smoothness and comfort of the famous

Packard ride, too—*real big-car ride!* You get the unforgettable whip-quick pull and zoom of the famous Packard Engine—*real big-car power!* In all, you get 70 big-car features.

So if you plan to buy a car in the \$2500 price class, be sure to see and drive the new Packard CLIPPER and compare it with other medium-priced cars. Make an appointment with your Packard dealer soon.



In addition to the Clipper, PACKARD is building today a car so beautiful and fine that it is applauded everywhere as "America's new choice in fine cars." Ask the man who owns one—today!

PLAINS IMPLEMENT COMPANY

619 WEST HILL

BROWNFIELD, TEXAS

JUDGES' STAND BURNS AT RODEO GROUNDS

Fire completely destroyed the judges' stand at the rodeo grounds about 10 a.m. Friday, according to Eunie Jones, fire chief. However, the fire department was able to prevent the fire from spreading, and the stock pins were saved. Firemen believe that the blaze was caused either by a careless cigarette smoker or by electricity.

Half of those who die of cancer in the United States are people under the age of 65, the American Cancer Society states.

BORDEN COUNTY ORGANIZES SHERIFF'S POSSE

Not to be outdone by more populous counties around it, Borden county recently organized a Sheriff's Posse, with Sid Reeder, Sheriff of Borden County as president.

They organized with 35 members, presumably mostly cowmen and cowboys, as Borden is mostly a ranch country. They will meet each first Monday, and the delivery of the charter was delayed to allow others to enter as charter members.

Read the Herald Ads and save.

YOAKUM VOTERS SWAT BIG BOND ISSUE

The voters of Yoakum county slugged the \$1,975,000 bond issue by a vote of 375 to 185, Monday. Some of the \$300,000 of this was to have been used for community buildings in each precinct, and the rest for paving county roads and streets in Denver City and Plains.

However, the voters did approve reallocation of taxes, to provide a transfer of a huge surplus in the jury fund, that could not be used for anything else, to the general fund.

POSTAL RECEIPTS SHOW RISE OVER '52

Postal receipts for the March quarter of 1953 are 9.7 higher than for the corresponding 3 months in 1952, according to Postmaster Joe Shelton. The similar quarter in 1952 has in turn made a substantial gain over the first 3 months in 1951.

The March 1953, quarter total was \$19,073.96, as compared to \$17,369.53 in 1952.

The Terry County Cancer Crusade's 1953 goal is \$1,200.

Chesshir Is Really Getting In The Car Business

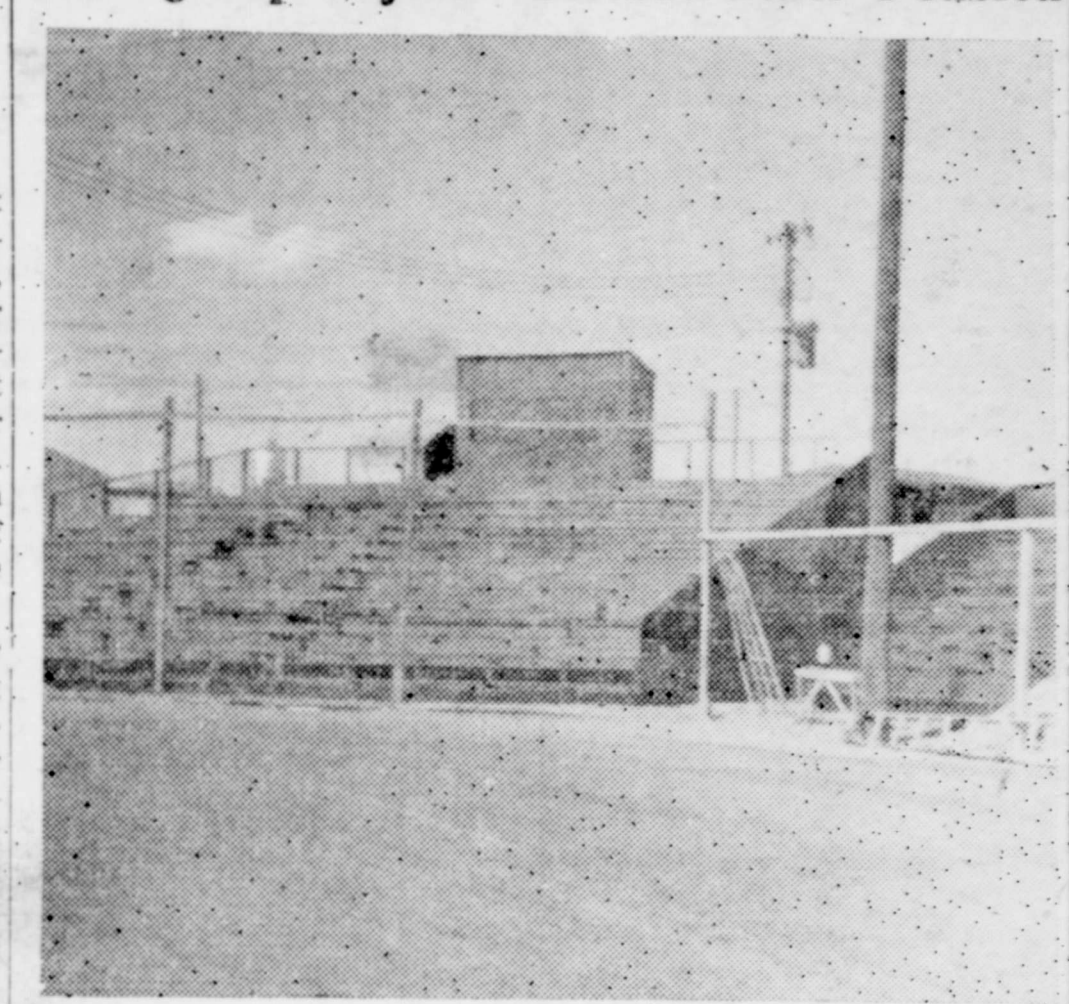
The announcement last week that Herbert Chesshir has purchased the interest of his partner, George Martin, in the Used Car business up on the Lubbock-Seagraves highway, was somewhat startling to us. But you can never tell what either is going to do. However, we look for Mr. Martin to get back into some kind of allied business—as soon as he returns from his fishing trip.

As for Herbert, it looked for awhile that politicking was going to be his aim in life. He was elected Assessor-Collector of taxes for Terry and made such a rep for efficiency and a way of getting along with folks, that he was put back by the folks after his first term. At the passing of the late Judge Homer Winston, he was put in as County Judge, after resigning the other office.

At the next election, he was given the office of County Judge on his own, and everyone thought Herbert was the high official man of Terry county, for a long time at least. But all at once, he resigned and bought into the automobile business with Mr. Martin.

And when the above sale was announced, we concluded with others that Herbert still wants to be his own boss, and the less mixing in politics the better it suits him. But everyone liked Herbert in or out of office.

Seating Capacity Of Softball Park Doubled



Site Of State Softball Tournament

In preparation for the 1953 Texas International Softball League Tournament which will be held here sometime in August, an additional 550 seats have been added to facilities of the Lions Club Softball Park.

According to W. N. (Doc) Lewis, committeeman for the project, the added seating space will more than double seating capacity of the ball park, which will now comfortably accommodate more than 1200 persons.

The concession stand has been remodeled, and a large storage space has been built for larger quantities of supplies, enabling stand personnel to handle the anticipated summer crowd.

A few advertising spaces on the fence enclosing the ballpark still remain to be sold. Prices are \$100 for a ten foot space inside the park, and \$50 for ten foot advertising areas outside the park. Also, since the press box had been moved atop the new bleachers, a \$200 advertising space is available on the back of the press box. All proceeds from advertising space sales will go toward the maintenance of the Lions Club Youth Center.

CANCER SOCIETY NEEDS FUNDS

The American Cancer Society needs money. Money to aid doctors in problems of diagnosis and treatment, to provide for costly research, to ease suffering of cancer victims. Our weapons are your dollars and cents.

Up to Monday afternoon there had been \$58 donated or sent in to the Cancer Fund. This time they are only asking \$1 a person. Want you help us fight against this terrible scourge.

Please mail your contribution to: Terry County Cancer Crusade, Box 147—Brownfield, Texas. For your convenience those wishing to contribute may go to any teller at The Brownfield State Bank and Trust Co. or First National Bank.

Give us your name and your dollar. Is your name on the list.

STATE SUNDAY SCHOOL CONVENTION

Dallas—An estimated 6,000 Texas Baptists representing 3,400 churches will gather in Dallas April 13-15 for the twenty-fifth annual Sunday School Convention of the Baptist General Convention of Texas. Headquarters will be the Gaston Avenue Baptist Church, Dallas.

A record number of conferences, 28, will give workers with various age groups an opportunity to discuss mutual problems, goals and activities and hear the advice of experts in their fields. Conference leaders will include many Southern Baptist Convention leaders from Nashville, Tenn.

Mr. and Mrs. L. P. Carrol have just returned from Ft. Leonard Wood, Mo., where they visited their son Melvin. He is taking engineering training.

Mr. and Mrs. Fred Nicholson and daughter, Judy, spent the Easter holiday with Mrs. Nicholson's mother, in Broken Bow, Okla. Fred did some fishing while away.

LEGION TO SHOW GENUINE BATTLE SCENES OF W W II

There will be a one and one-half hour sound movie shown at the Legion Hall tonight at 7:30. Will C. Brown, local Commander, says this picture is of actual battles of World War 2, and all GIs are urged to attend. There will be a barbecue followed immediately with the picture and informal meeting.

The American Cancer Society is financing the training of 75 young doctors in the diagnosis and treatment of cancer. A contribution to the 1953 American Cancer Society crusade will help support this work.



PHIL ADDISON

Remember The Days APRIL 17-18

Yes Folks, don't miss this event. Scores of champions are being produced each year by members of the Farm Youth Group. That is progress and we wish you success in your 1953 show.

PORTWOOD MOTOR COMPANY



4th and Hill

Brownfield, Texas

TO THE JUNIOR STOCKMEN

..OUR CONGRATULATIONS



John Earl Burnett, F.F.A. Member

You know, like we all know, that a Stock Show or business institution is not built in a day or a few months. It takes years of training and hard work to make a success in anything you try to accomplish. You, the Future Farmers, are doing this in your work in helping to build West Texas.

During our years of service, we have given aid to thousands of farmers in the Brownfield territory. It is a pleasure to welcome the present future farmers and stockmen to the 10th annual stockshow and to wish each member the best of luck in their undertaking.

Striving to insure the future of West Texas and the nation, is the goal of the Club Members. It is our aim to give the kind of service that will make their future a successful one.

Brownfield State Bank & Trust Company

"Over 45 Years Of Continuous Services"

EIGHTEEN BOYS TO LEAVE FOR INDUCTION ON APRIL 16

The following have been mailed orders to report for induction on the 16 day of April, 1953:

Clyde Robert Chambliss, Jesse Lee Brown, J. Frederick Ellis, Weldon Frank Arthur, Nalen Harrelson, Brownfield; Joe Reese Moore, Eual Harvey Allison, Darrell Van Cottrell, Wallace Newton Glass, Jackie Gerald Pannell, Ray Pico, Levelland; Lonnie Gene Fulford, Meadow; James Ferrell Bailey, Lee Roy Bert, Plains; Jim Bert Strickland, Sundown; John Allen Doshier, Whitharral; Bennie Elma Wright, Denver City; Johnny Quiroz, Austin, Texas.

NEAR HALF INCH RAIN SUNDAY

A heavy storm just past noon Sunday, put out .46 inch of rain. Hail, size of large grapes, ripped many leaves from trees, also knocked off some fruit.

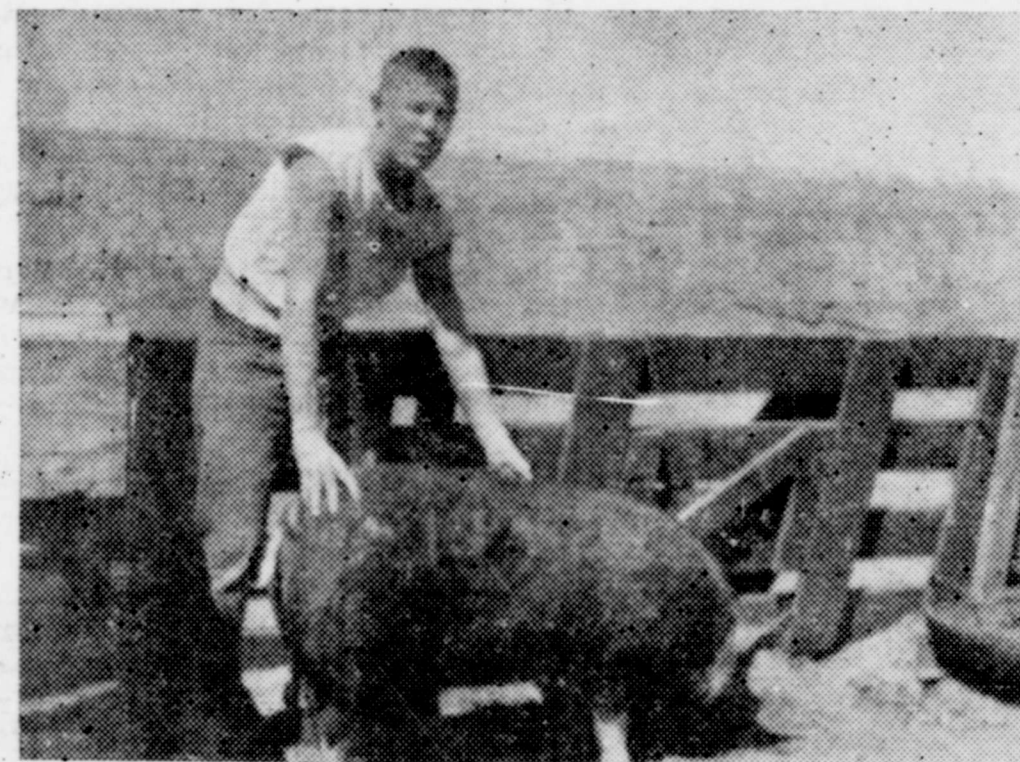
Mr. and Mrs. Sid Machen were in Amarillo over the weekend to visit their brother-in-law who is in the Veterans Hospital.



LITTLE BOYS GROWN TALL—Little boys just grown up into big boys, as evidenced by kid day activities at Brownfield High School recently. Pictured left to right are: Jerry Anderson, student body president; and class presidents, Ronnie Daniel, Senior; Billy Mack Herod, junior; Kelly Mack Sears, sophomore; and Sammy Kendrick, freshman.

Herald Want-Ads get results. Advertise in the Herald.

Congratulations . . .



JACK BISHOP

F.F.A. BOYS
ON YOUR
10th ANNUAL SHOW

APRIL 17-18

The wonderful records being established by members of the FFA are great assets to the achievements of the nation. The results of the annual Calf and Hog show prove that the younger generation is prepared to take over the Agriculture Industry. It is with pride that we congratulate all members and sponsors on the 10th annual show.

ROSS MOTOR COMPANY

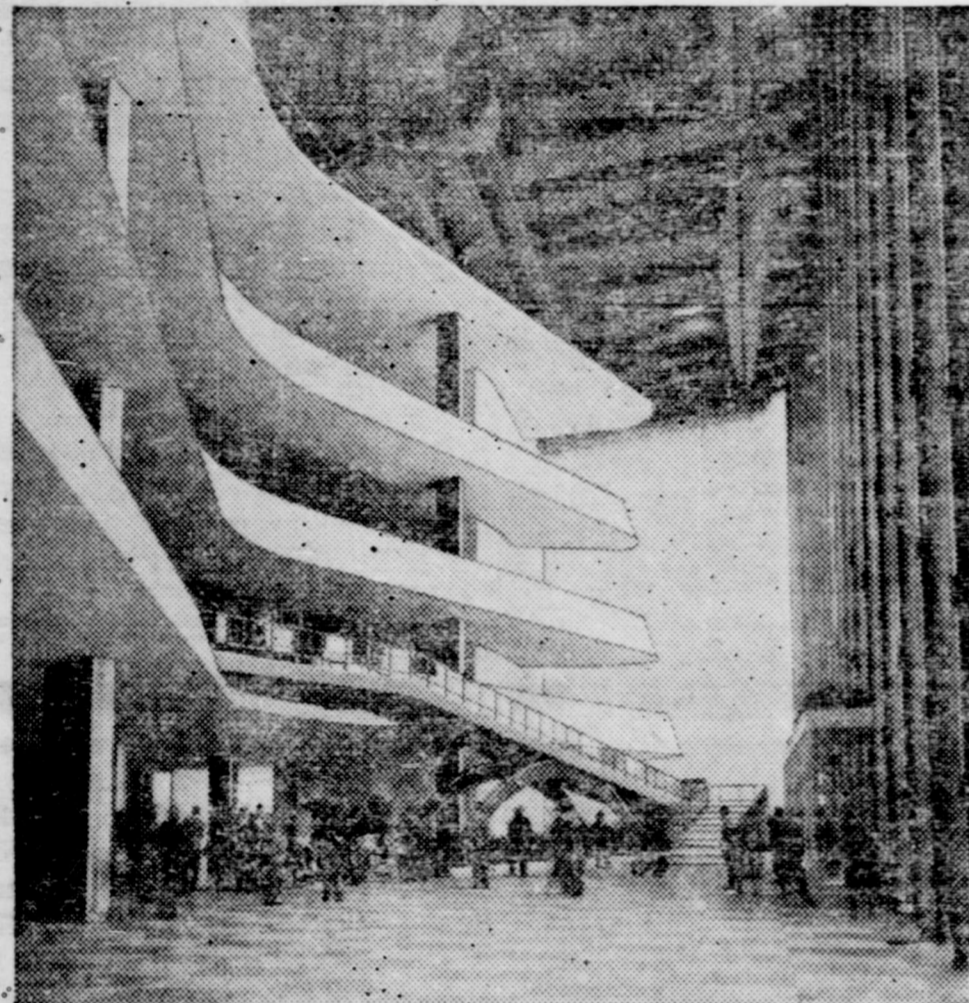
720 W. Broadway PONTIAC—GMC Brownfield, Texas

Fish Ponds Offer Important Food Source



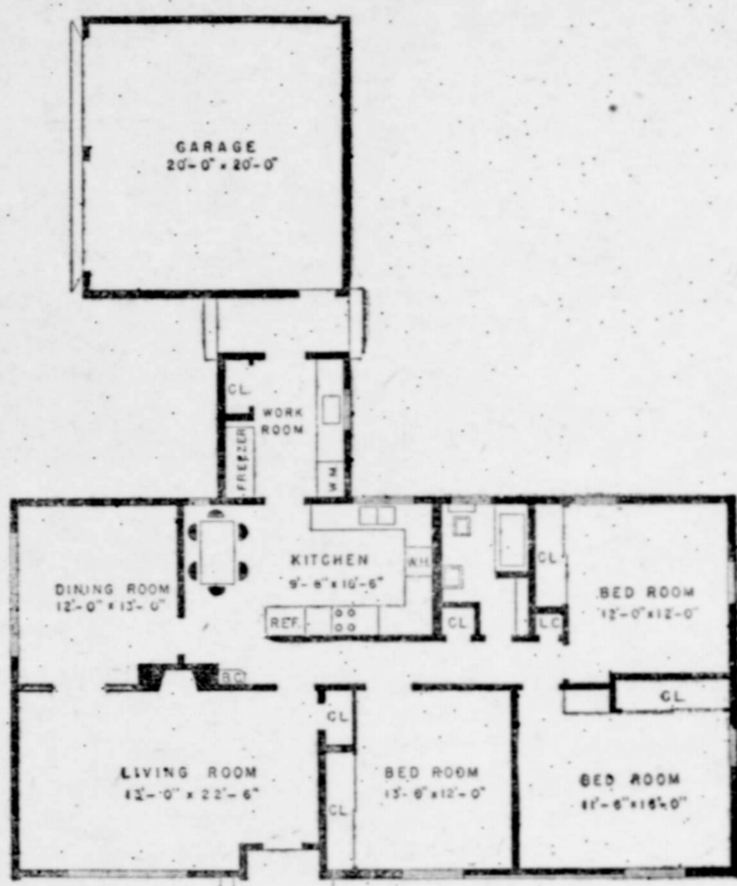
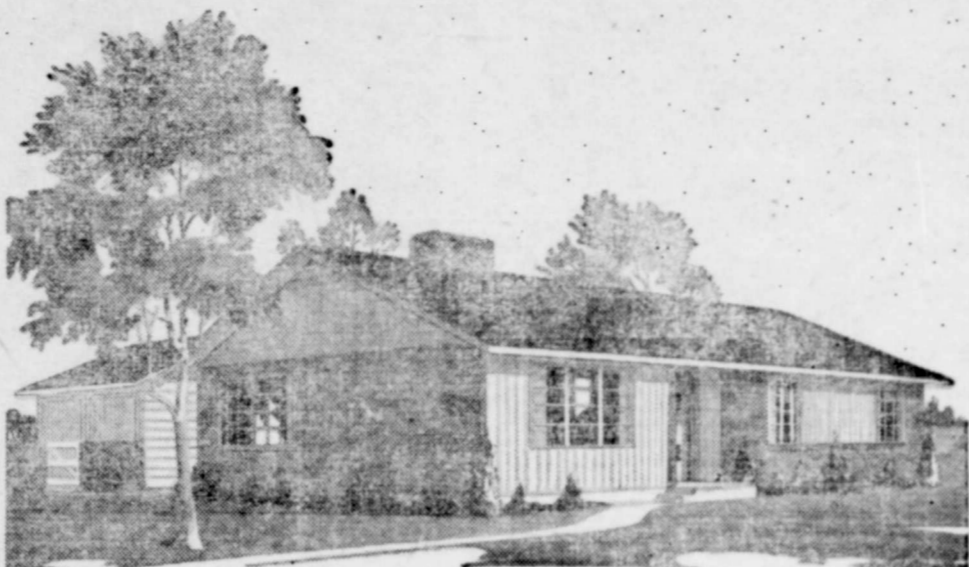
A carp goes into a basket for moving to a breeding pond in Indonesia, where fish culture in ponds is highly developed. A school of fish culture techniques will soon open a six-week long session at Djakarta in Indonesia for students from the Indo-Pacific area. The U.N. Food and Agriculture Organization sponsors the training course to open new food possibilities for people of hungry lands.

Galleries Seem Air Borne in U.N. Building



The U.N. Assembly Building main lobby embodies some unique architectural practices to give this impressive effect. The ramp leads to the delegates floor, while the hanging galleries open into press and public areas of the Assembly hall. Building cost \$12,500,000.

PLANNED TO A FINE POINT



We offer a lot in FARM AND RANCH House Plan No. 5248—three comfortable-size bedrooms with plenty of closet space, a large living room, a separate dining room, a nice kitchen with space for serving the family meals, a separate workroom, and good looks.

All of these things can be arranged in 1,600 square feet of heated floor area. There is no wasted space, no unnecessary turn or corners in the foundation or roof. By observing such simple economies as arranging all of the plumbing for the kitchen, bath, and workroom in one centralized area, providing a bearing partition down the center of the house to help support the roof, and reducing exterior features you can have a brick veneer home for the price of the ordinary siding. We suggest that you build the garage and workroom with wood siding for added economy—and a very attractive contrast.

overhanging eaves, brick veneer, and concrete slab foundation will be of great value in keeping up-keep costs at a minimum. Both the garage and workroom could be left off for those of you who do not have large quantities of milk, eggs, and other produce that you handle through the kitchen area and who have a garage already built. You will like the kitchen. It has 20½ feet of counter space if you use a tabletop water heater; otherwise it will have 18½ feet. The small entrance between the garage and workroom makes it convenient to get in from either side of the house or garage. This area could serve as a trap to keep flies out of the house. Simply close it in with a screen door on each side and use a third screen as you come into the workroom.

You can obtain blueprints for this TERRY COUNTY HERALD FARM AND RANCH House Plan No. 5248 and a handy list of materials by which you can figure your construction cost accurately. Send \$1 to Building Editor, FARM AND RANCH-SOUTHERN AGRICULTURIST, Dept. L-193, Nashville, Tenn. Order by number—plan No. 5248. Blueprints are adequate for any farm carpenter or for any farmer handy with tools.

Meadow News

Mrs. Nancy Rutledge of Denton, Tex., is a guest in the home of her son R. E. Rutledge and family for the past few days.

Mr. and Mrs. Bob Castleberry left Sunday afternoon for a few days visit with their son, Paul Castleberry and family of Borger.

Mr. and Mrs. Bill Peudergrass and children of Brownfield attended services at the Baptist church Sunday morning in the home of his sister Mrs. Sue Timmons and children.

Mr. and Mrs. Jess Turner and daughter Sonya Paul of Pecos Tex., spent Saturday in the home of her father J. E. Peek and Mrs. Peek.

Mrs. Dennis Raspberry was host to a Stanley party in her home Friday afternoon refreshments of cookies, toasted marshmallows and punch was served to the 21 ladies present.

The members of the Methodist church met Sunday morning for Sunrise Services and Breakfast was served after the services.

Mrs. Bo Wright and little daughter of Brownfield attended Morning services at the Baptist church and visited her grand parents Mr. and Mrs. W. A. Hinson.

Rev. J. Harvey Scott received word Saturday that his mother in Okla., had suffered a stroke he left at 6 o'clock to be at her bedside. Norman Lockett of Wayland College preached Sunday morning and night.

Mr. and Mrs. James Selman and daughter Pat of Hobbs, N. M., spent Sunday with her parents Mr. and Mrs. Guber and family and attended services at the Methodist church.

Pat Schuartz of Abilene spent the weekend with her parents Mr. and Mrs. E. F. Schuartz.

The W.M.S. met at the church Monday at 2:30 for a Royal Service Program.

Mr. and Mrs. Ralph Barrett and son from Korea visited over the weekend with friends from Shamrock, Tex.

Mr. and Mrs. Garland Peek and Mrs. Mary Armontrout of New Home visited Sunday afternoon with Mr. and Mrs. Edd Peek.

Miss Ailene Curtis of Texas Tech spent the holidays at home with her parents, Mr. and Mrs.

Arthur Curtie and family. Mrs. Robert Brooks and daughter, Sharon and her mother, Mrs. C. W. Hunt of Littlefield and her grandparents Mr. and Mrs. Cross of Post were all visitors in Andrews Friday.

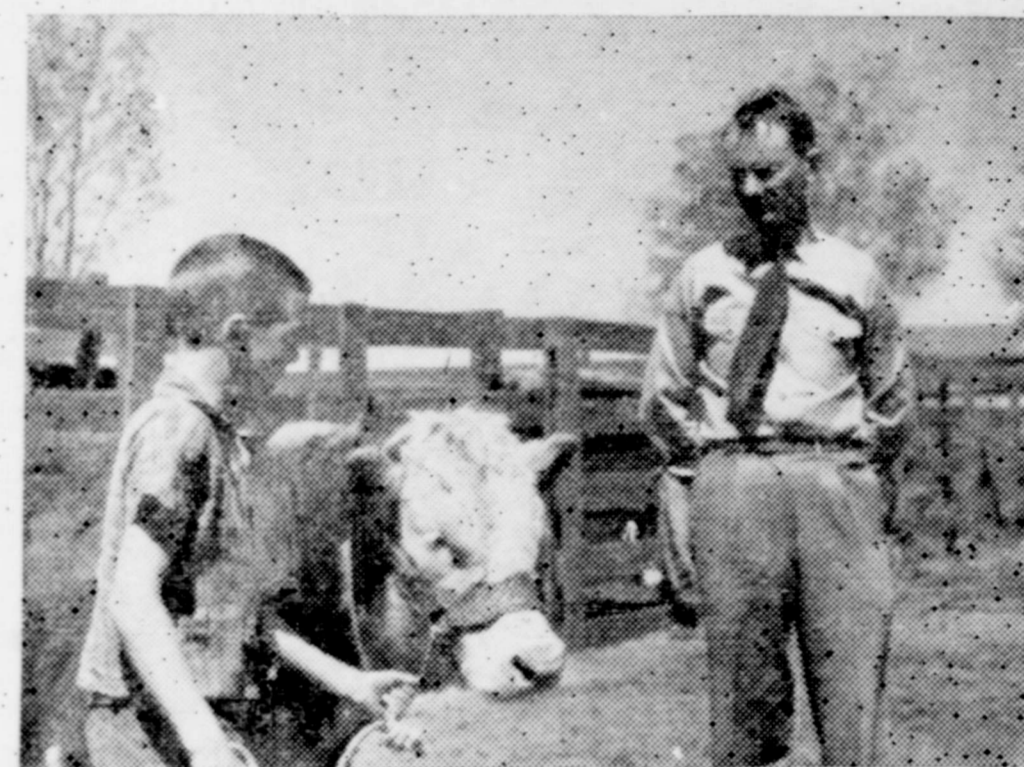
Tommy Ashburn and Guy Belew spent the weekend in the home of their parents Mr. and Mrs. Edd Ashburn and Mr. and Mrs. Horace Belew and families.

When the boss is looking for trouble, it's wonderful to be able to say, "I did it yesterday."

SEE—
HIGGINBOTHAM - BARTLETT CO.
—FOR—
L-U-M-B-E-R
and building materials of all kinds.

Read And Use Herald Want Ads

BEST OF LUCK FFA BOYS
-APRIL 17-18-



ARNOLD BUFORD AND FATHER, LESTER BUFORD

We'll be on hand to witness the FUTURE FARMERS display the achievements of the past year. The outstanding work being accomplished by Club Members is guaranteeing the future of West Texas. Let's all plan to attend the Big Stockshow April 17-18.

Farmers Co-Op Society No. 1

905 West Main L. L. White, Mgr. Brownfield, Texas

DODGE LOWERS PRICES!

\$60.60 to \$201.80

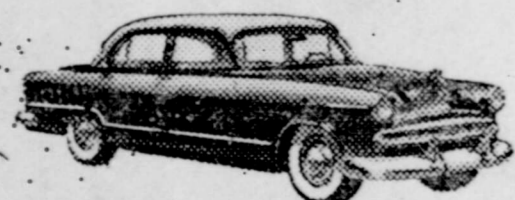
You are the winner! You get the savings as Dodge sales climb 50% and production rises to meet strong public demand. These across-the-board price reductions make Dodge the outstanding value of the entire automobile industry. Now is the time to step up to America's all-new Action Car.



Dodge Coronet V-Eight Club Coupe. Price reduced \$128.80



DODGE CORONET V-EIGHT DIPLOMAT
Price Reduced \$201.80! This is your savings on the smart Coronet Diplomat and the Coronet Convertible Coupe—fasting Sports cars of the great Dodge line. New 140-hp. Red Ram V-Eight engine. New curve-holding ride. New Gyro-Torque drive with flash-action "Sea" gear.



DODGE MEADOWBROOK SIX 4-DOOR SEDAN
Price Reduced \$67.50! America's biggest value now gives you more value than ever! Luxurious travel-lounge interior. Chair-high Comfort-Contour seats for six. Four wide-swinging doors. Powered by the great Get-Away Six engine.

Coronet V-Eight 4-Door Sedan	reduced \$135.80
Coronet V-Eight Club Coupe	reduced 128.80
Coronet V-Eight Diplomat	reduced 201.80
Coronet V-Eight Convertible Coupe	reduced 201.80
Coronet V-Eight Sierra	reduced 128.80
Meadowbrook Six 4-Door Sedan	reduced 67.50
Meadowbrook Six Club Coupe	reduced 67.50
Meadowbrook Six Suburban	reduced 60.60
Meadowbrook Six 4-Door Special	reduced 80.50
Meadowbrook Six Club Coupe Special reduced	80.50

DODGE TRUCK PRICES REDUCED, ALSO!

Don't buy any car until you've seen Dodge!

The Low Down From Hickory Grove

What we are to do in this land of speed and hurry with the added automobile drivers who figure it is smart to hit it up to 80 so long as their rear vision mirror shows no officer on their trail—that is the question. It is not just gawky teen-agers—it is smarty mamas and papas too, who speed—who cross double lines on the pavement—who have no idea as to what is an arm signal—who put manners and courtesy on ice, once they step on the starter and take off.

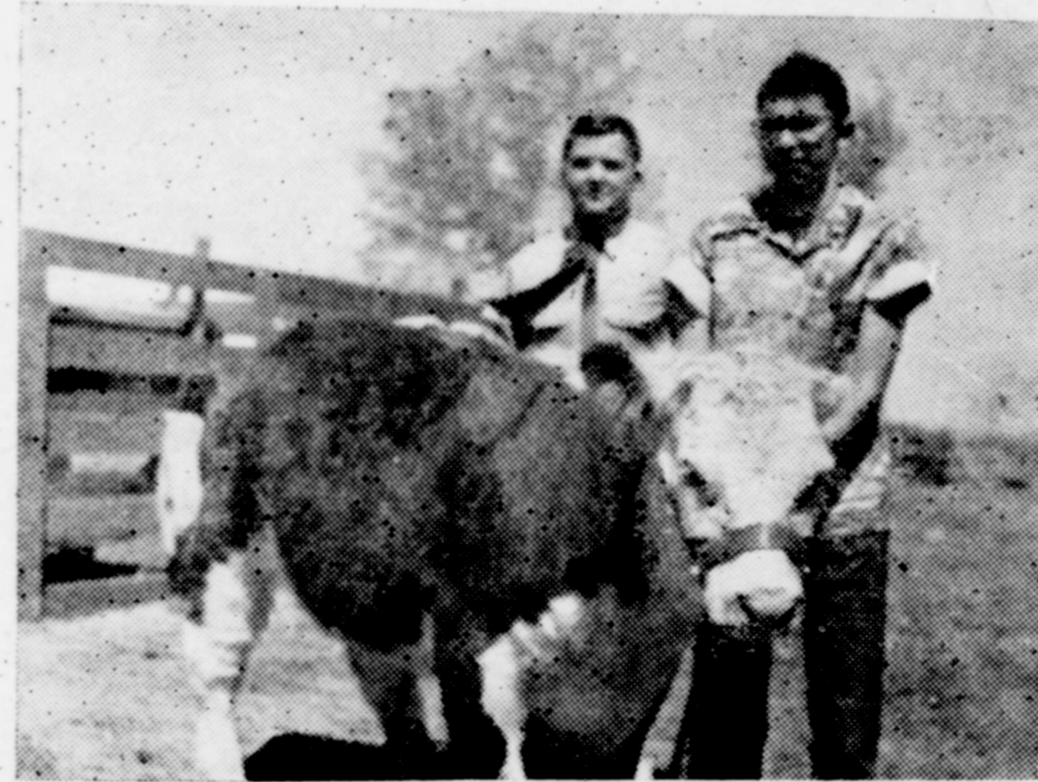
We might slow down the speeding part, if we went back to 20 horsepower versus 150 horsepower engines. But the matter of manners and courtesy—out the window as now—will require stern means. One police officer per mile might cut the mustard. Even that is doubtful. And while on the patrolmen subject, of all the folks who deserve the highest praise and the most liberal pay it is these men who try to so manage traffic that the fewest victims will be carted to the undertakers.

As a starter on highway safety, all budgets for police and patrolmen should be boosted—even if your town has to fire its barn dance director or even your 15,000 buck city manager that you hire so the mayor will have more hand shaking time on his hands. Yours with the low down,
JO SERRA

The funny story you hear at noon is likely as dead as a decapitated rattlesnake by sunset.

Advertise in the Herald.

JOIN THE CROWDS FOR THE BEST IN ENTERTAINMENT



RONNY WARD AND VES HICKS

WELCOME TO BROWNFIELD JUNIOR STOCKMEN

CLUB MEMBERS: The spirit with which you enter into these shows is a good example to other youths of the nation. Your progress in the work you are carrying on has led many another youth to start scaling the heights of success. The nation's leaders are born to the youth organization and the achievements of the Terry County farm youths indicate that West Texas will not be lacking in leadership during the next generation. To each member we wish the best luck during the 1953 show.

JONES THEATRES

Regal - Rialto - Rio - Rustic - Rig

SHIPLEY MOTOR CO. - - - 814 W. BDWY.

PMA NEWS

By Lora Miller

PROSPEROUS AGRICULTURE GOAL, SAYS DAVIS

In working out new programs, the goal of the new Administration will be full equality of farmers' income with other economic groups.

Emphasizing that improvements in farm programs will be worked out in cooperation with advisory groups representing producers and all other important segments of farm production and distribution.

"We want to examine all of the suggestions that come along with respect to improving our farm economy, we want to explore the expanded use of marketing agreements, the practicability of a two-price system, the feasibility of price insurance, the possibility of using guaranteed loans and many other ideas.

"In doing this, we intend to start from where we are and move to something better. In other words, we shall not scrap the present programs until we have something better. We expect to build on the experience of the past in order to make the future more secure and more prosperous than the past."

Price Comparison, 1947 vs 1952

Interest rates have more than doubled since 1947. Purchasing power of dividends paid by corporations to stockholders has increased 20 percent since 1947.



COTTON CLASSIC—Trim tailoring and soft accents make this a suit that fits almost any occasion—office, shopping, or traveling.

Corporate profits have increased 38 percent since 1947.

Purchasing power of average weekly earnings of manufacturing workers has increased 19 percent since 1947.

Farm purchasing power has decreased 26 percent since 1947. Another drop expected this year.

Dairy Cattle On The Increase In Texas

College Station—Cows and heifers 2-years-old-and-over kept for milk in Texas as of January 1, 1953, rose to 1,085,000 from 1,053,000 a year earlier, according to the Bureau of Agricultural Economics, U. S. Department of Agriculture.

These increases are in line with a national upsurge at the beginning of this year in numbers of heifers and cows being kept for dairy purposes, reversing a downward trend each year since 1946.

At the beginning of 1952, the total number of cows kept for milk on farms in the United States was 23,369,000, the lowest in over 20 years and more than 4 million less than the record high of 27,770,000 reached in 1945.

Milk production per cow in Texas fell to 3,290 pounds in 1952, as compared with 3,300 pounds per cow in 1951. Average milk production per cow for the United States as a whole was estimated at 5,328 pounds in 1952, the highest record thus far achieved on a Nation-wide basis.



Dallas Fashion Center Photo This summer weight gabardine suit becomes a costume this spring with the addition of a complementing stole. L & L of Dallas illuminates this ensemble's third piece with dazzling white in a lucky three combination—the stole lining, fringe and braid emblem on the pocket.

States as a whole was estimated at 5,328 pounds in 1952, the highest record thus far achieved on a Nation-wide basis.

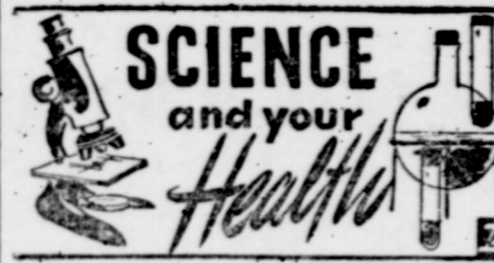
Farm Storage Of Few Crops Recommended

College Station—Increased supplies of most farm products are largely responsible for the lower prices. Demand, says C. H. Bates, farm management specialist for the Texas Agricultural Extension Service, is now fully as strong as in 1952, except for some farm products which have been materially affected by dropping exports.

It is significant, points out Bates, that large supplies of farm products accumulated despite last year's drought. With favorable weather during the 1953 crop season, he adds, stocks of food, feed and fiber may climb even higher.

Bates uses an example to show the value of on-the-farm storage. Last year, oat producers in North Central Texas sold oats during late May and early June, harvest time, for 75 to 80 cents a bushel. Four months later, the same quality and type were selling for \$1.30 to \$1.40 a bushel with much of the demand coming from growers for planting seed.

A glutted market, he says, always means depressed prices and often times markets can be stabilized by storage during peak harvesting periods. Also, farm storage will insure ample supplies of feed and seed without adding needless freight and handling charges.



THE VITAMIN FOR GROWTH

It's almost an axiom that Americans are the best-fed people in the world. But being "best-fed" does not necessarily mean being "best-nourished."

The study was conducted by Dr. Norman B. Wetzel, a world authority on child growth. Over a period of years, Dr. Wetzel kept a close check on the growth of a group of schoolchildren living in Shaker Heights, a well-to-do residential section of Cleveland.

He found that one out of every three children studied suffered from what he terms "growth failure." In 90 per cent of the cases, Dr. Wetzel was unable to pin down any direct cause, such as disease, for this failure.

How fast should a child grow? Dr. Wetzel says that each child has his own "proper" growth pattern, which can be predicted by means of a complicated chart. He adds that growth failure, once established, "tends to persist and get worse," lowering physique, physical vigor and slowing down the progress of all growth and development.

In an attempt to combat this problem, Dr. Wetzel chose 20 children whose growth pattern had been measured over a period of years and who had been found to be suffering from growth failure. These children were given a tiny amount of vitamin B12 daily for 16 weeks.

Of special interest is the fact that parents and teachers of the children reported improved behavior, greater alertness, and better scholastic work after treatment with B12.

without cost from this source. Financial assistance on storage facilities, he says, may be obtained through local lending agencies or the local office of the Production and Marketing Administration.

No Necessity For Having Diphtheria

Diphtheria is a disease of neglect, declared Dr. Geo. W. Cox, State Health Officer. If all babies, beginning at three months of age, were taken to a physician or clinic for immunization against diphtheria, the infant deaths from this disease would cease.

Diphtheria occurs most frequently in early childhood. It is caused by a germ that grows in the nose and throat and throws out a toxin or poison into the blood stream. This poison may attack the heart muscle or it may cause a paralysis known as peripheral neuritis.

Adequate immunization early in life is the main defense against diphtheria. It helps the body build up immunity against the dangerous malady.

About a year after completion of the initial triple immunization against diphtheria, whooping cough, and tetanus a booster injection may be given and another at four to six years of age.

Although the death rate from diphtheria has been markedly reduced in the past twenty years, infants were unsafe without immunization. It is only when all babies are immunized early in life that the conquest of diphtheria will be accomplished.

Financial assistance on storage facilities, he says, may be obtained through local lending agencies or the local office of the Production and Marketing Administration. The assistance from PMA is assured through June 30, but do not put off planning the needed storage facilities. Make the plans now and have the facilities ready well in advance of the harvest season, says Bates.

G. I. QUESTIONS and ANSWERS

Q—Both my friend and I are disabled Korean veterans, and we have gone into partnership on a farm. Could we both take Public Law 16 on-farm training, even though neither of us has complete control of the farm?

A—No. One of the requirements of the program is that the veteran must have complete control of the farm on which he takes his training. This would not be possible under the arrangement you mentioned.

Q—If I file a claim for disability compensation, and VA approves it, as of what date will my compensation payments go in effect?

A—If you file your claim within one year from your date of discharge, compensation will be paid from the day following that discharge date. If you wait longer than a year, the effective date will be the date VA receives your application.

Q—I'm a World War II veteran and I am going back on active duty. I plan to keep my National Service Life Insurance while I'm in uniform. Do I continue to pay my premiums to the VA as I did when I was a civilian?

A—If you wish, you can continue to pay premiums directly to the VA. Or you can arrange with your branch of service to have the premium paid by an allotment from your service pay. Or you may apply for waiver of premium under Public Law 23. See your Service unit's insurance officer for full details.

Q—If I take VA's vocational counseling in connection with my Korean GI Bill training, do I have to abide by the counselor's decision as to what I should study?

A—The VA counselor won't make any decision as to what you should study under the Korean GI Bill. Instead, the purpose of the entire counseling process is to help you understand your own aptitudes, interests and abilities, so that you'll be in a better position to make up your own mind.

Worst bankruptcy—Loss of enthusiasm.

Congratulations . . .

JUNIOR STOCKMEN



RONNY WARD—F.F.A MEMBER

The success of the proceeding shows guarantees the success of the 10th annual venture. The splendid achievements made in bringing ever better Livestock to West Texas is due largely to the co-operation and efforts of this organization. We wish to join the thousands in saluting you, the Future Farmers. The best of luck to each contestant.

APRIL 17-18



APRIL 17-18

CONGRATULATIONS JAYCEE SPONSORS

HERMANS GIN Plains Highway Brownfield, Texas

APRIL

17

18



APRIL

17

18

WE SALUTE THE FARM YOUTH GROUP

We not only want to congratulate our boys, on the great show they are producing, on the fine improvements they are making in livestock . . . but we want to join them in the actual work. It is profit and pleasure for them and it also aids our future ranching and farming. Striving to insure the future is the club members goal . . . we aim to give the kind of service that will make their future a successful one.

First National Bank

"A Complete Banking Service"

