

The LIVESTOCK



INSPECTOR

DEVOTED EXCLUSIVELY TO LIVE STOCK INTERESTS.

Fourth Year.
Double No. 18-19.

Woodward, Oklahoma, Feb. 15, 1899.

Subscription { One Dollar per Year
Single Copy 5c.



ROUND TOP RANCHE.—Property of S. B. Jones, on West Line of Woodward County.

FIRST BIENNIAL REPORT

Of the Secretary of the Oklahoma Live Stock Sanitary Commission.

HON. C. M. BARNES, Governor,
Guthrie, Oklahoma.

SIR:—I have the honor to herewith submit the report of the Live Stock Sanitary Commission for the biennial period covering the years 1897 and 1898. Although no provision is made by the laws for this report, yet the commission deemed the in-

terests of the live stock industry to be of so vast importance as to justify a voluntary statement from them as to its condition and the effect and result of the present quarantine laws, and feeling that some legislation touching the interests of the live stock industry will be offered during the coming meeting of the Legislature, it was considered that for your, and the legislators' information and enlightenment a report of this kind might be of some value and aid.

The history of the quarantine law in Oklahoma dates back to the Act of 1895. It was born of a necessity growing out of the demoralized condition of the live stock industry, especially of the cattle of the Territory of Oklahoma, due to the fact that

no protection was offered it on our statute books in the way of a provision for the prevention of the introduction or the spread of contagious and infectious diseases.

Owing to the geographical location Oklahoma is the gateway between the great breeding plains of Texas and the Republic of Mexico and the market and feeding pens of the north, and is traversed yearly by vast herds of cattle, both by trail and railway. Hence it is that the quarantine laws of the Territory, in the present form, have to do almost exclusively with a few diseases affecting cattle and horses, and the efforts and labors of this Commission have been directed almost exclusively

to the diseases affecting these two classes of live stock.

It is a matter of general information that the Gulf states and other states bordering thereon, and especially southern Texas and the lowlands of the Republic of Mexico, are permanently infected with the most destructive of diseases known to the cattle industry, namely, Southern or Splenic fever, commonly called Texas fever, and that all the cattle coming from these localities bring with them the infection of this disease, which is disseminated among our northern herds with the most fatal results.

Owing to the favorable climate it is presumable that these conditions will ever continue to prevail



POLLED ANGUS CATTLE AND BERKSHIRE SWINE.—Owned by J. W. Knox, Jacksboro, Texas.
(Published in Live Stock Inspector by Courtesy of Texas Farm and Ranch.)

CATTLE FOR SALE.

List of Cattle Which May be Purchased from Owners at the Convention in Woodward.

Prior to this issue the LIVE STOCK INSPECTOR announced that it would publish herein a list of cattle for sale by owners who would be here to attend the convention, Feb. 14 and 15, 1899. Following is a partial list of responses, many arriving too late for publication and some are even yet being received. This does not in any manner embrace all cattle which may be for sale at the convention, but it is of value to purchasers who will be here and materially aid the seller and buyer in getting together. Here is the list as received up to and including February 5th:

Geo. H. Healy, Benton, Okla.—For future delivery, 800 northern Arizona steers, four and five years old. Will weigh 1100. Have been wintered here. Good cattle and good colors.

L. H. Pruitt, Snyder, Tex.—800 steers; two hundred of which are 2s and 3s, and six hundred yearlings.

F. J. Clark, Cliff, N. Mex.—2000 steers ranging from 1 to 3 years of age; 2000 cows and heifers.

F. L. Barnum, Cleo, Okla.—21 yearling steers; 10 cows; 3 Whiteface bulls.

W. F. Taylor, Lefors, Tex.—75 two and three-year-old steers and 75 stock cows.

E. A. Rubottom, Higgins, Tex.—220 two-year-old steers, and 60 yearling steers. Red natives, with some Whitefaces.

W. B. Grimes Jr., Ashland, Kans.—3000 double wintered good quality western steers, threes and fours,

nearly all dehorned; 2500 cows, good color and quality; 400 yearlings.

N. J. Jones, Antelope, Tex.—300 head of two-year-old steers; 500 stock cattle.

W. D. Cornelius, Enid, Okla.—A ranch and about 700 head of stock cattle in Western Oklahoma, including 15 or 20 high grade Hereford bulls.

G. A. Bigelow, Higgins, Tex.—69 steers, nineteen of them coming twos and fifty yearlings.

J. E. Bull, Grand, Okla.—60 native steers, coming twos; 75 cows and 35 heifers. Steers \$26 per head.

John Grattan, Medford, Okla.—Five head of pure bred Hereford bulls.

B. R. Grimes, Ashland, Kans.—400 three-year-old steers.

Geo. Parker, Alva, Okla.—86 steers, 2-year-old; 120 heifers; 125 cows and 75 coming yearlings.

H. C. Evans, Alva, Okla.—325 cows, native and western; 70 calves; two Whiteface bulls and ten native bulls.

W. E. Wilson, Kiowa, Kans.—25 good Missouri bulls; 150 good western cows and 160 coming yearlings.

R. A. Doles, Waynoka, Okla.—121 steers, two-year-olds.

John Turner, Gage, Okla.—2000 steers, natives of the Panhandle, threes.

L. C. Beverly, Clarendon, Tex.—3500 steers; 2500 of them twos, 1000 threes and fours.

Ira Boone, Higgins, Tex.—100 steers coming twos.

Windsor Bros., Orange Grove Stock Farm, Garden Plain, Kans.—90 Hereford bulls for sale, coming ones and twos. Fine blocky fellows, out of

Roy B. Burnett, Benjamin, Tex.—four or five hundred high grade steers, threes and fours; 200 cows.

high grade Hereford cows and thoroughbred bulls. "Bertha's Bean Real" 57298 heads our herd.

A. J. Hargis, Lake City, Kans.—225 steers, two and three years old, all dehorned; 1300 dehorned cows, bred to Whiteface bulls; 300 calves. The cattle are Colorado and Kansas raised. Will sell and winter cut until grass. Has corn, cane and Kaffir corn sufficient to winter.

L. A. Johnson, Mangum, Okla.—50 yearling steers; 100 head of cows; 100 calves; 50 yearling heifers. All natives of Greer county.

F. E. Herring, Navajoe, Okla.—2000 steers, twos, threes, fours and fives. Wintering finely; price \$30.

J. K. Brazier, Camargo, Okla.—150 Texans, coming 3s and 4s; steers.

J. W. Davis, Camargo, Okla.—75 coming 2s and 3s, Texans; steers.

H. C. Boren, Higgins, Tex.—70 cows and 36 yearlings.

Johnson & Pyles, Stone, Okla.—400 steers, 350 of them threes and 50 coming twos; 400 cows; 75 yearlings.

J. W. Hiatt, Grand Summit, Kas.—1000 steers, 3-year-olds.

W. A. Hughes, Duke, Okla.—800 steers, ones, twos and threes.

Allen M. Barker & Co., Rural Hill, Ill.—100 steers, two years old; 100 cows and 100 yearlings.

Lee Crenshaw, Nocona, Tex.—700 steers, ones, twos and threes; 400 cows and 100 yearlings.

Wm. H. Jolly, Jolly, Tex.—225 good stock cattle for sale, at \$16 per head

around. 80 head of them coming three-year-old heifers; 20 cows; 30 head two-year-old heifers and 95 head of steers from 2 to 3. All she stock in calf by good bulls.

Lock Bros., Jester, Okla.—2000 steers, twos, threes and fours; 500 cows; 500 yearlings.

Lloyd B. Ferrell, Wichita, Kas.—Wants to buy 1500 three-year-old steers.

Parmer Bros., Quartz, Okla.—350 steers 2 to 3 years old; 400 cows and about 275 yearlings. All well graded up with Durham and Hereford.

Vernon House, Woodward, Okla.—200 head of threes and 50 cows; all domestics.

S. H. Nay, Woodward, Okla.—1000 threes and fours, mostly natives.

W. M. Ferguson, Wellington, Kas.—385 good Durham bred New Mexico cows; all dry and bred to registered bulls. Average weight 900 pounds.

A. S. Woods, Woodward, Okla.—1000 twos, part natives and part westerns.

Reduced Railway Rates.

For the occasion of the Fifth Annual Convention of the Oklahoma Live Stock Association, the Pecos Valley and Northern Texas Railway will sell tickets for ONE FARE ROUND TRIP, from all points on its line to Woodward and return. Dates of sale, Feb. 11, 12 and 13, good to return until Feb. 22nd.

D. H. NICHOLS, Gen. Manager.

Secretary Bolton's Response.

[Published in Wichita Daily Eagle January 23th and republished in the LIVE STOCK INSPECTOR by special request.]

The following is a response made at the National Live Stock Association in Denver, January 24th, by Secretary W. E. Bolton, of the Oklahoma Live Stock Association:

"Mr. President—The pleasant duty of answering the roll call of states for Oklahoma, the youngest and biggest baby of them all, is one which is fully appreciated by myself. Oklahoma is the vortex around which the swirl of commonwealths look longingly as they tug along with manifold constitutional amendment" desires, and envy the Land of the Fair God, as yet unspotted by the world or an enabling act.

"Oklahoma, still wearing safety pins and calling for statehood conventions, is at once the admired of all admirers, the gem of all the jewels, the throne room of all creation. Oklahoma, standing in vestal purity, with a cow-chip carefully poised on each shoulder, and wearing a coronet of cotton and corn field glory, challenges the attention of this convention and gracefully squats within the inner circle of your confidence in her wonderful resources, climate and future wealth.

"No need to tell you of the settlement and development of Oklahoma. The school children of the nation know it; the merchant, the laborer and the capitalist are familiar with it, and the Filipinos heard the echo of it when Dewey sailed into their water-hole and breathed the same American spirit into the chile con carne of Aragon and Castile.

"You, gentlemen of this convention, have noted its history. You have seen its fertile valleys peopled in a day with the best blood of the American continent, all high grade and registered stuff from an ancestry ante-dating the period when little George Washington mavericked the famous cherry tree. You have seen its broad mesas, foliaged by the most nutritious grasses, covered with herds of 'Southerns' and 'Westerns' and 'Domestics,' with an occasional dogy from Old Mexico simply serving as a horrid example. You have seen its lands peopled with stock farmers and cattlemen who have had experience in the old home and who start anew with the wisdom of former years to guide them in building up a great state. You have seen its plains dotted with ranch homes, where the most intelligent methods of handling have superseded the old happy-go-lucky plan of buying a brand book and looking for the cattle on the records of the commission salesmen.

"You have seen Oklahoma this year, when over a million head of cattle are being fed and wintered, and if you will keep your eye on Oklahoma you will see this increased 50 per cent during the coming year, thus emphasizing our idea of expansion.

"You have seen this young Future Great producing hundreds of the finest hogs to be found on any market, and have seen our horses and our asses loom up equal to any in America.

"I suppose it would be in place here to crib a few figures and tell, to the item, the exact count of cattle and all manner of live stock in Oklahoma, but in lieu of this I prefer to refer you to the annual reports of our governor, where this information is fully set forth. Figures are difficult to remember and a tabulated statement for reference is always to be found in the returns of the assessor and the market reports. Therefore I will not occupy your time by quoting them to you as it would require hours to do so.

"That our people are prosperous is instanced by our bank deposits, and we have a case, in my own town of Woodward, where last year the record of our local bank was exceeded by only one bank in the United States, the Chemical National of New York, which showed a greater deposit in proportion to its capital stock.

"In Day county, Oklahoma, we have the greatest per capita wealth of any county in the United States, the average being something over \$1,700

each for every man, woman and child in the county.

"Our school fund system is the best known, as it cannot be stolen. Every dollar of it is invested in imperishable Oklahoma dirt and the rentals only can be used. Four sections of each township are reserved for this purpose.

"Noting the lack of competent teachers in the states, Oklahoma has builded two normal colleges, one of which has its home in a magnificent building erected at a cost of over \$100,000 and all paid for. Oklahoma also has a branch of the United States Agricultural college, and an up-to-date university for higher education.

"The people of Oklahoma are Americans and it is due to this fact that the government of the United States has abandoned its military posts and stationed its troops in time of peace in the states, where protection is made more necessary by lawless foreign elements.

"In this connection, it is worthy of remark that all this trouble about army supplies of meats originated in Oklahoma. It was this way: Owing to the splendid hunting offered by Oklahoma some few years ago, General Miles visited our territory and while there had an opportunity to taste real Oklahoma beef, matured on our short-grass range and sweetened by the zephyrs which cure the ripened forage on our sun-kissed altitude. Is it any wonder, then, that he refused to eat the stringy, lot-fed stuff sent him from eastern states, and pronounced it 'embalmed beef?'

"Just a word more. Oklahoma has within its borders hundreds of range cattlemen who are thoroughly progressive and up to date. These men have interests which are alike shared by the range men of western Kansas and northwestern Texas. Uniting, they have formed an organization known as the Oklahoma Live Stock Association, which is now in its fifth year. Its members meet annually at some point selected for the purpose and matters of interest are there discussed. Its next annual convention will be held at Woodward, Oklahoma, on the 14th and 15th days of February, 1899. Thousands of cattle will there be offered and sold. The occasion will be of interest to every western and southern cattleman. And in conclusion, gentlemen, it is my pleasure as secretary of the Oklahoma Live Stock Association, to bid you come to that convention and share in its profit and enjoyment with us, and learn more of this wonderland held in trust by our government, Oklahoma.

"I thank you."

Lump Jaw.

Lump Jaw means death to the animal and may mean infection of your herd and pastures. The application of "Fleming's Lump Jaw Cure" means quick and permanent cure of every case. A common sense remedy, easily applied. One to three applications cure. Endorsed by leading ranchers of the continent. Money back if it should ever fail to cure. Particulars free. Address Fleming Bros., Chemists, Union Stock Yards, Chicago, Ill. Come to the Annual Live Stock Convention on the 14th and 15th of this month and hear W. J. Fleming discuss this subject which is of so much interest to every cattle grower.

Horses for Sale.

I have for sale 56 head of horses some of them broken to ride and to work. All are good extra stock and are very cheap in price. They may be seen at my place five miles northwest of Woodward. J. C. PETERSON.

H. L. Rochelle,
Breeder of
BUFF COCHINS...
Exclusively.

Won all first, three second and one third at Poultry show held in Wichita, Kansas, December, 1897, with strong competition. A few birds for sale from my breeding pens. Eggs, \$1.25 per setting for balance of season. Send stamp for circular.

H. L. ROCHELLE,
Box 795,
Wichita, Kansas.

St. Joseph Stock Yards Company,

ST. JOSEPH, MO.

We are in the Market Every Day for Cattle, Hogs and Sheep.

We are especially bidding for range cattle and sheep, both for slaughter and feeding. Located on fourteen railroads, and in the center of the best corn and live stock district of the United States, we are prepared to furnish a good market for all kinds of live stock. Our charges for yardage and feed are—

YARDAGE:			
Cattle, per head	20c	Horses, per head	20c
Hogs, per head	6c	Sheep, per head	5c
FEED:			
Corn, per bushel	60c	Hay, per hundred lbs	60c

Our packers furnish a daily market for all kinds of cattle ranging from canners to export cattle. Look up your railroad connections, and you will find them in our favor.

G. F. SWIFT, President,

JNO. DONOVAN, Jr.,

Vice Pres. and Gen. Mgr.

M. B. IRWIN, Traffic Manager.

Bulls at Auction!

WOODWARD, OKLA., FEB. 14-15, 1899.

Registered and High Grade Hereford and Short Horn Bulls!

These bulls have been purchased direct from regular breeders, and are of good serviceable ages. Parties wanting bulls for service at this time, are especially invited to inspect this offering. Buyers will be furnished a certificate of entry, pedigree and transfer with each registered animal.

FAULKNER & TUGGLE.

GEO. S. TAMBLYN, KANSAS CITY STOCK YARDS, KANSAS CITY, MO.
GEO. S. TAMBLYN, W. G. WORTHAM, CATTLE SALESMEN.
GEO. W. WESTFALL, HOG AND SHEEP SALESMAN.
ROBT. L. TAMBLYN, NATIONAL STOCK YARDS, ST. LOUIS, ILL.
J. A. FLEMING, OFFICE.

TAMBLYN & TAMBLYN,

Live Stock

K. C. Stock Yards,
K. C. MO.
Union Stock Yards,
CHICAGO, ILL.
National Stock Yards,
ST. CLAIR CO. ILL.

Com. Merchants.

Telephone 1129.

Rooms 382-383 A. 383 B.

KANSAS CITY STOCK YARDS,

.....Kansas City, Mo.

W. E. ELMORE.

FRANK COOPER.

ELMORE & COOPER,

Live Stock Commission Merchants,

KANSAS CITY STOCK YARDS.

All trains or parts of same consigned to us are met at the Yards and cared for in best manner.

Money can be obtained at short notice on fat cattle.

Buy and sell on order. Experienced salesmen. Best results obtained.

NICK HUDSON, Solicitor, Woodward, Oklahoma.

SEED DUE BILL FREE

To get new customers to test my seeds I will mail my handsome catalogue for 1899, lithographed and beautifully illustrated, and a 10c Due Bill, good for 10c worth of seeds for trial, absolutely free. It is full of bargains. All the Best seeds, Bulbs, Plants, Roses, new Fruits, Farm Seeds, Potatoes, etc., at lowest prices. Ten Great Novelties offered without names. I will pay \$50. FOR A NAME for each. Don't buy your stock until you see this new catalogue. Several varieties shown in colors. Great inducements for orders this year. You will be surprised at my bargain offers. Send your address or Postal today. Tell your friends to send too. Old customers will receive a copy. E. B. MILLS, Seedsmen, Box 115, Rose Hill, N.Y.

Trade Mark



LUMP JAW NOW CURABLE.

Surely, quickly and for good. Fleming Bros., Chemists, Union Stock Yards, Chicago, have a remedy that quickly cures the most obstinate cases. Supplied by mail under a positive guarantee. Price, \$2.00. Valuable information and full particulars FREE.

The Apron Hemming.

[The following lines detail a recent society event in Lubbock, Texas, as printed in the Lubbock Leader, and are worthy of reproduction. The "Hemming" was at the home of (Geo. Wolfarth, a well known cattleman of the Panhandle country.)

There are moods come o'er a feller
When he tells the story teller,
And relates experiences,
Scrapes and reminiscences.
And I pause and wonder sorter
Whether I ort not or orter,
But suppose since I've begun
That I'll hev to tell you "one."

I once seen a tacky party,
Costumes very much Del Sarte,
And the "Lubbock New Year's ball"
Wuzn't by no means so small;
But while these I ain't condemning,
I must say the "Apron Hemming"
Wuz about the medicine
To keep a feller snickerin'.

'Way out here upon the prairie,
Stretchin' far an' wide an' airy,
Near to Nature's throbbing heart,
'Nchantid by her artless art,
Who could long be sad an' dreary?
Who could be but gay and cheery?
Could refrain from wirth an' play?
Why, there couldn't nobody.

And I reckon that's the reason,
Tho' 'twas night an' cold an' freezin'
And each jolly moonbeam sprite
Danced on prairies frosty white,
That the young folks went a stemmin'
To that powerful apron hemming,
At the G. C. Wolfarth ranche,
On the North Fork Brazos branch.

Mu sic low and conversation,
An' like harmless recreation
Sorter made us all forget,
Sorter "overlook a be;"
Sorter put off tho'ts an' trouble.
As we sot thar paired off double,
Made us hope the hostess, -he
Would fergit the sewin' bee.

But O Lordy!—'cause the 'spression,
"Seuse yo'se!"—and your relations,
Soon the boys wuz axed to draw
For some envelopes—O, pshaw!
And inside these we found pieces—
Scraps of our apron Nemeses.
And the girls come mar-hin' in
Wearin' aprons and a grin.

Then each feller went a caperin'
'Till he'd matched a scrap and apron,
Got a needle and some thread
And the pesky things connected.
Then Jim Bowles made a diskivery
Which he told in this delivery:
"I'll be dogged!" we heard him sigh,
"This old needle's got no eye!"

Now I'll tell you we looked knowin'
Settin' up thar, tuckin', sewin',
Tuckin' in and stitchin' stout,
Tucker'n' till we tucker'd out.
And the girls, they give directions,
Coupled with these kind corrections:
"Pin that apron to your knee!"
"Here, no basting goes now—see!"

Talk about your hand-sewed gya'ments,
But you ort to see them va'ments,
'Specially the one C. Vaughn
Put the extra tuckerin' on.
His fair partner, filled with wonder,
'Saw him knock old rules to thunder,
And prove himself a very gen'
By putting pockets in the hem.

The editor, not far behind him,
On other points far outshined him.
Our extra stitching at the last
We guarantee as unsurpassed.
But Jim Bowles was somewhat neater,
As a mill'ner he's a heater—
He tore his apron part into
Just to show what he could do.

When he got that apron rent so
All his energies he bent to
Sew it so you couldn't tell
Where the sewin' was, and—well
Jim must be a reg'lar wizard—
Couldn't tell, to save your gizzard,
Where the stitches were put thro'—
He had made one long stitch do.

Wide that hem was when he started,
At the end width had d-parted.
But adjectives are far too skewer
To praise the work of Charley Piercee:
Wide that hem was on his apron,
Wide and bee-utifully taperin'
Till he come out—how forlorn!
At the small end of the horn.

I could talk n'gh to exhaustion
'Bout the work of Charley Boston.

The ladies said his work was best—
If it was, God save the rest!
He had done some powerful whippin'
So the ladies said—Dad lip 'em!
'Twas plain as could be in their eyes
Charley's work deserved a prize.

But I'll bet a long green fiver
They didn't tote fair with Jim Driver;
'Cause his hemming I opine
Was something very superfine.
As was that of Mr. Peter
Caraway, the lengthy creetur,
Everyone says the same thing
Pete should study Tayloring.

Claude and Roll were both hot numbers
Gauging blood from fings and thumbers,
Doing up that hemming right
And sewed 'em up plum out of sight.
When we'd got through with that sewing
Shades of Fashion, what a showing
Those dear girls made, every one
With a lovely apron on.

How they laughed and kept a laffin'
Said the hemmin' was't half done,
Looksd so fine and artistic—
Meant this last to be sarcastic—
But I reckon that that hemming
Didn't serve no more condemning,
Didn't fall short of the real
More'n our lives of the ideal.

Pen in Hand.

The editor of the INSPECTOR acknowledges the receipt of the colossal penholder and the nimble dollar mentioned in the following communication. The dollar has, of course, gone on its way doing good. But the penholder and the kindly letter will be cherished for life:

KIOWA, KAS., Jan. 21, 1899.

DEAR BILLY:—Please find enclosed postal order for one Bryan wheel for which give me credit on the LIVE STOCK INSPECTOR, the best stock paper edited. I also send you to-day a small pen and penholder. It's not the pen that signed the protocol nor was it found in the archives of any of the old Spanish ruins, but just a plain everyday pen. Of course it was discovered; it was discovered by me in a Wichita store and thinking it about your size I bought it at a great expense, 25 cents. Take it, keep it and use it as Secretary of the Association of which we are justly proud.

Yours respectfully,
TOM WILSON.

Do You Ship Cattle?

Very many readers of the LIVE STOCK INSPECTOR will soon begin shipping cattle to the markets at Kansas City, St. Joseph and St. Louis. For the benefit of those who may be undecided where to consign, the following list will be of value, representing as it does the leading and more progressive commission firms at the markets.

If you expect to get top sales for your stuff don't monkey with back number firms who are not alive to their business, who do not even solicit your patronage.

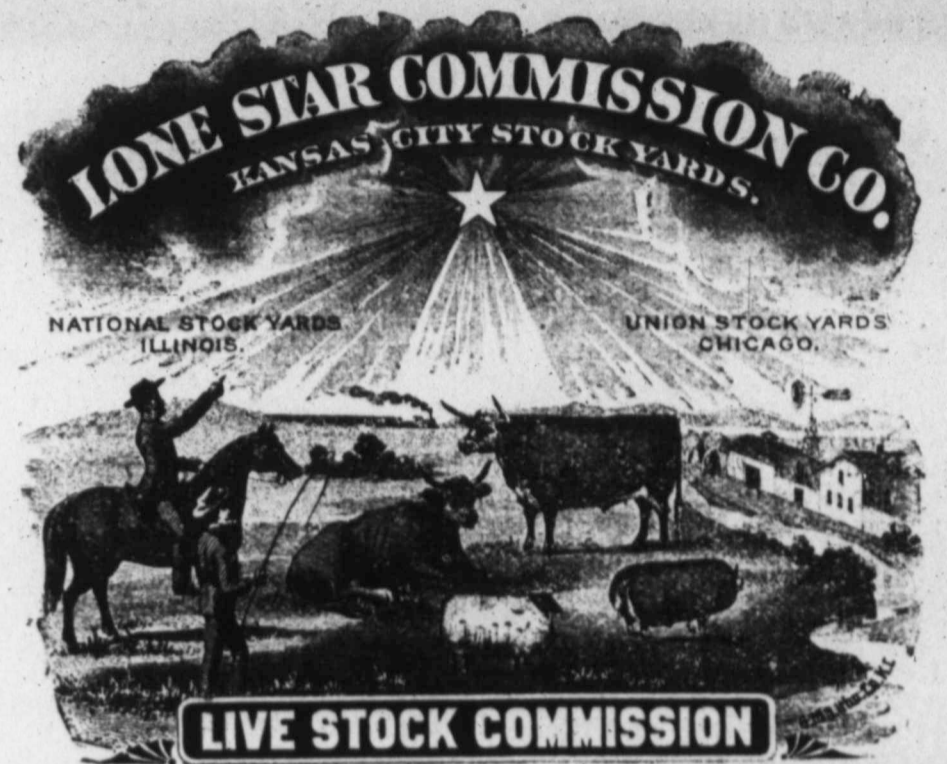
On the other hand, the firms and companies below named are up to date in method; they employ the very best salesman and buyers; they thoroughly understand their business and can give you the very best service at no higher rates than is charged you by others in the business who do not even seek your acquaintance.

In addition to all this these men aid you directly by assisting you to maintain an Association journal; they are interested in your success and invite your confidence. Consign to these people when you ship, no matter whether it be a single car load or a hundred; no matter whether it be cattle, hogs or sheep, and you will not have cause to regret your action.

Here are the
PROGRESSIVE COMMISSION FIRMS OF
KANSAS CITY, ST. JOSEPH AND ST. LOUIS.

- McDonald-Crowley Farmer Co.
- Lone Star Commission Co.
- Campbell, Hunt & Adams.
- Elmore & Cooper.
- Tamblyn & Tamblyn.
- Barse Commission Co.
- Chicago Live Stock Com. Co.
- Kansas City Live Stock Com. Co.
- Southee & Kirk.
- Zeb F. Crider Commission Co.
- T. P. Gordon Commission Co.
- Paugh & Co., Wichita, Kan.

CONSIGN CATTLE, HOGS & SHEEP TO



Organized in **TEXAS** By Experienced Stockmen from the **GREATSOUTH WEST.**

A competent force of men in every department

We have Experienced Salesmen in all Departments.

Consign your stock to us. Write to us. Call and see us.
Market reports furnished. Liberal advances on consignments. Loans made on marketable stock

Campbell, Hunt & Adams



LIVE STOCK
Commission
Salesmen.
S. St Joseph, Mo.
Kansas City, Mo.
National
Stock Yards
Illinois.

JACOB DOLD PACKING CO.

...PORK & PROVISION JOBBERS.

Purveyors to the People of Oklahoma, Kansas and Texas, by common consent.

OUR SPECIALTIES: "White Clover" Pure Fancy Leaf Lard. "Perfection" brand Fancy Mild Cured Hams, Breakfast Bacon

Our sausage department is given special attention. We produce highest grade only. We may ask you a fraction more than other makers, but you may be certain

"IF ITS DOLD'S ITS THE BEST."
Look for the Stamp "MADE IN WICHITA."

Packing Houses: WICHITA, KANS., KANSAS CITY, MO., BUFFALO, N. Y. Distributing Houses: LIVERPOOL, HARRISBURG, OKLAHOMA CITY. Dold Packing Co.

Wichita Union Stock Yards Co.,
WICHITA, KANSAS.

...Capacity 3,000 Cattle 5,000 Hogs

Private Yards for Texans. Perfect Sewerage and City Water. All Pens Covered... **W. R. DULANEY,** Supt. of Stock Yards.

DR. WHITTIER, SR., 215 W. Ninth St., Kansas City, Mo.

Oldest and Original. Most successful specialist. Established 1857.
NERVOUS DEBILITY, Lost Vitality Organic Weakness, Early Decay, Lack of Energy, Self Distrust, Weak Memory, Dyspepsia, Exhausting Losses, Pimples on Face, Aversion to society, Loss of Ambition, Unfitness to Marry, Stunted Development, Lost Manhood, Milky Urine, effects of abuse or excess Cured to Stay Cured. My life long experience, special study of each case, pure medicines insure a REAL CURE. Question list No. 1, free in plain envelope. Charges Reasonable. Terms Easy, Cash.
Blood and Skin Diseases, all forms Scrofula, Rheumatism, Catarrh, Eczema (itchy or scaly tetter), and all Blood Diseases, cured for life, safely and sure. Avoid patent medicines or inexperienced hands. Call or write for question list No. 2 on blood diseases.
Gonorrhoea, Gleet, Stricture, cured without instruments or pain. List No. 3 free.
Medical Dictionary and Adviser free at my office, by mail 20c. Hours 9 to 4, Sunday 10-12.

COLT & GRAY'S HEREFORD SALE.

Some Pointers Concerning the 50 Head. Public Sale at Kansas City February 23, 1899.

Among the public sales of registered Hereford cattle announced to take place here in the West is that of W. A. Colt, Clinton, Mo., and W. W. Gray, of Norris, both in Henry Co., Mo. The draft of 50 head consists of bulls and heifers whose breeding is as aristocratic as could be demanded by the up-to-date Whiteface breeder. The writer paid a late visit at both farms and was agreeably surprised to find so good cattle that had never been exhibited or advertised since the herds were founded. Mr. Colt's herd was founded in 1884 and now aggregates about 100 head. The foundation animals were selected out of the noted herds of Earl & Stewart and that of Van Natta, and since reinforced by the best obtainable. In his sale draft of 40 head are 20 2-year-old heifers sired by the premier herd bull Shadeland 36692, a full brother to the noted Earl of Shadeland 22d 27147. Sixteen of the nice heifers are safe in expectancy by the younger herd bull Daniels 71660, bred by Gudgell & Simpson and sired by the Imported Chesterfield 56697. One finds an extra good lot of young bulls well marked, finely coated and coming on in that way that insures sure future usefulness. The visitor at Mr. Gray's 500-acre farm situated near Maurine, on the Kansas City branch of the "Frisco," finds a herd of 60 head whose founding was laid in 1882 by individuals bred by Tom Clark, of Indiana, that were the immediate descendants of Success 2 and the Grove 3rd. The prices for these animals ranged at \$300 to \$800, therefore the reader will understand that they were good ones. The herd bulls since used were Nobleman 6th 4515, Equity 2d 12547 and Shadeland 36692 now in service in Mr. Colt's herd. The premier herd bull now is Printer 66684 bred by Gudgell & Simpson, sired by the great breeding bull Beau Brummell 51917. Individually Printer 66684 is a typical beef bull of the up-to-date Hereford type and is proving himself an extra good sire. The draft of 10 bulls that Mr. Gray puts in the sale were sired by Printer 66684 and like those of Mr. Colt's, have been cared for in a common sense way, being hardy, and as such are a desirable lot of youngsters. It may with propriety be stated that none of the females have ever been sold from either farm, hence the commingling of blood now found in these herds is a most desirable one. For further information concerning the sale and offerings consult the sale announcement elsewhere in this issue and write for a free copy of the sale catalogue. W. P. BRUSH.

The Grand View Herefords.

The attention of our readers is called to the advertisement of Grandview Herefords which appears on another page. This herd, although but a few years old, has become famous among cattlemen.

Grandview Farm, with its auxiliary farms aggregating over 10000 acres of fertile Northwest Missouri land, is the largest Hereford breeding establishment east of the Missouri river, and the herd consists of carefully selected registered cattle of the leading Hereford families, namely: The Lord Wiltons, The Grove 3ds, Alxieties, Beau Reals and Garfields. The herd has been gotten together at a great expense of time and money, and nothing has been omitted to make it equal to the best. It is too well known to require a further description.

Mr. Comstock has on hand over 100 choice registered 1898 bull calves. They are of the very best breeding and are large for their ages. They are well marked, are dark red and curly coated, are short legged and blocky; in short they are the kind that are always in demand. He can furnish you a single animal or more, and will make special prices on car load lots. This is a great opportunity for

southern and western men who wish to buy quite a number at a time; they do not have to go to several herds and pick up a few here and there, but can get what they want at one place and without any loss of time.

At the L. S. Rancho.

Among the new advertisements in this issue will be seen that of Chas. N. Whitman, owner of the L. S. rancho near Tascosa, Texas. This is the well known rancho formerly owned by Scott and Whitman and has only recently become the sole property of the latter. Attention is called to the fact that these cattle have just won second prize at the National Exhibition of Range Cattle at Denver last month, and were pronounced the best grade cattle on the grounds. Read the offer in the advertisement of Mr. Whitman and address his manager direct for further information, etc. It is perhaps unnecessary to add that these bulls are all bred from the well known Ridgewood Herefords of Leavenworth, Kas., and cannot be excelled in quality, breeding and good colors.

POSTAL CARD WANTS.

This department is conducted especially for LIVE STOCK INSPECTOR patrons, and only the small charge of one cent per word merely to cover cost is made for advertisements of cattle for sale or pasture, lands for lease or sale, feed for sale, etc.—in short any want felt about the rancho or farm. Enclose postal note for amount with order and insertion is desired for more than single issue, remit to cover the amount. Address, Postal Card Wants, care LIVE STOCK INSPECTOR, Woodward, Okla.

TO TRADE FOR YOUNG CATTLE.—An elegant upright Estey piano, walnut case, splendid tone, good as new. S. M. BARGER, Wichita, Kan.

FOR SALE.—Twelve head of thoroughbred and high grade Shorthorn bulls ranging from one year to three in age, all red in color and in good flesh. J. R. WARD, Gage, O. T.

WANTED.—The name and address of parties handling the thoroughbred red Polled cattle either in Oklahoma, Kansas or Texas. Address SAMUEL FISHER, Atsaphoe, O. T.

RANCHO FOR SALE, containing three quarters of land, taking in one and one-half miles of the Beaver river. Well improved; 200 acres of hay land. 35 miles from Liberal Kas. For particulars write to O. C. ARMSTRONG, Preston O. T.

FOR SALE.—Rams. One car lot Rambouillet, Merino and 18 Grade Shropshire yearlings. In fine shape for heavy service. Will be sold cheaper than same quality can be bought anywhere. J. W. DEGEER, 7 Deerhead, Barber Co., Kansas.

FOR SALE.—One hundred and sixty acres of deeded land, 80 acres under cultivation and 40 acres good meadow, balance rough. Good rough range adjoining. Never failing stream, with running stream on place. For further information address D. A. WANT, Woodward, Okla.

FEED FOR SALE.—For 3000 cattle, consisting of corn in shock, cane in shock, millet in stack, Kafir corn in shock and standing; 5000 acre pasture, with one lot, and small pasture and abundance of outside grass with the other, abundance of water and good shelter. Anyone desiring feed I would gladly show what I have and make prices and terms. RILEY LAKE, Lake City, Kas.

FOR SALE.—480 acres deeded land, seven miles southwest of Liberal, Kas. 4 wind mills, each capable of watering 1,000 head of cattle, endless range, horse pasture, large barn, corrals, feeding pens, watering troughs, 60 barrel storage tank, wind break, sheds, 9-room frame house, in fact its a first-class fully equipped ranch. Price \$3500, on time if good security is given. Address, G. L. DRUMMOND, End, Okla.

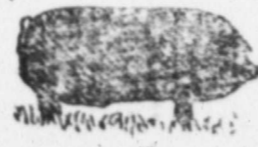
MY RANCH AND STOCK FOR SALE.—Near Alva the county seat of Woods county, Okla. Alva is situated on the Santa Fe R. R. in the northern part of Woods county. It has about 2000 inhabitants. The Northwestern Normal School is located at Alva and has the finest school building in the west. Ranch is located 4 miles north of Alva and consists of 1100 acres of grass land, 120 acres of plow land and 80 acres in wheat, all well fenced and cross fenced, 3 and 4 wire, corrals, etc. Good 3-room house, good outbuildings of all descriptions, granaries, cribs, stables, etc. Good orchard of 800 trees, half bearing, 500 forest trees. Land—section of homestead land, can be deeded, 1 section of school land 4 years lease yet at \$33 per year, all land is joined, good running springs in south end, wind mill and inexhaustible water in north end. 450 head cattle, cows, calves, yearling steers and heifers. 30 head of horses consisting of mares and mule colts and saddle horses. Farming implements of every description. Will sell ranch or cattle separate or together. Time on part. Reason for selling, retiring from business. GEO. S. PARKER, Alva, Okla. Box 189.

BREEDER'S DIRECTORY.

R. S. COOK, WICHITA, KAS.

BREEDER OF

Poland-China Swine



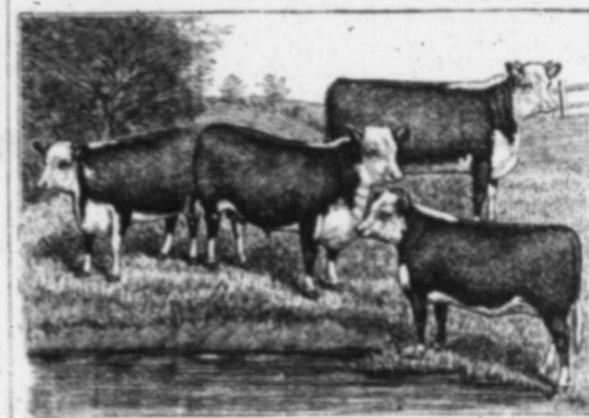
corresponde invited and.

The prize-winning herd of the great west. Seven prizes at the World's Fair; eleven firsts at the Kansas District fair, 1893; twelve firsts at Kansas State fair, 1894; ten first and seven second at Kansas State fair, 1895. The home of the greatest breeding and prize-winning boars in the West, such as Banner Boy 28441, Black Joe 28653, World Beater and King Hadley. For Sale, an extra choice lot of richly-bred, well-marked pigs by these noted sires and out of thirty-five extra large, richly bred sows. Inspection or

SEEDS ALFALFA SEED A SPECIALTY
Cane and Millet Seeds, Kafir and Jerusalem Corn, etc. All crop of 1898. Write for our "How to Sow Alfalfa," and prices on seeds. MCBETH & KINNIFFON, Garden, v. Kansas.

BE HUMANE and remove the horns of your herd and that of your neighbor's herd BY USING THE KEYSTONE DEHORNING KNIFE. Cuts clean on all sides, does not crush. One clip and the horns are off. Fully Warranted. Descriptive circulars FREE. A. C. BROSIUS, Cochranville, Pa.

Recorded Hereford Bulls.



40 Young Bulls For Sale.

FRED COWMAN, Lost Springs, Marion Co., Kans.

Bulls! Bulls!

GOOD HEREFORDS and DURHAMS.

200 Two-year-olds and 250 Yearlings.

All in the celebrated L. S. brand.

Address C. H. WITHINGTON, Tascosa, Tex.

Manager of the L. S. Ranch.

(Please mention this paper.)

Pure Bred

Hereford Cattle.

HILLSIDE RANCH, Woodward, Okla.

Fine Bulls for sale at all times. Singly or in Car Load lots

PATTON & MARUM.

D. P. NORTON, Breeder of Register'd Shorthorns COUNCIL GROVE, KAN.

Imp. Lord Lieutenant 120019 in service. Young stock for sale. Lord Lieutenant sired the second prize yearling bull at Texas State Fair, 1898, that also headed the second prize herd of bull and four females, any age, and first prize young herd of bull and four females. All stock vaccinated for black-leg.

WE SELL DIRECT TO THE FARMER. Hardened Steel Landside Double Board Plow, hard as class, 16-in. \$9. Salky Plows, \$25. Riding Gang Plows, \$35. 3-in. Wagon, \$30. Big catalogue free. Write now and get ready for spring work. HAPGOOD PLOW CO., Box 112, Alton, Ill. Only Plow factory in the United States selling direct to farmer.

Registered Bulls!

JACOB MADDOX, Jr., of Calloway county, Mo., has fine Cherry Red Missouri bred Bulls on feed at Pond Creek, Okla. He can sell you anything you want in Short Horn, registered or unregistered. Also in car lots White-Faced bulls from half-blood to 15-16. He has a few registered Short Horn Heifers. If you want anything in good blood, no matter what blood. Write him, or J. C. McCLELLAND, Pond Creek, Okla.

Prevent Blackleg

In Cattle by using Collier Williams Mixture. Easily applied and a sure preventive of Blackleg in cattle. For full information, price, etc., call on or address

COLLIER WILLIAMS, Woodward, Okla.

(Please mention this paper.)

Grandview Herefords!

Grandview Farm is devoted to the breeding of the most desirable strains of Herefords.

Over 100 choice registered coming yearling butts, including several grandsons of Ancient Briten for sale.

C. G. COMSTOCK, Albany, Mo.

Registered Hereford Cattle For Sale.

50 COWS, 20 BULLS and 15 HEIFERS.

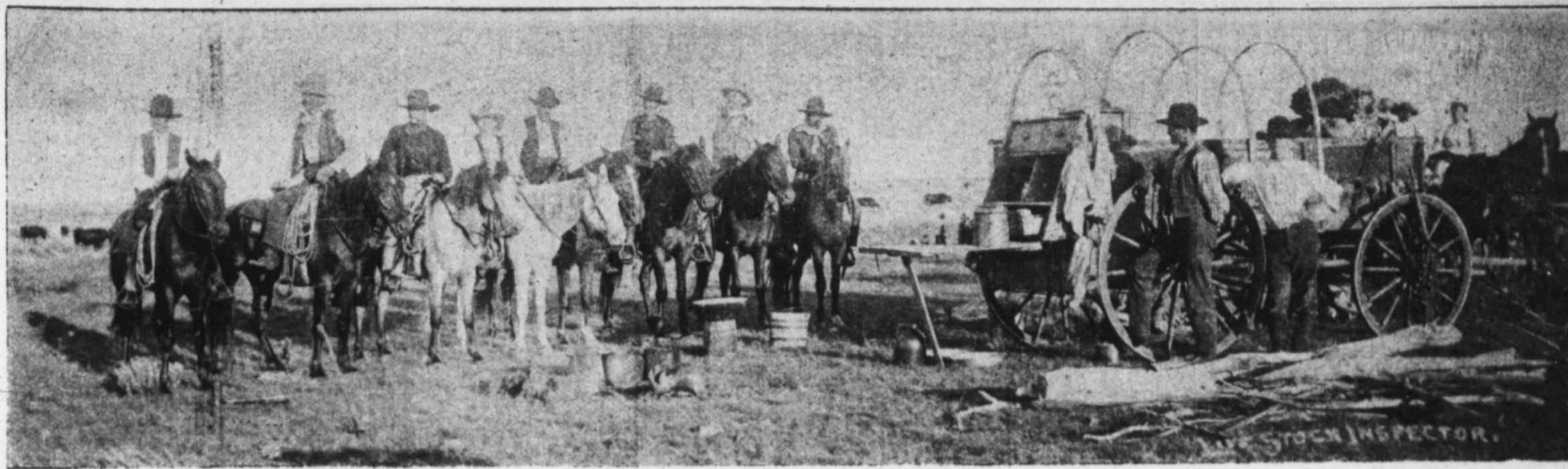
Car Load of High Grade Bulls.

THOMAS EVANS, Hartford, Kan.

The Circulation! OF THE Hardesty Herald

Thoroughly covers Beaver county, Oklahoma, Hansford Co., Texas, and Seward County, Kan.

R. B. QUIEN, Editor, Ad. Rates Reasonable. Hardesty, Okla.



OUTFIT OF B. MASTERSON, MOBERTIE, TEX.—(View near Gage, Okla.)

Squawville's Female Barber.

At the dawnin' of creation when the earth was newly made,
An' was ready to receive its population, it is said
That the Lord concluded Adam ort to have a purty bride,
An' He made her from a spare rib excavated from his side.
I am not so unbelievin' as to question of the truth,
Of the purty Eden-story that was taught us in our youth.
Yet, to judge by woman natur,' I am often somewhat prone
To believe the Master made her out of Adam's funny bone.

We have women here in Squawville that would seem to verify
My suspicions on that snbjek, an' in explanation why
I will mention as an instance an' embarrassin' affair
That'll show their funny natur,' though it made us fellers swear.
When a little female barber came to camp an' said that she
Was prepared to give our faces more respectability,
She created a sensation, for the camp had never seen
Such a natty wingless angel as that same fair Imogene.

She was trimmer than a jaybird, an' was plumper than a quail,
With a voice as soft an' pleasin' as a flute's heart-melting wall;
An' the smile she'd spring upon us, when we'd go into her shop
Kept the heart of every rooster in the diggin's on the flop.
Allus had a crowd a-waitin', for the queerness of the play
Started some of us to shavin' six or seven times a day;
An' she never lost her temper or appeared alarmed or vexed
At the cusswords or confusion when she'd sweetly murmur "Next!"

Our attention to the damsel caught the notice of our wives,
An' they riz in revolution till we trembled fur our lives;
An' they called a public meetin', swearin' that the gal should tramp
In a mighty hot-foot manner from the limits of the camp.
Summoned her to come afore 'em, an' the nery critter went,
I presume to satisfy 'em that she had no bad intent.
An' it sort o' paralyzed us when they issued from the place
Every cussed wife among 'em with a smile upon her face.

Then the women folks informed us they would let the lady stay,
An' would never raise a beller if she'd shave us every day,
An' there wouldn't be no rumpus if we'd sort o' court her smiles
Or acknowledge we was victims to her sweet an' wionin' wiles.
My ol' woman plainly tol' me that she wanted me to help
Fur to patronize the beauty, an' she'd never raise a yelp,
Fur a lonely little female such as her a seemin' bent
Fur to make an honest livin' ort to meet encouragement.



\$15.00 COUCH FREE!

Our price for Family Case and Couch is only \$13.50. Sent C. O. D., subject to examination, or \$13.00 cash with order, shipment immediate by freight. All orders must be signed by heads of families. Name first and second choice of colors of Couch to prevent delay.

The Consumers Supply Co.,
CHICAGO, ILLINOIS.

General Offices, 607 Atwood Building.

Couch is full length and width, with spring edge, seat and head, upholstered in velours or corduroy, samples of colors sent free on request.

To introduce our **FAMILY CASE of GROCERIES**

into more homes we offer this elegant couch **FREE** with each order. Our **FAMILY CASE** contains only first class goods, such as are in every day home use, and are all guaranteed to be strictly pure or money refunded.

Contents of Family Case:

10 lbs Best-M & J. Roast Coffee (or any kind wanted)	\$3.00
5 lbs Best Japan Tea	3.25
1 lb Ground Pepper, strictly pure	.40
1 lb " Cinnamon " " " "	.40
1 lb " Mustard " " " "	.40
1 lb " Allspice " " " "	.20
1 lb " Ginger " " " "	.20
1 lb " Cloves " " " "	.20
1 lb Penang Nutmegs " " " "	.20
1 lb Cream of Tartar " " " "	.20
1 pint Triple Ext. Vanilla " " " "	1.25
1 pint " Lemon " " " "	1.25
5 lb Can Best Baking Powder	2.00

The contents of our Family Case amount to..... \$13.00
The Elegant Couch sells for..... 15.00

(All Spices come in air-tight tin cans.) Total..... \$28.00
(Please mention this paper.)

We attributed their action to their sympathetic hearts,
Never dreamin' that the schemers was a playin' funny parts,
Never havin' a suspicion of their diabolic plot
Fur the gal that had ensnared us jes' iron was strikin' hot.
Like a hurricane it hit us, an' we hustled fur a rope,
But the barber spilled the program by a skippin' down the slope.
Fur the gal that had ensnared us jes' like suckers in a net
Was a beardless cuss from Leadville, payin' an election bet!

—Denver Post.

Norton's Shorthorns.

One of the standard breeders of registered Shorthorns, Mr. D. P. Norton, of Council Grove, Kansas, places his card in the breeders' directory of the LIVE STOCK INSPECTOR, beginning with this issue. The Neosho Valley herd of Shorthorns is considered equal to the best and lovers of the deep red color in cattle will welcome a knowledge of Lord Lieutenant who heads the herd and is an imported bull. His characteristics are the broad chest, straight lines, extra good loins, level quarters and masculine appearance. He is regarded as one of the best breeders in the country and one of his sons was winner at the Texas state fair last season. The cows of the herd are equally good, of Bates breeding topped with Scotch (and Booth) blood, broad ribbed, good colors and good workers. Among the best is Josephine, aged cow showing five of her best heifers in the herd. In addition to the above are some splendid cows sired by the famous imported Buccaneer and are of the kind which made the Shorthorns favorites. There are 25 young bulls of extra breeding now on sale by Mr. Norton, ranging in age from 18 months down Mr. Norton has recently purchased a young bull in Canada to assist Lord Lieutenant, which is known as Imported British Lion 133692. His sire is Isabella's Heir 130673 and dam is Britania 37th by Baron Evenlode 129045. Mr. Norton hopes to be able to attend our convention next week to meet the cattle-men of Oklahoma, Kansas and Texas.



SAVE \$8 ON A HARNESS!

We are the largest manufacturers of harness and carriages in the world selling to the consumer exclusively.

WE HAVE NO AGENTS, DEALERS OR MIDDLEMEN.

We sell you direct from the factory at wholesale prices and save you all additional expense. We ship anywhere for examination. We guarantee and warrant everything.

This Elegant Team and Farm Harness for \$19.50

Many customers who have bought it report that they have saved from \$5 to \$10 in buying this harness from us. For full description of this and other styles of harness and 15 styles of vehicle see our new illustrated Catalogue. Your name on a postal card will get it.

ELKHART CARRIAGE & HARNESS MFG. CO. W. B. PRATT, ELKHART, INDIANA



BUCKBEE'S SEEDS SUCCEED

My NEW SEED BOOK tells all about the best varieties of CORN and everything of interest in raising them to great profit, etc.

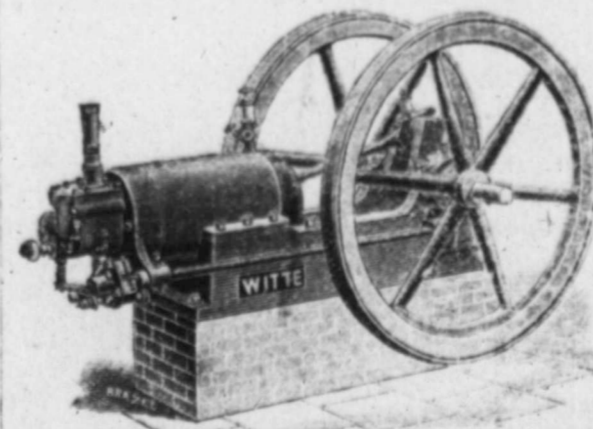
Write to-day. **FREE!** Mention this Paper.

and will send you a Sample of New Early Klondike—the Earliest Corn on Earth, together with beautiful and instructive Seed and Plant Book, H.W. BUCKBEE, Rockford Seed Farms, Box 205, Rockford, Ill.

Established 1870.

Incorporated 1896

Ranch Gasoline Engines



Sold on a full Guarantee.
Sent on Trial if Necessary.
Made over Ten Years.
Thirty Years in Business.
No Further Experiments.
Hundreds in Use.

Will Pump Water Day and Night.

A Gallon of Gasoline will raise 15,000 gallons of Water a reasonable height.

WITTE IRON WORKS CO.,

1220 Walnut St., KANSAS CITY, MO.

Send for Catalog H.

(Please mention this paper.)

THE LIVE STOCK INSPECTOR

PUBLISHED SEMI-MONTHLY BY

WILL E. BOLTON.

WOODWARD, OKLAHOMA

The only journal published in Oklahoma and the Indian Territory, devoted exclusively to live stock interests and stock farming.

Official Organ of the Oklahoma Live Stock Association.

Calendar for 1899 showing months from January to June with days of the week and dates.

At News Depots, and On Trains.

KANSAS CITY—By W. A. Rode News Co., 535 Main St. WICHITA—By C. A. Tanner & Co., 122 North Main St. DENVER—By Hamilton & Kendrick News Co., 17th and Champa. AMARILLO, Tex.—Morgan Bros. News Co. For sale on all western Santa Fe trains, by Newsboys. For sale on U. P., Denver & Gulf trains, by Denver Ry. News Co.'s agents.

OFFICERS OKLA. LIVE STOCK ASSOCIATION.

President... ARNER T. WILSON 1st Vice-P... JOSEPH WICKER 2nd " G. E. MORROW Secretary W. E. BOLTON Treasurer JOHN GERLACH

EXECUTIVE COM.

IRA EDDERMAN, W. E. HERRING, JNO. W. HOLMAN, GEO. W. CARR, B. MASTERSON, President and Sec'y, ex-officio

LIVE STOCK SANITARY COMMISSION OF OKLAHOMA. MEMBERS BOARD

C. J. BENSON, Shawnee, J. C. TOUSLEY, El Reno, B. S. BARNES, Ponca City, F. D. WICKOFF, Stillwater, R. J. EDWARDS, Oklahoma City Secretary, GOVERNOR BARNES, Ex-officio

TERRITORIAL QUARANTINE INSPECTORS.

CHAS. HICKEL, 1st Dist. SAM MATTHEWS, 2d Dist. JAKE CASTLELOU, 3d Dist.

Entered at the post-office at Woodward, Oklahoma, as second-class mail matter.

Subscription \$1 per Year in Advance.

FEBRUARY 15, 1899.

New laws protecting the registry of brands are needed by the stockmen of Oklahoma.

Get in line with the live stock interests of Oklahoma by handing in your membership to the Association; and do it now.

Eight million head of cattle and \$25,000,000 investment were represented at the National Live Stock Association meeting in Denver.

President Wilson has made a good executive officer and will doubtless be the unanimous choice of the convention for re-election.

New laws on quarantine should be carefully considered. Report of legislative committee should have the attention of all members.

The business session of the convention will begin promptly at 9 a. m. on the 14th. Every member of the association is earnestly requested to be present. THIS SESSION OF THE CONVENTION IS FOR MEMBERS ONLY.

Thanks to our newspaper friends for advertising the Fifth Annual Convention of the Oklahoma Live Stock Association at Woodward Feb. 14-15, 1899. Through the kindness of the press the convention dates have been well advertised and nothing but severe storms and cold weather can prevent the convention from being a howling success.

CONVENTION PROGRAM.

Fifth Annual Convention of the Oklahoma Live Stock Association, at Woodward, Okla., February 14-15, 1899.

TUESDAY, FEBRUARY 14.

9:00 a. m.—Business Session, by members of Association only.—Reports of Officers;—Quarantine Regulations;—Inspection of Brands;—Needed Legislation;—Election of Officers. One hour intermission at noon.—Session adjourn at 3:00 p. m. until 5:00 p. m. 5:00 p. m.—"Welcome to Woodward"—Judge J. R. Dean, in behalf of City and County of Woodward. Response by President Wilson for Association; by Governor Barnes, and by Chairmen of Delegations. 7:30 p. m.—Invocation, by Rev. S. G. Porter. Chorus—by Woodward Girls. Recitation—H. D. C. MacLachlan, Amarillo, Texas. ADDRESS—"Some Possibilities," by Hon F. D. Coburn, Secretary Kansas State Board of Agriculture. Recitation—"A Texas Pony"—Mrs. William J. Wallace of Wichita, Kansas. ADDRESS—Hon. James Wilson, Secretary Department of Agriculture of the United States of America. Vocal Solo—"The Holy City"—Mrs. Col. Bryant, Wichita. Selection—C. F. Roberts, of Woodward. Chorus—Woodward Girls. Adjournment.

WEDNESDAY, FEBRUARY 15.

9:00 a. m.—"Black-Leg in Cattle, and its Prevention"—Harold Sorby, of Chicago, representative in America of Pasteur's Institute, of Paris, France.—Discussion by members. 10:00 a. m.—"Splenic or Southern Fever"—Col. Albert Dean, Secretary Bureau of Animal Industry of the United States.—Discussion by members. 11:00 a. m.—"Lump-Jaw in Cattle, and its Cure"—W. J. Fleming, of Chicago.—Discussion by members. 11:30 a. m.—"Post Mortems"—Dr. Charles Cresswell, Veterinarian for Colorado; Dr. Lovejoy, Veterinarian for Illinois, and Dr. Lewis, Veterinarian for Oklahoma. 12:00 m.—Adjournment. 1:30 p. m.—"Our Foreign Meat Trade"—Bernard W. Snow, of Chicago. Discussion by members. 2:00 p. m.—"Live Stock in Oklahoma"—Governor C. M. Barnes. 2:30 p. m.—"Where are We At in the Cattle Business?"—Col. L. A. Allen, of Kansas City.—Discussion by members. 3:00 p. m.—"Feeder Markets"—M. B. Irwin, General Traffic Manager St. Joseph Stock Yards. 3:30 p. m.—"Relation of Commission Men to Producers"—Five minute talks, by Geo. W. Campbell, Frank E. Cooper, Zeb F. Crider, Geo. S. Tamblin, Chas. A. Davis, E. F. Kirk, J. H. Waite, I. S. Alexander, Thos. B. Lee, Frank Siegel and Ben L. Welch, Kansas City; T. P. Gordon, W. F. Davis, of St. Joseph; G. M. Paugh, E. J. Healy, Wichita; A. J. Campion, Denver; J. H. Handley, S. M. Scott, St. Louis. 5:00 p. m.—"Benefit of Home Markets"—W. R. Dulaney, Wichita.—Discussion by members. 5:30—"Future Prices of Cattle"—W. M. Ferguson, Wellington; Geo. Dold, Wichita; W. E. Campbell, Kiowa; H. B. Sanborn, Kansas City. 6:30 p. m.—Final adjournment subject to will of Convention. 8:30—p. m.—Cattlemen's Ball, given free to members and guests.

National Live Stock Convention.

The great Denver meet of live stock men was fully up to expectations, both in attendance and direct benefit. Many able papers were read and discussed.

The range cattle show was a distinctive feature and will be perpetuated by the Denver stock yards company. Twenty-three states made entries, consisting of at least one and often more ears each. The cash prizes aggregated \$2000 in addition to a long list of special premiums offered by Denver and Colorado merchants. Winners of prizes at the exhibit were:

Chambers & Whitney, Evanston, Wyo., best load of two-year-olds; Swan Cattle Co., Chugwater, Wyo., best load of yearlings; Newcomb & West, La Jara, Col., best load of calves; August Grundel, Gypsum, Col., best load Colorado two-year-olds; Mower & Co., Delta, Col., best load Colorado yearlings; J. O. Destal, Aroya, Col., best load Colorado calves; Swenson Bros., Childress, Tex., best load Southern yearlings; Mrs. C. Adair, Paloduro, Tex., best load of Southern calves; Charles N Whitman, Tascosa, Tex., silver medal for second best load of calves from Texas; Reynolds Land & Cattle Co., Channing, Tex., silver medal for second best load two-year-old steers, Southern division.

Sharp discussion on the matter of forage and grazing on government reservations resulted in commendatory resolutions urging an appropriation of \$10,000 to continue investigations.

Resolution was also adopted asking for an order from President McKinley giving preference to the cattle of the United States in the Cuban trade.

As the next place of meeting Fort Worth was chosen for next year, although many favored St. Joseph, Mo. In the choice at next year's convention Salt Lake City will ask for the meeting in 1901 which will be vigorously contested by several Missouri river towns.

The hospitality of Denver was never more free, and the entertainment committee came near preventing the business of the convention by lavish attentions from the start to a day after final adjournment. Wolf Londoner, President Springer, Fred Johnson, G. W. Ballantine, C. F. Martin and a host of others demonstrated their ability to get a good fill on the delegates and kept them wondering, what next? Everything from the Salvation Army band to a French Bal Masque was provided, while open club rooms, environment with good cheer in liquids and solids, tempted the guests between acts at all hours of the day and night. Denver is a sure enough daisy, with registered sires, and full blood dams enough to breed the unqualified admiration of a continent.

The annual address of President Springer, as delivered to the convention, is now in type for publication in this issue, but owing to lack of space will be published in full in the next number of the LIVE STOCK INSPECTOR.

Welcome to the Convention.

To the members of the Oklahoma Live Stock Association and its guests who will meet in Woodward this month, the LIVE STOCK INSPECTOR in behalf of every material interest on the great southwestern range, bids a warm welcome. Never before in the history of the Association has its future seemed so bright and its purpose been so well defined. Although only four brief years have been numbered since its organization as an Association, it has made a record of which every member may feel proud and has accomplished more with less expense than any similar body ever organized in the same length of time.

It has secured the enactment of beneficial laws for the stockmen.

It has extended the limits of the Federal Quarantine line.

It has secured lowest possible shipping rates to market.

It has prosecuted thieves successfully.

It has inspected thousands of cattle and saved hundreds of dollars to members.

It has directed the attention of the live stock world to the ranges of Oklahoma, Southwestern Kansas and the Panhandle of Texas and has done more to develop the interests of every cattleman, whether holding membership in the Association or not, than any other single agency.

It now enters upon its fifth year, confident of the future, free from indebtedness and with a balance in its treasury. With united action on the part of cattlemen within the territory above named and that intelligent cooperation which must be had by the membership of every successful organization, there is every reason to believe that its usefulness is but begun and the benefits to be shared by its members will be largely increased.

Therefore, welcome to your annual convention. May your deliberations be fraught with wisdom; may your action be the keynote of progress; may your profits be enhanced and your losses diminished by your coming together and uniting in an association which has for its object the good of every member. Thrice welcome to Woodward, the gem of the Canadian valley, where your coming is hailed with hospitality and your going is but coupled with the promise to return. May your losses be lighter, your pastures better, your cattle heavier and your markets higher by reason of your coming.

J. R. Word was in from Gage on the 30th and called at stockmen's headquarters. Mr. Word thinks the prices being paid now for fat cattle will hold up prices next summer until crop conditions are known. If Kansas grows a good corn crop stock cattle will be higher.



The above is an excellent reproduction of the features of B. M. Irwin, the hustling Traffic Manager of the St. Joseph Stock Yards Company. Mr. Irwin is a young man, full of push and persistent effort and has demonstrated his competency in many ways. To him is due no small share of the credit for the phenomenal increase of business at the St. Joe markets the past year. Mr. Irwin has engaged rooms for the coming convention here on the 14th and 15th and will distribute some elegant souvenir editions of the Journal of Commerce telling of the St. Joseph Stock Yards.

McBeth & Kinnison, the wholesale and retail seedsmen, of Garden City, Kan., have a new advertisement in this issue. This house is located in the center of the alfalfa seed producing district of the United States. It is claimed that on account of the dry climate of the Arkansas valley, seed matures better in that altitude and is more vigorous than alfalfa seed coming from other districts. Although they make a specialty of this seed which they can furnish in ear loads or bushel lots, the house also trades extensively in all kinds of field, tree and garden seeds.

This issue of the LIVE STOCK INSPECTOR is a double number, owing to the Annual Convention of Oklahoma Live Stock Association on Feb. 14th and 15th, and the issue consists of upwards of 10,000 copies. Its pages are handsomely illustrated and it presents many valuable advertisements to the reader for his consideration and thereby saving of money. Regular issues will follow and full report of the convention will be found in its issue of March 1, 1899.

Basis of Valuation Adopted by the County Assessors of Oklahoma.

The session of the county assessors of the Territory held at Guthrie last week adopted the following schedule:

Horses—First class to be assessed from \$50 to \$200; second class \$20 to \$50; third class \$5 to \$20.

Jacks and stallions to be assessed at \$20 for every \$1 service fee.

Mules and asses to be assessed as follows: First class \$35 to \$75, second class \$20 to \$35, third class \$5 to \$20.

Cattle six months old and under two years \$5 to \$15, cows \$10 to \$25; two years and over \$15 to \$25. Bulls \$15 to \$50.

Sheep and goats over three months to be assessed at 50 cents to \$1.50, and bucks at \$5 to \$25.

Swine over three months old to be assessed at \$2.00 per 100 pounds.

Farm implements to be assessed from 20 to 50 per cent of first cost, Wagons from \$20 to 80 per cent of first cost.

Gold watches at from \$20 to \$50, silver and other watches from \$1 to \$20.

Plate and jewelry to be assessed at cash value.

Pianofortes to be assessed at from \$40 to \$500.

Other musical instruments at from \$1 to \$100.

Household furniture at not less than \$5.

Pleasure carriages of every description, from 20 per cent to 80 per cent of first cost.

Bicycles at from \$5 to \$80.

Money to be assessed at 100 cents on the dollar. Credits to be assessed at cash value.

Manufacturer's stocks for the preceding year to be assessed at actual cash value.

Territorial bonds to be assessed at cash value.

Stocks in any company or corporation to be assessed at cash value.

Pr-missory notes at cash value.

Tax sale certificates at cash value.

Judgments at cash value.

Shares in national banks at face value.

Improvements on unentered lands at cash value.

Grain on hand at its market value.

All real estate to be assessed at its cash value.

Machinery of all kinds to be assess-

ed from 20 per cent to 50 per cent of first cost.

The aggregate of all other personal property to be assessed at cash value.

Oklahoma Cattle Convention.

The Fifth Annual Convention of the Oklahoma Live Stock Association will be held at Woodward, in that territory, on February 14 and 15. This association takes in the cattlemen of portions of Colorado, New Mexico and Texas, as well as of Oklahoma. An excellent program has been prepared. After the business session there will be a number of addresses by experts in the diseases of cattle. Secretary Wilson of the department of Agriculture is expected to be present and will speak on topics of interest to West ruckstockmen. Governor Barnes of Oklahoma and the territorial assembly have promised to attend, so that the convention will bring together a large and influential gathering of those interested in the stock industry. A rate of one fare for the round trip has been made by all railroads centering in Oklahoma from Kansas, Texas, New Mexico and Colorado points. The Oklahoma association, as well as all residents of Woodward, will extend a cordial welcome to all visitors who can make it convenient to attend, and assure hospitable entertainment for everybody. The stockmen of southeastern Colorado are especially interested in the proceedings of the Oklahoma association.—Denver Daily News Jan. 27th.

The February number of the Ladies' Home Journal contains an interesting description of the largest ranch in the world. The ranch (XIT) is located in Texas and borders on the Panhandle. It contains almost 5,000 square miles of Territory, greater in extent than the entire state of Connecticut, and a larger area than Delaware and Rhode Island combined. The ranch has about 120,000 head of cattle and 15,000 horses, and being thoroughly fenced and subdivided the necessary work is accomplished by not more than 100 cowboys. The calf crop branded last year exceeded 31,000. This vast tract of land was granted some twelve years ago to Senator Farwell and others in exchange for the handsome granite building that now serves the state of Texas as a capitol.

The town of Woodward has gone to the limit to provide accommodations for convention guests. Doubtless the cold weather will reduce the attendance somewhat, but all who come are welcome.



M. F. WORD'S FAVORITES.—View at Forest Home Rancho, near Grand, Day County, Okla.

Let the Blood Flow to the Udder.

Any excitement or disturbance of the animal system always affects the milk cow. In April 1898 the Kansas Agricultural College purchased 12 head of cows from Lincoln county, which had to be forwarded by rail for over 100 miles. Records were kept from each individual milking, and it was found that with the ride, homesickness and change of feed it took nearly two weeks for these cows to return to their normal quantity and quality of milk. Observations since then have demonstrated that any unusual excitement or disturbance always influences the milk flow. A little knowledge of the structure of the udder will show why.

The udder is composed of cavities, or milk cisterns, and milk ducts, surrounded by muscular connective and fatty tissues. At the end of these milk ducts we find small cells which have the property of secreting and transforming nutrients from the blood into milk. These cells are most active at the time of milking, and in fact a large part of the milk is elaborated at this time. This necessitates a good supply of blood to the udder during the process of milking, for it is impossible for these cells to manufacture milk without fresh supplies of nutrients from the blood. Any excitement that tends to contract the muscles of the udder or turn the blood to other portions of the body will cause a decrease in the flow of milk. Beating the cow with a milk stool or speaking to her in harsh language may cause the blood to flow, but not to the udder. Even feeding the cow while milking her is a bad practice, as it tends to divert the blood from the udder to the digestive tract. Every act of the milker and every surrounding of the cow should be such that the latter will give her whole attention to the secretion of milk at milking time. In other words allow the blood to flow to the udder.

Are You Going East?

If so we would like to call your attention to the fact that the Frisco Line is now operating through Newton and St. Louis. Free reclining chair cars and drawing room sleepers through without change. Ask your local agent for ticket via that route. Bryan Snyder, G. P. A., St. Louis, Mo.

The California Limited

Via Santa Fe Route, is the best and speediest train to California. Woodward to Los Angeles in 24 days, three times a week.

Pullmans, dining car, buffet smoking car with barber shop, and observation car with spacious parlor for ladies and children, vestibuled and electric lighted.

Address
A. T. & S. F. Railroad,
Woodward, Oklahoma.

'FRISCO LINE.

THE FRISCO WANTS

THE BUSINESS

The St. Louis and San Francisco Railroad Co.

The great live stock route, reaching the three great live stock markets of the world, Chicago, St. Louis and Kansas City. The attention of shippers is particularly called to the fact that we now have the shortest line from points in Texas to Kansas City and St. Louis. We are also giving special attention to live stock shipments from the Panhandle of Texas to St. Louis, taking same from the A. T. & S. F. R'y at Cherryvale, Kansas. Stock loaded at Woodward and points in that vicinity in the evening reach St. Louis the second morning. Information gladly furnished on application to
ZACH MULLHALL,
G. L. S. Agent,
National Stock Yards, Ill.
or J. P. MOORE,
L. S. Agent, Ft. Worth, Texas.

The KANSAS CITY STOCK YARDS...

—ARE THE—

**Finest Equipped,
Most Modern in Construction and
Afford the Best Facilities**

For the handling of live stock of any in the world. The KANSAS CITY MARKET, owing to its central location, its immense railroad system and its financial resources, offers greater advantages than any other. It is

The Largest Stocker and Feeder Market in the World.

While buyers for the great packing houses and export trade make Kansas City a market second to no other for every class of live stock.

	Cattle and Calves.	Hogs.	Sheep.	Cars.
Official Receipts for 1898	1,846,233	3,672,909	980,303	
Sold in Kansas City, 1898	1,757,163	3,596,828	815,580	

C. F. MORSE, E. E. RICHARDSON, H. P. CHILD, EUGENE RUST,
Vice-Pres. & Gen. Man'gr. Secy. and Treas. Asst. Gen. Mgr. Traffic Mgr

THOS. KELLY, President and General Manager. THOS. B. LEE, Vice President, Kansas City M'gr. E. B. OVERSTREET, 2d Vice President, St. Louis M'gr. JOHN E. WHITE, 3d Vice President. CHAS. KELLY, Sec'y and Treas.

SELLERS OF LIVE STOCK



Exclusively on Commission.

Chicago
Live Stock
Commission Co.

INCORPORATED
1888.

Capital Stock and Surplus
\$150,000.00.

Annual Business
\$20,000,000.00

Chicago, St. Louis, Kansas City.

CHICAGO OFFICES:
39-41-43-45 Exchange Building.

J. C. GILLILAND, Solicitor Chicago Office
Mangum, Okla.

MONEY ADVANCED ON CATTLE.

List Your Cattle for Sale WITH US!

Can Furnish Buyers. Can Meet Every Requirement of Commission Company and all Honorable Competition.

Best of Salesmen.

Money Loaned.

ZEB F. CRIDER COMMISSION COMPANY,

KANSAS CITY, MO. AND SOUTH ST. JOSEPH, MO.

Represented in Oklahoma by W. L. BYARS.

BLACK-LEG VACCINE.



Write for particulars, official endorsements and testimonials of thousands of American stockmen who have during the last 3½ years "vaccinated" their cattle and stopped losses from Black-Leg.

PASTEUR VACCINE CO., 56 Fifth ave., Chicago.

N. B.—Each packet of our original and genuine Vaccine bears our trade mark. Beware of imitators.

VACCINE and OUTFITS Kept in Stock by
Publisher LIVE STOCK INSPECTOR, Woodward, Okla.

E. S. WIGGINS,

Hardware

**Hardware,
Furniture & Undertaker's Goods.**

Buy Your Hardware of a Hardware Man.

And you will get the best BARGAINS. I carry the largest line of all the above goods and will compete with all.

WOODWARD, OKLAHOMA

J. K. SOUTHEE. E. F. KIRK.

**SOUTHEE & KIRK,
Live Stock Commission Merchants,**

KANSAS CITY STOCK YARDS.

Liberal advances made to parties grazing stock, at lowest rate of interest. Our customers get all the benefits.

WRITE US! KNOW US! SHIP TO US!

C. G. KNOX, Vice-President.

CHAS. T. JONES, Superintendent.

THE LIVE STOCK MARKET OF ST. LOUIS.

THE ST. LOUIS



National Stock Yards

Located at East St. Louis, Ill., directly opposite the city of St. Louis. Shippers should see that their stock is billed directly to the NATIONAL STOCK YARDS.

H. P. CHESLEY, General Manager.

THREE DAYS' HEREFORD SALE.

One Hundred and Fifty Head, Fifty Each From the Noted Herds of Sotham, Nave and Hornaday.

The writer takes pleasure in calling the attention of all beef cattle breeders, especially those interested in registered Herefords, to the three days' sale announced elsewhere in this issue. One hundred and fifty head, 50 each from the herds of Sotham, Nave and Hornaday, consisting of bulls, cows and heifers, ought to attract the attention of all progressive Whiteface breeders throughout our entire country. After a day spent at each of the three several farms in looking over the cattle that have been selected from an aggregation of over 500 head and catalogued, the writer takes it upon himself to state that in his judgment no better lot, either individually or in breeding has been offered at Kansas City in recent years.

THE SOTHAM OFFERING.

Of the three herds sending representatives into this sale, Mr. Sotham's is the oldest, dating back to 1839. No herd in this country since the early eighties has achieved more victories in the competitive annual beef cattle exhibits than has the Weavergrace herd. This also includes a long list of prizes won at Omaha last year, where the largest, strongest and doubtless best Hereford exhibit ever marshalled in the history of the breed met and competed for honors. The reader may, if he consults a copy of Mr. Sotham's sale catalogue, obtain a better idea of the 4,000 premiums won by the Weavergrace herd, especially those of recent years. Among those that will go into the sale is the first prize 3-year-old bull at Omaha, Sir Bredwell 63685. Such is the type, character and promise of Sir Bredwell and his get that seeing them is sure to stimulate the ambition of all Hereford breeders in endeavoring to have better ones in their herds. When asked by the writer why so many of the extra good ones were going in the sale Mr. Sotham replied: "We have the sires and dams all here in the herd and can now afford to send those catalogued out, not only for the benefit of Weavergrace but for the still higher estimation of the Herefords generally."

THE NAVE OFFERING.

Mr. F. A. Nave, who will offer 50 head on Thursday, March 2nd, is the owner and founder of the 700 acre Fairview Stock Farm, situated near Attica, Ind., on the main line of the Wabash railway. Mr. Nave has been from his youth up engaged in feeding and finishing beef cattle and after half a score of years he found as he says: "after trying Shorthorns, both breeds of the blacks and the Herefords, that the Whitefaces suited him best, and then concluded to found, if possible, a Hereford herd second to none in this country." The visitor now at the farm finds 150 head whose individual and collective character at once confirms the idea that the ambition of Mr. Nave has been indeed very successful. Last year the Fairview herd went out for honors beginning at the New York State fair as the champion herd. From there to the Indiana, Illinois and finally to the Trans-Mississippi Exposition, Omaha, Neb., where it maintained its champion honors at all of these exhibitions, the most successful record of any Hereford herd in recent years. At the Indiana state fair it won the highest cash prize offered in this country in 1898. The 50 head, 19 bulls and 31 cows and heifers that will go in the sale will include the two very excellent herd bulls Gold Dollar 73652, the best living son of Earl of Shadeland 22d. The other one Lamplighter jr., 69251, bred by Gudgell & Simpson, the well known and successful Missouri breeders at Independence. A major portion of the females will have been bred and safe in calf to either the champion, Dale 56481, Gold Dollar 73652, or Lamplighter jr., 69251. The prospective buyer can rest assured that the Nave cattle are all good ones, and the en-

tire lot as uniform lot in every essential requirement as the most fastidious breeder could expect to see or hope to have. Mr. Nave will take pleasure in mailing a free copy of his sale catalogue to any one desiring it. Therein one finds all the necessary information concerning the herd and the sale cattle.

THE HORNADAY CATTLE.

The Hornaday Live Stock company will sell 50 head on the 3d day of the sale, Friday March 3d. This offering of bulls, cows and heifers is from the foundation stock of females laid in 1896 by a draft from the Gudgell & Simpson herd that were either sired by the sons or grandsons of the great bull Anxiety 4th. Here one finds Don Carlos, Lamplighter and Beau Brummell daughters whose sires as above mentioned were all World's Fair winners. These females were in expectancy by Gudgell & Simpson bulls. Following this was a draft from the Weavergrace herd of Sothams and included in this lot was the young son of Corrector, Sir Comewell 68776, that after a very spirited contest in the sale ring was secured by Mr. Grant Hornaday, at \$840, thus making Sir Comewell the highest priced yearling bull in the year 1897. His calves are extra good individuals, proving him a great sire. The intending buyer will find in the Hornaday offering some very choice individuals, matured cows, serviceable bulls, and both heifer and bull calves. While this is the youngest of the three herds and has not been out for show yard honors the breeding and general character is such as every beef cattle man hopes to have and likes to own. The sale catalogue gives full and complete particulars concerning the sale offerings and will be sent free to all asking for it. W. P. B.

M. C. Campbell, of Wichita, who has large cattle interests in western Kansas, has been appointed chairman of the Kansas live stock sanitary board.

SAVE MONEY!

Send to the Live Stock Inspector to Save Money on Periodicals.

Look over our clubbing list below and send in your clubbing list to us. If you want more than one periodical with the LIVE STOCK INSPECTOR, subtract the price of this paper (\$1.00) from all but one and add together, or write us for a special rate if you wish to subscribe for several publications.

Address all orders to the LIVE STOCK INSPECTOR Woodward, Oklahoma.

American Gardening, New York\$1.75
Arkansas Traveler, Chicagomonthly 1.10
Atlantic Monthly, Bostonm. 4.05
Babyhood, New Yorkm. 1.60
Breeder's Gazette, Chicagow. 1.80
Century Magazine, New Yorkm. 4.30
Cincinnati Enquirer, Cincinnatim. 3.30
Cosmopolitan, New Yorkm. 1.60
Dallas News, Dallasdaily 5.65
Dallas News, DallasSunday 2.85
D-morest's Magazine, New Yorkm. 1.60
Denver Daily Post, Denver(Renewal) 5.00
.....New	4.05
Fireside Companion (and 30 books) N. Y.w. 3.05
Forum, New Yorkm. 3.30
Frank Leslie's Popular Monthlym. 1.65
Guthrie State Capitalw. 1.15
Harper's Weekly, New Yorkw. 3.85
Hard's Dairyman, Ft. Atkinson, Wis.w. 1.50
Horseman, Chicagow. 2.85
Independent, New Yorkw. 2.60
Judge, New Yorkw. 4.80
Kansas City Packerw. 1.75
Ladies' World, New Yorkm. 1.05
Life, New Yorkw. 5.35
McClure's Magazine, New Yorkm. 1.60
New Time, Chicagom. 1.55
New York Weekly, New Yorkm. 3.05
Outing, New Yorkm. 3.05
Puck, New Yorkw. 4.85
R. M.'s Horn, Chicagow. 2.05
Republic, St. Louiss-w. 1.55
Review of Reviews, New Yorkm. 2.40
Rocky Mountain News, Denverw. 1.65
Scientific American, New Yorkw. 3.30
Swine Breeders' Journal, Indianapolis, Ind.s-m. 1.10
Times, Kansas Cityw. 1.55

The Gerlach Bank.

Capital Stock \$25,000. Surplus \$1,500. Woodward, Oklahoma.

SOLICITS YOUR BUSINESS.

Correspondence: National Park Bank, New York; National Bank of Commerce, Kansas City; Kansas National Bank, Wichita; Canadian Valley Bank, Canadian, Tex.

C. HOOD, President.
L. A. ALLEN, Vice-President.

T. J. EAMAN Sec. & Treas.
H. S. BOICE.

The Kansas City Live Stock Com. Co.

Is one of the Oldest and Best Companies in Kansas City.

A good one to do business with.

They have ample capital and are perfectly reliable.

Twenty-five years in the trade.

Write to them for information and ship to them for good results.

GEO. B. CAMPBELL, Cattle Salesman.
L. A. ALLEN, Cattle Salesman.
CHAS. W. CAMPBELL, Cattle Salesman.
PEYTON MONTGOMERY, Cattle Salesman.
W. T. MCINTIRE, Sheep Salesman.
J. T. MCHREY, Hog Salesman.

GEO. R. BARSE, Pres. J. H. WAITE, Sec. and Treas.

BARSE Live Stock Commission Co.,

Rooms 159-160, Live Stock Exchange. KANSAS CITY, MO.
Established 1871.

Money to Loan on Cattle.

Experienced Salesmen. Prompt Remittances. Correspondence and Consignments Solicited.

B. T. McDONALD, Pres.
J. E. MCNAIR, Vice Pres.
I. S. ALEXANDER, Sec. and Treas.

SALESMEN
JERRY CROWLEY, Cattle
J. L. BENNETT, Cattle
J. B. CROWLEY, Hogs.

E. R. BOSWELL, Office.

THE McDONALD-CROWLEY-FARMER CO.,

LIVE STOCK COMMISSION MERCHANTS.
MARKET REPORTS FURNISHED FREE.

Correspondence promptly attended to. All consignments receive personal attention of members of the firm.

REFERENCES:—National Bank of Commerce, Kansas City; Pleasant Hill Banking Co., Pleasant Hill, Missouri. Telephone 2305.

ROOMS 232 AND 233 STOCK EXCHANGE, KANSAS CITY, MISSOURI.

The Hotel Central.

WOODWARD, O. T.

First Class in Every Particular. Patronage of Cattlemen Solicited.

York-Key Mercantile Co.

Woodward, O. T.
Stores at Kiowa and Dodge City, Kas.

Dealers in all kinds of RANCHMEN'S GOODS.

Bulls For Sale!

40 head Short Horns, from 15 to 23 months old.

80 head Short Horns, 9 to 15 months old.

30 head White Faces 15 to 22 months old. 1-2 to 15-16.

35 White Faces, 9 to 15 months old.

35 White Faces, from 8 to 12 months old.

All White Faces bred from thoroughbred Short Horn cows.

Also 10 head Registered Short Horn Cows and Heifers.

Will make Special Prices on car lots. Stock First Class. This offering is for a short time only.

Write me for particulars at POND CREEK, OKLA.

JACOB MADDUX,
POND CREEK, OKLA.

LIVE STOCK NOTES.

Stockmen are requested to write postal card items for this column. The INSPECTOR desires to print live stock notes from everywhere. Send us a postal—push it along.

Cattle for Sale.

Frank Woodard, Duke, Okla.—125 coming yearling steers; 50 coming threes

A. H. Tandy, Haskell, Tex.—1000 two-year-old steers for spring delivery. Cattle located in Woodward county, Okla.

Jno. M. Gist, Memphis, Tex.—100 yearling heifers and same number of two-year-old heifers, balance native young cows.

SHORTHORN BULLS FOR SALE.—We will be in Woodward Feb 14 and 15 and will talk with such persons as desire to buy Shorthorn bulls, all red and every one out of cows selected from the best herds in central Kentucky. H. T. GROOM.

The North Park News, Colorado, publishes the constitution of the Oklahoma Live Stock Association in full with this preliminary statement:

For the information of the stockmen of North Park, and by request of several whom we have, we publish the constitution and by-laws of the Oklahoma Live Stock Association, as published by the Live Stock Inspector of January 1, 1899, as a guide to the drafting of laws and rules suitable for an association for North Park.—Ed.]

Calvin Suggs, who has a good part of the Kiowa and Comanche country leased for cattle pasture, has made his million and a half since 1891 in the cattle business in Oklahoma. In 1891 Suggs, like nearly all of the cattlemen, was down. He had owned thousands of cattle and was counted a rich man, but every turn from 1885 took a big slice of his fortune, and he concluded to stick to cattle. In 1891 the tide changed and the cattle business began to improve and has been improving ever since.—Wichita Eagle.

While in Woodward attending the Live Stock Convention have Dr. M. Chamberlain, Dentist, fix up those teeth that you have been neglecting so long. Office first door west of postoffice.

The Pecos Valley and Northeastern Railway was formally opened Feb. 1st. D. H. Nichols is General Manager and Frank P. Morgan is Gen. Live Stock Agent. The line is 370 miles in length and is fully equipped with new engines, cars, passenger coaches and everything necessary to the successful operation of a first class railroad.

Words of Encouragement.

The publisher of the INSPECTOR is glad to perceive that the Woodward Bulletin is getting enthused with the right spirit in promoting the great live stock interest of this country, and incidentally, we are gratified that so much credit should be given to our humble efforts. The following is from the Bulletin of January 27:

“Woodward has attained the eminence of emporium of the live stock interests of Oklahoma, and is the supply point of stockers and feeders for Kansas, Nebraska, Missouri and Iowa, and is noted in Kansas City for its fine quality of grass beef, as well as its heavy shipments that are forwarded from this place, which is the center of an extensive scope of country devoted almost exclusively to cattle interests by stockmen that are up to date and thoroughly alive to the benefits derived by keeping their stock well graded and thereby attract buyers, the result of which is a mutual benefit to both seller and purchaser. The LIVE STOCK INSPECTOR, a stock journal of a high order, edited and published by W. E. Bolton, is entitled to much credit in helping bring about this state of affairs, as well as being the prime mover in establishing the Oklahoma Live Stock Association for the benefit and protection of all stockmen; and the annual convention of the Association is of vast importance to all, as there they can inform themselves on the demand, supply, price and condition of stock, and do more in two days in formulating trades than they could do in months of travel. All should attend these convention and discuss the markets, shipment, the trend of the cattle industry, diseases and their remedies, the results from feeding and all question pertaining to the raising of stock of all kinds, and as a promoter of all live stock interests. For the aid and encouragement the LIVE STOCK INSPECTOR has given for the benefits of a rancher it should receive your liberal patronage and support, morally and financially.”

SWEARINGEN-SCOTT: One ever since the last issue of the LIVE STOCK INSPECTOR which gave pleasure to their many friends, was the wedding of Tom Swearingen to Miss Lilli Scott at the home of the bride's sister Mrs. Ben Wolfarth, Sunday, January 29th. Mr. Swearingen is a prosperous young cattleman, popular with every one, and Miss Scott has several years past occupied the position of a favorite among her many friends in Woodward county. The LIVE STOCK INSPECTOR wishes them both lifetime happiness.

The coming convention might profitably resolve concerning the army beef matter.

KANSAS CITY LIVE STOCK MARKETS.

Monthly summary of receipts and prices of live stock at the Kansas City Stock Yards, compiled by the Kansas City Packer, and reproduced for the benefit of readers of THE LIVE STOCK INSPECTOR.

CATTLE.

Dec. 29 to Feb. 1 INCLUSIVE.	Receipts.	Dressed Beef & Shipping Steers, Native Fed.	Texas and Indian Steers.	Texas and Indian Cows.	Okla. Cows and Heifers.	Stockers and Feeders.	Bulls
Thursday, "	29 4,268	3 20-5 0	3 50-4 27	2 85-3 10	1 50-4 15	3 01-4 50	2 50-3 75
Friday, "	30 4,244	3 00-5 35	3 90-4 50	3 00-3 00	1 75-4 25	3 00-4 50	2 50-4 00
Saturday, "	31 1,325	—	—	—	3 00-3 30	3 25-3 90	2 80-4 00
Monday, Jan. 2	5,855	4 00-5 30	3 60-4 4	—	2 00-4 25	3 40-4 35	2 50-3 85
Tuesday, "	3 6,361	3 15- 60	3 25-4 0	—	2 10-4 25	3 35-4 20	2 00-3 60
Wednesday, "	4 7,755	4 00-5 50	2 55-4 15	2 10-3 75	2 2-4 50	3 00-4 40	2 40-3 75
Thursday, "	5 4,587	4 00-5 60	2 40-4 10	—	1 5-4 25	3 25-4 75	2 00-4 00
Friday, "	6 4,060	3 75-5 45	3 75-4 50	2 85-3 00	2 00-4 35	3 25-4 50	2 65-4 75
Saturday, "	7 194	—	—	—	1 90-3 75	2 65-4 10	2 2-3 20
Sunday, "	8 7,758	4 00-5 25	3 20-4 85	2 50-3 30	2 00-5 05	3 25-4 60	3 00-4 20
Monday, "	9 8,973	3 91-5 65	3 25-4 10	—	2 00-4 25	3 35-4 40	2 61-4 05
Tuesday, "	10 6,667	4 25-5 40	2 90-4 45	—	2 10-4 00	3 00-4 45	2 90-3 60
Wednesday, "	11 4,194	3 90-5 55	3 75-4 20	—	2 00-4 10	3 25-4 60	3 0-4 50
Thursday, "	12 3,485	4 00-5 60	3 5-4 35	—	1 75-4 0	3 00-4 75	2 75-3 80
Friday, "	13 81	—	—	—	2 50-5 50	2 65-4 0	1 50-4 40
Saturday, "	14 5,180	4 15-5 30	3 00-4 0	2 00-3 70	2 00-4 35	3 20-4 60	2 25-3 60
Sunday, "	15 9,67	4 30-5 80	3 10-3 35	2 25-3 10	2 5-4 75	3 50-4 60	2 75-4 90
Monday, "	16 7,944	4 20-5 15	3 65-4 85	2 55-3 90	2 50-4 20	3 25-4 50	2 0-4 20
Tuesday, "	17 5,609	3 75-5 55	3 6-4 35	2 85-3 50	1 75-4 75	3 35-4 75	3 00-4 00
Wednesday, "	18 5,352	3 60-5 65	3 95-4 65	—	1 75-4 10	3 50-4 0	3 15-4 00
Thursday, "	19 1,145	4 00-4 55	—	—	2 25-3 85	3 75-4 50	3 25-3 30
Friday, "	20 4,146	4 30-5 10	3 25-4 45	2 60-3 40	2 0-4 0	3 00-4 5	2 75-3 85
Saturday, "	21 7,047	4 4-6 0	3 5-3 50	—	1 50-4 00	3 5-5 10	3 00-4 05
Sunday, "	22 8,92	4 5-5 55	3 0-4 85	—	2 25-4 50	2 75 5 05	2 40-3 25
Monday, "	23 6,000	4 00-5 80	3 60-4 10	—	2 25-4 60	3 5-4 60	2 75 4 00
Tuesday, "	24 5,618	4 5-5 60	3 75-4 0	2 55-3 0	1 0-4 50	3 25-4 9	2 50-4 10
Wednesday, "	25 172	—	—	—	2 40- 80	3 75-5 00	2 50-3 25
Thursday, "	26 5,154	4 5-5 70	3 25 4 80	2 5-3 25	2 10-4 5	3 40-4 85	2 90-4 0
Friday, "	27 6,514	4 00-5 70	3 20-4 85	2 5-3 25	1 5-4 25	3 50 5 00	2 35-4 10
Saturday, "	28 9,157	4 2-5 85	3 00-4 10	—	3 0-4 75	3 25-5 00	2 40-3 90

Good News for All Our Readers.

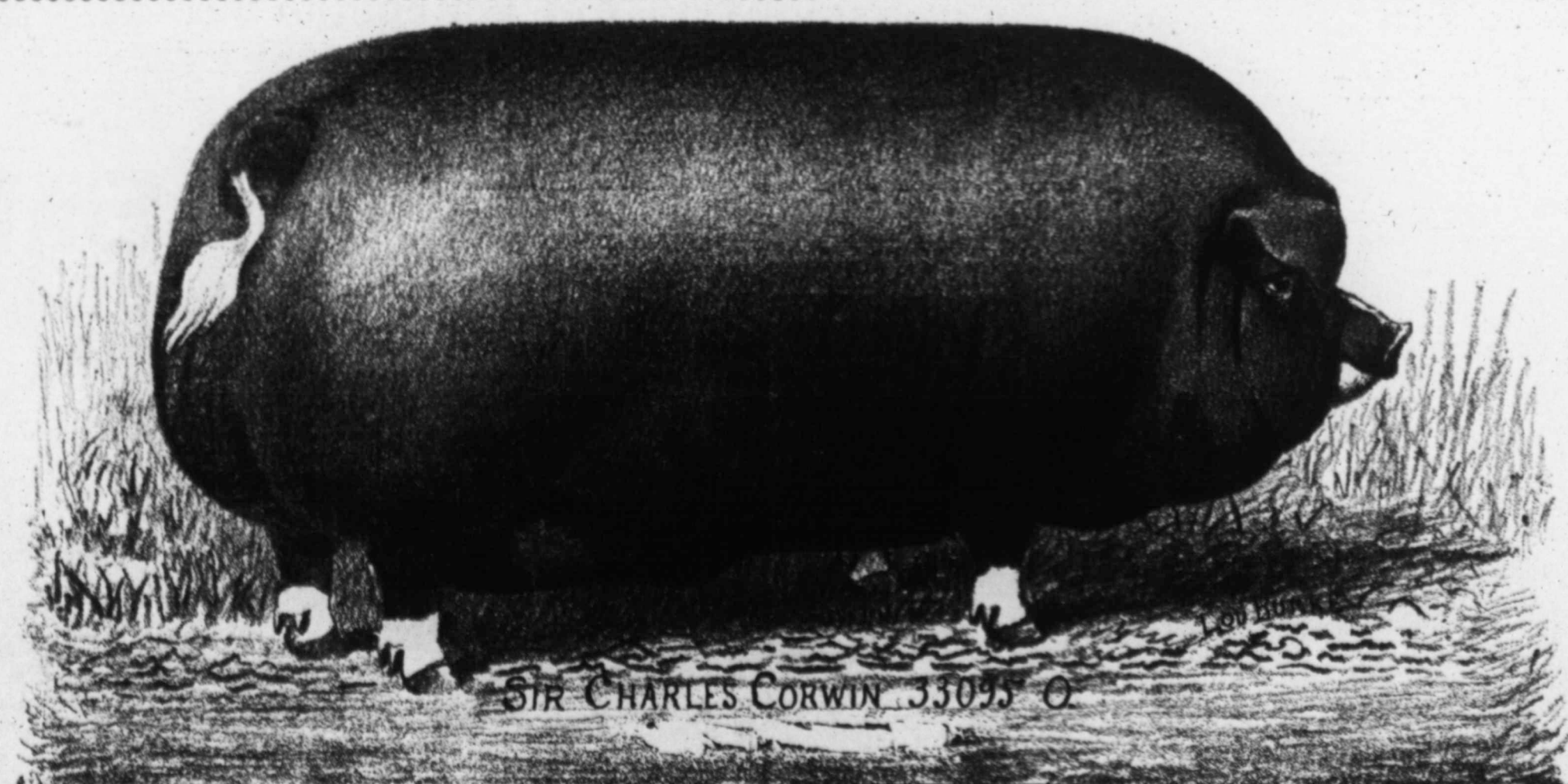
By special arrangement A. T. Cook, the well known seedsman of Hyde Park, N. Y., will send a valuable book on "The Window Garden—How to grow plants and make them bloom"—free and postpaid to any reader who will send him 5 one cent stamps for his mammoth 15 cent collection of choice Mixed Flower Seeds—over 30 lovely varieties. We believe this to be the finest assortment of beautiful, easy growing flowers ever put up. They will make a brilliant display the whole season through. Thousands have praised them. This offer is made solely to introduce. His illustrated catalogue will accompany the seeds. Order AT ONCE and name this paper and he will add free a superb painting (suitable for framing) of his magnificent Giant Pansies.

For only 16 cts. additional, he will send the popular (50 cent) Farm Journal ONE WHOLE YEAR. This is a pure, clean Journal; practical, up to date, and of intense interest and value to every Farmer, Gardener and housekeeper. There is nothing like it. Its teachings will save you money. Do not miss the chance—and be SURE to mention this paper. *tf

HOGS.

The market below is a representative basis of good hogs for packers' use.

Dec 29 to Feb 1 Inclusive.	Receipts.	Top Price.	Bulk of Sales.
Thursday, "	29 16,490	3 65	3 30-3 55
Friday, "	30 14,441	3 70	3 35-3 55
Saturday, "	31 7,822	3 5	3 45-3 65
Monday, Jan 2	7,885	3 75	3 45-3 70
Tuesday, "	3 16,215	3 75	3 4-3 70
Wednesday, "	4 19,24	3 75	3 40-3 60
Thursday, "	5 15,209	3 70	3 35-3 60
Friday, "	6 12,263	3 72	3 45- 6
Saturday, "	7 8,585	3 62	3 35-3 55
Monday, "	9 11,921	3 65	3 40-3 60
Tuesday, "	10 16,346	3 75	3 45-3 65
Wednesday, "	11 5,337	3 77	3 45-3 65
Thursday, "	12 15,060	3 75	3 45-3 66
Friday, "	13 13,075	3 75	3 40-3 55
Saturday, "	14 5,724	3 70	3 40-3 65
Monday, "	6 9 51	3 70	3 45-3 55
Tuesday, "	17 20,771	3 6	3 4-3 55
Wednesday, "	18 15,833	3 70	3 45-3 25
Thursday, "	19 13,908	3 70	3 45-3 60
Friday, "	20 11,586	3 67	3 45-3 0
Saturday, "	21 5,844	3 70	3 55-3 65
Monday, "	23 9,797	3 75	3 55-3 65
Tuesday, "	24 13,981	3 75	3 55-3 65
Wednesday, "	25 16,8 0	3 72	3 55-3 65
Thursday, "	26 12,953	3 77	3 50-3 65
Friday, "	27 14,212	3 82	3 6-3 75
Saturday, "	28 4,855	3 82	3 65-3 80
Monday, "	30 5,501	3 85	3 70-3 80
Tuesday, "	31 7,181	3 85	3 6-3 72
Wednesday, Feb 1	11,849	3 77	3 60-3 70



SIR CHARLES CORWIN 33095 O

Property of C. M. Irwin, Elm Beach Stock Farm, Wichita, Kansas.



PEG-LEG JOHNSON AND ONE OF HIS LONG-HORNS.
(View Near Wildhorse Lake, Beaver County, Okla.)

RANGE NOTES

A Friend to Winter Feeding.

PUB. LIVE STOCK INSPECTOR:

The past year has proven that the ranchmen and farmers of Western Oklahoma and Texas are learning how to profitably manage their resources. In addition to the grazing of cattle, they have turned their attention to stock farming and that with eminent success. There has been in the past year three times as much forage crops, such as kaffir corn and sorghum, raised as ever before. Kaffir corn is one of the surest crops in an arid region of the country and one too from which the results as a feeder for stock have been very satisfactory. It will have a tendency to enhance the value of lands where the effects of drouth have caused them to be regarded as worth but little. To-day the pastures of this region are filled with cattle many of which will go onto grass in the spring poor that would have paid a much larger profit to the owner if he had plenty of feed to keep them in growing condition all the time. One of our leading cattlemen remarked to me the other day the time had passed for any man of good business judgment to undertake to winter cattle without plenty of feed. Not just enough to get them through alive, but enough to keep all the flesh you had in the fall and get a good growth. He said that last year his per cent of profit on well fed cattle was double what it was on cattle that he roughed and grazed through; and further that all risk was eliminated on cattle over one year old. The merits of kaffir corn as a feed not only for cattle but for all kinds of stock are certified to by those most interested, so much so that there is no reason why the stock of the short grass region should not be fat the year round. Kaffir corn and sorghum is our best and truest friend, if only enough of it is planted.

J. C. T.
Waynoka, Okla., Jan. 21, 1899.

FROM THE KIOWA COUNTY (KAS.) RANGE
Thos. Taylor, owner of the T T ranch, received some fine registered Hereford bulls last Thursday.

Most of our feeders report cattle doing well. But very few losses have been reported.

The Rockefeller ranch has now some as fine Hereford bulls as can be found anywhere in the state. Mr.

Rockefeller purchased some fine individuals at the Cross sale at Kansas City lately.

C. P. Fullington is full feeding a bunch of four hundred western calves. He intends to finish with cotton seed meal.

No losses are reported from the storm of the 23d.

Up to the present time less Black Leg has been reported than there was a year ago. Quite a number of our stock men had their calves vaccinated last spring and the result bids fair to be of the best.

There are a number of old bachelor stockmen (rich) in this vicinity. We intend to send them to the convention right in shape for the market (matrimonial) and see if some of the fair ones of Oklahoma can make any impression on hardened old knights of single blessedness.

OLD 76.

The Union Stockyards and Transit Company of Chicago has held its annual meeting and elected these officers: Chairman of board, N. Thayer, of Boston, Mass.; president, John B. Sherman vice-president, J. A. Spoor; secretary-treasurer, J. C. Denison; general superintendent, James H. Ashby, assistant general superintendent, D. G. Gray; assistant treasurer, Walter Doughty.

The enormous output of McCormick Machines defies the mental grasp of man. If the machines we manufacture were to issue from the gate of our works, (with the largest output in the world) the spectator would see all throughout the working day a McCormick Machine emerging at full gallop every 40 seconds. The demand of the farmers in the past season of 1898 was for 189,760 McCormick Machines. This continuing tremendous call of the farmers will result in our manufacturing and selling still larger numbers in one season by the end of the century. What is the cause of this unheard of demand? What is the reason of the everlasting popularity of McCormick Machines? Why are we forced to run our Works by night and by day up to the output of a machine every 40 seconds? The cause is plain. The answer is simple. It is The Building of the Best in the World. Almost seventy seasons of success have elapsed since Cyrus H. McCormick invented the Reaper in 1831. In all that time the McCormick has been The Best Built Machine in the World. The McCormick Machines for 1899 are The Best in the World. The McCormick Right Hand Self-binding Harvester; the New 4 Mower 4 1/2 and 5 ft. cut; the Big 4 Mower 5 ft. and 7 ft. cut; the One Horse Mower, 3 1/2 and 4 ft. cut; the Folding Daisy; the Corn Harvester; the Corn Husker and Fodder Shredder and the Hand and Self-dump Hay Rakes 8 ft., 10 ft. and 12 ft. are The Best in the World. All these eight machines are McCormick End of the Century machines; built with a brilliance of invention and honor in construction that sets a noble standard to all other agricultural machines on earth.

J. C. Casey. D. A. Garst.
Casey & Garst,
WHOLESALE, WICHITA, KAN.
Sell Grocers' Sundries, Cigars, Tobacco, Candies and everything in our line. We can fit up country stores complete at low prices and low freight.
Goods well bought sell themselves at a profit. Write us for special prices and mention this paper.
CASEY & GARST,
Wichita, Kan.
Wholesale Merchants.

R. T. FRAZIER,
Maker of the Famous Pueblo Saddle. I make High grade saddles of the best Oak Tan California Leather. All saddles made by hand use the Famous Pueblo Tree or any tree desired. All saddles fully guaranteed. Send for catalogue.
R. T. FRAZIER,
Pueblo, Co.

Paugh & Co.
Successors to McCoy & Underwood and Eldridge & Campbell.
Live Stock Commission Merchants,
UNION STOCK YARDS, WICHITA, KAS.
Correspondence solicited. Markets by Eagle and Drivers' News sent free. Make your consignments to us. Special inducements to feeders.

When visiting Kansas City, stop at the
BLOSSOM HOUSE,
Opposite Union Depot.

John J. Gerlach. George Gerlach
GERLACH BROS.
MERCANTILE CO.
Dealers in General Merchandise and the largest outfitters in the Panhandle of Texas.
Implements in carload lots. Gents' Furnishing Goods. Largest stock carried in the Panhandle of Texas.
Canadian, Tex.

None More Popular!
No railroad in the great state of Texas more popular than
The Denver Road!
This popularity is not confined to one class of shippers. Every patron, when speaking of this deservedly popular line, says *Our Road*. The cattleman, stock farmer, grain shipper, merchant, tourist and everybody seems to have a personal interest in the welfare and prosperity of the road. The reason for this feeling is easily accounted for when a trip is made over the road.
Remember the DENVER ROAD can handle your Live Stock from the Panhandle and plains country to the market or ranges, or can take you to and through "America's Scenic Wonderland," Colorado.

Alaska Gold
Steel Frames & Royal Saws
Requires No Pit.
Hundreds of opportunities at low wholesale prices. Visit Sewing Machines, Bicycles, Organs, Pianos, Cider Mills, Carriages, Carts, Buggies, Harness, Saws, Bone Mills, Letter Presses, Jack Screws, Trucks, Anvils, Hay Cutters, Presses, Stands, Feed Mills, Stoves, Drills, Seed Sowers, Lawn Mowers, Coffee Mills, Forges, Lathes, Pump Carts, Corn Shellers, Hand Carts, Knives, Tools, Wire Fences, Planing Mills, Crow Bars, Rollers, Watches, Clocks, etc. Hay, Stock, Elevator, Railroad, Platform and Counter SCALES. Send for free catalogue and see how to Save Money.
406 Jackson Boulevard, CHICAGO SCALE CO., Chicago, Ill.

WE SELL DIRECT TO THE FARMER AT ONE-HALF DEALERS' PRICES.
New Disc Harrow, Grain Drill and Broadcast Seeder.
Throwing the earth all one way. Revolutionizes the method of seeding, as the twine binder did the harvest. Disc 65 in. and 49 in. apart. Send for circular.
DEATH TO HIGH PRICES.
16-in. Sulky Plow, \$25. 18-in. S. B. Plow, \$35. Rolling Cultivar, Extra \$1.50. 64-T. Lever Harrow, \$7.50. Mowers, \$29.50. Riding Gang Plow, \$35. 12-16 Disc Harrow, \$16. Hay Rakes, \$11.50. Wagons, Buggies, Harness, Sewing Machines, Cans and Cider Mills. Hay Tools and 1000 other things at one-half dealers' prices. Catalogue free. Harrow & Plow Co., Box 205, Alton, Ill.

MCCORMICK
McCormick Harvesting Machine Co.
CHICAGO.

STOCK BRANDS.

One cut, one year, \$10; each additional brand on cut, same owner, \$5 per year; each additional brand requiring engraved block, one year, \$2. These prices include copy of paper one year to any address. Strictly cash in advance.

HUDSON & TANDY.



P. O. Address, Woodward, Oklahoma.

Range, ten miles north and east of Woodward.



Other brands:

On side and short bar near it on thigh.

On left loin.

On left side.

On left hip and short bar on left thigh near it.

On the side and short bar near it on thigh.

HORSE BRANDS:

Bar Z on left shoulder, or N I K on right hip.
Range, same as above.

E. R. CLAUNCH.



P. O. address, Woodward, Ok.

Range, 12 miles north of Woodward on Bent canon.

Ear mark: shadow fork the right and underlope the left.

(On left side and hip. 77 on neck.)

(On left side. 77 on neck.)

(On side and hip and 77 on neck.)

On right side.)

On left side. 77 on neck.)

(On left side. 77 on neck.)



Range, same as above

S. C. WANE.



Post-office Address, Richmond, Oklahoma.

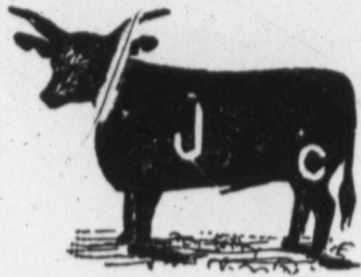
Mark, slit in left ear.

Range on Deep Creek.

Horse brand same as above, also same range.

J. P. CAMPBELL.

P. O. Address,—Ashland, Kansas.
Range,—Northeast portion of Clark county



Some cattle — on left side.

All cattle on left thigh.

Horse brand J C left shoulder.

H. C. GREER.



P. O. address, Woodward, Okla.
Range, 5 miles southwest of Woodward on head of Spring creek.

Some are branded same on left hip and back.

On right hip and side.

Horses are branded horizontal — on left thigh.
Range same as cattle.

E. M. HEWINS.



P. O. Address, Woodward, Okla.

Range, on North Canadian river, ten miles north of Woodward.

Other brands are: X on left side, and some are branded with a cross on right side.

HORSE BRAND:

Perpendicular bar on right shoulder of saddle horses. Stock horses are branded cross H on left shoulder. Range, same as described above.

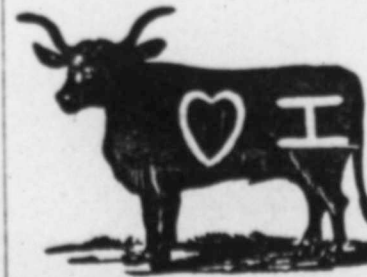
B. F. MAIN.



P. O.—Cline, Okla.
Range: On Beaver, eight miles east of Cline.

Also, some cattle are branded S I D
Horses unbranded. Range same as cattle.

S. B. JONES.



P. O. Address, Higgins Texas.

Range, in Texas and Oklahoma, near Higgins.

Other are:

On either side; also

On left shoulder and

On left side and

On left hip.

HORSE BRANDS:



Also heart on left hip

Range, same as above.

OTHER BRANDS:



10 on left side.

1B on left hip.

On left hip or shoulder.

On left hip.

On left shoulder.

HORSE BRANDS:

On left shoulder.

JACK LOVE.

P. O address, Woodward, Okla. Range, 20 miles north of Woodward on Buffalo.



Other cattle are branded on left hip.



Other brands are L on left shoulder on left shoulder;

Range: Same as cattle.

W. B. GRIMES, JR.



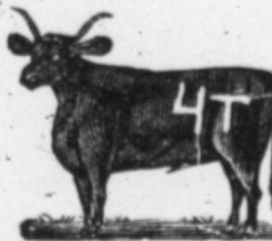
Range in Clark, Meade and Comanche counties.

P. O Address, Ashland, Kansas.

OTHER BRANDS:

On Right Hip.

Horse Brand, Left Shoulder.



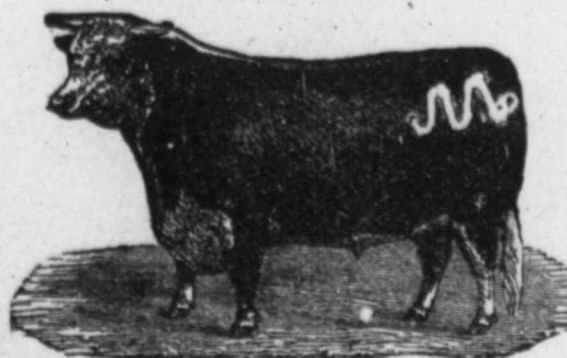
Horse range same as cattle.

T. C. SHOEMAKER.

CHAS. F. LUKENS, Foreman.
P. O. Address, 1416 Liwood Ave., Kansas City, Mo.
Ranch address, Dorsey, New Mexico.
Range, head of Beaver, in Beaver Co., Okla.



ZACK MULHALL,
Mulhall, Okla.



All Steers and Horses branded on right hip or loin same as above.

Location of Ranch: Joining Mulhall on Bayer and Cedar creeks.

O'BRYAN & HEWINS,



P. O. Address: Woodward, Okla.
Location of Range: Woodward county.

ROURKE & NELLIGAN,



P. O. Waynoka, Oklahoma. Range fifteen miles west of Waynoka, on White Horse Creek.

EAR MARKS: Under bit the left, and swallow fork the right.

ISHMAEL & RUDOLPH.



P. O. Kiowa, Kas.

Range on Buffalo, in Woodward county.

EAR MARKS: crop and split left.
Horses: branded heart on left shoulder.

F. D. WEBSTER,



P. O. Address, Gage Oklahoma.

Range, on Little Wolf east and south of Gage.

On left jaw of all young stock.

JAMES CUSHNY.

Post Office, Waynoka, Okla.
Range, 12 miles west, on Doe Creek.



Some cattle are branded anchor on left hip.
Horses, range same as cattle.

J. S. SCOTT.



P. O. address, Gyp, Okla.

Location of Range, West Burnett Creek G county.

Horses are branded Star on either shoulder.
Range, same as cattle.

TRANSIT HOUSE,

UNION STOCK YAR S,
CHICAGO, . . .

BOARD, WITH 1 CCM, \$2.00 PER DAY.

L. E. HOWARD, MANAGER.

ROOMS; 50c, 75c and \$1.00 per day.

Electric Cars pass the House on Halsted Street, without change direct to the Post-Office and City Hall, on Clark Street.

These Cars also go very near the Nickel Plate, Wisconsin Central, Polk Street and Lake Shore & Rock Island depots, and connects with cars for all other depots.

Also go very near all the Principal Theatres.

Take Wallace and Halsted Street Cars.

PUBLIC SALE of HEREFORDS!

We will Sell on February 23, 1899, at Kansas City, Mo. at Stock Yards Sale Barn.

Fifty Head of Grandly Bred Hereford Cattle Consisting of 80 Heifers and 20 Bulls.

Selected out of our own herds founded and owned by us. We cordially invite your inspection and attendance. For catalogue address

COL. F. M. WOODS and
R. E. EDMINSON,
Auctioneers.

W. A. COLT, Clinton, Mo.
W. W. GRAY, Norris, Mo.

61st Year OF THE Sotham's WITH HEREFORDS

WEDNESDAY, THURSDAY AND FRIDAY, MARCH 1st, 2d and 3d,

Supreme Hereford Sale of '99.

KANSAS CITY STOCK YARDS PAVILION,

Kansas City, Mo., Commencing at One O'Clock P. M. Each Day.

Cols. J. W. JUDY, F. M. WOODS, R. E. EDMONSON, J. W. SPARKS and Capt. W. H. TOUGH, Auctioneers.

This 3 days' sale includes as good individuals and blood as the breed affords.

MR. F. A. NAVE, owner of the 1898 Champion Hereford Herd, will sell on

THURSDAY, MARCH 2d, 19 Bulls and 31 Females, including prizewinners and females bred to Champion "DALE," believed to be as good a lot as can be had in the country. Catalogues ready. Address: F. A. NAVE, Attica, Ind.

ON FRIDAY, MARCH 3d, Grant Hornaday Live Stock Co. will sell 50 Head Bulls, Cows and Heifers. Foundation stock from Goodell & Simpson's ANXIETY, 4th strain. Young stock by the Champion Corner Bull SIR COMEWELL, 68776, highest priced bull of 1897. Catalogues ready. Address: Grant Hornaday Live Stock Co., Fort Scott, Kan.

Sotham's 16th annual SALE.

WEDNESDAY, MARCH 1st, 50 Young Herefords 25 bulls and 25 females, being the 1897 8 product of the Weavergrace Breeding Establishment, including the Champion Bull at Omaha. No culls; no "top" out. Catalogues ready. Address: F. F. B. SOTHAM, Chillicothe, Mo.

Established in 1839. I Will Sell

A. L. McPHERSON & SONS.



P. O. Address, Woodward, Okla. Range, Canadian river northward, including Cottonwood Springs.

On left side or shoulder. Horses branded same as above.


J. A. STINE & SON.



P. O.—Alva, Okla. Range—Woods Co.

Brand shown above may be anywhere on animal. Horses. Same as cattle.

MILLARD WORD.




P. O. Address, Grand, Day County, Oklahoma. Range, on South Canadian, Red Bluff and Mosquito creeks, in Day county.

Ear mark: Crop the left and swallow-fork the right.

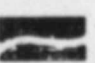
7 on left thigh.

EPDDLMAN BROS.




P. O. address Woodward, Okla. Range on Clear creek, 35 miles northwest of Woodward.

The above brand is regularly put on jaw and thigh; but sometimes on jaw, side and thigh; and on cattle having old brands it is put anywhere on left side, either on shoulder, loin or thigh.

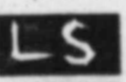
We also have some cows with  on left hip.


WHITE & SWEARINGEN.



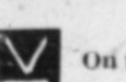
P. O. Address: Woodward, Okla. Range: On Sand creek, 5 miles north of Fort Supply.

OTHER BRANDS.


 On right side, seven underbit each ear.

 On both sides.

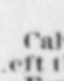
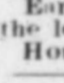
HORSE BRANDS.

 On right shoulder.


W. M. BYRD.



P. O.: Quanah, Tex. Foreman, W. C. Lyon, P. O., Manvum, Okla. Range on North Fork and Haystack, in Greer county.

Calves are branded  on left side and  on left thigh. Ear Marks: Crop the right and over bit the left. Horses: Range same as cattle.

GOBER & PUGH.



Range Woodward county, O. T. P. O.—Woodward Oklahoma.


M. A. NATIONS.



P. O.: Kansas City, Mo. Range: 15 miles N. W. of Woodward on Beaver creek.

Some cattle  Other  cattle branded  on left side or thigh. Horse brand same as main brand above.


J. F. FULLER.

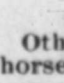


P. O. Woodward, Okla. Range, eight miles east of Woodward on the North Canadian.


On right side or on right hip. Horses unbranded. Range same as cattle.

M. C. CAMPBELL. Owner and Manager, Wichita, Kansas. JOE TEINBACH, foreman, Ashland, Kansas. Range on timberon, headquarters mouth of Snake creek, Clark county, Kansas.





Other brands,  on left shoulder of horses. Range same as cattle.

GEO. W. CARR.




P. O. Address, Stone, O. T. Location of range on Turkey Cr ek. in Day county.

BRAND OF CATTLE.

 On Left Hip.  on Left Hip.

All calves are branded same as cattle.

BRAND OF HORSES.

 On left thigh. Location of range same as cattle.

Gerlach-Hopkins Merc. Co.

—DEALERS IN—

GENERAL MERCHANDISE and OUTFITTING SUPPLIES


Woodward, - - Oklahoma.

EVERGREENS

100, 6 to 8 in. \$1; 12 to 18 in. \$2.50. 100, 2 ft. \$10 prepaid. 100, 4 to 6 ft. 25 varieties, \$15. 45 choice Fruit trees, 20 varieties, \$10. Ornamental & Fruit Trees. Catalogue and prices of 50 great bargain lots SENT FREE. Good Local Agents Wanted.

D. HILL, Evergreen Specialist, Dundee, Ill.


R. C. EDMISSON.



Range on North Canadian, 15 miles south east of Curtis. Horse range same.

Horses branded plain N on left hip.


A. H. TANDY.



P. O. Address, Haskell City, Texas. Range, ten miles north and east of Woodward.



Brand of horses same on horses as above. Range, same as above.

CH. S. HEWINS.



P. O. Address, Woodward, Okla. Range: On North Canadian river, ten miles north of Woodward.

OTHER BRANDS.

 On left shoulder.  On left shoulder. Horse brand is same as cattle.

Rates \$1 per day.

Everything New. Bath Room. Steam Heat. Gas Light.

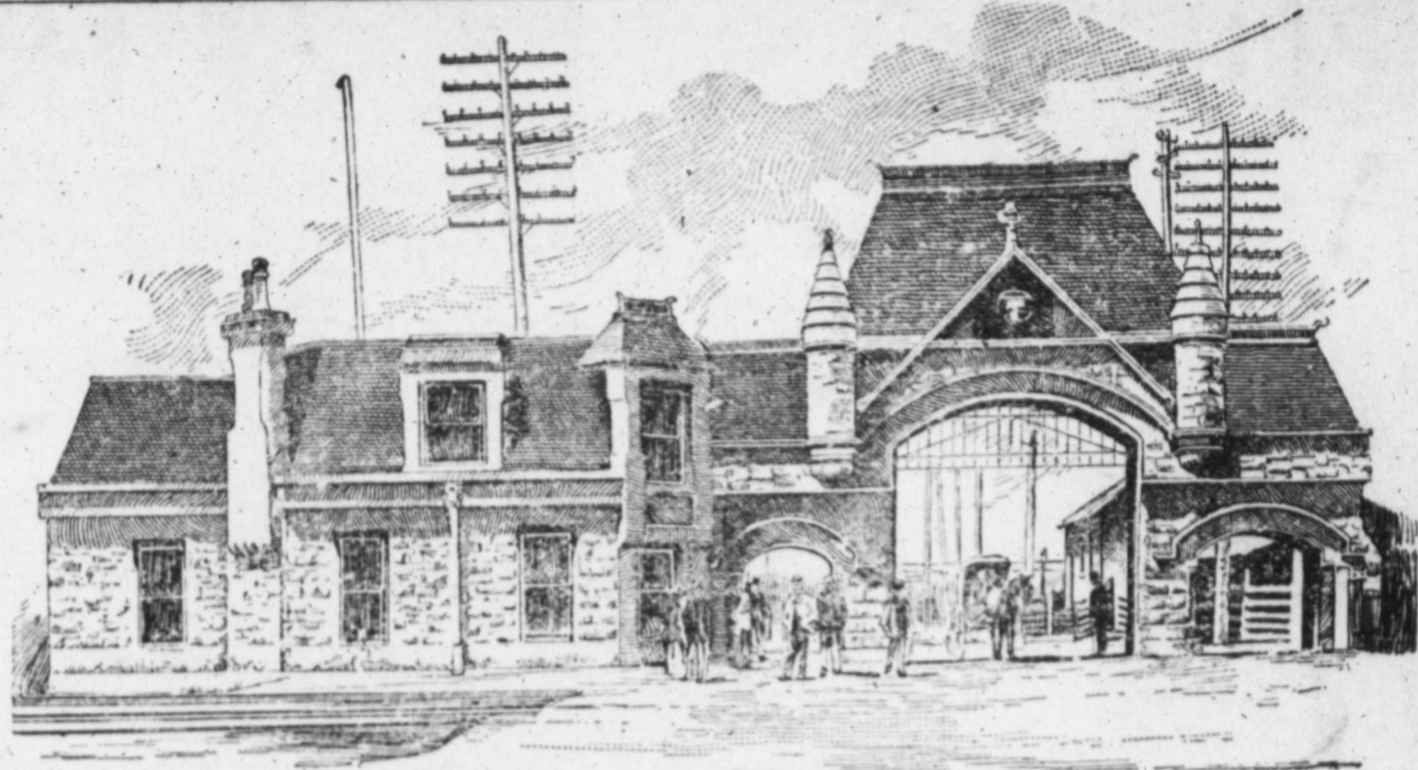
New Stock Hotel,

Headquarters for STOCKMEN.

J. E. LaHines, Proprietor. One half block from cable line to all parts of the city. 1611 Genesee St. KANSAS CITY, MO.

Are You
Aware that

**The Union
Stock Yards,
Chicago**



ENTRANCE TO CHICAGO STOCK YARDS.

Received in '98, 2,480,897 Head of Cattle?
OR 276,043 CARS

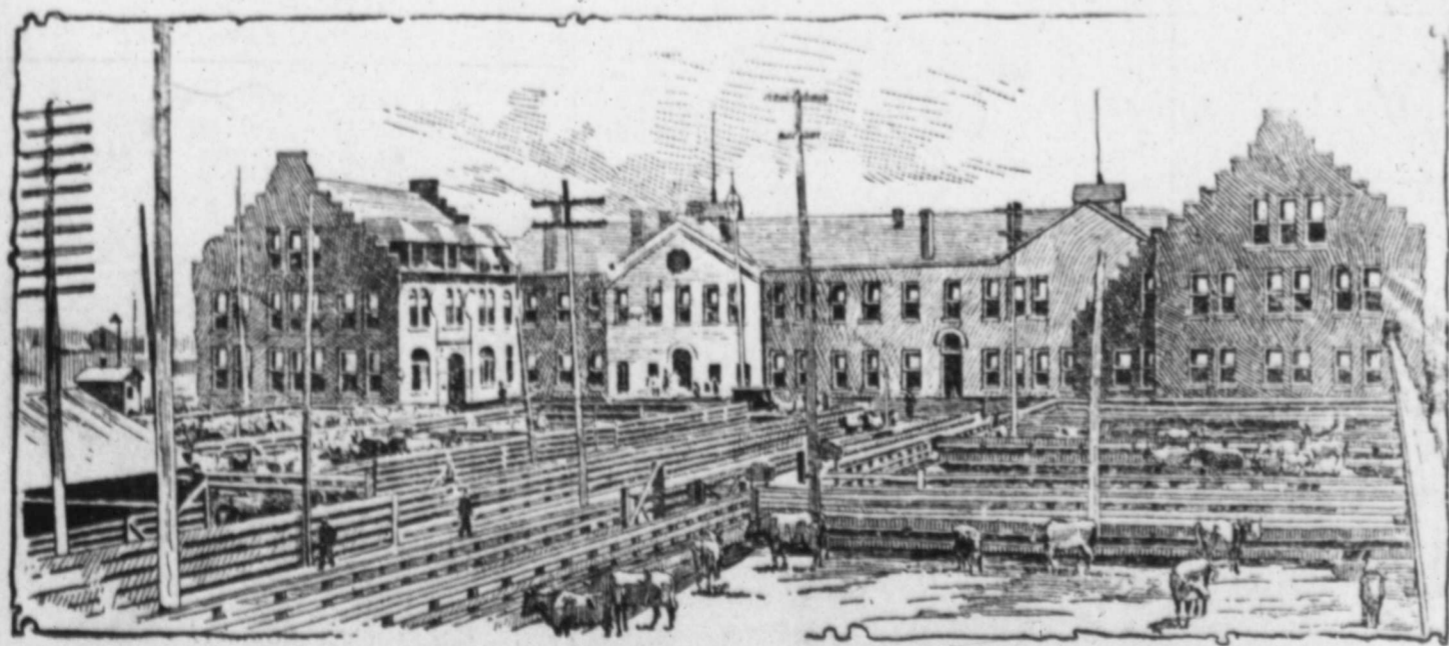
1,797,190 more Cattle than St. Louis,
1,688,653 more Cattle than Omaha,
722,933 more Cattle than Kansas City.

225,095 more Cars than St. Louis,
208,432 more Cars than Omaha,
154,617 more Cars than Kansas City.

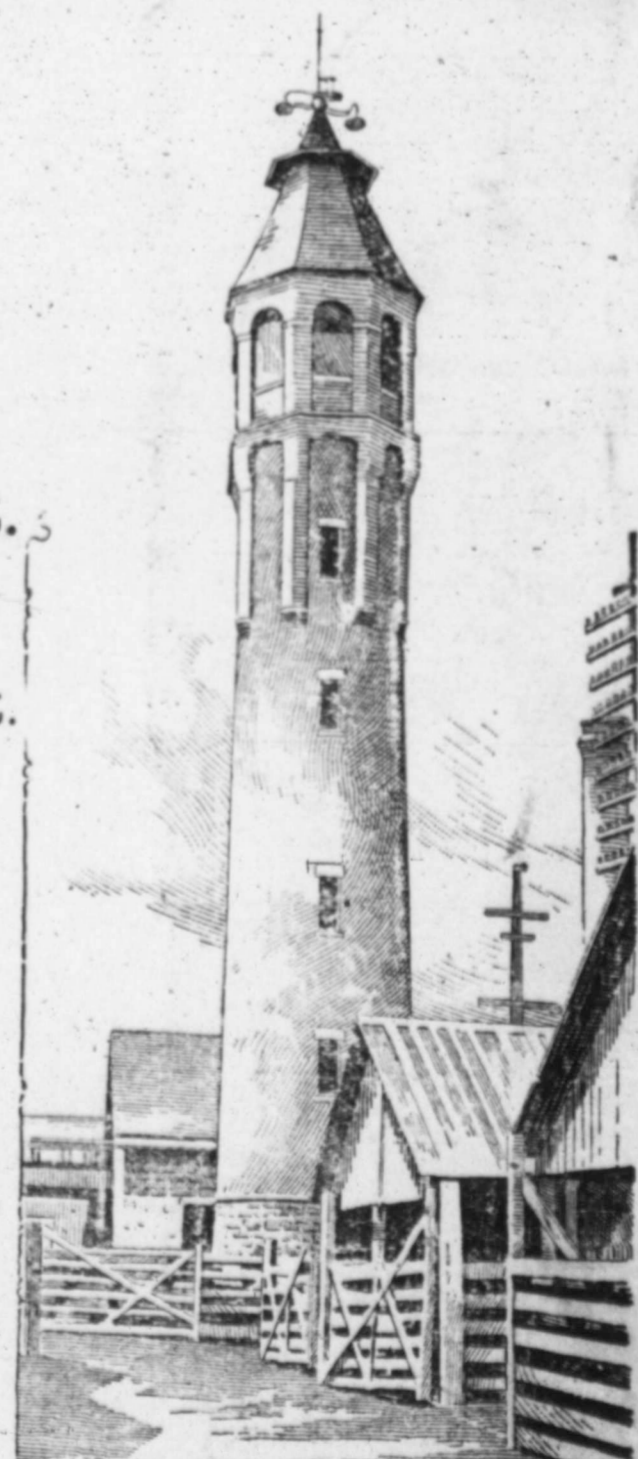
**Doesn't that Prove that the Majority of the People
KNOW that the Union Stock Yards of Chicago**

Is the place to ship Live Stock
To get the Very Best Results?

J. B. SHERMAN, President,
J. A. SPOOR, Vice-President,
J. C. DENISON, Sec'y-Treasurer,
JAS. H. ASHBY, General Supt.
WALTER DOUGHTY, Asst. Sec'y-Treas.
D. G. GRAY, Assistant General Superintendent,
JAS. L. HARRIS, General Live Stock Agent.



EXCHANGE BUILDING.—Union Stock Yards, Chicago.



WATER TOWER.—U.S.Y., Chicago.