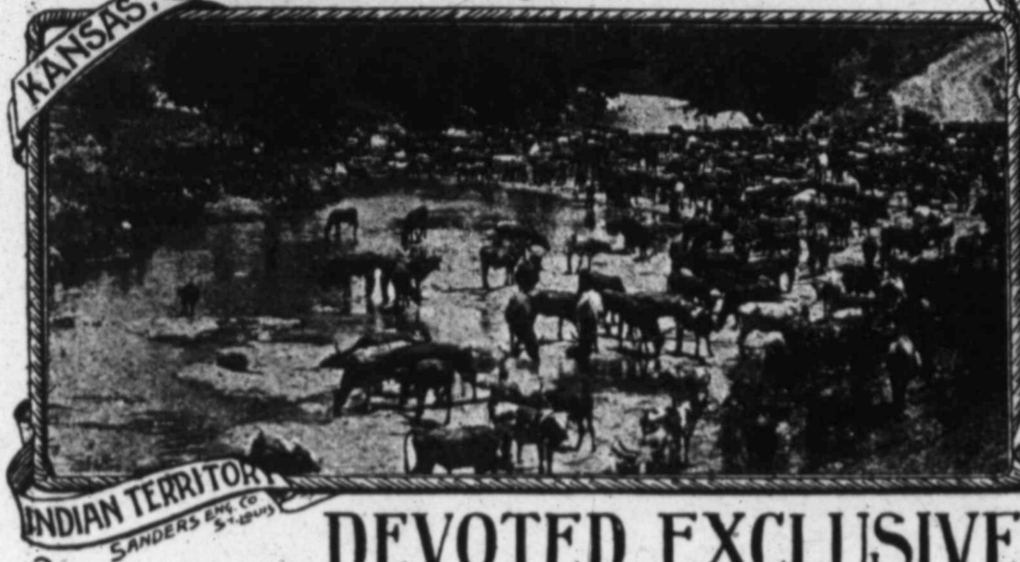


# The LIVESTOCK



# INSPECTOR

DEVOTED EXCLUSIVELY TO LIVE STOCK INTERESTS.

Seventh Year.  
Number 20

Woodward, Oklahoma and Kansas City, Missouri, February 1, 1902

Subscription } One Dollar per Year.  
Single Copy 5c.

## THE OKLAHOMA LIVE STOCK ASSOCIATION.

### Brief History of the Organization and What Has Been Accomplished.

In the spring months of 1894 the depredations of Lobo wolves in the then just-opened to settlement Woodward county, was heavy, occasioning much loss to owners of cattle. To this also was added loss by organized bands of cattle stealers, until the profits of the cattleman was marked up as a loss. Seeking the way out of these difficulties a meeting of parturmen was called at Woodward in the late summer and an organization perfected in a local way with out an idea of making it permanent. At this meeting matters were talked over and money subscribed by those present to pay bounties on Lobo scalps and hire an inspector. This plan did much good, but it was early discovered what has since been proven to be an annoying fact, that some of those most benefited were the slowest to "chip in" to maintain necessary expenses. The next step is told in the following from the LIVE STOCK INSPECTOR of April date, 1895:

"For over a year an organization has been maintained here by the local stockmen, but without rule or regulation, except as they chose to conform to at their meetings while in actual session.

"Hundreds of dollars have been raised and spent by the local organization in the furtherance of their interests. But the plan of raising money by subscription was wholly out of proportion to the benefits received at times, and therefore it was thought best to adopt a plan which would pro-rate whatever necessary expense should be borne.

"This idea involved a complete organization. For this purpose a meeting was arranged for February 22nd at Woodward. Representative stockmen from Woodward and adjoining counties were present. Committees were appointed to arrange and report a plan of organization to serve until the completed organization was perfected, which was intended to be done at the meeting of April 12th. Committees were delegated to secure the

friendly co-operation of the Texas Cattle Raisers' Association at Fort Worth on March 12th and to report full rules and regulations governing membership, applications, fees, rate of assessments, officary, etc."

This was done as shown by the report herewith of the First Annual Session, which convened here on April 12th, as stated in the headlines."

Then follows report of the proceedings of the April 12th meeting in which the following friendly relation-

ritory demand the consideration of many matters which are largely local and thus concern only themselves, and

WHEREAS, The formation of a subordinate Association looking to the protection of such interests, has been formed by said cattlemen at Woodward, Oklahoma, and,

WHEREAS, The objects of said Oklahoma Live Stock Association is in no manner antagonistic to the interests of the Texas Cattle Raisers' Association, but tends rather to strengthen it by active co-operation in individual

ness in their efforts to protect such interests.

I certify that the above resolutions were adopted by the Executive Committee of the Cattle Raisers' Association of Texas, this March 14th, 1895.

J. C. LOVING, Secretary.  
Respectfully submitted:  
J. M. PUGH, Chairman."

At this meeting the Constitution and Bylaws were adopted substantially as they are today. Blank forms of membership were used for the first time



At the 101 Ranch in Oklahoma.

ship between the big Texas organization and the young Association is recorded as follows:

"Mr. President: We, your committee delegated to attend the Cattle Raisers' Association at Fort Worth, Texas, on March 12th and invite their recognition and friendly co-operation, desire to submit the following as result of same; which, in our judgement, meets all requirements:

WHEREAS, The interests of the cattlemen of Oklahoma and adjacent ter-

ritory demand the consideration of many matters which are largely local and thus concern only themselves, and

RESOLVED, That we hereby recognize the Oklahoma Live Stock Association as an organization subordinate to this body, but without liability therefore, on our part; and assure them of the interest of this association in their welfare as cattle growers, whose membership is a constantly increasing source of strength to this organization as individual members heretof, and wish them unlimited sup-

and the real history of the organization was begun with M. F. Word the acting President and Tom Word Secretary. Among the active workers were W. P. Wright, A. T. Wilson, Ed Claunch, T. B. Jones, Ira Eddleman, Frank Garst, W. E. Daniels, J. H. Charlise, J. W. Holman, A. L. McPherson, R. G. Oldham, O. Ewell, J. T. Ishmael, J. R. Dupcan, Joe H. Carter, E. F. Wicker, L. N. Williams, Nelson Curtis and others.

(Continued on page 4.)



CHICAGO,

ST. LOUIS,

OMAHA,

KANSAS CITY.

# Evans, Snider, Buel Co.



## Live Stock Commission Agent.

## ADDRESS US

KANSAS CITY STOCK YARDS,  
KANSAS CITY, MO., ALSO  
UNION STOCK YARDS, CHICAGO, ILL.,  
NATIONAL STOCK YARDS, ILL.,  
UNION STOCK YARDS, SOUTH OMAHA, NEB.

## FOR THE SALE OF

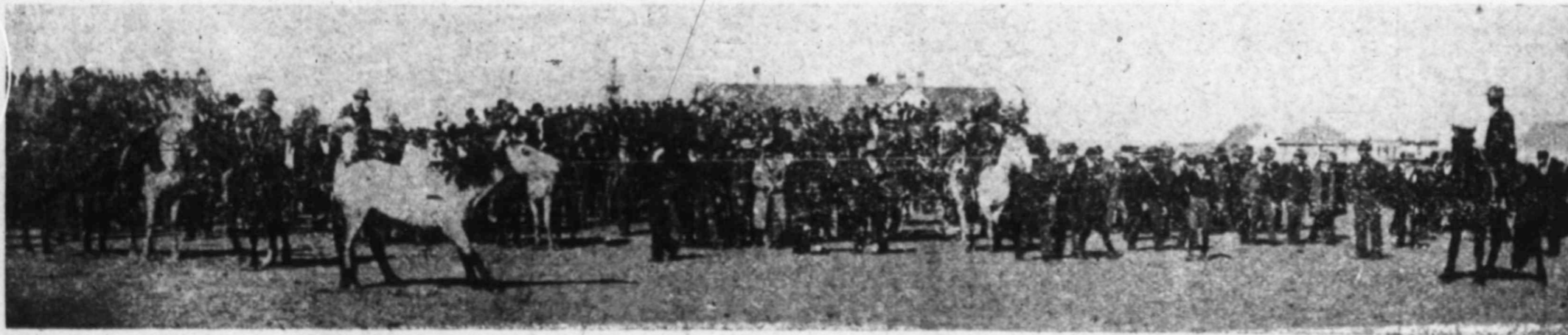
CATTLE,  
HOGS and  
SHEEP,

We Offer You Unequaled Service and Absolute Safety.



## OUR CATTLE SALESMEN:

CHICAGO: { F. H. Roberts. St. LOUIS: { T. J. Daniels. KANSAS CITY: { G. M. Walden  
{ P. J. Lawler. { W. B. McBride. { J. C. Farrar  
{ G. W. Sanders  
{ F. O. Sanders



Roping Contest at 7th Annual Convention, Woodward, 1901.

There is something funny about Newspaper Directory people. For instance, one of the large institutions of this kind have repeatedly solicited any thing from a full page ad to sixteenth page card, offering to accept payment for same in space in this paper to the amount ordered. After three or four invitations all of which were nicely worded, we gave them "copy" for a fourth page ad in their directory adding a stipulation in the contract that same was payable in new advertising in this paper at our full rate without deducting agents commissions. This they now refuse to accept, thereby proving that they want full rates for the space sold to publishers, but insist on agents discount rates for their advertisers. Looks like an exchange of space at an established regular price in one should offset space at established regular price in the other, at it don't.

## Drouth in Texas.

The drouth in southwest Texas is becoming very serious. A press dispatch from San Antonio says: On account of the almost total failure of grass and the high price of feed stuffs in this section, over 1,000 head of horses and milch cows have been killed in San Antonio during the past sixty days to prevent them from dying of starvation. There has been a drought in this section for twelve months or more, and there is no prospect for an improvement.

Texas is noted for the number and extent of its ranches. Of a total of several thousand, they vary in size from a few thousand to several million acres, the large ones averaging 50,000 acres. The greatest is the XIT, in the Panhandle, which embraces half a dozen counties and contains nearly 3,000,000 acres. It belongs to the Capitol Syndicate, a company of men who received this vast territory some twenty years ago in return for providing the magnificent state house at Austin.

It is now thought a special passenger train will run from Englewood to Wichita on Feb. 11th, thus giving Ashland, coldwater and other towns on that line a good run at one fare rate for round trip to attend the big convention

The Texas Live Stock papers are engaged in a beautiful scrap over the abolishment of the state quarantine line. The West Texas Stockman, which is published below the line, knowing full well the disastrous results which would follow the doing away with the measures now in force.

## FRISCO SYSTEM.

Frisco system has put on a new train known as the "Oklahoma Limited" between Oklahoma City and Kansas City. This is the fastest and finest equipped train out of Oklahoma for Kansas City, St. Louis and Memphis. The Oklahoma Limited leaves Oklahoma City at 6:10 p. m., arriving at Kansas City 7:40 next morning, St. Louis, 5:35 p. m., and Memphis 5 p. m.

It consists of baggage car, three chair cars and one Pullman. The Pullman sleeper and one chair car goes through to Kansas City without change, one chair car through to St. Louis, and one through to Memphis. The return train leaves Kansas City 9:20 p. m., arriving at Oklahoma City, 10:55 a. m. Further information regarding rates, etc., will be cheerfully given by any Frisco System Agent, or the undersigned.

B. F. DUNN,  
District Passenger Agent,  
Wichita, Kansas.

EIGHTH ANNUAL CONVENTION OKLAHOMA LIVE STOCK ASSOCIATION.  
Wichita, February 11-12 and 13, 1902.

For the above occasion the "Santa Fe" will sell round trip tickets at one fare for the round trip, \$4.81. Tickets on sale February 10-11-12th, good for return February 15th.

A. P. GLENDENING, Agent.

The INSPECTOR, \$1 per year.

**Supply of Live Stock at Five Big Markets the Greatest Ever Known.**

**Kansas City Drovers Telegram:** Receipts of cattle, hogs and sheep at the five western markets—Kansas City, Chicago, Omaha, St. Louis and St. Joseph, for 1901 were 32,003,128, an increase over 1900 of 3,030,315.

The receipts at Kansas City of cattle broke all records, and exceeded those of 1900 by 30,447. The receipts of hogs were the largest on record and exceeded those of 1900 by 622,265. The receipts of sheep were not the largest on record, but exceeded those of 1900 by 119,629.

The receipts of cattle at Chicago were the largest since 1893, and exceeded those of 1900 by 302,350.

The receipts of hogs were exceeded in 1891, 1897 and 1898, but exceeded those of 1900 by 181,430. The receipts of sheep were the largest on record, and exceeded those of 1900 by 495,210.

Omaha sheep receipts were the largest on record, exceeding those of 1900, the best previous year, by 38,066.

The receipts of cattle at St. Louis broke all records, and exceeded those of 1900 by 193,843. Its hog receipts were the greatest in its history, and exceeded those of 1900 by 132,220. St. Joseph's receipts were all record-breakers. The receipts of cattle exceeded those of 19 by 45,472; the receipts of hogs were 426,589 larger than in 1900, and the receipts of sheep exceeded those of the previous year by 135,625.

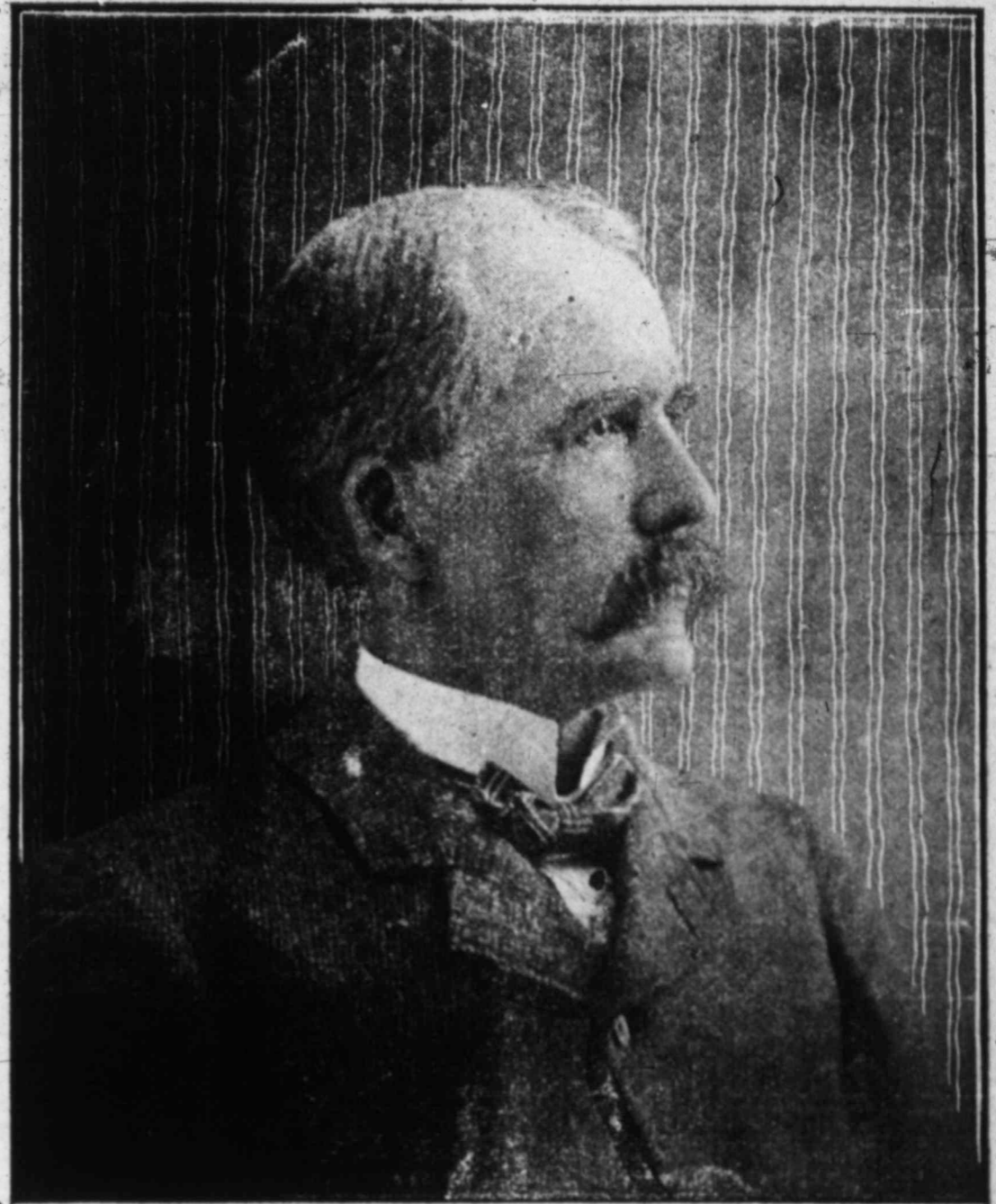
The receipts of cattle at the five markets in October, 1891, were the largest on record, aggregating 846,000. The receipts of hogs in December were 2,047,000, and were exceeded but once, and that was in December, 1898, when they reached 2,058,000. The receipts of sheep for one month were broken in October with 886,000. The record for receipts of cattle and sheep in the month of December were

broken in December, 1901, with 543,000 of the former and 486,000 of the latter.

Combined receipts at Kansas City, Chicago, Omaha, St. Louis and St. Joseph, were as follows:

	Cattle	Hogs	Sheep
1901...	7,167,625	18,450,365	7,385,138
1900...	6,605,715	16,874,635	6,492,563
1899...	6,242,976	16,556,247	6,289,769
1889...	5,966,891	17,359,951	6,212,178
1897...	6,021,453	15,382,958	5,986,232
1896...	5,693,888	16,699,508	5,532,819
1895...	5,528,629	12,614,160	4,931,322
1894...	6,148,725	13,109,907	4,225,448
1893...	6,303,153	10,189,535	4,202,005
1892...	6,458,270	12,572,993	3,070,467
1891...	5,752,624	13,578,228	3,057,735
1890...	6,094,846	13,160,826	3,156,288
1889...	5,170,059	10,051,620	2,641,271
1888...	4,462,016	8,866,323	2,393,415
1887...	3,674,674	9,677,991	1,962,378
1886...	2,406,572	10,309,727	1,433,745
1885...	2,838,010	10,572,666	1,490,177
1884...	2,578,690	8,152,243	1,321,460

The boy who does not learn to do something useful will find himself at a serious disadvantage later in life. Although he may not have to depend for a living upon the fruits of toil, he will have great need for the training which can be acquired in no other way. The poor boy needs to master some useful occupation that he may be able to support himself. The one who inherits wealth has need of this training in order that he may be able to manage his possessions to the end that he may not be forced to depend upon his labor alone for his support. Then, too, the person who is not fitted for some useful occupation has no real place in the economy of things. His opportunities for enjoyment and happiness are seriously lessened. Each and every healthy boy should be forced to do something useful and to do it diligently.—Ex.



HON. W. E. STANLEY,  
Governor of Kansas, who will attend the Eighth Annual Convention of the Oklahoma Live Stock Association at Wichita and appear on the program.



Interior View of the Great Saddlery House of R. T. Frazier, Maker of the "Famous Pueblo Saddles," from which saddles are Shipped Daily to Every Part of the West. Address, R. T. Frazier, Pueblo, Colorado.

(Continued from first page.)

At that time a semi-annual convention was deemed necessary and October 15 was selected for the next date. At this meeting, President Chenoweth being absent his place was filled temporarily by J. E. Love. The matter of taking up lease of school lands transferred by Wagoner and Son was adjusted by a committee appointed for that purpose. This included all school lands in Woodward county and the report showed all leased except fifty-seven sections and these were afterward taken by the Association members in compliance with arrangement with Gov. Renfrow, then chief executive of Oklahoma.

Just one year later than the first organization effected the April 1896 Inspector records:

"Pursuant to motion fixing March 16, 1896, as the date of the Second Annual Convention of the Oklahoma Live Stock Association, the body convened on this date and perfected the details of an organization, embracing within its limits Oklahoma, southwest Kansas, northeast New Mexico and the Panhandle country of Texas."

At this meeting Vice-President J. W. Holman was in the chair and at the close of the session Captain W. J. Good was elected president. W. E. Bolton was elected for the first time, secretary. Col. Albert Dean was present and made a very interesting address on Texas Fever. A very good attendance of members is reported, and much business was done, especially in regard to the action taken by the Association earlier in the year regarding quarantine, from which a paragraph of the committee consisting of A. T. Wilson, Ed Hewins and M. F. Word reports as follows:

"That we tender to Secretary Morton our thanks for his favorable action in acceding to our request as presented by committees from this body through Gov. Renfrow, and that we assure the Department of our deep concern in the preservation of said line from violation and will use every effort in our power to insure the enforcement of its provisions.

That we heartily favor any action by the Territorial authorities which will lead to the establishment of the Territorial quarantine line in conformity with the National line, believing that the long experience and observation by the Department of Agriculture at Washington constitutes the only safe guide to follow, and that we most earnestly favor the adoption of the National Quarantine line by the Territory, thereby the better securing its preservation from violation."

At this meeting an invitation was also formally extended to the Salt Fork Live Stock Association to "join us" which was afterward accepted. Round up work was also outlined for the spring work.

"The Second-Semi-Annual" was held Sept. 14, 1896. Attendance was reported fair. P. L. Herring presided, in the absence of President J. W. Good. Reports show much active work done. From a section of the report of the Executive Committee at this meeting has sprung some valued legislation. It reads:

"We further wish to recommend that a law be secured providing for the inspection of hides in Oklahoma."

The Third Annual Session convened in Woodward, Feb. 9, 1897. Concerning this meeting the minutes say:

"For the past three years this Association has been in what might be termed a struggling condition. Having its origin in a jumped-up organization of cattlemen who met and decided to pay a bounty for wolf scalps it has gone on, from session to session, adding members here and there until it now numbers almost one hundred members and represents upwards of 50,000 cattle on its books.

"The session just held has demonstrated the fact that it is an organization which meets the demands of this country and its record the past year in saving over \$9,000 in shipping charges alone to the cattlemen of this section causes it to find favor and a

ready and constant addition to its membership."

At this session the herd law proposition was discussed resulting in the famous "west of range 14" lease law, and providing for elections five years instead of six months apart. Many interesting papers were read. The Association at this meeting abolished the semi-annual meetings and fixed the permanent dates for holding the Annual Conventions on the 2nd Tuesday of February each year."

The next annual meeting, was held Feb. 8, 1898, and the gain in membership was fully 100 per cent and over. At the close of the session A. T. Wilson, the present head of the organization, was elected president and after a fight for the location between El Reno, Alva and Woodward for the next convention, Woodward was named.

The Fifth Annual was well attended and the basis of several measures which were afterward framed into laws were here first recommended, chief of which was the separation of the Live Stock Sanitary Commission from the Board of Regents of the A. & M. College. This has proven to be a very good measure for all cattlemen. After taking three ballots for location, the invitation of El Reno to meet there the following year, was accepted.

Of the 6th at El Reno, and the 7th at Woodward much might be said but they are well remembered by every one. The 8th is approaching, now only two weeks distant, at Wichita, Kansas.

The conditions confronting the organization at this time are new and it seems some changes will have to be made to conform to the growth of the organization or else limit it to a degree, within the confines of the rapidly growing grazing lands of Oklahoma. This will prove insufficient. The organization has proven its worth every year, not only in protection in the markets but in useful legislation and in exerting an influence to maintain and keep from violation the federal quarantine lines through Oklahoma, thereby saving to the cattlemen of the nine counties north of this line the aggregate of over one million dollars annually. That there is need of this organization has been proven from the start. That it should be maintained goes without saying.

Some changes may be required by enlarging its field of usefulness, and it is therefore proposed to submit the name, "Southwestern Cattle Growers Association" to take the place of the old name at the coming convention. This would enlarge its territory to cover more of Kansas, and parts of Texas and New Mexico, all of which is north of the quarantine lines, both state and federal, and therefore have a common interest to serve in the keeping up of the organization. In addition thereto, amend the constitution so as to include unbranded cattle in one division without inspection dues, and branded cattle in another division with inspection dues, the whole to be under the supervision of one executive committee representing the whole membership in which legislation beneficial to the interests of every member alike might be secured.

The history of the Oklahoma Live Stock Association in the past has been a continued measure of success, whatever may be in store for the organization in the future.

#### Get Your Money's Worth.

An effort is being made in Kansas City to protect stock men from the "heelers" who annoy and impose upon purchasers by running them into stores up town. The Kansas City Journal in speaking of this matter says: "The firms which do business at the stock yards are thinking of taking some united action to prevent their customers from being annoyed by runners who through the sidewalks near the stock yards exchange buildings. These men have arrangements with up town stores by which they re-

ceive commissions on the amount of purchases made by people whom these individuals bring to them. The firm paying the largest percentage is the one which gets the business, with the result that the out of town people who fall into these men's clutches are given the poorest class of goods at the highest prices. These solicitors thrust their cards into strangers' hands and dog their steps if they are not driven away. Considerable complaint has been made against them by cattlemen who trade here." Cattlemen and shippers going to Kansas City will save money and buy better goods by patronizing advertisers who solicit your trade publicly in this and other newspapers.

#### Western Quarantine Association.

An adjourned meeting of this organization will be held at the Carey Hotel Parlors on Feb. 10th, 1902 and the following have stated their intention of being present: Oklahoma Board, O. C. French, Thos. Morris, W. E. Bolton; Kansas Board, M. C. Campbell, F. H. Chamberlain, Fred Cowley; New Mexico, J. A. Larue; Missouri Board, Geo. B. Ellis, Dr. D. F. Lunkey; Colorado Board, Dr. A. B. McCapes, B. H. Dubois; Texas Board, M. M. Hawkins, W. J. Kleberg.

"An ounce of prevention is worth a pound of cure." We recommend no special swine remedy. A few dollars invested in them may save you hundreds. It is like fire insurance; you

may never have a fire but all the years you are safe

An American association of ranchmen and prominent cattle growers, of which J. Ryan, of Leavenworth, Kans., E. J. Carter, of Chicago, Ill., and John Holt, of Miles City, Montana, are the prime movers, have purchased a cattle ranch in old Mexico comprising two and a half million acres which will be used for breeding fine cattle.

The Department of Agriculture at Washington have made a very thorough research and investigation in regard to blackleg, its origin and treatment. They have reduced their investigation to a small, but very interesting book, covering the matter thoroughly.

C. A. Stannard, owner of the Sunny Slope stock farm at Emporia, Kans., has bought George S. Tamblin's Oklahoma herd of fine cattle consisting of 101 head. The consideration is not made public.

According to reports from Chicago there is an egg trust. An egg trust is easily formed when the hen is off duty on account of short rations, but when she goes to work again that egg trust will exist only in memory.

Reports from the plains country state that cattle are eating more loco this year than usual, and the spring losses from this trouble will be correspondingly heavy.

**If You Love ROSES**

Write Today for our Catalogue.  
We Grow Flowers for

**SOUTHERN PLANTERS Haskell Ave. Floral Co. Dallas Tex.**

**The Business End of the  
NEW RUMELY SEPARATOR**

Like all the "Rumely Goods" this is simply perfection. When coupled to our New Rumely Rear Geared Traction Engine they constitute a threshing outfit that not only makes big money for the thrasher, but saves grain and money for the farmer. They are durable beyond comparison and when you buy them you are done buying for years to come. Take a little time to think about how it would pay you to own such an outfit, then write us for free catalog.

**M. RUMELY CO., La Porte, Ind.**

**29 Years Selling Direct.**

We are the largest manufacturers of vehicles and harness in the world selling to consumers, and we have been doing business in this way for 29 years.

**WE HAVE NO AGENTS**

but ship anywhere for examination guaranteeing safe delivery. You are out nothing if not satisfied. We make 196 styles of vehicles and 65 styles of harness. Our prices represent the cost of material and making, plus one profit. Our large free catalogue shows complete line. Send for it.

**Elkhart Carriage & Harness Manufacturing Co., Elkhart, Ind.**

**SALZER'S SEEDS** **Never Fail**

It is a fact that Salzer's Seeds are grown in more gardens, and planted on more farms in America than any other. There is reason for this—

**SALZER'S SEEDS NEVER FAIL.**

No matter how poor the soil or inclement the weather, Salzer's Seeds produce. We are the largest growers of Vegetable and Farm Seeds, operating over 5,000 acres, and hence can make the following unprecedented offer—

**150 Kinds for 16c, Postpaid.**

99 kinds of rarest Lucerne Radishes  
19 magnificent earliest Melons  
16 sorts glorious Tomatoes  
25 peerless Lettuce varieties  
19 splendid Beet sorts  
65 gorgeously beautiful Flower Seeds

**150 kinds for only 16 cents.**

above 150 sorts, which will furnish you bushel baskets full of magnificent flowers and lots and lots of rare vegetables, together with our great catalog telling all about the rarest kind of fruits and flowers, and best earliest vegetables and farm seeds—all for but 16 cts. in stamps.

Write me for my Hardy Everblooming Garden Roses, postpaid. No. 1 Hardy Pinks, 3 Cherries, 3 Crabs and 7 Apples—all included, hardly as ask—the 16c postpaid for \$1.50.

Our great catalogue, positively worth \$100 to every wide awake gardener and farmer, is mailed to you upon receipt of 5c. postage, or with above 150 sorts for but 16c. postage.

**JOHN A. SALZER SEED COMPANY, La Crosse, Wis.**

**WANT COLUMN.**  
TWO CENTS A WORD.

"For Sale," "Wanted," "For Exchange" and small advertisements for short time, will be charged two cents a word for each insertion. Cash must accompany order.

**WANTED:** All readers to know that the use of this column only costs two cents per word. Send in your small ads.

**FOR SALE:** One vaccinating outfit complete, and 100 doses of vaccine virus will sell all for only \$10.00 if taken at once. Address LIVE STOCK INSPECTOR, Woodward, Okla.

**FOR SALE CHEAP:**—25 acres of feed, 1 an winter about 350 or 40 head of steers, plenty of corn fodder and grass eight miles south of Higgins Good running prairie water. Will handle steers for \$3.00 per head. Address G. H. Griffiths, Higgins, Tex.

**C. P. SHIPLEY'S**



**BOOTS**

AND

**SADDLES**

Are Winners

Order Catalogue and Measure Blank Today. Prices Right.

Opposite Stock Yards

KANSAS CITY - MO

**Sale Dates.**

Advertising for the following sale dates will appear in the LIVE STOCK INSPECTOR:

Colin Cameron—Herefords—Kansas City, May 7th and 8th, 1902.

National Hereford Exchange, T. F. B. Sotham:

Chicago, March 25—27, 1902;

Kansas City, April 22—24, 1902;

Omaha, May 27—29, 1902.

Chicago, June 24—26, 1902.

Criterion Sale, T. F. B. Sotham, Kansas City, Mo., Jan. 28—31, 1902.

A postal card, addressed to the Secretary of the Oklahoma Live Stock Association, Woodward, Okla., will bring by return mail a full set of blanks necessary for becoming a member of the Association, also full information pertaining to the same.

**BEST IN THE WORLD!**  
**IWAN'S AUGER** (Used by U. S. Government for Post Holes, Wells, for constructing Telegraph and Telephone Lines, Prospecting for Minerals, etc.)  
SIZES 4 to 10 in. \$2.50. Thrice the work accomplished with an "IWAN" than with others. Highest Award World's Fair. Special price to introduce. Show this to your dealer, or address IWAN BROS., Box 12, Streator, Ill.

**Agents Wanted.**

Representatives wanted to sell membership for a mercantile agency. Mention this paper. The Retail Credit & Collection Association, Boulder, Colorado.



HENRY E. ASP, Guthrie, Okla.  
(A Friend of Cattle Growers.)

**ALFALFA SEED**

From Locality where it grows in Greatest Abundance. Alfalfa, the king of drouth resisting forage plants. Pure and fresh 1901 seed, plump and vigorous. In ear or bushel lots. Also all other field seeds. Write us for prices. MCBETH & KINISON, Garden City, Kansas.

**York-Key Mercantile Co.**

Woodward, O. T.  
Stores at Kiowa and Dodge City, Kas.

Dealers in all kinds of RANCHMEN'S GOODS.

**J. G. Peppard**

MILLET CANE SEEDS.

**SEEDS.**

Eight near Santa Fe Street  
KANSAS CITY, MO.

CLOVERS  
TIMOTHY  
GRASS SEEDS

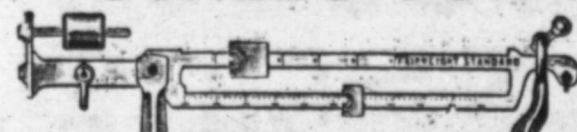
**KLONDIKE**

INCUBATORS and BROODERS  
...Are the Best...

Latest improvements, strongest guarantee, easily operated. Write for free catalogue, which contains much valuable information. Address: Klondike Incubator Co., Box 971, Des Moines, Ia.

**Wichita Commercial College.**  
THIRD FLOOR SHEETS BLDG. E. H. ROBINS - Pres.

**SCALES FOR ALL PURPOSES.**



Before you buy see the most up-to-date scales on the market. Compound beams, weighing all on the beams; steel levers; steel frames; concrete walls if desired. Every modern appliance, with no objectionable features. Material and accuracy guaranteed. High-class scales our specialty. Introductory prices where we have no agents. Mention this paper.

FAIRWEIGHT STANDARD SCALE CO., 22 Franklin St., Danville, Ill.

**STRONGER THAN STEEL**  
This famous fence is woven of best steel made more durable by heavy galvanizing. Every rod is guaranteed. When it is put up—tight—your fence troubles are ended for all time.

**ELLWOOD WIRE FENCE**  
stands heat and cold, storms, bulls, boys, horses, sheep and cattle. Made in six heights, from 18 inch to 55 inch. Styles for all purposes. Best and cheapest diamond mesh wire fence. Get prices. Sold in every town. If not handled by your dealer, write to AMERICAN STEEL & WIRE CO., Chicago, New York, San Francisco, Denver.

**A Beef Threat.**

It is threatened that the dairymen will produce beef, if the livestock interests persist in backing the fight against oleomargarine. Well, let them. If the dairy cow can produce a beef steer why just go ahead with the miracle. The small stunted, slim loined son of a mile cow may do for a butter factory beef club, but he will never create a furor in the meat market as a competitor of the carcass of the brother of the beef steer's sister. One can well imagine the smile of the Hereford, the Galloway, the Poled Angus and the Shorthorn at the abattoir ambition of the useless dairy steer. What will Iowa and Wisconsin produce next? Desperation kills.—The National Provisioner.

"Kansas live-stock breeders," says the Chicago Drovers' Journal, "are now engaged in a campaign to secure reciprocity between the United States and Mexico in order that the market for the staple commodities of our farms may be extended. The Kansas farmer is not at all selfish. In taking his stand to improve trade with our sister Republic he is not working for Kansas alone but for the millions in other States."

The census returns shows the approximate value of all live stock in the country to be three billions of dollars, exceeding the total combined value of the products of all the fields, forests and mines of the nation for the preceding year.

**FRISCO SYSTEM.**

Frisco system has put on a new train known as the "Oklahoma Limited" between Oklahoma City and Kansas City. This is the fastest and finest equipped train out of Oklahoma for Kansas City, St. Louis and Memphis. The Oklahoma Limited leaves Oklahoma City at 6:10 p. m., arriving at Kansas City 7:40 next morning, St. Louis, 5:35 p. m., and Memphis 5 p. m. It consists of baggage car, three chair cars and one Pullman. The Pullman sleeper and one chair car goes through to Kansas City without change, one chair car through to St. Louis, and one through to Memphis. The return train leaves Kansas City 9:20 p. m., arriving at Oklahoma City, 10:55 a. m. Further information regarding rates, etc., will be cheerfully given by any Frisco System Agent, or the undersigned.

B. F. DUNN,  
District Passenger Agent,  
Wichita, Kansas.

**About Alfalfa.**

So much has been said about Alfalfa that no argument is needed to convince the most skeptical of its great value. A few hints given in regard to sowing in the Drovers Journal will be found of much interest to LIVE STOCK INSPECTOR READERS.

"Alfalfa is growing in favor every day. It has been proved that it is more profitable than clover, and the wealth of the farmers in western states has been greatly increased by its culture and use. No subject has been of greater interest during the meeting of the various farmers' institutes and live stock association meetings this winter. We have heard that alfalfa has been the salvation of the Kansas farmer; we have been told that the stockmen of Colorado finish one and sometimes two steers on a single acre of alfalfa. It is grown extensively west of the Mississippi river and the farmers in the east are becoming more familiar with its merits. We receive quite a number of inquiries as to the amount of seed required per acre, the cost per pound and the best time to plant.

In buying seed, be sure that there are no weed seed mixed with the alfalfa. The worst enemy to alfalfa during the first year's growth is weeds. Moisten the fingers slightly and thrust the hand into a bag of seed and if there are any weed seed they will adhere to the fingers with the alfalfa. We have known of instances where nearly one-fourth of what was sold for clean alfalfa seed was weed and grass seed. Insist on having clean seed. Some seed men recommend ten pounds of seed per acre. Others say twenty pounds. The most successful growers plant about fifteen pounds.

The soil should be plowed deeply and thoroughly pulverized, and the seed sown broadcast and harrowed in. Much of the success in securing a stand depends on the kind of soil. One prominent farmer in Iowa says that clay or sandy loam is best, but under-drained black land will produce well. Mowing will not hurt it, but if grazed to excess it will die. It should be cut when beginning to bloom, as the feeding value of the hay when cured will be greater than if cut in full bloom. In Texas, hog feeders are very successful in fattening hogs by feeding chopped alfalfa hay, scalded, with corn chops, equal parts of each. According to the best authorities it would seem that once a man gets a stand he is a convert for all time to come.

## Poultry Department

A common wild mulberry or a plum tree is a good shade for a poultry yard.

Cow peas are a good laying food. Sow a patch this spring and try them.

A reader asks: "What is the best laying hen?" The answer is simple. The one that has the best care.

If poultry raisers would but learn to assort their fowls into several different houses or rooms and yards, they would find more profit in them.

We read a lot about the hen that lays 200 eggs in a year, but the 200 egg hen is scarce and the beginners in the poultry business must not expect such results. An exchange says it does not matter so much what the breed may be so they get the proper food and care.

The proper food to get the 200 eggs is scarce with many of us and if we bought it, it would in many cases eat up all the profit. We should give the best care and feed that can be got most reasonable and at the same time get enough eggs to pay us. Better get 100 eggs from a hen and make a profit of 50 percent than 200 eggs and get a less profit. The 200 egg hen exists but she is in most cases in the hands of fancy breeders who have high priced eggs to sell and she pays him, but with us farmers she is hard to find.

Eggs are always high during the cold season, and the scarcity is due as much to the lack of warmth as to the food supplied the fowls. When hens lay in summer they then have exercise and do not suffer from cold. To get eggs in winter give the fowls summer conditions. This may partially be done with warm quarters, having plenty of window glass and allowing materials as litter in which they may scratch. It is not necessary to feed an abundance of grain, though a sufficiency should be allowed. Give a variety and give it in a manner so that the fowls will scratch and work, as the exercise will keep them warm and increase the egg supply.—Ex.

Since writing my former letter, giving my experience with incubator hatched chicks, I have received letters from various parts of the country (many of whom forgot to inclose postage) and I therefore deemed it expedient to answer the questions in a general way.

First.—When is the best time to buy an incubator? My observation says the sooner the better, as a little experience is very beneficial to those who are unaccustomed to using them. While the adjustment is very simple and easily understood, yet I do not forget that it is much easier for me to manage one now than when I first undertook to do so. A large number of people, many of them intelligent, make a failure of the first hatch, so that beginning early you will have acquired valuable experience by the time you are really ready to begin active operations.

Second.—What is the best breed to raise? That depends entirely upon circumstances. If raising solely for a quick market for the table, I have found none that gives better returns than the Plymouth Rocks, as they grow very rapidly and furnish a very desirable quality of meat. There are doubtless others just as good, but I have not experimented with them. If you intend raising high-priced fancy fowls then almost every breed has its champion, and whichever one is chosen will return good profits if handled intelligently and kept up to the highest standard.

How much ground will I need? has been frequently asked and is a question impossible to answer, as it all depends upon the magnitude of the business. Some of my neighbors are making a success of the poultry business upon a comparatively small piece of ground, while one I now think of has a farm of 320 acres, which he is devoting exclusively to the raising of the various kinds of fowls.

It would extend this article indefinitely to answer all the questions asked, so I will have to leave the others for future articles, and bring this to an abrupt close by saying that if you buy a first-class incubator and brooder, select your eggs from a good strain of birds, operate your machine intelligently, and follow the instructions given by the manufacturer—who knows more about their capabilities than you could possibly know—you are bound to make money.

Mrs. LOUIE E. FLETCHER,  
Des Moines, Iowa.

### Stupendous Sale of Live Stock.

The special sales of cattle at Wichita Feb. 11-12 and 13, will exceed in number and value any offering ever heretofore made to buyers. On Feb. 11, fifty Short Horns and fifty Herefords will be offered by R. L. Faulkner of Jamesport, Mo.; on Feb. 12, sixty head of Short Horn cattle will be offered by F. F. Stoddard of Burden, Kansas; on Feb. 13, one hundred head of Hereford cattle from the breeding farms of C. A. Stannard, Emporia, Kansas; Gudgoll & Simpson, Independence, Mo.; Scott & March, Albany, Mo., and Mrs. C. S. Cross, Emporia, Kan. as, will be offered for sale. This constitutes by far the largest sale of registered cattle ever made in either Kansas or Oklahoma, to date. All sales will be under cover and will go on regardless of weather conditions. In addition to these is the sale on the 11th of eighty five pure blood Poland China swine by Snider Bros., Winfield, Kan., and on the 13th forty five head of Percheron, Clyde and Shire horses, from the famed Robinson Ranche at Towanda, Kan. Taken all in all this is a wonderful sale of blooded stock and no one interested in stock growing can afford to miss it.

### Jerry Simpson Will Welcome.

The following letter addressed to the Secretary of the Oklahoma Live Stock Association has been received:

Office of B. F. McLEAN, Mayor  
Wichita, Kans. Jan 18, 1902

DEAR SIR:  
Have just received your letter of Jan. 7th in my mail at city building, it was filed by mistake. I am informed that the Hon. Jerry Simpson will make the address.

We will be ready for you and the committee is arranging for a good time.

Yours Resp.  
B. F. McLEAN.

Jerry Simpson is now a resident of Wichita and as he was here last year and worked hard to get the next convention at Wichita, the members are assured in advance of a royal welcome.

The Convention will be a hammer.

## HORSES AND MULES

According to the San Antonio Express the total number of horses and mules sent from the port of New Orleans to South Africa during the past two years is as follows: 75,991 horses and 67,059 mules, valued at \$13,483,052. This exclusive of feed, which amounted to \$992,616, making a grand total of \$14,476,270. These figures cover the period from Oct. 1, 1899 to Nov. 30, 1901. This is the largest exportation of mules and horses from any single port in the history of the world, for the same length of time.

### GOOD HORSES LEAVING THE FARM.

Horse buyers are fast picking up all the best animals for city markets, says an Illinois farmer in American Agriculturist. A few are simply buying mares and are particular to get good ones. These animals are taken to large farms and breeding establishments. The good brood mare is worth more to the farmer than she is to the city man, who expects to wear her out in harness. In other words, the brood mare of proper type and free from blemishes is worth more money than she will bring unless she is bought by some breeder who can afford to pay more for her than professional horse buyers. It is a mistake to sell all the best mares instead of holding them. True, buyers want the best, but if farmers will keep the best mares the buyer will have to take the second best. If this is practiced, the farmer will be in shape to breed from first class stock and raise the fine horses which the market is now demanding.—Farm Topic.

### CROSS BREEDING HORSES.

One of the greatest sources of disappointment to amateur horse breeders and farmers is the cross breeding of different breeds with the idea of striking a happy medium which would be superior to either of the originals, says Western Horseman. The law of average is the great law with this class of breeders, and nothing seems more logical to them than that the produce of a 900 pound, fifteen hands roadster mare and a 2,000 pound, seventeen hands high draft stallion should be an ideal 1,200 pound, sixteen hands high coach or carriage horse. Twenty disappointments to one satisfactory product is a fair average of results in this line of breeding.

The Mexican government has another representative in this country visiting the stock farms devoted to breeding fine horses.

The ordinary horse has a stomach with a capacity of from three to four gallons, yet some men feed their horse regularly enough hay to fill a box car.

Attend the Convention.

## ONE FARE GOES.

All Railroads Will Make This Rate.

### Eighth Annual Live Stock Convention Will be a Hammer.

You'd Better Go!

The good News has been received by the Secretary that the railroads will make a one fare rate to the 8th Annual Convention of the Oklahoma Live Stock Association at Wichita, Kansas, effective Feb. 10th and 11th with a return limit of Feb. 15th. The rate covers Kansas, Oklahoma, Indian Territory, Colorado, Western Texas and New Mexico.

The program now being arranged is one of the best. The opportunity of meeting your neighbor in the cattle business is now practically at your door. Prices for spring trading will be made at this convention. Sales of blooded cattle and horses will be held. Roping and riding contests will afford you sport. Every body is going and you are invited.


Remember the date!

NOTICE:—Any expert roper desiring to enter the contest for purse offered to the best roper at the cattlemen's convention at Wichita, should send their names at once to A. B. Moore, chairman of committee, Wichita, Kansas. A car will be run from Amarillo to Wichita about five days before the cattlemen's convention to carry the roping horses to Wichita. Write to Mr. Moore for full information. Oklahoma, Kansas and Texas, papers along the Panhandle line please copy.

Advertising story from the Alva Pioneer: "The newspaper man is an enemy to bulletin board advertising on general principles, but there are occasions when the bulletin board might bring better results than a paper. The editor of the Pioneer suddenly observed one in front of a store in that city not long ago which read: 'B 4 U buy Pants come in and see ours.' He went in and there was not a confounded man clerk in the store so he bought a fan and went out."

Worry is the twin sister of nervousness. Neither should ever enter into the daily life of any one. God in his all wise providence, put the head of human beings on top, that all beneath it might be subservient to it. There is something wrong above the eyes, in the region of the will power, when one becomes nervous in the sense of excitability. "Know thyself" is good; control thyself is better. Worry and excitement never aided any one.—Kiowa Review.

Remember the round trip is only \$4.81 to Wichita during convention dates. Go early.



# 50 SHORT HORNS 50

# 50 HEREFORDS 50


## On Sale at Wichita Feb. 11th, 1902.

➤ Fifty Short Horn Bulls and Cows. Fifty Hereford Bulls ➤

The very best Families of the Breeds are represented in this offering. I have sold more good bulls and cows in Oklahoma and Texas in the past twelve years than any one doing business in this line. Best average obtained by any one offering bulls on sale. First customers are my customers today! Because my cattle are exactly represented.

Remember my Sale date, Tuesday afternoon, Feb. 11th.

## R. L. FAULKNER.



**Shorthorns at Wichita.**

By reference to our last issue, we find that we promised to briefly say something about the offering of Shorthorn cattle, that is to be sold at Wichita, Kansas, on Feb. 12th, 1902. An inspection of our advertising columns will reveal the fact that these cattle are a selection from the Silver Creek Herd, owned by J. F. Stodder, Burden, Cowley County, Kansas, and that 20 bulls and 33 heifers and young cows will pass under the hammer. Nearly all of the females will be in calf to Imp. Aylesbury Duke, a Scotch Missie bull that was imported by W. D. Flatt, Hamilton Ontario, and that is now owned by Mr. Stodder. Much of the young stuff is sired by Gwendoline's Prince 130913, a Scotch bull of royal breeding, as reference to his page in the catalogue will show. Mr. Stodder has always bred them red and so the entire offering with one exception is of that color. We do not feel that we are overstating it when we say that some of as fine cattle will pass through the show ring at Wichita on the afternoon of Feb. 12th, as will be sold in the West during the year 1902.

The offering is particularly strong in yearling heifers. No. 1 of the catalogue, Florence 4th, is an elegantly bred Dalcibella, sired by the Scotch herd bull Gwendoline's Prince. Her dam is by the Cruickshank topped Bates bull Palmer, and for grand sire she has the pure Cruickshank, Acornite's Commander 61430. She was a member of Mr. Stodder's 1901 show herd and took many prizes at the best of the Kansas fairs.

Oxford Bloom 11th, No. 12 of the catalogue, although never having been exhibited in the show ring is every inch of her a show heifer. With a beautiful head, horn and countenance, a short neck, symmetrically joined to a well layed shoulder, a fine brisket, a well sprung fore rib, excellent loin, broad and deep hind quarters, good top and bottom line, on short legs that are well spread, denoting a strong constitution, she is an ideal short-horn type. The kind that it is hard to pay too much for. Her sire is that same good Scotch bull, Gwendoline's Prince and her dam was sired by the Bellows bred Scotch, Champion's Best 114671. This gives her two Scotch tops and the balance of her pedigree traces through such breeders hands as the New York Mills people, J. O. Sheldon, Samuel Thorn and Thos. Bates, to Imp. Bloom by the Booth bred bull Sir Leonard. We would also call especial attention to No. 16, Third Rosewood of Silver Creek, No. 27, Second Silver Creek Beauty, No. 31 Mary Rose 6th and No. 4, Hattie May 13th. They are all a thick fleshed blocky lot of heifers with a good strong constitution and they are all sired by Gwendoline's Prince. Perhaps the best of the young cows is No. 22, Hatty May 2nd, of Silver Creek. She is a three-year-old show cow that most Kansas fair goers are familiar with, as she was shown over the State and Oklahoma as a two year old and in the cow class in 1901. It is enough to say that she is a plum good one in every respect, and what adds greatly to her value is the fact that she is due to calve shortly after sale day to Imp. Aylesbury Duke. She is sired by Champion's Best 114671. It will be noticed on sale day that some of the best young cows are sired by this same bull. Among them are No. 5, Hatty May 11th, No. 8, Fancy 2nd, No. 10, Topsy Turvey 2nd, No. 13, Fancy 3rd. They are all the broad backed, thick, early maturing kind, just the kind that breeders prefer to keep in their herds, rather than sell.

No. 28, Lady Dover is a fine large two-year-old heifer, a splendid dark red that is due to calve shortly after sale day to Imp. Aylesbury Duke. No. 5, Hattie May 8th and No. 21, Rosewood 6th will both have six months bull calves at foot. Both are fine dark red youngsters sired by Gwendoline's Prince. Clarinda of Silver Creek will also sell with a very handsome red bull calf by the same sire. She is No. 26 in the catalogue.

Somebody wanting a bull next year can well afford to watch these cows and calves.

Most of the bulls are a cracking good lot. No. 34, Sunflower Prince is the youngster that went out last fall and won in class at six different fairs and also won the sweepstake prize at five shows over all ages and all breeds. He was showing in the calf class. He may sell out of reach of many buyers. No. 37, Prince Constantine has four Scotch tops on the best of Bates foundation and is full of Scotch character. No. 40, Prince Fancy was thought good enough to take to the fairs and met with but few defeats except by his stall mate, Sunflower Prince. No. 43, Mixer, is a large boned, growthy fellow that is really one of the best to be sold. He has some white however and should make a number one steer getter. No. 45, Sharon Prince is a nicely bred Rose of Sharon, a bull of good style and excellent lines. Many a breeder has a worse one at the head of his herd. Prince Wild Eyes, No. 48 is a nicely bred Scotch Topped Bates, racing to Imp. Filbert by 2nd Cleveland Lad. All of the bulls are sired by Gwendoline's Prince and if you will take pains to look up the Gwendoline's Prince stuff in the sale you will come to the conclusion that you can't go wrong in buying any of it. No. 42, Scraph Lad, carrying a double cross of Imp. Sovereign Lord, bred by A. Cruickshank, must also be reckoned among the good ones. The cattle will be on exhibition at the Riverside sale barn at Wichita on and after Feb. 10th, where any and all information can be obtained about the sale or cattle. If you have not yet a catalogue write to J. F. Stodder, Burden, Cowley County, Kansas and you will be supplied.

**Prospective Prices Look Higher.**

Prevailing prices for grain, provisions and live stock are considerably higher than a year ago, and, in fact, away above the average for the opening month of the year. With the crowding of so much unfinished live stock to market naturally there is considerable speculation as to future supplies, and "what will the harvest be?" It is generally conceded there will be a decided "gap" in the marketing of hogs during the next few months, and there is no question but what the shortage of well finished cattle will be decidedly pronounced during the next six months. Some of the leading exporters are so fearful of a scarcity of matured cattle that they are afraid to engage steamer room ahead for over a month or so at a time, whereas, in other years, they freely contracted space for six and even twelve months in advance. The ever increasing demand for our meats and prospective smaller supplies of suitable cattle and hogs is certainly an encouraging feature for the producer, and, notwithstanding the high price of corn and other feed, the farmer who feeds his stock to a finish will be amply repaid, unless all signs fail. For several months past a great amount of half-fattened stock has been forced to market, reducing the average weight of all kinds of live stock to the lowest point on record, especially for this time of the year.

At present corn is selling nearly 30 cents per bushel higher than a year ago, with the general run of beef cattle 40 to 75 cents per 100 pounds higher, and top cattle about \$1.50 higher than a year ago. Plenty of 1400 to 1500 pound fully finished cattle were numbered among the arrivals a year ago, while at present most of them are short-fed cattle, there being comparatively few well-finished heaves with weight. The same conditions characterize the hog situation, there being an oversupply of thin, unfinished hogs, with fully matured stock scarce. Best hogs are fully \$1.00 higher than a year ago and \$1.60 higher than two years ago. In line with corn, cattle and hogs, pork is about \$3.00 higher, lard \$2.30 higher and short ribs \$1.50 higher than a year ago.—Drovers Journal.

Don't forget the Convention.

**BREEDER'S DIRECTORY**

**Percheron Horses**  
YOUNG STALLIONS AND MARES FOR SALE REASONABLE.  
J. W. and J. C. ROBISON,  
Towanda, Kansas.  
IMPORTERS AND BREEDERS.  
Largest pure bred herd in the state.

**WM. POWELL,**  
Breeder of  
Registered Hereford Cattle.  
The Home of the Hereford. Established 1868.  
Channing, Hartley Co., Texas.

My herd consists of 400 head of all the well known families of the breed. I have for sale at all times both Bulls and Heifers. Either singly or in carload lots. Correspondence solicited. 8-1

**Prevent Blackleg In Cattle**

by using Collier Williams Mixture. Easily applied and a sure preventive of Blackleg in cattle. For full information, price, etc., call on or address

**COLLIER WILLIAMS,**  
Woodwad, Okla.

**DILLARD SANITARIUM,**  
GUTHRIE, OKLA.  
Whiskey, Opium, Morphine, and Cigarette Habits Treated.  
(When writing mention this paper.)

Individual effort collectively exerted cannot fail to produce results. The Oklahoma Live Stock Association is best described by the above statement of facts. You should share its benefits.

**ASK FOR**

**ATLAS OATS**  
WRITE US FOR SOUVENIR CATALOGUE OF PREMIUMS FOR  
**ATLAS OATS COUPONS**

Our elegant assortment of Rogers Bros. A. 1 Silverware, Gold Rings, Silver Aluminum Novelties—Beautiful Works of Art—and Large List of Popular Books. All these premiums are of the highest standard and can not be compared with the common grade of premiums usually offered.  
KANSAS CITY OATMEAL and CEREAL CO. Kansas City, U. S. A.

**THE FLATO COMMISSION COMPANY.**

**St. Joseph Stock Yards, Mo.**  
CAPITAL - \$100,000.  
Cattle Salesman, W. S. WOOD. Hog and Sheep Salesman, J. P. CLAREY.  
H. L. FLATO, Manager.  
Consignments of all kinds Live Stock Solicited. Reference any bank in St. Joseph.

**St. Joseph Stock Yards Company,**  
ST. JOSEPH, MO.

We are in the Market Every Day for Cattle, Hogs and Sheep.

We are especially bidding for range cattle and sheep, both for slaughter and feeding. Located on fourteen railroads, and in the center of the best corn and live stock district of the United States, we are prepared to furnish a good market for all kinds of live stock. Our charges for yardage and feed are—

YARDAGE:			
Cattle, per head	25c	Horses, per head	20c
Hogs, per head	6c	Sheep, per head	5c
FEED:			
Corn, per bushel,	\$1	Hay, per hundred lbs	\$1.00

Our packers furnish a daily market for all kinds of cattle ranging from canners to export cattle. Look up your railroad connections, and you will find them in our favor.

G. F. SWIFT, President, JNO. DONOVAN, Jr.,  
Vice Pres. and Gen. Mgr.  
M. B. IRWIN, Traffic Manager.

THE LIVESTOCK INSPECTOR

PUBLISHED SEMI-MONTHLY BY W. E. BOLTON.

WOODWARD, OKLAHOMA. KANSAS CITY, MISSOURI.

Represented in Kansas City by Mrs. J. E. Reed and E. F. Halstead.

Represented in New Mexico by Geo. H. Hutchins, Carlsbad.

New York Office: 928 American Tract Society Building, W. B. Leffingwell, Manager.

Chicago Office: 35-37 Randolph Street, W. B. Leffingwell, Manager.

Mr. Leffingwell is authorized to accept advertisements for The LIVE STOCK INSPECTOR at our contract rates. Orders filed with him will receive our prompt and careful attention.

The only journal published in Oklahoma and the Indian Territory, devoted exclusively to live stock interests and stock farming.

Kept at the post-office at Woodward, Oklahoma, as second-class mail matter.

FEBRUARY 1 1902.

NOTICE TO SUBSCRIBERS.

REMITTANCES. In sending money to the LIVE STOCK INSPECTOR please observe that the Clearing House will not accept private checks at par. Remit by postal or express orders, eastern bank exchange, registered letter, or if by private check add twenty-five cents for collection. Amounts of less than \$1 can be paid in postage stamps.

DISCONTINUANCES. Subscribers wishing the LIVE STOCK INSPECTOR stopped at the expiration of their subscription must notify us in writing to that effect otherwise we shall consider it is their wish to have it continued and we will make collection for the same.

CHANGES OF ADDRESS. When a change of address is ordered, both the new and old address must be given and notice sent two weeks before the change is desired. We require this on account of our heavy mailing list.

Official Organ of the Oklahoma Live Stock Association.

At News Depots and On Trains.

Calendar for 1902 showing months from January to June with days of the week and dates.

WICHITA—By C. A. Tanager & Co., 122 North Main St.

DENVER—By Hamilton & Kenard News Co., 77th and Champa.

ENID, OKLA.—Parker's Book Store.

AMARILLO TEX.—Morgan Bros. News Co.

For sale on all western Santa Fe trains, by Newsboys.

For sale on U. P., Denver & Gulf trains, by Denver Ry News Co.'s agents.

Sold on K. F. S. & M., Mo Pacific and St. L. & S. F. trains by the agents of the Van Noy News Co.

OFFICERS OKLA. LIVE STOCK ASSOCIATION.

Pres. Abner T. Wilson, 1st Vice-Geo. Crowell, 2nd-Geo. W. Boyd, Sec. W. E. Bolton, Treas. John Gerlach.

EXECUTIVE COM.

A. H. TANDY, J. R. STINSON, GEO. CARR, IRA EDDELMAN, C. BROWN, ED T. DAVIS, TONK SMITH.

Pres and Sec'y ex-officio.

LIVE STOCK SANITARY COMMISSION OF OKLAHOMA MEMBERS BOARD.

W. E. Bolton, Pres. Woodward, Thos. Morris, Guthrie, O. C. French, Secretary, Guthrie, F. B. Ferguson, Ex-officio.

The office of the Board is in Guthrie.

OKLAHOMA POULTRY ASSOCIATION. J. J. WALLACE, Pres., Oklahoma City. L. F. LAVERTY, Sec'y, Guthrie. ROBT. MORRIS, Vice-Pres., Guthrie.

OKLAHOMA SWINE BREEDERS ASSOCIATION A. J. HENSTON, Pres., Oklahoma City. C. R. WILLIAMS, Sec'y, North End.

OKLAHOMA AGRICULTURAL, HORTICULTURAL AND IRRIGATION SOCIETY. E. E. BOGUE, Pres., Stillwater. C. A. McNEAR, Sec'y., Oklahoma City.

THE LIVE STOCK INSPECTOR exercises great care in admitting advertisements to its columns. If any of our readers wish information regarding any advertisement or advertiser we would be glad to give same. If you wish to buy anything that is not advertised in our columns, write us and we will refer you to the best place to buy.

No Federal Quarantine Changes in Oklahoma This Year.

The new Federal line for 1902 will be proclaimed in a few days by Secretary Wilson. Rumors that Greer county, Oklahoma was to be left below the line are wholly unfounded. Several counties in Texas, will be placed below but this will not affect Greer county, which will have the privilege of open markets, subject to inspection.

The Oklahoma Live Stock Sanitary Board which is backed unofficially by the Oklahoma Live Stock Association took prompt action through Governor Ferguson, with the above stated result.

This has again demonstrated the value of an active vigorous organization of cattlemen in Oklahoma, without which such loss would be sustained each year in this matter alone.

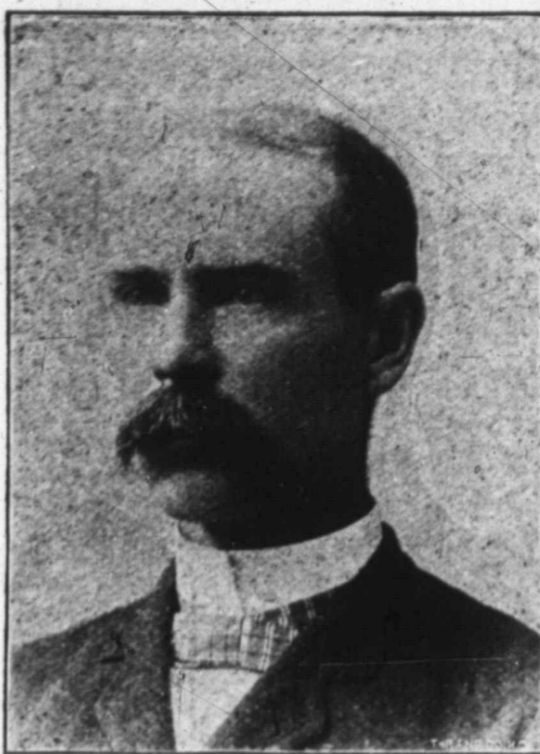
Information is received here that Albert Dean, livestock agent in charge of the Bureau of Animal Industry with headquarters at Kansas City, is preparing his annual report for the department at Washington. The report will show the number of cattle inspected in Texas and the States to which they were moved. W. D. Jordan of Quanah, prepared the Texas part of the report. It shows the number of cattle inspected last year to be 418,566, as against 307,658 for the preceding year.

The cattle were distributed as follows: Montana 90,408, South Dakota 71,285, New Mexico 63,470, Kansas 63,972, North Dakota 42,730, Wyoming 30,097, Nebraska 16,470, Colorado 10,855, Iowa 6,780, Oklahoma 5,466, Missouri 3,200, California 2,563, Illinois 2,240; total 418,566.—Childress, Texas, Index.

The one fare rate made by all railroads for round trip to Wichita, Kansas and return on the dates of the 8th Annual Convention of the Oklahoma Live Stock Association, Feb. 11, 12, and 13, next, is effective on 10th and 11th going, limited to return on the 15th. A splendid program has been prepared and Wichita will entertain royally all who may come. Among the features of special interest are special sales of registered cattle and horses, the regular convention program, roping and riding contests for purses, open packing houses and stock yards to all visitors and the annual Cattlemen's Ball. A cordial invitation to attend is extended to everyone. Remember the dates!

It is said that the best feed known for calves suffering from mal-nutrition is dried blood. This feed is something of an innovation with stock raisers throughout the country, but it has been thoroughly tested at various experiment stations and found to be invaluable.

J. P. Sands, of Walton, Kansas, will start a registered Hereford herd. He made several purchases at the Combination Hereford sale in Kansas City in January.



A. T. WILSON, Kiowa, Kan., president Oklahoma Live Stock Association.

In the special plea in which Mayor? Editor Hensley, of El Reno, before the Single State Press Association at Oklahoma City, Tuesday, attempted to explain his position, so many illogical statements were made that it really seems a waste of time to refer to any particular one.—Purcell Register.

Hensley usually makes an ass of himself whenever he tries to get above his level of indecency and chronic grafting.

We have no ill will whatever against settlers who are entering this county to farm for a living, but they are certain to fail, and go away poorer, but wiser, unless they revise their views early in the game and act upon the fact—proved beyond a doubt—that this is a stock range and not a farming country. Those who look upon this advice as false will realize its truthfulness later on.—Guymon Herald.

Chittum & Parel, of San Antonio, Texas, have just concluded a sale of 22,000 head of mixed cattle to Albert P. Rachel, of Kansas City, the price paid being \$13 per head or \$156,000. The cattle will form a part of 20,000 head which Rachel will ship to his Indian Territory pasture.

A writer in the Iowa Homestead says that where it can be done a good practice is to water a horse about thirty minutes before he is fed his grain and if water must be given after eating it should not be given for two hours.

Uncle Sam has another Wyoming ranchman by the seat of his pantaloons for illegally fencing several thousand acres of government land in the northern part of Laramie county.

Millet hay should be sparingly fed to horses as it affects the kidneys and soon the joints and the whole system becomes deranged. Millet may be fed with straw or other hay.

The Drivers Telegram, should be heartily commended in making a war on the "runners" for up-town trade at the Kansas City stock Yards.

A Kansas swine raiser sustained quite a loss recently by letting his hogs run after cattle which he had been feeding cottonseed meal.

Publisher's Notes.

The opening up of free mail delivery routes all over the country has resulted in a tremendous increase of the business of catalogue houses. Such firms as Marvin Smith Co., of Chicago, who always treat their customers in a very careful manner, are reaping a just reward of their straight forward business policy.

It seems that it has been the real merit of Page Fences that has induced farmers and stockmen to buy, and for the same reason have kept on buying. It is certainly worth a trial and

the farmer or stockman who thinks to put up a cheap fence will find it the most expensive in the long run

On another page in this paper appears an advertisement of Iwans' Post Hole and Well Auger. This Auger is simple and quick in use, scientifically constructed to perform the most work in the easiest manner and in the shortest time. Iwan Bros will be pleased to send particulars of their special prices both to agents and customers. Write to them and mention this paper.

Anyone of our readers who has not yet answered the three questions asked by the International Stock Food Co., through the columns of this paper should do so at once, and they will receive sample packages of Food in return. Much of this food is being used throughout the country and we are pleased to note that it is giving great satisfaction. The business of the firm is based upon good, practical sense and is not an experiment. Give their Stock Food a trial and you will be well pleased with the result.

Elsewhere in this issue of our paper will be found the advertisement of the M. Rumley Co. of Laporte, Indiana. Our readers will remember these people as being the manufacturers of the famous "Rumley" Threshing Machines, traction, portable and stationary engines. In keeping with their past, M. Rumley Co. has greatly improved their machines during the past year, and accordingly they are the very best that long experience, superior workmanship and material can devise. Write them for their new illustrated catalogue, and kindly say that you saw this notice in our paper.

Elsewhere in this paper appears a cut which represents the interior of the store-room of the R. T. Frazier Saddle Co., located at Pueblo, Col. We wish to call the special attention of our readers to this illustration in order that they may better conceive of the enormity of this establishment. Catalogs are furnished free upon request, and they are worth sending for. Mention this paper when you write.

"What is Home Without Music" is an old but truthful adage. Write to Lyon & Healey, Chicago, for the latest music. Everything known in the musical world can be purchased from this firm. See their ad in another column, this paper.

The steel wire fence which has been placed on the market by the American Steel & Wire Co., is the fence that will hold your stock. This fence is strong and durable and will last a life time. Many ranchmen and stockfarmers are now using this fence and declare it to be the best ever tried. It does not rust and will not wear out. One time is all you need to buy if you get this kind of fencing. Give them a trial.

The Incubator exhibit was no small feature of the recent poultry shows in Des Moines, Iowa, and the elegant one given by the Klondike Incubator Company as a sweepstakes premium was the center of attraction. It was given for the largest number of White Wyandotts securing 90 points and over, and was won by Mr. J. D. T. Hall, of Des Moines, Iowa. It was the universal sentiment that it was the handsomest machine on exhibition, and won well deserved plaudits from the largest poultry raisers present, many of whom are using them. The Klondike Company are to be congratulated upon the marked success that has followed the introduction of their machines on the market. Starting three years ago in a very modest way their increasing business demanded more room, and necessitated removal to their present quarters, consisting of a large double front, three stories and basement building on West Second street, with a working floor space of 17,000 square feet, and present indications are that ere long they will again be compelled to lease or erect quarters of sufficient capacity to meet the demands upon them for some years to come. We commend the firm as being entirely reliable and who will carry out any agreement that they may make. See advertisement in this issue.



Official Program of the Oklahoma Live Stock Association.

8th Annual Convention

of the

Oklahoma Live Stock Association

Wichita, Kansas.

February 11-12-13, 1902.



YOU ARE INVITED TO BE PRESENT AND BRING YOUR NEIGHBORS.

One Fare Railroad Rate to Wichita and return will be given from all stations on the lines of the following railroads in Kansas, Oklahoma, Indian Territory, Panhandle of Texas and Eastern New Mexico:

The Santa Fe Railway Co; Pecos System; Rock Island Railway Co; Frisco System; Missouri Pacific Railway Co; Choctaw, Oklahoma and Gulf Lines, all stations; Fort Worth and Denver Co. west of Victoria, Texas.

Special: All members attending the convention will please register with the Secretary of the Association and receive badges immediately on arrival in Wichita, at Hotel Carey.

All stockmen desiring to join the Association may do so at the place of registration, at any time during the convention. You are invited to become a member of the organization and share in its benefits.

MAKE YOURSELF AT HOME. THE TOWN IS YOURS.

CATTLEMEN'S ANNUAL BALL.

GARFIELD HALL, WICHITA, FEBRUARY 13, 1902.

ROUNDUP.

(Written for the Annual Cattlemen's Ball of the Oklahoma Live Stock Association.)

Once more are we met for a season of pleasure,  
That shall smooth from our brows every furrow of care.  
For the sake of old times we shall each tread a measure,  
And drink to the lees in the eyes of the Fair.  
Once more let the hand clasp of years past be given;  
Let us once more be boys and forget we are men;  
Let friendships, the chances of fortune have riven,  
Be renewed, and the past come back smiling again.  
The past when the prairie was big and the cattle  
Were as "scary" as ever the antelope grew—  
When to carry a gun, to make our spurs rattle,  
And "ride a blue streak" was the most that we knew—  
The past, when we headed each year for Dodge City,  
And punched up the drags on the old Chisolm trail—  
When the world was all bright and the girls were all pretty,  
And a fellow could "mav'rick" and stay out of jail.  
Then here's to the eyes that like diamonds are gleaming,  
And make the lamps blush that their duties are o'er;  
And here's to the lips where young love lies a-dreaming,  
And here's to the feet light as air on the floor;  
And here's to the memories—fun's sweetest sequel—  
And here's to the night we shall ever recall—  
And here's to the time—time shall know not its equal—  
When we danced the day in at the Cattlemen's Ball.  
—H. D. C. MACLACHLAN.

Stockmen around Canadian, Texas, are complaining that the grass is getting to dry to make good feed for cattle.

The rule of two car-loads or no pass home is being enforced again by the railroads.

The Chicago market handled over three million cattle last year.

A joint stock company has been organized at Springfield for the purpose of building and maintaining a plant for dipping cattle.

It is estimated that 1,000,000 cattle and 3,300,000 hogs will be fed in Nebraska this year.

There'll be a hot time in Texas when the federal quarantine line is withdrawn.

CONVENTION PROGRAM.

OKLAHOMA LIVE STOCK ASSOCIATION, EIGHTH ANNUAL CONVENTION, WICHITA, KANSAS, FEB. 11TH TO 13TH, 1902.

TUESDAY, FEBRUARY 11th.

9:30 a. m. Music by Sanford's Military Band.  
10:00 a. m. Convention called to order.  
Prayer, Rev.  
Address of Welcome, Hon. Jerry Simpson for Mayor B. F. McLean, Response, Hon. A. G. Cunningham, of Woodward, for Pres. A. T. Wilson.  
11:30 a. m. Business Session.  
Report of Secretary of the Association  
Report of Treasurer.  
Report of Executive Committee.  
Election of Officers.  
Appointment of Special Committees.  
Adjournment.

No afternoon session. Attend special sales, visit Stock Yards, get acquainted.

7:30 p. m. Music by Cornet Bands at Convention Hall.  
8:00 p. m. Prayer, Rev.  
"Then and Now," Gen. W. W. Guthrie, of Atchison, Kansas.  
Music, by Wichita quartette.  
"He Was a Tenderfoot," Miss Estelle G. Burk, of Wichita.  
Music, by Cornet Band from Oklahoma.  
"Live Stock Legislation" Hon. Norman C. Colman, First Secretary of Agriculture of U. S.  
Music.  
"Panhandle Cops," Miss Gail Sutton, Wichita.  
"Beef and Brains," Hon. F. D. Coburn, next Secretary of Agriculture of U. S.  
Music, Instrumental Solo.  
"Won," Mrs. Wm. S. Wolfe, Wichita.  
"Oklahoma Stockmen," Hon. T. B. Ferguson, Governor of Oklahoma.  
Band music.  
"Our United Interests," Hon. W. E. Stanley, Governor of Kansas.  
"The Spanish Pony," (by special request) Miss Estelle G. Burke.  
Song, "America," by the audience, led by Cornet Band.  
Adjournment.

WEDNESDAY, FEBRUARY 12th.

8:30 a. m. Music, by Cornet Bands.  
9:00 a. m. "The Work of the Sanitary Commission of Oklahoma," Col. O. C. French Secretary, Guthrie.  
"Prices Tomorrow," Col. L. A. Allen, Kansas City.  
"Splenic Fever," Col. Albert Dean, Bureau of Animal Industry U. S.  
"Importance of Quarantine Regulations," Hon. W. E. Campbell, Winchester, Okla.  
"Value of Individual Effort Collectively Exerted," Hon. Frank Cooper, Kansas City.  
"Oklahoma and Kansas and the

Louisiana Purchase," Hon. D. R. Francis, Ex Governor of Missouri.  
"Early Days of the Range and Trail," Col. Temple Houston, Woodward Oklahoma.  
Music by Sanford's Military Band Adjournment.

No Afternoon session. Special sales of Fine Cattle. Trading Broncho riding at stock yards.

EVENING: All members of the Association will be the guests of Wichita at Opera House where a special show will be given for their entertainment. Free to members; admission given to others at usual prices.

THURSDAY, FEBRUARY 13th.

8:30 a. m. Music by Cornet Bands.  
9:00 a. m. "Aronia in Cattle; Its Cause and Cure," Col. G. H. Moore, Kansas City Missouri.  
"Loco and Its Effects, How Best to Prevent," Prof. Jno. Fields, Director Oklahoma Experiment Station, Stillwater, Oklahoma.  
"Our Home Market," W. R. DuLaney Supt. Wichita Union Stock Yards Co. Wichita, Kan.  
"Live Stock Lessons of the Drouth," (by Request) G. M. Walden, Kansas City.  
"St Joseph Markets," M. B. Irwin, Traffic Manager South St Joseph Stock Yards Co.  
"Market Reports," Hon. J. Neff, Drivers' Telegram, Kansas City.  
"Live Stock Census of Oklahoma and Kansas," L. G. Powers, Washington, D. C.  
"The Kansas City Markets," Eugene Rust, Supt. K C Stock Yards Co., Kansas City.  
"The St. Louis Markets," L. W. Krake, Assistant Gen. Manager National Stock Yards, St. Louis.  
"Five Minutes in Chicago," Hon. W. E. Skinner, Gen. Agent Union Stock Yard and Transit Co., Chicago.  
"Feeders and Good Sales," Hon. W. M. Paugh, Wichita, Kansas.  
Report of Committee on Resolutions.  
Appointment and confirmation of Executive committee for ensuing year.  
Selection of place for holding next Annual Convention.  
Final Adjournment of Convention for 1902.  
Music by Cornet Bands.

No afternoon session. Special sales of Live Stock. Great Roping Contest at Stock yards.

8:30 p. m. Annual Cattlemen's Ball at Garfield Hall. Adios

**Apart** and away from the active whirl of the speculator, the stock jobber and gambler in foods which keep the widow and orphan from starving; not annoyed by the harping of the professional office-seeker; not suspecting every man's motive; not afflicted with the mental delusion that every woman who passes needs watching, but out under the canopy of sky, of sun, of moon, of forest; out where the winds are charged with life-giving ozone, health, happiness and contentment, lives the American stockman, the uncrowned prince of this rich and prosperous nation.—Jno. W. Springer.

**Very** few people have any idea of the magnitude of the live-stock industry of the United States. It is shown, by official government estimate, that the horses, mules, asses, cattle, hogs, sheep, and goats in the United States numbers over 140,000,000 head, and that their value is, according to a late estimate by Director of the Census Merriam, approximately \$3,000,000,000, the figures alone would have very little attraction or meaning to the majority of readers. But when told in addition that these animals would make a solid column of more than seventy-six abreast reaching from San Francisco to Boston; or, if placed in a single file in a solid procession, would reach six times around the earth and require twenty-one years to pass a given point marching constantly at the rate of twenty miles per day, or that would fill a solid stock train of 2,600,000 modern palace stock cars over twenty thousand miles in length; and, further, that their value exceeds the total combined value of all the corn, wheat, and other cereals, potatoes, hay, cotton, sugar, molasses, tobacco, lumber, wool, coal, petroleum, silver, gold and precious stones, iron, copper, lead, zinc, and other metals, annually in the whole country—then perhaps some adequate conception may be found concerning the magnitude and importance of the live-stock industry of the United States.—Journal of Sociology.

The live stock census reports show that in cattle Texas heads all other states with 9,546,870 head. Iowa is second with 5,587,311, and Kansas third with 4,495,043.

Winter is the time to prepare for the comforts of your sows at farrowing time. Make several box pens for them and put a scantling around the inside six inches from the floor.

Live stock values compared with a year ago are 50 cents to \$1.50 higher on cattle and 80 cents to \$1.40 on hogs.

The Pecos Valley Stockman, published at Roswell, New Mexico, has ceased to exist.

It is poor economy to keep young stock unless they are kept growing every day.

**From the Markets**

Kansas City Office, 289 Live Stock Exchange.

**The Center of The Live Stock Industry.**

According to the Federal census, giving the number of head of live stock in the different states of the Union on the first day of June, 1900, the great state of Texas stood first in cattle with 9,546,970, Iowa was second with 5,336,849 and Kansas third with 3,495,043. Missouri, Nebraska, and Illinois had about 3,000,000 each. Indian Territory and Oklahoma combined about 3,000,000 and Colorado 1,500,000. Kansas City is thus shown to be the central point and natural market of the greatest cattle producing territory in the world.

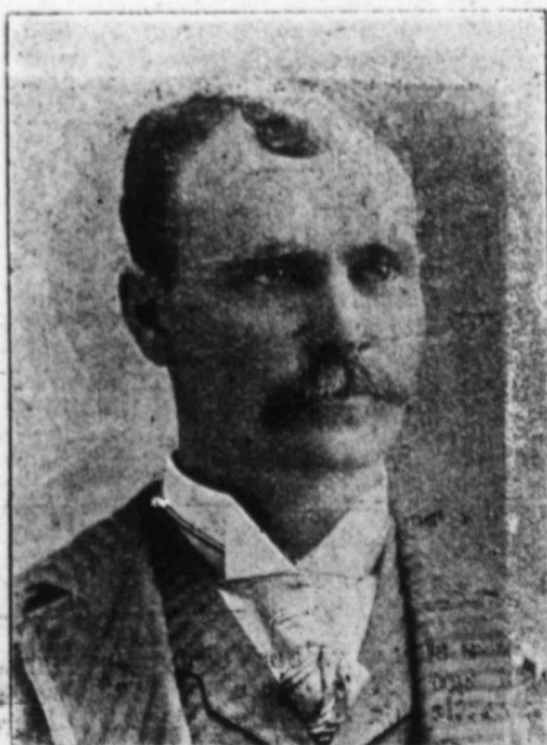
During the first year of the New Century, receipts of cattle amounted to 2,000,165 head exceeding the heaviest previous receipts by over 30,000. There was also 126,410 calves received while the hog receipts, which aggregated 3,716,404, were the largest ever recorded and over 600,000 in excess of the previous year's arrivals. Sheep receipts reached a total of 980,078 and of this number 776,691 were slaughtered in Kansas City, representing 79.3 percent of the total supply and eclipsing all previous slaughtering records, as did the killing of cattle which reached a total of 1,242,289 or 58.4 percent of the total receipts and the killing of hogs which amounted to 3,544,800 or 95.3 percent of the year's supply. There were also 96,957 horses and mules received during the year and the total valuation of all live stock passing through the Kansas City Stock Yards was \$130,377,653.00, over \$4,000,000.00 greater than in 1900.

Notwithstanding the severe drought which prevailed over the entire trans-Missouri country, Kansas City showed its supremacy as a feeder market, having sold 50,000 more cattle to range and feeding points during the year than any other two markets combined and having approached to within less than 9000 head of the greatest of all distributing years—1900—when, from Kansas City alone, about 670,000 cattle and calves found their way back to the country. Two thousand thoroughbred cattle sold at auction at Kansas City at an average price of \$226.15 during the year.

In fact, the year of 1901 was the most successful year in the history of the Kansas City live stock market and shows the steady trend of business to that point which is destined to be the greatest live stock market in the world.

**Rode on the First Santa Fe.**

A meeting of two old-time friends on Christmas day this year—men who were friends in the early pioneer



**BILL DANIELS,**  
First Treasurer of the Oklahoma Live Stock Association.

days of Kansas, served to recall to the mind of at least one of them some of the circumstances and vicissitudes which the first settlers of the Sunflower state encountered and, of course, overcame.

In these latter days when the state is traversed in even the remotest parts by the great trunk lines of railroads, it is difficult for one to grasp the idea of Kansas' being without railroads, or nearly so. Judge O. H. Nelson, now a well known live stock man of Kansas City, tells some very interesting reminiscences of these early times, and his stories were prompted by his meeting on Christmas day his old friend, W. W. Fagin, now a prominent railroad contractor, at present in Southwestern Texas.

Judge Nelson's memory takes him back to the first day of the operation of the Atchison, Topeka & Santa Fe road, of which system Mr. Fagin was the first general superintendent. In July of 1869 the Santa Fe road had completed 18 miles of track, running from Topeka to Carbondale. Judge Nelson lived then in Burlingame, Kas., and a party of young men, with their "best girls," drove overland 21 miles to Topeka and enjoyed a ride on the first trip of the first train of the now great Santa Fe route, riding from Topeka to Carbondale, where the overland ride was resumed back to Burlingame. The party believed the trip would later on prove an historical novelty to them, and they now recall the experience with considerable pride.

Judge Nelson also enjoys the distinction of shipping the first load of live stock ever hauled by a Santa Fe engine. It was a load of hogs consigned from Burlingame to E. W. Baker & Co., at Topeka. The consignee was a branch house of the Ridener-Baker wholesale grocery company. The hogs were slaughtered in what would now be considered rather a crude way, and the product was sent out on contract to the pioneer Western towns.

At that time in shipping live stock to Kansas City from along the line of the Santa Fe route, the cars were transferred at Topeka to the Kansas Pacific road which hauled them in to Kansas City. The Kansas Pacific road is now part of the Union Pacific system, but to the old-timers it is still known as the "K. P." road.

The first stock yards built along the Santa Fe line in Kansas were located at Burlingame, and since that time hundreds of carloads have come to this market from that point.—Drovers Telegram.

**Progressive Live Stock Commission Firms.**

When shipping to the Kansas City Stock Yards, remember the following progressive and reliable commission firms:

- Evans-Snyder-Buel Commission Co.
- Campbell, Hunt & Adams.
- Barse Commission Co.
- Drovers Commission Co.
- Rogers Commission Co.
- Kansas City Live Stock Com. Co.

When shipping to the St. Joseph Stock Yards, remember the following progressive and reliable commission firms:

- The Flato Commission Co.
- When shipping to the Wichita Union Stock Yards, remember the following reliable and progressive commission firms:
- E. J. Healy & Co.
- Paugh & Co.
- The Eldridge Commission Co.
- Union Live Stock Commission Co.
- Robbins & Alexander.

These firms have confidence in the cattle industry of the southwest and solicit your patronage.



**H. A. TICE,** Supt. Oklahoma Division, Santa Fe Railway.  
[An Active Member of the Oklahoma Live Stock Association.]

January cattle receipts at Chicago was the largest on record for the opening month of the year.

Subscribe for the INSPECTOR.

Here's another evidence of bad luck in opals. A man gave a Woodward young lady an opal set engagement ring and in three weeks they were married!

W. A. Michael. A. T. Mustion. H. S. Davis. E. E. Peters. J. A. Crane.

**DROVERS LIVE STOCK COMMISSION CO.**

KANSAS CITY STOCK YARDS.

Rooms 135 to 138 Exchange Bld.

Consignments and Correspondence Solicited. Financial Assistance Given Responsible Parties. Market Reports Mailed Free on Application. Proceeds Remitted on Day of Sale. Buying of Stockers and Feeders a Specialty. Consign Your Next Shipment to Us.

**GEO. H. BARSE, PRES.** **J. H. WAITE, Sec. and Treas.**

**BARSE Live Stock Commission Co.,**

Rooms 159-160, Live Stock Exchange. **KANSAS CITY, MO.**

Established 1871.

**Money to Loan on Cattle.**

Experienced Salesmen. Prompt Remittances. Correspondence and Consignments Solicited.

C. HOOD, President.  
L. A. ALLEN, Vice-President.

T. J. EAMAN Sec. & Treas.  
H. S. BOICE.

**The Kansas City Live Stock Com. Co.**

Is one of the Oldest and Best Companies in Kansas City

A good one to do business with.

They have ample capital and are perfectly reliable.

Twenty-five years in the trade.

Write to them for information and ship to them for good results.

- GEO. H. CAMPBELL, Cattle Salesman.
- L. A. ALLEN,
- CHAS. W. CAMPBELL, } Cattle Salesmen.
- PEYTON MONTGOMERY, }
- W. T. MCINTIRE, Sheep Salesman.
- J. T. MEGREY, Hog Salesman.

Stockers and Feeders.

There is much uneasiness and uncertainty about stockers and feeders and the course the market will take in the future and this condition has induced much mental speculation. Some are of the opinion that in the spring stock cattle will be higher than in the past while others are equally strong in the belief that they will be lower. This divergence of opinion arises from the fact that there is nothing whereby the future demand as well as movements can be gauged. In Texas, for instance, there are those who are anxious to dispose of their stock now, believing that in the spring the price will be low, or, at least, lower than at present; while, on the other hand, there are those strongly disposed to hold on to their possessions in the hope and belief that prices will be higher. In the spring Texas will have large numbers of cattle ready to be shipped northwards, but the question with Texas shippers is where to send them. If the sections in the North that usually took supplies from Texas would again ask to be supplied, the problem would be solved and prices range high, but it is that "if" that is proving such a stumbling block at present and causing such uncertainty in the minds of the cattlemen.

During the last summer and fall, on account of the drouth, a great deal of stock was shipped from Kansas and Nebraska to Montana, the Dakotas and Wyoming, to the extent probably of 350,000 head. In addition to this there were shipments from the southwest heavier than usual, and in consequence of the supplies from these two sections the Northwest has in possession a larger number of range stock than it has had for years. Now, the question arises, will the northern territory be willing to increase the stock already on hand? And the answer to this question is that it will, providing the prices are satisfactory, otherwise it will not. Corn is not being fed to cattle now to the same extent as formerly on account of its high price and thus it may be looked upon as a probability that a great deal of this year's crop is harvested. But it will be late next year before the new crop is available and should it turn out as meagerly as did the crop this year, and there is no assurance to base any prediction upon in that respect, the feeders might find themselves in a position requiring the utmost economy in the matter of feeding out the supply on hand. This is what makes the cattlemen pause. On the whole it is not thought that the corn states will be large purchasers of high priced stock cattle next year, and should this prove true the prices hoped for by the breeders would not be realized.

There is another consideration, and that is the high price of beef cattle in the spring, but what effect this will have is not with any certainty known. And then there is the question of money. This has been far from abundant during the last fall and there is no evidence that the market may not be more stringent in the spring. Without an easy money market cattle cannot be readily moved and good prices secured.

All the conditions, problematical and otherwise, are being duly considered by those closely interested and gives rise to the uncertainty and speculation already mentioned—Live Stock Indicator.

Elsewhere see adv. of Alfalfa Stock Farms and Ranches in Southern Kansas. If you are interested, see these men at Wichita and tell them you saw it in the LIVE STOCK INSPECTOR.

Special daylight trains will run on Feb. 10th to take all who wish to go to Wichita. This makes it more convenient than using the night train.

Farm Telephones.

How to put them up—what they cost—why they save you money—all information free. Write for it to J. A. Lusk & Sons Co., 220 W. Water St. Milwaukee, Wis.

Report of Deputy Live Stock Inspectors of Oklahoma, for Two Weeks Ending Jan 1, 1902.

Sec. 16, Chap. 31, Session Laws 1897, Statutes of Oklahoma: It shall be the duty of the inspectors provided for by this act to provide themselves with record books in which they shall record age, brand and color of all cattle slaughtered within their respective districts for the purpose of sale to the public, either wholesale or retail; . . . any person offering the meat of cattle for sale without having them inspected as aforesaid, shall be deemed guilty of a misdemeanor, and upon conviction thereof be fined ten dollars for every animal so unlawfully slaughtered.

Order of Live Stock Sanitary Board April 5th, 1900: It is hereby made the duty of all deputy live stock inspectors in Oklahoma at the end of each week to transmit to the secretary of the Live Stock Sanitary Commission for file and to the Live Stock Inspector at Woodward, Oklahoma, for publication duplicate report showing in detail the number of animals inspected by him during the week recommended as fit for slaughter, with a complete description of the marks and brands on each animal so inspected, giving location of same.

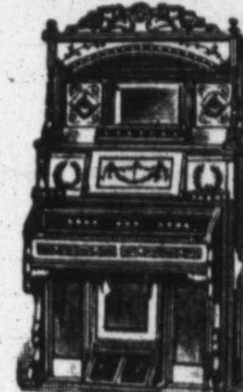
John A. Shaw, Kay county. Light red female age 6 yr brand S r s Light red white face female age 6 yr brand V r h Dark red white spot in face brand slanted bar r h On account of limited space all reports received are not published this issue. See next issue.

Dark red female age 3 yr brand r h Dark brindle age 2 yr brand n r h Dark brindle white spot in face female brand heart r s Light brindle white spots female age 4 yr brand M l h

When visiting Kansas City, stop at the BLOSSOM HOUSE. Opposite Union Depot.

EVERGREENS Hardy sorts, Nursery grown, for wind-breaks, ornament and hedges. Prepaid \$1 to \$10 per 100-50 Great Bargains to select from. Write at once for free Catalogue and Bargain Sheet. Local Agents wanted. D. Hill, Evergreen Specialist, Dundee, Ill.

LYON & HEALY ORGANS



are the great favorites today. Unapproached for Sweetness and Purity of Tone. New styles of

PIANO CASE ORGANS

which give the most enthusiastic satisfaction. All our organs have all the latest and most modern improvements. The cases are models of neatness and beauty and are made of fine

PRICES ALWAYS THE LOWEST. We make the terms of payment so easy that anybody can buy one. Ask your dealer for the Lyon & Healy Organs. If he does not keep them write direct to us. Beautiful Catalogue FREE.

Also bargains in good second hand Organs. A sealed guarantee with every Organ. The freight on an Organ is a very small matter. We ship Organs everywhere. Remember when you buy an Organ from us genuine musical worth is secured. Avoid the limitations now on the market. Write today. 52 Adams St. LYON & HEALY, CHICAGO, ILL.

SEE IT SWELL What about your bank account. Is it swelling? Wouldn't you like to see it swell? Two million people buy goods from us every year. They are thoughtful buyers who are looking out for their bank accounts. Are you one of them? BUY WHERE YOU CAN BUY BEST. Any Catalogue Mentioned Below Sent Free for the Asking Furniture—Farm Implements—Vehicles—Sewing Machines—Hardware—Crockery—Glassware—Stoves—Sporting Goods—Harness—Drugs—Stationery—Toys—Leather Goods—Musical Instruments—Silverware—Carpets and Rugs—Underwear—Notions—Books—Shoes—Millinery—Cloaks—Shirts—Furs—and Men's and Boy's Suits (both Ready-Made and Made-to-Order) including Samples. Each of the above catalogues illustrates and describes everything that anybody wants in its line. Each quotes the lowest wholesale prices; prices that cannot be duplicated anywhere in America. Write today for the one that interests you. MONTGOMERY WARD & CO., CHICAGO SPECIAL NOTE: We have just issued a very complete catalogue of Surgical Instruments. It will be sent free to physicians and veterinarians.

Genuine C. C. Co.'s PATENT EDGE CORRUGATED ROOFING makes a perfectly tight joint with one corrugated side lap. Don't throw away money on the other kind. 4 in. end lap with this equals 8 in. with others. Let us tell you how to save 20% to 25% in material. Free Catalog and price list sent you if you write. Kansas City Roofing & Corrugating Co., 216-220 W. 3rd St., Kansas City, Mo.

HAVE YOU SAVED up a little money? Would you like to go into a profitable business? Then buy one of our Star Drilling Machines and put it to work. You can get more money drilling wells of all kinds than you can make with the same amount of money invested in any other business. Write us at once for free catalog and proofs of these statements. STAR DRILLING MACHINE CO., Akron, O.

SCOUR CURE (Dr. A. S. Alexander's Formula) Used and recommended by Iowa Agricultural Station; "Uncle John" Lewis, Shadeland, Ind.; Thos. Clark, Beecher, Ind.; Riverside Hereford Cattle Ranch, Ashland, Nebr.; Andrew Thom, Bunker Hill, Ind.; Giltner Bros., Eminence, Ky.; B. C. Rhome, Rhome, Tex.; The Egger Hereford Cattle Co., Appleton City, Mo.; T. J. Wornall & Son, Liberty, Mo., etc. Price: \$1.00 per bottle; sufficient for 3 or 4 cases. "BLACKLEGINE" Pasteur Blackleg Vaccine, ready for use. Pasteur Vaccine Co., Chicago - New York City - Omaha - Kansas City, Denver - Fort Worth - San Francisco.

Subscribe for the LIVE STOCK INSPECTOR. One dollar a year.

What Are We Coming To?

I came to a mill by the riverside, A half mile long and nearly as wide. With a forest of stacks and an army of men Tolling at furnace and shovel and pen. "What a most magnificent plant!" I cried, And a man with smudge on his face replied, "It's Morgan's"

I entered a train and rode all day On a regal coach and a right of way Which reached its arms all over the land In a system too large to understand. "A splendid property this!" I cried, And the man with a plate on his hat replied, "It's Morgan's"

I sailed on a great ship, trim and true, From pennon to keel and cabin to crew, And the ship was one of a monster fleet; A first-class navy could scarce compete. "What a beautiful craft she is!" I cried, And a man with akimbo legs replied, "It's Morgan's."

I dwelt in a nation filled with pride, Her people were many, her lands were wide; Her record in war and science and art Proved greatness of muscle and mind and heart. "What a grand old country it is," I cried, And a man with his chest in the air replied, "It's Morgan's."

I went to heaven. The Jasper walls Towered high and wide, and the golden walls Shone bright beyond. But a strange new mark Was over the gate, viz: "Private Park." "Why, what is the meaning of this?" I cried, And a saint with livery on replied, "It's Morgan's."

I went to the only place left. "I'll take A chance in the boat on the brimstone lake Or perhaps I may be allowed to sit On the griddled floor of the bottom-less pit. But a leering lout with horns on his face Cried out, as he forked me off the place, "It's Morgan's"

Edmond Vance Cooke, in Cleveland Plain Dealer.

Coming Events.

- Central Shorthorn Breeders' association, Kansas City, February 4 and 5. Oklahoma Live Stock association, Wichita, Kas., February 11 to 13. Manitoba Live Stock Breeders' association, Winnipeg, February 18 and 19. Illinois State Farmers' institute, Rockford, February 18 to 21. National Live Stock Agents' association, Fort Worth, Tex., March 10. Texas Cattle Raisers' association, Fort Worth, March 11 to 13.

Oklahoma polled at her last territorial election 73,000 votes. This is more than the total polled in each of thirteen states at the last presidential election. These states are Delaware, Florida, Idaho, Louisiana, Mississippi, Montana, Nevada, North Dakota, South Dakota, Rhode Island, South Carolina, Vermont and Wyoming. These thirteen states have thirty-four congressmen and twenty-six senators. Oklahoma, like Porto Rico and the Phillipines, has none.

At a recent Missouri Farmers Institute, Dr. Lucky, State Veterinarian, declared that hog cholera in Missouri is very rare and most cases supposed to be cholera are nothing more nor less than large bunches of worms in the larger intestines, which proves fatal in many cases unless removed.

28 registered Hereford bulls, ranging in age from 7 to 19 months, richly bred and good ones. We solicit correspondence and inspection. We are on Wabash R. R., 5 miles north of Moberly, which is on both Wabash and M. K. & T. W. J. Boney & Son, Cain, Mo.

The so-called corn stalk disease is killing cattle again and while it is most prevalent in Kansas the trouble has lopped over into Colorado. A good preventive of this disease is plenty of salt and water.

Hog raisers will find that with a dry ground floor in their hog houses it will retain heat much longer than a board floor.

The loss of stock in Montana caused by poisonous plants has been estimated at from \$50,000 to \$100,000 per annum.

Advertisement for a horse-drawn carriage. Price \$49.00. Features include Anti-Kastler Coupler, Trimmings, Nickel Mountings, and various accessories. Marvin Smith Company, Chicago, Illinois.

Advertisement for various agricultural implements. Items include a team harness (\$18.50), a horse-drawn plow (\$17.70), a steel mill (\$15.05), a corn planter (\$28.75), a crank seeder (82 Cts.), and a horse-drawn planter (\$10.58). Marvin Smith Co., Chicago, Ill.

Large advertisement for International Stock Food. Features a large illustration of a pig and text: 'LARGEST HOG IN THE WORLD WEIGHT 1621 LBS.' 'A \$3000.00 STOCK BOOK FREE'. International Food Co., Minneapolis, Minn., U.S.A.

Advertisement for 'FENCE! STRONGEST MADE.' featuring Bull-strong, Chicken-tight, and Coiled Spring Fence. Winchester, Indiana, U.S.A.

Advertisement for 'SEVEN GREAT SCHOOLS' and 'THE MOLER SYSTEM OF COLLEGES'. Offers classes for ladies in hairdressing, manicuring, and facial massage. Address: nearest college.

Advertisement for a cattle convention in Wichita. 'WHEN IN WICHITA ATTENDING THE CATTLEMEN'S CONVENTION MAKE YOUR HEADQUARTERS At The 220 Ranch Jack Davidson, Prop. 220 EAST DOUGLAS Ave.'

Advertisement for the Fourth National Bank of Wichita. Capital \$100,000, Surplus \$25,000. General Banking Business Transacted. Kansas City Cancer Hospital Co. DR. J. C. MCLAUGHLIN, Physician in Charge.

Advertisement for 'SENT ON TRIAL' fence machine. 'A Fence Machine that will make over 100 Styles of Fence and from 50 to 70 rods a day AT ACTUAL COST OF WIRE'. Kitselman Bros., Muncie, Ind.

Advertisement for 'Seven Great Schools'. Includes Chillicothe Normal College, Chillicothe Commercial College, Chillicothe Shorthand College, Chillicothe Telegraphy College, Chillicothe Pen-Art College, Chillicothe School of Oratory, Chillicothe Musical Conservatory. ALIEN MOORE, Pres., Box P, Chillicothe, Mo.

Advertisement for 'Lafe Burger LIVE STOCK AUCTIONEER, Wellington, - Kansas.' Headquarters Wellington National Bank. Have conducted and am now booked for some of the largest sales in America.

Advertisement for 'SHIP YOUR FURS AND SHEEP PELTS TO McMILLAN FUR & WOOL CO., Minneapolis, Minn. WRITE FOR CIRCULARS'

Advertisement for 'HENS EAT BUGS' featuring the 'HUMPHREY Green Bone and Vegetable CUTTER'. Because they need animal food, feed cut bone and get eggs when eggs are eggs. Humphrey & Sons, Box 21, Joliet, Ill.

Advertisement for 'The Gallup Saddles'. 'I have been on the market for nearly a third of a century, and are growing more popular as the years go by. Our new catalogues, showing all latest improvements and newest ideas in Saddles and Harness, sent free upon application.' The S. C. GALLUP SADDLERY CO., PUEBLO, COLORADO.

Advertisement for 'TWO MAMMOTH JACKS. Weighing 3600 lbs, ages four and five years. First prize at Paris Exposition 1900. 13 jacks for sale. Also 35 jennies for sale, 21 bred this spring. S. O. HINGSTON, RICHMOND, OKLAHOMA. Attend the Convention.'



# CAR-SUL CATTLE DIP.

## Best by Every Test.

CAR-SUL CURES MANGE and TEXAS or SPANISH ITCH AFTER EVERYTHING ELSE FAILS. Kills Lice, Ticks and Grub or Wolf; drives out Screw Worms and heals the wound. Quickly cures wire cuts and heals harness and saddle galls while animal works. Is unequaled for MARKING, CASTRATING and BRANDING.

## Moore's Car-Sul Cattle Dip

is used and endorsed by such well known Stockmen as H. S. BOICE, of Kansas City, president of the Boice Cattle company OTIS L. BENTON, president of the Grainfield stock yards company at Grainfield, Kansas, who own and operate a dipping plant where CAR-SUL DIP is used with most gratifying results. C. GOODNIGHT, Goodnight, Tex.; W. S. IKARD, Henrietta, Tex.; ALBERTUS FRY, Montezuma, Kan.; LAKE TOMB CATTLE COMPANY Lubbock, Tex.; R. L. SLAUGHTER, Midland, Tex.; W. S. MARSHALL, Channing Tex., and hundreds of others.

## Use a Cattle Dip for Cattle.

CAR-SUL DIP is prepared exclusively to meet and overcome the DISEASES PECULIAR to CATTLE and therefore should not be compared to or comfounded with the many disinfectants which are so freely advocated for the cure of every ailment of all kinds of animals. CAR-SUL CATTLE DIP can be used with success either HOT or COLD, and is guaranteed to do the work in dipping tank or with spsay, swab or brush, without injury to the eyes or other parts of the animal.

**FREE TRIAL CAR-SUL** Write us stating number of cattle, you have and we will mail our books and send FREE OF COST enough Car-sul to clean up the mangiest or lousiest animal on your ranch.

**HOGS, HOGS, HOGS.** We are the originators of the dipping tank for hogs and MOORE'S HOG REMEDY is the standard by which all other hog remedies are judged. If your hogs are not thrifty it is probably the result of Lice, Mange and Worms. Write for our free book on "Care of Hogs," it will tell you how to clean your hogs up at small cost.

**CALL ON US** at the HOTEL CAREY, Wichita, Kas., during the coming convention of the Oklahoma Live Stock Association. We will have books and Trial Cans of CAR-SUL for free distribution among cattlemen.

Address all Orders or Letters of Inquiry to the

## Moore Chemical & Manufacturing Company,

1501-1503 Genesee St.

OPPOSITE STOCK YARDS.

KANSAS CITY, MO.



FOR WOMEN

IN RANCH AND STOCK-FARM HOMES

[EDITED BY "AUNT MARY."]

[Note:—All readers of the Live Stock Inspector, especially lady readers, are invited to send letters for publication in this Department. Help us make this Department one of the best features of the Live Stock Inspector. Address all letters to Aunt Mary, care Live Stock Inspector, Woodward, Okla.—The Editor.]

OBSERVANCE OF NOTABLE DAYS.

"Hello, Frank! What's that green ribbon bow for?" asked one boy of another.

"For St. Patrick!" laughed Frank. "Didn't you know this was his day?"

"No, who was he? Seems to me I remember hearing of a St. Patrick's party at Prof. Roland's last year."

"The're havin' one at our house today—just us home folks as mother says, but you come over about dinner time an' we'll tell you all about who he was. Mothers' makin' a St. Patrick's pudding. Don't you forget to come, it'll be good. Be sure and come, Jim, an' wear something green. Belle's goin to wear her green dress an' Luey's already got on a great green tie an' they're goin' to make pa wear his green velvet slippers an' sing some Irish songs. I'm goin' to recite—say, don't you know some kind o' Irish speech to say?"

"Nothin' but, Macarthy's Grave!"

"That'll do, fine! Don't you fail to come. I'm in a hurry, but I'll be back by the time you get there. Ain't nothin' much 'bout the business, only fun, but that's worth a heap, Jim, these dull times." Frank shouted the last words over his shoulder, for the boys were going in opposite directions and Frank was almost on a run.

"That's just like Frank's folks," mused the second boy. "No wonder he likes to hang around home and do things to please his mother. She's always gettin' up somethin' funny to please him. They have the jolliest holidays over there I ever saw. Course I'll go!" and he, too, broke into a run.

The incident brought attention to the growing custom of providing attractive and instructive home entertainment for our boys and girls. Mothers nowadays are on the alert to make home the pleasantest place in the world. Home is naturally a dear place, but the universe is full of fascinating allurements beyond its precincts and mothers are wise who adopt every offered advantage to make HOME the strongest magnet.

One of the things that adds to the child's appreciation of home is the yearly celebration of his birthday. That should never be neglected. No great feast need be spread, but some acknowledgment of the day certainly should be made. A special cake for the occasion is a pleasant feature, of course, with such presents as the members of the family choose to give. A few chosen friends as guests will make the celebration more remembered. A child likes nothing better than "special days at home," and will enjoy birthdays of his parents almost as well as his own, so it is not a bad plan to commemorate anniversaries of the entire family. The wedding anniversary should not be omitted.

Not only Christmas, Thanksgiving, New Years and Easter, but St. Valentine's, St. Patrick's, May Day, Arbor Day and Halloween should be made to bring additional flashes of brightness to the familiar routine of days. They are numerous but none too many. They are April 6th, February

22, May 30, July 4, and others of still less significance, but all worthy of some notice. Besides the happiness caused by these considerations, little people learn the meaning of many things thereby. All of it broadens the understanding, quickens the sympathies, and widens the influence of home. It strengthens the mother's hold upon the hearts of her children, increases their faith in her wisdom, and aids in winning from them a due regard for their own home as a fountain of happy inspiration.

KATE W. SEARCY.

LITTLE JEWELS

Our Motto—Love One Another.

Our Pledge:—I will try to be kind to every harmless living creature and to help make our club meetings interesting.

[Address all letters intended for this department to AUNT JOE, care of Live Stock Inspector, Woodward, Okla.]

WOES OF THE BOY.

What's the good of grown up people? Seems to me they're in the way. We'd have lots more fun with out them. That's what all us fellows say. Fathers, mothers, sisters, brothers, They're an awful rummy crew, And the chap as tries to lease them Comes to grief before he's through.

Now my dad he told me lately Not to let hi see me smok: Said that if I did he'd teach me Not to copy grown up folk. Well I thought he'd never see me If I smoked behind the shed; But he found me out, an' awful Were the things he did and said.

Then the miter, (though a grown-up, Very often she's a crick) Wants me a ways to be honest, Tell the truth and tell it quick. Uncle John dropped in one evening, Talked a lot of shilly rot; Asked me was I glad to see him, Told the truth—but wished I'd no!

There's my sister, had a bracelet On her birthday from her beau; "Twenty pearls," he said, "are in it—One for every year, you know." I said, "Bees make it thirty!" (Though she'd like the extra pearls) rky, but I caught it later! There's no gratitude in girls.

As for brothers and relations, They don't treat a fellow fair; Always sending me on errands, Or to wash or brush one's hair. Some folks say that boys are bothers—I think that's a great mistake. Seems to me, far causing trouble, Grown up people take the cake.

Doubtless every one of you have heard or read about the Convention which the Oklahoma cattlemen are going to hold at Wichita in February. If you have not, you will know all about it when you read this issue of the LIVE STOCK INSPECTOR and that is why the editor says "Don't ask for too much space this time." So we'll have to wait until next time to print the first little story about a cow, which came in answer to the offer of a prize for a pretty book. Did you read about it, last time? If you want to write there is plenty of time yet for this.

Here is a nice little letter from one of the LIVE STOCK INSPECTOR'S "Little Jewels." Can you do as well as Blanche?

Olney, Texas.  
Dear Aunt Joe:—You were wanting all the children to write to you. And I saw the nice little children's letters and it made me want to tell you about our school. It is a nice little school and it is in our home. The teacher came from England here. I will tell you how many scholars are in our school. There are thirteen this week and another next week. My age is eleven years. I study Fourth Reader, arithmetic, grammar, speller and geography.

Goodbye,  
BLANCHE PATTERSON.



MISS CORA EONNELL BEARDSLEE.

of Woodward, Oklahoma, who will sing a solo at the evening session of the Convention at Wichita, February 11th, 1902.

THANKS TO CATTLEMEN.

Live Stock Commission Issues Resolution to the Public.

Guthrie, O. T., Dec. 28.—The live-stock sanitary commission in the enforcement of the quarantine laws, have caused arrests of many violators, and of these arrests eighteen cattlemen have plead guilty of the charge against them, and have paid fines in many cases. The commission will not cease its good work, and the violators of the quarantine must expect arrest and prosecution.

The commission is warning persons in the north who desire to take cattle into the new country. Members of the commission state that seven-tenths of the northern cattle taken there will die. One Kansas man who recently went to the new country lost 13 head of cattle immediately after going there.

The work for the year is about closed up, and has been one of the most successful years in the history of the sanitary commission. Much hard work has been done, and the members of the commission deserve much credit for their hard labor.

The following resolution was issued to the public today, by the board: Guthrie, O. T., Dec. 26.

Whereas, This meeting of the Oklahoma live stock sanitary commission marks the close of its labors for 1901, and we, the members of the same, desire to express our thanks to the cattlemen of the territory who have so efficiently co-operated with this commission in its efforts to suppress splenic fever outbreaks, to the end that not a single case has been reported north and west of the federal quarantine lines during the year past, and to all others who have aided our efforts in promoting the welfare of the live stock industry of Oklahoma.

(Signed)  
W. E. BOLTON, President.  
THOS. MORRIS, Vice President.  
O. C. FRENCH, Secretary.

The Persimmon Cornet Band will make music in the air on the way to Wichita Feb. 10th. Daylight train.

Col. Temple Houston, Hon. A. G. Cunningham and Miss Cora Beardslee are on the convention program at Wichita.

The estimated attendance from Woodward county at the cattlemen's convention at Wichita is two hundred and fifty.

Kingman Kansas reports a big delegation going to Wichita during the convention.

ALFALFA STOCK FARMS AND RANCHES IN SOUTHERN KANSAS.

Do you want a stock farm or ranch in the best watered country in the state of Kansas? If so, go to Kingman county, which joins Sedgwick on the west. Splendid wheat, corn and alfalfa land. None better. Ranches from 320 to 4000 acres under fence with buildings and ready for occupation. We make ranches and stock farms a specialty, although we have many fine improved grain farms. You can find us during the Cattlemen's Convention at the Manhattan hotel, Wichita, Kansas. Call and we will give you descriptions, prices, locations, etc. Some snaps on hand. Inquire for Frank Weinschenk, Manager of Kingman County Colonization Company or Major W. L. Brown at Manhattan Hotel, or write to Kingman, Kansas.

# GRAND 3 DAYS COMBINATION SALE.

Wichita, Kansas, February 11, 12 and 13, 1902.

Largest Sale ever held in the West. Reduced Rates on all Railroads on account of Southwestern Cattlemens Association Meeting which meets in Wichita on same dates.

FEB. 11: 85 Poland-China Hogs, consigned by Snider Bros, Winfield, Kansas, and H. E. Lunt, Burden, Kansas.

FEB. 12: 60 Shorthorn Cattle, consigned by J. F. Stodder, Burden, Kansas.

FEB. 13: 45 Percheron, Clydesdale and Shire Horses, consigned by J. W. & J. C. Robison, Towanda, Kansas, and Snider Bros., Winfield, Kansas.

Sales at Riverside Barn, one block west of Mo. Pac. depot. Positively no postponement on account of weather as sales will be held under cover. Sales begin at 1. p. m. each day. Apply for catalogues to any of the consignors.

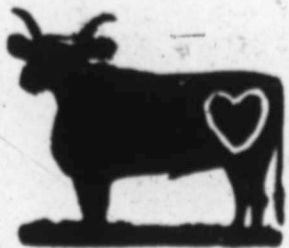
**AUCTIONEERS:** Col. J. W. Sparks, Col. H. L. Harriman, Col. L. F. Berger.

## STOCK BRANDS.

One cut, one year, \$10; each additional brand on cut, same owner, \$5 per year; each additional brand requiring engraved block, one year, \$2. These prices include copy of paper one year to any address. Strictly cash in advance.

**ISHMAEL & RUDOLPH.**

P. O. Kiowa, Kas.



Range on Buffalo, in Woodward county.

**BRANDS:** crop and split left. Horses: branded heart on left shoulder.

**A. L. McPHERSON & SONS.**

P. O. Address, Woodward, Okla.



Range, Canadian river northward, including Cottonwood Springs.

On left side or shoulder. Horses branded same as above. Range same as above.

**GEO. W. CARR.**

P. O. Address, Stobo, O. T. Location of range on Turkey Creek, in Day county.



**BRAND OF CATTLE.**

**T** On Left Hip. **7** On Left Hip.

All calves are branded same as cattle.

**BRAND OF HORSES.**

**T** On left thigh.

Location of range same as cattle.

**M. C. CAMPBELL.**

Owner and Manager, Wichita, Kansas. Range on Cimmaron, headquarters mouth of Snake creek, Clark county, Kansas.



**BRANDS:** **7** on left shoulder of horses. Range same as cattle.

**J. F. FULLER.**

P. O. Woodward, Range, eight miles east of Woodward on the North Canadian.



On right side or on right hip. Horses unbranded. Range same as cattle.

**MILLARD WORD.**

P. O. Address, Grand Day County, Oklahoma. Range, on South Canadian, Red Bluff and Mosquito creeks, in Day county.



**BRAND:** Crop the left and swallow-fore the right.

**7** on left thigh.

**T. C. SHOEMAKER.**

P. O. Address, 1416 Linwood Ave., Kansas City, Mo.

Ranch address, Optima, Oklahoma. Range, head of Beaver, in Beaver Co., Okla.



**OTHER BRANDS:**



**10** on left side

**F. D. WEBSTER.**

P. O. Address, Gage, Oklahoma.

Range, on Little Wolf east and south of Gage.



**F** On left jaw of all young stock.

**1B** on left hip.

**V** On left hip or shoulder.

**O** On left hip.

**ED** On left shoulder.

**HORSE BRANDS:**

**Are you a member of the Oklahoma Live Stock Association? If not, why not?**

## INSPECTOR CLUBBING LIST.

The following prices include the INSPECTOR for one year. Note the reduction in rates.

Address all orders to the LIVE STOCK INSPECTOR Woodward, Oklahoma.

American Gardener, New York	monthly	\$1.70
Arkansas Traveler, Chicago	monthly	1.30
Breeder's Gazette, Chicago	w	2.00
Cartier's Monthly, Chicago, Ill.	m	1.40
Century Magazine, New York	m	4.25
Cosmopolitan, New York	m	1.50
Dallas News, Dallas	semi w	1.50
Forum, New York	m	3.25
Frank Leslie's Popular Monthly	w	1.50
Guthrie State Capital	w	4.00
Harper's Weekly, New York	w	4.00
Harper's Magazine	m	4.00
Hoard's Dairyman, Ft. Atkinson, Wis.	w	1.40
Horseman, Chicago	w	3.00
Independent, New York	w	2.75
Judge, New York	w	4.75
Kansas City Packer	w	1.25
Ladies' World, New York	m	1.10
Life, New York	w	5.00
McClure's Magazine, New York	m	1.80
Arena, New York	w	2.50
New York Weekly, New York	w	3.25
Outing, New York	w	3.00
Puck, New York	w	5.00
R. M.'s Horn, Chicago	w	2.00
Republic, St. Louis	s-w	1.50
Times, Kansas City	w	1.50
Home Field and Forum, Oklahoma City	w	1.10
Journal, Kansas City	w	1.00
The Gentlewoman	m	1.10
Mail and Breeze, Topeka	w	1.25
American Boy, Detroit	m	1.10

**WHITE & SWEARINGEN.**

P. O. Address: Woodward, Okla. Range: On Sand creek, 5 miles north of Fort Supply.



**OTHER BRANDS.**

**LS** On right side, seven under bit each ear.

**W** On both sides.

**HORSE BRANDS.**

**V** On right shoulder.

# Wichita Live Stock Market.

W. M. Paugh. G. W. Kanavel.  
**W. M. Paugh & Co.,**  
 LIVE STOCK COMMISSION MERCHANTS.  
 Reference: Sedgwick County Bank. STOCK YARDS.  
**WICHITA, KANSAS.**

THE  
**Eldridge Commission Co.,**  
 LIVE STOCK COMMISSION AGENT.  
 R. W. Eldridge, General Mgr.  
 STOCK YARDS Telephone 295, Long Distance Equipment. WICHITA, KANSAS.

**SPECIAL NOTICE.**  
 All Business sent to us will have our personal attention we solicit a trial and will do our best to merit your trade.

**REFERENCES.**  
 National Bank of Commerce Wichita,  
 Bank of Pond Creek, Pond Creek O.  
 T. 1st Nat'l Bank, Enid, O. T.  
 1st Nat'l Bank Kingman, Kas.

**Union Live Stock Commission Co.**  
 Long Distance Phone No. 386. Office Exchange Bldg. **A. B. Moore Mgr.** Money always on hand to loan to cattle feeders.  
**UNION STOCK YARDS, WICHITA, KS.**

**Healy & Co.**  
 Live Stock Commission Merchants.  
 Market Reports Furnished.  
 UNION STOCK YARDS. Phone 395. WICHITA, KANSAS

C. P. JOHNSON, Pres. W. R. JOHNSON, Sec. and Treas.  
**C. P. JOHNSON & CO.**  
 Live Stock Commission Merchants  
 STOCK YARDS.  
 Money Always on Hand to Loan to Responsible Parties.  
 YOUR BUSINESS SOLICITED. WICHITA, KANSAS

F. ROBBINS. T. ALEXANDER  
**Robbins & Alexander,**  
 DEALERS IN  
**All Kinds of Cattle.**  
 Special attention given to furnishing stockers and feeders on order.  
 UNION STOCK YARDS. Telephone, 466. WICHITA, KANSAS



Chuck Wagon and Round Up Outfit in Oklahoma.

## THE WICHITA MARKETS.

Midway between the range counties of Oklahoma and Kansas, and the succulent pastures of the Flint Hills of Eastern Central Kansas are the Wichita Union Stock Yards, convenient and up to date in every respect. Nearby on all sides the great corn producing counties of Kansas furnish the full cribs for the winter feed lots. At the yard, commission firms who are honest and worthy of confidence are on hand to dispose of the product. Also, there in operation are two of the best packing houses in the west making a constant demand for fat hogs, and soon for fat cattle. Now figure for yourself, cut out the big shrink necessitated by long shipments. Take off the extra rate of freight required, compare the prices received and you will be a firm friend and shipper to the Wichita Union Stock Yards. Note the names of commission firms above, and consign your fat hogs and your feeders and stock cattle to them and you will get satisfactory results.

W. R. DULANEY, Supt.

Trade at Fulton's--it Pays.

# FULTON

Sells the best High Grade Dependable CLOTHING for the least money possible and largest and most complete stock of JOHN B. STEPHENSON, KNOX, SAYER HAWIS Hats in the West. "Small profits on a large scale" makes it to your financial interest to trade here. Mail orders receive prompt attention.

**G. R. FULTON,**  
 WICHITA'S GREATEST CLOTHING STORE.



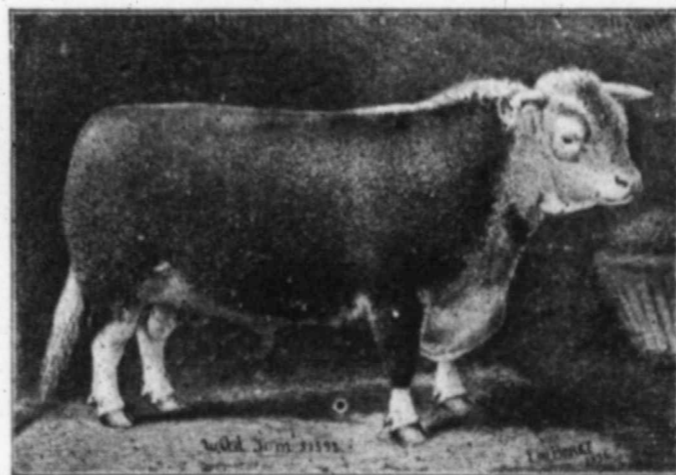
# COMBINATION SALE

OF

# 100-HEREFORDS-100

At Union Stock Yards, Wichita, Ks.,  
Thursday, Feb. 13, 1902, AT ONE O'CLOCK P. M.

This offering will consist of bred Heifers, and Bulls of serviceable age; 35 head of which have been inoculated against Texas fever.



This sale will be held during the Annual Meeting of the Oklahoma Cattlemen's Convention. One fare rates on all railroads.

## The Contributors:

C. A. STANNARD, Mrs. C. S. CROSS, SCOTT & MARCH, GUDGELL & SIMPSON  
Emporia, Kans., Emporia, Kans., Belton, Mo., Independence, Mo

For Catalogue, Address Gudgell & Simpson, Independence, Missouri.

Co.

on Merchants.

nished.

WICHITA, KANSAS

W. R. JOHNSON Sec. and Treas.

& CO.

Merchants

Responsible Parties.

WICHITA, KANSAS

T. ALEXANDER

Alexander,

Cattle.

s and feeders on order.

WICHITA, KANSAS



fat cattle. Now figure  
tated by long shipments.  
compare the prices re-  
shipper to the Wichita  
ommission firms above.  
s and stock cattle to them

DULANEY, Supt.

