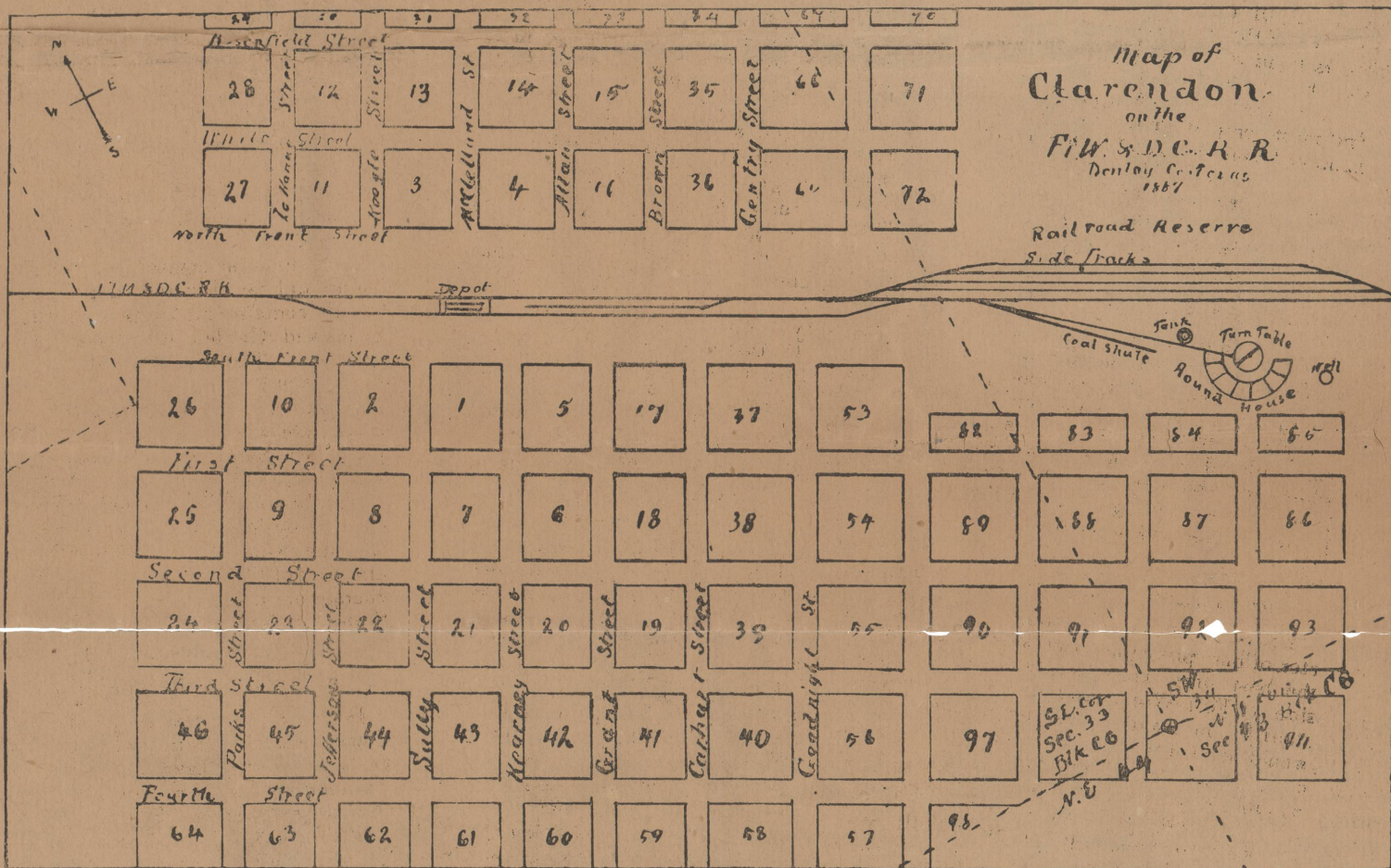


Panhandle News.

Immigration Supplement.

Clarendon, Donley County, Texas, January, 1888.



CLARENDON THE BEST PANHANDLE TOWN.

It is the county seat of Donley, to which the counties of Armstrong, Briscoe, Carson, Hall and Swisher are attached for land and judicial purposes.

The best location for a town in the Panhandle.

Plenty of the purest water.

Five hundred inhabitants.

Four grocery stores.

Three dry goods stores.

One hardware store.

Two drug stores.

One banking company.

Six restaurants.

Three hotels.

Two livery stables.

One laundry.

Two tin shops.

Two barber shops.

Two abstract firms.

One newspaper and job printing office.

One jeweler and watch maker.

Three real estate firms.

Two insurance firms.

One church organized.

Two large lumber yards.

Two coal dealers.

Two blacksmith shops.

One furniture establishment.

Three stores that sell feed.

Two wholesale houses.

Six painters.

Eight carpenters and builders.

Two doctors.

Eleven lawyers.

Four licensed saloons.

Best stock pens in the Panhandle.

One news stand.

Two butcher shops.

One shoe shop.

One tailor and hat maker.

One gun store and repair shop.

One millinery and sewing house.

One bakery.

One confectionery.

One sewing machine agent.

Two wagon yards.

One bone and hide house.

One nursery agency.

A postoffice with money order department.

Panhandle headquarters for the Fort Worth and Denver, and the promise of two other railways soon.

Not a single vacant house and daily demand for houses.

It is the cheapest place in the

handle to buy anything you want.

In addition to the original beautiful town site, two additions have already been laid off and platted.

McClelland addition lies in the western part of town and the

Beautiful Grant addition lies on the picturesque elevations south of town.

Be sure and buy a choice lot in the Grant addition while they are cheap.

RALPH JEFFERSON,

DEALER IN

GROCERIES, PROVISIONS,

CLOTHING, DRY GOODS AND

GENERAL MERCHANDISE,

TEXAS

Donley County.

Donley county was named for Judge Donley, one of the members of the Supreme court of Texas in an early day. It was organized in March, 1882. Donley is the best watered county in the Panhandle both in the abundance of surface water and ever flowing springs and easily accessible well water all of which is soft and pure. The middle fork of Red river courses through this country fed by numerous unfailling springs of freestone water. There are 26 creeks in Donley county, they are named White fish, Saddlers, Carroll, Lake, Allan, Reckard, Turkey, Rawhide, Barton, Skillet, Parks, Kelley, Big Brushy, Little Brushy, Mulberry, Mc Jolum, East Hall, West Hall, Boggy, Big sandy, Horse, Bitter, Oaks, Indian, Parker, and Buck creek. The old town of Clarendon was located in the valley of Red river by the colonists 1878, where the first printing press was planted in June 1880 on which the NEWS had been printed by contract first in Wisconsin and afterward in Sherman. At the time the printing office was transferred to the old town of Clarendon there was no semblance of a news paper or printing office in the Panhandle and none in northwest Texas west of Henrietta. In the month of July, 1887, the Ft. Worth & Denver railway was completed to the new town of Clarendon five miles southeast of the old town and on account of the

us. Garden vegetables grow to the greatest perfection here. From the abundant yield of the wild grape and plum crop, it is believed that this will become a fine fruit country, so soon as the experienced "man with the hoe" can have time to demonstrate this by the growing of orchards. Donley county being centrally located and with a large area of tillable lands and unrivalled water privileges, now that several great railway systems are sweeping by it is destined to assume an important position in commerce and society of the Panhandle. There is very little railway land in Donley county as its lands were located by private persons and stock companies so that the sections alternate between private lands and school sections. The four leagues of Donley county school land inherited from the state were sold at \$1 25 per acre and the income with what is appropriated annually from the state fund gives us a perpetual endowment for county free schools of \$2,000 a year. As the county is out of debt and over \$13,000 in the treasury there is an interesting future before us. We are in shape to invite the better class of people to settle among us and help us to build an American, Christian civilization peculiar to the Panhandle.

How to get Texas Lands

As we have constant inquiries from those who are seeking to purchase a homestead out of our public lands we reply once for all, that you can buy

eth of the principal annually, according to the appraisement put on each section in classifying and valuing it. Each annual payment on the principal must be made on or before the first day of August, together with interest at the rate of five per cent per annum on the unpaid principal. After you have occupied the land for three consecutive years and made the required payments of principal and interest due at that date, you will be allowed to pay the balance due on the land and obtain a patent for the same, provided you make satisfactory proof that you have resided on the land for the time specified. At the time after you have settled on the land and bought it, you can sell it to another actual settler, who will be required to assume your obligation to the state. All the unsold state lands are now on the market for sale to actual settlers only for the benefit of the common school, the state university, lunatic asylum, blind asylum, the deaf and dumb asylum and the orphan asylum funds. The Donley land district is composed of the counties of Donley, Armstrong, Briscoe, Carson, Randall and Swisher with headquarters at Clarendon. Public lands in these counties are being culled every day. Excellent state lands can be had here and a good location secured by coming at once. The sooner you come the better you will be served. When you come call on us and we will take pleasure in telling you all we know about the Panhandle.

If you wish to know the news from

abundance of pure soft water to be had by digging from 69 to 80 feet the railway folks determined to make it division headquarters. The necessary buildings for the use of the railway are being built as rapidly as possible. In the month of August, 1887, the entire NEWS printing office removed to new Clarendon without losing an issue and is still plying the business of advertising Clarendon and the Panhandle. In the southeastern part of the county the ground is considerably broken but in the central, west and northwest portions of the county there is a large area of fine agricultural land. Its plains have a rich black soil well adapted for small grain while the higher slopes have a warm sandy loam that will produce excellent fruit. Not much timber is found, but there are small groves of hackberry and cottonwood in the bottoms. The assessed valuation of the property of Donley county is \$858,537 and there are about 40,000 head of cattle well fed upon the rich natural grasses peculiar to the Panhandle. The rain fall is more abundant here than in Sherman or Dallas. On the highlands they are putting up windmills extensively for watering stock. One machine furnishing a supply sufficient for watering 1,500 head of cattle can be had by digging from 50 to 150 feet. As to the health of the country it cannot be excelled. Clarendon is 2,800 feet above the level of the sea. Malaria and cyclones can

not less than 160 acres, or 320, 480 or 640, but no more, unless you select purely grazing land without permanent water and not adapted to agriculture, of this pasture land you can buy not to exceed four sections. The dry land will cost you \$2 an acre. But you must come in person to the county seat of the county where the land lies or to which it is attached, if in an unorganized county, and call on the county clerk who will show you a public record of the classification of all unsold state lands. If on looking the ground over you find the land to suit you, you will get a blank form for an application to purchase and other information of the law and the land as may be known to him. You will then execute a sworn affidavit in your application for purchase that you want the land for a homestead for yourself and that no other person or corporation is interested in the purchase, and that you have in good faith actually settled thereon and will improve the same. You will forward your application to purchase directly to Hon. R. M. Hall, State Land Commissioner, Austin, Texas, inclosing the sum of thirty-two dollars to the order of F. R. Lubbock, state Treasurer, this is one-fortieth of the principal on a section of dry agricultural land. If you select land with permanent water on it, it will cost you \$3 per acre, which is one third more than the unwatered land. If you buy land that is valued chiefly for its timber you will pay \$5 an acre cash down. On other lands you will pay one forti-

the Panhandle send us one dollar and you will receive the NEWS for six months.

DISTANCE TABLE FROM CLARENDON —To—

Mobeetie	55 miles,
Carson city,	35 "
Quanah	87 "
Fort Worth	277 "
Tascosa	95 "
Palodura	26 "
Quitaque	75 "
Matador	100 "
Deep Lake	25 "
Camp Supply, I. T.	145 "
Commission Creek, I. T.	195 "
New Kiowa, Kansas,	235 "
Abilene	250 "
Colorado City	300 "
Dallas	309 "
Trinidad	275 "
Elwood	69 "
Canadian City	85 "
Childress	59 "
Amorillas	55 "
Old Clarendon	5 "

One of the most enterprising firms of Panhandle grocers is the Quilitch Brothers, whose chief stock of goods is at Clarendon with a large branch store at Quanah. They have a large retail trade at both places, and are deserving of a continued and enlarged patronage. Besides groceries they make a specialty of country produce of all kinds, with grain and hay. All who intend house keeping in this part of the Panhandle will do well to go and see these gentlemen.

DESCRIPTION OF COUNTIES

Attached to Donley County for Land Purposes.

ARMSTRONG COUNTY.

This county is coming to the front since the Ft. Worth & Denver has been built through it, and deserves a more favorable mention than has hitherto been awarded it. Its soil is deep and rich and the greater part is beautiful prairie land. What little experimenting has been done in seeding on the big ranches has demonstrated that it will be the wheat county. Its natural water courses are the Palo Verde and the middle fork of Red river. Along the winding banks of these streams in the southern part of the county the land is rough. In the western and northwestern parts of the county can be found a large area of the finest land in the state, and it is settling up rapidly. Armstrong and Washburn stations have already been started. At Armstrong Mrs. Young keeps a fine restaurant, and from this point there is now a daily hack to the town of Panhandle in Carson county, a distance of sixteen miles. At Washburn a tap railway to Panhandle City is under contract to be completed in sixty days, when we can reach the Southern Kansas and make the round of the Panhandle by rail. The best of water can be found in Armstrong county at a depth of from 80 to 100 feet. There is an abundance of cedar and other

timber in the canyons of the Palo Verde and the breaks of the other streams. Armstrong county is yet unorganized and attached to Donley county for judicial and land purposes. It will organize next summer.

BRISCOE COUNTY.

Nearly all the lands in this county are located on the plains, and only a portion are enclosed in the big pastures of the Tule and T. Anchor ranches. It is watered by the Prairie Dog fork of the Red river, which runs across the county from west to east, with Benson creek in the western part and Mulberry running across the north east quarter of the county. Like all the Panhandle lands, the water is excellent and the soil is rich. It is attached to Donley county for land and judicial purposes.

CARSON COUNTY.

It lies in the geographical center of the Panhandle and is attached to Donley county for judicial and land purposes. On account of its central location and being on the beautiful plains great expectations are entertained of its future. The Kiowa extension of the Southern Kansas road has been completed to the town of Panhandle, which is two miles south of the center of the county. In a few months the St. Louis & San Francisco will be completed to this point. By the last of February the Fort Worth & Denver will have a branch line finished to this place from Washburn. A preliminary line of the Chicago &

Rock Island has been run to this town and they will build in the spring. All of these roads will establish division headquarters here, so that an interesting future awaits the settlement of Carson county. As the railway folks own forty seven sections of land in this county they will do all in their power to settle the county. Several wells have been dug on the stock ranches near by and they furnish the best of water and plenty of it, but it is too far from the surface to suit the man with the hoe, and it will devolve on the railways to solve the water problem for the country people who may not have their water problem solved. This county will go forward to great prosperity in every department of wealth.

Mr. H. H. Brooks is publishing the Panhandle Herald at this place and will leave no stone unturned that will make Carson the hub of the Panhandle, (excepting, of course, our own young and beautiful Clarendon.)

HALL COUNTY.

The Fort Worth & Denver railway runs its trains daily across the northern line of this county and the town of Salsbury has been established. A great deal of this county is occupied for stock range, but it has a large area of fine agricultural land in it. The Prairie Dog fork of Red river courses through this county from the west to the east. Mulberry, Morgan and Berkley creeks give additional and unfailing supply of stock water. About one half of the county

is fine prairie land and the balance is broken on account of the breaks that line the streams on either side. For successful stock farming purposes this county cannot be excelled in the Panhandle. Hall county has 120,000 acres of school land on the market at \$2 per acre. The well water of this county lies near the surface and is of good quality. Lands in this county held by private parties are valued at from \$2 to \$5 per acre. Ephraim is the name of the principal postoffice in the county and a good settlement has been made. Garden vegetables have been grown successful in this neighborhood the past season, and wagon loads of them sold in the Clarendon market. Hall county is yet unorganized and is attached to Donley county for judicial and land purposes.

SWISHER COUNTY.

Our field correspondent reports: "I have been over most of the six counties attached to Donley county, and can say that there is not much to discriminate the one from the other. All of these counties afford gigantic prospects for the farmer and vary but little in their natural advantages. I will speak of Swisher county as an example. Its elevation is from 700 to 800 feet above the country at the foot of the hills and 3,300 feet above the level of the sea. The summers are perfect. The winds are constant like the land and sea breezes of the coast and by no means so high as in other parts of Texas. The air is as invigorating as that of Minnesota.

The heat of summer bears no lassitude and its breezes contain no malaria. I have traveled in the north, the south and the west, and have seen no summer climate to surpass it. I am told that the winters on the plains are severe, but I think this can only be relatively speaking, and chiefly because people do not take the precaution to dress for it. Old Texans and old farmers, men of judgment in their calling, tell me that the counties in this district of the Panhandle are not surpassed in agricultural advantages by any other portion of the state. The soil generally is a sandy loam, either black or brown in its excellence, therefore the new comer finds it difficult to decide on the section he will select. In Swisher county there are not 1,000 acres of waste land. The rains are more certain and plentiful than in other parts of the state and well water can be had at from 7 to 60 feet. The canyons afford the only timber. Farmers will have to grow this as they do in Nebraska. I have tried to write correctly and truthfully, and in my opinion, the Panhandle plains will yet be the garden of Texas."

Donley District Immigration Association.

President, Judge B. H. White,
Vice President and Treasurer, Col. O. P. Wood,
Secretary, S. T. Martindale.
EXECUTIVE COMMITTEE,
Armstrong county, Colonel C. Goodnight.

Clarendon county, E. S. Graham.
Carson county, O. H. Nelson.
Donley county, Dr. J. D. Stocking.
Hall county, Rev. J. A. Lafferty.
Swisher county, Charles Beverly.

Clarendon R. R. Committee.

Clarendon is on the line of four projected railways that will cross here if proper efforts are made to secure them. The following is the standing committee of correspondence:

Judge B. H. White, Col. O. P. Wood, S. T. Martindale, M. P. Carter, I. W. Carhart, W. J. Grant, J. B. McClelland, Judge G. A. Brown, J. H. Parks, S. H. Madden.

Panhandle Counties.

Armstrong, Briscoe, Carson, Hall and Swisher counties are yet unorganized and are attached to Donley county for land purposes. Clarendon is the county seat.

Collingsworth, Gray, Hansford, Hutchinson, Ochiltree and Roberts counties being unorganized are still attached to Wheeler county for land purposes. Mobeetie is the county seat, where information can be had.

Castro, Dallam, Deaf Smith, Hartley, Moore, Parmer, Randall and Sherman counties are attached to Oldham county, and Tascosa is the county seat.

Childress, county seat of Childress, Mansfield, county seat of Greer, Callahan, county seat of Hemphill, Lipscomb, county seat of Lamb county, and Archer, county seat of Archer county.

LEADING BUSINESS MEN OF CLARENDON.

HOTEL WINDSOR.

At Clarendon and Panhandle. Rates \$200 per day. The Hotel Windsor, at Clarendon Texas, the terminus of the western passenger division of the Fort Worth and Denver railroad is new and fitted up with all the modern improvements, has good sample rooms, and is the largest and most complete hotel in the Panhandle. The Panhandle house at Panhandle city, Carson county Texas, the terminus of the Southern Kansas railroad is the finest hotel in the county.

LESTER & GAULT, Proprietors.

ARNOLD SUTER AND COMPANY.

Keep a large stock of heating and cook stoves both for wood and coal, with complete outfits of tools for manufacturing tin ware and repairing everything in their line. This firm has ordered a stock of hardware which will be here in a few days. They have arranged to open a branch house at Panhandle in Carson county.

DR. STOCKING'S DRUG STORE.

Dr. J. D. Stocking, who is proprietor of our principal drug store, has the best drug house and stock this side of Fort Worth and keeps constantly on hand everything one would expect to find in a first class drug store, including paints, oils, window glasses, wall paper, lamps,

mirrors, clocks, watches, jewelry and notions, too numerous to mention, all of which he sells cheap for cash. The Doctor is also co-partner with Dr. J. H. Carter, in a drug-house in Panhandle, Texas. The Doctor's consultation rooms are in the rear of his store, where he may be found when not making professional calls.

FURNITURE STORE.

Clarendon has a good stock of furniture. Mr. E. M. Winfrey is a young man of tact and industry and in addition to the furniture line he carries in stock sporting goods and sewing machines. In the rear part of the store he has opened a repair shop for disabled guns, sewing machines or furniture.

SIG NEUMAN & CO.

Have a brand new livery stable, first-class rigs and good teams. Plenty of feed always on hands, and the best of attention given to stock. In connection with the livery, feed and sale stable they run a wagon yard with conveniences for the traveling public. Charges reasonable.

JAMES L. GRAY, SURVEYOR

Has done a great deal of professional work in Donley and its attached counties. He is not only an accurate surveyor but an excellent draughtsman and a general land agent. He will locate settlers, examine and report upon land, and make maps or sketches of lands in any portion of the Pan-

B. H. WHITE & CO.

One of the earliest and largest establishments in the Panhandle is the firm of B. H. White & Co., first located at the old town of Clarendon and afterwards transferred to the new town on the completion of the railway to Clarendon a few months ago. By years of experience in the general merchandise trade of the Panhandle they have acquired the tact to know just what the people want and how to supply it. By their strict integrity in all matters of business they have won the confidence of all the old settlers, and will still be able to hold their share of this trade, and are making public on account of the quantity of their goods and the low price put on them. In addition to their large establishment at Clarendon they have opened a branch house at Panhandle City in Carson county, and placed E. E. Carhart in charge. A more enterprising business firm never struck the Panhandle. One of the interesting secrets of their success is that they have spent more money in advertising their goods than any other house in the Panhandle.

MASON HOUSE.

The Mason house was the first hotel built in Clarendon and has twenty rooms in it. It is located near the center of business. J. P. Mason and Mrs. Mason have both labored hard to accommodate their guests and give their whole attention to the management of the house. When you reach Clarendon give

them a call.

ATTERBERRY HOTEL.

One of the first buildings you will see on approaching Clarendon by train is the Atterberry hotel located on the north side of the railway track. Mr. S. E. Atterberry is the oldest hotel keeper in town having kept the old town hotel before the building of the railway. Every effort will be made to accommodate guests.

LIVERY STABLE & WAGON YARD.

I. A. Traer has bought the Daniels livery stable and has improved it by enclosing the entire lot with a splendid fence and a row of good feed stalls around the north and west side, with outside gates in the front and rear for wagon entrance from both streets. He has built a cooking and lodging house for campers in his wagon yard and has put in a good cooking stove with all the utensils for cooking. First-class rigs and teams with plenty of feed always on hand at the Star stable and wagon yard. When you come to Clarendon remember the Star stable.

LAND LOCATOR.

James H. Parks is one of the early settlers of Donley county and has spent many years in the Panhandle as a practical surveyor and locator of land. He makes a specialty of locating parties who buy school lands. He is an expert in his profession.

WOOD-DICKSON MERCANTILE BANKING COMPANY.

One among the largest business houses in our city is the well-known mercantile company of Wood-Dickson. They are located in their own building which is a substantial wooden building, 100 feet wide by 100 feet deep, built with special view to their different departments of merchandise. The Grocery department is a model of neatness, where can be found everything pertaining to the grocery business. Next comes the furnishing goods department, which is complete in every particular. Next comes the hardware, stoves, farm implements, barbed wire, etc. This stock is complete and one of the largest west of Fort Worth. Next is the tinware and manufacturing department, where all repairing is done with neatness and dispatch; as also, a stock of harness and harness repairs are kept.

Next in order comes the extensive Grain and farming seed department, which contains all kinds of seeds—farm and Garden in an immense quantity. They also handle both spring and farm wagons. Wagon material, lumber, iron, coal and wood, which are sold at remarkably low prices. Coal at \$10 per ton, cord wood at \$5 per cord.

The banking department is presided over by Wm. Cook, an expert in this line, who will make collections in any part of the country, and sell exchange on any city in the United States or Europe.

PANHANDLE LAND COMPANY

Is the newest real estate firm in Clarendon. It is run by M. P. Carter & Co. They have for sale over six hundred and fifty thousand acres of Panhandle lands. Having special facilities by which to become familiar with the records of the district and with advantages of an attorney and practical surveyor in the firm they are prepared to render invaluable services to those who need such aid.

MCCLELLAND BROTHERS

Are the leading land agents of the Panhandle. They will buy, sell and lease lands in any portion of the Panhandle, they will render and pay taxes for non residents, perfect titles and obtain patents, make collections and sell or procure stock ranches in northwest Texas. Parties desiring information with a view of going into the cattle business will do well to correspond with us.

PRESCRIPTION DRUG STORE.

This enterprising drug firm opened the first drug store at Quanah where they still have a branch house, with their main stock at Clarendon, where they opened the first drug store after the arrival of the railway. They have on hands a new large and complete stock of pure drugs, with a beautiful assortment of perfumery, stationery and all kinds of show goods usually kept in a drug store.