

Dickens County Times

Volume 17.

Spur, Dickens Co. Texas, Thursday, October 16, 1941

NUMBER 51

Spur F. F. A. Has Heavy Steer Feeding Program

The F. F. A. members of the Spur chapter, 70 strong, are carrying on the heaviest steer feeding program in the history of vocational agriculture in Spur High School by feeding 44 head. Of these, 35 are herefords, 2 are Aberdeen-Angus, and 7 are cross bred. With the exception of 10 head, all of these weigh more than 500 pounds now, with more than one-half of them weighing from 600 to 800 pounds now. When the project show is held the latter part of March, the boys should have some very heavy and fat steers. These steers are not being fed fancy rations as is too often the common belief of the public, but are being fed home grown feed supplemented with cotton seed meal.

Boys feeding steers are: J. R. Stanley, 1 Hereford; Troy Boothe, 1 Hereford; Winford Morrow, 1 Hereford, 1 cross-bred; Kenneth Dodson, 1 Hereford; Francis Latham, 1 Hereford; C. A. Denson Jr., 3 Herefords; Jimmie Vernon, 1 Hereford, 1 cross-bred; Jimmie Draper, 1 Hereford; Harland Weaver, 2 Herefords; Homer Ray Smith, 1 Hereford; Virgil Rogers, 1 Hereford; Robert Ward, 1 Hereford; Keith Garner, 2 Herefords; Cadl Grantham, 2 Herefords; T. C. Sandlin, 2 Herefords; Weldon Reynolds, 1 Hereford; Eldon Reynolds, 1 Hereford; Willie Smith, 1 Hereford; Dale Fry, Alex Fry and Junior Fry, 2 Herefords each; Max Alexander, 1 Hereford; Anderson Young, 2 Herefords; J. M. Karr, 2 Herefords; Glenn McDaniel, 2 Aberdeen-Angus; and Junior Pickens, Clarence Ward, Melvin Rape, J. D. Elkins, and Charlie Harris, 1 cross-bred each.

Announcement will be made at the local project show as to who raised the calves in order that the respective ranchers will be given credit. Clarence Ward, F. F. A. Reporter.

Girard Future Homemakers Plan Box Supper

The Future Homemakers of Girard planned a years program of financing the club. A box supper Friday night, November seventh, in the Girard High School Auditorium, will be given first. The proceeds will be used to buy library books for the new home-making department.

Spur F. F. A. Feeds 65 Lambs

The Spur F. F. A. members are feeding about three times as many lambs this year as is their usual custom. The total of 65 fine-wool lambs on feed, came from San Angelo, and Austin Bell, Horace Wood, and Coy McMahan. The greater part of them came from San Angelo. These lambs are being fed home grown feeds. Two kinds of rations are being used according to the kind of feed available. One: Milo heads and alfalfa hay. The other, Milo heads, cane bundles, cotton seed meal, and powdered limestone.

It will be recalled that J. R. Stanley, local F. F. A. member fed and showed the champion fine-wool lamb at the South Plains Junior Fat Stock Show at Lubbock last year. There are a number of these 65 lambs this year that are of better quality than the winner of last year and a lot is expected of these lambs.

Boys feeding lambs are: Billy Jo McCombs, 3; Billy Glenn, 3; Pete Adcock, 3; Gene Brashear, 3; Edward Smith, 3; Erwin McDonald, 3; Frank Franklin, 5; Pat Fletcher, 10; Jimmie Draper, 3; Eldon Reynolds, 6; J. R. Stanley, 5; Eldon Hines, 3; Billie Smith, 5; Lewis Smith, 5; and Lane Ericson, 5.

Some lambs to be lambed this month will be fed on the ewes and will be sold on the Easter Market as "Hot-House" lambs. The exact number is not known at this writing but a later article will give this.

Clarence Ward, Reporter.

Spur Bulldogs Go To Ralls Friday Night

The Spur Bulldogs will put up an effort to catch the Ralls Jackrabbits Friday night at the Ralls football field. This will be a night game and will be called about eight o'clock in the evening.

The Ralls eleven have won one non-conference game this year. They played their first conference game last Friday against Floydada Whirlwinds and lost.

The Bulldogs have showed some excellent form and are growing better all the time, but to date have not won any games. They are pepping up this week in practice with the hope of pulling the fur off the Jackrabbits Friday night.

The Spur school band and the pep squad will accompany the team Friday evening, and quite a number of fans say they are going to stay behind the Bulldogs, win or lose. Let's all go to Ralls Friday night and boost for our team. That is one of the best ways to help them become a winning squad. On to Ralls Friday night, and hurrah for the Bulldogs.

—BUY U. S. DEFENSE BONDS—

Cotton Ginning in County Far Behind

The Department of Commerce reported October 1, that ginnings in Dickens County of the 1941 crop amounted to 403 bales at that date. This is far below the 1940 record which was 1,042 bales.

In Kent County the ginnings reported October 1 amounted to 884 bales as compared with 584 at the same period last year.

—BUY U. S. DEFENSE BONDS—

Four Boys in Next Call

In the next call for selective service there will be four young men to go from Dickens County. They are: Doyle Truman Fry, Jasper Harrel Cole, J. P. Bachman and Edgar Elwood Farmers, Jr.

Also, George Anglin, who was transferred to the Dickens County Board from Las Vegas, N. Mexico, will go at this call.

These young men will leave Spur today (Thursday) for Fort Bliss where they will be received and inducted into service.

—BUY U. S. DEFENSE BONDS—

Mrs. Presley Injured In Car Accident

While enroute to Spur Sunday morning, Mrs. Kate Presley and son W. C. Presley, were in a car accident on the highway at the McAtter farms. They were accompanied by two other people.

It appears that the Presley car was following behind a Ford, W. C. Presley who was doing the driving decided to pass around the other car and gave the signal with the horn. He started to pick up speed and was getting under way when the driver of the car in front stuck out his hand and turned across the highway in front of the Presley car. Mr. Presley had up too much speed and was too close the passing point to slow down in time to avoid a collision.

Mrs. Presley received a badly injured ankle and several tendons in her foot are injured. She is unable to use her foot in walking, and it is thought several weeks will be required for her to be able to use her foot again. The car lost a right front wheel, and the other car was badly damaged.

—BUY U. S. DEFENSE BONDS—

Restrictions Placed On Wheat Planting

Wheat producers will not be permitted to plow under wheat in 1942 for compliance purposes, according to a recent ruling. This means that wheat farmers must not at the beginning, plant more than their allotted wheat acreage when they start seeding wheat.

There is quite a heavy penalty for this over planting which consists of ten times the payment. Unless marketing quotas are amended, a producer over planting a small amount will be required to pay a penalty on the excess before he can be issued a marketing card.

Wheat farmers are urged by the county committee not to over seed their wheat allotted acres.

Peace Officers Meet At Spur

The West Texas Peace Officers Association held their bi-monthly meeting in Spur Tuesday morning. Sheriff B. L. Parker, president of the association, was in charge of the meeting and some very interesting discussions were enjoyed.

One of the features discussed was the advantage of a short wave receiving set being installed in each officer's car and in his office. It is known that KGKO, Lubbock gives two broadcasts each day in regard to crime events. One of these broadcasts is at 8:30 o'clock in the morning and the other is at five o'clock in the afternoon.

In speaking of the plan President Parker stated that the sets possibly would cost around \$40.00 and it would be a means of saving the county many dollars. Again, he stated that by all peace officers having a receiving set in their cars and their offices, a crime committed anywhere in the country could be broadcast and officers all over the West Texas territory could pick up the information and thereby throw a net around the offender before he could get out of the country. Sheriff Parker stated that it would be one of the easiest and most economical ways to surround an offender and bring him to justice. Other officers in the association stated that the receiving sets should be installed.

The discussion of the organization of a rifle club in the organization was well taken. A motion carried that a committee be appointed to make rules and regulations for such a contest, and to be ready by the next meeting which is in December. Captain Legge, of the Highway Patrol, was made chairman of the committee with authority to pick any helpers he might need. The contest will be held at the next meeting and prizes for first, second and third places will be awarded.

The place of the next meeting was called for. Sheriff Roy Hilliard of Crosby County asked that it be taken to Crosbytown and it was so voted. The next meeting will be on Tuesday after the second Monday in December, which will be December 9.

Several guests were asked to speak. County Attorney Watson of Crosbytown spoke and stated he felt the organization would help in eradicating crime in West Texas. Mr. Winslar, of the F. B. I., thanked the association for the cooperation given him in catching criminals. Others spoke and commended the organization for its work.

The meeting adjourned for lunch which was a barbecue at the Swenson Park just north of town. Sheriff Fred Christopher, who was the host Sheriff, furnished the meat for the dinner. The Spur Civic Club sponsored the serving of the dinner which had pickles, onions, coffee, bread and good old beans added to some very fine barbecued meat.

The West Texas Peace Officers met in Spur in August last year, and many recalled the meeting, stating how much they enjoyed the fine chicken barbecue served them at that time.

—BUY U. S. DEFENSE BONDS—

Farmers To Have New Plan For 1942

Plan No. 2, (whatever that is) has been adopted in this section for the 1942 farm program. In order to qualify for maximum farm payment the producer must devote at least 20 percent of his crop land to the following soil conserving practices:

Such as: first sudan grass for pastures. Second, sweet sorghums, sudan, millet, oats, barley and rye cut green for hay, provided in such crop a strip one rod wide is left on the land for each strip five rods wide is harvested;

Third, Idle lands in which approved terraces are constructed in 1942, to be summer fallowed according to methods recommended by the state committee, and approved by the AAA.

Biennial legumes may be used in soil building projects.

—BUY U. S. DEFENSE BONDS—

THE 4-W CLUB

We opened the meeting by singing God Bless America. The minutes were approved as read. The committees gave good reports and we enjoyed our program very much. We elected our new officers and they were: President Jimmy Murphree, Secretary, Iney Sizemore. Then we adjourned. —Reporter.

County School Books Audited

The firm of Campbell and Merri-man, of Lubbock, have just completed an audit of the common school accounts in the county for the year closing August 31. The auditors reported that all accounts are in good condition and there are no mistakes in the book-keeping and no corrections had to be made.

There are no outstanding warrants or unpaid bills that have accrued since January 1, 1939, that being the date that the present County Superintendent took charge. All expenses have been paid in cash. In addition the audit showed that about \$3,000.00 has been paid on old obligations which had accrued previously.

Superintendent Kelley and the various school boards have carried out the policy to keep the affairs of the common school districts on a cash basis. Every school in the county was able to maintain a term of nine months last year, and this is the first time that has happened in the history of the county.

Approximately \$100,000 in school funds annually is accounted for through the County Superintendent's office.

No school districts have been consolidated the past three years, and no tax valuations have been increased in that time in any common school district. Six schools are operating under contract plan which is thought better than the consolidation plan.

Egg Campaign To Close Saturday

We hope that many more people will bring in those eggs before the closing hour Saturday and get your subscriptions renewed. The time will not be extended any longer, but until closing time Saturday night, you will be allowed 50 cents per dozen for eggs at the Dickens County Times on subscriptions.

A great number of people have taken advantage of this offer and some have paid up far in advance. Yet, there are others who are in arrears that should bring in those eggs while the price is good. The time closes Saturday and we want several more cases by that time.

High School P. T. A. Met Tuesday

The High School Parent-Teacher Association held their regular meeting Tuesday night. The weather was in element, but there was a fine representation although people had to attend during a heavy rain.

H. L. Thurston, the president, took charge of the meeting and business was attended to. Motion that funds held over from last year be allocated to present needs, carried. There were some officers who had resigned, and a motion that the president be empowered to make appointments to fill all vacancies in the official family of the organization carried.

Mrs. W. R. Weaver was in charge of the program. A playlet under the direction of Miss Merle Lewis was rendered by Betty Jo Woodrum and Louise Ince. The play was a setting to the subject of discussion for the evening. A round table was held and many and varied opinions rendered as to the home and its management. The discussion was interesting.

Next meeting will be Tuesday night November 11.

Mrs. Laudy Dane and two daughters, and Miss Lynn McGeahy, all of Lubbock, visited their parents, Mr. and Mrs. Sam McGeahy here the last of the week.

Mr. and Mrs. Clyde Bingham and little daughter have moved to our city and are at home in the Simpson property on West Harris Street.

Mr. and Mrs. Bingham have been living at Aspermont where he was engaged in ranching.

Mr. and Mrs. Jasper Wood, of Lubbock, were guests of Mr. and Mrs. Clark Lewis Tuesday.

—BUY U. S. DEFENSE BONDS—

Young People at Roaring Springs Saturday-Sunday

The Young People's organization for the Stamford District will be held at Roaring Springs next Saturday and Sunday, October 18-19. It is hoped that all Methodist churches in the Stamford District will have their young people represented.

Registration will begin Saturday

Schools Gave Good Program Thursday

The Rotary Club at Spur really enjoyed a treat at the meeting last Thursday. The different schools gave selections on the program and everybody were on their toes about it. The East Ward gave two numbers which were really grand. Then came the Grammar School with an excellent selection by a number of girls. The selection by the High School was rendered by band members.

It was not known to the club members that judges were to render a decision on the program until after the meeting started. After the program the judges (not known to any but the program chairman, W. F. Godfrey and O. C. Thomas) gave their vote as to which school gave the best selection. All were close, but the High School were awarded the decision by one vote only.

The members of the Rotary Club are very proud of the Spur schools and the work the student body is doing. The program given the Rotarians last Thursday would have been fine for any occasion.

—BUY U. S. DEFENSE BONDS—

County-Wide Singings Meets at Dry Lake Sunday

Sunday afternoon, October 19, the singers of Dickens County will meet at Dry Lake at 2 o'clock to enjoy an afternoon of good singing and fellowship of wholesome entertainment.

You are invited to attend this singing and bring your friends and neighbors.

—Reporter.

Sheppard Field To Be Dedicated Tomorrow

Sheppard Field at Wichita Falls, world's largest air corps technical training school, will be officially dedicated Friday as the headline feature of Northwest Texas and Southern Oklahoma's historic two-day Sheppard Field Jubilee celebration.

Jubilee officials estimate 100,000 visitors will participate in the dedicatory ceremonies, scheduled to start at 11 o'clock Friday morning.

Mrs. Morris Sheppard, wife of the late, famed Texas statesman in whose honor the \$18,000,000 air corps technical training school has been named, will attend the dedication in company with scores of high ranking government, army and air corps officials.

Jubilee festivities will start Thursday night and continue at a streamlined speed through Saturday. Participation of military units from Camp Barkley at Abilene and Fort Sill, Okla., is assured. Artillery, infantry and military band units from both posts will figure prominently in the dedicatory ceremonies and other Jubilee activities.

Saturday's events will be headlined at 10:30 a. m. with the Jubilee and Grand Military Parade. Final plans indicate it will surpass in size and grandeur anything ever presented in the history of Northwest Texas and Southern Oklahoma.

Entertainment, both day and night, will be plentiful throughout the celebration. There will be rodeos and horse shows afternoon and night on both days, Indians, Hardin-Simmons famous Cowboy band with its six white horses and beautiful Cowgirls, entertainment by Sheppard Field soldiers, old fiddler's contests, whiskey judging, square and street dancing and a bevy of sports events including bowling, sail boating, casting, horse shoe pitching and golf.

Trains will run each hour Friday from Wichita Falls to Sheppard Field. Admission to the dedicatory ceremonies within the post grounds will be absolutely free.

—BUY U. S. DEFENSE BONDS—

TEACHERS COLLEGE SHOWS INCREASED ENROLLMENT

Despite various national defense programs which have attracted many Texas youths between the ages of 18 and 25, East Texas State Teachers College at Commerce enrollment shows an increase over last year. There was a heavy drop in the junior and senior classes but the freshman class is reported one of the largest

afternoon at five o'clock, and a supper will be served at seven o'clock in the evening. They will go into session after the supper is over.

Miss Elizabeth Swin is secretary of the district organization, and she urges all young people of the Methodist church organizations to be present.

Eagle Scouts to Hear Dr. West Next Thursday

Eagle Scouts from all parts of the South Plains Area Council will be invested with their Eagle Scout badges and other honors by Dr. James E. West, Chief Scout Executive of America, next Thursday. In fact, that date is to be given over to the interests of Boy Scout work in the South Plains Area Council, and Eagles, Boy Scouts and Cubs will be present to hear their great leader.

The Scout leaders will meet for assembly at ten o'clock that morning in the Hilton Hotel ballroom.

At the noon hour a luncheon will be served under the auspices of the Kiwanis Club. Plates at 60 cents each.

In the evening a banquet will be served at which it is thought more than 400 will be present to hear Dr. West's address. Tickets to the banquet will be 85 cents. Jack M. Randall is to be general chairman.

At five o'clock in the afternoon at the Lubbock High School Dr. West will address all Boy Scouts and Cubs present and pin badges on Eagle Scouts. All Scouts will want to be there.

Dr. West is one of the outstanding characters of America. He is one of the most noted workers in Scouting in the world and has been busily engaged in the business for more than 30 years. It was Dr. West who induced President Theodore Roosevelt to call the first White House Conference of Boy Scout work, and his activity in behalf of developing boys into real men have been unbounded.

Everybody will want to meet and hear Dr. West at Lubbock next Thursday, October 23.

—BUY U. S. DEFENSE BONDS—

East Ward P. T. A. Meeting

The East Ward Parent-Teacher Association met Tuesday afternoon at two o'clock in the East Ward auditorium. There were 46 members present. Following the business session Mrs. Hobert Lewis gave an interesting discussion on "No Sit-Down Strikes at Home." This was followed by a reading by Mrs. J. A. Koon.

Mrs. Patton's room received the pot plant for having the highest room count.

During the social hour plates of delicious home made candy were served by the hospitality committee.

—Reporter

—BUY U. S. DEFENSE BONDS—

One Dollar Per Capita Paid

The County Superintendent's Office last week paid \$1.00 per capita to Dickens County schools from the county available school fund. This is money which is derived from the interest on the County Permanent school fund. The amount of permanent school fund invested in interest bearing securities at this time amounts to \$56,291.58.

The county permanent school fund is invested in bonds and land notes of first class. There is a sum of \$916,266 in the permanent school fund that is not invested at this time. The total amount of the Permanent School Fund of the county is \$57,208.74. Only the interest on this fund can be used for any school purposes.

—BUY U. S. DEFENSE BONDS—

Dickens Owls Win Over Mustangs

The Dickens Owls and the Patton Springs Mustangs had a very hard fought game at Dickens last Friday. The Owls were victor to a score of 29 to 20.

Early in the game the Owls made a touchback, giving them two points. This placed them in the lead at the time. Later the Owls made a touch down and while trying to convert, one of the Mustangs recovered the ball and ran entirely across the field for a counter. The game was thrilling from the very beginning.

Dickens will play Roaring Springs at Matador field tonight (Thursday). This will be a night game and will be called about eight o'clock. The Owls hope to win this victory.

in the history of the state-supported institution.

Clarence Martin, son of Mr. and Mrs. E. F. Martin is the only Spur student registered among the 2,000 boys and girls whose average age is twenty one.

CLOVER FARM STORES
 Celebrating NATIONAL ROGERS WEEK
 WE OFFER THE MONEY SAVING
STORE OWNERS SALE

The OWNER of your Clover Farm Store is your neighbor—he is anxious to serve you well because his whole life is devoted exclusively to your community. You can depend upon your Clover Farm independent grocer for quality foods, priced right.

Choice MEATS

- Clover Farm Butter, 1b 39¢
- Fancy Chuck Roast 1b 23¢
- Dexter Sliced Bacon 1b 27¢
- Link Sausage 1b 27¢
- Seven Steak 1b 25¢
- Brick Chili 1b 27¢
- Sliced Bologna 1b 15¢
- Salt Pork 1b 18¢
- Smoked Ring Sausage 1b 23¢
- Assorted Cold Meats 1b 27¢
- Clover Farm Oleo 1b 19¢
- Yeast 2 for 5¢

CORN FLAKES

EAST TEXAS **YAMS** BUSHEL

BREAD CLOVER FARM

SOAP CLOVER FARM

COFFEE CLOVER FARM

- Clover Farm Milk 6 cans 23¢
- Pineapple 3 can 25¢
- Pail Snowdrift 3lb 63¢
- Pinto Beans 10 lb 45¢
- Star Lard 4 lb 59¢
- Apple Butter qt 19¢
- Palmolive Soap 3 for 19¢

Fresh PRODUCE

- Lettuce head 5¢
- Yams pound 3½¢
- Onions pound 2½¢
- Oranges doz 25¢
- Cabbage pound 2½¢

- Clover Farm 2 PKGS 15¢
- Large 24 oz. loaf 10¢
- 6 Large Laundry Bars 23¢
- 1 Lb. Can 29¢

See Four Leaf Clover for More Specials

Admiration Coffee
 THE RICHEST FLAVOR IN COFFEE
 ONE LB. PACKAGE 35¢

Admiration Coffee
 THE RICHEST FLAVOR IN COFFEE
 2 LB. VACUUM CAN 65¢

Welfare and Safety Of Nation Come First

A warning that "Republicans would do well to abandon partisanship when the neutrality vote is taken," was offered by Gould Lincoln, noted political columnist, in his column "The Political Mill," published by the Washington Star, an independent Republican newspaper.

In his column, Mr. Lincoln said: "The Republicans in Congress will, in a comparatively short time, have two more chances of voting on the foreign policy of this country. These opportunities will arise when the second lease-lend appropriation bill is up for action—in the House—and when the repeal or revision of the Neutrality Act is asked.

Inquiry leads to the belief that the strategists of the G. O. P. congressional campaign will by no means seek to have the party appear as the party of isolation, or even of non-intervention. But if the Republicans are to continue to vote in large majorities against these aid-to-Britain and national defense measures, the matter will be taken out of their hands—and the country will regard the G. O. P. as the party of isolation.

Tremendous pressure will be exerted by the isolation and non-intervention groups in and out of Congress to prevail upon Republicans—and Democrats also—to vote against both

the new lease-lend measure and the resolution for repeal or revision of the Neutrality Act. There are signs, however, that this pressure will not be as effective as it has been in the past.

The Republican leaders in Congress are confronted with a difficult problem, if they look at the issue from a merely political view. It would be better for them if they threw aside all thought of political partisanship when these votes are taken—and better for the country. There are, to be sure, ardent non-interventionists and isolationists among the Republican members of Congress. There are among the Democrats, too. But here is no time for the tail to be found wagging the dog.

—BUY U. S. DEFENSE BONDS—

Harry Patton, of Gilpin country, took off a while Saturday afternoon to come to town to attend to business affairs and talk with friends.

Arthur Bilberry, who has been living at Quemada, has moved back to Spur country and feels very much at home here.

Travis Smith, of Jayton, was in Spur Saturday attending to business matters and meeting friends, and while here joined the big family of Times Readers. Thanks, Mr. Smith.

Murl Foreman, of Espuela community, was in town Saturday attending to business affairs and talking with friends.



Andy Hardy, having graduated from high school, may now believe himself to have "become a man," but that doesn't prevent Judge Hardy from doing a little supervision on the process of washing, nevertheless. Lewis Stone and Mickey Rooney as they appear in a comic sequence from "Life Begins with Andy Hardy," latest of the popular Hardy Family dramas, which will be shown at the Palace Theatre, Sunday and Monday, and midnight prevue Saturday night.

Matador Trip Bulldogs

The Matador Matadors tricked a number of good plays Friday night and won a conference game over the Spur Bulldogs to the score of 20 to 6. The Matadors had a keen little backfield man who, when overpowered, would calmly stop and when turned loose, would go into action again and be out in the clear for a goal before the Bulldogs would get into action again. By this method he was able to get over for three counters and two conversions made up the total score. It was perfectly legitimate as the referee had not sounded his whistle to close any plays.

Spur received and were at the 20-yard line. Spur gained two yards. Next made a good gain but were penalized 15 yards. Spur kicked to the Matadors 44-yard line.

Matador failed on pass, then lost 10 yards. Spur gets another 15 yard penalty. Matador made five to complete a first down. Matador gained two yards, then went over 42 yards for a counter. Failed to convert and the score was 6 to 0 for Matador.

Spur received at their 44 yard line. Gained five yards, then three yards and one yard. Matador drew 15 yard penalty giving Spur a first down. Spur made no gain, then gained two yards. Failed on pass and kicked to Matador 20 yard line.

Matador gained six and six for a first down. Both sides off, no gain. Matador lost two yards, gained three yards and failed on pass. Matador punted to Spur's 38-yard line.

Spur lost two yards, then gained three. End run gave Spur 35 yards and a first down. Lost five yards. (Quarter) Spur failed on pass, no gain and punted to the Matador's 20.

Matador made no gain. Spur gets five yard penalty. Matador made three and three to complete a first down. Matador gained two yards, then no gain and then five yards gain. Spur get five yards for outside to complete a first down for Matador. Matadors gain five and five for a first down. Matador made no gain. Completed a pass for 15 yards but were offside and called back for five yards penalty. Matador punted to Spur's 44.

Spur made four yards and two yards, then lost four. Punted to Matador's 29.

Matador gained two yards and three yards. Failed on pass. Matador punted to Spur's 27 yard line.

Spur gained 10 yards for a first down. Then made no gain. Center flipped ball too high and Matador covered it. Matador failed on pass, then made no gain. Half called.

Matador received and had the ball at their 29 yard line. Matador received 15 yards penalty setting them back to their 14-yard line. They made four yards and 28 yards for a first down. Made no gain, gained six but called back and given five yards for offside. Matador gained five yards and then failed with a pass. Punted out of danger.

Spur had the ball at their 39 yard line. They lost three yards and gained three. Completed pass for five, and then lost the ball on downs.

Matador gained five, two and five for a first down. Matador then got loose for 25 yards for their second counter. They converted and the score was 13 to 0 for the Matadors.

Spur received and had the ball at their 30 yard line. They made a gain of 22 yards for a first down. Gained three yards and three yards, then completed a pass for 25 yards for another first down. They gained five and five for another first down. Made

no gain and then gained three yards. Then completed pass for a touchdown, Hahn going over. Failed to convert and the score was 13 to 6 for Matadors.

Matador received and were down at their 33-yard line. Gained five yards, but were called back and penalized five yards for offside. Matador gained three yards and two yards, eight yards and two yards for a first down (measured). Matador gained six yards but took five yard penalty for offside. Matador gained three yards and one yard and were at the 50-yard line. Matador's little trickster backfield man got away with the ball again for five yards gain and went down on his left hand and knees and after crawling about five or six yards arose to his feet and went over for their third counter. Spur tried to remonstrate with the referee, but the referee failed to see the act and the counter was chalked up against Spur. Matador converted and the score stood 20 for Matador and six for Spur.

Spur received at their 35 yard line. Made no gain and then gained eight and 17 yards for a first down. Spur gained three yards, made no gain and then made eight on pass to finish a first down. Spur made ten for a first down, Spur completed pass for six yards, then gained one yard, but failed on pass. Spur failed on downs and the ball went over at the 12-yard line.

Matador made four, and then lost one. Completed pass for seven yards for a first down. On next play they took five yards penalty. Completed a pass for no gain and the gun sounded.

Officials: Referee, Gene Barnett of Memphis; Umpire, Woodrow Wilson of Crosbyton; Head Linesman, Gaines Davis of Floydada. All three officials are from Texas Technological College.

Starting line-up for Matador was Ends, Tuennell and Breen, Tackles, Marshall and Pitts; Guards, Cox and Titus; Center, Allen; Quarterback, Durbin; Halfbacks, Price and Norman Pitts; Fullback Campbell.

Spur: Ends, Fletcher and Hines; Tackles, Rankin and Hahn; Guards, Stanley and Smith; Center, Ericson; Quarterback, Ball, Halfbacks, Weaver and Elkins; Fullback, Adcock.

—BUY U. S. DEFENSE BONDS—

V. S. Ford, of Midway community, was looking after business matters and visiting friends in town Saturday.

ANDY has a lot on his MIND!

He's a Big City boulevardier... without a dime in his pocket! He's a Captain of Industry... minus a job! He's a Carvel Casanova up against these Manhattan goldiggers!

MICKEY WOOS! JUDY SINGS!

LIFE BEGINS WITH ANDY HARDY

with PAT DANE The New Screen Personality

STONE ROONEY HOLDEN ANN RUTHERFORD SARA HADEN PATRICIA DANE RAY McDONALD and JUDY HARTLAND

PALACE—Spur

Plus Color Cartoon and Sport Reel

Midnite Prevue Saturday Night Sunday and Monday

New Texas Seed Law To Protect Farmers

The new Texas Seed Law, passed by the 47th Legislature, will help eliminate one of the hazards of farming—that is, questionable seed, according to J. E. McDonald, State Commissioner of Agriculture. The law requires that all seed offered for sale for planting or sowing purposes must be tagged, giving commonly accepted name, germination percentage, mechanical purity and other information. Thus, farmers will be able to buy seed for planting purposes without taking risks as to its actual value.

Because other states had more stringent laws governing the sale and shipment of seed, it was necessary that a uniform law be drawn in order to protect Texas farmers from the practice, by local as well as out of state firms and individuals, of "dumping" inferior quality of seed into the trade channels of Texas. The new Act, designed by agricultural leaders and Texas Seed Council, was passed by the legislature as emergency legislation. The vote was 129 to 3 in the House without dissenting vote in the Senate.

"The use of good seed is a vitally important factor in any farm production program," states a pamphlet on the new law issued by J. E. McDonald, Commissioner of Agriculture, and Linden Jones, Chief of the Seed Laboratory Division. "If the farmer will plant seed of known quality, more uniform stands will be obtained, resulting in a substantially increased income for our farm families."

There is nothing in the Act to prevent one farmer from selling to another farmer seed grown on his farm when such seed is not advertised in the public press outside the vendor's county, and not shipped by common carrier.

If the farmer leaves on consign-

ment or sells planting seed to a merchant, processor or seed dealer in his home county, the dealer is required to have the seed tested and tagged before it is offered or exposed for sale.

Anyone shipping seed to another state must comply with the seed laws of the state into which such shipments are made. "The Texas State Department of Agriculture will be glad to furnish shippers with information as to the noxious weed of other states, and will make free examination such seed to find if any noxious weeds are present in their shipments," McDonald said.

—BUY U. S. DEFENSE BONDS—

Mr. and Mrs. M. B. Rogers, of Wichita country, were in town Monday doing some trading and talking with friends.

To Relieve Misery of **COLDS** Take 666 LIQUID, TABLETS, SALVE, NOSE DROPS

AFTON BAPTIST CHURCH
 Sunday School, 10 a. m.
 Preaching, 11:00
 B. T. U., 6:45
 Preaching, 7:30.
 Everybody cordially invited to attend these services.
 W. F. Pool, Pastor,

REALLY—CHEAPER—
 TO SEND
 All Laundry and Cleaning to—
SPUR LAUNDRY and CLEANER'S
 PHONE 344

YOUNG MEN AND WOMEN

Young men and women with complete training for office work are now short of the demand, both in government work and privately owned business. Catch the popular business spirit and train for a good office position. Attend a school which renders every aid to its graduates in securing the better positions.

Investigate, write a penny post card for full particulars. Fall term opening August 25 and September 1 and 2.

Byrne College and School of Commerce
 1708½ Commerce Street
 Dallas, Texas

FORD CARS FOR '42 STRESS SAFETY IN LOWER BODY STYLES



The Ford car for 1942, powered with either an advanced six-cylinder engine or the famous V-8, went on display last week in dealers' salesrooms throughout the country.

Featuring new exterior lines and new styling within, the 1942 Ford car was disclosed to be lower, safer and easier riding than any of its more than 29,000,000 predecessors.

Either of the optional Ford engines delivers 90 horsepower. Their performance is even higher than before, and operating economy has been improved through a long series of engineering refinements.

Although production of 1942 Ford cars will be sharply curtailed as the immense program of defense work being carried out by the company gets into full swing, Ford engineers declare the new cars are unquestionably the finest in the 38 years of the company's history. While some new materials have replaced old ones because of defense requirements, the change has meant added manufacturing cost rather than any let-down in service or appearance of the parts affected.

Three lines of Ford cars are offered—the Super Deluxe, the DeLuxe and the economy Special. The first two are equipped at the factory with either the six or eight-cylinder engine. The Special is offered with the six-cylinder power plant only.

In appearance the new cars are larger and more massive. A completely new frontal design has a low, wide grille of bright metal as its dominant feature. Headlamps and auxiliary lamps are recessed in the front of the wider fenders, and the fenders themselves flow smoothly into the body lines to accentuate the general streamlined effect of the car's styling.

Bodies flare out at the bottom concealing the running boards completely. The Super DeLuxe models have bright exterior molding around all windows as an additional style

touch. Advanced style innovations are evident in the interior treatment of the 1942 Ford cars. Most striking of these are found in the Super DeLuxe body styles which this year reach a new high in luxury and comfort. Leather and cloth upholstery are used in combination to achieve an appealing two-tone effect.

The new instrument panel in all three Ford lines is exceptionally attractive, with instruments designed for easy reading. The speedometer, and thirty-hour clock in the Super DeLuxe, now have large circular dials, one on either side of the new plastic radio speaker panel. Most of the other instruments are grouped directly in front of the driver.

One of the chief engineering advances in the 1942 car is a softer and more stable ride. The car tread—that is, the width between the wheels—has been widened 2 1/4 inches in front and 1 3/4 inches in the rear. Springs have been redesigned and lengthened. Double-action high-pressure type hydraulic shock absorbers are provided all around. The effect of the improvements is to produce a "velvet" ride, even on rough country roads.

The center section of the new front axle is lower and this, in connection with the changes in the springs, has permitted the car floor and the car's center of gravity to be lowered proportionately. The frame is designed for great rigidity, which tends to keep bodies quiet through long service.

Stabilized, easier steering is another safety feature of the 1942 Ford. The torsion bar, which helps maintain balance on curves and in cross winds, has been improved further and now is combined with a track bar to help keep the steering mechanism in perfect alignment under all conditions.

The steering column is heavier and the wheel turns in a self-adjusting ball bearing. Operation of the finger-tip gearshift and hydraulic braking system also has been made still easier. Danger of skidding has been minimized through a 60-40 distribution of braking pressure between front and rear wheels.

Controlled ventilation is a feature of the car's body engineering. Visibility is exceptionally good because of large safety glass area and through the use of narrow body pillars. The windshield is low and this, in addition to the low hood and the high position of the adjustable front seat, permits the driver to have a clear view of the roadway close to the car.

Bodies are of all-steel construction. No wood whatever is used in the body structure. They have been very carefully sound engineered and are remarkably quiet, in part because rubber is used at all points of metallic contact as a sound insulator or vibration absorber.

Additional power, great fuel economy and improved cooling of the 1942 engines highlight the year's engineering advances on the engines. Faster acceleration and improved climbing ability have been brought about through a "streamlined" exhaust system which permits faster disposal of exhaust gases, reduced back pressure and correspondingly improved performance. The compression of the Ford V-8 90-horsepower engine has been maintained at 6.20, and the compression of the 90-horsepower six cylinder engine is 6.70.

Among other engineering improvements are changes in the ignition system to facilitate service. There is now a separate coil. The "pan cake" distributor has been redesigned for clearance but otherwise retains the features of the past. Improvements in greater fuel efficiency. The changed location of the fan is one of the factors in improved cooling. The fan now is belt-driven at speeds higher than engine speed. There are six Super-DeLuxe body

types, including a convertible club coupe with quarter windows in the sides of the top for the rear seat passengers, and an eight-passenger station wagon. The Super DeLuxe cars are available with a choice of six colors, all in the durable Ford baked synthetic enamel.

DeLuxe car body types are the Tudor sedan, Fordor sedan, coupe and a new sedan coupe, with a choice of three colors, which the Special body types are coupe and Tudor and Fordor sedans. The Special comes in black only.

—BUY U. S. DEFENSE BONDS—

CROTON AND WICHITA NEWS

The meeting at Prairie Chapel closed Sunday night. There were two persons received into the church by baptism and several by letter and other ways. Rev. Charles Torrence did the preaching.

Mr. and Mrs. Monroe Parnell and children, of El Paso, are here visiting relatives and friends.

Mr. and Mrs. A. O. Lambert and daughter, of Shallowater, were guests of Mr. and Mrs. T. S. Lambert Wednesday.

Mr. and Mrs. C. E. Butler honored Mr. and Mrs. Victor Lewis Jackson with a shower Saturday night at their home in Croton. Those that attended were: Mr. and Mrs. Jimmie Perryman and children, Mr. and Mrs. T. S. Lambert, Mr. and Mrs. R. E. Rogers and children Mr. and Mrs. J. P. Legg, Mrs. J. A. Legg, Mrs. T. C. Dempsey and son, Mrs. Rex Robertson and son, Mr. and Mrs. Wilburn Brendle, Mr. and Mrs. T. J. Conaway and son, Mr. and Mrs. A. J. Richey, Mr. and Mrs. Homer Jackson, Mr. and Mrs. Victor Lewis Jackson; Miss Laverne Starratt, Artis Poindexter, Luther Harris. They received lots of nice presents, and all reported a good time.

Mr. and Mrs. M. S. Lambert were shopping in Spur Wednesday.

Mr. and Mrs. Peyton Legg and sons, of Farmer were in our community Tuesday evening calling on friends.

Mr. and Mrs. Wells and children, of California, are here visiting their daughter and sister, Mrs. Clyde Parnell.

Mrs. J. A. Legg spent the past week at Farmer with Mr. and Mrs. Peyton Legg and sons.

Mr. and Mrs. Clyde Parnell and children and Mr. and Mrs. Wells and children, of California, spent the past week at Mineral Wells visiting relatives.

Mr. and Mrs. Jimmy Chesney and family spent the past week in El Paso visiting relatives. —Reporter.

—BUY U. S. DEFENSE BONDS—

U. of T. Enrollment Lower Than 1940

It looks as if the University of Texas has sent about one-eighth of its men students to military service or to jobs in the widening stream of defense industrial and business activity.

At least, its fall enrollment of men is down 13.3 per cent below last year at this time.

A 3 per cent increase is seen in the number of girls enrolled.

Total registration this fall is down 8 per cent, to 9,411, or a slightly smaller decrease than has been apparent at other institutions throughout the country.

Enrollment of freshmen students was 131 to total 1,735.

Due to their technical training for defense industries, engineering and business administration branches fared very well—the College of Engineering showing only a 4.9 per cent decline, and business administration picking up 0.8 per cent.

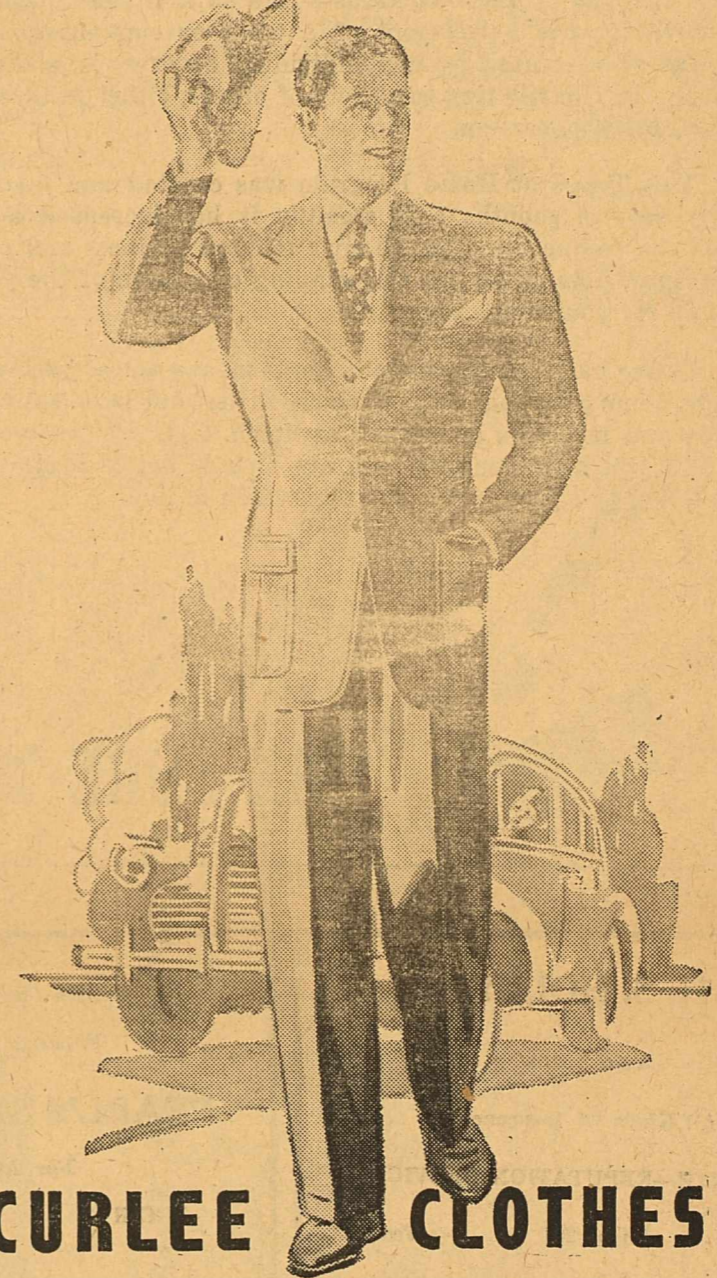
—BUY U. S. DEFENSE BONDS—
J. L. Taylor, of Calgary, was in town Saturday transacting business and greeting friends.

CURLEE CLOTHES CURLEE CLOTHES CURLEE CLOTHES CURLEE CLOTHES CURLEE CLOTHES

A Good Safe Place To Trade
B. SCHWARZ & SON
SPUR, TEXAS
"The Store Of Little Profit"

PRESENTING THE
**MEN'S STYLE PICTURE FOR
FALL '41**

It's A four-star feature, the array of new styles for men at Schwarz, we're showing the new things for Fall! Make it a point to see this style picture for your own benefit . . . to be successful, look successful!



CURLEE CLOTHES

ILLUSTRATED

Calvary Twill—one of the season's smartest fabrics in a 3-button drape suit and a fly-front notch lapel top-coat. Every detail of Curlee clothes will please you . . . stop in soon.

NEW FALL CURLEE SUITS

\$27.50

Extra Pants Available

DRESS-UP FOR FALL!
"The CURLEE Way"

Our Fall stocks of fine suits are brimming with things you need to keep a good appearance. Worsted, tweed, cavalry twill, covert and fleece top-coats in popular new styles and colors. Tweed, cavalry twill, and worsted suits with new tailoring details to make the most of your build. Be ready for Fall and Winter . . . get ready to look your best for all occasions, business and social! . . . get ready to enjoy the confidence and self-assurance that faultless dressing can give you by coming to Schwarz' now!

Pep Up Your Outfit with
a
Stetson "PLAYBOY"

Another Stetson "Winner"! The Playboy . . . Wider bands and wider brims . . . Light weight . . . Same fine Stetson quality . . . Stetson's same low price . . . In five colors . . . Sizes 6 3/4 to 7 3/4.

5.00

Stetson Stratoliners **\$6.50**
Complete stock Stetson
Staples



CURLEE CLOTHES CURLEE CLOTHES CURLEE CLOTHES CURLEE CLOTHES CURLEE CLOTHES

DO YOUR EARS RING?
Maybe somebody's talking about you! They noticed your bad breath. Sour, gassy stomach often accompanies occasional constipation. ADLERIKA blends 3 laxatives for quick bowel action and 6 carminatives to relieve gas. Try ADLERIKA today.
CITY DRUG CO

Beware Coughs
from common colds
That Hang On
Creomulsion relieves promptly because it goes right to the seat of the trouble to help loosen and expel germ laden phlegm, and aid nature to soothe and heal raw, tender, inflamed bronchial mucous membranes. Tell your druggist to sell you a bottle of Creomulsion with the understanding you must like the way it quickly allays the cough or you are to have your money back.
CREOMULSION
for Coughs, Chest Colds, Bronchitis

"SANITATION OUR MOTTO"
SPUR HATCHERY
We are buying eggs next Saturday the 12th for hatching, paying six cents over produce price per dozen. 22 to 28 oz. eggs suitable for setting from quality flocks.
Assistant Manager, Fieldman and Inspector of flocks
F. B. Crocket
General Manager
W. M. Hazel

PITCH IN AND HELP YOUR HOME TOWN

No great thing was ever created suddenly any more than a bunch of grapes or figs—Ephesus—And so it is that business or any civic move for the betterment of a town or community. No great thing was ever created by any individual as every one learns and is helped by the contributing to society of others, either in thought, labor, earnings, or co-operation.

This Trade at Home Program was created and inaugurated in our city several months ago, steadily it has increased and grown through the co-operation of the civic minded business and professional men of Spur. Lets make this the winning campaign of the year. Get in and pitch for your home town.

Better business for the merchants means better business for you. Trade at home give your local business firms your loyal support, Create the idea and principle of trading at home. Help the business firms to grow and you help yourself to grow. Create better business and you create a live and progressive town in which to live.



BE SURE TO BUY IN YOUR OWN HOME TOWN

H. S. HOLLY
Auto Loans
All Kinds Of Insurance
STRENGTH—REPUTATION SERVICE
Spur Phone 201 Texas

Satisfaction Guaranteed By
Experienced Operators
PEARL'S BEAUTY SHOP
For Appointment
Call 291

SPUR BAKERY
FRESH BREAD EVERY SUN RISE
Buy A Home Product

Brazelton Lumber Co.
"A Good Yard in A GOOD Town"
Spur, Texas Phone 44

SPUR IMPLEMENT CO.
FARMALL HOUSE
McCormick-Deering Farm Machinery
E. D. ENGLEMAN and JOHN ADAMS
Owners

High Quality Merchandise
At The Right Price
Headquarters for Builders Supplies
and Household Goods
RITER HARDWAR CO.

SPUR LAUNDRY & DRY CLEANERS
We have the equipment and experience to give you quick, efficient service. Special Care of Your Dry Cleaning. We maintain a Helpy Selvy Annex in addition to our regular laundry service.
Wilson Bros. Prop. Phone 344

ALLEN AUTO
HOME OWNED
—By A—
HOME OWNER
SUPPLY

ART STUDIO
Will Sell Kodak Films—Loan and Sell Kodaks—
Fine Portraits—Kodak Finishing — Commercial
Work.
WE WILL APPRECIATED YOUR WORK

BAND INSTRUMENTS
New Cornet \$49.50
Used Cornet \$14.00
Try Our Easy Payment Plan
Slide Trombone Oil 25c
Value Oil 15c
Saxophone Reeds 20c to 45c
All Keys

Clarinet Reed 15c to 25c
Band Pins 20c to 45c
Extra Good Quality
If you play any type of an instrument we have a pin for you—See our display—
Dickens County Times

People Enjoy
Eating at the Spur Cafe. First of All. People like Our Food — Service and the Atmosphere is relaxing.
SPUR CAFE
HOME OWNED

USE TIMES WANT ADS TO BUY, SELL OR RENT

SPUR TAILORS
"The Friendly Shop"
"Alterations to a Perfection"
A Specialty
Phone 18 For Dependable Service

City of Spur

BUYING AT HOME INCREASES LOCAL PAYROLLS

Spur Civic Club

The Dickens County Times

WILLIAM C. STARCHER Editor and Business Manager MRS. W. D. STARCHER Advertising Manager

Entered as second class matter at the Post Office in Spur, Texas, October 30, 1924, under the Act of Congress March 3, 1879.

Subscription Price: \$1.50 per year in Dickens and adjoining counties. Foreign Subscription is \$2.00 per year

Ad rates uniform to everyone in Spur Country

A Story About Texas

The following is a copy of a manuscript written by Lois Estelle Meadors, a Grammar School student in Dickens schools, about Texas. It is very accurate information, and should be very interesting and instructive to all citizens of Texas.

A TOUR OF TEXAS

By Lois Estelle Meadors One thing we all know about Texas is that it is the largest state in the union. Many people, however do not realize how vast an area is included in its borders. We do not realize just what it means to say that the area is 265,896 square miles. Nor can they imagine an area so big as to include 170 million acres. But Texas is just that big. In fact it is so big that if the whole area of the United States were divided into twelve states of equal size, none of them would be as large as Texas is now. We will realize how large Texas is while making the tour of it.

Nature has divide Texas into some interesting parts which we call natural regions. The divisions are known as, The Coastal Plains, The Central Plains, The Central Mineral Region, The Great Plains and the Trans-Pecos Region.

As we travel through the different divisions we all want to look out for interesting things which will help us to remember the different regions. We shall notice how the climate changes. Also we shall want to see how the natural conditions in the different regions affect the work people do.

We may begin our tour in the Coastal Plains, which as you can see from the map, includes the eastern and southern parts of the state. It is the largest division and has more subregions than the rest. The sub regions are the Rio Grande Region, The Coastal Prairie, The East Texas Timber Region and the Black Lands.

The Rio Grande Region is made up of rolling country some parts are open prairie while others have an orchard like growth of mesquite, cactus, and small shrubs, that is about all. We can expect of a rolling plain. The climate is mild. Some of the land is used for farming, fruits and vegetables, and there is a small acreage of roses.

The Coastal Plains is a low flat country most of which has black soil. In this region they grow cotton, corn, and rice. The natural products are sulphur, and petroleum. This has brought many people here with the help of the climate. The climate is mild in winters with a cool summer breezes which is popular with the resorts.

The East Texas Timber Region is mostly made up of longleaf pine, loblolly pine and short leaf pine. Along the way we find the longleaf being tapped for turpentine and some being used for lumber. The climate is cool and damp so this is good for farming since so much of the lumber has been cut it leaves enough space for farming.

The Black Lands soils are heavier and more fertile than those of the Grand Prairie being formed of a different kind of limestone. This land is very favorable for farming. The crops raised are cotton, corn, wheat, hay and oats.

The Central Mineral Region is made up of worn down mountains and hills. This is a very small region with no sub topics. The minerals found here are granite, a little marble, limestone and many others. This country is not good for farming, for the soil is too thin and rough and the climate is dry.

The Central Plains is mostly smooth but some is hilly. Much of the land is cultivated although it is used for ranching. Some minerals are found as coal, oil, gas, gypsum, sands for making glass, clays for making brick and mineral water. Much of the water is so highly charged with minerals that it cannot be used for drinking.

The Great Plains is next to the largest. It has two sub-regions. The Great Plains and the Edwards Plateau. The surface of the Great Plains in the northern part is built of minerals brought down from the mountains, while the surface of the South-

Sadler Tent Theatre Opens Here Monday



HARLEY SADLER

Harley Sadler and his Famous Tent Theatre will play Spur October 20 and 21 for two night only. Showing under the auspices of the Spur Fire Department.

Harley Sadler stage show needs no introduction to the theatre fans of this section as he has been conducting high quality entertainment in West Texas for almost a quarter of a century, and he has never failed to provide his audiences with clean, high quality performances. The veteran showman and actor predicts that a great deal is in store for his friends in Spur this visit. He has secured much new talent which includes singers, dramatic artists, vaudeville headliners all unsurpassed in their respective lines. One of the main features this visit will be "Wake Up America," a patriotic musical presentation which precedes the play and regular vaudeville.

The doors will open at 7:15. The presentation "Wake Up America" will start promptly at 8:10. The big tent theatre is water roof and comfortable in all kinds of weather. Popular prices will gain prevail.

Men In Minority At College

While the men are fading away from the campus of the North Texas State Teachers College at Denton, to "carry on" for Uncle Sam, the women of the college are carrying off honors in campus elections.

When President W. J. McConnell looked over his list of nominees from the various classes to the fine arts and publications councils this week, he found the proportion of women over men about five to one. For several years the president has appointed students to committees in order to get good geographical distribution and at the same time divide somewhat equally the number of men and women.

This year the male part of the student body was represented only in the athletic council, which is traditionally composed entirely of men. Last week, however, men held their own by carrying off all presidential jobs in class elections.

Mrs. W. W. Kluting and daughters, Misses Idell and Joan, and son, Boyce all of Peacock, were in our city Monday doing some shopping and visiting friends.

The High Plains is in the northern part of the Great Plains. The High Plains surface is flat, but it has many depressions and eroded areas. The climate is pleasant, except when there are sandstorms.

The occupation of the High Plains are ranching and farming. The crops raised are wheat and grain sorghums.

The Edwards Plateau has numbers of flat areas and it is cut by streams from almost every direction. The soil is thin and rocky, so is not very good for farming. Ranching is the leading occupation but a little farming is done. They grow cotton, grain sorghums and cattle. The Edwards Plateau is known for petroleum too.

The Trans Pecos is the last region on our tour, it makes up the western part of the state. The surface is hilly and the climate is not suitable for farming. There is only a little farming done, which is in the irrigated parts. Ranching overshadows all the other occupations. Minerals are worked in various parts of the region including oil in the Pecos Valley.

We have made our tour of the state and learned something about it. I want to tell you about the people of Texas. The Americans make up 71.9 per cent of the population. The negro population is 14.7 per cent. Most of the negroes live in the Coastal Plains. The Mexican population is about 11.7 per cent of the total. The Mexicans have come across the border into the southern and western part of the state.

If everyone would tour the state they would appreciate it more.

McAdoo News

Billie Joe Wooley who is working at Big Springs was at home last week end.

Miss Hazel Moore was at home one day last week to see her parents, Mr. and Mrs. W. I. Moore, Miss Moore is home economic teacher in Ropesville High School.

Mr. and Mrs. Jack McLaughlin and little daughter, Donna Ray of Gallup, New Mexico are here visiting his parents, Mr. and Mrs. Rush McLaughlin.

John Campbell, student in Tech College, returned to Lubbock Sunday afternoon, after spending the week end at home.

Mr. and Mrs. Lee Parker and family of Spur visited relatives here this week end.

Miss Modine Nettles went to Portales, N. M. this week end to attend the home coming of students of Eastern New Mexico College. Modine is a former student of the college.

Mrs. J. B. Baker and daughters have been at Amarillo to see her daughter, Mrs. Pete Marshall and family. They returned home the first of this week.

Mozell Baum returned to Lubbock Sunday afternoon after spending the week end at home. She is a freshman in Texas Tech.

Mrs. J. J. Griffin and baby spent several days recently at Dickens with her parents, Mr. and Mrs. Roy Ward.

Mrs. Floyd Smith and little son of Detroit, Michigan, are visiting her parents, Mr. and Mrs. V. C. Finney.

Mr. and Mrs. Doug Allen are the parents of a baby girl. The little daughter has been named Nelda Jane and was born October 2.

Mr. and Mrs. Charlie Autrey of

California are here to see her parents, Mr. and Mrs. Bennett.

Almeta Defoor of Paducah spent last week with her sister, Mrs. Bernard Parker and Mrs. Pete Whatley and their families.

C. L. Brownlow, Charles Owens and Jack Graham, were students from Texas Tech who spent the week end here in their respective homes.

Rev. J. B. Baker, pastor of the local Methodist Church closed a two weeks revival meeting at Tullia, Sunday night.

Bro. Baker's nephew, Luther Baker of Tahoka preached in the local church Sunday and Sunday night.

The Planview District Zone Meeting of the Women's Society of Christian Service was held at Floydada Wednesday, October 8.

Those attending the meeting from the local society were Mesdames B. M. Kelse, G. G. Allen, Wildon Cybert, Rufe Gallihar, C. Gallihar, H. U. Butts, H. V. Nettles, J. B. Baker and Miss Opal Nickels.

A new cafe has been opened for business in McAdoo. The new business place will be known as Slim's Cafe and is under the management of Slim Foster of Spur. Mr. Foster was in the cafe business in Spur for several years.

A theatre is also to be opened for entertainment of the people in a very short time.

Mr. and Mrs. George Archer, teachers in McAdoo High School spent the week end at Canyon with relatives.

McAdoo Eagles went to Roaring Springs Friday and scored another victory from the Roaring Springs football team, up to the present date the Eagles have won every game they have played this season. Mr. George Archer is coach of the team.

A large number from the local community and school attended the Fanhandle South Plains Fair at Lubbock during the past week.

The cotton picking season has been started at McAdoo. The first bale was ginned Monday, October 6. However more than 20 bales were ginned thru out the week "Jockey" Tooke brought in the largest number of bales to be ginned the first week.

Most of the cotton is late opening on the plains.

An operetta, entitled, "Tom Sawyer" was presented in McAdoo High School auditorium Tuesday night, October 7, the operetta was made up of students from the primary and intermediate grades and was under the direction of the teachers, Misses Bartie Lee Butts, Rosemary Hickman and Lenora Nickels. Preceding the operetta, Charlie McLaughlin gave a brief discussion of the aircraft warning service for Dickens County.

Edwin H. Boedeker, County Judge and member of the Council and another organizer, also gave information on the subject.

Winford Douglas Hinson and Miss Mary Lillian McCully were married last Saturday. Rev. J. V. Bilberry, a long time friend to both families, officiated in the rites in the presence of a few friends.

These young people live in the Red Mud community and are well known in that section of the country.

First appearance of the year for the corps was at McMurry's opening football game at Medley Stadium. A full season has been anticipated for the group. Including trips to football games, parades, and other appearances.

A. C. George, of Highway community, was trading and greeting friends in Spur Saturday. He is a reader of the Times now.



When you are ill the first thing to do is to see your doctor. Then bring your prescription to the Rexall-Drug Store—where you can depend upon it being compounded exactly as your doctor wrote it. Only the finest of fresh, full strength materials are used by capable, qualified pharmacists. And our double-check system guarantees accuracy.

HELP CELEBRATE NATIONAL PHARMACY WEEK VISIT OUR STORE!

Citp Drug Company



BUY IT NOW!



New, 1942 SERVEL ELECTROLUX models are now available. But why buy now? Read these answers and decide for yourself—

Q. 1. Why not wait until next summer? Why buy now?

Ans. Will you be able to buy any refrigerator then? No one knows. The defense program demands daily more and more steel, copper, etc.—the very materials required to build a Servel.

Q. 2. Can I get terms to suit my purse, if I wait?

Ans. No one knows. But—right now, a small down payment plus Servel Electrolux in your home—with 18 long months to pay!

Q. 3. How much tax will I have to pay, if I wait?

Ans. No one knows. Excise taxes, such as these, can be increased by Congress as required. And defense authorities say "far heavier taxes yet to come."

Q. 4. Is it patriotic to buy now?

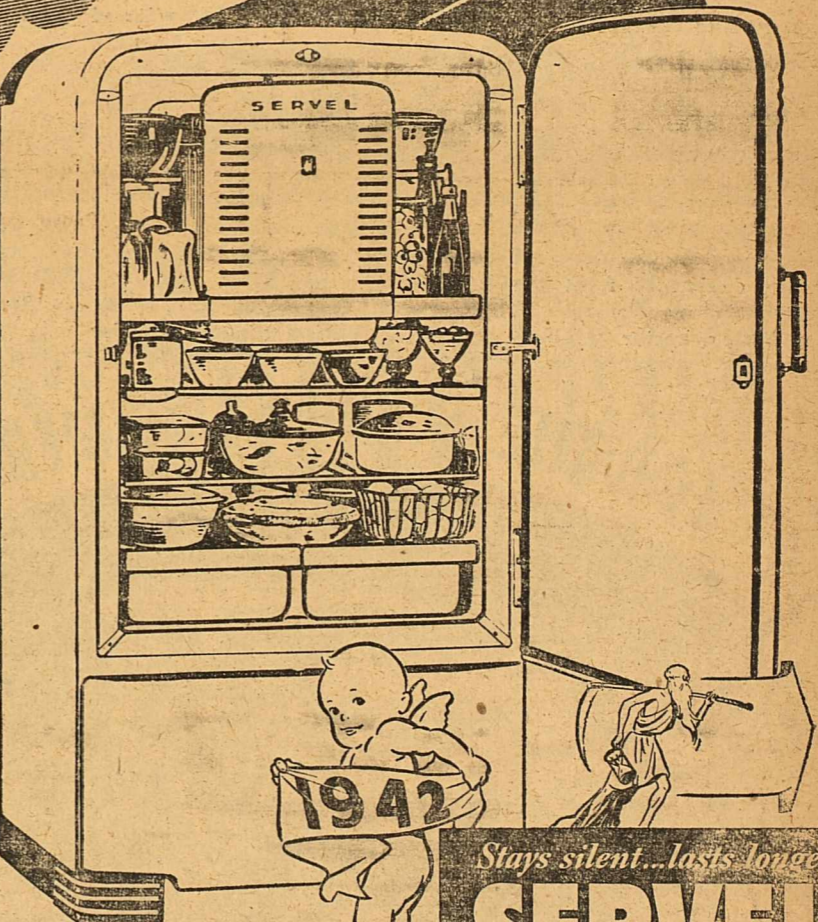
Ans. Buying now may release man-power, machine power, materials, later on, when they are much more badly needed for defense. And protecting the nation's health—your family's health—is a number one requirement for defense.

Q. 5. Is Servel a good investment at a time like this?

Ans. Food prices are going up! We probably haven't seen anything yet. The higher they go, the more Servel Electrolux will save in your home. Remember—it's always summer in your kitchen! At present, food prices we can show how an average family may save up to \$8.60 per month!

Q. 6. How long can I expect such savings?

Ans. Servel, the Gas refrigerator, is backed by an iron-clad 10-YEAR GUARANTEE on its entire refrigerating system—at no extra cost—still the ONLY one that is. Because there are NO MOVING PARTS in its freezing system. Nothing to wear, to cause costly repairs, to grow inefficient and costly to operate. In West Texas today, there are hundreds of Servel Electrolux refrigerators that have been giving faithful, trouble-free, refrigeration for 10, 12, 14 years—without one cent for service or repairs! Over and over again, they have paid for themselves. Yours can, too. Come in and pick out your 1942 Servel today.



Stays silent...lasts longer SERVEL ELECTROLUX GAS REFRIGERATOR

Iron-clad 10-YEAR GUARANTEE

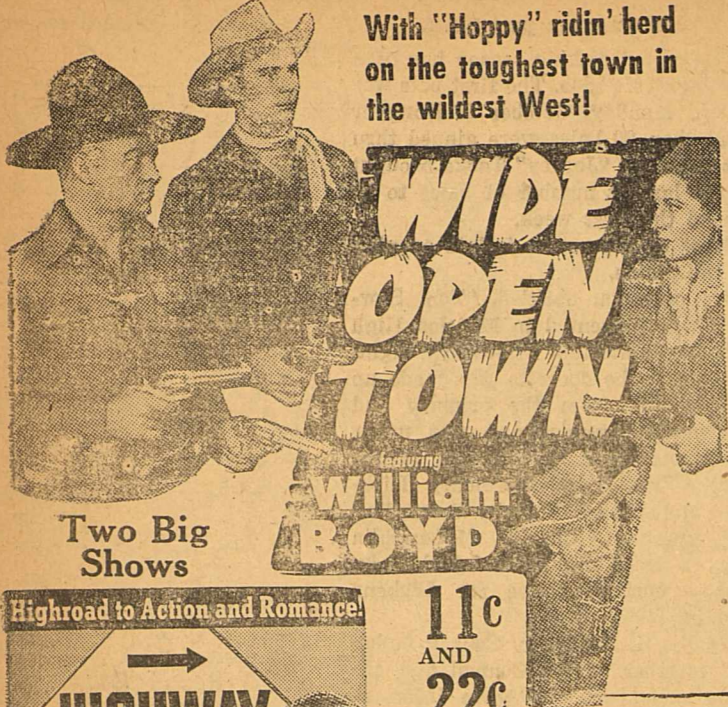
We guarantee to the original purchasers of 1942 Servel Electrolux Gas Refrigerators to furnish without cost any defective burner, control or refrigerating unit for a period of ten (10) years from date of installation. (You pay only cost of installing p.c.s.)

JUST A SMALL DOWN PAYMENT and 18 LONG MONTHS TO PAY

C. H. Elliott Appliance

TWO-TRIGGER JUSTICE!

With "Hoppy" ridin' herd on the toughest town in the wildest West!



Two Big Shows

Highroad to Action and Romance

HIGHWAY WEST



11c AND 22c

PALACE

Friday • Saturday

PLUS BUCK JONES in "White Eagle"

SPUR Theatre Friday and Saturday
THE BARGAIN THEATRE 11c and 17c

DARE-DEVILS OF THE SADDLE WHO DARE NEW DANGERS!

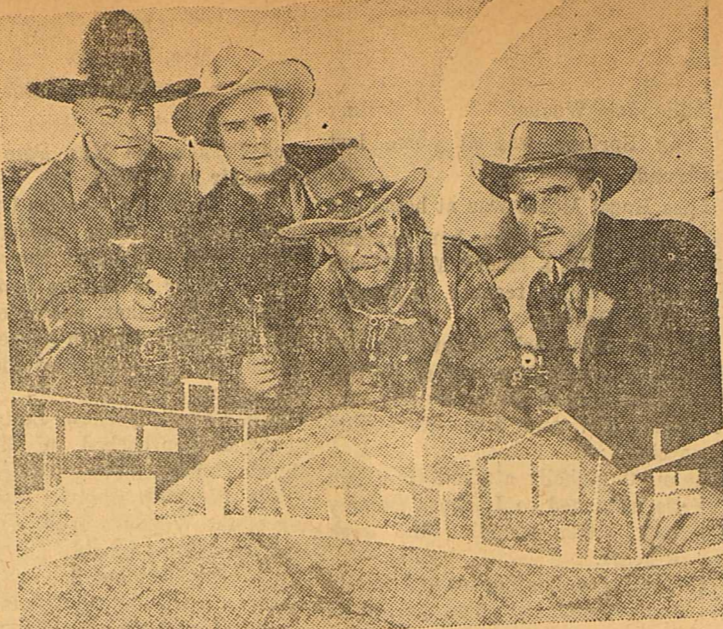
REPUBLIC PICTURES present



Soldiers Released From Army Must Register

Enlisted men who were in the registration age brackets on October 16, 1940, or July 1, 1941, and who have not already registered under the Selective Training and Service Act must register when discharged from the military establishment, General J. Watt Page, State Director of Selective

Service said today. Although members of the regular military establishment are relieved from registration as long as they are in service, General Page said, they must register when they are released from the armed forces. While the majority of such ex-service men probably are not liable for induction as selectees, the State Director pointed out that there are some men who are discharged from the Regular Army after completing one year of training and who, consequently, are liable for induction under



Hopalong Cassidy rides into town Friday and Saturday in "Wide Open Town." heading a double header, double action, double thrill show at the Palace Theatre. The other half of the double bill stars Brenda Marshall and Arthur Kennedy in "Highway West."

the selective Service law, the selective training and service act of 1940, as amended, General Page declared, relieves from liability for peacetime training and service under the Act only those Regulars who have satisfactorily served as an officer or enlisted man for at least three consecutive years in the Regular Army, Navy Marine Corps, or any enlisted man honorably discharged from the Regular Army or the Coast Guard within six months prior to the completion of his regular three-year period of enlistment.

Those one-year ex-service Regulars who are liable for further military training may enlist in the National Guard of the States in which they will live or join the Enlisted Reserve Corps, General Page said.

Selectees who are relieved from active duty with the Army, General Page emphasized, are transferred to the reserve as provided by law and will be classified by their local boards as being members of the military establishment. Although they are not liable for additional service as selectees after completion of their period of training and relief from active duty, they may be called to active duty as members of the reserve, he said.

—BUY U. S. DEFENSE BONDS—
J. F. Phifer, of McAdoo, was in Spur Friday transacting business and talking with friends.

C. H. Scott, of Soldier Mound country, was in town Friday attending to business matters and enjoying friends.

D. P. Smiley, of Duncan Flat, was in Spur Saturday transacting business and meeting friends.

A Lady Glad She Is A Homemaker

The following extract of a letter should make any lady glad that she is a homemaker, and that being a homemaker is a very important job. There is no higher calling for any lady that to be a good homemaker and feel that she is on the highest plane in her calling. The letter in question states:

"I want to tell you about my fruit cellar and my fruit cakes, etc. I canned in 1939 two thousand jars of different types of fruits and vegetables—I mean to be eaten in 1940. I took 39 different kinds of fruits, jams, and jellies off my shelves and entered the Michigan State Fair. I, also, baked tea biscuits, Johnny cakes, honey loaf cake, old fashioned cookies and made three kinds of candy. I took canned pork, beef and chicken to the fair.

"I won first prize on all and the sweepstake on canning.

"In 1940 I canned 110 quarts. I have 2,500 pars now in by basement—meats, vegetables, all kinds of fruit, jellies, and jams. Something to be proud of.

"I decided to make plum pudding and fruit cake because so many of the girls where I worked wanted these. I started with 50 pounds, and before I quit I had made 123 pounds. My profit was \$82.00 after my expenses were paid. I made 45 pounds of plum udding. I could have sold more of both, but I sold every bit I had made and Christmas was here. So, I called it off and quit for 1940. But this year, 1941, I am making 500 pounds, and it will be a dollar per pound. I already have orders coming in for this year."

When any homemaker can produce a product in her home that will gross her \$500.00 per year, and can produce most of the material on her farm home, she has made an accomplishment that is worthy of attention. The above letter was an inventory of canning, preserving and baking from Mrs. Addie Bouchane who lives in Detroit. She was here recently to visit her sister, Mrs. A. J. Richey, and her mother, but stated she would need to get back to Detroit soon as it will be time to make her fortune in household arts.

Mrs. Bouchane works at a job almost every day.

—BUY U. S. DEFENSE BONDS—

Attractions at NTSTC For The Year

Already scheduled for the 1941-42 fine arts series at the North Texas State Teachers College in Denton are six professional billings and two major student plays, Dr. Sam B. McAlister, fine arts chairman of the college, has announced.

To date the fine arts series includes the following: Latvian Singers, December 3; Dallas Symphony, December 5 (tentative date); College Players production of Kaufman and Hart's "George Washington Slept Here," December 11-12; Louise Meisner, pianist, January 16; Chekov Players, February 10; Agnes de Mille dance group, March 9; and Carroll Glenn, violinist, April 29.

Details of an American Composers Festival which will be held at the college during Music Week in May as the major music department undertaking this year are yet to be worked out and will be announced later, Dr. Wilfred C. Bain, music director at North Texas stated recently.

Yet to be bought by the college fine arts committee are two professional numbers, Dr. McAlister announced, and a second College Player production, to be given about the last of April, is yet to be selected.

—BUY U. S. DEFENSE BONDS—

Mr. and Mrs. W. E. Ball, of Espuela community, were in town Saturday doing some trading and visiting with friends.

NOW AT

CAMPBELL'S

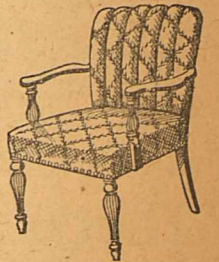
A very small down payment will furnish your home on EASY TERMS.

CHAIRS

Walnut Occasional Chairs of unusual workmanship and detail

\$5.50 up

Tufted back, Platform Chair, tapestry and veloure—



\$27.50 to \$39.50

PLATFORM ROCKERS—imported floral tapestry upholstery or Valoure Down Cushion

\$11.95 and up

Boudoir Lamps

TABLE LAMPS

\$1.50 and up

BRIDGE LAMPS AND FLOOR LAMPS Any type of lamp your home needs. All colors to enable you to carry out your motif—

\$5.25 and up



NEW STYLES TO MAKE LIVING ROOM BEAUTIFUL

STUDIO DAVENO SUITS

In walnut, maple and mahogany frames—The daveno opens into a roomy double bed and features extra details, such as convenient bedding compartment and others. In Valore or fancy tapestry—

\$37.50 up

DAVENO OVERSTUFF SUITS

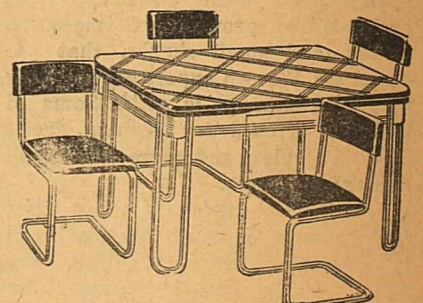
2-Piece Suits—Smartly designed with chair covered in your choice of heavy Rayon Velour or extra heavy tapestry.

\$68.50 up

5 Piece Chromo Breakfast Set

In colors you love—expensive tublar Chrome Plated chair, leatherette seat.

\$36.95



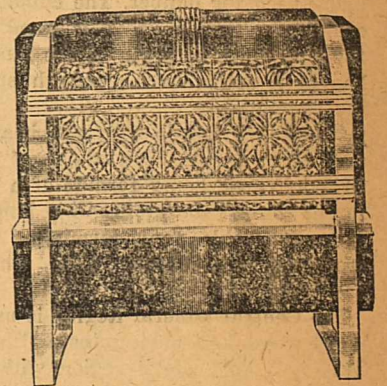
BEDROOM SUITES

See our new stock of beautiful bed room suites in solid maple, oak, walnut and mahogany finish, in both periods and modern designs—Priced Right!

Hearth Glo BUTANE GAS STOVES

Winter is around the corner—be prepared, come in and see our stoves—

\$6.65 up



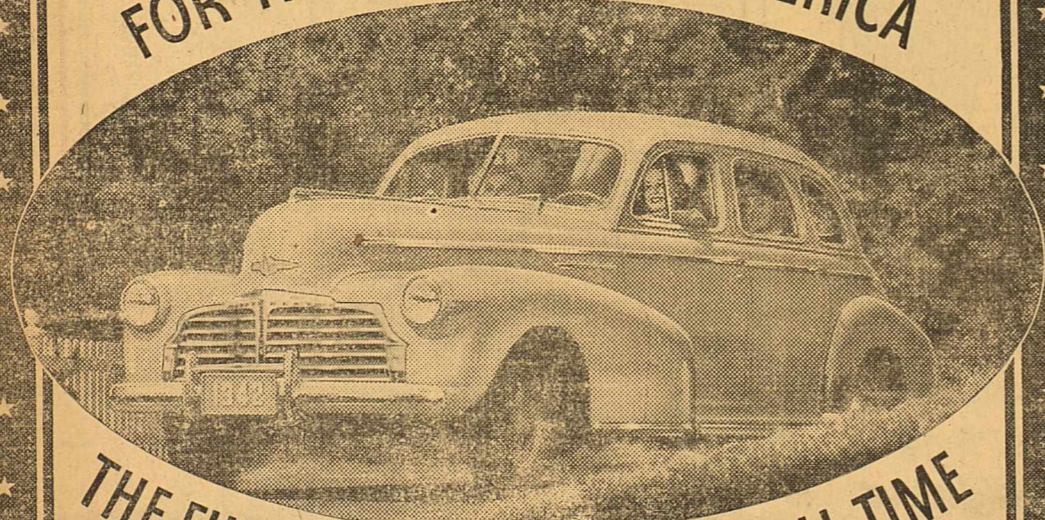
We are CLOSING OUT Our Line of SUPERFEX OIL HEATERS. Buy one NOW At A BARGAIN—Only 6 stoves left and at a HOT PRICE

CAMPBELL'S

FURNITURE STORE

We Deliver

FOR THE SERVICE OF AMERICA



THE FINEST CHEVROLET OF ALL TIME

Yesterday . . . Today . . . Tomorrow

ITS PROVED VALVE-IN-HEAD "VICTORY" ENGINE leads in all-round performance with economy

It's built of quality materials. . . It features the same sturdy cast-iron pistons which Chevrolet has developed during twenty years of manufacture of millions upon millions of cars. . . It's designed and built to out-perform, out-save and OUT-LAST its field!

Drive this car today, at your nearest Chevrolet dealer's, and convince yourself of its leadership.

DESIGNED TO LEAD IN STYLING

DESIGNED TO LEAD IN PERFORMANCE

DESIGNED TO LEAD IN ECONOMY

IT PAYS TO BUY THE LEADER AND GET THE LEADING BUY

SPUR MOTOR CO.

Spur, Texas



Lee Taylor, of Wichita community, was in Spur Monday attending to business matters and greeting friends. He brought in four dozen eggs to apply on his subscription and the editor and family enjoyed a good breakfast next morning.

Mr. and Mrs. W. I. Moore, of Medo, were doing some trading and greeting friends in our city Saturday.

Don't Neglect Your Gums

Do your gums itch, burn or cause you discomfort, druggists will return your money if the first bottle of "LETO'S" fails to satisfy. (4)

Sanders & Chastain Pharmacy



The Twin Meloders, Jimmy and Eddie Farren, Radio stars and recording artist with Harley Sadler Show, Monday, October 20 in Spur.

IS THE INTEREST RATE TOO HIGH On Your Farm Loan?

REFINANCE
Through The
FEDERAL LAND BANK

See
James B. Reed
SPUR NATIONAL FARM LOAN ASSOCIATION

East Ward School News

Mrs. W. A. McAlpine has been employed to teach in the Fourth grade work and will begin her work next Monday which is the beginning of the second six weeks term. A third division of the First Grade has been arranged and Mrs. H. C. Gruben will be the teacher in the new division. Both of these ladies have taught in Spur schools in former years and are recognized as fine instructors.

Tests on the first six weeks of work are being conducted this week. Reports on the work will go out Wednesday of next week and parents will have an opportunity to inspect the work their children have been doing. It is reported that more pupils in the East Ward are patronizing the lunch room this year than ever before. More than 100 pupils from East Ward get hot lunches at the school lunch room this year, and all report that the lunches are much better than they have been formerly.

The enrollment at East Ward was 317 last Monday, the largest it has ever been in the history of the school at this time in the term. That is a gain of 29 since school began.

There will be a Halloween carnival sponsored by the three P. T. A. organizations this month. This carnival will be held Thursday night (October 30, being set up one day on account of the football game which will be Friday night of that week. Plans are being formulated and a more specific announcement will be made next week. But everybody had a good time at the school carnival last year and will want to attend this one.

The assembly program Friday afternoon at 1:30 will be given by Mrs. Patton's room. Parents are invited and urged to be present.

The Rhythm Band is in practice now to be ready to give several selections at the school carnival. They will have their new uniforms by that time and will be a grand show within themselves.

—BUY U. S. DEFENSE BONDS—

Mr. and Mrs. Cal Martin spent the week end at Los Vegas, N. Mexico with their son, Everett, who is a student at the Highland University. Young Martin recently completed his courses in flying there and if he is not called into service, will receive a Bachelor Degree at the mid-term. He gave his parents an airplane ride and then saw him play football once again. H. J. Parks, east of town, was in Monday looking after business mat-

U. S. Building World's Finest Fighting Planes

The American aircraft industry is now turning out the finest fighting planes in the world, according to Robert A. Lovett, Assistant Secretary of War for Air.

This statement was borne out by Walter Leckrone, a writer for the Scripps - Howard newspapers, who made a lengthy survey of military aircraft production. He said America is building the "four fastest and deadliest fighting planes the world has ever seen."

Two of these new ships are the Bell Aircobra (the Army's P-39) and the Lockheed P-38.

The P-39 has been tested at speeds above 400 miles an hour and at an altitude of 15,000 feet. It mounts the heaviest armory of weapons ever carried by a light plane — eight machine guns and one 37 mm. cannon. A single shell from the cannon is powerful enough to blow an enemy aircraft out of the sky.

The P-38 was described by Air Secretary Lovett as "the fastest military plane in the world today." The Republic and the Curtis plants are also building new interceptor and fighting ships.

The Army has four new types of bombing planes coming off the production lines. One of these is the Douglas A-20, which has a speed in excess of 300 miles and is said to be the best of its class in the world.

The two medium bombers are the North American B-25 and the Martin B-26. In describing these ships, Air Secretary Lovett said:

"Each carries a crew of five. With a top speed only slightly less than certain famous fighter types currently used abroad, the B-25 has range, speed and load abilities superior to any foreign medium bomber. The Martin B-26 has a slightly higher top speed than the B-25 and its high cruising speed makes it the fastest bomber of its class in the world."

The production schedule on these new ships has been stepped up considerably. Each model has been thoroughly tested and it was made certain that they were the best possible types before war production got under way. In designing the ships, the experience gained by the Brit-

ish in actual fighting was taken into consideration.

"Production is beginning to roll," said Mr. Lovett, "and our share of it from here on should enable us to equip combat units at the rate of about one squadron every day. The rate should increase in coming months."

—BUY U. S. DEFENSE BONDS—

Cecil Caplinger went to Dallas Friday to confer with a specialist and to receive clinical examination. The physicians expressed a belief that he can recover his health without an operation and placed him under special instructions.

1917 Study Club

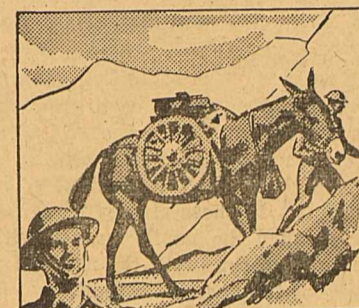
The 1917 Study Club met at the home of Mrs. E. L. Adams Tuesday afternoon at 8:30 o'clock. The president, Mrs. Clark Forbis, conducted an interesting business session. Then the meeting was turned over to Mrs. Malcom Brannen.

The principal speaker of the afternoon was Mrs. Henson. Other speakers were Mrs. Carl Patton and Mrs. Tom Posey. —Reporter.

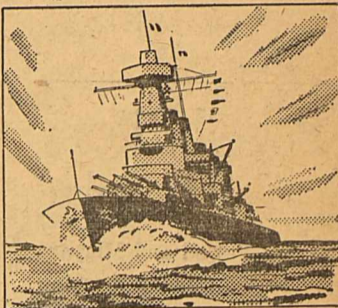
—BUY U. S. DEFENSE BONDS—
Mrs. Hagins, of Gilpin, was in Spur Saturday doing some shopping and visiting friends.

Fall in!

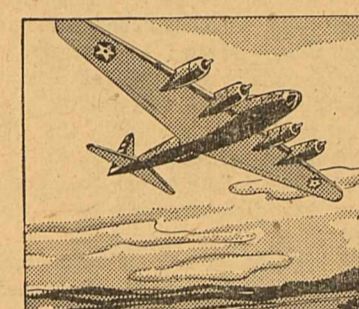
With more than 60 per cent of their efforts devoted to defense work, General Electric workmen, scientists, and engineers are in the front rank of America's defenders.



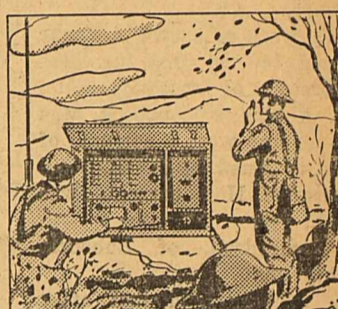
1. The U. S. Army carries pack howitzers wherever man and mule can go. General Electric is making them on machines that once made electric motors.



2. Big as a house is a battleship's transmission. General Electric made the gears, and the turbines that drive them, for four U.S. battleships launched recently.



3. Plane engines smothered for lack of air at high altitudes until the turbosupercharger, largely developed by G-E engineers, enabled them to fly seven miles up.



4. You depend on your radio for entertainment, but in the Army and Navy lives depend on radio-communication. General Electric makes sets for the Signal Corps.

General Electric believes that its first duty as a good citizen is to be a good soldier. General Electric Company, Schenectady, N. Y.

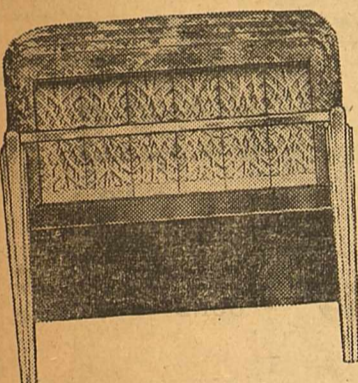
GENERAL ELECTRIC

STUDY CHIROPRACTIC

At the Texas Chiropractic College in San Antonio, Texas, which credits knowledge and natural ability as prerequisites for success.

Personal faculty assistance and supervision makes your work pleasant and profitable. For full particulars consult

Doctor O. R. CLOUDE, D. C.



HEARTH GLO GAS HEATERS

- EFFICIENT BURNERS
- MADE FOR THE FINEST HOMES
- POPULAR PRICES

\$3.95 and up.

Just received Big Shipment of Butane Gas Range Stoves. They will make the mother, or wife feel supreme in their kitchen.

THACKER - GODFREY CO.

HOME FOR BETTER FURNITURE

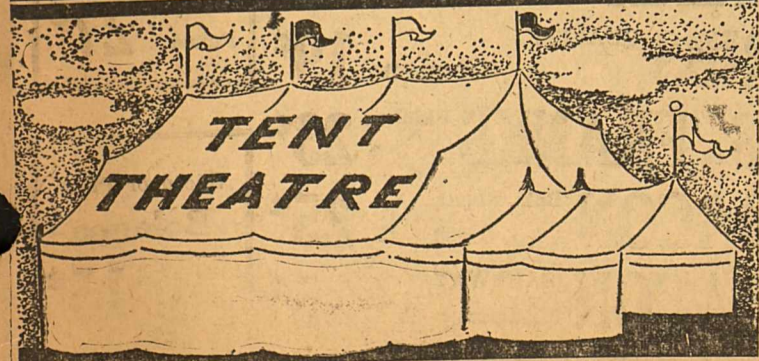
Show at Dickens Sunday Night, October 19

SPUR TWO NITES ONLY — STARTING

MONDAY **20** OCTOBER

AUSPICES SPUR FIRE DEPARTMENT

HARLEY SADLER



GENERAL ADMISSION RESERVE SEATS
Adults 27c—tax 3c—Total 30c Adults 18c—tax 2c—Total 20c
Children 9c—tax 1c—Total 10c Children 9c—tax 1c—Total 10c
ALL NEW STAGE SHOW

NEWS RELEASE FROM WASHINGTON

TIRE PRICES GOING UP!

RIGHT NOW IS THE TIME TO GET YOUR

GOOD YEAR TIRES

WHY YOU SHOULD BUY YOUR TIRES NOW

- 1—Tire prices are scheduled to go up.
- 2—Tire stocks are low. You may have difficulty getting your size later.
- 3—Tires mounted in cool weather last you longer.
- 4—You need gripping, non-skid treads for fall and winter slippery roads.

Great GOODYEAR "G-3" All-Weather

Your big value buy for long, safe mileage at low cost.

LAST CHANCE PRICE **\$10⁸⁹** SIZE 6.00x16

Plus amount of excise tax. Cash price with your old tire. Other sizes priced in proportion.

WRITTEN LIFETIME GUARANTEE

THEY make good or WE do!



GOODYEAR QUALITY BEGINS WITH THE **ALL AMERICAN TIRE**

LAST CHANCE PRICE **\$6⁷¹** SIZE 6.00x16

Plus amount of excise tax. Cash price with your old tire. Other sizes priced in proportion.

WRITTEN LIFETIME GUARANTEE

THEY make good or WE do!

BUY LIFE GUARD PROTECTION NOW

ALLEN AUTO SUPPLY

Chief Scout Executive



Dr. James E. West, Chief Scout Executive of the Boy Scouts of America for more than 30 years and Editor of "Boys' Life" magazine since 1923.

Ensel-Powell Rites Held Sunday Morning

Miss Elizabeth Powell and Minyard Ensey were married Sunday morning at the home of the groom's parents, Mr. and Mrs. T. C. Ensey. Rev. R. C. Brown, minister of the First Christian Church, read a double ring service which united the young couple as husband and wife.

The groom is a son of Mr. and Mrs. T. C. Ensey, just west of Spur. He is a graduate of the Spur High School and attended A. and M. College. He is one of the most energetic and business-like young men this community has ever produced.

Texas Asked For Army Modified Induction Plan

Major General Richard Donovan, Eight Corps Area Commander, with Headquarters at Fort Sam Houston, has issued call upon the Governor of Texas that will place in operation the Modified Induction Plan through the employment of Army Examining Stations.

This will remove a source of much criticism, since registrants will know whether they are accepted or rejected before making final arrangements in their personal, financial and other affairs prior to call for induction.

An Army Examining Station serving this area will commence operation on October 29, 1941, in the Post Office Building, Lubbock, Texas. Army Recruiting Officers in the Area are daily being called upon for information and advised by men seeking detailed information on Army matters.

Jobs For Graduates

Many unfilled positions every month virtually assure immediate employment opportunities on graduation. Urgent demand for graduates both in business and government offices at handsome starting salaries. Phone, call, or write today for Special Offer, before rates advance. Draughon's Business College, Lubbock Texas

Junior High School News

Jane Brannen and Dorothy Karr Spur Junior High School has added two new pupils to her roll. They are Leata Farmer who is in 6-A, and Neoma Whitecotton who is in 7-B.

Every Thursday the pupils in Junior High have a singsong in the gym. Mrs. Lively has taught us several songs in rounds.

The tumbling class is under way. The members are O. E. Byrd, Ted Smith, Bobby Wright, Ernest Roberts, Billy More, J. W. Wilson, Hardie Dement, Albert Brown. The following are boys who may later make the team: Howard Wilson, Billy Wayne Dyess, Mac Brannen and Roland Hairgrove.

Room 8-A is making Halow'e'en favors for orphan children as a Junior Red Cross project.

Every Friday in Eighth Grade English class there is a program given. Each room is divided into four groups. There is a Friday for each group to give a program. So far the programs have been very enjoyable, and it is believed that they will continue so in the future. In these classes when the roll is called the pupils answer with a verse from the Bible, the name of a flower, or the name of a fruit.

Used To Pay Debts

Silver dollars are carried to pay debts, not to create a sensation, thinks Nana Mae Milliken of Monta Vista, Colo., enrolled as a freshman home economics student at Texas Tech this fall. She was faintly surprised at the stir caused in the college business office when she rolled out 20 silver dollars to pay the balance on her first month's room and board.

She brought six more silver dollars with her—just because she happened to have them—from her Colorado home, but failed in her effort to spend each one. Every attempt was thwarted by some eager coed who offered her a dollar bill in exchange for the collector's piece. Others asked her to send home for silver pieces coined in the year of their births.

Asked if they were not heavy to carry around in a purse, she answers matter-of-factly, "Oh, you don't carry them unless you are going to pay a bill."

Found in West Texas

Latest addition to the "zoo" of prehistoric fossilized animals displayed in the Texas Memorial Museum, on the University of Texas campus, is a 175,000,000-year-old forerunner of the crocodile.

The reptile—known as a phytosaur—was discovered by a University-WPA geological field crew in Howard County. Its body measures 15 feet in length, the skull alone being four feet long.

The Phytosaur lived in the swamps of West Texas during the period when dinosaurs were beginning to inhabit the area, Dr. E. H. Sellards, Museum director, explained.

In seeking its prey, the strange creature would submerge in the water, leaving its eyes and nose above the surface, and would advance in a manner not unlike a submarine of today, Dr. Sellards pointed out.

Dickens School News

The assembly program Friday morning at nine o'clock will be given by the Seventh and Eighth Grades under the direction of Miss Erna Mae Overstreet. They will present a one act play entitled "When the Wife's Away." Other numbers on the program will consist of readings and musical numbers. Parents are extended an invitation to enjoy this program.

Miss Neta Polk, one of the teachers, and her sister attended the State Fair at Dallas the last of the week. They reported a great fair this year.

The school faculty held a meeting Monday afternoon to discuss school activities. Also, plans methods and other features were discussed which were thought would make the school work more efficient.

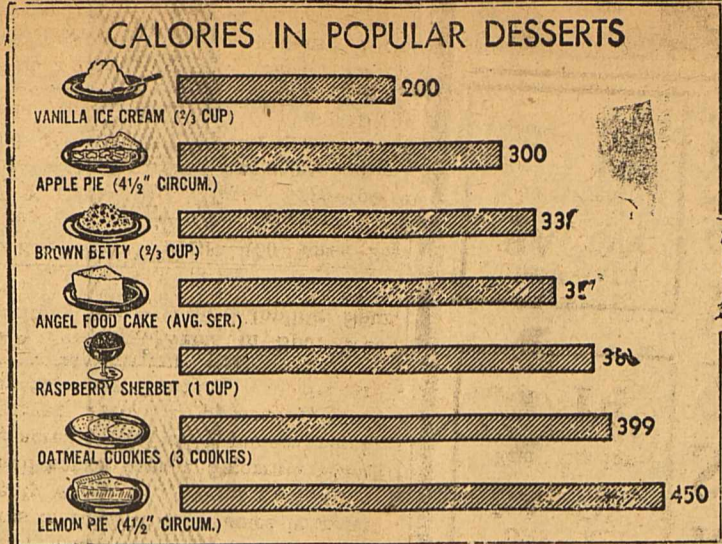
The school girls basketball team played the outsiders in the school gym Friday and won with a score of 18 to 8. This was a hotly contested game and people enjoyed it.

Helen Patterson, daughter of L. B. Patterson, has been selected as a member of the Wah Wahyaysee drum and bugle corps at McMurry College, Abilene, Texas. The corps selected 26 new members by tryouts last week.

Marching strength of the Wah Wahs is 50 members at each appearance. The corps now includes drum, bugle, bell lyres, flag and baton twirlers.

Miss Patterson is a Swiss-flag twirler and a sophomore student majoring in Business Administration. She is a resident of Spur.

Little Known Facts About Ice Cream



Many people are not aware that most popular desserts are much higher in calories than ice cream.

According to figures recently compiled by the National Dairy Council, an average serving of vanilla ice cream, measuring approximately one sixth of a quart, provides 200 calories. Compare this with 450 calories for a piece of lemon pie or 350 for a serving of angel food cake.

Another mistaken idea about ice cream is that it is "full of air." Air is a necessary ingredient in ice cream, as without it a solid frozen mass would result. Ice cream that did not have air beaten into it would be like bread that had not risen. The principle is similar to that followed in the kitchen when air is beaten into eggs, whipping cream, or batters.

The combination of lobster or star fish and ice cream in a meal

is still believed by many to be a cause of indigestion. Scientists have disproved the old belief, stating that if the fish is fresh no harm can result from the combination. Fish is often combined with milk in tasty sea food dishes. Ice cream, a milk product, can be served in the same meal with equal success.

Ice cream is a balanced food containing most of the nutritive elements of milk—protein, minerals and vitamins. Cream, milk and milk concentrates supply the sometimes missing fat, the basis of all ice cream. The typical composition of ice cream is about 40% cream and milk products, 14% sugar, 4.5% flavor, 0.5% stabilizers (usually gelatin).

About 4 1/2 billion pounds of milk are used each year to supply the cream and other dairy products used in the twelve hundred million quarts of ice cream which Americans eat annually.

Patients At Nichols Sanitarium

Anne Thurston, daughter of Rev. and Mrs. H. L. Thurston, city, underwent an operation Monday night. She is getting along fine at this time.

Claude Hairgrove, of Highway, underwent an operation Friday. He seems to be getting along fine.

Mrs. Albert Baillio, city, underwent an operation last week, and seems to be doing all right.

Virgil Peak, of Jayton, arm torn badly in a gin, Saturday, was treated at the sanitarium. Seems to be doing very well.

Mrs. Raymond Dodson, of Afton, underwent an operation Monday and seems to be doing fine.

M. L. Williams, of Dry Lake, underwent an operation Saturday night for ruptured appendix. Very ill but seems to be improving.

Mrs. W. C. Bronson, northeast of town, still is in the sanitarium and is improving.

Mrs. Kate Senning, city, fell Saturday morning and broke her right wrist. She was given X-Ray examination and the fracture set. She is getting along very well but has to endure a lot of pain.

Dr. O. R. CLOUDE Graduate Chiropractor MAGNECOIL-DIETETICS 103 Hill Street, Spur, Texas

Exchange Club Meeting

The Exchange Club met in the home of Mrs. Walter Carlisle. Those present engaged in sewing. The roll call was responded to by each one present with a poem.

All members present except three. There were 12 invited guests, and everybody reported a good time.

Gifts were exchanged at the close of the meeting.—Reporter.

Ladies FOR HEALTH SAKE BOWL Spur Bowling Club. Includes an illustration of a woman bowling.

Exchange Club Holds Meeting

The Exchange Club met in the home of Mrs. B. T. Moore Wednesday, October 8. A short business session was held at which a new member was elected.

The roll call was miscellaneous. Gifts were exchanged and pals were revealed.

The Club is formulating big plans for their annual Christmas banquet.

The next meeting will be with Mrs.



FOR RENT—Front bed room, private entrance, bath and inner spring mattress. Close in. Phone 207. 1016-tn.

Wanted—An electric washing machine. Spur Trading Post 10-16-tn.

FOR SALE—1938 Ford Coupe, excellent condition. Will trade for some live stock. See George Sloan, 10-16-tn.

FOR SALE/OR TRADE—40 acre farm just west of Spur. Phone 6. 1p.

FARM FOR SALE—165 acres seven miles west of Spur—Dry Lake community—known as C. A. Nash place, \$1,100 in Federal Land Bank. \$17.50 per acre. If interested write D. M. Tidwell, Administrator, 909 N. Wilson Way, Stockton, Calif. 10-16-3tc.

FOR SALE—A well improved 80-Acre farm right at edge of town. Good terms. See E. J. Lassetter. 1tp.

WANTED PARTNER—Am leaving early Sunday morning, October 19, for California. Will take two or three to help pay expenses. Contact L. C. Ponder, two miles east of Spur. 1tp.

FOR SALE 171 Acres of Land in Fisher County, located southwest of Longworth, Texas, 80 acres in cultivation, balance good grassland. Good improvements. See G. W. Blakley at Merchant's Freight Lines for further information. 2tp

FOR SALE—A 1936 Model Frigidaire in good condition at \$80.00. Over 4 cubic feet. Call No. 281, Spur 3-tp.

FOR SALE—1941 model Ford tractor and full equipment \$900.00. John Deere Row binder, \$75.00. Terms. L. D. Cravey, P. O. Box 22, Spur, Texas. 9-11-tn

FOR SALE—164 acres mixed sandy land farm, 1 1/2 miles southwest of Spur; near church and school, 92 acres in cultivation, balance in grass. Plenty wood, good well of river water. Small house, barn and corral. \$22.00 per acre. Crop and 1-4 mineral rights reserved. Terms. L. D. Cravey, P. O. Box 22, Spur, Texas. 9-11-tn.

FOR SALE—Farms in Spur trade territory, see Leonard Jopling, Spur. 8-28-tn.

FARM FOR SALE—150 acres 2 1/2 miles northeast of Spur known as the W. T. Garner home place. \$30.00 per acre with the rent. \$1,500.00 down, and terms. Wayne Carlisle, Littlefield, Texas. 9-25-4tp.

FOR SALE—Chester White gilts, registered. Will give papers. See Negro Wolfe at Spur Cafe. 10-2-4tp

WANTED—1,000 dozen eggs on subscriptions at the Times Office next week, starting Saturday Two dozens for a years subscription.

Good neighbor COFFEE DAYS. A SPECIAL CELEBRATION... INVITING YOU TO TRY THE FINE, FRESH, FLAVORFUL COFFEES GROWN BY OUR GOOD NEIGHBORS, THE LATIN AMERICAN COUNTRIES. FEATURED THE YEAR-ROUND BY SAFEWAY. Includes a list of coffee products and prices, and a 'GUARANTEED MEATS' section with items like Round Steak, Seven Steak, Short Ribs, Weiners or Franks, Sliced Bacon, and Roast.