



THE MULESHOE JOURNAL



Dedicated to the Progress and Development of Bailey County and the South Plains of Texas

ALTERA SCRIPTA MANET—THE WRITTEN WORD ENDURES

MULESHOE, County Seat of Bailey County, TEX AS, THURSDAY, JANUARY 19, 1939

VOLUME 16 NUMBER 52

Tractors Destroying Family Size Farms; 800 Tenant Farmers In Bailey Co. Lose Out This Year

College Station, Jan. 18.—Destruction of the family sized farm, resulting from an increased mechanization of farm activities is responsible for a large part of the recent increases in governmental activities, quotes the Farm Security Administration from a Texas Experiment Station bulletin prepared by Dr. C. Horace Hamilton, economist in rural life.

Dr. Hamilton asserts that social disintegration is brought on by an increase in use of tractors upon the farm beyond the imagination and comprehension of the average man. "Some areas of Texas have become completely mechanized, with one tractor replacing from five to nine human families."

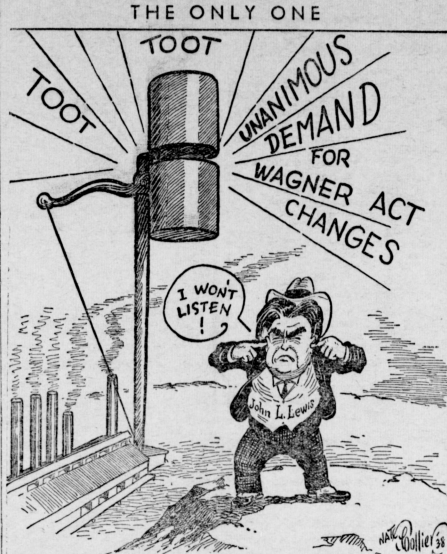
In Bailey county it has been estimated between 600 and 800 tenant farmers will be completely dispossessed of their former farm homes this year, while

another approximately 275 will have to move to some other farm.

Is Poorly Controlled

Evidence of "a very critical" social problem is presented, he said, in the fact that the Works Progress Administration and the Farm Security Administration in Texas are trying to take care of 75,000 families who have been thrown out of employment on the farm. Expansion of governmental functions he declared to be "the fruit of poorly controlled mechanization." Under our old rural culture, Dr. Hamilton said, we had developed the family farm institution in such a way that our social needs such as education, care of the aged, the dependent, and the unemployed were made without any elaborate political organization or expense. The fact that we are now spending billions of dollars to do things

(Please turn to back page)



NATIONAL FARM LOAN ASSOCIATIONS COMBINED WEDNESDAY; WILL COVER FIVE COUNTIES IN THIS AREA

At a meeting of the stockholders, Muleshoe and Farwell National Farm Loan associations held at the court house in Muleshoe Wednesday afternoon, the consolidation of the two associations was unanimously approved.

A meeting of the new Board of Directors was held immediately following the stockholders meeting and George W. Bolton was elected president of the board, D. C. Stovall vice-president and L. W. Jordan re-elected secretary-treasurer and appraiser. R. J. Klump, J. T. Gilbreath, H. H. Carlyle, Dr. A. E. Lewis, Ray Griffiths and W. E. Renfrow were elected loan committee.

An auditor from the Federal Land Bank will be in Muleshoe at an early date to audit the books of the two associations and assist in the consolidation of the records. The name of the combined organization will be the "Western National Farm Loan Association," and its chartered territory will cover all of Bailey, Farmer, Lamb, Cochran and Deaf Smith counties, being the same territory covered by the two former associations.

Decline in WPA Work Creates Most Serious Situation In West Texas City And Counties Hold Meet

A preliminary meeting of county judges, city mayors and other officials was held in Lubbock Friday afternoon to canvass the unemployment situation of West Texas, at which time it was decided to hold another meeting in that same city, at the Hilton hotel, Thursday afternoon, January 19, beginning promptly at 1:30 o'clock. The forthcoming meeting also has the sanction of Homer Bouldin, president, West Texas County Judges and Commissioners association, and all county judges, mayors and other county and city officials are urged to attend.

Commenting upon the proposed Thursday meeting, M. G. Miller county judge of Bailey county said:

"Our information is that at present the WPA is having to lay off a goodly number of workers because of lack of money—that the number of unemployed

who are qualified for WPA work is increasing by leaps and bounds.

"Because an effort is being made in Congress to reduce WPA funds, and perhaps require local governmental units to assume more responsibility, both as to financial and managerial assistance, we believe there is a definite probability of the situation becoming even more acute.

"Because of the seriousness of this situation, we believe it the duty of county, city and school officials to get together and devise ways and means of presenting this matter to Congress.

"The purpose of the meeting next Friday was to get the true facts in connection with this situation—to decide whether or not to present these facts to Congress, and how—and, insofar as possible, to learn firsthand the present requirements of WPA and our responsibilities in connection therewith.

Basketball Is The Leading Sport In Schools

Beginning Thursday of this week the Muleshoe High school girl's and boys' basketball teams will participate in an invitation tournament at Sudan High School gymnasium. Teams from numerous schools of Lamb, Bailey and other neighboring counties will take part in the playing which will continue thru-out Friday and Saturday.

Tuesday night of this week the local teams played match games here at the gymnasium with the Pettit High school boys and girls teams. The Pettit boys defeated the Muleshoe team in previous games played this season.

The Bula High school girls and boys basketball teams played the local school teams in match games here Tuesday evening of last week.

Muleshoe girls were victorious with scores of 51 and seven. This was a fast moving and interesting game, and all players of the local team, Miss Flora Morris coach, showed excellent team work in their playing.

Only 269 Poll Tax Receipts Issued In County To Date

Receipts for poll tax receipts in Bailey county are rather slow according to W. E. Renfrow, county tax collector, only 268 such receipts having been issued up to last Monday afternoon. The total poll tax receipt issued in this county last year was 1,598. However, since it is but only one year, there will be several state constitutional amendments coming up for voting this year, and perhaps other measures of interest, the Collector said he expected a spurt in such collections before the start of deadline Jan. 1. Demand for exemption certificates have also been light.

Eligible for exemption certificates are those who become 21 years of age between Jan. 1 and any election which may be held during the current year, also those who have reached their 90th birthday anniversary before any election of 1939.

1698 Auto License Plates Issued In Bailey For 1939

Bailey County Tax Collector W. E. Renfrow last week received a total of 1,698 auto and trailer license plates for 1939, and will begin issuing them between Feb. 1 and 15, according to demand. The law requires a change of plates by April 1, when the new auto fiscal year begins, but auto owners are warned to not place them on their vehicles before that date as that will still be a part of the present fiscal year which must adhere to the 1939 plates.

Passenger car plates this year will be orange with black numbers, the Bailey county numbers running from 19-001 to 21-100. Commercial truck license will be green with black numbers, running from 3451 to 3650. Farm trucks will be maroon background with green numbers, running from 3501 to 3750.

Finley White Is New Farm Agent For Bailey Co.

Finley White, of Silverton, accompanied by his wife and twin child, were in Muleshoe last Sunday afternoon, looking over the new territory he is to serve in the near future county agent, succeeding W. C. Taylor.

White expects to begin his work in Bailey county the latter part of next week. For the past five years he has been county agent of Briscoe county where his work has been exceptional meritorious and the citizens of county are loath to release him, but another has been appointed to in his stead to follow him there.

Mr. White, while a native of Mississippi, has spent most of his life in Texas, residing here ever since he was 11 years of age, though he later returned to Mississippi for his college work. Previous to his going to Briscoe county as farm agent he served acceptably as a graduate of the Agricultural Department, Texas A. & M. University, class of 1923.

He is a graduate of the Agricultural Department of the University of Texas, and has spent a considerable amount of time, being out of Entomology.

K. J. Edwards, district agricultural agent, speaks in the highest terms of Mr. White's service in Briscoe county, and unhesitatingly commends the farmers and other interested citizens of Bailey county. There are a number of persons in Bailey county who have been personally acquainted with Mr. White several years past, knowing him to be a very efficient worker in his chosen field, a gentleman of the highest order, courteous, friendly, a gentleman with the public, and who he thought to know he will be a fine farm agent of this county.

W. C. Taylor, retiring farm agent, has not yet completed his final papers, a gentleman of the highest order, courteous, friendly, a gentleman with the public, and who he thought to know he will be a fine farm agent of this county.

Investigation For Oil In Lamb And Bailey Counties

Further oil investigations are now being made in this area, it being reported the Humble Oil Co., is now operating a seismograph crew in south Lamb Co., adjoining Bailey on the east. Sporadic investigation with the seismograph have also recently been made in the southern part of Bailey county by another oil company.

Recently several more land oil leases have been sold at fair prices, and it is said other leases, spotting the land here and there, are also to be taken in the near future.

Several months ago more than 50,000 acres of Bailey county land was leased for oil investigation purposes, and with the oil area of Cochran and Hockley counties gradually reaching out in this direction, it is said oil companies are becoming more interested in the possibility of production in Bailey and Lamb counties.

County Commissioners Grant Right-of-Way For Highway 214

Bailey County Commissioners' court in session last week passed an order approving the State Highway Commission's requirement for 120 foot right-of-way on State Highway No. 214 leading north to the Farmer county line. Similar action has also been taken by the Farmer County Commissioners' court.

On petition of 10 citizens a Jury of view composed of Ed Hulise, Elmer Hold, J. M. Phillips, C. W. Williams and Charlie Phipps, was appointed relative to opening of a new county road starting at the S. E. corner, sec. 51, and S. W. corner Sec. 52, blk. B, Melvin Blum and Blum subdivision, thence N. between secs. 51 and 52 and between secs. 38 and 39 all in block B, said subdivision, to N. W. corner sec. 39 and N. E. corner sec. 38, blk. B, intersecting the Stegall and Bailey-boro road and terminating at N. W. corner sec. 39 and N. E. corner sec. 38.

Use of highways in Bailey county was granted the Bailey County Electric Co-operative association for erection and maintenance of electric transmission and distribution lines.

It was voted salaries of all county officials would remain the same during 1939 as they were in 1938.

3 In 1 Meeting Will Begin Here Sunday All Urged To Co-Op

A special series of revival services, under auspices of the Baptist church, the Church of Christ and the Methodist church, will begin next Sunday, and the ministers of these churches are asking for the full cooperation of every individual and organization of the town.

As these services will only last for eight days, it is urged they be given the right-of-way in all activities. The preachers say they feel they are not asking too much, that all clubs and lodges have their meetings so that they will not interfere with their various members attending the services.

The day services will be held at the theatre building with all cooperating in that service, and there will be services in each of the above named churches in the night. The preachers are not asking the business places to close their places of business unless they feel that they can do so without hurt to their business, but to make such arrangements as they can, so most of their help can attend the day services.

The success of these services is declared, will depend upon the cooperation of each citizen of Muleshoe and surrounding community.

115,000 CORRESPONDENTS WRITE FOR WEEKLIES

There are approximately 115,000 correspondents gathering news each week for the 11,852 weekly newspapers of this country, according to a figure released recently by the New York State Colleges of Agriculture and Economics. The amount written by all of the correspondents each week, according to the success of these services is declared, will depend upon the cooperation of each citizen of Muleshoe and surrounding community.

Senator Nelson Gets Appointment On Vital Committee

Austin, Jan. 16.—Selection of Senator C. H. Nelson this district as a member of nine important Senate committees has been announced by Lieutenant Governor-elect, Coke Stevenson.

Senator Nelson was named chairman of the Judicial districts committee, and vice-chairman of the Commerce and Manufacturers committee.

He was appointed a member of the highly important State Affairs committee which will consider all old age pension bills, tax measures, liquor control, and other subjects of state-wide importance.

Nelson was appointed to the Highways and Motor Traffic committee which will consider the question of raising the 7,000 pound limit on trucks.

Other committees to which Nelson was appointed were Counties and County Boundaries, Representative and Senatorial Districts, and State Institutions and Departments.

BAILEY COUNTY SHEEP BRING TOP PRICE

Selling well up in the price range for Texas steers, Habel Cattle Company's offering on the Kansas City market last week brought \$9.75 per cwt. There were 75 head in the shipment which average 1,109 pounds.

In the lamb division these sales were noted for C. M. Black, Muleshoe: 100-lb. lambs, \$9-pound average, \$8.25. Feb. 4. It will be under auspices of the Home Economics department and proceeds go to benefit of that department.

There will be approximately 10 characters in the cast.

HOW SANDY SANK THE SINK

I had twelve bottles whiskey which my wife said I must pour down the sink—or else.

So I went down to the cellar and poured the first bottle down the sink, all but a small glassful which I drank. Then I poured the second bottle down the sink, except a glassful which I drank. Then I took the third bottle which I poured down the sink, except a couple of glasses which I sank.

Next I took the fourth glass and bottled it down the sink, except a bottleful which I drank.

Then I took the seventh sink and drank it except for bottleful which I sank.

Next I poured the twelfth bottle down the glass, except the bottle which I bottled, which I sank in the sink, except a collarful which I tried to sell but had to drink instead.

Then holding the house steady with one hand, with the other, I fended off the other forty-three houses in the street as they came swimming up the cellar steps, except the cellar which I sank. I watched the corps pull the houses of the bottles and pour the sinks down the whiskey, except a glassful which I drank.

Summer session of Tech college, Lubbock will begin June 5. The second summer term will start July 17.

FRIENDS HELP MURRAH TO CELEBRATE

A Sunday surprise dinner was given in honor of Hill Murrah's birthday anniversary, when a group of friends gathered at his home in Muleshoe to celebrate the occasion.

A sumptuous feast was enjoyed and a pleasant afternoon was spent by guests visiting.

Among those attending were: Mr. and Mrs. W. L. Swanson, and son A. L. Mr. and Mrs. Tom Smith, Mr. and Mrs. J. J. Gross and son, Mr. and Mrs. Jess Murrah and family, Mrs. Culwell, mother of Mrs. Swanson, Mrs. Hill Murrah and the honoree.

SID HOPPING IS DEPUTY GRAND

Sidney C. Hopping, Littlefield Mason, has been appointed district deputy grand master for District No. 97, composed of four counties which include Bailey, by the Grand Lodge officials of Texas.

Mr. Hopping is well known in Muleshoe by several citizens of the Masonic fraternity who are looking forward to his official visit in the near future.

FINANCIAL CONTRIBUTIONS TO COUNTY TREASURY

In Bailey County court this week Clifford Taylor pleaded guilty to a charge of drunkenness and received fine and costs totaling \$14.00.

Loyd Bennett pleaded guilty to a charge of petty larceny, receiving fine and costs totaling \$16.80.

Chas. Leman and Tobe Wagon pleaded guilty to charges of hunting on closed land without permission, having their hunting licenses revoked for one year and assessed fines of \$10 and costs each, totaling \$23.50 each.

The Federal Crop Insurance Corp. last Saturday reported its holdings of wheat acquired as premiums on policies issued to farmers totaled 3,377,496 bushels, stored principally in elevators and warehouses adjacent to the wheat produced.

A Japanese newspaper editorially declared a few days ago Japan was determined to smash the U. S. navy if attention intended to get a foothold in China by fortifying Hainan and Wake islands.

FERN SMITH WINS STATE HONORS

High school pupils, Home department, first year girl completed their clothing re-according to Miss Oleta Moore there being 45 of them in work.

In the judging that fell Smith won first place, Bill don, second and Pauline To Winner of first place will the trip to State home convention to be held at Galveston.

JEWIS MAY COME TO WEST TEXAS AREA

A total of 46,000 acres of in the irrigation belt of Texas have been offered by the Texas Development Co. for colonizing refugee Jews from Germany having been made by the Board of Trustees at Austin.

It is also understood a group considering colonizing a tract in Bailey county, Texas have yet been made.

Buy it in Muleshoe.

"THAT WHICH A MAN DOES FOR HIMSELF DIES WITH HIM; BUT THAT WHICH HE DOES FOR HIS COMMUNITY LIVES ON AND ON." LET MULESHOE FOLKS LIVE AND DO FOR A BIGGER AND BETTER MULESHOE AND A MORE PROSPEROUS BAILEY COUNTY!



TRUCK WEEK CELEBRATION

This is the Fifth Anniversary Celebration of National Truck Week—and a wonderful line Chevrolet is offering you. Forty-five different models, 8 wheel base lengths from which to make selection, including a brand new model with Cab over Engine. In this wide line you will find a Truck for every need.

If you are in the market for any type of Truck it will pay you to come in and let us show and demonstrate to you some of these new models.

VALLEY MOTOR COMPANY

CHEVROLET SALES AND SERVICE

Mulleshoe,

Texas

DR. L. P. GIBBS

PHYSICIAN and SURGEON
Office in Damron's Drug Store
ne 38 Mulleshoe

PAT R. BOBO

ATTORNEY-AT-LAW
OFFICE OVER
WESTERN DRUG STORE
MULESHOE, TEXAS

DR. H. E. WILLIAMS

PHYSICIAN and SURGEON
Office Over Western Drug Store
Phones: Office 90; Res. 91, Mulleshoe

C. V. STEED

FUNERAL DIRECTOR
All arrangements carefully handled.
Ambulance Service anywhere
very reasonable.
Phone 47, Mulleshoe, or 14, Clovis

DR. J. R. DENHOF

Optometrist
EYE VISION WITH
COMFORT
104 W. 4th St., Clovis N. M.

Cecil H. Tate

ATTORNEY-AT-LAW
Office in Court House
Phone 52
MULESHOE, TEXAS

Dr. A. E. Lewis

DENTIST
Office upstairs over Western Drug
Mulleshoe, Texas

Send Your

Abstract Work

— To The —

**Mulleshoe Abstract
Company**

A. P. STONE, Prop.

MULESHOE, TEXAS
Agent for Warren Addition

Lubbock

Sanitarium & Clinic

Medical, Surgical and Diagnostic
General Surgery
Dr. J. T. Krueger
Dr. J. H. Stiles
Dr. Henrie E. Mast
Eye, Ear, Nose & Throat
Dr. J. T. Hutchinson
Dr. E. B. Hutchinson
E. M. Blake
Dentists & Children
M. C. C. Overton
Arthur Jenkins
General Medicine
Dr. J. P. Lattimore
Dr. H. C. Maxwell
Dr. U. S. Marshall
Obstetrics
Dr. O. R. Hand
Internal Medicine
Dr. R. H. McCarty
X-Ray & Laboratory
Dr. James D. Wilson
Resident
Dr. J. W. Sinclair
Hunt
J. H. Felton
intendant Business Mgr
X-RAY AND RADIUM
LOGICAL LABORATORY
"HOOLOF NURSING"

**General News Over
Texas And Adjoining
States For The Week**

More than 200 acres will be planted to sugar beets in Floyd county this year.

Seven hundred Amarillo school children, many of whom have no noon-day lunch, are now being given a free meal daily.

John Cox, of Amarillo, had for his Christmas dinner a turkey that was hatched out by a pigeon as she sat on her regular pigeon eggs.

The Struve cheese factory at Abertony during 1938 paid close to \$100,000 to farmers of that section for raw milk.

Co-operating in a rat killing campaign, citizens of 18 Texas counties recently, putting out 20,000 pounds of poisoned bait, killed approximately 280,000 rats.

When Gov. O'Daniel is inaugurated Jan. 17 he will wear a suit, the wool of which was grown, sheared, carded and woven at Tech college Lubbock, and made by a Lubbock tailor.

Parmer District court opened last Monday at Farwell, Judge Reese Tatum presiding. A heavy civil docket is to be heard. There are 12 divorce cases filed for decision.

A petition has been presented to the commissioners of Curry county, N. M., calling for an election on the prohibition question for the county, in general and the City of Clovis, in particular.

H. W. Stanton, Lubbock, is said to have the largest trench silo in the U. S. It is 350 feet long, 34 feet wide at the bottom, 60 feet wide at the top, 20 feet deep and holds 6,000 tons of ensilage.

It is now officially known that more than 300,000 Texas farmers and ranchers co-operating in the Federal farm program will receive approximately \$42,000,000 in conservation payments for the 1938 crop.

Officials of Potter county at Amarillo have launched a drive for collection of delinquent taxes, it being claimed there are approximately \$165,000 state and about \$90,000 county delinquent taxes due in that political subdivision.

There were 372,000 persons placed in suitable jobs during 1938 by the Texas State Employment service, 316,000 filed first claims for benefits, while more than 1,700,000 continuation claims were filed. More than a million benefit checks were mailed to eligible unemployed, averaging \$8.95 each, total amounts of benefits received being \$9,400,000. All of this came from the jobless fund built by employers of Texas during the past three years.

**Don't Give Up The
H. D. Ship Says
Mrs. Kennedy**

The great ship of Bailey County Home Demonstration work has been a good ship. She has sailed the high seas of home development carrying on board 400 women and girls. Many of these she has landed triumphantly in the ports of District and State recognition of work well done. Others she has carried securely to the clains of new worlds, in the achievement of higher plains of living. To all she has given an opportunity to build a domicile on the beautiful isle of new friendships.

Today our ship lies stranded in the wretchedness of our county's political status, her captain carried away by a pirate band, her passengers thrown into a panic. To the weak hearted it might seem that this great ship was done for; that she would be broken to pieces by the waves of discouragement and torn apart by the winds of illusion, but the stout heart of the true Home Demonstration women know this cannot and must not be true.

The ship has been fashioned from the steel of our determination to go forward, and builded by the aspiration of intelligent womanhood, she will hold together. Let us stay on board and fly high above her deck the flag of better home living, even though it must fly at half mast. Let us man our ship till such a time as the pirates barge can be sunk to the bottom of the ocean with armament given the American people to adjust unpleasant situations, then a kind of fate which destines that all things must come out right will bring our captain back and tow us out to sea. **DON'T GIVE UP THE SHIP.**

—MRS. WM. G. KENNEDY.

**HUNDREDS OF ACRES ARE
CONTOURED-TERRACED**

Surveys for terraces on 170 acres and for contour rows on 850 acres were made by County Agent W. C. Taylor during the first week of January. Plans for additional work of this kind amounting to more than 3,500 acres have been made which will be covered during the next two weeks.

NYA labor under supervision of the county agent is being used on this work. At present, only one boy is employed on this project, but it is expected additional ones will be certified soon.

**PROGRESS WOMEN'S
CLUB MEETING**

The Progress club met at the auditorium Tuesday, January 2.

It was decided the club would carry on the home demonstration work despite the fact we no longer have a home demonstration agent.

The year books of 1939 were given out and the contents were discussed. Plans for the year were the study of quick breads and cereals.

Our kitchen demonstrator, Mrs. L. R. Hogan, is very enthusiastic about plans for her new kitchen. She intends building new cabinets and changing her whole kitchen.

Home Food Supply Demonstrator, Mrs. M. A. Springstube, plans to continue her work, also.

Every member is asked to be thinking of a new name for our club, as we will no longer be called a Home Demonstration club.

The club will have their regular meetings on the first and third Tuesdays of each month.

The next meeting will be with Mrs. M. A. Springstube, January 17. This is the day for our year books to be filled out. Everyone is invited.

The name of Mrs. Jeff White was added to the club roll.

Those present: Mesdames Jeff White, W. G. Kennedy, L. R. Hogan, J. J. Gross, M. A. Springstube, Amos Williams, Cap Needham, Misses Elzada McMahon, Ada Hogan, Eunice Humphrey.—Reporter.

**NO. 1007
JOSEPHINE SCOTT, INDIVIDU-
ALLY AND AS INDEPENDENT EX-
ECUTRIX OF THE ESTATE OF A. J.
SCOTT, DECEASED, vs. W. P. SCOTT,
IN THE DISTRICT COURT OF
BAILEY COUNTY, TEXAS.**

**NOTICE OF SALE OF REAL
ESTATE UNDER EXECUTION**

WHEREAS, by virtue of an alias Order of Sale issued on the 4th day of January, A. D. 1939, out of the District Court of Bailey County, Texas, on a judgment rendered in said Court on the 18th day of December, A. D. 1938, in favor of Josephine Scott, individually and as independent executrix of the estate of A. J. Scott, deceased, and against W. P. Scott, in Cause No. 1007, on the docket of said Court, I did, on the 4th day of January, A. D. 1939, at 5 o'clock P. M., levy upon the following described tract of land situated in the County of Bailey, State of Texas, belonging to the said W. P. Scott, to-wit:

The East one half of the Southwest quarter of Section Number Twenty-three in Block "Y" of the W. D. and P. W. Johnson Subdivision, Bailey County, Texas, said tract consisting of eighty acres of land; and on the 7th day of February, A. D. 1939 being the first Tuesday of said month between the hours of 10 o'clock a. m. and 4 o'clock p. m. on said day, at the Court house door of said County, I will offer for sale and sell at public auction for cash, all the right, title and interest of the said W. P. Scott in and to said property.

DATED at Mulleshoe, this 4th day of January, A. D. 1939.

W. E. Renfrow, Sheriff of Bailey County, Texas.
Publ. Jan. 5, 12, 19, 1939.

**Forget Your
TROUBLES**

If you brood about your troubles That will only make them more; Just forget about yourself Let your mind above them soar.

Whenever you are troubled About the things you want to eat Just remember Beaver's Store Sells at prices none can beat.

**Come in, look
Over Our
Weekend Specials**

PHONE 2 FOR GOOD EATS

BEAVER'S
GROCERY & MARKET
Mulleshoe, Texas

Damron
THE Drug Store of Mulleshoe
"In Business for Your II"

SPECIAL
PHILCO
6-volt Radio and Battery

LUCKY TIGER
Special Hair Tonic deal, \$1.50 value for

GUARANTEED Bandruiff Remover of your money back

BARCELONIA
Shampoo, 50c value and 60c Zonic, both for .50

FACE POWDER
With the purchase of each \$1.00 J. of Five-Purpose Cleansing Cream we will give a 50c box of Boyer's Face Powder **FREE!**

WOODBURY
Cold Cream, with each 50c Jar Sale, a bar of Woodbury Facial Soap **FREE!**

Damron's Drug Store
We fill any Doctor's Prescription

**use the BABY POWDER that
FIGHTS OFF
GERMS**

Don't let germs infect your baby's delicate skin. Instead of using ordinary baby powders, use Mennen Antiseptic Powder. It's definitely antiseptic and fights off germs. This famous powder is as soft, as smooth and fine as a baby powder can be. But, in addition, IT KEEPS YOUR BABY SAFER—

tested against his worst enemies, germs and infection. It costs no more. See your druggist today.

MENNE'S Antiseptic POWDER

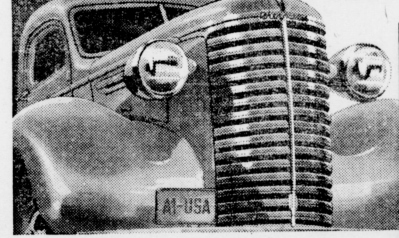
HATCHERY IS NOW OPEN

OUR BIG INCUBATOR IS SET FOR THE SEASON'S HATCHING— PLACE YOUR ORDERS EARLY FOR BABY CHICKS

CHICKS OF ALL POPULAR BREEDS AND FROM BLOOD-TESTED FLOCKS

MULESHOE HATCHERY
TYE YOUNG, Prop. MULESHOE, TEXAS

1939 CHEVROLET TRUCKS



**Again
THE NATION'S LARGEST
BUILDER OF TRUCKS**

**Brings You Higher Quality
Trucks At Lower Prices**

- FAMOUS VALVE-IN-HEAD TRUCK ENGINE
 - POWERFUL HYDRAULIC TRUCK BRAKES
 - MASSIVE NEW SUPER-LINE SHOCK STYLING
 - COUPE-TYPE CABS
 - VASTLY IMPROVED VISIBILITY
 - FULL-FLOATING REAR AXLE
 - Available on Heavy Duty models only.
- Chevrolet's unequalled truck volume naturally enables Chevrolet to give you unequalled truck value.
- Chevrolet trucks for 1939 are offered at the lowest prices ever quoted on trucks of such outstanding quality.
- Chevrolet's famous Valve-in-Head Truck Engine brings you an unmatched combination of power, reliability and economy.
- Chevrolet trucks are the only trucks in the entire low-price field with all the modern truck advantages listed here.



New Chevrolet-Built CAB-OVER-ENGINE MODELS Offering amazing new triple savings... the threefold economies of extra big load capacity, new lower prices, and exceptionally low operating costs. See your nearest Chevrolet dealer today!

SEE YOUR LOCAL CHEVROLET DEALER

THE THRIFT-CARRIERS FOR THE NATION
VALLEY MOTOR COMPANY
Chevrolet Sales and Service
MULESHOE, TEXAS

WEEKLY LAY SERMON NATIONAL NEED OF RELIGION

By JESS MITCHELL

That we are now living in a day of turmoil, discord and dissatisfaction, is evident to the most ordinary mind considering seriously present conditions. An effort to discover the cause of this present unrest, preachers, editors, sociologists, psychologists and various other leaders in the various arguments of human activity, are rapidly approaching a unity of opinion in the fact that the human race is in a state of moral degeneration, and that a return of spiritual ethics and religious living is paramount in overcoming the present manifestation of dissolution.

above God is necessary for a return of all normalcy and will be more effective than the use of navies and armies or any other methods now being advocated by totalitarian states.

Robert W. Babson, prominent long-distance economic forecaster, declares that unless America has a sweeping revival in the near future, it is only a matter of time until there will be a distinct decline in living standards as well as moral conditions, and he admits the latter has already begun.

Dorothy Thompson, widely read newspaper columnist, declares man has developed every faculty of his being except his religious instinct.

R. C. Holles, nationally known writer on economic conditions says, "because we have digressed from the philosophy of Christianity and worshiped Pagans we are now facing a crisis." Numerous other high-minded and avowedly interested citizens in human welfare might be quoted, all of whom, regardless of their own individual and peculiar ideas of application, insist that a spiritual awakening of some kind is necessary for the future welfare of the race, as individuals as well as nations.

Very little is ever done by any national government in behalf of the spiritual welfare of its citizens. Government seems to be largely interested in human physical welfare, and only in the spiritual as it may result from the extended satisfaction of the mental and physical. Heretofore, the spiritual welfare of a given nation has been largely in the hands of the various church denominations, their leading members and directors; but it now appears these churches must double their activities and must be further assisted by the leaders of other organized activities of a distinct nature, if definite and lasting results are to be obtained.

History indicates practically every economic depression is accompanied or followed by a moral depression. Witness economic conditions when Robert McChesney preached at Dundee and Scotland, men chosen, when Richard

Baxter preached at Kiddermaster, and England was aroused; when George Whitfield and other flaming evangelists came to America and this young nation was inflamed with spiritual zeal. In 1831 Charles G. Finney went to New York City when it was in the deepest throes of commercial depression, nearly all the banks were defunct, numerous leading business concerns had crashed, trade in general was paralyzed, and the people were all demoralized, and the people were all demoralized. Finney rented a down town theatre preached for seventy consecutive nights, and not only that city but for hundreds of miles around, the nation witnessed a mighty awakening when its citizens were revived spiritually, and confidence became restored economically. Numerous other similar incidences might be related where economic improvements have quickly followed on the heels of spiritual quickenings.

The Day of Pentecost, spoken of in the Bible, when 3,000 souls were converted to the Christian religion, was a definite revival meeting, and in all probabilities the Millennium, looked forward to by many people, will simply be another and a last spiritual revival before human transference from time to eternity. There are some people vitally interested in having the human race make prompt and necessary preparation for their existence in another life. I am frank to admit, I am more interested in how folks live in this life. Since humanity is born in this world, it can not possibly skip its existence, and it is my sincere belief if folks live as they ought to here, they are not going to have much to worry about in the hereafter. Other things being equal, folks who live godly lives now will just naturally gravitate to that place of eternal godly living.

The Church may be falling in its opportunity of influencing the spiritual lives of people because of the dilatoriness and lack of zeal among some of its ministers; yet when I realize the rank indifference among its membership and the icy atmosphere of congregations that greet the pulpiter, and know that preachers are human like their auditors, I can not censure them too severely. It is a tremendous thing for a man to stand in a pulpit and realize folks are going to be influenced by what he says concerning the soul and the future, it is a responsibility I fear some do not fully realize. On the other hand, it is an awful thing for folks to claim adherence to Godology and then be followers of deamology. In practically every church of a thousand members there are eight hundred of them spiritually cold and indifferent to their personal and community welfare, and the same ratio will hold good on down to the smallest churches.

Apparently, numerous church members are quite satisfied if they can just keep their names on the church rolls and remain semi-respectful adherents of spiritual organizations. They are multiplied millions of the race marching on toward eternity with little thought and care of their present spiritual conditions or the spiritual condition of their fellowman. Really, it is a tragic condition! Thousands are going on just touching religion with

their fingertips, just sauntering on lazily with little personal or community care for the present or the future.

It is a common accepted fact that the cause of God does not advance in the ratio as do material matters. Far more people are born into the world than are born into the spiritual kingdom, and in recent years the spiritual lag has greatly increased. More rank worldliness is apparent, crime is on the increase, inebriation grows, magazines are filled with the scum and dandruff and slag of sinful life and are controlled by the very scoundrels of society who pollute everything they touch. Even some churches are surrendering to numerous "isms" and "isms" that are compromising in their results.

Clearly, the condition of American citizens and of the nation generally, demands serious action. Ordinary thought and ordinary solitations are seemingly insufficient. The time for drastic action has arrived if this people and this nation is to be preserved. Scientists and philosophers, as never before have come to realize with ministers the need of definite and undelayed action in behalf of individual spiritual uplift and national improvement of social conditions. Someone has said "matter is merely spirit at a lower rate of vibration." I do not know as to that statement, it may possibly be a fact; but there are many in this nation who do realize that the mighty vibrations of spiritual entities living here do need to be greatly increased in behalf of the perpetuation of the race and of the nation.

OUT OF TOWN PRINTERS PAY NO TAXES HERE LET US DO YOUR PRINTING

Watch Your Kidneys!

Help Them Cleanse the Blood of Harmful Body Waste

Your kidneys are constantly filtering waste matter from the blood stream. But if they become clogged in their work—do not act as Nature intended—fail to remove impurities that, if retained, may poison the system and upset the whole body machinery.

Symptoms may be nagging backache, persistent headache, attacks of dizziness, getting up nights, swelling, puffiness around the eyes—redness of the face, nervous anxiety and loss of pep and strength. Other signs may be burning, scanty or too frequent urination.

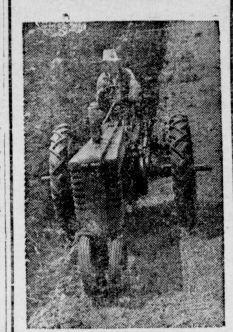
There should be no doubt that prompt treatment is wiser than neglect. Use Doan's Pills. Doan's Pills bring new friends for more than forty years. They have a nationwide reputation. Are recommended by grateful people the country over. Ask your neighbor!

DOAN'S PILLS

The Unadvertised BUSINESS

IS GOING DOWN HILL

Drive a New JOHN DEERE A or B Tractor



Get the Feel Of the Wheel

By all means, drive the John Deere Model "A" or the new Model "B". See how modern styling and design give you even better vision both to the right and left. Note the Easy, positive, shock-proof steering. A touch of the foot on convenient foot-brake pedals at row ends or fence lines makes turning easier. There's plenty of platform room so you can either sit in the comfortable seat or stand up and relax without stopping work. Price a John Deere . . . the tractor that does more work, for a longer time at lower cost. Ask for a demonstration.

W. H. PARSONS
DEALER
Muleshoe, Texas

Asphalt on Seashore
Asphalt is found in a pure state along nearly the entire shore line of the Dead sea.

PAY NO MORE!

See your Ford Dealer first for low-cost financing of FORD PRODUCTS

UNIVERSAL CREDIT COMPANY

FALSE TEETH BY MAIL—60 DAYS TRIAL

Satisfaction guaranteed or money refunded. Send No Money—Write for information

S. B. HEININGER FALSE TEETH
410 W. Huron St., Dept. 3276, Chicago.

666 relieves COLDS first day Headaches and FEVER due to Colds in 30 minutes

LIQUID TABLETS SALVE, NOSE DROPS

Try "Rub-My-Tism" a Wonderful Liniment

SILENT

... as an ICE-LOCKED POND on a CLEAR, CRISP NIGHT

THE Gas REFRIGERATOR

No moving parts. Lifetime service at low operating cost.

West Texas Gas Company

GRAIN!

BUY — SELL

STORAGE

SCALES GOVERNMENT TESTED—ALL WEIGHTS GUARANTEED CORRECT

Your Business Is Solicited

S. E. CONE
GRAIN CO.
MULESHOE, TEXAS

GRIFFITHS' ELEVATOR!

DEALER IN GENERAL FEEDS AND VARIOUS GRAINS FERTILIZERS FOR ALL NEEDS Field and Garden Seeds in Season

YOUR PATRONAGE APPRECIATED

RAY GRIFFITHS ELEVATOR

Muleshoe, Texas

You Will TRAVEL FURTHER on MANSFIELD tires

EXTRA MILEAGE

and HERE'S WHY

Mansfield Tires are built to give you extra mileage. Cord-Lock construction puts 31% more full weight cord fabric into the sidewall. The high tensile, steel plane wire beads are 7 times as strong as actually needed. The Thermic Rubber resists high speed wear and prevents "burns".

ARNOLD MORRIS AUTO CO.
Telephone 111
MULESHOE, TEXAS

OFFICIAL STATEMENT Of the Financial Condition of the MULESHOE State Bank

at Muleshoe, State of Texas, at the close of business on the 31st day of Dec., 1933, published in the Muleshoe Journal, a newspaper printed and published at Muleshoe, State of Texas, on the 12th day of Jan., 1934.

RESOURCES	
Loans and discounts, on personal or collateral security	\$239,128.24
Loans secured by real estate	1,825.28
Overdrafts	8.00
Securities of U. S., any state or political subdivision thereof	49,509.80
Other bonds and stocks owned	5,000.00
Customers' bonds held for safekeeping	5,900.00
Banking House	10,000.00
Furniture and Fixtures	2,480.00
Real Estate owned other than banking house	1.00
Cash and due from approved reserve agents	111,009.65
TOTAL	\$420,381.97

LIABILITIES	
Capital stock	\$25,000.00
Total Capital Structure	25,000.00
Surplus Fund	12,500.00
Undivided Profits, net	2,018.88
Dividends unpaid	3,125.00
Individual Deposits subject to check, including time deposits due in 30 days	362,448.84
Time Certificates of Deposit	9,182.25
Cashier's Checks Outstanding	206.20
Customers' bonds deposited for safekeeping	5,900.00
TOTAL	\$420,381.97

State of Texas, County of Bailey.
We, E. R. Hart, as President, and Jesse M. Osborn, as Cashier of said bank, each of us do solemnly swear that the above statement is true to the best of our knowledge and belief.

E. R. HART, President.
JESSE M. OSBORN, Cashier.

CORRECT ATTEST:
RAY GRIFFITHS,
HATTIE C. GRIFFITHS,
MARY E. HART
Directors.

Subscribed and sworn to before me this 9th day of January, A. D. 1934.

(SEAL) INEZ P. BOBO,
Notary Public, Bailey County, Texas.

"PASS THE BISCUITS--" PAPPY

It won't be long now before Governor Lee O'Daniel will be passing the biscuits—and gravy to his children in Texas; but—

We've been passing good, wholesome food of a wide variety for a long time to the people in and around Muleshoe. We believe they are more certain to get a square meal here than they are from the purveyors at Austin.

Just look about and see the healthy, happy folks who have been buying their food here during the past. They are all pretty well contented—and we didn't take nearly all their money either.

The Flour you buy here for biscuits is the best the market affords, as are also the rest of the Groceries we supply you.

TAXES OR NO TAXES, YOU HAVE TO EAT LET US HELP YOU SAVE MONEY

HENINGTON GROC'Y & MARKET
MULESHOE, THE RED AND WHITE STORE TEXAS

PUBLIC SALE

Having decided to quit farming, I am offering for sale to the highest bidder at my place on the Laura B. Cox farm, four miles north and one mile east of Muleshoe, the property described below, on the following day and date—

Tuesday, January 17th
SALE WILL BEGIN PROMPTLY AT 10:00 A. M.

- 32 HEAD OF LIVESTOCK**
- 1 brown Jersey Cow, 5 yrs., fresh in May, a 4 gal. cow
 - 1 brown Jersey Cow, 8 yrs., fresh in June, a 3 gal. cow
 - 1 brown Jersey Cow, 3 years old, fresh in March
 - 1 brown Jersey Cow, 6 years old, fresh in March
 - 1 yellow Jersey Cow, 2 years old, fresh in April
 - 1 cow, 6 years old, fresh, giving 4 gallons
 - 1 red Jersey Cow, 3 years old, fresh in April
 - 1 Jersey Heifer, 8 months old
 - 1 White Sow, wt. 250 lbs.
 - 16 head Hogs, weigh from 70 to 125 lbs. each
 - 75 white Leghorn and 25 Brown Leghorn Hens
 - Also, 5 other head good Milk Cows and 1 Calf.
 - 1 span Mares, 1200 lbs. each, smooth mouth.



- | Household Goods | | Farm Machinery | |
|--|-------------------------|--|----------------------|
| 1 Kingsbury Piano | 1 Divan | 1 2-row Go-devil Sled. | 1 Tanden Disc |
| 1 Florence Oil Heater | 1 Bathtub and Lavatory | 1 4-wheel Trailer | 1 2-wheel Trailer |
| 1 Coleman Gasoline Range, 1 year old | | 1 wide tire Farm Wagon good bed. | 1 set Harness |
| 1 Kitchen Sink with Drainboard | | 1 No. 2-B Gilson Seed Cleaner | 1 60-bushel Hog Feed |
| 1 Serge Electrobox Refrigerator, middle size | | A large quantity of small Tools, Implement Points, a large articles too numerous to mention. | |
| 1 large "Cooler" Ice Box. | 1 small Cream Separator | | |

Farmall Tractor, 1930 model, wheels on Rubber with Lister attachments

Allis-Chalmers Tractor, 1937 model, Lister attachment, wheels on Rubber


Portable Feed Grinder with Allis-Chalmers power unit, practical 12x14 ft. Box House with Sheet Iron Roof, almost new

Terms of Sale, CASH

NO PROPERTY TO BE REMOVED FROM PREMISES UNTIL FULL PAYMENT FOR SAME HAS BEEN MADE

FREE COFFEE—LADIES WILL SERVE LUNCH AT THE

SAM TIPTON, Owner
EDW. KERSTEN, Auctioneer, O. W. FRANCIS,



Standing for fast starting freezing weather is high test gasoline. And outstanding among high test gasolines is Phillips 66 Poly Gas. Economical, too. Costs nothing extra... because Phillips is the WORLD'S LARGEST PRODUCER of natural high test gasoline.

FILL UP WITH Phillips '66'

—AT—

PHILLIPS SERVICE STATION
On Main Street

HERSTINE BELLER, Prop.
Muleshoe, Texas

LOCALS

- E. M. Barker of Brashear was here Monday looking after land interests.
- Sheriff W. E. "Rae" Renfrow made a business trip to Big Spring Saturday of last week.
- FOR RENT: Good farm land to responsible parties. See or call R. C. Kennedy, Phone 67, Muleshoe. 51-2tp

- James St. Clair of Morton, visited in Muleshoe Sunday afternoon with Mr. and Mrs. Irvin St. Clair.
- FOR SALE: New Gold Seal 8x15 Congoleum rug. Inquire at H. D. office, Muleshoe. 51-1tc
- Clarence Goins registered a 1939 Dodge sedan in Muleshoe the latter part of last week.
- Mr. and Mrs. K. K. Smith and Mr. and Mrs. Pat Bobo were Clovis, N. M. visitors Sunday afternoon.
- FOR SALE: 10,000 bundles good cane. See Henry Randolph, 2 ml. N. Muleshoe. 50-4tp
- Otis Lilly of Amarillo was here last Saturday in the interest of Bailey county oil leases.
- A marriage license was issued in Clovis, N. M., last week to Miss Margie West and Arville Carter of Muleshoe.
- L. E. Wiggins of Clovis, N. M., attended to business and visited friends in Muleshoe, Monday.
- Attorney James A. Goudy of Olton, attended to business in Muleshoe, Monday.
- Miss Hazel Nelson visited in Lubbock Sunday with Miss Twila Farrell and other friends.
- Commissioners court met in regular session at the court house in Muleshoe Monday.

- Mrs. Bill Garrett and her mother, Mrs. Henry Ivy of the Lazduddy community were Lubbock visitors, Monday.
- Cecil McLaury attended to business and visited in Lubbock Saturday afternoon of last week.
- E. B. Reese and R. L. Maxwell of Sudan were here Monday wanting to buy a chunk of Bailey county land.
- Mr. and Mrs. Henry Hanover of Goodland, attended to business and visited in Muleshoe Tuesday.
- Rev. Jim H. Sharp returned to Muleshoe the latter part of last week from San Antonio where he attended a preachers evangelistic conference.
- A marriage license was issued in Muleshoe, Tuesday, January 3 to Miss Wilma Neighbors and Berriman Ray of Lubbock.
- I. C. Enoch of Jackson, Mississippi, was here the latter part of last week looking after his large land holdings in Bailey county.
- Mr. and Mrs. "Doc" Wilhite are constructing a new home in the west edition of Muleshoe, across the street west of the high school building.
- loyd Skeeters left the latter part of last week for Artesia, N. M., where he has accepted a position in the oil drilling section.
- Miss Hazel Nelson and Miss Elizabeth Harden made a business trip to Clovis, N. M., Thursday afternoon of last week.
- Mrs. Will Harper and Mrs. Joe Dameron, accompanied by Mrs. Charles Harris of Sudan, were Lubbock visitors Friday of last week.
- D. F. Wager, Lubbock, and Bob Rayburn of Slaton, attended to business and visited in Muleshoe Friday afternoon of last week.
- Mrs. Howard Elliott and daughter, Quinell of Lubbock spent the weekend in Muleshoe visiting her parents, Mr. and Mrs. Neil Rocky and friends.
- Mr. and Mrs. Irvin St. Clair returned home to Muleshoe Thursday evening of last week from a business trip to Dallas.
- J. C. Smith, county AAA supervisor and assistant Mrs. Reba Gibson, left Tuesday for College Station on AAA business.
- Miss Theda Wossum had as her guest last weekend her sister, Miss Jackie Wossum who is attending Texas Tech at Lubbock.
- Mrs. Ora Wood investigator for the old age assistance, from Littlefield attended to business in Muleshoe, Tuesday morning.
- FOR SALE: 75 acres 1 1/2 miles west of Muleshoe; 160 acres 4 miles north. W. A. MILROY, Clay Center, Kansas. 49-4tp.
- Frank and Vernie Snyder attended to business and visited various acquaintances in Lubbock, Saturday of last week.
- Judge M. G. Miller and Tye Young returned to Muleshoe Saturday morning of last week from a business trip to Austin.
- Mrs. Juanita St. John Cabanes of Hobbs, N. M., was here Monday looking after her land interests located in the Baileyboro community in Bailey county.
- Mrs. Charles Harris of Sudan, visited in Muleshoe Monday with her sister, Miss Naomi Harper, and parents, Mr. and Mrs. Will Harper.
- Miss Estelle Bates has been in Lubbock for the past several days with her brother, Jack Bates who underwent an emergency appendicitis operation in a sanitarium there last week.
- Judge M. G. Miller, D. Warner, H. E. Schuster, John Williams and J. W. Alford, members of Bailey County Commissioners court, made a business trip to Lubbock last Monday afternoon.
- Mr. and Mrs. Morris Childers, accompanied by his aunt of Amarillo, who has been visiting them for the past few days, were Littlefield visitors Sunday afternoon.
- Mr. and Mrs. Buford Butts visited in Spur, Sunday with Mr. and Mrs. Delma McCarty. They were accompanied on their return home by Mrs. Sallie Harden who had been visiting there several days.
- Claud Calloway, county judge of Ford county and members of the Commissioners court, all from Crowell, attended to business with local county officials at the court house in Muleshoe Friday of last week.
- Cecil McLaury has completed reconstruction of his residence, including addition of two rooms and installation of bath, the improvement being done under the first Federal modernization loan granted in Bailey county.
- Mr. and Mrs. E. W. Evans who have been visiting in Muleshoe for the past few weeks with her parents, Mr. and Mrs. Ray Griffiths, returned to Taft, California the latter part of last week.
- Through the courtesy of Senator G. H. Nelson, this district, Editor Jess Mitchell is in receipt of a special invitation to be guest at the inaugural reception given Gov. W. Lee O'Daniel and Lieut. Gov. Coke R. Stevenson. It is with much regret this scribble will not be able to be present when "the biscuits" are first passed.

- Mr. and Mrs. Jess Osborne returned the first of this week from Hope, Ark., where they were called last week on account of Mr. Osborn's mother who suffered a paralytic stroke. While still suffering from its effect on her left side, she is reported slowly recovering.
- You can secure the AMERICAN MAGAZINE, COLLIER'S WEEKLY, and the WOMAN'S HOME COMPANION as well as many other publications with our newspaper. See our Great Money Saving Magazine offers. Here is your opportunity to get really great value at small cost.
- Mr. and Mrs. Charley Shipley and family who have resided in Muleshoe for the past several months moved to Littlefield Saturday of last week. Earl Ladd and family moved into town to occupy the house vacated by the Shipleys.
- While backing an automobile out of a garage the first of this week, Claude Farrel, in some unexplainable manner was caught by the car and dragged several feet, badly wrenching a knee which will lay him off from duty for several days.
- BARGAIN DAYS rates extended to January 10, on the Fort Worth Star Telegram, Daily and Sunday, \$7.45, with Muleshoe Journal, both for one year, \$7.95. Daily without Sunday, \$6.45 With the Muleshoe Journal 1 year, both \$6.95. Don't delay. This offer positively closes Jan. 10.
- Mid-term examinations are being given in the Muleshoe High school, beginning Thursday. Each class is being allowed one hour and thirty minutes for the tests. Mid-term examinations are also being given in the grammar

- school this week. Beginning the second semester of school, Monday, January 16, if there is enough demand, commercial geography, Texas history, economics or business law will be offered to pupils desiring to study such courses.
- Miss Elmora Julch of Tulla, has been employed as primary teacher in the Muleshoe Grammar school, beginning work next Monday. The position has been filled by Mrs. Ed Johnson for the past few months since Miss Mildred Bassire resigned. Miss Julch is a graduate of West Texas state college, Canyon and has had one year teaching experience. She specialized in primary work during her college training. She comes here well recommended.

WAKE UP BUSINESS
By Advertising In This Newspaper



THIS WAS ADVERTISING ONCE

BUY SALE AGE

BUT NOW THE NEWSPAPER DOES IT BETTER



DELAYED THANKS!!

Recent illness has deprived me of the opportunity of expressing my appreciation to my many friends and customers for their patronage during the past year, and I do thank them very much.

During 1939—

I ask one and all to consider me as their Mileage Merchant and trade at my service station where every possible courtesy and mark of appreciation will be shown. We have a long list of—

CONOCO PRODUCTS, TIRES, TUBES, BATTERIES AND ACCESSORIES OF VARIOUS KINDS

Also, a Credit Plan to offer you which carries considerable merit and will be useful to you during the coming year.

I will be glad to call for and return your car at any time. I will repair Flat Tires any where and any time. Just phone 93, your Mileage Merchant, any time day or night for any needed service in my line.

R. L. BROOKS SERVICE STATION
"Your Mileage Merchant"
On State Highway No. 7, Muleshoe

CHOICE FARM LAND THAT MUST BE SOLD!

329 acres, well improved	\$1,500	CASH AND
40 acres with irrigation well	\$2,500	TERMS
20 acres with irrigation well	\$1,200	This land located
160 acres improved	\$ 500	mostly in the
10 acres	\$ 450	Shallow Water
		Area

I have 16 10-acre Tracts Ask Me About them!
PLENTY OF MONEY TO LOAN AT 5% PER CENT INTEREST

R. L. BROWN
"The Land Man"

MULESHOE, TEXAS

WARRANTS

Use only Genuine



INTERNATIONAL

Retain the lasting performance and original economy of your International Trucks by demanding genuine, correctly-priced, and precision-made International parts. Substitution never pays. Don't take chances.

E. R. HART COMPANY

FULL LINE OF PHILLIPS "66" PRODUCTS

Will be found at our Station on State Highway No. 7

"66" SERVICE STATION
DAN WINN, Prop.
Muleshoe

- Attorney J. D. Thomas of Farwell, attended to business and visited here Saturday afternoon of last week.
- R. A. Underwood of Dallas, attended to business in Muleshoe last Monday morning.
- D. L. Allen of Earth was here Monday interested in Bailey county land purchase.
- Mrs. M. A. Snider of the West Camp community attended to business and visited here Monday afternoon.
- Attorney Cecil H. Tate made a business trip to Lubbock Wednesday of last week.
- H. A. Robb has accepted a position at Beaver's Grocery & Market, beginning work Wednesday morning of last week. He was formerly employed at Henington Grocery & Market.

ROCK BOTTOM PRICES

....FOR CASH BUYING....

SOUP Nass Supreme Tomato and Vegetable, large 1 lb. 6-oz. can	.09
COFFEE, Vacuum Packed Any brand in the house, pound	.26
PORK and BEANS Medium size can, each	.07
BEANS Green cut, No. 2 size can, 2 for	.15
TAMALES La Frontera, No. 2 can, 2 for	.25
3-MINUTE OATS "National," with premium, package	.23
MATCHES 6-box carton, each	.20
SYRUP "Suncraft," pure cane, per gallon	.50
NATIONAL BROOMS Regular 75 cent seller, now	.50
Oleomargarine .12 "Springdale" brand, pound	
CHILI La Frontera 1 lb. can, each	.11
Fresh and Cured Meats	
PORK CHOPS Tender and delicious, lb.	.23
BEEFSTEAK Round, pound Loin, pound T-Bone, pound	.23
FRESH COOKIES Peculiar 10c Vanilla 7-oz. box Lemon 3 boxes 7-oz. box Ginger snaps for	.25c
BEEF ROAST Tender and Juicy, lb.	.12 1/2
BEEFSTEAK Forequarter, pound BEEFSTEAK Short Cuts, pound	.20
OTHER VALUES!!	
SAUSAGE Pure pork lb.	.20
POTTED MEATS, Libby's, 7 cans	.20

BORDER'S GROCERY and MARKET
"ORDER FROM BORDER"
Phone 65, We Deliver
Muleshoe, Texas