

Jo Ann Palmer
1207 Tayloe Ave
Sonora TX 76950-7830
48435

The Devil's River News

Serving Sutton County Since 1890

75¢

Volume 125 • Issue 32

SONORA, TEXAS

Thursday, August 8, 2013

Traffic Sign Refresher

Page 2

It's All About the Dirt



By Pascual Hernandez,
Sutton County Agricultural
Extension Agent

Page 3

State Agencies Asking Texans to Share How Drought Has Affected Their Lives

Page 4

Page Index

Page 2...Church
Page 3...FYI
Page 4...Oil and Ag
Page 5...Classifieds

THE DEVIL'S RIVER NEWS



04879 36954 7

School Board Hires New High School Principal

The Sonora School Board of Trustees, along with the recommendation of Superintendent James Hartman has hired Aaron M. Oliver as the new Sonora Highschool Principal. Mr. Oliver's previous position was assistant principal at the Carver Learning Center in San Angelo.

Before getting involved in education, Mr. Oliver served in the United States Military first in the Marine Corps (from 1993-1996) and then in the Texas Army National Guard from

2009 to present. While in the Marines Mr. Oliver served as a Cryptologic Linguist. In 2010 he enrolled in the Alabama Military Academy's Army Officer Candidate school.

In addition to the military training Mr. Oliver graduated Magna Cum Laude from Angelo State University with a B.A. in English and Spanish. In 2003 he received his M.Ed. in Guidance and Counseling, and in 2004 completed the Principal Program at ASU.

His first teaching post came in 2001 where he

taught 12th grade English at San Angelo ISD. In 2006 he taught 2nd grade Summer school as well as 8th grade English in 2008. On top of his teaching duties he also served as a Counselor (at San Jacinto Elementary) and At Risk Coordinator (Central High School) between the years of 2003 to 2011.

Mr. Oliver will be taking over for previous Sonora ISD higschool Principal Raul Chavarria who will be serving as the Crockett County ISD Superintendent.

Taking the Wild Out of Fire

By Dr. Charles "Butch" Taylor

In recent decades, the frequency and intensity of large wildfires and the length of the fire season have increased substantially. Despite the implementation of county burn bans and increased funding for fire departments, if climate conditions continue to become hotter and drier in the Southwest, this region will continue to experience a greater increase in wildfires.

Even though fire suppression should remain a high priority that is assigned to local fire departments, the wildfire problem in western Texas cannot be solved by focusing primarily on increased fire suppression efforts through more equipment, personnel, and burn bans. The current trend of increasing frequency and severity of wildfires can only be changed by developing and implementing programs that provide incentives for local communities and landowners to be proactive in reducing the levels of hazardous fuels on their lands. Large fires develop from initial small fires that escape suppression efforts of local fire departments. Attacking from the black, which local fire departments are trained to do, cannot suppress wildfires in heavy fuels with severe fire weather. There is a need to train the first responders in local fire departments in the proper and safe use of backfires for stopping the point of spread of wildfires before they become large. This technique applied early in cooperation with experienced landowners could prevent many wildfires from becoming large fires requiring expensive outside suppression efforts.

Texas passed legislation, starting in 1999, that established the landowner's right to manage their land with the use of prescribed fire; however, the potential use of prescribed

fire has not been realized due to the fear of lawsuits (liability), county burn bans, negative public reaction, and the lack of a fire-culture. The climate of western Texas is arid to semiarid and is characterized by about 60-percent of the years being below the average precipitation. Thus, droughts are a regular and expected occurrence with severe droughts expected periodically. This combined with the increasing number of homes in the rural and ex-urban areas increases the potential for both human and property losses. It has been widely demonstrated that prescribed burning reduces hazardous fuel loads significantly, thus reducing the intensity of wildfires that may occur. This contributes directly to enhanced suppression and reduced costs.

The wildfire season has already started in other states. California and Colorado are two examples that have received national news coverage because of their large and intense wildfires. Parts of Texas have received enough precipitation this growing season to grow sufficient fuel loads for potential intense wildfires with drier weather. Another factor that has contributed to the wildfire potential in our area is the amount of drought killed cedar. Not only will the dead cedar contribute to the volatile fuel load, but a reduction in cedar canopy cover will allow greater growth and production of grass. Increased amounts of grass will significantly increase the fuel load for potential wildfires.

However, these increased fuel loads can be safely managed with the use of grazing and prescribed fire. These two disturbances (i.e., grazing and fire) have naturally occurred on our rangelands for tens of thousands of years and are major evolutionally factors in the

development of our rangeland vegetation. To exclude fire and/or grazing from our environment is not natural and in fact, can be detrimental to rangeland productivity as well as public safety.

There are individuals in our community that are providing a great service to the public safety as well as improving our environment through their frequent use of prescribed fire.

For example, Curry Campbell conducted a prescribed burn on August 21, 2012 on the Live Oak Ranch in Edwards County. The prescribed burn was well planned ahead of time, and executed without any problems. Curry had developed a prescribed burn plan which ensured he had sufficient personnel to safely conduct the burn. He also had obtained a fire-weather report from the National Weather Service to ensure the burn could be conducted in a safe and effective manner. Curry is past president and currently a director of the Edwards Plateau Prescribed Burning Association which is a non-profit organization made up of landowners and other concerned citizens that form a partnership to conduct prescribed burns. Members of the burn association understand that prescribed burning is the key land management tool used to restore and maintain native plant communities to their former diversity and productivity for livestock production, wildlife habitat, and managing volatile fuel loads for public safety purposes. The Campbell burn was a family affair. Bonnie Lou assisted with the burn and also provided dinner for the burn crew. Chance was also present along with other young people to help with the burn. Allowing young people

to participate on prescribed burns is critical in re-introducing a fire-culture in Texas.

In general, Sutton County has a current fire policy that focuses almost entirely on fire suppression. While fire suppression efforts are important, they will not reduce the levels of hazardous fuels. As these fuels continue

to increase, the escalation of wildfire intensity will increase along with the associated costs of fighting these fires. Now is the time to be proactive and manage these fuels before major wildfires start to break-out. Once a fire builds into a large conflagration with high winds it will be too late.

Texas Lawmakers Sign Pro Life Bill

Gov. Rick Perry recently was joined by Texas legislators to stand for life and sign House Bill 2, which protects unborn babies after the fifth month of a pregnancy and raises standards for women's health care in Texas.

"This is an important day for those who support life and for those who support the health of Texas women," Gov. Perry said. "In signing House Bill 2, we celebrate and further cement the foundation on which the culture of life in Texas is built."

HB 2 builds on Texas' strong pro-life efforts by banning abortions after the fifth month of a pregnancy. The bill also requires physicians who perform abortions to have hospital admitting privileges at a facility within 30 miles. Additionally, it mandates that only a physician may dispense or administer abortion-inducing drugs, and requires the physician to comply with all FDA guidelines for the drug. The bill also requires licensed abortion facilities to meet the same minimum safety standards as ambulatory surgical centers, beginning Sept. 1, 2014.

"New research and advanced technology give prematurely-born children a renewed chance at life, which should give us all pause as we argue the definition of viability and consider the human impact of abortion," Gov. Perry said. "Additionally, House Bill 2 ensures that anyone performing abortions in Texas is doing so in a facility that is safe, clean and prepared to deal with any emergencies that might occur - a reasonable, common sense expectation for those caring for the health and safety of Texans."

Gov. Perry continues to be a staunch defender of life in Texas. He has signed legislation requiring parents to consent to their minor daughter's abortion, banning tax dollars from being used to support abortion facilities, and requiring women to have a sonogram before an abortion. The governor has also fought to ensure Texas women get the health services they need, including \$100 million in new funding to expand women's health services and creating the Texas Women's Health Program.

Preparations for Sutton County 2014 Elections

Voter registration can be accomplished at the Tax Assessor/Collections office administered by Erica Nicole Berry 325.387.2342 or on line at the Texas Secretary of State web site. Sutton County voting information can be obtained at the District/County clerks office administered by Rachel Chavez Duran, 325.387.3815. Candidates for County public office must contact their party chairperson listed below for registration, rules and fees.

The following elected positions will be up for re-election in 2014: County Judge, Treasurer, District/County Clerk, Justice of the Peace, Precinct 2 & 4 Commissioners, Republican Chair and Democratic Chair

The current Sutton County office holders/ incumbents eligible for re-election are : County Judge- Carla Garner; Treasurer-Janalyn Jones; District & County clerk Rachel Chavez Duran; John Wilson Justice of the Peace; John Wade Precinct 2; Fred Perez Precinct 4; Republican Chair- Brigitte Rogers 325.387.2309; Democrat Chair- Noemi Samaniego 325.387.3029.

Senior Center Activities

Thurs. July 18- Shopping w/Elsa 325-387-5657
 Fri. July 19- Exercise w/video
 Mon. July 22- BINGO
 Tues. July 23- C.E.A.P. will be here 11am-3pm
 Wed. July 24- Birthday cake for July's birthday's at noon

Senior Center Menu

Thurs. July 18- Steak w/mushroom gravy, capri veggies, pea salad, wheat bread & apple crisp
 Fri. July 19- Smothered chicken w/ rice blend, broccoli/ cauliflower blend, wheat bread & pears
 Mon. July 22- Chicken strips w/ gravy, mashed potatoes, mixed squash & fruit cup
 Tues. July 23- BBQ on a bun, potato salad, beans & apricots w/ topping
 Wed. July 24- Lemon baked fish, herbed rice, sweet peas, cucumber salad & jell-o w/ oranges
****ALL MEALS SERVED WITH MILK****

Participants in the senior nutrition program must be 60 or older. Meals are served Monday - Friday at 12:00 p.m.
Donations are accepted
 (suggested donation for Seniors is \$2.00; \$5.00 for under 60 and all other meals-to-go).

Obituary



Charles Mitchell Howard, Jr. of Sonora, Texas went to be with the Lord on August 4, 2013 at the age of 85. He was born November 12, 1927 in Gainesville, Texas to the late Charlie and Grace Howard. He is survived by his loving wife of 63 years Beverly, daughter Debbie Hard and husband Robert of Sonora, son Curtis Howard of Palm Springs, California, granddaughters Stephanie Hard of McAllen, Kara Blair and husband Cody of Sonora, brother Dale Howard and wife Cindy of San Antonio, nephews Cory Howard of San Antonio, Chad Howard and wife Michelle of Duncanville. Charles served in the U.S. Navy and while on furlough met his wife to be. Charles and Beverly Smith were married August 18, 1950 in Sonora.

After his honorable discharge from the Navy, he continued his education at Gainesville Junior College and graduated from North Texas University in Denton receiving a degree in Elementary Education Business Administration. Upon graduation, Charles and Beverly moved to Sonora where he was employed by Carl J. Cahill for 20 years. In 1971 Charles formed his own business, Charles Howard Construction, where he worked until he retired in 1995.

Charles was a faithful member of the Church of Christ. He loved doing good for others. He loved his place at Rough Canyon in Del Rio and loved to fish. He enjoyed RVing to many states.

A special thanks to Keith Butler for his help and support. Thank you to Dr. Chang, Veronica, Laura, Amber, Christie and Rose Marie from Hospice for their love and care they provided. Also thank you to Dr. Pajestka and the wonderful staff at Hudspeth Memorial Hospital.

A special thank you to all our wonderful friends and brothers and sisters in Christ who gave us support through this trying time.

"I have fought the good fight, I have finished the course, I have kept the faith; henceforth there is laid up for me a crown of righteousness, which the Lord, the righteous judge, shall give me at that day and not to me only but unto all them also that love his appearing."
 2 Timothy 4:7 & 8

Services will be held Wednesday August 7, 2013 at 10:30 A.M. at the SONORA CHURCH OF CHRIST. Pallbearers will be Jerry Kemp, Terry Schenkel, Eddie Smith, James Benson, Freddie Benson, James Blackman.

Engagement



Evans/Woehl Engagement

Mr. and Mrs. Lamar Evans of Sonora Texas proudly announce the engagement of their daughter Madison Ann to Aubrey Joseph (AJ), son to Mr. and Mrs. Arlin Woehl of Wall Texas and Ms. Brenda Woehl of San Angelo.

Madison is a 2006 graduate of Big Lake Texas High School. She graduated Angelo State University with a Bachelor of Business Management. Madison is a full time employee of Multi-Chem, A Halliburton Service and a seasonal employee of Mr. Boots. AJ is a 2007 graduate from Wall Texas High School. He graduated Angelo State University with a Bachelor of Science in Animal Business. AJ farms for a living around Wall, TX.

The couple will be married on January 11, 2014 at their church home, Sierra Vista Methodist in San Angelo.

Is This America Or China?
 U.S. Sen. John Cornyn
 National Review Online
 May 15, 2013

The events that have unfolded over the past week are showing big government at its worst. First we learned more details about the Obama administration's coordinated attempt to misrepresent the September 2012 terrorist attack in Benghazi, which claimed four American lives. Then a senior IRS official acknowledged that her agency had deliberately targeted conservative groups for harassment. Meanwhile, the administration was forced to admit that its top health regulator has been soliciting industry funds to help implement Obamacare. Finally, we discovered that the Justice Department has cast an extraordinarily wide net to capture the phone records of several journalists who work for the Associated Press.

All of these events highlight the Obama administration's massive credibility gap. As someone who has spent a career in public service, I want government to work. As a conservative, I want government to be as small and efficient as possible. As an American, I cannot tolerate a government that actively deceives the people it is meant to serve, whether through negligence, incompetence, or malfeasance.

In 2011, my office began receiving complaints of unfair treatment by the IRS from various conservative groups in Texas — groups such as the King Street Patriots, True the Vote, the San Antonio Tea Party, and the Waco Tea Party. They cited excessive, unreasonable, and improper inquiries from the IRS and feared that they were being targeted for their political beliefs. I sent multiple letters to then-IRS commissioner Douglas Shulman expressing my concerns and asking for an investigation. He categorically denied that the IRS was targeting specific groups.

Two years later, we learned that he was wrong and the conservative groups were right: The IRS was systematically targeting people of a certain ideology — one that happens to be at odds with the current administration. Furthermore, we have learned that senior IRS officials were aware of these accusations as early as June 2011. That is outrageous, but sadly not surprising from an administration that has chosen time and again to deceive the American people.

Indeed, whether the issue is a terrorist attack in Libya, partisan abuses by IRS agents, a potentially illegal effort to shake down health-care providers, or a questionably broad investigation by the nation's top law-enforcement agency, this self-styled "most transparent administration in history" has consistently put politics ahead of truth, justice, and the rule of law.

Perhaps even more alarming is the total lack of responsibility assumed by the president. Americans have caught their government in multiple lies, and President Obama's response has been a symphony of obfuscation, misdirection, and denial. At every turn, the president and his deputies have chosen not to be straightforward with the American people, and as a result they have seriously undermined both their credibility and their trustworthiness.

To review: Four American patriots are dead; U.S. citizens are being deliberately targeted and harassed by their government; journalists are understandably concerned about an intrusive Justice Department investigation; and a cabinet secretary is strong-arming the health industry to "voluntarily" fund a partisan, highly unpopular policy. Is this America or China? Any one of these issues is a "scandal." Together they reflect an administration that is deeply flawed and has lost the faith of the public it is sworn to protect.

Sonora Church Directory

Primera Iglesia Bautista 504 Santa Clara 387-2035	Church of Christ 304 N. Water 387-3190
The Church of the Good Shepherd Presbyterian 319 E. Mulberry 387-2616	First Baptist Church 11 E. Oak 387-2951
Lighthouse Community Church 1705 N. Crockett 387-9100	St. John's Episcopal Church 404 E. Poplar 387-2955
St. Ann's Catholic Church 229 W. Plum 387-2278	First United Methodist Church 201 N. Water 387-2466
Jehovah's Witness 310 St. Ann's St 387-5658/387-5518	Casa Del Altarero Asamblea De Dios 306 W. 4th St 325-226-1789
Faith Apostolic Church 120 N. Concho Ave. 206-0277	

Brought to you by:
Kerbow Funeral Home
 387-2266

SUTTON COUNTY HEALTH FOUNDATION

Help preserve quality healthcare locally for generations to come through **Bequests, Donations, Memorials, Gifts of Life Insurance, Real Estate and Securities.**
 P.O. Box 18, Sonora, Texas 76950
 All contributions are 100% deductible
www.suttoncountyhealthfoundation.org

The Devil's River News

Established 1890
 228 E. Main Street, Sonora, Texas 76950
 Phone: (325)387-2507 • Fax (325)387-5691
 Published every Thursday
 USPS (155-920)
Publishing Owners: Ben D. Taylor, Sam C. Taylor
Editor: Ben D. Taylor
Billing: Ben D Taylor
Advertising/Classified s: Angie Bryant
Internet Technician : Mike Taylor
Reporting/Photography/Typesetting: Staff
Guest Columnists: Kelly Thorp, Ray & Nancy Glasscock
 Delyse Jaeger, Pascual Hernandez, Susan Hall
Email: General Information: editor@sonoratx.net
 Advertising: sales@sonoratx.net

Copy and Ad Deadline: Monday 4:00 p.m.
Subscriptions
 \$25 per year in county • \$32 per year out of Sutton County
 \$22 per year Senior Citizens (in and out of Sutton County)
 Second class postage paid at Sonora, Texas
 Attn. Postmaster: Send address change to the Devil's River News,
 228 East Main Street, Sonora, TX 76950

Any erroneous reflection upon the character, standing or reputation of any person, firm, or corporation which appears in the columns of this paper will be corrected upon due notice given to the Editor of this publication. The views expressed in submitted articles are not necessarily the views of The Devil's River Newspaper.

MEMBER 2012

TEXAS PRESS ASSOCIATION

Traffic Sign Refresher,



NO LEFT TURN.... The "No Left Turn" sign tells drivers that they can't make a left turn at this location. This sign is really self explained. No left turn means do not turn left....

This sign is found alot in Sonora around the elementary school area. It was put up to help with the flow of traffic and the safety of others. Keep things going in one direction. It will be alot easier than having to wait for traffic coming from both direction at a stop sign. When school starts in a couple weeks lets see how many people really understand the meaning of this sign.

It's All About the Dirt



By Pascual Hernandez,
Sutton County Agricultural
Extension Agent

Though we've been blessed with rain, there are still many areas of bare ground on our rangelands. Bare earth reduces productivity and exposes the land to erosion. Rainfall is of the utmost importance in improving range condition, and the recent rains certainly help. Other parts of the equation include soil condition and having a seed source. Bare ground will eventually cover, but there are options to facilitate range health recovery.

To address these issues, Texas A&M AgriLife Extension Service in Sutton, Schleicher, and Irion counties will conduct a multi-county Rangeland Soil Renovation Workshop beginning at 8:30 a.m. Aug. 21 in the Schleicher County Civic Center in Eldorado. The workshop will present the factors affecting soil health, ways to renovate bare ground and demonstrate how to evaluate upward and downward range condition trends.

Topics and speakers will include:

– Soils 101, John Begnaud, AgriLife Extension horticulturist emeritus, San Angelo. Begnaud will discuss basic soil health principles, cover soil types, soil and water supply, plant water supply, and the role of microbes in the soil.

– Renovation Practices to Improve Rainfall Effectiveness, Joe Petersen, University of Texas Lands Office, senior range conservationist, Midland. Petersen will talk on soil compaction, hardpan and renovating bare-earth areas. Methods discussed will include contour ripping, wing ripping and diking.

– Monitoring Range Health, Dr. Bob Lyons, AgriLife Extension range specialist, Uvalde. Lyons' focus will be on rangeland trend monitoring. He will present alternatives, including clip and weigh methods, range health checklists and photo points.

Three Texas Department of Agriculture continuing education units will be available to those with a valid pesticide applicators license.

Individual registration is \$10 due by August 16. Registration can be mailed to the AgriLife Extension office in Schleicher County or brought to the Sutton County Office. Call the Sutton County Extension Office 387-3101 for more information.

28 New State Game Wardens Heading to the Field

AUSTIN – Twenty-eight new state game wardens soon will be spreading across Texas to begin their law enforcement duties after completing seven months of intensive training at the Texas Parks and Wildlife Department Game Warden Training Center in Hamilton County.

The 58th Game Warden class graduated in ceremonies at 9 a.m. Tuesday in the House of Representatives chamber at the Capitol in Austin. Featured speaker at the event was Daniel Hodge, first assistant Attorney General of Texas.

The new game wardens will be reporting for duty at stations spanning the state from East Texas to El Paso. While the primary duty of state game wardens is to enforce hunting and fishing laws and water safety regulations, they are fully commissioned peace officers who also respond to natural disasters, assist other local and state law enforcement agencies as well as conducting public outreach on a variety of conservation-related topics.

"Their much-needed presence will be felt as they assume duty assignments all across the state," said Danny Shaw, assistant director of TPWD's Law Enforcement Division. "Texas game wardens have played a vital role for over 118 years and these officers are prepared to carry on that rich heritage and tradition.

The new game wardens received 618 hours of instruction to meet the state-mandated training requirements for their basic peace officer certification including criminal and constitutional law; firearms; self defense; use of force; defensive driving; arrest, search and seizure; ethics, and first aid.

In addition, their curriculum included another 700 to 750 hours of training related to wildlife and fisheries enforcement, the Texas Water Safety Act, wildlife and fisheries identification, public relations and communications, boat operation, ATV operation, and specialized patrol tactics. The new wardens also have become certified hunter education and boater education instructors.

The 28 new wardens will bring TPWD's Law Enforcement Division to its authorized strength of 532 game wardens, a group of men and women who are carrying on a tradition of service to Texas dating back to 1895.

F.Y.I

Sutton County Friends of NRA Safe Full of Guns raffle is underway! Tickets are \$10 each with one winner taking home four firearms, to include an AR-15, and a 10 gun fire resistant safe. Tickets may be purchased at Buck N Bass/Sonora Air Cooled Engines, by contacting Tonya @ 325-206-0454 or by contacting any committee member. The winning ticket will be drawn during our 6th Annual Auction/Banquet, Saturday, September 21, 2013. Your support is appreciated

Art Classes the 1st or 2nd Monday of each month from 8:00AM to 5:00PM. \$36.00 per class, lunch included. FMI call Ken Rowland 432-238-3121, Lori Stricklan 325-226-2526 or Anita Spiller 325-387-5266.

Rent the Depot or Amphitheatre for your special party or event. Call 325-387-5084 Monday-Friday 8:00 a.m. -5:00 p.m.

76th LIONS CLUB AUCTION - October 22nd at Sutton County Civic Center. We need monetary donations and items for the auction. Lions Club supports community activities and offers student scholarships each year. Your help is greatly appreciated. For more information, call Janalyn Jones at 226-0067 or Jim Garrett at 206-1060.

Mark your calendars for our Back to School Bash Thursday, August 22nd 4:30 p.m. to 7:30 p.m. at The Bank & Trust



Member FDIC
P.O. Box 798
Sonora, Texas 76950
325-387-3861



Member FDIC
229 Hwy 277 N
Sonora, Texas 76950
325-387-2593

Sonora Service Directory

Allison Well Service

325-446-2382
All your pump and windmill needs.

Judy Edwards

Licensed Massage Therapist
The Cutting Edge
1001 St. Anns St.
325-234-5554

BRONCO HAIR SALON

MON-FRI
8:30am - 5:00PM
Saturday 9AM - 2PM
Tami Fitzgerald (325) 206-0982
Whitly Hernandez (325) 226-8480

Brewer Refrigeration

Lic. #TACLBO12114C
Ice Machines
Sales-Service-Rentals
We sell & service
Deer Coolers & Freezers
325-835-2141
Mobile 450-2793

Knox Floor Covering

Carpets-Vinyl-Tile
392-2180
201 Ave I Ozona, TX

Carl J. Cahill, Inc.

OILFIELD CONTRACTOR
(325) 387-2524
Sonora, TX

Charles Howard Construction, Inc.

Oilfield Contractor
Asphalt & Concrete Construction
email: chowardconst@sonoratx.net
phone: (325) 387-3093
fax: (325) 387-5543
mobile: (325) 206-0497

Rafter W Feed

201 Cedar
387-3042
Your local Acco, Purina and Sure Fed Feed Dealer



Circle Y Firearms
Ray Yourgalite
325-206-2171

Norrell Plumbing

325-387-2191
cell 972-215-9836
M-40069
Corey Norrell

FARMER'S DAUGHTER LANDSCAPE & GENERAL STORE

5433 BEN FICKLIN ROAD SAN ANGELO TX
JUST OFF LOOP 306 HEADED EAST
MONDAY-FRIDAY 9-5 SATURDAY 9-3
325.651.2665

OUTDOOR LIVING & DESIGN

FIREMAGIC ~ OUTDOOR AMERICAN GRILLS

OUTDOOR FURNITURE

OW LEE ~ HANAMINT ~ EBEL ~ SUNBRELLA

THE HYUNDAI 300 LC-9A EXCAVATOR

0% for 36 Mo. • 1.5% for 48 Mo. • 2.03% for 60 Mo.
*Price based on current availability. Price does not include applicable taxes. WAC.

Loaded with features such as

- Cummins Engine
- Advanced CAPO System
- Easy Access Service
- Self-Diagnostic System
- Hi-Mate GPS System
- MP3/CD Player
- Hands Free Phone Connection
- Multi Function Color LCD Monitor
- 360 Degree Visibility
- Rear View Camera
- Sunroof

Call Cisco Equipment today and discuss how Cisco Equipment and Hyundai can save you money!
325-653-2121
620 N. Bell
San Angelo, TX 76903

CISCO Equipment
Since 1978
Odessa • San Angelo • Lubbock • Artesia, NM
Celebrating our 36th year in business

True contentment is a thing as active as agriculture. It is the power of getting out of any situation all that there is in it. It is arduous and it is rare.
Gilbert K. Chesterton

State Agencies Asking Texans to Share How Drought Has Affected Their Lives

AUSTIN — What does your Texas drought look like? With more than 97 percent of Texas suffering from drought conditions, that's what the Texas Department of Agriculture (TDA), Texas Water Development Board (TWDB) and Texas Parks and Wildlife Department (TPWD) want to know. This coalition of state agencies today launched an interactive public awareness campaign inviting Texans to submit personal photos capturing what the drought looks like for them and how it has impacted their lives.

From now through September 30, Texans are invited to share their original photographs of the drought

on Flickr, Instagram and other social media platforms. Photos should illustrate how the drought is affecting daily life—whether it is dry creek beds, withered crops, native plants flourishing in the dry climate or the innovative water conservation measures Texans are using to combat drought.

"This current Texas drought, which started in 2010, has proven in many ways to be our worst drought in history. In fact, it has surpassed the Dust Bowl of the 1930s," Agriculture Commissioner Todd Staples said. "Every Texan has experienced the drought's ferocity in different ways and these agencies

are joining forces to collect and share these stories with other Texans, as well as for the historical record for future generations to appreciate the importance of drought preparedness and proactive, voluntary water conservation. We know citizen-led conservation efforts are our best alternative to mandated restrictions that can hurt our economy."

Texas' many diverse regions are each experiencing the drought in unique ways. This project aims to educate Texans on the critical nature of drought and water conservation. By providing the photographs, the public will help TDA, TWDB and TPWD garner an in-depth view of local drought conditions, ultimately helping manage and conserve the state's water resources.

"At the Texas Water Development Board, we're well acquainted with the effects of drought on our state," said TWDB Executive Administrator Melanie Callahan. "It affects water supplies for cities and agriculture alike, and can devastate economies and natural resources. This photo campaign is a way for Texans to document how drought affects them personally. Showing the results of water shortages and ways to conserve are equally important parts of this story."

According to the U.S. Drought Monitor, nearly the entire state of Texas is experiencing some form of drought, and more than 65 percent of the state is suffering from severe to exceptional drought. The state water plan dictates nearly 25 percent of our future

water needs will be met through water conservation.

"With the punishing drought our state has suffered, most people know how important it is to conserve water and plan to use it wisely, and dramatic photos showing the reality of drought certainly underscore that conservation is imperative," said TPWD Executive Director Carter Smith. "In poll after poll, Texans have consistently ranked water resources near the very top of public priorities. It's important for people in cities, and it's important for fish and wildlife, state parks and natural habitats—everything is connected. We all have a role to play in conserving water."

Photographs may be submitted to our Flickr group, "What does your Texas drought look like?" at <http://www.flickr.com/groups/texasdrought>. This is a public webpage that anyone with an Internet connection can view, even those who are not members of Flickr. The Flickr page above provides instructions on how to share photos.

Photographs also may be posted to Twitter or Instagram. Please use the hashtag #txdrought when sharing your photos. The campaign's Instagram account is [texasdrought](https://www.instagram.com/texasdrought). Tag photos with date, location and include a short description. Additionally, you can email up to three photos to TexasDrought@yahoo.com, and we will post the pictures to our flicker page. All user-submitted photographs must be original content.

Saltcedar Leaf Beetles Arrive In El Paso Valley

EL PASO — There's a new bug in town, but entomologists stress its arrival is good news for El Paso residents and the environment.

Subtropical tamarisk beetles, better known as saltcedar leaf beetles, have made their way to El Paso after first being released along West Texas waterways in 2006 to combat saltcedar, said Dr. Salvador Vitanza, Texas A&M AgriLife Extension Service entomologist in El Paso County. Saltcedar thickets compete for water, increase flooding and reduce biodiversity, said Dr. Allen Knutson, AgriLife Extension entomologist at Dallas. He said saltcedar was first introduced as an ornamental plant in the early 1800s but escaped and has become a serious invasive species.

"We've been working with the U.S. Department of Agriculture-Agricultural Research Service and other agencies to establish the leaf beetles for biological control of saltcedar," Knutson said. "We're now starting to see an areawide impact as beetles defoliate miles of saltcedar thickets along the Rio Grande and Pecos Rivers and in the Texas Panhandle and Rolling Plains."

Vitanza recently surveyed the westward movement of the beetles and found abundant larvae along the Texas/Mexico border south of Tornillo. He also found a few adult beetles two miles south of Fabens and 1.5 miles east of Clint.

"These beetles have been known to spread up to 80 miles in a season in ideal conditions," Vitanza said. "Currently, a few adult beetles have been observed defoliating saltcedar plants near Clint. It's possible some beetles may reach the city of El Paso before the year is over."

"Gerardo Tarin Torres, the department head of Mexico's Integrated Management of Contaminants in Chihuahua, reportedly found the beetle at Instituto Campestre in Ciudad Juarez on July 20 which is the first time they've been spotted in that city."

The control of saltcedar using the beetles is one of the most successful examples of biological control of noxious plant species in the U.S., according to Vitanza, who said the beetles are host-specific and safe around anything that's not a saltcedar or Athel tree, which belongs to the same plant genus as saltcedar. "You can rest assured that the saltcedar leaf beetle will not damage any plant species other than saltcedar and Athel, both in the genus Tamarix," he said. "The beetles will not hurt people or pets or attack other insects. Generally, when they run out of saltcedar to eat, they simply starve to death."

The one exception is athel, said James Tracy, a graduate research assistant in Texas A&M University's department of entomology. Tracy said there have been some isolated instances in the El Paso Valley of the beetles eating Athel, an ornamental tree which is a close relative of saltcedar, but the browning of the leaves is only temporary.

"The athel trees are not dead, but should resprout new leaves in a month or so," he said. Saltcedar beetles prefer saltcedar over athel, so damage to athel usually only occurs when beetle numbers are high. Defoliation of athel should be less once the larger beetle populations move upriver."

Dr. Mark Muegge, AgriLife Extension entomologist at Fort Stockton, said homeowners who want to save athel or even saltcedar trees in their landscape can protect the trees from the beetles by treating them with insecticide. For more information, see <http://today.agrilife.org/2010/08/27/saltcedar-beetle/>.

"Attacked trees turn brown as larvae consume leaves and girdle small branches," Knutson said. "Control of saltcedar occurs only after repeated defoliations, which weaken the trees, and they eventually die due to starvation, followed shortly by the beetle, once their food supply is exhausted."



2013 Sonora High School Volleyball Schedule
807 S. Concho
Sonora, Texas 76950

Superintendent: James Hartman Principal: Aaron Oliver
Athletic Director: Crates Phillips Head Volleyball: Amanda Rollert

School phone: 325-387-6940 Fax: 325-387-5348

Date	Place	Home/Away	JV White	JV Red	Varsity
Aug. 9	Sterling City Scrimmage	Away		TBD	TBD
Aug. 10	Sonora Scrimmage (Sonora, Junction, Comstock)	Home	9:00	9:00	9:00
Aug. 13	Dual Fred Herring/Venice	Home	1:00	2:00	3:00
Aug. 17	Dual Ft. Stockton/Bronte	Home	11:00	12:00	1:00
Aug. 20	Dual Center Point, LaPrvor	Away	TBD	1:00/3:00	2:00/4:00
Aug. 22-24	Crane Tournament	Away	TBA	TBA	
Aug. 23	Junction Tournament	Away			VAR
Aug. 27	TJCA	Here	4:00	5:15	6:30
Aug. 31	Venice	Away	11:00	12:00	1:00
Sept. 3	Crane	Away	5:00	6:00	7:00
Sept. 5, 7	Sonora Tournament	Home	TBA	TBA	TBA
Sept. 10	Junction	Away	5:00	6:00	7:00
Sept. 14	Lakeview	Away	11:00	12:00	1:00
Sept. 17	Comstock/Alpine	Away	4:00	5:00	6:00
Sept. 20	Harper/Homecoming !!	Home	4:00	4:00	5:00
Sept. 24	Reagan County	Away	4:00	5:00	6:00
Sept. 28	Wall	Home	10:00	11:00	12:00
Oct. 1	Bangs	Home	4:00	5:00	6:00
Oct. 5	Open/Scheduled Practice	Home	10:00	10:00	10:00
Oct. 8	Grape Creek	Away	4:00	5:00	6:00
Oct. 12	Reagan County	Home	10:00	11:00	12:00
Oct. 15	Wall	Away	4:00	5:00	6:00
Oct. 19	Open/Scheduled Practice	Home	10:00	10:00	10:00
Oct. 22	Albany/TBD Varsity	Away			TBD
Oct. 26	Bangs	Away	10:00	11:00	12:00
Oct. 29	Grape Creek	Home	4:00	5:00	6:00
Nov. 2	District Cert.				
Nov. 4-5	Bi-Dist.				
Nov. 7-9	Area				
Nov. 11-13	Regional Qtr. Finals				
Nov. 15-16	Regional Tray				
Nov. 21-23	State Tournament				

2013 PROPERTY RATES IN SUTTON COUNTY HOSPITAL DISTRICT & CITY OF SONORA

This notice concerns 2013 property tax rates for Sutton County. It presents information about three tax rates. Last year's tax rate is the actual rate the taxing unit used to determine property taxes last year. This year's effective tax rate would impose the same total taxes as last year if you compare properties taxed in both years. This year's rollback tax rate is the highest tax rate the taxing unit can set before taxpayers can start tax rollback procedures. In each case these rates are found by dividing the total amount of taxes by the tax base (the total value of taxable property) with adjustments as required by state law. The rates are given per \$100 of property value.

	County General	County FM&FC	County Hospital	City of Sonora
Last year's tax rate:				
Last year's operating taxes	\$ 2,772,503	\$ 995,346	\$ 1,078,181	\$ 673,843
Last year's debt taxes	\$ 0	\$ 0	\$ 0	\$ 0
Last year's total taxes	\$ 2,772,503	\$ 995,346	\$ 1,078,181	\$ 673,843
Last year's tax base	\$ 744,491,275	\$ 742,573,088	\$ 770,640,865	\$ 113,923,622
Last year's total tax rate	\$.36316/\$100	\$.078926/\$100	\$.139907/\$100	\$.541335/\$100

This year's effective tax rate:				
Last year's adjusted taxes (after subtracting taxes on lost property)	\$ 2,727,145	\$ 586,083	\$ 1,078,180	\$ 616,936
-This year's adjusted tax base (After subtracting value of new Property)	\$ 638,854,686	\$ 637,071,978	\$ 665,620,510	\$ 121,268,966
-This year's effective tax rate	\$.426880/\$100	\$.091996/\$100	\$.161981/\$100	\$.508733/\$100
Total effective tax rate	\$.518876/\$100			

This year's rollback tax rate:				
Last year's adjusted operating taxes (after subtracting taxes on lost property and adjusting for any transferred function, tax increment financing, state criminal justice mandate, and/or enhanced indigent health care expenditures)	\$ 2,727,145	\$ 586,083	\$ 1,178,180	\$ 1,057,836
-This year's adjusted tax base	\$ 638,854,686	\$ 637,071,978	\$ 665,620,510	\$ 121,268,966
-This year's effective operating rate	\$.426880/\$100	\$.091996/\$100	\$.177004/\$100	\$.872322/\$100
X 1.08 = this year's maximum operating rate	\$.461030/\$100	\$.099355/\$100	\$.191164/\$100	\$.942107/\$100
+This year's debt rate	\$.000000/\$100	\$.000000/\$100	\$.000000/\$100	\$.000000/\$100
-This year's rollback rate for each fund	\$.461030/\$100	\$.099355/\$100	\$.191164/\$100	\$.942107/\$100
This year's total rollback rate	\$.560385/\$100			
- Sales tax adjustment rate			\$.360453/\$100	
-Rollback tax rate			\$.581654/\$100	

STATEMENT OF INCREASE/DECREASE

STATEMENT OF INCREASE/DECREASE

If SUTTON COUNTY adopts a 2013 tax rate equal to the effective tax rate of \$0.518876 per \$100 of value, taxes would increase compared to 2012 taxes by \$25,289.

If SUTTON COUNTY HOSPITAL DISTRICT adopts a 2013 tax rate equal to the effective tax rate of \$0.161981 per \$100 of value, taxes would increase compared to 2012 taxes by \$7,398.

If CITY OF SONORA adopts a 2013 tax rate equal to the effective tax rate of \$0.508733 per \$100 of value, taxes would increase compared to 2012 taxes by \$3,885.

UNENCUMBERED FUND BALANCE

The following estimated balances will be left in the unit's property tax accounts at the end of the fiscal year. These balances are not encumbered by a corresponding debt obligation.

	TYPE OF PROPERTY	BALANCE
Sutton County	General Fund	\$ 2,160,188
	FM&FC	\$ 75,449
Hospital District	General Maintenance	\$ 330,000
City of Sonora	Restricted Fund	\$ 1,375,000
	Unrestricted Fund	\$ 686,225

STATE CRIMINAL JUSTICE MANDATE FOR SUTTON COUNTY

The Sutton County Auditor certifies that Sutton County has spent \$11,110 in the previous 12 months beginning August 1, 2012, for the maintenance and operations cost of keeping inmates sentenced to the Texas Department of Criminal Justice. Sutton County Sheriff has provided information on these costs, minus the state revenues received for reimbursement of such costs.

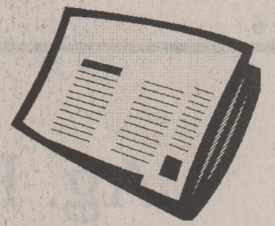
This notice contains a summary of actual effective and rollback tax rates' calculations. You can inspect a copy of the full calculation at Sutton County Appraisal District.

Mary Bustamante
Chief Appraiser

August 02, 2013

All real estate advertising in this newspaper is subject to the Fair Housing Act which makes it illegal to advertise "any preference, limitation or discrimination based on race, color, religion, sex, handicap, familial status or national origin, or an intention, to make any such preference, limitation or discrimination." Familial status includes children under the age of 18 living with parents or legal custodians, pregnant women and people securing custody of children under 18. This newspaper will not knowingly accept any advertising for real estate which is in violation of the law. Our readers are hereby informed that all dwellings advertised in this newspaper are available on an equal opportunity basis. To complain of discrimination call HUD toll-free 1-800-669-9777. The toll-free telephone number for the hearing impaired is 1-800-927-9275.

The Devil's River News Classified



(325) 387-2507

228 E. Main St.

sales@sonoratx.net

Employment

GIRLING HEALTH CARE

PERSONAL CARE ATTENDANTS

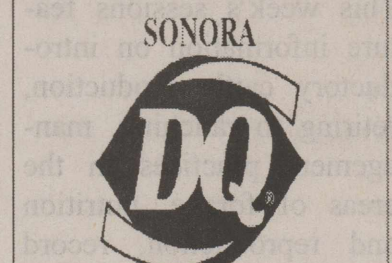
Seeking caring and dependable people to work in the homes of elderly and disabled clients. Will assist with preparing meals, shopping, personal care, errands, light housekeeping, and other assigned duties. We offer flexible day, evening, and weekend shifts. Must be at least 18 yrs of age with a clean criminal background. MUST have reliable transportation. No certifications or prior experience required.

Fax Resume referencing Ad # 12364 to (325)646-2278
For an application, call 1(800)665-4471

Apply online at www.girling.com. Or apply in-person at 1423 Coggin, BROWNWOOD, TX, 76804. E.O.E, M/F/D/V.

Employment

Help Wanted: Dependable fulltime service technician needed in the Sonora Area. Will Train. Must be 18 years of age, have a current Texas driver's license and a clean driving record. FMI call 325-387-3154 or come by 311 W. College St. for an application.



HIRING FOR ALL SHIFTS AND POSITIONS
Sonora Dairy Queen is offering a flexible schedule and beginning pay up to \$10.50 per hour
Apply online: richesondq.com

Public Notice

Public Notification of Nondiscrimination in Career and Technical Education (CTE) Programs

Sonora ISD offers career and technical education programs in Agriculture Science, Business Information Management, Family and Consumer Science, Career and Technology, and Industrial Technology. Admission to these programs is based on special needs and/or desire to participate.

It is the policy of Sonora ISD not to discriminate on the basis of race, color, national origin, sex or handicap in its vocational programs, services or activities as required by Title VI of the Civil Rights Act of 1964, as amended; Title IX of the Education Amendments of 1972; and Section 504 of the Rehabilitation Act of 1973, as amended.

It is the policy of Sonora ISD not to discriminate on the basis of race, color, national origin, sex, handicap, or age in its employment practices as required by Title VI of the Civil Rights Act of 1964, as amended; Title IX of the Education Amendments of 1972; the Age Discrimination Act of 1975, as amended; and Section 504 of the Rehabilitation Act of 1973, as amended.

Sonora ISD will take steps to assure that lack of English language skills will not be a barrier to admission and participation in all educational and vocational programs.

For information about your rights or grievance procedures, contact the Title IX Coordinator, James Hartman, at 807 S. Concho, 325-387-6940 ext. 3001, and/or the Section 504 Coordinator, Stefanie Taylor, at 807 S Concho, 325-387-6940 ext. 3401.

Public Notice

Notificación Pública de No Discriminación en Programas Vocacionales y de Educación Técnica (CTE)

El Distrito Escolar de Sonora ofrece programas vocacionales en Ciencia de Agricultura, Manejo de Información de Negocio, Ciencias de Consumo Familiar, Carrera y Tecnología y Tecnología Industrial. La admisión a estos programas se

basa en necesidades y deseo de participar.

Es norma del Distrito Escolar de Sonora no discriminar por motivos de raza, color, origen nacional, sexo o impedimento, en sus programas, servicios o actividades vocacionales, tal como lo requieren el Título VI de la Ley de Derechos Civiles de 1964, según enmienda; el Título IX de las Enmiendas en la Educación, de 1972, y la Sección 504 de la Ley de Rehabilitación de 1973, según enmienda.

Es norma de del Distrito Escolar de Sonora no discriminar por motivos de raza, color, origen nacional, sexo, impedimento o edad, en sus procedimientos de empleo, tal como lo requieren el Título VI de la Ley de Derechos Civiles de 1964, según enmienda; el Título IX de las Enmiendas en la Educación, de 1972, la ley de Discriminación por Edad, de 1975, según enmienda, y la Sección 504 de la Ley de

Rehabilitación de 1973, según enmienda.

El Distrito Escolar de Sonora tomará las medidas necesarias para asegurar que la falta de habilidad en el uso del inglés no sea un obstáculo para la admisión y participación en todos los programas educativos y vocacionales.

Para información sobre sus derechos o procedimientos para quejas, comuníquese con el Coordinador del Título IX, James Hartman, en 807 S. Concho, 325-387-6940 extensión 3001, y/o la Coordinadora de la Sección 504, Stefanie Taylor, en 807 S. Concho, 325-387-6940 extensión 3401.

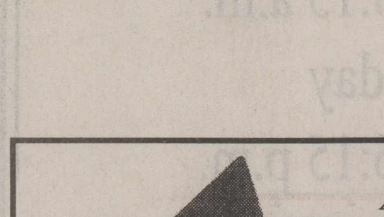
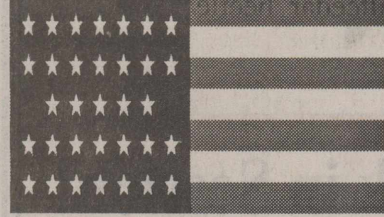
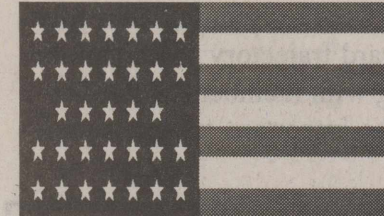
For Rent

2/2 mobile home in Sonora 425.00 per month References required call 361-701-0397

For Sale

FOR SALE- House/ Guest House & Workshop
1209 Mesquite

Large corner lot, open floor plan, sewing room, 2bd/1ba @ 1,600 sq. ft. a jacuzzi tub and nice appliances. There is a separate guest house 1br/1ba. This makes a great rental property. A large workshop, greenhouse and covered patio with tile floor. There is abundant covered parking for several vehicles including a RV/boat carport and a beautiful manicured lawn. Call 325-387-5349 or 325-226-2145



*"Make it simple.
Make it memorable.
Make it inviting
to look at.
Make it fun
to read."
- Leo Burnett*

Morales Feed and Supply
Hay for sale
We deliver
210-416-6415



ANDERSON ENERGY CORPORATION
Oil & Gas Producer
Acquisitions of Royalties
Term Royalties,
Leases & Production
Doing Business in
Sutton County Since 1980.
1-877-892-0123

Caruthers Realty
"The Best of the Best"
Need Listings!
Bob Caruthers - Broker
325-226-3003 Anytime
email: bobc@sonoratx.net

Mittel Dozing
Owned and Operated by
Robert Mittel
325-277-6883
Foreman • Todd Emery 325-277-0979
Brush Work • Fire Guards
Ranch Work
General Conservation Work
A Rancher, Working for Ranchers
16 years experience

It's time for CHANGE
We'll give you more than small change for you old or used jewelry.
WE'LL PAY TOP DOLLAR FOR:

- Unwanted Rings
- Unmatched Earrings
- Out-of-Style Pendants
- Coin Collections
- Dental Gold
- Unwanted Used Jewelry
- Knotted or Kinked Chains
- Sterling Flatware & Settings
- Silver Jewelry
- Gold & Silver Bars & Bullion (Any Size or Qty)
- British Pounds, Euros & Canadian Dollars (Paper Currency Only)

ANGELO GOLD EXCHANGE
325-655-4653 • 1017 Caddo St. • San Angelo
Open Everyday Except Sunday Until 7 p.m.

Main Street REALTY
Anita Hudson, Broker
Sam David Hernandez ~ Realtor
Will M. Black ~ Realtor
215 E. Main • Sonora, TX 76950
325-387-6115
www.SonoraTexasRealEstate.com

New Residential Listings

124 E Castlehill Road \$350,000
300 Scenic Drive \$484,900

- 3BR/3 1/2 Bath - Brick home
- Recently remodeled w/wood floors
- Beautifully Landscaped w/sprinkler system
- RV Covered, Greenhouse, Garden w/water well
- GREAT VIEWS!
- 3BR/3 1/2 Bath
- 3.338 Acres in City Limits
- Saltillo Tile
- Landscaped

New Commercial Listings

511 Cornell \$150,000
226 E Main St. \$87,500

- Former Head-Start Building
- Large metal building, paved parking and covered drive through loading/unloading area on .97 acre lot within city limits.
- Fenced with 6 foot chain link to enclose play yard with commercial play equipment. This facility has full kitchen, 6 large rooms and abundant storage. ADA Compliant!
- Remodeled in-line commercial building with prime location in the heart on historic downtown Sonora.
- Laminate wood floors with tall ceilings and crown molding make the front room ideal for an office or retail space. There is also an overhead door in the back for deliveries and separate storage.

View all other listings at www.sonoratexasrealestate.com

Advertise in the Devil's River News Today!!
Call Angie at 325-387-2507

Drought Continues: Ag. Producers Should Plan Accordingly

COLLEGE STATION — soe said, "remember, we Texas beef cattle producers are still reliving the 1950s drought-producing pattern with periodic breaks." The opening general session titled "Ranching Into the Future" featured presentations on weather, cattle market outlook and other industry issues.

Don Close, vice president for food and agriculture research with Rabobank, discussed the outlook for beef demand and trends in protein consumption across the U.S. He said thinking beyond the traditional mindset of beef consumption, eating habits are changing, especially as cultural diversification among the U.S. population continues. He cited Houston as the most diversified city in the U.S. per ethnic groups and how protein consumption differs compared to decades ago.

He said the beef industry has a great story. "Go tell it," he said. "Beef production does not end at the ranch gate. Consumer interest in food and where it comes from is only going to increase. Nobody in the world can tell your story better than you can. Tell the story, please."

The short course, which continues through Wednesday, features more than 60 speakers from Texas and the U.S. It is coordinated by experts with Texas A&M AgriLife Extension Service and the Texas A&M Uni-

versity department of animal science.

"We all know there have been some challenges and one of those challenges is from a rainfall perspective for the past 5 years," said Dr. Jason Cleere, AgriLife Extension beef cattle specialist and short course coordinator, during the opening of the general session.

Dr. Doug Steele, AgriLife Extension director, told the attendees, "Beef cattle are so important to our state. We have a vested interest in your success. That's why we continue to have the short course each year and give you the opportunity to come. I encourage you over the next couple of days to think about the future: where you are going with your practice, where the industry is going. We take our role in extending the great research in labs and in the field into the classroom and put that in (in a form of) education and outreach that is understandable to you."

This year's short course was dedicated to Dr. Randall Grooms, who retired in 1996 as professor and AgriLife Extension livestock specialist emeritus at the Texas A&M Research and Extension Center in Overton. Grooms was recognized at the short course prime rib dinner.

The beef short course event showcases the latest research and educational programs offered by

AgriLife Extension, Texas A&M AgriLife Research and the department of animal science at Texas A&M. The annual event is one of the largest beef-education workshops in the country, and has become one of the largest and most comprehensive beef cattle educational programs in the U.S., according to organizers.

The cattleman's college portion provides participants with an opportunity to choose workshops based on their level of production experience and the needs of their ranch, Cleere said. This week's sessions feature information on introductory cattle production, retiring to ranching, management practices in the areas of forage, nutrition and reproduction, record keeping, genetics, purebred cattle, landowner issues and much more, he said.

In addition to classroom instruction, participants will be attending live demonstrations featuring fence building, chute-side calf working, cattle behavior, penning and Brush Busters. "The goal of the short course each year is to provide the most cutting-edge information that is needed by beef cattle producers," Cleere said. "We think we have information for everyone to take home and apply to their operations."

"What good is the warmth of summer, without the cold of winter to give it sweetness."

John Steinbeck

Lawmakers Debate State's Infrastructure

Business leaders from across the state are urging lawmakers to pass increased funding to address Texas' expanding transportation needs.

At a press conference at the State Capitol Monday, representatives from the Texas Association of Business were joined by members of the Greater San Antonio Chamber of Commerce, the Greater Austin Chamber of Commerce, Transportation Advocates of Texas and the San Antonio Mobility Coalition to highlight the importance of passing House Bill 1 and House Joint Resolution 1, which would authorize up to \$1 billion in new transportation financing annually.

"Ensuring an adequate transportation system is essential to any successful community, not to mention a basic role of government, and Texas is in a position where further delay could set us back years," Gov. Perry said. "Today, the Texas business community echoed the importance of this legislation. They know a choice to do nothing about our roads can put our economic prosperity at risk."

Gov. Perry called for a third special session of the legislature last week to deal specifically with transportation funding.

Gov. Rick Perry issued the following statement regarding the passing of SJR1 and SB1 by the Texas Senate:

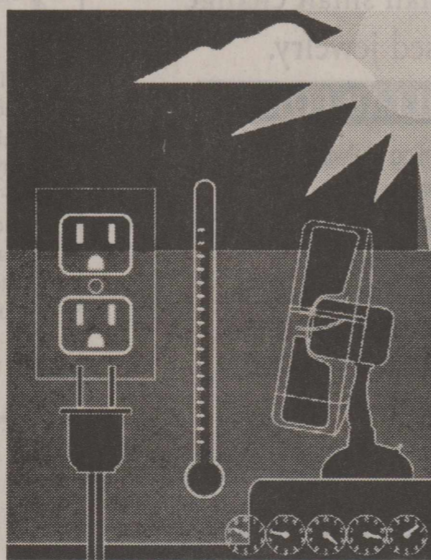
"Continuing Texas' success long into the future requires that we take bold steps now to maintain our state's infrastructure and keep up with our growing population and the need to move more and more goods to market. I commend Lt. Gov. Dewhurst and the members of the Senate for doing their part to keep Texas moving on an upward trajectory of economic fortune. I look forward to working with members of the Texas House to ensure we address the important transportation needs of our state."

Connect to Energy Savings

AS THE ELECTRIC DELIVERY COMPANY that has been serving south and west Texas for nearly 100 years, AEP Texas knows a thing or two about energy conservation. While we don't sell electricity or send out monthly bills, we recognize what hot weather does to electricity usage and the resulting bills.

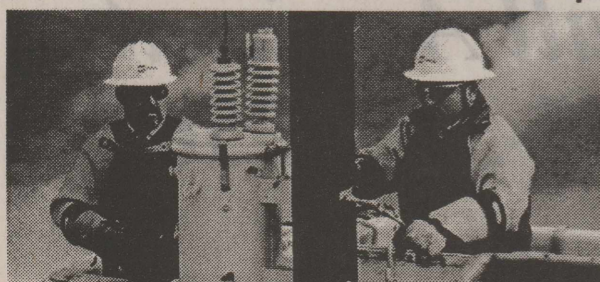
Since AEP Texas and the 1,700 AEP employees in Texas are directly connected to the many communities where we live and serve, we'd like to share some low or no cost tips on how to keep cooler this summer, while saving valuable energy and money.

- Set air-conditioning thermostats to the highest possible comfortable setting and dress accordingly.
- Turn off every appliance you are not using including lights, televisions and radios. Use the "sleep" feature on your computer equipment.
- Only cool rooms that you use. Close vents and doors in unused rooms. Be sure to close closet doors.
- Check your air-conditioning filter every month and replace as needed.
- Keep windows that let the sun in covered when the sun is shining on them.
- Weather strip and caulk around windows and doors to prevent drafts.
- Close your fireplace damper when the fireplace is not being used.
- Use fans to help circulate the air in your house.
- Air-dry dishes in the dishwasher.
- Lower the temperature on your hot water heater during the summer, take shorter showers and wash only full loads in the laundry and dishwasher.



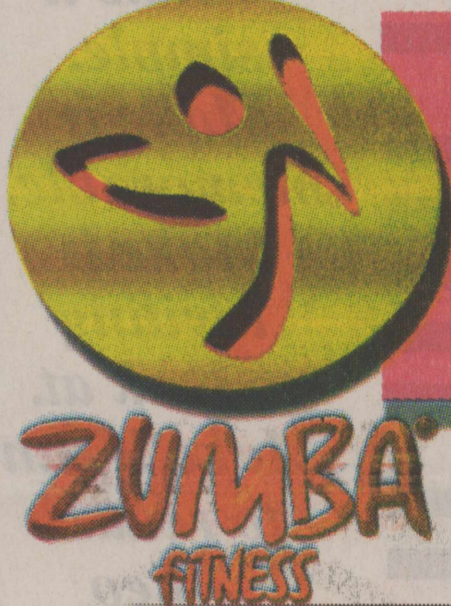
It's important to remember that if you're having trouble paying your electric bill, call your retail energy provider (REP) at the number listed on your current electric bill to avoid disconnection.

www.aeptexas.com



Connected to You.
Connected to Texas.

AEP TEXAS



**Sonora
Academy
Of
Arts
Schedule**

Zumba is Back in Session!

Tuesday & Thursday
5:30 a.m.-6:15 a.m.

Thursday
5:30 p.m.-6:15 p.m.

Contact Lizzie at
387-4796

The Sonora Academy
of Arts will hold a
registration drive on
Thursday August 8th at
6:30 p.m. for the
2013-2014 year. If you
have any questions
please call
Lizzie at
387-4786