

# Mr. Muleshoe . . .

By J. M. FORBES

## SOIL CONSERVATION

For more than 6,000 years man has been striding across the face of the globe until at last he has come to the end of the trail. There is no more new land, and his destiny is now irrevocably tied to the land he occupies. In his wake he has left a trail of waste, poverty, and ruin. He has dissipated with careless abandon those resources upon which his very existence depends. As he gained greater knowledge of machine and power he used his knowledge to increase the speed of his wastefulness until at last civilization is on trial for its follies.

Hunger is the greatest threat to the stability of any form of government. We have never had to face it here. There have been times when some of our people have not had enough to eat, but those occasions have resulted from the failure of political and social leadership and never from a shortage of food. Taken from the foreword to the just issued booklet of the Texas Conservation Board, "The First 10 Years of Soil Conservation Districts in Texas."

(We are tempted to turn aside here to remark on that allusion to political and social leadership failure, and to say that in the old days we used to wonder why on earth the government didn't do something to see that everyone, not just the rich had a decent standard of living; now that Government HAS done something we're doing our best to turn the rascals out.)

But we won't be turned aside for politics. We will persevere this booklet and reprint these terse statements:

Care of the land makes a big difference in the way it responds to the efforts of the individual farmer. Some land never was suitable for cultivation.

Soil erosion can kill a town. All needed soil conservation measures have been applied to the equivalent of 16 million Texas acres: cover crops, 2,818,619 acres; range, 11,398,514; contour farming, 4,557,003 acres; improved pastures, 1,706,464; stubble mulching, 6,897,658; strip cropping, 224,080; farm and ranch ponds, 15,625; woodland improvement on 162,750 acres; terracing, 114,763 acres; windbreaks, 186 miles; drainage, 104,137.

And so goes the story of conservation districts' first decade. It is a drop in the bucket, a scratch on the surface, but it's a start. So important do we consider the soil conservation movement that we would issue an extra paper — if it wasn't so much trouble.

I have been invited to attend a luncheon for Senator Taft in Lubbock this coming Tuesday. Will tell you what he has to say about things, if possible next week. And if I get to shake hands with him, I will let you shake hands with a man who shook the hands of a man that might become President.

Well of course you remember how much little attention Mr. Truman, as Senator, was attracted to a short time before he became vice-president. The President, and now chagrined quite a few in Lubbock and the South Plains were, when he became chief executive, that they allowed him to come to Lubbock and only 43 of them thought it worth while to turn out and listen to his talk. We don't intend for this to happen again, and us Democrats will be right down there getting acquainted with Senator Taft if possible. And if we want anything else we will remind him in future we will remember him from his visit down in Lubbock; it won't be like having a stranger up there.

## Picture Contest

### Winners Named

The Fashion Shop has on display in their window, the picture of the babies who won in the contest held at their store during January. First prize was won by Horace Lance Minckler, small son of Mr. and Mrs. B. K. Minckler of Muleshoe. Second prize was won by Earl Wayne Peugh, small son of Mr. and Mrs. Joe Peugh of Muleshoe. Third prize was Jimmie Lou Dulin, small daughter of Mr. and Mrs. J. E. Dulin of Muleshoe. The pictures were compliments of the Fashion Shop.

## WELCOME

A friendly welcome is our rule for strangers in our Sunday school. But once inside our open door, you're not a stranger any more.

SIDNEY PATRICK  
Church of the Nazarene

## Two Farm Sales Set Next Week

Farm sales are scheduled in the Muleshoe vicinity Monday and Tuesday of the coming week. On Monday, February 11, Wiley Holman will sell a big list of farm machinery, household goods, cattle, hogs, poultry and miscellaneous items. His place is located four miles east on the Plainview highway and two north, or 3/4 mile south of Y. L. school house. Y. L. ladies will serve lunch. The sale will start at 10 a. m.

Mr. and Mrs. Holman have sold their farm to two young men from Morton. They have not announced what their future plans will be. Mr. Holman has been working temporarily in the market of Piggly Wiggly store.

B. F. Brown will have his sale the following day, Tuesday, February 12. Mr. Brown also sold his farm. His place is 11 miles north and 12 east of Muleshoe, or 10 miles north and 5 west of Earth. The sale will begin at 10 a. m. Big Square community ladies will serve lunch.

Mr. Brown has a large list of farm machinery, livestock, poultry, feed, household goods, and many miscellaneous items to go at auction. Col. Dick Doshier, Farwell auctioneer, will cry both sales.

## Evans Bros. Grand Opening Was Held Here Saturday

Despite inclement weather some 753 persons registered at the formal opening of Evans Bros. Service Station here last Saturday. The opening was attended by a large group of Phillips Petroleum Company division officials.

C. C. Matthews, of Muleshoe won the first prize offered, a set of four Lee automobile tires. The second prize, a passenger car battery went to Betty Chisholm, of Sudan.

Ten prizes of an oil change each were presented to the following: Mamie L. Freeman, Muleshoe; M. M. Nowlin, Muleshoe; Roy Harris, Muleshoe; Mrs. L. N. Walker, Muleshoe; George Tompkins, Muleshoe; E. L. Brockman, Friona; Mrs. Pete Black, Route 2; Velma Baird, Amherst; Mrs. Ira Smith, Muleshoe; and Mrs. C. E. Layman, Muleshoe.

Ten free grease jobs went to: B. L. Jackson, Muleshoe; Marshall Washman, Muleshoe; John West, Muleshoe; J. K. Jackson, Wolforth, Texas; O. C. Kirk, Route 1; Norman Bays, Muleshoe; Andrew Wittner, Baileyboro; Olive Watson, Muleshoe; Mrs. L. J. Mills, Muleshoe; Alex Wilkins, Muleshoe.

Assisting in receiving the callers during the day were E. W. and Elmo Evans, operators of the station; Mrs. Elmo Evans, Mrs. E. W. Evans, Mrs. F. W. Jones, and Mrs. C. C. Griffiths.

Phillips Officials Attend  
A large group of Phillips Petroleum Company division officials from Amarillo were here to attend the formal opening of the new Phillips station; H. O. Starks, Division manager, and Mrs. Starks; R. M. Holt, District salesman, of Levelland; and Gene Ukena, Bob Pennington, W. D. Gibson, K. S. Irwin, Paul Gilliland, J. C. Taylor, Vern Cubit, M. R. Erhardt, and W. C. George, all of Amarillo.

E. W. and Elmo Evans, who are Phillips 66 jobbers in this territory, and who operate the new station, expressed their appreciation for the fine interest shown by so many people in their opening.

Those who visited the station during the day registered and received favors. Each lady who visited the station was presented with an orchid.

# The Muleshoe Journal

DEDICATED TO THE PROGRESS AND DEVELOPMENT OF BAILEY COUNTY AND THE GREAT MULESHOE COUNTRY

VOLUME 30, NUMBER 7

MULESHOE — County Seat of Bailey County — TEXAS

THURSDAY, FEBRUARY 7, 1952

## Potato Acreage Here Assured

### Civil Defense Course To Be Held In Muleshoe During Month of March

A civil defense training program will be held here in March, primarily for home demonstra-

### JayCeas Announce "Ready" For Show

A cast rehearsing the JayCeas' Minstrels of 1952 announced "ready" this week after several weeks of steady rehearsals. Costumes have arrived, the scenery is all set, and all they're waiting for now is for Thursday and Friday of next week to come.

The show will be unreeled in Muleshoe high school auditorium next Thursday and Friday nights, Feb. 14 and 15.

Tootie Middlebrook, JayCeas' president, announced a new feature has been developed, a real, old-fashioned "Dixie-land Jive Band", a 6-piece music making outfit that is sure to be a hit.

### BILL COVIN BREAKS A LEG WHILE SKIING

Bill Covin found skiing rougher than football when he broke a leg during a run on a ski course west of Denver Sunday, Jan. 27. A bone was broken in the lower left leg and his knee was badly twisted. Bill had gone there with a fellow student at Oklahoma U. Boardman Barb. The two returned to the University where Bill enrolled for the second semester, then came here to visit his parents, Mr. and Mrs. Herb Covin.

Bill lettered last year on the University's football team. Jim Weatherall, a teammate, named All-American tackle, visited Bill and the family here Friday and Saturday.

## "Disaster" Loans Made Available Through Local Farmers Home Office

The prolonged dry weather has resulted in the designation of eighty-nine counties in Texas as disaster areas. No estimate is available of the actual losses sustained by farmers and ranchmen as a result of these production losses, but L. J. Cappelman, State Director, of the Farmers Home Administration of Dallas said that the situation faced by farmers throughout the State is one of the most serious since the drought of 1934-35. Drought conditions reported by Cappelman follows closely those outlined by Pasture and Land Cover Conditions Map issued by the office of Louis P. Merrill, director, Soil Conservation Service of Texas, under date of January 15, 1952.

The map depicted conditions covering about two-thirds of the State extending from Bailey and El Paso counties on the west to Cherokee on the east and Starr on the south. Over this area, con-

### Legion Sponsors Aid Program

American Legion Post No. 403 of Muleshoe is sponsoring a drive to purchase hospital beds and wheel chairs to be kept at the Legion Home for the free use of any resident who might need them.

Pictured above is the model of hospital bed which will be available to the citizens of this county free of charge under the current community service project.

American Legion Post No. 403 of Muleshoe is sponsoring a drive to purchase hospital beds and wheel chairs to be kept at the Legion Home for the free use of any resident who might need them.

## H. H. Potter To Head Bailey Co. Annual Red Cross Fund Campaign

### GOP Organizes In Bailey Co.

Carl Case has been made Republican county chairman for Bailey County as part of an effort to organize the G. O. P. in the Plains country, Mohler D. Temple, Lubbock attorney told The Journal this week. He said that organizations likely will be set up in each of the county's seven voting precincts; that precinct conventions will be held and that following those meetings the Republican county convention will be held.

Each precinct will be allowed one delegate to the county convention. The county, will in turn, name a delegate to the district convention, whose sole purpose is to choose a delegate to go to the Republican National Convention next summer in Chicago.

Under the revised Texas election laws, Temple pointed out, Democrats may take part in the Republican party's precinct convention this year.

## Indications Are Farmers Will Be Ready To Build Own Labor Housing

### Senator Taft To Visit Plains

Senator Robert A. Taft, Ohio, a candidate for the Republican nomination for President of the United States, will visit Lubbock next Tuesday, February 12, on one of four stops he plans in Texas and Lubbock is making great preparations to receive him.

There will be a luncheon in his honor, given by the Lubbock Chamber of Commerce, and immediately thereafter the Senator will hold a press conference for newspaper men of the South Plains. Shortly thereafter, he will go to Tech for public appearance and that evening he will speak in El Paso.

The Senator's party, consisting of a group of dignitaries and some Fort Worth and Dallas newspapermen, his personal staff etc., will arrive at Lubbock from Dallas about 10:30 after a 15 minute stop in Amarillo. His party travels in a DC-3.

He will make a major political speech in Dallas the 11th, after appearing in Houston Feb. 10.

A reception for the Ohioan will give many of the South Plains the opportunity to become better acquainted with him.

### Short Course On Irrigation Held

An irrigation short course school was held here Wednesday under sponsorship of Bailey County Electric Cooperative Ass'n and the Extension Service. County Agent J. K. Adams said about 200 were present for the barbecue dinner served at noon. An outstanding address of the morning program was that of M. K. Thornton, Extension Soil Chemist of Texas A. & M. College on "Fertilizers."

The school was held in the auditorium of the high school beginning at 9:30 in the morning and the program was concluded at 4 p. m. by the awarding of the door prize.

VISITED IN QUANAH  
Mrs. E. E. Holland spent Tuesday in Quanah, visiting with her aunt and uncle Miss Minnie Patterson and Charles Patterson. Her mother Mrs. G. M. Devoll returned home with her to spend some time here. She has been in Quanah several months.

## Hereford Men To Erect A New Classing Shed

Muleshoe and Bailey County were assured a new potato processing shed this week, when the Chamber of Commerce and local real estate men secured the required acreage and railroad trackage for the new company. Fred Barrett and Sons, Irish potato growers and shippers of Hereford is the new concern that will plant between 250 and 300 acres of Bailey farmland to potatoes that will be processed and shipped from Muleshoe.

The elder Barrett was the pioneer potato grower in Deaf Smith county moving there from Colorado several years ago in search for suitable locations to produce early potatoes. Since then Barrett has seen Deaf Smith acreage flourish and grow into a multi-million dollar business.

Four sons and a son-in-law are connected with Barrett in the business and according to their present plans one or more families will move to Muleshoe if suitable housing can be secured for them.

The acreage secured by the Chamber of Commerce is scattered throughout the northern and northeastern section of county, in tracts of 40 to 80 acres each. "There was a double reason for this," Myron Pool, chamber president stated. "First, the Barretts are anxious to prove up Bailey County soil, and then they wished to have acreage in various portions of the county in hopes to avoid hail damage as much as possible."

"We are greatly pleased to have the Barretts' move to Bailey County," Pool went on. "They explain that if they can get their crop off from one week to ten days ahead of Hereford production that target conditions are usually quite a bit stronger and the gross profit in the crop increased considerably."

The Barretts are fully familiar with this phase of agriculture and chamber officials are optimistic that once Bailey County climate and soils are proved up that more and more acreage will be devoted to Irish potato production that is recognized as a fine money crop.

A local grower, Bill Millen, has enjoyed considerable success with this crop during the past few years and it is expected that the different techniques used by Millen and the Barretts will prove beneficial to other prospective growers in the county.

All of the Barretts acreage is irrigated land, scattered from the Y. L. community westward to just beyond the Friona highway. The Hereford operators have already moved in some equipment and are presently getting the land ready for planting which is expected to take place in late March and early April. Utilizing heavy fertilization, and forcing the growth the Barretts expect that, with favorable weather and growing conditions, the Bailey County crop will be ready for market between the 20th of June and July Fourth.

### DOROTHY KENT ON McMURRY HONOR ROLL

ABILENE, Feb. 5 — Dorothy Kent, freshman at McMurry College from Muleshoe, is one of the fifty-eight students named to the honor roll the first semester.

Only the upper ten per cent of the student body academically, make the honor roll. Miss Kent is the daughter of Mr. and Mrs. T. L. Kent of Muleshoe.

### LOCAL MARKETS

Eggs, doz.	32c
Light Hens, lb.	15c
Heavy Hens, lb.	19c
Hogs, cwt.	\$17.50
Kafir, cwt.	\$2.40
Maize, cwt.	\$2.40
Hogari, cwt.	\$2.40
Wheat, bu.	



### The Muleshoe Journal

PUBLISHED EVERY THURSDAY AT MULESHOE, TEXAS  
Entered as second-class matter at the Muleshoe Post Office under  
the Act of Congress, March 3, 1897.



**SUBSCRIPTION RATES**  
In Immediate Territory, 1 Year \$2.00  
Out of Immediate Territory, 1 Year \$2.50  
J. M. Forbes Editor and Publisher

#### BABSON DISCUSSES — Airplane Accidents

Babson Park, Fla., Feb. 7—Last week you read that 85 people have been killed in airplane accidents during the preceding thirty-eight days in Elizabeth, New Jersey, and yet nothing is being done about it. I believe it is a crime against the American people for the airplane companies not to do more to prevent such accidents. It is true that they can insure their planes so as to get a new one when a plane is destroyed, but no insurance can replace lives which they destroy. In my humble judgement, their attitude is all wrong.

#### CAUSE OF ACCIDENTS

A few airplane accidents occur from running into mountains during fog or storm. These are being eliminated by the latest modern altitude instruments and by radar. With good working instruments and bright-eyed pilots these accidents should no longer occur.

The major cause of airplane accidents is their engine trouble

or wing failure or some other breakdown which causes the airplane to drop to the ground and the gas tanks to explode. This throws the gasoline all over the occupants. Some electric spark starts the fire and the passengers are all smothered or burned to death. In short, "Old Man Gravity" is responsible.

#### YOUR HOME MAY BE DESTROYED TONIGHT

This means that these fatal accidents will continue and increase in number and severity as more planes fly and the size of the planes increases. When the airplane companies advertise they have the biggest planes, they do not tell you that the bigger the plane the more dangerous it will be for all concerned when it falls. Moreover, many believe that the bigger planes are more liable to fall.

It is not only those who travel in planes who are running the increasing risk as bigger planes are built. Every reader of this column, including those who never use air travel, is likewise subject to great danger, as was evident in Elizabeth, New Jersey. An airplane going over your house tonight may fall on your house and cover it with gasoline, causing your entire family to be burned up.

#### THE NEEDED REMEDY

There is only one means of preventing these accidents. This is to discover some partial insulator of Gravity, although helicopters may also help in solving the problem. Insulators exist for light, noise, fire, air, heat, cold, magnetism, electricity and even atomic energy. The work of the Gravity Research Foundation at New Boston, New Hampshire, is helping to discover a partial insulator for Gravity. This Foundation believes that the airplane companies could discover an alloy which would partially insulate Gravity if they would only combine and spend the money to do so. When a partial insulator is discovered the exterior of all planes would be covered with this alloy. The weight of the plane would then be so reduced that a fall need not cause a fatal disaster. Besides, the plane and contents would be so much lighter it would be much less liable to engine and other difficulties and hence less liable to fall.

#### HOW AIRPLANE COMPANIES REPLY

The airplane companies claim that scientists say it is impossible to discover a partial insulator for Gravity. My answer is that when I was a student at the Massachusetts Institute of Technology I was taught that it would be im-

possible to use commercially heavier-than-air machines. Professors taught us that only balloons and dirigibles would be practical.

Scientists have discouraged many great inventions in use today, claiming that they were impossible. The Babson Institute has the third largest collection in the world of Isaac Newton's writings and we believe that if he were here today he would agree that Gravity could be partially overcome. I ask every reader to take an interest in this problem because some airplane may fall on your house tonight and burn up you and your family.

#### CHRISTIAN SCIENCE SERVICES

The belief that evil can be real when God is all-power, fills all space and constitutes all, is re-futed in the Lesson-Sermon entitled "Spirit" to be read at all Christian Science services on Sunday, February 10. This Golden Text is included: "Teach me to do thy will; for thou art my God; thy spirit is good; lead me into the land of uprightness" (Psalms 143:10).

The Psalmist was aware of God's ever-presence and expressed it in this way: "Whither shall I go from thy spirit? or whither shall I flee from thy presence? If I ascend up into heaven, thou art there; if I make my bed in hell, behold thou art there. If I take the wings of the morning, and dwell in the uttermost parts of the sea; even there shall thy hand lead me, and thy right hand shall hold me" (139:7-10).

Mary Baker Eddy defines "Spirit" in these words: "Divine substance; Mind; divine Principle; all that is good; God; that only which is perfect, everlasting, omnipresent, omnipotent, infinite" (Science and Health with Key to the Scriptures, p. 594).

#### ATTEND FUNERAL IN AMARILLO

Mrs. Carl Stockman attended the funeral of her brother, Claude Yates, in Plainview Friday, Feb. 1 at 3. Mr. Yates died instantly of a heart attack Wednesday, Jan. 30.

#### VISITED SISTER

Mr. and Mrs. Julian Lenau visited Mrs. Lenau's sister, Mrs. E. C. Smith, of Hagerman, N. M., over the week end.

#### BERRY ELECTRIC CO.

Refrigeration Service

Electric Appliance Repairs

Wiring & Repairs

Phone 3750

## SAND HILLS PHILOSOPHER SAYS He's Baffled, Why Do Candidates Pay More To Run Than They Make?

Editor's note: The Sand Hills Philosopher on his Johnson grass farm is worrying again, his letter this week reveals.

Dear editor:  
I have been notice lately the trouble some prospective candidates for various offices have been havin in makin up their minds, from president on down, some of em sayin they already

decided, and they can't reach a decision, and they feel the same way every year I teach a decision. I can appreciate the letter as I read it. I just can't believe they just can't reach a decision. I tell you but ain't I know by the time I get my mind made fully up it's too late to plant.

But about the best case of indecision I've noticed is by a prospective candidate who says he will run for Senator if the people of the state contribute 150,000 to his campaign.

I will go him one better. If the people of Texas will contribute 150,000 to me, I believe I'd be willing to forget any political aspirations, of which I have none, and settle down to a steady life of farmin, especially since it would be necessary to serve in the U. S. Senate at least 10 years to even gross \$150,000.

As a matter of fact, I do not understand a lot of things about politics. For example, the opponents of Senator Taft claimed he'd spent 5 million dollars in his last race for the Senate up in Ohio, but he said that was nonsense, the race had cost only about \$7,000,000 all told, which means he'll have to serve 46 years to ever gross that much at the goin salary of \$15,000 a year, just to break even.

But I ain't singlin out any one person or party. Take nearly any

office, north or south, outside of public weigher and justice of the peace and a few court house jobs. There probably ain't a major race to be run this political year where the candidate or his friend won't spend ten to one hundred times as much gettin elected as the office pays.

I do not understand this. I can understand how a man can farm year after year and go in the hole every time, because I have done it for years, am probably doin it right now, but how a man can want to serve so bad he'll pay ten times what the office pays to get elected, has always been a source of great puzzlement to me. You mean to say politicians are as dumb as us farmers? I don't believe it.

Your faithfully  
J. A.

Texas

Weather conditions over Texas the past few months have been unfavorable. In fact, the state is suffering from a repeat performance of the dry weather that cut down crop production last year.

With the exception of parts of east Texas and along the upper coast, drouth conditions prevail over the entire state. Some plowing is being done but moisture generally is insufficient for land preparations, including the planting of spring crops, and fall planted small grains are barely holding their own.

An early winter freeze caused severe damage to tender vegetables throughout the lower part of the state and curtailed shipments. Hardy vegetables have come through so far without much damage and supplies are on the increase, especially from the irrigated sections where conditions are excellent.

Spinach and other vegetables in the non-irrigated areas have deteriorated to same extent under drouth conditions. Onions have fared a little better but

#### POOL INSURANCE AGENCY

COMPLETE INSURANCE COVERAGE

—LOW COST FARM LOANS

—AUTO LOANS

—IRRIGATION WELL LOANS

Dependable and Friendly Service

LEE POOL

Phone 7010

MYRON POOL

Muleshoe, Texas

### TODAY'S meditation

Chelupper Room  
© THE UPPER ROOM, NASHVILLE, TENNESSEE  
THE WORLD'S MOST WIDELY USED DEVOTIONAL GUIDE

#### SPIRITUAL RICHES IN CHRIST

The unsearchable riches of Christ (Ephesians 3:8.) Read Ephesians 3:8-21.

In Paul's mind the idea evidently behind this word unsearchable was that Christ is like that is!

acreage of this crop in north Texas may be reduced because of a shortage of plants.

Spring potato and tomato planting has started in the lower valleys, and some watermelons have been planted in the Fal-furris section.

Lack of moisture has delayed seed bed preparations and no general field crops have yet been planted.

#### LAMB WILDCAT WELL IS DRILLING AHEAD

Thirty-six miles north of the most northern producing field in the Permian basin, Anderson-Prichard Oil Company corporation No. 1 E. M. Gettys was drilling below 7,205 feet Thursday in lime and shale.

The rank wildcat in north-central Lamb county is 1,980 feet from south and 660 feet from east lines of the west half of section 59, block 1, W. E. Haisell, subdivision, and two and one-half miles northwest of Springlake. It is projected to 9,500 feet.

a continent on which are areas where no human footfall has ever heard; that He is like a region containing riches which have scarcely been tapped. Paul would say that there are in Christ areas which we have never known or visited. How suggestive that is!

Paul speaks of several kinds of unexplored territory. One of these is "riches of his grace". What a pity that we do not realize that we have this for the taking! Another is the "riches of his goodness". Again, to the Romans, Paul speaks of "the riches of his glory." "Eye hath not seen, nor ear heard, neither have entered into the heart of man, the things which God hath prepared for them that love him." Paul breaks out into song when he realizes the wealth that is his—"O the depth of the riches both of the wisdom and knowledge of God!"

#### PRAYER

O Lord, we bless Thee for Thy unlimited riches. Forbid that we should live at a poor dying rate, while Thy table is laden with spiritual riches. For Jesus' sake. Amen.

#### THOUGHT FOR THE DAY

This day I will seek the riches of God in Christ Jesus.

Alexander Louis Fraser (N. S.)

### THE MAYTAG AUTOMATIC GETS CLOTHES CLEANEST!

- Famous Gyrafoam washing action
- Fully automatic
- No bolting down
- See it today at...

Liberal trade-in easy terms

## JOHNSON-POOL

Tire & Appliance  
Dial 7370  
Muleshoe, Texas

B.F. Goodrich  
TIRE HEADQUARTERS

Our modern home loan plan allows you to pay off the loan with rent-money

Prompt service

FOR INFORMATION SEE

MULESHOE

Mildred Davis  
Western KYLA  
Building  
Muleshoe

FIRST  
FEDERAL SAVINGS  
AND LOAN ASSOCIATION  
Clovis, N. M. P. O. Box 478

our mechanics use "HEAD TOOLS," too



Any good service shop uses the latest tools such as compression testers, valve grinders, etc. Here in our shop we also take a lot of pride in what we call "head tools."

Our mechanics have the know-how to see a repair job from the engineer's viewpoint. They study and use the latest Allis-Chalmers manuals. Every machine is repaired for better performance, not just "to hold it together."

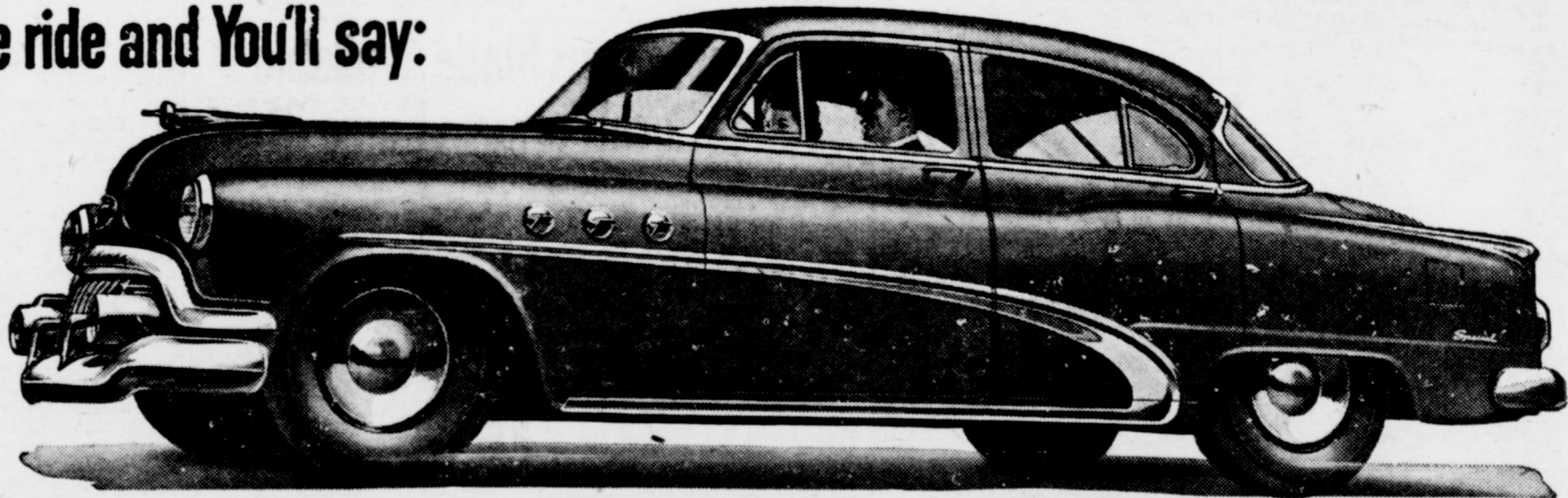
When your A-C equipment needs repairs, let us give it dependable Allis-Chalmers service.

Tune in the National Farm and Home Hour — Every Saturday — NBC



Muleshoe Implement & Supply

One ride and You'll say:



## "That's the Smartest Million Dollars BUICK Ever Spent"

WHEN we tell you that every 1952 Buick rides like a million dollars, we're not just slinging slang—we're talking real money—right-on-the-barrelhead cash.

A million dollars and more were poured into research and testing—design and tools—engineering, production and components—to team up the combination of ride features you'll find on a Buick—and on no other car in the world.

A million dollars and more was the price paid to work out control of end-sway and side-roll on curves—to double-check vertical "throw" with shock absorbers and big soft-acting coil springs for all four wheels—to V-brace the torque-tube keel and X-brace the

frame—to cushion body and engine—and to silk out the whole operation with Dynaflo Drive.\*

You may not care how the job was done, or what it cost. But we'll lay you this: You're going to say "thanks a million" to Buick engineers once you get this spirited smoothie under your hands and haunches.

Old familiar roads take on a new smoothness. Gone are the weave and wander, the jitter and jounce that you've felt in lesser cars. You ride with road-hugging assurance and level ease.

All of which only begins to tell you what really great cars these 1952 Buicks turned out to be.

Never before have style and stamina—comfort and character—power, performance and price been brought together with such satisfying skill.

The obvious thing for you to do is come in and look them over. How about taking half an hour off to do that—today?

Equipment, accessories, trim and models are subject to change without notice. \*Standard on ROADMASTER, optional at extra cost on other Series.

Sure is true for '52

When better automobiles are built

# BUICK

will build them

# Muleshoe Automobile Co.



## Mrs. Shelley Holds Quiz on Club Rules

The Rebecca Lodge met Tuesday night, Jan. 29, in their regular meeting. All of the officers' chairs were filled by the officers. Mesdames Geneva Freeman, Hazel Nowell, Barbara Burton, and Anna Dean Mock.

Mrs. Freeman presided over the business meeting and appointed Mrs. Mock to attend the Red Cross first air school. Mrs. Mock will then teach the club the first aid course.

## Needmore Lodge Has New Members

The Needmore Rebecca Lodge No. 160 met in regular session Tuesday night, February 5, with an attendance of 27 members.

All officers were present including the Noble Grand, Katherine Pierce, and the Vice Grand, Jesse Waldrop.

Officers and members assisted

### NORMAN W. BAYS

Attorney-At-Law

Office In Courthouse  
Phone 2670 Muleshoe, Texas

In conferring the Degree, from which Roy and Ruby Brashier were duly accepted and instructed as members of the Rebecca Lodge.

After Lodge was declared closed, a luncheon was enjoyed by all.

The Needmore Lodge meets each Tuesday evening at 7:30. Visitors are welcome.

### GAMMA IOTA CHAPTER MEETS IN LITTLEFIELD

The Gamma Iota chapter of the Delta Kappa Gamma Society met in the Littlefield High School for a luncheon Saturday, February 2.

The president, Mildred Hulse, presided during the business session.

The program theme was "Developing Our Culture Through Scholarships". A very clever skit on legislation was presented by a group of Plainview teachers.

Those attending from Muleshoe were Mrs. Radie Boone, Mrs. G. S. Dowell, Mrs. Ed Johnson, Mrs. Jerry Kirk, Mrs. Curtis Spivey, Mrs. John Watson, and Mrs. Wilson Witherspoon.

### ATTEND FUNERAL IN JOHNSON CITY

Rudolph Wiedebush and Victor Foss returned Tuesday morning from Johnson City, Texas, near Austin, where they attended the funeral of Rudolph Wiedebush's niece, 7-month old Rebecca Phelps. They went to Johnson City Sunday.

### SON RECOVERING

Harold Ray Newsom, son of Mr. and Mrs. Harold Newsom, who has been ill in the Clovis Hospital was brought home Wednesday and was much improved.

## Society News

THE MULESHOE JOURNAL, Thursday, February 7, 1952



MRS. R. E. BRYANT

## Sanders, Bryant Vows Exchanged In Evening Ceremony At Monument Lake

Miss Margaret Sanders, daughter of Mr. and Mrs. L. J. Sanders of Baileyboro, became the bride of Mr. R. E. Bryant, son of Mr. and Mrs. Roy Bryant, in a double ring ceremony performed Saturday evening, Jan. 26, at 3 o'clock by Rev. Russell McAnnally of Anton.

The vows were exchanged beneath an archway of greenery and bridal rope embanked with candelabra and baskets of pink gladioli in the Monument Lake Methodist Church.

Mrs. L. J. Sanders played the traditional wedding march and Mrs. Loyd Roberts sang "I Love You Truly" and "Indian Love Call."

Given in marriage by her father, the bride chose an aqua dressmaker suit with winter white accessories. She carried a

prayer book topped with a white orchid and stephanotis.

Serving the bride as maid of honor, Miss Frances Roy of Carlsbad, N. M., wore a winter white suit with chartreuse accessories. Her colonial bouquet was a blue iris with yellow feathered carnations.

Serving as best man was Sonny Bayless. Ushers and candlelighters were L. J. Sanders, Jr. of Andrews, Texas, and Don Fudge of Ft. Worth.

The bride's mother, Mrs. Sanders, wore a beige suit with black accessories. Her corsage was of pinocchio roses.

Following the wedding, a reception was held in the home of the bride's parents.

The table was decorated with pink carnations and centered with a two tiered heart shaped cake topped with a miniature bride and groom.

Dorothy Smart of Canadian, Texas, presided at the punch bowl and Helen Payne served the cake. Mrs. Don Fudge of Fort worth registered the guests.

Out of town guests were Mrs. Linnie Sanders of Idalou, Texas, Mr. and Mrs. Gene Payne and daughter of Lubbock, Mr. and Mrs. L. J. Sanders, Jr., of Andrews, Dick Payne of Morton, Mr. and Mrs. Bayne Price of Plains, and Rev. and Mrs. McAnnally and children of Anton.

The couple have made their home in Tucson where he is stationed in the U. S. Air Force.

## Mrs. Moeller Hosts Half Century Club

The Half Century Club met in their regular meeting January 31 in the home of Mrs. Anna Moeller.

Games were then played. Mrs. Anna Moeller was re-elected president and Mrs. Pearl Moore was re-elected secretary-treasurer.

Delicious refreshments were served to Mesdames Beulah Carles, Berdie Paul, Sallie Harden, Maude Jones, Lucy Layne, Hazel Farrell, Lula Kistler, Frances Williams, Snow Davis, Pearl Moore and the hostess, Mrs. Anna Moeller.

The next meeting will be a covered dish luncheon February 14 in the home of Mrs. Pearl Moore to celebrate all February birthdays.

## Classmeeting In Benson Home

The Homemakers Class of the First Baptist Church met February 5 in the home of Mrs. Lovie Benson in a social and business meeting.

The meeting was opened with the song "What a Friend We Have in Jesus", followed by prayer by Mrs. Beulah Perkins. The devotional was brought from Psalms 2 by Mrs. Beulah Motheral.

Refreshments of cocoa, coffee, sandwiches and pie were served to Mesdames Beulah Perkins, Emile Snow, Alene Dyer, Lois Shook, Alma York, Grace Winn, Beulah Motheral, and the hostess, Mrs. Benson.

## Class Meeting In Wimberley Home

The Homemakers of the Progress Baptist Church met January 31 in the home of Mrs. Wimberley.

The program, directed by Mrs. Gaddy, consisted of the group singing of "Speak to My Heart" and Mrs. Locker led in prayer. Mrs. Peugh gave the devotional. Mrs. Shipp gave the poem, "It's Not Easy". Mrs. Redwine read "Starting a Spat", and Mrs. Henry read "Hen or Egg."

Roll call was answered by each member asking a Bible question.

Mrs. Redwine directed the business session. The class decided to have dollar day each quarter.

Paper for the parsonage was discussed and several decided the date that they would work at the parsonage.

For the recreation secret pals

### Tax Returns

C. C. GRIFFITHS  
Ray Griffiths Elevator

### CECIL H. TATE

ATTORNEY-AT-LAW  
Muleshoe, Texas  
Office In Courthouse

## Epsilon Sigma Alpha Honors New Members

The Epsilon Sigma Alpha Sorority met Wednesday night, Jan. 9, in the home of Gwyneth Bigham.

Gwyneth presided over the program and each member participated by reading her favorite poetry selection and recording

were revealed and many useful gifts were exchanged. Names were drawn for the next quarter.

Refreshments of cake, cookies, and punch were served to the members, Mesdames Clyde Henry, M. D. Gaddy, J. J. Redwine, Buck Taylor, F. W. Locker, Vernon Raney, Troy McCain, C. C. Mrogan, H. T. Peugh, M. L. Shipp, C. A. Bishop, the hostess, Mrs. Wimberley, and seven children.

The next meeting will be February 14 at 2 p. m. in the home of Mrs. H. T. Peugh. This is a very important meeting and every member is urged to be present. Visitors are always welcome.

selection. Gwyneth concluded the program with several organ and piano solos.

Members present at this meeting were Ruby Gregory, Dorothy Beddingfield, Jean Allison, Sammie Allison, Verona Grizzle, Betty Glaze, Marianna Bryant, Ann Howell, Ellen Gupton, Joanne Barbour, Jane Griffiths, Marlene St. Clair, Marjorie Precure, Jeri Farrell, Billye Jones, and the hostesses, Gwyneth Bigham and Jean Lovelady.

The Sorority also met Wednesday evening, Jan. 23, in the home of Billye Jones honoring their new pledge, Miss Margaret Ann Johnson, with a canasta party.

Members present were Jeri Farrell, Marlene St. Clair, Jane Griffiths, Jean Allison, Sammie Allison, Ruby Gregory, Marjorie Precure, Ann Howell, Charlene Bickel, Marianna Bryant, Joanne Barbour, Gwyneth Bigham, the guest Margaret Ann Johnson, and the hostess, Billye Jones.

PAT R. BOBO  
ATTORNEY-AT-LAW  
Office In Bank Building  
Muleshoe, Texas

### DR. B. R. PUTMAN OPTOMETRIST

First Door North of REA Building  
Muleshoe, Texas Phone 6560

## COX DRIVE-IN THEATRE

Picture For Sat. & Sun., 9 & 10

## "CAVE OF THE OUTLAWS"

With McDonald Carey & Alexis Smith

Choose your color! Choose your heel!

Jacqueline  
PASTEL  
KIDSKINS

Frisulous "lady slippers" in so-feminine, Spring-sweet colors...and with the new flattery of widow's-peak vamps. Beautifully fitting in caressingly-soft kidskin....

SIZES 4 to 10  
AAAA to B



9.98

hi slim heel opera with the tapering toe and higher, straighter sides that are news this season!

## COBB'S

## MULTICOLOR



Connie  
LO-HEELERS

6.98

Sizes 4 to 10  
AAA to B

Smooth kid leather... it drapes like silk!  
NEW MULTICOLOR combination Ombre Tans.  
As Seen In Glamour

## COBB'S

# Get Gay Colorful CARNIVAL WARE IN MOTHER'S "CARNIVAL" OATS

FOR MIXING AND MATCHING

4 FESTIVE COLORS:—

- ★ Mexicali Blue
- ★ Leaf Green
- ★ Canary Yellow
- ★ Old Ivory

It's like unwrapping a present to open a big square package of Mother's "Carnival" Oats and find inside this gaily-colored Carnival Dinnerware.

Yes, every package is a double value because money can't buy a finer quality, more delicious, or more nourishing oatmeal than Mother's Oats! It's the good, hot, creamy-smooth oatmeal your family loves on chilly mornings!

Start collecting this gay, attractive Carnival Dinnerware for your home today. No waiting! No coupons! No money to send! Just ask your grocer for Mother's "Carnival" Oats.



Mother's Oats offers you all-purpose selection of DINNERWARE and ALUMINUM KITCHEN UTENSILS



Products of The Quaker Oats Company



### TIMELY TIPS FROM YOUR H. D. AGENT

By Mrs. Dian Reed

#### Get Into The Leap Year Swing

Nineteen fifty-two is Leap Year! And this is the month that celebrates Leap Year and Valentine's Day. It's the time to pamper men — both husbands and prospects. The practical woman finds ways to score high with men by serving them hearty and delicious foods. Practical women, too, make it a point to display their culinary arts without decontrolling the budget.

So let's get together and discuss foods and recipes that make a hit with the men. Basic to planning low-cost meals is a list of inexpensive and versatile foods everyone likes. One of my pet economy foods is the family of spaghetti, macaroni and noodles. It's a man's food — that's because it's so hearty. It's a woman's food, too, because it

gives her a chance to show off her skill — it can be used with so many other foods in so many ways. Here is an example:

**It's this Savory Apple-Flavored Pork Chops recipe we're giving the meat a new, meal-in-one twist. Plan on one small pork chop for each person. That's all you'll need for the recipe includes an apple flavored sauce, spaghetti and peas. First, brown the pork chops and remove from the skillet. When you make this recipe for four, use the following quantity of ingredients. Add about 3 cups of apple juice to the skillet and season with salt and paprika. Bring to a boil. Then add 4 ounces of uncooked and broken spaghetti. Sprinkle with 2 tablespoons brown sugar. Return the chops to the skillet and cover. Simmer 15 or 20 minutes. Then add 2 cups of peas and simmer until peas are tender. If you use the same approximate quantities of ingredients, you'll find it easy to change any of the ingredients. Vary the meat, the fruit juice, the spaghetti or the vegetable to suit yourself.**

TEXAS Almanac—a new supply at The Journal.

### Letters to the Editor . . .

**QUERY: WHO'S THE EDITOR OF THE MULESHOE JOURNAL? THEY KNOW WAY OFF UP IN NEW JERSEY**

Linden, New Jersey  
Dear Editor:  
At present I am a freshman at New Jersey State College for women. Recently we were given assignments a series of questions in English composition in order to learn to use the library for future research work.

One of the questions was: Who edits and publishes The Muleshoe (Texas) Journal?  
The answer was readily found in N. W. Ayer & Son's Directory of Newspapers and Periodicals of 1951.

Yours truly,  
H. M. MAGER

#### Ed's Note:

I thought sure they would know who's who in The Journal here without having to look it up. But we're glad to hear from this freshman up in New Jersey. He, or she, enclosed 10 cents for sample copy of the paper. Thanks for the letter and the 10 cents, both.

#### "THE RUDE AWAKENING"

I wonder if our President can go to sleep at night. Or does he toss and twist and turn, a guilty conscience fight? I wonder if he sees our boys, to foreign lands he sent. As they parade before his eyes, the dead, the maimed, the bent?

To pin the medals grand and new, for the deeds of duty brave. On broken hearted families, for loved ones in the grave.

Do you, O Mr. President, think that has scored a mark  
Toward solving any problems while lying in the dark?

Does counting sheep bring peaceful sleep and dreams of buried treasure  
And congressmen to dig it up 'til they have filled your measure?

Wake up, "O King", 'tis just a dream, a new day is commencing!  
The income tax reveal the facts, our Nation needs attention.

We can't go on and on and on, no peoples' "Midas tree" Will stand that kind of golden 'touch' that goes so rapidly.

We can't buy friendship everywhere or even the respect Of all the other countries who are breathing down our neck.  
Nor can we ever build enough of planes and tanks and ships To hold our good old U. S. A. together when she rips.  
So wake up, fellow countrymen No time for hesitation  
If we would save our Native Land we have to stop inflation

We also have to find a way to make our voices heard, Up there in that Convention Hall, ("Eye-wash" is a dirty word).  
O fellow countrymen, wake up, an awful clamor make, 'til Congress passes us a law that we can choose make

About the names that do appear on ballots that we mark,  
These hectic times demand the change from being in the dark.  
His eyes don't see His ears don't hear, His mouth says only words  
That "Party Pals" tell his to say and see; a "Big Time Mr. Snerd".  
Our "dander" we have gotten high, our rights and privileges, know  
Now is the time, O countrymen, to come to the aid of our Nation.  
We've had it in the neck enough, let's change the situation.

### FARE FOR ST. VALENTINE'S DAY



You'll serve heart shaped cookies, of course, this February fourteenth. They're traditional. Our cookies are rich, spicy, paper thin and delicately ornamented with pink sugar and white frosting. This is an old world recipe adapted and streamlined in the research kitchens of Blue Bonnet Margarine.

Nobody knows exactly how many Saints Valentine there were. Rumor says five. We'll settle for one. Here is our special, and delicious cookie recipe for greeting St. Valentine's Day

#### ST. VALENTINE'S COOKIES

- |                             |                              |
|-----------------------------|------------------------------|
| 1 cup Blue Bonnet Margarine | 1 teaspoon cinnamon          |
| 1 cup sugar                 | 1/4 teaspoon nutmeg          |
| 1 cup molasses              | 3/4 teaspoon powdered cloves |
| 1 egg                       | 1/2 teaspoon salt            |
| 1 tablespoon vinegar        | 4 cups sifted enriched flour |
| 2 teaspoons baking soda     | 1/4 cup sugar                |
|                             | 3-4 drops red food coloring  |

Cream margarine. Add sugar gradually and blend well. Stir in molasses. Beat in egg. Add vinegar and blend. Sift baking soda and spices with flour and add to molasses mixture. Mix until smooth. Wrap dough in waxed paper and chill overnight in refrigerator. Remove from refrigerator and roll out at once on lightly floured board to a thickness of 1/4 inch. Cut into heart shapes with cookie cutter. Sprinkle with 1/4 cup granulated sugar which has been colored red with food coloring. Place 2 inches apart on ungreased cookie sheets. Bake in hot oven (400° F.) approximately 5 minutes. Cool. Decorate around edges with white frosting using paper cornucopia or pastry tube. Makes about 8 dozen cookies. (ANS Features)

### MULESHOE FUNERAL HOME

LOYD ROBERTS  
FOR AMBULANCE SERVICE CALL  
2860

### Clovis Veterinary Hospital

AT THE STOCKYARDS CROSSING  
Facilities for Large and Small Animals

E. E. KRAUS, D. V. M. CHAS. WEBSTER, D. V. M.  
104 Hull Phone 5442 Clovis, N. M.



**FREE  
INSTALLATION**

on any  
**Truetone AUTO RADIO**  
\$39.95

Custom Styled  
Truetone Auto Radio  
Top-performing model! Controls fit into  
and match your instrument panel.  
8422

**WESTERN AUTO  
ASSOCIATE STORE**

Muleshoe, Texas Phone 4720

These hectic times demand the change from being in the dark.  
His eyes don't see His ears don't hear, His mouth says only words  
That "Party Pals" tell his to say and see; a "Big Time Mr. Snerd".  
Our "dander" we have gotten high, our rights and privileges, know  
Now is the time, O countrymen, to come to the aid of our Nation.  
We've had it in the neck enough, let's change the situation.

#### HAS OPERATION

Mrs. O. M. Self returned home Friday after undergoing an operation in the Clovis Memorial Hospital. She is reported as resting well.

#### VISITORS IN EVANS HOME

Mrs. Zane Evans of Lovington, N. M. is spending the week with her husband's parents, Mr. and Mrs. Leonard Evans. Sunday visitors in the Leonard Evans home were their daughters Shirley Evans of Plainview and Mrs. Jimmy Stevens and husband of Tullia.

### Stop Taking Harsh Drugs for Constipation

**End Chronic Dosing! Regain Normal  
Regularity This All-Vegetable Way!**

Taking harsh drugs for constipation can punish you brutally! Their cramps and griping disrupt normal bowel action, make you feel in need of repeated dosing.

When you occasionally feel constipated, get gentle but sure relief. Take Dr. Caldwell's Senna Laxative contained in Syrup Pepsin. It's all-vegetable. No salts, no harsh drugs. Dr. Caldwell's contains an extract of Senna, oldest and one of the finest natural laxatives known to medicine.

Dr. Caldwell's Senna Laxative tastes good, acts mildly, brings thorough relief comfortably. Helps you get regular, ends chronic dosing. Even relieves stomach sourness that constipation often brings.

Try the new 25¢ size Money back if not satisfied. Mail bottle to Box 280, N. Y. 18, N. Y.

**DR. CALDWELL'S  
SENA LAXATIVE**  
Contained in pleasant-tasting Syrup Pepsin

### California Western Irrigation Pumps

San Jose, Calif.  
Also UNIVERSAL Jet Pumps  
Quick Service — More water at less Cost  
Investigate and Compare — Casing Available  
Complete Estimates Made

See  
**RAY CARTER or E. H. KENNEDY**  
1200 W. 5th. Phone 5480 Muleshoe

How long before your luck runs out?



For Your Automobile Insurance See  
Eddie Lane At

### Lane Insurance Agency

Representing Only Old Line Legal Reserve  
Insurance Companies  
Phone 3630 or 5689 Muleshoe

### NEW AND USED

## Ford Tractors

And

## Equipment

When In Need of Service Or  
Parts Visit

### HICKS TRACTOR CO.

Clovis Highway Phone 6020 Muleshoe



Give your home the weather-defying protection of superb quality paint. It will beautify your home and give you years of satisfaction.  
**COOK'S PAINT... will do all these things.**

#### Exterior PAINT

Prairie Barn Paint  
Green and Red

#### Industrial Finishes

In a variety of colors for preserving wood and metal surfaces.

#### Super White Outside

Wonderful exterior and trim enamels.

- Coroc Water Thinned Wall Finish.
- Shadotone Flat Enamels And Satin Finishes
- Rapidry Enamels And Varnishes.



#### Wallpaper

Shop Our Wallpaper Department



**WILLSON-SANDERS LBR.**

Muleshoe Dial 7130

Texas

### GUARD YOUR EARNINGS

AGAINST THE

### PICKPOCKET YEARS

Many hands reach into your pocket without you knowing it. When your earnings are good it is easy to get a false sense of security. Later you find out there is nothing left of all your abundance.

Constant watchfulness is needed. Your best safeguard is to save regularly—and the best place to save is at the Muleshoe State Bank.

This bank will be closed  
**TUESDAY, FEBRUARY 12**  
Lincoln's Birthday

### MULESHOE STATE BANK

Member Federal Deposit Insurance Corporation

### WELL Cleaned! WELL Pressed!



### THE BUDGET WAY TO LOOK WELL DRESSED

A smart appearance starts with well-pressed clothes. Proper pressing and dry cleaning makes your clothes last longer.

We strive for the finest workmanship and the newest scientific processes to give your clothes the best possible care.

### Lambert Cleaners

Muleshoe

Texas



### VA Dividend To Be Paid In March

Veterans Administration today announced it will pay a regular dividend of \$200,000,000, beginning in March, 1952, to approximately 5,000,000 holders of National Service Life Insurance. Policy holders who wish to receive their 1952 dividend in cash must so notify VA, under Public Law 36, 82nd Congress. Policy holders who do not so notify VA, under this law, will not receive their dividend in cash.

Instead, it will be used by VA to pay the premiums becoming due after the dividends it payable, if the policy holder fails to pay such premiums. VA said it is mailing a special form to all eligible policy holders which they may use to request cash payment, if that is their desire. However, any type of written request for cash payment will be acceptable, VA said; but, in such cases, the policy holders are cautioned to give their full name and address and their insurance numbers so that their accounts may be identified easily and quickly. The dividend is payable to

policy holders whose policies were in force under premium-paying conditions for three months or longer between the 1951 and 1952 anniversary dates of their policies.

Policies of persons in active service since April 25, 1951, which are under waiver of premiums under Public Law 23, 82nd Congress, will not earn dividends for the period of the 1952 dividend that their policies are in such waiver status.

### Survey Indicates Early Effects Of Texas New Schools Setup Since 1949

Some early effects of the Gilmer-Aikin laws on rural education in Texas have been reported by Dr. R. L. Skrabanek, rural sociologist with the Texas Agricultural Experiment Station. These laws, enacted in 1949, called for a complete revision of the method for financing public schools and guaranteed each child of school age in Texas a school program for nine full months per year.

Dr. Skrabanek recently conducted a study of the effects of the Gilmer-Aikin laws in five rural counties in different parts of the state, Burleson county in East central Texas, Castro and Lynn counties on the high plains, Schleicher county on the Edwards Plateau and Tyler county in East Texas.

Although the five counties had a loss in population of 12.7 per cent between 1940 and 1950, the study showed that both school enrollment and attendance of rural children have increased since the Gilmer-Aikin legislation was enacted.

The average length of school term in 1945-49 was 171.8 days. In 1949-51, the average number of days that school was taught had increased to 175.1. Dr. Skrabanek reported that the number of pupils per teacher in 1945-49 was 24.6. This number had been reduced to 22.5 in 1949-51.

"Special service" teachers provided in the five counties during the 1950-51 school year included four librarians, three school nurses and four itinerant teachers. Dr. Skrabanek points out that schools in these five rural counties had no such personnel on their staffs before the Gilmer-Aikin laws were enacted.

As a result of the minimum wage scale for teachers provided by the Gilmer-Aikin laws, classroom teachers received an annual salary increase of almost \$1,000, an increase from an average of \$1,909 for 1945-49 to \$2,808 for 1950-51.

The percentage of classroom teachers who had not completed more than two years of college was reduced from 24 in 1945-49 to only 5.4 in 1949-51. The average number of years of college training received by teachers increased from 3.2 to 3.9.

Results of this study are given in Progress Report 1420, available from the Publications Office, College Station, Texas.

the names of persons writing on current topics should be printed with the letters and will observe this rule in the future, though we didn't print the name of the writer last week. However, officials of the JayCees have been shown the letter and know the name of the writer.

### Letters To The Editor...

The editor's mail has been full of interesting letters from readers this week. We print here some of them:

#### THEY READ THE JOURNAL WAY UP IN WAUKEGAN

Here's a letter from Jack DeShazo, a former employe of The Journal, now in the Navy, post-marked Waukegan, Ill.:

Dear Forbes: How's the editor and the boss of the Great Evening Journal? Everybody up here reads The

Muleshoe Journal and usually someone takes it home with them. I surely enjoy reading it myself. I didn't realize that it contained so much news.

The sun is shining today. I think for the first time since last summer. The ground is still covered with snow. There is nothing like Muleshoe.

I have the duty section this week end so I am catching up on my letters. I am planning to go to "South Pacific" in Chicago next week. Will see "youall" in June. JACK

Dear Friend Forbes:

Like to keep up with old friends of Muleshoe and the Muleshoe Country. So here's a check for another years subscription. We still need rain.

Sincerely, W. C. Cox

MANY BAILEY, CO. FARMERS are using Garner's Record books and tell us they are about the best they have ever seen. The Journal has them for sale.

A Pleasurable Evening Awaits You At The

## MOVIES

Week Days Open 6:45 p. m., Starts 7:00 p. m. Saturday and Sunday Open at 1:45, Starts at 2:00 and Continuous Showing

Admission: Adults 36c Children 9c

Here are the programs for the coming week at your local Theaters

### VALLEY PALACE

THURSDAY and FRIDAY

Betty Grable

—In—

Meet Me After The Show

SATURDAY ONLY

Rod Cameron

—In—

Cavalry Scout

SUNDAY and MONDAY

Van Johnson  
June Allison

—In—

Too Young To Kiss

TUESDAY and WEDNESDAY

Stewart Granger  
George Sanders

—In—

The Light Touch

THURSDAY and FRIDAY

Walter Pigeon

—In—

Calling Bulldog Drummond

SATURDAY ONLY

Robert Clark

—In—

Tales Of Robin Hood

SUNDAY and MONDAY

Dennis Morgan  
Virginia Mayo

—In—

Painting The Clouds With Sunshine

TUESDAY and WEDNESDAY

Frances Langford

—In—

Purple Heart Diary

Motion Pictures Are Your Best And Cheapest Entertainment

### Letters to the Editor....

THINKS JOKES USED BY JAYCEES WERE "CORNY"

Dear Editor: I certainly agree with the letter of "Just a Citizen" (printed in this column last week).

Not only were the jokes nasty, but "corny".

Why can't an organization, if they have to entertain, have a program that has a moral and is upbuilding.

I don't see where anyone could see where the whisky bottle, hiccups and garters have a very high moral, certainly no Christianity, and if the leaders of today bring entertainment with no moral, what can they expect of the next generation.

When our babies think of the program as nasty, I think it is time to stop and think.

JUST ANOTHER CITIZEN (Mrs. Arthur Askew)

Note: The Journal feels that

## ZENITH RADIOS

ALL MODELS IN STOCK

—At—

### Spence Radio Service Shop

Phone 7020 Muleshoe, Texas

Service On Any Make Radio



"I tested Conoco Super", says A. E. Stambaugh, Garageman, Salt Lake City. "My engine never performed better".



"Believe me, this '50,000 Miles—No Wear' story is all you say it is!"—Harry W. Brown, Oskaloosa, Kan.



"Conoco Super is the finest motor oil on the market"—P. S. Young, Young Motor Company, Walsenburg, Colorado.



"Checked car driven 39,000 miles on Conoco Super"—F. S. Young, St. Paul, Minn. "Never saw so little wear".

Expert Service men say:

"I got the story on

## '50,000 Miles—No Wear'

and changed to New Conoco Super Motor Oil"



"Dreams of working on clean engines come true when customers use Conoco Super"—Lewis Stoddart, Blackfoot, Ida.



"Tourists insist on Conoco Super", reports Richard Punch, Manager, Park Lane Hotel Garage, Denver, Colo.



"Changed to Conoco Super, driven 29,000 miles without trouble", writes I. W. Banard, Fort Smith, Ark.



"After overhaul, Conoco Super customers drive 50,000 more miles"—R. K. Comstock, Oklahoma City.

### '50,000 Miles—No Wear!' Proved Here—

After a punishing 50,000-mile road test, with proper crankcase drains and regular care, engines lubricated with Conoco Super Motor Oil showed no wear of any consequence. . . in fact, an average of less than one one-thousandth inch on cylinders and crankshafts. Amazing proof: factory finishing marks were still visible on piston rings!

AND gasoline mileage for the last 5,000 miles was actually 99.77% as good as for the first 5,000! This test proved that Conoco Super, with OIL-PLATING, can make your car last longer, perform better, use less gasoline and oil.



CONTINENTAL OIL COMPANY

## HOLTON CONOCO SERVICE

WHOLESALE AND RETAIL PHONE 6110 COLLECT MULESHOE, TEXAS

# Let's get down to the Solid Facts!

Chevrolet Trucks Can Save You Money All Along the Line



RUGGED and Thrifty too!

(Continuation of standard equipment and trim illustrated is dependent on availability of material.)

The facts show you how a Chevrolet truck can mean real substantial savings on your hauling or delivery job. Chevrolet trucks cost less to buy, less to own and operate. Their dependable valve-in-head engines, famous for power and stamina, keep fuel consumption low. Sturdy Advance-Design features keep maintenance costs down. Value is built in to stay in—safeguarding your truck investment. All over America there are more Chevrolet trucks in use than any other make. Come in and talk over your truck needs.

- Fact No. 1—More Truck for Less Money
- Fact No. 2—Rock-Bottom Operating Costs
- Fact No. 3—Engineered and Built for Your Loads
- Fact No. 4—Lower, Slower Depreciation



## C. & H. CHEVROLET CO.

MULESHOE, TEXAS



### Hospital News

Mr. C. L. Dyer was in for medical care. He has been discharged.  
 Mr. H. A. Angeley was in for medical care. He has gone home.  
 Mr. J. O. Cantrell was in several days for medical care. He has gone to his home.  
 Mrs. Addie Fry has been admitted for medical care. She is better today.  
 Mrs. S. Shelton was in for medical care. She has gone home.  
 Mr. W. J. Woody, a medical patient, has gone home.  
 Mr. D. J. Harris is receiving medical care. He is doing better.  
 Mr. R. Q. Whatley underwent major surgery. He is doing fine.  
 Buddie Community is receiving

medical care. He is resting well.  
 Mrs. Herold Wilson is in for medical care.  
 Clarence Weeks is in for observation.  
**Congratulations To:**  
 Mr. and Mrs. Billy Marlow on the birth of a daughter, Deborah, born Jan. 31, 1952.  
 Mr. and Mrs. Joe Ferris on the birth of a son, Leland Howard, born Feb. 5, 1952.

### Mules Five Lose To Littlefield

Muleshoe's Mules lost a conference basketball game to Littlefield's Wildcats there Tuesday night by a close margin of 33 to 31.

### WHERE TO START

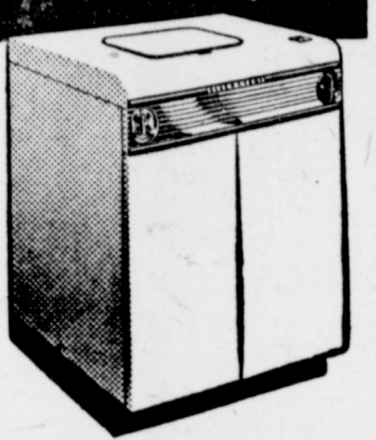
In life, in business, in civic undertakings, one has to start somewhere. So, pay no attention to this anecdote:  
 "Which road do I take for Cincinnati?"  
 "You know, if I were going to Cincinnati, I wouldn't start from here."

### Political Announcements

The Journal is authorized to announce the following candidates for office shown, subject to the Democratic Primary July 26, 1952:

- For County & District Clerk: M. G. BASS
- For County Attorney: NORMAN W. BAYS
- For County Treasurer: HELEN JONES, LEONA MASON
- For Commissioner, Prec. 1: L. T. MCKILLIP, M. E. FINLEY
- For Commissioner, Prec. 2: WOODROW W. COUCH
- For Commissioner, Prec. 3: BOB KINDLE, H. E. BAKER
- For Commissioner, Prec. 4: R. P. McCALL, W. E. "Woody" GOFORTH
- For Constable, Prec. 1: J. N. (Jesse) JAMES
- For County Judge and Ex-Officio County Superintendent: CECIL H. TATE
- For Sheriff, Tax Assessor and Collector: A. H. (Hugh) FREEMAN

### WORLD'S FINEST AUTOMATIC WASHER



**BLACKSTONE**  
 • We'll demonstrate its superiority right before your eyes. Weekly payments as low as \$2.50

**Johnson-Pool**  
 TIRE & APPLIANCE  
 Dian 7370 Muleshoe

### TARGET FOR TODAY

A man on a vacation had been told that he would find some good hunting on the lower end of a creek. Gun in hand, he wandered for miles without getting a shot and was on his way back in the late afternoon when he met a small boy.  
 "Is there anything to shoot around here?" he asked the lad. The boy scowled thoughtfully and shook his head. Then his face brightened.  
 "Here comes the principal of my school," he exclaimed.

WE HAVE A FRESH SUPPLY of Garner Farm Record Books. We stock them each year, so that a farmer can always have the same book he has been using.

### FOR SALE

- 12 A. improved, on pavement; \$5,250.00.
- 32 A. irrigated, improved, on pavement.
- 160 A. irrigated, well improved, all minerals.
- 640 A. improved, \$147.50 per A.
- 120 A. improved, good, large irrigation well. Deep soil. Priced right for quick sale.
- Nice 2 bedroom home, \$7,500.
- Nice 3 bedroom home, \$8,500.
- Other good listings on farms and city property.

**FARLEY**  
 REAL ESTATE & INSURANCE  
 Phone 7279 Muleshoe



It costs you more if you wait until your car lays down on the job, before having necessary repairs made! And it's riskier driving, too. Drive in for a complete scientific check-up.

Faulty lubrication or none can ruin a car. Our expert mechanics double check the trouble spots. Bring your car in for front-to-end protective lubrication.



### C. & H. Chevrolet

Phone 2720 Muleshoe, Texas

# Closing Out

## Entire Stock Of SERVEL REFRIGERATORS

At factory prices

	Reg. Price	NOW
Model BR-1118, 11 ft.	\$498.95	<b>379.00</b>
Model BN-800, 9 ft.	382.95	<b>289.00</b>
Model BR-917, 9 ft.	449.95	<b>329.00</b>
Model BR-813, 8 ft.	299.95	<b>229.00</b>
Model BN-600 6 ft.	312.95	<b>239.00</b>

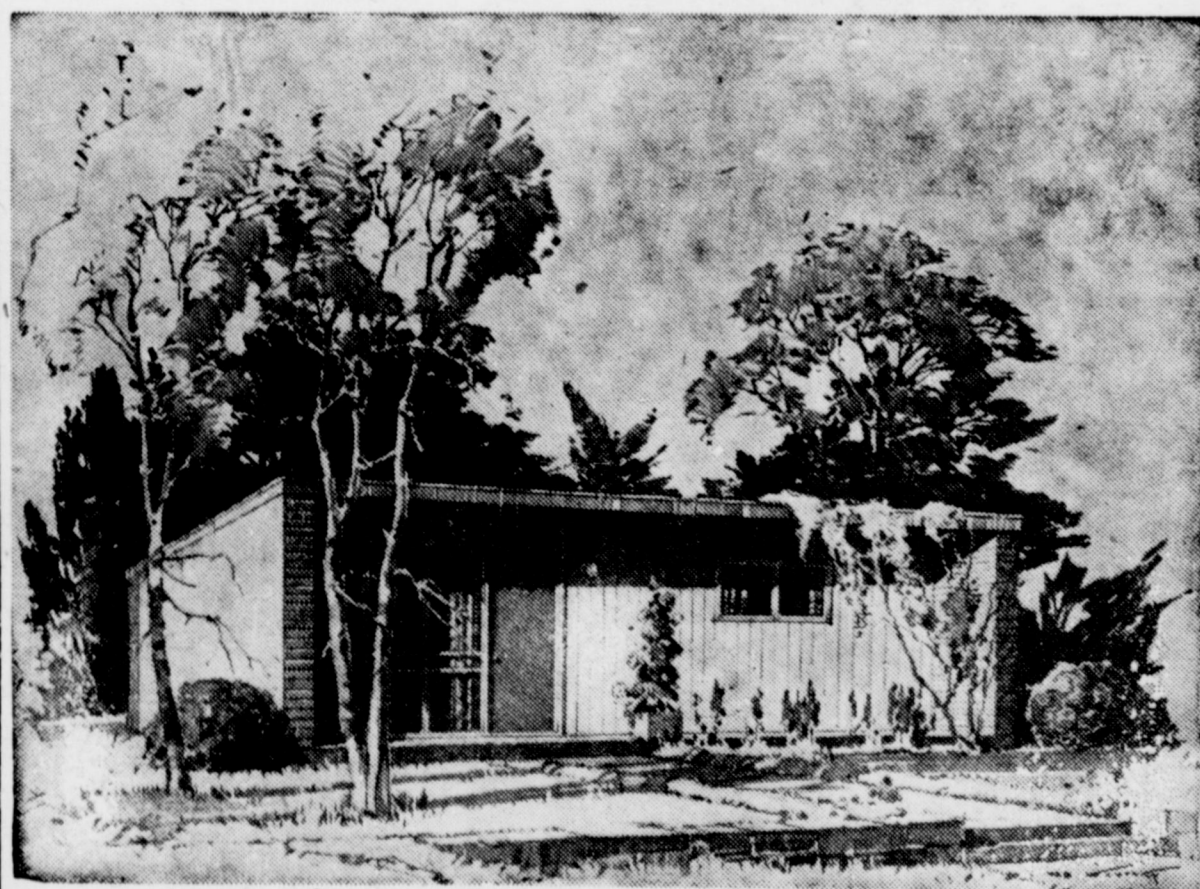
SORRY - NO TRADE-INS

## MULESHOE LIQUEFIED GAS CO.

Phone 3130 Muleshoe

ANNOUNCING....

## Low Income Housing FOR MULESHOE



You Can Have A Modern

2 Bedroom Home For Only **\$3,000**

For Further Information See George Mayo Or Houston Hart

## H. & M. Construction Co.

Muleshoe, Texas

**CARD OF THANKS**  
 We wish to thank everyone who assisted in the offering given us while our daughter was in the hospital at Ft. Sumner, N. M. Mr. and Mrs. A. E. Ward 7-11p.

**CARD OF THANKS**  
 We wish to express our thanks to all our friends who helped list our land for us recently.  
 The Cabe Barkers



**FOR RENT**

FOR RENT: Apartment across the street from hospital. \$35 per month with bills paid. S. E. Goucher. 5-8tc.

FOR RENT: 4 room furnished house with bath. See James Mitchell at Blondie Ray Service Station. 6-2tp.

FOR RENT: 3 room unfurnished house. Also 2 room furnished apartment, bills paid. \$35 mo. L. T. McKillip. 7-1tc.

FOR RENT: 2 houses, both 2 rooms, 1 unfurnished, 1 furnished. See Omer Kelton, at Hollands Barber Shop. 7-3tp.

FOR RENT: Three room modern apartment. Phone 4292. 7-1tp.

FOR RENT: Furnished apartment, 3 rooms and bath. John R. Hammock. Phone 6321. 7-1tp.

FOR RENT: 3 room furnished apartment with bath. Phone 5460 or see Mrs. A. J. Lender. 7-1tp.

**NOTICES —**

NOTICE To My Creditors: I am not yet able to write a check on my bank account or I would have all my accounts paid, but I hope after February 18 the court will grant me the privilege and right to use my savings as other citizens. Respectfully, C. S. Otto. 6-2tp.

NOTICE: Having moved back to our home, we invite you to come to see us and order all kinds of fruit trees, shrubbery, lawn seed, landscaping, and anything in the Nursery business. House No. 808, Avenue F & East Main. T. H. Murrah. 6-4tc.

NOTICE: Will person who borrowed Army cot from Buster Reid please return it. 6-2tc.

Will plow truck patches or gardens or will move dirt. Jackie Dulin, Second house north of Shady Rest. 6-2tp.

**WANTED —**

WANTED: 100,000 rats and mice to kill with Ray's Warfarin Rat Killer, also Squill Harmless to humans and pets. Sold by Western Drug and Jones Farm Store. 48-12tc.

WANTED: First class tractor mechanic. Good wages for right man. D. H. Sneed Supply Co. 4-1tc.

WANTED: Bookkeeper who can take care of parts department. D. H. Sneed Supply Co. 4-1tc.

WANTED: Barbers, Clovis Air Force Base, New Mexico license not necessary. Contact L. A. Cantrell at Base, or Box 12, Texico, N. M. 6-2tp.

Will keep children in my home by hour, day, or week. Mrs. Thomas, 1408 Ave. E., Phone 2431. 7-3tp.

Will do day time baby sitting in my home. Mrs. Carl Heard, 907 Ave. H. 7-1tp.

Baby sitting in your home. Mrs. Edna Carpenter, Phone 7180. 7-2tp.

**AUCTION**

**MINI CAR WASH**  
Detroit Mini Automatic Car Wash auction Saturday, Feb 9 at 11:00 a. m. Busiest place in town Capacity 300 cars daily. Kenneth Bozeman, auctioneer. 1510 Ave. L, Lubbock, Tex. 6-2tp.

# USE THE CLASSIFIED FOR RESULTS

## FOR SALE

### FARMS & RANCHES

● 80 acres northwest of Muleshoe, 14 inch irrigation well, 30 acres alfalfa, 1/2 minerals intact. \$25,200.  
● 80 acres well improved. Good red land, electric irrigation well, 18 acres new alfalfa. \$28,000.  
● 48 acres, 14 inch irrigation well, 4 room house, well located. 20 acres of new hay, some fenced hog proof. Good clean land. \$18,000.  
● 10 acres close in on pavement. Has irrigation well. House, 3 room and bath. \$10,000.  
● 160 acres on pavement. New clean level land, 14 inch irrigation well. Large barn, new 30 acre permanent grass, 45 acres alfalfa. This is a choice farm. \$360 per acre. (Exclusive listing.)  
● 160 acres on pavement. 3 bedroom home. Well located, good red land. Good out buildings, good irrigation well. If you are looking for a good home, this might be it. Priced at \$300 per acre.  
● 177 acres dry land on pavement. 4 room modern home. \$75 per acre.  
● 189 acres near Friona. Good clean land, irrigation well. \$150 per acre.  
● 293 acres North and east of Muleshoe, 206 acres in cultivation, good 8 inch irrigation well, 4 room house, 1/2 minerals intact. \$200 per acre.  
● 320 acres, 220 acres in cultivation, good barns and corrals, 7 room house. This is a real farm and stock farm. \$200 per acre.  
● 320 acres on pavement, good irrigation well. Will sell for \$200 per acre with only 29 per cent down.  
● 320 acres good clean level land to cash lease, 2 irrigation wells. This is a good cotton farm. Price, \$30 per acre.

### CITY PROPERTY

● 3 bedroom home well located on pavement. This is one of the best buys we have had to offer. \$6,000.  
● 3 bedroom home. Pavement on 2 sides. You will need to see this one.  
● These and many other good buys to offer.

### EDDIE LANE REAL ESTATE & INSURANCE

Phone 3630 or 5689  
Muleshoe, Texas

## Used Tractors And Equipment For Sale

● 1941 Model Ford Ferguson Tractor, 2 row lister, planter, cultivator, and knife attachments. \$750.  
● 1945 Ford Ferguson Tractor, clean tractor. \$695.  
● 2-1948 Ford Tractors, \$895 each.  
● 1-1949 Ford Tractor, \$930.  
● 2-1949 Model Ferguson Tractors, \$1150 each.  
● 1-1940 DC Case Tractor, wide front wheels, lister, planter and cultivator, 3 bottom breaking plow. \$800.  
● 1-1946 Model Chevrolet Truck, \$550.

### D. H. Sneed Supply Co.

Your Ferguson Dealer  
Pho. 4170 Muleshoe

THE MULESHOE JOURNAL, Thursday, February 7, 1952

## FOR SALE ARE YOU IN THE MARKET FOR LAND?



### AT THE MULESHOE NURSERY ON CLOVIS HIGHWAY

We are selling out all Nursery stock at Bargain prices. We have Poplars, elms, maples, evergreens, red bud, and other items too numerous to mention. Come out, and let us show you. EVERYTHING TO GO. MUST CLEAN OFF THE LAND.

### MULESHOE NURSERY

## The Lone Star Trading Post

IN MULESHOE has run out of something to sell around Muleshoe. If you have a good place to sell, list it with me. I have BUYERS with the money!

● 1/2 section good smooth land near Van Horn, in grass. Has plenty water under it. Good red land, within one mile new gin. Can be bought for \$75.00 acre, assume notes of \$9,000, total down payment \$15,000, maybe a little less. This place will be worth \$500 acre in a year or two. This land will make 2 bales every year.  
● 1/2 section near Van Horn. Will give 5 year lease if renter will put down irrigation well and pump and motor. Owner will pay back cost of well out of rent. Pay 1-3 and 4/4 rent.  
● 160 acres near Muleshoe, not level but good land with good irrigation well and pump and motor. 3 room house. Clean farm. \$175 acre with \$9,000 loan.  
● Good 3 bedroom house in Muleshoe. On pavement. Has large loan. Possession.  
● 385 acres, 8 miles south Hobbs, N. M. Has 2-10" wells with Pumps and motors. Fair improvements. Level land. Has FREE natural gas for pumping irrigation wells. No Minerals. Good cotton land or alfalfa. Can be bought for \$40,000. Has loan of about \$16,000. Possession. This is a steal as one crop will pay for it.  
● 90 acres clean land near Muleshoe for cash rent. Electric pump, on pavement. No house goes with rent. Cash \$2,000.  
We will be glad to help you find what you want. Come out to Muleshoe Nursery on Clovis Highway and see me.

### Dave Aylesworth

LONE STAR TRADING POST  
in MULESHOE  
Box 187

### FOR SALE

● 320 Acre Farm, Near Bovina. Well improved, with 6 room modern house. Almost new grain elevator, 12 bin size. Plenty of other out buildings. The land is all in cultivation. All nice and smooth and all will irrigate. This is a farm home that anybody would be proud to own. Priced at only \$150. per Acre.

### O. W. Rhinehart

ALL KINDS OF INSURANCE  
BOVINA, TEXAS

## FARM AND HOMES FOR SALE

● 160 acres, 4 room house. Barns and chicken houses. Clean, level land, on paved road. \$225. acre.  
● 160 acres, 5 rooms and bath, barns, good red land, some Johnson grass. Irrigation well set on 110 feet. \$250 acre.  
● 371 acres, 5 room house, good barns, irrigation well, good red land, nearly clean. 130 acres will water from well. Rented for year. \$150. acre.  
We have 3, 10, 20, 30, 50, and 80. acre places for sale.  
See us when you are ready to buy. We want some good listings if you want to sell. And we have some nice homes in town.

### HANOVER & DAY REAL ESTATE

Just North of Courthouse

### REAL ESTATE For Sale



We still have some good buys. Some of the best improved farms in the country, priced to sell. Come let us show you. Have a good small ranch of 1000 acres near Muleshoe that is a good buy. One of about 1400 acres near Muleshoe that is priced right.

### C. L. "HAPPY" DYER

C. E. BRISCOE  
Phone 3710 Muleshoe

## FOR SALE

● 80 acres, 10 in. well with electric motor. Modern home. Half of minerals. Small down payment. Will take a modern home in Lubbock as trade. \$300 acre.  
● 354 acres well improved. Good irrigation well. Half minerals. On pavement. \$185 per acre.  
● 140 acres of the best dry land. Unimproved. Half minerals.  
● 1 city home. East front. \$8,500.  
● 1 Flip-over plow for Ferguson or Ford. \$160.00.  
● 1 16-ft. grain loader with electric motor. \$250.00.  
● 1 Seed cleaner with electric motor. \$125.00.  
● 354 acres with new 8-in. irrigation well. \$10,000 home and other buildings. Bargain. \$132.50 per acre with minerals.  
● 151 acres. 5 room modern home. 25 acres alfalfa. 1/2 min-283 Acres dry land. A good buy at \$100 acre.  
2 bedroom G. I. home, \$900 down, payments \$47 mo.  
80 acres, 30 A. in alfalfa, 10 in. well on butane. Has 2 room house and well house. A good buy. Sell or trade for dry land.  
95 acres, good well, improvements OK. This place has natural gas for well and house. \$260 acre.  
Good business house in Muleshoe, \$12,500. Renting for \$125 monthly. Will trade for small farm.  
One small country store, small living quarters, fixtures and some stock, \$3,500.  
320 Acres of land in Lamb County, 100 acres in cultivation, rest in grass. A good buy at \$85 acre.

## Residence Lots Business Lots

SEE US NOW FOR BUNDLE FEED

We have several other listings. For the best service give us your listings from 1 acre up. What have you?

### W.R. (Ray) Carter

Farm Bureau Office Phone 6480  
Muleshoe, Texas

RUBBER IRRIGATION Gloves, \$1.25. Russell Supply, Army Store. 7-1tc.

## FOR SALE

### FARM EQUIPMENT

All this machinery is practically new.

- 1-UTU M-M Tractor with 4-Row equipment, cultivator, lister and knives.
- 1-13 foot Hoeme Plow.
- 1-3 Bottom M-M 14 inches mold board plow.
- 1-John Deere 8 inch, 16 inch Disc, Wheat Drill.
- 1-27 foot Grain Loader on rubber.
- 1-4 Section Harrow.

### AL CASSIDY

2 miles East on Plainview Highway, 4 1/2 North on Black Top. 7-2tp

## For Sale

FOR LEASE: A laundry doing good business. In choice location. Box 537, City. 7-3tp.

FOR SALE: Medium sized good sound dahlia bulbs. 50c each or 3 for \$1.00. G. H. Davenport. 7-1tp.

FOR SALE: Northern Star Cottonseed. First year from certified seed. Three disc 2-way plow for Ford or Ferguson. 10 miles east on Plainview Hi-way. 1 1/2 miles north. L. B. Peugh. 6-2tp.

Four Registered Hereford heifers for sale. John Gammon, Muleshoe. 1 mile north of town. 6-3tp.

Bred Hampshire Sows and Gilts for sale. John Gammon, 1 mile north of Muleshoe. 6-3tp.

FOR SALE: 2 75 ft. lots, east front 1 corner lot. Worth the money, on W. 7th. and Ave. H. Phone 4373. 6-1tc.

FOR SALE: Guaranteed fresh country eggs. 5 miles north, 1/2 mile west, 2 story house. Mrs. J. R. Bartlett. 6-3tp.

FOR SALE: 1 6 ft. windmill and tower, 74 ft. 2 in. pipe and rods, 1 posthole digger (tractor powered), 1 Kohler light plant. See John Bell, Route 1, 3 miles north and 2 miles west of city. 6-3tp.

FOR LEASE: 160 Acres, under irrigation, level. Cash lease \$4,200. See Wiley Baker, Phone 3373, Muleshoe. 6-2tc.

FOR SALE: Lister and Planter for Ford Tractor. J. Clyde Taylor, Muleshoe. 6-2tc.

FOR SALE: White Muskovy ducks, Martha Wuerflein, Star route 1. 6-2tp.

FOR SALE: 3 bedroom house, on pavement, close in. See Carl Case. 6-2tc.

FOR SALE: A boy's bicycle, new tires, good running condition. \$15. Call 2480. 4-1tc.

## Custom Made

Also Aluminum Storm Windows

Stops the dust - Stops Window sweating. Delivered and installed from factory in Clovis, N. M.

ALSCO OF TEXAS CO.  
S. Prince St.  
Clovis, N. M. 6-2tp.

## Real Estate

### Houses and lots for Sale:

● 4 vacant lots located just north of Mrs. Moeller's rock home. These lots are East front.

● Lots 13, 14, 15, Block 38 southwest corner lots. Block north of high school, pavement on west side of these lots. Priced \$1,000.

● 5 room modern house. 60x120 ft. lot. \$4,500.

● 3 bedroom home on pavement close to high school. This place is well located with an east front view. Priced \$8,500.

● 6 room house and garage, east front on pavement. Newly decorated. Priced \$10,000.

● 6 room modern home, large basement, garage, east front on pavement. Priced \$10,500.

● 3 Acres of land, 3 bedroom home with 2 baths, one has a shower. Pressure pump. Priced \$14,000. Sell or trade.

### CLYDE A. BRAY SR.

AT STOP LIGHT

Muleshoe

Phone 2820 Box 243

### SPECIAL PRICES

On all Radiators. International Farmall Cores \$25 exchange

### STOVALL-BOOHER

Radiator Sales & Service  
Plainview, Texas

WE BUY Old Brass, copper, radiators, scrap iron, batteries, etc. JOHN'S CUSTOM MILL, Phone 5730. 5-1tc.

FOR SALE OR TRADE: 1 1951 112 h. p. Kaiser hydromatic motor and transmission, driven 8000 miles. Would make deal for irrigation motor. M. B. Roberts, 7 1/2 miles southwest of Lockney, Route 2. 4-4tp.

RUBBER IRRIGATION Boots, \$7.50. Russell Supply, Army Store. 7-1tc.

### TAYLOR'S

Quality

### BABY CHICKS

Our chicks are not shipped in—they are all hatched in our hatchery.

Delivery Days  
Tuesdays & Fridays

TAYLOR'S HATCHERY

Muleshoe, Texas

# USED EQUIPMENT FOR SALE

- 1 - 8 ft. Stahmer Fertilizer & Spreader.
- 1 - M-M Model MTA Tractor.
- 1 - 1943 IHC Model M Tractor with Lister & Planter.
- 1 - 1948 M-M G-4 Combine.
- 1 - 1945 M-M G-4 Combine.
- 1 - John Deere Hay Rake.
- 2 - M-M 1941 UTU Tractors & 4 row listers & Planters.
- 1 - M-M Bale-O-Matic Hay Baler.
- 1 - M-M 7 ft. Mower.
- 1 - Morrell Hay Rake.
- 1 - Fairbanks-Morse Feed Mill with traveling feed table.
- 1 - John Deere 10" Feed Mill.
- 2 - 1941 M-M WTU Tractors, with listers, planters, & cultivators.
- 1 - IHC Model F-30 Tractor with lister, planter, and cultivator.
- 1 - IHC Feed Mill.
- 1 - M-M Model MTA Tractor, with lister, planter, & cultivator.
- 1 - Kelly Ryan Disc Harrow.
- 1 - 1948 Model A John Deere Tractor with lister, planter, & cultivator.

## FRY & COX BROS.

M-M FARM MACHINERY  
A ONE-STOP FARM SERVICE

Phone 3660

Muleshoe

## QUITTING SERVICE STATION BUSINESS

Closing out Sale on all tires, tubes, and station equipment, fixtures, and merchandise. All to be sold down on cost, to close out. All must go, in the next few days, as we want to repair the building, for other business.

## SEIBERLING TIRES UNCONDITIONAL GUARANTEE

SIZE	LIST PRICE	SALE PRICE
600-16 6 ply.	\$34.17	\$22.95
600-16 4 ply	\$26.32	17.00
650-16	32.25	20.00
700-16	37.66	24.50
670-15	28.68	18.00
710-15	31.79	20.00
710-15	47.54	26.00
760-15	34.87	23.50
800-15	38.19	25.50
820-15	39.81	26.50
700-15 6 ply	46.88	28.75
700-15 Truck & Bus 6 ply	51.88	34.50
800-15 Five tires. Goodyear		100.00

### TUBES

600-16	3.69	2.60
650-16	4.28	3.21
670-15	4.16	2.70
760-15	4.81	3.75

1 quick charger, 1 slow charger, 1 electric chamois ringer, 1 12 case electric coke machine, 1 trickle charge battery stand, 1 tire sprayer, several new batteries, 1 ton and 1/2 floor jack, 1 power tube vulcanizing machine and valve stem cooker, 1 cash register, 1 adding machine, several air hose & water hose, Counters & shelves, 1 electric buffer, 1 tire breaker. Lots of other items.

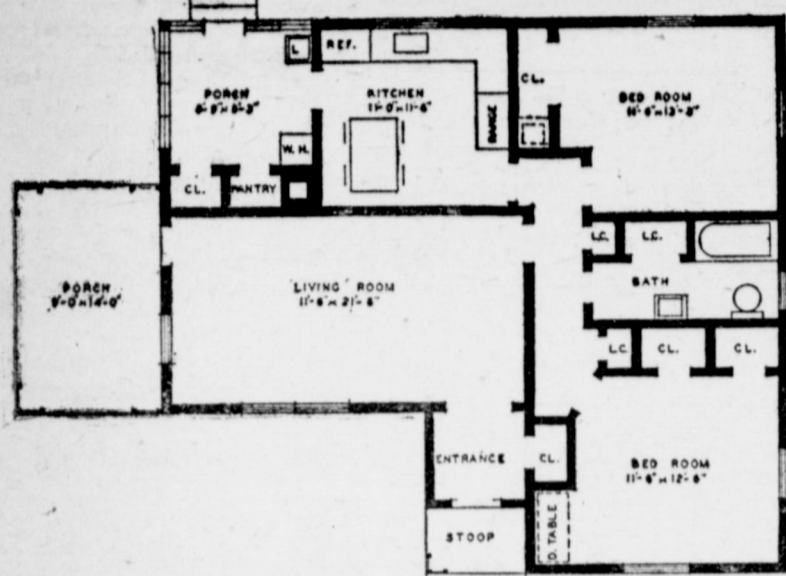
## BOB'S SERVICE STATION

NORTH END OF MAIN STREET  
PHONE 6940





House Plan No. 26



**A House With Lots Of Living Space**

The size of your home may be an optical illusion if you build this house, arranged for convenience and spaciousness. It will seem much larger than it really is.

The kitchen has ample work counter and storage space; also, plenty of room for a table on which to serve the family meals. The pantry on the porch is convenient for food storage, while the closet is ideal for rain togs, etc. Field hands will appreciate the lavatory on the back porch. The addition of this lavatory costs very little; it is conveniently located only about 5 feet from the hot and cold water lines and drain which go to the kitchen sink.

Plenty of wall space in the living room makes it easy to arrange your furniture. Either open or screened, the adjoining porch will serve as a very nice extension to the living room during warm months.

There is room for two chim-

neys, if you prefer to use solid fuel-burning space heaters. If they are not needed, the space can be utilized as an additional storage room.

In the comfortable bedrooms the large amount of closet space will make overcrowded closets a thing of the past for you. Also desirable are the two linen closets opening into the central hallway; besides a large one in the bathroom.

The front entrance is planned so that unexpected callers will not disturb your privacy in the living room. The entrance closet will serve as an excellent place for outside wraps which cannot

conveniently be stored in bedroom closets.

The lines of this home are simple yet attractive, keeping construction costs to a minimum. There are no unnecessary or expensive offsets which will give you trouble in the foundation or roof framing.

You can obtain blueprints for this The Muleshoe Journal Farm & Ranch House Plan No. 5026 and a handy list of materials by which you can figure your construction cost accurately. Send \$1 to Building Editor, Farm & Ranch Dept. L-36, Nashville, Tenn. Order by number, Plan No. 5026. Blueprints are adequate for any farm carpenter or for any farmer handy with tools.

**OPS Permission Required Of Fairs**

Organizations promoting livestock fairs, or exhibits must apply to the district office of the Office of Price Stabilization for their area before such shows are held, OPS officials said today.

Prior to the dates for such a livestock exhibit, the president, secretary or manager of the organization promoting the show must apply for permission to have the "club" or "show" stock sold at the fair and slaughtered. In turn the OPS district office will authorize the officials of the organization to issue certificates permitting non-slaughtering purchasers to have the stock they purchase slaughtered for them whenever it finds that the sale at the fair is held under the auspices of the 4-H clubs, Future Farmers of America, or other recognized youth organization.

The Lubbock district OPS office, 1202 Texas Ave., Lubbock, Texas, is the headquarters for

**DR. B. Z. BEATY**  
DENTIST  
Across From Muleshoe Motor  
Office Hours:  
9 - 12 a. m. - 1 - 5 p. m.  
Closed Saturday Afternoons  
Office Ph. 2040 Res. Ph. 5020

**Abstracts - Title Insurance**

Real Estate

Complete Abstract And Title Service

**Muleshoe Abstract Co.**

Barry T. Lewis

Tel. 7320

**Caprock Milo Is Highest Producer**

Caprock milo produced the highest average yields in the grain sorghum variety tests conducted at Lubbock on dryland, 1947-50, and on irrigated land, 1948-50.

These tests, conducted at the Lubbock unit of the Texas Agricultural Experiment Station, included 21 commercial varieties and experimental strains of grain sorghums.

Caprock was outyielded on dryland by an experimental selection of Plainsman, which ranked fourth in the irrigated tests. An experimental strain of Combine kafir produced the second highest average yield under irrigation, followed by Combine Kafir 60.

On the average, irrigation increases yields by approximately 110 per cent, according to E. L. Thaxton, Jr., agronomist with the Lubbock substation.

Thaxton reports that, when 69 West Texas counties, and organizations in this area should direct their applications or requests for information to this office.

normal seeding rates are used, the late maturing varieties have a higher average yield than those of medium or early maturity.

A summary of these variety tests is given in Progress Report 1422, available from the Publications Office, College Station, Texas.

This report gives separately the results of grain sorghum variety tests conducted at Lubbock in 1950, along with the characteristics of each variety and strain such as days to bloom, percentage, lodging, height, threshing percentage, test weight and moisture percentage.

**VISIT IN OKLAHOMA**

Mr. and Mrs. Bog Knight spent a few days visiting their grandparents, Mr. and Mrs. A. J. Aday, in Antlers, Okla., attended the Fat Stock Show in t. Worth, and visited an aunt, Mrs. Jimmy Foreman in Palo Pinta, Texas.

**TAYLORS HAVE VISITORS**

Wednesday night, Jan. 30, the Howard Taylors had as guests, Mr. Taylor's sisters and families, Mr. and Mrs. Worth Hawkins of Livermore, Calif., and Mrs. Woodrow Copeland and sons of Ceres, Calif. Also present was his brother, L. D. Taylor and family. The group enjoyed a birthday supper for Howard Taylor.

**F. H. A. & G. I. LOANS**      **TITLE INSURANCE**  
**BAILEY COUNTY ABSTRACT CO.**  
MRS. LELA BARRON      L. S. BARRON  
ABSTRACTS      LOANS  
Established in 1900

**Student Council Being Organized In Bula Schools**

An organizational meeting of the student council of Bula schools will be held Friday morning, February 8, at 9 o'clock in the high school auditorium. Faculty members are sponsoring the organization.

Candidates for election are: President, Jake Bogard, Ralph George, Richard Skinner, and Dewayne Neel. Vice President: Gary Nickels, Charles Seagler, and Jimmy Drake. Secretary: Patsy Blackman, Carolyn Reynolds and Benny Claunch. Sergeant at arms: Gera Thompson, Charles Seagler, Benny Claunch and Jimmy Drake.

**FARLEY INSURANCE AGENCY**  
**REAL ESTATE & INSURANCE**

Over Bank, Muleshoe, Texas

Office Phone 7279

Res. 5103

**ELIZABETH WOODLEY**  
**INSURANCE**

Nat'l Farm Loan Office Bldg

Phone 7350

**FARM SALE**

I have sold my farm, and will sell at public auction property described below at my place, 1 mile west of Big Square Church, 11 miles north and 12 east of Muleshoe, 10 miles north and 5 west of Earth, or 11 miles west and 12 south of Dimmitt, Texas, on

**Tuesday, February 12**

SALE TO BEGIN AT 10 A. M.

Big Square Ladies Will Serve Lunch - Free Coffee Bring Cups

**FARM MACHINERY**

- 1 - 1942 Model UTU 4-row tractor, with lister and cultivator, on butane, in good shape.
- 1 - 1942 model Baldwin Combine.
- 1 - 1937 Ford truck, good motor.
- 1 - 8 ft. One Way Plow, M-M.
- 1 - Myers Ditcher, V-type.
- 2 - 2-row steel slides.
- 2 - 2-row wood slides.
- 1 - 10 in. Case Feed Mill.
- 1 - 4 wheel trailer, 3 bales.
- 1 - 4 wheel trailer, 1 bale.

**HOUSEHOLD GOODS**

- 1 - Divan - 1 Platform Rocker.
- 3 - End Tables - 1 Dresser.
- 1 - Iron bedstead, springs and mattress.
- 1 - Wardrobe - 1 Dining Table.
- 5 - Chairs - 2 Butane Heaters.
- 1 - Bathroom heater.
- 1 - Pressure Cooker, 18 quart.
- 1 - Vacuum Cleaner.
- 1 - Lot Fruit Jars.
- 1 - Lot Canned Vegetables.

**MISCELLANEOUS**

- 1 - 24 in. Stillson, 1 - 36 in. Stillson.
- 6 - Steel Scratchers.
- 1 - Lot Go-Devil Knives.
- 1 - Lot Cultivator Sweeps.
- 12 - Chisels, new.
- 4 - 24 in. Sweeps, 3 38 in. sweeps.
- 3 - Long handle shovels.
- 3 - Metal Dams.
- 75 - 2 in. aluminum irrigation tubes.

- 1 - Scoop shovel. 2 Seed forks.
- 1 - Fence Charger.
- 2 - Furrow Guides.
- 1 - Girl's bicycle.
- 1 - Lot of Brick.
- 1 - Stock Water Tank.
- 1 - DeLaval Electric Cream Separator.
- 1 - Super Electric Iowa Cream Separator.
- Post hole digger - vise, anvil, 6 batteries, hack saw, saws hammers, wrenches, a lot of bolts, brace and bits, a lot of barrels, 5 gal. cans, some new lumber, 1 lot scrap iron, and lots of items too numerous to mention.

**LIVESTOCK**

- 1 - Holstein, 3 yr. old, 5 gal. calf by side.
- 1 - Holstein cow, 3 yrs. old, 4 gal.
- 1 - Jersey cow 7 yrs. old, fresh soon
- 1 - Red cow, 4 yrs. old, calf by side.
- 1 - Red cow, 3 yrs. old, calf by side.
- 1 - Black cow, 2 yrs. old, calf by side
- 1 - Jersey cow, 8 or 9 yrs. old.
- 3 - Black heifers, 1 yr. old.
- 1 - Black bull yearling.
- 1 - Roan heifer yearling.

**POULTRY**

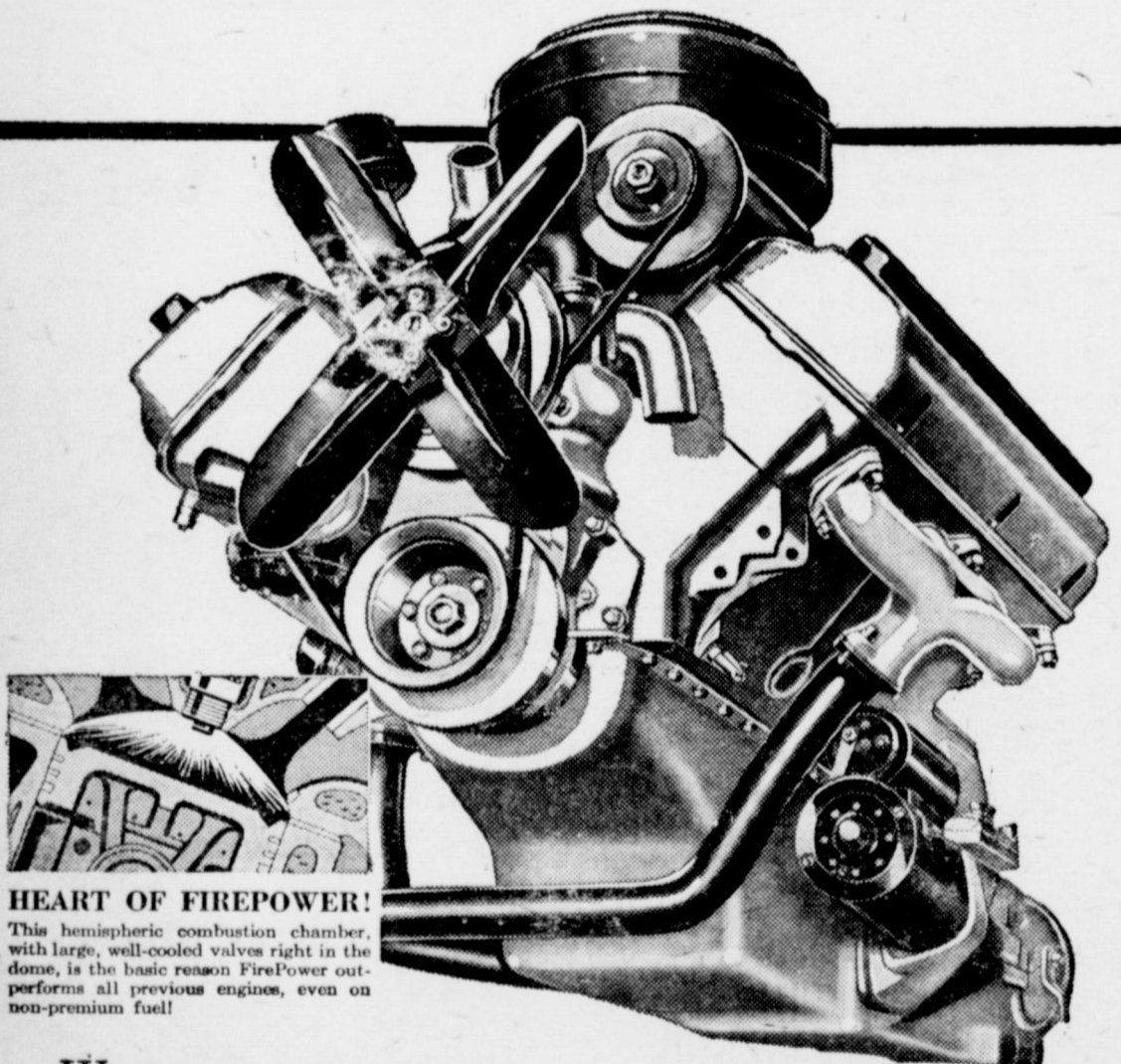
- 150 - White Leghorn Hens.
- 1 - Hog Feeder, 1,000 lbs. cap.

**FEED**

- 200 - Bales of Hegari pumices.
- 50 to 60 Bu. Ear Corn.

BEFORE YOU INVEST IN ANY FINE CAR... COME DRIVE THIS

**CHRYSLER V-8 ENGINE!**



**HEART OF FIREPOWER!**  
This hemispheric combustion chamber, with large, well-cooled valves right in the dome, is the basic reason FirePower outperforms all previous engines, even on non-premium fuel!

Whether you plan to buy a Chrysler or not, we cordially invite you to drive this revolutionary Chrysler FirePower V-8 engine. Only FirePower performance can possibly tell you what it is like. We want you to have that experience. The FirePower engine is a basic new design so advanced it can meet rising performance needs for years to come. Today it delivers 180 horsepower, even on non-premium fuel, and when desirable with

simple changes in manifolding, compression, and carburetion the horsepower can be raised to 250... or over 300, as in the experimental Chrysler K-310 car. Naturally, others will imitate this Chrysler achievement, at least in part. We honestly believe that the FirePower engine will outperform any other car in America... and we invite you to learn the new standard in engine performance Chrysler has set by driving it yourself.

**DRIVE a Chrysler and LEARN the difference**

**COVIN MOTOR CO.**

7021 WEST 1st STREET

MULESHOE, TEXAS

**B. F. BROWN, Owner**

Col. Dick Doshier  
Auctioneer

Orval Francis and  
Vernon Symcox, Clerks





*Your Guarantee*

Buy and try any of these Colgate-Palmolive-Peet Soap Products. If you are not completely satisfied that they are the very best, mail the unused portion to us in the original container, and we will refund double the purchase price for the product or products you return, plus postage.  
 COLGATE-PALMOLIVE-PEET CO., Dept. CHG, JERSEY CITY 2, N. J.

# GIANT SIZE PIGGLY WIGGLY VALUES

- LIBBY'S CUT NO. 303 CAN GREEN BEANS
- LIBBY'S NO. 1/2 CAN VIENNA SAUSAGE 22c
- DINTY MOORE 24 OZ. CAN BEEF STEW 21c
- LIBBY'S NO. 300 CAN PUMPKIN 15c
- OCEAN SPRAY NO. 300 CAN Cranberry Sauce 19c
- NIBLETS 12 OZ. CAN CORN 18c
- PATIO NO. 300 CAN Beef Tamales 30c
- PATIO NO. 300 CAN CHILI 50c
- PATIO NO. 2 CAN ENCHILADAS 52c
- Mrs. Tucker 3 Lb. Carton 63c
- CINCH BOX CAKE MIX 39c
- LINIT STARCH, box 14c

## SHORTENING

- PALMOLIVE REG. BAR Toilet Soap, 2 for 17c
- PALMOLIVE GIANT BAR Toilet Soap, 2 for 25c
- AJAX, 2 for 25c
- CASHMERE BOUQUET REG. BAR Toilet Soap, 2 for 17c
- CASHMERE BOUQUET BATH BAR Toilet Soap, 2 for 25c
- LARGE BOX SUPER SUDS 30c

**Giant Size FAB** 75c

**Economy Size VEL** 75c

- COLGATE 75c SIZE Dental Cream 49c
- CASHMERE GIANT CAN TALCUM 39c
- Plus Tax
- PALMOLIVE \$1.00 SIZE Shaving Lotion 79c
- Plus Tax

**DOUBLE GREEN STAMPS EVERY TUES!**

**THE SOLDIER'S DOG**  
 Mae was too old for war and knew that someday the whole world would be. For nostalgic memories don't miss it.  
 FEBRUARY EVERYWOMAN'S magazine 5c  
 at our CHECK-OUT COUNTERS



- PETER PAN 12 OZ. JAR PEANUT BUTTER
- GERBER'S BABY FOOD, 3 for 38c
- JOY SUDS, pkg. 27c
- CLOROX qt. 27c
- SKINNERS 7 OZ. BOX MACARONI 17c
- DEER NO. 2 CAN SPINACH 11c

## PINEAPPLE JUICE - 28c

## PRESERVES

### FRESH FRUITS & VEGETABLES

- FIRM HEADS LETTUCE Lb. 10c
- FLORIDA Green Beans, lb. 23c
- CALAVOS, ea. 12 1/2c
- FRESH, BUNCH Green Onions, 7 1/2c
- TEXAS SEEDLESS GRAPE FRUIT 8 Lb. Bag 33c
- SNOW CROP 4 OZ. CAN ORANGE JUICE 10c
- SNOW CROP 14 OZ. CAN SPINACH 25c
- SNOW CROP 12 OZ. CAN STRAWBERRIES 43c
- FLORIDA ORANGES, lb. 10c
- DIAMOND WALNUTS, lb. 39c
- FLORIDA TOMATOES, lb. 19c

### U. S. GRADED QUALITY MEATS

- WILSON'S CERTIFIED, HALF OR WHOLE HAMS Lb. 59c
- ARMOURS STAR SLI. BACON, lb. 59c
- FIRST CUTS PORK CHOPS, lb. 59c
- CHUCK BEEF ROAST, lb. 74c
- PINKNEY'S PURE PORK COUNTRY STYLE SAUSAGE Lb. 35c
- CUDAHAY'S SUGAR CURED Bacon Squares, lb. 39c
- PABST-ETT CHEESE, lb. 46c
- BALLARDS CAN BISCUITS 14c

- Savory Pure Peach or APRICOT, 2 lb. Jar

- SCOTTS 1000 SHEETS TISSUE, 2 for 25c
- HOLLANDALE COLORED OLEO lb. 22c
- SUNSHINE 7 1/2 OZ. PKG. HYDROX 25c
- MARSHALL NO. 303 CAN PEAS, 2 for 25c
- EAGLE BRAND MILK 29c
- NO. 1/2 CAN TUXEDO TUNA 21c
- FIRESIDE 8 OZ. PKG. GANES MEAL, 2 lb. 33c
- MARSHMALLOWS 19c
- SIJOUX 1 LB. BOX HONEY CREAM 33c
- GALLON CAN PRUNES 59c
- MARSHALL NO. 300 CAN PORK & BEANS, 3 for 29c

## Salad Dressing. 20c

**PIGGLY WIGGLY**  
 DAVIS & HUMPHRIES OWNERS & OPERATORS



## Barnett Lands At Camp Gordon

Travis Barnett, until recently advertising manager of The Journal, is in Camp Gordon, Ga. He entered the service about the first of the year, but writes that he has found time to write only a postcard giving his address.

Barnett took an examination in El Paso and in Amarillo looking toward entrance in the Army's Officer Candidate School. He was accepted for that assignment, and after spending a few days in Fort Sill, Lawton, Okla., he was sent on to the Georgia camp.

Mrs. Barnett has returned to Abilene where her parents and his mother live, and she is now teaching in the Abilene schools. Mrs. Barnett was bookkeeper for the D. H. Sneed Supply Co. while here.

While here Mr. Barnett was a member of the Jaycees, the Lions Club, and of the Masonic lodge. He was with The Journal more than a year, coming here from Ames where he had been publisher of the paper. Barnett is an ex-student of Hardin-Simmons U., Abilene, and has been connected with the printing and publishing business since early childhood.

## YOU and YOUR CONGRESS



WASHINGTON — A few weeks from now Congress will receive its Joint Economic Committee's considered opinion of the state of the nation.

Presumably, that opinion, dwelling mainly on the country's economic health, will influence the thinking of Congress on such matters as taxes and federal spending—whether either or both should be increased.

Actually, the influence of the Committee's report is likely to be mild. The reason is that this is a national election year. That fact will influence Congressional thinking more than anything else between now and November.

The Committee's membership includes such divergent thinkers as Sen. Taft (R-Ohio) and Rep. Wolcott (R-Mich.), on the one hand and Sen. O'Mahoney (D-Wyo.) and Rep. Patman (D-Tex.) on the other.

It is possible that the Committee members will adopt a conciliatory attitude and steer a non-political course as nearly as pos-

sible. But that is a great deal to ask in a national election year.

It would be surprising to most Washington observers if all harmony in the Committee's report ended at the point where it recommended increased efforts toward federal economy.

For one thing, Sen. Taft, his campaign for the Republican Presidential nomination already in high gear, has made it plain that, if nominated, he will campaign on points which will clash sharply with certain Administration policies as voiced by those such as O'Mahoney and Patman.

The Joint Economic Committee was established under the Full Employment Act of 1946—enacted at a time when there was fear in Congress of a bad postwar recession or depression.

The Act requires the President to send Congress periodic reports on the nation's economic outlook, together with suggestions for making or keeping it bright. He is assisted in drafting the reports by his Council of Economic Advisors, also established under the Act.

The Joint Economic Committee is required to digest the President's report, hold hearings on it and then make its own report and suggestions to Congress.

Because those fears of a bad postwar recession or depression turned out to be unfounded, the President's Economic Report in recent years has been devoted mainly to stating that economic conditions could be much worse than they are.

Usually, in January, the President's Economic Report follows his budget for the next fiscal year to Capital Hill. This year it was the other way around—and the President appeared to be using the Economic Report to prepare

### IN TEMPLE HOSPITAL

Mr. and Mrs. DeWitt Precure left Tuesday for Temple to take their daughter Donna, who is to undergo surgery there.

### VISITOR FROM CANYON

Mrs. Pearl Clark of Canyon was the week end visitor of her mother, Mrs. A. H. Owens, and her sister, Mrs. Harvey and family.

### ARE NEW GRANDPARENTS

Mr. and Mrs. C. A. Horsley became grandparents of a 7 lb., 7 oz. boy Monday, Feb. 4. The new boy's parents are Mr. and Mrs. Bruce Horsley of Abilene.

### TO DEALERS MEETING

George Hicks, of the Hicks Tractor Co., was in Dallas last week for a State meeting of dealers for Ford tractors.

Congress psychologically for his Budget Message.

In the Report, he forecast a sizeable federal deficit for the current fiscal year, ending June 30, and predicted a bigger one for the following fiscal year.

A few days later he sent up a Budget Message which detailed spending \$85.4 billion next year—\$14.5 billion more than this year with deficits of \$8.2 billion and \$14.4 billion for this year and next respectively.

While the Joint Economic Committee is digesting the President's Economic Report and, perforce, his budget recommendations, economic opinion is rapidly forming in Congress along political party lines.

And unless the Joint Economic Committee's report fits approximately into the Congressional opinion mold—which means disagreement on such things as the extent of new spending and deficits—it's likely to get lost in the shuffle.

## Union Compress & Warehouse Here Handled 42,798 Bales This Season

Union Compress & Warehouse Co., of Muleshoe, has handled 42,798 bales of cotton this season. Don Moore, the manager told The Journal today. He said this company handled here the year before and about 33,000 bales that went through the yard two years ago.

Moore said everything has been shipped out of yard excepting 13,595 bales which are still awaiting orders from the farmers or buyers who own the cotton. Some 2,000 bales that went

through the local warehouse went into the loan, Moore said, and the rest was sold to cotton buyers.

Mr. Moore issued a statement thanking the ginners and cotton producers of this area for their patronage and cooperation during the present season. He hopes to better his present record next year and since a big crop is desired, he thinks the company might handle as many as 60,000 bales.

Read The Journal Want-Ads Every Week.

### HOWELLS HAVE VISITORS

Saturday visitors in the home of Mr. and Mrs. Dalley Howell were Mr. Howell's sister and family, Mr. and Mrs. Guy Taylor and children of Lubbock.

### VISIT PARENTS

Mr. and Mrs. Bernice Pearson of Canyon, were visitors in the

home of the parents, Mr. and Mrs. Mr. and Mrs. John Benson, over the week end.

### CUMMINGS VISITED HERE

Joe Cummings, student at the University of Alabama, visited a few days between semesters with his parents, Mr. and Mrs. Frank Cummings.

SEE US FOR PROTECTION POLICIES YOU NEED

## BOBO INSURANCE AGENCY

Office In Bank Building

PHONE 2640

MULESHOE

## AIR WAY SANITIZOR DEALER

New & Used Vacuum Cleaners

PARTS AND SUPPLIES

ALL MAKES REPAIRED

Free Demonstrations In Your Home

## T. P. SMALLWOOD

1306 - 6th Street

Phone 4070

Muleshoe, Texas

## AUCTION SALES

Your Friendly Auctioneers

### KENNETH BOZEMAN & SON

Phone 25133

Lubbock, Texas

We Would Like To Handle Your Sale None Too Large — None Too Small

To Book Sale See Or Call

### TOM MORGAN

Phone 3366

Rt. 2, Muleshoe, Texas

# FARM SALE

We have sold our farm and will have a general farm sale at place 4 miles east on Plainview highway then 2 miles north from Muleshoe, or 1/4 mile south of Y. L. School House, on

## Monday, Feb. 11

SALE TO BEGIN AT 10 A. M.

Y. L. Missionary Ladies To Serve Lunch — Free Coffee, Bring Cups

### FARM MACHINERY

- 1 — 1951 model Ferguson Tractor, 2 row lister and 2-row cultivator.
- 1 — 1944 model Ford tractor, 2-row lister and cultivator. Tool bar Hoeme plow for Ford knife attachment for Ford, 2 battery breaking plow, 14 in., 7 ft. power mower for Ford, new.
- 1 — Tractor F-20 with equipment.
- 1 — Ford irrigation motor.
- 1 — V-type Ditcher.
- 1 — Blade for Ford.
- 1 — Horse Drawn Ditcher.
- 1 — Feed mill, new.
- 2 — 3-section Harrows.
- 1 — 2-wheel Stock trailer, 10 ft., good.
- 15 — 3 in. irrigation tubes, plastic.
- 30 — 3 in. irrigation tubes, aluminum.
- 1 — 1940 model Ford, good shape.
- 1 — Rubber tired wheel barrow.
- 1 — 16 in. breaking plow.
- 1 — M-M Power Mower.
- 1 — Fertilizer Spreader, 1 Case rake
- 1 — IHC 1-row wheat drill, seeder attachment.
- 1 — Stock Water Tank.
- 1 — New stock saddle, Textan.
- 1 — Electric Grain Loader.
- 1 — "Clipper" Electric Seed Cleaner.

### CATTLE

- 1 — Red cow, Shorthorn.
- 1 — 2 yr. old Shorthorn heifer.
- 1 — Yearling Shorthorn heifer.
- 26 — Head mix breed heifers, wt. 400 to 500 lbs.
- 1 — Whiteface cow and calf.
- 1 — Brindle cow and calf.

### HOGS

- 27 — Chester White hogs, wt. 100 to 190 lbs.
- 20 — Weaned Pigs.

### CHICKENS

- 150 — Hybred Pullets.

### HOUSEHOLD FURNITURE

- 1 — Dining Room Suite, 6 chairs.
- 1 — Living Room Suite.
- 1 — Platform Rocker.
- 1 — Breakfast Table.
- 1 — McCormick - Deering cream separator, No. 14, with new stainless steel bowl.
- 1 — Electric McCormick - Deering cream separator with stainless steel bowl.
- 1 — Wool Rug 9 x 12. 1 Kerosene Heater.
- 1 — Electric Sodering Iron.
- 1 — American Pressure Cooker, 7 quart.
- 1 — Butane Bottle. 3 End Tables.
- 1 — Regulator for Butane Bottle.

### MISCELLANEOUS

- 1 — Power Lawn Mower, Dearborn.
- 1 — Vise - Wrenches, scoops, hoes, forks.
- 1 — Emery - 2 10 gal. cans.
- 1 — Feed Trough. Several Barrels.
- 25 — Fence panels, 9 ft. 1 1/4 mi. hog wire.
- 1 — Hog Feeder, 2,000 lbs. cap.
- 1 — Lot barbed wire. 10 hog Troughs
- 1 — Butane 500 chick Brooder,
- 3 — Steel, 3 canvas irrig. stops. Woods. — Several laying huts.
- 1 — Horse, A gray filley, 4 yrs. old good and gentle.

TERMS: CASH

## WILEY L. HOLMAN Owner

Col Dick Doshier, Auctioneer

Hugh Freeman and Orval Francis, Clerks

From where I sit... by Joe Marsh



### Experienced Hand Wanted

Cappy Miller's back from visiting relatives and tells about a big snow storm that knocked out the electric power for miles around.

Naturally, the local power company was doing everything possible to restore service but folks kept calling in and one woman gave them a new twist.

"I don't mind not having lights," she grumbled, "but I've got 20 cows in my barn and they all have to be milked by machine. Nobody around here knows how to milk a cow by hand any more."

From where I sit, it's only too easy to forget how to do something—even as simple as milking a cow—if we don't keep at it. And that goes for practicing tolerance, too. Like forgetting our neighbor has a right to decide for himself whether or not to enjoy a temperate glass of beer. If we don't keep the other fellow's point of view in mind we're all liable to get "snowed under" by intolerance.

Joe Marsh

Copyright, 1952, United States Brewers Foundation

## Now you can judge car value for yourself!



Get the complete facts and figures the "Show Down" Way!

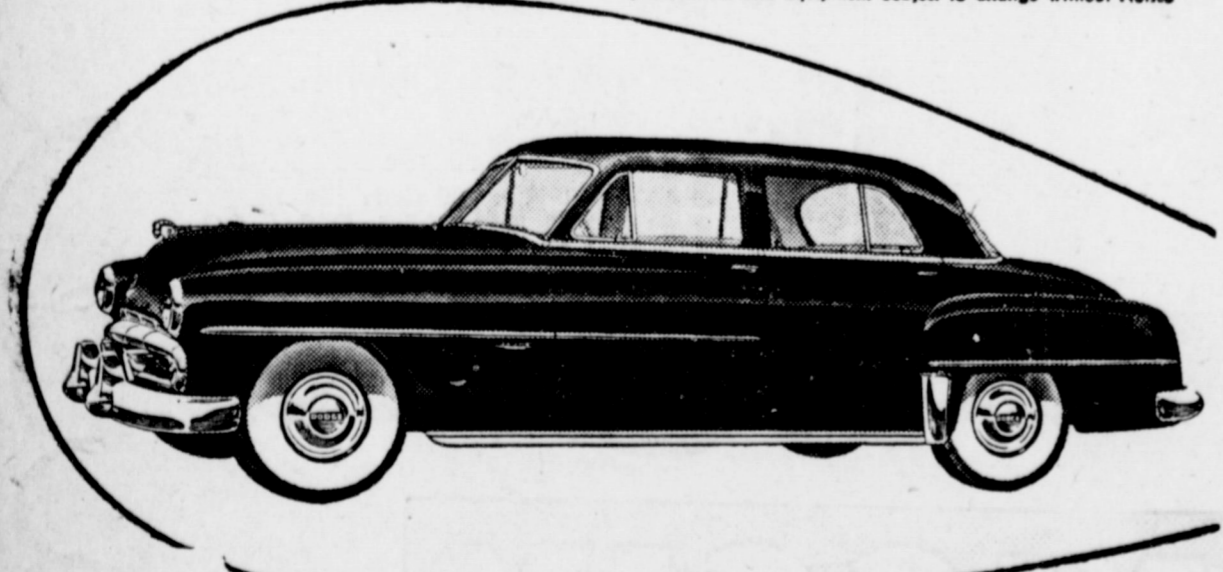
THIS FREE "Show Down" booklet gives you proof instead of "sell" ... presents the facts about features, arranged for easy comparison. For example, you can quickly compare Dodge head room, seat width and stretch-out room with that of other cars costing hundreds of dollars more. You get actual specifications — not generalizations.

No "Strings" — No Obligation

Come in today and get your own copy of the "Show Down" booklet. It's convincing, it's convenient, it's free. Take it home and make money-saving comparisons at your leisure. You'll learn what thousands of new Dodge owners will testify: "You could pay hundreds of dollars more for a car and still not get all Dodge gives you!"

## New, dependable '52 DODGE

Specifications and Equipment Subject to Change without Notice



NOW ON DISPLAY

## Arnold Morris Auto Co.

1012 MAIN STREET

MULESHOE, TEXAS





**PRIMITIVE BAPTIST CHURCH**  
At Friendship  
8 Miles South of Sudan  
Second Sunday and Saturday  
before, Elder V. J. Lowrance, pastor.  
Fourth Sunday and Saturday be-  
fore, Elder Jack West, pastor.

**UNITED PENTECOSTAL**  
Mrs. Maggie Aken, Pastor  
Preaching Service ..... 11 a. m.  
Evening Service ..... 8 p. m.  
Tuesday Evening ..... 7:30 p. m.  
Friday Evening ..... 7:30 p. m.  
Everyone invited to our services.

**WATSON BAPTIST CHURCH**  
Rev. W. O. Wilson, Pastor  
Special Prayer Service ..... 9:45 a. m.  
Sunday School ..... 10 a. m.  
Morning Worship ..... 11 a. m.  
Training Union ..... 7 p. m.  
Evening Worship ..... 8 p. m.  
Bible Study and Prayer  
Service, Wednesday ..... 7:30 p. m.  
W.M.U. Monday ..... 2:30 p. m.

**PROGRESS BAPTIST CHURCH**  
Rev. G. C. Morgan  
Sunday School ..... 10 a. m.  
Morning Worship ..... 11 a. m.  
B.T.U. ..... 7:30 p. m.  
Evening Worship ..... 8:30 p. m.  
Midweek Prayer Service  
Wednesday ..... 7:30 p. m.

**BAILEYBORO BAPTIST CHURCH**  
Arthur L. Nunn, Pastor  
Sunday School ..... 10 a. m.  
Training Union ..... 8 p. m.  
Evening Service ..... 8:45 p. m.  
Everyone Welcome.

**OKLAHOMA LANE BAPTIST CHURCH**  
Mayo D. Carpenter, Pastor  
Sunday School ..... 10 a. m.  
Morning Worship ..... 11 a. m.  
Evening Worship ..... 8 p. m.  
Prayer Meeting, Wed. .... 8 p. m.  
W. M. S. Thursday ..... 3 p. m.

**FIRST BAPTIST CHURCH**  
WEST CAMP  
Rev. T. L. Pond, Pastor  
Sunday School ..... 10 a. m.  
Morning Worship ..... 11 a. m.  
B.T.U. ..... 7 p. m.  
Service ..... 7 p. m.  
W.M.U., Thursday ..... 2 p. m.  
Evangelistic Service ..... 7:45 p. m.

**NORTH SIDE CHURCH OF CHRIST**  
Worship each Lord's  
Day ..... 10:30 a. m.  
Evening Service ..... 8 p. m.  
Tuesday Evening ..... 8 p. m.  
Mid-week Prayer  
You are welcome.

**CHURCH OF CHRIST**  
Muleshoe, Texas  
Ebb Randol, Minister  
Bible Classes for all ..... 10 a. m.  
Preaching ..... 10:50 a. m.  
Communion ..... 11:45 a. m.  
Preaching ..... 8 p. m.  
Wednesday  
Ladies Bible Class ..... 3 p. m.  
Bible Study and Singing ..... 8 p. m.

**PROGRESS METHODIST CHURCH**  
Carroll M. Jones, Pastor  
Sunday School ..... 10 a. m.  
Morning Worship ..... 11 a. m.  
Evening Fellowship  
Classes ..... 8 p. m.  
Evening Worship ..... 8:45 p. m.  
W.S.C.S. .... 2nd and 4th Mondays

**Y. L. BAPTIST CHURCH**  
First and Third Sundays  
Rev. James Tidengerg  
Sunday School ..... 10 a. m.  
Morning Worship ..... 11 a. m.  
Training Union ..... 7:30 p. m.  
Evening Worship ..... 8:30 p. m.  
Evening Worship ..... 8:30 p. m.  
Services every 3rd Sunday  
Starting at 10:30 a. m.

**FIRST CHRISTIAN CHURCH**  
Avenue G and West 2nd.  
Bible School ..... 9:45  
Morning Worship ..... 11:00  
Communion Services each  
Lord's Day.  
We welcome all our friends.

**ASSEMBLY OF GOD CHURCH**  
Rev. Lee F. Stokes, Pastor  
Sunday School ..... 9:45 a. m.  
Worship ..... 11 a. m.  
Tuesday Night Young  
People ..... 7:45 p. m.  
Thursday Night  
Bible Study ..... 7:45 p. m.  
Public invited to attend  
all services.

**ANTIOCH PRIMITIVE BAPTIST CHURCH**  
Across Street From Hospital  
Elder Jimmie Boss, Pastor  
Services every 1st and 3rd Sun-  
days and Saturday before 3rd Sun-  
day.  
Singing every Sunday night ex-  
cept 3rd Sunday.

**CHURCH OF THE NAZARENE**  
Sidney Patrick, Pastor  
Sunday School ..... 10 a. m.  
Morning Worship ..... 11 a. m.  
Evening Worship ..... 7:30 p. m.  
N. Y. P. S., Tues. .... 7:30 p. m.  
Mid-week Service  
Wednesday ..... 8 p. m.  
Come and Worship With Us.  
Interest is growing in our Sun-  
day School. The lessons are on  
the Bible and sound religion.

**MAIN STREET MISSIONARY BAPTIST CHURCH**  
M. E. Robinson, Pastor  
Sunday School ..... 10 a. m.  
Morning Worship ..... 11 a. m.  
Training Union ..... 6:30 p. m.  
Evening Worship ..... 8 p. m.  
W.M.U., Wednesday ..... 8 p. m.  
Mid-week Prayer Service, ..... 2 p. m.  
Wednesday ..... 7 p. m.

**Three Way Baptist Church**  
J. E. Moore, Pastor  
Sunday School ..... 10 a. m.  
Morning Worship ..... 11 a. m.  
Training Union ..... 7 p. m.  
Evening Worship ..... 8 p. m.  
W. M. U. Thursday, ..... 2:30 p. m.  
Brotherhood, first Thursday of  
each month ..... 7 p. m.  
Midweek prayer service and  
Bible study ..... 7 p. m.

**Y. L. METHODIST CHURCH**  
L. J. Helm, Pastor  
Second and Fourth Sundays  
Church School ..... 10 a. m.  
Preaching Service ..... 11 a. m.  
Bible Study Group ..... 7:30 p. m.  
Evening Preaching ..... 8:30 p. m.  
Prayer Meeting,  
W.S.C.S. First and  
Third Thursdays ..... 2:30 p. m.

**LONGVIEW BAPTIST CHURCH**  
Sunday School ..... 10 a. m.  
Preaching Services ..... 11 a. m.  
B. T. U. .... 8 p. m.  
Preaching Services ..... 8:30 p. m.  
W.M.S. Monday ..... 2:30 p. m.  
All Church Night,  
Wednesday ..... 7:30 p. m.

**FIRST BAPTIST CHURCH**  
Luzbuddie, Texas  
Sunday School ..... 10 a. m.  
Morning Worship ..... 11 a. m.  
Training Union ..... 6:45 p. m.  
Evangelistic Service ..... 7:45 p. m.  
"Not forsaking the assembling of  
yourselves together." Heb. 10:25

**FIRST METHODIST CHURCH**  
H. W. Rankin, Pastor  
Morning Worship ..... 10:55 a. m.  
M. Y. F. .... 6:30 p. m.  
Evening Worship ..... 7:30 p. m.  
Choir Practice  
Wednesday ..... 8:00 p. m.  
Young Women's Bible  
Study, Tuesday ..... 7:30 p. m.  
Wesleyan Service Guild,  
2nd and 4th Mondays ..... 7:30 p. m.  
W.S.C.S., Wednesday ..... 2:30 p. m.  
Stewards Meeting First  
Monday each month ..... 7:00 p. m.

**ST. JOHN'S LUTHERAN CHURCH**  
W. B. Gunamelt, Pastor  
Lariat, Texas  
Sunday School and Bible  
Class ..... 10 a. m.  
Divine Services ..... 11 a. m.  
Sunday School Teachers meet  
every Wednesday ..... 8 p. m.  
Ladies' Aid meets first Thursday  
of each month ..... 2:30 p. m.  
Walther League meets first  
Sunday of month ..... 8 p. m.  
A cordial welcome awaits you at  
"Let the Word of Christ dwell in  
you richly."—Col. 3:16.  
St. John's.

**LUZIER'S**  
Fine Cosmetics & Perfumes  
MRS. E. E. HOLLAND  
1101 East 2nd St.  
Phone 5449

**FIRST BAPTIST CHURCH**  
Rev. A. W. Blaine, Pastor  
Sunday School ..... 9:45 a. m.  
Morning Worship ..... 10:50 a. m.  
Training Union ..... 6:30 p. m.  
Evening Worship ..... 7:30 p. m.  
Prayer Meeting  
Wednesday ..... 7:30 p. m.  
Officers and Teachers,  
Wednesday ..... 8 p. m.  
W.M.U. Monday ..... 3 p. m.  
Choir Rehearsal,  
Thursday ..... 8 p. m.

**RETURNS TO FLORIDA**  
Arlo Farrell returned to his  
base in Tampa, Fla., where he is  
stationed, Wednesday, Jan. 30.

**VISITED IN LITTLEFIELD**  
Mrs. Ella Faubus spent the  
week end in Littlefield visiting  
her sister, Mrs. Vaughn and fam-  
ily.

**DRS. WOODS & ARMISTEAD**  
OPTOMETRISTS  
IRA E. WOODS, O.D.  
E. W. ARMISTEAD, O.D.  
GLENN S. BURK, O.D.  
Phone 328 Littlefield

**INSURANCE PROTECTION POLICY FOR EVERY NEED**  
**Lane Insurance & Real Estate**  
**EDDIE LANE, OWNER**  
PHONE 3630 MULESHOE, TEXAS

**Dr. C. H. McIlroy**  
Naturopathic Physician  
906 MAIN STREET  
Phone 5350 Muleshoe, Texas

**GUARANTY ABSTRACT CO.**  
BONDED FOR YOUR PROTECTION  
Office In Bank Building  
Phone 2640 Muleshoe  
Complete Abstracts of Title to All Lands  
and Towns in Bailey County, Texas  
PAT R. BOBO, Owner BETTE COWAN, Manager

**Don't let**  
**DRYING-**  
**clothes**  
**get you**  
**down!**  
**be carefree...**

**Install an Automatic Gas Dryer**  
FORGET about the weather outside! Say goodbye to clotheslines... to heavy lifting and carrying... and start enjoying extra hours of leisure. A new GAS dryer completes your washday automatically... economically... perfectly. See your gas appliance dealer today. Ask him to show you how you can forget washday weather worries... with a new automatic GAS clothes dryer.

**West Texas Gas Company**  
HELPING BUILD WEST TEXAS SINCE 1927

**COLD SHEETS???**

**SWITCH TO WARM Electric Sleeping!**

You may never catch a cold from a cold sheet, but you'll admit that warm sheets on a cold wintry night are far more inviting. And that's the way it is with modern electric sleeping. You merely set the control on your electric blanket (or electric sheet) a few minutes before retiring. You snuggle into a pleasantly warm bed and in no time at all you're in a sound, restful, pleasantly warm sleep. What's more you've no "weather worries" from then on. Your electric blanket maintains the temperature TO YOUR LIKING. It's a modern day... it's time for modern sleeping, at YOUR home.

SEE YOUR **MODERN ELECTRIC** APPLIANCE DEALER

**SOUTHWESTERN PUBLIC SERVICE COMPANY**  
27 YEARS OF GOOD CITIZENSHIP AND PUBLIC SERVICE

**ATTENTION**  
Sandy Land Farmers  
See Me For  
**Deep Breaking**  
New D-8 Caterpillar Tractor With Towner 48 in. Disc Plow.  
**H. E. Newsom**  
902 W. 9th. Phone 5820 Muleshoe

**It's the Greatest Car Ever Built in the low-price field!**

**IT'S NEW FROM ROAD TO ROOF!**  
**IT'S LONGER AND STRONGER!**  
**IT'S MORE BEAUTIFUL!**

**IT'S BUILT FOR KEEPS**  
**'Test Drive' the Ablest\* Car ever built for the American Road**

**52 FORD** at your Ford Dealer's  
**MOTOR CO.**  
FORD AUTOMOBILES AND TRUCKS  
PHONE 4930 MULESHOE, TEXAS

*\*Meets the widest range of motorists' needs.*

With two great engines!  
New 101-h.p. High-Compression Mileage Maker 5's  
New 110-h.p. High-Compression Stereo-Star V-8

Equipment, accessories and trim subject to change without notice. White sidewall tires, if available optional, at extra cost.



### Mrs. Baker Is Hostess To Garden Club

The Muleshoe Garden Club met Tuesday afternoon in their regular meeting with Mrs. E. O. Baker as hostess.

The president, Mrs. Robert King, presided over the business meeting. Minutes of the last meeting were read by the secretary and approved.

The resignation of Mrs. Howard Elliott and Mrs. George Stotts were accepted and Mrs. N. D. MacAllister and Mrs. Byrl Wingo were elected to take their places as members.

A total of \$66 was reported for the Club's contribution to the March of Dimes.

New officers elected for the

next year were Mrs. Jack Epps, president; Mrs. Jack Lenderson, First vice president; Mrs. W. D. Moore, Second vice president; Mrs. L. S. Barron, recording secretary; Mrs. B. H. Morgan, treasurer; Mrs. H. S. Sanders, Jr., parliamentarian; and Mrs. Winona Jordan, corresponding secretary.

The club voted to plant roses and vines on the Legion grounds when the trellises are erected.

The program was "Planning for Trees and Shrubs", directed by Mrs. Ray Morrison. The arrangement of the plants and the time are planted were emphasized as very important to the final effect.

Refreshments of coffee and cookies were served to Mesdames Howard Cox, E. O. Baker, E. E. Dyer, D. L. Morrison, C. M. King, Roy Jordan, R. F. Wright, Joe Damron, Jack Epps, W. E. English, B. H. Morgan, Ray Morrison, Bill Moore, Noel Woodley, Jack Lenderson, Robert King, and Ross Goodwin.



### Mrs. Strong Is Initiated Into Eastern Star

A regular meeting of the Muleshoe Chapter No. 792 Order of the Eastern Star was held Tuesday evening at 7:30 in the Masonic Hall, Betty Burkhead, worthy matron, presided over the meeting.

Mrs. Jewell Strong was initiated into the Order in a very impressive ceremony. Glenn Dunn, a past patron from Bovina Chapter, but now a member of the Muleshoe Chapter, filled the station of worthy patron during the initiation.

Several members were reported ill. M. S. Stidman, a former Muleshoe resident but now living at 304 West Choctaw, Lindsay, Okla., was among them.

Mrs. J. W. Thomson, mother advisor, of the Rainbow Assembly of Muleshoe, told about the school of instruction for Rainbow Girls to be held in Plainview, Saturday, Feb. 9. She is anxious for a number of the Rainbow Girls to attend. Cars, sandwiches, and three adult companions will be needed for the girls. If any member of the Masonic or Stars can help, please contact Mrs. Thomson. It will be necessary to leave early Saturday morning as the school starts at 9 p. m.

Refreshments were served by Mrs. Jean Griffiths, Mrs. Iva Ray Jones, Mrs. Helen Gardner, and Elizabeth Harden. The Valentine motif was carried out in the decorations and refreshments.

### AT HOME FROM FT. SUMNER HOSPITAL

After a 22 day stay in a Ft. Sumner hospital, Helen Ward, daughter of Mr. and Mrs. A. E. Ward, is at home and reported as doing fine.

Her physician was Dr. E. D. Fikany. Helen suffered 7 broken ribs, a cracked collar bone, and other chest injuries due to an accident a few weeks ago.

Youthful Mother Maternity Fashion. Cottons, Linens, and Chambray. Twil piece, and one piece dresses. Also Jackets. New spring colors. Dresses from 5.98 to 12.98. Jackets 3.98 to 5.98

**The Fashion Shop**

Dorothy Matthiesen  
Elizabeth Barnett

### H. D. Meeting Held In Lubbock

Wednesday, Jan. 30, Mrs. Dian Reed, Bailey County Home Demonstration Agent, Mrs. W. W. Couch, council chairman of the Women's Home Demonstration Clubs, of the county, and Mrs. A. W. Copley, Texas Home Demonstration Chairman of Bailey County, attended a meeting in Lubbock which was called by Mrs. Aubrey W. Russell, agent of District II.

The meeting was held in the Precinct I Club house of Lubbock County. Home Demonstration agents, Assistant Home Demonstration Agents, Council Chairmen, T. H. D. A. Chairmen were present from the sixteen counties in this district.

Subjects discussed were the annual meeting of the T. H. D. A. the 4-H encampment, the 4-H girl's scholarships, a camp for Home Demonstration Club women, a short course for women, crafts and design work, and plans for the State Roundup.

During the noon hour a luncheon was served by the Cowan H. D. Club.

**JACK YOUNG TO NAVY**

Jack Young, son of Mr. and Mrs. Tye Young left Sunday to report at Great Lakes Naval Training Station, Chicago. Jack was in the Naval Reserve. He had received his degree at Texas Tech, Lubbock, then attended the University of Texas, Austin, for a year and a half, taking the law course and working on his Master degree.

### Mrs. Hope Honored With Bridal Shower

Mrs. J. H. Hope, the former Miss Lucille Smith, was honored Monday afternoon at 2 with a bridal shower given in the home of Mrs. M. G. Hoover.

Hostesses were Mrs. Hoover, Mrs. R. T. Atchison, and Mrs. J. C. Shanks.

Refreshments of cake and punch were served to Mesdames C. A. Horsley, J. S. Horsley, M. E. Robinson, Bernie Smith, Robert Kimbrough, C. D. Hoover, Eta Welch, Arthur Ryan, Glenn Splawn, Mrs. Ruby Barton, Mrs. Hope, mother of the groom, and other relatives the hostesses, and the honoree.

Many sent gifts who were unable to attend.

**W. S. C. S. Meets In Harden Home**

The Women's Society of Christian Service of the Muleshoe Methodist Church met Monday, Feb. 4, in the home of Mrs. I. W. Harden.

The meeting opened with the song, "Blessed Jesus". Mrs. Roy Bayless then conducted the study from the book of Acts, with Mesdames Willmon, Holt, Harden, and Hanks taking parts.

During the business meeting, Mrs. Pierson reminded the society of the zone meeting at Earth on February 20. Mrs. H. C. Holt

and Mrs. H. Jay Wyer were asked to take parts on the program at that time.

The meeting next Monday will be in the home of Mrs. I. F. Willman.

Mrs. H. M. Shofner closed the meeting with prayer.

Present for the meeting were Mesdames Roy Bayless, I. F. Willman, H. M. Shofner, Beulah Carles, Lucy Layne, F. B. Pierson, H. O. Barbour, H. C. Holt, H. Jay Wyer, O. N. Jennings, J. E. Day, H. W. Hanks, and the hostess, Mrs. Harden.

**TEACHERS' ASSOCIATION ENTERTAINED WITH SKIT**

The Muleshoe Classroom Teachers' Association met February 4 for their regular monthly meeting.

The president, Mrs. Elizabeth Watson, presided over a short business meeting.

Mrs. Ruth Burchett of the program committee presented a skit, "Professionalizing our Profession". Teachers taking part in the program were Mesdames Mary B. Obenhaus, Lucille Shelby, Margaret Marshall, Rody Boone, Bernice Blackburn, Katherine Spivey, and Miss Zeffie Childress.

Refreshments were served after the program.

**ATTEND CONCERT IN LUBBOCK**

Mrs. C. W. Grandy, Miss Jean Gammon, Miss La Von Copley, Don Copley, A. W. Copley, and Mr. and Mrs. Sam Damron attended the concert presented in the Lubbock High School Auditorium Monday evening, Feb. 4.

The Dolly Lynch Concerts presented the quartet which is composed of Glanco D'Attili of Italy, Frank Mittler of Austria, Edward Edson of the United States, and Adam Garned of Poland.

**BULA AND ENOCHS MARCH OF DIMES PARTY TO BE HELD**

The Bula and Enoch Communities are planning a domino and canasta party Friday night, Feb. 8, at the Bula School cafeteria.

An entrance fee of \$1 per person will be charged and sandwiches, cake, pie, coffee, hot chocolate and all kinds of soft cold drinks will be sold. All proceeds will go to the March of Dimes Drive for polio.

Everyone is urged to come and help raise the much needed funds.

**MADE TRIP TO LAS VEGAS**

A group of men from the Church of Christ made a trip to Las Vegas, N. M., Monday in response to the invitation of that church to view the work that has been done in feeding and clothing those in need there and the missionary work. The Muleshoe church has assisted greatly in this work.

Those making the trip were S. C. Caldwell, Harold Wilson, Luther Hall, Bob Mills, W. M. Harmon, and Ebb Randol.

**UNDERGOES BRAIN SURGERY**

Donna Precure, 4 year old daughter of Dewitt Precure, underwent brain surgery Wednesday, Feb. 6, in a Temple hospital. At last report her condition was satisfactory.

**WENNERS HAVE VISITOR**

Ralph Wenner of San Diego, California, arrived Sunday for a two week vacation in the home of his parents, Mr. and Mrs. F. L. Wenner.

Home or Away From Home

## MULESHOE HOTEL

Under new management  
MRS. JACK ROBINSON

**WEEKLY RATES**

Private Long Distance Telephone Booth  
Open 24 hours

Private baths and connecting baths.



## PRODUCE MARKET

**CELLO PKG. TOMATOES, pkg. .... 15c**

**CALIFORNIA NICE FIRM HEADS CABBAGE, lb. .... 7c**

**CALIFORNIA LARGE STALKS CELERY ..... 19c**

**10 LBS. PURE CANE Sugar -- 79c**

**SIRLOIN OR T-BONE Steak lb. 79c**

**CHOICE CUTS PORK CHOPS, lb. .... 49c**

**CUDAHY'S PURITAN BACON, lb. .... 49c**

## THE RIGHT FOODS TO BUY - AT THE RIGHT PRICES TO PAY

**GIANT SIZE White King ..... 49c**

**SWEETHEART Dog Food ..... 12c**

**3 LB. CARTON CRUSTENE SHORTENING .... 59c**

**26 OZ. ROUND BOX Morton's Salt .... 17c**

**2 FOR RAISINS ..... 29c**

**2 LB. CELLO PKG. BESTYETT SPREAD OR SALAD DRESSING pt. .... 19c**

**BIG M CHICKEN NOODLE SOUP, No. 1 ..... 12c**

**THE BATH WITH A MILLION BUBBLES JOY SUDS ..... 25c**

**400 SIZE BOX DOESKIN FACIAL TISSUES ..... 25c**

**BLEACH, QUARTS, LAUNDREX ..... 25c**

**2 FOR 8 OZ. BOTTLE WORTH VANILLA FLAVOR . 5c**

**BRIMFULL IN HEAVY SYRUP, NO. 303 CAN CRUSHED PINEAPPLE ..... 19c**

## Mr. Farmer ....

We are now equipped to handle your

### Blacksmithing Needs

We have secured the services of

**Tom Burden**

To do your SHARPENING and STOODITING

**OUR PRICES ARE:**

14" Lister Share or 14" Breaking Plow Shares:

SHARPENING	75c
STOODITE	2.75
	\$3.50

Other Sizes Accordingly

We Are Offering On Sale Our Entire Stock of LISTER POINTS at

## \$4.00

Each. Bring Your Point Number

See Us For Complete Welding, Machine and Winch Truck Service

# MURRAH

Machine & Welding

One Block West of Hiway Barn on Clovis Hiway Muleshoe, Texas

**MRS. DEWEY ROSS**  
Star Route 2  
Muleshoe

was the winner of the year's supply of All SWEET Oleo in the drawing last Saturday.

# CASHWAY GROCERY

"Where Friends Meet & Prices Talk"

FREE DELIVERY - Phone 2440 or 2450

Muleshoe, Texas

**VANITY TOILET TISSUE ROLL 5c**

**WORTH MAPLE SYRUP QT. 29c**

**FROZEN FOODS FOR QUICK COOLING MEALS ...**

**10 OZ. PKG. SNOWCROP FROZEN CAULIFLOWER ..... 27c**

**10 OZ. PKG. SNOWCROP FROZEN CUT GREEN BEANS ..... 23c**