

The Muleshoe Journal

PUBLISHED EVERY THURSDAY AT MULESHOE, TEXAS
Entered as second-class matter at the Muleshoe Post Office under
the Act of Congress, March 3, 1897.



SUBSCRIPTION RATES
In Immediate Territory, 1 Year \$2.00
Out of Immediate Territory, 1 Year \$2.50
J. M. Forbes Editor and Publisher

BABSON DISCUSSES —
Advertising

New York City, Jan. 11 — This is not a defense of advertising. Probably as much money has been wasted on advertising as on drilling for oil or mining for gold; but getting only dry wells and dead veins! But without those willing to take these wild cat risks, we would have no oil and no gold. Advertising is a risk and should be sold as such. **ADVERTISING IS A GOOD RISK**

But advertising is a good risk. Money spent thereon is the best gamble that I know of. According to an Advertising Bureau which made a study of the 717 companies which were spending annually over \$25,000 an advertising ten years ago, 91 percent are still in business and doing more advertising than ever, while only 5 percent are now spending less on advertising. Only one company in twelve found advertising unprofitable.

Those companies which have quit advertising were trying to sell a wrong product, or had wrong sales policies, or an antiquated management. The way this 91 percent has stayed in business with continuing success, despite competition from new companies and improved products, proves my point.

OPPORTUNITIES IN SMALL CITIES

Most of the above 717 concerns are located in the larger cities; but I believe that statistics of merchants in small cities would show an equal percentage of success. The most successful companies are now giving much advertising to small dailies and weeklies. This tendency is sure to increase as years go on. The people of small communities read advertisements very carefully.

One of the safest investments is in newspapers, large or small,

especially where there is only one newspaper which controls the field. It is true that the costs of producing all newspapers are rising; but it is easy to raise the price of a newspaper. Most newspapers now sell for five cents, while some have recently increased to seven or ten cents. People want news; the more they pay for a newspaper, the more carefully it is read (news and ads) — hence, more valuable is its advertising space.

HELPING YOUR EMPLOYEES

I believe in Pension Plans; but pensions help wageworkers only after they are 65 years old. Advertising helps all employees all the time. Too few companies take seriously the problem of making factory workers understand the importance of what advertising does to hold up production, with high employment.

Labor newspapers should not accuse businessmen of "throwing money away" by spending it on advertising. It is true that advertising expenditures were about \$6 billion in 1951, but nearly all of it is closely watched for very prompt results in greater sales, which, when achieved, lead to larger payrolls.

THANK ADVERTISING FOR AMERICAN PROSPERITY

Advertising is largely responsible for the fact that our wages and standard of living are so much higher than that of any other country. Without advertising, we couldn't have mass selling. Without mass selling, we could not afford mass production. Without mass production, we would not enjoy the world's highest standard of living.

"What is selling and advertising doing to help me?", you may ask. It is helping you to secure 52 weeks of employment and is helping to increase your "take

SAND HILLS PHILOSOPHER SAYS

Unindustrialized Ain't The Same Thing As Backwardness To Him

Editor's note: The Sand Hills Philosopher on his Johnson grass farm is taking his usual backward attitude this week, his letter reveals.

Dear editor:
Lately I've been readin about the South and the Southwest, how we're gettin industrialized and how there's some hope of us improvin our standards, raisin our mental status, broadenin our vision, splittin our votes, multiplyin our traffic problems, maybe even decreasin our illiteracy, although there's something to say for bein illiterate, you ain't heard of any illiterate bein investigated in Washington for his wife's mink coat, every man I've heard of who's resigned under a scandalous at-a-mosphere from a government job recently has been able to read and write, and while I have never been opposed to progress, I want you know we had our good points before progress set in.

As I understand it, the classic description of the unindustrialized South gave it as a pretty awful place, where, when they buried a man, they buried him in a suit made in New York, shoes made in Boston, socks

made in Philadelphia, a shirt made in Cincinnati, and a coffin made in Chicago, with even the marble tombstone bein imported from Vermont and the grave bein dug with a shovel from Pittsburg. All the South furnished, according to that celebrated editor, Henry Grady of the Atlantic Constitution, was the corpse and the hole in the ground.

This was supposed to be an unanswerable indictment of the South's backwardness, but it never has affected me that way. What I want to know is what's wrong with it?

If some man in Boston has the energy to make my shoes for me, say let him do it. If I'm backward because some bird in Cincinnati sews my shirt for me, just keep his needle threaded and keep him thinkin I'm backward. I don't even care where they make shovels, already too many produced as it is.

In fact, it never has struck me that you measure a town or an area by its ability to produce all its own goods. That is, not in these days. Maybe in Carthage in 112 B. C., but you try to make every area industrialized and self-supportin these days and you'll ruin transportation, not to mention the billboard people and drive-in Cafes.

It may be the height of backwardness, but there ain't a hand bein turned out here at Muleshoe to make our own atom bombs, ain't nobody openin up a new car factory, very few heavy bombers bein planned here, the last home-spun suit wore out durin Cleveland's administration, we'd starve to death if we depended on our own lightbread.

MAGAZINE ADVERTISING HAS ONE DANGER

Everything in this world has its own advantages and disadvantages, hence, so has magazine advertising. It is becoming so beautiful and "pulling", prepared by high priced artists and psychologists, that it may get many women to buy more than they should and go needlessly into debt. These ads may also result in unreasonable labor demands. On this point, you might be interested to write the U. S. Chamber of Commerce, Washington 6, D. C., and ask for these free leaflets: "Fables and Facts About Advertising"; "The Man Who Couldn't See Beyond His Own Nose"; and "Where's Elmer".

HAS NEW SON

Mr. and Mrs. Bill Bickel became the parents of a 7 lb., 15 oz. boy, David Dwight, December 30 in the West Texas Hospital in Lubbock. Bill Bickel is a student of Tech and is the son of Mr. and Mrs. B. H. Bickel of the Pleasant Valley community.

made in Philadelphia, a shirt made in Cincinnati, and a coffin made in Chicago, with even the marble tombstone bein imported from Vermont and the grave bein dug with a shovel from Pittsburg. All the South furnished, according to that celebrated editor, Henry Grady of the Atlantic Constitution, was the corpse and the hole in the ground.

This was supposed to be an unanswerable indictment of the South's backwardness, but it never has affected me that way. What I want to know is what's wrong with it?

If some man in Boston has the energy to make my shoes for me, say let him do it. If I'm backward because some bird in Cincinnati sews my shirt for me, just keep his needle threaded and keep him thinkin I'm backward. I don't even care where they make shovels, already too many produced as it is.

In fact, it never has struck me that you measure a town or an area by its ability to produce all its own goods. That is, not in these days. Maybe in Carthage in 112 B. C., but you try to make every area industrialized and self-supportin these days and you'll ruin transportation, not to mention the billboard people and drive-in Cafes.

It may be the height of backwardness, but there ain't a hand bein turned out here at Muleshoe to make our own atom bombs, ain't nobody openin up a new car factory, very few heavy bombers bein planned here, the last home-spun suit wore out durin Cleveland's administration, we'd starve to death if we depended on our own lightbread.

Everything in this world has its own advantages and disadvantages, hence, so has magazine advertising. It is becoming so beautiful and "pulling", prepared by high priced artists and psychologists, that it may get many women to buy more than they should and go needlessly into debt. These ads may also result in unreasonable labor demands. On this point, you might be interested to write the U. S. Chamber of Commerce, Washington 6, D. C., and ask for these free leaflets: "Fables and Facts About Advertising"; "The Man Who Couldn't See Beyond His Own Nose"; and "Where's Elmer".

HAS NEW SON

Mr. and Mrs. Bill Bickel became the parents of a 7 lb., 15 oz. boy, David Dwight, December 30 in the West Texas Hospital in Lubbock. Bill Bickel is a student of Tech and is the son of Mr. and Mrs. B. H. Bickel of the Pleasant Valley community.

DOOMSDAY'S NOT YET!

Even while the alarmed doomsayers wring their hands and suffer agonies as they watch communism develop abroad and fear over-centralization here at home, we wish to point out the encouraging fact that right now in the United States we have more real democracy than we've ever had before. In evidence in proof—we offer the nation's soil conservation district.

They are the very essence of democracy. They are people working together voluntarily to solve mutual problems; that's democracy. Districts are a new high in the evolution of government by the people. In their very existence they constitute a new nationwide declaration of faith in democracy at a time when the faint-hearted fear the breakdown of our type government.

At no time before in history have so many gotten together of their own free will to get something done as in soil conservation districts. The oldest soil conservation districts in the nation are little more than 10 years of age, yet their impact is magnificent, their accomplishments tremendous.

Erosion and soil depletion—pointing up the need for a secure agriculture on which to build a nation-prompted conservation action. And in that action here in our United States the people could and did turn, not to some constituted authority, but to themselves for help.

In each state thinking men who saw the need for conservation soil buttonholed legislators until they made their point and got laws passed enabling the people to set up soil conservation districts. And everywhere that enough farmers and ranchmen wanted a local district they had an election and voted one in. And then they voted again and elected supervisors from among themselves to help operate the district to the best advantage.

No money-grabbers these supervisors: they get no salary, they dispense no patronage. They are men among men; they work with the others in their district to define the needs and plan programs that help control erosion and improve the soil's ability to yield permanently at a profit.

From time to time the folks in the district elect new supervisors as terms expire, and if the old supervisor isn't satisfactory they vote someone else into office.

Locally, as occasions arise, ranchmen and farmers appear before their boards and speak their pieces; they make their will felt. In all these things-in-the-planning, organization and operation of districts—is democracy. It's heartening.

People in soil conservation districts are licking their soil problems. But that's hardly more important than the fact that they turned naturally to the most democratic of institutions to get that job done. We're sorry if the alarmists are disappointed, but democracy isn't even dying. To be specific, it is young, growing, and thriving to beat the band in the process. Soil conservation districts are the proof. —From Soil & Water, new soil conservation magazine.

VISITOR FROM CALIFORNIA

Pat Sanders of Visalia, Calif., arrived January 10 to visit his brother and family, the Claude Sanders, and his mother, Mrs. Anna Pepper. He also visited the B. A. Gosses of Roaring Springs, Texas before returning on January 14.

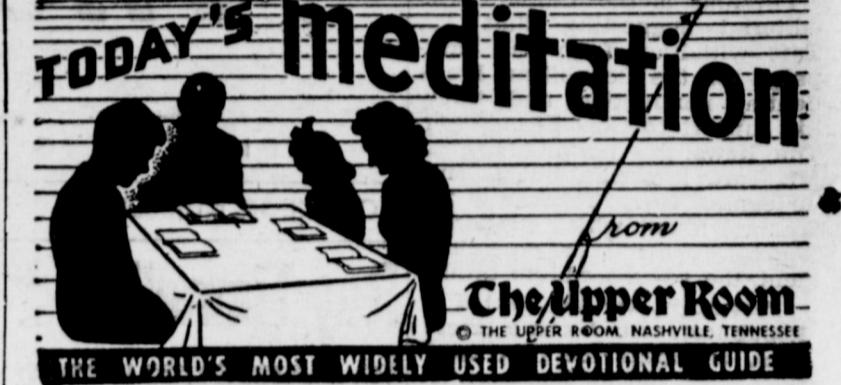
PETE JENKINS RECEIVES SERIOUS BACK INJURY

Pete Jenkins, son-in-law of Mr. and Mrs. Walter Witte, was

seriously injured about four weeks ago when he was pulled off a telephone pole because of a dangling line that was hung on a truck. Four vertebrae were broken and two were crushed because of the fall. He also suffered a sprained ankle.

He was released from the Big Spring hospital Saturday, Jan. 12, and is reported as doing nicely as could be expected.

Mr. and Mrs. Walter Witte visited him over the week end.



Through him (Christ) we both have access by one Spirit unto the Father. (Ephesians 2:18.)
Read Ephesians 2:1-10.

About Ismael is a converted young man. He stands as a faithful witness to his Lord. Lately he went to work with an American and his two children. The first work of Ismael was to tell to them his religious experience. About Ismael wondered very much that they are only Christians in name and do not even carry with them a New Testament. The other day he bought New Testaments from me to give to those friends.

They are now awakened by seeing his zeal. About Ismael prays with them. He says he does not understand their language in prayer but adds, "I feel

that we are under the influence of one unseen Power and have already become brothers. We are standing before the heavenly Father, through Christ."

How great the work of Christ who hurdles all obstacles of race, culture, and language and unites us all under the shadow of His wings. This experience is not one of old, but belongs to our present day as well.

PRAYER
We thank Thee, our heavenly Father, that in Jesus Christ Thou gatherest Thy children and united them in Thy spirit. Grant that each day this spiritual fellowship may be a reality for us. In Jesus' name we ask it. Amen.

THOUGHT FOR THE DAY
Our Christian fellowship is the work of the Holy Spirit.
N. Kachadourian (Syria)

SEE US FOR PROTECTION POLICIES YOU NEED

BOBO INSURANCE AGENCY

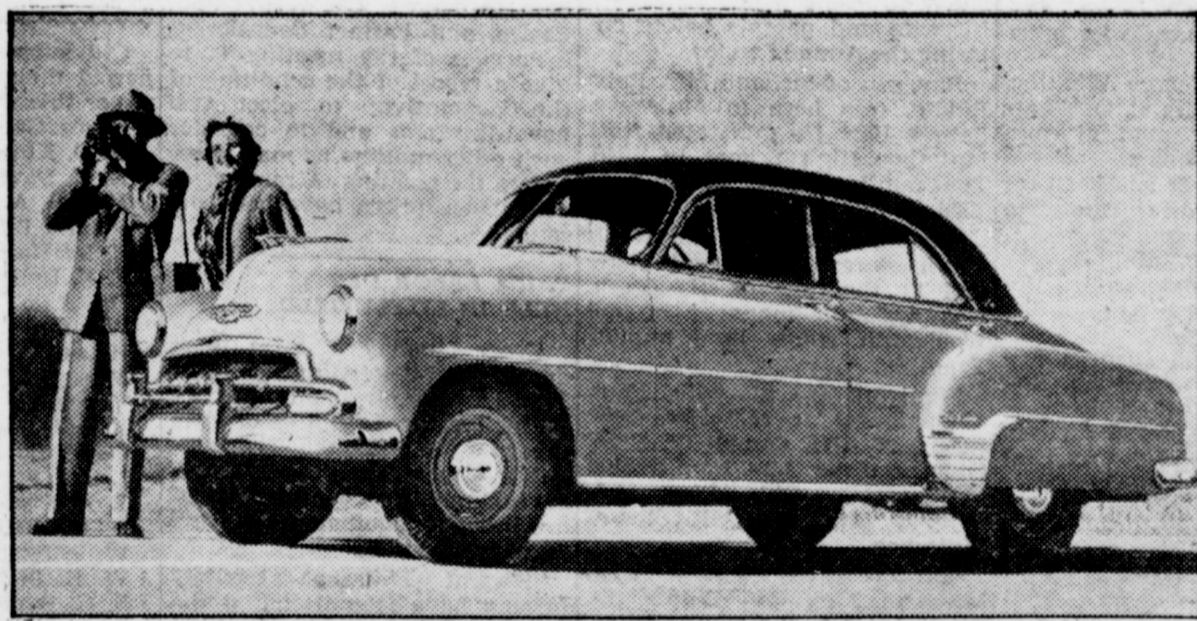
Office In Bank Building
PHONE 2640 MULESHOE

GUARANTY ABSTRACT CO.

BONDED FOR YOUR PROTECTION
Office In Bank Building
Phone 2640 Muleshoe

Complete Abstracts of Title to All Lands and Towns in Bailey County, Texas
PAT R. BOBO, Owner BETTE COWAN, Manager

You Are Invited To See The New
1952 Chevrolet



—ON DISPLAY—

Saturday, Jan. 29

IN OUR SHOW ROOMS

Free Coffee and Doughnuts All Day

C. & H. Chevrolet Co.

Muleshoe, Texas

I ALWAYS LET REDDY DO IT!

Smart lady. When it comes to the hard work of washday, she lets Reddy do it. With an automatic washer — and Reddy's dependable electric service — washday is no longer a day of drudgery. Just put the clothes in the washer, set the controls, and Reddy takes over. Automatic washers will handle any wash day task, too, from large flat pieces to your daintiest linens. Gone forever are scrub boards, rinse tubs, hand wringing — all the back break of wash day.

See your electric appliance dealer now. Live the modern way — the "Let Reddy Do It" way — by installing an automatic electric washer in your home now.

SEE YOUR Electric APPLIANCE DEALER

SOUTHWESTERN
PUBLIC SERVICE
COMPANY

27 YEARS OF GOOD CITIZENSHIP AND PUBLIC SERVICE

COX DRIVE-IN THEATRE

Picture For Sat. & Sun., 19 & 20

"CATTLE DRIVE"

With Joel McCrea & Dean Stockwell

FARLEY INSURANCE AGENCY

REAL ESTATE & INSURANCE

Over Bank, Muleshoe, Texas

Office Phone 7279

Res. 5103



ENSIGN
Butane-Propane
CARBURETION

...FOR LOW COST FARMING

With Butane-Propane you can cook and heat the home. You can also run the tractor, irrigate, generate electricity and fuel your trucks. Equip your various engines with ENSIGN Carburetion for Butane-Propane and make very substantial savings in fuel costs and engine maintenance. Engines burning Butane-Propane run three to four seasons without overhaul or valve grind.

The carburetion you buy and its method of application is the key to successful engine operation. Ensign carburetor specialists for 36 years, pioneered Butane-Propane Carburetion and has perfected the finest equipment for easy starting, power, economy and safety. Consult your local ENSIGN Dealer. He is a specialist on Butane conversions and will gladly inspect your engines and advise on the feasibility and cost of the installation. Call or write him for free bulletin on the use of Butane-Propane in tractor, truck and pumping engines.

WIEDEBUSH & CHILDERS

Phone 2810

Muleshoe

Here are the FINEST USED CARS at LOWEST PRICES!

If you need a car, or if you are thinking of becoming a "2 car family", it will pay you to learn how much you can save by buying a good used car over what you will pay for a new one. Look at one of these now on our lot:

- 1 — '50 model Plymouth Club Coupe.
- 1 — '49 Hudson Club Coupe.
- 1 — '49 Plymouth 4-door Sedan.
- 1 — '47 Chevrolet Fleetline 2 door.
- 1 — '48 Ford Fordor.
- 1 — '47 Ford Club Coupe.
- 1 — '49 Packard 4 door Sedan.

These cars are really nice, in good condition and ready to go. (We have some older models, too).

3 PICKUPS

- 1 — '49 Studebaker, 1/2 ton.
- 1 — '50 GMC Pickup, 1/2 ton.
- 1 — '48 Ford, 1/2 ton.

GOSS CONOCO SERVICE

Phone 4230

Muleshoe

High Winter Polio Incidence Calls For A Greater March Of Dimes Drive

AUSTIN, Jan. 15 — Reports and a warning of high polio incidence in Texas, unusual for winter months, call for a better March of Dimes than ever, Lloyd Gregory state chairman of the polio drive, declared today. Gregory recalled a recent warning by the State Health Officer, Dr. George W. Cox, who was quoted in an Associated Press dispatch as warning that continuation of the high winter incidence into the new year could give the state a fast push-off toward what might become the worst polio year in Texas history. Dr. W. A. Spencer, director of the Southwest Polio Center in Houston, this week verified a report that Harris County is having an unusual number of patients for this time of year. Galveston health officers recorded 21 cases since December 21.

Gregory stated, that although no one can predict accurately the number of cases in 1952, it is certain that over \$1,800,000 will be needed by National Foundation for Infantile Paralysis chapters

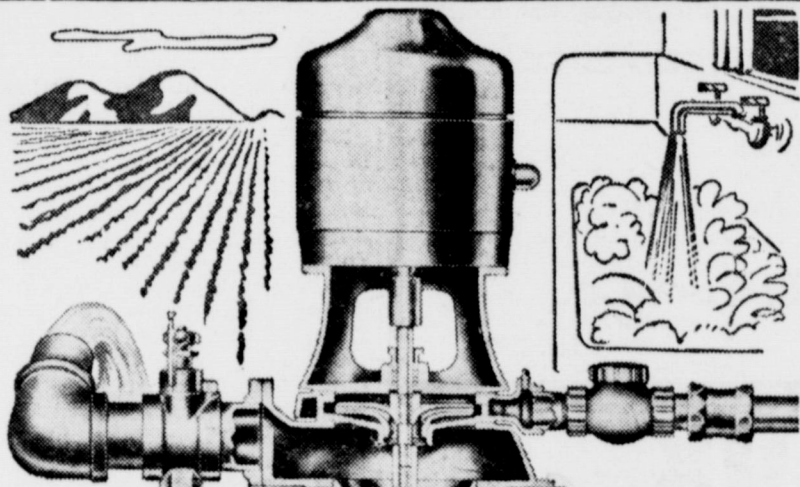
for patient care alone. "During the past four years," the polio leader noted, "Texas county chapters have been spending approximately one and one half million dollars annually. The cost in 1952 may be even greater, considering the large number of patients being carried over who still require treatment. "The time has come for us to examine our March of Dimes activities to make certain that no potential contributor is overlooked. Everyone must be given an opportunity to contribute voluntarily to the campaign for our success will depend upon proper organization in every county." Although no quotas are assigned to counties, the state chairman has asked each county to raise the maximum possible. He estimated that a state average of about 40 cents per capita will be needed.

SPENDS WEEK END IN CANYON

Mr. and Mrs. J. W. Thomson spent last week end visiting with friends in Canyon.

MULESHOE FUNERAL HOME

LOYD ROBERTS
FOR AMBULANCE SERVICE CALL
2860



YOUR ACE in the hole A BERKELEY

Water level dropping?

Go after it with a Berkeley
Dual-Purpose Deep-Well Turbine

For farms of 3 to 30 acres, this remarkable pump will supply both irrigation water and high pressure needs—efficiently. For larger farms, it adds to your irrigation source and gives excellent pressure service.

Capacity up to 275 gallons per minute: open discharge.
Water levels 30 feet and deeper.

See us today. Let us help you select the turbine for your needs.

E. R. HART CO.

Phone 3300

Muleshoe



PUT IDLE DOLLARS TO WORK . . .

Announcement —

The Muleshoe State Bank will now issue Certificates of Deposit for six months or longer at

2% INTEREST

MULESHOE STATE BANK

Member Federal Deposit Insurance Corporation

THE LORD WAS THEIR SHEPHERD

The first thing they did when they got off the ship was to kneel down under the open sky and thank God.

Each man was a free man responsible to God.

So it was when they wrote a Declaration of Independence, in that fateful moment of making themselves a nation, they called upon Him to behold the justice of what they were about to do.

And when they met to draw up a Constitution, governing how Americans should behave toward each other, they prayed for guidance from the Highest Lawgiver of all.

And from that day to this, when we come together to make a solemn public decision, we take a moment to ask God to make our minds wise, and our hearts good, and our motives pure. . . .

Thru most of our history we have lived with that faith. And only as long as we believe it, and go on living by it, will we be secure. —Texas Outlook.

January 31 Is Loan Deadline

January 31 is the deadline for farmers to obtain a loan on his 1951 grain sorghum and wheat. If farmers have grain sorghums or wheat on which they do not desire a loan but want to have the price guaranteed on the grain must sign a purchase agreement by January 31.

Maturity date will be March 31 on grain sorghum and April 30 on wheat.

Loans will be available on 1951 cotton until April 30 and cotton loans will mature on or before July 31, 1952. This information is contained in the January Newsletter which has just been released from the county PMA headquarters in Muleshoe.

JayCees Minstrel Rehearsals Begin

Rehearsals began this week on the Junior Chamber of Commerce 1952 Minstrel, to be staged in the high school auditorium here on Friday and Saturday nights, February 14 and 15.

Mrs. Noel Woodley is director of the show again this year and Tootie Middlebrook, president of the JayCees, says the show will be "bigger and better." It is the second annual minstrel to be staged by the local club.

There will be entirely new costumes, new jokes, new acts, new songs and music throughout the program.

The JayCees use money derived from sale of admission tickets to further their various civic projects.

VISITORS FROM SUNDOWN

Mr. and Mrs. C. L. Baker of Sundown were visitors in the home of Mr. and Mrs. Charles M. Baker Tuesday, Jan. 15.

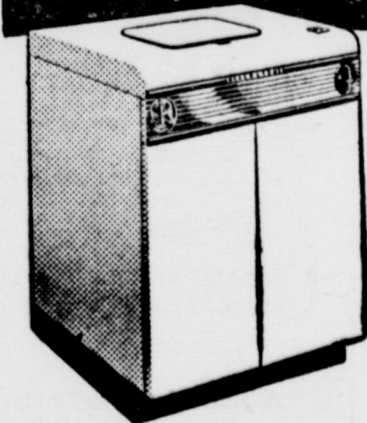
MRS. WARE HAS VISITORS

Cpl. and Mrs. Arthur Baker of Camp Hood, near Pampa, Texas, were guests in the home of Mr. Baker's sister, Mrs. Opal Ware, Monday, Jan. 14.

Maryland was settled by the Catholics; Pennsylvania by the Quakers; New York by the Walloons; Georgia by the English debtors; and Virginia by the Cavaliers.

A banquet was held in January 1835, during Andrew Jackson's administration, to celebrate the fact that the country was almost free of debt.

WORLD'S FINEST AUTOMATIC WASHER



BLACKSTONE

• We'll demonstrate its superiority right before your eyes. Weekly payments as low as

\$2.50

Johnson-Pool

TIRE & APPLIANCE Muleshoe
Dian 7370

Enochs and Bula FFA Boy Enter 7 Swine In San Antonio Stock Show

Five Enochs boys, members of Box 1746, San Antonio. The exhibition has announced the signing of the Don Franklin carnival for the 10-day show. Franklin plans to introduce a number of shows and other features on the midway which have not heretofore been seen in Texas.

Ralph George, Will Speck, and Richard Skinner have entered a pig each; Bennie Claunch and Curtis Green have entered two each.

San Antonio's third annual exposition will be its greatest since the show's founding, according to present indications. With final processing of entries still incomplete, the livestock entries have passed the 4,000 mark, according to Mark L. Browne, chairman of the general livestock committee.

Unusual advance interest also is being shown in in world's championship rodeo, which is to be produced by Everett Colborn. The heaviest advance ticket sale for the rodeo since the show's founding has been reported and mail orders are being accepted.

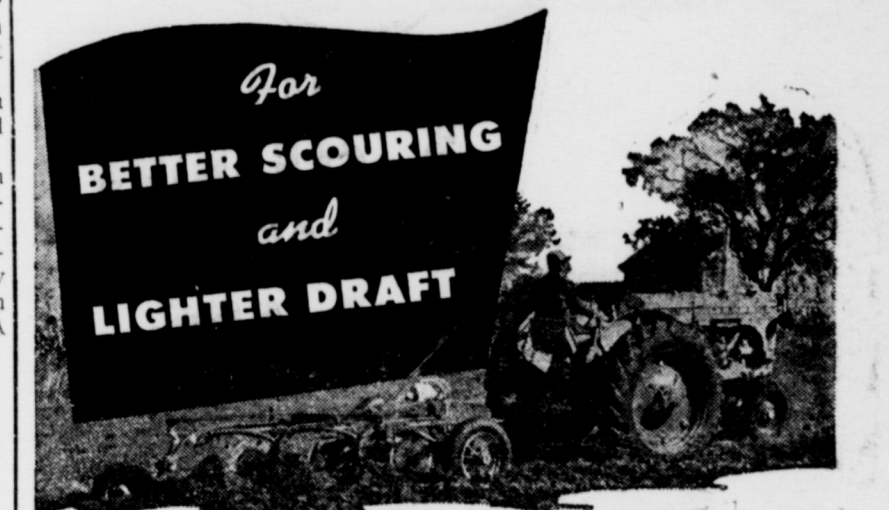
Ticket prices are: boxes, \$3.60; dress circles, \$3; lower balcony, \$2.40, and balcony, \$1.50. Orders may be mailed to the San Antonio Livestock Exposition, P. O.

SUNDAY GUESTS IN BAKER HOME

Mr. and Mrs. A. A. Mitchell and daughter, Mrs. Jacque Baker, of Anton, were guests in the home of Mr. and Mrs. Charles M. Baker Sunday, Jan. 13. Jacque Baker is the son of the Charles Bakers and is in the Air Force stationed at San Antonio.

VISIT IN FT. WORTH

Mr. and Mrs. Roy Bryant returned recently from a trip to Ft. Worth where their grandson Ronnie, son of Mr. and Mrs. Don Fudge, underwent an operation in the Harris Hospital.



For
BETTER SCOURING
and
LIGHTER DRAFT



Hi-Klearance PLOWS

Quality built for dependability and long-life, MM Hi-Klearance Plows are famous for light draft, correct scouring, and high lift. Here's the plow with a clearance of 23 1/2 inches between the point of the share and the underside of the beam. (26 1/2 inches on 16-inch plow) A high transporting lift of 10 inches provides easier turning at the ends of the field and prevents dragging of trash and stubble. MM's quick-action Uni-Matic power-lift provides a 7-inch lift without a lever change. A 10-inch lift is used to give extra high clearance when plowing unusually deep or in very soft ground. Since the plow can be set 12 inches deep, it will meet your most extreme needs.

UNI-MATIC POWER

MM's Uni-Matic hydraulic power-lift enables the operator to raise or lower implements automatically, permits pre-selecting or changing tool depth or height of cut. Uni-Matic Power reduces the fatigue, labor and drudgery of farming and is optional with MM's R, Z, U, and G Visionlined tractors. See us for complete facts on MM Uni-Matic Power, Hi-Klearance Plows, MM Modern Machines, Visionlined Tractors and Power Units.



QUALITY CONTROL IN THE FACTORY ASSURES DEPENDABLE PERFORMANCE IN THE FIELD

FRY & COX BROS.
M-M FARM MACHINERY

Phone 3660

Muleshoe

NOTICE

ANNUAL MEETING

January 18, 1 P. M.

High School Auditorium

Muleshoe, Texas

PRIZES

To Be Given Away
Hear Progress
and Financial Report
of Your

Bailey County Electric
Cooperative Association

Mrs. Jones Hosts Fidelis Class

Members of the Fidelis Sunday School Class of the First Baptist Church, met Thursday, January 10, in the home of Mrs. R. L. Jones and Mrs. Mary Hart as co-hostesses.

Mrs. Raymond Precure, president of the class presided over the meeting. The class voted to continue to assist their girl student in Brazil. This has been one of their projects the past four years. She graduated from school last year and will go into the interior of Brazil to do missionary work.

Mrs. N. C. Moore gave the devotional, from the 103 Psalms. New Names were drawn for sunshine friends and refreshments were served to the following: Mesdames Marion F. Green, C. M. King, Joe Damron, J. V. Peeler, W. B. McAdams, Faye Cox, N. C. Moore, F. H. Davis, Ray Griffiths, L. T. Green, Jr., Clinton Bristow, T. C. Young, Pat Bulloch, Raymond Precure, Mary Hart, Henry Schuster, A. W. Crow, the hostess and co-hostess.

"Crossroads of America", is the slogan and motto of the State of Indiana.

Garden Club Is Finishing Legion Landscaping Work

The Muleshoe Garden Club has done a lot of work in landscaping the grounds of the American Legion Home in Muleshoe and they are anxious that no one in a careless moment shall destroy the plants they have started.

Speaking for the club, Mrs. Robert King, president, said the ladies this week planted 275 poplars on all sides of the home excepting the front, have planted hedges, and flying shrubs. These hedges and shrubs divide the parking area from the recreation area. The ladies request that everyone refrain from driving on to the lawn; they should stop their cars at the ditches, for to drive over them will destroy the plants they have just placed there.

The Legion men plan to put caliche on the parking areas and there will be a plain division of parking areas and recreation areas so that there really will be very little excuse for violating the plantings.

There is a pressure pump on the grounds which will have to be run pretty steadily to keep water to all these plantings, in addition to the flower beds the ladies fixed up around the walks and near the building last year, but the Garden Club members

think they can work it out. "It has been a lot of work for these women", said Mrs. King, "but it is a pleasure to us, especially when we realize that as time goes on the grounds here will be ever more attractive. And we will sure appreciate it if everyone who uses the Legion Home will carefully observe how they drive on the grounds."

Demonstrators For Enochs Club Are Appointed

The Enochs H. D. Club began the new year with a meeting at the home of Mrs. I. A. Thomas, with 12 members and the agent Mrs. Dian Reed present.

The Club meeting was opened by playing a game, which was enjoyed by all.

Roll call was answered by all giving their New Year Resolution. Mrs. Johnson gave our financial report.

Mrs. Reed the agent gave a lecture on landscaping, suggesting improving and balancing our yards.

The following demonstration committees were appointed for the year: Crafts mesdames Dutch Cash, D. I. Johnson, Roland Gibson, L. A. Lenard. Foods: Mesdames Boydston, C. W. Vanlandingham, John Vanlandingham. Landscaping: Mesdames M. J. Gibson, Roland Gibson, D. I. Johnson, Dutch Cash.

We started the roll with mem-

bers present, others will be enrolled, as they come.

The club has decided to try and get another well drilled, at the cemetery.

Refreshments of Cake, Coffee & Tea were served to Mesdames Dian Reed, L. A. Lenard, Earl Thompson, D. T. Johnson, C. G. Seagler, Dutch Cash, M. J. Gibson, Roland Gibson W. A. Pool, John Vanlandingham T. J. Sullivan C. W. Vanlandingham and the hostess Mrs. I. A. Thomas.

The next meeting will be Jan. 24 in the home of Mrs. Earl Thompson.

GUEST IN PERKINS HOME
Mrs. M. E. Dodd of Norwalk, Calif., is visiting in the home of her son and family, Mr. and Mrs. Troy Perkins. She arrived Thursday, Jan. 10, and she plans to spend about two months visiting other relatives in Texas before returning to her home.

VISITING SONS FAMILY
Mr. and Mrs. A. V. Evans, of Bakersfield, Calif., are here for a visit with the families of their sons, E. W. and Elmo Evans.

Mrs. Hanks Hosts Wesleyan Guild

The Wesleyan Service Guild of the First Methodist Church met in the home of Mrs. Ray Edwards Monday evening, January 14, at 7:30 with Mrs. H. W. Hanks as hostess.

Mrs. Homer Sanders, Jr., president, presided over the business meeting.

Mrs. A. S. Stovall gave the last chapter of the study of the book of Acts.

Refreshments were served to Mesdames A. S. Stovall, Curtis Spivey, C. W. Grandy, Buford Butts, Delma McCarty, Jim Burkhead, Francis Gilbreath, Homer Sanders, Jr., Alex Wilkins, W. S. Otis, Ray Edwards, Jim Cox, Miss Elizabeth Harden and the hostess, Mrs. H. W. Hanks.

The next meeting will be January 28 in the home of Mrs. Homer Sanders, Jr.

MURPHYS IN MINNESOTA

Mr. and Mrs. J. R. Murphy and son, Jimmy, are spending the winter in Minneapolis, Minn., with Mr. Muhphy's parents, Mr. Murphy's father is ill.

TOP O' TEXAS HEREFORD SHOW AND SALE SET

The Top O' Texas Hereford Breeders Ass'n. will hold its Junior Livestock Show and Sale February 4 and 5, in Pampa. Seventy-nine head have been consigned to the sale.

VISITING IN MELROSE

Mr. and Mrs. Arthur Crow were visitors Sunday in Melrose, with his sister, Mrs. Henry Harral and family.

Inscribed on the Liberty Bell in Philadelphia are these words "Proclaim Liberty throughout all the land."



To your Best Love... give the World's Best Loved Box- Whitman's Sampler. The Famous WHITMAN'S SAMPLER in 1 pound and 2 pound sizes. Special Heart Boxes and other Whitman's Assortments attractively wrapped for Valentine's Day.

WOOD DRUG Phone 2240 — Muleshoe

Minnesota boasts the greatest water area of any state.

Area Rebekah Lodge Installation Of Officers Held Here Jan. 15

The Muleshoe Rebekah Lodge held the services for the installation of officers with the Earth, Morton, Needmore and Littlefield Lodge joining them for a joint installation Tuesday night, Jan. 15.

Ruby Shelly, deputy president, was assisted by P. N. G. Ruby Green, deputy I. G. Velma Howell, Deputy O. G.; Hazel Whalin, deputy chaplain, Clytie Dial, and the deputy marshal all of Muleshoe Rebekah Lodge No. 114, Deputy warden, Alma Yohner, and deputy treasurer, Tula Taylor, of Littlefield Rebekah Lodge No. 61, deputy musician, Maude Young of Needmore Rebekah Lodge No. 160, and deputy secretary, Lola Harris, of Morton Rebekah Lodge No. 39.

Officers installed for the Littlefield Rebekah Lodge No. 61 were Sella Edwards, N. G.; Eva Winston, V. G.; Lee Belle Johnson, secretary; Estelle Boykin, treasurer; Ann Anderson, chaplain; Inez Minyard, warden; Katherine Riewbach, conductor; Pearl Brandon, R. S. N. G.; Ruby Owens, L. N. G.; Florence Rice, L. S. V. G.; Daisey Steward, P. S. V. G.; Larvelle Lackey, musician; Willie Steward, I. G.; and Dock Minyard, O. G. and team captain.

Officers installed for the Earth Rebekah Lodge No. 139 were Gladys McCaskill, N. G.; Alma Stockstill, V. G.; Henrietta Armstrong, secretary; Alma Fay Adrian, treasurer; Alta Mitchell, chaplain; Gwón Talbert conductor; Virginia Kelley, warden; Adria Welch, R. S. N. G.; Minnie Parrish, L. S. N. G.; Mildred Kinderick, R. S. V. G.; Jodie Morris, L. S. V. G.; Jennie Barrett, I. G.; June Bills, O. G.; Nellie Barton and Mary Gilmore, altar bearers; J. E. Mitchell, team captain; Billie Lois Kerby, musician; and Grace Anderson, color bearer.

The Needmore Rebekah Lodge No. 160 officers were Katherine Pierce, N. G.; Jessie Waldrip, V. G.; Sarah Griffith, chaplain; Eris Kennedy, secretary; Juanita Busby, treasurer; Maude Young, R. S. N. G.; Gracie Lee McDaniel, L. S. N. G.; Ruby Troutman, R. S. V. G.; Millie Lee Simms, L. S. V. G.; Fern Warren, warden; Florence Holmes, conductor; Thursie Reed, I. G.; Thelma Gage, O. G. and team captain; and Sue Creamer, color bearer.

The Morton Rebekah Lodge No. 39 officers installed were Merline Dowdy, N. G.; Lennie Mae Woyte, V. G.; Bertie Pyburn, secretary; Faydiel Turney, treasurer; Lodie Tanner, warden; Lola Harris, conductor; Minerva Shaw, I. G.; Lois Crockett, O. G.; Ruby Killian, L. S. V. G.; Lorene Crockett, R. S. V. G.; Thelma Shaw, S. S. N. G.; and Juante Cook, chap-

lain.

Refreshments were served to 35 members and 63 visitors.

MOTHER ILL

Mr. and Mrs. Harold Weyer left for Big Springs, Friday to join her sister Mrs. Roy Cole and from there they went to Austin, to be with their mother, Mrs. Cooper Morgan, who was to undergo major surgery. Mr. Weyer returned home Friday night.

Minnesota boasts the greatest water area of any state.

Color Harmony

FOR YOUR HOME WITH COORDINATED PAINTS AND WALLPAPER

Old, drab rooms come to life with beauty and charm - with fresh new color. Achieve the ultimate in home decor with our complete line of color-coordinated paints and wall-papers. You'll find a wide variety of handsome papers and lovely - paint colors here in our showroom. Come in today.

- INTERIOR AND EXTERIOR PAINTS
- FINE, FAMOUS NAME WALLPAPERS
- FREE DECORATOR SERVICE

WILLSON-SANDERS' LBR.
Phone 7130 — Muleshoe

POLIO INSURANCE

FAMILY GROUP POLICY \$10.00
RAY CARTER
Farm Bureau Office

Flor-Ever

CUTS CLEANING CARE up to 40%

THE MAGIC NON-POROUS MEAL

GOOD NEWS, LADIES! Flor-Ever gives you more than just a shiny, sparkling floor. It's a permanent finish that stays with you through every scrubbing, waxing, and buffing. It's the only floor finish that's so easy to apply and so long-lasting that you'll never need to re-apply it again. And that's all GUARANTEED!

Come in and see Flor-Ever today—let us show you the magnificent colors—the infinite number of patterns and color combinations made possible by 6-foot widths and floor.

DYER

Hardware & Furniture
Phone 2590 — Muleshoe

Abstracts — Title Insurance

Real Estate
Complete Abstract And Title Service
Muleshoe Abstract Co.
Barry T. Lewis Tel. 7320

GLOS-LUX High Gloss ENAMEL

FOR WOODWORK - CUPBOARDS AND LARGE WALL AREAS IN KITCHEN AND BATHROOM

THEY'LL GLISTEN

Yes... A new tile-like finish is now available in many beautiful colors and white with BPS GLOS-LUX.

The easy flowing and spreading of GLOS-LUX is what makes it such a popular enamel, it just flows out without brush marks, dries fast too... and it's so easy to wash and keep clean.

GLOS-LUX is identically matched in color with FLATLUX and SATIN-LUX. Ask for the descriptive folder.

PATTERSON-SARGENT, BEST PAINT SOLD

HEATHINGTON LUMBER

Phone 7970

1 tone on tone PLAID

3⁵⁰

SHIP 'N SHORE

A plaid blouse so lovely, its looks belie its down-to-earth price. The smart action-back pleats allow freedom for sports. "Office orchids" love it too, lets them type unhindered. And the extra-long shirt-tails behave perfectly! Woven plaid in autumn shades. Ever lovely, ever washable combed cotton gingham. Sanforized, colorfast. Sizes 30 to 40.

COBB'S

JUST ARRIVED! REMINGTON RAND'S

TOPflight

ELECTRIC ADDING MACHINE

CUSHIONED POWER

STREAMLINED ACTION

In the new TOPflight electric adding machine, built-in steel cushions cut office clatter to a murmur. You'll turn out more work with new ease on this quieter, faster model, with its streamlined 10-key keyboard. And it's all-electric—adds, subtracts, multiplies directly as fast as your fingers will move. Come in—see it today.

- Cushioned power means noise, reduces vibration.
- Larger motor base means new ease of operation.
- Famous 10-key control provides new speed of figure entry.
- Lists and totals to \$100,000.00.
- Lists, adds, subtracts, multiplies electrically.

IT'S THE PORTABLE FOR OFFICE AND PERSONAL USE!

THE MULESHOE JOURNAL

Phone 7220 — Muleshoe

Stop Taking Harsh Drugs for Constipation

End Chronic Dosing! Regain Normal Regularity This All-Vegetable Way!

Taking harsh drugs for constipation can punish you brutally! Their cramps and griping disrupt normal bowel action, make you feel in need of repeated dosing. When you occasionally feel constipated, get gentle but sure relief. Take Dr. Caldwell's Senna Laxative contained in Syrup Pepsin. It's all-vegetable. No salts, no harsh drugs. Dr. Caldwell's contains an extract of Senna, oldest and one of the finest natural laxatives known to medicine.

Dr. Caldwell's Senna Laxative tastes good, acts mildly, brings thorough relief comfortably. Helps you get regular, ends chronic dosing. Even relieves stomach sourness that constipation often brings.

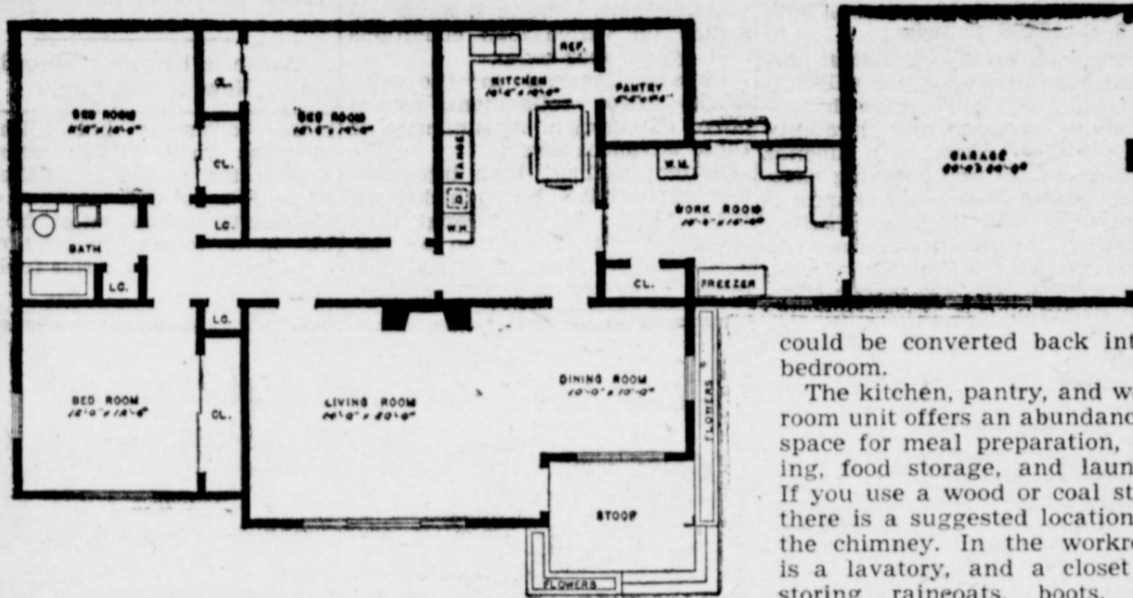
Try the new 25¢ size. Money back if not satisfied. Mail order to Box 280, N.Y. 18, N.Y.

DR. CALDWELL'S SENNA LAXATIVE

Contained in Pleasant-Tasting Syrup Pepsin



House Plan No. 28



Designed With An Eye To The Sun

A period of studying, planning, testing, tearing up and starting all over again, has brought forth Farm & Ranch

House Plan No. 28. It is specially adapted to the middle South. The house gives you maximum space for a low cost with room sizes that surveys have shown to be most popular. By combining the living-dining area, we have obtained a spacious effect at a cost much lower than if these were separate rooms. To set off the front entrance, the stoop and flower boxes were added. If you do not need three bedrooms at present, the one next to the kitchen could be paneled and made into an ideal den or office. Then, if needed later, it

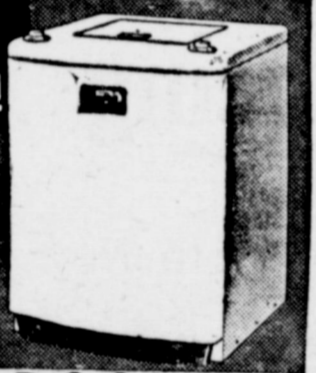
could be converted back into a bedroom. The kitchen, pantry, and workroom unit offers an abundance of space for meal preparation, eating, food storage, and laundry. If you use a wood or coal stove, there is a suggested location for the chimney. In the workroom is a lavatory, and a closet for storing raincoats, boots, and such. In addition to the large pantry, there is an abundance of storage space in the 12 lineal feet of base cabinet and 15 lineal feet of wall cabinet. There is an additional 12 lineal feet of both base and wall cabinet space provided in the workroom. The plan does not show a basement, but one could be added easily, with an entrance from either the workroom or garage. If you prefer a central heating system, you could install it in the basement. A hot air system could be placed in the workroom or attic. You can obtain blueprints for this The Muleshoe Journal Farm & Ranch Plan No. 5028 and a handy list of materials by which you can figure your construction cost accurately. Send \$1 to Building Editor, Farm & Ranch Southern Agriculturalist, Dept. L-36, Nashville, Tenn. Order by number, plan No. 5028. Blueprints are adequate for any farm carpenter or for any farmer handy with tools.

Tax Returns

C. C. GRIFFITHS
Ray Griffiths Elevator

THE MAYTAG AUTOMATIC GETS CLOTHES CLEANEST!

- Famous Gyrafoam washing action
- Fully automatic
- No bolting down



JOHNSON-POOL

Tire & Appliance
Dial 7370 Muleshoe, Texas



TIRE HEADQUARTERS



Protect Your Clothes With Our Complete Cleaning Services!



For the ultimate in fine dry cleaning try LAMBERT'S service just once and be convinced! We combine the finest workmanship and the newest, scientific processes to give your clothes the best possible care.



LAMBERT CLEANERS

PHONE 7260

Lubbock Stock Show Dates Set

LUBBOCK, Jan. 15 — Dates for the South Plains Junior Fat Stock Show have been set for March 17-18-19, show officials announced this week.

The announcement followed a survey of the area's agricultural leaders to determine favorable dates for the show. Exhibitors annually journey here from 26 counties in Texas and New Mexico. Officials had seriously considered later dates for the show this year, but the survey revealed that exhibitors would have a longer feeding time between their local shows and the regional show here.

The 19th annual exposition is expected to exceed last year's record entry list of 568 pigs, 266 calves and 142 lambs, a total of 986 animals.

VISITED DAUGHTER IN LAW

Mrs. C. D. Julian spent Sunday in Amherst with her daughter-in-law, Mrs. E. B. Julian who has been seriously ill and is in the Amherst hospital.

The United States once paid tribute to the Pirates of Tripoli and Algiers, for the privilege of trading in the Mediterranean.

Only one state has been named for a President, that being the State of Washington.

Cecil H. Tate
ATTORNEY-AT-LAW
Muleshoe, Texas
Office in Courthouse

PAT R. BOBO
ATTORNEY-AT-LAW
Office in Bank Building
Muleshoe, Texas

MERIT SYSTEM COUNCIL TO HAVE SEVERAL JOB EXAMS

The Merit System Council, serving the Texas Employment Commission and the State Department of Public Welfare, will offer examinations at approximately 45 different centers in Texas on February 23. Anyone interested in positions as clerks, typists, stenographers, key punch operators, tabulating equipment operators, senior child welfare workers, or clinical psychologists should apply to the Merit System Council, Box 671, Austin, Texas. Applications must be post marked not later than February 2, 1952.

Application blanks and further information may be obtained from local offices of the State Department of Public Welfare, local offices of the Texas Employment Commission, or by writing to the Merit System Council, Box 671, Austin, Texas.

DR. B. R. PUTMAN
OPTOMETRIST
First Door North of REA Building
Muleshoe, Texas Phone 6560

INSURANCE PROTECTION POLICY FOR EVERY NEED
Lane Insurance & Real Estate
EDDIE LANE, OWNER
PHONE 3630 MULESHOE, TEXAS

BRING US YOUR SUDAN
EITHER FOR STORAGE OR SALE
HIGHEST PRICES FOR GOOD
HEGARI - KAFFIR - MILLET
CANE SEED

GILBREATH SEED & GRAIN CO.
PHONE 2310 MULESHOE, TEXAS

FARM SALE

I have leased my farm and will sell at my place 7 miles south of Muleshoe, Texas, on Morton highway, property described below on

TUESDAY, JAN. 22

SALE TO BEGIN AT 1 p. m.

FARM MACHINERY

- 1—'51 Ford Tractor, all equipment.
- 1—Ford Blade.
- 1—2-row pickup Ford Knifer.
- 1—Single 16 in. Ford Breaking Plow.
- 1—Ford V-type ditcher.
- 50—2 in. irrigation tubes.
- 1—Irrigation Tarp.
- 1—Electric Separator.
- 1—Ford irrigation motor, with butane equipment.
- 1—Ford Puller.
- 1—P. & O. Bottom.
- 1—4-row Stalk Cutter.
- 1—2-bottom Breaking Plow.
- 1—Tractor Guide.
- 1—Feed Mill, a good one.
- 1—50 ft. Belt.
- Wrenches, sweeps, tools, hoes, shovels, forks etc.
- Large Lot Post & Wire.

- 1—2 wheel Tractor.
- 1—Wash Pot.

LIVESTOCK

- 1—Jersey Cow, heavy springer, fresh soon, 5 years old.
- 1—Jersey heifer, will be fresh by sale date.
- 1—White face heifer calf.

POULTRY

- 30—White Leghorn Hens.

HOGS

- 4—Fat Hogs, 180 lbs. ea.

COTTON SEED & FEED

- 50—Bu. Moca Cotton Seed.
- 30—Bushels Northern Star Cotton Seed.
- 10,000 lbs. Grain.
- 600 Hegari Bundles.

Anyone wishing to bring something to sale may do so.

TERMS: CASH

J. E. MOORE, OWNER

Kenneth Bozeman & Corky
Auctioneers

Tom & Hugh
Clerks

USE THE CLASSIFIED FOR RESULTS

THE MULESHOE JOURNAL, Thursday, January 17, 1952

FOR SALE

FARMS & RANCHES

- 80 acres good red land, 4 room and bath. ¼ mile from pavement. Electric irrigation well, good loan. \$28,000.
- 80 acres close in. 70 acres in alfalfa, on pavement. \$31,500.
- 160 acres, 3 bedroom home, good red land, large barn. You will need to see this farm.
- 480 acres, one irrigation well, 3 bedroom home, 2 baths, double garage. Good cotton land. Price \$155. per acre.
- 10 acres on pavement, 3 room and bath. Irrigation well. \$10,000.
- 1062 acres, 4 room house and other out buildings. 600 acres in cultivation, 200 acres good wheat. Plenty of good water, on REA. This land is priced to sell for \$55.00 per acre.
- 1328 Sections, plenty of water. Will run about 5000 head of cattle, 3 large ranch houses, barns, corrals, loading shutles. Pavement running through ranch. This ranch is well located. For further information on this ranch will be glad to furnish same. If interested call me.

FOR IRRIGATED AND DRY LAND IN AND AROUND BAILEY COUNTY CONTACT.

EDDIE LANE
REAL ESTATE & INSURANCE
Ave B West of Western Drug
Phone 3630 Muleshoe

SEE US FOR
Land & Property

This property is listed for sale and you get possession:

- 80 acres, and it is considered a perfect tract for irrigation. Extra well improved, good irrigation well. Possession.
- 78 acres, on highway, good irrigation well, 4 room house and Grade A Dairy barn.
- 80 acres, shallow water, three room house, modern.
- 80 Acres, ½ mile off highway, No. 14, 10 in. discharge Electric irrigation set up, 4 room house. This place is priced right and must sell.
- 80 Acres, well improved and irrigated, located on pavement.
- 110 Acres of the best red land in shallow water area.
- 160 Acres, shallow water, good irrigation set up and a 4 room house, modern.
- 200 Acres on highway and extra well improved, 2 irrigation wells on Natural Gas.
- 200 Acres in a square block, extra well improved and extra good irrigation well setting 160 ft. waters, perfect.
- 320 Acres well improved, good irrigation set up to water around 220 acres. Priced \$175 per acre.
- 320 acres good dry land but believed to be subject to irrigation. \$95 acre.
- 480 Acres, well improved and irrigation well, setting 160 ft.

Clyde A. Bray, Sr.
Muleshoe
Phone 2820 Box 243

FARM AND HOMES FOR SALE

- 80 acres, 3 room house, pressure water. Fair barns. 14 A. in alfalfa, new good irrig. well, level, with some grass. \$300 per acre.
- 369 A., 5 room stucco house, barns, chicken houses, 2 wells and mills. 345 acres in cult., some wheat. \$87.50 acre.
- 48 acres, close in. 4 rooms and bath. 10 in. irrig. well, 16 acres in alfalfa. Level and clean. \$18,000.

We want some places to sell. Give us your listings and see us when you are ready to buy.

HANOVER & DAY
REAL ESTATE
On Morton Highway
Just North Of Courthouse

FOR SALE: 12 Hybrid Duroc Registered pigs. See Travis Clements. 821 Main St. 2-4tc.

FOR SALE: A Ford 100 H. P. Irrigation motor. New overhaul, new wiring. Jack Angeley, Earth. 2-4tp.

FOR SALE: Good seven year old roping horse. Well trained. F. H. Gable, 3 miles north and 3 west of Goodland. 3-4tp.

LEGAL FORMS, deeds, chattel mortgage and other forms at The Journal office.

W.R. (Ray) Carter
Farm Bureau Office Phone 6480
Muleshoe, Texas

Used Tractors And Equipment For Sale

- 1941 Model Ford Ferguson Tractor, 2 row lister, planter, cultivator, and knife attachments. \$750.
- 1945 Ford Ferguson Tractor, clean tractor. \$695.
- 2-1948 Ford Tractors, \$895. each.
- 1-1949 Ford Tractor, \$930.
- 2-1949 Model Ferguson Tractors, \$1150. each.
- 1-1940 DC Case Tractor, wide front wheels, lister, planter and cultivator, 3 bottom breaking plow. \$800.
- 1-1946 Model Chevrolet Truck, \$550.

D. H. Sneed Supply Co.
Your Ferguson Dealer
Pho. 4170 Muleshoe

LAND FOR SALE

- 116 Acres. A very beautiful little farm. Highly improved with a four bed room house, plenty of other improvements. Land all in cultivation, all will irrigate and plenty of water under it. Natural gas available for fuel. If you are looking for a real nice home, this is it. Shown by appointment only.
- 160 Acres. Smooth as a table. All in cultivation, all in wheat, good stand and promising a good crop. This would be a beauty to irrigate.
- Two sections that can be sold in half sections. One with extra nice improvements, one with irrigation well and two with no improvements. Not a blemish on any part of these four half sections. All of the above land is extra top quality and ideal for irrigation. These farms must be seen to be fully appreciated.

O. W. Rhinehart
ALL KINDS OF INSURANCE
BOVINA, TEXAS

FOR SALE

- 80 acres, 10 in. well with electric motor Modern home. Half of minerals. Small down payment. Will take a modern home in Lubbock as trade. \$300 acre.
- 354 acres well improved. Good irrigation well. Half minerals. On pavement. \$185 per acre.
- 140 acres of the best dry land. Unimproved. Half minerals.
- 1 city home. East front. \$8,500.
- 1 Flip-over plow for Ferguson or Ford. \$160.00.
- 1 16-ft. grain loader with electric motor. \$250.00.
- 1 Seed cleaner with electric motor. \$125.00.
- 354 acres with new 8-in. irrigation well. \$10,000 home and other buildings. Bargain. \$132.50 per acre with minerals.
- 151 acres, 5 room modern home, 25 acres alfalfa. ½ min-283 Acres dry land. A good buy at \$100 acre.
- 2 bedroom G. I. home, \$900 down, payments \$47 mo.
- 80 acres, 30 A. in alfalfa. 10 in. well on butane. Has 2 room house and well house. A good buy. Sell or trade for dry land.
- 95 acres, good well, improvements OK. This place has natural gas for well and house. \$260 acre.

Good business house in Muleshoe, \$12,500. Renting for \$125 month. Will trade for small farm.

One small country store, small living quarters, fixtures and some stock, \$3,500.

320 Acres of land in Lamb County, 100 acres in cultivation, rest in grass. A good buy at \$85 acre.

Residence Lots Business Lots
SEE US NOW FOR BUNDLE FEED

We have several other listings. For the best service give us your listings from 1 acre up. What have you?

FOR SALE ARE YOU IN THE MARKET FOR LAND?



See me if you are, for I have some farms that I believe you will like. We also have some city property that might appeal to you.

WE ARE STILL
Selling that good Van Horn Land. Have you investigated this opportunity? Let us tell you about it.

DAVE AYLESWORTH
See me at my home—Muleshoe Nursery, Muleshoe, Texas.

For Sale REAL ESTATE

FOR THE FALL BUSINESS
We still have some good buys. Some of the best improved farms in the country, priced to sell. Come let us show you. Have a good small ranch of 1000 acres near Muleshoe that is a good buy. One of about 1400 acres near Muleshoe that is priced right.

C. L. 'HAPPY' DYER
C. E. BRISCOE
Phone 3710 Muleshoe

FOR SALE: Good 3 bale cotton trailer, priced cheap. 9 ½ miles on Friona Hiway. W. W. White. 3-2tp.

FOR SALE: Used Singer Sewing machines. In good condition. Dyer Hardware & Furniture. 3-2tc.

FOR SALE: Four unit Apartment across street from hospital. 13 acre unimproved farm, 4 miles northeast of city. S. E. Goucher, Phone 6261. 3-8tc.

SPECIAL PRICES
On all Radiators. International Farmall Cores \$25 exchange

STOVALL-BOOHER
Radiator Sales & Service
Plainview, Texas

WE BUY Old Brass, copper, radiators, scrap iron, batteries, etc. JOHN'S CUSTOM MILL, Phone 5730.

FOR SALE OR TRADE: 1 1951 112 h. p. Kaiser hydromatic motor and transmission, driven 8000 miles. Would make deal for irrigation motor. M. B. Roberts, 7 ½ miles southwest of Lockney, Route 2. 4-4tp.

FOR SALE: A boy's bicycle, new tires, good running condition. \$15. Call 2480. 4-4tc.

FOR SALE: 1948 Packard 4-door sedan. Has practically new 165 h. p. motor. Good tires. Cheap. 4-4tc.

FOR SALE: A nice 2 bedroom home, carpet, blinds, plenty of built-ins. 2 blocks east of Post Office. A good 1 bedroom rent house on Clovis highway at edge of town. Drawing good rent. A 12x28 Garage and lots on Clovis highway. A 1950 Dodge pickup, low mileage. Good condition. See H. O. GEORGE. 4-2tp.

TO TRADE: Income property for a small irrigated farm in Muleshoe vicinity. Phone 751R. Littlefield. No agent. 4-1tp.

FOR SALE: 640 acres in eastern Colo., highly improved and big loan. If desired. Too cheap. Hanover and Day. 4-1tc.

RAYMOND GREEN
COTTON BUYER
Moved to
1223 West 1st. Street
Old Telephone Office Building
On Morton Highway
Phone 6350 Muleshoe, Texas

New Chevrolet Cars And Trucks Go On Display The Coming Saturday

Retaining all of the quality and distinction that again in 1951 won a commanding lead in styles, new Chevrolet trucks will be introduced at dealerships, Saturday, January 19. C. & H. Chevrolet is the dealer for Muleshoe territory.

On display here will be representative models from the 22 series on 10 wheelbases that the company is scheduled to produce. The complete line covers more than 90 per cent of the truck market, with gross vehicle weights ranging from 4,100 to 16,000 pounds.

According to the Chevrolet announcement, the new line will provide the truck operator with outstanding economy and durability and the truck driver with superior comfort, safety and handling ease.

Important among the improvements for 1952 is more efficient smother performance during the warm up period. Redesigned cab door lock pillars and newly positioned striker plates permit the use of new push button door locks. Simple in design and of rugged construction this feature will find favor with both owners and drivers. An optional outside lock for the left door permits entry to the cab from either side.

Again for 1952 Chevrolet powers its trucks with either of two rugged valve-in-head engines, the 92-horsepower Thriftmaster or the 105 H.P. Loadmaster. Chevrolet's four-way lubrication system and controlled cooling which have contributed greatly to peak performance and long life are continued in the 1952 models.

Cab comfort, in which Chevrolet has scored notable progress during the last few years with new seat spring construction, increased visibility, better ventilation and wide, adjustable seats, is manifest in the latest series.

In addition, the company has retained in its chassis, synchro-mesh transmissions, braking systems designed for varied load conditions and hypoid rear axles.

Chassis changes in the new trucks cover refinements to improve carburetion. A summary of these advances reveal:

Better sealing both internally and externally by a thicker air horn flange and strengthened screw bosses; elimination of possible vapor lock in main fuel nozzle by re-design of the passage;

WHITES HAVE VISITORS
Mrs. Merrill Rundell formerly of California visited her parents, Mr. and Mrs. Bud White for several days before continuing to Alabama where she joined her husband, Cpl. Rundell, who is attending a military school. She left Muleshoe January 11.

TO CHICAGO
"Red" Johnson, proprietor of Johnson Furniture Co., flew to Chicago this week to spend several days in the Furniture Mart and learn all about the trends in the furniture business.

Maine is bounded by only one state, New Hampshire.

more consistent hot idling by revisions in the idle system and accelerator pump; smoother acceleration through removal of the accelerator pump outlet from the air horn to the top of the float bowl, providing a shorter fuel passage.

FOR SALE

FOR SALE: A trained Pekinese dog. Phone 4501. 4-2tp.

FOR SALE: 100 large type white leghorn hens, \$1.25 each. L. V. Julian, 2 miles north on Friona hi-way. ¼ miles west. 4-2tp.

FOR SALE: Place your orders now for fryers. Ready January 26 or 1st of February. Horace McAdams. 4-3tc.

MANY BAILEY. CO. FARMERS are using Garner's Record books and tell us they are about the best they have ever seen. The Journal has them for sale.

FOR RENT
ROOM FOR RENT: 703' Ave. B. Phone 6690. 49-1tc.

FOR RENT: Upstairs furnished 3 room apartment with bath. 1112 W. 9th. 52-1tc.

FOR RENT: One room efficiency apartment. 821 Main St. Dee Clements. 2-4tc.

FOR RENT: One side of duplex, 3 room and bath, all modern, garage for car. \$37.50 per month. See Farley Real Estate Office. 3-2tp.

FOR RENT: 3 room apartment. See Spencer Beavers at Bovell Motor Supply. 3-2tc.

WANT TO RENT: A farm for cash or percentage or would buy equipment. Contact W. R. (Ray) Carter. Box 594, Phone 6180 or G. I. DeRusha, Box 1616, Plainview. 3-2tp.

FOR RENT: 3 room modern house, 1207 West 6th. See H. A. Douglass, Sr. 4-2tp.

FOR RENT: 2 room apartment, vacant Feb. 6. Will reduce rent \$10 for right young couple. G. H. Davenport. 4-2tp.

FOR RENT: Will rent my 320 acres for 3 years with sale of equipment. Irrigated. Modern home. Burl Beene, Friona, Texas. 4-2tp.

FOR RENT: 160 acres irrigated. Money lease. 2 miles east of Lazbuddie. E. A. Parham. Route 1. 4-1tp.

How long before your luck runs out?

INSURE YOUR CAR TODAY!

For Your Automobile Insurance See
Eddie Lane At

Lane Insurance Agency
Representing Only Old Line Legal Reserve Insurance Companies
Phone 3630 or 5689 Muleshoe

Announcing . . .

Jones Farm Store Now Distributors Of

DOW ANHYDROUS AMMONIA

ANHYDROUS AMMONIA is shown being unloaded from a Dow Chemical Co. tank car to fill the large tanks of Jones Farm Store, located just to the rear of the store, easily accessible from the paved highway. The store has facilities to deliver this fertilizer to your farm and apply it on your field if you desire.

Anhydrous Ammonia Fertilizer Is Your Best Source Of Nitrogen

Mr. Farmer: We are proud to offer you this additional service — supplementing our other established lines — Purina Feeds, Seeds, Fertilizers, Farm Supplies, Baby Chicks, Livestock Remedies and now Anhydrous Ammonia.

Jones Farm Store
YOUR LOCAL PURINA DEALER
Phone 5000 Chief Jones Muleshoe, Texas
Joe Jones

Mrs. Byers Hosts Threeway Classes

The Dorcas and T. E. L. Sunday School Classes of Three Way Baptist Church met for a social and business meeting in the home of Mrs. W. R. Byers January 15 at 7:00 p. m.

The meeting was opened with a song, "Leaning on the Everlasting Arms," and a prayer by Mrs. Truett Smith. The devotional with a very interesting comment was also given by Mrs. Smith.

Roll call was answered by everyone with her favorite scripture.

Mrs. Byers presided over the business meeting. An offering was taken for the movie project.

A reading was given by Mrs. Irby Smith, and a duet was given by Mrs. Andrew Wittner and Mrs. D. P. Brinker who sang "Why Should He Love Me So?"

Present were Mesdames Baker Johnson, Clyde Price, Higginbotham, Truett Smith, Adolph Wittner, J. T. Lemons, Charles Speed, Frank Knox, Edwin Neutzler, D. P. Brinker, Glen Brannaman, Amos Dedgewick, Andrew Wittner, Irby Smith, Benny Emerson, and Homer Waldrop. Also present were Sandra Jean and Kay Lemons.

Games were played and the meeting was dismissed with a prayer by Mrs. Emerson. Refreshments were served by the Mrs. L. class.

Vinsome Class Meets In Home Of Mrs. Gilbreath

The Winsome Sunday School class of the First Baptist Church met Monday night, Jan. 14, in the home of Mrs. Rufus Gilbreath for the monthly business meeting and social with each member bringing a birthday gift for the teacher, Mrs. Lela Barron.

After the business session the evening was spent visiting.

Delicious refreshments of date loaf with whipped cream and iced tea was served to Mesdames Vernal King, Arch Fowler, Alton Epting, L. E. Bratcher, H. E. Wimberley, Verney Town, Hoyt Morgan, Willie C. Gilbreath, the hostess, Mrs. Gilbreath, and her mother, Mrs. York.

Mrs. Barron was absent because of a new granddaughter born to her daughter, Mrs. George Vaughn of Albuquerque, N. M., whom she is visiting.

Mrs. Couch Hosts West Camp H. D. Club Meeting

The West Camp Pollyanna Home Demonstration Club met Wednesday, Jan. 9, in the home of Mrs. W. W. Couch.

The meeting was called to order by the new president, Mrs. S. L. Busbice. After a short business session, Mrs. Dian Reed, the demonstration agent, gave a demonstration on "Planning the Grounds of a Home". Every member participated by giving some particular idea that she would want included in her personal plan.

The evening was spent visiting and telling of embarrassing moments.

Refreshments of Cokes, fruit-juice, and cake were served to Mesdames Dian Reed, S. L. Bus-

Study Club Hears Mrs. McGraw Tell Of Her Trip To England, Continent

Mrs. Anna Margaret McGraw, formerly of Muleshoe, now residing in Lubbock, entertained members of the Muleshoe Study Club and their guests with an account of her recent trip to Europe at the club's meeting held last Thursday night in the home of Mrs. John Watson.

Mrs. McGraw and a friend, Dr. Katherine Boyd, also of Lubbock, were students for five weeks in the University of London, England, last summer, then toured England, Scotland, and parts of the continent.

During the time they were in London, the two were principally interested in the theatre, and attended some 30 theatrical productions in the city and vicinity. They were impressed by the fact that a good theatre seat for the production, "Antony and Cleopatra", cost only 16 shillings, or \$2.60 in our money, whereas a seat for the same play on Broadway cost \$10 to \$25.

The English, said Mrs. McGraw, take their theatre seriously. Not only are the English people intensely interested in the theatre, but the actors and actresses themselves devote their entire time and energies to perfecting the roles they are to play.

The two ladies visited Shakespeare's birthplace, Stratford-on-Avon, where they saw the house in which William Shakespeare was born, the churchyard where he is buried, and Ann Hathaway's cottage. The house in which Shakespeare was born was built in 1450. They were fortunate to be given a ride back to London by some modern day members of the Shakespeare family.

The English probably place more emphasis on culture than do Americans, the speaker thought, but America has far greater business opportunities.

The two Plains ladies, like-

most all visitors to England, found far less food than in the U. S. and found it "rather poor" in quality. Mrs. McGraw said they grew irritable after being there a time and attributed that to an insufficient diet. The chocolate rations they were issued helped some. The English place great store on their daily tea but the American ladies found the pastry served with the tea was pretty but tasteless.

They visited a royal court of justice, built in 1850, and modernized in 1900, a building that contained four and one-half miles of halls, 1000 rooms, and its three judges, they found, still wear the powdered wigs, still "thimble their snuff." Among other places they visited Liverpool, the Lake Country, Scotland, and were particularly diverted by a visit to royalty's Windsor Castle. But everywhere, they found a disagreeable climate. It's too cold, even in summer. Homes and hotels alike are poorly heated, another evidence of England's austere living.

The English are very reserved, yet very kind and helpful in giving information about their country, Mrs. McGraw thinks. The Press, she thinks, have an antagonistic attitude toward America.

They Liked Paris

The two Plains ladies liked Paris, where they found better food, more comfortable hotels. There they visited among places the residence of Napoleon and Josephine Bonaparte. The French have more feeling for their homes and living quarters.

From Paris they journeyed to Italy, where they saw Rome, Florence, and Venice, and found a climate more like that of their homeland. Returning from Italy, they traveled through scenic Switzerland, and so to England where they embarked for home after an absence of 9 weeks.

Guests of the club were Mesdames J. L. Taylor, Curtis Spivey, C. W. Grandy, Finley Pierson. Members present were Mesdames Pat Bobo, J. M. Forbes, M. F. Green, Mary Hart, Houston Hart, Marion Harris, G. O. Jennings, Julian Lenau, Lee Pool, Buck Ragsdale, Homer Sanders Jr., Naomi St. Clair, Vance Wagner, Buck Wood, A. J. Gardner, Jack Hollan and H. D. King, Charles Lenau.

Before judging a man by his associates, we might hear in mind that Judas Iscariot traveled in pretty good company.

Win Watch Awards for 4-H Records

OUTSTANDING records of achievement in the 1951 National 4-H Dairy Foods Demonstrations and Meat Animal programs have won four Texas club members top state honors. Each received a 17-jewel watch. The winners and brief outlines of their records follow:

Enterprising and successful can best describe Mitchell Robinson, 20, of Ackerly, state winner in the 4-H Meat Animal program. Ability to select, feed and show livestock, are among the many skills he has learned during eight years in the project. Starting in 1944 with one steer and one gilt, he has raised a total of 35 beef cattle and eight swine. He estimates the net income from the marketing and sale of these animals around \$24,000. Mitchell has shown steers at every major show in the nation receiving many awards. In 1950 he showed the grand champion steer at International Livestock Exhibition in Chicago. This young stockman lives on the 610-acre ranch of his parents, Mr. and Mrs. T. M. Robinson and plans to make stock farming his career. An all-around 4-H'er, Mitchell completed 60 projects, among which were cotton, grain sorghum and dairy. He has served as president of his local club, and is a member of the Texas Council, Thos. E. Wilson, Chicago meat packer, has donated the awards in this program for 22 years.

Showing others how to use dairy products to make new and appetizing dishes, won top honors in the 4-H Dairy Foods Demonstration program for Doris Fisher, 15, of Victoria, and the team of Agnes Warren, 17, of Waco, and Cynthia McKethan, 17, of McGregor. Giving demon-

Furniture Fashions



Television is now a part of the American way of life—and the successful homemaker is always on the lookout for new and interesting television room arrangements. This room was especially designed for television. The television set has been partially recessed by the flanking book shelves. The sectional sofa permits convenient viewing arrangement and the low lounge chair mounted on casters gives the room flexibility. The nest of tables is ideal for serving snacks from the hostess cart. The long low coffee table also adds beauty and utility to the room. This room arrangement provides ideal comfort for the entire family.

Shower Honors Mrs. Gerald Byrd

Mrs. Gerald Byrd, the former Miss Janelle Green, was honored Wednesday, January 16, with a bridal shower in the home of Mrs. Jack Lenderson.

Hostesses were Mesdames F. H. Davis, D. E. Beller, Beryl Wingo, J. W. Watts, C. M. King, M. F. Harris, B. H. Morgan, and A. J. Lenderson.

In the receiving line were Mrs. Lenderson, Mrs. Robert Byrd, mother of the groom, Mrs. Clifford, mother of the bride, and the honoree, Mrs. Byrd.

The bride's chosen colors, pink and green, were carried out in the decoration. A white organdy cloth edged with eyelet ruffles and

pink satin streamers covered the table. A silver tea service flanked by pink carnations and pink candles in Cambridge arms completed the arrangement.

Spiced tea, cookies and mints were served to the guests. Lavelle Beller and Marion Clark Harris alternated at the service. Mrs. Cecil Mardis presided at the guest book.

Callers during the evening were Mesdames Arnold Moris, L. T. Green, Jr., Ed Hicks, M. S. Childers, H. P. Holland, Ed White, M. F. Green, Lila Pence, Billye Jones, Bill Moore, Leota Witter, J. J. Deshazo, Curtis Spivey, John Watson, Alton Epting, John Smith, Joe Damron, Ira Welch, W. B. LeVeque, Sallie Schuster, Anna Mathis, Partin Austin, Guy Austin, T. L. Pond, Ray Whit, Sam McLarty, O. W. Pair, L. M.

5 the local employes would miss this annual affair.

Customers are advised to do their shopping before 5 p. m. All the local employes families will go down to attend the party.

Progress HD Club Postpones Meeting

The Progress H. D. Club postponed their meeting set for Jan. 15 until Tuesday, January 22 because of the pending funeral arrangements of Peggy Lou Hill. The meeting will be held in the home of Mrs. Fern Davis at that time.

Shower Honors Mrs. Gerald Byrd

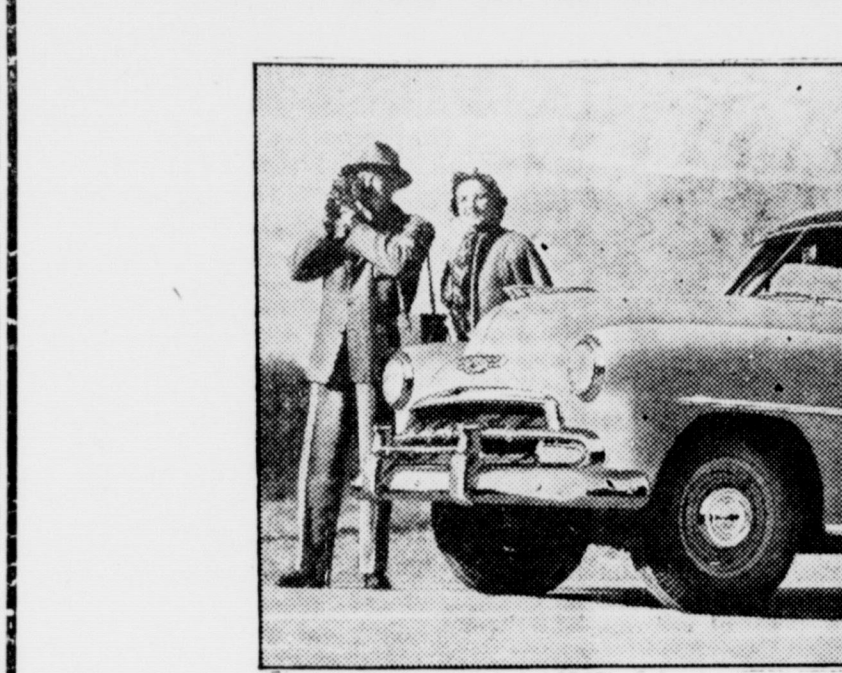
Mrs. Gerald Byrd, the former Miss Janelle Green, was honored Wednesday, January 16, with a bridal shower in the home of Mrs. Jack Lenderson.

Hostesses were Mesdames F. H. Davis, D. E. Beller, Beryl Wingo, J. W. Watts, C. M. King, M. F. Harris, B. H. Morgan, and A. J. Lenderson.

In the receiving line were Mrs. Lenderson, Mrs. Robert Byrd, mother of the groom, Mrs. Clifford, mother of the bride, and the honoree, Mrs. Byrd.

The bride's chosen colors, pink and green, were carried out in the decoration. A white organdy cloth edged with eyelet ruffles and

Correction



New Chevrolet On Display Saturday, Jan. 19

In the C. & H. Chevrolet advertisement in this paper the date was through error printed as the 29th. It's the coming Saturday, Jan. 19. And C. & H. Chevrolet invite you to visit their show rooms. There will be free coffee and doughnuts.

Muleshoe Precipitation Record By Months And Years Since 1921

YEAR	JAN.	FEB.	MAR.	APR.	MAY	JUNE	JULY	AUG.	SEPT.	OCT.	NOV.	DEC.	TOTAL
1921								1.05	3.02	.00	.00	.00	4.07
1922	.11	.10	.31	5.15	1.90	2.17	1.92	.40	1.60	.00	.33	.00	13.99
1923	.09	1.42	1.51	1.83	.77	10.05	1.70	1.12	2.32	6.27	1.33	.53	28.94
1924	.00	.25	1.07	.37	1.07	1.67	8.13	3.39	.95	.67	.45	.00	18.02
1925	.00	.00	.09	.08	1.69	3.96	1.46	2.78	4.14	.85	.37	.00	15.42
1926	.00	.00	1.62	2.42	4.33	.97	1.31	1.71	8.49	1.34	.40	.94	23.53
1927	.54	.00	.16	.13	.00	1.71	4.61	2.03	5.16	.03	.00	.55	14.92
1928	.00	.40	.20	.00	3.53	1.13	2.39	2.39	1.19	4.70	2.80	.23	18.94
1929	.23	.00	2.25	.15	5.16	2.59	.67	2.27	3.82	1.36	.57	.00	19.07
1930	.00	.00	.00	3.52	1.84	2.93	1.27	1.65	2.43	2.04	.69	.47	16.84
1931	1.11	1.17	.15	3.46	2.41	.68	2.45	4.63	.52	.72	1.41	1.46	20.60
1932	.52	.52	.05	1.05	.85	4.25	.30	2.70	4.58	.63	.00	1.89	17.34
1933	.48	.52	.69	.20	1.41	.69	.95	6.27	.91	.57	.86	.00	13.55
1934	.12	.14	1.16	1.31	1.64	2.39	1.28	1.34	1.77	.98	2.14	.14	14.41
1935	.35	.28	.35	.07	1.85	4.48	2.96	1.04	.89	.11	1.70	.22	14.30
1936	1.24	.14	.12	.19	5.66	1.36	1.80	.41	2.55	.88	.12	.67	15.14
1937	.08	.18	1.66	.95	5.66	2.56	1.24	.51	4.41	1.28	.00	.56	19.09
1938	.64	1.24	1.45	.73	1.63	7.74	1.78	.54	1.39	2.93	.34	.08	20.49
1939	1.96	.06	.40	.57	2.06	1.79	.94	3.42	.05	1.28	.18	1.34	14.05
1940	.27	.65	.00	1.53	2.63	1.89	.33	3.97	.37	.22	2.04	.07	13.97
1941	.24	.38	3.14	1.99	11.86	5.77	6.92	2.09	3.46	6.37	.47	.83	43.52
1942	.02	.00	1.15	2.96	.60	2.21	.98	4.50	2.29	4.94	.00	1.37	21.02
1943	.00	.50	.00	.28	1.67	1.74	3.13	.21	1.12	1.06	1.10	3.45	14.26
1944	.57	.78	.01	1.14	2.07	4.00	2.21	3.44	4.77	.12	.47	.93	20.51
1945	.57	.13	.17	.35	.64	.00	1.68	2.50	3.79	1.17	.00	.21	11.21
1946	1.18	.05	.19	.14	.80	2.82	1.00	2.20	4.21	5.48	.61	1.17	19.85
1947	.58	.20	.67	1.36	4.23	.35	1.50	.33	.44	.22	.85	.58	11.31
1948	.37	1.64	.50	.31	1.09	1.90	2.02	1.78	.86	.23	.00	.31	11.01
1949	2.34	.84	.15	1.96	7.26	4.73	2.95	.71	1.81	1.23	.19	.31	25.83
1950	.13	.02	.18	.12	.45	1.24	7.64	4.71	4.88	.07	.00	.03	19.47
1951	.62	1.16	.21	.11	6.86	5.34	3.48	1.34	.06	1.51	.29	.36	21.34

HOLIDAY FORMAL



For festive formal occasions during the holiday season, designer Tina Leser has created this romantic evening ensemble in luxurious cotton velveteen. The velveteen formal combines a graceful full skirt with a matching "toppet." The topset can be worn with over-the-shoulder straps or with straps in halter style. National Cotton Council fashionists say.

All of these activities are conducted under the direction of the Extension Service of the State Agricultural College and USDA cooperating.

Muleshoe Boys Enter 42 Head Pigs And Lambs In Fort Worth Stock Show

Muleshoe FFA boys have entered 39 lambs and three pigs in the boys livestock show of the Southwestern Exposition and Fair Stock Show in Fort Worth, Tex., Jan. 25 through Feb. 3. The show is offering a total of \$153,000 in premiums, largest amount in the show's 56 year history. The amount includes the horse show and the world's greatest rodeo, which will have nearly 400 contestants competing for the \$50,000 in prizes. Verne Elliott will be producer.

New speciality acts will be presented. Another new feature of the Fort Worth exposition will be the musical, "The Merry Willow", starring Edward Everett Horton of radio, stage and screen fame. From a new stage in Cattle Building No. 2, a continual round of band concerts, square dancing and other free entertainment will be offered. Visitors also will see a new exhibit hall with dozens of interesting displays. Many special days have been

GIVES 7 REASONS FOR USING HOMETOWN PAPERS

In a 6-column advertisement in his own newspaper, A. P. Cooke, president of the Florida Press Association, and publisher of The Plant City Courier, recently gave seven reasons why the best advertising value is in the hometown newspaper.

His reasons were:
1. The Courier is read from cover to cover by every member of the family—yes, and even by the neighbors who borrow it.
2. Your neighbors, your friends want the Courier; they want it bad enough to buy it every week or to subscribe to it by the year.
3. No one has the Courier thrown at them—free—no one ever tosses The Courier in the Post Office waste basket.
4. Besides, Courier advertising is dependable. Both the newspaper and the advertiser stand behind it.
5. If you missed something in the paper Friday, chances are you can look it up on Sunday, Monday or even Tuesday.
6. Courier advertising is durable. It lasts and lasts. Ask any advertiser.
7. One more thing: You don't have to turn on the Courier at any hour. It's there for you to read—and enjoy—and remember every hour of the day or night, from Friday to Friday.

COURTHOUSE RECORDS

REAL ESTATE TRANSFERS

Lee R. Pool, et ux to G. W. Lebow, Lot 9, Blk. 1, Gatlin Addition to Muleshoe, \$10.00.
James M. Miller to Beyrl Wingo, Lot 8, Blk. 1, Lakeside Addition No. 3, \$600.00.
W. C. W. Morris, et ux to R. L. McLeroy, SW-4 Section 5, Blk. X, \$38,000.00.
Hoyt Morgan, et ux to C. E. Spence, Labor 2, League 186, Swisher County School Land, \$23,408.50.
B. R. Lewis, et ux to Raymond Hall, et ux, Tract 94, League 182, Floyd County School Lands, \$12,800.00.
Virgil L. Martin, et ux to Elmer R. Pense, NE-4 Section 74, Block Z, \$17,600.00.
J. J. Williams, et ux to Riehl E. Williams, et ux, Part Section 33, Block Y, \$17,500.00.
W. B. McAdams, et ux to John W. Fowinkle, et ux, Lot 8, Block 1, Crawford Addition to Muleshoe, \$5,000.00.
June H. Gwyn to Willard Bentley Gwyn, 1-9 Interest in SE-4 Section 22, Block Y, \$1,777.77.
Cecil H. Tate, et ux to Sam E. Fox, Lot 1, Block 2, Warren Addition No. 2 to Muleshoe, \$3,500.00.
Walter Witte, et ux to John W. Fowinkle, et ux, E-2 of N-2 of Lot 8, H. O. George Subdivision, \$2,800.00.
James B. Glaze, et ux to Chas. L. Lenau, Lot 1, Block 1, Lakeside Addition No. 3 to Muleshoe, \$500.00.

Oil, Gas and Mineral Leases

C. H. Holdeman, et ux to Gulf Oil Corporation, Labors 19, 21 and 22, League 175, Sutton County School Lands.
Mattie M. Magness, et ux to E. N. Cain, N-2 Section 62, Block Z.
Peggy Williams Hargrove, et ux to E. N. Cain, S-2 Section 62, Block Z.
Edwin V. Williams, et ux to E. N. Cain, W-2 Section 61, Block Z.
M. F. Cooper, et al to E. N. Cain, N-2 SE-4 Section 6, Block Z.
W. J. Shaw, et ux to E. N. Cain, NW-4 Section 6, Block Z.
W. L. Clawson, et ux to E. N. Cain, Labor 23, League 679, Abner Taylor.
Nellie M. Dean to E. N. Cain, SW-4 Section 11, Block Z.
Cecil Eavenson, et ux to E. N. Cain, N-2 of SE-4 Section 11, Blk. J. W. P. Thomson, et ux to E. N. Cain, East 120 A, N-2 Section 12, Block Z.
W. E. Pohl, et ux to E. N. Cain, S-2 SE-4 Section 11, Block Z.

MARRIAGE LICENSE

Elwood Jasper Patterson, Route 1, Sudan, Texas, to Josephine Calame of Lubbock, Texas. Issued January 8, 1952.

CHRISTIAN SCIENCE SERVICES

"Understanding is a wellspring of life unto him that hath it." (Proverbs 16:22). This Bible verse is the Golden Text of the Lesson-Sermon entitled "Life" which will be read in all Christian Science churches on Sunday, January 20.
Further pointing out the importance of understanding God is this citation included in the Lesson-Sermon: "My son, attend to my words; incline thine ear unto my sayings. For they are life unto those that find them, and health to all their flesh" (Proverbs 4:20, 22).
Mary Bake Eddy writes in the Christian Science textbook, "Science and Health with Key to the Scriptures," "Be watchful, sober, and vigilant. The way is straight and narrow, which leads to the understanding that God is the only Life. It is warfare with the flesh, in which we must conquer sin, sickness, and death, either here or hereafter, certainly before we can reach the goal of Spirit, or life in God" (page 321).

TO MOVE TO MULESHOE

Mr. and Mrs. C. R. Mayhugh and Charles of Boonesville, Ark., formerly of Needmore, have bought a farm northwest of Muleshoe and will move here at the end of the school semester. Charles will attend Muleshoe High School.

VISITS PARENTS

Mrs. James Moore of Clayton, N. M., visited her parents, Mr. and Mrs. E. H. Gatlin, from Tuesday, Jan. 7, when they met her in Amarillo until James came Sunday and she returned with him.

VISIT IN LITTLEFIELD

Mr. and Mrs. L. L. Estep, Bill and Wanda visited with their son and brother and his family, Mr. and Mrs. A. K. Estep of Littlefield, during the week end.

VISITORS FROM WOLFFORTH

Mr. and Mrs. J. K. Jackson, and Mr. and Mrs. Herbert Jackson

Drs. Woods & Armistead
OPTOMETRISTS
IRA E. WOODS, O.D.
B. W. ARMISTEAD, O.D.
GLENN S. BURK, O.D.
Phone 328 Littlefield

Our modern home loan plan allows you to pay off the loan with rent-money

Prompt service
FOR INFORMATION SEE
MULESHOE
Mildred Davis Western N.F.L.A. Building Muleshoe
FIRST FEDERAL SAVINGS AND LOAN ASSOCIATION
Clavis N. M. P. O. Box 470

were visitors here Sunday afternoon in the home of their daughter and sister, Mrs. A. W. Crow and in the home of James Crow and Mrs. Crow.

To the Democratic party goes the distinction of having written the shortest platform of the two major parties, that written in 1860, which consisted of only 350 words.

A Pleasurable Evening Awaits You At The

MOVIES

Week Days Open 6:45 p. m., Starts 7:00 p. m.
Saturday and Sunday Open at 1:45, Starts at 2:00
and Continuous Showing
Admission: Adults 36c Children 9c

Here are the programs for the coming week at your local Theaters

VALLEY PALACE THURSDAY and FRIDAY Robert Mitchum Lizabeth Scott —In— The Racket SATURDAY ONLY Roy Rogers —In— Sunset In The West SUNDAY and MONDAY Farley Granger Shelley Winters —In— Behave Yourself TUESDAY and WEDNESDAY Richard Basehart —In— House On Telegraph Hill	VALLEY PALACE THURSDAY and FRIDAY Gene Kelly Oscar Levant —In— American In Paris SATURDAY ONLY Mighty Joe Young SUNDAY and MONDAY Janet Leigh Tony Martin —In— Two Tickets To Broadway TUESDAY and WEDNESDAY Gene Autry —In— Texans Never Cry
---	--

Motion Pictures Are Your Best And Cheapest Entertainment


ATTENTION

Sandy Land Farmers
See Me For
Deep Breaking
New D-8 Caterpillar Tractor With Towner 48 in. Disc Plow.
H. E. Newsom
902 W. 9th. Phone 5820 Muleshoe

Dr. C. H. McIlroy

Naturopathic Physician
906 MAIN STREET
Phone 5350 Muleshoe, Texas

R. M. "Bob" Gregory
REPRESENTATIVE OF
Great National Life Insurance Company
LIFE INSURANCE FOR YOU & YOURS
P. O. Box 187 No. Ave. D. Phone 2769



PLEASURE-PACKED PROGRAM PLANNED FOR FARM FAMILIES



To Be Guests of Davis-Lenderson Local John Deere Implement Dealer on John Deere Day January 18

No less than six brand-new movies are on the program for the annual John Deere Day show to be held for farmers and their families on January 18 at the Valley Theatre, according to Davis-Lenderson, local John Deere dealers and sponsors of the affair. Farmers who have not yet received their tickets, reminds Jack Lenderson and F. H. Davis, may obtain them by calling for them at the Davis-Lenderson store.
The feature picture, "Galahad Jones," features Richard Crane, Marjorie Lord, Elizabeth Patterson, Jonathan Hale, Ed Brophy, and four other Hollywood personalities. The story centers around a farmer's son, recently graduated from law school, who thwarts the efforts of a big time crook to profit from his political connections. It is a present day problem picture with a moral and plenty of laughs.
Leading the pack of five more applause winning films is "The Big Payoff," featuring Tom Gordon who, along with his typical American family, has won so many friends in previous John Deere pictures. The four films that complete the parade of entertainment offer something new and different in dealing with subjects close to the hearts of today's farmers.
"Those who attend this year's John Deere Day," the dealers say, "have a real treat in store for them, a day so packed with entertainment for the entire family that they will remember it with pleasure for months to come. Don't miss it! Get your tickets on your very next trip to town!"

DAVIS-LENDERSON

Your John Deere Dealer
Muleshoe Texas Phone 3080

ELIZABETH WOODLEY INSURANCE

Nat'l Farm Loan Office Bldg Phone 7350

The inside story of FIRST CHOICE POWER



Look at the inside of the WD Tractor—see what makes it today's first choice in tractor power.
PLENTY OF PULL for heavy jobs such as plowing with 3 full-size bottoms. Traction booster puts full engine power to work.
PUNCH IN THE PTO for harvesting heavy crops. Instant governor opening, quick carburetion, and two-clutch control handle overloads easily.
MORE FOR YOUR MONEY. You get work power equal to larger tractors at lower first cost, lower operating cost and less maintenance.
Come in and see the WD. Let us show you some of its many engineering advantages.

Tune in the National Farm and Home Hour—Every Saturday—NBC

ALLIS-CHALMERS SALES AND SERVICE

Muleshoe Implement & Supply

Muleshoe Texas Phone 3080

Get famous "Fire-King" glass CUP and SAUCER

in this MOTHER'S OATS package...

- Beautiful "Azur-ite" Blue Color!
- Lovely Modern Design
- Stands Oven Heat without cracking
- Made by Anchor Hocking Glass Corp.—famous for fine glassware

How exciting to open a big square package of Mother's Oats and find inside a beautiful, smartly designed "Fire-King" cup and saucer.
Yes, every package is a double value because money can't buy a finer quality, more delicious, more nourishing oatmeal than Mother's Oats! It's the good, hot, creamy-smooth oatmeal your family loves on chilly mornings!
Start collecting these lovely cups and saucers today! No waiting! No coupons! No money to send! Just ask your grocer for Mother's Oats with "Beautiful Cup and Saucer."



Mother's Oats offers you all-purpose selection of DINNERWARE and ALUMINUM KITCHEN UTENSILS

Products of The Quaker Oats Company

TWO-TIMER



A double-duty winter cotton ensemble by Tina Leser answers fashion needs of both day and night. A tiny velveteen jacket is worn over a dress in wrinkle-resistant menswear cotton suiting. Minus the jacket, the scoop-necked, short-sleeved top is perfect for evening occasions, National Cotton Council fashionists note.

TIMELY TIPS FROM YOUR H. D. AGENT

By Mrs. Dian Reed

PROTECT TILE FLOORS

Cleanliness is important in keeping asphalt and rubber tile floors looking like new. It is best not to allow spilled food or water to remain on the floor any longer than necessary. The more grit and dirt on the floor, the more wear it receives.

A self-polishing wax is recommended for a protective coating, rather than paste wax. The liquid used in thinning paste wax causes ingredients in asphalt and rubber tile to soften which results in swelling and pitting of the floor.

Avoid applying lacquer, varnish, shellac or so-called "plastic" finishes to asphalt or rubber tile floors. Don't use strong soap or caustic solutions. Instead use a mild soap or synthetic detergent and rinse the floor thoroughly after using them. Commercial floor cleaners can be used where colors are bleeding. Where the floor has become pitted slightly, a number 1 or number 2 steel wool can be used to cut the floor back to where it is hard and has a sheen. When this is done, however, do not rub too deeply.

SEWING MACHINE SHOPPING

With many makes of sewing

machines on the market, a shopper who is considering buying this popular piece of equipment sometimes wonders whether there are buying points which she might overlook and which might prove important.

If possible, borrow or rent a machine of the make that interests you, to use at home for a short while before buying. At least, ask to try it out yourself at the store.

If planning to exchange one kind of sewing machine for another, be sure that you cannot do everything with your present machine and its attachment that that machine in prospect offers. If you haven't learned to use some of the attachments you have, try them out, and compare with the machine being considered.

Be sure that you can get servicing in your own area for the make of machine being considered.

Ask about prospects of getting replacement parts over a long period of time. A sewing machine is likely to be a long-time possession.

NOTICE TO BIDDEDS

The commissioners court will accept bids to be opened at 10:00 A. M. on Friday 11th on the following machinery:

Two motor graders powered with diesel 100 horse power engines. Graders to be equipped with cab, cab heater, and extensions for the moldboard.

The county will offer in trade: One Model 610 Adams Motor Grader. One Model H Austin Western Motor Grader.

The county will also offer, for part payment, warrants not to exceed \$22,000 with final maturity not later than First day of May, 1956 and interest rate not more than five (5) percent. The court reserves the right to accept or reject any bids.

Cecil H. Tate
County Judge
Bailey County
4-2c.

FISHING TRIP TO MEXICO

Saturday, Jan. 12, Ernest Locker and son, Roy, Fred Locker and son, Alvin Lee, Morgan Locker, Dennis Williams, O. M. Self, and Mr. Baccus of Lubbock returned from a two week fishing trip to El Sugar Lake in Old Mexico.

They had three boats and brought back about 1200 pounds of fish. Most of their catch was channel cat but they caught one 50 pound yellow cat.

This fishing trip is an annual affair.

Uruguay means birds tail.

She'll Get There



Mary Jane Ducoite, of Bishop, Texas, smiles despite her two leg braces and abdominal support needed after polio attack. Help from the March of Dimes and other assistance from the Nueces County Chapter of the National Foundation for Infantile Paralysis makes possible continued treatment and ultimate rehabilitation of Mary Jane. January is March of Dimes month.

WORLDLY AMUSEMENTS

Many professed Christians are perplexed as they face problems of recreation and worldly amusement. These questions are not so acute for those who have suffered much under the chastening hand of God, or who are getting on in years. But they are very real for those who are young and strong and have abundance of energy exuberance of spirits.

But often the problems of life are well on the way towards steelments if they are carefully analyzed. For comment on question of worldly amusement for Christians verse I Corinthians 10-31. "Whether therefore ye eat or drink whatsoever ye do all to the glory of God." Can a Christian play cards, go to the theatre, or be a member of a worldly society? A negative or affirmative answer to the following seven points will solve the question.

1. Will this thing help me to glorify God? I Cor. 10-31.
2. Can I practice them in the precious name of the Lord Jesus? Col. 3-17.
3. Will they increase my influence for the good of others? Rom. 14-7.
4. Will the time I give them be lost or redeemed? Exh. 5-15.
5. Will the money that they require bring me eternal interest? Luke 16-9.
6. Will they nourish in me the new nature or the old man? Rom. 8-12-13.
7. Would I like to be busy in one or the other of these things when the Lord comes? I John 2-28.

It may be that some Christian mother or father is greatly concerned over the worldiness of a son or daughter. Who has professed faith in Christ. But has grown cold and uninterested in the things of God. Or it may be that someone who reads these lines may have begun to feel that the path of faith and obedience is just too narrow and unreasonable.

JIMMYE LOU DULIN IN LUBBOCK HOSPITAL

Jimmye Lou Dulin, daughter of Mr. and Mrs. J. E. Dulin was admitted Tuesday, Jan. 15, to the Lubbock Memorial Hospital where she is being treated for bronchial pneumonia. She is reported as resting well.

VISITORS IN MOORE HOME

Mr. and Mrs. James Moore and son Daryl of Clayton, N. M. spent the week end here in the home of his parents, Mr. and Mrs. Jim Moore, and their daughter, Mrs. Murray Simmons and husband of Hereford were here also.

ZENITH RADIOS

ALL MODELS IN STOCK

— At —

Spence Radio Service Shop

Phone 7020
Muleshoe, Texas

Service On Any Make Radio

Enochs News

Mrs. R. M. Crahtree is visiting in Levelland this week end with a son and family.

J. C. Arnold and family went to Amarillo Thursday on business.

Grady Hill and Mrs. Hill are here this week on business from Socorro, N. Mex. Grady Cotton farmed out there last year and said he made a good cotton crop.

Mrs. Ernest Bass has been sick with flu, but is better at this writing.

Cleo Hall has been prospecting in New Mexico.

Mr. and Mrs. Belton Bryant have gone to Burburnett to visit their son and family.

Mrs. P. A. Altman gave a shower for the Vanderventers, who lost their home by fire. They received a nice shower.

Douglas Cash is home from the Army. He is stationed in Camp Cook, Calif.

Mr. and Mrs. Ray Snodgrass have moved to their new home in Enochs. They have 3 children 2 in school. The Reporter

MR. SAIN IS PATIENT IN AMHERST HOSPITAL

Mr. J. H. Sain is resting well in the South Plains Co-op Hospital at Amherst where he has been confined for the past week suffering from bronchial pneumonia.

Mr. and Mrs. Hughey Albright and daughter, Helen, of Palo Alto, Calif., spent Tuesday night in the G. S. Province home and visited Mr. Sain. The Albrights and the Sains are old friends.

Political Announcements

The Journal is authorized to announce the following candidates for office shown, subject to the Democratic Primary July 26, 1952:

For County Judge and Ex-Officio County Superintendent:
CECIL H. TATE

For Sheriff, Tax Assessor and Collector:
A. H. (Hugh) FREEMAN

For County & District Clerk:
M. G. BASS

For County Attorney:
NORMAN W. BAYS

For County Treasurer:
HELEN JONES

For Commissioner, Prec. 1:
L. T. MCKILLIP
M. E. FINLEY

To Attend Electric Co-op Meeting



"COTTON SMITH", otherwise known as J. Garland Smith, farm editor of KGNC, will be in Muleshoe Friday, Jan. 18 to attend the Bailey County Electric Cooperative Ass'n. annual membership meeting. He will report the meeting on his "Trading Post", "Southwest Neighbors", and "Markets" program over KGNC after the meeting, which will be held in Muleshoe high school auditorium beginning at 1 p. m.

For Commissioner, Prec. 2:
WOODROW W. COUCH

For Commissioner, Prec. 3:
BOB KINDLE
ROY TUNNELL
H. E. BAKER

For Commissioner, Prec. 4:
R. P. McCALL
W. E. "Woody" GOFORTH

For Constable, Prec. 1:
J. N. (Jesse) JAMES

Lincoln Ellsworth claimed 81,000 square miles of newly discovered land in the Antarctic, for the United States, on January 11, 1939.

First Hatch Off On February 12

First hatch of the new season for Taylor's Hatchery in Muleshoe will be off February 12, the management announced this week.

Hatches of baby chicks will come off from their incubators regularly after that all during the season.

Kentucky, Massachusetts, Pennsylvania and Virginia are commonwealths.

BUTANE - PROPANE

THE IDEAL FUEL FOR

Economical POWER

Let Us Save You Money
By Converting Your Tractor
To Butane

MULESHOE LIQUEFIED GAS CO.

Phone 3130

Clovis Highway

Muleshoe

BABY CHICKS

The Farmer Who Loses Money on Chicks

- Buys cheapest chicks he can get.
- Does not consult his local hatchery but orders by mail.
- Does not think breeding makes any difference.
- Buys the cheapest feed he can find—thinks it is all the same.
- Does not tend to chicks properly and regularly.



The Farmer Who Makes Money on Chicks

- Buys chicks bred for his purpose—eggs or meat.
- Buys from hatchery with a good breeding and sanitation program.
- Buys from Hatchery with good standing.
- Feeds good feed.
- Cares for chicks properly and regularly.



Let Our Hatchery Help You Make Money Out of Your Baby Chicks In 1952

- All Flocks Rigidly Culled and Pullorum Tested.
- All White Leghorns Sired by U. S. R. O. P. Males.
- All Other Breeds Sired by U. S. Certified Males.
- Hatches off Twice Each Week Beginning February 12.

TAYLOR'S HATCHERY

Phone 3810

Muleshoe

It's ALL guaranteed

U. S. GRADED QUALITY MEATS

CHUCK FIRST CUT BEEF ROAST, lb. ----- 74c

Fryers LB. ----- **59c**

CAN BALLARD BISCUITS **14c** NO 1 SALT PORK, lb. ----- **39c**

BEEF SHORT RIBS, lb. **43c** VELVEETA, 2 LB. BOX ----- **\$1.10**

FIRST CUTS PORK CHOPS, lb. ----- **59c** CHEESE ----- **42c**

SWEET CLOVER DRY CURED SLICED BACON LB. ----- **59c**

Certificate of Guaranty
 We will never knowingly disappoint you. If for any reason, this purchase does not give you complete satisfaction, return the unused portion, together with this certificate and we will cheerfully refund the full purchase price.

This Certificate of Guaranty is your assurance that we are DETERMINED TO PLEASE YOU. You will find it in your meat, fish and poultry packages, and we also want you to know that this guaranty holds good for EVERYTHING IN YOUR PIGGLY WIGGLY SUPER MARKET. If you are not pleased with every purchase let us know, because we really are DETERMINED TO PLEASE YOU.



TUXEDO NO. 1/2 CAN ----- **20c**
 ALERT 1 1/2 OZ CAN ----- **9c**
 DOG FOOD ----- **11c**
 DORMAN NO. 2 CAN ----- **11c**
 LIMA BEANS

NORTHERN TOILET TISSUE 3 ROLLS ----- **25c**

CLEAR SAILING NO. 373 CAN ----- **10c**
 GREEN BEANS ----- **25c**
 MARSHALL NO. 373 CAN ----- **45c**
 PEAS, 2 for ----- **47c**

FRESH FRUITS & VEGETABLES

GOLDEN FRUIT BANANAS LB. ----- **12 1/2c**

DELICIOUS EXTRA FANCY APPLES, lb. ----- **15c** FLORIDA LARGE SIZE CALAVOS, ea. ----- **12 1/2c**

FLORIDA ORANGES, 5 lb. bag ----- **43c** FLORIDA PINK GRAPEFRUIT, lb. ----- **14c**

GLADIOLA FLOUR, 5 lb. bag ----- **51c** SPAM ----- **48c**

IPANA 50c SIZE

MENNENS BRUSH-LESS SHAVING CREAM ----- **27c** LUSTER CREAM, \$1.00 SIZE SHAMPOO ----- **69c**

DINNER LARGE BOTTLE CATSUP ----- **19c** DIAMOND 150 COUNT PAPER TOWELS ----- **19c**

SNOW CROP 6 OZ. CAN ORANGE JUICE ----- **19c** SNOW CROP 8 OZ. PKG. CUT CORN ----- **17c**

SNOW CROP 12 OZ. PKG. STRAWBERRIES ----- **39c**

AMERICAN BEAUTY NO. 300 CAN KRAUT ----- **10c** DURKEES 1/2 LB. BOX COCOANUT ----- **18c**

MARSHALL NO. 2 CAN MUSTARD GREENS ----- **10c** OLD BILL NO. 1/2 CAN VIENNA SAUSAGE ----- **9c**

MARSHALL NO. 2 CAN HOMINY ----- **11c**

OXYDOL, lg. box ----- **30c**

SUPER SUDS, lg. box ----- **30c**

BABO, 2 cans ----- **25c**

CLOROX, qt. ----- **19c**

SIoux BEE, 1/2 GALLON HONEY ----- **98c**

1 LB. CAN HERSHEY'S SYRUP ----- **18c**



BAKERITE SHORTENING 3 Lb. Can ----- **77c**

GERBERS BABY FOOD, 3 for ----- **27c** LIBBYS WHOLE 12 COUNT GLASS BEETS ----- **18c**

LIBBYS MEDIUM CAN VEAL LOAF ----- **43c** Monarch Country Style, dill or kosher 2 1/2 glass PICKLES ----- **39c**

LIBBYS NO. 1/2 CAN POTTED MEAT ----- **17c** SKINNERS LARGE BOX RAISIN BRAN ----- **17c**

LIBBYS 16 OZ CAN CHILE & BEANS ----- **37c** SKINNERS 7 OZ. BOX SPAGHETTI ----- **11c**

CHASE AND SANBORN Coffee 1 LB CAN ----- **84c**

BATH SIZE DIAL SOAP, 2 for ----- **37c** LARGE BOX SPIC & SPAN ----- **25c**

CASHMERE BOUQUET REGULAR TOILET SOAP, 2 for ----- **17c** ARMOURS TALL CAN MILK ----- **13c**

REGULAR BOX JOY SUDS ----- **27c** DEL MONTE NO. 2 CAN SPINACH ----- **17c**

RED PITTED NO. 2 CAN CHERRIES **22c**

KRISPY 1 LB. BOX CRACKERS ----- **31c** LIBBYS 46 OZ. CAN TOMATO JUICE ----- **29c**

HOLLANDALE, COLORED Margarine LB. ----- **23c**

PIGGLY WIGGLY SUPER MARKETS **DAVIS & HUMPHRIES OWNERS & OPERATORS**



SCHEDULE OF SERVICES
PRIMITIVE BAPTIST CHURCH
 At Friendship
 8 Miles South of Sudan
 Second Sunday and Saturday before, Elder V. J. Lowrance, pastor.
 Fourth Sunday and Saturday before, Elder Jack West, pastor.

UNITED PENTECOSTAL
 Mrs. Maggie Axen, Pastor
 Preaching Service 11 a. m.
 Evening Service 8 p. m.

GREEN
 Hospital & Clinic

Muleshoe, Texas

Dial 2250

POOL INSURANCE AGENCY

COMPLETE INSURANCE COVERAGE
 —LOW COST FARM LOANS
 —AUTO LOANS
 —IRRIGATION WELL LOANS
 Dependable and Friendly Service

LEE POOL
 Phone 7010

MYRON POOL
 Muleshoe, Texas

BERRY ELECTRIC CO.

Refrigeration Service
 Electric Appliance Repairs
 Wiring & Repairs
 Phone 3750

Tuesday Evening 7:30 p. m.
 Friday Evening 7:30 p. m.
 Everyone invited to our services.

BAILEYBORO BAPTIST CHURCH
 Arthur L. Nunn, Pastor
 Sunday School 10 a. m.
 Training Union 8 p. m.
 Evening Service 8:45 p. m.
 Everyone Welcome.

CHURCH OF THE NAZARENE
 Sidney Patrick, Pastor
 Sunday School 10 a. m.
 Morning Worship 11 a. m.
 Evening Worship 7:30 p. m.
 N. Y. P. S., Tues. 7:30 p. m.
 Mid-week Service
 Wednesday 8 p. m.
 Come and Worship With Us.
 Interest is growing in our Sunday School. The lessons are on the Bible and sound religion.

OKLAHOMA LANE BAPTIST CHURCH
 Mayo D. Carpenter, Pastor
 Sunday School 10 a. m.
 Morning Worship 11 a. m.
 Evening Worship 8 p. m.
 Prayer Meeting, Wed. 8 p. m.
 W. M. S. Thursday 3 p. m.

FIRST BAPTIST CHURCH
 Lutzville, Texas
 Sunday School 10 a. m.
 Morning Worship 11 a. m.
 Training Union 6:45 p. m.
 Evangelistic Service 7:45 p. m.
 "Not forsaking the assembling of yourselves together." Heb. 10:25

PROGRESS METHODIST CHURCH
 Carrol M. Jones, Pastor
 Sunday School 10 a. m.
 Morning Worship 11 a. m.
 Evening Fellowship
 Classes 8 p. m.
 Evening Worship 8:45 p. m.
 W.S.C.S. 2nd and 4th Mondays

WEST CAMP FIRST BAPTIST CHURCH
 Rev. T. L. Fond, Pastor
 Sunday School 10 a. m.
 Morning Worship 11 a. m.
 B.T.U. 7 p. m.
 Service 7 p. m.
 W.M.U., Thursday 2 p. m.
 Evangelistic Service 7:45 p. m.

WATSON BAPTIST CHURCH
 Rev. W. O. Wilson, Pastor
 Special Prayer Service 9:45 a. m.
 Sunday School 10 a. m.
 Morning Worship 11 a. m.
 Training Union 7 p. m.
 Evening Worship 8 p. m.
 Bible Study and Prayer Service, Wednesday 7:30 p. m.
 WMU Monday 2:30 p. m.

CHURCH OF THE NAZARENE
 Sidney Patrick, Pastor
 Sunday School 9:45 a. m.
 Morning Worship 11:00 a. m.
 N.Y.P.S. 7:30 p. m.
 Evening Worship 8:00 p. m.
 Mid-week Service
 Wednesday 8:00 p. m.
 Come and Worship With Us.

MAIN STREET MISSIONARY BAPTIST CHURCH
 M. E. Robinson, Pastor
 Sunday School 10 a. m.
 Morning Worship 11 a. m.
 Training Union 6:30 p. m.
 Evening Worship 8 p. m.
 W.M.U., Wednesday 2 p. m.
 Mid-week Prayer Service, Wednesday 7 p. m.

PROGRESS BAPTIST CHURCH
 Rev. C. C. Morgan
 Sunday School 10 a. m.
 Morning Worship 11 a. m.
 B.T.U. 7:30 p. m.
 Evening Worship 8:30 p. m.
 Midweek Prayer Service
 Wednesday 7:30 p. m.

NORTH SIDE CHURCH OF CHRIST
 Worship each Lord's Day
 10:30 a. m.
 Evening Service 8 p. m.
 Tuesday Evening 8 p. m.
 Mid-week Prayer
 You are welcome.

FIRST CHRISTIAN CHURCH
 2 Bks. West, 1/2 Blk. North Shady West
 Bible School 9:45 a. m.
 Morning Worship 11 a. m.
 Mid-week Prayer Service
 Wednesday 8 p. m.
 "We are Workers Together With God"—Paul.

CHURCH OF CHRIST
 Muleshoe, Texas
 Ebb Round, Minister
 Bible Classes for all 10 a. m.
 Preaching 10:50 a. m.
 Communion 11:45 a. m.
 Preaching 8 p. m.
 Wednesday
 Ladies Bible Class 3 p. m.
 Bible Study and Singing 8 p. m.

ASSEMBLY OF GOD CHURCH
 Rev. Lee F. Stokes, Pastor
 Sunday School 9:45 a. m.
 Morning Worship 11 a. m.
 Tuesday Night Young People 7:45 p. m.
 Thursday Night Bible Study 7:45 p. m.
 Public invited to attend all services.

LONGVIEW BAPTIST CHURCH
 Rev. J. E. Moore, Pastor
 Sunday School 10 a. m.
 Preaching Services 11 a. m.
 B. T. U. 8 p. m.
 Preaching Services 8:30 p. m.
 W.M.S. Monday 2:30 p. m.
 All Church Night, Wednesday 7:30 p. m.

FIRST METHODIST CHURCH
 H. W. Hanks, Pastor
 Church School 9:45 a. m.
 Morning Worship 10:55 a. m.
 M. Y. F. 6:30 p. m.
 Evening Worship 7:30 p. m.
 Choir Practice
 Wednesday 8:00 p. m.
 Young Women's Bible Study, Tuesday 7:30 p. m.
 Wesleyan Service Guild, 2nd and 4th Mondays 7:30 p. m.
 W.S.C., Wednesday 2:30 p. m.
 Stewards Meeting First Monday each month 7:00 p. m.

FIRST BAPTIST CHURCH
 Rev. A. W. Malone, Pastor
 Sunday School 9:45 a. m.
 Morning Worship 10:50 a. m.
 Training Union 6:30 p. m.
 Evening Worship 7:30 p. m.
 Prayer Meeting
 Wednesday 7:30 p. m.
 Officers and Teachers, Wednesday 8 p. m.
 W.M.U. Monday 3 p. m.
 Choir Rehearsal, Thursday 8 p. m.

METHODIST CHURCH
 Lutzville, Texas
 Rev. Hermon Keelin, Pastor
 Sunday School 10 a. m.

Church Service 11 a. m.
 Evening Service 8:30 p. m.
 Mid-week Prayer and Song Service 8:40 p. m.

ANTIOCH PRIMITIVE BAPTIST CHURCH
 Across Street From Hospital
 Elder Jimmie Boss, Pastor
 Services every 1st and 3rd Sundays and Saturday before 3rd Sunday.
 Singing every Sunday night except 3rd Sunday.

Y. L. BAPTIST CHURCH
 First and Third Sundays
 Rev. James Tidengerg
 Sunday School 10 a. m.
 Morning Worship 11 a. m.
 Training Union 7:30 p. m.
 Evening Worship 8:30 p. m.
 Evening Worship 8:30 p. m.
 Services every 3rd Sunday Starting at 10:30 a. m.

ST. JOHN'S LUTHERAN CHURCH
 W. B. Gummelt, Pastor

Lariat, Texas
 Sunday School and Bible Class 10 a. m.
 Divine Services 11 a. m.
 Sunday School Teachers meet every Wednesday 8 p. m.
 Ladies' Aid meets first Thursday of each month 2:30 p. m.
 Walther League meets first Sunday of month 8 p. m.
 A cordial welcome awaits you at St. John's.
 "Let the Word of Christ dwell in you richly."—Col. 3:16.

Y. L. METHODIST CHURCH
 L. J. Helm, Pastor
 Second and Fourth Sundays
 Church School 10 a. m.
 Preaching Service 11 a. m.
 Bible Study Group 7:30 p. m.
 Evening Preaching 8:30 p. m.
 Prayer Meeting, W.S.C.S. First and Third Thursdays 2:30 p. m.

NORMAN W. BAYS
 Attorney-At-Law
 Office in Courthouse
 Phone 2670 Muleshoe, Texas

DR. B. Z. BEATY
 DENTIST
 Across From Muleshoe Motor
 Office Hours:
 9 - 12 a. m. — 1 - 5 p. m.
 Closed Saturday Afternoons
 Office Ph. 2040 Res. Ph. 5020

RETURNS TO BASE
 Pfc. Don Quesenberry returned this week to Scott Air Force Base, Illinois, after a two weeks visit here with his parents, Mr. and Mrs. Lloyd Quesenberry and with Mr. and Mrs. Russel Quesenberry of Crane.

HOME ON LEAVE
 Wayne Holmes of the U. S. Navy spent the holidays with his parents, Mr. and Mrs. J. W. Holmes. He reported back to duty

to San Francisco on January 8 where he will sail to Japan to board his assigned ship, "Badang Straits". His position is a diesel Fireman.

LUZIER'S
 Fine Cosmetics & Perfumes
MRS. E. E. HOLLAND
 1101 East 2nd St.
 Phone 5448

MULESHOE LIVESTOCK AUCTION
 H. K. Freeman — Hugh Freeman
Cattle Sale Each Saturday
Col. Dick Doshier
 Auctioneer
 All Farm Sales 5% — Bills Paid
To Book Farm Sales
 CALL HUGH FREEMAN—PHONE 2230 or 3770

AIR WAY SANITIZOR DEALER
 New & Used Vacuum Cleaners
 PARTS AND SUPPLIES
 ALL MAKES REPAIRED
 Free Demonstrations In Your Home
T. P. SMALLWOOD
 1306 - 6th Street
 Muleshoe, Texas
 Phone 4070

JOHN DEERE DEALER to ENTERTAIN FARMERS and THEIR FAMILIES



JOHN DEERE DAY IS JAN. 18

"GALAHAD JONES"

WITH RICHARD CRANE, MARJORIE LORD, ELIZABETH PATTERSON, AND JONATHAN HALE

A full length feature picture, "Galahad Jones", will highlight the parade of entertainment to be staged for farmers and their families who attended the 16th annual John Deere Day show as guests of Davis-Lenderson on January 18 at the Valley Theatre.

part of "Galahad Jones" is ably supported by Marjorie Lord, Elizabeth Patterson, Jonathan Hale, Ed Brophy, and four other Hollywood personalities.

tendance with new John Deere implements and is sure to prove of interest to every farmer and his family. "The March of Harvest Time" and "Voices of Experience"—the two movies that complete the program, deal with subjects close to the heart of every farmer.

DAVIS - LENDERSON
 Phone 2970 Muleshoe

ON DISPLAY SATURDAY

Chevrolet
 Brilliantly NEW for '52!

ALLURING NEW INTERIOR COLORS
 NEW ROYAL-TONE STYLING
 IMPROVED CARBURETOR
 GORGEOUS NEW EXTERIOR COLORS
 New Centerpoise Power

LOWEST PRICED IN ITS FIELD
This great new Styline De Luxe 4-Door Sedan lists for less than any comparable model in its field. (Continuation of standard equipment and trim illustrated is dependent on availability of material.)

It's Big... Bright and Beautiful!

Come, see the finest of all Chevrolets... brilliantly new for '52 in all these exciting ways:

- Vivid New Royal-Tone Styling**... with Bodies by Fisher that set the standard for beauty.
- Radiant New Exterior Colors**... widest and most wonderful array of colors in its field.
- Alluring New Interior Colors**... with two-tone upholstery and trim harmonizing with body colors, in all De Luxe sedan and coupe models.
- New Centerpoise Power**... engine is cushioned in rubber to bring amazing new smoothness of operation and freedom from vibration to low-cost motoring.

New, smoother, softer ride for all passengers. All these and many other advantages are yours in the '52 Chevrolets at lowest prices and with outstanding economy of operation. They're the only fine cars priced so low. See them now!

Extra-Smooth POWER... with New Automatic Choke, gives finest no-shift driving at lowest cost. (Combination of Powerglide Automatic Transmission and 105-h.p. Engine optional on De Luxe models at extra cost.)

CHEVROLET
 The Only Fine Cars PRICED SO LOW!
C. & H. CHEVROLET CO.
 MULESHOE, TEXAS

LaFont Helps Legislature Council To Outline Solons' Program of Work

The Fifty-first Legislature recognizing a definite need in this State for an agency to assist the Legislature and its individual members in obtaining accurate and reliable information on specific legislative problems and matters affecting the general welfare of the State, and to assist the members in drafting proposed legislation, established the Legislative Council.

As most people know, the Legislature meets in regular session every two years and passes bills to meet the problems of the State. The regular sessions of the Legislature usually last about five months.

At the last regular session of the Legislature, ending June 9, 1951, and beginning January 9, 1951, 2,283 bills, resolutions and constitutional amendments were considered by the Legislature. Approximately 450 bills were actually passed by the Legislature and became the law of this state.

The membership of the Legislature actually feels a need for some method to obtain accurate information in reference to these various bills. It is not difficult to find someone in Austin to advise members of the Legislature on how to vote on a proposed law, but it is difficult to be able to know whether or not the advice that you get is accurate and unbiased.

The Legislative Council is composed of five State Senators, appointed by the Lieutenant Governor, and ten State Representatives, appointed by the Speaker of the House of Representatives. The Lieutenant Governor is Chairman of the Legislative Council and the Speaker of the House of Representatives is Vice-Chairman of the Legislative Council. The Council meets during the time the Legislature is not in session and studies problems that are to be presented before the next Legislature.

The present legislative Council was appointed about July 15, 1951. They have a staff of four people with office in Austin, who compile information and assist the Council in the studies made by the Council.

The problems of the State to be studied by the Legislative Council are submitted to the high officials of the state, mem-

bers of the Legislature themselves and citizens of the State. The committee is composed of five members of the Council.

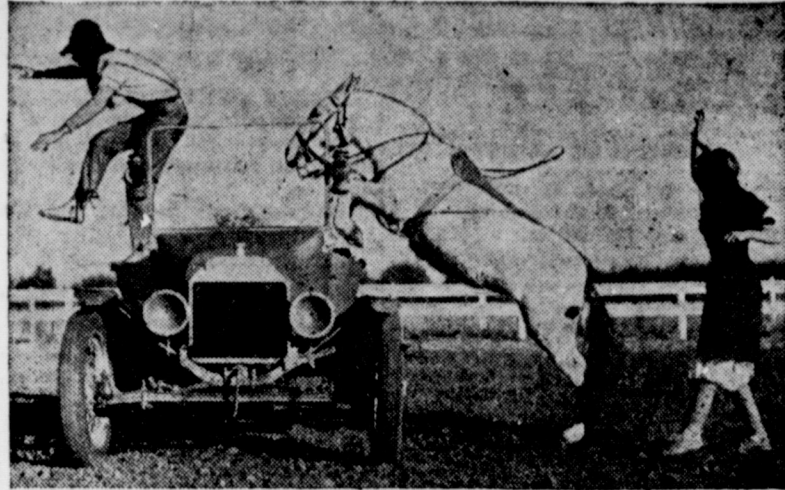
From the list of subjects submitted, to the Council the Council decides which subjects will be investigated. The Council has a subject Matter Committee, that recommends to the Council what problems will be studied out of those submitted to the Council. The Chairman of the Subject Matter Committee is Rep. Harold M. LaFont of the 120th District. His committee has been submitted to the Council for study, and they are as follows:

- (1) Tax Structure of the State;
- (2) Urban Local Government Units;
- (3) State and Local Highway Construction;
- (4) Uniform Commercial Code;
- (5) State Law Enforcement Agency;
- (6) Distribution of Judicial Work;
- (7) Juvenile Delinquency Laws;
- (8) Texas Constitution;
- (9) Study of Reorganization of State Government;
- (10) Public Health Laws;
- (11) Texas State Library System;
- (12) Higher Education;
- (13) State Agencies Project;
- (14) Texas Southern University;
- (15) Housing Facilities for Texas Education Agencies;
- (16) Public Utilities Commission;
- (17) Teacher's Certification;
- (18) Analysis 1950 Census Data;
- (19) Procedure of Statutory Revision;
- (20) Court decisions Manifesting Legislative Problems;
- (21) Surface Water; and
- (22) Study of Gilmer-Aiken Bill.

From the list of twenty-two subjects, the Subject Matter Committee has recommended six subjects for the Council to begin immediate study upon. They are:

- (1) Study of the State Tax Structure to eliminate inequities.
- (2) Study of Urban Local Government Units, to study opportunities for economy through organization of Urban Government Units and local governmental relationships.
- (3) The State and Local High-

To Appear In Ft. Worth Fat Stock Show



The Hendericks Family, offering the most spectacular as well as the most hilarious rodeo specialty acts in the nation, will be presented at the Southwest-ern Exposition and Fat Stock

Car Inspection Deadline Moved To September 6

AUSTIN, Jan. 15—Homer Garrison, Jr., Director of the Texas Department of Public Safety, announced today that the period for securing initial motor vehicle inspections in Texas has been officially extended until midnight, September 6, 1952. As originally specified, all vehicles would have been required to pass inspection before they could be registered on April 1.

Garrison made the announcement following an opinion issued

by the Attorney General in the process of being approved, by the office of Attorney General Price Daniel which ruled that the Safety Department might legally extend the inspection date, and that no inspection certificate would be necessary for 1952 registration.

Director Garrison had pointed out in his request for a ruling by the Attorney General that it would be impossible to complete an inspection of the nearly 3½ million vehicles in the State by April 1.

Effect of the new action will mean, according to Garrison, that all motor vehicles in Texas must be inspected and bear an approved sticker prior to next September 7. Following that, a second inspection will be required after September 7 but prior to April 1, 1953, before vehicles can be registered for 1953.

George W. Busby, Chief of the Department's Motor Vehicle Inspection Division, stated that he had, today, issued the 1000th

way Construction and Maintenance problems of the State.

- (4) The study of the recommended Uniform Commercial Code to determine whether or not this Code should be adopted and become a part of the Texas law.
- (5) The study of the law affecting Surface Water.
- (6) Study of the Gilmer-Aiken Law.

When the Council has completed the study of these six matters, they will begin work on others from the list as recommended by the Subject Matter Committee.

This is the first time the Panhandle of Texas has been represented on the Legislative Council of Texas. Rep. LaFont would like to have the advice and suggestions of the people of this area who are interested in the problems of the State.

Muleshoe Loses 38-51 To Levelland

The Levelland boys took their second district conference win in as many starts from the Muleshoe Mules Tuesday night, 51 to 38, although the visitors walked away with the other two games of the night, the Muleshoe girls winning 33 to 25 and the Mule B team taking a 44 to 33 win over the Levelland B squad.

In the top game of the night, Glenn Harlan led the Mules with 12 points. For Levelland top man was Gerald Parmer with 14 points. Levelland led 23 to 22 at the half.

Muleshoe now has two wins and one loss. Levelland has no defeats in District 7-AA.

VISITORS FROM CLOVIS
Mrs. Paul Jones of Clovis is visiting her grandmother, Mrs. Leota Wiltierding. She arrived Tuesday night, Jan. 15, and will return the first part of next week.

HOME FROM TECH
Eugene Henry, son of Mr. and Mrs. Clyde Henry of Progress, was home visiting his parents over the weekend.

license to official inspection stations. Another 1,500 are currently

Uncle Sam Says



It's just ten years ago since we began to Remember Pearl Harbor. Plenty has happened since then, but didn't the time go fast? Another ten years will go by just as quickly. Are you preparing to be better off than you are now? One way is to invest part of your earnings now in U. S. Defense Bonds. Purchase them regularly through the Payroll Savings Plan where you work, or the Bond-A-Month Plan where you bank. In 20 years, they will return you 77 per cent more than your original investment.



DISEASE spreads from the seed coat to the grain sprout

A costly and persistent enemy of the wheat farmer has met total defeat at the hands of modern science. It is bunt or stinking smut; and it is being wiped out by thousands of win- ter wheat farmers, by the simple and inexpensive means of treating their seed wheat with "Ceresan" seed disinfectant before they sow. Bigger yields of better quality grain are the result for the wheat grower.

The photograph shows how smut spores infect the growing wheat plant. The spores (seen as small black dots) lodge on the coating of the seed. They cannot penetrate its protective natural coat. But when the tender young sprout emerges from the seed, the smut spores

FOR A BETTER CROP

throw out a network of feelers, or mycelium, that spread to the sprout and infect the growing young plant with the parasitic smut fungus throughout its structure. The wheat plant acquires the fungus disease from its infected seed-parent. Since the spores of bunt smut are carried on the surface of the seed grain, it is readily controlled by disinfecting the surface of the seed. This is conveniently accomplished by proper treatment of the seed with the fungicide, at the same time the seed is cleaned. The cost of the entire process runs from 1¢ to 5¢ per acre. Call your County Agent to locate the seed cleaning and treating machine nearest to you.

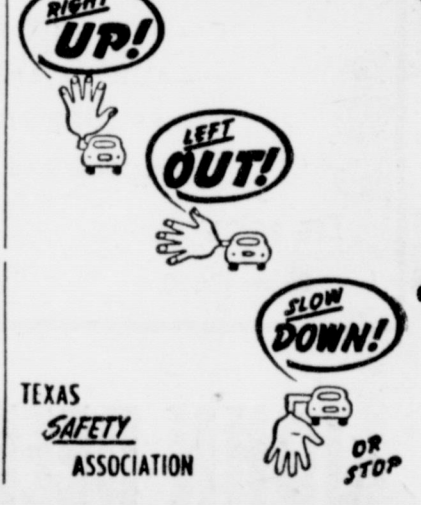
Local Teams Win In First Round At Whiteface

Both Muleshoe high school boys and girls basketball teams won opening round games in the Whiteface tournament which started Wednesday. The boys trimmed Sundown B 64 to 25 while the girls team went past Abernathy 49 to 45.

The Muleshoe and Abernathy game was described as the best one on Wednesday's schedule, with Muleshoe never able to pull into much of a lead. Muleshoe held a 24 to 22 lead at the half and play continued as close as that throughout. Jo Addine Wag- non had 21 points for her team and Bobbie McLane of Abernathy tossed in 22 points for her team.

39 to 15 over Sundown at the half and coasted on in, with Moose Harlan scoring 13 points for the winners.

GIVE PROPER HAND SIGNALS!



BUDGET SPECIALS CHECK OUR **LOW PRICES!**

SKINNER'S RAISIN BRAN 15c	32 OZ. BRIMFULL PURE PEACH PRESERVES 49c	GOLDEN RIPE BANANAS, lb. 12c
32 OZ. BRIMFULL PURE APRICOT PRESERVES 49c	NO. 303 BRIMFULL CHOPPED MUSTARD GREENS 9c	FLORIDA SEEDLESS WHITE GRAPEFRUIT, lb 9c
3 Lb. Can Bakerite SHORTENING... 69c	26 OZ. RD. BOX MORTON SALT 9c	BRIMFULL, R. S. P. NO. 2 CAN CHERRIES 23c
	1 LB. BORDEN'S STARLAC POWDERED MILK 35c	303 BRIMFULL CHOPPED TURNIP GREENS 9c

NO. 1 COLORADO, 2 LB. CELLO BAG PINTO BEANS 25c
1/4 LB. BOX BAKER'S COCOANUT 15c

Assorted Flavors **JELLO 5c**

WILSON'S CORN KING BACON, lb. 39c
LOIN OR T-BONE, GOOD OR CHOICE STEAK, lb 79c

(The New Liquid Suds) **JOY 25c** Brimfull Extra Fancy No. 2 Can **Tomatoes.. 15c**

FREE DELIVERY PHONE 2440 or 2450

CASHWAY GROCERY

"WHERE FRIENDS MEET AND PRICES TALK"