



## Price Supports For 1952 Crops Made Public By Bailey Co. PMA

Farm Commodities will be supported this year by means of CCC Loans and Purchase Agreements. Support rates announced to date on some of the crops produced in this area are as follows.

**COTTON:** Final loan rate will not be announced until about August 1, 1952; however the national average loan rate for Mid-ling 15-16 inch cotton will not be less than \$1.96. This compares with the final loan rate for Mid-ling 15-16 inch cotton in 1951 of \$1.46. The final loan rates for 1952 cotton will be 90% of Parity as of August 1, 1952.

**COTTONSEED:** The loan rate for cottonseed will be \$66.40 per ton basis 100 grade seed stored on

the farm.  
**WHEAT:** Final loan rate will be set at 90% of Parity as of July 1, 1952. Loans can be obtained at this time on the Interim Loan Rate of \$2.16 per bu. U. S. NO. 1 Wheat stored on the farm. Wheat stored in Commercial Warehouses approved by Commodity Credit Corporation will be storage to April 30, 1953.

**FEED GRAINS:** The following prices are based on grain stored in commercial approved WAREHOUSES. THE loan rate will be the same less storage to maturity date of the loan.  
Barley - \$1.17 per bu.  
Grain Sorghum - \$2.33 per CWT.  
Oats - \$0.84 per bu.  
Rye - \$1.35 per bu.

**OILSEEDS:** Peanuts - \$239.40 per ton (National average when planted within allotment.)  
Castor beans - \$0.10 per lb. (when planted under contract with CCC.)

Supplies at The Journal.

**NORMAN W. BAYS**  
Attorney-At-Law  
Office In Courthouse  
Phone 2670 Muleshoe, Texas

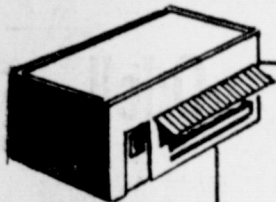
### GUARANTY ABSTRACT CO.

BONDED FOR YOUR PROTECTION

Office In Bank Building  
Phone 2640 Muleshoe

Complete Abstracts of Title to All Lands and Towns in Bailey County, Texas

PAT R. BOBO, Owner BETTE COWAN, Manager



#### OWN YOUR OWN BUSINESS?

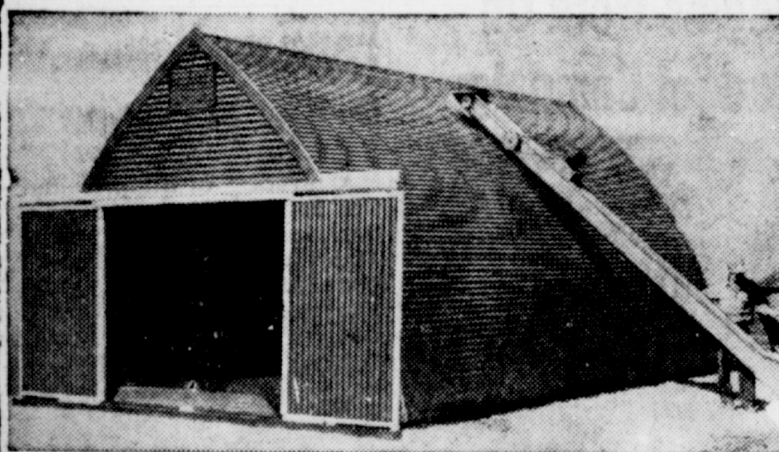
As Sole Proprietor of your business, all the profits belong to you. So, also, do the debts—and your estate—every bit of it—is liable for them. Why not shift the responsibility to life insurance today?

Marion F. Harris

REPRESENTING  
**Southwestern Life**  
Insurance Company  
JAMES RALPH WOOD, PRESIDENT HOME OFFICE • DALLAS

### NEW QUONSET ALL-PURPOSE

#### GRANARY



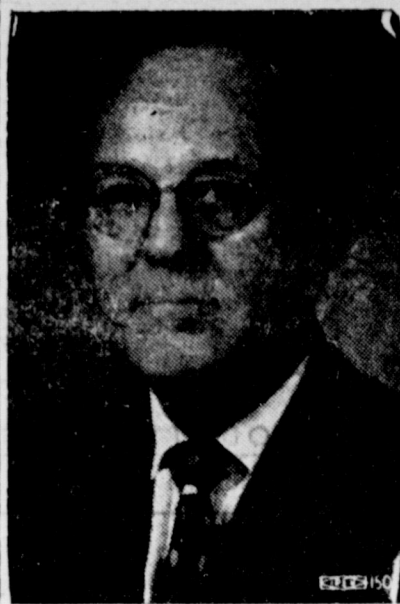
This addition to the well-known line of Quonset buildings, the All-Purpose Granary, will be on display at Clovis, N. M. June 28, it is announced by Dura Bilt Products Co., your Quonset dealer. Among several features as new as its lines, the rat-proof building features double walls for self-ventilation and provision for grain drying and cooling with fan and tunnel units available as optional equipment. The 16-ft., wide Quonset may be obtained in lengths providing a wide range of capacities.

FOR COMPLETE INFORMATION  
WRITE, CALL OR SEE

**Dura Bilt** PRODUCTS CO.

Box 986 Phone 7660  
Clovis, N. M.  
On Portales Hiway South of Underpass

### Supreme Court



FRANK P. CULVER

Associate Justice Frank P. Culver, of the Second Court of Civil Appeals, Fort Worth, is a candidate for the State Supreme Court, Place No. 1. Judge Culver is a veteran of both World Wars and has served on the district and appellate bench for 24 years and as Chairman of the Judicial Committee of the State Bar of Texas.

#### PANTY RAIDERS MIGHT USE ENERGY IN KOREA

Blondy Ray, a steady reader of The Journal, got quite a kick out of a recent item in Walter Winchell's column. Blondy, along with several million others, toughed it out in the last war in the Asiatics and in the last war when things were tough and go, and Blondy takes a dim view of our collegiates' extra-circular activities and thinks perhaps their energies might be directed into another channel. Winchell, he submits this from Winchell's column of recent date:

Headquarters Company, 2nd Battalion, 179th Infantry, 45th Division, APO 86, Korea: Dear WW: We want you to tell the lads raiding girl's dorms how proud we are of the brave, courageous, red-blooded Americans, who make these pantie raids back home. We here in Korea are wondering why these gallant countrymen at some of our colleges resort to such unorthodox means of amusement. If they want to go raiding they should come over here and take the place of buddies who haven't come back from the front lines. Frankly, we are not admitting they could! We expect those fortunate enough (to go to college) to make better use of their time. If they want to start a fat let them start filling the blood banks. Thanks."

#### RETURN FROM FISHING TRIP TO HOT SPRINGS

Mr. and Mrs. George Johnson and Margaret Ann, Dot Long, and Mr. and Mrs. Ed Johnson returned Wednesday night from a fishing trip to Elephant Butte Dam at Hot Springs, N. M., which began last Sunday morning. They reported a good time but very few fish.

**DR. B. Z. BEATY**  
DENTIST  
Across From Muleshoe Motor  
Office Hours:  
9 - 12 a. m. - 1 - 5 p. m.  
Closed Saturday Afternoons  
Office Ph. 2040 Res. Ph. 5020

#### LEGAL NOTICE OFFICE OF CITY'S INTENTION TO RECEIVE SEALED BIDS FOR PURCHASE OF FIRE-FIGHTING EQUIPMENT

Sealed proposals addressed to Mr. R. J. Klump, City secretary of the City of Muleshoe, Texas, will be received at the office of City Secretary until 5:00 o'clock p. m., on the 3rd day of July, 1952, for the purchase of Fire-Fighting equipment for the protection of said city to wit:

**PUMP:** Shall be of 500 gallons per minute capacity, three-stage Centrifugal with bronze Impellers and stainless steel shaft; the shaft to be carried on both ends with ballbearings, priming pump shall be approved design capable of lifting water eighteen feet, pump must be midship mounted, pump shall be equipped with the following connections:  
Two 4 inch inlet valves, one on each side;  
Two 2 1/2 inch discharge valves with remote control;

Balance gauges, Pump to Tank valve, 1/4 turn valves on tank to pump and pump to booster reels.

**BODY:** Made of automobile steel with hardwood slatted removable floor; capacity of body 1200 feet of double jacket 2 1/2 inch fire hose and 300 feet of 1 1/2 inch double jacket fire hose. Also a large equipment compartment for carrying miscellaneous items, body to be fully reinforced throughout; to be equipped with polished railing on both sides of body and rear and across rear of body, to have one hose body adjustable partition.

**REAR STEP:** To be 18 inches wide, strongly supported from hose body with steel channels, top of running boards to be fabricated with special safety tread. Rear fenders to be pressed steel of 14 gauge with one aluminum step on each fender.

**INSTRUMENT PANEL:** To be mounted on left side of truck with all controls grouped and plainly marked, also a panel light, water level gauge for booster tank, and vacuum clutch controls to be mounted on instrument panel.

**MOTOR:** To be equipped with closed out cooling system.  
**BOOSTER TANK:** Tank to carry 500 gallons of water, it must be of copper bearing steel, electric welded, with exception of top, which will be of removable type, and fully baffled with two inch outlet to pump.

**HOSE REELS:** To have two booster reels with 200 feet of 1 inch, 600 pound test on each reel. To be equipped with a Fog Gun on each base, shall also have anti-kick swivel gun.

**EQUIPMENT:** Shall have a master drain for all lines and pump on truck; two electric F. D. lanterns in holders; one full plated siren Federal or equal to be mounted on fender (Flasher Type); one F. D. crowbar in spring type holder; four clip type fitting holders on running boards (size specified by Fire Chief); one 2 1/2 gallon Foam and one 30 pound Ensel Dry extinguishers mounted; two ten foot lengths of 4 inch hard suction hose with long handle coupling on female end, pin lug coupling on male end, mounted with quick release clasp; one 10 foot section of soft suction 4 inch hose with long handle coupling on female end, pin lug coupling on male end with running board holder; one 12 foot roof ladder with folding roof hooks; one 24 foot extension ladder both to be

mounted with quick releases; one flasher red light to be mounted on cab; two pistol grip spot lights mounted on cab up-rights; two electric swivel search-lights mounted on rear body post; all electric appliances to be 6 volt; one 10 foot pike pole mounted; two 1 1/2 inch fog nozzles (Elkhart or equal); one 4 inch strainer; one 4 inch by 2 1/2 inch double female hydrant adapter; one 4 inch by 4 inch double female hydrant adapter.

**ALL FINISH:** All nozzles and similar polished metal parts shall be chromeplated.

**PAINTING:** This is to be done in first class manner with the best grade lacquer; lettering and decorations to be done in Gold Leaf with appropriate shading.

**COLOR TO BE RED:** Lettering to be as ordered.

**ELECTRIC SYSTEM:** Battery charger receptacle on rear.

Completed Fire Truck to be delivered at Muleshoe, Texas.

The truck to be tested and approved by State Fire Insurance Commission Officials.

A CERTIFIED CHECK or Cashier's Check in the amount of five per cent (5%) of the amount bid must accompany each proposal.

All bids will be opened in the office of the City Secretary on the 7th day of July, 1952, at 8:00 o'clock p. m.

THE CITY OF MULESHOE reserves the right to reject any and all bids.  
R. J. KLUMP  
City Secretary,  
City of Muleshoe, Texas  
24-4tc.

For Results Try The Journal | All Kinds of Paper, Office Supplies at The Journal.

### DR. B. R. PUTMAN OPTOMETRIST

First Door North of REA Building  
Muleshoe, Texas Phone 6560

We Sell And Install

## Metal Awnings

Long Lasting — Comfort Creating  
Carports — Industrial and Commercial  
Awnings  
Venetian Blinds — Seat Covers  
Furniture Upholstery & Repair  
Automobile Seat Covers

### MCCORMICK'S

Phone 6600

Muleshoe

### Lariat Elevator Gets First Wheat

The first load of wheat was received at the Lariat Elevator last Friday, June 13, from D. O. Burlsmith. The manager of the elevator, Boone Allison, reported that it was good No. 1 wheat. He received a premium for the first load.  
Mr. Burlsmith's wheat is making 25 to 30 bushels per acre.

### GREEN Hospital & Clinic

Muleshoe, Texas

Dial 2250

COX

DRIVE-IN THEATRE

Program

OF FINE ENTERTAINMENT!

Thurs. & Fri., June 19 & 20  
**HERE COMES THE GROOM**  
Bing Crosby & Jane Wyman

Saturday Only, June 21  
**ALONG THE GREAT DIVIDE**  
Kirk Douglas & Virginia Mayo

Sun. & Mon., June 22 & 23  
**FORT OSAGE**  
Rod Cameron

Tues. Wed., June 24 & 25  
**THEY GOT ME COVERED**  
Bob Hope & Dorothy Lamour

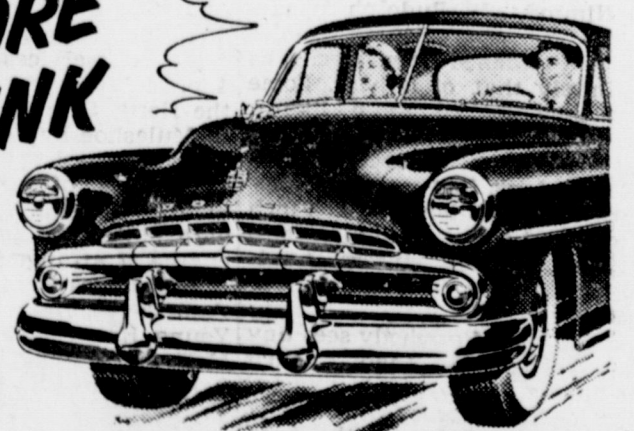
MULESHOE  
TEXAS

## Come in for a Money-Saving Surprise!

Right now your present car is probably

WORTH A LOT MORE THAN YOU THINK

—in trade on a new '52 DODGE



CREDIT RESTRICTIONS ARE LIFTED... MONTHLY PAYMENTS ARE LOWER!

COME IN... FIND OUT HOW EASY IT IS TO OWN A DODGE NOW!

And look what you get!

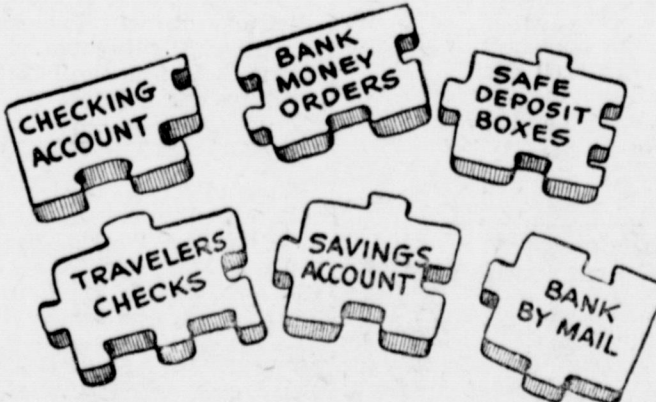
- \* Dazzling Array of New Spring Colors!
- \* Famous Oriflow Ride that smoothes bumpiest roads!
- \* "Watchtower" Visibility for greater safety!
- \* More head room, leg room, hip room!
- \* Money-Saving Dodge Dependability!



**FREE PROOF**  
Dodge Gives More for Your Money  
Come in for your free "Show Down" booklet that lets you compare Dodge, feature by feature, with cars costing hundreds of dollars more.

Specifications and equipment subject to change without notice.

MAKE YOURS A TROUBLE-FREE VACATION IN A DEPENDABLE DODGE



#### FIT THEM TOGETHER

At The Muleshoe State Bank.

They'll Make One Of Your Best And

Strongest Assets In Business

### MULESHOE STATE BANK

Member Federal Deposit Insurance Corporation

Arnold Morris Auto Co.  
1012 MAIN STREET  
MULESHOE, TEXAS

### Longview Proud Of Wilcy Moore

Muleshoe's Wilcy Moore is having a whale of a year with Longview in the Big State League, so good that Buster Hale, sports editor of the Longview News & Journal, has called Wilcy, in his column called "Sports Shots", the "best centerfielder in the League."

"The bespectacled Muleshoe speed merchant has made so many brilliant plays this season that Longview fans have grown to expect them from him. Certainly no player in the league has received less notice for his consistently great defensive performance."

The same paper carries evidence that Wilcy is no less a star in the offensive department. The clipping The Journal staff saw

gave Wilcy a batting average of .353, second only to a comrade outfielder on his club, Gene Depersmidt. Wilcy had batted 232 times, made 46 runs, had 82 hits, with 17 two baggers, 1 three base hit, and 12 home runs. He had 51 runs batted in to his credit.

Of course everybody here is aware that Don, Wilcy's older brother is having a great year with Pampa, of the West Texas-New Mexico League. Don was batting .365 at last reports and was having a good year defensively.

Don and Wilcy are sons of Mr. and Mrs. Nudy Moore of Longview community.

### Oklahoma Lane Baptist Church Has Successful School

Commencement exercises on Wednesday evening marked the close of a successful eight-day Vacation Bible School at the Oklahoma Lane Baptist Church, the pastor, Rev. Mayo D. Carpenter, reports.

After the professional and the joint service, each department presented a short program. An attractive display of handwork was featured in the department rooms.

### Norther Breaks Local Heat Wave

The first real heat wave of the summer was broken by a norther which hit here Sunday night, Monday, therefore, was nice and cool here in Muleshoe, though the north wind whipped up quite a lot of dust and sand.

Judge R. J. Klump, the local weather recorder said the mercury soared to 101 here Saturday and to 103 Sunday. People sweltered on both days. Sleeping was difficult on both nights unless the breeze was just right, or unless the air conditioner was turned on.

Not enough rain has fallen recently to justify the recorder to make a report to the paper, Judge Klump said. There have been several times when a light sprinkle fell, but no appreciable amount of moisture was recorded. It's still dry in the Muleshoe country.

The enrollment was one hundred and three with an average attendance of 78. Fourteen churches were represented in this group.

Mrs. Jack Roach, superintendent of the Nursery department (for worker's children), was assisted by Mrs. E. H. Young, Mrs. Cecil Rundell, Mrs. Lee Mason, Mrs. D. W. Carpenter, and Mrs. Frank Edwards. Workers in the Beginners department were Mrs. Sterling Donaldson, superintendent, Mrs. Clarence Johnson, Mrs. Gene Rea, Mrs. F. L. Brown, and Mrs. Lloyd Gober.

The superintendent of the Primary department was Mrs. Wind-bourne Hardage, with Mrs. Frank Doshier, Jr., Mrs. Dick Gerles, and Mrs. Claude Watkins as helpers. The Junior department was conducted by Mrs. Harold Carpenter, superintendent, Mrs. Delbert Garner, and Mrs. Raymond White.

Mrs. Bill Meeks was head of the Intermediate department, with Jo Ann Pruitt, Mrs. Dee Brown, Eugene Verner, Sam Jones, George Young, Mrs. J. M. Pruitt, and Mrs. Shelby Jones as workers.

Mrs. W. E. Verner was assistant to the principal, Mrs. Mayo D. Carpenter, and Marcella Verner was the pianist.

Refreshments were furnished and served by four different women each day.

### GORGEOUS GOLFER



It's pretty Virginia Mayo, Warner Brothers star, taking time out from the set of "The Iron Mistress" to get in a round on the golf course. Naturally she wears a becoming sports outfit of gray cotton gabardine.

### Softball Team Plays First Game

Muleshoe softball team has joined the Morton League, Ernest Gatlin, manager reports. He said the team will play a regular schedule in that league until the projected lighted field is completed here.

Upon completion of the local field it is planned to organize a softball league with games nearly every night for the entertainment of the people.

Muleshoe Junior Chamber of Commerce is sponsoring the erection of the field lights.

The local team played their first game of the season Monday night, defeating a team of Morton high school boys 10-9.

Players and their positions are: Chapman, c; Freeman, c; Lewallen, p; Bell, lb; Wilhite, 2b; Burden, ss; Vernon, 3b; Welch, 3b; Flanagan, lf; Rundell, cf; Cowan, cf; and Shafer, rf.

The boys only play one night a week and all of the Muleshoe people are invited to go to Morton and see them play.

VANCE RICHARD BASS  
Mr. and Mrs. Raymond Bass, of Lamesa, are parents of a boy, born last Thursday in Lamesa Hospital, and weighing 7 pounds. He has been named Vance Richard. The new boy is the grandson of Mr. and Mrs. Melvin Bass of Muleshoe. Raymond's mother is staying with the family for several days.

Helton, new Conoco consignee in Muleshoe, were introduced as new members. Melvin Bass, county clerk, and Jerry Kirk, superintendent of schools, were elected to membership in the club.

Special invitations to the installation banquet have been sent to Rotary Clubs of Sudan, Littlefield, Lubbock, Portales, Clovis, and Melrose.

### Rotary Banquet Plans Completed

Final details of their annual installation banquet was made by members of the Rotary Club of Muleshoe at the regular meeting Tuesday noon. The banquet will be in Fellowship Hall next Tuesday evening, June 24, and will be served by the ladies of the Methodist Wesleyan Guild and Woman's Society of Christian Service.

Jack Mears, dean of Eastern New Mexico University, Portales, will be the principal speaker. He is a member of the Portales Rotary Club.

Myron Pool will take over the duties of president from Bud Holton. New vice-president is Onard Upton and secretary is Bob Gregory. Directors are B. A. Dalton, Arnold Morris, Hoyt Morgan, and Arthur Crow.

Eddie Frear, Clovis businessman and member of the Clovis Rotary Club, will lead group singing. Mrs. C. W. Grandy will preside at the piano and one of her pupils will sing. Rev. H. W. Hanks will give the invocation and Rev. A. W. Blaine will introduce the guests.

D. B. Lancaster, manager of the Bailey County Electric Co-operative Association, and O. D.

### FOR SALE

4 Registered Hereford Bull Calves

11 Mo. to 1 Yr. Old

C. T. WILLIAMS FARM

Inquire BOB HARVEY Piggly Wiggly

26-1tp.

### 4-H Team Places In State Contest

The district winners of the dairy judging contest went to A. K. M. to place eighth in the state. The boys, Jackie Dulin,

Marion Inman, Robert Giles, and Jerry Inman, with their leader, Sherman Inman, report a very enjoyable and educational trip. The boys wish to thank the following for helping pay expenses of the trip: John Fried, Malone's Dairy and Jones Farm Store, \$10 each, and Pool Insurance, \$12.

### STOP .... Check Your Coverage!

Have you considered replacement costs of what you own in the light of today's prices? We shall be glad to consult with you on all your insurance problems . . . no obligation.

FARM LOANS • AUTO FINANCING

### POOL INSURANCE AGENCY

W. M. Pool, Jr. Lee Pool  
Phone 7010 Muleshoe

NOW

IMMEDIATE DELIVERY!



### GATED SURFACE PIPE

for Controlled Furrow Watering...

### Replace your old-fashioned inefficient ditches!

Say "goodbye forever" to wasteful, troublesome open ditches. Enjoy bigger and better crops, less work and worry with portable, efficient AMES GATED SURFACE PIPE. Easy to operate AMES FLO-CONTROL GATES provide instant precision control of the water flow and penetration in each furrow. Volumes are easily regulated from a trickle to full gate flow for tight or porous soils, level or sloping lands, long or short furrows. Your land is covered faster, more uniformly and a higher percentage of every gallon reaches and remains in the root zone of your crops.

AMES GATED PIPE is available in Galvanized Steel or Aluminum with SLIP-JOINT, "QCL" QUICK-COUPLING, or new "ABC" COUPLERS for instant, positive connections. Lengths and diameters to meet your needs.



### HORN BROOK DRILLING CO.

MULESHOE, TEXAS

### GOING FISHING?

### ONE NEW 12 MAN RUBBER LIFE BOAT

REGULAR PRICE \$119.95

OUR PRICE

\$25.00

JOHNSON-POOL

Phone 7370

Muleshoe

A \$20<sup>00</sup> TIRE FOR ONLY \$15<sup>95</sup>

6.00-16 PLUS TAX AND YOUR OLD TIRE

## B.F. Goodrich Silvertown

the tire that comes on new cars



SPECIAL SALE ENDS JULY 7

6.70-15 List Price

SALE PRICE

22<sup>95</sup>  
17<sup>95</sup>

plus tax and your old tire

PAY AS LITTLE AS \$1.00 DOWN

ALL TIRES MOUNTED FREE OF CHARGE

## JOHNSON-POOL

TIRE & APPLIANCE

PHONE 7370

MULESHOE



B.F. Goodrich

FIRST IN RUBBER

## LAWN MOWER SALE

1/2 PRICE

PRICE

REGULAR \$98.50

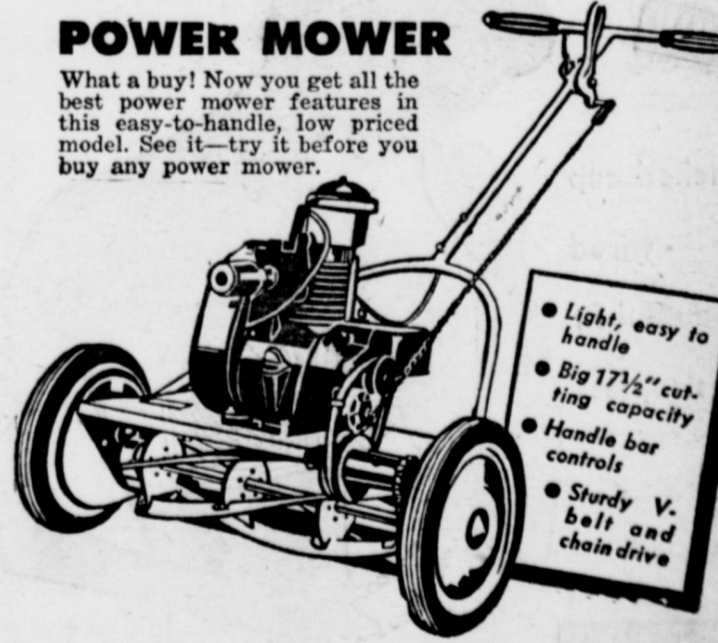
Makes Lawn Mowing a Pleasure



Powered with Briggs and Stratton 3/4 to 1 1/2 H.P. Engine - Mower speed controlled by throttle on handle bar. Ideal for most size lawns. Has 5 crucible steel blades.

22" "SCOUT" - 165.00

NOW ONLY \$71.75



### POWER MOWER

What a buy! Now you get all the best power mower features in this easy-to-handle, low priced model. See it—try it before you buy any power mower.

- Light, easy to handle
- Big 17 1/2" cutting capacity
- Handle bar controls
- Sturdy V-belt and chain drive

NOW ONLY \$49.50

## JOHNSON-POOL

TIRE & APPLIANCE

PHONE 7370

MULESHOE



TIRE HEADQUARTERS

### Miss Quesenberry, Mr. Johnston Are Wed In Double Ring Ceremony

Miss Nadine Quesenberry, daughter of Mr. and Mrs. Lawrence Quesenberry of Needmore, became the bride of Mr. Clifford Johnston, son of Mr. and Mrs. A. M. Johnston of Woodville, Okla., former residents of Sudan.

The double ring ceremony was read Sunday morning, June 15, at 9 o'clock in the home of the bride's parents, Rev. Wayne Perry, pastor of the First Baptist Church of Sudan, officiated as vows were repeated beneath an archway of fern bordered with stands of picardy gladioli.

The bride, given in marriage by her father, chose a ballerina length gown of white nylon with a round high neckline. Tiny rhinestones were set in lace flowers across the front in a sweetheart shape. Tiny covered buttons extended down the back of the fitted bodice and at the waist. The full skirt of nylon over taffeta was enhanced by nylon mitts. Her veil of white net fell from a tiara of delicate flowers. She carried a white Bible topped with cypripedium orchids with satin streamers.

Ann Meeks who served the bride as maid-of-honor wore a ballerina length gown of ice blue with Peter Pan collar and short sleeves with tiny buttons

extending down the front of the bodice. The skirt was of nylon over taffeta. She carried a colonial bouquet of pink carnations with tufts of mistletoe.

Margie Missamore played "Through the Years" as a nuptial prelude and Mrs. Jack Lane, sister of the bride, sang "I Love You Truly."

Best man was Kenneth Johnston, brother of the groom.

For her daughter's wedding, Mrs. Quesenberry chose a dress of grey nylon with black accessories and wore a corsage of yellow roses.

A reception given in the home of the bride's parents immediately followed the ceremony. The bride's table was laid with a lace cloth and centered with picardy gladioli. Wanda Whitmire presided at the punch service while Sue Glover served the lovely three tiered cake topped with a miniature bride and groom beneath wedding bells. Patsy Gore registered the guests.

For their trip to Oklahoma, Mrs. Johnston chose a dress of pink crepe with white accessories.

Mr. and Mrs. Johnston will make their home in Oklahoma where Mr. Johnston is engaged in ranching.

### Jane Stovall To Be Wed July 26

Mr. and Mrs. Alfred Swann Stovall announce the engagement and approaching marriage of their daughter, Jane Harriet, to Norman Nevill Durham, son of Mr. and Mrs. Harold H. Durham, Eastland, Texas.

Wedding vows will be solemnized for the couple Saturday, July 26, in the First Methodist Church in Muleshoe at 9:30 a. m.

Miss Stovall graduated from Frederick High School, where she served as co-editor of the annual and was a member of the Vagabond Club. She was valedictorian of her class and was awarded the Lions Club medal. Miss Stovall attended Texas Technological College, Lubbock, where she was elected treasurer of Alpha Lambda Delta, national women's honorary society. She graduated with honors from the University of Texas, receiving a bachelor's degree in bacteriology. She was a member of the Glee Club, Woman's Fraternity, Fellowship, Panhandle Club, Texas Collegiate Academy of Science, and the Texas Branch of the Society of American Bacteriologists.

Mr. Durham graduated from Eastland High School, and served two years in the United States Navy. He received B. S. and M. S. degrees from North Texas State College, Denton, where he held a teaching fellowship in the Department of Biology. Mr. Durham was a member of Beta Beta Beta, national honorary biological society, Pi Phi Pi social fraternity, Phi Delta Kappa, national men's educational fraternity, W. N. Master's Chemical Society, the Mathematics Club, and the Future Teachers of America.

Durham entered the University

of Texas in 1951, where he is working on a Ph. D. in bacteriology and biochemistry, doing research problems on cancer. He is a member of the Society of American Bacteriologists.

### Skit Is Enjoyed By W. S. C. S.

The Woman's Society of Christian Service of the First Methodist Church met in the Fellowship Hall Monday, June 16. The meeting was begun with the song, "Jesus, Savior, Pilot Me", followed by prayer by Mrs. Roy Bayless.

Mrs. I. F. Willman led the lesson on the theme of "That the Kingdom of God may be realized". Parts of the program, "Quadrennial Goals" were presented by Mesdames Roy Bayless, S. D. Anderson, H. W. Hanks, H. C. Holt, and H. Jay Wier.

A skit in two scenes for use in launching the Quadrennial Plans for 1952-56 was given by Mesdames F. B. Pierson, Beulah Carles, O. C. Kirk, D. B. Lancaster, and Arnold Morris.

During the short business session over which the president presided, roll call was answered with a verse of scripture. Minutes were then read and approved.

The Society was reminded of the Northwest Texas Conference School of Missions to be held in Lubbock, July 23 to August 1.

The meeting was dismissed with a unison prayer.

Mrs. Roy Bayless served Cokes to Mesdames O. C. Kirk, H. O. Barbour, Beulah Carles, H. Jay Wier, J. J. Gross, D. B. Lancaster, H. C. Holt, H. W. Hanks, S. D. Anderson, I. F. Willman, F. B. Pierson, and Arnold Morris and a new member, Mrs. A. L. Davis.

### Three Way News

Christine Moore of Plainview and Wayland College was a week end visitor with her parents, Rev. and Mrs. J. E. Moore of Three Way.

Captain Harold M. Brinker, wife and two children of Scott Field, Ill., have been visiting with his parents, Mr. and Mrs. D. P. Brinker.

Mr. and Mrs. Homer Waldrop, Mr. and Mrs. Don Lamar, and Herchel attended the Barnett family reunion at McKenzie State Park at Lubbock on Sunday, June 8.

Cpl. and Mrs. R. B. Wittner of Biggs Airfield, El Paso, have been here to be with R. B.'s mother who underwent an operation at West Texas Hospital in Lubbock and Mrs. Wittner's grandfather, Dr. Manning of Lorenzo who has been seriously

ill in Lubbock Memorial Hospital.

Miss Faye Aikens of Hopkins County is to teach home economics at Three Way this year. Mrs. Middlebrook, also of Hopkins County, will teach the fourth grade.

The vacation Bible school of Three Way Baptist Church closed Friday night, June 5, with a commencement program and a one act play, "The Challenge of the Cross". Average attendance for the school was 91.

**Entertain Young People**  
Mrs. Waldrop, assisted by Mrs. Frank Griffiths, entertained the young people of Three Way with a social Thursday evening, June 5. Several games were played and Carlos Cross and Jack Chun of Wayland College entertained the group with several songs and other entertainment.

Refreshments of sandwiches and punch and homemade ice

cream and cake were served to Colleen Reeves, Laverne George, Joyce Sanders, Wilma Emerson, Venita Stone, Paula Griffith, Peggy Wittner, Curtis Smith, Keith Price, Don Davis, and Yvonne Mitchell.

Mr. and Mrs. Frank Griffith and children were week end visitors with friends in Roswell, N. M.

The Levelland Girls won over the Stegal Girl's soft ball club by 2 scores Tuesday night at Levelland.

**Installation Planned**  
The Needmore Rebekah Lodge No. 160 will have installation of officers July 1 at the Needmore IOOF Hall.

Mr. and Mrs. Glen Branaman and children and Mr. and Mrs. W. R. Byers spent Father's Day in Lubbock visiting with children of Mr. and Mrs. Byers.

**Bible School Closes**  
The Hicks Chapel vacation Bible school closed Monday night

with a commencement program. The closing day was postponed from Friday to Monday because of the funeral services for L. G. Ballard. The average attendance for the week was 32.

Mr. and Mrs. L. D. Sanderson, Jr., were visitors at Hicks Chapel Sunday.

Roxine Fine, small daughter of Rev. and Mrs. G. W. Fine of Hicks Chapel, has been a recent visitor with her grandmother of Morton.

**CARD OF THANKS**  
We wish to thank all those who sent delicious food and who did so much to help us in our home at the passing of our husband and father.  
Mrs. Gussie Mardis  
And Family.

**TO COLORADO**  
Marion Waggoner and Herbert Ramage are on a vacation trip to Colorado this week.

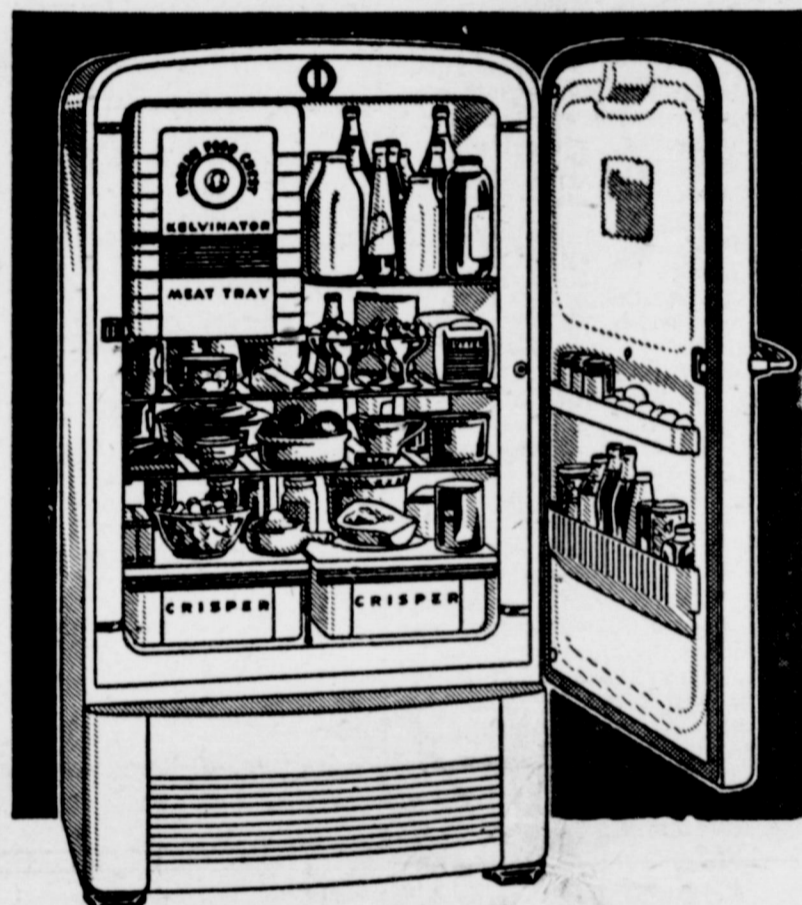
### Farm Agencies Housed Together

County offices of the Production and Marketing Administration, Soil Conservation Service, and the Farmers Home Administration are now all in the same building next door to the Post Office in Muleshoe.

The three groups have been working for some time to achieve this, and now that it has been accomplished the arrangement should be a great convenience to farmers needing to contact the various Government agencies.

**SURRATTS VISIT IN ARKANSAS**  
Mr. and Mrs. Woodrow Surratt visited last week end in Eureka Springs, Ark., with Mr. Surratt's father.

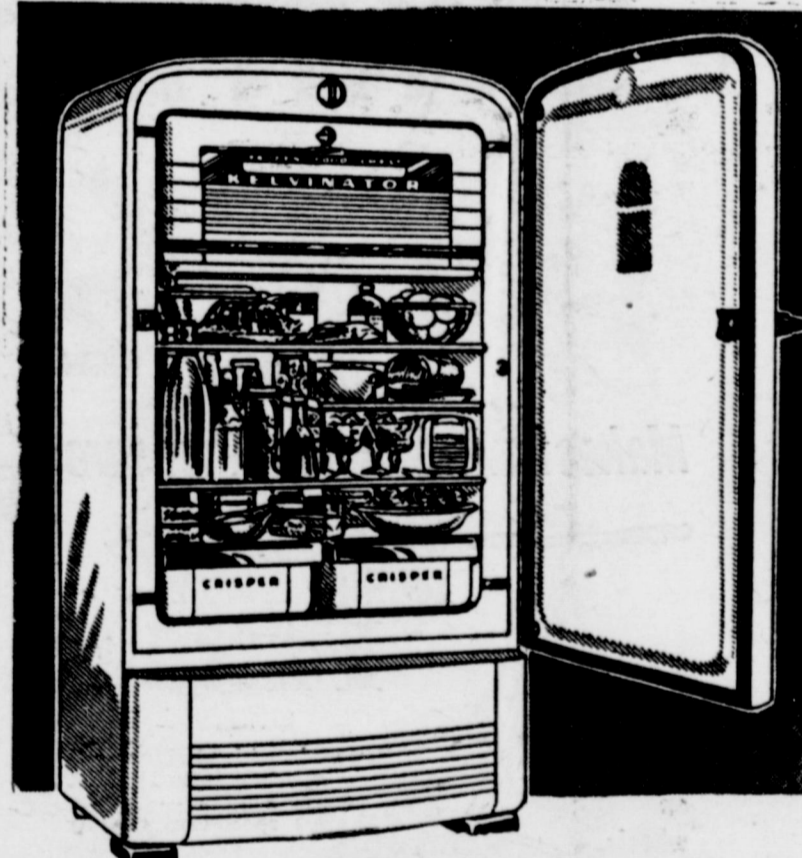
# "GOLD" IN YOUR PRESENT REFRIGERATOR AND WE'RE PROSPECTING FOR IT!



**NEW KELVINATOR**  
MODEL SR  
8 Cu. Ft., 33 Lb. FROZEN FOOD CHEST  
REG. PRICE \$269.95  
**YOU PAY \$199.95** PROBABLY MUCH LESS  
PLUS YOUR OLD REFRIGERATOR regardless of age, make, or condition

We'll Give You An Amazing Allowance On Your Present Refrigerator AS A TRADE IN ON ONE OF THESE NEW KELVINATORS

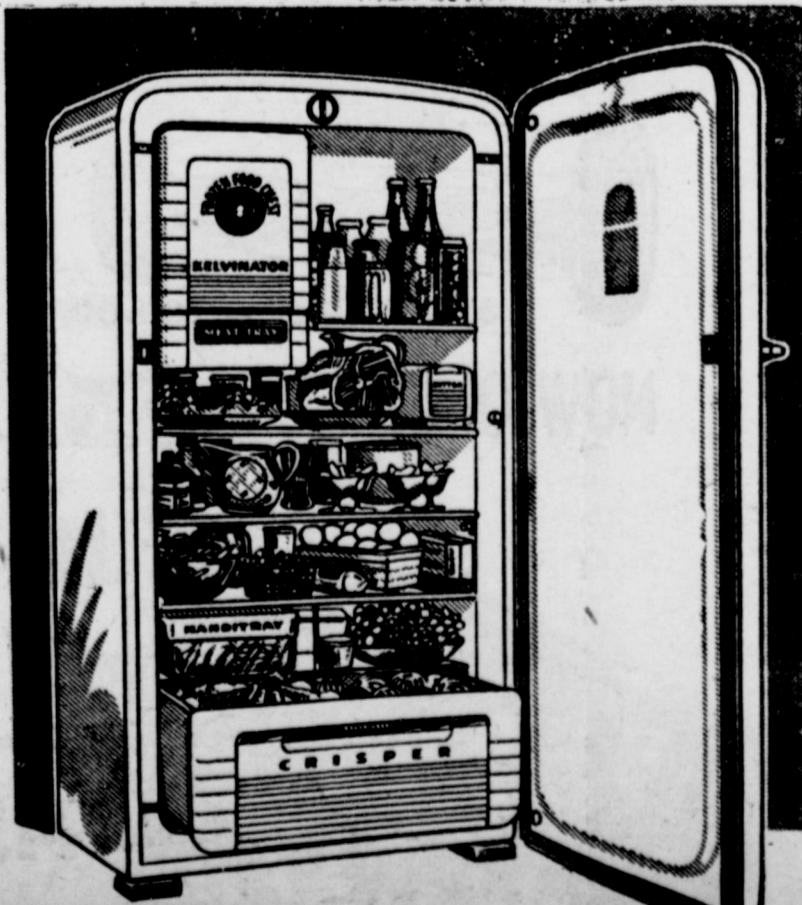
You've been waiting for this opportunity. We need used refrigerators—your used refrigerator—now. Our Service Department is anxious to get them ready for the big used refrigerator business we do every summer. This is your chance, then to get the absolute top price for your "old faithful" . . . and get a brand new Kelvinator at the same time!



**NEW KELVINATOR**  
MODEL DR  
8 Cu. Ft., 42 1/2 Lb. FROZEN FOOD CHEST  
REG. PRICE \$309.95  
**YOU PAY \$229.95** PROBABLY MUCH LESS  
PLUS YOUR OLD REFRIGERATOR regardless of age, make, or condition

So act now while the value of your present refrigerator is at its peak. See us today, and you'll be amazed how much your present refrigerator is worth! In most cases, the value of your refrigerator will be adequate to meet the Government requirements for the down payment. And, by tomorrow, you'll have a brand new Kelvinator in your kitchen—the most modern, most dependable refrigerator on the market!

- All 3 models feature . . .
- \* Big Sliding Crispers keep fruits and vegetables garden fresh!
  - \* Handy Butter Chest accessory keeps butter always "spreadable"!
  - \* Extra tall bottle space, and accommodation for big bulky foods!
  - \* Humidity Control Tray, serves as roomy, meat storage tray on HM and DR models!



**NEW KELVINATOR**  
MODEL SM  
11 Cu. Ft., 42 1/2 Lb. FROZEN FOOD CHEST  
REG. PRICE \$324.95  
**YOU PAY \$249.95** PROBABLY MUCH LESS  
PLUS YOUR OLD REFRIGERATOR regardless of age, make, or condition

Hurry in! Pick out your new KELVINATOR Your Old Refrigerator Will Probably More Than Make The Down Payment And You Have

**24 Months to pay**

**Hi-A** the beauty brassiere by Marja

Wonderful news! A moderately priced version of our famous strapless Hi-A, combining fine cotton broadcloth with English net and batiste elastic! So easily washable keeps fresh and lovely always. Exactly what you've wanted to wear under your bare-to-the-sun (or the moon) play-clothes and dresses. A perfect uplift, with Marja's exclusive patented stitching, round and out, with double rows on the bottom of the bust cup . . . lightly wired . . . amazingly comfortable. White, A, B, and C cups. Sizes 32 to 38.

**COBB'S**

**E. R. HART**  
PHONE 3300 COMPANY MULESHOE



**SCHEDULE OF SERVICES**

**THREE WAY BAPTIST CHURCH**

**J. E. Moore, Pastor**  
 Sunday School 10 a. m.  
 Morning Worship 11 a. m.  
 Training Union 7 p. m.  
 Evening Worship 8 p. m.  
 W. M. U. Thursday 2:30 p. m.  
 Brotherhood, first Thursday of each month 7 p. m.  
 Mid-week Prayer Service and Bible Study 7 p. m.

**OKLAHOMA LANE BAPTIST CHURCH**

**Mayo D. Carpenter, Pastor**  
 Sunday School 10 a. m.  
 Morning Worship 11 a. m.  
 Evening Worship 8 p. m.  
 Prayer Meeting, Wed. 8 p. m.  
 W. M. S., Thurs. 3 p. m.

**LUZIER'S**

Vine Cosmetics & Perfumes  
**MRS. E. E. HOLLAND**  
 1101 East 2nd St.  
 Phone 5449

**Dream castles become real thru saving here regularly with safety and profit**

**SAFETY INSURED**  
 up to \$10,000. for each saver

**MULESHOE FOR INFORMATION SEE**

MILDRED DAVIS  
 Western NFLA Building  
 Muleshoe  
**FIRST FEDERAL SAVINGS AND LOAN ASSOCIATION**  
 Clovis, N. M. P. O. Box 470

**CHURCH OF THE NAZARENE**

**Sidney Patrick, Pastor**  
 Sunday School 10 a. m.  
 Morning Worship 11 a. m.  
 Evening Worship 7:30 p. m.  
 N. Y. P. S., Tues. 7:30 p. m.  
 Mid-week Service Wednesday 8 p. m.  
 Come and Worship With Us.  
 Interest is growing in our Sunday School. The lessons are on the Bible and sound religion.

**ST. JOHN'S LUTHERAN CHURCH**

**W. B. Gummelt, Pastor**  
 Lariat, Texas  
 Sunday School and Bible Class 10 a. m.  
 Divine Services 11 a. m.  
 Sunday School Teachers meet every Wednesday 8 p. m.  
 Ladies' Aid meets first Thursday of each month 2:30 p. m.  
 Walther League meets first Sunday of month 8 p. m.  
 A cordial welcome awaits you at St. John's.  
 "Let the Word of Christ dwell in you richly."—Col. 3:16.

**CHURCH OF CHRIST**

**Muleshoe, Texas**  
**Ebb Randol, Minister**  
 Bible Classes for all 10 a. m.  
 Preaching 10:50 a. m.  
 Communion 11:45 a. m.  
 Preaching 8 p. m.

**WATSON BAPTIST CHURCH**

**Rev. W. O. Wilson, Pastor**  
 Special Prayer Service 9:45 a. m.  
 Sunday School 10 a. m.  
 Morning Worship 11 a. m.  
 Training Union 7 p. m.  
 Evening Worship 8 p. m.  
 Bible Study and Prayer Service, Wednesday 7:30 p. m.  
 WMU, Monday 2:30 p. m.

**FIRST BAPTIST CHURCH**

**Lazbuddie, Texas**  
 Sunday School 10 a. m.  
 Morning Worship 11 a. m.  
 Training Union 6:45 p. m.  
 Evangelistic Service 7:45 p. m.  
 "Not forsaking the assembling of yourselves together."—Heb. 10:25

**PROGRESS BAPTIST CHURCH**

**Rev. C. C. Morgan**  
 Sunday School 10 a. m.  
 Morning Worship 11 a. m.  
 B. T. U. 7:30 p. m.  
 Evening Worship 8:30 p. m.  
 Mid-week Prayer Service Wednesday 7:30 p. m.

**PROGRESS METHODIST CHURCH**

**Carrol M. Jones, Pastor**  
 Sunday School 10 a. m.  
 Morning Worship 11 a. m.  
 Evening Fellowship Classes 8 p. m.  
 Evening Worship 8:45 p. m.  
 W. S. C. S., 2nd and 4th Mondays

**LONGVIEW BAPTIST CHURCH**

Sunday School 10 a. m.  
 Preaching Services 11 a. m.  
 B. T. U. 8 p. m.  
 Preaching Services 8:30 p. m.  
 WMS, Monday 2:30 p. m.  
 All Church Night, Wednesday 7:30 p. m.

**FIRST CHRISTIAN CHURCH**

**Avenue G and West 2nd.**  
**Johnny Moore, Pastor**  
 Sunday School 9:45 a. m.  
 Morning Worship 11 a. m.  
 Evening Worship 7:30 p. m.  
 Communion Services each Lord's Day.

**FIRST BAPTIST CHURCH WEST CAMP**

**Rev. T. L. Pond, Pastor**  
 Sunday School 10 a. m.  
 Morning Worship 11 a. m.  
 B. T. U. 7 p. m.  
 W. M. U., Thursday 2 p. m.  
 Evangelistic Service 7:45 p. m.

**METHODIST CHURCH**

**Lazbuddie, Texas**  
**Rev. Harmon Keelm, Pastor**  
 Sunday School 10 a. m.  
 Church Service 11 a. m.  
 Evening Service 8:30 p. m.  
 Mid-week Prayer and Song Service 8:40 p. m.

**BAILEYBOND BAPTIST CHURCH**

**Arthur L. Nunn, Pastor**  
 Sunday School 10 a. m.  
 Training Union 8 p. m.  
 Evening Service 8:45 p. m.  
 Everyone Welcome.

**MAIN STREET MISSIONARY BAPTIST CHURCH**

**M. E. Robinson, Pastor**  
 Sunday School 10 a. m.  
 Morning Worship 11 a. m.  
 Training Union 7 p. m.  
 Evening Worship 8 p. m.  
 W. M. U., Wed. 2:30 p. m.  
 Mid-week Prayer Service, Wednesday 7 p. m.

**FIRST BAPTIST CHURCH**

**Rev. A. W. Blaine, Pastor**  
 Sunday School 9:45 a. m.  
 Morning Worship 10:50 a. m.  
 Training Union 7 p. m.  
 Evening Worship 8 p. m.  
 Prayer Meeting, Wednesday 8 p. m.  
 Officers and Teachers, Wednesday 8 p. m.  
 W. M. U., Monday 3 p. m.  
 Choir Rehearsal, Thursday 8 p. m.

**PRIMITIVE BAPTIST CHURCH**

**At Friendship**  
**8 Miles South of Sudan**  
 Second Sunday and Saturday before, Elder V. J. Lowrance, pastor.  
 Fourth Sunday and Saturday before, Elder Jack West, pastor.

**NORTH SIDE CHURCH OF CHRIST**

Worship each Lord's Day 10:30 a. m.  
 Evening Service 8 p. m.  
 Tuesday Evening 8 p. m.  
 You Are Welcome.

**UNITED PENTECOSTAL**

Sunday School 10 a. m.  
 Preaching Service 11 a. m.  
 Young People's Service 7 p. m.  
 Tuesday Evening Bible Class 7:30 p. m.

**FIRST METHODIST CHURCH**

**H. W. Hanks, Pastor**  
 Morning Worship 10:55 a. m.  
 M. Y. F. 6:30 p. m.  
 Evening Worship 7:30 p. m.  
 Choir Practice Wednesday 8 p. m.  
 Young Women's Bible Study, Tuesday 7:30 p. m.  
 Wesleyan Service Guild, 2nd and 4th Mon. 7:30 p. m.  
 W. S. C. S., Wed. 2:30 p. m.  
 Stewards Meeting 1st Monday each month 7 p. m.

**ASSEMBLY OF GOD CHURCH**

**Rev. Lee F. Stokes, Pastor**  
 Sunday School 9:45 a. m.  
 Worship 11 a. m.  
 Tuesday Night Young People 7:45 p. m.  
 Thursday Night Bible Study 7:45 p. m.  
 Public Invited To Attend All Services

**Y. L. BAPTIST CHURCH**

**First and Third Sundays**  
**Rev. James Tidengerg**  
 Sunday School 10 a. m.  
 Morning Worship 11 a. m.  
 Training Union 7:30 p. m.  
 Evening Worship 8:30 p. m.  
 Services every 3rd Sunday Starting at 10:30 a. m.

**Y. L. METHODIST CHURCH**

**L. J. Helm, Pastor**  
 Second and Fourth Sundays  
 Church School 10 a. m.  
 Preaching Service 11 a. m.  
 Bible Study Group 7:30 p. m.  
 Evening Preaching 8:30 p. m.  
 Prayer Meeting, W. S. C. S., First and Third Thursdays 2:30 p. m.

**ANTIOCH PRIMITIVE BAPTIST CHURCH**

**Across Street From Hospital**  
**Elder Jimmie Bass, Pastor**  
 Services every 1st and 3rd Sunday and Saturday before 3rd Sunday.  
 Singing every Sunday night except 3rd Sunday.

**CHRISTIAN SCIENCE SERVICES**

Since God creates all that really exists, man and the universe are spiritual, not material. This freedom-giving thought is explained in the Lesson-Sermon titled "Is the Universe, Including Man, Evolved by Atomic Force?" to be read in all Christian Science churches on Sunday, June 22. The Golden Text states: "Lo, he that formeth the mountains, and createth the wind, and declareth unto man what is his thought, that maketh the morning darkness, and treadeth upon the high places of the earth, The Lord, The God of hosts, is his name" (Amos 4:13).

From the Bible will be read this verse: "Thine, O Lord, is the greatness, and the power, and the glory, and the victory, and the majesty: for all that is in the heaven and in the earth is thine; thine is the kingdom, O Lord, and thou art exalted as head above all" (I Chronicles 29:11).

Mary Baker Eddy, the Discoverer and Founder of Christian Science writes: "The compound minerals or aggregated substances composing the earth, the relations which constituent masses hold to each other, the magnitudes, distances, and revolutions of the celestial bodies, are of no real importance, when we remember that they all must give place to the spiritual fact by the translation of man and the universe back into Spirit. In proportion as this is done, man and the universe will be found harmonious and eternal" (Science and Health with Key to the Scriptures, P. 209).

**PAT R. BOBO**

**ATTORNEY-AT-LAW**  
 Office in Bank Building  
 Muleshoe, Texas

**EXPERT LEATHER WORK**

Boots foxed, Saddles made or repaired.  
 Belts, purses & billfolds made to order.  
 Tarp repairs—Boots and shoes repaired.  
**DUFF LEWIS ROBINSON BOOT SHOP** IKE ROBINSON  
 Repairman Owner

SEE US FOR PROTECTION POLICIES YOU NEED  
**BOBO INSURANCE AGENCY**  
 Office in Bank Building  
**PHONE 2640 MULESHOE**

**BALL DOME LIDS**  
 are HOME-CANNING INSURANCE  
 POSITIVE "Touch-Test" SEAL  
 Only BALL Jars Come with DOME Lids

**THE MAYTAG AUTOMATIC GETS CLOTHES CLEANEST!**  
**JOHNSON-POOL**  
 Tire & Appliance  
 Dial 7370 Muleshoe, Texas  
**B.F. Goodrich TIREHEADQUARTERS**

*Don't let this happen to you!*  
 Buy a Dependable... Modern Automatic Gas Water Heater



Plenty of really hot water... for dishes... for baths... and the scores of other cleaning jobs... any hour, night or day, is always on tap when you have an automatic gas water heater sized to your family's needs. The clean blue flame of natural gas is dependable. Why wait for water to heat when you can always have plenty of really hot water on tap. Ask your gas appliance dealer or your plumber merchant to install a modern automatic gas water heater in your home today.



**West Texas Gas Company**  
 HELPING BUILD WEST TEXAS SINCE 1927

**Grab Grass?**  
**ORTHO CRAB GRASS KILLER**  
 Kill this ugly pest NOW—the easy, scientific way!  
 Gone are the backaches from digging out ugly crab grass patches. It's much easier and more effective to use the new, scientific ORTHO Crab Grass Killer. It kills and controls crab grass in many types of lawns.  
**ORTHO Crab Grass Killer is easy to use...** simply apply evenly over infested area. In severe cases, 2 or 3 applications at weekly intervals may be necessary.  
**For easiest application...** use the ORTHO Fertilizer Spreader—spreads evenly in just the right amounts.

**ORTHO**  
**Jones Farm Store**  
 Phone 5000 Muleshoe



**Just wait till you see the PRICE TAG!**

- ONLY BUICK PROVIDES THEM ALL**
- DYNAFLOW DRIVE\*
  - FIREBALL 8 ENGINE
  - NEW WIDE-BAND BRAKES
  - MILLION DOLLAR RIDE
  - TOP-CAPACITY TRUNKS
  - NEW TWO-TONE INTERIORS
  - SWEEPSPEAR STYLING
  - EASY-EYE GLASS\*\*
  - Plus These, Too, On ROADMASTER
  - AIRPOWER CARBURATION
  - POWER STEERING†
  - SILENCE

feel your shoulders sink back as this beauty takes off.  
 You'll feel like the million dollars it cost to perfect its ride, when you sample the steady smoothness of its gait.  
 It's eager, alert, alive—makes each mile a new experience.  
 Want to try it? Why not? We're willing to let this beautiful bundle of high-powered energy speak for itself.

Equipment, accessories, trim and models are subject to change without notice. \*Standard on Roadmaster, optional at extra cost on other Series. \*\*Optional at extra cost—available on most models. †Optional at extra cost on Roadmaster only.

Sure is true for '52  
 When better automobiles are built  
**BUICK**  
 will build them

**Muleshoe Automobile Company**  
 Highway 70 & North Ave. B Phone 4030 Muleshoe



MR. AND MRS. HULAN BASS

### Miss Jacque Bovell Is The Bride Of Mr. Hulan Bass In Ceremony At Home

Miss Jacque Bovell, daughter of Mr. and Mrs. W. T. Bovell, became the bride of Hulan Bass, son of Elder and Mrs. Jesse Bass of Goldthwaite, Texas, in a ceremony performed in the home of the bride's parents on June 17 at 10:30 a. m. Elder Bass, father of the groom, officiated.

Vows were exchanged before a fireplace beautified by two fern trees with purple asters on the mantle. Pink asters were arranged on the piano.

Joan Montgomery sang "Always" and "Because" accompanied at the piano by Mona Smith, Mona Ellen Wilhite played "I Love You Truly".

The bride, given in marriage by her father, chose a white dressmakers suit with orchid trim. She carried a bouquet of orchid carnations on a beautiful Bible from Jerusalem which is bound with a cover of cedars of Lebanon. The Bible was borrowed from her mother.

Tommie Lee, sister of the bride who served as brides maid, wore

a dress of white linen and navy orzandy with a white linen jacket. Her bouquet was of pink carnations.

Best man was Gene Ellis of Crosbyton, Texas.

The mother of the bride wore a tan nylon dress with blue accessories and a blue carnation corsage. Mrs. Bass, mother of the groom, wore a black sheer dress with natural accessories and a white carnation corsage.

Following the ceremony, a reception was held in the Bovell home. The table was covered with a white madiera linen cloth and centered with a tiered cake decorated with white wedding bells and blue birds and topped with bride and groom figurines.

For their trip to Colorado Springs, Colo., Mrs. Bass wore a sheer multicolor dress with white accessories. After their return they will reside in Sweetwater where he is employed with a surveying company.

Guests were Mr. and Mrs. T. J. Bovell, grandparents of the

### Jim Johnson And Miss Nancy Brown Exchange Vows In Ceremony Monday

The Sigma Alpha Epsilon fraternity temple on the campus of Northwestern University, Evans-ton, Ill., was the setting for the marriage of Miss Nancy Brown of Oconomowoc, Wis., and Lt. James P. Johnson of Muleshoe on Monday afternoon, June 16 at 2:30 o'clock. The Rev. Eugene Durham, Methodist Youth Foundation minister at Northwestern, officiated at the ceremony. White gladioli and carnations decorated the temple.

Both young people were graduated from the university that morning and Lt. Johnson was commissioned a second lieutenant in the Marine Corps at the same time.

Miss Brown, the daughter of Mr. and Mrs. C. W. Brown, chose a gown of white Chantilly lace fashioned with a front skirt panel of nylon net and a sweet-



MRS. JIM JOHNSON

bride of Tahoka, Texas, Mr. and Mrs. A. P. Edwards and Kay of Lubbock, Mr. and Mrs. Inez Knight, Lubbock, Mrs. Boyette Wicker, Goldthwaite, M. G. Bass, Mr. and Mrs. Harvey Bass and children, Carolla and Vina of Muleshoe, Kenneth and Stanley Bass, brothers of the groom of Goldthwaite, Mrs. Lutishia Watson, Charlene and Howard, Charles Bratcher, Betty Lynn Shook, Mona Wilhite, J. Ann Wyer, and Bill and Nine Ed, brother and sister of the bride.

heart neckline. A headpiece of two double rows of pearls and net flowers outlined in pearls at the sides of the head, held the fingertip net veil in place. The bridal bouquet was Amazon lilies and stephanotis.

Miss Marilyn Darby of Rockford, Ill., fiancée of the bride's brother, Bart, served as maid of honor. A cousin of the bride, Mrs. Benson Brainard, St. Paul, Minn., and Carol Moss, Wauwatosa, Wis., and Mary Giltname of Oak Park, Ill., sorority sisters of the

bride, were the other bridal attendants. They wore yellow net ballerina length gowns and carried bouquets of tan and brown orchids outlined in ivy. Similar flowers were worn in their hair.

Roald Johnson was best man for his brother. They are the sons of Mr. and Mrs. Fred Johnson of Muleshoe. Park Stuart, Lubbock, and Lyle Hoeft, Appleton, Wis., both of whom are fraternity brothers of the groom, and Bruce Brown, brother of the bride, performed the ushering duties.

Miss Inga Swenson, sorority sister of the bride, was the soloist.

For her daughter's wedding, Mrs. Brown chose a gray silk organza gown with white lace yoke and embroidery, set with rhinestones. Her corsage was of red roses. A dress of navy sheer with a pink yoke and a corsage of pink roses was worn by Mrs. Johnson, the mother of the groom.

Immediately after the ceremony, a reception was held at the Sigma Alpha Epsilon banquet room where the young people greeted their university friends and the friends of the families.

When the couple left for a wedding trip, young Mrs. Johnson wore a pale gold suit with soft blue coat and shoes and a white hat. Lt. Johnson will be stationed at Quantico, Va. The couple will live in Alexandria.

Both the bride and groom were active in university affairs during their four years at Northwestern.

The bride, a graduate of Oconomowoc High School, has been starred in Northwestern's Waamu shows for four years. She is a member of Alpha Phi Sorority and Zeta Phi Eta, professional speech fraternity. She was chosen color girl for the university's ROTC Commandant's Review on May 29. Mrs. Johnson received her degree from the School of Speech.

Lt. Johnson is a member of Sigma Alpha Epsilon, whose national headquarters are at Northwestern and is a past president of the Northwestern chapter. He served as battalion commander of the Naval ROTC at the university part of his senior year and won the Chicago Tribune medal for outstanding military character this year. He also was graduated from the School of Speech. He is a graduate of the Lubbock high school.

### Fidelis Class Luncheon Held In Griffiths Home

Wednesday, June 11, a 1 o'clock luncheon was given in the home of Mrs. Ray Griffiths with Mrs. R. D. Precure as co-hostess. The scene was decorated with arrangements of assorted summer flowers.

Salad refreshments were served to those present.

Visitors present were Mrs. W.

M. Pool, Lubbock, Mrs. W. B. Wagnon, Muleshoe, Mrs. Naomi St. Clair, Progress, and Mrs. Guy Nickels.

Members of the Fidelis Class present were Mesdames R. L. Jones, Lois Robison, J. J. DeShazo, W. B. McAdams, Mickey Lewis, Joe Damron, J. V. Peeler, T. C. Young, L. T. Green, Jr., Lula D. Gorrell, H. L. Blackburn, D. L. Morrison, W. M. Pool, Grace Lane, Altah Davis, Alice Bulloch, Bertie Nickels, Mabel Bristow, Maud Tate, Billie Mathis, Lou Green, Jackie Tate, Mae Schuster, Lila Pence, Madge D. Clements, and A. W. Crow.

### Mrs. John Thomson Hosts H. D. Club

The Progress Home Demonstration Club met Tuesday, June 17, in the home of Mrs. John Thomson.

Mrs. George Stotts presided over the meeting. Mrs. G. T. Maltby gave a reading, "The June Prayer" from the Progressive Farmer magazine. Roll call was answered with "A Suggestion for the Club Program for Next Year."

Council report was given by Mrs. Gordon Murrah. There is to be a craft show the week of July 7-12, with the articles being sold on Saturday, July 12.

Mrs. G. T. Maltby was elected as nominee to council T. H. D. A., chairman. Mrs. Harold Mardis was elected as nominee delegate to the state meeting.

Kiddies — Save all your Post Cereal box tops — the winner will receive the Roy Rogers Gun & Holster Set. The contest ends June 21st.

**your ONE-STOP shopping center**

FREE PARKING COMPLETE STOCKS ONE-STOP SHOPPING DAILY SPECIALS LOWEST PRICES

Be sure and save your Play Money given with each purchase — it's good for the drawing and auction of valuable prizes at Cox Drive-In.

#### GROCERY STAPLES

- DEER BRAND NO. 2 CAN SPINACH ..... 9c
- LIBBY'S 46 OZ. CAN TOMATO JUICE ..... 25c
- ROSE DALE NO. 303 CAN SWEET PEAS, 2 for ..... 25c
- KRAFT DINNER, 2 for ..... 25c
- KIMBELLS JUMBO NO. 2 CAN BUTTER BEANS ..... 15c
- DWAN'S R. S. P. NO. 2 CHERRIES 19c

- GIANT SIZE TIDE ..... 69c
- SAPHIRE PAPER TOWELS, 2 for ..... 29c
- JOY BUBBLE BATH ..... 25c

- HEARTS DELIGHT NO. 2 1/2 CAN PEACHES 25c

- 300 COUNT KLEENEX ..... 19c
- GREEN LABEL NO. 1/2 CAN STAR KIST TUNA ..... 29c
- GOOCH'S BEST FLOUR, 25 lbs. ..... \$1.89

- SALAD DRESSING QUART Miracle Whip ... 49c

- FULL POUND KRAFT CARAMELS ..... 29c

The Kraft Caramels guessing contest will end June 21st.

#### QUALITY MEATS

- SUGAR CURED HICKORY SMOKE PICNIC HAMS, lb. .... 39c
- WILSON CORN KING BACON Lb. .... 37c
- VANCE'S COUNTRY STYLE SAUSAGE, lb. .... 45c
- NO. 1 LEAN PORK CHOPS, lb. .... 49c

LIPTON Frostee DESSERT MIX

1 PKG. FROSTEE FREE FOR COUPON INSIDE SPECIAL WHEATIES PACKAGE—WHILE SUPPLIES LAST

- WHEATIES 12 oz. PKG. 21c

#### Fruits - Vegetables

- FRESH CALIFORNIA YELLOW SQUASH, lb. .... 5c
- GOLDEN RIPE BANANAS Lb. .... 9c
- FRESH CALIFORNIA SWEET CORN, ea. .... 5c
- SUGAR LOAF CANNING PINEAPPLE, doz. .... \$2.65, ea. .... 25c

#### FROZEN FOODS

- SNOW CROP FROZEN 10 OZ. CUT CORN ..... 19c
- SNOW CROP FROZEN 10 OZ. BABY LIMAS ..... 27c

FREE DELIVERY  
Phone  
2440 or 2450

# CASHWAY GROCERY

"Where Friends Meet And Prices Talk"



We keep tractors running smooth with our

## EXPERT SERVICE GENUINE PARTS

If a Ford Tractor gets conscientious maintenance attention every day it will deliver an awful lot of work before it needs an overhaul.

But the time comes, even to a Ford Tractor, when it needs a trip to the shop to put it in shape for economical, powerful, new-like performance. When that time comes, just phone us.



HICKS TRACTOR CO. MULESHOE

**FOR SALE**

**FOR SALE**—I have 7 lots in Lakeside addition to Muleshoe which I want to sell. I will sell these lots cheap and with a small down payment, or will trade. . . what have you?

● 5 lots on Clovis highway with a total of 270 feet highway front. Bargain. Will take down payment.

● 160 or 320 acres at Van Horn. Water proved. \$75.00 acre with \$30.00 down.

● 5 acres unimproved close to Muleshoe. Bargain.

● Good house, well located. Has large loan. Possession now.

\* 2.2 room houses to be moved. Bargain at \$785.00 each.

\* 1-3 room house to be moved for only \$1575.

\* Some acreage, close in. Fine building sites.

\* 640 acres good land, with good 4 room house, plenty outbuildings. This is a good section of land and clean. In water belt. Will pay rent this year with possession in January.

See DAVE AYLESWORTH at the MULESHOE NURSERY on Clovis highway. LONE STAR TRADING POST IN MULESHOE.

**REAL ESTATE**

**For Sale**

● 292 acres good dry land, well imp. well located south of town. Priced at \$100 per acre.

● 80 acres imp. irrigated, close in, \$28,000.

● 80 acres imp. shallow water, close in, \$21,500.

● 160 acres, best of land, irrigated, close in, \$42,500.

Some good small tracts priced to sell.

If you figure on buying it will pay you to look over our listings.

C. L. "HAPPY" DYER  
C. E. BRISCOE  
Phone 3710 Muleshoe

USE THE **CLASSIFIED** FOR RESULTS

**FOR SALE**

**FOR SALE**—'48 Chevrolet, in good shape, good tires and clean. See Ray Lawton, 10 miles east and 7 north of Muleshoe. 22-4tp

**FOR SALE OR TRADE**

\* 25 acres on pavement near Mineral Wells, Texas. Ranch style home, 3 bed rooms, den, 2 car garage. This home has a 99' 4-10 front, private fishing lake. 70 acres grass lease if you want a small stock farm this will suit party. Will trade 80 acres or 160 acres.

**City Property**

\* 4 room bath good, rent property, rented now for \$40 per month. Owner wanting to sell. Priced for quick sale. \$2,300, has some loan.

\* 2 room house to be moved. For quick sale. \$600 cash.

**Eddie Lane**  
Real Estate & Insurance  
Phone 3630 or 5689  
Muleshoe Texas

**FARMS AND HOMES**

**FOR SALE**

We are in this business to sell you a home. Come to see us when you are ready to buy. We have nearly any size farm you want and homes in town. Give us your listings if you want to sell.

**HANOVER & DAY**

**REAL ESTATE**  
On Morton Highway  
Just North Of Courthouse

**REMEMBER — To vote for Karl L. Lovelady, State Representative, 96th. District. 23-4tp.**

**FOR SALE:** Choice lots in West part of town. See Dyer Hardware and Furniture. 24-4tc.

**FOR SALE:** '49 Ford tractor on Butane. See Lee Mason, 6 mi. north, 1 west and 1/2 north. 21-5tp.

**FOR SALE**

**CROP FOR SALE**

\* A money maker for the right party. 750 acres — 600 acres in-cultivation, listed and knifed. 150 acres good grass. 5 room modern house, butane tank. Crop rent.

If you are a good farmer, this is a chance of a life time. A small amount of cash will pay for work that has been done.

Muleshoe, Texas

**H. C. HOLT**  
Real Estate  
1003 American Blvd.  
Phone 4880 or 6530

**REALTOR**

The term "Realtor" was coined to designate members of the National Association of Real Estate Boards and its constituent Boards. The exclusive right to the use of this term has been upheld by a score of court decisions.

The term designates those persons in the real estate business who have available to them the accumulated knowledge of over forty years of experimentation and research in real estate business methods and standards. Realtors are those who, in the judgement of their peers in their business, are persons with personal standards and business competence of sufficient merit to warrant entrusting them with the important fiduciary relationships involved in real estate transactions. They have voluntarily pledged themselves to a code of ethics governing their business conduct, their relations with each other, and their relations with the public.

**CLYDE A. BRAY**  
REALTOR

**FOR SALE:** 1 Jersey cow, 1 Holstein, both fresh, 1946 Model A-C combine, 1948 M-M mower. See D. F. Walton, 2 miles east of West Camp. 26-1tp.

**FOR SALE:** 6 registered OIC hogs at a bargain. See Ed Edmiston at Muleshoe Motor Co. 26-2tp.

**FOR SALE:** Factory made trailer house, 32 ft. long, includes bed, stove, ice box, table, divan, chairs, butane bottle. Newly painted. Phone 4880 or 6530. 26-1tc.

**Pigs For Sale:** A number of pigs to select from, all pigs subject to register out of FFA Hampshire Sows. Good pigs for Dallas Fair Show. Also registered sow for sale. See Keith Bray at High School or call 2820 for Clyde Bray. 20-14tc.

**FOR SALE:** Registered milking shorthorn cows, heifers and bulls. 3 mi. east and 7 north of Muleshoe. F. L. Wenner.

**FOR SALE:** 4 unit apartment. 28x60, modern with hard wood floors, linoleum, wall heaters and bath tubs. Corner lot and all paved, \$10,000, \$2,000 down. S. E. Goucher. 24-4tp.

**FOR SALE:** Metal irrigation pump houses built to order. 1 4-strand 80 cotton gin to be moved. 1 large cafe. Day phone 27612, night phone 22100. Weldon Willbanks, Lubbock. If not in leave name. 24-4tp.

**FOR SALE**

All Types Cushman Motor Scooters: We repair all makes of scooters. Cushman Scooter Sales & Service. 510 Prince, Clovis. 26-1tp.

**For Sale (Used)**

2-Disk Plows, 4 & 5, M-M.  
1-MTA M-M Butane Tractor.  
1-Ford Tractor.  
MACHA STORMPROOF  
COTTON SEED - DELINTED  
**JOHNNIE GRAHAM**  
Rt. 2, 6 mi. So. Littlefield Texas. 16-12tp.

**BUSINESS SITE FOR SALE OR LEASE**

One of the best business sites in Muleshoe. 339 ft. Clovis highway frontage between Fred Johnson's warehouse and corner facing Dr. Pittman's.

- Ideal for Tourist Court, Drive-in or Super Service Station.  
Low down payment, owner will finance if sold or will give long term lease.

Write  
**H. A. PHILLIPS**  
709 West Second  
Portales, N. M.

**NEW**

OLIVER 8 row Sprayer.  
DIESEL & Gas row crop "88" Tractors.  
OLIVER 14 ft. Self-Propelled Combines.  
OLIVER automatic Wire Tie Hay Baler.  
"99" WHEAT Tractors.  
4-Row Oliver cultivators.  
4-Row listers and planters.  
GAS 77 Tractors.  
GAS 66 Tractors.  
OLIVER Cotton Harvesters.

**USED**

3-Row front type lister for Oliver 70 ..... \$50  
JOHN DEERE D. late model ..... \$1250  
12-ft. Oliver Combine ..... \$2250  
12-ft. Baldwin Combine ..... \$1500  
"D" John Deere Tractor ..... \$450  
One Oliver Row-Crop "70" ..... \$350  
6-ft. Case Combine ..... \$250  
16-ft. International Combine, \$250  
12-ft. Oliver Combine ..... \$750  
2-row Oliver cultivators, \$125 ea.  
16x10 Oliver Drill ..... \$300  
Oliver 9 ft. Combine ..... \$150

Genuine Oliver parts with guaranteed service; pickup & delivery.

**MOORE OLIVER CO.**  
"Dutch" & "Pete" MOORE  
822 W. 7th Dial 6133  
Clovis, N. M.

**MUMFORD BOGART THE AFRICAN QUEEN KATHARINE HEPBURN**  
Released thru United Artists  
TECHNICOLOR

**Coming Soon**  
Cox Drive-In Theatre  
Muleshoe, Texas

**SALESMAN WANTED**

Unexpected change causes vacancy. Opportunity for man with car to supply demand for Rawleigh Products in Bailey County. No capital needed. White Rawleigh's Dept. TXF-270-203, Memphis, Tenn. 25-3tp.

**FOR SALE**

**CENTRALLY LOCATED HOME AND INCOME**

\* 4-room house, living room, dining and kitchen combined. Bedroom and bath. Located on paved streets. 2 blocks of high school. Immediately possession. Priced, \$3400.00. Half cash, balance payment in monthly installments.

Location: West 5th street.  
Legal: Lot 9, Block 6, Faces West, Skyline addition.  
Size Lot: 50x140.  
Description: This well-built home is of frame-stucco. Construction about 4 years old, interior is extra nicely furnished throughout. 2 bed rooms, living room and dining room, extra well equipped kitchen and garage attached. Priced \$9,000., loan of \$6,412.50, \$1,203.75 will handle to good reliable party.

**CLYDE A. BRAY, SR.**  
REALTOR  
Box 243 - Muleshoe Phone 2820

**FOR RENT**

**FOR RENT:** Furnished apartment, private bath. Mrs. Faulkner, 1218 Ave. E. 24-ttc.

**FOR RENT:** Furnished 3 rooms and bath. West 2nd and Ave. J. John R. Hammock. Phone 6231. 24-2tp.

**FOR RENT—Apartments, unfurnished.** Phone 6261. S. E. Goucher. 22-4tc.

**FOR RENT:** 3 business rooms, 24x140, 12x30 and 24x40. Mrs. Moeller. 11-ttc.

**FOR RENT:** Very nice furnished 3 room and bath apartment. Bills paid. Layne Apartments. 24-2tp.

**FOR RENT:** A. P. Stone residence. New furniture in part. See Barry Lewis. 24-4tc.

**REMEMBER — To vote for Karl L. Lovelady, State Representative, 96th. District. 23-4tp.**

**FOR RENT:** 3 room furnished upstairs apartment. Phone 5124. 25-2tp.

**FOR RENT:** Unfurnished apartment. Across the street from hospital. \$35 bills paid. S. E. Goucher. 26-4tp.

**FOR RENT:** 3 furnished apartments. See Nellie Dean, Ave. I and Main Street. 26-2tp.

**FOR RENT:** Apartment, 3 rooms and bath, unfurnished, \$35 per month. Farley Insurance Agency. 26-1tp.

**FOR RENT:** 4-room modern house. Alvin Kriegel, Shady Rest Grocery. Phone 3000. Phone 3000. 26-3tp.

**FOR RENT:** Furnished or unfurnished house. Bills paid. Call 6920 or see Royce Garth. 26-1tp.

**MASSEY-HARRIS**  
This Week's SPECIALS

Kelley Sweeps.  
Kelley Go-Devil knives.  
Sure Stand Grass Seeder.  
Comfort Sprayer.  
Fertilizing Attachments for planters.  
Massey-Harris Sales & Service.

**TEXAS MACHINERY CO.**  
Clovis Highway  
Phone 5010 — Muleshoe

**IRRIGATION FARMERS**

We Have A Limited Supply Of  
**PACKARD-8 INDUSTRIAL ENGINES**

At A Greatly Reduced Price

The new Packard-8 Engine develops 96 h. p. at 2200 R. P. M's. Comes complete with Twin Disc, clutch, Penn Safety Switch, Skid Rails, Cooling System and Butane Equipment.

WHILE THEY LAST, ONLY  
**\$795**

FOB MULESHOE

**D. H. SNEED SUPPLY CO.**  
"YOUR FERGUSON DEALER"

Muleshoe Texas

So Easy To Put On . . . So Easy To Keep Clean

**New Pittsburgh WALLHIDE**

Rubberized SATIN FINISH

**EXTRA TOUGH EXTRA GOOD LOOKING**

**Glides on with Amazing Ease**

Even if you've never painted before, you can do an expert job with either brush or roller. Stop or start any place. You'll leave no apparent brush- or lap-marks. Even missed spots can be filled in without impairing the final uniform appearance.

**Cleans in a Jiffy**

New WALLHIDE'S non-porous surface prevents dirt or soot from penetrating. Stubborn stains, grease, crayon, ink spots, mercurochrome, lipstick or finger smears can be washed off in a jiffy without harm to the soft, mellow sheen.

**Withstands Hard Family Usage**

No need to worry about lively children scuffing or marring the walls. The modern chemicals used in new WALLHIDE make it extra tough and durable. It dries speedily to a tough, elastic film that will not crack, chip, or rub off.

A COMPLETE LINE OF BUILDING SUPPLIES

● WHITE PINE — All Grades.  
● REDWOOD  
● OAK

A COMPLETE STOCK OF DIMENSION AND 1-INCH LUMBER

**WILLSON-SANDERS LUMBER CO.**

PHONE 7130 MULESHOE

**AT HOME OR AT WORK . . . be Cool, Comfortable, Relaxed!**

**HEALTHFUL COMFORT IS IMPORTANT!**

Everyone wants to be comfortable whether at home or at work. And, we all know it just doesn't pay to be touchy and irritable because we're hot and grumpy. So be wise . . . install a Utility Evaporative Air Cooler . . . and be Relaxed! Get in touch with us. We are Cooling Specialists.

**UTILITY EVAPORATIVE AIR COOLERS**

Built in the West **UTILITY** for Western Living

THE NATION'S FOREMOST MANUFACTURER OF EVAPORATIVE AIR COOLERS

**DYER'S**

PHONE 2590 Muleshoe

**MR. FARMER**

YOU GET FAR MORE WITH THE **SQUIB FARMORE**

**CROP SPRAYER**

4 MODELS - 4 TYPES  
FITS ANY TRACTOR

SERVES EVERY PURPOSE — TUBULAR CONSTRUCTION GIVES GREATER STRENGTH WITH LESS WEIGHT.

Better Spraying Gives You Better  
Insect Control — Better Crops

When You Spray With **FARMORE**  
You Spray With The Best

**JOHNSON-NIX**

PHONE 2940 INTERNATIONAL-OLDSMOBILE  
MULESHOE

### 14 Ordered To Take Physicals

Fourteen men in Bailey, Lamb and Cochran Counties have been ordered to report for pre-induction physical examinations June 24 by Texas Local Board No. 4, of Muleshoe.

The list follows:

Oran Majors, Littlefield; Billy Wayne Scott, Morton; D. O. Lorange, Muleshoe; Virgin Wade Burris, Muleshoe; June McCoy Short, Littlefield; Orlan Wells, Littlefield; Robert Danford, Littlefield; Kenneth Lee Burke, Morton; James J. Hodge, Littlefield; Charles Ross, Littlefield; J. D. Tinker, Littlefield; Richardo B. Hernandez, Littlefield; Ruben Navarette Ramirez, Littlefield; and Jose Gantán Escalante, Morton.

### Henderson With 25th Infantry

With The 25th Infantry Div. in Korea — Sergeant First Class Floyd W. Henderson, whose wife, Eva, lives in Muleshoe, now is serving with the 25th Infantry Division in eastern Korea.

The 25th, approaching its third year on the peninsula, held off the Reds at Pusan in the summer of 1950. Now the senior unit in Korea, its patrols are harassing enemy positions northwest of the Punchbowl.

SFC Henderson, an assistant platoon sergeant in Company E, 14th Infantry Regiment, entered the Army in 1948.

He is the son of Mr. and Mrs. Roy J. Henderson, Muleshoe.

The Texas soldier was formerly employed by the Wagner Construction Co. in Albuquerque, N. M.

### Political Announcements

The Journal is authorized to announce the following candidates for office shown, subject to the Democratic Primary July 26, 1952:

- For Representative 19th Congressional District:**  
GEORGE MAHON
- For Senator, 30th Senatorial District:**  
A. J. "Andy" ROGERS  
HAROLD M. LaFONT
- For Representative, 96th Legislative District:**  
KARL L. LOVELADY  
JESSE M. OSBORN
- For County Judge and Ex-Officio County Superintendent:**  
CECIL H. TATE
- For Sheriff, Tax Assessor and Collector:**  
A. H. (Hugh) FREEMAN  
W. F. (Buck) CREAMER
- For County & District Clerk:**  
M. G. BASS
- For County Attorney:**  
NORMAN W. BAYS
- For County Treasurer:**  
HELEN JONES  
LEONA MASON
- For Commissioner, Prec. 1:**  
L. T. MCKILLIP  
M. E. FINLEY  
TOM MORGAN
- For Commissioner, Prec. 2:**  
WOODROW W. COUCH  
TOM L. SMITH
- For Commissioner, Prec. 3:**  
BOB KINDLE  
H. E. BAKER
- For Commissioner, Prec. 4:**  
R. P. McCALL  
W. E. "Woody" GOFORTH  
C. W. VANLANDINGHAM
- For Constable, Prec. 1:**  
J. N. (Jesse) JAMES  
CECIL W. PERKINS  
EARL E. WILLEFORD

**VISITED IN PLAINVIEW**

Mr. and Mrs. Arnold Gross visited Friday near Plainview with her parents, Mr. and Mrs. Sam Long. Their sons, Jim and Joe, are spending the summer on their grandparents' farm.

**BUDDY WISEMAN TRAINS AT GREAT LAKES**

U. S. Naval Training Center, Great Lakes, Ill. — Undergoing a two-week reserve training course here is Buddy J. Wiseman, seaman apprentice, USNR, son of Mr. and Mrs. Charles Wiseman of Sudan.

The training given reserves closely parallels that given the regular recruit. Certain subjects are stressed and others are eliminated from the training due to the shortness of the course as compared to the 11-weeks afforded the regular Navy recruit.

**VISIT IN COLORADO**

Mr. and Mrs. W. M. Pool, Jr., are visiting in Ordway, Colo., with their daughter and family, Mr. and Mrs. David Jones and children.

### Our Honor Roll

New subscribers to The Journal this week are:

John Sain, Route 2.  
Floyd Templar, Hartshorne, Okla.  
W. S. Turner, Sudan.  
Ernest Ware, Austin, Texas.  
Eugene White, Friona.  
Old subscribers who have renewed their subscriptions to The Journal this week are:

Howard Cox, City.  
Opal Booth, City.  
Sam Fox, City.  
L. C. Browder, City.  
Dave Aylesworth, City.  
C. B. Howard, City.  
Morris Douglass, City.  
Cobb's, City.  
Fry and Cox, City.  
Muleshoe Liquefied Gas Co., City.  
C. A. Stone, City.  
Anna Moeller, City.  
Dudley Malone, City.  
Bert Gordon, Route 1.  
Kenneth Precure, Route 1.  
Deon Awtrey, Route 2.  
E. W. Locker, Route 2.  
W. W. Couch, Route 2.  
W. M. Harmon Star Rt. 2.  
Van Rogers, Sudan.  
I. M. Williams, Comanche, Tex.  
Donald Kimbrough, Ft. Worth.  
Sid Goodwin, Hobart, Okla.  
Edd Hay, Forrar, Iowa.  
J. B. Jennings, Ponca City.  
J. A. Meyers, Riverbank, Calif.  
Mrs. Earl Wilkins, Corcoran, Calif.  
Erich Moeller, Wheeling, W. Va.

### IS PROMOTED TO SERGEANT

Carter Taylor, son of Mr. and Mrs. Lud Taylor and student of N. M. M. I. of Roswell, was promoted to the rank of sergeant first class at the commencement exercises June 3. He went to armored summer camp at Fort Knox, Ky., on Monday, June 16. Leo Mihás, Demming, N. M., who was his roommate went with him. He is a freshman student in the college division.

Carter is a member of the Jambolaya baseball team, and the "I" Club. A full page in the 1952 "Bronco", the annual, is devoted to portraying Cadet Taylor blowing a coronet.

### MOVE TO ARKANSAS

Mr. and Mrs. Earl Jeter and daughter, Beth, their son and family, Mr. and Mrs. Bill Jeter and little son, Bill, have moved to Springdale, Ark. The family has resided here for many years.

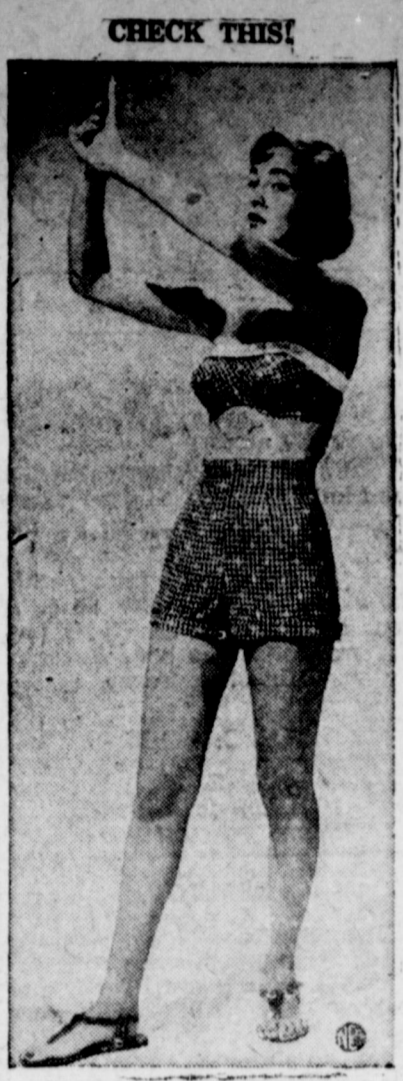
### HERE FROM CLOVIS

Mr. and Mrs. McCawley, of Clovis, visited here Sunday with his sister, Mrs. John Sain, and niece, Mrs. George Province and family.

### BACK IN STATES AFTER THREE YEARS IN AUSTRIA

Doyle Evans, son of Mr. and Mrs. L. E. Evans, is expected to arrive on the east coast this week after 39 months of overseas duty in Austria. When he left for Austria he was 18 years of age.

For Results Try The Journal Want-Ads.



CHECK THIS!  
The National Cotton Council says be sure to check this two-piece strapless bathing suit by Rose Marie Reid. It tells the story of 1952 swim-fashions—the check's the thing. This one of Ameritex swiss embroidered cotton trimmed with white pique is sensational casual news. The girl's okay, too!

IN SUMMER SCHOOL  
Jerry Kirk, superintendent of schools, is attending eight weeks of the summer session at West Texas State College, Canyon, working toward his Master Degree.

**Dr. C. H. McIlroy**  
Naturopathic Physician

906 MAIN STREET  
Phone 5350 — Muleshoe, Texas

**Clovis Veterinary Hospital**  
AT THE STOCKYARDS CROSSING  
Facilities for Large and Small Animals

E. E. KRAUS, D. V. M. CHAS. WEBSTER, D. V. M.  
104 Hull Phone 5442 Clovis, N. M.

**FEATURING**

- RADIO WAVES
- COLD WAVES
- MACHINE CURLS
- 4-WAY HAIRCUTS
- HAIR STYLING
- MANICURING

OPERATORS  
Evelyn Autrey — Sue Bradley — Noreane Albin

**SUE'S BEAUTY SHOP**  
Phone 2929 — Muleshoe

**HAY WANTED**  
TOP MARKET PRICE  
I want To Buy Your Baled Hay

**Sikie Watkins Hay Co.**  
Phone 6290  
NORTH OF KING BROS. ELEVATOR MULESHOE

A Pleasurable Evening Awaits You At The

# MOVIES

Week Days Open 7:30 p. m., Starts 7:45 p. m.  
Saturday and Sunday Open at 1:45, Starts at 2:00  
and Continuous Showing  
Box Office Closes 9:30 p. m.

Admission: Adults 36c Children 9c

Here are the programs for the coming week at your local Theatres

---

**VALLEY PALACE**

**THURSDAY and FRIDAY**  
Judy Canova  
—In—  
**Oklahoma Annie**

**THURSDAY and FRIDAY**  
Jeanne Crain  
Scott Brady  
—In—  
**Model And Marriage Broker**

**SATURDAY ONLY**  
Johnny Mack Brown  
—In—  
**Mam From Man From**

**SATURDAY ONLY**  
Robert Preston  
—In—  
**Palomino**

**SUNDAY and MONDAY**  
James Stewart  
—In—  
**Carbine Williams**

**SUNDAY and MONDAY**  
Richard Widmark  
—In—  
**Red Skies Of Montana**

**TUESDAY and WEDNESDAY**  
Fred McMurray  
Anne Baxter  
—In—  
**Smokey**

**TUESDAY and WEDNESDAY**  
Pat O'Brien  
—In—  
**Okinawa**

Motion Pictures Are Your Best And Cheapest Entertainment

**THE CHRYSLER NEW YORKER CONVERTIBLE**  
(This body style also available in Windsor DeLuxe with Spitfire Engine.)  
White side-wall tires at extra cost.

## ITS ENGINE ADDS MUSCLE TO EVERY DROP OF GAS!

To many owners, the mighty 180 H.P. V-8 engine that powers the Chrysler New Yorker is the most remarkable feature of this remarkable car. It is certainly the most discussed automobile engine in many, many years.

This is the engine with hemispherical combustion chambers... the engine that gets more power out of every drop of gas. And non-premium gas at that!

Actually, it puts you in control of more power than you'll probably ever need use. You'll sense this... together with its unequalled response... the very first yards you drive. It runs smoother, more quietly, and with less wear than any other engine ever built into an American automobile.

... and it makes driving (both cruising and the short runs) more fun than you have ever known it to be!

But that's not all. Along with this engine there are scores of other reasons, too, for driving a New Yorker before resolving on any new car. Like Full-time Power Steering that makes steering five times easier... and your control five times greater... than in ordinary cars. Like Power Brakes that cut needed pedal pressure by as much as two-thirds.

Like Oriflow shock absorbers that make even bad roads feel "newly paved"... restful chair-high seats... big, wide-opening doors... big windows that let you see more.

It's true... until you drive a Chrysler New Yorker you won't know what you're missing. Why not stop in today?

# CHRYSLER

THE FINEST CAR  
AMERICA HAS YET PRODUCED

DRIVE A CHRYSLER Today!  
Let Us Help You!

## Morrison Motor Co.

1021 WEST 1st STREET MULESHOE, TEXAS

**MY FAMILY IS SAFER BECAUSE WE HAVE AN ELECTRIC Water Heater**

Father knows best. He knows that only the completely-insulated electric water heater—the water heater with the enclosed heating elements—is the completely safe water heater. An electric water heater—conventional or table-top model—fits into your home. Place it where it fits your home plan best, you don't have to hide it.

There's a style, a size and a place for an electric water heater in your home.

SEE YOUR  
**MODERN ELECTRIC APPLIANCE DEALER**

**SOUTHWESTERN PUBLIC SERVICE COMPANY**  
27 YEARS OF GOOD CITIZENSHIP AND PUBLIC SERVICE



## Jacque Bovell Is Shower Honoree

The Spencer Beavers home was the scene of a come and go bridal shower on June 11 honoring Jacque Bovell, bride-elect of Jimmie Bass. The setting was enhanced by arrangements of summer flowers.

Hostesses for the occasion were Mesdames C. E. Layne, Jack Beddingfield, and Spencer Beavers. Registering the guests was Tommie Bovell, sister of the honoree.

Small white cakes topped with pink hearts were served by Jon Ann Thomson while Marilyn Gupton presided at the punch service. Gifts were displayed in the bedrooms.

Guests registered were Mesdames Horace Blackburn, C. A. Watson, H. S. Bass, John Thomson, Jerry Kirk, Alton Epting, F. S. Shelby, Ed Hicks, Ruth Fowler, I. M. Etinson, Troy Daniel, M. G. Bass, C. W. Wilhite, and Miss Carolyn Sue Kirk.

Sending gifts were Mesdames A. P. Edwards, W. W. Wilson, W. Q. Casey, Aubrey Heathington, Eddie Lane, Ray Griffiths, Byron Griffiths, J. H. Farley, Cliff Odom, Rufus Gilbreath, Jack Epps, A. J. Edwards, Buck Creamer, and Phyllis Rusch, Messrs. and Mesdames T. J. Bovell, Charles Lenau, Lynn Bratcher, John Evans, and Miss Mona Wilhite.

### FARRELL REUNION HELD IN HOME OF PAT BOBO

The Farrell family reunion was held in the home of Mr. and Mrs. Pat R. Bobo on Wednesday evening, June 11. Those attending were: Mr. and Mrs. Clay Buchanan, Peggy and Patsy, Morton; Mr. and Mrs. Arlo Farrell, who is stationed with the Air Force in Tampa, Fla.; Mrs. W. M. Stowe, Twila Gayle and Billy Mac of Oklahoma City; Mrs. James Carter of Amarillo; Mrs. Carl Huber and Claude of Bronx, N. Y.; and Mr. and Mrs. C. R. Farrell, Mr. and Mrs. Alvin Farrell, Daniel, M. G. Bass, C. W. Wilhite, and Miss Carolyn Sue Kirk.

## Society News

THE MULESHOE JOURNAL, Thursday, June 19, 1952

### Beautiful Candlelight Service Joins Miss Donna Kimbrough, Mr. Ed Nickels



MRS. ED NICKELS

In a beautiful candlelight service at the Main Street Baptist Church on June 14, at 7:30 p. m., Miss Donna Kimbrough, daughter of Mr. and Mrs. Finis Kimbrough, was married to Mr. Ed Nickels, son of Mr. and Mrs. Guy Nickels.

Rev. M. E. Robinson read the double ring ceremony under an arch of greenery and bridal satin. Tall candelabrum and fern trees banked the altar with baskets of pink gladioli completing the scene.

Miss Greta Paul at the piano accompanied Mrs. Loyd Roberts as she sang "Because" and "Always".

The bride, given in marriage by her father, wore an original gown of white metallic nylon and tulle, fashioned with a full skirt. The fitted bodice and slender waist was emphasized by a deep point in the center with a tiny covered button trim to waist. The long fitted sleeves ending in points over the hands were also trimmed with covered buttons. Her fingertip veil was

attached to a lace calet with seed pearls and rhinestone trim. She wore a single strand of pearls and carried a bouquet of white rose-buds surrounded with white stephanotis on a white Bible.

Attending the bride as maid-of-honor was her sister, Wanda Kimbrough. Her gown was of orchid metallic nylon and tulle fashioned similar to the bride's. She carried a bouquet of pink gladioli. The bridesmaids, Bettye Gaede of Limon, Colo., and Mrs. Charles King were identical ballerina length dresses of ice blue taffeta with corsages of pink gladioli.

J. A. Nickels served as his brother's best man and Lee Kimbrough and Charles King were ushers.

Little Miss Donna Jo Gaston, niece of the groom, was ring bearer. Her dress and bonnet was of yellow organdy ruffles with ribbon trim.

For her daughter's wedding, Mrs. Kimbrough wore a teal blue dress with black and white accessories. Her corsage was of white roses. Mrs. Nickels, mother of the groom, wore a navy suit of silk shantung with white accessories and a corsage of yellow

### Bridal Shower For Donna Kimbrough

A bridal shower was given in the home of Mrs. Dudley Malone Friday, June 6, from 4 to 6 p. m. honoring Miss Donna Kimbrough, bride-elect of Ed Nickels.

Registering the guests was Miss Bettye Gaede at a table decorated with an arrangement of red roses. Lime sherbert punch was served by Wanda Kimbrough, sister of the bride-elect, from a table covered with a madiera linpe cloth centered with a cambridge of arms holding white candles, white carnations, and white mints. An arrangement of assorted colors of larkspur on the coffee table completed the setting.

In the receiving line were the honoree, Donna Kimbrough, her mother, Mrs. Finis Kimbrough, and the mother of the groom to be, Mrs. Guy Nickels. They were presented with carnation corsages by the hostesses.

Hostesses were Mesdames C. M. King, E. R. Hale, Glenn Splawn, Clinton Bristow, Claude Sanders, Dudley Malone, Raymond Gaede,

roses. A reception was held at the home of Mr. and Mrs. Guy Nickels with the bride's attendants serving. The table was decorated with pink carnations, gladioli, and tulle. A crystal punch service and the beautiful double wedding cake completed the decorations.

For the wedding trip to Colorado Springs, Colo., the bride chose an ice blue suit of imported cotton with navy and white accessories. Her corsage was of roses.

The bride and groom are both graduates of Muleshoe High School and attended Texas Tech a Lubbock this year.

Mr. and Mrs. Nickels will reside in Muleshoe where he is associated with his father in the ginning business.

Out of town guests attending the wedding were Mrs. Frances Gaede, Charles and Bettye of Limon, Colo., Mr. and Mrs. Earl Sybert and Anne of Morton, Mr. and Mrs. Bruce Horsley and Ronny of Lubbock, Miss Claudene Goen, Floydada, Miss Nell-avene Vaughn, Lubbock, Mrs. T. L. Gilley, Jr., and Janice, Mrs. Winford Reeves and son, Amarillo, Mr. and Mrs. Jack Adud-dell and children, Bula, Mr. and Mrs. H. C. Nickels, Mr. and Mrs. Lawrence Nickels and Don Nickels, Littlefield, Billy Nickels, Midland, Mr. and Mrs. Edward Gaston and Donna, Bovina, Mr. and Mrs. Lawrence Cooper, Lariat, and T. E. Jones, grandfather of the groom of Olney, Texas.

Pat King, and Eddie Lane. RETURN FROM EAST TEXAS Mr. and Mrs. Lawrence McDaniel, Tom Donald, and Mr. and Mrs. Blondie Dyke and son, Junior have returned from a trip to Houston, Galveston, Austin, and San Angelo, Texas. and Misses Claudene Goen, Mona Smith, Greta Paul, Wanda Kimbrough, Bettye Gaede, and the hostesses.

### Farmers! Make Big Savings! Use Low-cost Philgas Tractor Fuel



**Convert your tractor!** Compared to gasoline, Philgas can save you several cents a gallon. These savings will soon pay the cost of conversion. And Philgas is easy and safe to use. No waste from spilling, overflow or evaporation, because the filling system is completely enclosed.

**Clean-burning . . . thrifty!** Save as much as 50% on engine maintenance costs. No cylinder wall washing. Long ring and valve life. Low cylinder wear. For a thrifty fuel with exceptionally high energy content (100 octane plus), get high-quality Philgas.

**All-purpose fuel!** Use Philgas to heat your home, for cooking, hot water and refrigeration! Use it also for heating stock tanks, chick brooders, and other needs around your farm. Install a central tank for all your needs. Low cost fuel. Convenient, clean, dependable!

**And remember . . .** your local Philgas distributor is fully qualified to make dependable installations, to provide prompt and courteous service. See him today.

Philgas is distributed by

### Muleshoe Liquefied Gas Co.

Phone 3130

Muleshoe

## 3rd anniversary sale!

SALE STARTS FRI., JUNE 20, ENDS SAT., JULY 5

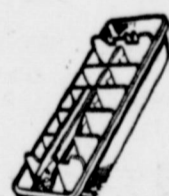
Thousands of other items on sale at greatly reduced prices.



### Save Time, Money and Work with a Wizard ELECTRIC RANGE

Beautiful to look at, a delight to cook on! Features that make your cooking a pleasure! 7-qt. deep well cooker, 7-speed surface units, 3 big storage drawers. See it today!

Reg. \$289.95  
**\$249.95**



Automatic ICE CUBE TRAY  
Reg. \$1.98  
**\$1.19**

Fits any refrigerator. Pull-up handle



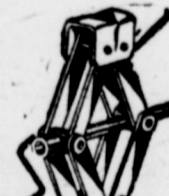
Sturdy 10" TRICYCLE  
Reg. \$6.90  
**\$6.19**

Adjustable seat, handlebars. Red.



BALL BEARING ROLLER SKATES  
Reg. \$2.85  
**\$2.29**

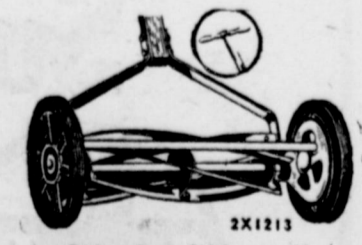
Light, fast and sturdy.



Scissors JACK  
Reg. \$4.69  
**\$3.98**



Guaranteed 24 Mo WIZARD DELUXE  
100 Amp. Original Equipment Size.  
Reg. \$14.65  
**\$13.95**



Westline "Master" LAWN MOWER  
• Ball bearing reel. \$  
• Rubber tires.  
Reg. \$18.95  
**\$17.75**  
Full 16" cut, 10" wheels. Adjustable cutting range.

## WESTERN AUTO ASSOCIATE STORE

PHONE 4720

1205 MAIN

MULESHOE

## Yipes! Stripes!

Jockey Brand UNDERWEAR



## IN CANDY STRIPES

Yes, now you can get Jockey Brand Underwear, that famous for comfort underwear, in brilliantly striped non-run tricot knit acetate fabric. Here's "color" such as you have never seen before in these washable, wearable He-Man Stripes.

Pick your favorite stripes today at:  
\$1.50 for the Jockey Short  
\$1.55 for the white acetate contoured shirt  
Also cotton Jockey Shorts from \$1.20.  
Get them at

## COBB'S

### COOL RETREAT FROM SUMMER HEAT



## RCA Room Air Conditioner

"Tune In" cool nights, pleasant days

No need to run off to the mountains or seashore to escape the heat. An RCA Room Air Conditioner will bring cool mountain resort climate into your own home. . . give you clean, fresh, filtered air the year 'round.

See why RCA gives you better air conditioning  
"HEART-OF-COLD" COMPRESSOR  
"AIRFLOW" GRILLE  
RCA FACTORY SERVICE

A Size For Every Room  
Prices As Low As  
**\$264.95**

COME IN FOR FREE DEMONSTRATION

## HUNKE'S ELECTRIC

Phone 7070

Muleshoe

### IT'S FORMFIT WEEK COBB'S will make yours

### A Sweetheart of a Figure

The Exclusive Life Bra Way



Formfit Week . . . the period each year when women concentrate on improving their figures with our individual consultation on figure problems! So drop in now and let our skilled fitters advise you. See how a Life Bra, Girdle or foundation . . . correctly fitted from our extensive selection . . . can instantly make yours "a sweetheart of a figure." You'll know then why more women wear Formfit than any other make!

Plunging Life Bra Shown \$250  
In Nylon-White and Black

Other Styles from \$125

## COBB'S

Phone 4090

Muleshoe

THE MULESHOE JOURNAL, Thursday, June 19, 1952

## Plains Alfalfa Has New Market In Chlorophyll

(From Plainview Herald)  
There's enough chlorophyll produced in the green crops on the irrigated High Plains of Texas to give the entire population of the United States a sort of greenish hue if all of it were extracted and used.

Chlorophyll is being lauded and exploited in every meadow of the

United States, television, radio, press, movies, billboards, have-a try distributors of chic (chewing gum to this generation, "wax" to the one before), and others.

But you can take the solemn declaration of Lee Leatherman, district manager of National Alfalfa, that there's "no kidding about the actual and beneficial uses of chlorophyll." It has its popular uses and its medicinal uses as well.

It is altogether possible that you may chew in gum, or have medicinally administered to you, some chlorophyll from alfalfa grown in the vicinity of Plainview. You may have washed your teeth this morning with a dentifrice containing chlorophyll that was grown on the farm of your next door neighbor, or your own, if you grow alfalfa. The mill here sends some meal to Lamar, Colo., early in the spring and late in

the fall.

On occasion, meal from Plainview is shipped to the Lamar plant of National Chlorophyll and Chemical Co., where chlorophyll, carotene, xanthophyll or other chemicals are extracted by the Kennedy continuous count-downed by Vulcan Copper & Supply Co.

This firm is building a million dollar chlorophyll plant at Lamar, Colo., for National. It will cost a cool million dollars and will have capacity for 4,000 pounds of chlorophyll per month. The plant will include facilities for processing the crude extract for finished chlorophyll, suitable for many industrial, pharmaceutical and medicinal purposes. It can refine the products to 100 per cent purity or deliver to about 70 per cent purity for industrial use, the inert ingredients in the low percentage probably being mostly moisture.

Locally grown meal will not be a big factor in the production of chlorophyll at the Lamar plant. It will likely be shipped there early in the spring or late in the fall, when the Colorado product is not available from fresh sources. Likewise California or Arizona plants of the firm will supply meal in season. If kept too long the chlorophyll and carotene oxidize and are not wholly acceptable.

Another plant which runs high in chlorophyll is rape. It is being grown here experimentally by National Alfalfa, under Leatherman's supervision. W. E. Brown, who lives eight miles northeast of Plainview, is cooperating in planting at various times, and the alfalfa company is planning, too, on acreage it leases from the airport.

Separating chlorophyll by the solvent extraction process, is a slow operation. About four pounds are obtained from a ton of meal. Thus 12,000 tons of alfalfa, with average content would supply the needs of a million dollar plant for a year.

## Y. L. News

Y. L. Vacation Bible School was held last week, June 9 to 13. There was an average attendance of 24 pupils from the ages of 4 to 14. Rev. T. J. Helm directed the school and gave the devotional each morning.

Teachers for each department were: kindergarten, Mrs. D. B. Head and Mrs. Leon Lewis; primary, Mrs. Dale Buhrman and Mrs. Mervin Wilterding; juniors, Mrs. Cecil Buhrman and Mrs. Frank Mooney. The pupils presented a program Friday night and showed their week's work. After the program, Bill Millen showed a film on "The Baptism of Our Lord".

Mr. and Mrs. Leo Hile and family of Lincoln, Neb., visited a few days in the home of his aunt, Mrs. E. H. Buhrman.

Mr. and Mrs. Jim Purdie and children of Melrose, N. M., and Mrs. Ashton Wilterding of Call, were visitors of the Wilterdings Sunday.

Mr. and Mrs. L. O. Norwood and Kathryn attended the rodeo in Clovis Friday night.

Carol June Buhrman spent last week with Linda Wilson at New Home, Texas.

Mr. and Mrs. Mervin Wilterding attended the rodeo at Clovis Wednesday and Thursday nights. The young people's night class

## New Quonset Granary Shown

On display the coming Saturday, June 21, will be the All Purpose Granary, latest addition to the well known line of Quonset buildings. It will be ready for inspection on the premises of the Dura Bilt Products Co., in Clovis, N. M.

The company's place of business is on the Portales highway, south of the underpass. The Dura Bilt Products Co. is dealer for Quonset buildings in this section, including Bailey Co. The all purpose granary is rat proof, has double walls for ventilation and provision for grain drying and cooling with fan and tunnel units available as optional equipment. The building is 16 feet wide and may be obtained in various lengths.

Ernie Sego, manager of the Dura Bilt Co., in Muleshoe on business Monday, invited the people of this section to come by his place and view the new building. The company has just completed the erection of a building in Plainview, the Laux Blacksmith Shop, and has erected buildings for many farmers of this immediate section.

## Letters To The Editor ...

LITERARY NOTE:  
Austin, June 13.

Dear Sir:  
Read Edna Ferber's new story "Giant" (first of the series in June Ladies Home Journal), then read last paragraph called "Journal About Town" in same, and see if you agree "she is an author who gets her facts straight!"

Sincerely, do you have one single resident thereabouts who would have been invited to such a party? I don't think so!

Sincerely,  
Lela Glasscock Foust.

To be truthful, and all editors must be, we haven't read this latest Ferber opus, which, we know is taking the Panhandle by storm. We must get around to doing so. Some implications about customs and traditions, manners, etc. therein have caused quite a lot of comment in the public print, already. We suggest the reader acquaint himself with the piece to be able to talk intelligently about it when he is supposed to be playing his card in a bridge game.

## THANK YOU

We wish to thank everyone for their kind words, for every kind deed, and for the beautiful flowers that were sent in our recent bereavement. May God bless all of you.  
Mrs. A. J. Allen  
And Family.

of the Y. L. Church enjoyed a skating party at Morton Monday night. Those attending were Pat Norwood, Irene and Norman Head, Carol June and Eugene Buhrman, Lenita, Ronald and Rita Lewis, Lon Martin, Bill Holman, Kiel Quesenberry, Roland Stevens, Bobby, Eddie and Earl Routh, Mr. and Mrs. Leon Lewis, Mr. and Mrs. D. B. Head, Mrs. L. O. Norwood, and Mrs. Lloyd Quesenberry.

## "OLD-TIMERS" ENJOY SUPPER AT JORDANS

Mr. and Mrs. Roy Jordan assisted by Mrs. Bill Gaede and Mrs. Irma Ray entertained some of the "old-timers" and neighbors with a barbecued steak supper in their lovely yard last Friday night.

Enjoying the occasion were Mesdames Duke, Gilbreath, Davis, Paul, Moeller, Harden, Panter, Jones, Louise, Lewis, Carles, and Blondie and Dixon Ray. Everyone had a very enjoyable time.

## WORKING IN LEVELLAND DURING THE SUMMER

Marquita Collins spent two weeks with her parents, Mr. and Mrs. Glen Splawn, but is now at Levelland working as a telephone operator. She will again enter E. N. M. U. in September as a junior. She is working for her B. S. degree in Home Economics with minors in science and art.

Marquita is active in home economics club work and is secretary of the New Mexico A. H. E. A. clubs department. Her husband, Bill, is serving in the U. S. Navy aboard the U. S. S. Dixie in the waters of Japan. He was a sophomore in business education when he began serving with the Navy last year.

Two women met on the street after a long absence. Said the first:

"Gracious, Dorothy, I haven't seen you for seven years. You certainly have aged."

"You too, Eleanor, dear—I wouldn't have recognized you except for the dress and hat!"

—Santa Fe Magazine

## FARLEY INSURANCE AGENCY

REAL ESTATE & INSURANCE

Over Bank, Muleshoe, Texas

Office Phone 7279

Res. 5103

IT'S NEW! NOW IN MULESHOE

## EVELYN'S

## Decorating Shop

Made To Order

- Cornices
- Slip Covers
- Drapes
- Bedspreads

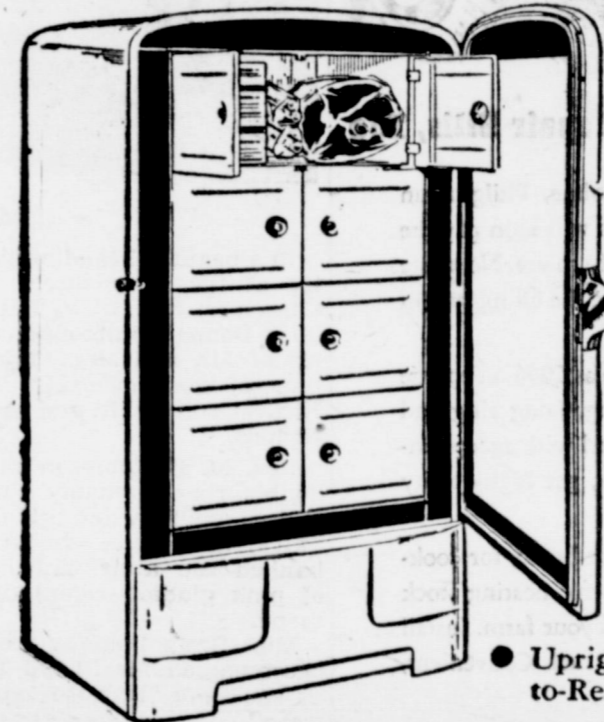
Individuality in Decorating

Evelyn Clark Holt

921 A Ave. B

Muleshoe

## A VALUE THAT CAN'T BE BEAT!



## Firestone

18½ Cu. Ft. Upright

## FOOD FREEZER

ONLY 10% DOWN

24 MONTHS TO PAY

All These Features

- Stores 647 Lbs. Frozen Food
- Quick-Freezes 50 Lbs. of Food at One Time
- Upright Styling — Easy-to-See and Easy-to-Reach Foods You Want

## BASS FIRESTONE DEALER STORE

1201 Main

Phone 4690

Muleshoe, Texas

**Sew n' Save!**

with the **amazing** **NECCHI** the world's finest sewing machine

✓ NO SPECIAL ATTACHMENTS NEEDED!

- ✓ Makes Buttonholes
- ✓ Sew on Buttons
- ✓ Sews Zig-Zag
- ✓ Embroiders
- ✓ Darns
- ✓ Sews Forward and Reverse
- ✓ Monograms

\* Available in handsome Console, Desk and Portable models.

"Your Necchi Sewing Circle"

### SPECIAL

- New Best-Built Sewing Machine With Attachments.

PORTABLE MODEL ..... \$89.95

CONSOLE MODEL ..... \$129.95

BUY ON EASY TERMS

We Can Electrify Your Old Machine — Also Clean and Adjust.

SEE THE NECCHI BEFORE YOU BUY

## BASS FIRESTONE DEALER STORE

Phone 4690 Muleshoe

## JUST RECEIVED

BIG STOCK — — —

NEW HOLLAND AUTOMATIC

## BALING WIRE

AND

## BALE TIES

## CONSUMERS

## FUEL & SUPPLY

Phone 2200 Muleshoe

Gloria Swanson

in

## "3 for Bedroom C"

the color motion picture filmed on the Santa Fe

## Super Chief

When you see this entertaining comedy-romance, you will see why the Super Chief is such a delightful way to travel. Luxurious private rooms with push button radio and music... gay lounges... Turquoise Room, only private dining room on rails... glass-enclosed Pleasure Dome, "top of the Super, next to the stars."

See this movie soon at your favorite theatre. For travel information just call your local Santa Fe Ticket Agent.

The Muleshoe Journal

PUBLISHED EVERY THURSDAY AT MULESHOE, TEXAS  
Entered as second class matter at the Muleshoe Post Office under the Act of Congress, March 3, 1897



**SUBSCRIPTION RATES**  
In Immediate Territory, 1 Year ..... \$2.00  
Out of Immediate Territory, 1 Year ..... \$2.50

J. M. FORBES Editor and Publisher

BABSON DISCUSSES

The Supreme Court Decision

Babson Park, Mass., June 13 — Investors seem to feel that last week's Supreme Court steel decision was a victory for them against the labor unions. This, however, is a mistake. The Supreme Court decision was a victory for every reader of this paper. It means that a President cannot become a Dictator without an express Act of Congress, and that this Act must be constitutional.

Just now, with a President friendly to the labor leaders, they are disappointed; but these labor leaders should realize that the time may come when someone may be President who is friendly to Labor. If the Supreme Court upheld the seizure of the steel industry, it could then be made very harmful to Labor. Therefore, all should be very happy with the decision. Furthermore, we should become immune to these strikes. They have been with us since the days of Cain and Abel and will continue for another 1,000 years.

**Pension Funds For Workers**  
One of the basic problems now connected with strikes applies to Pension Funds for employees. Naturally, I feel that pensions have their usefulness in the case of faithful executives and employees of long standing. Like everything else in this world, however, disadvantages as well as advantages.

I surely believe that all Pension Plans should be approved by the stockholders before adoption and should be very carefully

considered from every angle. Unfortunately, too many executives are rushing these Pension Plans in order to "get aboard" themselves.

Two Different Plans

The first question for a corporation to decide regarding pensions is whether (1) to have the Fund administered by a bank, or (2) to have it handled by an insurance company. A corporation which is willing to consult a courageous and experienced Investment Adviser constantly, can secure a higher rate of interest for the employees and can vary the payments according to business conditions and, at times, buy some of its own stock, by having the Fund administered by a bank. This I advise for my own companies.

If, however, there is a temptation to buy too many stocks at a critical time like this, it would be better to use an insurance company. By doing the corporation would avoid perilous kickbacks due to the shrinkage of assets by a carelessly self-administered Pension Fund.

Is This Request Crazy?

Among letters from readers I am asked: "Why pensions for officers, executive and everyone else but the stockholders?" One suggestion is that stockholders of 20 years or more should — under certain circumstances — be entitled to a pension! I am not now advocating this, but it may be a fair question. I don't know. The subject of "Pension for Stockholders" could well be one for discussion at conventions and government tax conferences. The Federal Treasury allows corporations to deduct, as an expense, their contributions to Pension Funds for officers and employees. But why not allow this (which means that Uncle Sam now pays 50% of the contribution to a Pension Fund) for faithful stockholders of 20 years standing?

An Important Warning

Without now taking sides in any pension discussion, I must remind corporation officials of this: Since the approval by stockholders should be secured to get pensions for officers and employees, the stockholders could block any Pension Fund which did not include them, the same as employees can strike for Pension Plans.

One thing is certain — either we are headed for an unjust and unwise socialistic system, or else greater consideration must be given to both employees, as well as to the stockholders who build the plant, pay for the machinery, and provide the working capital. The present unfair set-up, with double taxation of dividends, could ultimately result in unemployment, due to insufficient capital.

Here is one compromise suggestion: After a common stockholder has held stock for 20

THE SAND HILLS PHILOSOPHER

Gets A Little Serious, Tells Army How To Run War Prisoner Camp

Editor's note: The Sand Hills Philosopher on his Johnson grass farm is a little serious this week. It's probably the warmer weather we've been having.

Dear editor:  
It's a long way from out here in the Sand Hills to Korea and hasn't anybody asked me for my opinion but it seems to me the men who have been supervising the prisoners of war on Koje Island never did get around to learnin a few basic facts about human nature.

The way to run a prisoner of war camp is the same as the way to run your affairs, your own business, or your own farm, or anything else. The way to run it is like you think it ought to be run, not like somebody else thinks it ought to be run.



J. A.

Take a man here at home. If he's always wonderin how the next business step he takes is gonna affect somebody else, he's whipped to start with. The fellow that won't decide how much he ought to donate to the Red Cross or the church or anything else, the one who hedges and tries to find out how much somebody else gave so he can stay in line, ain't near as self-satisfied or respected as the man who makes up his own mind on how much he can give and hauls off and gives it, regardless of what anybody else does, and if he over-shoots or under-shoots his neighbor, it doesn't matter a particle.

Now take those officials in charge of those prisoner of war camps over on Koje. Instead of runnin the things like they ought to be run, they been leanin over backwards to run em so they won't offend the enemy, on the theory if they don't please the

enemy the latter will take it out on American prisoners of war in their hands.

This is known as balony. If the Communists want to do anything, they ain't never waited yet for an excuse. It there's anything they're good at, it's manufacturin excuses. We could furnish those prisoners of war with Turkish baths twice a day and air-conditioned loungin rooms and four-bit cigars, and if the Communists wanted to mistreat American prisoners, them cigars and other things wouldn't have any bearin on it.

If the army wants my advice, it's treat the prisoners as well as possible, but forget about what somebody else is gonna think, and keep em in line. I don't reckon you got much circulation in Korea though and I doubt if this reaches em.

Yours faithfully,  
J. A.

RETURNED FROM AMARILLO

Charlene Howard has returned from a week's visit with her sister, Mrs. Loyd Crain of Amarillo.

VACATIONING IN FLORIDA

Mr. and Mrs. Joe Richardson and son, Glenn of Tullia and Mr. and Mrs. Jack Richardson are vacationing in Florida. They plan to spend next week here visiting in the home of Mr. and Mrs. L. E. Evans and other friends and relatives before Jack reports for overseas duty in the Air Force.

Mrs. Jack Richardson is the former Shirley Evans.

VISITORS IN EVANS HOME

Visiting last week in the L. E. Evans home were Mrs. G. W. Nickel of San Angelo, mother of Mrs. Evans, her brother, P. E. Nickel and family of Portales, and Mrs. Jimmie Joe Stephens and daughter, Glorienne of Tullia.

LONE STAR

AGRICULTURE

Released by  
The Texas Department of Agriculture  
By John C. White, Commissioner

FERTILIZERS AND PESTICIDES

Farming and ranching gets just a little more complicated each year. In these days of stepped-up production, higher crop quotas, advances in mechanized equipment and changing economic conditions, the farmer and ranchman has to keep constantly re-adjusting his seasonal plans if he is to operate at a profit. In addition to keeping pace with day to day developments, he has to look ahead and anticipate future conditions that may have a bearing on his situation.

A crystal ball might be a big help in this respect. But since few, if any, of us have this advantage, then a little planned thinking is the next best method.

One thing is certain this season. Due to a mild winter, Texas may face one of the worst insect infestations in the last 20 years. And, of course, we must constantly practice those conservation measures which will keep our soil in top notch shape.

A heavy volume of pesticides

and fertilizers are expected to be needed this year to support the high level farm output. Farmers are urged to order their supplies well ahead of the time for applying these essential production materials. A last minute rush would tax industry's ability to fill orders and the channels of transportation from factory to farm.

Total requirements this year for pesticides, including insecticides, fungicides, and herbicides are expected to run about nine per cent higher than in 1950-51.

On the whole, supplies should be equal to the demand and prices generally are not greatly different from those of a year ago.

The United States Department of Agriculture reveals that supplies of pesticides containing copper and sulfur may not be sufficient to fill all demands but alternate materials will be greatly available. Lead arsenate supplies, critically short earlier in the year, are improved. Farmers should be able to get sufficient quantities of weed killers such as 2, 4-D and 2, 4, 5-T.

A generally strong demand for fertilizers has put pressure on the nation's soil building supplies. Fertilizers on the whole are slightly more plentiful although a little less phosphate is expected to be available than last year. Because of a high demand for ammonium nitrate and phosphates, those supplies will be somewhat tight.

Potash will be fairly plentiful.

Abstracts — Title Insurance

Real Estate

Complete Abstract And Title Service

Muleshoe Abstract Co.

Barry T. Lewis

Tel. 7320

INSURANCE PROTECTION POLICY FOR EVERY NEED

Lane Insurance & Real Estate

EDDIE LANE, OWNER

PHONE 3630

MULESHOE, TEXAS

MULESHOE LIVESTOCK AUCTION

H. K. Freeman

Hugh Freeman

Cattle Sale Each Saturday

Col. Dick Doshier  
Auctioneer

All Farm Sales 5% — Bills Paid

To Book Farm Sales

CALL HUGH FREEMAN—PHONE 2230 or 3770

ZENITH  
RADIOS

ALL MODELS IN STOCK

— At —

Spence Radio  
Service Shop

Phone 7020  
Muleshoe, Texas

Service On  
Any Make  
Radio

TODAY'S meditation

The Upper Room  
THE WORLD'S MOST WIDELY USED DEVOTIONAL GUIDE

JESUS CALLS US

Launch out into the deep, and let down your nets for draught. (Luke 5:4) Read Luke 5:1-11.

Most of us have heard the jibe that it is not known whether Christianity will work because it has never been tried. This is almost baseless but it has sufficient truth to make it embarrassing. The faith of every Christian lacks something, especially on some occasions.

At the time this is being written I am planning a sea voyage. I must commit myself absolutely to a ship and its pilot. The venture will never get started without this confidence.

Our Saviour's charge to Simon was: "Launch out into the deep."

years, he could have the option of exchanging it for preferred stock, which would give him, in part at least, preferred security.

Simon was unafraid physically but he feared it would be useless. He had already tried it in his own strength and wisdom. However, he obeyed and he and the other fishermen "inclosed a great multitude of fishes; and their net brake." Then Peter "fell down at Jesus' knees, saying, Depart from me; for I am a sinful man, O Lord."

Wonderful experiences are assured when we commit ourselves unreservedly to Jesus Christ as Saviour and Master.

PRAYER

Father in Heaven, give us faith to trust Thee in committing all of life unto Thee in obedience and service. We know that Thou wilt make us fruitful. We pray in the name of our Lord and Saviour, Jesus Christ. Amen.

THOUGHT FOR THE DAY

"Jesus is pleading, oh...hear Him today."  
Tim J. Campbell, (Iowa)

PISTON RING

SPECIAL

FOR FORD V-8's — 1942 THRU 1948 MODELS  
DURING JUNE AND JULY  
SAVE \$10.42

WE WILL — — —

- Install New Rings
- Install New Inserts
- Install New Gaskets
- Change Oil
- Change Filter Cartridge

REGULAR PRICE ..... \$56.91  
JUNE & JULY SPECIAL ..... \$46.49

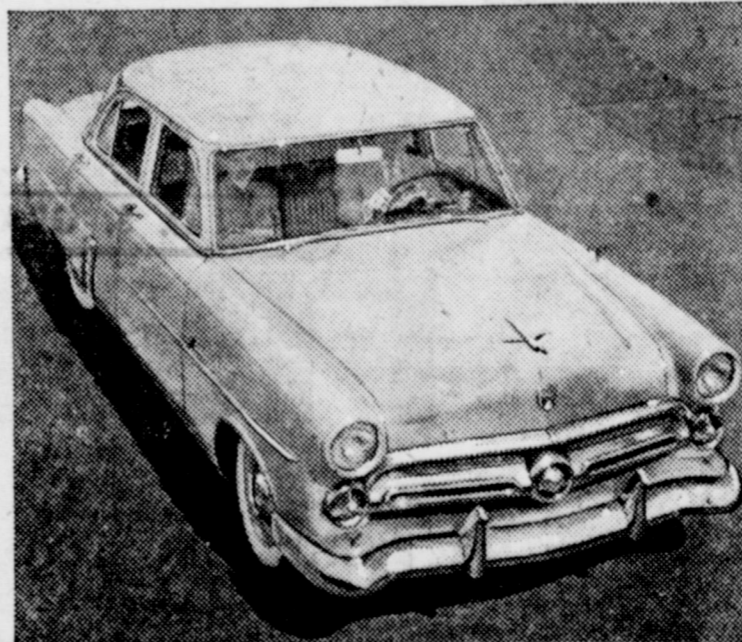
YOU SAVE ..... \$10.42



Motor Co.

Phone 4920

Muleshoe



IT'S THE MOST MODERN, MOST ADVANCED CAR IN THE INDUSTRY!

Ford's new modern design bodies are the newest, most advanced in the low-price field, styled ahead to stay new. New hull-tight construction seals out noise and weather. New easier-working Power-Pivot Pedals (suspended from above) eliminate dusty, drafty floor holes.

Ford's 110-h.p. high-compression Strato-Star V-8 is the only V-8 in the low-price field and Ford's 101-h.p. high-compression Mileage Maker Six is the only all-new, low-friction Six.

come in and "Test Drive" the



MOTOR CO.

PHONE 4930

FORD AUTOMOBILES AND TRUCKS

MULESHOE

'52 FORD

White sidewall tires, Fordomatic, Overdrive, optional extra cost. Equipment accessories and trim subject to change without notice.

PLAY SAFE

GET YOUR  
Dearborn NOW!

Get your Dearborns in time... buy them on time! Select now while our stock is complete, while models and sizes you want are readily available. Buy now—have them paid out when the first northern hit!

STAY SAFE  
WITH Dearborn

World's Finest, Safest Gas Space Heater

USE OUR  
LAY-AWAY PLAN

BUY NOW — —  
— — AND SAVE

Famous COOL SAFETY CABINET never gets hot on top, sides, back or bottom—can't scorch, walls or drapes—permits against-the-wall installation. Gas-saving High-Crown Burner and famous Glo-Brite Radiants give you more for your money—more heat and comfort at less cost!

Come in - Select your Dearborns NOW!

Muleshoe Liquefied Gas Co.

Phone 3130 Muleshoe

# Quality nationally famous brands advertised in

# LOOK

SOUR RED PITTED NO. 2 CAN  
**CHERRIES... 22c**

DEL MONTE NO. 2 CAN **SPINACH** ..... 16c  
 NO. 1 1/2 BOTTLE **WHITE KARO** ..... 24c  
 BETTY CROCKER PKG. **CAKE MIX** ..... 37c  
 LOG CABIN 12 OZ. BOTTLE **SYRUP** ..... 27c  
**BABY FOOD, HEINZ, 3 for** ..... 27c

MODART 75c SIZE  
**SHAMPOO - - 39c**

STAR 10 BLADES **RAZOR BLADES** ..... 49c  
 MENNENS **TALCUM FOR MEN** ..... 23c  
 PALOMOLIVE GIANT TUBE **LATHER SHAVE** ..... 43c  
 MARSHALL NO. 300 CAN **Pork & Beans, 3 for** ..... 29c

SNOW CROP 14 OZ. PKG.  
**SPINACH** ..... 23c

FORD HOOK 10 OZ. PKG.  
**LIMA BEANS** ..... 31c

COLD KING 10 1/2 OZ. BOX  
**STRAWBERRIES** ..... 29c

SNOW CROP 6 OZ. CAN  
**ORANGE JUICE** ..... 15c



Green Giant No. 303 Can.  
**PEAS** ..... 19c

KELLOG 12 OZ. BOX  
**CORN FLAKES** ..... 22c

**Catsup**  
LIBBY'S  
14 OZ. BOTTLE  
EACH ..... **19c**

**EAGLE BRAND MILK** ..... 29c

SUNSHINE 1 LB. BOX  
**GRAHAM CRACKERS** ..... 34c

RITZ LARGE BOX  
**CRACKERS** ..... 37c

LIBBY'S NO. 2 CAN  
**CORN BEEF HASH** ..... 41c

LIBBY'S NO. 1/2 CAN  
**VIENNA SAUSAGE** ..... 22c

**Kleenex**  
200 COUNT ..... 45c  
3 FOR ..... 69c

**BON AMI, can** ..... 12 1/2c

1 LB. PKG.  
**STARLAC** ..... 41c

SWIFTS, CAN  
**Meat For Babies** ..... 21c

ASSORTED FLAVORS -  
**Kool Aid, 6 pkg** ..... 25c

PLAIN, QT.  
**ICE CREAM** ..... 35c

12 CT. PKG.  
**Ice Cream Cones** ..... 16c

6 BOTTLE CARTON  
**CocaCola..... 19c**

LIBBY'S NO. 303 CAN  
**LIMA BEANS** ..... 25c

LIBBY'S SWEET MIXED 12 OZ. JAR  
**PICKLES** ..... 34c

LIBBY'S STUFFED 4 1/2 OZ. JAR  
**OLIVES** ..... 45c

COMSTOCK PIE SLICED NO. 2 CAN  
**APPLES.... 18c**

Lipton's 16 count  
**Tea Bags** ..... 21c

Lipton's 1/4 Lb. box  
**TEA** ..... 35c

PINT BOTTLE  
**Hawaiian Punch** ..... 53c

LIBBY'S NO. 2 CAN  
**Spaghetti & Cheese** ..... 16c

for  
**COOL**  
Cooking



FRESH FRUITS & VEGETABLES

**Blackeye Peas** Fresh Lb. .... **10c**

CALAVOS, ea. .... 12 1/2c Green Onions bunch 7 1/2c  
 WHITE POTATOES, lb. .... 10c LEMONS, lb. .... 15c

YELLOW SQUASH ... LB. .... 10c

FRESH CORN Ear ..... 6c

NIELSON'S SOLID PACK TUNA FISH ..... 31c  
 TREE SWEET 46 OZ. CAN ORANGE JUICE ..... 28c

T.D.E., large box ..... 31c

TOILET SOAP REGULAR BAR  
**WOODBURY, 3 for** ..... 25c

QUART BOTTLE  
**CLOROX** ..... 17c

CLEANSER CAN  
**OLD DUTCH** ..... 12 1/2c

U. S. GRADED QUALITY MEATS  
**FISH** White Trout Lb. .... **12c**

BONELESS, 2 to 4 LB. AVERAGE  
**PICNICS, lb.** ..... 75c KRAFT'S KAY **CHEESE, lb.** ..... 59c

WICKLOW SLICED **BACON, lb.** ..... 49c FRESH **Pork Roast** ..... 55c

**Frankfurters** Skinless Lb. .... **39c**

**DOUBLE S & H GREEN STAMPS EVERY TUES.**

TOILET SOFTEX 1000 SHEET ROLL  
**Tissue** 2 for ... **19c**

**PIGGLY WIGGLY**  
DAVIS & HUMPHRIES OWNERS & OPERATORS