



## Huge Retail Sales Of Television Sets Predicted On South Plains

A potential \$14,000,000 business for retail television dealers for Lubbock and Great South Plains areas during the next 14 months was predicted today by television executive, Dan D. Halpin.

Halpin, general sales manager for the receiver division, Allen B. Du Mont Laboratories, Inc., is a pioneer in television receiver merchandising and has been in the video industry for the past 12 years. He has helped introduce television in ever major area in the country.

"Based on past experience in our new television areas," Halpin declared, "the industry can anticipate sales of approximately 40,000 receivers in the Great South Plains areas covered by the KDUB-TV transmitter.

"Retail sales for these receivers will come to approximately \$10,000,000," he said. "Add to that \$4,000,000 for installation, maintenance and general service and you have the \$14,000,000 total."

"In addition to this surge in the television industry, local residents can also look forward to a general business increase," the Du Mont executive declared. "Experience in other new television areas has shown us that the rise in local employment with resultant increase in local purchasing power, and increased buying due to the television's effect as an advertising medium, supplementing newspapers, usually results in a 10-15%."

The local television market will be similar to Portland and Denver, the nation's two other

new video areas, declares Halpin.

"Television dealers experienced an unparalleled rush in both those western cities," he says, "and there is every reason to believe the same will be true in Lubbock."

"However, some words of caution must be given to local residents, he says, "that is, simply when you buy your television receiver, buy it from a reputable dealer, buy a nationally known brand and do not let price be the primary influence in your purchase of the receiver. Be sure that you purchase a quality-type set."

KDUB-TV is expected to be on the air within three weeks from an interim site atop the National Bank Building in Lubbock. In late February the station plans to start telecasting from a 1,000 foot tower, now under construction, at 74th Street and College Avenue in Lubbock. Total coverage of the station is expected to reach more than 350,000 persons, under full power operating conditions.

## JayCees To Honor Some Young Man

Raymond M. Roberts, Grand Prairies, President of the Texas Junior Chamber of Commerce, has announced plans for a statewide program in which the Texas JayCees will honor Texas' five most outstanding young men, between the ages of 21 and 36, at a banquet to be held in Dallas on Friday, January 16, 1953.

Sam B. Hall, Marshall, state JayCee vice president, was named state committee chairman for the program. He will work in conjunction with Truett Gilentine, Fort Worth, state Public Relations chairman. Roberts stated, "The purpose of this program is to honor the five outstanding young men of Texas who have presented to the state concrete evidence that success in our free enterprise system is still available to those young men who strive to achieve."

Any young man 21 to 36 years of age, who has been of service and an outstanding example of this precept to the people of Texas, is eligible to be nominated for this recognition.

A panel of distinguished Texas leaders, representing various fields of endeavor, will serve as judges.

## COURTHOUSE RECORDS

**REAL ESTATE TRANSFERS**  
David E. Glousey to Glen D. Young, E-2 Section 48, Block B, Melvin Blum and Blum Survey, \$24,000.

J. V. Stancell, et ux to C. H. Beck, V. V. Beck and Robert Beck 5.32 acres out of SW-4 Section 45, Block Z, \$2,500.

N. L. Johnson, et ux to R. L. Lewis Tract 2, Section 40, out of Block Y, Johnson's Subdivision.

W. H. Koons, et al to Lois West, Lots 21, 22, 23 and 24, Block 15, Original Town of Muleshoe, \$10.

Maudie E. Douglass to Julian E. Lenau, Lot 10, Block 5, Warren Addition to Muleshoe, \$840.

Julian E. Lenau, et ux to Rudolph Wiedebush, West 60 feet of Lot No. 10, Block 5, Warren Addition, \$300.

Julian E. Lenau, et al to City of Muleshoe, 20 feet off the SW side of Lot 10, Block 5, Warren Addition, \$100.

F. O. Bennett to C. W. Ramage, et ux, NE-4 Section 10, Block X, \$29,600.

C. C. Cunningham, et ux to W. T. Cunningham, et ux, W-2 Section 70, Block B, \$100.

A. M. Hughes, et ux to G. A. Jacobs, SE-4 Section 61, Block Y, \$10,000.

**MORAWS HAVE GUEST**  
Mrs. Frances Whitcomb of Oakland, Calif., is visiting in the home of her brother, Rudolph Moraw and family.

## Pigliff Is Set For November 17

LUBBOCK, Nov. 4 — Two hundred pigs, bred and raised on West Texas farms, will be loaded aboard a huge transport plane at Lubbock Municipal Airport Nov. 17 and then flown to Central America in the first "Pig Lift" from the South Plains.

Agricultural and civic leaders from 10 South Plains counties are working with representatives of the Texas Interfaith Service Committee and the Christian Rural Overseas Program (CROP) to provide the small farmers of Costa Rica and El Salvador with high grade pigs which will improve the farms of the two Central American nations.

The "Pig Lift" is aimed at bettering the understanding between the farmers of the United States and the two countries to the south. As Martin Straite, representative of one of the Interfaith organizations, said recently, "The program endeavors to help the 'little guy' in his struggle for a better life. That will do much toward changing his thinking in favor of the Christian and democratic ideas we in the United States have to offer."

The pigs are being gathered from Hale, Floyd, Crosby, Terry, Lynn, Cochran, Lamb, Hockley, Bailey and Lubbock counties and taken to the Texas Tech farm where they will be graded, inspected and inoculated on Nov. 6, 7, and 8. The animals will remain at the farm until time to load the plane Nov. 17.

MORE PEOPLE read the want-ads every week. They cost little, get the job done. Try one.

## Our Honor Roll

New subscribers to The Journal this week are:  
Olan D. Clements, Albuquerque, N. M.  
H. E. Thomas, Norman, Okla.  
James W. Lee, Huntsville, Tex.  
C. C. Jones, City.  
Sam Long, Hereford, Tex.  
Ollie Jones, City.  
J. D. Bayless, Enochs.  
Mrs. Lucille Wright, Littlefield.

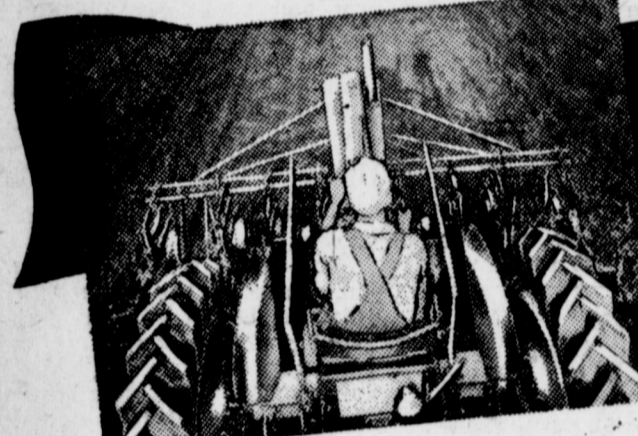
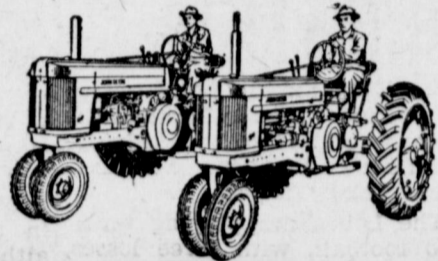
Old subscribers who have renewed their subscriptions to The Journal this week are:  
Mrs. E. T. Lambert, City.  
Jim Stokes, City.  
Alton Ashford, City.  
A. H. Owen, City.

W. W. Branscum, Route 1.  
C. R. Mayhugh, Route 1.  
C. C. Anders, Route 2.  
C. M. Evans, Route 2.  
F. H. Gable, Baileyboro.  
Mrs. John Webb, Mountainview, Ark.

## CUSHMAN SCOOTERS

ACCESSORIES — REPAIR WORK  
**Cushman Scooter Sales & Service**  
510 Prince St. Clovis, N. M. 39-124c.

## Another Great Feature of the JOHN DEERE "50" and "60" Tractors...



**Unexcelled View**

Everywhere you look from your position on the seat or platform.

STRAIGHT AHEAD over the center line of the tractor hood . . . to the left or right . . . directly down on either side, there's a clear, unobstructed view of the work.

Sitting or standing, there's no stretching or straining . . . no craning to see where you're going and what you're doing. The high, centered seat location and tapered fuel tank—basic reasons for the better

work view—have been retained and to further improve visibility in the new tractors, the air intake has been concealed under the hood and the exhaust stack and muffler moved to the right.

Seeing is believing. Stop in at our store and see what we mean by the unexcelled view of the work that's yours with a new John Deere Model "50" or "60" Tractor.

### OTHER OUTSTANDING FEATURES

Duplex Carburetion • "Live" Power Shaft • "Live" High-Pressure Power-Trol • Quick-Change Wheel Tread • Effortless Steering • Ultra-Modern Engineering • Greater Convenience • Unequaled, Two-Cylinder Simplicity and Strength.

## DAVIS - LENDERSON

YOUR JOHN DEERE DEALER

PHONE 2970

MULESHOE



See Your JOHN DEERE Dealer for Quality Farm Equipment

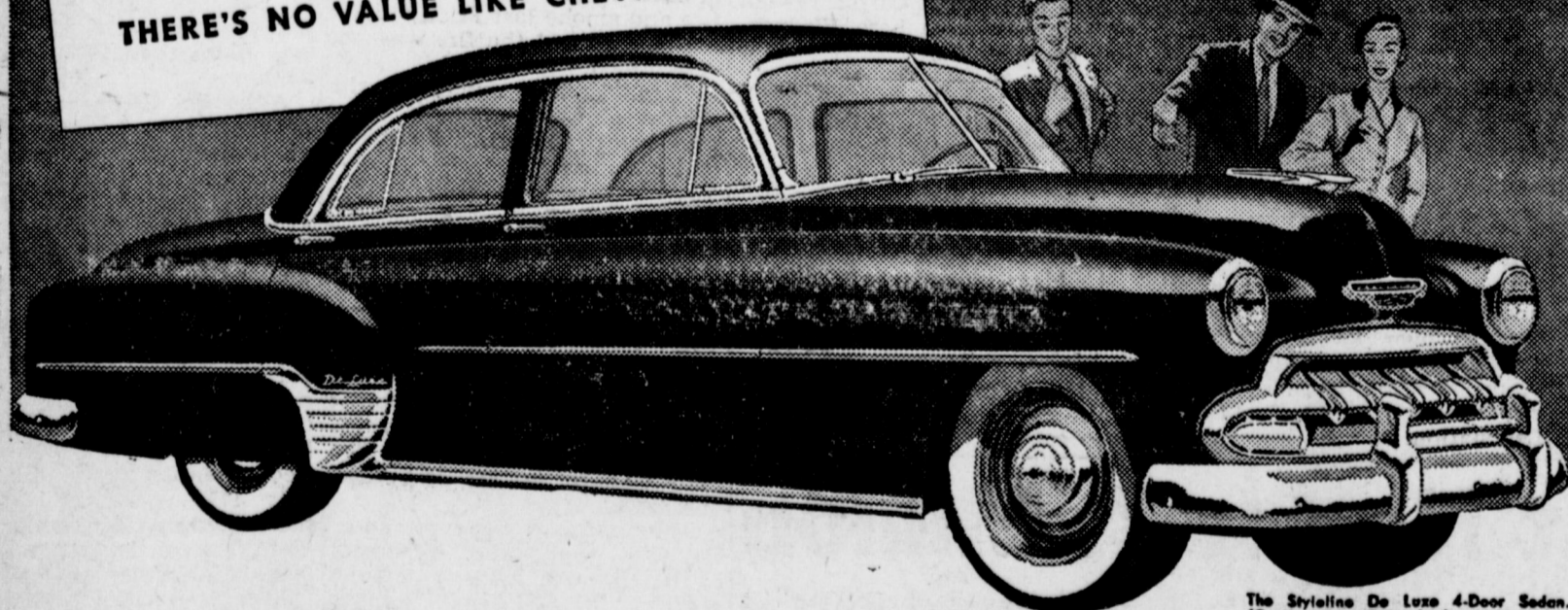
# Make No Mistakes!...

Come in . . . check our prices and these exclusive Chevrolet advantages before you buy!

## Be Sure You Get the Deal You Deserve!

Today's no time to take chances. You want to be certain of top value for your hard-earned dollars. So come in and check the deal we offer you. See how much more you get in Chevrolet . . . and how much less you need to pay. See us now for the deal you deserve!

THERE'S NO VALUE LIKE CHEVROLET VALUE!



The Stylized De Luxe 4-Door Sedan. (Continuation of standard equipment and price illustrated is dependent on availability of material.)

SEE WHAT YOU GAIN WITH THESE EXCLUSIVE CHEVROLET FEATURES

More Powerful Valve-in-Head Engine with Powerglide Automatic Transmission (optional on De Luxe models at extra cost) • Body by Fisher • Center-

poise Power • Safety Plate Glass all around, with E-Z-Eye plate glass (optional at extra cost) • Largest Brakes in its field • Unitized Knee-Action Ride.

SEE WHAT YOU SAVE WITH THE

# Lowest-Priced Line in its Field!

C. & H. CHEVROLET CO.

MULESHOE, TEXAS

## toys that last

**irha**  
HARDWARE STORE

Your Independent Home-Owned Hardware Store

Children are tough on toys! That's why it pays to buy the kind of durable, long-pleasure-giving toys we carry. You'll find our store replete with everything from trains to sleds, from skates to blocks—everything for kids of all ages . . . all made right and priced right!

<p><b>METAL LOG TRUCK</b> \$4.95</p> <p>Realistic detail and sturdy construction make this a durable toy. Brightly enameled, black rubber wheels, 5 smooth logs.</p>	<p><b>"SORRY" GAME</b> \$2.98</p> <p>A popular and exciting game for children and adults, too. Durable made and attractively finished and packaged.</p>	<p><b>CHILDREN'S HOUR</b> \$3.98</p> <p>Game box includes 3 good games especially for children ages five to ten years. Provides a full hour of fun for the younger set.</p>
<p><b>Blackboard &amp; Peg Bench</b> \$6.95</p>	<p><b>SENIOR ARTS PAINT BOX</b> \$1.98</p>	<p><b>DESK-ETTE TAK-A-PEG</b> \$</p> <p>We've Got 'em Coming</p>

### HINTS for the Handyman

NO. 11 UNDERWRITERS KNOT

When you repair an electrical plug, pare off half-inch of insulation from each wire. Twist strands tightly and thread wires back through plug. Then tie the safe Underwriters' knot, as shown above, just above exposed part of wires. Turn exposed wires counter clock-wise on posts and tighten down screws firmly.

(From Better Homes & Gardens HANDYMAN'S BOOK)

HARDWARE — FURNITURE — APPLIANCES

# E. R. HART CO.

PHONE 3200 MULESHOE

### What Your Chamber Of Commerce Means To You

By RAY FRANZ

The Chamber of Commerce is in a peculiar position because it is an organization not like any others in the country. It is a club without actually being a club in the general meaning of the term. A Chamber of Commerce has no official standing in the government or any community, yet in many instances its influence is often greater, than a depart-

ment or agency of the local government. It brings to gether, in one organization, the leaders of a community who are especially interested in all phases of community development and progress.

A person who first joins a Chamber of Commerce is very much like the young lad who wanted to get on the stage. One day he came home filled with happiness and enthusiasm. "I got a job!" he shouted to his dad. "It's a new play and I'm a man who has been married 20 years." "Splendid", replied his father. "That's a start anyway, my boy. Maybe someday they'll give you a speaking part."

The person who joins a

Chamber of Commerce is making a start on a new career as a benefactor for his fellow men and a booster for the city and community in which he lives. He can look forward to taking an active part in the development and progress of his community—much as the young lad in our story.

The Chamber of Commerce is an agency through which any person can direct his own efforts for the community advancement: All things come to him who WONT wait. It's not a policy of the Chamber of Commerce to wait for something to happen but its policy is this—to get busy and see that things worthwhile and necessary for a community are promoted and put over. Your Chamber of Commerce is dedicated to that policy for its loyal members are also dedicated to that purpose.

### Local People Attend Market

Hoyt Morgan, Mrs. Elizabeth Barnett, Mrs. Dorothy Matthieson, and Mrs. Clyde Bray represented local firms in Dallas attending the American Fashion Association's Advance Spring and Resort Market, October 26-31, held at the Adolphus, Baker, and Blue Bonnet Hotels.

Of special interest to the buyers this market was the "Man-Made Fiber Show" presented by The Ladies Home Journal under the auspices of the American Fashion Association, in which the modern synthetic fabrics, such as Vicara, Dynel, and Dacron, were demonstrated.

"Spring Fervor" was the theme of the American Fashion Breakfast Clinics which were held on October 28 and 29 at the Baker Hotel. Sales and promotion ideas relating to "Silhouette Fervor," "Fervor for Knits" and "Fervor for Neutralizers" were illustrated with garments modeled from the current lines shown in the market. Mrs. Evelyn Lambert was commentator.

The American Fashion Association is comprised of 500 manufacturers' representatives who display over 1,100 lines of women's and children's apparel. The next market will be held in Dallas January 18-22.

### Cline's Studio In New Quarters

Cline's Studio is now located in a room of the Moeller building, at 1324 Main Street, where they have built reception rooms, posing rooms, dark rooms and set up an efficient photographic studio.

Mr. and Mrs. R. C. Cline are the operators.

LEDGER SHEETS in stock at The Journal.

### GUARANTY ABSTRACT CO.

BONDED FOR YOUR PROTECTION

Office In Bank Building

Phone 2640

Muleshoe

Complete Abstracts of Title to All Lands and Towns in Bailey County, Texas

PAT R. BOBO, Owner

BETTE COWAN, Manager

### MULESHOE FUNERAL HOME

Ambulance Service Day or Night

DIAL 2860

TRAVIS E. REED, Mgr.

### STOP.... Check Your Coverage!

Have you considered replacement costs of what you own in the light of today's prices? We shall be glad to consult with you on all your insurance problems... no obligation.

FARM LOANS • AUTO FINANCING

### POOL INSURANCE AGENCY

W. M. Pool, Jr.  
Phone 7010

Lee Pool  
Muleshoe

INSURANCE PROTECTION POLICY FOR EVERY NEED

### Lane Insurance & Real Estate

EDDIE LANE, OWNER

PHONE 3630

MULESHOE, TEXAS



Got um TURKEY

All Sizes to meet the needs of every dinner table.

Drop in and see our choice selection of juicy, flavorful turkeys today. You SAVE money when you SERVE turkey.

### J & J PRODUCE

Now In The Former Location Muleshoe Ice & Produce  
Phone 3810

### John Magby is Accident Victim

John Magby, of Pickins, Okla., who is now employed by the Alfalfa Mill was the victim of a car wreck Sunday about 5:12 a. m. when the car which he was driving struck a telephone pole throwing him clear of the car, then burned.

The cause of the accident was undetermined but some thought it was caused by a blowout.

The accident occurred about 2 miles west of Olton at the detour of the highway. Magby is reported as doing fine after receiving treatment for cuts and scratches.

### MRS. BUSBY'S BROTHERS KILLED IN ACCIDENT

Two brothers of Mrs. Clinton Busby of Muleshoe were killed in a recent automobile accident near Mineral Wells. The men were Oscar Day Carter and George Carter.

The station wagon in which they were riding crashed into a bridge abutment. The two had lived in and around Stephenville all their lives and were born at Pigeon in Erath County. Oscar was 42, George, 32.

### VISIT IN WACO AND OTHER PARTS OF TEXAS

Mr. and Mrs. Albert Carroll were in Waco last week where they visited their daughter, Sammie, and attended the Baylor and A & M game. The Carrolls then went to Tyler and to Oklahoma where they visited relatives. They returned to Ft. Worth where they attended the Baylor and T. C. U. game and met Sammie there.

Mr. and Mrs. A. E. Lewis were also in Ft. Worth where they attended the game and visited their son, Charles, who also attends Baylor. Sammie and Charles plan to be in Muleshoe for the Thanksgiving holiday.

### VISITOR FROM ODESSA

R. E. Williams is visiting here with relatives and friends. He is now employed in Odessa as a machinist.

### Dinner Honors Mrs. Wynnie Dunn

The Order of the Eastern Star enjoyed a salad dinner Tuesday evening, at 6:30 honoring Mrs. Wynnie Dunn, the newly appointed deputy grand of Chapter II, section 3 of the Grand Chapter of Texas.

Thirty-five attended the luncheon and a regular Eastern Star meeting followed, with Mrs. Viola Layne, Worthy Matron, presiding.

Mrs. Layne and Mrs. Dunn each gave grand chapter reports of the grand chapter meeting held in Amarillo October 26-30.

A quartet composed of C. E. Layne, Buck Creamer, Mrs. Alice Bulloch and Mrs. Margaret Epps sang "My Faith Looks Up to Thee" dedicated to Mrs. Dunn.

Mrs. Dunn received a corsage from Mrs. Layne. She also received gifts from the Muleshoe Chapter and her husband, Glenn Dunn.

Office Supplies at The Journal

DR. B. Z. BEATY  
DENTIST  
Across From Muleshoe Motor  
Office Hours:  
9 - 12 a. m. — 1 - 5 p. m.  
Closed Saturday Afternoons  
Office Ph. 2040 Res. Ph. 5020

It couldn't be done...but Ford did it!



F.D.A.F.

White sidewall tires, two-tone color combination illustrated optional at extra cost. Equipment, accessories and trim subject to change without notice.

For years car makers thought you couldn't equal the finest cars in quality unless you equalled them in price. This year Ford proves you can have a car that compares with the best...at a price that compares with the lowest



MOTOR CO.

PHONE 4930

FORD AUTOMOBILES AND TRUCKS

MULESHOE

### STATE FARM FIRE & CASUALTY COMPANY

A CAPITAL STOCK LEGAL RESERVE COMPANY

WRITING PREFERRED RISKS AT 20% UNDER TEXAS REGULAR RATES

THE COMPANY SHOULDERS YOUR BURDEN — ASSUMES YOUR RISKS — INSURES AGAINST

Fire, Lightning, Windstorm, Hurricane, Hail, Explosion, Riot, Civil Commotion, Smoke, Aircraft, And Land Vehicles

Affiliated with and under same management as State Farm Mutual Auto and State Farm Life Insurance Companies, Bloomington, Illinois

COMBINED ASSETS OVER \$234,000,000.00

#### HAVE YOU ENOUGH INSURANCE?

Nearly all property values have skyrocketed during the past several years. If you have not looked over your insurance policies lately or haven't increased your coverage in keeping with present values, it could cost you dearly. We will check your policies, make appraisals, etc., at no cost or obligation to you.

If you own a business, does your present insurance protect your profits and fixed expenses in case of fire or other loss?

If you own rent property or your own home, would your present policy continue your rent or pay your rent elsewhere for you in case of fire or other loss?

If your policies do not cover these things, it might pay you to consult us.

Do you know that for an average dwelling \$1,000.00 fire and extended coverage with State Farm Fire would cost only about \$4.50 for One Year (Except minimum policy premium requirements might cause cost to be a little higher). It would cost even less on Furniture or Household Goods.

Three years Insurance for 2 1/2 annual premiums. Five years Insurance for 4 annual premiums.

INSURANCE WITH STATE FARM IS VERY LOW IN COST.

Writing Preferred Risks, Automobiles, Fire And Casualty, Life and Hospitalization

### BENTON INSURANCE

Office In Old Lumber Yard, NE Corner of Square

Phone 6460

Box 502

Muleshoe



WHAT YOU SHOULD KNOW ABOUT TELEVISION

IT'S NEW!

It's A Highly Specialized Electronic Device — It Requires Technical Skill To Assemble.

A television set is highly complex assembly of electronic tubes and parts. Each set contains an average of 800 individual component parts, 15,000 feet of wire, requiring about 7,500 assembly operations, including 750 soldered joints. So, you can see that great technical skill is required to assemble this large amount of electronic parts and tubes into the marvelous piece of equipment which bring SIGHT and SOUND into your home. The failing of a single component part of this highly specialized electronic de-

vice will render it totally or partially inoperative. Your TV serviceman must be able to diagnose the trouble, exercise the highest of skill and ability, duplicating and improving factory know-how and skills. Precision test apparatus and a thorough knowledge of circuit fundamentals are a prime requisite upon his part. As you expect the maximum of performance from your TV set, you will look to your own local TV dealer for the qualified competent service that will mean dependability.

THIS IS THE FIRST OF A SERIES OF ADS, PUBLISHED BY YOUR TV DEALERS DESIGNED TO GIVE THE FACTS ABOUT TELEVISION THAT WILL ENABLE YOU TO GET THE MOST FROM YOUR TV INVESTMENT NOW... AND TOMORROW.

Bass Firestone Johnson Furniture

Western Auto E. R. Hart Co.

Johnson-Pool Dyer Furniture

### Bureau Plans 19th Convention

The nineteenth annual state convention of the Texas Farm Bureau Federation will be held Nov. 10-12 at the Plaza Hotel in San Antonio, according to an announcement by Vice-president

C. H. DeVaney of Coahoma. Registration starts Sunday, Nov. 9, on the mezzanine floor. The convention proper will get under way Tuesday morning at 9:30. J. Walter Hammond, president of the TFBF, will be unable to attend the meeting this year for the first time in many years. The state farm leader is recuperating at his farm at Tye, Texas, after suffering an artery

condition Oct. 1 at a meeting of American Farm Bureau board of directors in Chicago.

High on the convention agenda are problems dealing with water legislation, rural roads and many other state and national issues involving agriculture. Voting on resolutions will be at the last session Wednesday afternoon.

National and state leaders in government and Farm Bureau will headline this year's program. Senator George D. Aiken of Vermont, member of the Committee on Agriculture and Forestry, will speak Tuesday night at the annual banquet.

Tuesday afternoon speakers include Romeo E. Short, vice-president of the American Farm Bureau Federation; Congressman Clark W. Thompson of Galveston, member of the House Committee on Agriculture; and Harry L. Bryson, director of field services of the AFBF.

Commodity specialists, agricultural experts and friends of Farm Bureau have been invited to attend the sessions.

### Bobby Kimbrough is Honored at Camp Stewart in Georgia

Below is a copy of a letter received by Mr. and Mrs. R. L. Kimbrough concerning their son, Bobby, who was recently selected for the honor of "The Soldier of the Month" at Camp Stewart, Ga.

October 27, 1952

Dear Mr. and Mrs. Kimbrough: It is with distinct pleasure that I inform you that your son, Bobby, through a process of testing and elimination has been selected as "Soldier of the Month" to represent Camp Stewart, Ga., for the period of 26 October 1952 to 29 November, 1952, inclusive.

His final selection from the many thousands of soldiers stationed here indicates his keen interest in all phases of his work and knowledge of all it entails.

Bobby's conizance of world affairs indicated by his spontaneous answers to queries regarding current events furnished a splendid demonstration of those qualities so desirable in an American soldier and citizen.

His professional ability, exemplary conduct and soldierly bearing are most gratifying to me and are well worthy of emulation by his fellow soldiers of my command.

I wish to take this opportunity to express my sincere admiration for your son's many fine accomplishments and to assure you that his welfare and progress are significantly important to each officer and non-commissioned officer with whom he comes in contact.

Sincerely,  
Lloyd A. Corkan  
Colonel Artillery  
Commanding

#### VISITED FRIENDS

Mr. and Mrs. Jack Holland, of Amarillo, spent the night here with friends Monday and cast their vote in the election Tuesday. They moved to Amarillo from Muleshoe a short time ago.

#### Letters To Santa—

Dear Santa Clause: I know it might seem a little early to write you, but before the last minute rush I would like to tell you what I want.

I want a log truck, and a maintainer. I have ried to be a good boy, but you know how hard it is sometimes to not do the things we shouldn't.

Remember all the little boys and girls and especially my Sunday School class.

Love,  
Max Eubanks

#### KIMBROUGHS VISITING IN HOME OF PARENTS

Mr. and Mrs. Bob Kimbrough are visiting in the home of their parents, Mr. and Mrs. Dudley Malone and Mr. and Mrs. Robert Kimbrough. The couple will spend his three week furlough in Muleshoe.

Bob is in the field artillery and is stationed at Camp Stewart, Ga.

IN OKLAHOMA CITY  
Mr. and Mrs. Howard Cox and Mr. and Mrs. E. E. Dyer were in Oklahoma City last week on business.

MORE PEOPLE read the want ads every week. They cost little, get the job done. Try one.

### Local Girls at Wayland College

Muleshoe is well represented in Wayland College's new honor service organization, the Ikwas, by Bobby Glenn, Mona Wilhite and Estelle Dawson.

Girls, chosen on the basis of personality, scholarship and leadership. Besides promoting all campus activities and encouraging a school spirit, the group will provide half time entertainment for all basketball games. The Indian word "Ikwa" means princess and the Indian theme will be carried out in the costumes of the girls.

Bobby Glenn, sophomore, was elected reporter. She works in the registrar's office and last year was on the dormitory council. She is the daughter of Mr. and Mrs. E. A. Glenn.

Mona Wilhite, junior, sings with the Oratorio Choir. Last year she was in the Baptist Student Union Choir and representative of the Women's Student Government. She is the daughter of Mr. and Mrs. Doc Wilhite.

Estelle Dawson, senior, is president of her dormitory and she is the daughter of Mr. and Mrs. J. U. Dawson.

### Wellborn Studying At Beauty School

Curtiss Wellborn of the Wellborn Beauty Shop was in Lubbock last week where he did post-graduate work in hair styling at the Isbell Beauty School.

Vernon Isbell of the Isbell University of Ft. Worth was in Lubbock last week where he held special classes.

Mr. Wellborn invites all his new and old customers in next week for the latest ideas in hair styling.

#### RETURNED FROM CALIFORNIA

Mr. and Mrs. M. D. Gaddy returned last Tuesday from Pismo Beach, Calif., where they visited her father, J. A. Stinnett, who has been very ill. His condition is still grave.

#### IN WASHINGTON

Mr. and Mrs. J. R. Moore left for Washington Tuesday morning where they will visit friends in Coupeville and other parts of Washington. They will return in approximately two weeks



MISS PATSY GORE

Is now office secretary for Bray Insurance Agency and is always ready to assist you in insurance matters and Farm Loan applications.



Consult  
CLYDE A. BRAY

about

- Insurance
- Real Estate
- Farm Loans

BRAY INSURANCE AGENCY

Muleshoe — Texas

## IT'S SHOWTIME AT THE WARM VALLEY & PALACE

Box Office Open 6:45 P. M. Show Starts 7:00  
Saturday & Sunday: 1:45 P. M. and Continuous Showing

#### VALLEY THURSDAY and FRIDAY

Anne Baxter  
McDonald Carey

#### My Wife's Best Friend

#### SATURDAY ONLY

Lash LeRue

#### King of Bullwhip

#### SUN., MON, TUES. & WED.

Bob Hope  
Jane Russell  
Roy Rogers

#### Son of Paleface

#### PALACE THURSDAY and FRIDAY

Richard Green  
Loretta Young

#### Kentucky

#### SATURDAY ONLY

Broderick Crawford  
Virginia Bruce

#### Butch Minds The Baby

#### SUNDAY and MONDAY

John Wayne  
Roy Rogers

#### Dark Command

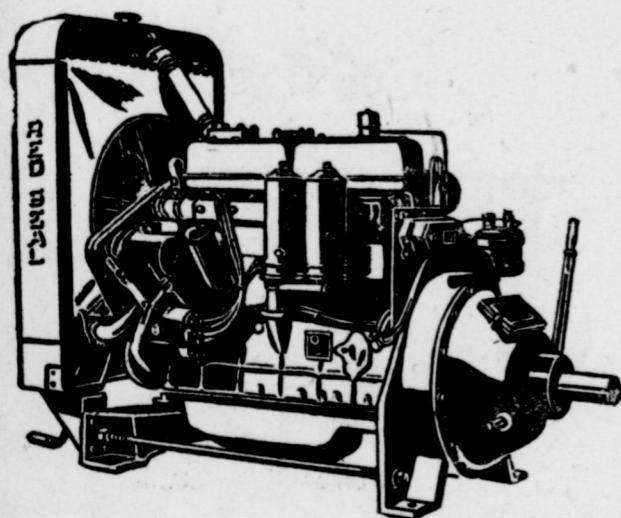
#### TUESDAY and WEDNESDAY

Myrna Loy  
Jeanne Crain

#### Belles On Their Toes

Motion Pictures Are Your Best and Cheapest Entertainment

## RED SEAL CONTINENTAL ENGINES



DESIGNED AND EQUIPPED FOR BUTANE, NATURAL GAS OR GASOLINE.

A complete line of engines from 1 1/2 HP to 280 HP.

WE NOW HAVE IN STOCK 4 sizes, special built Irrigation Engines, with 8.6 compression for Butane Gas. Equipped with heavy duty clutch, roto type valves, overhead oilers, Penn safety switches, and cooling system.

PRICES are very competitive for the amount of horsepower produced.

COME IN AND LET US SHOW YOU THE LATEST THING IN IRRIGATION ENGINES

### D. H. SNEED SUPPLY CO.

Phone 4170

Muleshoe

# MR. FARMER!



Early Application Of Agricultural Ammonia Pays! Store Your Plant Food For Next Years Harvest.

Speed Stalk Decomposition For Faster Return of Humus.

## Western Fertilizer Co. Inc.

AT KING BROS. ELEVATOR

# SHEEP & FARM AUCTION SALE

We will sell our sheep and farm equipment at public auction at farm, located 4 miles east of Muleshoe on Plainview highway, then 1 mile north.

## Thursday, Nov. 13

SALE TO BEGIN AT 1:00 P. M.

### 205 HEAD OF SHEEP 205

175 — Rambouillet Ewes. All bred, solid mouth, 4 to 6 years old.

6 — Black face Bucks.  
30 — Ewe Lambs, weighing about 65 pounds each.

#### DAIRY CATTLE

1 — Black heifer with calf by side.

2 — Milk cows.

2 — Pure bred Hampshire sows, and 12 pigs.

### FARM EQUIPMENT

1 — 1942 Ford Tractor, good shape and good rubber.

1 — Steel Land Float.

1 — Feed Mill.

1 — Old One Way Plow.

6 — Steel barrels.

1 — 2-wheel trailer.

1 — Ford fertilizer attachment.

A lot of pipe. Some good lumber and wire.

Some hog troughs, hog feeder. A lot of wrenches and new electric drills

Anyone wishing to bring anything to this sale may do so, and pay regular commission.

TERMS OF SALE: CASH

## A. E. GALLAWAY, OWNER

Kenneth Bozeman & Son,  
Auctioneers

Tom Morgan,  
Clerk

### MORE LIGHT ON THE History Of Muleshoe

Written by The Late A. P. Stone

The Legislature of the State of Texas passed an act for the construction of a capitol building, approved February 20, 1879. A contract was made with Abner Taylor for the construction of the present State Capitol building at Austin, Texas, the cost to the State of Texas to be 3,000,000 acres of land located mostly in the Panhandle of Texas and as far south as Bailey and Lamb counties.

This land is known as Capitol Syndicate, or merely Syndicate land, and the ranch established on it was known as the X I T Ranch.

In September, 1902, the Bovina Cattle Company, a partnership composed of W. D. Johnson, F. W. Johnson, Tom Hogland, and R. D. Gage, bought some 125,000 acres of this land out of what was known as Blackwater and South Alamouche pastures from the Syndicate. The Bovina Cattle Company used the mule shoe as its brand, hence the Muleshoe Ranch and incidentally the town of Muleshoe.

This brand was registered December 4, 1903, and the record shows it with open end at the top, and leaning to the left. It was on the left shoulder or left side of the animal.

This brand was transferred to E. K. Warren & Son, who had bought some 37,000 acres on the south side of the original Muleshoe Ranch, on November 1, 1907, and the mule shoe brand was discontinued.

In 1906 W. D. and F. W. Johnson, who had bought the interest of the other partners in the Bovina Cattle Company, cut this land into sections of 640 acres each, and during the next few years, sold that part of it lying north of the land sold to E. K. Warren & Son, to farmers, the first settlers being from Kansas, Nebraska, Missouri, and other Northern States.

In 1903, E. K. Warren bought 40,000 acres of land from L. T. Clark. This was known as the Y. L. Ranch and still so known.

Mr. Warren later sold the tillable land out of this 40,000 acres. It lies east of the Bovina Cattle Company land, and the subdivision is now Block W.

Blocks Z, X and Y, the Bovina Cattle Company Land, and Block W make a continuous strip of land some six miles wide and thirty miles long, with an abundance of irrigation water from 20 to 100 feet below the surface.

At the present time practically 100 per cent of this land is in cultivation with farm homes on practically every 160, valued at from \$4,000 to \$15,000 each, surrounded by fine shade trees and flowers.

There are some 375 irrigation plants in operation, wells furnishing from 1,000 to 1,500 gallons per minute. The crops grown on the dry land are principally grain sorghums, cotton and wheat. In addition to these crops, the irrigated farms grow alfalfa, spuds, onions, and tomatoes, not to mention beans.

Thirty-five years ago there were a few farm shacks, not a tree to be seen. The motive power was Pete and Beck, a walking plow, a one row cultivator, and a farm wagon being the farm equipment. Now the farm equipment is all kinds of modern stuff, tractors, two to four row cultivators, combines, having machinery handled by one man, occasionally by one woman, that puts the hay in the bale.

The kids, whose parents went to schools in board shacks, now go to modern schools, travel for miles on school buses, would think old Pete was a horse if they were to see him.

Of course, horses are still used on the ranches, where they can still see native grass.

### Lt. Pruitt At Fort Bliss

FORT BLISS, TEXAS — Second Lieutenant Garvin W. Pruitt, husband of Ruby Pruitt, Muleshoe, is now attending an Associate Battery Officers Course at this Post.

He will spend 15 weeks studying antiaircraft gunnery and tactics, guided missiles and communications.

Lt. Pruitt graduated from Muleshoe High School.

God has given man dominion over all the earth, and this heritage affords protection from evil. The Christian Science Lesson-Sermon titled "Adam and Fallen Man" to be read on Sunday brings this out.

Paul saw that Adam's mistake could not doom mankind, for Christ Jesus came to show us the way out of misery. The Golden Rule is taken from Paul's letter to the Romans in which he says, "If by one man's offence death reigned by one; much more they which receive abundance of grace and of the gift of righteousness shall reign in life by one, Jesus Christ" (5:17).

Mary Baker Eddy, the author of the Christian Science textbook, asserts that only one of the records of creation in Genesis can be true, and says, "Popular theology takes up the history of man as if he began materially right, but immediately fell into mental sin; whereas revealed religion proclaims the Science of Mind and its foundations as being in accordance with the first chapter of the Old Testament, when God, Mind, spake and it was done" (Science and Health with Key to the Scriptures, p. 537).

PAPER and Office Supplies at The Journal. Pho.7220.

### DORM DELIGHT



The key to a successful back-to-school wardrobe is the right leisure-wear ensemble, the National Cotton Council asserts. It goes places, does things around the clock. This striking two-piece cotton corduroy set by Kaylon goes to the Student Union, stays dorm-side or lounges in front of the television set on wintery weekends.

LEDGER SHEETS in stock at The Journal. Pho.7220.

### Bernard Jesko Completes Basic

Lackland Air Force Base, Texas—Bernard M. Jesko, 23, son of Mr. and Mrs. M. G. Jesko, Rt. 1, Muleshoe, is completing his AF basic airmen indoctrination course at Lackland Air Force Base, the "Gateway to the Air Force."

Lackland, situated near San Antonio, is the world's largest air force base, site of Air Force basic training, for men and women, headquarters of the Human Resource Research Center, and home of AF's Officer Candidate School.

His basic training is preparing him for entrance into Air Force technical training and for assignment in specialized work. The course includes a scientific evaluation of his aptitude and inclination for following up articular vocation and career.

### FOUR FRESHMEN AT WTSC FROM MULESHOE

CANYON, Oct. 29 — Attending West Texas State College this fall are four freshmen students from Muleshoe.

Student representatives of Muleshoe are Jon Ann Thomson, Marilyn Gupton, Robert Hardaway, Jr., and Max Clifford Crim.

VISITORS FROM CLARENDON Mr. and Mrs. John Rhea visited with Mr. and Mrs. Cecil Davis

Thursday and transacted business. Mr. Rhea is foreman of the J. A.'s of Clarendon, Texas, and is a cousin of Mrs. Davis'.

### CARD OF THANKS

We deeply appreciate the helpfulness of our friends and neighbors in our recent bereavement, their kind words and deeds, the food they brought to the home, and the beautiful flowers. May God bless you.

The Burden Family

### VISITED IN CANYON

Mr. and Mrs. Cecil A. Davis attended the Annual George Nance Registered Hereford sale at Canyon last week. While there they visited with the Pronger

Hereford breeders of Stratford, Texas. They are uncle and cousin respectively of Cecil, brothers and P. J. Pronger, Jr., Mr. and Mrs. Fred Johnson.

## FARLEY INSURANCE AGENCY

**REAL ESTATE & INSURANCE**

AUTO FINANCING — FARM LOANS

Over Bank, Muleshoe, Texas  
Office Phone 7279 — Res- 5103

## It's Old Stove Round Up Time!



### A Good Time To Put Your Brand On A Modern Gas Range

Don't delay! See the wonderful gas range values at your gas appliance dealers today! You're sure to find a range that's exactly right for you and your family — at the price you can afford. Trade in your old stove during the Round-Up on a modern gas range that gives you every cooking advantage.

You'll yell "yippee" when you see the modern automatic gas ranges built to "CP" standards. No range is more automatic. They are tops in performance, convenience and styling. See them at your gas appliance dealer's today. Trade your old stove in on a modern gas range today.



#### DRS. WOODS & ARMISTEAD

OPTOMETRISTS

IRA E. WOODS, O.D.  
B. W. ARMISTEAD, O.D.  
GLENN S. BURK, O.D.

Phone 328 Littlefield

### Stop Taking Harsh Drugs for Constipation

#### DR. CALDWELL'S SENNA LAXATIVE

Contained in pleasant-tasting Syrup Pepsin

Try the new 25¢ size

Money back if not satisfied

Mail bottle to Box 280, N.Y. 18, N.Y.

### Clovis Veterinary Hospital

AT THE STOCKYARDS CROSSING

Facilities for Large and Small Animals

E. E. KRAUS, D. V. M. CHAS. WEBSTER, D. V. M.  
104 Hull Phone 5442 Clovis, N. M.

### Money you save today will save you often in the future.

Let us help you plan a savings program

INSURED

FIRST FEDERAL SAVINGS AND LOAN ASSOCIATION

MILDRED DAVIS Western NFLA Building Muleshoe

Clovis, N. M. P. O. Box 470



## Like your travel with a JOYOUS THRILL?

WE HAVE NEWS for a lot of folks who want more fun from driving than they get from their present cars. There's a trim bundle of eager high-powered energy that's just the ticket for you — a spirited automobile that can give you thrill after joyous thrill, for mile after fleeting mile. Why not come in and try the Buick we have in mind? The excitement starts with your first look at it, your first sitting in it, your first fingering of its slender wheel. But wait! Dynaflo Drive\* begins working its magic—and its constant and complete smoothness fills you with never-ending wonder. Wait till you feel the bubbling exuberance

of taking your first hill with a high-compression Fireball 8 Engine doing the honors. That's when you get a man-sized sampling of the tremendously able and instantly responsive power you command here. Wait till you feel the serene satisfaction of skimming over rough roads, cobblestones or ridged crossings. That's when you know, better than words can tell, what a million dollars' worth of ride engineering can do in the way of magnificent comfort. Wait till you jockey into a real tight parking space and note the fun and ease that Power Steering\*\* brings to a once-tough job. But—why wait? There's a Buick that can do all this—and more, far more — all ready for you to try it.

And listen: If you can afford a new car, you can afford a Buick. How about coming in this week for a real sampling of this joyous travel? Equipment, accessories, trim and models are subject to change without notice. \*Standard on Roadmaster, optional at extra cost on other Series. \*\*Optional at extra cost on Roadmaster and Super only.

Sure is true for '52

WHEN BETTER AUTOMOBILES ARE BUILT

# BUICK

WILL BUILD THEM

**ONE QUART OF MILK IS EQUAL TO SIX ORANGES IN FOOD VALUE**

Think of how much more expensive it would be for every member of the family to have 6 oranges a day... than to have a quart of milk a day! Have your orange juice at breakfast, it's good for you. But balance it with two or three glasses of pasteurized milk during the day, as food or a beverage.

ASK FOR IT AT YOUR GROCERY

Phone 6710 For Home Delivery

## MALONE MILK CO.

## Muleshoe Automobile Company

PLAINVIEW HIGHWAY MULESHOE, TEXAS



**CELEBRATING  
NATIONAL  
4H CLUB WEEK  
NOV. 1-8**

**HERE'S  
SOMETHING  
NEW FOR THE  
KIDDIES**  
YOUR OWN SPECIAL LITTLE  
FOOD CARTS JUST LIKE MOTHER'S



Now you can shop right along with  
Mother and Daddy with shopping carts  
especially designed for you.

**VALUABLE  
GREEN STAMPS  
WITH  
EVERY PURCHASE**



**DOUBLE  
WITH \$2.50  
PURCHASE  
OR MORE...  
WED.  
NOV. 12**

WE WILL BE  
CLOSED TUES.  
NOVEMBER 11

FOR ARMISTICE  
**DOUBLE STAMP  
DAY WED.**

- REMARKABLE, NO. 2 1/2 CAN  
**PEARS** ..... 29c
- HEINZ  
**BABY FOOD, 3 for** .. 27c
- HUNTS NO. 2 CAN  
**Spinach** ..... 15c
- Libby's Spag. & Beans no. 2  
**CHILI** ..... 29c
- LIBBY 14 OZ. CAN  
**Brown Beans** .. 14c
- LIBBY NO. 353 CAN  
**Gard. Vege.** .. 19c

- BREAST OF CHICKEN NO. 1/2 CAN  
**TUNA** ..... 39c
- IRELANDS NO. 2 CAN  
**CHILI** ..... 67c
- MARSHALL NO. 2 CAN  
**HOMINY** ..... 12c
- MARSHALL  
2 FOR  
**Shoestring Potatoes** .. 25c

- MARSHALL NO. 300 CAN  
**PORK & BEANS, 3 for** 29c
- LIBBY NO. 303 CAN  
**FRUIT COCKTAIL** .. 25c
- HUNTS NO. 2 1/2 CAN  
**APRICOTS** ..... 31c
- WHITE HOUSE NO. 303 CAN  
**APPLE SAUCE** .. 19c
- ALMA, WHOLE, NO. 303 CAN  
**GREEN BEANS** .. 19c
- NORTHERN  
**TOILET TISSUE, 3 for** 25c

MARYLAND 1 LB. CAN ANY GRIND

**COFFEE... 84c**

- AUNT ELLEN'S BOX  
**PIDO** ..... 17c
- BAKERS PREMIUM, 4 OZ. BOX  
**COCOANUT** ..... 18c
- JUNKET QUICK, BOX  
**FUDGE MIX** ..... 33c
- ARGO, 1 LB. BOX  
**CORN STARCH** .. 15c
- SUNSHINE LARGE BOX  
**HI-HO CRACKERS** .. 35c

- SUNSHINE, 16 OZ. BOX  
**Graham Crackers** .. 33c
- 1 LB. BOX  
**CHOC. CHERRIES** .. 59c
- WELCH 10 OZ. JAR STRAWBERRY  
**PRESERVES** ..... 27c
- TALL CAN CARNATION  
**MILK** ..... 15c
- VERNAL'S 7 OZ. BAG  
**BUTTER MINTS** .. 35c

GIANT 57c SIZE BOX  
**RINSO..... 39c**

- CAMAY, BATH BAR  
**TOILET SOAP, 2 for** .. 25c
- CAMAY, REG. BAR  
**TOILET SOAP, 3 for** .. 25c
- PERSONAL IVORY, 4 bars** .. 25c
- 2 LARGE BOXES WITH NEW DETERGENT COUPON  
**OXYDOL** ..... 52c
- GIANT BOX WITH COUPON  
**OXYDOL** ..... 65c

ARMOUR STAR 2 1/2 OZ. JAR  
**PEANUT BUTTER** ..... 21c

ORCHARD GARDEN 46 OZ. CAN  
**GRAPEFRUIT JUICE** .. 19c

HOUSE OF GEORGE 46 OZ. CAN  
**TOMATO JUICE** ..... 25c

STALLEY'S DECANTER  
**SYRUP** ..... 47c

LIBBY'S  
OLIVES, 2 Oz. Jar  
STUFFED ..... 22c

WILSON 3 LB. CAN SHORTENING

**BAKERITE 69c**

LIBBY NO. 1/2 CAN  
**VIENNA SAUSAGE** .. 22c

SWANSON 6 OZ. CAN  
**BONED CHICKEN** .. 56c

CUDAHY WICKLOW

**BACON** 1 Lb. Pkg. ... 49c

FRESH GROUND  
**Hamburger Meat, lb.** 49c

OCEAN BEAUTY FISH  
**Boneless Perch, lb.** .. 49c

FIRST CUTS  
**PORK CHOPS, lb.** .. 59c

FRESH SLICED  
**PORK LIVER, lb.** ..... 33c

CLEARFIELD 2 LB. BOX  
**CHEESE FOOD** ..... 96c

CURED  
**HAM HOCKS, lb.** ..... 29c

PLACE YOUR ORDER FOR YOUR  
THANKSGIVING TURKEY NOW!

FROZEN MAID 10 1/2 OZ. BOX

**STRAWBERRIES ... 25c**

SNOW CROP 10 OZ. PKG. French Cut  
**GREEN BEANS** ..... 19c

SNOW CROP 10 OZ. BOX  
**BROCCOLI** ..... 19c

YOUNGBLOOD, 16 OZ. PKG.  
**PULLEY BONES** ..... \$1.39

SNOW CROP, CHOPPED 14 OZ. PKG.  
**SPINACH** ..... 19c

IPANA 50c SIZE  
**TOOTH PASTE** ..... 34c

BLUE STAR 3 BLADES  
**RAZOR BLADES** ..... 10c

MENNEN'S 5c SIZE  
**BABY CREAM** ..... 39c

TRUSHAY \$1.00 SIZE  
**HAND LOTION** ..... 89c

FRESH FRUITS & VEGETABLES

1 LB. CARTON  
**TOMATOES .. 19c**

Pink Grapefruit, lb. .. 12 1/2c

TOKAY  
**GRAPES, lb.** ..... 15c

BUNCH  
**GREEN ONIONS** .. 10c

FLORIDA  
**ORANGES, lb.** ..... 12 1/2c

DELICIOUS  
**APPLES, lb** ..... 19c

LARGE BUNCH  
**CARROTS** ..... 12 1/2c

**BE SURE TO BRING YOUR  
COUPONS HERE TO OUR  
STORE FOR REDEMPTION**

**PIGGLY WIGGLY**



DAVIS & HUMPHRIES

OWNERS & OPERATORS



**The Muleshoe Journal**

PUBLISHED EVERY THURSDAY AT MULESHOE, TEXAS  
Entered as second class matter at the Muleshoe Post Office under the Act of Congress, March 3, 1897



**SUBSCRIPTION RATES**  
In Immediate Territory, 1 Year ..... \$2.00  
Out of Immediate Territory, 1 Year ..... \$2.50

**J. M. FORBES** Editor and Publisher

**BABSON DISCUSSES**

**Christmas Buying**

KANSAS CITY, MO., Oct. 31—If Christmas had come last spring or summer when the steel strike was starting, it would have been a poor Christmas for manufacturers, merchants and the rest of us. Early in 1952, the public stopped buying. Television sets, washing machines, and other appliances were filling up storehouses; while the companies making these were discharging workers.

**NOW MAY BE TIME TO BUY**

A trip through our Great Central West makes us believe the above situation is changing. Wise buyers are making their Christmas purchases now, especially for the so-called hard goods, such as washing machines, refrigerators and appliances. Even automobiles appear to be selling well in most sections. They are now being produced at an annual rate of nearly 5,000,000 because the industry is catching up after the steel strike. However, for the same reason, full-year 1952 will not show such a total.

Probably most textiles can be bought for less now than they can in December. Sheets, blank-

ets, and other household goods will become scarcer as Christmas approaches, although there will be the customary "sales" in January. Carpets, including wool and the blended types, are moving well now even though they were in a drag on the market earlier this year.

**NEW HOUSES IN DEMAND**

New houses, the sale of which fell off badly during the summer, are again in demand due to the relaxation of credit controls. There is, however, little demand for large houses—though they are much better built. When well located, with land available for building small new houses, many of these larger old places are better buys than small ones. This is especially true where zoning permits larger houses to be used by two families.

Rents are sure to advance during 1953. This may once again make it profitable to build houses to rent. People have money; and they first want a home. Next, a television set! These are again moving and it is better to buy one either now or wait until after Christmas. They will be higher in December

**SAND HILLS PHILOSOPHER— Gets Mind Off Politics And Back To His Odd Philosophy Of Farming**

Editor's note: The Sand Hills Philosopher on his Johnson grass farm has shifted from politics to farming, if you want to call it that, his letter this week reveals.

Dear editor:  
Now that the election is over and I have woken up to the grim reality that regardless of all the golden promises that have been made to me I'm probably still

**than just now. WHAT ABOUT PRICES IN GENERAL?**

Wholesale prices have been declining for some time, and now consumer prices are moving very slightly lower. The Labor Department living cost index for September shaded off 190.8 percent of the 1933-39 average. That was against 191.1 in August. The immediate prospect is for foods, rents, utilities, and miscellaneous consumer goods and services to show little further change. Apparel may move down slightly. House furnishings will be unchanged. All in all, little change in the consumer price index is expected for the rest of the year. Food prices, on the average, appear to be declining a bit. Any change between now and the end of the year probably will be too moderate to be felt by the average family.

The above outlook is due to full employment in all but a very few sections. Contractors are again seeking workers; the utilities are employing more people; and most people willing to work can get a job. Stenographers, typists, and other office and store helps are now in great demand. The situation may be a little less optimistic after Christmas with a decline in ETA mas with a chance that there then may be greater-than-usual seasonal unemployment. The best way for manufacturers and merchants to help prevent this—and thus save their own skins—is to spend more on advertising and selling—but keep prices down.

**HOW TO HOLD YOUR JOB**

A number of persons now employed will be let go during the first few months of 1953, barring war. Defense work will not slack off, but there usually is a general reaction after Christmas. When reducing employees, manufacturers and merchants too often go on the principle of "last employed should be the first to be let go."

The above means that readers should not now change to some other job just to temporarily get more money. Stick where you are and do better work than you have ever done. Remember that Christmas—like other good things—may have an unpleasant "hangover." Play safe and don't be blinded by tinsel and candles.

gonna have to do my own work if it ever gets done, although I am glad to be livin in a country where it doesn't have to get done unless I feel like it and I'm the sole judge of how I feel. I was highly interested in an article I read in a magazine last night.

Accordin to this article, a seed which was buried fifteen feet deep in rock for 2,000 years has been found and watered and it sprouted, making a flower just as pretty as any we got today. I consider this welcome news.

It's a perfect answer to people who accuse me of bein lazy, who like to ask: "What's the matter with that crop of yours? Looks like mostly weeds. No garden? Why don't you plant one?"

Under this new system, all these critics are doin is demonstrate a lack of patience and foresight and a knowledge of plant life. I remember as plain as if was yesterday plantin all kinds of seeds in my garden back in 1928, and the fact they haven't come up yet is nothing to get alarmed about. What's 20 years or so compared with 2,000? I planted a good crop of wheat eight years ago, and the fact it hasn't come up yet is nothin, unless you're ignorant of the scientific facts on seeds. I never was selfish. If I don't get to harvest that crop, there's a great satisfaction in knowing somebody in the next 2,000 years may, and as far as I'm concerned he's welcome to it. I've never seen a crop yet that wasn't easier to plant than to gather.

In fact, if the people living years ago had been more thoughtful of future generations particularly the one I'm in, they'd have gotten more seed in the ground and we could be sittin back now watchin em sprout. I hope this new discovery will silence a lot of people who like to drive around criticizin farm-because a plot of ground is barren ain't no sign something ain't planted there. Come back in 2,000 years and see for yourself and just don't be so quick to criticize.

Yours faithfully,  
J. A.

**Editor . . . . Letters to the**

**VERMONT & KENTUCKY 14th & 15th STATE**

Whilst writing last week ye editor suddenly found himself surprised that two states were added to the original 13 as early as 1892. It was mentioned in connection with the laying of the cornerstone of the White House in that year. We said we'd give a year's subscription to the paper to the first person writing to say what states they were. Mrs. A. T. White wrote first, but quickly came a letter from Sue Actkinson, daughter of Mr. and Mrs. Troy Actkinson. Accordingly, we are extending the subscription date of these two families for one year, and thanks a lot. The editor never found time to look it up himself. The letters follow:

Dear Sir:  
In your paper you stated you would give a free subscription to the first person writing you telling the names of the two states added to the original 13 to make the fifteen United States. The two states added were Vermont, 1791, Kentucky, 1792.

**ZENITH**  
SALES & SERVICE  
RADIOS & TV  
MODELS IN STOCK  
— At —

**Spence Radio Service Shop**

Service On  
Any Make  
Radio  
Phone 7020  
Muleshoe, Texas

**TODAY'S Meditation**

**Chelupper Room**  
THE WORLD'S MOST WIDELY USED DEVOTIONAL GUIDE

**CHRISTIAN NEIGHBORLINESS**

I have given you an example, that ye should do as I have done to you. (John 13:15.) Read John 13:12-17.

In a Greek valley of 500 acres of swampland, a small group of young men spent the summer of 1951 opening up a channel that had been blocked for some hundreds of years. They were mostly Americans organized by the World Council of Churches. They lived in hard conditions and daily risked death. They wanted to clear the channel and thus drain the swamp and make of it productive dairy land for the villagers. They also wanted to demonstrate to the Greek peasants the Christian neighborliness of the world church.

For many generations these villagers had been poverty stricken. The people thought they were forgotten and unloved by the world. But this demonstration of Christian neighborliness ended their suspicion and awakened their hope.

Christ's whole life was an example. How often He has re-awakened hope and joy for us.

Mrs. A. T. White

Dear Editor:  
I noticed the article in your paper asking the names of the first two states added to the original thirteen star flag. The answer to this is Vermont and Kentucky.

A Reader,  
Sue Actkinson  
Route 2

**GREEN**  
Hospital & Clinic  
Muleshoe, Texas  
Dial 2250

to do for Christ's sake. Help us each day to do kind deeds for others, in the name of our Saviour and Master who went about doing good when He was upon earth. Amen.

**THOUGHT FOR THE DAY**  
I resolve to do some deed of Christian neighborliness each day. —John D. Grocott (New Zealand).

Office Supplies at The Journal

**LUZIER'S**  
Fine Cosmetics & Perfumes  
**MRS. E. E. HOLLAND**  
1101 East 2nd St.  
Phone 5449

**THE MAYTAG AUTOMATIC GETS CLOTHES CLEANEST!**

• Famous Gyroform washing action  
• Fully automatic  
• No hotting down  
See it today at . . .

**JOHNSON-POOL**  
Tire & Appliance  
Dial 7370  
Muleshoe, Texas

**B.F. Goodrich**  
TIRE HEADQUARTERS

**BIG SAVINGS ON**

COTTON SACKS — WORK SHOES — KHAKI CLOTHES  
IRRIGATION SUPPLIES — TENTS and TARPAULINS  
GUNS And AMMUNITION  
BLANKETS — QUILTS  
PRESTONE ANTI-FREEZE

**RUSSELL SUPPLY CO.**  
PHONE BILL RUSSELL — 3400  
Muleshoe Texas

**RAYMOND GREEN**  
Cotton Buyer  
Office At  
1223 West 1st Street  
Old Telephone Office Building  
On Morton Highway  
PHONE 6350 — MULESHOE

**NOW! A BRAND NEW USED CAR and TRUCK IDEA!**

**FORD DEALER'S A-1**

**GIVES YOU MORE FOR YOUR MONEY!**

**USED CARS AND TRUCKS**

CASH IN ON THE **A-1** STANDARDS OF USED CAR AND USED TRUCK VALUES  
NOW AVAILABLE AT YOUR FORD DEALER'S

It's the newest, biggest thing yet in used cars and trucks . . . the value protection you get at your Friendly Ford Dealer's. And you'll find that prices are downright low. We have to keep used cars and trucks moving to make room for more trade-ins on those wonderful new Fords!

**A-1 RECONDITIONED** **A-1 VALUE**  
**A-1 PERFORMANCE** **A-1 DEAL**

**SEE YOUR FRIENDLY FORD DEALER FOR A-1 USED CARS AND TRUCKS**

**MOTOR CO.**  
PHONE 4930 FORD AUTOMOBILES AND TRUCKS MULESHOE

**Electric Cooking**  
THE WINNER ON EVERY POINT!

**BALLOT**

- FAST
- SAFE
- CLEAN
- EASY
- CONVENIENT
- HEALTHFUL
- ECONOMICAL

MODERN ELECTRIC COOKING  
LANDSLIDE WINNER ALWAYS

SEE YOUR MODERN ELECTRIC APPLIANCE DEALER

**SOUTHWESTERN PUBLIC SERVICE COMPANY**  
28 YEARS OF GOOD CITIZENSHIP AND PUBLIC SERVICE



### New Telephone Methods Shown

A preview of things to come in the telephone business was given members of the Rotary Club and their guests at their noon luncheon.

H. M. Maclin, of Dallas, an engineer in the commercial department of General Telephone Corporation, was the speaker. He described the new method of making long distance calls, already in use in many places, and someday destined to be in use here.

By this new method, the caller

dials his number in a distant city, himself. He will tell the long distance operator the number in say, Dallas, that he desires to call. By pushing some buttons on her desk, the operator will make this possible for him in a matter of seconds.

Mr. Maclin showed a short film that was prepared by Bell Telephone Co., illustrating how the new "push button" method works.

G. D. Shelley, district manager for the company, of Lubbock, accompanied Mr. Maclin. B. A. Dalton had charge of the program. Ray Franz, manager of the Muleshoe Chamber of Commerce, was introduced as a new member.

### Charles Julian Is Discharged

Mr. and Mrs. C. D. Julian received a wire from Pearl Harbor this week stating that her son, Charles, will receive a discharge and will return home for the first time in 2 1/2 years.

Mrs. Charles Julian, who has been making her home in the C. D. Julian home will leave approximately November 5 to meet her husband in San Francisco where he is scheduled to arrive soon.

### Ginning in Lamb Half Finished

Lamb county gins have ginned about 65,000 bales of cotton so far this fall, says J. D. Jordan. He estimated that nearly half of the area crop was now ginned and that the balance of the crop would be in, for the most part, by November 20th. Many pickers have left for more southern locations.

### TO NEW YORK CITY FOR MARKETS

Lowell Irvin St. Clair will leave this Sunday, Nov. 9, for New York City to attend the markets. He will return Friday, Nov. 14.

Mr. St. Clair stated that he would fly both ways and will be with a group from Lubbock. This trip will be for the purchasing of spring goods as well as finding out the trends in the Eastern United States.

### VISITED IN OKLAHOMA

Mr. and Mrs. Carl Stockton spent last week end at Lawton, Okla., where they visited her parents, Mr. and Mrs. S. G. Yates.

### WADDLES HAVE VISITOR

Mrs. Bertha Waddle of Okmulgee, Okla., is visiting in the home of her son, Harry Waddle and family.

### VISITED IN BROWNFIELD

Mr. and Mrs. R. A. Bradley and children were in Brownfield Sunday where they visited his parents.

### THOMPSONS ARE PARENTS

Mr. and Mrs. Dan Thompson became the parents of a son, Sunday, Nov. 2, at the Lubbock Veteran's Hospital. Dan is in Japan where he is serving in the Navy.

### Band To Sponsor Magazine Sales

The Muleshoe Band Boosters will meet tonight at 8 p. m. in the band room of the high school.

The band will begin a magazine selling drive Monday, Nov. 10, of all the better-known magazines. Anyone wishing to subscribe to one of these magazines or to renew their subscriptions are asked to contact some member of the band boosters or band.

### VISITED IN LITTLEFIELD

Mr. and Mrs. Rudolph Wiedebush visited in the F. A. Ebeling home of Littlefield Monday night.

### FIFTH GRADE BOOTH EARNED \$26.30 TOTAL

Figures on booth earnings in the Fall Festival, Muleshoe school carnival, were revised this week by George Glover, high school principal. In his original figures the total earned by the fifth grade booth was placed at \$13.00.

Mr. Glover reports the amount should have been \$26.30.

### FROM NEBRASKA

Mr. and Mrs. F. A. Egger, of Roca, Nebr., are visiting Mrs. Egger's mother, W. M. Witterding, and other relatives.

LEDGER SHEETS in stock at The Journal. Pho.7220.

### More Toll Lines Provided Here

Additional long distance outlets for Muleshoe have been provided in recent weeks, G. D. Shelley, of Lubbock, district manager for General Telephone Co. announces.

He said that several changes in toll lines have been made, giving the Muleshoe territory more circuits, and providing additional circuits out of Littlefield. He said the changes should speed long distance telephone calls.

### VISITOR FROM FRIONA

J. M. McAdams of Friona visited in the home of his son, W. B. McAdams over the week end.

### GUESTS FROM CLEBURNE

Mesdames Lewis Stephens, J. S. Siddell, Bob Crosier, and Miller Williams all of Cleburne, Texas visited in the home of their brother, Martin Oliver and family over the week end.

PAPER and Office Supplies at The Journal. Pho.7220.

**PAT R. BOBO**  
ATTORNEY-AT-LAW  
Office in Bank Building  
Muleshoe, Texas

## BACTEX

THE ORGANIC and MINERAL FERTILIZER

Recommended Now

—FOR—

Fall feeding of Lawns, Flowers, Shrubs, Trees and Permanent Pasture.

**HICKS TRACTOR CO.**

Phone 6020

Muleshoe

WE WANT TO BUY

**SWEET SUDAN STRAW**

And

**HEGARI and CANE PUMMIES**

TOP MARKET PRICES

**Sikie Watkins Hay Co.**

Phone 6290

NORTH OF KING BROS. ELEVATOR

MULESHOE

### PIERSONS HAVE GUESTS

Mr. and Mrs. William J. Pierson of Lubbock visited last week end in the home of his parents, Mr. and Mrs. F. B. Pierson.

### VISITOR FROM AMARILLO

Mrs. Jack Holland of Amarillo was here the first part of the week visiting friends.

## Bailey County Abstract Co.

ABSTRACT SERVICE — LOANS  
Mrs. Lela Barron — Mgrs. — L. S. Barron  
Established in 1906

**You get EXTRA VALUES WITH MM HI-KLEARANCE PLOWS**

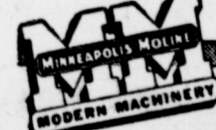
- ★ Quick, High Lift
- ★ Ample Clearance
- ★ Light Draft
- ★ Excellent Scouring
- ★ Better Results

You do a better job... and you do it easier with MM Hi-Klearance Plows. Their greater clearance, 23 1/2" between share points and beam, 26 1/2" between share points, helps eliminate your wash problems... greater lift prevents dragging trash or stubble at the end of rows, lets you plow deeper when necessary, makes turning post and turning easier.

MM Hi-Klearance Plows are built for strength and durability to meet the needs of modern, high-speed plowing. Longer land slides on the rear bottom act as rudder for entire plow keeping it in alignment with line of travel. Heat-hardened, carbureted shares give you longer plowing life. An adjustable hitch allows you to use Hi-Klearance Plows with all makes of tractors. Friction or Spring Trip hitches, standard equipment with Hi-Klearance Plows, protect shares and beams if plow strikes hidden obstacles.

WE CONGRATULATE THE 4-H CLUB ON NATIONAL ACHIEVEMENT DAY, SATURDAY, NOVEMBER 8

Let us show you the many advantages of MM Hi-Klearance Plows, Visionlined Tractors and the Complete Line of MM Modern Farm Machinery.



**FRY & COX BROS.**  
Phone 3660 — Muleshoe

**Dr. C. H. McIlroy**  
Naturopathic Physician  
Phone 5350 Muleshoe, Texas 906 MAIN STREET

COUPON

\$5.00 \$5.00

**ATTENTION**

This Certificate Is Worth \$5.00 Cash To You On Any New Watch In Our Store. Lay-A-Way Now For Christmas.

Void After Dec. 1, 1952  
NO TRADE-IN

**MULESHOE JEWELRY**  
PHONE 4190

COUPON

**WILL YOUR CHILDREN GO TO COLLEGE?**

You can assure their education through Southwestern Life Insurance

**Marion F. Harris**  
REPRESENTING  
**Southwestern Life Insurance Company**  
JAMES BAILEY WOOD, PRESIDENT HOME OFFICE - DALLAS

## DEARBORN-HEATERS

TOPS IN HEATING PERFORMANCE

MODEL NO. 35  
**\$39.95**  
MONTHLY TERMS

Stays Touch Cool While It Keeps You Warm

You get more for your money with Dearborn... The world's finest, safest gas heater. More safety, because its amazing Cool Cabinet never gets hot on top, sides, back or bottom... can't scorch walls, drapes, or woodwork... Safety pilot complete protection should flame be extinguished.

COME BY AND LET US SHOW YOU THE FAMOUS DEARBORN

**MULESHOE LIQUEFIED GAS CO.**  
On Clovis Highway Phone 3130

## HAVE QUALITY MEAT and SAVE MONEY

Through The **COMPLETE MEAT HANDLING SERVICE** at **MULESHOE LOCKER CO.**

- Slaughtering
- Dressing
- Processing
- Packaging
- Rendering
- Cold Storage

Bring In Your Animal For Complete Processing — Or Buy The Meat That You Select In Our Plant — Store It In One Of Our Food Lockers Or In Your Home Freezer.

**VANCE'S COUNTRY STYLE SAUSAGE**  
Always At Your Grocer's — Try Some

# Muleshoe Locker Company

PHONE 7030 MULESHOE

### B-Hi-U Class Has Installation

The young people of the First Baptist Church have recently organized a B-Hi-U (Baptist High School Union) for the purpose of inspiring the youth to higher Christian living.

At a very impressive candle-light service Wednesday night, officers of the newly-formed organization were installed in the

church auditorium with decorations carrying out the football motif in the class colors of blue and silver.

As a climax to the program the picture of Christ was flashed upon the wall with a movie camera. A concealed quartet composed of Mrs. Byron Griffiths, George Hicks, and Mr. and Mrs. Doc Wilhite sang, "Keep Your Eyes Upon Jesus" as the picture remained.

Following the installation, a beautiful silver tea was given by the adults in honor of the

### Mrs. Woodley Is Speaker At Meeting Of Wesleyan Guild

The Wesleyan Service Guild of the First Methodist Church met Tuesday evening, Oct. 28, in the home of Mrs. Homer Sanders, Sr., with members of the W. S. C. S. as special guests.

The meeting was begun with group singing. Mrs. Ray Edwards brought the devotional, then in-

roduced the speaker, Mrs. Noel Woodley, who reviewed the book, "Safari."

Mrs. Edwards presented an appreciation gift to Mrs. Woodley. Mrs. Alex Wilkins, president, presided over the business session. The W. S. C. S. and Guild voted to serve the banquet Tuesday evening, Nov. 4, for the Lions Club. This is the ladies night banquet.

Committees appointed were: menu, Mesdames Buford Butts, and Delma McCarty; table arrangements, Elizabeth Harden, Mrs. Fred Johnson and Mrs. Francis Gilbreath.

Refreshments of punch and individual cakes decorated in the Halloween motif were served to visitors. Mesdames Ruie Smith of Ft. Worth, J. K. Adams, I. F. Williams, Annie Stevens, C. R. Farrell, F. B. Pierson, W. D. Moore, Horace Edwards, Noel Woodley, Travis Reed and members, Elizabeth Harden, Mesdames Buford Butts, Delma McCarty, Velma Jennings, Lois Schoenberger, Fred Johnson, H. W. Hanks, Homer Sanders, Jr., Ray Edwards, Alex Wilkins, and the hostess.

### Mrs. Morgan Speaks At Progress WMU

The Progress W. M. U. met at the church November 3 at 2 p. m. The meeting was begun with the singing of "Blest Be The Tie" followed by a prayer by Mrs. Bishop.

Mrs. C. C. Morgan brought the devotional on the color, design and unity of the United States flag as it corresponds to our Christian lives. The devotional closed with a prayer by Mrs. E. W. Locker.

Mrs. Clyde Henry, president, presided over the business meeting with seven regular members, one new member and one visitor. The meeting was closed with a prayer by Mrs. C. C. Morgan.

Christmas boxes were then packed and wrapped for overseas service men of the Progress community.

The local W. M. U. meeting will not be held next Monday due to the district meeting at Spur.

### Marquita Collins In Honorary Club

Marquita Collins, daughter of Mr. and Mrs. Glen Splawn of Muleshoe and wife of Bill Collins of the U. S. Navy, has been elected into the "Pioneer Cacique" club at E. N. M. U. at Portales.

This club is an honorary service club composed of outstanding students who are judged to be most capable of serving the University and fostering its traditions. The word "Pioneer" was chosen as one who removed obstacles from the paths of others, "Cacique" is a Pueblo Indian word meaning "leader".

Marquita received her formal invitation Tuesday, Oct. 21. She is now a junior at E. N. M. U.

### Rebekahs To Nominate Officers

The Muleshoe Rebekah Lodge met in regular session Tuesday night with Noble Grand, Hazel Nowell, presiding.

The committee reported that \$36 was made from the bake sale.

The team captain urges all the members to be present next Tuesday night as he plans to pick his team and start practice. Nomination of officers for the next term will also begin Tuesday night, Nov. 18.

### Mrs. West Hosts Garden Club

The Muleshoe Garden Club met Monday, Nov. 3, with Mrs. John West as hostess.

The program was presented by Mrs. R. D. MacAllister on "Fruits, Flowers, and Foliage for Fall Beauty."

The Club receipts on the fall carnival was \$33.90.

A turkey luncheon is scheduled for December 1 at noon in the home of Mrs. Noel Woodley. Each member is to make a Christmas corsage which is to be worn to the luncheon.

### 250 BALES OF COTTON LOST IN LITTLEFIELD FIRE

A cotton fire that started Wednesday night at the Littlefield compress burned twenty-four hours before being smothered. More than 250 bales of cotton was destroyed in the fire. High winds at the time hampered the firemen.

PAPER & OFFICE supplies at the Journal Office.

SEE US FOR PROTECTION POLICIES YOU NEED

## BOBO INSURANCE AGENCY

Office In Bank Building  
PHONE 2640 MULESHOE

**DR. R. R. PUTMAN**  
**OPTOMETRIST**  
First Door North of REA Building  
Muleshoe, Texas Phone 6560

**COX**

**DRIVE-IN THEATRE**  
Program  
OF FINE ENTERTAINMENT

Thurs. & Fri., Nov. 6 & 7  
**BRAVE WARRIOR**  
Jon Hall & Christine Larson

Saturday Only, Nov. 8  
**VENGEANCE VALLEY**  
Burt Lancaster

Sun. & Mon., Nov. 9 & 10  
**I WANT YOU**  
Dana Andrews & Dorothy McGuire

Tues. & Wed., Nov. 11 & 12  
**DON'T BOTHER TO KNOCK**  
Richard Widmark & Marilyn Monroe

MULESHOE  
TEXAS

### NORMAN W. BAYS

Attorney-At-Law  
Office In Courthouse  
Phone 2670 Muleshoe, Texas

### CECIL H. TATE

ATTORNEY-AT-LAW  
Office In Courthouse  
Muleshoe, Texas

Don't be a "LIVING ROOM CAPTIVE"  
... Step out and see a great movie!

 JUNE ALLYSON, co-starring in "Bottle Circus," an M-G-M Picture.	 CORINNE CALVET, a Hal Wallis star, appearing in "Thunder In The East"—a Paramount Picture.	 SUSAN HAYWARD, starring in "The Snows of Kilimanjaro"—a 20th Century-Fox Picture. Color by Technicolor.	 RITA HAYWORTH, star of "Affair In Trinidad"—a Columbia Pictures Corporation Release.
 JANE RUSSELL, starring in "Montana Belle"—An RKO Radio Release.	 ELIZABETH SCOTT, starring in the Hal Wallis Production "Red Mountain"—a Paramount Picture. Color by Technicolor.	 ELIZABETH TAYLOR, co-starring in "Ivanhoe"—An M-G-M Picture. Color by Technicolor.	 ESTHER WILLIAMS, co-starring in "Million Dollar Mermaid"—An M-G-M Picture. Color by Technicolor.

### These Top Stars of Hollywood use LUSTRE-CREME Shampoo for the Most Beautiful Hair in the World

WHEN YOU SEE any one of these Hollywood stars at your favorite movie theatre, you'll thrill to her beauty, her charm, her dramatic skill. And you'll adore her glorious hair, sparkling in all its silken perfection... in all its Lustre-Creme glamour.

YES, THE MAJORITY of top Hollywood stars use Lustre-Creme Shampoo. It's their choice... and the recommendation of their studio hair stylists. For Lustre-Creme's lanolin-blessed lather helps restore the gorgeous sheen so often stolen by hot camera lights; leaves each star's hair looking its loveliest, so clean and manageable, so easy to curl and wave.

IF YOU'D LIKE YOUR HAIR to behave like the angels and shine like the stars... do as leading Hollywood stars do... use wondrous LUSTRE-CREME SHAMPOO

The lanolin-blessed cream shampoo that washes new sheen, fragrance, softness into your hair—leaves it so easy to curl and wave! Jars or tubes, 27¢ to \$2.00

REG. \$1.00 SIZE PIGGLY WIGGLY SPECIAL **69c**

GIANT \$2.00 SIZE PIGGLY WIGGLY SPECIAL **\$1.69**

# PIGGLY WIGGLY

PAPER PUNCHES in stock at The Journal.

**We Buy Cotton**

And Write Government Cotton Loans & Notes

**Denton Insurance**  
West 1st & Ave. C

ANNUAL OPEN HOUSE  
Nov. 8th - 10th - 11th  
—AT—

**KERSHNER'S NEW MEXICO NURSERIES**  
LOCATED ON CLOVIS-PORTALES HIWAY 70

**FREE - Coffee and Donuts All 3 Days**  
PLUS A FREE SHRUB TO EACH ADULT WHO REGISTERS.

When you register, pick-up coupon good for \$2.00 on \$10.00 purchase... \$5.00 on \$25.00 purchase.

NEWLY REMODELED SALES YARD TO BETTER SERVE YOU

Most of our stock is grown here and are already acclimated to the high plains. Our stock is now more complete than at any time in the past!

**KERSHNER'S**  
NEW MEXICO NURSERIES  
ON CLOVIS-PORTALES HIWAY 70

ROSES  
SHRUBS  
TREES  
LAWNS

## Important TV News for MULESHOE and Residents of Nearby Communities

New High Fidelity **PHILCO** Just Like a Boost in Station Power!

BRINGS A CLEAR STEADY PICTURE TO VAST NEW AREAS FOR THE FIRST TIME!



Now, local residents can enjoy television better than ever before. New, exclusive Philco developments greatly improve reception even under extreme adverse conditions. Get the full story of this Philco advance.

WITH **Golden Grid TUNER**

Yours in the Philco 2228, shown above, plus 245 square inch "No Glare" picture on a 21" tube.

Easy Terms!

High Fidelity 17-inch console with 150 sq. inch screen. It's the greatest console value in television today. Philco 1853.




Just Out! **PHILCO Multiwave RADIO**



With Special Service Band  
Yes, regular programs plus calls from planes, ships, police, amateurs and Civil Defense.

**DYER'S**  
HARDWARE & FURNITURE  
PHONE 5150 MULESHOE



**UNITED PENTECOSTAL**

Sunday School ..... 10 a. m.  
 Preaching Service ..... 11 a. m.  
 Young People's Service ..... 7 p. m.  
 Thursday Evening Bible Class ..... 7:30 p. m.

**PRIMITIVE BAPTIST CHURCH**  
 At Friendship  
 8 Miles South of Sudan

Second Sunday and Saturday before, Elder V. J. Lowrance, pastor.  
 Fourth Sunday and Saturday before, Elder Jack West, pastor.

**LONGVIEW BAPTIST CHURCH**  
 Rev. T. L. Pierce, Pastor

Sunday School ..... 10 a. m.  
 Preaching Services ..... 11 a. m.  
 B. T. U. ..... 7:30 p. m.  
 Preaching ..... 8:30 p. m.  
 Wed. Service ..... 7:30 p. m.  
 WMS, Thursday ..... 2:30 p. m.  
 PAPER and Office Supplies at The Journal, Phone 7220.  
 Bible Study ..... 7 p. m.

**METHODIST CHURCH**  
 Lazbuddie, Texas  
 Harold M. Morris

Sunday School ..... 10 a. m.  
 Church Service ..... 11 a. m.  
 Evening Service ..... 8:30 p. m.  
 Mid-week Prayer and Song Service ..... 8:40 p. m.

**NORTH SIDE CHURCH OF CHRIST**  
 Worship each Lord's Day

Day ..... 10:30 a. m.  
 Evening Service ..... 8 p. m.  
 Tuesday Evening ..... 8 p. m.

**WORLD'S FINEST AUTOMATIC WASHER**

**BLACKSTONE**

We'll demonstrate its superiority right before your eyes. Weekly payments as low as \$2.50

**Johnson-Pool**  
 TIRE & APPLIANCE

Dial 7370 — Muleshoe

**CHURCH OF CHRIST**  
 Muleshoe, Texas  
 Ebb Randol, Minister

Bible classes for all ..... 10 a. m.  
 Preaching ..... 10:50 a. m.  
 Communion ..... 11:45 a. m.  
 Preaching ..... 8 p. m.

**Wednesday**  
 Ladies Bible Class ..... 3 p. m.  
 Bible Study and Singing ..... 8 p. m.

**FIRST METHODIST CHURCH**  
 H. W. Hanks, Pastor

Sunday School ..... 9:45 a. m.  
 Morning Worship ..... 10:50 a. m.  
 M. Y. F. ..... 6:30 p. m.  
 Juniors ..... 6:30 p. m.  
 Evening Worship ..... 8:00 p. m.  
 W. S. C. S., Mon ..... 2:30 p. m.  
 Wesleyan Service Guild, 2nd. & 4th Mon. .... 8:00 p. m.  
 Stewards Meeting, 1st. Mon. .... 7:00 p. m.  
 Ph.la.thea Circle, 1st. & 3rd. Thurs. .... 8:00 p. m.

**PROGRESS METHODIST CHURCH**  
 Carrol M. Jones, Pastor

Sunday School ..... 10 a. m.  
 Morning Worship ..... 11 a. m.  
 Evening Fellowship ..... 8 p. m.  
 Evening Worship ..... 8:45 p. m.  
 W. S. C. S., 2nd and 4th Mondays

**WATSON BAPTIST CHURCH**  
 Rev. W. O. Wilson, Pastor

Special Prayer Service ..... 9:45 a. m.  
 Sunday School ..... 10 a. m.  
 Morning Worship ..... 11 a. m.  
 Training Union ..... 7 p. m.  
 Evening Worship ..... 8 p. m.  
 Bible Study and Prayer Service, Wednesday ..... 7:30 p. m.  
 WMU, Monday ..... 2:30 p. m.

**CHURCH OF CHRIST**  
 Bula, Texas  
 Norman L. Warren, Evangelist

We welcome ALL to the Bula community and wish to extend a special and warm welcome to attend all services of the Church of Christ.

Our Bible study on Lord's Day begins at 10:00 o'clock and the regular morning worship begins at 11:00. The Lord's supper is observed every Lord's Day.

Evening services begin at 7:15 each Sunday with the young people and preaching services at eight. This will still leave time for those who have children in school, to get them in bed at an early hour.

Our Ladies Bible study is on Tuesday afternoon, 2:30 p. m., and our midweek Bible study is on Wednesday at 8:00 p. m.

Please call on us for further information, or if you need transportation; and may we have the privilege of meeting and greeting you personally.

**ANTIOCH PRIMITIVE BAPTIST CHURCH**  
 Across Street From Hospital  
 Elder Jimmie Bass, Pastor

Services every 1st and 3rd Sundays and Saturday before 3rd Sunday.  
 Singing every Sunday night except 3rd Sunday.

**FIRST BAPTIST CHURCH**  
 Rev. A. W. Blaine, Pastor

Sunday School ..... 9:45 a. m.  
 Morning Worship ..... 10:50 a. m.  
 Training Union ..... 7 p. m.  
 Evening Worship ..... 8 p. m.  
 Prayer Meeting, Wednesday ..... 8 p. m.  
 Officers and Teachers, Thursday ..... 8 p. m.  
 W. M. U., Monday ..... 3 p. m.  
 Choir Rehearsal, Wednesday ..... 8 p. m.

**FIRST BAPTIST CHURCH WEST CAMP**  
 Rev. T. L. Pond, Pastor

Sunday School ..... 10 a. m.  
 Morning Worship ..... 11 a. m.  
 B. T. U. .... 7 p. m.  
 W. M. U., Thursday ..... 2 p. m.  
 Evangelistic Service ..... 7:45 p. m.

**FIRST CHRISTIAN CHURCH**  
 Avenue G and West 2nd.  
 Johnny Moore, Pastor

Sunday School ..... 9:45 a. m.  
 Morning Worship ..... 11 a. m.  
 Evening Worship ..... 7:30 p. m.  
 Communion Services each Lord's Day

**ST. JOHN'S LUTHERAN CHURCH**  
 W. B. Gummelt, Pastor  
 Lariat, Texas

Sunday School and Bible Class ..... 10 a. m.  
 Divine Services ..... 11 a. m.  
 Sunday School Teachers meet every Wednesday ..... 8 p. m.  
 Ladies' Aid meets first Thursday of each month ..... 2:30 p. m.  
 Walther League meets first Sunday of month ..... 8 p. m.  
 A cordial welcome awaits you at St. John's.  
 "Let the Word of Christ dwell in you richly." —Col. 3:16.

**BAILEYBORO BAPTIST CHURCH**  
 Arthur L. Nunn, Pastor

Sunday School ..... 10 a. m.  
 Training Union ..... 8 p. m.  
 Evening Service ..... 8:45 p. m.  
 Everyone Welcome.

**PROGRESS BAPTIST CHURCH**  
 Rev. C. C. Morgan

Sunday School ..... 10 a. m.  
 Mid-week Prayer Service ..... 7:30 p. m.  
 Wednesday ..... 7:30 p. m.  
 Evening Worship ..... 8:30 p. m.  
 B. T. U. .... 7:30 p. m.  
 Morning Worship ..... 11 a. m.

Beat The Christmas Rush!  
**Order Your Portraits Now**  
**Cline's Studio**  
 Phone 5399  
 1324 Main — Muleshoe

**Y. L. BAPTIST CHURCH**  
 First and Third Sundays  
 Rev. James Tidengerg

Sunday School ..... 10 a. m.  
 Morning Worship ..... 11 a. m.  
 Training Union ..... 7:30 p. m.  
 Evening Worship ..... 8:30 p. m.  
 Services every 3rd Sunday Starting at 10:30 a. m.

**ASSEMBLY OF GOD CHURCH**  
 Rev. Lee F. Stokes, Pastor

Sunday School ..... 9:45 a. m.  
 Worship ..... 11 a. m.  
 Tuesday Night Young People ..... 7:45 p. m.  
 Thursday Night Bible Study ..... 7:45 p. m.  
 Public Invited To Attend All Services

**OKLAHOMA LANE BAPTIST CHURCH**  
 Mayo D. Carpenter, Pastor

Sunday School ..... 10 a. m.  
 Morning Worship ..... 11 a. m.  
 Evening Worship ..... 8 p. m.  
 Prayer Meeting, Wed. .... 8 p. m.  
 W. M. S., Thurs. .... 3 p. m.

**FIRST BAPTIST CHURCH**  
 Lazbuddie, Texas

Sunday School ..... 10 a. m.  
 Morning Worship ..... 11 a. m.  
 Training Union ..... 6:45 p. m.  
 Evangelistic Service ..... 7:45 p. m.  
 "Not forsaking the assembling of yourselves together." —Heb. 10:25

**THREE WAY BAPTIST CHURCH**  
 J. E. Moore, Pastor

Sunday School ..... 10 a. m.  
 Morning Worship ..... 11 a. m.  
 Training Union ..... 7 p. m.  
 Evening Worship ..... 8 p. m.  
 W. M. U. Thursday ..... 2:30 p. m.  
 Brotherhood, first Thursday of each month ..... 7 p. m.  
 Mid-week Prayer Service and

**MAIN STREET MISSIONARY BAPTIST CHURCH**  
 M. E. Robinson, Pastor

Sunday School ..... 10 a. m.  
 Morning Worship ..... 11 a. m.  
 Training Union ..... 7 p. m.  
 Evening Worship ..... 8 p. m.  
 W. M. U., Wed. .... 2:30 p. m.  
 Mid-week Prayer Service, Wednesday ..... 7 p. m.

**CHURCH OF THE NAZARENE**  
 Sidney Patrick, Pastor

Sunday School ..... 10 a. m.  
 Morning Worship ..... 11 a. m.  
 Evening Worship ..... 7:30 p. m.  
 N. Y. P. S., Tues. .... 7:30 p. m.  
 Mid-week Service, Wednesday ..... 8 p. m.  
 Come and Worship With Us.  
 Interest is growing in our Sunday School. The lessons are on the Bible and sound religion.

PAPER PUNCHES in stock at The Journal.

**CALIFORNIA WESTERN PUMPS**  
**UNIVERSAL JET PUMPS**

WHY NOT get the best when you drill your Fall wells?  
 Our prices are right. Complete, Fast service at all times. Turnkey estimates made.  
 We have a wider variety of bowls to suit your water conditions. Service and pumps fully guaranteed.

E. H. KENNEDY  
 1200 W. 5th. St.  
 Phone 5480

RAY CARTER  
 Farm Bureau  
 Phone 6480

**Y. L. METHODIST CHURCH**  
 L. J. Helm, Pastor

Second and Fourth Sundays  
 Church School ..... 10 a. m.  
 Preaching Service ..... 11 a. m.  
 Bible Study Group ..... 7:30 p. m.  
 Evening Preaching ..... 8:30 p. m.  
 Prayer Meeting, W. S. C. S. First and Third Thursdays ..... 2:30 p. m.

**CHRISTIAN SCIENCE SERVICES**

According to next Sunday's Christian Science Lesson Sermon titled "Evelasting Punishment", you can know present freedom from evil, and experience full and abundant living today. The Lesson from the Bible and "Science and Health with Key to the Scriptures" will be read in Christian Science churches and will show that we cannot die out of evil but must reform our lives in order to be free of evil.

The Golden Text is: "Evil pursueth sinners: but to the righteous good shall be repayed"

(Proverbs 13:21). From the textbook by Mary Baker Eddy, the Discoverer and Founder of Christian Science, this passage will be read (p. 327): "The way to escape the misery of sin is to cease sinning. There is no other way. To the physical senses, the strict demands of Christian Science seem peremptory; but mortals are hastening to learn that Life is God, good, and that evil has in reality neither place nor power in the human or the divine economy."

**TO BIG SPRING**  
 Mrs. Walter Witte spent the latter part of last week in Big Spring with the family of her daughter, Mrs. Pete Jenkins.

**DR. A. E. LEWIS**  
 Dentist  
 East of Courthouse / Muleshoe  
 Off. Pho. 3040 — Res. 6570  
 Closed Wed. & Sat. Afternoon



BUTANE — PROPANE  
 CARBURETORS — STOVES — APPLIANCES  
 Phone 2810 For Prompt Service

**SATURDAY NOVEMBER 8th IS National 4-H Achievement Day**



**WE CONGRATULATE THE LOCAL BOYS AND GIRLS WHO ARE MEMBERS OF THE 4-H CLUB ON THIS THEIR DAY OF NATIONAL RECOGNITION**

We Are Happy Indeed To Pay Tribute To The Youth Of This Area Who Are Members Of The 4-H Club. In Their HANDS They Hold The Key To To Continued Progress Of This Country . . . In Their HEARTS And HEAD Are The Glorious Precepts Of Our Way Of Life . . . And, In Their HEALTH Lies The Foundation To A Vigorous Growth Of Our Sturdy American People!

**EDWARDS GIN CO.**  
**PAYMASTER GIN and ELEVATOR**

**NICKELS GIN CO.**

We Will Not Be Open For Business  
 Armistice Day, Nov. 11th

**MULESHOE STATE BANK**  
 Member Federal Deposit Insurance Co.

**\$1.66**  
 WIGGLY

Armistice day

... a day that has built a monument in our hearts for those young men who believed that peace was worth fighting for.

... a day to resolve that they shall not have died in vain.

W. D., Our Genial Produce Manager Invites You To Come In And Take Advantage Of  
The Many Bargains From Our Bountiful Supply Of Garden Fresh Vegetables!

WE WILL BE CLOSED  
ARMISTICE DAY, NOV. 11



RED OR WHITE  
**SPUDS**  
10 Lb. Mesh Bag ..... **59c**

COLO. FIRM GREEN  
**CABBAGE**  
Per Pound ..... **6c**

CALIF. TOKAY  
**GRAPES**  
Per Pound ..... **13c**

Fancy Golden Ripe  
**BANANAS**  
Per Pound ..... **12c**

CALIF. GREEN BELL  
**PEPPERS**  
Per Pound ..... **19c**

Fancy Calif. Kentucky GREEN  
**BEANS**  
Per Pound ..... **19c**

Pinkney's  
**Pure Lard** 4 Lb. Ctn. .... **59c**

Del Monte Cream Style  
**Yellow Corn** No. 303 Can ... **17c**

Swift's  
**PREM** 12 Oz. Can ..... **39c**

Modart  
**Shampoo** 75c Size .... **39c**

**FINE MEATS**

WILSON'S CORN KING  
**BACON**  
Per Pound ..... **45c**

VELVEETA  
**CHEESE**

2-Lb. Box ..... **89c**

VANCE'S PURE PORK SAUSAGE ..... lb. 49c

ARMOUR'S STAR ALL MEAT BOLOGNA ..... lb. 49c

- CURTISS, 10 OZ. CELLO BAG MARSHMALLOWS ..... 15c
- CHARMIN TOILET TISSUE, 4 roll pkg. .... 39c
- LAKEWOOD PURE, 32 OZ. GLASS PEACH PRESERVES ..... 45c
- WORTH, QUART JAR WAFFLE SYRUP ..... 33c
- GOLDCOAST WHOLE SPICED NO. 2 1/2 CAN PEACHES ..... 29c
- WHITE OR YELLOW, 3-MINUTE, 10 OZ. CAN POP CORN ..... 15c
- MONARCH WHITE OR YELLOW, NO. 2 CAN HOMINY ..... 9c
- MODERNTON 18 PC. SET BREAKFAST SET ..... \$2.95

- FROZEN FOODS •
- SNOW CROP 10 OZ. BABY LIMAS ..... 29c
- SNOW CROP 10 OZ. PKG. CUT CORN ..... 19c
- SNOW CROP 12 OZ. PKG., GREEN PEAS ..... 19c

**CASHWAY**

FREE DELIVERY

'When Dyes Talk'

HARDWARE

Phone 2440 or 2450

PHONE 5150