



## Parmer County Farm Bureau Will Hold Annual Convention Tuesday

The fourth annual convention of Parmer County Farm Bureau will be held in the Bovina School Auditorium Tuesday night, October 28 at 8:00 p. m. It is anticipated that this will be one of the best attended conventions in the history of the local organization.

Problems facing farmers, such as discontinuance of tractor gas tax exemption, increased freight rates, threats of state officials to divert funds now used for rural roads to build super cross-country highways, and threatened state ownership of the farmer's precious underground water are drawing agricultural people closer together in an effort to retain these things that have benefited them in gaining a higher standard of living than they have ever known.

Farm Bureau Leadership award pins will be presented to FFA and 4-H boys of the various county groups; certificates will be awarded to top membership solicitors; officers will be elected by ballot, and delegates to the State Convention in San Antonio chosen. Resolutions presented to the resolutions committee will be presented for approval before being sent to the State and National conventions.

The speaker of the evening will be announced later. Though members will receive individual invitations, the general public is cordially invited and urged to attend.

Membership in the Parmer County Farm Bureau has grown steadily since its inception in 1948 from 70 to 578 members in 1951. This represents about 85% of the resident farmers in the county.

## H. D. Club Meets In Carney Home

The Muleshoe Home Demonstration Club met October 14 in the home of Mrs. Roy Carney with Mrs. Dave St. Clair, vice-president, presiding over the meeting.

The Club voted to send gifts to two girls in a home at Abilene. Mrs. Briscoe and Mrs. Gillis then presented an interesting program on "Growing a Healthy Personality".

Refreshments were served to eleven club members and the agent, Mrs. Dian Reed.

The next meeting will be October 28 in the home of Mrs. Simmons at 2:30 p. m.

## Lions Ladies Night Set For Nov. 4

The Muleshoe Lions Club designated Tuesday, Nov. 4, as the date on which to hold their annual Ladies Night. Ernest Kerr was appointed general chairman and Noel Woodley will be Master of Ceremonies.

Those heading committees will be: program, Pat Bobo; food, Blondie Ray; gifts, Alex Wilkins; tables and hall, Curtis Wellborn; greeter, Sam Fox; invitations to guests, Cecil H. Tate and D. Clements.

During the regular meeting Wednesday noon, reports by the various committees on the school carnival were presented.

The program for the meeting consisted of the showing of the film of the recent Texas Tech and Baylor football game. Charlie Colson of Lubbock presented the film.

## Mrs. Burchett To Speak At PTA Meet

The elementary P. T. A. will hold its regular meeting Monday night, October 27.

Mrs. L. T. Green, program chairman announced that the program will be a talk by Mrs. Ruth Burchett on "Faith in Our Schools". Everyone is invited to attend and hear this informative talk.

## Cowboy Supper To Be Oct. 31

The Muleshoe Lunch Room will sponsor a Cowboy Supper Friday night, Oct. 31, from 6 to 8 p. m. at the high school lunch room.

The menu will include: beans, potato salad, barbecued beef, pickles, corn muffins, apple crunch and coffee.

Admission will be \$1 for adults and 50c for children. Proceeds will be used to buy equipment for the lunch rooms.

Everyone is invited to attend and enjoy a good meal before going to the ball game. No one will have to wait as they will be served promptly on arrival and everyone will make it to the game on time.

## Dorcas Class Gives Surprise Dinner

Several members of the Dorcas Class surprised their teacher, Mrs. Earl Humphrey, with a covered dish birthday dinner at her home in Goodland Tuesday night, Oct. 21.

Enjoying the evening were Mesdames T. R. White, T. W. Berry, E. F. Eason, A. P. Lambert, W. E. English, and Mr. and Mrs. Earl Humphrey.

Many sent gifts who were unable to attend.

## Election Clerks Need To Bring Fountain Pens

Election workers are reminded to bring their fountain pens with them when they come to help with the tabulation of the voting November 4. The reminder was expressed by Mrs. Walter Witte, assistant judge for voting box No. 1 in Muleshoe.

Presumably this will apply to workers in all other boxes of the county. Mrs. Witte said about 20 workers will help in the election and that if The Journal would publish this notice it would relieve her of the necessity of notifying each personally. The Journal is glad to oblige, but had no idea so many would be needed to conduct the election.

As said elsewhere in this paper, however, the ballot is a saddle blanket type sheet of paper, 19 by 24 inches, with 8 columns and the voter participation is expected to be very heavy for a general election.

## OUT FOR BASKETBALL

Duwayne Blackshear, formerly of Muleshoe, is a candidate for the Texas Tech basketball squad this year. Duwayne, who is the son of Mr. and Mrs. Dick Blackshear of Mountainair, N. M., former residents here, is a freshman and is eligible for the varsity team.

## CARD OF THANKS

We wish to express our heartfelt thanks and appreciation to our many friends for their kind deeds and soothing words during the long illness and passing of our wife and mother.

Melvin Collins and family.

Education is the cheap defense of nations. —Burke.

# CASHWAY GROCERY & MARKET

"Where Friends Meet And Prices Talk"

FREE DELIVERY Phone 2440 or 2450

THESE PRICES IN EFFECT THROUGH OCTOBER 30, 1952

NO. 303 CAN LIBBY'S CHILI, without beans ... **43c** NO. 303 CAN LIBBY'S CHILI-SPAGHETTI ... **29c**

**AUNT JEMIMA FLOUR** Print Bag 25 Lbs. ... **1.79**

1 LB. BAG SUPREME COCOANUT CHOCOLATE DROP COOKIES ... **49c** NO. 303 CAN OUR VALUE TOMATOES, 2 for ... **27c**

THE PERFECT COMBINATION FOR WASHING MACHINES INCLUDING AUTOMATICS

WHITE KING SOAP GIANT SIZE **49c**

WHITE KING SOAP GIANT SIZE **45c**

MONEY SAVING COUPON IN EACH BOX

12 OZ. BAMA PURE PINEAPPLE PRESERVES ... **25c**

12 OZ. BAMA PURE STRAWBERRY PRESERVES ... **29c**

\$1.00 Size Woodbury Shampoo  
\$1.00 Size Woodbury Beauty Lotion  
Both For **89c**

**Shortening** Bake-Rite 3 Lb. Tin ... **69c**

1 LB. BLUE BONNET OLEO ... **27c** BETTY CROCKER Ginger Cake Mix ... **25c**

ELBERTA PEACHES Our Value, In Heavy Syrup, No. 2 1/2 ... **29c**

## Produce

**POTATOES** Mesh Bag, 10 Lbs. **49c**

FANCY CALIFORNIA TOMATOES, lb. ... **15c**

YELLOW, NO. 1 ONIONS, lb. ... **7 1/2c**

CALIFORNIA LARGE GREEN PASCAL CELERY STALK, ea. ... **17c**

## Market

U. S. GOOD SIRLOIN STEAK, lb. ... **69c**

1 LB. ROLL PINKNEY'S PURE PORK SAUSAGE ... **39c**

ARMOUR'S STAR ALL MEAT BOLOGNA, lb. ... **49c**

**BACON**  
1 Lb. Wilson's Corn King **45c**

## FROZEN FOOD

**ORANGE JUICE** Frozen, Stokely's Honor Brand 6 Oz. ... **15c**

10 OZ. SNOW CROP FROZEN WHOLE OKRA ... **25c**

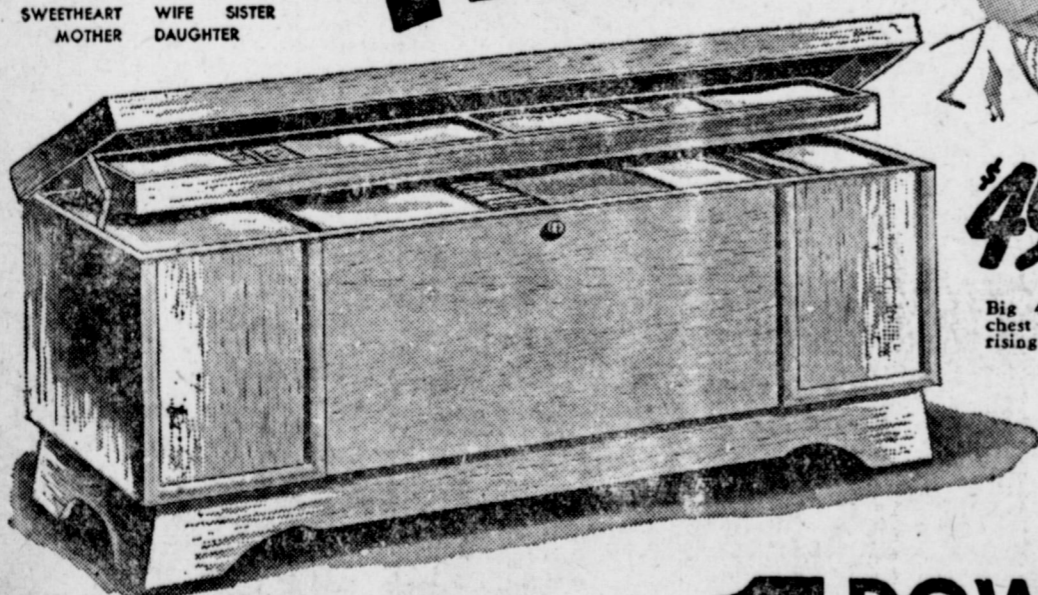
10 OZ. SNOW CROP FROZEN BUTTERBEANS ... **25c**



# LAY-A-WAY Her LANE CEDAR CHEST

# NOW!

Perfect Gift for: SWEETHEART WIFE SISTER MOTHER DAUGHTER



**49<sup>95</sup>**

Big 48" blond chest with self-rising tray.

As advertised in LIFE

It's easy to give her this wonderful thrill on Christmas morning if you'll use our long-term layaway plan now! Take Santa's tip—come in today and choose from our big selection!

ONE GARMENT SAVED PAYS FOR A LANE!

**\$1 DOWN RESERVES ANY**

EASY WEEKLY PAYMENTS!

# DYER'S

HARDWARE & FURNITURE

PHONE 5150

MULESHOE

### P. T. A. Raises Piano Fund

The High School P. T. A. met Monday evening, Oct. 20, at 8 p. m. with Mrs. R. F. Wright, president, presiding.

Three recommendations of the executive committee were voted upon and accepted. A plaque with names of donors to the piano fund will be purchased by the following committee selected by Mrs. Wright: George Glover, Mrs. Agee, J. H. Farley and Mrs. Connie Gupton.

The president, Mrs. Wright, and Mrs. Onard Upton are to be sent as delegates to the state P. T. A. convention in Wichita Falls November 19, 20, and 21. Mrs. Jeff Peeler was chosen as alternate.

A sum of \$2.50 will be sent to the Texas P. T. A. birthday fund.

Mrs. A. S. Stovall, program chairman, presented a very interesting program.

Jim Baker, social science teacher,

gave the invocation. A history of Texas P. T. A. was given by Mrs. Horace Blackburn paying tribute to its founders. For many years, said Mrs. Blackburn, there had been clubs for men to help them raise better crops and better livestock so "why not a club for mothers to help them raise better children", thought Mrs. Porter of East Texas.

In the year 1909 she appealed to the mayors of Texas to send representatives to Dallas to a convention. The result was overwhelming and the Texas P. T. A. had its beginning with Mrs. Porter as president for three years.

David Anderson, school board member, then spoke of "Faith in Our Schools". He praised the teachers and their work and made a plea to the parents to not expect miracles with their children in a short time, since perhaps they had not made the type of person of them during their lives. He added that the school board and teachers alike welcomed constructive criticism.

### Legion Auxiliary Plans Breakfast

The American Legion met Tuesday evening, Oct. 21, for a show-up for the Legion Home. A very nice array of gifts was received.

The group then went to the El Monterey in Clovis where they enjoyed a Mexican Supper. Fifteen members added.

A breakfast will be given November 11 in the dining room of the Post Office Cafe at 10 a. m. Everyone is urged to attend as plans for the Thanksgiving dinner that is to be given November 18 for members of the Auxiliary and their husbands will be discussed.

Paper & Supplies—The Journal

Parents are urged to show their interest in their children by attending the P. T. A. meetings. The next regular meeting is to be November 17.

### "Man-Made Fiber Show" Special Event of Spring Market Week

Spring will come early this year as Dallas and the American Fashion Association welcome 5,000 buyers of the Southwest to the Advance Spring and Resort Market to be held October 26 through October 31 at the Adolphus, Baker and Blue Bonnet Hotels.

An outstanding event of the Advance Spring and Resort Market will be the "Man-Made Fiber Show" presented by the *Ladies' Home Journal* and sponsored by the American Fashion Association. Mrs. Virginia McCone, Director of the Retail Merchandising Department of the *Ladies' Home Journal*, will conduct the show which will be held on the evenings of October 27, 28 and 29 on the Roof Garden of the Adolphus Hotel.

Using the theme of the market, "Spring Fervor," the American Fashion Association will present their two Breakfast Clinics on October 27 and 28 at the Baker Hotel Ballroom. Among the eight spring promotional ideas which will be illustrated are: Silhouette Fervor, Fervor for Neutralizers, and Fervor for Knits. A sequence entitled "Lay That Iron Away" will feature the new, no-iron fabrics, and models will show the new "Cover-up" trend in women's fashions from swim suits to evening gowns.

A copy of the *Sales Merchandising Manual* will be given to each buyer in attendance at the Breakfast Clinics. The *Manual*, a publication of the American Fashion Association, shows how to build sales and customer fashion-awareness through promotions, publicity, advertising and window displays.

The Breakfast Clinics, a special feature of Market Week, are presented by the Dallas Fashion Arts, Inc., in cooperation with the Amer-



A "Man-Made Fiber Show," presented by the *Ladies' Home Journal* and sponsored by the American Fashion Association, will be a special feature of the Advance Spring and Resort Market held in Dallas October 26-31. The "Man-Made Fiber Show" will demonstrate to retailers the kinds, qualities and uses of the new synthetic fabrics.

Ivan Fashion Association, Mrs. Evelyn Lambert will commentate.

#### KENNEDYS HAVE GUESTS

Mr. and Mrs. W. M. McMurtry of Shamrock were week end guests in the home of Mr. and Mrs. E. H. Kennedy. Also visiting in the Kennedy home Sunday were Mr. and Mrs. Craig Wofford and son, Mike, of Lubbock.

#### WITTES HAVE VISITORS

Mr. and Mrs. Pete Jenkins and children, Teddy and Becky Ann, visited recently in Muleshoe with Mrs. Jenkins' parents, Mr. and Mrs. Walter Witte, and friends on their way home from Ft. Worth where doctors removed the cast from Pete's ankle which was injured last December in an accident which occurred while he was on duty with the Texas Electric Co. at Big Spring. Their home is in Big Spring.

#### RETURNED FROM DALLAS

Mrs. Ola Ragsdale has returned from a visit with her daughter, Mrs. Dan Thomas of Dallas, and will begin work this week to move her three bedroom home into the Muleshoe Courts addition.

MORE PEOPLE read the wants ads every week. They cost little, get the job done. Try one.

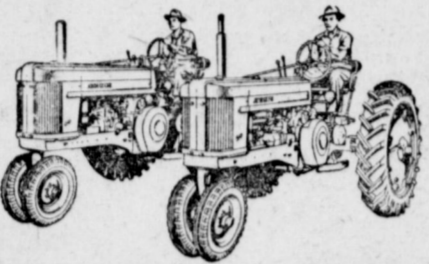
**Drs. Woods & Armistead**  
OPTOMETRISTS

IRA E. WOODS, O.D.  
B. W. ARMISTEAD, O.D.  
GLENN S. BURK, O.D.

Phone 328 Littlefield

LEDGER SHEETS in stock at The Journal. Pho.7220.

### Another Great Feature of the JOHN DEERE "50" and "60" Tractors...



**Saves time, muscle and temper.**

Yes, sir, it's "easy as pie" to respace the rear wheels on the "50" and "60" Tractors. All you do is jack up one wheel at a time... loosen three clamp screws... tighten two jack screws... and turn an adjusting nut to move the wheel in or out to the exact setting desired. To lock the

wheel in place, back off the jack screws and tighten the clamp screws. It takes less than 10 minutes and there's no reversing wheels from side to side, no lifting, hammering or tugging to obtain the full tread range of 56 to 88 inches.

See us for a demonstration of this new John Deere time- and labor-saving feature.

#### OTHER OUTSTANDING FEATURES:

Duplex Carburetion • "Live" Power Shaft • "Live" High-Pressure Power-Trol • Effortless Steering • Ultra-Modern Engineering • Greater Convenience • Unexcelled View • Unequaled Two-Cylinder Strength and Simplicity.

## DAVIS - LENDERSON

YOUR JOHN DEERE DEALER

PHONE 2970

MULESHOE



See your JOHN DEERE Dealer for Quality Farm Equipment

## Another Load Coming Up!

Washing is one of the household tasks that's never done. Even at the very moment that you have finished a wash, there's another load coming up as the children come in from a day of play.

With an automatic electric washer you can smile when you see "another load coming up," for once the clothes are in the washer, there's nothing left for you to do but flip a switch.

"Another load coming up" for you? Be ready for it with an automatic electric washer.

SEE YOUR MODERN ELECTRIC APPLIANCE DEALER

## SOUTHWESTERN PUBLIC SERVICE COMPANY

28 YEARS OF GOOD CITIZENSHIP AND PUBLIC SERVICE

### Halloween Party At Needmore

Needmore Rebekah Lodge No. 160 will give a Halloween party October 30 in the Needmore I. O. O. F. hall. The public is invited to attend.

There will be plenty of games and dominoes, and lots of eats for everybody. Come in costumes or wear masks.

### Progress Class Meets In Home Of Mrs. Wimberley

The Homemakers Class of the Progress Baptist Church met Thursday, Oct. 16, in the home of Mrs. J. H. Wimberley with nine members present.

Mrs. M. D. Gaddy, was in charge of the opening exercise. Her theme was "Life".

Mrs. Wimberley, vice-president, directed the business session. The class voted to remember each boy in armed services with a Christmas package. Mailing for overseas packages to be the first Monday of November. Everyone wishing to contribute is to leave the items at the parsonage with Mrs. Morgan.

New officers were elected and Mrs. Clyde Henry became the new president.

A social hour followed the business session and gifts were exchanged. Secret pals were also revealed. Refreshments were served to those present.

The next meeting will be in the home of Mrs. M. D. Gaddy on November 13.

### Rebekahs Plan Halloween Party

The Rebekahs met in regular session Tuesday night, Oct. 21, with Hazel Nowell, Noble Grand, presiding.

Plans were completed for the Halloween Party to be held next Tuesday night, October 28, at the IOOF Hall. Each member is to in-

## ZENITH

SALES & SERVICE  
RADIOS & TV  
MODELS IN STOCK

## Spence Radio Service Shop

Service On Any Make Radio

Phone 7020  
Muleshoe, Texas

### Don't be a "LIVING ROOM CAPTIVE" ... Step out and see a great movie!

 JUNE ALLYSON, co-starring in "Battle Circus," an M-G-M Picture.	 CORINNE CALVET, a Hal Wallis star, appearing in "Thunder in the East"—a Paramount Picture.	 SUSAN HAYWARD, starring in "The Snows of Kilimanjaro"—a 20th Century-Fox Picture. Color by Technicolor.	 RITA HAYWORTH, star of "Affair in Trinidad"—a Columbia Pictures Corporation Release.
 JANE RUSSELL, starring in "Montana Belle"—An RKO Radio Release.	 ELIZABETH SCOTT, starring in "Red Mountain"—a Paramount Picture. Color by Technicolor.	 ELIZABETH TAYLOR, co-starring in "Ivanhoe"—An M-G-M Picture. Color by Technicolor.	 ESTHER WILLIAMS, co-starring in "Million Dollar Mermaid"—An M-G-M Picture. Color by Technicolor.

## These Top Stars of Hollywood use LUSTRE-CREME Shampoo for the Most Beautiful Hair in the World

WHEN YOU SEE any one of these Hollywood stars at your favorite movie theatre, you'll thrill to her beauty, her charm, her dramatic skill. And you'll adore her glorious hair, sparkling in all its silken perfection... in all its Lustre-Creme glamour.

IF YOU'D LIKE YOUR HAIR to behave like the angels and shine like the stars... do as leading Hollywood stars do... use wondrous LUSTRE-CREME SHAMPOO

YES, THE MAJORITY of top Hollywood stars use Lustre-Creme Shampoo. It's their choice... and the recommendation of their studio hair stylists. For Lustre-Creme's lanolin-blessed lather helps restore the gorgeous sheen so often stolen by hot camera lights; leaves each star's hair looking its loveliest, so clean and manageable, so easy to curl and wave.



REG. \$1.00 SIZE  
PIGGLY WIGGLY  
SPECIAL

69c

GIANT \$2.00 SIZE  
PIGGLY WIGGLY  
SPECIAL

\$1.69



# Society News

By Mrs. Joyce Shafer

THE MULESHOE JOURNAL, Thursday, October 23, 1952

## Jarnigan-Smith Vows Are Read

Mr. and Mrs. Delley Jarnigan of Muleshoe announce the recent marriage of their daughter, Emily, to Gordon Douglass Smith, son of Mr. and Mrs. George M. Smith of Dallas.

Rev. Storm read the single ring ceremony in the First Baptist Church of Clovis, N. M., on Saturday, Oct. 18. Mr. and Mrs. Wesley E. Hawkins, nephew and niece of the groom, were best man and maid-of-honor.

Mr. and Mrs. Smith will make their home at Muleshoe where Mr. Smith is employed at the Barbour Service Station.

## Social Club Meets In Stevens Home

The Pleasant Valley Social Club met in the home of Mrs. Elmo Stevens Wednesday, Oct. 15. The

meeting was called to order and roll call was answered by telling "How I Met My Husband".

Delicious refreshments were served to members, Mesdames Leroy Hicks, John West, Raymond Roubinek, Oscar Allison, Harold Allison, E. K. Angeley, Gerald Allison, and the hostess.

A Halloween party will be held Friday night, Oct. 31, at the Pleasant Valley school house for members of the club.

The next regular meeting will be November 5 in the home of Mrs. W. A. Stevens.

## Three Way P. T. A. Plans Project

Three Way P. T. A. met Monday evening, Oct. 20, at 8 p. m. at the high school gymnasium.

Mrs. Baker Johnson, president, called the house to order and minutes of the previous meeting were read by the secretary, Mrs. H. E. Baker.

A report from the project com-

mittee was given by Mrs. Horace Hutton and the project for the year was decided upon. Badly needed tools for the F. F. A. boys work shop will be bought with P. T. A. funds this year.

The meeting adjourned and domino games were played. Refreshments of cake and coffee were then served.

## Letters To The Editor ...

### BLOCHER'S BEST FRIEND IN FAVOR OF CLEMENCY

Last week The Journal printed a letter from Karl L. Lovelady, attorney for L. D. Stevens, who was given the death sentence for his participation in the murder of Josh Blocher, Progress recluse, last August. Later on, Clifton Livesay was assessed a life sentence in the penitentiary for his part in the slaying. Lovelady sought assistance in bringing a plea to the Board of Pardon and Paroles and Governor Shivers, that Stevens' sentence be commuted to life imprisonment. He is in Austin now to present the case. Now comes R. L. Brooks, near neighbor and friend of the murdered man, who presents The Journal with a copy of a letter he has written to the Governor, which we print below:

Dear Gov. Shivers: I live in Progress. Joshua Blocher lived alone in a small cabin 200 feet from my store. I have known him since 1930, and have been with him almost daily for the last five years. He loafed daily at my place. I was the best friend that he had, doctored him when he was sick, waited on him at all times of the night, paid for his medicine, hauled him almost everywhere that I went.

He was a good man and his word was good. I don't know of any man living that I would trust any more than I would Joshua Blocher. He gave land here in Progress for a Post Office, and land for the school. He always paid his taxes and voted and was very patriotic.

I was first state witness and last witness after the defense witness at each trial. Karl L. Lovelady was appointed by the Court to represent the said Lester D. Stevens. He was sentenced to die, which was a just and honest verdict. Judge Bills' instructions to the jury were that when two persons commit a crime, regardless which one committed the murder, each one is equally involved.

Thomas Clifton Livesay's folks were able to raise some money to retain lawyers to represent him, and his case was transferred from Muleshoe to Farwell, then to Tulsa and finally to Haskell, and when tried he received a life sentence.

It seems to me that Lester D. Stevens and Thomas Clifton Livesay should receive the same sentence. They both are equally involved. Mr. Shivers, I have a feeling that you will do what you believe is just and honest.

R. L. Brooks.

The secret of education lies in respecting the pupil. — Emerson.

OFFICE Supplies at the Journal

### SHOFNERS HAVE GUEST

P. C. Mills of Terrell, Texas, visited in the home of Mr. and H. M. Shofner last week. Mills is a boyhood friend of the Shofners.

### DAVIS GUESTS

Guests in the A. L. Davis home Sunday were: Mr. and Mrs. E. D. Davis of Albuquerque, N. M., Mr. and Mrs. Cecil Clary, Mrs. Clary and Marvin, of Hot Springs, N. M., Miss Willie Mae Lucy, Mr. and Mrs. John Davis, Mr. and Mrs. Harlan Davis, of Muleshoe.

### COLLINS FAMILY HAS SEVERAL GUESTS

Visiting in the Bill Collins home over the week end were Mrs. M. F. Collins and daughter, Miss Bessie Collins, Mr. and Mrs. Carrol Ray and son, Frankie, of Marlow, Okla. Mrs. Collins is Bill Collins' mother.

### BRYANTS TO HAVE GUESTS

Mr. and Mrs. Don Fudge and son, of Hereford, are planning to visit this week end in the home of her parents, Mr. and Mrs. Roy Bryant and attend the Muleshoe - Springlake football game Friday night.

### IN AMARILLO

Mrs. F. H. Davis and Mrs. Jack Lenderson are in Amarillo shopping today.

### MRS. MURRAH HAS GUESTS

Mrs. Eva Murrah had as Sunday guests Mr. and Mrs. Wayne Stark of Lubbock and Mr. and Mrs. Claudis Murrah.

### VISITED IN PADUCAH

Mr. and Mrs. Ralph Carpenter visited over the week end in Paducah with his parents, Mr. and Mrs. Charlie Carpenter, and her sister, Mrs. Willie Gibbs and family.

### ADAMS' POLAND WINS

Top price for swine in the fifth annual Southwestern Cattle Festival in Clovis early this week went for a champion Poland China barrow bred and raised by John H. Adams of Tulia. The barrow brought \$49.50 at \$26 per hundredweight at the sale Tuesday. Mr. Adams is the father of J. K. Adams, Bailey County farm agent.

### LOCAL MARKETS

Cream, lb.	71c
Eggs, doz.	50c
Lt. Hens, lb.	13c
H. Hens, lb.	18c
Hogs, cwt.	\$18.00
Kafir, cwt.	\$2.75
Maize, cwt.	\$2.75
Hegari, cwt.	\$2.75
Wheat, bu.	\$2.18

Paper & Supplies—The Journal

## Bailey County Abstract Co.

ABSTRACT SERVICE — LOANS  
Mrs. Lela Barron — Mgrs. — L. S. Barron  
Established in 1906

**FRESH**  
**WONDERFUL**  
**AND LOADED WITH LAUGHTER**



It's Clifton Webb as a dignified college professor. But under that cap and gown beats the heart of Bruce Blair, ex-movie idol. And whether he likes it or not, his former movie queen is bringing his flaming flickers back on TV—and making him the rage of today's bobby sox age!

CLIFTON WEBB GINGER ROGERS

## DREAMBOAT

co-starring ANNE FRANCIS JEFFREY HUNTER  
with Elsa Lanchester - Ray Collins  
Produced by SOL C. SIEGEL - Directed by CLAUDE BINYON - Screen Play by CLAUDE BINYON

SUN. - MON., OCT. 26 & 27  
COX DRIVE-IN THEATRE

## A REMINDER --

We are back on the job and wanting to handle your REAL ESTATE business.

We invite you to give us a trial.

TUNE IN — Station KVOW, Littlefield, at 12:45 p. m. Mon., Wed., & Fri. 1490 on your dial.

We sell anything for anybody, anywhere, anytime!

Next To Anderson Cotton Office

## EMETTE CROSS

REAL ESTATE & AUCTIONEER

Phone 5790 — Res. 5700 — Muleshoe

A clean house calls for more than Whitewash!

**Set it right — Vote for Ike!**

(Pol. Adv. Paid for by R. D. Precure)

**THE MAYTAG AUTOMATIC GETS CLOTHES CLEANEST!**

- Famous Gyrateam washing action
- Fully automatic
- No bolting down

**JOHNSON-POOL**  
Tire & Appliance  
Dial 7370 Muleshoe, Texas

**B.F. Goodrich**  
FIRST IN RUBBER  
**TIRE HEADQUARTERS**

**COX**

**DRIVE-IN THEATRE**  
Program  
OF FINE ENTERTAINMENT!

Thurs. & Fri., October 23 & 24  
**THE WORLD IN HIS ARMS**  
Gregory Peck & Ann Blyth

Saturday Only, October 25  
**GERONIMO**  
Preston Foster & Ellen Drew

Sun. & Mon., October 26 & 27  
**DREAM BOAT**  
Clifton Webb & Ginger Rogers

Tues. & Wed., October 28 & 29  
**LET'S GO NAVY**  
Leo Gorcey & the Bowery Boys

MULESHOE TEXAS

Texas Democrats want **TEXAS-BORN IKE**

"RESOLVED... that it is the recommendation of the Convention that every Democrat in Texas vote and work for the election of Dwight D. Eisenhower for President and Richard Nixon for Vice-President..."  
TEXAS STATE DEMOCRATIC CONVENTION  
AMARILLO, TEXAS... SEPTEMBER 9, 1952

**A Vote for EISENHOWER Is a Vote for TEXAS!**

TEXAS DEMOCRATS FOR EISENHOWER

# M.B.C.E.D.

IT'S COMING TO MULESHOE

## WATCH FOR IT

# MORRISON MOTOR CO.

MULESHOE, TEXAS



### Library Ass'n. Met In Borger

District One of The Texas Library Association held its fourth annual meeting Saturday, October 18, in the Frank Phillips Junior College, Borger, with the largest attendance in the three years of the District's organization. The Chairman, Miss Jo Battle, Librarian of Carson County Library, Panhandle, reported on the library services of the forty-four counties in District One.

The program was one of interest to the varied group of Library Friends, board members, commissioners, teachers and librarians. The meeting was the beginning of a long range program in the state wide movement to improve services in ex-

### Nov. 1 Deadline For Draft Tests

AUSTIN — Oct. 20, Lt. Col. Morris S. Schwartz, deputy state Selective Service director, today issued a last reminder to college students that the deadline for application to take the December draft college qualification tests is November 1.

"No applications will be accepted that are mailed after November 1," Colonel Schwartz said. "Applications for the December test must be received by the existing libraries and to establish library service in all towns and counties of the state."

Highlights of the program included talks from state leaders, educators, and reports from district librarians. Thomas J. Gibson, State Librarian, described the various services of the State library to local libraries.

### WTCC PREXY



**R. WRIGHT ARMSTRONG**  
WICHITA FALLS, Oct. 21 — R. Wright Armstrong, of Fort Worth, vice president of the Fort Worth and Denver Railway Company, was elected president of the West Texas Chamber of Commerce at final session of its 35th annual convention here Tuesday.

Armstrong is a veteran of two wars. In World War I he was a captain and aide to Major General John A. Hulen, who later became vice president of the Fort Worth and Denver Railway. He served overseas with the 36th Division, and was active in the Texas National Guard many years. He was president of the 36th Division Association in 1947 and 1948.

**DANNIE MAC PARSONS**  
A six pound boy, Dannie Mac Parsons, arrived Thursday evening, Oct. 16, 1952. He will make his home with his parents, Mr. and Mrs. Dudley M. Parsons of Moriarty, N. M. His grandmother, Mrs. Scott Morris is spending a few days visiting with her daughter and husband and new grandson.

4 test must be postmarked no later than midnight, Saturday, November 1, 1952.

Students may secure application forms and bulletins of information which tell how to fill out the forms from any local board in the state. They also can secure self-addressed envelopes in which to mail applications from the same source.

Draft boards are closed on Saturdays and Sundays, so application blanks may be picked up personally by students only during Mondays through Fridays.

To be eligible to apply for taking the test, a student must (1) intend to request deferment as a student in writing directly to his local board, (2) be satisfactorily pursuing a full-time course of instruction, and (3) not previously have taken the test.

Colonel Schwarz emphasized in his statement that application forms can be secured at any local board.

**KISTLERS HAVE GUESTS**  
Mr. and Mrs. B. G. Woolpert of Topeka, Kans., visited over the week end with his sister, Mrs. Bill Kistler and husband.

### Retailers Get Ceiling Posters

DALLAS, Oct. 21 — A huge mailing of some 80,000 price ceiling posters to retail service establishments throughout the Southwest has been completed by the Office of Price Stabilization's Dallas regional office.

Retail businesses selling services in Texas, Oklahoma, Louisiana and Arkansas must post their ceiling prices on the posters and display them within their establishment within seven days after they receive them, according to Thomas J. Murray, OPS regional service division chief in Dallas.

Businesses which must display the new poster are those subject to OPS Ceiling Price Regulation 34, and include laundries, service stations, tailor and dry cleaning shops, parking lots, and shops doing repair work on shoes, radios, television sets, household electrical equipment, watches and clocks, furnaces, heaters, automobiles and trucks.

Murray explained that the

### Pvt. Edens Is Army Graduate

Fort Leonardwood, Mo — Pvt. A. D. Edens, son of Mr. and Mrs. Lonnie Edens, Friona, recently graduated from the tractor-scraper operation course of the Army Engineer Specialist School at Fort Leonardwood, Mo.

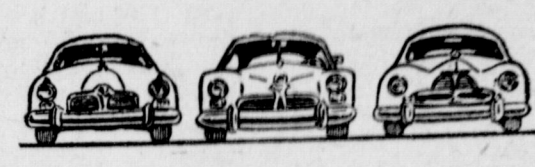
The eight week course included classes in the use of the D-7 Caterpillar tractor, methods of

ceiling prices which must be posted are the prices, subject to certain allowed adjustments, which were in effect during the base period of December, 1950 to January 25, 1951. The new method of listing ceiling prices on standard forms provided by OPS will replace the varied methods which service businesses have been using. The poster measures about 11 by 17 inches, with the words "OPS Ceiling Prices for Retail Services" printed across the top. It is similar to ceiling price posters displayed in restaurants and contains 20 blank lines on which each shop will list its principal services and their ceiling prices.

bulldozing, and the operation of huge earth moving equipment. Preventive maintenance and lubrication were stressed throughout the course, which was conducted by the 6th Armored Division. Private Edens has been in the

**HANEYS TOUR IN OKLAHOMA AND ARKANSAS**  
Mr. and Mrs. I. W. Haney are on a six-week trip through Oklahoma and Arkansas visiting friends and relatives. While in Arkansas, they will visit their birthplace and scenes of their childhood. They are expected back in Muleshoe about the last of October.

SEE US FOR PROTECTION POLICIES YOU NEED  
**BOBO INSURANCE AGENCY**  
Office In Bank Building  
PHONE 2640 MULESHOE



SEE OUR  
WIDE SELECTION  
OF  
NEW and USED  
CARS NOW  
Convenient Terms  
**C. & H. Chevrolet**  
CHEVROLET CARS & TRUCKS  
Phone 2720 Sales and Service Muleshoe

## SPECIALS

Thermalair 15,000 to 40,000 BTU

Circulating Radiant Heaters

**\$11.95 to \$29.95**

Super Glo 15,000 to 30,000 BTU

Radiant Heaters

**\$11.95 to \$18.95**

Firestone Apartment

Gas Range ----- \$89.00

Firestone Deluxe

Gas Range ----- \$189.95

Firestone 14 Cu. Ft. Upright

Food Freezer ----- \$385.00

Plenty of Good Used Sewing Machines

Also New Necchi Sewing Machines

Stop In Today!

**BASS** Firestone Dealer Store

Even the deep freeze  
couldn't keep the herring from smelling!

**Set it right -  
Vote for Ike!**

(Pol. Adv. Paid for by Earl Ladd)

## MR. FARMER:



Don't you think control of the farm program should be in your hands?

Don't you think you are capable of running your own business?

THEN VOTE FOR TEXAS IKE FOR PRESIDENT. HE IS PLEDGED TO DECENTRALIZE THE FARM PROGRAM. TO PLACE CONTROL ON THE STATE, DISTRICT AND COUNTY LEVELS.

THEN VOTE FOR TEXAS IKE FOR PRESIDENT. HE IS PLEDGED TO DECENTRALIZE THE FARM PROGRAM. TO PLACE CONTROL ON THE STATE, DISTRICT AND COUNTY LEVELS.

Here's what Ike said at Waco: "Our farm policies ought to begin, as well as end, out where the plowing and the planting are actually done. It should be a unified program, one in which the left hand knows what the right hand is doing."

IKE WILL THROW OUT THE FEDERAL WINDSHIELD FARMERS AND THE BIG CITY LAWYERS

VOTE FOR LOCAL CONTROL OF THE FARM PROGRAM. VOTE FOR IKE.

**TEXAS DEMOCRATS for EISENHOWER**

(Pol. Adv. Paid for by Claud M. Gilmer, Chairman)

## Did You Know

That

MULESHOE LOCKER CO.

Offers You A

## Complete Meat Handling Service

- Slaughtering
- Dressing
- Processing
- Packaging
- Rendering
- Cold Storage

Bring In Your Animal For Complete Processing — Or Buy The Meat That You Select In Our Plant — Store It In One Of Our Food Lockers Or In Your Home Freezer.

**HAVE QUALITY MEAT AND SAVE MONEY!**

We Invite You To Try  
VANCE'S COUNTRY STYLE SAUSAGE

## Muleshoe Locker Company

PHONE 7030

MULESHOE

We're rootin' for the

# HOME TEAM!

DOUBLE STAMPS EVERY TUESDAY  
**MAKE QUALITY PLUS SAVINGS PLUS YOUR GOAL!**  
 "J.P." GREEN STAMPS

GOLD MEDAL 10 LB. BAG  
**FLOUR.. 82c**

HOLLANDAILE COLORED, LB.  
**OLEO .. 22c**  
 PINT BOTTLE  
**WESSON OIL .. 34c**

LARGE CAN  
**Eagle Brand Milk .. 29c**  
 AUNT JEMIMA 5 LB. BAG  
**MEAL .. 49c**

R. S. P. NO. 2 CAN  
**PIE CHERRIES .. 18c**

GREEN GOLD NO. 303 CAN  
**ASPARAGUS .. 18c**  
 BEE BRAND  
**PEAS .. 3 for .. 25c**  
 BROOKS NO. 303 CAN  
**BUTTER BEANS .. 14c**  
 HEINZ 16 OZ. CAN  
**BAKED BEANS .. 15c**

NIBLETS 12 OZ. CAN  
**MEXICORN .. 22c**  
 GREEN GIANT NO. 303 CAN  
**Corn, Cream Style .. 19c**  
 CLEAR SAILING NO. 303 CAN  
**GREEN BEANS, 2 for .. 25c**

AUSTEX NO. 303 CAN  
**BEEF STEW .. 42c**  
 SWANSON 8 OZ. CAN  
**BONED TURKEY .. 54c**  
 SKINNERS LARGE BOX  
**RAISIN WHEAT .. 18c**  
 SUNSHINE 10 OZ. PKG.  
**VANILLA WAFERS .. 33c**

MARYLAND CLUB, 1 LB. ANY GRIND  
**COFFEE 84c**

All White Breast-O-Chicken, Chunk Style  
**TUNA, no. 1/2 can .. 34c**  
 Tomato Soup, 3 for .. 35c

TALL CAN IDEAL  
**DOG FOOD, 3 for .. 47c**  
 7 OZ. BAG  
**M & M CANDY .. 25c**

U. S. GRADED QUALITY MEATS

SHOULDER CUT  
**PORK ROAST** Shank End **39c** Butt end **49c**  
 Lb. Lb.

VANCES COUNTRY STYLE  
**SAUSAGE .. lb. .. 49c**  
 SKINLESS  
**FRANKS .. lb. .. 49c**  
 CROWN, SLICED, CELLO PACK  
**BACON .. lb. .. 59c**

BALLARDS CAN  
**BISCUITS, ea. .. 9c**  
 CLEARFIELD CHEE ZEE, 2 LB. BOX  
**CHEESE .. 96c**  
 SIRLOIN CHOICE BEEF  
**STEAK .. lb. .. 89c**

**FRYERS** Wilson Certified Fresh Dressed. Lb. **59c**

FRESH FRUITS & VEGETABLES

**Grapes** Tokay Lb. **15c**

**CARROTS, bunch .. 10c**  
**TOMATOES, lb. pkg. .. 19c**

**LETTUCE, lb. .. 12 1/2c**  
**CELERY, lg. stalk .. 19c**

RUBY RED  
**GRAPEFRUIT** Lb. **12 1/2c**

NORTHERN  
**TOILET TISSUES, 3 for .. 25c**

SNOW CROP 4 OZ. CAN  
**ORANGE JUICE 12 1/2c**

SNOW CROP 10 OZ. PKG. **SQUASH .. 18c**  
 SNOW CROP 10 OZ. PKG. **CUT CORN .. 22c**  
 YOUNGBLOOD 1 LB. PKG. **DRUMSTICKS .. \$1.17**  
 SNOW CROP 8 OZ. PKG. **GREEN PEAS .. 18c**  
 SNOW CROP 10 OZ. PKG. **Chop. Broccoli .. \$1.25**  
 YOUNGBLOOD 8 OZ. PKG. **GIZZARDS .. 39c**

OSCAR MAYER 12 OZ. CAN  
**LUNCHEON MEAT ... 39c**

ARGO  
**CORN STARCH .. 15c**  
 UNCLE BEN'S 14 OZ.  
**RICE .. 20c**  
 PETER PAN 12 OZ.  
**PEANUT BUTTER .. 38c**  
 DROMEDARY 1 LB. PKG.  
**DATES .. 39c**

LIBBY'S 14 OZ. BOTTLE  
**CATSUP .. 19c**  
 LIPTON, PKG.  
**ONION SOUP .. 16c**  
 TALL CAN  
**MILK DARICRAFT .. 15c**  
 BAILEY 12 OZ. JAR  
**Strawberry Preserves .. 52c**

GIANT 57c SIZE PKG.  
**RINSO ... 39c**

MENNEN'S 49c SIZE  
**BABY CREAM .. 39c**  
 PINT BOTTLE  
**ALCOHOL .. 15c**  
 HERSHEY  
**CANDY KISSES .. 27c**  
 HARTEX NO. 2 CAN  
**PINEAPPLE JUICE .. 10c**  
 NORTHERN, 80 CT. PKG.  
**PAPER NAPKINS, 2 for 25c**

TRUSHAY 50c SIZE  
**HAND LOTION .. 35c**  
 BAYER 15c SIZE  
**ASPIRIN, 2 for .. 25c**  
 HERSHEY  
**CANDY, 6 bar pack .. 25c**  
 CHOCOLATE 1 LB. BOX  
**CANDY CHERRIES .. 59c**  
 LIPTON SOUP  
**Tom. Vegetable, 2 for .. 25c**

**KLEENEX** 200 Ct. Box, 2 For **29c**

LARGE CAN  
**BON AMI .. 12 1/2c**  
 QUART BOTTLE  
**CLOROX .. 19c**

REG. BOX  
**BLUE WHITE FLAKES .. 10c**  
 SWEETHEART, REG.  
**TOILET SOAP, 3 for .. 25c**  
 16 OZ. BOX  
**BORAX .. 18c**

REGULAR BOX  
**IVORY SNOW .. 29c**  
 SWEETHEART BATH BAR  
**TOILET SOAP, 2 for .. 25c**  
 BATH BAR  
**DIAL SOAP, 2 for .. 37c**

**PIGGLY WIGGLY**  
 DAVIS & HUMPHRIES OWNERS & OPERATORS



### HIGH PLAINS POLL

Mark your preference for President and return to the office of this newspaper.

- FOR GOV. ADLAI STEVENSON
- FOR GEN. DWIGHT EISENHOWER

Eisenhower leads Stevenson in day is 16 for the General, 11 for the few straw vote ballots received by The Journal. The count to the poll thru next week.

Every **RILCO BUILDER**  
IS A  
**RILCO SALESMAN**



Over-the-fence conversation puts more Rilco buildings on more farms every day of the year. But it takes more than talk. Rilco has what it takes. Sound product engineering and skillful manufacturing combine to make Rilco a product of top quality. Let us show you sturdy Rilco buildings in your community. Check on the quality. Compare—and when you do, you'll choose Rilco construction. Let us help you plan new buildings, and get the materials you need. There's a Rilco Rafter for every type of building—barns, poultry houses, machine sheds and commercial structures. We'll be glad to tell you more about building quickly and economically with Rilco Rafters.



**HIGGINBOTHAM-BARTLETT CO.**

PHONE 3510

MULESHOE

## EVERLAY FEEDS

GOOD FROM START TO FINISH

- Chick Starter.
- Chick Growing Mash.
- Egg Mash.
- Rabbit Pellets.

Dr. LeGear's Poultry Remedies

We Pay  
Highest Cash Price For Your  
Cream and Poultry  
Let Us Dress Your Poultry

**J. & J. PRODUCE**

Former Taylor Produce Location

Phone 3810

Muleshoe

### 2,428 Bales Ginned To Date, Is 1473 More Than '51 Period

A check of the Cotton Gins in the City of Muleshoe of cotton ginned so far to date. This is an increase of approximately 1,473 bales over last year at this date.

Don Moore of the Union Compress estimated a total of 10,000 bales of cotton was on their dock. These bales do not represent cotton ginned in the Muleshoe gins alone.

Some stripping of cotton has started, but full scale mechanical harvesting is not expected for another week.

### Ford Tractor Dealers Meeting

Ford Tractor dealers and their dealership personnel from this area will attend an all-day meeting November 1 in the Science Building on the Texas State Fair grounds, Dallas, sponsored by The Stewart Company and Dearborn Motors Corporation, Birmingham, Michigan.

Hicks Tractor Company are dealers for Muleshoe territory.

The meeting will be conducted in the form of a stage presentation using motion pictures, slides and special skits to present latest management, merchandising and manpower plans to assist Ford Tractor and Dearborn Farm Equipment dealers during the year ahead.

Each dealer will be given a definite plan of action designed to help him serve his farm customers more effectively. The meeting is one of 32 being presented by specially trained traveling crews at central locations throughout the United States.

It is only the ignorant who despises education. —Publius Syrus.

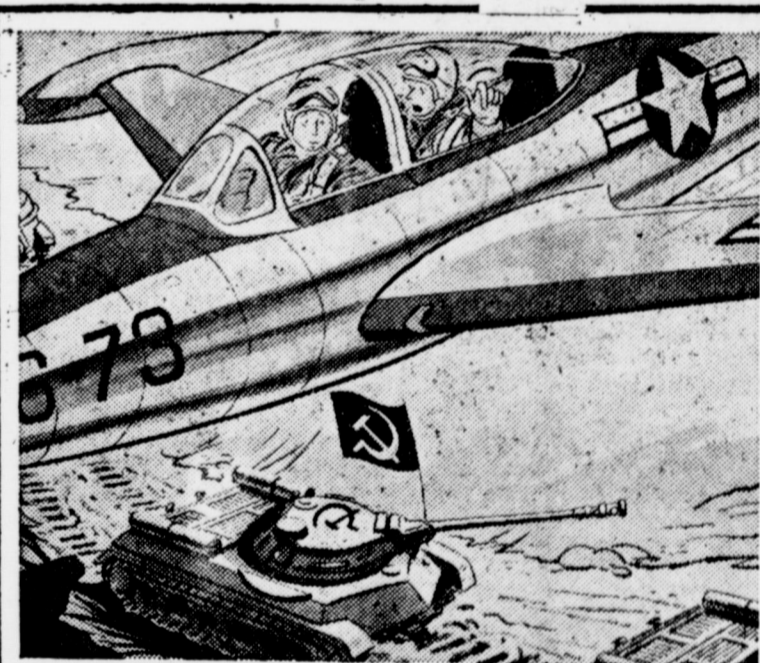
Character development is the great, if not the sole, aim of education. —William O'Shea.

### \$25 REWARD

For a suitable 3, 4 or 5 room furnished apartment or house to rent.

CALL SUDAN  
3771 Collect

PAPER PUNCHES in stock at The Journal.

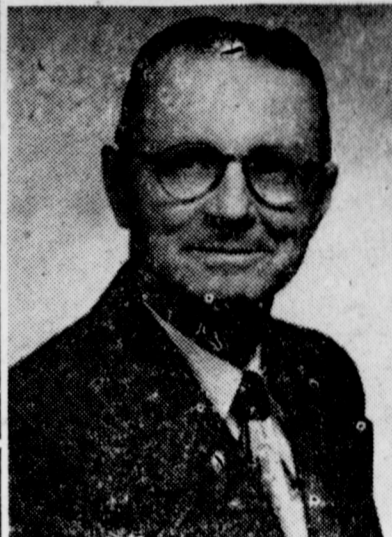


"Fergossakes — don't strafe 'em, Joe! You'll embarrass our State Dept.!"

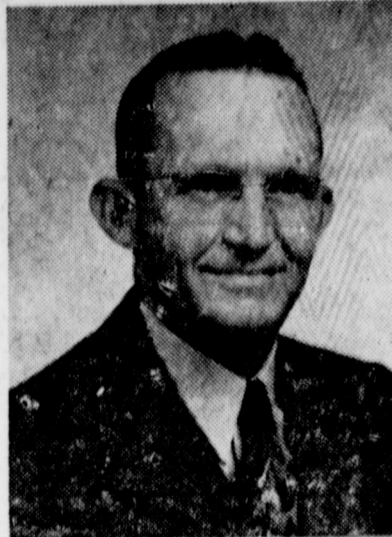
Sick of State Department Bungling?  
**VOTE for EISENHOWER & NIXON**

(Pol. Adv. Paid for by Otis Oliver)

### Dodge Dealers Announce 1953 Car



ARNOLD MORRIS



BUFORD BUTTS

Arnold Morris and Buford Butts, proprietors of Arnold Morris Auto Co., Dodge dealers, announce they will display the new 1953 Dodge Thursday, Friday,

and Saturday of this week. They invite everybody to visit their showrooms during these three days. The new Dodge features the Red Ram V-Eight engine.

### Buick Features Plains Area In Magazine Article

Productivity of the thousands of acres of the Texas Plains was played up in an interesting article appearing in the November issue of the Buick Magazine, circulated widely, throughout the United States.

The article, referring to the Buick irrigation motor, as the "fireball" of the Texas Plains, shows photos of truckloads of cotton as a processing plant near Plainview during the picking season, of an irrigated cotton field and maize grown near here. Also pictured are M. C. Muse and son, Bill, irrigation farmers near Plainview.

The value of the water and how the Texas Plains have been transferred from an arid area to an extremely producing section is stressed. Average pumping season for this area is 120 twenty-four hour days.

The article points up the tremendous cotton production of the twenty High Plains counties. It says that ten years ago, the 2,560 irrigation wells watered less than 200,000 acres. Today 16,600 wells foster productivity of 2,250,000 acres.

### None Hurt As Bus Overtakes

A Sudan school bus, carrying eighteen school children was badly damaged Wednesday afternoon shortly after 4 p. m. when the driver entered U. S. Highway 84 about five miles east of Sudan, and was struck by a car traveling east toward Littlefield. Two of the children, Roy Pettigrew, 4th grade student and Glenna Fowler 5th grade student in the Sudan schools were taken to the Amherst hospital for x-rays. The driver of the bus was also x-rayed but it was reported that no one was injured seriously.

According to reports, Jim Green, Sudan girls' basketball coach, driver of the bus was entering U. S. 84 from the North and failed to see an oncoming 1952 Ford driven by a young couple from Muleshoe. The Muleshoe car hit the right rear corner of the bus, sending it toppling over into the bar ditch. The Ford was badly damaged, but its occupants escaped with only minor injuries it was reported.

### CANVAS DUO



This young housewife, with her torreador pants to match her awnings, reminds that it's time to remove canvas awnings for winter storage, the National Cotton Council says.

### CARPENTERS

Have all of your saws filed on our precision machine. Mechanically accurate jointing, filing and setting. They'll cut cleaner, truer, faster.

A. E. SCARBROUGH  
1305 East Second St.  
Muleshoe, Texas

## BIG SAVINGS ON

- COTTON SACKS — WORK SHOES — KHAKI CLOTHES
- IRRIGATION SUPPLIES — TENTS and TARPAULINS
- GUNS And AMMUNITION
- BLANKETS — QUILTS
- PRESTONE ANTI-FREEZE

**RUSSELL SUPPLY CO.**

PHONE BILL RUSSELL — 3400

Muleshoe

Texas



"Wish I was the Administration. Every time I'd pull a boner, some other guy would get drafted!"

Sick of Expensive Incompetence?

**VOTE for EISENHOWER & NIXON**

(Pol. Adv. Paid for by F. L. Oliver, Jr.)

## BEAT THE RUSH!



**SPECIAL**

PER CASE ..... **\$16.95**

**Johnson - Pool**

PHONE 7370 TIRE AND APPLIANCE MULESHOE



TIRE HEADQUARTERS

See Us Now For - - -

## Distinctive Western Style XMAS CARDS

Beautiful - Different

*Muleshoe Journal*

Let Us Winterize Your

**Pontiac**

OR

**G.M.C.**

We Repair All Makes Cars And Trucks  
SEE US FOR YOUR CAR SERVICE

**LADD PONTIAC**

PHONE 3080

MULESHOE



# The Muleshoe Journal

DEDICATED TO THE PROGRESS AND DEVELOPMENT OF BAILEY COUNTY AND THE GREAT MULESHOE COUNTRY

VOLUME 30, NUMBER 44

MULESHOE — County Seat of Bailey County — TEXAS

THURSDAY, OCTOBER 23, 1952

SECTION TWO

## County Gets Set for General Election

### Coronation Of Football Queen

(From the Hee Haw, High school publication)

Crowning of the 1952 Football queen has unanimously been declared to be one of the most impressive that Muleshoe has ever had. Credit for this beautiful performance no doubt goes to Mr. Loyd Alsop, his band and chorus.

The details distinctly showed that much work had been put into the program, which made it a high light of the year for M. H. S. Betty Chisholm made a charming queen as she came onto the football field atop the class Buick Convertible.

She was attended by Jo Addine Wagnon and Texann Holdeman who added to the attractiveness of the coronation. Betty was escorted onto the field by co-captains Buck Johnson, Bobby Seid and Dewayne Burkhead, followed by her attendants who were escorted by Bill Willis and Bennie Bickel.

As she was being crowned the chorus most appropriately sang "Ain't She Sweet" accompanied with the music by the band.

Thanks Mr. Alsop for such a nice performance. Hat's off to you Betty 1952-53 football queen.

PAPER PUNCHES in stock at The Journal.

PAPER and Office Supplies at The Journal. Pho. 7220.

### Permits Required For Drilling — Well Spacing Left To County Committee

Committeemen representing the 13 counties in the Hi-Plains Water Conservation District voted to require permits for drilling water wells and to leave well spacing in the hands of county committees. This action, taken at a meeting in the Hotel Jim Hall, Hereford, Texas, October 2, was a follow-up to recommendations made at recent county meetings in the district.

Only one dissenting report was submitted against the well permit and spacing rule action. Parmer County farmers, Committeemen Bruce Parr of Friona reported, are opposed to any rule which would limit their freedom in drilling wells. Parr said irrigation in Parmer County is a comparatively new development and farmers at present see no need for regulation.

In line with action taken at this meeting, officials of the district expect to have the well drilling permit requirement in effect, probably by the first of the year and not later than Feb. 15. If farmers object to county committee's ruling they may take their request for a drilling permit to the district board, which may call in professional engineering assistance to work out a system of well spacing suited to the particular area.

Tom McFarland of Lubbock, manager of the Hi-Plains Water Conservation District, presided at the meeting.

Speakers on the morning program included W. L. Broadhurst of Austin, Tom Craig of Amarillo, and Norris P. Swanson, irrigation specialist with the Soil Conservation Service.

Broadhurst and Craig agreed in recommending the district employ professional engineering help in working out well spacing rules.

General trend of all discussion was to urge enforcement of water conservation rules on a county and district level in order to prevent control from slipping to state and federal agencies.

### Film Program Given At Rotary

A film entitled "Harvest of America" was shown at the regular meeting Tuesday noon of the Muleshoe Rotary Club with L. S. Barron as the projector. Herb Potter was in charge of the program and the film was furnished by Arthur Crow, of C. & H. Chevrolet, the film having been made by the Chevrolet Motor Co.

Paul Scott, manager of Paymaster Gin and Paymaster Elevator, was announced as a new member.

Guests included Wayne Moore of the high school; Mark Davis, Lubbock; H. H. DeLozier and Wendle McCormick, both of Clovis.

### Big Turnout Of Electors Is Anticipated

It's a saddle blanket ballot that the voter will have the privilege of marking on November 4. The ballots have been printed by the Journal and delivered to county officials, who are distributing them to precinct election officials in the seven voting boxes.

Absentee voting began in the coming election last Wednesday, and M. G. Bass, the county clerk, had the supplies, including the ballots, ready for those who applied. He indicated there is considerable inquiry about absentee voting.

On the ballot, which measures 19 by 24 inches, there are eight columns for this general election, as follows: Democratic Party, Republican Party, Prohibition Party, Progressive Party,

Christian Nationalist Party, Constitution Party, Independent, and Write-In.

One can vote a straight party ticket or split from one to the other. The job of counting the votes this year is going to be slower and tougher than ever.

In addition to voting for the candidates, the voters will be called upon to vote yea or nay on two proposed amendments to the Constitution of the State of Texas: 1. An amendment authorizing the Legislature to provide for Workmen's Compensation Insurance for employees of cities, towns and villages; No. 2. An amendment providing for the establishment of a State Medical Education Fund under which grants, loans or scholarships may be made to students desiring to study medicine.

Bailey County will also be called upon to vote on the Re-Allocation of Funds authorization. This proposal is worded as follows: "the re-allocation of county taxes under the limitations and in the manner provided for in Article 8, Section 9, of the Constitution".

The voter will find several candidates for State office listed in both the Republican and the Democratic columns. Starting with Price Daniels, candidate for U. S. Senator, and Allan Shivers, candidate for Governor, the Republicans have nominated

the Democratic slate on down through the office of State Treasurer with one exception.

The exception is John C. White, candidate to succeed himself as state commissioner of agriculture. His name appears only in the Democratic column.

The voter will find nominees

in the Democratic column on down through district, county, and precincts, with names of candidates given even through constable and justice of the peace precincts in Bailey County.

Only a few days remain before the election, which comes a week from next Tuesday.

## PAYMASTER ELEVATOR

In The Market For Your

### SORGHUM GRAINS

Highest Market Prices At All

Times

PAUL SCOTT, Mgr.

Muleshoe, Texas

See Us Or Call 4820

### CARD OF THANKS

We wish to express our deepest gratitude for the assistance, the kindness and the beautiful flowers during the illness and at the death of our beloved wife, daughter and sister.

Allan Harris  
Mr. and Mrs. W. W. Bates  
Mr. and Mrs. D. J. Harris and family  
Mr and Mrs. Hoyte Eubanks

### TEACHER'S PET



Youngest scholar of them all will be teacher's pet in this back-to-school frock from Youngland in Bates disciplined cotton. In contrasting colors, the bodice repeats the dark color of the skirt in the collar and sleeves. The belt through loops is a "big-sister" touch.

### Stop Taking Harsh Drugs for Constipation

End Chronic Dosing! Regain Normal Regularity This All-Vegetable Way!

Taking harsh drugs for constipation can punish you brutally! Their cramps and gripping disrupt normal bowel action, make you feel in need of repeated dosing.

When you occasionally feel constipated, get gentle but sure relief. Take Dr. Caldwell's Senna Laxative contained in Syrup Pepsin. It's all-vegetable. No salts, no harsh drugs. Dr. Caldwell's contains an extract of Senna, oldest and one of the finest natural laxatives known to medicine.

Dr. Caldwell's Senna Laxative tastes good, acts mildly, brings thorough relief comfortably. Helps you get regular, ends chronic dosing. Even relieves stomach sourness that constipation often brings.

Try the new 25¢ size Money back if not satisfied. Mail bottle to Box 280, N. Y. 10, N. Y.

**DR. CALDWELL'S SENNA LAXATIVE**

## ARTCRAFT ELECTRIC SEWING MACHINES \$149.50

IN BEAUTIFUL MAHOGANY OR BLEACHED MAHOGANY CABINETS — QUEEN ANN STYLE WITH STURDY METAL HARDWARE. CAN DO ANYTHING THAT ANY OTHER CAN DO THAT COSTS TWICE AS MUCH.

LOW DOWN PAYMENT — EASY TERMS

## JOHNSON FURNITURE

PHONE 5150

MULESHOE, TEXAS



## We Believe....

THAT all the lies — half lies — half truths — vile names — rantings — ravings — and mud slinging, printed, broadcasted, and sounded off by the partisans of both our major parties have failed to gain A SINGLE VOTE OR CHANGE ONE MIND.

WE ARE NO politician. We seek no office. We have no axe to grind. We ARE interested in politics. It is a part and parcel of American life.

WE FAVOR the Democratic party. We feel they are the more liberal.

WE BELIEVE: That the Democrats endeavor to enact legislation, not harmful to any minority, but beneficial to the majority.

WE BELIEVE: That what is best for the majority — is best for the Nation.

WE BELIEVE most of all in America. We believe in a free ballot.

WE BELIEVE in the right to vote AS WE PLEASE — without fear.

SO VOTE — VOTE AS YOUR CONSCIENCE DICTATES. VOTE.

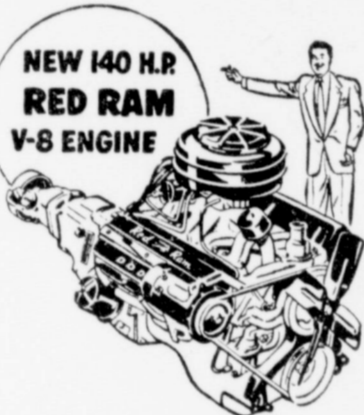
**FRED J. JOHNSON**

# ANNOUNCING

## America's New ACTION CAR is Here Now!



You Are  
Cordially  
Invited  
To Attend  
Our Special  
Showing Of  
This New Car  
Thurs. - Friday  
and Saturday  
Oct. 23 - 24 - 25



NEW 140 H.P.  
RED RAM  
V-8 ENGINE

### Powered for ACTION!

Here is flashing acceleration, with magnificent reserve power to master hill and highway. The new Dodge Red Ram V-8 is the most efficient engine design in any American car. New hemispherical combustion chamber and short punch piston stroke deliver more power from every drop of fuel.

All New! Brand New!

# '53 Dodge

Thrilling Power Packed Beauty for Active Americans

### The Newest, Nimblest Piece of Live Action on Four Wheels!

This is a Dodge year! Out of the vast resources and engineering know-how that have made Dodge a great name for 38 years comes this completely new kind of automobile: *The Action Car for Active Americans!*

It is powered for action, styled for action, engineered for action! From rakish Jet Air-Flow Hood to sweeping Cargo-Carrier rear deck, it is low, lithe and lovely... with a new road-hugging ride that lives up to the promise of its sleek, trim lines.

A "Road Test" Ride is waiting for you. Find out what Dodge has done to put more adventure, more pleasure in driving. You'll discover a new concept of motor car enjoyment in the action-packed '53 Dodge!

Specifications and Equipment subject to change without notice.

**NEW!** "Pilot View" curved windshield—up to 244 square inches more glass area **all told.**

**NEW!** Distinctive Jet Air-Flow hood—feeds air to engine, **boosts performance.**

**NEW!** Travel-Lounge interiors with chair-high Comfort-Contour seats.

**NEW!** Cargo-Carrier rear deck—up to 11 cubic feet more luggage carrying capacity.

**NEW!** Gyro-Torque Drive—flashing acceleration with nimble change of pace.



### NEW! ACTION TAILORED TO YOUR DRIVING NEEDS

**2 GREAT ENGINES**  
RED RAM V-EIGHT  
GET-AWAY "SIX"

**4 GREAT DRIVES**  
NEW GYRO-TORQUE DRIVE\*  
GYRO-MATIC DRIVE\*  
AUTOMATIC OVERDRIVE\*  
STANDARD DRIVE  
\*Optional at extra cost

Visit Your Dodge Dealer Today and Thrill to a "Road Test" Ride

IN ALL OF OUR EXPERIENCE IN THE AUTOMOTIVE BUSINESS WE FEEL THAT THE  
NEW DODGE WITH THE RED RAM V-8 ENGINE IS THE FINEST CAR WE HAVE EVER  
HAD THE PLEASURE OF PRESENTING TO THE FOLKS OF THIS TRADE AREA!

# ARNOLD MORRIS AUTO CO.

"Your Authorized Dodge-Plymouth Dealers"

Arnold Morris  
MULESHOE, TEXAS

Buford Butts  
PHONE 7150

## Statewide Water Research Center Is Established On A. & M. College Campus

College Station, Oct. 8 — Establishment of a statewide Water Research and Information Center on the campus of the A. and M. College of Texas has been authorized by the board of directors of the Texas A. and M. College System with funds appropriated to get this major undertaking under way. The Center is designed to bring together and organize the vast amount of scattered information now existing on Texas water problems and to develop research programs needed to answer many problems still unsolved. Action was taken by the board at its most recent meeting on a plan presented by Chancellor Gibb Gilchrist, which provided for starting this long-range program with existing facilities and personnel of the A. and M. College System. Governing body for the Center was established, with Chancellor Gilchrist as chairman and including the president of A. and M. College, the vice-chancellor for Agriculture and directors of the Agricultural Experiment Station, Agricultural Extension Service, Engineering Extension Service and Forest Service.

**Johnston Is Organizer**  
Dr. J. R. Johnston, on loan from the Agricultural Experiment Station, of which he is assistant director, was named as executive head of the new organization in its formative stages. He will establish an office in the System headquarters building on the A. and M. campus and organize the staff. A full time engineer to

work with Dr. Johnston will be employed jointly by the Engineering Experiment Station and Engineering Extension Service. An agricultural water specialist and the needed clerical staff will be supplied by the Agricultural Extension Service. Personnel to assemble and catalog maps, publications and other data will be supplied by the A. and M. College.

This plan of attack was worked out over a period of eight months during which top executives of the Texas A. and M. College System met with officials of other governmental agencies concerned with Texas water problems, leaders of water associations and districts, representatives of industry, consulting engineers and others to determine the part which the System should take in the overall attack on water problems of the state. Throughout the conferences the need for assembling, digesting and putting to use existing information and for organizing scattered research work in relation to water supply and use was given first priority.

It was agreed that the existing organization of the A. and M. System, with its research groups in engineering and agriculture, its statewide field forces of extension workers in both fields and its established library and laboratory facilities was suited to this work. The System recognized at the same time that collection and distribution of water information and research on problems of water supply and use were within its established responsibilities.

Dr. Johnston and his new organization will first analyze and pull together all work on water problems being done with the Texas A. and M. System. Next they will survey all organizations working on separate phases of water problems in Texas and study the work which they have done and now have under way.

**To Collect Written Material**  
The first big project of the new Center's staff will be the collection of publications, papers, maps and other material representing the accumulated knowledge of all organizations and scientists on Texas water supplies and problems. It is generally agreed by authorities in the field that more information is available on Texas water than on the water resources of any similar area in the world, but that it is scattered and hidden away in organizational files and buried in technical reports so that it is at present of very little use to the state as a whole. Members of the Center's staff will visit headquarters of regional, state and national organizations, libraries, industrial concerns and others, seeking out this material and making arrangements for securing it.

As this material is accumulated

and digested it will become the basis for publications in various general areas, some technical and many popular, to place useful information in the hands of those who need it in a form which will be suited to practical application. As it is developed, this collection will furnish Texans for the first time with one central agency from which they may secure all existing information, technical and otherwise, existing on the water resources of Texas and their efficient use.

### Complete Maps Planned

Topographic maps and maps of underground structures involving water will be collected and organized so that their information may be available when needed. It will then be possible to determine the additional mapping needed to fill in the gaps and a long range program will be organized to fill this important need. Provisions will be made for reproduction of maps and diagrams for those who need them at minimum cost.

After consultation with organizations working on Texas water problems, the head of the Water Research and Information Center will work with the president of the System's colleges on the establishment of special programs of study to equip men for work in this field, in which there is a serious shortage of technically trained men at this time. Both undergraduates and graduate programs of study will be developed for work in many phases of water development and use, agricultural, industrial and

municipal. Short courses for those engaged in water development will be organized, to make the latest information available and give training in new methods and equipment to those now employed in this field.

"This plan of work", Chancellor Gilchrist told the board of directors in presenting the project, "will not duplicate the work now being done by any governmental or private agency, but will serve to pull together the scattered work now being done by many on Texas water problems. It will furnish a center of information and training for technical people in the water business and citizens throughout the state. We will undertake to furnish the information needed and do the research within our fields as a service which established organizations have declared to be their most serious need."

LEDGER SHEETS in stock at The Journal. Pho.7220.

## Pleasant Valley Club Meets In Roubinek Home

The Pleasant Valley Social Club met in the home of Mrs. R. L. Roubinek Wednesday afternoon, Oct. 1.

The meeting was called to order by the president and roll call was answered. A box of food and clothing was packed to be sent overseas to displaced persons.

Mrs. Leo Duijn has become an honorary member. Mrs. W. A. Stevens and Mrs. Opal Robison were visitors.

Delicious refreshments were served to the visitors and members present, Mesdames Oscar Allison, Harold Allison, Floyd Andreas, Gerald Allison, John West, and Jimmy Dulin.

The next meeting will be in the home of Mrs. Elmo Stevens.

### WEEK END IN DALLAS

Misses Delores Determan, Hazel Wills, Meridith and Valera Goode spent the week end in Dallas attending the fair and ice capades. They reported a very enjoyable trip.

### DICK DAY IN MASSACHUSETTS

Dick Day, son of Mr. and Mrs. J. E. Day, who is joint owner of

the C & D Atlantic Service Station in Norwood, Mass., recently was commended by a business review of Norwood for the success of the station in giving splendid service to that vicinity. The station is located at 61 Central Street.

MORE PEOPLE read the wants every week. They cost little, get the job done. Try one.

# RAYMOND GREEN

## Cotton Buyer

Office At  
1223 West 1st Street

Old Telephone Office Building  
On Morton Highway

PHONE 6350

MULESHOE

WE WANT TO BUY  
**SWEET SUDAN STRAW**  
And  
**HEGARI and CANE PUMMIES**  
TOP MARKET PRICES  
**Sikie Watkins Hay Co.**

Phone 6290  
NORTH OF KING BROS. ELEVATOR MULESHOE

FOR  
Portraits of Weddings  
and  
Commercial Photography  
See

**Cline's Studio**  
Muleshoe — Texas

**GREEN**

Hospital & Clinic

Muleshoe, Texas

Dial 2250

IT'S  
**SHOWTIME**  
AT THE **WARM**  
**VALLEY & PALACE**

Box Office Open 7:15 P. M. Show Starts 7:30  
Saturday & Sunday: 1:45 P. M. and Continuous Showing

### VALLEY

THURSDAY and FRIDAY

Kirk Douglass  
Elizabeth Threat

—In—  
**Big Sky**

SATURDAY ONLY

Allen Lane

—In—

**Leadville**  
**Gunslinger**

SUN, MON, TUES & WED.

Edmund Gwenn  
Maureen O'Sullivan

—In—

**Bonzo Goes**  
**To College**

### PALACE

THURSDAY and FRIDAY

Frankie Lane  
Billie Daniels

—In—

**Rainbow Round**  
**My Shoulder**

SATURDAY ONLY

Olsen & Johnson

—In—

**Crazy House**

SUNDAY and MONDAY

Rita Hayworth  
Glenn Ford

—In—

**Affair in Trinidad**

TUESDAY and WEDNESDAY

Rody McDowell  
Preston Foster

—In—

**Thunderhead,**  
**Son of Flicka**

# Attention Voters!



Gov. Adlai Stevenson  
The Gentleman From Illinois

Let's Take Some of the Wind Out of The  
Windjammers And Smoke Screen  
Spreaders'!

**HEAD LINES**

That Should Be In All The Big Daily Papers:

**TO ARMS, FELLOW DEMOCRATS!**

GOVERNOR AND ATTORNEY GENERAL OF ONE OF THE LARGEST STATES IN THE UNION, CAPTIVE OF THE GOP OLD GUARD. DEMOCRATIC LEADERS AFTER SERIOUS DELIBERATION FOR 24 HOURS DECIDE THIS DETRACTS NOTHING FROM THEIR CAUSE. SO WILL LET THE GRAND OLD PILFER KEEP THEM: THEN WENT HOME AND GOT SOME SLEEP.

● Another thing that we hear so much about is that our freedom is in jeopardy. Now what worries us is whether they have in mind, freedom of exploitation or freedom of speech, etc.

● And, too, you hear it screamed from the house tops that our prosperity is a false prosperity.

## NOW WE WANT TO ASK YOU:

Does it mean prosperity to have a nice bank balance instead of a mortgage loan drawing 10% interest?

New houses in place of shacks?

New tractors instead of junk?

Or that your children have good conveyance to school, together with good clothes and hot lunches?

New automobiles instead of an old jalopy?

Paved roads in place of mud holes and sand pits?

YOU DARNED TOOTING, WE THINK IT DOES!

## AND THERE IS ANOTHER THING WE WANT TO ASK YOU:

Do you remember Hoover's ambassadors of prosperity? Of course you do, thousands of them, that sat on top of every freight train in the land, carrying the message of Republican prosperity to the four corners of our country.

LET'S GET BEHIND GOV. STEVENSON AND SENATOR SPARKMAN, AND NOT TRADE 20 YEARS OF PROSPERITY FOR A LOT OF PROM-ISES!

## NOW WE DON'T ASK YOU TO THINK:

You have already done that. Just meet us at the polls on Nov. 4 and vote your sentiments.

(Pol Adv. Paid for by O. D. Ray, Bailey County Democratic Chairman, Ed Johnson, George Johnson, Roland Bigham, and others.)

Motion Pictures Are Your Best and Cheapest Entertainment



### Report To The Nation Is Due In National 4-H Day November 8

November 8 is national 4-H achievement day. More than two million members in 86,000 4-H clubs under the guidance of nearly 300,000 adult leaders are preparing to report to the nation on this occasion.

Floyd Lynch, state 4-H club leader for the Texas Agricultural Extension Service says the 1952 achievement day culminates the work for the year of 117,000 members in nearly 5,000 4-H clubs in Texas. "Serving as Loyal Citizens Through 4-H" has been the theme and November 8 will be achievement day for the club members in the state. They will observe the work done by individuals and clubs and give

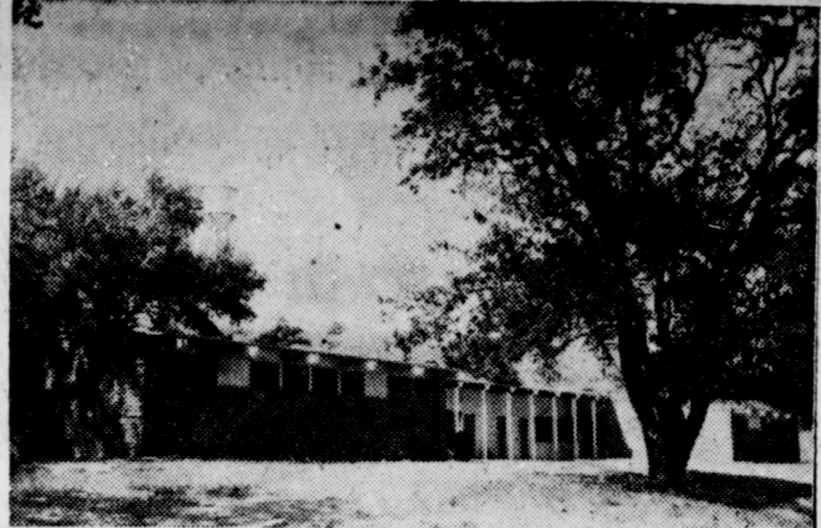
special recognition to parents and the 4-H leaders and friends who support their activities.

"If you are familiar with the 4-H club members and their activities in your community, you will enjoy being their guests on November 8 for many special occasions they are planning," Mr. Lynch says. "If you do not know what 4-H stands for and the young persons who are members of the clubs in your community, November 8 will be a good time for you to take notice", he adds.

For instance, the club members in Ward County are planning a 4-H Roundup and observance of achievement day at Monahan Community Building. Similar events will be scheduled for counties where 4-H councils act as clearing committees for county wide planning.

"The state committee is the Texas 4-H Council", Mr. Lynch says. The officers of the state-wide organization of 4-H club members are: Delbert Taylor, Tarrant County and Dorothy Foltyn, Lamb County, co-chairman; Jo Jon Hall, Martin County secretary; Agnes Ann Warren, McLennan County, and Johnnie

**CUSHMAN SCOOTERS**  
ACCESSORIES — REPAIR WORK  
**Cushman Scooter Sales & Service**  
510 Prince St. Clovis, N. M. 39-12tc.



An angle view of the newly completed 24 boy housing unit at America's First Boys' Ranch shows counselor's apartment in foreground, part of boys' living quarters, center, and the recreation room, far right. Every four-boy room has its own bath and all the boys have individual closets.

### National Alfalfa Breaks Ground On Big Lamar Chlorophyll Plant

LAMAR, COLO — Ground was broken here this week for the construction of a \$1 million plant for the National Chlorophyll & Chemical Co.

The company said it would be the world's largest plant for the continuous extraction of chlorophyll.

J. C. Hearn, company president, who spoke at the groundbreaking ceremonies, said the plant will have an annual capacity in excess of 100,000 lb. In 1951, the entire industry in the U. S. produced approximately 60,000 lbs. of chlorophyll and the 1952 production is estimated at 95,000 pounds, he said.

Mr. Hearn also is president of the National Alfalfa Dehydrating & Milling Co., parent company of National Chlorophyll. Alfalfa meal is the principal source of chlorophyll.

Orders for new machinery for the new plant were placed some time ago, Mr. Hearn said, and it is expected that the machinery will be completed in time to ensure full operation by April of next year.

**Initial Step**  
He said construction of the plant at Lamar marks the initial step in a long range program. Plans have already been drawn up for the building of additional units in other areas as demand for the product expands, he added.

National Chlorophyll at present is operating a pilot plant and two small commercial facilities for the extraction of chlorophyll. These were originally built and developed by the parent com-

pany, National Alfalfa. All of the research developed by the parent concern was turned over to National Chlorophyll when it was organized several months ago.

Mr. Hearn said "completion of the new plant will give impetus to developing the vast potential of chlorophyll for medicinal uses in addition to its already known qualities". He said if it has even wider uses in pharmaceutical and therapeutic fields than it has in the widely publicized field of odor control. Also, he noted, many possible industrial uses are being developed, including the addition of the product to paints, plastics and textiles.

National Chlorophyll has pioneered in extensive research in the refinement and production of chlorophyll, Mr. Hearn said. In addition, John C. Kephart, vice president in charge of research, has carried on activities in the development of new uses for the product.

Gov. Dan Thornton of Colorado spoke at the cornerstone ceremonies, emphasizing the importance of the new plant to the economy of Colorado and the Southwest in general. Among other dignitaries present were Colorado's U. S. senators, a congressman and the lieutenant governor.

#### HUNTING IN COLORADO

Mr. and Mrs. C. W. Stallings are in Colorado where they are hunting deer and elk.

Halbert, Nacogdoches County, publicity co-chairman.

### Gas Company Picks Directors

At the regular meeting of the Board of Directors of West Texas Gas Company in Amarillo on October 10, Thurman S. Whitis of Lubbock and H. R. Budke of Amarillo were elected directors of the company. Other members of the board are R. F. Hinchey and C. I. Wall of Lubbock and Thos. F. Cartwright of Amarillo.

Mr. Whitis was employed by the company in 1929. He served in several responsible positions including Supt. of Gas Measurement Department. In 1946 he transferred to Amarillo Oil Company, an affiliate, and served

that company as engineer. He came back to West Texas Gas Company, Lubbock, in 1949 as General Supt. of Pipe Lines and in 1951 was named Vice President in charge of transmission lines, compressor stations and gas measurements.

H. R. Budke is president of Amarillo Gas Company and is also a vice president of Amarillo Oil Company.

As directors, Messrs. Whitis and Budke succeed A. R. Jones and Ralph E. Mullin of Kansas City, resigned.

West Texas Gas Company is owned by Southwestern Development Company, a public utility holding company which owns

in addition to the companies mentioned above Clayton Gas Company, Dalhart Gas Company, Amarillo Gas Company and Red River Gas Company.

**GATEWOODS HAVE VISITORS**  
Mr. and Mrs. Leon Binion and children are visiting in the home of Mr. and Mrs. L. A. Gatewood this week.

**REDWINES MOVE TO CLOVIS**

Mr. and Mrs. J. J. Redwine and family of Progress have moved to Clovis where they operate the former Shady Grove Tourist Courts.



They all laughed when he sat down to play

(they didn't know he was playing with their dough-re-mi)

Set it right — Vote for Ike!

(Pol. Adv. Paid for by Siskie Watkins)



**MIGHTIEST 4 TONS** in trucking history!

A product of General Motors

Watch the TV Football Game of the Week Every Saturday on NBC Television.

**GMC TRUCKS**

GASOLINE—4,800 GVW to 90,000 GVW  
DIESEL—19,500 GVW to 100,000 GVW

HERE'S the new gasoline-powered GMC Model 472-30A—the tractor that will haul more payload within the 45,000 GVW limit than any ever built, by as much as 1,200 EXTRA pounds of cargo in some cases!

Fueled and ready for the road, this revolutionary new highway tractor weighs a trim 8,000 pounds—the result of new engineering techniques, developed by GMC, which eliminate load-robbing "dead weight" from truck design.

A good example is this GMC's revolutionary new "302" valve-in-head engine—pound for pound the mightiest

in truck history. It achieves a record-breaking 7.2 to 1 high-compression ratio from regular fuel, produces 145 horsepower—yet weighs as much as 500 pounds less than competitive engines!

It has all the features you want in a great truck. Standard equipment includes full air brakes and husky rear axle rated to accommodate 10:00/20 tires. Available in conventional and cab-over-engine models in a variety of wheelbases.

It's waiting—ready to haul a bigger payload than you've ever been able to put behind your tractor before!

**LADD PONTIAC**

PHONE 3080

MULESHOE

**JESSE SAYS:**

We Have Plenty Of Pen Raised

**TURKEYS**

Young Toms And Young Hens

**Oven Ready**

PLACE YOUR ORDERS NOW FOR THANKSGIVING AND CHRISTMAS — WHILE YOU CAN STILL GET YOUR CHOICE OF SIZE

See Or Call

**Jesse Thompson**

Phone 3810 Muleshoe

**SPECIAL OFFER**

**FREE**

Flashlight CAMERA KIT

With The Purchase Of

**NECCHI SEWING MACHINE**

**THIS OFFER GOOD 2 FULL WEEKS OCT. 17-30**

Whether You're A Photo Fan Or Not Here's Your Chance To Own A Beautiful New Camera Absolutely FREE. Takes Perfect Pictures Day or Night. Take Advantage of This Offer Now — We Cannot Duplicate It.

- BUTTON HOLES
- MONOGRAMS
- ZIG-ZAG
- HEMS AND OVEREDGE
- DARNS

- EMBROIDERS
- FORWARD AND REVERSE
- PLAIN
- BUTTONS
- HAND ROLLS
- ECONOMICAL

Your Old Machine May Make The Down Payment . . . 24 Months To Pay The Balance! Let Us Give You A Free Demonstration.

**"Your Necchi Sewing Circle"**

**BASS FIRESTONE DEALER STORE**

MULESHOE, TEXAS PHONE 4960

### The Muleshoe Journal

PUBLISHED EVERY THURSDAY AT MULESHOE, TEXAS  
Entered as second class matter at the Muleshoe Post Office under the Act of Congress, March 3, 1897



**SUBSCRIPTION RATES**  
In Immediate Territory, 1 Year ..... \$2.00  
Out of Immediate Territory, 1 Year ..... \$2.50

J. M. FORBES Editor and Publisher

#### BABSON DISCUSSES

### Babson Getting Optimistic

New York City, Oct. 17 — According to the Cycle Theory a business depression may be due during the next year or two. When at Wellesley, studying charts and statistics, I am inclined to agree with this school of thought. After, however, a visit to New York and seeing what the sales organizations are doing today, compared with twenty years ago, I believe that barring World War III, there will be no return of conditions such as existed in 1932.

The brightest factor, which I have in mind, never existed twenty years ago. I refer to the billions now being spent on wise advertising, salesmen training, and especially on conventions. During my visit here in New York City, I have seen some of the brains, the plans, and the energy which are being spent on copy, color, space, type, and even models! When you read national advertisements in a great weekly, or in your local newspaper, you have no idea of the work spent in preparing those advertisements.

#### PROTECTION FOR ALL WORTHY CASES

There are several reasons for my mild optimism. (1) Real estate mortgages will be protected by the Federal Housing Agencies. (2) Stock prices will be bolstered by 50% margins. (3) Big business failures will be prevented by the RFC. (4) The banks are in a very strong position, and most of the large corporations have no loans outstanding, but rather big surpluses. (5) Farmers are insured by price supports, and climate controls. The most damage will come from selfish labor leaders, heavy imports, and reckless price cutting.

#### MARKETS NOW ARE ANALYZED

Even before writing these advertisements, both the product and the appeal have been tried out on thousands of housewives. Perhaps five different advertisements would be selected out of forty copies submitted; then each of these five would be tried out on five thousand families. The reaction of these housewives determines who are the best artists, photographers, copy writers and psychologists. In case of a depression, this advertising will be even increased as a factor in

#### OUT FOR BASKETBALL

Glen "Moose" Harlin, of Muleshoe, is a candidate for the Hardin-Simmons University Cowboy basketball team which has started practice. Glen is a freshman at the Abilene school. He was a star performer several years for Muleshoe high school basketball teams.

giving consumers confidence to buy when the nation is again threatened with unemployment.

In addition to this newspaper, magazine, and similar advertising; millions are being spent on radio and television. Modern television advertising did not exist twenty years ago. Not only is this a great factor today in creating consumer buying, but plans are being laid for television to serve in a most wonderful capacity in case business should suddenly go into a tail spin.

#### CONVENTIONS FOR SALESMEN

Twenty years ago anyone couldn't get a job at anything else could always try to sell something on commission. Now this is all changed. Eighty percent of the salesmen being employed today have taken college courses on Business Administration. Before being allowed to sell, they are put through individual plant training. Then once a year the leading concerns have great conventions here in New York, or elsewhere. Preceding the last depression only about 150 of these annual national conventions were held. I learn today that over 585 are already planned for the next eight months. Moreover, plans are made so that this number could be doubled if unemployment should seriously return.

#### VISUAL DEMONSTRATIONS

At these conventions the sales forces not only hear speeches; but these speeches are illustrated by films, tape recorders, dioramas and "flip photos." In short, when the last depression struck, the country was unprepared with no economic army, navy, or air force. But, today we have in reserve for special use, in case of unemployment, a sales army, an advertising navy, and a radio-television air force. These can be thrown into activity at the drop of a hat.

So long as people are dishonest, inefficient or lazy, there will be business depression; the same as there are sickness when we abuse our health. As, however, new treatments and new drugs are reducing the death rate, so these new sales developments can prevent unemployment from becoming too severe. In other words, we are now building up an economic "fire department" to prevent an economic conflagration. This, we never had before.

#### SAND HILLS PHILOSOPHER

### Gets Around To Helping Candidates Discover The Farming Problem

Editor's note: The Sand Hills Philosopher on his Johnson grass farm has a new slant on the farm problem, his letter this week reveals.

Dear editor:

I was listenin to the radio the other night tryin to keep up with the Presidential race, you know with the major candidates and their henchmen all makin from four to fifteen speeches a piece a day a man has about as much chance of keepin up with the race as he has of keepin up with the conversation of sixteen women at four tables of bridge, but I remember hearin one candidate say "you can't run a farm from a swivel chair in Washington," and he's right.

But what I want to know is why can't you? Why ain't they workin on it? I suppose what the candidate meant was the only place you can run a farm from is a tractor seat, but if you ask me that's about the worst place I can imagine to run a farm from.



I don't know that there'd be

any point in workin out the details so completely you could run a farm from a swivel chair in Washington but runnin one from a swivel chair on your front porch at home would be good enough for me. In fact, I wouldn't even insist on a swivel chair, no use runnin up the tax bill any higher, a rockin chair would do me just as well.

What I would like to see is some of the candidates make some promises in that direction. Up to now, agriculture has been promised everything anybody could think of, with the exception of the one thing all candidates avoid: how to run a farm without goin up one row and down another. It's all right to have the candidates promise us high prices from now on and telephones and electricity and roads and permanent peace and low interest rates and improved fishin, but those things don't hold a light to the real farm problem. I'm always interested in hearin the politicians discuss the farm problem, just to see what they think the problem is, but up to now they've missed it altogether. If you ask me, the farm problem is plowin, beddin and re-beddin, but the platforms are strangely silent on this.  
Yours faithfully  
J. A.

#### CHRISTIAN SCIENCE SERVICES

There is Bible authority for trusting that good is more powerful than evil, and seeking to prove that God is omnipotent. In Romans are found these words (12:21): "Be not overcome of evil, but overcome evil with good." Christian Science assures that this is not only possible but necessary, in the Lesson-Sermon to be read in Christian Science churches this Sunday. The subject is "Probation After Death." This Golden Text will be read from I Corinthians (15:56-57): "The sting of death is sin; and the strength of sin is the law. But thanks be to God, which giveth us the victory through our Lord Jesus Christ."

Mary Baker Eddy points out that our salvation is not won through death, and has written in "Science and Health with Key to the Scriptures": "The sin and error which possess us at the instant of death do not cease at that moment, but endure until the death of these errors" (p. 290). She also says (p. 269): "Every mortal at some period, here or hereafter, must grapple with and overcome the mortal belief in a power opposed to God."

#### DATE BAIT



There will be stars in the eyes of a young college belle when she snags the eyes of the stag line in Judy 'n Jill's lovely date frock of rich Merrimack velvet. Bead embroidery on the white bordered tank top adds elegance, and the princess line flatters the slim figure, the National Cotton Council says.

it is especially applicable to all persons, even to those who are receiving the insurance payments after age 75 whether they are retired or not."  
Mrs. Juanita Short, Field Representative of the Lubbock office, will be at the Post Office in Muleshoe at 9:30 a. m. on Wed., Oct. 29, to assist in all matters concerning social security.

#### Our Honor Roll

New subscribers to The Journal this week are:  
C. B. McCord, Amarillo.  
Vernal King, City.  
Old subscribers who have renewed their subscriptions to The Journal this week are:  
Mrs. Leota Hamblin, City.  
E. R. Simmons, City.  
J. O. Aday, City.  
Neal MacAllister, City.  
O. G. York, Route 1.  
Arthur Askev, Star Route 2.  
D. L. Hale, Sudan.  
Conrad Williams, Goodland.  
M. L. Howard, Dimmitt.  
E. A. Beller, Hawthorne, Calif.

#### MRS. CARLES HAS GUESTS

Visiting last week in the home of Mrs. Beulah Carles who is ill were her sister, Mrs. I. D. Todd of Las Cruces, and her daughter, Mrs. R. H. Bradley of Decatur.

#### GUEST IN PAUL HOME

Visiting last week in the home of Mrs. Birdie Paul was her daughter, Mrs. H. E. Pumphrey and daughters, Lalayne, of Las Cruces, N. M., and Mrs. H. M. Hale of Oakland, Calif. Mrs. T. D. Todd, sister of Mrs. Carles, returned with Mrs. Pumphrey to Las Cruces Monday.

#### VISITORS FROM EL PASO

Mr. and Mrs. Robert Hooten of El Paso visited here with relatives over the week end.

#### KINGS HAVE VISITORS

Mr. and Mrs. W. H. Parsons of San Diego, Calif., visited last week in the home of Mr. and Mrs. C. E. King.



BUTANE — PROPANE  
CARBURETORS — STOVES — APPLIANCES  
Phone 2810 For Prompt Service



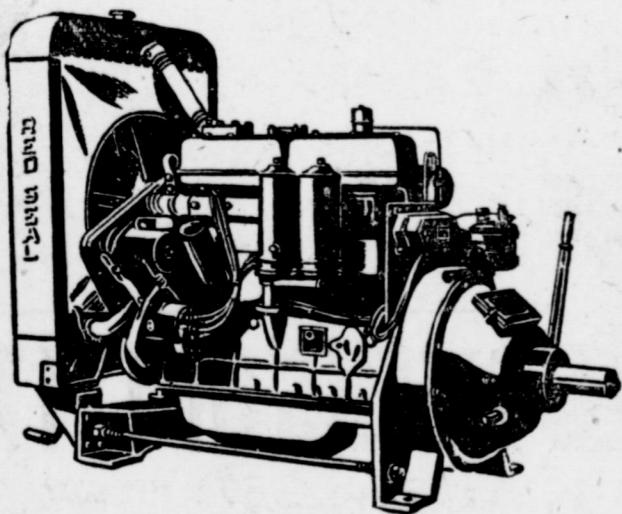
### TAX PROBLEMS?

You can meet the tax problem of tomorrow with a sound program of business life insurance.

Marion F. Harris

REPRESENTING  
**Southwestern Life**  
Insurance Company  
JAMES RALPH WOOD, PRESIDENT HOME OFFICE • DALLAS

### RED SEAL CONTINENTAL ENGINES



DESIGNED AND EQUIPPED FOR BUTANE, NATURAL GAS OR GASOLINE.

A complete line of engines from 1 1/2 HP to 280 HP.

WE NOW HAVE IN STOCK 4 sizes, special built Irrigation Engines, with 8.6 compression for Butane Gas. Equipped with heavy duty clutch, roto type valves, overhead oilers, Penn safety switches, and cooling system.

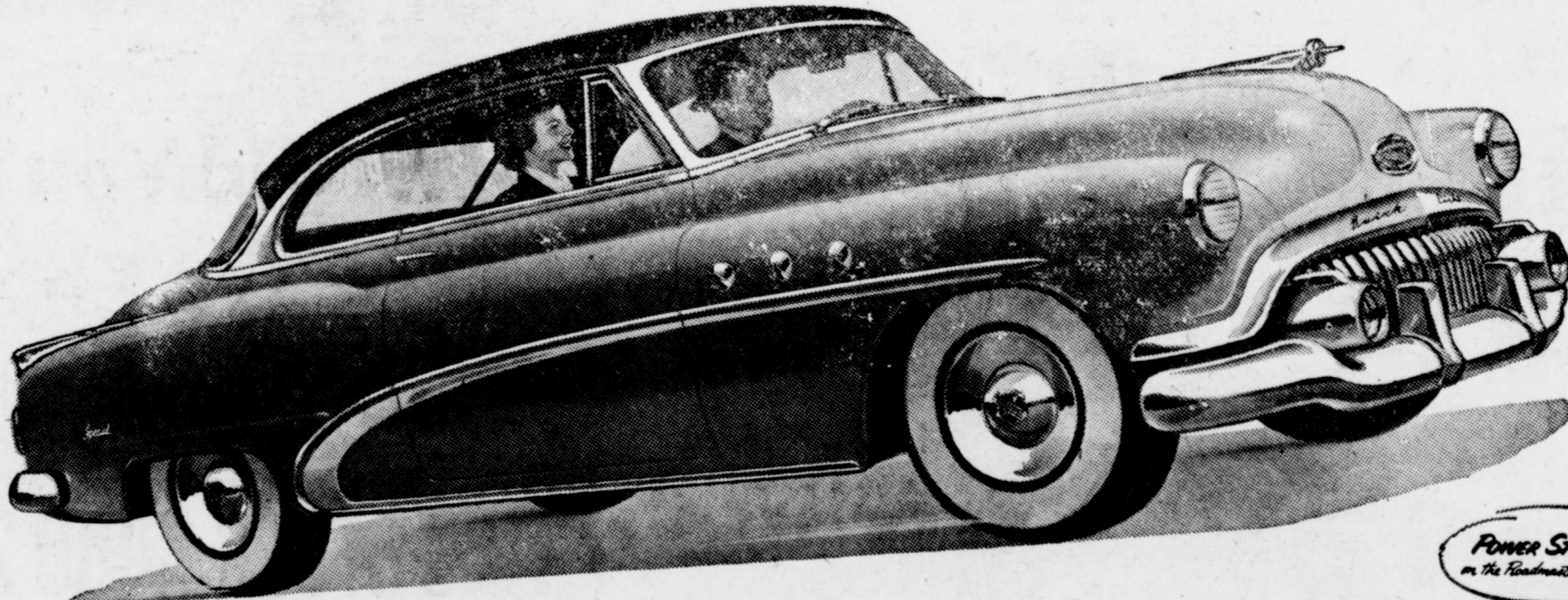
PRICES are very competitive for the amount of horsepower produced.

COME IN AND LET US SHOW YOU THE LATEST THING IN IRRIGATION ENGINES

D. H. SNEED SUPPLY CO.

Phone 4170

Muleshoe



### "Best Seller" that's too good to miss

YES, this is a RIVIERA. Sleek and swift-lined, like a convertible. Solid-topped like a sedan. Six-passenger roomy—and just about the smartest number that's made its bow in years.

And how folks love it. The day it was first displayed, orders started rolling in.

The rest of the industry took a look—and decided to make a carbon copy.

Over the years, these "hard top" jobs have spread to every price range—

including the big-volume, lower-priced three.

But this Buick version has forged ahead in popularity—and today it's the "best seller" in the whole "hard top" field—bar none.

What's the reason?

Well, it is—as you can see—a smoothie to look at and a smoothie to drive.

It's a Buick—with Buick's famous Fireball 8 Engine—Buick's marvel

Million Dollar Ride—Buick's exclusive Dynaflo Drive\*—Buick room—Buick's Power Steering†—Buick comfort, Buick style—and Buick durability.

And when it comes to price—you will find out this: What you pay for a SPECIAL, a SUPER or a ROADMASTER RIVIERA will shine by comparison with the price tag of anything in their fields.

Isn't that enough to make you want to try out a RIVIERA today?

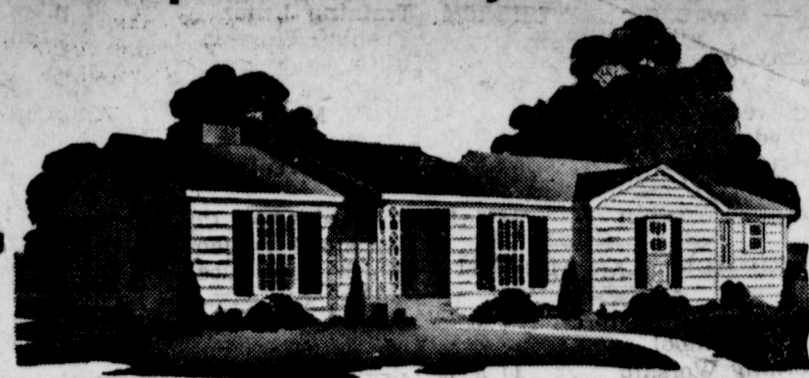
Equipment, accessories, trim and models are subject to change without notice. \*Standard on Roadmaster, optional at extra cost on other Series. †Optional at extra cost on Roadmaster and Super only.

Sure is true for '52

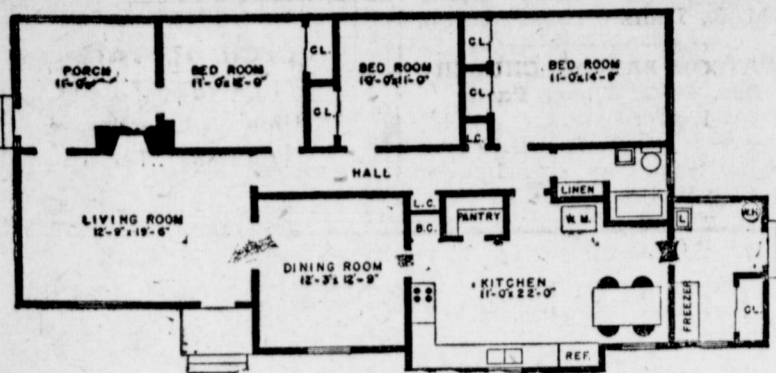
When better automobiles are built  
**BUICK**  
will build them

—Two great television events: See the Football Game of the Week every Saturday and Buick's own TV show "The Circus Hour" every fourth Tuesday—  
**Muleshoe Automobile Company**  
PLAINVIEW HIGHWAY  
MULESHOE, TEXAS

## Well-Proportioned, Easily Constructed



HOUSE PLAN No. 33



The maximum for the minimum; that is, the maximum in home attractiveness, comfort, and convenience; the minimum in cost and in construction work. The unusually spacious kitchen is conveniently located. The pantry and home freezer will be ideal for storing the family food supply. There is 12½ feet of

counter and storage space with ample room for at least 10 feet of wall cabinets.

If your family spends a lot of time in the kitchen, as do most farm families, you'll appreciate the cheerful spot for the breakfast table near the refrigerator and a front window.

By the back door is a closet where boots and outside clothing can be kept. The extra lavatory by this door can be installed for little more than the cost of the fixture itself because it is so near the drain from the bathtub. This will be valuable, because field hands can wash up before going into the house.

**LUZIER'S**  
Fine Cosmetics & Perfumes  
**MRS. E. E. HOLLAND**  
1101 East 2nd St.  
Phone 5449

## Selective Service Call Announced

The State Selective Service headquarters Monday received a call for 2,784 men for the army in December, biggest monthly

The bedrooms are convenient to the bath, and offer a maximum of privacy. Yet they are easily accessible from the living area or the kitchen. They have large closets with sliding doors; this makes a maximum use of space.

The living room is large enough for pleasant family living and for entertaining small groups. If you need more space, you can use the dining room and porch very nicely for group entertainment. The central hallway permits traffic through any part of the house, including the outside, without it being a disturbance to party guests.

If you do not care for the porch adjoining the living room, it is an ideal spot for a library or study. Very few materials would be required to enclose it.

You can obtain blueprints for this The Muleshoe Journal Farm & Ranch House Plan No. 5033 and a handy list of materials by which you can figure your construction cost accurately. Send \$1 to Building Editor, Farm & Ranch, Dept. L-36, Nashville 1, Tenn. Order by number, Plan No. 5033. Blueprints are adequate for any farm carpenter or for any farmer handy with tools.

call received by Texas in 20 months. The national quota for December is 47,000 men, all for the Army.

Lt. Col. Morris S. Schwartz, deputy state Selective Service director, said calls to the state's 137 boards will be mailed "later this month". He said the call would be largely filled with men in the 20-year-old age group. The boards will not be able to send any man for induction below the age of 20 except delinquents and volunteers.

Induction of men in December will take place from December 1 through December 13 because of customary armed forces holiday leaves and furloughs at Christmas time. Normally, inductions and pre-induction examinations are spread more fully throughout a month.

State Selective Service headquarters Monday also received a call for 14 doctors and six dentists for the armed services in November. This is the state's share of a national quota of 341 doctors and 200 dentists for both the Army and Air Force.

The October 22 induction list for the local board includes Oran D. Majors, Littlefield, June McCoy Short, Littlefield, Benton Cleon Davis, Bledsoe, J. C. Hulse, Littlefield, Edgar W. Houghton, Morton.

The November 4 induction list includes Charles W. Schoolcraft, Muleshoe, Henry Alton Lamb, Jr., Morton, Dorman Theodore Toten, Muleshoe, N. D. Wormly, Amherst, Vernon Leroy Turvaille, Littlefield, Bobby Lane Mayon, Spade, Walter C. McCamish, Mor-

## CHRISTIAN SCIENCE SERVICES

Man in God's likeness is neither a hopeless sinner nor a helpless invalid, according to the Lesson-Sermon entitled "Are Sin, Disease, and Death Real?" which will be read at Christian Science services next Sunday.

The Golden Text states, "Bless the Lord, O my soul, and forget not all his benefits; who forgiveth all thine iniquities; who healeth all thy diseases; who redeemeth thy life from destruction" (Psalms 103:2-4).

One of the Bible citations to be read will be this verse from Matthew: "When the even was come, they brought unto him many that were possessed with devils; and he cast out the spirits with his word, and healed all that were sick" (8:16). From the Christian Science textbook by Mary Baker Eddy will be read: "Jesus strips all disguise from error, when his teachings are fully understood. By parable and argument he explains the impossibility of good producing evil; and he also scientifically demonstrates this great fact, proving by what are wrongly called miracles, that sin, sickness, and death are beliefs—illusory errors which he could and did destroy" (Science and Health with Key to the Scriptures, p. 343).

Supplies at The Journal.

ton, James Lee Bales, Littlefield, Milton Gilbert Elliott, Earth, Dudley Monroe Cash, Enochs, and Bill Wayne Templar, Muleshoe.

## COURTHOUSE RECORDS

### REAL ESTATE TRANSFERS

Mack H Hale, et ux to Charles L. Lenau, Lot 5, Block 1, Lakeside Addition No. 3 to Muleshoe, \$450.

Julian E. Lenau, et al to Muleshoe Homes, Inc. West 10' Lot 20, and all of Lot 21, Block 3, Lenau Subdivision to Muleshoe, \$850.

C. W. Ramage, et ux to H. E. Newsom, Lots 11 and 12, Block 8, Highland Addition to Muleshoe, \$10,000.

## OIL, GAS, AND MINERAL LEASES

L. P. Gladden, et al to D. V. Blocker and son, NE-4 Section 13, Hansford County School Lands. J. W. Gregory, et al to E. N. Cain, N-2 Section 6, Block 2.

**DR. S. Z. BEATY**  
DENTIST  
Across From Muleshoe Motel  
Office Hours:  
9 - 12 a. m. — 1 - 5 p. m.  
Closed Saturday Afternoons  
Office Ph. 2040 Res. Ph. 5020



**R. M. "Bob" Gregory**  
REPRESENTATIVE  
OF  
Life Insurance  
Company  
Great National  
LIFE, HOSPITALIZATION  
and POLIO INSURANCE  
FOR YOU & YOURS  
P. O. Box 743 706 N. Ave. E.  
Phone 2769

## Clovis Veterinary Hospital

AT THE STOCKYARDS CROSSING

Facilities for Large and Small Animals

E. E. KRAUS, D. V. M. CHAS. WEBSTER, D. V. M.  
104 Hull Phone 5442 Clovis, N. M.



From where I sit ... by Joe Marsh

## Wonder How Miss Gilbert Is in "Histery"?

By now I guess you've heard about the spelling errors in the kids' report cards this week.

A typical card looked like this:  
Arithmetic ..... B  
Geography ..... B  
Spelling ..... C  
Grammar ..... B

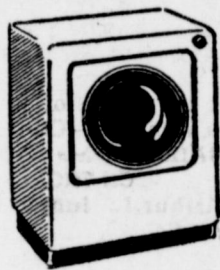
I don't know if Miss Gilbert, the principal, actually wrote those cards, but she took full responsibility. This morning I hear she got up in the Assembly Hall—before all the students—and started writing GRAMMAR with two "a's" on the blackboard 100 times!

From where I sit, I'll bet this makes her even more popular with the students. It's nice to see an expert admit she occasionally makes a mistake. Too many so-called "experts" claim they're never wrong on such subjects as what you or I ought to eat . . . what we should wear . . . whether we should enjoy beer or butter-milk. A really wise person never claims to "know all the answers" all the time.

Joe Marsh

Copyright, 1952, United States Brewers Foundation

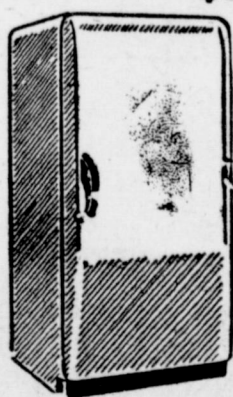
# Worth Thinking About



\$249.95



\$229.95



\$329.00



\$111.50

## Would You Like To Have These In Your Home - FREE ? !!!

### YOU COULD.....IF

You Didn't Have To Pay Excessive Taxes To Maintain Excessive Government.

## The Taxes Paid In One Year By The Average Family Of Four Would Otherwise Buy

A Television Set	costing .....	\$229.95	<b>PLUS.....</b>	A New Stove .....	\$169.95
A new Refrigerator .....		\$329.00		A Dishwasher and Sink .....	\$399.95
Matched Luggage Set .....		\$111.50		An Electric Ironer .....	\$219.95
A Washing Machine .....		\$249.95			

And ... have \$730.00 left over for clothing, luxuries or pleasure.

But direct or indirect taxes get your money instead. DO YOU THINK YOUR MONEY IS BEING SPENT WISELY BY THE GOVERNMENT? WHEN WE HAVE TO SACRIFICE SO MUCH, DON'T YOU THINK IT'S TIME WE DEMANDED AN END TO WASTE AND CORRUPTION?

(Pol. Adv. Paid for by Shelton Sanders)

## GRAND FEELING

the independence that comes with a growing account in our bank. Try it!



## MULESHOE STATE BANK

Member Federal Deposit Insurance Corporation



UNITED PENTECOSTAL

Sunday School 10 a. m.
Preaching Service 11 a. m.
Young People's Service 7 p. m.
Thursday Evening Bible Class 7:30 p. m.

PRIMITIVE BAPTIST CHURCH

At Friendship 8 Miles South of Sudan
Second Sunday and Saturday before, Elder V. J. Lowrance, pastor.
Fourth Sunday and Saturday before, Elder Jack West, pastor.

LONGVIEW BAPTIST CHURCH
Rev. T. L. Pierce, Pastor
Sunday School 10 a. m.
Preaching Services 11 a. m.
B. T. U. 7:30 p. m.
Preaching 8:30 p. m.
Wed. Service 7:30 p. m.
WMS, Thursday 2:30 p. m.
PAPER and Office Supplies at The Journal, Phone 7220.
Bible Study 7 p. m.

CHURCH OF CHRIST

Bula, Texas
Norman L. Warren, Evangelist
We welcome ALL to the Bula community and wish to extend a special and warm welcome to attend all services of the Church of Christ.

Our Bible study on Lord's Day begins at 10:00 o'clock and the regular morning worship begins at 11:00. The Lord's supper is observed every Lord's Day.
Evening services begin at 7:15 each Sunday with the young people and preaching services at eight. This will still leave time for those who have children in school, to get them in bed at an early hour.

Our Ladies Bible study is on Tuesday afternoon, 2:30 p. m., and our midweek Bible study is on Wednesday at 8:00 p. m. Please call on us for further information, or if you need transportation; and may we privilege of meeting and greeting you personally.

METHODIST CHURCH

Lazbuddie, Texas
Harold M. Morris
Sunday School 10 a. m.
Church Service 11 a. m.
Evening Service 8:30 p. m.
Mid-week Prayer and Song Service 8:40 p. m.

CHURCH OF CHRIST

Muleshoe, Texas
Ebb Randol, Minister
Bible Classes for all 10 a. m.
Preaching 10:50 a. m.
Communion 11:45 a. m.
Preaching 8 p. m.
Wednesday
Ladies Bible Class 3 p. m.
Bible Study and Singing 8 p. m.

ASSEMBLY OF GOD CHURCH

Rev. Lee F. Stokes, Pastor
Sunday School 9:45 a. m.
Worship 11 a. m.
Tuesday Night Young People 7:45
Thursday Night Bible Study Public Invited 7:45 p. m.
All Services

FIRST BAPTIST CHURCH

Lazbuddie, Texas
Sunday School 10 a. m.
Morning Worship 11 a. m.
Training Union 6:45 p. m.
Evangelistic Service 7:45 p. m.
Not forsaking the assembling of yourselves together. -Heb. 10:25

ANTIOCH PRIMITIVE BAPTIST CHURCH

Across Street From Hospital
Elder Jimmie Bass, Pastor
Services every 1st and 3rd Sundays and Saturday before 3rd Sunday.
Singing every Sunday night except 3rd Sunday.
FIRST BAPTIST CHURCH WEST CAMP
Rev. T. L. Pond, Pastor
Sunday School 10 a. m.
Morning Worship 11 a. m.
B. T. U. 7 p. m.
W. M. U., Thursday 2 p. m.
Evangelistic Service 7:45 p. m.

FIRST CHRISTIAN CHURCH

Avenue G and West 2nd.
Johnny Moore, Pastor
Sunday School 9:45 a. m.
Morning Worship 11 a. m.
Evening Worship 7:30 p. m.
Communion Services each Lord's Day.

ST. JOHN'S LUTHERAN CHURCH

W. B. Gummelt, Pastor
Lariat, Texas
Sunday School and Bible Class 10 a. m.
Divine Services 11 a. m.
Sunday School Teachers meet every Wednesday 8 p. m.
Ladies' Aid meets first Thursday of each month 2:30 p. m.
Walther League meets first Sunday of month 8 p. m.
A cordial welcome awaits you at St. John's.
"Let the Word of Christ dwell in you richly." -Col. 3:16.
BAILEYBORO BAPTIST CHURCH
Arthur L. Nunn, Pastor
Sunday School 10 a. m.
Training Union 8 p. m.
Evening Service 8:45 p. m.
Everyone Welcome.

PROGRESS BAPTIST CHURCH

Carrol M. Jones, Pastor
Sunday School 10 a. m.
Morning Worship 11 a. m.
Evening Fellowship 8 p. m.
Classes 8 p. m.
Evening Worship 8:45 p. m.
W. S. C. S., 2nd and 4th Mondays

THREE WAY BAPTIST CHURCH

J. E. Moore, Pastor
Sunday School 10 a. m.
Morning Worship 11 a. m.
Training Union 7 p. m.
Evening Worship 8 p. m.
W. M. U., Thursday 2:30 p. m.
Brotherhood, first Thursday of each month 7 p. m.
Mid-week Prayer Service and

Y. L. METHODIST CHURCH

L. J. Helm, Pastor
Second and Fourth Sundays
Church School 10 a. m.
Preaching Service 11 a. m.
Bible Study Group 7:30 p. m.
Evening Preaching 8:30 p. m.
Prayer Meeting, W. S. C. S. First and Third
Thursdays 2:30 p. m.

MAIN STREET MISSIONARY BAPTIST CHURCH

M. E. Robinson, Pastor
Sunday School 10 a. m.
Morning Worship 11 a. m.
Training Union 7 p. m.
Evening Worship 8 p. m.
W. M. U., Wed. 2:30 p. m.
Mid-week Prayer Service, Wednesday 7 p. m.

PROGRESS BAPTIST CHURCH

Rev. C. Merigan
Sunday School 10 a. m.
Mid-week Prayer Service 7:30 p. m.
Wednesday 8:30 p. m.
Evening Worship 7:30 p. m.
B. T. U. 7:30 p. m.
Morning Worship 11 a. m.

OKLAHOMA LANE BAPTIST CHURCH

Mayo D. Carpenter, Pastor
Sunday School 10 a. m.
Morning Worship 11 a. m.
Evening Worship 8 p. m.
Prayer Meeting, Wed. 8 p. m.
W. M. U., Thurs. 3 p. m.

WATSON BAPTIST CHURCH

Rev. W. O. Wilson, Pastor
Special Prayer Service 9:45 a. m.
Sunday School 10 a. m.
Morning Worship 11 a. m.

Training Union 7 p. m.
Evening Worship 8 p. m.
Bible Study and Prayer Service, Wednesday 7:30 p. m.
WMU, Monday 2:30 p. m.

GUESTS FROM FT. WORTH

Mr. and Mrs. Clyde Sellars and Mr. and Mrs. Jack Sellars of Ft. Worth were guests in the home of Mr. and Mrs. R. T. Atchison over the week end.

LEDGER SHEETS in stock at The Journal, Pho. 7220.

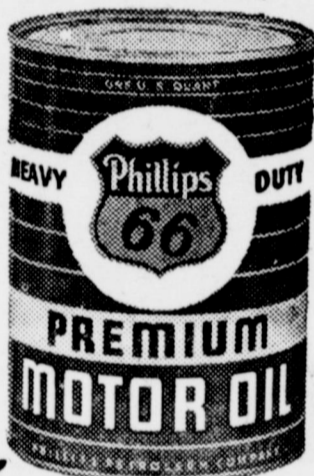
CECIL H. TATE ATTORNEY-AT-LAW Office in Courthouse Muleshoe, Texas

Guaranteed to Satisfy!

When you refill with Phillips 66 Heavy Duty Premium Motor Oil your dealer gives you a printed certificate... your guarantee of satisfaction! Use this good oil for ten days or up to 1,000 miles... and if you aren't completely satisfied on every count... go to any Phillips 66 Dealer and he will refill your car's crankcase with any other available oil you want... at Phillips expense! Would any oil thing be surer than this guarantee?



Surpasses Highest Recommendations of U.S. Car Makers!
An Extra Measure of Protection!
Phillips dares to guarantee Phillips 66 Heavy Duty Premium Motor Oil because it actually surpasses the highest recommendations of car manufacturers for all makes of cars! It has a "safety-margin" over and above normal driving requirements. You can depend on it for wear protection... bearing protection... and cleaning action... under conditions more extreme than your motor is ever likely to face! Get Phillips 66 Heavy Duty Premium Motor Oil. It's guaranteed to satisfy you!



Get "Lubri-tection"

OUR COTTON CROP IS VERY LIGHT

Therefore

WE WILL HAVE PLENTY OF ROOM FOR SOME OF YOUR COTTON AROUND MULESHOE

WE HAVE 2 FINE GINS -

Beck Gin, No. 1
8 Miles Due South of Sudan

Beck Gin, No. 2
6 Miles South, 3 West of Sudan - Or 4 Miles East And 3 South of Circleback

Both Have Been Repaired And Are Ready To Give You A Good Turnout

So-

IF YOUR GINS HERE GET SWAMPED THIS SEASON WE INVITE YOU TO BRING SOME OF YOUR COTTON TO ONE OF OUR PLANTS NEAREST TO YOU.

CALIFORNIA WESTERN PUMPS UNIVERSAL JET PUMPS

WHY NOT get the best when you drill your Fall wells?

Our prices are right. Complete, Fast service at all times. Turnkey estimates made.

We have a wider variety of bowls to suit your water conditions. Service and pumps fully guaranteed.

E. H. KENNEDY 1200 W. 5th. St. Phone 5480

RAY CARTER Farm Bureau Phone 6480

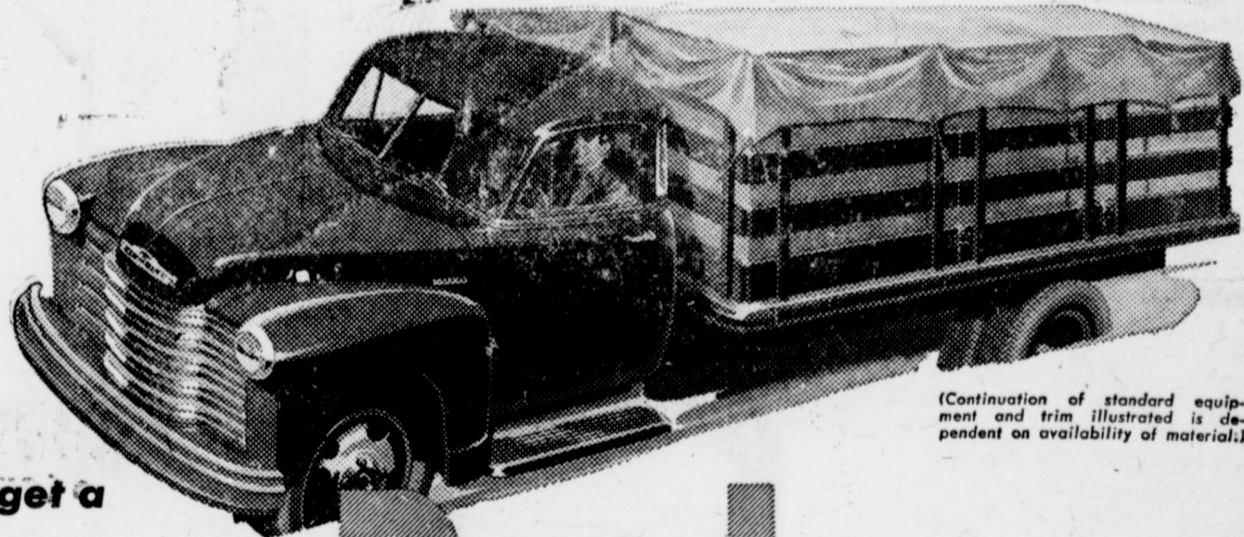


"Quit yer beefin', Bub! Didn't you just hear the Washington Boys say 'Americans never had it so good?'"

Sick of War?

VOTE for EISENHOWER & NIXON

!Pol. Adv. Paid for by Martin Oliver!

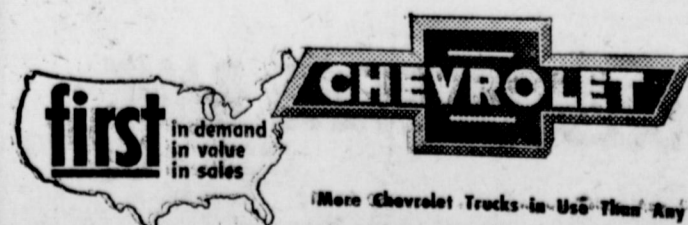


You'll always get a

Better Deal and a Better Buy WITH CHEVROLET TRUCKS!
A better buy because... They list for less than comparable models of other makes. Low operation and maintenance costs-plus traditionally higher trade-in saves you money.
A better deal because... Chevrolet's long list of extra-value features offers more truck for less money! Get a better deal and a better buy with Chevrolet trucks!

You get more work for less money with Chevrolet trucks! For a Chevrolet truck is always right-factory-matched to the job, with the right power, the right capacity, the right engine, transmission, springs, axle, and tires.
Come in and see how you'll get a better deal and a better buy with Chevrolet trucks!

Better buy now!



C. & H. CHEVROLET CO. MULESHOE, TEXAS