

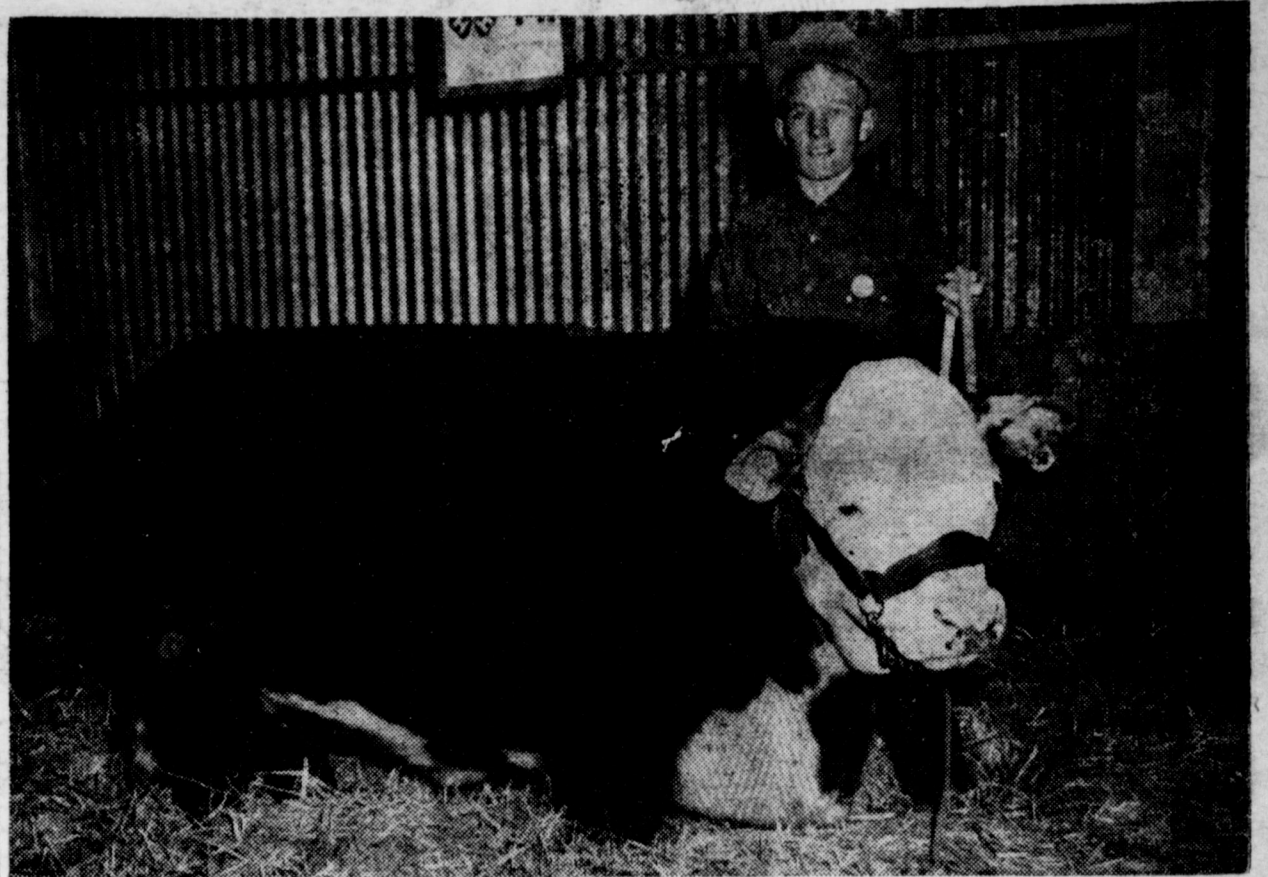
# Schools' Expansion Needs Studied

Conditions that apparently will force the Muleshoe Independent School District to increase its school plant in the next two or three years were outlined by Jerry Kirk, superintendent of schools here in recent speeches before the Lions Club and Rotary Club. "We will soon need more housing for the boys and girls of our growing district," Mr. Kirk said. With the expected normal increase in scholastics, soon the entire 32 rooms of the grade and

junior high school will be occupied by pupils through the 6th grade alone. There are now 367 pupils in the high school and approximately that number in the junior high school. Right now, the visual education room is pressed into service as a classroom, with three classes a day being conducted there. In the next three years, he predicted there will be some 270 to 350 pupils who will have no room in the Muleshoe schools

unless additional buildings are constructed. His prediction took no account of additional families who would move into the district should large tracts of ranch land be opened to farmers; nor did it consider additional families that new industries, such as the Union Compress will bring here. Some 15 to 20 classrooms, with study hall, library and supply space will be needed. He said that the board of trustees have been studying the situation carefully, and they will appreciate the advice and counsel and the cooperation of people of this district to the end that problems brought about by these circumstances may be solved successfully. Mr. Kirk complimented the people of the district, for, he said, he had never seen a group of people who were so willing to do whatever is needed for their children; and the children themselves, he said, are "Jim Dandies".

# Prather's Calf Places High At Fort Worth



Pictured here is Tim Prather and his fine steer "Blocky Boy". The steer placed 3rd in the open division of the Southwestern Exposition and Fat Stock Show at Ft. Worth. Tim Prather, a Muleshoe 4-H Club boy, and son of Mr. and Mrs. Charlie Prather of Star Route 1, Muleshoe, is shown in the above picture with "Blocky Boy", a recent winner of high honors in the Southwestern Exposition and Fat Stock Show. This fine steer, thought by many close observers to be the best show steer to ever leave this vicinity for exhibition in a major show, was bred by Lewis Bros., of Muleshoe. A late check on entry rules as stated in the catalogue showed "Blocky Boy" to be a few days too old for the club show, and young Tim had no choice other than to go into competition against nationwide competitors in the adult division. "Blocky Boy", with Tim at the halter, placed third in this division and weighed in at 1,020 lbs. Tim put in many hours feeding, exercising, and grooming his calf during the past year. His excellent showing is a credit to the livestock industry in this community. Lewis Bros., are showing their appreciation for Tim's fine work by offering him an opportunity to pick their herd for a show calf.

# THE MULESHOE JOURNAL

DEDICATED TO THE PROGRESS AND DEVELOPMENT OF BAILEY COUNTY AND THE GREAT MULESHOE COUNTRY  
VOLUME 32, NUMBER 6 MULESHOE - County Seat of Bailey County - TEXAS THURSDAY, FEBRUARY 11, 1954

## Plans Complete For Muleshoe's First "Community Clinic" Tuesday

Plans for the Community Clinic ("Ol Town Hall"), to be held at Fellowship Hall next Tuesday have been completed. The clinic is being brought to Muleshoe by representatives of the West Texas Chamber of Commerce, by invitation of the board of directors of the local chamber. E. O. Baker, chairman of the Community Clinic Program, explained the purpose of the clinic as being an opportunity for all citizens of the city and county to express their opinion on community needs. There will be four sessions of one hour each, and to be successful, the program must be entered into by every adult citizen of the community and trade area. At 9:00 a. m., the first group will be Service and Trades, 10:00 a. m., Retail Trades, 2:00 p. m., Farmers, Professional Group and Employees and at 4 p. m. Teachers and ladies of the community. The expressions of the people will be tabulated in card form and analyzed by the West Texas Chamber of Commerce experts. They are then condensed into a definite work program and recommendations are then made to the local chamber in the establishment program of work they may well carry 3 to 5 years. These meetings are a means for you to be of great benefit to our community and become better acquainted with the sincere purpose of the Chamber of Commerce. We know that each and every citizen has definite ideas for the advancement of our community. All we ask is that you attend one of the sessions at Fellowship Hall, February 16. Tell us what YOU, as an individual want for your community to make it a better place in which to live, work and play.

## Muleshoe's Future And You

Tuesday, February 16 may well turn out to be the "Day of Decision" for Muleshoe and its surrounding area, because in a single day, if things go right, the citizens of the community will give more thought to their collective future probably than they have in several years put together. We are referring, of course, to the "Community Clinic", which will consist of a series of five group meetings, where citizens will tell what they think the community should strive to do, and where experts from the West Texas Chamber of Commerce and our own chamber leaders will sit in as mentors. Each person in attendance at the various group meetings will be asked to put down his ideas on a card to be discussed by the experts and then by the group; or if he wishes, he can make a speech. These meetings will be "wide open" for me, or you, or you to express his thoughts for the development and betterment of the community. There is nothing highbrow about the procedure, and one man's idea will receive as careful attention as another's. Out of this "Clinic" actually will come the work that the Chamber of Commerce, as the community's central organization, will undertake in the next few months, the next year, or perhaps will furnish the body with enough ideas to work on for five years. Therefore, if a fellow ever has a thought about his community and its development materially, culturally, spiritually, and makes his ideas known at this "Clinic", he might single handed influence the course of his city and area for a long time; perhaps leave forever the impact of his thinking. Mr. Citizen, considering that possibility, can you afford to pass up this opportunity to "speak your piece". Do not, pray, feel that your idea is unworthy to be presented; tell your idea and let others be the judge of that. Large oaks from little acorns grow; and your idea might sow the seeds that, who knows, could sprout into a wonderful growth. Remember: Cities do not happen, they are built. Communities do not just happen to grow into the type place you want to live in and work in and play in and raise your family. They are made that way by men and women, boys and girls working together toward a common goal. Please show up Tuesday at one or more of these group meetings and do what only you can do: express your own ideas.

## Court Of Honor For Scouts To Be Held Tonight

Muleshoe will be the scene tonight for a district Boy Scouts Court of Honor. It will be staged in the high school auditorium beginning at 7:30 p. m. Gaylord Tate, a son of Judge and Mrs. Cecil Tate is a candidate for the Eagle Scout degree. In addition, Muleshoe has the largest number of candidates for Scout advancement of any town in the district. Boys from many towns and adult leaders and Scout officials of the district will be in attendance. Everybody is invited to attend.

## 150 Attended Pancake Supper

One hundred-fifty attended the Pancake Supper, Monday night, February 8, at the Fellowship Hall. The supper was sponsored by the W. S. C. S. of the Muleshoe Methodist Church and the following companies and firms supplied ingredients for the pancakes. General Mills, Bisquick; Pet Milk Co., milk; Green Label Karo, a corn product; Kraft Par-kay margarine; Mazola Cooking Oil; Maxwell House Coffee, furnished by Cashway; and served with the pancakes was Vance's Country Style Sausage. Members of the W. S. C. S. wish to thank all who contributed, or helped in any way with the supper, and especially do they wish to thank C. V. McCord, of General Mills, and Robert L. Bell of the Pet Milk Co. A box of Bisquick was given away at the door to each family represented, and seventy-one boxes were given away. After the supper, the new pastor or his family, Rev. and Mrs. Clarence Stephens were recipients of a Church-wide Pounding.

## New Teacher For Muleshoe High

A new teacher arrived in Muleshoe last week, to teach Home Economics in the Muleshoe High School. She is Miss Nancy White, who is taking the place of Miss Thomas. Miss White has her B. S. degree in Home Economics, from Texas Tech. Her home town is Brownfield, and she graduated from the Brownfield High School. While in college, she belonged to the International Relations Club, Home Economics Club, and the Pi Beta Phi sorority.

## Dr. B. R. Putman To Fort Worth

Dr. and Mrs. B. R. Putman will leave Saturday afternoon, to attend the Fourteenth Annual Southwestern Congress of Optometry in Ft. Worth, February 15, 16, and 17. The Southwestern Congress is essentially the presentation of graduate work in the profession of Optometry to men and women who know and feel the need for further extension of their skill in their daily practice. The featured speaker of this year's meeting is Dr. N. A. Robin of the Buffalo Institute of Reading and visual training, who is nationally known for his work with retarded readers in conjunction with psychologists and remedial reading teachers.

**JACK RHEA REOPENS GRO. AND MARKET AT MAPLE**  
Jack Rhea Grocery and Market at Maple will re-open their store Saturday with many new features to facilitate the shopping convenience of their customers. They have remodeled, enlarged and put in new and modern fixtures.

## Muleshoe In Twin Upsets Over Lobos

The Muleshoe boys and girl cagers pulled two upsets last Friday night at the local gym, edging both the Levelland teams in two very close games. The Mulettes won their game with a 56-55 score, led by Jean Montgomery's 23 points. The game was a very close one all the way. At the end of the game, they were all tied up and in the two minute overtime period, the Muleshoe girls slipped past the Lobos 56-55. In the other upset of the night, Muleshoe's A-team slipped past the Lobos 50-49, after trailing most of the game. Jimmie Allison, hitting from every angle, on long shots and jump shots, was high scorer for the night with a grand total of 23 points. Freeman was high man for Levelland with 15 points. This marked the end of a long losing streak for the Muleshoe boys, as this was the first time in 4 long years that they have been able to defeat the Lobos in basketball play.

**KOPPLIN IN VISIT HERE**  
E. H. Kopplin, of Litchfield, Minn., has been in the county this week on business. He owns farms west and south of Muleshoe.

## Postoffice Cafe To Reopen Friday

Re-opening of the Post Office Cafe is announced for Friday, Feb. 12 by the owners, Mr. and Mrs. Theron West. They announced there will be free coffee for all visitors in the cafe Friday. The Wests closed the place several days ago to remodel. They have remodeled and redecorated and those who visit the cafe will find an entirely new interior. New booths have been installed and a partition divides the dining section from the counter and stools. Also the Wests have installed a fountain and will be able to offer customers their favorite soft drinks. A new ice maker they have purchased will be a big convenience in this department. A separate dining room, on the east side has been provided for Latin-Americans, and it will be operated by people of their own race.

## Prairie Dog Control Work In County Projected

A possibility that a prairie dog extermination drive in the county could be mounted in the near future was discussed here early this week by J. K. Adams, county agent. Mr. Adams said several of the farmers and ranchers had brought up the matter here. He has had a letter from E. G. Pope, of San Antonio, mammal control supervisor for the Texas Predatory Animal Control Ass'n., and A. M. College, stating that cooperation in the work will be extended as soon as possible. He said some work in the county will be scheduled during the spring.

## Ladies Golf Club to Have Guest Speaker

The Ladies Golf Club of Muleshoe will meet for a luncheon and business session at the Dinner Bell, Wednesday, Feb. 17 at 12 o'clock noon, according to announcement of the president, Mrs. Clyde Holt. Mrs. Ann Barnett, president of the Littlefield Golf Club, will be present to explain the high points relative to membership in the South Plains Golf Association. Mrs. Holt requests all members who possibly can, to be present.

## FASHION SHOP REMODELS FRONT OF STORE

The Fashion Shop has completed remodeling the front of their store, with new style display windows and an entire new front. They also plan to re-paint the inside. Mrs. Dorothy Matthiesen and Mrs. Elizabeth Barnett, proprietors, stated they had planned the remodeling for sometime in an effort to give their customers a better and more pleasant service.

## 42 Women Register For Necchi School

The Necchi School, sponsored by Harvey Baas Appliance Co., got off to a good start Tuesday evening when 42 women registered for classes. One class will start Tuesday night, February 16, and another class Wednesday afternoon, February 17. A later class to start in five weeks, has also been booked to begin March 23. Mr. Baas stated that anyone desiring to take the course, and who failed to appear for registration Tuesday, may still register for a later class. Mrs. Raymond R. Benham, home economist, is in charge of the school.

## Hospital News

Mr. J. J. Gross was admitted with a severe stroke. He is about the same. Kathie Wilson was in for a tonsillectomy. She has been released. Congratulations To: Mr. and Mrs. Alan Stancell on the birth of a son.

## Baker Sale Is Set For Tuesday

Another b held the c ruary 16 at in the sout ty. Col. Kenneth E. Baker for the sale which will be by Tom Morgan. The Baker place is miles north of Three house on the pave about 4 miles north of about 30 miles southw Muleshoe. Sale list includes a large group of farm machinery, including two tractors. It also includes some cattle, one horse, chickens and household furniture and appliances. Additional articles probably will be consigned to the sale, because the auctioneer and Mr. Baker are inviting anyone who desires to bring anything they wish to the sale at the regular commission. There will be free coffee, and the ladies of Watson Community will serve lunch. The sale begins at 10:30.

## Thurlo Branscum Elected President Credit Asso.



Thurlo Branscum of Muleshoe, was re-elected President of the Plainview Production Credit Association at the annual stockholders meeting in the high school auditorium at Plainview last Saturday. More than 600 persons were present for the twentieth annual meeting of the Association. Service expansion was the theme of the program from 10 a. m. until noon. Clay Henry, secretary, pointed out that loans have increased from \$195,004 in 1934, the year the association was established, to \$6,311,049 last year. Muleshoe led Littlefield and Dimmitt, and was second only to Plainview. Henry told the stockholders and their families that payments now are 96 per cent of last year's loans. Other officers elected are W. A. Painter, vice-president; Clay Henry, secretary-treasurer; Olan Alexander, assistant sec-treas.

Above are shown the board of directors of the Plainview Production Credit Association who were re-elected to their posts at the annual stockholders meeting at Plainview Saturday. Left to right, back row: W. A. Painter, Plainview; and Cecil Davis, Muleshoe; front row, L. R. Durham, Lockney; Thurlo Branscum, Muleshoe and S. J. Payne, Tulla.

years service. They were Buntin, John McGarr, Plainview, to whom the first share of stock was issued, and H. Roy Brown, of Silvertown, a member of the first board of directors. Durham presented the trio with 20-year service pins. C. L. Abernathy, Plainview Chamber of Commerce president, welcomed the crowd on behalf of Plainview. Jim Ed White, cashier of the Hale County State Bank, addressed the stockholders and their families on "What Is Profit?" Former directors attending the meeting in addition to Brown and McGarr were J. E. Rigler, Plainview; D. T. Northcutt, Silvertown; and A. R. Axtell, Springlake. Organ music by Miss Jennie Linn Rucker, preceded formal opening of the business session. Bobby Hoover, minister of the Church of Christ, delivered the invocation.

# Cotton Crop Sets Record

Bailey County farmers have completed harvesting of the biggest cotton crop ever grown in the county. Figures just released by the Census Bureau reveals that gin plants of the county have turned out 73,369 bales from the crop of 1953. This compares to ginnings of 46,006 bales for the 1952 crop. Lubbock County again was the state leader in ginnings, with 249,304 bales and Hale County was second in the area and in

the state with 227,068 bales. Nineteen counties of this section ginned 1,403,209 bales, one-fourth of Texas' total. The Plainview Herald Sunday ran a story saying that nine counties of which Hale County is the center is the biggest producer for any nine contiguous counties in the world. Lamb County was third high producer in this section with a whopping 186,615 bales for 1953.

Cochran County, our neighbor to the south, had a crop of 34,287, against 18,066 for 1952. The Lubbock Cotton Classing Office reported Saturday that 1,383,902 bales had been classed for this area. It was said that drought cut or eliminated cotton production on two million acres of dry land, and that otherwise the area's cotton production most likely would have exceeded that of 1952.



**USE OUR WANT ADS TO... BUY SELL RENT TRADE**

THE MULESHOE JOURNAL, Thursday, February 11, 1954

**1. PERSONALS**

**NOTICE:** Every family should be protected by a Singleton Burial Policy. We write from birth to ninety years; Inquire or call Singleton Funeral Home, Home owned and operated. Dial 2860 1-5-tfc.

**SPECIAL PRICES**  
On all Radiators. International Farmall Cores \$25 exchange  
**STOVALL-BOOHER**  
Radiator Sales & Service  
Plainview, Texas

**SALESMAN WANTED**  
Your Own Business. Rawleigh Dealers earn good profits. Start in Bailey County. Exceptional opportunities for industrious man. For full particulars see Clifford Leak Bovina, Texas, or write Rawleigh's, Dept. TXA-270-170, Memphis, Tenn. 1-5-8-3tp.

**WANTED:** To keep children by the hour or by the day. 1404 Ave. B and West 5th. 1-6-2tp.

**2. LOST and FOUND**  
If the person who borrowed my refrigerator truck will return it, I will greatly appreciate it. Johnson Furniture Co. 2-6-1tc.

**4. Houses For Rent**

**FOR SALE AND RENT:** 2 bedroom house for rent, Lenau Addition, unfurnished. All furniture for sale. See John McLean, Lenau Addition. 4-4tc.

**5. APTS. FOR RENT**

**FOR RENT:** Two modern furnished four room apartments. Nellie Dean, 601 Main. 5-6-1tp.

**8. REAL ESTATE FOR SALE**

**REAL HOMES SALE**  
All bargains in town. If market for a farm in town, come to see and let me tell you about it. If you want to sell give me listing.

**J. E. DAY**  
REAL ESTATE  
On Morton Highway  
Just North Of Courthouse



**C. L. "HAPPY" DYER**  
LAND COMPANY  
We have some of the best of land in Bailey County listed.  
● 160 Acres, good improvements, 2 irrig. wells, on pavement, 1/2 minerals, \$250 acre.  
● 320 Acres, good improvements, 2 good irrigation wells, 200 acres hay. Price \$235 an acre.  
Some good 160 acre and some good 80's, so come in and let us show you some of this land.  
I have three good salesmen, namely—  
● 3,800 acre ranch in Bailey County. Plenty of grass and water. For sale cheap.  
**C. E. Briscoe** Walter Ramm  
Jud Gaddy

**TV-RADIO SERVICE**  
Phone 7020  
**SPENCE RADIO SHOP**  
Muleshoe, Texas

**8. REAL ESTATE FOR SALE**

**REAL ESTATE**  
Give us your Farm and City listings, of all size, For Sale, Rent or Trade. We have buyers every day.  
We have some good listings now. See—

**M. E. FINLEY or RAY CARTER**  
**FARM BUREAU OFFICE**  
Phone 648 — Muleshoe 41-tfc.

**FOR SALE**  
● Good section of land near Bovina, all in cultivation. All in wheat, buyer gets the rent. Priced at only \$100 per acre, 29% down payment, balance at 5% interest.

**O. W. RHINEHART**  
All Kinds of Insurance  
Bovina, Texas

**WANTED TO SELL:** One or two good modern houses for part cash. See me at once if interested, also have three room apartment, furnished, bills paid, for rent. See G. H. Davenport Phone 7642. 8-6-1tc.

**FOR SALE:** 100' Tractage with highway frontage, ideally located. Barry Lewis, Phone 7320, 8-7-2tp.

**FOR SALE:** Two room house, 16x28, to be moved, \$700, and 1947 Dodge pick-up, \$250. Ray Suddeth, Farwell, Texas, Phone 86634. 8-7-2tp.



● 160 acres good red land north of Muleshoe with new 8" pump. All in cultivation. Priced too cheap, \$15,790 down. Balance in long time loan, better look.  
● Still have some one acre tracts to build on with small down payment.  
● 160 acres good level land, old 8 room house, for only \$10,000, 1/4 cash.  
● 160 acres, well improved, level, irrigated. For only \$260 per acre.  
● Good Duplex, well located.  
● 3 bed room house for only \$8500.  
See Dave Aylesworth at the Lone Star Trading Post in Muleshoe, Phone 5290.

**FARM—CITY PROPERTY**

● 80 Acres, 4 room house, out buildings, 8" well, Johnson grass, \$13,000.  
● 320 Acres red land, well improved, 3 wells, waters two ways, \$250 per acre.  
● 320 Acres, Farmer Co., \$100 per acre, 29% down.  
● 17 Acres, 4 room house, irrigation well, Trade for house in Muleshoe.  
● 856 Acres, Del City, 10 and 12 inch pumps with 40' lift. Will trade or sell with small down payment.  
● 80 Acres irrigated, 3 bedroom house, 29% down.  
● 320 Acres north of Muleshoe, 8" well, \$165 per acre.  
● 80 acres, irrigated, trade for dry land or take reasonable priced house in Muleshoe, Littlefield or Lubbock as part payment.

**CITY PROPERTY**

● Two houses on corner lot, well located. If you're interested in rental property, you will need to see this.  
● Duplex, well located. This is very desirable rental property.  
● Beautiful 3 bedroom home, 2400 ft. floor space, 2 car garage, priced \$28,500 furnished. Would take smaller house trade in.

**EDDIE LANE**  
Real Estate and Insurance  
**JOE BENNETT, Salesman**  
Phone 5640 or 5279

**TO TRADE FOR FARM:** \$30,000 income property. Consists of 4 modern houses, 3 brand new. E. F. Ferguson, Box 14, Texico, N. M., Phone Clovis 8-2507, 11-6-2tp.

**FOR SALE OR TRADE:** For more cattle. Young Whiteface bull. R. L. Fields, 7 mi. south of Muleshoe. 11-6-2tp.

**10. FARM EQUIP. FOR SALE**

**FOR SALE:** 1947 Model G John Deere Tractor, on Butane. 4-row equipment, planter and cultivator. Extra set of dual tires. Priced \$1,585. See Dee Clements at REA or call 5289. 10-7-3tc.

**NEW AND USED** Bulldozers, Motor Graders, Crawler Tractors, Power Units, Loaders, and Construction Machinery. GUY STROUD, c/o Plains Machinery Co., Phones 26035 Nite, 33467 days, Lubbock, Texas. 10-9-4tc.

**FOR SALE:** Brand new Farmall Super "M" and four row cultivator, complete with lifting cylinder, \$2575. O. W. Elmore, Box 33, Hamilton, Texas. 10-8-3tc.

**15. FARM PROP FOR RENT**

**FOR SALE:** G John Deere tractor. Four row equipment. See John McLean, Lenau addition, Muleshoe. 10-6-1tp.

**16. MISCELLANEOUS**

**LOOK!**  
Plenty Of  
Fresh Vegetables  
NOW IN STOCK

**IRISH POTATOES**  
Nice Stock of Groceries  
Open 8 A. M. to 8 P. M.  
OPEN SUNDAYS

**PICK 'N PACK**  
**FRUIT STAND**

**NOTICE OF SALE OF PERSONAL PROPERTY**

**THE STATE OF TEXAS) COUNTY OF BAILEY)**  
NOTICE IS HEREBY GIVEN that by virtue of an order of the Commissioner's Court, of Bailey County, Texas, on the 2nd day of February A. D., 1954, Bailey County, Texas, will sell and dispose of the following described personal property, to-wit:  
One (1) 1953 1/2 Ton Pickup, Motor Number F10R-3-D-12167; (Ford).  
One (1) 1953 1/2 Ton Pickup, Motor Number F10R-3-D12171; (Ford).  
One (1) 1953 1/2 Ton Pickup, Motor Number F10R-3-D-12194; (Ford).  
One (1) 1953 1/2 Ton Pickup, Motor Number F10R-3-D-12176; (Ford).

**THEREFORE, NOTICE IS HEREBY GIVEN,** that on the 8th day of March A. D., 1954, that the Commissioner's Court, of Bailey County, Texas, will receive sealed bids, for the purchase of the above described personal property. That anyone desiring to make a bid on said above described personal property, shall file said Bid with the Commissioner's Court, of Bailey County, Texas, on or before March 8th, 1954, at 10 o'clock A. M. Anyone desiring to bid on said personal property, will deposit Cashier's Check with the Commissioner's Court; said check to be in an amount of 5% of the bid.  
The Court reserves the right to reject any and all bids.  
Witness my official hand and seal, this 3rd day of February A. D., 1954.

**Cecil H. Tate,**  
County Judge, Bailey County  
Texas  
5-4tc.  
(SEAL)  
**READY BUILT HOUSES:** 2 bedroom as low as \$2500, Phone Clovis 8-2507. 16-8-4tp.

**FOR SALE:** Registered Angus heifers, good ones, \$100 to \$150. See Baker, 4 mi. north Maple. 16-6-3tc.

**WANTED:** Plowing or listing. Inquire at Edward's Gin. 1-6-1tp.

**Political Announcements**

The Journal is authorized to make the following announcements for public office, subject to action of the Democratic Party primary in July, 1954.

**For Representative 96th Legislative District:**  
**JESSE M. OSBORN**  
(Re-election)  
**For County Judge And Ex-officio Superintendent Of Public Schools:**  
**CECIL H. TATE**  
(Re-election)

**For Sheriff, Tax Assessor And Collector:**  
**HUGH FREEMAN**  
(Re-election)  
**CLINTON BUSBY**

**For County Treasurer:**  
**HELEN JONES**  
(Re-election)  
**EDITH (JULIAN) WILT**

**For County Attorney:**  
**NORMAN W. BAYS**

**For Commissioner, Prec. 1:**  
**TOM MORGAN**  
(Re-election)

**For Commissioner, Prec. 2, Bailey County:**  
**WOODROW COUCH**  
(Re-election)

**For Commissioner, Prec. 3:**  
**R. R. "Bob" KINDLE**  
(Re-election)

**For Commissioner, Prec. 4, Bailey County:**  
**R. P. McCALL**  
(Re-election)

**For Justice of the Peace, Prec. 1:**  
**JOE D. VAUGHN**

**For Constable, Prec. No. 1:**  
**J. N. (Jesse) JAMES**  
(Re-election)

**CARD OF THANKS**  
We wish to thank our many neighbors and friends for the many wonderful donations and gifts, which were given us, when our home was destroyed by fire. May God bless each and every one of you.  
Mr. and Mrs. Bill Ingle

**FORMALS — WEDDING GOWNS**  
INDIVIDUALLY STYLED  
And  
MADE BY  
**Mrs. Lou Dell Wilhite**  
1304 Ave. E Phone 2339 Muleshoe, Texas

CALL THE JOURNAL FOR—  
**OFFICE MACHINES REPAIR**  
Repair Man Will Be Here Every  
THURSDAY — FRIDAY — SATURDAY  
Telephone 5400 — 7220  
**LEON JONES, Repair Man — HEREFORD**

**CUT**  
tractor and implement  
**OPERATING COST**  
through the  
**ECONOMY OF KENDALL QUALITY**

**KENDALL**  
2000 MILE OIL  
● The only complete line of lubricants refined from 100% Bradford, Pennsylvania Crude Oil... richest and costliest in the world.  
**INSURES**  
Longer Service • Better Performance  
Less Wear • Fewer Repairs  
**SEE YOUR INDEPENDENT KENDALL DEALER**  
**MORRISON MOTOR CO.**  
YOUR CHRYSLER & PLYMOUTH DEALER  
Phone 4130 — Muleshoe

**Mrs. Woodley Will Give Book Review**

Ida Mae Shofner, president of the Lucy Hanks Philathea Circle, called the meeting Thursday afternoon, February 4, as members met at the home of Mrs. Helen Gardner. Opening prayer was led by Mrs. Gardner, who was also in charge of the program for the day.  
The Circle voted to purchase a \$500 bond, which will go toward some carpeting for the new Church building.

The president appointed a committee for the mother-daughter banquet, which is scheduled to take place sometime in May. Due to the fact that the Fellowship Hall is limited in space, only 125 tickets will be sold, and will go at \$1 each.

The Woman's Society of Christian Service invited members of the Philathea Circle to attend a book review at the home of Mrs. Ophel Jennings, on February 22. "Wetbacks", is the title of the book to be reviewed, and will be presented by Mrs. Noel Woodley.

The anniversary dinner of the Philathea Circle, will be held this year on March 18.

Those present other than the hostess were Mmes. Jean Allison, Ethel Benetes, Della Mitchell, Gladys Black, Beth Blair, Dorothy Wyrer, Ida Mae Shofner, Thresa Edwards, Sammie Allison, Betty Murrah, Mildred McReynolds, Ruby Faubus, Mary Nell Chapman, and Charlene Bickel.

**ATTENDED FRIENDSHIP NITE**  
Those from Muleshoe attending the Friendship Night and salad supper at the Morton Eastern Star Lodge Tuesday evening were Rev. and Mrs. Clarence Stephens, Mr. and Mrs. W. F. Creamer, Mrs. Eula Neal of Temple, Elizabeth Harden, Mmes. Alton Epting, C. E. Layne, J. H. Farley, Arnold Alcorn, Pat Bullock, Buford Butts, Jim Cox, and Bert Mathis.

**IS VISITING HERE**  
Mrs. Eula Neal of Temple, is visiting here with her daughter, Mrs. D. B. Lancaster and family.

**DR. B. Z. BEATY**  
Dentist  
Next Door To Wood Drug  
Office Hours: 9-12, 1-5  
Off. Phone 2040, Res. 5020  
Closed Saturday P. M.

Every child born today is born naked, hungry, and with a whipping, and a tax debt of over \$1,000. Your child can be born with a \$25 bond. Register today. No purchase necessary.  
**THE MATERNITY SHOP**  
1003 13th Street — Lubbock, Texas

**INCOME TAX SERVICE**  
KARL LOVELADY — L. S. BARRON  
Phone 3940

**Bailey County Abstract Co.**  
ABSTRACT SERVICE — LOANS  
Established In 1906  
Mrs. Lela Barron — Mgrs. — L. S. Barron

SEE US FOR PROTECTION POLICIES YOU NEED  
**BOBO INSURANCE AGENCY**  
Office In Bank Building  
PHONE 2640 — MULESHOE

R. E. MITCHELL SAYS:  
Women are like money; keep 'em busy or they lose interest.  
**REPUBLIC NATIONAL LIFE INS. CO.**  
Muleshoe, Texas

**Irrigation And Water Well S**  
Drilling  
ANY SIZE — ANY DEPTH  
—SEE—  
**DICK DORAN**  
Two Blocks North On Friona Highway  
Phone 3280 — Muleshoe

**Clovis Veterinary Hospital**  
AT THE STOCKYARDS CROSSING  
Facilities for Large and Small Animals  
CHAS. WEBSTER, D. V. M.  
104 Hull Phone 5442 Clovis, N. M.

*Say it With* **FLOWERS**  
Make this a Valentine Day the one you love will never forget. Send her flowers from the—  
**Muleshoe Floral Co.**  
Phone 2870

**Save Money**  
1954 CHRYSLER  
INDUSTRIAL ENGINES, 195 H. P.  
NOW **\$950** Complete  
1953 — 180 H. P. Engines ..... \$1,045.00  
1954 — 195 H. P. Engines ..... \$950.00  
YOU SAVE ..... \$95.00  
**Jay Wyer**  
Is Ready To Service Your Old Engine  
**MORRISON MOTOR CO.**  
Your Chrysler & Plymouth Dealer  
Phone 4130 — Muleshoe

**- NOTICE -**  
My Office Will Be Closed Next  
Monday, Tuesday, and Wednesday, Feb. 15, 16, 17  
I Will Be Attending The Fourteenth Annual Southwestern Congress of Optometry In Ft. Worth  
**DR. B. R. PUTMAN**  
OPTOMETRIST  
Muleshoe — Texas



Legal Notice

NOTICE RELATIVE TO ESTABLISHMENT OF VOTING PRECINCTS IN BAILEY COUNTY.

BE IT REMEMBERED THAT ON THIS 8th day of February, A. D., 1954, The Honorable Commissioners' Court of Bailey County, Texas, met in regular session at its regular meeting place in the Courthouse in the City of Muleshoe, with all members present, to-wit:

Cecil H. Tate, County Judge and Ex-officio County School Superintendent.

Tom Morgan, Commissioner of Precinct No. 1.

W. W. Couch, Commissioner of Precinct No. 2.

R. R. Kindle, Commissioner of Precinct No. 3.

R. P. McCall, Commissioner of Precinct No. 4.

M. G. Bass, County Clerk, and Ex-Officio Clerk of Commissioners' Court, when the following business was had and done:

Motion was made by Commissioner R. R. Kindle and seconded by Commissioner R. P. McCall that the VOTING PRECINCTS OF BAILEY COUNTY BE, and the same are hereby established as hereinafter described, and effective for the year 1954, and until further order of the Court; and that said designations be published one time in The Muleshoe Journal, a paper published regularly in Bailey County; which said motion carried unanimously by all the Commissioners voting "Yes", and None voting "No", and said Designations so declared as follows:

MULESHOE VOTING PRECINCT

NO. 1: Beginning at the Northeast Corner of Bailey County, Texas; Thence South on the County line between Bailey and Lamb County, Texas, to a point where the County line intersects the North Labor line of Labor 2, League No. 209, Deaf Smith County School lands; Thence West on the South Labor line of Labors 22, 23, 24 & 25, League 208, Ogletree Co. School Land, Labors 21, 22, 23, 24 and 25, League 202, Roberts County School Land; Labors 21, 22, 23, 24 & 25, League 192, Foard County School Land; Thence continuing West on the south boundary lines of Tracts 12, 11, and 10, League 187, Swisher County School lands; Thence continuing West along the South Boundary lines of Labors 21, 22, 23, 24 and 25, League 176, Motley County School land to the Southwest Corner of Labor 25, League 176, Motley County School Land; Thence North on League line between League 176, Motley Co. School Land and League No. 170, Hale County School Land, and on League line between League 175, Sutton County School Land, and League 171, Hale County School Land; Thence continuing North between Section lines of Section 20 & 21, John H. Stephens Block S-2; and continuing North between Section lines 4 & 6, Block "Y", W. D. & F. W. Johnson Subdivision and continuing North on the Section lines between Section 9, Block "X", and Section 5, Block "Y", and continuing North on Section Lines between Sections 10 & 39, 22 and 11, 21 and 12, 20 and 13, 19 and 14, and continuing North to where the County line of Bailey and Parmer Counties, Texas intersects the boundary line of Section 18 & 13, all in Block "X", W. D. & F. W. Johnson Subdivision; Thence EAST along the County Boundary line between Parmer and Bailey County, Texas to the Northeast corner of Bailey County, Texas, the place of beginning. The place of voting for said District to be at the Old Commodity House; Muleshoe, Texas.

WEST CAMP VOTING PRECINCT

No. 2

West Camp Voting Precinct No. 2 beginning at a point where the section line between Sections 18 & 15 intersects the County line between Bailey County and Parmer Counties, Texas; Thence due South on the Commissioners' Precinct line between Commissioners' Precinct Nos. 1 & 2, the same being the section line between Sections 15 & 18, 14 & 19, 13 & 20, 12 & 21, 11 & 22, 10 & 39, 9 & 5, 4 & 6, in Block "Y" to the Southeast corner of Section 4, same being the Southwest corner of Section No. 6, Block "Y", and continuing due South across the John H. Stephens Survey and on the line between the Stephens Survey and the W. S. Simpson Survey and continuing south on the League Line between League 173 and 174, to the Southeast corner of League No. 173, the same being the Southwest corner of Section 174, Sutton County School Land; Thence due West on the League line between Leagues 173, Sutton County School Land, and League 171, Hale County School Land to the Northwest corner of League 171, Hale County School Land, the same being the Southwest corner of League 173, Sutton County School Land; Thence due South on the West line of League 171, Hale County School Land to the Northeast corner of the W. H. L. Survey; Thence due West on the North line of said Survey and continuing due

West on the North line of said Survey and continuing West on the North line of Sections No. 68, 67, 66, 65, 64, 63, 62, 61, 60, Block A Melvin Blum and Blum Survey to the New Mexico line; Thence North on the State Line between the State of Texas and the State of New Mexico, to the Northwest corner of Bailey County, Texas; Thence East on the county line between Bailey and Parmer Counties, Texas, to the place of beginning; all voters residing in this territory shall vote at the West Camp School House.

MAYS VOTING PRECINCT NO. 3:

Mays Voting Precinct No. 3, Beginning at the Northeast corner of League 171, Hale County School Land the same being the Northwest corner of League No. 175, Sutton County School Land; Thence due West on the League line between League No. 173, Sutton County School Land and League 171, Hale County School Land to the Northwest corner of League No. 171, Hale County School Land, the same being the southwest corner of League 173, Sutton County School Land; Thence due south on the League line between Leagues 172 and 173, Sutton County School Land to the Northeast corner of the W. H. L. Survey; Thence due West on the North line of said Survey and continuing west on the Section Line between Section No. 68 and the Garza County School Land and Section No. 67, Block "A", and Section No. 4, Block "O", and continuing due West on the Section line between Section No. 55 & 66, 54 & 65, 53 & 64, 52 & 63, 51 & 62, 50 & 61, 49 & 60, Block "A", Melvin Blum and Blum Survey, to the State line between the State of Texas and the State of New Mexico; Thence South on the State line between the State of Texas and the State of New Mexico to the Southwest corner of Section 112, the same being the Northwest corner of Section 125, Block A, Melvin Blum and Blum Survey; Thence due East on the Commissioners' Precinct Line between the precincts Nos. 2 and 3, the same being the Section line between Sections Nos. 127 and 125, 113 and 126, 114 and 127, 115 and 128, 116 and 129, 117 and 130, 118 and 131, 119 and 132, 120 and 133, to the Northeast corner of Section 133, the same being the Southeast corner of Section 120, Block A, Melvin Blum and Blum Survey; Thence due North on the West line of Block F, to the Northwest corner of Section No. 4, the same being the Southwest corner of Section No. 3 of Block F; Thence East on the Section line between Sections 3 and 4, Block F, and continuing on the League line between Leagues 170 and 169, Hale County School Land, to the Southeast corner of League No. 170, the same being the Northeast corner of League 169, Hale County School Land; Thence due North on the Commissioners' Precinct Line between Commissioners' Precincts 2 & 1, the same being the League line between Leagues 170, Hale County School Land, and League No. 171, Hale County School Land and 175 Sutton County School Land to the place of beginning. All voters residing in this territory shall vote at the residence of Bert Seales, in this community and voting precinct.

THREE WAY VOTING PRECINCT

NO. 4: BEGINNING at the Northeast corner of Labor No. 1, League No. 169, Hale County School Land; Thence South on the boundary lines between League 177, Motley County School Land and League 169, Hale County School Land and League 178, Motley Co. School Lands, and League 179, Motley Co. School Land and League 176, Itron Co. School Land and League 166, Itron Co. School Land and League 180, Floyd County School Land; League 165, Itron County School Lands and League 181, Floyd County School Lands; Thence east on the South boundary line of Labor 101, and continuing East on South boundary line of Labor No. 102, to a point which is the Northeast corner of Tract No. 6, Block 5 1/2, J. M. Maloy Survey; Thence South on the division line between Tracts 6, Block 5 1/2 and Tract 5, Block 7, J. M. Maloy Subdivision; and continuing South on the League lines between Leagues 122 and 123; Leagues 121 and 124, Childress County School Land to where the County Boundary line between Bailey and Cochran Co. intersect; said League line between Leagues 121 and 124, Childress County School Lands; Thence West along the Bailey-Cochran County Line to the Southwest corner of Bailey County, Texas; Thence North between the Boundary Line of the State of Texas and the State of New Mexico to a point on said boundary line directly West of the Northwest corner of Section No. 125, Block A, M. B. & B. Survey; Thence East across Section No. 85, Block A, to the Northwest corner of Section No. 125, Block A; Thence East on Section lines between Section 125 and 112, 126 and 113, 127 and 114, 128 and 115, 129 and 116,

130 and 117, 131 and 118, 132 and 119, 133 and 120, all in Block A, M. B. & B. Survey, to the Northeast corner of Section 133, Block A, M. B. & B. Survey. Thence North on Section lines between Section 120, Block A, M. B. & B. Survey and Section 4, Block F, Leon Blum Survey to the Northwest corner of Section 4, Block F; Thence East on Section line between Section No. 4 and Section No. 3, Block F, Leon Blum Survey to the Northeast corner of Section No. 4, Block F, Leon Blum Survey; Thence South between Section 4, Block F, Leon Blum Survey, and Labor 25, League 170, Hale County School Land, to the Northwest corner of League 169, Hale County School Land; Thence East on the League line between League 169, Hale County School Land and League 170, Hale County School Land, to the Northeast corner of League 169, Hale County School Land, the place of beginning. All voters residing in this territory shall vote at the Three-Way Independent School District School House.

BAILEYBORO VOTING PRECINCT NO. 5

Beginning at the Northwest corner of League 177, Motley County School Land; Thence East on League Lines between League 176 and 177, Motley County School Land, and between League 187 and 186, Swisher County School Land to the Northwest corner of League 186, Swisher County School Land; Thence South along League Lines between League 186, Swisher County School Land and League 193, Foard County School Land; and continuing South between Leagues 185, Swisher County School Land and 194 Foard County School Land, and between Leagues 184, Swisher County School Land and 195, Foard County School Land to the Southeast corner of League 184, Swisher County School Land; Thence West along League Lines between Leagues 184, Swisher County School Land, and 183, Floyd County School Land, and between Leagues 179, Motley County School Land and 180, Floyd County School Land, to the Southwest corner of League 179, Motley County School Land; Thence North on League Lines between Leagues 179, Motley County School Land and 167, Itron County School Land and between Leagues 178, Motley County School Land, and 168, Hale County School Land, and between Leagues 169, Hale County School Land and 177, Motley County School Land to the Northwest corner of League 177, Motley County School Land, the place of beginning. All voters residing in this territory shall vote at the old Baileyboro School House.

BULA VOTING PRECINCT

NO. 6

Beginning at a point on the County Line at the Northeast corner of Labor 12, League 212, Uvalde County School Land, the same being the Northwest corner of Labor 11, League 212, Uvalde County School Land; Thence South on the County Line between Bailey County and Lamb County, Texas, to the Southeast corner of Bailey County, Texas; Thence West on the County Line between Bailey County and Cochran County, Texas, to a point on said County Line where it intersects the League Line between League 124 and 121, Childress County School Land; Thence North on the League Line between Leagues 124 and 121, 123 and 122, Childress County School Land, and continuing due North to the North Line of the J. M. Maloy Survey; Thence West on the North Line of the J. M. Maloy Survey to the Southeast corner of League 165, Itron County School Land, the same being the Southwest corner of League No. 181, Floyd County School Land; Thence due North on the League Line between League 165, Itron County School Land and League 181, Floyd County School Land and continuing due North on the League Line to the Northeast corner of League 166, Itron County School Land; the same being the Northwest corner of League 180, Floyd County School Land; Thence West on the League Line between League 179, Motley County School Land and 180, Floyd County School Land and continuing West on the League Line between League 184, Swisher County School Land and 183, Floyd County School Land to the Northeast corner of Labor 7, League 183, Floyd County School Land; Thence South on the Labor Line between Labors 7 and 8, 14 and 13, to the Southeast corner of Labor No. 14, the same being the Southwest corner of Labor 13, League 183, Floyd County School Land; Thence East on the Labor Line between Labor 13 and 28, 12 and 29, 11 and 30, to the Northeast corner of Labor 30; Thence South on the League Line between League 186, Swisher County School Land and 196, Lubbock County School Land to the Northwest corner of Labor 15, the same being the Southwest corner of Labor 6, League 196, Lubbock County School Land; Thence due East on Labor Line between 6 and 15, 7 and 14, 8 and 13, 9 and 12,

Traffic Safety Laboratory Held In Plainview

A "Youth for Traffic Safety Conference Laboratory", was held in Plainview, yesterday, February 10. Letters were sent to the various high schools and junior high schools in the surrounding territory, asking that representatives of each school be sent to this conference. Each local P. T. A. president has been asked to pledge support to this project. Entertainment was planned by the student council members of Plainview High School. Mr. J. O. Musick, general manager of Texas Safety Association, spoke to the group, as did Dr.

10 and 11, League 196, Lubbock County School Land and continuing East on the Labor Line between Labors 6 and 15, 7 and 14, 8 and 13, 9 and 12, 10 and 11, League 98, Lubbock County School Land and continuing due East across the Blanco County School Land and the Uvalde County School Land to the place of beginning. All voters residing in this territory shall vote at the Bula School House.

CIRCLEBACK VOTING PRECINCT NO. 7

Beginning at a point where the League Line between Leagues No. 208 Ochiltree County School Land and League 209, Deaf Smith County School Land intersects the County Line between Bailey and Lamb Counties; Thence South on the County Line between Bailey County and Lamb County to the Northeast corner of Labor No. 12, Crosby County School Land; Thence due West on the Labor Line between Labor No. 12 in League 212, Uvalde County School Land and Labor No. 13, in League No. 212, Uvalde County School Land, Labor 14 in League 212 Blanco County School Land, Labor No. 15, League 212, Blanco County School Land and continuing due West on the Labor Line between Labors Nos. 10 and 11, 9 and 12, 8 and 13, 7 and 14, 6 and 15, League 198, Lubbock County School Land and continuing West on the Labor Line between Labors Nos. 10 and 11, 9 and 12, 8 and 13, 7 and 14, 6 and 15, League 196, Lubbock County School Land; Thence North on the League Lines between League No. 196, Lubbock County School Land and League 183, Floyd County School Land to the Southeast corner of Labor No. 11, the same being the Northeast corner of Labor No. 30, League 183, Floyd County School Land; Thence due West on the Labor Line between Labors Nos. 11 and 20, 12 and 29, 13 and 28, to the Southwest corner of Labor No. 13, the same being the Northwest corner of Labor No. 28, League No. 183, Floyd County School Land; Thence due North on the Labor Line between Labors Nos. 13 and 14, 7 and 8, to the Northwest corner of Labor No. 8, the same being the Northeast corner of Labor No. 7, League No. 183, Floyd County School Land; Thence due East on the League Line between League No. 184, Swisher County School Land and League No. 183, Floyd County School Land to the Southeast corner of League No. 184, Swisher County School Land, the same being the Northeast corner of League 183, Floyd County School Land; Thence due North on the League Line between Leagues 184, Swisher County School Land and League 195, Foard County School Land and League 185, Swisher County School Land and 194, Foard County School Land and 193, Foard County School Land to the Northeast corner of League 186, Swisher County School Land, the same being the Northwest corner of League 193, Foard County School Land; Thence due East on the Commissioners' Precinct Line between Precincts Nos. 1 and 4 and on the League Line between Leagues 192, Foard County School Land and League 193, Foard County School Land, League No. 201, Roberts County School Land to the place of beginning. All voters residing in this described territory shall vote at the Circleback School House.

THE STATE OF TEXAS: COUNTY OF BAILEY:

I, M. G. Bass, County Clerk and Ex-officio Clerk of the Commissioners' Court, Bailey County, Texas, hereby certify that the foregoing is a true and correct copy of the proceedings had relative to the Designation of Voting Precincts for Bailey County, said proceedings had at the Regular Session of said Court held on the 8th day of February, 1954, and recorded in Volume No. 3, Minutes of the Commissioners' Court, Bailey County, Texas. Witness my hand and seal of said Court, this 9th day of February, A. D., 1954.

John McFarland, superintendent of schools at Vernon, who was the inspirational speaker of the day.

Others who are vitally interested in safety were present to participate on the program. Among those taking part on the program were the youth from the 14th District, who attended the State Conference Laboratory.

More than one hundred youths attended the conference, and were to take what they learned back to their respective schools. Wanda Busby and Gwynelle Workman were chosen as delegates from Muleshoe High School, while Doris Jean Childers represented Junior High. The girls were accompanied by Mrs. Onard Upton, president of the P. T. A., and Mrs. Aubrey Jarman, safety chairman.

Dolan Fennell At San Diego

Dolan Fennell, son of Mr. and Mrs. R. K. Fennell of Star Rt. 1, is now undergoing his basic training at the U. S. Naval Training Center, at San Diego, Calif. Dolan entered the navy February 2. He is a graduate of Springlake High School, and before entering the service had been engaged in farming with his father.

INFLUENCE OF KINDNESS

We often wonder why people do not make more of the marvelous power there is in kindness. It is the greatest lever to move the hearts of men that the world has ever known; greater by far than anything the mere ingenuity of man can devise or subtly suggest.

Kindness is the kingpin of success in life; it is the prime factor in overcoming friction and making human machinery run smoothly. If a man is your enemy you cannot disarm him any other way so surely as by doing him a kind act. The meanest brute that ever drew breath is not altogether insensible to the influence of kindness. Of course, it takes a strong man, the very strongest in fact, to do kindness to a man who has wronged him, and yet there is no other way of so certainly bringing about restitution.

Not only this, but it develops additional strength in the man who does it, and the peculiar thing is that the power of kindness can be exercised by the lowest as well as the highest. The king upon his throne has no more privileges in this respect than the digger of ditches, and there is no other factor in human life so well calculated to destroy the distinction of caste. Kindness makes the whole world akin. It breaks down the barriers of distrust, deceit, envy, jealousy, hate and all their miserable train. The kind man is the good man, and the good man is the kind man. The victories of kindness are untold. (Clipping submitted by Dan Winn, of Muleshoe.)

Advertisement for Jones Farm Store featuring a large image of a chick and text: 'GET YOUR CHICKS', 'STARTED EARLY', 'And To Start Quick, Sturdy Growth Feed Them Purina Startena', 'COCKERELS - COCKERELS', 'Big, Husky Leghorn Cockerels 4c', 'Heavy Cross Bred Cockerels 8c', 'Now Accepting Orders DELIVERY EVERY FRIDAY', 'JONES FARM STORE', 'YOUR LOCAL PURINA DEALER', 'Dial 5000 Muleshoe'

Advertisement for Morrison Motor Co. featuring the text: 'SPECIAL ON GOOD USED CARS', 'We Offer These Real Bargains-', a list of cars and prices: '1949 Oldsmobile \$400', '1947 Mercury \$100', '1940 Chevrolet \$75', '1947 Nash \$225', '1949 Ford \$500', '1946 Ford \$200', '1947 Pontiac \$200', '1948 Pontiac \$475', '1948 Willis Station Wagon New Motor, Radio, Heater and Overdrive \$475', 'Many Others - Mks Us An Offer', 'Morrison Motor Co.', 'YOUR CHRYSLER & PLYMOUTH DEALER', 'Muleshoe'





Wonderful, Wonderful News For Every Family

# CASHWAY NOW GIVING



What a wonderful opportunity to make your Dollars do Double Duty at your CASHWAY GROCERY!

## DOUBLE



Gunn Bros. Thrift Stamps

EVERY TUESDAY AT  
**Cashway**

FREE DELIVERY PHONE 2440 OR 2450  
"WHERE FRIENDS MEET AND PRICES TALK"

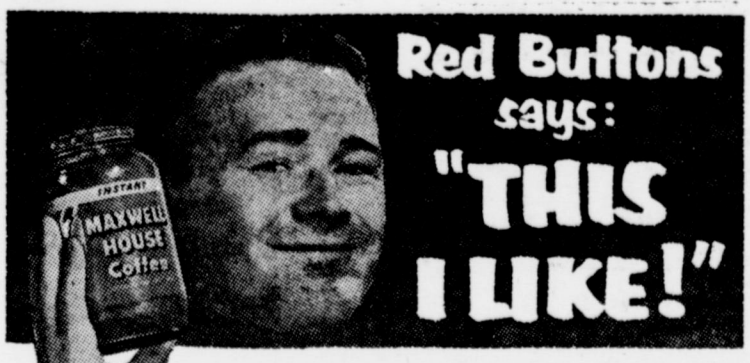
AUNT JEMIMA FLOUR 25 LB. PILLOW CASE SACK ..... \$1.99  
LIBBY'S STUFFED OLIVES NO. 5 JAR ..... 29c



# Shortening

Snow Drift 3 Lb. Tin ..... **59c**

Instant Maxwell House Coffee SERVED **FREE** ALL DAY SATURDAY



INSTANT **MAXWELL HOUSE** Coffee 2 OZ. JAR ..... **59c**

• PRODUCE •  
MARYLAND SWEET OR PORTO RICAN YAMS ..... lb. 7c  
CALIFORNIA SUNKIST LEMONS ..... lb. 10c  
COLORADO PREMIUM RED SPUDS ..... lb. 3 1/2c  
GARDEN FRESH GREEN ONIONS ..... bunch 5c

LIBBY'S NO. 2 CAN CRUSHED PINEAPPLE .. 4 For **\$1**

• CHOICE GRADE MEAT  
**STEAK** ..... lb. 59c  
CUDAHY'S WICKLOW BACON ..... lb. 59c  
CUDAHY'S PURITAN BACON SQUARES ... lb. 39c

**Roast** Pinkney's Economy Round or Sirloin Tips ... lb. 59c

**GRAPEFRUIT JUICE**  
LIBBY'S DEEP BROWN BEANS ..... 8 for 14 OZ. \$1

**GREEN BEANS** ..... 30c







Family That Lives In Muleshoe And Vicinity

# ES GUNN BROS STAMPS

# DOUBLE STAMPS

**NEW!**  
**SUGAR**

for More, Fri. & Sat.

Fri., Sat., Feb. 12 and 13 With Cash Purchases of \$2.50, or More



**FREE!** (Sat. Only) Starter Book With Free Page of Stamps!  
**FREE!** For Every Family - Gunn Bros. Gift Catalog!  
**FREE!** (Sat. Only) Balloons For Children - While they last!  
**FREE!** Junior Collectors Books For Children With Kay-Gee's Picture On Front

**FROM CASHWAY •**

Kenney's Economy  
 loin or T-Bone, lb. **29c**

CUDAHY'S PURITAN READY TO EAT  
 CURED HAMS ..... lb. **69c**

CUDAHY'S PURITAN SLAB  
 SLICED BACON ..... lb. **69c**

conomy  
 ARM, LB. **29c**

PINKNEY'S ECONOMY BONELESS  
 Rump or Pikes Peak Roast ... **49c**

**ICE** 46 Oz. Libby's  
**4 For 1.00**

LIBBY'S BEEF STEW ..... NO. 2 CAN  
**3 for \$1**

3 Libby's  
**5 For 1.00**

1 LB. BOX BORDEN'S Starlac ..... 3 for \$1  
 5 QUARTS TALL CAN Borden's Milk, 9 for \$1  
 LIBBY'S 46 OZ. CAN Orange Juice . 3 for \$1

# COCA COLA

12 Bottle Carton (Plus Deposit) **39c**



LIBBY'S 46 OZ. CAN  
**PINEAPPLE JUICE** ..... **3 for \$1**



LIBBY'S NO. 303 CAN  
**FRUIT COCKTAIL** ..... **4 for \$1**



LIBBY'S NO. 303 CAN CREAM STYLE  
**YELLOW CORN** ..... **5 for \$1**



LIBBY'S NO. 303 CAN  
**SLICED or HALVES PEACHES** ..... **5 for \$1**

**ICE COLD COKES FREE ALL DAY SATURDAY**

• FROZEN FOODS •

TROPICANA ORANGE JUICE .. 6 OZ. CAN **15c**

REALEMON LEMON ADE ..... 6 OZ. CAN **15c**

SNOW CROP CUT CORN ..... 8 O. PKG. **19c**

SNOW CROP WHOLE OKRA ..... 10 OZ. PKG. **25c**





## Elaine Damron Hosts Los Planos

The Los Planos Study Club met in regular session Tuesday, February 9, at the home of Elaine Damron, with Ruby Lee Kerr acting as co-hostess.

A short business session was held, and it was decided to change the date of the style show from March 12, to March 26.

The program began with a devotional given by Fern Autry. Helen Schmitz gave "Building Your Marriage". Jerry Farrell gave "Your Mental World", and Lauranette Mason gave "Living With Your Children."

Refreshments were served to seventeen members, and one guest, Jayne Reese.

### LEFT FOR DEL RIO

Joe Vaughn, Bert Gordon, and Buck Taylor left Monday on a fishing trip to Del Rio.

### DR. A. E. LEWIS

Dentist

East of Courthouse - Muleshoe  
Off. Ph. 3040 - Res. 6570  
Closed Wed. & Sat. Afternoon

for smart styling  
**PAINT WALLS and WOODWORK IN THE VERY SAME COLOR!**



Two Different Finishes... **FLAT** and **SEMI-GLOSS**  
...Perfectly Color-Matched for **EXTRA BEAUTY!**

Now you can color-match walls and woodwork easily... economically. Just apply Washable, one-coat Flat-Lux to your walls and then... finish woodwork in exactly the same color with beautiful semi-gloss Satin-Lux. Try it! You'll love the colorful new beauty it offers.

USED AND APPROVED BY MILLIONS

Come in today!

LET US TELL YOU ABOUT SMART NEW SINGLE COLOR STYLING

HEATHINGTON LUMBER CO.

Phone 7970

Muleshoe

## Mrs. Wayne Clark Is Honoree Of A Stork Shower

The home of Mrs. H. W. Carpenter of the Lazbuddie Community, was the setting recently for a stork shower, honoring Mrs. Wayne Clark. Beautiful shades of yellow and mint green, were carried out in decorations and appointments.

The honoree was presented with a corsage of carnations, in the featured colors.

As the game of "Treasure Hunt", was played, Mrs. Clark was presented with a lovely basket, filled with many beautiful and useful gifts.

Refreshments of yellow and mint green cake, and punch was served by the hostess to those present.

Hostesses were Barbara Hinkson, Mary and Jimmie Carpenter, Charlene Graeff, and Betty Waggoner.

Those attending were Meses. W. B. Wagnon, O. M. Jennings, Marie Wright, Myrtle Gillmore, Josie Clark, James Beavers, Frank Hunt, Kenneth Heard, C. C. Matthews, Claude Pruitt, Bill Thompson, Oma Lee Heard, Rheta Welch, Jack Templer, Walter Howard, Susan Parhams, Harold DeLoach, Levina Brown, Phyllis Thompson, Henry Ivy, Dud Reed, R. D. Reed, Edith Templer.

And Meses. Ernestine Steinbock, E. E. Engelking, H. W. Carpenter, Sam Lucy, Edith Graeff, Marie Hunt, J. D. Carpenter, J. J. Briggs, Virgil Teague, Richard Engelking, Charlie Gustin, Henry James, Demp Foster, Myrtle Steinbock, Frank Hinkson, Ben Foster, U. O. York, Bessie Clark, and Misses Noretta James, Willa Mae Lucy, Shirley and Betty Littlefield, Mitzi Ivy, and Theresa Steinbock.

Many who were unable to attend sent gifts.

Read The Journal Want-Ads.

## Mike Epting Is Honored With Birthday Party

Mike Epting was honored recently on his 8th birthday, by his mother, with a party.

After games were played, gifts were opened, and refreshments of birthday cake and punch were served.

Those attending were Joyce Adams, Donna Kelton, Carol Wayne, Carolyn Blansett, Kathryn Puckett, Stanley and Clifford Black, Ronald Autrey, Virgil Willis, Bob Green, Wayne Gregory, Gaylon Black, Teddy Jacobs, David Roberts, Gerald Waggoner, Harold Willburn, and the honoree, Mike.

## Church of Christ Ministers Will Meet In Muleshoe

There will be an all day meeting at the Church of Christ in Muleshoe, Monday, February 15, beginning at 10:30 a. m.

Visiting ministers and their wives, with other interested persons from the surrounding communities will be guests of the local congregation. This is just a get-together of the various ministers, and others, for a period of fellowship.

Brother W. B. McKinney of Friona will speak at the morning hour on the subject of "Women's work in the Church". Following this will be the noon hour, and lunch will be prepared by the ladies of the Church.

From 1:00 to 3:00 p. m., there will be a round table discussion. Some twenty-five ministers and their wives are expected to attend.

## O. E. S. Chapter Met Last Tuesday

A regular meeting of the O. E. S. Chapter No. 792, was held Tuesday evening, February 2, at 7:30 in the Masonic Hall.

Mrs. Ruby Cox, worthy matron, and W. F. Creamer, worthy patron, presided in the East.

Invitations were read from the Morton, Floydada, Hale Center, and Petersburg chapters, inviting the Muleshoe Chapter to attend their Friendship nights on

the 9th, 11th, 15th, and 18th, of February respectively. Several ladies indicated they could attend some of these meetings.

W. F. Creamer made an announcement concerning parents visiting their schools during Public School Week, in March.

A letter was read from the Morton Chapter stating that the Rev. and Mrs. Clarence Stephens, formerly of the Methodist Church there, who are now taking up the duties of the Muleshoe Methodist Church, are both active members of the Star.

Refreshments of coffee and cherry pie topped with whipped cream were served by Meses. Emma D. Copley, Margaret Epps, and Elaine Damron.

The Valentine motif was carried out in decorations.

### VISITED TAYLORS

Visiting in the home of Mr. and Mrs. Buck Taylor over the

More water for less horsepower

with the **BERKELEY CRUSADER**

**DEEPWELL TURBINE**

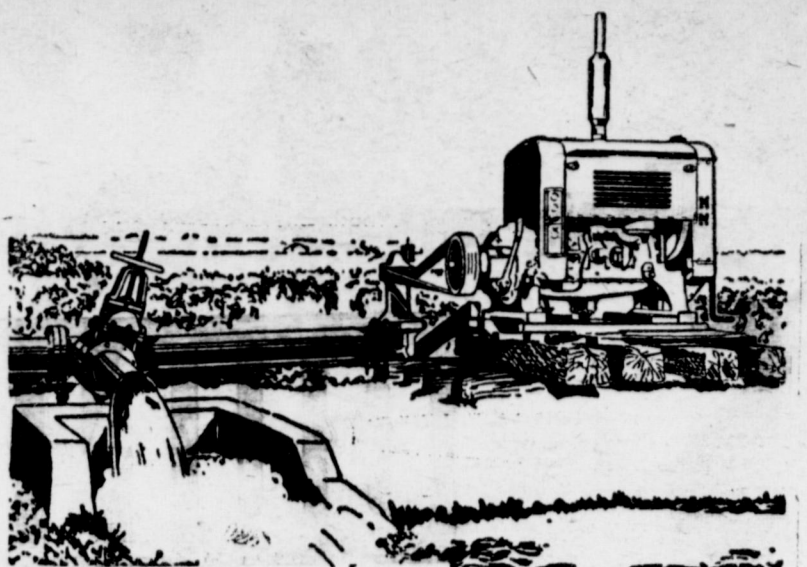
You can get increased capacity with decrease in motor size, lower power consumption... at a lower initial cost... with the Berkeley Crusader Deepwell Turbine. This medium sized water system fills the gap between jet pumps and larger turbines.

Berkeley Crusader Turbines are designed for 4 in. inside diameter wells and larger, 25 to 50 G.P.M., 1 1/2 to 7 1/2 H.P., depths to 500 ft. The Crusader maintains ample pressure for household use while flood irrigating.

E. R. HART CO.  
Phone 3300 - Muleshoe

were her mother, Mrs. Jamie Anderson, of Anton, and her sister, Mrs. Madge Turner of Phoenix, Ariz.

WANTED: Clean Cotton Rags At The Journal Office.  
Read The Journal Want-Ads.



MM 283-4A Power Unit Pumping Irrigation Well

## MM POWER WHEREVER PUMPS ARE USED

Performance and economy records have been established by the entire line of Minneapolis-Moline industrial units from 25 to 230 h.p. They are widely used on well drilling rigs, test pumps, oil well pumps, irrigation pumps, gravel pumps, flood control pumps, drainage pumps, and compressors.

Dependable and efficient when it comes to the grueling continuous-duty grind, MM units require minimum service and deliver smooth power day in and day out. Remarkably low "down time" and easy, low-cost maintenance save operators time and money.

For maximum economy, MM Power Units are so designed that the user buys only what he needs—the engine alone, radiator and fan, fuel tank, enclosures, or the completely assembled unit.

Cylinder heads and blocks are cast in pairs for easy servicing and economical maintenance. Efficient fuel equipment for low cost operation on gasoline, distillate, natural gas, or LP gas is optional and allows operators to take advantage of the most economical fuel available.

See us now for details on the heavy-duty design and safety features of all MM Power Units.

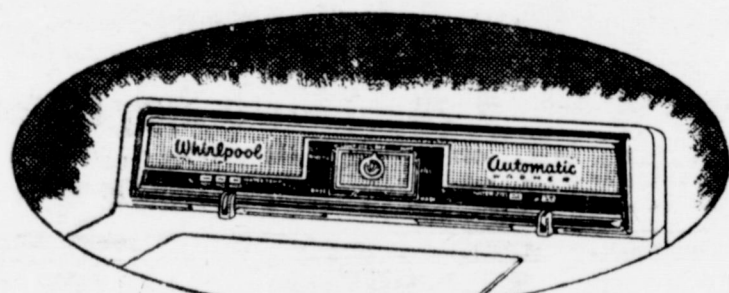
FOR SALE

1 - 1941 JOHN DEERE TRACTOR WITH POWERROL \$400

**FRY & COX BROS.**  
A ONE-STOP FARM SERVICE  
Phone 3660 - Muleshoe

# NEW Guide Lite Control!

lights your way to brighter, easier, thriftier washdays!



Most convenient, most accurate Control Panel in home laundering!



## Whirlpool

ALL FABRICS **WASHER and DRYER**

THE WHIRLPOOL Fully Automatic Imperial WASHER \$3.75 A WEEK after small down payment

THE WHIRLPOOL Fully Automatic Imperial DRYER \$2.90 A WEEK after small down payment

Here's effortless Guide Lite Control of the greatest benefits in automatic washing. A touch brings you famous Suds-Miser savings. New Select-a-Level water economy. The precise time and temperature that's best for any fabric. More exclusives: Sun-a-Tizer Lamp; Cycle-Tone Signal; Flush-to-Wall Construction.

No costly "guessing games" when you dry the Whirlpool Guide Lite way: safe-sure-fast! Exclusive new Delicate Fabric Control, and gentle breeze-blown ThermoFlow Action give you perfect results with ALL fabrics, from denims to dacrons. Other Exclusives: Sun-a-Tizer Lamp and Cycle-Tone Signal.

5 YEAR WARRANTY ON TRANSMISSION

See a Whirlpool Guide Lite Demonstration in our store.



## Berry Electric

PHONE 3750

MULESHOE

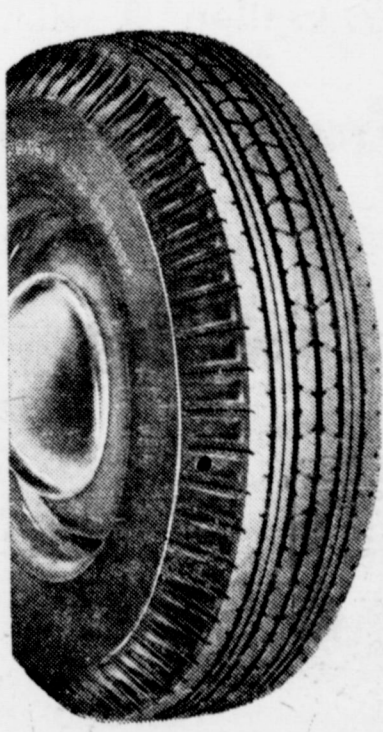
### WASHING

ALSO VACUUM YOUR CAR

### LUBRICATING

ALL BRANDS OF OIL

PICK-UP and DELIVERY SERVICE



SAVE WITH SAFETY

Wards Riverside Tires—made of first quality materials throughout. Full tread width—full nonskid depth—for long mileage. A remarkable value.

\$13.95 \$14.95  
6.00-16 6.70-15  
\*Plus Fed. Tax

Riverside Deluxe 6.00-16 Tubes. None finer. Plus Fed. Tax. 0.00

TIRES MOUNTED! We put on your Riversides and check your tubes and rims at no charge. Flats fixed, wheels balanced.

Riverside Tires and Tubes, Winter King Car and Tractor Batteries



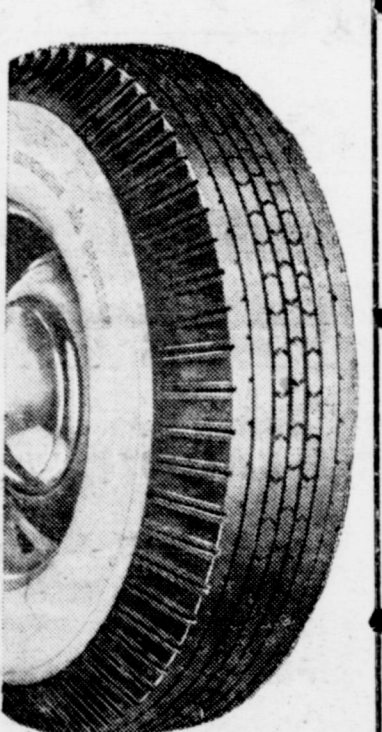
Special Make for Tractors

Type 13.95 Exchange

GET THE BEST 24 MONTH GUARANTEE—Winter King Tractor Battery. Specially made to take jars, jolts of rugged farm work. Plastic-glass insulation for extra plate protection. Buy now.

WE SPECIALIZE Batteries are our business—get the best service in town. See us for all types new batteries, one-hour or 24-hour recharge, any ignition work. Extra-low prices.

Riverside Tires and Tubes, Winter King Car and Tractor Batteries



SAVE WITH SAFETY

Buy Riverside Deluxe Whitewall tires—dress up your car at a price far below other first-line whitewalls. You get the tops when you get a Riverside Deluxe.

\$17.95 \$19.75  
6.00-16 6.70-15  
\*Plus Fed. Tax

Riverside Deluxe 6.00-16 Tubes. None finer. Plus Fed. Tax. 0.00

TIRES MOUNTED—No charge. Drive right out with your new Riversides. See us any time for top tire service.

Winter King Batteries and Riverside Tires and Tubes.

SEE US FOR THAT GOOD GULF GASOLINE

# Muleshoe Service Station

Highway 84 and 5th Street

Phone 4120

Muleshoe, Texas





GET YOUR

Valentine

TREATS



**Margarine** Hollandale 1 Lb. Carton **18c**

LIBBY'S VIENNA SAUSAGE NO. 1/2 CAN **19c**  
 SKINNER'S SPAGHETTI 7 OZ. BOX **12 1/2c**  
 LIBBY'S SOUR OR DILL PICKLES 22 OZ. JAR **35c**  
 LIBBY'S KRAUT NO. 303 CAN **15c**

**CHERRIES** Monarch Red Pitted No. 2 Can **22c**

CAMPFIRE BLACKEY PEAS NO. 300 CAN **12c**  
 STALEY'S WAFFLE SYRUP 24 OZ. JAR **47c**  
 SWANSDOWN CAKE MIX, 2 for LARGE BOX **39c**  
 PARD DOG FOOD 16 OZ. CAN **16c**  
 SWIFT'S MEAT FOR BABIES **22c**  
 PINT BOTTLE WESSON OIL **33c**

**ICE CREAM** Bell's 1/2 Gallon **79c**

ASHLEY'S TORTILLAS 18 TO CAN **43c**  
 FOR DISHWASHER FINISH 20 OZ. BOX **43c**  
 BLUE PLATE SWEET POTATOES NO. 3 SQUAT **31c**  
 HUNT'S TOMATO SAUCE, 3 for 8 OZ. CAN **25c**  
 HUNT'S PEARS NO. 300 CAN **25c**  
 POWDERED BONAMI **12 1/2c**

**FLOUR** Everlite 10 Lb. Bag **79c**

PALMOLIVE TOILET SOAP, 2 for BATH SIZE **25c**  
 PALMOLIVE TOILET SOAP, 3 for REG. BAR **25c**  
 TOILET SOAP, VEL BEAUTY BAR **25c**  
 SEA FEAST SALMON, PINK NO. 1/2 CAN **25c**  
 PETER PAN PEANUT BUTTER 12 OZ. JAR **39c**  
 AUSTEX PLAIN CHILI NO. 300 CAN **39c**

**FRESH FRUITS & VEGETABLES**

**Cabbage** Fresh Lb. **2c**

FIRM HEADS LETTUCE lb. **12 1/2c**  
 LARGE BUNCH TURNIP & TOPS **10c**  
 FLORIDA ORANGES 5 LB. BAG **39c**  
 CALIFORNIA CALAVOS, each **12 1/2c**

**DRUMSTICKS** Youngblood 16 Oz. Pkg. **69c**

HILLS 'O HOME BLACKEY PEAS 12 OZ. PKG. **19c**  
 HILLS 'O HOME SPINACH 12 OZ. PKG. **14c**  
 SNOW CROP ORANGE JUICE 12 OZ. CAN **29c**  
 PICK SWEET STRAWBERRIES 10 OZ. PKG. **25c**

DAIRY CRAFT MILK, 2 for TALL CAN **25c**



**SCOT TISSUE** 1000 Sheet Roll **10c**

**U. S. GRADED QUALITY MEATS**

**Steak** Loin or T-Bone Com., Lb. **33c**

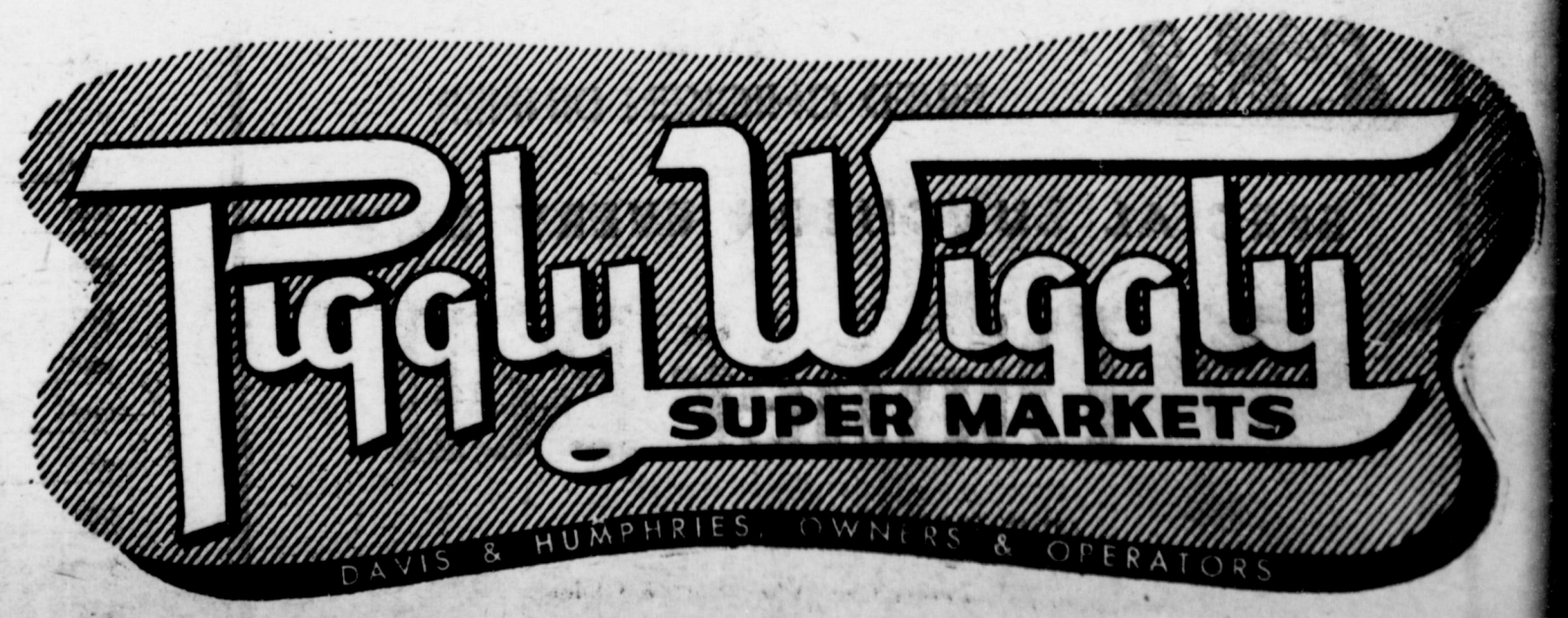
FRESH GROUND HAMBURGER MEAT, lb. **29c**  
 WILSON'S PLAIN SLICED BACON lb. **39c**  
 CUDAHY'S SAUSAGE 1 LB. ROLL **49c**  
 BONELESS FILLETS PERCH FISH lb. **39c**

**PICNICS** Wilson Certified 1/2 or Whole, Lb. **39c**

FRESH SHOULDER PORK ROAST lb. **39c**  
 FRESH SLICED PORK LIVER lb. **23c**

DIAL SHAMPOO **67c**  
 BAYER'S ASPIRIN 15c TIN **10c**  
 GILLETTE BLUE RAZOR BLADES 10 BLADES **49c**  
 PALMOLIVE BRUSHLESS SHAVING CREAM GIANT TUBE **43c**

300 COUNT BOX **Kleenex... 17c**





### Mrs. Walter Spence Shower Honoree

Mrs. Walter Spence, the former Miss Eddie Lone Ham, was honored with a bridal shower at the home of Mrs. W. S. Menefee, Wednesday afternoon.

Mrs. Spence is now teaching in the Odessa Public Schools, and Mr. Spence is a production clerk for the Magnolia Oil Co. in Odessa. She is a daughter of Mr. and Mrs. Luther Ham of the Lazbuddie community.

During the afternoon, games furnished entertainment for the

guests. Refreshments of spiced tea and cakes were served.

Those present were: Mmes. Sam Brownlee, F. W. Green, Raymond Houston, C. A. Watson, Matt Jesko, Wesley Barnes, Dan Cargyle, Buck Crim, J. H. Clay, J. L. Wartes, Thomas Carroll, and Jimmie Ivy.

Hostesses for the occasion were Mmes. W. H. Menefee, Bert Gordon, John Crim, E. R. Hale, Carrie Withron, John Agee, Juel Treider and L. Hardage.

**ADMITTED TO HOSPITAL**

J. J. Gross was admitted to the Green Hospital and Clinic Tuesday morning with a severe stroke.

### Mr. and Mrs. Cox Feted With Shower

Mr. and Mrs. Frank Cox, were the honorees of a shower, Thursday, February 4, beginning at 7:30 p. m., at the home of Mrs. C. D. Julian. Mr. and Mrs. Cox were married January 17.

Hostesses were Mrs. Jullian and Mmes. Leslie Mills, Curtis Wellborn, D. L. Morrison, Hazel Wimberly, Jake Roberts, C. W. White, and Cliff Odom.

Refreshments of delicious pineapple mint punch, individual cakes, and plate favors of mints were served.

The young couple received many lovely and useful gifts. Approximately thirty persons who could not attend sent gifts.

Those attending were Mrs. Mark Grimsley, Mr. and Mrs. Charles Bratcher, Mrs. Ruth Roberts, Mr. and Mrs. Leslie Mills, Mrs. Will Harper, Mrs. M. D. Gaddy, Mrs. Byron Griffiths, Mrs. Ed Hicks, Mrs. Ed Little, Mrs. Arch Fowler, Mrs. Earl Bratcher, Mrs. Helen Lee, Mr. and Mrs. J. V. Peeler, Mrs. Mary Hart, Claudia Cox, Mrs. Charlene Williams, Neoma Jackson, Ginger Roberts, Mrs. Connie Dale Guppton, and Mrs. Faye Cox. All the hostesses attended.

Guests were registered by Mrs. Charlene Williams.

### Sunshine Club Finished Quilt

Mrs. Cecil Harvey hosted members of the Sunshine Club in an all day meeting in her home on February 4.

The ladies quilted during the morning hours, and at noon, ate a delicious lunch. Each member of the club brought a dish.

After the lunch hour, there was a short business session, and the quilt was finished.

Those present were Mmes. Adkins, Browder, Johnson, Odom, Patterson, A. Harvey, and the hostess.

The next meeting will be held March 18, with Mrs. W. W. Lee as hostess.

### RECREATION SCHOOL HELD AT ATHENS

A school to train adults in conducting recreation programs for youths, is to begin under auspices of the Texas Farm Bureau Sunday, Feb. 14, in Athens, Texas.

Attending from this county will be Mrs. Bill Millen, of Muleshoe, and Mrs. Marvin Skinner, of Bula.

### ATTENDED DISTRICT FARM BUREAU MEETING

Lester Howard and Bill Millen Monday night attended a meeting for county Farm Bureau

presidents and secretaries, held in Lubbock Hotel. Hub King, district director, presided. Counties of the High Plains territory were represented.

### WE BUY— COTTON EQUITIES

Clyde W. Robertson — Dorothy Jones  
Next Door Maynard Jewelry  
Main Street — Sudan, Texas  
**ROBERTSON AND JONES**

## NOTICE

TO FARMERS

I have moved my office to the Nickels Gin. Will be glad to have a chance to buy your cotton and Government Loan Cotton. Will be glad to give information on your Loan Cotton as this cotton is being reconcentrated.

— SEE US BEFORE YOU SELL —

## NICKELS GIN

S. D. ANDERSON

We Have Some Good  
**Used Tractors**  
and Equipment

DON'T FORGET —

Have Your Car Inspected Before April 15.  
We Are An Official  
Inspection Station

## HICKS TRACTOR CO.

Phone 6020

Muleshoe

### One Act Plays Being Rehearsed By Speech Class

The high school speech class has discontinued its study of radio broadcast to take up a few seasonal items, two of which are the one act plays and the senior play.

On the latter, the tryouts will be sometime next week. Miss Gaither said the following is a rundown on a couple of the one act plays to be presented in the next few weeks:

"Three's A Crowd", a comedy.

### Too Late To Classify—

**WANTED:** Job as saleslady, waitress, or practical nurse. Contact Muleshoe Journal for details. 1-6-1tp.

**FOR RENT:** Nice unfurnished house. Two rooms and bath. See at 1201 E. 3rd St., or call 6321, Mrs. Della Seales 7-2tp.

**FOR SALE:** 12x24 ft. building, hardwood floor, well built, to be moved. See S. D. Anderson, Nickels Gin. 6-1tc.

**FOR SALE:** 160 acres, irrigation well just completed. Over 800 gallons minute. All can be irrigated. One half minerals. \$125 per acre cash. Write or phone Edna Johnson, Springfield, Colo. 8-7-2tp.

**WORLD ALMANACS**  
The Journal has received a supply of the World Almanacs, the great argument settler. They sell for \$1.10.

### Library News

"Intruder Of The Sea", by Gordon McDonald, is just one of the many interesting and exciting books to be found at the Muleshoe Library. Below is a short review on the book, by Mrs. Wright, librarian:

Sam Freeman was sunning himself on the beach at Santa Monica, Calif., and though he suspected nothing, a surprise uneasiness came over him when Johnny Oaks appeared. While Sam was sunning, his wife Alice was keeping an eye on the two children, Pete and Janie, who were playing along the beach. The instant she looked away, Pete was caught in a strong tide. He was rescued by Johnny Oaks, and although both parents were grateful, Sam wished someone else had rescued the boy.

Before Sam could go to the F. B. I. they came to him, and before he had time to give any thought to the safety of his family, they were trapped by a ring of Russian spies, and the chase was on.

### WERE HERE SUNDAY

Mr. and Mrs. Persey Parson and son Mike, of Post, visited Sunday afternoon in the home of Mr. and Mrs. Buck Taylor.

The cast: Eddie, Bobby Nelms; Evelyn, Marion Harris; Ellen, Sue Young; Elmer Tom Osborn; and Mr. Harris, Wayne Bristow.

The cast for "Nobody Sleeps", a comedy: Spike, Tommy Osborn; Daisy, Helen Stovall; Ada, Pat Inman; Glory, Dorothy Underdown; Mrs. Busby, Lola Roark.

"Three's A Crowd" is the story of young love at one of its more trying times. "Nobody Sleeps" is about a soft hearted burglar and a bunch of half-witted sisters. Miss Gaither said there will be four or five one act plays presented during this last semester.

## Re - Opening Friday, February 12

## the NEW Post Office Cafe

COME IN FOR FREE COFFEE

We think you'll agree that it IS new. We have completely remodeled and redecorated — added new booths for your convenience and new equipment. We have also provided a new, separate dining area for Latin-Americans.

### FOUNTAIN SERVICE

We've Installed A New Fountain — Let Us  
Serve You With Your Favorite Drinks

And Again We Say *Thank You*

Yes, folks, we do feel like saying "Thanks To All". We appreciate your fine patronage and your friendship in the years we have been in business. It's been a real pleasure to serve you.

MR. and MRS. THERON WEST

### Muleshoe Precipitation Record By Months And Years Since 1921

YEAR	JAN.	FEB.	MAR.	APR.	MAY	JUNE	JULY	AUG.	SEPT.	OCT.	NOV.	DEC.	TOTAL
1921								1.05	3.02	.00	.00	.00	4.07
1922	.11	.10	.31	5.15	1.90	2.17	3.92	.40	1.60	.00	.33	.00	13.99
1923	.09	1.42	1.51	1.83	.77	10.05	1.70	1.12	2.32	6.27	1.33	.53	28.94
1924	.00	.25	1.07	.37	1.07	1.67	8.13	3.39	.95	.87	.45	.00	18.02
1925	.00	.00	.09	.08	1.69	3.96	1.46	2.78	4.14	.85	.37	.00	15.42
1926	.00	.00	1.62	2.42	4.33	.97	1.31	1.71	8.49	1.34	.40	.94	23.53
1927	.54	.00	.16	.13	.00	1.71	4.61	2.03	5.16	.03	.00	.55	14.92
1928	.00	.40	.20	.00	3.53	1.13	2.39	2.39	1.19	4.70	2.80	.23	18.94
1929	.23	.00	2.25	.15	5.16	2.59	.67	2.27	3.82	1.36	.57	.00	19.07
1930	.00	.00	.00	3.52	1.84	2.93	1.27	1.65	2.43	2.04	.69	.47	16.84
1931	1.11	1.17	.15	3.46	2.41	.68	2.45	4.63	.52	.72	1.41	1.46	20.60
1932	.52	.52	.05	1.05	.85	4.25	.30	2.70	4.58	.63	.00	1.89	17.34
1933	.48	.52	.69	.20	1.41	.69	.95	6.27	.91	.57	.86	.70	13.55
1934	.12	.14	1.16	1.31	1.64	2.39	1.28	1.34	1.77	.98	2.14	.14	14.41
1935	.35	.28	.85	.07	1.85	4.48	2.96	1.04	.89	.11	1.70	.22	14.30
1936	1.24	.14	.12	.19	5.66	1.36	1.80	.41	2.55	.88	.12	.67	15.14
1937	.08	.18	1.66	.95	5.66	2.56	1.24	.51	4.41	1.28	.00	.56	19.78
1938	.64	1.24	1.45	.73	1.63	7.74	1.78	.54	1.39	2.93	.34	.08	20.49
1939	1.96	.06	.40	.57	2.06	1.79	.94	3.42	.05	1.28	.18	1.34	14.05
1940	.27	.65	.00	1.53	2.63	1.89	.33	3.97	.37	.22	2.04	.07	13.97
1941	.24	.38	3.14	1.99	11.86	5.77	6.92	2.09	3.46	6.37	.47	.83	43.52
1942	.02	.00	1.15	2.96	.60	2.21	.98	4.50	2.29	4.94	.00	1.37	21.02
1943	.00	.50	.00	.28	1.67	1.74	3.13	.21	1.12	1.08	1.10	3.45	14.26
1944	.57	.78	.01	1.14	2.07	4.00	2.21	3.44	4.77	.12	.47	.93	20.51
1945	.57	.13	.17	.35	.84	.00	1.68	2.50	3.79	1.17	.00	.21	11.21
1946	1.18	.05	.19	.14	.80	2.82	1.00	2.20	4.21	5.48	.81	1.17	19.88
1947	.58	.20	.67	1.36	4.23	.35	1.80	.33	.44	.22	.35	.58	11.31
1948	.37	1.64	.50	.31	1.09	1.90	2.02	1.78	.86	.23	.00	.31	11.01
1949	2.34	.84	.15	1.96	7.26	4.73	2.95	.71	1.81	1.23	.19	.31	25.83
1950	.13	.02	.18	.12	.45	1.24	7.64	4.71	4.88	.07	.00	.03	19.47
1951	.62	1.16	.21	.11	6.86	5.34	3.48	1.34	.06	1.51	.29	.36	21.34
1952	.80	.09	.26	1.74	.47	1.59	1.64	1.60	.86	.00	1.09	.80	10.44
1953	.81	.07	.81	.82	1.90	.83	3.70	1.53	.0	2.20	.36	.21	13.23

## OUR THANKS

We sincerely thank you for driving out to see us and solicit your continued patronage. We are endeavoring to give you better service every day and will have

**CURB SERVICE SOON**

**SATURDAY and SUNDAY**  
Large Ice Cream Sodas, any flavor ..... 15c

**SUNDAY SPECIALS**

FULL COURSE TURKEY DINNER  
AND  
FRIED CHICKEN DINNER



**SPECIAL LUNCHEON EVERY DAY**

## The Dinner Bell

JOE DUKE, Proprietor

Clovis Highway — Across From Wiedebush & Childers



# THE MULESHOE JOURNAL

DEDICATED TO THE PROGRESS AND DEVELOPMENT OF BAILEY COUNTY AND THE GREAT MULESHOE COUNTRY  
 VOLUME 32, NUMBER 6 MULESHOE — County Seat of Bailey County — TEXAS THURSDAY, FEBRUARY 11, 1954

## Sen. Rogers Will Address Lamb Co. Bureau Gathering

Guest speaker at the Kick-off supper, February 15, for the Lamb County Farm Bureau membership drive, will be Andy Rogers, State Senator.

Senator Rogers was born and raised and still lives 2 miles northeast of Childress. He graduated from Texas A. & M. He served in the lower house 2

terms and is now in the Senate. Senator Rogers' father is Vice-president of the Childress County Farm Bureau. Andy has been a loyal supporter of the farmers for the last 6 years, he knows the Farm Bureau program and has done much to further it.

Mrs. Rogers will accompany the Senator at the dinner.

This barbecue is being held for the workers and their wives of the Lamb County Farm Bureau membership drive February 16. Anyone wishing to help with this drive may attend this barbecue simply by contacting the Farm Bureau office on or before Saturday, February 13.

## Bailey People Give To The USO

Bailey County people have contributed \$148 to the USO, the service organization that provides for the comfort and entertainment of members of the Armed Services. This was announced Monday by Noel Woodley, the county chairman for the drive.

Mr. Woodley said he will still accept contributions for the cause.

He called attention to the importance of the USO: "Since our Universal Military Training law will continue to drain off our young people and send them on duty in many parts of the world, we cannot afford to let down in any part of our defense—and that definitely includes USO", Mr. Woodley said.

Texas Almanac, on sale at The Journal, Phone 7220, we deliver.

## Rev. L. J. Ferguson Assumes Pastorate Main Street Church

Rev. L. J. Ferguson, pastor of the Gilmer Baptist Church the past eight years, and an active Baptist minister for 40 years, arrived with his wife last Friday to assume the pastorate of the Main Street Baptist Church in Muleshoe.

The Fergusons have two children, a son, First Lt. L. J. Ferguson, Jr., an instructor at Fort Sill, Okla., and a daughter, Mrs. Cleo Marjorie Byrd, of Alvin, Okla., and three grandchildren.

Rev. Ferguson stated that most of his pastorates had been in northeast Texas and Arkansas, but that he liked the South Plains, and especially Bailey County and Muleshoe.

## Dallas McCurry Is Taking Basic



Pvt. Dallas C. McCurry is taking his basic training at Ft. Bliss. He will be stationed there for seven weeks. Dallas is the husband of Billy Ray McCurry, and the son of Mrs. R. M. McCurry of Littlefield.

Mr. and Mrs. A. W. Copley are in Austin this week, attending the Ginner's Convention.

## Muleshoe State Bank Donates \$500 To Park Fund Which Now Totals \$4400

Leading the recent donations in the park improvement drive was the Muleshoe State Bank with a gift of \$500. Funds now total \$4400, according to Ray Franz, manager of the Muleshoe Chamber of Commerce.

This all has been accomplished in a period of six months, the first deposit being made in July, 1953.

The most recent women's club to make a donation was the Muleshoe Study Club. All civic organizations and women's clubs have made generous contributions, as well as the many individual donors, stated Franz. Among them was the Rebekah Lodge which contributed a \$75 out-door cooking unit.

There have been several benefit affairs, the most lucrative being the auction held in late summer, which netted a total of \$2100. Farmers donated loads of hay and feed to the auction, as well as other articles by business houses and individuals from Shetland ponies down to the smallest items. Also, a considerable sum was realized from Cox's Drive-In Theatre donating the half of the proceeds of a show.

Mr. Franz stated that individual contributions are still coming in at a fair rate.

Plans for park improvement include play ground equipment, a picnic area, lights for little league baseball, and a complete recreation program.

**Hair Styling**

We can give you a flattering passport into a new year of beauty... Try our Distictive Hair Styling.

Both Operators licensed to give 4-way Haircuts.

**THE MULESHOE BEAUTY SHOP**  
 MARTHA STEPHENS — Operators — LUCILLE CHERRY  
 Phone 3110

**INSURANCE PROTECTION POLICY FOR EVERY NEED**

**Lane Insurance & Real Estate**

EDDIE LANE And  
 O. D. "Blondy" RAY, Owners

PHONE 3630 MULESHOE, TEXAS

**ONLY \$3,250**

— For —

- Super M Farmall Tractor, Factory equipped for L. P. Gas. and with standard equipment.
- HM 10-79 Lister-Planter with 6:00-9 rubber tired gauge wheels.
- M-448 4-row Cultivator with Rubber Tired Gauge Wheels.

All of above is FACTORY NEW and in DEALERS STOCK

— SEE —  
**H. G. Griffiths**  
 At Highland Motel — Or Phone 5930

## Babson Not Pessimistic

Babson Park, Mass., Feb. 11, 1954—Many of my readers are greatly disturbed by recent Associated Press figures showing quite a falling off in reported December business. It also appears that figures for January are none too good. Readers ask me the reason. My reply is that in view of a falling off of consumer demand, and the consequent piling up of inventories, merchants are not buying their usual quotas of new goods.

**CHRISTMAS CARDS A FACTOR**

The slowness of Christmas buying was due mostly to the unseasonable weather. Some sections were suffering from a long drought—no rain for months; yet certain states had seen only rainy days. Many millions substituted Christmas cards for gifts. In fact, Christmas cards are becoming a serious menace to Christmas business. (A few weeks ago I heard a sales clerk say: "Buy Your 1954 Christmas Cards And Wrapping Paper Now.")

What the answer to this "Christmas card" craze will be, I don't know. Certainly, merchants associations should seriously consider its ramifications as potentially capable of completely upsetting present Christmas practice. Such cards sell without newspaper advertising; any cards left over can be put on the counters a year later; and the mark-up is good—40%-50%. In view of Newton's Law of Action and Reaction, the Christmas card business will be overdone and people will get tired of either sending them or getting them. Some people already look upon the Christmas cards sent out by business concerns as a waste and nuisance.

## FORECASTING CAN BE OVERPLAYED

But to get back to the Business Outlook, I do not believe that business and employment will fall off 10% during the next six months as is generally forecast. Furthermore, I do not forget that the Forecasting Business is subject to the same Law of Action and Reaction that every other business is. This can be overdone and may have been overdone for 1954. This is one reason we confine our forecasts to only six months at a time. Even the Gallup Polls, which are honestly and carefully operated, may turn out to have been largely a fad.

Here is another thought: Does a new year necessarily start every January first? A new year starts every month and even every day. Annual Forecasts are really based upon an old religious custom started centuries ago. From a logical standpoint, it is foolish to celebrate the ending of an old year every December 31 and the beginning of a new year every January 1. I forecast that some day this silly custom will be abolished.

## CHURCH BELLS A GOOD BUSINESS BAROMETER

With my intimate knowledge of the new products, methods and inventions now on drawing boards and in test tubes, I simply cannot get pessimistic now. Only waste, inefficiency, dishonesty, and sin can cause business depressions. When visiting big cities, I am temporarily blue; but when I get out into smaller cities and hear the church bells ring, I am again an optimist on America.

I am watching with great interest the possible new sources of power. Immediately ahead of us is the peace-time use of atomic energy. Around the corner is the use of unlimited solar energy, upon which the Massachusetts Institute of Technology at Cambridge, Mass., is working. Then the Gravley Research Foundation of New Boston, N. H., tells me that the discovery of a gravity "insulator" will harness gravity for the benefit of everyone. Added to these are the great possibilities of mental energy.

## HUMAN BRAINS AND SOULS

The world's most wonderful machine — namely, the human brain and soul — we all possess. Yet, we are using them at less than 5% of capacity. Let this be increased by new educational plans to only 7%, and factories cannot then get help enough, and shops cannot hold the customers. Think this over! May I add the closing paragraph of a Christmas letter received from Turkey:

"I'd like to write about what is going on in the world at large but the world is too full of opportunities and problems for anyone to say much about it from over here. I suppose I am an incurable optimist because I believe so firmly that 'This is my Father's world. O let me ne'er forget that though the wrong seems off so strong, God is the Ruler yet.'"

"The battle rages fiercely all over the world and in the hearts of men. You and I have our part in this warfare in which there is no neutrality but only utter loyalty to our Captain who is bound to win in the end. In this faith a Joyful Christmas to you and a Happy New Year."

# NOTICE

Farmer County Water Committee will meet at the Farm Bureau Office in Friona, February 18, 7:30 p. m., and each 1st and 3rd Thursday thereafter for the purpose of issuing irrigation well permits.

No permits will be issued between regular meetings except when crops would otherwise be jeopardized.

All applications must be filled out by this office and left in the office for approval at regular committee meetings in the presence of the applicant or his qualified agent (Not a well driller or pump salesman).

## INFORMATION REQUIRED:

MEASUREMENTS MUST BE ACCURATE WITHIN 10 YARDS EXACT WHEN MINIMUM SPACING IS USED

Land description — measured distance to wells, or hi-points on all adjoining quarters — measured distance to two sides of quarter in which drilling is to be done. (Minimum spacing is 400 yards).

COMMITTEE MEN: Walter Kaltwasser, Bruce Parr, C. V. Potts, D. B. Ivy and Raymond Euler

**GUARANTY ABSTRACT CO.**

BONDED FOR YOUR PROTECTION

Complete Abstracts of Title to All Lands and Towns in Bailey County Texas

PAT R. BOBO, Owner BETTE COWAN, Mgr

Office In Bank Building  
 Phone 2640 Muleshoe

# Now In Maple

Get Quality Merchandise With Frontier Stamps

Mail Your Stamp Books To: Frontier Stamps 1812-Ave. Q Lubbock, Tex.

SAT., FEB. 13 DOUBLE STAMP DAY

## At JACK RHEA Grocery & Market MAPLE, TEXAS

Spuds .....	lb. 5c	Crisco .....	3 lb. tin 82c
Bananas .....	lb. 11c	Tide .....	large box 29c
Carrots .....	bunch 9c	Pecches no. ..	2 1/2 can 25c
Cabbage .....	lb. 4c	Sugar .....	10 lbs. 98c

---

## Coffee White Swan (limit) lb. 89c

FRESH Ground Beef .....	lb. 39c	Bacon .....	lb. 49c
Steak, T-Bone .....	lb. 49c	HONEY BOY Salmon .....	can 34c

---

## FLOUR Light Crust 25 Lb. Bag 1.98

300 SIZE BOX Kleenex .....

MRS. TUCKER'S Shortening .....

17c 3 lbs. 69c

Saturday, February 13, Double Stamp Day





By John C. White, Commissioner

**KNOW YOUR COTTON SEED**

"Beware of Greeks who come bearing gifts!" And while you're at it, beware of slick-talking cotton seed salesmen who make extravagant claims for their products.

This word of advice if offered to Texas cotton farmers who are apt to be swayed into buying inferior cotton seed this season. Complaints already have reached the Texas Department of Agriculture about poor quality seed offered from some out-of-state sources.

Some of the seed is listed as

"certified" by the seller. Several of these cases investigated by the Department failed to reveal deliberate fraud but the seed was three generations removed from the initial certification. Seed more than one generation removed from certified stock probably will not have all the desirable qualities needed for top production.

Another claim being investigated is on seed reportedly treated with a "secret" chemical guaranteed to kill all cotton pests. It is doubtful that such a "miracle" chemical exists. Research laboratories have been

trying to develop one but positive results have not been announced.

The farmer's best bet is to buy cotton seed which has been certified by the Texas Department of Agriculture. It is also important to know the dealer from whom the purchase is made.

Every bag of seed offered for sale in Texas must bear either a Texas "Tested Seed" label, a "Certified" label or a "Registered" tag. These labels are not guarantees of top production, but they do tell the buyer what he can expect in germination quality and bag content.

More than \$15 million worth of cotton seed will be bought and sold in Texas this year. That kind of money is sure-fire bait for attracting unscrupulous operators.

It is especially important in this year of controlled cotton production that the farmer plant good seed. He must take full advantage of every measure that will help him raise more cotton on his reduced acreage. Poor seed is not worth the risk.

There is no such thing as "Bargain Basement" seed. You will have to pay the price for good seed but the results will be worth it.

**CHRISTIAN SCIENCE SERVICES**

The allness of God and His complete control of the universe will be discussed in the Lesson-Sermon entitled "Soul" which will be read at Christian Science services Sunday.

Scriptural selections will include this verse from Psalms (84:11): "The Lord God is a sun and shields: the Lord will give grace and glory: no good thing will be withheld from them that walk uprightly."

The following correlative citation from "Science and Health with Key to the Scriptures" by Mary Baker Eddy will also be read: "Day may decline and shadows fall, but darkness flees when the earth has again turned upon its axis. The sun is not affected by the revolution of the earth. So Science reveals Soul as God, untouched by sin and death—as the central Life and intelligence around which circle harmoniously all things in the systems of Mind" (p. 310).

**Blackman "Man of The Month" Union Life Ins. Co.**

M. F. Blackman, Muleshoe, is Union Life Insurance Company's first "Man of the Month" in 1954, according to Frank Whitbeck, vice president and director of agencies, Little Rock.

A member of the Krebs Insurance Agency, Lubbock, Mr. Blackman wins the ordinary department's "Man of the Month" trophy because of his outstanding personal production in January.

Mr. Blackman is past president of the Muleshoe JayCees and past Vice-president of the Texas State Junior Chamber of Commerce. He is a member of the Texas Association of Life Underwriters, the National Association of Life Underwriters, the South Plains Association of Life Underwriters. In addition, he belongs to the Muleshoe Quarterback Club, the American Legion, V. F. W., and the Muleshoe Methodist Church.

The Krebs Insurance Agency of which Mr. Blackman is a

**Cpl. Billy J. Whalin Security Guard To Transport Prisoners**

Marine Cpl. Billy J. Whalin, son of Mr. and Mrs. Charles W. Whalin of Muleshoe, was among the security guards aboard one of the 15 ships taking 14,000 anti-communist Chinese prisoners from Korea to Formosa.

Dubbed "Operation Comeback", the movement involved transporting Chinese non-repatriated prisoners to the Chinese Nationalist island of Formosa, where they have been offered freedom and citizenship by Chiang Kai-Shek's government.

The Leathernecks, commanded by Lt. Col. Cecil D. Ferguson of 908 Court St., Fulton, Mo., are all members of the 3rd Battalion, 4th Regiment of the 3rd Marine Division. They were assigned duties of escorting, protecting, and insuring the safe delivery of the prisoners.

Accompanying the Marines were 15 Navy doctors and a four-

member, was Union Life's outstanding agency in 1953.

man sanitation-control team, in addition to the regularly assigned battalion corpsmen.

All personnel, including staff non-commissioned-officers, participate as riflemen, with no distinction given to specialists such as cooks, clerks, and communications men.

The refusal of more than 20,000 communist troops to return to their red-dominated country dealt a serious blow to communist propagandists.

**ENLISTS IN NAVY**

Harold Gene Metcalf, son of Mr. and Mrs. Joseph C. Metcalf of Route 2, Muleshoe, was enlisted in the Navy this past week at Albuquerque, N. M., and then sent to the U. S. Naval Training Center in San Diego, Calif., for eleven weeks of Boot Camp. The boys are given two weeks leave after completing Boot Camp.

**IS ILL**

Mrs. Ann Bracken, who has been ill, had as guests over the weekend, her sons, Lawrence and wife of Friona, and Floyd and wife of Amarillo. Her nephew, Charlie Emmert, of North Vernon, Ind., who has spent the past month here with her and his cousin Zelpha Zimmer, returned to his home earlier this week.

**PROUD PARENTS**

Mr. and Mrs. Thomas H. Lightsey, are the proud parents of a son, John Hilliard, born January 16, at the Ambers Hospital. The young gentleman weighed 7 lbs. Grandparents are Mr. and Mrs. John Moore of Muleshoe, and Mr. and Mrs. W. E. Lightsey of Eola.

**WAS HERE LAST WEEK**

Mrs. Dan David Thomson, of Lubbock, spent last Thursday here with her husband's parents, Mr. and Mrs. O. C. Thomson. Dan is still with the Armed Forces in Japan, and will return to the United States sometime in April.

**LEAVING MULESHOE**

Mr. and Mrs. Everett Talley and daughter are leaving Muleshoe this week, and will make their home in Friona.

**VISITED HERE**

Mr. and Mrs. John R. Rogers of Logan, N. M., spent last week here in the home of Mr. and Mrs. John Vinson.



And you'll like it, too... Dearborn's Cool Safety Cabinet that never gets hot on top, sides or bottom—won't scorch drapes, walls or furniture—won't burn careless fingers. Circulates bone-warming heat to the far corners!

You'll like these Dearborn features—

FAMOUS HIGH-CROWN BURNER—gives you all the heat you're paying for. GLO-WHITE RADIANTS—give abundant, bone-warming radiant heat in a pop. FLOW OPERATED—no more match hunting in odd winter months. COME IN—See our complete line of famous Dearborn gas heaters.

**WIEDEBUSH & CHILDERS**

PHONE 2810

BUTANE — PROPANE

MULESHOE

**Your Comfort Valley & Palace**  
Theatres in Muleshoe

Box Office Opens 6:45 P. M.; Show Starts 7:00 P. M.  
— Saturday & Sunday: 1:45 P. M., Continuous Showing —

**PROGRAMS**

**VALLEY**

**THURSDAY & FRIDAY**

Kathryn Grayson

Howard Keel

—In—

**Kiss Me Kate**

WIDE SCREEN

**SATURDAY**

Kirk Douglass

Virginia Mayo

—In—

**Along The Great Divide**

**SUN., MON., TUES. & WED.**

Mitzi Gaynor

Jeffrey Hunter

—In—

**Three Young Texans**

WIDE SCREEN

**PALACE**

**THURSDAY & FRIDAY**

Anthony Dexter

Afan Hate

—In—

**John Smith And Pocahontas**

**SATURDAY**

Brenda Joyce

Robert Shayne

—In—

**Shaggy**

**SUNDAY & MONDAY**

Spencer Tracy

Theresa Wright

—In—

**The Actress**

**TUESDAY & WEDNESDAY**

Paulette Goddard

Jean Aumont

—In—

**Charge of The Lancers**

MOTION PICTURES are your best and cheapest entertainment!

**how long is 3 minutes?**

It was more than enough for Lincoln to deliver the 267 words of his famous Gettysburg Address!

On Long Distance calls you can average about 500 words in 3 minutes. In fact, the majority of our Long Distance calls are completed in that time.

When you can say so much so economically, it pays to use Long Distance often. And remember, always CALL BY NUMBER. Your calls go through twice as fast.



**General Telephone Company of the Southwest**

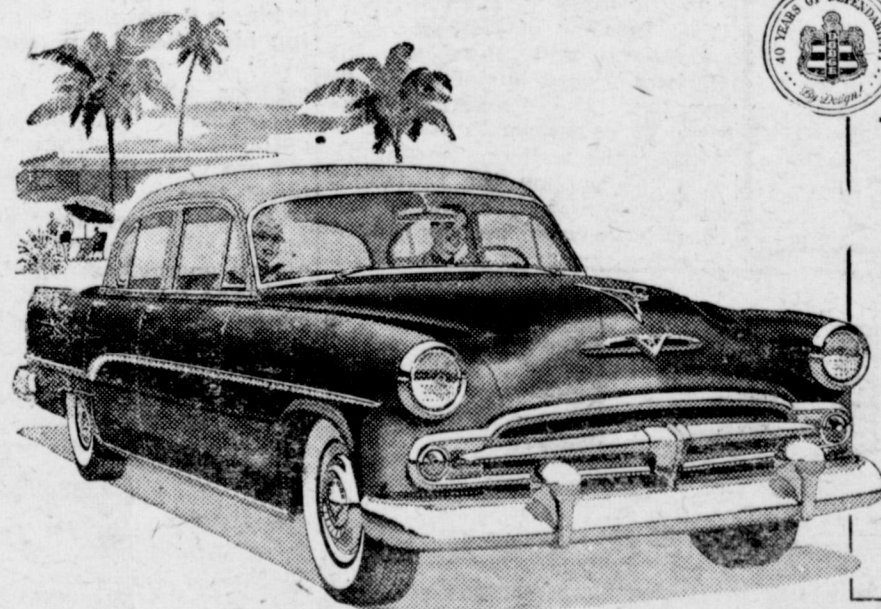


A Member of One of the Great Telephone Systems Serving America.

SHOWING FAST: General Telephone System has doubled its plant and equipment in 6 years

**Win! 2 Weeks Away with Double Pay!**

and the use of an **Elegant New '54 Dodge!**



**40 Grand Prizes**

TO CELEBRATE 40 YEARS OF DODGE DEPENDABILITY!

(A GRAND PRIZE A DAY FOR 40 DAYS)

- ★ 2 weeks' vacation for two anywhere in the U.S.A.!
- ★ All expenses paid—meals, hotels, resorts, air or train transportation!
- ★ New '54 Dodge at your disposal for the two weeks!
- ★ Dodge doubles your pay for the two weeks you're away!
- ★ An additional \$500 "fun money" to spend or save as you please!

PLUS . . . 1000 cash prizes—25 a day!

**Dodge 40th Anniversary All-America Contest!**

We have a lot to celebrate—and you're going to celebrate it with us!

We're celebrating the 40 great years of Dodge in America . . . 40 years of growth and development and success.

We're celebrating the greatest Dodge car in 40 great Dodge years—the record-breaking, history-making new '54 Dodge.

We're celebrating the Dodge victory over all "eights" in the Mobilgas Economy Run . . . the 196 official American records for performance, stamina and endurance that this new '54 Dodge shattered on the Bonneville Salt Flats.

The celebration is starting right now at every Dodge dealership throughout the country—a contest a day for 40 days with 40 grand prizes!

You can be the winner of 2 weeks away with double pay—a wonderful expenses-paid vacation for two anywhere in the U.S.A.—with a brand new 40th Anniversary '54 Dodge at your disposal.

★ **NEWS FLASH from Indianapolis!** ★ More honors for America's most exciting new car! The dashing '54 Dodge V-8 has been selected as the Official Pace Car for the Indianapolis 500-Mile Race!

**It's Fun! It's Easy to Enter! See Your Dodge Dealer Right Away!**

Your Friendly Dodge-Plymouth Dealer Brings You—Danny Thomas, ABC-TV. Bert Parks in "Break The Bank," ABC-TV. Roy Rogers, NBC Radio

**Arnold Morris Auto Co.**

1012 MAIN STREET

MULESHOE



### Indian River Coming Here

A. A. Meredith, secretary and treasurer of the Canadian Municipal Water Authority, will bring a film, titled "The Canadian River Project" to Muleshoe for showing at Tuesday noon, February 16.

The program is being brought here at the invitation of Muleshoe Rotary Club, which is inviting everyone who is interested to see the film.

County Agent, J. K. Adams is acquainted with the film and says it is **imminently worth** the time of anyone to see it. The film deals largely with the Canadian River dam but tells much about the Plains country and is said to be very educational.



### National F. F. A. Officers To Visit Texas On Nation Wide Tour February 12-15

Texas Future Farmers will have the honor of entertaining the national officers of the Future Farmers of America organization, February 12-15, when these boys spend three days on a Texas visit.

The national officers are on their annual nation-wide tour, meeting leading governmental industrial and agricultural people as they represent the FFA and as they endeavor to promote its work. This is the first time that Texas has been included in the annual itinerary of the national officers, and Future Farmers will be eager to meet them during FFA Day, February 13 at the Houston Fat Stock

Show. It will give local FFA boys a wider scope of the duties and objectives of the national organization.

While in Texas, the national officers will meet donors to the FFA, philanthropists and leading agricultural men in the state. The boys will continue their tour to Phoenix, Los Angeles, San Francisco, Salt Lake City, and Denver. From Denver they fly back to Washington and Chicago.

Drs. A. W. Tenney and R. E. Naugher, of the Office of Education Washington, D. C., are accompanying the boys on their tour.

### Schools To Help In "Bundle Week" For Needy Children Beginning Mar. 22

The Muleshoe schools will take part in the state-wide Save-The-Children "Bundle Week" drive to collect used clothing for needy children, it was announced today by Superintendent Jerry R. Kik. The drive, which is part of the Twelfth Annual Children's Clothing Crusade, will take place here on March 22 and will last for 5 days.

Three million pounds of wearable clothing have been set as the national goal. Last year in the Eleventh National Children's Clothing Crusade, nearly 5 million pupils collected a total of 2,900,000 pounds of clothing, approximately five million garments.

"We cannot stress too much the desperate need for clothing that exists among children in this country and overseas", Superintendent Kik said. "I am sure the citizens of Muleshoe will want to lend a helping hand. Bundle Week provides a practical and effective means of clothing collection, and at the same time, teaches youth in our schools to share with the less fortunate. Participation in the National Children's Clothing Crusade will help foster a sense of brotherhood and lay a foundation for international good-will".

Clothing collected by the Federation is used to aid needy children and families in Korea,

in war-depleted countries of Europe and the Middle East, and in disadvantaged rural areas of the United States.

More than nine million Korean men, women and children are homeless refugees in their own country. At the request of United States Government authorities, the Save The Children Federation continues to send warm clothing and shoes to these victims of Communist aggression.

In many countries of Europe

the scars of war have not yet healed. Save the Children Federation representatives in Europe report that clothing needs are particularly acute in many areas of Italy, and in Greece, where villagers who fled from Communist aggression have returned to their native homes only to find them in ruins.

In the United States clothing is distributed in low-income rural areas of eight Southern and Mid-western States and on the Navajo and Papago Indian Reservations. If it were not for the Bundle Week collections, thousands of these rural children would not be able to attend school because of the lack of adequate clothing.

Superintendent Kik said that wearable clothing of all types, in babies, children's and adult sizes; blankets, sheets and other bedding; and low-heeled shoes are especially needed.

"I hope we will give a bit of ourselves with these gifts, by cleaning and mending the garments so they will express our good wishes for the children who receive them", he added.

**GREEN**  
Hospital & Clinic  
Muleshoe, Texas  
Dial 2250

**LAYNE & BOWLER PUMPS**  
Agriculture's Best Insurance  
OUR EQUIPMENT IS IN PERFECT CONDITION  
— SEE —  
**IRRIGATION SUPPLY CO.**  
MARTIN OLIVER, Owner  
DIAL 3840  
Muleshoe Texas

**Letters to the Editor . . .**  
Goodrich, Texas  
Dear Editor:  
Would like to get this in the paper to see if I can find Mr. and Mrs. N. J. Holt. They used to live up there, and I have moved to Goodrich, Texas.  
I surely would love to visit Muleshoe again. Am sure it has grown a lot since '43.  
Very sincerely,  
MRS. ADA GEAN  
**VISITED PARENTS**  
Mrs. R. L. Dillard and son Clinton, spent the weekend in Wellington with her parents, Mr. and Mrs. Ernest Jackson.  
**WERE IN LEVELLAND**  
Mr. and Mrs. Everett Lambert and son, and Mrs. Nettie Lambert visited Sunday in Levelland.

**CHINCHILLAS FOR SALE**  
We Have A Few Pair Of Young Chinchillas For Sale. These Animals Are Of The Highest Quality; And Registered With The N. C. B. A. If You Are Interested In The Profitable Business Of Fur Farming We Will Be Glad To Discuss It With You  
**Muleshoe Chinchilla Farm**  
W. B. Wagnon — W. B. Wagnon, Jr.

**STOP**  
When you see this sign  
**KENDALL**  
2000 MILE OIL  
MORRISON MOTOR  
Phone 4130

**R. M. (Bob) Gregory**  
GREAT NATIONAL LIFE INSURANCE CO.  
**NEW BABIES SPUR LIFE INSURANCE BUYING**  
Reporting on a recent survey on life insurance purchases, a story in the Sacramento (Calif.) Bee said: "Families with babies under two years old are more likely to buy new life insurance than any other family group . . . 47 per cent of families with children under two had bought new policies since these babies were born, a much larger percentage than any other group."  
How much income will it take for your family if you die too soon — or for you if you live too long  
Box 743  
Office - 3600 MULESHOE, TEXAS Res. - 2769

# FARM SALE

I have sold my farm, and will offer for sale at Public Auction the following described property, located 2 miles north of Three Way School House on pavement, or four miles north of Maple or about 30 miles southwest of Muleshoe.

**Tuesday, February 16**  
SALE BEGINS 10:30 A. M. FREE COFFEE, BRING YOUR CUP  
Lunch To Be Served By Watson Community Ladies

- FARM MACHINERY**
- 1 — 1947 M-Farmall on Butane with all equipment.
  - 1 — 1937 John Deere Tractor in good shape and good rubber with Lister and Planter.
  - 1 — 4-row Stalk Cutter, pick-up type.
  - 1 — 4-row Massey-Harris Knife attachment.
  - 1 — 4-row Shop Made attachment.
  - 1 — 27 ft. Mayrath Grain Loader with 8 hp. Briggs and Stratton Motor.
  - 2 — 12x38 Tractor Tires.
  - 1 — Good Stock Trailer.
  - 2 — Montgomery Ward 14-inch Feed Mills.
  - 1 — Shop Equipment.
  - 1 — 500 gal. Propane Tank.
  - 1 — 1000 Gallon Propane Tank.
  - 2 — Water Tanks.
  - 1 — Gas Tower Service Gas Tank.
  - 2 — Set Rotary Hoes.
  - A Lot of Good Wire.
  - 1 — Set M-M Markers.
  - Sweeps, Forks, Hoes, Digger, etc.
  - 1 — Ford V-8 Motor.
  - 2 — 3-Bale Cotton Trailers.
  - 3 — 2-Bale Cotton Trailers.
  - 2 — M-M Furrow Guides.
  - 5 — John Deere Chisel Beams.
- CATTLE**
- 6 — Registered Black Angus Cows.
  - 5 — Registered Black Angus Heifers, 7 to 14 mo. old.
  - 1 — Roan Milk Cow.
- HORSES**
- 1 — Kid Pony, very gentle.
  - 1 — Good Saddle and Bridle.
- CHICKENS**
- 40 — Young White Leghorn Pullets.
- FURNITURE**
- 1 — Divan.
  - 2 — Dining Tables.
  - 1 — Oil Heater.
  - 1 — Oil Cook Stove.
  - 1 — Dresser.
- Bring Any Article You Wish To The Sale, 5% Commission.

**TERMS - CASH**  
**H. E. BAKER, Owner**  
COL. KENNETH BOZEMAN Auctioneer  
TOM MORGAN Clerk

**Get a modern truck!**

10 to 25 More Horsepower from new GMC's high-compression engine than ANY other standard light-duty six-outpowers some trucks twice its size!

**Truck Hydra-Matic Drive\*** for wonderful ease of handling, lower vehicle maintenance, longer life and reduced fuel costs. \*Optional at extra cost.

**Driver Comfort Unsurpassed** in two-toned interiors, three-passenger room and luxury details

**Future-Styled** with passenger-car smartness for prideful ownership

Come in and drive it today at:  
**LADD PONTIAC**  
PHONE 3080 MULESHOE

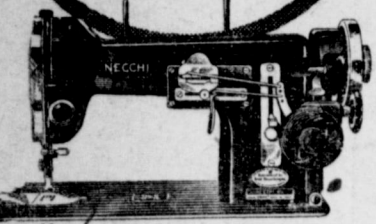


## Joe Simmacher Is Honoree of Party

Joe Simmacher was the honoree of a surprise birthday party, given him by his wife, Sunday evening, February 7, beginning at 6:30.

Approximately fifty-two guests

**NEW NECCHI WONDER WHEEL**  
sews 56 embroidery stitches without your touching the machine



- || sews on buttons
- || without attachments... sews
- || straight and zig-zag... makes
- || every woman an expert seamstress overnight. For your protection, see a demonstration of this amazing machine before you buy any other.

**HARVEY BASS APPLIANCE**

were present for the occasion, including five of Mr. Simmacher's brothers and sisters, and son Bruce, who is attending college. Only one of his brothers was unable to attend.

There were several home movies shown, after which the group watched T. V., and played card games.

Later in the evening, a delicious meal of baked ham with all the trimmings, and the beautifully decorated white nut cake, was served.

## Fidelis Class Met With Mrs. Killion

Mrs. Guy Killion was hostess to nine members of the Fidelis Class, in her home February 3, at 4:00 o'clock in the afternoon.

Mrs. Truma Griffiths read from the 5th chapter of John, and presented an inspirational devotional. Beth McLeroy led in prayer.

Mrs. Jewel Griffiths, vice-president of the class, was in charge of the business meeting.

Following the business refreshments were served to Meses. Doris English, Edith Blaine, Frances Garrison, Grace Lane, Jewel Griffiths, Truma Griffiths, Jewel Pool, Beth McLeroy, and the hostess.

The class will have a "covered dish" luncheon and social in the Church dining hall, Friday, February 12, at 7:30 in the evening. Those who are interested in membership in the class are cordially invited to attend.

## Society News

By Miss Dorothy Giles

Phone 5400

THE MULESHOE JOURNAL, Thursday, February 11, 1954

## Book Review Given At Luncheon Feb. 4

Mrs. M. F. Green entertained members of the Friendship Class of the First Baptist Church, in her home Thursday, February 4, with a luncheon and book review.

After the luncheon, a short business meeting was called to order by the president, Mrs. Joe Damron, and the opening prayer was by Mrs. R. D. Precure. A report was given by the secretary, Mrs. W. B. McAdams, who stated that the class gave \$36.65 to the March of Dimes drive.

At three o'clock, a very interesting and inspiring book review on the book, "In His Steps", by Charles M. Sheldon, was given by Mrs. H. L. Blackburn.

There were nineteen present for this meeting, including six visitors. An out of town guest was Mrs. Ina M. Robinson of Oklahoma City, Okla., a sister-in-law of Mrs. R. D. Precure.

Other visitors were Meses. T. C. Young, R. L. Jones, L. T. Green, W. B. Wagnon, and A. C. Bray, all of Mulshoe.

Members who attended were Mrs. Ray Griffiths, teacher;

Mmes. Joe Damron, W. B. McAdams, C. M. King, Pat Bulloch, W. E. Young, N. C. Moore, E. H. Kennedy, H. L. Blackburn, R. D. Precure, H. E. Schuster, and the hostess, Mrs. Green.

## Progress Club Has Program On "Foot Care"

The Progress H. D. Club, meeting in the home of Mrs. Davis Gulley on February 2, had a very interesting program on "Foot Care", presented by Mrs. Fern Davis. A large poster was displayed with shoes of long ago, on down to today, showing the difference in shoe styles.

Mrs. Davis said that shoes of long ago, were definitely not designed to fit the foot. She also stated that a person's foot should be measured each time a new pair of shoes was purchased. The average housewife walks seven miles each day, and should therefore have a pair of shoes she can walk in with comfort.

The meeting opened with the singing of the state song, "The Song of Peace", and others, led by Mrs. Gulley. A very interesting discussion was carried on during roll call, as each member answered the call with "My Experience With Fertilizer".

Mrs. George Haley reported that council is making plans for the annual Commissioner's Banquet which is slated for sometime in March.

Mrs. Ada Murrah was the elected nominee for District meeting delegate to represent the Club at Post, on May 5. She was also elected nominee for County TH DA Chairman.

It was decided that there would be a craft workday, held once each month; the first of which will be held at the home of Mrs. Davis Gulley, Tuesday, February 23. Each member is asked to come as early in the afternoon as possible and bring the works which have not been completed at former meetings.

The next regular meeting will be at the Sherman Sweetman home February 16.

The recreation period, led by Mrs. Murrah, concerned the program subjects of shoes. Each member told of an amusing experience they had had with shoes.

A delicious salad plate with Valentine cookies were served to Meses. Veta Self, Mary Sweetman, Letha Patterson, Gladys Haley, Ada Murrah, Jessie Mae

Thomas, Marie Maltby, and Fern Davis, by the hostess.

## VISITED SUNDAY

Mr. and Mrs. Cayle Reed spent Sunday in Levelland with relatives and friends.

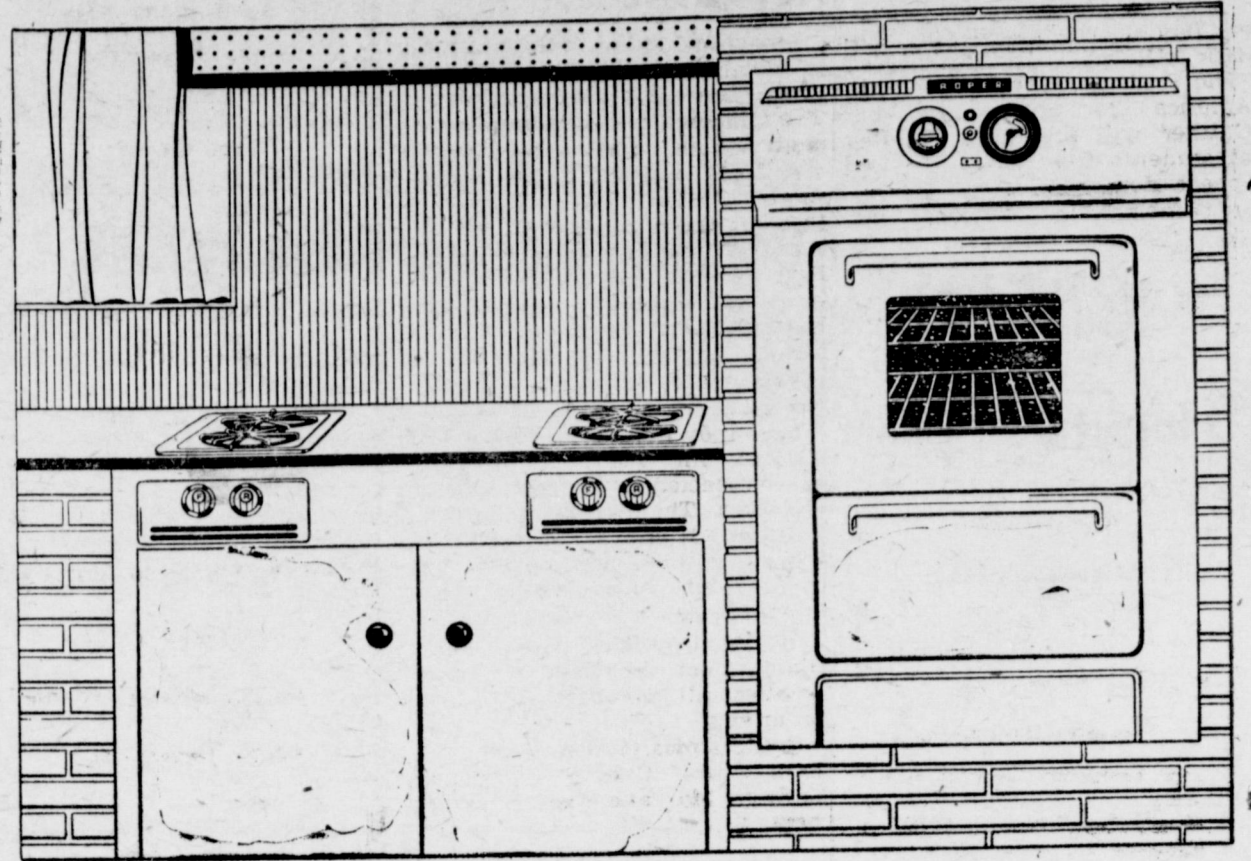
## ATTEND FRIGIDAIRE MEET

Mr. and Mrs. Harvey Bass and Mr. and Mrs. Jeff Peeler will leave Sunday to attend a Frigidaire Products presentation meeting to be held Monday at the Will Rogers Memorial stadium in Fort Worth.

## VISITED IN LUBBOCK

Mrs. H. B. Flanagan daughter were in Lubbock a day visiting and on business. Read The Journal Want-Ads.

## Modern Today.. Modern Tomorrow.. Automatic Built-In Gas Range



Illustrated above is the new Roper Automatic Gas Range. This built-in (decentralized) range is built to "CP" standards and is fully automatic.

Whatever your cooking needs are there is an automatic Gas range built to meet your specific requirements. See the modern automatic Gas ranges being displayed at your dealer's now. Buy an automatic Gas range and enjoy the convenience of truly modern cooking. Look for the "CP" trademark on the range you buy. It is your buying guide to cooking perfection.

More than 20 manufacturers make ranges built to "CP" standards

## Pioneer Natural Gas Company

FUEL FOR A GROWING EMPIRE

LESS THAN 3 1/2c PER DAY

## Buys A Frozen Food LOCKER

MULESHOE LOCKER CO.

## BARGAINS

WE MUST MOVE THESE 1953 MODELS FRIGIDAIRES

MS90 regular \$369.95, for	\$279.95
SS97 regular \$309.95, for	\$229.95
MS86 regular \$319.95, for	\$239.95

### FRIGIDAIRE ELECTRIC RANGES

Model RO10 regular \$189.95, for	\$149.95
Model RO35 regular \$229.95, for	\$169.95

### FRIGIDAIRE FREEZER

HR92, regular \$369.95, for	\$309.95
-----------------------------	----------

### UNIVERSAL GAS RANGES

One Deluxe Model, reg. \$359.95, now only	\$259.95
No Better Price In Mulshoe!	
Universal Automatic Super Deluxe, reg. \$395.50 for	\$289.50

### FRIGIDAIRE IRONER

One Model, regular \$259.95 for only	\$199.95
--------------------------------------	----------

### AUTOMATIC WASHER

1954 Model Hamilton Automatic Washer, reg. \$299.95 for	\$229.95
---	----------

MANY OTHER BARGAINS

## HARVEY BASS APPLIANCE

Phone 4690

Mulshoe

## Only the '54 Chevrolet gives you all these features at lowest prices!



The new 1954 Chevrolet Bel Air 2-door sedan. With three great series, Chevrolet offers the most beautiful choice of models in its field.

Striking New Luxury-Line Styling. Here are the best-looking Chevrolets of all time. Available in 161 model-color combinations!

Luxurious New Modern-Mode Interiors. Richer fabrics—vinyl trim—interior colors keyed to exterior colors in "Two-Ten" and Bel Air models!

New Power in "Blue-Flame 125" Engine. More power—more smoothness—more economy—with this brilliant Powerglide engine.

New Power in "Blue-Flame 115" Engine. The "Blue-Flame 115" Engine also gives you new high-compression power, finer performance and important gas savings.

Highly Perfected Powerglide. Now you can have the finer, thrifter Powerglide automatic transmission\* on all Chevrolet models.

Extraordinary Four-Fold Economy. (1) Lowest-priced line (2) extremely low operating costs (3) excep-

tionally low maintenance costs (4) traditionally higher resale value.

New Low Price on Power Steering. Gives fingertip control. Available on all models.\*

New Power Brakes for Your Safety-Protection. The first and the outstanding Power Brakes\* in Chevrolet's field. Do much of the work of braking for you. (Available on Powerglide models.)

New Automatic Window and Seat Controls. Touch a button to raise or lower front windows. Move the front seat up and forward or down and back with the same ease. Available on "Two-Ten" and Bel Air models.\*

Come in, see and drive the new 1954 Chevrolet at your earliest convenience, and we believe you'll decide it's the car for you! \*Optional at extra cost.

POWERED FOR PERFORMANCE! ENGINEERED FOR ECONOMY!

SYMBOL OF SAVINGS CHEVROLET EMBLEM OF EXCELLENCE

MORE PEOPLE BUY CHEVROLETS THAN ANY OTHER CAR!

C. & H. CHEVROLET CO. MULESHOE, TEXAS



### Members Of PTA Joe Observe Honders Day

Joe Monday evening, February 8, 30 members of the High P. T. A. and their families will meet at the High School Building, for an observance of Founders Day.

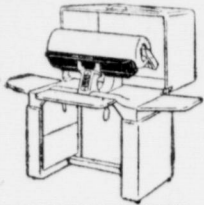
The evening's festivities will begin with a free picnic supper, serving to begin at 7:30.

A birthday offering for Founders Day is scheduled, and Mr. Kirk will speak on the subject, "The P. T. A. Keeps Faith With America". Mr. Shirley and Miss Gaither will present a number of students from the band and speech departments.

Homemaking students will have charge of a nursery for the

End the drudgery of  
hand ironing forever...  
WITH AN

### Ironrite AUTOMATIC IRONER



DELUXE MODEL

- Two completely usable open ends
- Handy Do-all ironing points
- Genuine cast-iron shoe
- Simple knee controls for easy operation
- Finished in easy-to-clean white enamel

Now... end the last big chore in the home. Exclusive Ironrite design features cut the hard work of ironing to nothing at all... cut your ironing time by two-thirds! Ironrite lets you iron anything you can wash... from flatwork to frills... beautifully... leaving you nothing to finish by hand.

FREE HOME DEMONSTRATION



Harvey Bass  
Appliance  
AUTHORIZED DEALER

convenience of mothers who bring babies and small children of pre-school age. Mothers should bring bassinets for the babies and toys for the small children.

Since P. T. A. is an organization for all teachers, parents, and patrons, everyone is invited, and urged to attend.

### Half Century Club Elected New Officers

Mrs. Judy Julian was hostess to members of the Half Century Club, last Thursday afternoon. The following members were present: Beulah Carles, Gussie Mar, Sally Harden, Birdie Paul, Anna Moeller, Daisy Engram, Mattie Duke, Annie Stevens, Clara Willman, Sweetie Johnson, Barbara Case, Jenny Panter, Hazel Farrell, Lois Schoenberger, Hertha Walker, Judy Julian, and Mrs. F. L. Widders, a visitor.

Mrs. Hazel Farrell was co-hostess.

Mrs. Judy Julian was nominated president, and Hertha Walker was elected to the post of secretary. The thanks and congratulations of the club were extended to the outgoing officers of the club, Anna Moeller and Pearl Moore.

The next meeting will be February 11 at the home of Anna Moeller. All members are asked to attend.

A Christmas card was received from Laura Cox of Excelsior Springs, Mo., and read to members.

### Methodist Church Had Full Program

The Muleshoe Methodist Church had a full program Monday, February 8, with activities beginning early in the morning, and lasting into the night. Ladies of the W. S. C. S. met in the Church Monday morning at 10:00 o'clock, and continued their study on "Spanish Speaking Americans", and at 6:00 o'clock p. m., they began serving the Pancake Supper.

The Board of Stewards met at 7:00 p. m. for their regular meeting, after which they adjourned to the Fellowship Hall, where members of the Church were giving an old-time Pounding for the new pastor and his wife, the Rev. and Mrs. Clarence Stephens. Following the men's Fellow-

ship met at the Church, while members of the Wesleyan Guild went to the home of Mrs. H. S. Sanders, Jr., for their regular meeting.

The devotional at the Guild meeting was given by Elizabeth Harden, and Mable Dowell pre-

sided over the business session in the absence of the president, Mrs. Delma McCarty.

The Guild will meet Monday, February 22, with the W. S. C. S., in the home of Mrs. O. N. Jennings, for a book review to be given by Mrs. Noel Woodley.

The next regular meeting will be held March 8, with Mrs. D. Warner acting as hostess. A new study, "Within These Borders", will be taken up at this meeting.

Refreshments of cake and coffee were served to one new member, Mrs. Stephens, wife of the

pastor; a visitor, Mrs. Sam McKinstry; Elizabeth Harden, and Mmes. A. S. Stovall, Jim Burkhead, Mable Dowell, Ray Edwards, Buford Butts, D. Warner, and H. S. Sanders, Sr.

**VISITS SISTER HEHE**  
Jackie Stephens of Lubbock visited her sister, Martha Stephens here over the weekend.

Read The Journal Want-Ads.

### Rayon Linen... Soap 'N Water Tri-Color BLOUSES

By Blanche Bath  
As Advertised  
In "Seventeen"  
Magazine

2.98



- Sand - Bronze - White
- Pink - Navy - White
- Powder - Navy - White
- White - Navy - Red

A — Worth comparison in every detail. High double mandarin neck in 2-tones on contrasting body. Short set-in sleeve with contrast cuff. Button back. In four grand color combinations.

SIZES 32-36

B — You'll love to wear this smart blouse with split-back Peter Pan collar, 2-Tone yoke on contrasting color body. Shoe button front. Cuffed cap sleeves. Lots of style, low budget priced.



Anthony's  
C.R. ANTHONY CO.

SPECIAL PURCHASE SELLING... NEW SPRING

# Skirts

LOOK AT THE STYLES... Look at the Grand Savings. You'll be amazed at these fine quality Rayon Butcher Linen Skirts completely washable. Seven different styles to choose from. Straight Lines, Flares, Pocket Trims, tri-color combinations, novelty tab buttons, in the new Spring colors you will want NOW. Sizes 22 to 32.



2.99



Only through a special purchase are values like these possible, so hurry for yours. You'll choose three or four when you see them.

Anthony's  
C.R. ANTHONY CO.



## CHERRIES

Kimbell's RSP  
No. 2 Can ..... 25c

DEL MONTE NO. 2 1/2 CAN AUSTEX 38c  
FRUIT COCKTAIL TAMALES NO. 303 CAN 24c

WELCH'S  
GRAPE JELLY 10 Oz. Glass ..... 21c

### • FRUITS & VEGETABLES •

- WINESAP APPLES ..... lb. 15c
- FLORIDA JUICY ORANGES ..... lb. 7c
- LETTUCE
- LARGE Firm ..... Lb. 9c
- FRESH FANCY CELLO BAG CELERY HEARTS ..... 19c

### • FROZEN FOODS •

- MRS. CHESHER'S FROZEN FRYERS ..... 2lb. 99c
- FRESH FROZEN 12 OZ. PKG. STRAWBERRIES ..... 25c
- SNOW CROP 14 OZ. PKG. SPINACH ..... 19c

MELLORINE Malone's 1/2 Gallon ..... 39c

DEL MONTE MOIST PACK NO. 1 CAN Dried Prunes ..... 35c  
Kimbell's Turnip or Mustard No. 303 Can Greens ..... 11c

VEL Large Box ..... 25c

KIMBELL'S WHOLE NO. 303 CAN Beets ..... 13c  
WHITE SWAN, WHOLE NO. 303 CAN Green Beans ..... 29c

OLEO Parkay 1 Lb. ..... 25c

### • CHOICE GRADE MEATS •

- CHOICE BEEF CHUCK ROAST Lb. ..... 39c
- HOMEMADE CHILI ..... lb. 49c
- ALL MEAT BOLOGNA ..... lb. 33c
- ALL MEAT FRANKS ..... lb. 39c
- LEAN, TENDER PORK CHOPS ..... lb. 53c
- SHORT RIBS Lb. ..... 19c

WAGNON GROC. & MKT. PHONE 4060 FREE DELIVERY



## The Muleshoe Journal

PUBLISHED EVERY THURSDAY AT MULESHOE, TEXAS  
Entered as second class matter at the Muleshoe Post Office under the Act of Congress, March 3, 1897.



### SUBSCRIPTION RATES

In Immediate Territory, 1 Year \$2.50  
Out of Immediate Territory, 1 Year \$3.00

J. M. FORBES Editor and Publisher

## SAND HILLS PHILOSOPHER CLAIMS— He Knows Exactly How To Control Production Without Using Quotas

Editor's note: The Sand Hills Philosopher on his Johnson grass farm no doubt has another unworkable idea this week, his letter will reveal.

Dear editor:

Some boy three farms over was flyin a kite out here the other day and when the string broke I kept my eye on it, figuring he might have it out of a newspaper, and sure enough it fell within walking distance of where I was sitting and I went over and picked it up and found it was made out of a copy of The Muleshoe Journal, which makes just as good a kite as any newspaper in the United States.

I took it around to the south side of the barn and sat down in the sun and before I'd gotten myself situated comfortably I noticed an article by an expert who said the world's population

is increasing so fast the problem of farm surpluses will soon disappear and it'll be a mad scramble to produce enough to feed everybody.

The population of the world now is two and a half billion, including the slaves Russia has workin in Siberia, and this expert estimates it'll be seven billion within the next 100 years, and people will be clamoring for every scrap of food and fibre a farmer can grow, which of course put an end to acreage controls, etc.

While this is encouraging news, I don't believe I can wait that long. The fact that whoever is occupyin this Johnson grass farm out here 100 years from now is gonna be in clover is not much use to me. Also, I doubt if all the butter we got stored up in this country will keep that long.

And also, I don't have that much confidence in experts. Say the farmers pull in their belts and wait around a hundred years for the world's population to reach 7 billion, and it winds up only 3 billion? There's gonna be a mighty lot of disappointed farmers. Predictin the population is sometimes as hard as predictin an election, it's hard to say what people are gonna do.

The trouble with farmin is you have to do it right now. I've tried spendin the profits I'm gonna make next year, and it don't work.

However, I have been givin the problem of surpluses and the need for acreage controls some heavy thought lately and I believe the government is approachin the problem from the wrong angle.

Instead of limiting the number of acres a farmer can plant, why not limit the number of hours he can work? Then we'd be gettin somewhere. Forget about the acres and acreage controls, and put the limit on the running hours of a tractor. It would eliminate measurin land, settin up complicated rules, and then checkin to see everybody stayin within his allotment. Just put a time clock on everybody's tractor, and when production gets out of hand, limit the hours a man can go up one row and down another. Or if this won't

work on account of some people feel guilty if they ain't goin from sun-up to sun-down, have a special rullin for these people requirin em to use only one-row equipment instead of three and four-row. The four-row cultivator probably has done more to create unneeded surpluses than any other one thing.

I don't know why, but controllin production shouldn't be such a problem, if the officials would keep in mind the best way to do it is to cut down on work.

Yours faithfully  
J. A.

## New Rules, Regulations For High Plains Water District

By JIM COMPTON

New rules and regulations governing the waste of underground water, drilling and spacing of new wells, and reworking or replacing of old wells, have been formulated by the High Plains Undergruond Water Conservation District Board of Directors.

Several amendments to the rules were made necessary this year, said District Manager Tom McFarland. Also, he said, clarification has been needed in parts of the old constitution and by-laws.

The new rules and regulations became effective Sunday, February 7.

One of the most important changes in the rules concerns water waste, McFarland said. In the past, because of lenient rules, much water has been wasted. Not deliberately, but unconsciously, he hastens to add. The new rules and regulations definitely define the term waste as applied to underground water, and provisions have been added for its prevention.

According to the new Rule 1, waste is any water not used for agricultural, gardening, domestic or stock raising purposes; it is water which is not used for beneficial purposes; it is waste escaping from one underground reservoir to any other reservoir not containing underground water; it is water which is knowingly permitted to escape from irrigation land; it is that which is permitted to escape into natural watercourses such as depressions in the land, creeks and rivers; and it is excess water which is not returned to the underground strata.

According to the provisions of the above rule, water shall not be produced within or used within or without the district boundaries in such manner and under such conditions as to constitute waste.

Concerning the application and issuance of drilling permits, the new rules clearly and definitely prescribe brief procedures to be used by owners or tenants desiring to drill, McFarland said.

work on account of some people feel guilty if they ain't goin from sun-up to sun-down, have a special rullin for these people requirin em to use only one-row equipment instead of three and four-row. The four-row cultivator probably has done more to create unneeded surpluses than any other one thing.

I don't know why, but controllin production shouldn't be such a problem, if the officials would keep in mind the best way to do it is to cut down on work.

Yours faithfully  
J. A.

According to the present rules, no person, firm or corporation shall drill, construct or equip a new well within the district without first making application for a permit. Water wells which are to be used in a temporary capacity in supplying oil or gas wells are exempt from this rule. Also, upon application, information pertinent to the drilling, construction or equipping of the new well must be furnished the district by the applicant. After the proper information has been furnished and approved, a permit may be issued.

Also, no well shall be drilled and equipped without the owner submitting a drilling log and registration data.

As for spacing of wells, which has always been a large problem to cope with, we think the new rules have clarified the situation greatly, McFarland said. Following are minimum specified distances between wells as incorporated into the new regulations: 4-inch or smaller pumps, 200 yards; 5-inch pumps, 250 yards; 6-inch pumps 300 yards, and 8-inch pumps, 400 yards. A special permit must be obtained for pumps larger than 8 inches.

Pumping rates will be regarded as follows: 4-inch or smaller pumps, 70 to 265 gallons per minute (gpm); 5-inch pumps, 265 to 390 gpm; 6-inch pumps, 390 to 560 gpm; and 8-inch pumps, 560 to 1,000 gpm.

The rules are so constructed, McFarland said, to allow users to apply for exceptions to spacing, provided they can present a sound basis for such.

These rules have been made, he added, with the interest of every water user in the district at heart. We hope they will provide for more conservation of underground water on the part of everyone in the bounds of High Plains Water District.

Other rules such as those for recharge wells, rehearings, changed conditions, and well testing and inspections, have been changed in some respects and should be studied by water users he said.

Provisions also have been made for the reworking or redrilling of old wells, he added.

## Parmer County Farm Bureau News

TO COTTON GROWERS:

In a Thursday morning paper, these items were presented by the UP: "Texas Farm Bureau recommended Wednesday that Texas' share of increased 1954 cotton allotments be allocated by the state PMA committee directly to farmers to take care of 'hardship' cases. The Farm Bureau board of directors said hardship cases would profit more in this manner than if the increases were apportioned by counties on the basis of past acreage."

In the same news item, Agriculture Commissioner, John C. White said, "I don't think it could be done under the present law."

At the close of the item appeared these words: "Farm Bureau President J. Walter Hammond said 'the vital need for alleviating 'Hardship' cases is the main reason for the Farm Bureau fight for the increase in the first place.'"

After a phone conversation with Claude McCan, this telegram was sent to the appointed meeting place of the state PMA committee: Claude McCan, State PMA Chairman, College Station, Texas, January 28 — "Parmer County Farm Bureau with five hundred sixty members reaffirms support of Texas Farm Bureau requesting 1954 cotton allotments be allocated by state PMA Committee directly to farmers for benefit of hardship cases as provided by recent congressional action."

Sunday morning daily papers carried this item concerning the allotment meeting. "The state committee composed of Claude McCan of Victoria, chairman, and Fred Chandler of Pecos and Bob Lyons of Amarillo issued this statement yesterday: 'The increase of 1,342,320 acres in the 1954 state allotment for upland cotton (will) be apportioned directly to farms in the state under the 65, 40, 50 formula; this method of apportionment has been

"We hope that through the new regulations, more water will be conserved in the future", McFarland concluded. "It's not inexhaustible," he added.

## ATTEND C OF C BAN IN CLOVIS FRIDAY

A number of Muleshoe residents attended the Chamber of Commerce banquet and dinner, N. M., last Friday evening. Ads. Howard Weishaupt of Clovis, was guest speaker. His is was "Modern Business Trends".

Approximately 250 guests from surrounding areas attended. Present from Muleshoe were: Mr. and Mrs. H. S. Sanders, Jr., Mr. and Mrs. Clyde Hollers, Jr., Mr. and Mrs. W. M. Pool, Jr., Mr. and Mrs. Ralph Mardis, Mr. and Mrs. George Hicks, Mr. and Mrs. Buford Butts, and Mr. and Ray Franz.

Consider This: "When the righteous are in authority, the people rejoice; but when the wicked beareth rule, the people mourn." —Proverbs 29:2.

SPENT WEEKEND HERE  
Archie Scarbrough of Amarillo, spent the weekend here with his parents, and other relatives and friends.

## Read The Journal Want-Ads.

# DANCE

EVERY SATURDAY

NIGHT

—MUSIC BY—

LLOYD ALSUP  
AND THE BOYS

LA VISTA

CLOVIS

THE PLAINS FINEST DANCE SPOT



From where I sit... by Joe Marsh



Wish I'd Said That

You know Miss Perkins. Well, she's been driving her own car around our town for a little more than 30 years.

The other day she had a bit of trouble parking down on Main Street. Didn't quite make it the first try, so she pulled out to start over when a fellow waiting to pass started tooting his horn impatiently.

On the second try, she was still having a little difficulty and this smart aleck hollered, "Lad, do you know how to drive?" "Yes, young man," Miss Perkins answered, "I do. But I don't have time to teach you now."

From where I sit, it's not always easy to have a good answer ready when you need it. But when somebody insists that I vote for his candidate, for instance, or choose tea instead of a temperate glass of beer with dinner, I know the answer. It's all a matter of personal preference... and none of us like "backseat driving" from anybody.

Joe Marsh

Copyright, 1954, United States Brewers Foundation



WORLD'S MOST COPIED TRACTOR

... yet, the ONLY one that gives you ALL these fine features!

- Built-In Hydraulic System
- Automatic Implement Protection
- Finger Tip Implement Control
- Automatic Steering Alignment
- 3-Point Converging Implement Linkage
- Automatic Draft Control
- Traction Without Built-In Weight
- Special Valve-in-Head Engine
- ... plus many more!

When you add Ferguson's unusually high-quality standards to these features—and the many others you will see in an actual demonstration on your farm—you know you'll agree that although you can buy a cheaper tractor, you can't buy a better tractor at any price.

Ask for a demonstration on your farm. Find out for yourself why so many others have tried to copy the features of the revolutionary Ferguson Tractor.



FINE-CAR POWER CONTROLS—Pontiac offers all modern power and driving conveniences—improved Power Steering, new Power Brakes, new Electric Window Lifts, Dual-Range Hydra-Matic Drive, special Comfort-Control Seat and Air Conditioning.

## Never has a low price bought such quality and performance!

Do just two things and you'll make a fast and firm decision that Pontiac is your best buy.

First, get behind the wheel and drive the new 1954 Pontiac Chieftain. You'll be very pleasantly surprised at its spectacular performance and its marvelous ease of handling. Look around you at all the features that speak of quality—luxurious fabrics, fine-car appointments, extra conveniences everywhere. And remember that Pontiac's quality is most evident in its acknowledged reputation for long, dependable, economical life—assurance that Pontiac's low first cost is matched by an absolute minimum of operating and maintenance expense.

fact: You just can't buy more quality or finer performance anywhere near Pontiac's price—a price so low that you can have all of Pontiac's wonderful new power options and still spend less than you would for standard models of many makes.

Come in at your first opportunity. Drive Pontiac and you'll want it. Price Pontiac and you'll buy it!

DOLLAR FOR DOLLAR YOU CAN'T BEAT A

# PONTIAC

Now price Pontiac! Learn this very significant

# LADD PONTIAC

PHONE 3080

MULESHOE

D. H. SNEED SUPPLY CO. Muleshoe Phone 4170

The FERGUSON SYSTEM makes the DIFFERENCE!



**ATTENDED CELEBRATION**

Mr. and Mrs. Arnold Alcorn attended the birthday celebration of his father, O. N. Alcorn, in Slaton, Sunday. Approximately thirty-five were present for the occasion.

**ATTENDING TECH**

Carolyn Kirk, daughter of Mr. and Mrs. O. C. Kirk, is now attending Texas Tech College in Lubbock. Carolyn entered Tech at mid-term.

**TO SAN ANTONIO**

Mr. and Mrs. H. E. Schuster left Tuesday for San Antonio for a visit with their daughter and husband, Mr. and Mrs. W. L. Crow. While there Mr. Schuster expects to have a medical check-up also.

**IN ARIZONA**

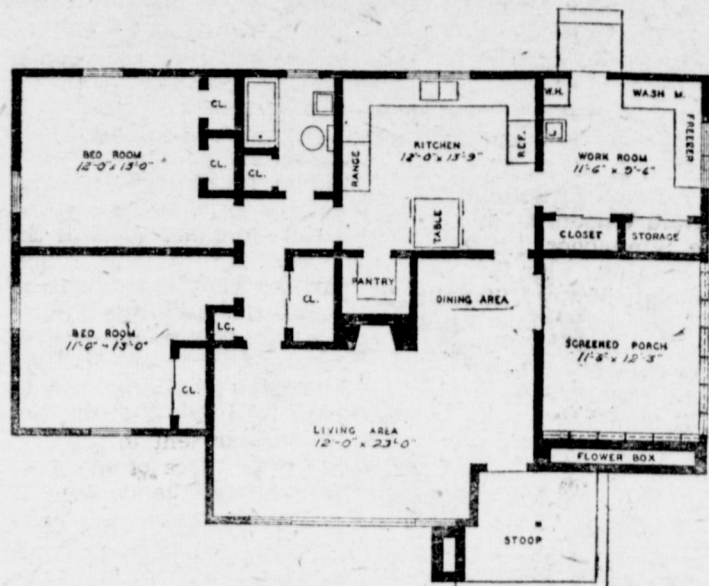
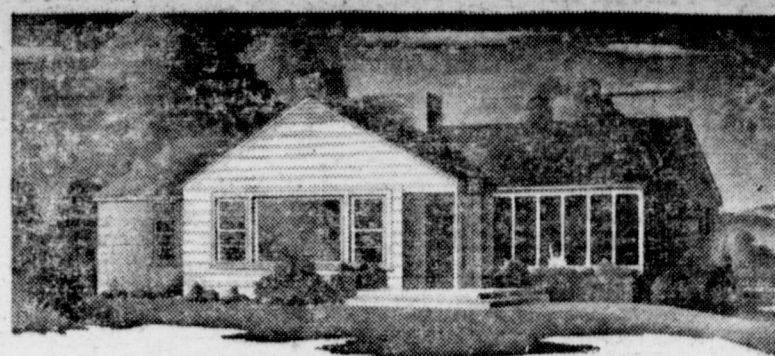
Mr. and Mrs. Irvin St. Clair and children, and Mr. and Mrs. Oscar Tims, of Hereford, are vacationing in Phoenix, Ariz.

**NAVY RECRUITER HERE**

Tony J. Dibbie, Engineman First Class, U. S. Navy from the U. S. Navy Recruiting Station in Clovis, New Mexico, will be in Muleshoe, Monday, Feb., 15, from 11:00 a. m. to 12 Noon to interview applicants male and female interested in applying for enlistment in the Regular Navy.

**TO ARIZONA**

Robert Giles is visiting in Moredock, Ariz., for an extended time with his aunts and uncles, Mr. and Mrs. Ed Earl Brown and Veron, and Mr. and Mrs. Lyndon Snody, and children.



**This House Has Individuality**

A room with a view may be the feature of this house of many attractive features. You will like the picture window whether or not you have a building site with a view of mountains, hills, or river. You will like it simply because it is smart and modern and lets in a lot of this Dixie sunshine.

The arrangement of the living and dining areas together permits a comparatively small section to serve as a dining room, and adds much to the spacious proportions of the living area.

Both bedrooms are designed for casual comfort and for attractive furniture arrangement. Ample closet space in each room is supplemented by the large closet opening into the hall.

The kitchen-workroom area has an abundance of storage room, plus space for a freezer chest, laundry equipment, a hot water heater, and a lavatory. Plenty of wall cabinets can be arranged around the double windows over the sink. The kitchen arrangement permits a counter or work surface approximately 18 feet long.

The screened porch is designed to be an addition to the living dining area when you desire. Large double doors open onto it from that section of the house. For those who prefer some

form of central heating system, the hall closet can serve as space for gas heating equipment. Any necessary duct work will be at a minimum. It will be equally feasible to install an attic type furnace. If oils or solid fuels are used, a small basement under the kitchen area will be all that is needed for the furnace.

You can obtain blueprints for this The Muleshoe Journal Farm & RANCH Plan No. 5023 and a handy list of materials by which you can figure your construction cost accurately. Send \$1 to Building Editor, FARM & RANCH, Southern Agriculturist, Dept. L-36, Nashville, Tenn. Order by number, Plan No. 5023. Blueprints are adequate for any farm carpenter or for any farmer handy with tools.

**WEEKENDED HERE**

Mr. and Mrs. Frank Bryant and daughter, Coleen, spent the weekend here with Mr. and Mrs. Mack Hale and family.

**WERE IN CANYON**

Mr. and Mrs. John Vinson spent the weekend in Canyon with M. and Mrs. B. L. Pearson.

**WEEKENDED WITH FRIEND**

Marion Waggoner, Clark Colson, and Lawrence Jackson, spent the weekend in Sulphur, Okla., with their friend, Herbert Ramage, and his family. Also spending the weekend with Herbert were two other Muleshoe boys, Herbert James, of the AFB in Ardmore, Okla., and Teddy Harrison and an army buddy of Ft. Hood, Texas.

**ARE IN SAN DIEGO**

The C. E. "Jack" King family are in San Diego and Jack has been getting in some good fishing. This is all reported by post-

card to The Journal. Previously they had visited in New Mexico and Arizona. Their grocery store here is closed while they are on vacation.

**WE BUY COTTON**

And Write Government  
And Texas Cotton  
Growers Loans

Grace Benton

PHONE 6460

MULESHOE



"With malice toward none with charity for all"

We will not be open for business  
Lincoln's Birthday, February 12th

**MULESHOE STATE BANK**

Member Federal Deposit Insurance Corporation

**Television Service**

Expert Radio & Television Repair  
And Service On Any Make or Model

JOHNSON-POOL

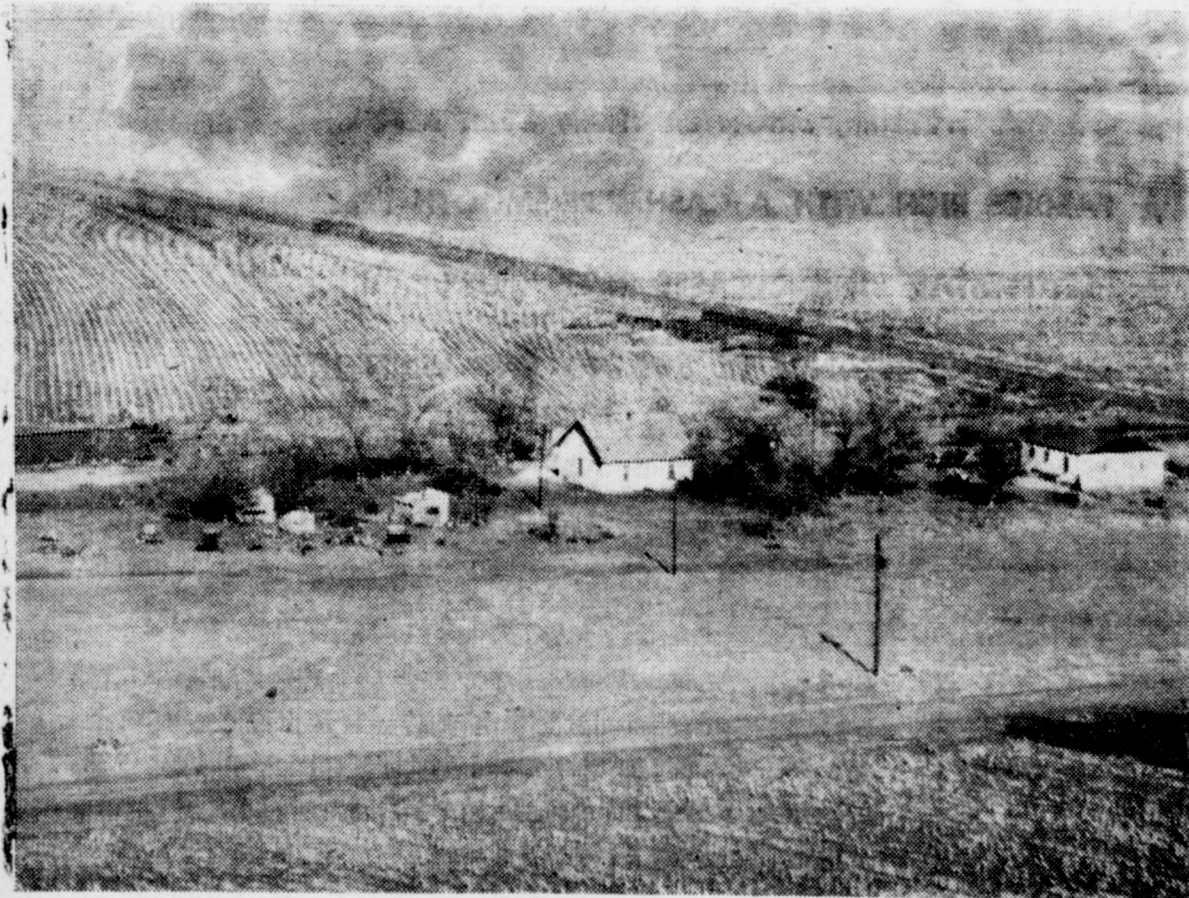
PHONE 7370

MULESHOE

THIS WEEK'S

**"Mystery Farm"**

Pictured here is a farm of the Muleshoe Country. If you are the first correctly to identify the farm pictured you win 2 tickets to Cox Drive-In Theatre. Owner may have a free picture of his home by calling at The Journal office. Winners in city and out of city may pick up tickets at the office of the sponsor shown below.



FOR THE FARMS OF THE MULESHOE COUNTRY WE SUPPLY:

**ANHYDROUS AMMONIA**

And All Kinds of Dry Fertilizers — Discuss Your Fertilizer Needs With Us

— We Invite Your Business —

**WESTERN FERTILIZER CO.**

OFFICE AT KING BROS. ELEVATOR

Phone 2700

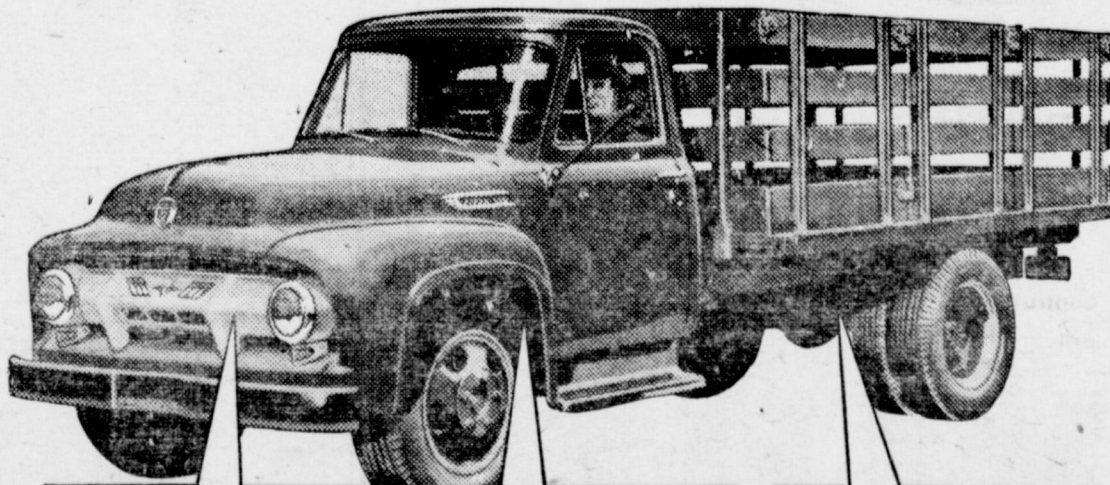
Muleshoe, Texas

They're here!

**FORD TRIPLE ECONOMY TRUCKS FOR '54**

**Low Friction, High Compression  
Overhead Valve, Gas-Saving  
power now in every model!**

ONLY FORD gives you so much in all 3 essentials of lower-cost trucking!

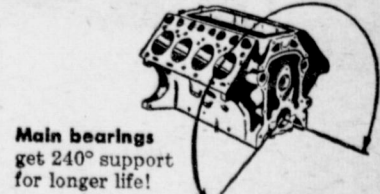


**1** NOW! Mightiest concentration of power per cubic inch ever in any truck engine line! Save gas! Every cubic inch of displacement in an engine demands gas. That's why 1954 Ford Truck engines are built with less displacement, for the high power they develop!

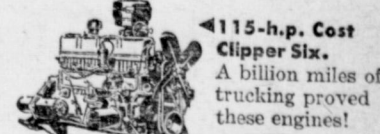
**2** NEW Driverized Cabs, new Power Steering, new Power Brakes, Fordomatic Drive! Easier control! New Power Steering\* for most Ford Big Jobs cuts steering effort as much as 75%! New Power Braking\* on 1/2-tonners! Fordomatic Drive\* for all light-duty models. (\*Extra cost.)

**3** NOW! Low curb weights! Big payload capacities! Over 220 new models! New F-500 1 1/2-tonner, shown with Deluxe Cab,\* takes payloads up to 9,473 lbs., with body and equipment. Also, new Ford-built 6-wheelers... 2 new Cab Forwards! (\*Extra cost.)

NOW! Deep-Block design for smooth power! Five engines, V-8 and Six!



Main bearings get 240° support for longer life!



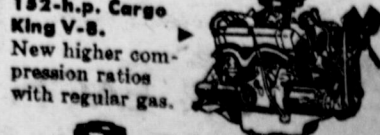
115-h.p. Cost Clipper Six. A billion miles of trucking proved these engines!



130-h.p. Power King V-8. Ford Truck engines cut friction up to 33%.



138-h.p. Power King V-8. Overhead rotating valves, for longer valve life.



152-h.p. Cargo King V-8. New higher compression ratios with regular gas.



170-h.p. Cargo King V-8. Ford full-flow oil filters reduce engine wear.

See them Today!

**FORD TRIPLE ECONOMY TRUCKS**

MORE TRUCK FOR YOUR MONEY

**MULESHOE MOTOR COMPANY**

PHONE 4930

FORD AUTOMOBILES AND TRUCKS

MULESHOE

IF YOU'RE INTERESTED IN AN A-1 USED TRUCK — BE SURE TO SEE YOUR FORD DEALER



**ARE VISITING HERE**

Mr. and Mrs. Bob Clary of Hot Springs, N. M., are visiting here with Mr. and Mrs. Cecil Davis.

**VISITED PARENTS**

Rex Robinson, who is attending college at ENMU, at Portales, N. M., spent the weekend here with his parents, Mr. and Mrs. S. L. Robinson and friends.

**Parmer County Farm Bureau News**

To you farmers who are still wondering how to figure an estimate of your 1954 cotton allotment acreage: Add the planted acreage of 1951, 1952 and 1953 and divide by three; now multiply by .65. Next, select the greatest planted acreage of either of those years and multiply by .40. Whichever figure is the greatest will be your allotment within three or four acres, except that it must not exceed 50% of your cultivated acreage.

If, when you receive your allotment, you do not wish to plant all, or any part of it, do your part by turning that acreage back to the ASC Committee for allocation to someone who wants it. If you do this, you will receive history credit for it next year. If you don't, neither you nor the county will receive credit for it.

Well, the cotton situation has been pretty well taken care of now. It is none too early to begin thinking about the proper method of allotting grain sorghum acreages for 1955. Give it some thought, and if you have suggestions bring them to your Farm Bureau where they will be properly channeled for possible

acceptance by the USDA, as the cotton program was.

Of course, it's a free country, and if you and your neighbor want to pool your funds and go to Washington on your own, you can do that too. But it's cheaper (only \$10 per year) to have your Farm Bureau do it for you with over a million and a half volunteer supporters and well qualified leaders; and the record indicates it's more dependable where results are concerned.

It's getting close to membership drive time and your directors and officers are laying plans for a thorough program of enrollment. We figure the 65-40-50 cotton program is worth \$10, even to a non-cotton farmer, because each additional acre of cotton means one less acre of milo or other crops he may be depending on. This is only one immediate reason for belonging.

We figure that Parmer County Farm Bureau directors and officers are about the most faithful group in the county. At two o'clock Friday afternoon (a beautiful working day) 12 out of 13 were on hand for a called meeting, and we're sure that one was completely unable to make it, for he's usually on hand. (None of them receive any remuneration for attending).

Consider This: Evil men understand not judgment; but they that seek the Lord understand all things. Proverbs 28:5.

**Urge Natural Resources Tax To Pay Teachers**

Texas Farm Bureau President J. Walter Hammond has announced that the state farm organization favors a pay raise for teachers to be financed by a natural resources tax but will oppose efforts to raise revenue by changing principles of the Gilmer-Aikin Law.

The TFB Board of Directors, in session in Waco Jan. 27, interpreted resolutions of the organization as favoring an adequate pay raise for teachers to attract

and hold more qualified teachers in the profession. This policy was adopted by the TFB convention last November in Mineral Wells.

The Farm Bureau is also on record favoring a natural resources tax, if additional state revenues are needed for any purpose.

Hammond stated that the Texas Farm Bureau will oppose any efforts to raise revenue for the pay raise if it means an increase in the local district's share of the Gilmer-Aikin Foundation Fund. Local district's share of the Fund is now set at \$45 million, with each district contributing according to its ability to pay, as determined by the economic index for the state.

Last year in Austin, the TFB vigorously fought and helped defeat legislation which would have hiked the districts' share of the Fund by forcing local districts to share costs of the Fund with the state on a 20 per cent-80 per cent basis, with districts paying the 20 per cent. This, in effect, would have given the State Legislature the power to increase local school taxes without permission of the people in the districts.

WANTED: Clean Cotton Rags At The Journal Office.

- Bob Blatz, Littlefield.
- Harold Wilson, Rt. 1.
- Joe Simmacher, Rt. 2.
- C. W. Goss, City.
- Rudolph Moraw, Star Rt. 2.
- W. D. Dement, Star Rt. 2.
- Rev. A. W. Blaine, City.
- J. O. Crawford, Rt. 2.
- Cecil Harvey, City.
- E. H. Kennedy, City.
- Pat Barnett, Sudan.
- Adolph Wittner, Baileyboro.
- Mrs. Shirley Kizer, Lubbock.
- G. A. Nelson, City.

**SINGLETON FUNERAL HOME**  
Ambulance Service Day or Night

DIAL 2860

TRAVIS E. REED, Mgr.

**Irrigation SERVICE**

Time NOW to start getting ready for Irrigation. We are equipped and have the mechanics to service

**ANY BRAND MOTOR**

JUST RECEIVED — NEW 135 H. P. CHEVROLET UNITS For Irrigation

**C. & H. CHEVROLET**

Phone 2720

Muleshoe



ALL MAKES REPAIRED and MODERNIZED into Electric, Console or PORTABLE HARVEY BASS APPLIANCE Your Authorized Necchi Dealer Phone 4690 — Muleshoe

**FARLEY INSURANCE AGENCY**

REAL ESTATE & INSURANCE

AUTO FINANCING — FARM LOANS

Over Bank, Muleshoe, Texas

Office Phone 7279

Res. 5103

—See Us Now For—

**FARM LOANS**

POOL INSURANCE AGENCY

W. M. Pool, Jr. Phone 7010

Lee Pool Muleshoe

**Our Honor Roll**

New subscribers this week to The Journal were the following:

- Buck Wood, City.
- Mrs. W. K. Corder, Ore.
- Glynn Dale Bartley, Amarillo.
- S. L. Busbice, Rt. 2.
- Edwin Julian, Baileyboro.
- O. C. Brooks, Okla.
- Mrs. Richard Turner, City.
- R. D. Precure, City.
- F. O. Warren, Sudan.
- C. C. Patton, City.
- O. W. Pair, Rt. 2.
- Jack Smith, Lazbuddie.
- Sam McKinstry, City.
- V. L. Bradley, Jr., City.

Old subscribers renewing their subscriptions were:

- Dr. G. A. Pittman, City.
- F. H. Davis, City.
- C. A. Horsley, City.
- A. J. Hicks, Rt. 2.
- Mrs. W. R. Bowers, City.
- John Watson, City.
- L. E. Pollard, Enochs.
- E. L. Bartley, Rt. 1.
- H. C. Lee, City.
- Virgil Teague, Rt. 1.
- Johnny Johnson, City.
- D. O. Burelsmith, Rt. 2.

**WE DARE**

MAKE THESE *sensational* CLAIMS



BECAUSE... We are the Exclusive, licensed



Drycleaner in this city!

- ★ GARMENTS LOOK SPARKLING NEW AGAIN
- ★ COLORS LIVELIER, BRIGHTER THAN EVER BEFORE
- ★ FABRICS RICH WITH A CASHMERE-SMOOTH FEEL
- ★ PLEATS STAY "IN"—CREASES STAY "PUT"
- ★ GREATER RESISTANCE TO SOILING AND WRINKLING

Try Sta•Nu—it costs nothing extra!



Here's the convincing "HALF AND HALF TEST"

YOU CAN SEE AND FEEL THE DIFFERENCE!

STA•NU is the new money-saving miracle of modern drycleaning that peeps up every drycleaned article with NEW LIFE! That's because STA•NU puts back into fabrics what nature originally put into it! Vital textile oils are replaced by the exclusive STA•NU process. Important oils that are lost in ordinary cleaning and wear.

SO WHY BE SATISFIED WITH DRIED-OUT DRYCLEANING?

**Lambert Cleaner**

WOODIE LAMBERT — Phone 7260

**TRADE — AT — HOLT'S — AND — MAKE A SUBSTANTIAL SAVING**

ON EACH GALLON OF GASOLINE

YOU PURCHASE

OUR ETHYL IS 93 OCTANE