

# Parade Friday To Start Homecoming Activity

"Ag'in" Women On Juries

## Five Amendments Passed By Local Voters In Light General Election

Only five of the proposed 11 amendments to the Texas Constitution were passed in a light turnout by Bailey county voters at the mid-term election held Tuesday.

Amendments passed in local voting included the one concerning old age assistance increases; pension fund; not using State money for toll roads; allowing absentee voting by those in armed service, and changing the present law concerning the office of sheriff and tax collector.

Voters in this county turned down the amendments changing retirement credits and employee benefits for teachers and State employees; increasing state salaries; women jurors, four year terms changed to two, and the one concerning creation of county hospital districts.

Although the vote was light, totaling only 525 on the heaviest spot on the ballot, that of State Senator, local voters expressed a decided opinion concerning Texas women serving on juries, defeating the proposal 271-217. They also felt pretty strongly about changing the present four year terms of office to two year terms, defeating this one 298-183.

In the Governor's race, Allan Shivers polled 460 votes to 50 received by Adams, his GOP opponent.

Senator Lyndon Johnson received 450 votes, with Watson, his Republican opponent getting 75 votes, and Spangler running a rather poor third, with no votes at all.

Most other offices on the ballot were unopposed, so no count was taken for publication, since all were unanimous by those who marked the boxes on the ballots. Complete but unofficial returns show the amendment vote in Bailey county:

## Hard Fighting Mules Lose To Floydada

In a hard fought, hard tackling and fine blocking game, the Muleshoe Mules came up on the short end of a 20-0 score in their game with the conference leading Floydada whirlwinds last Friday night in Benny Douglass Stadium.

The Muleshoe boys played perhaps their best game of the season against a fine team from Floydada, who are picked to wrap up the District 2-AA crown this year. The Mules more than held their own throughout the game, outplaying the whirlwinds all through the game.

The Floydada crew capitalized on a blocked kick, intercepted pass and a recovered fumble to set up all three of their touchdowns. The Mules, outweighed about 20 pounds a man, made the whirlwinds fight for every gain of the night, perhaps surprising them with their rugged line play, hard tackling and blocking. The Mules couldn't get their offense rolling when they needed that little more push to carry them across the double stripes.

Near the end of the game tempers flared from the hard fought game, and several boys from both teams were ejected from the game, a little rough and over anxious. The Mules played a terrific game, with all the boys doing a fine job tackling and blocking from end to end.

- No. 1 — 309 for 140 against.
- No. 2 — 206 for 227 against.
- No. 3 — 201 for 218 against.
- No. 4 — 466 for 92 against.
- No. 5 — 172 for 177 against.
- No. 6 — 200 for 143 against.
- No. 7 — 217 for 271 against.
- No. 8 — 183 for 298 against.
- No. 9 — 150 for 277 against.
- No. 10 — 311 for 138 against.
- No. 11 — 205 for 167 against.



MULESHOE HIGH SCHOOL BAND members form the traditional "M" formation for the Journal camera. The 46 piece band, under the direction of Norvil Howell will march in the Homecoming Day parade here tomorrow afternoon at 2:30, and will perform during half-time activity tomorrow night. The band will also perform during homecoming day ceremonies at Bula High school Saturday. (Staff Photo)

Two school bands, a large number of decorated floats, and the first public appearance of the newly organized colored school drum and bugle corps will highlight the parade through downtown Muleshoe tomorrow (Friday) afternoon at 2:30 pm, inaugurating the first annual Homecoming Day program for exes of Muleshoe schools.

The parade was originally scheduled to begin at 4 pm, but was re-scheduled so it would be in line with the giant pep rally to be held on the school grounds at 3 pm. A feature of the pep rally will be the appearance of a number of members of the 1938 Mules team that was undefeated district champion of that year.

Preceding the parade, at 1 pm, a registration of all ex-students and teachers of MHS will be held in the High school auditorium, followed by a registration tea.

A banquet for former students and teachers will be held in the school lunchroom at 6 pm. Tickets for the banquet were purchased in advance, according to

Mrs. Pat Glasscock, chairman of the celebration.

The game between the Mules and Tulia at 8 pm will be another feature of the Homecoming Day Festivities, with half time shows planned by Norvil Howell, band director. Mums in school colors will be offered for sale by members of the Junior class in High school.

A dance will be held in Legion Hall following the game, with music furnished by Lloyd Alsip and his orchestra.

Both the senior and junior high school bands will be in the parade, Howell reported.

All ex-students and teachers of the local school have been invited to participate in the event.

# THE MULESHOE JOURNAL

DEDICATED TO THE PROGRESS AND DEVELOPMENT OF BAILEY COUNTY AND THE GREAT MULESHOE COUNTRY

VOLUME 34, NUMBER 44

16 PAGES — SECTION I — 8 PAGES

THURSDAY, NOVEMBER 4, 1954

## Bennett Farm Sale Nov. 10

First farm sale of the season is scheduled for Wednesday, November 10, at the Joe Bennett place, 4 miles north of Muleshoe on the Firona road. The sale is to begin at 1:30 pm. A long list of farm implements, tools, miscellaneous items, and some young hens is carried in an advertisement in this paper.

The sale will be conducted by Col. Kenneth Bozeman, auctioneer, and will be clerked by Mr. and Mrs. Tom Morgan of Muleshoe.

## CofC Membership Hits 190 This Week

Membership in the Muleshoe Chamber of Commerce has reached 190, according to manager Ray Franz, who stated Tuesday morning that more than 50 new members have been signed up since the membership drive began five weeks ago.

The information came at the regular weekly meeting held Tuesday morning at Gerald's, attended by 32 persons.

Muri Wilson spoke briefly on the needs of the Chamber of Commerce, stating that the CofC needs the time of members as well as financial support. Wilson was introduced by Bob Gregory.

A door prize of an animated TV lamp was won by Mrs. Mack Hale.

Irvin St. Clair discussed the Quarterback club.

## FIRE DESTROYS CLOTHING

Fire of undetermined origin destroyed a considerable amount of clothing in the home of Mrs. G. D. Kersey, 1001 W. 5th., between 8 and 8:30 pm Wednesday. Firemen answering the alarm did not determine where the blaze began due to excessive smoke around the blaze.

## Grand Jury Returns 20 Indictments At November Court Term This Week

The Grand Jury returned 20 true bills, six no-bills, and passed over 10 cases at its November meeting of the District Court here this week.

Included in the indictments were two for car theft; six for swindle with worthless checks; one DWI second offense; three burglary; disposing mortgaged property; two; four theft; one kidnapping and one forgery.

Cases no-billed included one mortgaged property; one theft; three swindle; one rape.

Six persons plead guilty and were tried in court this afternoon at 1:30. At press time, results and sentences in each case were not known.

Members of the Grand Jury included Howard Ashley, E. W. Locker, D. S. Anderson, Baker

## Farm Bureau To Have Six Voting State Delegates

Muleshoe and Bailey county Farm Bureau members will attend the state Farm Bureau convention in Galveston, November 7-11. The Bailey County FB is allowed six voting delegates, but any member may attend.

Those going from here include Mr. and Mrs. Bill Millen, FB office secretary, Mrs. Doris Tra-week, Joe Sooter, Jimmy Wedel and Richard Smith.

A chartered bus will leave Lubbock at 5 pm Sunday for Galveston and will return about 7 pm, November 11. Round trip expenses will be \$17.50.

The convention will begin at 7:30 pm Sunday with vesper services led by Melvin T. Miller, of Dallas. The State Farm Bureau Queen will be selected Monday evening.

## The Weather

	Low	High
Oct. 28	53	30
Oct. 29	70	35
Oct. 30	50	32
Oct. 31	60	28
Nov. 1	66	30
Nov. 2	50	27
Nov. 3	62	32

## Winners Announced In Reliability Run

Winners in the reliability run sponsored here by the Ramblin' Eight automobile club last Sunday were announced early this week.

Jerry Hale won first place award, with second place going to Robert Berry.

Wayne Bristow was third place winner, and trophies were awarded each winner by club members.

## Chamber of Commerce Essay Contest To Award College Scholarship To Seniors

Bailey county High school seniors of the current school year are eligible to enter an essay contest sponsored by the Muleshoe Chamber of Commerce to earn a \$250 scholarship to any college or university in West Texas of their choice.

Chamber of Commerce Manager Ray Franz appeared at all schools in the county this week to explain the contest, which is based on essays on the subject, "What Can My Town Do To Have More Industry?"

Contestants must be students who will graduate from Muleshoe, Threeway, Bula or Lazbuddie High schools not later than August 31, 1955, and the essay must not be more than 1500 words.

Entries should be typed or handwritten, double spaced on plain white paper, using only one side of the sheet. No assistance in the actual composition may be received from an adult, although research for material, including interviews with adults is encouraged.

Judging will be based on the practical adaptability to the local situation of ideas advanced in the essay; evidence of serious study and research by the contestant; and the usual consideration for good composition and neatness.

Judges in the contest locally are J. M. Forbes, publisher of The Muleshoe Journal; Fred Johnson, of Johnson-Nix Implement Co., and C. D. Clair, English and Journalism instructor at Muleshoe High school.

Winners in the local contest will be presented awards by the Muleshoe Chamber of Commerce totaling \$25 for first place, \$15 for second and \$10 for third prize.

The winning entry in the Bailey

## Santa Fe Names Muleshoe Jewelry Time Inspector

The Muleshoe Jewelry, Mr. and Mrs. H. E. Schuster, proprietors, are this week announcing that they have been appointed as local time inspector for the Santa Fe System.

This contract calls for them to inspect and regulate watches for employees of the Santa Fe System in Muleshoe.

Mrs. Schuster stated that they have been working to secure this contract for some time. She stated it is a symbol of accuracy and precision in work and several specifications have to be met in order to secure the appointment.

## Goodfellows Meet To Be Held Tonight

The Goodfellows of Muleshoe will hold their meeting in the courthouse tonight, Thursday, at 7:30 pm instead of tomorrow night as originally announced.

The Homecoming Day activity here has caused the change in date of the meeting.

## 17 School Buses Run 1235 Miles Daily Carrying 800 Riders To Local Classrooms

Seventeen school buses carrying rural students to Muleshoe schools traveled approximately 1235 miles each school day during the 1953-54 school year, according to information released this week by School Superintendent Jerry Kirk.

Kirk reports that about 800 students are bus riders, on routes averaging 67.66 miles each.

Expenditures for operating the buses during the 1953-54 school term totaled \$35,058.13, with the majority of this expense being the \$15,781.25 paid as salaries to bus drivers.

Repairs, parts and labor accounted for \$2,771.66, and tires and tubes cost \$1,377.97.

Batteries cost the school board \$303.83, while gas and oil to operate the vehicles amounted to \$5,959.19.

Drivers bonds cost \$127.50, and fire insurance on the 17 buses cost \$285 in premiums.

New bus purchases totaled \$8,417.28, and other supplies accounted for the remaining \$34.45.

## Funeral Held Friday For J. T. "Jack" Lane

Funeral services for John Tolbert (Jack) Lane, 69, were held Friday at 10 in Muleshoe First Baptist Church.

Mr. Lane passed away October 28 at his brother's residence in Amarillo, where he had resided less than a month. He was a Muleshoe resident for 20 years, and was a retired cafe operator.

Born in Shelby county, Texas, Mr. Lane is survived by one daughter, Mrs. Clyde Henderson, of Coleman, Texas; three sisters, Mrs. Nora Wheeler, and Mrs. Zora Thompson, Kirbyville, Texas, and Mrs. Julia Espy, of Tuscaloosa, Ala.; three brothers, Roy Lane, Corona, Calif., E. M. Lane, of Amarillo, and Dillard Lane, of Perris, South Dakota.

Funeral services were under direction of Singleton Funeral Home, with Rev. E. K. Shepherd officiating. Interment was in Muleshoe Cemetery.

Pallbearers were Ira Robinson, I. G. McNairy, Clinton Bristow, Ed Johnson, N. H. Johnson, Bill Moore and Ike Robinson.

## Public Meeting Set For Legion Hall

A public meeting will be held in the American Legion hall at Muleshoe November 8, at 8 pm for the purpose of discussing plans to form a Community Chest or similar organization for charitable fund drives, according to J. D. Vaughn.

Steve Matthews, Lubbock City Manager will be principal speaker at the meeting. Matthews is well known in this section of the county, and his talk promises to be an interesting one.

## P-TA Carnival Will Net More Than \$400

The annual Muleshoe P-TA Halloween carnival will net more than \$400, according to all booths have reported their income, according to School Superintendent Jerry Kirk.

Mr. Kirk said early this week that the carnival was termed a success, and that a large crowd attended the coronation ceremonies for the carnival queen in the High school auditorium.

Rhonda Johnson of the fifth grade was queen of the grade school, escorted by Nelson Shipman; Sue Logan was chosen queen of Junior High, escorted by Max King, and Bettie Collins was High school queen, escorted by Keith Buhman.

Proceeds from the carnival will be divided between the Elementary and High school P-TA on the basis of student enrollment. Funds will be used for Association projects.

## Thursday Morning

5650  
Bales Had Been Ginned Here



P-TA HALLOWEEN CARNIVAL QUEENS AND THEIR ESCORTS. Center is Miss Bettie Collins, Senior High school queen and her escort, Keith Buhman. Left is Miss Sue Logan of the seventh grade, who was chosen Junior High school queen, and her escort, Max King. On the right is Miss Ronda Johnson, of the fifth grade, elementary school queen, with her escort, Nelson Shipman. (Photo by Cline)



HIGH STEPPING MAJORETTES of the Muleshoe Band are pictured here in typical formation for the Journal camera. From left to right: Betty Collins, Janelle Sedgewick, Kay Wilmon, Billie Ann Pence, Doris Fields, and LaVon Copley. These young ladies will lead the band in the parade tomorrow afternoon, and during half time activity of the game between the Mules and Tulia tomorrow night at Homecoming activity. (Staff Photo)



# use the Want Ads to BUY SELL RENT HIRE

## 1. Personals

**NOTICE: IF YOU WANT YOUR HAY STACKED SEE SPENCER BEAVERS, BOVELL MOTOR SUPPLY.** ttc.

**HELP WANTED:** Full time appliance salesman wanted to represent Montgomery Ward in this territory. Must have car. Excellent commission rates paid. Full employee benefits. Contact Eugene Riggins, Appliance Mgr., Montgomery Ward, Clovis, N. M. 44-2tc.

**WANTED:** Sewing, alterations, mending, buttonholes. Mrs. Carl Case, 1212 W. Ave. E. Phone 7569. 1-26-tfc.

**SPECIAL PRICES**  
In all Radiators International Farmall Cores \$25 exchange  
**STOVALL-BOOHER**  
Radiator Sales & Service  
Plainview, Texas

**NURSERY:** Want keep children by hour day or night 1212 W. Ave. E. Mrs. Carl Case. Phone 7069. 1-tfc

**ATTENTION LAZBUDDIE PEOPLE**  
Who received a 1954 Census of Agriculture Form: If at all possible, have yours ready for checking when the enumerator arrives at your home. 1-45-2tc.

**ESTERBROOK** pens, points pencils, at The Journal.

THE MULESHOE JOURNAL, Thursday, November 4, 1954

## 2. Lost and Found

**LOST:** One four hundred-fifty lb., Black Angus heifer. Please notify Kenneth Precure, 8 mi. E. 5 1/2 N on Plainview highway. 2-44-1tp.

## 3. Help Wanted

**WANTED:** Cotton to strip. 15-bale trailers. Inquire at Edward's Gin, or Blackburn Grocery. Herbert Nash. 46-3tp.

**WANTED:** Experienced Waitress, Cross Roads Cafe. 3-44-1tc.

**WANTED AT ONCE:** Rawleigh Dealer in Bailey County. See R. E. Wright, Littlefield, Tex., or write Rawleigh's, Dept. TXK-270-R, Memphis, Tenn. 3-45-2tp.

## 6. Rooms For Rent

**FOR RENT:** Furnished room, 1 or 2 persons, Phone 7290. 6-44-1tp.

## 8. Real Estate For Sale:

**FOR SALE:** New 12x28 house to be moved, asbestos shingles, oak floors, \$1050. Call 6569 or 5350. 8-44-3tc.

**FOR SALE OR TRADE:** 177.1 A., SW Sudan, 4 room modern house, 3 room tenant house, government granary, other outbuildings. On pavement, school bus, mail by door. Cheap or trade on irrigated land. 180.8 and 178.7 A also trade on irrigated land. This is not sand. It is the best red catclaw land. My 3 bedroom home, 6 rooms, garage attached, corner lot, carpets, built-ins of all kinds, cheap or trade. Also, 77.1 A near Muleshoe, \$110 per A. Plenty water. W. F. Harper, Sudan, Texas. Phone 4581. 8-44-3tp.

## 8. Real Estate For Sale:

**PROGRESS SCHOOL BUILDING**  
**FOR SALE:** 70x54 feet brick and tile. By sealed bids closing Nov. 15. Usual rejection privileges retained. Six miles NW Muleshoe. Address GORDON MURRAH, Muleshoe. 8-44-3tc.

## FARMS

● 80 acres, 3 bed room new home, 8" irrigation well. Well located, crop go if sold soon, priced to sell with crop.  
● 160 acres, modern home, good 8" well, price \$225 per acre. \$17,000 cash will handle.  
If you plan to buy or sell, see us.

## CITY PROPERTY

Houses and lots, Business and rentals.

## EDDIE LANE

**REAL ESTATE**  
Salesman **JOHN ZAHN**  
Phone 6580 Muleshoe

**FOR SALE:** Johnson Boll Machine, 10 miles on West Camp highway. E. W. Bass. 43-1tp.

## 8. Real Estate For Sale:

**C. L. "Happy" Dyer**



**"THE LAND MAN"**  
Of Bailey County  
Muleshoe, Texas

● 160 A. Well improved, close in. \$338,000.  
● 80 A. Nicely improved, good land, \$20,000.

● 640 A. Well improved, in water belt, \$225 per acre.  
● 80 A. Best improved, well located place in country, \$40,000.  
● Two, well improved 160 A. farms. Priced to sell.

● 130 A. Nicely improved. Two wells, on highway. Priced right. We have some buyers for good 160 A or 320 A. So if you want to sell, give us your listings.

## HAPPY DYER

— Salesman —  
**C. E. Briscoe & Judd Gaddy**

## HOLLAND BARBER SHOP

— 3 Barbers To Serve You —  
E. E. Holland  
Johnny Henderson—J. W. Watts  
We Appreciate Your Patronage

For Fine Watches  
For Expert Repair  
— It's —  
**LINDSEY JEWELRY**

## FARM FOR SALE

160 Acres, about nine miles southeast of Bovina, in good water belt. Fair modern improvements, about 120 acres in cultivation, balance native grass. This is an outstanding home proposition for someone at only \$110 per acre.

## O. W. RHINEHART

Bovina, Texas 8-39-tfc.

## FARMS AND HOMES FOR SALE

I have lots of farms for sale. If you are in the market to buy, see me before you buy. I am in need of some good smooth 160 A places. I have the buyers if you have the place and want to sell, give me a listing on it. I think we can make a deal.  
I have nice homes in town to sell with good terms. I have trading property if you want to trade. See me before you buy or trade.

## J. E. DAY

**REAL ESTATE**  
On Morton Highway  
Just North Of Courthouse

## FOR SALE: 240 acres irrigated farm, 8 in. pump operating on natural gas. Good modern improvements. Priced right with good terms, 1/2 mineral rights. Owner living on this farm, 3 miles south of Clovis, N. M., on U. S. Highway 70, R. W. HYMAN, Rt. 3, Clovis, N. M., Phone 4963. 8-45-2tp.

## Kelton Barber Shop

— BARBERS —  
**Omer Kelton Glen Wilson**

## FARMS & CITY HOMES FOR SALE

We have some good farms and nice city homes for sale. We need some smooth 160 A., and some 80 and 40 A. farms. If you want to sell, list your property with us.

## M. E. FINLEY and W. R. CARTER

**Real Estate**  
At Farm Bureau Office, Muleshoe  
Office Phone 6480  
Residence Phone 6252

## 10. Farm Equip. For Sale:

**FARM FOR SALE OR TRADE:** 177 Acres, 8 mi. south, 1/2 east of Muleshoe, Burl Pierce, Box 272, Turkey, Texas. 8tp.

## FOR SALE: One Johnson cotton stripper. Hans J. Hanson at Allison farm, 8 mi. east Muleshoe. 10-41-tfc.

## 11. Swap:

**TO TRADE:** 1950 Model Ford tractor for good used car. Mrs. Rose Allen, 1 1/2 mi. west of Puckett's corner. 11-44-1tp.

## 12. Household Goods:

**USED UPRIGHT and Spinnet piano** Will sell to responsible parties on low monthly payments. Write Credit Dept., McBrayer Piano Co., 217 W. 6th St., Amarillo, Tex. 12-39-tfc.

## 13. Appliances For Sale:

**ELECTRIC MAYTAG WASHER;** wool comforter. Call or phone 6241. Birdie Paul. 3tp.

"Must retire present obligation on used upright and spinnet piano. Terms to responsible parties. Write, Credit Dept., W. H. White Music Company, 3315 W. 6th St., Amarillo, Texas." 13-44-3tp.

## I Am Representing CASEY CARPET CO.

I have a nice line of samples wool and cotton, and pads. Prices laid on floor by expert carpet men.  
Call and See At  
1208 East 2nd St.  
Phone 5263  
**MRS. R. E. LUTTRELL** 44-tfc

## FOR LEASE: 80 acres cash lease. See Alta Holdeman, 7 mi. east, 1 mi. north on Plainview highway. 2tp.

## 15. Farm Property For Rent:

## 14. Property For Lease:

## 16. Miscellaneous:

**KIRBY SALES AND SERVICE:** Repairs for all makes. Call Mrs. Julian Sewing Shop, 5180. 16-43-tfc.

**FOR SALE:** Needlework. Would make good Christmas gifts. Mrs. John Benson. 16-45-2tc.

**QUICK SERVICE on Farm Loans, Auto Financing, Low Interest rates. Pool Ins. Agency.** 16-43-tfc.

## ATTENTION!

**— Fresh Melons —**  
Nice Stock of Groceries  
Selection of Ivy and Rubber Plants  
Open 6 A. M. 'Till 8 P. M.  
— OPEN SUNDAYS —  
**PICK 'N PACK FRUIT STAND**

**FOR SALE:** Two milk-fed beef calves. Ideal for locker. Gordon Murrah. 16-45-2tp.

## TV-RADIO SERVICE

Phone 7020  
**SPENCE RADIO SHOP**  
Muleshoe, Texas

**CANARIES FOR SALE:** See at 1114 W. 3rd. Phone 4294. 16-45-2tp.

**FAT CALVES** For your locker: Will deliver, R. L. Fields, 7 miles south of Muleshoe. 16-46-3tp.

**FOR SALE:** Coke box, Dr. Pepper box and R. C. Allen combination cash register and adding machine. See at bus station. 16-44-tfc.

**FORNEY ARC WELDERS:** Factory representative. E. M. Golden, Rt. 1, Box 503, Phone 3-6340, Amarillo, Texas. 16-47-4tp.

**FOR SALE:** 2 bedroom home, on pavement, large sleeping porch floor furnace, venetian blinds, partial basement. 914 west 3rd. Priced to sell. See Clarence Jones, Arnold Morris Auto Co. Call 6440 after 6 pm. 45-2tp.

**LOST:** Wheelbarrow from construction job on Sixth street Hallowsen night. Call Willson-Sanders Lumber Co. 44-1tc.

## D. L. Morrison Sees Plymouth Preview in Oklahoma City

Plymouth Motor Corporation is planning on the greatest sales volume in its history during 1955, and is getting off to a fast start by scheduling all-time high production, according to D. L. Morrison, owner of Morrison Motor Co., local Chrysler-Plymouth agency, who recently returned from a preview of the 1955 line of Plymouth cars at Oklahoma City.

With a line of cars featuring all new styling, new high horsepower engines, and many luxury features formerly found only in the most expensive cars, Plymouth has retrofitted its factory and by mid-November will be

producing more than 3,000 cars per day. They are longer, lower and wider than previous models, and the most powerful cars Plymouth has ever built.

By the end of December, Plymouth expects to have built 160,000 of the new models. That is some 60,000 more than were built during November and December in the peak year of 1953. Plymouth officials pointed out that a week before the first of the new cars came down the assembly line, enthusiastic dealers had ordered more than 150,000 without having seen a single model. The backlog of orders is expected to be more than doubled by the time all dealers have seen the cars.

Plymouth, traditionally the world's third largest producer of passenger cars, expects to double its 1954 sales during 1955 and to sell nearly 20 per cent more cars than the record 635,000 units which were sold during 1953.

Officials pointed out that Plymouth has had the new car under development for three years, and at the same time has been "tooling up" its manpower in pointing for a big sales year in 1955.

DR. B. R. PUTMAN  
OPTOMETRIST  
1208 East First St.  
Muleshoe, Texas

DR. A. E. LEWIS  
Dentist  
East of Courthouse - Muleshoe  
Off. Ph. 3040 - Res. 6570  
Closed Wed. & Sat. Afternoon

**Bobo Insurance Agency**  
Phone 2640 — Muleshoe

**GUARANTY ABSTRACT CO.**  
BONDED FOR YOUR PROTECTION  
Complete Abstracts of Title to All Lands and Towns in Bailey County Texas  
PAT R. BOBO, Owner      JOAN MONTGOMERY, Mgr.  
Office In Bank Building  
Phone 2640 — Muleshoe

**WE STILL HAVE PLENTY OF LOCAL GRAIN STORAGE — FOR — COMMODITY CREDIT GRAIN — ALSO — WE WANT TO BUY YOUR GRAIN AT Highest Market Prices**

**Paymaster Elevator**  
MULESHOE — TEXAS

**DR. B. R. PUTMAN OPTOMETRIST**  
1208 East First St.  
Muleshoe, Texas

**DR. A. E. LEWIS Dentist**  
East of Courthouse - Muleshoe  
Off. Ph. 3040 - Res. 6570  
Closed Wed. & Sat. Afternoon

**Bobo Insurance Agency**  
Phone 2640 — Muleshoe

**GUARANTY ABSTRACT CO.**  
BONDED FOR YOUR PROTECTION  
Complete Abstracts of Title to All Lands and Towns in Bailey County Texas  
PAT R. BOBO, Owner      JOAN MONTGOMERY, Mgr.  
Office In Bank Building  
Phone 2640 — Muleshoe

**WE STILL HAVE PLENTY OF LOCAL GRAIN STORAGE — FOR — COMMODITY CREDIT GRAIN — ALSO — WE WANT TO BUY YOUR GRAIN AT Highest Market Prices**

**Paymaster Elevator**  
MULESHOE — TEXAS

**DR. B. R. PUTMAN OPTOMETRIST**  
1208 East First St.  
Muleshoe, Texas

**DR. A. E. LEWIS Dentist**  
East of Courthouse - Muleshoe  
Off. Ph. 3040 - Res. 6570  
Closed Wed. & Sat. Afternoon

**Bobo Insurance Agency**  
Phone 2640 — Muleshoe

**GUARANTY ABSTRACT CO.**  
BONDED FOR YOUR PROTECTION  
Complete Abstracts of Title to All Lands and Towns in Bailey County Texas  
PAT R. BOBO, Owner      JOAN MONTGOMERY, Mgr.  
Office In Bank Building  
Phone 2640 — Muleshoe

**WE STILL HAVE PLENTY OF LOCAL GRAIN STORAGE — FOR — COMMODITY CREDIT GRAIN — ALSO — WE WANT TO BUY YOUR GRAIN AT Highest Market Prices**

**Paymaster Elevator**  
MULESHOE — TEXAS

**DR. B. R. PUTMAN OPTOMETRIST**  
1208 East First St.  
Muleshoe, Texas

**DR. A. E. LEWIS Dentist**  
East of Courthouse - Muleshoe  
Off. Ph. 3040 - Res. 6570  
Closed Wed. & Sat. Afternoon

**Bobo Insurance Agency**  
Phone 2640 — Muleshoe

**GUARANTY ABSTRACT CO.**  
BONDED FOR YOUR PROTECTION  
Complete Abstracts of Title to All Lands and Towns in Bailey County Texas  
PAT R. BOBO, Owner      JOAN MONTGOMERY, Mgr.  
Office In Bank Building  
Phone 2640 — Muleshoe

**WE STILL HAVE PLENTY OF LOCAL GRAIN STORAGE — FOR — COMMODITY CREDIT GRAIN — ALSO — WE WANT TO BUY YOUR GRAIN AT Highest Market Prices**

**Paymaster Elevator**  
MULESHOE — TEXAS

**DR. B. R. PUTMAN OPTOMETRIST**  
1208 East First St.  
Muleshoe, Texas

**DR. A. E. LEWIS Dentist**  
East of Courthouse - Muleshoe  
Off. Ph. 3040 - Res. 6570  
Closed Wed. & Sat. Afternoon

**Bobo Insurance Agency**  
Phone 2640 — Muleshoe

**GUARANTY ABSTRACT CO.**  
BONDED FOR YOUR PROTECTION  
Complete Abstracts of Title to All Lands and Towns in Bailey County Texas  
PAT R. BOBO, Owner      JOAN MONTGOMERY, Mgr.  
Office In Bank Building  
Phone 2640 — Muleshoe

**WE STILL HAVE PLENTY OF LOCAL GRAIN STORAGE — FOR — COMMODITY CREDIT GRAIN — ALSO — WE WANT TO BUY YOUR GRAIN AT Highest Market Prices**

**Paymaster Elevator**  
MULESHOE — TEXAS

**DR. B. R. PUTMAN OPTOMETRIST**  
1208 East First St.  
Muleshoe, Texas

**DR. A. E. LEWIS Dentist**  
East of Courthouse - Muleshoe  
Off. Ph. 3040 - Res. 6570  
Closed Wed. & Sat. Afternoon

**Bobo Insurance Agency**  
Phone 2640 — Muleshoe

**GUARANTY ABSTRACT CO.**  
BONDED FOR YOUR PROTECTION  
Complete Abstracts of Title to All Lands and Towns in Bailey County Texas  
PAT R. BOBO, Owner      JOAN MONTGOMERY, Mgr.  
Office In Bank Building  
Phone 2640 — Muleshoe

**WE STILL HAVE PLENTY OF LOCAL GRAIN STORAGE — FOR — COMMODITY CREDIT GRAIN — ALSO — WE WANT TO BUY YOUR GRAIN AT Highest Market Prices**

**Paymaster Elevator**  
MULESHOE — TEXAS

**DR. B. R. PUTMAN OPTOMETRIST**  
1208 East First St.  
Muleshoe, Texas

**DR. A. E. LEWIS Dentist**  
East of Courthouse - Muleshoe  
Off. Ph. 3040 - Res. 6570  
Closed Wed. & Sat. Afternoon

**Bobo Insurance Agency**  
Phone 2640 — Muleshoe

**GUARANTY ABSTRACT CO.**  
BONDED FOR YOUR PROTECTION  
Complete Abstracts of Title to All Lands and Towns in Bailey County Texas  
PAT R. BOBO, Owner      JOAN MONTGOMERY, Mgr.  
Office In Bank Building  
Phone 2640 — Muleshoe

**WE STILL HAVE PLENTY OF LOCAL GRAIN STORAGE — FOR — COMMODITY CREDIT GRAIN — ALSO — WE WANT TO BUY YOUR GRAIN AT Highest Market Prices**

**Paymaster Elevator**  
MULESHOE — TEXAS

Enjoy Good Movies Every Time  
At The  
**Valley & Palace**  
In Muleshoe  
Box Office Opens 7:00 P. M.; Show Starts 7:15 P. M.  
— Saturday & Sunday 1:45 P. M., Continuous Showing —

## Valley Theatre

### THURSDAY & FRIDAY

Gary Merrill  
Jan Sterling  
— IN —

### HUMAN JUNGLE

### SATURDAY ONLY

Rock Hudson  
Barbara Rush  
— IN —

### TAZA, SON OF COCHISE

### SUNDAY & MONDAY

Doris Day  
Phil Silvers  
— IN —

### LUCKY ME

### TUESDAY & WEDNESDAY

Linda Darnell  
Joseph Cotten  
— IN —

### TWO FLAGS WEST

## Palace Theatre

### THURSDAY & FRIDAY

### DESTINATION GOBI

—Starring—  
Richard Widmark  
Don Taylor

### SATURDAY & SUNDAY

### OUTLAW STALLION

—Starring—  
Phil Carey  
Dorothy Patrick

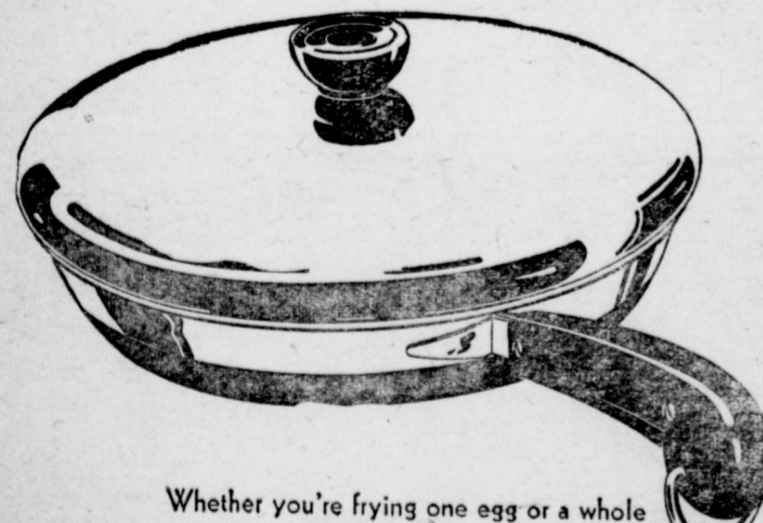
MOTION PICTURES ARE YOUR BEST AND CHEAPEST ENTERTAINMENT

## E. R. HART CO.

PHONE 3300

MULESHOE

is headquarters for  
**REVERE WARE**



Whether you're frying one egg or a whole chicken, there's a Revere Ware Skillet tailor-made to fit the job. Glowing copper for quick, even heating... gleaming stainless steel for easily-cleaned beauty. Another member of the Revere Ware family — the World's Finest Utensils.

ILLUSTRATED:  
Revere Ware 12 in. Skillet.  
Available in 6, 8, 10 and 12 in. sizes.



WE CARRY A COMPLETE STOCK OF REVERE WARE

## Bailey County Abstract Co.

ABSTRACT SERVICE — LOANS  
Established in 1909  
Mrs. Lola Barron — Mgrs. — L. S. Barron

## FARLEY INSURANCE AGENCY

REAL ESTATE & INSURANCE

AUTO FINANCING — FARM LOANS

Over Bank, Muleshoe, Texas

Office Phone 7279

Res. 5103

## AMERICAN T. V. SERVICE

ON ALL MAKES AND MODELS — TV AND RADIO

WEEKDAYS 8:00 A. M. TO 9:00 P. M.

PHONE 3442

BOB GLASS  
Service Tech.

1222 Ave. E  
1 Block South of Grade School

## COL. DICK DOSHER

Auctioneer

Farm Sales

5% Commission — We Pay Advertising

Phone 83337  
Clovis

Box 38  
Farwell, Texas



### Priddy And Barnett Engagement Told



MISS VERA LOU PRIDDY

Mr. and Mrs. Jack Priddy, 1302 Axtell, Clovis, N. M., are announcing the engagement and approaching marriage of their daughter Vera Lou, to Richard

Barnett, son of Mr. and Mrs. C. A. Barnett, of Muleshoe. The wedding will take place November 21, in the First Presbyterian Church at Clovis.

### WMU Studies Work In South Africa

W. M. U. of the First Baptist Church Mission held a regular meeting at the church Wednesday morning, October 3, at 9:15 am.

The group heard a very interesting and inspiring program on mission work in South Africa, subject of the lesson being "New Roads In Southern Rhodesia."

Mrs. B. O. McDaniel was in charge of the program. She used as her theme, "The Highway of Christian Service." Those assisting her were: Mmes. Ed Hicks, I. M. Stinson, Cleon Davis, A. C. Bray, and E. K. Shepherd. A beautiful violin solo was rendered between discussions by Mrs. Bill Bickel, with Mrs. Doc Wilhite at the piano. The program

ended with a solo, "How Long Must We Wait", by Mrs. Byron Griffiths. She was accompanied at the piano by Mrs. Wilhite.

Mrs. Shepherd dismissed with a prayer for mission work in Southern Rhodesia.

A short business session was led by Mrs. Ed Hicks, following the program.

Attending were: Mmes. Ed Little, E. K. Shepherd, Vernon Jamison, Verney Towns, Gid Albin Ratliff, A. T. Fowler, Jake Roberts, Doc Wilhite, I. M. Stinson, Troy Perkins, Cleon Davis, Amos Sedgewick, Hazel Wimberley, Uleta Jenkins, A. C. Bray, J. E. Moore, W. B. McAdams, M. D. Gaddy, Ernest McNatt, Bill Bickel, R. O. McDaniel, E. F. Eason, Eddie Lane, Walter Sain, Ed Hicks, and Byron Griffiths.

Rev. E. K. Shepherd dismissed with a prayer.

Read the Journal Want Ad's

### First Meeting Of Piano Club Held

The Hi-Lo Piano Club had their first meeting Tuesday, October 26, at the Fellowship Hall.

Mrs. Robert King, as secretary, read the minutes and gave the roll call, which each piano pupil and mothers answered with a musical term.

For all who had birthdays in October, the "Birthday Song" was sung with Charles King at the piano, and Alva Lee Shofner leading.

Mrs. Sam McKinstry, club counselor, introduced Mrs. C. E. Moore, who was the leader for the story hour. Mrs. Moore told the story of Johan Sebastian Bach, which was followed by several Bach minuets played at the piano by six year old Tommy Welch and Donna Kay Talbert.

"The Wedding of the Dolls", presented at the piano by Janet Franz, drew applause, as Charles King, Susan Franz, and Patricia Butts manipulated the dolls on a table.

Hostesses, Mmes. David Anderson, J. K. Adams, Jarvis Angeley, and Harold Allison, served delicious Halloween refreshments of orange punch, and gold and black cookies to those present.

Mrs. Buford Butts, vice-president, handed out the attractive year books to each family.

### Joy Finley Hosts Epsilon Members

Epsilon Sigma Alpha Sorority members met for a social Wednesday evening, October 27, at the home of Joy Finley with Jane Griffiths as co-hostess.

Members and pledges dressed Chinese fashion.

Games were played and a delicious Chinese supper was served to the following by the hostesses: Joyce Alsop and guest Mary Lou Edwards, Ellen Guppton, Betty Jo Glaze, Alta Mae Ellis, Helen Jean Harvey, Mary Moore, Mary Anna Bryant, Billye Jones, Marjorie Precure, Marlene St. Clair, pledges: Cookie Bamert, Pat Glasscock, Kay Malone and Margaret Hough.

### TEL Class Met With Mrs. Evans

Mrs. Carl Evans' home was the scene of a T. E. L. Class meeting at 3:00 o'clock in the after-

### ANNOUNCEMENT

Troy Wilkerson, president of the Band Boosters, is announcing a called meeting of that organization, Tuesday evening, November 9, at 8:00. He requests that all members of the Boosters be present, as there is some urgent business to discuss.

noon, Tuesday, November 2.

Mrs. John Benson was in charge of the business session. Opening prayer was offered by Mrs. Gaddy, and Mrs. D. W. Winn gave the devotional. Reports were given by two group leaders, Mrs. A. C. Bray led in the discussion on members making some article to send to the Orphan's Home.

Mrs. John Benson dismissed with a prayer.

Refreshments were served to 11 members and two visitors.

### Mrs. Mathis Gives Report On Trip To Grand Chapter

Eastern Stars of the Muleshoe Chapter held a regular meeting Tuesday evening of this week at the Lodge Hall.

Mrs. Billy Mathis, Worthy Matron, and John Thomson, Worthy Patron, presided over the business meeting.

Following the close of business, Mrs. Mathis reported on her trip to Houston last week, where she attended Grand Chapter. Grand Chapter next year will be held in San Antonio. Following her report, John Thomson gave the

### Masonic meeting.

An invitation was read from the Morton Eastern Star Chapter, highlights of his recent trip to El Paso, where he attended a ter inviting the lodge members to attend Friendship Night there November 22. Members from here who wish to go, are asked to meet at the hall, from where the group plans to leave not later than 6:15.

Muleshoe's Friendship night has been set for November 15, at which time a salad supper will be served. Members will be notified as to what they are to bring. Elaine Damron and Hattie Jones were elected as the program committee.

Two visitors attended the meeting. They were: Mrs. Adeline Fields, of the Montezuma Chapter, Delores, Colo., and Mrs.

Eleanor Dwyer, of the Ardell Chapter.

### Legion Breakfast To Be Held Nov. 11

The annual breakfast will be held at the Legion Hall starting at 6 am, November 11, according to Commander P. Q. Stickney of Ben Richardson Post 403.

A fine meal of bacon, scrambled eggs and hashed brown potatoes will be served to American Legion members and other veterans.

Mr. and Mrs. Dave Aylesworth and family went to Ft. Hood, Texas over the weekend, where they saw their son Bill, off to a

## Announcing . . .

Effective as of November 1, The Muleshoe Jewelry has been appointed as Local Time Inspector for the Santa Fe Ry. System.

This contract calls for us to inspect and regulate Watches for Employees of the Santa Fe at Muleshoe, Texas.

We have been working on this for some time. It is a symbol of accuracy in work, and several specifications had to be met in order to secure this appointment.

FOR THE BEST IN WATCH REPAIRING See

## MULESHOE JEWELRY

Mr. and Mrs. H. E. Schuster

Phone 4190

Muleshoe

### WILL YOU SELL YOUR FARM

# 29% DOWN

We Need Listings Right Now On Farms Which 29 Per Cent Down Payment. See Us If You Want Place. We Handle Any Type Real Estate — Business Lots, Residence, Residence Lots, Farm

### DO YOU NEED A LOAN

We Can Loan You As Much As \$20,000 On Arter; \$10,000 On An Irrigated 80. We Make Loans Buildings, For Improvements, G. I. Houses, and

### B. & M. REAL ESTATE

— AND —

### MORTGAGE INVESTMENT

SOUTH OF THE COURTHOUSE

JOHN MOCK  
Real Estate

Phone 3940



"I am a relatively new user of electric cooking, and I am just enjoying everything about it.

My daughter, Diane, was enrolled in a Girl Scout cooking class, and her enthusiasm for electric cooking reached its climax when she and her daddy bought me an electric range for Christmas last year. I'm as enthusiastic now as Diane."



"The deep-well cooker on my electric range is wonderful for preparing corn on the cob, as well as soups and stews. It's really economical."

"Cleanliness is an electric cooking feature that I really enjoy. My cooking utensils, as well as the range itself, are much easier to keep clean."

"I'm a troop leader with Diane's Girl Scout troop and the automatic features of my electric range make it possible meal preparation while I am enjoying time with

# "Electric Cooking

## GIVES ME MORE TIME FOR MY FAMILY!"

SAYS: MRS. T. J. SCARBOROUGH  
2924 WALLACE STREET  
CLOVIS, NEW MEXICO



SEE YOUR REDDY KILOWATT APPLIANCE DEALER

### Patricia Inman To Be In Baylor Band

Patricia Inman of Muleshoe, will march with the newly uniformed Baylor University Golden Wave band when they appear during half-time activity for a coast to coast audience over TV Saturday afternoon.

The band will perform between halves of the Baylor-University of Texas game.

apan. Leaving Ft. Hood they traveled to Texas City, where they visited Mrs. Aylesworth's brother and wife, and their new on. On the return trip they toured points of interest in Houston and Galveston.

### M FOR OWN

Can Be Sold On Rent To Sell Your Business Buildings, & Ranches

### COAN?

Irrigated Quarters On Business FHA Loans.

### DATE

### ENT CO.

L. S. BARRON  
Loans  
Muleshoe

### Leota Mahan Honored With Bridal Shower

Leota Mahan, bride-elect of Donald "Chilli" Jordan, was honored with a bridal shower in the lovely new home of Mrs. Hubert Elliott, Wednesday afternoon, October 27, at 3:00 o'clock. Hostesses were: Mmes. Hubert Elliott, Glen Scott, Barney Floyd, John Littlefield, Howard Carpenter, Alfred Steinbock, J. D. Carpenter, Wayne Clark, Frank Hunt, C. C. Graef, and Frank Hinkson.

The serving table was covered with a beautiful lace cloth over blue, and centered with a lovely arrangement made up of wedding bells, from which flowed wide satin streamers with the names "Leota" and "Chilli" printed in gold. A miniature bride and groom standing under an arch, surrounded by pink rosebuds was arranged on the mantle.

Corsages of white carnations were presented to the honoree and her mother, Mrs. Mae Mahan.

Those attending the shower were: Mmes. Alton Cherry, Virgil Teague, J. L. Ivy, J. W. Hunt, Ray Lawhorn, James Welch, Jimmy Ivy, Mae Mahan, F. W. Green, C. C. Matthews, N. J. Goodnough, Willie Steinbock, Walter Steinbock, J. H. Kyle, Demp Foster, Finis Jennings, Bernice Weber, Richard Engelking, Ronald Davis, Wesley Barnes, E. V. Crain, C. D. Gustin, Joe Bates Jennings, Homer Mangum, Owen Broyles, Beryl Dean Broyles, Denton Thomson, Calvin Clark;

Andrew Brown, Jack Smith, N. N. McCurdy, R. G. Treider, Opal Bewley, Doc James, Al Jennings, E. L. Clark, James Gilmore, Thomas Carrol, H. L. Ivy, J. C. Scruggs, Leonard Elliott, Elmer Houston, Bill Brown, Truman Gleason, and Misses Noretta James, Betty Floyd, Imogene Treider, Marlene Cargile, Caroline Scott, Juanita Scott, Caroline Hinkson, Wanda Hunt, Sherry Steinbock, and the honoree's grandmother, Mrs. O. R. Mahan, of McKinney.

Many who were unable to attend sent gifts.

The Journal Want Ads always gets results.

### ALL NEW! Frigidaire Electric Range



with exclusive "Wonder Oven"

24 MOS. TO PAY

First, it's one big oven. Slip the divider in place and presto, it's 2 ovens! Lets you bake and broil at the same time in the same oven!

#### Plus All This

- Multi-Duty Thermizer, including deep-fat fryer and corn popper
- Quick-Clean Oven Design
- New Cook-Master Oven Clock Control
- Lifetime Porcelain finish inside and out
- Waist-high Broiler
- Exclusive Radiantube Surface Units
- Now! Choice of white or 2 exterior colors

Harvey Bass  
Appliance

Phone 4690 — Muleshoe

### Miss Gay Sanders And George Neill Are Married In Candlelight Ceremony



MR. AND MRS. GEORGE NEILL

(Photo by Cline)

Before a beautifully decorated arch of candelabra flanked by greenery and tall baskets of white gladiolus and mums, Miss Gay Lajuan Sanders, daughter of Mr. and Mrs. Claude Sanders, of Muleshoe, became the bride of Mr. George Hardin Neill, of Midland.

The Rev. J. H. McWilliams, of Austin, uncle of the bride, read the double ring ceremony in the First Baptist Church of Muleshoe, at 4:00 in the afternoon, October 31.

Musical selections presented by soloist Keith Gaede, and organist LaVon Copley included: "Because", "I Love You Truly", "Clare de Lune", and the traditional wedding marches.

The bride, given in marriage by her father, was lovely in a captivating wedding dress of hand-clipped Chantilly lace over nylon net over satin. The lace redingote with long sleeves and scalloped border, fit snugly through the bodice and curved out sharply over the bouffant net skirt.

Her silk illusion veil was attached to a lace pill box hat touched with seed pearls and sequins, and her bouquet was formed of a white orchid surrounded by stephanotis.

Mrs. Don Mickey Sanders, sister-in-law of the bride, was matron of honor. She wore a waltz length dress of blue tulle over taffeta, and a white lace redingote, similar to that of the bride's. Her hat was of white lace over a blue tulle veil, and she carried a bouquet of gladiolus. Mrs. Bobby Joe Kimbrough and

Mrs. John Dee Whipple, bridesmaids, wore identical waltz length dresses of blue net over taffeta, designed with round necklines outlined with seed pearls. Their bouquets were of gladiolus.

Candlelighters were Miss Joyce Sanders of Enochs, and Miss Sandra McWilliams, of Austin, both cousins of the bride. Their dresses were of light blue taffeta, designed with sweetheart necklines outlined in seed pearls. They wore waist corsages of white carnations.

Best man was Mr. Dennie Neill, of Dallas, brother of the bridegroom. Ushers were Don Mickey Sanders, brother of the bride, of Muleshoe, and Charles Vanderford and Bill Price, both of Midland.

The home of the bride's parents was the scene of a reception immediately following the ceremony. The table was covered with a lace cloth, and centered with the beautiful three tiered cake topped with a miniature bride and groom.

Miss Wynema Cochran and Miss Shirlyn Bassham, of Midland, presided at the bride's table.

For a wedding trip to New Orleans, the bride chose a mauve dress with matching accessories and a white orchid corsage.

The bride is a graduate of Muleshoe High School and attended Texas Tech and Baylor University. The bridegroom is a graduate of the University of Texas. He is employed as an en-

gineer with The Western Company in Midland, where the

#### Too Late To Classify:

FOR SALE: Nice two bedroom home in Muleshoe, located on corner lot. See at 1200 W. 11th. Charles Thomas. 8-44-1tp.

Office Supplies at the Journal

#### Earthmoving

Irrigation Earth Moving  
Tournadozer  
Carryall — Land Plane

IVEN PREWETT

Star Rt. 1 — Muleshoe  
From Muleshoe: 1 mi. E. on Plainview Highway, 1/2 N. 1 East, 1/2 North



Who

Is

This

For the answer see  
Back Page, Section II

SAVE!!  
IN OUR  
SENSATIONAL APPLIANCE

# SALE!

WHITE KING FREEZER  
HOLDS 530 LBS. OF FOOD  
15 CU. FT.



- Hermetically sealed unit.
- Separate rapid-freeze section.
- Easy-to-lift lid, built-in light.
- Convenient baskets and dividers.
- 5 year protection plan warranty.

This new White King freezer has loads of storage space — will save money on food cost now more than ever. It's top quality throughout and tops in convenient food storage.

\*Plus \$5.00 Protection Plan charge.

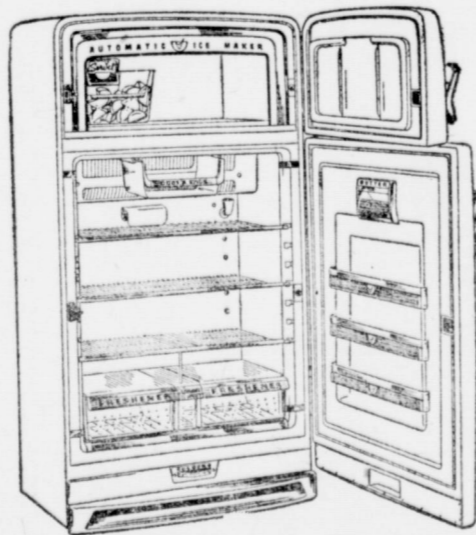
SPECIAL SALE PRICE ..... \$299.95

SLIGHTLY USED 23 CU. FT. DEEP FREEZE LIST NEW \$600, SALE ..... \$250.00

WESTINGHOUSE UPRIGHT, \$414.95 LIMITED TIME ONLY ..... \$299.95

WHITE KING 15 FT. UPRIGHT, SALE ..... \$299.95

#### SERVEL 3 IN 1 SENSATION



1. SELF DEFROSTING REFRIGERATOR
2. REFILLS ITSELF WITH
3. BIG 80 LB. FREEZER ICE CUBES AUTOMATICALLY

REG. \$599.95

Sale \$439.95

12.5 CU. FT.

CROSLY

DELUXE 2 DOOR

REG. \$559.95

Only \$395.95

EXQUISITELY BEAUTIFUL LANE

DINETTE SUITES

6 CHAIRS — REG. \$139.95 VALUE

THIS SALE ONLY

\$99.95

## Johnson-Pool

TIRE & APPLIANCE  
Phone 7370 Muleshoe

### IT'S OLD RANGE ROUNDUP TIME

Cooks with gas off!

The MAYTAG Dutch Oven GAS RANGE!



• Cooks by stored-up heat ... cooks superbly by usual methods too. Liberal trade-in — easy terms

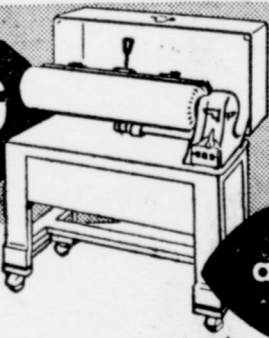
The New Maytag Range Is A Good Looker And A Clean Cooker

11 Beautiful Models To Choose From — Priced As Low As \$199.95.

TAPPAN RANGE \$224.95, SALE ..... \$149.95 Ex.

RCA 30 APT. RANGE \$199.95, SALE ..... \$129.97

the MAYTAG ironer



Let us show you how easy it is to use

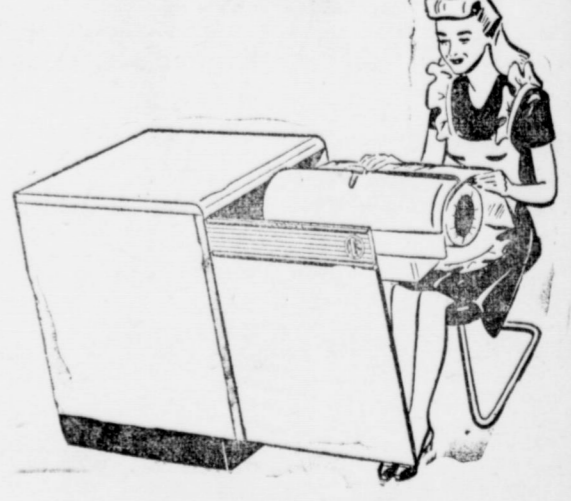
come in and see it today

You'll save hours of ironing time. Irons frills, ruffles, shirts, dresses, flat things quickly and easily.

Regular Price \$214.95, Sale ..... \$99.95

SLIGHTLY USED BLACKSTONE WASHER

NEW BLACKSTONE IRONER



Reg. \$339.95 Value

NOW ..... \$199.95

Reg. \$185.95

NOW ..... \$99.95

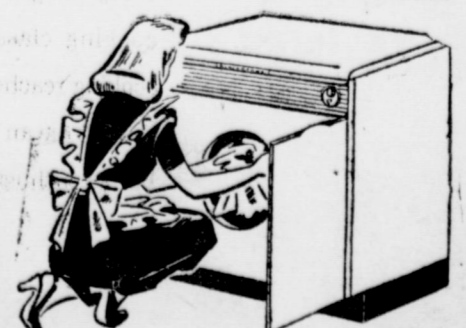
NEW BLACKSTONE DRIER

Reg. \$279.95

SALE ..... \$199.95

WESTINGHOUSE DRIERS

Reg. \$229.95, Sale \$150.



op. The auto- to go on with my children."

**GUESTS FROM OKLAHOMA**

Guests in the O. M. Self home a few days last week was Mrs. Bill Chamlee, of Cordell, Okla., and George Self, of Sentinel, Okla. The Journal Want Ads always gets results.

# Attention !

We Wish To Invite All Those Who Have Been Asking For—

## Butter Milk and Whipping Cream

To Come In And See Us. We Now Have Plenty!

### COMPARE OUR DAIRY PRODUCTS IN QUALITY & PRICE

- EGGS, guar. fresh, doz., med. 50c — large 55c
- ORANGE DRINK, 1/2 gal. 30c
- WHOLE SWEET MILK, 1/2 gal. 35c
- FRESH BUTTERMILK, 1/2 gal. 25c
- WHIPPING CREAM, 1/2 pt. 20c
- FRESH COUNTRY BUTTER, lb. 65c

## THE MILK JUG

Open Weekdays 10:30 a. m. to 8 p. m.; Sun., 5 to 8 p. m.  
Clovis Highway East of Valley Motel Phone 5370

**PARMER COUNTY Farm Bureau News**  
By RAYMOND EULER

"How in the world are you going to educate them if you can't get them to come to the classes?" Bill Broadhurst, hydro-

**DR. B. Z. BEATY**  
Dentist  
Office Hours: 9-12, 1-5  
1314 West 1st.  
Closed Saturday P. M.  
Off. Phone 2040, Res. 5020

**SINGLETON FUNERAL HOME**  
Ambulance Service Day or Night

DIAL 2860 TRAVIS E. REED, Mgr.

**KNOW YOUR LIFE INSURANCE AGENT**  
as you would your family physician. It pays to do business with an agent living in your own community. Your local agent is more interested in you.

**FOR THE FINEST IN LIFE INSURANCE**  
See Your Muleshoe Agent  
**W. B. McADAMS**

Representing JEFFERSON STANDARD LIFE INS. CO.  
(Over a billion dollars insurance in force — and currently paying 4% interest on dividend accumulations and policy proceeds.)

logist for the Water District asked this question when someone suggested expanded educational activity with regard to the irrigation problems developing. We are certainly aware of the timeliness of the question. Several meetings have been held in this county, with wide publicity before hand. The most that have ever attended such meetings was about two hundred, if our memory serves us right. There were less than a hundred at the majority of them. There is a little paper called "Cross Section" published by the Lubbock Office of the Water District. In it are discussions of various problems and some of the answers. If you want to receive this publication,

all you have to do is tell one of your water committee men and it will be sent to you regularly without cost.

To you sorghum producers who are worried about the surplus: if you are not willing to give one thousand pounds to get twenty thousand pounds shipped to your missionaries for distribution to hungry men, women and children, we wonder what you would ask for. That is exactly what you can do by simply telling your elevator man you want to. Tell him to put whatever amount you wish to give in the account of CROP (Christian Rural Overseas Program). We don't think you'll ever be hungry enough to enjoy a bowl of maize for breakfast, but just remember, there are those who are.

Round trip tickets from Lubbock to Galveston on chartered buses to the Farm Bureau Convention cost \$17.50. Why don't you go?

One of the greatest steps toward surplus disposal was made with the adoption of Farm Bureau's Agricultural Trade Development Act in the last legislative session. It provides for the sale and export (not give away) of one billion dollars worth of surplus agricultural commodities for local currency through private traders. This system provides, among other things, local currency for paying U. S. obligations abroad. It's a business approach to the problem.

Consider This: Wealth maketh many friends; but the poor is separated from his neighbor. Proverbs 19:4.

## They Appreciate It!

Mr. J. M. Forbes  
Muleshoe Journal  
Muleshoe, Texas  
Dear Mr. Forbes:

This is to express our sincere appreciation for your recent statement of policy in The Muleshoe Journal with respect to discontinuing the advertisements sponsored by the United Brewers Ass'n. We do realize that this decision may mean a financial loss to you, but we are sure that this loss will be more than compensated for in the increase of respect that so naturally follows your action. We can now be rightfully proud of "our paper". There is now no question about its welcome into our homes, and in behalf of our homes we are grateful.

Every department of the Progress Methodist Church: The Official Board, Women's Society of Christian Service, Methodist Youth Fellowship, Methodist Men, and the Church School join in this commendation.

- Carrol M. Jones, Pastor.
- Gordon Murrah, Church School Supt.
- John Thomson, Chairman of Official Board
- Joyce Walker, President of Woman's Society of Christian Service
- Pat Cooper, President of Methodist Youth Fellowship.
- Troy Atkinson, Progress Methodist Men
- James P. Wedel.

Farm tractors are dangerous. During past weeks at least five Texans have died as a result of tractors turning over. Why take chances, ask your Texas Farm and Ranch Safety Committee.

## Pvt. Willie Kelly Trains At Bliss



Pvt. Willie Kelly, Jr., 19, son of Mrs. Bertha Kelly of Muleshoe recently began eight weeks of Army basic training in the Aircraft Artillery Replacement Training Center at Fort Bliss, Texas. He will spend his first eight weeks of basic military training on fundamental subjects such as rifle, machine gun, bazooka marksmanship and familiarization with Army technical subjects. This first phase of training is climaxed with a one week maneuver in the field. Fort Bliss, established as a frontier outpost more than a century ago, is located in West Texas on the Mexican border, adjacent to El Paso.

PAPER & Supplies at The Journal Office.

**STOP**  
When you see this sign

**KENDALL**  
The 2000 MILE OIL

MORRISON MOTOR  
Phone 4130

Who is This

For the answer see Back Page, Section II

POCKET MORE CHANGE FROM FOOD DOLLARS AT THESE

# LOW PRICES

## CRISCO 3 Lb. Can 83c

- WHITE SWAN NO. 2 CAN TOMATO JUICE 2 for 29c
- WHITE SWAN NO. 300 CAN PINTO BEANS 2 for 27c
- CONCHO NO. 303 CAN TOMATOES 2 for 27c
- VAN CAMP'S Tuna Can 1/2 Flat 25c
- WHITE SWAN 1 LB. BOX DATES 44c
- WHITE SWAN 8 OZ. BAG Marshmallows 19c
- PLANTER'S 8 OZ. CAN COCKTAIL PEANUTS 37c
- WHITE SWAN NO. 303 CAN FRUIT COCKTAIL 2 for 49c
- SUN BONNET SUE 10 LB. BAG FLOUR 79c
- WHITE SWAN NO. 2 1/2 CAN SLICED PEACHES 29c
- WHITE SWAN 24 OZ. JAR APRICOT PRESERVES 41c
- LARGE BOX Oxydol 25c
- WHITE SWAN 2 LB. BOX DRIED PRUNES 51c

- FRESH FRUITS & VEGETABLES ●
- JONATHAN — COOKING Apples LB. 10c
- LARGE GOLDEN BANANAS 14c
- HOME GROWN LETTUCE 9c
- CRISP CELERY HEARTS cello bag 19c
- FROZEN FOODS ●
- DONALD DUCK GREEN PEAS 10 OZ. BOX 19c
- DONALD DUCK 10 OZ. BOX BRUSSELS SPROUTS 19c
- BIRD'S EYE CUT 10 OZ. BOX Green Beans 19c
- CAMANO 10 1/2 OZ. BOX Strawberries 25c
- MEATS ●
- CUDAHY PURITAN, SLICED 2 LB. FAMILY STYLE PKG. BACON . . . 1.09
- RIB OR BRISKETT ROAST lb. 29c
- NO. 1 GRADE DRY SALT PORK lb. 39c
- CHOICE GRADE LOIN STEAK lb. 69c

Ferguson tractor-mounted DISC HARROW

Check these features that speed your work and cut your costs

- Automatic draft control through Ferguson System—keeps you from bogging down in tough going.
- Independent adjustment of disc angle on each gang—permits you to fill gullies and dead furrows, level ridges and back furrows, level seedbeds, eliminate ridging in irrigated fields.
- Finger Tip Hydraulic Control—for easy transport and turns; one-minute attachment three-point linkage.
- Stronger, lighter construction—the Ferguson System with Finger Tip Control provides desired working depth without excess weight . . . eliminates need for useless extra weight to be hauled back and forth over fields.
- Less draft means less fuel—with less weight to drag around, it takes less fuel to do a better discing job—a big saving with an implement that gets so much use during the year.
- Cutaway discs for front gangs—available on some models, these special discs provide extra penetration under trashy conditions such as bog work or pasture renovation.

**D. H. SNEED SUPPLY**  
Phone 4170 Muleshoe

See it here. Ask for a free demonstration on your farm.

**FERGUSON TRACTOR** and Ferguson System Implements

**WAGNON GRO. & MKT.** PHONE 4060 DELIVERY SERVICE

**FROM LUBBOCK**

Mr. and Mrs. Arlo Farrell and son, Terry, of Lubbock, spent the week end here with his parents, Mr. and Mrs. C. R. Farrell and other relatives. Arlo is attending Texas Tech.

**VISITED PARENTS**

Donald Harmon, who is attending Texas Tech, visited over the weekend in the home of his parents, Mr. and Mrs. William Harmon and brother Billy.

Read the Journal-Want Ad's.

**AFBF Convention In NYC To Feature Train Excursion Trip**

Mr. and Mrs. Bill Millen and daughter Rose Lee and Linda will attend the American Farm Bureau Federation convention in New York City December 12-16. Millen, who is Bailey county FB president, announced this week.

A special excursion train for FB members from Texas will make the trip, picking up sleeper cars from various Texas cities. Members who make the trip will make sightseeing stopover tours in Cincinnati, Williamsburg, Va., Jamestown and Yorktown, Pa., visit Old Point Comfort; take an overnight steamer trip on the Chesapeake Bay, and tour the Nation's Capitol.

A complete tour of all points of interest in New York City will also be included for FB dele-

gates to the national conclave. On the return trip, sightseeing tours will be conducted in St. Louis, Mo.

Anyone interested in making this interesting trip should contact the local Farm Bureau office for more details. Expenses will average a little more than \$200 per person, with each person paying his own expenses.

**Former Resident Dies At Borger**

T. D. Hough, a former resident of this community, passed away at 3:10 pm Sunday in North Plains hospital, Borger, following a brief illness. He was the son of Mrs. C. M. Hinkle of Muleshoe. Mr. Hough's father, a Baptist preacher, formerly lived here and preceded him in death.

Mr. Hough was an employee of the Sinclair Oil Company in Borger, where he had lived 20 years. Survivors include his wife, Sybil, and son, Donald, both of the home; one daughter, Mrs. James Abernathy of Gould, Colo.; his mother, Mrs. C. M. Hinkle, of Muleshoe; a brother, Travis of Roswell, N. M.; and a sister, Lois Brewer of Farmington, N. M.

Funeral services were held at 2:30 pm Tuesday, Nov. 2 from North Hill Baptist Church, Borger, with Rev. Norman Dollar, pastor, officiating, assisted by Rev. J. E. Moore of Muleshoe.

Attending services from Muleshoe were the mother; Cecil Harvey and family; Bob Harvey, Mr. and Mrs. Gene Harvey. Mr. Hough was a brother-in-law of Cecil Harvey.

**Auto Dealers Tell Of '55 Cars**

Four local automobile dealers brought members of the Rotary Club up to date on new features of the 1955 cars which they represent in an unusual program given at the club meeting Tuesday. B. A. Dalton was in charge of the program.

First, Arthur Crow, of C. & H. Chevrolet told about the product he distributes. General Motors, he reminded his listeners soon will build their 50 millionth au-

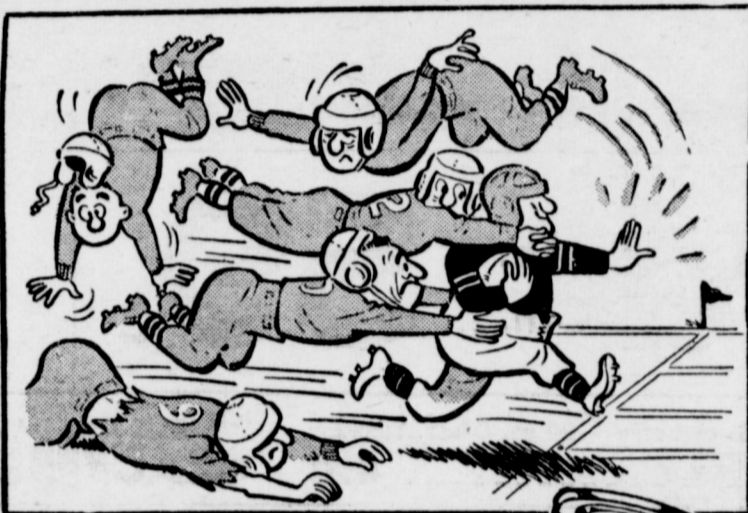


WESTERN DRUG'S NEW FOUNTAIN AND SNACK BAR are shown in this Journal Photo. The new and very attractive gray and red fountain fixtures were installed last week by manager Harry Waddle. The modern and inviting fixtures make Western Drug an ideal place for that mid-morning or afternoon coffee break, or for a quick, delicious snack any time of the day. (Staff Photo)

FOR YOUR PRESCRIPTIONS TO BE  
**- FILLED RIGHT -**  
 - HAVE THEM FILLED BY -  
**DAMRON REXALL  
 DRUG STORE**  
 WE FILL ANY DOCTORS PRESCRIPTION  
**THE MOST COMPLETE PRESCRIPTION  
 DEPARTMENT IN WEST TEXAS**  
 Muleshoe Phone 2100

**"Some Football Players are Better than Others!"**

— and so are some motor oils! MADE better by Old Mother Nature. Made tough. Tough enough to stay up on that cylinder wall, at any normal engine heat — keep hot steel from grinding away steel. No matter what "detergents" are added to that oil, to help it keep gummy sludge out of those ring-grooves, it's the OIL that has to keep those hot moving parts A - P - A - R - T. Will



YOUR oil do that? It will, if it's AMALIE 100% Pure Pennsylvania Motor Oil!



100% PURE PENNSYLVANIA MOTOR OIL

**MULESHOE SERVICE STATION**

PHONE 4120

MULESHOE

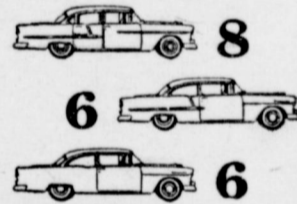
**What's new with Chevrolet? everything!**



And look what you see from the driver's seat Chevrolet's new Sweep-Sight Windshield curves around to vertical corner pillars, giving you a wide, full view. And you can see all four fenders from the driver's seat!



**Wonderful new Glide-Ride Front Suspension** New spherical joints flex freely to cushion all road shocks. New exclusive Anti-Dive Braking Control, assures "heads up" stops.

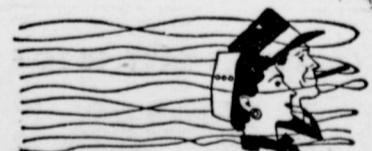


**New Outrigger Rear Springs** Rear springs are longer—and they're attached at the outside of the frame. This means they're spaced wider apart, outrigger-fashion, to give you greater stability in cornering. And Chevrolet's new Hotchkiss drive cushions drive-line shocks through the rear springs!

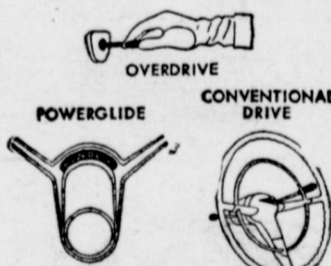
**Even Air Conditioning, if you wish** Air is heated or cooled by a single unit that fits compactly into the front of the car. Requires no trunk space! (V8 models only.) And that's only one of the wonderful extra-cost options you can get!



**Easier steering, stopping, clutching** The new Chevrolet steers with ball-bearing ease, thanks to new friction-cutting Ball-Race Steering. New Swing-Type Pedals pivot at the top.



**A ventilating system that really works** Chevrolet's new High-Level Ventilating System takes in cleaner air at hood-high level—away from road heat, fumes and dust.

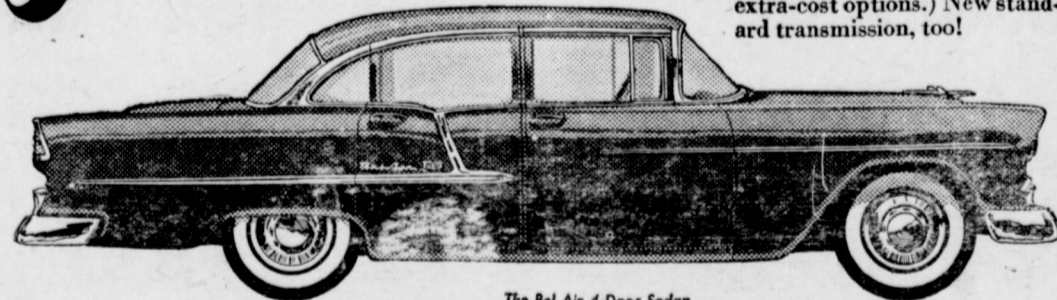


**Three drives, including Overdrive** There's Powerglide teamed with the new V8 or the new "Blue-Flame 136." New Overdrive teamed with the new V8 or the new "Blue-Flame 123." (Powerglide and Overdrive are extra-cost options.) New standard transmission, too!

**Tubeless tires as standard equipment** On all models! Proved tubeless tires give you greater protection against a blowout . . . deflate more slowly when punctured.



. . . and Chevrolet's got that long, low "let's go" look It's a show car from the word go! Longer looking—and lots lower. There's plenty of glamor inside, too—plus more room for hats, hips and shoulders!



The Bel Air 4-Door Sedan

Chevrolet and General Motors have started something—a whole new age of low-cost motoring—by taking a whole new look at the low-cost car. Here are new ideas, young ideas . . . and some of tomorrow's ideas, too! And they're all rolled up in the most glamorous package that ever wore anything like a Chevrolet price tag!

This is the car that began with a great idea—the idea that a low-priced car could be built that would have the style, the performance, the comfort and convenience features, and the fine quality "feel" of high-priced cars

This is the car that only the world's leading car builders—Chevrolet and General Motors—could have built. The Motoramic Chevrolet!

Come in and see how the Motoramic Chevrolet for '55 is far more than a new model. It's more, even, than a completely new car. It's a whole new idea about cars!

Come in and meet the *motoramic* Chevrolet  
 —more than a new car—A NEW CONCEPT OF LOW-COST MOTORING

**C. & H. CHEVROLET CO.**

MULESHOE, TEXAS

to; Chevrolet dealers will this year drive golden colored autos. New Chevrolets were shown here last weekend and are now on view.

Murray Dial, Muleshoe dealer for Mercury and Lincoln, said he has been to Kansas City to see 1955 versions of these cars. Their formal showing will be held here soon. Mr. Dial told of the new "Montclair", a car somewhere between the Mercury and Lincoln in size and price.

D. L. Morrison, head of Morrison Motor, Chrysler and Plymouth dealers, described 1955 models of his cars. He had seen them on preview in Dallas, but they have not been shown here yet. The Chrysler is vastly improved in beauty and value and the Plymouth is just about a new car.

Arnold Morris, of Arnold Morris Auto Co. verified Mr. Morrison's estimate of the new Plymouth. His firm distributes Dodge and Plymouth. Dodge and Plymouth for 1955 resemble very little their predecessors for this year.

All four dealers said some 75

per cent of new tires will come equipped with tubeless tires.

John Thomson, son of Mr. and Mrs. O. C. Thomson, was introduced as the junior Rotarian of the month. He is a senior in Muleshoe high school.

**Juan Garcia Spends Leave In Japan**

Army Pfc. Juan Garcia, son of Matias Garcia, Earth, recently spent a seven-day rest and recuperation leave at Camp Kobe, Japan, from his unit in Korea. Sight-seeing and entertainment facilities at Camp Kobe provided Garcia with a welcome break in the task of maintaining security in Korea, where he is a member of the 24th Infantry Division's 21st Regiment.

Mr. and Mrs. Harvey Bass and daughters attended funeral services for Mrs. Bass' grandmother held in Floydada Tuesday.

**WELFARE FIELD WORKER OMITS NOVEMBER VISIT**

Mrs. Blanche Dodgen, field worker for the State Department of Public Welfare, will not be in her office here on the third Monday of November.

Those wishing to interview her will please come to her office at the courthouse on the third Monday in December.

Office Supplies at the Journal Phone 7220. We deliver.



Who  
 Is  
 This

For the answer see Back Page, Section II

**Anthony's**  
 C. R. ANTHONY CO.

**SENSATIONAL Floor Covering Value**

**9' x 12' RUG**  
 OF SOFT, SMOOTH, VELVETY  
**CUT COTTON PILE**



Not a rough loop twist but a soft smooth cut cotton pile with 2 1/2" fringe all the way around. In a group of the most wanted decor colors. Can be cleaned with sweeper or by washing. Will add beauty to any room, will wear and wear and wear. Truly one of the greatest rug values ever.

**19<sup>95</sup>**

Less Than \$1.70 Per Square Yard

- BEIGE
- GREY
- RED
- GREEN
- COCOA

NON-SKID BACK

Fringe All Around

# FALL Harvest OF VALUES

WEAVER ALUMINUM FOIL 25 FT. ROLL 25c WHITE SWAN WHITE CREAM STYLE LUNCHEON CORN NO. 303 CAN 15c

SWIFT'S **Pure Lard** 3 Lb. Ctn. **59c**

Mrs. C. E. Briscoe Was The Winner Of The Curtiss Lionel Electric Train

POWDERED OR BROWN SUGAR 1 LB. BOX 2 for 25c COMSTOCK PIE-SLICED APPLES NO. 2 CAN 29c Kimbell's Pure Strawberry PRESERVES 20 oz. Glass. Tumbler 49c SUPREME SALAD WAFER CRACKERS 1 LB. BOX 25c

SUN SPUN **OLEO** 1 LB. **17c** KIMBELL'S PURE, 20 OZ. GLASS TUMBLER **Apple Jelly** **29c**

WOLF CHILI NO. 1 CAN 25c WOLF TAMALES NO. 1 1/2 CAN 19c ECONOMY SHELLED PECANS 12 OZ. CELLO PKG. 89c DEL VALLE POTTED MEAT 6 for 25c

**KLEENEX** 300's Large Box Facial Tissue **15c** DEL VALLE VIENNA SAUSAGE 3 for 25c KARO WAFFLE SYRUP QUART DECANTER 39c BIG TOP PEANUT BUTTER 20 OZ. REFRIGERATOR JAR 49c

EVANGELINE CHILI CARTILLAS 12 OZ. JAR 19c DURAND'S WHOLE SWEET POTATOES NO. 2 1/2 CAN 25c AUSTEX BEEF STEW NO. 300 CAN 29c

LIBBY'S PUMPKIN NO. 303 CAN 11c SWANS DOWN CAKE MIXES 29c MARYLAND CLUB COFFEE 2 OZ. JAR (INSTANT) 49c **TIDE** Large Box **19c**

**Nutritious Delicious**

CALIFORNIA MOUNTAIN GROWN PEARS lb. 15c  
 FRESH & CRISP PARSNIPS 1 1/2 LB. CELLO PKG. 19c  
 CALIFORNIA FRESH ROASTING EARS EACH 5c

COLORADO GARDEN FRESH  
**RADISHES** Bunch 5c  
 CALIFORNIA BEEF STEAK  
**TOMATOES** LB. 19c

FRESH DRESSED, HEAVY, (5 TO 6 LB. AVG.)  
**HENS** LB. **49c**

SUN RAY, WHOLE CURED HAMS lb. 49c U. S. D. A. CHOICE BEEF ROUND STEAK lb. 69c

U. S. D. A. CHOICE BEEF  
**CLUB STEAKS** LB. **59c**

U. S. D. A. CHOICE BEEF  
 BONELESS STEW or BARBECUE MEAT lb. **39c**

SWIFT'S PREMIUM (READY TO SERVE) BONELESS  
 HAM 5 lb. can \$5.19

Always a Good Egg  
**PURINA EGGS** 65c

DOZEN Grade A Large

• FROZEN FOODS •  
 1 LB. PKG. CATFISH 49c  
 SNOW CROP PEACHES 10 OZ. PKG. 25c  
 SNOW CROP BABY LIMAS 10 OZ. PKG. 25c

# CASHWAY

FREE DELIVERY WE RESERVE THE RIGHT TO LIMIT QUANTITIES Phone 2440 or 2450



# THE MULESHOE JOURNAL

DEDICATED TO THE PROGRESS AND DEVELOPMENT OF BAILEY COUNTY AND THE GREAT MULESHOE COUNTRY  
VOLUME 34, NUMBER 44 SECTION II — 8 PAGES THURSDAY, NOVEMBER 4, 1954

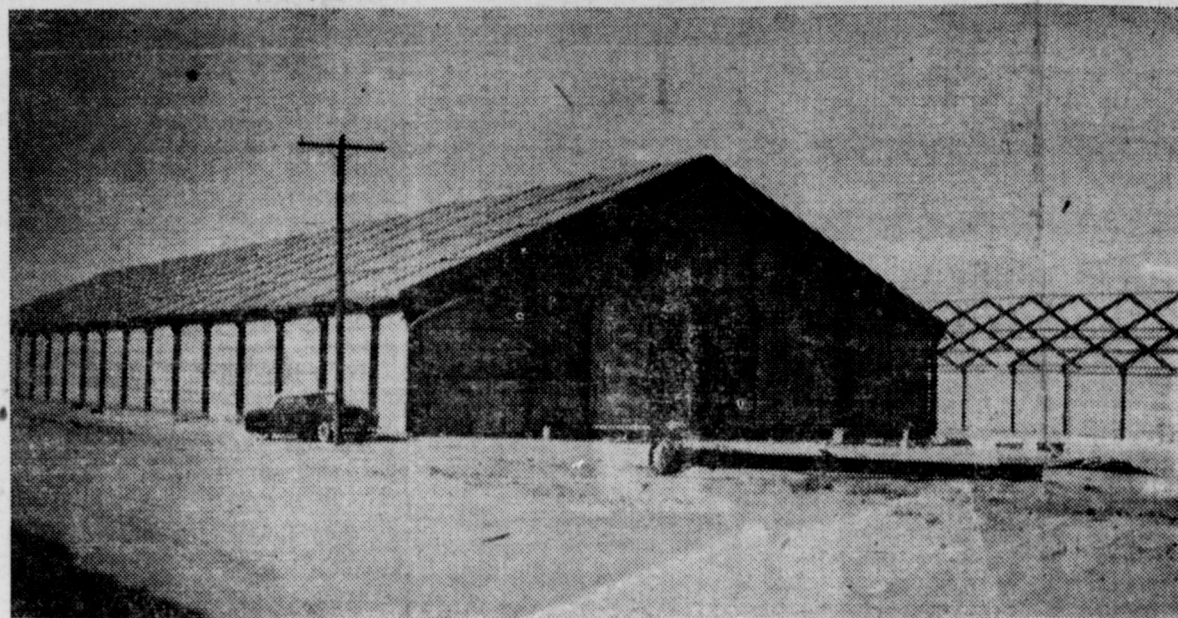
## Bumper Grain Crop Makes Storage Problem Locally

The better than expected yield of grain from irrigated lands in Bailey county and the Muleshoe area in particular have created a severe problem in grain storage for elevator and warehouse men in Muleshoe.

Last year Griffith constructed a 300,000 bushel warehouse unit to take care of increased grain production, as did Cone Elevator Co., which constructed a 260,000 bushel warehouse.

This year King Brothers is in the process of constructing two warehouses of 250,000 bushel capacity each to handle the overflowing mountains of grain being delivered to their elevators daily.

Although the car shortage is not so severe this year as it has been in years past, the delay in getting cars accounts for some of the huge mounds of grain that have been dumped on the ground near every elevator in town. With the construction of additional terminal line warehouses on the Santa Fe railroad, the cars for shipping grain can be re-



NEW WAREHOUSES FOR GRAIN STORAGE are seen in this Journal photo at the King Brothers plant in Muleshoe. The two buildings were originally planned as temporary warehouses, but so much grain is being brought in, the firm plans to convert both buildings to permanent storage facilities. The building in the background is not completed, but when finished, the two buildings will hold 500,000 bushels of grain in approved storage. (Staff Photo)



See Back Page

turned to way points much faster, it was learned, thus relieving the pile ups of grain throughout the area. King has shipped 125 cars so far this year.

Grain men here report that 98 per cent of all grain being hauled into Muleshoe is going into government loan. Such grain must meet the required 13 per cent moisture specification before being eligible for government loan.

With the grain crop about 70 per cent harvested, grain men

feel they are about "over the hump" as far as storage problems are concerned for this fall.

But most grain men here will tell you that the sale of virgin farm land, most of which will go into grain, promises even higher yields in future years, thus creating more storage problems.

November 13 is 4-H Achievement Day in Texas. Join with the 4-H members in your community as they report on their 1954 achievements.

### THIS & THAT

About Homemakers & Homemaking In Bailey County  
By Mollie Jordan

Any kitchen needs dozens of tools and utensils to serve a variety of purposes from paring vegetables to dish washing. Though the job that any one of these tools does may be small, the sum total of all of them is a large share of the kitchen work.

Even though your kitchen may be amply stocked with utensils it might pay you to consider carefully what tools a homemaker actually needs. After all, you will need to make replacements in your own tools. Or any new homemaker appreciates a wisely selected and useful kitchen utensil.

In a column it is impractical to go into the details on all the tools for food preparation and dishwashing that the modern woman uses daily. Instead I'll give you some general pointers on the buying of kitchen utensils. If you would like more detailed information or a list of the recommended tools needed in every kitchen come by the office and pick up a copy of the bulletin, "Tools for Food Preparation and Dishwashing."

In general, double-use tools are the best investment. Special-purpose gadgets, unless frequently used, can clutter up the kitchen. There are a few items in such constant use that it saves both time and steps to have duplicates in different parts of the kitchen. This applies especially to paring knives and spoons used for stirring and tasting.

For tools of metal that will get hard use, choose durable metals such as stainless steel, heavily trimmed steel or aluminum, unless it has a special stain-resisting finish, tends to leave marks on some other materials. Look for this finish when buying aluminum mixing bowls, stirring tools, colanders, dishpans or sink strainers.

Glass used in measures and mixing bowls should be heat-resistant. Transparent glass is a good choice for refrigerator dishes and measures.

Rubber or synthetic rubber in kitchen tools should be resistant to grease and not easily damaged by heat. Sink mats and scrapers should be made of ra-

## County Agent Urges Completion Agriculture Census Questionnaires

Progress of the 1954 Census of Agriculture is being delayed because farmers have not completed the forms which were sent to them by mail. This word comes from the director of the census to J. K. Adams, County Agricultural Agent for Bailey County.

Failure to complete the census questionnaire slows down the enumerators and greatly reduces the number of farms which can be visited each day, explained

Mr. Adams. This makes the work of the enumerators more difficult and materially increases the cost of the undertaking.

The information which farmers are being asked to supply is not only valuable to them in planning future operations but to businessmen who supply the farm market's needs; agricultural leaders to whom farmers look for guidance and the agencies and organizations which service agriculture. Too, says Adams, the census information on the nation's agricultural resources is of vital importance to the 163 million citizens of the country. This census officially started in Bailey County November 3.

The nation's taxpayers are footing the bill for the census taking job and the county Agent points out that anything which a farmer can do to speed up the work will reduce the cost. All farmers who have not completed the census questionnaire should give it immediate attention so it will be ready for the census taker when he visits the farm.

Painted or varnished finishes on handles of tools often do not wear well. Frequent washing will cause a poor finish to peel off and when it is gone the wood roughens. Some finishes soften in water and stain everything they touch. The new resinbonded or plastic-treated wood is a durable material for handles.

When selecting a tool, hold it as you would when using it and, without gripping it too tightly, notice whether it feels secure. Be sure the handle is comfortable to grasp and won't slip or turn too easily. For tools to be used at the range handles of material that will stay cool such as wood or plastic rather than metal is advisable. Since the handles will scorch or burn they must be kept away from the flame or heating unit.

Some kitchen tools have labels with information about the materials and workmanship that will help in making a selection. Be sure to look for such labels and to read all the information they contain.

Most tools for handling and washing food are used and washed repeatedly. So look for features that contribute to ease of handling and cleaning and resistance to damage from water.

Look, too, for sturdy construction—parts well joined and finished, moving parts that operate smoothly.

Mr. Adams. This makes the work of the enumerators more difficult and materially increases the cost of the undertaking.

The information which farmers are being asked to supply is not only valuable to them in planning future operations but to businessmen who supply the farm market's needs; agricultural leaders to whom farmers look for guidance and the agencies and organizations which service agriculture. Too, says Adams, the census information on the nation's agricultural resources is of vital importance to the 163 million citizens of the country. This census officially started in Bailey County November 3.

The nation's taxpayers are footing the bill for the census taking job and the county Agent points out that anything which a farmer can do to speed up the work will reduce the cost. All farmers who have not completed the census questionnaire should give it immediate attention so it will be ready for the census taker when he visits the farm.

## FFA Boys Exhibit In Fair Livestock Show

Seven Muleshoe FFA boys showed livestock in the State Fair at Dallas recently.

In the fat calf show, Ronald Lewis' heavy class Hereford placed prime, and Hugh Otwell's calf placed choice. John Young's light class calf placed good, as did the light class calf owned by John Lee Howard.

Delbert Black's two Southdown lambs just missed the ribbons division. John Stevens' two cross-breed lambs could not make the weight to class.

Richard Greene showed two pigs in the swine show, placing eighth with one, and nineteenth with the other.

Deferred grazing, planting supplemental grazing crops and provisions for adequate reserves of hay, silage or other roughages should be included in the program for balancing livestock.

The building used for housing caged layers should be cleaned and the droppings removed only once or twice each year and the winter months are described as the ideal time for doing the job.

# FARM SALE

AT MY PLACE 4 MILES NORTH OF MULESHOE ON FRIONA ROAD. I HAVE SOLD MY FARM AND WILL SELL ALL MY EQUIPMENT

## Wednesday, November 10

SALE TO BEGIN AT 1:30 P. M.

### FARM IMPLEMENTS

- 1 — 1954 DC Case Tractor with Lister and planter.
- 1 — John Deere Tractor, Model A, Good Shape.
- 1 — Massey-Harris 12 ft. Wheat Drill with alfalfa and seed attachments.
- 1 — Ferguson Hay Rake, a Good One.
- 1 — Ford Planter.
- 1 — Ford Mold Board Breaking Plow.
- 1 — 2-disc Case Breaking Plow.
- 1 — 2-Bottom John Deere Breaking Plow with Fertilizer.
- 1 — Ford Front End Loader.
- 1 — 4-row Stalk Cutter.
- 1 — 4-row Knifing Attachment.
- 1 — Case Corn Picker.
- 2 — 20 ft. Trailers with Grain Bed.
- 1 — Tricycle Wheel for Ford Tractor.
- 1 — Cotton Harvester.
- 1 — John Deere Mower.
- 6 — M-M Chisel Beams.
- 1 — 400 gal. Propane Tank.
- 1 — Ford Tandem Disc.

- 1 — Ford 2-way Breaking Plow.
- 1 — Chattin Ditcher.
- 3 — Sets Rotary Hoes.
- 1 — WW Squeeze Chute For Cattle
- 15 — Rolls New Barbed Wire.
- 1 — 4-Section Harrow.
- 1 — Lone Star Cultivator, 4-row, A good one.
- 1 — Front End Breaking Plow.
- 23 — 3-inch Irrigation Tubes.
- 50 — 2-inch Irrigation Tubes.
- Lot of Good Posts.
- 1 — 5-Deck Chicken Battery Brooder, Elec.
- 1 — 9 ft. Kitchen Cabinet.
- 1 — 8-row Spraying Machine.
- 1 — All Steel Feed Trough.
- 1 — Tin Horn.
- 1 — Tractor Whirlwind Seeder.
- 80 — Young Hens.

— Lot of 2 in. & 1 1/4 in. Pipe.  
— Wrenches, Sweeps, Shovels and other things too numerous to mention.

## JOE BENNETT, Owner

Col. Kenneth Bozeman  
Auctioneer

Tom and Grace Morgan  
Clerks

# STORAGE

— FOR YOUR —

## Grain & Seeds

BRING US YOUR  
SEED CLEANING

- SUDAN
- MILLET
- CANE
- OTHER SEEDS

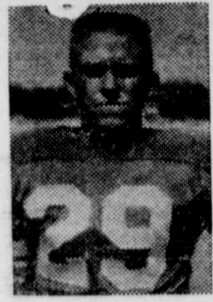
WE WANT TO BUY YOUR  
GRAIN & SEEDS

## Ray Griffiths & Sons

PHONE 6030

MULESHOE





EUGENE SHAW



JACKIE TIDWELL



R. L. GABBERT



G. R. HOWELL



THURSTON GARRISON



DOYLE RUSH



LEANDER SIMS



DOYLE HENRY



CHARLES WAGGONER



JOE ROARK



DON MOORE



GENE PAUL JARMON



WAYLAND CHITWOOD



BOBBY NELMS



DOYLE GABBERT



LEON HARVEY



COACH LEROY SCOTT



COACH BILL TAYLOR

WIN, LOSE  
OR DRAW—  
WE'RE  
BEHIND YOU  
MULES!



KEITH BUHRMAN



GORDON WILSON



BO BRYANT



DUANE MORRISON



JIMMY GROSS



JERRY ROGERS

# "LET'S GO" MULES BEAT TULIA



FRIDAY NIGHT UNDER THE LIGHTS AT BENNY DOUGLASS STADIUM

KICK OFF 8:00 P. M.

This Page Sponsored In The Interest of Good Sportmanship By The Following Merchants:

C. R. Anthony Co.  
Cobb's  
Holts  
Damron Rexall Drug  
Singleton Funeral Home  
Gilbreath Feed & Seed  
Bobo Insurance Agency  
C. & H. Chevrolet Co.  
Ladd Pontiac  
Bovell Motor Supply  
City Cleaners  
Lambert Cleaners  
Alsup Cleaners  
Morrison Motor Co.  
Pool Insurance Agency  
Gerald's Cafe

Morris Douglass Imp. Co.  
Western Drug Co.  
Alsup Insurance Agency  
The Texas Co., Sam Fox  
Wellborn Beauty Shop  
Hicks Tractor Co.  
Arnold Morris Auto Co.  
Muleshoe Elevator Co., Inc.  
Fry & Cox Bros.  
Muleshoe Jewelry  
S. E. Cone Grain Co.  
Ray Griffiths & Sons  
Crossroads Cafe  
Muleshoe Service Station  
The Muleshoe Journal  
Blackburn Food Store

Willson-Sanders Lbr. Co.  
The Milk Jug  
E. R. Hart Co.  
Muleshoe Liquefied Gas  
Cashway Grocery & Market  
Wagnon Grocery & Market  
Piggly-Wiggly  
Johnson-Nix  
Muleshoe Motor Co.  
Johnson-Pool  
Allen Guinn Body Shop  
Cayle Reed Buick Co.  
Higginbotham-Bartlett Lbr.  
Harvey Bass Appliance  
Tasty Cream  
Howard & Green

"It's Not The Amount of Mules in The Fight — It's The Amount of Fight In The Mules"



DUANE FARR



CHARLES PARKER



JOHN YOUNG



EDDIE WILT



BUDDY POOL



BOBBY BLACK



RAY CLINE



STANLEY FOX

**SON AND FRIEND VISITED HERE**  
McMurry, Abilene, visited here the past weekend with Rev. and David Stephens and his friend Mrs. Clarence Stephens, and David Arnold, both students at friends.

ANNOUNCING OPENING OF—  
**COMMERCIAL SHEETMETAL WORKS**  
Clovis Highway — Former Texas Machinery Location  
**GENERAL SHEETMETAL WORK INDUSTRIAL & RESIDENTIAL CONTRACTORS**  
Phone 4210



"MAGNIFICENT OBSESSION" (L-C)

Jane Wyman and Rock Hudson, starring in "Magnificent Obsession", showing at the Cox Drive-In Theatre, Sunday, Monday, Tuesday and Wednesday, Nov. 7, 8, 9 and 10. The story by Lloyd C. Douglas, who is author of "The Robe", is a powerful dramatic performance, in which love triumphs over hate.

**HERE FROM TECH**  
Spending the weekend at Circleback with his parents, Mr. and Mrs. Jess Richardson, was Gene Richardson, a student at Texas Tech.

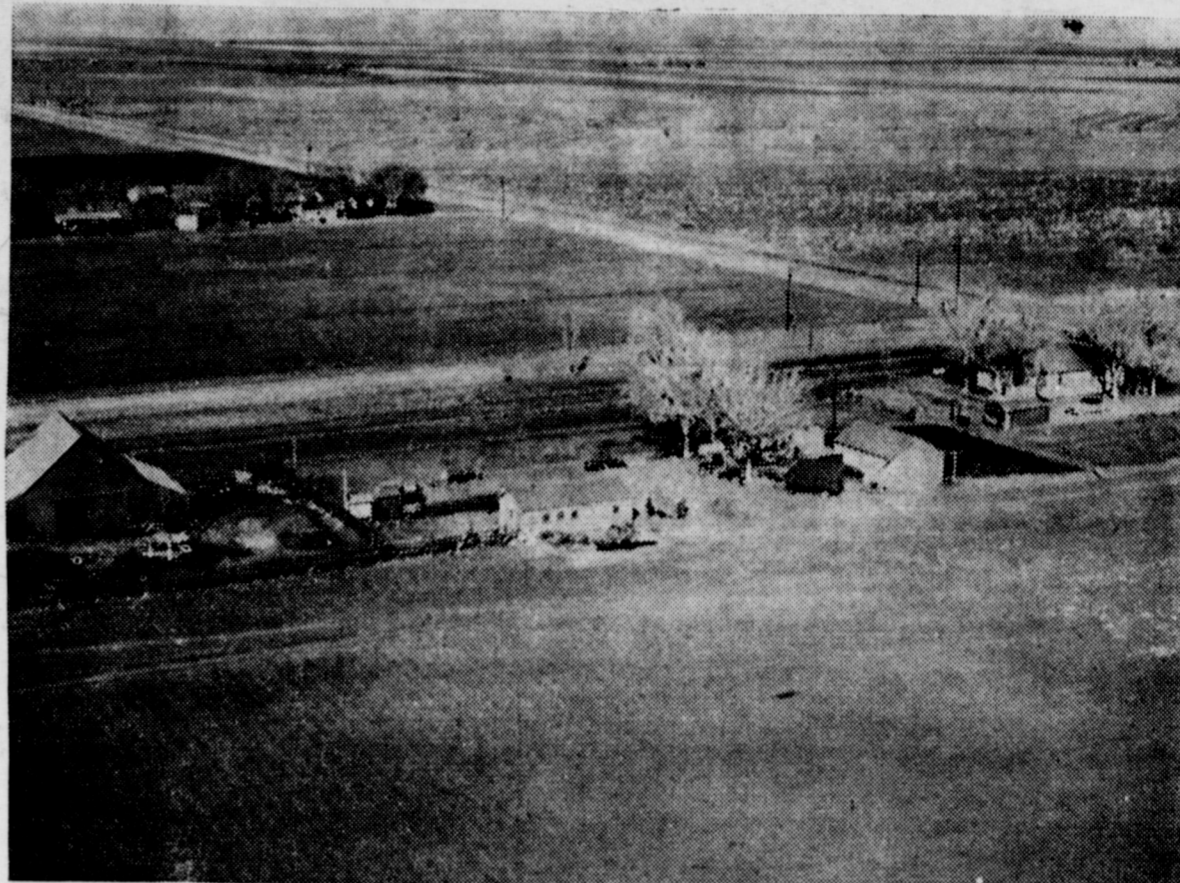
**SON WAS HERE**  
Visiting here the past weekend with his parents, Mr. and Mrs. K. K. Krebs, was Dale Krebs, Dale is a student of Texas Tech, in Lubbock.

**VISIT IN CALIFORNIA**  
Mrs. Lilla Melindy, Mrs. Holly Bucy and Mrs. Hattie Jones left last week for points in California to visit relatives.

**ATTEND DODGE SHOWING**  
Mr. and Mrs. Arnold Morris and Mr. and Mrs. Buford Butts of the Arnold Morris Auto Co. Dodge-Plymouth dealers, attended the showing of the new 1955 Dodge held in Ft. Worth last Friday. They also plan attending the Plymouth showing in Dallas Monday.

## This Weeks Mystery Farm

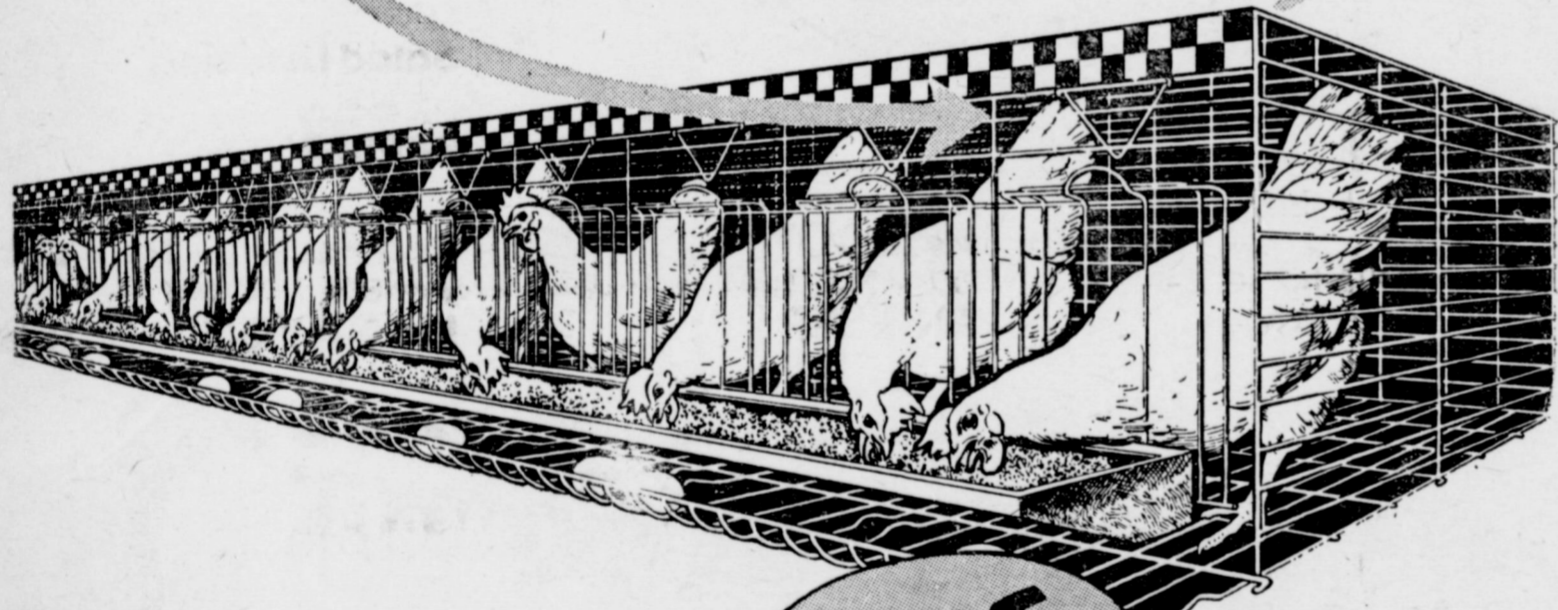
**CAN YOU IDENTIFY THE MYSTERY FARM?** If you are the first correctly to identify the farmstead pictured below, you will be awarded two tickets to Cox Drive-In Theatre in Muleshoe. Watch The Journal each week for a picture of an attractive farm home of the Muleshoe country.



Just phone The Journal and inform us where you live and whose farm you think this is. There will be two tickets each for the first out of city dweller and the first city resident to telephone or call at this office. Phone 5400 and 7220.

**NEW! DIFFERENT! SCIENTIFIC!**

**FROM THE MOST MODERN "EGG FACTORIES" IN THE WORLD**



**PURINA CAGE EGGS**



**FOR TOP QUALITY EVERY TIME**

You get the same fine flavor and goodness in every carton of Purina Cage Eggs. The reason: They're scientifically produced in modern, caged-hen "egg factories." Each hen, in its own off-the-ground cage is carefully fed and managed the Purina Way. The eggs roll

quickly after being laid into little wire baskets that keep them clean, cool and fresh until collected. You wouldn't find a finer, tastier egg anywhere. So serve them often!



Guaranteed Fresh Eggs from Muleshoe Farms

Look for **PURINA CAGE EGGS** at these Leading Grocers:  
Cashway Grocery  
Blackburn Grocery  
B & G GRO. & MKT.  
Served at Cross Roads Cafe

**JONES FARM STORE**

PHONE 5000

MULESHOE

**UNDERGOES SURGERY**  
Mrs. Glen Splawn underwent major surgery at the Plains Hospital in Lubbock Monday.

The Journal Want Ads always gets results.

**ROUND THE CLOCK INSURANCE SERVICE**

**IS YOURS AT-POOL INSURANCE AGENCY**

W. M. Pool, Jr. Lee Pool  
Phone 7010 — Muleshoe  
Representing THE TRAVELERS, Hartford

## Quarterback Club Asks Support of Program To Improve Athletics

Part of the unallocated funds now available to school use should be diverted to increase the athletic program in Muleshoe schools, according to Karl Lovelady, speaking at a meeting here last Thursday night.

Lovelady said the athletic program of our school has been bypassed in the growth of other school facilities. Pointing out that our enrollment is near 1500 now, our athletic program is comparable to schools with 300 or 400 students enrolled.

More coaches, including a full time athletic coach, are needed, the Quarterback Club speaker maintains, stating that schools of comparable size have from five to seven coaches, while Muleshoe has only two, both of whom are part time teachers in addition to having coaching duty.

Athletics has become an integral part of our overall education program, the club believes, with a more complete program of athletics in all grades of school needed.

The training found in athletic program develops many faculties necessary for success in outside activity, the speaker said, pointing out the number of successful

athletes in their school years.

The public should make their desires known to the officials, the club avows, so that proper action can be taken to bring about the necessary changes in the program.

Lovelady stated that only about two per cent of total available funds are now being spent on the athletic program by the school, with the football gate receipts sustaining expenses of the team.

The ideals and practices found in a well rounded athletic program help fight juvenile delinquency, the club members believe, and add that this is another good reason for improving present athletics in our school.

A school is judged by its football team and its band, Superintendent Jerry Kirk stated this week, adding that the public sees these groups more often than they do the class rooms and work done inside the school.

## County Short 1,000 Hands, TEC Reports

Bailey county was still short 1,000 hands for the cotton harvest last week, according to the Texas Employment Commission report.

TEC states that housing is available for small crews, but difficult to find for larger crews.

Crop conditions are good in the county, TEC reports, with the crop about 70 per cent open, and about 13 per cent harvested. Gins are said to be averaging 10 hours a day this week, and scale remaining at 1.55 for pulling.

**WILLSON - SANDERS LUMBER**

**Comfort Quiz**  
give yourself this Hot water 3rd degree

YES NO Since your present heater was installed:  
 have you added, or do you plan to add, extra living area to your home — bathroom, bedroom, etc.  
 have you added, or do you expect to add, laundry or kitchen appliances to your home?  
 has your family increased in number or grown up considerably?

When you buy a water heater insist on a **WORRY-FREE DAY & NIGHT jetglas WATER HEATER**  
JETGLAS... first used to double hot-engine life, now makes water heaters last twice as long!  
CAN'T RUST-COSTS LESS BECAUSE IT LASTS SO LONG!

Call us today for a FREE HOT WATER SURVEY  
**WILLSON-SANDERS LBR. MULESHOE**  
PHONE 7130

**DODGE**  
has done it...

better wait!  
Flair-Fashioned

coming Nov. 17  
**ARNOLD MORRIS AUTO CO.**

DEL MONTE and



Annual Fall

# Roundup



**THE LID'S**  
GREEN STAMPS WITH EVERY PURCHASE

REGULAR CAN  
**SPIC & SPAN** ..... 25c  
BOYER'S 6 OZ. BOTTLE  
**HAIR ARRANGER** ..... 49c

300 COUNT BOX  
**KLEENEX** ..... 17c  
BAYER'S 15c TIN  
**ASPIRIN** ..... 10c  
GLEEM, 50c SIZE  
**TOOTH PASTE** ..... 30c

**FROZEN FOODS**

YOUNGBLOOD, 1 LB. BOX  
**Thighs** ..... 69c

SEALD SWEET, 6 OZ. CAN  
**Orange Juice** ..... 15c  
LIBBY'S CHOPPED, 10 OZ. PKG.  
**BROCCOLI** ..... 15c

FRESH PACT, 10 OZ. PKG.  
**Strawberries** ..... 25c

**DOUBLE GREEN STAMPS EVERY TUES.**  
WITH \$2.50 PURCHASE OR MORE

**FRESH FRUITS AND VEGETABLES**

- DEL MONTE, NO. 2 1/2 CAN  
**PEACHES** ..... 25c  
DEL MONTE, 46 OZ. CAN  
**TOMATO JUICE** ..... 27c  
DEL MONTE, LARGE BOTTLE  
**CATSUP** ..... 17c  
DEL MONTE, QUART BOTTLE  
**PRUNE JUICE** ..... 37c

## Shortening Swift Jewel 3 Lb. Ctn. 69c

- |                                                            |                                                         |                                                          |
|------------------------------------------------------------|---------------------------------------------------------|----------------------------------------------------------|
| DEL MONTE CUT, NO. 303 CAN<br><b>GREEN BEANS</b> ..... 23c | DEL MONTE, NO. 303 CAN<br><b>SPINACH</b> ..... 15c      | DARICRAFT, TALL CAN<br><b>MILK</b> ..... 2 for 25c       |
| DEL MONTE, NO. 303 CAN<br><b>KRAUT</b> ..... 15c           | DEL MONTE, 8 OZ. CAN<br><b>Tomato Sauce</b> ..... 9c    | SALAD BOWL, PINT JAR<br><b>Salad Dressing</b> ..... 27c  |
| DEL MONTE, NO. 303 CAN<br><b>COCKTAIL</b> ..... 22c        | DEL MONTE, NO. 303 CAN<br><b>APRICOTS</b> ..... 25c     | MA BROWN PEACH, 21 OZ. JAR<br><b>PRESERVES</b> ..... 39c |
| DEL MONTE, NO. 303 CAN<br><b>PEAS</b> ..... 19c            | DEL MONTE, SOUR, 24 OZ. JAR<br><b>PICKLES</b> ..... 35c | ALERT<br><b>Dog Food</b> 3 for 25c                       |
| DEL MONTE, NO. 303 CAN<br><b>New Potatoes</b> ..... 14c    |                                                         | SKINNER'S, 7 OZ. BOX<br><b>MACARONI</b> ..... 13c        |

**U.S. GOVT. GRADED QUALITY MEATS**

MARYLAND SELECT, PINT  
**OYSTERS** ..... 89c

FRESH SLICED  
**PORK LIVER** ..... lb. 29c

GULF STREAM, 10 OZ. BOX  
**SHRIMP BREADED** ..... 39c

WILSON SAVORY  
**SLICED BACON** ..... lb. 49c

PINKNEY'S, 2 LB. SACK  
**SAUSAGE** ..... 79c

**PICNICS** Decker's 1/2 or Whole ..... 35c

U. S. CHOICE  
**CHUCK ROAST** ..... lb. 33c

FRESH GROUND  
**Hamburger Meat** ..... lb. 29c

U. S. CHOICE  
**ROUND STEAK** ..... lb. 59c

SHOULDER CUT  
**PORK ROAST** ..... lb. 49c

PETER PAN, 12 OZ. JAR  
**PEANUT BUTTER** ..... 39c

EVERLITE, 10 LB. BAG  
**FLOUR** ..... 79c

## Oranges 5 LB. BAG 39c

- |                                                 |                                                               |
|-------------------------------------------------|---------------------------------------------------------------|
| CALIFORNIA<br><b>TOKAY GRAPES</b> ..... lb. 10c | FIRM HEADS<br><b>LETTUCE</b> ..... lb. 9c                     |
| SNOW WHITE<br><b>CAULIFLOWER</b> ..... lb. 10c  | CALIFORNIA, GREEN LARGE STALK<br><b>CELERY</b> ..... each 15c |

## Grapefruit Texas White LB 7 1/2c

- |                                                               |                                                               |
|---------------------------------------------------------------|---------------------------------------------------------------|
| MARSHALL GOLDEN, NO. 300 CAN<br><b>HOMINY</b> ..... 3 for 27c | LUCKY STRIKE CHUNK, NO. 1/2 CAN<br><b>TUNA FISH</b> ..... 29c |
|---------------------------------------------------------------|---------------------------------------------------------------|

## Chili Wolf Brand No. 2 Can 43c



**GOVERNOR PROCLAIMS LEGION DAYS**



American Legion Days from October 20 through Veterans Day November 11 was officially proclaimed by Governor Allan Shivers who is a life member of Post Arthur Post No. 7. Flanking the governor, center, is State Commander E. L. 'Stonewall' Jackson of Cisco, left and Culp Krueger, El Campo, state chairman of post activities and membership.

**Cpl. James Dale Visits In Japan**

Cpl. James L. Dale, 22, whose wife, Sharon, lives in Erick, Okla., recently spent seven days in Japan on a rest and recuperation leave from the 24th Anti-Aircraft Artillery Battalion's Battery C in Korea.

Available to Dale at Camp Hakata were recreational and sight-seeing facilities giving him a fascinating glimpse of Oriental culture.

Dale, son of Mr. and Mrs. Gilbert Dale of Star Route 2, Muleshoe, entered the Army in March 1953 and arrived overseas in September of the same year.

**Lane Completes Course In Georgia**

Pvt. William T. Lane of Muleshoe, will graduate this week from the Pole Line Construction Course, one of the many courses offered at The Southeastern Signal School, Camp Gordon, Ga. He is the son of Mr. and Mrs. Eddie Lane, Muleshoe and husband of Mrs. Jo Ann Lane of Muleshoe.

The Pole Line Construction Course, which is 8 weeks in length, trains selected enlisted men to construct, maintain and rehabilitate open wire, cable and field wire communications systems.

During his training, Pvt. Lane received technical education worth thousands of dollars. He will now be reassigned to an active unit of the United States Army.

The Southeastern Signal School is a component of the Signal Corps Training Center, a mammoth communications college, which supplies trained signal technicians to Army units all over the world.

The Journal Want Ads always gets results.

**FASTEST KNOWN PAIN RELIEF FOR ARTHRITIC, RHEUMATIC VICTIMS—NOW AVAILABLE**

Seven "Film-Coated" Ingredients Offer Positive Relief

The crippling, torturing, twisting pain of Arthritis and Rheumatism may soon be forgotten, thanks to an exciting new laboratory discovery named Ar-Pan-Ex.

Ar-Pan-Ex was perfected by a noted scientist of a world-famed university, working with all known facts about these crippling ailments. The result is a safe, easy to take tablet that promotes the fastest relief known from that stubborn agony.

Ar-Pan-Ex is compounded of seven active ingredients including a special new medicine to help provide longer lasting relief. Ar-Pan-Ex is exclusively perfected to curb chronic, deep-seated pains.

Why AR-PAN-EX Helps

Ar-Pan-Ex does not dissolve uselessly in the stomach—avoids stomach distress. Ar-Pan-Ex is scientifically "Film-Coated" so that ALL

**Friona Soldier At Camp In Japan**

Army Pfc. Thomas H. Sherrill, 23, whose wife, Merle, lives in Canyon, Texas, recently spent seven days in Japan on a rest and recuperation leave from the 68th Anti-Aircraft Artillery Gun Battalion in Korea.

Available to Sherrill at Camp Hakata were recreational and sight-seeing facilities giving him a fascinating glimpse of Oriental culture.

Private First Class Sherrill, son of Mr. and Mrs. Ural Sherrill, Friona, is a cook with the battalion. In the Far East since last February, he was previously stationed at Fort Hood, Texas. Sherrill is a 1953 graduate of the West Texas State College.

**Navy Recruiter To Be Here Monday**

Daryl G. Ford, Bollerman First Class, U. S. Navy Recruiter from Clovis, N. M., will be in Muleshoe on Monday, November 8, from 9:30 to 1:00 to interview any prospective applicants either male or female for enlistment in the Regular Navy. Ford may be found at the Post Office during the above mentioned time.

At the present time enlistments may be accomplished within a week or two weeks time.

**HERE THIS WEEK**

Mr. and Mrs. Cecil Moore and children, of El Centro, Calif., spent part of last week here with her parents and brother, Mr. and Mrs. Homer Ary and Jackie.

**BAND TO BULA**

Muleshoe High school band will take part in Homecoming Day activities at Bula school Saturday, November 6. A football game between Bula and Pettit teams will be a feature of the celebration.

**C. L. Covington Now On USS Wasp With Fleet In Far East**

C. L. Covington, seaman, USN, son of Mr. and Mrs. C. E. Covington of Muleshoe, and husband of the former Miss Nancy M. Dickey, of Plainview, is serving aboard the attack aircraft carrier, USS Wasp, which has just arrived in Far Eastern waters for an eight month cruise.

While operating in the Western Pacific, the Wasp will be a unit of the U. S. Seventh Fleet undergoing training operations in the South China Sea.

The cruise is the second for the former Atlantic Fleet ship since the end of Korean hostilities.

**PARMER COUNTY Farm Bureau News**

By RAYMOND EULER

CROP . . . We hope that as you take your bountiful harvest of maize to the elevator you will tell them to put a few thousand pounds of it in the Christian Rural Overseas Program and ship 20 times that amount to hungry people.

If there is a more desirable agricultural area than this one, taking everything into consideration, we wonder where it is. We are reasonably sure there is no land anywhere that will produce with as little attention as this. Even the careless farmer makes a pretty good crop quite often. The ones who choose to give better care and attention to their operations can be reasonably sure they will receive comparable dividends. It's a dependable country. It seems strange that yields can now exceed by a hundred bushels per acre, what, before irrigation would have been considered an exceptionally good crop.

Knowing the value of our irrigation opportunities, we believe there will be added evidence of conservation measures on every farm in the immediate future. There are several definite projects underway already. Resilient farmers can influence their less permanent fellow farmer. If they wish, in the same direction. One pretty good way to insure cooperation in this matter is to include such an agreement in lease contracts, as some are doing.

County Farm Bureau directors will meet in the Bovina Legion Hall Monday night at seven thirty. You are welcome, too. A word of gratitude is due Legionnaires, incidentally, for the facilities they have available for meetings like these.

ed yesterday should be alleviated shortly. If not, let me know." (Don Tarrell.)

Consider This: The wicked flee when no man pursueth; but the righteous are bold as a lion. Proverbs 28:1.

**Old Uniforms Of Band Are Wanted**

Local people are asked to look in the back of their clothes closets and see if they have an old uniform of Muleshoe High school band. And if they find one, they're asked to turn them in.

They will be used for the newly organized Drum and Bugle Corps at the colored school.

Norvil Howell, band director, says the musical organization will perform at the Homecoming Day football game here Nov. 5.

He said Mrs. Christene Raven and Mrs. Georgia Traylor, colored teachers have taken the lead in organizing the group.

**HERE FROM TECH**

Spending the past weekend here was Roald Johnson, a student at Texas Tech, Lubbock. He visited his parents, Mr. and Mrs. Fred Johnson, and friends.

**RETURN FROM TRIP**

Mrs. Lois Schoenberger and Mrs. Fred Johnson returned Saturday from Denver and other points of interest in Colorado, where they spent the past two weeks.

**JayCeers Replenish Lubbock Blood Bank**

Members of Muleshoe JayCeers volunteered to replenish blood used at Lubbock Memorial Hospital in treatment of L. M. Dupler, who passed away Oct. 11 there. Mr. Dupler was the father-in-law of Al Griffin, a JayCeers member.

Giving blood this week were Pesky Winn, James Crow, Slike Watkins, Bill Wilson, Frank Benites, Wayland Harris and Frank Cox. Others were to donate blood later in the week.

Office Supplies at the Journal Phone 7220. We deliver.

**BUTANE - PROPANE SALES AND SERVICE**

LP AND NATURAL GAS APPLIANCES



- Gasoline — Oil — Tires — Batteries
- Let Us Convert Your Tractor and Motors to Butane
- Plant At Needmore For South Bailey County



**Muleshoe Liquefied Gas Co.**

MULESHOE

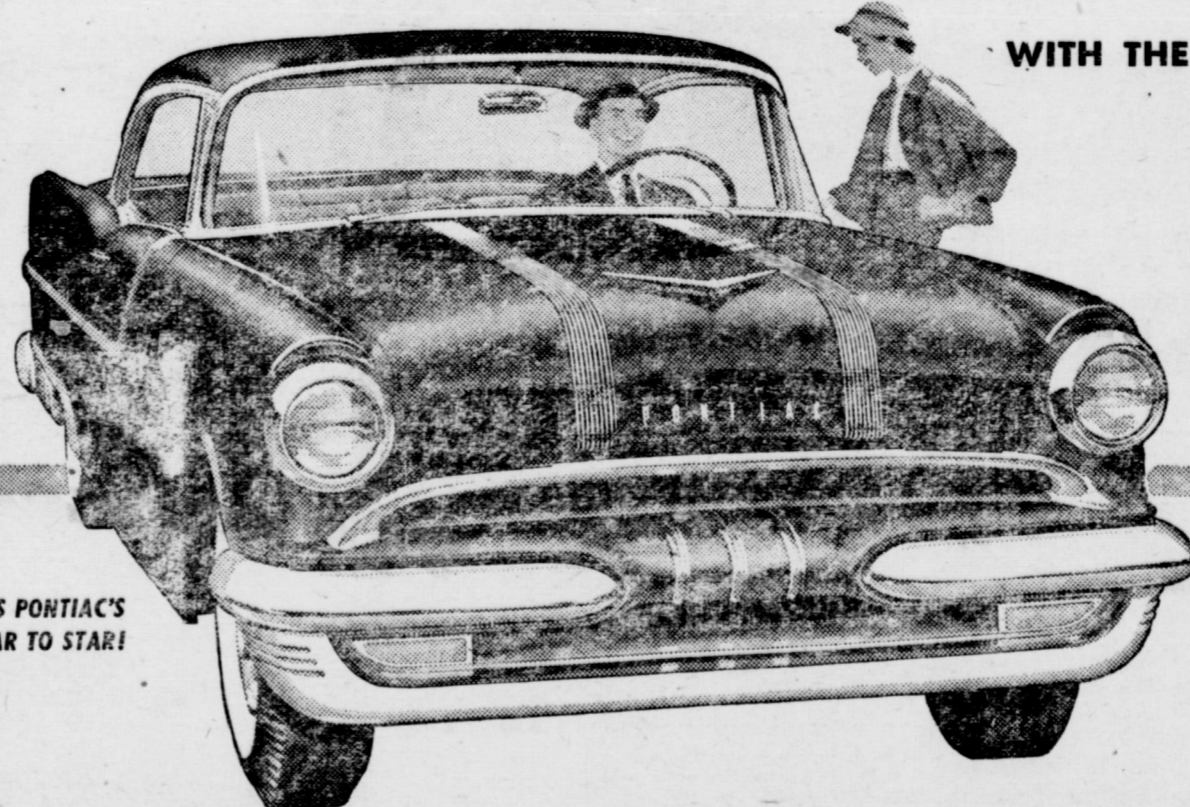
CLOVIS HIGHWAY

PHONE 3130

TEXAS

*It's Here!*  
*the All-New '55 Pontiac*

WITH THE 180-HP STRATO-STREAK V-8!



IT'S PONTIAC'S YEAR TO STAR!

**ALL-NEW PANORAMIC BODY**

There's vastly greater vision from its panoramic windshield. Interiors, color-keyed to the Vogue Two-Tone body hues, present the latest glamour fabrics, super-smart appointments, wonderful new conveniences! Here is a masterpiece of styling with a clear touch of tomorrow. A graceful sweep of glorious new contours—that's the Pontiac for '55!

**ALL-NEW SHOCK-PROOF CHASSIS**

For '55, Pontiac gives you the newest and finest in riding comfort, driving ease, all-around safety. Look at these future-engineered chassis features: Heavier "X" framed Bigger brakes! Recirculating ball steering! Tubeless tires! Wider-spaced parallel rear springs! Vertical king pins! And that's only part of the under-the-car advances!

**ALL-NEW STRATO-STREAK V-8**

There's action-plus packed into this mighty 180-horsepower Strato-Streak V-8. From quick-response carburetor to the fast warm-up intake manifold, it's an all-new engine—thoroughly proved for outstanding economy and dependability by well over three million test miles!



DOLLAR FOR DOLLAR YOU CAN'T BEAT A PONTIAC

**LADD PONTIAC**

PHONE 3080

HIGHWAY 70 & 84 — MULESHOE

**We Buy COTTON**

And Write Government And Texas Cotton Growers Loans

**GRACE BENTON**

PHONE 6460

MULESHOE

## Party Highlighted By Scavenger Hunt

Spooks, pirates, and witches were among the guests who attended a Halloween party at the home of Mr. and Mrs. Albert Davis, Friday evening, October 29. Co-hostesses with Mrs. Davis were Lucile Davis and Pat Cooper.

The Progress Methodist Youth Fellowship sponsored the all-family social.

The house was decorated in the Halloween motif, with orange lights and eerie silhouettes of bats, cats and witches.

Games played included: Making a Mill, The Old Witch and Murder. The spooky atmosphere was highlighted by ghost stories, fortune telling,

apple-bobbing, and a scavenger hunt.

Refreshments of popcorn, orange cake, and hot chocolate were served.

M. Y. F. members present were: Kim and Linda Jones, Sue and Donna Atkinson, Hendrik Bruns, Pat, Ralph, Linda, and Sandra Cooper, Elmer and Lucille Davis.

Others attending were: Mr. and Mrs. Troy McCain and children, Deanne, Janice and Clinton; Mr. and Mrs. Troy Atkinson, Mr. and Mrs. Byron Gwyn, Rev. and Mrs. Carrol Jones, Mrs. Arthur Cooper and Kirk Jones.

**WEEKEND GUESTS**

Weekend guests in the Noel Woodley home was their daughter Ann, and her friend Yvonne Harten, of Plainview. Both girls are students at W. T. S. C., Canyon.

## Sunshine Sue,

star of WRVA's "Old Dominion Barn Dance" says:

"You know, friends, I just couldn't keep house without Karo"



my family loves the hearty maple-y flavor Karo adds to every bite



Pour Karo Waffle Syrup on biscuits, pancakes... everything!

★ 1 1/2-POUND AND 3-POUND BOTTLES... 5- AND 10-POUND CANS ★

## Quiet Day Is Observed By Progress WSCS

On Thursday, October 28, the W. T. S. C. of the Progress Methodist Church held a special "Quiet Day" program to observe the "Week of Prayer and Self Denial". The society met in the sanctuary of the Church, which was decorated with beautiful arrangements of chrysanthemums in shades of bronze, yellow, and deep red. Mrs. Velma Gwyn, spiritual life secretary, was in charge of the observance.

A prayer of consecration and a hymn, "I Need Thee Every Hour" started the devotional. Mrs. Doris Wedel told of the United Nations and its many varied services. Another song "All Hail The Power of Jesus' Name", closed the devotional period. Hymns were led by Mrs. Gloria Herrington.

Several meditative talks on "The Qualities of Christ" were led by Mrs. Elnita Gray and Mrs. Joyce Walker. Periods of prayer and quiet study were observed at intervals between the meditations.

Mrs. Jean Carter led a song poem.

The program closed with a sacrificial offering and a prayer.

Refreshments of punch and cookies were served to Meses. Sadia Bass, Gloria Herrington, Elnita Gray, Joyce Walker, Doris Wedel, Jean Carter, Velma Gwyn, Vita Jones, Ruth Cooper, Mattie Griffin and Ruby Atkinson.

Three children were in attendance in the nursery, which is presided over by Mrs. O. S. Richards.

## Jordan-Stinson Vows To Be Read On November 27

Mr. and Mrs. Emmett Jordan of Kaufman, have announced the engagement of their daughter, Mollie Elizabeth Jordan, to Bill Stinson, son of Mr. and Mrs. C. C. Stinson, of Lubbock.

Miss Jordan graduated with honors from Texas Technological College last May. While at-

## Wedel Home Scene Halloween Party

The primary and junior departments of the Progress Methodist Church enjoyed a Halloween party in the James Wedel home, the evening of October 29. Assisting Mrs. Wedel with the party was a teacher, Mrs. Joe Walker. Halloween games and stunts

included peanut hunt, drawing a picture in the dark, pumpkin puzzles, and fortune telling. Prizes were awarded to the contest winners.

Refreshments of candy, raisin cookies and apple cider were served to: Shadie and Stevie Bass, Jim Thomson, Frances and Doris Cooper, Trudy Davis, Janie, Wanda and Mary Ellen Wedel, and the hostesses, Mrs. Wedel and Mrs. Walker.

THE MULESHOE JOURNAL, Thursday, November 4, 1954

## Society News

DOROTHY GILES — Phone 5400

tending Texas Tech, she received many scholastic honors and was active in campus activities. She was listed in Who's Who in American Colleges and Universities. Miss Jordan is now employed as Home Demonstration Agent in Bailey County.

Mrs. Stinson served four years in the Air Force. He is now attending Texas Technological College where he is a Junior Geology Major.

The couple will be married on November 27, at the home of the bride's parents in Kaufman.

## Spelling Bee Main Event As Sunshine Club Met

Nine members were present as the Sunshine Club met in the home of Mrs. S. D. Anderson, October 21.

Main event of the evening was a spelling bee, with words being taken from an old blue-back speller.

Mrs. C. C. West was presented with a gift from the club in observance of her birthday.

November 4 has been set as the time for the next meeting, at Mrs. H. D. Crawford's home.

Present were: Meses. George Chambless, C. H. Odom, Muri Barnhouse, I. H. Gatlin, H. D. Crawford, L. D. Tipton, Dave Coulter, and one new member, Mrs. C. C. West

## Stork Shower Is Given In Honor Of Mrs. Simmons

was the scene last Thursday afternoon at 2:00 o'clock for a stork shower honoring Mrs. Roy Simmons.

Covering the serving table was a lovely white lace cloth over pink. A beautiful arrangement of yellow and white mums centered the table, and a bouquet of the flowers also adorned the top of the piano.

Mrs. Jimmy Shafer served the cake, while Mrs. Pruitt presided at the crystal punch service. Pastel mints were served as favors. Assisting in the serving were Mrs. Billy Joe Webb and Mrs. M. M. Simmons.

Hostesses for the occasion were: Meses Jimmy Shafer, Jasper Pruitt, and B. J. Webb.

Three entertaining games were led during the afternoon by Mrs. Shafer.

Mrs. Simmons received many nice gifts. Many who were unable to attend sent gifts. Approximately sixteen were present.

## Musical Program For Lions Club Meet

A musical program entertaining members of the Lions Club at their Wednesday noon luncheon meeting this week.

Band director Norvil Howell and three High school students, Misses Betty Shanks, Jean Montgomery and Doris Ann Fields presented two vocal and instrumental selections for the club. Sam Damron was program chairman.

Noel Woodley was appointed institutional representative for the club in the forming of a second Boy Scout troop here, which the Lions club is sponsoring. A meeting will be held at Oswald's Cafe Monday night for this purpose.

The Lions club will meet with the Muleshoe Junior High class for luncheon at Fellowship Hall next Wednesday.

## Mahan And Jordan Engagement Told



MISS LEOTA MAHAN

(Photo By Cline)

Mrs. Mae Mahan, of Lazbuddie, daughter, Leota, to Donald Ray announces the engagement and "Chillie" Jordan, of Sacramento, approaching marriage of her Calif.

## One Dead, One Hurt In Friday Car Wreck

One man was killed and another slightly injured in an automobile wreck last Friday afternoon three and a half miles north of Muleshoe on the Friona highway.

Sheriff Hugh Freeman said the body of Junior Jackson of Paris, Texas, who was killed in the accident was shipped to Paris for funeral services by Singleton Funeral Home of Muleshoe.

The accident occurred when the car driven by Wayne Watts, of Hale Center, went out of control on a sandy shoulder and turned over three times. Highway patrolmen investigated the accident. Watts received minor injuries.

## HOME FROM COLLEGE

Home from college over the weekend was Joy Dean Warner, who visited her parents, Mr. and Mrs. Dee Warner, and other relatives and friends. She is a student at W. T. S. C.

## WEEKEND GUESTS

Guests for the weekend in the Raymond Caede home was their son Keith and his friend Franklin Springer, of Hereford, and son Jim and friend Iva Crowley, of Slaton. Keith and Franklin are attending W. T. S. C., and Jim and Iva are students at Texas Tech.

## VISITED SISTER

Mrs. Reba Atchison, of Leveland, visited for a few days last week with her sister, Mrs. A. C. Bray, and Mr. and Mrs. Horace Blackburn.

## Honor Roll

Following is a list of new subscribers to The Journal during the past two weeks.

- Frona Star, Friona.
  - Lillie Kennedy, Clovis.
  - Atcheson & Atcheson, Lubbock
  - Ralph Wenner, Calif.
  - T. R. Mills, Clovis.
  - Mrs. E. E. Marrs, Amarillo.
  - L. O. Wiseman, Route 2.
  - Ralph Broyles, Route 1.
  - W. E. Meyers, City.
  - Mrs. Euna McLauri, City.
  - Jerry Phipps, City.
  - Reaford Wenner, Route 1.
  - Joe W. Moore, Route 1.
  - L. R. Hall, Route 1.
  - John Purdy Gln, City.
- The past two weeks the following have renewed their subscriptions to The Journal.
- Hugh Freeman, City.
  - R. L. McCauley, City.
  - Joe Tipton, Route 1.
  - J. H. Engram, City.
  - Mrs. H. W. Hanks, Calif.
  - O. M. Self, Route 2.
  - Joe Bradshaw, Route 2.
  - John J. Mock, City.
  - J. O. Aday, City.
  - H. G. Harvey, City.
  - Mrs. L. E. Evans, City.
  - M. D. Gaddy, Route 2.
  - F. H. Gable, Route 1.
  - W. W. Branscum, Star Rt. 1.
  - Mrs. J. W. Webb, Ark.
  - Owen Broyles, Route 1.
  - C. C. Anders, Route 2.

## Radar Enforcement of Speed Laws To Be Used In November

Radar enforcement of speed laws on all major Texas rural highways will go into effect sometime this month, according to Homer Garrison, Jr., director of the Texas Department of Public Safety.

Garrison said early this week that as soon as additional radar units have been received and warning signs erected throughout the state, the public will be advised of the date the new type speed enforcement will go into effect.

Based on the same principles that allow pilots of high speed jet aircraft to find and bomb unseen enemy targets, the radar speed control units make use of bounced high frequency radio waves to record the speed of passing automobiles.

The radar speed officers will work in teams of two cars each; one car carrying the radar unit which records the speed of the car passing, and the other highway patrol car which will be used to apprehend the speeder after having been contacted by radio from the radar equipped unit.

More than 30 State and city police units are using radar in speed law enforcement now.

In Texas, during the last five years, 11,779 people have been killed in motor traffic accidents. Of these, 8,557, or 72 per cent were killed on rural roads in 6,934 rural traffic accidents. In 60 per cent of these accidents only one driver was involved. And in 37 per cent of these fatal accidents, the driver did not collide with anything.

Speed, says Garrison, is the number one public enemy in Texas and is a prime factor in Texas motorcides on rural highways.

## VISITED PARENTS

Mr. and Mrs. Ves Garner had as guests this weekend, their sons Carlos, who is attending college at Canyon, and Billy Joe, who was home before leaving for Dallas, where he was to begin working this week.

Meet your local Santa Fe agent

Your local Santa Fe agent is a transportation expert. He is in business in this community to serve your shipping and travel needs—to see that you get the most for your money from Santa Fe services and facilities.

For shippers, your Santa Fe agent can supply complete information on freight rates, schedules, and the many services available to Santa Fe shippers. For travelers, he can sell tickets to any destination, secure train reservations, and provide complete travel information for any trip.

YOUR SANTA FE AGENT IS AS CLOSE TO YOU AS YOUR TELEPHONE. CALL HIM TODAY FOR EXPERT ADVICE ON YOUR TRANSPORTATION PROBLEMS.



The story of a woman's need for a man that will become one of the great emotional thrills of your lifetime!

Universal International presents  
**JANE WYMAN  
ROCK HUDSON  
BARBARA RUSH**

LLOYD C. DOUGLAS  
*Magnificent Obsession*  
TECHNICOLOR

with AGNES MOOREHEAD • OTTO KRUGER • GREGG PALMER  
Directed by Douglas Sirk • Screenplay by Robert Bliss • Produced by Ross Hunter

**COX DRIVE-IN THEATRE**  
SUN., MON., TUES., WED. — NOVEMBER 7, 8, 9 & 10  
MULESHOE PHONE 6000



By John C. White, Commissioner

**ELIMINATE ANIMAL LOSSES**

The number of chicks and pullets, calves and heifers, pigs and shoats, sheep and lambs that the average Texas farmer loses annually costs him the price of a new car.

In addition to these death losses, there is a staggering waste of feed and labor involved. Because of disease or inadequately fed livestock, thousands of eggs are never laid and tons of meat and milk is never produced.

Proper feeding and management are the most important factors in producing for a profit. Most Texas farmers realize we are just not getting out of poultry and livestock what is bred into them. Yet, many other farmers are content to be just average in their results.

Here is a graphic example of waste in hog breeding:

The average hog raiser breeds 12 sows. Only 11 farrow and of the 100 pigs farrowed, the farmer markets only 56, mostly be-

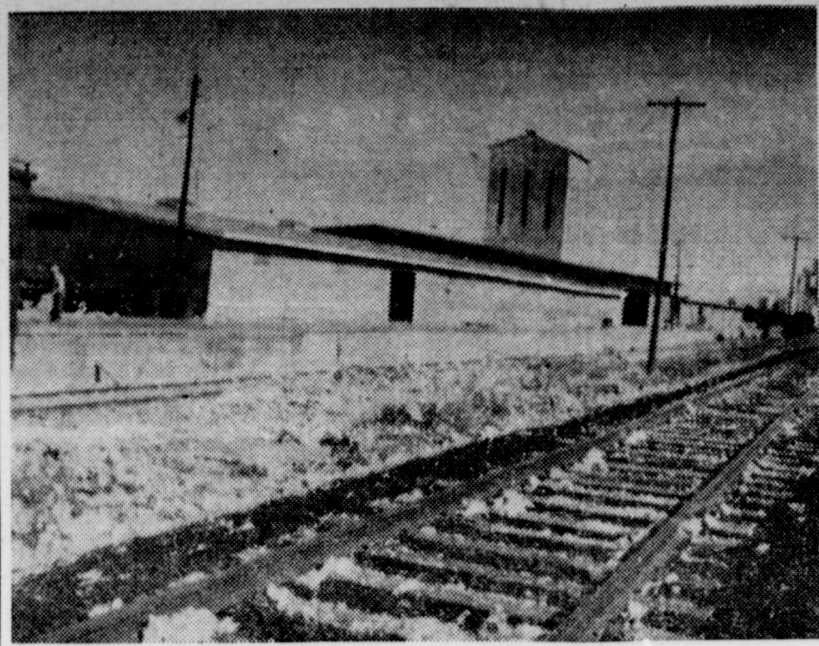
cause of premature deaths.

On a two litter a year system, each sow is marketing only 11 pigs a year at this rate. Actually, a hog raiser should expect to market 17-18 pigs per sow, weighing 200-225 when 5 1/2 months old.

Similar losses occur in poultry and livestock. About 1 out of every 5 calves dropped, dies before it is six months old. Some 10 per cent of the chicks and 15 per cent of the poulters will not live for 56 days.

Eliminating loss is a key to badly needed profits. The farmer in Texas has been hard-hit by drouth and insects for four years. He cannot afford to suffer unnecessary livestock deaths in addition.

The knowledge and practice of good feeding and management programs will help reduce these deaths. High production per hen, per cow and per sow is no longer a goal in Texas — it is a necessity if you intend to make money farming.



NEW UNION COMPRESS at Muleshoe prepared this week to begin pressing bales, according to manager Don Moore. Final wiring and painting was expected to be complete this week, in anticipation of almost full scale operations next week and in the weeks to come. (Photo by Cline)

**4-H Achievement Day To Be Nov. 13**

November 13 is Texas 4-H Achievement day, and the 120,000 Texas members will be reporting to the state on their activities and achievements for the year.

More than 18,000 Texas members are from urban homes. A broad program for youth devel-

opment offers opportunity for study in many fields suited to both urban and rural populations.

Besides ranching, raising crops and livestock, cooking and sewing, the 4-H program includes such things as money management, safety, first aid, music appreciation, citizenship and entomology. 4-H members study electricity, home management, beautification of home grounds, forestry and recreation. Over 75

different projects are open to 4-H members.

Active in their communities, 4-H members appear on radio or TV programs or give a speech with poise developed through their training. They give demonstration at the State Fair. Top 4-H youth in the state win trips to the National 4-H Club Congress in Chicago. Many attend the Texas 4-H Leadership Training Laboratory each year.

4-H clubs are based on the four-square development of head, heart, hands and health. Members try to follow the official 4-H Club Pledge "I pledge my head to clearer thinking, my heart to greater loyalty, my hands to larger service and my health to better living for my club, my community and my county."

Management plays a big role in the success of small grains and annual clovers for winter grazing. Plants should be at least six inches high before they are grazed. Rotation grazing is strongly recommended.

Balancing livestock numbers with the feed on the range is described as a major problem of livestock producers. The tendency is to remember stocking rates during good years. Base the rates on the average years.

A new Texas Agricultural Extension Service Publication, L-207 Fly Control in Laying Cage Houses, is available from local county extension offices or from the Agricultural Information Office, College Station.

Facilities for Large and Small Animals

**Clovis Veterinary Hospital**

AT THE STOCKYARDS CROSSING

E. E. KRAUS, D. V. M.

104 Hull

Phone 5442

Clovis, N. M.

**Television Service**

Expert Radio & Television Repair And Service On Any Make or Model

**JOHNSON-POOL**

PHONE 7370

MULESHOE

**Flies In Cage Houses Can Be Controlled**

Sprays, poison baits and management holds the key to successful control of flies in laying cage houses of poultry.

Flies are a definite problem in cage houses and contribute to dirty eggs, says a new bulletin by the Texas Agricultural Extension Service.

The publication says control of flies begins with the elimination of moisture needed for their development. Watering devices should be constructed so as not to leak.

Let the droppings underneath the cages build up into cones. The circulation of air will dry the droppings, eliminating moisture.

Clean the house and remove droppings only once or twice a year the publication suggests. Winter is the most ideal time.

Sprays of DDT and malathion and poison baits of methion, sugar and dried whey are recommended for use in the houses.

Copies of the bulletin, L-207, Fly Control in Laying Cage Houses, are available from county agent's offices or from the Agricultural Information Office, College Station, Texas.

forage production for range maintenance, the specialist says. Research shows when more than 50 percent of the forage was removed, growth of the plant roots stopped for a period of several days to several weeks.

Studies in central Texas show that farmers who did not have adequate feed reserves fed about \$10 more feed per ewe than those who had ample feed during the winter. A similar study shows that cattle on farms with adequate feed were wintered at an average saving of nearly \$20 per head.

Office Supplies at the Journal Phone 7220. We deliver.

**LEE AND MYRON POOL'S POOR RELATION IN TOWN**

This here's Zeke. When your correspondent first saw Zeke we thought he was our brother-in-law, ol' Tige Teeter come down from the Ozarks. But

then Tige ain't much for travel and Zeke is all for it. Besides Zeke is from Tenn. He's quit runnin' a still to come to Muleshoe to work for his rich uncles, Myron and Lee Pool at Pool Insurance Agency.

Zeke says he and his family, last name McCoy, are gonna help them sell insurance. We've heard of shotgun weddings, but if Zeke hangs around, who knows, maybe there'll be some shotgun insurance sales.

We first heard of this stranger when the Pool boys brought his picture to us and we soon found him to be none other than one Zeke McCoy from the backwoods Tennessee Community, who had heard of the opportunities in Muleshoe and Zeke and his family are now en route by wagon to Muleshoe to go to work for Pool Insurance Agency.

Anyway the McCoy's will be here in a week or so if the wagon don't give out or the wagon doesn't break down — and the Pools said they would report further each week in our paper about the McCoy's.



**Balancing Livestock With Feed on Range**

Balancing Livestock with feed on the range is a "number one" problem of livestock raisers.

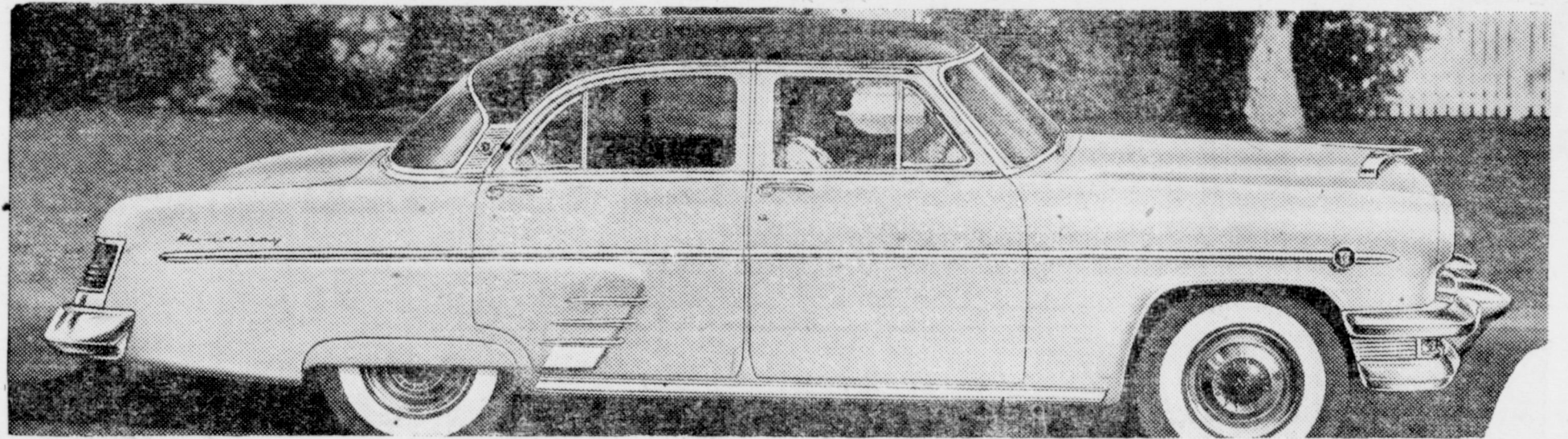
The tendency is to remember stocking rates during good years, says A. H. Walker extension range specialist. "A balanced livestock program is based on average years."

Proper grazing gives plants a chance to maintain themselves, withstand drouth and conserve moisture, Walker points out.

A balanced program for growing livestock includes plans for deferred grazing, the planting of supplemental grazing crops and provisions for silage or hay reserves.

If feed is needed, buy it early and in season. Plan to graze half and leave half of the annual

THEY CALL US THE **Wildest Traders in Town!**



YOU COULDN'T GO WRONG ON ONE OF THESE:

1 NEW 1954  
**MERCURY MONTERREY COUPE**  
Red and White

1 NEW 1954 MERCURY  
**4-DOOR CUSTOM SEDAN**  
Gray

1 1954  
**MERCURY STATION WAGON**  
Fully Equipped — Park Lane Green  
Used As Demonstrator

1 1954  
**LINCOLN 4-DOOR CAPRI**  
2 Tone Gray, Power Brakes, Power Steering, Power Seats, Power Windows.  
Used As Demonstrator

1 1951  
**MERCURY 4-DOOR SEDAN**  
2 Tone, Automatic Transmission

1 1951  
**BROWN PONTIAC 2-DOOR**  
Automatic Transmission

"WE DON'T MEET COMPETITION—WE MAKE IT"

**RAYMOND GREEN**

NEW AND USED CARS

CAR LOT ON MORTON HIGHWAY

MULESHOE, TEXAS

PHONE 635C



BUTANE AND PROPANE

Our New 2-Way Radio Enables Us To Give An Even Better Service

**WIEDEBUSH & CHILDERS**

PHONE 2810

MULESHOE