



**HOW ABOUT "E"**  
The letter "e" is the most un-fortunate letter in the alphabet because it is always out of cash, forever in debt; always in danger and peril; in heck all the time; and is the end of existence. On the other hand, it is never

In war and always in peace. It is never the beginning of existence, the start of ease, and the end of trouble. Without it there would be no bread, nor meat, nor life or heaven; it is the center of honesty, makes love perfect, and without it there would be no editors and no news.  
—From Muleshoe high school "Hee Haw".

dent Hal Sayles \$1,800 to complete the \$2,300 deposit each club must make with the league. Jones said 1,011 season tickets had been sold as of last night. He said it was hoped a total of 1,600 such tickets could be sold before the season started next month.

**Johnson Wins Pair In First Tech Meet**

Muleshoe's Buck Johnson chalked up a pair of first places for the Texas Tech Red Raiders Saturday when Tech opened its track campaign with a 61-56 victory over Sheppard Air Force Base in an informal inaugural of the new cinder track at Tech. Johnson took the 880 yard run in 2:05.3 and won the mile run with a time of 4:41.3. A cold wind kept times down and hampered the trackmen.

**'55 Track Season Opens At Olton**

Track for '55 got underway last Friday afternoon for the MHS Mules when they journeyed to Olton to compete in a triangular meet with Olton and Springlake. The Mustangs edged the Mules while playing hosts and Springlake's Wolverines were pushed into the last slot. The local team totaled 42 points in their afternoon's work. Muleshoe took first places in 440, 220, 880, and mile relay runs. Gaylord Tate was off to a good start for the season running best in the 440 with 55.3 and timing 23.4 on the 220. Doyle Henry took

**Clovis Baseball Has Been Assured**

LUBBOCK, March 5 — Clovis definitely will field a team in the West Texas-New Mexico Baseball League this year, club President Eddie Jones said today. Jones handed league Pres-

Other matters for the league directors to decide at their meeting today were described as routine.

Lubbock, Pampa, Abilene, Amarillo, El Paso and Plainview, Tex. are members of the Class B league, along with Albuquerque and Clovis, N. M. Frank Benites, of Muleshoe, is the playing manager of the Clovis Pioneers. Quite a few tickets to Pioneers games were bought by Bailey County folks.

THE MULESHOE JOURNAL



**Sports**

WAYNE BRISTOW Sports Editor

**Montgomery Sets School BB Records**

Looking back on the '55 basketball season, Jean Montgomery, center for the 2-AA champion Mulettes, stands out as the holder of one of the most outstanding records in the history of girls basketball at MHS. The tall brunette hook shot artist played her last game of high school basketball at Hereford when the Mulettes dropped their bi-district clash to the Dalhart Wolverines on March 1.

Jean stepped in as varsity center for the Mulettes mid-way through her sophomore year when the team lost their star to the marriage rule. That year she led her team's scoring attack in the state tournament. In the duration of her career she played 65 straight games with the chain being broken due to sickness when the locals met Littlefield in the second round of district play this year.

More than 1700 points have been hooped by Montgomery in the past three seasons. She reached a peak of 717 in '54-'55 play. A new MHS scoring record was set when Jean averaged 25.6 points per game for the past season. In the game with Farwell during the Amherst Invitational tournament she played her top game, scoring a total of 41 points.

To Jean and every other member of the '55 Mulette goes credit for a job well done.

Holt of Muleshoe, Texas had an easy time taking the meet with A & M placing second. In the freshman division Holt copped top honors on the 440 yard run, 49.8 and later in the afternoon brought TU another first while serving as anchor man on the mile relay team, and running the quarter in 49 flat.

Holt, after a very impressive high school track career, is well on the road to writing an outstanding record in the annals of the state university with three years of pounding the cinders still ahead of him.

**H!, NEIGHBOR!**



**'Eddy Arnold Time'**

A thrilling new half hour musical show with Eddy Arnold and his all-star gang of entertainers—including Betty Johnson, sensational new songstress, the Gordonaires Quartette, and Hank Garland-Roy Wiggins guitar team.



8:00 P. M. TO 8:30 P. M.

Every Wednesday

K. G. N. C.

CHANNEL 4

**Holt Takes First In Austin Events**

Outstanding in the triangular track meet between Texas, Houston U., and Texas A & M at Austin last Saturday, was Jimmy

the 880 in 2:24. Seven seconds under the 1954 relay team's best time, Muleshoe passed the stick off at a clip of 3:45.6. Darle Mason of Olton bested Jackie Tidwell, skimming the high hurdles at 17.9. Muleshoe's Eddie Wilt placed second in the mile with a time of 5:22. Gross and Parker tied at seven feet to take third place pole vault honors for the Mules. The locals finished out with Wimberley placing second in the 880, Spivey third in the 440, and Tidwell ran fourth in the low hurdle event.

Coach Bill Taylor will take the boys to the Hereford Invitational meet on the 19th of this month where they will run against 26 high schools in this area.

**BROWN SUPPLY CO.**

LUBBOCK LITTLEFIELD PLAINVIEW

- CONCRETE IRRIGATION PIPE.
- "RAIN WAY" SPRINKLER IRRIGATION SYSTEMS
- SURFACE ALUMINUM PIPE
- GATED ALUMINUM PIPE

— See —

**BEN CHAPMAN**

Res. Phone 6859 Muleshoe Office Phone 479 Littlefield

**Luna Snow Plumbing Shop**

PLUMBING CONTRACTOR — PLUMBING SUPPLIES

Located 3rd Door East of Cecil Tate Office  
Muleshoe, Texas

**Call Us For Any Repair Job**

Business Phone 7270 — Residence Phone 3231

FOR YOUR PRESCRIPTIONS TO BE  
**- FILLED RIGHT -**  
— HAVE THEM FILLED BY —

**DAMRON REXALL  
DRUG STORE**

WE FILL ANY DOCTORS PRESCRIPTION

THE MOST COMPLETE PRESCRIPTION  
DEPARTMENT IN WEST TEXAS

Muleshoe Phone 2100

**1ST. YEAR Anniversary Sale!**

**5 SUPER SAVINGS BONUS DAYS** Thursday, March 10 Thru Tuesday, March 15

**To Be Given Away Tues. March 15 — At — 4 o'clock**

Your Name Goes In THE DRAWING WITH EACH \$5.00 PURCHASE OF GROCERIES



RED POTATOES	10 lb. bag	59c
CHUCK WAGON, NO. 300 CAN BEANS	8 for	\$1.00
JERGEN'S HAND OR FACE, BATH SIZE SOAP	2 for	15c
DIAMOND CORN	8 for	\$1.00
DELITE LARD	3 LB. Ctn.	59c
FRIONOR FROZEN CATFISH	1 lb. pkg.	49c
LIBBY'S FROZEN, 6 OZ. CAN ORANGE JUICE	EACH	15c
UNDERWOOD'S FROZEN BEEF BAR-B-Q		69c
PATIO FROZEN, COMPLETE MEXICAN DINNER	EACH	59c
OCEAN SPRAY CRANBERRIES	lb.	9c

**- FRESH QUALITY MEATS -**

TENDERIZED LEAN CUTLETS

**STEAK** . . . LB. **69c**

Northwester, Pheasant Chicken, Ea. Family Style Fryers **98c** Steak **49c** lb.

WILSON'S CERTIFIED FAMILY STYLE BACON **99c** 2 lb. pkg.

WILSON'S CERTIFIED, 1/2 OR WHOLE PICNIC HAM **37c** lb.

VANCE'S MULESHOE COUNTRY STYLE Sausage **49c** LB.

WILSON'S CERTIFIED CHOPPED BEEF BIF **\$1.00** 3 cans for

WILSON'S CERTIFIED ALL MEAT VIENNA SAUSAGE **35c** 2 cans

BELL, 2 QUARTS OR 1/2 GALLON MELLORINE **49c**

**WE HAVE SUPER SAVINGS DRAWINGS EVERY MONTH — IN PLACE OF GIVING STAMPS**

**B & G FOOD** 7 A. M. 'TILL 11 P. M.

PHONE 6469 FOR DELIVERY SERVICE

**YOU SAVE**

WHEN YOU TRADE HERE

**ONE 1949 FARMALL-M**  
With Lister and Cultivator Completely Overhauled

**ONE 1953 SUPER-M FARMALL**  
With 4-Row Lister

**ONE MAJOR FORDSON DIESEL**  
Brand New — Can Be Bought At A Good Saving

**ONE EXTRA GOOD SLIGHTLY USED 4-ROW CULTIVATOR**

**ONE 20-FOOT FREEZER**  
Scratched — Will Sell At A Special Price Of—

**\$350.00**  
With New Guarantee

**Johnson - Nix**

INTERNATIONAL & OLDSMOBILE  
Phone 2940 Muleshoe

**Anthony's**  
C. R. ANTHONY CO.

**BIG HOME FURNISHINGS SALE**



Wat-a-set Permanent Finish  
**NYLON**

- CURTAINS
- PANELS
- TIERS

Smart New Design in

**CHENILLE SPREADS**

The season's most startling VALUE in bedspreads are our new chenille spreads. Unusual two-tone tweed-effect stripes or all-over tweed effects. Full sizes — extravagantly fringed. New colors to harmonize with the latest decorating schemes.

**3.99**

Regular \$4.98 Value



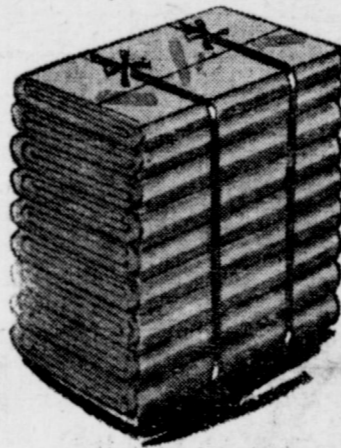
FULL SIZE

**COLORED SHEETS**

- 128 THREAD COUNT
- SIZE 81"x108"

**1.99**

An UNEXCELLED VALUE—Lovely pastel sheets. Firmly woven, 128 threads to the inch, these sheets launder beautifully, brighten your home. Slight imperfections. If perfect, would sell for \$2.49.



*Terrific Savings*

Lovely Nylon curtains to dramatize your windows. Treated by our Miracle Wat-A-Set process which gives every single thread a permanent lasting finish, greater strength, more elasticity. You'll love their Super Sun Resistance and the quick easy way they can be laundered.

**PRISCILLA CURTAINS**

At this price, you can eliminate all "problem windows." 43x90 Wat-A-Set Nylon Marquisette Priscillas, with generous 7 inch ruffles, frame your windows gracefully. Also easily laundered, they should be at least a dollar more. White only.

**2.99** PAIR

**TIERS or PANELS**

If your taste runs to tiers or panels, we've exactly what you want. Same top quality Wat-A-Set Nylon Marquisette. Same Low, Low Price. Panels are 41x81. Tiers are 29x36 inches. Regular \$1.98 Value.

**99c**

Foam Rubber or Orlon Filled

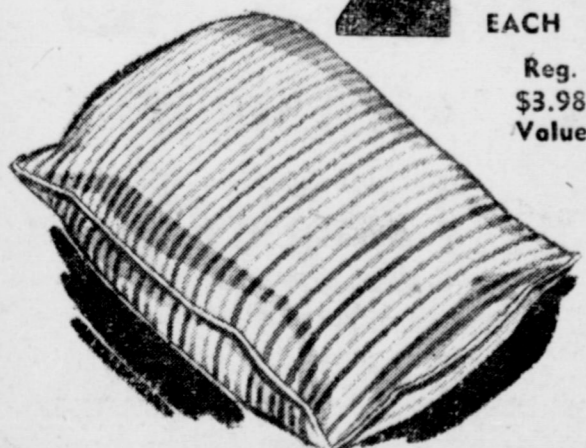
**PILLOWS**

Here's the pillow you've been looking for. A terrific bargain in price—a wonderful investment in comfort. Filled with Miracle Fiber Orlon or soft Foam Rubber. Mildew proof. Odorless. You'll want several at this price.

- Allergy Free
- Orlon Size 21"x27"
- Foam Rubber 17½"x26"

**2.99** EACH

Reg. \$3.98 Value



Size 42"x84" Banjo Weave

**DRAPES**

The BUY of the season, these Banjo Weave Drapes are designed to save you money. Made of heavy material 42 inches to each side before pleating. 84" long. Excellently tailored. Up-to-the-Minute colors that complement the newest homes.



- GOLD
- ROSE
- HUNTER GREEN

**2.99** PAIR

Regular \$4.98 Value

Made of excellent quality material. Examine them and compare with similar Drapes. You'll be convinced of their fine workmanship, their Quality materials.

High Low Sculptured

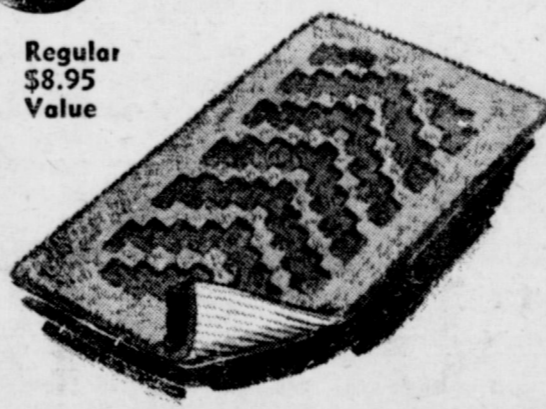
**COTTON RUGS**

FOR THE FIRST TIME . . . we offer this High Low sculptured cotton rug . . . at this low bargain price. You loved it at \$8.95, you'll want several now. Block patterned in Lipstick Red, Brown, Chartreuse, Rose Beige, Hunter Green, Gray, Blue, Antique Gold, Dusty Rose and White.

**5.99**

Regular \$8.95 Value

- Approximate Size 4'x6'
- Lovely Colors



Colorful Plaids, Stripes, Solids

**WASH CLOTHS**

You can't afford to overlook the LOADS OF ECONOMY we offer in these high quality wash cloths. Fully absorbent. Bright colors that liven up your home. Stock up at this price. Your family will enjoy a supply of these.

**10 FOR**

**99c**

Buy Several And Save!



Size 22"x36" Colorful Cotton

**CUT PILE RUGS**

Savings . . . savings . . . savings . . . highlight this bargain cut pile rug. 4-row shag border with loop fringe all around. Rubber-coated, non-skid back. Colors to match every room.

**99c**

11 LOVELY COLORS

Regular \$1.49 Value



Size 20"x34" Cotton Chenille

**BATH MAT SET**

A BARGAIN IN BATHROOM BEAUTY is this cotton chenille bath mat set. Of cut pile in multicolor stripes. It can't be beat in quality—in price. A typical Anthony Value.

**99c**

- Cut Pile
- Multi-Stripe

Low Anthony Priced



**Four New Members Join HD Club At Progress**

Four new members joined the Progress H. D. Club when it met at 2:30 in the afternoon, February 24 at the home of Mrs. Joe Sinnacher. They were: Mmes. A. R. McGuire, James Wedel, J. C. Wells and L. R. Williams.

Opening the meeting Ada Murrach sang, "The Eyes of Texas". The council report was given by Elvov Sinnacher and the commissioners' banquet was discussed. The committee presented the new constitution and by-laws for the club and they were accepted by the club. The Progress Club will support Mrs. S. C. Caldwell for re-election for the THDA Chairman. Mrs. T. Haley was the club nominee for council.

Mrs. Mollie Stinson, agent, gave an interesting demonstration on making bound buttonholes. She also showed slides on farm and home development. The craft leader reported that twelve tables, four baskets, and two lamps of wrought iron and red have been ordered for the next work day.

The club will meet March 10 with Mrs. Sherman Sweatmon. Ladies present were Mmes. Phoebe Gray, Gladys Haley, Ada Murrach, Veta Self, Elvov Sinnacher, Fern Davis, Mae Sinnacher, Marie Maltby, Ruby Batchelor, Lela Mardis, Glenda Haley, Estelle Hill, Mollie Stinson, the new members and one visitor, Mrs. W. W. Couch.

**Fidelity Class Met On March 8**

The Fidelity Class of the First Baptist Church met at 7:30 in the evening, March 8, for the regular monthly meeting.

Mrs. Lou Green, president, was in charge of the meeting. Devotional, taken from Job 13:15 was given by Mrs. Eddie Lane.

Refreshments were served to Mmes. Edd Hicks, R. L. Harrison, Lee R. Pool, L. T. Green, Jr., Eddie Lane, Gene English, Lou Green, Buddy Hicks, and the hostess, Mrs. Sherman Sweatmon.

**Eleven Present For WSCS Meeting**

The sanctuary of the First Methodist Church was the scene for the meeting of the WSCS at 2:30 in the afternoon March 8. Eleven members attended.

Mrs. Arnold Morris conducted the devotional on "Lasting Peace and Security for All." Scripture was taken from I Cor. 1:10 and I Cor. 12:12-26. The group then sang "Lead On O King Eternal". Those taking part on the program were Mmes. H. Jay Weyer, J. E. Day, and F. W. Watts.

The business session was conducted by Mrs. Weyer, and the study, "That They May Have Life", was introduced by Mrs. F. B. Pierson. Members are asked to remember the slogan, "Come, Bring Someone".

Those present were Mmes. F. B. Pierson, J. J. Gross, J. E. Day, F. A. Watts, Arnold Morris, I. F. Willman, O. S. Richards, C. R. Farrell, H. Jay Weyer, Clarence Stephens, and Mrs. Gable.

**Society Officers Are Installed**

Members of the newly formed National Honor Society of MHS met last Monday to elect officers for the coming year.

The group, which consists of students from the junior and senior classes with high school grade averages of 90 or better, elected Clinton Dillard as president for this year's society.

Linda Lou Lancaster was elected secretary, Jean Montgomery vice-president, and Mona Mitchell was installed as reporter. Other members of the organization are: Billy Ellis, Elizabeth Farley, Darla Myers, Sue Actkinson, Lucille Davis, Pat Cooper, Pat Sinnacher, and Mary Alice Baker.

**BAND BOOSTERS TO MEET AT 7 P. M., THURSDAY**

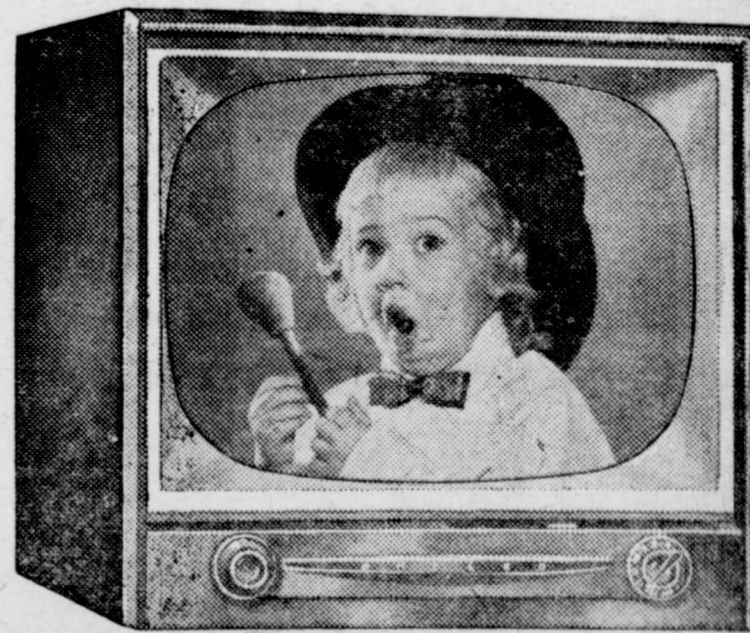
The Muleshoe Band Boosters will have a special business meeting Thursday night at 7 o'clock at the band room of the Muleshoe High School. All interested parties are urged to attend.

The Journal Want Ads always gets results.

**Full Quality 21-inch PHILCO**

with Finger Tip Tuning

ANTENNA FREE WITH EACH SET



PHILCO 4006

UNMATCHED anywhere at its low price. But price is only half the story. Nothing less than Philco offers so much for the money in dependable performance, styling, and advance design. Come in, see and hear it now.

- No Grappling
- No Groping
- No Guessing

— TERMS IF DESIRED —

**DYERS**

PHONE 2590

MULESHOE





# LOOK! LOOK!

You Haven't Driven A Tractor, Till You  
Drive The WD45

## ALLIS CHALMERS

— FOR FREE DEMONSTRATION, SEE —

**STEVE**

— AT —

### MULESHOE IMPLEMENT AND SUPPLY

Phone 3080

Muleshoe

## Lazbuddie News

\* On Monday, March 7, a special program was held at the regular P. T. A. meeting.

The meeting was called to order by Mrs. Graef and the minutes were read and approved and the treasurers report was approved.

As this is Public School Week, the emphasis is on visiting schools. A poem, "Visiting School", was read by Jim Gordon. Then a one-act play by Verne Powers, "High Window" was presented. The cast included Mrs. Winthrop, played by Louise Ham; Judge Stephen Craig, played by Jim Gordon; Judith Ware, by Jean Gammon; Walter Hodge, by Jimmie Ivy; and Linda Norton, played by Glenda Hall.

After this play the other business was taken care of and the meeting was adjourned.

\* Mr. and Mrs. Frank Spittler spent the week end in Shawnee, Okla., visiting his parents, Mr. and Mrs. S. O. Spittler.

\* The Senior Class has ordered several play books that they plan to read over before selecting their annual three-act play.

\* The Lazbuddie High School basketball team and parents went to Canyon Friday, March 4, to see the regional play-offs. They reported that they saw some good basketball games and enjoyed the evening.

\* Mr. and Mrs. Luther Ham spent the past week visiting their daughter, Winnie Paul, at Brownwood, visiting Mrs. Ham's mother, Mrs. A. L. Freeman, at Gatesville, and visiting another daughter and family, Mr. and Mrs. Jim Delmar and Jamie at Lancaster, Texas. They returned home Saturday night.

\* After the presentation of the one-act play Monday night, the cast went to Clovis, N. M., to see "The Caine Mutiny".

\* Clifford Morton, of Baylor University, is home to stay after completing his studies there. His sister, Mary, also of Baylor, is home spending a few days and will return to Waco on Tuesday.

\* Weldon Crim, son of Mr. and Mrs. John Crim, of Route 3, Muleshoe, was in the hospital at Muleshoe Wednesday night suffering from a case of food poisoning. He has recovered rapidly and is suffering no after effects.

\* The Women's Missionary Union of the Lazbuddie Baptist Church observed their "Week of Prayer" program for home Missions Friday, March 4. The ladies brought covered dishes and lunch was enjoyed in the basement of the church.

Those present were Mmes. Wes-

#### TO OUR FRIENDS AND NEIGHBORS OF MULESHOE:

After seven and one-half years spent in your community, we take this means of saying to the good people of Muleshoe and surrounding area, many, many thanks to you for your friendship and the courtesies that have been extended to us and on behalf of the Church of Christ during our stay here.

We are moving to Melrose, N. M., to work with the church there and we extend to you an invitation to visit us there.

Again we say, "Thanks!" for all the consideration shown us. We have enjoyed living among you.

Sincerely,  
Minister and Mrs. Ebb Randol

ley Barnes, C. K. Roberts, Thomas Carrell, Jimmie Ivy, Claude Heath, Ira Wimberley, Carrie Withrow, Juel Treider, John Agee, J. T. Mayfield, and Mrs. Mick.

\* The Lazbuddie Baptist Church conducted a religious census of the Lazbuddie community this past Sunday afternoon in preparation of their coming revival.

#### PARMER COUNTY Farm Bureau News

By RAYMOND EULER

Ralph Miller, Chairman, Bill Mayben, C. A. Lawrence and O. B. Moyer, Farm Bureau Legislative Committeemen were in Lubbock last Friday attending a district policy execution meeting. We commend these men, all new on the committee, for their 100% participation in this meeting.

The membership kick-off banquet was among the most successful in the history of Parmer County Farm Bureau. The committee in charge of arrangements express their appreciation to the merchants and other individuals who contributed to the success of the affair.

Membership acquisition has been equally successful, with particular emphasis on new members. If you new members are not familiar with the services you are entitled to, come in to the office and request information from some of the personnel here.

"We are for farmers getting the highest possible net farm income in sound dollars. All aspects of our broad Farm Bureau program are designed to be consistent with this objective. Our members have no illusions that their interests are adequately protected by price guarantees alone. They fully understand that the volume that can be sold and the costs that must be paid are more important in obtaining high per family income than government support prices." This paragraph is included in American Farm Bureau President Charles B. Schuman's address as he appeared before the House Agriculture Committee recently. The address was made in opposition to H. R. 12, a bill to

#### CARD OF THANKS

We wish to thank each and everyone sincerely for sharing our sorrow at the loss of our loved one. Your kind deeds are more deeply appreciated than we can find words to express. May God's richest blessings be with you always.

Mrs. Hester Webb and family,  
Mr. and Mrs. Gid Webb  
Mr. and Mrs. R. M. Webb  
Mrs. Jim Webb  
Lee Webb  
Mrs. Emma White  
Mrs. Ida Butler

#### HERE FROM LEVELLAND

Mrs. Annie Carter, of Level-land, is here this week visiting her sister and brother-in-law, Mr. and Mrs. H. C. Holt.

set government supports at 90 per cent of parity on wheat, cotton, corn, rice and peanuts for the 1955, 1956 and 1957 crops without regard to supply.

If you should be a reader who believes H. R. 12, referred to above, would be good for farmers and all Americans, we suggest you lay it down beside the Communist Party's recommendations made at their 1954 convention and see if you still believe it sounds good.

Under the mandatory 90%

parity program, net farm income fell 25% from 1947 to 1954. The major portion of this drop occurred after 1948 when exports, previously stimulated to an all time high by war, began to drop back to normal. A system that will normally stimulate export markets and increase domestic markets is necessary to a prosperous agricultural economy.

Consider This: Open thy mouth, judge righteously, and plead the cause of the poor and needy. Proverbs 31:9.

#### PHOTO FINISHING

## ONE DAY SERVICE

On Films Left Monday, Wednesday or Friday  
Films Left Monday Before 2:30 Ready 2:30 Tuesday  
Films Left Wednesday Before 2:30 Ready 2:30 Thursday  
Films Left Friday Before 2:30 Ready 2:30 Saturday

### WESTERN DRUG

Headquarters For Kodaks, Kodak Film, Flash Bulbs, Etc.

If You Don't Have A Camera We'll Rent You One

# SALE

## LAVATORY-COMMODE CAST IRON TUB

COMPLETE WITH  
ALL FITTINGS

**\$139.95**

— LIMITED TIME ONLY —

## Johnson - Pool TIRE AND APPLIANCE

PHONE 7370

MULESHOE



# Whirlpool

ALL-FABRICS FULLY-AUTOMATIC

## WASHER and DRYER

New beauty combines with top performance  
for the finest in home laundry equipment

Touch — and go! Simply set the controls on your wonderful Whirlpool Washer and Dryer — and you're off — to shop or visit.

Touch — and glow! Beautiful, fully-illuminated Guide Lite control panel shows every step of washing and drying cycle. And look at all these exclusive features that your Guide Lite panel controls:

Suds-Miser — the only built-in, patented suds-saving system. Saves 1/2 the cost of soap and hot water! Plus . . . Agiflow action, 7 Rinses, Free-Flow draining — 3-Temp water selection, Select-A-Level filling con-

trol—delicate fabric guide—porcelain top and tub—giant capacity—Dual Cycle-Tone—5-Year Warranty on transmission.

Whirlpool dries clothes better, safer, surer than the sun and outdoors! Dry clothes any time—day or night—clothes last longer, look better! Enjoy workless Whirlpool drying with all these advantages: Three temperature settings plus Delicate Fabric control — Cycle-Tone signal — Therma-Flow tempered heat drying action — Sun-A-Tizing lamp—automatic interior light—automatic door safety shut-off—giant capacity — your choice of electric or gas models.

## 10 DAY FREE TRIAL

NO OBLIGATION TO BUY

## JOHNSON - POOL

TIRE AND APPLIANCE

PHONE 7370

MULESHOE

★ In '54 -- ★

as in years before --

# CHEVROLET is

# FIRST in SALES

According To Official Count

## C. & H. Chevrolet Co.

PHONE 2720

MULESHOE

# PIGGLY WIGGLY AND DOLE

## Pineapple House Party



EVERLITE FLOUR..... 10lb. bag 75c

DOLE, 46 OZ. CAN PINEAPPLE JUICE..... 29c

DOLE, NO. 2 1/2 CAN SLICED PINEAPPLE..... 39c

**PINEAPPLE**

DOLE, NO. 1 CAN SLICED PINEAPPLE..... 17c

Dole Crushed No. 2 Can..... 25c

CRYSTAL, 24 OZ. BOTTLE APPLE JUICE..... 27c

POMPEIAN, 4 OZ. OLIVE OIL..... 23c

LIBBY'S CROSS CUT, 22 OZ. JAR SWEET PICKLES..... 45c

HUNT'S, NO. 300 CAN TOMATO JUICE..... 10c

CHOPPED, WILSON'S, 12 OZ. CAN BEEF..... 33c

MORTON'S, 26 OZ. BOX SALT..... 11c

NABISCO, 1 LB. BOX CRACKERS..... 28c

HI-C, 46 OZ. CAN ORANGE ADE..... 29c

3 MINUTE, SMALL BOX OATS..... 19c

DASH, 1 LB. CAN DOG FOOD..... 15c

LIBBY'S, NO. 303 CAN PUMPKIN..... 13c

HUNT'S, 8 OZ. CAN TOMATO SAUCE..... 9c

MORTON'S, PINT JAR SALAD DRESSING..... 20c

HOLLANDAIE, COLORED QUARTERS OLEO..... lb. 21c

CAMPBELL'S Tomato Soup..... 3 for 35c

DRY, 2 LB. CELLO PINTO BEANS..... 29c

GERBER'S BABY FOOD..... 3 FOR 27c  
FRENCH'S, 6 OZ. JAR MUSTARD..... 11c  
STAR KIST CHUNK STYLE, No. 1/2 Can TUNA..... 33c

Marshall Golden, No. 300 Can HOMINY..... 3 for 27c  
Campfire, No. 300 Can PINTO BEANS..... 10c  
Happy Vale, No. 303 Can PEAS..... 15c

Carnation, Instant, Dry 3 Quarts MILK..... 31c  
Vermont Maid, 24 Oz. Bottle SYRUP..... 59c  
Schilling's, 2 Oz. Can PEPPER..... 22c

**SHORTENING**

Snow Drift 3 Lb. Can..... 69c

Two Taste, 2 Lb. Box CHEESE..... 69c  
Fresher Brand, 1 LB. COD FISH..... 39c  
Fresher Brand, 1 LB. MERCH FISH..... 39c  
Cello, 1 Lb. Pkg. FRANKS..... 49c

**Government-graded quality meats**  
U. S. CHOICE BEEF ROUND STEAK..... 79c  
U. S. CHOICE BEEF CLUB STEAK..... 59c  
U. S. CHOICE BEEF CHUCK ROAST..... 39c  
LB. FRESH GROUND HAMBURGER..... 29c  
LB. PINKNEY'S, BULK SAUSAGE..... 39c  
LB. FRESH SLICED PORK LIVER..... 29c

**Slab Bacon**

Pinkney's First Grade Sliced Free LB..... 39c

**fresh fruits and vegetables**

POTATOES Red 10 Lb. Bag..... 39c

TEXAS WHITE GRAPEFRUIT..... lb. 7 1/2c CALIFORNIA NAVAL ORANGES..... lb. 12c

BUNCH TURNIPS & TOPS..... 10c FIRM HEADS CABBAGE..... lb. 5c

BUNCH GREEN ONIONS..... 5c BUNCH RADISHES..... 5c

NORTHERN TISSUE..... 3 for 25c  
NORTHERN, 80 COUNT BOX NAPKINS..... 2 for 25c  
QUART BOTTLE CLOROX..... 17c  
TIDE..... large box 31c  
VEL..... giant box 75c  
LUX, BATH SIZE TOILET SOAP..... 2 for 25c  
BABO, GIANT CAN CLEANSER..... 2 for 35c

LIBBY'S FROZEN, 10 OZ. PKG. CUT CORN..... 15c

LIBBY'S FROZEN, 10 OZ. PKG. CUT BEANS..... 17c  
LIBBY'S, 6 OZ. CAN ORANGE JUICE..... 15c  
LIBBY'S FROZEN, 10 OZ. PKG. SPINACH..... 15c  
HILLS-O-HOME, 10 OZ. PKG. BLACKEYE PEAS..... 17c  
LIBBY'S FROZEN, 6 OZ. CAN GRAPE JUICE..... 19c

200 COUNT BOX KLEENEX..... 10c

BAYER'S, 18c SIZE ASPIRIN..... 10c  
COLGATE, 80c SIZE DENTAL CREAM..... 33c  
PINT BOTTLE ALCOHOL..... 15c

**Exciting—New—Different PINEAPPLE UPSIDE DOWN CAKE**

**PINEAPPLE UPSIDE DOWN CAKE**  
1-lb. 4-oz. can sliced pineapple  
1/4 cup butter or margarine  
1 cup brown sugar  
1 pkg. Pillsbury White Cake Mix  
1/2 cup Instant FET  
Nostalgia Dry Milk

Drain pineapple and save juice. Add enough water to juice to make 1 1/2 cups. Melt butter over low heat in a 10-in. skillet or a 9-in. square pan. Remove from heat and sprinkle sugar over melted butter. Arrange 8 pineapple slices on sugar. Let stand. Put cake mix into a 2-qt. bowl. Mix in the dry milk with spoon. Add 3/4 cup of pineapple juice and beat hard 2 min. Then add 3/4 cup of juice and beat hard 1 min. Add juice that is left and beat hard 1 min. Pour batter over pineapple slices in skillet or pan. Bake on rack slightly below center in 375 oven (high moderate) about 45 to 50 min., or until cake pulls from sides of skillet or pan. Remove from oven. Let cake stand 5 min. before turning out. Decorate with maraschino cherries, if desired.

**S.W. GREEN STAMPS WITH EVERY PURCHASE •DOUBLE• ON TUES. WITH \$2.50 PURCHASE OR MORE**





**DOUBLE ON TUESDAY**

*Any Day... Every Day...*

**BUY MORE SPEND LESS**



JOY SUDS  
**BUBBLE BATH** ..... 25c

LIBBY'S, 46 OZ. CAN  
**PINEAPPLE JUICE** ..... 27c

SUN SPUN R. S. P. NO. 303 CAN  
**CHERRIES** ..... 23c

WILSON'S, 12 OZ. TIN

**Chopped Beef 29c**

HUNT'S FANCY, NO. 2 1/2 CAN

**Apricots 29c**

OUR VALUE CUT, NO. 303 CAN  
**GREEN BEANS** ... 2 for 23c

6 LB. TIN  
**CRISCO** ... large size \$1.59

HONEY BOY, NO. 1 TALL CAN  
**SALMON** ..... 33c

OUR VALUE, NO. 2 1/2 CAN  
**ELBERTA PEACHES** ..... 25c

10 LB. BAG PURE CANE

**SUGAR 89c**

PRINT — READY-MADE APRON, 25 LB. AUNT JEMIMA

**FLOUR 1.79**

MISSION, NO. 303 CAN  
**SUGAR PEAS** ..... 15c

RANCH STYLE, NO. 300 CAN  
**SPAGHETTI** ..... 13c

AUSTEX, NO. 300 CAN  
**CHILI** ..... 29c

PRISCILLIA, 40 COUNT CELLO PKG.  
**DINNER NAPKINS** ..... 15c

**PINTO BEANS** ..... 2 Lb. Cello Pkg. Colorado ..... **19c**

BORDEN'S, 1 LB. BOX  
**INSTANT STARLAC** ..... 33c

BETTY CROCKER, SOFTASILK, LARGE BOX  
**CAKE FLOUR** ..... 39c

AUNT JEMIMA, 2 1/2 LB. BOX, WHITE OR  
**YELLOW MEAL** ..... 27c

**FAB** ..... large size 25c

GLEEM, 47c SIZE  
**TOOTH PASTE** ..... 30c

BOYER H. A., 63c SIZE  
**HAIR ARRANGER** ..... 49c

**KLEENEX**  
FACIAL TISSUE  
300's SIZE  
LARGE BOX ..... **15c**

**DR. PEPPER**

12 Bottle  
Carton  
Plus  
Deposit ..... **39c**



CALIFORNIA SUNKIST LB. CALIFORNIA SUNKIST LB.  
**LEMONS** ..... 9c **ORANGES** ..... 9c

FRESH FIRM HEAD CALIFORNIA, CRISP GREEN, Large Stalk  
**CABBAGE** ..... lb. 5c **CELERY** ..... each 17c

LARGE CALIFORNIA  
**Avocados** . . . **9c**



FRESHER  
**FISH STICKS** 10 Oz. Pkg. .... **35c**

SNOW CROP FROZEN  
**BLACKEYED PEAS** ..... 10 oz. pkg. 25c

SNOW CROP  
**LEMONADE** 6 Oz. Tin ..... **15c**



WILSON CORN KING, SLICED 2 LB. PKG.  
**BACON** . 99c

U. S. CHOICE BEEF CHUCK, CENTER CUTS LB.  
**ROAST** . 37c

1 LB. ROLL PINKNEY'S SUN RAY PORK 3 LBS.  
**SAUSAGE** . \$1

U. S. CHOICE BEEF, CLUB LB.  
**STEAK** . . 49c

U. S. CHOICE BEEF SHORT LB.  
**RIBS** 19c

U. S. CHOICE BEEF ARM, CENTER CUT LB.  
**ROAST** 39c

**CASHWAY**

FREE DELIVERY

WE RESERVE THE RIGHT TO LIMIT QUANTITIES

Phone 2440 or 2450





## Employment Up In February

Maurice Oden of the local Texas Employment Commission re-

### FROM PLAINVIEW

Mr. and Mrs. Earl Hicks visited in Muleshoe over the weekend with Mr. and Mrs. L. D. Tipton. They are from Plainview.

ports an increase in employment for the month of February over January. He reports that he accepted applications from 22 persons wanting work, six of whom were women.

In non-agriculture work, he received sixty-eight referrals. He made seventy-three persons were hired. Seven of these were short-time jobs which lasted two days or less.

He referred seventy-six persons

in agricultural jobs, thirty-three of whom were placed. This made his total placements for the month, eighty-six.

Even though there is very little unemployment in the Muleshoe area due to so much construction work going on, Oden says that he has a few exper-

enced farm hands still looking for work, and urges farmers to use his services in getting necessary labor. If the type of laborer is not available in Muleshoe, Mr. Oden has the facilities to obtain the type wanted, elsewhere at no cost whatsoever to the farmer.

1955? A recent study by the Department of Agriculture indicates that wind erosion conditions still exist in West Texas and six other midwestern states. Drouth has held sway over this region for four years or more. Last spring the most widespread and severe soil blowing since 1938 was experienced. At a general rule, conditions have not much improved since last year. In some places, moisture and crop conditions have deteriorated still further.

This doesn't mean that dust storms and wind erosion will be worse when the usual high winds of March and April come. It depends on the force and persistence of the spring winds—and on the amount of rain that may yet fall. Fortunately, some rain has been received in parts of West Texas and the South Plains, but more is needed.

More than 4 million acres of land in the seven-state area were damaged by wind erosion this winter. If above normal winds come to the region this spring as they did last year, farmers probably will have a serious dust problem.

If the sand comes, it will again point up the need for adequate conservation practices. The government in the past has provided cooperative funds to encourage permanent improvements that will protect the soil in "blowing" areas. Protected land is the only sure solution to the annual problem.

Read The Journal Want-Ads.

### VISITED RELATIVES

Mrs. Scott Donaldson visited with relatives in Ft. Sumner, N. M., one day last week.

### HERE FROM LOVINGTON

Dr. and Mrs. Kenneth Osborn and daughters Becky and Beth of Lovington, N. M., spent last weekend in Muleshoe with her parents, Mr. and Mrs. Sam McKinstry.

### NOTICE TO BIDDERS

Notice is hereby given that the Commissioner's Court of Bailey County, Texas will receive bids until 11:00 a. m., March 21, 1955 for the following described road machinery:

Two (2) rubber tired loaders, gasoline powered, 3/4 Cu. Yd. Bucket; electric starter, lights and horn; oil bath air cleaner; pre-cleaner; oil filter; muffler, drawbar, hydraulic brakes, parking brakes, clutch type transmission and hydraulic torque converter, to be delivered and properly serviced in Bailey County, Texas.

Bailey County offers in trade as partial payment one International I-9 tractor and equipment.

And notice is also given that, as further consideration, it is the intention of the Commissioners to issue warrants against the Bailey County Road and Bridge Fund for an amount not to exceed \$10,900 which are to bear interest at a rate not to exceed 2 1/2% per annum with a maximum maturity not to exceed four (4) years from their date. Said warrants will be authorized by an order to be passed by the

Commissioner's Court on the 21 day of March, 1955.

A Cashier's or certified check issued by a Texas Bank, payable without recourse to the order of Glen Williams, County Judge of Bailey County, Texas in the amount of five (5%) of the amount of the bid must accompany each bid as a guarantee that if awarded the contract the bidder will promptly enter into contract and execute bonds in the amount and in the form required by law.

Bailey County reserves the right to reject any or all bids.

GLEN WILLIAMS  
County Judge,  
Bailey County, Tex.  
10-2tc

### Legal Notice

THE STATE OF TEXAS  
To any Sheriff or any Constable within the State of Texas—  
GREETINGS:

You are hereby commanded to cause to be published once each week for four consecutive weeks, the first publication to be at least twenty-eight days before the return day thereof, in a newspaper printed in Bailey County, Texas, the accompanying citation, of which the herein below following is a true copy.

### CITATION BY PUBLICATION

THE STATE OF TEXAS

TO: The Capitol Freehold Land & Investment Company, Limited, a defunct corporation, its unknown officers and its unknown stockholders; Bovina Cattle Company, a partnership; R. D. Gage, and should he have ever married, then his unknown wife or wives; Thomas Hoghland and his wife, Hallie Fay Hoghland; W. D. Johnson; F. W. Johnson; A. Franklin Peddie; G. R. Leeds; James Nicholson and his wife, Christina Nicholson; James B. Heggesson, and should he have ever married, then his unknown wife or wives; Dan D. Warner, and his wife, Pearl E. Warner; James B. Higginson and his wife, Linn M. Higginson; G. W. Barton and his wife, Cartherine Barton; J. E. Stewart and his wife, Laura Stewart; P. J. Hodgins and his wife, Sylvia B. Hodgins, if living, and the unknown heirs, assigns, devisees and legal representatives of any of the aforesaid parties who are deceased, Defendants, Greetings:

YOU ARE HEREBY COMMANDED to appear before the Honorable District Court of Bailey County at the Courthouse thereof, in Muleshoe, Texas, by filing a written answer at or before 10 o'clock A. M. of the first Monday next after the expiration of forty-two days from the date of the issuance of this citation, same being the 4th day of April A. D. 1955, to Plaintiff's Petition filed in said court, on the 18th day of February A. D. 1955, in this cause, numbered 1907 on the docket of said court and styled GEORGE E. LANGE, Plaintiff, vs. The Capitol Freehold Land & Investment Company, Limited, et al, Defendants.

A brief statement of the nature of this suit is as follows, to-wit: Plaintiff brings this suit in trespass to try title, alleging that he is the owner in fee simple of NE 1/4 Section 31, Block "Z", W. D. & F. W. Johnson's Subdivision of Parmer & Bailey Counties, Texas; that on or about the 1st day of Jan., 1955, the Defendants unlawfully entered upon such land and ejected Plaintiff therefrom and wrongfully withheld possession from such Plaintiff; and Plaintiff further sets up and pleads the 5 and 10-year Statutes of Limitations as is more fully shown by Plaintiff's Petition on file in this suit.

If this citation is not served within ninety days after the date of its issuance, it shall be returned unserved.

The officer executing this writ shall promptly serve the same according to requirements of law, and the mandates hereof, and make due return as the law directs.

Issued and given under my hand and the seal of said court at Muleshoe, Texas, this the 18th day of February A. D. 1955.

Attest: AL GRIFFIN, Clerk,  
District Court Bailey County,  
District Court Bailey County, Tex.  
(SEAL)

11-4tc



By John C. White, Commissioner

### WILL SAND STORMS COME THIS SPRING?

It is a standard joke you can see a lot of Texas if you just stand in one spot and watch the land go by.

This has been particularly true the past two years. Many an East and South Texas housewife hurriedly removed her wash from the line to save it from a coat-

ing of West Texas dust last spring. On occasion, even the red and white soils of Kansas and Nebraska cast a pall over the Texas sun.

Yet, the re-occurring dust storms are nothing to joke about. They are physical proof of the tragic destruction and loss of precious soil.

What are the prospects for

Facilities for Large and Small Animals

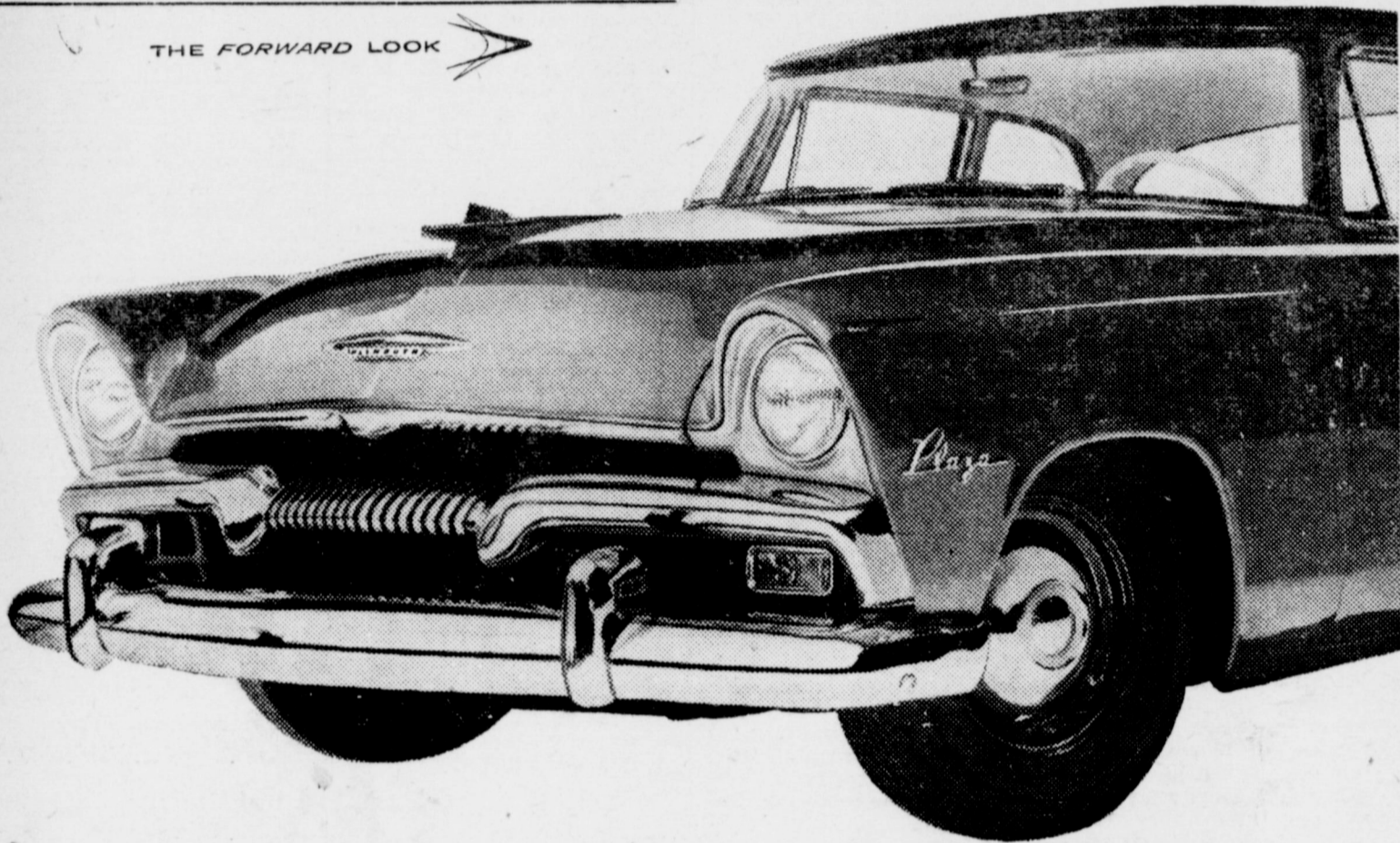
## Clovis Veterinary Hospital

AT THE STOCKYARDS CROSSING

E. E. KRAUS, D. V. M.

104 Hull Phone 5442 Clovis, N. M.

THE FORWARD LOOK



# TOP CAR...TOP SIX

of the low-price 3!

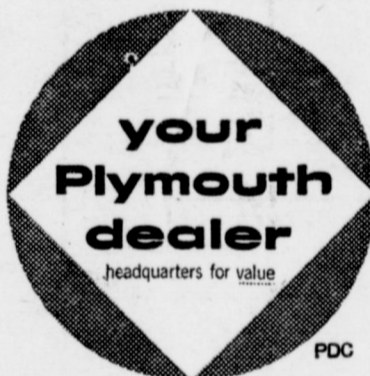
BIGGEST SIZE, SMOOTHEST PERFORMANCE, HIGHEST ECONOMY

Take a turn at the wheel behind Plymouth's new PowerFlow 117 engine—see why it's the smoothest, thriftiest 6 in the lowest-price field. Here's power for all driving needs, plus the super-smoothness of the PowerFlow's Chrome-Sealed Action. No other low-price car has it, and it's your guarantee of more years of gas-saving economy and trouble-free performance.

Taxicab operators, who depend on cars for a living, buy more PowerFlow 6's than all other makes combined... they say the PowerFlow 117 is the most economical, most efficient 6 ever built! Its L-head

design means fewer working parts, less friction. Its automatic choke meters each drop of fuel. Its bypass cooling system gives you quick warm-up in cold weather; dozens of other exclusive features promise you much lower operating expense.

The PowerFlow 117 engine is one big reason why the big swing this year is to the forward-looking Plymouth. Another is the new 167-hp Hy-Fire engine, the most powerful standard V-8 in Plymouth's field. Plan to drive a big, beautiful Plymouth with either of these two great powerplants soon—how about today?



Best buy new; better trade-in, too

# ALL-NEW PLYMOUTH



Just like flying—  
with NEW Shamrock  
CLOUD MASTER

MADE WITH AVIATION COMPONENTS

For driving that feels like flying, try Shamrock's new Cloud Master gasoline. And that comparison is more than accidental because the octane rating of new Cloud Master is way up and the octane is raised with the same aviation alkylate that was heretofore used only in the highest grade aviation fuels. This means an octane rating that exceeds the requirements of your car (no matter what car you drive). And it means that you get and keep getting power you paid for because drive. And it means that you get and keep getting power you paid for because drive. And it means that you get and keep getting power you paid for because drive. For new speed, new power, for all around top performance from your car, try Shamrock's new Cloud Master gasoline for 1955.

New Cloud Master gasoline, like all Shamrock products...



QUALITY You Can Measure By Your Car's Performance

### FARMERS!

I Can Now

CLEAN OR DELINT  
YOUR COTTONSEED

WILLIAMS  
SEED  
CLEANING CO.

Located

On Clovis Highway  
Night Phone 5654

Muleshoe — Texas

### Earl Ladd Attended GMC Dealer Meet

Earl Ladd of Ladd Pontiac has just returned from a GMC meeting in Dallas where he attended a preview of the all-new 1955 line of GMC "Blue Chip" trucks built by GMC Truck & Coach Division. Officials from the GMC Home Office in Pontiac, Michigan, outlined the Division's sales plans for the coming months,

and described the merchandising program for introducing the new truck line to the public.

The meeting included four color movies illustrating many of the hundreds of major styling and engineering advances of the new models. The 1955 line of GMC's is the most improved and the most complete in the history of the Division, according to Mr. Ladd.

THANK YOU NOTES, personal stationery at The Journal office. Office Supplies at The Journal

### Deduction Rule Being Changed

We have been advised that the regulations with respect to deductions for irrigation borders and ditches within fields planted to cotton in 1955 have been made more restrictive. The changes made are as follows:

Irrigation borders and irrigation ditches within the fields are to be deducted provided such borders or ditches are at least four (4) normal rows in width and contain one tenth (0.1) acre or more. Borders and ditches around the outside boundary of a permanent field may be deducted the same as turn-rows

provided the border or ditch plus any turn-rows is at least one tenth (0.1) chain in width and contains at least one tenth (0.1) acre. (One tenth (0.1) chain is 6 and 6/10 feet).

### Cpl. Estep In Hood Army Test

FORT HOOD, TEX. — Cpl. Lloyd D. Estep, 23, whose wife, Janelle, lives in Amherst, recently participated in a special Army test exercise at Fort Hood, Texas.

Purpose of the exercise was to test combat command experimental formations organized by the 1st Armored Division to

adapt to the latest concepts of atomic-age ground warfare.

Corporal Estep, a wire chief in Headquarters and Service Company of the 13th Tank Battalion, entered the Army in April, 1953. A former student at Littlefield High School, he is the son of Mr. and Mrs. L. L. Estep, of Muleshoe.

### Cpl. Fine Takes Part In Exercise

FORT HOOD, TEX. — Cpl. James E. Fine, whose wife, Pamela, lives on Arch Route, Baileyboro, recently participated in a special Army test exercise at Fort Hood, Tex.

Purpose of the exercise was to test combat command experimental formations organized by the 1st Armored Division to adapt to the latest concepts of atomic-age ground warfare.

Corporal Fine, a clerk in Company B of the 13th Tank Battalion, entered the Army in April, 1953. A graduate of Three Way High School, he is the son of George W. Fine, Star Route, Baileyboro.

### DALTONS ARE PROUD PARENTS

Mr. and Mrs. Alvin R. Dalton are the proud parents of a son, who was born in Ft. Worth, February 25. The young gentleman, who was named Terry Lee, weighed 8 lbs., 14 oz. at his arrival.

Mrs. Dalton is the former Miss Barbara Bowers. She and her husband both attended Muleshoe High School.

Grandparents are Mr. and Mrs. W. R. Bowers and Mr. and Mrs. B. A. Dalton all of Muleshoe.

## H. E. NEWSOM

DIRT CONTRACTOR

Box 247

Phone 5222

MULESHOE, TEXAS

1 Block W and 1 Block S Dinner Bell Cafe

DEEP BREAKING

BULL DOZERS

CARRY ALLS

LAND PLANING

D-8 CATEPILLAR TRACTORS

## NEW DODGE & PLYMOUTH CARS



NEW DODGE PICKUPS AND USED CARS

— SEE — John Dempster — AT —

ARNOLD MORRIS AUTO CO

YOUR DODGE-PLYMOUTH DEALER

Phone 7150

Muleshoe

# MORE PEOPLE BOUGHT FORD CARS IN 1954 than any other make!

Ford passenger-car sales to customers outnumbered those of any other make by thousands\*



### AND IT'S EASY TO SEE WHY!

#### Ford is the leader in styling

Motorists know that Ford has set the style trend in the industry for years. And now, with styling inspired by the fabulous Thunderbird, Ford is farther out front than ever!

#### Ford is the leader in V-8 power

Ford was first in its field (by 23 years) to provide the advantages of V-8 power. Since that time, Ford has built over 14,000,000 V-8 engines—more than all other makers combined! For 1955, Ford offers two new and mighty V-8's, as well as a most modern Six—all with the split-second response of Trigger-Torque power!

#### Ford is the leader in ride

Ford was first in its field to introduce Ball-Joint Front Suspension—the greatest advance in chassis design in 20 years. And, for '55, it's even better. Springs are set at an angle to smooth out even the tiniest bumps. It's the new Ford Angle-Poised Ride.

**FORD IS THE LEADER IN ALL THE FEATURES THAT MAKE YOUR CAR WORTH MORE WHEN YOU BUY IT • WORTH MORE WHEN YOU SELL IT.**

# FORD

First in value Proved by sales

\*According to registration figures furnished by R. L. Polk & Company.

## About People You Know

### DR. BIRDSONG ATTENDED MEDICAL-SURGICAL CLINIC

Dr. W. F. Birdsong of the West Plains Hospital and Clinic in Muleshoe attended a Post Graduate Medical and Surgical course held at Scott & White Hospital and Clinic in Temple, March 7, 8 and 9. He will return to Muleshoe Friday.

### ARNOLD GROSS IS INJURED IN FALL

Mrs. Sam Long of Plainview visited Friday with her daughter and son-in-law, Mr. and Mrs. Arnold Gross.

Mr. Gross has returned home after spending a week in the West Plains Hospital and Clinic, following an accident last week. He is employed by the R. E. A., and last Monday fell approximately 25 feet when he slipped off a pole while working near Morton.

### GUESTS FROM FRIONA

Mr. and Mrs. Gibbie Trigg of Friona visited Sunday in Muleshoe with her sister, Mrs. L. D. Cannon and family.

Other guests in the Cannon home were Mr. and Mrs. A. E. Scarbrough.

### FROM TUCSON, ARIZ.

Mr. and Mrs. Ivan D. Mardis of Tucson, Ariz., were recent visitors in Muleshoe in the home of his mother, Mrs. C. C. Mardis and other relatives and friends.

### VISITED SUNDAY IN PLAINVIEW

Mr. and Mrs. D. Clements and Wanda Joyce spent Sunday visiting in Plainview with her mother, Mrs. W. Q. Chaney, who celebrated her birthday.

### HAS RETURNED HOME

Mrs. W. R. Bowers returned home Sunday after visiting in Ft. Worth for the past week, with her daughter and son-in-law, Mr. and Mrs. Alvin R. Dalton and new son.

### GUESTS IN ESTEP HOME MONDAY

Guests in the home of Mr. and Mrs. L. L. Estep Monday of this week was her mother, Mrs. A. K. Cocknougher of Idalou; her sister Mrs. Jerry L. Anderson also of Idalou; and another sister, Mrs. L. B. Teel, of New Deal.

### HOME ON LEAVE

A/1c Charles W. Peace of the Bergstrom AFB in Austin is here on a sixteen day leave visiting his mother, Mrs. F. A. Allison and Mr. Allison and other relatives and friends.

### BOYS VISIT FROM TEXAS TECH

Sammy Donaldson and Jim Green of Texas Tech spent the weekend in Muleshoe with their parents, Mr. and Mrs. Scott Donaldson and Dr. and Mrs. M. F. Green and other relatives and friends.

### VISITED SUNDAY WITH RELATIVES

Mr. and Mrs. Willard Carter and family of Lubbock visited near Muleshoe Sunday with her sister, Mrs. C. C. Anders and

family and other relatives and friends.

Visiting Saturday in the Anders home was their daughter and son-in-law, Mr. and Mrs. Dale Dudley and son of Olton, who were in Muleshoe on business.

### ARE IN ARKANSAS

C. L. Dyer and Mr. and Mrs. Kenneth Briscoe are visiting this week in Springdale, Ark., with Mr. and Mrs. Earl Jeter, former residents of Muleshoe, and other friends. Mr. Jeter has been seriously ill, and is still rather low.

### GIRL SCOUT COOKIE SALE BEGINS MARCH 15

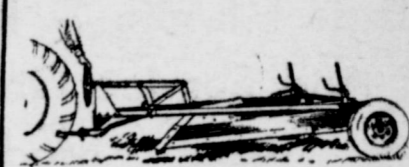
Girl Scouts of Muleshoe will have their annual cookie sale beginning Tuesday, March 15. It will continue through Saturday, March 19.

The money is to be used for Girl Scout activities during the next year. The price will be 80c per box.

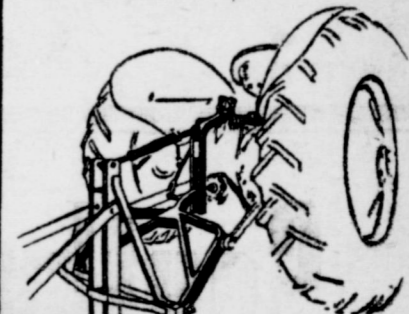
### VISITED IN EUNICE, N. M.

Mr. and Mrs. H. B. Flanagan and La Quita visited over the weekend in Eunice, N. M. with her brother and family, Mr. and Mrs. Gaylon Black and other relatives and friends.

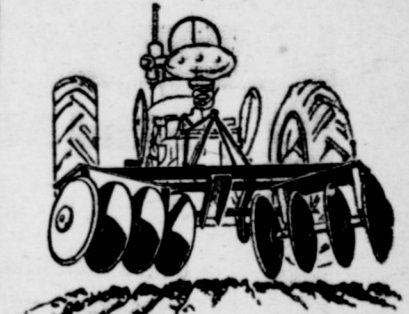
## Meyer DITCHERS & FILLERS



MEYER DITCHER: Several models available on either steel or rubber. New, simple width-of-ditch adjustment on rear.

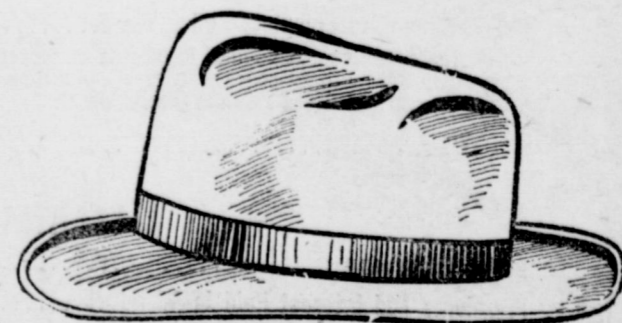


MEYER Three-Point-Hitch DITCHER: With new Hi-Lo Yoke as standard equipment. Gives higher lift and greater depth.



MEYER DITCH FILLER: Standard or three-point-hitch. Fills ditches smoothly. Saves crop. Makes borders.

MULESHOE IMPLEMENT AND SUPPLY  
Phone 3080 Muleshoe



We'll Keep It Under OUR HAT!

What passes between us is held in the strictest privacy. It could be no other way in our bank!

## MULESHOE STATE BANK

Member Federal Deposit Insurance Corporation

# MULESHOE MOTOR COMPANY

PHONE 4930

FORD AUTOMOBILES AND TRUCKS

MULESHOE





**TO PREACH HERE**

Bro. W. R. Craig of Magnolia, Ark., will preach at the Church of Christ Wednesday morning.

**HERE HERE FOR THE WEEKEND**

Mrs. Joe Wicker and children

of San Angelo, were here for the weekend visiting Mr. and Mrs. D. Warner and other relatives.

**Mary Sue Byers Is Homemaker Of Tomorrow**

The Betty Crocker Homemaker of Tomorrow in the Three Way school is Mary Sue Byers. She received the highest score in a written examination which tested the homemaking knowledge and attitudes of the senior girls in the graduating class. She will be entered in competition to name this state's candidate for the title of All-American Homemaker of Tomorrow. Also, she will receive a golden award pin, cook books for herself and the school.

The national winner in this search conducted among 187,000 young women in 8,000 of the nation's public, private and parochial high schools in Philadelphia.

General Mills is the sponsor of this program designed to assist schools in building in young women a deeper appreciation and understanding of the American home and the personal qualities necessary to successful homemaking.

A scholarship of \$1,500 will be awarded each state winner, and she will receive a trip with her school advisor to Washington D. C., colonial Williamsburg, Va., and Philadelphia. Her school will receive a set of the Encyclopedia Britannica.

The scholarship of the young women named All-American Homemaker of Tomorrow will be increased to \$5,000.

The 50-minute written examination designed and judged by Science Research Associates of Chicago, which was given to all participants in this national search, consisted of multiple choice and subjective questions which tested the students' attitude and knowledge in the major areas of Homemaking.

Each girl who took the test received a 24-page homemaking guide which will assist her in pursuing the career of homemaking.

Mary Sue is an outstanding student in the senior class and is enrolled in Homemaking 111 this

year under the direction of Mrs. Helen Gay, Three Way Economics teacher.

**Mona Beth Shaefer Initiated Into Rainbow For Girls**

Mona Beth Shaefer was initiated into the Order of Rainbow for Girls Thursday evening, with Ginger Gaede as Worthy Advisor, presiding.

The following attended the initiation: Elizabeth Farley, Darla Myers, Jean Gammon, Elaine Evans, Mary Janice Puckett, Darla Johnson, Pat Browne, Mary Jo Holt, Doris Childers, Marcia Redwine, Kay Lendeson, Nell Moore, Carolyn Hinkson, Kay Brown, Sandra Welch, Judy Hanks, Nel-da Redwine, Judy Lambert, Jackie Burton, Delores Wagnon, Marie Houston, Laquinn Stone, and Pat Thomson.

Refreshments were served at the close of the meeting.

**Miss Dawson And Leon Harvey Were Married Friday**

Miss Alice Bronza Dawson became the bride of Morris Leon Harvey in a quiet ceremony performed by Rev. Cole at the Calvary Baptist Church in Clovis, N. M., Friday morning, March 4, at 10:00 o'clock.

She is the daughter of Mr. and Mrs. J. U. Dawson of Muleshoe and his parents, also of Muleshoe, are Mr. and Mrs. R. C. Harvey.

The bride was attired in a toast brown suit, with brown accessories.

Following a trip to Albuquerque, N. M., Mr. and Mrs. Harvey will make their home in Muleshoe. Both are senior students in Muleshoe High School.

Mrs. Harvey, mother of the bridegroom, and Misses Lynn Foster and Velta Gillis attended the ceremony.

**Klumps Observe 45th Anniversary**

Mr. and Mrs. R. J. Klump celebrated their forty-fifth wedding anniversary at their home last Sunday, March 6, with a dinner. Those attending were Mr. and

Mrs. W. J. Matthews, Mr. and Mrs. J. T. Harding and Mr. and Mrs. D. L. Harding, Texico, N. M.; Mr. and Mrs. Howard H. Carlyle, Lubbock; Mr. and Mrs. Ed Daniels, Clovis, N. M.; and Miss Paul, Jonie Green, Gambrel Smith, and Mr. and Mrs. H. H. Carlyle, all of Muleshoe.

**Half Century Club Donates To Red Cross**

Mrs. Sweetie Johnson served coffee, hot cider and other refreshments to members of the Half Century Club when they

met at her home last Thursday afternoon.

The ladies played canasta during the afternoon and enjoyed a social hour.

The next meeting will be held in the home of Mrs. Jennie Panter, March 17.

Members of the club voted to donate \$10 to the Red Cross drive and \$5 to the Boy Scouts.

Ladies attending were: Mmes. Gussie Mardis, Sallie Hardin, Frances Williams, Alpha Mathiesen, Laura Gilbreath, Hazel Farrell, Beulah Carles and Mary Young.

**CARD OF THANKS**

We wish to thank all for their kindness in our hour of need in the death of our loved one. Mr. and Mrs. Truman Lorraine and family.



**Is Your Irrigation Motor READY TO GO**

IF NOT - CALL 6930 FOR FAST, EFFICIENT SERVICE

**HOMER MILLSAP MOTORS**

Located On Sudan Highway  
HOMER MILLSAP

BOB PEACE

Phone 6930  
NORMAN LOFTIS



"Thanks to G-E push-button control, son—"

**Starting our pump is easier than turning on a faucet!"**

"It sure is easy to start our pumps with General Electric controls. Just push a button and the pump starts—that's all there is to it with G-E magnetic starters! "And you can forget about this control once it's installed. That's because its all-weather case is so well protected from rust, rain, and all kinds of weather. Even the push buttons are weather-resistant! "Now take the overload relays that protect our motor from overheating. They're in a special ventilated compartment so that the heat from the sun will not cause them to prematurely shut off the motor. This compartment is also protected with a rust-proof screen to keep out insects.

"All-weather protection for the control means continued protection for the motor because the control guards our motor against damage from overloads and short circuits. And the motor itself is built to last a generation or more! Its controlled bearing lubrication and sturdy cast-iron housing keep it ready for service whenever we turn it on.

"Son, General Electric knows our irrigation pumping problems and has the right motor and control team to solve them completely!"

Be sure to ask your local pump dealer for G-E motors and control for your irrigation pumps!

**GENERAL ELECTRIC**

**Send for your 8-page bulletin on G-E pump motors and controls**

Here's all the information you need on "How to Select and Apply Electric Equipment for Irrigation Pumping." Send this coupon today.

General Electric Co.  
1801 North Lamar Street,  
Dallas 2, Texas

Please send me a copy of your free bulletin GEA-5917B.

Name \_\_\_\_\_  
Address \_\_\_\_\_  
City \_\_\_\_\_ State \_\_\_\_\_

*Beautiful..Modern..Dependable*



Illustrated above is a Western-Holly completely-automatic built-in Gas range. Western-Holly built-in ranges may be financed as part of your long term FHA Title II loan... or a convenient Title I loan if you're remodeling.

*Naturally...it's Gas*

The modern, dependable, completely-automatic built-in gas ranges are beautiful and flexible, too! Flexibility is the key word with built-in automatic gas range cooking units. Note the convenient burner arrangement... the waist-high oven and broiler and the eye-level controls. See your dealer, builder or architect. Install a beautiful... modern... dependable... completely-automatic built-in gas range in your home.

**Pioneer Natural Gas Company**  
FUEL FOR A GROWING EMPIRE

**CLYDE BRAY MADE ACCREDITED FARM BROKER**

Chicago — Clyde A. Bray, local Realtor with offices at 905 Avenue C, has been awarded the professional designation of Accredited Farm Broker, according to an announcement just made

by the National Institute of Farm Brokers.

This professional designation indicates that Mr. Bray has met the following requirements: He has been favorably recommended by the Texas chapter of the Institute as to his reputation, mor-

al character, integrity, sincerity of purpose, and quantity of experience. He has received a satisfactory grade on written examination, set up by an examining committee of the Institute, based on general farm brokerage, farm economics, farm phraseology and legal definitions.

**WEEKENDED IN MULESHOE**

Mrs. George Chambless had as a guest this weekend her daughter, Mattie Mae Chambless, of Amarillo.

**Sorghum Meeting Set At Farwell**

Farwell will be host to the sorghum grain growers of Parmer County tonight, the meeting scheduled to begin at 8 o'clock in the district courtroom. Farwell Chamber of Commerce is extending a welcome and will serve refreshments following the business session.

According to Joe W. Jones,



**PRE-EASTER SPECIAL ON PERMANENT WAVES**

Our Fine Custom Permanent, PLUS A Reconditioning Treatment For Damaged Or Over-Bleached Hair . . . PLUS One Of Our Famous Individualized Style Settings. All Three For The Price Of The Permanent.

CALL 6089 FOR AN APPOINTMENT NOW

LOIS Operators REBA

**JOHNSON BEAUTY SHOP**

Layne Building on Clovis Hi-way, Muleshoe



**BUTANE AND PROPANE**

Our New 2-Way Radio Enables Us To Give An Even Better Service

**WIEDEBUSH & CHILDERS**

PHONE 2810 MULESHOE

**This Weeks Mystery Farm**

**CAN YOU IDENTIFY THE MYSTERY FARM?** If you are the first correctly to identify the farmstead pictured below, you will be awarded two tickets to Cox Drive-In Theatre in Muleshoe. Watch The Journal each week for a picture of an attractive farm home of the Muleshoe country.



Just phone The Journal and inform us where you live and whose farm you think this is. There will be two tickets each for the first out of city dweller and the first city resident to telephone or call at this office. Phone 5400 and 7220.

Parmer County agricultural agent, the meeting is a follow up to and in accordance with

the regional meeting for sorghum growers held in Amarillo two weeks ago. At that meeting, a resolution was adopted proposing that a permanent organization of these farmers from over a five state area formed.

At the Farwell meeting a representative will be named to participate in the proposed organization. Mr. Jones hoped to have Dr. Kramer, of the Lubbock Agricultural Experiment Station present to discuss milk breeding work with emphasis on Hibred grain sorghums.

you want the premeasurement service you must come to the ASC Office to make request and pay the amount specified above before April 1, 1955.

**IN NEW MEXICO**

Mrs. J. M. Moore was visiting earlier this week with relatives in Logan, N. M.

**FROM FT. BLISS**

Gene Bartlett, of Ft. Bliss, near El Paso, was a recent visitor in Muleshoe.

**ASC Measurement Service Provided**

The cotton premeasurement service will be offered again this year. If you want your cotton ground measured before planting time, you can make request to the ASC Offices in Muleshoe, before April 1, 1955. The charge for the service will be \$7.00 for the first plot on the farm and \$2.00 for each additional plot.

If you do not want to pay this amount for premeasuring, your cotton will be measured after it comes up the first time free, as in the past. Remember that if

THANK YOU NOTES, personal stationery at The Journal office.



See the **NECCHI** BEFORE YOU BUY

You owe it to yourself to see the **Miracle Sewing Machine** that

- \$55 on button!
- Blindstitches hem!
- Makes buttonholes!
- Does all your sewing more easily!

**WITHOUT ATTACHMENTS.**

Call for Free Home Demonstration

**Harvey Bass Appliance**

Phone 4690 — Muleshoe

**For The Best In Entertainment In Muleshoe**

**VISIT THE Valley and Palace**

Box Office Opens 7:00 P. M.; Show Starts 7:15 P. M. — Saturday & Sunday 1:45 P. M., Continuous Showing —

**Valley Theatre**

**THURSDAY & FRIDAY**  
**Trouble In The Glen**  
—starring—  
Forrest Tucker  
M. Lockwood  
In Cinemascope

**SATURDAY ONLY**  
**RED MOUNTAIN**  
—starring—  
Alan Ladd

**SUNDAY & MONDAY**  
**BOUNTY HUNTERS**  
—starring—  
Randolph Scott  
Marie Windsor  
In Cinemascope

**TUESDAY & WEDNESDAY**  
**On The Waterfront**  
—starring—  
Marlon Brando  
Eva Marie Saint

**Palace Theatre**

**THURSDAY & FRIDAY**  
**THE BIG SLEEP**  
—starring—  
Humphrey Bogart  
Loren Bacall

**SATURDAY & SUNDAY**  
**CALL OF THE WILD**  
—starring—  
Clark Gable  
Loretta Young

MOTION PICTURES ARE YOUR BEST AND CHEAPEST ENTERTAINMENT

**There's even more to Chevrolet styling than meets the eye!**

This is beauty with a bonus . . . for Chevrolet styling is designed to add safety and comfort while you drive, and to return greater value when you trade.

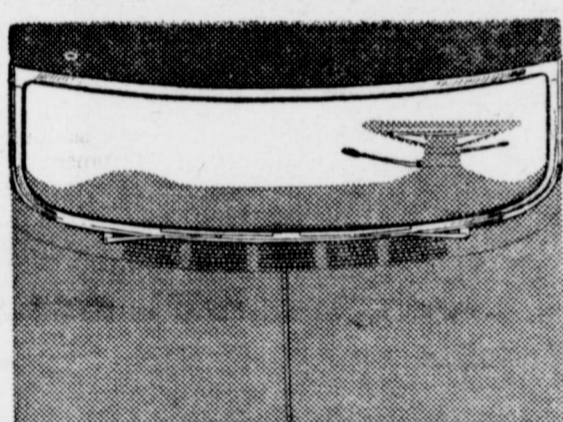
Truly modern lines are shaped by usefulness. You can see what we mean in the deep crystal curve of Chevrolet's Sweep-Sight windshield . . . a dramatic style note, certainly, but one that stems from the need for wider, safer vision. Or take high-set taillights—they add to the impressive length of line . . . but they are up there where they can be seen for safety's sake; and as convenient guides in parking. So, too, with the jutting peaks over the headlights.

The smart louvers across the hood aren't just decoration . . . they mark the intake for the High-Level ventilation system for cleaner, fresher air. And the whole shape of the body—its lowness, the dipped belt line—is merely a reflection of a lowered center of gravity, the added stability.

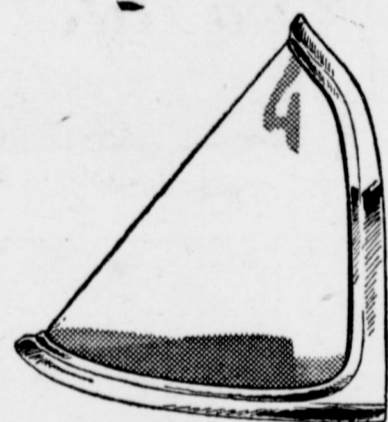
This is truly functional styling that serves you better every mile, and preserves its value against the distant day when you trade. This is Body by Fisher—another Chevrolet exclusive in the low-price field. Come in and let us demonstrate that this new Chevrolet is just as exciting to drive as to look at!



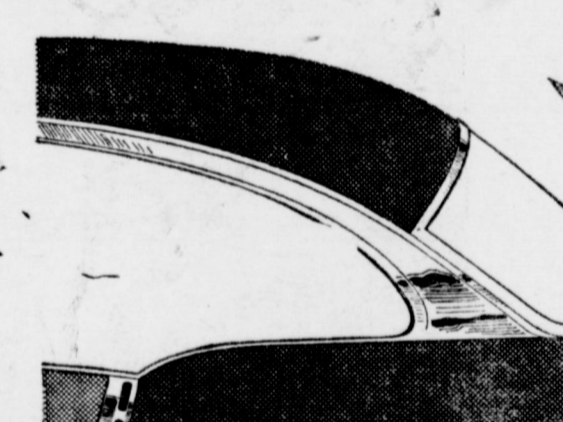
1 Visored headlights



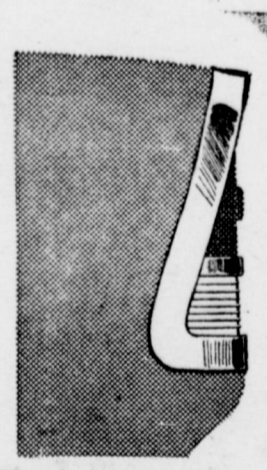
2 Lowered High-Level air intake



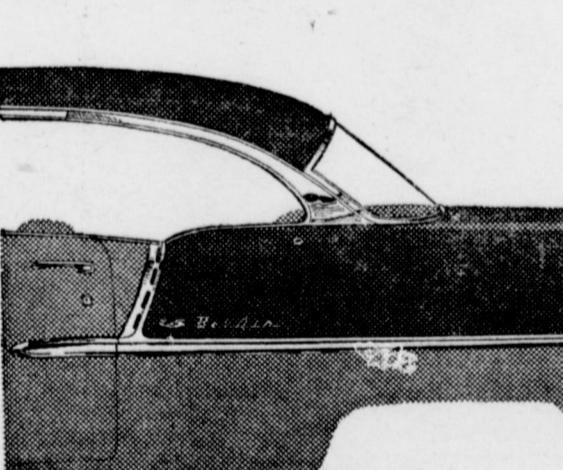
3 Sweep-Sight windshield



4 Distinctive dip in belt line



5 Fender-high taillights



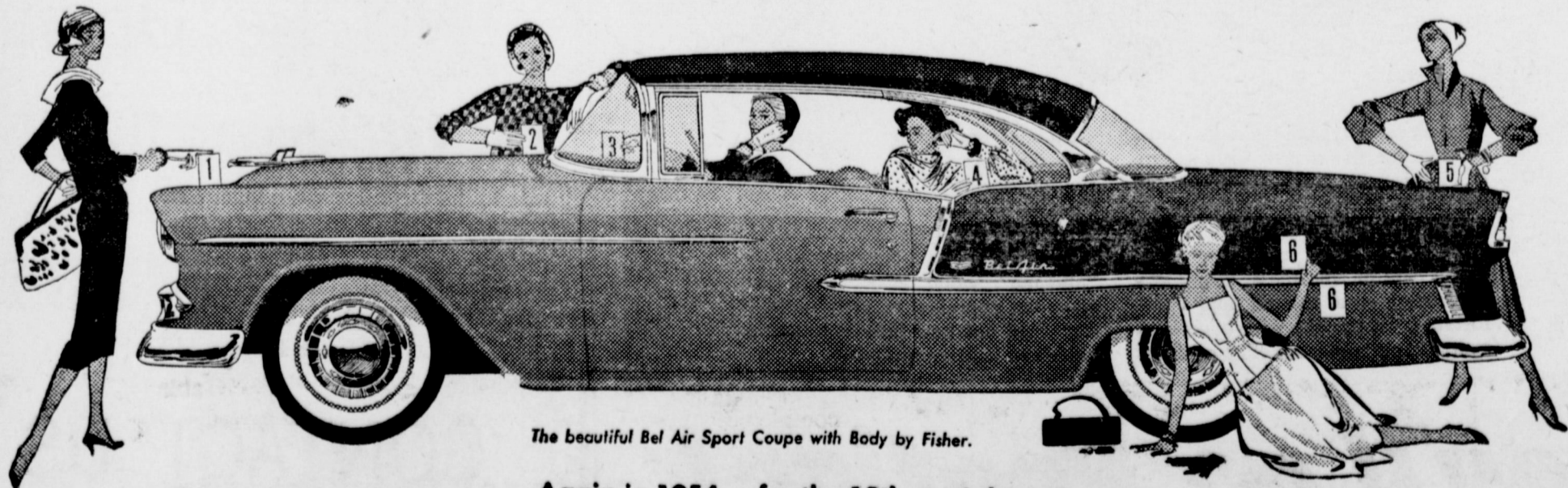
6 Tasteful two-tone color styling

motoramic

**CHEVROLET**



STEALING THE THUNDER FROM THE HIGH-PRICED CARS!



The beautiful Bel Air Sport Coupe with Body by Fisher.

Again in 1954 — for the 19th straight year—  
**MORE PEOPLE BOUGHT CHEVROLETS THAN ANY OTHER CAR!**  
**C. & H. CHEVROLET CO.**  
MULESHOE, TEXAS

**CHRISTIAN SCIENCE SERVICES**  
 Man's trust in God's provision of all good will be stressed in the Christian Science Lesson.

Sermon entitled "Substance" at church services this Sunday. This view is supported by selections which will be read from the King James Version of the Bible, and

the Christian Science textbook, "Science and Health with Key to the Scriptures" by Mary Baker Eddy.

The Golden Text is from II Corinthians (9:8): "God is able to make all grace abound toward you; that ye, always having all sufficiency in all things, may abound to every good work."

The following passage is from the textbook (p. 306): "The myriad forms of mortal thought, made manifest as matter, are not more distinct nor real to the ma-

terial senses than the the Soul-created forms to spiritual sense, which cognizes Life as permanent." This is corroborated by the Bible verse from James (1:17): "Every good gift and every perfect gift is from above, and cometh down from the Father of lights, with whom is no variableness, neither shadow of turning."

THANK YOU NOTES, personal stationery at The Journal office.

**COL. CLAYTON MYERS AUCTIONEER**

Muleshoe Livestock Auction — Sale Every Saturday

**BOOK YOUR FARM SALES WITH ME**

Phone 4303

Muleshoe

**Bailey County Abstract Co.**

ABSTRACT SERVICE — LOANS  
 Mrs. Lola Barron — Mgrs. — L. S. Barron  
 Established in 1906

**BUTANE - PROPANE SALES AND SERVICE**

LP AND NATURAL GAS APPLIANCES



- Gasoline — Oil — Tires — Batteries
- Let Us Convert Your Tractor and Motors to Butane
- Plant At Needmore For South Bailey County



**Muleshoe Liquefied Gas Co.**

MULESHOE

CLOVIS HIGHWAY  
 PHONE 3130

TEXAS

**New Chevrolet Being Offered In Novel Contest**

You or a member of your family can win a 1955 Chevrolet and a \$1,000 U. S. Savings Bond to boot in a contest beginning here March 1 under the sponsorship of the Chevrolet Motor Division and C. & H. Chevrolet Co.

To enter the Chevrolet "Miracle Mile" contest, you need merely fill out an entry form, write in 25 words or less why you would like to own a 1955 Chevrolet and deposit the entry in the mailbox provided at C. & H. Others of driving age in the family may also enter by preparing the material on plain paper and attaching them to the official form, Arthur Crow of the firm said.

Entry forms may be obtained at the dealership, Mr. Crow said. There's a bonus of a \$1,000 bond in it for every winner who takes a demonstration ride in a new Chevrolet at the time he turns in the entry form. Besides writing frankly why he would like to own a new Chevrolet, each contestant must answer four elementary questions about the car's mechanical features, answers for which may be found in the contest booklet, Mr. Crow said. Entries are being judged nationally on the basis of sincerity and originality rather than writing excellence, grammar and vocabulary.

The contest ends May 9 and is divided into six contest periods. In each contest period, 16 new Chevrolet Bel Air sedans and a sports model will be awarded winners, for a total of 102 cars nationally. Each winner who has taken a "Miracle Mile" ride will be given a \$1,000 bond.

If a winner has purchased a new Chevrolet during the contest, he will be presented with the

**STOP**  
 When you see  
 this sign



MORRISON MOTOR  
 Phone 4130

**There Is Strength for YOU in Group Praying**



When you pray with others — in the family — or in the church — you lay hold of DIVINE RESOURCES of STRENGTH for yourself and your world!

full retail price of a 1955 Chevrolet Bel Air sedan in cash and a \$1,000 bond as well, if he has taken a demonstration ride, Mr. Crow said.

**Local Boys Make Trip To Austin**

Several boys, Doyle Rush, Gordon Wilson, Billy Ellis, Clinton Dillard, and Wayne Bristow, journeyed from Muleshoe to Austin last week in order to see

the boys' championship basketball tournament at Gregory gym on the University campus.

While in the state capital the group made sight-seeing tours through the Capitol building and the campus of the University of Texas. They spent Thursday night and Friday seeing San Antonio. Highlighting the trip to the "Alamo City" were visits to missions San Jose, The Alamo, and Conception. On Friday afternoon the group toured the zoo and Breckenridge Park.

After returning to Austin for the finals in the mammoth tournament and the first track meet of the season for the Texas Longhorns the boys returned home feeling that their three day vacation had been well spent.

Also in Austin for the tournament were Buddy and Roger Pool and Bob Wingo of the local high school.

**POLKA DOT PARTY FROCK**



Big dots for a little girl's party dress! This young lady is ready for the party in a gay frock of Peter Pan's Everglaze cotton satin. The full-skirted dress has a grown-up touch with its detachable cape collar.

**SPENCE RADIO SHOP HAS MOVED**

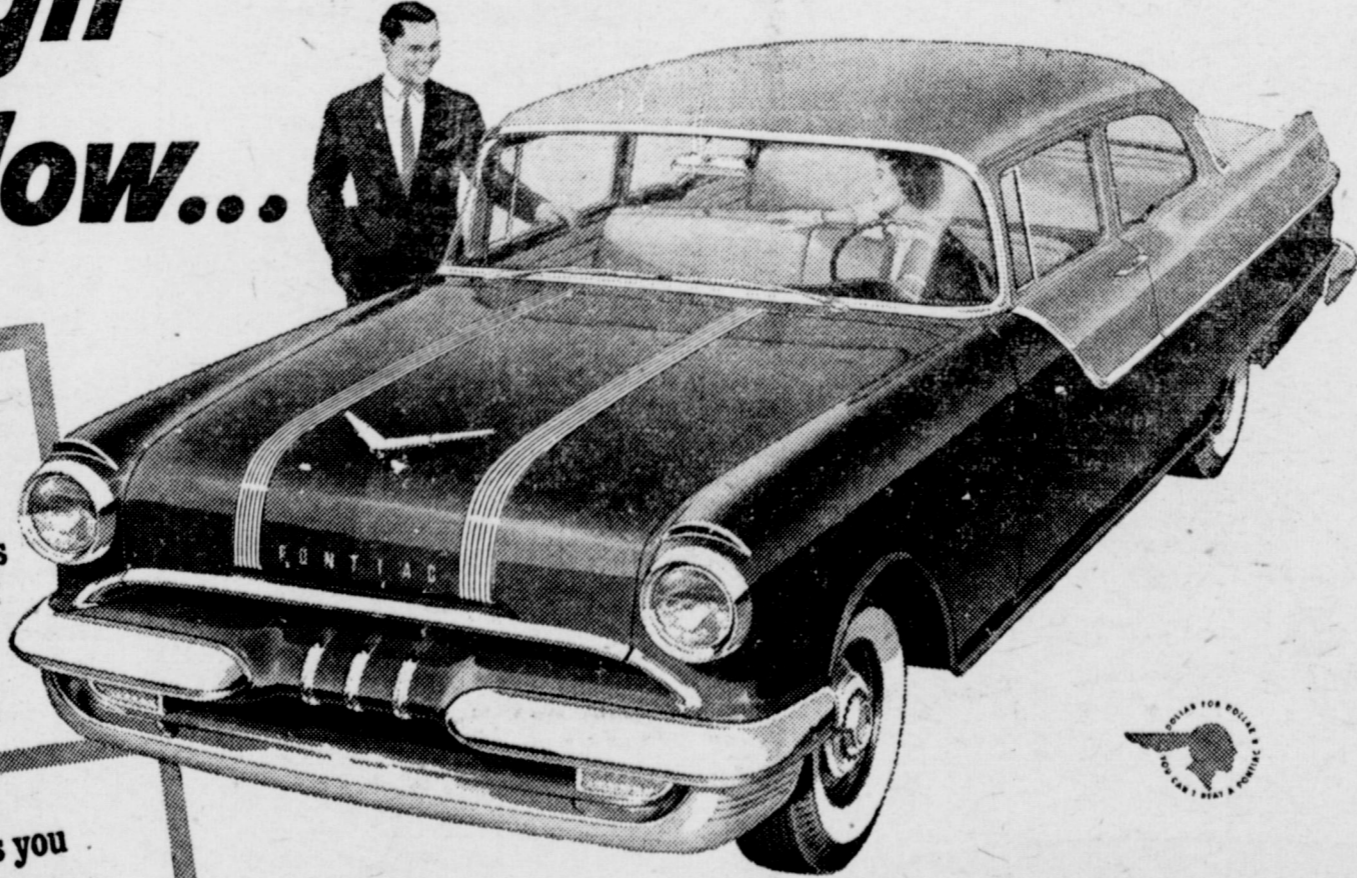
To New Location

— IN THE —  
 GILBREATH BUILDING

Next Door To  
 BOVELL AUTO SUPPLY

Phone 5250 — Muleshoe

**Look high and low...**



**1. Pontiac for less than many models of the lowest-priced cars or stripped economy models of higher-priced makes!**

**2. Only Pontiac gives you luxury-car size plus the sensational Strato-Streak V-8!**

Biggest car at its price (122" and 124" wheelbase) • Most powerful car at its price (180 horsepower) • Only car at any price with distinctive Vogue Two-Tone Styling and the riding and driving ease of the torsion-free, shock-proof chassis.

The most enthusiastic Pontiac owners are those who have taken this advice. They've looked the field over from top to bottom—and here's what they learned:

Pontiac is way up there with costly cars in wheelbase, roominess and riding ease. It's big and comfortable, yet handles with expensive sports car nimbleness. The exciting

dash and compelling drive of the Strato-Streak V-8 produce the richest thrills in motoring. And Pontiac is America's most distinctive car in styling as in action.

Come in for the facts about this "all-time" value leader and our generous appraisal of your present car! Find out how little it takes to switch to modern motoring.

**and you'll go Pontiac!**

**LADD PONTIAC**

Muleshoe

Phone 3080

**Texas Harvesting ASSOCIATION Will Be Open**

**EACH MONDAY & THURSDAY**

Of Each Week

**BEGINNING FEBRUARY 28**

Through Balance of Year

**CONTACT US WHENEVER YOU NEED MEXICAN NATIONAL LABOR**