

The Muleshoe Journal DEDICATED TO THE PROGRESS AND DEVELOPMENT OF BAILEY COUNTY AND THE GREAT MULESHOE COUNTRY

VOLUME 36, NUMBER 2

Published Each Thursday At Muleshoe, Bailey County, Texas

THURSDAY, JANUARY 10, 1957

Freeman Takes Prison Position

Mr. and Mrs. Hugh Freeman and children, Ronnie and June, have moved to Eastham State Prison Farm, Weldon, Texas...

High School Band Wins Honors At Sun Bowl Game

Fifty students from the Muleshoe high school band, and ten sponsors traveled to the Sun Bowl game and festivities in El Paso, New Years day.

District FB Meet In Lubbock On January 16

All Farm Bureau members are invited to attend a District Farm Bureau meeting to be held January 16 according to Bill Millen, county president.

Goodwin, Daricek Win Posts In Water District

Boss Goodwin, Route 2, Muleshoe, was elected Bailey county committee man for the High Plains Underground Water Conservation District in an election held Tuesday.

First National Directors Chosen

Stockholders of the First National Bank, in annual meeting Tuesday, elected a board of directors and heard reports of officers.

The Weather

Table with 2 columns: Day and High/Low temperatures. Thursday: 57-31, Friday: 59-27, Saturday: 56-29, Sunday: 60-25, Monday: 68-27, Tuesday: 70-50, Wednesday: 70-20.

Bank Deposits Up \$830,297 Over Last Year

Deposits in the two Muleshoe banks increased \$830,297.24 over deposits at the end of 1955, according to recently published statements of the two banks.

Fund Campaign For Hi Plains Station Reaches \$159,386

On January 7, the campaign for investments in the 310 acre, High Plains Station of the Texas Research Foundation at Halfway reached a total of \$159,386.37.

Texico FFA Boys Enter Swine In El Paso Show

Four members of the Texico Future Farmers of America chapter have listed entries in the Junior Division of the 28th Annual Southwestern Livestock Show in El Paso, Texas, Feb. 4-10.

FARMERS UNION MEETING

The Lazbuddie Farmers Union will hold a meeting in the Lazbuddie school building at 7:30 p.m., January 15, according to Wyle Bullock of that community.

Blackwater Valley SCD Publishes Annual Report of 1956 Program

More than 73,000 acres of Bailey County land has come under the influence of the Blackwater Valley Soil Conservation District supervision during 1956, during which time 465 cooperators were serviced according to the annual report made public this week by the District office in Muleshoe.

Office of Sheriff And Tax Collector Now Separated

The office of the county sheriff and county tax assessor-collector have now been separated, with the taking of office by Carey Stafford, first elected official to that newly created office.

Council Talks To Delegations At Wednesday Meet

The Muleshoe City Council met Wednesday afternoon and talked with two delegations concerning future growth and development of the community.

Doris Copley Wins Colleague Honors

Over two hundred guests witnessed the annual "Open House" sponsored by the young ladies who live in the California dormitory at John Brown University at Siloam Springs, Ark., recently.

ELIZABETH ANN FARLEY RETURNS TO COLLEGE

Elizabeth Ann Farley returned to TSCW at Denton Sunday after spending the Christmas holidays here with her parents, Mr. and Mrs. John Farley, who accompanied her as far as Lubbock on her return to college.

HIWAY WIDENING POSSIBLE IN SUMMER

Three Injured In Highway Accident Last Saturday

Three persons were injured Saturday at the intersection of FM 690 with highway 84, 2.9 miles east of Farwell.

Coaches Speak At Lions Club Meet

Coaches Bill Taylor and Charles McClure of the athletic department in Muleshoe schools, spoke to the Lions club at the club's luncheon meeting Wednesday.

Bays Resumes Law Practice

Norman Bays, for six years county attorney of Bailey County, has resumed the private practice of law in Muleshoe after completing his term of office Jan. 1.

Organize G. O. C. At Needmore

An organizational meeting of the Ground Observer Corps of Civilian Defense, will be held January 14 at 7:30 p.m., in the Needmore community building.

FRIENDSHIP SS CLASS MET IN PRECURE HOME

Friendship class of the First Baptist Church met in the home of Mrs. R. D. Precure Thursday, Jan. 3, Mrs. W. T. Andrews presiding.

County Certified

Bill Millen, president of the Bailey County Farm Bureau, has been notified by telegram from Congressman George Mahon, that Bailey County has been certified for drought emergency feed.

Amarillo Rodeo January 19-25

On a tour to publicize and invite persons in this area to the annual Amarillo Stock Show and All Professional Indoor Rodeo, beginning January 19 and continuing through January 25, a group of Amarillo businessmen were in Muleshoe on Wednesday.

Archie Thomas Jr. Funeral Services Held Here Thursday

Funeral services were conducted at 2:30 p.m. today (Thursday) for Archie Thomas, Jr., 24, who passed away at 5:15 a.m. Tuesday in West Plains Hospital, Services were held at First Baptist Church here with Rev. E. K. Shepherd, the pastor officiating.

Parents Aid Asked In School Census During January

The Muleshoe school census is being taken during the month of January this year. All children who are six years old or older before September 1, 1957, but will not be 18 or older on or before that same date should be counted in this census.

Superintendent Attending Meet In Austin Today

Superintendent of schools, Jerry Kirk, left Wednesday to attend the annual meeting of state school administrators in Austin, Thursday and Friday.

Mules Win Finals In Amherst Tourney Saturday Evening

The high-scoring Muleshoe Mules continued their winning streak Saturday by winning the Amherst invitational tournament defeating Friona, 67-47, after beating Spade 53-51 in the semi-final round of the three day tourney.

Basketball Game At Lazbuddie For March Dimes Fund

A special benefit basketball game for the March of Dimes will be played between the faculty of Lazbuddie school and farmers of that community January 17 at 7:15 p.m.

Parents Aid Asked In School Census During January

The child should be counted in the census if on or before that same date should be counted in this census. School officials point out that the school census is of vital importance and urged parents to cooperate by filling out the census forms and returning them promptly.

Plans Complete For Seventh Annual Chamber Commerce Banquet Jan. 11

Music will be furnished by the high school choir, under the direction of Paul Summersgill, and new officers will be introduced.

Electric Coop Annual Meeting January 18

The annual meeting of the members of the Bailey County Electric Cooperative Association will be held at 2 p.m., January 18 in the Muleshoe high school auditorium.

Deadline Set For Payment of Taxes

February 1 is the deadline for paying poll taxes for 1957, Carey Stafford, county tax assessor-collector announced this week.

One Accident On Holiday Weekend

Only one minor accident marred the traffic picture over the New Year long weekend, according to the local office of the State Highway Patrol.

Harding Becomes Associated With Farwell Firm

Hurshel Harding, who has been practicing law in Muleshoe for the past several months, has closed his office here to become associated with the firm of Aldridge and Aldridge in Farwell.

MARKETS

Table with 2 columns: Commodity and Price. Rye, cwt. 2.50, Wheat, cwt. 1.95, Wheat, bu. 2.05, Soy Beans, bu. 2.20, Corn, cwt. 2.60, Eggs, doz. 30c, Cream, lb. 58c, Lt. Hens, lb. 8c, Hvy. Hens, lb. 12c, Roosters, lb. 5c.

Rep. Jesse Osborn Appointed To Five Legislative Posts

Rep. Jesse Osborn, of Muleshoe has been re-appointed to the appropriations committee in the State Legislature, in session now in Austin. This is the second year Mr. Osborn has served on this important committee.

One Accident On Holiday Weekend

The Pierce car overturned, causing considerable damage but not injuring Pierce. Slight damage was caused to the fender of the pickup.

Harding Becomes Associated With Farwell Firm

Hurshel Harding, who has been practicing law in Muleshoe for the past several months, has closed his office here to become associated with the firm of Aldridge and Aldridge in Farwell.

Deadline Set For Payment of Taxes

February 1 is the deadline for paying poll taxes for 1957, Carey Stafford, county tax assessor-collector announced this week.

One Accident On Holiday Weekend

Only one minor accident marred the traffic picture over the New Year long weekend, according to the local office of the State Highway Patrol.

Harding Becomes Associated With Farwell Firm

Hurshel Harding, who has been practicing law in Muleshoe for the past several months, has closed his office here to become associated with the firm of Aldridge and Aldridge in Farwell.

Rep. Jesse Osborn Appointed To Five Legislative Posts

Rep. Jesse Osborn, of Muleshoe has been re-appointed to the appropriations committee in the State Legislature, in session now in Austin. This is the second year Mr. Osborn has served on this important committee.

One Accident On Holiday Weekend

The Pierce car overturned, causing considerable damage but not injuring Pierce. Slight damage was caused to the fender of the pickup.

Harding Becomes Associated With Farwell Firm

Hurshel Harding, who has been practicing law in Muleshoe for the past several months, has closed his office here to become associated with the firm of Aldridge and Aldridge in Farwell.

Deadline Set For Payment of Taxes

February 1 is the deadline for paying poll taxes for 1957, Carey Stafford, county tax assessor-collector announced this week.

One Accident On Holiday Weekend

Only one minor accident marred the traffic picture over the New Year long weekend, according to the local office of the State Highway Patrol.

Harding Becomes Associated With Farwell Firm

Hurshel Harding, who has been practicing law in Muleshoe for the past several months, has closed his office here to become associated with the firm of Aldridge and Aldridge in Farwell.

Table with 2 columns: Commodity and Price. Rye, cwt. 2.50, Wheat, cwt. 1.95, Wheat, bu. 2.05, Soy Beans, bu. 2.20, Corn, cwt. 2.60, Eggs, doz. 30c, Cream, lb. 58c, Lt. Hens, lb. 8c, Hvy. Hens, lb. 12c, Roosters, lb. 5c.

WEEKLY CROSSWORD PUZZLE

Canine Breed

HORIZONTAL

- 17 Depicted
- 18 Form a notion
- 19 Type of fur
- 20 Fruit drink
- 21 Willow
- 22 Greek letter
- 23 Compass point
- 24 Short jackets
- 25 Symbol for
- 26 Former
- 27 Russian ruler
- 28 Three times (comb. form)
- 29 Chopping tool
- 30 Hypothetical structural unit
- 31 Spain (ab.)
- 32 Symbol for selenium
- 33 Yes (Sp.)
- 34 Through
- 35 Bitter vetch
- 36 Sea eagles
- 37 Native of Latvia
- 38 Behold!
- 39 Spirited
- 40 Comparative suffix
- 41 Be indebted
- 42 Rugged mountain crest
- 43 Feminine name
- 44 Graciously
- 45 Sea nymphs
- 46 Literary compositions
- 47 It has a black coat with tan markings

VERTICAL

- 1 Huge person
- 2 Most unusual
- 3 Scottish sheepfold
- 4 Ambery
- 5 Siouan Indian
- 6 Bird's home
- 7 Observed
- 8 Strays
- 9 Symbol for thulium
- 10 Bind
- 11 Complete
- 12 Domain
- 13 Type of moth
- 14 Ascended
- 15 Horsemen
- 16 Pendant ornament
- 17 Goddess of the earth
- 18 Volcano in Sicily
- 19 Run away to marry
- 20 Lock of hair
- 21 Facile
- 22 Greek god of war
- 23 Die
- 24 Wanders stealthily
- 25 Fixed
- 26 Run away to marry
- 27 Lock of hair
- 28 Facile
- 29 Greek god of war
- 30 Goddess of the earth
- 31 Volcano in Sicily
- 32 Run away to marry
- 33 Lock of hair
- 34 Facile
- 35 Greek god of war
- 36 Goddess of the earth
- 37 Volcano in Sicily
- 38 Run away to marry
- 39 Lock of hair
- 40 Facile
- 41 Greek god of war
- 42 Goddess of the earth
- 43 Volcano in Sicily
- 44 Run away to marry
- 45 Lock of hair
- 46 Facile
- 47 Greek god of war

Here's the Answer

Hybrid Sorghums Available For 1957 Planting

Seven grain sorghum hybrids, developed cooperatively by the Texas Agricultural Experiment Station and the U. S. Department of Agriculture, will be available to farmers for planting in 1957. These hybrids are the result of research work which began in 1921 and are the first practical hybrids to be released from these studies.

The seven hybrids, RS 590, Texas 601, RS 610, Texas 611, RS 650 and Texas 660, are the best of several hundred produced and tested during the past 20 years at the Lubbock and Chillicothe stations. Tests were conducted last year throughout Texas and all have thus grown under limited field

demonstrations. To plant breeders for the Texas Station say still better hybrids with improved adaption to various growing conditions can be expected in the near future.

Farmers are advised to plant one or more of the hybrids adapted to their areas and to make comparisons with standard varieties. Further, it is suggested that only certified hybrid seed be planted as insurance that seed planted are correctly labeled.

Planting seed of these seven hybrids are white, but the grain produced will be red. In general, the higher the hybrid number, the later is its maturity, but none is as late as Plainsman. Yields 20 to 40 percent greater than varieties of the same maturity under most conditions can be expected. The plants show superior seedling vigor, rapid growth and uniform height and maturity. Since the hybrids have larger heads and are often slightly taller than the varieties, occasionally more lodging may occur in the hybrids. Cultural

practices for the sorghum hybrids are the same as recommended for sorghum varieties. Detailed information on each of the seven hybrids is given in L-310, Grain Sorghum Hybrids. It is available from the Agricultural Information Office, College Station, Texas.

Irrigation Book Released By A & M

"Thinking of Irrigation" is the title of a publication just released by the Texas Agricultural Extension Service and it is available without cost from the offices of local county agents or from the Agricultural Information Office, College Station, Texas.

Extension Irrigation Specialist R. V. Thurmond, the author, has listed in concise form the most important considerations for those contemplating an irrigation program for their farm. Illustrations are used to empha-

size and clarify the facts listed. Such items as water supply, soils, crops, methods of applying water, equipment and planning and designing the system are covered in the publication. The final test comes, says Thurmond, when these cost factors are all added together — water cost, extra equipment, taxes, maintenance, fertilizer, depreciation, interest on investment and labor — and compared with the expected increased income derived from irrigation.

To be profitable, the engineer emphasizes that income must be increased enough through the use of irrigation to offset the additional costs. Installing an irrigation system should not be looked upon as a short time proposition, but as a change in farm management and operation which will affect farm production and income for a long period of time, says Thurmond.

Mr. Brady, father of Mrs. James Kizer, is on the critical list at the Amherst Hospital.



No Gain Shown In Fertilizer Sales In Texas For '56

Total fertilizer tonnage sold during the spring of 1956 was about the same as during that period in 1954 and 1955. Tonnage of mixed goods sold in the first six months of 1956 was 5% less than a year ago, according to J. F. Fudge, state chemist, but sales of materials were about 5% higher.

Higher analysis fertilizers are still on the upgrade. Sales of the 5-10-5 grade were over 20,000 tons lower than those of 1952 while high analysis sales have climbed 24,000 tons in a five year period.

Amount of nitrogen sold was up 6,000 tons from the same period last year and is twice as high as in 1952. Sale of normal and concentrated super-phosphates was about the same as in 1955, but showed a slump of

Highly significant decreases occurred in sales of all grades without nitrogen, Fudge said, indicating increased availability of nitrogen materials. Grades of high-analysis 1-2-1 ratio accounted for two-thirds of the mixed goods tonnage and 1-1-1 grades composed one-eighth of the total.

Fudge said the trend toward

two thirds from 1952 sales. Significant increases were noted in tonnages of anhydrous ammonia, urea, and ammonium phosphates.

East Texas used slightly over one-half of the nitrogen, available phosphoric acid, and potash in mixed goods. East Texas also accounted for 50% of the 1-2-1 goods and 55% of the 1-1-1 goods sold. West Texas used two-thirds of the total tonnage of anhydrous ammonium sulfate and 16-20-0, and two-thirds of the rock phosphates.

Average composition of all mixed goods sold in the state was approximately a 7-14-7 grade and the average percentage of nitrogen in all fertilizers increased from 8.52 in 1951 to 16.74 this year. The complete report is available from the Agricultural Information Office, College Station. Ask for Progress Report 1890.

INCOME TAX RETURNS

— See —
C. C. GRIFFITHS
— At —
Ray Griffiths & Sons
Muleshoe — Phone 6030

DR. F. B. FAUST
Announces The Opening of The
NEW FAUST CLINIC

EARTH, TEXAS
Office Hours 8-12 a. m. Phone 4631
1-5 P. M.

NOTICE Taxpayers

Your 1956 Property Taxes Are Now Due And MUST Be Paid Before The FIRST DAY OF FEBRUARY to AVOID PENALTY.

WARNING!!

Midnight, January 31st is DEADLINE FOR ISSUING POLL TAX RECEIPTS

1957 AUTOMOBILE LICENSE FEES

Cannot Be Paid Before February 1, 1957, But MUST BE PAID Between February 1st and April 1st, 1957. All Residents of Texas Are Required By Law to Buy Licenses For Motor Vehicles In The Counties In Which They Reside. Bailey County Will Retain All License Fees — They Will Go To Help Build County Roads.

Poll Taxes Must Be Paid On Or Before January 31, 1957

Carey Stafford

TAX ASSESSOR-COLLECTOR
BAILEY COUNTY, TEXAS

CLEARANCE!
JANUARY
SALE STARTS SAT., JAN. 12
ALL SALES FINAL **NO ALTERATIONS**

FALL DRESSES
MANY SUITABLE FOR WEARING ON INTO SPRING

WIDE-SWEEP CLEARANCE!

| | |
|--------------------|---------|
| \$32.95 VALUES NOW | \$17.95 |
| \$24.98 VALUES NOW | \$14.98 |
| \$21.98 VALUES NOW | \$12.98 |
| \$19.95 VAUES NOW | \$10.98 |

LARGE SELECTION DRESSES
Excellent Values In Wool Jersey, Flannel, Faille, Satin and Cottons, Only **\$9.98**
One Rack Mixed Size Dresses **\$5.00**

MATERNITY DRESSES & TOREADOR PANTS R-E-D-U-C-E-D

| | | |
|--|--|---|
| CHILDREN'S CORDUROY SUITS Sizes Medium, Large and Extra Large \$7.98 Value NOW \$4.98 \$3.98 Values NOW \$2.50 | TABLE PETER PAN BRASSIERES \$5.00 Values NOW \$3.00 \$3.95 Values NOW \$2.50 One Group Mojud Hose \$1.50 Values NOW \$1.00 Ladies' Silk Scarfs \$1.49 Values NOW \$1.00 | ONE TABLE MISCELLANEOUS ITEMS Ladies Slips, Bed Jackets, Infants Wear, Toys, Men's Flannel Pajamas, Etc. Your Choice \$1.00 TABLE JEWELRY 1/2 OFF |
|--|--|---|

GOOD WINTER COATS GREATLY REDUCED

| | |
|--------------------|---------|
| \$69.98 VALUES NOW | \$36.98 |
| \$65.98 VALUES NOW | \$32.98 |
| \$49.98 VALUES NOW | \$26.98 |

ONE GROUP COATS
\$25.98 Values Now **\$9.98**

ALL SKIRTS REDUCED

BLOUSES REDUCED
\$5.98 to \$10.98 Values
Now \$3 to \$6.98

LADIES' JACKETS REDUCED

LADIES' CORDUROY ROBES AND ONE-PIECE TOREADOR SUITS
\$9.98 Vals., Now **\$5.98**

VELVET, CORDUROY & QUILTED SATIN TOREADOR PANTS **1-3 Off**

The Fashion Shop

ELIZABETH BARNETT PHONE 3910 MULESHOE DOROTHY MATTHIESEN



EVERY WEEK IS THRIFT WEEK HERE!

SWEET PEAS Mission No. 303 2 For 29c
Golden Corn Kounty Kist W. K. 12 Oz. 2 For 25c
Collard Greens Kimbell's Chop. No. 303 2 For 19c
BEANS Heinz Campside No. 300 3 For 45c
JOY Instant Liquid For Dishes Regular Size 39c

PT. JAR KRAFT'S MIRACLE WHIP
SALAD DRESSING 25¢

JOY Instant Liquid For Dishes Giant Size 69c
PIE APPLE Lucky Leaf, Sliced No. 2 19c

FLOUR 25 LB. PRINT BAG KIMBELL'S BEST **1.79**

PRUNE PLUMS Hunt's No. 2 1/2 2 For 49c
Vienna Sausage 1/2's Red Seal 2 For 29c
DREFT It's Lotion Pink Large Size 29c

COFFEE 93¢ | **BEEF** 29¢

MINCE MEAT White Swan 9 Oz. Box 19c
PET MILK Tail Cans 2 For 25c
Crackers "Golden Glow" Nabisco, 1 Lb. Box 25c
CRACKERS Town House 1 Lb. Box 29c
Apple Butter Bama, Pure 29 Oz. Jar 25c
PICKLES 24 Oz. Jar Del Monte Sour or Dill 33c

MELLORINE 39¢ | **JUICE** 25¢

Tomato Catsup Stockton 12 Oz. Bottle 15c
Olives Haase's Imported Stuffed No. 7 1/2 Bottle 33c
COCOANUT Baker's 1/4 Lb. Box 15c
DR. PEPPER 12 BOTTLE CARTON PLUS DEPOSIT 39¢

You'll Think Money DOES Grow On Trees
 When You Shop Cashway's Low, Low Prices Plus Gunn Bros. Stamps
 "THE STAMP THAT GIVES YOU MORE" DOUBLE ON TUESDAY

Thrifty Time MEAT BUYS

VANCE'S COUNTRY STYLE PURE
Pork Sausage 2 LB. SACK 89c
ROUND STEAK Choice Beef lb. 75c
FRANKS Pinkney's Jumbo Pak 3 lb. pkg. 89c
 FRESH LEAN CENTER CUTS
PORK CHOPS Lb. . . . 49c
Back Bones Country Style Fresh Meaty Pork lb. 39c
PORK ROAST Extra Lean Semi-Boneless lb. 43c
FRESH WATER CATFISH Lb. . . 65c
BACON Pinkney's Hickory Smoked Sugar Cured, 2 Lb. Pkg. 89c
PORK STEAKS Fresh Extra Lean lb. 49c

Garden Fresh VEGETABLES
 CALIFORNIA MIXED NUTS . . lb. 39c
 CALIFORNIA SNOW WHITE CAULIFLOWER Lb. 10¢
Turnips lb.. 7c
Maryland Sweet YAMS lb. 7c
 TEXAS JUICY ORANGES 5 LB. BAG 29¢

• FROZEN FOODS •
GRAPE JUICE Snow Crop 6 Oz. Can 19c
TAMALES Patio 12 to Pkg. 39c
OCEAN CATFISH Fresh Frozen 1 Lb. Pkg. 49c
SLICED PEACHES Snow Crop 12 Oz. Pkg. 25c



CASHWAY

Free Delivery Phone 2440 or 2450

LISTEN TO THE MULE TRAIN
 BROADCAST FROM MULESHOE OVER KMUL 1380
 MONDAY, WEDNESDAY & FRIDAY, 10 A. M.
 Another Service Of Your CASHWAY GROCERY

Bula News

Mrs. Jack Speck was the honoree at a layette shower at the home of Mrs. John Blackman on Friday afternoon, Jan. 4.

Mrs. Leo Holt directed the games during the afternoon.

Mrs. Dale Middlebrook presided at the serving table, which was laid with a white rayon damask cloth. Center arrangement was a plastic stork standing on styrofoam encircled in a flower arrangement in lovely pink and white flowers.

Coffee and punch was served with pen all pimento-cheese sandwiches and individual cakes.

Attending were Meses, Jim Claunch, V. C. Weaver, W. L. Clawson, John Latham, Ruby Reid, G. B. Salyer, T. L. Harper, Hollis Prims, Gene Bryan, Gardon Overland, W. B. Gage, Tom Bogard, and hostesses, Leo Holt, Dale Middlebrook and John Blackman.

Mr. and Mrs. Cecil Jones are visiting this week in Ft. Worth with their daughter, Mr. and Mrs. Murry Alexander and family.



STRENGTH FOR THESE DAYS
I will not leave you comfortless: I will come to you. —(St. John 14, 18.)

Christ Jesus, Son of God, gave up His life to redeem us, to save us. Still, as He promised, He is with us today, close beside each one of us every moment, for He is immortal, He is Spirit; He is ever forgiving us of our sins and weakness, ever ready with His love and compassion to help and comfort us.

Miss Jeannie Holt underwent a tonsillectomy at the Medical Arts Hospital in Littlefield Monday morning.

Mr. and Mrs. F. L. Simmons visited in Lovington, N. M., Sunday in the homes of Mr. and Mrs. W. T. Carter and Mr. and Mrs. F. L. Simmons.

Visiting and enjoying games of "84" Saturday night in the Jack Hicks home were Mr. and Mrs. J. R. Teaff, Mr. and Mrs. Clyde Hagme, and Mr. and Mrs. F. L. Simmons.

Mrs. B. L. Blackman returned home Sunday after spending three weeks visiting in the R. L. Blackman and W. F. Carter homes at Lovington.

THIS CURIOUS WORLD By William Ferguson



ANSWER. To protect them from tooth and claw.

PARMER COUNTY Farm Bureau News

By RAYMOND E. JELER

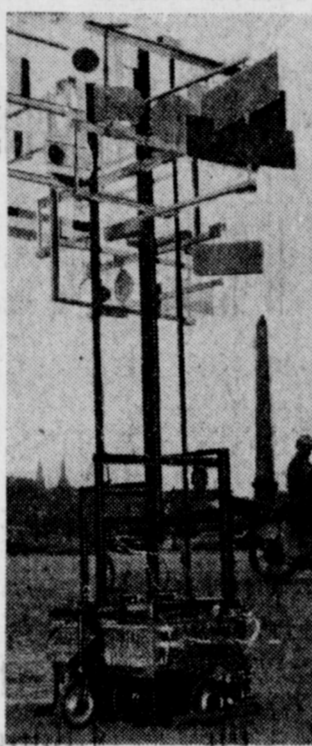
Calendars with the big date numbers, fishing information, theoretical weather information, etc., are available at the office. Pick one up at your convenience. If you have a new car or truck, get some more "Scotch Lite" stickers.

Texas Farm Bureau has arranged for a meeting with President Eisenhower, and USDA Secretary Benson at San Angelo during their "drouth tour" of this area. A meeting in Lamesa Thursday of this week will accumulate and summarize suggestions of Farm Bureau leaders of the Texas Plains, for drouth aids.

During Texas Legislative sessions this year, Texas Farm Bureau representatives will be present urging acceptance of TFB resolutions. Some of these are: Assisting Texas Extension and Experiment departments to obtain increased state appropriations necessary to carry out an expanded research and education program. Passage of a new Texas Commercial Feed Law. Passage of a State Egg Grading and Labeling Law. Support of all fair and feasible water legislation but opposition to any water legislation that would be financed by an increase in the state-wide ad valorem tax. Supporting exemption of farm utility trailers from licensing. Urging increased appropriations for Livestock Disease Control Program. Opposing any increase in State Motor Fuel Tax. For a labeling law requiring all Grade A milk to be labeled to show butter fat content. Opposing efforts to take away State Non-Highway used Gasoline Tax Refund. These, of course, are just a few of the important subjects.

The March of Dimes is due your support. Please give liberally.

Most informed farmers are no longer interested in arguing the subject of flexible versus rigid price supports. There are still some politicians and political hopefuls that introduce the subject, but farmers who have looked at the picture long and honestly have decided that a real sale of a product is much more valuable than a loan from an



ELECTRONIC WHATZIT—This whatzit does it electronically. The "spatio-dynamic," designed by Nicolas Scheffer of Paris, France, turns itself on and off, moves backward and forward, and reacts to color, sound and light. "Cyspi," as the gizmo is called, isn't too useful, but for a whatzit with a wowzit, it sure hasit.

ed to the Bula community in 1927 and reared their children here, but ill health forced him to give up farming. He has made his home for the past few years with a daughter and son at Lev-

Blightmaster Is New Variety Of Cotton Developed

A new disease-tolerant, storm-proof cotton variety, called Blightmaster, has been announced by the Texas Agricultural Experiment Station at College Station.

The variety was developed at the Lubbock Experimental Station and is a cross of Stormmaster and Stormer 4-1. It is a high yielding, stormproof boll-type that has a tolerance to bacterial blight and is recommended in the Plains areas where such a variety is desired.

Blightmaster is said to yield at least as much under blight free conditions as other storm-proof varieties now grown, and may be expected to yield even greater amounts under heavy blight conditions. It is medium in maturity and the plants are of the semi-spreading type.

Performance yields in variety tests show that in dry and irrigated lands in the Lubbock area, Blightmaster led all other varieties in yield and staple length, which is usually from 15/16 to one inch.

KEITH GAEDE HOME
Keith Gaede, Pensacola Naval Air Station, was home for Christmas holidays with his parents, Mr. and Mrs. Raymond Gaede. Keith is a Naval Air Cadet, having entered this training some months ago. He has been in service nine months.

BIBLE LEARNERS CLASS MET IN BOWERS HOME
The Bible Learners Sunday School Class met in the home of Mrs. W. R. Bowers Monday evening, Jan. 7. Mrs. J. E. Moore brought the devotional and the group was favored with a special song by Mrs. Glenn Dunn.

Refreshments were served to: Meses, F. A. Allison, C. M. Hinkle, J. E. Moore, Glenn Dunn, Charles Bratcher, Robert Bynum, J. D. Niewarner, Odessa Slayden, E. L. Walters, C. W. Hollingsworth, Troy Perkins, Miss Wanda Fay Moore, and two visitors, Nellie Goodson and Josephine Kirby.

HOWARD COX TO TAKE RESERVE TRAINING
Mr. and Mrs. Howard Cox will go to Dallas Saturday, and Howard will enter reserve training for a two weeks period at the Dallas Naval Air Station.

Howard is aviation chief electronicsian

agency that can neither sell nor give the security away with any success. Some "grain dealers" who are really only warehousemen still swear rigidity is the only answer, but the producer is becoming increasingly leary of taking advice from the man who makes more out of his product in storage than he does out of producing it.

CONSIDER THIS: A wicked doer giveth heed to false lips; and a liar giveth ear to a naughty tongue. Proverbs 17:4.



MOLDING HIS FUTURE—This little Hungarian refugee is intent on the task of molding modeling clay at a camp in Traiskirchen, Austria. Once he and his family are relocated, he'll be able to mold his future, free of the shadow of the Red terror. Junior Red Cross supplied the clay, one item in a play kit given to children who previously had few, if any, playthings in the hastily improvised Austrian havens.

MULESHOE CHIROPRACTIC CLINIC

PHONE 6090
Located Across From Courthouse

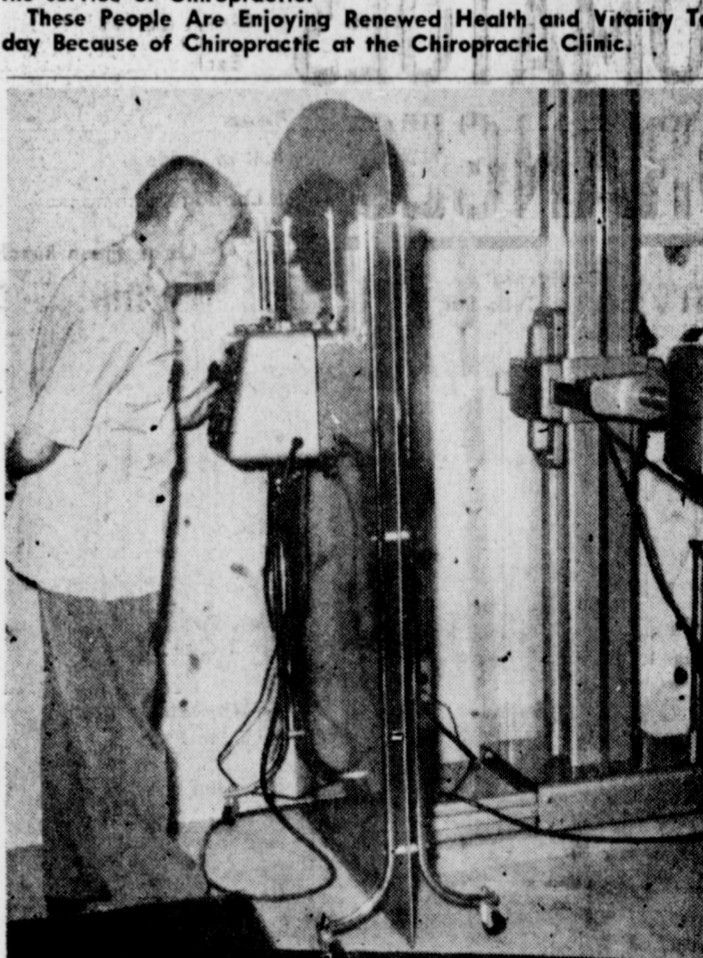
THERE IS A "CAUSE" FOR EVERY DISEASE
CHIROPRACTIC LOCATES AND CORRECTS IT

Resolve Now To Improve Your Health In 1957

We will be glad to discuss your problem of health and to answer any question you may wish to ask about Chiropractic. We feel certain that when we explain the common-sense principles upon which chiropractic is based, you will understand why it gets results. And when you know why Chiropractic can help you—you will want to take advantage of it.

Success with serious cases has built a favorable reputation for the efficiency of Chiropractic, and there has come the recognition by a vast number of people who resolve to stay well thru the service of Chiropractic.

These People Are Enjoying Renewed Health and Vitality Today Because of Chiropractic at the Chiropractic Clinic.



DR. BROOKE GREEN, D. C., shown setting controls on the new Universal X-ray machine installed recently in Muleshoe Chiropractic Clinic.

Ruptured Discs Headaches

Case History: Man, age 31, came to the Chiropractic Clinic after reading an ad describing a condition similar to his. He had been confined with extreme back pain which was aggravated by a spinal tap which in turn started terrific headaches. He was medically diagnosed "ruptured discs", and was told it would take a year or more to recover. In an effort to avoid an expensive and dangerous spinal fusion operation, he consulted us. After an examination consisting of nerve analysis and spinal X-Ray at the clinic, this man began corrective spinal adjustments. His pain was lessened from the first adjustment. His condition continued to correct rapidly until in less than six months he was doing heavier mechanic work than ever before.

On September 15 of this past year, a man, age 83, came to the Chiropractic Clinic with entrance complaints, of severe head pains occurring every few seconds, nervousness, dizziness, weakness, constipation, severe lower back pains and a kidney condition. All of these conditions had existed for years and were gradually becoming worse. He had tried many therapies with no apparent results. As he expressed it, he had reached the end of his rope so he decided to try Chiropractic. After an examination he was accepted as a patient. Under the recommended period of service, his response was satisfactory considering his extreme age. He came in one day last week for a check-up and told us that all his entrance ailments were gone and that he felt better than he had for many years.

"YOU DO NOT NEED TO DRIVE 60 OR 70 MILES FOR HEALTH"

— OFFICE HOURS —
Monday, Wednesday, Friday
9 a.m. to 12 — 3 p.m. to 6 p.m.
Tuesday, Thursday, Saturday
9 a.m. to 12

IT'S EASY TO BANK

BY MAIL!

PAY BY CHECK

So Take Advantage of Our Fast Efficient Service Now

JUST THINK!
You don't have to leave your home to do your banking or pay your bills when you have a checking account with us!

RESOLVE NOW THAT YOU WILL MAKE THE FIRST NATIONAL YOUR BANK DURING 1957!

THE FIRST NATIONAL BANK
A HOME OWNED BANK
MEMBER FDIC
Phone 7770 Muleshoe

"Sure have paid that loan down since you changed to AMALIE L. P. G.!"

BANK

"You wouldn't believe what that AMALIE L. P. G. Oil can save when you're burning butane or propane in your engines. Butane's a problem; common, ordinary oil thickens up till it looks like gear-grease. Dust and grit cake up. That sure is rough on engines. But no more—with AMALIE L. P. G.!" Nothing but the finest Pennsylvania crude in AMALIE L. P. G. Oil—no other crude like that on earth. And AMALIE chemists have done two great things; in refining, produced an oil that holds its "viscosity," or flowing quality, and developed additives to keep grit, dust, etc., in solution, so they filter out. That's why we say—

Give YOUR engines—and your bank balance—a break!

AMALIE MOTOR OIL

Wiedebush & Childers
BUTANE — PROPANE
Phone 2810 Muleshoe

This sweet, smooth and sassy new Chevy has its own built-in "dollar-saver"—America's favorite six!

Hard to believe it, but this big beauty is a bottom-priced Chevrolet "One-Fifty." It's got Body by Fisher quality written all over it. And it has a peppery, sweet-running "Blue-Flame" six under the hood to make your gas stops few and far between.

Like all new Chevies, it brings you a very special sureness of control. This is a quality that just can't be measured in dollars and cents. Lots of cars that cost lots more just don't have it. Come in and see how much pleasure we're passing out these days at Chevrolet prices!

CHEVROLET 1 USA

Big beauty with small-budget ways!
It's powered by Chevy's famous six

The "One-Fifty" 2-Door Sedan with Body by Fisher—one of 20 beautiful new Chevies for '57! AIR CONDITIONING—TEMPERATURES MADE TO ORDER—AT NEW LOW COST. LET US DEMONSTRATE!

Only franchised Chevrolet dealers **CHEVROLET** display this famous trademark

C & H CHEVROLET CO.
MULESHOE, TEXAS

Wiedebush & Childers
BUTANE — PROPANE
Phone 2810 Muleshoe



It's FIESTA DAY when you serve our "quick serve"

MEXICAN FOODS

In all Mexico they never had it so bueno (good) as South Plains housewives. You can serve delicious Mexican foods in "muy poco tiempo" (very little time) by selecting from the large stock of canned and frozen Mexican foods at your neighborhood Piggy Wiggly Supermarkets, where you get S & H Green Stamps with every purchase — Double on Tuesday.

- WOLF BRAND CHILI** NO. 2 CAN **43¢**
- CRACKERS** Supreme 26¢
Salad Wafers 1 Lb. Box
- BOLOGNA** Sliced, All Meat LB. **39¢**
- LONGHORN CHEESE** Kraft's Elkhorn Lb. **43¢**

- FISH FILLETS** Booth's Red Snapper 1 Lb. Box **79¢**
- Haddock Fillets** Taste-O-Sea 1 Lb. Box **39¢**
- BRICK CHILI** E & R Brand 1 Lb. **49¢**
- PORK CHOPS** First Cut lb. **49¢**
- CHEESE WHIZ** Kraft's, 8 Oz. Jar **35¢**
- Spanish Peanuts** Fisher, 6 Oz. Can **23¢**
- BREEZE** Large Box, With Dish Cloth Free **33¢**
- BEEF RIBS** U. S. Choice, Pen Fed Beef lb. **19¢**
- T-Bone Steak** U. S. Choice Pen Fed Beef lb. **89¢**
- SLICED BACON** Wilson's Corn King Lb. **49¢**
- FISH STICKS** Booth's Heat & Eat 8 Oz. Pkg. **33¢**
- Sopaipilla Mix** 10 Oz. Box **33¢**
- Liquid Detergent** Lux 12 Oz. **39¢**
- Chuck Roast** U. S. Choice, Pen Fed Beef lb. **39¢**
- LOIN STEAK** U. S. Choice, Pen Fed Beef lb. **69¢**
- Paper Towels** Jumbo, Northern Roll **27¢**
- SURF** Giant Box, 12c Off Net Price **65¢**

- TOMATOES** Fresh Carton Each **17¢**
- ORANGES** Texas Full of Juice 5 Lb. Bag **39¢**
- POTATOES** California 1 Lb. Cello Bag **12 1/2¢**
- POTATOES** Colorado Red U. S. No. 1 10 Lbs. **49¢**
- Carrots** California 1 Lb. Cello Bag **12 1/2¢**
- Turnips & Tops** Large Fresh Bunch Each **10¢**

- BABY MAGIC SPRAY NET** Helene Curtis 4 1/2 Oz., \$1.25 Size Plus Tax **89¢**
- EGGS** Fresh Country Dozen **37¢**
- ENCHILADAS** Beef, Patio No. 2 Can **39¢**
- ASPIRIN** Bayer's 15c Tin **10¢**
- Vicks Vaporub** 45c Size **38¢**
- TISSUE** Northern White or Colored 3 For **27¢**

Kraft's Sliced Cheese Kraft's Deluxe American or Pimento, 1/2 Lb. Pkg. **35¢**

- FRUIT PIES** Simple Simon Apple or Peach 24 Oz. **39¢**
- Dinners** Patio 16 Oz. Pkg. Mexican **59¢**
- Tamales** Beef, Patio 12 Ct. Pkg. **39¢**
- ENCHILADAS** Beef, Patio, 8 Count Pkg. **57¢**
- FROZEN GREENS** Mustard or Turnip Hills O Home 12 Oz. Pkg. **10¢**

- LUNCH MEAT** K-P 12 Oz. Can **32¢**
- PI-DO** Aunt Ellen's 9 Oz. Box **17¢**
- PUREX BLEACH** Half Gallon **33¢**
- WAX PAPER** Wax-Tex 100 Ft. Roll **21¢**

- CHILI & BEANS** Gebhardt's, No. 300 Can **25¢**
- MEXICORN** Niblets, 12 Oz. Can **18¢**
- Brown Beauty**, No. 300 Can
- Mexican Beans** 2 For **25¢**
- SPANISH RICE** Libby's, No. 300 Can **17¢**
- TORTILLAS** Ashley's 18 Count **47¢**
- OLIVES** Libby's 2 Oz. Stuffed Manzanilla **27¢**
- CARAMELS** Kraft's, 1 Lb. Cello Bag **35¢**



- OLEO** . . . **17¢**

- PINEAPPLE** Hillsdale Broken Slices No. 1 Fla. Can **2 For 25¢**



- PICKLES** Libby's, Sour or Dill 22 Oz. Jar **35¢**
- BON AMI** Jet Spray 14 Oz. Can **59¢**
- Chocolate Peanuts** M & M, 6 oz. Bag **29¢**
- Preserves** Par, Pure Strawberry 22 oz. Tumbler **39¢**
- NEW POTATOES** Hunt's No. 300 Can **13¢**
- Quick Fudge Mix** Junket, Chocolate or Penucho, 8c Off Pkg. **31¢**

Holly Ann Cox, Ted Millsap To Exchange Vows February 2



MISS HOLLY ANN COX

Mr. and Mrs. Jack Cox of Muleshoe, are announcing the engagement and approaching marriage of their daughter, Holly Ann, to Ted R. Millsap, son of Mr. and Mrs. Homer Millsap, also of Muleshoe.

The bride-elect, a graduate of Muleshoe high school, is a student at Wayland Baptist College in Plainview. The groom-to-be, also a graduate of Muleshoe high school, is employed with his father at Millsap Motors.

The couple will exchange vows at 7 p.m. on February 2 in the First Baptist Church of Muleshoe, with Rev. E. K. Shepherd officiating.

All friends of the couple are cordially invited to attend.

Brenda Kimbrough Honored On Her Third Birthday

Brenda Kimbrough, daughter of Mr. and Mrs. Bob Kimbrough, was honored at a party on her third birthday this week in the home of her grandparents, Mr. and Mrs. R. L. Kimbrough.

Games were played and refreshments were served to Brenda and Brent Hall, Nicky and Rene Nickels, Nancy Kimbrough, Becky Broyles, Glenda Harlan, Larry Shafer, and Mike Kimbrough.

HD Women Attend Training Meeting

Mrs. A. W. Copley, Bailey County Texas Home Demonstration Association chairman and Mrs. W. R. Bowers, Bailey County Home Demonstration Council Vice-chairman, attended the District II training meeting held in Lubbock in the Directors Room of the Plains Co-op Oil Mill, Friday.

Mrs. Ross Adamson, District II vice-president, was in charge of the meeting. An interesting panel discussion on THDA and Council was led by Mrs. Aubrey W. Russell, District II Home Demonstration Agent.

After lunch, "How 4-H Scholarship Girls are Chosen", was discussed by Mrs. Jewel Robinson, a County Demonstration agent.

Three girls who are 4-H Scholarship girls at Teas Tech College gave interesting reports of their college life and expressed their thanks to the club women for making their scholarships possible.

Dates to be remembered by Home Demonstration club women are the District II meetings in Levelland in March and the state meeting in Houston August 14, 15 and 16.

Los Planos Club Meetings Held

Members of Los Planos Club had their husbands as guests when the club met in the home of Mrs. Jack Schuster Dec. 11. The Christmas story was given by Mrs. Arch Fowler. Refreshments of fruit cake and coffee were served.

Fred Marshall, safety officer of the Teas Highway Patrol, was guest speaker, discussing driver education when Los Planos Club held its Jan. 8 meeting in the home of Mrs. Sam Damron with Mrs. Bob Dryden as co-hostess.

Attending were Mmes. Ben Chapman, Thurman Kent, Bill Wilson, J. E. McVickers, Horace Edwards, Al Griffin, G. L. White and Ruth Roberts. After a short business meeting, refreshments of angel food cake, nuts and coffee were served.

Gaede Family Has Holiday Reunion

Mr. and Mrs. F. B. Gaede and family of Lyman, Colo., were hosts to a family reunion and Christmas dinner for members of their family, marking the first occasion for the Gaede children to be together at Christmas in 13 years.

Present were Mr. and Mrs. J. S. Horsley, of Muleshoe; Mr. and Mrs. Earl Sybert and Ann, of Morton; Mr. and Mrs. Jim Sybert of Morton; Mr. and Mrs. R. L. Kimbrough, Mr. and Mrs. Finis Kimbrough, and Mr. and Mrs. C. A. Horsley, all of Muleshoe, and the Gaede children, Mr. and Mrs. Freddie Williams and daughter of LaJunta, Colo., and Charles Gaede of Ft. Collins, Colo.

Thirteen Cubs Are Graduated

Cub Pack graduated thirteen members in services held last Thursday night in Fellowship hall. Graduating were Herbert Blair, Danny Allen, Harland Curry, Gerald White, David Roberts, Harold Wellborn, Jim Thomson, Don Daley, Gary Smith, Wayne McNut, Clarence Hall, Jr., Danny Sullivan, and Teddy Jacobs.

Other awards given were: Bobcat to Donald Griswold and Charles Davis Alsip; Wolf badges to Donald Griswold and Charles David Alsip; Arrows on Bear rank were 3 for Dale Griswold, 2 for Bill Allen, 1 for Allen Roberts and 1 for Charles Eldred; Lion badges were Dale Griswold, Gerald White, Gary Smith, Clarence Hall, Jr.

The committee were also presented with badges: Leonard Griswold, Homer Curry, Curtis Wellborn, and the Cub Master, Jim White, was presented with a Cub Masters pin and a lovely Christmas gift.

Mrs. Betty Griswold was presented with a three year service star for Den Mother. Den mothers and committeemen will meet at the home of James White Thursday, Jan. 10, at 7:30 p.m.

Half Century Holiday Dinner In School Cafeteria

The following members of the Half Century Club ate Thanksgiving dinner in the elementary school luncheon room.

Jennie Panter, Beulah Carles, Birdie Pauls, Clara Willman, Laura Gilbreath, Mary Young, Anna Stephens, Swettie Johnson, Lois Schenberger, Alpha Mathiesen, Sally Harden, Maudie Douglass, Pearl Moore, Lulu Kistler, I. W. Haney, Mattie Duke, Daisy Engram, Gussie Mardis, and Mrs. Moore.

Class Reviews Book Of Matthew

A review of the book of Matthew was given by Rev. Clarence Stephens at the meeting Jan. 3 of the Philathea Circle of the Methodist Church in the home of Mrs. Ben Chapman.

The ladies and the pastor discussed passages which puzzled them most. Rev. Stephens answered questions and gave his impressions of Christian faith. His personal convictions and expressions were particularly inspiring.

Refreshments were served to: Mmes. Vernon Ferris, Betty Cowan, Charlene Bickel, Jimmie Porter, Sammie Allison, Margaret Adams, Beth Blair, Ann Birdsong, Rev. Stephens and Mrs. Stephens, Dorothy Weyer, Bonnie Adcox, Geanne McVickers, Scottie Morris, Gladys Black, and Texas Dryden.

Blalack-Spencer Plans Announced

Announcement is being made of the engagement and approaching marriage of Miss Marquette Blalack of Hereford, formerly of Muleshoe, to Mr. Robert A. Spencer, of Hereford.

Miss Blalack is the daughter of Mrs. Lillian Blalack, of Hereford, and Mr. Lawrence Blalack, of Ft. I. Muleshoe.

The couple plan to make their home in Hereford where Mr. Spencer is employed by the Continental Grain Co.

SPECIAL PRICES
On All Radiators, International Farmall Cores \$26 Exchange

STOVALL-BOOHER
Radiator Sales & Service Plainview, Texas

ARTHRITIS, RHEUMATISM, NEURITIS Sufferers Now Offered Amazing Relief From Agonizing Pains

Sensational new medical discovery called AR-PAN-EX works through blood stream where it can do the most good, fastest. Even most stubborn cases have gotten blessed relief from torturing misery. See us today about guaranteed AR-PAN-EX tablets.

WESTERN DRUG CO.

T E L Class In Regular Session

T. E. L. class of First Baptist church met Jan. 8 in the home of Mrs. Will Harper for regular business session. Mrs. E. E. Dyer, president, presided. After prayer by Mrs. Beulah Perkins, Mrs. W. B. Byers gave the devotional.

Mrs. Lois Shook brought an interesting letter from our Boys Home at Round Rock. A committee was appointed to send gifts to the home, composed of Mrs. Mary Evans, Mrs. Henry Harvey, Mrs. Birtie Paul and Mrs. W. B. Harlan were named on the scrapbook committee.

Mrs. Dyer asked if anyone had anything to say that might help the class. Mrs. Duke started the discussion that it would not have to be big things, but the little things that count. Some said just a smile or a kind deed. Refreshments were served to 16 members.

Mrs. Wollard Is WSCS Hostess

WSCS of the Muleshoe Methodist Church met Tuesday afternoon, Jan. 8, in the home of Mrs. Jim Cox with Mrs. J. C. Wollard as hostess.

Presenting the program were Mrs. Clarence Stephens, Mrs.

Arnold Morris, and Mrs. Lonnie Bass. A short business session was held. Next week is the WSCS luncheon and those who are to make reports are urged to have them ready.

It was announced that a 2-quart copper bottom sauce pan and lid, belonging to Mrs. Peggy Childers was lost during the Country Fair at Fellowship Hall. Members were asked to help locate this pan for it was valued as a gift.

Refreshments were served to Mmes. I. F. Willman, A. H. Owen, Cecil Davis, C. R. Farrell, Clarence Stephens, H. O. Barbour, F. B. Pierson, Lonnie Bass, Arnold Morris, R. O. Gregory, the hostess, Mrs. Wollard, Mrs. Jim Cox and visitors, Mrs. Bennie Porter and daughter, Sharidon, and little Delton Bass. The group had a delightful time in the home of Mrs. Cox, who is a Guild member.

Lunchroom Menu

MONDAY
Vegetable beef soup.
Balony sandwiches with relish.
Stuffed celery.
Fruit.

TUESDAY
Pork chops, creamed potatoes and gravy.
Green beans, raisin and carrot salad.
Rolls and butter, peach upside down cake.

WEDNESDAY
Roast and gravy.
Candied yams, blackeye peas.

MULESHOE DITCHING SERVICE

L. A. GREEN, Manager
Located on Clovis Highway, Next to Leigons Cafe
Business Phone 4079 — Muleshoe — Res. Phone 6372

United Pipe and Tubing

PLASTIC GAS LINES AND UNDERGROUND IRRIGATION WATER SYSTEMS

IRRIGATION HEADQUARTERS

ALL OF OUR ENGINES ARE BRAND NEW AND CARRY A FULL FACTORY GUARANTEE

1957 CHEVROLET, 148 h.p. 261 cu. inches, complete less carb. \$499 (In crate \$340.60)

1957 OLDSMOBILE Golden Rocket T-400, complete less carb. \$639 (In crate \$475)

1957 CHRYSLER, complete less carb. \$759 (In crate \$630)

CITY AUTO PARTS

LUBBOCK, TEXAS
1505 EAST BROADWAY PO3-4393

Muleshoe HD Club Names Committees For The New Year

The Muleshoe HD Club met in the home of Mrs. M. E. Simmons January 8 at 2:30 p.m., with 12 members present.

The devotional was given by Mrs. M. L. Oswalt, who read "The Love of God."

Time was well spent on filling out the New Year books, roll call was answered with "Good color combinations", which gave

Jello salad and fruit.
Apricot cobbler.

THURSDAY
Fish, buttered potatoes.
Cream peas, green salad.
Rolls and butter.

FRIDAY
Hot dogs, mustard, onions.
Baked beans, potato chips.
Fruit cup.

good points to the women. Committees were appointed for the new year, and they are as follows:

EEE, Oswalt, Gillis, Briscoe; Finance, Caldwell, Witte; Mearbook, Copley, Griffiths; Recreation, Witte, Robison, Fletcher; Civil Defense and Citizenship, Mrs. Copley;

Clothing Demonstrator, Bowers; Clothing Leaders, Bowers and Robison; Foods and Nutrition Demonstrator, Caldwell, Day; Family Meals Leaders, Caldwell, Briscoe.

A report for Dist. 2 4-H scholarship girls was read.

Members in attendance were: Mmes. S. L. Robison, A. W. Copley, W. R. Bowers, C. E. Briscoe, C. H. Gillis, F. F. Maddox, J. E. Day, M. T. Hukill, M. L. Oswalt, Lynn Fletcher, W. W. Smith and S. C. Caldwell.

Rep. and Mrs. Jesse M. Osborn have gone to Austin to remain during the session of the Texas Legislature, which began this week.

U.S. INCOME TAX
STATE INCOME TAX
PROPERTY TAX
PERSONAL TAX

STEADY, DAD!

In one chunk they look horrible, but spread over the year they are easier to live with. Here's a suggestion.

Estimate your taxes one year in advance. Then open a savings account and each month lay aside one-twelfth of the total. Try it for the coming year... and use our friendly help.

MULESHOE STATE BANK
Member Federal Deposit Insurance Corporation

IRRIGATION ENGINES

FORD HAS THE INDUSTRIAL ENGINES

You Need for Handling Your Irrigation Problems

Check Your Muleshoe Motor Co. And Learn About The Following INDUSTRIAL MOTORS

- Big 332 Cu. Ft. V-8 Industrial Engine
- 272 Cu. Ft. V-8 Industrial Engine
- 223 Cu. Ft. In Overhead Valve 6 Industrial Engine.

These Motors are Industrial Engines. They are NOT Passenger Car Engines

The Muleshoe Motor Co. Is Equipped To Make IMMEDIATE Delivery on the Industrial Engine You Need to get your job done. Come by and Check The Facts.

See — BOB HARVEY, ED EDMISTON, SAM COOK OR JACK MORRIS

MULESHOE MOTOR CO.

PHONE 2510

MULESHOE



Beats the Rainbow for Colors
...Choice of 3 Finishes, Tool

BPS TINT-N-COLOR



For Lovely Walls, Ceilings and Trim

NOW you can be sure of the right color... be sure of the right finish.

And there's no fuss or bother. No guesswork. Easy to do, fast-drying and long-lasting, too! BPS TINT-N-COLOR assures you the finest in finish. World's loveliest colors—300 to select from!

It's the modern way to decorate! BPS TINT-N-COLOR easily applied by brush or roller.

Heathington Lumber

Phone 7970

Clovis Road

Muleshoe

ARE YOU GETTING YOUR SHARE OF THIS MULTI-MILLION \$ MARKET?

BAILEY COUNTY FARM PRODUCTS ESTIMATED AT \$14.6 MILLION

MANY OF YOUR COMPETITORS ARE ...

BECAUSE BUSINESS IS GOOD...

Bank Deposits Indicate \$600,000 Increase Over Same Period in 1955

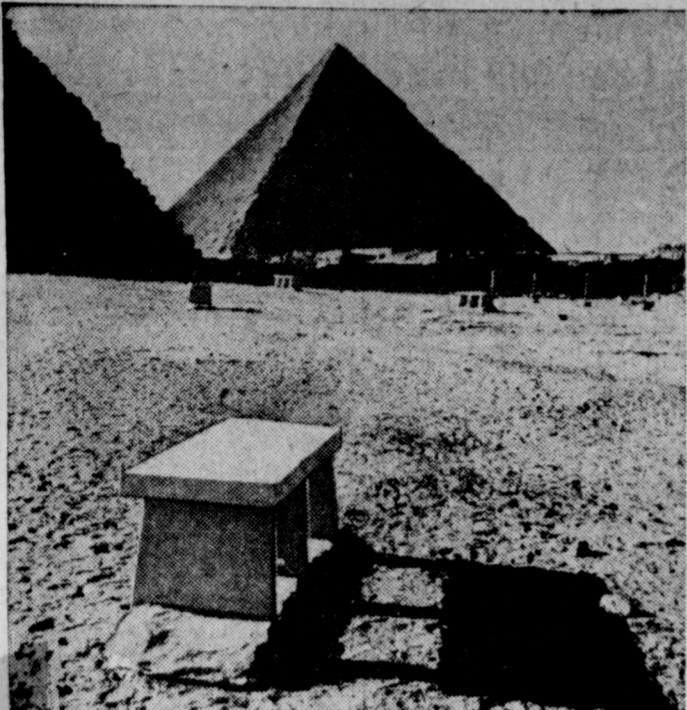
...AND IS GOING TO GET BETTER

Harvest Season Begins With Good Prospects

Sand Hills of Bailey County Disappearing

Old Muleshoe Ranch Land Rapidly Turning Into Sprinkler Irrigated Farms

Your advertisement, appearing regularly in **The Muleshoe Journal** WILL REACH THAT MARKET AND GET SALES RESULTS FOR YOU!!



CANAL CASUALTY — That which is missing is what is significant about this picture. Absent from the site of Egypt's brooding pyramids near Cairo are the tourists. They often fill the benches dotted across the nearby desert as points from which to observe the ancient tombs of the Pharaohs. The tourist trade is a casualty of the Middle East unrest, scuttled for the time being as surely as the hulks which block the Suez Canal.

Judge Williams Gives Inspiring Talk For Rotary

County Judge Glen Williams, who was the principal speaker for the Rotary Club at its noon luncheon Tuesday, presented some enlightening thoughts on county government, and some informative facts about the county's financial condition.

Principal indebtedness of the county now is owed by the road

and bridge fund, which has had to purchase much equipment in order to keep the county's far-flung road system in good condition. When machinery now being bought is added, the fund's indebtedness will go over the \$100,000 mark.

The county's bonded indebtedness consists of some \$17,000 of courthouse and jail bonds still outstanding. Then Road District

1-A, which issued some \$650,000 in bonds to build 126 miles of farm to market roads in 1946, still owes much of these bonds, but the debt has been retired more rapidly than was expected; \$73,000 of these bonds were bought and retired in addition to the regular schedule of retirement. All told, the county finds itself in good financial condition.

The county's tax valuation now amounts to \$11,250,000, Judge Williams said. The rate is \$1.25 and the valuation rate is one-eighth of what is considered a conservative price of property. This rate yields about \$300,000 a year. Another source of income for the county is the sale of vehicle license tags, fines, court costs, etc. But the county's annual payroll amounts to about

\$120,000. However, about 61.6% of all expenditures of the county are made by the road and bridge fund, to build, operate, and maintain some 800 miles of dirt roads besides maintaining paved roads.

In conclusion, Judge Williams inspired his listeners by giving them his conception of his ideal of service, on the part of all public officials and community leaders in developing the community spiritually and physically. Ralph Tunnell, high school senior, was introduced as the Junior Rotarian for the month.

Luchroom Guests Before Holidays

The following guests ate in the Muleshoe school elementary lunchroom just before the Christmas holidays.

Mrs. L. C. Spivey, Mr. and Mrs. Conelison, Mrs. C. P. Henson, Mr. and Mrs. James Wedel, Mr. Charles Coffman, Mrs. M. L. Shipp, Mrs. B. J. Lewis, Mr. and Mrs. W. R. Underdown, Mrs. E. Jackson, Mrs. C. H. Gillis, Mrs. J. D. Hudson, Mrs. M. L. Oswald, and Mrs. J. R. Copley from Mrs. Middlebrooks room.

From Mrs. Shelby's room were: Rev. and Mrs. Richard V. Luna, Mr. and Mrs. F. W. Jones, Mr. and Mrs. Alex Wilkins, Mrs. Eugene Black, Mrs. Robert Blackwood, Mrs. Burt Lott, Mrs. Kirk Pitts, Mrs. L. W. Dalrymple, Mrs. Robert Harrison, Mrs. Lee R. Pool, and Mrs. W. F. Ragland.

From Mrs. Gaede's room were: Mr. and Mrs. Elmo Evans, Mr. and Mrs. W. D. Dement, Mr. and Mrs. William B. Shayden, Mr. and Mrs. Jack Little, Dr. and Mrs. Bryce Putman, Mrs. Duane Bartee, Mr. and Mrs. S. W. Inman, Mrs. Virgil Obenhaus, Mrs. W. F. Birdsong Mr. and Mrs. R. G. Bennett, Mrs. Julian E. Lenau, and Mr. and Mrs. J. L. Elmore. From Mrs. Costen's room were: Mrs. G. L. White, Mrs. E. A. Eaks, Mrs. John Copley, From Mrs. Vickreys room were: Mr. and Mrs. Arch Fowler, Mr. and Mrs. J. W. Smith, Mr. and Mrs. A. E. Epting, Mrs. Harold Allison, Mrs. D. N. Coulter, and Mrs. K. H. Buhman.

From Miss Z. Childress' room were: Mrs. W. D. Nicewarner, Mr. and Mrs. C. A. Stone, Mr. and Mrs. T. C. Sullivan, Mr. and Mrs. G. R. Hill, Mr. and Mrs. C. O. Hall, Mrs. A. H. Williams and Kathy, Benny Ray Nicewarner, Mr. and Mrs. W. R. Bowers, Mrs. J. C. Wells, Mrs. M. L. Baker, Mrs. Frances Bland, Mrs. A. D. Stancell, Mrs. V. O. Crawford, Mrs. Marie Allen, Mr. and Mrs. J. R. Lee and Johnny, Mrs. Goodman, Mr. and Mrs. J. K. Adams, and Patty Sullivan.

Miss Eggers' room were: Mrs. Templar, Mrs. George Bragg, Mrs. Farris Heathington, Mrs. Mike Perez and daughter and Mrs. Freeman. In Mrs. Hawkins' room: Mrs. Kenneth Burton, Mrs. Jessie Gray, Mrs. G. R. Gregory, Mrs. J. H. Miller, Mrs. W. L. Shafter, Mrs. H. E. Wimberly, Mrs. E. W. Bass, Mrs. S. S. Story, Mrs. Vanoy Tipton, and Mrs. B. H. Waggon.

ment were treated to a dinner at the Lubbock Country Club. Taylor Metal Products have just accepted the dealership for Fedders refrigerative air conditioning equipment in Muleshoe territory.

Those on the sick list last week were: Mr. Cliff Phillips, Mrs. Cecil Mann, Mrs. C. L. Taylor and Mrs. J. M. Simpson.

Mr. and Mrs. Oran Reaves and Batch visited Mr. and Mrs. Carey Stafford of Muleshoe Friday.

CARD OF THANKS
Thanks to my many friends who so thoughtfully remembered me with flowers, cards and visits during my recent illness. Blessings and best wishes to all.

Mrs. O. M. Jennings and Family

CARDS OF THANKS
We wish to express our appreciation and thanks to our friends and neighbors for the kindness and sympathy shown us at the death of our darling baby. The Arthur Proffitt Family 1-tp.

TAYLORS GUESTS AT LUBBOCK MEETING, DINNER

Mr. and Mrs. Don Taylor were guests of Anderson-Young Electric Co., at Lubbock Sunday afternoon. After a business session, they and other dealers for Fedders air conditioning equip-

Maple News Events

We regret to see the Jawns Burks family move out of our community. They moved back to Friendship, where they had lived several years before moving to Maple. We surely do miss them.

Mr. and Mrs. Deward Wall and children visited in the Verles Wall home and boys visited her Grandmother in Lubbock Friday and Saturday.

Mr. and Mrs. Kenneth Pyburn have as their guest her mother, Mrs. Murfey of Denver Colo.

Mr. and Mrs. Foy Lewis and children visited in the C. L. Taylor home Friday night.

Mr. and Mrs. Ted Simpson and children attended their brothers wedding in Lubbock Saturday night, their little daughter Sandra was one of the flowers girls.

TO LOWERY AIR BASE
Kay Wells and Michelle returned to Denver with her husband, A. J. James O. Wells, to make their home there while he is stationed at Lowery AFB. Mrs. Dick Willman went along and spent four days there with them, returning by plane Saturday night.

JAYCEE-ETTES TO BUY ANOTHER PAIR GLASSES

Muleshoe JayCee-ettes decided at their Monday evening meeting that they would purchase another pair of glasses for some school child who needs them. They bought a pair last month for one child.

The JayCee-ettes met in the home of Jean Gillespie, with eleven members present: Bonnie Adcox, Wilma Bandy, "Punk" Bragg, Pauline Middlebrooks, Marie Roark, LaVerne Simmons, Doris Thomas, Louise Wilson, LaVerne Winn, Martha Young, and the hostess. Next meeting will be Feb. 5 in the home of LaVerne Simmons.

Spring Fabric FESTIVAL

Cotton Fabrics

Just Received... Just Unpacked, A Tremendous Selection Of Higher Priced... First Quality... Famous Brands... Washable

Fresh, crisp new Spring and Summer Cottons... in a gorgeous array of the most beautiful colors and patterns you have ever seen. Every pattern especially selected for this special Spring Fabric Festival. They're all first quality, full pieces... all washable... and just look at this thrifty price. Choose now for that special spring wardrobe, and save.

See These... Compare These
You'll Find Values Up To
1.19 Per Yard

50^c yd.

- ★ Gilbrae Fine Combed Woven Gingham
- ★ Gilbrae Waffle Pique Prints
- ★ Gilbrae All Combed Manana Cloth
- ★ Gilbrae All Combed Ship and Sail Prints
- ★ Gilbrae All Combed Polished Cotton Prints
- ★ Gilbrae Fine Combed Woven Gingham with Overprints
- ★ Combed Everglaze Sheers-Prints and Solids
- ★ Petite Sanforized Blouse Prints

- ★ Solid Drip'n'Dri Drizzle Broadcloth
- ★ Solid Fine Combed Everglaze Sateen
- ★ Solid Satin-Glow Everglaze Embossed Sateen
- ★ Printed Satin-Sheen Everglaze Cotton
- ★ "Malibu" Everglaze Cotton Prints
- ★ Drip'n'Dri Combed Printed Drizzle Broadcloth
- ★ "Gold Rush" Gold Printed Cottons
- ★ Drip'n'Dri Printed Sailcloth

36 - 38 - 39 and 42
INCH WIDTHS

Drapery Fabrics

44-45 Inch "THURSTON" PRINTED BARK CLOTH

77^c yd.

All Sunfast - Washfast - All First Quality

One of the most sensational drapery fabric buys we have ever presented. Hurry on down now for best selections. All first quality "Thurston" Printed Bark Cloth, Sunfast and Washfast... Printed Scenics, Florals, Moderns, Traditionals, Gold Prints, Spaced Provincials... each pattern skillfully selected and specially purchased for this event.

IF YOU THINK YOU CAN AFFORD

REFRIGERATIVE AIR CONDITIONING

DON'T READ THIS AD

- TO -

Small Home Owners — Small Shop Owners

A REFRIGERATIVE AIR CONDITIONER

FOR \$499.50

PLUS INSTALLATION AND DUCT

(\$100 TO \$250 DEPENDING ON SIZE)

NOTHING DOWN - 3 YRS. TO PAY

FIRST PAYMENT APRIL

MINIMUM OPERATING COST — CAN BE SEEN AT—

TAYLOR METAL PRODUCTS

PHONE 4210

CLOVIS ROAD

MULESHOE



J. M. FORBES, Publisher
Entered as second class matter at the Muleshoe Post Office under the Act of Congress, March 3, 1897.

Babson Discusses

CONGRESS

Babson Park, Mass., Jan. 10 — Now that the Senators and Representatives have become organized, we are able to make a rough analysis of their ability and training.

TOO MANY LAWYERS
It appears that about three quarters of both branches of Congress are lawyers. At first glance, this seems reasonable, as their job is to make laws; this, however, should be the work of professional clerks.

SUEZ CANAL RUMPU
Probably the Suez difficulty is due to many causes, but it was primarily a matter of politics. President Nasser, of Egypt, was playing politics to get the good will of his people while raising money to build the great Aswan Dam.

Sand Hills Philosopher Finds HE AND U. S. TREASURY ARE IN ABOUT THE SAME BOAT

Editor's note: The Sand Hills Philosopher on his Johnson grass farm claims he has found company in his financial problems, his letter this week reveals.
Dear editor: With the Suez Canal jammed with ships and Washington jammed with Congressmen as the new session got underway, I naturally was interested in getting hold of a newspaper before 1957 gets too old but I searched this place thoroughly and couldn't find one yesterday, outside of one published two weeks ago containing predictions on what Congress will do this year and anybody who relies on a newspaper columnist's predictions is pretty hard up and not very well equipped to face the future.

CHRISTIAN SCIENCE
The divine answer to human needs will be brought out at Christian Science services Sunday.
Readings from the King James Version of the Bible and correlative selections from "Science and Health with Key to the Scriptures" by Mary Baker Eddy

LOSE UGLY FAT IN TEN DAYS OR MONEY BACK

If you are overweight here is the first really thrilling news to come along in years. A new and convenient way to get rid of extra pounds easier than ever, so you can be as slim and trim as you want. This new product, called DIATRON curbs both hunger and appetite. No drugs, no diet, no exercise. Absolutely harmless. When you take DIATRON, you still enjoy your meals, still eat the foods you like but you simply don't have the urge for extra portions and automatically your weight must come down.

CLEAN UP! BRING YOUR GARMENTS TO US FOR A FRESH-UP
WARDROBE
Let us show you how our advanced methods and extra care can revive winter-weary garments with new beauty.
We don't care how dirty and droopy looking they are—we send them out sparkling fresh and new looking.
LAMBERT CLEANERS
PHONE 7260 MULESHOE

New Red China Promoter?



Ten Word INTELLIGRAM

- Check the correct word:
1-The U.S. refugee relief program is slated for (expansion) (curtailment).
2-A disastrous brush fire swept a suburban residential area near (San Francisco) (Los Angeles) recently.
3-The Army has announced a sweeping reorganization of its (combat) (service) divisions, to take place in '57.
4-The President has named (Winthrop W. Aldrich) (John Hay Whitney) as U.S. ambassador to Great Britain.
5-A "mad bomber" has been operating for 15 years in (Chicago) (New York).
6-Highway death toll over the long Christmas weekend topped (500) (700).
7-It (was not) (was) the highest in history for the Yule season.
8-Our new ambassador to Italy will be (Clare Boothe Luce) (James D. Zellerbach).
9-Integration in (schools) (on buses) has been top news from the South recently.
10-A group of lions is correctly termed a (herd) (pride).
Count 10 for each correct choice. A score of 0-20 is poor; 20-60, average; 70-80, superior; 90-100, excellent.

Decoded Intelligram
York, 6-700-7-Was. 8-Zellerbach, 9-Buses, 10-Pride.
1-Expansion, 2-Los Angeles, 3-Combat, 4-Winthrop W. Aldrich, 5-New York, 6-700, 7-Was, 8-Zellerbach, 9-Buses, 10-Pride.

TODAY'S MEDITATION
Behold, I Make All Things New!
Read Galatians 6:1-10.
If any man be in Christ, he is a new creature; old things are passed away; behold, all things are become new. (II Corinthians 5:17)

HERE'S HOW GOOD IRRIGATION ENGINES GET YOU YOUR MONEY BACK

ENGINES offer
• LARGE PISTON DISPLACEMENT
• CONSERVATIVE PISTON SPEED
• HIGH COMBUSTION PRESSURE
These "good" work-type engine advantages are why you can pump millions of gallons for pennies per hour and get your irrigation investment back year after year.
NO MINIMUM RATES OR STANDBY CHARGES when you irrigate with an MM Irrigation Engine. You pay only for the power you actually use... and only when you use it.
Stop In and See Why the Dependable Long-Life MM Irrigation Engines Get You Your Irrigation Investment Back Sooner.
FRY & COX BROS.
Your Friendly One-Stop Farm Service
Phone 3660 Muleshoe

Hospital News

ADMITTED
Mrs. Ruby Johnson, Jimmy Laux, H. W. Woodward, Deborah Johnson, L. L. Haney, Jimmy Lambert, Mrs. Oscar Castillo, Mrs. David Clevenger, Rogers Laticia, Kenneth McAdams, and Mrs. Charles Martin.
DISMISSED
J. C. Phillips, W. E. Peugh, Mrs. Grady Johnson, Barbara Ann Bell, Kemp Foster, B. M. Myers, Mrs. Marie Valdez, Keith Lowe, Mrs. J. R. Walker, Van Rogers, Spencer Beavers, Mrs. Jack Cox, Jean Newcomb, Lewis Stewart, Mrs. Kirk Herrington, Mrs. Andrew Curriolo, Mrs. J. D. McClellan, Mrs. C. W. Coffman, Mrs. Consulo Lerma, W. T. Cunningham, Fredey Quian, Mrs. H. C. Richardson, A. A. Clements, Mrs. Curtis Parker, Janice Toombs, Billy Paul Bennett, Mrs. Inez Ampa-

drifted away. Following her husband's death about four years ago, she turned back to God and the Church.
She wrote in her letter: "We are having some wonderful Lenten services at our church, and I am enjoying them so much. I just love my little church. It is difficult for me to describe my feeling, but somehow I feel as if the church is a part of me and I wonder how I lived without it. Life is now so different. No problem seems difficult any more. God is with me wherever I go. Loneliness is not bad any more. Illness and pain are easier to bear. I'm sure you understand."
Knowing Christ enables one to really live.

MATTRESSES

For your mattress Renovating or New Mattresses and Box Springs and Foam Rubber Mattresses, call Drake 39332 or write—
Box 2422, Amarillo
Our Factory is the Newest and Most Modern Factory in the Panhandle and is Home Owned and Home Operated.
Over-Size Mattresses and Box Springs a Specialty.
Our Spring Units range from 180 coil to and including 837 Coil.
Free Pickup and Delivery
Acme Mattress & Spring Co.
705 N Fillmore, Box 2422
Amarillo, Texas

ran, W. T. Goodson, Mrs. Ronald Lewis, Donna McDonald, Gambil Smith, Kathy Kamp, Joe Damon, Seannie Gebhart, Athylene Wood, Gary Knowlton, Mrs. J. A. Nickels, Loretta Bean, Luther Ellis, Mike Gray, Mrs. Dale Krebs, and James Collins.



MRS. D. O. SMITH
Mr. and Mrs. R. P. Martin and son of Clovis, have recently moved to Muleshoe. He is man-

ager of the Jones Firestone store. They are members of the Baptist church and reside at 1524 West Ave. B.
Mr. and Mrs. J. W. Casey and two children, Grady 10, and Ray Lynn, 1 week old, of Haskell, are new residents of Muleshoe. They have purchased a farm southwest of town and are making their home with his parents, Mr. and Mrs. W. Q. Casey until they can build their new home. They are members of the Baptist church.
Remington Rand Typewriters and Adding Machines For Sale at The Journal.

You Won't Wait Long!
3 BARBERS TO SERVE YOU
• John Booher
• Billy Hatch
• J. W. Watts
SHINE BOY—
Virgil Livingston
Sanitary Barber Shop
113 Main Muleshoe

HIGH Pressure!
There is no place for it in selling insurance, especially if an agent represents good companies with reasonable rates and a proven record for settling claims fairly and squarely.
Perhaps that's why most folks prefer to do business with a local, independent man. Stop in!
ALSUP INSURANCE AGENCY
MULESHOE'S OLDEST
Phone 3200 Muleshoe

Here comes the Blue Chip line of trucks:
GMC's BIG 1957 MONEY-MAKERS
With new V8's to 232 hp
With 4- and 6-wheel models to 60,000 GCW
With advanced Hydra-Matic Drive*
New cabs with 89" b.b.c.
THESE '57 GMC's are going against the amazingly low cost records set by their famous '56 versions.
But—as you can see—they've got plenty to smash those records with!
In fact, these Blue Chip advantages are in 36 models that can be practically custom-built for their jobs.
What you need, we sure have got. Call us—and we'll have a man over to prove it!
*Standard on some models; optional at moderate extra cost on others.
See us, too, for Triple-Checked used trucks
LADD PONTIAC
HIGHWAY 70 AND 84 MULESHOE

