

The Muleshoe Journal

DEDICATED TO THE PROGRESS AND DEVELOPMENT OF BAILEY COUNTY AND THE GREAT MULESHOE COUNTRY

VOLUME 38, NUMBER 12 14 PAGES, SECTION I, 6 PAGES Published Every Thursday At Muleshoe, Bailey County, Texas 10c Per Copy THURSDAY, MARCH 26, 1959



EIGHTH GRADE GIRLS BASKETBALL TEAM: back row, left to right: Barbara Surratt, Kay Davis, Gayle Wilson, Mary Beth Bowling, Coach Lumsden, Barbara Ellis, Jeannine Coffman and Donnie King. Front Row: Joan Mock, Marilyn Green, Roxanna Hart and Mickey Sooter. — Journal Photo

Mrs. Carothers Rites Pending

Mrs. Addie Mae Carothers died here at 7:30 p.m. Wednesday evening, March 25. Mrs. Carothers was stricken at her home, and was pronounced dead upon arrival at West Plains Hospital where she was taken in a Singleton ambulance.

She had been a resident of Muleshoe for 30 years and most of the time had operated businesses in the city. Mrs. Carothers was born at Emils, Ellis County, Texas.

Funeral arrangements were incomplete at time of going to press with this paper today. The body is at Singleton Funeral Home.

Bracero Forges \$400 In Checks, Returns to Mexico

A crafty Bracero made profitable use of his last few hours in Muleshoe before returning to Old Mexico Saturday, according to Bailey county authorities.

Sheriff Doc Clements said the Bracero laborer forged and passed almost \$400 worth of checks in four downtown stores just before boarding the bus to return to Mexico.

Checks were passed in Cashway, BBI Supers and Cobb's stores by the laborer, who forged the name of J. G. Arrin to the checks.

Officers said they have his contact number, but anticipate some difficulty in apprehending him once he reaches Mexico.

COMMUNITY WIDE

SUNRISE SERVICES

**First Baptist Church
Muleshoe**

Sunday, March 29

Sponsored by the
Ministerial Alliance

INVOCATION
Rev. Edwin Hall First Methodist

SCRIPTURE READING
Rev. E. K. Shepherd First Baptist

PRESIDING
Rev. Paul Robinson - Main St. Baptist

MESSAGE
Rev. George Wilton Trinity Baptist

BENEDICTION
Rev. R. V. Luna Assembly of God

SPECIAL MUSIC

FIRST METHODIST — FIRST BAPTIST — ASSEMBLY OF GOD

Three School Trustee Elections In County For Saturday, April 4

Gerald P. Tucker Funeral Services Are Held March 24

Gerald Pierson Tucker, 35, passed away March 22 in an Albuquerque, N. M., hospital after two months illness. He was a native of Baylor County, and had resided at Muleshoe for four years, working as a mechanic.

Funeral services, under direction of Singleton Funeral Home, were conducted March 24 at 5 p.m. from First Baptist Church, with Rev. E. K. Shepherd officiating, assisted by Rev. Paul Robinson. Interment was in Muleshoe Cemetery.

Surviving are his wife, Peggy Fried Tucker, his parents, Mr. and Mrs. T. M. Tucker of Greece, Texas; one sister, Mrs. Mary Bariek of Menard; three brothers, E. W. of Muleshoe, Clayton of Lubbock, and T. M. Jr., of Colorado City.

pallbearers were Clifford, Don and L. G. Layman, Dennis Bailey, Clyde Knight, and Roy Bayless. Honorary pallbearers were Quint Whitley, Ollie Jones, J. H. Whitson, Emmitt Cross, and Red Marshall.

District trustee elections will be held in three Bailey county school districts next Saturday week, April 4, and in connection two county trustees will be elected as well as county trustee at large.

County Trustees

In precinct 2, incumbent Ross Goodwin is a candidate for re-election as county trustee, and Tye Young is a candidate for trustee-at-large for the entire county.

Carl Pollard, incumbent, is opposed by L. E. Warren in the post of county trustee from precinct 3.

Bula School District

There are five candidates seeking two posts in the Bula school district trustee election. J. Ray Spence and Chester B. Selliff are the incumbents seeking re-election. They have as their opponents Donald

Grusendorf, L. I. Medlin, Jr., and Robert Clauch.

Three Way District

In the Three Way school district election, incumbents Earl W. Bowers and Charlie Byars are both seeking re-election. They are opposed by Thurl Lemons, Gene Kenley, and Michael Flaniken.

Muleshoe District

Paul Scott and Leon Lewis, incumbent board members are both seeking re-election to the Muleshoe board of trustees. Also listed as candidates are Ralph Ehridge of Longview, Jack Lenderson and Harold King, both of Muleshoe.

Polling place for the Muleshoe election will be the library of the junior high school building.

H. S. Yearbook Wins Second In District Contest

Muleshoe high school's Muletain, the school annual, placed second in Class B competition at the annual meeting of the Panhandle High School Press Association convention at Canyon Tuesday.

Mrs. Horace Blackburn is faculty advisor to the Muletain staff.

Olin Hinkle, associate professor of journalism at Texas University was the main speaker at the morning session.

Get Those Safety Stickers Now, Warns DPS

Motorists were asked again this week to get their 1959 safety inspections before the April 15 deadline.

Representatives of the Department of Public Safety told The Journal that the total last minute rush may be avoided by getting the inspection done now.

Easter Sunrise Service Sunday At First Baptist Church Here

Pig Parlor Field Day Scheduled

A field day is being planned by F. W. "Chief" Jones, of Jones Farm Store, shortly after conclusion of his pig feeding demonstration, which runs about three months.

Chief said the date for the field day will be set to be staged a short time after the third weighing of the pigs toward the end of April.

In another page of this paper will be found the results of the demonstration so far. The pigs were first weighed in and began feeding in the parlor on January 20; they were weighed February 20, and March 19. A summary of results in the demonstration will be carried in the paper after the final weighing.

Wayland Veep Is Luncheon Speaker

Tom Parrish, vice-president of Wayland College at Plainview, told members of the Muleshoe Lions club Wednesday that freedom must be earned and that freedom must compete with the regimentation of the Communist world.

Education must play a vital part in that competition, the speaker said, and pointed out some of the differences in the status of college professors in America and in Russia.

Pat Bobo was program chairman and introduced Parrish.

church, sponsored by the Bailey County Ministerial Alliance.

Rev. Edwin Hall, minister of First Methodist church will offer the invocation, and Rev. R. V. Luna, minister of Assembly of God church, the benediction.

The scripture reading will be by Rev. E. K. Shepherd, minister, First Baptist Church, and Rev. Paul Robinson, minister, Main Street Baptist Church, will preside over the service.

Special musical arrangements are under the direction of T. W. Gear of First Baptist, with music furnished by choirs of First Methodist, First Baptist and Assembly of God churches.

Mrs. W. T. Andrews will play the organ and Mrs. Biddy Hicks will be at the piano.

Time of the service is at sunrise, and members of all faiths are cordially invited to attend, by members of the Ministerial Alliance.

'Black Duster' and Gale Force Winds Immobilize West Plains Area Friday

Muleshoe folks suffered along with other residents of the Plains Friday when one of the worst dust storms in recent years howled all night Thursday and on through the day and into the night Friday.

However damage was less severe locally than might have been expected, considering that the wind blew as sustained velocities of 50 mph, with gusts of more than 70 mph.

Business places along the Clovis highway bore the brunt of the storm, with the canopy at Coral Drive-In blowing down, and the sign at OK Rubber Welders, across the road, also fell before the gale. A plate glass window at the same place blew out also.

TV antennas suffered considerable damage, and a number of homeowners reported shingles blown from their roofs.

No one was reported injured because of the storm, and there were no major traffic accidents attributed to the poor visibility.

A little of everything accompanied the winds. Dust, blowing debris, some snow, a little rain, and a trace of sleet, turned the storm into mud at times, and about 1/2 inch of snow was on the ground at dark Friday.

Fire Causes \$3000 Damages Tuesday In Home on Elm

Muleshoe's second in-city fire loss this year occurred at 2 a.m. Tuesday, when fire caused an estimated \$3,000 damage to the home of Chester Wilson, 310 Elm, Lennu Addition.

City fire marshal Owens Jones said firemen received the call at 2 a.m., and had the fire out in 20 minutes after arriving at the scene. He also pointed out that some delay was experienced in getting the alarm turned in to the proper authorities, and that the fire had progressed considerably before firemen arrived.

Possible cause of the fire was attributed to mice gnawing electrical wiring in the ceiling of the garage where rugs and other inflammables were stored.

In addition to actual fire damage, smoke caused considerable damage in other parts of the house.

The loss was covered by insurance.

A.P. Sutton Dies; Funeral Services Held In Sherman

Funeral services for Alva Phillip Sutton, 69, who died March 23 at his home five miles east of Muleshoe, were conducted from a Dennison, Texas funeral home on March 25 at 2 p.m. Interment was in Friendship Cemetery at Sherman, Texas, under direction of Singleton Funeral Home, Muleshoe.

Mr. Sutton was a farmer, a native of Arkansas, and a member of the American Legion.

He is survived by his son, A. P. Sutton, Jr., of Muleshoe; three daughters, Mrs. Glendon Kenney of Muleshoe, Mrs. Taylor Ross of Sherman, and Mrs. Clarence Woodall of Sedalia, Mo.; one sister, Mrs. Stella McAllister of Jerome, Idaho, and one brother, Abe Hobbs of Osage, Okla., and six grandchildren.

Mules Lose Opening High School Baseball Game Here Tuesday Nite

Coach George Washington's Muleshoe high school baseball team was defeated by a 21-7 score Tuesday night in their first game of the season against Portales here in Babe Ruth League park.

Charles White started for the Mules, with Bob White behind the plate. White lasted four innings, and was relieved by Dixon Ray and Jerry Roddam.

Playing Tuesday night were Roddam, ss; King, 3b; Shepherd, 1b; Oliver, 2b; Bob White, catcher; Jack Wright, lf, and catcher; Phillip Billingsley, cf, and Kenny Splawn, rf.

Substitute players included Travis Fudge, Mike Barron, Joe Childs, Gary Pierce, and Benny Walters.

Bruce and Williams handled the battery for Portales.

Mules who had runs were Roddam, Shepherd, Oliver, King, Barron, Splawn, and Ray.

The next game will be next Tuesday afternoon at Portales, 1:30 p.m. Texas time, Coach Washington reports he needs several cars for transportation, with adult drivers.

Anyone who will volunteer a car for the trip should contact Superintendent Jerry Kirk.

Don Moore and Bob Glass handled umpiring chores Tuesday night, with L. S. Barron keeping score. Mr. Graves assisted in coaching duties.

The Mules are acknowledged district winners by default, and are grooming for bi-district playoffs.

Wayland Veep Is Luncheon Speaker

Tom Parrish, vice-president of Wayland College at Plainview, told members of the Muleshoe Lions club Wednesday that freedom must be earned and that freedom must compete with the regimentation of the Communist world.

Education must play a vital part in that competition, the speaker said, and pointed out some of the differences in the status of college professors in America and in Russia.

Pat Bobo was program chairman and introduced Parrish.

Grand Jury Returns Fourteen Indictments At Monday Meet

The Bailey County Grand Jury meeting Monday returned 14 indictments, including seven for theft, under the leadership of Roy Young.

In addition to the seven indictments for theft, two indictments were returned for forgery, three for worthless check, and one each for breaking and entering, and theft by bailer.

Other members of the Grand Jury in addition to Young, were: A. S. Stovall, Tommy Gall, Robert Blackwood, Rudolph Wiedebush, O. M. Self, Tom Bogart, Ross Goodwin, Guy Austin, Jim Clauch, Baker Johnson, and D. B. Head.

A petit jury trial scheduled for Monday was settled out of court. A damage trial for petit jury is scheduled to begin today at 10 a.m.

Visiting Daughters

Mrs. A. C. Whittenburg of Loveland is here visiting her daughters and families, Mrs. B. C. Locke and Mrs. G. L. Splawn.

SEVENTH GRADE GIRLS BASKETBALL TEAM



SEVENTH GRADE GIRLS BASKETBALL TEAM. Back row, left to right: Marsha Burhman, Peggy Lewis, Katherine Puckett, Betty Davenport, Coach Lumsden, Linda Haley, Lou Venia Williams, Beatrice Stinson, Mona Rucktaschel and Donna Baker. Front Row: Debbie Reeder, Diana Chappal, Charlotte Childs, Barbara Simmons, Patricia Tucker, Linda Wood, Jane Wedel. — Journal Photo



EIGHTH GRADE GIRLS BASKETBALL TEAM: back row, left to right: Barbara Surratt, Kay Davis, Gayle Wilson, Mary Beth Bowling, Coach Lumsden, Barbara Ellis, Jeannine Coffman and Donnie King. Front Row: Joan Mock, Marilyn Green, Roxanna Hart and Mickey Sooter. — Journal Photo

News FOR Women

Page 2, The Muleshoe Journal, Thursday, March 26, 1959



Three Hour Good Friday Service

The traditional three hours that Jesus hung upon the cross will be observed by many of this community in the First Methodist Church here in Muleshoe. The service will begin at 12:00 noon and continue until 3:00 p.m. People may come and go as their time permits. There will be a nursery provided.

The three-hour service will feature a number of excellent musical numbers by the Chancel Choir of the First Methodist Church and featured soloist.

Some of the music will be: "O Come and Mourn With Me Awhile", "God So Loved The World", and "I Walked Today Where Jesus Walked", by the choir. Iva Gaede will sing "Must Jesus Bear Another Cross". There will also be others and many congregational hymns.

Rev. Hall has invited seven

ministers to speak on one of the "Seven Last Words of Jesus" spoken from the cross.

1. "Father Forgive Them". Rev. Bernard Seay, First Methodist, Lazbuddie.

2. "Today . . . In Paradise". Rev. E. K. Shepherd, First Baptist Church, Muleshoe.

3. "Woman, Behold Thy Son! Behold Thy Mother." Rev. C. C. Lamb, Methodist, Progress.

4. "My God, My God, Why Hast Thou Forsaken Me?" Rev. Harold Secord, First Methodist, Earth.

5. "I Thirst". Dr. Luther R. Kirk, District Superintendent, Plainview District of the Methodist Church.

6. "It Is Finished". Rev. Hall.

7. "Father, Into Thy Hands I Commend My Spirit". Rev. Ellis Todd, Methodist Church, Sudan.

Rites Unite Miss Carolyn Kirk, Mr. Roy Lee Wallace, March 21



MRS. ROY LEE WALLACE

Miss Carolyn Kirk became the bride of Mr. Roy Lee Wallace by vows exchanged in the Youth Chapel of the First Methodist Church Saturday, March 21, at 3:00 p.m.

Rev. Edwin L. Hall, minister, performed the double-ring ceremony before a white kneeling altar with white iris and stock centered by green palm trees.

The bride is the daughter of Mr. and Mrs. O. C. Kirk, and the groom is the son of Mr. and Mrs. Lee Roy Wallace of 1209 South Weatherford, Midland.

Escorted to the altar by her father, Carolyn wore a dress

of white lace fashioned with princess lines. She carried a white orchid on a white Bible. Mrs. Stacy Cole, of Henderson, was matron of honor. For her sister's wedding, she wore a dress of blue embossed cotton complimented by a corsage of white iris. Mr. Lee Roy Wallace served as best man for his son.

Mrs. Noel Woodley played the traditional wedding selections and accompanied Mrs. Mack Ragsdale who sang "The Lord's Prayer" at the closing of the ceremony.

A wedding reception followed in the Youth Room. The bride's chosen colors of blue

and white were carried out on the serving table which featured a "Bunny Bride" and blue tapers. Assisting with the hospitalities were Ruthie Kirksey, Jean Head, Ann Birch, and Margaret Ann Wallace, sister of the bridegroom, all of Midland.

For traveling the bride chose a two-piece beige suit with bone accessories.

Mr. and Mrs. Wallace will be at home in Midland where Mr. Wallace is employed with H & M Drilling Co.

Golden Circle Class

Meets In Adams Home

Mrs. Charles Hargrove was elected vice-president of the Golden Circle Sunday School Class of the First Baptist Church at a meeting in the home of Mrs. Jerry Adams on Thursday evening, March 19. The class also elected Mrs. Charles Hargrove as group leader.

A fellowship period of fun and games followed the business meeting. Refreshments of German chocolate cake was served by the hostess to Meses Ray Preure, Jean Hamilton, Frank Ford, Wayne Smith, W. B. Bishop, Hargrove, Bartlett, A. J. Phillips, Bobby Noble, Jimmy Carpenter, and the class teacher, Mrs. E. K. Shepherd.

Rites Unite Miss Cunningham Mr. Garlington



Mrs. Jerry Garlington

Miss Jeanette Cunningham and Mr. Jerry Garlington exchanged wedding vows in a single ring ceremony in the parsonage of the First Baptist Church, Friday, March 6, with the Rev. E. K. Shepherd officiating.

The bride wore a navy blue linen suit with white accessories and her corsage was of white feathered carnations. For "something old" the bride carried a handkerchief belonging to Nancy Julian's great grandmother. Her "something new" was her wedding suit, the "something borrowed" was a pair of gloves borrowed from Goldialu Goucher. She wore a

traditional blue garter given her by Sandra Taylor.

Attending the bride and groom were Sue and Doyle Rush of Artesia, N. M. Mrs. Rush is a sister of the bride. She was dressed in a light blue linen suit complemented by red accessories.

The couple are now at home in Muleshoe at 1303 West 6th Street. Mr. Garlington is employed at R. B. H. Supers.

Eyes Examined

Glasses Fitted

BLACK OPTOMETRIC CLINIC

A. J. Black, O.D.

Office Hours:
9:00 to 5:00
Sat. 9:00 to 1:00

113 West 1st. St.
Phone 8240
Muleshoe, Texas

Printing

Most Usually — A One Day Service

Or Sooner If Necessary
No Charge For Prompt Delivery

The Muleshoe Journal

CALL 5400 — 7220

BE SURE ABOUT Insurance



HAVE YOU LOOKED OVER YOUR FARM INSURANCE PROGRAM LATELY?

You know, not only do needs change, but so do the prices of lumber, seed, etc. A once-adequate program may not be complete today. Our clients always know where they stand on their coverage. We make constant checks!

Alsop Insurance Agency

MULESHOE'S OLDEST 109 S. First Phone 3200

THE ONLY WAGON THAT OUTSELLS

FORD

NOW THROUGH APRIL 30

"WAGON LIVING DAYS"

AT

Muleshoe Motor Company

Get Ready for Outdoor living days

With a FORD STATION WAGON TODAY!

FORD — the only WAGON in the low price three with 3 forward facing seats

Bowling Alley Load Space with folding seats at a fingertip

COME IN - TAKE A RIDE

DRIVE OUT

in a 1959 FORD STATION WAGON

• FROM •

Muleshoe Motor Company

Phone 2510

at the Crossroads

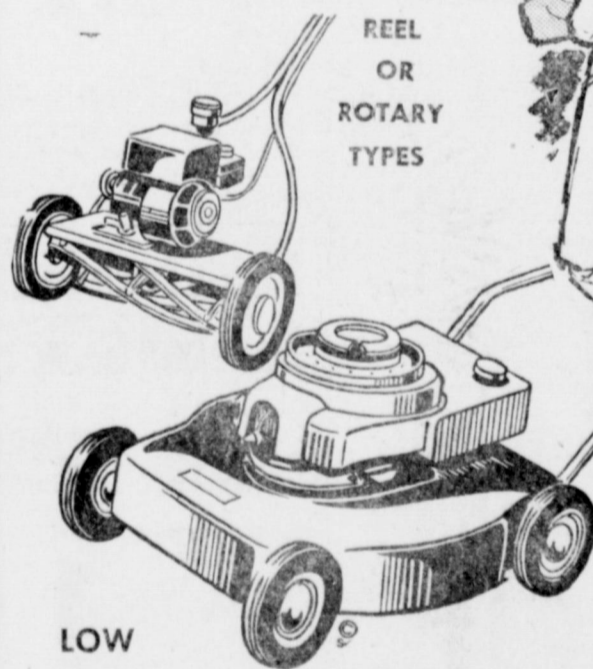
Muleshoe

The Pick of our stock at special LOW, LOW prices!

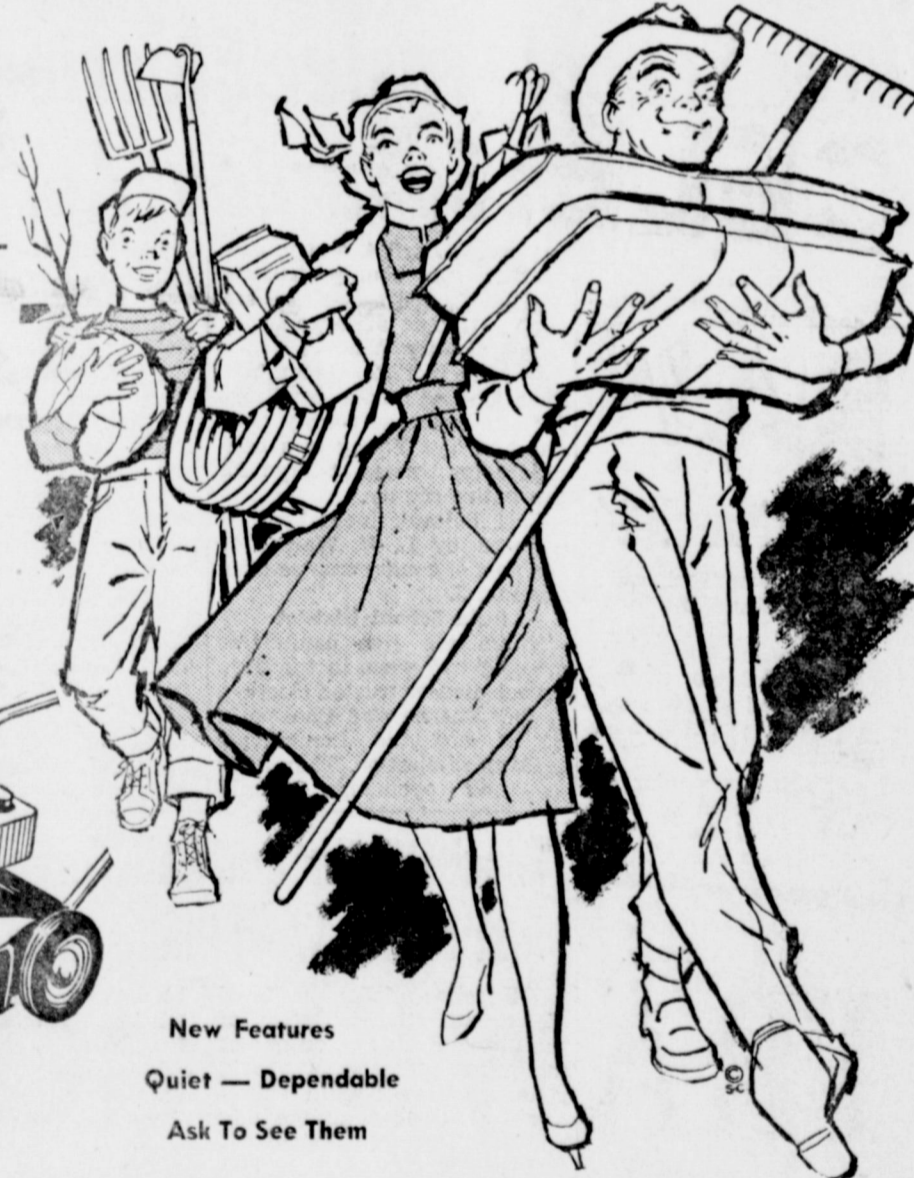
SPECIALS FRIDAY - SATURDAY

Savings are at their peak right now in our store! Stock up today on quality garden supplies. We have a complete selection.

YARD-MAN POWER MOWERS



LOW PRICES



New Features
Quiet — Dependable
Ask To See Them

Plant-Rite Row Seeder

Reg. \$4.95

Sale \$3.95



ALL TYPES

ALL PRICES

See The All New EVEREADY Pressure Sprayer And Duster

ONION SETS SUPPLY LIMITED GET YOURS TODAY

SUNSHINE

SHEEP MANURE 25 LB. \$1.25

Will Not Burn Lawns or Garden

FREE ROSE BUSHES!

The First 24 Customers Friday

Purchasing \$3.00 in Lawn or Garden merchandise will receive choice of \$1.50 rose bush

ABSOLUTELY FREE

NURSERY STOCK

It's Time to plant shrubs hedges, fruit and shade trees
Our Stock is Complete

Landscape Service

JERRY'S

Lawn and Garden Center

808 Avenue D

MULESHOE

FAVORITE FOODS FOR YOUR EASTER TABLE



EASTER MENU
 Holiday Glazed Ham
 Easter Egg Garnish
 Parsley Potatoes Buttered Green Peas
 Spring Salad
 Coffee Milk
 Angel Cake with Strawberries

HOLIDAY GLAZED HAM
 Place Ham fat side up on a rack in an open pan. Use no water. Heat in a slow oven (325°F.) about 10 minutes to the pound, or to an internal temperature of 130°F. if a meat thermometer is used. Remove shank skin. Cover with a favorite glaze. Bake in a very hot oven (450°F.) 15 minutes.

Easter Eggs
 12 Oz. 23¢
 10 Bag, Unwrapped



Favorite foods for a favorite holiday! May YOU have a joyous Easter Sunday and we hope when you think of planning for your family this week-end, you'll think of Piggly-Wiggly, where we are always anxious to serve you.

Ocean Spray, 16 oz. Can Whole or Strained Serve with your Ham or Turkey.

CRANBERRY SAUCE 25c

HAM E & R Brand 49¢
 1/2 or Whole LB. Shank End LB. 43¢

TURKEY Toms, Praters 39¢
 Fresh Frozen LB.

HAMS Morrell's, Iowa Farms, fully cooked, 1/2 or whole, Lb. 59c

BISCUITS Pillsbury's Canned, 3 Cans For 29c

Smoked Turkeys Prater's Ready to eat 98c

HAMBURGER Fresh Ground 39¢
 LB.

Fruit Cocktail Hunt's No. 300 Can 20c

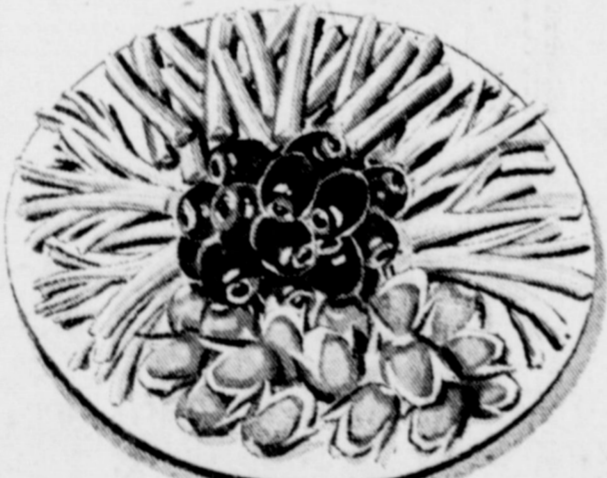
Coca-Cola 12 Bottle Carton 39c

Mellorine Plains Assorted Flavors, 1/2 Gallon 39

California Green 48 Size, Each
CELERY 7 1/2¢

Golden Fruit, LB.
BANANAS 12 1/2¢

TURNIPS Fresh, Purple Tops, Lb. 10c
GREEN ONIONS Fresh, Large Bunch, Each, 7 1/2c
CARROTS California, Fancy 1 lb. Cello bag 10c
AVOCADOS California, Large Size, Each 10c
LETTUCE Large Firm Heads, lb. 10c



Western Wonder, Frozen, 10 Oz. Pkg.
STRAWBERRIES 15c

Heads Frozen 24 Count Bag
ROLLS . . 19¢

Silverdale, 9 oz. Frozen Package
BROCCOLI SPEARS 19c

Frigid Dough, Family Size, Frozen
APPLE or CHERRY PIES 39c

Hunts Bartlett Halves, No 300 Can
PEARS 25¢

Easter Egg Dye Paas, No. 19 Kit 19c

OLIVES Libby's Stuffed Manzanilla, 7 1/4 oz square Jar 39c

Reynolds Foil Heavy Duty Aluminum Foil 18" x 25" Roll 59c

Paper Napkins Northern, 80 box, 2 FOR 25c

LIBBY'S FANCY BLUE LAKE Green Beans Whole, No. 303 Can 25c

ASPARAGUS Libby's Fancy All Green Spears No. 300 Can 39c

Niblet's Corn Whole Kernel, Vacuum Pack 12 oz. can 18c

Salad Oil Kraft's Quart Bottle 52c

Tomato Juice Deer Brand, 46 oz. Can 25c

Pickles Libby's Whole Sweet's, 22 oz. Jar 49c

Pickles Betty, Sour, Dill or Kosher Dill, Quarts 25c

Vanilla Wafers Nabisco 10 oz. Cello bag 25c

PUREX 1/2 Gallon 37c

TREND 2 large Boxes 39c

LIQUID TREND 2 large cans 59c

PEAS Hunt's Tender Garden, No. 300 Can 15c

Luster Creme 1.00 Jar
SHAMPOO 69¢
 Pepsodent, 69c Value
TOOTHBRUSHES 49c 100 Count Bottle
 10c off Label, Net Price
AIR WICK MIST 69c **BUFFERIN** 79c

PINEAPPLE Libby's, No. 1/4 Flat Can, Fancy Sliced 20¢

GREEN STAMPS
DOUBLE TUE.
 WITH \$2.50 PURCHASE OR MORE

Salad Dressing, Pint Jar
MIRACLE WHIP . 33c
 Swansdown White, Yellow or Devils Food, Box
CAKE MIX . . 25c

Piggly Wiggly
 SUPER MARKETS
 DAVIS & HUMPHRIES, OWNERS & OPERATORS

Adult Homemaking Interest Survey

INTEREST SURVEY

name _____

address _____

phone _____

am interested in Adult Classes in Homemaking

If you are interested in an adult class in homemaking, there is a possibility of one being started in the near future, according to Mrs. Charline Walker, homemaking teacher in Muleshoe high school.

This course will include study of food, clothing, child-care, household management, and personality development. Fill in the coupon and mail to Muleshoe high school.

Y.W.A. Hears Book Review

Mrs. T. W. Goar gave a book review on "The Charlie Matthews Story" at the parsonage of the First Baptist Church on Monday evening. This excellent review was enjoyed by members of the Y. W. A. After the review, the members discussed the house party to be held at Wayland April 21 and 25. Sandwiches and all the trimmings were served by Mrs. E. K. Shepherd to those present.

WSCS Circles Met Tuesday

Maurine Hooten brought the devotional on the Easter theme at the meeting of the Ester Circle Tuesday morning in the Youth Chapel of the First Methodist Church. Mrs. Hooten read the poem, "Two Pieces of Wood" while background music, "The Old Rugged Cross" was played.

For the first part of the program, Mrs. Arnold Morris brought the third chapter on the current study, "Middle East Pilgrimage". Her chapter was titled, "Roadways of the New Pilgrimage". Mrs. Ray Daniel gave the four chapter, "Religions of the Middle East".

Mrs. Edwin Hall gave an interesting report on her trip to Midland as delegate to the WSCS Conference.

Members of the Ester Circle drew names of shut-in members to visit and do service for, as the circle project.

There were 12 members present, one visitor, Mrs. Franklin Mann, and one new member, Mrs. Frank Ellis.

Mrs. Dean Bishop, Mrs. H. Jay Weyer, Mrs. Bill Moore, and Mrs. O. N. Jennings brought the program parts on "Christian Concerns for North American Neighbors" at the meeting of the Mary-Martha Circle Tuesday afternoon in the Youth Chapel of the First Methodist Church.

The president, Mrs. Bill Moore, presided over the business meeting.

There were eight members present for the meeting of the Alpha Circle in the home of Martha Lowe Tuesday afternoon. The members were happy to have one visitor, Pat Prater.

Polly Wampler brought the devotional and Betty Welson gave the second part of the

high library. These newly elected officers will be installed on April 9 by past president, Ola B. Jones.

On completion of the business meeting, hats were styled and modeled by the members. Prizes were given for the best. The Easter motif was carried out in the table decorations, favors, and refreshments by the hostesses, Mmes. John Watson, Ed Johnson, and Jack Beddingfield.

Those present were Mmes. Virginia Summersgill, Joyeline Costen, Lena Hawkins, Lena Ford, Grace Whitley, Ola B. Jones, Margaret Slemmons, Mary B. Obenhaus, and Misses Lillie Williams, and Sarah Pittman.

Miss Carolyn Kirk Shower Honoree

The home of Mrs. W. Q. Casey was the scene of a bridal shower on Friday afternoon honoring Miss Carolyn Kirk, bride-elect of Mr. Roy Lee Wallace. The guests called between the hours of 3 and 5 p.m.

In the receiving line were Mrs. O. C. Kirk, Carolyn, and Mrs. Stacy Cole, sister of the bride of Henderson, Texas. They were presented with corsages of white carnations by the hostesses.

The honoree's chosen colors of blue and white were carried out on the serving table laid with a white cloth, centered with an arrangement of blue carnations and white stock and white tapers. Frosted blue punch and sand tarts were served to the 35 guests who called.

Assisting with the hospitalities were Mmes. Pat Arnold, Jo Adiene Mayhew, Bobbie Harrison, and Frances Bland.

The hostesses for the occasion were: Mmes. Morris Childers, Jeff Peeler, R. F. Wright, D. C. Stovall, David Stovall, Garland Freeman, R. C. Everett Bill Collins, Edgar Broyles, Francis Gilbreath, A. W. Copley, G. W. Cherry, W. Q. Casey, J. G. Arnn, and Miss Helen Jones.

DUNCAN ELECTED TO TEXAS TECH FRATERNITY

Damon Harlon Duncan, junior mechanical engineering student at Texas Tech College, has been elected into Tau Beta Pi, honorary engineering fraternity. He is the son of Mr. and Mrs. O. E. Duncan, Rt. 5, Muleshoe.

Duncan is a graduate of Sudan High School, where he was active in sports. He served in the Army from 1953 to 1956.

He is married to the former Betty Moore of Lubbock.

WANT ADS are as newsy as the front page and high in reader response. To place your want ad dial 7220 or 5490.

State Inspections C & H Chevrolet

AUCTION SALE

Going out of business. Complete stock antiques and used furniture.

Antique Sale March 31

Furniture Sale April 1

7 PM, M.S.T.

PETE'S TRADING POST

108 Main Clovis, N.M.

PINKNEYS HARVEST TIME SLICED

BACON 69c

2 LB. PKG.

Hormel's Delicat Smokies SAUSAGE Heat and Serve all meat 12 oz. pkg. 59c

CHOICE HEAVY PEN FED BEEF CHUCK ROAST lb. 49c

CHOICE HEAVY PEN FED BEEF ARM ROAST lb. 53c

Spiced Luncheon Pinkney's All Meat 12 oz. Pkg. 49c

HAMS 45c

PINKNEYS HICKORY SMOKED SUGAR CURED WHOLE . Lb. . .

DR. PEPPER 39c

12 BOTTLE CARTON PLUS DEPOSIT

GREEN BEANS 19c

No. 303 WHITE SWAN BLUE LAKE CUT

SALMON 39c

No. 1 TALL CAN HONEY BOY

FRUIT COCKTAIL No. 303 White Swan 25c

GRAPE DRINK Qt. Can Welchade 3 for \$1

ORANGE JUICE Kimbells 46 oz. Can 39c

TOMATO CATSUP 14 oz. Bottle Heinz 25c

PEACHES Sliced or Halves No. 2 1/2 Hunts 29c

CRACKERS Nabisco Premium 1 lb. Box 29c

White-Yellow-Devil Food and Butterscoth

Swan's Down Cake Mixes 4 FOR \$1

DOG FOOD "Kim" Tall Can 3 FOR 25c

HI-HO CRACKERS Sunshine 1 lb. Box 29c

Hershey Semi-Sweet Daintees 6 oz. Pkg. 23c

CHOCOLATE QUIK Nestle's Instant 1 lb. 45c

Blue Bonnet OLEO 1 lb. Pkg. 25c

98c SIZE ECONOMY PAK NOTE BOOK

FILLER PAPER 50c

TISSUE 49c

DELSEY BATH ROOM TISSUE ASSORTED COLORS 4 ROLL PACKAGE

FLOUR \$1.98

25 LB. PILLOW CASE BAG PUR-A-SNOW

FROZEN FOOD		
Brussels Sprouts	Keiths 10 oz. pkg.	23c
FRUIT PUNCH	Libby's Tropi - Cal 6 oz. Can	19c
STRAWBERRIES	Sally Ann Sliced 10 oz. pkg.	19c
WHITING	Booth's Quick Frozen 1 1/2 lb. pkg.	39c

VEL 25c

LARGE SIZE

Red Potatoes 29c

10 LB. BAG No. 1 COLORADO

FIRM CRISP GARDEN FRESH CABBAGE . . . lb. 5c

APPLES Washington Red Delicious lb. 13c

ORANGES California Sunkist lb. 13c

DOUBLE GUNN BROS STAMPS ON TUESDAY

CASHWAY

"Where Friends Meet and Prices Talk"

Free Delivery Phone 2440 or 2450

We Use HOW Service Plan

CHINA INN INVITE YOU TO HELP CELEBRATE THEIR

803 E. FIRST, Clovis

2nd Anniversary

ON SATURDAY, MARCH 28, 1959

SPECIAL CHINESE and AMERICAN FOOD

Register for free meal awarded each week

Oriental Dishes - Famous Steaks
Childrens Plates

Dine with us - You'll Enjoy it

OPEN 7 DAYS A WEEK 6 AM to 11 PM



LEFT: Mr. and Mrs. Paul Scott, Sandra and Linda, Muleshoe Church of Christ.
 CENTER: Mr. and Mrs. George Cabera, George, Jr., Raymond, Mike and Jimmy, Catholic.



ABOVE: Mr. and Mrs. Joe Peugh and Earl Wayne, Church of Nazarene.



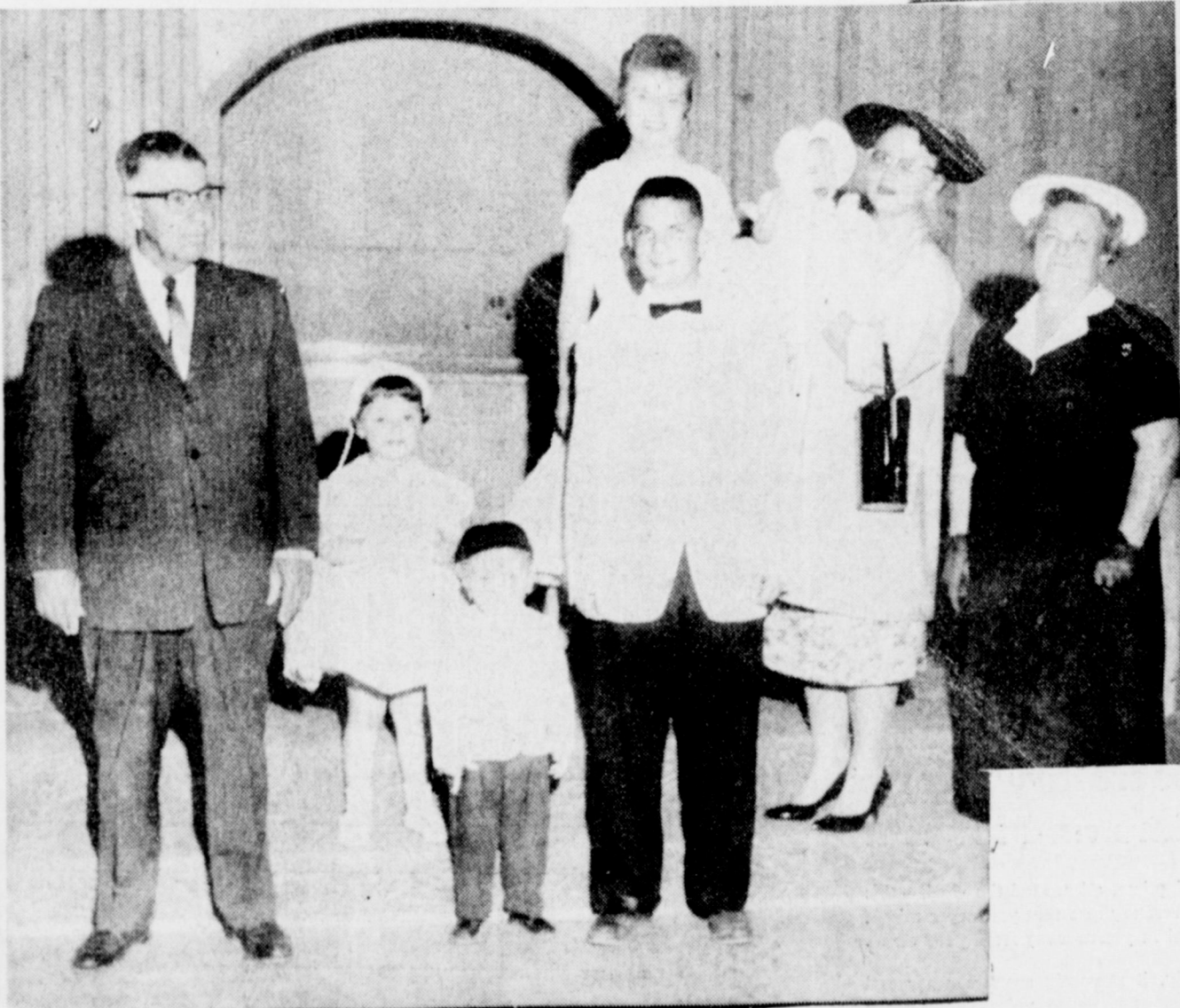
SECTION TWO-8 PAGES
The Muleshoe Journal
 The Muleshoe Journal Thursday, March 26, 1959



*Go to your
 Church
 Easter Sunday*

ABOVE: The Jan Wampiers, First Methodist

BELOW: Mr. and Mrs. Eubanks, Billy, Larry, and Gary and Jayne, Assembly of God.



BELOW: Mr. and Mrs. Jack Schuster, Alex, Debbie, and Kathy, First Baptist

ABOVE: Mr. and Mrs. Leon Perry, Mary Lou, Jeanette, Donna, Doris, Eddie and Morris, Trinity Baptist.

LEFT: Dave Aylesworth, Cheryl Kay, John David, Smitty, Bea, Amarina Moore, Melody Ann, Mrs. D. Aylesworth, First Christian.

BELOW: Mr. and Mrs. J. L. Phipps, Ann, Sue, Kay and Gail, Primitive Baptist.



Farm Organization Scores Labor Regulations Issued On March 13

The U. S. Department of Labor issued a revised proposal on farm labor regulations on March 13.

The new regulations—purported to be a softening of those originally proposed on February 7—are, according to farm leaders more far reaching and more drastic than the earlier ones.

In brief, the proposals would require any farmer or rancher who uses the service of the Employment Service to recruit either domestic (other than local) or foreign workers to:

Provide farm labor housing acceptable to the Department of Labor.

Pay prevailing wages, or wages paid by other farmers who have successfully recruited and retained farm workers. (This last provision would mean that all farmers would have to pay wages equal to the highest paid in the area, thus result in escalation of wages.)

Pay transportation to workers on same basis that farmers in any area have found to be successful in recruiting workers. (Since Michigan berry farmers pay round trip transportation to workers from south Texas, then, farmers everywhere would have to pay round trip transportation comparable distances.)

"The employer must comply with non-discriminatory practices established by law or public policy." (This provision could mean that a farmer would have to employ workers regardless of race even if he had to mix them in the same camp.)

According to J. H. West, president of Texas Farm Bureau, these new proposals of the Department of Labor are "just an underhanded attempt, by executive order, to bring farm and ranch workers indirectly under the Wage and Hour Law, something that Congress has repeatedly refused to do by law."

American Farm Bureau states, "It is the position of Farm Bureau that the regulations are not based on legal authority and should be withdrawn in their entirety."

Joe Sooter, president of the Bailey County Farm Bureau, has been working on the farm labor problem for several months and has this to say of the new proposals. "During recent months the Department of Labor has exhibited a continuing tendency to go from the unreasonable to the completely irrational. Under these regulations farm wages could be forced higher than the minimum wage for industry, and since Mexican National wages are hitched to the top bracket of "prevailing domestic wage" they would travel right along with them. This would mean ruin to those segments of our agriculture that are dependent

IN COUNTY JAIL
Prisoners in county jail this week were in on the following charges: five drunks, four investigation, two no drivers license, and on DWI.

CARD OF THANKS
We wish to thank all of our friends for the flowers, food, and kindness shown to us in the passing of our beloved husband, son, and brother. God's richest blessings be with each of you.
Mrs. Peggy Tucker
The John Fried Family
The Tucker Family.
11p.

Call off the search!

Find It Fast In The Yellow Pages

Listen in

Listen in to what consistent savers say... you'll find many people who save so that they'll have cash for purchases and for security, too. Join

In Muleshoe See BARRY T. LEWIS

HI-PLAINS
Savings and Loan Association
128 EAST THIRD
HEREFORD, TEXAS

on volume labor such as cotton, vegetables, and fruits.

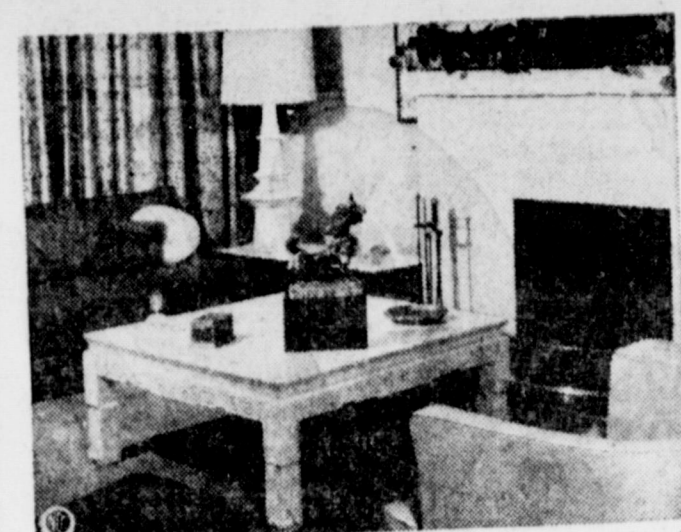
"I urge farmers and businessmen in our area to write to Secretary of Labor, James P. Mitchell, Department of Labor, Washington, D. C., and to our Congressmen and Senators in Washington protesting the issuance of these regulations. These regulations are to be put in effect in the next few weeks. If we don't protest now, we will be dead ducks soon."

CAP Meets Monday Night

The Muleshoe Squadron of C. A. P. held their weekly meeting Monday night in the Junior high school building at 8 p.m. Col. Davis, the new commander of the group, was in charge of the meeting.

Colored slides of the new Air Force Academy at Colorado Springs, Colo., were shown by Wayland Harris. The slides were furnished Col. Davis by the Academy.

Davis invites any boy who is interested in the Air Force Academy and would like information on it, to see him. He has material with which a person may receive free literature containing requirements for entrance into the Academy. The Squadron is being divided into two equal groups for the purpose of learning



FOR COZY CONVERSATION—Charm and chic are combined in this colorful conversational grouping. In this urban apartment living room, interior decorator Mary T. Luscher, NSID, blends harmonizing shades of blue and green in cotton slipcovers on the sofa, barrel-back chairs and throw pillows and in the cotton print draperies. A white cocktail table, lamp and fireplace set off these colors.

more phases of CAP and indoctrination. Courses in indoctrination will begin soon with personnel of the squadron bringing different phases of the work.

Scout Leaders Learn Outdoor Activities

The District Director of the Caprock Council of Girl Scouts, Miss Mary Anderson, was in Muleshoe on Monday and Wednesday of this week. She was directing a course on Outdoor Activity on the Day Camp theme. Assisting Miss Anderson was Mrs. Leonard McNeese, district neighborhood chairman of Littlefield.

On Tuesday of next week, for the final day of the course,

es, the group will go to the Game Reserve and set up camp. They will also cook their noon meal.

MULESHOE STUDY CLUB TO MEET TONIGHT

Mrs. B. O. McDaniels will be hostess for the regular meeting of the Muleshoe Study Club on Thursday evening, at 8:00 p.m.

The program will be on nursing. Winona Dudgeon will speak on "Nursing Pays in Service Well Done", followed by Nancy Julian giving "Teenagers Views on Nursing".

SON IS EXPECTED HOME FOR EASTER

Mr. and Mrs. Arnold Morris are expecting their son, Marshall, wife Elaine, and grand-

Borger Site Of Convention

The 38th Annual Convention of the Seventh District of the Texas Federation of Women's Club will be held in Borger on April 2 and 3.

Registration will begin in the Hotel Borger at 9 a.m., on April 2. At 1:30 p.m., Mrs. A. T. Cocanougher, president of the seventh district will formally open the 38th Annual Convention in the First Christian Church. Following the

sons, Mark and Kurt of Ft. Worth to be with them during the Easter holidays.

welcome and reports from the Executive meeting, the Vogue Pattern Style Show, "Keys To 59ness", will be held. The winner from the Muleshoe Los Planos Study Club, Cara Juan Schuster, will model her black silk dress and matching jacket.

Thursday evening, April 2, a banquet honoring club presidents will be held in the high school cafeteria. Federation Mother of the Year, Teacher of the Year, Outstanding Family, and Outstanding High School Student will be introduced at this banquet. A Fine Arts program will follow the banquet in the high school auditorium. Borger A Capella Choir will entertain.

The Friday morning session

The Muleshoe Journal, Thursday, March 26, 1959, Page 3

will take place in the ballroom of the Borger Hotel. The afternoon routine business and reports from the committees will be conducted from the First Christian Church.

Mrs. Thurman White, president of the Muleshoe Study Club, is planning to attend this convention and would like to take others with her. Ladies should send reservations for rooms and meals, and registration to Mrs. Graham Short, 811 Home Road, Borger. These reservations are to be in by April 1.

WANT ADS are as newsy as the front page and high in reader response. To place your want ad dial 7220 or 5400.



Bailey County Tax Office
WILL BE
OPEN ALL DAY
SATURDAY, MARCH 28
To Sell 1959 Car Tags

REMEMBER
To Bring Your **TITLE**
and 1958 **REGISTRATION RECEIPT**
These Papers Are Important
and Licenses Cannot Be Issued
Without Them

DESS STAFFORD
Tax Assessor-Collector

Galaxie Sunliner Convertible

EYE THE 59 FORD AND YOU'LL BUY

6-passenger Ranch Wagon

Convertible or station wagon, there's year-round fun for the family choosing its favorite vacation Ford right now. For here in Texas we're year-round travelers. It's always the right time to visit friends—or take the family on a nice trip. The big demand for these popular models isn't until Spring when families make plans for vacation travel. Today, your Ford Dealer has an excellent selection of wagons—all six in the exciting Ford line. And he has two of the most popular convertibles in America—the Galaxie Sunliner and the Galaxie Skyliner, the world's only retractable hardtop. A wide selection of color combinations as well as options and accessories are available to complete the Ford of your choice. So see your Ford Dealer now, while he has the car you want and can deliver it without delay. You'll discover, too, that you save more than ever when you make your next wagon or convertible a Ford. Get ahead of the rush. Start now to enjoy the world's most beautifully proportioned car... the spectacular 59 Ford.

THE WORLD'S MOST BEAUTIFULLY PROPORTIONED CAR

Muleshoe Motor Co.
AT THE CROSSROADS
Muleshoe

Phone 2510

HOUSE S-T-R-E-T-C-H-E-R

Good looking, thermostatically-controlled electric heaters like this cost little, are easily installed and give the safety that is needed for both children and adults.

SOUTHWESTERN PUBLIC SERVICE COMPANY

ELECTRIC HEATING • HIGH IN COMFORT • LOW IN COST

HEAT BETTER ELECTRICALLY

If yours is a home now heated by a floor furnace perhaps you have cold spots in outlying rooms — maybe even the room itself becomes too cold for healthful comfort. There's an easy solution — a way, in effect, to s-t-r-e-t-c-h your living space. Cold rooms become warm and pleasant with the easy addition of a safe, clean, efficient and low cost electric wall panel. Such heaters do a wonderful job for less than 3c an hour — certainly a small price for the kids to have a safe, warm place to play while you and mother enjoy the quiet comfort of your living room. Your Public Service manager can give you the facts.

More for the Money in '59 Cars



There were special ceremonies commemorating automotive and economic progress at the end of the assembly line when the 11 millionth Plymouth was built at Detroit. Harry E. Chesebrough, left, general manager of Plymouth division, agreed with other veteran auto men in some interesting observations comparing the 1959 car with the first Plymouth, built in 1928. Here are some of their findings: The typical wage earner today can make enough money to buy a new Plymouth by working 180 hours less than was necessary in 1928. Today's car will last twice as long and travel nearly three times as far before it is worn out. The modern car has nearly half again as much passenger space, has more than 60 items of standard equipment which were not available in 1928, and will out-perform by two to one the car of 31 years ago.

Legal Notice

ORDER FOR ELECTION

THE STATE OF TEXAS: COUNTY OF BAILEY:

WHEREAS, there will be held an election on the 7th day of April, A. D., 1959, to elect a certain number of City Aldermen for the CITY OF MULESHOE, BAILEY COUNTY, TEXAS, and WHEREAS, it is required of the Mayor of the City of Muleshoe, Bailey County, Texas, to order said election, and WHEREAS, the said election will be for the election of three (3) Aldermen.

NOW, THEREFORE, I, W. T. BOVELL, Mayor of the CITY OF MULESHOE, BAILEY COUNTY, TEXAS, hereby order an election for the election of three (3) Aldermen to be held on the 7th day of April, A. D., 1959 at the City Hall in the City of Muleshoe, Bailey County, Texas; and the three persons receiving the highest number of votes for alderman shall be declared the duly elected City Aldermen.

IT IS FURTHER ORDERED by me that the City Secretary receive petitions for names to go on the ballot as candidates for the office of Aldermen and all petitions must be in the office of the City Secretary at least thirty (30) full days before the date of the election.

IT IS FURTHER ORDERED that the said City Secretary transmit the names of all candidates duly petitioned to some person who shall print said ballots, and same shall be known as the OFFICIAL BALLOT FOR THE ELECTION OF CITY ALDERMEN.

IT IS FURTHER ORDERED that notice of this election shall be given by publication of the same in some newspaper within the city limits of the City of Muleshoe, Bailey County, Texas, for at least thirty (30) days prior to the date of the election, if there be one, and if none, then by posting notice of same in at least three public places in the said City Limits of the City of Muleshoe, Bailey County, Texas, before the date of the election.

IT IS FURTHER ORDERED that all persons residing within the city limits of the City of Muleshoe, for at least six (6) months prior to the election, and for one (1) year in the State of Texas, and otherwise qualified to vote under the Constitution and Laws of the State of Texas, are declared eligible voters in said election.

I FURTHER ORDER that J. E. Day be and he is hereby appointed presiding officer to hold said election, and he shall select two judges and two clerks to assist him in the holding of the said election, and he shall within the time prescribed by law make due return thereof of said election

Enochs News Events

by Mrs. Jerome D. Cash

Donny, Marilyn and Randy McCall spent the weekend with their grandmother, Mrs. Nath Crockett of Morton.

Mr. and Mrs. Dutch Cash spent Sunday evening in Lubbock visiting his sister and family, Mrs. P. L. Dade.

Brenda, Shortie, and Debbie of Clovis, N. M., are visiting their grandmother this week, while their parents are in Arkansas at the bedside of his sick mother.

Mrs. Abbott Speaks

Mrs. John Abbott, missionary to Spanish people of Espanola, N. M., spoke at the Baptist Church Sunday night. She also showed films of her work there. She took back a station wagon full of used clothes and milk, to the Spanish people there, donated by the Baptist church.

Brother and Mrs. J. J. Terry attended workers conference at Rocky Ford Friday.

Mrs. Ray Vaught and two children of Carlsbad, N. M., visited in the home of Mr. and Mrs. R. P. McCall Friday. Mrs. Vaught and Mrs. McCall were old school mates, and hadn't seen each other in 20 years.

Visit In Albuquerque

Mr. and Mrs. John Vanlandingham left Monday morning for a weeks visit, with their two sons, Woodrow and Arthur and families in Albuquerque, N. M.

Mr. and Mrs. James Cash and family of Hereford visited in the home of her sister, Mrs. H. H. Snow.

Mr. and Mrs. Edward Crume of Bula visited Saturday night with Mr. and Mrs. H. H. Snow.

Zed Roberson is in California at the bedside of his brother, who is ill.

WANT ADS can raise extra money, find you a home, or a baby sitter. Dial 7220 or 5400.

Returns and such returns shall be canvassed by the CITY COUNCIL of the CITY OF MULESHOE, within five (5) days thereof after said election.

Dated this the 25th day of February, A. D., 1959.

W. T. BOVELL, Mayor, City of Muleshoe, Bailey County, Texas

ATTEST: BILLIE BAYLESS, City Secretary (Official Seal) 9-4tc.



Shop FOR BETTER BUYS

BE SURE AND REGISTER FOR THESE BIG FREE PRIZES TO BE GIVEN AWAY DURING THE NEXT 4 WEEKS

3 BICYCLES 4 ROASTERS

8 COFFEEMAKERS

12 BARBECUE GRILLS

AND GRAND PRIZE LADIES WRIST WATCH

Valued At \$295.00 Set In Diamonds

Thanks To All!

We thank the people of Muleshoe area for their fine cooperation in making our opening Friday Saturday the great success that it was.

Thank you for your attendance, for the beautiful flowers, and for the many expressions of good will friendship.

We feel "at home" in Muleshoe, and we're happy to have the opportunity to serve such wonderful people.

THE HAM FAMILY

Clary's Grade A Medium

EGGS

46 Oz. Can **25**

Margarine Food King LB. **15**

TOMATO JUICE

OLEO

EASTER EGGS Candy, 11 Oz. Bag **39c**

PEAS Libbys Garden Sweet, 303 Can **5 For \$1**

GREEN BEANS Libbys Cut 303 Can **19c**

CORN Libbys Cream Style, 303 Can **19c**

SPINACH Libbys 303 Can **17c**

BEETS Libbys, Cut 303 Can **2 For 29c**

APPLE SAUCE Shurfine 303 Can **2 For 37c**

PEANUT BUTTER Zestee 12 Oz. Jar **39c**

BLACKEYED PEAS Food King 303 Can **10c**

PORK & BEANS Food King 303 Can **10c**

PRESERVES Zestee, Apricot, Peach Red Plum, 18 Oz. Tumbler **39c**

KRAUT Crest Form, Old Fashion Barrel, Qt. **49c**

CRACKERS Premium 1 Lb. Box **29c**

GRAHAM CRACKERS Supreme 1 Lb. Box **39c**

VANILLA WAFFERS Sunshine Cello Bag 9 1/2 Oz. **25c**

FROZEN FOOD

ORANGE JUICE

Shurfine 6 Oz. Can **15**

PEAS Silver Dale, 10 Oz. Pkg. **1**

STRAWBERRIES Mity-Nice 10 Oz. Pkg. **1**

ICE CREAM Pic Pak, 1/2 Gallon **0!**

Dietetic Foods - Complete Line

TREET 39c

DRUG ITEMS

IRONING BOARD COVER WITH PAD

Reg. 1.98 **10 LB. SUGAR FREE**

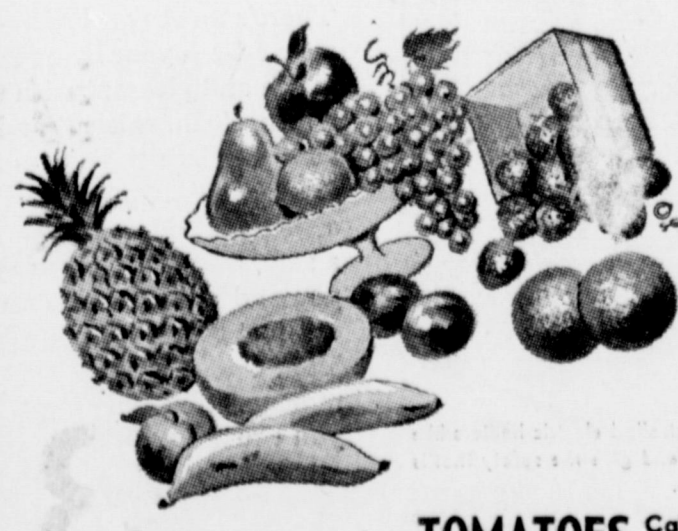
BALL PENS

Semi Speed **2 for 39c**

Reg. 2 for 79c

COFFEE MUGS

Regular 15c **6 for 69c**



Spring Fresh Fruits

APPLES DELICIOUS LB.

CARROTS Cello Bag **7 1/2c**

TOMATOES California Red Ripe **lb. 19c**

POTATOES

BANANAS Golden Ripe LB.

FEEDERS GRAIN, INC.

Daily Buyers For Cattle Feeders

Federal Storage License 3-4451

No. 2 Milo . . . \$1.90 cwt

WE CAN USE BARLEY • HAVE SEMI-LIFT

Located At

Sudan Livestock & Feeding Co.

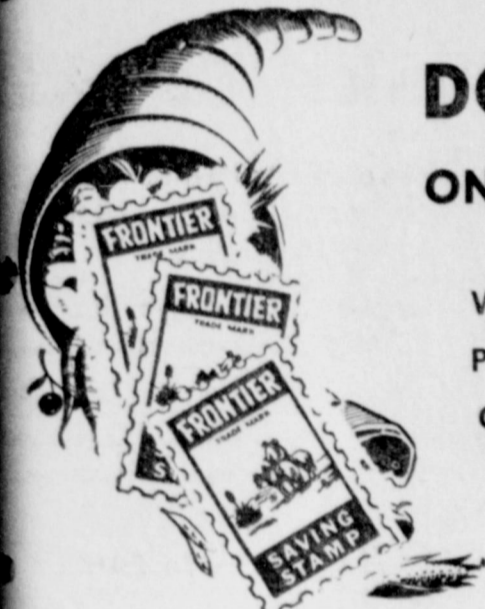
Phone 5311 Sudan, Texas

More!

I'M TAKING HOME AN ARMLOAD OF MONEY-SAVER SPECIALS!

DOUBLE ON TUESDAY

WITH 2.50 PURCHASE OR MORE

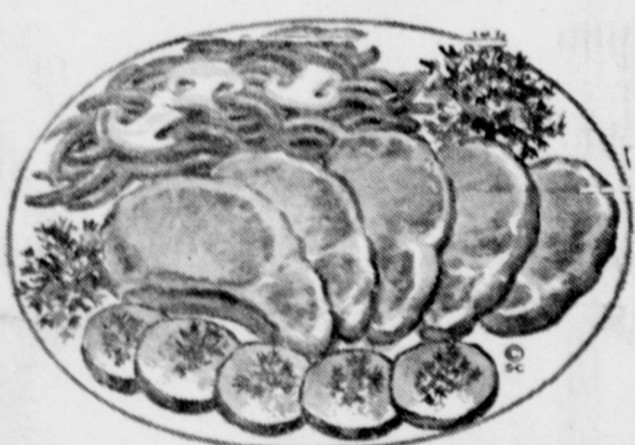


39^c

PORK CHOPS

Center Cut . **59^c** Rib Cut . **49^c** Center Cut . **39^c**

Boneless Rolled **BEEF ROAST** lb. **49c** Chopped, Town and Country, 20 Oz. Pkg **BEEF STEAKS** **89c**



HAMS



Farm Pac Half or Whole, LB. **55^c**

Shank End, LB. **47^c**

HAMBURGER

Meat Fresh Ground **3 LB. For \$1.**

Beddown Whole Hog, 2 Lb. Ewg **SAUSAGE** . . . **\$1.09**

DARTMOUTH BREADED 10 OZ PKG. **SHRIMP** . . . **59c**

Vegetables

Shurfresh, 2 Lb. Box **CHEESE SPREAD** **69^c**

15^c

7 1/2c

32c

10^c



Texas To Host Opera Stars



Above, Theodor Uppman and Jean Madeira
Below, Zinka Milanov and Leonard Warren
North Texas will be host to the world-famous Metropolitan Opera when Dallas civic leaders import the New York company for four performances in State Fair Music Hall, May 8 to 10. Four of the stars are pictured above. The season will offer: May 8, evening, "Die Fledermaus," with Blanche Thebom, Laurel Hurley, Theodor Uppman and Frank Guarrera; May 9, matinee, the twin bill of "Cavalleria Rusticana," with Zinka Milanov and Daniele Barioni, and "Pagliacci," with Lucine Amara and Carlo Bergonzi; May 9, evening, "Rigoletto," with Leonard Warren and Roberta Peters; and May 10, matinee, "Carmen," with Jean Madeira and Richard Tucker.

Progress News

by Mrs. M. O. Nigh

Sgt. Douglas Rogers of Cannon City Base, visited his aunt and uncle, Rev. and Mrs. C. C. Lamb Sunday, and attended the Sunday night service at the Methodist Church.

WMU
Eight ladies went to Muleshoe to the First Baptist church to see the cancer film on Monday, March 23.

G. A. and Sunbeams met at their regular time at 4:30 with their sponsors.

Correction
Correction on last week's note on Mrs. Rose's mother. The word Mrs. Aose received on the death of her mother was incorrect. She was very ill, but alive.

Mr. and Mrs. Martin Kube and sons, Wayne and Bryan, of Wildorado, were Sunday visitors in the home of Mr. and Mrs. Bill James and family.

Newlyweds Visit
Mr. and Mrs. Jesse Rogers of Grants, N. M., visited Sunday with his parents, Mr. and Mrs. John Rogers and children. The young Mr. and Mrs. Rogers were married Saturday, March 21.

Mr. and Mrs. J. R. Walker, Sr., had as their guests this past weekend their son and family, Mr. and Mrs. J. R. Walker, Jr., and children of Hobbs, N. M., and their daughter and family, Mr. and Mrs. Ronnie Dalby and son of Lubbock.

From Missouri
Mr. and Mrs. Richard Smith and children of Mexico, Mo., are here visiting the D. O. Smiths and other relatives and friends. Also visiting his parents over the weekend was D. L. Smith of Lovington, N. M.

Visiting in the C. B. Kindred home Sunday were their children and families, Mr. and Mrs. Bob Kindred and children of Lubbock Mr. and Mrs. Wayne Kindred and children of Muleshoe, and Mr. and Mrs. Bill Leonard and girls of Odessa, and Bud, who lives at home with his parents.

Back From Dallas
Mr. and Mrs. Jimmie Presley and Sherman Weldon came home Sunday after spending a couple of weeks in Dallas.

Mr. and Mrs. W. E. Duncan visited in Ft. Sumner Sunday.

Mrs. John Rogers and Mrs. Johnnie Westbrook went to Clovis on business Monday morning.

Mr. and Mrs. Roy Sooter visited over the weekend with their parents, Mr. and Mrs. Troy Atkinson and Mr. and Mrs. Joe Sooter.

Mr. and Mrs. Opal Myers and Deanna visited in Hart with Mr. Myers' brother and family Sunday.

The M. L. Shipp family visited in the Mundell Shipp home in Lubbock Sunday.

Mr. and Mrs. Sherman Sweatman came home Monday. Mrs. Sweatman has been in a Dallas hospital where she had surgery about two weeks ago.

Meeting Closed
The Methodist revival closed Sunday night, March 22. Rev. Bruce Parks of eVga did the preaching and O. E. Lumsden led the singing.

Luncheon was served at the noon hour Sunday at the Fellowship Hall.

Mr. and Mrs. R. M. Gibson visited their son and family of Enochs Sunday.

WSCS Met
The ladies of the Progress Methodist church met with Mrs. Byron Gwyn Thursday, March 19 for their first lesson in the book on "The Middle East". There were 11 members present.

Mrs. Gwyn served the ladies food representing food of the Middle East.

To MYF Meeting
James Wedel took a group of the M. Y. F. to a sub-district meeting at the First Methodist Church of Olton Sunday, March 22.

TO OUR FRIENDS
We wish to thank each and every one for the kindness shown to us during my wife's illness. For all the cards, flowers, food and for every favor shown us.

Wife is doing well and is recuperating nicely.

Again we thank you and may God's richest blessings be upon you.

Sincerely,
Mr. and Mrs. C. M. Baker

WANT ADS are as newsy as the front page and high in reader response. To place your want ad dial 7220 or 5400.

- Pump Pulling and Setting
- Perforating Casing In The Hole
- Well Cleanouts
- Western Landroller Sales & Service

REPAIRS ON ALL MAKE OF PUMPS

EDWARDS IRRIGATION SERVICE

Phone 5670

IN CORN EXPERIMENTS...

Early Planting And Early Harvest Advisable, Says Research Station

Research on corn was included in the program of the High Plains Station by the Advisory Council when they organized the Station in 1956. The wisdom of this action has been justified by the results obtained during the first two years of operation. Corn is expected to claim an increased number of acres in 1959.

One of the most serious hazards to corn production in the High Plains area is the Southwestern Corn Borer, which causes as high as 50% lodging (falling down). The High Plains Station conducted experiments in 1958 to find if this damage could be controlled or reduced by changing the date of planting. There is at present apparently no chemical method of adequately controlling the Southwestern Corn Borer.

Many Varieties Tested

Early, midseason and late maturing varieties were planted April 8 and 24, May 5 and 21, and June 19. In this test the April 24 planting proved to be the most satisfactory date, for the lodging was only 8.75%. Lodging increased progressively upward with the later planting dates to 58.68% on the June 19 planting. The average yield for the 5 varieties used in the test that were planted on April 25 was 93.2 bushels. The same varieties planted on May 21 had the highest yield of 119.6 bushels per acre but with 58.38% lodging on that date, and the increased harvesting cost, made the yield from the April 24 planting more profitable.

By using early or midseason hybrids and planting early, a farmer can harvest his corn with a combine using a corn header attachment before too much stalk breakage occurs. Combines work best when the corn moisture is from 20 to 25 percent which makes artificial drying necessary. This operation is profitable because it permits harvesting earlier, eliminating much less from lodging and normal picking operations. The increased yield from combine harvest would probably pay the drying cost.

The corn varieties used in this test were TRF 3, TRF 9, TRF 13, Texas 17W and Funk 779W. All varieties and all dates of planting received 50

pounds of nitrogen, 100 pounds of phosphorus and 25 pounds of potassium at time of planting and 150 pounds of nitrogen sidedressed when the plants were 10 to 12 inches tall. However, 120 to 150 pounds of nitrogen should be sufficient fertilizer on Pullman Clay loam of average fertility.

Early planting and early harvest before lodging takes place seems to be indicated for successful corn production, Douglas Owen, Assistant Agronomist, stated today.

Fertilizer Use Up Over 1958 By 4.2 Percent

The total tonnage of fertilizer sold during the last half of 1958 in Texas was 4.2 percent over the same period in 1957 but 20 percent above the tonnage sold during the same period of 1953. State Chemist J. F. Fudge also revealed in his bi-annual report on distribution of sales of fertilizer that the trend toward the use of higher analysis fertilizers continued at a rapid pace.

The average composition of mixed goods was higher than ever before with the average for the state near the 9-18-9 level. The average nitrogen in materials was significantly higher—over three times above the 1953 average. On the other hand, Fudge pointed out that the percentage of available phosphoric acid continued to decrease. Sales of 10-20-10 were 30 percent higher than in 1957 and accounted for 71 percent of the total for 1-2-1 ratio and 55 percent of all mixed fertilizer sold.

Sales of materials were up 3.6 percent from a year ago due almost entirely to the great increase in anhydrous ammonia, especially in West Texas, said Fudge. Tonnage of this material used was seven times more for 1959 than for the same period in 1953, and accounted for a third of all materials sold during the past fall season.

Sales in East Texas accounted for 48 percent of the total tonnage of mixed goods

Farm News

LONE STAR AGRICULTURE

PROTECTION FOR THE 1959 COTTON CROP

Cash value from cotton and cottonseed in Texas for 1958 has been estimated at a whopping \$756,655,000 by agricultural economists.

This means that last year Texas cotton growers received an average gross income of \$140.12 for each harvested acre of cotton as compared with an average of \$39.73 from all other crops.

This year, then, cotton will again be the best cash crop for farmers capable of producing high yields of good quality. But it is a challenge calling for quality production in an efficient and economical manner.

For most farmers, this goal was achieved in 1958. They harvested 4,350,000 bales from 5,400,000 acres with an average yield of 387 pounds of lint per acre. This was the highest acre yield since production records started way back in 1866. The yield was 121 pounds higher than the average of 226 pounds for the previous five years.

During this past winter however, conditions have been generally favorable for the buildup of many insects injurious to cotton. This is especially true in sections where the boll weevil and the pink bollworm are a problem. Last year, the farm cleanup and stalk destruction program were hampered by a late harvest and continued wet weather.

Complacency concerning the insect threat could easily prove disastrous to many cotton growers in 1959. No cotton producer should ever forget that when conditions are favorable for making good yields, conditions are also favorable for a buildup and damage from cotton insects.

A bulletin entitled "Texas Guide for Controlling Cotton Insects" is available to all farmers from the Texas Agricultural Extension Service at Texas A&M. It can prove valuable in pointing out proven and practical insect control methods. All good cotton cultural methods should be practiced this year to help keep down injurious insects and make a profit out of the 1959 crop. Copies of the bulletin are available on request.

Pork Tops List Plentiful Foods For Next Month

The current supply of pork is sufficient to rate the feature spot on the U. S. Department of Agriculture's April list of plentiful foods for this area.

The list also includes many other energy foods that go well with increased spring activity. Lamb has taken a spot on the list. Broilers and fryers continue plentiful, as do eggs, milk and other dairy products, peanuts and peanut products. And with pork plentiful, lard is too.

Potatoes, cabbage and canned peas are still sufficiently abundant to rate the plentiful tag.

Honey and walnut supplies also continue plentiful and they complete the April list.

The monthly list of plentiful foods is supplied by the USDA through the southwest distribution division of Agricultural Marketing Service, after national and local supplies are determined. Only foods in heavier supply than normal make the list.

Parmer County Farm Bureau News

The Farm Bureau office will be closed Saturday (day before Easter).

President Gilbert Kaltwasser, Herman Gerles and Vernon Symcox, directors, attended a meeting in Dallas last Thursday, called by the Texas Agricultural Employer's Association. Purpose of the meeting was to discuss means of avoiding encroachment of the labor department and CIO-AFL upon agricultural and retail stores employment practices.

Presidents of Texas County Farm Bureaus will be in another meeting in Amarillo Thursday discussing the same problem. The application of the Wage and Hours Act to farmers and retailers would be a catastrophic move, particularly in rural areas like this. One of the things pointed out regarding regulations is that if one farmer in the county should see fit to pay a

able in pointing out proven and practical insect control methods. All good cotton cultural methods should be practiced this year to help keep down injurious insects and make a profit out of the 1959 crop. Copies of the bulletin are available on request.

Vertical Integration Topic of New Bulletin Published At A&M College

Vertical integration, a practice common in many non-agricultural industries, is seeping into agriculture and many people think it may become a dominant force in the future development of Texas agriculture.

Vertical integration means the linking together of two or more stages of production, processing or marketing activities under one management. The key feature is that decision-making, risk-bearing and supervision are centralized.

The present trend toward "partial" vertical integration, which involves the linking together of certain specialized

stages of production, processing or marketing.

Vertical integration may involve farmer-businessman arrangements that extend from the transfer of only one or two risks to complete ownership and operation of the farm by business, or vice versa.

The Texas Agricultural Extension Service and the Texas Agricultural Experiment Station have joined to publish a leaflet on "Vertical Integration in Texas Agriculture."

This publication covers many phases of this increasingly important subject. Some of the topics discussed are how wide spread is it? why is it growing? how does it work? advantages and disadvantages and what's ahead?

PLAY SAFE BUY AN Exide BATTERY. An Exide in your car is the safest insurance against battery failure. WHEN IT'S AN Exide YOU START! Arnold Morris Auto Parts. Phone 7150 Muleshoe.

IRRIGATION ALCOA STANDARD CLASS 15B. Expertly Engineered For Your Farm With Superior Irrigation Equipment. Includes illustration of a farm with irrigation equipment.

Aluminum SALE Aluminum For The Finest Material And Engineered SPRINKLER SYSTEMS. With Either The Center Riser Or The Riser In The Couplings. CONTACT US FOR YOUR NEXT SPRINKLER SYSTEM. No System Too Large Or Too Small. Give Us A Chance At Your Business; We Will SAVE YOU DOLLARS! DROWN SUPPLY CO. 4124 Nights Muleshoe, Texas. Phone 5311.

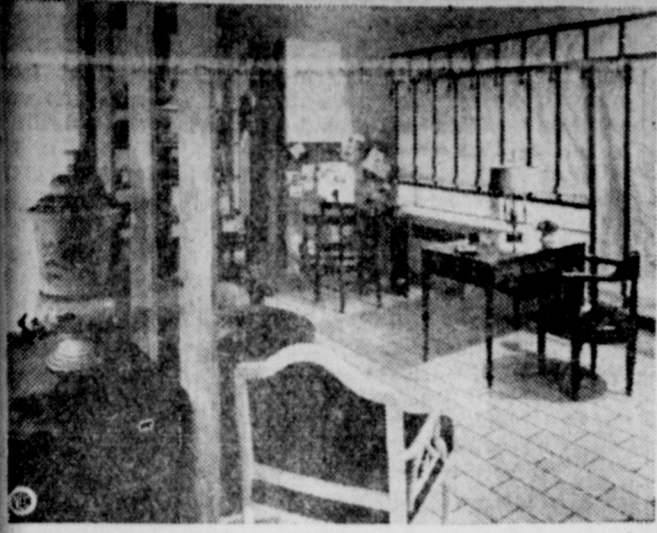
I looked into the mirror and there I was! SPARKLING LIKE NEW. Includes illustration of a woman looking in a mirror.

CYCOLOGY SEZ. SANITONE DRY CLEANING. Brings favorite dresses back spotless! Colors sparkling! Even tho it's not exactly new, you'll wear that gown happily after it has been "Sanitoned." Our remarkable dry cleaning recaptures original beauty and color. And ours is a leisurely gentle process that's kind to your "lovelies." Trust us for fine cleaning. Includes illustration of a woman and a man.



Wilson, Tex., Man Reports— \$35 net increase per acre on cotton, despite limited water. Howard Moerbe (left), shown with Ira Clary, his Phillips 66 Ammonia distributor, says: "We have a water problem in this area, but even with this handicap, my cotton yields have been increased through the use of Phillips 66 Ammonia. My increases have averaged 1/4 to 1/2 bale to the acre. Last year, with the least acreage, I got the biggest lint yield yet—amounting to \$35 per acre net increase. You can actually see the difference when you use ammonia—the bolls are bigger, stalks taller and healthier. "I apply my Phillips 66 Ammonia pre-plant, about 70 pounds to the acre." Other successful Southwestern farmers have discovered that they make more profit per acre, using Phillips 66 Ammonia. They get more cotton that classes higher at the gin... yields of sorghum grain or ensilage are increased... profits on wheat and small grains are increased through higher grain yields and improved forage... more marketable vegetables are harvested. Phillips 66 Ammonia can be applied pre-plant or as a side dressing. It can be easily applied either by you or your distributor. See us today about leach resistant, concentrated Phillips 66 Agricultural Ammonia... it gives you more nitrogen per dollar than any other form of fertilizer—a full 82%.

Phillips 66 Order Your Supply of Phillips 66 Agricultural Ammonia Today! Western Fertilizer Co., Bovina, Texas. Western Fertilizer Co., Muleshoe, Texas. Western Fertilizer Co., Lazbuddie, Texas. Winders Fertilizer Co., Earth, Texas.



SHADES OF WHITE—A novel window treatment becomes the focal point in this inviting living room by decorator Melanie Kahane, AID, in New York's Washington Square Village. A heavy white cotton striped with acid green lining is used in the draw shade, the overcurtain and tasseled valance. Wood tones in the room are set off by touches of black and green.

Three Way News

by Mrs. Frank Griffith

Congratulations to Virgil Thomas, the new spelling champion of Bailey county. The other contestants from the Three Way in the contest at Muleshoe recently were Linda Lutts and Winona Williams, instead of Terry Flanagan as appeared in this column last week.

The junior class took in 24.25 at their play Thursday evening.

Paula Griffith, a student at NMU, Portales, spent the weekend with her parents, Mr. and Mrs. Frank Griffith.

Mrs. W. C. McCelvey visited relatives at Anton Friday.

Bible Study Club

The Goodland Bible Study Club met Tuesday, March 17 with Mrs. Buck Eagsdale to study chapters 15 and 16 of Mark. In the business meeting, the club chose a quilt pattern to make and sell for funds to carry on the projects. Visitors were Mrs. D. P. Brinker and Mrs. Ed Latimer. Members present were Mmes. Tommy Galt, Cass Stegall, L. D. Sanderson, Pete Tarlton, L. W. Chapman, B. Johnson, W. C. McCelvey, Lewie Jordan, Jack Lowe, and Horace Hutton.

Mr. and Mrs. Jimmie Bateas and girls of West Camp visited relatives and friends in the community Sunday afternoon.

Mr. and Mrs. Elmer Pruitt of Causey, N. M., visited Saturday evening in the Frank Griffith home.

Mr. and Mrs. Buddy Lowe visited recently in Ft. Worth.

School Holiday
Monday, March 30 is a holiday for students and teachers at Three Way school.

Track Meet
Coach Bill Wood took a team of five boys to the track meet at Odessa last weekend. Those making the trip were Dewayne Clay, Roy Epperly, Leslie Fine, Bailey Griffith, and Butch Tucker. The boys did not place in any event.

Ten women were present at the Home Demonstration Club meeting at the club house at Maple Thursday, March 19. M. D. Gunstream of the First National Bank of Muleshoe spoke to the group on savings and investments. The next regular club meeting is April 2.

Expected guests for Easter in the W. C. McCelvey home are Mr. and Mrs. E. N. Williams and girls of Tulsa, Okla. Mrs. Williams is a daughter of the McCelveys.

Thurl Lemons and Leon Jones made a business trip to Ft. Worth last week.

Mr. and Mrs. Glen Brinker and children of Tatum, N. M., visited Sunday with his parents, Mr. and Mrs. D. P. Brinker.

Mr. and Mrs. Jack Lane took their daughter, Janice Sue, to Littlefield Sunday afternoon to have her tonsils removed.

Mr. and Mrs. Lewie Jordan and Linda visited the John Shackelfords at Cotton Center Sunday.

Vacant House Burns
The vacant house on the old Williams farm, two miles west and 1/2 north of Stegall burned Friday during the high wind.

Mrs. Baker Johnson reported the wind blew a north window pane out of their home north of Goodland.

Revival
A revival meeting began at Hicks Chapel Baptist Church Friday evening and will continue through Sunday, March 29. Rev. Whitfield of Longview church is the evangelist. Mrs. Harold Carpenter is conducting the song service.

Mr. and Mrs. Frank Griffith and Mrs. Florence Bailey attended the Physical Education Revue at Greyhound Gymnasium at Portales Friday evening. Paula Griffith performed with members of her PE class in the revue.

Mr. and Mrs. David Coffman and daughter of Morton visited Sunday afternoon with his parents, the Clyde Coffmans.

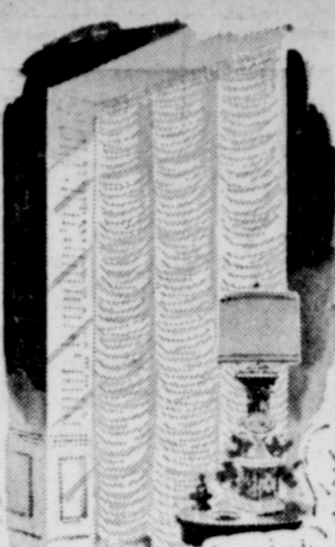
Mrs. A. G. Taylor was hostess to the WSCS meeting in her home Monday afternoon.

The study of Isalah was continued.

Guests in the Eston Sowder home Sunday were Mr. and Mrs. Everett Sowder and children, Mr. and Mrs. Bill Sowder and children of Arch, N. H., Miss Frances Sowder of Muleshoe, Mr. and Mrs. G. B. Dupler and children, Mr. and Mrs. Hugh Dupler and son.

Mr. and Mrs. Bill Mann and girls, all of Morton, Mr. and Mrs. Mickey Sowder and children of Lubbock, Mr. and Mrs. Archie Sowder and children of Goodland, and Mr. and Mrs. Erve Kelly and boys, who were moving from California to Missouri. Mrs. Kelly is a sister to Eston and Everett Sowder.

Your reporter will be gone next weekend and Gayle McCelvey will write the news. If you have news for her call Whitehall 6-2340.



An Austrian shade is the perfect solution for the long narrow window, often awkwardly jammed in a corner or by an entrance. For this attractive yet simple treatment, choose a pastel cotton fabric such as cotton satin, plisse, batiste, voile, or chiffon which lend themselves to shirring.

visited his sister, Mr. and Mrs. C. L. Taylor and family Friday.

Mrs. Deward Wall and Deval and Mrs. Odell Ballard and children were in Lubbock Tuesday and visited Mrs. Wall's mother.

Kenneth Pyburn was released from the hospital last Tuesday. We are happy that he is able to be up and about again.

Mr. and Mrs. Kenneth Pyburn visited relatives near Amarillo Sunday.

Mr. and Mrs. C. L. Taylor were in Lubbock Monday. Mrs. Taylor went back for a check-up with her doctor.

The ladies of the Maple Church of Christ have changed their meeting time for ladies Bible Class, from 2:00 o'clock Tuesday afternoon to 2:00 o'clock Monday afternoon. They are studying in the book "The Christian Home".

Dean Lackey of ENMU, Portales, visited his parents, Mr. and Mrs. Orville Lackey over the weekend.

Several friends met in the Ray Clay home one night last week to play "12". Refreshments of coffee and cake was served to the guests. Everyone enjoyed a nice time.

Our Honor Roll

New Subscribers

Rev. Jess Rains, City, W. E. Durrett, Jr., City, C. G. Davis, Farwell.

Renewals

Dick Lynskey, Maple, D. J. Cox, Enochs, Jim Clauch, Enochs, Austin Panter, Neb., H. F. McClure, Illinois, Levi Jensen, Iowa, T. B. Hubbard, Calif., W. H. Acheson, Calif., J. R. Henry, Kilgore, Murray Simmons, Roby, L. L. Kitchens, Rt. 5, Lester Howard, Rt. 5, Harlan Davis, Rt. 5, Dan D. Darsey, Rt. 5, Mrs. Otis English, Rt. 4, J. D. White, Rt. 3, Jess Pendergrass, Rt. 3, Florence Mason, Rt. 3, T. W. Watson, Rt. 2, Weldon Tims, Rt. 2, Tom Smith, Rt. 2, M. O. Stearns, Rt. 2, Ira Stancell, Rt. 2, A. Palmer, Rt. 2, Bud McMahan, Rt. 2, M. D. Locker, Rt. 2, Boyd Lowery, Rt. 2, Robert Byrd, Rt. 2, B. H. Black, Rt. 2, N. R. Iley, Rt. 1, J. W. Bickel, Rt. 1, W. M. Dudley, City, Nellie V. Norwood, City, Bill Hunt, City, John A. Mills, City, Effie Childress, City.

Maple News

by Mrs. Oran Reeves

Mr. and Mrs. Tommy Gattis and boys of Griffith visited his parents, Mr. and Mrs. Guy Gattis Thursday night.

Mr. and Mrs. Jake Burkett and Debbie of Portales, N. M.,

FORMER RESIDENTS VISITING HERE

Mr. and Mrs. Richard O. Smith and family, Deann, Sue Carrio, and Denzie, of Mexico, Missouri, arrived in Muleshoe Sunday for a visit with family and friends. The family had Sunday dinner at the home of the Richard Ellis.

ABOARD USS BOXER

Puerto Rico — Billy R. Hargrove, USN, son of Mr. and Mrs. J. D. Hargrove of Rt. 1, Fritona, serving aboard the support aircraft carrier, USS Boxer, departed Norfolk, Va., March 3, to participate in "Brigadelex 2-59" which is the second in a series of amphibious exercises and assault landings at Vieques Island, Puerto Rico.

Pleasant Valley Views

by Mrs. John West

Farm Bureau met in the community center for the regular meeting. Weed control was discussed. Refreshments of coffee and Spudnuts were served to the members and one visitor, Mr. Guy Nickels.

Mr. and Mrs. John W. West were hosts to a group of friends Friday night for a pleasant and venison dinner. The evening was spent visiting and playing dominoes. Those present were Mr. and Mrs. W. A. Hardin, Mr. and Mrs. Kenneth Preucure, Mr. and Mrs. Harold Allison, Veta, Carolyn, Jack and Jamey.

Mack Allison, Ken Angeley and Phyllis Milligan attended the rodeo in Lubbock Saturday night.

The Allen Turners of Lubbock spent the weekend with his parents, the Doyle Turners.

Doyce Turner was one of the guests of honor at the Plains Co-op Oil Mill award luncheon held Saturday at noon in Lubbock. Doyce placed second in the district with his 4-H cotton program. Also attending the luncheon were Mr. and Mrs. Doyle Turner, Rita and Sherri Turner of Pleasant Valley, and Miss Janelle McGuire of Muleshoe.

Mrs. Bonnie Haberer had as her guests on Sunday, Rev. Wayne Bristow and Jim Botter-

THE MULESHOE JOURNAL, THURSDAY, MARCH 26, 1959, PAGE 7

hof of Plainview, and Miss Hlene Angeley of Earth.

Mr. and Mrs. Oscar Allison, Susan, Mack and Samo, Mrs. Sam McKinstry of Muleshoe, went to Lovington, N. M., to visit Dr. and Mrs. Kenneth Osborne and children.

HUFFS HONORED WITH HOUSE WARMING

Mr. and Mrs. Alex Daricek were hosts for a "house warming" given to honor Mrs. Carrie Huff and boys on March 21. Coffee, Cokes, and cookies were served to the 29 guests present. The Huffs received many lovely gifts.

VISITING FAMILY THIS WEEK

Donald Barnett, son of Mr. and Mrs. Charlie Barnett, was in Muleshoe this week visiting with the family and friends. His wife, Joy, and children did not accompany him on the trip.

SEE

the first showing of the advanced outboards that leave all others years behind. There's a sleek new **SCOTT OUTBOARD** for every boat and budget — 10 great models from 3.6 to 60 hp. in the fast-stepping 1959 fleet. Absolutely no obligation. Come and join the fun at our Open House **PREVIEW**. Check over the motors, ask questions. Get the facts about our low-priced boat and motor combinations, generous trade-in allowances and easy terms.

WIEDEBUSH & CHILDERS
Clovis Road
Phone 2810 Muleshoe

LET US PREPARE YOUR PROPERTY FOR City Mail Delivery

Steel Sidewalk Forms
Form Setting - Cement Finishing
33c Sq. Ft.

We Have Just Bought Forms To Build IRRIGATION BASES SPILLWAYS

and We plan to Carry A Complete stock

All Types of Concrete Work By Contract or By Yard

Delivered where you want it — when you want it

Also We Have **DITCHING MACHINE**
To dig your Foundations or pipe line ditch — 12 in. or 18 in. wide, 40 inches deep.

Ready Mix Concrete Co.
Clovis Road — Phone 7880
MULESHOE TEXAS

Mr. Cotton Farmer

May We Recommend The **WET ACID PROCESS** As The Process To Be Used In Chemically Fertilizing Your Cotton Seed

HERE'S WHY —

1. Seed stays in contact with the acid for a period of 30 seconds or less.
2. Water is used as a neutralizer.
3. Does not eat the bags.
4. Wet and green seed can be safely delinted.
5. Seed can be safely stored and used for a period of several years.
6. Does a more thorough job on angular leaf spot and other seed borne diseases.
7. Heat is used only to dry the seed after the acid has been washed off.
8. Planting 12 lbs. per acre the cost is less than 10c per acre more—using wet acid.
9. More uniform planting.
10. More even stand.
11. Quicker emergence.
12. Plant faster.
13. Get bigger yields.
14. Gravity table floats out weak seed.
15. Treating prevents seed rotting even in cold damp weather.
16. No sticks, stems, or lint to clog the planter.
17. In warm soil seed will sprout in 12 hours. A stand in four days.
18. Less moisture required for germination.
19. For only 1 lb. of lint cotton per acre, you can chemically delint your cotton seed, using the safe Wet Acid Process.

For An Appointment Call The — **Hub Delinting Plant**
Phone Hereford, Texas **HUB 2705 (Collect)**
Or bring your seed. We have a saw plant in connection with our acid plant.

THE Morton Delinting Co.

Is Open for business now with both plants in operation. We can wet acid your cotton seed or we can saw delint it. We would appreciate doing business with you.

For Information CALL **5606**
Morton, Texas

Located North of Morton on Muleshoe highway

Chevy makes one for you...
and you'll want it for all its worth

The plain fact is Chevrolet builds so many different kinds of cars there's one to please just about everyone.

Say you want a stylish, spacious car that combines low initial cost with rock-bottom operating expense. You'll find what you want in the Biscayne 2-Door Sedan — one of the lowest priced of all Chevy models. And you can have Chevrolet's new Hi-Thrift 6 under the hood to stretch and stretch the distance between gas stops.

If, on the other hand, you're looking for a car of utmost elegance, you could hardly make a happier choice than the Chevrolet Impala 4-Door Sport Sedan. And, to go with it, Chevy's velvety V8 power teamed with triple-turbine Turbo-glide* — one of the finest, smoothest automatic drives offered on any car.

These are just two examples of the dozens of different kinds of Chevrolets you can choose from.

It's almost certain—with models ranging from five beautiful, dutiful station wagons to the unique Corvette—that Chevrolet builds your kind of car. Your dealer's waiting to help you pick it out.

CHEVROLET
The smart switch is to the '59 Chevy!

Your Chevrolet choice includes the Corvette, the Impala Sport Coupe, the Nomad Station Wagon, the Bel Air 4-Door Sedan, El Camino, and the Impala Convertible—all shown above.

now—see the wider selection of models at your local authorized Chevrolet dealer's!

C & H CHEVROLET CO.
7 MAIN MULESHOE, TEXAS PHONE 2720

Safflower Meets Set in Area By Farmer Union

Alex Dickie, Jr., president, Texas Farmers Union, announced today that meetings have been set up for interested counties in the Panhandle-South Plains Area beginning Monday, March 30 at Levelland in Hockley County for the Safflower Program. A list of the meetings is attached.

Contracts for the growers will be available at these meetings and the seed orders will be signed. Irrigation Specialist and Plant Breeding Specialist will speak at meetings.

Interested farmers are urged to attend meeting held in their area.

Texas Farmers Union and International Safflower Corporation are jointly planning construction of oil mill to process seed.

A goal of 20,000 acres has been announced for this crop year.

WAF Procurement Officer Visits Muleshoe April 1

Lt. Therese Stone, new WAF procurement officer for this area will pay her first visit here on April 1 and 2, according to T/Sgt. Ryan, local Air Force recruiter.

While she is in this area, Lt. Stone will interview young women interested in an Air Force career.

In her new position, Lt. Stone will engage in WAF recruiting activities throughout the five state area of Texas, New Mexico, Oklahoma, Arkansas and Louisiana.

Women with a baccalaureate degree can qualify for a direct commission. They must be single, between the ages of 21 and 33, in good physical condition and be able to pass an Air Force officer selection test. Starting pay is over \$4,000 annually.

The Air Force also offers commissions to two year college women between the ages of 20½ and 29½ through an officer candidate training program.

For high school graduates and women with less than two years of college, the enlisted WAF program is available.

Interested? Then call Sgt.

Ryan in Clovis at P.O. Box 201 or drop him a post card at P.O. Box 601, Clovis, N. M. Giving your name, address, phone number so that he can contact you and make an appointment for you with Lt. Stone.

Hospital News

MULESHOE HOSPITAL
Admitted
LeRay Stubb, Judy Carlton, Mrs. Ruby Mills, Mrs. Harold Bink, Mrs. Vera Rucker, Mrs. L. D. Spiller, Mrs. Maggie Fraher, Dianne Hoybrook and Mrs. Helen Walters.

Dismissed
Mrs. Lonnie Merritt, Mr. Whitecotton, L. R. Testerman, Skel Brockman, Robbie Atty, Mrs. E. J. Hall, Mrs. Bill Dopley, and Mrs. LaDell Flanagan.

WEST PLAINS HOSPITAL
Admitted
Mrs. E. E. Ford, Karen Jones, Mrs. Anna Moeller, Frank Estrada, Jack Ketcherside, C. Kendeleman, Mrs. A. A. Richards, Richard Fox, and Mrs. L. B. Hambright.

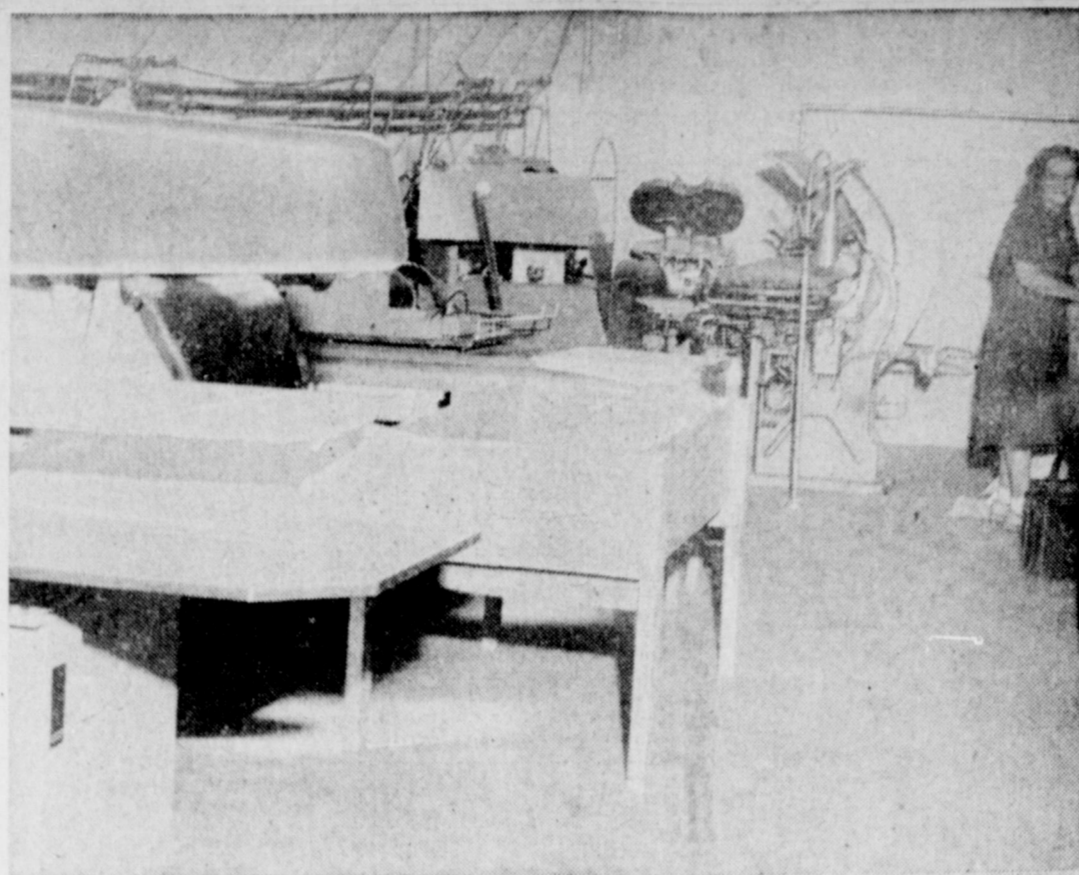
Dismissed
Walter E. Rector, Mrs. Jack Beddingfield, Mrs. W. B. Wagon, Nancy Kelly, Kay Fine, Mrs. Freddie White, Mrs. H. M. Gilbert, Mrs. Jasper Clark, David Crawford, Santos Herrera, Charles Williams, Paul Langford, H. D. Darby, and Mrs. Orvel Morris.

Congratulations To:
Mr. and Mrs. Jasper Clark of Lubbock on the birth of a daughter March 19 at West Plains Hospital. Weighing 7 lbs., 7 ozs., she has been named Ruby Nell.

Mr. and Mrs. E. E. Ford of Sudan on the birth of a daughter March 23 at West Plains Hospital. She has been named Wanda Wynonne, and weighed 8 lbs., 2 ozs.

PLEDGES FRATERNITY AT TEXAS TECH
Donald Owen Taylor, son of Mr. and Mrs. Don Taylor of Muleshoe, is among 20 pledges to Kappa Sigma, national social fraternity at Texas Tech.

VISIT DAUGHTER IN NEW MEXICO
Mr. and Mrs. H. M. Shofner went to Amistad, N. M., last week to visit with their daughter and family. Rev. and Mrs. Hershel Wimberly. They enjoyed a trip to Eagle Nest Pass also while visiting the Wimberlys.



TOWN AND COUNTRY Steam Laundry, which formally opened Saturday after being open on a limited basis for the past week. Shown here is a portion of the new and modern equipment installed by owner W. H. "Bill" Cronshaw. Mrs. C. R. Roebuck, laundry manager is in the left background. —Journal Photo

Southwestern Life Sets New Records in '58

Southwestern Life Insurance Company's 56th annual financial statement, released today, revealed new records in almost every phase of the Company's business operations in 1958.

President James Ralph Wood said new life insurance issued totaled \$366,622,650, an increase of 26.9 per cent over the amount issued in 1957. Of this amount, \$29,152,167 was reinsurance assumed, and \$3,722,114 was ordinary insurance originally issued or reinsured by Estate Life Insurance Company of Amarillo as assumed by Southwestern Life through the State Liquidator.

The remainder of \$303,748,269 was acquired through the Company's own agency organization, which was the tenth consecutive year achieved a record in the production of new business.

Insurance in force at the end of the year was \$1,899,208,594, a twelve-month gain of \$192,721,532 and the largest annual increase ever recorded by the Company.

Policy benefits paid to policyowners and beneficiaries totaled \$29,524,360, also a new record, and such payments by the Company since it was organized nearly 56 years ago reached a total of \$296,356,465.

On December 31, 1958, assets amounted to \$450,665,482, up \$32,502,097 from the total at the end of the prior year.

The Company's investments in 1958 aggregated \$61,659,733, in individual, corporate and public enterprises throughout the Southwest. Of this sum, 70 percent was placed in loans on real estate. The statement shows a total outstanding investment of \$207,746,270 in such loans, which account for 46 per cent of the Company's total assets.

Southwestern Life is represented in Muleshoe by Marion F. Harris.

Net Farm Income Rises 79 Percent

Net income realized by Texas farmers in 1958 averaged \$3,254 per farm, 79 percent more than in 1957, according to preliminary estimates of the Agricultural Marketing Service.

Realized net income is the amount available for spending after farm production expenses were paid. Realized gross income per farm in Texas averaged \$8,999 in 1958. This is \$2,187 more than in 1957.

Cotton was responsible for more than half the increase in total cash receipts. Sorghum grain, wheat and cattle also showed substantial gains. But production expenses, especially depreciation charges, feed, livestock and hired labor, also rose.

Texas farmers increased inventories of crop and livestock in 1958. Total net income, which includes an allowance for these changes in inventories, averaged \$3,262. A year earlier it was \$2,431.

For the United States, realized net income averaged \$2,750 per farm in 1958. This was 23 percent more than in 1957 and the third highest amount on record. Because of larger inventories, the total net income per farm showed an even greater increase. The average of \$2,985 per farm was 25 percent more than in 1957, and second only to the 1948 record of \$3,056.

WANT ADS can raise extra money, find you a home, or a baby sitter. Dial 7220 or 5400.

Famous Flying Queens Seeking Senior Players

PLAINVIEW, March 24 — Annual spring try-outs for the Hutcherson Flying Queens of Wayland College, four times National Women's A. A. U. Champions, are expected to draw numerous high school senior girls from several states this April.

Two weekends are now being planned to take care of the large number of cagers expected in Plainview. The two weekends are April 10-11 and April 17-18, with workouts at 4:00 p.m. and 7:00 p.m. on each Friday. Girls need to be at only one workout on Friday, but Coach Harley Redin, coach of the Flying Queens, states that all girls should be prepared to workout Saturday, as some of them will be asked to stay for a second practice.

Rooms will be ready in the dormitories on campus, and meals will be served in the school cafeteria at no cost, but girls must bring their own bedding and their own practice equipment. If by accepting the free meals and lodging the girl's remaining school eligibility is affected, the ap-

plication must pay.

All wishing to attend should write Coach Harley Redin, Athletic Director, Wayland Baptist College, Plainview, Texas, and signify which weekend they will attend the workouts. Each player attending the workouts will be invited to attend Wayland next fall to play with one of the two teams, although only two or three scholarships will be offered next fall.

The Flying Queens are now making plans for the 1959 National Women's A. A. U. Basketball Tournament to be held in St. Joseph, Mo., March 30-April 3. Wayland has a record of 26-2, including four wins over the defending champion, Nashville Business College. This year two teams have represented Wayland. The newly formed Queen Bees, composed of freshmen cagers, have recently finished their season with only one loss, that by two points, and with the championship of the first annual Texas College Women's Basketball Association Tournament in their possession.

A Bailey County freshman at Wayland, Betty Halford, of Bula, was a member of the Queen Bees. The Journal understands.

WANT ADS are as news as the front page and high in reader response. To place your want ad dial 7220 or 5400.

TIPS ON DRIVING

SPEED AND POOR JUDGEMENT

During a period of seven weeks, from January 19, to March 12, I have collected the sum of forty-five traffic accidents. The cost of all the accidents would, no doubt, be thousands of dollars.

There was a total of sixty-five killed and eighty-eight injured. The number of vehicle accidents have been rising annually. More people have been losing their lives simply because of poor judgement and speeding.

Speeding Main Cause
Most all the accidents were caused on collisions and overturning of car. The main cause of all the accidents was speeding. Other factors such as weather conditions and mechanical failure played a large part also.

There were several accidents involving trains. Most of these proved fatal.

The accidents could have been prevented by lowering speed, using better judgement, and paying attention to driving and road conditions.

There is a great need for people to realize the danger of traveling at high speeds. If every driver would be more courteous and considerate of the other driver, there would be fewer accidents. Until the public opens their eyes and begins to do something about traffic accidents and deaths, they will continue to rise.

Parents Cooperate
Driver Education Course is an example of the public's interest in the future. The parents of every student in Driver Education have agreed to follow the rules of the road.

The students have agreed to follow the example set by their parents. This course is believed to cut accidents in half.

To sum it up, the best policy to follow is to never drive too fast for existing road, weather and car conditions. Remember, "slow down and live, the life you save may be your own."
—RONDA JOHNSON

Tax Man Sam Sez:

If you sold your house during 1958 you will have to account for any profit or loss on your income tax return. The cost of the house plus any additions to the house, such as chain link fence, original cost of putting in the lawn and shrubs and a number of other deductions including real estate fees may be deducted

from the sale price in determining whether you have a profit or loss. You will probably be entitled to a capital gain on a profit. However, if you have a loss, you don't get a tax deduction. The 1959 edition of "Your Federal Income Tax", Publication 17, which is on sale at all Internal Revenue Service offices for 35c will probably answer all of your questions on just how to figure out whether you owe Uncle Sam some tax or not on the sale of your residence.

the Golden Text from Mark (1:14, 15): "Jesus came into Galilee, preaching the gospel of the kingdom of God, and saying, The time is fulfilled, and the kingdom of God is at hand."

Selections to be read from "Science and Health with Key to the Scriptures" by Mary Baker Eddy include the following (203:20): "Let us learn of the real and eternal, and prepare for the reign of Spirit, the kingdom of heaven—the reign and rule of universal harmony, which cannot be lost nor remain forever unseen."

From the Bible we read the following (II Corinthians 4:6): "For God, who commanded the light to shine out of darkness, hath shined in our hearts, to give the light of the knowledge of the glory of God in the face of Jesus Christ."

Christian Science Services

Christ Jesus' mission to reveal the true nature of God and man will be brought out at Christian Science services Sunday.

Highlighting the Lesson-Sermon entitled "Reality" is

No other wall finish goes on as easily as Flatlux, the one-coat wall paint that gives you luxury colors at low cost. Easy to apply with brush or roller, Flatlux is fadeproof, fully washable, dries quickly to a beautiful long-lasting finish. Insist on Flatlux today! It can't be beat!

HEATHINGTON LUMBER CO.
Phone 7970 Muleshoe

REPORT OF CONDITION OF THE FIRST NATIONAL BANK OF MULESHOE

In The State of Texas at the close of business on March 12, 1959 published in response to call made by comptroller of the currency, under Section 5211, U. S. Revised Statutes.

ASSETS	
Cash balances with other banks, including reserve balance, and cash items in process of collection	\$858,382.00
United States Government obligations, direct and guaranteed	\$1,066,120.00
Obligations of States and political subdivisions	\$291,046.00
Corporate stocks (including \$7,500.00 stock of Federal Reserve bank)	\$7,500.00
Loans and discounts (including \$6,783.85 overdrafts)	\$1,484,872.00
Bank premises owned \$66,000.00, furniture and fixtures \$18,379.80	\$84,379.80
Other assets	\$31,799.00
TOTAL ASSETS	\$3,796,260.00
LIABILITIES	
Demand deposits of individuals, partnerships, and corporations	\$2,689,848.00
Time deposits of individuals, partnerships, and corporations	\$316,750.00
Deposits of United States Government (including postal savings)	\$30,853.00
Deposits of States and political subdivisions	\$330,884.00
Other deposits (certified and cashier's checks, etc.)	\$68,862.00
TOTAL DEPOSITS	\$3,437,199.96
Other liabilities	\$12,704.00
TOTAL LIABILITIES	\$3,449,904.00
CAPITAL ACCOUNTS	
Common Stock	\$200,000.00
Surplus	\$50,000.00
Undivided profits	\$96,356.00
TOTAL CAPITAL ACCOUNTS	\$346,356.00
TOTAL LIABILITIES AND CAPITAL ACCOUNTS	\$3,796,260.00

MEMORANDA

Assets pledged or assigned to secure liabilities and for other purposes
Loans as shown above are after deduction of reserves of \$21,792.00
Loans to farmers directly guaranteed and redeemable on demand by the Commodity Credit Corporation, and certificates of interest representing ownership thereof \$31,975.00
Total Amount of Loans, Certificates of Interest and Obligations, or Portions Thereof (listed above), which are fully backed or insured by agencies of the United States Government (other than United States Government obligations, direct and guaranteed) \$31,975.00
TOTAL AMOUNT OF LOANS, CERTIFICATES OF INTEREST AND OBLIGATIONS, OR PORTIONS THEREOF, which are fully backed or insured by agencies of the United States Government, (other than "United States Government obligations, direct and guaranteed") \$31,975.00

I, Robert Alford, Cashier of the above-named bank solemnly swear that the above statement is true to the best of my knowledge and belief.

CORRECT—ATTEST: Robert Alford, Cashier

M. D. Gunstream }
E. O. Baker } directors
W. M. Oliver }

STATE OF TEXAS, COUNTY OF BAILEY, ss:
Sworn to and subscribed before me this 19th day of March, 1959, and I hereby certify that I am not an officer or director of this bank.

Dean Spraberry, Notary Public
My commission expires June 1, 1959 (SEAL)

COX DRIVE-IN
WHO CARES ABOUT A ROBIN
OPEN APRIL 4TH

Do it yourself!
(BUT LET US HELP!)
ADD STORAGE SPACE!
FINISH THE ATTIC!
BUILD A CARPORT!
BUILD A FENCE!
LUMBER
Muleshoe
Phone 5311

Go to the **CHURCH** of your choice this **EASTER**

Easter—the Prince of Peace is risen

And the angel said: fear not ye
He is not here: for He is risen...

— THIS MESSAGE SPONSORED BY —
Bailey County Electric Cooperative Ass'n., Inc.
"A locally owned and managed tax paying farm organization"