

The Muleshoe Journal

DEDICATED TO THE PROGRESS AND DEVELOPMENT OF BAILEY COUNTY AND THE GREAT MULESHOE COUNTRY

VOLUME 38, NUMBER 11

18 PAGES — SECTION I, 8 PAGES

Published Every Thursday At Muleshoe, Bailey County, Texas

10c PER COPY

THURSDAY, MARCH 19, 1959

SCOOP SEZ

By J. M. Forbes

When Hertha Walker showed "Auntie Mame" at the Valley Theatre here this week it was "a hoss on me", for I had predicted, after seeing a preview of the new film in Dallas a few weeks ago that it wouldn't be seen in the smaller towns for quite a while or even longer. But the Valley showed it to enthusiastic crowds here last week and now I eat crow. Funny thing, though, is that Hertha, who believes in being honest, didn't like the show very much. Rosalind Russell, the star, fluttered around too much, waved her hands too much, for Hertha. But this scribe ate it up, thought it superb entertainment, and so has everyone who saw it at the local theatre; they liked it.

My old friend, Kelly Hooper, former sheriff of Hale County, writes from his lair north of Plainview:

Scop: Will you please place a notice in your paper advising the people to quit shooting rabbits. We will need them to eat, since "Hoover Days" are here again.

Now Kelly, I will tell you what a man here in Muleshoe told me in a confidential whisper: I have a secret. I know a pasture where there's two fat jackrabbits.

And another sign of the times: We printed some stickers this week for some farmers and all this sticker said was "To H... with B...". They expect to put them on autos from Texas to Maine.

Noel Woodley, sitting before the TV other evening with his shoes off, desiring to go to bed, still wanting to hurry back to see who else got killed, made a 19200 at the feline, struck at chair leg with his toe and broke it, the toe fell mean. Emilly might not consider is socially correct to sit around the house with your shoes off, anyway.

ONE MORE ROUND

Of the many statements made by the late James J. Corbett during his colorful career, one is pre-eminent. "What" someone asked him, "is most important for a man to do to become champion?" And Corbett replied: "Fight one more round."

Corbett was a champion of the prize ring, but there have been champions in other fields, and the same has held true of them. They have been able to fight "one more round."

Not since the summer of 1955 has there been so much change, growth, development, and new enterprises as now in Muleshoe. We predict more is to come and will welcome it. However we sometimes have a nostalgia for the old days of 14 years ago, when the town wore a different aspect and Bill's was about the main place to meet a fellow for coffee.

But another opening is set for tomorrow, another Saturday, opening of another big store in the city won't be long delayed. We still hear about more firms moving out on the highway to find more room for further developing their operations. Muleshoe is in a strong position, geographically, economically, and by reason of great people, fine climate, lots of water and rich land.

We are constantly amazed at Muleshoe and we now warn our readers not to peg this area's potential too low.

Pardon a personal reference, but The Journal now sells as many papers on news stands in drug stores, cafes, grocery stores, as we printed altogether (almost) a few years back. And have you noticed the string of new subscribers and renewals listed in the paper each week these days? Looks like a Who's Who of the area, whereas when we began this practice only a few years ago a dozen lines would suffice. Of course, other firms have grown incomparably faster than The Journal. We have nothing to fear but fear itself, and may with confidence face into our future.



NEW LOOK for a familiar landmark. This sign (left) formerly marking the entrance to the Bailey County Electric Cooperative Association, Inc., has been removed and replaced by one depicting "Willie Wirehand," emblem of rural electric cooperatives. Manager D. B. Lancaster said the change was made to help educate the public to the fact that the cooperative is locally owned and managed and is not a Federal agency, as the REA sign would indicate. —Journal Photo

Funeral Services For Travis Reed Held March 17

Funeral services were conducted at 10 a. m. on March 17 from First Methodist Church, Muleshoe, for Travis Early Reed, 49, who passed away at 3:30 a. m., March 16 at West Plains Hospital.

Mr. Reed was a native of Brady, Texas, and moved to Muleshoe in 1952 from Lamesa. He was a mortician and operated Singleton Funeral Home until he became ill. He was a veteran of World War II, a member of the Methodist Church, the IOOF lodge, and the Muleshoe Lions Club.

Rev. Hall, pastor of First Methodist church officiated at services, assisted by Rev. E. K. Shepherd, pastor of First Baptist Church, and Rev. R. V. Luna, pastor of the Assembly of God Church. Interment, directed by Singleton Funeral Home, was in Westbrook, Texas Cemetery.

He is survived by his wife; one daughter, Maria; two sisters, Mrs. Jess Woosley of Odessa and Mrs. A. W. Brown of Pecos; and three brothers, Ben Reed of Pleasanton, Hobert Reed of Pleasanton, and C. D. Reed of Brady.

Active pallbearers were Byron Housewright, Woody Underwood, W. Q. Casey, Bill Vaughn, O. D. Harris, and Lee Pool.

Honorary pallbearers were doctors from both local hospitals, and local law enforcement officers; Roy Kelley, Webb Watts, Elmo Owen, J. E. Chisholm, Noel Woodley, Jeff Peeler, Johnnie Freeman, Everett Talley, Bob and Ed Halye, Macky Hoard, Charles Alsop, and Myron Pool.

MORE THAN \$1750 IN PRIZE MONEY WON...

Grand Champion Banners Won By Adams, Mardis and Murrah At Livestock Show

Bailey county 4-H and FFA boys and girls took home cash prizes totalling more than \$1750 from the annual junior livestock show held here Thursday and Friday of last week. Joe Adams won grand champion in the swine division with his Poland China barrow, and Mike Pollard won reserve in the same division with a Poland China. Grand champion lamb was a Southdown shown by Burl Mardis, and Travis Bessire took reserve honors with another Southdown lamb. In the fat steer division, Myke Murrah's heavy weight Hereford won grand champion banner, and reserve went to Ronald Julian.

Directors Seek C of C Manager

Directors of the Muleshoe Chamber of Commerce met last week and voted to begin making application blanks to prospective applicants for the position of manager of the Chamber.

Secretary Helen Moore was instructed to begin the mailing Monday of this week to all who have indicated interest in the position.

Chamber president Jeff Peeler said three firm applications have been received thus far, and several other people have indicated they will apply for the job vacant by the resignation of Senn Slemmons.

Bank Deposits Top \$9 Million At March Call

Total deposits of the two Muleshoe banking houses comes to \$9,402,165.25 at the close of business on March 12, according to a bank call for statement of condition on that date. The deposits, while off somewhat from those of the last bank call in January, are almost half a million dollars higher than at the same time of the call in March 1958, when deposits totaled \$8,911,282.92.

In the current call, Muleshoe State Bank showed deposits of \$5,964,965.29, and total assets of \$8,604,270.73. First National Bank had deposits of \$3,437,199.96, and total assets of \$3,817,342.85.

Officials of both banks explained that figures are off due primarily to heavy withdrawals for tax paying, spring farming requirements and similar needs.

Credit Union Meets Tonight

Members of Muleshoe Federal Credit Union will meet tonight (Thursday) at 7:30 at Leigon's according to president Jim Burkhead.

Purpose of the meeting is to continue the educational program of saving, and all members are urged to bring a prospective member with them to the meeting.

Bass Employs TV Technician

Ben Warwick, recently of Roby, has taken the position of TV and radio technician at Harvey Bass Agency. He and his family, consisting of his wife and their three sons have arrived to make their home in Muleshoe. The boys are James 11, Dale 10, and Jerry 2.

Mr. Warwick studied TV and electronics at Southern College in Ft. Worth, and has attended factory schools held by Philco, RCA, Zenith, and General Electric. He is an approved Chevrolet radio mechanic. In Roby he was commander of the American Legion Post and chaplain of the VFW. He has operated his own TV and radio shop there the past five years.

Three DWI Cases In Three Days

Highway patrolmen Bill Angel and James Freeman arrested three persons in three days, each charged with driving while intoxicated.

In addition to the three DWI cases, the county jail now harbors three drunks, one for drunk and disturbance, one for theft, and one felony bad check, recently extradited from Oregon.

TO TEACH SEWING CASSES AT SCHOOL

Harvey and Marie Bass will teach sewing machine classes in the Home Ec. department of the high school next Tuesday, March 24, 9 to 12 noon.

Berkshire, light: Jim Young, Wayne Cherry, Wayne Cherry, Leland Dean, and Travis Bessire. **Berkshire and Chester white heavy weights:** Gene Bates, Jerry Harp, Fred Paiz, Glen Price and David Williams.

BARROWS
Berkshire, light: Jim Young, Wayne Cherry, Wayne Cherry, Leland Dean, and Travis Bessire. **Berkshire and Chester white heavy weights:** Gene Bates, Jerry Harp, Fred Paiz, Glen Price and David Williams.

Chester White, lightweight: Richard Goodwin, Larry Pollard, Jana Goodwin, Richard Goodwin. **Duroc, lightweight:** Rodney Blackwood, first and second places; Steve Leigon, Nelson Shipman, Rodney Blackwood, Glen Stroud, Richard Hawkins, Oran Reeves, and Roy Baker.

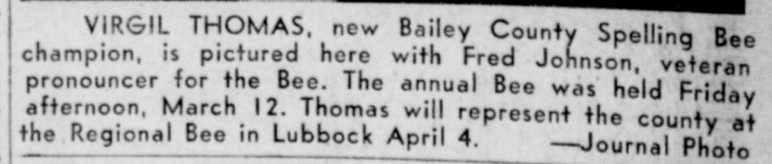
Duroc heavy weight: Rodney Blackwood, Jerry Dawson, Glen Price, David Douglas, Marshall Wimberley, Steve Leigon, Morris Lewis, Don Douglas, Roy Baker, and Jerry Dawson. **Hampshire, light weight:** David Williams, Donnie McCall, Donald Williams, Jerry Cox, Fred Paiz, and Donald Williams.

Hampshire heavy weight: Jerry Cox, Glen Phipps, George Nieman, Larry Pollard, Donald Williams, Johnny Corrales, Poland China, light weight: Joe Adams, first and second; Garry Hicks, Wayne Cherry, Mike Pollard, Kathy Pollard, Stanley Black, Don Douglas and Bobby Carlisle. **Poland China heavy weight:** Joe Adams, Mike Pollard, Jerry Cox, Kathy Pollard,

LAMBS
Southdown: Burl Mardis,

FAT STEERS
Light: Stacy Lackey, William Howard, Mack Allison, Billy Roming, Gerry Pierce, Gene Bates, and Gerry Pierce. **Medium:** Richard Scarbrough, Jacky Redwine, Larry Lumpkin, Glen Phipps, Allen Kirtrell, Gregg Blackwood, Rodney Blackwood, and John Dyke.

Dark: Myke Murrah, Ronald Julian, Myke Murrah, Mike Leigon, Mack Allison, William Howard, Kenneth Phipps, and Joe Paul Dyke.



VIRGIL THOMAS, new Bailey County Spelling Bee champion, is pictured here with Fred Johnson, veteran pronouncer for the Bee. The annual Bee was held Friday afternoon, March 12. Thomas will represent the county at the Regional Bee in Lubbock April 4. —Journal Photo

Virgil Thomas Champ Speller

Virgil Thomas, eighth grade student in Three Way school, won the Bailey County Spelling Bee held in the high school in Muleshoe last Friday afternoon. He will represent the county at the Regional Bee, to be held in Lubbock Saturday, April 4.

Virgil was one of nine contestants from Muleshoe, Three Way, and Bula schools.

Runner-up was Lamar Pollard, sixth grade, 11-year-old student at Bula. In third place was Charles Pool, of Bula, who is 12 and in the 6th grade.

It was the third try in the county bee for Virgil. He is the 13-year-old son of Mr. and Mrs. T. A. Thomas of Maple.

The Journal, sponsors of the County Bee, gave prizes of \$15 for first, \$7.50 for second, and \$2.50 for third place winner. Rich prizes await the winner.

Friday	High	Low
Saturday	49	16
Sunday	33	
Monday		
Tuesday		
Wednesday		
Thursday		

News FOR Women

Page 2, The Muleshoe Journal, Thursday, March 19, 1959

Muleshoe P. T. A. Elects Officers

The Muleshoe P.T.A. met in regular session March 16 in the high school auditorium, with 100 parents and teachers present. Mrs. Allen Guinn presented a program on leisure time, "Constructive or Destructive". The Junior High Band presented three numbers, followed by the chorus from Junior high under the direction of Mr. Murphy. Mrs. Alec Wilkins gave a short talk on Cub Scouts and had displays showing some of the things Cub Scouts make. The Home Ec. department presented a delightful style show with twenty-five girls participating.

A short business meeting was held by Mrs. B. R. Putnam, president. Membership, Civil Defense, Budget, Health and Safety Committees were recognized. \$48.12 in Safety Patrol supplies will be given to Richard H 111s and DeShazo schools this week.

New officers for 1959-60 elected were Mrs. Aubrey Heathington, president; Mrs. Douglas Avery, first vice-president; Mrs. Ed Edmiston, second vice-president; Mrs. Roy Kelly, secretary; Mrs. J. A. Nickels, treasurer; Mrs. R. O. Gregory, historian; and Mrs. R. O. Gregory, parliamentarian.

It was voted to send the present officers and the officers for 1959-60 to Plainview April 14 to Spring Conference. The next meeting will be April 20 to install officers. Dr. C. V. Wivel from ENMU, Portales, N. M., will speak at this meeting.

E. S. A. Plan May Luncheon

A program on "Spring Fashions" was given by Charlie Ann Hanks at the regular meeting of the Epsilon Chi Chapter of Epsilon Sigma Alpha on Wednesday night. Gwen Moore gave a talk on the proper accessories to wear with the spring fashions.

During the business meeting that followed, plans were made for the annual Mother-daughter affair, which will be held in the Country Club on May 13.

Members discussed becoming active in the State E. S. A. The president, Maurine Hooten, read letters from Ellen Gupton and Mary Moore stating that they wished to become inactive.

The hostesses, Pearl Gunstream and Jane Griffiths, served refreshments from a table decorated with an Easter Bunny hiding eggs amidst a field of jonquils.

Members present were, Pat

Arnold, Iva Gaede, Janice Gaede, Betty Glaze, Hanks, Hooten, Moore, Gunstream, Griffiths, Bill Ed Jones, Marie Roark, LaVern Winn, Johanna Wrinkle, LaNetta Small, Anna Copeland, and Ann Alford.

Study Club Hears Review

"The Hem of His Garment" by Argye M. Briggs was reviewed by Mrs. B. O. McDaniel at the regular meeting of the Muleshoe Study Club on Thursday evening in the home of Mrs. Sean Slemmons. There were 14 members and four guests, Marge Hazen, Barbara Reading, and Mary Farley present, to enjoy this excellent review.

Members of the club voted to contribute \$25 to the local Girl Scouts and then heard a report from the treasurer of the donations that had already been made to various other drives this past year.

Ladies of the club were invited to an Antique Show on March 18, 19, and 20 to be held in Plainview and several of the women are making plans to attend.

Members were also advised of the District Convention in Borger April 2 and 3.

The next meeting of the club will be March 22 in the home of Mrs. B. O. McDaniel with a program on nursing. Winona Dudgeon and Nancy Julian will be speakers from the nursing profession.

JayceeEts Elected Officers Tuesday

Anna Copeland was elected president of the Muleshoe JayceeEts at a called meeting on Tuesday night in the home of Amarina Moore. Other officers elected were: Louise Wilson, vice president; Johnnie McMillen, secretary and treasurer; Amarina Moore, historian and reporter; and Jean Gillespie, state director.

Refreshments were served by the hostess to those attending.

Rebekahs Here Report On Lodge At Waco

The Muleshoe Rebekah Lodge 114 met in the IOOF Hall on Tuesday night with 15 present. The Noble Grand presided.

A report was given by Mary Taber and Mary Moore stating where they attended Grand Lodge.

Rebekahs are asked to please note that members will meet at 7 p.m. on March 24 and go to Muleshoe high school auditorium in a group. They will witness the elimination contest of the contestants competing for the honor of being the Rebekah and Odd Fellow delegate to the U. N. this summer.



MR. and MRS. R. E. DAVENPORT

Ford-Davenport Vows Exchanged

Miss Opal Jane Ford, daughter of Mr. and Mrs. E. L. Ford, became the bride of R. E. Davenport, Jr., in a double-ring ceremony performed by Rev. R. V. Luna on March 7 in the

Assembly of God parsonage. The bride wore white nylon lace over blue satin with portrait neckline and large puff sleeves, with waltz length skirt. She carried a colonial bouquet of white carnations centered with yellow roses.

The young couple are at home in Clovis, where the bridegroom is stationed at Cannon AFB.

To Observe Holy Week

At the beginning of Holy Week, the Rev. Edwin L. Hall, pastor of the First Methodist Church of Muleshoe, will deliver a series of sermons that every person in our community will want to hear. Each sermon is based upon a scriptural message of the last week of our Lord on earth. The theme of this series is "Were You There?"

On Palm Sunday morning at 10:50 the topic will be "When He Entered Triumphantly", and the evening service at 7:00 will be "When He Was Betrayed."

There will be services night through the week at 7:00 with the following sermon titles: March 23, "When He Was Denied?"; March 24, "When He Was Accused"; March 25, "When He Was Condemned"; March 26, "When He Gave The Holy Supper"; (Holy Communion will be observed.)

On Good Friday there is to be a three hour service from 12:00 noon to 3:00 with devotionals on "The Seven Last Words From The Cross", and the sermon topic "When He Was Crucified."

On Easter Sunday morning March 29, a community wide Sunrise Easter service will be observed in the First Baptist Church.

Rev. Hall's Easter morning sermon will be entitled "When He Arose From The Grave", and the evening service will be "To Walk The Glory Road."

Rev. Edwin L. Hall has been minister of the First Methodist Church in Muleshoe for almost two years. Sunday by Sunday the sanctuary is filled with people who come to hear him preach. This is an excellent time for you to hear him speak on the excellent theme, "Were You There?". The First Methodist Church welcomes you.

OUT-OF-TOWN VISITORS
Visitors from out of town who visited the First Baptist Church on Sunday were: Mr. and Mrs. Delbert Mooney of Earth, Miss LaVern Robinson of Amarillo, Miss Dana Akin of Tahoka, Miss Sandra Howard of Clovis, N. M., Miss Rose Marie Swinford of Sudan, David Jenkins of Portales, N. M., Gary Dale of Vernon, and Charles Witty of Lubbock.

Visitors who attended the morning worship services of the First Methodist Church on Sunday were, Hettie Hutchinson of Abilene, David and Janice Wilterding of Amarillo, Lt. and Mrs. H. L. Robinson of Wichita, Kans., Mr. and Mrs. R. L. Hazen of Atascadero, Calif., Mr. and Mrs. J. G. Bishop of Lubbock, and Mrs. Stacy Cole of Henderson.

The Methodist Church was happy to have Mr. and Mrs. Frank Ellis of Plainview First Methodist Church move their membership to Muleshoe.

ASSISTING WITH WEDDING PLANS
Mrs. Stacy Cole and daughter of Henderson are in Muleshoe this week helping make arrangements for the wedding of her sister, Carolyn Kirk.

Little House Viewed Sunday

The Los Planos Study Club were hostesses for the official opening of the Muleshoe Girl Scout Little House on Sunday, March 15 from 3 to 5 p.m. More than 100 guests registered during the afternoon.

Refreshments were served from a tea table decorated by using the official Girl Scout colors of green and yellow. Flowers for the occasion were sent by Peerless Pump Company, First National Bank, and the Muleshoe Floral presented corsages to members of the house party: Mrs. Jack Schuster, Mrs. June Wagnon, Mrs. Sam Hopper, Mrs. Norman Thomas, Mrs. Joe Mack Wagnon, Mrs. Harlan Davis, Mrs. J. E. McVicker, Mrs. Irvin St. Clair, and Mrs. Bernard Phelps.

Brownies and Girl Scouts who assisted in hospitalities were Susan and Jan McVicker, Ana Phelps, Melinda Harris, and Pamela St. Clair.

Mr. and Mrs. J. E. McVicker are co-chairmen of the building committee and have been responsible for the tremendous amount of improvement achieved to this date.

Anyone who was unable to attend open house is invited to drop in and visit with troops that will be meeting there after school on week days.

Home Ec. Students Model For P. T. A.

Several homemaking students modeled in a style show for the Muleshoe P.T.A. meeting Monday afternoon.

The girls modeled dresses they had constructed and Mary Gross, a Homemaking III student narrated the show. Those appearing in the show were: Rita Rucktashel, Wanda Parker, Zona Millen, Janie Sanders, Ann and Sue Phipps, Dorothy and Virginia Hickman, Linda Landers, Kathy Phillips, Jeanne Gray, Doris

Cooper, Juanita Burkett, Tommie Hail, Yvonne Hendon, Geraldine Cooper, Jana Goodwin, Mary Ann Green, and Margaret Durham.

Gwen Roberts, Sharon Evans, Shirley Burelsmith, Sandra Harris, Glenda McCary, Frances Cooper, Donna Guinn, Annamary Elrod, Lula Maye Embury, Lida Hart wore a dress made by Jaquet Nowell and Sherry Lowery modeled a dress made by Ann Phipps.

Visitors Take Part On Panel

The Muleshoe Chapter of Delta Kappa Gamma National Honorary Teachers Organization was hostess for a meeting held in junior high library on Friday 13.

After the business meeting, presided over by the president, Mrs. John Watson, there was a panel discussion on "How To Insure Better Public Relations" led by Mrs. Horace Blackburn. Those on the panel were: Jack Christian, representing the Littlefield Rotary Club; Bob Manley, of the Littlefield Chamber of Commerce; Mrs. Simon Hay from the Sudan '35 Study Club; Mrs. Wayne Whiteaker of the '50 Study Club from Sudan; Louis Hair, president of the Olton school board; Mrs. Wilma Hines, president of the Olton P.T.A.; Louie Hardy and Don Williams from the Olton Chamber of Commerce; and Mrs. John Miller, representing the Muleshoe A. A. U. W.

Following the panel discussion, Mrs. Jerry Kirk, assisted by Mrs. Wilson Witherspoon and Mrs. Kenneth Wiseman of Sudan, gave a birthday tribute to the Epsilon Chapter of Delta Kappa Gamma.

Junior IOOF Lodge Formed At Needmore

A Junior Odd Fellow Lodge was instituted Saturday night, March 14 at Needmore, by Hereford Lodge.

Five members were initiated into the new lodge and the following officers were elected: Grand Ruler, PeeWee Gage; Deputy Grand Chief Ruler, Damon May; Recorder, Raymond May; Chaplain, Henry Reid, and Warden, Virgil Woods.

Other officers will be elected and appointed at the next meeting. Meetings are to be held the second and fourth Monday nights at 8 p.m., in the Needmore IOOF Hall.

Looking for something? Find it fast in the Yellow Pages



Sports Jackets Need this Special Aid to Good Grooming!



Fit and Finish fully restored with Lambert Cleaners thorough dry cleaning

Our famous Sanitone Dry Cleaning plus careful workmanship by experts in fabric care makes the amazing difference. Spots are gone — colors sparkle with new life — like-new feel is restored! Just try us and compare!

LAMBERT CLEANERS There is No Substitute For Quality Phone 7260 Muleshoe

Announcing a great new team...

SCOTT OUTBOARDS and WIEDEBUSH & CHILDERS

Your new SCOTT Dealer

COME IN...SEE OUR 1959 SCOTTS NOW!

Let us show you the great line of outboards—7.6 to 50 hp—that leave all others years behind! They're loaded with luxury features, styled in striking modern design—with six bright hood colors to choose from!

*Horsepower OBC Certified

We're celebrating our opening with some extra-good deals—generous trade-in allowances, easy payment terms, and special boat-motor-trailer combinations at low, low prices. Hurry over now to...

CLOVIS ROAD MULESHOE PHONE 2810

- Pump Pulling and Setting
- Perforating Casing In The Hole
- Well Cleanouts
- Western Landroller Sales & Service

REPAIRS ON ALL MAKE OF PUMPS

EDWARDS IRRIGATION SERVICE

Phone 5670 MULESHOE

BE SURE ABOUT Insurance

HAVE YOU LOOKED OVER YOUR FARM INSURANCE PROGRAM LATELY?

You know, not only do needs change, but so do the prices of lumber, seed, etc. A once-adequate program may not be complete today. Our clients always know where they stand on their coverage. We make constant checks!

Alsop Insurance Agency

MULESHOE'S OLDEST

Phone 3200 109 S. First Member FDIC

Eyes Examined Glasses Fitted

BLACK OPTOMETRIC CLINIC

A. J. Black, O.D.

Office Hours: 9:00 to 5:00 Sat., 9:00 to 1:00

113 West 1st. St. Phone 8240 Muleshoe, Texas

A FARMER'S BANK CAN MEAN A LOT TO HIM

Of course, a farmer's bank provides a safe place for him to deposit his savings... a safe deposit box for his valuables... checking account service to pay his bills conveniently... and credit when he wants to borrow for farm needs. But to his bank a farmer also looks for sound advice based on long experience.

Our bank welcomes every opportunity to talk over your money matters with you, whether you need banking service or just friendly counsel.

REGISTER in bank lobby for \$25 E Savings Bond to be given away each Friday Afternoon

2 1/2% Interest Paid on Savings Accounts

1% Interest Paid on Certificates of Deposit For One Year

MULESHOE STATE BANK

Member FDIC

Santa Fe

Ship and Travel Santa Fe

It's the only railroad under one management linking Chicago, California, Colorado, Texas and points in the busy southwest.

See your nearest Santa Fe agent



GRAND CHAMPION LAMB with owner Burl Mardis and livestock show queen Naomi Watson. Burl showed the Southdown to first place in its class earlier in the show Friday. —Journal Photo

Barnetts Move To Lampasas

Mr. and Mrs. Pat Barnett, after a third of a century residence in Bailey county, are moving to Lampasas county, and left Wednesday for their new home. Pat has bought a small ranch which borders on the Colorado River, located between the towns of Lampasas and San Saba, near the town of Lomet.

He will raise cattle and go fishing in this soft, easy going country.

Mr. Barnett came here with his family in 1926, the same year that Mrs. Barnett, a daughter of the Long family of Baileyboro community arrived. They don't expect to forget about Bailey county; their son, Kelly Joe and family run the Barnett farm at Baileyboro, and another son, Billy, is employed by Conrad Williams, large farmer of the same area.

Y. L. Methodists Plan Revival

The Y. L. Methodist Church revival will start next Sunday, March 22, with Rev. Luther Kirk, district superintendent, doing the preaching.

This pre-Easter revival is in addition to the customary summer revival, which will be in July or August.

Skipping Monday morning, the day services will be at 10 a.m., and evening services will be at 8 o'clock. Everyone is invited to attend and enjoy the blessings of these services.

Rev. Kirk will hold the Fourth quarterly conference just after services Sunday morning, March 29.

Youth Rally At Enochs March 26

The West Plains Association Youth Rally is planning the biggest and most entertaining youth's rally ever staged in the West Plains Association. It is to be held at the Enochs First Baptist Church on Thursday, March 26, at 8 p.m.

A special invitation is extended to each and every youth in the West Plains Association. An interesting and

entertaining program will be presented with Wayland College giving a special Easter pageant.

Fellowship, with games, songs, skits, and a good time in general for each one is planned with a Smorgasbord style meal following.

Coffee Honors Jane White

Friends of Mrs. Jane White honored her on Friday afternoon with a farewell coffee in the home of Mrs. Charles Lennau with Mrs. David Anderson as co-hostess.

Coffee, punch, cake and an assortment of nuts and sweets were served to guests who called by Mrs. Anderson from a table decorated with a large paper mache Easter Bunny from Old Mexico.

Mrs. White received many lovely gifts as tokens of her friends' affections.

Those attending were: Mmes. J. D. Rucktashel, Houston Hart, Dick Willman, Gil Lamb, W. F. Birdsong, L. T. Green, Jr., Vanoy Tipton, Rufus Gilbreath, Ed Moore, J. E. McVicker, Bernard Phelps, Mack Ragsdale, and Don Moore.

Half Century Club Is Mrs. Schoenberger's Luncheon Guests

Mrs. Lois Schoenberger was hostess for a luncheon given in the home of Mrs. Fred Johnson for the members of the Muleshoe Half Century Club.

A green salad was served on tables decorated in the St. Patrick's Day motif. Ladies who then enjoyed an afternoon of visiting and cards were: Pearl Moore, Myrtle Harper, Alice Mitchell, Beulah Carles, Jennie Panter, Mary Young, Beulah Kistler, Hazel Farrell, Sally Harden, Birdia Paul, Anna Moeller, and Hertia Walker.

Morrison's Entertain Baptist T. U. Members

The N. Q. and Challenger T. U. members and associate members of the First Baptist Church met for an evening of Fellowship and fun in the home of Mr. and Mrs. D. L. Morrison on Tuesday evening, March 17.

SHOOTERS' SUPPLIES

Firearm Sales & Service Standard & Wildcat Rifles

DAVID WYER 314 W. Ave. B — Evenings Muleshoe, Texas



DR. B. R. PUTMAN

OPTOMETRIST Muleshoe, Texas

Visual Analysis Contact Lenses Glasses Prescribed Office Hours: 9-5 Sat., 9-12 111 East First Box 985 Phone 6560



Writing ALL Lines of General Insurance

Auto — Fire — Liability — Bonds

Consult Your Insurance Agent or Broker as you would your Doctor or Lawyer

Jennings Ins. Agency

105 E. Ave. B — Box 144 — Ph. 6150 — Muleshoe

CONDENSED STATEMENT OF CONDITION OF THE Muleshoe State Bank

Muleshoe, Texas

At The Close of Business March 12, 1959

RESOURCES	LIABILITIES
Cash and Due from Banks \$953,038.59	Capital \$200,000.00
U. S. Bonds 885,410.90	Certified Surplus \$200,000.00
New Public Housing Bonds (Gov't. Guaranteed) 303,053.71	Undivided Profits and Reserves for Bad Debts \$240,305.44
Bonds and Warrants 612,323.25	TOTAL CAPITAL FUNDS \$639,305.44
TOTAL CASH QUICKLY AVAILABLE \$2,753,826.45	
Loans and Discounts 3,771,524.76	DEPOSITS \$5,964,965.29
CCC Loans 5,533.60	TOTAL \$6,604,270.73
Bank Building, Furniture and Fixtures 72,487.73	
Other Assets 808.19	
TOTAL \$6,604,270.73	

The Above Statement Is Correct — NORMAN L. THOMAS, VICE-PRESIDENT & CASHIER

OFFICERS
DR. ANSON L. CLARK, CHAIRMAN OF THE BOARD
W. Q. CASEY, PRESIDENT
ROBERT H. MIDDLETON, VICE-PRESIDENT
NORMAN L. THOMAS, VICE-PRESIDENT & CASHIER
BOBBY AIRHART, ASSISTANT VICE-PRESIDENT
ELIZABETH THOMSON, ASSISTANT CASHIER
JO WHITE, ASSISTANT CASHIER
WILLIAM EDD JONES, ASSISTANT CASHIER

DIRECTORS
DR. ANSON L. CLARK
W. Q. CASEY
WARREN E. HILL
KENTON MCGEE
ROBERT H. MIDDLETON
T. DWIGHT WILLIAMS
NORMAN THOMAS
JAMES R. HAZELWOOD
W. T. ANDREWS

1 Lb. Tin Kimbell's Drip or Reg

COFFEE 59^c

MELLORINE

1/2 Gallon Malones Assorted Flavors 29^c

PEPSI COLA

12 Bottle Carton Plus Deposit 35^c

SHORTENING! 59^c

Kimbell's Vegetable 3 Lb. Tin

29c Reg. Price, Meads Fine

Potato Chips 2 for 29c

Kimbell Tall Can MILK . . . 2 for 25c

- PRESERVES 18 Oz. Glass Tumbler Kimbells Pure Strawberry 35c
- CRACKERS 1 Lb. Box Sunshine Krispy 29c
- APPLE JELLY 18 Oz. Glass Tumbler Kimbells Pure 25c
- VEL Giant Size 65c
- CRACKERS 12 Oz. Box Nabisco Ritz 29c

OLEO 10^c

Kimbells 1 LB. Carton

FLOUR 1.65

Kimbells 25 Lb. Print Bag

- CAKE MIX Betty Crocker Devil Food 25c
- PICKLES Pt. Jar Diamond Sour Or Dill 19c
- ORANGE DRINK 46 Oz. Can Kimbells 25c
- PINEAPPLE JUICE 46 Oz. Can Diamond Sweetened 29c

- TUNA 1/2 Flat Can Kimbells Light Meat 19c
- PEANUT BUTTER 18 Oz. Refg. Jar Kimbells 45c
- HOMINY No. 2 Can Kimbells White 9c
- No. 303 Kimbells Chopped Turnip or Mustard Greens 2 For 21c

ORANGES 9^c

TEXAS JUICY

LB. 9^c

RADISHES Garden Fresh BUNCH 2 For 9c

GRAPEFRUIT Texas Ruby Red lb. 9c

LETTUCE 9^c

California Crisp Green Firm Heads

LB. 9^c

BACON 89^c

Wilsons Corn King Sliced

2 lb. Pkg. 89^c

- HAMS Hormel Del 1 Cut, Ready To Eat Fully Cooked Whole lb. 65c
- T BONES Choice Heavy Pen Fed Beef lb. 73c

- CHEESE Elk Horn Aged Long Horn lb. 39c
- HAM Danish Cooked Boneless Skinless Plumrose 2 Lb. Can \$2.19

Round Steak 69^c

Choice Heavy Pen Fed Beef LB.

DOUBLE GUNN BROS STAMPS ON TUESDAY

CASHWAY

"Where Friends Meet and Prices Talk"

Free Delivery Phone 2440 or 2450



SPRING GARDEN GREEN THUMB SALE

WINNER OF \$500 CASH:
EDGAR BROYLES

Best cure we know for spring fever is to get out in your yard and test your Green Thumb!
Garden and lawn supplies are priced low at Piggly Wiggly and you get the extra saving of S & H Green Stamps, DOUBLE every Tuesday, with 2.50 purchase or more.

BEETS Libby's No. 303 Can, Cut	14c	SPINACH Libby's California No. 303 Can	17c
Tomato Sauce Libby's 8 Oz. Can	10c	BEEF STEW Libby's 24 Oz. Can	53c
KRAUT Libby's No. 303 Can	15c	Chili Spaghetti Libby's 16 Oz. Can	33c
NEW POTATOES Libby's No. 303 Can	15c	Vienna Sausage Libby's No. 1/2 Can	25c

GARDEN HOSE

Plymouth Vinylite, Premium Hose 1/2" Diameter, Unconditionally Guaranteed, 50' Length, Reg. 4.49 . . . **\$3.49**

Plymouth Vinylite Standard Hose Guaranteed, Reg. 3.98 **\$2.98**

Canton, 1/2" Diameter, Regular 2.98 **\$2.49**

Plastic, Rust Proof, Regular 7.95 for	FERTILIZER SPREADER	4.95	VIGORO Rose Food	3 Lb. Bag	69c
For Your Lawn, 50 Lb. Bag	GOLDEN VIGORO	3.99	END O WEED Lawn Spray	16 Oz.	1.49
VIGORO 10 Lb. Bag		99c	END O WEED Garden Dust	Gun, 8 Oz.	98c

TOMATO JUICE Libby's 46 Oz. Can	25¢
COFFEE Folgers 1 Lb. Can	67¢
SNOWDRIFT Shortening 3 LB. Can	69¢
PINEAPPLE Libby's Crushed Fancy No. 2 Can	25¢
COCA COLA 12 Bottle Carton	39¢

CHEESE FRYERS

Borden's Chateau 2 Lb. Box	79¢
Clary's Whole Grade A LB.	29¢

BISCUITS Pillsbury 3 Cans For	29c	RIB STEAK U. S. D. A. Good Beef	lb. 59c
Catfish Fillets Icelandic, 1 Lb. Package	49c	SHORT RIBS U. S. D. A. Good Beef	lb. 39c
FILLETS Red Snapper, Booth's 1 Lb. Package	69c	Ground Beef U.S.D.A. Good Beef Fresh Ground, Lb.	49c

SPARE RIBS

Fresh Frosted Pork, LB.	39¢
-------------------------	------------



Toothpaste, 69c Size	GLEEM . .	49c
SATIN SET Revlon Plus Tax		1.35
SUPER SET Nestle, 8 Oz. Bottle, Plus Tax		29c

BROCCOLI

Spears, Frozen Libby's 10 Oz. Pkg.	19¢
BEEF TAMALES Patio, 12 Count Frozen Package	39c
CHILI PIE Frito, 5 1/2 Oz. Frozen Package	35c
Pineapple-Orange, Dole, 6 Oz. Can	
FRUIT JUICE . .	19c



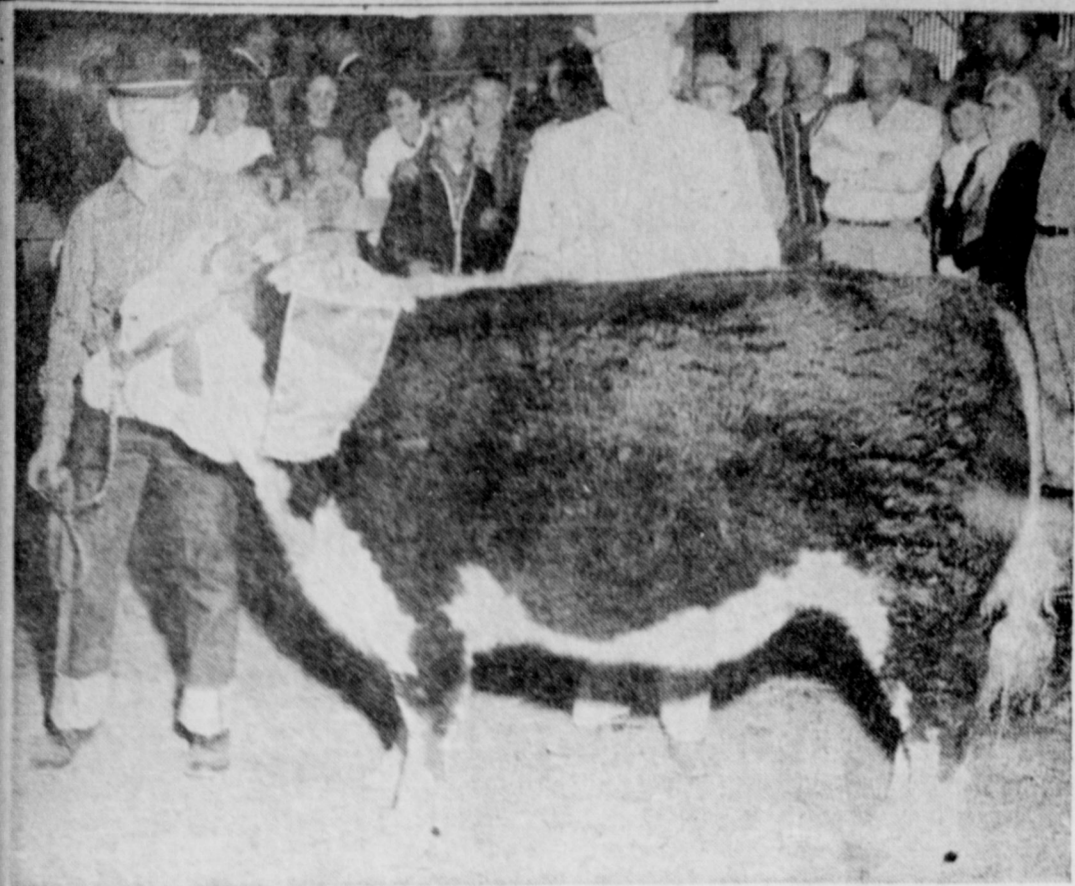
ORANGES Texas Sweet Lb.	10¢
LETTUCE Firm Heads Lb.	10¢
APPLES Washington Fancy Winesaps, LB.	15c
GRAPEFRUIT Texas, 5 Lb. Bag Each	39c
CARROTS Calif. Fancy, 1 Lb. Cello Bag Each	10c
Mustard Greens Fresh, Large Bunch	10c

KLEENEX

400 Count Box	25c
---------------	------------

Peanut Butter Jif 12 Oz. Can	43c
PEARS Libby's Bartlett, Halves No. 303 Can	29c
PICKLES Libby's 22 Oz. Sour, Dill Or Kosher Dills	35c
ASPARAGUS Libby's No. 300 Can All Green Spears	39c
Green Beans Libby's Whole, Blue Lake, No. 303 Can	25c
GARDEN LIMAS Libby's No. 303 Can	25c





GRAND CHAMPION CALF, with owner Myke Murrah, and Hale County Agent Ollie Liner, who judged the Bailey county stock show here Friday afternoon. —Journal Photo

Farm Bureau Membership Drive To Kickoff March 23 With Dinner Meet

The Bailey County Farm Bureau is getting set to kick-off a combined membership and education drive on the morning of March 24, according to Horace Hutton, chairman of the membership and education committee.

members who are volunteering their services to acquaint non-members with Farm Bureau, its policies and its achievements on a local, state and national level and invite them to join Farm Bureau and participate in the work of the largest and most effective farm organization.

Hutton states, "The drive will be preceded by a kick-off supper March 23 for those

"We have decided to carry

on the educational program", said Hutton, "because it is high time that the farmers of our area realize the full consequences of being Bensonized, Mitchellized and Unionized. We intend to fight to the end, the Labor Unions and the Secretary of Labor, Mitchell, in their efforts to (1), bring agriculture under the minimum wage and hour law, (2), bring farm crew leaders under the control of the Department of Labor and make them sitting ducks for Union Organizers, (3), convert our local TEC into a regulatory agency, (4), drastically cut the Bracero program and turn it over to Walter Reuther and George Meany, (5), and end up with farm labor unionized."

Hutton further stated, "The

LETTERS TO THE EDITOR

LEVI JENSMMA IN ANNUAL REPORT FROM IOWA

Newton, Iowa
March 17, 1959
The Journal, Muleshoe:
Enclosed check for which please send The Journal for another year.

We have had a very stiff winter, 7 inches of snow on ground now, and rather cold. Our crops were good this last year, plenty of flu here now. We have escaped so far.

Respt.
LEVI JENSMMA

RESERVE CHAMPION BRED BY INMAN AND SONS

The reserve champion swine of the South Plains Junior Livestock show at Lubbock, was bred by Sherman Inman and sons of Muleshoe.

The barrow, a Poland China, was shown by Denver Ford of Tahoka, and sold in the auction for \$2.75 per pound.

mistakes of Benson or any bad farm legislation can be corrected but once agriculture falls the victim of organized labor, they have reached "the point of no return."

It is regrettable that there is one group, claiming to be a farm organization that supports the Labor Unions and Secretary Mitchell in these efforts and testified to that effect at the hearings of National Advisory Committee on Farm Labor in Washington, D. C., on February 5-6, 1959. Farm Bureau does not believe that it can serve its members by becoming a satellite of AFL-CIA nor will the local Farm Bureau be willing to ride around on the coat-tails of a Jimmie Hoffa or Dave Beck.

"Farm Bureau believes that the Labor Monopoly is the most serious threat to our American way of life and should be subject to the same anti-trust laws as a business monopoly. We invite all farmers, businessmen and organizations who feel the same way to join us in our efforts."

Lazbuddie Wins Track Meet Held March 12

The Lazbuddie track team won over Muleshoe and Friona in a triangular track meet at Lazbuddie Thursday, March 12.

The Lazbuddie Longhorns, coached by Bobby Crooks and John Bond, continued to show promise of having a good team this year. Lazbuddie will host the District 3-B track meet on April 11. Other teams in the district are Nazareth, Hart, Bovina, and Happy.

Results of the meet at Lazbuddie were: Lazbuddie 48½, Muleshoe 45½, and Friona 43 points.

The first and second place results:

High Hurdles: Barter, Friona, 16.2; Jennings, Lazbuddie.

100 Yd. Dash: Savage, Lazbuddie, 10.3; Oliver, Muleshoe.

440 Yd. Dash: Corrales, Muleshoe, 56.1; Watkins, Lazbuddie.

440 Yd. Relay: Friona, 47.35; Muleshoe, 48.2.

880 Yd. Run: Thomas, Muleshoe, 2:20.2; Hardage, Lazbuddie.

220 Yd. Dash: Savage, Lazbuddie, 23.5; Walker, Muleshoe.

Mile: Watson, Lazbuddie, 5:41.5; Seaton, Lazbuddie.

Mile Relay: Friona, 3:46.5; Lazbuddie.

Low Hurdles: Oliver, Muleshoe, 22.5; Beavers, Lazbuddie.

High Jump: Tie, Briggs, Lazbuddie and Baxter, Friona, 5' 11¼".

Broad Jump: Brooks, Friona, 18' 5"; Bradley, Friona.

Shot Put: Oliver, Muleshoe, 38' 9"; Camp, Muleshoe.

Discus: Lee, Muleshoe, 109'; Roden, Friona.

Country Club NEWS

LADIES' LUNCHEON

Thirty members attended the luncheon Wednesday of the Ladies Golf Association. In the afternoon there were four tables of bridge and five of the ladies played golf. Mrs. Kenneth Hanks is a new member.

Door prize was won by Mrs. Ray Daniel, who also won high score in the bridge games. Second high went to Lois Lenau, bingo was won by Veree Fox.

Winner in golf was Mary Frances Holt with a low gross on No. 8. A list of monthly play days reads as follows: May 6, Hereford; June 17, Tullia; July 1, Muleshoe; August 12, Morton; Sept. 9, Floydada; Oct. 6, Levelland. Also October 6 is qualifying day for the annual High Plains Women's golf tournament set for October 7, 8, and 9.

High Plains Met
All officers and directors of High Plains Women's Golf Association met in Muleshoe March 12. Represented were Hereford, Tullia, Muleshoe, Morton, and Levelland. Floydada is a member but had no representative.

Bingo Saturday
The regular bingo will be Saturday night, March 21 for all members and children.

Pro-Am Winners
The team of Don Moore, B. Z. Beaty, Earl Schmitz, and Ray Daniel won high with a 93 in the Pro-Am. In second place with 88 was the team of John Renner, Preach Edelman, Sam Gholson, and Truman



GRAND CHAMPION BARROW, shown and owned by Joe Adams, son of Mr. and Mrs. J. K. Adams in the Bailey county livestock show Friday. The Poland China barrow placed first in the heavy weight division. —Journal Photo

CONGRATULATIONS TO...

Burl, "Curly" and Mickey Ham
OF
R. B. H. Supers

On the opening of their
New Store in Muleshoe

ALSUP INSURANCE AGENCY

"MULESHOE'S OLDEST"

Phone 3200

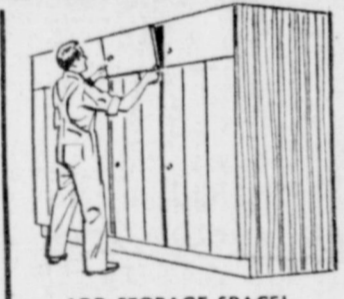
109 S. First

Do it yourself!

(BUT LET US HELP!)



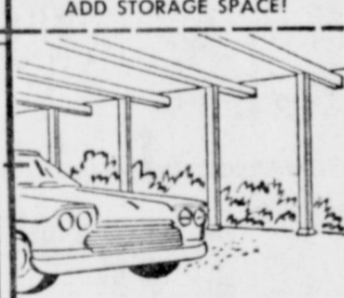
FINISH THE ATTIC!



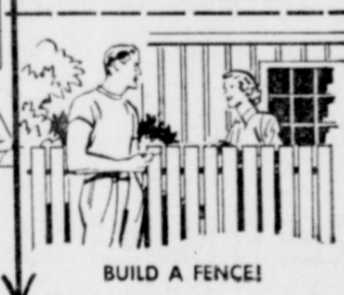
ADD STORAGE SPACE!



REMODEL THE KITCHEN!



BUILD A CARPORT!



BUILD A FENCE!

WILLSON - SANDERS LUMBER

Phone 7130

Muleshoe

— SEE —

ARNOLD MORRIS AUTO FOR

- Parts and Service for Your
- Auto
- Truck
- Tractor
- Irrigation Engines

PLAY SAFE

BUY AN **Exide BATTERY.**

An Exide in your car is the safest insurance against battery failure.

WHEN IT'S AN **Exide YOU START!**

Arnold Morris Auto Parts

Phone 7150 — Muleshoe



A Ham Actor

might "attract" some fruit, eggs and vegetables...

But if you really want to get in the produce business (or any business) and stay in it, you'll find it much safer to depend on consistent advertising in your local Newspaper.

TEXAS PRESS ASSOCIATION

1716 San Antonio St • Austin, Texas

You'll never know what a field can yield until you use RAINBOW



Do you really know what sort of yields your land might produce with the right fertilizer?

You won't know for sure... until you use the best in premium fertilizers, Rainbow Plant Food. Rainbow is several cuts above anything you've ever used before... tailored for your soils and crops, scientifically designed to

feed crops all season long.

Here's an easy way to find out for yourself how much difference Rainbow can make in yields and profits. Put Rainbow on your own soil this year. See how much more a field can yield... when fertilized with Rainbow Premium Plant Food. Call us for the full details.



PLANT FOOD DIVISION

INTERNATIONAL MINERALS & CHEMICAL CORPORATION

Plant Location: Ft. Worth, Texas

SECTION TWO - 6 PAGES



The Muleshoe Journal Thursday, March 19, 1959

Donnie King and Peggy Lewis have been awarded trophies for having the highest free-throw average for the year.

Childrens Home Open House Set Next Saturday

Open house and a ground breaking ceremony Saturday, March 21, will precede the building of a new cottage at the New Mexico Christian Children's Home, reported Grover C. Ross, superintendent.

The afternoon program will be highlighted by an address by Robert C. Jones, Amarillo, Texas, who will speak concerning "Plans for the Future", and Rex Stockton, assistant to the superintendent, will speak concerning "Our Needs."

The new self-contained cottage will be of pumic brick in functional style. It will house 18 children and two house parents. There are 42 children living in the present home dormitory.

Elders of the 4th Street Church of Christ, home directors, accepted the low bid of A. B. Ribble Lumber company, Portales.

Funds for the cottage and support of the home are being provided by congregations and members of Churches of Christ in Muleshoe and throughout this area.

nions for several months. "This number includes about 3,517 vehicles in Bailey county where there are four inspection stations to do the work," said Captain Johnson.

Many motorists are going to find long lines awaiting them as the deadline rolls nearer as the inspection stations will not be able to cope with the usual last minute rush.

He added, "It is as much a violation to display an old sticker as not to have one at all."

Farm Labor Men Meet In Dallas To Discuss Problems

The Texas Conference of Agricultural Employers has called a meeting of farm labor em ployers, businessmen interested in agriculture; Cham bers of Commerce, Farm Bu reaus, and Retailers in agri cultural areas to be held in Dallas March 18 at 9:00 a.m. in Hotel Adolphus.

The purpose of the meeting, according to Joe Sooter, president of West Texas Agri cultural Employers Group, is to coordinate efforts of all groups that are interested in: (1) preventing the extension of minimum wage and hour law to Agriculture and Retailers; (2) preventing the extension of rules and regulations we have on braceros to domestic labor; (3) heading off legisla tion that would give the De partment of Labor control of farm crew leaders; (4) contin uing our TEC offices as ser vices agencies instead of a regu latory agencies and; (5) pre venting a further expansion of monopoly by AFL-CIO.

Sooter has recently attended farm labor meetings in Kan sas City, Washington, and Los Angeles and has this to say about the agricultural labor situation: "The Labor Unions have become very cocky and aggressive since winning several Congressional seats in the last election. They are really putting the pressure on in Washington where it counts most. The Department of Labor is responding to their prodings in a way that threatens to wreck the farm economy. Industry has been able to absorb the demands of labor by demanding more for their products. Farmers are not in a position to do this."

"Farmers are already caught in a cost price squeeze that threatens bankruptcy. The minimum wage and hour demands of organized labor and the Department of Labor could be the last straw that breaks many a farmers back. This will have serious repercussions on businessmen in agricultural areas. The main purpose of the Dallas meeting is to acquaint the businessmen with this situation and plan a coordinated effort to try to prevent it from occurring."

Anyone interested in the problem is invited to attend. Several representatives of Farm Labor Associations, Farm Bureau, Plains Cotton Growers, Chamber of Commerce, and businessmen have made arrangements to be there.

ATTENDS CLINIC
Joe D. Vaughn, Veterans County Service Officer for Bailey county attended a Rehabilitation Clinic for Service Officers in Lubbock, on March 12-13.

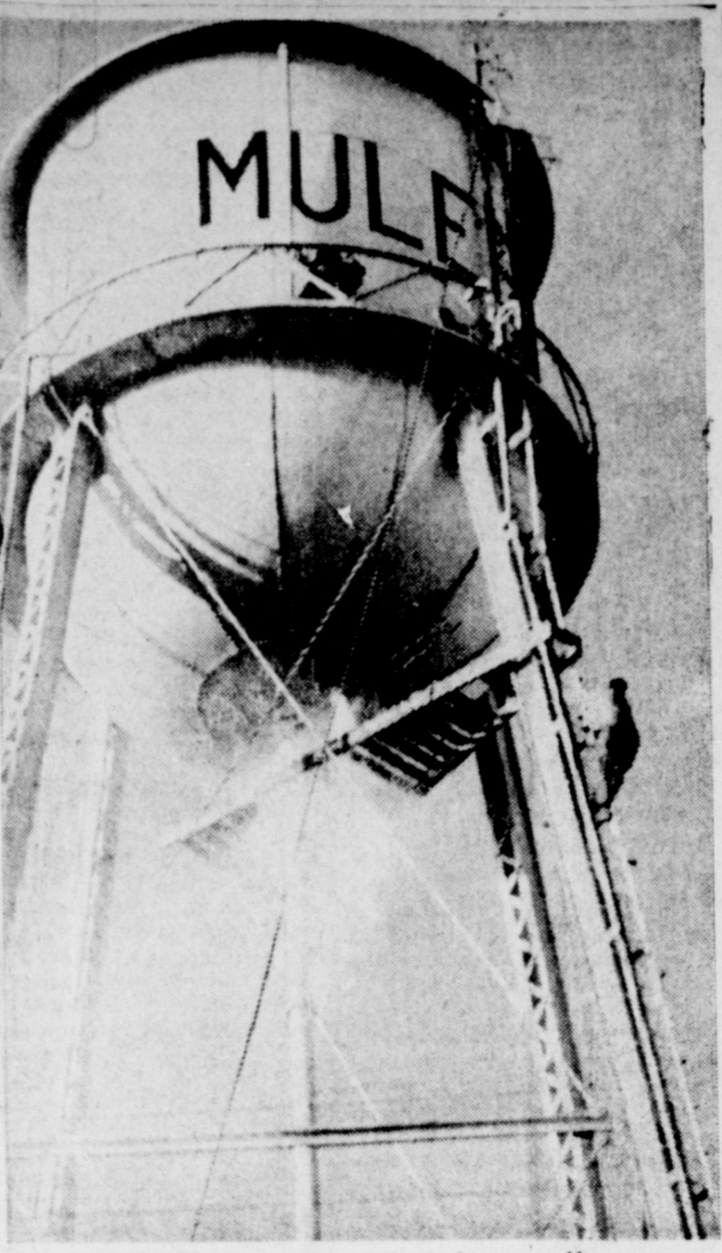
CYCOLOGY SETS



NOTHING THE MATTER WITH THE RISING GENERATION - AFTER THEY ONCE GET UP FOR THE DAY

May we serve as your insurance counselor? A part of our job is to check with you on your present policies and on your needs... then to make certain your insurance is in proper order.

Bobo INSURANCE AGENCY
Phone 2640
Insurance & Abstracts
Over 30 Years Service in Muleshoe
BOBO BLDG. MULESHOE, TEX.



THEY MADE IT RAIN, around the postoffice anyway, when city workmen drained the big water storage tank south of the postoffice Monday, the water thoroughly wet down the area. City employees said periodic drainings are necessary to eliminate sediment in the tank.

—Journal Photo

Tips On Driving

DON'T RUN AWAY

We have all heard the age old statement "don't run away from life; it always catches up with you." This is especially true in a traffic accident. If you, as the driver of a vehicle, are involved in a traffic accident, you are required to do the following things: Presuming your car is still in commission, stop as soon as possible where you will not interfere with traffic.

Turn the ignition off and guard against fire. Warn on-coming traffic in order to pre-

vent other casualties. Render aid to anyone who might be injured, remembering that the wrong type of help may be more harmful than none at all. If anyone is injured or killed, notify the local police if the accident occurred in town, otherwise the county sheriff or the nearest highway patrolman. Use the quickest means of communication available to notify the proper authorities of the accident.

Give your name, address, vehicle registration number, and drivers license number to anyone else who was involved in the same accident. Obtain that same information

from the other driver. You must submit a written report to the Department of Public Safety, Statistical Division, Austin, Texas within ten days. The approved form may be obtained at all police agencies.

This must be done in the event there was either an injury, a death or a total damage (to all vehicles and property) of \$25 or more even though your vehicle was the only one involved. Be sure that your report contains the correct date, location, and that you the driver have signed it.

In the event that you damage an unattended vehicle, you must locate the owner or leave your name, address, name of the owner of the vehicle which you were driving and a statement of the circum stances, on the damaged ve hicle in a conspicuous place in or on the damaged property.

—Janell Walker

Progress News

by Mrs. M. O. Nigh

Mr. and Mrs. A. R. Rose re ceived word Friday of the death of Mrs. Rose's mother, who lived at Snyder.

Progress 4-H Club

The 4-H Club met this past week with Mary Gross, with 12 members present.

Mary demonstrated how to make a bound buttonhole. Cakes and cookies were served to all the girls, and Mrs. Jackson, the Home Demonstration Agent, and Mrs. George Gross.

We were all proud for Myke Murrah, as his calf won Grand Champion.

Kenneth Powell and Lucille Davis were home from college for the weekend.

Visiting Sunday in the home of Mr. and Mrs. Kenneth George were her parents, Mr. and Mrs. Raymond Horton of Plainview and her brother and family, Mr. and Mrs. C. L. Horton and son Wayne, of Edmondson, Texas.

Mr. and Mrs. B. C. Donald and son moved into the Albert Kube house, recently vacated by the Bill Aylesworths, The McDonalds moved here from Morton.

Mr. and Mrs. Eugene Shaw of Muleshoe, and Mrs. Jimmie

Scribner and children of Littlefield visited Sunday in the home of Mr. and Mrs. Bill James.

Mrs. Birda Garrett and son Jim visited Sunday with Mr. and Mrs. L. D. Tipton.

Bridal Shower

A bridal shower was given honoring Judy (Murrah) Roming Friday, March 13 at the Methodist parsonage. The table was covered with white net with the centerpiece of pink roses and pink and orchid grapes.

Judy received many nice and useful gifts. Mrs. Ada Murrah and Mrs. Vernon Roming helped unwrap her many lovely gifts. There were around 30 present and many who could not attend sent gifts.

The hostesses were Mes. Byron Gwyn, Sherman Sweatmon, O. M. Self, Ross Goodwin, Troy Actkinson, Joe Sooter, Joe Simmacher, Tom Smith, Bell Shaw, Sadie Bass, E. A. Bass, C. C. Lamb, Cleburn Gray, Eugene Black, and M. O. Sterns.

The guests were served white individual cakes and pink punch.

Melvin and Kelvin Cooper of Matador, nephews of Mr. and Mrs. Arthur Cooper visited Monday on their way to Albuquerque, N. M., where they will be inducted in the Navy.

Mrs. Elizabeth Simmacher and Morris went to Portales to visit her sons, Faroy and Leon, and also to visit her parents, Mr. and Mrs. B. L. Gammell of Dora, N. M., Monday of this week.

Mrs. Arthur Cooper preached the morning and evening services at the Methodist Church at Oklahoma Lane Sunday, March 15.

Jesse Rogers of Grants, N. M. visited Sunday with his parents, Mr. and Mrs. John Rogers.

Mr. and Mrs. O. D. Gulley sold their farm to Mr. and Mrs. John Brown, who have moved here from Oklahoma.

Gary Shipman of Muleshoe spent Monday night with Larry Nigh.

Mr. and Mrs. Jimmie Presley and son are in Dallas to be with Mrs. Presley's mother, Mrs. Sherman Sweatmon, who underwent surgery last week.

The Remarkable Story of Wide-Track Wheel Design

How It Started - How It Works
What This Highly Successful Pontiac Achievement Means to You

It all started, as most innovations do, with a problem to be solved.

The problem was that when you turned a corner or rounded a curve your car swayed and everybody aboard leaned with the force of the turn.

Over the past few years car body widths have been increased to give you more passenger room and comfort. But widths between the wheels have not increased proportionately. This between-wheel width is called the "track".

A wide body without a wide track is top-heavy, lacks balance, looks awkward. It's a little like a husky football player, wearing wide shoulder pads and dainty ballet slippers, running with his feet close together.

THE SOLUTION

The answer was simply to widen the track to match the body. We moved the wheels five inches farther apart. This widened the stance, but not the car. This was the birth of Wide-Track Wheel design.

You use the same principle and feel a similar effect when you stand erect with your feet spread wide apart. You're braced and steady.

LEAN AND SWAY REDUCED

Our first road tests showed how significantly we had reduced lean and sway. The car held to the turns and hugged the curves as had no other car we had ever driven, except for sport cars, which of course are not designed primarily for passenger comfort.

This greater stability gave the driver a noticeably improved feeling of security, control and confidence. All passengers, back and front, rode with less fatigue, more comfort.

IMMEDIATE PUBLIC ACCEPTANCE

It usually takes car owners a little time and many miles to be convinced of the merits of many automobile engineering improvements. That's because some

improvements are far removed from the car owner's everyday driving experience.

Not so with Wide-Track Wheels. There was an immediate understanding of what we had done and a fast and favorable response to its advantages.

From the first week our dealers began demonstrating the 1959 Pontiac, we knew Wide-Track Wheel design was every bit the accomplishment we had hoped for. People who drove the car told us it was the finest, easiest handling automobile they'd ever been in.

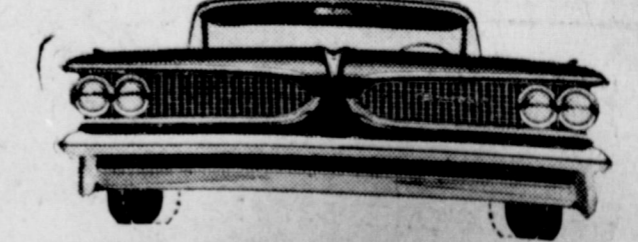
WHO'S BUYING ALL THE NEW PONTIACS?

Pontiac sales, we are happy to report, have confirmed public opinion. This car has apparently captured the imagination of tasteful people who were looking for clean, uncluttered styling. People attracted by the quality of workmanship and attention to detail we give every single Pontiac we build. And, of course, people quick to grasp the remarkable story of Wide-Track Wheel design.

YOUR NEW PONTIAC

Investing in a brand-spanking new automobile, fresh, sweet-smelling and totally different is a wonderful thing to happen to a family in the spring. Wouldn't it do your morale good to become the owner of a gorgeous new Wide-Track Pontiac within the next few weeks?

We are confident it is an automobile in which you will take great pride and from which you will reap much personal satisfaction and enjoyment.



ONLY PONTIAC HAS WIDE-TRACK WHEELS
WHEELS ARE FIVE INCHES FARTHER APART.
DOTTED LINES SHOW CONVENTIONAL WHEEL POSITIONS.

PONTIAC MOTOR DIVISION • GENERAL MOTORS CORPORATION

SEE YOUR LOCAL AUTHORIZED PONTIAC DEALER

LADD PONTIAC CO.
Highways 70 & 84
Muleshoe, Texas

THE Morton Delinting Co.
Is Open for business now with both plants in operation. We can wet acid your cotton seed or we can saw delint it. We would appreciate doing business with you.
For Information CALL 5606 Morton, Texas
Located North of Morton on Muleshoe highway

LET US PREPARE YOUR PROPERTY FOR City Mail Delivery
Steel Sidewalk Forms
Form Setting - Cement Finishing
33c Sq. Ft.
We Have Just Bought Forms To Build IRRIGATION BASES SPILLWAYS
and We plan to Carry A Complete stock
• All Types of Concrete Work By Contract or By Yard
Delivered where you want it - when you Want It
Also We Have DITCHING MACHINE
To dig your Foundations or pipe line ditch - 12 in. or 18 in. wide, 40 inches deep.
Ready Mix Concrete Co.
Clovis Road - Phone 7880
MULESHOE TEXAS



RESERVE CHAMPION CALF shown by Ronald Julian, shown at right with judge Ollie Limer, and FFA sweetheart Naomi Watson. —Journal Photo

Corn Variety Test At Hi Plains Farm

One hundred and forty-seven varieties of white and yellow corn hybrids were included in the 1958 corn research program at the Hi Plains Station of the Texas Research Foundation at Halfway. The tests were under the supervision of Lawrence Gundy, corn breeder from the Texas Research Foundation.

Three hybrid corn yield tests, each containing 49 entries, were conducted. The average yields on these tests were 77 to 97 bushels per acre while individual entries ranged from 56 to 135 bushels per acre. The tests included hybrids now available in the Hi Plains plus a number of midseason and early commercial and experimental hybrids.

Nine yellow hybrids out of 50 tested produced yields above the test average of 97 bushels per acre. The top yielding yellow hybrids were: Texas 28, 134.8 bu.; Asgrow 104, 122.4 bu.; Watson III, 121.6 bu.; Conrad 3, 121.3 bu.; Texas 30, 116.3 bu.; Texas 26, 116.1 bu., and Conrad No. 1, 115.5 bu.

The high yielding white corn hybrids were: G779w, 132.9 bu.; Asgrow 105w, 121.3 bu.; Asgrow 101w, 114.2 bu.; TRF 9w, 105.2; Asgrow 107w, 102.3 bu., and P. A. G., 633w, 101.4 bu. White corn acreage increased in 1958 in the Hi Plains.

White corn buyers discovered that the Angoumois grain moth, a serious problem for corn in storage in the corn belt, had not yet heavily infested corn storage in this area. This has increased the market for white corn especially in the Muleshoe area.

The variety tests were planted April 25 with 26 pounds of

nitrogen and 78 pounds of phosphorous applied in bands at planting time. This was followed by 150 pounds of nitrogen applied as a side dressing on May 5.

Maple News

by Mrs. Oran Reeves

Mr. and Mrs. Odell Ballard had as their guests Sunday her parents, Mr. and Mrs. Polk and her brother and wife, Mr. and Mrs. White, all of Levelland.

Guests in the C. L. Taylor home from Friday until Sunday were her sister, Mrs. Bub Allen and children of O'Donnell.

Mr. and Mrs. Albert Smyer

visited his sister and family, Mr. and Mrs. Wayne Cash and children in Lubbock Tuesday night.

Mr. and Mrs. Ed Farris and Glenda visited Mr. and Mrs. Clark and children of Anton Sunday afternoon.

Mr. and Mrs. Foy Lewis visited Friday night and Saturday with his mother, Mrs. Lewis in Snyder. Saturday they went to San Angelo to visit their son and wife, Mr. and Mrs. Ernest Lewis.

Mr. and Mrs. C. L. Taylor and Dorman spent Sunday with their daughter and family, Mr. and Mrs. Cecil Mann and children of Portales, N. H. They attended services at the Second Street Church of Christ in Portales Sunday morning.

Mr. and Mrs. Odell Ballard and children spent Saturday

night in Levelland with her parents, Mr. and Mrs. Polk.

Some of those on the sick list that we know about are Mrs. Albert Smyer and Mr. Mrs. C. L. Taylor.

The ladies of the Maple Church of Christ met Tuesday afternoon at 2:00 o'clock and their study was in the book, "The Christian Home". Everyone is welcome to attend any or all of the classes.

Mrs. Kenneth Pyburn visited her husband in the Plainview Hospital Sunday afternoon. He seemed to be better at this time.

WANT ADS are as newsworthy as the front page and high in reader response. To place your want ad dial 7220 or 5400.



KATHY POLLARD and the reserve champion barrow which won owner Mike Pollard \$15.00 award in addition to the \$20.00 it took in the Poland China heavyweight division. —Journal Photo

Parmer County Farm Bureau News

Labor has been one of the greatest problems of farmers in the past several years. Getting enough of the quality necessary to do the work has been the principal concern in the past. Now a new threat to the farmer's economy is rearing its head with no apologies. It is the U. S. Department of Labor in conjunction with the AFL & CIO. Concerted efforts are being exerted to bring all employees under Federal Control.

This means that if these efforts are successful, farm labor and retail stores labor will be included under the Federal Wage and Hour Act, and the Federal Workmen's Compensation Law. This means that negotiations for payment agreement between you and your employee will not be made on an individual basis, as it has been in the past. You will, instead, accept the pay and hour provisions set up by the department of labor. These provisions are, of course, determined by the AF of L and CSIO.

This will be the case soon

unless, of course, efforts to put a stop to the trend are successful. Farm Bureau is the only farm organization that has made any effort to stop it. The Texas Labor Users Committee is calling a meeting of interested parties in Dallas March 18, which will have passed before you read this.

Farm Bureau will be well represented. We hope that there will be enough interest to avoid any such thing as the above mentioned happening in this session of Congress. You should write your congressman in the meantime if you feel that agricultural and retail stores should have continued exemption from the wage and hour act.

Membership reports are pretty good so far. However, if you have not been contacted yet, please send your membership check of \$10 in by mail, or as some are doing, bring it in personally. Although the quota for the year was set at six hundred, twenty-five, there should be more than seven hundred members now if they were ever needed for strength in legislative efforts.

CONSIDER THIS: All the ways of a man are clean in his own eyes; but the Lord weigheth the spirits.

—Proverbs 16:2.

Tulia Jersey Record Breaker

People from the Lone Star State make a practice of doing things in a big way. Apparently Signal Sable's Knight Doris, a 3-year-old registered Jersey cow owned by Victory Jersey Farm, Tulla, Texas, is also following that practice.

Doris just recently turned in a record breaking performance to The American Jersey Cattle Club, Columbus, Ohio. She produced 17,988 lbs. milk with 1,056 lbs. fat in 305 days at the age of 3 years and 9 months. This is not only a new state milk record and fat record but also a new national record for both milk and fat for senior 3-year-olds in 305 days.

The owner of Doris, J. Chester Elliff, Victory Jersey Farms, also does things in a "big way" as this record makes a total of thirty-three 1,000 lbs. butterfat completed on his farm.

WANT ADS are as newsworthy as the front page and high in reader response. To place your want ad dial 7220 or 5400.

JOHNSON - POOL TIRE and APPLIANCE

JAMBORREE of VALUES

Shop this weekend for these typical savings

RCA WHIRLPOOL IMPERIAL WASHER
Reg. \$349.00 Exchange **\$249.95**

RCA WHIRLPOOL "Seventy" Washer
Reg. Price \$299.95, Exchange **\$199.95**

RCA WHIRLPOOL WASHER DRYER Combination Reg. \$49.95 Exchange **\$399.95**

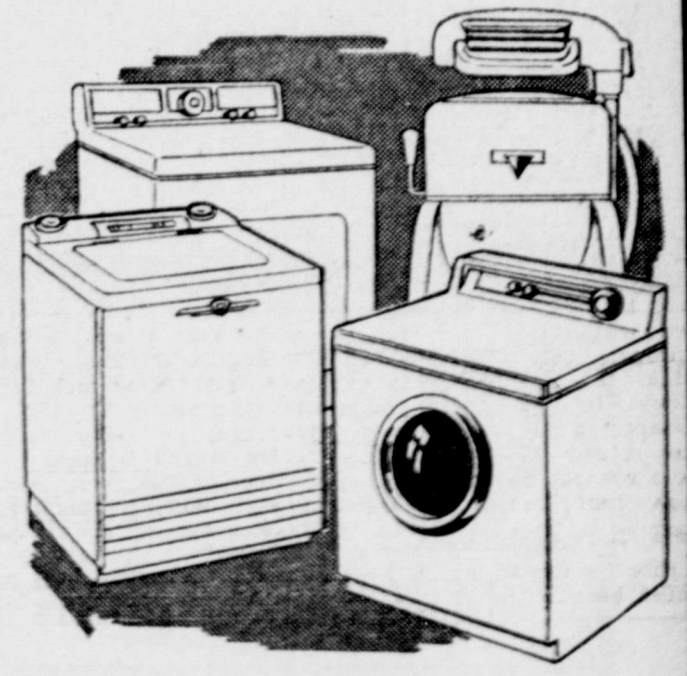
USED WASHERS
your choice **\$25**

KELVINATOR Automatic Washer
Reg. 349.95 Exchange **\$259.95**

WESTINGHOUSE WASHER & DRYER
Space Saver Reg. 519.90 Exchange **\$357.95**

RCA WHIRLPOOL IMPERIAL DRYER
Reg. 319.95 Exchange **\$219.95**

RCA WHIRLPOOL CUSTOM DRYER
Reg. Price Is 199.95, Exchange **\$149.95**



FOOD FREEZERS

20 CUFT White King Chest Type
Reg. 339.95 Exchange **\$269.95**

RCA Whirlpool Upright 20 Cu Ft.
Reg. 629.95 Exchange **\$429.95**

OTHER REAL BUYS!

Irrigation Motor Batteries

24 Mo. Guarantee \$11.95
6 VOLT, Exchange

Two Year Guarantee \$14.95
12 VOLT, Exchange

FIT ANY CAR

Electric and Gas RANGES
all priced to save you big MONEY

SEE OUR REFRIGERATOR SALE PRICES
Marked down so low you can't afford not to buy

TRACTOR TIRES

We've got the hottest prices in town on tractor tires.

13x38 six ply first line tires **\$92.08 each**
plus tax and recappable tire

GUARANTEED NEW TREAD TIRES
6.70x15 black wall.
Special price
4 for \$39.80
plus tax and recappable tire
Whitewalls \$1 each higher

FISHING TACKLE
Rods, Reels, Lures etc. We've cut the whole lot **25% off**

GIFT ITEMS
Many items . . . **50% off**

TRICYCLES
Buy now at . . . **1/4 off**

HI-FI STEREO PHONOS
RCA & ZENITH SETS
Are Selling At Savings Up to **\$100.00 off**

Lindsey 788
The Hybrid with short, strong stalks and large heads full of grain.

For the Big Yields, Plant **Lindsey 788**

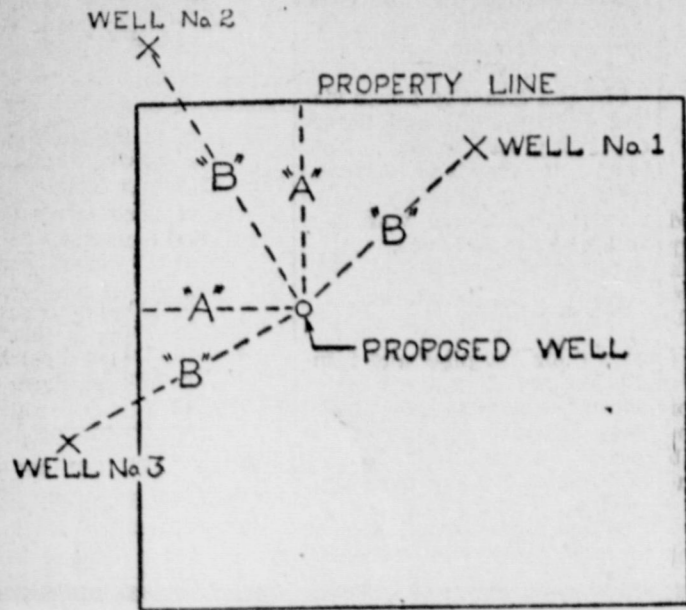
For the Highest QUALITY Hybrid Sorghums
Lindsey's RS 501, RS 590, Tex 601, RS 608, RS 610, Tex 611, Tex 620, RS 650, Tex 660.

SEE YOUR LINDSEY DEALER SOON

Farmer's Co-Op Elevator
Muleshoe

JOHNSON - POOL TIRE & APPLIANCE
PHONE 7370 MULESHOE

Rules For Drilling Irrigation Wells Told by High Plains Water District



A—Measured distance to two nearest property or quarter-section lines
 B—Measured distance to three nearest wells within one-fourth mile

Do you plan to drill an irrigation or commercial water well? If you do, and you expect to produce more than 69 gallons per minute from the well, you should read the following paragraphs.

The rules of the High Plains Underground Water Conservation District provide that wells drilled within its bounds of jurisdiction and produce in excess of 69 gallons per minute be spaced certain minimum distances from wells in the immediate vicinity.

4-inch well must be a minimum distance of 200 yards from the nearest well.

5-inch well must be a minimum distance of 250 yards from the nearest well.

6-inch well must be a minimum distance of 300 yards from the nearest well.

8-inch well must be a minimum distance of 400 yards from the nearest well.

10-inch well must be a minimum distance of 440 yards from the nearest well.

The District's rules further provide that a person who desires to drill a well must first obtain a well drilling permit.

To assist either the landowner or his agent in filing an application for a well drilling permit, each county has an office and a secretary.

Before contracting his local County Secretary, the well drilling applicant will need the following information:

Name and mailing address of the owner of the land on which the well will be drilled.

The legal description of the land.

The measured distance from the proposed drilling site to the two nearest property lines or quarter-section lines

(Shown as lines "A" on drawing.)
 The measured distance from the proposed drilling site to the three nearest wells. Distances to wells that are over 40 yards from the proposed drilling site are not required. (Shown as lines "B" on drawing.)

When the above information has been determined by the applicant, he is then prepared to contact his local county secretary and file his drilling permit application.

A deposit of \$10 is required with the filing of each application.

When the application form is filled out completely and correctly, the applicant must then make certain that it is signed by three members of the local County Committee. This is most important, and it must be done before drilling operations are commenced.

When signed by the Committee, the permit is valid for the drilling of one well only, and it only at the location specified on the permit.

The drilling permit is valid for a period of 4 months from the date of filing.

LONE STAR AGRICULTURE

Texas' Cotton Picture: A Challenge For Survival

Since man first set plow to the fertile fallow ground of Texas a century and a half ago, cotton has reigned supreme as the state's top agricultural money-maker. Today, that position of cotton faces a challenge—not only for continued supremacy—but for actual survival as an agricultural mainstay.

This challenge to the cotton industry of Texas and the South boils down in final analysis to one critical point: economic survival of the crop under today's heavy production costs. Competition from synthetics, threats of pest infestation and weather uncertainty are of minor concern when faced with the possibility of voluntary elimination of cotton as an economically unfeasible crop.

The responsibility for meeting this challenge has been placed squarely on the shoulders of the cotton farmer, for he alone can decide whether he can produce a cotton crop under today's pent-up costs and come out with a profit. He is under no obligation to anyone to undertake the tedious task of raising cotton, and if there is no money in it for him, he will switch to something else.

Lower Production Costs A Must

A too-frequently overlooked economic fact is that cotton is initially produced by the farmer for the benefit of the farmer and, of course, to provide fiber for consumer goods. Growth and profit of other facts of the cotton industry which follow the farmer are important, to be sure, but their growth and their profit are a by-product of the farmer's

work, and they can not exist for any other purpose.

The price of the farmer's cotton bale today is more or less stabilized. But his expense involved in producing and getting it into the bale is not stabilized. Nowhere in our country has inflation become more real than in agricultural production costs, and no crop has been harder hit by inflated production costs than his cotton. If costs continue to rise at the present rate of increase, a cotton crop won't put a dollar into the farmer's jeans, and then no one else in the industry can hope for a dollar either.

While the Texas farmer's chances for an equivalent profit from cotton production have lessened, he has at least been given a provisional opportunity to try his luck at coming out on a larger production volume. The change in acreage allotment rules allowing for increased cotton acreage under a lowered support price could possibly give cotton farming a boost in some areas where production is most economical such as in South, Central, and West Texas.

This alternative to a higher support accompanying acreage is hailed by many farmers who are more willing to work uninhibited on a sizeable crop and to take their chances on getting a fair price. With the Soil Bank gone—and no one in Texas has expressed extreme regret at seeing it go—the prospect of increased or renewed production will likely bring to front the farmer's enterprising spirit to face even the challenge of production costs.

SOIL CONSERVATION DISTRICT NEWS



OUR SOIL ★ OUR STRENGTH

Several ranchers in the county have realized the necessity of giving their rangeland a brief rest every few years to allow it to improve in vigor and forage production.

On rangeland that is heavily overgrazed, a complete deferment for a year or more may be necessary to allow the range to improve in composition as well as vigor.

The rancher should only graze half of the growth of the grass during the grazing season. Even if the grass is properly grazed, it is recommended that a pasture be given a 90-day rest period during the spring or fall at least every third year.

This gives the plants an opportunity to produce more seed and increase in vigor. Some bare spots that may exist can

Farm News

COMPLETES TRAINING
 FORT SILL, OKLA. — Pvt. Richard D. Green, 19, son of Mrs. Odell Green, Route 3, Muleshoe, completed eight weeks of advanced individual artillery training March 7 at the Artillery and Missile Center, Fort Sill, Okla.

Green received training in the duties of a cannoner in a 105 millimeter howitzer section.

He completed basic training at Fort Carson, Colo. Before entering the Army in October 1958, Green attended Springlake high school and was engaged in farming.

WANT ADS can raise extra money, find you a home, or a baby sitter. Dial 7220 or 5400.

COTTON LOAN EQUITIES

WILL BUY SOME GRADES and STAPLES
 1958 COTTON LOAN EQUITIES

WALT COLBERT
 OFFICE AT EDWARDS GIN
 MULESHOE, TEXAS

Bailey County Tax Office

WILL BE

OPEN ALL DAY
 SATURDAY, MARCH 28
 To Sell 1959 Car Tags

REMEMBER

To Bring Your TITLE
 and 1958 REGISTRATION RECEIPT
 These Papers Are Important
 and Licenses Cannot Be Issued
 Without Them

DESS STAFFORD
 Tax Assessor-Collector

HOME LOANS



CHOOSE A HOME YOU'LL BE PROUD OF
 SEE US FOR A LOAN YOU CAN AFFORD

We specialize in making loans on good homes for responsible families. When you want to buy or build, come in and talk over your plans with our friendly Loan Officer... find out how easily you can own your "dream house" on terms to fit your budget.

In Muleshoe See
 MILDRED DAVIS
 316 Main

Home Office
 Fourth & Pike St.
 Clovis, N. M.



Classic beauty—unexcelled craftsmanship—LINCOLN FOR 1959

Never before has so much splendor surrounded so much space inside



CONTINENTAL MARK IV—the most distinguished motorcar of our time

ON DISPLAY HERE NOW

Muleshoe Motor Co.

Phone 2510

AT THE CROSSROADS

Muleshoe

COMING

Stamps Quartet

KRLD DALLAS, TEXAS

Pleasant Valley Community Bldg.
 Tuesday, March 24th, 1959 8:00 p. m.

NO ADMISSION

• Compliments Of •
 NORTHERN STAR COTTON SEED FARM
 O'Brien, Texas

FREE SUPPER at 7:00 p. m.
 Compliments of NICKELS GINS

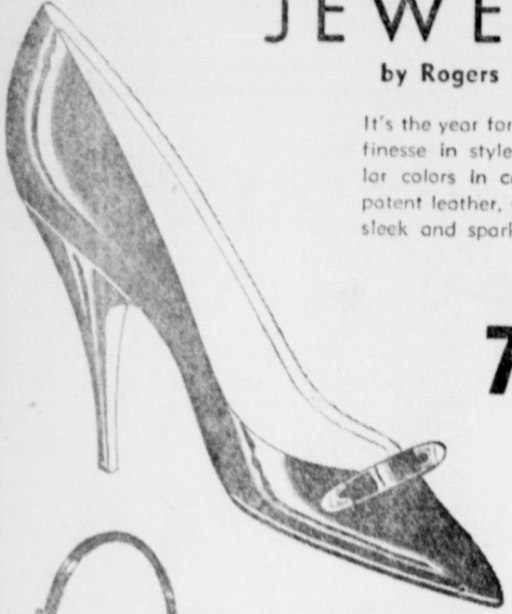
Anthony's Family SHOE WEEK

Just a step ahead in shoes for the family

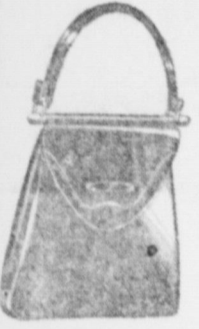
JEWELS

by Rogers

It's the year for pumps... with finesse in style and fit. Popular colors in calfskin or black patent leather, which is so shiny sleek and sparkling for spring



7.95



LOVELY BAG TO MATCH 2.98

Use Our Easy LAY-AWAY PLAN



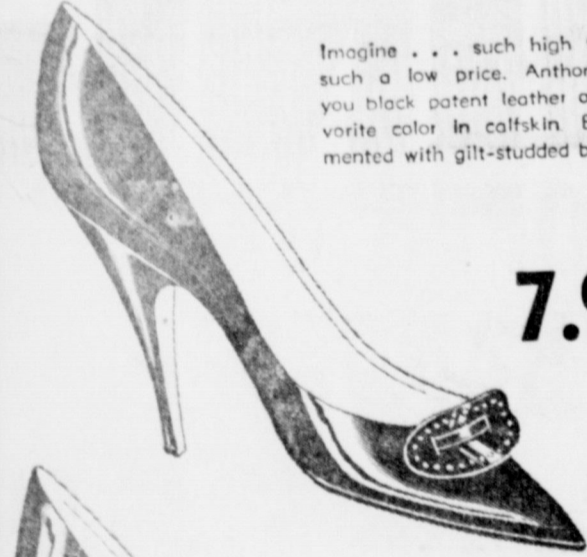
6.95

SIZES 4-9

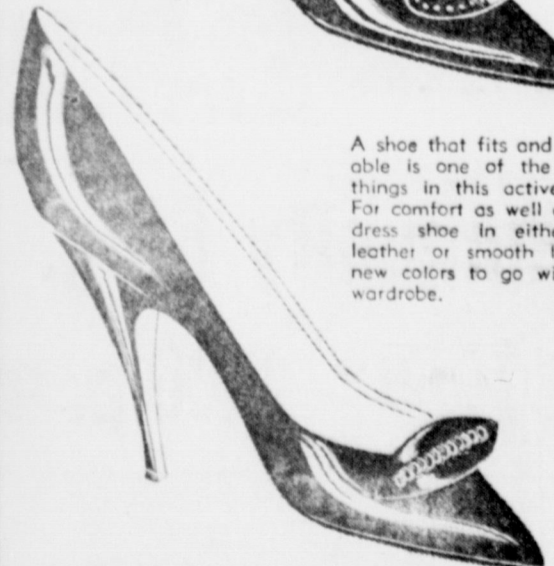


LOVELY BAGS TO MATCH 2.98

Imagine... such high fashion at such a low price. Anthony's offers you black patent leather or your favorite color in calfskin. Both ornamented with gilt-studded bow.



7.95



7.95

A shoe that fits and that is comfortable is one of the most important things in this active world we live. For comfort as well as looks buy this dress shoe in either black patent leather or smooth leather. Exciting new colors to go with your summer wardrobe.

The JELLY BEAN

IN SOFT GLOVE LEATHER



Float your feet in the comfort of Anthony's soft, glove leather Jelly Bean casuals. Natural saddle glove leather as well as various other colors. White crepe soles make walking a pleasure.

SIZE 4-9

2.98

Elegantes

3.98



HIGH STYLED DELUXE FLATS And Ribbed Soles

- Kid Leathers
- All Lined
- Popular Colors
- Compo Soles
- Crepe Soles
- Contrasting Trims
- Sizes 4-9

Swankees

2.98



LOW HEEL CASUALS

- Smooth Leathers
- Modified Toes
- Tapered Toes
- Newest Styles
- Popular Colors
- Thrifty Priced
- Sizes 4-9
- Grand Selection

Swankees

1.99



LOW HEEL CASUALS

Smart NEW SPRING STYLING

- Smooth Leathers
- Newest Colors
- Compo Soles
- Crepe Soles
- Sizes 4-9



A PALE GREEN THUMB

A few random thoughts on spring planting:

BEDS
In planting beds of annuals and perennials, try to visualize how the plants will look when grown, rather than the tiny size they are when you put them out.

In other words, plant your taller plants in the back of the bed, shorter plants in the middle, and low growing types in the border near the front edge.

Zinnias, dahlias, asters, marigolds, larkspur, and delphinium should go in the back of the border, as they will ordinarily reach heights of 30 inches or more.

Medium height plants such as dwarf asters, some taller petunias, cox comb, etc., should be in the mid-border, and some plants such as dwarf petunias, violets, etc., should be in the front border.

COLORS
For a novelty effect you might like to try some solid color beds this spring. Among the new varieties you will find similar color choices in annuals and perennials that will give you a massed effect of any chosen color. The trend is toward cool colors, such as

blue in south and west exposure beds. You might prefer an all-red or all yellow bed, either of which would be simple to arrange according to your individual taste.

PRUNING
Now is the time to take cuttings from your roses and other perennial plants that are beginning to bud out.

Pruned branches from most rose varieties can be easily rooted in vermiculite or sand, providing they are kept out of direct sun, and supplied with plenty of humidity, but not too much water. They will root in water sometimes, but this is not too reliable. Many people are successful in rooting rose cuttings by sticking them in the bed outside, and covering them with a fruit jar or similar cover to hold the humidity, and keep out the chill of spring nights.

This column welcomes questions concerning gardening problems, and while it makes no pretense of being able to answer them all, we'll do our best.

We will also welcome any gardening hints you may wish to pass along, and will try to act as an exchange column for you who love to garden.

FLY TO ALABAMA

Mr. and Mrs. J. L. Alsop left by plane on Tuesday for Alabama to spend 10 days with their daughter-in-law, Joyce, and Vicki and Larry in Mobile, Ala.

Hospital News

MULESHOE HOSPITAL

Admitted
Mrs. Betty Lynn Copley, Mrs. H. B. Flanagan, Mr. L. R. Testerman, Mrs. J. F. Prather, Mr. Lee Roy Stubbs, Mrs. Chalmers Davis, Mr. Robbie Autry, and Mrs. E. J. Hall.

Dismissed
Les Smith, Eddie Hall, Dewey Ball, Shirley Nichols, J. M. Copley, Mrs. Jessie Lewis, Mrs. Kenneth Turner, Karl Lovelady, and Nolan Young.

Congratulations To:
Mr. and Mrs. Billy Copley on the birth of a 8 lb., 6 oz. girl, March 14.

Mr. and Mrs. Chalmers Davis on a 5 lb., 5 oz. girl, March 15.

WEST PLAINS HOSPITAL

Admitted
Mrs. Cecil Davis, Mrs. Emma Swart, Mrs. Henry Ham, Mrs. Jack Ketcherside, Mrs. Lloyd Edwards, John Humphreys, Jim Burkhead, John Seid, Debbie Davis, Sharon Morris, J. L. Calvert, Mike Jones, Elbert Moore, and Jack Obenhaus.

Dismissed
T. L. Oliver, Mrs. Albert Simmons, Mrs. Sam Johnson, Annette Hoage, C. C. Snitker, Mrs. Louise Gonzales, Threda Fay Tine, Lee Ann Yerby.

WANT ADS can raise extra money, find you a home, or a baby sitter. Dial 7220 or 5400.

WILL MOVE TO LUBBOCK
J. V. Adcox, who has been associated with the West Plains Hospital for the past five years, purchased the Goodnight Pharmacy at 2613 34th Street in Lubbock and took possession March 9.

Mrs. Adcox and the daughters, Peggy and Vickie, will remain in Muleshoe until April 1 and then the family will be at home at 2715 56th Street.

RETURN FROM FISHING TRIP TO RIO GRANDE

Mr. and Mrs. L. D. Cannon returned home recently from a several week stay in the Rio Grande Valley. While there they fished at Port Isabel.

On Monday night the Cannons served a fish supper to their children which included some red snappers that were caught by Mr. Cannon while deep sea fishing in the Gulf off of Port Isabel.

The Cannons report that they were in lots of rain in the Valley.

VISITS STATE WOMEN'S CLUB HEADQUARTERS

While in Austin attending the World Council of Churches convention, Mrs. O. N. Jennings also had the pleasure of visiting the State Headquarters of the Federated Women's Clubs. She signed the register and attended an art show of painting done by persons past the age of 70. She was amazed by their beauty and wishes more people could see them.

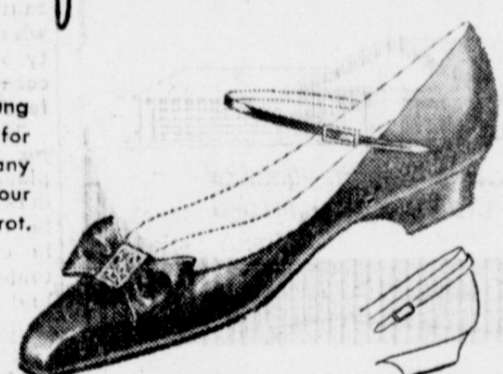
Poll Parrot

SHOES FOR BOYS AND GIRLS

Styled in the newest young folks' fashion, they are famous for fit and long wear. See the many new styles for Easter... dress up your small fry with sparkling beauties by Poll-Parrot.

POLL-PARROT 8 1/2 to 3

SCAMPEROOS 8 1/2 - 3



this Easter
STEP OUT IN STYLE

Trim Tred

Shoes For Women

You'll love Trim Tred shoes! Styled with fashion's latest flair, are unsurpassed in smooth fit and perfect comfort. You've seen them on TV on "The Price Is Right" and you'll like the price of Trim Treds.

TRIM TREDS \$6.95 TO \$11.95



FOR MEN The RAND Shoe

Handsomely styled and expertly constructed of finest leathers. Rands and Randcrafts for men and big boys will provide the sharp and comfortable look you want, for Easter and Spring.

RAND SHOES \$10.95 TO \$19.95

RANDCRAFT \$7.95 TO \$9.95

GET YOUR FREE POLL PARROT SURPRISE Shoe At ANTHONY'S In Muleshoe, Texas



Muleshoe, Texas



Mrs. Marge Hazen of Atascadero, Calif. signs the guest book at the open house of the Girl Scout Little House Sunday afternoon. Assisting with the registration of the large number who called are Susan McVicker, Ann Phelps, and Melinda Harris. —Journal Photo

BULA NEWS BRIEFS
 by Mrs. John Blackman

Mr. and Mrs. Dee Parkman and girls of Pettit were lunch guests Sunday with his parents, Mr. and Mrs. C. W. Parkman.

Mrs. Ray Kennison of Portales visited Sunday with her parents, the Tom Bogards.

Mr. and Mrs. L. H. Medlin of Broken Arrow, Okla., visited their son and family, Mr. and Mrs. Buck Medlin from

Wednesday until Saturday.

Murry Alexander left Tuesday for Waco. He will leave Wednesday for camp assignment for two weeks duty in the Army. Mr. Cecil Jones will accompany him and return his car here. Mrs. Alexander will make her home at the present with her parents here, the Cecil Jones.

Mrs. Boyd Magby and children, Starla, Skip and Rick of Muleshoe, spent part of last week in the home of her aunt here, Mrs. Lloyd Pollard.

To Iceland
 Sgt. Roger C. Baker left recently for his new assignment in Iceland. Mr. Baker is to be in Iceland for one year's duty. He and his wife and two children have been visiting here for several weeks in the home of Mrs. Baker's parents, Mr. and Mrs. P. R. Pierce. Mrs. Baker and children will live here while her husband is away. Mrs. Baker will be remembered here as Miss Minnie Pierce.

Mrs. Fred Archer received word early Thursday morning of the sudden death of her brother, Pete Nebrough of Fresno, Calif. After receiving this word, Mrs. Archer left immediately for Fresno. She was accompanied by her sister, Mrs. Allene Coffman of Big Springs and her brother, Chester Nebrough and daughter, Barbara of Bovina.

Mr. and Mrs. L. L. Walden have been visiting for several days with relatives. At Lockney in the Van Allred home and in Duncan, Okla. in the Clarence and Henry Allred homes, and also at Ringland, Okla., with Mrs. Catherine Bawcom.

Pounding
 Members of the Bula Church of Christ drove to the home of the new minister and wife,

Bud and Sue Hammons after church services Sunday evening and gave them an old fashioned preacher pounding. Sandwiches, cookies, pickles, coffee and pops were served by ladies of the church.

Bro. Hammons and wife turned out to be good hostesses and really entertained the group.

About 45 were present.

Mrs. B. L. Blackman returned to her home here Tuesday after visiting for three weeks with relatives in Amarillo and Clarendon.

Mr. and Mrs. Leo Holt and son, L. O., visited last week with her mother, Mrs. A. V. Davis at Stamford.

Sunday afternoon guests in the Paul Young home were Mr. and Mrs. J. E. Humphrey of Lubbock.

WCS of the Methodist Church met Wednesday afternoon in the home of Mrs. F. L. Simmons with 11 ladies present. Mrs. Ivan Clawson had charge of the lesson, with Mrs. Kile giving the scripture reading. Program opened with the group singing "Rescue the Perishing". Mrs. Simmons brought the first part of the lesson entitled "A New Kind of Sharing". Mrs. Medlin brought the second part, "Women That Work in Okinawa", and Mrs. Clawson brought the third part, "Missionaries To U. S. A."

Lesson closed with the group singing "Near The Cross", and Mrs. Paul Young gave the benediction. Refreshments of coffee, Cokes and cake were served by the hostess.

LOCAL AGENCY LEADS IN SOUTH COAST LIFE

The Pool Agency and Bob Jacobs of Muleshoe, representatives for the South Coast Life Insurance Company, were first in paid club volume amongst all of the company's representatives for the month of February.

The South Coast Life Insurance Company has home offices in Houston.

WANT ADS are as newsy as the front page and high in reader response. To place your want ad dial 7220 or 5400.

Christian Science Services

The effectiveness of prayer in healing the sick will be stressed at Christian Science services Sunday in the Lesson-Sermon entitled "Matter."

From the Gospel according to St. Mark will be read the healing by Christ Jesus of the young lad who had "a dumb spirit." The account ends with Jesus' comment to his disciples, "... This kind can come forth by nothing, but by prayer and fasting" (Mark 9:29).

Also emphasizing the power

of prayer are passages from "Science and Health with Key to the Scriptures" by Mary Baker Eddy, including the following (15:9): "To enter into the heart of prayer, the door to the erring senses must be closed. Lips must be mute and materialism silent, than man may have audience with Spirit, the divine Principle, Love, which destroys all error."

ATTENDED DAUGHTER'S SHOWER

Mrs. O. C. Kirk was in Midland last week to attend a bridal shower honoring her daughter, Carolyn, bride-elect of Roy Lee Wallace.

Muleshoe Chiropractic Clinic

Dr. Brooke Green, Director
 South of Courthouse Muleshoe

TO THOSE WHO ARE SICK RHEUMATISM

For several years I was in poor health, and I was gradually getting weaker. At the insistence of one of my sons, who had been a Chiropractic patient, I consulted Dr. Brooke Green of the Muleshoe Chiropractic Clinic. After a Chiropractic examination which included spinal X-rays, I became a patient. My condition at this time included: extreme nervousness, difficulty in breathing, kidney condition of several years, a lower back condition for more than 30 years, swelling of the legs, headaches, high blood pressure, constipation, stomach disorder, sleeplessness, and rheumatism over entire body.

From the first Chiropractic adjustment, I felt some improvement and the progress has continued. Now after two months of Chiropractic care, several of these symptoms have completely disappeared and the other conditions have much improved. I have given this above affidavit in the hope that others may find the relief and good health that I now enjoy.

MRS. MANDY E. ACTKINSON
 Muleshoe, Texas
 October 10, 1958

Sworn and subscribed to before me a Notary Public in and for Bailey County, Texas, this the 10th day of October, A. D., 1958.

L. S. Barron, Notary Public
 Muleshoe, Texas

Tom Stell Died Sunday, March 8

Tom Stell, a resident of Lipan for seventy years, died at the home of a daughter, Mrs. S. I. Self in Denton Sunday, March 8, 1959. He had been with Mrs. Self and her family for about two years. Prior to that, Lipan had been his home. Mr. Stell was ninety-two years of age.

He was married to Rosa Lee Dickinson in 1887. She passed away in 1928 and in 1930 he married Ina Foster who passed away last year. Three sons, Jim, Dennis, and John and one daughter, Mrs. Irvin St. Clair also preceded their father in death.

Survivors are two sons, A. L. Stell of Brownfield and W. L. Stell of Colorado City; four daughters, Mrs. S. I. Self, of Denton, Mrs. R. C. Dyer of Hico, Mrs. Alice Bullock of Muleshoe, and Mrs. Tillie

Meeks of Oildale, Calif.; twenty-four grandchildren, forty-four great grandchildren.

During his seventy years in Lipan Mr. Stell was active in the Baptist Church where he had been a member for 65 years. He was a deacon and served in other capacities. He had been a Mason for fifty years.

Funeral services were held at 2:00 p.m. Wednesday, March 11, 1959 at the First Baptist Church in Lipan with the pastor, Rev. Harry Hames and a former pastor, Rev. McQuerry of Perrin officiating. Many friends gathered to pay their respects to a beloved citizen.

Interment was in the Evergreen Cemetery, the Smith Funeral Home in charge. Pall bearers were the deacons of the church in which his membership had been for so many years.

Carter's Mother Died Friday

Mrs. S. A. Carter, mother of Rufus Carter of Lazbuddie community, passed away Friday, March 13, at Mangum, Okla. Mr. and Mrs. Carter and their daughter, Mrs. Buck Bradshaw of Farwell, attended funeral services, held in Willow, Okla., Sunday. Burial was in Jester cemetery, near Willow.

Mrs. Carter, who was 88, had not been well since falling and breaking a leg last August. She with her family moved to Mangum in 1908, from Wise County, Texas, and she had resided there since that time. Her husband passed on in 1902.

She is survived by four daughters, Mrs. Emma Hargrove, Chickasha, Okla.; Mrs. Maggie Gilbreath, Willow, Okla.; Mrs. Henry Ford, Amarillo; and Mrs. Sim Snow,

Wyer Discusses Guns At Rotary

David Wyer, Muleshoe boy who made a hobby grow into a business that pays him for his time and work, discussed this hobby, gunsmithing, at the meeting Tuesday of the Rotary Club. Wyer displayed guns of every type, rifles, pistols, and shotguns, that he has worked on.

He repairs and rebuilds guns of all kinds, and conducts a cartridge refilling operation powering the cartridge according to specifications wanted by the customer.

David first began the study of guns in his spare time and now all the time he can spare from his regular job is devoted to his gun work.

He was introduced by Clyde Holt, who had charge of the day's program. The club voted again to support the Little League by sponsoring the Cardinals, a league club and voted the money needed be paid into the league treasury.

Chester, Okla., and the son, Rufus Carter, Muleshoe. Two sons preceded her in death.

Formal Opening Saturday TOWN & COUNTRY STEAM LAUNDRY

NOW Send your family off every day in fresh laundered clothing for that look of clean Freshness

Open 7AM - 6PM
 Mon. Through
 Saturday



Located in Town and Country Laundrymat Building
 Next door to Piggly-Wiggly on the Clovis Highway

Send Your Clothes To The Laundry

Town and Country Steam Laundry Offers these services to YOU!

FLUFF DAMP
 your clothes washed and extracted

FLUFF 'N FOLD
 washed, dried and folded

FAMILY BUNDLE SERVICE

Washed, dried and all flat work finished, or tumbled according to customers request. All wearing apparel finished.

STRAIGHT FINISH WORK

DYEING **BLANKETS** **RUGS**

We Invite Commercial Work On Negotiated Price Basis

Come to our OPEN HOUSE SATURDAY, MARCH 21

We'll be on hand to welcome you and demonstrate why "the laundry does it better"

FREE COKES

We're proud of Muleshoe's own Steam Laundry and will be looking for you Saturday

Bring Your bundles in by 9 AM and pick up your finished laundry the same afternoon



TOWN & COUNTRY

Steam Laundry

W. H. CRENSHAW, Owner
 Phone 6610

R. B. H. Supers To Open New Supermarket At Main & Ave. C



PERSONNEL OF RBH SUPERS from left to right: BURL HAM, president; CLAUDE "Curly" HAM, vice president; MICKEY HAM, secretary and treasurer; and ED SMITH, market manager.

RBH Supers, Muleshoe's newest supermarket will hold its formal opening Friday morning with appropriate opening ceremonies, free gifts, and worldwide special prices. The new store is owned and operated by Burl, Claude and Mickey Ham, who also operate a similar store in Eunice, N. L. All three have many years very chain on the Plains, and

are well equipped by virtue of this experience to operate a store here. The store is located in the building formerly occupied by Dunlap's, and contains more than 7500 square feet of shopping space, tastefully decorated in pastel colors with new equipment, also in pastel, throughout. Parking space in a

paved lot adjacent to the store is large enough to accommodate 55 cars. Opening day specials include double Frontier Stamps with each 2.50 purchase; free sugar, coffee and cold drinks; hose to the first 50 ladies Friday morning; and the awarding of merchandise totaling \$2,750. Free merchandise to be

given includes bags of groceries, bicycles, percolators, electric roasters, and a diamond-set ladies wrist watch. Claude Ham will manage the store, with Ed Smith in charge of the meat department. Full details of the opening are to be found in this section of today's Journal.

Our Honor Roll

RENEWALS

Vernon Jamison, Lariat. Cecil Atehley, Lariat. David Setliff, Friona. T. W. Bewley, Friona. Gilbert Wenner, Friona. C. D. Roger, Earth.

Olan D. Clements, N. M. Oscar Allison, Earth. Lonnie Arnold, Sudan. Harry Bell, Sudan. V. E. Ganer, Sudan. C. C. Snitker, Morton. Carl Pollard, Goodland. Hugh Gore, Circleback. Raymond Gage, Circleback. Woodrow Smith, Badleyboro. W. F. Ragland, Rt. 5. Jodie Barrett, Rt. 5. C. H. Clem, Rt. 5.

Ralph Ethridge, Rt. 5. J. R. Lee, Rt. 5. C. S. Sullivan, Rt. 5. Ike Houston, Rt. 5. Arie Woodfin, Rt. 5. Grace Haberer, Rt. 4. G. G. Priboth, Rt. 4. W. C. Stout, Rt. 4. Doyle Turner, Rt. 4. A. J. Dutton, Rt. 4. L. K. Dean. Alem Henley, Rt. 4. Mrs. Bonnie Haberer, Rt. 4. L. B. Peugh, Rt. 4. E. W. Atkins, Rt. 3. Charles Bratcher, Rt. 3. P. L. Brown, Rt. 3. Willis Ellis, Rt. 3. M. M. Norris, Rt. 3.

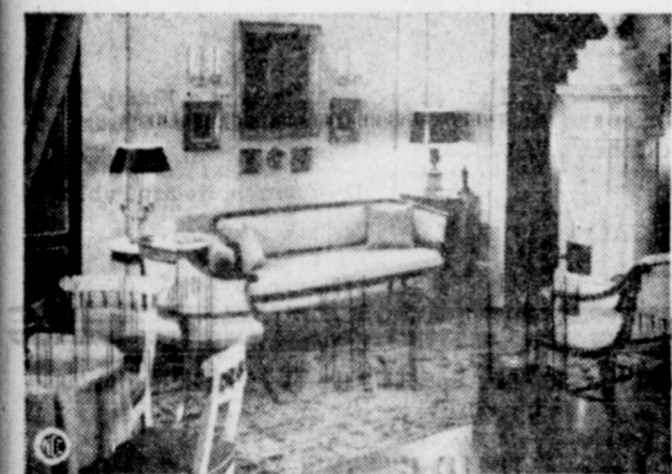
Eleta Hamblin, City. Clio Middlebrook, City. Fred White, City. E. U. Billingsley, City. Troy Atkinson, Rt. 2. Ted Allen, Rt. 2. Glen Stevens, Rt. 1. Alford Steinbock, Rt. 1. L. O. Norwood, Rt. 1. Seaborn Moore, Rt. 1. E. R. Lawhon, Rt. 1. C. D. Gustin, Rt. 1. R. O. Gregory, Rt. 1. L. F. Green, Rt. 1. Harold Wyr, City. Jim White, City. H. N. Nivens, City.

Melvin Treider, Rt. 3. Delter Wenner, Rt. 3. J. E. Wright, Rt. 3. D. O. Burelsmith, Rt. 2. W. H. Rutherford, Rt. 2. J. W. Roberts, Rt. 2. J. L. Redwine, Rt. 2. R. D. Hess, Rt. 2. Lendon Phillips, Rt. 2. M. E. Little, Rt. 2. A. R. McGuire, Rt. 2. Lewis Seymore, Rt. 2. Mrs. R. F. Wright, Rt. 2. Ernest Kuber, Rt. 2. James Wedel, Rt. 2. L. N. Walker, Rt. 2. Joe W. Peugh, Rt. 2. D. P. Brown, Lavon. Paul Chandler, Richardson. Mrs. W. N. Burkhardt, Calif. Myrtle Maxwell, Calif.

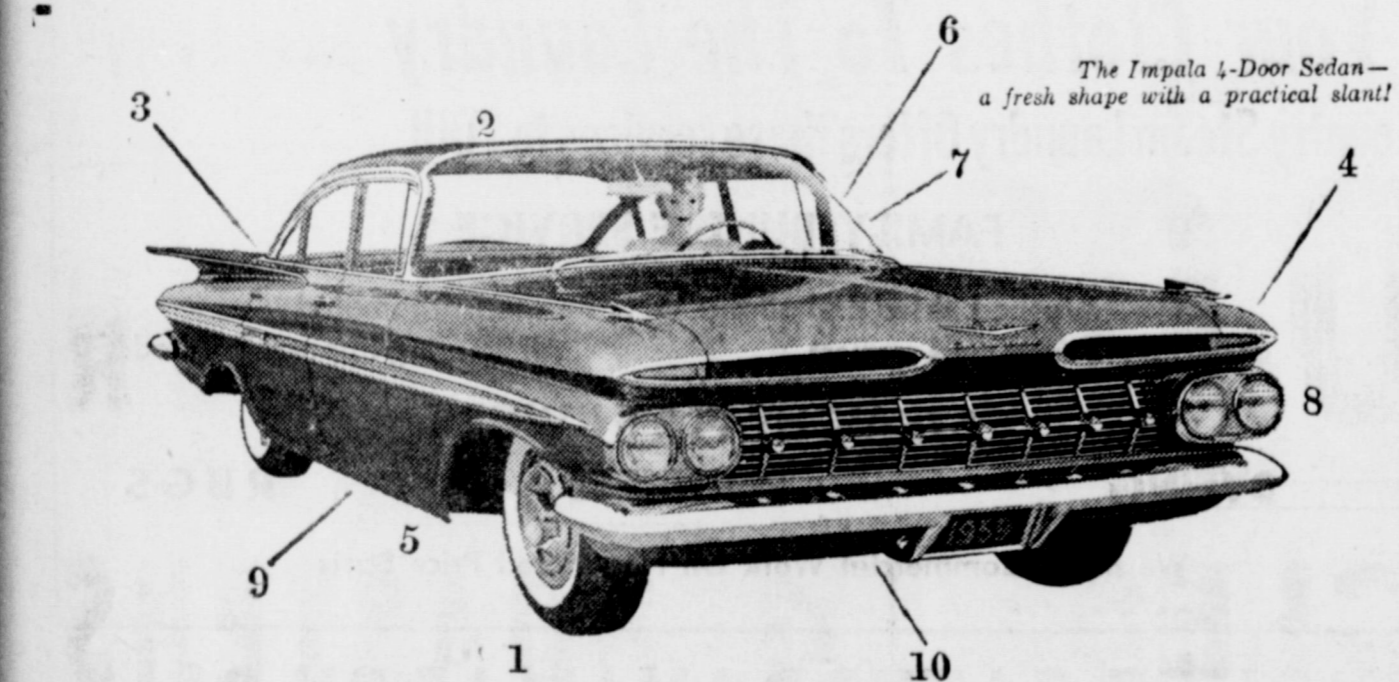
STRENGTH FOR THESE DAYS

The Lord bless thee, and keep thee; the Lord make his face shine upon thee, and be gracious unto thee; the Lord lift up his countenance upon thee, and give thee peace.—(Numbers 6:24-26.)

Surely the three most beautiful, most wonderful words in the world must be these—'God Bless You'—when we say them sincerely, devotedly and prayerfully to one another.



TEMPERED FOR TODAY—The elegance of yesterday's drawing room is tempered for today's casual living in this living-dining room by interior decorator Mrs. Truman P. Handy. All beige and white pinstripe cotton ticking is used throughout—on the sofa and chairs, in the draperies and tablecloth and in panels on the wall. A white porcelain stove is set in a niche of marbledized blue.



The Impala 4-Door Sedan—a fresh shape with a practical slant!

Chevy's new beauty makes beautiful sense!

From its lustrous new finish to its roomier interior, Chevy is as logical as it is lovely. It's '59's best looker—for the best reasons!

- 1. HANDSOME WHEELS. COOL BIGGER BRAKES. Air slots help assure safer stops time after time.
- 2. NEW MAGIC-MIRROR FINISH. NEEDS NO WAXING OR POLISHING FOR UP TO THREE YEARS.
- 3. REAR DECK. HOLDS MORE LUGGAGE. Five cubic feet more space.
- 4. FRONT AIR SCOOPS. HELP ENGINE COOLING. Those stylish openings above the grille bring in more air.
- 5. ROOMIER FISHER BODY—wider than many costly cars.
- 6. VAST NEW AREAS OF VISIBILITY. And you'll find Safety Plate Glass all the way around.
- 7. INDIVIDUALLY HOODED INSTRUMENTS REDUCE GLARE.
- 8. ANODIZED ALUMINUM TRIM. Rust-resistant trim helps keep that showroom look.
- 9. EASIER TO GET IN—NEW STEP HEIGHT AND SEAT DESIGN. And there's lots of head room too!
- 10. HIGH CLEARANCE. Takes rough roads with room to spare.



See your local authorized Chevrolet dealer and pick out your new Chevy!

C & H CHEVROLET CO.

207 MAIN MULESHOE, TEXAS PHONE 2720

Renner Report

High Protein Hay. Dr. William Longstaff, Texas Research Foundation soil scientist, has made fertilized Coastal Bermuda pay big dividends in tons of high protein hay on the A. P. Fowler farm near Canton in Van Zandt County. Dr. Longstaff produced more than 11.39 tons of 13.3 per cent protein hay an acre at a fertilizer cost of \$73 an acre—a gross per-acre income of \$280 which reflected \$3.84 profit for each dollar invested in fertilizer. Dr. Longstaff used standard farm equipment in a dry farming operation during 1957-58 on conventional East Texas fields.

Conservation Library. Texas Research Foundation has acquired the botanical-agricultural library of the late Dr. Carleton Roy Ball of Washington, D. C. The library is one of the most comprehensive collections in the nation of source material on all phases of conservation, and includes Dr. Ball's unfinished manuscript for a text on that subject. An internationally famous botanist and agronomist, Dr. Ball served the Department of Agriculture as a cerealist and taxonomist for more than 60 years. He died in February, 1958, at the age of 81. His library further enhances the Foundation's research facilities.

Corn Testing. Fourteen South Texas Future Farmers Chapters have entered Texas Research Foundation's regional corn testing program this spring. Seventy of the boys are planting more than 110 acres of white and yellow corn hybrids—TRF 9 and TRF 10, respectively—and will make reports to the Foundation this fall on harvest results. Chapters participating are Beeville, Pawnee, Skidmore, Three Rivers, Sinton, Los Fresnos, Santa Rosa, Jourdanton, Dilley, Eagle Pass, Lytle, Zapata, Carrizo Springs, and Cotulla. The plantings by the South Texas Future Farmers bring to three the number of regions in which FFA are participating in the Foundation's testing program. East Texas Future Farmers have been cooperating for two years, and Northeast Texas Future Farmers for four years.

\$5,000 Reward. Texas Research Foundation has launched and Elsie Joan Dickson, Chairman F. De Witt and Carolyn Sue Burris. Jerry Wayne Garlington and Hazel Jeanette Cunningham. Ray Emory Davenport, Jr., and Opal Jane Ford.

Forty Years of Service



ROUNDED BY DOUGHBOYS OF THE AEF IN PARIS, FRANCE, MARCH 15-17, 1919, THE AMERICAN LEGION IS CELEBRATING ITS 40TH ANNIVERSARY. NEARLY 3,000,000 LEGIONNAIRES PLUS 1,000,000 WOMEN IN ITS AUXILIARY MAKE IT THE LARGEST ORGANIZATION OF WAR VETERANS IN HISTORY.

EACH YEAR 2,000,000 YOUNGSTERS TAKE PART IN SOME LEGION PROGRAM SUCH AS BOYS STATE, BOYS NATION, ORATORICAL CONTESTS OR JUNIOR BASEBALL. LEGION POSTS SPONSOR 4,500 BOY SCOUT UNITS. SINCE 1925 THE ORGANIZATION HAS SPENT \$148,000,000 FOR CHILD WELFARE AND YOUTH WORK.

GRADUATES OF LEGION JUNIOR BASEBALL MAKE UP OVER HALF OF ALL MAJOR LEAGUE PLAYERS.

THE G. I. BILL OF RIGHTS WHICH SMOOTHED THE RETURN OF 20,000,000 WAR II AND KOREAN VETS TO CIVILIAN LIFE WAS THE PRODUCT OF LEGION EXPERIENCE AND LEADERSHIP IN VETERANS AFFAIRS.

FEEDERS GRAIN, INC.

Daily Buyers For Cattle Feeders

Federal Storage License 3-4451

No. 2 Milo . . . \$1.90 cwt

WE CAN USE BARLEY • HAVE SEMI-LIFT

Located At

Sudan Livestock & Feeding Co.

Phone 4491 Sudan, Texas

WELCOME to MULESHOE

R. B. H. SUPERS

and

Burl, Claude and Mickey Ham

on the opening of your new store here!

Best Wishes For Your Continued Success

Higginbotham - Bartlett Lumber Co.

Muleshoe

R. B. H. SUPERS

Main At Avenue C

Plenty of FREE Parking In
Our Big Paved Lot



Those Who Know...

enjoy lower prices and
FRONTIER STAMPS



Frontier Stamps
DOUBLE
FRIDAY and SATURDAY
With Each 2.50 Purchase
Or More

GRAND

fun!
savings!
values!



OPENING

Friday-Saturday

March 20-21



200 BAGS OF GROCERIES

10 Bags Given Every Hour On The Hour

FRIDAY and SATURDAY

BEGINNING AT 10:00 A. M. FRIDAY

FIRST 50
Customers
FRIDAY MORNING

PURCHASING
\$15.00 or more

Will Receive A
FREE pair of

99c Ladies Hose
In Addition To 10lb. Sugar



Grand Prize WRIST WATCH

To Be Given
Away
SATURDAY
APRIL 18
4:00 P. M.



Ladies
GRUEN
Set in Diamonds
Valued At
275.00

FREE

PRIZES totalling

\$2,750.00

4 BICYCLES ENGLISH BUILT

VALUED AT 57.95 EACH

One Bicycle Given Each Wednesday Afternoon
At 4 p. m. For 4 Weeks First One March 25

12 ELECTRIC AUTOMATIC COFFEEMAKERS

VALUED AT 12.95 EACH

One Every Day At 4 P. M. For 2 Weeks
Beginning Monday, March 23



12 CHARCOAL PORTABLE BARBECUE GRILLS

VALUED AT 12.95 EACH

One Each Afternoon At 4 P. M.
Beginning April 13

FREE 10 LB. BAG

IMPERIAL PURE CANE SUGAR

WITH \$15. Or More Purchase

ON

FRIDAY and SATURDAY

BE SURE TO

REGISTER

FOR THE FREE PRIZES

4 ROASTERS

Westinghouse Electric Automatic

VALUED AT 49.95 EACH

One Each Saturday At 4 p. m. For
The Next 4 Weeks First One March 28

R. B. H. SUPERS

Muleshoe, Texas

FREE

200 BAGS OF GROCERIES
4 BICYCLES 12 COFFEEMAKERS
4 ROASTERS 12 BARBQUE GRILLS
GRAND PRIZE LADIES WRIST WATCH

COCA COLA 12 Bottle Carton Plus Deposit **39^c**

SHORTENING Swift Jewel 3 Lb. Can **59^c**

CAKE MIX Gladiola **4 For 1.00**

FLOUR Gladiola 5 Lb. Bag **39^c**

DRUG ITEMS

ADORN — TONI Reg. 1.50
SPRAY NET . 89^c

TOOTH PASTE 53c Size Gleem **39^c**
 BABY MAGIC 60c Size Mennen **39^c**
 DEODORANT 73c Size Large Ban **52^c**
 Note Book Paper 98c Size **59^c**

LADIES SAND & SAGE
HOSE
 60 Guage, Reg. 99c

Sand-n-Sage hosiery
 PAIR **49^c**

STRAWBERRIES Mity - Nice 10 Oz. Pkg. **15^c**

FRUIT PIES Morton Apple Cherry, Coconut Custard **39^c**

POT PIES Morton Macaroni Casserole FREE, **1.**

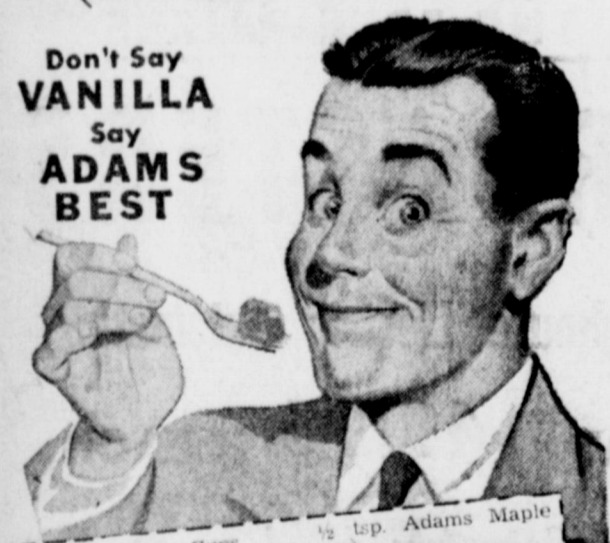
Gladiola 24 Pack **ROLLS** 25c
 Pic Pak 1/2 Gallon **ICE CREAM** 59c
 Bordens Glacier Club 1/2 Gallon **ICE CREAM** 59c



DOUBLE
 With 2.50 Purchase or More
 Friday and Saturday

- IRISH POTATOES Surfine Whole No. 303 Can 2 For **29^c**
- BEETS Shurfine Cut No. 303 Can 2 For **27^c**
- POP CORN Jolly Time Can **25^c**
- ASPARAGUS Shurfine Cut No. 1 Picnic Can **21^c**
- BEANS Rosarita Mexican Style No. 303 Can **17^c**
- BEEF STEW Dinty Moore 1 1/2 Lb. Can **59^c**
- BLACK PEPPER Schillings 4 Oz. Can **33^c**
- CRACKERS Salad Waffers 1 Lb. Box **29^c**

ADAMS BEST MAKES
Cakes taste better
 (and Cake Mixes too!)



Don't Say **VANILLA**
 Say **ADAMS BEST**

1 lb. or 2 1/2 Cups Brown Sugar
 1/2 Cup Boiling Water
 1 Cup Milk
 1/2 Cup Chopped Pecans

1/2 tsp. Adams Maple Flavor
 1/2 tsp. "Adams Best" (Vanilla)
 1/2 tsp. Adams Walnut Flavor

Dissolve sugar and water in pan over slow fire. Add milk. Boil to soft ball stage (235 degrees). Remove from fire. Cool awhile. Add pecans and flavors. Beat until is creamy. Pour into a greased pan. When cool cut into squares.

Favorite recipes in every **ADAMS BEST** package

ADAMS BEST
 It's no trick... it's **ADAMS BEST**
 TWICE AS STRONG AS STANDARD VANILLA

TOMATO JUICE Libbys 46 Oz. Can **4 For 1.00**

SALAD DRESSING FREE 8 Oz. Morton Sandwich Spread With Each Quart **39^c**

POTATO CHIPS Mortons 15c Pkg. **2 For 15^c**

ADAMS 1 1/2 Oz. **VANILLA 33^c**
 1/2 Oz. Imitation Butter Free

Malone's All Flavors 1/2 Gallon **MELLORINE . . . 33^c**

VISIT YOUR NEARBY
FRONTIER STAMPS
 REDEMPTION CENTER

R. B. H.
SUPERS
 MULESHOE, TEXAS

R. B. H. SUPERS

Be Sure To Register FOR THE \$2,750.00 IN PRIZES

GRAND fun! savings! values! OPENING

OLEO All Sweet LB. **23¢**

TO BE GIVEN AWAY DURING OUR

TOMATOES	Cello Carton Each	15¢
ORANGES	Texas 5 Lb. Bag	39¢
Crisp Green Stalk CELERY	12 1/2¢
Large Firm Heads LETTUCE	. . . lb.	10¢
No. 1 Russets 10 Lb. Bag	POTATOES	39¢
Bunch	RADISHES	5¢
Green Bunch	ONIONS	5¢

PEAS Libbys Garden Sweet 303 Can	5 For \$1	PEARS Libbys 303 Can	29¢
CORN Libbys Cream Style Golden 303 Can	19¢	CATSUP Libbys 14 Oz. Bottle	19¢
BEANS Libbys Cut Green 303 Can	19¢	Blackeyed Peas Food King 303 Can	10¢
Fruit Cocktail Libbys 303 Can	27¢	Pork & Beans Food King 303 Can	10¢
Zestee 18 Oz. Jar Peach, Apricot or Red Plum			
PRESERVES 39¢			
HOMINY Food King 303 Can	3 For 25¢	CANDY Puritan Window Pak	2 For 59¢
Crackers Ritz Nabisco 13 Oz. Box	31¢	MACARONI Skinners 7 Oz. Pkg.	2 For 25¢
Pickles Ma Brown Old Fashion Pint	29¢	CLOROX Qt. Bottle	19¢
SOUP Heinz Cream of Tomato	2 Cans 25¢	Cookies Hydrox 12 Oz. Pkg.	39¢



COFFEE

Maryland Club 1 Lb. Can **67¢**

FRONTIER SAVING STAMP MARKET



FRYERS

Clarys Fresh Dressed LB **27¢**

U. S. Gov't Graded Beef LOIN STEAK	lb 69¢	U. S. Gov't Graded Beef RIB STEAK	lb. 59¢	U. S. Gov't Graded Beef SHORT RIBS	lb. 29¢
---	--------	--	---------	---	---------

Hoe Down Whole Hog

Sausage

2 Lb. Bag **1.09**

Frankfurters

Betty Crocker

BISCUITS

3 For **29¢**

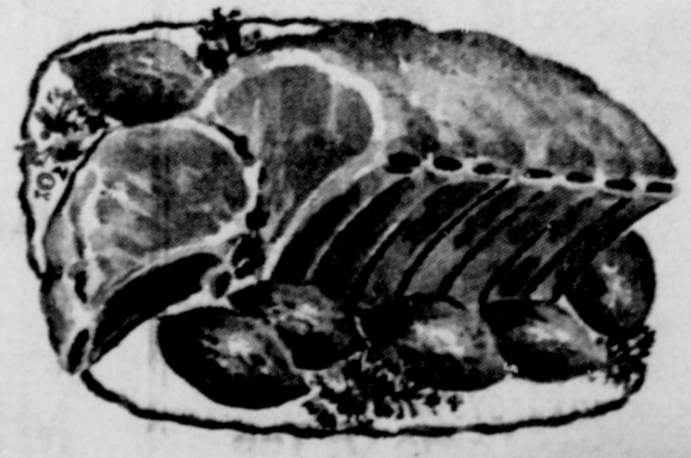
Farm Pac

1 LB. PKG. 49¢

CHUCK ROAST U. S. Gov't Graded Beef	lb. 55¢	PORK ROAST Picnic Cut	lb. 29¢
SHOULDER ROAST U. S. Gov't Graded Beef	lb. 49¢	PORK STEAK Boston Butt Cut	lb. 49¢

BACON

Frontier Sliced **2 LB. PKG. 79¢**



Frontier Stamps DOUBLE Friday and Saturday With 2.50 Purchase or more



Legal Notice

ORDER FOR ELECTION

THE STATE OF TEXAS: COUNTY OF BAILEY:

WHEREAS, there will be held an election on the 7th day of April, A. D., 1959, to elect a certain number of City Aldermen for the CITY OF MULESHOE, BAILEY COUNTY, TEXAS, and WHEREAS, it is required of the Mayor of the City of Muleshoe, Bailey County, Texas, to order said election, and WHEREAS, the said election will be for the election of three (3) Aldermen.

NOW, THEREFORE, I, W. T. BOVELL, Mayor of the CITY OF MULESHOE, BAILEY COUNTY, TEXAS, hereby order an election for the election of three (3) Aldermen to be held on the 7th day of April, A. D., 1959 at the City Hall in the City of Muleshoe, Bailey County, Texas; and the three persons receiving the highest number of votes for alderman shall be declared the duly elected City Aldermen.

IT IS FURTHER ORDERED by me that the City Secretary receive petitions for names to go on the ballot as candidates for the office of Aldermen and all petitions must be in the office of the City Secretary at least thirty (30) full days before the date of the election.

IT IS FURTHER ORDERED that the said City Secretary transmit the names of all candidates duly petitioned to some person who shall print said ballots, and same shall be known as the OFFICIAL BALLOT FOR THE ELECTION OF CITY ALDERMEN.

IT IS FURTHER ORDERED that notice of this election shall be given by publication of the same in some newspaper within the city limits of the City of Muleshoe, Bailey County, Texas, for at least thirty (30) days prior to the date of the election, if there be one, and if none, then by posting notice of same in at least three public places in the said City Limits of the City of Muleshoe, Bailey County, Texas, before the date of the election.

IT IS FURTHER ORDERED that all persons residing within the city limits of the City of Muleshoe, for at least six (6) months prior to the election, and for one (1) year in the State of Texas, and otherwise qualified to vote under the Constitution and Laws of the State of Texas, are declared eligible voters in said election.

I FURTHER ORDER that J.

E. Day be and he is hereby appointed presiding officer to hold said election, and he shall select two judges and two clerks to assist him in the holding of the said election, and he shall within the time prescribed by law make due return thereof of said election returns, and such returns shall be canvassed by the CITY COUNCIL of the CITY OF MULESHOE, within five (5) days thereof after said election.

Dated this the 25th day of February, A. D., 1959.
W. T. BOVELL,
Mayor, City of Muleshoe
Bailey County, Texas

ATTEST:
BILLIE BAYLESS,
City Secretary
(Official Seal) 9-4tc.

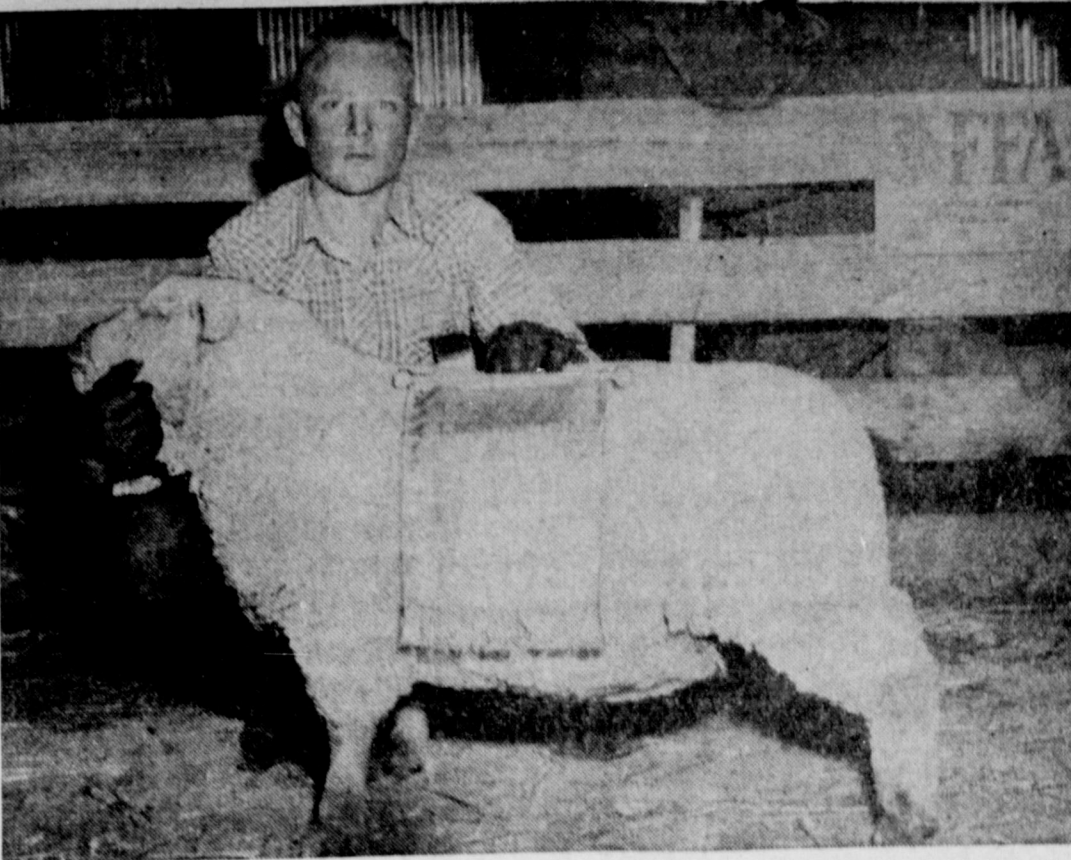
THE STATE OF TEXAS
To Any Sheriff or Any Constable Within The State of Texas—Greeting:

Dessie Stafford, Community Survivor of the Estate of Wiley Carey Stafford, Deceased having filed in our County Court his final Account of the condition of the Estate of said Wiley Carey Stafford, Deceased numbered 440 on the Probate Docket of Bailey County, together with an application to be discharged from said Community Survivor.

YOU ARE HEREBY COMMANDED, That by publication of this Writ one time and said publication shall be not less than ten days before the return day hereof, in a Newspaper printed in the County of Bailey you give due notice to all persons interested in the Account for Final Settlement of said Estate, that they ARE CITED TO APPEAR on Monday the 30th day of March, A. D., 1959, (the time fixed by the Clerk in accordance with the provisions of the law relating to Return of Citation and Notices in probate matters), before the said County Court, at the Court House in Muleshoe, Texas; to contest said account if they see proper to do so, by filing their written objections thereto at or before 10 o'clock A. M. of said day.

HEREIN FAIL NOT, but have you before said Court at the time aforesaid, this writ with your return thereon, showing how you have executed the same.

WITNESS my hand and official seal, at Muleshoe, Texas this 18th day of March, 1959.
Hazel Gilbreath, Clerk,
County Court,
Bailey County, Texas.



RESERVE CHAMPION LAMB at the Bailey County 4-H and FFA livestock show Friday was shown by Travis Bessire. The Southdown also placed second in its division. —Journal Photo

RETURN HOME
Mr. and Mrs. D. E. Beller and Mr. and Mrs. Cecil Buhman returned to Muleshoe Tuesday night after spending three weeks in California.

They reported they didn't see a cloud in the sky during the three weeks.
FROM OKLAHOMA CITY
Mr. and Mrs. Lowell Young

and children, Sandra Kay and Bradley Keith, of Oklahoma City were house guests of Mr. and Mrs. W. E. Young over the weekend.

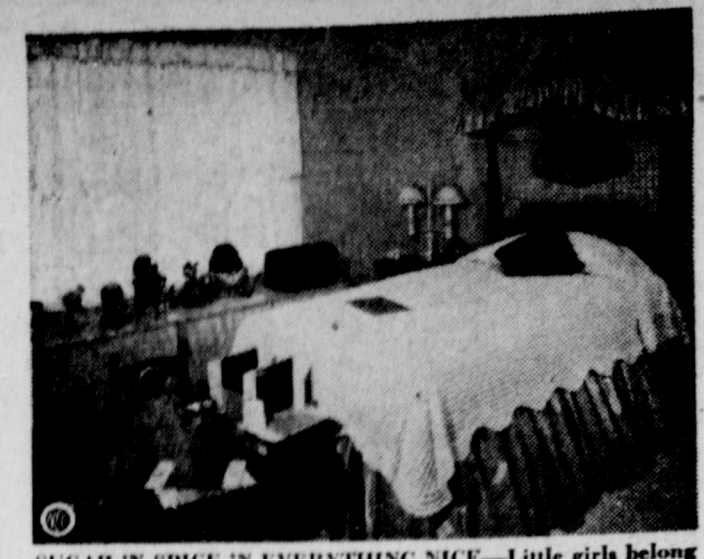
Our Honor Roll

New Subscribers

Charles Arnold, Neb.
Sam Lindley, City.

Renewals

Mrs. C. J. McKnight, Calif.
C. W. Ramage, San Angelo.
Bric P. Edison, Odessa.
Baker Grocery, Meadow.
George Elder, Hereford.
Virgil Wood, Sudan.
C. G. Damron, Sudan.
Lee Stewart, Morton.
Architectural Record, Lubbock.
Dr. E. W. Armistead, Littlefield.
Frank Claunch, Enochs.
B. G. Murdock, Albuquerque.
Rudolph Moraw, Rt. 5.
L. H. Davenport, Rt. 5.
Clayton Wells, Rt. 2.
J. V. Stancell, Rt. 2.
Eugene Black, Rt. 2.
Mrs. Rose Allen, Rt. 2.
Dottie Wilterding, Rt. 1.
Mrs. Alex Steinbock, Rt. 1.
Robert Blackwood, Rt. 1.
E. K. Angeley, Rt. 1.
Mrs. F. L. Wenner, City.
R. L. Hobbs, City.
Major Woods, City.
C. R. Farrell, City.
Lois Shook, City.
B. F. Murdock, City.
W. F. Creamer, City.
E. L. Magby, City.
E. W. Evans, City.
G. E. Lay, City.
J. E. Moore, City.
A. A. Clementso, City.



SUGAR 'N SPICE 'N EVERYTHING NICE—Little girls belong in a charming old-fashioned bedroom like this one. The cheerful cafe curtains are of Avondale Perma-Presed white chambray. White is repeated in the hobnail cotton bedspread. The crisp and feminine dust ruffle and demi-canopy are chintz in little girl blue to match the all-cotton ball fringe trim of the curtains.

Mrs. Bob Burkett, City.
Jessie Mae Arnold, City.
Kenneth Nesbitt, Route 2.
Howard Ashley, City.
Mrs. J. A. Dearing, Ft. Worth.
Plains Cotton Growers, Lubbock.
Gwineth Cox, Toyahvale.
Ethel Elledge, Okla.
Buford Butts, Colo.
Clara Jarnagen, Rt. 1.
Tye Young, City.
Roy Dyer, City.
St. Clair's Stores, City.
Union Compress, City.
Dr. B. R. Putman, City.
Wiley Moore, City.

J. A. McGee, City.
Earl Ladd, City.
W. E. Meyers, Rt. 2.
H. G. Harvey, Rt. 2.
Bobby Hudson, Rt. 2.
M. G. Gaddy, Rt. 2.
C. C. Anders, Rt. 2.
J. T. Atkinson, Rt. 2.
Reaford Wenner, Rt. 1.
Elmo Stevens, Rt. 1.
Lloyd Quesenberry, Rt. 1.
Earl Patterson, Rt. 1.
Henry Landers, Rt. 1.
Finnis Jennings, Rt. 1.
Billy Watts, Farwell.
E. E. Dyer, City.
F. H. Davis, City.

IRRIGATION

ALCOA STANDARD CLASS 150
Expertly Engineered For Your Farm With Superior Irrigation Equipment



Aluminum SALE Aluminum
For The Finest Material And Engineered SPRINKLER SYSTEMS
With Either The Center Riser Or The Riser In The Couplings
CONTACT US FOR YOUR NEXT SPRINKLER SYSTEM
No System Too Large Or Too Small
Give Us A Chance At Your Business; We Will SAVE YOU DOLLARS!
BROWN SUPPLY CO.
Phone 2700 Days Friona Highway 4124 Nights Muleshoe, Texas

IT'S SPRING

Love THAT SHOE



Jacqueline
exactly as seen in Vogue
A shoe to be wooed is our winning Jacqueline, Toe-pointed, bowflaunted and so seductive a look . . . from the moment sheathes your foot you'll be smitten — in red, cream, cactus green or black calf, black patent.



dotty Dan
Ensemble his Sunday Suit
Rugby Coat 8.98
Long Slacks 3.98
Dacron, Cotton Shirts 2.98
Dotty DAN makes it easy for you to dress your very young man just the way you — and he — like to do it. The coat is a nubby rayon and acetate in white. Sizes 2 to 6. The slacks are rayon tropical linen with saddle stitch trim. Brown, black, Charcoal, navy, white. Sizes 1 to 6. The Shirt has saddle stitching and an embroidered emblem on the pocket. White. Sizes 1 to 6.

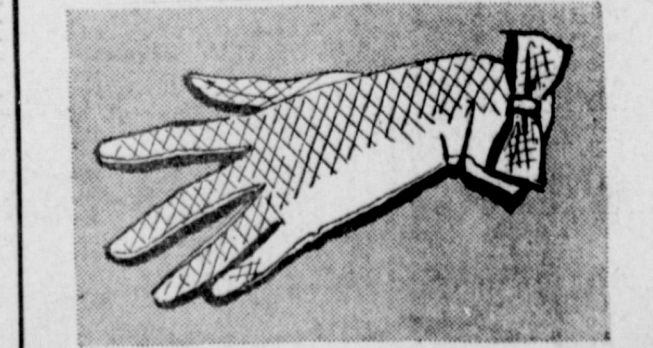
Faster

IS RAPIDLY NEARING
— SHOP COBB'S IN MULESHOE
For Your New Wardrobe And Accessories



Plaid perfection for Arlene Ainess in her lovely bouffant Easter dress. The twin prints are accented via solid collar piping and sash. Added attraction . . . the pretend cherry trim at the waist. Washable.
\$5.98

LADIES GLOVES



Large Selection of Colors
\$1.00 to \$4.00

Cobb's
Muleshoe, Texas



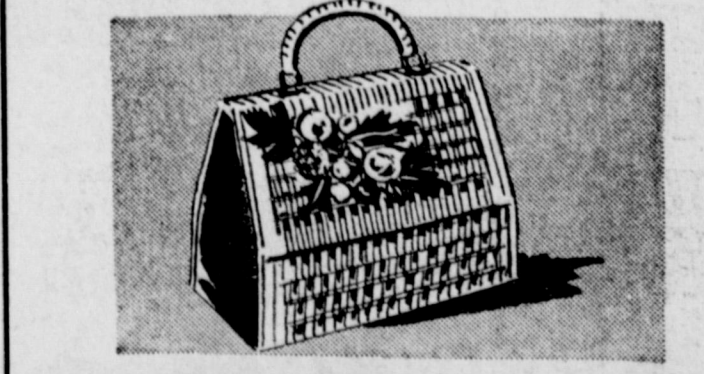
Donovan Galvani
Champagne Styling at Working Girl Prices

Hemstitched . . . and frilly
Drip-dry Combed Cotton Shirwaist

DONOVAN-GALVANI square off for Spring with this charmer . . . the bodice hemstitched in big squarers outlined with ruffles of nylon lace, the skirt full with unpressed pleats that lie smoothly at the waistline. The fine drip-dry cotton has a silky finish. What a graduation dress! Wonderful for everyone, though, morning to night! White, Beige Iris, Blue Hydrangea, Bronze Zinnia. Sizes 8 to 18.

\$21.95

LADIES HANDBAGS



LEATHERS — STRAWS — DECORATIVE BAGS — Prices From—
\$2.98 to \$19.98

LADIES HATS

Priced from
\$3.98 to \$19.98

