



The Lynn County News 20c

VOLUME 79, NUMBER 8

TAHOKA, LYNN COUNTY, TEXAS, THURSDAY, FEBRUARY 25, 1982

10 PAGES IN ONE SECTION

New Home Girls Win Bi-District

Two New Home girls scored in double figures to lead the team past Motley County 54-46 in a bi-district playoff game at Lorenzo Tuesday night, moving the Leopardettes into the regional tournament at South Plains College Texan Dome Friday.

New Home, now 23-6 for the year, will take on its biggest hurdle immediately, facing Nazareth at 8:30 p.m. The Swiftettes have won the state championship in their division for the last five years.

Despite this, Coach Lynn Johnston, his talented girls, and New Home fans believe they can win. The Leopardettes were 23-4 until two games were lost last week to playoff teams in higher classifications. Andrews and Abernathy. "We played both teams tough," said Johnston, "and we're very proud of our girls for the way they came through against Motley County in the bi-district."

New Home led 23-18 at

halftime, trailed 38-37 at the end of three, and came back to win it by outscoring their opponents 17-8 in the last quarter.

Lana Kieth scored 19 points and Angela Paul 13 in the contest. Elaine Griffin had 8 and Linda Tillman 9. These girls and 5-11 senior Kristi Macker make up the starting lineup for New Home. Kieth and Paul, 5-11, also are seniors, with the other two juniors.

There will be eight teams in the regional at Levelland. New Home girls last went to regional in 1972, Johnston said.

Science Fair Set March 2

The fifth annual Science Fair will be held March 2 (open house night). There will be approximately 100 projects on display, dealing with all aspects of science.

The projects will be divided into two divisions, junior and senior. Junior division will consist of seventh and eighth grade students with their projects on display in room 306. These students are under direction of Pam Vaughan and Tommy Boyd.

Senior division will consist of 9-12 grade students. These projects will be on display in room 115. Hedy Bulc and Budd Todd are the instructors for this group.

Everyone is invited to view the projects from 7 to 8:30 p.m. Winners will be announced during this time. The winners will then go to the regional science fair in Levelland March 26-27.

Tahoka Weather

DATE	HIGH	LOW
Feb. 17.	64	35
Feb. 18	65	41
Feb. 19	68	46
Feb. 20	72	42
Feb. 21	80	43
Feb. 22	80	48
Feb. 23	85	45

Precipitation this month .09 inch; this year .8 inch.
Tuesday, Feb. 23, was one of the warmest ever recorded here for this month.

WOODWORK



by dalton

NOT TOO long ago, we sept in a subscription to Newsweek, a highly-respected magazine which has disappointed me somewhat in content. I don't really know what I expected from Newsweek, but most of it is not that interesting, although some has been pretty good.

The real reason we were upset with Newsweek was because the introductory offer we took them up on was supposed to include a road atlas of the USA and a world map to go on the wall. And they didn't send it, until we wrote them and asked howcome. Then we got the items, but not until we already had received some more mail about why don't we renew the 26-week subscription now and extend it for nine years for only 38 cents per issue, or some such figure.

Magazines are in trouble like everybody else, I guess. But I don't think we'll renew. After all, the world map they sent us looks kind of funny, all flattened out. If it weren't, it wouldn't go on the wall, but still a globe gives a better picture of where things are. On the wall map you have to visualize the left side of the map actually being just a half inch or so to the right of the right side, although they really are four feet apart. The map comes from the Flat Earth Society, maybe.

VOLKSWAGEN has made an experimental vehicle which set eight world speed records for diesel-powered vehicles in 1980, including a one-hour average speed of almost 220 mph. It's a six-cylinder diesel with turbocharger and a weird shaped chassis. It supposedly can average 39 miles per gallon while cruising at 155 mph.

The way I figure it, I could go from my house to the office in 23 seconds. Except that I'm not usually in that big a hurry to get to work.

I can't see any practical purpose for a car that would go that fast in 55-mph zones. But every teenager in town probably would want one.



TAHOKA RESIDENT INJURED--Mike Reid, 34, of Tahoka was critically injured last Thursday as this car he was driving was involved in a collision with another vehicle at the intersection of U.S. 87 and FM 41 in Lubbock County. Reid reportedly was headed east on 41. The employee of Lyntegar Electric Co-Op was in very critical condition Tuesday evening in a Lubbock hospital.

Prison Term Given In Lynn Burglary

Two persons were assessed prison terms on pleas of guilty before 106th District Judge George Hansard in Tahoka Monday.

Gary Leon Dick of Oklahoma, arrested just last week, was sentenced to seven years in prison for burglary of a building. Dick was arrested at the scene of a burglary north of O'Donnell, Trinidad Gutierrez of Lubbock was given a 9-year sentence, probated after she made restitution, after pleading guilty of theft of aluminum pipe owned by Zane Curry of Tahoka on Jan. 29, 1981.

Charges of theft by check against Anne Killimer of Odessa were dismissed by Judge Hansard on the recommendation of Dist. Atty. Joe Smith, after the accused made restitution to the injured party.

The Lupe Baldez residence 12 miles west and one mile south of Tahoka was reported burglarized on Saturday, with car, a necklace and a piggy bank containing about \$50 in change stolen.

Kenneth Cogburn of Tahoka told police Friday that someone had broken a door

glass on his 1974 Oldsmobile parked at 2309 N. 5th.

Joe Rodriguez reported a cooler stolen from his auto at a farm two miles east of Tahoka Cemetery. And a resident of S. 3rd Street

reported youngsters throwing rocks at his home Monday.

In county jail during the week were two for public intoxication and disorderly conduct and one for intoxication.

Irrigation Wells' Level Measured

The High Plains Underground Water Conservation District has completed its annual program of measuring depth-to-water levels in the 38 wells in Lynn County. These wells are part of a larger network of more than 950 observation wells scattered throughout the District's 15-county service area.

Jerry Funck was able to complete 36 measurements of "static" water levels in observation wells and tag them with the District's red identification sticker for owner information.

"I visited with several irrigators in the field who wanted to know what their water's doing," said Jerry. "We have the initial results for each County, but tabulated data on the entire observation network readings is not expected to be complete until mid-year."

Lynn County's 1981-1982 depth-to-water table below surface minimum reading was at 33.25 feet, and the maximum level read was at 162.35 feet. This year's average change in depths-to-water in the county was +0.14 of a foot, which compares with a 1980-1981 county reading of -1.60 feet. Comparing the rate of

change calculated this year for these wells shows a minimum decline change of +2.48 feet and a maximum decline change of -2.02 feet.

The Water District keeps a record of annual decline and rate of change going back to 1962. The data is used for making projections of decline rate, for determining the amount of water left in storage, and as a basis for the income-tax depletion allowance claims on landowner's tax returns.

In the 15-county Water District, measurements of water levels showed an average change of 0.37 of a foot lowering from January 1981 to January 1982. The -0.37 foot change compares favorably with the ten year average annual change of -1.42 feet for 1970-1980. Water District officials attribute the reduced rate of decline to improved water conservation practices, the high cost of energy to pump water and the presence of unusual amounts of precipitation in the late summer of 1981. The abnormal rise in water levels in some wells probably reflects filling of the cones of depression around those wells rather than substantial recharge to the aquifer. Because most of the wells

Bingo Election Set For County Precinct

An election to determine if residents of Lynn County Precinct 3 favor allowing bingo games operated by non-profit organizations was called Monday by Lynn County Commissioners for April 3, to coincide with city, school and hospital board elections in the county.

The election was called by the commissioners after they were presented a petition carrying 48 signatures of mostly O'Donnell residents, more than the number of registered voters required by law. Texas statutes say that when more than 10 per cent of the number of persons who voted in a precinct in the last general election sign such a petition, the commissioners have no choice but to call an election.

The petition was presented by Rev. Rodney Howell, priest of Catholic Churches in Tahoka and O'Donnell, both of which are in the precinct involved. In the last general election, only about 300 persons voted in the precinct, so the 48 signatures of qualified voters easily fulfilled that requirement.

None of the commissioners appeared anxious to be put in the position of making a motion for a bingo election, but since they had no choice, the action was taken by common consent.

Commissioners voted to employ Mrs. Harriett Pierce as county home demonstration agent, heard a report on progress toward getting

measured are operational irrigation wells, the month of January was chosen for the observations in order to allow for a dormant period and for well recovery from the cone of depression developed during the pumping season.

Three bids were received,

right-of-way for the Petty Road state paving project, discussed at length a written policy on sick leave and vacations for county employees, and opened bids on a new motor grader for Precinct 4.

but the commissioners delayed awarding any of them until Precinct 4 Commissioner E.R. Blakney had a chance to study the proposals further.

All commissioners and Judge Melvin Burks were present at the meeting.



HARRIETT PIERCE

New Extension Home Economist Announced

An experienced county Extension agent for home economics will begin serving Lynn County on March 16. The appointment of Mrs. Harriett Pierce was announced this week by Lynn County Judge Melvin Burks and Billy C. Gunter, district director with the Texas Agricultural Extension Service.

Mrs. Pierce has been serving as county home economics agent for Guadalupe County since July 1977. Prior to that, she served a year as assistant agent in Coleman County.

Mrs. Pierce fills the vacancy left when Mrs. Sherry Etheredge moved from Lynn County when her husband changed employment.

A native of Lampasas, Mrs. Pierce is married to Danny Pierce, a native of Post where his parents, Mr. and Mrs. Sid Pierce, reside. They have a 2 1/2-year old son, David.

After graduating from Forest High School in Forest, Miss. where she was president of the Future Homemakers of America, Mrs. Pierce attended Central Texas College at Killeen and Stephen F. Austin State University at Nacogdoches. She received her Bachelor

of Science degree in home economics from Southwest Texas State University at San Marcos. She was a member of Kappa Lambda Kappa home economics sorority. She had done graduate work at Southwestern and at Texas Tech University in Lubbock.

While Guadalupe county agent, Ms. Pierce was president of the American Business Women's Assn. chapter in Seguin. She is active in Zonta International and in the Texas Assn. of Extension Home Economists. She serves on the Senior Citizens Advisory Board for Guadalupe County, represents that county on the Community Council of South Central Texas, and serves on the board of the Guadalupe County, represents that county on the County Council of South Central Texas, and served on the board of the Guadalupe County Youth Livestock and Homemaker show. She is a member of Presbyterian Church.

It is better to have nothing to do, than to be doing nothing. Atilus

Friendship often ends in love; but love in friendship never. Colton.



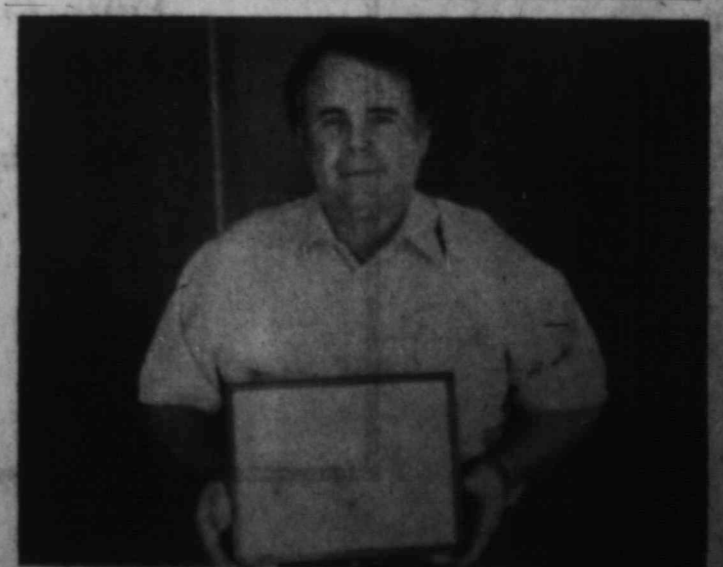
PINEWOOD DERBY GROUP--These Cub Scouts from Tahoka took part in the district Pinewood Derby last Saturday in Brownfield, with the three in front bringing home trophies. Those three, from left, are Chris Carter, first place in 8-year-old division; Todd Wright, second in 9-year-olds; and Michael Tipton, second among the 8-year-olds. On the back row, from left, are Tim Barrow, Joey Stone, Jay Forsythe, Troy Nance, Troy Brown and Matt Taylor. (LYNN COUNTY NEWS PHOTO)

Present plans are to hold the annual rodeo to coincide with the June Pioneer Reunion and this year's event will be dedicated to the late "Dub" Powers, a rodeo worker for many years. The Association will sponsor a parade and a queen contest.

On March 11, a chili supper will be held at the Methodist Fellowship Hall to raise funds for improvements, at which \$150 in groceries will be given as door prizes. Other financing for grounds improvements is being sought.

The re-organized Rodeo Assn. already has about thirty members, Woodard said.

Appearances deceive. And this one maximum is a standing rule: Men are not what they seem. Howard



DOLLAR OF PROFIT--Bobby Davis, manager of Griffin Oil Company, new distributor of Texaco products in Tahoka, holds a framed dollar presented by the Tahoka Chamber of Commerce. The business is currently owned by Tom Glen. Davis distributes gasoline, oil, and diesel fuel in the area.



INSIGHT INTO EYESIGHT

Van Moore, O.D.
OPTOMETRIST

ASTIGMATISM
One of the eye problems that causes blurred vision is astigmatism. This happens when the cornea or "window of the eye" is out of shape. A normal cornea has a perfect curve, with the same degree of slope on all sides. Light rays that pass through the cornea come together at a single point on their way to the retina.

But that isn't possible in the astigmatic eye. The rays of light don't come together at the same point. There are two separate images. This doesn't mean that people with astigmatism see double. But it does blur their vision.

astigmatism, depending on the eye's point of focus. It's "nearsighted" if the focus takes place before the image gets to the retina. It's "farsighted" if the focus takes place after the image reaches the retina. Or it can be a combination of both.

Whatever the cause, happily, it can be corrected with glasses. Then the images will be sharp and clear when they get to the brain.

In the interest of better vision from the office of:

Drs. Armistead, Moore and Gibson
Optometrists
2132 - 50th St. 747-1635
Lubbock, Tx. 79412

Get Your Office Supplies
At LYNN COUNTY NEWS

Tahoka School Menu

BREAKFAST
MONDAY-Honey Buns, Sliced Peaches, Milk
TUESDAY- Sugar Pops, Toast, Orange Juice, Milk
WEDNESDAY- Cinnamon Toast, Pear Halves, Milk
THURSDAY- Pancakes, Syrup, Butter, Grape Juice, Milk
FRIDAY- Scrambled Eggs, Biscuits, Jelly, Butter, Orange Juice, Milk
LUNCH
MONDAY- Hot Dogs w Chili, Seasoned Pinto Beans, Cole Slaw, Pineapple Cake, Milk
TUESDAY- Hamburgers, French Fries, Lettuce, Onions, Pickles, Milk
WEDNESDAY- Turkey, Dressing, Seasoned Green Beans, Cheese Wedges, Hot Rolls, Mixed Fruit, Milk
THURSDAY- Salisbury Steak, Creamed Potatoes, Tossed Salad, Rolls, Choc. Pudding, Milk
FRIDAY- Fish, Catsup, Buttered Potatoes, Tossed Salad, Cheese Wedges, Cornbread, Milk

Tahoka Merchants
Appreciate
Your Business

Anchorperson Is Named By TV Station

Cathy Conley, has been named as weekend Anchorperson for KAMC-TV News, according to an announcement by Pam Baird, News Director for the ABC affiliated station. Conley, a 1980 Journalism-Political Science graduate of Texas Tech, has been with the KAMC-TV news department since 1979. Her assignments include coverage of Lubbock city government, and political races. A native of Raymondville, she was an exchange student to Belo Horizonte, Brazil in 1973 and to Hasselby, Sweden in 1975.

Comptroller Available March 3

State Comptroller Bob Bullock has announced that Margaret McClung from his Lubbock Field Office will be at the Lynn County Courthouse in the Courtroom on March 3 from 10 a.m. to noon. A comptroller's representative is available to assist local residents at the Courthouse the first Wednesday of each month.

Bullock urges anyone with problems or questions concerning state taxes to contact Mrs. McClung at the Courthouse in person or call the Lubbock Field Office at 806-795-0691.

Hospital Auxiliary

The Lynn County Hospital Auxiliary will hold its Fun and Food Fest again this year on April 17 from 4 until 9 p.m.

All persons interested in booths, the talent show or donating hand-made items to the auction, are asked to call Nadine Dunlap or Grace Huffaker 998-4377 or 998-5135. Further details will be announced later.

The regular Auxiliary meeting will be held Monday, March 1, at 9:30 a.m. in the hospital cafeteria.

Sinclair Family Will Give Concert

The Sinclair family will present a gospel concert at the First Baptist Church in Tahoka at 7 p.m. Sunday, with the public invited to hear the group which travels nationwide presenting programs.

Larry Sinclair, formerly with The Followers, has been in the gospel music all his life. His wife, Frieda, is considered one of the finest gospel ventriloquists in the world, combining humor and sincerity, and the children, Kimble and Jodi "are inspirations as they blend their voices in songs of praise," according to church spokesmen.

A nursery will be provided Sunday night.

AMA Sponsors Tennis Tournament

The American Heart Assn., Lubbock County Division, and the Lubbock area Assn. of Life Underwriters will co-sponsor the sixth annual Heart Open, Doubles Tennis Tournament on March 26-28.

The Tournament will be held at the Lubbock Racquet Club. There is an entrance fee of \$20 per person. Divisions will include men's and women's open, A, B and C. If interested contact the Racquet Club, 9002 Memphis Drive, Lubbock or call 806-795-0675. Final registration is March 22 at 5 p.m.

All proceeds from this tournament will go to the American Heart Assn.



Abigail Smith Adams is the only woman in the nation's history to be wife of one president and mother of another.

HOW SUPERMARKETS SERVE THE PUBLIC INTEREST

A Great American Invention



The first supermarket opened in 1930 - and helped change the American way of life.

The supermarket was invented just 50 years ago, and brought about more changes than most people today are aware of.

For one thing, without supermarkets the cost of almost everything you put on the table would probably skyrocket, because many more people would be necessary to service your needs: people like the butcher, the baker, the candlestick-maker—each with his own staff of clerks to wait on you.

You would need much more time to shop, time to buy bread from the bakery, meat from the meat market, fruit and vegetables from the produce store and

TIPS FROM EXPERTS AT UNITED EQUITABLE

Medicine is prescribed to make people well. However, if used improperly, it can be dangerous. The following don'ts are suggested by The United Equitable Insurance Company for persons using medicine:

Don't:
• Take more - or less - than the prescribed amount of any drug.

• Stop taking a drug suddenly without checking with your doctor, even if you feel better.

• Mix alcohol and medication unless your doctor says it's o.k. Although not all drugs react adversely with alcohol, many do.

• Take medicine prescribed for someone else or give yours to someone else.

• Transfer a drug from its original bottle to another.

average of 25 percent and still stay in business, points out the Food Marketing Institute.

Supermarkets are still doing that today, but they are such an established part of our daily lives, they're pretty much taken for granted.

As a distribution system serving the public daily, however, the supermarket positively influences the quality and convenience of life as much as most significant inventions of the 20th century.

You might consider your next trip to the supermarket more than just a stop at the store—but also a visit to a great American institution.

Tahoka, Texas 79373

"Oldest Business Institution in Lynn County"
THE LYNN COUNTY NEWS (USPS 323200) is published weekly by Woodwork, Inc., on Thursday, except the last Thursday of each year, at Tahoka, Lynn County Texas. Office location is 1617 Main, Tahoka. Phone (806) 998-4888. Entered as second-class matter at the post office at Tahoka, Texas 79373 under Act of March 3, 1879. Postmaster: send address change to The News, P.O. Box 1170, Tahoka, Tx. 79373.

SUBSCRIPTION RATES

Lynn and Adjoining Counties	\$8.50
Elsewhere in Texas	\$9.50
Out of Texas	\$10.50

Dalton Wood	Editor and Publisher
Betty Jolly	Adv. and Bookkeeping
Velma Phillips	Compugraphic Operator
Terry Wood	Advertising
Danette Phillips	Photography

Reduce current taxes while setting aside retirement money...

now just about everyone can with State Farm's Individual Retirement Annuity



Ed Redwine
2128 Lockwood
998-5250

Thanks to the new tax law, you're probably now eligible for State Farm's Individual Retirement Annuity (IRA). Even if you're already covered by a retirement plan, you can set aside a portion of your earned income now for future enjoyment...free from current income tax. For details call

State Farm
Life Insurance Company
Home Office: Bloomington, Illinois



Dairy Queen

Tahoka

Opening For

Breakfast

March 1

Monday - Saturday

6 A.M.

Sunday

8 A.M.

Tuesday

Bean Day

99¢

Pinto Beans

Hush Puppies

Onions

Jalapenos

All You Can Eat

998-5118

Dairy Queen

Try Our New Chicken Fry



FRUIT-TOPPED CHEESECAKE

Graham Cracker Crust (below) 1 cup dairy sour cream
1 package Betty Crocker 2 eggs
cream cheese & nuts 1 can (21 ounces) fruit
frosting mix pie filling

Heat oven to 350°. Bake Graham Cracker Crust; cool. Beat frosting mix, sour cream and eggs in large bowl on low speed until moistened. Beat on high speed until smooth and fluffy, 1 minute. Spread over crust. Bake until set, 30 to 35 minutes; cool. Spread pie filling over cheesecake. Cover and refrigerate at least 4 hours. Refrigerate any remaining cheesecake. 16 to 18 servings.
Graham Cracker Crust: Mix 1 1/4 cups graham cracker crumbs (about 16 squares), 2 tablespoons sugar and 1/4 cup margarine or butter, melted. Press firmly and evenly in bottom of ungreased square pan, 9x9x2 inches. Bake 10 minutes.

"The safest way to double your money is to fold it over once and put it in your pocket." Kin Hubbard

Around Town

By Leona Waldrip

Mrs. Betty Little and two children of Jal, N.M. spent last week with her mother, Mrs. Edith Kuwaski.

Mrs. Dora Carpenter, who had eye surgery last Tuesday, is home at her apartment at Golden Manor and is doing very well.

Past Noble Grand Club met in regular session on Thursday night in the home of Leona Waldrip. Six members were present. New officers were installed. Bertha Williams was elected president; Leona Waldrip, vice-president and Willie Childress, secretary-treasurer. A covered dish meal was served at the close of the meeting. Evelyn Burr will be hostess for the March meeting.

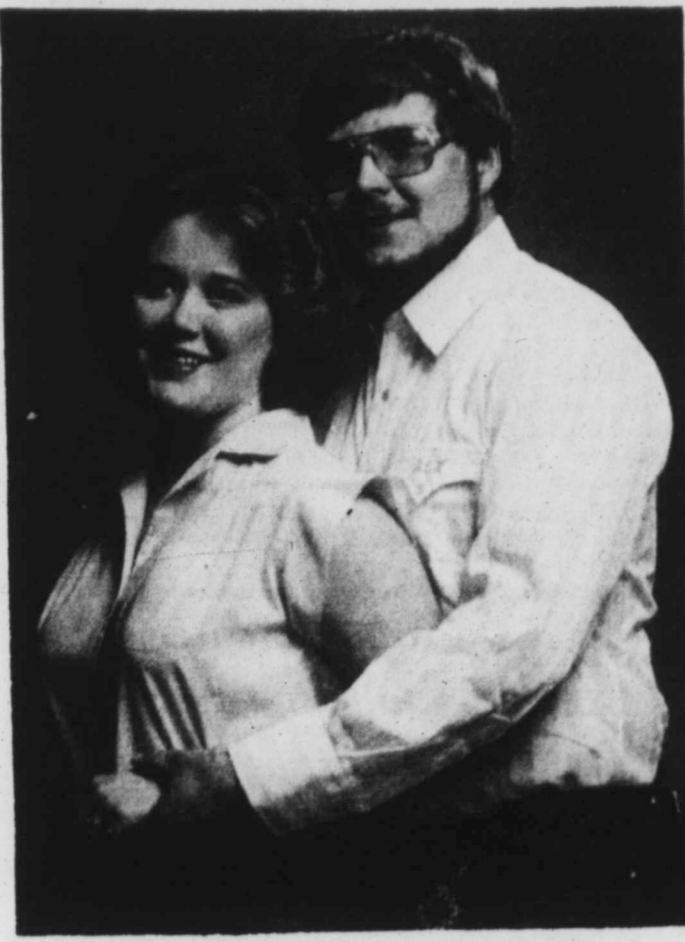
Mr. and Mrs. Rick Etheredge and two daughters were visiting friends in Tahoka Sunday. They attended services at First Baptist Church. The Etheredges moved to Stamford about 2 months ago after living in Tahoka about 8 years.

Mrs. Audrey Akin visited with the Eldon Akins in Lubbock over the weekend. They celebrated her birthday while there.

Mrs. Teddie Kelley has been ill at her home for more than a week.

Two-month-old Ricky Robinson is here this week with grandparents, Mr. and Mrs. R.V. Long, while his mother, Sherrill, is in the hospital. His home is in Anton.

Deadline For News Items
Tuesday Noon



PAMELA BARNETT - RONNIE HARMONSON

Barnett - Harmonson Engagement Announced

Mr. and Mrs. J.W. Barnett announce the engagement and approaching marriage of their daughter, Pamela Gay, to Ronnie Le Harmonson, son of Mr. and Mrs. Leon Harmonson of New Home.

The couple plan to be married March 20 at 7 p.m. in the New Home United Methodist Church.

Pam is a 1978 graduate of New Home High School and attended American Commercial College. She is presently employed by Methodist Hospital as a date entry clerk.

Ronnie is a 1979 graduate of New Home High School and is a graduate of Lubbock Christian College. He is engaged in farming.

Crotwells Honored With Shower

Wayne and Adria Ann Crotwell were honored with a bridal shower Saturday, Feb. 20, at the home of Mrs. Garland Pennington.

The bride's mother, Mrs. Leoda Hinson, Mrs. Nina Cornett and great aunt, Mrs. Freddie Tatum were honored guests along with the groom's mother, Mrs. Elwayne Crotwell, and his sister Brenda, who registered the guests.

The hostess gift was a Kitchen Aid Food Processor and towel sets.

Hostesses were Mmes. Garland Pennington, Loamuh Harston, Sam Pridmore, Olen Renfro, Steve Renfro, T.A. Stone, Finis Botkin, Alton Kelley, Jimmy Bragg, Marlin Hawthorne, Dayton Parker, Sharon Terry, Olen Pinkston, Curtis Bass, Lyndell Bell.



MRS. WALTER HUNTER nee PAULA KIRBIE

Paula Kirbie - Walter Hunter Exchange Vows In Wilson

Paula Diana Kirbie became the bride of Walter Lee Hunter in a double ring ceremony Saturday, Feb. 20, at 2 p.m. in the First Baptist Church in Wilson with Rev. E.K. Shepherd of Brownfield officiating.

Parents of the bride are Mr. and Mrs. A. S. Kirbie of Wilson. Groom's parents are Mr. and Mrs. Ray K. Hunter of Las Cruces, N.M.

The bride wore a traditional style gown of white knit chiffon with re-embroidered chantilly lace and bridal pearls. The bodice featured a Queen Anne neckline with a hi-rise waist. The long, full sheer sleeves ended in lace cuffs. The a-line crystal pleated skirt and chapel length train were finished with a band of lace.

A scalloped veil of silk illusion was edged in bridal pearls and fell to elbow length from a Juliet cap.

The bride's bouquet featured white and burgandy silk roses with white lace ribbons and streamers.

Adriana Cox of Rotan was maid of honor and Letha Strickland of Houston and Donna Chandler of Odessa, cousin of the bride, were bridesmaids. They wore burgandy gowns with off-white lace yoke trimmed in off-white lace. They carried long-stemmed burgandy silk roses.

Kenneth Hunter of Las Cruces, N.M., brother of the groom, served as best man. Groomsmen were Gene Garms of Ruidoso, N.M. and Charles Drexler of Odessa. Ushers and candlelighters were Bill Seals of Abilene.

West Point TEHA Meets

West Point TEHA meeting was held in the home of Dorothy Hale Thursday, Feb. 18, at 2 p.m. The new officers were installed by Clifford Tankersley in a program using vegetables and creating a pot of stew.

Officers installed were: president, Joy Bragg; vice president, Dorothy Fuller; secretary-treasurer, Dorothy Hale; associate reactional, Lucille Wright; council delegate, Dorothy Ashcraft; reporter, Esta Mae Kidwell.

Refreshments were served to eight members and one new member.

cousin of the bride, and John Cox of Rotan.

Beverly Strickland sang "The Wedding Song" and "The Lord's Prayer" accompanied by Sheryl Anger of Wilson, pianist.

Jayne Jones of Lubbock registered the guests.

A reception at the church followed the ceremony. Carolyn Day and Shelly Livingston of Wilson and Karen Moore of Odessa served at the bride's table while Joan Weese of Amarillo attended the groom's table.

The bride is a graduate of Wilson High School and attended Howard College in Big Spring. The bridegroom is a graduate of Las Cruces High School and attended New Mexico Southern University.

The couple will reside in Big Spring.

Post United Convalescent News

The senior citizens came on Tuesday. Mr. Moore played his harmonica accompanied by Mrs. Edwards at the piano.

The ladies of the VFW gave our monthly birthday party last week. They decorated with a Valentine tree and gave valentines to all the residents and served punch and cake.

Nell Mathews, our social activities director, found out that she can't play checkers or dominoes very well. Abb Ussery beat her in both games.

A Valentine party was held Saturday, Feb. 13. Valentine King and Queen were Lewis Babb and Willie Duncan.

Visitors this week came from as far away as Durango, Colo.

As empty vessels make the loudest sound, so they that have the least wit are the greatest babblers. Plato

Statement Of Intent To Change Rates

General Telephone Company of the Southwest, in accordance with the Rules of the Public Utility Commission of Texas, hereby gives notice of the Company's intent to implement a new schedule of rates in Texas effective March 5, 1982.

The proposed changes in rates will affect all customer classes and are designed to increase the Company's intrastate revenue by 24 percent.

A complete set of revised rate schedules has been filed with the Public Utility Commission at Austin, Texas, and is available for public inspection in each of the Company's Business Offices in the State of Texas. A summary of the Company's rate filing has also been sent to the Mayor's Office of each affected Municipality.

GTE
General Telephone

GET ALL YOUR
OFFICE SUPPLIES
AT
LYNN COUNTY NEWS

The next meeting will be a called meeting, Monday, March 1, at 5 p.m. at Tahoka Cafeteria. Plans will be made for the annual spring style shoe and luncheon. All members are urged to attend.

Sentry Action Account

13.85%

(As Of Feb. 8, 1982)

for \$1,000
and fixed for entire term.

Now you can earn the premium rate paid to very large accounts by participating in the Sentry Action Account.

Action Accounts are available to individuals, partnerships, corporations and nonprofit organizations. You select a term (from 30 to 89 days). Your interest rate is fixed for the entire term and based upon the rate in effect at the time you open your account.

You need only \$1,000 to open an Action Account. There are no set up fees or enrollment charges.

To open an Action Account, come to any Sentry Savings office. Bring Sentry your savings. We'll guard them and make them grow.

THIS OBLIGATION IS NOT A SAVINGS ACCOUNT OR DEPOSIT AND IS NOT INSURED BY THE FEDERAL SAVINGS AND LOAN INSURANCE CORPORATION. IT IS A GENERAL OBLIGATION OF SENTRY SAVINGS ASSOCIATION AND IS BACKED BY THE FULL FAITH AND CONFIDENCE OF THE ASSOCIATION.



SENTRY SAVINGS

Tahoka
1900 Lockwood • 998-4586
Headquarters: Slaton, TX • Offices in Post, Lamesa, Lubbock and Idalou

COW POKES

By Ace Reid



"Yep I gotta diamond ring, cadillac, land and smoke 25¢ cigars. I got everything a millionaire's got, only I ain't got no money."

YOUR FULL SERVICE BANK

You can relax with confidence once you put your precious things and valuable papers in one of our safe deposit boxes! Rent one for safety! The cost is nominal!

Wilson State Bank
WILSON, TEXAS

Member Federal Deposit Insurance Corporation

CUSTOM TERRACING
Building - 28¢ a foot
Rebuilding - 22¢ a foot
Charles Ashbrook
327-5665

Dr. Swapan Banerjee
announces the opening
of his office in
Lynn County Clinic
Answer Phone From 12 to 1 p.m.
Office Hours:
Monday - Friday
8:30 to 5 p.m.
Noon Saturday
Closed Wednesday Afternoon
998-4572

NUGGETS
made from your old gold!
All 14K Gold - 50% Off
These prices are effective year round!
Green's Jewelry
TAHOKA
PHONE: 806/998-5227
1928 LOCKWOOD (on Brownfield Hwy) Hours: Tues thru Fri 10-5:30 (Open Sat. by Appointment)

Save At Bray Chevrolet Company
1615 Lockwood Tahoka, Texas
762-3203 or 998-4544
Save \$\$\$ On 1981 Demonstrators And Company Cars.
Select From One Of These...
1981 Chevette Scooter, Std. Trans., No Air - Economical To Drive \$4895
1981 Chevrolet Malibu S/W V6, A/C PS, PB, Automatic \$7450
1981 Chevrolet Citation 4 Dr. 4 Speed, A/C, PS, PB, Custom Interior \$6995
1981 Scottsdale 1/2 Ton 6 Cyl. Loaded \$8595
1981 Caprice Classic 4 Dr. 305 V8, with OD Trans. Loaded, Wire Wheel Covers \$9535
1981 Chevrolet Caprice Classic 2 Dr. 305 V8 A/C, PS, PB, AT, WWT, Wire Wheel Covers \$8750
1981 Chevrolet Silverado 1/2 Ton, V8 Loaded \$8225
WE HAVE A GOOD SELECTION OF NEW 1982 CARS AND PICKUPS - ALL PRICED .LESS REBATE WHEN APPLICABLE!
CALL TODAY!
Bray Chevrolet Company
762-3203 or 998-4544



42 TOURNAMENT WINNERS.--Winners of the THS Student Council sponsored "42 Tournament" are as follows from left, third place winners- Leona Holden and Trudy Schuknecht; second place- Lottie House and Jewel Smith; first- Radene and Dick Turner.

TV-28 Plans Recognition For Service

KMAC-TV President, Bill McAlister, announced the institution of a Golden Service Award, to be presented to persons or organizations which perform outstanding service to a community, a group or a person.

McAlister, who is the owner of KAMC-TV Channel 28 in Lubbock, and KMCC-TV Channel 12 in Clovis said, "too often groups or individuals who perform outstanding acts toward communities or his fellow man, never receive the recognition they deserve."

"Our stations will seek out and publicly honor these groups and persons," McAlister said, "and that's where the general public can be of help."

McAlister urged persons throughout the South Plains and Eastern New Mexico to nominate a person, a group, or a community, for any noteworthy contribution which may have occurred over the past several weeks.

Those selected as the most outstanding group or person, will be publicly honored and will receive an engraved plaque. Nominations, in writing, may be sent to stations: KAMC-TV, Box 2805 Lubbock, TX 79408, or KMCC-TV, Box 2049, Clovis, N.M., 88101.

In 1980, a Fortune magazine report showed Georgia-Pacific to have the best overall growth record of all Fortune 500 corporations over a 25-year period.

PECAN CHICKEN CASSEROLE

- 8 chicken thighs and drumsticks
- 1 C. chunked zucchini squash
- 1 C. carrots
- 1 C. pecan halves
- 3 C. chicken bouillon
- 2 1/2 T. cornstarch
- 3 T. melted butter
- 1/2 tsp. salt
- 1/4 C. white wine

Brown chicken and place in casserole dish. Arrange squash, carrots, and pecans around chicken. Dissolve cornstarch in bouillon and stir in remaining ingredients. Bake, covered, at 350 degrees F. for about 45 minutes. Serves 4.

For additional recipes, write: Commissioner Reagan V. Brown, Texas Department of Agriculture, P.O. Box-12847, Austin, Texas 78711.

TUESDAY DUPLICATE BRIDGE WINNERS

The winners at Tuesday night Duplicate Bridge Feb. 16 were as follows: first, Mrs. Sam Edwards and Mrs. Arlyis Askew; second, Mrs. Margie Maddox and Roy LeMond; third, Mrs. Meldon Leslie and Mrs. C.R. Burleson; fourth, Mrs. H. B. McCord and James McAllister; tying for fifth were Mrs. Alta Thomas and Auda Norman and Mrs. Mabel Gurley and Mrs. Roy LeMond.

THURSDAY BRIDGE WINNERS

Thursday T-Bar Country Club Bridge played in regular play Feb. 18 at T-Bar Country Club. Winners were: first, Gerry Renfro and Fern Leslie; second, Marge Maddox and Margaret Kutch, both of Lamesa; third, Punk Franklin and Margaret Noble, O'Donnell; fourth, Rachel Huffaker and Mae Hill; fifth, Weesie Carroll and Mac Edwards. Next play will be Feb. 25 at 1 p.m.

Louis Sockolexis of Maine was the first American Indian to play professional baseball. The Cleveland Indians are so named for him.

THE 'IMPOSSIBLE' IDEA THAT WASN'T

They said it couldn't be done. But today, over 100,000 jobs have been created because American men and women did it. "Too small," said experts years ago when asked if Southern yellow pine logs could make plywood for constructing American homes. But a company incorporated with just \$12,000 of capital in 1927 has



succeeded. For every dollar of capital then, the company has

over \$415,666 in assets now. In 1981, the accomplishment—making plywood from Southern yellow pine logs—meant 16,500 plywood industry jobs, \$1.25 billion in plywood shipments and 80,000 support jobs for American communities. The company that succeeded with the logs that to others seemed "too small" is Georgia-Pacific, now the world's largest plywood producer.

For cruises, tours, and all other travel arrangements CONSULT LOCALLY WITH **LENNIE COX** representative of Envoye Travel Phone 998-4908 Special departure from Lubbock to Hawaii and Europe

Agriculture Day March 18, 1982 A Time to Say We're Proud of Texas Agriculture

after you see your doctor, bring your prescription to **Dayton Parker Pharmacy** TAHOKA PH. 998-4300

Now is the time to spray your yards to kill wild rye and other noxious weeds with **Roundup**. Have pull type spray rigs with 10 gallon tanks for riding mowers. Have built in pumps and spray nozzles. Good for liquid fertilizer. Also: beat the rush and bring in your mowers for tune up and repairs and be ready! **Curry's Commuter & Lawnmower** 727 Lockwood Tahoka 998-4779

STILWELL-APPLE-PEACH-BLACKBERRY **Fruit Cobblers** 2 LB. BOX \$1.39

OUR DARLING WH. KERNEL/CREAM STYLE **Gold Corn** NO. 303 CANS 279¢

PAPER TOWELS **Spill-Mate** JUMBO ROLL 68¢

DETERGENT 20¢ OFF LABEL **Ivory Liquid** 22 OZ. BTL. \$1.09

70¢ OFF LABEL LAUNDRY **Dash Detergent** 13 LB. 3 OZ. BOX \$6.99

DEL MONTE CRU./CHU./SLI. **Pineapple** 15 1/2 OZ. CAN 59¢

SHURFINE GRAPEFRUIT NATURAL PINK **Juice** 46 OZ. CAN 79¢

VISIT YOUR HOME REDEMPTION CENTER

HEAVY GRAIN FED BEEF BONELESS **Chuck Roast** \$1.89 LB.

HEAVY GRAIN FED BEEF BONELESS **Chuck Steak** \$1.99 LB.

Gooch Franks 99¢

HEALTH & BEAUTY AIDS

LIP BALM **Chap-Stick** 49¢ EACH

COTTON SWABS **Q-Tips** \$1.19 170 CT. BOX

VASELINE INTENSIVE CARE EX. STRENGTH/REG./HERBAL/ **Lotion** \$1.49 10 OZ. BTL.

POLISH REMOVER REG./LEMON **Cutex** 79¢ 4 OZ. BTL.

VASELINE PETROLEUM **Jelly** \$1.69 7 1/2 OZ. PLASTIC JAR

Tahoka's Full Service S...

LEGAL NOTICE
 Notice is hereby given that an election will be held on the 3rd day of April 1982 in Lynn County Hospital District for the election of three (3) directors. Said election to be held in accordance with the resolution and order passed by the Board of Directors of said district on the 9th day of February 1982 and said resolution and order being made part of this notice for all intents and purposes.
 This notice of election is issued and given by the undersigned, pursuant to authority conferred by virtue of the resolution and order of the Board of Directors of Lynn County Hospital District and under authority of law.

Witness our hands and the seal of said district this 9th day of February 1982.
 /s/ Larry Hagood, President
 Board of Directors
 Attest:
 /s/ John Brooks, Secretary
 Board of Directors

Forms to have your name placed on the ballot for hospital directors may be picked up at the administrator's office at the hospital and must be returned no less than twenty-five (25) days before election or by March 9, 1982.

**OEA Student
 Of The Week**



OEA STUDENT OF THE WEEK--This week's student is Pam Krause, daughter of Stanley Krause and Glenda McCleskey. She is a senior at THS and is in her first year of OEA. Pam is studying police secretary work.

**Stork
 Market
 Report**

Tommy and Connie Davis of Lubbock are the parents of a daughter born Wednesday Feb. 17, at 5:47 a.m. in Methodist Hospital. Adelle Lynn weighed 7 lbs. 2 ozs. Maternal grandparents are Mr. and Mrs. Lionel Miller.

CORRECTION
 Last week's News should have stated that Mr. and Mrs. Jim Looker of Kerrville had given \$500 to Tahoka Pioneer Museum honoring Mrs. Looker's parents, Mr. and Mrs. R.B. McCord on the "Honored Pioneers" plaque installed on the wall in the building. The story stated Mrs. Jim (Lucille) Looker made the donation in honor of her parents.

**Block to
 Visit Texas**

AUSTIN--Secretary of Agriculture John Block will make his first visit to Texas February 24 to speak at Stockmen's Day at the Houston Livestock Show.

Block will be the keynote speaker at the noon barbecue to be held in the Astrodome. It is the 50th anniversary of the Houston Livestock Show. Governor Bill Clements will introduce Block. Agriculture Commissioner Reagan V. Brown will be on the program and urges livestock raisers and others in the meat industry to attend the Stockmen's Day activities. "We are very pleased that Block is coming to Texas. We want to show the strength of the livestock industry in Texas, the Number One cattle state in the nation."

Be ye angry and sin not; let not the sun go down upon your wrath. Eph. 4:26

Scanning Social Security

By Jim Latimer, Field Representative
 Social Security Administration
 1205 Texas Ave., Room 102
 Lubbock, TX 79401

**USE TELESERVICE TO
 DEAL WITH SSA**

In good weather and in bad, you might wish to stay at home and do business with Social Security on the telephone. If you do not want to get out on a bad day, simply call the Social Security Office. Almost all problems can be solved and questions answered over the telephone. If you need to mail something in, you will be told while you are on the telephone. Use of teleservice saves you time, money, gasoline, and the frustrations of driving. Applications for all kinds of benefits can be made on the telephone, with the forms mailed to you for signature. All evidence needed to support your case can be mailed in with your application.

Original documents in your possession must be sent in as photocopies are not acceptable.

If you wish to deal with Social Security from the comfort of your home, call 800-762-7385 to apply for a check and 800-762-7381 to get the answer to a question. If you live outside of Lubbock, you can call toll free 1-800-392-1603 to receive answers to your Social Security questions.



The Mesabi Range is the world's greatest source of iron ore.

Insurance
 If you are trying to watch your dollar closer, why not start by checking our prices and protection.

**Hochheim Prairie
 Farm Mutual**
 See us for low-cost coverage to fit your needs!

Fire & Extended Coverage
 Hospitalization

Medicare Supplements
 Life & Estate Planning

J. A. & Joyce Pebsworth
 Jeannell Edwards

2208 Main St. Tahoka
 998-4564 998-5160

**Get Your
 Office
 Supplies
 At Lynn
 County
 News**

Pioneer Club
 Monday night at 7 p.m. will be the monthly singing. We have 2 quilts for sale and need help in quilting others. Game night is every Monday night except the first Monday of the month.

Lynn County Merchants
 Appreciate Your Business

**Mrs. Cox
 Attends Library
 Meeting**

Mrs. Lennie Cox, librarian at the Lynn County City Library, attended the Library Information Service workshop at Western College in Snyder on Feb. 10-11, sponsored by the West Texas Library System at Lubbock and the Big Country Library System at Abilene. The Workshop was designed to help local librarians provide better information services to adults and children in West Texas Communities.

Qualified And Ready To Serve!

**Your Vote For
 Charles A. Smith
 for Commissioner of Pct. 4
 Will Be Appreciated
 on May 1**

Pol. Adv. Paid By Charles A. Smith, Box 278, New Home, TX. 79383

**HOME TOWN
 CENTER**

**1614 MAIN
 NEXT TO
 TAHOKA
 DRUG**

**TEXAS SWEET
 Oranges \$1.29**
 5 LB. BAG

**WASHINGTON RED
 DELICIOUS
 Apples \$1.19**
 3 LB. BAG

**NEW CROP NORTH CAROLINA
 Yams LB. 49¢**

**COLORADO ALL PURPOSE
 Potatoes RUSSET 10 LB. BAG \$1.49**

**PURPLE TOP
 Turnips 3 LBS. \$1.00**

MEAT SPECIALS

**OSCAR MAYER BEEF FRANKS OR
 Wieners \$1.69**
 1 LB. PKG.

EX. LEAN HEAVY GRAIN FED BEEF \$1.99
Stew Cubes LB.

CHUCK QUALITY GUAR. 80% LEAN \$1.69
Ground Beef LB.

Boneless \$2.59
Sirloin Tip LB.

DECKER'S REG. SLI. MEAT \$99¢
Bologna 12 OZ. PKG.

SELECT SLI. YOUNG \$99¢
Beef Liver LB.

**NO CHOLESTEROL
 Wesson Oil \$1.19**
 24 OZ. BTL.

**HERSHEY'S CANDY
 MR. GOODBAR KRACKEL HERSHEY ALMOND
 Big Block 3 \$1.00**
 2 OZ. BARS

DAIRY & FROZEN FOODS

**PLAIN/PIMIENTO/JALAPENO
 Cheez-Whiz 8 OZ. JAR 99¢**

**SOFT MARGARINE
 Parkay 2-8 OZ. CUPS 89¢**

**PILLSBURY BUTTERMILK/
 SWEET MILK
 Biscuits 5 7 1/2 OZ. CANS \$1.00**

GROCERY SPECIALS

**SUNSHINE
 Hydrox Cookies \$1.19**
 15 OZ. PKG.

HONEY BOY PINK \$1.99
Salmon 15 1/2 OZ. CAN

MAXWELL HOUSE ALL GRINDS \$2.49
Coffee 1 LB. CAN

KELLOGG'S RAISIN-RICE-RYE \$1.69
Cereal 18 OZ. BOX

SUMMITT'S

We're proud to give you more!

the price fighter
Venture
FOODS

PRICES EFFECTIVE FEB. 25-MAR. 3
 WE RESERVE THE RIGHT TO LIMIT QUANTITIES

MEMBER STORE **AF** AFFILIATED FOODS, INC.

WE ACCEPT FOOD STAMPS
 WE ACCEPT MANUFACTURER'S COUPONS

Full Service Supermarket

**FROM THE
ACEA'S DESK**
Brent Drennan

How can anyone influence the development of people to make them responsible, self-respecting members of our democratic society? The 4-H program can provide experiences! When our nation was younger and even up to one or two generations ago, young people did not have the problem of meaningful experiences. They were in small, intimate groups, mostly farm and small church oriented, where they fit into the picture. But, because most people live in an urban setting today, meaningful experiences may be limited.

That's where 4-H comes in, says Brent Drennan, County 4-H program coordinator. 4-H can help the family, church and community provide the proper development of young people by providing the right kind of experiences. Most of the things we want young people to become are a part of the 4-H program. The whole idea of 4-H is development of young

people. Since 4-H is family oriented and co-educational, it is truly people. 4-H starts in one of our first "Groups"—the family group which has so much influence on us. The 4-H program goes down to the "grass roots" because the people in it— from Extension people to local leaders and even the young people themselves— actually help decide the kind of program they want. So, besides involving the family group, 4-H also closely involves the community group, Drennan said.

**Civic
Organization**



Tahoka Rotary Club meets at 12 Noon each Thursday at Tahoka Cafeteria.

**Jody Edwards
Custom Terracing**

We construct new terrace systems or rebuild your old ones.
Call 327-5252 or Mobile 924-7623

52-tfc



"THE TRACTOR SPECIALIST"



Why not deal with the specialist...?

CALL GRADY JACKSON, HOME 744-0806
CALL JCE ANTHONY, HOME 762-5040

Case Power & Equipment

3302 Slaton Hwy., Lubbock 745-4451

**Spot Cotton
Trading
Increases**

Lubbock's spot cotton trading increased from the previous week, according to Mack Bennett, Area Director for USDA's Marketing Services Office in Lubbock. Grower owned cotton supplies remained heavy. Merchant demand improved as shippers filled March delivery commitments. Growers with qualities not in demand or dissatisfied with current prices continued to move cotton into Commodity Credit's loan program. Bids for loan equities ranged from \$4 to \$10 but no equity trading was reported, Bennett said. An estimated 1.1 million bales of 1981-crop High Plains cotton had entered the loan as Form A, Form G or seed cotton by early this week.

USDA's Crop Reporting Board estimated that U.S. growers will plant 12.6 million acres to cotton this spring. This compares with about 13.8 million harvested during the 1981 crop year.

High Plains growers sold mixed lots of mostly grades 42 and 52, staples 31 and 32, mike 35 - 49 at about 44.50 cents per pound, unchanged from a week earlier. Grade 52, staple 32, mike 30 - 32 sold around 39.15 cents, down 25 points from a week earlier. Gins paid High Plains growers \$70 to \$80 per ton for cottonseed, mostly \$75 per ton.

Lubbock's Marketing Services Office classed 39,000 samples during the four-day week ended Feb. 18 for a season's total of 2,296,000. This compares with 1,614,000 classed by the same date one year ago.

Predominant grades were grade 42 at 14 percent, grade 52 - 40 percent, grade 43 - 13, and grade 53 at 21 percent. About 89 percent of the samples were reduced one grade because of bark. Eight percent was below grade.

Predominant staples were staple 29 - 10 percent, staple 30 - 36, staple 31 - 37 and staple 32 at 12 percent for an average of 30.6 thirty-seconds of an inch.

Micronaire 35 - 49 was 21 percent, 33 - 34 was 17-30, 32 was 31, 27 - 29 was 19 and 26 or below was 12 percent for an average of 31.

Impossible is a word to be found in the dictionary of tools. Napoleon I



LUBBOCK, Friday, February 19, 1982

Five matters of major concern to High Plains cotton producers were pinpointed in an "issue paper" submitted February 18 to Secretary of Agriculture John Block by Lubbock-based Plains Cotton Growers, Inc.

The paper went to the Secretary for his consideration in advance of his scheduled visit to Lubbock February 25 and 26, during which time he will be discussing agriculture's problems face-to-face with PCG officials, individual farmers and agribusiness people. It is understood that other commodity groups and general farm organizations have submitted similar papers.

The top function on the Secretary's itinerary in Lubbock is a town-hall meeting at 8:00 p.m. on Thursday, February 25, in the Lubbock Municipal Auditorium on the campus of Texas Tech University. Secretary Block is expected to present an overview of the Administration's agricultural policies and respond to questions from the floor.

The cotton issues highlighted by PCG in its communique to the Secretary include the Commodity Credit Corporation-cotton loan level, loan program discounts applied to High Plains cotton, production financing, raw cotton and textile exports and research and promotion.

In accord with the policy adopted by its 50-man Board of Directors, PCG called on the Secretary to support a minimum cotton loan at 65 percent of parity. "Current and rising production costs," the PCG paper states, "require a higher base loan if the loan is to facilitate production financing and serve as an orderly marketing tool as intended."

Loan discounts on High Plains cotton impose an unfair price penalty on typical High Plains cotton qualities, PCG advised the Secretary. The PCG letter blames this inequity on the treatment of data used to figure quality differentials, contending that equal weighting of price quotations from all markets has resulted in discounts "essentially unrelated to either end-use value or true market demand" for shorter staple, lower micronaire cottons.

Calling attention to a combination of factors that have reduced thousands of High Plains cotton producers to the brink of bankruptcy, PCG urged "that USDA provide adequate FmHA and economic emergency funds for production financing at the lowest possible rate."

On the subject of exports the PCG paper noted that the High Plains traditionally sells approximately two-thirds of its production in export markets and went on to say "It is of utmost importance to us (1) that these markets be maintained and expanded through vigorous development programs, (2) that the revolving export credit fund authorized by the Agriculture and Food Act of 1981 be implemented at the earliest possible date and (3) that all barriers to U. S. exports of both raw cotton and textile products be eliminated."

PCG's position on research and promotion requests that USDA and the Congress expand government funding of production and utilization research and cooperate with and provide maximum assistance to producer-funded research and promotion programs.

**A Visit With Your
County Agent**

By Stanley Young

Producing a good pecan crop depends a lot on the type of pest management program that you follow, says Stanley Young, county agent with the Texas Agricultural Extension Service. The key point is to spray only when you need to, but there are a number of critical times during the season when spraying is important. Nine opportunities for spraying during the season, depending on the area of the state.

1. Dormant stage—apply dormant oil for scale insects.
2. Bud break—apply a fungicide in areas of 30 or more inches of rainfall and include zinc.

3. Pre-pollination—apply in insecticide plus zinc.
4. Casebearers—apply an insecticide plus zinc.

5. Second first generation casebearers—apply an insecticide plus zinc.
6. Second generation casebearers—apply an insecticide plus zinc.
7. Water stage—apply a fungicide in areas of 30 or more inches of rainfall.

8. Shuckworms and Weevils—apply an insecticide 14 days after the water stage.
9. Shuckworms and weevils—make a second insecticide application if these pests are heavy.

It's important to apply zinc at least three times between the bud-break stage and before the water stage. Zinc is critical to the growth of the pecan tree and the crop it supports.

Since the 1982 pecan crop will likely be light because it's the alternate or "off" year, pest management is even more critical to protect this light crop.

If you do cut back on spray treatments, monitor your pest situation closely so that you know what's happening. You may be able to skip a spray or two, but sooner or later, you're going to suffer a pest problem unless you monitor your crop and spray when needed.

Of course, it's better not to spray if you can avoid it. Cutting back on pesticides which could eventually lead

to pest resistance. The county Extension office has specific recommendations on pesticides cleared for use on pecans.

**Brown to
Speak For
24th Year**

AUSTIN — Agriculture Commissioner Reagan V. Brown will be nearing the quarter-century mark in speaking to the annual conference of county judges and commissioners when it convenes in College Station February 17. Brown, who helped originate the conference, has spoken to this group for 23 consecutive years. He was also instrumental in the formation of the Texas Association of Counties and as special assistant to Governor Dolph Briscoe, was the liaison with county officials.

**BROWNIE WALNUT
RING CAKE**

1/3 cup margarine or butter, softened
1/4 cup packed brown sugar
3/4 cup coarsely chopped walnuts
1 package (21.5 ounces) Betty Crocker® fudge brownie mix

Heat oven to 350°. Mix margarine and brown sugar. Spread in bottom of ungreased 10-inch ovenproof ring mold; sprinkle with walnuts. Prepare Cake-like Brownies as directed on package. Spoon and spread dough over mixture in mold. Bake 30 to 35 minutes. Run knife around edge of mold to loosen; immediately invert on heatproof serving plate. Remove mold. Serve warm with ice cream and garnish with maraschino cherries if desired.

Heat oven to 350°. Mix margarine and brown sugar. Spread in bottom of ungreased 10-inch ovenproof ring mold; sprinkle with walnuts. Prepare Cake-like Brownies as directed on package. Spoon and spread dough over mixture in mold. Bake 30 to 35 minutes. Run knife around edge of mold to loosen; immediately invert on heatproof serving plate. Remove mold. Serve warm with ice cream and garnish with maraschino cherries if desired.



**PLANTING INTENTIONS
ANNOUNCED:** The U.S. Department of Agriculture's Feb. 1 survey shows farmers intend to plant 12,599,000 acres of upland cotton in 1982. This compares with a 1981 plantings figure of 14,319,000 acres.

State planting totals include: Arizona, 550,000; California, 1,440,000; Oklahoma, 650,000; and Texas, 6,300,000.

BALE COMMITTEE TO MEET: The Joint Cotton Industry Bale Packaging Committee will meet March 3 in Memphis, the National Cotton Council announces.

The agenda includes discussion of a guide for acceptable bale conditions, systems for complete bale coverage, and reports on various experimental test products.

Proposals for testing new materials during 1982 also will be considered.

SIGN-UP DATES SET: Cotton producers who plan to participate in the 1982 cotton program, which calls for a 15 percent acreage reduction to be eligible for price support loans and target price payments, should report to their ASCS offices between Feb. 16 and April 16, according to the National Cotton Council.



**Wildcat
Mfg.**

6 Miles S. on U.S. 87

Leighton Knox Jr.

★ Treflan Rigs Built

★ General Spray Equipment

★ Wildcat 3-Wheelers

Phone 327-5602

**Come By O'Donnell Farm & Ranch
for Free Coffee and Discussion Of
Your Fertilizer Needs!**

- ★ Sol-U-Phos Fertilizer
- ★ We Custom Blend To Fit Your Needs
- ★ Custom Applications
- ★ Dry Fertilizer
- ★ Dry Fertilizer Applicators For Rent
- ★ Take Soil Samples
- ★ Basalin
- ★ Prowl
- ★ Treflan
- ★ Garden Seed
- ★ Golden Acre Milo Seed
- ★ Haygrazer Seed

O'Donnell Farm & Ranch

998-4541
TAHOKA

428-3442
O'DONNELL

**Let Us Put Down Your
Fertilizer & Treflan**

Lynn County Fertilizer

998-5307 Day 998-4869 Night

APPLICATION \$2⁰⁰ PER ACRE

CALL BENGE WILLIAMS AT
924-7663 or 327-5282

AMERICA'S HISTORY



One of the most palatial and imposing mansions in America is Stanton Hall in Natchez, Mississippi, open to visitors year round.

**Dawson County
Production
Meeting Set**

The annual Dawson County Cotton Production meeting will be held Friday, Feb. 26, beginning at 1 p.m. in the Dawson County Community Building, corner of South Houston and Ninth Street. Donald Vogler, Chairman County Crops subcommittee will be presiding. Program is as follows:
1 p.m. - Will Bollworms Be a Problem in 1982?
1:45 - The Importance of Planting Time, Temperature, Seed Quality
2:45 - Your Fertilizer Situation - Making the Most of Your Dollar Spent for Fertilizer
3:30 - Use of Chemicals and Resistant Cotton Varieties to Control Nematodes, Disease Problems, Verticillium and Fusarium Wilt.

A suspicious parent makes an artful child. Haliburton.

**THESE TAHOKA FIRMS ARE MAKING
THIS FARM NEWS POSSIBLE**

McCord Oil Co. H. B. McCord, Jr.	Lubbock-Tahoka Federal Land Bank Assn. Jay Dee House, Mgr.
Production Credit Association Don Boydston	Farmers Co-Op Assn. No. 1 Tommy Lawson, Mgr.
Tahoka Co-Op David Martin, Mgr.	Tahoka Auto Supply The Hollands
Lynn County News	Lynn County Farm Bureau Pat Green, Mgr.

Nichols Brand

**Chisel Sweeps - High Clearance
6" thru 24"**

Chisel Spikes - High Clearance 2" X 18"

Cultivator Sweeps - 6" thru 24"

Buy a set - get 5% off

Pay Cash - get 5% off

**V Busters
6", 8", 10", 12", 14", 15" cut**

Wade Farm Implement, Inc.



TAHOKA

PH 998-4558 or 998-4559

Obituaries

Tom N. Hale

Services for Tom N. Hale, 85, of Tahoka, a former county commissioner and law enforcement officer, were held at 2:30 p.m. Sunday, Feb. 21, at First Baptist Church of Tahoka with the Rev. Don Cass, pastor, and the Rev. Gene Wisdom, pastor of First United Methodist Church of Tahoka, officiating.

Burial was in Tahoka Cemetery under direction of White Funeral Home.

Hale died at his home Saturday morning. Justice of the Peace Ed Hamilton ruled the death was by natural causes.

He was born April 3, 1896 in Gail and moved to Lynn County in 1910. He married Eula Yates Nov. 29, 1917, in San Antonio. He was a veteran of World War I. He was a Lynn County commissioner from 1939 to 1945. He also had been a deputy sheriff under Sam Floyd from 1946 to 1949 and under Norvell Redwine from 1953 to 1963 and a farmer.

Survivors include his wife; two daughters, Ruth Wells and Pauline Stephens, both of Tahoka; a son, Tom W. Hale, who preceded him in death Jan. 30, 1979; a brother, E.R. of Austin; eight grandchildren; and 18 great-grandchildren.

Pallbearers will be Jim Wells, Valton Stephens, Bob Key, Gary Morrison, Joe Spearman, Edwin Pebsworth and Jessie Spruiell. Law enforcement officers served as honorary pallbearers.

Mrs. Bert Flemins

Services for Mrs. Bert Flemins, 86, a retired teacher of Stamford, and mother of Mrs. Gweneith Patterson of Tahoka, were held at 2 p.m. Monday at the Kinney Funeral Home Chapel in Stamford with Rev. Julius Early, pastor of St. John's United Methodist Church, and Rev. Jesse Morton, pastor of Temple Baptist Church, officiating.

Burial was in Stamford's Highland Memorial Cemetery.

Mrs. Flemins died about 1:30 p.m. Saturday at her home in Stamford.

Born Sept. 26, 1895 in Waxahachie, she had lived in Jones County since 1901. She married Bert Flemins on May 8, 1917 in Abilene. She was a member of St. John's United Methodist Church.

She was preceded in death by her husband and twin daughters.

Survivors include two daughters, Mrs. Patterson and Patricia Thompson of Arlington; a sister, Ruth Young of Stamford; four grandchildren, Sharon Kenty of Japan, Rett Patterson of Lubbock, Gayle Collier of Atlanta Ga., and Jay Thompson of Austin; and four great-grandchildren.

Spring with Rev. Harold D. Scarborough, pastor of Temple Baptist Church of Amarillo, assisted by Rev. Guy White, pastor of East Fourth St. Baptist Church of Big Spring, officiating.

Burial was in Trinity Memorial Park in Big Spring.

Mrs. Draper died Wednesday, Feb. 17, at her home after a sudden illness.

She was born on June 3, 1930 in Tip City, Ohio and married Billie Draper on Nov. 5, 1962 in Lubbock. They moved to Big Spring two years ago. She was a member of the East Fourth Street Baptist Church of Big Spring.

She is survived by her husband, Billie; one son, Danny, of the home.

Bill is the brother of Mary Brecheen and Mrs. James (Bobby) Petty, both of Abilene, Robert T. Draper, and John Draper, both of Tahoka.

Survivors include three sons, Grady Herschell of Lubbock, Clyde of Lawton, Okla., and Leslie of Boonerville, Ark.; two daughters, Faye E. Johnson of LaPunte, Calif., and Eddie Young of Oklahoma City; a sister, Myrtle Cobb of Haskett; 20 grandchildren; 29 great-grandchildren; and two great-great-grandchildren.

Available Money Should Help Texas Farmers

AUSTIN—Investment of bond sale returns in the Texas Family Farm and Ranch Loan Security Program is growing and should help beginning farmers get started when the program is initiated next year.

Agriculture Commissioner Reagan V. Brown announced that the investment of the \$10 million from bond sales has increased by more than \$80,000 after interest payments were made on the state loan.

"As of January 31, 1982, we have \$7,990,027 in tax-exempt bonds at 11.5 percent and \$1.5 million invested by the State Treasurer at around 13 percent, depending on fluctuations in the national rate. The balance is in certificates of deposit at various institutions," Brown said.

He explained that arbitrage laws governing such state handling of bond money have limited the amount of interest that can be earned. Certain funds have to be kept liquid to pay the interest charges on the original issue of \$10 million in bonds to begin the fund.

Brown introduced the program and lead the passage in the Legislature. "The program still has not cost taxpayers any money. Interest has made payments on the loan," he said.

The program is guided by a statewide advisory board appointed by the Governor.

The Senate Subcommittee on Agriculture, chaired by Senator Bill Sarpalius, has held a series of hearings around the state this year on ways to improve the program. Senators Carlos Truan and John Wilson are members of the committee. The final hearing will be in July. "When their report is submitted, we will act on suggestions that will make it an even better program," Brown said.

The farm and ranch loan security program was passed through a constitutional amendment to help beginning farmers purchase land for growing crops or raising livestock. However, since its enactment, high interest rates have prevailed, and no applications were received by the Texas Department of Agriculture in the first year.

There are provisions in the bill for payment adjustments for each of the first 10 years of a loan, by which the state would pay four percent of the year's outstanding balance. The purchaser would repay the state at six percent interest, beginning with the eleventh year.

"This adjustment would probably have encouraged farmers to buy land despite the interest rate. However, funding was not incorporated

Available Money Should Help Texas Farmers

AUSTIN—Investment of bond sale returns in the Texas Family Farm and Ranch Loan Security Program is growing and should help beginning farmers get started when the program is initiated next year.

Agriculture Commissioner Reagan V. Brown announced that the investment of the \$10 million from bond sales has increased by more than \$80,000 after interest payments were made on the state loan.

"As of January 31, 1982, we have \$7,990,027 in tax-exempt bonds at 11.5 percent and \$1.5 million invested by the State Treasurer at around 13 percent, depending on fluctuations in the national rate. The balance is in certificates of deposit at various institutions," Brown said.

He explained that arbitrage laws governing such state handling of bond money have limited the amount of interest that can be earned. Certain funds have to be kept liquid to pay the interest charges on the original issue of \$10 million in bonds to begin the fund.

Brown introduced the program and lead the passage in the Legislature. "The program still has not cost taxpayers any money. Interest has made payments on the loan," he said.

The program is guided by a statewide advisory board appointed by the Governor.

The Senate Subcommittee on Agriculture, chaired by Senator Bill Sarpalius, has held a series of hearings around the state this year on ways to improve the program. Senators Carlos Truan and John Wilson are members of the committee. The final hearing will be in July. "When their report is submitted, we will act on suggestions that will make it an even better program," Brown said.

The farm and ranch loan security program was passed through a constitutional amendment to help beginning farmers purchase land for growing crops or raising livestock. However, since its enactment, high interest rates have prevailed, and no applications were received by the Texas Department of Agriculture in the first year.

There are provisions in the bill for payment adjustments for each of the first 10 years of a loan, by which the state would pay four percent of the year's outstanding balance. The purchaser would repay the state at six percent interest, beginning with the eleventh year.

"This adjustment would probably have encouraged farmers to buy land despite the interest rate. However, funding was not incorporated

Senior Citizens Menu

March 1-5-82

MONDAY- Beef Stew w Vegetables, Salad, Cornbread, Butter, Milk

TUESDAY- Green Enchilada Casserole, Pinto Beans, Sliced Onions, Pickles, Cole Slaw, Roll, Butter, Applesauce, Milk

WEDNESDAY- Roast Beef, Brown Gravy, Potatoes, Carrots, Roll, Butter, Milk

THURSDAY- Chicken Chop Suey, Chinese Noodles, Broccoli, Roll, Butter, Apricot Cobbler, Milk

FRIDAY- Chicken Fried Steak, Cream Gravy, Mashed Potatoes, Green Beans, Roll, Butter, Applesauce, Milk

Compared to only 22 percent for the work force as a whole, 28 percent of women working for newspapers are in managerial or professional positions.

A little nonsense now and then, is relish'd by the best of men. *Amos*

A pound of tea makes about 125 cups.

TEA

SAVE UP TO \$2.00

ON HEAVY DUTY BATTERIES

RAYOVAC will send you \$1.00 when you buy any three packages of Heavy Duty Batteries. And then RAYOVAC will double your money when you send in this ad, plus the Official Refund Certificate from the RAYOVAC Display in our store. See our display for details, and don't forget to clip this ad to get \$2.00 and more Power for the Long Run.

Expiration Date: July 31, 1982

POWER FOR THE LONG RUN

Higginbotham-Bartlett Company

Tahoka

Suzette Southward

Services for Suzette Southward, 18, were held at 4 p.m. Tuesday in the Emma Church of Christ in Ralls with Roy Shave, minister, officiating.

Burial was in the Ralls Cemetery.

Miss Southward, a native of Lubbock, died about 3:30 p.m. Sunday in Methodist Hospital in Lubbock of injuries sustained in a car-truck accident in Lorenzo about 1:30 p.m.

The Ralls High School senior had lived in Ralls most of her life. She was a member of Future Home-

makers of America, Future Teachers of America, Ralls Girls' Athletic Assn., and Home Economics Cooperative Education program. She lettered two years in basketball and one in tennis. She was voted the most valuable member of the senior class.

Survivors include her mother, Elnaree Southward of Ralls; her grandmother, Mrs. C.O. Southward of Ralls; her grandfather, J.E. Evatt of Ralls; three sisters, Mrs. Joe Lloyd (Jamerec) Freeman of Matador, Sherita Southward of Lubbock and Reyna Southward of Fort Worth.

Mrs. E.L. King

Services for Mrs. E.L. "Docia" King, 83, of Slaton were held at 10 a.m. Monday at First United Methodist Church of Slaton with the Rev. Steve McElroy, pastor, and the Rev. H.B. Coggins of Abernathy officiating.

Burial was in Southland Cemetery in Southland. Mrs. King died Thursday in

Methodist Hospital after a brief illness.

She was born in Glen Rose and married E.L. King Oct. 12, 1913, in Texas. She moved to the Southland area in 1925.

Survivors include three sons, Grady Herschell of Lubbock, Clyde of Lawton, Okla., and Leslie of Boonerville, Ark.; two daughters, Faye E. Johnson of LaPunte, Calif., and Eddie Young of Oklahoma City; a sister, Myrtle Cobb of Haskett; 20 grandchildren; 29 great-grandchildren; and two great-great-grandchildren.

Agriculture Commissioner Reagan V. Brown announced that the investment of the \$10 million from bond sales has increased by more than \$80,000 after interest payments were made on the state loan.

"As of January 31, 1982, we have \$7,990,027 in tax-exempt bonds at 11.5 percent and \$1.5 million invested by the State Treasurer at around 13 percent, depending on fluctuations in the national rate. The balance is in certificates of deposit at various institutions," Brown said.

He explained that arbitrage laws governing such state handling of bond money have limited the amount of interest that can be earned. Certain funds have to be kept liquid to pay the interest charges on the original issue of \$10 million in bonds to begin the fund.

Brown introduced the program and lead the passage in the Legislature. "The program still has not cost taxpayers any money. Interest has made payments on the loan," he said.

The program is guided by a statewide advisory board appointed by the Governor.

The Senate Subcommittee on Agriculture, chaired by Senator Bill Sarpalius, has held a series of hearings around the state this year on ways to improve the program. Senators Carlos Truan and John Wilson are members of the committee. The final hearing will be in July. "When their report is submitted, we will act on suggestions that will make it an even better program," Brown said.

The farm and ranch loan security program was passed through a constitutional amendment to help beginning farmers purchase land for growing crops or raising livestock. However, since its enactment, high interest rates have prevailed, and no applications were received by the Texas Department of Agriculture in the first year.

There are provisions in the bill for payment adjustments for each of the first 10 years of a loan, by which the state would pay four percent of the year's outstanding balance. The purchaser would repay the state at six percent interest, beginning with the eleventh year.

"This adjustment would probably have encouraged farmers to buy land despite the interest rate. However, funding was not incorporated

Survivors include two sons, S.E. McRoberts of Cisco and G.E. McRoberts of Amarillo; four daughters, Zela King of De Soto, Amy Patton of Snyder, Adele Norman of Denton, and Mary Frances Penhall of Richardson; a sister, Downie Farr of Wichita Falls; 10 grandchildren, including Sammie Mantooth of New Home; 30 great-grandchildren, and four great-great-grandchildren.

Survivors include her mother, Elnaree Southward of Ralls; her grandmother, Mrs. C.O. Southward of Ralls; her grandfather, J.E. Evatt of Ralls; three sisters, Mrs. Joe Lloyd (Jamerec) Freeman of Matador, Sherita Southward of Lubbock and Reyna Southward of Fort Worth.

Mrs. E.L. King

Services for Mrs. E.L. "Docia" King, 83, of Slaton were held at 10 a.m. Monday at First United Methodist Church of Slaton with the Rev. Steve McElroy, pastor, and the Rev. H.B. Coggins of Abernathy officiating.

Burial was in Southland Cemetery in Southland. Mrs. King died Thursday in

Survivors include a niece, Odessa Smith of New Home and several nieces and nephews.

Survivors include two sons, S.E. McRoberts of Cisco and G.E. McRoberts of Amarillo; four daughters, Zela King of De Soto, Amy Patton of Snyder, Adele Norman of Denton, and Mary Frances Penhall of Richardson; a sister, Downie Farr of Wichita Falls; 10 grandchildren, including Sammie Mantooth of New Home; 30 great-grandchildren, and four great-great-grandchildren.

Survivors include her mother, Elnaree Southward of Ralls; her grandmother, Mrs. C.O. Southward of Ralls; her grandfather, J.E. Evatt of Ralls; three sisters, Mrs. Joe Lloyd (Jamerec) Freeman of Matador, Sherita Southward of Lubbock and Reyna Southward of Fort Worth.

Mrs. E.L. King

Services for Mrs. E.L. "Docia" King, 83, of Slaton were held at 10 a.m. Monday at First United Methodist Church of Slaton with the Rev. Steve McElroy, pastor, and the Rev. H.B. Coggins of Abernathy officiating.

Burial was in Southland Cemetery in Southland. Mrs. King died Thursday in

Survivors include a niece, Odessa Smith of New Home and several nieces and nephews.

Survivors include two sons, S.E. McRoberts of Cisco and G.E. McRoberts of Amarillo; four daughters, Zela King of De Soto, Amy Patton of Snyder, Adele Norman of Denton, and Mary Frances Penhall of Richardson; a sister, Downie Farr of Wichita Falls; 10 grandchildren, including Sammie Mantooth of New Home; 30 great-grandchildren, and four great-great-grandchildren.

Survivors include her mother, Elnaree Southward of Ralls; her grandmother, Mrs. C.O. Southward of Ralls; her grandfather, J.E. Evatt of Ralls; three sisters, Mrs. Joe Lloyd (Jamerec) Freeman of Matador, Sherita Southward of Lubbock and Reyna Southward of Fort Worth.

Mrs. E.L. King

Services for Mrs. E.L. "Docia" King, 83, of Slaton were held at 10 a.m. Monday at First United Methodist Church of Slaton with the Rev. Steve McElroy, pastor, and the Rev. H.B. Coggins of Abernathy officiating.

Burial was in Southland Cemetery in Southland. Mrs. King died Thursday in

Available Money Should Help Texas Farmers

AUSTIN—Investment of bond sale returns in the Texas Family Farm and Ranch Loan Security Program is growing and should help beginning farmers get started when the program is initiated next year.

Agriculture Commissioner Reagan V. Brown announced that the investment of the \$10 million from bond sales has increased by more than \$80,000 after interest payments were made on the state loan.

"As of January 31, 1982, we have \$7,990,027 in tax-exempt bonds at 11.5 percent and \$1.5 million invested by the State Treasurer at around 13 percent, depending on fluctuations in the national rate. The balance is in certificates of deposit at various institutions," Brown said.

He explained that arbitrage laws governing such state handling of bond money have limited the amount of interest that can be earned. Certain funds have to be kept liquid to pay the interest charges on the original issue of \$10 million in bonds to begin the fund.

Brown introduced the program and lead the passage in the Legislature. "The program still has not cost taxpayers any money. Interest has made payments on the loan," he said.

The program is guided by a statewide advisory board appointed by the Governor.

The Senate Subcommittee on Agriculture, chaired by Senator Bill Sarpalius, has held a series of hearings around the state this year on ways to improve the program. Senators Carlos Truan and John Wilson are members of the committee. The final hearing will be in July. "When their report is submitted, we will act on suggestions that will make it an even better program," Brown said.

The farm and ranch loan security program was passed through a constitutional amendment to help beginning farmers purchase land for growing crops or raising livestock. However, since its enactment, high interest rates have prevailed, and no applications were received by the Texas Department of Agriculture in the first year.

There are provisions in the bill for payment adjustments for each of the first 10 years of a loan, by which the state would pay four percent of the year's outstanding balance. The purchaser would repay the state at six percent interest, beginning with the eleventh year.

"This adjustment would probably have encouraged farmers to buy land despite the interest rate. However, funding was not incorporated

Survivors include two sons, S.E. McRoberts of Cisco and G.E. McRoberts of Amarillo; four daughters, Zela King of De Soto, Amy Patton of Snyder, Adele Norman of Denton, and Mary Frances Penhall of Richardson; a sister, Downie Farr of Wichita Falls; 10 grandchildren, including Sammie Mantooth of New Home; 30 great-grandchildren, and four great-great-grandchildren.

Survivors include her mother, Elnaree Southward of Ralls; her grandmother, Mrs. C.O. Southward of Ralls; her grandfather, J.E. Evatt of Ralls; three sisters, Mrs. Joe Lloyd (Jamerec) Freeman of Matador, Sherita Southward of Lubbock and Reyna Southward of Fort Worth.

Mrs. E.L. King

Services for Mrs. E.L. "Docia" King, 83, of Slaton were held at 10 a.m. Monday at First United Methodist Church of Slaton with the Rev. Steve McElroy, pastor, and the Rev. H.B. Coggins of Abernathy officiating.

Burial was in Southland Cemetery in Southland. Mrs. King died Thursday in

Survivors include a niece, Odessa Smith of New Home and several nieces and nephews.

Survivors include two sons, S.E. McRoberts of Cisco and G.E. McRoberts of Amarillo; four daughters, Zela King of De Soto, Amy Patton of Snyder, Adele Norman of Denton, and Mary Frances Penhall of Richardson; a sister, Downie Farr of Wichita Falls; 10 grandchildren, including Sammie Mantooth of New Home; 30 great-grandchildren, and four great-great-grandchildren.

Survivors include her mother, Elnaree Southward of Ralls; her grandmother, Mrs. C.O. Southward of Ralls; her grandfather, J.E. Evatt of Ralls; three sisters, Mrs. Joe Lloyd (Jamerec) Freeman of Matador, Sherita Southward of Lubbock and Reyna Southward of Fort Worth.

Mrs. E.L. King

Services for Mrs. E.L. "Docia" King, 83, of Slaton were held at 10 a.m. Monday at First United Methodist Church of Slaton with the Rev. Steve McElroy, pastor, and the Rev. H.B. Coggins of Abernathy officiating.

Burial was in Southland Cemetery in Southland. Mrs. King died Thursday in

Survivors include a niece, Odessa Smith of New Home and several nieces and nephews.

Survivors include two sons, S.E. McRoberts of Cisco and G.E. McRoberts of Amarillo; four daughters, Zela King of De Soto, Amy Patton of Snyder, Adele Norman of Denton, and Mary Frances Penhall of Richardson; a sister, Downie Farr of Wichita Falls; 10 grandchildren, including Sammie Mantooth of New Home; 30 great-grandchildren, and four great-great-grandchildren.

Survivors include her mother, Elnaree Southward of Ralls; her grandmother, Mrs. C.O. Southward of Ralls; her grandfather, J.E. Evatt of Ralls; three sisters, Mrs. Joe Lloyd (Jamerec) Freeman of Matador, Sherita Southward of Lubbock and Reyna Southward of Fort Worth.

Mrs. E.L. King

Services for Mrs. E.L. "Docia" King, 83, of Slaton were held at 10 a.m. Monday at First United Methodist Church of Slaton with the Rev. Steve McElroy, pastor, and the Rev. H.B. Coggins of Abernathy officiating.

Services for Tom N. Hale, 85, of Tahoka, a former county commissioner and law enforcement officer, were held at 2:30 p.m. Sunday, Feb. 21, at First Baptist Church of Tahoka with the Rev. Don Cass, pastor, and the Rev. Gene Wisdom, pastor of First United Methodist Church of Tahoka, officiating.

Burial was in Tahoka Cemetery under direction of White Funeral Home.

Hale died at his home Saturday morning. Justice of the Peace Ed Hamilton ruled the death was by natural causes.

He was born April 3, 1896 in Gail and moved to Lynn County in 1910. He married Eula Yates Nov. 29, 1917, in San Antonio. He was a veteran of World War I. He was a Lynn County commissioner from 1939 to 1945. He also had been a deputy sheriff under Sam Floyd from 1946 to 1949 and under Norvell Redwine from 1953 to 1963 and a farmer.

Survivors include his wife; two daughters, Ruth Wells and Pauline Stephens, both of Tahoka; a son, Tom W. Hale, who preceded him in death Jan. 30, 1979; a brother, E.R. of Austin; eight grandchildren; and 18 great-grandchildren.

Pallbearers will be Jim Wells, Valton Stephens, Bob Key, Gary Morrison, Joe Spearman, Edwin Pebsworth and Jessie Spruiell. Law enforcement officers served as honorary pallbearers.

Survivors include two sons, S.E. McRoberts of Cisco and G.E. McRoberts of Amarillo; four daughters, Zela King of De Soto, Amy Patton of Snyder, Adele Norman of Denton, and Mary Frances Penhall of Richardson; a sister, Downie Farr of Wichita Falls; 10 grandchildren, including Sammie Mantooth of New Home; 30 great-grandchildren, and four great-great-grandchildren.

Survivors include her mother, Elnaree Southward of Ralls; her grandmother, Mrs. C.O. Southward of Ralls; her grandfather, J.E. Evatt of Ralls; three sisters, Mrs. Joe Lloyd (Jamerec) Freeman of Matador, Sherita Southward of Lubbock and Reyna Southward of Fort Worth.

Mrs. E.L. King

Services for Mrs. E.L. "Docia" King, 83, of Slaton were held at 10 a.m. Monday at First United Methodist Church of Slaton with the Rev. Steve McElroy, pastor, and the Rev. H.B. Coggins of Abernathy officiating.

Burial was in Southland Cemetery in Southland. Mrs. King died Thursday in

Survivors include a niece, Odessa Smith of New Home and several nieces and nephews.

Survivors include two sons, S.E. McRoberts of Cisco and G.E. McRoberts of Amarillo; four daughters, Zela King of De Soto, Amy Patton of Snyder, Adele Norman of Denton, and Mary Frances Penhall of Richardson; a sister, Downie Farr of Wichita Falls; 10 grandchildren, including Sammie Mantooth of New Home; 30 great-grandchildren, and four great-great-grandchildren.

Survivors include her mother, Elnaree Southward of Ralls; her grandmother, Mrs. C.O. Southward of Ralls; her grandfather, J.E. Evatt of Ralls; three sisters, Mrs. Joe Lloyd (Jamerec) Freeman of Matador, Sherita Southward of Lubbock and Reyna Southward of Fort Worth.

Mrs. E.L. King

Services for Mrs. E.L. "Docia" King, 83, of Slaton were held at 10 a.m. Monday at First United Methodist Church of Slaton with the Rev. Steve McElroy, pastor, and the Rev. H.B. Coggins of Abernathy officiating.

Burial was in Southland Cemetery in Southland. Mrs. King died Thursday in

Survivors include a niece, Odessa Smith of New Home and several nieces and nephews.

Survivors include two sons, S.E. McRoberts of Cisco and G.E. McRoberts of Amarillo; four daughters, Zela King of De Soto, Amy Patton of Snyder, Adele Norman of Denton, and Mary Frances Penhall of Richardson; a sister, Downie Farr of Wichita Falls; 10 grandchildren, including Sammie Mantooth of New Home; 30 great-grandchildren, and four great-great-grandchildren.

Survivors include her mother, Elnaree Southward of Ralls; her grandmother, Mrs. C.O. Southward of Ralls; her grandfather, J.E. Evatt of Ralls; three sisters, Mrs. Joe Lloyd (Jamerec) Freeman of Matador, Sherita Southward of Lubbock and Reyna Southward of Fort Worth.

Mrs. E.L. King

Services for Mrs. E.L. "Docia" King, 83, of Slaton were held at 10 a.m. Monday at First United Methodist Church of Slaton with the Rev. Steve McElroy, pastor, and the Rev. H.B. Coggins of Abernathy officiating.

Burial was in Southland Cemetery in Southland. Mrs. King died Thursday in

Survivors include a niece, Odessa Smith of New Home and several nieces and nephews.

Survivors include two sons, S.E. McRoberts of Cisco and G.E. McRoberts of Amarillo; four daughters, Zela King of De Soto, Amy Patton of Snyder, Adele Norman of Denton, and Mary Frances Penhall of Richardson; a sister, Downie Farr of Wichita Falls; 10 grandchildren, including Sammie Mantooth of New Home; 30 great-grandchildren, and four great-great-grandchildren.

Real Estate

FOR SALE

160 acres, two 6" wells, with side roll sprinklers, more water than necessary, 10 miles E of Tahoka on Highway 380.

160 acres unimproved dry land in Ward County at \$110.00 per acre.

354 acres irrigated farm with 250 in cultivation, abundant water, 1/2 minerals in SW Bailey County. Owner financing at 10 percent interest.

354 acres dry land farm near Maple, some minerals, too, reasonable priced.

New Home News

By Florence Davies
Call 924-7479

The names of Mr. and Mrs. Roy Miller of Tahoka were inadvertently left out of the birth announcement of Jonathan Adams in last week's News. They are the paternal great-grandparents.

Jaga Meyers of Lubbock spent the weekend here with her grandparents. Mr. and Mrs. Joe Lewis.

Mr. and Mrs. Floyd Smith, Dwayne Smith and Mr. and Mrs. Rodney Reese and Brandon of Lubbock, Mr. and Mrs. Matt Hendrick of Hobbs, N.M. and Mrs. Minnie Fewell of Ropesville visited here Sunday with Mr. and Mrs. Don Sharp.

Mrs. Shine Barnett was dismissed from Methodist Hospital Saturday and is at home.

After spending their summer school vacation here with grandparents, Joe and Betty and in Lubbock with great-grandparents, Mr. and Mrs. J.P. Unfred and Mrs. Jane Fetter and other relatives, Angelique and Cheri left Friday, Feb. 19, for their home in Sidney, Australia accompanied by grandmother, Mrs. Ray Roach of Humble. Betty went to Australia Jan. 10 and spent two weeks with Dave and family and the girls returned home with her.

Mr. and Mrs. Aubrey Smith went to Amarillo Friday and spent the night with Kay, Larry, Shon and Crystal.

Theta Eta Chapter of Delta Kapa Gamma met at the New Home Baptist Church Fellowship Hall Thursday, Feb. 19. Since in February there was Washington and Lincoln's birthdays and Valentine's Day the hostesses decided to be different. The 4th of July theme was used in decoration. The centerpiece was a big display of firecrackers and a large basket of sandwiches. Drinks were iced down in a wash tub, and served with ice cream. Oleta Smith of O'Donnell spoke on "The Media Today". About 30 members were present.

The Distinguished Service Award was presented to L.C. Unfred at the Joint Annual Cooperative Meeting in Dallas. This was the thirtieth Joint Annual Cooperative

meeting which includes the Texas Federation of Cooperatives, the Texas Bank for Cooperatives and The Texas Cooperative Ginners Assn. Attending from New Home were Wilmer Smith, Bob and Linda Ballard and L.C. and Natalie Unfred.

Mrs. Lewie Holt accompanied her brother, Gentry Hobbs of Seagraves and his daughter, Gloria Hern of Seminole to Wellington for funeral services for their sister, Mrs. Roy Scott. Mrs. Scott, 77, died Saturday in a Wellington Hospital after a sudden illness. Services were held in the First Baptist Church in Wellington on Monday.

Mrs. Donnie Morris will enter Methodist Hospital Tuesday and on Wednesday will have an angiogram.

Grady and Frances King of Mulshoe visited with us here last Monday.

Katie and Jack Clements of Mangum were here several days last week attending business and visiting friends.

Virgil Haley is still on crutches and under treatment for an infection in his right foot. The foot was badly crushed when a shredder tongue fell on it about five weeks ago.

Gloria McBrayer had major surgery at Brownfield Hospital on Tuesday, Jan. 26. Recovery has been slow, but

she is about back to normal now.

The youth from the New Home Baptist Church and their sponsors went to the Pizza Planet in Lubbock after evening services Sunday. About thirty attended.

In the Methodist Church preacher exchange day Sunday, Rev. Rick Wolf Preached in the New Deal Church, and their pastor, Rev. Charles Lewis, preached for the New Home congregation.

Mrs. Sherman (Beatrice) Inman of Mulshoe suffered a broken nose and her right arm was broken in a fall in the Post Office in Mulshoe last week.

J.W. Edwards is in room 562 Methodist Hospital after surgery to amputate his left leg last Friday. He is doing very well.

Mr. and Mrs. Harold Nettles and Mr. and Mrs. Steve Fillingim were in Rawleigh, N.C. Wednesday, Feb. 17-20 to visit the Cotton Inc. research facilities and some area textile mills.

A work day is planned for Saturday, Feb. 27, in the New-Home Baptist Church. Come and help and enjoy a dinner at noon, 9 a.m. till?

Buster Todd, city Maintenance man returned to work Friday after a 1 1/2 month illness. His brother-

in-law, Ray Vallance, filled in for him.

We were in Ralls Tuesday afternoon for funeral services for Suzette Southward.

New Home School Menu

BREAKFAST
MONDAY- Oatmeal, Toast, Pineapple Juice, Milk
TUESDAY- Choice of Cereal, Banana, Milk
WEDNESDAY- Sausage Balls, Apple Juice, Milk
THURSDAY- Cinnamon Toast, Stewed Prunes, Milk
FRIDAY- Donuts, Juice or Fruit, Milk
LUNCH
MONDAY- Corn Dogs, Ranch Style Beans, Fresh Apple Milk
TUESDAY- Frito Pie, Corn, Applesauce, Cinnamon Roll, Milk
WEDNESDAY- Chicken Enchiladas, Mexican Salad, Diced Peaches, Milk
THURSDAY- Spaghetti, Meat Sauce, Tossed Salad, Garlic Toast or Crackers, Pear Half, Milk
FRIDAY- Hamburgers, Lettuce, Pickles, Tomatoes, Onions, Tator Tots, Cookie, Milk

Summer Recipes

Now that summer is practically here, naturally our thoughts turn to foods that require minimal preparation. The kitchen is kept cool and there is nutritional balance. Chilled soups and tantalizing salads are good make-ahead conveniences.

If you haven't tried a smooth, creamy chilled soup, you should. This style soup is becoming increasingly popular. The flavors are delicious, tastes refreshing, and preparations are easy and attractive. Salads may be prepared in advance and chilled. Two favorites are:

Chilled Avocado-Chicken Soup

1 medium onion, chopped
1/2 cup celery
1 whole chicken breast (about 16 oz.)
1 can (10 1/2 oz.) condensed chicken broth
1/2 cup water
1 tablespoon flour
1/2 teaspoon salt
1/2 teaspoon curry powder
1 avocado, peeled and chopped
1/2 cup half & half cream
Combine onion and celery in 2-quart glass mix'n pour bowl. Cut chicken breast in half; place on vegetables, skin-side-up. Cover with waxed paper. Microwave (high) 9 to 10 minutes or until chicken is done, rotating dish once. Remove chicken and set aside. Add chicken broth to vegetables. Combine water, flour, salt and curry powder. Blend into chicken broth. Microwave (high), uncovered, 4 1/2 to 5 minutes or until mixture boils, stirring once. Cool. Combine broth mixture and avocado in blender or food processor container. Cover and process at medium speed until smooth. Return to mix'n pour bowl. Blend in half and half. Dice chicken and add to soup. Cover and refrigerate until chilled. If desired, garnish with parsley and lemon slices. About 4 servings.

Potato-Ham Salad
A hearty potato salad that can be served warm or cold. We find it easier to micro-

wave the sliced potatoes than to microwave the whole potatoes before slicing.

5 potatoes, peeled and sliced
1/4 cup water
2 cups cubed, cooked ham
1/2 cup cooking oil
2 tablespoons sugar
3 tablespoons white wine vinegar
1/2 teaspoon salt
1/2 teaspoon Garlic salt
1/2 teaspoon celery seed
3 green onions, sliced
Radishes, if desired
Combine potatoes and water in 1 1/2 quart glass casserole. Cover with casserole lid. Microwave (high) 9 to 10 minutes or until potatoes are just about tender, stirring once or twice. Let stand covered 5 minutes; Add ham. Cover. Microwave (high) 1 to 1 1/2 minutes or until ham is heated. Combine oil, sugar, vinegar, salts and celery seed in 1 cup glass measure. Microwave (high) uncovered, 1 to 1 1/2 minutes or until hot. Stir to dissolve sugar. Pour over potatoes and ham. Add onions and stir lightly. Serve warm or chilled. If desired, garnish with radish slices. 5 to 6 servings.

TIPS: a 24 oz. package frozen hashbrown potatoes can be substituted for the potatoes and water. Increase time in step 2 to 13 to 14 minutes. Continue as directed. If using regular vinegar, decrease the quantity to 2 tablespoons.

If you would like recipes and instructions for preparing yeast breads in the microwave write: Vivian Lin-

Wilson Menu

March 1-5, 1982
BREAKFAST
MONDAY-Sliced Peaches, Donut, Milk
TUESDAY-Waffle, Syrup, Butter, Pineapple Juice, Milk
WEDNESDAY-Biscuit, Bacon Slice, Pear Half, Milk
THURSDAY-Blueberry Muffin, Applesauce, Milk
FRIDAY-Cereal, Toast, Jelly, Banana, Milk
LUNCH
MONDAY-Meat & Cheese Sandwich, Pork & Beans, Carrot Stick, Pickle Spear, Potato Chips, Lemon Pudding, Milk
TUESDAY-Turkey & Dressing, Gravy, Cranberry Sauce, Green Beans, Hot Rolls, Fruit Salad, Milk
WEDNESDAY-Corndog, Mustard, Ranch Style Beans, Corn on Cob, Purple Plums, Milk
THURSDAY-Salmon Croquettes, Cream Potatoes, Hot Rolls, Blackeyed Peas, Sliced Peaches, Milk
FRIDAY-Cheeseburger, Lettuce, Tomato, Onions, Pickles, Potato Rounds, Banana Pudding, Milk

He who is most slow in making a promise, is the most faithful in the performance of it. *Roussseau*

Consumer Service Rep., Box 631, Lubbock, Texas 79408. Ask for Microwave Yeast Breads.

At General Telephone... We're Not Simply Talking About Service Improvements We're Making Them In Tahoka

At General Telephone, better service isn't just a goal, it's a solid commitment. General Telephone spent over 354 million dollars in 1981 on capital expenditure projects (i.e. new electronic switches, expanded cable projects, modernization), and GTE will spend over 410 million dollars in 1982 to provide you the best telecommunications available.

For Tahoka this investment in service improvement is working as shown below. General Telephone is working hard to continually provide you with the best of service.

The Texas Public Utilities Commission (PUC) has established certain standards in public hearings, and our service results are listed against those standards.

	Tahoka		
	Texas PUC Standards	January 1981	Most Current Figure
% customer calls answered promptly	90	91.2	98.3
% business office/repair service	90	88.2	98.4
% service order commitments met as promised	90	100.0	94.4
% local calls completed on 1st try	98	89.0	99.5
% direct dialed long distance calls completed on 1st try	95	86.9	96.2
% out-of-service trouble cleared within 8 working hours	90	94.0	95.9

*these results based on electronic testing
GTE
General Telephone

ITEMS AVAILABLE AT TG&Y FAMILY CENTER
SLATON PLAZA ONLY
FEBRUARY 25-27
STORE HOURS 9-9 MON.-SAT.

\$30 Million Stock Reduction SALE!

We're over-stocked! Now's your chance to enjoy tremendous savings throughout our stores! But you'll have to hurry... these valuable specials won't last long!

WELCH'S GRAPE JUICE 64 oz. Bottle	Was 1.99 Now 1.77	PANASONIC STEREO Model 5508 AM/FM Multiplex with Cassette	Was 379.00 Now 299.00
WELCH'S GRAPE JELLY 4 lb. Jar	Was 1.99 Now 1.77	TG&Y BLACK AND WHITE TV Model E 4813 12" Diagonal Measurement	Was 78.88 Now 69.00
GIANT HERSHEY'S KISS 8 oz Solid Milk Chocolate	Was 2.88 Now 1.50	SOFT SENSE SKIN LOTION 15 oz. Size	Was 2.99 Now 2.34
INCANDESCENT DESK LAMP For Relaxed Reading Comfort	Was 11.96 Now 8.00	SOFT & DRI ROLL ON ANTI-PERSPIRANT 1.5 oz. Size	Was 1.79 Now 1.00
DIAL SOAP 5 oz Size Deodorant Bar	Was .54 Now .38	THE "SHOW OFF" The Anything Anywhere Table	Was 7.96 Now 7.96
PILLSBURY PLUS CAKE MIX Yellow, White, Devil's Food or German Chocolate	SAVE Now .87	BRUISER™ TALL KITCHEN BAGS 20 Bags and Ties Fits up to 13 Gal. Cans	Was 1.17 Now 1.00
FLIP BED Tan Blue Yellow	Was 79.88 Now 59.88	MR COFFEE® FILTERS 200 Count	Was 1.47 Now .99
GILLETTE CRICKET LIGHTERS Economy 3 Pack	Was 1.47 Now .99	LADIES WESTERN BOOTS Various Styles and Sizes	Values To 79.88 Now 30.00
OLD SPICE ANTI-PERSPIRANT DEODORANT STICK For Dependable Protection 2 oz. Size	SAVE Now 1.27	VITAHUME® ORGANIC PEAT 40 lb. Bag	SAVE Now 2.37
PHONE AND ADDRESS BOOK Complete with Alphabet Index Tabs	Was 4.99 Now 3.57	VITAHUME® COW OR SHEEP MANURE 40 lb. Bag	SAVE Now

TG&Y

TRI COUNTY MOTORS

1800 S. 9th - Slaton, Texas

828-4144 8 a.m. - 7:30 p.m.
828-6816 After Hours - Sunday

SPECIAL SALE!!

1974 Lincoln, loaded, 4 dr.	\$1995
1976 Chevrolet Caprice Classic 2 dr.	\$1995
1976 Dodge Dart 2 dr.	\$1995
1978 Ford 1/2 Ton Pickup	\$1995
1975 Chevrolet Nova 2 dr. Extra Nice	\$2200
1977 Camaro, Super Clean, Sporty	\$3650
1977 Buick Regal, 2 dr, Black, Loaded	\$3650
1979 GMC 1/4 ton Crewcab	\$3950

MANY MORE TO CHOOSE FROM
FINANCING AVAILABLE

***** WORK CARS—SCHOOL CARS—FAMILY CARS *****
GOOD CREDIT—BAD CREDIT—NO CREDIT

1963 Chevy II Wagon, 6 cyl.	\$375 down
1964 Chevy 4 dr. 6 cyl., Auto.	\$375 down
1975 Vega 2 dr. 4 cyl. 4 spd.	\$450 down
1967 Chevrolet P/u with Cabover Camper	\$500 down
1972 Chevrolet 1/2 ton P/u	\$600 down

Low Weekly Payments

Southern Real Estate

FO
HOUSES
COMMER
FARMS, R

HOUSE
2 bedroom
single gara
school.

3 bedroom
with firepl
house and
building.

2 bedroom
home with
garage. B
Beauty Eq
ed in price

Native st
with 3 b
baths, dou
age and
nice locat

Oil royalty
and southw

100 x 140
North 7th.
dential loc

4 bedroom
Austin st
sunroom o
room. Sin
and fence
location. P

2 bedroom
with doubl
ed in sur
storage b
rent house
lot.

3 bedroom
with firepl
double ca
backyard a
Financing

Barn is 40'
x 170' lot
West side.

1642 MA
for furth
co
Jeanell
Office
Res.

J.A. Pei
BR
Office
Office
Res.

J.E.
B
REAL
BI

If it
We
Be
Sh
S

Ph 998-4
Ph 998-4

BOX S

Get
O
Sup
At
Co
N

295 a
miles
380.
Cont
4261
4319.

Peaches.
Syrup.
Juice.
Biscuit.
Half Milk
Blueberry
e. Milk
Toast, Jelly

& Cheese
& Beans.
kle Spear.
mon Pud.

y & Dress-
erry Sauce.
ot Rolls.

Corndog.
yle Beans.
ple Plums.

almon Cro-
Potatoes.
eyed Peas.
ilk
urger. Let-
ions, Pick-
ds, Banana

st slow in
ise, is the
he perform-
Rousscau

ervice Rep..
ock, Texas
Microwave

le...
king

m

a goal, it's
nt over 354
projects.
million

ement is
is working
t of service

as
ings, and
indards.

ca
ost Current
Figure

8.3
98.4

94.4

99.5

96.2

95.9

RS

\$1995
\$1995
\$1995
\$1995
\$2200
\$3650
\$3650
\$3950

375 down
375 down
450 down
500 down
600 down

FAST RESULTS WITH WANT ADS

Southwest Real Estate

FOR SALE
HOUSES - LOTS
COMMERCIAL BUILDINGS
FARMS, RANCHES

HOUSES FOR SALE
2 bedroom, 1 bath home, single garage, across from school.

3 bedroom, 2 bath home, with fireplace, 3 room rent house and outside storage building.

2 bedroom, 2 bath, stucco home with central air and garage. Beauty Shop and Beauty Equipment included in price of house.

Native stone trim home with 3 bedrooms, 1 1/2 baths, double garage, storage and fenced yard, nice location.

Oil royalty for sale south and southwest of Tahoka.

100 x 140 ft. corner lot on North 7th. Excellent residential location.

4 bedroom, 1 1/2 baths, Austin stone home. Has sunroom or extra bedroom. Single car garage and fenced yard. Excellent location. Priced to sell.

2 bedroom, 1 bath home with double carport, glassed in sunporch, 2 large storage buildings and a rent house on large corner lot.

3 bedroom, 2 bath home with fireplace in den and double carport. Fenced backyard and heated shop. Financing available.

Barn is 40' x 70' space, 100' x 170' lot - Fenced on the West side.

1642 MAIN, TAHOKA
for further information
contact:
Jeanell Edwards
Office 998-5162
Res. 998-4784

J.A. Pebsworth, Jr.
BROKER
Office 998-4564
Office 998-5160
Res. 998-4091

J.E. "Red" Brown

REAL ESTATE BROKER

If It Can Be Sold We Can Sell It

Beecher Sherrod

Salesman
Ph 998-4930-J.E. Brown
Ph 998-4382 B.F. Sherrod
BOX 515 - TAHOKA

Get Your Office Supplies At Lynn County News

For Sale

295 acres of choice farmland, 2 miles east of Tahoka on US 380. Pavement on 2 sides. Contact F.E. Redwine 998-4261 or Norvell Redwine 998-4319. 38-tfc

Business Services

YOUR OLD family portraits copied and restored by C. Edmund Finney, 1813 North 1st. Hours 1-5 p.m. 22-tfc

COOK PUMP SERVICE
Service on Western turbines and all makes of submersibles. Ph. 998-4752. tfc

WE DO PICTURE FRAMING. All sizes. Borden Davis Frame Shop. tfc

PEST CONTROL
Roaches, mice, termites and other household pests. Will be in Tahoka on Thursdays. Call Charlie Skupin Pest Control. Brownfield 637-3333. 50-tfc

Real Estate

House For Sale: 3 bedroom, 2 baths, central heat and air, built-ins. Low Equity. 998-5134. 8-1tc

HOUSE FOR SALE: 4 br. 2 baths, carpeted. 1904 N. 8th in Tahoka. Call 817-668-7643 after 5 p.m. and weekends. 8-2tc

640 acres, more or less, north east part of Lynn County. 4 miles south of Wilson, 2 miles west of FM 1054 adjacent east of Tahoka Lake. Jones Appraisal-Farm & Ranch B.L. Jones, Broker 806-799-5040 or 795-6359 3-4tc

For Sale: 2 bedroom, 1 bath large kitchen, dining room and living room. New electrical wiring and new plumbing. New metal frame windows, very large lot. Carpeted. \$19,500 assumable 9 percent loan with equity. Weekdays 872-8454, nights and weekends call 497-6438. 5-tfc

For Sale: Prime residential corner lot in Roberts Addition. Located at 2501 N. 4th St. Lot is 125 feet wide and 140 feet deep. Call 998-4656 or 998-4660. 43-tfc

Farm For Sale: 352 acres, 6 miles west of Tahoka on 380 and 1 mile south. Call 327-5207 or 439-6354. 2-tfc

For Sale By Owner: 3 br home, 2 baths, fireplace, central heat, refrigerated air. Call 998-4481 after 4 p.m. 7-tfc

SLATON-Brick, 3 bdr., 2 full baths. Double garage. Extra landscaping and garden area. Fireplace. Assumable loan. \$19,400 Equity. \$58,950. Kathy, 828-4680, Century 21. Big State 797-4381. 8-2tc

Farm For Sale: 320 acre irrigated farm, 2 miles NE of O'Donnell. 806-428-3496. 7-3tc

Garage Sales

Garage Sale: Saturday, Feb. 26, 1712 N. 6th. 8-1tp

B & B Plumbing

Specializing in all types of plumbing repair. No job is too large or too small. We sell service not labor. Call 744-3618 Lubbock. 6-4tc

Misc. For Sale

AKC registered Bassett Hound pups for sale. Call 998-5029 7-tfc

For Sale: Lilliston 7600 chopper chisel tillager. 13 spring shanks with Noble mulcher, one pass operation. Call 998-4549 Sammy. 2-tfc

For Sale: Top quality feed outs and planting seed outs. Cleaned and sacked. Jake Dunlap 998-4377 or 998-4210 40-tfc

For Sale: 10 row JD Disc bedders 18 and 20 in. disc, scrapers for 4x7 or 5x8 bar. Call 327-5207 or 439-6354. 2-tfc

For Sale: Indoor Jogger Trampoline- extra large and sturdy, like new \$140. Exercise bicycle \$40. Thursday call 327-5541 Kay Hill. Friday and Saturday call 998-4010. 8-1tp

For Sale: Full size box spring and mattress, good condition Also 16 ft. trailer, self contained. Call 998-4205. 8-1tc

For Sale: 1980 model GMC diesel 1/2 ton pickup 25,000 miles. Extra clean, radio and CB. New seat cover, new open and shut back glass, 5 tires and wheels new. Driven from McCords to station at red light when purchased. Tom Cloe 8-2tp

Political Calendar

For State Senator, 28th District
E.L. SHORT
Re-election

For District Judge 106th District
GEORGE HANSARD
Re-Election

For County Judge, Lynn County
MELVIN BURKS
Re-Election

J.F. BRANDON

For Justice of the Peace Lynn County Pct. 1
ED HAMILTON
Re-election

For Justice of the Peace Lynn County Pct. 4
BEN MORRISON
DAVID SMITH

For Commissioner, Pct. 2, Lynn County
BOYD BARNES
J.C. GANDY
Re-Election

For Commissioner, Pct. 4 Lynn County
E.R. BLAKNEY
Re-Election

ROBERT EDWARDS
CHARLES A. SMITH

For Lynn County Clerk
C.W. ROBERTS
Re-Election

CATHERINE BARHAM

For County Treasurer, Lynn County
CYNTHIA (Cindy) BRYAN
MARGIE JESTER

BLANCHE FRANKLIN
RADENE TURNER

GLENDIA WILLIAMS

For District Clerk, 106 Judicial District
Lynn County
JOY LAWS
Re-Election

Misc. For Sale

For Sale: Nice couch, good condition, camper shell for long bed pickup, jewelry box, miscellaneous. S. 8th St. second house on left. Mrs. A. B. Thornton. 7-1tc

For Sale: one ferret- small pet, good with children. Phone 998-4080 8-tfc

Notice

United Convalescent Home in Post needs LVN--good benefits- good pay. Call Barbic Edler or Darlene Rylant at 806-495-2848 or 495-3849. 4-4tc

Pepsi, Pepsi Lite and Mountain Dew-.99 carton. Chancy & Son. 8-2tc

It's Time Now!
Fertilize weed and feed your lawn!
Whitaker Hardware 8-5tc

Home satellite TV system you can build or buy. Sixty channels entertainment! Free details. Satellite, Box N48 Arcadia, OK 73007. 8-2tp

Will do carpenter work. Painting inside and out. Free estimates--Call 998-4220 after 5. Thomas Jolly 8-tfc

Help Wanted- Day and night shift. Apply in person between 10 and 5. Tahoka Dairy Queen. 7-2tc

OIL AND GAS LEASES
Need to sell your oil leases!!! I have buyers for unleased acreage for five year leases. I'll get you a better deal!!
Drake Oil Leases
806-794-4160
30 years experience! 7-4tc

PROFESSIONAL DIRECTORY

P & D PRODUCTS, INC.
Phone 428-3882 O'Donnell, Texas

SAND FIGHTERS
BED SLIDES
MARKERS

STALK CUTTERS
TOOL BAR ACCES.
POINT SHARPENING

CUSTOM WELDING OF ALL KINDS

S & S CONSTRUCTION
General Contractor
Licensed and Bonded Office [806] 797-3629
Night [806]-794-6982

Offering construction services of all types to Lynn County

You wouldn't "think" of putting "tap" water in your "steam" iron but, you "will" drink and "cook" with it. Happiness is "knowing" your drinking and cooking water is "pure" and "Clean" free of all "impurities." Our home water distillers makes it that way.
Raymond Griffin, Turlock, Calif.

TAHOKA BODY SHOP
FREE ESTIMATES
Raymond Barrientez
1617 S. 3rd St.
Bus. 998-5309 Res. 998-5208

Service To All Faiths
"WE CARE FOR YOURS AS WE WOULD HAVE OURS CARED FOR"
BILLIE WHITE - OWNER
WHITE FUNERAL HOME
PHONE 998-4433
COMPLETE FUNERAL SERVICE

Spraberry and Associates
Specializing In Rare Coins & Stamps
318 North Austin
Lamesa, Tx. 79331
Phone (806) 872-6231
L.M. TNA, L.M. ANA, APS
MR. AND MRS. DAVID SPRABERRY

Sam Pridmore & Son Aerial Spraying



NORTH SIDE OF T-BAR AIRPORT AT TAHOKA
TAHOKA PH# 998-5212 NEW HOME PH# 924-7261

Arthur Whitley Electric Co.
998-5373
Nights 998-4844
FREE ESTIMATES ON ALL JOBS!

WOODS JEWELRY
Fine Quality Jewelry At Discount Prices
Special- Men's and Ladies' Quartz Digital Watches, yellow and white, with metal bands \$19.95 to \$21.95.
Watch and Jewelry Repair
54 Years in Tahoka

Tahoka Gun Shop
1505 Ave J
Gun Repairs
Ammunition

REAL ESTATE SALES
Lease & Rental Contracts
Management Services
NEW HOME FARM STORE, INC.
Box 177 New Home, Tx 79383
Call 806-924-7444
Joe D. Unfred, Broker 924-7272
Lee Moore, Sales 924-7329 or 863-2593
Jan Stone 327-5263

Income Tax Prepared
Jimmy Wright
998-4517

VETERANS OR WIDOWS OF ALL WARS WHO NEED HELP OR ADVICE IN CLAIM BENEFITS, CONTACT-

RUSSELL HOWLE
SERVICE OFFICER

Wednesday of each week at Courthouse Tahoka, Texas

Billy W. Davis
AGENT
Robert Harvick Ins. Agency
Phone Office 998-4536 Home 998-5039
P.O. Box 190
Tahoka, Texas 79373

FLOWERS TODAY
5108-B SLIDE ROAD LUBBOCK, TEXAS 79416
TELEPHONE 806/795-9333
TIM TIPPIT

* SPRAYING * DUSTING * SEEDING * FERTILIZING

RANDOLPH AVIATION
"WE FLY ON SERVICE"
Box 299, Tahoka - DICKIE RANDOLPH
T-Bar Airport 806/998-4239

Dan's AUTO & BODY REPAIR
FRONT END ALIGNMENT
COMPLETE ENGINE WORK
Interstate Highway 380 & 87
Tahoka, Texas
998-5375
DAN TAYLOR
Bus. 998-4897



FACTORY TRAINED - N.I. CERTIFIED TECHNICIANS

EVERYDAY LOW DISCOUNT PRICES

Why Pay More?



ROGER STAUBACH

DOUBLE S & H GREEN STAMPS
EACH WEDNESDAY WITH 2ND PURCHASE OR MORE

ALL PURPOSE GLADIOLA FLOUR
25 LB. BAG \$4.49
5 LB. BAG **79¢**

DEL MONTE CS/WK CORN
5 17 OZ CANS **\$1.98**

CAMPBELL'S SOUP CHICKEN NOODLE
3 10 3/4 OZ. CANS **\$1.00**

GENERIC TISSUE
4 ROLL PKG **69¢**

OSCAR MAYER WIENERS OR BEEF FRANKS 1 LB. PKG. \$1.69	SUPER SELECT REGULAR FRESH 3-5 LBS. AVG. SPARE RIBS LB. \$1.49
SUPER SELECT LEAN TRIM CENTER CUT PORK CHOPS LB. \$1.89	HEAVY GRAIN FED CLUB STEAK LB. \$2.29
SUPER SELECT TRIM COUNTRY STYLE SPARE RIBS MEAT LB. \$1.49	GOOCH'S HOCKORY SMOKED SLICED SLAB BACON LB. \$1.39
SUPER SELECT TRIM FRESH PORK STEAK LB. \$1.49	
WILSON'S REGULAR SLICED BOLOGNA 1 LB. PKG. \$1.49	

HORMEL'S SUPER SELECT LEAN TRIM QUARTER PORK LOIN

PORK CHOPS LB. **\$1.39**

TOTAL GROCERY SAVERS

MAXWELL HOUSE COFFEE MASTER BLEND 13 OZ. CAN \$1.99
BUSH'S SHOWBOAT PORK & BEANS 3 1 1/2 OZ. CANS \$1.00
POST CEREAL HONEY COMB 14 OZ. BOX \$1.69
CHEF BOYARDEE CHEESE PIZZA EACH ONLY \$1.39
CHEF BOYARDEE PEPPERONI OR SAUSAGE PIZZA EACH ONLY \$1.79
SUNSHINE COOKIES HYDROX 15 OZ. PKG. \$1.19
NABISCO NILLA WAFERS 12 OZ. BOX 99¢
KEEBLER COOKIES PITTER PATTER 15 OZ. PKG. \$1.19
TASTY LUNCH "HOT" BROASTED CHICKEN
FRESH DAIRY SPECIALS
KRAFT MARGARINE SOFT PARKAY 2-8 OZ. CUPS 79¢
PILLSBURY BUTTER/BTRMLK/SWTMLK BISCUITS 2 7 1/2 OZ. CANS 49¢
FROZEN FOOD SPECIALS
STILLWELL (CHERRY *1.89) APPLE/BLACKBERRY/PEACH FRUIT COBBLERS 2 LB. PKG. \$1.69
MORTON CHICKEN OR TURKEY POT PIES 2 8 OZ. PKGS. 88¢
SHURFINE SPEARS BROCCOLI 10 OZ. PKG. 59¢

HEALTH & BEAUTY AID SAVINGS

CHEWABLE TABLETS **TYLENOL CHILDREN'S** 30 CT. BTL. **\$1.79**

EXTRA STRENGTH **TYLENOL CAPSULES** 50 CT. BTL. **\$2.99**

COTTON SWABS **Q-TIPS** 170 CT. PKG. **\$1.19**

BLUE SEAL PETROLIUM **VASELINE JELLY** REG. LEMON OILY CUTEX 7.5 OZ. JAR **\$1.89**

POLISH REMOVER 4 OZ. BTL. **79¢**

70% OFF LABEL **DASH DETERGENT** 211 OZ. BOX **\$6.99**

KRAFT COLBY OR CHEDDAR **HALFMOON HORNS** 10 OZ. PKG. **\$1.59**

CALIFORNIA SUNKIST NAVEL **ORANGES** 3 **\$1.00** LBS.

VINE RIPE **FRESH TOMATOES** LB. **59¢**

WASHINGTON GOLDEN DELICIOUS APPLES LB. 49¢
WASHINGTON D'ANJOU PEARS LB. 49¢
YELLOW SWEET ONIONS LB. 39¢
ALL PURPOSE RUSSET POTATOES 10 LB. BAG \$1.29

40% OFF LABEL **DOWNY FABRIC SOFTENER** 96 OZ. BTL. **\$2.99**

RAVE HAIR SPRAY **\$1.19**

GN **MILK** 12 OZ CAN **38¢**

GN **DINNER PAPER PLATES** 100 CT **99¢**

GN **TASTY RICE** 4 LB BAG **\$1.18**

FIELD TRIAL RATION **DOG FOOD** 25 LB. BAG **\$3.89**

10% OFF LABEL **IVORY SOAP** 3 BATH BARS **79¢**

25% OFF LABEL **GIANT BIZ** GIANT SIZE BOX **\$1.99**

BUY 3 GET 1 FREE **BATH ZEST** 4 BAR PACK **\$1.69**

PAPER TOWELS **BRAWNY** JUMBO ROLL **59¢**

20% OFF LABEL **IVORY LIQUID** 22 OZ. BTL. **\$1.19**

SUNSHINE KRISPY **SALTINE CRACKERS** 16 OZ. BOX **59¢**

FRESH SHIPMENT ALL AMERICAN **ROSE BUSHES**

We're proud to give you more!

WE ACCEPT FOOD STAMPS WE RESERVE THE RIGHT TO LIMIT PRICES EFFECTIVE FEB. 25-MAR. 3, 1982

THRIFTWAY AFFILIATED FOODS INC. MEMBER STORE

Texas Assoc
VOLUME 79
Tahoka Win
Tahoka FF National So water Feb. first among Three other sixth, ninth The first p Sean Todd individual in sixth among Assisting t McDaniel a
Check Certifi Says
Lynn Court check their certificates are register voting prec and collect Cracken sai McCracke necessary precinct changed. office at t Tahoka she any change one precinct change in r Applicativ tained at N O'Donnell, New Hom Gin in W office in T April 1 is eligble vo tered to v primary, M
W
TWO M from Gr alleged we receiv working approved other, a entertain compani Sounds chocola caught.
THE F one, with I've alw lion, it g reverse i -Chance rip-sno even by unfit for out here weather Anywa several loudly a about h because move in
TOO problem than ke Postoffi So she paint th I don't since th her and practicir they mo circumse The pa decided day. Wh bricks a drivewa