

THE MULESHOE JOURNAL

Dedicated to the progress and development of the great Muleshoe country

VOL. 48, NO. 31

10 PAGES

Published every Thursday at Muleshoe, Bailey County, Texas - 79347

THURSDAY, JULY 30, 1970

Weather

	High	Low	Precip.
July 29	88	66	0.7
July 28	92	66	
July 27	90	64	
July 26	91	60	

MOISTURE

Total July 1.82
Year total 5.56

Hospital Election Controversy Continues

Hospital Schedules Dedication Sunday

130 Witnesses Jam District Courtroom

By J. P. Hall

around
muleshoe
with the journal staff

Plainview To Host Governor, Guests

While practicing at the Muleshoe Country Club for the Tournament of Champions in Odessa August 12-13, Kenny Taylor made a hole in one on the ninth hole. He was playing with Stanley Wilson and Bruce Chapman. His overall score was 72, the best he has ever shot.

Mrs. F.L. Wenner has returned home after eight days visiting in the home of a sister in Chickasha, Oklahoma and other relatives there.

Mr. and Mrs. Gerald Priboth of Houston are visiting in the home of his sister, Mr. and Mrs. R.L. Matthiesen.

Mrs. Robert Alford and children Rob, Lydia and Gregg, former Muleshoe residents, now of Breckenridge, Texas, were guests in the home of the J.O. Small's Monday night.

Mr. and Mrs. Roy Clark and granddaughter Sandra Stallings visited a nephew at Murray and then attended the Wages family reunion at Olney over the week-

Mrs. Floyd Grimsley and Mrs. Buck Taylor jointly entertained several friends recently in the Taylor home.

The guests were feted with a fish fry from a fishing trip to Graham for the Taylors.

Guests included Mr. and Mrs. Ernest McNatt, Mr. and Mrs. Sherman Inman, Mr. and Mrs. Cecil Osborn Sr., and Mr. and Mrs. Walter Harrison, daughter, Denise and a granddaughter.

Mr. and Mrs. Arlo Farrell and family were special guests in the home of her mother, Mrs. Susie Whitley, recently. They are from San Antonio.

Other guests attending a dinner in the home were Mr. and Mrs. George Whitley and Mr. and Mrs. Tommy Whitley and family, all of Muleshoe.

Schedule Vote On Assessment

A special election will be held by the Texas Soybean Association on September 26 on the proposition of whether or not soybean producers in a 23-county area in Texas shall assess themselves one-half cent per bushel. Collection would be made at the point of the first processing of the soy beans or at the first sale.

Also to be named in the election will be a nine-man commodity producers board to administer proceeds of such assessment which will be used for research, disease and insect control, education, and promotion designed to encourage the production, marketing and use of soybeans.

Counties included in the referendum area are Bailey, Deaf Smith, Parmer, Castro, Swisher, Brisco, Lamb, Hale, Floyd, Lubbock, Crosby, Bowie, Red River, Lamar, Delta, Fannin, Orange, Jefferson, Chambers, Liberty, Hardin, Harris and Galveston.

Polling place in Bailey County will be the meeting room of Production Credit and voting hours will be from 8 a.m. to 5 p.m. Absentee ballots can be obtained from the County Agent beginning, September 12. Final absentee balloting date will be midnight, September 25. Absentee ballots should be mailed to the Texas Soybean Association, Brawer 'Q', Plain-

Two big days are coming up in Plainview this weekend. On Saturday at 2 p.m. and Sunday at 4 p.m. ribbon cutting ceremonies and dedication of the Central Plains General Hospital and Central Plains Comprehensive Community Mental Health/ Mental Retardation Center will be held.

The complex is located at 2601 Dimmitt Road in Plainview and construction has been underway for some time.

Governor Preston Smith of Texas will give the dedicatory address on Sunday afternoon. He will be joined by several other state, county and city dignitaries.

Wilson-Conine Top Winners In Tournament

A total of 64 teams entered the Partnership Tournament at the Muleshoe Country Club Golf Course last weekend for the two days of play.

A team of Tommy Wilson and John Conine beat out Ricky Botkin and Dick Johnson for the championship in a sudden death playoff on the second hole. Total for both teams was 132. In second place were Botkin and Johnson; third was a team of Bill Jim St. Clair and Irvin St. Clair who bested Steve White and Brooks Jennings, also in sudden death playoff. Their score was 133.

In the first flight, Myron Pool and Bernard Phelps beat out Howard Carlyle and Hardy Carlyle for first place with 141. Pool had a hole-in-one on the ninth hole. A good gallery was present and applauded Pool's hole-in-one.

Third was the team of W.D. Martz and Don Martz with 142.

Winners of the second flight were Gene Bartley and J.W. Coppedge with 148; second was the team of Jack Wells and Bill Wells with 149 and third place winners were Mike Nix and Cordell Huddleston who had a 150.

James Newkirk and Sam Goodnight won first place in the third flight with 151; Steve Earsley and Jim Miloritis were third with a 157.

Country Club Golf Pro Pearl Ward said several teams had to be turned down when the flights were quickly filled.

Farm Bureau Sends Youths To Meeting

Two high school students from Bailey County will travel by chartered bus Tuesday, July 28, to Baylor University in Waco where they will attend a Citizenship Seminar July 28-31 conducted by the Texas Farm Bureau.

They are Larry Shafer and Beverly Ewins.

The Bailey County Farm Bureau is sponsoring the local students at the four-day training school. Some 457 students from 156 counties across the state are expected to attend the session.

Four outstanding, nationally-known lecturers will address the Waco training school, according to Ernest Ramm of Muleshoe president of the Bailey County Farm Bureau. They are Dr. Clifton L. Ganus, Jr., president of Harding College, Searcy, Ark.; Dr. C.L. Kay, vice president for public

ies. Among those invited are all state representatives from Amarillo, Lubbock, Plainview, Matador and Springlake; State Senator Jack Hightower; U.S. Representatives George Mahon and Bob Price; U.S. Senators Ralph Yarborough and John Tower and all doctors from the nine counties included in the Central Plains Comprehensive Community Mental Health/ Mental Retardation Center.

Also bank presidents from the nine counties; all hospital administrators from the nine counties; all judges and commissioners court from the nine county area; all mayors from the towns of the nine county area, the Mayor of Lubbock, The Mayor of Amarillo; Directors of Community Mental Health Centers from Amarillo and Lubbock; the Texas Department of Mental Health/ Department of Mental Health/ Mental Retardation Board; The Texas Department of Health Board members; official from the Health, Education and Welfare Dallas office and news media from the nine counties, Lubbock and Amarillo.

The hospital is licensed for 151 patients.

The main hospital building will include four floors and a partial basement, which is under the central part of the building. This basement will house Central Supply, connected to all floors by dumb waiters. Also included will be classrooms for inservice training. An area for pathology and the morgue is in the basement area. The print shop and a central storeroom is also in the basement.

Cont'd. on Page 3, Col. 5

Treana Bryant In Miss Grain Sorghum

Muleshoe's reigning Miss Muleshoe, Treana Bryant, has been entered in another beauty contest. The Muleshoe Jaycees have entered her in the Miss Grain Sorghum Contest which will be held in Dimmitt on August 14-15.

Treana recently returned from the Miss Texas Pageant where Clarence Christian, Jaycee chairman for the contest, said she made a "real fine showing" although she was not in the top ten contestants.

She is the daughter of Mr. and Mrs. Don Bryant and lives in the Pleasant Valley community, northeast of Muleshoe.

Farm Bureau Sends Youths To Meeting

affairs of Lubbock Christian College, Lubbock; John Noble, Muncy, Pa., author of "I Was a Slave in Russia;" and W. Cleon Skousen, Salt Lake City, Utah, author, lawyer, educator, and former FBI agent.

In addition, a young former narcotics addict and ex-convict will relate the tragic story of his life as an addict and criminal. He is Richard Perigo of Dallas, who is associated with HIP (Help Is Possible), an organization dedicated to the prevention of delinquency and drug abuse among teenagers.

Purpose of the seminar is to give the student a better understanding of the American system and way of life. Emphasis will be placed on the economic, moral, and social aspects of the American society. Instruction will consist of lectures, films, and panel discussions.



JUST A FACE IN THE CROWD -- Chairs were placed in the halls on the second floor of the Bailey County Courthouse Tuesday to seat some of the many witnesses who had been subpoenaed for the Bailey County Hospital District and Bond Election Suit. Here, witnesses wait their turn to be called into the courtroom. More than 130 witnesses were sworn in by District Judge Pat Boone Tuesday morning in a 'mass swearing.' More than 180 subpoenas had been issued by the law firm representing the contestants, Kirby, Ratliff and Sansom of Littlefield.

Postal Department Returns Postmark

Muleshoe Postmaster Spencer Beavers received a telephone call from J.M. Benesch, Postal Service Officer from Amarillo Monday morning informing him that Muleshoe's postmark had been returned.

The service officer told the local postmaster to once again start cancelling the out-of-town mail from Muleshoe with the

familiar postmark which had been deleted almost a month ago. After a postal department directive, the Muleshoe post office, along with several small town post offices in the area, had their postmarks removed on Saturday, July 4.

On that day, all post office departments in the area were told to send all out of town mail to the Central Post Office at Lubbock for processing.

This was in an effort to save tax dollars and expedite postal service. The Lubbock office had installed a high speed cancelling machine which has the capacity to handle up to 5,000 pieces of mail per hour. However, local merchants and residents expressed displeasure with the new procedure.

The business people said that when they sent orders to Dallas on Friday before the

Individuals And Businesses Help Babe Ruth

When the ALMO Senior Babe Ruth All-Star team defeated the Lubbock Senior Babe Ruth All-Star team on Friday, July 17, some fast money had to be accumulated in order for the team to make the trip to San Antonio for state competition.

Several local contributions were made to help the team. Local contributors included Alvis Burge, Muleshoe Jaycees, Tri-County Savings and Loan Association, Muleshoe State Bank, Western Auto, Alex Williams, Cobbs Department Store, Foster Fertilizer, Lazbuddie, Farmers Union Co-op, Lazbuddie, Sherley-Anderson Elevator, Lazbuddie, Ivy Fertilizer, Lazbuddie, Jess Osborn and Heathington Lumber Company.

An official of the Senior Babe Ruth Baseball League said a special 'thanks' should be given Wayne Williams, who worked accumulating the contributions. Williams is president of the Babe Ruth Baseball League in Muleshoe.

Local boys on the Muleshoe All-Star team included Don Heathington, Randy Field, Monte Barnes, Derrell Matthews, Bobby Burge and Mike Riley. Local coach was Kenny Heathington and Bill Darnell was business manager.

postal change the orders were received by Monday. After the change, the same orders for merchandise did not reach Dallas warehouses until the following Wednesday of Thursday.

Muleshoe, along with Littlefield, Brownfield, Lamesa, Levelland and other area towns which had lost their postmark to Lubbock began a petition to help get their hometown postmark returned.

Last week Muleshoe Chamber of Commerce Manager Jerry Hutton reported that more than 550 names had been signed to petitions asking that out-of-town mail be cancelled with the Muleshoe postmark instead of the Lubbock postmark.

Slight changes will still be in effect in order to have out of town mail cancelled with the Muleshoe postmark, according to Postmaster Beavers. Mail which is put in outgoing boxes at the post office up to five p.m. on weekdays and Saturday, and by 11 a.m. on Sunday, will be cancelled with the Muleshoe post mark. All mail put in the outside mail box after those hours will be cancelled with the Muleshoe post mark. All mail put in the outside mail box after those hours will be

Cont'd. on Page 3, Col. 4

used in questioning by contestant's attorneys were; basic questions pertaining "to the boundaries and position of communities in Bailey County; the method of determination and number of polling places in the election; the cost of expenses during process of election and to whom paid; Medicare provisions for hospitals; "which board member talked, and where to explain issues in the election"; the Texas Municipal Bond Col. and the district's financial advisor, Joe Smith's participation in calling-bonding of the election.

Also included in contestant's questioning of witnesses Tuesday were the hours of election, 8 a.m. to 7 p.m.; how the board investigated the county resident's "concern" and how board advised county residents of issues involved; and questioned how the \$380,000 obligations (debts and liens against existing hospital and nursing home) were to be paid.

Testimony of the contestees lawyers and hospital board

Cont'd. on Page 3, Col. 1

Sunday Wreck Sends Five To Local Hospital

A two vehicle crash shortly before 1 p.m. Sunday afternoon sent five persons to West Plains Memorial Hospital for emergency treatment. Admitted to the hospital were Mr. and Mrs. Frank Stratton, passengers in one of the vehicles. Treated and released were Nickey Kim Nickles, 16 of Muleshoe, driver of the other vehicle and Walter Rogers, passenger in one of the vehicles involved.

Four other passengers were not injured. They were Robert Stratton, Margie Stratton, Shirley Stratton and Grady Free.

Stratton has several fractured ribs according to a spokesman for West Plains Memorial Hospital and Mrs. Stratton's injuries are not considered to be serious, said the spokesman.

John Joiner was the driver of a 1962 Oldsmobile traveling west on U.S. Highway 84 and attempting to make a left turn when it was struck broadside by a 1970 Ford pickup which was driven by Nickey Nickles.

The accident occurred around 12:50 p.m. between Seventh and Eighth Streets on Highway 84. After the initial collision, the Oldsmobile then struck a high-line pole head-on.

The accident was investigated by Muleshoe City Police Chief Harold White.



TWO HOSPITALIZED FROM ACCIDENT -- Mr. and Mrs. Frank Stratton are hospitalized in West Plains Memorial Hospital after this 1962 Oldsmobile was struck broadside Sunday afternoon while attempting to turn into a service station on West American Blvd. Five persons were injured, with three of the injured being treated and released at the hospital.



Treana Bryant

LET'S HAVE A COOK OUT!



Libby's
CATCHUP
26 oz. BTL.
2 FOR 79¢



LIBBY'S **CORN**
#303 CAN
CREAM STYLE
GOLDEN OR
WHOLE KERNEL
GOLDEN
4 FOR 89¢



LIBBY'S **BEANS**
#303 CAN
CUT GREEN
4 FOR 89¢



LIBBY'S **VIENNA SAUSAGE**
4 oz. CAN
4 FOR 99¢



LIBBY'S **FRUIT COCKTAIL**
#303 CAN
4 FOR 99¢



GOODIES FOR YOUR **Picnic**

COCA-COLA
6 BTL. CTN.
KING SIZE
39¢
PLUS DEPOSIT

POTATO CHIPS
MORTON'S 69¢
TWIN PAK 59¢

SALAD DRESSING
MORTON'S 29¢
QT. JAR

LIBBY'S **PINEAPPLE**
#1 1/2 CAN
SLICED OR CRUSHED
3 FOR 89¢




Fryers

WHOLE
GOLD NUGGET
USDA GRADE A
FRESH DRESSED
Lb. 29¢




SWIFT'S PREMIUM PROTEIN BEEF
T-BONE STEAK \$1.29
SWIFT'S PREMIUM PROTEIN BEEF
SIRLOIN STEAK \$1.19

SAUSAGE
VANCE'S PURE PORK
COUNTRY STYLE
2 Lb. Bag \$1.49



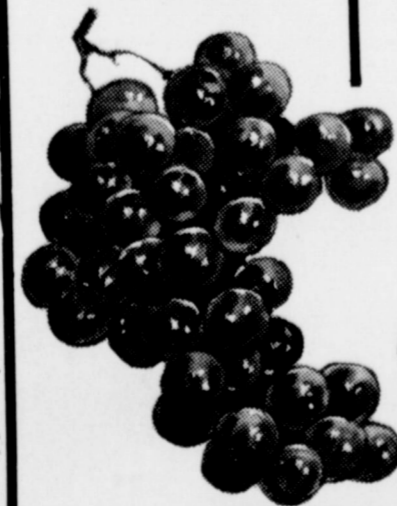
ARMOUR'S STAR ALL MEAT
FRANKS SKINLESS 49¢
12 oz. Pkg.
HORMEL'S RANGE BRAND THICK OR
THIN SLICED
BACON 2 Lb. Pkg. \$1.69

SHORTENING
DIAMOND
3 Lb. TIN
69¢



SHERBERT
BORDEN'S
ASSORTED
FLAVORS
1/2 GAL. 65¢


- 4 Oz. Can Shilling Pure **BLACK PEPPER** 39¢
- 1/2 Gal. Ctn. Cloverlake **BUTTERMILK** 49¢
- 2 Lb. Ctn. Cloverlake **COTTAGE CHEESE** 59¢
- 16 Oz. Can Libby's Sliced **PICKLED BEETS** 4 for 99¢
- 25 Lb. Bag Lucky Lady **FLOUR** \$1.99
- No. 3 1/2 Oz. Can Libby's **POTTED MEAT** 7 for 99¢
- Jumbo Roll Bounty **PAPER TOWELS** 37¢
- 1 Lb. Can Nestle's Chocolate Flavored **QUICK** 45¢
- Giant Size Box Cold Power **DETERGENT** 69¢
- Giant Size Bottle 22 Oz. **LIQUID IVORY** 49¢
- 1 Lb. Box Cracker Barrel **CRACKERS** 25¢
- 7 1/2 Oz. Pkg. **GLADIOLA CORNBREAD & MUFFIN MIX** 3 for 25¢



PRODUCE Sale
LEMONS
CALIFORNIA SUNKIST

25¢

GRAPES
RED CARDINAL Lb. 29¢
TEXAS FRESH GREEN
CABBAGE Lb. 7¢



GUNN BROS.
STAMPS
DOUBLE EVERY
WEDNESDAY

White's CASHWAY

We Reserve The Right To Limit Quantities

Listen to MULETRAIN
over KMUL
10:15 a.m.
Sponsored by
WHITE'S CASHWAY

FROZEN FOODS STOCK-UP SALE

- 1 Lb. Pkg. Empire Ocean **PERCH FILLETS** 49¢
- 15 Oz. Pkg. Chun King Chicken **CHOW MEIN** 69¢
- 16 Oz. Pkg. Blue Morrow's **BEEF STEAKS** 89¢
- 6 Oz. Can Coastal Pink **LEMONADE** 7 for \$1



PLAINVIEW HOSPITAL COMPLEX -- Dedication ceremonies will be held Saturday and Sunday in Plainview for the new Central Plains Community Hospital and Central Plains Comprehensive Community Mental Health/Mental Retardation Center with special guest, Governor Preston Smith, making the dedicatory address. Local residents on the board of directors

Hospital...

Cont'd, From Page 1

member-witnesses brought out several points, included were several reviews of the efforts of the temporary and newly-elected board members to upgrade medical facilities in the county - both long and short range. Also reviewed, were board meetings and plans, the feasibility studies and contacts with HUD, State Department of Health, Texas State Hospital League, architectural firms, privately owned hospital units, Hill-Burton matching fund system, hospital authority vs. hospital district; investigations and trips to visit various hospitals by board members.

Explained through testimony were election procedure checking and setup; cost of election; limited funds of board; time deadlines; doctor shortages; several near hospital shutdowns; open staff hospital; non-profit corporation of present hospital; requirements to qualify for Hill-Burton funds; difference in general obligation and revenue bonds; Texas Hospital requirement of 50-approved beds to serve an area of this size.

Harrassment and embarrassment to board members, families, secretaries, newspaper and radio media was brought out in testimony. Evidence for contestees included 11 issues of the local newspaper and two mailers. Evidence was given that two new doctors have located here following the approval of the hospital district by local voters.

First witness to be called was Jerry Don Gleason, DVM, who answered in quick order that "Yes ... registered voter, owned home, listed on 1969

More Hill-Burton Funds Are Sought

A growing demand from the public in recent years for more and better hospital care facilities has tested the resources and ability of both state and federal health care officials. As a result, the Federal Hill-Burton Act authorized financial assistance for construction and modernization of health facilities and the Texas State Department of Health is required to develop an annual "State Plan" listing the facilities provided in the state and establishing "bed" need for health facilities in Texas.

The Health Facilities Construction Section of the State Health Department is responsible for the preparation and the administration of the "State Plan". The plan is primarily a survey of present facilities and a projection of bed need in any given area or facility. These facilities are then rated as to priority of need, in order to qualify for the limited Hill-Burton funds available. Allocations of these funds are made by the State Board of Health. The Hill-Burton program approved by Congress only a few weeks ago calls for \$1.2 billion in federal funds to be spent in the next three years for construction and modernization of facilities across the country. In past years, Texas has received about 6.4 per cent of the total allocation. If Congress appropriates the funds for each of the proposed three

tax rolls, paid school, city, state and county taxes." Gleason was excused following his testimony regarding his voting legalities.

Bailey County Attorney Roger Gorrell, second witness called, answered upon question that he had been delivered a copy of Bailey County Hospital District Statement of Contest. He identified a copy of the necessary document.

In the witness stand for more than four hours as third witness was former hospital board member Don Harmon. Harmon had served as secretary of the temporary board "for a short time" following the May 16 election and canvass on May 18. He was appointed, among others, by the county commissioners court in May, 1968 with specific instructions to study needs of the county and its hospital situation.

Harmon testified to lengthy, yet rapid, questions from both contestants and contestees lawyers, with a complete review of the hospital situation ending with "the only feasible route is through the hospital district method (of calling an election) to give people the opportunity to express themselves by vote."

He continued, "We definitely feel the nursing home will produce income for payments due lien holders" and pointed "out revenue bonds were issued to pay for the acquisition of existing hospital and revenues from hospital and nursing home are pledged to pay the principal and interest of the bonds." His testimony continued after much questioning to a comment about people who go to a hospital where they contribute no taxes for their hospitalization and nothing besides paying their bills, "Do they (when they go

years, the State is expected to receive the largest state grant ever. The maximum grant the state has received to date is about \$17 million. These funds will be allocated for modernization of existing facilities, construction of hospitals and public health centers, long-term care facilities, diagnostic and treatment centers, rehabilitation facilities, and, for the first time this coming year, funds will be allocated specifically for modernization and construction of emergency room facilities.

New categories of Hill-Burton funds were created by Congress this year. Among these are a loan guarantee program to private non-profit organizations, with an interest payment grant to retire three per cent of the interest of a loan to a non-profit private hospital, in addition, direct loans are available to non-profit public health facilities. Approximately 60 applications for Hill-Burton grants and loans have been received this year. These applications seek to initiate over \$143 million in construction or modernization projects. Funds are being sought from the Hill-Burton Program in the amount of nearly \$39 million or federal grants. About 100 projects are now active.

and the advisory committee of the Central Plains Comprehensive Community Mental Health/Mental Retardation Center include Dr. B.E. Sanderlin, trustee, and Mrs. Bernard Phelps, Mrs. John Watson, Mrs. Dorothy Green, County Judge Don Chak, Mrs. Pat Bobo and Dr. Charles Pummill on the advisory board.

elsewhere) contribute anything (taxes) for their hospitalization besides paying their bills? After the door was opened with the contestant's lawyers comment that persons in the county's southwest and southeast "do not trade in Muleshoe and have no medical business in Muleshoe."

Mrs. Bernard Phelps, present secretary of the hospital district, came to the stand armed with board minutes, the original copy of the election order, and correct (succulent) terminology of names of "the board before and after all the election."

In closing, she was asked, "But now why wouldn't you (the board) have a box at Bula?" She answered, "Why spend more (money)? I would gladly drive 20 miles if I wanted to vote on something." Neil Dillman was the number six witness. The board member stressed in testimony that "to get facts as I saw them to people was the most important thing for me .. and then let them vote. The people were informed ... and .. it should be kept on a human level."

This testimony was given following several rephrasings of questions to him. Dillman was assigned by the board to be in charge of advertising and sending out mailers.

It was also brought out through questioning of witnesses that apathetic people who don't show up at polls to vote often lose an election to those who organize opposition against a proposition, for they get out the vote more than those who favor issues of elections.

The last witness Tuesday afternoon was Board President Charles G. Lewis, local dentist, who again reviewed upon questioning the hospital - past and present. His testimony began at 4:40 p.m. until adjournment after 6 p.m. Tuesday.

He testified that he was elected president of the board after the district was established per statutes (Texas House Bill 97) which was passed April 28, 1969. His testimony also included investigations in four days at Bowie and Seymour hospitals; contact with HUD; the effort to tell voters that the "\$380,000 was to be paid by Revenue Bonds."

Besides Judge Boone, lawyers and court reporter, sitters at the trial was contestants were Jim Claunch, Barry Lewis, Chester Setliff and Ross Goodwin. Doctor Lewis sat with the hospital district lawyers. By 11 a.m. Wednesday, eight witnesses had taken the stand

in the courtroom. The eight included Charles Moraw, Mrs. Rudolph Moraw, Mrs. Florence (Rosa) Pedroza, Mrs. Mark Grimsley, Leonard L. (Monte) Dollar, Rev. Doug DuBose, Hazel Gilbreath and recall witness, Mrs. Bernard Phelps. Ernest Kerr, Guy Nichols, Don Chak and Donald Lee Shanks testified before noon. Joe Smith, Lubbock, was to be the first witness called after lunch on Wednesday. The controversy continues ..

Postal...

Cont'd, From Page 1

cancelled in Lubbock. Because the U.S. Postal Department relented, and returned the local postmark to Muleshoe, several smiles were noted as residents knew that Muleshoe would be able to retain some of its individuality.

Postmaster Beavers said much credit should be given the Post Office Department as they changed their minds for the good of the small communities. The Chamber of Commerce Manager, Jerry Hutton, said everyone owed a special "thank you" to senators and representatives who worked to have the small town postmark returned to the small towns.

Farm Bureau Makes Effort In Leadership

Bailey County Farm Bureau is currently involved in a statewide effort to evaluate current organization programs on the state and county level and establish goals and priorities, according to Ernest Ramm of Muleshoe, president.

In a special board meeting held July 16, 1970 in Muleshoe the local Farm Bureau directors adopted a resolution committing themselves to the "leadership of their county Farm Bureaus in a joint effort to up-grade and strengthen the organization's program to better serve the needs of farm and ranch families."

The board also voted to send President Ernest Ramm as a representative to a special statewide meeting of county presidents August 27-28 in Brownwood. The purpose of this conference is to chart a recommended course of action for the Farm Bureau.

Dedication...

Cont'd, From Page 1

The main floor of the hospital includes one-story additions in the front for administrative and laboratory facilities. The most modern lab and X Ray equipment and facilities is already installed.

A cafeteria for the hospital employees and families of patients is through the lobby and on the south of the building. The kitchen, adjoining, is as modern and complete as is available. Refreshments will be served in this area at the Open House.

There are six VIP rooms with kitchenette. Adjoining and connecting rooms can be available which will turn these into a suite.

All patient rooms will have a recliner chair for the comfort of the family. All rooms are equipped with electric beds.

Vote...

Cont'd, From Page 1

view, Texas. Any person who is producing soybeans for commercial purposes is eligible to vote, including owners of farms and their tenants and sharecroppers, if the tenant or sharecropper would be required to pay the proposed assessment.

Each room, reception area, lobbies are all beautifully draped. All cotton drapes are selected since the 9 county area this hospital serves is "cotton country". The drapes were made in Plainview. The landscaping is being done by local people. The American Legion is presenting a flag and flagpole and presentation of the flag will be part of the dedication of the hospital.

The Mental Health Center building is on the northwest part of the Hospital grounds attached to the Hospital by a corridor. The Emergency Room is between the buildings. A full time psychiatrist is on the staff of the Mental Health Center and an outpatient clinic is now in operation. In this building five services will be phased in. The inpatient service has 25 beds and 3 partial hospitalization bed/office combination rooms. A fully equipped occupational therapy and recreational therapy department is in the south part of the building. The north part is for inpatient rooms. The East entrance is for the outpatient clinic.

The full staff and operation of this facility is dependent upon a federal staffing grant from Health/Education/and Welfare. The Texas Department of Mental Health/Mental Retardation started funding this facility November 1, 1969, for partial operation. Local funds were used for matching money. This operation is legislated to cover the following nine counties: Bailey, Briscoe, Castro, Floyd, Hale, Lamb, Motley, Farmer and Swisher. The nine county board is selected by each judge appointing a Trustee. This nine county board is the governing board of the Center under the sponsorship of the Central Plains General Hospital Board. The building, valued at \$600,000.00, was built by the Hospital Authority by matching with local funds the \$400,000 Health, Education and Welfare grant. This grant and matching local money provided for the completely equipped mental health facility. The Hale County Hospital Authority Board with the help of Judge C.L. Abernethy, Representative Ralph Wayne, Dr. Mary Bubliss, and Mrs. Eleanor Griffin prepared documentation to get the federal construction grant in time to start the building along with the Planning Grant to write a program for mental health that would qualify under State and Federal Rules and Regulation. Part of this job was to organize the nine counties, work with the nine county judges and commissioners needed for these communities in the way of a mental health program. This was approved by the Texas Board of Mental Health and

Mental Retardation at their site visit in September 1969, and it was funded on a limited basis November 1, 1969. The Mental Health Center has provided a detoxification center and crisis accommodations for mental health patients through a cooperative agreement with the Plainview Hospital "turns" in to the Central Plains General Hospital. This service will be expanded. The Board is listed at the end of this material. W.W. Allen, Plainview, is chairman.

HOSPITAL COMPLEX
No financing for this facility has been done with tax money... County or City. The PEOPLE pledged \$891,282.85. Of this pledge \$682,157.50 has been paid to date. Other financing has been from Hill Burton, Federal Housing and Urban Development Agency and bonds were sold to First Southwest Company. Also included in the pledge was 80 acres of farmland, and a 12.8 acre new hospital site. Medical Center Hospital merged with the Plainview Hospital in 1969. Their property was bought by the Hale County Hospital Authority. Allen Riggler, who made the statement at the beginning of the project that the Hospital's completion will be a lasting testimonial to the determination, farsightedness, and generosity of a people who believe in their area.

Mental Retardation at their site visit in September 1969, and it was funded on a limited basis November 1, 1969. The Mental Health Center has provided a detoxification center and crisis accommodations for mental health patients through a cooperative agreement with the Plainview Hospital "turns" in to the Central Plains General Hospital. This service will be expanded. The Board is listed at the end of this material. W.W. Allen, Plainview, is chairman.

HOSPITAL COMPLEX
No financing for this facility has been done with tax money... County or City. The PEOPLE pledged \$891,282.85. Of this pledge \$682,157.50 has been paid to date. Other financing has been from Hill Burton, Federal Housing and Urban Development Agency and bonds were sold to First Southwest Company. Also included in the pledge was 80 acres of farmland, and a 12.8 acre new hospital site. Medical Center Hospital merged with the Plainview Hospital in 1969. Their property was bought by the Hale County Hospital Authority. Allen Riggler, who made the statement at the beginning of the project that the Hospital's completion will be a lasting testimonial to the determination, farsightedness, and generosity of a people who believe in their area.



GARDEN HOE
Versatile all-around gardener's aid.
Chops weeds. Cultivates furrows. #AHG-6
2.70 Value **\$1.43**



HERITAGE THE HOUSE
FRUIT, NUT & VEGETABLE SPRAY
BUTHION prevents worms from entering and destroying fruits and nuts. Controls vegetable insects. Spray and harvest in 7 days.
2.95 Value **\$1.77**



CHARCOAL GRILL
Buddy L #2880
\$4.95 Val **\$15.97**



GIBSON'S DISCOUNT CENTER
WHERE YOU ALWAYS BUY THE BEST FOR LESS
MULESHOE, TEXAS



GOLF CART
#830 **\$8.97**



GARDEN WEED PREVENTER
Stops crabgrass and 25 other weeds and grasses when they germinate. Safe to use on flowers, vegetables and grass. One application lasts all summer.
4 1/2 OZ. **\$1.17**
GIBSON'S PRICE



50% MALATHION INSECT SPRAY
Kills over 100 kinds of insects on shrubs, flowers, lawns, fruits, vegetables, trees and pets. Safe on all vegetables.
8 OUNCE **\$1.17**



ZEBCO 404
NOW ONLY **\$2.87**



ZEBCO 33
NOW ONLY **\$8.77**



ZEBCO NO. 12.45
COMBINATION \$5.97



Zebco 800 Shakespeare
SPINNING REEL
NEW HEAVY DUTY PUSH-BUTTON REEL
DUAL DRAG No. 1788
NOW ONLY **\$21.97**



ZEBCO MODEL 77-2
ROD & REEL \$4.77



COLEMAN 3 BURNER CAMP STOVE
#426D **\$21.97**



CRAPPIE JIG
YOUR CHOICE **7¢**



Crappie Rigs
EACH **9¢**



COLEMAN CATALYTIC HEATER
#513 GIBSON'S PRICE **\$22.97**



COOLER
5252 28 QT. **\$12.97**



WIRE FISH BASKET
\$1.73



ICE CHEST
30 Qt. Styrofoam **99¢**




COLEMAN SLEEPING BAG
36" x 80" #8123B 3 LB. **\$12.97**



WILLIS CATFISH BAIT
63¢


Perhaps you've never thought of life insurance as "happiness." But it is in many ways. It helps you get rid of financial worries so you can live a little! Each dollar you put into cash-value life insurance works like four. It works as a protection dollar. As an emergency dollar. As an opportunity dollar. And as a retirement dollar. Four ways. Ready money whenever you need it. That's a lot of happiness!



Vic Benedict Southwestern Life

ANNOUNCING
The Offering Of
Technical Agronomic Service
To Farmers And Agricultural Industry
Clarence Christian
Agricultural Consulting
BOX 394, MULESHOE, TEXAS 79347 806-272-3998

MULESHOE JOURNAL
Established February 23, 1924
Published by Muleshoe Publishing Co., Inc.
Every Thursday at 304 W. Second Box 449
Muleshoe, Texas, 79347
Second class postage paid at Muleshoe, Texas 79347



TEXAS PRESS ASSOCIATION 1970

L.B. Hall, President
Jessica Perry Hall, Secretary-Treas.
L.B. Hall, Publisher & Managing Editor
Clete Williams, News Reporter
Katie Foster, Society Reporter

SUBSCRIPTIONS:
Zone 1-Bailey-Parmer-Cookson-Lamb counties: \$4.00 per year, \$4.50 per year by carrier. With Sunday Bailey County Journal, both papers: \$5.50 per year, \$6.00 per year by carrier.
Zone 11-Child-Ed-Territory: \$4.30 per year, with Sunday Bailey County Journal, both papers, \$6.25 per year.
Monthly, by carrier-55¢; single copies-10¢
Advertising rates upon application

Mrs. Robert Kiser Honored At Shower



MRS. ROBERT KISER, the former Susan Camp

Mrs. Robert Kiser, the former Susan Camp, was honored with a bridal shower, Friday, July 24 from 7:30 to 9:30 p.m. at the Muleshoe State Bank Community Room.

The honoree, her mother, Mrs. Bernis Camp and her husband's mother, Mrs. Pete Kiser of Denver City, Texas were presented with pale blue orchid corsages.

A mixed floral centerpiece of the brides' chosen colors of Avocado green and royal blue, and featuring a miniature bride and groom adorned the white organdy covered serving table. Crystal and silver appointments were used to serve the cookies, and pineapple punch. Assisting with serving was Mrs. Bill Darnell, of Canyon, Texas; and also Patte Camp, and Carol Camp, sisters of the bride.

The hostesses presented the bride a set of stainless steel cookware. Hostesses for the occasion were: Mrs. C.E. Moore; Mrs. Russell Bryant; Mrs. J.W. Roberts; Mrs.

Howard Watson; Mrs. Larry Jones; Mrs. Wiley Moore; Mrs. Sam Hopper; Mrs. Jack Julian; Mrs. H.A. Douglass; Mrs. Bobby Nickels; Mrs. Horace Hutton; Mrs. Dick Ellis; Mrs. Charles Daniel; Mrs. E.M. Pruitt; and Mrs. Dee Puckett.

Goodland Bible Study Club Has Meeting

The Goodland Bible Study Club met Tuesday with Mrs. Buck Ragsdale to complete the study of the Book of Esther.

The club voted to help Girlstown get their airplane by giving books of trading stamps. The stamps are to be brought to the September 1, 1970 meeting at Mrs. Freddie Parkman's. This meeting will be a special study on the "Integrity, Authenticity and History of the English Bible".

Members answering roll call with a favorite scripture were Mrs. Baker Johnson, Mrs. Tommy Galt, Mrs. Cass Stegall, Mrs. Pete Tarilton, Mrs. W.C. McCelvey, Mrs. Buck Ragsdale and one guest Mrs. Bob Klutts. There will be no meetings during August due to vacations.

Vacation Bible School Held At YL Church

Thirty-two children attended vacation Bible school July 20-24 at the YL United Methodist Church.

Twelve children were in the nursery taught by Mrs. Bobby Newman and Mrs. George Newman. Mrs. Ronnie Campbell and Mrs. Jack Knowlton taught Kindergarten class with nine pupils. Mrs. J.C. Gatewood conducted the junior class with nine students. Mrs. Kenneth Powell was the director of the church school.

Rev. Aaron Mitchell presented opening devotional each day. Refreshments were provided by Mrs. Leon Lewis, Mrs. Aaron Mitchell, Mrs. D. B. Head, Mrs. W.T. Millen and Mrs. Jessie Fox.

Sunday evening at 6:30 p.m. at the YL United Methodist Church, the children presented a program and exhibited their crafts. Afterwards everyone enjoyed a picnic on the church ground.

Mrs. Albert Fields, Mr. and Mrs. W.Q. Casey, Mr. and Mrs. Jess Winn, Mr. and Mrs. George Cabrera, Mr. and Mrs. Jimmy Ivy, Mr. and Mrs. Larry Hall, Rev. Doug DuBose, Mr. and Mrs. John Miller, Harmon Elliott, Mr. and Mrs. E.T. Ford and Kerry Moore.

Shower Fetes Miss Henexson

The home of Mr. and Mrs. J.W. Coppedge was the scene for a lingerie shower honoring Miss Vicky Henexson, bride elect of Randy Selman, July 27 at seven p.m.

Hamburgers cooked outside were served to the guests along with cookies and cold drinks. Guests present were Debbie Burrows, Connie Julian Barnes, Sue Pylant, Annette Williams and Pam Hardwick of Friona. Hostesses for the occasion were Kay Coppedge and Peggy Williams.

Women Enjoy Talk While Men Attend Conference

While the men attended a Rotary conference with the district governor, Woody Pyeatt of Sweetwater in the home of Mr. and Mrs. Harvey Bass, the women were entertained by Mrs. Ruby Wilman of The Candle Shop. She showed her collection of candles and demonstrated how to assemble different arrangements. She also explained how candles were made.

After the business meeting and the entertainment, the men and women adjourned to the patio where they enjoyed home-made ice cream and cookies.

Those attending were Mrs. Ruby Wilman, Mrs. Jewel Anderson, Mr. and Mrs. Alex Williams, Mr. and Mrs. Troy Acton, Mr. and Mrs. Woody Pyeatt, Mr. and Mrs. Ronnie Shafer, Mr. and Mrs. Gil Lamb, Mr. and Mrs. Morris Nowlin, Mr. and Mrs. Earl Harris, Mr. and Mrs. Olan Burrows, Mr. and Mrs. Roger Albertson, Mr. and Mrs. Clinton Kennedy, Mr. and Mrs. Burel Block, Mr. and

Mrs. David Jones Is Shower Honoree



MRS. DAVID JONES, nee Jana Stevenson

Saturday, July 25, in the home of Mrs. Charles Pummill, Mrs. David N. Jones, the former Miss Jana Stevenson, was honored with a bridal shower four to six o'clock p.m.

The table was laid with a white cloth and centered with an arrangement of daisies and lighted blue candles. A brass coffee service was used with the crystal appointments.

Corsages were presented to the honoree, her mother, Mrs. Ralph Stevenson, and the groom's mother, Mrs. Norma Long of Clovis. Special guests were Mrs. Myron Pool, Sr., grandmother of the groom, Mrs. Jewel Richter, grandmother of the bride, Abernathy, Mrs. H. A. King and daughter Becky

of Hobbs, Mrs. Jerry Howard, San Angelo, Diana King, Las Cruces, New Mexico and Mrs. Jackie MacAlpine of Canyon. Miss Janice Crane, Terry Crane, Miss Cristina Espinosa and Miss Cordy Velasquez served the guests. Miss Becky King, cousin of the bride registered the guests.

Hostesses were Mrs. Jack Beddingfield, Mrs. Eugene Black, Mrs. Harmon Elliott, Miss Christina Espinosa, Mrs. Ben Gramling, Mrs. Eldon Davis, Mrs. J.W. Roberts, Mrs. James Crane, Miss Cordy Velasquez, Mrs. Ruby Green, Mrs. Charlene Zoth and Mrs. Charles Pummill.

The hostess gift was an electric mixer.

Bridal Luncheon Honors Miss Smith

Miss Patricia Smith, bride elect of Charles Thatcher Jr., was guest of honor at a bridal luncheon Saturday, July 25, given in the home of Mrs. Gil Lamb.

The table was laid with an organdy cloth and centered with a bouquet of daisies and bells of Ireland. Silver and crystal appointments were used. Decorations were carried out in the bride's chosen colors of blue, yellow and white. Bouquets of mixed garden flowers were featured in the receiving room.

Fourteen guests were present. Special guests were Mrs. Troy Thomas and daughter Mrs. Wayne Gilliland, sister and niece of Mrs. Eric Smith, mother of the honoree. Hostesses were Mrs. Sam Damron, Mrs. Larry Hall, Mrs. Jack Rennels and Mrs. John Watson. Hostess gift was a linen and lace table cloth.

Miss Smith and her fiancé plan to be married August 8 at the First United Methodist Church in Portales, New Mexico.

A Difference

The difference between a sailor and a seabee is that while a sailor and his girl are looking for a park bench, the Seabee builds one.

-The Sea Hawk.



MRS. ERIC SMITH and PATRICIA

Lust's Host Hamburger Fry

The lawn at the home of Mr. and Mrs. Frank Hinkson, was the perfect setting for the hamburger fry, hosted by Mr. and Mrs. Glenn Lust, Junior Past Worthy Matron and Worthy Patron, of Muleshoe Chapter No. 792, Order of the Eastern Star, Monday evening, July 27, Frank Hinkson, the official chef, for the evening, served hamburgers with all the trimmings, to the following officers and their wives or husbands, serving with Mr. and Mrs. Lust, in the Chapter Year, 1969-70.

Mr. and Mrs. Wyle Bullock and Ronnie; Mr. and Mrs. John Thomson and two grandsons; Mr. and Mrs. Tom Smith; Mr. and Mrs. Wayne Williams and Roger; Mr. and Mrs. Alex Williams; Mr. and Mrs. Alton Epting; Mr. and Mrs. Elbert Nowell; Mrs. John Farley; Mrs. Louie Norwood and Mrs. Willie Strong.

Mrs. Hinkson, Mrs. Lust and Mr. Lust served home-made ice cream and cake, and personalized plaques of original design, were presented each officer, by Mr. and Mrs. Lust. Commendation and appreciation were expressed to Mr. and Mrs. Hinkson and Mr. and Mrs. Lust, for the enjoyable evening.

4-H Girls Lead Parade of Home Sewing Champions

SPECIAL - One of the booming home arts today is sewing. Technology has made available a wide array of miracle fabrics, invisible thread, hidden zippers, and sewing machines that all but sew by themselves.

Learning to sew is no longer the tedious, base-and-rip, time consuming chore it once was. More young girls are making their own clothes today than ever before: in school, at home and especially through 4-H Clubs.

Nearly one million girls from nine to 19 are working on 4-H clothing projects, reports the National 4-H Service Committee. They decide what to make, get pointers from their volunteer clothing project leaders, sales clerks, Extension Service personnel, sewing bulletins and the educational department of Coats & Clark Inc.

This 156-year-old firm, which started out making cotton thread and now is a leader in sewing notions, has a 30-year record as sponsor of the

national 4-H clothing program. In this time span, company officials have personally congratulated some 1,500 teenage girls for excellence in making their own clothes.

These talented young seamstresses were top state award winners and guests of Coats & Clark Inc. at the annual National 4-H Congress in Chicago. More than 300 received national clothing scholarships.

Again this year, 51 girls, one from each state plus Puerto Rico, will travel to Chicago at the expense of this long-time 4-H friend, A Coats & Clark official will be on hand once more to present \$600 scholarships to six new national champions.

Girls who would like to be a part of this teen home fashion scene can get into the act by contacting a local 4-H Club of the county extension office. The Cooperative Extension Service supervises all 4-H programs.

Progressive Home Club Met Wednesday

The Progressive Home Club met Wednesday, July 22, at three p.m. in the home of Lois Norwood. Roll call was answered with a household hint. Minutes were read and approved. Zida Mae Black presided over the business meeting. She displayed Christmas cards which are to be sold by members and members made their selection. Minnie Dunn drew the hostess gift. There was one guest present, Mrs. Lillie Hoover of Lubbock.

Members present were Lois Norwood, Lucille Harper, Zida Mae Black, Minnie Dunn, Bessie Myers, Roxie Hoover, Mabel Ryan and Lula Embry.

The Club voted to not meet until September 23, at which time Annette Black of Farwell will display the Sarah Coventry line of jewelry.

it's the little things in life

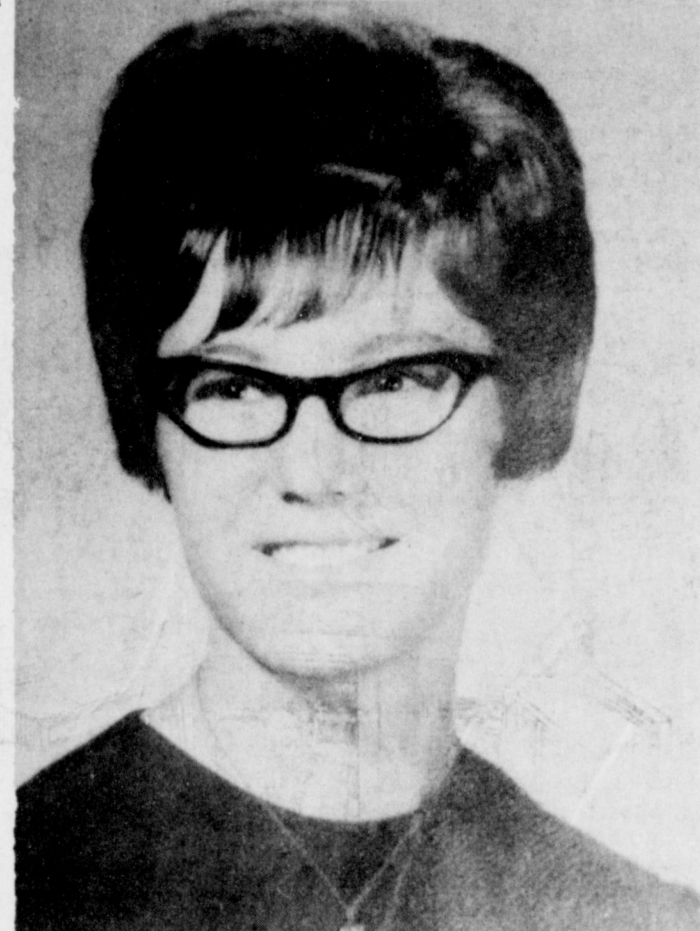
Little problems can sometimes add up to big trouble. Take those little bills, for instance. One after the other, they can really mount up. But with our help, you can banish bill bother. Get a Bill-Paying Loan, at low bank rates... pay all those bills at once, repay on convenient terms. See us for full details.

INSURED UP TO \$20,000

Muleshoe State Bank

The Bank With The Time And Temperature

MEMBER FDIC



SEPTEMBER WEDDING PLANNED ... Mr. and Mrs. Paul Winegeart, Farwell, announce the engagement and approaching marriage of their daughter, Nelda Kay, to Delton Eugene Wilhite, son of Mrs. Emma Lue Wilhite and the late Lonnie Wilhite of Muleshoe. Miss Winegeart is a 1968 graduate of Farwell High School and is a junior at West Texas State University. Wilhite graduated from Farwell High School in 1966 and graduated from Texas Tech in May of this year. The couple plans to marry September 6 at 2:30 in the Oklahoma Lane United Methodist Church.

West Plains Clinic

ANNOUNCES

THE ASSOCIATION OF HOMER W. ALGOOD, M.D.

IN GENERAL PRACTICE

DINE and DANCE

Enjoy the Finest Food in Eastern New Mexico. Steak, Shrimp & Lobsters, and Other Taste Tempting Delights Served From 11 a.m.-12 p.m.

BOB DURHAM DUO

Featuring Bob & June

Appearing nightly

8:30 To 12:30 A.M. Monday through Thursday.

8:30 To 1:30 A.M. Friday and Saturday.

For Reservations Call 763-4433

Off the Lobby of Clovis Hotel At Second and Main

ENJOY A NIGHT OUT Dining Dancing

ANNOUNCING...

THE ASSOCIATION OF Gerrie (Cooper) Lumpkin BEAUTICIAN AT REBA'S BEAUTY SHOP

GERRIE TAKES APPOINTMENTS TUES THRU SAT.

CALL Melba, Reba or Gerrie FOR AN APPOINTMENT TODAY

1614 W. AM. BLVD. PH. 272-4730

Any florist with a lot of scents is in the Yellow Pages

Miss Moore Given Bridal Gift Tea

Miss Sherry Moore, bride elect of Ronnie Barrett, was honored with a bridal gift tea Saturday, July 25, from three to five p.m. in the home of Mrs. Robert Blackwood.

The serving table was decorated with a white linen cloth and a centerpiece of blue daisies and candles in a gold and crystal candelabra. Arrangements of fresh cut flowers were throughout the house.

Green punch and blue thumbprint cookies were served by Kay Douglas, Vicky Julian, Rickie Richardson and Susan Wood. Registering guests was Mrs. Billy Darnell, sister of the bride elect. Approximately 50 guests called.

The honoree was presented with a corsage of white gardenias and her mother, Mrs. Wilcy Moore and the prospective groom's mother, Mrs. Jodie Barrett were presented with a corsage of white carnations.

Hostesses were Mrs. Arnold Prater, Mrs. Henry Stoneham, Mrs. Herbert Griffiths, Mrs. Delbert Berry, Mrs. Kathryn Parks, Mrs. Chester Yerby, Mrs. Roy White, Mrs. Don Bruns, Mrs. Cleon Davis, Mrs.



MISS SHERRY MOORE, bride elect of Ronnie Barrett

Huckabee's Honored With Farewell Tea

Mr. and Mrs. W.H. "Bill" Huckabee were honored with a Going Away Tea hosted by friends at their store in Baileyboro Sunday, July 26.

Bill Huckabee moved to

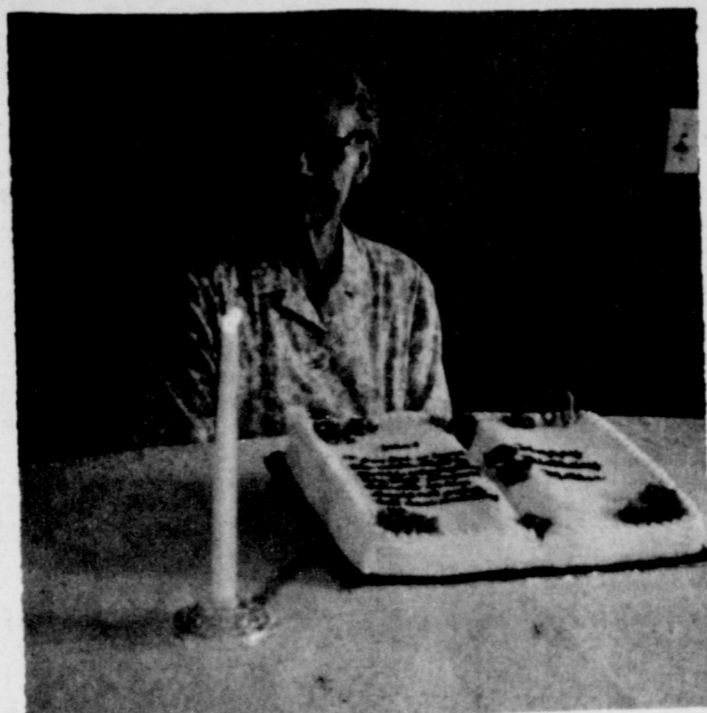
Baileyboro the later part of 1924 and started farming. In 1927 he opened a garage and filling station and in 1936 went into the grocery business. In 1944 the post office was opened with Ruth Huckabee becoming postmaster and remaining until her death in December of 1958.

On April 15, 1969, the Baileyboro Post Office was closed. Bill Huckabee married Myrtle Martin in October of 1963 and they have operated the store and post office there in Baileyboro. They are moving some time this week to Thatcher, Arizona where they will retire.

Approximately 60 guests called during the afternoon from two to seven p.m. Guests registered from Lubbock, Plainview, Littlefield, Sudan, Muleshoe, Portales, N.M., Goodland, Waco and Morton. The Huckabees invite all their friends to drop by to see them at their new home.



MR. AND MRS. W.H. (BILL) HUCKABEE



MRS. ODESSA SLAYDEN

Mrs. Odessa Slayden Celebrates Birthday

Mrs. Odessa Slayden celebrated her 80th birthday Saturday night, July 25, with all eight of her children present and many of her grandchildren. The occasion was a supper held in the W.D. Dement home, topped off with a birthday cake decorated with white icing and red roses in the shape of an open Bible with a scripture reading of John 3-16 and the figure "80" standing above the icing.

Children present were Mr. and Mrs. Elmer Slayden, Victoria, Texas; Mr. and Mrs. Charlie Wickham and Kenneth from Clarksville, Tennessee; Mr. and Mrs. Bob Buchholz, San Angelo, Texas; and from Muleshoe; Mr. and Mrs. Jessie Ray Carter, Peggy and David; Mr. and Mrs. R.E. Ethridge, Bruce Slayden, Mike and Mark; Mrs. Earline Ragland and Mr. and Mrs. W.D. Dement. Other grandchildren were Mr. and Mrs. Wayland Ethridge, Kristi and Steven; Mr. and Mrs. Ronnie Ethridge, Debbie and Deana; Mr. and Mrs. Bud Bruns and Donnie; Mr. and Mrs. Pat Vinson, Larry, Pan and Diana all of Muleshoe and Mr. and Mrs. Jim Straube of Fontana, California;

Mr. and Mrs. Bill Harbin of Big Spring and Don Buchholz of Amarillo. Also present were Mrs. Lizzie Lou Clements and Dumont Bridge of Dickens.

During the party her children presented her with a violin. She also received other lovely gifts.

Planning Ahead
Future generations won't be squandering their hard earned money foolishly—we've already done that for them.
-Record, Columbia, S.C.

No Fun
Today it costs more to amuse a child than it used to cost to educate his father.
-Santa Fe Magazine.

Jehovah's Witnesses Attend Convention

"With attacks being made from every quarter on belief in God and the Bible, some of these from religious leaders themselves, it was spiritually refreshing to listen to discourses and see Bible dramas enacted that upheld God's Word," reports Boyd Lowery presiding minister of the local congregation of Jehovah's witnesses. Lowery was referring to the District Convention of Jehovah's witnesses just concluded in Amarillo, Texas. Local delegates returning home this week report that upwards

of 10,023 persons from over 25 states attended.

Several hundred new ones were added to the Witness organization. They were ordained at a baptismal ceremony. According to Lowery "The decision of these persons to undergo baptism was not the result of some emotional experience but rather an intellectual experience after a concentrated program of Bible study."

"Much information was given for the benefit of the young people," Lowery said. "We are

now living in the 'age of rebellion', with these 'last days' producing a bumper crop of rebellious ones as foretold in the Bible. Our youth enjoyed several frank and pointed discussions that enables them to recognize and eliminate rebellious tendencies."

Lowery announced that meetings this week will be held at the regularly scheduled time at the local Kingdom Hall.

Defined Fishing—An uninhabited body of water surrounded by liars in old clothes



MISS NARSSIA OTWELL, bride elect of Randy Lackey

Shower Honors Miss Narssia Otwell

A bridal shower honoring Miss Narssia Otwell, bride elect of Randy Lackey, was held in the Muleshoe State Bank Community Room Monday, July 27, from 7:30 to nine p.m. A corsage of white daisies was presented to the honoree and similar ones were presented to the honoree's mother, Mrs. J. R. Otwell, and the prospective groom's mother, Mrs. O.M. Lackey. Special guests were the bride's grandmothers Mrs. Grover Tapp and Mrs. Jack Lee and the groom's aunt, Mrs. Homer Lackey.

The serving table was laid with a linen cut-work cloth over green. The centerpiece was made of daisies, the bride's chosen flowers, arranged in a large gold and crystal epergne. The registering table was laid with a white lace cloth over yellow center with a bud vase holding a single daisy. Registering guests was Miss Debbie Sain, friend of the bride. Serving the guests was another friend of the bride, Miss Debra Rudd. Lime punch and thumbprint cookies filled with yellow icing were served to about 50 guests.

Hostesses were Mrs. Fred Horn, Mrs. Frank McCamish, Mrs. Earlene Ragland, Mrs. Mary Johnson, Mrs. Nova Darsey, Mrs. J.R. Carter, Mrs. Imogene Tiller, Mrs. S.M. Ethridge, Mrs. S.P. Stockard, Mrs. W.L. Speck, Mrs. Gene Sisemore, Mrs. George Williams, Mrs. Doug Horsley, Mrs. S.H. Griffin, Mrs. S.D. Seagraves, Mrs. James Warren, Mrs. Howard Spawn and Mrs. Chester Yerby.

Installation credit rose in February.

U.S. surprised by Vietnamese border action.

Nixon expected to announce more troop cuts.

'70 census strives to count uncounted blacks.

ATHLETE'S FOOT HOW TO TREAT IT—
Apply quick-drying T-4-L. Feel it take hold to check itch, burning in MINUTES. In 3 to 5 days, infected skin sloughs off. Watch HEALTHY skin replace it! If not delighted in ONE HOUR, your size back at any drug counter. NOW at

Damron Drug

Looking Ahead To COLLEGE For Your Children?

Use this chart to plan your college fund. This chart is based on our current rate of 5% a year on savings, with earnings added to the account and compounded quarterly.

Starting at Child's Present Age	Here's how various amounts build up by the time your child is 18			
	\$5 monthly	\$10 monthly	\$20 monthly	\$50 monthly
8	279.04	557.56	1115.12	2790.16
9	482.40	964.74	1929.48	4824.00
10	590.83	1181.28	2362.55	5908.33
11	503.52	1006.70	2013.40	5035.20
12	420.43	840.59	1681.18	4204.30
13	341.38	682.53	1365.06	3413.80
14	266.15	532.13	1064.27	2661.50
15	194.58	389.03	778.05	1945.80
16	126.47	252.86	505.71	1264.70
17	61.66	123.29	246.58	616.64

FIRST FEDERAL SAVINGS & LOAN ASSOCIATION of CLOVIS
HOME OFFICE: 801 Pila St. CLOVIS, N. MEX.
BRANCH OFFICE: 2nd and Abilene St. PORTALES, N. MEX.

BEST BEEF BUYS

- ROUND STEAK.....Lb. 98¢
- CUBE STEAK.....Lb. \$1.19
- SIRLOIN STEAK.....Lb. \$1.09
- RUMP ROAST.....Lb. 79¢
- PKG. BOX OF: 10 Lb. ROUND OR SIRLOIN STEAK, 9 Lb. HAMBURGER, 3 Lb. PORK CHOPS, 3 Lb. BEEF ROAST \$18.95

CUT & WRAPPED FOR YOUR FREEZER
HIND QUARTERS.....Lb. 69¢
HALVES.....Lb. 62¢

Carl's Meat Co.
Open 6 Days A Week
8 a.m. To 7 p.m. Ph. 272-4361

THE HOME OF **WHITE STORES, INC.** GREATER VALUES

NEW STORE SPECIALS!

A SUPERMARKET in Your Kitchen
15' CATALINA Side-By-Side REFRIGERATOR-FREEZER
SAVE OVER \$30

\$339

Even though it's only 28" wide, this Catalina side-by-side features 15 cubic feet of food-keeping convenience with 21.6 square feet of shelf area. It's also "frostless" in both the refrigerator and freezer sections... there's no more messy defrosting! Features: 14.4 quart porcelain crisper, 226 pound capacity freezer, and hand-door shelves. Choice of white, copper-tone, or avocado.

PORTABLE COLOR TV
BUY ON EXCLUSIVE VACATION TERMS

- Truly Portable—Weights Only 45 Lbs!
- 102 Square Inches of Viewing Area!
- Telesopic VHF, Loop UHF Antennas!
- Automatic Color Purifier & Automatic Color Control for natural color!

REGULAR \$299⁹⁵
\$249⁹⁵
SAVE \$50⁰⁰

15 cu. ft. CATALINA CHEST FREEZER
Cut Food Costs—Beat High Cost of Living!

- Will Hold Over 1/4 Ton of Frozen Food!
- Huge 525 Pound Frozen Food Capacity!
- Includes One Basket and One Divider!
- Compartment for Fast Freezing Foods!
- Has Interior Light for your Convenience!
- Safety Lock Is Protection Against Theft!

REGULAR \$219⁹⁵
SAVE \$20⁹⁵
\$199

NO PAYMENT till DECEMBER on Deferred Vacation Terms

WHITE STORES, INC.
MULESHOE, TEXAS

TEXAS BANKAMERICA NOW AVAILABLE



**THURSDAY, JULY 30
SATURDAY, AUG. 1**

9 A M Till 6 P M

**1801 BROADWAY IN
LUBBOCK**

**BIG
DEAL!**

(WE THINK SO!!!)

Shop all day for fantastic quality furniture at value unsurpassed in any firm, in any city! All first line stock, exciting styles and truly remarkable values! And you can purchase on easy terms with free delivery! Hurry to Jenkins!!!!

2,300 GREAT FURNITURE VALUES! NOTE THE EXAMPLES ON THIS PAGE!

Save 50% on Internationally Famous "Matador" Spanish SOFA, CHAIR & OTTOMAN or SOFA AND LOVE SEAT

YOUR CHOICE

REG. \$516 **\$258**

IN SPANISH NAUGHAYDE

Big massive 84" sofa, 40" love seat high back chair and extra large ottoman in Naughayde!

SOFA MAY BE PURCHASED SEPARATELY FOR \$168

RUSTIC ANTIQUE PINE MILK STOOLS

Reg. \$9.99 **\$2**

With Actual Leather Thong in Handle (Cash & Carry Item)

10 ONLY!

10 GROUPS ONLY! DON'T MISS THIS RARE BEDROOM VALUE! HURRY TO JENKINS!

WE THINK THIS IS THE FINEST BEDROOM PRICE EVER OFFERED! PRICES GOOD ONLY IN STOCK ITEMS!

6 Piece!

REG. \$449 **\$199**

WOULD YOU BELIEVE IT... THE FINEST MADE SPANISH BEDROOM WITH A HUGE 66 INCH DRESSER BASE! TWIN MIRRORS! CHEST ON CHEST ELEGANT KING-SIZE HEADBOARD

EASY TERMS! FREE DELIVERY!

Accent or Baby Chests!

Reg. \$59 **\$29**

36"x24"x16"

IN ACCENT COLOR OF WHITE OR SPANISH GREEN! (THIS ITEM CASH AND CARRY.) HEAVY BRASS PULLS! 36 INCHES HIGH!

39 INCH THREE POSITION RECLINING CHAIR! REG. \$89.95 **\$39**

PLUSH AND DURABLE 90 INCH STEAMED VELVET SOFA!

MATCHING VELVET CHAIR! REG. \$199 **NOW \$88** REG. \$499 **\$198**

IN PALE PINK COLORS!

FULL OR TWIN! QUILTED INNERSPRING MATTRESS AND BOX SPRINGS! REG. \$99 **\$49**

60-INCH LOVE SEAT! 90-INCH SOFA! REG. \$569 **\$258**

NOW BOTH! LIMITED STOCK ON THIS GREAT LIVING ROOM VALUE! HURRY TO JENKINS!

IN FLAT FINISH BLACK NAUGHAYDE! OR FLUSH CRUSHED VELVET!

4 Piece 60 Inch Padded Bar Set! Three Stools! REG. \$300 **\$148**

FAMOUS MAKE FRENCH ANTIQUE WHITE COMPLETE KING SIZE BEDROOM

\$399

- TRIPLE DRESSER
- LANDSCAPE MIRROR
- KING SIZE BED
- NIGHT CHEST
- BIG CHEST ON CHEST

5 PIECE! REG. \$899

NOW IN STOCK! FAMOUS "CASA-DEL-SOL" MASTER DINING ROOM!

REG. \$1,100 **\$588**

6 PIECE WITH LIGHTED CHINA CABINET!

"SCOTCHGUARDED" VELVET CHAIR SEATS!

ROUND EXTENTION TABLE! 4 MATE CHAIRS! MAR-PROOF TOP! HAND RUBBED MAPLE FINISH!

REG. \$199 **\$96**

5 PIECE SET!

OWN ONE OF THE DISTINCTIVE LIVING ROOM GROUPS AVAILABLE TODAY!

SOFA! RECLINER! TUB CHAIR!

IN HEAVY TEXTURED GLOVE-SOFT NAUGHAYDE! AND THE SOFA RETRACTS TO A FULL-SIZE BED. THREE-PIECE GROUP AVAILABLE IN CHOICE OF COLORS! COIL SPRING COMFORT.

3 PIECES \$248

Reg. price \$700 cut velvet Spanish sectional! With state inset tables built-in! Gold and green stain resistant velvet! **\$263**

90-INCH LOOSE CUSHION HEAVY VELVET SOFAS! (60-Inch and 112-Inch Also Available)

Reg. \$499 **\$198**

IN CHOICE OF DECORATOR COLORS! SUITED FOR CORRELATION WITH YOUR EXISTING FURNITURE!

LIMITED STOCK! PRICES GOOD ONLY WHILE LASTS!

Dacron Wrapped Cushions! Self Deeked Under Seat!

Own the Newest and Most Exciting Bedroom Groups Anywhere! And Just Look at What A Very Few Dollars Will Buy! Hurry to Jenkins!

- TWIN MIRRORS!
- TRIPLE DRESSER! (76 Inch)
- BEDSIDE CHEST!
- SCULPTURED DESIGN KING OR FULL SIZE HEADBOARD

REG. \$549 5 Piece! NOW \$218

MASSIVE "DOOR FRONT CHEST ON CHEST! AVAILABLE FOR \$60!

BIG TRIPLE DRESSER WITH POPULAR "DOOR" FRONTS!

CARVED FRONT BEDSIDE CHEST WITH "DOOR" FRONTS!

ON EASY TERMS! WORLDS MOST P-O-W-E-R-F-U-L AIR CONDITIONERS

FEDDERS

12,000 B.T.U. ON 110 VOLTS!

REG. \$349 **\$299**

SAVINGS

810 CHARGE FOR INSTALLATION!

1801-BROADWAY IN LUBBOCK

Box CAR

No. 1

IN WEST TEXAS BECAUSE WE BUY DIRECT FROM THE FINEST OF FURNITURE MAKERS IN CARLOAD VOLUMES OFFERING FOR YOUR SELECTION THE FINEST IN VALUE WITH FREE DELIVERY!

Jenkins

ONE BLOCK FROM AVE. "Q" — ON BROADWAY

FURNITURE CENTER
(TELEPHONE 806-PO3-6487)

1801 Broadway

HANGING "SWAG" LAMPS! WITH CHAIN! REG. \$59 **\$29**

(CASH OR CARRY ITEM)

Famous "Crawford" Custom Decorator "Stack" OTTOMAN

On Brass Sheppard Casters In Variety Of Colors! Reg. \$59 **\$19**

3-PIECE SET! (CASH OR CARRY ITEM!)

STATE CAPITAL Highlights AND Sidelights by Vern Sanford TEXAS PRESS ASSOCIATION

AUSTIN, TEX. -- As fast as the state's major finance agencies moved out of the capitol into the new Finance Building, contractors' bids were opened for remodeling of the old quarters to the tune of more than \$1 million.

Work soon will be underway on all floors of the capitol, including the basement.

Senators will get private offices of at least 550 square feet each. Bulk of the new Senate space will come from quarters long occupied by the State Comptroller.

House members will have smaller offices -- but at least a private office -- in the old first-floor State Treasury rooms, including one specially wired for sound and tv lights.

Capitol station post office will make an early move into the new Finance Building, clearing the east entrance of the state-house for restoral to its original splendor.

ENROLLMENT LIMIT ASKED Soaring public college enrollments prompted a request for the Coordinating Board of the Texas College and University System that each school give "immediate consideration" to the problem.

If voluntary curtailment does not result, Board officials indicated they will ask the Legislature for power to order mandatory ceilings. Atty. Gen. Crawford Martin held in a recent opinion that the agency does not now have such authority. University of Texas system regents, meanwhile, approved a UT enrollment-control plan and a lottery system for use when units reach capacity.

Corrdinating Board at its last meeting also placed the student loan program under federal loan insurance to guarantee repayments, advised expulsion of students who are involved in campus disruptions, and directed studies of free credit exchange among all public institutions and possible elimination of unnecessary college courses.

INTEGRATION PRESSED Federal negotiators conferring with representatives of Texas school districts found 48 not in compliance with desegregation provisions of the 1964 civil rights act.

Sessions are seen as a last-ditch effort to get voluntary integration without a massive lawsuit by the U.S. Justice Department demanding immediate compliance.

Negotiators included three



ROTARY DISTRICT GOVERNOR GUEST -- Pictured at a fireside meeting Monday night are from left, Muleshoe Rotary Club President Harvey Bass, Rotarian Troy Atkinson and special guest, Rotary District Governor W.W. 'Woody' Pyeatt. The Rotary Governor was also special speaker at the regular meeting of the Rotary Club Tuesday noon. He and his wife were honored in the Bass home. Members of the Rotary Ann were entertained while the Rotarians held discussion sessions.

teams representing the civil rights division of the Department of Health, Education and Welfare, plus Justice Department Washington headquarters and Dallas regional office.

Texas Education Agency has contacted all 48 districts following receipt of a letter from the Justice Department asking TEA's help in ending school segregation.

School districts were limited to a maximum of three on their negotiating teams -- preferably the board president, superintendent and school attorney or board vice-president or another board member.

Federal teams limited each district to one-hour hearings. Any agreement, if not worked out in that time, will be communicated to HEW as soon as possible after local board discussions.

Each district was requested to bring copies of its own desegregation plans to the Austin meetings. Independent or consolidated school districts named by the Justice Department as not in compliance were:

Amarillo, Atlanta, Austin, Bellville, Calvert, Carthage, Churchill (annexed to Jacksonville), Concord Rural High, Crockett, Cypress-Fairbanks, Ector County, Elysian Fields, Ferris, Friendship (annexed to Caldwell), Galea Park, Garland, Hearne, Hengstead, Henderson, Jackson, Jasper, Jefferson, Karnack, Katy, Kilgore, Klein, La Vega, Lubbock, Lufkin, Madisonville, Marshall, Midland, Mount Haven (annexed to Jacksonville) Neogoches, Palestine, Port Arthur, Refugio, Richardson, Sabine Pass,

San Angelo, San Augustine, Shelbyville, Silsbee, South Park, Sulphur Springs, Temple, Waskom and Wichita Falls.

COURT SPEAK

Third Court of Civil Appeals voided incorporation of West Lake Hills (an Austin suburb), holding that a city cannot incorporate solely to escape annexation and taxes of a neighboring city.

Supreme Court held that the State Board of Medical Examiners could not revoke the license of a Galveston pathologist for failing to keep records of medication administered to himself and his family.

Reversing an Abilene domestic relations court ruling, the High Court directed that custody of four children be taken from the mother and given to the father.

Court of Criminal Appeals said the co-defendant in a case cannot be called as a witness against another unless he previously agreed to testify.

WAR ON TAXES

Texas Manufacturers Association has declared war on additional state taxes and set up a special department to keep an eye on state spending.

Alarmed by reports that the 1971 tax bill may go as high as \$700 million, TMA President Ed C. Burris said its organization is going to do everything in its power to prevent any kind of increase.

TMA, said Burris, also will be on guard against long range spending programs, with increases automatically built into state law.

Carl H. Braubach, a budget analyst under former Gov. John Connally, and one time Legislative Budget Board staffer John

A. Haddad will head a research project on keeping government spending within revenues. Offices will be located in Austin near the capitol.

APPOINTMENTS

Frank Vandiver, acting president of Rice University and a noted historian, will be executive director of Texas' American Revolution Bicentennial Commission.

H.C. Pittman of Austin is the new president of national Automotive Trade Association Managers, Sam White of Houston already heads National Automobile Dealers Association.

Ed Latta, Jerry Heare and Jim Heath will be directors of information, community development and prospect development for Texas Industrial Commission.

TEXAS SHEEP SENT TO MEXICO

Texas sheep are going south of the border -- to help Mexico upgrade its livestock breeding.

Aided by the State Department of Agriculture, Dr. M.V. Alberto Encinas, director general of the Livestock Division of Mexico's Department of Agriculture, recently began selecting more than 1,000 head in the West Texas area for the experiment.

SHORT SNORTS

Howard B. Boswell will retire as executive director of Texas Water Development Board on October 1.

Collingsworth, Donley, Hall, Hemphill, Lipscomb and Wheeler Counties in the Panhandle received approval for grazing and harvesting of hay on land retired from production under the cropland adjustment program.

Texas Public Employees

Lazbuddie News

Mrs. Richard Engelking

First Baptist Church was host to the Billy Graham film "The Restless Ones" Monday night.

The Shorthorns, teams I and II of the Minor league baseball enjoyed a good season in league play at Muleshoe so they were rewarded with a party Friday night. They enjoyed a picnic at the park in Friona then on to the "Drive Inn" for a swinning sessin.

Those attending were the coaches Jimmy Briggs and Elvis Powell and their families, also the Joe Moores, Junior Matthews, Mrs. Reaford Wenner, Reyburn and LaReta, Mrs. Billy Weir and Byron, Mr. and Mrs. Marvin Mimms and Mark, Mrs. Dalton Mimms, Michael and Quentin, Mrs. Don McDonald, Johnny and Dana, Vicki and Sherri Reese, Delayne, Charlestone, Dennis Steinbock, Mark Foster, Randy Smith, Riley and Moses Saucedo, Tommy Ponder and Carey and Stevie Wright.

Debbie and Davey Engelking accompanied their grandparents, the Ike Engelkings, to a ranch nestled in the mountains above Pecos, New Mexico, for some good trout fishing.

Mr. and Mrs. Jimmy Briggs, Joe Dan and Jana have entered

most of last week then for Sunday dinner they hosted Jimmy's mother, Mrs. Easter Briggs of Adrian, Mrs. Marie Briggs, Wilcox, Arizona and an uncle Frank Pidsley, Grandfield, Oklahoma. Now visiting are Mr. and Mrs. Robert W. Wright of Boulder, Colorado.

Mrs. Paul Jesko, Kelley, Kolleen, Wade and Anthony Andrew are here visiting from Beaumont, Lynn and children came down from Hereford, Tuesday, where they had been visiting with Paul's parents, the Matt Jesko's. While here they will visit with all the Jesko families and former neighbors, the Don McDonalds.

The Joe Moores, Jimmy Briggs and Wayne Hardages attended the Line production "Desert Fiesta" recently in Carlsbad, New Mexico. It is a production similar to Paul Green's "Texas".

Mrs. Theron McGuire, Robert and Rheta are moving from our midst to make their home in Shallowater. We are going to miss them but wish for them the very best in their new home.

Miss Jan Mason of Midland, was here over the weekend visiting her folks, Lee and Bortha Mason and grandparents Lucy and Bertha Hardage.

Shirley Howard, of Houston, has been visiting her parents, DeBee and Iva Carpenter, She and her son Danny are seeing

the sights of Disneyland and other interesting places on the West Coast. They were accompanied by Dee Dixon and Dana, also of Houston.

J.B. and LaDema Wright had visitors from Wichita Falls this week, his nephew Mr. and Mrs. Monty Wright and children Sandra and Ron.

Most reports seem to be favorable on the crop outlook for this year. The early July rains helped some areas considerably. The Maize headed out earlier this season than most. Probably the dry weather earlier had something to do with that. I realize for you folks who live away this report hasn't enlightened you too much on the crop situation, but will just have to do until I'm able to leave these four walls and see things for myself!!

See ya, and remember, 'dat ole sunny side of the street,

BIBLE VERSE

"Have you believed because you have seen me? Blessed are those who have not seen and yet believe."

1. Who was the author of the above statement?
2. To whom was he talking?
3. Upon what occasion?
4. Where may this verse be found?

Answers To Bible Verse

1. Jesus.
2. To his disciple, Thomas, often known as "the Doubter."
3. Upon the occasion of Jesus' appearances to his disciples following his resurrection.
4. John 20: 29.

ANNOUNCING...

THE
Corral Drive In
IS OPENING
Saturday, August 1st
UNDER THE MANAGEMENT OF
Charles & Ruth L. Haight
They Invite You To Come
By For Good Food & Service
OPEN 10 a.m.
FOR TAKE OUT ORDERS PH. 272-3497



Fry & Cox, Inc.

MF FACTORY SALE!

AUTHORIZED SALE!

BECAUSE OF SPECIAL FACTORY DISCOUNTS

GIGANTIC SAVINGS!
MAMMOTH TRADE-INS!
AMAZING LOW PRICES!

ASK FOR THE SPECIAL LOW PRICE!

THE FAST ONE!



THE TURBOCHARGED 120 HORSEPOWER

MF 1130 WITH MULTI-POWER 12-SPEED TRANSMISSION STANDARD!

ALSO STANDARD...

- Hydrostatic Power Steering
- Adjustable Steering Column
- Hydraulic Power Brakes
- Direct fuel injection

A turbocharger boosts power—and when you shift to low on-the-go with Multi-Power 12-speed, you get another power boost! Takes those big plows, disc harrows and chisels through big acreage fast! Take advantage of good weather and good deals by seeing us now. We'll put you on an MF 1130 for less than you expect!

NEW! SAVE NOW!

SAVE \$2,106

CLEARANCE! GOOD USED TRACTORS!

401 S. 1st. Muleshoe

IRRIGATION MOTOR REPAIR??

YES SIR...

Anything from a minor tune up to a complete overhaul -

Your 'SATISFACTION' is our only GUARANTEE


TRY US FIRST!

PLAINS AUTO PARTS

(Across From Cashway)

South Main MULESHOE Phone 272-4576

it takes TWO to TANGO



Yes, sir, he's all dressed up but he can't Tango . . . not without a Partner.

It's the same with your business. You may be all dressed up in a fine, well-stocked store, but without customers you'll have to 'TANGO' all alone.

This newspaper can help you find those necessary partners. So why don't you really TANGO with ads in your local Newspaper?

TEXAS PRESS ASSOCIATION
1716 San Antonio St. • Austin, Texas



On July 22, after a long and turbulent germination period, a seedling farm bill for cotton, feed grains, wheat, dairy products and wool finally emerged from the House Committee on Agriculture. It is now headed for its first survival test on the floor of the House, possibly as early as July 29.

The Ag Committee version of cotton legislation contains provisions for cotton much the same as reported back in May before the sprouting farm bill bumped its head against the crusty payment limitation issue. The cotton section calls for replacing long standing marketing quotas with a national cotton production goal which the Secretary of Agriculture would translate into acreage allotments each year.

It spells out that the national base acreage allotment shall be 11.5 million acres in 1971 and for 1972 and 1973 would be of such size as the Secretary determines necessary to maintain adequate supplies.

The loan level, set at 18.7 cents per pound, basis 3.5 to 4.5 micronaire, would be comparable to this year's loan of 20.7 cents per pound for cotton in the premium micronaire category. The maximum that the Secretary could require a producer to "set aside" would be an acreage equivalent to 33-1/3 percent of his base allotment. And in the event the producer's payments

under the program were limited, the Secretary would reduce his set aside requirement to the extent he "deems fair and reasonable in relation to the amount of the payment reduction."

An advance payment of 15 cents per pound times the average actual production for the previous three years would be made on each farmer's base acreage allotment. This payment would be supplemented later if necessary to bring the payment plus the national average market price up to 35 cents a pound. For example if the national average market price came to only 19 cents, a supplemental payment of one cent per pound would be made. However, should the market price average 21 cents per pound or more, producers would not have to return any of the advance payment. For purposes of determining the amount of the supplemental payment, the national average market price for the first five months of the cotton marketing year, August through December, would be used.

The bill would continue sale and lease of allotment within states, but do away with the requirement for a referendum to permit acreage to cross county lines. Release and reassignment of acreage also would be continued for the three years of the bill.

On payment limitations the



LAW SCHOOL UNDERWAY -- Pictured are a few of the officers from a wide area who are attending a special FBI training school in Muleshoe this week. Standing at the projector is Earl Cullum, FBI agent from Dallas, who is coordinator of the school. Some of the towns represented at the school are Muleshoe, Friona, Hart, Littlefield and Clovis. The school will conclude on Friday.

News of Our SERVICEMEN

Billy Gilbreath

SHERMAN, TEX.--U.S. Air Force First Lieutenant Billy S. Gilbreath, son of Mr. and Mrs. Francis E. Gilbreath, 1705 W. Ave. D, Muleshoe, has arrived for duty at Perrin AFB, Tex.

Lieutenant Gilbreath, an accounting and finance officer, is assigned to the 4780th Air Base Group, a unit of the Aerospace Defense Command which protects the U.S. against hostile aircraft and missiles. He previously served at Phu Cat AB, Vietnam.

M.L. Navejar

REDSTONE ARSENAL, ALA. - Private First Class Miguel L. Navejar, 18, whose parents, Mr. and Mrs. Leonard J. Navejar, and wife, Maria, live in Muleshoe, recently completed the ammunition storage course at the U.S. Army Missile and Munitions School, Redstone Arsenal, Ala.

During the 10-week course, he learned to receive, store, ship and issue ammunition, ammunition components and military explosives. He also received instruction in the destruction of unserviceable and irreparable ammunition and explosives.

Dennis Bush

FT. BLISS - Private First Class Dennis L. Bush, 19, son of Mrs. Margaret D. Jones, Star Route, Sudan, recently completed a HAWK missile and launcher maintenance course at the Army Air Defense School, Ft. Bliss, Tex.

The 26-week course provided him with training in the operation and maintenance of the HAWK missile system and associated test equipment.

A 1962 graduate of Muleshoe High School, he attended the University of Texas and received his B.B.A. degree from Texas Technological University in 1967. He is a member of Phi Gamma Delta.

The lieutenant was commissioned in 1967 upon completion of Officer Training School at Lackland AFB.

R.L. Williams

The Navy Recruiting Branch Station, Clovis, N.M., announced today that Robert Lee Williams was just recently enlisted in the United States Navy and is presently undergoing his training at the Naval Training Center for Recruits.

The new sailor is the son of Mrs. Essie Mae Williams of Sudan, Texas. Robert is a long time resident of the Muleshoe and Sudan area. He attended school at Sudan.

While attending basic training, the new blue jacket will receive instruction on such subjects as: History and Traditions of the Navy; Different types of ships, submarines, airplanes, and space craft; the many types of educational opportunities available; Navy's recreational programs; Rating's and rank structures; Military drill and innumerable other phases of Navy life.

M.H. Kimble

SAN ANTONIO -- Airman Michael H. Kimble, son of Mrs. Pearl B. Smith of 200 Elms Ave., Littlefield, has received his first U.S. Air Force duty assignment after completing basic training at Lackland AFB, Tex.

The airman has been assigned to a unit of the Strategic Air Command at Vandenberg AFB, Calif., for training and duty in vehicle maintenance. Airman Kimble attended Littlefield High School.

Fair Officials Offering Top Swine Prizes

LUBBOCK -- The Panhandle South Plains Fair's swine show--often a stepping-stone to further honors at the State Fair in Dallas -- is offering \$4,392 in premiums this year to the top exhibitors of the South Plains area.

Swine judging is scheduled on the opening two days of the exposition, slated to run Sept. 28-Oct. 3 this year.

Allen Christian of Iowa State University will judge the entries.

Lee Roy Colgan of Lamesa, Dawson County Agent, will serve as superintendent. Colgan has been associated with the fair 23 years, one of the longest consecutive runs of any of the volunteer experts who make up the exposition's "official" lineup.

Berkshire, Duroc and Chester white swine will be judged Sept. 28, while Hampshire, Poland China and Spotted Poland China entries go into the arena the following day.

In addition to cash premiums and banners in 34 lots in six divisions, special awards also will be furnished by a half dozen breeding associations.

Competition in the fair's swine show often is so keen that winners here go on to grab state championships.

An all-star variety show has been carded for Fair Park throughout the weeklong fair run.

Opening the stint Monday and Tuesday will be Ray Stevens show, Gloria Loring and Jack Blanchard and Misty Morgan. Charley Pride returns Wednesday and Thursday with Johnny Duncan and ventriloquist Alex Houston and Elmer. Closing out the fair's last two dates will be Porter Waggoner and the Wagonmasters, Dolly Parton, Speck Rhodes and Jo Ann Castle, formerly of the Lawrence Welk show.

Ticket prices for the 5:30 p.m. and 8:30 p.m. shows are \$2.93 and \$4. All seats are reserved.

Requests for advance tickets are being accepted by the Fair Association at P.O. Box 208, Lubbock.

Appointments for a "good time" are rarely broken.

Billy Graham, Evangelist, speaking at his alma mater: "Be to the world a sign that while we as Christians do not have all the answers, we do know and care about the questions."

roads and turnpikes, or in aid thereof.

(c) Notwithstanding the provisions of Subsection (b) of this Section, bonds may be issued by any county in an amount not to exceed one-fourth of the assessed valuation of the real property in the county, for the construction, maintenance, and operation of macadamized, graveled, or paved roads and turnpikes, or in aid thereof, upon a vote of a majority of the resident property taxpayers voting thereon who are qualified electors of the county, and without the necessity of further or amendatory legislation. The county may levy and collect taxes to pay the interest on the bonds as it becomes due and to provide a sinking fund for redemption of the bonds."

Sec. 2. The foregoing constitutional amendment shall be submitted to a vote of the qualified electors of this state at an election to be held on the first Tuesday after the first Monday in November, 1970, at which election the ballots shall be printed to provide for voting for or against the proposition: "The constitutional amendment to authorize the Legislature to provide by law for the establishment of a uniform method of assessment of ranch, farm and forest lands, which shall be based upon the capability of such lands to support the raising of livestock and/or to produce farm and forest crops."

roads and turnpikes, or in aid thereof.

(c) Notwithstanding the provisions of Subsection (b) of this Section, bonds may be issued by any county in an amount not to exceed one-fourth of the assessed valuation of the real property in the county, for the construction, maintenance, and operation of macadamized, graveled, or paved roads and turnpikes, or in aid thereof, upon a vote of a majority of the resident property taxpayers voting thereon who are qualified electors of the county, and without the necessity of further or amendatory legislation. The county may levy and collect taxes to pay the interest on the bonds as it becomes due and to provide a sinking fund for redemption of the bonds."

Sec. 2. The foregoing constitutional amendment shall be submitted to a vote of the qualified electors of this state at an election to be held on the first Tuesday after the first Monday in November, 1970, at which election the ballots shall be printed to provide for voting for or against the proposition: "The constitutional amendment authorizing any county, on the vote of a majority of its qualified property taxpayers electors, to issue road bonds in an amount not to exceed one-fourth of the assessed valuation of the real property in the county."

roads and turnpikes, or in aid thereof.

(c) Notwithstanding the provisions of Subsection (b) of this Section, bonds may be issued by any county in an amount not to exceed one-fourth of the assessed valuation of the real property in the county, for the construction, maintenance, and operation of macadamized, graveled, or paved roads and turnpikes, or in aid thereof, upon a vote of a majority of the resident property taxpayers voting thereon who are qualified electors of the county, and without the necessity of further or amendatory legislation. The county may levy and collect taxes to pay the interest on the bonds as it becomes due and to provide a sinking fund for redemption of the bonds."

Sec. 2. The foregoing constitutional amendment shall be submitted to a vote of the qualified electors of this state at an election to be held on the first Tuesday after the first Monday in November, 1970, at which election the ballots shall be printed to provide for voting for or against the proposition: "The constitutional amendment authorizing any county, on the vote of a majority of its qualified property taxpayers electors, to issue road bonds in an amount not to exceed one-fourth of the assessed valuation of the real property in the county."

roads and turnpikes, or in aid thereof.

(c) Notwithstanding the provisions of Subsection (b) of this Section, bonds may be issued by any county in an amount not to exceed one-fourth of the assessed valuation of the real property in the county, for the construction, maintenance, and operation of macadamized, graveled, or paved roads and turnpikes, or in aid thereof, upon a vote of a majority of the resident property taxpayers voting thereon who are qualified electors of the county, and without the necessity of further or amendatory legislation. The county may levy and collect taxes to pay the interest on the bonds as it becomes due and to provide a sinking fund for redemption of the bonds."

Sec. 2. The foregoing constitutional amendment shall be submitted to a vote of the qualified electors of this state at an election to be held on the first Tuesday after the first Monday in November, 1970, at which election the ballots shall be printed to provide for voting for or against the proposition: "The constitutional amendment authorizing any county, on the vote of a majority of its qualified property taxpayers electors, to issue road bonds in an amount not to exceed one-fourth of the assessed valuation of the real property in the county."

roads and turnpikes, or in aid thereof.

(c) Notwithstanding the provisions of Subsection (b) of this Section, bonds may be issued by any county in an amount not to exceed one-fourth of the assessed valuation of the real property in the county, for the construction, maintenance, and operation of macadamized, graveled, or paved roads and turnpikes, or in aid thereof, upon a vote of a majority of the resident property taxpayers voting thereon who are qualified electors of the county, and without the necessity of further or amendatory legislation. The county may levy and collect taxes to pay the interest on the bonds as it becomes due and to provide a sinking fund for redemption of the bonds."

Sec. 2. The foregoing constitutional amendment shall be submitted to a vote of the qualified electors of this state at an election to be held on the first Tuesday after the first Monday in November, 1970, at which election the ballots shall be printed to provide for voting for or against the proposition: "The constitutional amendment authorizing any county, on the vote of a majority of its qualified property taxpayers electors, to issue road bonds in an amount not to exceed one-fourth of the assessed valuation of the real property in the county."

Dry Heat Process Boosted For Sorghum

COLLEGE STATION -- A search for a physical process to improve the utilization of grain sorghum by cattle has been going on for a long time. A possible solution is recognized in dry heat processing of the sorghum by J.K. Riggs, J.W. Sorenson, Jr., and Price Hobgood, all of Texas A&M University.

A project, planned and enacted in 1967, provided an opportunity to study the equipment requirements, the effect of initial moisture content on popping characteristics of sorghum grain and the bulk densities of the various components of the popped grain mixtures.

The study also evaluated feedlot performance and carcass characteristics of cattle fed the dry heat-processed and nonprocessed grain in all-concentrate finishing mixtures. Rumen volatile fatty acid levels and grain digestibility were also determined in the work done cooperatively by the Departments of Agricultural Engineering and Animal Science at A&M.

An infrared-heated reciprocating steel table machine and a gas-heated vibrating-tray conveyor machine were used in the research to determine the feasibility of using dry heat in a popping operation to process the sorghum grain for finishing beef cattle.

Results of the study showed that the grain should be cleaned to assure an even flow free from foreign materials for efficient operation of the reciprocating-table machine.

A grain moisture content of 15 percent was optimum for obtaining the highest percentage of completely popped grain which was 45 percent. The weight or bulk densities of the loose-fill samples ranged from 49 pounds per cubic foot for the original whole grain to about 6 pounds per cubic foot for the completely popped grain.

When compared with non-heated, dry-rolled grain, the self-feeding of the popped grain mixture, either completely popped or partially and non-

popped grain, all crimped and in all-concentrate feed mixtures to finishing steers resulted in a significantly reduced feed intake. The reduced feed intake was accompanied by an increase in efficiency of feed utilization but a nonsignificant decrease in rate of gain, final weight, carcass weight, dressing percent, carcass grade and fat thickness.

Rumen samples showed significantly lower levels of acetic and isovaleric acids but higher levels of propionic acid in cattle fed the dry heat-treated grains than in those fed the nonheated grains. The resulting narrower acetate:propionic acid ratio coincided with the greater efficiency of feed utilization observed by the researchers in the cattle.

The cattle fed the dry heat-treated grains showed higher digestibility of dry matter, organic matter, nonprotein organic matter and nitrogen-free extract, but not of fat, fiber or protein.

No differences in digestibility were found among cattle fed the three heat-treated grain fractions. The researchers concluded that this indicated that dry heat rather than popping itself was responsible for the changes in performance.

"Dry Heat Processing of Sorghum Grain for Beef Cattle" is the title of a recent Texas Agricultural Experiment Station publication which explains the research. It is B-1096 and copies are available from the Department of Agricultural Information, Texas A&M University, College Station, Texas 77843.



PUBLIC NOTICE

Proposed CONSTITUTIONAL AMENDMENT
NUMBER TWO ON THE BALLOT (SJR10)
General Election Nov. 3, 1970

BE IT RESOLVED BY THE LEGISLATURE OF THE STATE OF TEXAS: Section 1. That Subsection (a), Section 20, Article XVI, Constitution of the State of Texas, be amended to read as follows:

"(a) The Legislature shall have the power to enact a Mixed Beverage Law regulating the sale of mixed alcoholic beverages on a local option election basis. The Legislature shall also have the power to regulate the manufacture, sale, possession and transportation of intoxicating liquors, including the power to establish State Monopoly on the sale of distilled liquors."

Sec. 2. The foregoing constitutional amendment shall be submitted to a vote of the qualified electors of this state at an election to be held on November 3, 1970, at which election the ballots shall be printed to provide for voting for or against the proposition: "Repeal of the prohibition against open saloons found in Section 20, Article XVI of the Constitution of the State of Texas."

PUBLIC NOTICE

Proposed CONSTITUTIONAL AMENDMENT
NUMBER THREE ON THE BALLOT (SJR15)
General Election Nov. 3, 1970

BE IT RESOLVED BY THE LEGISLATURE OF THE STATE OF TEXAS: Section 1. That Section 1-d, Article VIII, Constitution of the State of Texas, be amended to read as follows:

"Section 1-d. The Legislature shall have the power to provide by law for the establishment of a uniform method of assessment of ranch, farm and forest lands, which shall be based upon the capability of such lands to support the raising of livestock and/or to produce farm and forest crops."

Sec. 2. The foregoing constitutional amendment shall be submitted to a vote of the qualified electors of this state at an election to be held on the first Monday in November, 1970, at which election the ballots shall be printed to provide for voting for or against the proposition: "The constitutional amendment to authorize the Legislature to provide by law for the establishment of a uniform method of assessment of ranch, farm and forest lands, which shall be based upon the capability of such lands to support the raising of livestock and/or to produce farm and forest crops."

PUBLIC NOTICE

Proposed CONSTITUTIONAL AMENDMENT
NUMBER SIX ON THE BALLOT (SJR32)
General Election Nov. 3, 1970

BE IT RESOLVED BY THE LEGISLATURE OF THE STATE OF TEXAS: Section 1. That Section 51, Article XVI, Constitution of the State of Texas be amended to read as follows:

"Section 51. The homestead, not in a town or city, shall consist of not more than two hundred acres of land, which may be in one or more parcels, with the improvements thereon; the homestead in a city, town or village, shall consist of lot, or lots, not to exceed in value Ten Thousand Dollars, at the time of their designation as the homestead, without reference to the value of any improvements thereon; provided, that the same shall be used for the purposes of a home, or as a place to exercise the calling or business of the head of a family; provided also, that any temporary renting of the homestead shall not change the character of the same, when no other homestead has been acquired."

Sec. 2. The foregoing constitutional amendment shall be submitted to a vote of the qualified electors of this state at an election to be held on the first Tuesday after the first Monday in November, 1970, at which election the ballots shall be printed to provide for voting for or against the proposition: "The constitutional amendment increasing the value of the homestead which is exempt from forced sale."

PUBLIC NOTICE

Proposed CONSTITUTIONAL AMENDMENT
General Election Nov. 3, 1970
NUMBER FOUR ON THE BALLOT (HJR15)

BE IT RESOLVED BY THE LEGISLATURE OF THE STATE OF TEXAS: Section 1. That Article III, Section 51-b, Subsection (a), Constitution of the State of Texas, be amended to read as follows:

"(a) The State Building Commission is created and succeeds to the powers and duties heretofore vested in the agency of the same name by this Constitution and to the powers and duties the Legislature has vested or may vest in the Commission. Its membership shall consist of three Texas citizens appointed by the Governor with the advice and consent of the Senate. The term of each member shall be six years except in the first appointments to the Commission the Governor shall appoint one member for two years, one for four years, one for six years, and thereafter one member biennially. The Governor shall biennially designate one member as Chairman. Vacancies in the Commission shall be filled by appointment by the Governor for the unexpired term. The provisions of this paragraph shall be self-enacting."

Sec. 2. The foregoing constitutional amendment shall be submitted to a vote of the qualified electors of this state at an election to be held on the first Tuesday after the first Monday in November, 1970, at which election the ballots shall be printed to provide for voting for or against the proposition: "The constitutional amendment reconstituting the State Building Commission as a three-member appointive commission."

PUBLIC NOTICE

Proposed CONSTITUTIONAL AMENDMENT
NUMBER ONE ON THE BALLOT (HJR30)
General Election Nov. 3, 1970

BE IT RESOLVED BY THE LEGISLATURE OF THE STATE OF TEXAS: Section 1. That Subsections (5), (6), (7), (8), (9), (10), (11), (12), and (13), Section 1-a, Article V, Constitution of the State of Texas, be amended to read as follows:

"(5) The Commission may hold its meetings, hearings and other proceedings at such times and places as it shall determine but shall meet at Austin at least once each year. It shall annually select one of its members as Chairman. A quorum shall consist of five (5) members. Proceedings shall be by majority vote of those present, except that recommendations for retirement, censure, or removal of any person holding an office named in Paragraph A of Subsection (6) of this Section shall be by affirmative vote of at least five (5) members.

"(6) A. Any Justice or Judge of the Appellate Courts and District and Criminal District Courts, any County Judge, and any Judge of a County Court at Law, a Court of Domestic Relations, a Juvenile Court, a Probate Court, or a Corporation or Municipal Court, and any Justice of the Peace, and any Judge or presiding officer of any special court created by the Legislature as provided in Section 1, Article V, of this Constitution, may, subject to the other provisions hereof, be removed from office for willful or persistent conduct, which is clearly inconsistent with the proper performance of his said duties or casts public discredit upon the judiciary or administration of justice; or any person holding such office may be censured, in lieu of removal from office, under procedures provided for by the Legislature.

"B. Any person holding an office named in Paragraph A of this subsection who is eligible for retirement benefits under the laws of this state providing for judicial retirement may be involuntarily retired, and any person holding an office named in that paragraph who is not eligible for retirement benefits under such laws may be removed from office, for disability seriously interfering with the performance of his duties, which is, or is likely to become, permanent in nature.

"(7) The Commission shall keep informed as fully as may be of circumstances relating to the misconduct or disability of particular persons holding an office named in Paragraph A of Subsection (6) of this Section, receive complaints or reports, formal or informal, from any source in this behalf and make such preliminary investigations as it may determine. Its orders for the attendance or testimony of witnesses or for the production of documents at any hearing or investigation shall be enforceable by contempt proceedings in the District Court.

"(8) After such investigation as it deems necessary, the Commission may in its discretion issue a private reprimand, or if the Commission determines that the situation merits such action, it may order a hearing to be held before it concerning the removal, or retirement of a person holding an office named in Paragraph A of Subsection (6) of this Section, or it may in its discretion request the Supreme Court to appoint an active or retired District Judge or Justice of a Court of Civil Appeals as a Master to hear and take evidence in any such matter, and to report thereon to the Commission. If, after hearing, or after considering the record and report of a Master, the Commission finds good cause therefor, it shall issue an order of public censure or it shall recommend to the Supreme Court the removal, or retirement, as the case may be, of the person in question holding an office named in Paragraph A of Subsection (6) of this Section and shall thereupon file with the Clerk of the Supreme Court the entire record before the Commission.

"(9) The Supreme Court shall review the record of the proceedings on the law and facts and in its discretion may, for good cause shown, permit the introduction of additional evidence and shall order public censure, retirement or removal, as it finds just and proper, or wholly reject the recommendation. Upon an order for involuntary retirement for disability or an order for removal, the office in question shall become vacant. The rights of an incumbent so retired to retirement benefits shall be the same as if his retirement had been voluntary."

"(11) The Supreme Court shall by rule provide for the procedure before the Commission, Masters and the Supreme Court. Such rule shall afford to any person holding an office named in Paragraph A of Subsection (6) of this Section, against whom a proceeding is instituted to cause his retirement or removal, due process of law for the procedure before the Commission, Masters and the Supreme Court in the same manner that any person whose property rights are in jeopardy in an adjudicatory proceeding is entitled to due process of law, regardless of whether or not the interest of the person holding an office named in Paragraph A of Subsection (6) of this Section in remaining in active status is considered to be a right or a privilege. Due process shall include the right to notice, counsel, hearing, confrontation of his accusers, and all such other incidents of due process as are ordinarily available in proceedings whether or not infeasible is charged, upon proof of which a penalty may be imposed.

"(12) No person holding an office named in Paragraph A of Subsection (6) of this Section shall sit as a member of the Commission or Supreme Court in any proceeding involving his own retirement or removal.

"(13) This Section 1-a is alternative to and cumulative of the methods of removal of persons holding an office named in Paragraph A of Subsection (6) of this Section provided elsewhere in this Constitution."

Sec. 2. The foregoing constitutional amendment shall be submitted to a vote of the qualified electors of this state at an election to be held on the first Tuesday after the first Monday in November, 1970, at which election the ballots shall be printed to provide for voting for or against the proposition: "The constitutional amendment relating to the removal, retirement, or censure of Justices, Judges, and Justices of Peace under prescribed circumstances."

PUBLIC NOTICE

Proposed CONSTITUTIONAL AMENDMENT
NUMBER SEVEN ON THE BALLOT (HJR 22)
General Election Nov. 3, 1970

BE IT RESOLVED BY THE LEGISLATURE OF THE STATE OF TEXAS: Section 1. That Subsection (a), Section 64, Article III, of the Texas Constitution, be amended to read as follows:

"Section 64. (a) The Legislature may by special statute provide for consolidation of governmental offices and functions of government of any one or more political subdivisions comprising or located within any county. Any such statute shall require an election to be held within the political subdivisions affected thereby with approval by a majority of the voters in each of these subdivisions, under such terms and conditions as the Legislature may require."

Sec. 2. The foregoing constitutional amendment shall be submitted to a vote of the qualified electors of this state at an election to be held on the first Tuesday after the first Monday in November, 1970, at which election the ballots shall be printed to provide for voting for or against the proposition: "The constitutional amendment authorizing the Legislature to provide for consolidating governmental offices and functions and allowing political subdivisions to contract for performance of governmental functions in any county."

PUBLIC NOTICE

Proposed CONSTITUTIONAL AMENDMENT
NUMBER FIVE ON THE BALLOT (HJR28)
General Election Nov. 3, 1970

BE IT RESOLVED BY THE LEGISLATURE OF THE STATE OF TEXAS: Section 1. That Section 52, Article III, Constitution of the State of Texas, be amended to read as follows:

"Section 52. (a) Except as otherwise provided by this section, the Legislature shall have no power to authorize any county, city, town or other political corporation or subdivision of the State to lend its credit or to grant public money or thing of value in aid of, or to any individual, association or corporation whatsoever, or to become a stockholder in such corporation, association or company."

"(b) Under Legislative provision, any county, any political subdivision of a county, any number of adjoining counties, or any political subdivision of the State, or any defined district now or hereafter to be described and defined within the State of Texas, which may or may not include, towns, villages or municipal corporations, upon a vote of two-thirds majority of the resident property taxpayers voting thereon who are qualified electors of such district or territory to be affected thereby, in addition to all other debts, may issue bonds or otherwise lend its credit in any amount not to exceed one-fourth of the assessed valuation of the real property of such district or territory, except that the total bonded indebtedness of any city or town shall never exceed the limits imposed by other provisions of this Constitution, and levy and collect taxes to pay the interest thereon and provide a sinking fund for the redemption thereof, as the Legislature may authorize, and in such manner as it may authorize the same, for the following purposes to wit:

"(1) The improvement of rivers, creeks, and streams to prevent overflows, and to permit of navigation thereof, or irrigation thereof, or in aid of such purposes.

"(2) The construction and maintenance of pools, lakes, reservoirs, dams, canals and waterways for the purposes of irrigation, drainage or navigation, or in aid thereof.

"(3) The construction, maintenance and operation of macadamized, graveled or paved

roads and turnpikes, or in aid thereof.

(c) Notwithstanding the provisions of Subsection (b) of this Section, bonds may be issued by any county in an amount not to exceed one-fourth of the assessed valuation of the real property in the county, for the construction, maintenance, and operation of macadamized, graveled, or paved roads and turnpikes, or in aid thereof, upon a vote of a majority of the resident property taxpayers voting thereon who are qualified electors of the county, and without the necessity of further or amendatory legislation. The county may levy and collect taxes to pay the interest on the bonds as it becomes due and to provide a sinking fund for redemption of the bonds."

Sec. 2. The foregoing constitutional amendment shall be submitted to a vote of the qualified electors of this state at an election to be held on the first Tuesday after the first Monday in November, 1970, at which election the ballots shall be printed to provide for voting for or against the proposition: "The constitutional amendment authorizing any county, on the vote of a majority of its qualified property taxpayers electors, to issue road bonds in an amount not to exceed one-fourth of the assessed valuation of the real property in the county."

WANT ADS WORK WONDERS

WANT ADS PH. 272-4536

CLASSIFIED RATES

OPEN RATES

First insertion, per word- 7¢
Second and additional insertions-5¢

NATIONAL RATES

First insertion per word- 9¢
Second and additional insertions- 6¢
Minimum charge- 75¢

Card on Thanks - 1.50 Double rate for blind ads
Classified Display- 95¢ per col. inch
\$1.05 col. inch for reverses

DEADLINE FOR INSERTION

Thursday's Muleshoe Journal- Noon Tuesday
Sunday's Bailey County Journal- Noon Friday
The Journals reserve the right to classify, revise or reject any classified ad.
Check advertisement and report any error immediately. Journals are not responsible for error after ad has already run once.

FOR SALE: 68 model tandem truck, also Palodora seed wheat, Call 272-4014
11-29s-tfc

FOR SALE: Special prices on all sizes of good used aluminum pipe, hydrants, valves, tees, etc. We also have new ALCOA aluminum pipe and a wheel-move sprinkler system. Before you buy see STATE LINE IRRIGATION - LITTLEFIELD - MULESHOE.
11-9t-tfc

FOR SALE: 2-4 row John Deere 95 Corn headers, Phone 272-4175 or 272-4964.
11-28s-tfc

FOR SALE: NEW 4X1280 foot towline complete with hook up hose, sprinkler hitch, and plugs. \$995 BOSS IRRIGATION Clovis Road & Quaker Ave, in Lubbock.
11-31t-2tc

11. FOR SALE OR TRADE

FOR SALE: Two cemetery lots, Phone 272-3133.
11-29s-tfc

12. HOUSEHOLD GOODS

MARY CARTER PRINTS, EXTRA good used furniture, New furniture and used appliances, Show cases-gun cases, Roll top desks- unfinished furniture, DUNAGANS FURNITURE AND UPHOLSTERY 101 Pile St, Phone 762-0892- Clovis, N.M.
12-15t-tfc

It's inexpensive to clean and upholster with BLUE LUSTRE Rent electric shampooer \$1. Perry's 123 Main.
12-50t-1tc

Lost bright carpet colors... restore them with BLUE LUSTRE. Rent electric shampooer \$1. Higginbotham - Bartlett 215 Main.
12-50t-1tc

TAKE OVER PAYMENTS: 1968 Model Singer Sewing machine in Walnut console. Will zig zag, blind hem, fancy patterns etc. Assume three payments at \$7.96. Will discount for cash. Write Credit Manager 1114 19th St, Lubbock, Tex.
15-7s-tfc

15. MISCELLANEOUS

FOR CLOVIS News Journal call 272-3510.
15-29t-5tc

14 FOOT WIDES \$4795. Free set up and delivery.
Easy Living Mobile Homes
2000 North University, Lubbock, Texas.
15-31t-tfc

WANTED TO BUY: 500 cows and calves, Hereford, Charolais, or Angus. Will take small bunches. Write Randy Johnson, Box 610 or phone 272-3356.
11-25t-tfc

WANTED TO BUY: Acreage up to 10 acres around Muleshoe. Call 925-3420.
15-29s-8tc

PUPPIES FOR SALE: Shelties (miniature collies) Champion blood line. Eighteen champions in four generations pedigree. Betty Wagon 1816 W. Ave. G. Phone 272-3722
15-31t-4tc

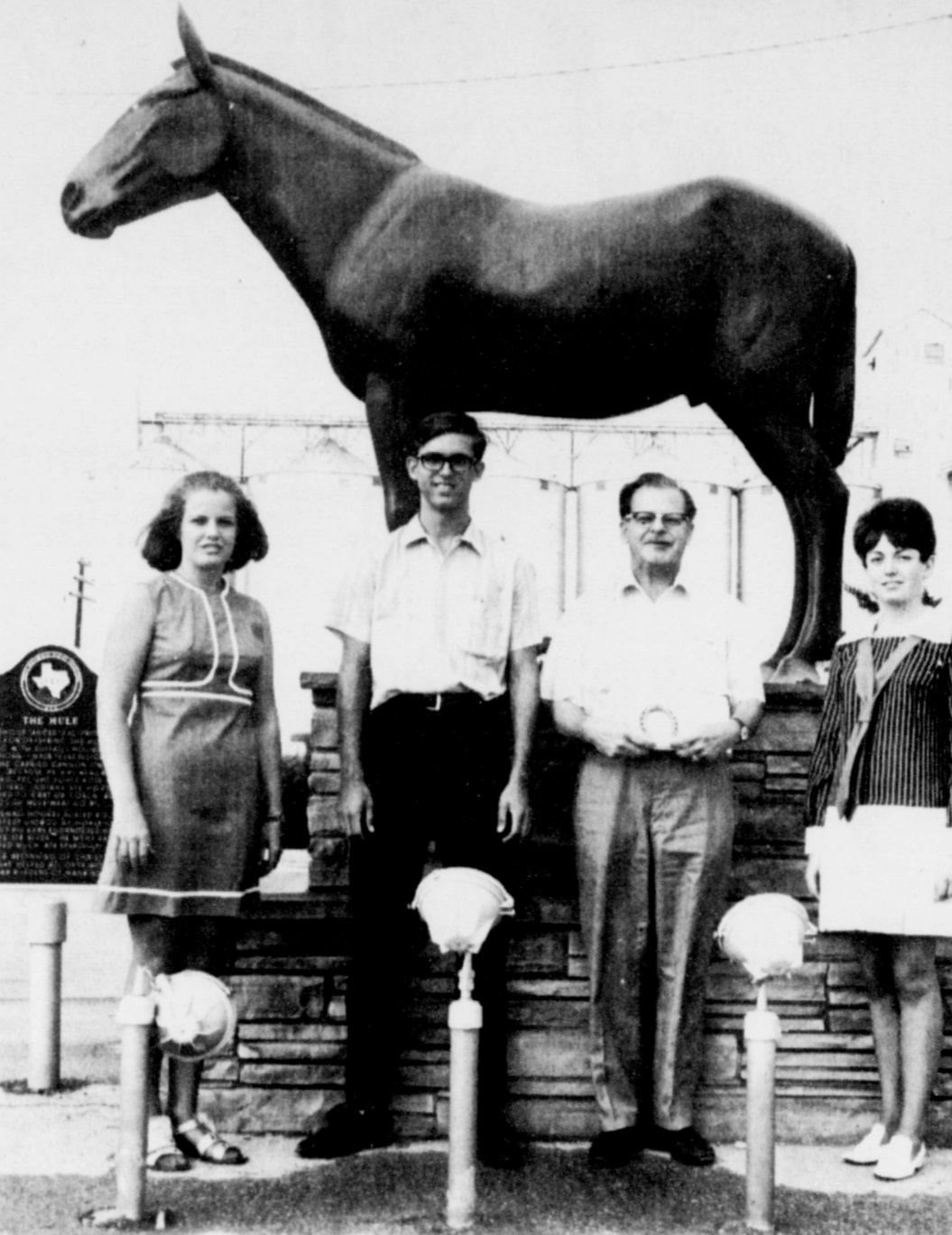
FOR SALE: Camper with two beds and shelves made by Ski-Mant, Co. See or call at King's Feed Lot.
15-29s-4tc

WILL CONTRACT HOUSE painting by the hour. Call 946-2481.
15-29s-4tc

16. LIVESTOCK

NEED, LIGHT CALVES? Stocker cows, feeders? Call Ted Haber 257-2113 Earth, Texas.
1-37t-tfc

It is getting to the point where an individual who doesn't agree with a minority is accused of being un-American.



TOURISTS OF THE WEEK -- Welcomed to Muleshoe by Chamber of Commerce Manager Jerry Hutton and Muleshoe Ambassadors, Becky Milner, left and Devona Bradley, right, as Tourists of the Week last week were Dan Jentzen and his son, Dan Jr., of Shipley, Fla. Jentzen said he is a retired school teacher and the duo was enroute to their home after making a trip to Japan for Expo '70. They received a free meal, free tank of gas and a free nights lodging, which was given by local merchants.

LEGAL NOTICE

Being certified by the Commissioner of Agriculture of the State of Texas for this purpose, the Texas Soybean Association, Route 2, Plainview, Texas 79072 proposes a referendum election on September 26, 1970 under provisions of Article 55c, Vernon's Civil Statutes, on the proposition of whether or not soybean producers in a 23-county area of the State of Texas shall assess themselves a maximum amount of 1/2 cent per bushel to be collected at the point of first processing or sale and to elect members for a 9-man commodity producers board to administer proceeds of such assessment to be used for research, disease and insect control, education, and promotion designed to encourage the production, marketing and use of soybeans. Counties to be included in the referendum area are: Deaf Smith, Parmer, Castro, Swisher, Briscoe, Bailey, Lamb, Hale, Floyd, Lubbock, Crosby, Bowie, Red River, Lamar, Delta, Fannin, Orange, Jefferson, Chambers, Liberty, Hardin, Harris, and Galveston. The referendum and election will be held in each county by personal balloting. Polls will be open from 8:00 a.m. until 5:00 p.m. on the date of the election. The polling place for Bailey county will be at Meeting Room, Production Credit Building, Muleshoe, Texas. Voting will be conducted on September 26. Any person within the area described above engaged in the business of producing, or causing to be produced, soybeans for commercial purposes is eligible to vote, including owners of farms and their tenants and sharecroppers, if such person would be required to pay the assessment proposed. Any person qualified to vote at the referendum may place his name in nomination for election to the proposed commodity producers board by written application to the above organization signed by himself and at least ten other persons eligible to vote in the referendum. Such applications must be filed at least 30 days prior to the election date. Any person who wishes to vote absentee may obtain a ballot at his local County Agent's office on or after September 12, 1970. Such ballots must be completed and returned to the Texas Soybean Association, Drawer Q, Plainview, Texas prior to midnight on the election date.
31t-3tc

17. FEED AND SEED

FOR SALE: Baled wheat straw, 900 bales. Contact Steve Black, Route 2, Muleshoe or Phone 806-965-2426
17-29t-3tp

LEGAL NOTICE

Lazbuddie School Board will accept bids for the 1970-1971 school year on milk, bread, and gasoline. Bids are to be submitted by August 10 to the Administration office, Lazbuddie Public School. Bids will be opened at the regular board meeting of August 10, 1970. The board reserves the right to accept or reject any or all bids. The 1970-1971 School Budget Hearing will be August 10, 1970 at the regular board meeting.
31t-4tc

FREE!

Season Tickets to all Red Raider home football games with purchase of any mobile home.
Easy Living Mobile Homes
2000 North University, Lubbock, Texas.
15-29t-4tc

John Tower United States Senate COMMITTEE ON ARMED SERVICES

This week the Senate will begin debate on the Military Procurement Authorization Bill. This bill will authorize our defense expenditures for this fiscal year and we can expect major challenges to the Anti-Ballistic Missile program, as well as some of the other hardware contained in the bill. Additionally, we can expect a controversial amendment to the bill which would set a specific timetable for our withdrawal from Southeast Asia.

The Senate Armed Services Committee, of which I am a member, has already pared down the level of area defense requested by the Administration for this year's ABM development and I believe the Committee has recommended the minimum ABM progress we must have this year.

Also, I believe it vital to our successful attainment of peace in Southeast Asia that the Congress refrain from temptations to tie the President's hands by setting for him, and thereby announcing to our enemies, a timetable for withdrawal of our combat forces. Establishment of a timetable will only tell our enemies that if they simply wait until a set date that they will no longer be forced to contend with U.S. forces in the field. It seems to me that this will only encourage their intransigence in diplomatic negotiations.

But the main point I wish to discuss with you this weekend is the overall level of military capability provided in this bill.

We have all heard a great deal about huge defense expenditures. We have heard of the marvelous advances we could make with domestic programs if only we could divert our military expenditures to those programs. I believe it is vitally important that we keep in mind that unless we maintain an adequately strong defense, all our domestic improvements will go for naught. We cannot afford to build a utopia at home for our own personal enjoyment if, in the process, we sacrifice our capability to protect our civilization and our progress for our children.

The bill upon which the Senate begins debate this week is, to use a trite but accurate phrase, a "rock-bottom, bare-bones" bill. As a member of the Armed Services Committee, I have studied this bill in thorough detail. The Administration recommended earlier this year a military budget for fiscal 1971 which it considered the bare minimum required. Yet, the Committee pared 1.3 billion dollars from the Administration request for 20.3 billion dollars.

I ask your indulgence in reviewing with me a few statistics. Since fiscal 1968, our nation's defense budget has been reduced more than 17 billion dollars while non-defense expenditures have risen more than 18 billion. Since fiscal 1968, the percentage of defense expenditures to the total federal budget has been reduced from 43.2 percent to 34.6 percent. While 43 cents of every tax dollar went for defense spending in fiscal 1968, only about 34 1/2 cents will go for that purpose this fiscal year. In fiscal 1968, 9.7 percent of this nation's Gross National Product was spent on defense. This fiscal year, we will spend only about 7 percent of our GNP. In June of last year, we had some 3,459,000 men in uniform. In June of next year, we can anticipate about 2,908,000 a reduction of roughly 14 percent.

These reductions in military spending actually are even more than dollar figures indicate. While our dollar expenditures have been coming down, prices have been going up. The authorization recommended to the Senate by the Armed Services Committee is actually the lowest since fiscal 1961 if we consider what we will be getting for our money. There is no basis for a contention that defense spending is constantly going up.

All these reductions are due in part to our de-escalated activities in Southeast Asia and in part to continuing efforts to handle our defense funds in a more efficient and wiser manner.

The Committee has been careful to recommend authorization for only those weapons systems which are actually needed. For example, this year's military procurement bill involves fewer aircraft for the Air Force than in any year since 1935.

This year's bill provides the lowest dollar level consistent with our requirement for insured national survival. I do not like to make dire predictions and I would not do so unless I felt strongly that they could be accurate. But, sincerely believe that unless the Congress supports the minimum national defense provided for in this bill, the United States will become a second-rate military power by the middle of this decade and will face economic isolation by 1980. Our current world situation demands that the United States maintain the military flexibility required to back up our diplomatic efforts toward world peace.

Courthouse News

NEW CARS
Bruce Bridges, 1970 Ford, Muleshoe Motor Company, John Gunter, 1970 Ford, Muleshoe Motor Company, Juan Gutierrez, 1970 Ford Maverick, Muleshoe Motor Company, Kerry Moore, 1970 Oldsmobile, Brock Motor Company, Barrett Produce, 1970 Ford, Muleshoe Motor Company, Gilbreath Seed and Grain Company, 1970 Cadillac, Marcum Olds and Cadillac, Thomas Ware, 1970 Chevrolet Pickup, Crow Chevrolet Company, L.C. Blalock, 1970 Chevrolet Crow Chevrolet Company, C. C. Buhman, 1970 Chevrolet Crow Chevrolet Company.
MARRIAGE LICENSE
Stephen Wayne Pierson, Plainview, Texas and Bobbie Kay Gilbert, Muleshoe.

CARD OF THANKS
We would like to take this opportunity to thank all the friends and loved ones for the prayers, food, cards and words of sympathy on the loss of our loved one J.L. (Bert) Hudson, May God bless each of you, Mrs. Bert Hudson and Delmar Mr. and Mrs. Bobby Hudson Mr. and Mrs. Charles Bogart M. and Mrs. Clifford Parks Mr. and Mrs. Carl Parks Mr. and Mrs. David Tolman Mr. and Mrs. Arthur Bolton Mr. and Mrs. Alva Hudson John Hudson
Mrs. Sarah Payne
31t-1tp

Lions Club
meets each Wednesday, 12 Noon
FELLOWSHIP HALL Methodist Church
Don Harmon, President

Muleshoe Oddfellows
meets each Thursday 7:30 p.m.
H.H. Snow, Noble Grand

Jaycees
meets every Monday, 12 Noon
Derrell Oliver, Pres.

Muleshoe Rotary Club
meets every Tuesday at 12:00
FELLOWSHIP HALL Methodist Church
Harvey Bass, President

VFW
Walter A. Moeller Post # 8570
8:30 p.m.
2nd & 4th Streets
Old Prillie Skating Rink
D. T. Garth, Commander

Masonic Lodge
Lodge No. 1237 AF AM
meets the second Tuesday of each month
practice night each Thursday
Ray Cline, W M
Elbert Nowell, Sec.

1. PERSONALS
REDUCED PRICES ON Pennyrick BRAS
Ruth Malone
Phone 272-3107

3. HELP WANTED
WANTED: Men to run sprinklers, full time, housing, old Muleshoe Ranch, 2 miles West of Muleshoe.
3-30t-tfc

WANTED: Experienced farm hand, Two bedroom house furnished. James Mabry. Phone 965-2754 or 965-2178
3-27s-8tc

WANTED: MILL FOREMAN with mechanical background. Would consider mature training. Must be able to manage people. Good opportunities for advancement. Fringe benefits. Write Box 449 Muleshoe, Texas.
3-23t-tfc

HELP WANTED: Program director to direct Community Action Program in Bailey and Lamb counties. College degree or equivalent. Equal opportunity employer. Education: background in social work, education, or sociology desirable. Salary open. Send resume to Executive Director, Box 610, Levelland, Texas 79336.
3-31t-2tc

WANTED: Hair stylist Mau Street Beauty Shop. Phone 272-3448.
3-35s-tfc

WANTED: PASTURE, Sudan or Native grass for cows or yearlings. Call Randy Johnson 272-3056.
3-30s-tfc

ADULT HELP WANTED: \$1.25 hour. Call 4801.
3-31t-tfc

NEED GINNER TO GIN ON 120 saw Murray air blast. George Grammer, Bardwell, Texas 75101. Phone 214-646-2711 home or 214-646-2971 gin.
3-30s-6tc

Experience Farm and Ranch hand. One that knows farming machines. Will furnish living quarters and transportation. Call Randy Johnson, 272-3056.
3-9s-tfc

4. HOUSES FOR RENT

FOR SALE OR RENT: House, Call W.R. Byers, 272-3697.
4-19s-tfc

5. APTS. FOR RENT

FOR RENT: Furnished garage apartment. Bills paid. Available August 1. Three rooms, carpeted, air conditioned. No pets. See at rear of 202 West 8th or call 272-3901 after 5 p.m.
5-31t-tfc

FOR RENT: Furnished apartments large or small. Trailer space. Brisco Apartments, Phone 3465
5-34t-tfc

APARTMENTS FOR RENT: Phone 272-3697.
5-19s-tfc

6. ROOMS FOR RENT

FOR RENT: Bedroom, 807 West 7th. Phone 272-4166 or 272-4903.
6-29s-tfc

FOR RENT: bedrooms 410 West 2nd
6-34s-tfc

8. REAL ESTATE FOR SALE

FOR SALE: two bedroom house, garage, 308 W. 11th. Take late model Ford or Chevrolet pickup as part payment.
8-28s-7tc

KREBBS REAL ESTATE
25 years in Bailey County
210 South 1st.
8-46s-tfc

FOR SALE: 3 bedroom house, 2 baths, garage and storage. Fenced backyard. Large lot. See at 319 W. Ave. E. No phone calls.
8-29t-tfc

FOR SALE: Two bedroom house reasonably priced near the school. Call 272-3382 after 6 p.m.
8-31t-tfc

9. AUTOMOBILES FOR SALE

NEW 1970 PICKUP LADD PONTIAC
FOR SALE: 1960 Pontiac. Used furniture garage sale, 510 East Chicago, W.B. LeVeque.
11-30s-2tc

10. FARM EQUIP. FOR SALE

WYLE M. SIDNEY DELL
BULLOCK'S ANTIQUES
AUTHENTIC
1001 E. 2ND ST. LUBBOCK, TEXAS 79401
PHONE 272-3107

TRUCK SEATS EXCHANGED 15 MINUTE SERVICE
McCormick's AUTO SUPPLY AND TRIM SHOP
PHONE 385-4555
227 MAIN LITTLEFIELD, TEXAS

Out of Orbit
PAD 39
"THIS TIME I BROUGHT ALONG SOME COLORING BOOKS"

BUSINESS DIRECTORY

BENEDICT, FARLEY & ASSOCIATES INS. AGENCY
Real Estate and Insurance
COMPLETE INSURANCE COVERAGE
SERVICE BEYOND THE CONTRACT
224 West 2nd
Phone 272-4727 and 272-3218

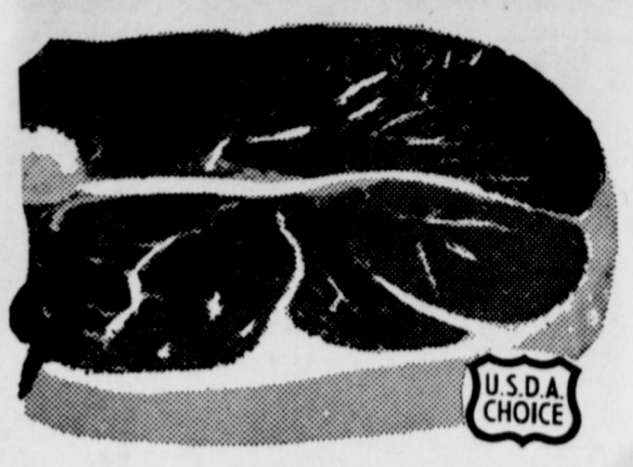
ROBINSON'S BOOT SHOP
127 Main-Phone 272-4726
Fine Western Wear
MEN, WOMEN & CHILDREN
Shoe Repair Shop
Ike Robinson
SERVING MULESHOE SINCE 1925



Total Shopping Value!
 - QUALITY - SERVICE - PRICE
 and -S&H GREEN STAMPS!

LOOK TO **PIGGLY WIGGLY** for Better Brands And Everyday Low Prices!

Round Steak 88



For Braising or Stewing, USDA Choice Beef **SHORT RIBS** Pound **38c**
 Perfect for Chicken Fry, USDA Choice Beef **CUBED STEAK** Pound **\$1.38**
 Arm Cuts, USDA Choice Beef **SWISS STEAK** Pound **88c**
 Oven Ready, USDA Choice Beef **RUMP ROAST** Pound **89c**
 For Stewing, USDA Choice Beef **BONELESS BEEF CUBES** Pound **89c**
 Center Cut Chuck, USDA Choice Beef **BONELESS ROAST** Pound **94c**
 Farmer Jones, 3 Varieties **LUNCH MEAT** 6-Ounce Package **33c**
 Center Cut Rib, Northern Pork **PORK CHOPS** Pound **98c**
 Farmer Jones, American or Pimento **SLICED CHEESE** 6-Ounce Package **39c**
 Hi Brand, Heat and Serve **CHICKEN FRIED STEAK** Pound **89c**

CHUCK ROAST
 Blade or Pot Cut, USDA Choice Beef
 Pound **58c**

GROUND CHUCK
 Extra Lean, Dated to Assure Freshness
 Pound **79c**

RIB STEAK
 Individual Size, USDA Choice Beef
 Pound **98c**

PORK SAUSAGE
 BLUE MORROW HOT OR MILD
 1 Lb. Pkg. **69c**

Rite Good, All Flavors, CANNED
SODA POP
 12 12 Oz. Cans **\$1**
 RITE GOOD SODA POP
 28 Oz. 5/\$1

FAMILY STYLE STEAK
 Lean Shoulder Cuts of USDA Choice Beef
 Pound **78c**

Strawberry Flavor **NESTLES QUIK** 1 Pound Can **51c**
 Carey's **ICE CREAM SALT** 5 Pound Bag **25c**

Libby's, All Meat **VIENNA SAUSAGE** No. 1/2 Cans **29c**
 Duncan Hines, Assorted Layer Cakes **CAKE MIXES** 20 Ounce Box **43c**

Del Monte Tomato **CATSUP** 14 Ounce Bottle **29c**
 LaChoy, Chinese **MIXED VEGETABLES** 16 Ounce Can **55c**

Pure Vegetable **CRISCO OIL** 38 Ounce Bottle **89c**
 Regular or Super Napkins **MODESS** 12 Count **89c**

FROZEN FOOD SPECIALS!

Garden Pride 10-Ounce Package **Strawberries** 4/\$1
 Strawberries Naturipe 10-Ounce Packages **33c**
 Baby Lima Beans Silverdale 10-Ounce Packages **27c**
 Cobblers Old South All Varieties 2-Pound Package **99c**
 Lemonade Libby's 12-Ounce Cans **29c**
 Pot Pies Sparrow, Beef Chicken, Turkey 6-Ounce Package **15c**
 Mexican Dinner Pato 15-Ounce Package **55c**

BROCCOLI
 Silverdale Chopped 10-Ounce Package **6/\$1**

GRAPES
 Thompson Seedless California
 Pound **29c**

CAULIFLOWER California Sno-White Pound **49c**
ROMANE LETTUCE Large Bunches Each **29c**
ORZO Small Pods Pound **39c**
GRAPEFRUIT California, Ruby Red Pound **29c**
CUCUMBERS Long Green Slicers Pound **29c**

California, July **NECTARINES** **39c**
 California, Full-O-Juice **LEMONS** **25c**

ICE CREAM
 Farmer Jones, All Flavor
 1/2 Gallon **69c**
 MELLORINE, Borden's, All Flavors 1/2 Gallon **39c**

CHUNK TUNA
 Carol Ann
 No. 1/2 Cans **3/\$1**
 GRATED TUNA, Hi Note Number 1/2 Can **25c**



Pork & Beans LIBBY'S No. 303 Cans **\$1.00**
Sweet Peas Rosedale, Green No. 303 Cans **16c**
Kleenex 280-Count Box **39c**
Bleach Bonne Liquid, 3c Off Label 1/2 Gallon **29c**
Cokes King Size, Plus Deposit 6-Bottle Carton **39c**

EVERYDAY LOW SHELF PRICES

CIGARETTES Regular and King Size Carton **\$3.99**
BABY FOOD Gerber's Strained Assorted 4 1/2-Ounce Jars **13c**
KOOL AID All Flavors, Unsweetened 6 Package **39c**
INSTANT BREAKFAST Carnation, All Flavors 6-Count Box **79c**
PRODUCT 19 Kellogg's Cereal 12-Ounce Box **64c**
INSTANT COFFEE Nescafe 10-Ounce Jar **\$1.85**
SWEETIE PIES Fireside, Assorted 14-Ounce Box **39c**
EAGLE BRAND MILK Borden's Large Can **47c**
COFFEE MATE Coffee Lightener 6-Ounce Jar **49c**
MINUTE RICE Regular, Quick Cooking 7-Ounce Box **33c**

FREE FAMOUS ARTISTS PAINTINGS
 THIS WEEK'S FEATURE!
 11" x 14" PRINT
 With newspaper insert coupon and 85¢ purchase or more
 SAVE UP TO 50% ON QUALITY FRAMES

Health & Beauty Aids!
HAIR SPRAY DRY CONTROL FOR MEN, Gillette's The Dry Look Adjustable Valve 4-Ounce Size **69c**
Toothpaste Groom II Head & Shoulder, Let's Win It! or Tube Family Size **69c**
Shampoo LIT, Special Wave Each **\$1.49**
Permanents Each **\$1.69**
Hair Spray VO 5, Regular - Super or Hot to Hold Calm, Anti-Perseptant or Pedar **10-Oz. Can \$1.09**
Deodorant Bufferin **5-Oz. Can 99c**
Remedies **100-CL Bottle \$1.27**

MARGARINE GOLDEN KORN Corn Oil 1 Lb. Pkg. **29c**
DOG CHOW PURINA MEAL 10 Lb. Bag **\$1.59**
CATSUP Hunt's Tomato Full Quart Bottle **49c**
 STOKELY TOMATO CATSUP 14 Oz. Bottle **25c**



DUZ Dishwasher Detergent, Giant Box **86c**
BLACK PEPPER Schilling's, Pure, 4 Ounce Can **45c**
CASCADE Dishwasher Detergent, Giant Box **81c**
MAYONNAISE Suzan Quart Jar **73c**
OLIVES Towie Stuffed No. 610, 7 Oz. Jar **59c**
MUSTARD Garden Club 24 Ounce Jar **29c**

Shop Rite... Shop Piggly Wiggly!