



THE MULESHOE JOURNAL

The Community of Opportunity-Where Water Makes the Difference

Weather

	HIGH	LOW
September 2	92	58
September 3	93	57
September 4	88	58
September 5	94	52

VOL. 51 No. 36

8 PAGES

Published Every Thursday at Muleshoe, Bailey County, Texas 79347

10 CENTS

Thursday, September 6, 1973

Lions Club To Sponsor Fish Supper Friday

Prior to the Muleshoe-Dimmitt Football Game Friday night, the Muleshoe Lion's Club will be sponsoring a Fish Supper.

On the menu will be all the fish you can eat, beans, french fries, slaw, cherry cobbler, corn bread, tea or coffee.

Tickets priced at \$1.50 per person are now being sold by the Muleshoe Junior High School student council. Tickets will also be available at the door.

The supper will be held at the High School cafeteria and serving times will be from 6 to 7:30 p.m.

The Lions Club uses the funds from their projects to help the blind, support the crippled children's camp at Kerrville, buy glasses for underprivileged children and contribute to Girlstown.

Everyone is welcome to come to the supper Friday night and support the Mules at the game.

Prices Set By Forward Contracts

COLLEGE STATION -- Forward contracting has become a popular marketing tool, its basic advantage being a guaranteed price for a particular commodity and thus insurance against a market price drop. But what happens when prices are rising, as is the case this year?

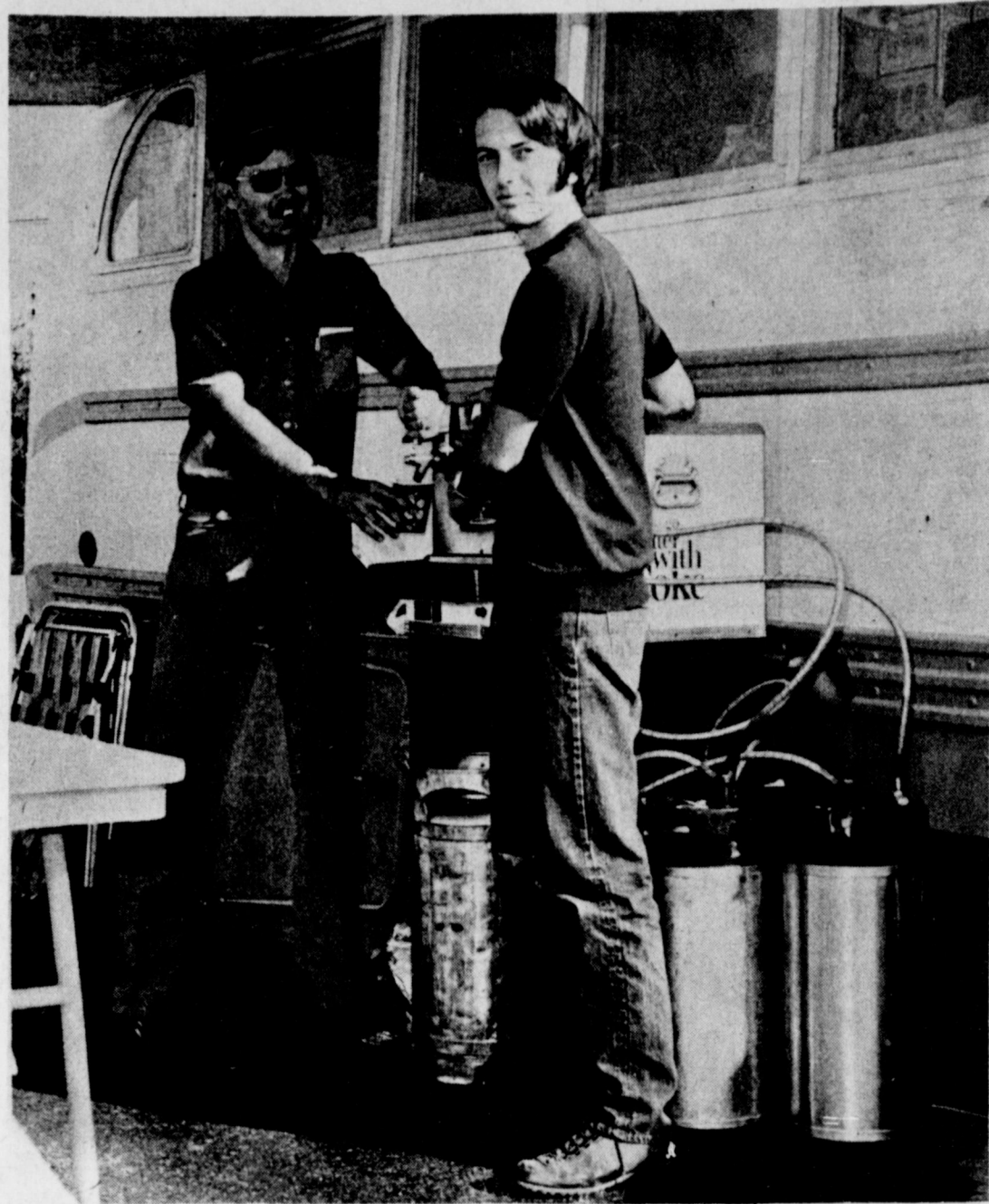
"Contracting doesn't allow for farmers to benefit from rising prices like the recent upsurge in cotton and grain," point out Wayne Hayenga and Roland Smith, agricultural economists for the Texas Agricultural Extension Service. "Especially in cotton, this year's situation is just reverse of what it was last year."

Last year many cotton buyers took heavy revenue losses when prices fell below contracted levels. This year we feel most farmers will live up to their end of the bargain and deliver their product at the contracted price, point out the Texas A&M University System economists.

When farmers were committing themselves in March for the "high" prices of \$2.50 for grain sorghum and 30 cents for cotton, \$5-grain sorghum and 60-cent cotton appeared to be impossible figures.

"There is some concern in the marketing system about rumors that some farmers may

Cont. on Page 3, col. 2



JAYCEE REST STOP The Muleshoe Jaycees sponsored a Labor Day Weekend Rest stop at the Mule Memorial this past holiday weekend. The rest stop was in operation from 4 p.m. Friday until midnight Monday night which was 80 continuous hours. Free coffee and other refreshments were served to motorists. Shown above are Monty Dollar, left, and Steve Hamilton, right, during their stint Saturday morning. The rest stop is an annual project of the local Jaycees and is held to try and remind motorists to slow down over the busy holidays.

Mules Will Tackle Dimmitt Here Friday

Rotary met at noon Tuesday with the special speaker being Muleshoe High School Football Coach Fred Hedgecock. He showed a video tape film of the scrimmage with Tulsa pointing out the Mules' better points as well as their weak spots.

Don Long, Muleshoe's only quarterback, did a good deal of ball carrying in view of the fact that Fred Locker has been sidelined.

The Mule's head coach pointed out that approximately 80 men signed up for football this year and the overall attitude has been excellent with a large number of dedicated players. He explained that the sen-

iors that have put in four years in his program have done a lot of work.

Friday night, the Muleshoe Mules will take on a quick, much improved and spirited Dimmitt team in their season opener.

Although the Mules will be favored, they will have to control Dimmitt's talented backfield which includes a speedster by the name of Mayberry. He has recorded a time of under 9.9 seconds in the hundred this year. Joining him in the backfield will be a 205 pound fullback. Across the front, Dimmitt averages around 185 pounds. Even with these things going for them, Dimmitt will

be hard pressed to move the ball against Muleshoe's defensive unit if it performs as it should.

Muleshoe's big edge should come by way of their offensive unit which racked up over 450 yards and five touchdowns in their scrimmage two weeks ago against Tulsa. The Mule's ground game, like last year's, will be awesome and the talents of the backfield will be sharpened by the strong offensive line.

Overall, Muleshoe looks very strong with seven senior starters returning to the squad this year, and one of the heaviest lines Muleshoe has had in some time.

Progress 4-H Horse Club Play Day Winners Named

The Progress 4-H Horse Club Playday was held Saturday, September 1, in Muleshoe.

Winners in the events are as follows:

Grand Champion Mare, Tim Wheeler, Progress 4-H Club; Reserve Champion Mare, Donita Hall, Amarillo; Grand Champion Gelding, Sarah McClung, Cochran County; Reserve Champion Gelding, Sheri Starkey, Swisher County.

The High Point Boy and Girl in each age group were Pee Wee Girl, Sarah McClung, Cochran County; Pee Wee Boy, John Warren, Three Way 4-H Club; Young Junior Girl, Shelly McGlaun, YL 4-H; Young Junior Boy, Curtis Carpenter, Progress; Junior Girl, Vicki Snodgrass, Texico, N.M.; Junior Boy, Eddie Joe Pearson, Swisher County; Senior Girl, Sherrie Starkey, Swisher County; Senior Boy, Tim Wheeler, Progress.

The High Point Club named at the Playday was the Cochran County 4-H Club.

Winners in the Halter Class, Registered Mare, five years and over, were Tim Wheeler, Progress, first; Tommy Wheeler, second, Progress; Kelly Hill, Hockley County, third; Larry Nowell, Progress, fourth; and Donna McMakin, Muleshoe, fifth.

Halter Class, five years and under: Donita Hall, Amarillo, first; and Tomi Johnson, Three Way, second.

Grade Mare, five years and over, Melinda Presley, Progress, first; Sandy Coleman, Cochran County, second; Curtis Wheeler, Progress, third; Tracy Walker, Muleshoe, fourth; and Sharon Carpenter, fifth, Progress.

Grade Mare, five years and under, Gredia Leavell, Texico, N.M., first; Leigh Ann Halamick, Terry County, second.

Registered Gelding, five years and over, Sherri Starkey, Swisher County, first; Melinda Presley, Progress, second; Casey McGlaun, YL 4-H, third; Kathy Tucker, Swisher County, fourth; and Shelly McGlaun, YL 4-H, fifth.

Registered Gelding, five years and over, Sarah McClung, Cochran County, first; John Warren, Three Way, second; Kristi Hancock, Terry County, third; Melinda Presley, Progress, fourth; and James Johnson, Three Way, fifth.

Young Junior Western Pleasure, Shelly McGlaun, YL 4-H, first; Hope Free, YL 4-H, second; Nancy Hobbs, Vega, third; Kathy Tucker, Swisher County, fourth; and Holly McGlaun, YL 4-H, fifth.

Junior Western Pleasure, Diane Naegle, Bovina, first; Eddie Joe Pearson, Swisher County, second; Tammy Cristian, Bovina, third; and Valery Tipps, Swisher County, fourth.

Senior Western Pleasure, Tim Wheeler, Progress, first; Sherri Starkey, Swisher County, second; Sherman Presley, Progress, third; Randy Coleman, Cochran County, fourth; and Melvin Dearing, Yoakum, fifth.

Pee Wee Reining, Sarah McClung, Cochran County, first; James Johnson, Three Way, second; John Warren, Three Way, third; and Kristi Hancock, Terry County.

Young Juniors Reining, Curtis Carpenter, Progress, first; Bill Hodnett, Three Way, second; Tomi Johnson, Three Way, third; Donita Hancock, Terry County, fourth; and Renay Puckett, Terry County, fifth.

Junior Reining, Eddie Joe

years and under, Shelly McGlaun, YL 4-H Club, first; Lisa Campbell, Swisher County, second; Toby Tucker, YL 4-H, third; Holly McGlaun, YL 4-H, fourth; Melvin Dearing, Yoakum County, fifth.

Grade Geldings, five and over, Randy Coleman, Cochran County, first; Trey McGlaun, Cochran County, second; Eddie Joe Pearson, Swisher County, third; Norris Cole, Castro County, fourth; Curtis Carpenter, Progress, fifth.

Grade Geldings, five and under, Sarah McClung, Cochran County, first.

Winners in the Western Pleasure events included:

Young Junior Western Pleasure, Shelly McGlaun, YL 4-H, first; Hope Free, YL 4-H, second; Nancy Hobbs, Vega, third; Kathy Tucker, Swisher County, fourth; and Holly McGlaun, YL 4-H, fifth.

Junior Western Pleasure, Diane Naegle, Bovina, first; Eddie Joe Pearson, Swisher County, second; Tammy Cristian, Bovina, third; and Valery Tipps, Swisher County, fourth.

Senior Western Pleasure, Tim Wheeler, Progress, first; Sherri Starkey, Swisher County, second; Sherman Presley, Progress, third; Randy Coleman, Cochran County, fourth; and Melvin Dearing, Yoakum, fifth.

Pee Wee Reining, Sarah McClung, Cochran County, first; James Johnson, Three Way, second; John Warren, Three Way, third; and Kristi Hancock, Terry County.

Young Juniors Reining, Curtis Carpenter, Progress, first; Bill Hodnett, Three Way, second; Tomi Johnson, Three Way, third; Donita Hancock, Terry County, fourth; and Renay Puckett, Terry County, fifth.

Junior Reining, Eddie Joe

City Passes New Garbage Ordinance

Rate Increase Due With New City Sanitation Ordinance

The Young Farmers Organization have just re-organized and will have a meeting Monday, September 10, at 8:30 p.m. in the Ag. Building at Muleshoe High School.

New officers for the club are Jerry Lee, president; Barry Wilson, vice-president; Carroll Kelton, secretary; Robert Hunt, treasurer; Jimmy White, reporter; Ronnie Holt, program chairman; and Nicky Nickels, social chairman.

At the September 10 meeting, Lucky Spurlock will be explaining the multi-million dollar plant and alfalfa operation of the Protein Processors.

This program should be of interest to all people raising

Cont. on Page 3, col. 3

TGSPB Directors Election Deadline Near

The September 15 deadline for mailing TGSPB ballots in the biennial election is approaching. Over 29,000 ballots have been mailed to potential voters in the 29-county Texas High Plains area and additional ballots have been mailed to county agents for those farmers who may qualify to vote but do not receive a ballot by mail.

Running for six year terms in the election are incumbents: A.W. Anthony, Jr., of Friona, John Gilbreath of Hart, Don Marble of South Plains, and E.C. Witten of Edmonson. Also seeking terms are candidates: John Dunlap of Floydada, Don Nelson of Tulia, and Troy Sloan of Spearman.

To qualify as a voter, one must farm or cause to be farmed grain sorghum in the counties served by the Texas Grain Sorghum Producers Board. Those counties are: Armstrong, Bailey, Briscoe, Carson, Castro, Cochran, Crosby, Dallam, Dawson, Deaf Smith, Floyd, Gaines, Hale, Hansford, Hartley, Hockley, Hutchinson, Lamb, Lubbock, Lynn, Moore, Oldham, Farmer, Potter, Randall, Sherman, Swisher, Terry and Yoakum.

The sealed ballots will be tallied by a committee of people not associated with the Texas Grain Sorghum Producers Board. The committee will be sworn in by county judge Roderick Shaw and the operation of counting the ballots will be conducted under the observation of the judge, a Texas Department of Agriculture official, a representative from the extension service and an officer of TGSPB.

Ballots can be disqualified for the following reasons: 1) if more than one ballot is signed by the same person; 2) if the voter fails to sign the ballot in the spaces provided and

Cont. on Page 3, col. 1

City Council Table Motions At Meeting

The Muleshoe City Council met in regular session on Tuesday morning, September 4, at the city hall.

Present for the meeting was Mayor Alex Williams, Councilmen Clarence Christian, Max King, Lindal Murray and Alex Williams, and city manager Jim Rankin.

E.T. Ford was present and he requested information about water and sewerage related to a proposed development in the Country Club Addition.

Bids for a loader to be purchased by the city were opened but were tabled until the council can make an additional study.

Recipients of the bids will

The Muleshoe City Council passed City Ordinance No. 115A Tuesday morning in their regular meeting. The ordinance regulates the collection of garbage, trash and rubbish in the city of Muleshoe.

The terms of the ordinance prohibits the depositing of garbage, trash, etc., on streets, vacant lots, etc.; prescribes the duties of owners or occupants in use of metal containers provided by the city; provides a method of collection of trash not placed in regulation containers; provides reasonable charges for the collection and disposal of garbage by the city; provides a method for bill and collection of said charges; establishes fees for use of garbage disposal area; and prescribes a penalty for the violation of this ordinance.

Section Two of the ordinance states that "it shall be un-

lawful for any person to sweep, haul, throw or deposit any garbage, grash, dirt, concrete, rocks, brick, plaster, tile, stagnant water or dead animals into, upon or along any drain, gutter, alley, sidewalk, parkway, street or vacant lot, or upon any public or private premise within the corporate limits of the city."

Section Three states that "every owner, occupant, tenant, or lessee using or occupying any building, house or structure within the corporate limits of the city for residences, churches, schools, colleges, lodges, commercial, industrial, business, or other purposes shall comply with the following requirements:

All persons shall be required to use containers provided by the city for garbage and trash disposal if containers are available.

All persons shall be required to first reduce the size or any bulky object before placing it in the container for disposal. Bulky objects shall include, but not be limited to, cardboard boxes, paper containers, wooden boxes and crates, and other such objects that can be reduced in size.

Lids of all containers shall be kept closed at all times except when the container is being filled.

It shall be unlawful for any person to disturb a sanitation container furnished by the city or in any way disturb the contents of said container; however, this subsection shall not apply to the owner or occupant of the premises for which such container has been furnished, not their employees, not to duly authorized employees of the city.

It will be unlawful to make a fire or burn any material in a sanitation container furnished by the city or to paint or mark upon same or to place any poster, placard or signs upon same or to damage said container in any way.

It will be the duty of every person placing garbage in any container to eliminate as far as possible all water and liquid from the garbage and it will be unlawful to pour water or any liquid over the garbage.

It is stated in Section 4 of the ordinance that in the event that trash is of such nature that it cannot be put in the regulation containers, it shall be placed in neat, orderly piles, and placed adjacent to the alley or on the edge of the alley, in order that it may be removed conveniently. Tree limbs and hedge clippings shall not exceed four feet in length and no single tree limb, stump or cutting shall exceed 50 pounds each. It shall be unlawful for any person to place trash or any other material in any alley or street so as to obstruct or hamper vehicles or pedestrian traffic.

The sanitation department will make regular collections of trash and rubbish which has been prepared in accordance with this section, and if more than normal work is necessary in making such collection, a reasonable charge shall be made for such service in addition to the regular monthly service charge.

In order to defray the cost and expense of collection garbage, trash and rubbish in the city of Muleshoe, there will be a monthly service charge for each person, firm or corporation, owning, leasing, managing, occupying or operating any premises within the business and residential districts, for making such collections and removals of garbage, trash and rubbish.

Residential service charges will be computed according to the applicable residential category such as \$2.50 for single family residence, and \$2.50 per unit for multi-family residences or trailer houses.

The service charge per month for collection and removal of garbage and trash from houses, buildings and premises used

for commercial and business purposes shall be computed according to the applicable category as set out in the table below:

Single offices such as insurance, real estate, attorney's office, etc.; automobile, sales only; jewelry stores; oil wholesale; welding shop; abstract offices; optometry and dental offices; music stores; radio and TV repair; production credit; Texas Employment Commission; Farm Bureau; Plumbing Shop; Chamber of Commerce; Lodge; automatic car wash; electrical repair shops, etc. will be charged \$4.

Pump sales and service; sheet metal shops; tire repair and recapping; body shops; laundries; blacksmith; public garages; upholstery shops; machine shops, etc. will be charged \$5. Boot and shoe repair, barber shops, beauty shops, savings and loan, cleaning and pressing shops, service stations, funeral homes, pool halls, clinics, butane sales, utility offices, etc., will be charged \$6.

Implement dealers, meat processing plants, florist shops, farm supply, feed and seed, nursery, U.S. Post office, newspaper publishing, printing shops, office supply companies, etc., will be charged \$7.

Drug stores, lumber yards, theaters, auto sales and service, courthouse, etc. will be charged \$10.

Furniture stores, appliance sales, drygoods stores, office buildings, hardware stores, parts supply houses, mail order houses, stamp redemption stores, banks, hospitals, cafes, drive-in food and drink electric co-op associations, motels, hotels, tourist courts, irrigation pipe supply, potato sheds, feed mills, elevators, seed cleaning and delinting, cabinet shops, alfalfa mill and schools, grocery stores will be charged \$8-\$25.00.

Heavy or unusual accumulations are not included in the regular service. Heavy accumulations such as brick, broken concrete, rocks, stones, ashes, lumber, clinkers, cinders, dirt, plaster, sand, gravel, automobile frames, dead trees and other bulky, heavy material shall be disposed of at the expense of the owner or person controlling same or upon payment of the actual cost of such removal plus ten per cent of such cost to the city sanitation division.

Manure from cow lots, horse stables, poultry yards, fowl coops, pigeon lofts, other animals and similar matter, shall be disposed of by the owner under the direction of the city sanitation division.

The bodies of dead animals shall not be placed in solid waste containers or in any street, alley, easement or public way. The collections and removal of dead animal bodies shall be a service of the city and shall be furnished upon request or notification by any interested party. Requests shall be made to the animal control officer.

Brush, limbs, leaves and cuttings from trees and shrubs which have been trimmed or

Cont. on Page 3, col. 1

Club Members Are Entered In Hereford Rodeo

There will be several members of the Muleshoe Tri-State High School Rodeo Club who will be participating in the Hereford High School Rodeo this Thursday, Friday and Saturday nights and Saturday afternoon.

Those participating are Sherman Presley, Jimmy Henderson, Bill Milburn, Ross McKilip, Gene Rogers, Eddy Mardis, Joe Pate, Durk Green, Gary Herring, Gary Don Gartin, Eddie Waggoner, Danny Lance, Connie Floyd, Dan Ellis, David Saylor and Arvis Burris.

FINE IMPORTED

PIGGLY WIGGLY Carolyn Porcelain China

by CROWN VICTORIA

BUILD A COMPLETE SET, AN ITEM EACH WEEK

This Week! **Cup 49¢**

Collect as many pieces as you wish
Two with \$6.00 purchase
Three with \$8.00 purchase
Four with \$12.00 purchase

with each \$3.00 purchase

BONUS OFFER!
WEAR-EVER SUPER-CHEF
TEFLON II COOKWARE
THIS WEEK
1 1/2-Qt. Covered Sauce Pan
Only **\$3.49**

Plus Porcelain China Ovenware and completer pieces in the Carolyn Pattern

OPEN 7 AM - 12 PM 7 DAYS A WEEK

Prices good thru Sept. 8, 1973



Fresh Ground Beef

89¢

Lb.

Glover Hot Links **98¢**

Lb.

Kraft's Single Sliced American Cheese **63¢**

8-oz. Pkg.

Cod Fish Fillets **79¢**

Lb.

Superb Valu Trim

Sirloin Steak

\$1.39

Lb.

Value Trim

Club Steak **1.39**

Lb.

Rump Roast **1.29**

Lb.

Rib Roast **1.39**

b.

Arm Roast **1.18**

Lb.

Rib Steak **1.39**

Lb.

T-Bone Steak **1.65**

Lb.



Superb Valu Trim

Round Steak

\$1.39

Lb.

Superb — Boneless

Sirloin Tip Steak **1.79**

Lb.

Decker Breaded Beef Patties **98¢**

Lb.

Farmer Jones Franks **98¢**

12 oz. pkg.

Superb Chuck Roast **98¢**


Lb.

Superb Family Steak **1.39**

Lb.

Farmer Jones Wafer Thin Lunch Meats **39¢**

3-oz. Pkg.



Tomatoes

18¢

Lb.

Sweet, Juicy Ears **Corn Cobs** **3/29¢**

Colorful Cherry **Tomatoes** **49¢**

Bright, Crisp, Cellar **Radishes** **2/33¢**

Firm, Green, Fresh **Cucumbers** **23¢**

High Quality Hearts **Celery** **69¢**

Prune **Plums** **39¢**

Fresh Tokay Grapes **39¢**

Vitamin Rich

Carrots **29¢**

1-Lb. 2 Pkg.



Plus Deposit

Dr. Pepper

6 \$1

32-oz. Btls.

Peanut Butter **49¢**

18-oz. Jar

Piggly Wiggly Golden Corn **5 \$1**

17-oz. Cans

Del Monte Cut Green Beans **4 \$1**

16-oz. Cans

Piggly Wiggly Pear Halves **3 \$1**

16-oz. Cans

100ct **LUAU NAPKINS** **25¢**



Assorted Colors Facial Tissue

Kleenex

4 \$1

200-Ct. Boxes

Kimbies, Daytime, Disposable Diapers **1.69**

30-Ct. Box

Long Grain Arrow Fancy Rice **28¢**

Lb. Bag

Piggly Wiggly Pure Ground Black Pepper **35**

4-oz. Can

Piggly Wiggly Fudge Brownie Mix **49¢**

22-oz. Box

Nabisco Assorted Flavors Toastettes **3 6 1/2-oz. Box \$1**

Secret Deodorant **49¢**

18-oz. Btl.

Scope Mouthwash **79¢**

Regular or Super

Kotex Tampons **1.29**

40-Ct. Pkg.



Delsy, Prints

Bath Tissue

4 \$1

2-Roll Pkgs.

Aerosol Room Freshener, Assorted Scents Renuzit **49¢**

7-oz. Can

Powdered Cleanser Comet **19¢**

14-oz. Can

Pine-Oil Disinfectant Soft-Pine **39¢**

15-oz. Btl.

Palmolive Detergent **49¢**

Piggly Wiggly Liquid Bleach **39¢**

Gal. Btl.

Piggly Wiggly Grapefruit Juice **39¢**

46-oz. Can

Hunt's Assorted Fruits & Puddings, 4 Pak Sleeve Snack Paks **59¢**



Kleenex Assorted Colors

Towels

3 \$1

120 Sheet 2 Ply Rolls

Gleem II Toothpaste **63¢**

7-oz. Tube

Carol Ann Vanilla Wafers **4 \$1**

14-oz. Pkgs.

PIGGLY WIGGLY

The people pleasin' store

Winners...

Cont. from Page 1

Pearson, Swisher County, first; Jimmy Hodnett, Three Way, second; Valerie Tipps, Swisher County, third; Ricky Brooks, Dawson County, fourth; and Tammy Christian, Bovina, fifth.

Senior Reining, Randy Coleman, Cochran County; Sherri Starkey, Swisher County, second; and Melvin Dearing, Yoakum, third.

Young Junior Barrel Racing, Bill Hodnett, Three Way, first; Kelly Hill, Hockley County, second; Curtis Carpenter, Progress, third; and Tomi Johnson of Three Way and Tommy Stoneham of Progress, tied for fourth.

Junior Barrel Racing, Vicki Snodgrass, Texico, first; Pam Henry, Cochran County, second; Billy Henry, Cochran County, third; Eddie Joe Pearson, Swisher County, fourth; and Susie Snodgrass and Valeri Tipps of Swisher County, tied for fifth.

Senior Barrel Racing, Sherri Starkey, Swisher County, first; Sherman Presley, Progress, second; Sam Stewart, Post, third; and Fredia Leanelle of Texico and Connie Floyd of Progress, tied for fourth and fifth places.

Pee Wee Flag Race, Kelly Blankenship, Brownfield, first; Stephanie Coleman, Cochran County, second; Sarah McClung, Cochran County, third; Melinda Presley, Progress, fourth; and Ray Walston, Progress, fifth.

Young Junior Barrel Racing, Kelly Hill, Hockley County, first; Curtis Carpenter, Progress, second; Tommy Wheeler, Progress, third; Bill Hodnett, Three Way, fourth; and Trey Stoneham, Progress, fifth.

Junior Barrel Racing, Vicki Snodgrass, Texico, first; Dawn Branscum, Earth, second; Pam Henry, Cochran County, third; Ricky Brooks, Dawson County, fourth; and Valeri Tipps and Eddie Joe Pearson, Swisher County, tied for fifth.

Senior Barrel Racing, Connie Blankenship, Brownfield, first; ah McClung, Cochran County, first; Stephanie Coleman, Cochran County, second; John Warren, Three Way, third; Melinda Presley, Progress, fourth; and Vonda Stevens, Lamb County, fifth.

Young Junior Barrel Racing, Bill Hodnett, Three Way, first; Kelly Hill, Hockley County, second; Curtis Carpenter, Progress, third; and Tomi Johnson of Three Way and Tommy Stoneham of Progress, tied for fourth.

Junior Barrel Racing, Vicki Snodgrass, Texico, first; Pam Henry, Cochran County, second; Billy Henry, Cochran County, third; Eddie Joe Pearson, Swisher County, fourth; and Susie Snodgrass and Valeri Tipps of Swisher County, tied for fifth.

Senior Barrel Racing, Sherri Starkey, Swisher County, first; Sherman Presley, Progress, second; Sam Stewart, Post, third; and Fredia Leanelle of Texico and Connie Floyd of Progress, tied for fourth and fifth places.

Pee Wee Flag Race, Kelly Blankenship, Brownfield, first; Stephanie Coleman, Cochran County, second; Sarah McClung, Cochran County, third; Melinda Presley, Progress, fourth; and Ray Walston, Progress, fifth.

Young Junior Barrel Racing, Kelly Hill, Hockley County, first; Curtis Carpenter, Progress, second; Tommy Wheeler, Progress, third; Bill Hodnett, Three Way, fourth; and Trey Stoneham, Progress, fifth.

Junior Barrel Racing, Vicki Snodgrass, Texico, first; Dawn Branscum, Earth, second; Pam Henry, Cochran County, third; Ricky Brooks, Dawson County, fourth; and Valeri Tipps and Eddie Joe Pearson, Swisher County, tied for fifth.

Senior Barrel Racing, Connie Blankenship, Brownfield, first; Rancy Coleman, Cochran County, second; Tim Wheeler, Progress, third; Sherri Starkey, Swisher County, fourth; Melvin Dearing, Yoakum County, fifth.

Pee Wee Goat Race, Roy Walston, Progress, first; Sarah McClung, Cochran County, second; Melinda Presley, Progress, third; James Johnson, Three Way, and Vonda Stephens, Earth, tied for fourth and fifth.

Young Junior Goat Race, Curtis Carpenter, Progress, first; Trey Stoneham, Progress, second; Nancy Hobbs, Vega, third; Bill Hodnett, Three Way, fourth; and Tommy Wheeler, Progress, fifth.

Junior Goat Race, Eddie Joe Pearson, Swisher County, first; Ross Feagley, Progress, second; Rodney Geissler, Lamb County, third; Kimmi Waters, Vega, fourth; and Dawn Branscum, Earth, fifth.

Senior Goat Race, Sherri Starkey, Swisher County, first; Tim Wheeler, Progress, second; Randy Coleman, Cochran County, third; and Connie Blankenship of Brownfield and Sherman Presley, Progress, tied for fourth and fifth.

Young Juniors Break-Away Roping, Joey Martin, Lubbock, first; Curtis Carpenter, Progress, second; and Elmo Sorrels, Swisher County, third.

Seniors Break-Away Roping, Sherman Presley, Progress, first; Gene Bray, Progress, second; Eddie Mardis, Muleshoe, third; and Randy Coleman, Cochran County, fourth.

Merchants and individuals who donated awards for the Play day include: Monsanto, James Glaze Insurance, B&S Irrigation, Muleshoe Motor Co., Production Credit Association, Farmer's Co-op Elevator, Mansanto and Jimmie Carpenter, Town and Country Oldsmobile - Buick, Shook Tire Company, Crow Chevrolet, Gordon Wilson Appliance, Henry Insurance, Heathcote Lubmer Company, Bailey County Electric, First National Bank, Spudnut Shop,

alfalfa or corn. Clarence Christian will present helpful suggestions in shelling corn, also at the meeting. The newly re-organized club will be meeting each second Monday of the month.

Mr. and Mrs. Eugene Shaw, Mr. and Mrs. Donald Harrison, Mr. and Mrs. Carl Bamert, Wheeler Farms, Mr. and Mrs. Ronnie Black, Mr. and Mrs. Deway Moore, Mr. and Mrs. Dale Griswald, Mr. and Mrs. John H. Puckett, Mr. and Mrs. Jim Pearson, Mr. and Mrs. Jimmy Presley, Mr. and Mrs. Ricky Barrett, Mr. and Mrs. Henry Stoneham, Mr. and Mrs. Jimmie Carpenter, Mr. and Mrs. Bob Henderson, Mr. and Mrs. C. J. Feagley, Mr. and Mrs. Joe Rhodes, Mr. and Mrs. A. R. Floyd, Mr. and Mrs. Raymond Walston, Mr. and Mrs. Keith Bray, Mr. and Mrs. Darrell Nowell, Mr. and Mrs. Donnie McCall.

The High Point Club Trophy was donated by the Cowboy Store in Levelland, Texas. Other Progress 4-H members who participated in the Play day were Stella Black, Delia Shaw, Steven Griswald, Michael Barrett, Greg Harrison, Lavon Rhodes, Jo Rhonda Rhodes, Johnnie Puckett, Connie Puckett and Lynn Moore.

The Progress 4-H Horse Club wishes to thank the Muleshoe Journal and KMUL for all the news coverage and help.

Ray Griffiths and Son, Wooley-Hurst, John's Custom Mill, Gibson's, Fry and Cox, Sam Fox Texaco, Spurgeon Motor Supply, Plains Auto, Muleshoe Auto Parts, Muleshoe Co-op Gin, St. Clair's Department Store, Howard Watson Cubing, Beavers Flowerland, C.R. Anthony's Co., J.W. Maddox Trucking, Dinner Bell Cafe, Irrigation Supply, Jim's Pay and Save, Magby Ditching, Art Craft Printing, Joe Shipman Body Shop, Kings Feed Lot, Lindsey Jewelry, Western Dru, Bakers Farm Supply, J.E. Birdwell, A and B Plumbing, West Camp Gin, Baker's Maytag Laundry, The Spencer Tankdleys, Tom Flowers Auction, Higginbotham -Bartlett, Harvey Bass Appliance, Poyner's White's Auto, Rasco, Leo's Blacksmith, Cobb's, Muleshoe Floral, Cashways, A&J Dairy, Redwine 66, Gilbreath Seed and Grain, Decorator's 216, Allison Shoes, Muleshoe Locker, Wiedebush, Kemp Well Drilling, Bob Stovall Printing, Williams Brothers Office Supply, James Crane Tire Co., Calvert's Grocery, Bill's Drive In, Ranch House Cafe, Wilson Drilling, Black Insurance, Jerry Gleason Thoroughbred Horse Farm, Muleshoe State Bank, Sanitary Barber Shop, Muleshoe Machine Shop, Claude's Shamrock, Fair Store, Texas Sesame.

Mr. and Mrs. Eugene Shaw, Mr. and Mrs. Donald Harrison, Mr. and Mrs. Carl Bamert, Wheeler Farms, Mr. and Mrs. Ronnie Black, Mr. and Mrs. Deway Moore, Mr. and Mrs. Dale Griswald, Mr. and Mrs. John H. Puckett, Mr. and Mrs. Jim Pearson, Mr. and Mrs. Jimmy Presley, Mr. and Mrs. Ricky Barrett, Mr. and Mrs. Henry Stoneham, Mr. and Mrs. Jimmie Carpenter, Mr. and Mrs. Bob Henderson, Mr. and Mrs. C. J. Feagley, Mr. and Mrs. Joe Rhodes, Mr. and Mrs. A. R. Floyd, Mr. and Mrs. Raymond Walston, Mr. and Mrs. Keith Bray, Mr. and Mrs. Darrell Nowell, Mr. and Mrs. Donnie McCall.

The High Point Club Trophy was donated by the Cowboy Store in Levelland, Texas. Other Progress 4-H members who participated in the Play day were Stella Black, Delia Shaw, Steven Griswald, Michael Barrett, Greg Harrison, Lavon Rhodes, Jo Rhonda Rhodes, Johnnie Puckett, Connie Puckett and Lynn Moore.

The Progress 4-H Horse Club wishes to thank the Muleshoe Journal and KMUL for all the news coverage and help.

Mr. and Mrs. Eugene Shaw, Mr. and Mrs. Donald Harrison, Mr. and Mrs. Carl Bamert, Wheeler Farms, Mr. and Mrs. Ronnie Black, Mr. and Mrs. Deway Moore, Mr. and Mrs. Dale Griswald, Mr. and Mrs. John H. Puckett, Mr. and Mrs. Jim Pearson, Mr. and Mrs. Jimmy Presley, Mr. and Mrs. Ricky Barrett, Mr. and Mrs. Henry Stoneham, Mr. and Mrs. Jimmie Carpenter, Mr. and Mrs. Bob Henderson, Mr. and Mrs. C. J. Feagley, Mr. and Mrs. Joe Rhodes, Mr. and Mrs. A. R. Floyd, Mr. and Mrs. Raymond Walston, Mr. and Mrs. Keith Bray, Mr. and Mrs. Darrell Nowell, Mr. and Mrs. Donnie McCall.

The High Point Club Trophy was donated by the Cowboy Store in Levelland, Texas. Other Progress 4-H members who participated in the Play day were Stella Black, Delia Shaw, Steven Griswald, Michael Barrett, Greg Harrison, Lavon Rhodes, Jo Rhonda Rhodes, Johnnie Puckett, Connie Puckett and Lynn Moore.

The Progress 4-H Horse Club wishes to thank the Muleshoe Journal and KMUL for all the news coverage and help.

WASHINGTON REPORT BY Lloyd Bentsen, United States Senator

The following is a letter from Sen. Lloyd Bentsen to Dr. John Dunlop, director of the Cost of Living Council:

Dear Dr. Dunlop:

I request your immediate attention to the burgeoning problems of beef shortages in retail stores, plant closings, and the general disruption of the meat supply chain.

During your briefing last week to the Senate and Senate Staff, I was greatly surprised that Mr. Fedders of your office stated that you had no information that the ceiling on beef prices was causing beef packing plants to close. My telegram of July 6th to the President, which was referred to your office, warned that there were already many documented examples of beef packing plants being forced to close. A week earlier, in your meeting with the Senate Committee on Agriculture, Senator Talmadge and others warned that distortions of the beef supply system were imminent unless the beef ceiling was abandoned. The facts were clear: cattle placements were down over 10% for each of the months since the ceiling was announced, consumer demand was continuing, and feeding costs were continuing to rise. The results could only be a sharp economic hardship for the entire beef industry if the ceiling was continued.

The picture is clearest in the case of the beef packer and processor. To illustrate the situation, I have carefully documented the current status of packing plant closings in South Texas. The following plants which process a great deal of the beef consumed in the area have already been forced to close: Alice Packing Company, Alice, Texas; Armour Packing Company in Brownsville; Kay Packing, Houston; Friedman Packing Company, Houston; and Armour Packing, Houston. In addition, two of the largest plants in the area report they have already released many of their workers, and will close

within a week if the ceiling is not lifted. The reason for these plant closings is easy to understand, they were paying approximately 43¢ a pound for their beef when the March 29 ceiling was announced. Today they must pay at least 46¢ a pound for their beef -- if they can find a producer who is willing to sell now rather than wait for the ceiling to be lifted, This creates a \$2 to \$15 per head loss for the packing plants. It must also be pointed out that these plant closings do not simply reflect the loss of beef processing for the area, but the loss of employment for hundreds of people. Further, the disruption means the supply system problems will extend beyond the September 12 date because it requires time to re-start such operations. Please understand that this is not an isolated area, but rather a mirror example of what is happening all across the country.

What does this mean for the consumer? A survey of the major supermarket chains in South Texas reveals they have enough beef to last for approximately five to eight days, and then very real shortages will occur on the supermarket shelves. There will be a shortage of beef for the consumer at a period of very high demand. This is a very unfortunate situation that government action

cannot understand why the Council chose to continue the ceiling for beef, and to discriminate against this most important segment of the nation's food supply industry. With all sincerity, I request that you lift the ceiling on beef prices immediately. This must be done if our consumers are to continue to have access to beef with the expectation of an expanding supply of beef and resulting lower consumer costs in the future.

cannot understand why the Council chose to continue the ceiling for beef, and to discriminate against this most important segment of the nation's food supply industry. With all sincerity, I request that you lift the ceiling on beef prices immediately. This must be done if our consumers are to continue to have access to beef with the expectation of an expanding supply of beef and resulting lower consumer costs in the future.

Sincerely, Lloyd Bentsen

Contest...

Cont. from Page 1

second place and four points for third place.

Accumulation of points during the contest, which will run through the football season, will determine the grand prize winner.

The grand prize this year will be \$50 in cash and two tickets to the Cotton Bowl game in Dallas. Rules of the contest state that all entries must be 12 years old or older; only one entry per person may be made for one contest; weekly contests are open to everyone except employees and families of this newspaper.

Cash prizes and points will be divided between winners in the event of ties.

The decision of the judges will be final.

around muleshoe with the journal staff

Kenny Taylor, son of Mr. and Mrs. Bill Taylor left Sunday for Howard Payne College in Brownwood. He is attending on a Golf Scholarship.

Taylor was a regional medalist and went to state in golf. He is a 1973 graduate of Muleshoe High School.

Criticism springs from two sources - intelligent disapproval and emotional reaction.

Despite the short routes and quick cures, there's no easy way to anything that is worth very much.

Market...

Cont. from Page 1

gain delayed by varying amounts of rainfall this week. In some locations it was expected to be at least a week before harvesting could resume. Elsewhere in the Region, crop progress was generally good. Some locations on the Texas Plains and in Oklahoma could use additional moisture for optimum production. Insect populations built up in some Central Texas locations and control measures were being taken. Some growers in California's San Joaquin Valley were expected to begin defoliating in about two weeks. In Arizona the bottom crop was open in some areas and plants were continuing to fruit heavily.

City...

Cont. from Page 1

removed by a commercial tree trimmer shall be disposed of at the expense of the owner or upon payment of the actual cost of removal plus ten per cent of such cost to the city sanitation division.

Construction material and other accumulations as a result of construction, remodeling, repairing or destruction shall be disposed of at the expense of the owner or person controlling the same, or upon payment of the actual cost of removal plus ten per cent of the city sanitation division. The following fees will be charged for use of the city garbage and trash disposal area: pickup trucks or trailers having a capacity of two cubic yards or less, \$1.00 for each load; trucks or trailers having a capacity of between two and six cubic yards, \$2.00 each load; and trucks or trailers having a greater capacity than six cubic yards, \$3.00 each load.

A householder disposing of garbage and trash from his own family unit on which there is a sanitation charge being paid currently, and persons disposing of dirt, broken concrete and similar materials from public works projects within the city limits will be exempt from the charges.

Any person who violates any of the provisions of this ordinance will be deemed guilty of a misdemeanor and upon conviction, shall be fined in any sum not to exceed \$200.00 for each offense.

The ordinance will become effective immediately.

Contracts...

Cont. from Page 1

not honor their contracts. This may have long term effects on the whole contract marketing procedure and some drastic short term effects on farmers who don't deliver their contracted crop," say the economists.

The reason for this concern is that the first buyer has made a commitment to continue the product through the marketing system to the final consumer. For example, in the case of grain sorghum the usual practice is for the local elevator, as soon as he signs a contract with a farmer, to resell the grain to a regional elevator or exporter. The local elevator normally writes these contracts with only a small markup to cover his expenses and give a small profit.

What happens when a farmer doesn't deliver his grain to the elevator?

"A farmer who has contracted his crop could face a law suit if he does not deliver and fulfill the contract," note Hayenga and Smith. "Cotton mills or large grain exporters will not hesitate to file suit against local buyers who do not honor their contracts. These local merchants and elevators probably do not have the financial base to absorb the losses that could occur this year, so they may be forced to sue individual farmers or go bankrupt."

MULESHOE JOURNAL
Established February 22, 1924
Published by Muleshoe Publishing Co., Inc.
Every Thursday at 204 W. Second Box 449
Muleshoe, Texas, 79347
Second class postage paid at Muleshoe, Texas 79347

TEXAS PRESS ASSOCIATION
Member 1973

L.B. Hall, President
Jenetta P. Hall, Sec.-Treasurer
L.B. Hill, Managing Editor
Katie Beckett, News Reporter
Tom Eagle, Society Reporter
Delinda Aling, Advertising
Polly Ottwell, Office

SUBSCRIPTIONS:
Zone 1-Bailey-Farmer-Cochran-Lamb counties: \$4.00 per year, \$4.50 per year by carrier. With Sunday Bailey County Journal, both papers: \$5.50 per year, \$6.00 per year by carrier.
Zone 11-Out-of-Territory: \$4.30 per year, with Sunday Bailey County Journal, both papers, \$6.25 per year.
Monthly, by carrier-\$5; single copies-10¢
Advertising rate card on application

Program...

Cont. from Page 1

alfalfa or corn. Clarence Christian will present helpful suggestions in shelling corn, also at the meeting. The newly re-organized club will be meeting each second Monday of the month.

Mr. and Mrs. Eugene Shaw, Mr. and Mrs. Donald Harrison, Mr. and Mrs. Carl Bamert, Wheeler Farms, Mr. and Mrs. Ronnie Black, Mr. and Mrs. Deway Moore, Mr. and Mrs. Dale Griswald, Mr. and Mrs. John H. Puckett, Mr. and Mrs. Jim Pearson, Mr. and Mrs. Jimmy Presley, Mr. and Mrs. Ricky Barrett, Mr. and Mrs. Henry Stoneham, Mr. and Mrs. Jimmie Carpenter, Mr. and Mrs. Bob Henderson, Mr. and Mrs. C. J. Feagley, Mr. and Mrs. Joe Rhodes, Mr. and Mrs. A. R. Floyd, Mr. and Mrs. Raymond Walston, Mr. and Mrs. Keith Bray, Mr. and Mrs. Darrell Nowell, Mr. and Mrs. Donnie McCall.

The High Point Club Trophy was donated by the Cowboy Store in Levelland, Texas. Other Progress 4-H members who participated in the Play day were Stella Black, Delia Shaw, Steven Griswald, Michael Barrett, Greg Harrison, Lavon Rhodes, Jo Rhonda Rhodes, Johnnie Puckett, Connie Puckett and Lynn Moore.

The Progress 4-H Horse Club wishes to thank the Muleshoe Journal and KMUL for all the news coverage and help.

Mr. and Mrs. Eugene Shaw, Mr. and Mrs. Donald Harrison, Mr. and Mrs. Carl Bamert, Wheeler Farms, Mr. and Mrs. Ronnie Black, Mr. and Mrs. Deway Moore, Mr. and Mrs. Dale Griswald, Mr. and Mrs. John H. Puckett, Mr. and Mrs. Jim Pearson, Mr. and Mrs. Jimmy Presley, Mr. and Mrs. Ricky Barrett, Mr. and Mrs. Henry Stoneham, Mr. and Mrs. Jimmie Carpenter, Mr. and Mrs. Bob Henderson, Mr. and Mrs. C. J. Feagley, Mr. and Mrs. Joe Rhodes, Mr. and Mrs. A. R. Floyd, Mr. and Mrs. Raymond Walston, Mr. and Mrs. Keith Bray, Mr. and Mrs. Darrell Nowell, Mr. and Mrs. Donnie McCall.

The High Point Club Trophy was donated by the Cowboy Store in Levelland, Texas. Other Progress 4-H members who participated in the Play day were Stella Black, Delia Shaw, Steven Griswald, Michael Barrett, Greg Harrison, Lavon Rhodes, Jo Rhonda Rhodes, Johnnie Puckett, Connie Puckett and Lynn Moore.

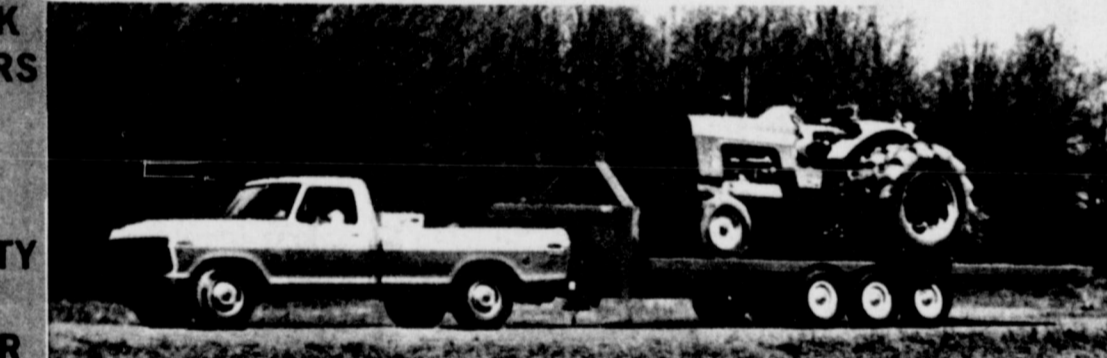
The Progress 4-H Horse Club wishes to thank the Muleshoe Journal and KMUL for all the news coverage and help.

Mr. and Mrs. Eugene Shaw, Mr. and Mrs. Donald Harrison, Mr. and Mrs. Carl Bamert, Wheeler Farms, Mr. and Mrs. Ronnie Black, Mr. and Mrs. Deway Moore, Mr. and Mrs. Dale Griswald, Mr. and Mrs. John H. Puckett, Mr. and Mrs. Jim Pearson, Mr. and Mrs. Jimmy Presley, Mr. and Mrs. Ricky Barrett, Mr. and Mrs. Henry Stoneham, Mr. and Mrs. Jimmie Carpenter, Mr. and Mrs. Bob Henderson, Mr. and Mrs. C. J. Feagley, Mr. and Mrs. Joe Rhodes, Mr. and Mrs. A. R. Floyd, Mr. and Mrs. Raymond Walston, Mr. and Mrs. Keith Bray, Mr. and Mrs. Darrell Nowell, Mr. and Mrs. Donnie McCall.

Gander TILT & HOIST supplies the muscle to get things MOVING!

Rugged Dependability

Designed for ease of loading, handling and maneuverability. Gander construction reflects its superior engineering and high-quality workmanship. Whether you choose an all-purpose Gander flat bed with stake pockets for use with side boards or, for greater versatility, a Gander spring loaded tilt bed—with 8,000 lb. winch—you'll be buying a new dimension in transporting.



Gooseneck Stock Trailers & Vans

For The Best Built And Most Attractive Stock Trailer On The Market Today - or - For The Equally Impressive Gander Van (a real money-saver in transportation - available in a variety of sizes). See your Gander dealer ... he has a story to tell.



Keep your trucks on the move ... your Gander trailer waits while your pickup works!

Auto REPAIR

MUFFLER SPECIALISTS

FAST INSTALLATION

If you want fast and efficient installation stop into our shop. Faulty mufflers are extremely dangerous. Don't take chances. Our prices are low.

Plains AUTO PARTS South Main Muleshoe Phone 272-4576

P.O. Box 186 Muleshoe, Texas 79347

Pickup and Go ... with Gander™

ANTI-FREEZE Permanent Type \$1.35/gal
55 Gal. Drum

WHILE IT LASTS!

WOOLEY-HURST INC.



AAUW HOSTS SUPPER . . . The American Association of University Women held a salad supper September 3. Left to right

AAUW Hosts Salad Supper

The American Association of University Women met Monday, September 3, in the home of Mrs. Tom Jinks for a Salad Supper at 7:30 p.m. Mrs. R.G. Wilson and Mrs. Mabel Wolfe were co-hostesses. Miss Virginia Bowers, president, welcomed the members and guests and presided during the initial meeting of the 1973-74 year. Mrs. Wolfe, Membership Chairman, reviewed the purposes and projects of the Muleshoe Branch: Mrs. Eric

Smith, Program Chairman, previewed the years program, and Mrs. Jack Rennels, Cultural Chairman, announced that the Children's Theater presentation would be given by the Muleshoe High School Speech Department in November. Members attending were Miss Virginia Bowers, Mrs. Joe Costen, Mrs. Neal Dillman, Mrs. A.T. Henderson, Mrs. Robert Hooten, Mrs. Oscar Rudd, Mrs. Jack Rennels, Mrs. Eric Smith, Mrs. John Watson and the host-

ess, Mrs. Eric Smith, Mrs. R.G. Wilson, Mrs. Tom Jinks, Mrs. A.T. Henderson, Mrs. Mable Wolfe and Miss Virginia Bowers.

Corn Omelet
 1/2 c fresh or canned corn
 1 egg
 1/4 t salt-pepper
 2 T cream
 2 T butter
 Add well beaten egg yolk to chopped corn. Add salt, pepper, and cream. Fold in stiffly beaten egg white. Heat omelet pan, and add

butter. Pour in corn mixture and cook until set and well browned. Serve at once.

WEST PLAINS HOSPITAL Hospital Briefs

ADMISSIONS:
 Mrs. Thurlo Branscum
DISMISSALS:
 Mrs. Lillie Wiseman, Mrs. Alex Telles and Baby Boy, John H. Sowder, Mrs. Robert Phillips and Baby Girl, Mrs. Lora Parks, Mrs. DeWayne Martin, Mrs. Mary B. Hardin, Mrs. Jessie Lewis, Tom Lewis, A.B. Miller and Blas Cabazas.
STILL IN THE HOSPITAL:
 Mrs. Thurlo Branscum, Mrs. Beulah Miller and twin baby daughters of Mr. and Mrs. Manuel Muniz.

Mothers Club Receives Honor

Mothers Club received a certificate of appreciation issued on the recommendation of Mike Hunt, Master Council; Alton Epting, Advisor Council; Chairman and Grand Secretary, G.M. Sanders. The international supreme council of the order of DeMolay hereby presents to the president officers and members of the Mothers Club of Muleshoe this certificate of appreciation given in grateful recognition of services rendered and contributions made to advance the principles and ideals of the order of DeMolay. All mothers of DeMolay boys are asked to seek membership. The purposes of a Mother Club are to cooperate with and assist the advisory council of the chapter in promoting the welfare of the chapter and its members, to serve the chapter and strengthen the interest of the boy in DeMolay and his aims toward higher standards of thinking and living and to provide the things which only mothers interest and a woman's hand can accomplish.

St. Mary's Circle Discuss Business

St. Mary's Circle met August 29, at 9:30 in the Catholic Center with Mr. Lee Britting, hostess. Coffee and rolls were served to nine members: Mrs. Arnold Alcorn, Mrs. Lee Britting, Mrs. B.A. Dearing, Mrs. Ken Duncan, Mrs. C.J. Feagley, Mrs. Charles Isaac, Mrs. Ettie Jesko, Mrs. Pat Suttentuss and Mrs. Harry Waddle. Old and new business was discussed with the next meeting to be held in the center on September 25 with Mrs. Ken Duncan as hostess. The meeting automatically adjourned at 11:00.

Wedding Policy

The Muleshoe and Bailey County Journals will hereafter print wedding stories and pictures under the following guidelines:

1. Newspaper reproduction is best with black and white photographs which have good contrast. Color prints often do not have enough contrast to reproduce well and are slower to have developed and must be done by professional studios. Those taking pictures at the wedding should have at least one black and white picture taken of the bride before the altar, to be ready immediately following the ceremony, to be submitted with the wedding story. Pictures submitted for publication should be of the bride only.
2. Photos and stories must be in the office by noon Monday for the Thursday Muleshoe Journal and noon Thursday for the Sunday Bailey County Journal.
3. Story with picture must be presented by deadline for publication in issue no later than two weeks following the ceremony.
4. Stories without photos will be printed if received in time for publication within the same two weeks deadline.
5. All information will be printed as desired and as space allows with the exception of out-of-town guests. The immediate family of the bridal couple will be printed as out-of-town guests, as space allows. If serving in some capacity at the wedding, names will not be repeated in the guest list.
6. Information preferably should be typed, either on a form provided by the paper, or in story form, in which case it should be double spaced, on one side of the paper only. The paper will not be responsible for misspelled names taken from handwritten stories or forms.
7. Photos are returnable following publication and appropriate arrangements should be made with the Society Reporter.
8. When announcing engagements, the Journal's wedding form may be obtained from the Society Reporter. The staff is available to assist brides-to-be and her family.
9. As with all copy, the Journal reserved the right to edit all stories to fit newspaper standards and policies.
10. Any society story received after deadlines will be subject to further editing or publication in later issues.



UNITED METHODIST WOMEN . . . The United Methodist Women began their fall program with a salad luncheon. Among those attending were Rev. and Mrs. C.B. Milton and Minister-in-training, Russ Byrd and his wife. Mrs. Ted Allen conducted the business meeting. Mrs. Reagan Cox gave an outline of the fall studies for individual circles.



PLANNING BEGINS . . . The planning committee for all church bazaars met Tuesday, September 4. Those attending were Mrs. C.B. Milton, Mrs. Harold Allison, Mrs. Robert Hooten, Mrs. J.E. McVickers, Mrs. David Anderson and Mrs. Carter Williams. The Harvest Bazaar '73 will be November 9. Plans were made for seven booths and two meals from 10 a.m. till 8 p.m.

The Harmon Football Forecast

Saturday, Sept. 8th—Major Colleges				Midwest (Continued)			
Arizona	30	Colorado State	7	Northern State	25	Morris	22
Arlington	17	North Texas	10	NW Missouri	23	William Jewell	7
Clemson	20	The Citadel	8	Northwestern, Ia	24	Dakota State	0
Davidson	21	Wofford	20	Oshkosh	22	Gustavus	21
Dayton	26	Youngstown	21	Ottawa	26	Bethany, Kansas	7
Drake	21	West Texas	16	Panhandle	22	Eastern N.M.	20
Fresno State	35	Cal Poly (Pomona)	0	Platteville	16	St. Norbert	13
Grambling	21	Long Beach State	7	St. Thomas	27	St. Cloud	6
Idaho	22	El Paso	20	Southern State	18	Springfield, S.D.	13
Lamar	22	New Mexico State	14	So. Dakota State	42	SW State, Minn.	0
Louisville	26	Memphis State	7	Tabor	15	McPherson	14
Massachusetts	21	Holy Cross	13	Valparaiso	21	Wabash	10
Mississippi	38	Villanova	7	Wayne, Neb	23	Missouri Valley	20
Nebraska	24	U.C.L.A.	17	Wayne, Mich	23	Nebraska Wesleyan	13
No. Carolina State	28	East Carolina	0	Whitewater	21	Northern Michigan	15
Northern Illinois	20	Indiana State	14	William Penn	35	Northern Western	0
Pacific	38	Sacramento	0				
Presbyterian	21	Furman	6				
San Jose State	31	Santa Clara	6				
Temple	27	Xavier	8				
Virginia	24	V.M.I.	10				
V.P.I.	27	William & Mary	13				
Western Michigan	17	Central Michigan	10				

Other Games—South & Southwest			
Alcorn A & M	26	Pine Bluff	12
Arkansas State	23	Abilene Christian	15
Bethune-Cookman	20	So. Carolina State	0
Bluefield	21	Concord	10
Carson-Newman	25	Samford	14
Chattanooga	21	Eastern Kentucky	20
East Central Okla.	19	McMurry	14
Elon	31	Gardner-Webb	6
Emporia State	14	Arkansas Tech	8
Fayetteville	13	Federal City	7
Hampden-Sydney	26	Guilford	0
Harding	20	Tarleton	13
Henderson	14	Austin Peay	13
Hillsdale	23	Glenville	7
Howard	19	Morris Brown	13
Howard Payne	24	Texas Lutheran	7
Jacksonville	23	Texas A & I	21
Kentucky State	42	St. Paul's	0
Mars Hill	24	Millsaps	6
Maryland E. Shore	21	Nicholls State	15
Mississippi Valley	20	J. C. Smith	14
Morehead	20	Alabama A & M	19
Newberry	21	Central State, Ohio	6
No. Carolina A & T	25	Emory & Henry	7
No. Carolina Cent'l	30	Elizabeth City	7
NE Louisiana	17	Florence	6
NW Louisiana	24	SE Oklahoma	13
S F Austin	27	Troy State	16
Sam Houston	22	East Texas	23
Shepherd	23	Cameron	7
Southern State	17	Texas Southern	21
Southern U	15	West Va. Wesleyan	6
Tennessee State	27	Salem	13
Tennessee Tech	20	West Va. Tech	8
Trinity	56	Appalachian	14
Virginia State	14		
West Liberty	17		
West Va. State	21		
Western Kentucky	20		

Other Games—Far West			
Chico State	21	Southern Utah	20
Colorado College	28	Hastings	7
Idaho State	21	Montana State	14
Montana	28	Simon Fraser	0
Nevada (Las Vegas)	25	State College Ark.	13
Nevada (Reno)	31	San Francisco	7
Southern Colorado	35	Fort Lewis	6

Presented in the public interest for football fans by
TEXAS SESAME DIVISION OF PARIS MILLING CO.
 Bill Wimberly, Mgr.
JAMES GLAZE COMPANY
 General Insurance
 Loans- Real Estate

If you're looking for a new dishwasher ...look at the new KitchenAid.

(It's built better...not cheaper)

Model KDS-17

KitchenAid dishwashers have always been built to meet high standards of performance and reliability. Now there's a new KitchenAid that's even better.

MOTOR 5-YEAR WARRANTY

The KitchenAid 1/2 horsepower motor, the biggest in any home dishwasher, is so reliable it has a 5-year warranty. If it should fail, it will be repaired or replaced at no cost to you during the first year; you'd be charged only for labor during the next four years.

PLUS many other outstanding KitchenAid features:

- Pushbutton cycles including patented Soak Cycle for automatic soaking of pots and pans.
- 9-way upper rack that adjusts for big bowls above or platters below.
- Fully usable Spacemaker Racks with no wasted space.
- Exclusive KitchenAid 3-coat porcelain-on-steel wash chamber.
- Exclusive KitchenAid washing and drying. No hand-rinsing needed.
- Made by Hobart, the world's oldest and largest maker of commercial dishwashers.

Don't spend less to get less-why buy 2 to last as long as our 1 KitchenAid?

Add a KitchenAid Food Waste Disposer to your clean-up center. KitchenAid disposers are built to grind finer, faster, quieter and to last longer. Built with KitchenAid reliability.

Add a KitchenAid Hot-water Dispenser. It's like a "Built-In Teakettle" It gives you steaming hot, 190° water on tap. You can make instant foods or drinks instantly, prepare soups, gravies. It's also a big help in thawing, cooking, dissolving, blanching.

SEE YOUR KITCHENAID DEALER NOW

Wilson Appliance

117 Main MULESHOE PHONE 272-3138

MADE TO MEASURE DRAPERIES

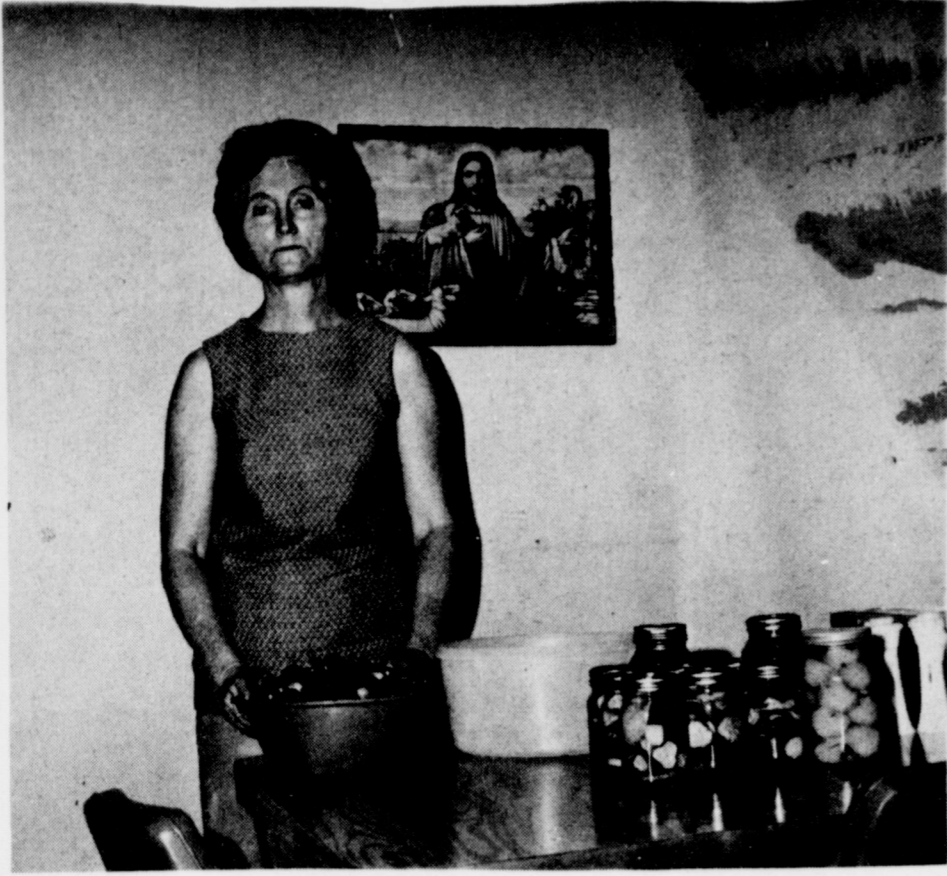
Select Fabrics
 Expert Workmanship

You measure the windows and install your own drapes

Save yourself some money and still have the finest . . . Measure your own windows and install the draperies yourself. We have a beautiful selection of fabrics. Drapes will be fan folded, with drapery hooks, weighted, ready to hang.

master charge TEXAS BANKAMERICAN CASH LAWAWAY

Anthony's
 C.R. ANTHONY CO.



BUSY WOMAN Mrs. Fred Stigaulde of 815 West 3rd is a LVN at the West Plains Memorial Hospital as well as being a housewife and mother yet she still finds time to can. Mrs. Stigaulde has four daughters, Mrs. Riva Scheffer, Mrs. Wilma Brock, Mrs. Karen Beavers and Vickie of the home. She also gardens a little as the cucumbers she has prepared are from her own back yard. "When I have time I also like to sew" says Mrs. Stigaulde.

Annual Arts And Crafts Festival

The Pampa Fine Arts Association is sponsoring the annual Top O' Texas Arts and Crafts Festival, Oct. 13-14, in the Heritage Room of the M.K. Brown Memorial Civic Auditorium.

An invitation is open to join artists and craftsmen from the Top O' Texas area in offering your paintings and crafts for sale. Demonstrations in booths will be encouraged.

Ben Konis, a well known artist and teacher from Amarillo will conduct a pastel demonstration in the Heritage Room on the 13th. A painting, "Taos Creek" by Konis, will be presented to the holder of the winning ticket on the 15th.

Konis conducts classes at his studio in Amarillo, and also summer workshops in Texas and New Mexico. He is recognized as one of the most important and influential new painters in the southwest. His paintings are on permanent exhibit in Ruidosa and Santa Fe, N.M., Jackson, Wyo., Arlington, Tex., and other art centers throughout the United States. A gourmet booth will offer a variety of home baked and canned foods for sale. Everyone is invited to participate by bringing their favorite foods to be sold.

The Pampa Garden Club will have a judged flower show during the festival. Also flower arrangements and garden accessories will be featured.

Entertainment will be presented in the M.K. Brown Civic Auditorium, Saturday, Oct. 13, at 8 p.m., by the Pampa High School Drama Department, under the direction of Mrs. Calvin Lacy. An all-star cast will present: "The Night Thoreau Spent in Jail", by Jerome Lawrence and Robert E. Lee.

Mrs. Lacy, one of four teachers recently nominated for Texas State Director of the In-

NEW ARRIVALS



Tiffany Maree Angeley

Mr. and Mrs. R.D. "Tubb" Angeley are the proud parents of a baby girl born August 28 at 9:08 in St. Mary's Hospital in Lubbock. The baby weighed 7 lbs, 7 ozs. and was named Tiffany Maree. She has one sister, Kristal.

Grandparents are Mr. and Mrs. George W. Davis of Shamrock and Mrs. E.K. Angeley of Muleshoe.

"Alternates" For Weight Watchers

Mrs. Dorothy Hopson, lecturer, urged all members of the local Weight Watchers to bring their pink work book to class Thursday, September 6. Each member is urged to attend this weeks meeting because of additions of foods to the program.

Weight Watchers International, Inc. has made a number of important changes and additions in its eating program that will enable consumers to add a little more variety to their menu and hopefully, save money in the supermarket and still lose weight.

This was announced here by Adele McGinty, Area Director of WEIGHT WATCHERS in the West Texas Area, who said that the revisions, which are in line with recent findings in the field of nutrition, reflect the WEIGHT WATCHERS Organization's continuing efforts to provide members with a menu plan that is nutritious and which contains a wide variety of foods.

Especially significant, in a time when meat is disappearing from supermarket shelves (and what's left brings exorbitant prices) are a number of "alternates" to meat that have been added to The Program. The "alternates," now categorized with fish, meat and poultry on The Program, are dried beans, dried lentils and dried peas -- including black-eyed or cowpeas, chick or garbanza peas and split peas. The food values found in these foods are acceptable as alternates for those found in many meats.

A particularly welcome addition to the eating program is soybeans.

These relatively inexpensive beans, like meats, are high in nutritional content.

Notable among the additions to the eating program are ham and pork, both of which have been included on The Program for the first time. Ham is the only smoked or cured meat on The Program; pork has been included because it is now available as a much leaner meat than could be had before. So-called pork "products" are still "illegal," however, in that they are not 100% pork.

In some food markets, Mrs. McGinty said, the label will read "lean pork." In the preparation of the pork, Mrs. McGinty stressed, all visible fat should be removed. The same rule applied to boiled ham. Sauces or gravies from these meats, though, are still "taboo." Other "firsts" on the eat-

ing program are:

1. Freeze-dried vegetables. However, in order to be used, they must be rehydrated and equated to the amounts indicated on the menu plan for fresh vegetables. Freeze-dried vegetables should be labeled giving their equation to fresh vegetables.

2. Freeze-dried fruits are now permitted on the eating program, provided they can be equated to fresh fruits after rehydration.

3. Canned apricots, pears and peaches, provided these fruits are packed in their own (unsweetened) juice.

4. Mixed vegetable juice and combined orange and grapefruit juice have been added, as well as orange sections and grapefruit sections in their own (unsweetened) juice.

5. The eggs and cheese category on the menu plan has been modified to include cheese "products," provided only hard cheeses, such as American, Swiss or Cheddar are used, (cheese spreads remain "illegal").

6. Any 100% whole wheat bread is now permitted, even if it contains honey or molasses. Mrs. McGinty pointed out that five fish meals a week are required on the WEIGHT WATCHERS Program. However, certain fish that previously were restricted to once a week - such as clams, oysters, scallops and scungilli - are now listed with the five-times-a-week fish.

Mrs. McGinty added that in the future, the WEIGHT WATCHERS Organization will continue to apply the most advanced knowledge in nutrition in developing The Program that

will include foods that are sensible as well as nutritious, to help members lose weight without gaining it back.

Market Report

College Station --- Despite lower prices this week, watch for fluctuations in poultry supplies and prices during the weeks ahead.

This advice comes from Mrs. Gwendolyn Clyatt, consumer marketing in formation specialist with the Texas Agricultural Extension Service, Texas A&M University System.

"Buy a whole chicken and cut it up yourself--then pocket the savings," she suggested. Turning to other meats, the specialist predicted uncertainty over beef prices after the freeze lifts on Sept. 12.

"Although supplies will be somewhat larger, prices will likely go up.

"So, careful shopping and creative cooking continue important.

"One way of making food dollars go further involves planning meals with less meat. But this isn't easy--and usually requires additional shopping and preparation time.

"Casseroles, meat loaves and sausage - vegetable combinations make a little meat go a long way," Mrs. Clyatt said.

"Or, a small portion of meat served with milk, cooked beans, peas or lentils provides necessary protein at less cost than a large serving of meat."

The specialist noted that several varieties of fresh plums decorate market fruit sections including attractively priced purple plums.

Cantaloupes and watermelons

remain plentiful and of excellent quality. Peaches on the other hand, are priced high. Pears, bananas, nectarines, grapes, pineapples and oranges warrant consideration, she added.

"Some vegetable flaunt lower prices than a week ago with cabbage, head lettuce, dry yellow onions and sweet potatoes the most noticeable."

Carrots, bell peppers, celery, corn, collard greens, mustard greens and hard shell squash are moderately priced, Mrs. Clyatt concluded.

Tender zucchini, or yellow squash seasoned with green onions, chunks of tomato and a generous pinch of oregano or sweet basil--cooked in foil--goes with any meat, says Mrs. Gwendolyn Clyatt, consumer marketing information specialist, Texas Agricultural Extension Service, Texas A&M University System.

Density makes a difference

in carpeting--tighter tufts mean easier cleaning, explains Patricia Bradshaw, housing and home furnishings specialist the Texas Agricultural Extension Service, Texas A&M University System.

High food costs encourage maximum use of home appliances such as freezers. Save money--prepare frozen tv-dinners from leftovers and freeze day-old baked goods, suggests Lynn Bourland, home management specialist, Texas Agricultural Extension Service, Texas A&M University System.

A two-year-old is old enough to say "thank-you, hello and goodbye," however, don't force him--instead, show pleasure when he makes the right response, advises Jane Fleischer, family life education specialist with the Texas Agricultural Extension Service, Texas A&M University System.

TUTU'S SCHOOL of BALLET

announcing registration to begin.

THURSDAY AUG. 30

with

classes to begin Monday, Sept. 10, 1973

Dance/rize in Social Dancing
Modern Jazz Tumbling (Boys & Girls)
Ballet Gymnastics

Classes for ages 4 through adult.

501 Main Sudan

OPEN 9 AM-8 PM WEEKDAYS CLOSED SUNDAYS

GIBSON'S DISCOUNT CENTER
1723 W. AMERICAN BLVD. MULESHOE, TEXAS

SALE STARTS THURS SEPT 6th GOOD THRU SATURDAY SEPT 8th

DECORATIVE NOVELTY CLOCKS
Our Reg. \$9.97 \$6.97
Our Reg. \$10.97 \$7.97
Our Reg. \$11.97 \$8.97
Our Reg. \$16.97 \$12.97

SANYO 12" BLACK & WHITE TELEVISION
\$69.95
NO. 21V65

10 QT. STYROFOAM MINNOW BUCKET
GOTHAM ONLY 66¢
OUR REG. 87¢

RED TAG SPECIAL LADIES SPRING & SUMMER SHOES
MARKED 1/2 OFF

GRADE A MEDIUM EGGS DOZEN
65¢

CASSETTE TAPE RECORDER
No. DS409 \$18.88

AJAX CLEANSER
21 OZ. CAN 19¢

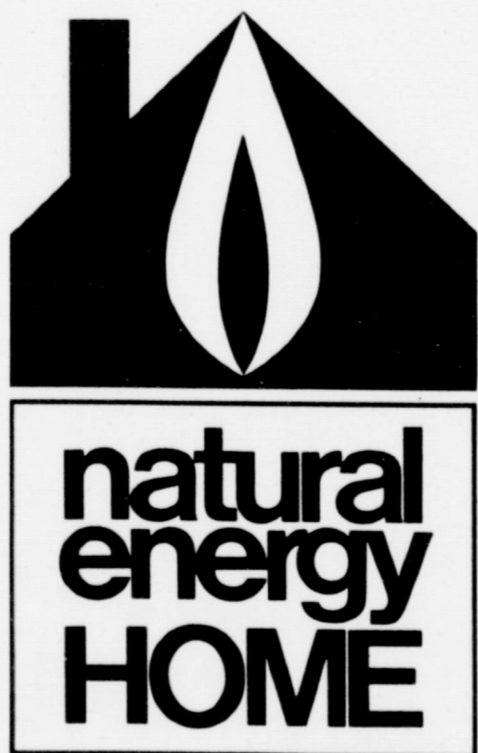
IRISH SPRING
2 BARS For 29¢ REG. BAR

BREATH of SPRING AIR FRESHENER
7 oz. CAN ONLY 29¢

BAGGIES 150 ct. SANDWICH BAGS
FOR SCHOOL WORK OR PICNICS 49¢

Close-up TOOTH PASTE
FAMILY SIZE TUBE ONLY 59¢

BAGGIES LEAKPROOF WASTEBASKET BAGS
8 GAL. CAPACITY 20 PAGES TO BOX 49¢

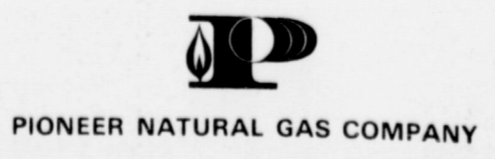


CLEAN ENERGY FOR TODAY AND TOMORROW

A Natural Energy Home uses natural gas for heating, cooling, water heating, cooking and clothes drying to save you money and help conserve our cleanest natural energy resource . . . natural gas.

That's because electricity in West Texas is generated by burning natural gas, and in the process of generating and transmitting electricity to your home, 2/3 of the gas energy is lost.

So, by using gas directly in the home for the jobs it can do, you're helping to conserve it and you're getting more energy for your money.



Key for '73 GET REVIVED involvement!
Attend a fundamental, Bible Believing, Bible Preaching, Bible Teaching- LOCAL CHURCH
Sunday School - 10:00 am Sept. 9, 1973 Lesson Ps. 119:161-168
Worship Hour - 11:00 am Subject: "The Pig that is caught under the gate, squeals the LOUDEST."
Nursing Home: 3:30- 3:00 p.m. Special Singing and West Plains Memorial Hospital Appropriate Scripture Reading
CALVARY BAPTIST CHURCH
18th & Ave. C Muleshoe, Texas 272-3329
Pastor: Charles Kenneth Harvey



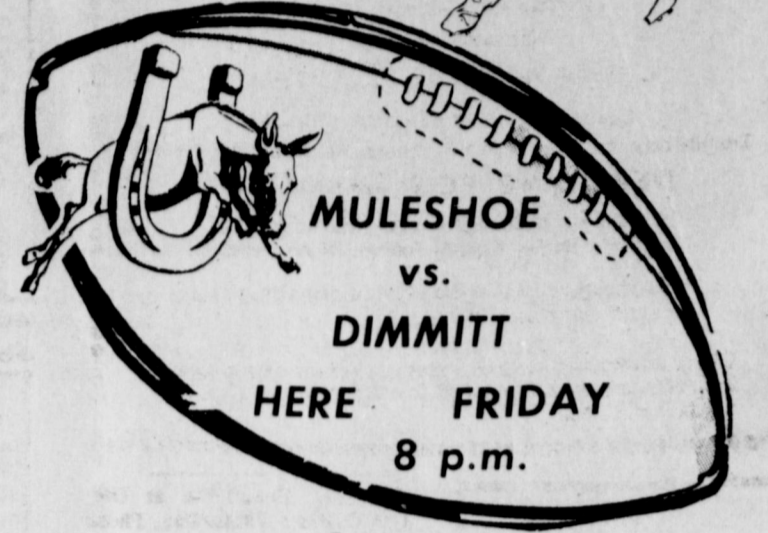
FOOTBALL CONTEST!



It's KICK-OFF Time
FOOTBALL SEASON OPENS!

You Have Until 5 P.M.
 Friday to Enter Contest

Enter Our Contest Each Week
 ...Nothing to buy - Just Pick Winners
HERE'S YOUR CHANCE TO



"PICK-A-WINNER"

WIN CASH WEEKLY PRIZES!



WIN FIRST PRIZE \$ **5**
WIN SECOND PRIZE \$ **3**
WIN THIRD PRIZE \$ **2**



THE FAMILY FUN GAME!

Watch for the Official
 Entry Blank Each Week

The Following Firms Urge
 You to Back The "MULES"
 & Attend All The Games:

The Following Firms Urge
 You to Back The "MULES"
 & Attend All The Games:

GRAND PRIZE \$50 For expenses and
 two tickets to the Cotton Bowl at Dallas, Texas. There will
 also be a contest and prizes for the Bowl Games!


**WINNERS TO BE ANNOUNCED
 IN NEXT WEEK'S PAPER**

Please write **FOOTBALL CONTEST**
 Muleshoe Publishing Company
 Box 449 Muleshoe, Texas
 on envelope of mailed entry.

**Read the rules... Start Winning
 RULES OF THE CONTEST:**

1. The contestant must be 12 years or older.
2. Only one entry per person may be made for any one contest.
3. Weekly contests are open to everyone except employees and families of this newspaper; bring or mail your entries to the Journal office.
4. Mailed entries must be postmarked not later than 5 p.m. Friday; winners names will be published in this newspaper each Thursday following the close of the weekly contest.
5. Check the team you think will win; 10 points for 1st place, 6 points for 2nd place and 4 points for 3rd place determines the Grand Prize winner.
6. The tie-breakers will count as one of the games picked, the predicted scores will be used to determine the top three places in that week's contest, if necessary, and cash prizes and points will be divided between winners in event of ties. Please write FOOTBALL CONTEST on envelope of mailed entry.
 Decision of the Journal's scoring judges will be final.

- JAMES GLAZE CO.
- WESTERN DRUG
- WILSON APPLIANCE
- HENRY INSURANCE AGENCY
- REDWINE '66 SERVICE STATION
- JOHNS CUSTOM MILL
- STATE LINE IRRIGATION
Muleshoe and Littlefield
- MAIN STREET BEAUTY SHOP
- SMALLWOOD REAL ESTATE
- HIGGINBOTHAM-BARTLETT
- DARI DELITE
- BEAVERS FLOWERLAND
- BOB STOVALL PRINTING
- COBB'S
- TEXAS SESAME

- MULESHOE MOTOR CO.
- WRINKLE WELDING & MACHINE SHOP
- BAILEY COUNTY ELECTRIC COOPERATIVE ASSOCIATION
- COUNTY AUCTION-PHONE 272-4154
- FIRST NATIONAL BANK
Member FDIC
- PRODUCTION CREDIT ASSOCIATION
- FARM BUREAU INSURANCE
Louis Stallings
- WOOLEY-HURST, INC.
- 
- WEST 6th TEXACO
- TRI-COUNTY SAVINGS & LOAN ASSOCIATION
- MULESHOE IMPLEMENT & SUPPLY CO.
- WHITT, WATTS & REMPE INC.
- MULESHOE CO OP GIN
- THE FAIR STORE

OFFICIAL ENTRY FORM
PICK THE WINNING TEAMS

1. Northern Illinois _____ <input type="checkbox"/>	Indiana State _____ <input type="checkbox"/>
2. Massachusetts _____ <input type="checkbox"/>	Holy Cross _____ <input type="checkbox"/>
3. Arizona _____ <input type="checkbox"/>	Colorado State _____ <input type="checkbox"/>
4. Arlington _____ <input type="checkbox"/>	North Texas _____ <input type="checkbox"/>
5. Panhandle _____ <input type="checkbox"/>	E.N.M.U. _____ <input type="checkbox"/>
6. Virginia _____ <input type="checkbox"/>	V.M.I. _____ <input type="checkbox"/>
7. Drake _____ <input type="checkbox"/>	West Texas _____ <input type="checkbox"/>
8. Idaho _____ <input type="checkbox"/>	El Paso _____ <input type="checkbox"/>

TIEBREAKER

9. Nebraska _____ SCORE	U.C.L.A. _____ SCORE
10. Muleshoe _____ SCORE	Dimmitt _____ SCORE

NAME _____
 ADDRESS _____
 CITY _____
 STATE _____ ZIP _____
 PHONE NO. _____

CLASSIFIED ADS

THE PLACE TO LOOK



WANT ADS PH.272-4536

CLASSIFIED RATES

OPEN RATES
 First insertion, per word-9¢
 Second and additional insertions-6¢

NATIONAL RATES
 First insertion, per word-11¢
 Second and additional insertions-7¢
 Minimum Charge-

CARD OF THANKS.....\$2.00

Classified Display \$1.12 per col. inch
 Double rate for Blind Ads \$1.15 per col. inch for Reverses

DEADLINE FOR INSERTION

Thursday's Muleshoe Journal-Noon Tuesday
 Sunday's Bailey County Journal-Noon Friday

The Journals reserve the right to classify, revise or reject any classified ad.

Check advertisement and report any error immediately. Journals are not responsible for error after ad has already run once.

VFW
Walter A. Moeller
 Post #8570
 8:00 p.m. 2nd & 4th Mondays
VFW Hall
 Joe T. Gonzalez, Commander

LODGE NO. Masonic Lodge
 meets the second Tuesday of each month practice night each Thursday
Frank Hinkson, WM
Elbert Nowell, Sec.

Lodge No. 58 Muleshoe Oddfellows
 meets each Thursday 8:00 p.m.
Joe Carroll
Noble Grand

Jaycees
 meets every Monday, 12 Noon
XIT Steak House
Bill Russell, President

Lions Club
 meets each Wednesday, 12 Noon
XIT Restaurant
Jim Shafer, President

Meets Every Wednesday 6am
XIT Restaurant
KIWANIS CLUB
R.A. Bradley, President

meets every Tuesday at 12:00
DINING ROOM
XIT Restaurant
Muleshoe Rotary Club
Jess Winn, President

1. PERSONALS
 I will not be responsible for any debts other than my own.
J.C. Kimbrough

I am responsible for no other debts than my own.
Rod Springfield
 1-36t-3tp

2. LOST & FOUND
 LOST: Long hair black male Shepherd-Mix, with crooked tongue. Answers to 'Boo' Lost between Texico and Muleshoe. Call collect 214-357-9815.
 35t-3tp

3. HELP WANTED
 WANTED: Part time book-keeping assistant and typist for farm related business. 20 hours weekly. Some experience. Please send resume to Box 449, Muleshoe, Texas, 79347.
 3-36t-tfc

ROUTE SALES Milk route openings now available. Good benefits. Apply at Bell Dairy Products, Inc. 201 University Avenue, Lubbock, Tex. or call 806-765-8833.
 3-35t-tfc

Applications are now being accepted for route salesman. Experience helpful but not required. Must have Commercial Operators license. Apply in person at Texaco Inc. 224 W American Blvd.
 3-36t-tfc

WANTED: Beautician at Dae Dae Couture Fantasies. Phone 272-4375.
 3-16s-tfc

Agency position for experienced fire and casualty insurance secretary available in Plainview. Prefer party with supervisory ambition and ability. All replies confidential. Excellent salary and other benefits. Apply with letter or resume to box 449, Muleshoe, Tex. 79347.
 3-36s-2tc

FOR RENT: 2 bedroom unfurnished apartment. Phone 272-4838 Smallwood Real Estate.
 5-47s-tfc

FRIONA APTS. now have available 1, 2, & 3 bedrooms. Call 247-3666 or come by 1300 Walnut Street.
 5-29s-tfc

7. WANTED TO RENT
 WANT TO LEASE: 40 to 160 acres of land for vegetables for '74. Call 364-1233 Hereford or write Box 405.
 7-34s-6tc

Want to lease wheat pasture, call 272-3866
 7-36t-4tp

8. REAL ESTATE FOR SALE
 FOR SALE: 2 bedroom house with bath and garage. 326 Chicago. Call 272-3003 or 272-3872 or 792-1659.
 8-36s-tfc

FOR SALE: 2 bedroom house at 316 West 10th. Call 272-4871.
 8-27t-tfc

FOR SALE: 160 acres dry land. Will rent 160 with it. Call 272-3191 or 272-3685.
 8-33t-tfc

FOR SALE: 3 bedroom, 1 3/4 bath, brick home in Richland Hills. Call 272-4376.
 8-22t-tfc

KREBBS REAL ESTATE
 210 S. 1st PH.272-3191

FOR SALE 30 acres exclusive near town New 8 inch well in alfalfa. NEED LISTINGS FOR HOUSES AND ACREAGE:
HOLLAND REAL ESTATE

113 W. Ave D
 Phone 272-3293 day or night
 8-32t-tfc

JAMES GLAZE COMPANY
REAL ESTATE AND FARM & RANCH LOANS
 Phone 272-4549 219 S. 1st.
 42t-tfc

POOL REAL ESTATE
 For Sale: 1 section good irrigated land. Would appreciate your listings on houses, farms and ranches. Pool Real Estate 214 East American Blvd. Phone 272-4716 Lee Pool 272-3136 Woody Goforth 272-3079

FOR SALE: 3 bedroom house, 1 full bath, 1 car garage, 1725 Ave. B. Phone 272-4709.
 8-34s-tfc

FOR SALE: 1964 Chev. van, Call 272-4340.
 9t-tfc

FOR SALE: 1970 Delta Olds 88 Royale 2 dr Hardtop. Well cared for. Call 272-5544.
 9-31t-tfc

10. FARM EQUIP FOR SALE
 WE PAY CASH for tractor and equipment of all kinds. Tom Flowers Auction, Inc. Day 272-4145 Night 10-2s-tfc

VALLEY SELF PROPELLED SPRINKLER SYSTEMS standard and reversing. Let us talk with you about our new 6-8-10 year lease. Programs which now include PVC plastic pipe. AVI, Inc. 1534 W. American Blvd. Muleshoe, Tex. Phone 806-272-3565.
 19-33t-tfc

2 80 acre tracts 8 miles west of Muleshoe, \$595. per acre-164 acres dry-land \$150. per acre. 324 acres 22 miles southwest of Muleshoe \$125. per acre. See Curtis Walker or call 272-3162.
 11-35s-4tc

Minimum Capitol required to buy thriving ladies dress shop. Call 272-4766 or 272-4412.
 11-35s-tfc

FOR SALE: 160 acres of land, 3 miles northwest of Muleshoe. Good irrigation well. Phone days, 806-272-4212. Nights, 806-272-3364.
 11-36t-4tfc

FOR SALE: Clarinet -- 272-4864.
 11-34s-4tp

FOR SALE: Registered Poodle puppies \$25.00. 1616 W. Ave. C Phone 272-3186.
 11-36t-2tc

FOR SALE: 1971 350 Hoada XL. Call 272-3138 or see at 117 Main. Wilson Appliance
 11-36t-tfc

FOR SALE to be moved im-mediately- 7500-8000 Clay tile 1500-2000 red brick 272-3329
 11-34t-4tc

FOR SALE: '77 Model John Deere stripper and John Deere Basket. Call 965-2154.
 11-35t-6tc

FOR SALE BY OWNER: 2 bedroom house close to high school. Fully carpeted, J.A. Rushing Tharp 225-6155.
 8-35s-8tp

FOR SALE BY OWNER: 2 bedroom house with den. Carpeted and fully plumbed. Fenced back yard. 618 Austin or call 272-4031.
 11-36t-tfc

Must Pick up small piano and Hammond organ by September 15th. Will allow person with good credit to assume payments on either piano or organ or both. For more information call or write American Music Co. 207 E. 8th Odessa, Texas, 79761 or phone 915-332-2711.
 11-34t-7tc

SHERIFF'S SALE: 1 '66 Dodge Wagon, serial#DL46-G63147329 - 1 '66 Pontiac #R100077, 1 '49 truck # 7HA6050-02- 1 '69 Buick, no serial, license #CGH 668. Combination Motors and Salvage.
 11-36t-3tc

BLUE Lustre not only rids carpets of soil but leaves pile soft and lofty. Rent our Blue Lustre electric shampoo machine. Higginbotham-Bartlett 215 Main

FOR SALE: New and used furniture. Call 272-4340.
 12-26s-tfc

SUPER stuff, sure nuff! That's Blue Lustre for cleaning rugs, and upholstery. Rent our Blue Lustre electric shampoo machine. Perry's 128 Main.

FOR SALE: Twin size mat-ress and box spring. Firm and clean. Call after 5, 965-2929.
 12-36t-2tp

Thinking about buying used furniture? We Have It At The Swap Shop
 Call 272-3074
 213 S. Main
 Muleshoe, Texas

FOR SALE New & Rebuilt Kirby's Carolyn Duncan
 Ph.272-4182 220 W. 10
MISCELLANEOUS

OFFICE SPACE FOR RENT: 1614 West American Blvd. Next door to Farm Bureau Office. Contact Farm Bureau office for further information. Phone 272-4567.
 15-29s-tfc

ELBON RYE SEED, Sacked and cleaned 965-2695, Elvis Powell
 31s-12tc

FOR SALE: 1/2 price compact Farfisa organ like new. Also 6 lots Bailey County Memorial Park. Call Friona 247-3419.
 15-20t-tfc

For Sale Vine Ripe

SAVE MONEY on vaccines, antibiotics, instruments and all animal health products. Affiliated supply. 1005 Ave. A or call 481-9234, Farwell, Tex. 15-35t-tfc

Public Notice
 Sealed proposals addressed to Three-Way Independent School District, Maple, Texas, for the general construction, which will include mechanical and electrical work for Additions & Alterations to Three-Way School, Three-Way Independent School District, Maple, Texas, will be received at the Office of the Superintendent of Schools, Maple, Texas, until September 25, 1973, at 2:00 p.m. at which time and place proposals will be publicly opened and read aloud. Any bid received after closing time will be returned unopened.

Bidders may obtain plans, specifications and related documents in the office of Atchinson, Atkinson, Cartwright & Rorex, Architects and Engineers, 1214 14th Street, Suite 106, Lubbock, Texas.

The Owner reserves the right to reject any or all bids and to waive any or all formalities.

Each bidder must deposit with his bid, security in the amount, form and subject to the conditions provided in Instructions to Bidders.

No bidder may withdraw his bid within thirty (30) days after the date of the opening thereof.

Three - Way Independent School District
 By: T. Doyle Davis, President
 Board of Trustees
 35s-2tc

Public Notice
 Three-Way School will hold its '73 - '74 school budget hearing on September 13, 1973 at 8 p.m. at the school.
 36t-ttc

Public Notice
 ORDINANCE NO. 115-A
 An ordinance regulating the collection of garbage, trash and rubbish in the City of Muleshoe; defining terms; prohibiting the depositing of garbage, trash, etc. on streets, vacant lots, etc.; prescribing duties of owners or occupants in use of metal containers provided by City; providing method for collection of trash not placed in regulation containers; providing reasonable charges for the collection and disposal of garbage by the City; providing method for billing and collection of said charges; establishing fees for use of garbage disposal area; prescribing penalty for the violation of this ordinance; providing a savings clause; and repealing all ordinances in conflict herewith.
 36t-2tfc

Wisdom
 Wisdom is knowing what to do next, skill knowing how to do it, virtue is not doing it.
 -Tribune, Chicago.

IT'S TOO LATE TO CLASSIFY
 WANTED: Intelligent young married man willing to work to learn equipment assembly and parts. Good job with a future for right person. Write Box 449, Muleshoe, Tex. 79347.
 3-36t-tfc

Texas Prison Rodeo Set For Next Month

HUNTSVILLE -- Chute-doggin' -- an event where convict cowboys will be required to take a young steer, using only one hand and a rope, to a designated spot in front of the chute gate to throw and tie the head of stock -- has been added to an already action-packed 42nd annual Texas Prison Rodeo scheduled for each Sunday in October.

It promises to be one of our most exciting events, forecasts E.H. (Hoot) Crawford, rodeo arena director.

And for the second year, the Goree Cowgirls will perform at the annual rodeo. The Goree Cowgirls stole the hearts of rodeo fans last year in their initial prison rodeo appearance while participating in the calf tussle, pig-sacking contest, and the donkey barrel race.

The 1973 rodeo -- getting underway at 2 p.m. each October Sunday with the grand entry parade -- will feature 40 convict cowboys contesting for the coveted all-around top hand title. Thirty-nine of these cowboys will be trying to wrestle the title away from the current

champ, Harry Southerland of Fort Worth.

Southerland owns back-to-back titles and will be shooting for three in a row -- a feat accomplished only once before in the history of the prison rodeo.

The cowboys participate in saddle bronc riding, bull riding, bareback riding, a mad scramble (10 riders on 10 bulls coming out of the chute gates at the same time), and a wild horse race that has 10 three-man teams attempting to catch, saddle, mount and ride to a designated finish line for top money.

The redshirts, a group of 40 inmates divided into two-man teams, will vie in the wild-cow milking contest event, and will participate individually in the Hard Money event. Hard Money involves the contestants trying to grab a Bull Durham-size sack from between a bull's horns. Hard Money is held twice each Sunday with the sacks being worth \$50 and \$25.

Country western music will add to the rodeo when inmate recording stars and bands swing out for the midway show beginning at 9 a.m., and the pre-rodeo arena show at 12:30.

Ticket information -- may be received by writing to the Rodeo Ticket Office, Box 99, Huntsville, Texas, 77340, Foley's in Houston or Sears stores throughout Texas and Louisiana.

News of Our SERVICEMEN L V Ringwald

BILOXI, Miss. -- Sergeant Larry V. Ringwald, son of Mr. and Mrs. Coy E. Ringwald of Nazareth, Tex., has graduated at Keesler AFB, Miss., from the U.S. Air Force electromagnetic compatibility course.

Sergeant Ringwald, an air traffic control radar repairman, is returning to his unit at Laughlin AFB, Tex. He is a member of the Air Force Communications Service.

The sergeant is a 1967 graduate of Nazareth High School. His wife, Joyce, is the daughter of Mr. and Mrs. Leonard E. Wilhelm of Rt. T, Nazareth.

TOOL SALE!

S-K TOOLS

Booster Cables
 Industro Wrenches
 ALL Hand Tools

Large Discount

check your tool supply come by

Ery & OX INC. 401 S. FIRST MULESHOE TEXAS 79347 PH. 272 4511

Take advantage of the Sale to get ready for harvest.

SEE THE "YIELDIN'EST HYBRIDS YOU'VE EVER SEEN"

P-A-G Hybrid Corns are reaching maturity now in test plots planted for your observation throughout the High Plains area.

Your area P-A-G Dealer invites you to visit these plots and see for yourself the high quality yields that these hybrid corns are a gain producing in YOUR area.

Observe these varieties which already have proven performance and several N are being evaluated to insure adaptability for your area.

SX520 A P-A-G single cross Hybrid Corn that is an excellent dual purpose corn for high grain yield-high quality top silage. NUMBER ONE in yield tests conducted in the Dimmitt area during 1972 with a yield of 221.5 bushels per acre. Distinctive because of its dark green color and relatively upright leaf for maximum light utilization. Has a bred-in "digestive system" that gives it the capacity to make full use of large amounts of fertilizer.

SX98 A very attractive 3-way cross with dark green color and large girthy ears. A real producer.

344 A tall, rugged 4-way with the built-in capacity to produce "tons" of high quality silage over a wide range of conditions. 492 produces lengthy ears with dense grain high in test weight.

492

Xtest plots located on land farm:1 by Bob Free.

Take U.S. 70 three miles east of Muleshoe-4.5 miles North on pavement-2 miles West. Across from H.M. Gables

MULESHOE 3 Mi. 4.5 Mi. 2 Mi. U.S. 70

After the visit, plan to book P-A-G Hybrid Corn and see what we mean when we say "Yieldin'est Hybrids You've Ever Seen".

PAG yieldin'est hybrids you've ever seen

sorghum seed

corn seed

DISTRIBUTED BY **DORMAN & COMPANY** LUBBOCK, TEXAS

Handfull of Teams To Play Saturday

Only a handful of major college football teams will see action this Saturday, but it will be "huge-butterflies-in-stomach" and a new start for at least five schools. Long Beach State, Drake, Fresno State, Lamar, and Texas at Arlington have all been reclassified by the N.C.A.A. They've been moved up from the ranks of college division football, and have been given major status. Four of them are favored

to make successful starts in their major college debuts... the fifth, Long Beach State, is a 14-point underdog to Grambling College. Grambling was our 4th-ranked college division team in 1972. Texas at Arlington faces North Texas State, and the Mavericks should win it by ten. Iowa's new major representative, Drake University, meets a toughie in West Texas... Drake is only favored by 5

points. Fresno State should have no trouble with Cal Poly of Pomona, winning by 35 points. But Lamar University, in Texas, will be hard pressed to whip New Mexico State. Lamar is the upper-dog by just eight points. The major attraction of the weekend, of course, will be the TV game of the day in

Lincoln between Nebraska and U.C.L.A. We ranked the Cornhuskers fifth in our final ratings last fall... the Bruins, 13th. Naturally, the Uclans would like nothing better than to duplicate their 1972 upset of Nebraska, and because of the Huskers' graduation losses, it's possible. However, we're going with the Cornhus-

ers by 7 points. This would be Nebraska's first-in-history win over U.C.L.A. Rated 23rd in our final 1972 ratings, the Mississippi Rebel is another early starter among major powers. Villanova is the opposition - the going spread is 31 with Mississippi the heavy favorite. North Carolina State, big win-

ner over West Virginia in the Peach Bowl, was our #27 team in 1972. The Wolfpack, who finished with a 7, 3, and 1 record last season, will whip East Carolina Saturday by 23 points. Powerful Delaware, #1 in all polls in college division ranks in 1972, meets Akron in its 1973 season opener. The Blue Hens who rejected all post-season

bids last November, will be heavy 22-point favorites over the Zips from Ohio.



MARITAL TROUBLES
MOSCOW--Nazri Sobirov, paid 1,400 rubles, two rams, four bags of flour, 300 yards of cloth and over 400 pounds of rice for his bride. After three days of marriage she left. Claiming he was cheated, he and his bride were put in a work labor camp-wife-buying is illegal.
So it seems
Many motorists appear willing to meet the other car more than half way.
-Constitution, Atlanta.



MIKE HUNT, MASTER COUNSILOR

Mike Hunt Installed As Master Counsilor

Mike Hunt, son of Mr. and Mrs. Bill Hunt of Muleshoe, was installed as Master Counsilor of the Muleshoe Chapter, Order of Demolay, in ceremonies held Friday evening, August 31, at 8:00 p.m. in the

Muleshoe Masonic Lodge. Mike, a junior at Muleshoe High School, has been a member of the Muleshoe Chapter for two and one half years and has been awarded the LCC and the Representative DeMolay Award, the highest award a DeMolay can earn. He will serve as Master Counsilor of the Chapter for four months.

Field Day Set At Halfway Foundation

The importance of water conservation will be spotlighted during the 17th Annual Field Day September 13 at High Plains Research Foundation at Halfway. Reduced rainfall and the increase in the number of irrigated acres due to the new farm program makes this topic even more important this year. Jim Valliant, research director and specialist in soil and water conservation, will describe methods of stretching existing water supplies through total utilization and methods of water harvesting at the one field tour stop.

In past years, the field tours have stopped at several points for discussion of research activities and results on several High Plains Research Foundation programs. This year, the water conservation program at the Foundation's multi-purpose well will be the only stop. Foundation scientist will serve as tour guides aboard the trailer trucks to point out research plots of interest and answer questions. The tours will be about one-hour in length. J. Joe Wright, associate agronomist in charge of variety tests and small grain crops, will present short programs on small grains and triticale throughout the afternoon.

Jack Cloude, public relations director, reports that the equipment exhibit is shaping up to be larger than last year's. "We had tremendous initial response. But we have plenty of spaces left. Anyone wanting to reserve exhibit spaces can contact me here at the Foundation," he said.

More Field Day activities are being planned, Coude noted. "We are lining up door prizes and other activities at the present time," he said.

Other officers installed were: Bobby Henry, Senior Counsilor; Max Buhrman, Junior Counsilor; Kip Garth, Treasurer;

Larry Torres, Scribe; Tracy Buhrman, Senior Deacon; James Cook, Junior Deacon; David Smith, Senior Steward; Steve VanZandt, Junior Steward; Ricky Claybrook, Chaplain; Mike VanZandt, Sentinel; Robert Young, Standard Bearer; Robert Stovall, Almoner; John Dean, Marshal; Mark Gregory, Orator; Zeb Payne, First Preceptor; Terry Mick, Second Preceptor; Eugene Reeder, Third Preceptor; Danny Howard, Fourth Preceptor; Keven Smith, Fifth Preceptor; Darrel Rasco, Sixth Preceptor; Larry Puckett, Seventh Preceptor; Danny Brown, Master Counsilor Aid; Billy Barry, Senior Counsilor Aid; Tim Jinks, Junior Counsilor Aid.

Members of the Advisory Council are, Wyle Bullock, Alton Epting, Melvin Seymore, Bill Hunt, Bob Phillips, and M.M. Mick.

The invocation was given by Rev. V.L. Huggins and the welcome by Melvin Seymore. The guest speaker was Woody Clark, west Texas Area Executive Officer from Plainview. The flower talk was given by John Dean and the benediction by Gary Hudson.

Members of the installing team were: David Seymore, Installing Officer; Gary Merriott, Installing Senior Counsilor; Ronald Bullock, Installing Junior Counsilor; Lonnie Ferris, Installing Marshal; Marcus Puente, Installing Chaplain; Paul Bell, Installing Senior Deacon. The guest registrant was Bonnie Sain. Musician was Kathy Seymore. Kathleen Jennings and Cassie Precure presided at the serving table. Hostesses were, Mrs. Jim Hudson, Mrs. D.T. Garth, Mrs. Wyle Bullock, Mrs. Calvin Embry, Mrs. Bennie Bickle, and Mrs. Melvin Seymore.

Fine Foods

FOR... **Very Important People**

MARKET ITEMS

COCA-COLA 32oz. BOTTLE **6 for \$1** Plus Deposit



Hormels Best Select Family Pack **PORK CHOPS** **98¢ lb.**

Decker Quality Thin Sliced **BACON** 1 lb. Pkg. **\$1.39**

Peyton All Meat Chuck **BOLOGNA** lb. **98¢** **FRANKS** 12 oz. pkg. **89¢**

Swift Premium Proten Beef **ARM ROAST** lb. **\$1.09**

Swift Premium Proten Beef **RANCH STEAK** **\$1.09 lb.**

Swift Premium Proten Beef **RIB STEAK** lb. **\$1.29**

MORTONS MINI-TACOS 59¢ pkg. **39¢**

USDA Grade A Small **EGGS** one dozen **59¢**

Gladiola **FLOUR** 5 lb. Bag **69¢**

- 1 Lb. Ctn. Two-8 oz. Tubs Shedd's Gold 'N Korn
- SOFT OLEO** 100% Corn Oil **39¢**
- 1 Lb. Box Sunshine **HI-HO CRACKERS** **49¢**
- 2 Lb. Box **RIVER RICE** **59¢**
- 7 1/4 oz. Pkg. Gladiola **CORN BREAD MIX** **2/19¢**
- 4 Roll Pkg. Charmin **BATHROOM TISSUE** **45¢**
- White Swan Oven Ready **BISCUITS** **6 49¢**
- 3 oz. Jar Liptons **INSTANT TEA** **\$1.09**
- #300 Can White Swan **HOMINY** **2 for 25¢**
- 12 oz. Cello Pkg. Skinners **PURE EGG NOODLES** **39¢**

FROZEN FOOD

- Stilwells 32oz. Box **FRUIT COBBLER** **79¢**
- 10 oz. Ctn. **PET WHIP** **49¢**
- 10 oz. pkg. Keiths **YELLOW SQUASH** **23¢**
- Family Size Banquet **CREAM PIES** **29¢**

- King Size Bottle Downy **FABRIC SOFTENER** **\$1.39**
- Giant Size Box White King **DETERGENT** **69¢**
- Bath Size **VEL BEAUTY BAR** **25¢**
- 15 oz. Can Niagara **SPRAY STARCH** **49¢**
- 15 oz. Can Ajax **WINDOW CLEANER** **59¢**
- #303 Can White Swan **TURNIPS & GREENS** **21¢**
- 14 oz. Bottle Hunts **TOMATO CATSUP** **4 for \$1**
- #303 Can White Swan **LUNCHEON PEAS** **5 for \$1**
- 46 oz. Can Texsun Pink **GRAPEFRUIT JUICE** **49¢**

PRODUCE

- Texas Crisp Yellow **CARROTS** **2 for 25¢**
- Golden Ripe **BANANAS** **9¢ lb.**

#2 WHITE POTATOES **5¢**

BANANAS **9¢ lb.**

Gerber Strained **BABY FOOD** 4 3/4 oz. Jar **10¢**

TEXAS FIRM GREEN HEADS CABBAGE **lb. 10¢**

Clinical Masseur
Thersia Davis, Owner
109 SOUTH FIRST PHONE 272-3677
MULESHOE, TEXAS 79347

DO YOU WANT RELAXATION FROM TENSION AND STRAIN? Then visit Thersia Davis, your Clinical Masseur for Complete Body Massage, Massages for sore muscles, and all around better relaxation. The clinic also offers steam and whirlpool baths, steam packs, and paraffin treatments. So fight fatigue and lead a happier healthier life by visiting Thersia at 109 South Main.

GUNN BROS. STAMPS
DOUBLE EVERY WEDNESDAY

White's CASHWAY
We Reserve The Right To Limit Quantities

Listen to **MULETRAIN** over **KMUL** 10:15 a.m. Sponsored by **WHITE'S CASHWAY**