

Weather

	HIGH	LOW	PREC.
April 28	80	52	
April 27	88	48	
April 26	83	44	
April 25	74	41	
Precip. to date 1.35"			

MULESHOE JOURNAL

'The Community of Opportunity-Where Water Makes the Difference'



Volume 53 Number 18

12 Page

Published Every Thursday at Muleshoe, Bailey County, Texas 79347

10 Cents

Thursday, April 29, 1976

Primary Contest Slated Saturday

Young's Caravan Hits Campaign Trail Voters Face First Presidential Primary

Local Incumbent DA Hot After Voters

Jack Young put his campaign for re-election for District Attorney in the 154 Judicial District in high gear Saturday, when a group of friends and supporters left in a caravan to visit towns in Lamb, Bailey and Parmer Counties.

Young is the incumbent candidate for District Attorney of the 154 district and is running against Doyle Elliott, Friona. The present D.A. was elected to office in 1961 and has subsequently been re-elected to that office.

Young, a 46 year old attorney and son of Mrs. Mary Young and the late Ty Young, was born and raised in Muleshoe. He is married to the former Martha Hall of Sudan and is the father of two daughters, Prisca and Pam.

He attended Muleshoe High School and is a graduate of Texas Tech University with a B.A. Degree, also a graduate of the University of Texas at Austin Law School and was admitted to the State Bar of Texas in November of 1955. He served two years from 1952-1953, as a Petty Officer in the U.S. Navy, during the Korean Conflict.

On law and order, Young has made the following statement: "I believe that society should be able to rest secure in its property, its homes, businesses and in public places without fear of interference from a lawless element. I further believe that when an individual violates the law and commits a crime against society, that individual should be required to answer for such violation and if found guilty by a jury of his peers, he should be punished. This is the premise upon which I have operated as District Attorney."

Young, who pursues a courtroom policy of "stay with the law", apparently has had considerable success against opponents who attempt to confuse the issues with "client pleasing" side show antics, based on soap-opera emotionalism, clouded with a mist of skulduggery.

He has a license to practice in the United States Supreme Court, is a member of the State Bar and other legal associations and has also been cited by the State Securities Board for out-

Cont. on Page 3 Col. 3



CANDIDATE AND FRIENDS . . . All ready to start on a three-county election tour last Saturday is Jack Young, friends, and supporters. Young's tour was made in an effort to solicit votes on

his behalf. In the Democratic Primary Saturday, May 1, he will be the incumbent candidate for District Attorney of the 154 District.

Extension Beef Cattle Specialist Named

COLLEGE STATION -- Beef cattle production is one of the major agricultural enterprises of the Texas Plains, and the Texas Agricultural Extension Service has named a beef cattle specialist to provide leadership in educational programs related to this industry.

The new specialist is Dr. John W. McNeill, who will be headquartered at the Extension District 1 office in Amarillo, effective June 1. McNeill will serve the 20-county area of District 1 along with a number of counties in Extension Districts 2 and 3 (South and Rolling Plains). He fills the position vacated by Dr. Cal Parrott who resigned recently to enter private business.

"We feel Dr. McNeill is capable of giving strong leadership in educational programs designed to boost the beef cattle industry of this area of the state," said Dr. H.O. Kunkel, dean of agriculture at Texas

A&M University and acting Extension Service director, in announcing the appointment. "Management of cattle is becoming more and more critical due to economic pressures, and Dr. McNeill will be giving particular emphasis to increasing production efficiency. He will be working closely with county Extension agents and county program building committees in planning and conducting educational efforts."

McNeill has been associate professor and acting head of the Department of Animal Science at West Texas State University at Canyon for the past two years. He also was an assistant professor there for two years prior to beginning work on his doctoral degree.

The new specialist is a native of Armstrong County. He was graduated from Happy High School where he was an out-

Cont. on Page 3, Col. 6.

ASCS Sets Final Date To Reapportion Cotton Acreage

The USDA Service Center has set a final date, May 3, for the farmers to transfer, release, or request reapportioned cotton acreage. The abandoned wheat must be reported of the acreage to the office prior to plowing it.

DECA To Host Employer's Day Thursday

DECA, in an innovative attempt to show their appreciation to the business community, for their cooperation with the Distributive Education Program, is sponsoring an Employer's Day at the XII Steak House.

Instead of being a member of the "Banquet Bunch", DECA thinks they can provide more of a service and convenience to the employer by providing a meal and a short program during either breakfast, lunch, or supper, depending on the public's schedule.

Whichever the people choose, they may come at their leisure for a free meal and a chance to browse through the materials DECA will have displayed; materials that may be used for store meetings; such as shoplifting filmstrips, tapes on business telephone techniques, and creative selling aids.

These materials are used in class to correspond with the job projects that have been completed during the year, and a chance to talk with the students about

Cont. on Page 3, Col. 6

Bailey County 4-H's Win At District

Bailey County 4-Hers won honors at District Two 4-H Contests held on Saturday, April 24, 1976 at Lubbock. As a result, the 4-Hers won the right

Smith, Accident Victim Tuesday

Kim Smith sustained a broken leg, a broken pelvis and multiple lacerations about the face and head. The accident happened around midnight Tuesday, April 27. The pickup he was driving turned over four or five times, about five miles west of Littlefield.

Smith is in intensive care at Methodist Hospital in Lubbock. He is the son of Mr. and Mrs. Les Smith of Muleshoe. At press time, he was in very serious condition.

up. It must be inspected, if they want history credit and protection and possible disaster payment.

The 1975 disaster payments are near completion. If the farmers feel they are due a payment on their farm, but one has not been received, it may be that the office does not have the signature on the farm questionnaire. Please come by the office; it is probably holding up payment.

The office has, to date, paid out \$1,376,645.71 in disaster payments to Bailey County Producers.

1976 TARGET PRICES AND LOAN RATES: The Agriculture and Consumer Protection Act of 1973 required that target prices for the 1976 crop be adjusted upward from the 1975 levels to reflect increased production costs during 1975. The 1975 loan levels are also being adjusted upward to reflect approximately the same percentage increase as made in the target prices. The 1976 target prices and loan rates are as follows:

Wheat (Bu.), target prices for 1976, 2.29, for 1975, 2.05, loan rates for 1976 1.50, for 1975, 1.37.

Corn (Bu.), target prices for 1976, 1.57, for 1975, 1.38, loan rates for 1976 1.25, for 1975, 1.10.

Grain Sorghum (Cwt.), target prices 2.66, for 1975, 2.34, loan rates for 1976, 2.13, for 1975, 1.88.

Cotton (Lb.), target prices for 1976, 43.20, for 1975, 38.00, loan rates for 1976 37.12, for 1975, 34.27.

Target prices are used to determine payments when the higher of (1) the national average market price or (2) the loan rate, is less than the established target price. Target prices are also used to determine payments for these crops under disaster provisions. Disaster payments at a rate of not less than one-third of the target

price for each crop, will be paid to eligible producers whose yields are substantially reduced to a natural disaster.

PLANTING DATES: The normal planting dates for Bailey County are as follows: Upland cotton, May 5 to June 10; Grain Sorghum, April 1 to June 20; Corn, March 20 to May 1; Soybeans, April 20 to July 1 and Peanuts, May 20 to June 10.

Speech Students Win At Regional

Students of the Muleshoe High School Speech Class, in district 1-AAA, journeyed to the Regionals Tournament at Odessa College, Saturday, April 24.

Selected for All Star Cast in the One Act play were Larry Mills and John Dean. Placing first in Debate were Lashelle Lewis and Royce Clay, with John Dean and David Smith taking second. Bill Durham placed second in Prose Reading, Mike O'Grady won third place in Persuasive Speaking and Mary Ann Gonzales, placed second in Informative Speaking.

All students placing in this tournament will advance to the state meet held at Austin, May 7 and 8, at the University of Texas Campus, Austin.

Lazbuddie Holds Registration May 3 Through 7

The Lazbuddie Elementary School, will hold their registration of kindergarten and first grade students on May 3 thru 7, at the elementary, between the hours of 8:00 a.m. and 3:30 p.m. Students entering kindergarten must be five years of age by the first of September, 1976 and first grade students must be six years old.

Parents should bring their child's birth certificate, as well as their immunization record. The new students must have measles, polio, D.P.T. and Rubella shots by September 1, for enrollment in school.

Chamber Breakfast Set For Thursday

The Chamber of Commerce bi-monthly membership breakfast and agriculture is scheduled for Thursday, April 29, at 6:30 a.m., at the Corral Restaurant.

This breakfast is to honor the past Mayor of Muleshoe, Alex Williams. He will be recognized for the accomplishments and the growth of Muleshoe during his administration.



SEEKING REPUBLICAN POST . . . Jim Reese is seeking a seat on the United States Representative 19th District on the Republican ticket. Reese was designated "Outstanding Citizen of Odessa 1973" by Odessa Chamber of Commerce; President, Texas Association of Mayors, Councilmen and Commissioners; Vice President of the United States Jaycees (1965-66) and was the President of the Texas Jaycees in 1964-65. Reese married the former Jayne Damron of Muleshoe and they have three children. He is the son-in-law of Mr. and Mrs. Joe Damron; brother-in-law of Sam Damron and Mrs. John Smith, all of Muleshoe.



TRIENDER ELECTRIC WON . . . The Jaycees sponsored a volleyball game Thursday through Saturday of last week. Those on the winning team were back row, l to r are Bob Doose, Jerry Engleking, Richard Engleking, front row, l to r are John Agee, Jimmy D. Seaton and Hobby Jennings.

A New Arthritis Drug Released To Help Pain

Physicians in the United States have a new prescription drug to help relieve the pain, stiffness, and inflammation of joints in patients with rheumatoid arthritis -- but they're still looking for a cure.

The new compound discovered by Eli Lilly and Company, is called Nalfon (fenoprofen calcium, Dista), known generically as fenoprofen calcium. According to Lilly scientists, the pro- or "propionic-acid derivatives" are a relatively new class of prescription drugs that represent an advance in the management of the disease.

Cleared recently by the Food and Drug Administration for marketing in the U.S., Nalfon has undergone one of the most extensive evaluations of any drug in the company's 100-year history, according to Lilly officials. More than 5,000 individuals participated in the clinical trial program. In just one study involving 216 patients suffering from rheumatoid arthritis, 51,000 separate laboratory tests were conducted. In all, 194 different studies were undertaken.

The major attribute of Nalfon and other propionic-acid derivatives is their ability to relieve pain and reduce inflammation with less chance of serious side effects commonly associated with many of the other prescription drugs available for the management of rheumatoid arthritis.

During clinical tests, improvement observed with Nalfon was comparable to that seen with therapeutic doses of aspirin, but frequency of the milder gastrointestinal adverse effects and other side effects such as ringing in the ears was less than in aspirin-treated patients.

The company's researchers are quick to point out, however, that Nalfon is not a panacea. It will not cure rheumatoid arthritis, one of many forms of arthritis -- a disease that affects more than 40 million Americans -- nor has the drug's effectiveness been established in patients who are largely or wholly incapacitated by rheumatoid arthritis.

In discussing the new drug, Anthony S. Ridolfo, M.D., head of research in arthritis and connective tissue diseases at the

Lilly Laboratory for Clinical Research, emphasized the importance of a physician's involvement in the management

of a patient with arthritis. "Because there is no cure for the disease, many people with

Hand Hoeing Gets Small-Garden Weeds

Hand hoeing is still the most effective way to weed a small garden, believes Spencer Tanksley, county agent for the Texas Agricultural Extension Service. "Hand hoeing is inexpensive, accurate and even enjoyable and rewarding for some," he says. "Begin hoeing when weeds appear and keep it up throughout the growing season. Weeds that are close to the base of plants should be pulled by hand."

If you can't stand the strain of hoeing, mulches and herbicides (chemical weed killers) can be used to keep weeds out of the garden. Mulches, which prevent weeds from emerging by blocking out the sun, work best against weeds that come up each year from seed, Tanksley

explains. Compost, straw, leaves, hay, sawdust, wood shavings and bark all make good mulch materials. Plastic sheeting, newspaper and black polyethylene film can also be used for mulching. However, clear plastic is not an effective mulch because it lets in sunlight.

"Before applying any mulch, moisten the soil," points out Tanksley. "If you plan to use plastic sheeting, apply most of the fertilizer plants will need beforehand." Tanksley recommends applying organic mulches only when the soil temperature has warmed up. Otherwise, the soil will stay cool longer, thus slowing plant growth.

It might be necessary to add nitrogen to organic mulches because micro-organisms in the mulch use this element in the decaying process.

As far as herbicides are concerned, these are difficult to use in a small garden with many different kinds of vegetables. A herbicide that is safe for one kind of vegetable may not be safe to use on another, Tanksley points out.

A good all purpose preplant herbicide that kills weeds, nematodes and fungi is Vapam. The material can be applied to the soil with a hose-on sprayer several weeks before planting. Water the soil well for a few days after application so the herbicide seeps into the soil. Covering the garden with plastic sheeting immediately after applying the herbicide makes the treatment more effective.

Tanksley adds that herbicides applied at or after the time of planting are not as good as preplant herbicides. However, Dacthal, a pre-emergence herbicide which is applied after planting, is a satisfactory weed killer for gardens.

All chemical herbicides should be used only according to instructions on the label and should be applied with caution, emphasizes Tanksley.

Formula

Late to start
And early to stop
Makes life easy --
But you a flop.

One Method

"Could you give me a recipe for cold tomato soup?"
"Well, one simple method is to be very late for dinner."

Splendid Sort

Employer--Young man, I will hire no drinkers. Are you a total abstainer?
Youth--Oh, yes, sir. Frequently.

arthritis feel it won't do any good to see a doctor and, instead, become the victim of quacks -- to the tune of \$400 million a year -- while others just quietly suffer. It is important that persons with arthritis know that treatment by a physician can often bring relief and reduce or prevent disability," he said.

Despite extensive research by many scientific institutions, progress to date has been very slow

Cattle Fed In Area Feedlots Are Still On The Decline

The number of cattle being fed in area feedlots is still on the decline, it was revealed today in the 1976 Fed Cattle Report compiled by the Agricultural Development Department of Southwestern Public Service

Delegates Visit Muleshoe

State Senator Max Sherman, James R. Lovell, of Dumas, and Mrs. Travis (Jeanette) Spears, of Levelland, were in Muleshoe April 21, in behalf of their candidacy as delegates to the Democratic National Convention. The three of them are listed as delegates for United States Senator Lloyd M. Bentsen.

The three agreed that Bentsen delegates from Texas will give the state a united voice in the selection of the Democratic presidential nominee. Sherman, Lovell, and Mrs. Spears, for example, each live in a different section of the 31st Senatorial District. They know the people of this area.

Sherman grew up in the Phillips-Borger area, graduated from Baylor University and the University of Texas Law School, and has practiced law in Amarillo since graduation. He has represented this area in the State Senate since 1971.

Lovell grew up in the Clarendon area, graduated from Southern Methodist University Law School, and has practiced law in Dumas since graduation. He is a past director of the State Bar of Texas and presently serves on the WTSU Board of Regents.

Mrs. Spears and her husband, teach at South Plains College in Levelland. She received her bachelor's and master's degrees from Eastern New Mexico University. She also attended Hardin-Simmons University and University of Texas at Austin. The three nominees said they "are pledged to represent the interest of this area and of Texas."

in finding a cure for arthritis, now counted as one of the most disabling diseases. Thus far, no drug known will do for arthritis what penicillin did for pneumonia. But according to Dr. Ridolfo, the discovery of new drugs such as Nalfon is an important step in making various forms of the disease easier to live with until a cure can be found.

The Arthritis Foundation claims that almost \$3.5 billion in

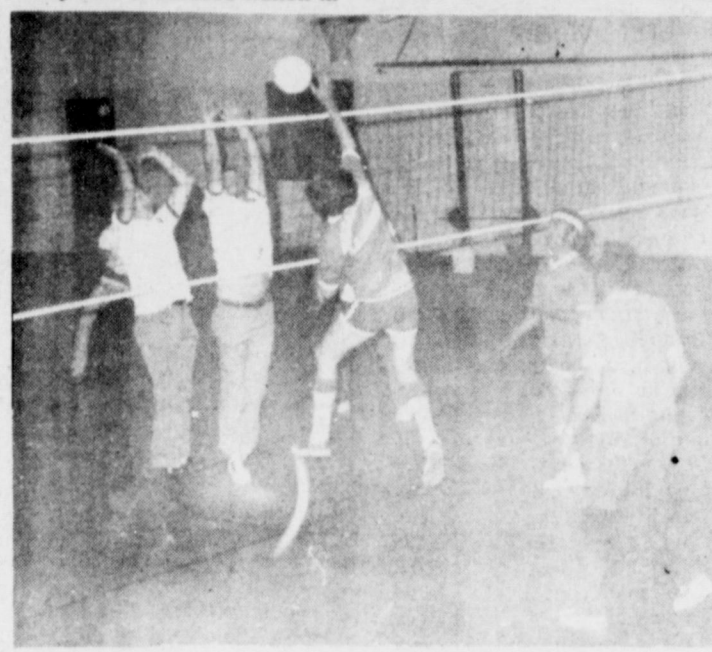
wages and homemaker services are lost annually because of arthritis. The disease affects one of every four families.

Most serious, most painful, and most crippling is rheumatoid arthritis, causing chronic inflammation of joints, with women afflicted about three times more often than men. More than 5-million Americans suffer from rheumatoid arthritis, which usually strikes in the 20-to-45 "prime-of-life" years. Lilly first introduced Nalfon in

South Africa in October, 1973. The drug is also currently available in a number of countries, including Brazil, Canada, Spain, Switzerland, the United Kingdom, and West Germany. Dista Products Company, a Lilly division, is introducing the drug in the U.S.

Errors of opinion may be tolerated where reason is left free to combat it. -Thomas Jefferson.

Rivers rush to the ocean no faster than man rushes to error. -Voltaire.



S-T-R-E-T-C-H... John Agee of Treider Electric has to stretch a little for a spike to Blackwater Agriculture during the men's volleyball tournament. Treider Electric won, and will be playing for first place.

Cotton Weaving Set For First Half Of May

Members of American Cotton Growers have received another five-cents per pound progress payment, L.C. Unfred of New Home, President of the 3,000-member marketing cooperative announced today.

"This is the second progress payment made to members from the marketing pool since January," he said. "We are pleased with the progress of our pool." The recent payment of \$4.5 million brings to over \$9 million total progress payments made to the ACG membership in addition to the advance of gross CCC loan value at time of delivery.

In commenting on the balance of the pool marketing year which will conclude on September 30, Unfred said the Association is in good position to capitalize on any market upturn. "We have over 45,000 bales of cotton remaining to be sold from this season's pool in addition to

20,000 bales which are earmarked for the Association's textile mill in Littlefield."

Commenting on progress of the \$30 million denim manufacturing facility under construction by ACG, Unfred stated that the plant is progressing on schedule and limited startup of weaving operations is anticipated sometime during the first half of May.

To err is human, to forgive divine. -Alexander Pope.

Who says he does not err, errs in conceit. -John Norden.

There is no error so crooked but it hath in it some line of truth. -Martin F. Tupper.

No 17 OFFICIAL BALLOT BOLETA OFICIAL

REPUBLICAN PARTY PARTIDO REPUBLICANO

Vote for the candidate of your choice in each race by placing an "x" in the square beside the candidate's name.

(Vote por el candidato de su preferencia para cada candidatura marcando con una "x" el cuadro junto al nombre del candidato.)

I am a Republican and pledge myself to support the nominees of this primary. (Yo soy Republicano y me comprometo a apoyar a los candidatos nombrados de esta Primaria.)

DELEGATES TO NATIONAL PRESIDENTIAL NOMINATING CONVENTION DELEGADOS A LA CONVENCION NACIONAL QUE NOMBRARA EL CANDIDATO PRESIDENCIAL

VOTE FOR ANY 4 DELEGATES (VOTE POR CUALESQUIER 4 DELEGADOS)

Delegate Candidate (Candidato Delegado) Presidential Candidate (Candidato Presidencial)

- ERNEST ANGELO, JR. delegate for (delegado a favor de) RONALD REAGAN
- MEL MONTE delegate for (delegado a favor de) RONALD REAGAN
- ROBERT L. MONAGHAN delegate for (delegado a favor de) RONALD REAGAN
- BARBARA CULVER delegate for (delegado a favor de) RONALD REAGAN
- JAMES N. (JIMMY) ALLISON, JR. delegate for (delegado a favor de) GERALD R. FORD
- MARY KIRCHHOFF delegate for (delegado a favor de) GERALD R. FORD
- DAVID M. SHANNON delegate for (delegado a favor de) GERALD R. FORD
- MRS. R. S. (TERRY) TAPP delegate for (delegado a favor de) GERALD R. FORD
- JUANDELLE LACY Uncommitted Delegate (Delegado Sin Preferencia)

Vote for the candidate of your choice in each race by placing an "x" in the square beside the candidate's name. (Vote por el candidato de su preferencia para cada candidatura marcando con una "x" el cuadro junto al nombre del candidato.)

For United States Senator (Para Senador de los Estados Unidos)

- ALAN STEELMAN
- LOUIS LEMAN
- HUGH W. SWEENEY

For United States Representative, 19th District (Para Representante de los Estados Unidos, Distrito No. 19)

- JIM REESE

For Railroad Commissioner (Para Comisionado de Ferrocarriles)

- WALTER WENDLANDT

For County Chairman (Para Presidente del Condado)

For Precinct Chairman, Precinct No. (Para Presidente del Precincto No.)

Place an "x" in the square beside the statement indicating the way you wish to vote. (Ponga una "x" en el cuadro al lado de la frase que indica la manera en cual usted quiere votar.)

The following are not binding. (Las siguientes no son obligatorias.)

- FOR (A FAVOR DE) } Do you favor a constitutional amendment or legislation to deny release or bail to repeat felons who are awaiting trial? (¿Apoyaría usted una enmienda constitucional o legislación que les negaría liberación o fianza a criminales repetidores?)
- AGAINST (EN CONTRA DE) }
- FOR (A FAVOR DE) } Do you favor legislation which would require mandatory, non-parolable prison sentences for felony offenses involving the use of deadly weapons or resulting in bodily injury? (¿Apoyaría usted legislación que requeriría sentencias mandatorias y sin liberación condicional para delitos criminales en que se usan armas mortíferas o que resultan en lesión corporal?)
- AGAINST (EN CONTRA DE) }
- FOR (A FAVOR DE) } Would you favor a constitutional amendment or legislation which would allow the use of oral confessions in a trial? (¿Apoyaría usted una enmienda constitucional o legislación que permitiría el uso de confesiones orales durante el juicio?)
- AGAINST (EN CONTRA DE) }
- FOR (A FAVOR DE) } Do you favor a constitutional amendment allowing the use of electronic surveillance to fight organized crime? (¿Apoyaría usted una enmienda constitucional que permitiría el uso de vigilancia electrónica para combatir el crimen organizado?)
- AGAINST (EN CONTRA DE) }
- FOR (A FAVOR DE) } Would you favor a constitutional amendment or legislation banning the use of forced busing of school children for the purpose of achieving racial balance? (¿Apoyaría usted una enmienda constitucional o legislación que prohibiría el uso de transportación mandatoria de niños escolares con el propósito de lograr el equilibrio de las razas?)
- AGAINST (EN CONTRA DE) }

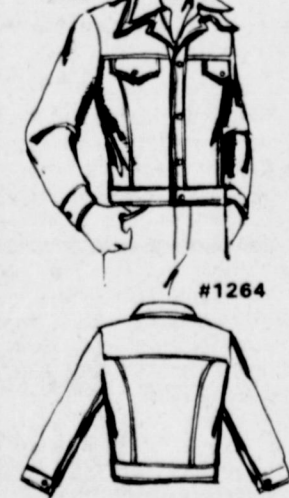
Presented in the public interest by:

First National Bank

Member FDIC

Belle's Patterns With A WESTERN Flair

SIZES 34 TO 46 \$1.50



Men's Jean Jacket

Get the working western look with this jean style jacket. Features flat-felled seams, cuffed sleeves, and pointed pocket flaps over inset pockets. Waistband fits slightly below the waist. Detailing is completed by top-stitching.

Printed pattern #1264 in sizes 34 to 18. Send \$1.50 for this pattern... add 50¢ handling and postage. Send to:

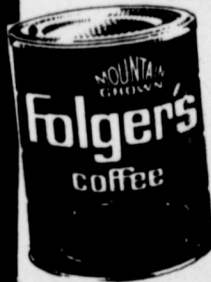
Belle's Patterns P. O. Box 841 - Dept. 451 Hurst, Texas 76053

OPEN 24 HOURS

ALLSUP'S CONVENIENCE STORES

OPEN 24 HOURS

WE HAVE CUSTOMER PLEASING WEEKLY BARGAINS!



MOUNTAIN GROWN FOLGER'S COFFEE 1 LB. CAN \$1.49

PRINGLES BUY ONE GET 1 FREE POTATO CHIPS \$1.25

RANCH STYLE BEANS 4/\$1

GIANT SIZE TIDE \$1.29

COKE 3/99¢

32 oz. Bottle PLUS DEPOSIT

HOT COOKED FOODS

- BBQ CHICKEN
- HOT LINKS
- BURRITOS
- GERMAN SAUSAGE
- BBQ RIBS
- MILD LINKS
- CORN DOGS
- BULK BBQ BEEF
- BBQ BEEF SANDWICHES

ALLSUP'S DAIRY FAVORITES

BORDEN'S Cottage Cheese 12 OZ. CTN. 49¢

BORDEN'S ICE CREAM 1/2 GAL. NO. CTN. \$1.19

SOFLIN LARGE ROLL TOWELS 59¢

SHOP THE FRIENDLY, CONVENIENT ALLSUP'S STORE NEAR YOU!



ALLSUP'S #34 MULESHOE, TEXAS 414 W. AMERICAN BLVD.

Cold-Tolerant Seen For High Plains

LUBBOCK -- Last September, when cotton on the Texas High Plains was entering its critical boll development stage, two consecutive weekends of cold, wet weather interspersed by several unusually warm days dealt cotton a severe blow. Agriculturists blamed the weather for causing at least a 50 percent loss in the 1975 cotton crop.

Texas Agricultural Experiment Station researchers at Lubbock now say at least two experimental varieties show "good genetic tolerance to cold", offering hope that varieties can be developed that will reduce the heavy economic losses that occurred last September.

Dr. Jack Gipson, Experiment Station cotton physiologist at Lubbock, says that since cotton is a hot weather crop, temperatures in excess of 70 degrees Fahrenheit are required for normal boll development. As temperature drops below this level, the rate of boll development gradually slows, ceasing almost entirely at about 60 degrees F.

In the High Plains area, most of the boll development occurs during August, September, and October, says Gipson. Beginning in September, and occasionally even in August, cold fronts periodically move through the area, resulting in minimums considerably below the optimum for boll maturation. August minimums average in the mid 60's, but in many seasons minimums dip to the mid 50's. September minimums average 58 degrees F with lows of 41 not uncommon, and October minimums average 47 degrees F with occasional dips to the low 30's.

"Low temperatures during boll maturation periods adversely affect yields, fiber and seed quality," Gipson explains.

"Fiber fineness, one of the most important measurements of fiber quality, is affected the most by temperature.

"In practice, fineness is usually determined by the micronaire apparatus, and is reported as the weight (in micrograms) per inch of fiber, he adds. "Since weight per inch is closely related to fiber wall thickness, the micronaire value serves as a very useful measure of fiber maturity."

Gipson has been studying the influence of temperature on cotton production and quality in cooperation with Dr. Levon Ray, Experiment Station cotton breeder, also of Lubbock. They found that certain varieties appear to be better adapted or more tolerant to low temperature than others, indicating that cotton does possess a genetic potential for cold tolerance.

Based on this premise, they began a program of testing and selection for cold-tolerant cotton



CERTIFICATE AWARDED . . . Judge Glen Williams, of Bailey County, awarded a certificate for participation in the Texas Community Improvement Program to Mrs. Robert Hunt, secretary, and Mrs. George Wheeler, filling in for her husband, who is president of the West Camp Community Improvement Association. They have worked hard this past year to improve their community standards. Standing from left to right are Mrs. Robert Hunt, Judge Glen Williams and Mrs. George Wheeler.

in 1972. In their research they are using early maturing experimental types developed at the Lubbock Texas A&M University Agricultural Research and Extension Center by Dr. Ray for narrow-row production.

These experimental lines are grown out in field growth chambers equipped with air conditioners and gas furnaces so that night temperatures can be controlled at the desired levels. Three commercial cotton varieties are also used to provide standards by which progress can be gauged.

Selections are then made under low-temperature (57 degrees F) stress conditions. Selections are made both for earliness, and for cold tolerance.

"With the aid of the low-temperature chambers the process of selection is speeded up considerably over what could be achieved under normal field conditions," Gipson says. "Thus, an earlier and more cold tolerant variety should be developed several years sooner than under ordinary selection programs.

"To date, two experimental lines show very good promise," says Gipson. "They are earlier than the commonly used standard commercial varieties and consistently produce fiber with higher micronaire values than the standard varieties."

Gipson says this is especially important in view of the large marketing discounts on low micronaire cotton. Cotton with micronaire values of 3.5 - 4.9 is

not discounted, he said, but at 3.4 and below it is discounted in ranges, that is, 3.3 - 3.4, 3.0 - 3.2, 2.7 - 2.9, and 2.6 or less. Thus even an increase of a 0.3 micronaire unit could result in a shift upward of one to two brackets, thus reducing the discount.

"When one considers that on a long-term average, about 60 percent of the crop for the 25-county High Plains area falls in the penalty range of 2.4 to 3.4, the importance of shifting to higher micronaire brackets can be realized," Gipson emphasizes.

Assuming a two million-bale crop, some 1,200,000 bales would be penalized to some degree for low micronaire, he says. Based on a common discount of \$15 to \$20 per bale, the economic loss to the High Plains is staggering.

Gipson's study is being supported by the U.S. Department of Agriculture with funds made available through Cotton Incorporated, of New York and Raleigh, N.C.

Young...

cont. from Page 1 standing prosecution in securities violations.

A long time members of the First Baptist Church, Young is also a member of a gospel singing group "The Crusaders", who have entertained at many area functions with their religious renditions and fellowship.

Three Way News

By Mrs. H.W. Garvin

Cecil Lendsey of Eastland died Saturday, in an Eastland hospital and was buried at Eastland Sunday. Mr. and Mrs. Cecil Lendsey lived several years until their retirement in Maple, where he was manager of the State Line Butane Company.

Mr. and Mrs. Jackie Dupler and son, from Mt. Pleasant spent the weekend visiting their parents, the Leon Duplers and Jay Boyce.

Mr. and Mrs. Sidney Key from Littlefield spent the weekend with his parents, the Bill Keys.

Mrs. P.L. Fort and Bonnie Long were in Lubbock Thursday on business.

Mr. and Mrs. George Tyson were dinner guests in Lubbock Sunday, with their daughter, The Tommy Durham family.

Mr. and Mrs. Jack Furgeson spent the weekend visiting their daughter, The Jim Green family in Tulia.

Kim and Glen Fowler from Levelland spent the weekend with their grandparents, the D.S. Fowler's Sunday. Supper guests in the Fowler home were their sons, Mr. and Mrs. James Fowler and son and Mr. and Mrs. Ray Fowler from Lubbock.

Voters...

cont. from Page 1 es they are seeking, all Democrats, are Jack Pope, Associate Justice, Supreme Court, Place One; Charles W. Barrow and Don Yarbrough, Associate Justice, Supreme Court, Place Two; James G. Denton, Associate Justice, Supreme Court, Place Three; John F. Onion, Jr., Presiding Judge, Court of Criminal Appeals; Truman Roberts, and Jerome Chamberlain, Carl Dally, Jim Vollers, W.T. Phillips, Judge, Court of Criminal Appeals; Max Sherman, State Senator, 31 District; Bill Clayton, State Representative, 74 District and Charles L. Reynolds, Associate Justice, Court of Civil Appeals.

Five different referendum questions will be on Republican ballots, but will not be on the Democratic ballot. The main questions give GOP voters a chance to express their opinions on forced busing of school children and crime in the streets.

On the Raza Unida Party ballot are Fred Rodriguez Garza, for Railroad Commissioner; Domingo Ramos as County Commissioner, Precinct No. Three and Alberto G. Daniel is running for County Chairman.

The ground floor of the Court House will be petitioned off for the Republican and Democratic primaries.

The Republicans will vote in the Judges office and the County Treasury office entering on the south side of the Court House.

The Democrats Precinct One will vote in the Commissioners Chambers, county tax office, county agent office and social security office entering by the east door and the west door of the court house.

There will be signs designating the place to vote in Democratic and Republican primaries.

The Democratic Party will vote at the following places: Precinct One, Raymond Scott, chairman, in the Courthouse; Precinct Two, Joe Costen, chairman, has voting boxes two and three and two will vote at West Camp Baptist Church, three will vote at Richland Hills School; Precinct Three, Don Williams, chairman and Jack Furgeson, chairman, voting box four at Three-Way School and voting box five, Muleshoe High School cafeteria; Precinct four, John Hubbard, chairman voting box six at old Bula School voting box seven, Fred Bean, chairman, seven and eight; voting box seven in Needmore Community Center, voting box eight in Muleshoe City Hall.

Party conventions will be held immediately after the polls close. Each party will meet at the place they voted.

The Democratic Party convention will meet in each precinct with the precinct chairman presiding. The first order of business will be to elect a chairman and secretary to preside over the convention. Next on the agenda will be to elect delegates to go to the County Convention the following Saturday night to be held in Muleshoe.

The precinct convention has the right to present any resolutions that they might bring to the county convention. In this way local resolution may be taken to County, to State and maybe on to National convention.

The only qualification to attend a Democratic Convention is to have voted that day in your party precinct.

Where the political lightning will strike is unknown but not many politicians are without hope.



AWARD PRESENTED . . . Faye H. Jones, Post Mistress of the Bula Post Office was presented with an award by Elmer J. Reed Jr., manager of the Sectional Center of the U.S. Postal Service of Lubbock. Miss Jones, who has been Post Mistress since July 1975, was presented the award for support of community activities in commemoration of the United States Bicentennial. Approximately 25 people attended. Featured in the picture are from left to right front row: Elmer J. Reed, Mrs. Cecil Jones, Mrs. Dick Kelton, Mrs. G.F. Howell, Mrs. Nolan Harlan; back row, left to right, Cecil Jones, Gil Lamb, and Rudolph Morrow.

Extension...

cont. from Page 1 standing FFA member. He is also a 10-year veteran of 4-H and has many awards to his credit. McNeill attended Texas Tech University for three years and then completed his B.S. degree in animal science at Texas A&M. His M.S. degree in

animal nutrition is also from Texas A&M while his Ph.D. in ruminant nutrition is from the University of Kentucky.

While at Texas Tech McNeill was on the Dean's Honor Roll. At Texas A&M he was a Distinguished Student and was elected to the Gamma Sigma Delta honor fraternity. He also won a scholarship award from

the American Society of Animal Science.

McNeill holds membership in the American Society of Animal Science, Plains Nutrition Council, Agricultural Division of the Amarillo Chamber of Commerce and the International Livestock Judges and Coaches Association. He and his wife, Judy, have three children.



DISTRICT 4-H WINNERS . . . There were two 4-H contests held at District Saturday, April 24, at Lubbock. As a result, Bailey County brought home honors. Left to right are Curtis Carpenter, Sharla Farmer and Mark Fried. These 4-Hers won in Horse Judging with a first. Their sponsors were Mr. and Mrs. Charles Farmer.

DECA...

cont. from Page 1 the Distributive Education Program.

It will be held April 29. Breakfast is to be served from 6:30 to 8:30 a.m., lunch from 11:30 to 2:00 p.m. and supper, from 5:00 to 8:00 p.m.

Free coffee is to be served at the XII for the public all day long, also.

Bailey..

cont. from Page 1 Greg Harrison, Alan Harrison and Kelly Harrison. The Junior Horse Team placed and was composed of Kim Farmer, Casey Farmer, Delia Shaw and Tommy Wheeler.

County Extension Agent Spencer Tanksley said about 400 boys and girls competed in the event at Texas Tech University which included livestock, dairy, horse judging and rifle skills. The second phase of District Contest will be held this coming Saturday, May 1 at Texas Tech when 4-Hers will be presenting individual and team demonstrations.

Fri.-Sat.-Sun.



"DONALD'S DUCKLING GANG" THRU MAY 2

April 30, May 1, 2

X. I. T. DRIVE - IN THEATRE MULESHOE, TEXAS

REMEMBER TO VOTE FOR

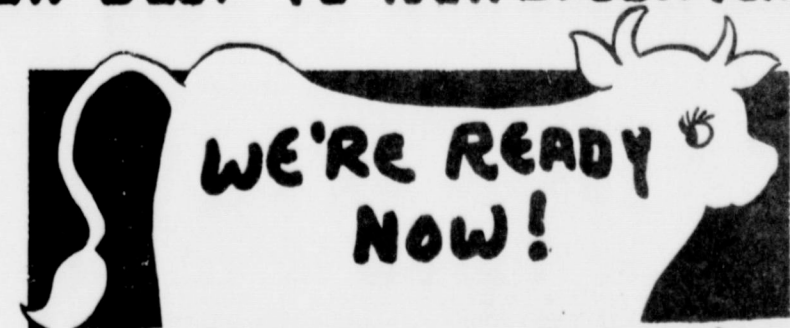
JOHN R. BLACKWELL



Candidate for Constable
Precinct #1
SATURDAY, MAY 1
DEMOCRATIC PRIMARY

Pol. Adv. Paid by John R. Blackwell, Muleshoe, Texas

WE Will CUSTOM PROCESS YOUR BEEF TO YOUR SPECIFICATIONS



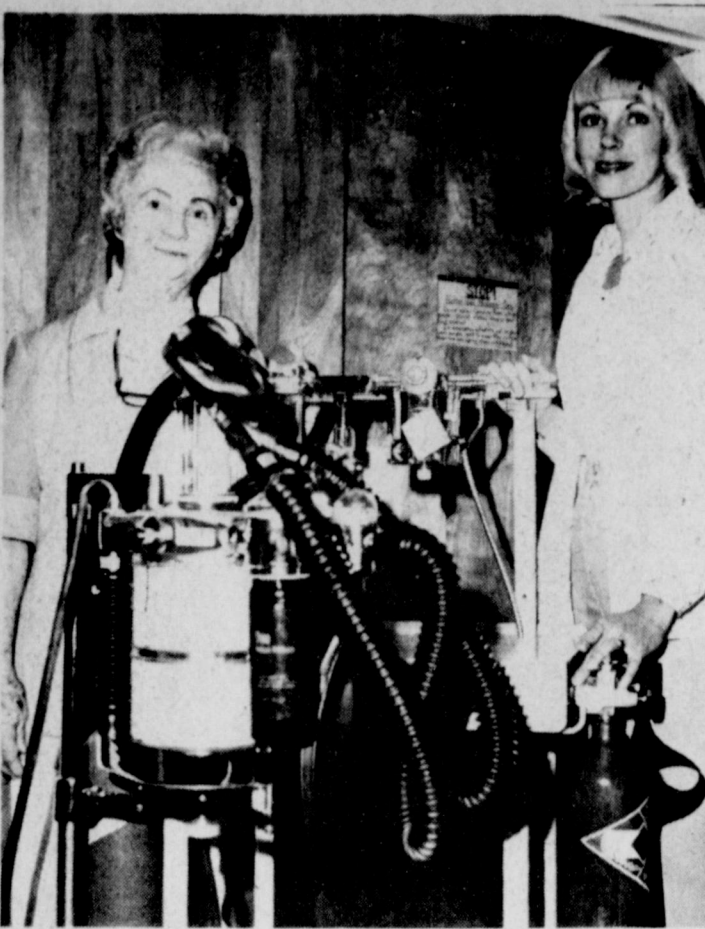
CALL OR COME IN TODAY!

CROW MEAT CO.

So. Hwy. 214

Friena, Texas

Phone 247-3333



Diane
Mr. and Mrs. Enconision Silva are the proud parents of a baby girl born April 26, 1976 at 6:54 p.m. She weighed six pounds and eight ounces and was named Diane. This is the couple's first child.

Fashion
All sorts of extra things seem to be a style of this season. It may be a dickey to wear with a jacket or dress or it may be an apron-like tunic. And then there is the popular vest or the bodice with sleeves, to be worn with a jumper.

Smart Man
The wise man doesn't expect to find life worth living; he makes it that way.

Plenty True
"Do you think our daughter will ever get married, John?"
"Well, yes, dear, I do. But I wouldn't worry about it for at least twenty years, darling. I never heard of a girl sixteen months being an old maid."

HOSPITAL RECEIVES ANESTHETIC MACHINE . . . Tuesday morning, April 27, Mrs. Dorothy Green, president of the Muleshoe Hospital Auxiliary, presented an Anesthetic Machine to Anesthetist, Jill Peat CRNA, at the West Plains Memorial Hospital in Muleshoe. Mrs. Peat stated she was grateful the Auxiliary chose this particular machine for their donation to the hospital, as it will be most helpful in surgery. Pictured from left to right are Mrs. Dorothy Green and Jill Peat.

Her Plan
Neighbor--What do you plan to do, Janie, when you get as big as your mother?
Janie--Diet.

Very New
Newly hired secretary to boss: "Do you want double spacing on the carbon copies, too, sir?"
--Herald, Rock Hill, S.C.

Duckling Spells Dining Elegance

With the advent of cool weather and the cranberry harvest, roast stuffed duckling with cranberry orange sauce spells a message of old-fashioned elegance certain to delight your family or flatter your guests.

This pecan and orange dressing, combined with the cranberry orange sauce and succulent duckling, is designed to augment the warmth of the hearth, friendship and kinship, causing you to forget the chilliness of the season outside.

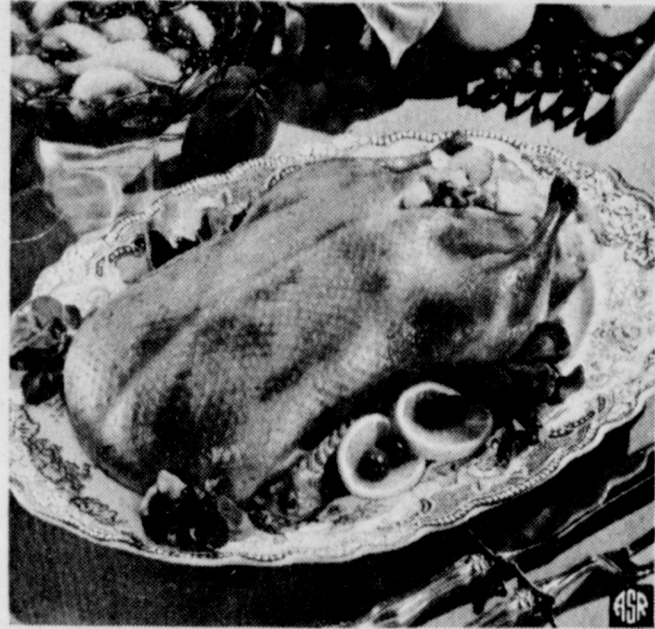
Available all year in supermarket frozen meat display cases, duckling is easy to prepare and serve. For your convenience, the National Duckling Council suggests that you always keep a brace of fresh frozen duckling in your freezer.

Wash and drain duckling; dry skin gently with paper toweling. Sprinkle body and neck

cavities with 1/2 teaspoon salt. Cook celery and onion in butter or margarine until onion is soft. Add bread cubes, pecans, orange juice, sugar, orange rind and remaining 1/4 teaspoon salt; toss lightly. Fill neck and body cavities loosely with stuffing. Skewer neck; skin to back. Cover opening of body cavity with aluminum foil and tie legs together loosely. Place on rack

in shallow roasting pan. Bake at 350° F. until drumstick meat is tender, about 3 hours. To make sauce, combine water and sugar and bring to boil; boil 5 minutes. Add cranberries and cook until they pop, about 5 minutes. Combine orange juice and cornstarch; stir until smooth. Add to cranberries; cook until clear and thickened.

Stir in orange rind and sections. Serve duckling with sauce. Makes 3 to 4 servings.



Roast Stuffed Duckling With Cranberry Orange Sauce

- 1 frozen duckling (4 1/2 to 5 pounds) defrosted
- 3/4 teaspoon salt
- 1 1/2 cups thinly sliced celery
- 1/4 cup chopped onion
- 2 tablespoons butter or margarine
- 2 1/2 cups 1/2-inch bread cubes
- 1/2 cup chopped pecans
- 2 tablespoons orange juice
- 1 teaspoon sugar
- 1 teaspoon grated orange rind
- Cranberry Orange Sauce
- 1 cup water
- 1/2 cup sugar
- 2 cups cranberries
- 1/4 cup orange juice
- 2 teaspoons cornstarch
- 2 teaspoons grated orange rind
- 1/2 cup orange sections

Summer Camp For Children

COLLEGE STATION -- Recognizing "whose idea" summer camp really should be parent's first thought in selecting the camp, according to one family life education specialist with the Texas Agricultural Extension Service, The Texas A&M University System.

Dorothy Taylor contended that the child himself should have some "input" about the decision to attend camp.

"It's not fair for parents simply to announce that 'you'll be going to such and such camp

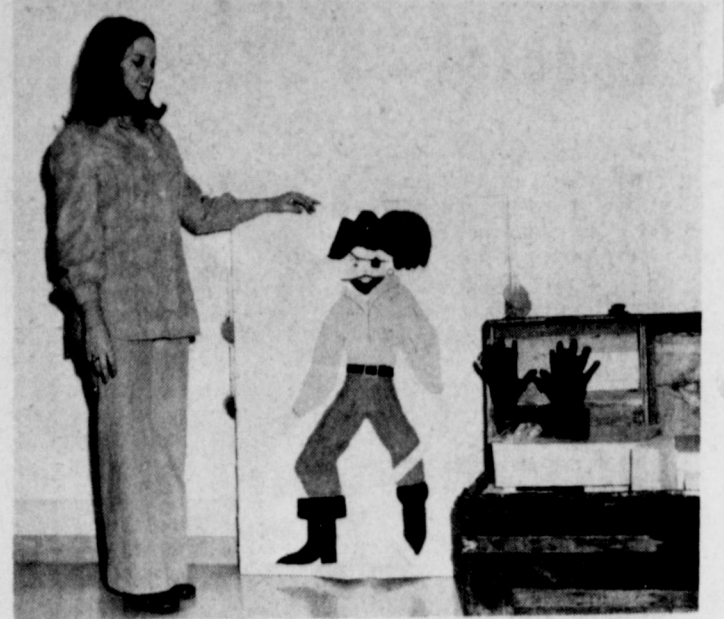
ONE MINUTE SPORTS QUIZ

1. Identify "Slopsie Maxie" Rosenbloom.
2. Who won the Citrus Open Golf Tournament?
3. What team does Frank Robinson manage?
4. Who is number one in the AP basketball poll?

Answers To Sports Quiz

1. Light heavyweight boxing champion 1930-34.
2. Hale Irwin.
3. Cleveland Indians.
4. Indiana.

A Terrible Situation
Bates--Gregg hasn't taken a vacation in years.
Gates--He must be a hard worker.
Bates--Just the opposite. His job is so easy that he hates to rest because it's too much like work.



WTSU . . . Keeping children entertained in the classroom can be difficult, but Mrs. Frank Ellis, a West Texas State University senior from Muleshoe, has found a way. Mrs. Ellis is the daughter of Mr. and Mrs. Harold Cowan, of Muleshoe. For her language arts class, Mrs. Ellis has constructed a pirate and treasure chest learning center to aid children in increasing visual, phonetic and number sequence skills.

place in each day, girls may want to take a hair dryer or hot curlers. And if there are long spaces of free time, the children might want to take along some library books.

"It's important for parents to know camp customs before enrolling their child. Campers will need extra pocket money if camp tradition calls for a gift exchange. Or perhaps trading or bartering may occur among campers. And if cost of the camp is a deciding factor, parents need to know these things beforehand."

Many camps send a sample menu. This helps parents decide whether they will be expected to send money for extra snacks or if the menu provides this.

Turning to the physical setup of the camp, this specialist suggested parents consider sanitation, source of drinking water, who cooks and cleans -- some camps have campers do this -- health and first aid facilities, and whether swimming will be in river or pool.

Miss Taylor said that parents might view summer camp as a child's reward for "just being himself."

Parents actually need to decide in their own minds just what they expect the child to get from his camp experiences -- further religious study, outdoor recreation, help with special problems such as diabetes, or intensive training in some sport, the specialist said.

As for age and first-time camping, Miss Taylor said that the child's level of maturity is more important than age.

"However, camp shouldn't be the child's first night away from home. If he has spent nights away from family and feels good about handling himself in these situations, then summer camp can be a good experience."

"Camps can't remake children -- a shy child won't return from camp changed into an outgoing type," the specialist explained. Shy children need a camping program that allows plenty of free time for privacy. An outgoing child will have a better time in a program with lots of activities."

If this is the first time for camp, it's a good idea to visit before the beginning date. This lets the child see what it looks like -- where he'll sleep, eat, play -- and helps him realize what distance he will be from home.

"During the pre-camp visit, be sure to obtain a schedule of each day's activities. This will help children plan what to take. If swimming occupies a prominent

Dying To Sleep
Sleeping at the wheel is another way to keep the motorist from growing old.
--Everybody's Weekly.

ANTHONY'S

Pants Suit

CARAVAN

HUNDREDS TO CHOOSE FROM

'HAMILTON 8'

FAMOUS

15 STYLES. SIZED 8 TO 20

100% POLYESTER DOUBLE KNIT WITH LONG OR SHORT SLEEVES.

\$17⁸⁸

SUIT

YOUR CHOICE

3 FOR \$49

REG. \$22-\$36

Johnson Furniture

Mother's Day Sale

LA-Z-BOY

SALE

We now have one of the largest selections of La-Z-Boy recliners for immediate delivery. Stop and choose one just right for your home. Best of all, they're on sale. So you save!

Sale priced as low as **\$159⁹⁵**

Save **\$40 to \$60** per chair

Johnson Furniture

Muleshoe Texas West Hwy. 84



Mrs. Harding Oldest 1976 E.N.M.U. Graduate

80-YEAR OLD GRADUATE. . . Mrs. Ethel Harding of Farwell, will be Eastern New Mexico University's oldest graduate of 1976 when she receives her associate of arts degree Friday, April 30. One of the oldest students to ever graduate from Eastern and the state of New Mexico, Mrs. Harding extends the advice to all young people "to get an education."

(Photo by ENMU)

PORTALES - "I was hungry for an education and darn glad I'm getting one," says Mrs. Ethel Harding, Eastern New Mexico University's oldest 1976 graduate at the age 80.

"I always said I was going to go to college and make something of myself," explained the Farwell, resident, who was born in 1895. "I was unhappy that I couldn't go to college because I was busy at home. When I did get the opportunity to go, I was afraid I would fail."

Failure in college did not happen to Mrs. Harding as she had made good grades at ENMU and will receive an associate of arts degree in general education Friday, April 30, in the University's baccalaureate and commencement ceremonies.

Mrs. Harding enrolled at Eastern in the fall of 1971 after attending night classes only 28 times in order to earn a high school diploma. Since that time she has missed only one day, due to illness of a family member, and has never been late to a class.

After attending public schools through the ninth grade, Mrs.

Harding married in 1911, at the age of 16 to N.R. Harding of Comanche. She was widowed five years ago.

During her marriage, she explained that she strongly stressed education and told her children they should obtain a college education. Today her four sons work as a lawyer, businessman, teacher, and hospital administrator.

Mrs. Harding paid for her children's education by selling butter she made on the family farm in Farwell. "I made 100 pounds of butter each week, with my work putting a local creamery out of business," she said. During the time she spent in the butter business, from 1911 to the beginning of World War II, she sold \$20,000 worth of her product, in addition to raising chickens, turkeys, geese and cattle.

An active woman in the Baptist Church, organizations, and other social activities, Mrs. Harding also spent her time in arts and crafts. Leathercraft became her first interest and eventually she taught courses in Farwell and Bovina, Texico, Clovis, and Portales. She served as an aid for an ENMU art professor one semester and has completed eight paintings.

Each Monday through Friday, Mrs. Harding drives from her

Farwell home to ENMU in Portales, a total of 60 miles round-trip. It is during this drive, she said that she does most of her praying.

Mrs. Harding related that she has had a good education at Eastern and has enough hours to continue towards obtaining a bachelor's degree. She does not

plan to work on a master's degree, but desires to travel in the United States and in foreign countries.

One of the oldest students to ever graduate from Eastern and the state of New Mexico, Mrs. Harding extends the advice to all young people "to get an education."



NEW OFFICERS ELECTED . . . New officers were recognized at the TSTA banquet held Thursday, April 22, at the high school cafeteria. L to r are President, Mike Richardson; President-Elect,

Mrs. Jack Obenhaus; Second Vice-President, Mrs. Pat Watson; Secretary, Mrs. Eloise Wilson; Treasurer, Mrs. Jane Rudd and Parliamentarian, Keith Bray.

On Wall Street
By Bob Hill
Lentz, Newton & Co.

West Plains Hospital Hospital Briefs

ADMISSIONS
April 22 - Alonso Quintana, Nico Bara, Debbie Kennemer, R.D. Hassell and Klay Camp.
April 23 - Theresa Claunch and Lori Cost.
April 24 - Chad Griswold and Effie Mullinax.
April 25 - David Smith and Ruby Pruitt.
April 26 - Howard Elliott.
DISMISSALS
April 22 - Kevin Grantt, Bonnie Hartin, Janell Garrett and Barbara Case.
April 23 - Mrs. W. Barber, Mrs. Robert Shugart, Don Strahan, Albert Kube and Debbie Kennemer.
April 24 - Theresa Claunch and Lori Cost.
April 25 - Dean Waltrip, Refugia Daniel, Nico Bara, Mrs. Ricki Kelley and son, and Alonso Quintana.
April 26 - Chad Griswold and Klay Camp.
April 27 - R.D. Hassell and Celestine Lewis.

Not long ago I addressed a large group of school teachers on the subject of Coming World Shortages. Our world (for you and me it's basically the U.S.A.) is no longer a world of surplus of excess commodities as it once was. Now, our world has fast become one of shortages. We are not accustomed to another country telling us how much of a commodity we may have or what it will cost us. In short, we have been spoiled, taking our abundant natural resources for granted.

Now that the "Third World" nations control many essential resources, we as the largest single user of those resources, must find ways to work with those smaller countries in order to avoid embargoes. We have no choice while we seek alternative resources or other supplies.

The Third World countries have been caught in a squeeze of dropping demand for their resources during the recent worldwide recession, with an inflation spiral on goods which they import. They want relief.

The U.S. is offering a scheme in which a new international bank with billions of capital and resources would be formed to develop new sources of income for the poorer nations, hard hit by falling prices for such commodities as coffee, sugar, and copper. The manager of the new bank would be the World Bank. Oil-rich nations would put up half the \$1 billion in capital and the industrialized nations would put up the other half. The U.S. ante would be around \$200 million. The bank would then sell its bonds in the international money markets to raise additional funds with which to develop resources. One of the big advantages of the scheme is getting the corporation in partnership with each developing nation, making it more difficult for a small country to kick out a partner after a project is operating but before the corporation has recovered its investment.

No one knows if the scheme can get off the ground. Bringing the "Haves" and "Have-Nots" to a mutual agreement is an almost impossible task.

The effect of the indulgence of human affection is a certain exhilaration. -R.W. Emerson.

TYE DYE GAUZE 45" Wide 50% Polyester 50% Cotton reg. \$1.59 yd 99c Yard	3 DAYS ONLY 1lb. Bag SHREDDED FOAM 67c reg 99c
Spirit Of '76' PRINTS Bicentennial Prints 45" Wide 100% COTTON reg \$1.59 yd. 99c Yard	BED PILLOWS & THROW PILLOWS All Man Made Materials 88c
Short Lengths DENIM Navy or Lt. Blue \$1.99 value 99c Yard	Craigs RUBBING ALCOHOL 4 / \$1 16oz. Bottle
Dan River GINGHAM CHECKS 65% Polyester 35% Cotton 45" Wide Dan Press reg. \$1.49 yd. \$1.19 Yard	DIAL Very Dry Anti-perspirant 67c 5oz. Can reg. 88c

perry's

SHOP CASH
BANKAMERICARD
master charge

LAY-A-WAY

Anthony's
CR ANTHONY CO.
TEXAS

Baby Week!

Adorable fashions for your little Ones
Reg. 3.99 **2.88**

For the little one in your family, how about these adorable diaper sets. And mother, they're all of easy care permanent press Kodel® polyester and cotton blends available in baby soft pastel colors in sizes 0-18 mo.

BOXED SLEEPERS FOR THE SLEEPY HEAD
Reg. \$3 **1.88**
Flame retardant soft terry or nylon one piece sleepers in pastel colors or charming nursery prints. Makes a lovely gift item. Sizes 0-18 lbs. G 16-21 lbs.

WARM, COZY BLANKETS
Reg. 2.99 **1.88**
These fluffy, soft, 100% acrylic blankets come in lively nursery prints and pastel solids. Completely washable. Available in size 45" x 40". Also thermal blanket in size 36 x 50.

PRECIOUS GIFT SETS FOR BABY
Reg. 1.99 **1.88**
Charming boxed gift sets for infants in pastel colors or per nursery prints. Completely machine washable for easy care.

BIRDEYE DIAPERS
Reg. 2.49 **1.88** Pkg.
A great buy on a half dozen 27" x 27" soft, absorbent, long wearing, all cotton birdseye diapers. Fit comfortably. White. 6 diapers in a package.

Deluxe Baby Carrier
Reg. 4.99 **3.33**
Baby will love to go bye-bye in this sturdy carrier. Features cushioned seat, adjustable safety belt and 5-position adjustable back. Gift boxed. White or Yellow.

JUVENILE FURNITURE 20% OFF

Strollers, walkers, high chairs, car seats, cribs, mattresses, bassinets . . . and lots more. All in charming and colorful designs that is sure to delight any small child and NOW they're on sale at a low, low price to please you! Hurry while they last.

Editorial

One For Ford

President Ford deserves the thanks of every American for his recent veto of a bill repealing the 36-year-old ban on political activity by federal employees.

A spineless Congress has given in to the federal bureaucratic army time after time in recent years. The millions of federal payrollers now get automatic pay increases, higher pay than private industry employees and all sorts of additional benefits and costly job security. (It's impossible to fire incompetents in many cases.)

The disgusting Congressional bid to allow federal employees to engage in partisan politics would have given the bureaucracy an even greater influence with Congress and the political parties and would have been another major step in the direction of a federal bureaucracy so entrenched and influential as to be largely out of the taxpayers' control.

What the nation needs, and the taxpayers deserve, is a Congress with the guts to end the automatic increases, useless jobs and do-nothing agencies—so that a President can cut the budget, when necessary. So much automatic pay increases cost and other already-legislated costs are built into every annual budget the chief executive now has only limited power to reduce the size of the bureaucracy and federal spending.

Foreign Policy

It's unfortunate U.S. foreign policy becomes a major subject of debate in election years. It's the worst climate for achieving objectivity; in this nuclear age domestic politics and foreign policy emotionalism shouldn't be mixed.

The truth is that for some years, under both President Nixon and Ford, when James Schlesinger was Defense Secretary (who now wails long and loud about his own failures), the nation's conventional military strength was allowed to steadily wane. The trouble stems largely from the effort to have an all-volunteer military establishment.

Due to the unpopularity of the Vietnam war President Nixon saw this as a political must for reelection in 1972 (it was not) and since inauguration of the high-pay policy to attract enlistments, the country hasn't been able to afford the weapons needed to keep pace with Russian armament.

The only solution is a universal service law requiring the nation's youth to serve their country at modest pay for eighteen months or two years. The young people of the nation would understand this necessity if it is properly explained and would respond to the country's call. All need not serve in the military. They would serve in both civilian and military jobs—at modest pay in the spirit of doing something for their country.

If candidates now arguing about military preparedness in the election campaign would, in the national interest, agree on such a course, the defense budget could be greatly reduced (sixty per cent of defense costs today are in salary and personnel). In addition, the nation would have extra money available to build up its conventional military strength on a par with that of the USSR. Of course, that's expecting much in an election year.

THE TIME OF YOUR LIFE STARTS HERE

Just stop in to our store for your chance to win the prize of a lifetime in the Bulova "Time of Your Life" Sweepstakes. No purchase is necessary.

THE GRAND PRIZE

A magnificent Cadillac Seville.



FIVE SECOND PRIZES

\$1,000 Jewelry Shopping Sprees in our store.

PLUS

100 Polaroid SX-70 Model 3 Land Cameras.

Come in for your entry, today . . . or any day before June 15th. And while you're here, be sure to look over our complete selection of fine watches from Bulova.



BULOVA CARAVELLE
17 jewel stainless steel
Depth-tested to 666 feet.
Automatic Calendar.
\$59.95

BULOVA ACCUTRON
Banglue bracelet.
Rhodium plated.
Blue dial.
\$165.00

BULOVA
Day/date automatic.
Reflector dial.
17 jewels.
All stainless steel.
\$89.95

From BULOVA, masters of time for over a century.

Lindsey's
Jewelry

202 Main

Muleshoe

272-3355



WASHINGTON NEWS REPORT

Byrd In? Joan Kennedy-Kissinger-New Scandal-

WASHINGTON, D. C. -- Senator Robert Byrd (D-W.Va) might be "in" as the new Majority Leader of the Senate. The election won't come until January but Byrd claims he has 33 commitments.

Senator Edmund Muskie and Ernest Hollings, of Maine and South Carolina, other contenders for the job, doubt Byrd's head count. But if the West Virginian has anywhere near that number, he might have

the job in the bag.

Hollings is an admitted longshot candidate. He's better liked than Muskie, who isn't highly popular in the Senate. And if Jimmy Carter is the Democratic candidate and elected, Hollings, from the neighboring state of South Carolina, might be an attractive choice.

Joan Kennedy's revelation that she has been an alcoholic for years is another blow to Senator Edward Kennedy's present or future presidential hopes. One of the potential Kennedy handicaps is the doubt left in the minds of millions how he would act in a crisis.

Now there are doubts about his physically at-

tractive wife and whether the nation would have a first lady who could control her weakness.

Secretary of State Henry Kissinger is caught up in another money scandal. It's reported he ran up an \$11,000 bill paid by the government when his wife underwent an operation in Boston.

Kissinger took a working party to Boston to be with her and occupied an entire floor at a luxury hotel. He paid for his own room but the government picked up the tab for the others, about \$4,000.

In addition, the bureaucrats were flown to Boston by the Air Force at a cost of about \$7,000 to the taxpayers.

NEWS NOTES

ON SWINE FLU

GENEVA--A recent special meeting of international influenza experts called on health authorities around the world to prepare against possible epidemics of killer swine flu next winter.

EXAM CHEATING

WEST POINT, N.Y. -- Cadets suspected of violating West Point's honor code were accused recently of cheating on an examination in what could be the second-worst scandal in U.S. Military Academy history.

REPEL PROTESTERS

NICOSIA, CYPRUS--U.S. Marines, firing tear gas from the embassy roof, recently helped repel some 3,000 Greek-Cypriots protesting against the resumption of U.S. arms aid to Turkey.

WEED KILLER KILLS

PINNEBERG, WEST GERMANY--Four tree nursery laborers died after drinking a highly poisonous weed killer from what appeared to be a rum bottle. Police said they do not suspect foul play.

HELPS OLDESTERS

NEW YORK--Once a week policeman Richard Croce spends his lunch hour taking senior citizens shopping and banking. His beat included the Mount Eden Senior Citizens Club in the Tremont neighborhood.

COLLECTS CADILLACS

LIBERAL, KAN.--Jack Randall collects 1976 Cadillac convertibles. The 72-year-old businessman has seven such cars and an eighth is on order, which will come from the final production of 199 convertibles.

IRAN BREAKS WITH CUBA

TEHRAN, IRAN--Iran severed diplomatic relations with Cuba over Fidel Castro's alleged interference in Iran's internal affairs.

BEGINS LIFE TERM

PITTSBURGH--Former United Mine Workers President W.A. "Tony" Boyle has entered Western Penitentiary to serve three life terms for arranging the murder of Jock Yablonski, a UMW rival, and Yablonski's family.

TOWN BANS CHILDREN

PEMBROKE PINES, FLA.--Families with young children have been banned from parts of this city in southern Florida, and residents who rent or sell homes to such families face jail terms or fines. The area had been designated as an adult community.

PRICES HOLDING

Consumer food prices on the average held steady during the first three months of this year, the first quarterly leveling off in more than four years, the Agriculture Department said.

PRaises KISSINGER

President Ford has called Henry A. Kissinger "one of the greatest secretaries of state in the history of the United States" and said his Wisconsin primary victory "fully justifies my faith" in Kissinger.

PAYMENTS LAG

A higher proportion of homebuyers are behind on their mortgage payments than at any time in nearly a decade, but analysts say there is no immediate danger of a crisis in foreclosures.

ON ALIENS

The number of illegal immigrants who have overstayed their tourist visas and accepted employment in the United States has grown dramatically, a State Department official said.

TOWER TALKS

by U.S. Senator for Texas
JOHN TOWER



Setback for Reform

WASHINGTON--The Senate has dealt the cause of food stamp reform a severe setback.

The federal food stamp program, which began ten years ago as a modest effort to help the genuinely needy, has degenerated into a gigantic boondoggle.

In 1965, one out of every 439 Americans received food stamps, at a cost to the taxpayers of only \$40 million. Today, one of every 13 Americans receives food stamps, at a cost to taxpayers of more than \$5 billion.

There is every indication that the food stamp problem will grow worse in the future. Under present regulations, one of every four Americans is eligible for food stamps, and the number could grow easily to one of every three Americans.

Public outcry against abuses of the food stamp program also has been growing apace, and this month the Senate approved and sent to the House a bill entitled the National Food Stamp Reform Act.

But the bill is not the answer. It not only will not correct most of the blatant abuses of food stamps, it will add more than \$1.1 billion to the overall cost of the food stamp program.

Virtually the only "reform" the National Food Stamp Reform Act makes pertains to a ceiling on the incomes of those eligible for food stamps.

Under present regulations, families making as much as \$16,000 a year can qualify for food stamps. The bill ostensibly would limit eligibility to persons with net incomes at or below the poverty level, currently \$5,500 for a family of four.

But even this reform is cosmetic. So many loopholes have been added so that a family making as much as \$7,818 could conceivably be eligible for food stamps.

Except for that one reform, the National Food Stamp Reform liberalizes, rather than tightens, food stamp rules.

The bill reduces the purchase price of food stamps from 27.5 percent to 25 percent, with a provision that could lead to elimination of the purchase requirement altogether.

The measure also permits minor children to collect food stamps if they no longer live with persons legally responsible for their support, and makes it much more difficult to remove cheaters from the food stamp rolls.

It would do nothing about loopholes in current law which permit strikers and college students to receive food stamps. This is unconscionable. Any person who could be working but who, for whatever reason, refuses to work should not be eligible for food stamps. To give food stamps to the undeserving hurts both those who truly need them and the taxpayers who must foot the bill.

Hopefully the House will see through this bill and rewrite it entirely. If not, I shall urge President Ford to veto it. The voters deserve meaningful food stamp reform, not an election year hoax.

ON POSTAL RATES

Tying boosts in mail rates to increases in the cost of living would cause a much higher postal deficit, the chairman of the Postal Rate Commission reports.

VOTES FOR CENSUS

The House has voted to hold a federal census every five years, thus changing the practice begun in 1790 of a 10-year interval between every census.

ON PROFITS

Federal regulations that once protected an infant airline industry are now reducing profits of grown-up airlines and forcing up the cost of air travel, two Cabinet officers said.

FLU SHOT FUNDING

The Senate Appropriations Committee has approved a \$135 million measure to vaccinate all Americans against flu.

GARAGE SERVICE

MAJOR/MINOR TUNE-UP



It pays you to keep your car engine in top operating condition; you get better mileage and far more dependability. When you have a major or a minor tune-up you will pay less when you bring your car to us.



FREE ESTIMATES
Phone 272-4567
South Main
Muleshoe

On May 1st Vote For JOHN W. SMITH

BAILEY COUNTY COMMISSIONER
PRECINCT ONE

DID YOU KNOW --
That the Bailey County Commissioners will be spending \$700,000 of your tax dollars this year? That makes Bailey County BIG BUSINESS. So, doesn't it make sense for you to hire a businessman to work for you as commissioner of Precinct One?

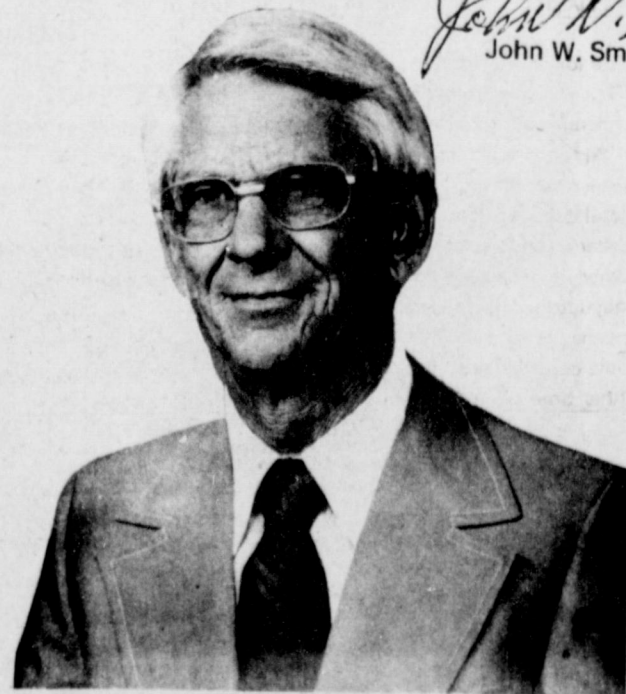
I have been in business in Bailey County for many years. I now own and operate Smith L.P. Gas Company, and would like to put that business experience to work for you as your commissioner. Tough business-like decisions need to be made at our court house, deciding what is necessary and what is luxury. We need a practical businessman's approach to keeping spending down and holding the line on taxes.

While running this butane and oil business I have become familiar with just about every road in the county. This background will help me to do a better job for you. It is my hope that we can have an expansion of our farm to market road system. If elected I will keep my door open for the discussion of problems and interests of the people.

I served six years on the Muleshoe Independent School District School Board developing educational facilities for our children while working to stretch our tax dollars. This county is my home, always has been and always will be. It's a good place to live and raise a family. I need your help and vote, and together we can make it even better.

Sincerely,

John W. Smith
John W. Smith



Paid Political Advertisement - Paid For by John W. Smith - Muleshoe, Texas 75047

Judge Truman Roberts

TRUMAN ROBERTS has established an outstanding record over the past five years as judge of the state's highest court in criminal matters. Before election to the Texas Court of Criminal Appeals he served 11 years as County Attorney and District Attorney, then 10 years as Presiding Judge of the 52nd Judicial District.

Judge Roberts has been endorsed in his race (over a Dallas opponent) by 76.4 percent of more than 11,000 attorneys voting in the State Bar of Texas poll.

Vote to keep a man with this excellent experience and recognized ability. Vote in the Democratic Primary on May 1 to re-elect Judge Truman Roberts to a second term on the Texas Court of Criminal Appeals.

Texas Court of Criminal Appeals



Bula News

By

Mrs. J. Blackman

Our sympathy is extended to the children and other relatives of Mrs. S.A. Williams. Mrs. Williams passed away early Tuesday morning at the Medical Arts Hospital, after being hospitalized for almost two weeks. Mrs. Williams had been a resident of the Knights Rest Home in Littlefield, for several years, and had enjoyed real good health, for her age. She would have been 94, in August. She and her husband lived in the Bula community, where they reared their children, and she still owned land in the area. Funeral services were held

Tuesday at 2 p.m., in the Bula Baptist Church. Children surviving are Sammie Williams of Morton, C.A. Williams of Bula, Ruther Hendricks of Carmichael, California, Christine Kulhank of Los Angeles, and Velma Smith of Burleson.

Mr. and Mrs. C.A. Cannon enjoyed having their children with them Sunday, Mr. and Mrs. R.E. Martin of Lubbock, and their daughter, Miss Beverly Martin, student at Baylor University, and Mr. and Mrs. Jimmy Cannon and son, Timmy of Bula.

Mr. and Mrs. Gene Bryan, accompanied by Mr. and Mrs. Otis Neel of Friona, spent the past week at Ten Killer Lake, in Oklahoma, near Gore.

Mr. and Mrs. John McCormack and children spent the Easter Holidays visiting with her sister and family, the Ken Grays at Lawton, Oklahoma and with her mother, Mr. and Mrs. J.W. Judeman at Edna, Okla.

Mr. and Mrs. Cecil Jones spent Wednesday through Sunday with their daughter, Mrs. Darlene Alexander and boys Kelly and Brit, at Uless.

Mr. and Mrs. V.C. Weaver enjoyed having with them Easter Sunday a daughter and husband, Mr. and Mrs. Bob Suggs of Odessa, a granddaughter, Mrs. Timothy Wacharmurka and children Amy, Lena and Timmy of Lubbock, and Mr. and Mrs. Rickey Arend and girls Shamie, Sharie and Shannon, of Bula.

Mr. and Mrs. J.R. Teaff and granddaughter, Jeannie Driscoll enjoyed the weekend visiting with Mr. and Mrs. Clyde Hogue at their mobile home site on Lake Hubbard.

Mr. and Mrs. L.H. Medlin accompanied by their daughter Mrs. Rocky Dewbre and small son, Michael, and a grand daughter, Shelly Salyer, drove to Corsicana, and spent a few days with their son and family the Dennis Medlins. While there they all enjoyed a day at Six Flags.

Mr. and Mrs. James Sinclair enjoyed having with them over the Easter holidays, their daughter, Kelly, from Odessa Junior College, grandsons Tod and Tanner Childress and their baby sitter, Miss Cathy Moreno, from Midland. Also Mr. and Mrs. Joel Sinclair and baby daughter, Brooke of Muleshoe, and Steve of the home were there.

James Kunselman from Spearman, visited the past week in the home of his sister, Mr. and Mrs. Larry Clawson.

Mr. and Mrs. Edward Crume drove to Rochester Thursday, where they spent the night with their daughter, Miss Diane Crume, teacher in the Rochester School System. Friday she accompanied them to Dallas, where they spent the weekend with another daughter and husband, Mr. and Mrs. Danny Smith.

Mr. and Mrs. P.R. Pierce enjoyed having their four girls with them for Easter day, with part of their families. To be together were Mr. and Mrs. Johnny Jackson and son Mike, Mrs. Mellie Baker, children Ben, Donna, and Johnnie, also Miss Alma Lou Pierce, all of Lubbock, and Mr. and Mrs. Jim



FIVE YEAR PINS . . . There were six awards presented to deserving women at the TSTA Banquet Thursday, April 22. It was held at 7:30

Carpenter and boys Jeff, Joey and Jeremy, of Muleshoe.

Easter Sunday company in the Dewitt Tiller home were her parents, Mr. and Mrs. John Aduddell of Littlefield, Mr. and Mrs. Marvin Skinner from Texas, also Mr. and Mrs. Johnnie Hall and son Johnnie and Beverly and Mark Tiller all of Littlefield.

Mrs. Richard Stanley of Hereford spent Thursday with her parents, the John Hubbards.

Mr. and Mrs. J.L. Cox and

children Jamie and Denene spent the Easter week at Lake Hubbard. Two nights were enjoyed by camping out in tents. Later on in the week they were joined by her parents, Mr. and Mrs. Morris Phillips and son, Leon, of Muleshoe, her brother and wife, Mr. and Mrs. DeWayne Phillips, of Lubbock, and Mr. and Mrs. Darwin McBea and girls, and his mother, Mrs. A.M. McBea of Enochs.

Mr. and Mrs. E.E. Lancaster enjoyed having to visit with her Sunday their children, Mr. and Mrs. J.D. Lancaster, Mr.

p.m. in the high school cafeteria. L to r are Mrs. Robert Finney, Mrs. Joe Jinks, Mrs. Bill Bickel, Mrs. Keith Bray, Mrs. Pat Gunter and Mrs. Bobbie Grogan.

and Mrs. Earskin Grayson and son, Leslie and daughter, Mary Joe, Mr. and Mrs. G.D. Lancaster and daughter, Beckey Joe, all from Dumas. Also a grandson, Kerby Norrell from Amarillo.

Mr. and Mrs. D.J. Cox and daughter, Yvette, enjoyed the Easter weekend fishing at Lake Greenwood.

John David Harlan, son of Mr. and Mrs. Nolan Harlan, fell while playing last Sunday afternoon, and cut a gash several

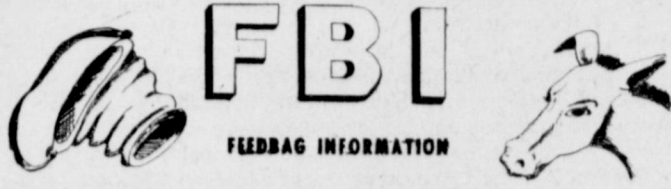
inches long across his forehead. He was carried to the doctor, and eight stitches were required to close the wound. He was able to attend school Monday.

Wisdom is the art of proportion.

Most values in life are relative.

Courts don't always dispense justice.

At Muleshoe Junior High



Eighth Grade Attended Meet At Springlake-Earth

On April 10, the eighth grade Mules went to their final track meet at Springlake. The Mules got fourth and brought back a

few ribbons. On the 60 yard high hurdles was Zeke Pecina running a 9.3 getting fifth, Tommy Wheeler with a 10.0, and Mark Northcutt 11.3. The 440 yard relay getting fifth place was Jim Norman, Zeke Pecina, Lyndall Stovall and Ruben Orozco with a 2:25.8. The 100 yard dash was Norman getting sixth with 11.7, Stovall with 11.9, and Wesley Cook with 12.4. 440 dash was Stovall with 66.3, Todd Ellis with 64.4, and Joe Flores with a 61.6. In the 330 low hurdles was Wheeler with 52.0, Pecina with a 48.9 and Cook with 55.5. The 220 dash was Orozco getting a 26.0. John Carrion with a 30.9. Ruben Orozco got third in the 220. Curtis Elder got third in the 880 run with a 2:18.9. Al Ontiveroz got a 2:25.8. Ricky Leura with a 2:40.6. The 1320 was run by Joel Bratcher with a 4:06, David Patterson with a 4:23 and Jesse Silguero with a 4:26. The Mile Relay was run by Norman, Orozco, Elder, Flores getting second running a 3:56.7. The discus was Oscar Hernandez throwing 91 feet and 2 1/4 inches. Leal with 89 feet, and Reyna with 83 feet 2 inches. Broad jump was Orozco getting second jumping 17 feet 7 inches. Pole Vaulting was Ellis with 7 feet 9 inches.

Muleshoe Goes To Clovis Meet

On April 3, 1976, the Muleshoe eighth grade boys track team went to the Clovis track meet.

Zeke Pecina got third in the 120 low hurdles with a time of 15.2. Mike Northcutt got fifth in the 70 high hurdles with a time of 11.1. He also got fourth in pole vaulting with a height of 9' 6". Mike tied for third and lost the flip. Curtis Elder got a third in the 880 run with a time of 2:17.0.

The 440 relay team got fourth with a time of 50.1. The 440 relay team consisted of Wesley Cook, Zeke Pecina, Lyndall Stovall, and Ruben Orozco. The 880 Medically Relay, consisting of Wesley Cook, Zeke Pecina, Ruben Orozco, and Curtis Elder got fifth place with a time of 1:51.0. The Mile Relay got first place with a time of 3:57.0. This relay consisted of Jim Norman, who ran a 59.0, Ruben Orozco, who ran a 59.4, Curtis Elder, who ran a 60.0, and Joe Flores, who ran a 58.6 as anchor man.

Junior High Honor Rolls

The honor roll for this six-week period is as follows:

SIXTH GRADE
Sherry Henry, Cindy Turner, Stacey Campbell, Debra Bouchelle, Jill Turner, Susie Pierce, Jan Whitt, and Cara Bass.

Also, Robin Burgess, Shelly Davis, Lupe Rosales, Belinda Wheeler, Lori Hartline, Kristi Henry, Francis Saldana, and Regina Beavers.

SEVENTH GRADE
Mary Mata, Lupe Pacheco, Greg Harrison, Clifford Watson, Keva Roming, Carroll Precure, Diana Saldana, and Andy Snell. And, Debra Everts, Michelle Agee, Tammy Huckabee, Brad Poyner, Jimmy Gleason, Curby Brantley, Benton Glaze, and Sandy Rojas.

Also, Sally Lunsford, Shelli Hawkins, Tammy Buckner, Albert Lopez, Brenda Clay, Tyree Wagnon, Tena Landers, and Johnny Puckett.

EIGHTH GRADE
Mark Northcutt, Cindy Hamblen, Shelly Splawn, Lauri Burgess, Shelly Dunham, Tommy Wheeler, Kanetha Hysinger, Debra Stevens, JoRonda Rhodes, and Pam Young.

And, Linette Newman, Shelia Henry, Dennis Watson, Mike Henry, Brenda Dodd, Robert King, Sandy Dunbar, Linda Shafer, Fran Berryhill, and Jolletta Robinson. Also, Jesse Lackey, Jerry Pucite, Sam Whalin, Joel Bratcher, Patty Moore, Christine Isaac, Curtis Elder, Manuel Garcia and Lorenza Martinez.

CORRECTED COPY Report Of Condition Muleshoe State Bank

Form 64 (State) (3-76)
Consolidated Report of Condition of "Muleshoe State Bank" (Legal title of bank)
of Muleshoe, Bailey, Texas 79347 (City) (County) (State) (Zip Code) and Domestic Subsidiaries
at the close of business on March 31, 1976 State Bank No. 1631 Federal Reserve District No. 11

BALANCE SHEET		ASSETS		Sch.	Item	Col.	Mil.	Thou.	
1.	Cash and due from banks	C	7				4	385	1
2.	U.S. Treasury securities	B	1	E			1	627	2
3.	Obligations of other U.S. Government agencies and corporations	B	2	E				900	3
4.	Obligations of States and political subdivisions	B	3	E			3	286	4
5.	Other bonds, notes, and debentures	B	4	E				none	5
6.	Corporate stock							none	6
7.	Trading account securities							none	7
8.	Federal funds sold and securities purchased under agreements to resell	D	4					550	8
9a.	Loans, Total (excluding unearned income)	A	10				8	874	9a
b.	Less: Reserve for possible loan losses							242	t
c.	Loans, Net						8	632	c
10.	Direct lease financing							none	10
11.	Bank premises, furniture and fixtures, and other assets representing bank premises							540	11
12.	Real estate owned other than bank premises							none	12
13.	Investments in unconsolidated subsidiaries and associated companies							none	13
14.	Customers' liability to this bank on acceptances outstanding							none	14
15.	Other assets	G	7					263	15
16.	TOTAL ASSETS (sum of items 1 thru 15)						20	183	16
		LIABILITIES		Sch.	Item	Col.			
17.	Demand deposits of individuals, partnerships, and corporations	F	1f	A			7	436	17
18.	Time and savings deposits of individuals, partnerships, and corporations	F	1f	B+C			9	487	18
19.	Deposits of United States Government	F	2	A+B+C				4	19
20.	Deposits of States and political subdivisions	F	3	A+B+C			1	095	20
21.	Deposits of foreign governments and official institutions	F	4	A+B+C				none	21
22.	Deposits of commercial banks	F	5+6	A+B+C				none	22
23.	Certified and officers' checks	F	7	A				84	23
24.	TOTAL DEPOSITS (sum of items 17 thru 23)						18	106	24
a.	Total demand deposits	F	8	A			7	802	a
b.	Total time and savings deposits	F	8	B+C			10	304	b
25.	Federal funds purchased and securities sold under agreements to repurchase	E	4					none	25
26.	Other liabilities for borrowed money							none	26
27.	Mortgage indebtedness							none	27
28.	Acceptances executed by or for account of this bank and outstanding							none	28
29.	Other liabilities	H	9					346	29
30.	TOTAL LIABILITIES (excluding subordinated notes and debentures)						18	452	30
31.	Subordinated notes and debentures							none	31
		EQUITY CAPITAL							
32.	Preferred stock a. No. shares outstanding			None		(Par value)		none	32
33.	Common stock a. No. shares authorized			20,000		(Par value)		400	33
	b. No. shares outstanding			20,000		(Par value)		500	34
34.	Surplus							831	35
35.	Undivided profits							none	36
36.	Reserve for contingencies and other capital reserves							1	731
37.	TOTAL EQUITY CAPITAL (sum of items 32 thru 36)							1	731
38.	TOTAL LIABILITIES AND EQUITY CAPITAL (sum of items 30, 31, and 37)							20	183
		MEMORANDA							
1.	Average for 15 or 30 calendar days ending with call date:								
a.	Cash and due from banks (corresponds to item 1 above)						3	849	1a
b.	Federal funds sold and securities purchased under agreements to resell (corresponds to item 8 above)							903	b
c.	Total loans (corresponds to item 9a above)						8	957	c
d.	Time deposits of \$100,000 or more (corresponds to Memoranda items 3a plus 3b below)						1	777	d
e.	Total deposits (corresponds to item 24 above)						17	990	e
f.	Federal funds purchased and securities sold under agreements to repurchase (corresponds to item 25 above)							none	f
g.	Other liabilities for borrowed money (corresponds to item 26 above)							none	g
2.	Standby letters of credit outstanding							none	2
3.	Time deposits of \$100,000 or more:								
a.	Time certificates of deposit in denominations of \$100,000 or more						1	777	3a
b.	Other time deposits in amounts of \$100,000 or more							none	b

I, Paul E. Hindelang, Cashier of the above-named bank do solemnly (SWEAR) (AFFIRM) that this report of condition (including the information on the reverse side hereof) is true and correct, to the best of my knowledge and belief.
Correct—Attest: [Signature]
B.E. Loyd, Charles L. Lenau, Sam Damron } Directors.
Place for official seal to be affixed by officer before whom acknowledged. Notary must not be an officer or director of the bank.
State of Texas, County of Bailey, ss:
Sworn to and subscribed before me this 27th day of April, 1976.
My commission expires June 1, 1977. [Signature] Notary Public.

RE-ELECT JACK YOUNG



QUALIFIED

EXPERIENCED

DISTRICT ATTORNEY

154th Judicial District Of Texas
Lamb, Bailey, Parmer Counties

Your Vote And Influence
Will Be Appreciated

Political Advertisement—Paid For By Jack Young—Muleshoe, Texas 79347

Sudan News
By Mrs. Wayne Doty

The members of the Sudan Hornet Band will be having a bake sale Saturday, April 24 from 9 a.m. to 5 p.m. at the Pay & Save Grocery. Money will be used to help send the band to Colorado April 29 - May 3.

Mr. and Mrs. Marvin Bowling vacationed at Pt. Aransas during the Easter holidays.

Mr. and Mrs. Bobby Jack Markham and Lee returned home Saturday after vacationing at Pt. Aransas.

Mr. and Mrs. Troy Waller and children of Amarillo, visited Sunday in the home of her parents, Mr. and Mrs. Claud Kropp.

Mr. and Mrs. Mike Fisher and

children of Ralls, visited during the Easter weekend in the home of his parents, Mr. and Mrs. Lee Roy Fisher. They were here also to celebrate Mike's birthday. Joining them was their daughter and sister, Kathy of Hart.

Mrs. Mary Powell was recently honored on her birthday. Friends made a sign and put it downtown on Main Street in Sudan. While the Powell family was in Clovis for the afternoon, friends decorated the house with toilet paper streamers up-side furniture and big balloons and signs. They also left a cake on the table for her.

Mr. and Mrs. Homer Morris returned recently from visiting in Grants, New Mexico, with their son and family, the Jerry Morris'.

Recent visitors in Mr. and Mrs. Bob Nelson's home, were her parents, Mr. and Mrs. J.T. Henderson of Whiteface, her sister, Mrs. Sue Haley and children, of Wilcox, Arizona and Mr. and Mrs. Eddie Wilson.

The Nelson's visited with her parents in Whiteface along with other family members during the weekend.

Mr. and Mrs. Dale Hanna and Mechelle vacationed during the spring break at Lake Brown-wood.

Mr. and Mrs. Theron Hill and children and Melody Poe vacationed at Ruidoso, New Mexico a few days during the spring break.

Mr. and Mrs. Joe Bellar and boys, spent some time during the break at Carlsbad, New Mexico and toured the Caverns.

Mr. and Mrs. Philip Gordon and children visited during the Easter weekend in Olney with her mother, Mrs. Vera Thomas and her brother and family, Mr. and Mrs. Gordie Thomas of Amarillo.

Dour Hunter of Amarillo, returned home Saturday after visiting here for several days with his grandparents, Mr. and

Mrs. Charles Logan. His mother, Lynda Hunter, came after him.

Mrs. Sonja Carter and Nicole of Amarillo, visited recently with her grandmother, Mrs. Daisy Ford.

Mr. and Mrs. Claud Kropp, visited during the weekend with their children in Hereford. They included Mr. and Mrs. Butch Waller and children of Hart, Mr. and Mrs. Charles Minchew and boys of Hereford, Mr. and Mrs. John Kropp and children of Hereford and Mr. and Mrs. Troy Waller and children of Amarillo.

Mr. and Mrs. G.C. Ritchie visited Saturday in Lubbock with their daughter and granddaughter, Jan Rudd and April.

Mrs. Lewis Fields and boys and her mother, Mrs. Ima Olds, visited relatives in Ida, Louisiana and Kilgore last week.

Mr. and Mrs. Hal Cardwell of Lubbock, visited Sunday in the

home of their son and family, Mr. and Mrs. Glen Cardwell and girls.

Mr. and Mrs. Jerry Etheridge and Kay Lynn of Dimmitt and Mr. and Mrs. Lary Schweppe of Lubbock, visited Sunday in the home of their parents, Mr. and Mrs. G.C. Churchman and Scott.

Mr. and Mrs. Bill Olds returned home Friday, after having vacationed for the past several weeks at the lake.

Mr. and Mrs. Kenneth Noles, visited their daughter and family, Mr. and Mrs. John Hruska in Ozona during the Easter vacation.

Mrs. J.A. Turner recently received word that her brother, Roy Peetoom, 78, died Wednesday, April 14 at 5:15 p.m. at LaVerne, Oklahoma. Funeral services were held there at the funeral chapel Saturday, April 17. Peetoom has been a Sudan visitor on numerous occasions.

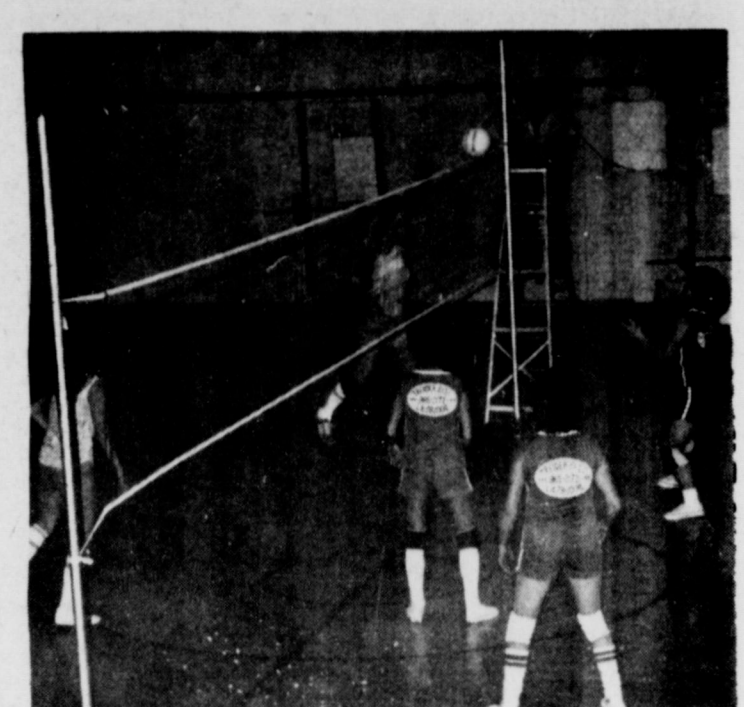
Pre-registration for kindergarten children will be held here April 27-30 at the Sudan Elementary School office. All children in the Sudan School District who will be five years old by September 1, 1976 should register. A parent must accompany the child and according to Bernard Wilson, principal, should bring the child's birth certificate and health records as required by state law.

Little Miss Brandi Nelson has returned home from the Littlefield Hospital, where she was rushed Saturday after being seriously ill. It has been reported that she has improved.

Doo Harragan is a surgical patient in the Methodist Hospital in Lubbock where he has been for several days.

Denver Rudd, Bruce Newman and Ronnie Gatewood were in El Paso during the weekend.

Frank Rone of Cross Plains and formerly of Sudan is a patient in the hospital in Temple.



BARELY OVER . . . AMP & I tips the ball over the net to Neely Moore on the Treider Electric Women's Volleyball team. Treider Electric won after playing three games for the best two out of three.



CELLO CARTON
JUICY TOMATOES
39¢
Ea.

Florida Indian River, Ruby Red
Grapefruit Lb. **25¢**

California New Crop Valencia
Oranges 4-Lb. Bag **89¢**

Romaine, Endive, Red or Green.
Leaf Lettuce Ea. **39¢**

Add the Gourmet Touch
Artichokes Ea. **39¢**

California
Navel Oranges
19¢
Lb.

SPECIAL PRICES from

Prices good thru May 1, 1976. We reserve the right to limit quantities. None sold to dealers.

ROUND STEAK
\$1.28
Lb.

SIRLOIN STEAK
\$1.28
Lb.

NU-SPRED
25¢
16-OZ.

Farmer Jones, Regular or
Beef Franks 12-oz. Pkg. **87¢**

Farmer Jones, No. 1 Quality
Sliced Bacon 12-oz. Pkg. **\$1.19**

Piggly Wiggly
Low Fat Milk 1/2-Gal. **93¢**

Piggly Wiggly
Butter 1-Lb. Pkg. **\$1.29**

Local Brand
Fresh Yogurt 4 8-oz. Ctns. **\$1**

Swift's Can (9 Patties)
Ham Patties 21-oz. Can **\$2.29**

Superb Valu-Trim Heavy Aged Beef Family Pak, (5-Lbs. or More Lb. \$1.58)
T-BONE STEAK
\$1.78
Lb.

Superb Valu-Trim Heavy Aged Beef Boneless, Rump or Bottom
ROUND ROAST
\$1.58
Lb.

Luncheon Meat
HORMEL'S SPAM
89¢
12-OZ. Can



FIFTEEN YEAR PINS . . . On Thursday, April 22, at 7:30 p.m. in the high school cafeteria there were two receiving fifteen year pins. L to r are Mrs. Ernest Kerr and F.D. Rogers.

 Is anyone keeping up with the price of living?
 Three of a kind: golfers, fishermen and proud parents.

 No one can afford serious mistakes but everyone makes them.

Rice Picture Bleak For 76

COLLEGE STATION -- It looks like rice producers in the United States are faced with a "feast to famine" situation.
 After several years of record setting rice prices, producers are now planting their 1976 crops confronted with an uncertain market due to record domestic and world rice production last year.
 That assessment of the rice producers plight comes from Dr. Randall Stelly, marketing economist for the Texas Agricultural Extension Service and the Texas Agricultural Experiment Station.
 "The thing that is really casting a dark cloud over the rice market this year is the possibility that U.S. rice stocks on August 1 could be five times the level of last summer -- 34 to 35 million hundredweights compared to only 7 million hundredweights," points out Stelly.
 "The main reason for this drastic increase is a 14 percent increase in population from 1974 to 1975 coupled with almost a 16 percent decrease in exports due to strong foreign competition."
 As far as the current crop year is concerned, rice production both in the U.S. and the world is expected to be high again, bringing further pressure on the already glutted market.
 "A startling fact is that about 45 percent of last year's U.S. rice crop has still not moved into market channels," emphasizes Stelly. "And in three months the new rice crop will start coming in. Unless some rice currently in storage is moved, a real bottleneck will exist -- to say the least. Marketing activity is almost nonexistent at this time; even exports under Public Law 480 (food aid) are moving slowly."
 Current rough rice prices are about a third less than they were a year ago, according to the Texas A&M University System economist. That puts rice at about \$6 a hundredweight.
 What can U.S. rice producers do about their dilemma?
 "They can do little at this


point," laments Stelly. "Their main concern should be to keep production costs as low as possible while still trying to produce a good quality crop. U.S. rice is far superior to foreign rice but our foreign competitors on the world market can produce their rice so much cheaper. That's our main obstacle."
 "Since the foreign rice crop won't be harvested until this fall, U.S. producers must go ahead with their production plans. If a good foreign crop develops, our farmers will suffer."
 Affection bends the judgment to her uses.
 -Dante.
 When affection speaks Truth is not always there.
 -Thomas Middleton.
 "Tis sweet to feel by what fine-spun threads our affections are drawn together.
 -Laurence Stern.

Boy Scouts Council Camporee Successful


The South Plains Council, Boy Scouts of America held a Council wide Spirit of '76 Bicentennial Camporee this weekend in Maxey Park, according to John Crews, 1976 Camporee Chairman.
 There were 533 Scouts and 132 adult Scouters from the seven Districts in the South Plains Council which covers a twenty county area. There were 46 Scout Troops that participated in the contests of Scouting Skills which consisted of Indian Travois conducted by Don Theall of Lubbock, Ten Peg Relay Race lead by Arnold Woods, Ralls, First Aid Race by Angus Wood, Plainview, Flag Raising by Bob Ennis of Lubbock, Scout Pace under the leadership of J.B. Huckabee of Brownfield, Log Rolling contest lead by Tom Hilbun of Littlefield and a Bucket Brigade Race lead by Larry Samuels, Lubbock. All of the events were judged by Alpha Phi Omega fraternity of Texas Tech University.
 The events concluded Saturday afternoon after the Scouts had a fun filled day of contests, Crews said. There was a surprise event added this year. It was for the Leadership Corps, which is the older Scouts in each Troop who are the Troop Leaders working under the Scoutmaster, stated Crews.
 Saturday's program included a Bicentennial Campfire where songs were sung and skits presented by the Scouts.
 The awards were presented Sunday after an outdoor religious service was held. As everyone packed their tents and other camping gear, it was said by many, we hope we do this again next year, according to John Crews.

PIGGLY WIGGLY


Duet China
 Complete Your Set Now!
49¢
 each piece only
 with each \$3.00 purchase




All Grinds, Coffee,
MARYLAND CLUB
\$1.19
 1-Lb. Can
 Limit one (1) with \$10.00 purchase or more



Betty Crocker, Cherry Chip, German Chocolate, Sour Cream White, White or Yellow, Layer Variety
CAKE MIX
49¢
 18 1/2-oz. Box
 Limit two (2) Please



Charmin, 500 Ct., 1 Ply
BATH TISSUE
69¢
 4-Roll Pkg.



Beef, Beans n Franks, Chicken Croquettes, Fish, Fried Chicken, Meat Loaf, Round Up, Salisbury Steak, Spaghetti & Meatball, & Turkey, Frozen
MORTON DINNER
55¢
 8 3/4-oz. Pkg.

Van Camp's **Pork & Beans** 2 15-oz. Cans **69¢**
 Piggly Wiggly, Twin Pack **Potato Chips** 8-oz. Pkg. **59¢**
 Nestea **Instant Tea** 3-oz. Jar **\$1.39**

Piggly Wiggly, Leaf Spinach, Cut Green Beans, Cream Style or Whole Kernel
Golden Corn 4 16-oz. Cans **\$1**
 Campbell's, Chicken Noodle **Soup** 10 1/2-oz. Can **24¢**
 All Flavors **Jello Gelatin** 3-oz. Pkg. **25¢**
 Piggly Wiggly, Liquid **Bleach** 1/2-Gal. Btl. **48¢**
 Piggly Wiggly, Dishwasher **Detergent** 35-oz. Box **89¢**

For Underarm Protection
Armid XX Deodorant 14-oz. Size **\$1.39**

Tater Tots with Onions, Tater Tots, Crinkle Cuts, Hash Browns, Cottage Fries, Frozen
Ore-Ida Potatoes 2-Lb. Pkg. **69¢**

Del Monte **TOMATO JUICE**
49¢
 46-oz. Can

Pure Vegetable
CRISCO OIL
69¢
 24-oz. Btl. Limit one (1) please

Tomato
DEL MONTE CATSUP
69¢
 Qt. Jug

100-Ct. Btl.
Bayer Aspirin Ea. **89¢**



Reagan. . .Or Ford? There Is A Difference

FORD:

Despite his conservative-sounding rhetoric, it was Gerald Ford who

- appointed a Secretary of Labor (W. J. Usery, Jr.) favors "common situs" picketing, supports federal legislation to legalize compulsory unionism, and favors repeal of the Taft-Hartley Act's Section 14(b), which protects a state's right to pass Right to Work Laws.
- appointed Nelson Rockefeller as Vice President of the United States
- retained Henry Kissinger as Secretary of State, and fired a Secretary of Defense who disagreed with Kissinger's "detente".
- gave 24 of 35 top policy-making positions to identifiable liberals, according to a study by the American Conservative Union.
- weakened the embargo on Castro's Cuba and put an adviser to George McGovern in charge of U.S. Latin policy.
- approved of amnesty for Vietnam deserters and appointed radical liberal Charles Goodell to oversee the program.
- approved \$100 billion in deficits in two short years and said the growth of social welfare programs was "on the whole, commendable."
- talks ambiguously about forced busing and refuses to support a constitutional amendment that would stop it.

REAGAN:

Backed by an eight-year record as governor of our largest state, it is Ronald Reagan who

- is the ONLY presidential candidate so far—from either party, who has said unequivocally that he supports Right to Work. Ronald Reagan believes "Monopoly is evil—whether by government, by business or by labor."
- cut the welfare rolls in California by 300,000 people.
- converted a \$700 million deficit into a half-a-billion dollar surplus.
- restored law and order to the turbulent campuses of California.
- says we should not cave in to Communist tyrant Fidel Castro and his revolutionary export business.
- says "detente" should not be a one-way street of American weakness.
- says the Federal budget can, and must, be brought into balance by cutting back on wasteful welfare handouts.
- proposes to break the momentum of the liberal welfare state by restoring authority and funding to the states.
- says we should not give up the Panama Canal Zone but should defend American sovereignty there.
- supports a constitutional amendment to halt forced busing.

Enochs News

By Mrs. J.D. Bayless

The Baptist women met at 9:30 a.m. Tuesday, for their mission program, taken from the Royal Service Book. The meeting opened with a song, "Break Thou the Bread of Life" and a prayer by Mrs. Ray Seagler. Mrs. Quinton Nichols was in charge of the program. They took a tour through Singapore, the Book Store, the Supreme Court building and City Hall. Taking parts in the program were Mrs. J.W. Layton, Mrs. Harold Layton, Mrs. Ray Seagler and Mrs. Johny Cox. Refreshments were served in the fellowship hall of the church. Punch and Satay was served by Mrs. Quinton Nichols.

Mr. and Mrs. Chester Petree drove to Lubbock Sunday afternoon to visit their son, Mr. and Mrs. Danny Petree and family.

Mrs. Winnie Byars went to Friona to spend the weekend and care for her grandchildren while their parents were gone.

Mr. and Mrs. Orbe Phillips were in Lubbock Wednesday and drove out to Salton and spent the night with their daughter, Mr. and Mrs. Alton Lavender.

Mrs. Annie Calvert of Lyford, and Mrs. J.H. Machen of Morton visited Mrs. Winnie Byars Wednesday morning. Mrs. Alma Altman and Mrs. E.N. McCall visited and had coffee with them. In route home they stopped in for a visit with Mrs. Johnny Cox.

Kim and Kerry Rowden of Lubbock spent Monday and Tuesday with their grandparents, Mr. and Mrs. E.N. McCall.

Mrs. E.C. Gilliam was dismissed from the Morton hospital Saturday after 17 days in the hospital.

Mrs. Geyma Price, Mrs. Quinton Nichols, Mrs. Alma Altman, Mrs. Burley Roberts, Mrs. Olive Shaw, Mrs. Chester Petree, and Mrs. Dale Nichols attended the Vacation Bible school clinic at the First Baptist Church in Sudan Friday.



DEMOCRATIC DELEGATES . . . Bentsen delegates visited in Muleshoe Wednesday, April 21. All three are listed as delegates for the United States Senator Lloyd M. Bentsen. L to r are James R. Lovell, of Dumas; Mrs. Travis Spears of Levelland and State Senator Max Sherman of Amarillo.

BIBLE VERSE

"He that hath two coats, let him impart to him that hath none; and he that hath meat, let him do likewise."

1. Who made the above statement?
2. To whom was he speaking?
3. What happened just after this?
4. Where may this statement be found?

Answers To Bible Verse

1. John the Baptist.
2. The people who were listening to his sermon.
3. He introduced Jesus as the long promised Messiah of Jews.
4. Luke 3:11.

Telltale Kind

Storekeeper: "What kind of soap do you want, my boy?"
Henry: "Just any kind that's got lots of perfume in it so's Ma kin smell it and won't make me wash all over again."

If You Want
To Elect
Gov. Ronald Reagan
President...
YOU MUST



1. Vote in the Republican Primary on Saturday, May 1st . . . and
2. Vote FOUR times for Reagan by voting for all four delegates pledged to Reagan from your Congressional district:

19TH CONGRESSIONAL DISTRICT
MARK YOUR BALLOT FOUR TIMES

- Ernest Angelo, delegate for RONALD REAGAN
- Mel Monte, delegate for RONALD REAGAN
- Robert L. Monaghan, delegate for RONALD REAGAN
- Barbara Culver, delegate for RONALD REAGAN

"Officially endorsed by CITIZENS FOR REAGAN, but not authorized to expend or receive money on behalf of CITIZENS FOR REAGAN, pursuant to Advisory Opinion 1975-12 of the Federal Election Commission."

The Texas Primary is crucial. Our state will elect 100 delegates to the Republican National Convention. There are 17 primaries in May—15 of them after Texas votes May 1 . . . and California doesn't vote until June. This campaign is just beginning. What WE do, here in Texas, could make all the difference.

The Choice, Fellow Texans, Is Up To You.

Paid for By Bailey Co, Citizens For Reagan . . . Cheryl Gist, Chairman

<p>GLADE AIR FRESHENER 7 OZ. REG. 63¢</p> <p>49¢</p>	<p>GIBSON'S DISCOUNT CENTER</p>	<p>master charge THE INTERBANK CARD</p> <p>PRICES GOOD APRIL 29 THRU MAY 1</p>
<p>Half Gallon Picnic Jug 99¢</p> <p>69¢</p>	<p>Edge 84¢</p> <p>REG. \$1.09</p>	
<p>AIR CONDITIONER PUMP REG. 7.19</p> <p>\$5.79</p>	<p>RIGHT GUARD BRONZE 13 OZ. \$1.33</p>	
<p>WEED B GONE BARS REG. \$6.99</p> <p>\$4.99</p>	<p>SANI-FLUSH AUTOMATIC SOLID 7 OZ. 63¢</p>	
<p>PROEN ROOT FEEDER FERTILIZE WHILE YOU WATER TREES, SHRUBS, ROSES, LAWNS REG. \$8.97</p> <p>6.66</p>	<p>KRAFT MIRACLE WHIP 32 OZ. JAR 93¢</p>	

**WANT...
TO BUY?
TO SELL?
RESULTS?**

WANT ADS

**...WILL
WORK
FOR YOU!**

OPEN RATES
1st insertion, per word - 9¢
2nd and add., per word - 6¢
NATIONAL RATES
1st insertion, per word - 11¢
2nd and add., per word - 7¢
Minimum Charge - 50¢
CARD OF THANKS - \$3.00
Classified Display - \$1.25
per column inch.
Double Rate for Blind Ads -
DEADLINE FOR INSERTION
Nondaily for Thursday
Nondaily for Friday
Nondaily for Sunday
WE RESERVE THE
Right to classify, revise or
reject any ad.
NOT RESPONSIBLE
For any error after ad has
run once.

1 PERSONAL
PTI (PRAISE THE LORD) Chan-
nel 28, 8:30 - 10:30 a.m.
Monday through Friday.
15-12s-tfc

I, J.M. or Jess Pruitt wish to
inform the public that I will not
be responsible for any debts or
any checks or any obligations for
any one except what I make
myself.
J.M. Pruitt
1-18t-3tp

3. HELP WANTED
WANTED: Still taking applica-
tions for workers at Allsup's
7-11.
3-46s-4tc

WANTED: Mechanic 5-day
work week; excellent working
condition. **Crow Chevrolet.**
3-49t-tfc

The City of Muleshoe now has
opening for two (2) Street
maintenance people. Duties in-
clude maintaining streets and
alleys. Traffic signs, along with
other maintenance responsibilities.
Applicants should have
maintainer, loader and street
sweeper experience. Applicants
should apply at the personnel
department at City Hall. The
City of Muleshoe is an equal
opportunity employer.
3-17s-3tc

AVON
Need cash for Mother's Day,
Father's Day, Easter and gradu-
ations? Make good earnings on
your own time selling quality
products. Call 272-3208.
16t-3tc

WANTED: Life guard at Mule-
shoe Country Club. Contact Bob
Lee.
3-17s-3tc

HOMEWORKERS WANTED
IN THIS AREA: Men, women,
students. No experience neces-
sary; stuffing and addressing
envelopes (Commission Mail-
ers). Earn sparetime money at
home. Free details for long
stamped envelope to: **S. LEOPOLD,**
1365 SIOUX, N. BRUNSWICK,
N.J. 08902.
3-18t-1tp

5. APARTMENTS FOR RENT
MOVING NOW - Nice 1, 2 and 3
bedroom apartments. Fully car-
peted, individual heat-air, 1 1/2
baths, utilities paid, play-
ground, laundry facilities.
Saratoga Gardens
1300 Walnut Street
Frona, Texas
247-3666
Office hours 10-6
5-3t-tfc

8. REAL ESTATE FOR SALE
FOR SALE: One 2 bedroom
house to be moved. Contact Ed
Cox at Fry and Cox. 272-4511.
8-14s-6tcc

10 acres with well.
20 acres with well.
2 and 3 bedroom houses.
Commercial lots and commer-
cial buildings.
Apartment houses with flower
shop.
5 Bay car washer and buildings.
34 acres for sale with well.
32 acres for sale with 3 rent
houses.
Three bedroom house for sale
519 Avenue E. 2 rent houses
with it. Car port. Exclusive
listing.

E.H. HALL REAL ESTATE
505 AUSTIN STREET
PHONE 272-4784.
8-17t-4tc

FOR SALE: 2 bedroom and
bath, large living room. Kitchen
and dining room combination.
Refinished throughout. 309
Ave. J Call 965-2868.
8-7t-tfc

**SALES, LOANS
AND
APPRAISALS**
In Bailey County 30 Years
**KREBS
REAL ESTATE**
210 S. 1st

FOR SALE: 4 lots and 1000 ft.
barn. 1016 South Main. Call
272-4984.
8-15s-tfc

FOR SALE: Five room modern
house. Large fenced back yard.
\$4000.00.
E.H. GATLIN
111 QUINCY
272-4467
8-18t-2tp

FOR SALE: 600 acres \$200 per
acre. 4 small wells. Southwest of
Muleshoe.
320 acres dry land, \$300 per
acre. Northwest of Enochs.
G.D. HARLAN
ROUTE 1
LITTLEFIELD, TEXAS
262-4270 NIGHT
8-16s-4tc

EXCLUSIVE LISTING: 160 ac-
res for sale. Good land.
34 acres for sale. Good land
For quick sale call:
POOL REAL ESTATE
272-4716

FOR SALE: 181 Acres irrigat-
ed. 1 well. Lays real good on
highway. West of Progress.
160 acres irrigated. 6" wells.
North of Bovina on FM high-
way.
320 acres north of Bovina.
Priced to sell.

15 acres with new 3 bedroom
1 3/4 bath home. Has 4" well.
Sheds and corrals. Near
Progress.
**J.B. SUDDERTH REALTY
INC.**
BOX 627
FARWELL, TEXAS
481-3288
8-15t-tfc

FOR SALE: 1974 428 Ford
Irrigation Motor. 440 HP volts.
Electric motor. \$675. 50 HP year
head 3 to 4 Roto \$300. Phone
272-4602 after 5 or 266-5969
after 5.
10-17s-5tc

Your neighbors trade at **STATE
LINE IRRIGATION** for all their
irrigation needs. Why not you?
Muleshoe, Littlefield, & Level-
land.
10-45s-tfc

**PUMPS - 2-6", 250' and 280',
3-submersible 7/8, 15 and 25
horsepower. All 180". Phone
385-3620.
10-13t-16tc**

FOR SALE OR TRADE: 1970
Model 2 bedroom mobile home.
Call 272-4411
11-15s-6tc

FOR SALE: Grain-fed beef
calves. For your locker. 1/2 or
whole. 925-3510. Leldon Phillips
11-2t-tfc

FOR SALE: Attrex, Milogard
\$2.70. Treflan Eradicane and
Roundup. Wholesale on most
all Ag. chemicals - Farmers
sales - Denny... Lorenzo. Call
806-634-5382.
11-50s-31tc

FOR SALE: Mini 5th wheel
travel trailer. Call 272-4740.
11-14s-tfc

**FOR SALE BY M.D. GUN-
STREAM:** Good pea green
baled hay. Call 272-4515 or
272-4709.
11-18t-tfc

FOR SALE: 1976 14' x 72'
Mobile home. 2 bedroom - 2
bath. Furnished or unfurnished.
Call 272-3331 after 5 p.m.
11-17t-tfc

FOR SALE: Pace and Powell
radios. Base and mobiles.
\$120 and up. Call 272-3163.
15-15s-tfc

13 FOR RENT OR LEASE
FOR RENT OR LEASE: Busi-
ness building. 5200 square feet.
422 N. 1st. 272-3767.
13-5s-tfc

13. MISCELLANEOUS
PHILLIPS HOUSE OF MUSIC
118 Main
Clovis, New Mexico
Pianos, organs, band instru-
ments, new and used. Profes-
sional repairs, sheet music.
rentals, terms.
Phone: 505-763-5041.
15-30s-tfc

Bulldozer work. 965-2622.
15-11t-tfc

We specialize in moving, ty-
ing, skirting and blocking mo-
bile homes. For free estimate
call 647-5462 or after 6, 647-
5212 or 647-3260.
15-18t-2tc

WANT TO BUY: 2 or 3 bedroom
house to be moved. E.E. Hol-
land. Phone 272-3293.
15-17s-tfc

**Kirby Sales
& Service
NEW & REBUILT**
Carolyn Duncan Ph. 4182

FOR SALE: 16" well casing,
new steel 18" 2c a lb.; 6" and
8" column pipe. 1/2 prices for
junk iron.
FARWELL PIPE & IRON
601 Ave. A
Farwell, Texas
15-46t-tfc

FOR SALE: Used carpet and
padding. \$1.00 a yard. Phone
272-5578 or 272-3658.
15-17t-tfc

**ALCOHOL AND DRUG
ABUSERS**
Want help... need a home...
want a new start in life?
Call collect Plainview (806) 293-
8651.
15-17t-8tc

FOR SALE: 1974 Honda CL 360
windshield, luggage rack and
leg guards, 2227 miles. Good
condition. \$825. Call 946-3697.
15-17s-3tp

FOR SALE: Spinnet Piano - will
sacrifice new Spinnet rather than
return. Cash or reliable party
may pay \$39 monthly. Write
Channer Music, Box 1163, Ster-
ling, Colorado. 522-4520.
15-18t-1tp

DEPENDABLE SERVICE.
Backhoe - Frontloader
Cesspool Pumping
Drain Cleaning
Roto-Rooter
Roto-Tilling
Light-Hauling
DWAIN WHEAT
272-3378
If no answer call at noon or
after 5 p.m.
15-11t-tfc

Reduce safe and fast with
GoBese tablets and E-Vap "wa-
ter pills". **DAMRON DRUG.**
15-17t-10tpp

FOR SALE: In-dash Am/8
track stereo, taken out of a 76
Camero. Under-dash Teak au-
tomatic reverse cassette player.
Both with speakers. Call Ran-
dy at 272-3319 or 272-4739.
15-18t-tfc

Heavy truck tarps. 10' x 22'.
\$40 each. Trade Center. 272-
4592.
15-18t-3tc

Are you looking for a new hair
stylist? Do you have unruly or
problem hair? We are capable
and want to help you with your
hair problems. We are located
at the Hideaway Style Shop in
Cactus Alley, 2610 Salem Ave.,
Lubbock, Tex. Behind the Con-
cord House on the Brownfield
Highway. Please call for an
appointment or drop by for
consultation. 795-8008.
15-18t-4tp

YARD SALE: 115 E. Avenue C.
Thursday and Friday 11 a.m.
15-18t-1tp

ERADICANE 17 Pterid 15-gal.
ATTREX 253 lb.
MILOGARD 258 lb.
HEPTACHLOR 2 lb
ROUNDUP ?
I think I have the lowest
discount on all Ag Chemicals.

FARMERS SALE - DENNY
806-634-5382
CALL COLLECT
LORENZO, TEXAS
17-18t-12tc

Lose weight with Grapefruit
diet plan with Diadax - Reduce
excess fluids with Fluidex.
WESTERN DRUG
15-12t-12tpp

FOR SALE: 1/4 sec. good
land. 5 miles n.w. of Mule-
shoe. 1 8" irrigation well, 2
bdr. house.
180 acres for sale. Eight miles
west of Muleshoe on south side
of highway 84. Three irrigation
wells.
Smallwood Real Estate
116 E. Ave. C
Muleshoe, Texas

17 SEED AND FEED
WHEAT. Mites, chinchbugs,
greenbugs are killing your
wheat, not just dry weather.
Don't lose irrigation invest-
ments.
J.L. COX SPRAYING
933-2300
17-13s-10tc



HENRY H. WILLIAMS

**Public
Notice**

**NOTICE OF PUBLIC HEARING
BY THE TAX BOARD OF
EQUALIZATION OF THE
THREE WAY INDEPENDENT
SCHOOL**

Three Way Independent
School District will hold public
hearings relating to equalization
for tax purposes of all properties
situated within the taxing juris-
diction of the Three Way Inde-
pendent School District, Satur-
day, May 15, 1976, from 8:00
a.m. to 12:00 p.m. at the school
building, Maple, Texas. All
persons owning property, real,
or personal, within the district,
having business before said
board shall contact the secretary
of the equalization board, Box
87, Maple, Texas prior to the
above date for said hearings.
Conrad Williams
Secretary
Three Way ISD
Equalization Board
18t-2tc

**Public
Notice**

**NOTICE TO ALL PERSONS
HAVING CLAIMS AGAINST
ESTATE OF
MILDRED F. WELCH**

Notice is hereby given that
original letters testamentary up-
on the estate of Mildred F.
Welch issued to me, the under-
signed on the 26 day of April,
A.D. 1976.
In the proceeding indicated
below my signature hereto
which is still pending, and that I
now hold such letters. All
persons having claims against
said estate, which is being
administered, in the County
below named, and hereby re-
quired to present the same to me
respectively at the address be-
low given before suit upon same
are barred by the general sta-
tutes of limitations, before such
estate is closed, and with the
time prescribed by law, my
residence and post office ad-
dress is Star Route, Maple,
Bailey County, Texas.
Dated the 26th day of April,
A.D. 1976.
Willie L. Welch, Independent
Executor of the Estate of
Mildred F. Welch, deceased,
No. 1164, in the County Court
of Bailey County, Texas.
18t-1tp

**Public
Notice**

**NOTICE OF THE NAMES OF
PERSONS APPEARING AS
THE OWNERS OF
UNCLAIMED AMOUNTS
HELD BY:**

First National Bank of Muleshoe
Box 565, Muleshoe, Texas,
79347.
This notice is given and pub-
lished pursuant to Section 3,
Article 3272b, Revised Civil
Statutes of the State of Texas,
in an effort to locate persons who
are the depositors or owners of
amounts in accounts that have
remained inactive or dormant
according to the provisions of
Article 3272b for more than
seven (7) years.
The unclaimed amounts due
the depositors or owners listed
herein will be paid upon proof of
ownership at the office of the
named depository within nine
(9) months, and if unclaimed
thereafter they may be subject
to report to and conservation by
the State Treasurer in ac-
cordance with said Article 3272b.
Names of Missing Depositors
are Roland R. Buhrkuel, Samu-
el F. Cook, Bea Excamilla, Mary
S. Gonzales. Muleshoe Area
Joint 4-H Club, Richard Dale
Smallwood, and Standard Ab-
stract Company.
18t-1tc

**Funeral
Services For
Williams**

Funeral services for Henry H.
Williams, 88, of Muleshoe, were
held Sunday, April 25, in the
Trinity Baptist Church, with the
Rev. David Everts, pastor officia-
ting. Burial took place at the
Bailey County Memorial Park
Cemetery, under the direction
of Singleton-Ellis Funeral Home
of Muleshoe.

Williams, who died at 6:28
p.m., Friday April 23, in West
Plains Medical center in Mule-
shoe, had been a resident of
Muleshoe since 1957, moving
from Lynn County. He was a
native of Carrollton, Mississippi.
Williams was a retired farmer
and ginner, a member of the
Muleshoe Trinity Baptist
Church and a member of the
Masonic Lodge.
Survivors include his wife,
Effie; three daughter, Mrs. Jake
Roberts of Muleshoe, Mrs. Tom
Burnett of Seminole and Mrs.
C.A. Held of Lubbock; a bro-
ther, W.W. of Fort Worth, seven
grandchildren and nine great-
grandchildren.

The test of intelligence
is your ability to detect
sham.

ATTENTION FARMER!! We
now have **WEATHER MAS-
TER SEEDS:** Hybrid Corn,
Alfalfa, grain sorghum, forage
sorghum, soybeans, and cere-
al grain. Call **Laverne Harvey**
collect 806-272-4626 or 247-
8828
17-13t-tfc

People who sit up late
at night rarely ever want
to get up early in morn-
ing.

You Are Invited!!
To a Farewell Tea For The
Joe Moore's
Saturday, May 1, 1976
8 - 10 pm
THE JIMMY BRIGGS HOME
1/2 mile west and 1 mile south
of Lazbuddie Elevator

**JOHN
NEWTON**
Texas Railroad Commission

JOHN NEWTON BELIEVES:
"Texans are going to get a handle on rising
utility costs only when we reject phony political
promises and attack the problem both here and
in Washington."

LEADING JOURNALISTS AGREE:
"The public will expect and demand of the
commission a performance more judicious and
exacting than ever before in its 85-year history.
Of all the candidates in this important race, we
believe Jon Newton is best qualified to meet the
needs of this new day for the commission." *Dallas
Morning News, April 19, 1976.*

"Jon Newton is an unusually well-qualified
candidate for this office which today is of tre-
mendous and growing importance to our state
and nation." *Kilgore News Herald, April 18, 1976.*

"He has worked successfully for consumer and
environmental causes, he is for a realistic and
wise use of our state's resources and he has spo-
ken out in federal forums for adequate energy
policies." *Port Arthur News, April 20, 1976.*

"If a voter wants to do something about solving
energy and transportation problems, one effective
way would be to vote for Jon Newton for Texas
Railroad Commission." *Houston Chronicle, Feb.
15, 1976.*

"Newton talks common sense on energy and is
ready to go to bat for all Texans... (his) views
are sound, his goals admirable and his qualifica-
tions superior." *Victoria Advocate, Feb. 15, 1976.*

"We need men like Jon in every capacity in
state government." *Beeville Bee-Picayune, Jan.
19, 1976.*

"Ask Jon Newton' is becoming the byword
around the Capitol when it comes to energy
and utility regulations." *Houston Post political
column, Feb. 15, 1976.*

JON NEWTON HAS THE ANSWERS.
**VOTE FOR THE RESPONSIBLE DEMOCRAT
FOR THE TEXAS RAILROAD COMMISSION.**
P.O. Box 152, Jon Newton Campaign Committee, Tom Hagan,
Treasurer, P.O. Box 1952, Austin, Texas 78767



SANDYLAND RC&D PROJECT... The officers of the Sandyland RC&D Project left to right are Jim Montgomery, secretary; Judge Glen Williams, director; George Martin, chairman; Jerry Iley, director; and Dick McGinty, vice chairman.

**Junior Sheepmen To Meet In
Tucumcari, May 8**

More than 500 4-H and FFA
sheep enthusiasts from New
Mexico, Texas, Oklahoma and
Colorado are set to converge in
Eastern New Mexico at the
Quay County Fairground in
Tucumcari, Saturday, May 8,
for the Batie Sheep Farm's
second annual judging contest
and club lamb sale.

In the judging contest, which
starts at 10 a.m. on the eighth,
three top junior judges will be
awarded discounts of 1/2, 1/3 and
1/4 off the purchase price of
lamb bought in the sale which
begins at 1 p.m. the same day.
The three top teams in the
contest will receive attractive
trophies from the Batie's.

from Albuquerque, will handle
the sale.
According to Batie, the idea of
holding a sale and field day was
decided upon for a two-fold
purpose; first, to stimulate in-
terest and knowledge of sheep
in New Mexico through the
judging contest which will be
supervised by New Mexico State
University sheep extension spe-
cialist, Jim Sachse and James
Duffy, NMSU extension agent
from Roswell, and secondly to
allow all junior exhibitors an
equal chance to pick from the
Batie lamb crop.

Batie has been a longtime
supporter of junior sheep exhi-
bitors and has gained a reputa-
tion as one of the nation's top
producers of both purebred
breeding sheep and club lamb
projects. This year's Batie sale
will feature lambs produced
from the same bloodlines that
produced the Reserve Grand
Champion lamb over all breeds
at this year's gigantic Houston
Livestock Show. Purebred live-
stock auctioneer Chuck Stocks.

For further information and
judging contest entry blanks,
junior members, and their par-
ents and advisors may contact
Eugene Batie, Rt. 4, Box 182,
Tucumcari, New Mexico 88401,
or phone Tucumcari 461-0714.

**The Journals
Political Column**

**MEET
THE
CANDIDATES**

Rate for listing in the Journal's Political Column is
\$35 for all offices except those for city council and
school board offices, which are \$30. This fee includes
a front page announcement article and a one-column
photograph at the time the announcement is made, in
addition to the listing in the Political Column from the
date of the announcement until the final election.
Charges for announcements are cash in advance,
and this same policy applies to all political advertising
carried in the columns of this newspaper.
Names for each office will be listed in the Political
Column in the order they are received at the
newspaper office.
The Journal has been authorized to announce the
following candidates for public office:

DISTRICT ATTORNEY
Jack Young

W. Doyle Elliott
BAILEY COUNTY COMMISSIONER
Robert P. (Bob) Sanders
Precinct No. 3
James Warren
Precinct 3
John W. Smith
Precinct 1
C. R. Black
Precinct 1
W. M. (Matt) Dudley
Precinct 1
PARMER COUNTY COMMISSIONER
Cecil Atchley
Precinct No. 3
CONSTABLE PRECINCT 1
Claude Don Holmes
John Blackwell
Bailey County
SHERIFF
Dee Clements
JUSTICE OF PEACE
Precinct 1
Kenneth Martin
TEX HOUSE OF REPRESENTATIVES
Bill Clayton

The Pastor Speaks

By Rev. Evetts

THE BI-PRODUCTS OF CHRISTIANITY—Matthew 13: 47-48 "Again, the Kingdom of heaven is like unto a net, that was cast into the sea, and gathered of every kind: Which, when it was full, they drew to

shore, and sat down, and gathered the good into vessels, but cast the bad away." This is the last of seven parables illustrating certain phases of the Kingdom of Heaven. In this parable - The Kingdom is compared to a fisherman's net. Not the fish caught by the net, not the man casting the net, not the sea into which the net was cast - But like the net itself. **THE FORCE OF THE ILLUSTRATION IS PLAIN:** As we examine this parable we find

several things of importance, especially to those who are members of God's Kingdom. First of all we learn that the net hauls in many different kinds of fish. Some are good, some are not so good, and some are bad and unfit. Some are small, some are large, some are profitable while some are actually dangerous and unprofitable. But we can be assured that the kinds that are caught in the net are no reflection upon the net. We cannot blame the net because a worthless thing was caught in it.

A study of Christianity reveals that through the ages, many unfit and worthless things have been caught in the meshes of the Gospel Net. The first time it was cast out - it caught Judas Iscariot and a man by the name of Simon Magus. But it is no reflection on the Gospel that in all ages some very wicked men have claimed to be believers. This is a warning however, against such unfit things - even though they are found in a church. We are told that the devil will seek membership in

the church - and will deceive the very elect if it can be possible. But Jesus said: "...not everyone who says, Lord, Lord, shall enter the Kingdom of God." **THE FORCE OF THE FACTS:** The Gospel has offered a very fertile field for fanaticism, radicalism, and hobbies and frustration. Such things are always found in the wake of the Gospel. Especially in a land where men are permitted to do their own thinking - and set up their own religious standards. Many things are caught in the Net that

look beautiful but they are in reality very dangerous. I was fishing one day off the shore of the Texas Coast when we caught a Sting-Ray, not a very pleasant experience. Many things are caught in the Gospel Net that are poison. The Church is often sick because it has taken on more of such than can be digested. Someone has said: "...a back-door revival is sometimes the greatest need of the church." It is a sad day for the Kingdom of heaven if the church is in the hands of

unregenerated men. **THE FORCE OF THE PRE- DITION IS ALSO HERE:** This unfortunate condition might always be expected as long as time lasts. It is going to be with us as long as we live and we will, we must learn to fight against it. Unregenerate men will find their way into the church - this has always been true and it is true today. But this does not mean that they are in the Kingdom of God. Nor that they will go to heaven when they die. The day of separation come

in God's own good time. In the next world such mixtures will not be found. They may get into the church on the earth - and they may be allowed to do much and lasting damage - but they will not get into heaven. **A Sorry Lot** Judge--When you married him you promised to share his lot, didn't you? Wife--Yes, but I didn't know then that it was just a lot of trouble.



THIRTY YEAR PINS ... Mrs. Jack Obenhaus and Mrs. J.W. Watson received thirty year pins at the TSTA Banquet, held April 22, at 7:30 p.m., in the high school cafeteria.

WHO KNOWS?

1. What is dyslexia?
2. Name the flower and birthstone for March.
3. When is Mardi gras?
4. How did "The Star Spangled Banner" become the national anthem?

Answers To Who Knows

1. Impairment of the ability to read, often as the result of genetic defect or brain injury.
2. Jonquil and bloodstone.
3. March 2nd.
4. By an act of Congress, March 3, 1933.

Help Clear the Smoke Millions of Americans are trying to stop smoking cigarettes, but need help. Support your American Cancer Society Crusade and help fund Quit-Smoking Clinics.

Crop Reports Needed By Farmers

During the last half of May, a random sample of some 24,000 Texas farmers will receive a crop acreage questionnaire from W.H. Walther, Agricultural Statistician in Charge of the Texas Crop and Livestock Reporting Service, Austin.

This information will be the basis for determining the planted acreage for the state of Texas and for each county. Texas covers such a wide area that state totals alone do not provide adequate information on Texas' most basic industry - agriculture. The Texas Legislature has provided a program of estimates for each county. This is a cooperative effort of USDA's Statistical Reporting Service and the Texas Department of Agriculture.

Accurate estimates are of great importance to farmers in planning production and marketings and in providing an unbiased picture of Texas agriculture. Farmers who receive questionnaires are urged to complete and return them by mail. All individual reports are confidential and are used only for state and county totals.



GET PROFESSIONAL carpet cleaning results!

(At do-it-yourself prices)

RENT OUR RINSEVAC—the new portable, easy-to-use hot water extraction carpet cleaning machine that gets it...
 • rinses carpet fibers with hot water and cleaning solution
 • loosens and lifts dirt, grime and residues to the carpet surface where they are immediately vacuumed up
 • leaves your carpets CLEAN and FRESH!



ATTENTION MULESHOE AREA CATTLEMEN
 ...In regard to dead stock removal... If you have a problem with service... whether in the feed yard or on the farm... Please give US a chance! Thank You.
YOUR LOCAL USED COW DEALER IN MULESHOE
 Ph. 965-2903
 Mobil 965-2429
Muleshoe Bi-Products



FOR BETTER VALUE AND LOWER FOOD PRICES


46 oz. Can Texsun	65¢	U.S.D.A. GRADE 'A' FRESH DRESSED MARKET CUT	
ORANGE JUICE	65¢	FRYER PARTS	
#300 Can, Mountain Pass	29¢	DRUMSTICKS	lb. 69¢
REFRIED BEANS	29¢	NECKS	lb. 10¢
#1 1/2 Can White Swan	45¢	THIGHS	lb. 69¢
CRUSHED PINEAPPLE	45¢	BREASTS	lb. 79¢
7 1/2 oz. Your Choice	79¢	STEAK FINGERS	lb. 98¢
THE SPREADABLES	79¢	BLUE MORROWS FULLY COOKED.....	lb. 98¢
#303 Can Diamond	29¢	THICK SLICED BOLOGNA	GLOVERS CHUCK WAGON..... 12 oz. Pkg. 79¢
PEELED TOMATOES	29¢	BEEF BOLOGNA	GLOVERS CHUCK WAGON..... 12 oz. Pkg. 79¢
7 oz. Can Spam	79¢	THIN SLICED BACON	SWIFTS PREMIUM VAC-PAC..... 1 lb. Pkg. \$1.39
LUNCHEON MEAT	79¢	SKINLESS FRANKS	SWIFTS PREMIUM..... 12 oz. Pkg. 69¢
18 1/2 oz. Box Swans Down	49¢	RANCH STEAK	SWIFTS PREMIUM PROTEN BEEF..... lb. \$1.09
CAKE MIX	49¢	ARM ROASTS	SWIFTS PREMIUM PROTEN BEEF..... lb. \$1.09
13 oz. Can Pet	3/\$1	RIB STEAK	SWIFTS PREMIUM PROTEN BEEF..... lb. \$1.19
EVAPORATED MILK	3/\$1		
1 lb. Carton Imperial	65¢		
MARGARINE	65¢		
18 oz. Jar Bama	69¢		
APPLE GRAPE JELLY	69¢		
32 oz. Jar Best Maid Kitchen Stvie	59¢		
PICKLES	59¢		
5 oz. Hungry Jack Butter Tastin	3/69¢		
BISCUITS	3/69¢		
16 oz. Can Hershey's Flavored	45¢		
CHOCOLATE SYRUP	45¢		
100 Count 5 oz. Dixie Refill	89¢		
KITCHEN CUPS	89¢		
Quart Bottle Liquid Wisk	\$1.19		
DETERGENT	\$1.19		
1/2 Gal. White Swan	49¢		
BLEACH	49¢		
20 oz. Can Shout Heavy Duty	\$1.39		
STAIN REMOVER	\$1.39		
Giant Size Box Cold Power	\$1.19		
DETERGENT	\$1.19		



QUART JAR BEST MAID SALAD DRESSING 59¢

PAMPERED PRODUCE

Mexico Vine Ripe	CANTALOUPE	lb. 29¢
Texas Ruby Red	GRAPEFRUIT	lb. 19¢
Florida Garden Fresh Corn	ROASTING EARS	ea. 10¢
Long Green Slicers	CUCUMBERS	lb. 29¢



42 oz. CAN SWIFT'S JEWEL SHORTENING 79¢
 Limit 1 With \$10 Purchase or More.

FROZEN FOODS FOR SPRING

Banquet (Chicken, Beef, or Turkey)	POT PIES	4/\$1
2 lb. Stillwell	BLACKBERRY COBBLER	89¢
10 oz. Keith's	BLACKEYED PEAS	35¢
2 lb. Pkg. Armour's Star	TURKEY LOAF	\$2.29

No. 248

OFFICIAL BALLOT BOLETA OFICIAL

RAZA UNIDA PARTY PARTIDO DE RAZA UNIDA

Vote for the candidate of your choice in each race by placing an "X" in the square beside the candidate's name. (Vote por el candidato de su preferencia para cada candidatura marcando con una "X" el cuadro frente al nombre del candidato.)

No. 248

May 1, 1976
 (1 de Mayo de 1976)
CONDADO DE BAILEY COUNTY, TEXAS
RAZA UNIDA PARTY PRIMARY ELECTION (ELECCION PRIMARIA DEL PARTIDO DE RAZA UNIDA)
 NOTE: Voter's signature to be affixed on the reverse side.
 (NOTA: Firma del votante sera fijada al lado reverso.)

#12 THIS COUPON IS GOOD FOR **100 FREE GUNN BROS. STAMPS**

AT WHITES CASHWAY
 No Purchase Required

Please fill in your name and city
 Only One Coupon Per Customer—Coupon Expires

#12 THIS COUPON IS GOOD FOR **100 EXTRA GUNN BROS. STAMPS**

AT WHITES CASHWAY
 With the Purchase of
 With 7.50 Purchase

Please fill in your name and city
 Only One Coupon Per Customer—Coupon Expires

We Welcome **USDA FOOD STAMP COUPONS**



COME TO CASHWAY FOR YOUR WIC CARD PURCHASES

200 BONUS GUNN BROS. STAMPS Each Week For 12 Weeks JUST CLIP AND REDEEM OUR STAMP COUPONS!

GUNN BROS STAMPS DOUBLE EVERY WEDNESDAY



White's CASHWAY

STORE HOURS: 7:30 a.m. Till 9:00 p.m. Monday Thru Saturday CLOSED SUNDAY
 We Reserve The Right To Limit Quantities

Listen To MULETRAIN Over KMUL 10:15 a.m. Sponsored By WHITE'S CASHWAY

For Railroad Commissioner (Para Comisionado de Ferrocarriles)

FRED RODRIGUEZ GARZA

For County Commissioner, Precinct No. 3 (Para Comisionado del Condado, Precincto No. 3)

DOMINGO RAMOS

For County Chairman (Para Presidente del Condado)

ALBERTO G. DANIEL

For Precinct Chairman, Precinct 3 (Para Presidente del Precincto 3)