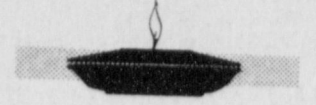




# BAILEY COUNTY JOURNAL

'The Community of Opportunity-Where Water Makes the Difference'

MEMORIAL DAY



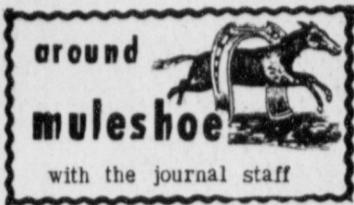
Vol. 11 No. 21

10 Pages

Published Every Sunday at Muleshoe, Bailey County, Texas 79347

10 CENTS

Sunday, May 25, 1975



The Texas Woman's University held its annual Spring Commencement program Saturday, May 17, awarding bachelor's, master's and doctoral degrees. Recipients and their fields of study included Deborah Lynn St. Clair of Muleshoe who was awarded a B.S. degree in Special Education/Elementary Education.

Texas State Scholarships worth \$200 each have been awarded to 77 freshman and sophomore students for the 1975-76 school year at South Plains College.

Students must demonstrate financial need and show academic promise in order to qualify for the state-supported scholarships, said Glenn Pounds, financial aid officer at SPC.

Debbie Jasko of Muleshoe was among the recipients.

The Texas Tech University School of Law has announced recipients of major honors and awards for the academic year just ended. Among them was Betty Little, daughter of Mr. and Mrs. Joe H. Harbin of Muleshoe. A first year law student, she received a \$200 award from the firm of Geary, Brice, Barron and Stahl of Dallas.

Some 3,500 students, candidates for degrees or diplomas from the University of Houston for the Fall 1974 and Spring 1975 semesters, celebrated their graduation at commencement ceremonies Saturday, May 17 in Hofheinz Pavilion on the UH Central Campus.

Dr. Duncan Wimpress, president of Trinity University in San Antonio, delivered the commencement address.

Dr. Philip G. Hoffman, president of UH, presided, conferred degrees and diplomas, and presented teaching excellence awards.

Dr. Emmett B. Fields, UH executive vice president and dean of faculties, presented candidates for degrees and recognized honor graduates.

Candidates for degrees or diplomas included Jerry D. Redwine, Doctor of Optometry, Muleshoe.

## Hearing Held On Nursing Home Election

A hearing on the validity of an election held December 6, 1974, for unionizing the Muleshoe Nursing Home employees was held Thursday and Friday in Muleshoe at the City Hall.

The hearing was held by the National Labor Relations Board with Judge Dobbs of Fort Worth presiding.

Marshall Cook, administrator of the Muleshoe Nursing Home, reports that eight to 10 witnesses appeared at the meeting Thursday.

The hearing was held to determine the eligibility of several challenged ballots in the election. The challenged ballots have not been opened or counted at this time. Of the counted votes, 14 were for the union and 13 were against.

The Muleshoe Nursing Home was represented by Don Graf of Lubbock and the Retail Clerks Union was not represented by attorney.

The judge is expected to issue his decision in two to three weeks.

## Local Senior Citizens Plan Luncheon

Muleshoe Senior Citizens will be observing Senior Citizen Month with a luncheon Monday, May 26, at noon in the First United Methodist Church of Muleshoe.

During the luncheon, the Senior Citizen of the Year will be named and the "Parade of Pioneers" will be held.

Everyone is encouraged to attend.



Congressman George Mahon

## Donations Furnish New Hospital Rooms

Several new memorials and dedications have been received this week for the new proposed hospital.

Memorials include in memory of Lela Mardis from the Kenneth Henrys' in memory of Carrol Goss from the Kenneth Henrys; in memory of Josephine Clark from Bernice Holderman and Main Street Beauty Shop; in memory of W. H. Kistler from Mrs. W. H. Kistler; in memory of Lucy Marie Maltby given by Glen Maltby; also a donation was given in honor of the birth of the Jack Rennels' son from the J. E. McVickers.

Several of the rooms of the proposed hospital have already been furnished by memorials. The most recent include a private room furnished in honor of Mary Moore given by Mr. and Mrs. N. C. Moore and Wilcy Moore; a private room furnished in loving memory of Mervin Wilterdin by Mrs. Mervin Wilterdin; a private room furnished in memory of Roland Bigham given by Mrs. Roland Bigham; a semi-private room was furnished in honor and appreciation of Rev. H. D. Hunter given by the Lee Pools; a semi-private room was furnished in memory of Andrew Lyte Williams and Teri Lynette Williams, infant children of Carter and Lela Williams and in memory of Scott Williams given by Mr. and Mrs. Conrad Williams.

The conference room was furnished by an area family in loving memory of a family member. The American Association of University Women have donated \$200.00 for art and wall hangings.

A semi-private room was furnished in memory of Naomi St. Clair given by the St. Clair family. The L.C.U. Unit was furnished in memory of Irvin St. Clair given by the St. Clair family.

The emergency room was furnished by Mr. and Mrs. Byron Gwynn. A private room was furnished in memory of Fred J. Johnson by Mrs. Fred J. Johnson and Mr. and Mrs. Ronald D. Johnson and children.

A get-well wish was given in honor of Leon Lewis from Lucille, Shirlee, Ruby, Mary B. of the Nursing Home Staff.

There are many other areas in the proposed new hospital that can be furnished in memory of someone dear, or in honor of someone special. This is a lasting memorial and will serve the needs of the living through better hospital facilities for the community.

There will be 18 private rooms and six semi-private rooms. Five private rooms and three semi-private rooms have been taken to be furnished.

In addition to these rooms are two examination and treatment rooms, \$5000.00 each; the clinic waiting room, \$10,000.00; nurses lounge, \$2,000.00; and a gallery station, \$5,000.00.

Also needed is kitchen equipment to make meal preparation easier and better. Some

Cont. on Page 3, col. 1

and three semi-private rooms have been taken to be furnished.

In addition to these rooms are two examination and treatment rooms, \$5000.00 each; the clinic waiting room, \$10,000.00; nurses lounge, \$2,000.00; and a gallery station, \$5,000.00.

Also needed is kitchen equipment to make meal preparation easier and better. Some

Cont. on Page 3, col. 1

## Council Ups Water Charges

The Muleshoe City Council met Tuesday morning in regular session with all councilmen and the mayor present. The council delayed any action on renewing a contract to Southwestern Public Service for street lights.

Water deposits for the city for residents were raised from \$15 to \$25.

The water turn-on policy for people whose water has been turned off due to delinquent accounts, was raised from \$1 to \$5 during working hours. After hours, the charge will be \$7.50. This raise was due to the fact that between 50 and 60 residents a month were having to have their water turned on and off.

The council planned the use of Revenue Sharing for the latest entitlement period.

## P.E.T. Course Will Begin In Muleshoe Thursday, May 29

A Parent Effectiveness Training Course is scheduled to begin in Muleshoe on Thursday, May 29, from 9 a.m. until 12 noon in the Tri-County Savings and Loan Community Room.

Instructor for the course which will be held for eight consecutive weeks, will be Mrs. Ann Ford, Central Plains Mental Health Center, Plainview.

P.E.T. is a training program for parents, to teach them the skills they need for the most important job they will ever have, raising responsible children.

The course was designed by Dr. Thomas Gordon in 1962. It is taught by specially trained instructors in hundreds of communities in every state and several foreign countries. The number of parents enrolled in P.E.T. has doubled each year, and at this rate of growth, more than a quarter million parents will have taken P.E.T. by 1975.

Each parent who enrolls in the course receives a P.E.T. book as a text. Thousands of people who first read the book later enroll in the course so they may acquire more competence in the methods and skills explained in the book.

Cont. on Page 3, col. 5

and the special entertainment were discussed and ways to finance all Fourth activities.

Special recognition was made of the two senior Ambassadors who will retire at the end of the summer. Miss Rhonda Stevenson and Miss Susie Coussate were given plaques and gift certificates for their representation of the Chamber.

Also, the two new Ambassadors were recognized. They are Miss Anna Hernandez, daughter of Mr. and Mrs. Frank Hernandez, and Miss Sheryl Stovall, daughter of Mr. and Mrs. Bob Stovall. Miss Perri Poyner and Miss Esther Lucero, the other two Ambassadors were also present.

Door prizes were as follows:

from Williams Brothers Office Supply, a desk lamp was won by Marvin Lewis; from Howard Watson Alfalfa, a set of tools was won by Bruce Peterson; and from C.R. Anthony Company, a piece of luggage was won by James Crane.

The cash door prize now goes up to \$75.00 because the chamber member whose name was drawn was not present.

The next Chamber Breakfast is set for July 17 and all chamber members are urged to be present. The breakfast is a dutch treat and meals cost \$2.00. The breakfast is designed to bring the Chamber membership into a closer relationship and to encourage new ideas and suggestions.

Cont. on Page 3, col. 1

# George Mahon To Be Here Wednesday

## Chamber Breakfast Held On Wednesday

The second bi-monthly Membership Breakfast for the Muleshoe Chamber of Commerce and Agriculture was held on Thursday morning, May 22, 1975, at 6:30 a.m. at the Corral Restaurant. Approximately 55 persons attended.

The program of the morning included entertainment by the Crusaders. This group of gospel singers includes Marvin Lewis, Bruce Peterson, W.T. Watson, Jack Young, Wayland Ethridge and H.D. Hunter, Jr. After their part of the program, a panel composed of R.A. Bradley, Dave Sudduth, Clarence Christian and Tommy Black discussed questions directed by Ken Henry regarding the July Fourth Activities. Specifically, the barbeque, kid's games

## DANGER! Toxic Chemical Taken Here

Robert Mack Moss, Plant Manager of Riverside Chemical Company, Muleshoe, is informing the public that whoever stole the 55 gallon drum of Technical DT-Lyston from Riverside Chemical Co. over the weekend of May 17, 1975, please do not use this material as it is extremely toxic and could kill someone.

This material is not made for direct application since it is a deadly poison. If sprayed on a crop it could leave

Cont. on Page 3, col. 3

## Local Girls Enroll In E-Ball Camp

Terri Clark of Friona, Texas and Angela Matthews of Muleshoe, Texas have enrolled in the Ranger Junior College Basketball Camp June 1 - June 6. This camp is directed by Ron Butler, Coach of the Ranger Junior College Range-Anns, the 1971 National Junior College Champions.

This is the sixth annual camp, and this year there are three sessions. The camp is for

Cont. on Page 3, col. 1

and the special entertainment were discussed and ways to finance all Fourth activities.

Special recognition was made of the two senior Ambassadors who will retire at the end of the summer. Miss Rhonda Stevenson and Miss Susie Coussate were given plaques and gift certificates for their representation of the Chamber.

Also, the two new Ambassadors were recognized. They are Miss Anna Hernandez, daughter of Mr. and Mrs. Frank Hernandez, and Miss Sheryl Stovall, daughter of Mr. and Mrs. Bob Stovall. Miss Perri Poyner and Miss Esther Lucero, the other two Ambassadors were also present.

Door prizes were as follows:

from Williams Brothers Office Supply, a desk lamp was won by Marvin Lewis; from Howard Watson Alfalfa, a set of tools was won by Bruce Peterson; and from C.R. Anthony Company, a piece of luggage was won by James Crane.

The cash door prize now goes up to \$75.00 because the chamber member whose name was drawn was not present.

The next Chamber Breakfast is set for July 17 and all chamber members are urged to be present. The breakfast is a dutch treat and meals cost \$2.00. The breakfast is designed to bring the Chamber membership into a closer relationship and to encourage new ideas and suggestions.

Cont. on Page 3, col. 1

from Williams Brothers Office Supply, a desk lamp was won by Marvin Lewis; from Howard Watson Alfalfa, a set of tools was won by Bruce Peterson; and from C.R. Anthony Company, a piece of luggage was won by James Crane.

The cash door prize now goes up to \$75.00 because the chamber member whose name was drawn was not present.

The next Chamber Breakfast is set for July 17 and all chamber members are urged to be present. The breakfast is a dutch treat and meals cost \$2.00. The breakfast is designed to bring the Chamber membership into a closer relationship and to encourage new ideas and suggestions.

Cont. on Page 3, col. 1

Cont. on Page 3, col. 1

Cont. on Page 3, col. 1

Cont. on Page 3, col. 1

Cont. on Page 3, col. 1

Cont. on Page 3, col. 1

Cont. on Page 3, col. 1

Cont. on Page 3, col. 1

Cont. on Page 3, col. 1

Cont. on Page 3, col. 1

Cont. on Page 3, col. 1

Cont. on Page 3, col. 1

Cont. on Page 3, col. 1

Cont. on Page 3, col. 1

Cont. on Page 3, col. 1

Cont. on Page 3, col. 1

Cont. on Page 3, col. 1

Cont. on Page 3, col. 1

Cont. on Page 3, col. 1

Cont. on Page 3, col. 1

Cont. on Page 3, col. 1

Cont. on Page 3, col. 1

Cont. on Page 3, col. 1

Cont. on Page 3, col. 1

Cont. on Page 3, col. 1

Cont. on Page 3, col. 1

Cont. on Page 3, col. 1

Cont. on Page 3, col. 1

Cont. on Page 3, col. 1

Cont. on Page 3, col. 1

Cont. on Page 3, col. 1

Cont. on Page 3, col. 1

Cont. on Page 3, col. 1

Cont. on Page 3, col. 1

Cont. on Page 3, col. 1

Cont. on Page 3, col. 1

Cont. on Page 3, col. 1

Cont. on Page 3, col. 1

Cont. on Page 3, col. 1

Cont. on Page 3, col. 1

Cont. on Page 3, col. 1

Cont. on Page 3, col. 1

Cont. on Page 3, col. 1

Cont. on Page 3, col. 1

Cont. on Page 3, col. 1

Cont. on Page 3, col. 1

Cont. on Page 3, col. 1

## Luncheon, Reception Planned For Mahon

Mayor Alex Williams has declared Wednesday, May 28 as George Mahon Day in Muleshoe.

Congressman Mahon will be in Muleshoe visiting with various individuals and organizations on that day. Arrangements have been made to have an informal reception for him at the Community Room at the Muleshoe State Bank from 10 a.m. until 11 a.m. and interested persons are invited to come by and welcome him to the Muleshoe area.

From 12 until 1:30 the Muleshoe Jaycees, Lions, Kiwanis and Rotary Clubs will have a joint luncheon for Mahon who will also speak. This will be held at the XIT Steak House and everyone is welcome to attend. The price will be \$3.00 per plate and anyone not a member of Lions, Rotary, Kiwanis or Jaycees need to make reservations by calling the Muleshoe Chamber of Commerce and Agriculture Office by noon Monday.

Congressman Mahon has served the 19th Congressional District of Texas since 1934, having been the only man to serve this district in the House of Representatives, Washington. He is chairman of the Agriculture and Conservation Committee.

Cont. on Page 3, col. 1

Cont. on Page 3, col. 1

Cont. on Page 3, col. 1

Cont. on Page 3, col. 1

Cont. on Page 3, col. 1

Cont. on Page 3, col. 1

Cont. on Page 3, col. 1

Cont. on Page 3, col. 1

Cont. on Page 3, col. 1

Cont. on Page 3, col. 1

Cont. on Page 3, col. 1

Cont. on Page 3, col. 1

Cont. on Page 3, col. 1

Cont. on Page 3, col. 1

Cont. on Page 3, col. 1

Cont. on Page 3, col. 1

Cont. on Page 3, col. 1

Cont. on Page 3, col. 1

Cont. on Page 3, col. 1

Cont. on Page 3, col. 1

Cont. on Page 3, col. 1

Cont. on Page 3, col. 1

Cont. on Page 3, col. 1

Cont. on Page 3, col. 1

Cont. on Page 3, col. 1

Cont. on Page 3, col. 1

Cont. on Page 3, col. 1

Cont. on Page 3, col. 1

Cont. on Page 3, col. 1

Cont. on Page 3, col. 1

Cont. on Page 3, col. 1

Cont. on Page 3, col. 1

Cont. on Page 3, col. 1

Cont. on Page 3, col. 1

Cont. on Page 3, col. 1

Cont. on Page 3, col. 1

Cont. on Page 3, col. 1

Cont. on Page 3, col. 1

Cont. on Page 3, col. 1

Cont. on Page 3, col. 1

Cont. on Page 3, col. 1

Cont. on Page 3, col. 1

Cont. on Page 3, col. 1

Cont. on Page 3, col. 1

Cont. on Page 3, col. 1

Cont. on Page 3, col. 1

Cont. on Page 3, col. 1

Cont. on Page 3, col. 1

Cont. on Page 3, col. 1



SELF-HELP HOUSING SITE . . . Joe Valdez, executive director of Viviendas Cuauhtemoc, the self-help housing corporation in Muleshoe, is pictured driving the stake on the sign denoting the location of one of the first self-help housing sites in Bailey County. Construction is scheduled to begin within a month. Other locations are located in various places over town. This lot is located on West Ninth Street in Muleshoe.

## Drive Defensively On Memorial Day

AUSTIN, May 19 -- The Texas Safety Association today reminded motorists to make their Memorial Day travel sensible by buckling safety belts and observing speed limits.

The Memorial Day holiday period begins at 6 p.m. Friday, May 23, and ends at midnight, Monday, May 26.

The most important passenger protection feature in the American car today is the seat belt system, asserts TSA, yet it is estimated that less than 30 percent of drivers wear lap and shoulder belts regularly. As a result, each year more than 14,000 persons die in highway crashes that would not have been fatal if the victims had been wearing safety belts.

TSA cited the National Safety Council estimate that over 100 drivers could be saved over the upcoming holiday if they simply took the time to fasten their safety belts.

Speed is another key factor in traffic death and injury, points out TSA, noting that in 1974, statewide traffic deaths decreased by 17 percent. But in 1975, with compliance to the 55 m.p.h. speed limit apparently slipping, deaths are on the increase again. The latest Department of Public Safety report shows traffic deaths up 23 percent so far this year.

Learning to deal with situations that cause accidents can help the driving public survive not only in holiday traffic but every day. A good way to learn is to take the Defensive Driving Course, a joint effort of TSA and the National Safety Council. Studies show that graduates have fewer accidents and buckle their safety belts. The course also saves the graduate insurance money. Drivers who successfully complete the eight-hour, classroom course are eligible for a ten percent automobile insurance discount. For more information on the course, contact the Texas Safety Association, P.O. Box 9345, Austin, Texas, 78766.

A change of fortune hurts a wise man no more than a change of the moon.

Benjamin Franklin

## Family Land Heritage Program To Reopen Registration June 1

AUSTIN--Registration for the second Family Land Heritage Program, honoring

families who have owned and continuously operated a farm or ranch for 100 years or more, begins June 1.

Last year 565 families and individuals were honored at ceremonies at the state fairgrounds in Dallas. Twenty families who missed the 1974 deadline have already qualified for 1975.

Agriculture Commissioner John C. White said applications are available at the county judge's office in all counties that were settled by 1875. He explained that judges in areas of Texas settled after that date did not receive forms. However, if a family in one of these areas thinks they qualify, they may write directly to the Texas Department of Agriculture for an application.

"Applicants must use the new forms if they wish to qualify," White said.

TDA sponsors the program. Registration deadline is Aug. 15.

White stressed that the land must have been agriculturally productive and owned by family members for 100 years or more. If all the land has ever been rented out, it will not qualify.

Persons must live on and work the land, or, if they live off the historic land, they must actively manage and direct the everyday operation of the farm or ranch. Absentee ownership of land devoted to hunting and timber leases and similar operations will not qualify.

"Last year was our first year for Family Land Heritage, and it was a big one," White said. "We were proud and happy to honor some of the first families of Texas, those who have given so much to Texas agriculture and, therefore, its people, for

Those who qualify will be honored at appropriate ceremonies in the fall. They will receive a certificate suitable for framing and a brief history of their land will be printed in the "Family Land Heritage Registry."

**SHUGART COUPON**

**SAT. MAY 31**

**Pay-N-Save**

**515 West American Blvd.**



**9**

WALLET SIZE

COLOR PORTRAITS

**99¢**

ASK About Our

**8 x 10**

OFFER

Extra charge for GROUPS



HONORED AT ICE CREAM SUPPER . . . Standing left to right are John Gunter, Robby Sowder, and Kelly Head. Seated are Robert Stoval and Ellen Shafer. These seniors will be graduating this year.

### Lazbuddie School Menu

May 26 - 28

MONDAY

Beef Burritos  
Pinto Beans  
Scalloped Potatoes

Green Salad  
Coconut Pudding  
Cornbread - Butter

1/2 Pt. Milk

TUESDAY

Beef Stew  
Cheese Sticks  
Buttered Rice

Crackers  
Peanut Butter Cookies

1/2 Pt. Milk

WEDNESDAY

Hamburgers and  
Sloppy Joes

Potato Sticks

Pickles - Lettuce

Ice Cream

1/2 Pt. Milk

1/2 oz. peanut butter with each lunch.

AND ENTERTAINMENT!

CHARLOTTE, N.C.--The

Mecklenburg County library

presents a triple-feature program at the food stamp office to help applicants pass their time while waiting to fill out forms for food stamps.

Too much Vitamin D can cause calcification of the soft tissues resulting in kidney damage. Healthy children and adults can get needed Vitamin D from sunlight, fortified milk and egg yolks, according to Safly Springer, foods and nutrition specialist with the Texas Agricultural Extension Service, The Texas A&M University System.

### 'TASTE TEST' CAT FOOD

ST. PETERSBURG, FLA.

-- A staff writer for a St. Petersburg paper recently

tasted 12 brands of cat food to find out what cat food is like. Victor Livingston reported that five of the foods were rated acceptable with

with three of them quite good.

### OVERWEIGHT

No Drugs No Exercises

No Starvation No Hunger Pains

Diets

Provides most needed daily nutrients

Helps tighten skin

Promotes better nerve condition

Helps increase energy

Exclusive and guaranteed

If I am not in on your first call, please try again.




GET SLIM INC.

POLLY OTWELL

Ph- 272-3163

## He wants to help put you through college. Now.

He has a college education plan you can take advantage of right now. It's called Project AHEAD: Army Help for Education And Development. You select your college and the course of study. The Army will provide the time and up to 75% of the tuition. So, you earn college credit while in the service. And, G.I. Bill for afterwards. See your Army recruiter.



**Join the people who've joined the Army.**

SSG Michael Primeaux  
810 Broadway, Plainview  
296-9228

LET US NOT FORGET

# MEMORIAL DAY

MAY 26

*Western Auto*



*Black Insurance*

*First Street Conoco*

*West 6th Texico*

*John's Custom Mill*

*First National Bank*

*Beaver's Flowerland*

*Muleshoe Co-op Gins*

*White's Cashway Grocery*

"I did not know the dignity of their birth, but I do know the glory of their death."

--Gen. Douglas MacArthur



TO OUR FALLEN COUNTRYMEN...

To the spirit of America's fallen servicemen who sacrificed their lives in defense of our country and for the cause of freedom throughout the world, we rededicate ourselves. In grateful tribute we give thanks for the priceless heritage they helped to preserve.

AVI

*Dari Delite*

*Plains Auto Parts*

*Wooley-Hurst Inc.*

*Howard I. Watson*

*Ray Griffiths & Sons*

*Farm Bureau Insurance*

*Muleshoe Publishing Co.*

*Williams Bros. Office Supply*

# Growth Regulation May Boost Onion Production

LUBBOCK -- Onion growers on the Texas High Plains normally transplant their onions

## Donations...

Cont. from Page 1  
of the equipment needed is a char-grill, a steamer; a walk-in freezer and a walk-in refrigerator, a micro-wave oven, to list only a few possibilities. Prices were not immediately available, but can be determined if anyone is interested.

## Camp...

Cont. from Page 1  
girls of high school, junior varsity and junior high.  
The primary purpose of the camp is to teach new skills in the fundamentals of sound basketball and to improve the skills and individual abilities of each girl. Along with these ideas, the camp will also stress the ideas of good sportsmanship, leadership, and good citizenship.  
This year's camp instructors include Larry Tucker, Rivercrest High School; George Scott, Miami High School; Charlotte Mason, Eastland High School; and Dan Durham of Carroll High School.

## P.E.T....

Cont. from Page 1  
performance; parenthood becomes a joy, not a burden.

The eight sessions will cover the following topics: "Parents are Human", "How to Listen to Children Will Share Problems", "Putting Your New Skills To Work", "How to Talk So Kids Will Respect Your Needs", "Other Ways to Prevent and Change Unacceptable Behavior", "The Inevitable Conflicts, Who Will Win?", "The No-Lose Method", and "How To Avoid Being Fired as a Parent".

A tuition charge will cover 24 hours of instruction and includes workbook and textbook. For further information and registration contact Rowena Watson at the Central Plains Referral Center, 211 East Avenue B., Muleshoe, phone 272-4433.

## Jr. Class Presents "A Garden Party"

Saturday, May 15, 1975, the Muleshoe High Junior Class honored the Muleshoe High School Senior Class at the annual Junior-Senior Banquet. The theme of the banquet was "Garden Party".  
The main course of the banquet was shish-kabobs. Also served was baked potato, salad, hot rolls and butter, cocktails and tea, homemade ice cream and chocolate chip cookies.  
Entertainment was provided by the Sledgehammers. Their program was singing songs of the 50's, "Sixteen Candles", "Rock Around the Clock", and "Jailhouse Rock" were a few of the songs.  
Johnny Dean served as Master of Ceremonies. The inven-

to achieve early harvest when prices are high. These transplants have to be brought in from the Rio Grande or winter garden areas, increasing labor and production costs. But, if research here continues to turn up favorable results, that may no longer be necessary.  
According to Dr. Bill Lipe, horticulturist with the Texas Agricultural Experiment Station here, researchers are looking at growth regulating chemicals as a possible means of hastening maturity of direct-seeded onions. If this is possible, not only costs of onion production will go down, but producers may be able to avoid disease and nematode prob-

## Tractors Require Rollover Protection

AUSTIN, May 14, 1975 -- Modern jet combat aircraft have rocket ejection seats to save the pilot from almost certain death in a crash. So far, no one has proposed rocket seats for tractor drivers, but starting in 1976 all new tractors will afford the operator increased protection in a rollover.  
Noting that tractor rollovers have accounted for some 125 deaths among Texas farm workers during the past five years, the Texas Safety Association today issued a reminder that the Occupational Safety and Health Administration has now officially adopted rollover protection standards for agricultural tractors.

The standard applies to all agricultural tractors manufactured after October 25, 1976. After that date tractors of over 20 engine horsepower used in agriculture must be equipped with a seat belt and rollover protective structures which meet government performance requirements.  
In addition, the standard requires that the employer assure that all employees use the seat belt and that employers enforce prescribed operating rules whether or not a rollover protective structure is required.

Unlike earlier proposals, the final standard exempts "low-profile tractors" while used in orchards, vineyards, hop

lems that usually accompany imported transplants from the valley.  
Research the past several years, says Lipe, has shown that chemicals such as Ethepon, when sprayed on onions in the four- to ten-leaf stage, influence the initiation of bulb- ing. Bulbin normally begins for a particular variety when the length of day reaches a certain number of hours. For short-day types, this may be as little as 12 hours and as much as 16 hours for long-day types.

At the point when day-length is achieved, production of hormone in the plant is triggered which causes the swelling at the base of the plant known as

yards and low clearance buildings. Also exempted are tractors mounted with implements incompatible with the protective structure during these usages.  
The new standards, adopted April 25, are included in a new Part 1928 of Title 29, Code of Federal Regulations, safety and health standards for agriculture. The Secretary of Labor designated the area of rollover protective structures a priority subject for a standard in appointing the Standards Advisory Committee on Agriculture in June, 1972.

## Chemical...

Cont. from Page 1  
lethal residues in the crop, if it was sprayed on a garden, there could be such a strong toxicity that it could kill whoever ate from this garden.  
Technical DT-Lyston is made for formulation of other products through special techniques and is extremely toxic when used directly on a crop. Moss stated that if the one that took the barrel of Technical DT-Lyston would leave it somewhere and contact him, they would pick it up.

## Mahon...

Cont. from Page 1  
proprations Committee and is a man very interested in this area of Texas. Everyone is urged to come out and meet the congressman.

bulbing.  
Growth regulators are being explored as tools to modify the time at which bulbing is initiated to change the rate of bulb enlargement, Lipe reports.  
Ethepon has been found to initiate bulbing any time that it is applied after the plants are in the two- to four-leaf stage.

In trials conducted at the Texas A&M University Agricultural Research and Extension Center, onions of short, medium and long day length requirements were stimulated to begin bulbing simultaneously. However, the rate of bulb enlargement differed according

## Farmers Union Opposing Army Water Jurisdiction

The National Executive Board of the Farmers Union has issued a statement vigorously opposing a proposal by the Army Corps of Engineers to expand its jurisdiction over U.S. waters, especially those affecting agriculture.  
Jay Naman, Waco, President of Texas Farmers Union and a member of the National Farmers Union Executive Board, said that the resolution was passed at the board's recent Cincinnati, Ohio meeting.

Naman said the Corps of Engineers has made four alternative proposals, any of which would involve a substantial expansion of its jurisdiction over agriculture.

The most stringent proposal would require every farmer to get permission to plow fields adjacent to flood control levees, enlarge stock ponds or erect anti-erosion structures to protect their land, said Naman.

The least restrictive proposal would require permits in coastal areas below the mean high water mark or salt water vegetation line, whichever extends further, and along inland waters to navigable waters and their primary tributaries to their headwaters.

"Being a coastal state and having several navigable rivers many farmers and ranchers all across Texas would be subject to regulation under the proposals put forth by the Corps of Engineers. Not only would this involve much bureaucratic red-tape but it would be contrary to the good conservation practices which have traditionally been carried out by farmers and ranchers as stewards of the soil," the Texas president said.

Naman said the Farmers Union objects to such a "power

to the variety.  
For New Mexico White Grano (short-day type), bulbing was initiated immediately after application and chemical stimulation earlier enlargement. Bulbs on treated plants reached maximum size 7 to 14 days earlier than non-treated plants. However, maximum bulb size was reduced 14 to 20 percent by the treatment.

Work is continuing to determine optimum times of application and concentrations. Lipe and his co-worker are also looking at the use of Ethepon to reduce flowering in overwintered onions.

## League...

Cont. from Page 1  
Mrs. Ed Johnson, Woodie Lambert, Lazbuddie Garage and Supply, Don McDonald, Main Street Beauty Shop Joyce Shafer, Alex Williams, A. J. Lenderson, Phil Garrett, Mrs. Randy Johnson, Mrs. T. R. White, James Glaze, Mrs. Vernon Brown, Mrs. Tom Jinks, E. W. Johnson, J. L. Phipps, Mrs. W. E. Howard, Mrs. G. L. Splawn, Orbie Jarman, Roy Whitt, Clifton Finley, T. W. Watson, Marie Lane, George Chapman, Edd Edmiston, and Francis Franks. Many other donations were made anonymously.

The Officers, directors and volunteers of the Muleshoe Little League, as well as the 250 boys and girls who are players, are most grateful to all who have helped their program with shampoo purchased and cash donations.

**Bailey County Journal**  
Established March 31, 1902  
Published by Muleshoe Publishing Co., Inc.  
Every Sunday at 304 W. Second - Box 419  
Muleshoe, Texas 79347  
Second class postage paid at Muleshoe, Texas  
Muleshoe, Texas 79347.

**TEXAS PRESS ASSOCIATION**  
L. B. Hall, President  
Jessica F. Hall, Sec. - Texas  
L. B. Hall, Managing Editor  
R. H. Hinkle, News Editor  
Cathy Moore, Society Editor  
Polly Kewell, Office  
Nanci Hinkle - Advertising

**SUBSCRIPTIONS:**  
The Muleshoe Journal and Bailey County Journal  
Bailey and surrounding Counties \$8.50  
The Muleshoe Journal and Bailey County Journal  
Elsewhere in Texas \$10.95  
The Muleshoe Journal and Bailey County Journal  
Outside of Texas \$12.95  
Monthly, by carrier, \$4.50  
Advertising rate card on application

## Vegetables Need Space To Grow

Do my plants have enough room? This is a question all vegetable gardeners should be pondering as they view the progress of their seedlings, says County Extension Agent Spencer Tanksley. Spacing decisions are important, too, when transplanting the potted plants bought from a nursery.

There is a tendency among new gardeners to crowd too many plants into a given space, Tanksley says. It is most difficult to sow seed at a rate that will give proper space for the plants as they grow toward maturity. Judicious thinning of seedlings is a technique that must be acquired through careful study and practice. Neophytes, he adds, should consult more experienced friends on the matter of spacing plants.

Vegetable gardening pamphlets available from the county Extension agent's office have tables of space requirements. Many seedsmen print spacing instructions on their seed packets, since each vegetable has a requirement for growing space unique to its kind. Different varieties of the same vegetable vary in the space needed for optimum growth and development.

Gardeners can easily esti-

mate the spacing for seedlings of root crop by visualizing the diameter of the mature root. Most everyone who has prepared vegetables for meals can do this easily. For example, if the diameter of a radish is one inch, allow at least 1 to 1 1/2 inches between plants. Carrots that will be 1 1/2 inches across at harvest must be spaced 1 1/2 to 2 inches apart in the row. If a perfectly round, sweet, Spanish onion bulb of three inches is desired, the plants must be no closer than three to four inches in a row. Most varieties of snap and dry beans produce maximum yields when plants are spaced two to three per foot of row. Fruiting plants require much more room.

Tomatoes to be trellised and pruned to a single stem need 15 to 18 inches between plants in rows at least three to four

feet apart.  
This out unwanted seedlings by cutting the stems at ground level with a sharp knife, he advises. Never pull of the plants. Pulling unwanted plants will cause uprooting injury to the plants you want to save.  
Immediately after the thinning job is done, irrigate the soil to resettle soil particles around the plants left to grow.  
If in doubt about spacing, leave more space than you think is necessary, for too much is better than too little. Crowded plants do not receive enough light and air and cannot move freely between their leaves. In small gardens, space can be conserved by trellising plants. Tomatoes, cucumbers, whole snap and Lima beans, English peas, vine squash, and melons are well adapted to limbing if provided with a vertical support of twine, wire, or wood.

**WE WILL BE CLOSED MONDAY, MAY 26, 1975, IN OBSERVANCE OF MEMORIAL DAY**

**Cobb's**

**ALLSUPS #34 MULESHOE, TEXAS**

**CRISCO Shortening \$1.69 3 LB. CAN**

**Folgers COFFEE \$2.99 3 LB. CAN**

**Bounty TOWELS 2 Ply 49¢**

**SHURFINE HAMS \$3.99 3 LB. CAN**

**WIENERS CHUCK WAGON 12 OZ. PKG. 39¢**

**PAMPERS 30 Count DAYTIME \$2.39**

**COMET 14 OZ. CAN 19¢**

**SHURFRESH BOLOGNA 12 OZ. PKG. 59¢**

**CHARCOAL 10 LB. SACK \$1.09**

**LIQUID JOY 59¢**

**Tide GIANT TIDE 49 OZ. BOX \$1.09**

**PRICES GOOD MAY 25th THROUGH MAY 31st**

**8-TRACK TAPES**  
REG. \$7.98 \$6.98  
REG. \$6.98 \$5.98

**KEN-L-RATION DOG FOOD 15 OZ. CAN 5/\$1**

**ALLSUPS CONVENIENCE STORE**

**YOUR 24 HOUR CONVENIENCE STORE**

**HOT BAR-B-Q DAILY**  
ICEE, POPCORN  
DONUTS  
CUBED ICE  
MONEY ORDERS

A business owner we know is smiling about his business life insurance. He took the advice of a dollar-stretcher.

A professional.

**Southwestern Life**  
Happiness is what we sell

721 W. Ave. C  
Ph. 272-3218

**VIC BENEDICT**

## GENERAL REVENUE SHARING PLANNED USE REPORT

General Revenue Sharing provides federal funds directly to local and state governments. This report of your government's plan is published to encourage citizen participation in determining your government's decision on how the money will be spent. Note: Any complaints of discrimination in the use of these funds may be sent to the Office of Revenue Sharing, Wash., D.C. 20226.

PLANNED EXPENDITURES		
(A) CATEGORIES	(B) CAPITAL	(C) OPERATING / MAINTENANCE
1 PUBLIC SAFETY	\$ 5,700	\$
2 ENVIRONMENTAL PROTECTION	\$ 8,000	\$
3 PUBLIC TRANSPORTATION	\$15,173	\$ 22,711
4 HEALTH	\$	\$
5 RECREATION	\$	\$
6 LIBRARIES	\$	\$
7 SOCIAL SERVICES FOR AGED OR POOR	\$	\$
8 FINANCIAL ADMINISTRATION	\$	\$
9 MULTIPURPOSE AND GENERAL GOVT	\$ 7,550	\$
10 EDUCATION	\$	\$
11 SOCIAL DEVELOPMENT	\$	\$
12 HOUSING & COMMUNITY DEVELOPMENT	\$	\$
13 ECONOMIC DEVELOPMENT	\$	\$
14 OTHER (Specify)	\$	\$
15 TOTALS	\$36,423	\$ 22,711

THE GOVERNMENT OF **MULESHOE CITY**

ANTICIPATING A GENERAL REVENUE SHARING PAYMENT OF **\$59,134**

FOR THE SIXTH ENTITLEMENT PERIOD, JULY 1, 1975 THROUGH JUNE 30, 1976. PLANS TO SPEND THESE FUNDS FOR THE PURPOSES SHOWN.

ACCOUNT NO. **44 2 005 001**

**MULESHOE CITY** **0039**

**CITY SECRETARY**  
215 S FIRST ST  
MULESHOE TEXAS **79347**

Submit proposals for funding consideration by **February 19, 1975**

to **City Manager's Office** A copy of this report and supporting documents, are open for public scrutiny

at **215 South First Street - Muleshoe, Texas 79347**

(E) ASSURANCES (Refer to instruction E1) assure the Secretary of the Treasury that the non-discrimination and other statutory requirements listed in Part E of the instructions accompanying this report will be complied with by this recipient government with respect to the entitlement funds reported hereon.

**Dave Marr, Jr.**  
Signature of Chief Executive Officer

**Dave Marr, Jr.** **City Manager** **5/20/75**  
Name & Title - Please Print Date

## Miss Bearden, Henry United



Debbi RaNae Bearden became the bride of James Alan Henry Saturday, May 24, 1975 at 7:30 p.m. at Hodges Chapel, First Christian Church in Lubbock. The double ring ceremony was performed by Dr. Dudley Strain, pastor of the First Christian Church, Lubbock. She was given in marriage by her father.

The bride is the daughter of Mr. and Mrs. Don W. Bearden of Lubbock. Jim is the son of Mr. and Mrs. William W. Henry of Midland, Texas. They will take a wedding trip to Vail, Colorado and will reside at 2301 - 9th, Apt. #5.

Matron of Honor was Mrs. Scott (Terri) Cornwell, sister of the bride, of Ponca City, Oklahoma. Bridesmaids were Mrs. Mike Moffitt of Houston; Miss Jo Beth Barrett of Lubbock; and Miss Sherri Wallace

of Monette, Missouri. Best man was Buddy Loew of Lubbock. Groomsmen were Mike Moffitt of Houston; Glenn Jaegli of Lubbock; and Bob Henry of Midland. Ushers were Jim Harper of Hobbs, New Mexico; Larry Seale of Midland; Scott Cornwall of Ponca City, Oklahoma; and Mike Wallace of Monette, Missouri. Candle-lighter was Lane Bearden of Lubbock. Flower girl was Cary Schiermeyer of Lubbock. Ring bearer was Brian Walker of Joplin, Missouri. Organist was Julie Wyrick of Lubbock. Soloists were Tim and Jana King of Lubbock.

Bride's dress was of imported pure silk sheer organza enhanced with re-embroidered Alencon lace. The sculptured empire bodice, with scalloped re-embroidered Alencon lace overlay, featured a contoured neckline and Queen Ann sleeves

with deep re-embroidered Alencon lace overlay. A full chapel train edged with scalloped re-embroidered overlay and scattered with re-embroidered Alencon lace motifs fell from the softly gathered silhouette. The dome headpiece was covered with re-embroidered Alencon lace holding a full length tier of illusion.

Attendants' dresses were identical blue floral organza with an A-line skirt, scooped neck with wide ruffle collar and ruffle sleeves.

A reception was held in the Green Room of First Christian Church.

## Jaycee Ettes Receive Award

Three Jaycee-Ettes, Mrs. Charles Moraw, Mrs. Butch Duncan, and Mrs. Bill Dale traveled to Houston for the Texas Jaycee Convention held at the Houston Astrodome on May 15, 16, and 17th. They attended business meeting, husband's award presentation, and on Saturday the Jaycee - Jaycee-ETTE Installation Banquet and Grand Ball.

All three members entered different areas of competition. The club entered their scrapbook in competition and placed third in aid to Jaycee in their population division. This is the first time in several years that a scrapbook has been entered in competition.

The highest honor received was the travel trophy. Mrs. Charles Moraw, president, accepted this award on behalf of the club. This award along with the scrapbook will be displayed Saturday night at the Jaycee Installation Banquet to be held at the Catholic Center beginning at 7:30 p.m.



MRS. JAMES ALAN HENRY

## XI Omicron XI Enjoys Program On Mexico

Mrs. Paul Poyner and Mrs. Charles Pummil hosted a dinner for members of Xi Omicron Xi Chapter of Beta Sigma Phi in the Fellowship Room of the 16th and Avenue D, Church of Christ Tuesday night. This was the last regular meeting of the 1975-76 sorority year.

The president, Mrs. Paul Poyner, presided over the business meeting. In addition to routine business, it was reported that the scrapbook has been entered in state competition

and will be judged prior to and announced at the State Beta Sigma Phi Convention to be held in San Antonio in June. Several members plan to attend the Convention.

Committees reporting included Social Committee, and the Executive Board. Plans were accepted for socials to be held for the coming year, and the budget was also approved.

Mrs. Marcia Henry presented charms to officers and committee chairmen who were not present for the Founder's Day Banquet and expressed her appreciation to them for their service during her term of office.

Mrs. Poyner introduced Mrs. Dorine Harbin, who in turn presented Miss Angelica Bazan and Miss Menon Bazan. These young ladies are from Mexico City and have been living in the Harbin home for the past year and a half. They presented a most interesting program on their home showing slides of Mexico City and Acapulco and

discussed customs of their country. They answered questions asked by the members. The girls were presented tokens of the sorority's appreciation of their program. Angelica is a senior at Muleshoe High School and will be a member of the 1975 graduating class at the Commencement services Friday, May 23. Menon is a seventh grader at Muleshoe Junior High School. The Bazan family will be present for commencement, and Angelica and Menon will return home with the family.

The delicious dinner with shish-ke-bob as the entree and baked Alaska for dessert was enjoyed by Mrs. Don Barnes, Mrs. John Neal Agee, Mrs. Marcia Henry, Mrs. Tom Jinks, Mrs. Joe King, Mrs. Max King, Mrs. Don Rempe, Mrs. Eric Smith, Mrs. Spencer Tanksley, Mrs. Doyce Turner, Mrs. Curtis Walker, Mrs. Glen Watkins, and one guest, Miss Jan Jinks.

Xi Omicron Xi and Alpha Zeta Pi Chapters of Beta Sigma Phi will have a joint social Tuesday, May 27, in the home of Mrs. Doyce Turner with the Social Committees of both chapters in charge. Secret pals will be revealed and gifts exchanged.

Jesus died too soon. He would have repudiated His doctrine if He had lived to my age.

-F.W. Nietzsche.

AUGUST WEDDING PLANNED . . . Mr. and Mrs. R.H. Benter of Austin announce the engagement and approaching marriage of their daughter, Deborah Kay, to Richard L. Black, whose parents are Mr. and Mrs. Richard E. Black of Sudan. Miss Benter is a 1973 graduate of John H. Reagan High School. She has attended the University of Texas and is employed by State Farm Insurance in Austin. A graduate of Sudan High School, Black received a BA degree from the University of Texas in 1973. He will return in August to the University's School of Law, where he will be a second-year law student. The wedding ceremony is planned for August 9, at the North-east Baptist Church in Austin.

## TOPS Elect Mrs. Stroud Queen

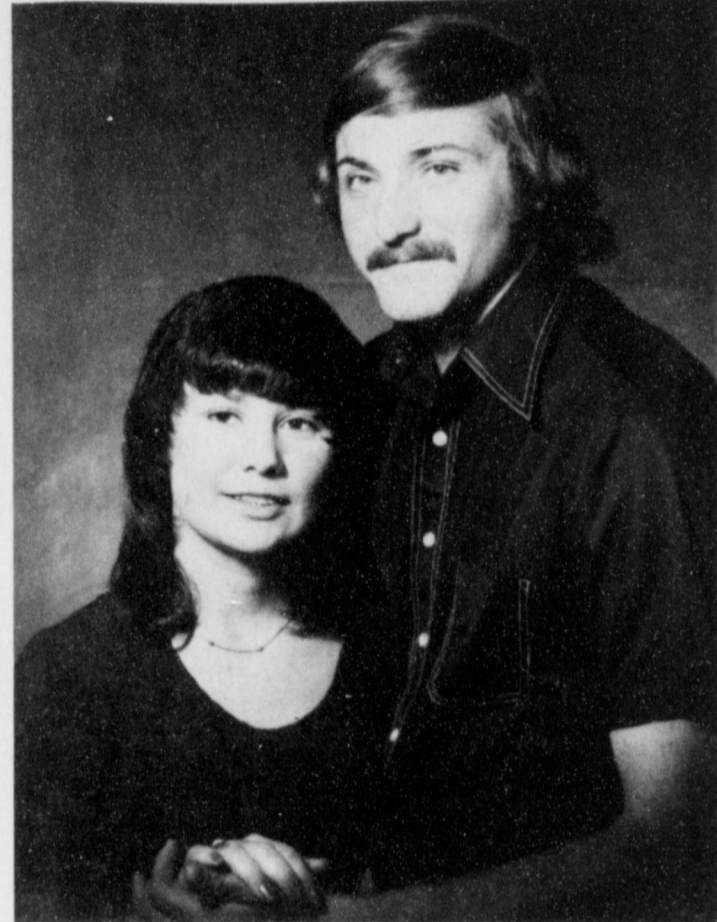
TOPS met Thursday, May 15, with eighteen members weighing in. Weekly Queen was Mrs. Glen Stroud - First Runner-up was Mrs. Dan Vinson - and Second was a three-way tie between Evelyn Moore, Clara Crane, and Mrs. Dee Clements. Can Can was drawn by Mrs. Owsa Jones who could receive it. Mrs. Dee Clements had a birthday and drew a gift from the birthday box. Mrs. Bobby Newman reached her TOPS rating.

International Recognition Day will be held in Atlanta the first week in June. Area Recognition Day will be held in Sunray.

TOPS met again Thursday, May 22, with 15 members weighing in and there was one visitor, Elaine Parker.

The club received a letter from Mrs. Tom Berry who is in Brownwood fishing. Mrs. Dan Vinson and Mrs. Buria Vinson both had birthdays and drew gifts from the birthday box. The Can-Can was drawn by a member who had gained a quarter of pound so she could not draw it.

Weekly Queen was Mrs. Glen Stroud, First runner-up was a three way tie between Mrs. Dan Vinson, Mrs. Don Martin, and Mrs. Owen Jones.



JUNE WEDDING PLANNED . . . Mr. and Mrs. C.W. Weeks of Muleshoe are proud to announce the engagement of their daughter, Brenda, to Jimmy Winn, son of Mr. and Mrs. Jess Winn. The bride elect is a 1974 graduate of Muleshoe High School. Jimmy is a 1970 graduate of Crosbyton High School. The couple plan a June 12 wedding at the home of Mr. and Mrs. C.W. Weeks. The couple will reside in Wilcox, Arizona.

## West Plains Hospital Hospital Briefs

ADMITTED:  
May 20 - Fimeto Carter and Eva Bell.  
May 21 - Clara Sloan.  
May 22 - D.P. Brinker.

DISCHARGED:  
May 20 - John Groves.  
May 21 - Mrs. C.H. Horsley, Gilbert Recio, and Mrs. Edd Haskins.  
May 22 - David Pedroza.

**TELEX.** Hearing Aids  
**Clovis Hearing Aid Center**  
Batteries & Molds. Free Tests.  
Service All Makes.  
416 Mitchell Phone 763-6900  
Clovis, N.M.

At last...a Seamless Bra with real support

NEW!

PLAYTEX  
CROSS YOUR HEART  
SEAMLESS  
BRA

Now famous Cross Your Heart bra styling for youthful shaping... with smooth seamless cups that hold their shape for the look that is naturally you. Seamlessness plus Support! Available in Soft Cup and Fiberfill: 32/36A, 32/38B, 32/38C

**Anthony's**  
CR ANTHONY CO.  
MULESHOE, TEX

Four Contents: Style #2885-Cups: 100% Polyester; Elastic Back and center; Nylon, Spandex. Elastic: Cotton, Rayon, Spandex, Nylon. Exclusive of other elastic. © 1975 Playtex. Printed in U.S.A.

SPECIAL INTRODUCTORY PRICE  
**\$200 OFF**  
SOFT CUP (REG. \$6.95) FIBERFILL (REG. \$7.95)  
OFFER ENDS JUNE 28, 1975



## SCHEDULE OF EVENTS

MONDAY, MAY 26:  
Memorial Day.  
12 noon: Jaycees -- XIT.  
TUESDAY, MAY 27:  
8:30 a.m.: City Council, City Hall.  
7:30 p.m.: OES Masonic Hall.  
Rebeka Lodge, Odd Fellows Hall.  
8:00 p.m.: Bailey County Cowbelles, Tri County Savings and Loan meeting room.  
WEDNESDAY, MAY 28:  
7:30 p.m.: DeMolays, Masonic Hall.  
THURSDAY, MAY 29:  
7:00 p.m.: TOPS Bailey Co. Electric Meeting Room.  
5:30 p.m.: Weight Watchers, First Presbyterian Church.  
Any upcoming community event for Schedule of Events please report it to the Journal office.

**MULESHOE STATE BANK**  
Member FDIC

# HOW'S The Electric Company DOING?

Let's ask Bert Ballengee - Reddy's financial man.

"It takes money to build for the future so that you'll have a dependable supply of electric power. We'll need \$345 million over the next five years. Of this amount, we'll have to borrow \$200 million. And, at today's interest rates, it's easy to see why electricity may cost more. But, it's all part of creating the good electric service you've come to expect from The Electric Company."



Bert regularly visits the financial centers of the nation keeping in touch with the financial market and arranging for the millions of dollars it takes to assure your electric future.



ELECTRICITY-IT DOES SO MUCH GOOD  
**The Electric Company**  
FOR SO MANY PEOPLE  
The Future IS Electric!

EQUAL OPPORTUNITY EMPLOYER



ESA'S NEW SPRING PLEDGES . . . Mrs. Terry Hillen, Mrs. Larry Goree, and Mrs. Johnny St.Clair, Mrs. Terry Parham, Mrs. Larry Goree, and Mrs. Johnny St.Clair.

### Nursing Home News

by Myrtle Guinn

Members of the Assembly of God group came Sunday at 2:30 p.m. and brought a program of music and singing. Brother Davis brought a short message and was enjoyed by all of us here who could attend.



LISA McGEHEE

Mrs. Mamie Miller is improving gradually each week, her daughter, Mrs. O'Hair, of Bovina comes every few days. Mrs. Miller is always so happy to see her.

Mr. and Mrs. Kenneth Largent of Littlefield came Friday to visit her mother, Mrs. Boydson.

### Birthday Party Given For Lisa

Lisa McGehee had a birthday party at her home, Monday, May 19. She was seven years old. Her classmates in the first grade were her guests. They all rode the bus home with her after school. The theme was raggedy Ann Cup cakes and ice cream was served. The ice cream scoops were decorated to look like Raggedy Ann. Guests were: Andy Copley, Sue Collins, Wanetta Templar, Anthony Elliott, Chantell Hicks, Tazia Smith, Bryan Houston, David Schacker, Amy McGehee, and Kevin McGehee.

Mrs. Hugh Preston came Sunday for a short visit with her mother, Mrs. Myrtle Latham, Mrs. Preston lives in Farwell.

Mr. and Mrs. Blonde Ray come often to see her mother, Mrs. Duke.

Mrs. Lee Hardy of Sudan came Friday to see her mother, Mrs. Fulcher.

Mrs. Miller is improving and sitting up more all the time. We hope she will be walking in a few days.

Mrs. Hardin's daughter, Gladys, who works in the lunch room at grade school, comes to see her often.

Mrs. Robin Taylor comes to see her mother, Mrs. Kaltwasser often.

Mrs. Vivian White visits her mother, Mrs. Harris, real often also.

Mrs. Mankley of Dimmitt came Sunday for a short visit with her daughter's mother-in-law, Mrs. Hall. She attends the Primitive Baptist Church here, and lives in Dimmitt.

Mr. Brown was quite ill one night and day last week and is much better and able to come to the dining room for his meals now, we are happy to report and hope he continues to stay as well as possible.

Mrs. Kaltwasser had a birthday Sunday and her family came and they had a birthday get together in the dining room. She enjoyed it all so much.

Sanford Gilbreath's has another sister who visited him as did his other sister, Mr. and Mrs. Glasscock on Friday afternoon of last week.

## Alpha Zeta Pi Meets at Bank

Members of Alpha Zeta Pi chapter of Beta Sigma Phi met Tuesday, May 20, at the First National Bank. Hostesses were Mrs. Tommy Black, Mrs. Tommy Merritt, and Mrs. Louis Cardinal.

Mrs. Kearney Scoggin, president, presided over the business meeting. Officers and committee chairmen gave their reports. Mrs. Monty Dollar, membership chairman, announced that names for the fall rush be turned in by July 15. She also announced dates for rush parties and pledge rituals.

Tuesday, May 27, Muleshoe chapters of Beta Sigma Phi will have their end of year social at Mrs. Doyce Turner's home. At this time secret sisters will be revealed.

Mrs. Reagan Cox, chairman of the social committee reported that dates have been set for the 1975-1976 year. A new

social, and special dinner just for husbands has been added for next year.

Mrs. Louis Cardinal asked that the Service Committee and anyone else who could meet at the chamber office on Wednesday to organize plans for fourth of July events. Alpha Zeta Pi will be in charge of Kid's Day activities.

The members votes on a hostess of the Year and Program of the Year which will be revealed at the End of Year Social.

The program for the evening was entitled 'The Beautiful' and was presented by Mrs. Gene Howard and Mrs. Reagan Cox. They told each girl what they considered beautiful about their physical appearance. Then each person answered 10 questions that revealed to each person her inner beauty and character. The hostesses served tuna

and pimento cheese sandwiches, relishes, chips, cokes, Dr. Pepper, strawberry cake and ice cream.

Members present were: Mrs. Kearney Scoggin, Mrs. Garry Shipman, Mrs. Jerry Wennohs, Mrs. Mike Miller, Mrs. Ted Barnhill, Mrs. Tommy Black, Mrs. Skip Magby, Mrs. Monty Dollar, Mrs. Tommy Merritt, Mrs. Bob Finney, Mrs. Louis Cardinal, Mrs. Corky Green, Mrs. Paul Willbanks, Mrs. Wayne Gregory, Mrs. Ken Box, Mrs. Jerry Gleason, Mrs. Gene McGlaun, Mrs. Reagan Cox, and Mrs. Gene Howard.

### Fashion

Many women make the mistake of putting on make-up under artificial light when they are going to outdoor affairs. Colors are different in these situations and the outdoor girl should test her color by a window, if possible.



ESA INSTALLS NEW OFFICERS . . . President - Mrs. Ed Cox; vice president - Mrs. Jim Crawford; recording secretary - Mrs. Ronnie Barrett; corresponding secretary - Mrs. Don Golden; Treasurer - Mrs. Jerry Harrison; and educational director - Mrs. Hugh Young.

## ESA Receives New Pledges Installs Officers

The Epsilon Chi Chapter of Epsilon Sigma Alpha met May 20 in the home of Mrs. Terry Hillin. Co-hostesses were Mrs. Larry McMillan, Mrs. J. D. Merritt, Mrs. Terry Parham, Mrs. Larry Goree, and Mrs. Johnny St.Clair.

The president, Mrs. Carter Williams called the meeting to order. The Pledge Pin Ceremony was given by Mrs. Ed Cox. Receiving the Pledge Pin was Mrs. Johnny St.Clair. An installation ceremony was conducted by William Ed Jones.

A yellow graduation cap and a certificate of merit were presented to each of the new officers. Installed as President was Mrs. Ed Cox. Other Officers installed were Mrs. Jim Crawford, Vice President; Mrs. Jack Rennels, Publicity; Mrs. Don Golden, Recording Secretary; Mrs. Jerry Harrison, Treasurer; and Mrs. Hugh Young, Educational Director. The theme for ESA's new year is "Walk on the Sunny Side".

Mrs. Jim Crawford announced Cindy Hamblen, daughter of Dr. and Mrs. David Hamblen, received the Epsilon Sigma Alpha Outstanding Youth Award. Mrs. Jerry Harrison gave final plans for Mrs. Williams special educational class field trip to be held Friday, May 23. The children will be taken to several points of interest in the city. Mrs. John Blackwell, Ways and Means Chairman, announced ESA had been invited to participate in the Pleasant Valley Community Arts and Crafts fair. Plans for the Lual, fall rush and radio thong were

outlined and Epsilon Chi voted to pledge \$1,000 to the Hospital Action. Fun. Mrs. Jim Crawford announced Treema Matthews had accumulated her 1,000 points to receive the First Pearl Award. Secret Sisters, were revealed by an exchange of gifts. Mrs. Carter Williams presented her out going officers a token of appreciation for all their hard work during her administration.

The 1975-76 President, Mrs. Ed Cox named the committee chairmen for the new year: Awards, Mrs. Ronnie Barrett; Jontull Girl, Judy Lambert; Historian, Mrs. Charles Moraw; Scrapbook, Mrs. Carter Williams; Parliamentarian, Mrs. Hugh Young; Chaplain, Mrs. Jack Rennels; Publicity, Judy Lambert; Social, Mrs. Jim Burgess; Contact, Mrs. Richard Kimbrough; Ways and Means, Mrs. John Blackwell; Membership, Mrs. Jim Crawford; Yearbook, Mrs. Dean Allen; Philanthropic, Mrs. Derrell Matthews; School Parties,

Mrs. Andy Douglass; and Telephone, Mrs. Ronnie Barrett. The closing ritual was led by Mrs. Ed Cox.

Members attending were: Mrs. John Blackwell, Mrs. Ed Cox, Mrs. Jim Crawford, Mrs. Don Golden, Mrs. Jerry Harrison, Mrs. Carter Williams, Mrs. Hugh Young, Mrs. Jim Burgess, Mrs. Charles Isaac, Judy Lambert, Mrs. Charles Moraw, Mrs. Derrell Matthews, Mrs. Andy Douglass, Mrs. Wayne Tunnell, Mrs. Dean Allen, Mrs. Mack Garrett, Mrs. Richard Kimbrough, Mrs. Larry McMillan, Mrs. J.D. Merritt, Mrs. Terry Hillin, Mrs. Terry Parham, Mrs. Larry Goree, Mrs. Johnny St.Clair, and one guest, William Ed Jones.

Smoking linked to fetus breathing movements.



JAMES MARDIS

## Ice Cream Supper

The senior high Sunday School class of the First United Methodist Church enjoyed an ice cream supper in the home of Mr. and Mrs. Mickey Sowder last Tuesday night. Mrs. Lewis Wayne Shafer was co-hostess. Twenty-one attended including Dr. and Mrs. David Hamblen, Cindy and Kelly.



MRS. DELL SNELL

## Shower Honoring Mrs. Dell Snell

Mrs. Dell Snell was honored Thursday, May 22, with a layette shower at the home of Mrs. Gerald Pepper.

Table was covered with yellow lace over white with a yellow stork centerpiece and green napkins with stork centers. Crystal appointments were used in serving punch and there were frosted miniature cup cake mints and nuts. The honoree was presented with a corsage made of baby sock. The hostess gift was a yellow robe and gown, with

scarfs to match. Hostesses were Mrs. Gerald Pepper, Mrs. Wendall Robinson, Mrs. Tommy Whaltry, Mrs. Loyd Garlington, Mrs. Harlan Davis, Mrs. Roy Atchinson, and Mrs. J.T. Eubanks.

## GET PROFESSIONAL carpet cleaning results! (At do-it-yourself prices)

RENT OUR RINSE N VAC - the new portable, easy-to-use hot water extraction carpet cleaning machine that gently . . .



RINSE N VAC CLEANER CAPSULES. KEEP THEM CLEANER LONGER.

POYNORS

**THOMAS CARPET CLEANING SERVICE**  
Your carpets cleaned by the Steri-Steam Vac method.  
Extracts dirt - doesn't scrub it in.  
Spring cleaning special thru June 15th.  
Living Room and Hall--\$25.95  
Living Room, Dining Room and Hall--\$29.95  
Call 238-1640 or 238-1330 (Res.)  
401 7th St., Box 116,  
Bovina, Texas, 79009.

**VISITING DOWNTOWN NEW ORLEANS?**  
**MAKE YOUR RESERVATIONS AT THE NEW WARWICK HOTEL**

- 176 completely-renovated, newly decorated rooms, lobby and public meeting space.
- Luxurious, air-conditioned rooms and suite accommodations with color TV.
- Downtown location, close to New Dome Stadium, Rivergate Convention Center, French Quarter, shopping and entertainment.
- Fine dining and cocktail lounge. • Parking facilities.
- Business meeting and social function rooms.

Telephone 504-586-0100  
THE WARWICK HOTEL  
1315 Gravier Street  
Overlooking the Civic Center  
New Orleans, Louisiana 70112

**FERTILIZER HEADQUARTERS**

This combination feeds your lawn and controls grub worms, June bugs and many other soil insects.

Penetrates deep to feed roots directly. No need to dig holes.

Apply before weeds reach maturity. Excellent lawn food combination.

Specially formulated for flowers and vegetable gardens.

Add deep, rich green to your lawn. Feed your lawn and add iron for that deep green. One easy step.

Chelated iron in liquid form. Change your lawn color from yellow to deep green.

your ECOLOGICAL choice

**POYNORS** WHITE'S STORES, INC. ph. 272-4552  
103 Main Street Muleshoe, Texas 79347

**SAT. MAY 31**  
**9 99¢**  
KING SIZE WALLET CREATIVE COLOR PORTRAITS FOR ONLY

NO LIMIT  
Extra Charge for GROUPS

GET PICTURES MADE OF GRANDPA, GRANDMA, DAD, MOM AND ALL THE LITTLE ONES AT THESE SAME LOW PRICES!

**SHUGART COLOR PHOTOS**  
ASK About Our FREE 8 x 10 OFFER

**Pay-n-Save**  
QUALITY AND SERVICE  
515 West American Blvd.



# SUMMER SALE

# SALE

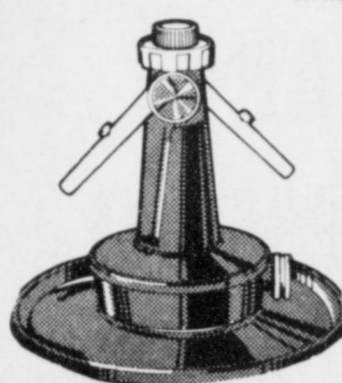
OPEN MEMORIAL DAY 9AM to 8PM

SET THE DIAL TO COVER 10 FT. OR 50 FT., FINE SPRAY OR DRENCHING SHOWER



**Thunder Cloud**

A twist of the control dial swings the arms vertically from 0 to 90. This not only can vary coverage from 5 feet to 50 feet in diameter, but also adjust the spray from a gentle mist to a drenching shower. Gives uniform watering under all water pressures.



#S-361  
REG. \$8.29

**5<sup>77</sup>**

MELNOR EVERAIN

**PULSATING SPRINKLER**

#9514

WITH BASE

OUR REG.

7<sup>99</sup>

**4<sup>99</sup>**

**ROLLER & TRAY SET**

9 IN. FOR LATEX PAINTS

REG. \$2.59

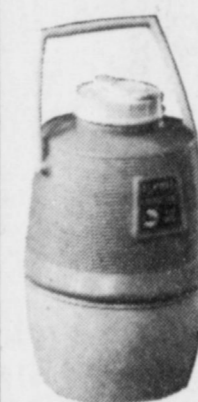


**1<sup>66</sup>**

**INSULATED KEG**

1 1/2 GALLONS

REG. \$1.89



**1<sup>27</sup>**

**PEAT POTS**

20-3 IN.

REG. \$1.23

**77¢**

MCGRAW EDISON  
POWER HOUSE

**HEDGE TRIMMER**

DELUXE TWIN  
EDGE #571020

REG. \$15.99

**10<sup>97</sup>**

SPECTRACIDE  
LAWN & GARDEN

**INSECT CONTROL**

ONE PINT COVERS  
UP TO 2000 SQ. FT.

REG. \$3.49

**1<sup>99</sup>**

GOHAM  
STUROFOAM

**ICE CHEST**

40 QT.  
2 METAL HANDALS

REG. \$3.39

**2<sup>22</sup>**

**LUCITE**

MEMORIAL DAY SALE

REG. \$1.69



**SPRAY PAINT**

**99¢**



**INTERIOR ENAMEL**

1 GAL. REG. \$9.99

**7<sup>99</sup>**

**7<sup>99</sup>**

**EXTERIOR ENAMEL**

1 GALLON REG. \$9.99



**FREE**

CAN OF COURT TENNIS BALLS

\$3.19 VALUE WITH

PURCHASE OF

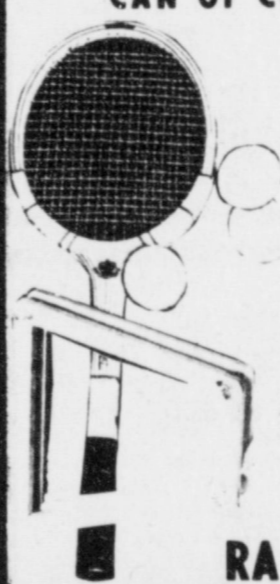
RAWLINGS

TENNIS

RACKETS

#T-538 OR #T-540

RACKET PRESS **88¢**



WHAMO

**FRISBEE**

CHOICE OF PROFESSIONAL,

MOONLIGHTER OR ALL AMERICAN

YOUR CHOICE

REG. \$1.59

**99¢**

LUCITE

**REDWOOD STAIN**

ONE GAL.

**2<sup>22</sup>**

EXL 12"

**PORTABLE FAN**

2 SPEED

#11067

REG. \$22.99

**14<sup>97</sup>**



**WALL PAINT**

1 GAL. REG. \$7.99

**5<sup>99</sup>**

**6<sup>99</sup>**

**HOUSE PAINT**

1 GAL. REG. \$8.99



BUDDY L

**HOODED GRILL**

WITH ROTTISERIE

#2315B

REG. \$20.97

**14<sup>88</sup>**

BLACK FLAG

**ROACH TRAPS**

2 TRAPS WITH BAYGON

REG. \$1.09



**69¢**

**PIONEER  
BISCUIT  
MIX**

2 LB. CHOICE OF  
REGULAR OR  
BUTTERMILK  
REG. \$1.09

**88¢**

**CRISCO**  
SHORTENING



3 LB. TIN  
REG. \$2.19

**1.69**

**MEN'S & BOY'S  
TRACK  
SHOES**

BLACK WITH WHITE STRIPES  
REG. \$4.97



**3.33**

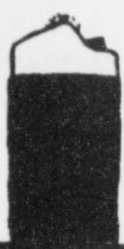
**ZEST**  
DEODORANT SOAP



REG. 44¢

**3 / 1.00**

**STORM KING  
DISPOSABLE BUTANE  
GAS LIGHT  
LIGHTERS**



OR **49¢** EA.

FREE WITH  
PURCHASE OF  
1 CARTON OF  
CIGARETTES

**GIBSON'S  
BABY  
POWDER**

14 OZ.  
REG. 59¢

**44¢**

**ALL GRINDS  
MARYLAND  
CLUB  
COFFEE**

1 LB.  
REG.  
\$1.19



**79¢**

**GIBSON'S  
BABY  
SHAMPOO**

16 OZ.  
REG. 67¢

**49¢**

**VITALIS  
SUPERHOLD**



NON-AEROSOL  
HAIRSPRAY  
FOR MEN  
REG. \$1.87

**1.29**

*Cutex*  
LEMON  
OILY  
**POLISH  
REMOVER**



4 OZ. REG. 59¢

**44¢**

**STAYFREE  
MAXI-PADS**

30's REG. \$1.83

ONLY

**1.27**

**COCA COLA  
OR  
SPRITE**



28 OZ.

**3 FOR 1.00**

**MR  
CLEAN**



ALL PURPOSE CLEANER

28 OZ. REG. 99¢ **79¢**

**GLASS  
PLUS**

GLASS CLEANER  
REFILL

32 OZ.  
REG. 99¢

**49¢**

**TOP  
JOB**

HOUSEHOLD CLEANER  
WITH AMMONIA



40 OZ. REG. \$1.33 **89¢**

**SPIC  
AND  
SPAN**

54 OZ.



REG. \$1.47

**1.19**

**ICE  
CREAM  
FREEZER**



4 QT. ELECTRIC  
#6640 REG. \$14.99 **9.99**

**PUREX  
BLEACH**



1/2 GALLON REG. 59¢ **49¢**

**WESTBEND  
STAINLESS STEEL  
PANS**

1, 2 & 3 QT. SAUCE  
PANS  
8 & 10 IN. SKILLETS



**1 / 3 OFF**



STORE HOURS:  
9AM-8PM DAILY  
CLOSED SUNDAY

PRICES  
EFFECTIVE  
MAY 26-28

1723 W. AMERICAN BLVD.

**Memorial Day**

**PRICE CHOPPER SPECIALS**

**Bula News**  
By Mrs. John Blackman

Bula School celebrated its Fiftieth Anniversary, with a three day celebration May 16, 17 and 18. Bula School will no longer be known as an independent School District. The scholastic population of the Bula District had dropped so low that it did not appear feasible to continue. March 3, 1975 a referendum was held to see if the people of the District wanted to

continue with the school and pay the high taxes or be consolidated with another school. 126 votes were cast, with 98 votes for consolidation and 28 votes against. With majority stating they prefer to be annexed with the Threeway School. So at a called meeting on Tuesday, April 15, at the City Hall in Muleshoe, Bula School officially became annexed with Threeway Independent School District. Festivities for the celebration began Friday night with the coronation ceremony and

crowning of Mrs. Jerry Cox as Queen to reign over the festivities. This was followed by a huge bonfire and pep rally. Then a dance in the School Gym at 9:00 p.m. The young and the old danced, and spectators laughed, all had fun. Saturday, the day was full of activities, registration began at 10:00 a.m. with only 272 signing the register book and 120 of them being graduates of Bula High. Many more were there but failed to register. Classrooms exhibited Arts, crafts, historical exhibits. There were contests for prettiest baby, ugliest man, longest hair, best mustache. Other outdoor activities included tobacco spitting contests and bicycle riding contest.

Recognition was made of former faculty members that were present. Mrs. Gladys Butler, of Lubbock was recognized as first teacher of Bula School in 1925. Mrs. Lois Simmons, now of Georgetown, being the oldest teacher present and coming the farthest. Ruth (Light) Wallace of Amarillo, next in line for living the farthest away. Mr. G.O. Smith, Lubbock, recognized for being the oldest administrator present. Former coach Curley Risinger and Mrs. Risinger recognized for having served the school the longest period of years. At this time Queen of the festivities Mrs. Cox, presented Mr. and Mrs. Risinger a plaque, in memory of their untiring work with the Bula school. This was given by the Booster club. Mrs. John Alford was also recognized as a teacher in the early years of the school and also served as school principal for a period. Each were presented a red apple (candle) for the teacher.

Former students Susie (Jones) Shields, of Lelia Lake, Tex., Janell (Seagler) Turner, of Las Cruces, N.M. and Opal (Bogard) Roberts, of Junction entered from the back of the room yelling like Pep Squad girls and dressed like leaders of three different periods, each one leading a yell of that decade. One recognized all former honor students present that Bula had produced. One recognized all former cheer leaders and one recognized all former athletes present.

This part of the program closed by group singing the school song "Bula Hi", led by Mr. Sinclair.

A musical program was enjoyed for awhile, with Mrs. Sinclair at the piano, accompanied by stringed instruments, played by Mr. and Mrs. H.W. Garvin, Mr. and Mrs. George Tyson of Threeway, J.D. Rowland of Littlefield.

This was followed by the recognition and awards given to winners in various contests, and shows. Mr. Jerry Teaff gave the awards to winners in art, crafts and sculpture. First winner in arts went to Michael Greer; second, Cecil Harrington; third, Cecil Foster, and fourth Judy Kirk. Ribbons were given to Jamie Cox

for pencil drawing, Ferol Krizek, Betty Hart, Willie Mae Rice, Cara Schuster and Wayne Fisher. Sculpture winners: first, Mickey Stephens; second, Carl Hall; third, R.C. McCormack and grandson Danny Hogue; and fourth, L.W. Chapman. Crafts: first, Mrs. Carl (Doris) Robinson of Littlefield. A miniature country store was her exhibit, this was fantastic. Second, Mrs. J.D. Bayless; third, Carl Hall, and fourth Peggy Ray. Ribbons went to Wanda Layton and Mrs. V.C. Weaver.

Returning to the auditorium at approximately 4:30 p.m. the general program for the exes started, with a former student and currently a coach in the Levelland school system, Mr. Charles Seagler, introducing the master of ceremony for the evening program, Mr. Marion J. McDaniel, from Cotulla, Tx. former teacher 1951-1956 and administrative head from 1946-1971.

**We Will Be Closed**  
**MONDAY, MAY 26, 1975**

In Observance Of  
**MEMORIAL DAY**

Tri-County Savings  
& Loan Assn.

A sandwich lunch was served at the noon hour sponsored by the Bula Booster Club. At 1:00 p.m., every one that could, crowded into the auditorium for the program, with Mrs. James Sinclair in charge. Welcome was given by superintendent James Sinclair, pre-

sentation of colors by Boy Scout Troop 676 Steve Pollard and pledge of allegiance led by Jamie Cox. All joined in singing the National Anthem "Star Spangled Banner", led by James Sinclair. Invocation was given by school principal Mr. G.O. Smith.

Prettiest baby contest results was announced by Mrs. John McCormack. First place for the prettiest girl went to Brandi Risinger, baby daughter of coach and Mrs. Pat Risinger; second place to Martie Fred, daughter of Mr. and Mrs. Buck Fred.

In the baby boys contest, first place went to Jerry Bellar Jr., small son of Mr. and Mrs. Jerry Bellar and Mark Tiller making second place. Bicycle contests for 10 speed was won by Danny Hogue and overall place was also won by Danny. Twelve entered in this contest. Ugliest man first place went to Burley Roberts with Carl Hall coming up for second. Best mustache went to Craig McDaniel. Longest hair

to Jimmy Risinger. Tobacco spitting contest won by Gene Autry, Agriculture teacher Mr. Lester Bounds, could not be beaten on his spitting 18 1/2 feet, but he was not eligible to win.

People are Superior", then the former Bula-ettes, Lanell (Claunch) Powell, Judy (Young) Kirk, Sandra (Angela) Austin, and Janell (Seagler) Turner, with Mrs. Parkman at the piano sang "Moments To Remember", "Somebody Bigger Than I", and "American The Beautiful".

An investment in Your Future

**ATTEND CHURCH**

"For where your treasure is, there will your heart be also"


- FIRST UNITED METHODIST CHURCH  
MULESHOE-YL PARISH  
C. B. Melton-Pastor  
Russel Byard-Minister & Training  
111 Route 1, Muleshoe  
507 West Second, Muleshoe
- ZION REST PRIMITIVE BAPTIST CHURCH  
207 E. Ave. G  
Glen Williams, Elder
- PRIMITIVE BAPTIST CHURCH  
621 S. First  
Aron Richards, Elder
- FIRST CHRISTIAN CHURCH  
130 W. Ave. G  
Rev. Walter Bartholf  
Sunday School 10:00 a.m.  
Worship 11:00
- LATIN AMERICAN METHODIST MISSION  
Ave. D & 5th Street  
Esteban Lara, Pastor
- FIRST PRESBYTERIAN  
Morton Highway  
Edwin L. Manning, Pastor  
Sunday Morning Service
- CHURCH OF THE NAZARENE  
Ninth & Ave. C
- CALVARY BAPTIST CHURCH  
1733 W. Ave. C  
Charles Kenneth Harvey, Pastor
- TRINITY BAPTIST CHURCH  
314 E. Ave. B  
V. L. Huggins, Pastor
- MULESHOE ASSEMBLY OF GOD  
517 S. First  
H. D. Hunter, Pastor
- JEHOVAH'S WITNESS  
Fryona Highway  
Boyd Lowery, Minister
- RICHLAND HILLS BAPTIST CHURCH  
17th & West Ave. D  
Gerald Pepper, Pastor

**A SYMBOL OF SAFETY**

When the ship is in danger, we can depend on the life-boats to take us over the seas to safety. It is comforting to glance at the life-boat when the seas are rough.

Our Armed Services are a symbol of safety when our country is in trouble. when war threatens to raise its ugly head. In the past, when war has come, our servicemen have not hesitated to give their lives to protect and defend us.

There is a special Day each year when we remember and honor our servicemen who have died in the defense of our blessed country. Let us not forget, as individuals, to honor these dead and give thanks to God for those who protect us even now. Remember them as you attend church this week.



The Church is God's appointed agency in this world for spreading the knowledge of His love for man and His demand for man to respond to that love by loving his neighbor. Without this grounding in the love of God, no government or society or way of life will long persevere and the freedoms which we hold so dear will inevitably perish. Therefore, even from a selfish point of view, one should support the Church for the sake of the welfare of himself and his family. Beyond that, however, every person should uphold and participate in the Church because it tells the truth about man's life, death and destiny, the truth which alone will set him free to live as a child of God.

EVERYONE IN THE CHURCH  
THE CHURCH IN EVERYONE

- SPANISH BAPTIST MISSION  
E. 3rd and Ave. E  
John Jaquez, Pastor
- PROGRESS SECOND BAPTIST CHURCH  
Clifford Slay, Pastor  
1st and 3rd Sundays
- MULESHOE BAPTIST CHURCH  
8th Street & Ave. G  
Bob Dodd, Pastor
- ST. JOHN LUTHERAN  
Lariat, Texas  
Herman J. Schelter-Pastor
- FIRST BAPTIST CHURCH  
220 W. Ave. E  
Rev. J. E. Meeks
- SPANISH ASSEMBLY OF GOD  
East 6th and Ave. F  
Rev. Hipolito Pecina
- ST. MATTHEW BAPTIST CHURCH  
W. Third  
E. McFrazier, Pastor
- NORTHSIDE CHURCH OF CHRIST  
117 E. Birch Street
- PROGRESS BAPTIST CHURCH  
Progress, Texas  
Murrell Johns, Pastor
- SIXTEENTH & D CHURCH OF CHRIST  
Sunday-10:30 a.m.  
Evening-6 p.m.  
Wednesday-8 p.m.  
Ivan Woodard, Minister
- IMMACULATE CONCEPTION CATHOLIC CHURCH  
Father Timothy Schwertner  
Northeast of City in Morrison Edition
- MULESHOE CHURCH OF CHRIST  
Clovis Highway  
Royce Clay, Minister

<p>Compliments of</p> <p><b>SOUTHSIDE GULF</b></p> <p>502 South First</p>	<p>Compliments of</p> <p><b>CHARLES LENAU LUMBER CO.</b></p> <p>202 E. Ash St. 272-4222</p>	<p><b>GIBSON'S DISCOUNT CENTER</b></p> <p>1723 West American Blvd. 272-4306</p>	<p>Compliments of</p> <p><b>TORO GRAIN</b></p> <p>Division of Olton Feed Yards, Inc. Olton, Texas 285-2634</p>	<p>Compliments of</p> <p><b>LEO'S BLACKSMITH &amp; MACHINE SHOP</b></p> <p>Welding &amp; Pump Service 310 W. American Blvd. 272-4418</p>
<p>Compliments of</p> <p><b>AVI, INC.</b></p> <p>Hwy. 84 W, 272-4266</p>	<p>Compliments of</p> <p><b>MORRISON OIL COMPANY</b></p> <p>Consignee for Texaco, Inc. 272-4688</p>	<p><b>HOWARD I. WATSON</b></p> <p>Alfalfa Hay 272-3552 272-4038</p>	<p><b>MAIN STREET BEAUTY SALON</b></p> <p>115 Main 272-3448</p>	<p>Compliments of</p> <p><b>MULESHOE MACHINE &amp; WELDING</b></p> <p>Gear Head repair, Sales &amp; Service 123 Fir St. 272-3145</p>
<p><b>BEAVERS FLOWERLAND</b></p> <p>"Flowers for all occasions"</p> <p>272-3024 or 272-3116</p>	<p>Compliments of</p> <p><b>HENSLEY RUSSELL, INC.</b></p>	<p><b>WHITE'S CASHWAY GROCERY</b></p> <p>402 Main "Where friends meet and price is talk"</p>	<p><b>SOUTHSIDE GULF</b></p> <p>Road Service 501 S 1st 272-4818</p>	<p>Compliments of</p> <p><b>STATE LINE IRRIGATION</b></p> <p>Littlefield-Muleshoe-Levelland</p>
<p><b>BERRY ELECTRIC</b></p> <p>Residential-Commercial-Industrial service 104 E Ave B 272-3375 Res #272-4746</p>	<p>Compliments of</p> <p><b>ST. CLAIR'S</b></p> <p>110 Main</p>	<p><b>WHITT-WATTS-REMPE IMPLEMENT CO.</b></p> <p>John Deere dealer Muleshoe 272-4297</p>	<p><b>SPUDNUT SHOP</b></p> <p>Special order on cakes 328 Main 272-3542</p>	<p>Compliments of</p> <p><b>WRINKLE WELDING &amp; MACHINE</b></p> <p>909 W. American Blvd. 272-4486</p>
<p><b>BRATCHER MOTOR SUPPLY</b></p> <p>107 E Avenue B 272-4288</p>	<p>Compliments of</p> <p><b>WEST 6TH TEXACO</b></p> <p>Road Service 272-4633 W 6th at W. American Blvd.</p>	<p><b>DOLLY CUP DRIVE IN</b></p> <p>Hamburgers-chicken-shrimp Twist Cone Ice Cream 102 E Ave B 272-8957</p>	<p><b>Dairy Queen</b></p> <p>Margie Hawkins, Manager 272-3412</p>	<p><b>ATTENTION MULESHOE AREA CATTLEMEN</b></p> <p>... In regard to dead stock removal... If you have a problem with service... whether in the feed yard or on the farm... Please give US a chance! Thank You.</p> <p><b>YOUR LOCAL USED COW DEALER IN MULESHOE</b></p> <p>Ph. 965-2903 Mof 935-2423 <b>Muleshoe Bi-Products</b></p>

1930-1939, music of this period "Down Yonder Rag", played by Jean, with Barbara dressed in the attire of this era with her brother Jake Bogard, from Charley, Tex., doing the Down Yonder Rag. Exes of that era rose and introduced themselves, and told what class they graduated with. History of this period was given by Mrs. John Alford. Mrs. Christine (Waltrip) Brecht of Fort Worth and Omas (Campbell) Petree of Morton were graduates of the first graduating class 1930-1931.

Era 1940-1949, Mrs. Parkman started softly playing a war song "When Johnnie Comes Marching Home". Then she went into the "Tennessee Waltz", with Jake and Barbara doing a waltz. Suddenly she changed into playing a jitterbug "In The Mood", with both doing the jitterbug. This decade of exes rose and introduced themselves. George Allan Simmons of Irwin, Tx., now a pharmacist, gave the history of this period.

1950 - 1959, Mrs. Parkman played an Elvis Presley tune, Barbara and Jake did the bop dance, a popular dance of that time. History of this era was read by Wendell Jones, 1957 graduate and currently member of the school board. All attending school and graduates of this period introduced themselves.

1960-1969, time for the rock and roll music, so Barbara and Jake did the rock and roll dance to the music "Rock Around the Corner". History of this period was given by Mike Risinger 1964 graduate, now a soil scientist at Del Rio, Tx. Jean started playing quietly "Bride Over Troubled Waters" and "Last Date". Then students stood and introduced themselves. History of this last age was read by Edward Clawson, 1974 graduate and attended San Marcus University the past year.

This closed the afternoon program and every one journeyed to the School Gym for a free barbecue, by the Bula-Enochs Lions. At 7:30 program resumed with reminiscence and contributions by exes, with Mr. McDaniel as master of ceremony. First a silent prayer was given in memory of the three wars and deceased exes of the history of the school. This was followed by McDaniel making a tribute to all exes in various fields. He also expressed gratitude to the community and various organizations that had backed and supported our school. Last but not least McDaniel stated he wanted to give tribute to the present faculty that will carry forward the youth from this district to another.

Tommie Ann Gaston, graduate of 1949 class was introduced by McDaniel. She read her farewell to dear ole Bula High. McDaniel read a poem he had composed in honor of the School and both Bula and Enochs community. Just before he completed reading his poem, Mrs. Parkman started playing "God be With You Till We Meet Again". At the close of his reading everyone rose to their feet and sang the song.

Then the floor was open for reminiscence, Charles Seagler, did a research on "Why Bula



# WANTS AND ADS

**OPEN RATES**  
1st insertion, per word - 9¢  
2nd and add., per word - 6¢  
**NATIONAL RATES**  
1st insertion, per word - 11¢  
2nd and add., per word - 7¢  
Minimum Charge - 50¢  
**CARD OF THANKS** - \$3.00  
Classified Display \$1.25  
per column inch.  
Double Rate for Blind Ads -  
**DEADLINE FOR INSERTION**  
Noon Tuesday for Thursday  
Noon Friday for Sunday  
**WE RESERVE THE**  
Right to classify, revise or  
reject any ad.  
**NOT RESPONSIBLE**  
For any error after ad has  
run once.

**PERSONALS**  
\$100 reward offered for information leading to conviction of anyone damaging Journal news paper stands.  
21s-1-1tp

**WANTED:** Used motor boat and camper trailer. Call Tommy Black 272-4248.  
1-15t-1tp

**WANTED:** to do yard work. Have own equipment. Call 272-3449.  
1-18t-8tc

**FOR YOUR Stanley Home Products, Jewel Broyles, call 965-2481.**  
1-16t-1tc

I will not be responsible for debts or checks made other than those made by me, Herman Vinson as of May 21, 1975.  
1-21s-3tp

**LOST & FOUND**  
FOUND Blonde Medium size dog, Female, Call Mary Jones 925-3363 in West Camp area.  
2-21s-1tc

**HELP WANTED**  
WANTED: Still taking applications for workers at Allsup's 7-11.  
3-46s-1tc

**WANTED:** Operator needed, Main Street Beauty Shop.  
3-18t-1tc

**WANTED:** Pump setters and roughnecks, Kenny Gearn Machine Work, Hereford, Texas 364-2702 or Box 1635.  
3-21t-2tc

**WANTED:** 100 members at \$5.00 each Annual dividends - Life Insurance Friendly Atmosphere MULESHOE FEDERAL CREDIT UNION, 209 W. Secon, Muleshoe, Open: 10 a.m. to 12 p.m. - 2 p.m. to 5 p.m.  
3-21s-10tc

**WANTED:** Person to do ironing in own home, for a family on weekly basis. Phone 272-4749.  
3-21s-1tp

**WANTING:** To Keep Children, 3 years or older. Call 272-4031.  
3-21s-

**APARTMENTS FOR RENT**  
FRIONA APTS. now have available 1,2, and 3 bedroom. \$145.00. Call 247-3666 or come by 1300 Walnut Street, Friona. Sorry no pets.  
5-24s-1tc

**REAL ESTATE FOR SALE**  
FOR SALE by owner: Good 2 bedroom house and big store house. \$500 down, \$9,000 balance 8 1/2 percent. Low monthly payments. See or phone J.K. Adams.  
8-21s-21tp

**For Sale:** All electric homes, 3 bedrooms, 2 bath, double garage, refrigerated air.  
**HEATHINGTON LUMBER CO.**  
806-272-4513  
8-3s-1tc

**FOR SALE:** 3 bedroom brick. Livingroom, den, 2 baths, fireplace and covered patio. 6% Loan. Richland Hills addition. 272-4632.  
8-18t-1tc

**FOR SALE:** Exclusive 2 bedroom home on 4.43 ac-272-3293 Day or 113 West Ave, D. Night, HOLLAND REAL ESTATE  
8-19t-1tc

Several good tracts of land for sale. Some at 29% down. Good water.  
8-37s-1tc

**POOL REAL ESTATE**  
214 E. AMERICAN BLVD  
PHONE 806-272-4716

**FOR sale:** Brick, 3 bedroom, 2 bath, approx 1500 sq. ft., close in on small acreage with income producing property. 803-272-4354.  
8-4s-1tc

**FOR SALE:** Trailer 10' x 50' with 10' x 4' Slide out, Nicely furnished, full bath, skirting, anchored. North Dock Trailer Court, Ute Lake, Logan, New Mexico, Call 374-6958.  
8-21s-2tc

**FOR SALE:** 3 bedroom, 2 baths, fenced back yard, cellar, storage house, 1714 W. Ave. B, or Call 272-5542 after 4 p.m.  
8-21t-4tp

**KREBS REAL ESTATE**  
Bring Us Your Listings If You Want Action.  
**SALES\* LOANS APPRAISALS**  
AUTOMOBILES

**FOR SALE:** 1969 International Transtar 250 Cummins, Road ranger, turn screw, with 43 ft. tanium Hobbs flat bed. 965-2751.  
9-21t-4tp

**FOR SALE:** 70 Toyota Corona MKII 4 door, \$1300. Days 272-3483, Nights 272-3335.  
9-19s-8tp

**FOR SALE:** 1971 Chevy Impala, 4 door - Nice - Needs motor - \$1,000.00 Cash. 272-3838.  
9-21s-1tp

**FARM EQUIP. FOR SALE**  
FOR SALE: 2 Donahau goose - neck grain trailers with hydrolic dump, tandem axle, 12-16, 5 10 ply tires, '75 tags. Like new. \$4,000 each.  
74 - 3/4 ton F250 Ford Explorer only 14,000 miles. 460 cubic inch engine. Air and power, saddle tanks (total 80 gal. regular not unleaded) fifth wheel and trailer controls, very clean \$4500.00 Call 806-247-3744.  
10-20s-4tp

**FOR SALE:** 620 Heston Swather, diesel cab; 630 Case tractor diesel with cab; 346 John Deere Baler with Wisconsin engine, 224 John Deere Baler with Wisconsin engine; 11 x 28 Goose neck equipment trailer. Abernathy, Tex. 298-2659.  
10-20s-4tc

New 16 inch well casing. Two 1-9 wall \$8.95 ft. 6 inch well casing 188 wall at \$3.45 ft. Good used California Western 6 5/8 column pipe with 2 1/2 x 1 7/16 tubing and shafting \$10.50 per foot. 2 3/8 structural tubing 40¢ foot.  
We pay Number One for prepared scrap iron - \$50 ton. Farwell Pipe & Iron, Farwell, Texas. Phone 806-481-3287.  
10-18t-1tc

**For sale:** 2-6 row Case planters equipped for bed planting; also spraying attachment; also several other 6 row items. Call 806-272-3089.  
9-7t-1tc

**LAND FOR SALE:** Approx. 320 acres, 11 1/2 miles west, 2 wells ready for circle sprinklers.  
Approx. 277 acres 6 miles west, 2 wells and one circle sprinkler. Crop ready to graze now.  
Approx. 191 acres, 2 wells, 4 side roll sprinklers. Crop ready to graze now. Call Harold or Max King 806-272-4541.  
8-10s-1sttc

**HOUSEHOLD GOODS**  
EXPERT SAW-TOOL and scissor sharpening. Modern equipment and factory trained operator. Dunagan's C & R Upholstery, 412 Mitchell, Phone 762-7033.  
12-8s-5tfc

**DUNAGAN'S C & R UPHOLSTERY:** Top quality work, satisfaction guaranteed. Large selection of materials and years of experience. 412 Mitchell, Clovis, New Mexico, Phone 762-7033.  
12-8s-5tfc

## Card of Thanks

We wish to say a big "Thank You" to all Eighth Grade mothers who so generously helped with our Eighth Grade Day. Thank you for the cake and home made ice cream and for your time.  
Wayland Ethridge,

**Planos, organs, band instruments, new and used. Professional repairs, sheet music, rentals, terms.**  
Phillips House Of Music  
118 Main, Clovis, N.M. Phone 505-763-5041  
12-34s-1tc

**FOR SALE:** 23' Zenith color T.V. Early American cabinet 90 day warranty on parts and labor \$249.95, Wilson Appliance, Phone 5531.  
12-20s-6tc

**FOR SALE:** Spinnet Piano \$37.00 monthly. Channer Music, Box 1163, Sterling Colorado. 522-4520.  
12-21s-1tp

## MISCELLANEOUS

**\*Expert and Colorful Weddings**  
**\*Family Groups**  
**Anywhere, Anytime**

**PHOTOGRAPHY by Oecia**  
CALL 385-6083  
Littlefield 409 W. 2nd

**All type roofing & building repair. FREE ESTIMATES**  
Phone 806-272-3756  
**DON'S ROOFING CO.**  
15-32s-1tc

**ATTENTION:** Excellent for yards and gardens. Composted feolot manure. No objectionable odor. 100 lb. sack - \$3.75, 1,000 lbs or more in bulk - \$3.00 per hundred. Farmer's Compost, Muleshoe. Call 272-4795 for details.  
15-14t-1tc

**HOME REPAIRS and remodeling, inside and out. Landscape, trees in or out, New lawns or rejurination. Clovis 963-6111 or 763-4122.**  
15-19s-1tc

**FOR SALE:** AKC Registered Tiny Toy Poodles; Pekingese, and Pomeranian puppies.  
15-20t-1tc

**GRIMES KAWASAKI**  
Complete line of parts & accessories, Factory trained mechanics.  
New and used motorcycles. South 385, Littlefield, Texas. Phone 806-385-3049  
15-50s-1tc

**SAVE A \$100 UB6 plus capsules now available in convenient 200 capsules, 33 day supply at Western Drug.**  
1-19t-8tp

**TO BE MOVED:** 3 room and bath house. Call 946-3614.  
15-21t-2tc

**NEED A HOME LOAN?**  
**FIRST FEDERAL SAVINGS**  
AND LEARN ASSOCIATION  
801 Pile St.  
762-4417  
Clovis, New Mexico

**SEED AND FEED**  
CONTRACTING PINTO BEANS  
To be grown as primary crop or as crop following small grains to be planted by July 1. Interested growers should write Womack Brokerage Co., P.O. Box 1464, Lubbock, Texas, 79408. Include name, address, and phone number.  
17-20s-4tc

**Mobile 965-2214**  
Res. 965-2196  
GLEN WATKINS

## Card of Thanks

The family of Josie Clark wish to thank all their friends for the food, flowers, words of comfort, prayers, and Cards during our time of sorrow in the passing of our beloved wife, mother, and grandmother.  
E.L. Clark  
Wayne Clark & family  
Albert Clark & family  
Ed Clark & family  
George Clark & family  
Cory Eddeman  
Perry Davis  
21s-1tc

## Public Notice

**MULESHOE INDEPENDENT SCHOOL DISTRICT**  
514 West Avenue G, Muleshoe, Texas 79347  
The Trustees of the MULESHOE INDEPENDENT SCHOOL DISTRICT will offer for sale by Sealed Bids, the following vehicles, to-wit:  
1 - 1967 60 Passenger, International School Bus, Superior Body.  
1 - 1971 60 Passenger, Dodge School Bus, Carpenter Body.  
The above Buses may be inspected at the Muleshoe ISD Bus Barn between 8:00 a.m. and 5:00 p.m. Monday through Friday.  
Bids will be opened June 9, 1975 at 8:00 p.m. The Board reserves the right to reject any and all bids in the best interest of the District.  
TOM G. JINKS  
Director of Special Programs and Business Affairs  
-21t-2tc

## Public Notice

**ORDINANCE NO. 147-A**  
An ordinance establishing a new policy, and the terms, conditions, and methods to be followed in setting a time reference for water charges to be paid by water consumers and penalties to be assessed against delinquent water consumers; providing for a provision to repeal existing or parts of existing ordinances and the date the ordinance shall take effect.  
Now therefore be it ordained by the City Council of the City of Muleshoe, Texas, that:  
All charges for water service furnished or rendered by the City Waterworks of the City of Muleshoe, Texas, shall be due and payable on the first day of each month at the office of the Utility Bill in Department, City Hall, Muleshoe, Texas, and if not paid by the 12 day of the month, a 10 percent penalty shall be added to the bill, and if not paid by the 15th day of the month, the City reserves the right to cut off and discontinue water service to the premises of any water consumer without further notice and same shall not be reconnected and no additional water furnished until all past due accounts and charges are paid in full. Where service has been discontinued for failure to pay for services rendered, a charge of five (\$5.00) dollars shall be paid for each and every meter before such service shall be restored or water turned on again during regular business hours of the Utility Billing Department. Such charge of five (\$5.00) dollars will be in addition to any delinquent water bill, including penalty charges added to the delinquent bill. If such restoration of water service is made after regular hours of the Utility Billing Department or during designated City holidays, the charge for such restoration will be seven dollars and fifty cents (\$7.50). It shall be the duty of the individual or business wishing service to be restored to have the correct amount of money and such money will be paid to the personnel in charge of restoring service. No service shall be restored without the total fees, including current charges, delinquent charges, and turn-on charges, being paid in full.  
Passed and approved this the 20th day of May, 1975.  
Alex H. Williams, Mayor, City of Muleshoe.  
ORDINANCE NO. 148-A  
An ordinance establishing a new policy, and the terms, conditions, and methods to be followed in collecting water meter deposits for individuals who are residential home-owners, individuals who lease or rent housing, and/or own mobile homes, and commercial establishments; fixing the effective date of this ordinance and repealing all ordinances or parts of ordinances in conflict with the provisions of this ordinance; and providing a savings clause.  
Passed and approved this the 20th day of May, 1975.  
Alex H. Williams, Mayor, City of Muleshoe.  
-21s-1tc

**On Wall Street**  
By Bob Hill  
Lentz, Newton & Co.

The dramatic drop in the economy has eased inflationary pressures and temporarily eliminated the cost spiral businessmen have had to fight for the past three years. A recent survey confirms the consensus of many businessmen that the economy will continue to slide and prices will continue to ease for several more months.  
But, while businessmen are enjoying some slack in the economy and some price-cutting by suppliers, those same businessmen are convinced that their worst enemy is still inflation. Some leaders are anticipating a sharp rise in the cost of living before the end of 1975. The majority of those interviewed are convinced that the inflation spiral won't commence again until late 1976 or beyond.  
Most inflation-worriers are concerned with the longer-term view. They believe that over-stimulation of the economy now will result in a dramatic inflation wave in 18 to 24 months. That wave of inflation could easily be in the double digit category if the government and/or congress panics over a slow recovery from the present recession and primes the pump too heavily in an upward course.  
Many companies are not just thinking about inflation, but are already doing something about it now. One major paint manufacturer has doubled its cap-

walking shoes are important to the wardrobe.  
If you wear glasses, take a long an extra pair. Or at least a copy of your prescription. If you're taking regular medication, make certain your supply is adequate before leaving. Finally, don't overdo it. Almost no one other than trained athlete is ready for 36 holes of golf or five sets of tennis under a broiling sun. Schedule your vacation to allow for daily rest periods. Do most of the driving in the morning hours and stop for the night in early or mid-afternoon.  
Your vacation should be a holiday for rest and relaxation. It should not be a grind that necessitates another vacation to rest up from the vacation.

## Preparing For Vacation Trips

The traditional summer vacation trip of the American family is highly recommended by your doctor. The family needs to get away from home and office chores, forget day-to-day worries for a short time and generally get rejuvenated and ready to face another year.  
Whether your vacation is a short trip to a nearby lake or the Gulf Coast, camping out in a national park, a plane trip abroad, or what have you, the Texas Medical Association lists a few things to keep in mind that will help avoid having the holiday spoiled by illness.  
Depending on where you're going, you may need some vaccination shots. Tetanus, certainly, for anyone who expects to include some out-of-doors activities. Typhoid, if your journey includes areas where the water supply is uncertain. Possibly smallpox, if you're visiting a foreign land where the disease is still present. Ask your doctor about these, and possibly other, immunizations.  
Use common sense in regard to your vacation diet. Many a family trip has been spoiled by too many roadside hamburgers and soft drinks. A sound rule while driving cross-country is to eat lightly. Be cautious about heavy, rich meals, particularly if you're not accustomed to such at home.  
Know what sort of climate you will encounter at your vacation spot and dress accordingly. It can get cold in the mountains or on the desert at night, even in midsummer. Good

ital spending for plant and equipment this year, in spite of a drop in income. Another large manufacturer is already planning future growth and expansion with a five percent - six percent inflation rate built into its plans.  
Wages are the big question mark because Labor has managed to hold wages up in a soft economy. With the current recession almost over, wages have not dropped and economists expect prices to go still higher in order to absorb the higher labor costs which are sure to come. Excessive deficit spending by the federal government in the past has given a strong push to prices in general. Sharp increases in food and fuel costs have locked in a strong inflationary rate of six percent or better for the foreseeable future.

**DALLAS KINARD TRADE CENTER AUTO**  
FRIONA HIGHWAY  
WE TRADE FOR ANYTHING!  
WE BUY HORSES, MULES, WAGONS, TRAILERS, CARS, TRUCKS & PICKUPS & FARM MACHINERY  
DAY 272-4592  
NIGHT 272-3282

**Morton Manufacturing Co.**  
Levelland Hwy.  
Morton, Tx  
806-266-5342  
**\*STALKCUTTERS, 8 ROW \$730**  
**\*BEDKNIFERS, 7-ROW-\$375, 9 ROW-\$482**  
**\*SANDFIGHTER, 13, 19, 21, AND 24 ROW**

**WHY WAIT???**  
Get Two Crops In Before First Payment  
**FOR A LIMITED TIME:**  
AVI is offering to put a Valley Center Pivot Sprinkler on your farm for a 10% refundable security deposit. First payment not due until NOV. 1976. It's not to late. Immediate delivery. System can be running in matter of days.  
**Self-Propelled**  
**AVI**  
272-4266  
MULESHOE, TEXAS HWY. 84 WEST

**"THE DEALER WHO CARES"**  
Sooner or later you'll buy a New or Used Car FROM D.B. GULLEY  
**Big Country**  
Hagelgantz  
2400 MABRY DRIVE  
CLOVIS, NEW MEXICO

**To IRRIGATION SUPPLY FOR ALL YOUR IRRIGATION FARMING NEEDS**  
**FARWELL WE FIX LEAKS**  
\*ZIMMATIC PIVOT SPRINKLING SYSTEMS  
\* SIDE ROLL SYSTEMS  
\* GATED AND ALUMINUM FLOW LINE PIPE- GAS PIPE  
\* LOW & HIGH PRESSURE PVC UNDERGROUND PIPE  
A COMPLETE INVENTORY OF IRRIGATION SUPPLIES ON HAND, WITH QUALIFIED SALES, REPAIR, AND INSTALLATION PERSONNEL.  
2nd & Ave A  
Ph. 481-3393

# Plants Poisonous To Livestock

Trees turning green and wild flowers blooming are a welcome sight each spring. Cattle and horses welcome spring, also, the tender green forage is a real treat following several months of dry grass. Livestock producers should particularly watchful this time of year because there are several toxic plants in the Panhandle that are among the first to turn green. Consequently, animals will eat these plants at this time much more frequently than any other time of year.

Several of the more common plants poisonous to livestock in the Panhandle and South Plains areas are listed below:

Shinnery or any other forms of oak are probably the most widespread toxic plant in our area. It is especially toxic in early spring. The buds, small leaves, flowers, and stems are palatable and poisonous. The toxic principle is a tannin that can severely damage the lining of the stomach and intestines. Calcium hydroxide (hydrated lime) is an effective antidote for oak poisoning.

Senecio is abundant in the western half of Texas. There are several varieties. The leaves of the plant are more toxic than the stem and young leaves are more toxic than mature growth. There is usually quite a time lapse between the animal eating the plant and the first signs of poisoning. The symptoms are continuous walking and nervous disturbances to the point the animal may attack anything that moves.

Woolly Locoweed is widely distributed in the area. This has been a good year for abundant growth of this toxic plant. Horses are more susceptible to the toxin than cattle, but both may develop loco poisoning. Affected animals are nervous and will exhibit a staggering gait, staring look, loss of weight, abortion, and muscular incoordination. Symptoms may not be apparent while the animal remains quiet, but when subjected to muscular exertion, signs of locism appear and complete recovery is rare.

Cocklebur is very poisonous in the two-leaf stage requiring as little as 0.75 percent of an animal's body weight to produce death in 24 to 48 hours. The toxicity gradually decreases

## Kidnap Breakfast

Saturday, May 10, Mrs. Jack Young and Pam Young honored Prisca Young with a kidnap breakfast. The girls were picked up at 6 a.m. in the morning and taken back to the Young's home. The girls had juice, biscuits, eggs, sausage rolls, sweet rolls and milk.

Those attending were Vicky Griffin, Andy Harvey, Judy Dearing, Jana Oyler, Nita Wall, Robbie Nesbitt, Marcia Rudd, Pam Vinson, Pam Young, Prisca Young, Linette Newman and Mrs. Jack Young.

On May 16, the girls attended a Mexican food supper and slumber party at the Jack Young home. After supper and going running around the girls returned to exchange gifts.

Those attending were Judy Dearing, Pam Vinson, Cindy Harvey, Robbie Nesbitt, Vicky Griffin, Marcia Rudd, Jana Oyler, and Prisca Young.

## TEXAS TALK

by RAY DAVIS

A marked decline in the number of varieties being grown commercially is one of the unusual things about Texas' number one cash crop, cotton in 1910 F. J. Baker, in an article entitled *Varieties of American Upland Cotton* reported for the United States Department of Agriculture that there were 613 varieties of cotton being grown. Sixty-five years later there are fewer than 50 with only about ten of those commonly used. Two reasons are predominant for the unusual turn-around. First the boll weevil infestation wiped out many susceptible long-staple varieties. Second, producers have developed the varieties they like best and are satisfied with the increases in crop yields, the storm resistant boll for machine harvest and the generally shorter growing season provided by relatively few types. Evidence of the success of the varieties being used is amply illustrated when comparing current yield per acre with that of 1950.

## FARM BUREAU INSURANCE

1612 American Blvd, Muleshoe, Tx. Office 272-4567 Home 272-3592

and the mature plant is not considered to be dangerous to livestock although the burs are a problem when they get in the wool and hair. Animals poisoned by cockleburs will generally be found dead. If alive, they will be depressed, weak, have a rapid weak pulse, labored breathing, and spasmodic contractions of the legs and neck. Pigs may squeal and have convulsions. Control of cockleburs is very easy while young with 2,4-D at the rate of 1/2 to 1 pound per acre.

Oleander is not very abundant in this area, but occasionally will be grown in the yard as an ornamental shrub. Yard clippings containing oleander being fed to animals is the usual way poisoning occurs.

Oleander contains a highly toxic cardiac poison. People

have become poisoned by using branches for meat skewers. Poisoned animals suffer abdominal pain, stimulation of the heart, and constriction of the blood vessels. They will tremble, develop a progressive paralysis, become comatose, and die.

Ergot is produced by several fungi. Under favorable climatic conditions, sufficient fungus growth may occur to produce poisoning. This fungus growth occurs on several plants such as rye, barley, and fescue grown in the area.

Ergotism is divided into two different diseases. The acute form is usually characterized by nervous symptoms. The chronic form produces gangrene. The chronic gangrenous

type is the most prevalent in this area. The toxin causes constriction of the blood vessels. Gangrene therefore develops in parts of the body with the poorest blood supply, such as feet, legs, ears, and tail. These parts will completely drop off in advance cases. Cattle may be seen walking without hooves with no apparent pain. Should ergot develop, the forage should be mowed or the animals moved to new pasture.

Photosensitization is a condition that can occur while animals are grazing lush green forage. Green plants produce a substance called porphyrin that can cause an allergic type reaction with sunlight if this substance is allowed to build up excessively in the blood.

Normally the liver removes the substance from the blood and there is no problem, but occasionally the liver may become damaged and fail to filter out sufficient porphyrin. Symptoms of photosensitization are red watery eyes, reddening of the skin around the muzzle, eyes, the top of the neck and shoulders, also the udder or scrotum. The severity of this reaction is worse on animals with light pigmented skin and white hair in these areas. This reaction progresses

until the skin cracks and becomes very hard and dry like a scab.

In severe cases, the skin in these areas may die and slough off. The cycle can be broken by taking the animal off of green feed or placing it under a shade out of direct sunlight. If possible, both practices are recommended. In addition, antibiotics, antihistamines, and corticosteroids should be given daily for several days.

Many untreated animals suffering from photosensitization will die. Following complete

recovery, these animals can generally be placed back on the green pasture with no ill effects.

Diagnosing and treating poison cases is complicated. Accuracy of the diagnosis and speed of treatment often means the difference between whether the animal lives or dies.

veterinarian and a good laboratory such as the Texas Veterinary Diagnostic Laboratory are indispensable in keeping animal losses to a minimum. A second facility of the Texas Veterinary Diagnostic Laboratory will soon be operational in Amarillo.

**Singleton-Ellis Funeral Home**  
24 Hour Ambulance Service  
Ph. 272-4574 Muleshoe

**PLUMBING, HEATING, & AIR CONDITIONING**  
**D-L PLUMBING**  
Serving Muleshoe & Area  
DON LEAK 272-4769

**We Will Be CLOSED MONDAY, MAY 26th**  
In Observance Of **MEMORIAL DAY**

**MULESHOE STATE BANK**

**PIGGLY WIGGLY**

The people pleasin store

**BE A SUPER SAVER SHOP PIGGLY WIGGLY**

**We Will Be Open MEMORIAL DAY**



Superb Valu-Trim **Chuck Roast** 89¢ Lb.

Superb Valu-Trim, Boneless, Full Cut **Round Steak** 1.69 Lb.

Superb Valu-Trim, Boneless **Top Round Steak** 1.89 Lb.

Farmer Jones **Round Steak** 1.49 Lb.

Farmer Jones **Sliced Bologna** 1.19 1-Lb. Pkg.

Superb Valu-Trim **Hot Links** 98¢ Lb.

Superb Valu-Trim **Rib Steak** 1.49 Lb.

Superb Valu-Trim, Boneless Cubed **Bottom Round Steak** 1.89 Lb.

Farmer Jones **Sliced Bologna** 1.19 Lb.

Superb Valu-Trim **Sirloin Steak** 1.49 Lb.

German **Ring Sausage** 1.09 12-oz. Pkg.

Land O' Frost, Water Thin **Smoked Sliced Meats** 49¢ 3-oz. Pkg.

USDA **Whole Fryers** 49¢ Lb.

Farmer Jones **Round Steak** 1.69 Lb.

Superb Valu-Trim, Boneless **Top Round Steak** 1.89 Lb.

Superb Valu-Trim **Round Steak** 1.49 Lb.

Farmer Jones **Sliced Bologna** 1.19 1-Lb. Pkg.

Superb Valu-Trim **Hot Links** 98¢ Lb.

Superb Valu-Trim **Rib Steak** 1.49 Lb.



Fresh **Ground Beef** 79¢ Lb.

Farmer Jones **Juicy Franks** 69¢ 12-oz. Pkg.

Farmer Jones **Juicy Franks** 69¢ 12-oz. Pkg.

Farmer Jones **Juicy Franks** 69¢ 12-oz. Pkg.

Farmer Jones **Juicy Franks** 69¢ 12-oz. Pkg.

Farmer Jones **Juicy Franks** 69¢ 12-oz. Pkg.

Farmer Jones **Juicy Franks** 69¢ 12-oz. Pkg.

Farmer Jones **Juicy Franks** 69¢ 12-oz. Pkg.

Farmer Jones **Juicy Franks** 69¢ 12-oz. Pkg.

Farmer Jones **Juicy Franks** 69¢ 12-oz. Pkg.

Farmer Jones **Juicy Franks** 69¢ 12-oz. Pkg.

Farmer Jones **Juicy Franks** 69¢ 12-oz. Pkg.

Farmer Jones **Juicy Franks** 69¢ 12-oz. Pkg.

Farmer Jones **Juicy Franks** 69¢ 12-oz. Pkg.

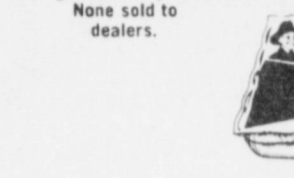
Farmer Jones **Juicy Franks** 69¢ 12-oz. Pkg.

Farmer Jones **Juicy Franks** 69¢ 12-oz. Pkg.

Farmer Jones **Juicy Franks** 69¢ 12-oz. Pkg.

Farmer Jones **Juicy Franks** 69¢ 12-oz. Pkg.

Farmer Jones **Juicy Franks** 69¢ 12-oz. Pkg.



Mouth-Watering **Meaty Cantaloupe** 3 \$1 FOR

Tropical Treat **Sweet Pineapple** 79¢ Ea.

Serve A La Mode **Mangos** 39¢ Ea.

Sun-Flavored **Mellow Pears** 39¢ Lb.

Kiddies Love 'Em **Golden Delicious Apples** 49¢ Lb.

Boasts Flavors Of Others Foods **Tangy Lemons** 59¢ Lb.

Packed With Vitamin C **Juicy Oranges** 79¢ 5-Lb. Bag.

Creamy **Ripe Avocados** 4/\$1

Gourmet's Delight, Medium **White Mushrooms** 59¢ Lb.

**Bell Peppers** 10¢ Ea.

Nippy Chinese Or **Savoy Cabbage** 39¢ Lb.

**Yellow Squash** 39¢ Lb.

Only One Calorie Per Slice **Cool Cucumbers** 29¢ Lb.

**Buns** 3 \$1 8-Ct. Pkgs.

Piggly Wiggly **Coneys or Hamburger**

**Charcoal Briquets** 79¢ 10-Lb. Bag.

Van Camp's **Pork & Beans** 4 \$1 15 1/2-oz. Cans.

**Coca Cola or Dr. Pepper** 1.59 32 oz. Bottle PLUS DEPOSIT

**Paper Plates** 89¢ 100-Ct. Pkg.

**Vienna Sausages** 4 \$1 5-oz. Cans.

**20¢ Off** the purchase price of one (1) 1/2-Gal. Round Ctn. Local Brand **Ice Cream** Coupon Expires May 31, 1975

**20¢ Off** the purchase price of one (1) 8-oz. Twin Pak, Regular or Waves **Potato Waves** Coupon Expires May 31, 1975

**30¢ Off** the purchase price of one (1) 16-oz. Btl. 7-Seas Dressing **Green Goddess** Coupon Expires May 31, 1975

**30¢ Off** the purchase price of one (1) 6-oz. Btl. Pre-Electric Shave Lotion **Mennen Skin Bracer** Coupon Expires May 31, 1975

**40¢ Off** the purchase price of one (1) 14-oz. Price's **Pimento Cheese** Coupon Expires May 31, 1975

**50¢ Off** the purchase price of one (1) 40-Lb. Bag **Oxy-99 Sulphate** Coupon Expires May 31, 1975

**\$1.00 Off** the purchase price of one (1) 3-Lb. Can **Folger's Coffee** Coupon Expires May 31, 1975

**25¢ Off** the purchase price of six (6) 8-oz. Cans Ballard's **Canned Biscuits** Coupon Expires May 31, 1975

**10¢ Off** the purchase price of one (1) 16-oz. Pkg. Mazola Regular Quarters **Corn Oil Oleo** Coupon Expires May 31, 1975

**30¢ Off** the purchase price of one (1) 6-oz. Can DeWetex Aerosol **Foot Powder** Coupon Expires May 31, 1975

**10¢ Off** the purchase price of one (1) 16-oz. Johnson's **Good'N Spicy Chili** Coupon Expires May 31, 1975

**25¢ Off** the purchase price of three (3) Pint Baskets **Strawberries** Coupon Expires May 31, 1975

STORE HOURS  
8-10 DAILY  
9-9 SUNDAY