



# MULESHOE JOURNAL

'The Community of Opportunity-Where Water Makes the Difference'



Volume 55, Number 22

10 Pages

Published Every Thursday at Muleshoe, Bailey County, Texas 79347

10 Cents

Thursday, June 1, 1978



Bailey County Farm Bureau has combined the Lazbuddie and Muleshoe policy development meetings into one meeting at 8 p.m. on Thursday, June 1. The meet is scheduled for 8 p.m. in the Muleshoe State Bank community room and all Farm Bureau members are urged to be present.

On Thursday, June 15, the county Farm Bureau policy meeting will be at 8 p.m. in the Muleshoe High School cafeteria.

Donita Dale, daughter of Mr. and Mrs. Lewis Dale, is reported to be gaining strength at St. Anthony's Hospital in Amarillo.

She has been a patient in the Amarillo hospital for approximately six weeks.

Bailey County Sheriff Dee Clements was reported at press-time to be a little stronger at St. Mary's Hospital in Lubbock.

No visitors are allowed the sheriff except for the family, according to a hospital spokeswoman.

Named to the President's Honor List at South Plains College, Levelland, for the spring semester from Muleshoe are Venida Collins and Melinda Ziegenfuss.

On the Dean's Honor List at the college for the spring semester are Melinda Ziegenfuss, Jean Treadwell, Mark Burden and Venida Collins.

Mrs. Corda Taylor was in Plainview Friday and Saturday to attend the graduation, from Wayland College, of her youngest granddaughter, Karen Mauney. The graduation was Saturday morning. Joining Mrs. Taylor there were her daughter and husband, Joyce and Cecil Osborne, Jr., from California. Also, Mrs. Taylor's oldest granddaughter and husband, Mr. and Mrs. Ronnie Somers, and girls from Seminole. Others there were Mr. and Mrs. Cecil Osborne, Sr., and their daughter, and granddaughter, Mr. and Mrs. Hardy Burres, Sr., of Tulla. The group enjoyed lunch together at Furr's cafeteria.

## Bike-A-Thon Slated Here On Saturday

On Saturday, June 3, the American Cancer Society, Bailey County Branch, and the Muleshoe Kiwanis, will sponsor a Bike-A-Thon around the football field at Muleshoe High School.

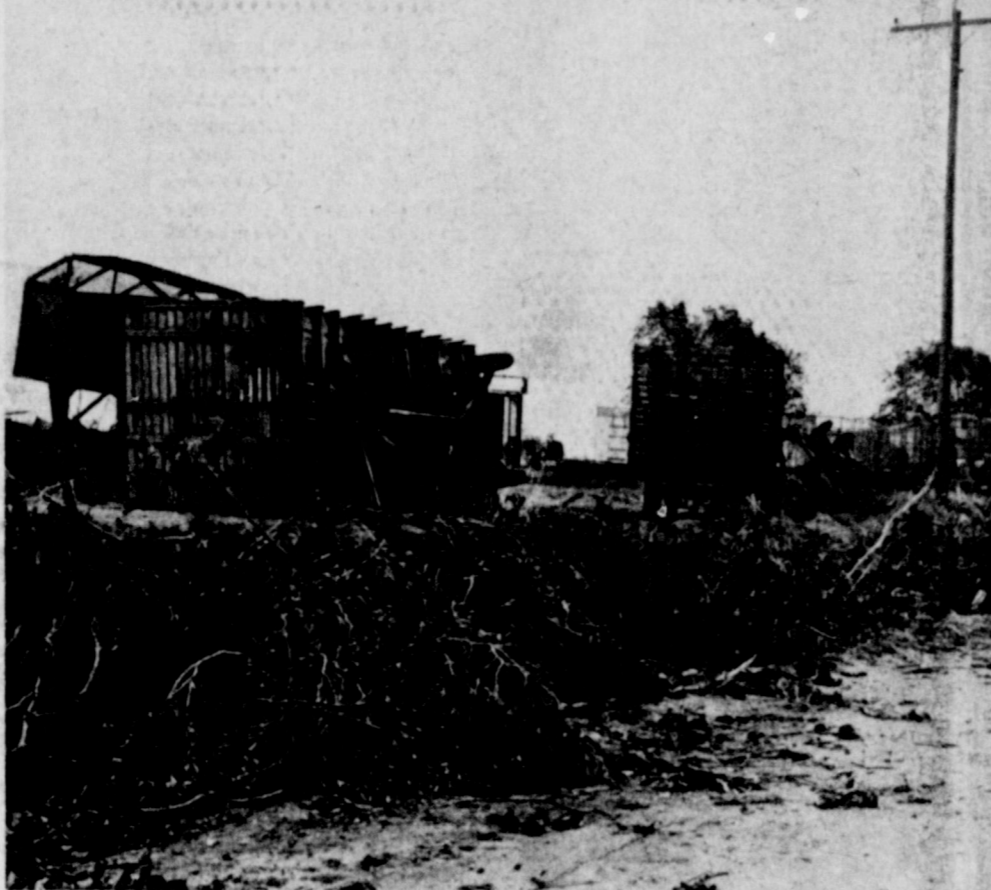
Participants are asked to pick up pledge forms at the Muleshoe Chamber of Commerce and Agriculture or at the Dairy Queen. All participants are asked to be at the football field at 9 a.m.

The Bike-A-Thon is called "A Ride For Life" and all interested bikers are asked to help with the drive.

For additional information, or in case of adverse weather, call Tommy Black at 272-4248 or 272-3872; or Terry Bouchelle at 272-4619 or 272-4664.



LONGHORN SPIRIT AWARDS--Receiving the annual Longhorn Spirit Awards during the annual Lazbuddie All-Sports Banquet were at left, Judy Lust, daughter of Mr. and Mrs. Glenn Lust and Charleson Steinbock, son of Mr. and Mrs. Max Steinbock.



STORM DAMAGE--Late last Friday, red sand and boiling clouds rumbled through the Muleshoe area dropping a hard driving rain, and leaving massive damage in its trail. These cotton trailers and large trees on the Y-L road were victims in the storm.

## Muleshoe Jaycees Name 'Outstanding'

"If It Is To Be, It Is Up To Me," was the theme of the 27th annual Jaycee Installation and Award Banquet last Friday night, and will be the theme for the next year for the Muleshoe Jaycees.

Although a severe storm raged at banquet time, held the banquet crowd down some this year, and kept the band from showing up, persons at the banquet enjoyed the evening's festivities.

Acting as Master of Ceremonies was Max King, who kept the crowd entertained with his sharp wit and caustic tongue. However, even he was completely without words late in the banquet when he was presented the highest honor that can be presented a Jaycee, the JCI Senate award.

Setting the stage for the presentation were Derrell Oliver, Curtis Walker, Ken Henry and Bob Stovall, all previous recipients of the JCI Senatorship. They Eulogized King's civic activities and public work during the past few years before they presented his plaque.

## Lazbuddie's 'Top' Athletes Honored

Athletes in Lazbuddie High School were feted with a banquet last week and Outstanding athletes were named and honored.

Mike Windham, son of Mr. and Mrs. Scottie Windham, was named Outstanding Boy Athlete at Lazbuddie High School for 1977-78.

He was second team All

King joined the less than ten other JCI Senators in Bailey County with the presentation which is given to only a very small percentage of Jaycees any time.

Another major presentation was given by Jaycee Gene McGuire, who presented the Outstanding Citizen for 1977. McGuire said, "It is a privilege to present this award to the outstanding citizen. Our recipient has been an outstanding citizen during the years he has lived here."

He has been an ambassador for Muleshoe ever since he moved here, and has been instrumental in acquiring industry for the city."

McGuire also cited his assistance with the American Agriculture Movement and his trip to Washington to testify before the Agriculture Committee and his contributions to the church.

Rusty Whitt presented a 'first time' award in the evening. The Johnnie Williams Memorial Award was presented Jaycee Kevin Tucker, who also received the Key Man award, the Sparkplug award, President-

District Running Back; first team All-District Safety; and first Team All State Safety in football.

Windham also was honorable mention All South Plains Running Back and All South Plains Safety.

He was all District guard in basketball; and high point individual with 32 points at the district track meet. He was regional finalist in 110 meter high hurdles at 15.4; high jump, six feet and long jump, 20 feet, eight inches. Mike also was a member of the district championship golf team which finished fifth at regional.

Co-recipients of the Outstanding Girl Athlete Award for 1977-78 were Tammie Smith, daughter of Mr. and Mrs. Gene Smith; and Judy Lust, daughter of Mr. and Mrs. Glenn Lust.

Judy was unanimous All District Forward in basketball; and a regional qualifier in high jump and 1600 meter relay.

Tammie Smith was district and regional champion in the 800 meter dash; fifth in state in the 800 meter dash and played basketball.

Charleson Steinbock, son of Mr. and Mrs. Max Steinbock and Judy Lust were named recipients of the Longhorn Spirit Award. The award is given for Outstanding Dedication, Sacrifice and Tenacity.

Miss Green lives on Route 1, and Miss Brantley at 709 West Avenue G, Muleshoe.

Outstanding Chairman of the year was Terry Gunter, trustee of youth basketball and Outstanding committeeman and Jaycee of the year was Rusty Whitt.

Outstanding First Year Jaycees were Chuck Smith and Ted Millen and Committee Chairman of the Year was Lionel Lane. Outstanding Director was Kenny Kittrell, and the JCI Senator Award was presented Chuck Smith.

Spoke awards were given Chuck Smith, Ted Millen, Allen Smyer and Jack Eades and Sparkplug Awards were presented Ricky Mata, Kenny Kittrell, Johnny St. Clair, Kevin Tucker, Rusty Whitt and Gene McGuire.

A special Honorary Membership in the Muleshoe Jaycees was presented Cleta Williams during the evening.

Gene McGuire installed incoming officers and directors, including Ken Bales, first vice president; Ricky Mata, second vice president; Allen Smyer, secretary; Oran Sain, treasurer, Kenny Kittrell, reporter and Barry Cowart, chaplain and directors Terry Gunter, state director; Johnny St. Clair, Ted Millen, Chuck Smith, Keith Burns and Jack Eades, directors.

Cont. Page 3, Col. 7

## Duo Receive Scholarships To West Texas

WTSU--Jane Green and Stephanie Brantley, both of Muleshoe, have been selected to receive West Texas State University President's Honor Scholarship for the upcoming academic year.

"The primary objective of West Texas State University is to provide quality education for our students," said WTSU President Max Sherman. "Because of our respect for academic accomplishments, West Texas State University established the President's Honor Scholarship program for the 1978-79 academic year."

One hundred eighty nine students in 69 high schools in the region have elected to receive the \$100 scholarship, which is in addition to any other they might receive.

Miss Green lives on Route 1, and Miss Brantley at 709 West Avenue G, Muleshoe.

## Area Assesses Damage From Wind, Hail Storms

### Cotton Acres Lost, Young, Petite Blonde Corn, Potatoes Hurt

An overnight visitor in Muleshoe Tuesday was making an unscheduled stop on a trip from Lubbock to Albuquerque, N.M. Driving a big Mack truck and hauling a load of fluffy, pulverized Texas clay to an Albuquerque insulation company, the driver was detained in Muleshoe.

When Texas Department of Safety License and Weight officer Lyndon Huckaby stopped the large truck, climbing out was a small, petite blonde with almost waist length hair, Johanna Wilson, who has been driving the large rigs for the past seven years, was driver and sole occupant of the large truck.

She said she was an 'accidental' truck driver as she recounted some of her driving experience.

According to her story, as a college student in Nebraska, she had car trouble while traveling to and from college. Truckers would stop to help her and she developed an interest in the driving profession.

She added that it took her eight months to learn to drive, as she hitchhiked, accepting rides only in large trucks where she would have an opportunity to learn some more about driving and handling the rigs.

During the interim, she said she took any driving job that was offered until approximately six years ago when she went to work for Werner Enterprises, home-based in a suburb of Omaha, Neb.

Her large, blue truck is equipped with a sleeper, and she added that she does not ever sleep outside her truck, when it is parked, she always stays with it.

Miss Wilson said she has a portable television that plugs into the cigarette lighter on the truck, her CB radio, where she uses the handle "Hitchhiker" and carries food and books. "I have a complete social hall in my truck," she commented. At the time of the interview, she was wearing a ruffled skirt, Cont. Page 3, Col. 1



OFFICERS RAID HOME--Wayne Holmes, Muleshoe City Police officer, is shown with some of the small marijuana 'harvested' from a side yard at a residence in Muleshoe. Two people were charged with misdemeanor possession of the substance.

## New Postage Stamps Are Available Now

A new postage stamp that bears the letter "A" instead of a denomination, has been placed on sale at the Muleshoe Post Office and all postal branches, Postmaster Tom Lobaugh announced Tuesday.

The stamp's value is 15 cents and corresponds with the new 15 cents postage rate for one ounce of first-class domestic mail which went into effect at 12:01 a.m., Monday, May 29.

The new first class rate was approved Friday, May 19, by the Postal Service Governors.

Featured on the stamp is an eagle with the legend "U.S. Postage" beneath it. The letter "A" appears beside the eagle. The eagle and lettering are white, on an orange background.

U.S. Postal Service printed the stamps in 1975-76 when similar uncertainty existed regarding its last rate case. At that time, it also printed and put into use two non-denominated 1975 Christmas stamps.

Postmaster Lobaugh said the "A" stamps are available in sheets, coils and booklets, and embossed envelopes, bearing "A" in lieu of a denomination, also may be purchased.

The "A" stamps and envelopes, along with stamps and postal stationery items already in the Postal Service inventory, are sufficient to meet mailers' needs until deliveries begin of postal items with denominations

## Republican, Democrats Face Runoff

Saturday, June 3 will be election day again all over Texas, with several runoff elections scheduled. In Bailey County, polls will open at 7 a.m. and close at 7 p.m. in two polling places for the Democrats and on polling place for Republicans.

Taking the spotlight in Bailey County will be the runoff election between Republicans Jim Reese and George Bush Jr. for the 19th Congressional District seat.

In the Democratic runoff, Jerry Sadler will face John Poerner for Railroad Commissioner.

Republicans and Democrats will vote at the Bailey County Courthouse and the Democrats will also have a box at Enoch.

Tuesday May 30, will be the final day to vote absentee at the Bailey County Clerk's office in the courthouse.

Three miles north of Progress on the Gully farm, John Gulley said the cotton was damaged badly in two days of hail. On Thursday, he said the cotton was damaged, and then on Friday, the hail got what it missed the first day.

Wind tore a large peach tree branch off the Gully farm, but John said their apple loss was greater than anything else, with small apples littering the ground.

One 30 acre potato field seven miles northwest of Muleshoe received some damage, but the damage was from the high wind, not hail. The potatoes were expected to come out and go ahead and produce, although production may be cut back from the damage.

It was reported to The Journal, that Randy Bush, north-west of Muleshoe, lost his entire cotton crop in the devastating hail and will have to replant his entire crop.

Although it did not rain in the Lazbuddie community on Saturday, hail did fall briefly Saturday around noon six miles northeast of Lazbuddie. Most of the hail was pea to marble size, although a few golf ball size hailstones were reported.

Mostly fair skies marked Memorial Day, and predicted Cont. Page 3, Col. 8

## Pair Charged After Raid On Marijuana

Two city and two county officers raided a local home late Friday night and arrested two persons on a controlled substance charge.

Following the late Friday evening storm, City officers Wayne Holmes and Gary Burkhardt and County Deputies James Williams and Monte Phipps, found the roads extremely muddy as they drove in to the home and a growing marijuana patch.

Apparently, the marijuana was taking advantage of recent rains, and some of it was three to four inches high, and other growth was just coming out of the ground. The patch was approximately three feet wide and some 15 feet long.

Officers harvested the crop before it could grow anymore, and were to go back to the patch to poison the ground to prevent additional growth.

One person was released on \$1000 bond on the misdemeanor charge and one remained in jail on a misdemeanor charge at presstime. Both were charged in connection with the case.

Pair Charged After Raid On Marijuana

Pair Charged After Raid On Marijuana

Pair Charged After Raid On Marijuana

Pair Charged After Raid On Marijuana

Pair Charged After Raid On Marijuana

Pair Charged After Raid On Marijuana

Pair Charged After Raid On Marijuana

Pair Charged After Raid On Marijuana

Pair Charged After Raid On Marijuana

Pair Charged After Raid On Marijuana

Pair Charged After Raid On Marijuana

Pair Charged After Raid On Marijuana

Pair Charged After Raid On Marijuana

Pair Charged After Raid On Marijuana

Pair Charged After Raid On Marijuana

Pair Charged After Raid On Marijuana

Pair Charged After Raid On Marijuana

Pair Charged After Raid On Marijuana

Pair Charged After Raid On Marijuana



DWARFED BY TRUCK...Johanna Wilson, a young truck driver, is dwarfed by her truck as she is shown here. She said she always tries to remember to be feminine, even though she is competing in what is still predominantly a 'mans' world. She spent the night in Muleshoe Tuesday waiting for a necessary paper to arrive for the truck.

# FOXY SHOPPERS SAVE AT PIGGLY WIGGLY



**WE GLADLY REDEEM  
USDA FOOD STAMPS**

**WE SELL REPUBLIC  
MONEY ORDERS**



**WE GIVE  
S & H  
GREEN  
STAMPS**

"Each of these advertised items is required to be readily available for sale at or below the advertised price in each store, except as specifically noted in this ad."

Prices good thru June 3, 1978. We reserve the right to limit quantities. None sold to dealers.

USDA Grade A  
Whole With Backs &  
Giblets

**SPLIT  
FRYERS**

**49¢**

Lb.



Combination  
10 Chops, 6 Centers  
& 4 Ends

**PORK  
CHOPS**

**\$1.38**

Lb.



Swift's

**BUTTERBALL  
TURKEYS**

**79¢**

Lb.

Farmer Jones

**SLICED  
BACON**

**\$1.59**

1-Lb. Pkg.



Lean

**GROUND  
CHUCK**

**\$1.19**

Lb.



**SAVE 18¢**

Liquid  
**CLOROX  
BLEACH**

**69¢**

1-Gal. Btl.

**SAVE 40¢**

Banquet Frozen  
**Fried  
Chicken**

**\$1.89**

2-Lb. Lb.

Piggly Wiggly Grade A

**Large  
Eggs**

**55¢**

Doz.

**SAVE 16¢**

All Purpose  
**GOLDEN BEST  
SUGAR**

**89¢**

5-Lb. Bag

Limit one (1) 1-Gal. Btl. with \$7.50 or more additional purchase

Limit one (1) 5-Lb. Bag with \$7.50 or more additional purchase

Chicken Noodle  
**Campbell's Soup** 4 10-1/2-oz. Cans **\$1.00**

Golden Best  
**Whole Tomatoes** 4 16-oz. Cans **\$1.00**

Kraft  
**Miracle Whip** 16-oz. Jar **69¢**

Smooth or Crunchy Peanut Butter  
**Peter Pan** 18-oz. Jar **99¢**

Ripple or Twin Pack Potato Chips  
**Pringles** 8-9 oz. Can **79¢**

For Cooking  
**Crisco Oil** 24-oz. Btl. **89¢**

**SAVE 10¢**

All Varieties  
Fruit  
**HI-C  
DRINKS**

**49¢**

46-oz. Can

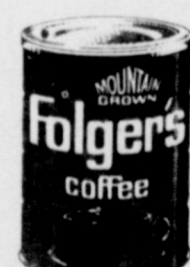


**SAVE 60¢**

Drip, Electric  
Perk or Regular  
**FOLGER'S  
COFFEE**

**\$2.79**

1-Lb. Can



Heavy Duty 20 or 30 WT.  
**Havoline Motor Oil** ..... Qt. **59¢**

Gladiola White or Yellow  
**Cornbread Mix** ..... 5 6-oz. Pkgs. **\$1.00**

Carnation  
**Evaporated Milk** ..... 13-oz. Can **37¢**

Snack Treat, 1-oz. Pkgs.  
**Cracker Jack** ..... 3-Pack Pkg. **45¢**

Stokely's Lemon/Lime or Orange  
**Gatorade** ..... 32-oz. Btl. **49¢**

1000 Island, Italian, French, Creamy Italian or Garlic French  
**Kraft Dressing** ..... 8-oz. Btl. **59¢**

Com Oil Oleo  
**Fleischmann's** 1-Lb. Pkg. **89¢**

Johnson & Johnson  
**Baby Shampoo** 22-oz. Btl. **\$1.79**

Johnson & Johnson  
**Baby Powder** 4-oz. Btl. **69¢**

Country Time Frozen  
**Lemonade** 6-oz. Can **27¢**

Petroleum Jelly  
**Vaseline** 3 1/2-oz. Jar **59¢**

Valencia

**ORANGES**

**12 For \$1**

Fresh

**CANTALOUPE**

**59¢**

Ea.

Ripe

**BANANAS**

**4 Lbs. \$1**

**ON SALE THIS WEEK**

**AUTUMN COLLECTION  
STONEWARE  
SAUCER**

Only **79¢** with every \$3.00 purchase

### Driver...

Cont. from Page 1  
 peasant blouse with a shawl and wore sandals and stockings. She said she tries to remain as feminine as possible in the still make dominated field.  
 She said she also drives in cut-off jeans and slacks at times.  
 "Only during the past four years have female truck drivers become more acceptable," she recounted with a rueful grin, remembering some instances when female drivers were not accepted at all.  
 Although she carries a tool box and can do limited work, she freely admits she cannot do extensive repairs to her rig.  
 Most of the time she is gone from home 10-14 days, and

prefers to drive in the west although she has traveled all over the United States.  
 No more than two weeks ago, she was snowed in for two days in Wyoming and conducted Bible study at the truck stop for all interested truck drivers, she said, and the Bible study was well accepted as the drivers waited to get back on the highways.  
 A single, her boyfriend is a former driver who now has his own trucking company. She said she would not drive for him to eliminate any possible side effects from his other drivers, who may not like such an arrangement.  
 When asked how her parents felt about her driving a truck, she said, "My parents are happy as long as their children

are happy. They occasionally hitch rides with me to see some of the other kids when I am going that way."  
 A dedicated truck driver, she thinks truck drivers are still courteous and most of the time they will stop to help stranded motorists.  
 After verifying that the paper the law requires to be carried in the truck was in the Omaha office, she continued on her trip to Albuquerque. On Thursday morning, she stopped back in Muleshoe and took a sack of doughnuts to the Bailey County Law Enforcement office for the officers who treated her "nicely and fairly" and brought a doughnut to The Journal reporter who talked with her. Then, she crawled back into her truck to get back on the highway.

**Country Western Dance**  
**At Merry Go Round In Olton**  
**Saturday - June 3**  
 9 p.m. - 1 a.m.  
**Buzz James & The Sounds Of The West**  
 Western Swing  
 Good Ole Fiddle  
 Concession Stand Will Be Open.

### Stamp...

Cont. from Page 1  
 stamps to meet the new first-class rate for letters weighing an ounce or less.  
 The charge for each additional ounce or letter mail over one ounce is 13 cents. Therefore mailers can affix "A" stamps in combination with as many 13 cent stamps as necessary to letters weighing more than an ounce.  
 "An abundant supply of stamps—including a 15 cent stamp bearing the portrait of Oliver Wendell Holmes and first issued in 1978—and other postal items are available at all postal locations to meet the needs of our customers," Postmaster Lobough concluded.

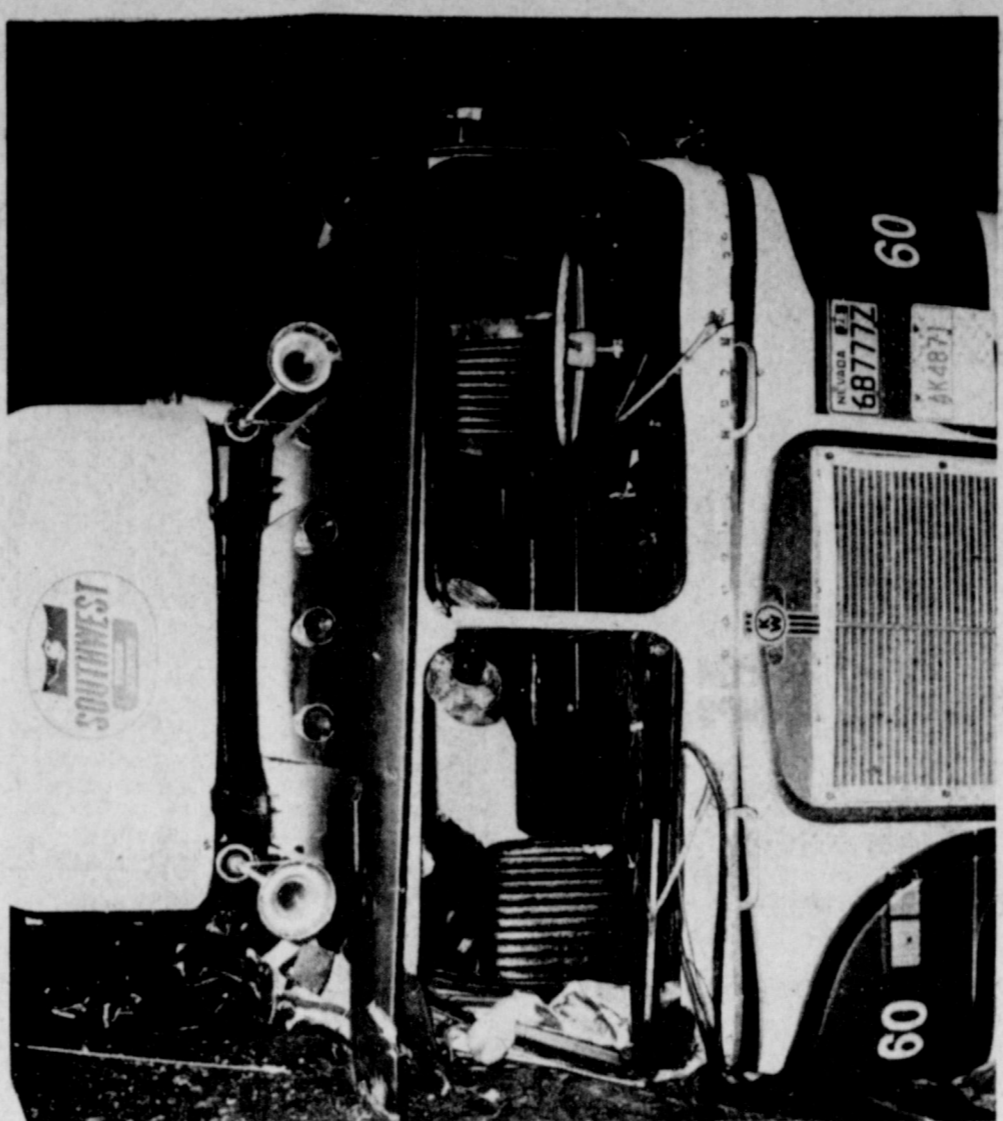
....  
 The trouble with the world is the people in it.

Our Joint Whole Life policy can protect husband and wife at less cost than two individual whole life policies.  
 One for two. Another way a professional saves you money. Person to person.

**Southwestern Life**  
 Person-to-person service for 75 years.

**PROTECT**

Curtis Walker  
 Box 512  
 Ph 272-4876



**WIND TURNS TRUCK OVER**—A storm victim between 7:30 and 8 p.m. last Friday was this large truck which overturned at the west Progress limits. Both the driver and a passenger received injuries in the accident which occurred when the empty trailer started hydroplaning and swung around, causing the truck to go out of control and overturn in the median.

### Students Hold 'Open' House

On the last day of school for 1977-78, several Muleshoe High School Students hosted an open house in one program. Students who were active in the High School Tutoring Program, taught by Jean Allison, explained the program and what they had personally learned during the year.  
 High School Principal Wayland Ethridge said the program was impressive, they talked openly about how the program had really helped them.  
 Two essays from the program are reproduced below:

**REVELATION**  
 As the boys entered the room, the first thing they noticed was the bouquet of iris placed on the table. The bright violet and the burnt orange

flowers stood out in the dull everyday room. Coming closer to the flowers, they caught a tantalizing scent of fresh air, and they could picture in their minds a green field (meadow) of flowers with butterflies dipping among the flowers in the open air.  
 The soft violet colors reminded them of Easter, Spring and the renewal of life. The cadmium and Naples yellow hues produced the image of the sun and the different colors of the seasons. Seeing the velvety beauty of the flowers in the English style vase with the antique-like glass handle made the boys realize how easy it is to bring sunshine into a dull room. Suddenly, it was revealed to them that the little, thoughtful things we do for others bring the sunshine into life.  
 By three boys  
 Ignacio Agundis  
 Walter Bartholf  
 Dondie Gage

flowers, a composite of the ideal employee can be summarized as someone who is extremely honest, dependable, and with enough flexibility to meet unusual situations. Not only is the employee willing to work, but he does his work in a cheerful manner. Furthermore, he does more than he is asked to do; as one employer stated, "A good employee never has idle time."  
 These are the essential traits nearly all employers seek. Any other assets, such as mathematical ability, experience, etc., simply add to the value of an employee. As you can see, obtaining a job may not be too difficult, but being a valued employee takes some very unusual qualities.

**THE IDEAL EMPLOYEE**  
 by Maria Pacheco and Rodney Unrein  
 After interviewing a number of employers, we have found some of the main qualifications it takes to be an ideal employee. Characteristics desired by most employers are honesty, dependability, willingness to work, a pleasant personality with some experience and a basic knowledge of technology.  
 Perhaps the trait most valued by employers is honesty. Over and over again, as we interviewed employers, we heard the word honesty, honesty, honesty. Not only should the employee not steal, but he should also admit when he has done something incorrectly. Also, the employer desires that the employee be honest when dealing with the customer, telling him or her whether or not the product suits his or her need.  
 Following honesty closely as desired traits are dependability and willingness to work. Dependability includes reporting to work every work day on time, showing a willingness to fill-in when needed, and demonstrating initiative on the job by finding extra things to do. Self-respect and will power to do the very best possible when on the job to benefit the employer, the customer and fellow employees are valuable characteristics. These result in a more pleasant environment for everyone and are good for business.  
 The personality and the style in which the employee deals with customers have much to do with the success of the business. For this reason, the employer searches for employees who meet customers comfortable, understand their needs, and also get along well with other employees.  
 While technology and experience are not absolutely essential, it is desirable to have some knowledge of the business, and understanding of the equipment and enough mathematical ability to avoid costly mistakes.  
 After interviewing these em-

**Make It Short**  
 Florist: "You want to say it with flowers, sir? Certainly. How about three dozen roses?"  
 Customer: "Make it half a dozen. I'm a man of few words."

### Jaycees...

Cont. from Page 1  
 Special guest of honor was John Smith, who was charter president of the Muleshoe Jaycees in 1951. He and his wife, JoAnn, were at the head table for the evening.  
 After incoming president, Hugh Young, was installed by Jaycee Charles Moraw, he said, "It has been an unusual year for the Muleshoe Jaycees, and especially unusual for me."  
 There's not a thing the Jaycees cannot do, and we are looking for a new era in the

Muleshoe Jaycees."  
 He made a special presentation to his wife, Pat, as did Mrs. Charles Moraw, who presented her the flowers from the head table. Other centerpiece flowers were won by three of the Jaycee 'ladies' at the banquet.  
 The barbecue dinner was catered by the XIT Steakhouse.

### Damage...

Cont. from Page 1  
 showers failed to materialize. Tuesday afternoon, large fluffy white clouds again floated around, but no measurable precipitation, or severe storms were forecast.

### BEST OF PRESS

**Experienced**  
 A successful executive is one who can delegate all the responsibility, shift all the blame, and appropriate all the credit.  
 -Fulcrum, Boston.  
**It Is**  
 Alimony is like paying off the installments on the car after the wreck.  
 -Coast Guard Magazine.

**Muleshoe Journal**  
 Published February 22, 1978. Published by Muleshoe Publishing Co., Inc. Every Thursday at 304 W. Second, Box 444, Muleshoe, Texas 79401. Second class postage paid at Muleshoe, Texas 79401.  
**TEXAS PRESS ASSOCIATION**  
 I. B. Hall, President  
 James Wood, Vice President  
 Dave Williams, News  
 R. L. Franklin, Secretary  
 Paul O'Neil, Treasurer  
 Hugh Wilson, Advertising  
 April Rollins, Subscriptions  
 Muleshoe Journal and Bailey County Journal  
 Bailey and surrounding Counties \$36.00  
 Muleshoe Journal and Bailey County Journal  
 Everywhere in Texas \$40.00  
 Muleshoe Journal and Bailey County Journal  
 Outside of Texas \$41.00  
 Yearly by Carrier \$41.00  
 Monthly by Carrier \$3.50  
 Advertising rate card on application

### Late Planting ?

If you are late planting corn, plant Trojan Brand TXS-102. This corn produced better than 9,600 dry, last year locally. Have Trojan Brand milo seed, which is green bug tolerance. M56G and M60G for dry land and irrigated.  
 Am now dealer for Paymaster seeds. Have on hand Sweet Sioux, hybrid sudan seed.  
 Also have BULK garden seed, along with Ferry-Morse packet garden and Flower seed.  
**For Your Seed Needs See Us**  
**If We Don't Have It Will Get It**  
**BROWN SEED**  
 2015 W Amer Blvd  
 Ph. 272-3335 Muleshoe

**Farmers Cooperative Elevators**  
**Invite All Members To Their 22nd Annual Meeting To Be Held**  
**Friday, June 2, 1978 7:00p.m.**  
**Muleshoe High School Cafeteria**  
**Enjoy Dinner**  
**Which Will Be Catered By South Seas of Lubbock**  
**Dividend Checks To Be Given & Election Of Two Directors**

**Sample Ballot**

No. 41

**REPUBLICAN PARTY 2ND PRIMARY ELECTION**  
 (ELECCION PRIMARIA DEL PARTIDO REPUBLICANO)  
 (CONDADO DE) BAILEY COUNTY, TEXAS  
 JUNE 3, 1978 (3 DE JUNIO DE 1978)

**OFFICIAL BALLOT**  
**BOLETA OFICIAL**

**INSTRUCTION NOTE:**  
 (NOTA DE INSTRUCCION)

Vote for the candidate of your choice in each race by placing an "X" in the square beside the candidate's name. (Vote por el candidato de su preferencia para cada candidatura marcando con una "X" el cuadro al lado del nombre del candidato.)

I am a Republican and pledge myself to support the nominees of this primary. (Yo soy Republicano y me comprometo a apoyar a los candidatos nombrados de esta primaria.)

**For United States Representative, 19th District**  
 (Para Representante de los Estados Unidos, Distrito Num. 19)

JIM REESE  
 GEORGE BUSH

**DEMOCRATIC PARTY RUN-OFF ELECTION**  
 (CARRERA DE ELECCION DEL PARTIDO DEMOCRATICO)  
 (CONDADO DE) BAILEY COUNTY, TEXAS  
 JUNE 3, 1978 (3 de June de 1978) No. 00311

**OFFICIAL BALLOT** **BOLETA OFICIAL**

**INSTRUCTION NOTE:**  
 (Nota de Instruccion)

Vote for the candidate of your choice in each race by placing an "X" in the square beside the candidate's name. (Vote por el candidato de su preferencia para cada candidatura marcando con una "X" el cuadro al lado del nombre del candidato.)

**For Railroad Commissioner (Unexpired Term)**  
 (Para Comisionado de Ferrocarriles) (Termino no Completado)

JERRY SADLER of Anderson County  
 JOHN PEORNER of Medina County

**Presented In Public Interest By:**  
**First National Bank**  
 Member FDIC Muleshoe, Texas  
 224 S. 1st



### Miss Webb Honored With Reception

Tana Webb was honored with a reception, Sunday night, May 21, by the Richland Hills Baptist Church. She is the daughter of Mr. and Mrs. Cleo Webb, of Muleshoe.

Tracy Webb served cake, and Shelly Davis served punch off of a table covered with a white lace cloth edged in black ribbon. The table was centered with red carnations and black, with three small red roses. Pineapple sherbert, and ginger-ale punch was served from crystal appointment.

The register table was laid with a white cloth, with black candle holders, and white candles.

Tana was first chair flute, in the Muleshoe High School Band and was active in other areas of her school. She plans to attend WTSU in the fall.

Hostesses were members of the Richland Hills Baptist Church.

**WEDDING PLANS ANNOUNCED**—Mr. and Mrs. Clark McCamish, of Muleshoe, announce the engagement and approaching marriage their daughter, Sheryl, to Ronnie Altman, son of Mr. and Mrs. Wayland Altman of Mapie. The couple will exchange vows August 5, in the Trinity Baptist Church, in Muleshoe. Miss McCamish will be a senior in Muleshoe High School next year and is employed as a D.E. Student at Muleshoe State Bank. Altman is a 1978 graduate of Three Way High School and is currently engaged in farming.

### Miss Crane Honored By Beta Sigma Phi

Janie Crane, of San Antonio, daughter of Mr. and Mrs. James Crane, was honored recently at the Annual Founder's Day Banquet of Beta Sigma Phi in San Antonio.

Miss Crane received a governor's committee for Employment of the Handicapped.

The certificate was given to her for her work as a member of Delta Theta chapter of Beta Sigma Phi.

Janie is an English and Journalism teacher at Edgewood High School in San Antonio.

It's often tiresome to work for the pay you get but that's the way it is.

Wisdom is not necessarily shown by those who make no mistakes.



**AUXILIARY NEW OFFICERS**—New officers for the Hospital and Nursing Home auxiliary are: Clara Crain, second vice president; Fay Poyner, treasurer; Dorothy Green, president; Sammy Ethridge, first vice-president; and Clara Lou Jones, secretary. Not pictured are Joy Tibbets, reporter, and historian; and Marie Bradley, corresponding secretary.

### Summer Reading Club Begins

The 1978 Summer Reading Club at the Muleshoe Area Public Library will begin June 1st with registration of all boys and girls who wish to participate. The registration and activities will continue until August 1st, with a Special Recognition Day on August 2.

This year's theme is "COME TO CHIMERA"—Chimera has two meanings—it is a Monster; Strange and terrible looking; and it is also a dream or a fantasy where anything you can think is possible! So, poster, reading lists, bookmarks and decorations in the library are pure fantasy with strange and weird monsters, dragons, & beasts. Features in books will be fantasy and fairy tales for the small children and science-fiction and Monotor books for the older. We would like to emphasize that this year's program is being geared for the older boys and girls, as well as the small-fry, with two alternate plans to choose.

Every Wednesday morning at 10 a.m. we will show first a cartoon or fairy tale; then at 10:30 we will show Monotor Movies, such as Dracula; the Vampire of Dusseldorf; The devil's Hand; and Frankenstein for the older children. They will

also enjoy the weird sound effects to go along with the movies. Each participant will receive a certificate from the Texas State Library when they read 10 books; then if they wish to continue, they may add their ribbons and badges to their certificate. All young people from the 2nd thru Junior High will be eligible to enjoy this "Fun-tastic" Summer Reading Club.

### Piano Students Have Recital

Mrs. Jean Craft presented her piano pupils in informal recital May 18th, at 7:30 p.m., at Trinity Baptist Church, of Muleshoe. Participating in the recital were Terry and Heather Baker, Tim and Shelley Sain, Page and Lacy Layman, Mandy Plank, Penny Kiesel, Tisha Cox, Jena Baucum, Cynthia Curtis, Alan Finney, Lezlee Jones, Marty Watson, Shawndi Geissler, Sherri Kinard, Janna Wuelflein, Kelley Walden, Dorinda Shafer, Mark Jordan, Sandra Speck, Mitzi Dutton, Rebecca Barber, Kristine Miller.

Following the recital, Audition certificates and pins were presented to the winners, also State theory medals were given.

Gold Medals were given to Terry Baker, Rebecca Barber, Mitzi Dutton, Mandy Plank, Marty Watson. Silver Medals were given to Shelley Sain, Alan Finney, Shawndi Geissler, Sherri Kinard, Page Layman, Kelley Walden, Dorinda Shafer, Mark Jordan. Bronze Medal was given to Sandra Speck. Two Special Awards were presented to Terry Baker, son of Mr. and Mrs. Roy Baker, for making highest score on state level theory test and to Rebecca Barber, daughter of Mr. and Mrs. Bud Barber, for making highest score in National Pional Audition.

### Senior Girls Honored With Brunch

The senior girls of 1978 were honored with a brunch in the home of Connie Harmon, Saturday, May 13th. Chicken-a-lacking, melon balls, muffins and juice was served to: Stephanie Brantley, Susan Crittenden, Cherylee Bryant, Dana Wilkinson, Janie Ramos, Renae Ruthardt, Susan Douglass, Tana Webb, Lora Wallace, Jane Green, Melody Mauldin, Vicki Williams, Elizabeth Isaac, Cindy Harris and Connie Harmon. White luncheon cloths and spring flowers accompanied the graduation theme and each girl was presented with a note pad.

### West Plains Medical Center Briefs

**ADMISSIONS**  
May 25—Lessie B. Hardin, Theresa King.  
May 26—Kirk Jesko, Donna Elaine Cargile, Antonia Retana, Ollie Jones, Debbie Nickels, Michael Faughy, John Tutt.  
May 27—Ignocia Sierra, Rush Dewey.  
May 28—Maria Guerrero, H.H. Carlyle.  
May 29—Calla Freedman, Nancy Gleason, Ardath Glasscock.  
May 30—Iva Joan Vinson.

**DISMISSALS**  
May 26—Manuel Flores, Rosie Pearson, Thresa King.  
May 27—Billy Murphy, W.W. Mullins, John Jesko, Antonia Retana, Mike Faughy, John Tutt, Elaine Cargile.  
May 28—Rosa Ellison, Ruby Acthinson, Ignacia Sierra.  
May 29—Mary Hodges, Maurillo Ramirez, Debbie Nickels, Vic Benedict, Lessie Harden, Maria Guerrero, Eloise Gary.  
May 30—Mancy Gleason, Marion Kettelson.



**OUTSTANDING YOUTH AWARD**—Epsilon Delta, chapter of ESA, presented the Outstanding Youth Award to one of the Jr. High Students. Receiving this award was Patty Garcia, daughter of Mr. and Mrs. Albert Garcia. Jo Blackwell presented this award to her at the Muleshoe Junior Awards Assembly Friday, May 26.

new baby girl born May 28, 1978 at 2:18 p.m. in the West Plains Medical Center, in Muleshoe. The baby weighed six pounds and nine ounces and was named Olivia Guerrero.

Grandparents are: Mr. and Mrs. Manuel Guerrero, of Old Mexico, and Mr. and Mrs. Avelardo Gallegos, of Old Mexico.

### Carmelita Retana

Mr. and Mrs. Jesse Retana, of Bovina, are the proud parents of a new baby girl born May 26, 1978, at 6:29 a.m. in the West Plains Medical Center, in Muleshoe. The baby weighed six pounds and five ounces and was named Carmelita Retana.

### Guy Wayne Nickels

Mr. and Mrs. Nicky Nichols are the proud parents of a new baby boy born May 26, 1978 at 7:15 p.m. in the West Plains Medical Center in Muleshoe.

The baby weighed eight pounds and was named Guy Wayne Nickels. The couple have one other child, Nicky Chad, two years old.

Grandparents are: Ralph Glover, of Muleshoe, and Mrs. Josie Kootz, of Muleshoe. Great grandparents are Mr. and Mrs. Ed. Nickels, of Muleshoe.

*In Fashion*

The smock big shirt, a perfect floaty dream-look for those sizzling summer days ahead, comes in linen-like polyester, cotton, bisque and checks.

We would like to know where the statisticians get their comparisons.

Mr. and Mrs. Bill Franklin

Mr. and Mrs. M. C. Street Jr.

invite you to share in the ceremony

with their children

Becky Ann

and

Mr. John Wesley Street

Saturday, the third of June

nineteen hundred and seventy-eight

at six o'clock in the evening

Community Church

Muleshoe, Texas

Reception following at Muleshoe State Bank

**Womens' Fashions**

By  
**Panhandle Slim, Lee, Briar Patch, Levi, Wrangler & Miller**

**Come In & See Our Selection Of Leather Handbags**

**ee's WESTERN WEAR**

Open Mon.-Sat. 9 a.m.-6 p.m.  
1910 W. Amer. Blvd. 272-4663

## YOU DECIDE

On June 3, Texas voters will elect one of two men as the Democratic candidate for Railroad Commissioner:

**Jerry Sadler**, 70, is a twice-defeated former Land Commissioner. Here's what three of the state's leading newspapers have to say about him:

**The Austin American-Statesman:** "Voters deserve to know whom they will be choosing between in the runoff June 3. Poerner is not a household name; Sadler is. But Sadler has a sorry record in state government. He is the only person ever censured by the Texas House of Representatives (for failure to cooperate with an investigation). He became notorious for attempting to choke then-State Rep. Jake Johnson. He was defeated at the polls in 1970 and lost to Jon Newton in a race for Railroad Commissioner in 1976. And now he's back again."

**The Dallas Times Herald:** "Sadler has made Texas government a universal target of ridicule and derision."

**The San Angelo Standard Times:** "Under Sadler, the Railroad Commission just might become the laughing stock he once made of the General Land Office."

### IS THERE REALLY ANY CHOICE?

The Railroad Commission regulates the oil, gas and transportation industries in Texas. Our energy and utility rate problems demand vigorous and responsible leadership. We need John Poerner to fight for Texas and protect what is rightfully ours.

**John Poerner**, 45, is a respected businessman and rancher. John Poerner was elected to three successive terms in the Texas House before being named Executive Director of the Governor's Committee on Aging and Director, Education Resources of Texas.

His honors include being named "Citizen of the Year" in his hometown of Hondo, receiving a "Distinguished Legislator" award from the Vocational Agriculture Teachers Association, and being named to the "Agriculture Hall of Fame" at Southwest Texas State University.

He was recently appointed to the Railroad Commission by the Governor.

"Poerner is a solid, competent individual with a record of 10 years of dedicated public service," says the **Houston Chronicle**. "(We urge) his election."

## JOHN POERNER

Texas Railroad Commissioner

VOTE June 3 in the Democratic Primary Runoff



Put pol. ad. to elect John Poerner Railroad Commissioner. Ed Ingram, Treas. 1037 Brown Bldg. Austin, Texas 78701

# COTTON TALKS

FROM PLAINS COTTON GROWERS, INC.

The sign-up date for the 1978 farm program has been extended to May 31, giving farmers a little more time to digest program provisions.

The extension was needed, say officials of Plains Cotton Growers, Inc., Lubbock, because of "last-minute" changes and rumors of changes in the program.

"Judging from the questions we are getting," says PCG Executive Vice President Donald Johnson, "there is still not a good understanding of the program and how it will operate."

Some of the most repeated questions and the answers given to PCG by the State Agricultural Stabilization and Conservation Service in College Station follow.

Question: Are we now assured that the cotton loan in 1978 will be 48 cents per pound?

Answer: Yes. President Carter has signed into law a 48-cent minimum loan for 1978 through 1981 and the law gives the Secretary no power to lower it. The President has said the Administration would introduce legislation removing the 48-cent minimum, but there is no thought that such legislation will affect the loan in 1978.

Q: If it doesn't rain and I qualify for a prevented planting payment on June 1, can I plant another cash crop on the land and still get the payment?

A: If grain sorghum or another crop which might subsequently be eligible for a prevented planting payment is planted, the acreage planted in excess of last year's acreage will be deducted from the cotton acreage on which a prevented planting payment is made. If another crop, such as sunflowers or soybeans is planted this acreage will be subtracted acre for acre from the cotton acreage eligible for payment.

Q: If I qualify for a prevented planting payment on cotton and it rains after June 1, am I required to plant feed grains, soybeans, sunflowers or some other crop?

A: Originally the regulations required planting of another crop, but PCG and others objected, and the rules have been modified for Texas. As it now stands, if you put a herbicide on your land in anticipation of planting cotton, you won't be required to plant feed grains. And if you have no history of planting soybeans, sunflowers or other crop, you will not be required to plant these crops either.

Q: If I plant cotton and fail to get a stand, get hailed or blown out or otherwise become eligible for a "failed acreage" payment, can I then plant another non-conserving crop without losing the payment?

A: Yes. Nothing in current regulations would penalize you for planting another cash crop after you have reported the loss of your cotton and the ASCS office has inspected and released the acreage.

Q: Is there a difference between prevented planting and failed acreage payments?

A: There can be a difference in the number of acres eligible for payment. Both payments will be at the per-acre rate of 17.3 cents per pound times 75 percent of established yield. The maximum acreage on which you can qualify for a prevented planting payment is the acreage planted in 1977, while all acreage actually planted in 1978 is eligible for a failed acreage payment. "There are any number of other questions relating to individual situations," Johnson says, "and even for those producers who may have already signed up in the program, another trip to the ASCS office for clarification of the most recent rulings may well be profitable."

## Girls Compete In District

Five Muleshoe girls will compete in Fri., and Sat.'s competition for the Cinderella Pageant in Plainview. The girls will compete in talent, modeling of sportswear, and party dress, and personal interview. The girls have been working for several weeks in preparation for the two day competition under the coordination and direction of their pageant director and dance teacher, Tutu King.

In preparation for the contest the girls and their mothers have chosen the proper clothes, worked on their model pattern and put many hard and long hours into their talent presentations. The girls participating in the contest are:

Amy Nelson, the six year old daughter of Mr. and Mrs. David Nelson, of Lazbuddie. She will be competing in the three to six year old La Petite Division. She was first runner up in Miss LaPetite Tri County.

Lisa Black, the nine year old daughter of Mr. and Mrs. Ronnie Black, of Muleshoe. Lisa

will be doing a jazz dance to "Alley Cat". Lisa is the current Little Miss Tri County.

Latrece Barrett is the nine year old daughter of Mr. and Mrs. Ricky Barrett. Latrece will be competing with a routine to "Oklahoma". Latrece was fourth runner up to the Little Miss Tri County.

The competition will be held in Wayland Baptist College Auditorium, June 2 and 3. The top five winners in each division will be invited to go on to State Competition in Denton, June 26, through July 1.

Sponsors are: Latrece Barrett, First National Bank of Muleshoe, Melissa Wilbanks, Western Drug; Sherri Bessire, Bobo Insurance Agency; and Lisa Black, Riverside Chemical.

Many who flee from evil don't understand that it's in their hearts.

Poor work, completed, is better than brilliant work promised.

## The Sandhills Philosopher

Editor's note: The Sandhills Philosopher on his Johnson grass farm on Sandy Creek sees great possibilities in a new government ruling this week.

Dear editor:

As I understand it, the Federal Trade Commission has now ruled that if a movie queen claims in a TV commercial that a certain oil if applied to your face

or put in your car will improve one or the other or both, she has to prove it, or be prepared to pay some of her \$100,000 fee to the women who were taken in by it.

Nothing's worse than a woman with skin blotches stranded on the highway in a car with burned-out piston rods, and she ought to get her money back.

This ruling by the Federal

Trade Commission has opened up vast possibilities for fun. How is Pete Rose going to prove what he smells like after nine innings of baseball on a hot afternoon? How is Sophia Loren going to prove how pure that water is that comes out of her faucet with the special gadget on it, especially if the water comes out of a river a few miles downstream from a chemical plant? Can some movie star prove the sleeping pill he's recommending in a commercial will put you to sleep any faster than the program he's just interrupted? How much will it cost a star to recommend a politician who turns out to be no more effective than the acne preparation recommended by Pat Boone?

The air will be filled with law suits, but that may be better than having it filled with those awful TV commercials.

I have never understood why anybody would buy a car or a set of tires or even a sparkplug or a Congressman just because some entertainment figure told him to.

They say there's no accounting for human nature, but TV commercials do it six times out of every hour, 24 hours a day. Yours faithfully, J.A.

Self-interest has always been the foe of national security, the destroyer of patriotism.

The casual borrower is a casual payer.

No one is interested in excuses.

Some children may fool their parents, but a lot of parents fool their children.

A little prominence does not go to the head of a really prominent person.

## 10¢ Sunflower Contracts

- \* Delivery By Sept. 9
- \* Top Producing Seed
- \* Seed & Spraying Can Be Carried By Note Till Harvest

**Glen Watkins**  
925-6743

# Anthony's WAREHOUSE SALE

TEXAS 321 MAIN

Big once a year event—special price concessions from our Oklahoma City warehouse brings you extra savings on needs for the family & the home.



Men's Dress & Sport Shirts  
3<sup>97</sup> or 2 for 7<sup>50</sup>

Men's dress shirts of polyester & cotton blends in sizes 14 1/2-17. Sport shirt solids & prints in polyester & cotton. Sizes S-M-L-XL.

Men's and Boys' TUBE SOCKS  
Men's Reg. 89c Boys' Reg. 79c  
6 prs. \$5. 6 prs. \$4.

One size stretches to fit comfortably. White with stripe tops.

Girl's BIKINIS  
7 prs. \$3.

Easy care polyester & cotton bikinis with elastic waist and leg. Sizes 4-14. In prints only.

JUNIOR TOPS  
4<sup>50</sup>

Many lovely styles of tops with short sleeves. Pretty colors in stripes. Sizes S-M-L.

Ladies' SOFTEE TIE OXFORD SHOES  
3<sup>77</sup> or 3 for \$10.

Two eyelet tie with crepe sole & heel. Size 5-10. Several color choices.

BATH TOWELS  
Reg. 1.59  
3 for \$4.

Jacquards, printed stripes, solids & prints bath towels that will accent any decor. 100% cotton. Slight irregulars.

ENTIRE STOCK RED HEART WINTUCK YARN  
\$119 EACH \$12  
12 SKEINS

LADIES' PANTS AND TOPS  
Reg. 5.97  
\$5. 2 for \$9.

Fine first quality double knit polyester pull-on pant in solids & checks. Sizes 10-20. To coordinate with these stylish pants—beautiful printed, stripes, and solid colored tops—all of 100% polyester. Sizes S-M-L.



Boys' WESTERN STYLE JEANS  
Sizes 1-7 Slim & Reg. Sizes 8-12 Slim & Reg.  
3<sup>97</sup> - 2 for \$7. 4<sup>97</sup> - 2 for \$9.

4-pocket western style flares with bartacked at all stress points. Reinforced knees on sizes 1-7 and riveted front pockets. Polyester & cotton blends. Colors: Navy, Brown & Green.

SPECIAL PURCHASE  
FLORAL QUILTED  
BEDSPREADS  
TWIN OR FULL  
\$10<sup>97</sup> EACH  
IRREGULAR OF REGULAR \$19.99 TO \$26.95



SERVING YOUR NEEDS 24 YEARS ANNIVERSARY GIFTS

**Fathers Day Getting Closer (June 18)**

Surprise him. Delight him.

He gave you a diamond, didn't he? So he deserves one, too, doesn't he? Just think what a marvelous surprise it will be!

John Alden FROM \$80

Lindsey's Credit Jewelry 272-3355

202 Main JEWELRY STAINLESS FLATWARE

BRACELETS NECKLACES FASHION RINGS EARRINGS WATCH BANDS DIAMOND RINGS

# College Gets Approval On Bilingual Program

Wayland Baptist College has received provisional state approval for its bilingual education program in teacher education.

Endorsed by the Texas Education Agency, Education Commissioner M.L. Brockett commended Wayland's effort to train teachers. "We appreciate the fine spirit which you and your staff have demonstrated in cooperating with the State procedure for approval of teacher education programs and with efforts to improve the preparation of our future teachers."

Presently, bilingual programs are mandated by the State in all grade levels that have 20 or more students of limited English speaking ability, explained Wayland Dr. Terry Northup, education department head and chairman of teacher education. "There is a strong demand for teachers who are certified to teach in bilingual classrooms."

Northup said Wayland's new bilingual program is the result of urging through the Caprock Teacher Education Center. The Center is an association of five area school systems, plus Wayland.

Initial preparation was done during the 1976-77 school year. Last year, Wayland employed Dr. Joseph Ballejo to teach Spanish and to serve as director of the bilingual education programs.

Northup added that many people seem to believe that the goal of the bilingual program in Texas schools is to provide instruction in both languages throughout the student's school

career. "If this occurred, Mexican American students, whose main language is Spanish, could complete high school without ever learning to speak English. While there are some people in the country that might support this dual language concept, this approach is not supported by the Health, Education and Welfare Department, the Texas Education Agency, PISD, nor by Wayland."

Continuing his explanation of the bilingual program, Northup explained that children whose native language was Spanish have been sent to Texas schools for more than 100 years. "They were punished for speaking Spanish, they were taught in English, and, indirectly, they were taught that their culture was inferior to the Anglo culture. After two or three years most of these students learned enough English to understand the words that were said in the classroom. However, since they had not learned the basic ideas taught in math, science and social studies during the first two years, they were far behind in content knowledge. Only the very best ever caught up."

Northup emphasized that the goal of the bilingual program is not to teach Spanish speaking students in Spanish forever and handicap them in competing and progressing in the American school system.

"Some alternative to the 'English only' approach to teaching these children had to be found because that approach was a

massive failure." He added that the bilingual approach that has evolved teaches students initially in

Spanish, if that is their dominant language, at the same time English is introduced. "Gradually more and more instruction

is given in English. By the fourth grade the students should be capable of learning in English only. In addition, he

has learned to read and write in Spanish."

Ballejo expressed excitement that Wayland's program had become a reality. "Even though we consider our program a very

sound one, we are seeking ways of improving it in order that our bilingual teachers will receive the best possible training."

He added, "We are proud of our first group of bilingual-aides



MEMORIAL AWARD PRESENTED--Kevin Tucker, left, received the first annual Johnnie Williams memorial award at the Jaycee banquet. In center is Mrs. Johnnie Williams, and at right is Chuck Smith, who received the Jaycee Senator Award.

## Regulations Hitting Cotton

An excess of government regulations hangs like an albatross around the collective necks of people who make up the cotton industry these days.

In fact, a National Cotton Council economist says cotton's outlook depends as much on its ability to cope with regulations as to compete with man-made fibers in price and performance.

"In an effort to comply with federal regulations, the cotton industry is spending more and more of its research dollars to develop qualities the government wants rather than those the consumer wants," says Gaylon Booker, assistant director of the Council's economic and market research division. He cites flammability and cotton dust as the two areas where regulatory impact is most severe.

Jack G. Stone, a Stratford, Calif., producer, who is chairman of the Council's board of directors, also notes that regulations are denying farmers access to needed chemicals and

discouraging the research necessary to develop new and better ones.

He says the Council's major approach in dealing with the various federal agencies who make the regulations is to present factual and well-documented information that points up the need for considering costs along with benefits of proposed rules.

But he points out that the federal agencies have mandates from Congress.

"The only way we can help bring some reason into the regulatory process is going to have to be through the Congress and through the Administration in power. "Clearly, the time has come for all cotton industry people to get more heavily involved in the political process," Stone said. "We had to play 'catch-up' in research and market development for many years, and we may have to do the same thing in politics, too, if we are to survive."

that, despite the demands of some course and the skepticism of some individuals, continue to prepare themselves for a very challenging and rewarding specialization. Future generations will benefit from the efforts of these and other individuals who hopefully will take up this unique challenge of our changing times."

There are other students in the Wayland Community who, in Ballejo's opinion, could be an asset to any bilingual program.

"Several of these individuals are preparing to be teachers. It would be a shame and a tragic loss to the teaching profession if they left Wayland without their bilingual certification. Bilingual endorsement would make these individuals more marketable and at the same time add a new dimension to their lives as teachers."

Anyone interested in this program should contact Dr. Ballejo, or Cecil Golden in the Department of Modern Languages at Wayland.

## Cotton Seedbeds Lose Moisture

Cotton growers in some southern and coastal counties of Texas have had a heap of trouble getting their crop up this spring. The reasons point mainly to two factors--poor quality seed and loss of moisture due to improper seedbed preparation.

"Cotton farmers need to evaluate their particular situations to determine which of these factors may have led to problems in getting their crop up," says Dr. Robert B. Metzger, cotton specialist with the Texas Agricultural Extension Service. "Although there is nothing they can do about this year's crop, farmers can plan ahead to eliminate the problem-causing factors for their 1979 crop."

A good seedbed is vital to getting a good stand of cotton, contends the specialist, and poorly prepared or overprepped seedbeds are to blame for many

poor stands this spring. "The seedbed should be prepared early, in the fall if possible," advises Metzger.

"Late plowing results in the loss of valuable soil moisture, and this was especially critical this spring due to lack of rainfall. Consequently, many fields did not have enough moisture to get seed up to a stand."

Some farmers encountered problems due to the unusually cool spring weather and poor quality seed, notes Metzger. Young seedlings that were long in vigor were especially affected by cool temperatures and dry conditions.

According to the specialist, most cottonseed from western states is of good quality. However, a hurricane and other adverse weather during the 1977 production season con-

tributed to some low quality seed. And some cotton produced under drought stress last year resulted in small seed with small embryos and hard seed coats that take up water slowly. Due to the small embryos, these seed had limited food reserves. "So, if such seed are planted too deep or where soil moisture is limited or the soil is still cold, you can see the problem in getting a stand," emphasizes Metzger.

"Fall land preparation, including the application of herbicides and fertilizer, is the real key in getting a cotton crop off to a good start in the spring," contends Metzger. "Many South Texas producers can attest to that. Those that had a firm seedbed prepared early had little or no stand problems this spring."

**Why Pay More**  
See Randy Or One  
Of His Salesmen Today!  
**Johnson Chevrolet**  
201 Commerce 227-2050

**Now Open**  
Come See Us For All  
Your Sports Needs

- .Baseball
- .Golf
- .Fishing Gear
- .Softball
- .Tennis
- .Uniforms

**Sam's Sporting Goods**  
226 Main Street - Telephone 806/272-4414  
MULESHOE, TEXAS 79347

**True Value**  
BARGAIN of the MONTH  
Quantities Limited  
12-Qt. LITE COOLER CHEST  
Polyurethane insulated. Holds 12 cans, plus food, ice. Lid doubles as serving tray. Use on picnics, outings, etc. Colors. 036  
now **6.99**  
401 South First  
MULESHOE, TEXAS 79347

**GIBSON'S DISCOUNT CENTER**

## Summertime Sale Event

PRICES EFFECTIVE JUNE 1-4  
STORE HOURS: MON-SAT 9-7 SUN 1-6

<p><b>GIRLS &amp; LADIES SWIM SUITS</b> 25% OFF REG \$3.97 <b>\$3.33</b></p> <p><b>BOYS SWIM SUITS</b> REG \$3.97 <b>\$3.33</b></p>	<p><b>DEL MONTE GREEN BEANS</b> 3 FOR <b>88¢</b></p> <p><b>CORN</b> WK OR CR REG 29¢ <b>4 FOR \$1</b></p>	<p><b>SCOPE MOUTHWASH</b> REG \$1.69 <b>\$1.19</b> 30¢ OFF LABEL</p> <p><b>INSTANT NESTEA</b> REG \$2.19 <b>\$1.88</b></p>	<p><b>COCA COLA</b> CANNED REG 25¢ <b>6 FOR \$1.15</b></p> <p><b>CASCADE</b> 35 OZ <b>99¢</b></p>
<p><b>MENS SWIM SUIT</b> REG \$4.97 - \$5.97 <b>\$3.99</b></p>	<p><b>13" TRICYCLE</b> REG \$26.99 <b>\$23.45</b></p>	<p><b>WHITE RAIN SHAMPOO</b> REG \$1.29 <b>\$1.14</b></p> <p><b>MACCLEANS</b> 5 OZ REG 89¢ <b>69¢</b></p>	<p><b>NELSON BARD-B-QUE #116 GRILL</b> REG \$5.97 <b>\$4.88</b></p>
<p><b>EVERY DAY LOW PRICES</b></p> <p>1 GAL HOMO MILK \$1.83 1/2 GAL HOMO MILK 93¢ 1 GAL LOWFAT MILK \$1.57 1/2 GAL LOWFAT 87¢ 1/2 GAL BUTTERMILK 87¢ 1 LB COTTAGE CHEESE 67¢ 2 LB COTTAGE CHEESE \$1.33 WHIPPING CREAM 53¢ SOUR CREAM 45¢</p>	<p><b>WHAMO'S SLIP &amp; SLIDE</b> <b>\$9.99</b></p>	<p><b>REDUCTION SALE JOY LIQUID DISH SOAP</b> 10¢ OFF LABEL <b>79¢</b></p>	<p><b>POND'S LIGHT MOISTURIZER</b> REG \$1.19 <b>89¢</b></p> <p><b>REDUCTION SALE TIDE</b> KG SIZE <b>\$1.99</b></p>
			<p><b>BEACH TOWEL</b> REG \$9.39 SOLIDS &amp; PRINTS SIZE 36x65 <b>\$6.99</b></p>

**Sudan News**

**Evelyn Ritchie**

Mr. and Mrs. Dorman Chester have returned home recently from an extended vacation at the lake. Other family members joined them there for a few days.

Mother's Day guests in the home of Mr. and Mrs. Lee Roy Fisher were their children, Mr. and Mrs. Mike Fisher, Tonya and Shannon, of Ralls, and Miss Kaithey Fisher, of Hart.

Danny Williams was in Austin Sat., to attend the State Track Meet.

Mr. and Mrs. W.A. Newell, of Las Vegas, Nev., former Sudan residents, visited Monday with Mrs. Gladys Terry, and Mr. and Mrs. Bernard Wilson.

Mrs. Mareen Barnett has been in Abilene with her mother for a few days.

Dr. Evelyn Milam, of Nevada, Mo., was a recent visitor with her parents, Mr. and Mrs. John Milam.

Mat Hanna, son of Mr. and Mrs. Billy Hanna, has arrived home from SPC in Levelland, where he has been attending college this past year.

Mr. and Mrs. R.B. Knox have been vacationing the past few days.

Joe Dorsey is a patient in the Amherst hospital where he was taken Monday following a stroke.

Claud Kropp has been a patient in the Hereford Hospital where he was taken Sunday. Their son, Oliver, remains in serious condition.

Mr. and Mrs. Tracey Bowling have arrived home from college at A&M, where they have been attending classes.

Mr. and Mrs. R.G. Wilkinson and daughter, Dana, of Muleshoe, visited his aunt, Mrs. Joe Wilkinson, Sunday. Also visiting Mrs. Joe Wilkinson was her daughter, Mrs. and Mrs. James Wages, and daughter, Mr. and Mrs. James Wages, and daughter, Mr. and Mrs. James Wages and daughter, Gaile, of Earth.

Visiting in the home of Mr. and Mrs. Wayne Howell recently was his sister, Mr. and Mrs. Wayne Kruckman, of Portland, Oregon.

Jimmy Savage visited with his parents, Mr. and Mrs. Curtis Savage, and Mr. and Mrs. Raymond Nix.

Mr. and Mrs. Marvin Tollett visited Fri. night with his brother,



**AWARD WINNERS**—Kenny Kittrell, left, shows his Director of the Year award, he received at the annual Jaycee banquet last Friday. Center, Rusty Whitl received both the Outstanding Committee Man and Jaycee of the year awards and Ted Millen, right, received the Outstanding First Year Jaycee Award.

Mr. and Mrs. Wayne Tollett, in Inez, N.M.

Burke Tollett, visited his parents, Mr. and Mrs. Marvin Tollett, Sun. He returned to Lubbock, where he plans to attend summer school.

Mrs. Marvin Tollett has been teaching the business course at Amherst the past three weeks.

Mr. and Mrs. M.A. Walker, of Roseril, visited recently with Mr. and Mrs. Joe Slaem.

Mrs. Linda Locke, and son, James, visited Sat., in the home of her mother Mrs. Opal Roberts, of Wilson. They also visited Linda's sister, Mr. and Mrs. Bob Smith, and sons,

Charlie and Randy, of Wilson, and Mrs. Judy White, and girls, Debra, Glenda, and Rhonda, of Ruidosa, N.N.

Among those students returning home from college for the summer, are Kim Fisher, son of Mr. and Mrs. Jack Fisher, and Brad Pierce, son of Mr. and Mrs. Leonard Pierce.

Mr. and Mrs. Pete Lance, and Mr. and Mrs. Bo Lance were in Austin during the weekend to attend the State Track Meet.

Mr. and Mrs. Kenneth Noles were in Austin during the weekend to attend the State Track Meet and to visit their children.

Mr. and Mrs. Phillip Gordon, and children, Jeff and Kay Lynn, visited Mrs. Gordon's mother, Mrs. Vera Thomas, and other relatives in Olney over the weekend.

Visiting in the home of their parents, and brother, Mr. and Mrs. B.A. Beauchamp, Jr., and Derwin, were their daughters, Mrs. Kay Vickers, and daughter, and Mrs. Sherry Capers, and daughters, from Ohio.

Visiting in the home of Mr. and Mrs. Connie Franks, and family over the weekend were Mrs. Franks, sister, Mr. and Mrs. Randall Tomison, and sons, Greg and Gary, of Marble Falls.

Visiting in the home of Mr. and Mrs. Jimmy Carpenter over the weekend was her sister, Mr. and Mrs. L.H. Hight, and daughter, of Odessa. Also visiting was their daughter, Mr. and Mrs. Kenneth Fender.

**Drought Preparation Studied By College**

"Water will be served only if asked for" and "Pay ten cents for a glass of water."

Recent droughts in California and other Western states prompted restaurants to post these signs, although they were just one of many visual impacts of a drought on municipal and domestic water management.

One obvious solution to urban drought problems would be for city managers to increase supply and reduce consumption. That, according to experts, is easier said than done.

The only other solution would be to plan in advance for a drought. Even then, officials of the Water Resources Center at Texas Tech University are concerned that there is little or no documentation on the various planning alternatives available to city managers. In the absence of advance planning it is quite likely that water management during dry periods may not be based on sound economic or engineering principles.

Dr. Lloyd V. Urban, a civil engineer associated with the Water Resources Center, says that during past droughts decisions regarding water resources management have been based largely on intuition and individual experience, instead of on scientifically developed information.

"As a result, many decisions have been made which have yielded unsatisfactory results from a timely, economic or engineering standpoint," Urban explains.

"The problem," says Dr. Ralph H. Ramsey, also of the civil engineering faculty, "is even more serious in the semi-arid Great Plains area where little effort has been made to develop a program to prevent drought damage."

City governments, the experts say, usually respond to a drought, but they are seldom prepared for it. This was demonstrated recently in the western United States where vast urban areas experienced prolonged drought conditions.

City managers initially react by exploring ways of conserving water and increasing supply.

"If that is achieved," Urban says, "most drought-related problems for urban areas can be solved."

The difficulty arises in selecting approaches for conserving water and increasing supply. Water conservation can be accomplished either by voluntary support from the community or by an ordinance. Besides these two options, there exist the questions of how much conservation is necessary and what the impact of water conservation is on a city's revenue structure, Ramsey says.

system developed over the years by the combination of private and public activities.

Sabadell's comments were included in the April issue of the "ICASALS Newsletter" published by Texas Tech's International Center for Arid and Semi-Arid Land Studies (ICASALS).

Sabadell lists several effects of water management during droughts in the absence of advance planning. They include: industrial and urban growth or non-growth policies; wastewater reclamation activities; financial feasibility and public acceptance of more dams, canals and other water works; changes in legislation to guarantee minimum levels of water quality for diverse usages and environmental concerns; impacts on energy budgets of diverse drought-related policies; and the economic and financial effects of conservation practices and changes of rate structures.

She maintains that these constraints arise from the overlapping, complex and conflicting interests of the diverse water users and the intricate water



**Cultac HI - COTTON™ FOLIAR SPRAY FOR MAXIMUM YIELDS**

A balanced blend of NP&K and important chelated micro-nutrients in a fermentation soluble that are easily absorbed by the foliage of the cotton plant. Ask your RIVERSIDE man! He carries a complete line of Cultac products including specially formulated products for cotton, corn, milo, peanuts and others. He'll also tell you about our easy field applied seed treatment products and about the field test conducted in West Texas last year.

Ask Your RIVERSIDE Man  
**Riverside Chemical Co.**  
Manufactured by TransAgra Corporation  
Merrietta, Tennessee 38138 U.S.A.  
A subsidiary of Texas Gas Transmission Corporation  
Hwy. 84 - Muleshoe - 272-4203

**ALLSUP'S CONVENIENCE STORES**

**Fabulous FOODS & Fantastic VALUES**  
PRICES GOOD MAY 29-JUNE 10, 1978

**Hawaiian Luau Days**

SHURFINE CRUSHED OR SLICED <b>PINEAPPLE</b> 3 FLAT CANS <b>89¢</b>	SHURFINE YELLOW CLING <b>PEACHES</b> 2 16 OZ. CANS <b>79¢</b> HALVES ON SLICES	SHURFINE FRUIT <b>COCKTAIL</b> 2 16 OZ. CANS <b>89¢</b>
SHURFINE FRUIT <b>DRINKS</b> 2 46 OZ. CANS <b>79¢</b> PUNCH ORANGE GRAPE	SHURFINE <b>POP</b> 8 12 OZ. CANS <b>\$1.00</b> ASSY FLAVORS	SHURFINE <b>SPINACH</b> 3 15 OZ. CANS <b>89¢</b>
SHURFINE CUT <b>GREEN BEANS</b> 3 16 OZ. CANS <b>89¢</b>	SHURFINE GOLDEN <b>CORN</b> 4 17 OZ. CANS <b>\$1.00</b> CREAM STYLE ON WHOLE KERNELS	SHURFINE <b>PORK &amp; BEANS</b> 4 16 OZ. CANS <b>\$1.00</b>
SHURFINE MAC & CHEESE <b>DINNER</b> 4 7 1/2 OZ. BOXES <b>\$1.00</b>	SHURFINE <b>FLOUR</b> 49¢ 5 LB. PAPER BAG	SHURFRESH <b>BISCUITS</b> 9 8 OZ. CANS <b>\$1.00</b> BUTTERMILK ON STEAKFLAVOR
SHURFINE <b>BLEACH</b> 39¢ 64 OZ. BTL.	ENERGY CHARCOAL <b>BRIQUETS</b> 99¢ 10 LB. BAG	SHURFINE ASSY'D PAPER <b>NAPKINS</b> 2 160 CT. PKG. <b>\$1.00</b>
FOOD KING WHITE PAPER 9 IN. <b>PLATES</b> 89¢ 100 CT. PKG.	SHURFINE EARLY HARVEST <b>SWEET PEAS</b> 3 17 OZ. CANS <b>89¢</b>	SHURFINE WHOLE PEELLED <b>TOMATOES</b> 3 16 OZ. CANS <b>\$1.00</b>
SHURFINE TOMATO <b>SAUCE</b> 6 8 OZ. CANS <b>\$1.00</b>	SHURFINE PINK <b>SALMON</b> \$1.59 15 OZ. CAN	SHURFINE HAMBURGER <b>SLICED DILLS</b> 69¢ 32 OZ. JAR
SHURFINE <b>CATSUP</b> 79¢ 32 OZ. BTL.	SHURFINE <b>MUSTARD</b> 2 16 OZ. JARS <b>69¢</b>	SHURFRESH SALTINE <b>CRACKERS</b> 2 16 OZ. BOXES <b>89¢</b>
<b>BURRITOS</b> 3/99¢	<b>COKE</b> 12 OZ <b>10¢</b>	<b>POP CORN</b> BAG <b>15¢</b>

**SPECTACULAR VALUE**

**BORDEN JUNE IS DAIRY MONTH**

BORDEN'S BUTTERMILK.....	1/2 GAL. CTB.	<b>89¢</b>
BORDEN'S FRUIT DRINK.....	PLASTIC GAL. JUM	<b>69¢</b>
BORDEN'S ASSY'D FLAVORED YOGURT.....	8 OZ. CTB.	<b>3 FOR 89¢</b>
BORDEN'S PREMIUM ICE CREAM.....	1/2 GAL. 96 CTB.	<b>\$1.19</b>
BORDEN'S ALL NOVELTIES.....		<b>2 FOR 25¢</b>

**CLIP & SAVE!!**

**XIT**  
DRIVE-IN THEATRE  
MULESHOE, TEXAS  
JUNE 1978

Attend the Church  
Of Your Choice  
Every Sunday

SUN	MON	TUE	WED	THU	FRI	SAT
May 28	May 29	May 30	May 31	June 1	June 2	June 3
Get More MOVIES THE BEST IS						SEEKING THE NEW MOVIE "SEMI-TOUGH"
GENE WILDER THE WORLD'S GREATEST LOVER				CLOSED		In a world gone soft, ROBERT MITCHUM THE ARMISTEAN KILL
JON BAKER + SUSAN SARANDON Checked Flag or CRASH				CLOSED		HENRY WINKLER THE ONE AND ONLY
				CLOSED		Mark Hamill Annie Potts CORVETTE SUMMER
SEEK OUT FOR THE NEW MOVIE "BOLLECAANTER"				CLOSED		American Hot Wax

## STATE CAPITAL HIGHLIGHTS

By Lyndell Williams  
TEXAS PRESS ASSOCIATION

AUSTIN—A state Senate committee has launched a long range study of feasibility of a multi-billion-dollar refinery tax.

The committee, headed by Sen. Peyton McKnight of Tyler, held an organization meeting at the capitol last week. McKnight declared it can and probably will "look into the whole picture of state tax sources and requirements," with a view to eventual replacement of some revenue from oil, gas and land taxes.

Meanwhile, McKnight said he considers Seadock, a proposed offshore oil unloading terminal along the Texas coast, a "dead duck in the water." McKnight and other senators on the committee expressed doubt the terminal can be revived with financing guaranteed by the state.

"Twenty to 25 percent of the cost of state government has been financed by severance taxes on oil and gas," said McKnight. "When the goose that laid the golden egg dies, what do we do? This committee would be derelict if it didn't take a look into alternative taxes. . . . And the wealthiest states can't any longer be judged strictly in terms of their land values. The courts are going to rule that we have to look at all classes of property for tax purposes—and that includes stocks and bonds."

McKnight said he is convinced 60 to 70 percent of a tax on oil processed through refineries could be passed along to out-of-state purchasers.

Acknowledging that both Republican and Democratic candidates for governor are committed against new taxes, McKnight said the committee might be able to come up with a proposal to substitute a new type major levy for an existing one.

Slow Count

Nearly three weeks after the Democratic primary, State Party Chairman Calvin Guest finally announced a referendum on legalizing horse race wagering had failed 692,307 to 724,584.

But that didn't put an end to the controversy over the slow count and alleged errors in reporting returns. Horse racing proponents continued to charge irregularities in the returns leave the issue in doubt.

The State Democratic Executive Committee will meet here June 13 to announce results officially, and more changes in the total are likely.

Guest also announced a referendum issue on whether the legislature should authorize higher interest rates on loans under \$5,000 had failed 146,510 to 1,209,840.

### Money Freed

In a legal interpretation of potentially far-reaching political significance, Secretary of State Steve Oaks said Texas laws prohibiting corporations and labor unions from spending money to support or defeat measures on the ballot are invalid.

Oaks cited an April 26 ruling of the U.S. Supreme Court in a Massachusetts case, holding unconstitutional a state law barring the corporate and labor contributions to aid or fight ballot propositions, including constitutional amendments and referendum issues.

Oaks' staff said the opinion has no bearing on prohibitions against corporate contributions to candidates for public office.

However, some attorneys quickly questioned whether future litigation will successfully attack that ban.

Others speculated the decision will encourage corporations to spend heavily on ballot propositions of particular interest to them.



1978-79 DIRECTORS—Directors for the Muleshoe Jaycees for 1978-79 installed last Friday night are from left, Jack Eades, Ted Millen and Johnny St. Clair.

Labor officials took a dim view of the ruling, stating they don't have the funds to compete with corporations on issue campaigns.

### Courts Speak

The Court of Criminal Appeals affirmed the death penalty assessed a San Antonio man in the fatal stabbing of a nurse.

At the same time, the court, in a divided verdict, upheld a 50-year sentence given a Texas City man for slaying his wife.

The State Supreme Court took under study a case involving the issue of whether the state equal rights amendment allows wives the right to sue for loss of "consortium" (affection, comfort and assistance of their husbands). A Dallas wife asserted an auto accident injured her husband and deprived her of that benefit.

In other action, the Supreme Court:

—Held an Amarillo lawyer who refused to pay a \$24 lawnmower repair bill now must fork over more than \$1,000 to the repairman as a result of their long-standing dispute.

—Upheld the practice of property tax reappraisals on the basis of rotation in various parts of a city.

### DNC Choices

Three Texans vacated places on the Democratic National Committee, and successors were due to be named at a special meeting of the State Democratic Executive Committee meeting June 1.

Jess Hay of Dallas resigned immediately after the May 6 primary in which he backed Gov. Dolph Briscoe over John Hill. With Hill the victor, Hay concluded the nominee should have his choice of a committeeman.

Joe Bernal of San Antonio and Alicia Chacon of El Paso also resigned several months after both had accepted high federal appointment to regional jobs. DNC members are selected regularly at

quadrennial June state party conventions. Vacancies between conventions are filled by majority vote of SDEC.

### Short Shorts

Mrs. Rosalynn Carter, first lady of the U.S., addressed a seminar here on mental health.

Southwestern Bell Telephone spokesmen led off a parade of witnesses before the Public Utility Commission at a hearing on Bell's request for \$220.3 million in rate increases.

Attorney General John Hill recommended the Texas Railroad Commission approve the proposed Lo-Vaca Gathering Company rate controversy settlement plan with four changes designed to give consumers \$200 million in financial benefits.

Republican gubernatorial nominee Bill Clements moved his campaign headquarters lock, stock and barrel from Dallas to Austin—into the old quarters formerly occupied by Gov. Dolph Briscoe.

The State Board of Education scheduled a June 9 hearing on proposed policies to

govern hearings on student suspensions and placement of handicapped pupils.

John Stennis, Senator (D-Miss), on carrier funds:

"Committee members view the ship as the last real large carrier but think it's needed to maintain the Navy's striking power through the 1990's."

**FATHERS DAY**

If We Can't Dress  
The Ol'Boy No One  
Can!

Free Gift Wrap With  
\$5 Or More

**St. Clairs**

110 Main 272-4453

## Current Fisherman Report

(compiled by personnel of the Canyon fisheries lab., P&WD)

**GREENBELT LAKE**—generally fishing has been good for most species of fish with white crappie, largemouth bass and white bass improving as warmer spring weather arrives. Several channel and blue catfish have been caught last week. Crappie have not spawned. Water temperature is still cool at 63 degree F. at five feet. Some walleye have been caught, and a few northern pike also.

**MCCELLAN LAKE**—most species are being caught except bass. Several channel catfish from 5-6 pounds were caught recently. Water temperature is near 65 degrees F.

**RITA BLANCA**—Fishing has been fair to good. Several largemouth bass have been caught from 3-5 pounds. Channel catfish have started biting, but recent cold weather has kept them slow. Some trout were reported caught earlier, but none lately.

**MACKENZIE LAKE**—Several channel catfish in the 5-6 pound class were caught recently along with a few crappie. Some largemouth bass are biting in size up to 1 1/2 pounds. Several walleye were caught weighting 2 1/2-3 pounds. One fisherman caught 2 trout with other unconfirmed reports coming in. Lake temperature is still 66 degrees F. at six feet depth.

**BAYLOR LAKE**—fishing has been fair. Some smaller bass have

been caught and water is still too cool for good fishing. Several nice crappie and channel catfish have been caught out of Old Lake Childress nearby. Channel catfishing has been the best so far.

**MARVIN LAKE**—Bluegill fishing has been excellent since spawning began. Some large channel catfish have been caught up to 12 pounds. Largest bass was 5 pounds. The lake is full at two feet below spillway.

**LAKE PAULINE**—Some nice strings of white crappie and largemouth bass have been reported. Windy weather has reduced fishing opportunities at times.

**LAKE THEO (Caprock Canyons State Park)**—The overall fishing has been slow so far due to cool weather, but should improve with the higher temperatures.

**LAKE MEREDITH**—Generally, fishing started earlier than usual, but slowed somewhat with recent cool weather. Recent P&WD creel checks from vario-

us boat ramps have confirmed good strings of fish, especially sand bass and white crappie. During a recent Amarillo bass club tournament, several anglers had good luck catching both largemouth and smallmouth bass. Recent totals on the department creel checks recorded 24 channel catfish, 62 white bass, 8 smallmouth bass, 10 largemouth bass, 107 white crappie, 45 walleye. Fishing should improve with the warmer temperatures. A good rainfall on the lake's watershed would be the greatest contributing factor in improving fishing at Merdith.

No Spunk  
Wife to Husband: "I wish you had the spunk the government has—the don't let a little debt keep them from spending."  
—Dispatch, St. Louis.

**CARBURETOR SPECIALISTS**

37.48 JUN78

On new, rebuilt or repair needs, we offer complete car analysis, electronic motor tune-up, complete electrical service.

**Plains AUTO PARTS**

P. O. Box 306  
MULESHOE, TEXAS  
79247

## —NOTICE—

In order to give our employees some extra time to spend with their families, our offices will be closed on Saturdays throughout the summer months. After hour appointments can be arranged in advance.

**Dr. B.W. Armistead**  
**Dr. Steven D. Smith**  
**Optometrists**

406 LFD Drive 385-5147 Littlefield

## AUCTION

Knowles Furniture & Auction

522 W. Amer. Blvd. Muleshoe 272-4993

Sunday, June 4, 1978 1:00 p.m.

### New Tools

Assorted Hand Tools

Roll Tool Boxes

Hydraulic Jacks

Power Plant

Electric Motors

### Miscellaneous

Cars & Pickups

16' Tandem Stock Trailer

Rifles

Camper

Western Hats & Boots

Portable Corral

### New Furniture

Living Room Suits

Bedroom Suits

Chairs

### Used Furniture

Sofas

Trash Compactor

Dish Washer

Chest Freezer

Air Conditioner

Refrigerator

Stove

Televisions

Other Items Too Numerous To Mention

TERMS: CASH

ALL PURCHASES TO BE SETTLED DAY OF SALE

KNOWLES AUCTION

JACK KNOWLES  
215 West 4th Street  
Muleshoe, Texas  
Phone 272-1122

LANEY KNOWLES  
914 Gm.  
Muleshoe, Texas  
Phone 272-4993

HELVIE KNOWLES  
52nd Street  
Amarillo, Texas

License No. T&GE-029-0969

When the economic survival of farmers and ranchers is constantly threatened, so is the economy of our entire district. West Texas producers are being squeezed between the inflation of retail farm prices and the demand to sell wholesale at the marketplace. Government surplus policies discourage incentives for growth, while foreign markets remain undeveloped.

There is one candidate in the Congressional Run-Off who is very knowledgeable in the economics of energy and agriculture that keep West Texas alive . . . George Bush. He is keenly intelligent and deeply committed to the future of our district.

His appeal as a leader transcends political parties and special interest groups. George has integrity, talks straight-from-the-shoulder, and his grasp of the issues show that he 'just plain' has more substance than any-



**Just plain better.**

one else who's running. And he can get results. He will work in Congress to decrease government controls over domestic markets, insure fair profit incentives, and adopt real-

istic policies in developing new, international markets. George stands for support for ranchers by formulating a beef import policy and labeling all imported beef. An overhaul of the inheritance tax structure is in order . . . one which gives relief to the productive land holder.

The Midland Reporter-Telegram endorsed his candidacy while saying; " . . . Bush seems to have the ability—the best of any of the candidates—to understand and relate to the problems of farmers and ranchers."

George Bush is the frontrunner.

His campaign is swelling as evidenced by his near primary victory. Go with a proven winner when you vote in the June 3rd Run-Off. Go with the one man who can achieve victory in November. For the future of our district: George Bush . . . the one Republican for all West Texans.

Vote in the Republican Primary Run-Off on Saturday, June 3rd.

**Bush**  
George W. Bush for Congress





# CLASSIFIED ADS

## THE PLACE TO LOOK



**Deadline For Classified Ads Is At 11:00 Tuesdays And Fridays**

**OPEN RATES**  
 1st insertion, per word - \$1.11  
 2nd and add., per word - \$.09  
**NATIONAL RATES**  
 1st insertion, per word - \$1.11  
 2nd and add., per word - \$.07  
 Minimum Charge:  
 1st insertion - \$1.65  
 2nd insertion - \$1.35  
**CARD OF THANKS**  
 30 words - \$3.00  
 Over 30 words charged at regular classified rates.  
 Classified Display - \$1.40 per column inch.  
 Double Rate for Blind Ads.

**DEADLINE FOR INSERTION**  
 11:00 Tuesday for Thursday  
 11:00 Friday for Sunday  
 WE RESERVE THE RIGHT TO CLASSIFY, REVISE OR REJECT ANY AD.

NOT RESPONSIBLE FOR ANY ERROR AFTER AD HAS RUN ONCE.  
 Effective May 1, 1978.

For all your real estate needs call:  
**GLAZE & GOFORTH**  
 112 Ave. C  
 272-4208  
 8-11s-tfc

**FOR SALE:** 20 acres pasture, 2 miles from Muleshoe, 272-5578, or 272-3658 evenings and weekends.  
 8-22s-tfc

**DUPLEX FOR SALE:** 824 S 1st. Contact Phylis Beavers 272-3116.  
 8-18t-tfc

**FOR SALE:** New 3 bedroom energy efficient brick home, 1 car garage, 1-3/4 baths, cedar fence, by J&R Construction. call 272-3758 or 272-4347.  
 8-22s-tfc

**KREBBS REAL ESTATE**  
 112 Ave. C  
 See us for your real estate needs.  
 Appraisals.  
 8-13s-tfc

**FOR SALE:** new three bedroom, 1-3/4 bath brick home with fireplace and carpet, located at 1703 W. Ave. F Call 272-4434 or 272-3015, after 5:00 for appointment.  
 8-20t-tfc

**9. AUTOMOBILES FOR SALE**  
**FOR SALE:** 1972 Plymouth Satellite Sebring Plus. Houston, Power, Air 272-4317 ---\$2195.  
 9-22s-2tp

**10. FARM EQUIP. FOR SALE**  
 Will sell below wholesale New 60A Heston Stacker, G955 M&M only 800 hours. Call noon or night 925-6712  
 10-22s-4tc

**STALKCUTTERS**, 8 row, bearings \$1160.00  
**BEDKNIFER**, 9 runners \$590.00  
**CHISLE**, 11 shank, 3-bars \$1495.00  
**CHISEL**, 9 shank, 3-bars \$1175.00  
**CULTIVATOR**, 8 row, 2-4x4's on bottom \$1650.00  
**LISTER**, 9 shanks, 4x7 bar \$1250.00  
**COULTERS**, 28" BLADE, HEAVY DUTY \$126.00 each  
**GAGE WHEELS**, HEAVY DUTY \$105.00 each  
**TOOL BARS**, ALL 8 ROW SIZES IN STOCK  
**CLAMPS**, all sizes  
**SHANKS**, HIGH CARBON C 1080 STEEL  
**EXTENSION**, all sizes  
**KNIFING ATTACHMENTS**  
**ROD WEEPER ATTACHMENTS**  
**DEALER INQUIRIES INVITED**  
 Morton Manufacturing Co., Inc., Rt. 2 Box 40-A, Morton, TX 79346  
 10-12t-tfc

**11. FOR SALE OR TRADE**  
**FOR SALE:** 32' Holiday Rambler travel trailer. Loaded. Phone 965-2868.  
 11-21s-tfc

**\$100 REWARD** Offered for arrest and conviction of anyone doing damage to paper stands. Muleshoe Publishing Co. 272-4536.  
 -11t-15tfc

**FOR SALE:** 32' Holiday Rambler travel trailer. Loaded. Phone 965-2868.  
 11-21s-tfc

**REBUILT MATTRESS BOX SPRINGS**  
 2-Piece Set  
 118" x 78" x 10" (Lined) \$69.00  
 (Lowest Price Now)  
 Western Mattress  
 tri-chem 965-2622  
 15-16t-tfc

**FOR RENT:** Trailer space and overnight parking. 1304 W. Ave. B. Call 272-3448.  
 15-6t-tfc

**FOR SALE:** AKC Poodle puppies, male and female, silver, chocolate, and apricot. 227-22-43, 600 Hay Street, Sudan.  
 15-22s-2tc

**FOR SALE:** Lancer mobile home, 15 x 72, 1977 model - 1 year old, 2 bdr., 2 bath. 965-2667 after 5:30 or weekends 11-19t-tfc

**George Meany, AFL-CIO**  
 President, on wages:  
 "We are willing to cooperate... But we can't respond to something that is impossible for us to give him a positive answer on."

**Saudi Arabian business-** man to buy Lance stock.

**BURROWS Upholstering.** Reasonable rates. Also Furniture and Appliances bought and sold. Moved to 213 South 1st Street. Phone 272-4255.  
 12-12s-tfc

**FOR SALE:** 12'X9' new kitchen carpet. 12'X23' new linoleum. New 12'X16' burgundy carpet. 1 admiral cornet 120 refrigerated air conditioner. ph. 272-3534 after 5 or come by 718 W. 2nd after 6p.m.  
 12 21t 4tc

**15. MISCELLANEOUS**

**FOR SALE:** Travel trailer, 18 ft., self contained, sleeps six. 512 West Ave. B. Phone 272-3436.  
 15 22t 4tp

**WANTED:** Painting and building repair, spray acoustical ceiling, tile, panelling. Call 272-3838 or 272-4359.  
 15-22t-8tc

**FOR SERVICE ON T.V. Call** 272-5531.  
**WILSON APPLIANCE**  
 117 MAIN MULESHOE, TX  
 We stock parts and do service on Zenith, Sylvania, RCA, Catalina. Store Hours 8-6 Monday-Saturday.  
 15-16s-tfc

**EZ SEWER CLEANER** same day service. 272-4440.  
 15-14t-tfc

**WILL KEEP CHILDREN** in my home, day or night. 272-5055.  
 15-21s-3tc

**RENTAL SERVICE**  
 Washers, dryers, televisions, refrigerators. By week or month. Call 272-5531.  
**WILSON APPLIANCE**  
 117 MAIN MULESHOE, TX  
 15-16t-tfc

**PHILLIPS HOUSE OF MUSIC**  
 118 MAIN CLOVIS, NEW MEXICO  
 Pianos, organs, band instruments, new and used. Professional repairs, sheet music, rentals, terms.  
 Phone: 505-763-5041.  
 15-30s-tfc

**SANDSTORMS** and Kirbles. They don't mix, but they do go together. Kirby rebuilds. As low as \$79.95.  
**LLOYD WHITE, LITTLEFIELD,** Call 385-3357. KIRBY SALES & SERVICE.  
 15-12s-tfc

**ASPHALT ROOFING, COM-** position singles, new roof and repairs. Free estimates. Call collect RON FOSHEE 385-5680.  
**LITTLEFIELD ROOFING**  
 15-42s-tfc

**REBUILT MATTRESS BOX SPRINGS**  
 2-Piece Set  
 118" x 78" x 10" (Lined) \$69.00  
 (Lowest Price Now)  
 Western Mattress  
 tri-chem 965-2622  
 15-16t-tfc

**FOR RENT:** Trailer space and overnight parking. 1304 W. Ave. B. Call 272-3448.  
 15-6t-tfc

**FOR SALE:** AKC Poodle puppies, male and female, silver, chocolate, and apricot. 227-22-43, 600 Hay Street, Sudan.  
 15-22s-2tc

**FOR SALE:** Lancer mobile home, 15 x 72, 1977 model - 1 year old, 2 bdr., 2 bath. 965-2667 after 5:30 or weekends 11-19t-tfc

**George Meany, AFL-CIO**  
 President, on wages:  
 "We are willing to cooperate... But we can't respond to something that is impossible for us to give him a positive answer on."

**Saudi Arabian business-** man to buy Lance stock.

### Enochs News

By Mrs. J.D. Bayless

Lee Olan Chick, of Borger, came Monday and spent till Wednesday with his uncle and aunt, Mr. and Mrs. J.W. Layton.

Miss Vina Tugman is home after a trip to visit a niece and nephew, Mr. and Mrs. Kenneth Watson at Decator, a brother, Mr. and Mrs. Milton Turman, at Rush Springs, and other relatives at Cash, Oklahoma. John Richardson of Lovington, N.M. took his mother, Mrs. Rowena Richardson, to Okla. and visited relatives and brought Vina home with them.

The Baptist women met Tuesday morning for their business meeting. Mrs. Dale Ness meeting. Mrs. Dale Nichols was in charge of the meeting. Mrs. Chester Petree led a song, "Redeemed", with Mrs. Flo Nichols at the piano. Mrs. Charlie Shaw led in a prayer. Mrs. J. D. Layton brought a devotional "People, Salt of the Earth" and read Matt. 5:13 and Mark 9:50. Mrs. Flo Nichols read the minutes and treasurer's report. Mrs. Dale Nichols gave the call to prayer and Mrs. W.B. Peterson led in prayer for the missionaries and benediction. Those present were Mmes. Flo Nichols, J.E. Layton, Dale Nichols, Charlie Shaw, E.N. McCall, Bill Key, W. B. Peterson, and J.D. Bayless and one visitor Mrs. Alberta Bryant of Littlefield.

Mrs. Barbara Autry and children, Michalle, Kim and Russell were supper guests in the home of her mother, Mrs. Agnes Shakespeare, Monday.

Mr. and Mrs. Mark Derrington, of Del Rio, were dinner guests in the home of her grandparents, Mr. and Mrs. J.W. Layton, Tuesday, and they spent the rest of the week with her parents, Mr. and Mrs. Harold Layton.

Vacation Bible School will be June 5-9 at the Baptist Church with Rev. Charlie Shaw as principal, the time will be 2:30-5:30 p.m. all the children 3-12 are invited to attend.

Tommy Brown broke his ankle Monday while playing baseball.

### Legal Notice

**NOTICE TO ALL PERSONS** HAVING CLAIMS AGAINST THE ESTATE OF OPAL MCELEVEY, DECEASED. Notice is hereby given that original letters of administration with will annexed upon the Estate of Opal McCelevy, Deceased, were issued to me, the undersigned, on the 30th day of May, 1978, in the proceeding indicated below my signature hereto, which is still pending, and that I now hold such letters. All persons having claims against said estate, which is being administered, in the County below named, are hereby required to present the same to me at the address below given, before suit upon the same are barred by the general statutes of limitations, before such estate is closed, and within the time prescribed by law. My post office address is Goodland, Texas 79327.

Dated this 30th day of May, 1978.  
 W.C. McCelevy, Jr., Administrator of the Estate of Opa McCelevy, Deceased, with will annexed, No. 1283, in the County Court of Bailey County Texas.  
 22t-1tp



**JAYCEE OFFICERS**-New officers installed for 1978-79 during last Friday's Jaycee Installation banquet, are from left, standing, Allen Smyer, secretary and Kenny Kittrell, reporter. Seated from left are Kem Bales, first vice president; Hugh Young, president and Ricky Mata, second vice president. Not pictured is Oran Sain, treasurer.

Mrs. Barbara Autry took her children, Michalle, Kim and Russell to the airport in Lubbock for them to catch the Plane for McAllen for a visit with their father, John Autry.

Mrs. J.W. Layton was a dinner guest in the home of her sister, Mr. and Mrs. H.H. Snow, Thursday, at Muleshoe.

Visiting in the home of Mr. and Mrs. P.R. Pierce last Sunday was a grandson, Lieutenant and Mrs. Steve Jackson and children, Christina and Tracya from Frankford, Germany and their daughters, Mrs. Johnny Jackson, Miss Alma Lou Pierce of Lubbock, Mr. and Mrs. Jim Carpenter of Muleshoe. Other guests were Debra Walls, Mr.

and Mrs. Ervin Nieman of Muleshoe.

The Methodist Church had their dinner and fellowship at their church, Sunday, and they had a surprise birthday party for Mrs. Bob Adams then singing in the afternoon. There were several visitors, Mrs. J.C. Snitker, from Sunray, Mr. and Mrs. Chester Petree, Mrs. J.D. Bayless, also Mr. and Mrs. Johnny Love, of Morton, and some from Muleshoe.

John Snitker of Sunray visited his dad, Mr. and Mrs. J.C. Snitker, Sunday.

The D.J. Cox's visited her parents the J.H. Chesser's at Levelland recently.

### Letters To The Editor

dear Editor:  
 I wonder if your public is aware that the perpetual care at the Memorial Cemetery leaves something to be desired? May 14, was Mother's Day and many graves were decorated with real and artificial flowers. On Thursday, May 18, the caretaker had removed every flower from every grave-except two graves, which he told my father, were special. My family spent many dollars for flowers for Mother's Day. All to be put in the trash bags on Thursday, May 18.  
 I would like your public to be aware of this and possibly something done about it. respectfully,  
 Jerry Evans Yonaka  
 6531 E. Calle Cappella  
 Tucson, Arizona 85710  
 phone 1-602-748-7566

**Survival Fight**  
 If your budget has survived paying your taxes, it's time to make the vacation test.  
 -Christian Sci. Monitor.

**Save With Our Low Overhead Come In Soon Johnson Chevrolet**

201 Commerce Sudan 227-2050

**NATIONAL 1978 Paint Week**

OUR GIANT SEMI-ANNUAL PAINT CELEBRATION!  
 OUR 3 MODERN FACTORIES! FINEST VALUES FROM PAINT NOW AND SAVE.

**WEATHERALL ACRYLIC LATEX HOUSE PAINT - OUR FINEST QUALITY.**

**997 GAL.** Puts more years between you and your next paint job. WeatherAll's tough, acrylic latex formula resists weather, blistering, fading, high hiding. Rich low sheen. Easy to apply. Dries buff-free in 30 minutes. Water cleanup. 35 Jamestown Colors and white. (HPX)

**E-Z KARE LATEX FLAT ENAMEL - PERFECT FOR EVERY ROOM!**

**997 GAL.** Looks like a flat, scrubs like enamel. Resists dirt and stain. Soiling scrubs off easily without leaving a shiny mark or damage to the paint. For walls and woodwork. Dries fast. Water cleanup. 44 Colors & White. (EZ)

**SELECT LATEX HOUSE PAINT FOR GREAT ECONOMY**

**697 GAL.** A real money-saving value for wise and thrifty homeowners. Uniform, low sheen finish resists blistering, stains, fumes and fading. Dries fast. Water cleanup. White & 4 Colors. (M)

**TRU-TEST PAINTS True Value HARDWARE STORES**

**WE OWN 3 LARGE TRU-TEST PAINT FACTORIES TO GIVE YOU FINEST QUALITY PAINTS AT LOWEST PRICES!**

**TRU-TEST SAT-N-HUE 897 GAL. FLAT LATEX.** Custom Colors Higher. Thick, creamy, non-drip flat for all walls and ceilings. Easy to apply. Dries fast. Fully washable. 44 Colors & White. (P)

**TRU-TEST WEATHERALL ACRYLIC LATEX HOUSE PAINT.** Puts more years between you and your next paint job. WeatherAll's tough, acrylic latex formula resists weather, blistering, fading, high hiding. Rich low sheen. Easy to apply. Dries buff-free in 30 minutes. Water cleanup. 35 Jamestown Colors and white. (HPX)

**TRU-TEST E-Z KARE LATEX FLAT ENAMEL.** Looks like a flat, scrubs like enamel. Resists dirt and stain. Soiling scrubs off easily without leaving a shiny mark or damage to the paint. For walls and woodwork. Dries fast. Water cleanup. 44 Colors & White. (EZ)

**TRU-TEST SELECT LATEX HOUSE PAINT.** A real money-saving value for wise and thrifty homeowners. Uniform, low sheen finish resists blistering, stains, fumes and fading. Dries fast. Water cleanup. White & 4 Colors. (M)

**TRU-TEST MARVELUSTRE 997 GAL. SEMI-GLOSS.** Custom Colors Higher. Rich latex satin finish resists steam, moisture, soiling. Ideal for kitchen, bath, walls, trim. 44 Colors to match Sat-N-Hue. (E)

**TRU-TEST X-O RUST 397 QT. METAL ENAMEL.** Our finest hi-gloss finish for lawn furniture, gutters, metalwork, machinery. Fights rust. Non-toxic.

**TRU-TEST POLYURETHANE VARNISH 297 QT.** Mar-proof! Water-proof! Clear hammer-hard finish for wood. Won't chip or crack. Gloss/Semi-Dull.

**TRU-TEST SOLID COLOR LATEX STAIN 699 GAL.** Hides like paint; acts like stain. Won't hide texture of rough cut wood siding, shakes, shingles. 22 colors.

**TRU-TEST REDWOOD LATEX STAIN 299 GAL.** Rich redwood color for bare or stained wood; shingles, siding, fences. Water clean-up.

**Fry & Cox, True Value HARDWARE STORES**

Muleshoe 272-4511 Sale Ends June 4

**STORE HOURS**  
 MON. - FRI. 7:30 a.m. - 6:30 p.m.  
 SAT. 7:30 a.m. - 5:30 p.m.

**ATTENTION MULESHOE AREA CATTLEMEN**

... In regard to dead stock removal ... If you have a problem with service ... whether in the feed yard or on the farm ... Please give US a chance! Thank You.

**YOUR LOCAL USED COW DEALER IN MULESHOE**  
 Phone 965-2903  
 Mobile 965-2429

**Muleshoe Bi-Products**

# Accent On Health

Texas Department of Health  
Fratris L. Duff, M.D., Commissioner

People with something to hide are finding a shadow under which to shield their true identities with fraudulent birth certificates.

Fraud associated with birth records is a serious problem and one of deep concern to the Texas Department of Health, according to W. D. (Don) Carroll, Chief of the Bureau of Vital Statistics of the Texas Department of Health.

To meet this problem, the Bureau of Vital Statistics recently initiated

the use of a new certification of birth form which, it is believed, cannot be successfully counterfeited.

If a person's birth wasn't registered when born, a Delayed Certificate of Birth can be filed. Supporting documents showing the date and place of birth must be submitted. Many such delayed certificates have been filed based on affidavits and supporting documents subsequently proved to be false. The Bureau has been instrumental in providing evidence needed to convict those guilty of causing fraudulent delayed certificates of birth to be filed.

Elia Malca-Valdivia is serving a 13-year



**LAZBUDDIE'S OUTSTANDING ATHLETES**—Judy Lust, left, Mike Windham, center and Tammie Smith, were all named Outstanding Athletes in the Lazbuddie All-Sports banquet recently. Their names are engraved on the plaque shown and will be on permanent display at the school.

penitentiary sentence McAllen by US agents. More than 200 following his arrest in Department of Justice aliens sought his assistance

in preparing applications for delayed certificates showing birthplace in Texas. To support these applications, Malca caused to be created false affidavits, false baptismal certificates and false Bible records.

At the time of this arrest, a suitcase containing Malca's ledgers and various record forms was seized. His ledger showed that each individual paid between \$800 and \$1,400 for his services.

Last November the Rev. Luis Hernan Acevedo-Cuevas of Houston pleaded guilty to two counts of a 23-count indictment charging him with violation of immigration laws by supplying fraudulent documents to illegal aliens, most of whom were born

in South America. He is serving an eight-year sentence.

Rev. Acevedo charged as much as \$2,500 for a package of false documents, including a delayed certificate of birth, a baptismal certificate, voter registration card, Social Security card, and a passport.

In April, 1977, a Dallas man, Domingo Rodriguez, and his wife, Anita Rodriguez, were given prison sentences of two and three years, respectively, after pleading guilty to conspiracy to commit fraud by obtaining and selling fraudulent birth certificates. The husband-wife team charged \$700 to \$800 each for false delayed certificates of birth sold to illegal aliens.

Another problem encountered is the fraudulent use of valid birth certificates, where one person uses a certified copy of the birth certificate of another person. In one case, a young lady used a certified copy to obtain a Social Security card, a driver's license, various identification cards and even a passport.

Many people want to establish a new identity or dual identities, frequently for criminal purposes. They would prefer to get the birth certificate of a person who is dead. They use inscriptions on tombstones, obituary columns and other sources to obtain the information necessary to request a certified copy of a deceased person's birth certificate.

Counterfeiting of birth certificates has been a way of getting a new identity or establishing United States citizenship.

In Texas, other states and in certain foreign countries, counterfeit certified copies of birth certificates are being printed which are purported to have been issued by the Texas Bureau of Vital Statistics, said Carroll.

In a Chicago case leading to conviction, a search of the woman suspect's home disclosed equipment and materials seized which are too numerous to mention, said Carroll. But, he said, they included birth certificates, baptismal certificates, Social Security cards, Selective Service cards, voter registration cards, facsimile signature stamps of the State Registrar of Texas (Carroll), a Texas State Seal, and a Department of Justice Seal. The woman's husband had been running the fraudulent document business while in the penitentiary. Following release he was soon back in business but was arrested and faces charges.

Carroll said the Bureau of Vital Statistics of the State Health Department maintains very close liaison with the US Department of Justice, Department of State and other security agencies and has on many occasions provided evidence required for the convictions of persons guilty of perpetrating various types of fraud involving birth certificates.

## That's A Heap Of Bed Sheets

Know how much cloth it would take to cover some 34 billion beds? Almost 6,800 square miles. And as unbelievable as it may sound, that's the amount of bed sheets that could have been produced from the total output of cotton farmers in 1977. Or if all of the 14.5 million bales marketed by farmers that year had gone into men's dress shirts, every Tom, Dick, and Harry—plus their counterparts—could have been supplied with also 132 shirts apiece.

Double Gunn Bros.

Stamps

Every

Wednesday

Whites

# CASHWAY

We Reserve The Right To Limit Quantities

7:30 a.m. til 9:00 p.m.

402 Main MONDAY-SATURDAY

272-4214 CLOSED ON SUNDAY

## GOOD EATIN' VALUES

- 22 oz. BOTTLE FOR DISHES  
**LIQUID JOY**..... 79¢
- 40 oz. BOTTLE CLEANER DISINFECTANT..... \$1.59
- PINE SOL**..... \$1.59
- 19 oz. CAN JOHNSON'S STAIN REMOVER  
**SHOUT**..... \$1.29
- 16 oz. CAN EASY OFF..... \$1.39
- OVEN CLEANER**..... 99¢
- 17 oz. CAN DOW  
**BATHROOM CLEANER**..... 99¢
- 100 sq. ft. ROLL GLAD  
**PLASTIC WRAP**..... 49¢
- 4 ROLL PKG. ZEE NICE'N SOFT  
**BATHROOM TISSUE**..... 79¢
- 4 oz. CAN WHITE SWAN PURE GROUND  
**BLACK PEPPER**..... 59¢
- 16 oz. PKG. SUNSHINE  
**Hi Ho CRACKERS**..... 79¢
- 20 oz. PKG. POST  
**40% BRANFLAKES**..... 89¢
- 16 oz. BAMA  
**GRAPE JELLY**..... 69¢
- NO. 2 CAN COMSTOCK  
**APPLE PIE FILLING**..... 69¢
- 2 lb. TIN MARYLAND CLUB  
**COFFEE ALL GRINDS**..... 53¢
- NO. 303 CAN DEL MONTE  
**SLICED BEETS**..... 29¢
- 32 oz. BOTTLE LEMON LIME  
**GATORADE**..... 49¢
- GRADE "A"  
**SMALL EGGS**..... 2 DOZ. 89¢

3 oz. JAR  
WHITE SWAN  
INSTANT  
TEA **\$1.49**

LISTEN TO THE MULETRAIN  
10:15 a.m. MONDAY-FRIDAY  
OVER KMUL  
SPONSORED BY  
WHITES CASHWAY

HUNTS  
TOMATO SAUCE **3/\$1**  
15 oz. CAN

**FROZEN FOOD SALE**

12 oz. CAN DONALD DUCK  
**ORANGE JUICE** **79¢**

9 oz. BOX MORTONS GLAZED  
**DONUTS** **75¢**

6 oz. PKG. GREEN GIANT WHOLE  
**MUSHROOMS**..... 79¢

8 oz. PKG. BANQUET  
**POT PIES**..... 4/\$1

COME TO  
CASHWAY  
FOR YOUR  
WIC CARD  
PURCHASES

WE WELCOME  
USDA  
FOOD STAMP  
COUPONS

**19¢**

each place setting piece

Porcelain  
Fine China

SAV-A-TAPE

Simply save the cash register tapes you'll receive every time you make a purchase at our stores. Keep the tape in the convenient "Saver Envelope" and when you have sufficient tapes, redeem them for your place setting pieces.

Redeem \$49.00 in register tapes for your BREAD & BUTTER PLATE.

HORMELS LEAN FAMILY PACK

**PORK CHOPS** **\$1.29**  
LB.

TYSONS SLICED 12 oz. PKG.  
**CHICKEN BOLOGNA** **59¢**

SWIFTS PREMIUM PROTEN BEEF

**ARM ROAST** **\$1.29**  
LB.

PEYTON'S DEL NORTE

**HOT LINKS**..... LB. 98¢

HORMELS EXTRA LEAN CENTER CUTS

**PORK CHOPS**..... LB. \$1.59

LONGHORN WISCONSIN RED RIND MARKET CUT

**CHEESE**..... LB. \$1.49

SWIFTS PREMIUM PROTEN BEEF

**RIB STEAK**..... LB. \$1.49

SWIFTS PREMIUM PROTEN BEEF

**RANCH STEAK**..... LB. \$1.29

ARMOR STAR  
**VIENNA SAUSAGE** **3/\$1**  
5 OZ CAN

## PRODUCE

CALIFORNIA FANCY YELLOW  
**PEACHES** **79¢**  
LB.

CENTRAL AMERICAN GOLDEN RIPE  
**BANANAS** **4 LB. \$1**

MEXICO FANCY RIPE  
**MANGOS**..... EACH **89¢**

TEXAS NO. 1 WHITE  
**ONIONS**..... LB. **25¢**

ARIZONA CHOICE VALENCIA  
**ORANGES**..... LB. **25¢**

True Value  
TOOL of the Month  
CAROL NOW **6.99**  
QUANTITIES LIMITED  
100-Ft. VINYL EXTENSION CORD  
Flexible 16-ga., 3-wire cord ideal for portable power equipment indoors and out. Orange cap and connector for high visibility. UL listed. 03302  
EPOXY BOX