



### Simply Peachy

By Betty Barclay

PEACHES are a universal favorite and still abundant and inexpensive. What more delightful way to show off their beauty and usher out the summer season than in this delicious Peach Cream Pie? An easy-to-prepare base, made with vanilla pudding and pie filling mix, calls for slices of juicy, ripe peaches, used generously as a garnish. For special occasions, try adding an unbaked meringue topping to give it that "something extra" that makes a party.



#### Peach Cream Pie

1 package vanilla pudding and pie filling mix; 1 egg yolk, slightly beaten; 2 cups milk; 1 baked 8-inch pie shell; unbaked Meringue; fresh peach slices.

Place packaged pudding in saucepan. Combine egg yolk and milk; add to pie filling mix gradually, blending well. Cook and stir, over medium heat until mixture comes to a boil and is thickened. Cool slightly (about 5 minutes), stirring once or twice. Turn into pie shell. Chill. Pile Unbaked Meringue around edge of pie, if desired. Garnish with peach slices.

Unbaked Meringue: Combine 1 unbeaten egg white, 1/4 cup sugar, a dash of salt, and 1 1/2 tablespoons water in top of double boiler; beat with rotary egg beater until thoroughly mixed. Place over rapidly boiling water and beat 1 minute. Then remove from heat and continue beating 1 minute longer, or until mixture will stand in peaks. Add 1/4 teaspoon vanilla. Pile lightly on pie filling.

### Have You

been visiting had visitors sold anything bought anything had a party been to one joined a club or been thrown out of one got engaged been jilted got married been divorced had triplets quadruplets or even one baby?

### That's News!

and we, and your friends would like to know about it.

### Call The News-Record

ask for the society editor, that's me

### Or If You're Scared

we can't spell your name or somebody else's

### Then Write It Up

on a piece of scratch paper and bring it in or mail it in or something and we'll all know it and we'll all be happy!

### Thank You!



FOR THE LATEST MODES OF

### HAIR STYLING

Call 123 for Appointment

### Vanity Beauty Shop

Sterling City, Texas

### City Barber Shop

H. F. MERRELL, Prop.

"Satisfaction Guaranteed"

### Stop Taking Harsh Drugs for Constipation

End Chronic Dosing! Regain Normal Regularity This All-Vegetable Way!

Taking harsh drugs for constipation can punish you brutally! Their cramps and griping disrupt normal bowel action, make you feel in need of repeated dosing.

When you occasionally feel constipated, get gentle but sure relief. Take Dr. Caldwell's Senna Laxative contained in Syrup Pepsin. It's all-vegetable. No salts, no harsh drugs. Dr. Caldwell's contains an extract of Senna, oldest and one of the finest natural laxatives known to medicine.

Dr. Caldwell's Senna Laxative tastes good, acts mildly, brings thorough relief comfortably. Helps you get regular, ends chronic dosing. Even relieves stomach sourness that constipation often brings.

Try the new 25¢ size

Money back if not satisfied. Mail bottle to Box 280, N. Y. 18, N. Y.

### DR. CALDWELL'S SENNA LAXATIVE

Contained in pleasant-tasting Syrup Pepsin



By BETTY BARCLAY

... as the saying goes in France-across-the-sea. On this side of the ocean we say "Everybody to his own taste." But a family taste test will give a happy vote of approval to this recipe for Frozen Crunch, a delightful new cooler that is as refreshing as a sea breeze itself. It's a mixture of ice cream, nut meats, and the new candy-coated rice cereal that lends itself so well to recipes:

#### Frozen Crunch

2 tablespoons butter  
1/2 cup chopped nut meats  
1/4 cup brown sugar, firmly packed  
2 cups candy-coated rice cereal, crushed  
Dash of salt

2 teaspoons gelatin  
1/4 cup cold water  
1 1/2 cups hot milk  
1/2 cup sugar  
Dash of salt  
1 cup cream, whipped  
1 teaspoon vanilla

Melt butter in skillet over low heat. Add nut meats and brown lightly. Add brown sugar and cook, stirring constantly, until sugar melts and caramelizes slightly. Add cereal and salt; mix well. Cool and crumble.

Combine gelatin and cold water; mix well. Add hot milk and stir until gelatin is dissolved. Add sugar and salt and mix well. Chill until slightly thickened. Then fold in whipped cream and vanilla.

Turn into freezing tray of automatic refrigerator, setting control for coldest freezing temperature. When partially frozen, turn into a chilled bowl and beat with rotary egg beater until fluffy and smooth. Fold in 1/2 of the cereal mixture. Return to tray and freeze 30 minutes longer; stir. Then sprinkle remaining cereal mixture over the top and freeze until firm. Freezing time: 3 to 4 hours. Makes 1 quart.

You can even European-ize this interesting treat: for Mock Biscuit Tortoni, simply turn the ice cream and cereal mixture into 4- or 6-ounce paper cups. Top them with the remaining cereal mixture and freeze them until firm. This makes 12 to 16 servings.



### Our Relations Are Fine

Friendly relations certainly go a long way toward making this a happier world. We feel particularly fortunate in having such friendly relations—with you!

When service is good, you are quick to tell us. When occasionally you do have trouble with service, you report it in a friendly, reasonable manner. Your understanding of our problems is much appreciated too. With such friendly relations, is it any wonder we're doing everything possible to give you the best service money can buy.

### SAN ANGELO TELEPHONE COMPANY

### SPORTING GOODS

FISHING TACKLE, GUNS, AMMUNITION, CAMPING, etc.

### C. C. AINSWORTH

PHILLIPS 66 STATION  
Phone 148

FIRESTONE TIRES  
Sterling City, Texas

### Robert Massie Co.

"Everything in Furniture"

AMBULANCE SERVICE

FUNERAL HOME

San Angelo, Texas

### State Fair of Texas

BIGGEST and BEST Fair Yet!  
16 FUNPACKED DAYS!

- ★ GUYS & DOLLS - ICE CYCLES
- ★ COTTON BOWL FOOTBALL
- ★ MIDWAY - THRILLCADE
- STORY BOOK OF TEXAS
- AGRICULTURE
- PAN-AMERICAN NATIONAL
- HEREFORD SHOW

FREE Exhibits  
FREE Acts!

OCT. 6-21  
DALLAS

DON'T MISS IT!

### Palace Theater

Fri., Sat., Oct. 19-20

### "FRENCHIE"

Joel McCrea, Susan Winters

Sun., Mon., Tues., Oct. 21-22-23

### "Vengeance Valley"

Burt Lancaster, Robert Walker

Wed., Thurs., Oct. 24-25

### "I Can Get It For You Wholesale"

Dan Dailey, Susan Hayward

Fri., Sat., Oct. 26-27

### "Bells of Coronado"

Roy Rogers

### Dawson Chevron Station

JOHNNY DAWSON, Owner

### Time Now Winter Check-Up

Bring Your Car in To Us

We'll Do The Job Right!

Phone 95

Sterling City

### "Push Button" Laundering with a

### BENDIX

### Work-free Washer

turns wash DAYS into minutes!

At the SNAP of a dial it...



- WASHES automatically
- RINSES automatically
- DRAINS automatically
- VACUUM DRIES automatically
- SHUTS OFF automatically

Demand these 1951 advantages when you buy a 1951 washer:

- Freedom from washday drudgery
- Cumbersome wringer eliminated
- Porcelain work-top
- Fully automatic operation
- Time and money saving

There's a BENDIX to fit Your Needs!

**the Economat.** The automatic washer every family can afford. Powerful Undertow washing with the 5-year guaranteed Wandertub. No bolting down.

**the Dialomatic.** The fully automatic washer that requires no plumbing, no bolting down... roll it anywhere. Your hands never touch water!

**the DeLuxe.** All the advantages of "Tumble-Action" at low cost. Plus up-to-the-minute features and added refinements. It saves and saves and saves. Every fourth load is free!

**the Gyramatic.** Stingy with your soap and water... exclusive Water Rationer saves your money... clothes touch nothing but porcelain. There's no finer washer... no bolting down!

Trade-Ins!

Budget Terms!

#### The Economat

Thrifty to use, and thrifty to own, the Economat is a fully automatic Bendix washer that every family can afford. The entire washing, rinsing and damp-drying operations are completed in one continuous, fully automatic cycle. You don't even have to be there. Now's the time to free yourself from washday drudgery... buy your Bendix today!



West Texas Utilities Company

**RESOLUTIONS OF RESPECT**

At the regular meeting of the Sterling City Lions Club held October 10th, 1951, the resolutions as follows were made and passed.

**BE IT RESOLVED:** That, whereas, our true and noble Lion and fellow worker, Dr. W. B. Everitt, has been taken from our midst, we endeavor to show, in this tribute of words, our appreciation for our friend and the sorrow caused by the loss of him. Death having come among us on the evening of September 29th, laid his hand upon one of our most faithful and honored members; one who has been active in the progress of our club since its inception.

Dr. Everitt took an active part

in the organization of our club, and served as President for several years. Ever since, his attendance and association with the members has been a source of great benefit and encouragement. Through constant association with Dr. Everitt, we have come to know the impulse of his heart, his ambitions and ideals, his clean wholesome and incorruptible character, his unalterable courage, fidelity and uprightness of living. He had a personality that inspired his friends with confidence and brotherly love. He was true to every obligation; inspiring in his high ideals and broadness of vision. He had a big warm heart which went out to those who suffered. He led a clean and honorable

life; held no narrow or dogmatic views. He was possessed with those fine qualities of intellect and manhood, which combined to make him a beloved, useful and distinguished member of our organization.

**BE IT RESOLVED:** That, in expressing their deepest regrets for the loss of a friend whose frequent presence lent help and optimism to our daily toils, those members carrying on the work of this club, do also express our sincere regrets for the loss of one whose upright dealings and honest opinions made him our devoted friend and valued associate.

**BE IT FURTHER RESOLVED:** That a copy of these resolutions be sent to the members of the be-

**THE AMERICAN WAY**



A Chinese Puzzle

**The Jet Drive-In Theater**

Bring The Family—Always A Good Show At

**BIG SPRING'S LARGEST DRIVE-IN THEATER**

San Angelo Highway

Phone 2455

Many of the rural communities offer very little in the way of high grade entertainment, but they do have the advantage of being within easy driving distance of every amusement at the **New Jet Drive-In Theater** in Big Spring. Since many of our readers make frequent shopping trips to Big Spring why not go early enough to have all the trading done in time for a real

show at this fine drive-in theater? The **Jet Drive-In Theater** has booked honest to goodness entertainment that will please the old and young alike. Stories with more human interest—more real life—more comedy and more all-around and pleasing entertainment.

We know of no more delightful way of entertaining a party of friends than to invite them to drive

to Big Spring and spend an evening at the **Jet Drive-In Theater**, where you can enjoy the privacy of your own car—can smoke—talk or enjoy refreshments from their convenient snack bar. Try it on our suggestion and see if the whole party does not vote your party a success. Remember to attend the **Jet Drive-In Theater** in Big Spring.

reaved family and that a copy be placed on the pages of our permanent records.

Roland Lowe  
J. T. Davis  
H. M. Knight  
COMMITTEE.

Mr. and Mrs. P. E. Reeves and family visited in Bronte last Sunday with Rev. and Mrs. William Reeves.

For engraved announcements, cards, letterheads and envelopes, see the News-Record. Prices are reasonable.

Job Printing Done. News-Record.

**STERLING CITY NEWS-RECORD**

JACK DOUTHIT, Publisher

Entered Nov. 10, 1902, at the Sterling City postoffice as second class matter.

PUBLISHED EVERY FRIDAY

**SUBSCRIPTION RATES**  
\$1.50 a year in Sterling County  
\$1.75 Elsewhere in Texas  
\$2.00 Outside State of Texas

NEWS established in 1890  
RECORD established in 1899  
Consolidated in 1902

All classified ads, public notices, cards of thanks, legals, and such advertising are charged for at regular rates—2c per word. Display rates are 42c per column inch.

**The Texas Co.**

Petroleum and Its Products

**R. P. BROWN**

Consignee

Phone 157 Res. Ph. 84

**"HOW TO SPOT A RED SPY"**  
Budenz tells how the Communists recruit espionage agents from our universities, place them in influential positions, and train them to steal vital government information. Read this gripping article in the American Weekly, that great magazine distributed with next Sunday's Los Angeles Examiner.

For your home—use paper drinking cups. Cheap to use—cleaner, less work in dish washing. Don't spread germs in your home—use paper cups. Get cups and dispensers at the News-Record.

Get the NEW 1952-53 Texas Almanacs for \$1.25 at News-Record.

**Write for Free Folder**

**Travel Previews**—The outstanding series of manuals about travel for education. Here are page after page of travel facts about interesting states and areas that possess scenic, scientific and historic attractions with unlimited possibilities for educational travel.

**TEACHERS:** Travel Previews Manuals contain hundreds of topic and class-outline suggestions to apply as teaching-aids for travel-study class and field-study tours.

**STUDENTS:** Travel Previews Manuals are designed to supply factual data on travel . . . to portray a better understanding of our travel opportunities and a broader insight on the natural, recreational, historical, industrial resources of our states.

**PARENTS:** For the thrilling, informative, authoritative study of travel for education. For assisting your children in school or college with extra curricula credits.

For making-up tour itineraries. For making educational travel more intellectually stimulating, enjoyable and entertaining—learn more about Travel Previews Educational Manuals.

Write today for FREE Folder

**TRAVEL PREVIEWS**

Dept. B.M. Box 1433 Milwaukee, Wis.  
County Representatives Wanted

Size it up and you'll see why

**More People Buy Chevrolets Than Any Other Car!**

**Longest of the Lot**

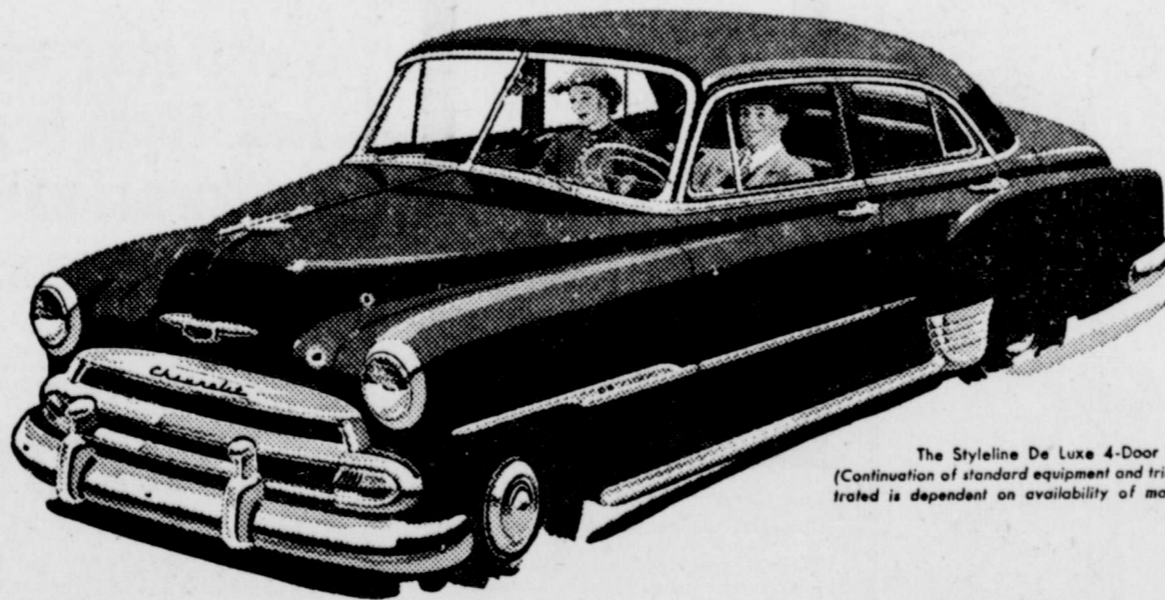
Chevrolet looks longest, Chevrolet is longest . . . a swank and sweeping 197 1/2 inches over-all that tops any other car in the low-price field. Size up, Chevrolet's greater length, and you'll find it hard to settle for less.

**Most Road-Hugging Weight**

Gives you more road-hugging, road-smoothing weight . . . a hefty 3140 pounds\* in the model illustrated that no comparable car in the field can match. Get the feel of this big car, and you won't settle for less. (\*Shipping weight.)

**Widest Tread in Its Field**

Here's the steadiness of the widest tread in the field . . . 58 3/4 inches between centers of rear wheels. Once you've known the better roadability of Chevrolet's wider tread, you wouldn't settle for less.



The Styleline De Luxe 4-Door Sedan  
(Continuation of standard equipment and trim illustrated is dependent on availability of material.)

**Finest Comfort Features**

Luxury of Body by Fisher . . . cradled ease of unitized Knee Action . . . smooth control of Center-Point Steering!

**Biggest Brakes of Any Low-Priced Car**

Big, powerful Jumbo-Drum brakes—largest in the low-price field! Use the car's own momentum to increase stopping power.

**Way Ahead with Valve-in-Head**

The trend's to valve-in-head. And Chevrolet's had it for nearly 40 years! Get sparkling performance and real over-all economy.

Join the Shift to No-Shift **POWER Glide** Automatic Transmission\*

Sensationally smooth! Excitingly easy! It's a new experience in driving, the modern way to drive. Costs little more—or even less than many a car with standard gearshift!

\*Combination of Powerglide Automatic Transmission and 105-h.p. Engine optional on De Luxe models at extra cost.



America's Largest and Finest Low-Priced Car!

**C & W MOTOR COMPANY**

Sterling City, Texas

Phone 35



By BETTY BARCLAY

Summer is here again when those sunny moments and whiffs of fresh air have a drastic effect on healthy appetites. You'll want to keep a cool, filling dessert ready to serve on a moment's notice when family and friends troop in from work or play.

Serve Easy Coffee Ice Cream fresh from your refrigerator, gently flavored with delicious instant coffee. It's easy to make—and what a pleasure to serve! That delicious coffee flavor comes from adding exactly the right amount of instant coffee from the jar—no more wasted moments waiting for coffee liquid to drip through or confusion about proper strength. Instant Maxwell House Coffee insures perfect flavor every time.

Make Easy Coffee Ice Cream early in the day and have it waiting for between meal feasts or serve it with light summer meals that need a dessert that agrees with the weather. You'll find it saves you time spent preparing meals in the kitchen—and adds to everybody's enjoyment.

**Easy Coffee Ice Cream**

- 1 rennet tablet
- 1 tablespoon cold water
- 2 cups light cream
- 2 tablespoons Instant Maxwell House Coffee
- 1/2 cup sugar
- 1/2 teaspoon salt
- 1/2 teaspoon vanilla

Dissolve rennet tablet in cold water. Combine cream, Instant Maxwell House Coffee, sugar, and salt in saucepan, mixing well. Heat gently until mixture is lukewarm. Remove from heat. Add vanilla and dissolved rennet, stirring quickly to blend. Pour at once into freezing tray. Let stand about 10 minutes, or until set.

Place tray in freezing compartment of refrigerator setting control for coldest freezer temperature. Then freeze until firm. Turn into bowl and break into small pieces. Beat with rotary beater until smooth, but not melted. Return to tray and freeze until firm. Freezing time: about 1 1/2 hours. Makes 1 quart.

**CARD OF THANKS**

We want to thank our friends in Sterling for their past favors and kindnesses. We were glad and proud to have been a part of the community life while we lived here and will always appreciate the good people of Sterling. There are no better people to be found anywhere. Especially do we want to thank Dr. Swann for his many courtesies and kindnesses.

May God bless all of you, and we'll not forget you.  
Pete and Tommie Easley  
George and Johnny

WASHING AND Ironing done at my home. Your Worw Appreciated.  
Mrs. John Purvis.

Visitors at the Jim Bob Clark's the ten day ending over the weekend were Mrs. Clark's mother, Mrs. Howard Long and her grandmother, Mrs. Ella Shepard of Monte Vista, Colorado.

WHEN you have places to go and things to do, let me keep the babies for you. Call 133 or just bring them by. Mrs. M. W. Smith. 1tp

The Hal Knights attended the Texas-Oklahoma football game in Dallas last Saturday and saw the stage play, "Guys and Dolls" at the Fair.

Your Scrap Iron and Metals Can Help Remodel the Community Center.

**STERLING LODGE**  
**A. F. & A. M.**  
**No. 728**

Regular Meetings on the Second Tuesday of Each Month

**Insurance & Abstracting**  
Reliable Abstract Work  
Fire and Automobile Insurance  
**DURHAM ABSTRACT CO.**  
**DURHAM INSURANCE AGCY.**  
Worth B. Durham, Mgr

**WORTH B. DURHAM**  
Lawyer  
Sterling City, Texas

**DEAD ANIMALS**  
*Un-Skinned*  
**REMOVED free**  
CALL COLLECT  
San Angelo 3200  
If no answer:  
3444  
**SAN ANGELO RENDERING CO.**

**Stop Taking Harsh Drugs for Constipation**

**End Chronic Dosing! Regain Normal Regularity This All-Vegetable Way!**  
Taking harsh drugs for constipation can punish you brutally! Their cramps and griping disrupt normal bowel action, make you feel in need of repeated dosing.  
When you occasionally feel constipated, get gentle but sure relief. Take Dr. Caldwell's Senna Laxative contained in Syrup Pepsin. It's all-vegetable. No salts, no harsh drugs. Dr. Caldwell's contains an extract of Senna, oldest and one of the finest natural laxatives known to medicine.  
Dr. Caldwell's Senna Laxative tastes good, acts mildly, brings thorough relief comfortably. Helps you get regular, ends chronic dosing. Even relieves stomach sourness that constipation often brings.

Try the new **25¢** size  
Money back if not satisfied  
Mail bottle to Box 280, N. Y. 18, N. Y.  
**DR. CALDWELL'S SENNA LAXATIVE**  
Contained in pleasant-tasting Syrup Pepsin

**STOP** You Can Have That **Printing**  
DONE HERE IN STERLING CITY AT THE **News-Record**

**Announcement**  
**To our Sterling City patients**

We now have a complete lens-grinding laboratory service so that we can make your glasses and fit them to you the same day that we examine your eyes.  
It will help us if you will come as early in the day as possible so that we may make your glasses while you shop or visit in Big Spring.

**HAMILTON**  
**Optometric Clinic**

106 West Third (Across from Court House) **BIG SPRING**



To be of help to those who need it in times of sorrow and bereavement is our inspiration to give the kind of service that helps ease the pain left by the departure of a loved one. When the need arises, let us serve you.

**Lowe's Funeral Chapel**

Be sure to specify Lowe's. We will make complete arrangements. We work with Johnson's Funeral Home in San Angelo and the Nalley Funeral Home in Big Spring.  
AMBULANCE SERVICE PHONE 64 STERLING CITY

**SPECIALS**

**Mon. and Tues., Oct. 22 & 23**

- PATIO BEEF ENCHILADAS** ..... 49c
- MRS. TUCKERS SHORTENING, 8 lb. can** 2.45
- KUNER'S CREAM STYLE CORN, 8 oz. cn.** 10c
- KUNER'S TOMATOES, 2 cans** ..... 34c

**Banner Milk**

- HOMOGENIZED CARTONS, qt.** ..... 26c
- QUART BOTTLES, 2 for** ..... 47c
- HALF GALLON BOTTLES, each** ..... 48c
- QUART ORANGEADE** ..... 15c

**Drive-In Grocery**

Tommie Lilly

Store Hours: Week-days 7 a.m. to 10 p.m.  
Sundays: To 11 p.m.

**Garrett & Bailey**  
Everything in Dry Goods and Notions  
PHONE 24 STERLING CITY, TEXAS

**GLOVER'S**  
**Out-Door Quilted Coats**  
Mouton Fur Collars  
All Wool Inner Lining  
**\$22.50**  
**BAILEY BROS.**  
The Men's Store

**HEAD NOISE MISERY?**

Try this simple home treatment. Many people have written us that it brought them blessed relief from the miseries of Hard of Hearing and Head Noises due to catarrh of the head. Many were past 70! For proof of these amazing results, write us today. Nothing to wear. Treatment used right in your own home—easy and simple.



SEND NOW FOR PROOF AND 30 DAY TRIAL OFFER  
THE ELMO COMPANY  
DEPT. NO. 978  
DAVENPORT, IOWA