

Sterling Drops Game To Ackerly Friday

Although leading at the half 25 to 24, the Sterling Eagles lost a non-conference tilt with the Ackerly footballers last Friday by the score of 66 to 32.

Accounting for the Eagle (Sterling) touchdowns were Bill Young two, Melvin Foster one, and Jim Davis and Lynn Glass one each.

Alvin Cates rolled up four TD'S for Ackerly while Dub Grigg racked up four and Pat Grigg accounted for one.

As the game opened Sterling kicked to Ackerly. In rapid succession Ackerly fumbled (but recovered), got a 7-yard gain and then went over for a TD. They kicked the ball through the uprights for two more points making the score 8-0 right quick. As Ackerly kicked to Sterling, Melvin Foster advanced the oval 20 yards as he took the kick. As scrimmage play resumed, Sterling lost two yards but on the next play made a first down with a pass from Bill Young to McWhorter. That same combination again clicked putting the ball down on the three yard line. Then Young took a pass and raked up 6 points for the locals.

As play resumed, Sterling kicked to Ackerly. They made 5 yards on the first play and six on the next. They made a first, but it was called back and they got a 15-yard penalty. Then they failed to make the first, so Sterling wound up with the pigskin. Quickly Lester passed to Bill Young, who went all the way for a score making the board show Sterling 12, Ackerly 8.

Sterling kicked to Ackerly who made 12 yards on a line play and the first quarter ended. On a double pass play, the Ackerly boys made a first and Dub Grigg went over for a score. The officials called the play back. Ackerly's backfield was in motion. Alvin Cates then took over and the the job right. Their kick for extra point was good so the score stood Ackerly 16, Sterling City 12.

As play resumed one the third try, Melvin Foster took the ball, broke through the line and ran a full three-fourths length of the field for a score. Sterling picked up one point on the try for extra point, making the score 19-16 in favor of the locals.

Sterling kicked off to Ackerly who failed to make a first so the ball went over to the Eagles. Bobby Lester made a first down on the first try. Foster picked up 8 yards and Glass made a first down to A's ten-yard line. A pass from Davis to Glass was good for a TD, making the score 25-16. As play resumed, Dub Grigg for Ackerly made a score on a fake play, winding up the half with the score Sterling 25,

Ackerly 24.

Beginning the second half Ackerly kicked to Sterling. Lester got 10 yards through the line, a fumble lost ground and then an incomplete pass messed up the locals. Glass then decided to kick and the Ackerly boys blocked the kick, taking over the ball. After two plays, Ackerly lost the ball and Sterling again handled the pigskin. Soon Pat Grigg intercepted a pass and ran for a TD, making the score 30-25, in favor of Ackerly.

As play again resumed, Sterling couldn't seem to advance the ball and it went to Ackerly. They rack up a score making the score 36-25.

As Ackerly kicked Lynn Glass caught the kick and ran all the way for a thrilling TD. It didn't take the Ackerly boys long to run in another score making the board show Ackerly 42, Sterling 32.

Ackerly then went on their merry way to score regularly. Coach Young used his entire squad and gave all the locals a chance in the game. McWhorter got in some very good tackles, and Stone made a nice return of a kick following a touchdown by Ackerly.

The score ended Ackerly 66 and Sterling City 32.

The officials seemed a little green at officiating. For instance, they forgot to make the teams change goals at the end of the third quarter. Coach Diddle Young went out two minutes later and reminded them.

Play Knott Tonight At Knott

The Eagles journey to Knott tonight to engage in another non-conference game. Quite a large crowd of fans are planning to make the trip with the team and pep squad.

New '56 Fords on Display Today at Sterling Motor Company

The new 1956 Fords are on display at the Sterling Motor Company today. Free coffee and doughnuts are being served to all who attend the showing of the new lines.

Manager H. W. Smith said that they had four body styles on display. They feature the Thunderbird motor in the Fairlane series. Life-guard features are stressed in the new models, too, he said.

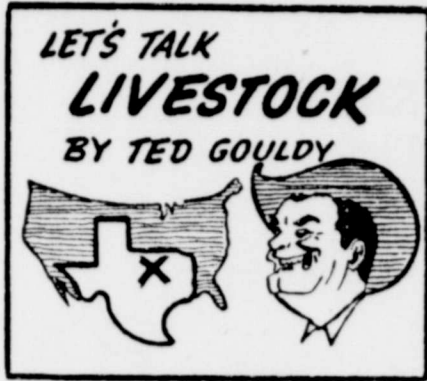
Smith and owner Martin Reed cordially invite the public in to see the new models.

Highway Job Let To Bailey Firm

A contract for new construction on State Highway 158 in Sterling County has been awarded to a Bailey firm, it was announced in Austin this week by the State Highway Commission.

John T. Leslie submitted the low bid of \$230,817.40 on the project. Construction of grading, structures, base and surfacing on sections between Glasscock Co. line and U.S. 87, 4 miles NW of Sterling City is expected to take 150 working days, according to J. A. Snell, District Highway Engineer at San Angelo.

H. L. Bailey, Resident Engineer at Sterling City will be in active charge of the project while under construction.



OVER 162,000 CATTLE AND CALVES MARKETED MONDAY

FORT WORTH—The Fall movement of cattle to market around the major marketing circle hit its highest level last Monday for the season. The 12 major markets reported more than 162,000 cattle and calves and many of the Cornbelt markets had the largest runs since last Fall.

Prices were inclined to weaken on most cattle and calves at nearly all markets, and that was pretty much the story at Fort Worth, too.

Relatively large numbers of cows and heifers were reported at most markets, but the calves continue to be marketed in considerably smaller numbers than a year ago. This holding on the farms of larger numbers of calves appears to be about offsetting the increase in cow and heifer slaughter at most points.

General feeling among the trade at Fort Worth is that there is now small likelihood that there will be a really significant change in the cattle population at the turn of the year.

COMPARATIVE PRICES IN LINE WITH LAST WEEK

Good and choice fed cattle were scarce at Fort Worth Monday, a few such selling from \$19 to \$22 and a few eligible to sell above \$21 were in the offering. Common and medium steers \$12 to \$18. Fat cows \$9.50 to \$12, and canners and cutters \$6.50 to \$10. Several strings of cows Monday included R. T. Foster, Sterling County, a load of 1,030 cows at \$11.50; R. J. Coke of Dallas County, had some 743-lb. cows at \$12. Seven J Stock Farm, Houston County, sold 60 cows at 1,014 pounds at \$12, and 20 at 977 pounds at \$10. They also had three loads of 427-pound yearlings at 17 dollars and a load at 432 pounds at \$18. LaRue Stock Farms of Houston County had a load of 431-pound yearlings at \$17 and a load of 382 pound calves at \$15.

Fat calves of good and choice kinds drew \$16 to \$17.50, some heavies to \$18. Baby beef calves of 600 pounds and up sold into yearling beef channels up to \$20. Common and medium slaughter calves \$10 to \$15. Stocker steer calves \$20 down. Yearling stockers \$18.50 down. Stocker heifers and stocker heifer calves sold \$2 to \$3 under similar steers. Stocker cows sold from \$8 to \$12.50, and some light young cows reached \$14 late last week.

SHEEP STEADY, LAMBS SELL STEADY TO 50c OFF

Fat lambs topped at \$18.50 Monday at Fort Worth and strictly choice lots were quotable above that figure. The slaughter lamb trade was weak to 50 cents lower, and feeders were steady to weak. Good feeder lambs sold at \$15 and choice light lambs are quotable well above that. Yearling muttons sold from \$8 to \$15.50 and aged muttons drew \$8 to \$11.50. Old ewes drew \$4 to \$5 and old bucks sold around \$4.

HAL KNIGHT NOW DRAFT BOARD REGISTRAR HERE

Austin, Texas, Sept. 20—Hal M. Knight of Sterling City has been appointed registrar for the Midland

Miss Bobby Weaver and Dan Glass Married in Lubbock Church

In a double ring ceremony solemnized by the bridegroom's uncle Miss Bobby Jean Weaver became the Bride of Dan Glass Saturday at 3 o'clock in the parlor of the Asbury Methodist Church in Lubbock.

The Rev. John A. English, pastor of the Asbury Methodist church read the ceremony before a background of greenery, white chrysanthemums and tapers.

The bride is the daughter of the late Mr. and Mrs. R. O. Weaver of London; the bridegroom is the son of Mr. and Mrs. Harvey Glass of Sterling City.

Candles were lighted by Bobby Sanderson of Blackwell, cousin of the groom.

Mrs. Phil Waynick, pianist, accompanied Lee Belknap as he sang "I Love You Truly" and "The Lord's Prayer."

The bride wore a waltz length gown of pink embroidered satin and carried white carnations. For traveling she chose a red velveteen suit and black accessories.

A reception followed in the church parlor. The table was laid with a cutwork white Maderia linen cloth, centered with the bride's bouquet. Serving were Mrs. Jack Blanchard of Snyder, cousin of the groom and Mrs. Tom Robinson of San Angelo.

The couple is at home at 2505 1/2 Dallas St. in San Angelo where both are attending San Angelo College. Mrs. Glass is a business major and her husband is majoring in engineering.

Engagement of Daughter Is Announced

Mr. and Mrs. Pat Boatler announce the engagement and approaching marriage of their daughter June, to Hollis Kennemer. The marriage will take place at the First Presbyterian Church here on October 16.

County Agent's Column

By Fred Campbell, County Agent Livestock shows over the area are changing their dates so that cattlemen may exhibit their show herds at all of the mapor shows. Dates of the shows at which the Sterling County 4-H Club anticipates attending are:

ODESSA Show (Sand Hills Hereford Show) Jan. 3-7.

EL PASO Livestock Show February 6-12.

ABILENE Fat Stock Show. Later part of February.

SAN ANGELO Fat Stock Show. March 8-11.

The date for the Sterling County Livestock Show has not been set.

Two finewool lambs have been donated by Nick Reed to the Sterling County 4-H Club to be used in a feeding experiment. These two lambs will be self-fed on a commercial basis on a ration consisting of Cotton-burs, Maize, Cottonseed meal, Alfalfa Meal and Molasses. In an adjacent pen two 4-H Club lambs will be fed on the fattening ration used by the club boys. Troy Murrell, son of Mr. and Mrs. Loyd Murrell, will do the feeding of both pens of lambs.

Sterling-Glasscock county draft board in the Sterling City area.

Boys who reach the age of 18 can register in Sterling City by calling on Mr. Knight at the post office.

Mr. Knight takes the place of Mrs. Ann Knight, who resigned as registrar for the Sterling City area. A registrar is maintained in the area so that men will not have to travel to the draft board office at Midland.

A local board is maintained for the three-county area because one board can take care of the work. The state director of Selective Service says that "a board in each county in many areas would prove to be a waste of government money."

All males are required to register under the draft law on their 18th birthday of within five days thereafter. Maximum penalties that can be applied for failure to register are \$10,000 fine, or five years in prison, or both.

Lions Club Luncheon

A film on hunting in Alaska was shown to members of the Lions Club following the luncheon Wednesday in the community center.

A past president's pin was presented to R. T. Caperton by president Rufus Foster.

Coach Diddle Young told of the football game with Knott there tonight. Vocational agriculture instructor Fred Igo told of plans for a F.F.A. barbecue that was to be held soon. Money raised would go to finance the boys trip to the State Fair in Dallas next month.

Guests included Igo, A. T. Barrett and a Mr. Garner. The latter is a concrete contractor specializing in curb work. He said he did curbing for \$1.35 a running foot, in case any property owner wanted curbing done.

North Concho River Soil Conservation News

William and Bubba Foster, cooperators with the North Concho River Soil Conservation District have recently completed installation of a 20 acre level border irrigation system on their ranch 1 mile east of Broome, Texas. The system has been planted to oats to furnish winter grazing for livestock.

Water for the irrigation system is furnished by a well yielding about 200 gallons of water per minute. The water is pumped into an earthen reservoir and released into the ditches and from there onto the land at a rate of approximately 1800 gallons per minute. Concrete tile drop structures were installed in the ditches to keep them from washing and the aid in getting the water into the border.

They have completed the first watering and have a good stand of oats up and growing. Their plans are to plant the system to alfalfa next fall for hay production.

The conservation irrigation system was staked out by Soil Conservation technicians assisting the North Concho River Soil Conservation District.

Historic Shrines Studied By Wimodausis Club

"Americanism . . . Our Historic Shrines" was the topic for study when the Wimodausis Club met Wednesday at the Community Center. Eighteen members answered to roll call by naming an Historic Shrine in America.

Mrs. R. T. Foster discussed Independence Hall and Betsy Ross House; Mrs. Ray Lane gave a talk on Mount Vernon; and Mrs. C. A. Bowen discussed Williamsburg, Symbol of a Great American Tradition.

The Federation Counselor's report was given by Mrs. W. N. Reed, and new aims of the Federation were brought by Miss Ethel Foster, who attended the Sixth District Board meeting in Abilene on Monday of this week.

Mrs. Roy Morgan, president of the club, presided at the meeting, and in the business session it was voted to have a bake sale on Saturday, November 19. Mrs. L. S. Dubberly and Mrs. C. B. Stovall were welcomed as new members in the club.

During the social hour which followed Mrs. T. F. Foster and Mrs. C. N. Crawford were hostesses.

HOSPITAL NOTES

Patients in the Sterling County Hospital on Thursday morning of this week included—

Mrs. T. S. Foster
Jodie Emery
Mr. and Mrs. D. P. Glass
Mrs. C. C. Reynolds
Mrs. Neal Reed
Candelario Medina
Mrs. G. G. Ainsworth
Mrs. Lura McClellan
Dismissals since Thursday morning of last week include—
Cynthia Davis
Mrs. Luther Hallmark
Mrs. Alfred Harmon
Mrs. G. C. Murrell

Attend Mercury Showing

Mr. and Mrs. Martin C. Reed went to New Orleans last weekend to be present at a dealer's showing of the new '56 Mercurys early this week. Reed is the owner of the Sterling Motor Company, dealers of Mercurys and Fords. The new Mercurys will be shown to the public next Thursday, September 29, said Reed.

THE AMERICAN WAY



The Moocher

**Long-Time
Hunter
R. P. Brown
Gets the First
Exempt Hunting
License Issued
In Sterling
County**



R. P. Brown, perennial hunter, got the first exempt hunting license in Sterling County this year. A law passed by the last Legislature makes hunting licenses free to hunters over 65.

Mr. Brown first went deer hunting in 1905 in Coke County. On that hunting trip with him was the late J. Q. McCabe, the late Temp Whiteside and the late J. I. Murtishaw. He killed his first deer in Coke County in 1907.

With few exceptions, Brown has been deer hunting every year since 1905, including last year. He

got his largest deer in 1953, which dressed out around 250 pounds, he estimated.

The two best hunts that comes to Mr. Brown's memory are ones that happened in the Big Bend Country. In 1915 his party got four deer on the first day of hunting. In 1925 there in the Delaware Mountains his party got five deer on the first day of hunting.

The picture above was taken by Lowe Slaton of San Angelo, his hunting partner of 42 years after a hunt in Presidio County in 1950. The two plan to go again this year.



YOUR HOMETOWN CLEANING PLANT

Suits -----	85c	Ties -----	15c
Plain Dresses -----	85c	Hats -----	75c
Pants -----	40c	Skirts -----	40c & up
Shirts -----	40c	Blouses -----	40c & up

BAILEY BROS.

One look tells everyone you've graduated from the low-price field



Yet you can own a big super-powered Mercury for less than 13 models of the low-price 3*

The neighbors will think that you got a raise—when actually you'll be saving money!

For example, on first cost. You can buy a big 188-horsepower Mercury Custom 6-passenger Sedan for less than 13 models in the so-called low-price field.* And that's only the beginning of what you save . . .

Our record sales mean record allowances. Mercury is one of the year's hottest cars. Our quick turnover, high volume, lets us give you more for your present car.

You save on future resale value. Mercury consistently leads its field for resale value according to independent market reports.

Remember, too, that Mercury's famous economy and stamina keep operating costs low—help make Mercury one of the lowest-cost cars in its class to own.

In Mercury's lowest-cost Custom series you've got 4 models to choose from. For a few dollars more you have your choice of 7 more models in the Monterey and 198-horsepower Montclair series.

We invite you to stop in at our showroom to see and try the model that fits your needs and budget best.

*Based on comparison of manufacturers' suggested list or factory retail prices, using a Mercury Custom 2-door Sedan (not illustrated).

NO OTHER CAR OFFERS YOU BIGGER REASONS FOR BUYING IT

- Exclusive styling shared by no other car
- New SUPER-TORQUE V-8 engines on every model (188 or 198 horsepower) —backed by Mercury's record of producing V-8 engines exclusively
- 4-barrel vacuum carburetor on every model at no extra cost
- Dual exhausts at no extra cost on all Montclairs and Montereys
- Ball-joint front suspension for easier handling
- Unique anti-fouling high-compression spark plugs
- Consistently highest resale value in its field

IT PAYS TO OWN A **MERCURY**—FOR FUTURE STYLING, SUPER POWER

Sterling Motor Company

PHONE 197

STERLING CITY, TEXAS

SPORTING GOODS

FISHING TACKLE GUNS, AMMUNITION, CAMPING, etc.
C. C. AINSWORTH

PHILLIPS 66 STATION
 Phone 148

FIRESTONE TIRES
 Sterling City, Texas

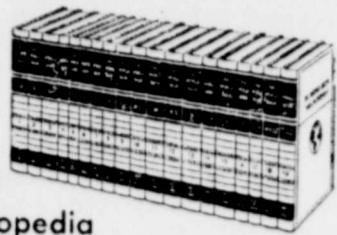
BEST for children
BEST for grown-ups!

WORLD BOOK

America's Leading Family Encyclopedia

World Book is the *only* reference work especially designed to fit the exacting needs of children and adults, too. This is one more reason why more families buy World Book than

any other encyclopedia. For more information, write or phone . . .



Mrs. B. J. Crossno, Phone 134

O. T. Jones, Phone 103

Ed Nunnally, District Manager

237 N. Magdalen St.

San Angelo, Texas

Phone 4540

Attend Humble Banquet In San Angelo

Humble dealer John Hamilton took coaches W. L. Young and E. B. Hosca to the Humble Kickoff Banquet in San Angelo last week. The affair was held in the ballroom of the Cactus Hotel. Following the banquet highlights of games of the Southwest Conference Football games were shown (film) to the dealers and their guests.

Wayne G. Mulloy, son of Mr. and Mrs. L. B. Mulloy of Sterling City, formerly of Longview, has been accepted in the University of Texas Medical School at Galveston. Wayne completed his pre-med at Baylor where he was a member of the A.E.D. pre-medical honor society. He is a member of the Nu Sigma Nu fraternity in Galveston.

Mr. Mulloy is chief engineer for American Oil Co., Sterling station.

THANK YOU

I want to thank each and everyone for the lovely flowers and cards that I received while in the St. John's Hospital. Your visits to the hospital to see me were appreciated so much.

May God bless you all.

Mrs. Martin Brown

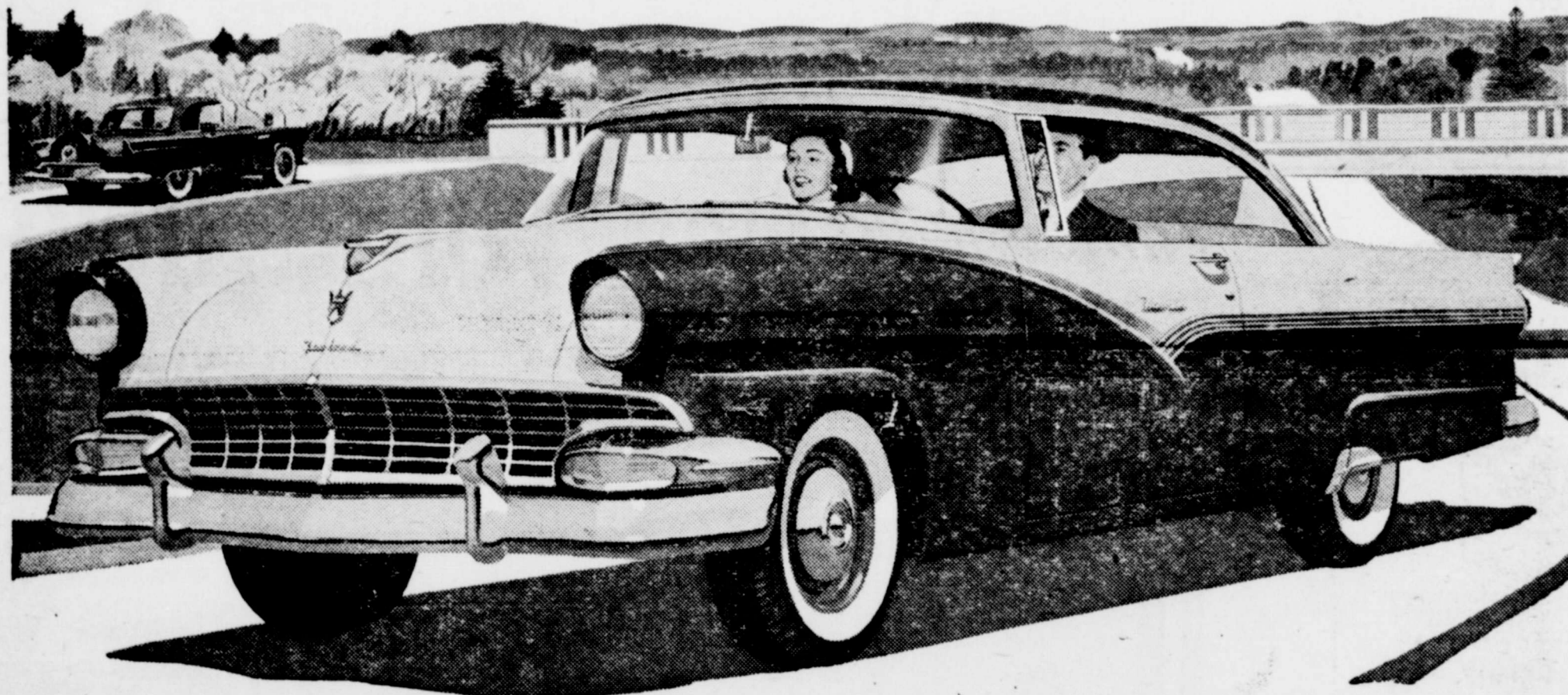


SEDAN IN THREE SERIES—The four-door sedan, traditional American family car, is offered in three series by Ford for 1956—Fairlane, Customline and Mainline. Above is the Customline four-door in one of the 21 two-tone paint combinations offered on models which will be displayed by dealers Friday, September 23. A lower roof line, restyled grille and parking lamps, a new design of body side moldings are among 1956 Ford appearance changes. Thunderbird Y-8 engines in Fairlane models develop 202 horsepower for Fordomatic drive, or 200 hp for overdrive or conventional drive. In the Customline and Mainline, Y-8 engines produce 176 hp for Fordomatic, or 173 hp for overdrive or conventional drive. The 137 hp Ford I-Block six also is available in all models with all tr.

Advertising Doesn't Cost—It PAYS

Here Today! NEW '56 FORD!

The fine car at half the fine car price!

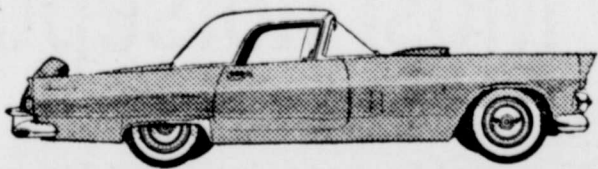


With **new** 202 h.p. Thunderbird Y-8



New 202-h.p. Thunderbird Y-8 engine is available in Fordomatic Fairlanes and Station Wagons. In Fordomatic Customlines and Mainlines you can have the 176-h.p. Y-8. And Ford's new 137-h.p. Six is available in all 18 models.

...with **new** Thunderbird styling



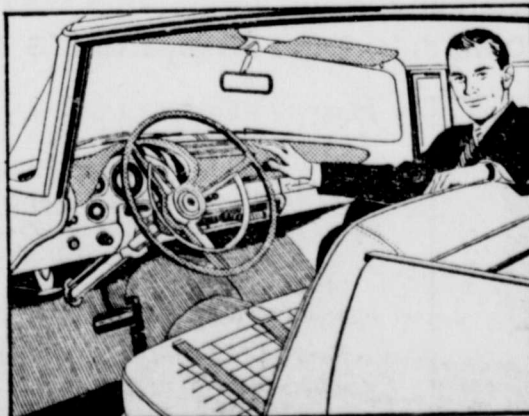
The new '56 Ford looks like the Thunderbird! You'll find the same graceful lines . . . the same long, low silhouette . . . the same dashing appearance . . . styling which helped the fabulous Ford Thunderbird to win America's heart.

...with **new** Lifeguard Design

For '56, Ford brings you the greatest safety news in a generation . . . Lifeguard Design. In cooperation with universities, medical associations and safety experts, Ford learned the cause of most serious injuries in accidents. To provide extra protection against these hazards Ford developed the new Lifeguard features described at right.

But there is still more wonderful news! Ford brings you Thunderbird power in a modern deep-block Y-8 . . . Thunderbird beauty, too . . . rich new interiors . . . quality throughout.

See it . . . try it . . . you'll agree the '56 Ford is the *fine* car at half the fine car price.



Ford's new Lifeguard features are: a new deep-center design steering wheel, to act as a cushion in event of accident . . . double-grip door locks to reduce chance of doors opening under shock . . . optional padding for control panel and sun visors to help lessen injuries . . . optional seat belts to help keep occupants in seats.

**Come in . . . See the
 new '56 FORD
 today**

Sterling Motor Company

PHONE 197

STERLING CITY, TEXAS

LEGAL NOTICE
The State of Texas)
County of Sterling)

NOTICE OF SALE
By virtue of an Order of Sale issued out of the District Court, 51st Judicial District, of Sterling County, Texas, on a judgment rendered in said Court on the 16th day of May, 1955, in favor of E. F. McEntire and against J.S. Bade and L. H. Bade, in the case of E. F. McEntire against J. S. Bade and L. H. Bade, No. 375 in such Court, I did on the 7th day of September, 1955, at 11 o'clock A. M., levy upon the following described tract and parcel of land situate in the County of Sterling, State of Texas, as the property of said J.S. Bade and L. H. Bade, to wit:

All of the South 50 feet of Lots Nos. 1, 2 and 3, in Block No. 14, in the town of Sterling City, Texas, according to map or plat of said town recorded in Vol. 1, page 476, Deed Records of Sterling County, Texas, together with all buildings, improvements and fixtures located thereon and therein, and being the Frozen Food Locker Plant in Sterling City, Texas; and on the 4th day of October, 1955, being the first Tuesday of said month, between the hours of 10 o'clock A.M. and 4 o'clock P. M., on said day, at the courthouse door of said county, I will offer for sale and sell at public auction, for cash, all the right, title and interest of the said J. S. Bade and L.H. Bade in and to said property.

DATED at Sterling City, Texas, this 7th day of September, A. D. 1955.
(Signed) W.O. Green, Sheriff,
Sterling County, Texas

STERLING CITY HIGH SCHOOL FOOTBALL SCHEDULE

Sept. 23—Knott There
Sept. 30—Jayton at Home
October 7—Open
October 14—Flower Grove at Home
October 21—Garden City at Home
October 28—Water Valley There
Nov. 4—Forsan at Home
Nov. 11—Christoval There
Nov. 18—Mertz on at Home.
(The last 5 games are conference)
W.L. (Diddle) Young—Coach
E. B. Hosea, Assistant Coach

Two Operators



Call 123 for Appointment
MRS. RUBY GRUNY
MRS. RUBY DRENNAN
Vanity Beauty Shop
Sterling City, Texas
(All appointments not cancelled 1 hour before time to be charged for)

HIGHEST CASH PRICES For DRY
BLACKEYED PEAS
AND OTHER COW PEAS
Buying West Texas Peas Since 1944
DORMAN & COMPANY
2211 Ave. G P.O. Box 308
Lubbock, Texas

R. T.
Caperton Insurance Agcy.
Motors Insurance Corp.
ALL KINDS AUTO INSURANCE
STERLING CITY, TEXAS

Realtors -- Land Loans
YOUR LISTINGS APPRECIATED
Rentals, Homes, Land
Sterling Finance Co.
Po. O. Box 668, Sterling City, Tex.

The Texas Co.
Petroleum and its
Products
HENRY BAUER, Jr.
Consignee
Phone 157

What's Doing in the Churches

FIRST METHODIST CHURCH
L. S. Dubberly, Pastor
Church School 10:00 a.m.
Morning Worship 11:00 a.m.
Evening worship 7:30 p.m.

CHURCH OF CHRIST
Wayne Zuck, Minister
Bible School 10:00 a.m.
Morning Worship 11:00 a.m.
Young People's Class 7:15 p.m.
Evening Worship 8:00 p.m.
Tuesday, Ladies Bible Class 9:30 a.m.
Wednesday, Mid-Week Bible Study 8:00 p.m.

FIRST BAPTIST CHURCH
Claude B. Stovall, Pastor
Sunday School 10:00 a.m.
Morning Worship 11:00 a.m.
B. T. U. 6:30 p.m.
Evening Worship 7:30 p.m.
Evening Worship 8:00 p.m.

FIRST PRESBYTERIAN CHURCH
Baxter D. D. Greer, Pastor
Sunday School 10:00 a.m.
Morning Worship 11:00 a.m.
Evening Worship 8:00 p.m.

PRESBYTERIAN CHURCH
Rally Day Dinner
"The Spirit of Rally Day" will be featured in all services at the First Presbyterian Church Sunday, September 25, according to announcement by Dr. Baxter Greer. Sunday School will meet at 10 a.m. Regular preaching services at 11 a.m. and 8:00 p.m.

The Women of the Church will sponsor a dinner in the Fellowship Hall of the church at noon. Mrs. Fowler McEntire, Mrs. Pat Boatler and Mrs. E. L. Bailey are members of the committee on arrangements.

Plate lunch 85c. Steaks, Sandwiches, Hamburgers and Hot Dogs our Specialty. Carter's Cafe (Adv.)

Rubber Stamps at News-Record

METHODIST CHURCH

Rev. L.S. Dubberly, pastor of the Methodist Church, announces an important change in the time for the evening services. Beginning next Sunday the evening service will begin at 7:30. This change is made in order to make it easier for school children to attend and also the days are much shorter and the nights longer. Beginning October 9 the Methodist Church will have a bulletin with a picture of the church on the front and the church directory on the back.

The Woman's Society of Christian Service begin their study "Introduction to Five Spiritual Classics" on Thursday evening, September 22. This study will be held again on the 26 and 29 and also on October 3 and 6. The study will begin at 7 o'clock and be over by 8:30. Everyone is invited to attend. The official board of the church will meet Sunday evening at 5:45 at which time four members of the board will serve the evening meal. Following the meal the board will conduct the business of the church. The sermon topic for the morning service next Sunday will be "Fixed Points", and the topic for the evening service will be "At the Mercy of the Interpreters."

Quality Job Printing, News-Record

Insurance & Abstracting

Reliable Abstract Work
Fire and Automobile Insurance
DURHAM ABSTRACT CO.
DURHAM INSURANCE AGCY.
Worth B. Durham, Mgr.

How Christian Science Heals

"YOU ARE FREE"
KGKL (960 kc.)
Sunday 8:15 a. m.

School Lunchroom Menus

MONDAY, SEPT. 26
Stew, pinto beans
Combination salad, onion slices
Enriched bread, banana cake
TUESDAY, SEPT. 27
Hamburger steak, kraut
Buttered corn, tomato wedges
Biscuits, Boston cream pie
WEDNESDAY, SEPT. 28
Smothered liver, creamed potatoes
Buttered spinach
Vegetable salad, cornbread
Chocolate drop cookies
THURSDAY, SEPT. 29
Chicken and dressing
Macaroni and cheese
Celery sticks, fruit salad
Rolls, cherry pie
FRIDAY, SEPT. 30
Cheeseburgers, potato salad
Buttered peas, sliced tomatoes
Pumpkin pie

STERLING CITY NEWS-RECORD

JACK DOUTHITT, Publisher

Entered Nov. 10, 1902, at the Sterling City postoffice as second class matter.
PUBLISHED EVERY FRIDAY

SUBSCRIPTION RATES
\$1.50 a year in Sterling County
\$1.75 Elsewhere in Texas
\$2.00 Outside State of Texas

NEWS established in 1890
RECORD established in 1899
Consolidated in 1902

All classified ads, public notices, cards of thanks, legals, and such advertising are charged for at regular rates—2c per word. Display rates are 42c per column inch.



From where I sit... by Joe Marsh

...Makes a Man Healthy, Wealthy—and Tired!

Sandy Peterson's nephew Pete has gone back to college. He worked on Sandy's farm a couple of months last summer to get hardened up for football.

He seemed to enjoy farm life all right—but like most city kids 't took him some time to get used to a farmer's schedule.

Sandy claims that when he went in to wake Pete—on the first morning—the boy looked up startled and asked what time it was. Sandy replied it was four-fifteen. "Gee," Pete murmured, "if we're going to do a day's work tomorrow you'd better get to bed!"

From where I sit, we must have heard a million stories like that. But they show how some people assume their customs are the only proper ones. To most city folks getting up at 4:15 seems odd, because they don't do it. Just like some people don't think enjoying a glass of beer is "right" . . . because they happen to prefer another beverage and haven't waked up to the fact that everyone has a right to his own choice.

Joe Marsh

Copyright, 1955, United States Brewers Foundation

Announcing New Ford Trucks for '56



Exciting new functional styling draws all eyes to the finest trucks on the American road—new Fords!

Now! Most horsepower per dollar!

- NEW! More horsepower in every model**
... up to 26% more! Every engine Short Stroke!
- NEW! Bigger capacities! New Driverized Cabs!**
New Lifeguard safety features!
- NEW! New styling, new "leadership look"!**
Over 280 models, from Pickups to BIG JOBS!



Comparison of strokes shows how much piston travel is saved by Short Stroke engine. Result: less friction, less wear, more usable power.

Now—'56 Ford Trucks give you a choice of seven Short Stroke Y-8's and a Short Stroke Six. Horsepower increases up to 26%. More power to get you rolling faster, save you time all the way! More horsepower per dollar than any other truck line—proved by comparisons of net horsepower and suggested list prices of all trucks!

New Driverized Cabs with full-wrap windshields cut driving strain. New Lifeguard features give you protection you can't get in any other truck! See the new Ford Trucks now, at your Ford Dealer's!

No other truck gives you all of these '56 features

- NEW!** 8-ft. "1/2-ton" Express for bulky loads. Also, 6 1/2-ft. Pickup. GVW 5,000 lbs.
- NEW!** Deep-center Lifeguard steering wheel helps protect driver from steering column. Only Ford has it! No extra cost.
- NEW!** Lifeguard door latches give added protection against doors jarring open in an accident.
- NEW!** 12-volt ignition for better starting, better performance, greater electrical reserve.
- NEW!** "Special" Y-8 engines with exclusive hood air scoop, 4-barrel carburetor and dual exhaust system . . . for extra power and performance!
- NEW!** Tubeless tires run 25° cooler, give extra mileage! Standard on every Ford Truck!
- NEW!** Sodium-cooled exhaust valves in heavy-duty engines operate as much as 225° cooler!
- NEW!** Full-wrap windshield standard on all cabs. New full-wrap rear window at low extra cost.

P.C.A.

ON DISPLAY TODAY—SEE YOUR NEIGHBORHOOD FORD DEALER

Close-out Paint Sale

On Pee Gee Wonder Tone Paint

WHILE IT LASTS

GALLONS Regularly 5.35 on Sale 4.25

QUARTS Regularly 1.60 on Sale 1.20

White and Colors

South Texas Lumber Co.

How To Be At Home With The World

By WILLIAM PARKER McFADDEN
Prominent Interior Decorator and World Traveler

"Souvenir hunting" can be one of the most rewarding—or one of the most wasteful—features of any trip, whether it's 100 or 10,000 miles from home.

The ultimate value of any souvenir you acquire depends on "selective buying"—the purchase of good items which can be worked into your everyday pattern of living.

One of the chief objections to souvenirs—which can mean any object acquired as a reminder or memento—is that people store them in boxes in the backs of drawers. Consequently, they are never reminded of anything, unless it's the presence of a lot of "junk" when they start cleaning out those drawers.

"Selective souvenir hunting" was the objective on a three-month trip around the world to acquire furnishings and art objects for a series of model homes being decorated by McFadden Associates at the 1955 State Fair of Texas.

Articles were brought back to Dallas from Japan, India, Finland, Mexico, Denmark, Hong Kong, Siam, Burma, Spain, Morocco, Java, Bali, Lebanon, Syria and Italy. The various items as used in the State Fair rooms will illus-

trate how you can be "at home with the world" in Dallas, Texas.

One very inexpensive thing used very effectively was a collection of coins from all of these countries. Instead of burying the coins in a closet, we have had them embedded in black plastic trays which form the top of a long coffee table. In this way the trays and coins are in constant use—thus fitting them into a daily living pattern. The same thing could be done with tiles, or with any number of items people usually buy when they are traveling.

Another example is a ceremonial wash basin from Japan. Something like this makes a wonderful conversation piece when used as a salad bowl or centerpiece filled with colorful fruits. Everyone can enjoy it as a "museum display piece."

This is just as true of items you can purchase in a trip to El Paso or Galveston as to Japan or Africa.

The model rooms at the State Fair will be in connection with the new International Center, devoted to exhibits by nine foreign countries. The Center is located in the General Exhibits Building.

Best coffee in town and only 5c. Open 7 days a week. Carter's Cafe and Drive-In Grocery. (Adv.)

FOR SALE—Registered Suffolk bucks. See or write Clyde Barron, Box 118, Lamesa, Texas

Rubber Stamps at News-Record.

We still serve the best steaks in town, but the pretty girls are gone. Still have a mighty good cook, however, at Carter's Cafe, East Highway. (Adv.)

FOR SALE—Concrete Mixer machine for block making. See Will Meyer. T9-30

Anything less is an old-fashioned truck!



Chevrolet Truck Work Styling is well illustrated in these four models ranging from the low Cab Forward and Cameo Carrier at left to the pickup and tractor-trailer unit at right.

New Chevrolet Task-Force Trucks

They're the most modern trucks on the road. If you don't get all the advantages they offer, you stand to lose money on the job today... and again at trade-in-time!

Most modern power—V8 or 6

In most new Chevrolet truck models, you have your choice of V8* or 6. Chevrolet's new truck V8's have the shortest stroke of any V8 in any leading truck! That means less friction and wear per mile. The valve-in-head sixes are new editions of the engines that have long been famous as the "work horses" of the truck world! And all Chevrolet truck engines have a modern 12-volt

electrical system for quicker starting, better ignition and a greater electrical reserve.

The truck driver's "dream cab"

That's the closest we can come to describing the new Flite-Ride De Luxe cab. What truck driver wouldn't go for features like these: panoramic windshield for wider, safer vision; concealed Safety Step that stays clear of snow, mud and ice; High-Level

ventilation that provides a more constant supply of outside air in all kinds of weather.

Most modern truck styling

We call it Work Styling—and you get it only in new Chevrolet trucks! Two fresh, functional styling treatments are offered—one for light- and medium-duty models, another for heavy-duty models. Your Chevrolet truck will do your job better—and look better doing it!

Most modern features throughout

Advanced suspensions, more rigid, ladder-type frames! Tubeless tires standard on 1/2-ton models! Come in and see all the ways you're way ahead with new Chevrolet trucks!

*V8 standard in L.C.F. models, an extra-cost option in all others except Forward Control models.



Year after year, America's best selling truck!

R. T. Caperton Chevrolet Co.

PHONE 35

STERLING CITY, TEXAS

City Barber Shop
 H. F. MERRELL, Prop.
 "Satisfaction Guaranteed"

Palace Theater
 Fri., Sat., Sept. 23-24
"RUN FOR COVER"
 James Cagney, Viveca Lindfors
 Sun., Mon., Tues., Sept. 25-26-27
THREE FOR THE SHOW
 Betty Grable, Marge & Gower Champion
 Wed., Thurs., Sept. 28-29
20,000 LEAGUES UNDER THE SEA
 Kirk Douglas, James Mason
 Fri., Sat., Sept. 30, Oct. 1
"HELL'S ISLAND"
 John Payne, Mary Murphy

PTA CARNIVAL PLANS MADE
 The PTA executive committee and teachers met Tuesday night to plan for the 1955 Hallowe'en Carnival. This year's carnival will be held on the evening of Monday, October 31. The operation of booths in the school will open the affair, followed by the coronation of high school and elementary school kings and queens. The evening will be climaxed by an over-all school program.

The money taken in during the carnival will be used by the PTA to carry out its projects for the year.

After the meeting on carnival plans, the PTA executive committee held a special session to approve program plans for the year. It was decided to change the time of the next regular meeting to 7:30 p.m., October 13, instead of the 3:00 p.m. time originally scheduled. Refreshments will be served.

SOCIAL SECURITY FOR FARM AND RANCH EMPLOYEES
 Since January 1, 1955, any farm (or ranch) employee, regardless of age, who is paid as much as \$100 in cash wages by any one farm employer during a calendar year is covered by social security. This means that the farm employer, who has such an employee, will deduct a 2% social security tax from the cash wages he has paid the employee and he will contribute an

equal amount. He must report the amount of cash wages that he has paid to each such employee and send the total tax to the District Director of Internal Revenue.

The first social security wage information returns covering farm employees, together with the payment of the social security taxes due, should be sent to the District Director of Internal Revenue not later than January 31. Large farm operators can get complete information about taxes from the District Director of Internal Revenue.

Rubber Stamps at News-Record

We strive to please with Courtesy and Merchandise—"The Best Service Possible Is Our Pledge."
 Carter's Drive-In Grocery & Cafe.

FOR YOUR EVERY INSURANCE NEED See—
D. L. HARALSON, Jr. AGENCY
 I Write All Forms of Insurance Including the Following:
 Personal Property Life Polio Compensation
 Public Liability Theft Hospitalization Accident & Health
 Automobile Bonds Cancer
 Fire Burglary Property Damage
 Phone 115 or 94
 25% Less Than the Texas Published Rate on Most Classes of Fire Ins.

STATE FARM
 Your Car
 Your Home
FARM
 Your Life
INSURES ALL 3
 Sometimes it's smart to put all your eggs in one basket... especially when it's your insurance protection. You'll enjoy the convenience of having all your personal insurance in the hands of one person who knows your individual needs. Call me anytime.
 It pays to know your STATE FARM Agent
G. C. MURRELL
 Phone 30 or 199 Sterling City, Texas

WORD NOT "HOW" — IT "WOW"
 WHEN YOU SEE
THE BIG M
 THE BIG NEW 1956 MERCURY on display THUR., SEPT. 29TH

SPECIALS Sat. & Mon.

Swiftining gives you digestibility... plus!
 FINER CAKES! FLAKIER PIES! MORE NUTRITION!
 Swiftining 3 LBS. **.79**

Libby's Peaches
 303 Size Cans
2 for 45¢

Skinner's Macaroni or Spaghetti
 2 boxes 25c

HEINZ CATSUP
 2 14-oz. bottles **49¢**

Sun Spun Pork & Beans
 2 Cans for **19¢**

Bright & Early Tea
 1-4 lb. pkg. **19¢**

Green Beans Kimbell's Whole
 2 cans **45¢**

Chopped Beef
 Swift's 12-oz. can **29¢**

Homogenized Milk
 2 half-gals. **1.00**

Drinks 12 Bottle Carton **45¢**

We feature **SWIFT'S** Brands of Meat
 Chuck Roast # **49c**

Beef Ribs lb. **25c**

Parkay Oleo **29c**

Assorted Lunch Meats
 1 lb. **49¢**

Swift's Premium Franks lb. **45¢**

Diamond Brand Small Cans
 Tomatoes 3 Cans **25¢**

Flour Gold Medal 25 lb. Sack **1.79**
 10-lb. sack **79¢**

Jello 3 **25c**

CHAPPLE'S

"WE APPRECIATE YOUR BUSINESS"

CATT AS G
 FO
 of m
 the c
 days
 at Fo
 Inn
 areas,
 from
 eas o
 cause
 sharp
 Thi
 ter ki
 invad
 selling
 All
 50 ce
 kinds
 high
 Cho
 lackin
 range
 good
 sold
 grade
 \$16 b
 Fat
 and c
 \$7 to
 \$14.
 Goc
 sold
 mon
 \$12 t
 \$12.
 Sto
 \$21, a
 \$19 d
 sold f
 cows
 packe
 to \$11
 SHEE
 FAT
 Sma
 opene
 Mond
 choic
 and c
 aroun
 to \$1
 of m
 from
 of 55
 \$16.50
 from
 sold f
 aroun
 to \$5
 129 p
 to th
 STOC
 SOU
 Rec