

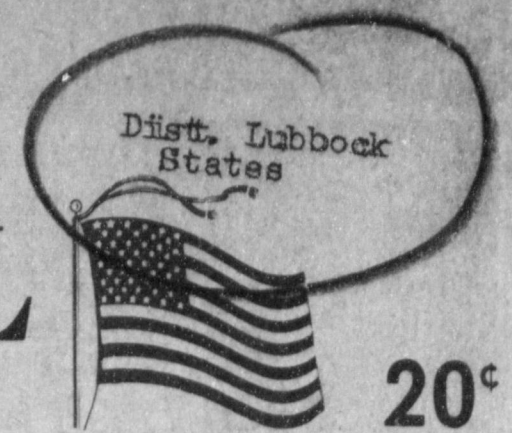
**WEATHER**

	Hi	Lo
February 10	27	10
February 11	58	15
February 12	51	25
February 13	52	23
February 14	59	26
February 15	70	31
February 16	64	32
February 17	73	32

The Foreman Co.  
Box 68  
Muleshoe, Texas 79347

# MULESHOE JOURNAL

*'The Community of Opportunity-Where Water Makes the Difference'*



Volume 59, No. 7

10 Pages Today

Published Every Thursday at Muleshoe, Bailey County, Texas 79347

Thursday, February 18, 1982

## Lazbuddie FFA Holds Annual Stock Show

### Board Turns Down New Tax Exemption



Youth skating will be hosted by the FFA Boosters Friday night, February 21, from 7-10 p.m. at the Bailey County Coliseum.

W.I.F.E. (Women Involved in Farm Economics) plan an Emergency Crisis Meeting tonight, Thursday, at 7 p.m. in the Muleshoe State Bank community room.

Joan McCray said the meeting is open to the public, and all interested persons are encouraged to attend.

Joe Tarter of Lazbuddie has Duroc hog entries at the Southwestern National Duroc Congress to be held at the Agricultural Exhibit Building, Arkansas City, Ks. on February 25-27.

Tarter will join other Duroc breeders from all parts of the nation for this National Duroc show and sale.

Jeff Jesko, Lazbuddie FFA member, showed the first place lightweight Red Angus Steer at the San Antonio Livestock Show and Exposition last week.

### Muleshoe ISD Hosts Teachers Workshop

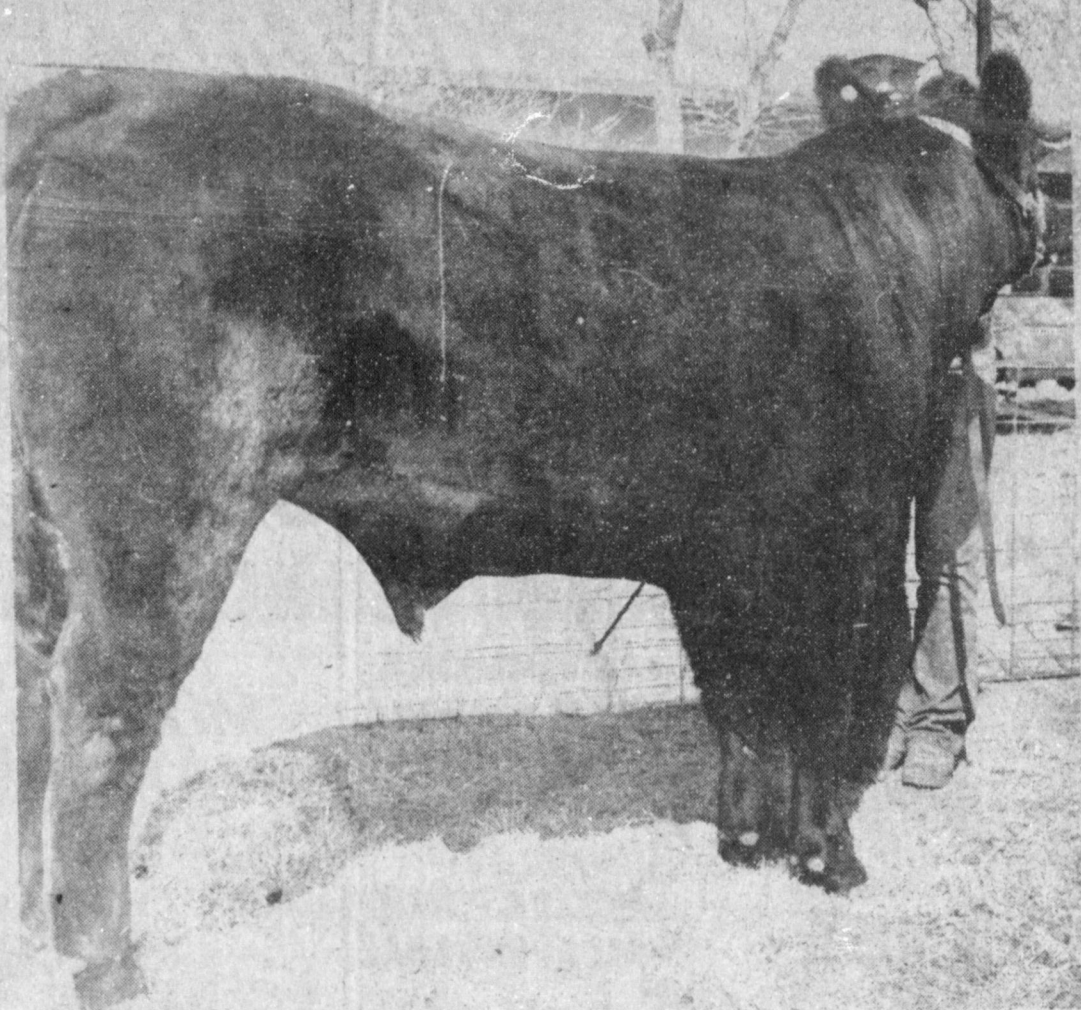
Teachers and teacher aides who work with three and four year old handicapped children met in Muleshoe on Thursday, February 11, for a workshop on *Strategies for Parent Involvement*. This workshop was conducted by Madeline Douglas from Region XVII Education Service Center. She was assisted by Barbara Drake also of the Education Service Center.

Early Childhood Educators from Sudan, Plainview, Olton and Muleshoe were involved in the staff development. All the participants observed in Amy Gilliland and Nancy Kidd's classroom at Dillman Elementary School. The remainder of the workshop was conducted in the parlor of 16th and Ave-Cont. Page 6, Col. 2

### Spot Cotton Market Trading Slows

Trading in the Lubbock spot cotton market slowed from the previous week's moderate pace, according to Mack Bennett, Area Director at USDA's Marketing Services Office in Lubbock. Grower-owned supplies from 1981's record crop were heavy. Trading quickened late in the week as cotton shippers looked to March delivery dates and started filling commitments, Bennett said.

Growers with qualities not in demand moved cotton into Commodity Credit. Cont. Page 6, Col. 5



**GRAND CHAMPION STEER**--Phillip Jesko showed a steer belonging to his brother, Jeff Jesko, to the Grand Championship of the Lazbuddie FFA Livestock Show held at Lazbuddie last Saturday, February 13. This steer also placed first in its class.



**GRAND CHAMPION LAMB**--Sean Mason took Grand Champion honors with his Hampshire lamb Saturday, February 13, in the Lazbuddie Livestock Show. Sean placed first in his class also.

### Muleshoe FFA, Bailey 4-H'ers Will Participate At Houston

4-H members from Bailey County and FFA members from Muleshoe, will be participating in the 1982 Houston Livestock Show and Rodeo, February 20-March 7. With more than 29,000 expected livestock entries, the Golden Anniversary Houston Show will once again be the largest livestock show in the world.

Those exhibiting livestock for the Muleshoe FFA Chapter are:

Michael Barrett, Sonny Bayless, Cheyenne Bickel, Lisa Black, Joey Bruton, Lynn Copley, Kim Farmer, Lance Free, Tamara Gilliland, Jerry L. Gleason, Beth Harmon, John Houston, Craig Hunt, Eddie Johnson, Todd Jones, Jeff Kline, Pat LeFebre, Robin Moore, Kellie Overman, Earl Parish, Kay Lynn Prather, Michelle Stevenson, Casey Stewart and Ray Vinson.

Muleshoe and Bailey County 4-h exhibitors are:

Sherri Bessire, Todd Bessire, Russell Brown, Heath Burleson, Julie Claunch, Rhonda Dunham, Jacinda Gleason, Jay Gleason, Jerry Gleason, Jerry Bob Graves, Wes Hanks, Alan Harrison, Polly Harrison, Zanna Huckaby, Holly Huckaby, Staci Kirby, Gwenna Kay Morrison, Sharla Morrison, Donae Parker, Gena Pearcey, Dusty Rhodes, Chad Robberson, Jamie Robberson, Jeanine Robertson, Milti Robertson, Danny Seales, Darin Shaw, Joni Suddeth, Colin Tanksley, Tracy Tunnell, Belinda Wheeler, Jamie Wheeler, Jodie Wheeler, Wade Wheeler, Chris Young and Greg Young.

Muleshoe FFA youth who will participate in the Dairy Calf Scramble are Chris Hopkins and Carlos Carmona.

"The 1982 Show offers spectators a unique opportunity to see some of the finest livestock ever and it's all gathered under one roof," said Assistant General Manager Don Jobs, Jr.

The Houston Show also Cont. Page 6, Col. 5

### Dimmitt Downs Mules, Mulettes

The Muleshoe Mulettes played the Dimmitt Bobbies in Muleshoe last Friday night, losing to them at a score of 53-39. The Mulettes trailed in both the first and second quarters by six or seven points. However, following half-time, the Bobbies began to put more distance between and ended the fourth quarter with the final score of 53-39.

Denise Wilson led the Mulettes scoring with 18 points. The next high scorer was Kristie Henry with seven points. Others adding to the total points tallied for the Mulettes in-

### Homestead Option Not Granted

Monday night, members of the Muleshoe Independent School District Board of Trustees found a full agenda to consider.

Occupying much of their time and consideration was a possible "homestead" tax exemption; contracts for school personnel and proposals for improvement of the school system.

Turned down by the members of the School Board was an option of granting additional homestead exemptions. The following reasons were given for turning down the option of additional exemptions which would have been provided through Article VIII, Section 1(e).

(1) The "exemption" is actually shifting of the tax burden to:

- (a) Nursing Homes - which would increase the cost of care to the elderly.
- (b) Business - who then would pass the additional costs on to customers, particularly pharmacies and food stores.
- (c) Rental Properties - which would increase the cost of housing to those unable to purchase a home.
- (d) Industry and Utilities

### Blood Drive Scheduled February 19

Due to inclement weather the last blood drive only drew 10 people to donate blood here in Bailey County. The United Blood Services has scheduled another blood drive to be held on Friday, February 19 from 3 p.m. to 6:30 p.m. at the West Plains Medical Center.

United Blood Service is a part of a system of 19 non-profit community blood centers which supply blood needed by over 800 hospitals throughout the United States. The Lubbock center serves a 22 county area and 35 hospitals in the South Plains and in Eastern New Mexico. Current requirements are between 1800 and 2000 units of blood per month.

The increased demand Cont. Page 6, Col. 1

which would pass the additional costs on to customers.

(2) The minimum \$5000 exemption would eliminate all taxes on some homesteads, particularly mobile homes.

(3) The minimum \$5,000 exemption would often eliminate all taxes on some homesteads for school tax purposes because of the freeze on the increase in taxes.

(4) The exemption would require an increase in the tax rate to retrieve the taxes lost from homesteads which could result in a tax referendum to roll back the taxes.

(5) One of the largest services of early income, in the form of taxes paid from escrow accounts of lending institutions on homes, would be drastically reduced.

(6) The reduction in the Cont. Page 6, Col. 1

### Heart Association Plans Radio Day

The Bailey County unit of the American Heart Association met at the Corral, Friday, February 5, at noon for the regular monthly meeting.

Lloyd Haire, president, presided and reports were given by the secretary - treasurer and committee chairman.

Laura Seales, campaign

### Band Boosters Will Sponsor Volleyball

Lazbuddie Band Boosters are sponsoring a Volleyball Tournament, March 18, 19 and 20 in the Lazbuddie High School gym.

Volleyball teams may contact Jerry or Louise Engelking by March 10, deadline for all entries. Glenda Dale, Betty Bur-

Cont. Page 6, Col. 2

The Lazbuddie FFA Chapter held their school stock show last Saturday, February 13, beginning at 1 p.m. on the Lazbuddie School Ag grounds. Judges for the show this year were Joe Womack and Jay Blackburn. Most of the ag students who participated in this show will be showing at the county show next weekend, and then on to the bigger shows in Houston.

In the sheep division, the big winners were: Grand Champion, Sean Mason with a medium wool Hampshire and Reserve Champion, Sheldon Mason with a medium wool Suffolk.

Taking Grand Champion Steer honors was Jeff Jesko (shown by Phillip Jesko) and the Reserve Champion steer belonged to Kira Gregory.

In the swine division, Casey McBroom took the Grand Champion honors with a lightweight duroc and Russell Redwine took Reserve honors with his medium weight barrow.

An adult showmanship class was held following the judging of the animals. Thirteen men participated in the class, which was

judged by Sean Mason, Terry Jesko, Casey McBroom and Joe Dan Tarter. This event proved to be, by far, the most interesting of the day. The winner was Gene Paul Jarman, who showed a sheep that actually zipped and unzipped his jacket. The award for this honor was a frozen, silver-glazed "cow pattie." Jarman, however, took it all in good humor and this event topped off the day with everyone having a good laugh.

Exhibitor placings for the stock show are as follows:

#### SHEEP FINE WOOL

Placings were one through six as follows:

Terry Steinbock, Ginger Jesko, Wendy Jarman, Terry Steinbock, Wesley Jarman and Marty Mouser.

#### LIGHTWEIGHT MEDIUM WOOL

Placings one through Cont. Page 6, Col. 2

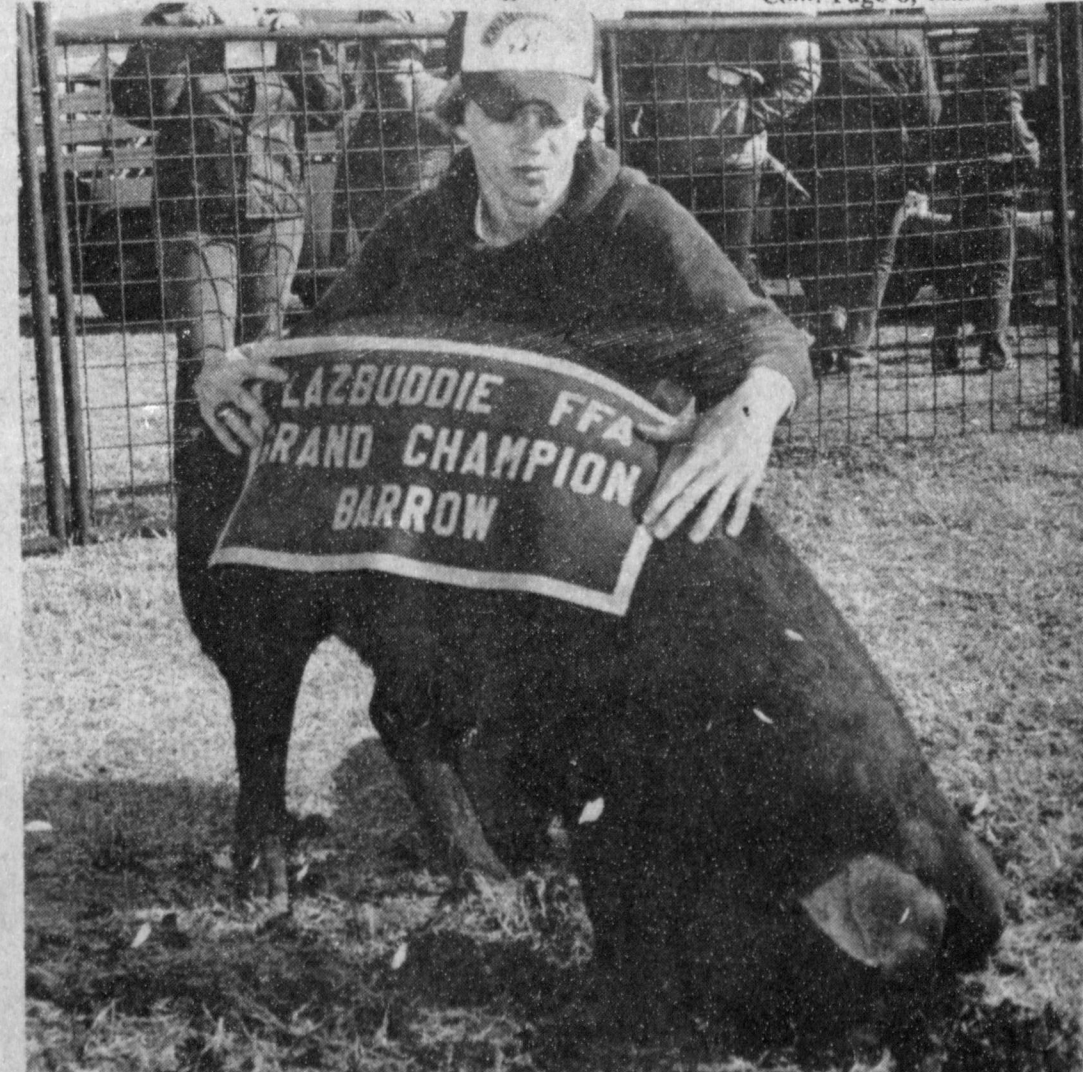
### Local Textbook Committee Selected

Mr. Harold Horne, superintendent of Muleshoe Schools, announces the selection of the local textbook committee approved by the Muleshoe School Board. This committee will evaluate and recommend books to be adopted for use in the local schools for the 1982-83 school year.

The subject areas for which textbooks will be selected are kindergarten, elementary art, and social studies grades 4-6. High school subject areas are speech, math, physical science, geology, Spanish I, II, III, homemaking, drafting, graphics, industrial art and power systems, and general woodworking.

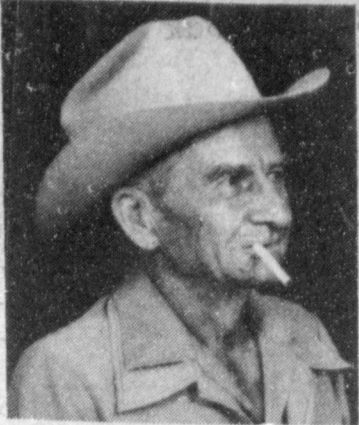
Members of the committee are Virginia Bowers, Diane Skipworth, Bill Taylor, Charles Brewer, Fred Mardis, Gayla Wagnon, Kerry Moore, Tom Smith, Marilyn Miller, Stephen Johnson, Linda Tanksley, Keith Taylor, Wayland Ethridge, Elizabeth Watson, Milton Oyler, and Harold Horne, superintendent.

All teachers are involved Cont. Page 6, Col. 1



**GRAND CHAMPION BARROW**--Casey McBroom showed his Duroc barrow to the Grand Championship in the Lazbuddie FFA Livestock Show. Casey also placed first in his class.





JOHN W. THOMSON

### Thompson Memorial Services Held

Memorial services for John W. Thomson, 74, of Conroe, and a former Muleshoe resident, will be conducted at 2 p.m. today, Thursday, at Ellis Chapel of the Chimes in Muleshoe, with Rev. Bill Kent,

pastor of the First United Methodist Church, officiating.

Masonic Lodge Chapel services will also be conducted for Thomson, who died Monday, February 15 at Doctors Hospital in Conroe. Local arrangements were under direction of Ellis Funeral Home of Muleshoe.

He moved to Muleshoe

from Ingleside, Tex. in 1941 and moved to Conroe six years ago.

John W. Thomson was born December 26, 1907 in Lawton, Okla. and was a farmer and welder. He was married to Ada Alexander on August 28, 1930 in Texline. He was a member of the Muleshoe Masonic Lodge, the Scottish Rite, York Rite and the Mont-

gomery Eastern Star Lodge.

His survivors include his wife, Ada; two sons, George L. Thomson of Greenville and James E. Thomson of Fredericksburg, Va.; three daughters, Mrs. Carl Crow of Canyon; Mrs. Pat Hicks of Arizona City, Az. and Mrs. Kaye Long of Salt Lake City, Utah; one sister,

Mrs. Ed Johnson of Houston; one brother, Courtney Thomson of Commerce; 10 grandchildren and five great-grandchildren.

In lieu of flowers, the family suggests memorials to a favorite charity or to the Masonic Home and School in Fort Worth.

Neither nation nor people are equal; but they should have free and equal opportunity.

### ONE MINUTE SPORTS QUIZ

1. Who won the Texas Open Golf Tournament?
2. Craig Morton quarterback for what pro football team?
3. Who won the LPGA Portland Ping Team Championship?
4. Identify Eric Heiden.
5. Citation was the 1948 Triple Crown Winner, name the next one.

Answers To Sport Quiz

1. Bill Rogers.
2. Denver Broncos.
3. Donna Caponi and Kathy Whitworth.
4. A speed skater who won 5 gold medals in the 1980 Olympics.
5. Secretariat in 1973.

Boot & Shoe Repair  
111 E. 30th

### Haley Memorial Services Set For Sunday

Memorial services for Mrs. Glenda Haley, 48, of Bandera, will be held at 2 p.m. Sunday, February 21, in Chapel of the Chimes with Rev. Dick Tarr, pastor of First Christian Church of Muleshoe, officiating.

A memorial service was held Tuesday, February 16 in Bandera and was conducted by Ran Vinson of Austin, former pastor of the First Christian Church of Muleshoe.

Mrs. Haley died Sunday, February 14 in a San Antonio hospital after a short illness.

She was born July 14, 1933 in Earth, attended the Y-L School and graduated from Muleshoe High School. She married Allen Haley May 12, 1954 in Clovis, N.M. The Haleys lived in the Pleasant Valley community and moved to Muleshoe in 1962. In 1967 they moved to Kingroy, Australia where they were engaged in ranching for a number of years. They returned Kerrville in 1974 to make their home and later moved to Bandera.

While living in Muleshoe, she was active in PTA, 4-H and Christian Women Fellowship of the First Christian Church.

Survivors include her husband, Allen Haley, of Bandera; one daughter, Mrs. Sandra Harclerod of Houston; her mother, Mrs. Sena Stevens of the Pleasant Valley community; a sister, Mrs. Sheryl Borden of Portales, N.M. three brothers, Roland Stevens of Dimmitt, Duane Stevens of Muleshoe and Rick Stevens of Houston.



MRS. GLENDA HALEY

"Here's #12 of my 17 reasons why H&R Block should prepare your taxes."



### REASON #12: The changing tax laws.

The Economic Recovery Tax Act of 1981 affects every taxpayer, regardless of income. Your H&R Block tax preparer can show you how the new tax law helps you save money on your 1981 taxes, and point out changes that could affect your taxes in 1982.

**H&R BLOCK**  
THE INCOME TAX PEOPLE

17 reasons. One smart decision.

224 W. 2nd  
272-3332  
Weekdays 9-6  
Saturday 9-5

## WHITE'S CASHWAY SUPERMARKET

MULESHOE, TEXAS  
Double Gunn Bros. Stamps Every Wednesday & Saturday  
Open Monday - Saturday 7:30 A.M. to 9:00 P.M.  
Sunday 12:00 P.M. to 9:00 P.M.  
WE WELCOME WIC CARDS & USDA FOOD STAMPS



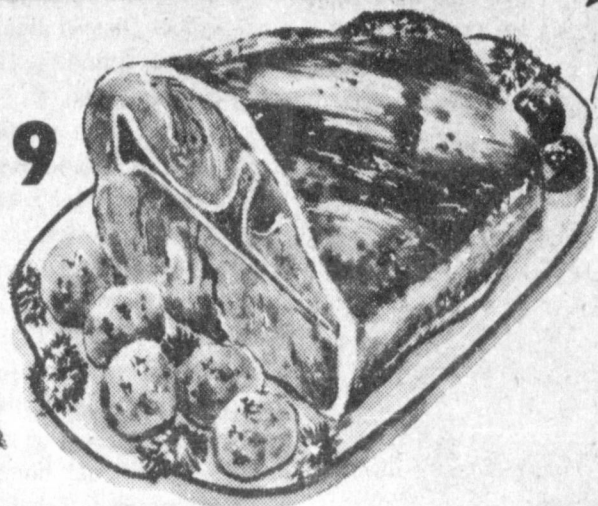
# Washington's Birthday



# SALE

PORK BUTT ROAST..... LB. \$1<sup>19</sup>

PORK BUTT STEAK..... LB. \$1<sup>29</sup>



OWEN'S PURE PORK SAUSAGE 2 LB. \$2<sup>99</sup>  
OWEN'S PURE PORK SAUSAGE 1 LB. \$1<sup>59</sup>  
RED RIND LONGHORN CHEDDAR CHEESE..... LB. \$1<sup>98</sup>

OWEN'S PURE PORK SAUSAGE 2 LB. \$2<sup>99</sup>  
OWEN'S PURE PORK SAUSAGE 1 LB. \$1<sup>59</sup>  
RED RIND LONGHORN CHEDDAR CHEESE..... LB. \$1<sup>98</sup>

### ARMOUR LUNCHMEATS

- BEEF BOLOGNA
  - MEAT BOLOGNA
  - COOKED SALAMI
  - SPICED LUNCHEON
  - LIVER LOAF
  - PICKLE & PIMENTO LOAF
  - JALAPENO LOAF
- MIX OR MATCH 69¢  
VAC PAC 6 OZ. PKG.

KRAFT VELVEETA 12 OZ. SLICES \$1<sup>49</sup>

HAM OWEN'S SPRING CREEK FARM FULLY COOKED BONELESS AVG. WT. 1 1/2 TO 3 LB. \$2<sup>59</sup> LB.

GLADIOLA FLOUR 5 LB. 79¢  
25 LB. \$4<sup>99</sup>

SUNNY FRESH EGGS LARGE SIZE CRTN. 79¢

6-32 OZ. DIET OR REGULAR PEPSI \$1<sup>39</sup>

RICH 'N READY ORANGE OR FRUIT PUNCH 1 GAL. JUG 98¢

WHITE SWAN BLEND SHORTENING 42 OZ. \$1<sup>29</sup>

COMSTOCK CHERRY PIE FILLING 21 OZ. \$1<sup>39</sup>

MR. COFFEE COFFEE FILTERS 50 CT. 2/99¢

DEL MONTE MEDIUM PRUNES..... 16 OZ. 89¢  
DEL MONTE RAISINS..... 15 OZ. \$1<sup>39</sup>

WHITE SWAN CRACKERS..... 1 LB. 59¢  
AUTOMATIC DISHWASHER DETERGENT CASCADE..... 50 OZ. \$2<sup>19</sup>

WHITE SWAN BISCUITS..... 8 OZ. 5/51  
ZEE BIG ROLL PAPER TOWELS.. 69¢

IVORY LIQUID..... 22 OZ. \$1<sup>19</sup>  
AMERICAN BEAUTY ELBO RONI!..... 10 OZ. 49¢

RANCH STYLE BEANS 15 OZ. 39¢

FOLGERS FLAKED COFFEE 12 OZ. \$2<sup>19</sup>

WOLF BRAND CHILI 15 OZ. 89¢  
• NO BEANS  
• W/BEANS

Health & Beauty Aids  
SURE ANTI-PERSPIRANT • REGULAR 4 OZ. \$1<sup>98</sup>  
• UNSCENTED CAN

HEAD & SHOULDERS SHAMPOO 7 OZ. TUBE \$2<sup>69</sup>

SCOPE MOUTHWASH 18 OZ. \$2<sup>19</sup>

### Fresh Produce

CALIF. HASS AVOCADOS..... 4 FOR \$1

CALIFORNIA CARROTS 1 LB. BAGS 3 FOR \$1

FINE FOR BAKING POTATOES..... 4 FOR \$1

TEXAS RUBY RED GRAPEFRUIT 4 LBS. \$1  
RED DELICIOUS APPLES EXTRA FANCY LB. 49¢

ARIZONA FRESH GRM. ONIONS 5 BUNCHES \$1

### Frozen Foods

BIRDSEYE BROCCOLI..... • SPEARS • CHOPPED 10 OZ. 69¢

STILLWELL BREADED OKRA..... 12 OZ. 59¢

PET RITZ DEEP DISH PIE SHELLS..... 2 CT. 79¢



# At Muleshoe Junior High



# FBI

FEEDBAG INFORMATION



## MJH Spotlights Reading Department

This week, MJH is spotlighting the Reading Department. Mrs. Pat Watson is the sixth grade reading teacher, Mrs. Alice Liles teaches the seventh grade reading and Mrs. Barbara Milburn is the teacher in the eighth grade.

A wide variety of reading skills is covered at the sixth grade level, including word meanings, differentiating between fact and fiction, sequencing, reference skills, figures of speech, detecting meaning through context, and a root word study. The classes do a unit on America Folklore, in which they explore our heritage through poems, stories, songs, etc. Students do a personal interview with an older person, asking their about their background, old time remedies, superstitions, stories, songs, etc. These interviews are presented to the class either orally or on cassette tape.

Student book reports are given periodically, both in written and oral form. Students spend two class periods a month in the library, where they have access to books and magazines. The librarian presents a library skills lesson during this period.

Individualized reading is a vital part of the total sixth grade reading program. Students are able to progress at their own speed, on their own level, with individualized help from the teacher. As part of this instruction, each student records himself reading and listens to the playback. Students are also required to turn in creative writing assignments, using a variety of approaches.

The sixth grade reading program stresses comprehension, reading to learn, in many content areas. Reading is the key to so many areas of productivity and students are encouraged to read just for the pleasure it brings.

Under Mrs. Liles direction is the seventh grade reading. Some of the activities include a unit on study skills and study habits to make students aware of how they could improve in that area. The students concentrate on organizing and expressing thoughts in good writing, which includes short discussion answers to questions over reading assignments in-

stead of filling in the blank or multiple choice, etc. They also work on development of good paragraphs through the use of a paragraph formula which contains a topic sentence, major and minor points and concluding sentence.

Other things include poetry writing through imitations of the format of famous poems, and other poetry forms such as diamante, haiku, etc. The seventh graders are focusing on vocabulary and using new words correctly, in work of their own. They also work on comprehension reading skills, which require critical student thinking, such as comparing and contrasting stories, recognizing analogies, and stating themes of selections. They also learn to recognize the figures of speech.

Toward the end of the year when the students are more familiar with the library, they will go into research skills, including taking notes, outlining, bibliography forms, and organizing and writing reports.

Mrs. Milburn stated that a variety of materials are used in the eighth grade reading classes, including textbooks, and paperback books, along with supplemental texts, micro-classics, video tapes, film strips and a classroom library. There are materials structured to provide the transition from the direct teaching of reading to the functional teaching of reading.

Each student's learning is enhanced through a variety of activities allowing students to work individually at their own level and speed. They have just completed a five week individualized program. Also other activities are done in small groups and others with the class as a whole. Total class participation is an important factor because of the stimulation of class discussion. Eighth grade students challenge each other and learn from each other in the total class situation.

Every other Friday they spend class time in the library in an interesting

and worthwhile study.

They are learning the Dewey Decimal System. Mrs. Rudd spends a part of each library period teaching reference skills. Her interest in teaching about the library is really appreciated.

This will be the last year students spend in a formal reading class. It is the belief that with the ability to identify words, comprehend meaning (both literal and implied), the ability to study effectively, and with an interest and love for reading, eighth graders have accomplished a major objective.

### Teacher of the Week

The Student Council chose Mrs. Jean Moore as Teacher of the Week. She is currently teaching sixth grade art. She has been teaching for 20 years, and has taught in Bula, Amherst, Liberty and Fairview. She graduated from Muleshoe High School and received her teaching degree from Texas Tech.

When asked what her favorite part of teaching is, she commented, "I like children and I like working with them. I also enjoy my association with the other teachers and school personnel."

Mrs. Moore is married to C. E. Moore, who is a farmer in the area. They have three daughters, Kathy Flanary, Nogal, N.M., Valerie Daniel, Lubbock, Texas, and Lana Bomer, Muleshoe. They also have five grandchildren, Emily Jean Bomer, five years old; Julie Daniel, three; Taylor Ross Daniel, six weeks; Suzanne Flanary, two years and Charles Flanary, four months old.

Mrs. Moore likes to do oil paintings and enjoys all kinds of sports. She has a major in physical education as well as art. Mrs. Moore also said, "I especially like being with my grandchildren."

The two WAVES were being followed by a lone sailor.

Finally, one of the gals could stand the suspense no longer, and turning to the sailor, ordered: "Either quit following us or get another sailor."

### Teacher Feature

Every week the Junior High Student Council selects a "Teacher of the Week." This week, the teacher is Mrs. Alice Liles. She is currently teaching seventh grade reading and sixth grade English.

She and her husband, Bill, have two children; Caroline, who is 12, and A. J., who is nine. Mr. Liles is the manager of the Federal Land Bank, and his hobby is refereeing football games.

Mrs. Liles went to Texas A&M, Texas A&I, and received her master's degree from the University of Houston. She majored in education.

Mrs. Liles and her family have lived in Muleshoe two years. Before they moved to Muleshoe, they lived in Edna, where she taught reading and language arts.

When asked her comments about Muleshoe, she replied, "Muleshoe has a colder winter than I am used to, so I am having to adjust to the weather. But it is a nice place to live."

### Mules Defeat Bobcats

The Muleshoe seventh grade Mules traveled to Dimmitt on February 8 to play the Bobcats. The outcome of the game ended up with the Mules on top, 34-27.

The high pointer was Norman Perez with 15, followed by Sidney Lewis with 10. The next high pointers were David Medlin with four and Chris Harris and Roy Ramos, each with two.

The Mules play Olton February 15, at Olton.

### Beat cholesterol by exercising instead of dieting

COLLEGE STATION — The author of a controversial scientific study on heart disease suggests that Americans "get off their butts, out from in front of the television and exercise" rather than worry about limiting the intake of fat in their diets.

In a guest lecture at Texas A&M University, Dr. Robert Olson, chairman of the medical school at St. Louis University and president of the American Institute of Nutrition, said the amount of fatty cholesterol eaten by Americans was not an important factor in controlling the levels of cholesterol in the blood, believed to be the cause of clogged arteries.

Olson said the causes of cardiovascular disease, the nation's leading killer, are not clearly known "despite what appears in ladies' magazines and the utterances of the American Heart Association."

### Bobcats Scratch Mullettes

On Monday, February 8, the seventh grade Mullettes played the Dimmitt Bobbies, losing by a score of 35 to 19, Dimmitt's favor.

Debbie Isaac was high pointer for the Mullettes with nine points, followed by Shannon Pelton with five. Jana Brown had four and Lisa Black made one point by a free throw.

Parents and friends are urged to support the basketball teams.

### Mules Kick Wildcats 13-12

The Littlefield Wildcats traveled to Muleshoe Feb. 1 to take on a much improved Muleshoe team. The Mules jumped off to an early lead in the first half, but the Wildcats battled back and at the end of the first half, the score was 13-12, Muleshoe.

In the second half, the score went back and forth between the two teams; it was anybody's ballgame. In the final quarter, the Mules took the lead for keeps with key baskets from Jay Stovall. The final score of the game was 30-27 with the Mules on top.

In the Mules next game, they played a tough Dimmitt Bobcat team. They battled, but just couldn't pull it out. The final score of the game was 37-30 with the Bobcats on top.

High pointer for both games was Jay Stovall with 13 points in each game.

### Sherri's Spots by Sherri Stovall

It's been awhile since you have had our paper. We have been swamped trying to meet our annual deadline, and we finally got the annual mailed. The annual staff can't wait to get the final copy.

Aching muscles are around the corner because the M.J.H. track season starts soon. I hope both the Mules and Mullettes have a great season.

The Mules and Mullettes played their last game on Monday against Olton. The boys traveled to Olton and the girls played here.

The U.I.L. events are coming up. Best of luck to everyone entered.

This week has been a patriotic week. Events included: morning watch, afternoon watch and raising and lowering of the flag. Also, each grade decorated their part of the hall. Tomorrow will be red, white and blue day. There will also be a program in gym with Ricky Rasco and Julie Sanders giving patriotic speeches.

Well, that's about all. See ya next week.

**Muleshoe Journal** USPS #0-820  
 Established February 23, 1924. Published by Muleshoe Publishing Co., Inc. Every Thursday at 304 W. Second St. 449, Muleshoe, Texas, 7947. Second class Postage paid at Muleshoe, Texas, 7947.

**MEMBER 1981**  
**TEXAS PRESS ASSOCIATION**

**EDITOR** L. B. Hall  
**MANAGING EDITOR** James Woods  
**ASSOCIATE EDITOR** Shirley Farner-News  
**EDITORIAL BOARD** Evelyn Harris-Society  
 Holly Milroy-Advertising  
 Ronni Bennett-Bookkeeper

**SUBSCRIPTIONS**  
 Muleshoe Journal and Bailey County Journal: \$10.00 per year in advance.  
 Muleshoe Journal and Bailey County Journal: \$11.00 per year in advance.  
 Muleshoe Journal and Bailey County Journal: \$12.00 per year in advance.  
 Muleshoe Journal and Bailey County Journal: \$13.00 per year in advance.  
 Muleshoe Journal and Bailey County Journal: \$14.00 per year in advance.  
 Muleshoe Journal and Bailey County Journal: \$15.00 per year in advance.  
 Advertising rate card on application.

### Courthouse News

#### WARRANTY DEEDS

Richard N. Johnson to H. D. Hunter Jr. and wife, Helen Hunter: A 100 feet by 140 feet tract of land out of the (NE/4) of Section Thirty-three (33), Block Y, W. D. and F. W. Johnson Subdivision Number Two, Bailey County, Texas.

Kenneth Dale Wilhite and wife, Linda Wilhite, to Kim K. Black and wife, Sheila Renae Black, 0.8 acres out of the SE/4 of Section Twenty-One (21), Block Y, W. D. and F. W. Johnson Subdivision Number Two in Bailey County, Texas.

Zelma Heath Arthur to Jack N. Barbour, the West Forty (40) feet of Lot Number Three (3) and the Easterly Fifteen (15) feet of Lot Number Four (4) in Block Number Four (4),

Stewart Subdivision to the Town of Muleshoe, Bailey County, Texas.  
 Olen L. Dutton and Melvyn B. Dutton to Flossie F. Dutton, Lot Twenty Five (25) in Block Number Eight (8) of the Lenau Subdivision to the City of Muleshoe, Bailey County, Texas.

Bessie Joy Vinson to Dan C. Vinson and Ann Vinson, Lots Seven (7), Eight (8) and Nine(9) of the McCain Addition to the Town of Muleshoe in Bailey County, Texas.

**MARRIAGE LICENSES**  
 Darrell Don Bode, Clovis and Imogene Treider Cox, Muleshoe.

Richard Wayne Kenner and Laura Sue Andringa, both of Muleshoe.

**COUNTY COURT**  
 Mario Arizola Costilla, one year probation, plus \$150 fine and court costs, DWI.

Attorney General Smith: weaker voting act extension.

SAVE TIME, GAS, AND MONEY WITH A 2-WAY RADIO FROM **Edwards Electronics**

Announcing an Electronic Technological Breakthrough in UHF 2-way communication

**GMR-1 by Standard Communications** is now available at the unbelievable price of **\$549.95**

WHILE CURRENT STOCK LASTS! PHONE 806/797-3365 Mickey Conday or Don Holloman Your 2-Way Radio Specialists

2111-30TH ST. • LUBBOCK, TX 79408

## Public AUCTION

### E. H. CHILDS and OATHER DALE

481-9303 825-3544

We are quitting farming and will sell the following described equipment at the Child's Farm located one mile east of Lariat then cross the Railroad Tracks on the Bovina Hiway and turn east one mile. Watch for sign. Fourteen miles Northwest of Muleshoe, Texas on Hiway 84.

**TUESDAY, FEBRUARY 23, 1982 10:30 a.m. CST**

TERMS: CASH - All Accounts Settled Day Of Sale Please Bring Your Own Checkbook

**LUNCH WILL BE SERVED**

<b>TRACTORS &amp; PICKUP</b> 1-1969 John Deere Diesel 4020, Cab & Good Tires, Ready to Go 1-1965 John Deere Butane 4020, Runs Good 1-1978 4440 John Deere, Cab, Air, Duals, Real Clean, 3500 Hrs. 1-4010 John Deere Butane with John Deere 282 Stripper and Triangle Basket 1-1973 John Deere 4430, Air, Duals, Fully Loaded, Nice and Clean 1-1963 Ford 800, Butane, 12 Speed, Good and Clean 1-1958 Ford 800, Gas, Good Shape 1-Old U.T.U. Molene Tractor, Will Run 1-Good 1971 Datsun Pickup, Tool Box, West Coast Mirrors, Good Radial Tires, New Overhaul	<b>FARM EQUIPMENT</b> 1-4 Row 3 Pt. Knife Sled 1-Old Spray Rig 1-5 Row Stalk Cutter 1-4 Row MM Lister 1-3 Pt. Lifter 1-Lot John Deere Cylinders and Hose 1-3 Row John Deere Tool Bar 1-4 Section Harrow 5-John Deere Orchard Shanks 1-Set John Deere Gauge Wheels 1-Lot Swoops, All Sizes 1-Lot Front Wheel Wts. 1-Set H.D. Row Markers 4-John Deere Lister Bottoms, #129 1-Set John Deere Rotary Hoe Fenders 1-6 Row Bed Packer 1-2 Row Caldwell Shredder 1-6 Row John Deere Lister, 4x7 Bar and Markers 1-Winkles 20 Ft. Float 1-Big Ox Blade 1-Eversman Ditcher 1-2 Row Massey Spinner Plow 1-4 Row John Deere Spinner Plow, Good 1-John Deere 21 Ft. Tandem Disc, Food Wings 1-4 Row Multiplier 1-Massey Rotary Hoe 1-7 Row P.T.O. Rod Weeder 1-21 Ft. Hamby Roll Bar with Shanks and Swoops 1-6 Row Lillian Rolling Cultivator 1-Double Tool Bar 6-Flex Planters 1-6 Row Double Bar Disc Plow 2-Tool Bars, IHC Shanks 4-MM Knife Attach, Fits on Shank	<b>FARM EQUIPMENT</b> 2-500 Gallon Propene Tanks 1-Lot Small Rotary Hoes 1-Set 12 In. Pipe Drags 1-Set 8 In. Drags 1-Triple Bar Stubble Mulch Plow 1-3 Pt. Lifter 1-Lot Hi Line Poles 1-Good Big 12 Grain Cart 1-3 Bottom Massey Breaking Plow 1-Packer for Breaking Plow 1-4 Wheel 20 Ft. Hay Trailer 1-Big Ox 9 Chisel Ripper Plow 2-4 Bale Cotton Trailers, Metal 1-Lot Swoops, Chisels, Forks, Shovels & Many Miscellaneous Articles 1-Several Large Piles Scrap Iron 1-Lot 55 Gallon Barrels 1-Transmission Gun
---	---	---

**IRRIGATION EQUIPMENT**  
 40-Joints Galval Pipe, 7x40x20x2 1/2  
 21-Joints Galval Pipe, 7x28x20x2 1/2  
 5-7x12 Hydrants  
 1-Lot 7 In. Tees and Elbows  
 1-Lot 8x12 Hydrants  
 1-Lot of Elbows and Tees  
 1-Lot Flow Line, 30 Ft. x 7 In.  
 1-Lot Short Joints  
 1-Lot Siphon, Tubas, 1 in. to 3 in.  
 1-58A Chrysler Motor  
 2-428 Ford Motors  
 1-413 Chrysler Motor  
 240-Ft. 12 In. Pipe and Shaft  
 1-Well Built House to Be Sold To Be Moved, 4 Rooms, Bath, Hardwood Floor.

## Tate Auction Service

HANEY TATE Rt. 2, Clovis, N.M. 505 985-2671 Texas License NMS-013-0529

BILL TATE Rt. 2, Clovis, N.M. 505 985-2487

BILL ADAMS Farwell, Texas 806 481-9315 Texas License TXE-031-0571

FRED MOORE, Clerk Clovis, N.M. 505 763-6585

40 YEARS IN AUCTION BUSINESS IN THIS AREA  
 Our Commission is Still 5%

**Statement of Intent to Change Rates**

General Telephone Company of the Southwest, in accordance with the Rules of the Public Utility Commission of Texas, hereby gives notice of the Company's intent to implement a new schedule of rates in Texas effective March 5, 1982.

The proposed changes in rates will affect all customer classes and are designed to increase the Company's intrastate revenue by 24 percent.

A complete set of revised rate schedules has been filed with the Public Utility Commission at Austin, Texas, and is available for public inspection in each of the Company's business Offices in the State of Texas. A summary of the Company's rate filing has also been sent to the Mayor's Office of each affected Municipality.

**GTE** General Telephone

**True Value** HARDWARE STORES

**TOOL VALUE OF THE MONTH**

**now 9.99** While Supplies Last

**4-IN. HOME SHOP VISE** Heavy-duty construction. Chrome-plated handle & drive screw. Double-locking base swivels 360°. Built-in pipe jaws; 4-in. jaws. MV-440. Quantities Limited.

**FAN-FORCED REBOARD HEATER**  
 Save energy—heat a small area, not your entire home! Thermostat control with positive OFF position, tip-resistant metal case with efficient "Comfort Angle" reflector. 90 watts. 519 BTU/hr. G.L. listed. HFR

**TEXACO** **HAVOLINE** MOTOR OIL

10W30, 10W40 30W  
 LIMIT OF SIX EA. 99c

**Fry & Cox, Inc.**  
 401 S. 1st 72-4511





AURORA ELIZARRARAZ and JOJO VIDAL

## Baby Shower Honors Aurora Elizarraraz

Aurora Elizarraraz was honored with a baby shower Friday, February 12, from 7-10 p.m. in the community room of Tri-County.

Guests were greeted by Ana Berta Esparza and Brine Elizarraraz and registered by Emelina Elizarraraz.

The serving table was covered with a white lace cloth and accented with an arrangement of baby sock flowers, baby rattles, dried roses, baby's breath and violet ribbons. The honoree's corsage was made of dried roses with ribbons, lace and baby's breath.

Pina Colada punch, cake, nuts, mints and cookies were served.

Special guests included

Mrs. Helen Quintana and Rosie, Sylvia and Percila Quintana and a very special guest, JoJo Vidal.

The hostess gift was a white wicker bassinet.

Hostesses for the occasion included Lupe Ronquillo, Maria Gutierrez, Nancy Solis, Elena Hernandez, Amelia Madrid, Abelina Madrid, Cuquia Cuevas, Alicia Garcia, Aurora Hernandez, Maria Torres, Juanita Sandoval, Cuca Poras, Consuela Hernandez, Neli Silguero, Esperanza Guillen, Betty Ovalle, Virginia Reyes and Susana Vela.

### Dr. Gregory

### Named

### Mr. Valentine

Dr. Jerry Gregory was elected by the listeners of Channel 6 as 'Mr. Valentine' during the station's second annual contest held last week.

A total of 488 votes were cast (more than the last city election) and 13 men were nominated for the honor.

Nominees were Dr. Gregory, K. B. Martin, Tommy Sullivan, David Cox, Terry Field, J. C. Shanks, Harmon Elliott, Bill Kent, Bruce Bruns, Carroll Rhodes, Lacie Kirk, David Hamblen and Lonnie Gillson.

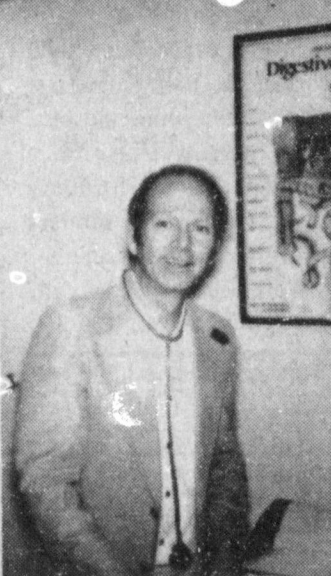
Dr. Gregory received gifts from Flowers Unique, Sonic Drive In, Ann's T-Shirts, Lonnie's Photography, Buddy's Shoes, Decorator's Nursery and Floral, Sanitary Barber Shop, St. Clair's Department Store, Dinner Bell Cafe, Main Street Beauty Shop and Muleshoe Auto Parts.

### ONE MINUTE SPORTS QUIZ

1. Who won the Suntory World Match Play Golf Championship?
2. Who won the LPGA Almaden Classic?
3. What year did Mark Spitz win 7 Olympic gold medals?
4. Dan Fouts quarterbacks for what pro team?
5. Name the four teams in the play-off for the World Series.

### Answers To Sport Quiz

1. Severiano Ballesteros.
2. Hollis Stacy.
3. 1972.
4. San Diego Chargers.
5. L.A. Dodgers, Montreal Expos, N.Y. Yankees and Oakland A's.



DR. JERRY GREGORY

### TOPS Weekly Meeting

TOPS Chapter TX #34 met Thursday, February 11 in the meeting room of Bailey County Electric. Clara Lou Jones, president, called the meeting to order.

The TOPS pledge was recited and the fellowship song sung. Leavell Parker called the roll with 29 members present.

One new member, Mary Garza, was welcomed to the club. Matilda Reyna was a visitor.

Linda Vinson read the minutes of the previous meeting. They were approved.

Weekly best loser was Neomi Garza. First runner-up was Jewel Peeler and Evelyn Moore was second runner-up.

Jim Ella Clemmons was named monthly best loser. Runners-up were Brenda Murphy, first; Ella Norman, second. The monthly KOPS queen was Mae Provence.

Belinda Lopez received a weight loss charm.

All members were asked to turn in all quilt squares by the next meeting so the contest winner can be determined.

The meeting was dismissed with the singing of the goodnight song.



## The Creative Woman

BY SHERYL BORDEN

Mary Ellen Payne, Extension Home Economist for Lincoln County, will be the first guest on "The Creative Woman" show on February 16 and 20 and will show lots of "unusual" ways to use our microwave ovens and therefore get more use from them.

Then Christi Clancy, Interior Decorator with Clancy Carpet and Draperies in Clovis, will demonstrate how to upholster walls. As

she will explain, this is quite easy, not too expensive and a very creative way to decorate walls in different rooms. It is also a technique that can be used over any surface of walls, which makes it an ideal way to disguise unsightly faults or problems.

Joy Best will demonstrate how to prepare homemade french bread, which looks and tastes just like the "store-bought" variety. She will also discuss the importance of using a dough cradle for making french bread, and will explain how easy and inexpensively one can be made. The recipe for french bread and the directions for making a dough cradle and cooling rack will be available in a booklet entitled "Basics of Yeast Bread."

And finally, Jimmy Webb, CPA with the public accounting firm of Holloman, Woodard, Widner and Webb in Clovis, will present tax related information.

"The Creative Woman" is seen on Channel 3 at 12:30 p.m. on Tuesdays and at 2 p.m. on Saturdays. The show is produced and hosted by Sheryl Borden for KENW-TV. The viewers outside Portales can request copies of our printed materials by calling on KENW-TV's toll-free telephone numbers. These are New Mexico: 1-800-432-2361 and Texas: 1-800-545-2359. Portales and Roosevelt County viewers are asked to call 562-2112. All callers should call on Monday through Friday between 8 a.m. and 5 p.m.



### Latest Arrivals

### Beau Cameron Henry

Lt. and Mrs. Bobby D. Henry of Seymour Johnson Air Force Base in Goldsboro, North Carolina, announce the birth of a son, Beau Cameron, on February 12 at 2:15 a.m.

He weighed seven pounds, 12 and one half ounces and was 21 inches long.

Grandparents are Pat Nickels and the late J. A. Nickels, Marsha Henry Rohde and the late Doyle Henry.

Great-grandparents are Mr. and Mrs. Clyde Henry, Mr. and Mrs. Demp Smith, Mrs. O. N. Jennings and Mrs. Gery Nickels.

Great-great-grandmother is Minnie Redwine.

Boy, These Maytags Are Really Built!

Harvey Bass

Your Authorized Sales & Service Dealer

122 S. 1st  
272-3030

**NON-DEDUCTIBLE COVERAGE**

- FIRE • STORM • THEFT • HAIL
- LIGHTNING • VANDALISM
- EXTENDED COVERAGE

- HOMES • MOBILE HOMES
- CONTENTS • FARM BUILDINGS
- FARM MACHINERY • TOOLS
- IMPLEMENTS • FENCES • FEED and SEED

CONTACT YOUR HOCHHEIM AGENT

**Barbara Scarbrough**  
Branch Manager  
272-5093

**Robert Wilson**  
272-4069

**David Gowens**  
272-5419

**HOCHHEIM PRAIRIE FARM**  
MUTUAL INSURANCE ASSOCIATION  
Branch no. 87 Rt. 3 Box 63B  
Muleshoe



**TWISTERS QUALIFY FOR STATE**--Eleven Twisters from Hawkins and Purdy School of Dance and Gymnastics qualified for the state gymnastics meet to be held in April. Front row (L-R) Jarrod Sowder, Sammy Sayago, and Lance King; Kneeling, Jay Hawkins, Brett King and Matt Sowder; Back Row, Kevin King, Drew Overbeck (coach) and Scott Terrell.

### From Journal Files

#### 40 Years Ago

1942

On February 15, 1942, Muleshoe Ice and Produce advertised heavy hens at 15 cents per pound; light hens, 12 cents per pound and eggs, 30 cents per dozen.

#### 10 Years Ago

1972

Advertisements for a local tire shop included: Tires, 600x16, 4-ply, \$15.95; 650x16, 6-ply, \$24.50; 9.5 Lx15 6-ply, \$28.50; and 11L x15, 6-ply, \$33.50.

Grocery specials included: Pot Pies, 15 cents each; 2 pound fruit cobbler, 99 cents; Texas oranges, 5-pound bag, 49 cents; potatoes, 10 pound bag 59 cents and cabbage, nine cents per pound.

**Annoying**  
Always forgive your enemies. You'll find that it annoys them so much.  
-Record, Columbia, S.C.

**Generous**  
Many a man's charity is to give unto others the advice he can't use himself.  
-Spotlight, San Diego.

#### 30 Years Ago

1952

In February of 1952, admission at the local theaters was 36 cents for adults and nine cents for children under 12.

#### 20 Years Ago

1962

Grocery specials advertised in the Journal included: Crisco, three pound can 79 cents; Eagle Brand Milk, 29 cents per can;

## Birthday Party Honors

### Joy Stancell

A surprise birthday party honoring Joy Stancell (Social Activities Director of the Muleshoe Nursing Home) was held Wednesday, February 10 at 2 p.m.

Residents of the home, along with visitors, and some of the staff, hosted the party. Those planning the party and making the preparations included Glenda Jennings and Rosemary Pool.

"Almost all of the residents gathered in the dayroom to sing hymns led by Glenda Jennings (Mrs. Stancell thought)," says Rosemary Pool. The group sang 'Home on the Range' and hymns. They also sang the birthday song.

Mrs. Stancell received gifts and a birthday card with 50 names on it.

Angel food, coconut, devil's food and sponge cakes were served, along with iced raspberry punch.

Serving refreshments were Manwella Richeno, Florene Mills, Rosemary Pool, Winnie Berry, Thelma Bartlett, Lula Embry and Glenda Jennings.

## SMILES

### Now He Remembers

An enthusiastic golfer came home to dinner. During the meal, his wife said: "Willie tells me that he cad-died for you this afternoon." "Just think of that," said Willie's father. "I knew I'd seen that boy before."

### New Problem For Dairymen

"Do you keep any calves?" the new city mother inquired anxiously of the milkman. "Why, yes, ma'am, I do," was the reply. "Ah good!" the young mother heaved a sign of relief. "Then please bring me a pint of calf's milk every day. I'm afraid cow's milk is a little too strong for my baby."

## Remember Now So You Can Remember Then.

### A Professional 8 x 10 Color Portrait For 88 Cents

All ages welcome - babies, adults, and families! Choose from our selection of scenic and color backgrounds. We'll select poses, and additional portraits will be available with no obligation. Satisfaction always, or your money cheerfully refunded.

88¢ per sitting. No charge for additional group subjects. One special per person. Backgrounds may occasionally change. Remember, children must be accompanied by parent.

**February 18, 19, 20**  
**Thurs. & Fri.**  
**10 a.m.-6 p.m.**  
**Saturday**  
**10 a.m.-5 p.m.**  
**128 Main Muleshoe**

## JUST FOR YOU IN '82!

regularly **2 FOR .82**

CORN DOGS - 59¢ ea.

2 pcs. CHICKEN with roll - reg. \$1.59 **\* Special: .82**

FISH on a Bun SAVE 37¢ **\* Special: .82**

8 pcs. CHICKEN with fries, salad, rolls regular price \$6.59 **\* For \* You \$4.82**

\* Just For You prices effective 2/13 thru 2/19

1900 W. Amer. Blvd.  
272-5337



## Mr. And Mrs. Dale Celebrate Anniversary

Mr. and Mrs. Roland Dale were honored with a reception Sunday, February 14 in the fellowship hall of the Assembly of God Church, in observance of their 45th wedding anniversary.

The reception was hosted by their children, Mr. and Mrs. Bill Martin of Lariat, Mr. and Mrs. Cyrus Dale of Farwell, Mr. and Mrs. Donald Dale of Friona, Mr. and Mrs. Vernon Conner of Lubbock and Mr. and Mrs. Gilbert Dale.

Marcie Dale, granddaughter, registered the guests. Accented the registration table was a blue silk rose in a bud vase, and a feathered pen.

The serving table was covered with a white lace cloth and accented with an arrangement of blue and white silk roses. Granddaughters, Yolanda McFarland, Rhonda Dale and Cindy Davis served cake and punch from crystal appointments.

Out of town guests included Mr. and Mrs. Oscar Maiden of Borger, Mr. and Mrs. James Gray of Pam-

**AARP Enjoys Games**

**And Visiting**

AARP met Friday, February 12 at 2 p.m. in the recreation room of Harmon Elliott Complex for a game session.

It was reported that the group enjoyed games and visiting.

Refreshments of homemade cookies, crackers and fruit punch were served to the following: Mr. and Mrs. Ernest McNatt, Mr. and Mrs. Willie Burford, Ranetta Dawson, Hazel Reeder, Jane Williams, Maude Young, Lena Hawkins, Marie Parker, Mr. and Mrs. E. R. Wall, Myrtle Creamer and Stella Morgan.

The group will meet on Friday, March 12, at 2 p.m. with games and visiting planned.

AARP President Myrtle Creamer said she hoped to make the monthly game session a regular thing for the members and guests.

**A Tribute**  
It would add a lot to domestic harmony if husbands could understand that when a wife buys on credit she is displaying her confidence in her husband.

pa, Mr. and Mrs. Lester Lockett of Meadow, Mr. and Mrs. Perry Lockett of Brownfield, Mr. and Mrs. Lanny Lockett of Hale Center, Mrs. Precious Johnson of Sudan, Mr. and Mrs. Lonnie Isbell and Mr. and Mrs. Ernest Isbell of Tahoka and Mr. and Mrs. Charles Taylor of Lubbock.

Dale and the former Lora Davis were married February 13, 1937 in Eric, Oklahoma. They have lived in the Muleshoe area 33 years.



MR. AND MRS. ROLAND DALE



GRAND OLD FLAG--February 15-19 has been designated "Patriotic Week" in the Muleshoe Schools. Each school is observing this week in some special way. At Dillman Elementary, the music classes are learning patriotic songs and flag routines. Friends and parents are urged to visit and observe this week during their child's special classes.



YANKEE DOODLE AND SWEETHEARTS--First grade students at Dillman Elementary are learning patriotic songs and flag routines this week designated "Patriotic Week."

## FASTER WAYS WITH MICROWAVES

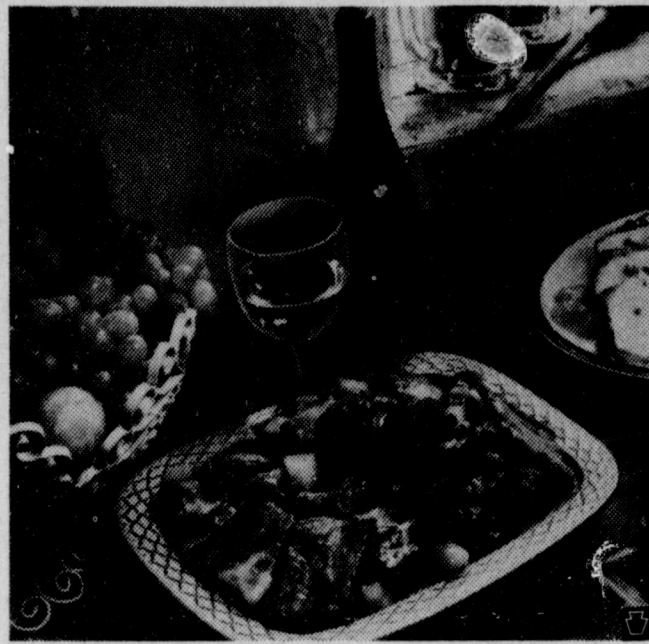
Snow, wind and winter cold mean that the family needs more than a bologna sandwich to keep them warm. Your microwave oven makes a hot, stick-to-the-ribs dinner fast and easy. The following recipes, taken from a Whirlpool microwave oven cookbook, are great for family or for guests. Sweet-Sour Riblets and Shrimp-Pineapple Toss warm you up with a far-eastern touch.

**SWEET-SOUR RIBLETS**  
Total cooking time: 33 minutes (shown)

- 1 15 1/2-ounce can pineapple chunks (juice pack)
- 3 tablespoons packed brown sugar
- 1 tablespoon cornstarch
- 1/2 teaspoon salt
- 1/2 cup cold water
- 2 tablespoons vinegar
- 1 tablespoon soy sauce
- 1 green pepper, cut in 1-inch pieces
- 2 1/2 pounds pork spareribs, sawed in half crosswise

Drain pineapple, reserving 1/4 cup juice. In 4-cup glass measure, combine brown sugar, cornstarch, and salt. Blend in the reserved juice, cold water, vinegar, and soy sauce. Cook at HIGH for 3 minutes or till thickened and bubbly, stirring 3 times. Stir in green pepper and pineapple. Set aside.

Cut meat into 2-rib sections; season with salt and pepper. Place in 13x9x2-inch baking dish. Cook covered, at MEDIUM HIGH for 15 minutes. Drain; turn and rearrange ribs. Cook covered, at MEDIUM HIGH for 15 to 20 minutes or till tender, giving dish half turn after 10 minutes. Makes 6 servings.



SHRIMP-PINEAPPLE TOSS  
Total cooking time: 9 minutes

- 1 pound fresh or frozen shrimp in shells
- 1 3/4-ounce can pineapple chunks
- 2 teaspoons cornstarch
- 3 tablespoons soy sauce
- 1 teaspoon grated fresh gingerroot
- 8 green onions, sliced diagonally into 1 1/2-inch lengths
- 1 tablespoon cooking oil
- 1 8-ounce can water chestnuts, drained and sliced

Thaw shrimp if frozen. Shell and devein shrimp. Halve shrimp lengthwise. Drain pineapple, reserving liquid. Blend reserved pineapple liquid into cornstarch; stir in soy and set aside.

In 8x8x2-inch baking dish, cook gingerroot and onions in oil at HIGH for 3 minutes or till tender, stirring once. Stir in shrimp, water chestnuts, and soy mixture. Cook covered, at HIGH for 5 minutes, or till shrimp are done, stirring twice. Stir in pineapple. Cook at HIGH for 1 minute or till heated through. Serve over rice, if desired. Makes 4 servings.

**MICRO TIP:** For easy hot buttered wine, pour 6 ounces hearty burgundy into a coffee cup or mug. Heat room temperature wine, uncovered, at HIGH for 1 to 1 1/2 minutes. (Heat refrigerator temperature wine 1 1/2 to 1 3/4 minutes.) Top with a pat of butter and serve. If you wish, sprinkle the wine before heating with a dash or two of pumpkin pie spice or cinnamon, cloves, and nutmeg.

and Esperanza Guillen.  
Feb. 15 - Ruben Lopez and Amelia Salinas.

**DISMISSED**  
Feb. 11 - Clifton Finch,

**Washer Pitching**

**Tourney Set**

On Saturday and Sunday, March 20 and 21, the first West Texas Championship Washer Pitching tournament will be held at the Garza County Livestock Barn in Post, Texas. Sponsored by the OS Ranch Steer Roping and Art Exhibit, the proceeds will be donated to the West Texas Boys Ranch in San Angelo.

The tournament will be limited to the first 64 teams to enter. Entry fee is \$100/team and must be mailed by March 6th to the OS Ranch Steer Roping and Art Exhibit, P. O. Box 310, Post, TX 79356, along with names and addresses of the team members. This popular event will open each day at 11:00 a.m. for general public admission. For more information, call Bob Palmer at 495-2710 during office hours; or Mike Mitchell at 495-3104 evenings.

Feb. 12 - Brenda Capres, Terrie Snell, Pat Shafer, J. L. James, Fabian Martinez, Lindy Chancey, Anna E. Miller, Fred Horn and Maude Sowder.

Feb. 13 - Debbie Carpenter, Mason Sinclair and Julia Hawkins.

Feb. 14 - Juanita Snow

Bradly Long, Robert Gonzales, Kay Knowlton, Joshua Pyle, and Buhnie Palmer.

Feb. 12 - Melinda Lumbaro, Elvira Loya, Kendall McDaniel, Cary Skaggs, Otilie Wisian, Gloria Chico and baby.

Feb. 13 - Sulema Marquez, Brenda Capps, Sarah Kelton, Shirley Aguirre, Brent Shank, Lish Thurman.

Feb. 14 - Dustin Cleavinger and Eula Ratliff.

Feb. 15 - Terrie Snell and baby boy, Lewis James, Lourdes Nieto and baby.

**Hard To Stomach**  
People make ulcers possible, and ulcers make some people impossible.

-Times, Marshalltown, Ia.

## Comptroller Says Texas Can Deal With New Federalism

State Comptroller Bob Bullock said Friday the Comptroller's office is fully capable of bringing in the money in 1983 and 1984 to take over costs of the food stamp and dependent children programs without new state taxes.

Bullock noted that Texas voters would first have to raise the present \$80 million welfare spending limitation in the constitutional amendment election of November 1982.

"We in the Comptroller's office will meet President Reagan's challenge of 'New Federalism' just as we have met other challenges, by increasing efficiency, dedication and hard work," Bullock said.

For the past four sessions of the Legislature the Comptroller's office has increased tax collections to pay for new and expanded services authorized by the Legislature without deficit spending.

He noted that in 1981, Texas' population increased 1.9 percent and that inflation as 8.9 percent but that state tax collections by his office had increased 23.2 percent over 1980.

"This additional 12.4 percent--or \$900 million--over and above population increases and inflation in 1981 just didn't blow in with a blue norther," Bul-

lock said.

Approximately 1.2 million Texans take part in the food stamp program and 296,000 mothers and children receive help from the aid to families with dependent children program.

U.S. to increase surveillance of Cuba.

## CALENDAR OF EVENTS

- MONDAY**  
12 p.m. Jaycees, XIT Restaurant (every)  
3:45 p.m. P.T.A., Mary DeShazo or Richland Hills School Cafeteria (second)  
7:30 p.m. Rainbows, Masonic Hall (second & fourth)  
8 p.m. Fine Arts Boosters, Band Hall
- TUESDAY**  
12 p.m. Rotary Club, Civic Center (every)  
2 p.m. Art Association, Muleshoe State Bank (second)  
4 p.m. Christian Women Fellowship, First Christian Church (second)  
7:30 p.m. Progress 4-H West Camp Community Center (third)  
7:30 p.m. Llano Estacado (second)  
8 p.m. Athletic Boosters, Muleshoe High School Cafeteria
- WEDNESDAY**  
12 p.m. Lions, Civic Center (every)
- THURSDAY**  
11:30 a.m. W.O.T.S. (every)  
12 p.m. Optimist, Corral Restaurant (every)  
2 p.m. Hobby Club, Muleshoe State Bank (first & third)  
6:30 p.m. T.O.P.S. Bailey County Electric Community Room (every)  
7:30 p.m. Odd Fellows, Odd Fellows Hall (every)
- FRIDAY**  
11:30 a.m. A.A.R.P., Civic Center (fourth)  
6:30 p.m. Kiwanis, Corral Restaurant (every)
- SATURDAY**  
7 p.m. Muleshoe Singing Group, Trinity Baptist Church (every)  
If you would like your club or organization listed on the calendar of events, please furnish the information in with your report.

## West Plains Medical Center Report

**ADMITTED**

Feb. 11 - Shirley Aguirre, Lourdes Nieto, Manuel Hernandez, Brent Shank, L. R. Thurman.

Feb. 12 - Brenda Capres, Terrie Snell, Pat Shafer, J. L. James, Fabian Martinez, Lindy Chancey, Anna E. Miller, Fred Horn and Maude Sowder.

Feb. 13 - Debbie Carpenter, Mason Sinclair and Julia Hawkins.

Feb. 14 - Juanita Snow

Expressions Of Love  
Bridal Selections  
Of  
Shelli Hawkins  
Bride Elect Of  
Curtis Carpenter  
Open 10-5:30 Mon. - Sat.  
**Expressions**

**\$ NEW DOG \$ BREEDERS NEEDED**  
Be your own boss - your own business at home. Possible to turn 1/2 acre into a fine income. We assist all new breeders, if qualified. Start small or large.  
**RAISE QUALITY PUPPIES FOR PROFITS**  
Our computerized marketing system with several thousand buyers assures you of continued top prices nationwide.  
For information and qualifications  
Call 800/346-0749 Nationwide  
or 218/834-5536 in Minnesota  
or  
write: Kennels  
P. O. Box 8  
Two Harbors, Minnesota 55616  
(Include Phone Number)  
**PUPPIES MEAN PROFITS**

**B & W's Fun Shop**  
520 S. 1st  
9-6 Mon. - Fri.  
9-2 Sat.  
**Chalk Classes**  
February 22  
7 P.M.  
\$3 Per Class  
Supplies Will Be Available We Have Green Ware & Supplies  
**Ginger Bales & Vada Wilcox**  
272-4143  
Muleshoe

**Wilson Appliances**  
Invites You To Compare Prices!  
Shop At Wilson Appliance & Save!  
**Maytag Washers & Dryers Features!**  
Dependability  
Energy Efficient  
Few Repairs  
Commercially Proved

Washers:  
A710 \$499<sup>95</sup>  
A510 \$429<sup>95</sup>  
A209 \$399<sup>95</sup>

Dryers:  
DE710 \$379<sup>95</sup>  
DE410 \$336<sup>00</sup>  
DE210 \$308<sup>00</sup>

**Wilson Appliances**  
"Wilson Appliance Services"  
What They Sell!"  
We Have A Tried Technique To Service Our Products  
Store Hours Mon. - Sat. 9:00 - 6:00  
272-5531  
117 MAIN



### Homestead...

Con't from page 1

tax base resulting from this exemption, together with the exemptions for the disabled, agriculture, homestead, over 65 homestead, timber, farm implements, cattle, government-owned properties, etc. would require massive state aid to school districts to make up for less local revenue.

One year contract extensions were given Tom Jinks, Elizabeth Watson, Wayland Ethridge, Fred Mardis, Bill Taylor, Milton Oyler, Carol Horne, Georgia Pena, Bob Graves, Ben Gramling, Ronnie Jones, Betty Jennings, Linda Marr, Windy Williams, Jim Pope, Robert Brandon, Eddie Chance, Frank Guenther, Kevin Wiseman, and Kerry Moore.

Proposals for improvements to the school system included the following approved proposals:

Proposal I - The schools currently give a \$250 bonus to teachers who complete their contract and/or resign before July 15 each year. Due to recent legislation, the Texas Teacher Retirement System does not include bonuses as

### Blood...

Con't from page 1

for blood is due to several factors, including increasing medical sophistication and new techniques, growing capabilities as Lubbock becomes a medical center. Blood can only be provided by healthy donors who are willing to share their own natural resources.

### Textbook...

Con't from page 1

in making these selections and are encouraged to study and evaluate the books carefully.

Sample copies are available for examination by interested parents and/or lay citizens. These copies are on display in the curriculum office and each principal's office.

The selection process will be completed by March 1, 1982.

### Mules...

Con't from page 1

44. Ronny Cox led the Mules in scoring with 14 points to his credit, followed by Michael Isaac with eight and Alan Bracey with seven. Ronnie Angeley had six, Macario Reyes, two, Wayne Precure, four and Jeff Hamilton, with three. Monty Hysinger and Chubby Ramos also got in some playing time.

The Mules and Mulettes will play their final games Tuesday, February 16, in Friona.

salary. It was agreed that the \$250 be considered as salary and prorated over the year.

Proposal II - The Board agreed to revise the personal leave policy.

Proposal III - A summer enrichment program in science and mathematics was approved for Junior High School students.

Proposal IV - The Board agreed to increase the pay for substitute teachers.

Proposal V - The Board agreed to initiate a "Reading for Enjoyment" Program.

Proposal V - The Board agreed to provide adequate office space for Special Education and Federal Programs Directors. A converted classroom will be used.

Proposal VI - The Board agreed to initiate a "Reading for Enjoyment" Program in the elementary schools.

Proposal VII - The Board agreed to begin a grounds beautification project.

Proposal VIII - The Board agreed to initiate a choral music program in the High School.

In other action, a proposal was made by Staci Vandiver, the High School Band President, to make band count toward honor points for honor rolls and honor graduates. Members of the School Board instructed Harold Horne to confer with Wayland Ethridge and Ben Gramling and make recommendation to the Board.

Doyle King was appointed election judge for the school trustee election and Jesse Leal as alternate judge, and the board approved use of the Mary DeShazo gym by the Little Dribblers basketball.

During the meeting, a report was given by Tom Jinks on construction of the vocational agricultural project barn. He reported that the concrete slab was being poured. Also, the board approved a request by Muleshoe State Bank to withdraw and change securities for school funds.

Approval was given the 1982-83 School Calendar and the superintendent reported on enrollment and school activities.

In other action, board members sat for the photographer from the High School Annual, who made individual and group pictures.

Also considered by the board was the financial report and tax collection report. Approval was given for the payment of current bills.



**ADULT SHOWMAN**-Gene Paul Jarman captured adult showmanship honors with a sheep that could zip and unzip his jacket. Jarman was awarded a silver sprayed cow patty for his efforts. All in fun, however, as camaraderie among the 13 competitors at the Lazbuddie Stock Show was clearly present.

### Show...

Con't from page 1

eight were as follows: Sharon Glover, Brian Glover, Terry Steinbock, Joe Dan Tarter, Kevin Fuqua, Shonda Mitchell, Scotty Mitchell and Kim Gregory. **MEDIUMWEIGHT MEDIUM WOOL**

Placings one through

### Workshop...

Con't from page 1

nue D Church of Christ. The group ate together at the Corral Restaurant in order to have a full day for sharing and gaining ideas to work with our handicapped children.

### V-Ball...

Con't from page 1

Entry fee of \$20.00 may be mailed to Jerry Engelking, Route 3, Box 78, Muleshoe 79347.

The Band Boosters wish to make this the best tournament, so get your entries in early.

### Heart...

Con't from page 1

elmsmith and Clara Lou Jones were elected to serve as the nominating committee.

Members attending were Mr. and Mrs. D. O. Burlesmith, Lloyd Haire, Mr. and Mrs. Don Seales, Mr. and Mrs. Marshall Head, Hugh Young, Miss Linda Mullins, Mr. and Mrs. Owen Jones and Mrs. Elizabeth Watson.

six were as follows: Sean Mason, Sheldon Mason, Brian Glover, Ginger Jesko, Terry Jesko and Jackie Mouser.

**HEAVYWEIGHT MEDIUM WOOL**

Placings one through six were as follows: Shane Mason, Danny Powell, Danny Powell, Kim Gregory, Kim Gregory and Terry Jesko.

**STEERS LIGHTWEIGHT**

Placings one through three were: Kim Gregory, Tim Lust and Mark Lust.

**HEAVYWEIGHT**

Placings one through four were: Jeff Jesko, Terry Jesko, Mickey Powell and Danny Powell.

**BARROWS LIGHTWEIGHT**

Placings one through six were: Casey McBroom, Susan Redwine, Ginger Jesko, Shannon Weaver, Sean Mason and Pat McBroom.

**MEDIUMWEIGHT**

Placings one through five were: Casey McBroom, Susan Redwine, Terry Jesko, Susan Redwine and Sheldon Mason.

**HEAVYWEIGHT**

Placings one through five were: Wesley Jarman, Shane Mason, Wesley Jarman, Wendy Jarman and Lee Scott.

**Turnabout**

Judge: What happened after the prisoner gave you the first blow?"

Witness: "He gave a third one."

"You mean a second one?"

"No, I gave him the second one."

### Houston...

Con't from Page 1

provides an opportunity for exhibitors to participate in some of the toughest showing competition after a year's worth of preparation for their animals. This year's show once again promises to be profitable for them, as open show and junior exhibitors will vie for more than half a million dollars in prize monies and premium auction prices above market value.

Houston, the fastest growing city in the nation, brings western heritage to life when it once again hosts this two week extravaganza. Livestock show dates are February 20 - March 7, and rodeo dates are February 24-March 7.

The largest civic event in the history of the nation's

### Cotton...

Con't from Page 1

it's cotton loan program. Some growers sold equities for about \$10 per bale, though the volume of equity sales was very light.

USDA announced on February 1 that eligible upland cotton farmers will be paid 7.67 cents per pound deficiency payments for their 1981-crop cotton. Payment checks will be issued through A.S.S. offices as soon as possible.

High Plains growers sold mixed lots of mostly grades 42 and 52, staples 31 and 32, mike 35 - 49 at around 44.50 cents per pound, down 25 points from a week earlier. Grade 52 staple 32 mike 30 - 32 sold around 39.40 cents, down 25 points, also. Gins paid High Plains growers \$70 to \$80 per ton for cottonseed, mostly \$75 per ton.

Lubbock's Marketing Services Office classed

fourth largest city inspires local business people and residents to take to horseback and buckboard, or at least wear western hats and boots, all in the Old West spirit of "Going Texan."

The annual rodeo parade will fall on the first Saturday of the show this year, which will be February 20, at 10:00 a.m. This event draws more than 6,000 trailriders journeying as far as 386 miles to downtown Houston where they meet with city officials, bands and spectators to lead the parade.

Open competition for the livestock show begins February 22. Professional breeders and ranch owners from some 35 states will bring in the best in breeding stock to compete in breeding beef, dairy, poultry, swine, sheep, Angora

31,000 samples during the week ended February 11 as the 1981 - season continued to wind down. This brought the season's total to 2,257,000 and compares with 1,614,000 classed by the same date last year.

Predominant grades were grade 42 at 18 percent, grade 52 - 39 percent, grade 43 - 14 percent and grade 53 - 16 percent. About grade 53 - 16 percent. About 87 percent of the samples were reduced one grade because of bark. About six percent was below grade.

Predominant staples were staple 29 at 10 percent, staple 30 - 38 percent, staple 31 - 33 percent and staple 32 - 12 percent for an average of 30.6 thirty-seconds of an inch.

Micronaire 35 - 49 was 24 percent, 33 - 34 was 16 percent, 30 - 32 was 28 percent, 27 - 29 was 22 percent and 26 or below was 10 percent.

goat and rabbit shows.

As the Houston show is a showcase of the livestock industry, cattlemen from Europe, Mexico and Central and South America travel to the open show to view the best in stock. Last year, more than 500 international visitors from 29 countries registered with show officials and the 1982 International Days, February 22-27, should draw an even larger crowd.

The 4.3 acre Abercrombie Arena, adjacent to the livestock exposition building (Astrohall), provides the setting for all horse show activities. With 3,000 horses entered in the nine shows, the horse show must run for 16 days, beginning on February 20, in order to accommodate all classes. Eight hundred contestants are expected for competition during the sixth annual horse judging contest held February 25.

During the second week of the livestock show, junior show exhibitors take over the 22.6 acre livestock exposition facility. Judging this second week begins on March 3, although some junior show competition is held during the first week. Competition here is fierce as these exhibitors know they're up against both the best in livestock and in judges.

Junior shows include breeding beef heifers, dairy cattle, breeding sheep, Angora goats, beef and dairy scramble heifers, commercial steers, breeding rabbits, market lambs, market poultry, market turkeys, market swine and market steers, including a carcass contest.

Exhibitors of market animals realize that, in addition to the premium awards and trophies, a grand championship in their market division at the Horston Show could pave

the way for a future cattle herd or college diploma.

The Houston Livestock Show holds the world's record in all categories of prices paid for championship market animals: the grand champion steer --- \$112,000; grand champion lamb --- \$60,000; grand champion barrow --- \$51,500; grand champion pen of five broilers --- \$33,000; and grand champion turkey --- \$20,000.

Due to the tremendous community involvement and civic support from thousands of individuals and businesses alike, junior exhibitors are assured that their animals selling in the market auctions will bring premium prices. Junior exhibitors are also competing in livestock and dairy judging contests where their knowledge of animals can win calf purchase certificates worth \$400 toward the purchase of a purebred, registered beef or dairy heifer.

For the 1982 rodeo, 448 boys and girls, including Jerry Gleason from Muleshoe, will be participating in beef and dairy calf scrambles as part of rodeo action in the Astrodome.

In addition to providing some of the best rodeo entertainment, the calf scramble offers winning youngsters the opportunity to earn a calf purchase certificate worth \$400. Together with the top 40 winners of the livestock and dairy judging contests, calf scramble winners participate in a special year-long program that stresses education and responsibility. It concludes with special show ring competition at the following year's show.

**Keep Moving**  
All things come to him who waits-but "him" better be working while he's waiting.  
-Sentinel, Onawa, Ia.

**Sportsman**

**Complete & Balanced Nutrition Dog Food**

**PUPPY FOOD**

**27% PROTEIN**

20 LB. Bag **\$5.95**

---

**HI-PROTEIN DOG MEAL**

**26% PROTEIN**

50 LB. Bag **\$10.59**

---

Five Point

**Dog Food**

50 LB. Bag **\$9.36**

25 LB. Bag **\$5.15**

Alert

**Cat Food**

10 LB. Bag **\$3.45**

**A&M**

FARM AND RANCH SUPPLY

**PRICES EFFECTIVE FEB. 18-20, 1982 WHILE SUPPLIES LAST**

**COOKED FOOD SPECIAL**

**HAM & CHEESE SANDWICH**

**99¢**

**SUNSHINE KRISPY CRACKERS** 1 LB. BOX

**89¢**

<b>FOLGER'S 1 LB. COFFEE</b> \$2.79	<b>GIANT SIZE TIDE</b> \$1.79
<b>3 LB. CAN CRISCO</b> \$1.89	<b>HEINZ 32 OZ. KETCHUP</b> 99¢
<b>COKE &amp; SPRITE</b> 2 LITER <b>\$1.09</b>	

**ALLSUP'S ICE CREAM**

ASSORTED FLAVORS

**\$1.49**

1/2 GAL. HD. CTR.

**BORDEN'S HI-PRO MILK** 1/2 GAL. CTR.

**\$1.09**

**BORDEN'S 6 CT. PKG. POPSICLES**

**89¢**

**BORDEN'S 6 CT. PKG. FUDGESICLES**

**89¢**

**ALLSUP'S CONVENIENCE STORES**

**"THERE'S ONE NEAR YOU"**

**29¢**

LARGE BAG

FRESH POPPED, BUTTERED

**ALLSUP'S POPCORN**

"A special reason why H&R Block should prepare your taxes."

**H&R BLOCK**

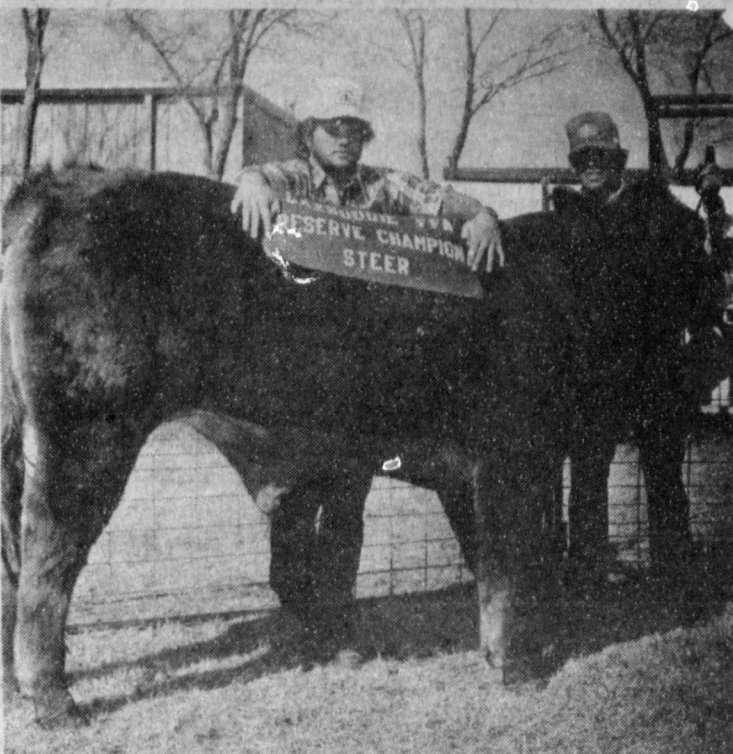
THE INCOME TAX PEOPLE

17 reasons. One smart decision.

224 W. 2nd  
272-3332  
Wkds 9-6  
Sat. 9-5



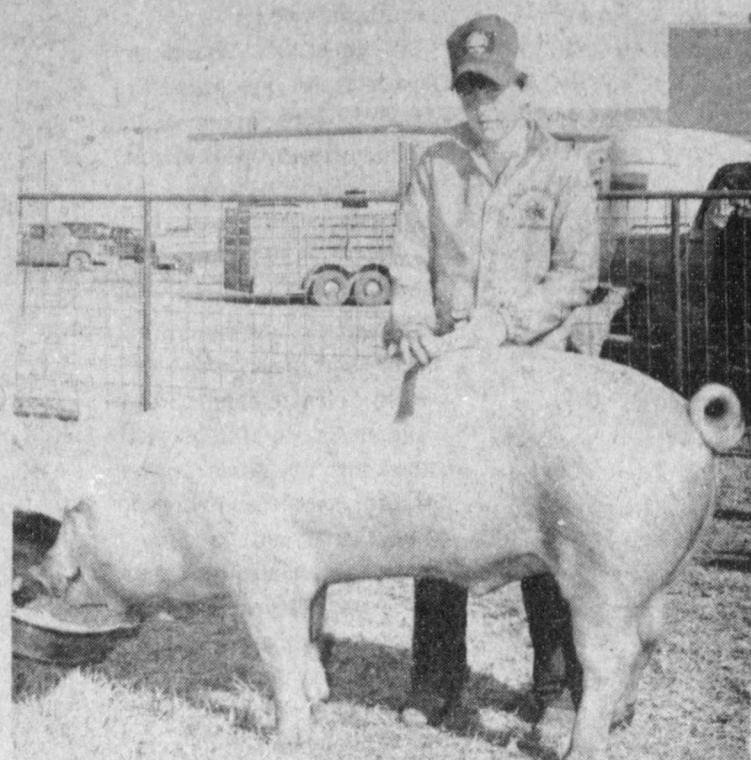
# Lazbuddie Stock Show Winners



**RESERVE CHAMPION**--Terry Jesko is shown here with the Reserve Champion Steer of the Lazbuddie Stock Show. Terry is showing for Jeff Jesko. They are the sons of Mr. and Mrs. Lee Jesko.



**FIRST PLACE**--Sharon Glover, daughter of Mr. and Mrs. Jerry Don Glover, is shown here with her Hampshire which was a first place winner at the Lazbuddie Stock Show.



**FIRST PLACE**--Wesley Jarman is shown here with his Yorkshire which was a first place winner at the Lazbuddie Stock Show. Wesley is the son of Mr. and Mrs. Gene Paul Jarman.



**FIRST PLACE**--Terry Steinbock is shown here with his lamb which was a first place winner at the Lazbuddie Stock Show. Terry is the son of Mr. and Mrs. Max Steinbock.



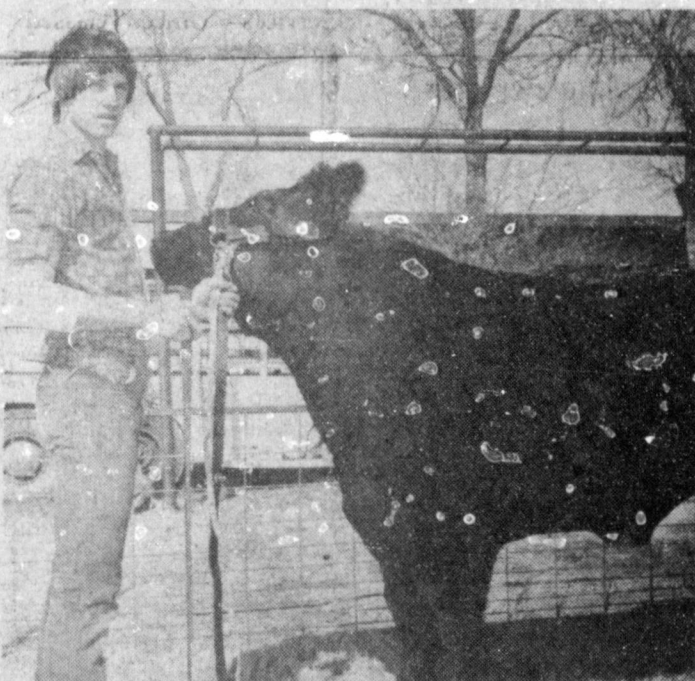
**GRAND CHAMPION DUROC**--Casey McBroom, son of Mr. and Mrs. Everett McBroom, is shown here with his barrow which was Grand Champion at the Lazbuddie Stock Show.



**GRAND CHAMPION LAMB**--Sean Mason is shown here with his Hampshire which was Grand Champion at the Lazbuddie Stock Show. Sean is the son of Mr. and Mrs. Darrell Mason.



**RESERVE CHAMPION BARROW**--Russell Redwine is shown here with his barrow which was Reserve Champion at the Lazbuddie Stock Show. Russell is the son of Mr. and Mrs. Harold Redwine.



**FIRST PLACE**--Todd Gregory is shown here with his Chi-Angus Cross which was a first place winner at the Lazbuddie Stock Show. Todd is the son of Mr. and Mrs. Claude (Greg) Gregory Jr.



**FIRST PLACE WINNER**--Pat McBroom is shown here with the first place winning Duroc of the Lazbuddie Stock Show. Pat is showing for Casey McBroom and they are sons of Mr. and Mrs. Everett McBroom.



**RESERVE CHAMPION LAMB**--Sheldon Mason is shown here with his Hampshire which was the Reserve Champion of the Lazbuddie Stock Show. Sheldon is the son of Mr. and Mrs. Darrell Mason.



**FIRST PLACE**--Shane Mason is shown here with his lamb which was a first place winner at the Lazbuddie Stock Show. Shane is the son of Mr. and Mrs. Darrell Mason.

Presented By The Following Businesses:

- Lazbuddie Ag Boosters**
- Farmers Co-op Elevators**
- Farmers Spraying Service**
- First National Bank**
- Lazbuddie Farmers Supply Inc.**
- Lazbuddie Grain Inc.**
- Lazbuddie Garage & Supply**
- Muleshoe Co-op Gins**
- Tide Products Inc.**
- Foster Fertilizer Inc.**
- Irrigation Pumps & Power Inc.**
- Coker & Sons Spraying**
- Sherley Anderson Lazbuddie Elevator**
- Five Area Telephone Co-op Association**



### Letters To The Editor

Dear Editor:

A few days ago, I had the opportunity to pass through your fair city where I had occasion to read your issue of 28 January 1982. I was most impressed with the column by J.A., the "Sandhills Philosopher," and consequently offer these thoughts in response to the discussion about intellectuals.

First of all, I believe that you, as editor, may have been a bit unfair to this obviously sage philosopher by your disclaimer at the head of his column, hinting that he may be less than qualified to discuss intellectuals. It is very apparent in his article, that he not only knows about intellectuals, but just barely warmed to the subject, in the meager space allotted. For example, he very competently lays before the public, but in very succinct terms, the essence of the intellectual economist, politician, farmer, and writer, in that order. I got the very secure feeling that this Sandhills Philosopher would just as easily and wholly adequately disposed of the intellectual bureaucrat, the intellectual professor, the intellectual minister, and most important of all, the intellectual radio-talk-show-host-all of whom dearly need disposing of. As a matter of fact, I am disposed somewhat to attempt a few remarks about these particular species of intellectual myself, but in view of the superior eloquence of the Sandhills Philosopher, I am more disposed to request that you allow more space, at the very earliest opportunity, to the Sandhills Philosopher to exhaust this

important topic and to specifically describe these types of intellectuals and any others wherein his eminent wisdom might benefit a watching and waiting world.

It does not lessen my respect for this master to point out one very minor flaw however in his article, and this is in relation to his remark that the genuine intellectuals are hard to produce. I would not contest his contention that they are sometimes difficult to identify properly, but as an illustration that they are not hard to produce I should like him to know that in my small hometown where I grew up in Arizona, we were all under the impression for a number of years that for a town our size we were quite unique in that we had two village idiots instead of the usual one. Well, lo and behold, it turned out that one of them actually was an intellectual all the way along.

Also yours faithfully,  
/s/ Rex Arnett

P.S. If you find it in your favor to print this letter, please send me a copy to the above address. I should like to be able to show my relatives that I also am somewhat of an expert of intellectuals.

#### A&M's AFROTC unit receives award

COLLEGE STATION — The Air Force ROTC detachment at Texas A&M University has been presented one of the Air Force's Outstanding Unit Awards.

The Texas A&M unit was selected from among 150 units for exceptionally meritorious service. Only nine other programs in the country were recognized.

The unit was commended for its use of "innovative" techniques in recruiting, coupled with "sound academic instruction" which have allowed the unit to become "the largest producer of commissioned officers for the Air Force Reserve Officers' Training Corps in the nation."

## U.S. Farmers Urged To Political Action

Texas Farmers Union President Mike Moeller called on farmers and ranchers in Texas to "forget the defeats you suffered in 1981 and become more active in voicing your views to elected officials and the general public." Moeller offered his words of encouragement at the conclusion of the 78th annual Texas Farmers Union convention in Fort Worth on January 7-9.

"It is time we put 1981 beneath us for economically these are the worst of times for agricultural producers," Moeller said. "Everyone of us knows we are in a crisis and we all know we have a bleak forecast for 1982. But we should not fall victim to

### RECIPE

By Sarah Anne Sheridan

February desserts usually include cherry pies. This can be made the day before you plan to serve it. It's very appropriate for club refreshments.

**Cherry-Cheese Pie**  
1 9 inch crumb crust or baked pastry shell  
1 8 oz. pkg. cream cheese  
1 15 oz. can sweetened condensed milk  
1/2 c lemon juice  
1 t vanilla

Soften cream cheese to room temperature; whip until fluffy. Add condensed milk slowly, while continuing to beat until well blended. Add lemon juice and vanilla. Pour into crust. Chill 2-3 hours before garnishing top of pie with Cherry Glaze.

#### Cherry Glaze

1/2 c cherry juice.  
3 T sugar  
2 T cornstarch  
1 c drained, pitted sour cherries

Blend cherry juice, sugar and cornstarch. Cook, stirring constantly until thickened and clear. Mix in few drops of food coloring, if desired. Add cherries. Cool before garnishing top of pie.

defeatism." As he spoke parity prices for agricultural goods are at the lowest level since 1932.

Moeller said many things occurred in 1981 which created havoc in the agricultural sector. "The Reagan Administration quickly forgot its promise of parity prices for agriculture. In David Stockman's own words they feel it is more important to bankrupt farmers than to ferret out 30 billion dollars of waste in the pentagon," Moeller stated.

Moeller also criticized Congress for "failing to have the guts to stand up for what was right" in the way of the 1981 Farm Bill. The Texas Farmers Union has called the four year legislation covering farm programs the "Farm Bankruptcy Act of 1981." The Farm Bill was passed and signed by the President in December.

"We have a lot of weapons in our arsenal that we have forgotten how to use," Moeller remarked. "But, in 1982, we are going to learn how to use them all over again."

Moeller urged farmers and ranchers to become politically active since 1982 is an election year. "Despite the low number of farmers and ranchers compared to other areas of the population, there is no more potent political force

than farmers when they are organized," Moeller said. "We would all be doing ourselves a favor if we spent more time this spring plowing the political fields than planting in our own fields."

The TFU president also urged farmers to form coalitions with other groups to pass needed legislation. "We have the tool through the Farmers Union to carry our case to our city cousins, those who are working men and women, those who own small businesses and every consumer who is concerned about their grocery bill."

Moeller also called on farmers to examine their production levels when planning for 1982. "Our most important weapon is our production but unlike other weapons it works in reverse. The less you fire it, the more potent a force it becomes."

The Texas Farmers Union has adopted a program which calls on the federal government to undo the work done in the 1981 Farm Bill. The program, called the "Farmers Bill of Rights," is a four point plan designed specifically for acceptance by the Reagan Administration. The plan will free American farmers and ranchers to set their own prices for their products, control agricultural exports and imports

and, through a democratic referendum, control production.

"We won't get the government out of agriculture simply by cutting off FHA loans and price support programs for commodities," Moeller said.

"While we allow oil companies to control production and set prices, and at the same time we are encouraging farmers in Poland to take the same action, our national policy is encouraging the bankruptcy of the family farm system in the U. S.," he concluded.

#### A&M professor receives SME award

COLLEGE STATION — Dr. Robert E. Young, assistant professor of industrial engineering at Texas A&M University, has been awarded the 1982 Outstanding Young Manufacturing Engineer Award by the Society of Manufacturing Engineers.

Young is a leader in the construction of miniature machine tools built with plastic parts from West German toymaker Fischertechnik that simulate factory machines costing millions of dollars. Computerized numerical controls and stepping motors make the machines work like the real thing.

"The SME Honor Awards Committee is deeply impressed by your accomplishments and feels that the society's prestige will be enhanced by your selection to receive this new award," said Arthur R. Thomson, chairman of the committee.

#### Legislator supports farmers in fuel production

COLLEGE STATION — Texas Rep. Dan Kubiak (D-Rockdale) says it's time Americans turn to farmers for additional sources of fuel.

"We lost 3,000 farmers in Texas last year and estimate that 6,000 will be lost next year due to inflation, high interest rates and an expanding urban population," Kubiak said at Texas A&M University. "Farmers are falling flat on their face. The prices they are now getting for farm products have fallen 14 percent lower than they were a year ago today. At the rate things are going, farmers will become extinct."

Kubiak said government subsidies should be increased to provide alternative markets for farm products and to create an incentive for alcohol production. Increasing the amount of fuel produced by American farms will help bring farmers out of a slump, he said, and it will make us less dependent on foreign countries for fuel.

"Alcohol will gain more interest as the price of gasoline increases," Kubiak said, "and it will have to be accepted by major oil companies before it can be marketed here."

**KLEIN & RECESSION**  
BLOOMFIELD, CONN. — Lawrence Klein, a Nobel Prize-winning economist, said the recession will be over by May, but for the next two years, the economy will show little or no economic growth.

## AUCTION

AUCTION SALE EVERY SUNDAY 2:00 P.M.

516 NORTH FIRST - MULESHOE, TEXAS  
Come Rain, Snow, or Sunshine  
NEW AND USED

FURNITURE, APPLIANCES, TELEVISIONS  
AND LOTS MORE

— CONSIGNMENTS WELCOME —

### Knowles Auction Service

516 NORTH FIRST MULESHOE, TEXAS PHONE 272-4993  
OPEN: 9:00 A.M. TO 7:00 P.M.  
CALL ANY TIME DAY OR NIGHT

TERMS: CASH; All Accounts Settled Day of Sale Please bring your own checkbook.

LANNY KNOWLES MONTY BOND JACK KNOWLES  
516 NORTH FIRST, MULESHOE, TEXAS P. O. BOX 14, MULESHOE, TEXAS 341 WEST POLK, MULESHOE, TEXAS  
(806) 272-0882 (806) 272-0882 (806) 272-0882

LICENSE T&S-011-0489

Conduct Sales Of All Kinds - Call 806 272-4993 For Free Estimate

# did you know?

Reporting a power outage helps SPS personnel restore service more quickly. During major power interruptions, plant operators receive a signal telling them that a problem exists. Calls from customers help these operators pinpoint the exact location of the outage, allowing service crews to make repairs quickly, with less inconvenience to customers.

Billy Mason, Area Dispatcher, Roswell.

The most energy-efficient portable appliances are those that can be used for more than one thing. For instance, an electric fry pan may be used to fry eggs and meats, make a cake, cook roasts or prepare one-dish meals. When buying portable appliances, look for good warranty coverage and local availability of replacement parts and service. And always read the use and care book provided by the manufacturer BEFORE using the appliance. Baking a cake in an electric skillet is twice as economical as in the oven.

Christye Waters, Home Service Advisor, Lubbock.



It takes nearly one pound of coal to produce one kilowatt-hour of electricity. Southwestern Public Service has long-term coal contracts with mines in Wyoming to provide the large supply of coal needed to generate electricity for its customers. Even though it is transported about 1,000 miles, in 110-car trains, coal is still the least expensive fuel.

Jerry Hermesmeier, Plant Manager, Harrington Station.

Knowing what electricity is worth is worth knowing. For answers to your questions, call or write your SPS manager.



SOUTHWESTERN PUBLIC SERVICE COMPANY

## Pay-n-Save SHOP & SAVE TODAY!

PRICES EFFECTIVE FEBRUARY 15 THROUGH FEBRUARY 20, 1982  
WE RESERVE THE RIGHT TO LIMIT QUANTITIES

**LAYS CHIPS**  
29 SIZE FRITO LAY POTATO  
**89¢**  
PKG.

**FRYERS**  
WHOLE FRESH  
**69¢**  
LB.

**BREASTS**  
SOFT FRYER  
**\$1.19**  
LB.

**THIGHS**  
FRESH FRYER  
**\$1.09**  
LB.

**DRUMSTICKS**  
FRESH FRYER  
**\$1.09**  
LB.

**SPAM**  
LUNCHEON MEAT REGULAR OR SMOKED  
12 OZ. CAN  
**\$1.29**

**HORMEL SPAM**  
12 OZ. CAN  
**\$1.29**

**ICE CREAM**  
BORDEN ASSORTED  
1/2 GAL. CTN.  
**\$1.99**

**CHEESE**  
BORDEN COTTAGE  
12 OZ. CTN.  
**69¢**

**PARKAY**  
KRAFT SOFT MARGARINE  
8.8 OZ. BOWLS  
**79¢**

**ROLLS**  
PILSBURY PRESIDENT DRIVER  
8 CT. CAN  
**89¢**

**ROLLS**  
PILSBURY CHAMPION  
8 CT. CAN  
**89¢**

**HOT COCOA**  
MILK CHOC. WITH MINI. MARSH-MALLOW SWISS MISS MIX FOR  
12 OZ. BOX  
**\$1.29**

**WHOLE FRYERS**  
USDA GRADE "A" CERTIFIED  
FINEST QUALITY COUNTRY PRIDE  
**52¢**  
LB.

**MEAT SPECIALS**  
LEAN FRESH GUAR. 73% LEAN  
**GROUND BEEF**  
LB.  
**\$1.19**

**FRANKS**  
4-HOUR FRESH QUALITY MEAT  
12 OZ. PKG.  
**99¢**

**BOLOGNA**  
4-HOUR FRESH QUALITY SLICED MEAT  
12 OZ. PKG.  
**\$1.19**

**SAUSAGE**  
HATCH'S COUNTRY STYLE PORK  
1 LB. BAG  
**\$1.49**

**SAUSAGE**  
HATCH'S COUNTRY STYLE PORK  
2 LB. BAG  
**\$2.97**

**DELSEY BATHROOM TISSUE**  
WHITE PRINT  
**79¢**  
4 ROLL PKG.

**SPECIALS FROM THE GROCERY DEPARTMENT**

**DEL MONTE STEWED TOMATOES**  
18 CT. CAN  
**59¢**

**DEL MONTE PINEAPPLE GRAPEFRUIT DRINK**  
48 OZ. CAN  
**79¢**

**DEL MONTE PINEAPPLE JUICE**  
48 OZ. CAN  
**99¢**

**DEL MONTE TENDER SPINACH 2**  
15 OZ. CANS  
**89¢**

**DEL MONTE FRUIT COCKTAIL**  
17 OZ. CAN  
**69¢**

**MAXWELL HOUSE INSTANT COFFEE**  
10 OZ. JAR  
**\$4.29**

**WAFERS**  
SUNSHINE CHOCOLATE FLUDGE  
12 OZ. PKG.  
**89¢**

**CORN OIL**  
MAZOLA COFFRYING  
16 QT. BTL.  
**\$2.99**

**DINNERS**  
KRAFT DELUXE MACARONI & CHEESE  
14 OZ. BOX  
**79¢**

**JAM**  
KRAFT STRAWBERRY  
3 LB. JAR  
**\$1.69**

**KOTEX**  
REGULAR OR SUPER NAPKINS  
18 CT. BOX  
**\$1.39**

**COFFEE**  
ALL GRADES MAXWELL HOUSE CLUB  
1 LB. CAN  
**\$2.99**

**IRISH SPRING**  
SUNSHINE YELLOW  
2 BATH SALES  
**89¢**

**TIDE**  
70% OFF LABEL FAMILY SIZE  
**\$5.89**  
BOX

**HUNT'S KETCHUP**  
THICK RICH TOMATO  
44 OZ. BTL.  
**\$1.49**

**AIM TOOTH PASTE**  
15% OFF LABEL  
4.6 OZ. TUBE  
**99¢**

**COTYLENOL**  
COLD TABLETS  
24 CT. PKG.  
**\$2.29**

**HUNT'S SLICED PEACHES**  
HUNT'S YELLOW CANTALOUPE HALVES OR  
29 OZ. CAN  
**79¢**

**COLORADO POTATOES**  
ALL PURPOSE  
10 LB. BAG  
**\$1.34**

**ORANGES**  
CALIFORNIA BLANKET  
10 LB. BAG  
**37¢**

**PEPPERS**  
LARGE BELL  
LB.  
**55¢**

**CABBAGE**  
HEAD GREEN  
10 LB. BAG  
**22¢**

**COKE**  
32 OZ. BOTTLES PLUS DEPOSIT  
**\$1.89**  
6 BTL. CTN.



# BUYING? SELLING? CHECK OUT THE...

# CLASSIFIED ADS

**DEADLINE FOR CLASSIFIED ADS IS TUESDAYS AND FRIDAYS 11:00A.M**

**CLASSIFIED RATES**  
1st Insertion,  
Per Word -- \$.15  
Minimum Charge--\$2.30  
2nd Insertion  
Per Word--\$.13  
Minimum Charge--\$2.00  
**CARD OF THANKS**  
Charged at Regular  
Classified Rates  
**CLASSIFIED DISPLAY**  
\$1.55 per column inch  
**BLIND AD RATES**  
50% More  
**DEADLINE FOR INSERTION**  
11 a.m. Tues. for Thurs.  
11 a.m. Fri. for Sun.  
**WE RESERVE THE RIGHT TO CLASSIFY REVISE OR REJECT ANY AD.**  
**NOT RESPONSIBLE FOR ANY ERROR AFTER AD HAS RUN ONCE.**

**PERSONALS**

**LADIES:** I have your favorite plasticware. One that's guaranteed against breaking, chipping or cracking under normal use and dishwasher safe. Interested in a party? Call **Sandy**, 272-4737. 1-6s-7tc

**WE BUY USED FURNITURE AND APPLIANCES**  
CALL 272-3030  
**HARVEY BASS APPLIANCE**  
1-18s-tfc

Custom farming, 8 row equipment. Reasonable rates. Call 272-5317 before 8 a.m. or after 7 p.m. 1-16s-tfc

Tired of problems with your roof due to leakage, hail and wind. Call for a free estimate on a beautiful roof that shields against the elements. **Jerry Helton**, 272-3836. 915 Gum.

**SQUARE DANCE Lessons** offered once a year! This is the time!! Limited to 25 couples. Two free lessons beginning Feb. 19: Feb. 26. All ages welcome. **American Legion Hall**, 8-10:30 p.m. 1-7t-3tc

**OWN YOUR OWN** Jean-Sportswear Shop or Jean Program. Offering all Nationally known brands such as Jordache, Chic, Lee, Levi, Vanderbilt, Calvin Klein, Wrangler, over 100 other brands. \$8,900.00 to \$16,500.00 includes beginning inventory, airfare for 1 to Fashion Center, training, fixtures, Grand Opening Promotions (Also Infant/PreTeen Shop). Call **Mr. Loughlin** [612] 835-1304. 1-7t-1tpts

**LOST&FOUND**

**LOST:** 6-mo. old doberman, Thursday morning on Hwy. 84. Call 933-4340 or 227-2329. Reward offered. 2-7t-2tp

**HELP WANTED**

**NOW TAKING APPLICATIONS** for waitresses and cooks. Full and parttime. Must apply at **Pizza Hut** 3-7t-4tc

**NEED EXTRA CASH?** Several Avon routes available now in Muleshoe area. Call **Nettie** 272-3208. 3-4t-tfc

**APARTMENTS**

**SARATOGA GARDENS**  
1300 N. Walnut, Friona  
Phone 247-3666  
1, 2, or 3 bedroom apartments modern, wall to wall carpet, heating/cooling, kitchen equipped, laundry facilities, parking. Low rent for needy families. Call collect. 5-46t-tfc

**HOUSE FOR RENT:** \$200. 272-5289. 4-7t-4tc

**7. WANTED TO RENT**

**WANTED TO RENT:** 3 BR House. **Terry Wheeler**, 925-6488. 7-7t-2tc

**REAL ESTATE**

**HOUSE FOR SALE OR FOR LEASE:** Attractive L. R., Dining Room, Kitchen combination (W/fireplace). 3 bedroom, 2 bath, double garage. 272-4428. 8-6s-tfc

Choice Building site. **Richland Hills**. Will finance. 272-4096 11-49s-stfc

**FOR SALE:** 3 bedroom, 2 bath, brick, living room, den with fireplace, office, **Richland Hill**. 272-4701. 8-21t-tfc

2 year old brick home for sale. 3 bedroom, 2 bath, built in appliances, living room with beam ceiling and fire place. Double car garage. **Parkridge Addition** Call 272-3512 8-1s-tfc

Irrigated, new underground pipe. 2- 158 acre tracts near Muleshoe. \$1150 / acre **Norman Realtors** 806-795-9514 8-42s-tfc

**FOR SALE:** 3-2-2 fenced yard, 1 fireplace, large den, 272-5135. 8-6t-8tc

**FOR SALE:** 4-year old brick house, 1770 sq. ft., 3BR, 1 1/2 bath, cathedral beam ceiling, fireplace, skylight, custom brick patio, fenced, corner lot. 1002 West 7th. 272-4727. 8-6s-tfc

**FOR SALE:** 3-BR brick house, 1-3/4 baths, living room, den with fireplace, large storage in back. 1713 W. Ave. H. Call 272-3400 after 5 and on weekends. 8-3s-stfc

160-acre farm for sale. 4 miles north on Hwy. 214. Call 272-4280. 8-6s-tsc

**HOUSE FOR SALE:** 3 BR, 1 1/2, LR, kitchen-dining combination, den, ample storage, corner lot, near 3 schools, 1928 sq. ft. living area, 621 West 6th. Phone 272-4732 days or 272-4827 evenings. 8-2s-tfc

**HOUSE AND 2 ACRES:** 3 bedroom, 1 bath, newly remodeled inside. Outside needs more repair. 272-4552 or call **Amherst**, 246-3472, after 6:30. 8-4t-tfc

**HOUSE FOR SALE:** 2BF, 1B, garage, fenced back yard, good location. Call 272-3920, 418 Dallas. 8-3t-tfc

**Bingham & Nieman Realty**  
116 E. Avenue C  
272-5285  
nights 965-2488  
"We Appreciate Your Business!"  
**George & Dianne Nieman**  
8-49t-1tc

**Krebs Real Estate**  
201 W. Ave. C  
Appraisals  
Serving Muleshoe Area 25 years. We Appreciate your business.  
8-52t-tfc

**DENT & ASSOCIATES REAL - ESTATE**

**FARMS--RANCHES COMMERCIAL RESIDENTIAL**

**LEON DENT**, broker  
nites 272-3580

**DON REMPE**  
nites 272-4643  
1516 W. AMERICAN MULESHOE, TX. 79347  
OFFICE 272-4236

**LIST YOUR PROPERTY WITH US**  
8-6t-tfc

**We Want Your Business**

**REMEMBER REID REAL ESTATE**  
1614 W. American Blvd.  
272-3142  
**Thursie Reid**  
272-3142

For all your real estate needs call:  
**GLAZE & GOFORTH**  
112 Ave. C  
272-4208  
8-11-tfc

**Smallwood Real Estate**  
232 Main  
272-4838  
\*\*\*\*\*

3 bedroom, 2 bath, 1 car garage, brick, fenced back yard.

Duplex, 2 bedroom, 2 bath each, small down payment.

3 bedroom, 2 bath, 2 car garage, fenced back yard, 2,800 sq. ft.

8-4s-tfc  
See or call **Joe Smallwood, Broker**

**Henry Realty**  
2 bedroom completely remodeled, carpet, good location. FmHA Approved

Country living 3 bedroom, 2 bath, double garage, brick home on Hwy 2 miles from town. Immediate possession.  
8-46t-8-46t-tfc

Small acreage 3 miles east of Muleshoe on highway.  
111 W. Avenue B, Muleshoe  
272-4581  
8-44s-tfc

**TOWN and COUNTRY REAL ESTATE**

Large brick home over 2300 sq. ft. 3 bedroom, 2 baths, 2 car garage, fireplace, central heating and lots of extras.

Brick home in best of neighborhoods. Over 2000 sq. ft. 3 bedrooms, 2 baths, 2 car garage, fireplace, central heating and refrigerated air. Assumable loan of 9%.

Nice 3 bedroom, 2 bath brick home with fireplace. Has 2 car garage, covered patio, storm cellar and back yard fence.

Nice 3 bedroom, 2 bath stucco house with composition shingles. Has F.H.A. loan.

Stucco house painted inside and out. 3 bedrooms, 2 baths. All new carpet.

Small 3 bedroom home. Asbestos siding. F.H.A. loan.  
8-5t-tfc

**USED CARS-TRUCKS**

**SURPLUS JEEPS, CARS, TRUCKS** inv. value \$2143, sold for \$100. For information on purchasing similar bargains call 602-998-0575 Ext. 0511. Call refundable.  
9-6t-4tp

1981 Ford P.U. 351 engine, PS, PB, cruise, tilt, good rubber, excellent shape. XLNT, some cash, take over payment 272-5289.  
9-7t-4tc

1977 Golden Eagle Jeep: CB, Pioneer Stereo, 4-ton winch with 150 ft. cable, new canvas top. \$4,200.00 See at 420 Temple, Sudan.  
9-5t-4tp

1974 CHEVROLET VEGA. Needs motor. Good body and interior. 272-4552, or call **Amherst**, 246-3472, after 6:30. 9-5s-tfc

**FARM EQUIPMENT**

"WINDMILL DEALER NEEDED" LOWER YOUR ELECTRIC BILL

A dealer is NEEDED NOW for America's fastest growing Windmill Corporation. "America Wholesale Windmills, Inc." ACT NOW and become a part of the industry of the FUTURE. .40% Federal & State Tax credits available. Profit Potential UNLIMITED & virtually NO COMPETITION. Along with the purchase of a windmill, selected customers are AWARDED dealerships. Write today or call (Toll Free: 1-800-241-6759) to learn how "YOU" can become a part of this exciting and lucrative industry. (We only need 1 dealer for your area, so ACT NOW!!!) **AMERICAN WHOLESAL WINDMILLS\* INC.**  
2260 Northlake Parkway Suite 307  
Tucker, Ga. 30084  
10-5t-4tc

Poland has sweeping increase in food prices.

**FOR SALE OR TRADE**

**FOR SALE:** Wurlitzer spinet piano. Good condition. Phone 272-4804. 11-7t-4tc

**FOR SALE:** Sears 30-inch continuous cleaning - harvest gold range. Excellent condition. Call 272-5449. 11-7t-2tc

**FOR SALE:** Brand new gas cooker. In good condition. Call 272-4261. 11-2s-tfc

**FOR SALE:** Warm winter nest, furnished 2 BR trailer on lake LBJ with stove, refrigerator, washer, central heat and air. Nice. 272-5408. 11-2s-tfc

**USED 50 hp. IV-8F.** Vertical hollow shaft motor, new switch gear. \$8,145.00. **Owens Electric, Hereford, Tx.** 364-3572. 11-5t-tfc

For sale: 4 clothes racks, 1 jewelry case, 1 gondola. Call 257-3313 or 986-2024.

**HOUSEHOLD GOODS**

**BURROWS UPHOLSTERY AND FURNITURE REPAIR**  
209 W. 2nd  
phone 272-4255  
12-44s-1tc

**PROPERTY FOR LEASE**

Commercial building 30'x60' for rent 272-4878 after 6 p.m. 13-44s-tfc

**MISCELLANEOUS**

**FRANK'S REFRIGERATION APPLIANCE & SERVICE PARTS & REPAIR**  
315 W. 3rd Ph. 272-3822  
15-7t-tfc

Want a propane system? check with **SMITH LP GAS MULESHOE**  
15-30s-tfc

1000 gallon tank. \$500.00. 272-5289. 15-7t-4tc

**BURROWS UPHOLSTERY** Unclaimed furniture. Recliners, love seats, club chairs. 209 W. 2nd. 15-7t-3tc

**WANTED TO BUY**-used aluminum pipe of all sizes. Also side roll sprinklers of all sizes. No quantities too large. Top prices paid. **Stateline Irrigation** 272-3819 or 272-3450 15-33t-tfc

**GORDON PLUMBING** Licensed and bonded. New, repair, commercial work. Free estimates. 20% discount for senior citizens. 24 hour service. 272-4111, 221 East 4th. 15-4s-tfc

**LIVESTOCK**

**NOW STANDING:** Registered AQHA Stallion, "Lucky Bug Rex." SI-88, Conformation, disposition, plus. Call 272-5317 after 6 p.m. 16-4t-tfc

**Three Way News**  
By **Mrs. H.W. Garvin**

Mrs. H. W. Garvin visited Mrs. Minnie Dupler Monday afternoon.

Mrs. Tommy Galt is a medical patient in Methodist Hospital in Lubbock.

The Three Way High School basketball teams played Whitharral Tuesday night losing both games. Three Way played Whiteface Friday night, losing both games.

Mr. and Mrs. S. G. Long visited the Chester Petrees Saturday evening at their home in Enochs.

Mr. and Mrs. George Tyson spent last Thursday night in Lubbock with their daughter, the Tommy Durhams.

Mrs. Jack Furguson was in Lubbock part of last week helping take care of her granddaughter who is an accident patient in the Methodist Hospital.

Mr. and Mrs. H. C. Toombs were in Lubbock Saturday on business.

Malissa Green of Shallowater spent the weekend with her grandparents, the Jack Furgesons.

Mrs. Elmer Lee from Pep and Mrs. Scott Reed and son from Odessa, visited Mrs. George Tyson Wednesday afternoon.

Mrs. Rayford Masten was in Lubbock Wednesday on business.

W. L. Chapman was a medical patient in Cochran Memorial Hospital the past week.

Mrs. Elmer Lee from Pep and Mrs. Scott Reed and son from Odessa visited the Ricky Lees Wednesday.

Mrs. H. W. Garvin was a dinner guest in the home of her brother, Mr. and Mrs. George Tyson Sunday.

Several families attended the fat stock show at Ft. Worth the past week where several of our youth showed stock.

Mrs. Adolph Wittner was in Lubbock Monday on business.

**Women's Seminar focuses on non-traditional jobs**

SAN ANTONIO — The woman who coined the phrase "workwife," another who urges women to "make time work for them" and a third who found success in a blue collar trade are among speakers for a national women's conference to be held here March 7-10. Sponsored by the Texas Engineering Extension Service of the Texas A&M University System and the Women's Bureau of the U.S. Department of Labor, the conference is titled "Society's Hope for Equality — Women in Non-Traditional Employment," and will be held at the Hyatt Regency Hotel.

The conference is open to any woman — especially those seeking employment in non-traditional jobs or who are considering mid-life career changes — as well as employers of women. Registration information is available from the Texas Engineering Extension Service, P.O. Box 40, San Antonio, Texas, 78291.

Mrs. Lamer Pollard from Whitharral visited her parents, the Rayford Mastens on Wednesday.

Mrs. Robert Kindel was in Canyon the past week to help her sister, Carla Martin, move.

Farmers in the community are very busy plowing the land.

The junior high at Three Way played Whitharral on Monday night at Three Way, losing the games. Tuesday night, Three Way High School basketball teams played Whiteface on the home court losing both games. Friday night, Three Way played Sundown at Sundown with the Three Way boys winning and the girls losing.

Robin Reeves, Hobbs, N.M. spent the weekend with her parents, the Jack Reeves.

**MEET THE CANDIDATES**  
**Parmer County**  
Democratic  
Commissioner  
Precinct 4  
**Raymond McGehee**

**VOTE FOR THE CANDIDATES OF YOUR CHOICE!**

Rates for listing in the Journal's Political Column is: \$35 for all offices except those for City Council and School Board post which is \$15. This fee includes a front page announcement article and a one column photograph at the time the announcement is made, in addition to the listing in the Political column from the date of announcement until the final election. Charges for announcements are cash in advance, and this same policy to applies to all political advertising carried in the columns of this newspaper. Names for each office will be listed in the Political Column in the order they are received at the newspaper office. The Journal has been authorized to announce the following candidates for public office:

- Democratic**
- \* County Clerk \*  
**Barbara McCamish**
  - \* District Clerk \*  
**Nelda Merriott**
  - \* County Treasurer \*  
**Dorothy Turner**
  - \* Tax Assessor \*  
**Kathleen Hayes**
  - \* Justice Of Peace \*  
Precinct No.1  
**Tana Holmes**  
**Jack Bates**
  - \* County Commissioner \*  
Precinct No. 4  
**Rudolph Moraw**  
**Frankie Dee Fine**  
**Dale Middlebrooks**  
**Pete Hurtado**
  - \*287th Judicial District Judge \*  
**Bailey & Parmer Counties**  
**Jack D. Young**
  - \* County Judge \*  
**Gordon H. (Corky) Green**
  - \*Commissioner \*  
Precinct No. 2  
**Glen Dalton Harris**  
**Roy Whit**  
**Don Seales**  
**William Carl Patterson**  
**Charles Glover**
  - Republican**
  - \* County Treasurer \*  
**Jean Treadwell**
  - \* County Attorney \*  
**Lamar Dee Treadwell**
  - \* County Judge \*  
**Thomas S. Freeman**
  - \* Justice of Peace \*  
Precinct 1  
**Paulette Cuevas**





Beef Bone In  
**SIRLOIN STEAK**  
**\$2.29**  
lb.



Sliced Slab  
**BACON**  
**\$1.29**  
16 oz.



USDA Grade A  
**SPLIT FRYERS**  
**51¢**  
lb.



Rib or Loin Ends Cuts  
**PORK CHOPS**  
**\$1.49**  
lb.

Fresh U.S.D.A Grade A  
**FRYER BREASTS** lb. **\$1.19**  
Center Cut Loin  
**FORK CHOPS** lb. **\$1.89**  
Hatch  
**SAUSAGE** 2 LB. **\$2.89** 1 LB. **\$1.49**  
Lean and tender  
**T-BONE STEAK** lb. **\$2.69**  
Porterhouse Beef Loin 1st Cut  
**STEAK** lb. **\$2.79**  
Boneless Tender Beef  
**SIRLOIN STEAK** lb. **\$2.89**



**SHOP RITE**

**DOUBLE COUPONS EVERY SAT.**

Each of these advertised items is required to be readily available for sale at or below the advertised price in each store, except as specifically noted in this ad. We reserve the right to limit quantities. None sold to dealers.

Wilson's Certified  
**FRANKS** 7 oz. **88¢**  
Oscar Mayer Meat or Beef  
**BOLOGNA** 12 oz. **\$1.45**  
Oscar Mayer Meat Assorted  
**LUNCH MEATS** 3 oz. **\$1.39**  
Oscar Mayer Meat or Beef  
**FRANKS** 16 oz. **\$1.79**  
Kraft 1/2 Moon Longhorn Cheddar or Colby  
**CHEESE** 10 oz. **\$1.79**  
Lean  
**STEW MEAT** **\$1.69**

US No. 1 Red  
**POTATOES**  
**3 lb. 99¢**



Snow White Heads  
**CAULIFLOWER** lb. **\$1.19**

Golden Ripe  
**BANANAS**  
**3 lb. 99¢**



Jalapeno  
**PEPPERS** Spice Up Your Meal lb. **\$1.19**

**PLAY**

Put \$2,500 in your pocket...play **CASH KING**

ODDS CHART EFFECTIVE JANUARY 20, 1982

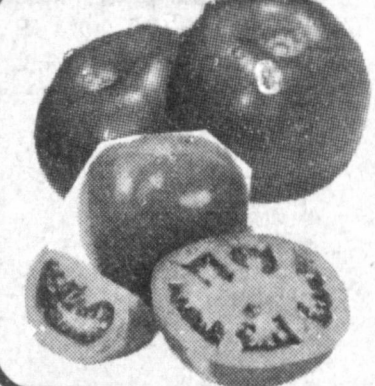
PRIZE VALUE	NUMBER OF PRIZES	ODDS FOR ONE GAME TICKET	ODDS FOR 10 GAME TICKETS	ODDS FOR 20 GAME TICKETS PLUS 10 SAVER DICES
\$1,000	1	1 in 1,000,000	1 in 100,000	1 in 10,000
100	10	1 in 100,000	1 in 10,000	1 in 1,000
10	100	1 in 10,000	1 in 1,000	1 in 100
5	300	1 in 3,333	1 in 333	1 in 33
2	1,000	1 in 1,000	1 in 100	1 in 10
1	10,000	1 in 100	1 in 10	1 in 1
TOTAL	11,400	1 in 85	1 in 7.4	1 in 2.7

Odds vary depending on number of Game Tickets you obtain. The more tickets you obtain, the better your chance of winning. Odds to obtain all ten (10) Saver Dices and qualify for Grand Prize Drawings are 1 in 25. Odds to win Grand Prize Drawings will depend on the number of Saver Dice redeemed.  
Cash King Series #CCKB is being played in 11 participating stores located in New Mexico and Texas. Scheduled termination date of this promotion is April 30, 1982. However, Cash King officially ends when all game tickets are distributed.



Golden Delicious  
**APPLES**  
**49¢**  
lb.

Naturally Sweet  
**PINEAPPLES** EA. **98¢**



Red Ripe  
**TOMATOES**  
**69¢**  
lb.

Bell Excellent for Stuffing  
**PEPPERS** 3 for **99¢**

Shurfine  
**FLOUR** **69¢**  
5 lb. bag

**MIRACLE WHIP** **\$1.19**  
Kraft Salad Dressing  
32 oz. jar

Shurfine All Grinds  
**\$1.69 COFFEE**  
1 lb. can

35¢ Off  
**DOWNY** 64 oz. **\$1.88** Cut Del Monte  
**GREEN BEANS** 3 16 oz. can **\$1** Breakfast Cereal  
**POST TOASTIES** **\$1.19** Nabisco Premium Crackers  
**CRACKERS** 1 lb. Box **69¢**  
Shurfine  
**TOWELS** 2 Roll **99¢** Pet Ritz 2-9 in.  
**PIE SHELLS** 10 oz. pkg. **59¢** Del Monte  
**TOMATO SAUCE** 4 8 oz. cans **\$1** American Beauty  
**ELBO RONI** 30 oz. Pkg. **\$1.09**

Campbell Chicken Noodle  
**SOUP**  
**4 \$1**  
10 3/4 oz. can



Shurfine  
**FRUIT COCKTAIL**  
**59¢**  
17 oz. can




**PEPSI**  
**\$1.09**  
6 pak 12 oz. cans

**DOUBLE COUPONS THURSDAY, FRIDAY, SATURDAY**