

# STERLING CITY NEWS-RECORD

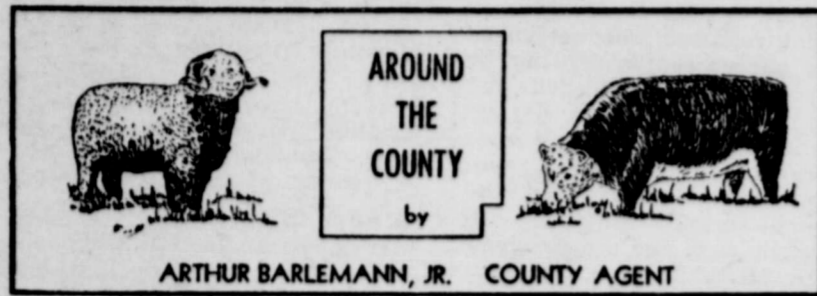
VOL. NO. 67

"Since 1890"

PUBLISHED EVERY FRIDAY AT STERLING CITY, TEXAS

MARCH 21, 1958

No. 12



Wool producers are reminded that all papers on shorn wool and lambs marketed between April 1, 1957 and March 31, 1958 must be filed in the county ASC office by April 30, if the operator is to qualify for payment under the Wool Incentive Program. Lambs and wool sold after March 31 will be eligible in the 1958 program.

The rancher will need all his sales receipts for wool and lambs. Sales receipts for unshorn lambs must be marked UNSHORN; on wool he will need to know the freight on the hauling of the wool. For further information on the wool program, contact Johnny Hailcy, county office manager in the ASC office or Marie Finnegan, clerk.

David Durham, a 4-H club member, lost one of his registered Rambouillet rams last week. The ram died after contracting tetanus or lockjaw, as it is commonly known. Treatment was given the ram as advised by a veterinarian but was ineffective.

Tetanus is caused by a germ which enters a wound. This germ causes a toxemia or poison to be set up in the animal's system which results in paralysis of the voluntary muscles of the legs, face, neck and tail. In sheep it is practically 100% fatal while other animals do respond to treatment. Horses are easily treated and usually recover; cattle and hogs also are not as likely to die with it as are sheep.

Contrary to popular belief, rabies is not a hot weather disease. The Delbert Haralson's youngest daughter is presently taking the rabies shots after being exposed to it when a pet cat had the disease. The cat died last week in a San Angelo veterinary hospital. The head was sent to Austin and diagnosed as positive for rabies. The child had played with the cat shortly before it became sick and has to take the shots as a result.

This week a fox came up to the Chat Reynolds ranch house and fought with the dogs most of the night. It was killed the next morning. While it is not positive for rabies, it is highly suspected and all precautions will have to be taken.

The Haralson cat had been vaccinated for rabies but there are two things that may have happened. One, the vaccine may have "broke" which occurs in any vaccine; no vaccine is 100% effective since in every so many thousand doses, one dose may break. Two, the cat may have been exposed to rabies before being vaccinated. In that case the vaccine is not effective. When an animal is known to have been ex-

posed to rabies, it should be given a booster shot even though it may have been previously vaccinated and closely observed. If it has not been vaccinated, there is no use in vaccinating after exposure. Such animals exposed and known to have been bitten or scratched by rabid animals should be destroyed. The incubation period of the rabies virus is from 14 to 285 days; this means that an exposed animal would have to be kept under very close observation for as long as 10 months.

Now is the time to fertilize your fruit and nut trees if you want to get them off to a good start this spring. As soon as we have some warm, sunny weather the trees are going to put out and it is then that they need all the plant food that is available.

If you are going to use a commercial fertilizer, use one that contains both nitrogen and phosphorus. Potash, another plant nutrient, is in good supply in this area and is not needed by plants. A good fertilizer to use in this area is 16-20-0 which is available at nearly all feed and seed and garden supply stores. This particular fertilizer contains 16 pounds of nitrogen and 20 pounds of phosphorus in each 100 pounds; the rest of the 100 pounds is a carrier.

Apply the fertilizer at the rate of 2 to 3 pounds per diameter inch of trunk. A tree with a six inch diameter would require from 12 to 18 pounds of fertilizer. It may be broadcast around the base of the tree extending from about 18 inches from the trunk to the outer drip area of the branches but the best way is to punch a series of holes around the tree starting about 18 inches from the trunk and extending out to the edge of the drip area. These holes may be punched with a crowbar or an iron rod of some type to a depth of about 12 to 18 inches. The holes are filled with the fertilizer and watered well after finishing. Since we do have considerable trouble with chlorosis in this area it is well to add some iron sulphate to the fertilizer to stave off the chlorosis of yellowing leaves. Mix the iron sulphate with the fertilizer on a basis of 1 part of sulphate to four parts of fertilizer.

### Class Party Postponed

A party or social that had been set for Saturday night by members of the young married couples class of the Baptist Church, has been postponed. The affair had been set for Saturday night, but was called off because there are so many cases of measles in town.

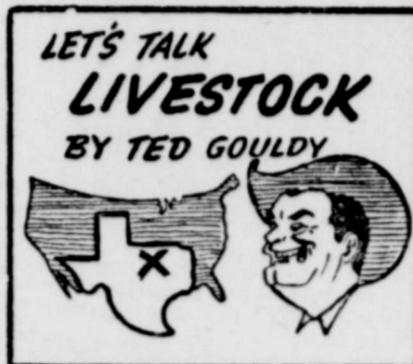
### Lions Club Luncheon

Twenty-four members were present when the Lions Club held the regular weekly luncheon Wednesday in the community center.

H. A. Chapple told of food donations that could be had when the club puts on the pancake supper.

S. M. Bailey was named director of the Highway 87 Improvement Association, replacing R. T. Caperton, resigned.

The current Red Cross drive was talked about, but no action was taken on starting the drive.



### INCREASED LIVESTOCK SUPPLY FINDS VERY STRONG DEMAND

FORT WORTH—Stocker demand remained very broad and prices were stronger again, despite a 20% increase in the cattle and calf offering at Fort Worth Monday. Slaughter interests were again faced by a very tight supply situation and were forced to yield stronger prices on their portion of the supply. Anything suitable to go back to pasture was priced beyond the reach of slaughter interests. The somewhat more open weather of the past weekend enabled stockmen to expand shipments to market.

Comparative prices: Mature steers were virtually lacking in the run. Good and choice slaughter yearlings cashed at \$24 to \$28, and medium and lower grades cashed at \$16 to \$24.

Fat cows cashed at \$18 to \$20.30 and canners and cutters sold from \$12 to \$18. Bulls brought \$15 to \$21.75.

Good and choice slaughter calves sold from \$24 to \$28, and common and medium offerings cleared at \$17.50 to \$24. Culls sold at \$14 to \$17. Good stocker steer calves and lightweight stocker yearlings sold from \$23 to \$28.25, some around 550-pound yearlings at \$28.25. Heifer calves of good grades sold around \$2 40 to \$26. Some good to choice 350-pound calves sold at \$29.

### LARGEST OFFERING OF YEAR ARRIVED IN SHEEP DIVISION

There were about 7,000 sheep and lambs in the run at Fort Worth Monday as clearing weather last week permitted some expanded movement to market. A larger portion of the run was new crop milk fat lambs, and prices were firm on them. Old crop lambs and yearlings encountered some weakness and were much less active in clearing than were the new crop lambs. Old sheep were scarce and fully steady. Feeder outlets followed the slaughter interests in putting some pressure on old crop feeders.

Good and choice slaughter Spring lambs cashed at \$23.50 to \$24.50 and cull to medium sorts sold from \$17 to \$23. Good and choice shorn old crop lambs ranged from \$20 to \$23 with most sales from \$21.50 down. Lambs at \$21.50 and \$23 carried No. 1 or better pelts, while recently shorn lambs stopped around \$20 or \$20.50 at best. Medium and good feeder lambs sold around \$20 to \$21.

Some excessively heavy yearlings and two's sold around \$15 to \$16, and lighter weight yearlings drew \$18 to \$19. Old wethers cashed at \$16 down. Slaughter ewes sold from \$9 to \$11. Some aged broken mouthed ewes sold for stocker purposes up to \$12.

### HOGS HIGHER DESPITE BIGGER NUMBERS IN NORTHERN POINTS

The trade on hogs at Fort Worth Monday saw some of the most determined sorting for meat type hogs that has so far developed here. Both major and the smaller packers were bearing down on lard types and willing to pay premiums for the meat type hogs, and a wide spread developed in prices. The 12 major markets had 10,000 more hogs Monday than a week earlier.

The day's extreme top was paid for only a dozen head of fancy No. 1 meat hogs, and the bulk of the better meat types falling in No. 1 or No. 2 classifications sold at \$22 to \$22.25. Other good butchers of mixed grades and weights sold

## Roy T. Foster Named Bank President

### HOSPITAL NOTES

Patients in the Sterling County Hospital on Thursday morning of this week included—

Mrs. Bobby Blair  
Neill Munn  
Jim Butler  
Mrs. Horace Donalson  
Mrs. Cora Hanson  
Mrs. A. C. Pearson  
D. P. Glass  
C. A. Plummer

Dismissals since Thursday morning of last week include—

Mrs. Pat Boatler  
Mrs. Billy Derrell Blair and infant son, William Thomas  
Fannie Copeland  
Mrs. Raymond Blair  
Frank Milligan  
Bobby Westbrook

Roy Foster was named president of the First National Bank here in action Tuesday by the directors. Roy became the third president of the institution, following J. T. Davis, deceased. The first president of the bank was Roy's father, the late W. L. Foster, who served from 1910 (date of organization) until 1950. It was then Davis was named president.

Flavy Davis, nephew of J. T. Davis, was named a director in the bank, taking the place vacated by J. T.'s death.

In action the same day, the directors elected H. L. Hildebrand vice-president. Roy had been vice-president since 1950.

Other officers of the bank include J. S. Cole, executive vice-president, D. L. Haralson, Jr.—cashier; and W. R. Brooks, assistant cashier.

Directors include Flavy Davis, Roy Foster, Rufus Foster, Claude Collins, J. S. Cole, H. L. Hildebrand, and Roland L. Lowe.

### Named Freshman Class Favorite at Sul Ross

Alpine, Texas—In a recent meeting of the Sul Ross State College Freshman Class, Billy Ernest Young was elected boy Freshman Class Favorite to represent his class in the 1958 BRAND, the college yearbook. Mr. Young was then presented to the student body at a formal presentation of Campus and Class Favorites and coronation of the Brand King and Queen. This occasion took place at the annual formal Brand Dance in the Student Union Building on March 8. For the coronation he escorted Anita Stephenson, girl Freshman Class Favorite, from Big Lake, Texas. In addition Bill will be pictured on a full page in the 1958 BRAND.

A graduate of Sterling City High School, Bill was an outstanding freshman member of the Lobo Football team. He is working toward a major in physical education at Sul Ross.

Bill is the son of Mr. and Mrs. W. L. Young of Sterling City.

Typewriter Paper for sale at the News-Record.



GLEND A SPARKS

### Engagement Announced

Mr. and Mrs. E. C. Sparks of Sterling City announce the engagement of their daughter, Glenda, to William Bruce Fletcher, son of Mr. and Mrs. Leonard Fletcher of Bronte. The wedding will be held April 18 in the home of the bride's parents.

## Turkey Dinner and Style Show Tonight

A combination of a turkey dinner and a style show with entertainment is on tap tonight at the school building. The seniors are sponsoring the affair and patrons are assured of a full \$1.00 worth with the dinner and show. Children's clothes are being modeled, and the clothes are being furnished by Brooks & Bailey, local dry goods store. A program to go along with the show has been worked up.

### SOUTH DAKOTAN NAMED ASSISTANT MANAGER

The engineer who played a key role in rebuilding the Sioux City Stockyards after it was flattened by flood, and who played a major role in rebuilding the St. Paul Stockyards following the disastrous fire there, will be a new assistant manager at Fort Worth starting May 1.

John M. Lewis, currently president and general manager at the Sioux City Stockyards has been assigned to Fort Worth, according to General Manager W. L. Pier.

"Mr. Lewis will play a key role in the many plans we have for remodeling and improving the facilities at Fort Worth," Pier said. "our vast program of streamlining and improving will call for more and better facilities for handling truck and trailer shipments and convenience for patrons. Once our business was 100% rail shipments, and now it is 98% truck shipments. Modification has been going forward for many years, but our full program will now get underway following a complete engineering study. In order to make these improvements and still handle the two or three million head of livestock which will use our facilities this year, will be difficult. However, the first stages of the program have been so well received by stockmen and their families, that we want to push the rest as rapidly as possible."

A turkey and dressing supper is to begin at 6 p.m. in the school cafeteria. Cost for the plate (and the show) is \$1.00. On the menu will be turkey and dressing, green beans, fruit salad, cranberry sauce, tea, coffee, cake and homemade bread made by Mrs. Jeff Davis.

Commentator for the style show will be Mrs. H. A. Chapple. Everyone is invited to attend the show and supper. The mothers of the seniors are in charge.

Money raised will be used by the seniors on their senior trip to Colorado Springs, Colorado.

So, for a big dollar's worth—be out at the school tonight for the big turkey supper and style show.

A square dance will be performed by junior high students and Jackie Cole will sing a solo. He will be accompanied by Mrs. I. W. Terry.

### EPSILON ZETAS TO HOLD BAKE SALE APRIL 10

The Epsilon Zeta Club members are to hold a bake sale here April 5 at 10 a.m. The sale will be held in the McClure Feed Store.

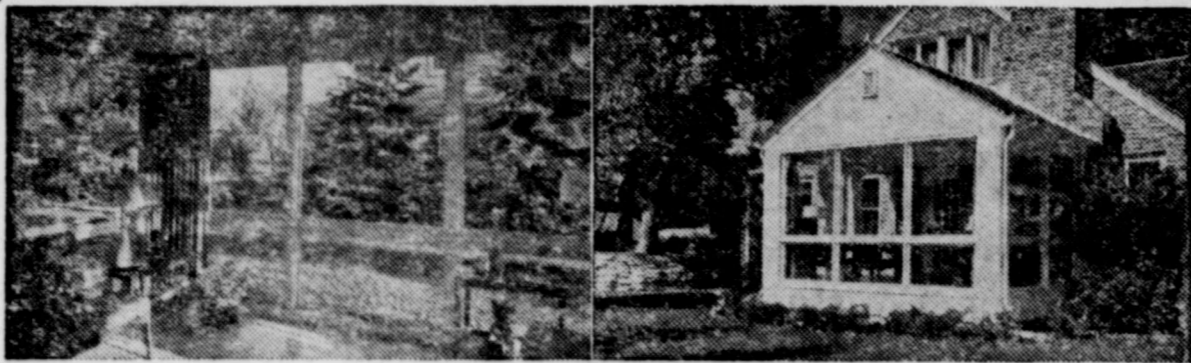
No baked goods will be sold at advance sales, said a club spokesman.

### THE AMERICAN WAY



He Hadn't Thought of That!

## Old Porch Becomes Useful Room



Porch enclosed with window units of ponderosa pine adds year around living space, new exterior beauty to this house in Minneapolis. Use of old screened porch below was limited.

Wood window units can make conversion of a porch into a year-around room easier and far less expensive than you'd imagine.

This is because window units of ponderosa pine, such as the ones used in the photographs, are available in stock from building material dealers and can be installed quickly and with a minimum of labor.

The units come with frame and sash made to fit together. Hardware and weatherstripping are attached, and the unit needs

only to be fastened in place and painted.

The large glass units in the porch above have fixed sash at the top with an awning window section at the bottom. A bank of six individual awning units was installed on one side. These awning windows open outward for full ventilation. They also can be left open during a rain-storm, since the glass becomes a tiny "roof" that keeps rain-drops out.

The porch shown was converted by a professional. However, these and styles of other



window units of ponderosa pine can be installed by a handyman with an average amount of skill.

### 'Exceptional Opportunity'

For reliable person, man or lady, with vision and ability to act immediately for a lifetime of assured income. To service route of cigarette machines established locally for operator. \$900 to \$1,800 cash investment required, the return of which is guaranteed in writing by us, for you to earn up to \$260 per month part time. You can net up to \$28,000 annually on a full time basis. We are an established reputable concern with the finest and oldest name brand equipment. If you have the cash and are sincerely interested please write giving your phone number and brief background for local interview at your convenience.

COIN SALES DISTRIBUTORS, Inc.  
5750 Nicollet Ave.  
Minneapolis 19, Minnesota

### BUSINESS OPPORTUNITY

Local area Man or Lady, wanted to service and collect from coin-operated dispensing equipment. 4 to 9 hours weekly earns operator up to \$290 monthly. No age limit or selling but must have car, references and \$402 to \$804 working capital. For interview give personal particulars, phone number. Write Box 4728, Dallas 6, Texas.

In case of fire Dial 8-2121.

### What's Doing in the Churches

**FIRST METHODIST CHURCH**  
L. S. Dubberly, Pastor  
Church School ..... 10:00 a.m.  
Morning Worship ..... 11:00 a.m.  
Junior Fellowship ..... 5:30 p.m.  
MYF ..... 6:00 p.m.  
Evening Worship ..... 7:00 p.m.  
Wed. Evening Choir  
Practice ..... 7:00 p.m.

**CHURCH OF CHRIST**  
Marion H. Hays, Minister  
Bible School ..... 10:00 a.m.  
Morning Worship ..... 11:00 a.m.  
Young People's Classes 6:00 p.m.  
Evening worship ..... 7:00 p.m.  
Wednesday Mid-Week .....  
Service ..... 7:30 p.m.  
Tues. Ladies Bible Class 9:30 a.m.

**FIRST BAPTIST CHURCH**  
Billy R. Crews, Pastor  
Sunday School ..... 10:00 a.m.  
Morning Worship ..... 11:00 a.m.  
Evening Worship ..... 7:00 p.m.  
Mid-week Prayer Service 7:00 p.m.

**FIRST PRESBYTERIAN CHURCH**  
Lewis G. Petmecky, Pastor  
Sunday School ..... 10:00 a.m.  
Morning Worship ..... 11:00 a.m.

REWARD—To anyone not finding us courteous to our customers 7 days a week. Carter's Drive-In Grocery & Cafe.



**THIS**  
is the world's finest gasoline...

...it will make you proud of your car's performance

If you're not already a Golden Esso Extra user, you can improve the performance of your car by changing to this magnificent motor fuel.

Golden Esso Extra leads all other gasolines in quality. It has highest octane rating. It develops maximum power for maximum performance—in traffic and on the highway. It gives

quickest starting and warm-up. And users say it delivers more miles to the gallon.

It's a better gasoline than "premium," a better gasoline than "super-premium." By every standard, Golden Esso Extra gives you more performance value for your money.

Fill up under your neighbor's Humble sign.

THREE FAMOUS GASOLINES:  
Golden Esso Extra, world's finest gasoline  
Esso Extra, No. 1 "premium" in Texas  
Humble Motor Fuel, second to none among the "regulars"

World's finest gasoline!



HUMBLE OIL & REFINING CO.

### Have You

been visiting  
had visitors  
sold anything  
bought anything  
had a party  
been to one  
joined a club or been  
thrown out of one  
got engaged  
been jilted  
got married  
been divorced  
had triplets  
quadruplets  
or even one  
baby?

### That's News!

and we, and your friends would like to know about it.

### Call The News-Record

ask for the society editor, that's me

### Or If You're Scared

we can't spell your name or somebody else's

### Then Write It Up

on a piece of scratch paper and bring it in or mail it in or something and we'll all know it and we'll all be happy!

### Thank You!

MILK COWS for sale—Springers and first calf heifers. See Claude Ditmore at Water Valley.

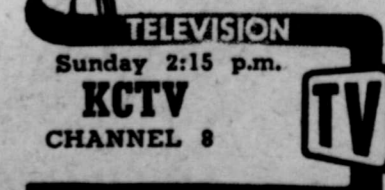
### Insurance & Abstracting

Reliable Abstract Work  
Fire and Automobile Insurance  
DURHAM ABSTRACT CO.  
DURHAM INSURANCE AGCY.  
Worth B. Durham, Mgr



### HENRY BAUER

CONSIGNEE  
Phone 8-4321 Sterling City, Tex.  
WHOLESALE



**STERLING CITY NEWS-RECORD**  
 JACK DOUTHIT, Publisher  
 Entered Nov. 10, 1902, at the Sterling City postoffice as second class matter.  
**PUBLISHED EVERY FRIDAY**  
**SUBSCRIPTION RATES**  
 \$2.00 a year in Sterling County  
 \$2.50 year Outside Sterling County  
 NEWS established in 1890  
 RECORD established in 1899  
 Consolidated in 1902

Cards of Thanks, reader or classified ads are charged for at the rate of 3c per word for first insertion and 1 1/2c thereafter.

**Political Announcements**

The following announce their candidacy for the offices listed, subject to the action of the Democratic Primary July 26, 1958:

- Sterling County Judge:**  
 T. E. (Gene) CARR  
 C. T. (Boots) WILLIAMS
- Sterling County Treasurer:**  
 MRS. SALLIE WALLACE
- Commissioner Precinct No. 2:**  
 S. K. HORWOOD
- Justice of the Peace, Precinct 1:**  
 A. W. DEAREN
- For State Representative, 101st Legislative District:**  
 J. GORDON (Obie) BRISTOW

(Cost of political announcements are \$25 for state and district offices; \$20 for county offices and \$15 for precinct offices. Payable at the time of announcing.)

FOR SALE—Big fat hamburgers and sandwiches of all kinds. Try Carter's Drive In Grocery & Cafe.

Don't let your subscription expire to the News-Record. Keep up with Sterling happenings by subscribing to your hometown paper. Rates are \$2 per year in Sterling County and \$2.50 out of county.

**Realtors - Land Loans**  
 YOUR LISTINGS APPRECIATED  
 Rentals, Homes, Land  
**Sterling Finance Co.**  
 P. O. Box 668, Sterling City, Tex.

**City Barber Shop**  
 H. F. MERRELL, Prop.  
 "Satisfaction Guaranteed"

**SIGHT-SEEING QUIZ**  
*Can You Name This Spot?*



**Clue.** This is the world's largest convention hall and home of the International Livestock Exposition. Several presidents have been nominated here.

**Answer.** Chicago Stockyards International Amphitheatre.  
*Good eyes mean good memories. Care for your eyes at all times.*

**School Lunchroom Menus**

- MONDAY, MARCH 24**  
 Fried Ham, Macaroni & Cheese  
 String Beans, Cabbage and Pineapple Salad  
 Rolls, Cookies
- TUESDAY, MARCH 25**  
 Meat Loaf, Baked Beans  
 French Fried Potatoes  
 Cabbage and Tomato Salad  
 Cornbread Muffins  
 Chocolate Cake
- WEDNESDAY, MARCH 26**  
 Roast Beef and Gravy  
 Buttered Potatoes  
 Tomatoes and Spaghetti  
 Congealed Salad, Rolls  
 Applesauce Cake
- THURSDAY, MARCH 27**  
 Sausage, Buttered Corn  
 String Beans and Potatoes  
 Lettuce and Tomato Salad  
 Biscuits Doughnuts
- FRIDAY, MARCH 28**  
 Turkey, Dressing, Gravy  
 Candied Sweet Potatoes  
 Green Peas, Fruit Salad  
 Rolls, Fruit Cake

Call 8-4451 for Appointment  
**MRS. RUBY GRUNY**  
**Vanity Beauty Shop**

**Home Cooling To Gain in '58, Officials Say**

Leading government and industrial officials in the home construction field are predicting that 1958 will see more installations of central air conditioning in new homes than ever before in history.

The chief reason for this outlook is a new policy of the Federal Housing Administration in which Commissioner Norman Mason said that "FHA should start encouraging the inclusion of air conditioning" in homes with FHA-insured mortgages.

In a memorandum to field offices across the country, Mason pointed out that air conditioning actually saves more money than it costs to run, and that before long houses without it will be out of date.

He suggested that FHA officials forget about "the anticipated operating cost of air conditioning" in considering mortgages for homes costing more than \$15,000.

"The best opinion . . . is that the savings on cleaning, laundry, and medical expenses resulting from air conditioning more than offset the added cost of operating a compressor during the cooling season."

The FHA Commissioner added that:

"Within a few years, any house that is not air conditioned probably will be obsolete, so FHA should start encouraging the inclusion of air conditioning."

FHA's new attitude toward air conditioning is based for the most part on studies showing that the economy of present-day home cooling makes it almost a necessity rather than the luxury it once was.

A lion's share of the credit for this new economy goes to extra-thick insulation. Years of testing have proved, for example, that 6 inches of mineral wool in the ceiling of an air-conditioned house, a minimum of 3 inches in walls, and 2 inches in the floor blocks the penetration of heat so effectively that the size—and therefore the cost—of cooling equipment can be drastically reduced.

This same ability of mineral wool to keep summer heat outside results in lower operating costs.

**Has Party on 81st Birthday**

Mrs. Lura McClellan honored her mother, Mrs. G. Ainsworth with a birthday party at her home last Friday. Mrs. Ainsworth was 81 years old. The total ages of those present reached 889.

Present were Mrs. D. C. Durham, Mrs. T. S. Foster, Mrs. John Welch, Mrs. W. R. Hudson, Mrs. Ralph Byrum, Mrs. O. F. Carper, Mrs. O. M. Cole, Mrs. Aaron Clark, Mrs. Harvey Glass, Mrs. Frank Cole and Mrs. Charlie Coulson.

Gifts were received from those present and Mrs. M. E. Churchill, Mrs. R. P. Ainsworth and Mrs. C. C. Ainsworth.

Typewriter Paper for sale at the News-Record.

FOR SALE—12-foot Marine Plywood boat. Excellent condition. Priced reasonable. See or call Darwin Sprawls at South Texas Lumber Company.

For engraved announcements, cards, letterheads and envelopes, see the News-Record. Prices are reasonable.

Rubber Stamps at News-Record.

**STERLING LODGE**  
**A. F. & A. M.**  
**No. 728**  
 Regular Meetings on the Second Tuesday of Each Month

ANNOUNCING . . .

**Laundry Service For STERLING CITY**

Furnished by the D & D LAUNDRY of San Angelo.

We've Been in Business in San Angelo for 22 Years. Dependable Service on Regular Days. Each Bundle Is Washed Separately. Satisfaction Guaranteed.

Pick Up Tuesday—Deliver Friday.  
 Pick Up Friday—Deliver Tuesday

**ROUGH DRY. WE WASH, STARCH, DRY FOLD AND WRAP FOR 10c per Pound. No Wet Wash.**

Leave Your Bundles at—

**State Hotel**

Not later than 11 a. m. Tuesdays and Fridays.

TERMS COD. For Further Information Call 7494 San Angelo

**COLONIAL REST HOME**

For the aged or invalid. 24-hour care by courteous and competent people. Contact Mrs. E.W. Rhoden, 837 Clay, Kerrville, Texas.

Ref.: Kerrville Chamber of Commerce. Phone CL 7-5880.

**D. L. HARALSON, JR.**  
 INSURANCE OF ALL KINDS  
 20% Less than Texas Published rate  
 On Fire Insurance  
 Phones 8-2191 or 8-2511

**SPORTING GOODS**  
 FISHING TACKLE, GUNS, AMMUNITION, CAMPING, etc.  
**C. C. AINSWORTH**  
 PHILLIPS 66 STATION Phone 8-2911  
 FIRESTONE TIRES Sterling City, Texas

**South Texas Lumber COMPANY**  
 We have just received a complete line of Weather Stripping, Calking, Striping, etc. Also any type of Chrome Moulding.  
**Ph. 8-4401 Darwin Sprawls**

**Open Sundays Till 1 P. M.**  
 Plumbing Fixtures and Repairs  
 Rheem Glass Water Heaters  
 Air Conditioner Supplies  
 Electric Wiring Supplies  
 Pipe and Fittings  
 Plastic and Copper Tubing & Fittings  
 Paints and Glass  
 Tools and Builders Hardware  
 Custom Pipe Threading

**Spiva Hardware**  
 2724 N. Chadbourne (U. S. 87 North)  
 Phone 23092 San Angelo

**LOOK SPECIAL Values galore COME SAVE MORE**  
 Spanking-new FRIGIDAIRE Ranges at terrific savings! Top trade-in allowance saves you even more!

**Model RD-25 \$269.95 With Trade-In LIMITED STOCK**

**HURRY! HURRY! HURRY! HURRY! HURRY! HURRY!**

**BUY NOW - AT West Texas Utilities Company**

**SPECIAL THIS FRIGIDAIRE Electric RANGE FOR AS LITTLE AS \$350 Per Week Price Includes "WIRING IN"**

**SPECIAL \$329.95 with trade-in Here's a fully AUTOMATIC Electric FRIGIDAIRE RANGE**  
 • COOK-MASTER Oven Control cooks entire meal automatically!  
 • GIANT TURKEY OVEN bakes a pig or the biggest turkey you'll ever buy.  
 • FRIGIDAIRE QUALITY—through and through! All-metal construction.

**SPECIAL THIS FRIGIDAIRE Electric RANGE \$286 Per Week Price Includes "WIRING IN"**  
 SHEER LOOK styling gives that wanted "built-in" look.  
 FRIGIDAIRE QUALITY—builds and sets solid one-piece frame.

**Washington Newsletter**

By Congressman O.C. Fisher

THE RECESSION CLAIMED first attention over sputniks and missiles, as official Washington flinched with the announcement of the February 15 unemployment figure. The 5.1 million unemployed, representing 6.7 percent of our total labor force, was the highest in 16 years. Actually, however, the percentage was only a few decimal points under the unemployment peak reached in the 1949 slide.

Just how serious is this trend, and what can be done to stem the tide? The seriousness of it will be indicated in the next government report, due about April 10. It is generally expected that a half million or so from the ranks of the February unemployed will be back at work, and the report will be encouraging. Here are a few of the treatments being discussed or prescribed by the Government:

1. Stepped up defense contracting and spending. This item alone will see close to \$5 billion more in de-

fense contracts let during the first six months of 1956 than in the last six months of 1955.

2. Stepped up highway construction. This should see some \$4 billion of Federal funds go to the States for road building as part of the Federal-State interstate system.

3. The Federal Reserve system has twice lowered discount rates recently, thus easing credit. More housing construction is being encouraged with more inviting and liberal terms.

4. Advancement of public works projects, such as flood control and reclamation that have been approved by Engineers.

5. Tax reduction. Right now it appears doubtful any tax cuts will be voted at this session UNLESS the economic situation worsens. If it does, then a tax reduction for business and individuals is likely.

EVERYONE is aware of the seriousness of the present lull in the economy, this is certainly no time for panic. Basically our economy is sound. Some think the people simply overextended themselves, and that the lull or dip was inevitable. Under union pressures, wages went up and up, with the costs of products passed on to consumers in the form of higher prices. So wages boomed and so did prices, and so did the cost of living. And the set-back has finally caught up with us.

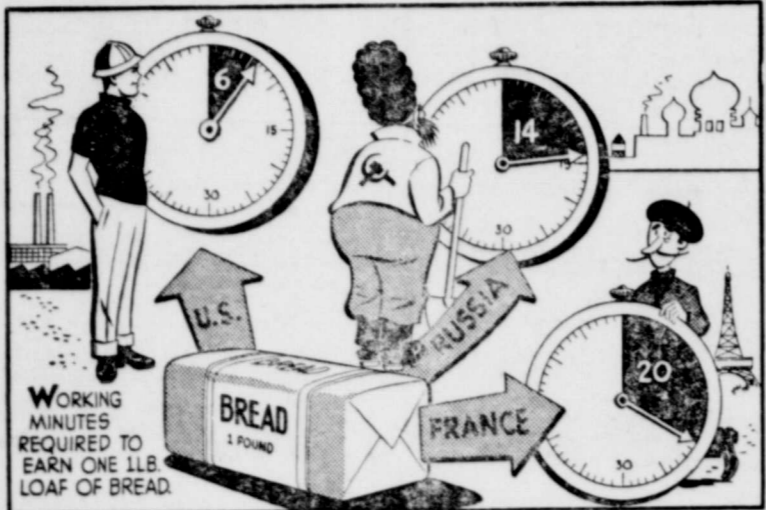
**Davis Will Entered For Probate**

The will of the late J. T. Davis was admitted for probate action in probate court here Monday morning. Probate judge Mrs. G. C. Murrell appointed three local men as appraisers of the estate. Named

were S. L. Augustine, Roy Morgan and Fowler McEntire.

The three executors of the estate, Roy Foster, H. L. Hildebrand and Flavey Davis, were present and were sworn in as executors.

Worth Durham, attorney for the estate, established facts entitling the will to probate.



Ivan Skavinsky Skavar, the average Russian industrial worker, labors five times as long to fill his family's market basket as does Joe Smith, the typical American laborer.

In a talk before the National Food Conference, held recently in Washington, D. C., Vice President Nixon pointed out that Joe Smith can buy a pound loaf of enriched bread with six minutes of labor, according to figures compiled by the United States Bureau of Labor Statistics. Ivan works 14 minutes for the same amount of bread which does not equal the U. S. loaf nutritionally.

Ivan works 132 minutes for a pound of beef. Joe Smith buys it with 31 minutes of labor. Joe works 25 minutes to add a pound of sliced bacon to the family larder; Ivan has to stay on the job 331 minutes to buy the same amount from a Moscow State store.

A grouping of 11 foreign countries, according to the work time required to buy food, indicates that the American worker spent less than one-fifth as much time to pay for a given quantity of food as the Soviet worker. He (the American) spent from 20 to 36 per cent as much as the Italian, Austrian, or French workers; from 39 to 48 per cent as much time as the Dutch, West Germans, Irish or Swiss; and from 62 to 71 per cent as much time as the Danish, British, or Norwegian workers.

Joe Smith works 4 minutes for a pound of flour. Irishmen and Norwegians are runners-up. They work six minutes for their pound of flour. Again, tops in the flour field is Russia, where 27 minutes of work are necessary.

French bread is in demand in many countries, but not-so-lucky-Pierre works 20 minutes for a pound of it.

**SERVICE WITH A CAPITAL 'S' AT SPECK'S Station**

**SPECK'S TEXACO SERVICE STATION**  
Chas. Speck, Owner



Want to see your car perk up . . . and mileage costs go down?

Your friendly Cosden dealer is standing by to show you how to squeeze extra miles out of every tankful of gas!

It's not magic, but science, that packs a greater punch in Cosden's Higher Octane or Cosden Premium Gasoline.

They're the twin results of intensive research and skilled refining techniques, produced in one of the world's most modern refineries.

Fill up at your nearest Cosden dealer's today!

**Sterling Oil Company**  
Pat Baatler, Owner  
STERLING CITY, TEXAS



10-lb. Sack 95c

3-lb. can 89c



Reg. bx. 29c



1-lb. Can 89c

**Cigarettes**



CARTON

All Popular Brands (Regular)  
Reg. Carton 2.29

**Specials for Sat. & Mon.**



**MARKET**

- PORK LIVER, lb. 29c
- PORK CHOPS, lb. 59c
- PAN SAUSAGE, lb. 49c
- SLAB BACON, lb. 65c
- FRESH FRYERS, lb. 39c

Sugar 5# 49c

- DRINKS, King-Size, Carton . . 75c
- QUAKER OATS, Small box 19c
- DIAMOND NAPKINS, 2 pks. 25c
- JELLO, 3 boxes for 25c
- PARD DOG FOOD, can 15c
- YARD EGGS, Ungraded, doz. 49c
- MILK, Gandy's, quart carton 25c
- ICE CREAM, Gandy's, 2 pints 45c
- FRUIT COCKTAIL, 4 303 cans 99c

LIBBY'S DEEP BROWN BEANS  
2 Cans for 25c

We Have Six \$2.29 RUGS Left. Now on Sale for Only 1.89

FROZEN STRAWBERRIES 25c

CHICKEN & TURKEY POT PIES  
Each (Fr zen) 25c



1-lb. box 27c

1-lb. bag 47c



**CHAPPLE'S**

"WE APPRECIATE YOUR BUSINESS"