



MULESHOE JOURNAL



20¢

'The Community of Opportunity-Where Water Makes the Difference'

Volume 59, No. 23

10 Pages Today

Published Every Thursday at Muleshoe, Bailey County, Texas 79347

Thursday, June 10, 1982

Protest Filed With TABC On Club Permit

On March 12, 1982 three Bailey County residents filed with the Texas Alcoholic Beverage Commission, an application for a private club registration permit and a beverage garage permit. John Curtis Slaughter, Jr., Robert Lee Copeland, Jr., and James Orville Elder applied for such license to be known as "The Slaughterhouse," located 3/10 mile west of the Muleshoe city limits on Highway 84.

On April 28, a hearing before the TABC regarding this permit had protests filed against it at that time. Following that April hearing, however, TABC hearing examiners issued a re-

Cont. Page 6, Col. 3



Harry B. Thompson, son of Floren and Mary Thompson of 1715 S. Ave. M, Portales, N.M. has been promoted in the U. S. Air Force to the rank of airman first class.

Thompson is a flight control systems specialist at Carswell Air Force Base, Texas, with the 7th Avionics Maintenance Squadron.

Muleshoe Rotary met at noon Tuesday. Jeff Smith and Buck Campbell are at the Rotary Convention in Dallas. Guests were Jerry Hicks, Bret and Lance King, John Atkins, Charles Aycock, Jack Hysinger, and John Hill. Bob Stovall was in charge of the program and had as his guest speaker, John Gulley, manager of the Muleshoe Chamber of Commerce and Agriculture who spoke to the group regarding the July celebration and Sidewalk Sale plans.

Medication Aide Class Offered

LEVELLAND--A class for medication aides currently working in nursing homes is scheduled 8 a.m. - 4 p.m. June 26 at South Plains College here.

The seven-hour continuing education course will help meet educational requirements of nursing aides.

Cost is \$10 a person, and the class will be in the SPC Technical Arts Building, Room 115.

Instructor is Martha Haynes, R.N. and part-time instructor at SPC.

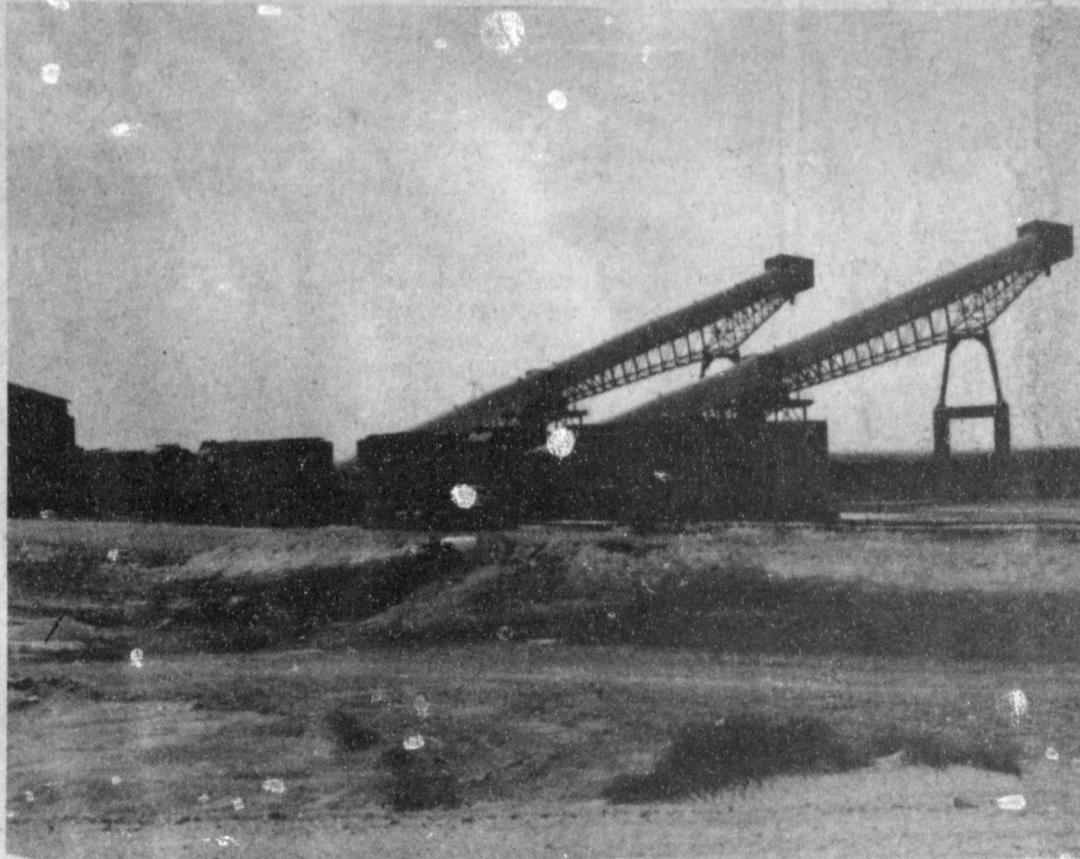
For more information, contact the SPC Continuing Education Office at (806) 894-9611, ext. 242 or 243 or SPC's vocational nursing personnel at ext. 247.

Police, Sheriff, DPS: Share, Share Alike

On May 30, Muleshoe City Police arrested Gloria Torres for public intoxication. She was reportedly ramming a 1973 Ford belonging to her husband with a 1972 Dodge auto, causing extensive damage to both vehicles.

On May 31, city police arrested Emilio Sandoval on a warrant issued for burglary of a habitation, which occurred on May 18 at a residence at 304 West 20th Street in the city.

Local officers investigated a minor accident on June 4 involving an auto owned by Josephine Chavez Gonzales and driven by Raul Gonzalez. Gonzales



COAL TRAIN DUMP AT TOLK--Monday morning 110 coal cars rolled into Tolk Station for unloading. The cars are dumped automatically being separately turned upside down on individual swivel hitches. Jets of water spray over the coal as it is dumped, keeping down the dust as the coal drops into the pits directly below the dumps. The coal is then transported by conveyor belts to the outside dump to await the grinding process. Tolk Station is about three weeks away from producing electricity, according to Eddie Barron, resident engineer for SPS. The coal-handling facility is Wheelabrator-Frye Company.

'81 Fourth Quarters Sales Surpass '80 - Up 19.9%

State Comptroller Bob Bullock reported Tuesday that gross sales in Texas for the fourth quarter of 1981 -- October, November and December -- totaled almost \$109 billion.

Fourth quarter sales in 1981 passed 1980 fourth quarter sales by \$18 billion, Bullock said, a 19.9 percent increase.

Bullock's report details gross sales--all sales made by Texas businesses -- as well as those subject and use tax.

The Comptroller said the sales tax analysis for October, November and December of 1981 shows 375,699 outlets reporting, compared with 341,539 reporting in 1980. Out-of-state taxpayers numbered 6,815 compared with 6,096 a year earlier.

Total gross sales for 1981 came to \$337 billion in the state.

With 266 outlets reporting, Bailey County's 1981 fourth quarter gross sales amounted to \$56,191,043, reflecting a 48.1% change from the \$37,932,657 in 1980 gross sales for the fourth quarter. Use tax purchases were \$92,069 and \$5,105,940 was subject to tax in Bailey County.

Castro County's 280 reporting outlets showed \$51,118,140 gross sales for the fourth quarter of 1981. Castro reflected a -22.8% change from 1980's fourth quarter gross sales of \$66,196,341. Use tax purchases for 1981's fourth quarter were \$247,669 and the amounts subject to tax in Castro County was \$5,242,208 in that fourth quarter.

A 14.0% change in 1981

was hit by an auto driven by Rita Wilemon Johnson as she backed out into the street. No estimate of damage was given.

On June 4, David Ruiz Torres was arrested for public intoxication after officers investigated reports of fighting going on in an auto which was parked south of the City Limits on Highway 214. The Torres vehicle was impounded. Torres was later released on \$75 bond.

Walter Shain, the high school auto mechanics instructor reported to Muleshoe police that on June 6, someone drove through

Cont. Page 6, Col. 3

Chamber Garage Sale Kick Off Celebration

★★★ ★★★

1983 Wheat Program Open For Suggestions

Information from County ASCS Executive Director, Rusty Williamson, indicates that the United States Department of Agriculture has announced its intentions to make the following determinations with regard to the 1983 crop of wheat: 1) the loan and purchase level; 2) the established or target price; 3) the national program acreage; 4) whether a voluntary reduction percentage should be proclaimed, and if so, the amount of such percentage reduction; 5) whether an acreage reduction program should be established, and if so, the percentage of such set aside; 6) whether to permit haying and grazing of conservation use acreage if an acreage reduction or set-aside program is established, and if so, the extent of such diversion and the level of payment; 7) provisions of the farmer-owned reserve; 8) whether to require offsetting compliance if an

Cont. Page 6, Col. 5

Local Residents' Participation Sought

Muleshoe will be a center of activity on Saturday, July 3, as the annual Independence Day Celebration is held. But the previous Saturday, June 26, will be a busy day as well.

On the 26th, the Muleshoe Chamber of Commerce and Agriculture will be conducting a garage sale at the Crossroads Conoco. The sale will be held from 9:00 a.m. until 6:00 p.m. Proceeds from the garage sale will go toward financing the fireworks display on July 3.

Those interested in contributing items to the garage sale can bring their merchandise to St. Clair's Department Store during regular hours. Any items not sold during the sale will be auctioned off to the highest bidder beginning at 6:15 p.m. on the day of the sale.

The 26th of June will also see a city-wide Sidewalk Sale. This sale, which will be called a "Carnival of Values," will see many local merchants slashing prices and displaying sale items in front of their stores. All area merchants are being encouraged to participate.

Also in connection with the celebration scheduled for July 3, all area clubs and organizations are reminded that booths at the Civic Center are now being reserved at the Chamber office in City Hall. Spaces are available on a first-come, first-served basis. Spaces are available for a \$10 fee. All area organizations are encouraged to participate in the activities being planned for the Civic Center.

GTE Customer Contact Office Opening Here

General Telephone has announced plans for the establishment of a local customer contact office in Muleshoe, according to O. D. Hearn, the firm's division manager. The office will be located at 122 W. Avenue C. "The facility has been undergoing remodeling in preparation for the official opening on June 14 with the grand opening slated for June 21," Hearn said.

GTE officials has announced the appointment of Bruce Chapman to the newly created position of Muleshoe local manager, according to O. D. Hearn, the firm's division manager. "He will be responsible for the operation of the company's new local service office which will open on June 14 while retaining control of all local activities associated with the installation and maintenance of customer services," Hearn stated.

"We are very proud to make this announcement and have full confidence that his appointment, plus the opening of the local

office, will serve our customers in Muleshoe and the surrounding area in a most satisfactory way," he concluded.

Chapman has served as Installation and Maintenance Supervisor in Muleshoe for the past two and a half years. He and his wife, Cynthia reside at 721 West D. They have two children.

The new office will offer Muleshoe and area customers many of the advantages of a full business office

Cont. Page 6, Col. 1



BRUCE CHAPMAN

Municipal, JP Courts Have Full Case Load

Ten cases of speeding violations were filed in Justice Court with Justice of the Peace, Tana Holmes, during the period June 1 until June 8. Two cases were filed for defective equipment, and one each for the following charges: simple assault, expired plates, non valid MVI and

running stop sign. Fines were paid and dispositions were made on eight speeding cases, four public intoxication, and one each for defective equipment, expired MVI and passing in no passing zone.

In Municipal Court, twenty-three cases were fi-

Cont. Page 6, Col. 2

Local Boy Makes Bid In High School Rodeo

Lynn Moore of Muleshoe is currently sitting in ninth place in bull riding in the Tri State High School Rodeo association finals which will be held June 10-12 in the Amarillo Fairgrounds Coliseum.

Moore will make his bid for a berth in the overall finals on stock producers Bill Hext string of amateur bulls.

The 18 year old athlete has attended Donny Gay's and Bob Blackwood's bull

riding schools in 1980 and 1981, in an effort to perfect his skills on the bulls. He plans to ride in collegiate rodeo next year as he enters South Plains College in Levelland and joins their rodeo team. Moore will add

one more event to his schedule at that time, when he attempts bareback bronc riding in competition.

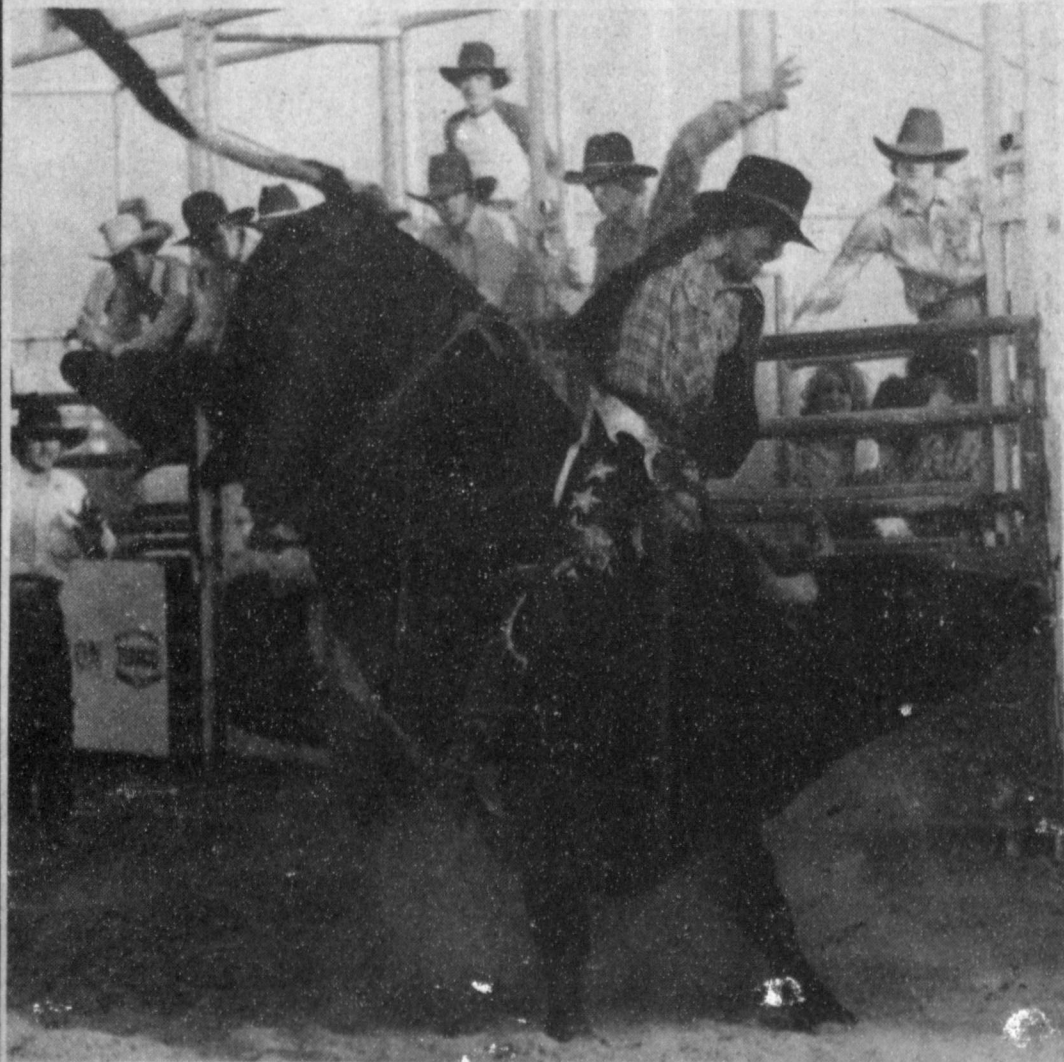
His long-term plans for the future, as far as rodeo is concerned, depends on how good he can become in his college career. Secretly, he would like to enter the world of pro-rodeo if everything "goes right."

Since getting atop one of these animals is no mean feat, *The Journal* asked Moore if he was ever scared. His answer? "All the time. I never get on a bull, that there is not a little fear in what I'm doing." The fear likely keeps him alert. Citing the worst scare he ever had, Lynn stated that it was when he drew a bull named "Danner." "This bull was bad to hook and had the distinction of never having been ridden," Lynn said.

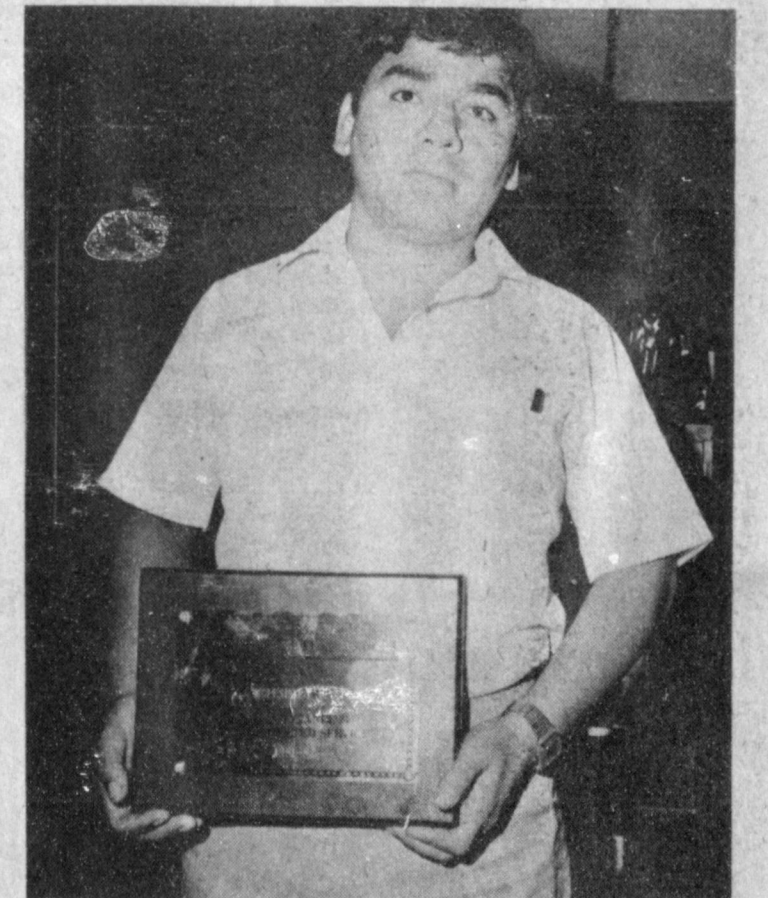
Moore figures that he has traveled around 5,000 miles in the last year, making high school and amateur shows. His parents, Dewey and Judy Moore, support him heartily and go to most all of the rodeos. "They were a little apprehensive at first, but they are behind me 100 percent now."

The Tri-State High School rodeo finals will be on June 10 through 12 in the Amarillo Fairgrounds Coliseum. Performances are

Cont. Page 6, Col. 1



'OUTSIDE, BOYS'--Coming out of the chutes at Plainview, local bullrider, Lynn Moore placed first with a 67 score on the bull, 32 Juicy Fruit in April. Moore will be trying for a top slot in the 1982 Tri State High School Rodeo finals at Amarillo this weekend, and will advance to collegiate rodeo this fall at South Plains College in Levelland.



SERVICE AWARD--David Gutierrez, Texas Migrant Center Director in Muleshoe accepted an "Outstanding and Dedicated Service" award on June 4 in the Council's first annual award banquet in Lubbock. The banquet awards included all Panhandle employees and special guests.

Whitt Defeats Seales By Four Vote Margin

In Bailey County Democratic run-off elections Saturday, June 5, Roy Whitt edged out Don Seales by a four vote margin. Ironically the margin developed in the absentee voting, since both Seales and Whitt received 112 votes each in the voting boxes in the county. Out of the 225 votes cast in this balloting, one had to be 'thrown out' since both candidates were voted for. Whitt received 17 votes in the absentee voting while Seales received

13. The election canvassing was held Tuesday night for the official record.

In state-wide elections, Jim Mattox triumphed over John Hannah in the democratic nomination for Attorney General, while newcomer Garry Mauro led Pete Snelson in the race for General Land Office Commissioner. In Bailey County, Hannah had 177 votes to Mattox's 153, while Snelson had 203 votes to Mauro's 125 votes in the

Cont. Page 6, Col. 2

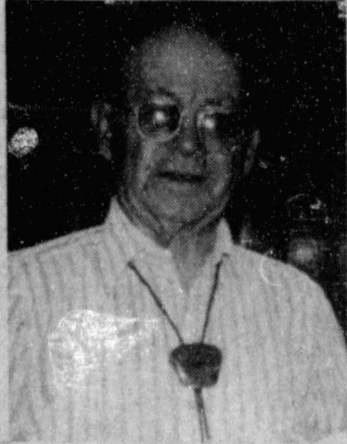
Roy Thomas Services Held Today

Services for Roy Thomas, 82, were held at 10 a.m. today, Thursday, June 10, in the Chapel of the Chimes with Elder K. B. Martin of the Primitive Baptist Church, officiating.

Interment was in Bailey County Memorial Park under the direction of Ellis Funeral Home. Thomas was dead on arrival at West Plains Medical Center Tuesday morning.

He was born March 29, 1900 in Norman, Okla. and moved to Muleshoe in 1938 from Purcell, Okla. He married the former Cora Kitty Skaggs August 3, 1919 in Purcell. Thomas was a retired butcher of Thomas Slaughter House and Locker at Amherst and attended the Primitive Baptist Church in Muleshoe.

Survivors include his wife, Cora; five sons, Roger S. Thomas of Waco; Clarence I. 'Spud' Thomas of Lubbock; Leroy Thomas of Fairbanks, Alaska; E. J. Thomas of Puyallup, Wash. and Carl Thomas of Kent, Wash.; three daughters, Mrs. Barbara Wilson and Mrs. Janie McDaniels of Anaheim Hills, Calif.; and



ROY THOMAS

Lobaugh Services Held In Olton

Services for M. B. Lobaugh, 77, of Olton were held at 2 p.m. today, Thursday, June 10 in the Main Street Church of Christ in Olton with Don Freeman, minister, officiating.

Burial was in the Olton Cemetery under the direction of Parsons Funeral Home of Olton. Lobaugh died at 10:05 a.m. Monday in Central Plains General Hospital in Plainview.

He was born December 22, 1904 in Pauls Valley, Okla. and married the former Iva Adams December 21, 1929 in Hollis, Okla. He had recently moved to Olton from Camden, Tenn. and was a retired farmer. He was a member of the Olton Church of Christ.

Survivors include his wife, Iva; five sons, Ronald of Tahlequah, Okla., Cecil of Camden, Tenn., Tom of Muleshoe, Garry of Oklahoma City, and James of Sacow, Maine; one brother, Bill of Lone Wolf, Okla.; 18 grandchildren and eight great grandchildren.

In a mad chase...



to catch up with changing investment options? Then come see us!

We handle resources worth millions for our association and our customers. And, we help them handle millions more. It's our business. So, to keep pace with your financial future, start by putting your money to work for you. Start seeing us today!

We Invite You To "JOIN US AT THE TOP"

SUMMIT SAVINGS ASSOCIATION
MEMBER OF THE TEXAS SAVINGS AND INVESTMENT ASSOCIATION

Mrs. Teresa Freeman of Bothell, Wash.; two sisters, Mrs. Ellen Caldwell and Mrs. Letha West of Norman, Okla.; three brothers, Elbert Thomas and Earl Thomas of Norman and Lawson Thomas of Oklahoma City, Okla.; 18 grandchildren and nine great-grandchildren.

Mrs. Connell Services Held In Canadian

Funeral services for Nellie Bulah Connell, 92, were held at 2 p.m. Tuesday, June 8, in the Stickley Hill Chapel in Canadian.

Interment was in the Lipscomb County Cemetery of Canadian. Mrs. Connell died at 9 p.m. Sunday. She was born January 8, 1890 in Frankfort, Indiana and married Samuel Grover Connell on October 16, 1911 in Colorado. Connell died in 1976. Mrs. Connell was a resident of the Muleshoe Nursing Home.

Survivors include one son, Mac Connell of Alamogordo, N.M.; four daughters, Mrs. Neta McCutcheon of Amarillo; Mrs. Ethel Sanderson of Lubbock; Mrs. Doris Thomas of Cedar Creek and Mrs. Nell Martin of Dimmitt; one brother, Kenneth McKown of Sterling, Kansas; 17 grandchildren and 21 great grandchildren.

Grandsons were pallbearers.

West Plains Medical Center Report

ADMITTED
 June 3-Edilia Valdez.
 June 4-Deborah Richards Ernest Kerr, Jan Whitt, DeNettie Watson, Cheryl Trimble.
 June 5-Janie Bowery, Rosie Toscano.
 June 6-Nona Davis, Rosario Vilarreal, Mae Davis, Linda Burton.

DISMISSED
 June 3-Jamie Teel, Kimberly Jennings, Coleen Griffiths, Jan Whitt, Lisa Cook, William Dannham, Pete Davis, Velma Gwyn.

June 4-Connie Reyna, Abel Leal.
 June 5-Mandy Chapman, Alicia Lora.
 June 6-Deborah Richards, Cheryl Trimble.

BIBLE VERSE

"Every Kingdom divided against itself is brought to desolation; a house divided against a house falleth."

1. Who made this statement?
2. To whom was he speaking?
3. What happened just prior to this?
4. Where may this verse be found?

Answers to Bible Verse

1. Jesus.
2. The Pharisees.
3. Jesus had caused a dumb man to speak.
4. Luke 11:17.

Mrs. Garrett Services Held Wednesday

Services for Juanita Garrett, 70, were held at 2 p.m. Wednesday, June 9, in the Ellis Chapel of the Chimes with Rev. J. E. Meeks, pastor of the First Baptist Church, officiating.

Interment was in Bailey County Memorial Park under the direction of Ellis Funeral Home. Mrs. Garrett died at 12:41 p.m. on Sunday in West Plains Medical Center.

She was born on October 27, 1911 in Collin County and was a resident of the Muleshoe Nursing Home. She had worked as a beautician in Farwell. She married G. A. 'Bill' Garrett April 17, 1932 in Clovis, N.M. Garrett died in February of 1980. Mrs. Garrett was a member of the Baptist Church.

Survivors include two daughters, Mrs. D'Ann Welsh of Las Cruces, N.M. and Mrs. Judy Kay Reed of San Francisco, Calif.; one sister, Mrs. Oneita Wagon of Muleshoe; four brothers, Olan Ivy of Lubbock; Tony Ivy of Vanita, Okla.; R. V. Ivy of Dimmitt and D. B. Ivy of Muleshoe; four grandchildren and one great-grandchild.



JUANITA GARRETT

Ranchers Roundup Set In Del Rio In August

More than 100 of the ranching industry's best noted experts and policy makers will present their expertise at the 2nd annual International Ranchers Roundup (IRR) August 10-12 in this festive border city.

Local Woman's Mother Dies In Crosbyton

Services for Lue Vina Fowler, 80, of Crosbyton were held at 10 a.m. Tuesday, June 8 in the Primitive Baptist Church with elders George Johnson, Joe Jackson and Bernard Gowens officiating.

Interment was in Johnson Cemetery in Munday under the direction of Adams Funeral Home. Mrs. Fowler died at 7:10 p.m. Sunday at the Crosbyton Care Center following a brief illness.

A Palo Pinto County native, Mrs. Fowler moved to Crosbyton in 1938 from Munday. She married Wick Bingham on April 12, 1917 in Graham. He died May 29, 1937. On March 11, 1942, she married O. C. Fowler in Crosbyton. He died August 23, 1971. She was a Baptist and a member of the Big 4 Club of Crosbyton.

Survivors include two sons, W. G. Bingham and Edd Bingham, both of Big Spring; three daughters, Stella Fay Brints of Crosbyton, Marie Bass of Muleshoe and Gelletha Harvey of Lubbock; two sisters, Iva Alton of Graham and Ollie Pottet of Howe; 11 grandchildren; 21 great grandchildren and one great grandchild.

gressive Southwest Texas ranchers are scheduled August 9 and Mexico ranch tours, August 13.

"Effective Ranch Management" is the theme of IRR '82.

Headline keynote speakers include Raymond D. Lett, executive assistant to Agriculture Secretary John Block; Charles G. Scruggs, Vice-president and editor of Progressive Farmer magazine; Susan McBeck, Texas State Representative; Stan Parsons, Savory Grazing System consultant; Bob Bliss, Friona Industries; and Terry Mitchell, with the Australian Department of Agriculture.

Since the deadline for tour registration and the \$50 registration fee discount is July 15, prospective participants are urged to send promptly for registration materials. Both tours will be limited to the first 200 registrants. Registration material is available by writing to IRR, P.O. Box 1849, Uvalde, Texas 78801.

Last year's IRR the first and largest of its kind ever held in the Southwest, attracted some 700 ranchers and industry leaders to the

border area for five days of educational Activities. Based on enthusiastic comments from many of those participants throughout the year, plans are being made to accommodate 1,000 registrants this summer.

Producer's comments ranged from "it was like trying to take the entire Texas A&M animal science curriculum in five days... just overwhelming" to "there were too many beneficial activities occurring at once... I didn't know which to attend first."

All general session talks will be presented Tuesday, August 10, in the Del Rio Civic Center.

Concurrent sessions geared to more effective management of beef cattle, sheep and Angora goats, meat goat production, range resources and wildlife will be conducted at Del Rio High School August 11-12. Some programs such as ranch business management have been incorporated into major commodity discussions. Simultaneous translation will be provided in sessions important to Mexican ranching.

This year a special feature is being added for all female participants. "Woman in Ranching" will feature experts from around

the country discussing such topics as "Protecting Women's Economic Interest in Ranching." "The Ranch vs. the Family," "Micro-computers in the Ranch Home," "Ranch Estate Planning" and "Together We Can!"

IRR participants will be treated to a Mexican Fiesta August 10 in Ciudad Acuna hosted by that city's mayor and country-western dance August following a steak banquet. No evening functions are scheduled August 12 allowing IRR participants to enjoy the many varied entertainment opportunities and dining cuisine available in this border area.

"They say" has ruined many lives.

FATHER ON HIS DAY
 A Lasting Gift of Precious Jewelry \$85.00
 Rings 1/2 Price
 Jewelry and Diamonds by Priscilla
 \$21.50
 "Saving You Needs For 28 Years"
Lindsey's Credit Jewelry
 202 Main 272-9355

1 Day Twirling Clinics
Now Registering
 Advanced - June 12
 Beginners July 17th
 Intermediates July 10th
 The Intermediate Clinic Will Include
 Competition for Ribbons & trophies For More
 Information Call
 Debbie Cloud 272-3584
 or Sue Bessire 965-2757

CORDOVAN TIRE SALE

CORDOVAN PREMIER IV
ALL SEASONS STEEL BELTED RADIAL
 Polyester/Steel Whitewall

CORDOVAN SOVEREIGN

SAVE UP TO 15% OFF OUR REGULAR LOW PRICES

ALL WEATHER COMPUTER DESIGNED TREAD
 A quiet running, computer-designed tread channels water away to provide excellent gripping action for any type of road conditions - wet or dry. New tread compounding remains flexible in cold weather for extra traction on ice or snow.

ARAMID BELTS
 Provides a more comfortable ride than steel. Aramid belts increase your protection from cuts, punctures and other road hazards.

POLYESTER RADIAL PLYS
 Polyester cord radial plys run from bead to bead. These strong body plys absorb bumps and road shock. Radial construction keeps the tread flat on the road for great control, even on curves.

SPECIAL SIDEWALL REINFORCEMENTS
 A special high modulus apex strip is positioned above the tire bead. This stabilizes the sidewall for more positive steering action and recovery on sharp turns.

RADIAL CONSTRUCTION
 Radial construction minimizes friction and tread distortion for long tread life. You benefit with better gas economy, improved traction and handling and superior control on curves.

NEUTRAL CONTOUR TIRE SHAPE
 New stress-free neutral contour has been designed to reduce internal stress points at belt edges. Engineered for unified strength and performance.

OUR BEST

No. 32C47 - P20575R14 REG. 76.03 - SPECIAL.....	68⁵⁰ FET 2.58	No. 32C49 - P23575R15 REG. 87.35 SALE.....	79¹⁰ FET 2.74
No. 32C48 - P21575R14 REG. 61.51 - SALE.....	52¹⁵ FET 2.91	No. 32C44 - P23575R15 REG. 91.14 SALE.....	82¹⁰ FET 2.85

Free Mounting **Free Road Hazard Guarantee**
Free Balancing **Optional Computer Balance Only 3.50 Ea.**
No-Trade Required **Additional Mounting Charge on all Split Rims**

A & M

FARM & RANCH SUPPLY

1601 S. Ave. D - Portales
 2600 E. Mabry Drive - Clovis
 1302 W. American Blvd. Muleshoe

In a mad chase...

to catch up with changing investment options? Then come see us!

We handle resources worth millions for our association and our customers. And, we help them handle millions more. It's our business. So, to keep pace with your financial future, start by putting your money to work for you. Start seeing us today!

We Invite You To "JOIN US AT THE TOP"

SUMMIT SAVINGS ASSOCIATION
MEMBER OF THE TEXAS SAVINGS AND INVESTMENT ASSOCIATION

GTE Rate Changes Effective June 4

General Telephone Company of the Southwest placed rate changes in effect June 4 under statutory authority subject to refund to reduce revenue losses in excess of \$4 million a month.

E. L. Langley, president of General Telephone, said "The revenue deficiency under consideration in Austin is based upon financial data as of Sept. 30, 1981. This means whatever the commission grants in the way of new revenue in a final order later this summer is to cover deficiencies existing since last September.

"In other words, we have lost eight months of badly needed revenues as we go through the lengthy process of assembling data, filing the paperwork, preparing testimony, holding hearings, allowing time for the parties involved to study all the information, the hearings examiner to issue a report, and the commissioners to issue a final order."

Langley said the losses amount to over \$30 million under PUC staff's recommendation for new revenues and over \$70 million under the company's request.

"To delay placing rates in effect until a final order is issued, probably in August, would mean we would not begin collecting any new revenues until September, resulting in even greater losses."

He continued by saying the Texas PUC has one of the best track records in the nation as far as turnaround time in rate proceedings. "But even with their record, the time-consuming regulatory process has a 12 to 24-month lag between the time we make new investments and the time we are able to collect new revenues based on those investments.

"Our losses will continue even with the interim rates

since we did not place all of the recommended rates in effect June 4. However, this amount will help reduce our losses," Langley said.

"Deterioration of our earnings resulted in our bond rating being dropped from A to A- last year. If we do not show improvements, that rating could slip further and the money we must borrow to continue our modernization and service improvement programs would become more costly, a cost ultimately paid by customers.

"By placing the rates in effect in June, we can improve our financial picture more than if we wait until a final order is issued."

"The bonding process is a method established to protect all parties and permit adequate time for the regulatory process without excess penalty to the utility," Langley said.

The bonded rates include restructured local service rates to reflect the additional costs of providing extended area service (EAS) or toll-free calling between two or more exchanges, and are shown separately on customer bills.

He explained EAS is a communitywide service to provide communities unlimited toll-free calling to one or more exchanges. Of the 289 exchanges served by the company in Texas, 188 have toll-free calling to one

or more exchanges. The service is not the same as the optional metro service available in some Dallas-Fort Worth and Houston area exchanges.

"Under the current state-wide rate-making policy, the costs associated with the service (EAS) are included in the local basic rate of every customer, whether they have the service or not. Under the bonded rates, only customers in exchanges having and benefiting from the service will pay. This will keep local basic rates for customers in exchanges without the service lower than they would be under past policies and those with EAS service will know what they are paying for," Langley pointed out.

EAS rates were established based upon costs determined as follows:

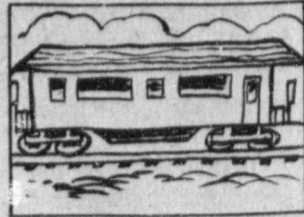
(1) Intercity cables and circuit equipment were assigned to EAS based upon actual costs.

(2) The balance - land, buildings, central office equipment, outside plant, and station equipment were assigned to EAS based upon actual minutes of use for EAS calling.

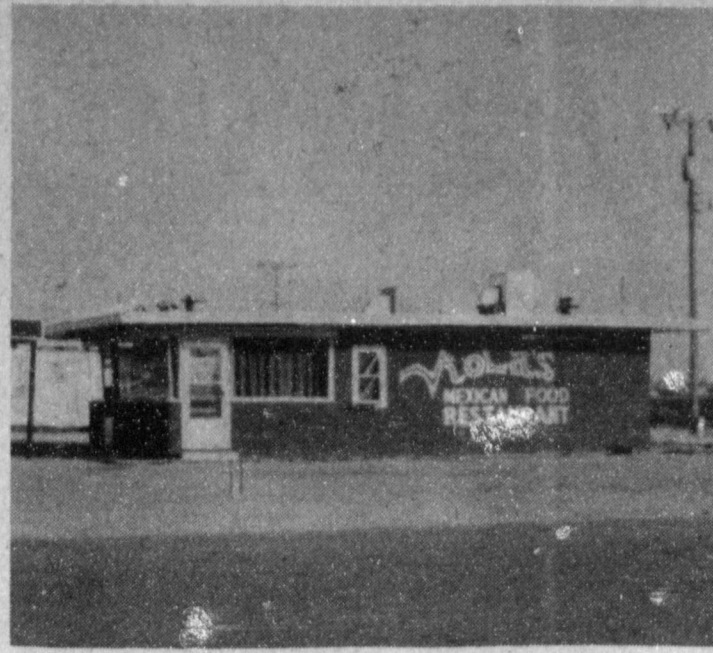
(3) The EAS intercity facilities costs were combined with the costs associated with EAS usage and rates were then established, by rate groups, based upon usage.

that EAS provides for unlimited calling for the basic charge," he said.

"Should a community having EAS desire to change, they may elect one of two options. The first option would be to return to regular toll network. The other option would be to utilize usage sensitive service. Either of these alternatives would provide individual customers greater control over their costs for telephone service."



The Pullman was the first successful railroad sleeping car. George M. Pullman built the first one at Bloomington, Illinois in 1859.



VIVA VIOLA'S-The grand opening of "Viola's" under the management of Viola Anzaldua will be held on Thursday, June 10 with a ribbon cutting being performed at 11 a.m. Viola's will feature traditional Mexican dishes and will be open from 11 a.m. till 10 p.m. every day except Tuesdays. The new business is located at 2022 West American Boulevard in Muleshoe.

Attention...

We Are Ready To Receive Your Wheat For Cash Sale, Open Store, Government Loan Or Government Reserve At Our Main Plant In Muleshoe.

Phone 272-4231 or Come By And See Us.

Texas Sesame

Anthony's

C. R. ANTHONY CO.

- 321 MAIN STREET
- Muleshoe, Texas
- Open 9 to 6



Penwatch \$10

Give Dad some time on his hands with Fada's® sleek penwatch! The digital readout gives the hour, minute, second, plus the month and date. Choose from silver stainless steel, reg. \$16; or Goldtone and black, reg. \$18.

super Gifts for a super Dad



Men's Polycotton Jumpsuit 14⁸⁸

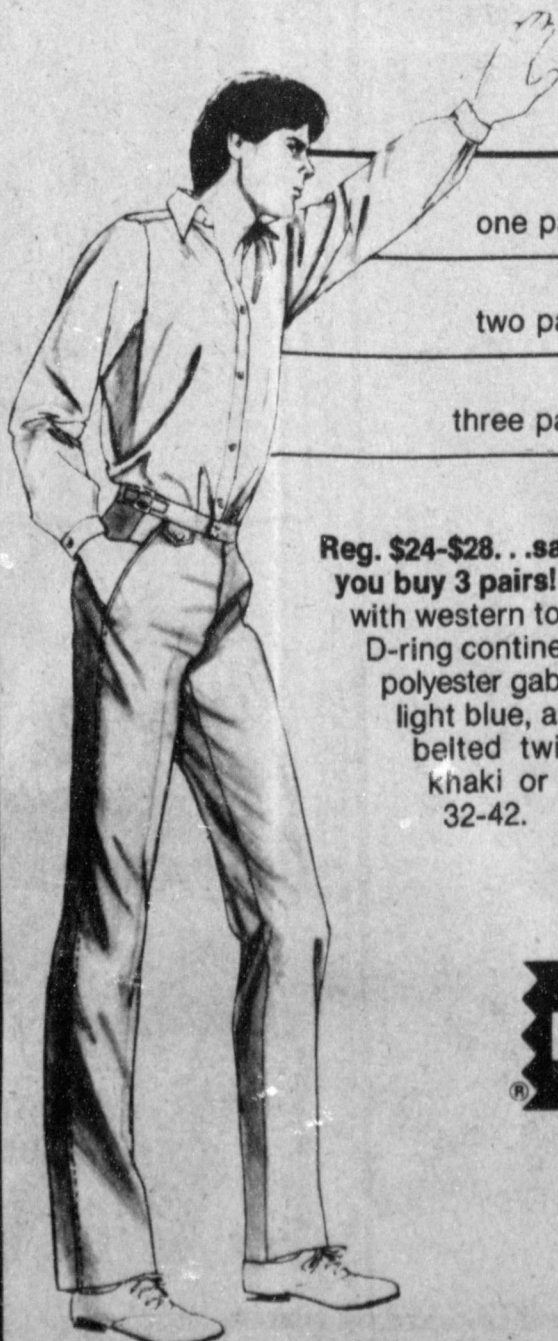
Reg. 16.99. Good looks for hard-working men in Tom Cat's® poly-cotton short sleeve jumpsuit. Features include a zipper front and belt. In assorted colors.



Men's Knit Shirts \$10

Add to Dad's Munsingwear® collection and save up to \$13! Their "Grand Slam" collection features poly-cotton knit shirts with tailored button placket collars and that famous penguin. Colorful solids and stripes in sizes S,M,L,XL. Reg. \$18-\$23.

MENS HAGGAR SLACKS



one pair 16.88
two pair \$30
three pair \$45

Reg. \$24-\$28... save up to \$39 when you buy 3 pairs! The belt loop style with western top pockets and the D-ring continental style are both polyester gabardine in tan, navy, light blue, and white. The self-belted twill pant comes in khaki or navy. All in sizes 32-42.

HAGGAR



MENS WRANGLER JEANS Reg. To 18.....\$15⁸⁸

MEN'S LEVI'S JEANS Reg. To \$20.....\$18⁸⁸

Polyester Twill & Knit Jeans 17⁸⁸

Reg. \$22. That great Levi's® style, now with stretch... it's the Saddlemans® boot jean in polyester textured twill and polyester denim. Indigo denim and fashion colors, sizes 28-42.

Muleshoe Journal USPS 367-820
Established February 23, 1924. Published by Muleshoe Publishing Co., Inc. Every Thursday at 304 W. Second, Box 499, Muleshoe, Texas, 79247. Second class postage paid at Muleshoe, Texas 79247.

MEMBER 1982
TEXAS PRESS ASSOCIATION

L.B. Hall-Präsident
James Woods-Vice President
Shirley Forrest News
Eveline Harris Society
Robby Wilkins Advertising
Sammy Hall-Bookkeeper

Muleshoe Journal and Bailey County Journal
Bailey and surrounding counties.....\$12⁰⁰
Muleshoe Journal and Bailey County Journal
Elsewhere.....\$13⁰⁰

Advertising rate card on application



Kills Grubs and feeds your lawn

Diazinon® trademark of CIBA-GEIGY

ferti-lome

Baker Farm Supply
1532 W. Amer. Blvd.
272-4613

Fathers Day Special

Crisp, cooled-down colors in

SUMMER LIGHTS from Arrow

KENT 2—Arrow's lustrous, lightweight open-weave summer shirt in elegantly understated pale, soft colors. Cool looking... cool feeling... comfortable... to put you at ease anywhere. And of easy-to-care-for 80% polyester, 20% cotton fabric. Moderate spread collar to highlight today's neckwear fashions. "Gentleman's Fit" (slightly shaped) body cut for superior fit.

20% Off Monogram Price



The first great designer label worn by half the men in America.

St. Clair's Department Store



110 Main

272-4453

Bridal Shower Fetes Miss Kelly Guzaway

Mrs. Kelly Guzaway, nee Debra Stevens, was feted with a bridal shower Saturday, June 5 from 2-4 p.m. in the home of Mrs. Jack Young.

The honoree and her mother, Mrs. John Stevens, greeted the guests.

L. G. Fred Honored On Birthday

Mrs. Bob Newton honored her father, L. G. Fred, with a birthday dinner on Sunday, June 6, at her home. Fred was celebrating his 81st birthday.

Those attending included Mrs. F. G. Lindsey, Mr. and Mrs. Bennie Frey, Mr. and Mrs. Bill Rogers, Connie and Roger and Mr. and Mrs. Ricky Doshier, Michelle, Tammy and Rick, all of Levelland; Mrs. Dell Sanders and Mr. and Mrs. James Hooper, of Brownfield; Mr. and Mrs. Bobby Fred, Janet, Robert and Mark of Denver City, Mr. and Mrs. Keith Fred and Jessica of Plano; Mr. and Mrs. Gary Lindsey and Gibbs of Salinas, Calif.; Timmy and Jennifer White of Hayward, Calif.; Mr. and Mrs. Steve Newton and Billy of Lubbock and Mr. and Mrs. Tom Newton, Amanda and Barry of Morton.

A white lace cloth with a blue underlay covered the serving table, which was adorned with an arrangement of apricot colored silk flowers. The honoree's corsage was of silk spring flowers and measuring spoons.

Special guests included the bride's grandmothers, Mrs. Edith Gilliland and Mrs. Bertha Stevens.

The hostess gift was a vacuum cleaner. Hostesses for the occasion included Martha Young, Pam Atwood, Anne Floyd, Gayle Morris, Jeanette Burden, Frances Bruns, Kay Griswold, Dell Snell, Mrs. Henry Landers, Nelda Hunt, Olgalene Pruitt, Lucille Whisenhunt, Molly Davis, Lois Atwood, Jean Whalin, Betty Ruthardt, Marjorie Merritt, Frankie Lunsford, Lauranette Mason, Kanetha Foster, Latrell Hysinger and Maxine Rogers.

Emergency Call
Meek Voice-Doctor, this is Mr. Henpeck. My wife has just dislocated her jaw. If you're out this way next week or the week after, you might drop in.



MRS. KELLY GUZAWAY

Bridal Shower Honors Miss Kathy Fisher

Miss Kathy Fisher of Hart, bride elect of Ralph Granger, was honored with a bridal shower Saturday, May 29, in the home of Mrs. Joe Ellison.

The serving table was covered with a lace edged white linen cloth and accented with a fresh floral arrangement of shades of pink peonies and tiger lilies and miniature roses.

The honoree was presented a corsage of pink peonies.

Mints, cookies, punch and coffee were served from crystal and silver appointments.

The hostess gift was a Mixmaster.

Special guests included her mother, Mrs. Josephine Fisher; an aunt, Mrs. Fred Annen, and a cousin, Mrs. Jerry Annen, both of Dimmitt; also, her sister, Missy, and sister in law, Mrs. Patsy Fisher.

Hostesses included Mrs. Dwayne Powell, Mrs. Joe Ellison, Mrs. Tommy Cate, Mrs. Frances Gardner, Mrs. Wayne Whiteaker,

Mrs. Loretta Reid, Mrs. W. C. Masten, Mrs. Dexter Baker, Mrs. R. A. Lance, Mrs. Danny Masten, Mrs. John Williams, Mrs. Glen Cardwell, Mrs. R. C. Williams, Mrs. Nolan Parrish, Mrs. J. L. Davison, Mrs. Ernest Legg, Mrs. Billy Chester, Mrs. Calvin Vernon, Mrs. B. M. Wilson, Mrs. Al Harrison, Mrs. Elray Rasco, Mrs. Corley Baker, Mrs. Wiley Mudgett, and Mrs. Pete Phillips.

ONE MINUTE SPORTS QUIZ

1. Who won the Colonial National Invitation golf tournament?
2. Who won the LPGA Lady Michelob tournament?
3. Name the pitcher who recently won his 300th game.
4. Andrew Toney plays pro basketball for what team?
5. Who won the Preakness horse race?

Answers To Sport Quiz

1. Jack Nicklaus.
2. Kathy Whitworth.
3. Gaylord Perry.
4. Philadelphia 76ers.
5. An upset victory by Aloma's Ruler.



BY SHERYL BORDEN

Topics to be covered on "The Creative Woman" show for June 15 and 19 include new techniques in quilting, a sewing tip from Stretch and Sew and information for treating and controlling grubworms in cool season lawns.

Quineil Roark is the first guest and she's from Clovis and is very much into quilting and has taught quilting classes to interested persons. She'll talk about some of the new techniques in regard to quilting.

Ann Person is president and founder of Stretch & Sew, Inc. and will demonstrate using bonding interfacing and will show how to insert drawstrings at the shoulder line of a garment.

Cool season lawns, such as blue, rye and fescue grasses are apt to have the problem of grubworms more so than a bermuda lawn. There are many new products on the market for dealing with and treating this problem. Charles Guthal, owner of Guthal's Nursery, Clovis, will show how to treat this problem and discuss the use of the commercial products for the treatment of grubworms.

On June 17, the topics for "The Creative Woman" will include microwave quick tricks, upholstering walls, making french bread and a sewing tip from the Stretch & Sew, Inc.

The first guest will be Mary Ellen Payne, Extension Home Economist from Carrizo and she has lots of suggestions for some new ways to use the microwave oven than perhaps the more common things that people are used to doing.

Upholstering walls is a rather new way of decorating in the house. Christi Clancy is an Interior Deco-

For the action-minded sportsman ARROW PIN-HI

Arrow approves of exercise but wants you to really look good and feel good doing it. Thus, Pin-Hi... a pique stitch knit of fine, soft 65% polyester, 35% cotton two ply. With taped neck and shoulders, shoulder top stitching, vented sides and extended tail. In a galaxy of active sportswear colors. Totally machine washable and machine dryable.

The first great designer label worn by half the men in America.

**St. Clair's
Department Store**

110 Main

272-4453

Happy Birthday



Love,
Steve and Traice

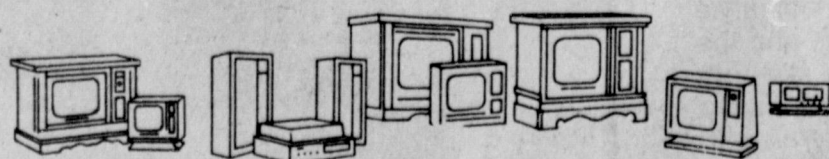
The '83's are here and we need more space!

LAST CALL!

All 1982 Model

ZENITH

TV's and STEREOS MUST GO!



Our new models are here so the '82's must go. Save now on all 1982 model Zeniths. Hurry!

We Have A
Trained
Technician
To Service
Our Products

Wilson Appliances

Mon. - Sat.
8:00 - 6:00

117 Main

272-5531



**Viola's
Mexican Food Restaurant**

Open 11 a.m.-10 p.m.
(Closed Tuesdays)

Grand Opening

Thursday June 10, 1982

Ribbon Cutting 11 a.m.

Thursday Only

Register For Free Dinners To Be Given Away!
Winners To Be Announced Friday
Tostadas And Iced Tea Free With Meal

--Menu--

- | | |
|---|--------------------------|
| Enchiladas | Nachos |
| Tamales | Pico de Galo
Chili |
| Tacos | Carne Guisada |
| Garditas | Carne Verde
Con Carne |
| Chili Con Queso Dip | Chimichangos |
| Chalupas | Reg. Hot Sauce |
| Chili Relleno
Stuffed With Cheese
& Stuffed With Meat | |



2002 W. Amer. Blvd.

LATEST ARRIVALS



Jayla Brooke Livingston

Mr. and Mrs. Jay Livingston are the proud parents of a daughter, Jayla Brooke born May 28 at 8:44 p.m. at South Plains Hospital in Amherst.

The young lady weighed seven pounds and three ounces and was 18 inches long. She has a sister, Cheri.

Grandparents are Mr. and Mrs. James H. Cox of Littlefield and Mr. and Mrs. Freddie Baggett of Elgin, Okla.

Great grandparents are Mrs. Josie Dempsey of Littlefield and Mr. and Mrs. Ural Newton of Fletcher, Okla.

Branyon Manning May

Mr. and Mrs. Larry May of Gardendale are the proud parents of a son born May 24 at 4 p.m. in an Odessa Hospital.

He weighed nine pounds and has been named Branyon Manning. The couple

has one other child, Kristen, three years of age.

Grandparents are Mr. and Mrs. Ray May of Sudan and Mr. and Mrs. Charles Mitchell of Moore, Okla.

Amber Burton

Mr. and Mrs. William D. Burton are the proud parents of a daughter born at 9:52 a.m. June 7.

The young lady weighed nine pounds and two ounces and has been named Amber. She has a one year old brother, Arron.

Grandparents are Mr. and Mrs. Gene Snell and Mr. and Mrs. Earl Burton, all of Muleshoe.

Great grandparents are Mr. and Mrs. Vernon Symcox of Lariat and Mrs. Opal Cain of Clovis, N.M.

Ramon Villarreal, Jr.

Mr. and Mrs. Ramon Villarreal are the proud parents of a son born at 1:49 p.m. June 6. The young man weighed eight pounds and 11 ounces.

He has been named Ramon Villarreal. The couple has one other child, Erika, four years of age.

Grandparents are Mr. and Mrs. Antonio Garcia of Friona and Mr. and Mrs. Ignatio Villarreal of Del Rio.

Stephen Lyle Hill

Mr. and Mrs. Derek Hill of Littlefield are the proud parents of a son born May 10 at Littlefield Medical

Center.

The young man weighed eight pounds and one fourth ounce and was 22 inches long. He has been named Stephen Lyle.

Grandparents are Mr. and Mrs. Dale Hill of Littlefield and great grandparents are Mr. and Mrs. J. P. Denton of Littlefield and Mrs. Ruth Callaway and Mrs. J. V. Hill, both of Sudan.

Jason Keith Richards

Mr. and Mrs. Donald Richards are the proud parents of a son born at 6:18 p.m. June 4. He weighed nine pounds and four ounces and has been named Jason Keith. He is the first child for the couple.

Grandparents are Mr. and Mrs. Herman Chavez of New Mexico, Jack Richardson of Farmington, N. M. and Mr. and Mrs. DeWayne Johnson of El Dorado.

Great grandparents are Mrs. F. W. Hall of Muleshoe, Mr. and Mrs. Roger Parker of Earth, Ms. Edna Calvert, Rue J., Kirk Johnson of Littlefield and Mr. and Mrs. Carl Cody of Earth.

Fiedel Ceballos Lira

Mr. and Mrs. Pablo Lira are the proud parents of a son, Fiedel Ceballos, born at 7:20 a.m. June 3. He weighed six pounds and 14 ounces.

The couple has six other children, Victor, nine; Israel, 15; Ernest, 13; Sonja, 12; Vegina, seven and Laura, Four.

Grandparents are Suzanna Ceballos of Sudan and Mr. and Mrs. Victor Lira of Mexico.

Miss Nix, Gaston Engagement Announced

Mr. and Mrs. Olin Nix, Jr. of Sudan announce the engagement and approaching marriage of their daughter, Ann to Dyke Gaston, son of Mr. and Mrs. Gene Gaston, of Earth.

The couple plans to be married August 7th in the First United Methodist Church of Sudan.

Faith in one's self is the foundation of success.

From Journal Files

40 Years Ago

1942
Prices for grains and produce by Muleshoe buyers are as of Wednesday of this week, and all are subject to change without notice:

Eggs ---- 25 cents
Cream -- 34 cents
Light Hens --- 13 cents
Heavy Hens --- 16 cents
Hides ----- 8 cents

30 Years Ago

1952
Grocery specials advertised in the Muleshoe Journal include lettuce 12½ cents per pound, cabbage 5 cents per pound; squash 10 cents per pound; tomatoes 17 cents per pound; fryers 45 cents per pound; boneless fish 39 cents per pound; pork liver 39 cents per pound; chuck roast 74 cents per pound; strawberries 29 cents 10 oz. package; radishes 5 cents; melon 39 cents, ½ gallon; and Crisco 3 pound can 69 cents.

20 Years Ago

1962
Memorial to Maud, the lowly and often-cussed mule, moved a notch nearer to realization this week when a former Muleshoe resident now living in California, sent a check for \$100 to be applied to the fund to eternalize the mule in bronze.

A tour through Bailey County Wednesday by County Agent J. K. Adams revealed there still is not enough moisture to permit cotton planting.

Mrs. G. W. Crain has

been named Muleshoe State Bank customer of the week. She lives on Route 3 and has been banking with Muleshoe State Bank since 1933.

10 Years Ago

1972
The new Rasco Store in Muleshoe will have its grand opening today beginning at 9 a.m. with a ribbon cutting ceremony. Scattered thunderstorms roamed over Bailey County this week leaving .33 inch of rain in Muleshoe according to local weatherman, Jeff Peeler.

FACTS & FIGURES

One major corporation has enough service and support personnel—if it were a separate company—to make it one of the 1,000 largest listed by Fortune magazine. How many? 16,000 employees.

That company, DEC, known also as Digital Equipment, has shipped more computers than any other manufacturer. Its DECmate WorkProcessor™ is not only efficient to use, the software is upgraded automatically, at no extra charge, for those who have a service contract.

The bigger the author, the smaller the words he tries to use.

The unemployed aren't all eager to find what they're looking for.

Most people are limited by their inability to appreciate others.

Welcome To Muleshoe



Jerry Hernandez

This week we welcome Jerry Hernandez back to Muleshoe. Hernandez comes to us from Littlefield where he was associated with Pay-N-Save. Jerry is now the manager of the Servall Thriftway here in Muleshoe. Hernandez is the son of Mr. and Mrs. John Lopez of Muleshoe. Jerry and his wife, Rosa, are currently living in Littlefield but plan to move to Muleshoe in the near future. As hobbies Hernandez enjoys water skiing and is a Baptist.

James Crane Tire Co.

GOODYEAR

322 N.1st.

272-4594

Henry Insurance Agency

Box 563

Muleshoe

Damron Rexall Drug

308 Main

272-4210

Happy 37th



Sweet Sue

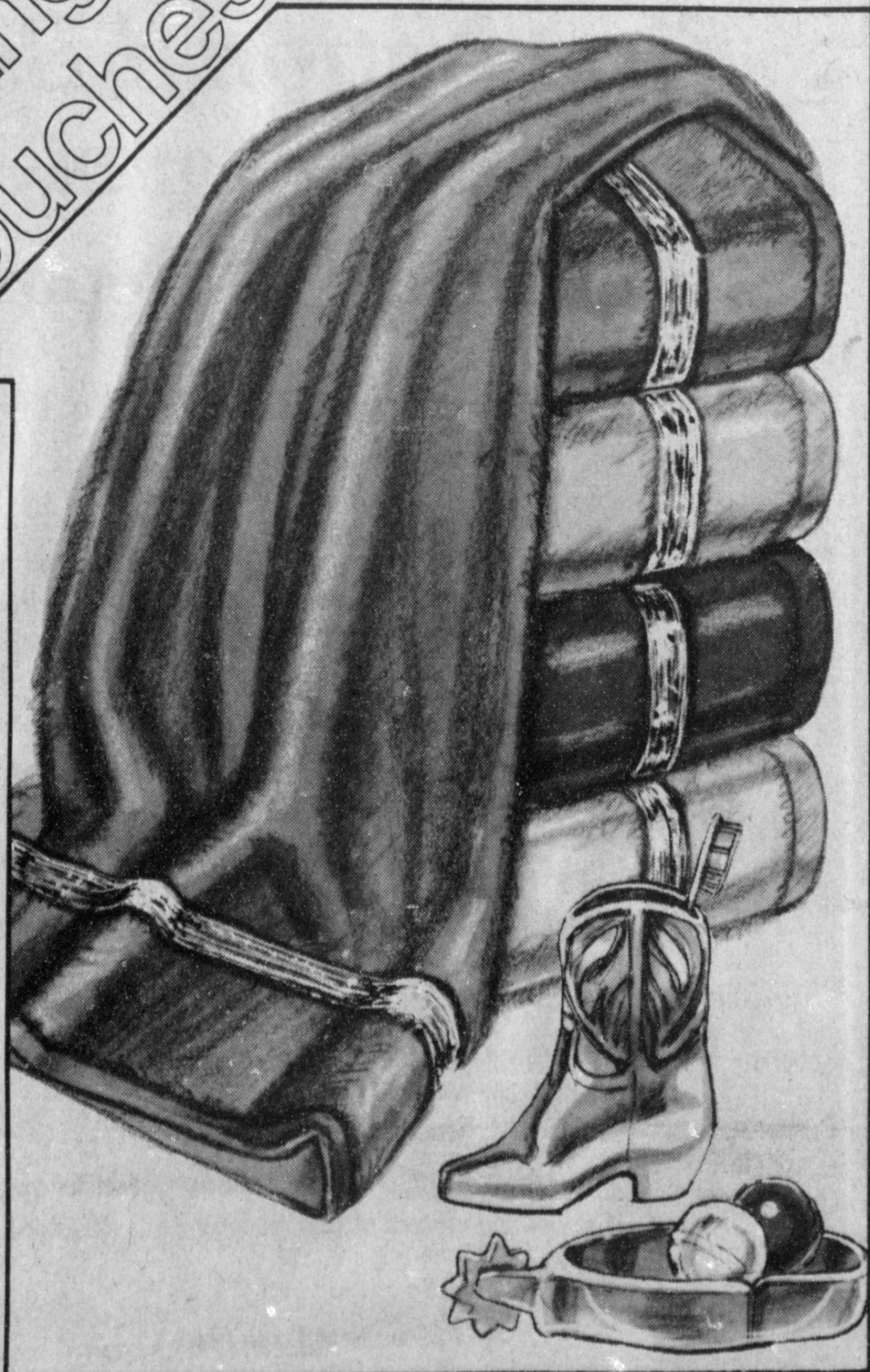
Finishing Touches FOR YOUR HOME

LUXURIOUS KING SIZE BATH TOWELS

\$3.77 ea.

Reg. \$5.99

Our richly absorbent king size (25" X 48") towel of 100% cotton sheared terry. Slightly irregular; values to 7.99 if first quality.



Anthony's
C.R. ANTHONY CO.

321 MAIN • OPEN 9 to 6

10 YEAR NO SWEAT WARRANTY



If Air Conditioning doesn't have it here it probably doesn't have it.

Gas Air Conditioning Has It!

No other air conditioner has a warranty like a gas air conditioner because no other air conditioner is built like a gas air conditioner.

Gas air conditioning has fewer moving parts and no compressor to wear out or break down. This means less wear and tear and lower maintenance costs.

That's why gas air conditioning is so dependable and why it has a warranty that's twice as long as other types of units ... a full 10 years!

Find out more about the air conditioning that's backed by the best warranty available. Call Energas today for a free cooling survey and cost estimate. There's no obligation.

Remember, all air conditioning was not created equal. And we have the paper to prove it!

Manufacturer's limited warranty covers all defects in materials and workmanship on the sealed refrigeration unit for ten years from the date of installation of the air conditioner when it is installed in a single family residence. All other parts are warranted for one year from date of installation.

ENERGAS

Sales...

Cont. from Page 1
amounted to \$206,365 and amount subject to tax was \$3,801,884.

Lubbock County had 5,415 outlets reporting, reflecting \$11,090,791,196 in gross sales for the fourth quarter in 1981. This is a 5.9% change from the 1980 fourth quarter gross sales of \$11,588,647,779. Use tax purchases amounted to \$6,660,612 and amount subject to tax in 1981 was \$229,128,457.

The fourth quarter 1981 total reflected sales of \$86.3 billion in gross sales in the state's 26 Standard Metropolitan Statistical Areas (SMSAs), \$10.7 billion in non-metropolitan areas and \$11.8 billion in sales by out-of-state taxpayers.

Sales in the state's 10 leading urban areas were 1. Houston \$33.6 billion, up 19.7%; 2. Dallas-Fort Worth \$21.7 billion, up 12.9%; 3. San Antonio \$4.7 billion, up 13.8%; 4. Corpus Christi \$4.4 billion, up 22.6%; 5. Beaumont-Port Arthur-Orange \$2.4 billion, down 4.8%; 6. El Paso \$2 billion, up 15.1%; 7. Austin \$1.9 billion, up 19%; 8. Odessa \$1.5 billion, up 22.6%; 9. Victoria \$1.3 billion, up 42% and 10. Longview \$1.2 billion, up 19.7%.

The Comptroller's Office also released a computer analysis showing reported sales in each of the SMSAs and the state's 254 counties.

Rodeo...

Cont. from Page 1
scheduled for 8 p.m. on Thursday and Friday nights on June 10 and 11. Saturday performances will include one at 2 p.m. and the final one at 8 p.m. that evening.

Admission to the finals for advance tickets is \$3 for adults and \$2 for children. These prices will be increased by 50 cents each at the gate.

Fifteen contestants will vie for top honors in ten events including bareback, bulls, calf roping, ribbon roping, steer wrestling, team roping, barrels, poles, goat tying and breakaway roping. Both boys and girls will compete.

GTE...

Cont. from Page 1
while retaining the economies associated with the centralization of major work functions. The facility will be equipped and staffed to handle payments, perform some limited repair work on standard telephones and serve as a marketing point for certain telephones which will be sold outright. The office will also serve the community as a central point at which applications or changes in service may be ordered, repair service requested or billing inquiries initiated, the spokesman continued.

Office hours will be from 9:30 a.m. to 1:00 p.m. and 2:00 p.m. to 5:00 p.m. on Monday through Friday.

The driver's license office will be closed for six weeks except for Mondays and Thursdays from 9 a.m. until 4 p.m. when C. D. Fitzgerald is in Muleshoe.

Courts...

Cont. from Page 1
led over the past two weeks. Seven cases were filed for speeding, three for violation of city ordinance, two each for the following charges: no driver's license, expired plates, disorderly conduct, and issuance of bad checks. One violation each was filed on the following charges: illegal parking, expired sticker, failure to signal lane change, public intoxication and running stop sign.

Fines paid over the past two weeks totaled 43 in number. Ten of these were for speeding, five for bad checks, four for stop signs, three for violation of city ordinance and expires stickers. Two cases each were filed on the following violations: exhibition of acceleration, expired registration failure to signal lane change, public intoxication and one each for the following: unsafe lane change, no driver's license, stopped in roadway, disorderly conduct, illegal parking, no drivers license in possession, excessive noise, no motorcycle license, defective headlights and driving without headlights.

Election...

Cont. from Page 1
county.
In the judicial races for Court of Criminal Appeals, Place 1, Charles F. Campbell, Jr. won out over John E. Humphreys state wide, as well as in Bailey County. Campbell took 149 votes in Bailey to 146 for Humphreys.

For Judge of Court of Criminal Appeals, Place 2, Chuck Miller won over Bill Black statewide. In Bailey County, however, Miller got only 131 votes to Black's 154.

No Republican runoff were held in Bailey County.

Looking Back

Becoming wiser today isn't an unmixed blessing. It causes a person to realize what a fool he was yesterday.
-Courier, Bristol, Va.

Share...

Cont. from Page 1
front yard, damaging the grass. No suspects were named, but a report of criminal mischief was filed.

Bobby Free reported to police the theft of 3500 pounds of calf ration stolen from his private barn at 500 East Ash in Muleshoe. The report stated that a tractor was started which had a grinder-mixer attached to it, in order to feed the ration out the auger. No estimate was given on this loss.

On June 6, city police arrested Facundo Olivias on a charge of Driving while intoxicated. Officers observed the suspect driving erratically and weaving. He was given a breath test and transported to County Jail.

On June 1, Bailey County Sheriff's office arrested Buddy Leon Gordon on a DWI charge. He was later released on a \$5,000 bond. On May 27, Mac Norman was arrested on two separate charges: arson and burglary. He was later released on a \$2500 bond per charge.

On June 3, Frank Maestros was arrested by city officers on a DWI charge

and that of carrying a prohibited weapon. He was released on a bond of \$430. Also on the third, separate charges of welfare fraud were filed on Ofelia Saucedo and Maria Juana Arredondo. Both suspects were released on \$2,000 each.

DPS officials arrested Manuel Arturo Ruvalcaba on a charge of driving while intoxicated on June 6. He was later released on \$265 bond. Ricky Allen Dutton was also arrested on June 5 for a DWI charge by DPS officials here. Dutton was released on a \$265 bond.

The Sheriff's office also investigated two rural burglaries on June 6. Keith Price reported the burglary of a habitation two miles south of Enochs. Reports indicated that a door knob had been knocked off and the door of the habitation kicked open. Investigation revealed nothing missing, however. Alexander Valdez, on the Eugene Black farm reported the theft of a .22 caliber pistol from beneath the seat of a vehicle on the farm. The pistol was valued at \$149.95.

Club...

Cont. from Page 1
commendation following full consideration of applications and protests. The recommendation was that the application be granted. Hearing examiner Hallie Huttash's investigation found that it had not been proven that the place or manner in which applicant might conduct its business warranted the refusal of a permit. Also that it had not been proven that the applicant would unlawfully sell liquor in a manner contrary to law or would knowingly permit an agent, servant or employee to do so.

An exception to this decision has now been filed by the protesters with the Texas Alcoholic Beverage Commission, stating that the recommendation is in conflict with certain findings that were made. Specifically, that "the place or manner in which the Appli-

cant may conduct his business warrants the refusal of a permit based on the general welfare, health, peace, morals, and safety of the people and on the public sense of decency." A part of this protest is based upon the testimony indicating that Highway 84 is the major thoroughfare through Muleshoe and traffic would be increased as a result of this business opening. The balance of the protest filed reiterates the original petition.

People who hold public office sometimes forget that they are supposed to represent all of the people.

It's odd how the U.S. media never seems to get outraged over leftwing terrorism in Central America.

Wheat...

Cont. from Page 1
the Agricultural Act of 1949, as amended.

Williamson advised that all area producers should contact the USDA and let them hear local ideas on this matter. "Producers who are truly concerned about the 1983 wheat program are urged to write and state their views and suggestions to the USDA," Williamson said. "Many times, these programs are shaped on only a few comments, so some of ours could be the important ones," he elaborated.

These comments must be received in Washington on or before June 24, 1982 and should be addressed to Dr. Howard C. Williams, Director, Analysis Division, USDA, ASCSA, Room 3741 South Building, P. O. Box 2415, Washington, D. C. 20013.

Loan rates for 1982 crops have been released and are available in the county ASCS office. Another reminder includes that of Aerial measurement on summer seeded crops. Williamson says that these crops must be signed-up by July 1, if producers wish to ensure themselves of this service. Aerial measurement on 1982 wheat will start shortly and producers will have five days to certify after the measurement service is performed.

Defense dollars less than money spent on alcohol

COLLEGE STATION — Americans spend more on alcohol consumption annually than has been spent to operate the Air Force, a Defense Department official said during a recent banquet for Texas A&M University Air Force cadets.

"We are now spending annually three times as much on toys and sports than we budget for strategic forces of the Air Force," said Under Secretary of the Air Force Edward C. Aldridge Jr.

He said the United States has spent more than twice as much for social programs, nearly \$1.4 trillion, than was spent on our national defense.

Sausage Supper Is June 19

The tenth annual German Sausage Festival will be held in Nazareth, Texas on Saturday, June 19. Estimates of between 1500 and 1700 pounds of sausage will be homemade by the Nazareth Lions Club. The sausage will be sold frozen, by the pound, at the festival.

Highlighting the festival will be a meal which will be served from 4 to 7 p.m. on June 19. Menu includes German sausage, potato salad, sauerkraut, relish plate, corn, green beans,

homemade bread, German chocolate cake and apple crisp. Charge for the meal will be \$3.75 per plate.

Other activities which will start at 2:30 p.m. will feature an Arts and Crafts show and sale, with area artists participating. Some booths are still available and may be obtained by calling 945-2562 or 945-2583.

A fiddler's contest will also be held. There will be no entry fee charged for this event. Prizes will be given to the winners. Following the contest, all area musicians are invited to play in a Blue Grass concert. Other afternoon activities include softball, raffle and water polo.

A dance will wind up the evening, beginning at 9 p.m. with music provided by the Rough Riders band. Admission for the dance will be \$3.00 per person.

For further information concerning the festival, contact Irene Wilhelm, Route 2, Happy, Texas, or call 945-2532.

Brewer Named WTSU Hostess

WTSU--Dana Brewer, a graduating senior at Muleshoe High School, has been awarded a Campus Services \$800 scholarship to attend West Texas State University during the 1982-83 academic year.

As one of 10 beginning freshmen students who receive the scholarship, Brewer will serve as an official hostess of the university to take visiting students and parents on campus tours and to assist with campus activities. They will work in the office of Keith Winter, director of development.

Winter interviewed more than 100 high school seniors from Texas, New Mexico, Kansas and Oklahoma for the 10 scholarships.

To be eligible for the scholarships, students must have a score of 21 or above on the American College Test or 902 or above on the Scholastic Aptitude Test college entrance exam-

ations, must have exhibited leadership qualities, have a record of participation in extracurricular activities, a "B" average or above in high school and two letters of recommendation with one of the letters from the high school counselor.

A competitive scholarship of \$200 or more at WTSU waives out-of-state tuition which often is 10 times higher than in-state costs.

During her years at Muleshoe High School, Brewer has been involved in band, served as drum

major, been selected All-Region Band, served as a member of Distributive Education Clubs of America and National Honor Society.

She has been named as outstanding debator and qualified for state competition in University Interscholastic League play activities. She is listed in the top 10 graduating students and is president of First United Methodist Youth.

She resides with her parents, Charles and Pat Brewer, at 1722 W. Avenue D.

Money
To Loan On Anything Of Value
Bargains In Unredeemed Pledges
All Loans Strictly Confidential
Regulated Loan License
For Information Call 272-5105
"No Loan Too Large Or Too Small"
Muleshoe Pawn
213 S. 1st

- JEWELRY
- PISTOLS
- WATCHES
- DIAMONDS
- GUNS
- LUGGAGE
- RADIOS
- CAMERAS
- TYPEWRITERS
- GOLF CLUBS
- SPORTING GDS
- MUSICAL INSTRUMENTS

did you know?



Southwestern Public Service Company is part of the Southwest Power Pool, a voluntary group of power suppliers. Membership in this pool increases the reliability of SPS' electric service, since such membership allows transfer of power from another utility system to ours if necessary. Power pools are guided by many checks and balances, and are regularly reviewed by the Federal Energy Regulatory Commission (FERC).

Oscar Hernandez, Local Manager, Tucumcari.

SPS is planning for your future energy demands. Because it takes many years to finance and construct a power plant, SPS' long-term forecasters begin planning 15 to 20 years before the plant will be needed. Through "load forecasting," SPS can predict how much electricity our customers will require in the future. If our forecast is too high, we could build expensive plants prematurely. If it is too low, we might not have enough energy to go around. SPS takes its forecasting responsibility seriously, to bring you reliable electric service next week, next year, and into the next decade.

Larry Simms, Division Superintendent, Lubbock.

Buildup of indoor pollutants may present a serious health risk, since people spend more than 85% of their time indoors. Indoor pollutants can be found in some furniture cleaners, office machinery, fireplaces and building materials. SPS encourages our customers to insulate their homes, yet they should be aware that an airtight home requires daily airing, particularly during winter months or on cleaning days, when household cleaners that may contain dangerous chemicals are used.

Joe Don Parrott, Building Records Coordinator, Amarillo.

Knowing what electricity is worth is worth knowing. For answers to your questions, call or write your SPS manager.



SOUTHWESTERN PUBLIC SERVICE COMPANY

Effective May 1, 1982

First National Bank

Offers You A 91 Day Certificate Of Deposit

With An Interest Rate Tied To The 13 Week Treasury Bill Rate.

Before now a minimum of \$1000,000 was required to purchase a certificate of deposit with a maturity of less than 6 months at a favorable rate.

This new Certificate of Deposit offers you the opportunity to earn a high rate of interest while investing in shorter term Certificate of Deposits Vs. the six month money market.

Also the minimum deposit of \$7,500 provides you with more versatility to work your money.

The new Certificate of Deposit is fully insured and is automatically renewable.

The three month certificate could be perfect for you, if so see the officers at First National Bank, Muleshoe, Texas.

"Your Home Owned Bank"

1ST national bank
Member F.D.I.C.

ferti-lome
Baker Farm Supply
1532 W. Amer. Blvd.
272-4613

- More tomatoes
- Earlier
- Less seeds

Wheat Industry Unites Behind Promotion

According to Texas Wheat Producers Board officials, grain elevator operators throughout the State of Texas will be deducting 1 1/2 cent per bushel from all farmer deliveries of wheat beginning with the 1982 harvest. The voluntary "Implied Consent" amassed funds will be expended at the direction of the initiating organizations to strengthen the market demand, price and producers income for all classes of wheat in the State, according to a joint announcement made by Presidents of supporting organizations; Carrol Chaloupka, Dalhart, Texas Farm Bureau; Mike Moeller, Austin, Texas Farmers Union; Wiley Tabor, Quanah, Texas Wheat Producers Association; and W. H. (Diz) Ansel, Rosenberg, Texas Grain and Feed Association. The new "Texas Wheat Promotion Plan" is to be administered by the farmer-elected Texas Wheat Producers Board, through its professional and

technical staff headquartered in Amarillo, according to W. R. Moore, Jr., Munday, TWPB Chairman. The dynamic change in wheat production and marketing within the State make such a bold self-help effort mandatory if any semblance of profit is to be maintainable, the Ag-leaders say. They point to the fact that just ten years ago, in 1971, Texas ranked sixteenth among the states in production with only 31 million bushels. In 1981 it had leaped to third place nationally with 183 million bushels. During the same time, the acres planted in Texas jumped from 3.5 to 7.8 million while the harvested acres leaped from 1.6 to 6.6 million. This dynamic change in wheat production upped the producers' value of the crop and their spending power in taxes, goods, services and production inputs from \$70 million to over \$700 million. Even though during the same period, the farm

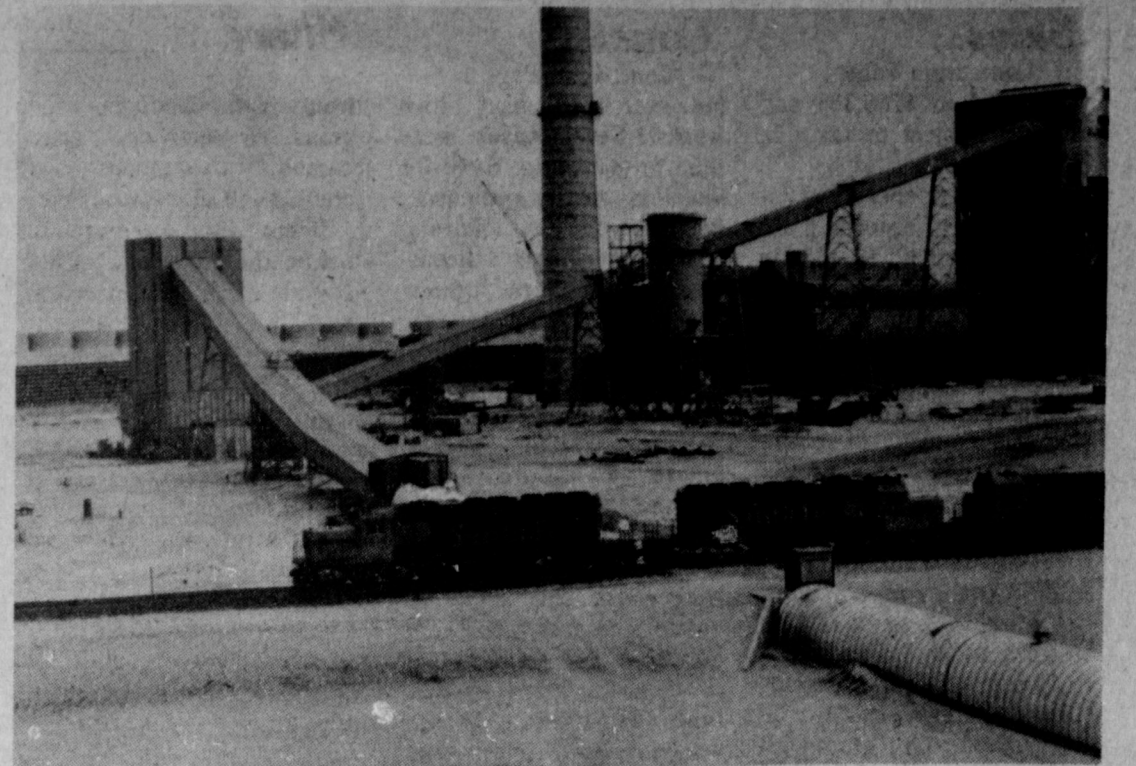
price of wheat increased 172%, the big disappointment to farmers throughout the State is that demand has not been strong enough to overcome the increased production costs and strengthen farm prices to a profitable level. Wheat production and marketing has also been dynamic in its shift within the State. In 1971, 85% of all wheat in Texas was produced in a 34-county North Texas, Panhandle - Plains area. Today at least 55% is produced outside that former traditional area. Wheat use in the United States during the past ten years, and in the foreseeable future, has been static in action and virtually unchanging. All the dynamics in wheat production -- putting idle acres back into production, absorbing increased yields from research and technical advances, expansion into new areas, and all the price increase from \$1.34 per bushel since 1971 -- has been

made possible by increased exports. U. S. wheat exports go not only to big customers like Japan, China, the Soviet Union and Mexico -- but to over 90 countries throughout the world. Exports reduce carryover stocks and help to strengthen farm prices. Wheat producers nationally work for export expansion through their boards and commissions with self-assessment programs ranging from 1/2 cent to 2 cents per bushel in the individual states. Their effort is channeled through one producer-supported organization -- U. S. Wheat Associates. It maintains a Washington, D. C. headquarters and twelve overseas offices. "Increased support of U. S. Wheat Associates export market development, disease and insect control, transportation studies, and other activities that might enhance the value of wheat production and marketing in the State are the kind of projects that will be recommended to the directors of the Texas Wheat Promotion Plan," according to Bill Nelson, Amarillo. Posters will be placed by the Texas Grain and Feed Association at each wheat receiving location in the state receiving location in the State indicating that the 1/2 cent deduction will be made unless producers

request exemption prior to settlement. Procedures in the 34-county traditional wheat area operating under provisions of the Texas Commodity Referendum Law since 1971 will not be affected by the new program, other than have the assurance that now producers in the remainder of the State will have an opportunity to participate.

February Texas Gas Production

Railroad Commission Chairman Jim Nugent announced that Texas oil and gas wells produced 490,786,592 Mcf of gas in February 1982, down 4.52 percent from field runs a year earlier. Marketed gas production totaled 418,038,756 Mcf and reflected a 4.96 percent decrease from the February 1981 volume. Marketed production is the total gas to transmission lines, carbon black and plant fuel and lease use. Gas exported from Texas in February totaled 276,910,150 Mcf. Natural Gas Pipeline Co. of America was the month's largest exporter, moving 75,619,368 Mcf of gas of which 37,144,697 Mcf was Texas-produced gas. Exports of Texas-produced gas in February totaled 196,879,171 Mcf, and reflected a 6.31 increase from the year-earlier month.



WHEELABRATOR-FRYE COAL FACILITIES--The long tunnel of pipe in the foreground of this photo is the method of conveyance of coal into the grinding facility at the SPS Tolk Plant. From there, the coal is taken into the bunkers in the plant facility (far right) for feeding into the firing mechanisms of the first unit.



COAL CHUTES--The coal chutes which transfer the coal after it is dumped from the cars into the stockpiles awaiting grinding are dust-protected with water sprays, as the coal moves along the conveyor. This photo shows the inside of one of the two coal chutes at the Roy Tolk Plant.

SHUGART COUPON
Sat. June 12
Pay-N-Save
515 W. Amer. Blvd.
19¢
WALLET SIZE
COLOR PORTRAITS
99¢

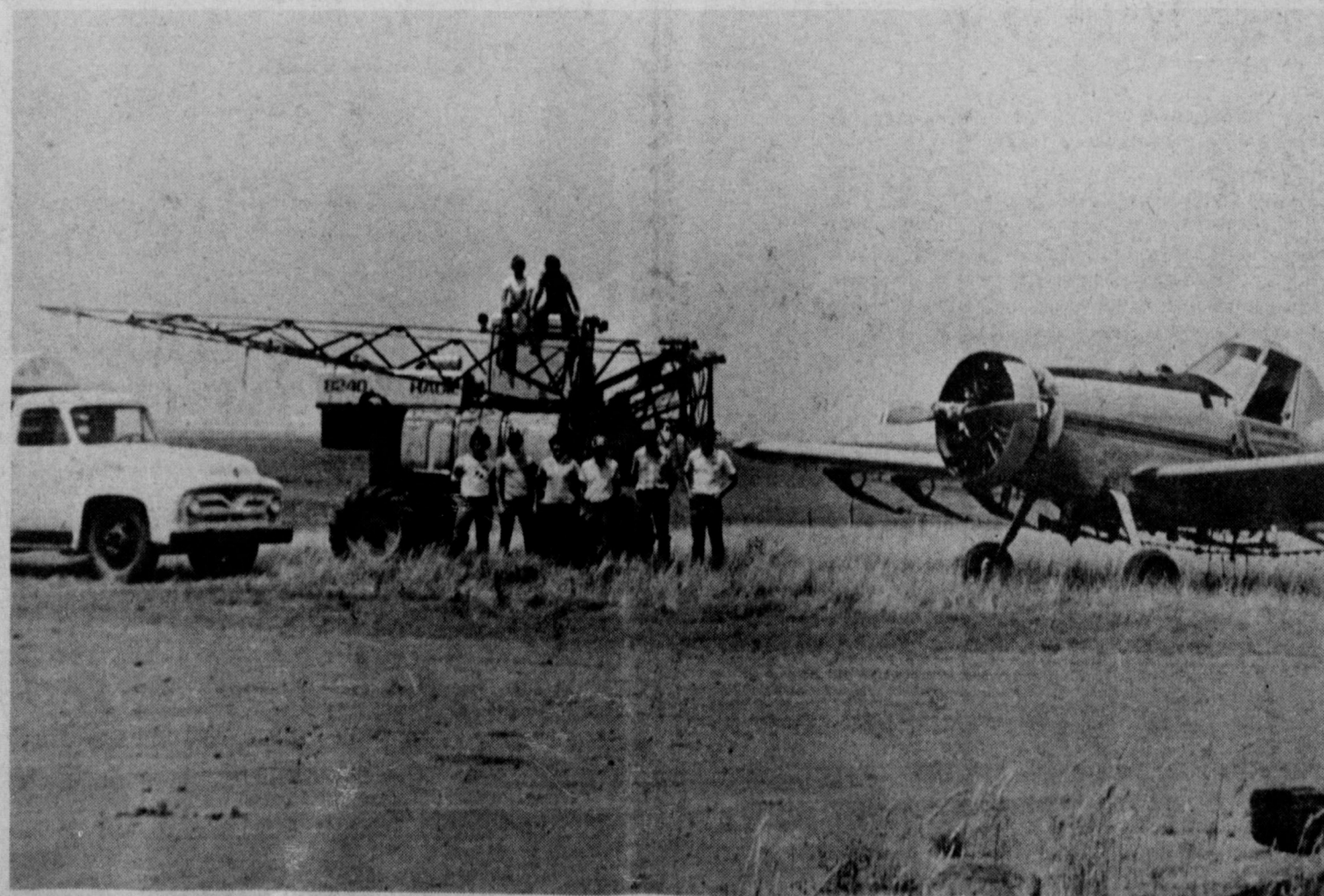
ASK About Our
FREE
8 x 10
OFFER

Extra charge
for
GROUPS

<p>TOOL VALUE OF THE MONTH</p> <p>Quantities Limited White Supplies Last 4.99</p> <p>Master MECHANIC® 6-Pc. Screwdriver Set with Storage Rack</p> <p>A practical Father's Day gift! 6 forged screwdrivers, including 2 Phillips type—a big help for Dad. Includes a free rack. TT6R</p>	<p>HARDWARE VALUE OF THE MONTH</p> <p>now 7.66 White Supplies Last</p> <p>50-Ft. Nylon-Reinforced Garden Hose</p> <p>Full nylon reinforcement for strength and durability. Easy coiling, even under extreme temperatures. 5/8-in. inside diameter. T669-5C QUANTITIES LIMITED</p>	<p>BARGAIN OF THE MONTH</p> <p>now 9.99 White Supplies Last</p> <p>12-Qt. COOLER CHEST & 1/2-Gal. JUG</p> <p>Both pieces are molded of polyethylene. The chest holds up to 18 12-oz. cans, and the wide-mouth jug is insulated to keep beverages hot or cold. 036-011</p>
---	---	---

Fry & Cox Inc.
401 S. 1st 272-4511

Coker & Sons Inc.



Now The Finest Application
By Air or Ground

Call 965-2329



The Consumer Alert

by Mark White
Attorney General

AUSTIN—One of the hottest crazes today is electronic games. "Pac Man," "Asteroids," and others seem to have totally captured the interest of the American public. In every convenience store, supermarket, laundromat, and shopping center there will be a selection of teenagers, career professionals, and tradesmen avidly dropping quarters into slots and feverishly working controls. If you are thinking of investing in electronic videogames either for a full-time or part-time income, you should be aware of certain considerations.

Typically a game retails for between \$2,000 and \$5,000. You should call several suppliers for prices. Many manufacturers sell directly to a customer wanting to place a small order (one to ten games.)

It takes time and equipment to make a game route profitable. The key is location, which means time spent in making contacts of business owners, moving machines into locations, and then rotating machines to different locations as they lose playtime and become obsolete in one place. In order to move a game, which weighs about 300 pounds, generally the operator needs a vehicle capable of loading and transporting heavy loads. Usually it takes several people with a dolly to move the machines. The best production for a machine in one location is generally from two to six months, so moves are frequent.

Routes require maintenance. Switches and other heavily used parts go out. Most videogame operators keep an inventory of commonly replac-

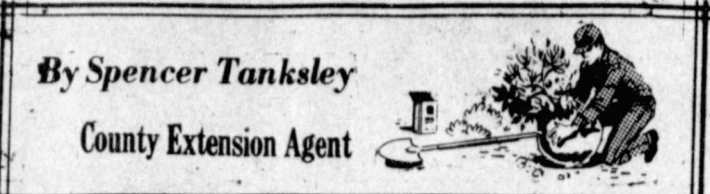
ed parts on hand, so that the time of a game is maximum.

Beware the "get rich quick" game route plan. There are many unscrupulous companies either selling poor machines, or failing to deliver the product ordered. Watch out for advertising of a "game show" to be held in a hotel suite for three to seven days. Often it is difficult to check references or obtain information on these operators. Claims of profitability are phenomenal, but the customer is not told of the time and effort involved in maintaining a route. Usually the pitch recites that the only time needed is to go around and empty the coin boxes, which will be overflowing every day. Beware of supposed innovations in engineering; often this is a gimmick that make the customer think that his game is exclusive in some

way. A large down payment or deposit "up front" is another signal that you may be on the way to the cleaners.

Texas, like many states, has a law requiring a company selling a business opportunity (like most videogame routes) to file disclosure statements revealing company addresses, officers, and documentation of claims of profitability. The Uniform Commercial Code Division of the Secretary of State's Office is the designated office for filing. In addition, you might check with the Better Business Bureau for information on reputation, and with local law enforcement agencies.

If you feel you have been victimized by a game route company, contact your nearest Consumer Protection Division Office for assistance in filing a complaint.



By Spencer Tanksley
County Extension Agent

Bagworms are one of the major pests of junipers and other trees and shrubs in the South Plains. Insecticide control is most effective in late May and early June when the bagworms are small, says County Extension Agent Spencer Tanksley.

In the spring, bagworm larvae emerge from hatching eggs inside last year's bags and begin feeding on leaves. Soon they begin to construct their own protective bag of silk, twigs and leaves, making them camouflaged and hard to see. As the larvae and their bags continue to grow, control becomes more difficult.

Bagworms feed throughout the summer months, building their bags until the bags are about 1 1/2 inches long. Tanksley adds, "In the fall, the bagworms become adults, mate and the females lay eggs inside their bags. They then overwinter in these bags in the trees and shrubs."

"Since the bagworm only completes one generation a year and spreads very slowly from plant to plant, picking the bags off infested plants in the winter will help a lot toward controlling this pest," says Tanksley. "But if bagworms were present on the plant last year and control measures were not applied, the chances are very good that an insecticide will be needed this spring."

Insecticides which can be used to control bagworm infestations include sevin, dursban, diazinon, malathion, dylox and orthene. The biological insecticide *Bacillus thuringiensis* can also be used. To obtain effective control, thorough coverage of the foliage is important. Always read and follow label instructions when applying insecticides.



The clock at Washington's National Bureau of Standards is accurate to one second in 300 years.

Free enterprise in outer space restricted by treaty

COLLEGE STATION — The future of American space exploration and colonization is

in jeopardy from new treaties that could restrict free enterprise in outer space, says a Texas A&M University econo-

mist. Dr. Larry Wolken, associate director of Texas A&M's Center for Education and Research in Free Enterprise, says economic concerns rather than technological considerations pose the greatest stumbling block to settling space. Wolken points out the economic potential of further space exploration would be stifled particularly by the

United Nations "Agreement Governing the Activities on the Moon and Other Celestial Bodies," commonly called the Moon Treaty. The treaty declares all celestial bodies and their resources the "common heritage of mankind." No nation can claim sovereignty over any celestial body and their resources can't become the property of any nation or person.



AWAITING HARVEST—Many wheat fields in Bailey County are similar to the one shown, ready for harvest; within the next few weeks. Dry spring weather cut down on the acres of dryland wheat, but irrigated seemed to flourish. Bailey County producers lost several hundred acres of wheat in recent hail storm damage.

Systemic action goes directly into the root systems and works throughout the entire plant. Control aphids on your roses

ferti-lome

Baker Farm Supply
1532 W. Amer. Blvd.
272-4613

19 KING SIZE WALLET CREATIVE COLOR PORTRAITS FOR ONLY **99¢**

Kodak paper. For a Good Look at the Times of Your Life.

NO LIMIT

Extra Charge for GROUPS

ASK About Our FREE 8 x 10 OFFER

Shugart's inc. COLOR PHOTOS

Sat. June 12
Pay-N-Save

515 W. Amer. Blvd.

WHY BUY A GAS GRILL NOW?

Now is a great time to buy a new gas grill. Choose from 7 quality models ... save a big 20% ... and take the heat out of your kitchen, too.

You'll really enjoy the convenience of cooking out with a natural gas fired grill ... love the flavor of outdoor cooking without the mess of charcoal or the hassle of LP tanks.

Order your gas grill from any Energas employee now and make the most of summer.



PATIO KITCHEN

PK grills provide the convenience of natural gas fired barbecuing ... have heavy top and bottom aluminum castings and H-shaped stainless steel burners for years of long wear ... and exclusive Range Rock briquettes with controlled porosity for even heat and less flare-up.

PK DELTA 1
Single-burner model with 270 sq. in. chromed steel cooking grid.

ONLY \$6.85 PER MONTH*

List price \$150.00
Less 20% -31.50
Plus installation 124.00
70.00
194.00
5% sales tax 9.70
CASH PRICE \$203.70
BUDGET PRICE* \$246.60

Budget terms: no down payment, \$6.85 per month for 36 months.

PK REGENT 1
Dual burner and controls let you use one-half or all of burner. 325 sq. in. cast iron cooking grid, plus 120 sq. in. chromed steel step-up grid for warming.

ONLY \$8.91 PER MONTH*

List price \$228.00
Less 20% -45.60
182.40
Plus installation 70.00
252.40
5% sales tax 12.62
CASH PRICE \$265.02
BUDGET PRICE* \$320.76

Budget terms: no down payment, \$8.91 per month for 36 months.

JACUZZI
Jacuzzi cast aluminum grills feature Char-Brown enamel finish, rust-resistant porcelainized cast iron cooking grids, and cast iron and nickel alloy burners.

JET CHEF 4020
Two individually controlled burners in this top-of-the-line grill with 375 sq. in. cooking grid plus 110 sq. in. raised warming rack, accurate sealed temperature gauge, and all-weather shell.

ONLY \$13.63 PER MONTH*

List price \$395.00
Less 20% -79.00
316.00
Plus installation 70.00
386.00
5% sales tax 19.30
CASH PRICE \$405.30
BUDGET PRICE* \$490.68

Budget terms: no down payment, \$13.63 per month for 36 months.

DUCANE

Ducane cast aluminum grills feature top-ported stainless steel burners, which last longer and save gas ... porcelainized steel cooking grids ... and a unique coal grate designed to prevent flare-ups and grease collection at the bottom of the firebox. Some models have Rotis-A-Grate, a separate vertical burner for rotissing from behind the meat.

CHALLENGER 800
Single-burner model with 310 sq. in. cooking surface.

ONLY \$8.57 PER MONTH*

List price \$216.00
Less 20% -43.20
172.80
Plus installation 70.00
242.80
5% sales tax 12.14
CASH PRICE \$254.94
BUDGET PRICE* \$304.52

Budget terms: no down payment, \$8.57 per month for 36 months.

CHALLENGER 1500
Dual burners, dual controls — one for each side, which saves gas when you don't need to use the total cooking surface of 405 sq. in.

ONLY \$12.27 PER MONTH*

List price \$347.00
Less 20% -69.40
277.60
Plus installation 70.00
347.60
5% sales tax 17.38
CASH PRICE \$364.98
BUDGET PRICE* \$441.72

Budget terms: no down payment, \$12.27 per month for 36 months.

CHAMPION 4000
Two burners — one main and one Rotis-A-Grate vertical burner, electronic ignition, 310 sq. in. cooking grid, rotissing motor and spit — all packaged in an elegant cart with large storage area, hardwood side shelf, heavy duty dual wheels, and connection hose.

ONLY \$21.67 PER MONTH*

List price \$711.00
Less 20% -142.20
568.80
Plus installation 45.00
613.80
5% sales tax 30.69
CASH PRICE \$644.49
BUDGET PRICE* \$780.12

Budget terms: no down payment, \$21.67 per month for 36 months.

TROPHY 2002
Three burners — two main and one Rotis-A-Grate vertical burner, electronic ignition, 310 sq. in. grid, rotissing motor and spit, and hardwood side shelf.

ONLY \$16.45 PER MONTH*

List price \$495.00
Less 20% -99.00
396.00
Plus installation 46.00
442.00
5% sales tax 22.10
CASH PRICE \$464.10
BUDGET PRICE* \$552.20

Budget terms: no down payment, \$16.45 per month for 36 months.

ASK ANY **ENERGAS** EMPLOYEE

* Budget terms available at 12.75% annual interest on declining balance. † Prices include sales tax and normal post-type installation, except for Ducane Champion 4000.

Sale ends July 31, 1982.

Sportsman Complete & Balanced Nutrition Dog Food

PUPPY FOOD 27% PROTEIN 20 LB. Bag **\$5.95**

HI-PROTEIN DOG MEAL 26% PROTEIN 50 LB. Bag **\$10.59**

Five Point Dog Food

50 LB. Bag **\$9.36**

25 LB. Bag **\$5.15**

Alert!

A&M Cat Food

10 LB. Bag **\$3.45**

FARM AND RANCH SUPPLY

BUYING? SELLING? CHECK OUT THE...

CLASSIFIED ADS

Moving? Do It Yourself-- And Save Money

Of the many Americans who move every year, nearly 75 percent do it themselves. For 1982, it is estimated that three million families will rent a truck to move themselves. And for good reason: to save money.

All moving costs depend on weight and distance. However, families that rent trucks to move themselves often will come out ahead, dollarwise, compared with those who hire professional household movers.

According to Ryder Truck Rental, Inc., for average city-to-city moves in the United States, people can save as much as several hundred dollars by moving themselves rather than hiring a professional moving firm.

"Because a professionally handled move can be very expensive... the savings possible through a self-move can be considerable — 50 percent or more," says Jim Shiplet, Ryder's vice president-removal at the company's Miami headquarters.

Besides saving money, people rent a truck to move themselves because it also offers other advantages. For example, the self-mover controls the timing of the move and doesn't have to depend on a professional moving company's schedules. Self-movers and their belongings arrive at

their new home together. Self-movers, therefore, do not have to spend money at a local hotel or motel while waiting for their goods to arrive. And, of course, no one handles someone's belongings more carefully than the owner.

Shiplet says self-movers should give careful attention to their selection of the rental firm supplying the vehicle and moving accessories. Proper equipment, he says, can help assure the move-it-yourself experience is a safe and successful one. Critical factors in choosing a rental firm are the dependability of its equipment and the accessibility and professionalism of the company.

Some Helpful Hints

Ryder self-moving experts urge the do-it-yourselfer to plan the move carefully. A timetable set three to four weeks before the move is suggested for proper organization, mailing change-of-address notices, collecting cartons and packing, changing banks and other services, and, of course, reserving the rental truck and other moving equipment.

When packing, it is a good idea to wrap fragile items in several layers of newspapers for protection. Use tissue paper for porcelain or china, since newspaper can stain those items. Use small boxes

for books and other heavy items and larger boxes for lighter items, such as clothing and bed linens. Try to keep the weight of each box under 30 pounds.

Close to moving day, dismantle tables, if possible, for easier loading. Defrost the refrigerator and allow 24 hours for its interior to dry out, doors opened. Be sure to know how to disconnect all appliance lines. Tape doors shut, and apply tub-lock devices for washers and dryers to prevent the tubs from spinning in transit.

Arrange for a group of friends to help with loading. Try to schedule the loading on a weekend day.

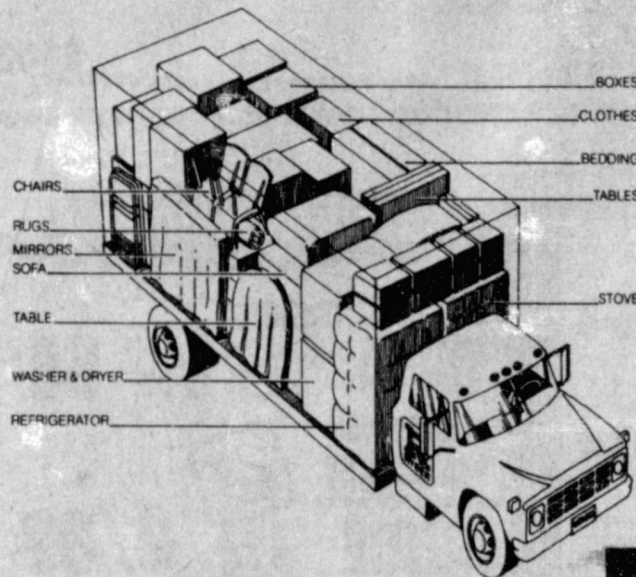
Plan to load on one day and begin your move after a good night's rest. Load heavy items first, toward the front of the truck. The boxes of items that will be needed immediately at the new home should be loaded last.

Rules of the Road

Shiplet also advises that driving a truck is a bit different from the family four-wheeler, so play it safe by knowing your vehicle and the rules of the road.

He says to "take the attitude of a professional truck driver."

- Be aware of the height of the truck. Be sure that it is less than the height of an upcoming overpass.
- A slow and steady stop is best for a loaded truck.
- When passing, be certain there is enough room to complete the maneuver before pulling into the passing lane.



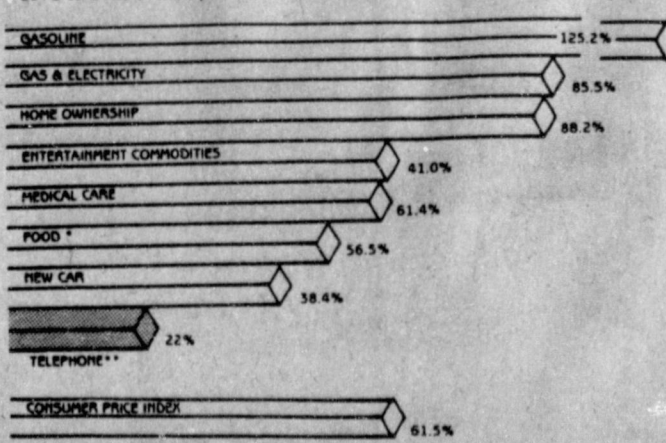
HOW TO PACK A TRUCK: Load large appliances first, sliding them all the way forward. Fill spaces in between with small cartons and tie everything securely. Load large furniture next, with table legs removed and table tops protected by pads or blankets. Stand box springs, mattresses, mirrors (wrapped securely) and pictures on their edges along the sides of the truck.



The cat is one of the longest lived of the smaller domestic animals. The reported maximum age is about 30 years. The average life span is around 14.

YOUR TELEPHONE SERVICE - A REAL BARGAIN

All things considered, talking is a real bargain. The chart below shows how your telephone costs compare against other goods and services you use daily.



* Away from home
** Basic local service in OTSW's Texas exchanges

Frequently, the convenience of the telephone is taken for granted. For instance, a few things you use your phone for:

1. Shop ahead, save gas.
2. Make appointments (doctor, sales calls, lawyer, preacher)
3. Emergencies (police, fire, ambulance)
4. Talking with loved ones in other towns
5. Conducting business via long-distance, save on travel cost
6. Calling scout troop, civic club, little league team, etc.
7. Visit with a friend across town.

Talk is cheap and also a real bargain. For a true picture, divide your basic local service rate by the days in the month. For just pennies a day, excluding long distance and special services, you have your town at your fingertips.

General Telephone **GTE**

"YOUR TELEPHONE SERVICE - A REAL BARGAIN"

- When you stop for fuel, check your truck's tire pressure, oil, cargo — and yourself. If tired, take a coffee break.
- Be prepared. In an emergency stop, pull completely off the road, turn on your emergency lights and place road flares in front of and in back of your vehicle.

For more information on self-moving, call Ryder Central, Customer Service, toll-free at 800/327-7777. Florida residents call 800/432-1930. Or write to Cathy Rowe, Customer Service, Ryder One Way Operations, P.O. Box 520816, Miami, Fla. 33152.

DEADLINE FOR CLASSIFIED ADS IS TUESDAYS AND FRIDAYS 11:00 A.M.

LEGAL NOTICES

PUBLIC NOTICE

The Trustees of the Muleshoe Independent School District will offer for sale by sealed bids the following equipment:

- 1 - 1963 Dodge, 6 cyl, automatic, van
- 1 - 1967 GMC 2 Ton Van
- 3 - Electric Hotpoint Pressure Cookers, 220 Volt
- 1 - Metal Cutter
- 1 - Language Laboratory Console with 25 booths and headphones

All of the above items are in fair to good condition and may be inspected by appointment. Call Tom Jinks, Assistant Superintendent, at 272-3911 for appointment.

Bids will be opened on Monday, June 14, 1982, at 8:00 p.m. The Board reserved the right to reject any and all bids in the best interest of the District. pub. not.-21s-7tc

PERSONALS

MADAME ROSE PALM READER AND ADVISOR

Tells past, present and future. Having problems in love, marriage, business, health, happiness, finance? Cannot save money, hard time to succeed? Advised on all matters of life. There is no problem so great she cannot solve. Open 7 days a week, 8 a.m.-10 p.m. No appointment necessary. Speaks English and Spanish. 219 E. 9th. Littlefield. 385-5452. 1-20t-8tc

CARD OF THANKS

I want to thank the voters for electing me your Democratic candidate for Commissioner of Precinct 2. Your confidence is appreciated. Sincerely, Roy Whitt

CARD OF THANKS

I want to say thank you to all the people who voted in the June 5th run-off election. A special thanks to all the people who supported me and voted for me. Don Seales

WE BUY USED FURNITURE AND APPLIANCES CALL 272-3030 HARVEY BASS APPLIANCE 1-18s-tfc

INSTANT CREDIT Living room group or Bedroom set. \$699.95. \$75.00 down, \$60 per month. Baker Furniture, 108 E. Ave. B, 272-4000. We tote the note. 1-16t-tfc

LOST&FOUND

LOST: Blue Seal point Siamese cat. Blue eyes and wearing blue collar. Strayed from 9th and D. Reward offered. 272-5611 after 6 p.m. or call 946-3341. 2-23c-4tc

HELP WANTED

JOB INFORMATION Cruise Ship jobs. Also Houston, Dallas, overseas jobs. 602-998-0426. Dept. 0511. Phone call refundable 3-23t-2tpt

WANTED: Experienced beautician. Apply in person at Main St. Beauty Salon. 3-8s-tfc

WE'RE GOING TO MAKE YOU FEEL BEAUTIFUL We help, inspire, encourage. We're Avon. Earn \$\$\$.

Call Now: Phyllis Duff, 806-794-3498 or Nettie Long - 272-3208 3-22T-8TC

APARTMENTS

FOR RENT: 14x70, 2 BR, 1 1/2 bath house trailer. Furnished or unfurnished. Central heat and air. Earth, Texas. 4-23s-tfc

SARATOGA GARDENS 1300 N. Walnut - Friona Phone 247-3666

NOW, 1 MONTH FREE RENT 1, 2, or 3 bedroom apartments, modern, wall to wall carpet, heating/cooling, kitchen equipped, laundry facilities, parking. Low rent for needy families. Call collect.

1 BR unfurnished apartment for rent. Has appliances, range, dishwasher, refrigerator and waste disposal. Call 272-4986. 4-23t-tfc

REAL ESTATE

BY OWNER: 3 BR, 2 bath assumable 10% loan 1902 W. Ave. E. Call 272-5289. 8-20s-tfc

FOR SALE: 3 acres of land with barn and arena. North edge of town, 272-4701. 14-12t-tfc

ASSUME PAYMENTS on beautiful 2 BR 14' wide. Dealer Repo. Furnished, carpeted and storms. \$227.87 a month. \$1345.00 due. Call 353-1280. 8-21t-8tc

HOUSE FOR SALE: 3 BR, 1 1/4, LR, kitchen-dining combination, den, ample storage, corner lot, near 3 schools, 1928 sq. ft. living area, 621 West 6th. Phone 272-4732 days or 272-4827 evenings. 8-2s-tfc

STATE SALE SETTLEMENT/ New Mexico. Killion Farms. 2800 acres/cultivation including modern home. Cash or price negotiable. Also large modern home "Built 1974" on adjacent 2 to 10 acres. By owner trustee; Will be in New Mexico May 21-28 at 505-356-4098. After that, contact Joe Frasier, 109 Longhorn, Tx. 76240 or Call 817-668-6334. 8-21s-8tc

We Want Your Business

REMEMBER REID REAL ESTATE 1614 W. American Blvd. 272-3142 Thursie Reid 272-3142

Krebs Real Estate 201 W. Ave. C Appraisals

Serving Muleshoe Area 15 years. We Appreciate your business. 8-52t-tfc

Bingham & Nieman Realty 116 E. Avenue C 272-5285 nights 965-2488 "We Appreciate Your Business!" George & Dianne Nieman 8-49t-tfc

DENT & ASSOCIATES REAL - ESTATE

FARMS--RANCHES COMMERCIAL RESIDENTIAL

LEON DENT, broker nites 272-3580

DON REMPE nites 272-4643

1516 W. AMERICAN MULESHOE, TX. 79347 OFFICE 272-4296

LIST YOUR PROPERTY WITH US 8-6t-tfc

Henry Realty

2 BR house, 2 bath. Stucco, 100 ft. lot. Ideal for apartment housing. Located near grade school and downtown.

316 acres, 18 miles north of Muleshoe in Parmer County. 2-pivot systems, 2 irrigation wells. Established alfalfa hay. Low down payment. Good terms.

Small acreage 3 miles east of Muleshoe on highway.

111 W. Avenue B, Muleshoe 272-4581 8-44s-tfc

USED CARS-TRUCKS

FOR SALE: 1977 Chevette 48,000 miles. Good condition. Cash price \$2,450. Excellent school car. Call 272-3304 or 272-3267. 8-20s-tfc

SURPLUS JEEPS* \$65. CARS \$89. TRUCKS \$100. Similar bargains available. Call for your directory on how to purchase. 602-998-0575. Ext. 0511. Call refundable. 9-22t-4tpt

FOR SALE: 1979 Honda, 110 ATC. Good condition. \$550. 925-6616. 9-22s-4tc

FOR SALE OR TRADE

FOR SALE: Warm winter nest, furnished 2 BR trailer on lake LBJ with stove, refrigerator, washer, central heat and air. Nice. 272-5408. 11-2s-tfc

WANT TO SELL OR TRADE for anything of value: 5 cent and 10 cent vending machines. Good opportunity for part-time work and extra income. Call 915-573-7942 or 272-3994. Write: J. D. Spurgeon, Star Route, Box 54 AA, Ira, Tx. 79527. 11-23s-tfc

USED 25 hp VHS motor and switch, \$1100. Owens Electric, Hereford, Tx. Call 364-3572. 11-16t-tfc

FOR SALE: 17 ft. used trailer house. Good condition. Call 272-5035 or 272-4515. 11-23t-tfc

HOUSEHOLD GOODS

BURROWS UPHOLSTERY AND FURNITURE REPAIR 209 W. 2nd phone 272-4255 12-44s-tfc

ATTENTION: Kirby Sales & Service: Call for a home demonstration of a new Kirby. We also have rebuilt Kirby's. Starting price \$235 with trade. 356-6110 day or night. Joe Enis Distributor. 12-20t-8tc

MISCELLANEOUS

FARM EQUIPMENT

DUDLEY ROOFING, R.C. roof, new roof or repairs. 272-4837. 15-18t-tfc

GARAGE SALE: From 3 till 8 Friday, June 11. 8 a.m. till 8 p.m. Saturday, June 12. clothes, toys, lamps, vacuum. 319 E. American Blvd. 15-23t-1tp

BIG GARAGE SALE: Friday and Saturday, June 11 and 12. 9 to 5 p.m., 1625 Ave. A. (across from Sherry Anderson Elevator, Farwell, Texas. 15-23t-1tp

PIANO IN STORAGE Beautiful spinet - console stored locally. Reported like new. Responsible party can take at big saving on low payment balance. Write Joplin Piano, Inc., Joplin, Missouri 64801. Include home phone number. 15-23s-2tc

NOW STANDING: Registered AQHA Stallion, "Lucky Bug Rex." SI-88, Conformation, disposition, plus. Call 272-5317 after 6 p.m. 16-4t-tfc

MISCELLANEOUS

Rent-To-Own Color TV
Stereos Microwave Ovens Dryers
Refrigerators Freezers Washers Dishwashers
No Service Expense No Interest To Pay

Wilson
Appliance
117 Main MULESHOE 272-5531

3 - FAMILY YARD SALE: Friday and Saturday (June 11 and 12.) 519 West 8th. 15-23t-1tc

WILL BUY your used refrigerator or freezer or air conditioner, working or not. 15-25t-8tc

WATER BUGS, ROACHES, MOTHS? Call Bland Pest Control. 272-3015. 15-20s-tfc

FRANK'S REFRIGERATION APPLIANCE & SERVICE PARTS & REPAIR 315 W. 3rd Ph. 272-3822 15-7t-tfc

DANDELIONS or other weeds in your yard? Call Bland Pest Control. 272-3015. 15-20s-tfc

STORAGE ROOMS FOR RENT \$25.00 - \$30.00 **TED BARNHILL** 272-4903 15-14t-tfc

GORDON PLUMBING Licensed and bonded. New, repair, commercial work. Free estimates. 10% senior citizens discount. 24 hour service. 272-4111 15-22s-tfc

221 East 4th 15-22s-tfc

MEN AND WOMEN 17 - 62 TRAIN NOW FOR CIVIL SERVICE EXAMS

No High School Necessary Positions Start As High As \$9.38 HOUR
•POST OFFICE •CLERICAL •MECHANICS •INSPECTORS
KEEP PRESENT JOB WHILE PREPARING AT HOME FOR GOVERNMENT EXAMS
Write & Include Phone No. To: National Training Svc., Inc. c/o Muleshoe Publishing, Box 449, Muleshoe, Tx. 79347. 15-18t-6tpt

The Sandhills Philosopher

Editor's note: The Sandhills Philosopher on his Johnson grass farm, on Sandy Creek speculates on the worth of a budget this week.

Dear editor:

The difference between big city columnists and somebody like me is that they have to write a column three times a week even when they don't have anything to say and I have to do it only once a week.

For example, when President Reagan left for his economic conference with European leaders, columnists began saying he was

Information For Veterans

Nearly 192,100 Texas veterans who have kept their GI life insurance policies in force will share in a record \$664.6 million dividend during 1982.

The Texas dividends will total more than \$34.3 million, according to the Veterans Administration.

Because of higher interest rates earned by insurance funds, the amount to be paid to policyholders during 1982 is \$45 million above the 1981 figure.

No application is needed. Dividends will be paid automatically during 1982 on the anniversary date of the individual's insurance policy.

Policyholders will receive varying amounts depending on the type of policy, the amount of insurance in force, the insured's age at issue or renewal and time the policy has been in force.

Nationally, almost \$24 million will be paid to 78,000 World War I veterans with current policies. The average dividend for term policyholders will be \$307 and for permanent plan policyholders, \$303.

Some 3,124,000 World War II veterans with active policies will share \$590 million. Average dividend will be \$246 and modified life plan policyholders will receive an average of \$116.

Korean conflict veterans who kept their GI insurance in force -- a total of 496,000 -- will receive an average payment of \$71. Their policies earned \$35 million during the past year.

More than 161,000 disabled veterans of World War II and the Korean Conflict holding Veterans Special Life Insurance policies will receive an average dividend of \$97. This is only the third year dividends will be paid in this program.

A greater share of the higher interest rates was earned by those veterans who converted their insurance plans to permanent type policies rather than continuing to hold the original term policies.

Each of the four participating insurance program funds are a separate entity, accounting for the difference in average dividends.

going to be under an embarrassing handicap because Congress hadn't voted on a budget. "It's going to be difficult to explain to those leaders," one wrote. Why would it be hard to explain to a European leader that we don't have a budget when he hasn't got one?

Or, if he's got one, how come he doesn't live within it?

Unless it's Switzerland,

which does very well storing money in undisclosed bank accounts for people around the world who don't want their own government tax collectors knowing about it, I doubt if you can find a major nation that isn't deep in debt and operating on borrowed money, whether they have a budget or not.

A national budget, I understand, is a basic economic tool, or would be if

it weren't amended every time something unforeseen comes up. It's like the national debt ceiling, sternly passed in 1941 and raised every time the government finds it needs more money, which has happened 43 times since 1955. If it were as easy to get the votes to pass a budget as it is to raise the debt ceiling, we'd had one a year ago.

As for a personal budget, most people have lived for

years without one, and a lot of those with one have not lived within it.

Yours faithfully,
J. A.



Texas has more fairs, festivals and expositions than any other state -- over 500 each year.

Veterans Q & A

Q--What is the GI Education Bill for someone now entering the service and is there a time limit to use this benefit?

A--Those enlisting after December 31, 1976, have the opportunity to contribute to a special training fund while in service. When they go to school, the federal government matches their contribution at the rate of \$2 to \$1. The trainee gets a monthly amount based on training time and the amount of contributions. The benefit must be used within ten years of release from active duty.

Q--As a widow, I was covered under the Civilian Health and Medical Program of the VA, but I have recently remarried. Am I entitled to keep my CHAMPVA coverage?

A--No. Surviving spouses who have remarried, loses entitlement to CHAMPVA. Eligibility may be reinstated, however, if the marriage is terminated.

There are those who expect to get to Heaven by telling others they are going to Hell.

WHITE'S CASHWAY SUPERMARKET

MULESHOE, TEXAS
Double Gunn Bros. Stamps Every Wednesday & Saturday
Open Monday - Saturday 7:30 A.M. to 9:00 P.M.
Sunday 12:00 P.M. to 9:00 P.M.

WE WELCOME WIC CARDS & USDA FOOD STAMPS



VINE RIPE CANTALOUPE..... LB. 39¢

PEACHES CALIFORNIA SWEET & JUICY... LB. 59¢

LARGE GREEN PODS BELL PEPPERS..... 7 FOR \$1

YELLOW SQUASH..... LB. 39¢

ALL PURPOSE 10 LB. BAG POTATOES..... \$1.49

JALAPENO PEPPERS..... LB. 49¢

LIGHTCRUST FLOUR 5 LB. 89¢

LONE STAR DOG FOOD 20 LB. \$3.39

WHITE SWAN CUT GREEN BEANS 15.5 OZ. 3/\$1.00

MRS. TUCKER'S SHORTENING 42 OZ. \$1.29

MEDIUM SIZE EGGS 49¢ DOZ.

USDA GRADE "A"

WHOLE FRYERS

55¢ LB.

COUNTRY PRIDE GRADE A FRYING

CHICKEN PARTS

SPLIT BREASTS..... LB. \$1.19
DRUMSTICKS..... LB. 99¢
THIGHS..... LB. 99¢



WHITE SWAN GUEST QUALITY SLICED BACON 1 LB. \$1.69

COUNTRY PRIDE GRADE "A" BAKING HENS 4 TO 6 LB. AVG. LB. 59¢

WHITE SWAN PIMENTO CHEESE SPREAD..... 7 1/2 OZ. 79¢

ROEBELEN BRAND FULL POUND SLICED COOKED SALAMI MEAT BOLOGNA, LUNCHEON MEAT 16 OZ. \$1.59

HEALTH & BEAUTY AIDS

ULTRA BRITE 6 OZ. TOOTH PASTE \$1.39

LAVORIS 12 OZ. MOUTH WASH \$1.49

SOFT & DRY SOLID 2 OZ. SUPER DRY UNSCENTED BABY POWDER DEODORANT \$1.99

FRESH FROZEN FOODS

STILLWELL BREADED OKRA 12 OZ. 69¢

WHITE SWAN ORANGE JUICE 6 OZ. 2/89¢

FISHERBOY FISH STICKS 8 OZ. 69¢

SUMMER FESTIVAL

VELVET OLEO SPREAD 2 LB. 89¢

DUNCAN HINES CAKE MIXES 18.5 OZ. 79¢

IMPERIAL SUGAR 5 LB. \$1.39

DR. PEPPER OR SUGAR FREE DR. PEPPER 6-32 oz. \$1.98 PLUS DEPOSIT

SUNSHINE 17.5 OZ. CHIP-A-ROOS \$1.49

ATKINS 32 OZ. DILL HAMBURGER SLICES POLISH KOSHER PICKLES 99¢

GERHARDT'S 15 OZ. REFRIED BEANS 2/89¢

AJAX 21 OZ. 6 OFF LABEL CLEANSER..... AJAX 59¢

JOHNSON'S 12 OZ. FAVOR FURNITURE POLISH..... \$1.39

SEVEN SEAS 16 OZ. GREEN GODDESS, HERBS & SPICES ITALIAN VIVA, BUTTERMILK RECIPE SALAD DRESSING..... \$1.29

PRINGLES 9 OZ. LIGHT, REGULAR POTATO CHIPS..... \$1.19

IRISH SPRING 20 OZ. 4 BAR PACK BATH SOAP..... \$1.69

FRESH START 35.5 OZ. DETERGENT..... \$3.19

PALMOLIVE 22 OZ. DISH LIQUID..... \$1.19

CASCADE DISHWASHING DETERGENT 65 oz. \$2.89

DELTA TOWELS 1 CL. 59¢

\$1,000.00 CASH MONEY BACK

EVERYBODY WINS EVERYTIME WITH MONEY BACK CARDS

HERE'S HOW!

YOU--PICK UP YOUR FREE MONEY BACK CARD TODAY OR WHEN YOU DO YOUR NEXT SHOPPING.

YOU--BRING IT WITH YOU EACH TIME YOU SHOP AT OUR STORE.

YOUR FRIENDLY AND HELPFUL CASHIER WILL RECORD YOUR PURCHASES AND YOUR VISIT.

YOUR CONCERNED MANAGER WILL OPEN THE SEAL IN THE AWARD SECTION WHEN YOU HAVE COMPLETED YOUR CARD.

GUARANTEED



EVERY CARD WORTH \$1.00 IN CASH WHEN PROPERLY PUNCHED

COMPARE THESE ODDS TO ANY OTHER PROGRAM AND YOU WILL SEE THE DIFFERENCE!

Cash Award \$1,000.00 Total Number of Awards 2 Odds Of Winning 1 in 8,333	Cash Award \$100.00 Total Number of Awards 10 Odds Of Winning 1 in 1,666	Cash Award \$50.00 Total Number of Awards 10 Odds Of Winning 1 in 1,666
Cash Award \$10.00 Total Number of Awards 100 Odds Of Winning 1 in 166	Cash Award \$5.00 Total Number of Awards 200 Odds Of Winning 1 in 83	Cash Award \$1.00 Total Number of Awards 16344 Odds Of Winning 1 in 1

THIS IS OUR WAY OF SAYING Thank You BY GIVING YOU BACK SOME OF THE MONEY YOU SPEND AS YOU SHOP OUR STORE

Boy, These Maytags Are Really Built!



Your Authorized Sales & Service Dealer

MARVEY BROS

122 S. 1st
272-3030