

20¢

# MULESHOE JOURNAL

'The Community of Opportunity-Where Water Makes the Difference'

## Weather

|            |    |    |
|------------|----|----|
| October 10 | 67 | 35 |
| October 11 | 64 | 34 |
| October 12 | 60 | 38 |
| October 13 | 57 | 36 |

Volume 59, No. 41

12 Pages Today

Published Every Thursday at Muleshoe, Bailey County, Texas 79347

Thursday, October 14, 1982

# Oil, Gas Leases Filed On Additional Acres

## Around Muleshoe

Guests at the Muleshoe Rotary Club on Tuesday, were Scott Campbell, Todd Thornton, Johnny St. Clair, Hugh Mosley, Walter Hughes, Bob Kirk and Frank Ellis, Sr.

The program was brought by Dr. Bruce Purdy who had as a special guest, R.A. Bradley. Bradley talked about the miniature golf course, the history of it and the fact that the land was donated by the County. He also mentioned the work done by the Kiwanis and the Youth Activities Committee and the additional work that still remains. It is hoped that the course can be opened in May, 1983. Bradley mentioned the fact that all help is needed and appreciated.

The Dimmitt Lions Club will be serving its annual pancake supper to football fans in the Dimmitt High School Cafeteria before the Dimmitt-Muleshoe game on Friday evening.

From 5 to 7:30 p.m. the Lions will serve pancakes, country sausage, thick sliced bacon along with coffee, tea and milk. Prices are \$2.50 for adults and \$1.50 for children 6 and under. The High School Cafeteria is located at the east end of the school building, just north of the football field.

Staff Sgt. Felix P. Marquez, son of E.C. Marquez Sr. of Earth, Texas, has arrived for duty at Moody Air Force Base, Ga.

Marquez, a jet engine mechanic with the 347th Tactical Fighter Wing, was previously assigned in Zweibruecken, West Germany.

His wife, Anita, is the daughter of R.O. Hernandez of Earth, Texas, and Paula Lopez of Muleshoe, Texas.

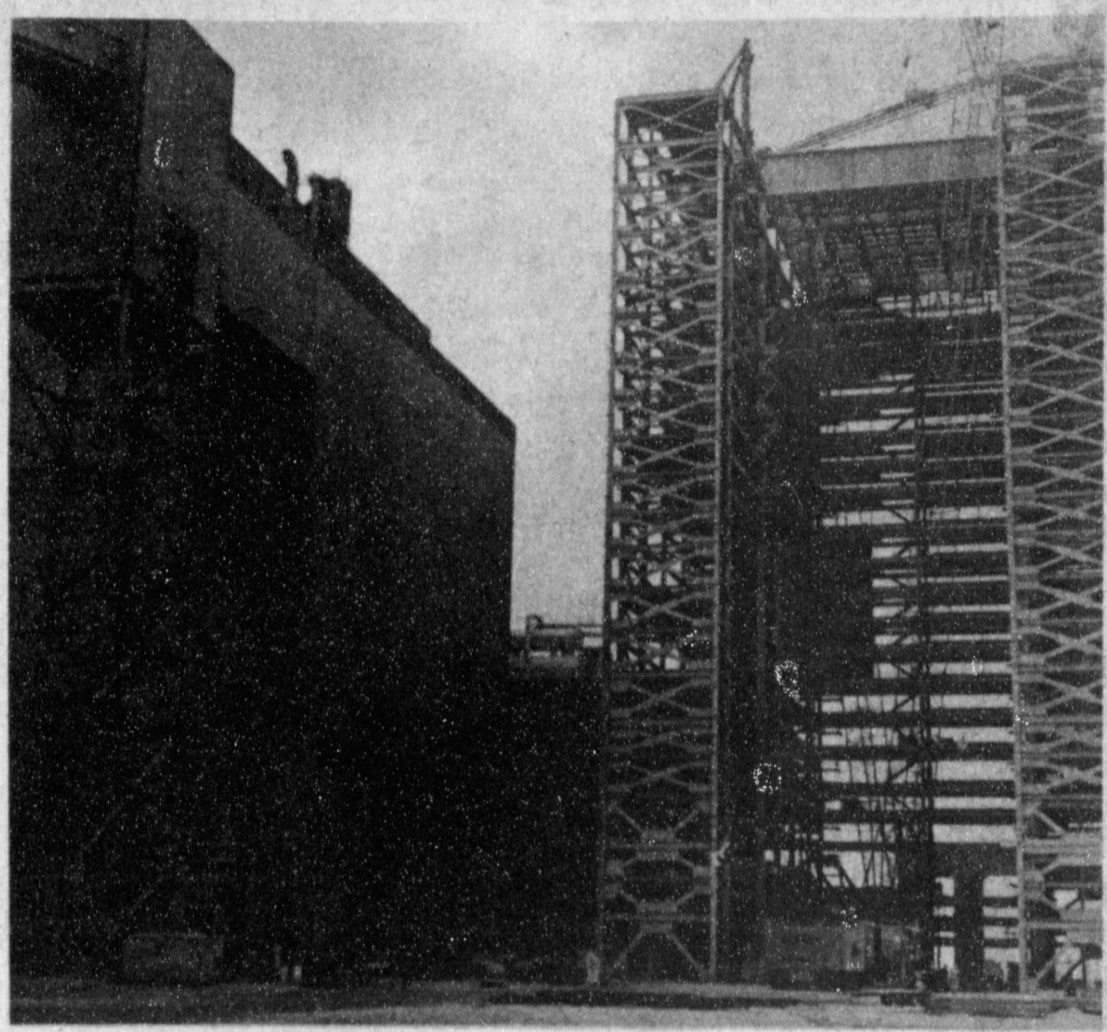
Cont. on Page 6, Col. 1

## Mendoza Commissioned As Trooper With DPS

Jesse J. Mendoza of Muleshoe has been commissioned as a trooper with the Texas Department of Public Safety.

Mendoza received his commission as a State of Texas law enforcement officer from Colonel Jim Adams, DPS director, in a recent graduation ceremony at DPS Headquarters in Austin.

Mendoza completed a challenging 18-week training program at the DPS Academy. The intensive course, recognized as one of the best programs of its kind in the U.S., included instruction in traffic law enforcement, accident investigation, the Texas Code of



**TOLK #2 ON THE RISE...**The second station under construction at this time at the Tolk Plant located between Earth and Muleshoe is going up as planned. According to Manager, Eddie Barron, all of the structure is up and the boiler structure completed, in readiness for the placement of the boilers. The skeleton to the right will look the same as the completed structure on the left when all is completed. A Tolk Open House is planned for the weekend before Thanksgiving on Unit 1.

## Mules Take On Dimmitt In Friday District Clash

When the Muleshoe Mules travel to Dimmitt Friday night, hopefully, all players will be in full uniform with the exception of Todd Thornton, who is probably out for the season with a broken arm. Alex Paez should be back in action this week as the Mules take the field against the Bobcats. Dimmitt is known well for playing a good ballgame against Muleshoe at each meeting.

Although the Journal was unable to interview Coach Wendy Williams, the general consensus was that he was fairly pleased with his team's performance against the Abernathy crew last Friday. However, again this

is for District and that's what it's all about, so Dimmitt could come on strong.

Players of the week for the Abernathy game were: offense, Hector Orozco and defense Thurman Coleman. Both players played an excellent game against Abernathy.

In a telephone interview with Dimmitt Head Coach Gene Griffin on Tuesday, Griffin indicated that he and his team had a lot of respect for the Muleshoe squad and their coach. Griffin stated, "I feel that the district title will be between Muleshoe, Friona and Littlefield. We are improving, but have a long way to go." The Bobcat's fast tailback, Mark Bruegal is possibly out of the game for Friday with a badly sprained knee. However, Dimmitt still has some apt players, especially in the three returning lettermen Jeff Watts, Bill Johnson and Brad Holcomb. Griffin also has some newcomers who are showing extremely good form. Griffin says that the Mules have it over the Bobcats on quickness.

He is not, however, downing the Bobcats since he feels that they have played very competitive with every team although their record now stands at 3-3, with one of these being district competition against Littlefield last week.

The Bobcats run offensive out of the Slot I and use the defensive split four. Starting lineup offensively for the Cats will be: center, Rod Hunter, right guard, Kennen Howell, left guard, David Ogus, right tackle, Shan Powell, left tackle, Scott Nelson, tight end, Jeff Watts (who by the way, is very tough), split end, Brad Holcomb, wingback, Bill Johnson, Quarterback, Richard Guzman, fullback, Johnny Gonzales and tailback, Sid Sagerer.

Defensive starters for the Bobcats include: tackles, Rod Hunter and Max Sandoval, inside linebackers, Johnny Gonzales and Bill Johnson, outside linebackers, Shan Powell and Sid Sagerer, defensive ends, Jeff Watts and David

Cont. Page 6, Col. 3

## Journal Football Contest Is Still 'Anybody's Game'

Well, football fans, it seems that we just can't come up with any kind of two time winner on our football contest....so, as the saying goes, "it's anybody's game."

This week's first place winner is Steve Griswold. Steve missed four games and was 15 points off in the tie-breaker scores. This gives him a total of ten points towards the grand prize and a \$6 winners check.

Second place winner was Donnie McDonald, who was right behind Griswold with four games missed and 18 points off in tie-breaker. McDonald will receive \$3 and six points towards the contest end.

Taking third place this week was Danny Sanchez. Sanchez missed four games also, but was 23 points off in the tie-breaker scores. He will receive \$2 and four points for a third place win.

This is getting to be a real cliff-hanger, since the one who finally wins two games or even places second will stand a chance to pull ahead into the contest lead.

Adding the above winners to the already growing list, we have six first place winners being: Jo Blackwell, Terry Field, Lloyd Pollard, Ruth Newell, Kevin Manasco and Steve

Cont. Page 6, Col. 4

## Cross Country Teams Ready For District

Muleshoe's varsity cross-country teams traveled to Amarillo on October 9, Saturday, and came away with an eighth place win. Three of the main varsity runners were out due to various reasons, including Aldo Almanza, Henry Carrion, and Tony Rojas.

Tony Luna placed second in the meet with a time of 16:18. Martin Mendoza placed 29th with 17:26; Ronnie Logsdon, 51st with 18:12; Allen Beasley, 61st with 18:24; Chris Hopkins, 69th with 18:45 and Ben Allison, 92nd with 25:24. Coach Brandon sent the group on as a team, and stated that he felt "it better to enter as a team, since there is probably only one other boy's team which will be in District competition. District will be held in Lubbock, on October 26.

The Mullettes finished seventeenth in the Amarillo meet with Sylvia Ibarra finishing 74th with a time of 14:34, Brenda Ellis, 78th with 14:37, Janna Wuerlein, 102nd with 16:27; Diana Ramos, 105th with 17:12; Shelley McMeans, 106th with 17:49. Two other girls, Becky Perez and Julie Sander came in 111th and 112th; however.

## Commissioners Modify Charges On Coliseum

On Monday, October 11, the Bailey County Commissioner's Court met in a regular session in the courthouse with all members present.

One of the main items on the agenda was an order which was passed by the court to modify the charges for the use of the coliseum to create a charge range for parties or events involving between 50 to 100 persons. The Commissioners ordered that a charge of \$100 would be assessed to events involving 50 to 100 persons. The standard rate of \$175 had been being charged for all over 50. For those parties of over 100 persons, the charge will remain \$175.

An order was also passed by the court to approve the payment of \$200 in expenses for Frank Ellis' attendance at a Justice of the Peace seminar recently held in Amarillo.

The field notes on the closing of an old county road in 1961 located between sections 66 and 99, Block A, Blum and Blum Survey, Bailey County, were amended by the Court's order.

A County Treasurer's report was made by Dorothy Turner and approved by the Court for the quarter past.

## Democratic Rally Set In Lubbock

United States Senator Ernest "Fritz" Hollings, D-S.C., who is a candidate for the Democratic nomination for the 1984 presidential election, and U.S. Rep. Kent Hance will headline the Lubbock County Democratic Rally Saturday night.

The rally will begin at

no time was recorded for them.

According to Coach Brandon two other girls' teams will be competing in district and that includes Abernathy and Tulia.

The next meet will be held on Saturday October 16, in Lubbock, just a little over a week prior to district meets.

## County Child Welfare Board Organized

A meeting was held in the District Courtroom, Thursday evening, October 7, for the purpose of organizing a County Child Welfare Board for Bailey County. The basic function of the board will be to serve as a liaison body between the Protective Services division of the Department of Human Resources and the Commissioners' Court in the area of abused, dependent, neglected, and homeless children.

The board can also be instrumental in providing help for those type children in distress or crises situations - such as foster care homes, clothing, food, and other necessities. The State Department has certain authority and responsibility in that area as does the Commissioners' Court.

The Board is a 15 member board with appointments being made by the Commissioners' Court for three year terms, but at the outset, terms are staggered so one-third of the terms will expire each year. Thus there will be at least ten experienced members on the board at all times. Board members showing their respective terms of office are as follows:

One year terms: Polly Otwell, Venida Collins, Dr. and Mrs. Jerry Gregory, and Dorene Harbin. Those

## Heavy Concentration In West Camp Area

Last week, on October 7, another additional 3,840 acres of oil and gas leases were filed, for the most part by W. Wayne Gill. The acreage involved in these leases, with the exception of 320 acres northeast of Maple, are in the West Camp vicinity and are heavily concentrated in one block of lands, which is located northwest of the West Camp Grocery Store

in Bailey County.

Beginning in January, 1982, oil and gas lease buying seemed to hit a boom in Bailey County, with some of the first and largest amounts of acreage in and around the Bula-Enochs area and then some westward towards Goodland, Texas.

The filing of these leases came to a peak when in April over eight thousand acres of leases were filed in Bailey County, bringing the total for the year to upwards of forty thousand acres.

While a good amount of this activity has been paced by W. Wayne Gill, a buyer for an unknown entity, larger oil companies have also been in the area such as Gulf, Atlantic - Richfield, Shell and Phillips. Also a couple of other individuals have been in on the activity, but to a lesser extent, up through May 23.

Then, on September 2, an update of filings were done which indicated an additional 5,453 acres bringing the total acreage filed on to 42,507 acres since January.

Speculation and reports from various landowners indicate that a large number of acres have been leased, but still not filed. This last

with two year terms are: Julian Dominguez, Lanelle Skaggs, Vowery Dodd, Pam Zwickey, and Janie Bolderas. Members holding three year terms are: Les Irvin, Johanna Wrinkle, Phyllis Woods, Connie Bynum, and Nonette Robinson.

At the meeting, Police Chief Les Irvin was chosen as President, Mrs. Jerry D. Gregory, Vice President, Vowery Dodd, Secretary, Polly Otwell, Treasurer, and Johanna Wrinkle was chosen to serve as Legislative Coordinator. Phyllis Woods, Lanelle Skaggs, and Nonette Robinson will serve as a committee to draft the by-laws.

Cont. Page 6, Col. 1

Cont. Page 6, Col. 3

## Pioneer Hi-Bred Funds 4-H Scholarships

Pioneer Hi-Bred International has established a \$4,000 scholarship with the Texas 4-H program, effective June 1, 1983.

The scholarship will be managed through the Texas 4-H Foundation, said H.T. Davison, the foundation's executive director and 4-H and youth specialist with the Texas Agricultural Extension Service, Texas A&M University System. It will be available to 4-H members who are graduating high school seniors.

Candidates for this

scholarship must be planning to major in agriculture or home economics and must attend a Texas college or university, Davison said. A major objective for the scholarship is to encourage competent young people to study and remain in the fields of agriculture and home economics.

Clarence Kerns of Plainview, spokesman for Pioneer Hi-Bred International, Southern Region Division, said the initial scholarship

Cont. Page 6, Col. 2

## Checklist Helps Decide Whether To Harvest Cotton

West Texas cotton farmers, beset all spring by disastrous weather and all year by difficult decisions, are facing another tough choice as harvest time approaches. With thousands of acres replanted following spring hail and rainstorms, lower than average yields and possibly reduced quality are expected. Many producers are wondering whether it will pay to harvest their crop.

Their decision is further complicated by considerations of the federal disaster and deficiency payment programs authorized for 68 Texas counties, four in New Mexico and four in Oklahoma, noted Dr. Gary Condra, agricultural economist and farm management specialist with the Texas Agricultural Extension Service.

"The real question is whether the income from harvesting the crop will pay for the costs of harvesting and ginning, with some additional return for unpaid labor," Condra said.

Many producers are concerned about losing their costs of production up to this point if they abandon the crop, the economist

said. "These costs are really not relevant to this decision," he stressed. They are "sunk" costs and won't change, whether or not the crop is harvested, he explained.

Likewise, depreciation,

interest on equipment and other fixed costs won't appreciably change whether or not the crop is harvested, the economist said.

"This means the decision

Cont. Page 10, Col. 1



**COAL STOCKPILE...**The Tolk Plant now has reached and surpassed its 90 day stockpile of coal. (290 thousand tons). This amount will allow the plant to run 90 days in the event of a strike or of the coal being undeliverable. When the second unit is completed about 500 thousand tons will be necessary to stockpile for the 90 days ahead.

## CHECK LP-GAS HEATERS

If you are one of thousands of Texans who use heaters fueled by liquefied petroleum gas, it's time for pre-winter maintenance. According to Hugh Keepers, director of the Railroad Commission's liquefied petroleum gas division, a heater is safer and more efficient when well maintained.

The first step is a thorough cleaning. Keepers warns not to use lp-

gas to blow out heaters or radiants. While you're cleaning the heater, check the name plate to make sure it is approved for use with lp-gas. It's dangerous to use lp-gas with a heater designed for other fuels, Keepers says.

When you connect the appliance, use only approved connectors. Slip-on hose connectors are

Cont. Page 6, Col. 4



**JESSE MENDOZA** other subjects related to law enforcement. Cont. Page 6, Col. 3



**Three Way News**

**Mrs. H.W. Garvin**

Mrs. H.C. Toombs and Mrs. Bulah Toombs were in Lubbock, Monday, on business.

Mr. and Mrs. George Tyson and Mrs. H.W. Garvin spent Thursday night in Lubbock. The Tysons spent the night with their daughter, the Tommy Durhams and Mrs. Garvin spent the night with her daughter, the James Gillentine family.

The Three Way Baptist and Maple Church of Christ are holding Sunday evening church services together with services at 5 p.m., later showing a film on "Focus on the Family", with fellowship following services.

Mrs. Robert Kindle visited in Lubbock Wednesday, with Mrs. Rayford Masten who is a patient in St. Mary's Hospital.

Several of the Trustees of Three Way school were in San Antonio attending a conference.

Mrs. S.G. Long and Mrs. H.W. Garvin spent the weekend in Clovis, N.M. The Longs visited their nephew, the Paul Allison family and Mrs. Garvin visited her daughter, the Kenneth Fox family.

The community received showers early Sunday morning. Amounts varied over the area.

Mr. and Mrs. Rayford Masten spent Thursday thru Saturday, at Seymour and visited her father at Stanford.

Mrs. Lamar Pollard and boys, and Lance Pollard from Whitehall, spent Sunday with her parents, the Rayford Mastens.

Mr. and Mrs. Acie Daniel have returned home from Red River, N. M., where they vacationed last week. They were there for the Bicycle Convention that was organized by Johnny Miller, a former Sudan resident who is now Mayor of Red River. There were 619 persons joining the 100 mile ride to promote physical fitness.

Visiting in the home of Mr. and Mrs. Acie Daniel recently were life long friends, Mr. and Mrs. W. W. Rowe from Denver, Colo.

Mr. and Mrs. Arnold Beckett, Mrs. Marley Hall and Debbie were in Muleshoe Tuesday night, Sept. 21, for dinner in the home of their daughter and sister, Mr. and Mrs. Alton Burton.

It was reported that Ralph Bellamy of Hurst, son of Mrs. Edna Bellamy, is doing fine following the kidney transplant he received recently.

Boy, these Maytags are really built!



**MAYTAG**

Your Authorized Sales & Service Dealer

**HARVEY BASS**

122 S. 1st  
272-3030

**WHITE'S CASHWAY SUPERMARKET**  
MULESHOE, TEXAS

Double Gunn Bros. Stamps Every Wednesday & Saturday  
Open Monday-Saturday 7:30 A.M. to 8:00 P.M.  
Sunday 12:00 P.M. to 8:00 P.M.  
WE WELCOME WIC CARDS & USDA FOOD STAMPS



**DELICIOUS PRODUCE!**

- CELERY**..... 3/\$1.00
- TEXAS SWEET & JUICY
- ORANGES**..... LB. 39¢
- ALL PURPOSE 10 LB. BAG
- POTATOES**..... \$1.29
- FRESH GREEN
- BROCCOLI**..... LB. 49¢
- TEXAS RUBY RED
- GRAPEFRUIT**..... LB. 29¢



- OWENS SAUSAGE**
- 1 LB. ASSORTED \$1.89
  - 2 LB. ASSORTED \$3.75
- CADAHY GOLD COIN CANNED  
**PICNICS**..... 3 Lb. ea. \$5.49
- LONG MONT TURKEY  
**1/2 HAMS**..... LB. \$1.59
- COUNTRY PRIDE GRADE A SMOKED  
**TURKEYS**..... LB. \$1.29
- U.S.D.A. CHOICE BEEF  
**FAJITAS**..... lb. \$1.79
- SWIFT SIZZLEAN  
**BREAKFAST STRIPS**..... 12 OZ. ASSORTED \$1.49
- U.S.D.A. CHOICE BEEF  
**SHORT RIBS**..... LB. 99¢

- SIGNAL MOUTHWASH**..... 24 Oz. \$2.49
- AIM REGULAR MINT
- TOOTH PASTE**..... 6.4 Oz. \$1.69
- BABY MAGIC
- LOTION**..... 4 Oz. \$1.29

- AUNT JEMIMA  
**WAFFLES**..... 10 Oz. 69¢
- STILLWELL BREADED  
**OKRA**..... 24 Oz. \$1.19
- WHITE SWAN 6oz.  
**ORANGE JUICE** 2/\$1
- NICE N' SOFT TOILET
- TISSUE**..... 6 ROLL \$1.69
- THRIVE 27 Oz.
- CAT FOOD**..... 3 lb. 8 oz. \$2.49
- LONE STAR
- DOG FOOD**..... 20 Lb. \$3.49

- U.S.D.A. GRADE 'A'
- SMALL EGGS**  
2 Doz./\$1
- JEWEL PRE-CREAMED  
**SHORTENING**  
42 Oz. \$1.29
- JELLO INSTANT  
**PUDDING**  
3.75 Oz. 39¢

1 LB. FOLGERS ALL GRINDS

**COFFEE**

**\$2.29**



8 Oz. DELMONTE

**TOMATO SAUCE**

**5/\$1**



- KEEBLER
- CLUB CRACKERS**..... 16 Oz. 99¢
- ZEE EARTHTONE
- NAPKINS**..... 140 Ct. 89¢
- TILEX MILDEW
- REMOVER**..... 16 Oz. \$1.69
- BIZ BLEACH**..... 45 Oz. \$2.99
- LA CHOY CHOW MEIN
- NOODLES**..... 5 Oz. 59¢
- LA CHOY BI-PACK
- DINNERS**..... ASSORTED 42 Oz. \$1.98

- AMERICAN BEAUTY LONG
- SPAGHETTI**  
24 Oz. 99¢
- RAGU SPAGHETTI  
**SAUCE**  
ASSORTED 32 Oz. \$1.45

1 LB. LAND O LAKE REG QUARTERS

**MARGARINE**

**59¢**



1 Ct. DELTA

**TOWELS**

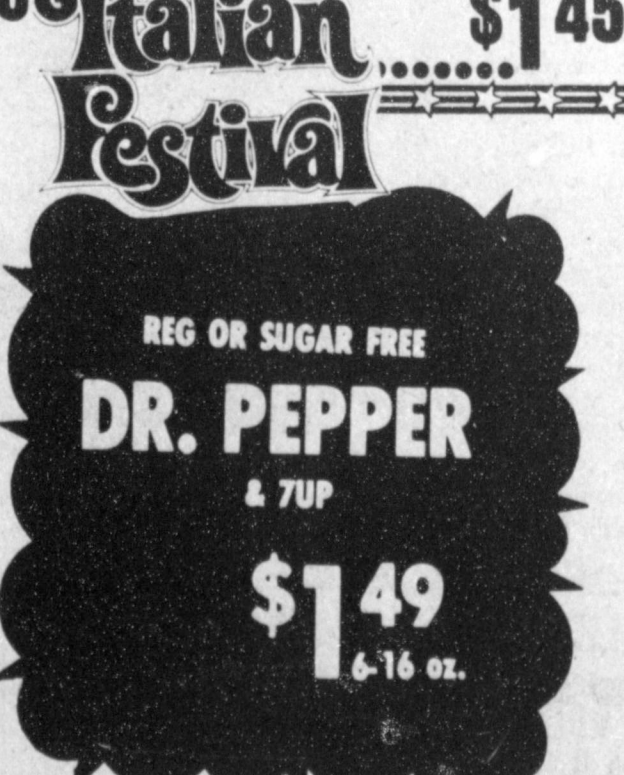
**49¢**



REG OR SUGAR FREE

**DR. PEPPER**  
& 7UP

**\$1.49**  
6-16 oz.



**Super Savings Discount Booklets**

|   |   |   |  |  |  |
|---|---|---|--|--|--|
| DEL MONTE<br><b>TOMATO SAUCE</b><br>5/59¢ 8 oz. | BIG ROLL DELTA<br><b>PAPER TOWELS</b><br>1¢ | JEWEL PRE-CREAMED<br><b>SHORTENING</b><br>79¢ 3 lb. Can | SWIFT'S SIZZLEAN<br><b>BREAKFAST STRIPS</b><br>99¢ 12 oz. pkg. | U.S.D.A. GRADE 'A'<br><b>SMALL EGGS</b><br>1-Doz. 2¢ | LAND O LAKES<br><b>MARGARINE</b><br>2¢ 1 lb. |
|---|---|---|--|--|--|



# St. Clair's

YOUR FAMILY FASHION CENTER

Serving Muleshoe Since 1930

110 Main

272-4453

**We Give & REDEEM  
GOLD BOND STAMPS  
HERE!**



Get them here ... Save them ... and when you're ready  
**We'll redeem your stamps  
at \$2<sup>50</sup> per filled Savers Book  
TO SPEND ON ANYTHING WE SELL!**

A great new way to get "that something special" you wanted here ... or to save \$2.50 on a larger purchase! If you'd rather have something from the Gold Bond Catalog, that's fine, too. Just save our stamps and get your gift prepaid by mail.



WALL  
COTTON DUCK

INSULATED  
**COVERALL**

REG. \$54<sup>00</sup>

**\$39<sup>97</sup>**

SAVE \$15<sup>00</sup>



WALL COTTON DUCK  
INSULATED  
**JACKET**

REG. \$35<sup>00</sup>

**\$24<sup>97</sup>** Save \$10



HANES  
THERMAL  
**UNDERWEAR**

REGULAR

TOP \$5<sup>99</sup>  
bottom \$5<sup>99</sup>

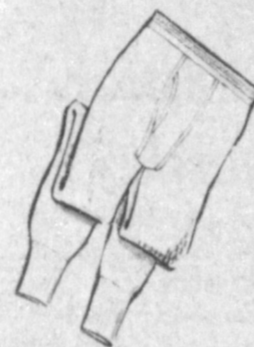
SALE \$4<sup>39</sup>

SAVE \$3<sup>00</sup> SET

TALL TOP \$7<sup>99</sup>  
BOTTOM \$7<sup>99</sup>

SALE \$5<sup>75</sup>

SAVE \$3<sup>00</sup> SET



LADIES  
**HANDBAGS**

RECEIVE 1000 FREE STAMPS  
(100 GOLDEN TENS)  
WITH PURCHASE

LADIES  
**WINTER COATS & JACKETS 1/3 OFF**  
SAVE UP TO \$25<sup>00</sup>

LADIES & JUNIOR

**JEANS**

CHIC, LEE, WRANGLER

RECEIVE 1000 FREE STAMPS  
(100 GOLDEN TENS)  
WITH PURCHASE

LADIES & JUNIORS  
**CORDUROY  
COORDINATES**

RECEIVE 1000 FREE STAMPS  
(100 GOLDEN TENS)  
WITH PURCHASE OF ANY  
PANT OR BLAZER

**SAS**

Made in Texas, USA

*Genuine Handsewn Leather*



Try our New Super Soft Sole  
for that extra comfort  
you deserve.

RECEIVE 1000 FREE STAMPS  
(100 GOLDEN TENS)  
WITH PURCHASE

JUSTIN

**WORK BOOTS \$59<sup>97</sup>**

COWBOY HEEL  
REG. \$90<sup>00</sup>

SAVE \$30<sup>00</sup>

Red Wing  
**WORK BOOTS**  
Save \$15<sup>00</sup> ON ANY  
STYLE IN STOCK



ARROW  
**DRESS SHIRTS**

RECEIVE 1000 FREE STAMPS  
100 GOLDEN TENS  
WITH PURCHASE  
FREE CHRISTMAS WRAP

ONE GROUP

**MEN'S SUITS 1/2 OFF**

BOYS  
**WRANGLER JEANS**

RECEIVE 1000 FREE STAMPS  
(100 GOLDEN TENS)  
WITH PURCHASE  
FREE CHRISTMAS WRAP

GIRLS & BOYS

**WEATHER TAMER  
COATS**

SIX MONTH-TODDLER

4-6x

RECEIVE 1000 FREE STAMPS  
(100 GOLDEN TENS)  
WITH PURCHASE  
FREE CHRISTMAS WRAP

Stamps & Prices

Good Through

October 23

Come see our selection, browse through the Gold Bond catalogs and register to win one of these Gold Bond gifts:

**GRAND PRIZE:** G.E. Food Processor

**1st PRIZE:** Hamilton Beach Air Corn Popper

**2nd PRIZE:** Kodak Colorburst Instant Camera

**3rd PRIZE:** G.E. AM/FM/TV Portable Radio

**OFFICIAL  
RULES:**

1. Enter as often as you wish at the Gold Bond Gift Shop.
2. Winners must be 18 years or older. Limit one prize per person.
3. No purchase necessary. You need not be present to win. Winners will be notified.
4. Employees of our store and Gold Bond Stamp Company are not eligible to win.

**ENTRY BLANK**

Celebrate our  
**GOLD BOND GIFT SHOP—**  
Register to win!

Name \_\_\_\_\_  
Address \_\_\_\_\_  
City \_\_\_\_\_  
Phone \_\_\_\_\_

No purchase necessary. Enter as often as you wish at the Gold Bond Gift Shop!



Celebrate  
our new  
**GOLD BOND  
Gift Shop!**



## Tips On Sewing Leather, Leather-like Fabrics

Leather and leather-like fabrics are very much in fashion this fall and several things should be considered before sewing garments from these materials, says Becky Saunders, clothing specialist with the Texas Agricultural Extension Service, Texas A&M University System.

"Many leather or leather-like fabrics currently available have different weight and color than those used previously, making them easier to sew and care for," she explains.

Choose a vest or tunic pattern that is simple to sew when making a leather garment the first time, Saunders suggests, and select fabric accordingly.

"The newest trend in suede and leather looks or actual skins is they are also lightweight and soft," she adds.

Skins are sold by the square foot, and an average size full skin is about six square feet. For one yard of fabric, approximately nine square feet makes a fabric 36 inches wide, 11 square feet equals 45 inches wide, 13 square feet equals 45 inches in width and 15 square feet equals 60 inches in width.

"Add approximately ten

to 15 percent to the square footage needed to allow for any irregular shapes of a real skin," Saunders suggests.

Skins should be matched according to color and weight and sewn with a minimum seam of one-fourth inch. Leather doesn't have a true grain line but stretches the way it grows, and stretch should go around the body.

All pattern pieces should be laid out in the same direction and skins should not be folded when cutting out a true leather garment, she advises. Some leather-like fabrics can be cut with double thickness to save time.

A test seam should always be constructed when making the garment to see if tension and pressure may need adjusting, she says.

"Avoid back stitching at the end of the seam when using real leather, because it weakens the garment," Saunders suggests. "Knot thread instead, and remember to stitch slowly for maximum evenness."

Caring for the finished product is also important, she says. Use the right temperature and recommended brand name detergent when machine washing. If dry cleaned, as suggested for real leather, make sure leather techniques are used.

If the leather garment becomes wet, Saunders says to stuff it with paper or let it air dry at room temperature, since heat may cause shrinking. The garment should be kept on a padded or shaped hanger in a cool, dry place, and plastic should never be used. Sunlight may also cause fading.

"Pressing will vary according to the fabric content and weight," Saunders says. "True leather garments use a low setting and for best results require heavy brown paper between the fabric and iron."

Always test for the right heat and pressure before ironing so no visible marks will be left on the fabric, she concludes.

Some of the puzzles of life confound us, but we're always about to find someone who knows all the answers.

If you don't take care of yourself properly, listen to your heart beat next time you have a chance. If it isn't beating, you're dead.



**GYMNASTIC COMPETITION...**Michelle Finney, daughter of Mr. and Mrs. Bob Finney, competed in a Class III district meet at Amarillo recently. She had an overall score of 23.90

## Muleshoe OES Chapter Meeting Held Tuesday

Mr. and Mrs. Alton Epping, Worthy Matron and Worthy Patron of Muleshoe Chapter No. 792, Order of the Eastern Star, presided at the meeting of the Chapter, Tuesday evening, October 5, in Masonic Hall.

The Bible was opened upon the Altar, Pledge of Allegiance was recited in unison and "God Bless America" was sung.

Grand Officer presented was, Mary Farley, a member of the Founders Day Committee of the Grand Chapter of Texas. Routine business was transacted.

In observance of the 56th anniversary of Muleshoe Chapter, The Worthy Matron gave the dates of Instituting and Constituting and names of the Chapter members and read a poem, and names of the Charter members and read a poem.

The Charter was received October 28, 1926, with the following members signing: R.J. and Fannie Klump; Mrs. Dora McCarthy; Taylor and Ruth White; Connie and Gladys Gupton; J.E. and Pauline Aldridge; A.V. McCarthy, Jr.; Mrs. Pauline Waugh; Mrs. Tressa Skeeters; Mrs. Nellie D. Lawrence; Mrs. Mabel Mil-

## LATEST ARRIVALS



### Melissa Mae Cuellar

Mr. and Mrs. Juan F. Cuellar of Friona are the proud parents of a daughter, Melissa Mae, born at 9:31 a.m., September 17 in West Plains Medical Center.

Melissa Mae weighed eight pounds and four ounces. She has a brother, Carlos, two and a half years of age.

### Joel Acosta

Mr. and Mrs. Jose Acosta of Bovina are the proud parents of a son, Joel, born at 11:23 a.m., October 8 in West Plains Medical Center.

Joel weighed eight pounds and four ounces. He has a nine year old brother, Adrian and a sister, Yvette, eight years of age.

Grandparents are Urbano Elias of Sunray and Antonio Acosta of Mexico.

Great grandparents are Mr. and Mrs. Catarion of Mexico.

### Kendra Donette Gallman

Mr. and Mrs. Robert Gallman of Friona are the proud parents of a daughter born at 2:01 p.m., October 8 in West Plains Medical Center.

The young lady weighed eight pounds and four and a half ounces and has been named Kendra Donette. The couple have two other children, Jo Anna, five and Deon, two years of age.

Grandparents are Mr. and Mrs. J.W. Herengton of Muleshoe and Ms. Lorraine Gallman of Friona.

### David Wayne Knapp

Mr. and Mrs. Gilbert Knapp of Friona are the proud parents of a son

born at 2 p.m., October 7 in West Plains Medical Center.

The young man weighed seven pounds and five ounces, and has been named David Wayne. The couple have two other children, Shyla, eight and Gregory, five years of age.

Grandparents are Mr. and Mrs. Chencho Vasquez and Doris Knapp, all of Friona.

Great grandparent is Ida Adams of Friona.

### Daniel Caleb Watson

Mr. and Mrs. Jimmy Watson are the proud parents of a son born at 3:41 a.m., September 21.

The young man weighed seven pounds and five ounces and was 20 inches long. He has been named, Daniel Caleb. He has a four year old sister, Sarah and a brother, Jim, Jr., 19 months old.

Grandparents are Mr. and Mrs. Delbert Watson of Muleshoe, Dorothy Wynn of Tyler, and Earl DelValle of Oneco, Florida.

Great grandparents are Mrs. Tom Watson of Muleshoe, Mrs. Marie Christie of Tyler and Mrs. Pedro DelValle of Florida.

## Childrens Home Associates Make Quilts

The Muleshoe Associates of the Portales Christian Childrens Home met Tuesday, October 5, in the home of Vickie Hendricks and made two quilts to sell for the home.

The ten members present included Beulah Harper, Ruth Williams, Bernice Amerson, Ethel Julian, Lillie Barnhouse, Blanch Autrey, Mabel Caldwell, Marie Smith and the hostess, Vickie Hendricks.

Refreshments of pie, coffee, and tea were served.

The club will meet Friday evening, October 16, to make popcorn balls and candy to take to the garage sale in Portales.

The next regular meeting will be Monday, November 1.

## Christmas In October Planned At Floydada

Take time now, before the rush to the holiday season, to get a little of that Christmas spirit! "Christmas in October", sponsored by the Floyd County Family Living Committee, will be Saturday, October 23 at Floydada High School.

This event promises something for nearly everyone. A Christmas Bazaar will kick off the day's activities when it opens at 9:00 a.m. The bazaar, featuring areas artists and crafts exhibitors, will be an excellent place to shop early for unique gifts for everyone on your list.

Special programs will be presented throughout the day beginning at 9:30 a.m. Programs planned include:

9:30 - "Initially Yours" - Machine embroidery, monogramming and applique demonstrations and ideas - presented by Pay Langley of Slaton.

10:45 - "Turkey - Holiday and Everyday" - Carving the turkey for your holiday table, curing and smoking turkey, trimming the food budget, creative ways with leftovers - by Dr. James Denton, Poultry Specialist, Texas Agricultural Extension Service, College Station.

12:15 - "Gifts with a Personal Touch" - New and easy ideas you can make, tips on gift selection - presented by Nancy Brown, Clothing Specialist, Texas Agricultural Extension Service, College Station.

1:30 - "Festive Foods" - Recipes and preparation hints for easy and nutritious menus with holiday flair - presented by Joy Parnell, Consumer Service Representative, Southwestern Public Service, Lubbock.

3:00 - "Holiday Sparkle for Your Wardrobe" - A Fashion Show of this season's holiday fashions, tips on updating your wardrobe.

making the most of accessories - presented by Brenda Becknell, Director of Robert Spence School of Modeling, Lubbock.

4:15 - "And All Through the House" - Tips on Christmas tree decoration and lighting, techniques for beautiful home decorating, holiday decorations you can make - by Tommy Burrus and Cindy Harrist of Christman Morning, Plainview.

5:30 - "Christmas Creations" - Bread dough sculpture, Christmas ornaments and soft sculpture - by Colleen England, Crosby County Extension Agent.

All programs are free and open to everyone regardless of socioeconomic level, race, color, sex, religion or national origin.

## Muleshoe Singing Group

The Muleshoe Singing Group met at 7:30 p.m. Saturday, October 9, in the fellowship hall of the Trinity Baptist Church.

Mrs. Mae Wilterding gave the invocation. Thirty one were present including Mr. and Mrs. Ralph Miller, Mrs. Hattie McGuire and Lorena Carlyle of Clovis, N.M., Burford Hobbs, Lucile Teal, Ramah Rutledge, Opal Turnbow, her uncle and granddaughter, all of Portales, N.M.

A quartet was arranged by the Portales group. They also sang other arrangements.

Two instrumental pieces were played with Cecil Rundell on the harmonica, Ralph Miller on the guitar and Mrs. J.C. Shanks at the piano. Mrs. Hattie McGuire also helped with the piano music.

The benediction was given by Mrs. Hattie McGuire.

**Muleshoe Journal** (M-J) 1982  
 Established February 23, 1924. Published by Muleshoe Publishing Co., Inc. 1000 Thunders at 36 W. Second. Phone 647-4284. Second class postage paid at Muleshoe, Texas.  
**MEMBER 1982**  
**TEXAS PRESS ASSOCIATION**  
 218 Main Street  
 James Woods Vice President  
 Stanley Parker Secretary  
 Pauline Hatten Treasurer  
 Muleshoe Journal and Bailey County Journal  
 Bailey and surrounding counties 12¢  
 Muleshoe Journal and Bailey County Journal  
 Elsewhere  
 Advertising - 6¢ per line per application

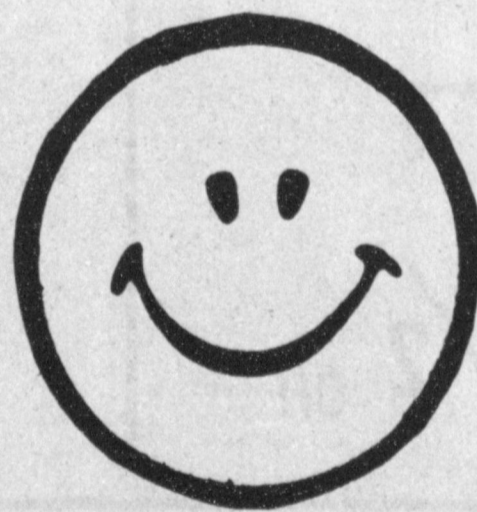
# Sensational Super Purchase

\*DISTRIBUTOR MIS-ORDERED - two carloads. Therefore, we're making this tremendous offer from us to you.

**UNTIL LIMITED QUANTITY SOLD**

Autocycle Defrost  
 Family Size  
 Meat Keeper  
 Twin Vegetable Crispers  
 Full width adjustable slide out shelves  
 Power saving heater control switch.  
 3.34 Cu. ft. freezer  
 9.07 Cu. ft. food compartment  
 Space saving 28" width  
 While Supply Lasts  
**\$399**  
 Model EHT122DT with a working trade  
**Wilson Appliances**  
 272-5531

Make It A Great Day  
 Get Your C.D.  
 At FNB



We Have The  
**Maximum**  
 Interest Rates  
 Allowed By Law

Save  
**Something**

"Helping You Change Things For The Better"

## 1st National Bank

MEMBER F.D.I.C.

Muleshoe, Texas 79347

Accounts Insured up to \$100,000



### Alpha Beta Family Fun Night

It's a family night or entertainment for all at the annual Alpha Beta Pi carnival. Lots of fun, games, food and winners will be at the Bailey County Civic Center, Saturday, October 23 from 7 to 10 p.m.

There will be games for the kids, a bake sale, Bingo, a concession stand for the hungry and a chance to win a \$25 money doll.

Tickets for this night of family fun can be purchased from any Alpha Beta Pi member for one dollar each or at the door for one fifty each. Each ticket buys one Bingo card and a chance to win lots of prizes.

During the evening's events, a \$25 money doll will be given away to some lucky winner. Tickets for this drawing are 25 cents each and you need not be present to win. The money proceeds will go to help the Girl Scouts in Muleshoe.

Homemade cakes, pies, breads, candy, cup cakes and canned goods will be there to tempt your sweet tooth.

A Go-fishing booth will be a favorite attraction for the children and 50 cents will buy a surprise gift for any man, woman, boy or girl at the white elephant booth.

And if you should get hungry from all these attractions, there will be a concession stand selling homemade chili, hot dogs, chili dogs, frito pie, popcorn, candy and soft drinks.

### Sudan FFA 1st In Exhibit At Fair

The Sudan FFA placed first in the Educational Exhibit Booth at the South Plains Fair. Their exhibit titled "Low Energy Precision Application", a relatively new method of energy saving irrigation, received the highest placing and \$250.00 in prize money.

Eighteen members also took 31 crop projects for competition. They had a total of five firsts, two seconds, and two thirds. Those receiving a first were Charlie Fisher - white corn ears; David Harper - popcorn ears; Dean Richards - sunflowers; Scott Ballew - red grain sorghum. Placing second were Charlie Fisher - white shelled corn; and Lee Bartley - white grain sorghum. Placing third was Randy Wiseman - white grain sorghum and Brad Franks - alfalfa hay. Other members exhibiting crops were Mike May, Randall Damron, Ronnie Smith, Dale Johnson, Terry Peck, Wade Donnell, Keevan Masten, Brian Burns, Lyn Bartley, Mike Gatewood and Rudy Ortega.

Crops exhibited included watermelons, peppers, tomatoes, soybeans, purple hull peas, oats, wheat, okra, ornamental gourds, and love grass hay. Next year they hope to have cotton to add to their list.

Thursday, Lyn, Lee, Michael, and Misti Bartley will be exhibiting their steers in the Junior Steer Show.

New officers for 1982-83 for FFA are Keevan Masten - President; Scott Ballew - Vice President; Brad Franks - Secretary; Randall Damron - Treasurer; Randy Wiseman-Reporter; Joseph Kessler - Sentinel; and Robbie Kent - Historian.



**MONEY DOLL**...Alpha Beta Pi Sorority members, Linda Bullock (on left) and Pam Shipman pictured with the \$25 money doll to be given away October 23, by the Alpha Beta Pi Sorority. All proceeds from the doll will go to the Muleshoe Girl Scouts.

### 1982 Harvest Festival Planned In Brownfield

The 1982 Harvest Festival in Brownfield is planned for Saturday, October 16, according to Charles Orum and Elyvonne Crenshaw, General Co - Chairman.

As in the past, all surrounding communities are invited to join in the festivities beginning at 10:00 a.m. with a parade. It will begin in downtown Brownfield and end at Buckley and First Street. At 12:00 Noon, an afternoon of continuous entertainment gets underway at the American Legion Memorial Amphitheatre in Coleman Park.

An Old Fiddlers Contest will be part of the entertainment this year. This will be a Nov - Associate contest with two age divisions: 50 and under, and over 50.

Prizes for each division are First Place - \$150.00; Second Place - \$100.00; Third Place - \$75.00. The best two overall accompanists will also receive prizes: First Place - \$50.00; Second Place - \$30.00. The 50 and under division will begin at 1:40 p.m. and the over 50 at 3:55 p.m.

The Harvest Festival Queen will be crowned at 7:30 p.m. and the Grand Prizes, a Mexican Riviera Cruise for two aboard the Tropicaire for seven days, and \$500.00 cash, will be given away.

Five young ladies from Terry County are competing for Harvest Queen. They are each sponsored by a civic group which will be working hard to help

### Plainview Show Features Local Artists

The eighth Running Water Draw Arts and Crafts Festival opens Friday, October 15, at the Hale County Ag Center. The annual event is sponsored by Plainview Rotary Club and Llano Estacado Museum. The show features only handcrafted items by 125 artists and craftspeople from as far away as Arizona. All media and price ranges are represented.

Muleshoe participants are metal sculptor, Ron Elliott and China - painter, Erald Long Gross. Both are returning artists to the Plainview show.

In addition to the 125 arts and crafts booths, Plainview TOPS Clubs and Wayland Baptist University's French and German Clubs will have food items. For the first time since his death in 1978, the family of the late Ted Bell of Floydada will be offering three of his watercolors for sale. Proceeds from the sale will go to the Ted Bell Memorial Art Scholarship at Wayland.

The Festival is open from noon until 8:00 p.m. on Friday, 10:00 a.m. - 9:00 p.m. on Saturday, and noon - 5:00 p.m. on Sunday. Admission is \$1.00 for adults and \$.25 for children. Visa and Master Card are accepted for all purchases.

their candidate win. The contestants are: Camille Noble-Optimist; Becky Mayfield - Evening Lions, Paige Chambers - Noon Lions; Leslie Porter - Rotary; and Debbie Davis - Kiwanis. Coordinating the activities for the Queen candidates is Mrs. Jan Hale, who is affectionately known as the "Queen Mother."

The girls will also participate in a Talent Contest, which will be held on Thursday, October 14, in the Middle School Auditorium, at 7:30 p.m. They will be judged on talent, evening gowns, poise, personality, etc.

The Terry County Fair is also held in conjunction with Harvest Festival. Exhibits will be open to the public on Friday, October 15, from 1:00 to 7:00 p.m. and on Saturday, October 16, from 11:00 a.m. to 6:00 p.m.

Dick Fletcher, Brownfield Chamber of Commerce President, is issuing an invitation to all citizens in the South Plains area to come to Brownfield for this festival and other activities. He promises that Brownfield will make you feel welcome.

### BIBLE VERSE

"To every thing there is a season, and a time to every purpose under the heaven."

1. Who made the above statement?
2. Whose son was he?
3. What was the theme of the book from which it was taken?
4. Where may this statement be found?

### Answers to Bible Verse

1. Most scholars agree that it was Solomon.
2. The son of David.
3. How man may obtain real, substantial happiness.
4. Ecclesiastes 3:1.



DANA BREWER

### Local Grad Named WTSU Hostess

Officers for the West Texas State University Campus Services, an official host and hostess organization, have been selected for the 1982-83 academic year.

Joe Marr Wilson, a freshman pre-law major from Dalhart, is president; vice president is Valerie Van Pelt, a freshman from Wellington; and Penni Weatherly, a freshman from Friona, is secretary-treasurer.

Other Campus Service members are Dana Brewer, a freshman from Muleshoe; Irma Carrillo, a freshman pre-law major from Plains; Kim Chavez, a freshman from Belen, N.M.; Kevin Kinder, a freshman business major from Abilene; Bryan Patterson, a freshman agriculture major from Amherst; Hector Ramos, a freshman from Abernathy; and Tim Taylor, a freshman computer information systems major from Hedley.

To be eligible for the scholarships, students must have a score of 21 or above on the American College Test or 902 or above on the Scholastic Aptitude Test college entrance examinations, must have exhibited leadership qualities, a record of participation in extra-curricular activities, a "B" average or above in high school and two letters of recommendation.

### Young Artist Competition Entries Sought

Kerrville Texas Arts and Crafts Foundation chairman of the board, Dr. Sam Junkin announces the opening of the 1983 Young Artists Competition. Official application forms and complete information are available from the Kerrville based non-profit organization.

First prize is a \$500.00 scholarship to be used at a college chosen by the winner, and the winner must use the scholarship during the 1983-1984 college year. Those entering must be between 17 and 21 years of age.

In February, the three talented young artists also may attend the annual workshops sponsored by the foundation with registration free. "The Business Side of Art", workshops teach record keeping, marketing and other business techniques necessary for earning a living in the arts. Kerrville motels traditionally add rooms for young artists while they attend.

Covers of the Texas State Arts and Crafts Fair program carry the young artists' works, providing actual publication of their art while they are still in school. Portfolio building is an important part of the establishment of a young artist in the field.

To receive the application and exhibitor information, contact TACF, P.O. Box 1527, Kerrville, Texas 78028, (512)-896-5711.

### Golden Gleams

Beauty is truth, truth beauty. -John Keats.

There is in true beauty, as in courage, somewhat which narrow souls cannot dare to admire. -William Congreve.

If you get simple beauty, and nought else. You get about the best thing God invents. -Robert Browning.

### From Journal Files

**40 Years Ago**  
1942  
Mr. and Mrs. John Smith of San Diego, Calif., are visiting in Muleshoe this week.

**30 Years Ago**  
1952  
Mr. and Mrs. Kenneth Precure and children have returned after a visit with relatives at Fredrick, Okla.

**20 Years Ago**  
1962  
Mr. and Mrs. W.T. Watson are the proud parents of a son born Saturday at the Clovis Memorial Hospital.

special merit from the National Association.  
**10 Years Ago**  
1972  
Corkey Green was elected president of the Muleshoe Chamber of Commerce recently.

**RECIPE**  
By Sarah Anne Sheridan  
Pear Marmalade  
1 pk. of pears grated  
5 lbs. sugar  
1 qt. grated pineapple  
1 pt marshino cherries  
Mix pears and sugar. Let boil 3 hours. Add pineapple and cherries which have been cut fine. Let cook 5 minutes. Pour into sterilized glasses and seal.

**Baked Stuffed Pears**  
Pears  
Pitted dates, seeded raisins or chopped nuts, tart marmalade or shredded coconut.  
Pare and core pears. Stuff with dates, raisins or nuts mixed with either marmalade or coconut. Place close together in baking dish, cover bottom of pan with water. Bake slowly until tender.

**Certificate of Special Merit** from the National School Yearbook Association, Columbia, Mo., awarded the High Honor score of A to the 1961-62 Muletrain Annual.

This is the first time for Muleshoe High School to receive the certificate of

**ART LOFT**  
1529 West American Blvd.  
Muleshoe, Texas

Special "Think Christmas" Week Beginning Monday, October 11th! Exciting Festive Atmosphere, With Special Gifts At Special Prices, For Everyone On Your Gift List. We Look Forward To Seeing You And Helping You With Your "Fun" Problems Of Christmas Shopping.

**PUBLIC NOTICE**  
CITY OF MULESHOE HOUSING AND COMMUNITY DEVELOPMENT PROGRAM  
The City of Muleshoe is currently making plans to apply to the U.S. Department of Housing and Urban Development for Community Development Block Grant funds.  
The City of Muleshoe will conduct a public hearing to discuss the proposed uses of funds if received from HUD. In addition, housing opportunities and assistance programs for low and moderate income persons will be discussed.  
The public hearing will be held at City Hall at 8:30 A.M. on October 19, 1982.  
The City of Muleshoe encourages individual citizens and citizen groups to make their views known at this public hearing. The City welcomes the full participation of its citizens in the development of this CDBG program.  
Citizen comments may be delivered in advance to City Hall at any time prior to the public hearing. Handicapped individuals who may have difficulty in attending this meeting should contact City Hall to arrange for assistance.  
For further information, call Phone #272-4528.

*Pleasing You...Pleases Us!*

**FALL WAREHOUSE SALE**

PRICES EFFECTIVE OCT. 14-16, 1982 WHILE SUPPLIES LAST LIMITED SUPPLY

SCOTT TOWELS 59¢ JUMBO ROLL

LAY'S POTATO CHIPS 99¢ REG. \$1.29 PER BAG

MEDIUM Shurfresh Eggs 49¢ doz.

BORDEN'S COTTAGE CHEESE 12 OZ. CTN. 79¢

BORDEN'S MILK 1 GAL. \$2.49

Swift Chili No Beans 69¢ 15 oz.

DELICIOUS RATH BACON 1 LB. PKG. \$2.19

FRESH COOKED ALLSUP'S BURRITOS 2.99¢ FOR

BORDEN'S ASSTD. PREMIUM ICE CREAM 1/2 GAL. RD. CTN. \$1.59

VASELINE INTENSIVE CARE LOTION 10 OZ. BTL. \$1.29

**ALLSUP'S CONVENIENCE STORES**  
"THERE'S ONE NEAR YOU"



## Around Muleshoe

Cont. from Page 1

While IRS toll-free assistance will be available on Monday through Friday 8 a.m. to 4:30 p.m., the Lubbock office of the Internal Revenue Service will no longer provide walk-in tax help, announced Don Whitlock, Lubbock IRS director representative. Taxpayers who wish to order forms or get answers to their federal tax questions should dial 1-800-492-4830.

Whitlock noted that IRS Examination and Collection activities would continue at the Lubbock location.

Wesley United Methodist Church of Hereford is hosting its Second Annual Wesley's Fall Festival of Arts and Crafts on Saturday, November 13, 9 a.m. - 6 p.m. at the Hereford Community Center. Only a limited number of booths are available with applications being screened. All area artists are invited to apply. So be getting your items ready now! For further information write Mrs. Gail Blain, Box 164, Hereford, Texas 79045.

Jim Lutz of the Soil Conservation Service in Muleshoe has notified the Journal that order blanks are now available for the ordering of trees for planting of 1983 farmstead windbreaks. Orders must be in by February 7, 1983. Trees may be picked up on March 10, 1983 at the Lubbock TAMU Experimental Station. Lutz stated that the earlier you order your trees, the better your chances are of getting the type of tree you want.

## Welfare...

Cont. from Page 1

Also attending the meeting and assisting with the organization was Wanda Stuart, Jerri Williamson, and Phyllis Payne of the State Department. All those in attendance manifested much enthusiasm and dedication. Thus it is believed that the board will perform valuable service and will be appreciated by the community. The First Thursday of each month was set as regular meeting time.

People often seek excuses for their failures instead of trying to do something about them.

The Women's Ministries of the Assembly of God Church are selling pecans through November. The shelled pecan halves are from Irish Acres and are \$4 per pound.

If you would like to have pecans you may call 965-2727 or 272-3452.

Mr. and Mrs. Billy Don Williams of Abilene spent the weekend in Muleshoe visiting in the home of their parents, Mr. and Mrs. Billy Williams and Mr. and Mrs. Wayland Harris.

Authorities have informed local pharmacists to be on the lookout for bogus prescriptions. It has been reported that a person or persons unknown had purchased a scented spray from a local pharmacist using a phony prescription signed by a Dr. Max "Tylenol" King.

## Scholarshi p...

Cont. from Page 1

to be presented in 1983 will be the first in a series of four to be awarded in consecutive years. "We are pleased that Pioneer Hi-Bred International has elected to fund a 4-H scholarship in Texas," said Dr. John Pelham, state 4-H and youth leader with the Extension Service. "Even though scholarship standards are high, several hundred young people compete annually for the more than 70 scholarships available through the Texas 4-H Foundation."

The Texas 4-H Foundation is a non-profit educational organization which works cooperatively with the Texas Agricultural Extension Service to develop private sector support in behalf of 4-H programs. He said.

Davison said that about \$350,000 in scholarships will be available to graduating 4-H members in 1983. 4-H members may apply for these scholarships by securing an application from their local county Extension office after Jan. 1, 1983.

The best way to get your share of the wealth of the country is to work hard for it.

## Oil, Gas Leases

Cont. from Page 1

filing is the largest one since May. Lessees of these latest filings have indicated to the Journal that the Gill offer was \$50 per acre, up front and \$1 per acre per year for five years. Other reports filed earlier indicated that as much as \$65 per acre up front was being offered back in May.

Reports have indicated that there is production from the Pennsylvania Bough Formation at 9,000 feet as well as from the San Andreas Formation at 4,000 feet.

## Mendoza...

Cont. from Page 1

"This training goes beyond teaching the skills necessary to function efficiently as a states peace officer. It is designed to build character and foster the most sincere dedication to excellence in the law enforcement profession," said Colonel Adams. "This is indeed a proud occasion for the Department."

Trooper Mendoza, 28, has been assigned to the Highway Patrol Service and will be stationed at Plainview.

Approximately 300 persons took the special training and graduated from the DPS Academy during 1982.

Trooper Mendoza is the son of Mr. and Mrs. Pablo Mendoza, Sr. of Lazbuddie, Texas.

## Mules...

Cont. from Page 1

Ogas, defensive halfbacks, Brad Holcomb and Dwight McDonald and safety David Barton. The Bobcats have some pretty large players and a good deal of experience, with several returning starters. Watts is a sparkplug for both the defense and offense and the 6'5", 220 pound senior ranks as one of the area's best tight ends around. He also has speed to burn and that makes him a super pass rusher.

So, football fans, drag out all the blankets and warm clothes, since the weather man is promising pure fall weather Friday night. Gametime is 7:30 in Dimmitt. Get on your black and white and boost the Mules upwards in their climb to a District win.

A lot of worry can be wasted on other people.

The Patterson field located between Dora and Elida, New Mexico, has production from the Pennsylvania Cisco Formation at approximately eight thousand feet.

A recent check with tax offices have indicated that no taxes are being paid on production from any Bailey County wells at this time.

## Contest...

Cont. from Page 1

Grissold. Second place winners are: James Whitson, James Byers, Carolyn Wiseman, Raymond Villalobos, Larry Ross and Donnie McDonald. Third place winners are: Gary Freeman, Jerry Gleason, Kay Grissold, Barry Lewis, Marilyn Engelking and Danny Sanchez.

## Safety...

Cont. from Page 1

prohibited by state law. "Many house fires have resulted when a child or animal ran across a room and pulled off a slip-on connector," Keeper says. Always use a flair-type, fitted lp-gas hose with metal threads.

If your home has any gas outlets where no appliance will be attached, make sure the gas-cock is capped to insure against accidental opening of a valve. Never place a heater directly facing curtains, furniture or bedding. Consider the traffic flow in a room when placing heaters. Avoid placing heaters in congested or narrow areas. Someone passing may trip or clothes may brush against the heater and catch fire. Don't place an unvented heater in bedrooms or rooms normally kept closed. This type heater may burn the oxygen out of a room quickly and asphyxiate can result.

Finally, check the vents on any vented appliances. Vents should be cleared from obstructions and those damaged by the elements or that are corroded should be replaced.

Most people are ready to spend someone else's money.

## Illinois To Host Ohio In Big "10" Conference

Illinois hosts Ohio State in a key contest in the Big Ten Conference Saturday. Both teams were among pre-season favorites for the league title and to date they're living up to expectations. Illinois was 3-0 in the conference prior to last week's game with Purdue. The Buckeyes met Wisconsin in only their second league game after an initial win over Michigan State. And if last year's game is an indicator - and it should be - it'll be a crowd-pleaser. Last fall, Ohio State beat the Illini in a wild one 34-27. Illinois will win in what could be another high scoring contest.

Stanford, coming off an all-important Pac-10 match-up with Arizona State last Saturday night, runs right into another heavy in the conference as it entertains Southern California. Two weeks ago the Indians whipped Oregon State 45-5 while the Trojans rolled over Oregon 38-7. Southern

Cal has beaten the Indians the past two years 34-9 and 25-17, but this year Stanford will be a stronger



**NEW HOUSING COMING TO MULESHOE...**At the extreme southern portion of the Muleshoe City Limits, there has been much activity towards land-clearing and readying for construction. The above site is located at Avenue K and is pinpointed for low-income housing on a new subdivision.

## Rally...

Cont. from Page 1

7:30 p.m. in Lubbock's Municipal Auditorium at 4th Street and Boston. Tickets are \$10 per person and can be purchased by calling 744-3527. Tickets also will be available at the door.

The rally will honor long-time Lubbock County Democratic chairman Madison Sowder, who served for 11 years before turning over his party duties this year to Harvey Morton.

Hollings, a 60-year old Democrat from Charleston, S.C., is an attorney and former governor of South Carolina. He has been one of the United States Senate's strongest "hawks" for defense policies in past years, but has recently favored budget cuts in the immense defense build-up proposed by the President. He has gained national prominence for his support for racial integration and anti-poverty programs, while taking a hard-line approach to dealing with the Soviet Union in arms limitations. He was one of the first to oppose the strategic arms limitations treaty (SALT). He most recently grabbed the media attention for his proposals at an economic solution because of his position that the Democratic Party must produce a workable budget alternative. His plan calls for a balanced budget by the end of 1984.

Hollings will be introduced at the Democratic Rally by Hance. In addition, a number of other state-wide candidates will be in attendance.

## UT Offers \$10,000 Excellence Award

Outstanding high school seniors across the state will be interested in a \$10,000 scholarship to The University of Texas at Austin. The Texas Excellence Award for Scholarship and Leadership is the first of its kind in the state. Funded

by alumni through The Foundation for Texas Excellence of the Ex-Students' Association, the award is based solely on academic accomplishments and leadership in extracurricular activities. Presented for the first time last year, five more such awards will be presented in March 1983. The University's Centennial Year. Each award will be granted over a four-year period (\$2500 per year).

To be eligible, students must rank in the top five percent of their class at the end of their junior year in high school. Beyond scholastic achievement, students must demonstrate leadership ability. Approximately ten finalists will be selected in a process involving University deans, distinguished alumni, and other UT officials. Following on-campus interview, five recipients will be chosen. Announcements will be made in the winners' hometowns by local Texas Exes Clubs, and awards will be presented on campus in the fall.

Almost 100 years ago, the Texas Legislature established The University of Texas at Austin to serve the State of Texas as a "University of the first class". Today the Texas Excellence Award celebrates that tradition by emphasizing The University of Texas' alumni commitment to academic excellence.

Eligible high school seniors may obtain applications from their school counselors or from The Ex-Students' Association (P.O. Box 7278, Austin, TX 78712). Applications must be postmarked no later than November 1.

Good manners are good form, even on the highways.

## Firefighters Report

By Wayne Peterson

Septembers regular business meeting was called to order by Wayne Wauson. Owen Jones read the minutes of last month's meeting. They were approved as read.

Brian Rudd was voted in as the newest member of the department. Brian and his wife, Renee live at 311 West 8th. Brian is employed by the Texas Hiway Department. We want to welcome Brian and Renee to the department and to Muleshoe.

Certificates were presented to those fireman attending the Lubbock and Canyon training schools this year. After the late arrival of the chief and no show of our training officer, the meeting was adjourned on the fourth attempt.

Winter weather sure seems to have arrived and heating will be needed. Safety measures should be taken before heaters and fire places are put to use. Chimneys and fire places should be checked and cleaned. Heaters should be cleaned, filters changed, and vents opened. Read up on instructions of proper operation of which ever heating source you have. Gas and electric companies have service men that can help.

## County Selected For Diabetes Test Materials

Bailey County has been selected by the state to pilot test some written materials on diabetes. The participant would receive the materials from the Extension Office, read through them and then fill out an evaluation form which would tell us if the materials were beneficial to you.

There is no cost involved for the pilot program which contains valuable information for diabetes. As a participant, you do not have to have diabetes yourself. You may have a family member or a friend who had diabetes and simply wants to know more about the disease. All you have to do is call the Extension office at 272-4583, and ask to be put on the mailing list for the Diabetes Mailout Pilot Program. We really need your assistance in testing the materials and helping to decide whether or not to publish them. Please call today and volunteer to help with this pilot program.

Winter weather sure seems to have arrived and heating will be needed. Safety measures should be taken before heaters and fire places are put to use. Chimneys and fire places should be checked and cleaned. Heaters should be cleaned, filters changed, and vents opened. Read up on instructions of proper operation of which ever heating source you have. Gas and electric companies have service men that can help.

## The Bob Harmon Forecast

Saturday, Oct. 16 — Major Colleges

|                   |    |                    |    |
|-------------------|----|--------------------|----|
| Air Force         | 27 | Colorado State     | 17 |
| Alabama           | 27 | Tennessee          | 8  |
| Appalachian State | 17 | Lenoir-Rhyne       | 7  |
| Arizona State     | 41 | Texas-El Paso      | 0  |
| Army              | 21 | Princeton          | 16 |
| Auburn            | 23 | Georgia Tech       | 7  |
| Ball State        | 17 | Kent State         | 14 |
| Boston College    | 31 | Rutgers            | 7  |
| Bowling Green     | 30 | Northern Illinois  | 0  |
| Brigham Young     | 31 | Hawaii             | 13 |
| Brown             | 26 | Cornell            | 20 |
| California        | 29 | Oregon             | 13 |
| Central Michigan  | 23 | Toledo             | 22 |
| Cincinnati        | 26 | Memphis State      | 10 |
| Citadel           | 24 | East Tennessee     | 23 |
| Clemson           | 21 | Duke               | 17 |
| Drake             | 26 | Nebraska-Omaha     | 14 |
| Florida State     | 21 | East Carolina      | 7  |
| Florida           | 37 | West Texas         | 7  |
| Fresno State      | 24 | Nevada-Reno        | 7  |
| Georgia           | 30 | Vanderbilt         | 13 |
| Harvard           | 23 | Dartmouth          | 13 |
| Holy Cross        | 23 | Connecticut        | 14 |
| Illinois          | 28 | Ohio State         | 17 |
| Indiana State     | 28 | Eastern Illinois   | 14 |
| Iowa State        | 22 | Missouri           | 21 |
| James Madison     | 22 | V.M.I.             | 20 |
| Lafayette         | 27 | Pennsylvania       | 21 |
| L.S.U.            | 24 | Kentucky           | 10 |
| Louisiana Tech    | 30 | Lamar              | 7  |
| Louisville        | 21 | Richmond           | 12 |
| Maryland          | 35 | Wake Forest        | 13 |
| Miami, Fla.       | 24 | Mississippi State  | 22 |
| Michigan State    | 23 | Wisconsin          | 21 |
| Michigan          | 21 | Iowa               | 13 |
| Minnesota         | 28 | Indiana            | 13 |
| Mississippi       | 24 | T.C.U.             | 14 |
| Navy              | 28 | William & Mary     | 7  |
| Nebraska          | 40 | Kansas State       | 7  |
| New Mexico        | 35 | San Diego State    | 14 |
| North Carolina    | 36 | No. Carolina State | 10 |
| NE Louisiana      | 23 | Arkansas State     | 17 |
| Notre Dame        | 23 | Arizona            | 10 |
| Ohio              | 21 | Eastern Michigan   | 10 |
| Oklahoma State    | 20 | Colorado           | 17 |
| Oklahoma          | 21 | Kansas             | 6  |
| Penn State        | 38 | Syracuse           | 9  |
| Pittsburgh        | 28 | Temple             | 10 |
| Purdue            | 31 | Northwestern       | 10 |
| San Jose State    | 24 | Long Beach State   | 13 |
| Southern Carolina | 28 | Furman             | 6  |
| Southern Calif.   | 27 | Stanford           | 23 |
| S.M.U.            | 26 | Houston            | 20 |
| So. Mississippi   | 25 | Tulane             | 21 |
| SW Louisiana      | 21 | Texas-Arlington    | 14 |
| Tennessee State   | 24 | Tenn.-Chattanooga  | 10 |
| Texas A & M       | 26 | Baylor             | 24 |
| Texas Tech        | 29 | Rice               | 7  |
| Tulsa             | 24 | Southern Illinois  | 15 |
| U.C.L.A.          | 34 | Washington State   | 7  |
| Utah State        | 24 | Pacific            | 12 |
| Utah              | 27 | Nevada-Las Vegas   | 7  |
| Washington        | 41 | Oregon State       | 6  |
| West Virginia     | 20 | V.P.I.             | 10 |
| Western Carolina  | 24 | Marshall           | 16 |
| Western Michigan  | 21 | Miami Ohio         | 20 |
| Wichita           | 26 | New Mexico State   | 13 |
| Wyoming           | 30 | Cal-Fullerton      | 8  |
| Yale              | 26 | Columbia           | 7  |

Other Games — Midwest

|                     |    |                   |    |
|---------------------|----|-------------------|----|
| Adrian              | 24 | Kalamazoo         | 7  |
| Akron               | 17 | Morehead State    | 8  |
| Ashland             | 23 | Franklin          | 14 |
| Augustana, Ill.     | 24 | Milikin           | 17 |
| Baldwin-Wallace     | 21 | Mount Union       | 17 |
| Benedictine         | 42 | Central Methodist | 6  |
| Centre              | 15 | Oberlin           | 10 |
| Chadron             | 15 | Peru              | 10 |
| Concordia, Minn.    | 36 | Bethel, Minn.     | 6  |
| Concordia, Neb.     | 26 | Nebraska Wesleyan | 20 |
| Dartmouth           | 28 | Marshall          | 17 |
| E. Central Oklahoma | 30 | NW Oklahoma       | 13 |
| Elmhurst            | 33 | Carthage          | 8  |
| Evansville          | 21 | Valparaiso        | 7  |
| Hillsdale           | 28 | Ferris            | 12 |
| Hope                | 31 | Alma              | 17 |
| Kearney             | 20 | Missouri Western  | 17 |
| Missouri-Rolla      | 56 | Cuiver-Stockton   | 0  |
| Missouri Southern   | 29 | Emporia           | 6  |
| North Dakota State  | 24 | South Dakota      | 10 |
| North Dakota        | 24 | So. Dakota State  | 23 |
| NE Missouri         | 25 | Central Missouri  | 10 |
| Northern Iowa       | 23 | Grand Valley      | 20 |
| Northern Michigan   | 24 | Westmar           | 10 |
| Northwestern, Iowa  | 49 | Westmar Valley    | 10 |
| Northwood           | 26 | Iowa Wesleyan     | 7  |
| St. John's          | 30 | Augsburg          | 6  |
| St. Joseph          | 38 | Indiana Central   | 21 |
| SW Missouri         | 21 | Western Illinois  | 20 |
| Southwestern, Kan.  | 20 | Bethany, Kan.     | 16 |
| Tabor               | 20 | Kansas Wesleyan   | 19 |
| Wabash              | 33 | Rose-Hulman       | 0  |
| Wayne, Mich.        | 22 | Michigan Tech     | 20 |
| Wheaton             | 28 | Carroll           | 17 |
| William Jewell      | 26 | Missouri Valley   | 14 |
| Wilmington          | 27 | Defiance          | 10 |
| Wis-Stevens Point   | 7  | Wis-Superior      | 13 |
| Whitener            | 28 | Denison           | 10 |
| Yankton             | 31 | Dakota Wesleyan   | 0  |

Other Games — South & Southwest

|                     |    |                     |    |
|---------------------|----|---------------------|----|
| Angelo State        | 24 | Abilene Christian   | 17 |
| Bishop              | 23 | East-Texas Mexico   | 8  |
| Butler              | 35 | Georgetown, Ky.     | 0  |
| Cameron             | 20 | Ark-Monticello      | 14 |
| Carson-Newman       | 23 | Mars Hill           | 7  |
| Central Arkansas    | 21 | Southern Arkansas   | 17 |
| Concord             | 31 | West Va. Tech       | 20 |
| Delta State         | 23 | Troy                | 6  |
| East Texas          | 40 | Howard Payne        | 6  |
| Elizabeth City      | 21 | St. Paul's          | 7  |
| Elon                | 25 | Presbyterian        | 20 |
| Florida A & M       | 35 | Albany State        | 6  |
| Gardner-Webb        | 26 | Catawba             | 10 |
| Grambling           | 38 | Mississippi Valley  | 6  |
| Hampden-Sydney      | 20 | Washington & Lee    | 17 |
| Harding             | 24 | Southwestern, Tenn. | 7  |
| Jackson State       | 24 | Southern U.         | 23 |
| Jacksonville State  | 33 | Valdosta State      | 10 |
| Midstate Tennessee  | 28 | Murray State        | 13 |
| Mississippi College | 31 | Cuachita            | 7  |
| North Alabama       | 24 | Tennessee-Martin    | 20 |
| NW Louisiana        | 23 | Alcorn              | 14 |
| Pace                | 21 | Salisbury State     | 13 |
| Randolph-Macon      | 33 | Emory & Henry       | 6  |
| Shepherd            | 28 | West Va. Wesleyan   | 8  |
| So. Carolina State  | 42 | Davidson            | 6  |
| SW Texas            | 41 | Sam Houston         | 6  |
| Texas A & I         | 30 | S. F. Austin        | 14 |
| Texas Southern      | 10 | SE Louisiana        | 10 |
| West Georgia        | 28 | Knoxville           | 17 |
| Western Kentucky    | 23 | Tennessee Tech      | 17 |
| Winston-Salem       | 23 | Fayetteville State  | 13 |
| Wolford             | 30 | Newberry            | 10 |
| Youngstown          | 17 | Austin Peay         | 10 |

Other Games — Far West

|                    |    |                     |    |
|--------------------|----|---------------------|----|
| Azusa              | 26 | Redlands            | 6  |
| Boise State        | 24 | Montana State       | 23 |
| Cal State          | 27 | Santa Clara         | 27 |
| Cal Lutheran       | 23 | Sacramento State    | 21 |
| Cal Poly (S.L.O.)  | 23 | Northern Colorado   | 20 |
| Central Washington | 27 | Western Oregon      | 10 |
| Fort Lewis         | 17 | Colorado Mines      | 13 |
| Hayward State      | 23 | Cal Poly (Pomona)   | 14 |
| Humboldt State     | 26 | Southern Oregon     | 14 |
| Northern Arizona   | 32 | Idaho State         | 21 |
| Occidental         | 24 | Claremont           | 22 |
| Puget Sound        | 23 | Northridge          | 12 |
| St. Mary's         | 21 | San Francisco State | 13 |
| Whittier           | 24 | Pomona              | 6  |

Presented By:

## Muleshoe Co-op Gins

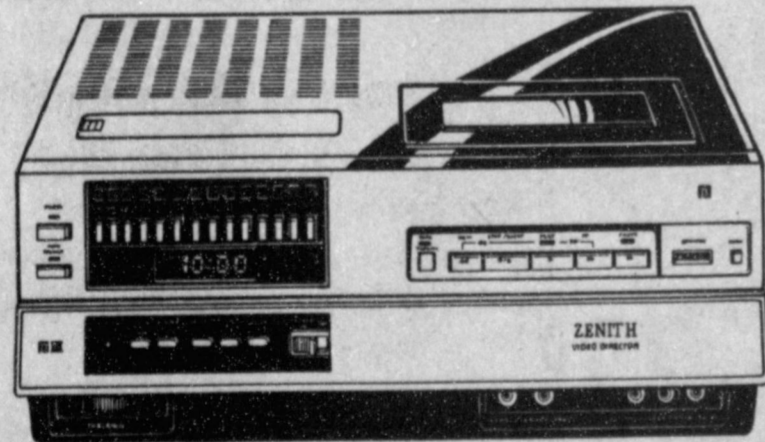
Charles Moraw, Manager

## SPECIAL BETA BONUS OFFER!

7 FREE VIDEO TAPES

with purchase of any

ZENITH HI-TECH BETA VIDEO RECORDER



Model VR8500PT

24-Hour Electronic Timer allows one automatic recording cycle each day. Optional remote control features Picture Speed Search in forward and reverse, Stop Action and Pause. Pewter Metallic Color Cabinet.

\$629<sup>95</sup> \$50 REBATE

HURRY! GOOD ONLY THRU OCT. 27

\$579<sup>95</sup> NET

Features:

- Beta Is Better
- Beta III Record
- Beta III/II Playback
- 5 Hours Recording Time with LB30 Cassette
- Speed Search with Picture
- Stop Action
- Precision Electronic Digital Clock
- Digital Tape Counter
- Optional Remote Video Action Control

ZENITH / The quality goes in before the name goes on.



1 Make Our Store  
Your Favorite Place To Shop

**SERV-ALL**  
**THRIFTWAY**

DUKE VS CLEMSON

2 For:  
★ **INSURANCE**  
★ **TIRES**  
★ **BATTERIES**

Bailey County Farm Bureau  
1612 W. Amer. 272-4567

CORNELL VS BROWN

3 **ANY PRESCRIPTION ANYTIME!**

**Western Drug**  
114 Main 272-3106

FLOYDADA VS CHILDRESS

4 For The Best  
Insurance For Your Money -  
See Your Independent Agent:

THE **BIG DIFFERENCE**  
YOUR AGENT  
**TERRY FIELD Ins.**  
213 E. Ave. B 272-5551

MISSOURI VS IOWA ST.

5 **PROFESSIONAL PIA INSURANCE AGENTS**  
**Henry Insurance and Realty**  
"SERVING ALL YOUR INSURANCE NEEDS"

111 W. AVENUE B — MULESHOE, TEXAS — PHONE 806/272-4581

PACIFIC VS UTAH ST.

**BACK THE MULES FOOTBALL CONTEST**

**GRAND PRIZE \$100**

1st \$6 2nd \$3 3rd \$2

Players Of The Week

CONTEST RULES:

- Pick the winner of each of the games contained in the advertisements on this page. Write the name of the teams you think will win opposite the game number in the blanks provided on the official contest blank.
- The contestant must be 12 years of age or older.
- Only one entry per person may be made for any one contest.
- Bring your entry blank by *The Journal* office by 5:30 p.m. Friday, or, if mailed, the entry must be post-marked not later than 5:30 p.m. Friday. Write "FOOTBALL CONTEST" on mailed entry, and mail to P. O. Box 449, Muleshoe, Tx. 79347.
- Pick and write in the score of the tiebreaker game. This score will be used to break weekly as well as grand prize winners. Decision of *The Journal's* scoring judges will be final.
- Check the team you think will win; 10 points for first place, 6 points for second place and 4 points for third place.
- To count for grand prize, entries must be on official blank printed in the paper.

6 **B.T.S. Hair Care**

**Main Street BEAUTY SALON**  
115 Main 272-3448

TULANE VS SO. MISSISSIPPI

7 **Need A Good Car For School?**  
COME SEE US!

**THORNTON Chevrolet**  
201 Main 272-4521

MINNESOTA VS INDIANA

8 HOME OF:  
**'THE GREEN MACHINE'**

**Robert D Green, Inc.**  
2400 W. American 272-4588

COLORADO VS OKLAHOMA ST.

9 **\* SEED \* FEED \* SERVICE**

**McCormick Seeds, Inc.**  
400 E. Ash 272-3156

WISCONSIN VS MICHIGAN ST.

OFFENSE DEFENSE

30-Hector Orozco 61-Thurman Coleman

10 'The Upper Crust of the Donut World'  
Your Favorite Coffee & Sandwich Shop

**SPUDNUT SHOP**  
328 Main 272-3542

T.C.U. VS MISSISSIPPI

11 **'We Appreciate Your Business'**

**Joe Shipman & Sons Body Shop**  
410 N. 1st 272-4408

ESTACADO VS CANYON

12 **First National Bank**  
Your Home-Owned Bank

All The Bank You'll Ever Need  
202 S. 1st 272-4515

FRIONA VS ABERNATHY

13 **Farmers Co-op Elevators**  
"3 Locations To Serve You"

272-4335  
ENOCHS MULESHOE  
CLAY'S CORNER  
BAYLOR VS TEXAS A&M

14 **'We're Ready To Serve You - Better!'**  
See:  
**American Valley Irrigation & Reid Real Estate**  
West Highway 84 272-3142

MIAMI (OHIO) VS WESTERN MICHIGAN

15 **Featuring - The Latest In Fashions & Cosmetics**

**Latrell's Fashions**  
1519 W. American 272-3459

OREGON VS CALIFORNIA

October 14, 1982 OFFICIAL ENTRY BLANK

NAME \_\_\_\_\_ PHONE \_\_\_\_\_

ADDRESS \_\_\_\_\_

|    |    |
|----|----|
| 1  | 11 |
| 2  | 12 |
| 3  | 13 |
| 4  | 14 |
| 5  | 15 |
| 6  | 16 |
| 7  | 17 |
| 8  | 18 |
| 9  | 19 |
| 10 | 20 |

TIEBREAKER  
SMU VS HOUSTON

This Week:  
**Muleshoe vs. Dimmitt**  
T - 7:30 p.m.

16 **JOIN SAM'S Sporting Goods**  
In Supporting All Our Athletic Programs

226 Main St. 272-4414

KANSAS VS OKLAHOMA

17 **Come See Us For All Your Farming Needs!**

**Wooley International inc.**  
W. Hwy. 84 272-5514

ARMY VS PRINCETON

18 **OPEN! After The Games At Home Or Away Dinner Bell**

2103 West American 272-3460

SOUTHERN CALIF. VS STANFORD

19 **Your Wedding, You Want It To Be Special. And We Do Too.** Your wedding photographs are tangible moments of your special day. Trust them to a professional - Trust them to us. When you book your wedding with us, we'll give you a bridal portrait setting absolutely free.

We offer a complete line of wedding services.  
"Your Wedding Specialist"

**Adrian Photography**  
218 West Second Phone 806/272-5187 MULESHOE, TEXAS 79347

MULESHOE VS DIMMITT

20 **Money**  
To Loan on Anything of Value  
Bargains on Unredeemed Pledges

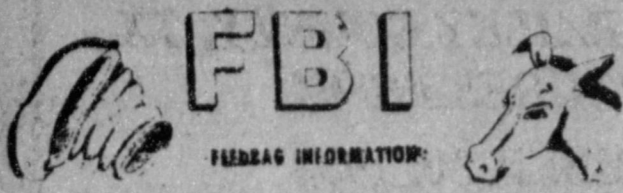
All Loans Strictly Confidential  
"No Loan Too Large or Too Small"

**Muleshoe Pawn**  
213 S. First 272-5105

MISSISSIPPI ST. VS MIAMI FLA.



At Muleshoe Junior High



Lisa's Lines  
by Lisa Hamilton

This week has really been great, Thursday, we had our first Jr. High Pep Rally, which was really great. The Jr. High band really played well. Friday night when the Mules played Abernathy the Jr. High band marched at half-time. The band directors, Mr. Chance and Miss Anthis, were extremely proud to show everyone at the

Antelopes  
Outdistance  
7th Mules

The seventh grade Mules played the Abernathy Antelopes Thursday night in Muleshoe. The Mules played a tough game but came out on the short end of the score, 6-2.

This was the first district game for the Mules and Coach Hargis. We asked for Coach Hargis' comments, and he stated, "The seventh grade Mules lost a heartbreaker of a game to the Abernathy Antelopes Thursday night by a score of 6-2. The Mules only score came on a safety. The defense played inspired football, led by linebacker Russel Brown and end, Miguel Sanchez. The Mules were led on offense by the running of Andy Olivarez and the blocking of a great offensive line. Abernathy scored its first and only touchdown with 13 seconds left in the game. The game was a tough one to lose, but the Mules will come back strong as they play the Dimmitt Bobcats at Dimmitt next Thursday evening at 5:00".

game from both Muleshoe and Abernathy the size of our MJH band. It consists of 115, seventh and eighth grade students.

The annuals are still on sale for \$8.00 but hurry because on October 29, they will go up to \$9.00. November 19 is the last day to buy your annuals. NO EXTRA ANNUALS WILL BE ORDERED. Group pictures were taken on Tuesday, October 12.

There was a slight error with the movie on Tuesday. Instead of "No Deposit, No Return" we received "Oliver Twist". It was sent to us by accident and we would like to convey our apologies to those who saw the movie and were disappointed.

Report cards were passed out on Wednesday, the sixth. Most everyone was pleased with their grades.

Education is expensive. Ignorance is more expensive.

8th Mules Romp On Antelopes

The eighth grade Mules played the Abernathy Antelopes in Benny Douglas Stadium in Muleshoe, Thursday, October 7. The final score was the Mules 8-0 over the Antelopes.

In the first half, the Mules battled with the Antelopes by both teams fumbling. The Mules' Steve Neptune recovered a fumble giving the Mules good field position. The Mules pitched the ball to Ramon Martinez and he ran it in for the only touchdown of the game.

In the second half the Antelopes threatened for a touchdown, but Francisco Ybarra made a saving tackle to end the game. The Mules are 1-0 in district play. The Mules will play Dimmitt, there, October 14.

The outstanding offensive

Junior High  
Honor Students

EIGHTH GRADE

Darren Albertson - 95.6; Michael Angeley - 90.3; Brent Black - 97.2; Jana Brown - 93; Norma Castorena - 92.4; Tisha Cox - 93.3; Shannon Crozier - 97; Lisa Hamilton - 95; Kathy Horn - 94.4; Debbie Isaac - 93.3; Casey King - 96.1; Nathan Lloyd - 90.4; Tracy Long - 95.1; Genie Lopez - 92.3; Charles Martin - 91.1; David Medlin - 92.2; Freddy Paez - 92; Chantel Robison - 90; Kristi Taylor - 94.4; Pam Williams - 91; Scott Williams - 91.3; Francisco Ybarra - 92.3.

SEVENTH GRADE

Amy Bean - 90.1; Misti Brewer - 95.2; Melissa Burnett - 92.2; Ali Cage - 97.4; Brandon Carpenter - 90; Ed Chance - 95.1; Torey Cox - 95.3; Johnny Garcia - 90.2; Carey Gonzalez - 90.2; Sergio Gonzalez - 91.1; Jerry Bob Graves - 95.1; Jennifer Green - 98.1; Van Gregory - 92; Sue Haire - 99.1;

players were: Michael Angeley, Freddy Paez, Ramon Martinez, Eddie Garcia, Darren Albertson, Mark Mata, Steve Neptune, Scott Williams, Joel Soto, Mike Robeledo, and Shawn Bussey.

The Outstanding defensive players were: Scott Bickel and Francisco Ybarra.

When asked about the game, Coach Soto commented, "The kids played a great game Thursday. We had great scoring opportunities but Abernathy played well. Everybody played well. The kids are improving everyday. Next week, we play at Dimmitt at 6:30."

Americans are great denouncers of the wrongs done by others and great proclaimers of their own virtues.

Stacey Haley - 91.1; Angela Kidd - 93.3; Lisa Caredo - 92.1; Caroline Liles - 94.1; Richard Muyschondt - 90.4; Tanya Nowell - 93.2; Donnie Nowlin - 91.1; Britta O'Tay - 97.1; Fancy Rodriguez - 95; Mary Jane Sanchez - 92.4; Lisa Silguero - 90.2; Richie Tillema - 92.

SIXTH GRADE

Esther Acosta - 94; Krystal Angeley - 95.3; Mary Lou Bastardo - 93.1; Jason Buckner - 91.1; Shane Burris - 92.1; Toby Carpenter - 91.1; Edmund Clements - 93; Julie Crittenden - 94.2; Norma Jean DeToro - 95; Krystal Derrick - 91; Laurel Dillard - 95.1; Andrew Espinoza - 97; Lou Ann Galan - 93; Selina Gonzales - 95; JoAnn Gutierrez - 93; Justice Hanes - 93.3; Jeff Hicks - 97.4; Kevin King - 93.2; Felix Martinez - 93.5; Christy Mata - 93.2; Billy Murphy - 92.5; Shawn Nieman - 90.2; Lisa Noble - 96.4; Shawn Rejino - 90.4; Dusty Rhodes - 95.2; Gorge Salinas - 92; David Sanders - 94.1; Timmy Shipman - 91.1; Tonya Sisemore - 91.4; Mychelle Stout - 95; Becky Vela - 91.1; Josie Villareal - 91.5; Brandon Wilson - 97.

MJHS Has  
New Teacher

Teacher of the week was Mr. Mike Richardson, who teaches eighth grade Math. He says he has always enjoyed Math and it has always been an easy subject for him. He also commented that he tries to teach his students so that they can understand and be able to use math in whatever they do.

Mr. Richardson attended Bula High School, then later attended South Plains Jr. College. He then attended Texas Tech University, where he received a B.S. degree in Education. He is married to Jean Richardson and they have two children, Michael, who is eight, and Misty, who is six. Misty is in kindergarten and Michael is in the third grade.

Teacher  
of the Week

Recently, MJHS received a new teacher, Mrs. Ginger Caldwell. She is replacing Mrs. Gilleland, who is now teaching full time at Dillman Elementary School.

Mrs. Caldwell and her husband, Mike, have one child, Kelli. They moved here in November of 1981.

She has been teaching five years, two years in St. Louis, Montana, two years in Dallas, and a half a year in Memphis, Texas.

Mrs. Caldwell received an A.A. at the Lubbock Christian College, and a B.S. in education at the University of Montana. She also studied in Deaf Education at Eastfield Community College in Dallas.

When asked for any comments, she replied, "We love Muleshoe, and I especially enjoy teaching here". The Annual Staff wishes you a great year!!!

ANUNCIO PUBLICO  
LA CIUDAD DE MULESHOE  
PROGRAMA DE VIVIENDAS Y  
DESARROLLO DE LA COMUNIDAD

La Ciudad de Muleshoe esta formando actualmente planes para solicitar al Departamento de Viviendas y Desarrollo Urbano de EE.UU. fondos de Dativa a la Cuadra para el desarrollo de la Comunidad.

La Ciudad de Muleshoe administrara una audiencia publica con el proposito de discutir los usos propuestos de tales fondos en caso que se reciba de HUD. Tambien, se discutiran programas de oportunidades y ayuda en cuanto a viviendas para las personas de ingresos bajos y las de ingresos moderados.

La audiencia publica se tendra en las oficinas de la ciudad a las 8:30 A.M., Octubre 19, 1982.

La Ciudad de Muleshoe aconseja a cualquier ciudadano, o a cualquier grupo de ciudadanos a expresar sus opiniones e ideas en esta audiencia publica. La Ciudad invita la plena participacion de sus ciudadanos en el desarrollo de este programa de CDB.

Se pueden entregar de antemano comentarios de ciudadanos al Edificio de la Municipalidad a cualquier hora antes de la audiencia publica. Los individuos con desventajas fisicas que puedan encontrar dificultades en asistir a esta reunion deben hacer contacto con la Municipalidad para que se les de ayuda.

Para mas informacio, hay que comunicarse con numero de telefono #272-4528.

Kid Bits

by  
Shera Foster

As a teacher and a mother, it is my experience that getting started right really begins before school starts. A good start is not just luck; it is planning and the determination to stick to good habits.

School is the center of the universe for elementary age children. All their experiences - friends, work, play, joys, disappointments, recognition, and achievements all revolve around school. The elementary child actually spends more hours at school with his teacher and classmates than he does with his parents once school begins.

On the first day of school I explain to my new charges that we are a family. They are to look upon me as their mother away from home, and their classmates as brothers and sisters.

Before school begins, parents should begin to establish a positive attitude toward that most important person about to enter the child's life - his teacher.

During the summer, mothers begin to compare notes in an effort to find out who is the best teacher for their child. Understandably we all want our children to work with and under a teacher sympathetic to our own child's particular foibles and special needs. We want the "special" teacher who is well organized, knowledgeable, personable, and lovable. Unfortunately, all teachers don't live up to those standards all the time. However, once the child is assigned to a teacher, it behooves us as parents to have a positive attitude and to be open-minded and fair.

The first thing a parent should do upon learning to whom the child is assigned is to make a sincere effort to become acquainted with the teacher. Remember that everyone has some good qualities! Go in intending to discover just what they are. Tell your child what you like and appreciate about his new teacher. Let the teacher know that you are interested, cooperative, and willing to help.

Teachers experience a great deal of pressure the first weeks of school. They are expected to be well prepared, efficient, pleasant, and to produce wonderful results from 25 children who have their own ideas about what they want to do. It takes a while for children to get used to getting up early, being attentive all day, and working for hours in a building without air conditioning in the hottest part of the summer. Once the weather cools, children and teachers alike relax and mold into the routine.

Parents should try to be available to their children at the beginning of school. Should one attempt to change teachers? Rarely.

Relationships are not established instantly and the best teacher may not be the most popular.

Each school opening has its crises, and it's nice to be around for end-of-the-day support. A reserved vacation day or two would come in handy at this time.

Do take immediate action if you find some aspect of school arrangement unacceptable. As parent and taxpayer, you own your share of our school, so speak up. It is in the best interest of the child not to let problems fester.

At home, guidelines should be established and rules negotiated concerning the use of the television. Battles may be headed off with good planning.

Study time should be decided on and a generous amount of free play should be set aside. After seven hours indoors, children crave the freedom of the outdoors and the choice of selecting how they spend their time.

And last, end each day in a happy mood. Never let your child go to bed worried if you can relieve that worry. Children suffer too many pressures and childhood is too short. Let's work together to see that they enjoy it.

Life has no secrets that a teen-ager can't read about in some of the magazines offered for sale.

Why don't more grocers mark down prices of produce and meat which must be sold at once?

If one believes the advertisements of various cosmetics, beauty of face and figure is only a matter of money.

Nursing Home

News  
By: Joy Stancell

Jackie Johnson read to the residents Wednesday morning.

The Assembly of God Church Came Friday to have a devotional with the residents.

Wednesday morning, Rickie Warren, Vicki Black,

West Plains  
Medical Center  
Report

ADMITTED

October 7 - Sarah Godinez, Virgie Adams, David Moore, Myrtle Creamer, Teresa Garcia, Irma Leal, Ali Cage, and Alice O'Brien

October 8 - Maria Acosta, Ryan Herber, Winnie Mills, Ted Millsap, H.F. Vandiver, Ellen Gallman, Alma Ott, and Max Bachicha

October 10 - Betty Rejuno, Ester Cuellar and Alayandrina Chairez

October 11 - Sheryl Kimbrough, John Hermsillo, and Willie Copeland.

DISMISSED

October 7-Marshall Head, Sheryl Kimbrough, and Ali Cage

October 8 - Monty Foster, Olene Mason, Anna Copeland, Gloria Soto and baby girl, Willie Copeland, Max Bachicha, and Belinda Caswell

October 9 - Jessica Pedrosa, Kerma McGuire, Michael Thompson, and Woods Goforth

October 10 - Karen Watson, Maria Acosta and baby boy, and Ellen Gallman and baby girl.

Joan Lewis, Linda Marr, Lindy Schuster from Xi Omicron Xi Chapter, came to play Bingo with the residents. Louise Sullivan was our high winner. "bingoing" three times. Refreshments of juice and Spudnuts were served.

Marie Engram was visited by Nelda Merriott, Wilma Waddle, Lynn Campbell, Jerry Hutton, Jean Bristo, Josie Flowers, Marjorie Precure, Sonya Florace, Mrs. Bessie Stephenson, Felipa Garcia.

Effie Smith visited with her family in Clovis, over the weekend.

Ruby Gore visited in the home of her daughter, Louise Allen, Sunday. Her son and his family, Mr. and Mrs. Hilton Gore of Abilene, where there visiting too.

Our thanks to Xi Omicron Xi for their generous check for Bingo Prizes.

Thursday, October 28, at 2:30 p.m., the Needmore Community Club will host our monthly Birthday Party. Residents having a birthday this month are, Ruby Gore, October 8, 1896, Murphy Berry, October 21, 1906, Alva Shofner, October 24, 1891, Lynn Brather, October 28, 1908. We welcome friends and family to attend.

Friday, October 29, the American Blvd. Church of Christ will host our Halloween Party at 2:30 p.m.

Bertie Hendrix's son and his wife, Mr. and Mrs. Dave Hendrix from Chicago, Ill., were here visiting last week.

Our thanks to Paula Means for decorating our October birthday bulletin board.

did you know?

Electricity is vital to our food supply. A full 16.5% of the energy consumed in the United States is used in the production, processing and distribution of food. Additional electricity is used by businesses like farm equipment dealers and feed suppliers who depend on agricultural sales. Managing electricity wisely helps the farmer, the utility company and each of us, since the cost of electricity directly affects the price we pay for food at the supermarket.

Sam Thomas, Agricultural Development Manager, Amarillo.



Air leaks in your home can increase your yearly electric bill by 20 to 40%. Air can enter your home through cracks around doors, windows or any other place where two materials or parts of the house meet. To find air leaks around your home, wait for a windy day, then turn off your furnace or air conditioner. Hold a small piece of tissue or a candle next to cracks around windows and doors. If the tissue or candle flame flutters, leaks are reducing your home's energy efficiency. Weatherstripping and caulking can help plug these leaks and save you money, too.

Helen Hernandez, Order Clerk, Carlsbad.

Caring properly for portable appliances improves their safety and efficiency. Always plug an appliance cord directly into a wall outlet, rather than into lightweight extension cords. Unplug the appliance immediately after use. When disconnecting an appliance, pull the cord plug from the outlet first, then remove from the appliance. Always grasp the plug itself; do not pull on the cord. When cleaning portable appliances, first check the instruction book to see if the appliance is immersible. Then wash it with hot sudsy water and rinse and dry thoroughly. And always read the instruction book before using an appliance for the first time.

Joy Parnell, Consumer Service Representative, Lubbock.

For answers to your questions, call or write your SPS manager.

You and SPS, partners managing electricity, make the difference.



SOUTHWESTERN PUBLIC SERVICE COMPANY

**Red Tag SALE**

**\$49**

WHITEWALL XWWT

| SIZE       | SUGGESTED EXCHANGE | SALE PRICE |
|------------|--------------------|------------|
| P185/75-14 | 115.45             | \$77.00    |
| P195/75-14 | 121.23             | 81.00      |
| P215/75-14 | 134.73             | 91.00      |
| P225/75-14 | 139.20             | 94.00      |
| P205/75-15 | 125.58             | 89.00      |
| P215/75-15 | 137.15             | 93.00      |
| P225/75-15 | 141.73             | 96.00      |
| P235/75-15 | 148.63             | 102.00     |

FET: \$2.14-3.21

**MICHELIN X**

**Wheel Alignment**

- Set toe-in
- Inspect tires
- Adjust caster and camber

**\$16.99**  
Most cars

**Radial-Tuned Shocks**

- Lifetime warranty
- Six-stage valving
- Recommended for radial tires
- Installation available

**\$14.99**  
Each

Prices good through Oct. 16, 1982

**SHOOK TIRE & SERVICE**  
"the only way to go!"

301 North First • 272-3420  
Manager: John Robinson

Serving Texas for 51 years



### Threeway School News

**FHA**  
The Three-Way FHA chapter was the top FHA chapter at the Panhandle South Plains Fair, bringing in a total of \$102.75.

The freshman members brought in \$2.25 and two Honorable mentions with one third. The sophomore members (the first over-all money winners for the chapter) brought in \$46.50, with four firsts, seven seconds, and three thirds. Sophomore, Donae Parker was the fair's individual FHA winner.

The junior class brought in \$14.50 with one first, one second, and four thirds. The senior class brought in \$24.50, with six firsts, no seconds, and three thirds. Senior Sheryl Waltrip was the fair's third highest individual FHA winner.

**FAROUT FIFTH**  
This week the fifth grade got their report cards. They were all very good. We were all looking forward to them.

Chad Welch, Melinda Turney, Shelia Tucker and Heather Hutton all entered something in the fair. They did very good, and all the fifth graders are proud of them.

**SENIOR SPOTLIGHT**  
Mr. and Mrs. Fidencio Banda welcomed their daughter, Sylvia in this world on March 3, 1965, at Taft, Texas.

Sylvia's favorite foods are shrimp and fish and everything that is light blue. Her favorite subject is Drama because she enjoys acting.

Sylvia wants to go to Law Enforcement Training Academy after graduation. Sylvia likes being a senior because she has more privileges than the other classes, and she has more confidence in herself.

Sylvia like all other seniors, is working hard to earn money to go on her senior trip.

**KINDERGARTEN FRIENDS**  
The Kindergarten Friends of Three Way elementary are enjoying a variety of different activities. Fridays are our favorite days because we can wear beat tags and attend the pep rally.

We are decorating our room for our Halloween party, October 29. Everyone in our class will wear a costume the entire day. It's so much fun! Please drop by that day for a visit and see our costumes.

Mrs. Furguson is especially pleased with the overall attendance record for the class with only three absences for the first six weeks. We have a total of twelve students, including Natalie Barker, Jr. Hernandez, Aaron Huff, Sonia Ornales, Scott Peel, Alma Pina, Lisa Salamanca, Erin Sowder, Monty Turney, Nick Duarte, Barney Tobar-Lopez and Marcelo Rodri-

**Researcher says managers should reward performance**

**COLLEGE STATION** — Bosses who get upset over employees coming to work late or socializing on the job often care more about them putting in the time than putting the time to use, says a Texas A&M University management professor.

"Managers who focus on time usually concentrate on the wrong things," says Dr. David Van Fleet, an expert in time management and organizational behavior.

"They're saying that, but what's really important is doing the work."

The professor pointed out that some people with lenient working hours who are regularly tardy, normally leave a little early to lunch and get back a little late may do more than others who are on time.

"Workers do what they perceive as necessary to get rewards," Van Fleet said. "Managers should concentrate on rewarding performance, rather than worrying about time."

guez.  
We have been collecting egg cartons this past week to make into adding machines for our Kindergarten Friends. We are also working on a new calendar for the month of October.

**SPIRITED SECOND**  
We started decorating our room this week for Halloween. We have witches, ghosts, spiders, and scarecrows all over the room. Our teacher, Mrs. Gibson, told us she was bringing her ceramic Halloween decorations Monday, we can't wait.

We completed our nutrition booklets Wednesday and took them home, we started them about two weeks after school started. We learned about the different food groups and the foods that are in each group.

### VA News

Students enrolled full time under the GI Bill may supplement their monthly Veterans Administration educational assistance by earning money under the Veterans Work-Study Program.

Eligible veterans earn \$3.35 an hour and may work up to 250 hours per term, advised the Director, Waco VA Regional Office.

Work performed under the program is VA related and located at a school or VA facility in the area. Examples of such service might include processing of VA paperwork at schools or a VA office, VA outreach services or services performed at a VA medical facility.

For applications and additional information, contact the Veterans Affairs Office on campus, or the Waco VA Regional Office toll-free number listed in the telephone directory.

Appropriate ceremonies and activities to mark the special day are planned at Veterans Administration medical centers and regional offices in Texas, Louisiana, Mississippi, and elsewhere.

The VA also is advising former POW's in the Texas-Gulf area who haven't done so yet, to contact its Waco, Houston, New Orleans, or Jackson Regional Office or a local veterans service organization to see if there are more benefits and services due them now because of their imprisonment.

That is important, VA directors said, because the Prisoners of War Health Care Benefits Act of 1981, which covers persons detained or interned during periods other than wartime, liberalizes certain eligibility requirements and extends existing benefits.

\*\*\*\*  
The good citizen who helps build his community is leaving something worthwhile to his children.

## Farm Picture Bleak But Hope Remains

Texas farmers are suffering from a siege of economic setbacks that are the most serious since the depression of the '30s. But despite the catastrophic situation, there is some glimmer of hope as farmers forge ahead and plan for 1983.

"Both weather and the marketplace have devastated the hopes of many producers this year," said Dr. Carl Anderson, economist with the Texas Agricultural Extension Service, Texas A&M University System. "It's been a year filled with widespread crop losses due to hail, wind, floods and drought, and now at harvest time, high stockpiles of most crops coupled with a sagging demand are driving prices below production costs."

And delinquent loans are running rampant, with almost half of the 25,000 Texas farmers with Farmers Home Administration loans behind in their payments. To make matters worse, most have nowhere else to turn for financial backing, said Anderson.

Many farm prices have been driven through the floor by huge crops the past two years, noted the economist. During the first half of 1982, prices for cotton, cottonseed, rice and hay dropped more than 30 percent below the same period last year and grain sorghum averaged about 20 percent less.

Texas livestock producers are faring a little better than crop growers. Hog prices are up 21 percent and beef cattle prices are holding even compared to the first half of 1981 while milk prices are off slightly. Prices for calves, sheep, turkeys and eggs are averaging 5 to 10 percent less while wool prices are off 20 percent.

Along with poor prices, farmers continue to face high interest rates when compared to returns to investments generated from their operations, and high exchange rates have destroyed growth in the export market, Anderson said.

With this overall dismal situation, how can there be hope for farmers?  
"Economic health can return from either lower supplies or increased demand that will boost market prices or through more favorable farm program prices," said Anderson. "Either adjustment may take up to three years to develop fully."

"Currently, Texas farmers are looking to Commodity Credit Corporation loan rates, farmer-held reserve loan rates and target prices as their main hope for surviving the most severe financial pressure in half a century," he said. "Unfortunately, earlier this

year many of them did not recognize the benefits of support prices and the looming financial dangers."

According to Anderson, failure of more than half of the sorghum farmers to take part in the farm program has caused grain prices to fall sharply below the CCC loan rate. This resulted because nonparticipants were ineligible to put their grain into the loan program and thus had to dump large amounts on the open market, driving prices down.

Now farmers must look ahead to the 1983 farm program. Specifics of the program are being developed, said Anderson, and should be available soon for planning next year's crops.

However, farmers can use expected target prices and loan rates for various crops in their early planning. Expected target prices are \$4.30 per bu. for wheat, \$2.86 per bu. for corn, \$4.91 per cwt. for grain sorghum, 76 cents a lb. for cotton and \$11.40 per cwt. for rice. Regular CCC loan rates will be close to \$3.65 per bu. for wheat, \$2.65 per bu. for grain sorghum, 55 cents per lb. for cotton and \$8.55 per cwt. for rice. Anticipated farmer-held reserve loan rates are \$4.00 per bu. for wheat, \$2.90 per bu. for corn, and \$4.91 per cwt. for grain sorghum. There is no reserve loan for cotton and rice.

Using these anticipated figures, maximum deficiency payments (difference between target price and CCC loan rate) that farmers could expect are 65 cents per bu. for wheat, 21 cents per bu. for corn, 41 cents per cwt. for grain sorghum, 21 cents a lb. for cotton, and \$2.85 per cwt. for rice.

"Since reduced production will be a major goal of next year's farm program, it will likely call for laying out 15 to 25 percent of the base acreage for each eligible crop," said Anderson. "Farmers should take this into consideration as they begin land preparation and fertilizer and herbicide applications for next year's crops."

1983 farm income could improve some with increased participation in the farm program since reduced production would help the supply situation and allow loan rates to be more effective in setting price floors. On the demand side, lower interest rates should give a boost to the marketplace. And an improved economic climate could spur the demand for farm products, said the economist.

Meanwhile, farmers will be looking at controlling or minimizing operating expenses, evaluating alternative crops for highest returns while taking as little price risk as possible, foregoing capital purchases and taking a hard look at full participation in the government farm program, Anderson said.

### NOTES--

**--COMMENTS**  
Too many sports writers try to be cute rather than report events.

\*\*\*\*  
Mystery: Why is slaw often served in minuscule paper cups—at full price?

### Political Calendar



County Attorney  
**Linda Guelker**

## REPORT OF BAILEY COUNTY TREASURER OF BAILEY COUNTY, TX., OF RECEIPTS AND EXPENDITURES FROM JULY 1, 1982 - SEPTEMBER 30, 1982

### CERTIFICATE OF APPROVAL

Came on to be considered the certificate of the Bailey County Commissioners Court and the report of the County Treasurer of Bailey County, Dorothy Turner, for the period ending September 30, 1982.

MOTION was made by Commissioner James Warren and was duly seconded by Commissioner Rudolph Moraw that said report be and the same is hereby in all things approved and that the certificate of the Commissioners Court and the Treasurer's Report as follows be published one (1) time as soon as possible in the Muleshoe Journal a newspaper of general circulation in Bailey County, Texas.

The vote being called for the Commissioners present voting "AYE", the motion carried.

THE STATE OF TEXAS )  
COUNTY OF BAILEY )

BEFORE ME, the undersigned authority, County Clerk, of Bailey County, Texas, on this day personally appeared Glen Williams, County Judge; R.L. Scott, Commissioner, Precinct No. I, Lloyd Stephens, Commissioner, Precinct No. II, James Warren, Commissioner, Precinct No. III, and Rudolph Moraw, Commissioner, Precinct No. IV, constituting the Commissioners Court of Bailey County, Texas, who being first by me duly sworn, each upon oath severally stated:

"That they and each of them have fully complied with the laws of the State of Texas relating to the matters set forth herein; that they and each of them have fully inspected the report of the County Treasurer of Bailey County, submitted the them at the Regular Term of the Commissioners Court of Bailey County, Texas held on the 11 day of Oct., 1982, which report covers receipts, disbursements and ending balances of all county funds for the period ending the 30 day of September, 1982, and that they and each of them have actually counted and fully checked the amount of money and other assets in the hands of said treasurer and have found the amounts shown in such report, attached hereto, true and correct."

/s/ Glen Williams  
Glen Williams, County Judge  
/s/R.L. Scott  
R.L. Scott, Commissioner Precinct I  
/s/ Lloyd Stephens  
Lloyd Stephens, Commissioner Precinct II  
/s/ James Warren  
James Warren, Commissioner Precinct III  
/s/ Rudolph Moraw  
Rudolph Moraw, Commissioner Precinct IV

/s/ Hazel Gilbreath  
Hazel Gilbreath, Bailey County Clerk

Sworn to and subscribed before me this 11 day of Oct., 1982.

| FUND                     | BALANCE      | EXPENDITURES  | RECEIPTS      | BALANCE       |
|--------------------------|--------------|---------------|---------------|---------------|
| JURY                     | \$ 7,862.42  | \$ 4,491.33   | \$ 766.83     | \$ 4,137.92   |
| COLISEUM                 | \$ 1,019.68  | \$ 7,192.33   | \$ 8,765.03   | \$ 553.02     |
| LAW ENFORCEMENT          |              |               |               |               |
| STANDARD EDUCATION       | \$ 217.00    | \$ 346.00     | \$ 400.00     | \$ 271.00     |
| DISTRICT ATTORNEY        |              |               |               |               |
| INVESTIGATOR             | \$ 662.78    | \$ 5,136.62   | \$ 6,544.08   | \$ 2,070.24   |
| ROAD & BRIDGE            | \$ 16,967.08 | \$ 70,943.46  | \$ 92,437.49  | \$ 38,461.11  |
| ROAD & BRIDGE            |              |               |               |               |
| PRECINCT #1              | \$ 1,994.25  | \$ 13,436.99  | \$ 16,492.60  | \$ 5,049.86   |
| ROAD & BRIDGE            |              |               |               |               |
| PRECINCT #11             | \$ 3,163.77  | \$ 8,958.00   | \$ 15,258.91  | \$ 9,463.88   |
| ROAD & BRIDGE            |              |               |               |               |
| PRECINCT #111            | \$ 3,174.59  | \$ 12,279.14  | \$ 10,315.00  | \$ 1,210.45   |
| ROAD & BRIDGE            |              |               |               |               |
| PRECINCT #1V             | \$ 1,463.88  | \$ 12,284.67  | \$ 15,316.30  | \$ 4,495.51   |
| SPECIAL ROAD             | \$ 5,796.32  | \$ 34,702.10  | \$ 46,188.74  | \$ 17,282.96  |
| LATERAL ROAD             | \$ 10,785.08 | \$ 10,785.08  | \$ 0.00       | \$ 0.00       |
| GENERAL                  | \$ 612.27    | \$ 107,515.05 | \$ 127,762.08 | \$ 20,859.30  |
| SENIOR CITIZENS          |              |               |               |               |
| TRANSPORTATION           | \$ 309.09    | \$ 4,242.57   | \$ 3,752.69   | \$ 180.79     |
| OFFICERS SALARY          | \$ 5,989.24  | \$ 75,150.69  | \$ 80,546.42  | \$ 11,384.97  |
| PERMANENT IMPROVEMENT    | \$ 66.57     | \$            | \$ 766.84     | \$ 833.41     |
| SOCIAL SECURITY          | \$ 861.82    | \$ 17,583.75  | \$ 17,571.50  | \$ 849.57     |
| REFUNDING BONDS          |              |               |               |               |
| 1978 SERIES              | \$ 1,545.95  | \$ 4,725.00   | \$ 3,766.84   | \$ 587.79     |
| LAW LIBRARY              | \$ 326.81    | \$ 1,081.89   | \$ 934.00     | \$ 178.92     |
| JUSTICE PLANNING         | \$ 1,172.50  | \$ 1,875.00   | \$ 2,165.00   | \$ 1,462.50   |
| CRIME VICTIMS            | \$ 0.00      | \$ 385.00     | \$ 385.00     | \$ 0.00       |
| ELECTIONS                | \$ 0.00      | \$ 0.00       | \$ 0.00       | \$ 0.00       |
| VOTER REGISTRATION       | \$ 638.54    | \$ 84.24      | \$ 0.00       | \$ 554.30     |
| JUVENILE PROBATION       | \$ 4,557.29  | \$ 4,316.23   | \$ 43.42      | \$ 284.48     |
| JUVENILE PROBATION       |              |               |               |               |
| 1982-83                  | \$ 0.00      | \$ 942.65     | \$ 1,376.50   | \$ 433.85     |
| JUVENILE PROBATION TRUST | \$ 0.00      | \$ 47.30      | \$ 633.00     | \$ 585.70     |
| JUVENILE SERVICES        | \$ 1,000.00  | \$ 1,000.00   | \$ 0.00       | \$ 0.00       |
| REVENUE SHARING          |              |               |               |               |
| ENTITLEMENT #12          | \$ 92.11     | \$ 92.11      | \$ 0.00       | \$ 0.00       |
| REVENUE SHARING          |              |               |               |               |
| ENTITLEMENT #13          | \$ 508.00    | \$ 508.00     | \$ 0.00       | \$ 0.00       |
| TOTALS                   | \$ 68,747.68 | \$ 400,106.00 | \$ 452,188.27 | \$ 120,829.95 |

### CERTIFICATES OF DEPOSIT

|                                      | Revenue Sharing |                                   |
|--------------------------------------|-----------------|-----------------------------------|
| #6890.....General Fund.....          | \$ 40,000.00    | #6854.....Entitlement #12.....    |
| #6862.....Road & Bridge Fund.....    | \$ 171,933.11   | #6855.....Entitlement #13.....    |
| #6861.....Special Road Fund.....     | \$ 121,806.60   | #6564.....Juvenile Probation..... |
| #6504.....Permanent Improvement Fund | \$ 12,156.34    | Totals.....                       |
|                                      |                 | \$ 419,825.87                     |

STATE OF TEXAS I  
COUNTY OF BAILEY I

Before me, the undersigned authority on this the 5 day of October, 1982, appeared Dorothy Turner, County Treasurer of Bailey County, Texas, who being duly sworn upon oath, says that the within and foregoing report is true and correct.

Subscribed and sworn to before me this 5 day of October, 1982.

*Dorothy Turner*  
County Treasurer  
Bailey County, Texas

*Barbara McComish*  
Deputy Clerk County Court  
Bailey County, Texas

**True Value**  
BARGAIN OF THE MONTH



**199**  
Taylor Dial Window Thermometer  
Outdoor thermometer made of colorful high-impact plastic with adjustable bracket. 5310  
Quantities Limited

**True Value**  
TOOL VALUE OF THE MONTH



**299**  
Master MECHANIC Hacksaw Frame  
Nickel-plated steel frame adjusts to hold blade (incl. in 1 of 4 positions). 100MM  
Quantities Limited

**Fry & Cox, Inc.**  
401 S.1st 272-4511



## Harvest Or Not ?

Cont. from Page 1

really boils down to whether the harvested cotton will cover out-of-pocket or cash costs of harvest," Condra stressed.

Condra, Supak and Grubaugh analyzed a number of different situations, using different cotton prices, costs and assumptions regarding ownership of land.

The three specialist range of yields in this decision is probably from 50 to 100 pounds of lint. "If the projected yield is less than 50 pounds, it probably won't pay to harvest," they said. "If the projected yield is over 100 pounds, it probably will pay to harvest."

"If the projected yield is between 50 and 100 pounds, the producer should definitely use the worksheet to fill in his own expectations, costs and rental situation."

The old rule of thumb that one boll per inch of row on a 40-inch spacing will produce a bale of cotton will serve fairly well, they said. This means that it takes 100 bolls per three paces (100 inches), 157 bolls per 13 feet, or 1,570 bolls per 131 feet to make a bale of cotton.

"The key is to take an accurate sample and count only harvestable bolls," Supak said.

To estimate the yield potential of a given field, make five to 10 boll counts at various locations in the field, the specialists advised. If the stand is uniform, counts can be obtained from three-pace or 13-foot strips. However, if the stand is not uniform, boll counts should be made from 131-foot strips.

The checklist includes an example situation for a producer who (1) is renting his land, (2) has his own two-row, tractor-mounted stripper, (3) has his cotton custom modulated and hauled to the gin, (4) is located in a disaster county, and (5) expects to put his cotton in the loan with grade 42 (SLM, Light Spot), staple 31, and micronaire of 3.0 to 3.2.

In this example, the out-of-pocket costs for stripping were estimated to be \$8 an acre including hired labor. This includes fuel, oil, lubrication and repair. No allowance is included for depreciation and other fixed costs because these will be incurred regardless of the situation.

A custom rate for modulating and hauling of \$85 per module was used. This is based on \$50 for the modulating operation and \$35 for hauling to the gin of each module. Each module was assumed to make seven bales due to expected low turnout (15 percent), instead of the more normal 10 bales.

Ginning, bagging and ties were charged at \$2 per hundredweight of seed cotton, based on a 15 percent turnout. Seed credit was allowed at \$70 per ton for 4-10 tons of seed per bale.

All of these costs and returns were calculated on a lint pound basis to allow calculation of the break-even yield.

The loan price for the example grade, staple and micronaire (42:31, 3.0-3.2) cotton in Lubbock is 44.8 cents per lint pound. "This value was used for the cotton price since supply and demand conditions don't appear to warrant a more optimistic assumption," the specialist said.

In the affected counties, the disaster program will pay 20 1/2 cents per pound for the difference between 75 percent of the established program payment yield and actual yield. The target price program will then provide a deficiency payment for the difference between the established program payment yield and the portion of the yield for which disaster payment was made. The U.S. Department of Agriculture has projected a deficiency payment of 12 cents a pound, but the final level of payment won't be determined until later this year.

The significance of these two payments, the specialists explained, is that the producer will give up the

disaster payment and gain the deficiency payment for every pound of lint he harvests up to 75 percent of his established program payment yield. "Of course, if he expects to harvest that much cotton, he probably isn't faced with a decision of whether or not to harvest," Condra said.

Rental arrangements will also affect the decision because the renter normally has to pay for stripping the cotton while he sells only his share. In this example, a traditional one-fourth share arrangement is used. Had this been a cash rent arrangement, the rent would not have been included because it is also a "sunk" cost which is unaffected by the harvest decision, the Extension economist explained.

The worksheet includes a section for calculation of a break-even yield. This is the yield of cotton which will just cover the out-of-pocket stripping costs and costs for modulating, hauling, ginning, and other necessities.

In this example, the break-even yield was calculated to be about 41 pounds of lint-with 30 pounds net to the renter. The costs and returns per acre are: Total Receipts \$18.84; Total Expenses \$18.95. Net Return from harvesting \$0.11.

This shows there is no return at this yield for unpaid labor, nor is there room for error in estimating the yield, quality or costs, Condra noted.

A number of factors aren't included in the worksheet, but should be considered by the producer, the Extension specialists cautioned.

First, a zero yield may affect a producer's established program payment yield for subsequent years. Thus there is some benefit to harvesting a yield which barely covers out-of-pocket costs. "This benefit will be pending upon each producer's situation," Condra said.

Second, disaster payments can be received immediately if the crop isn't going to be harvested. This money would be available to reduce the operating interest costs.

Third, if the crop is going to be plowed under, it may be more beneficial to do so promptly to eliminate further depletion of soil moisture and retention of plants that serve as hosts for insects and diseases.

In case you haven't realized it, 1982 is moving along.

Many people take better care of automobiles than they do of their bodies.



LUBBOCK, Friday, October 8, 1982

In response to questions from cotton producers, Lubbock-based Plains Cotton Growers, Inc. has asked USDA's Analysis Division for the reasoning behind the Department's projection of a 12.8-cent price deficiency payment on cotton in 1983.

The answer, whether one agrees or disagrees not only is interesting, PCG officials say, but also could be of use to producers soon to be deciding whether to put cotton into the loan in hopes of better prices to come, or sell at harvest "for whatever pittance may be offered above the loan price."

The deficiency payment in 1983 will equal the difference between the 76-cent target price and the higher of (1) the 55-cent national average loan rate or (2) the weighted average market price received by all farmers during calendar 1983.

So, unless next year's prices rise significantly above levels seen thus far in 1982, the 1983 deficiency payment will be at the maximum 21 cents per pound—the difference between 76 cents and the loan. The average price paid to farmers for cotton has not been above the loan price since November of 1981 and not many in the industry are willing to predict much improvement within the next 12 to 18 months.

Yet USDA, by projecting the 1983 deficiency payment at 12.8 cents, in effect is estimating that the 1983 average price paid to farmers will be 63.2 cents, over 6 cents above the current 57.08-cent loan and 8.2 cents above the 55-cent 1983 loan rate.

The Department lists four factors they say favor a higher average price to farmers next year, with no indication as to which of the four might have the greatest influence.

First mentioned was the likelihood that cotton sales in 1983 will be heavier in the latter months of the year due to this year's below-normal production, increasing demand in 1983, and expectations for a more normal crop next year. Thus if USDA isn't miscalculating, higher prices during the second half of the year will carry more weight in the annual average than the low prices forseen for the earlier months.

Second, the Department expects the 1983 acreage reduction program, with a 20 percent voluntary reduction requirement and an additional five percent paid acreage diversion, to have a favorable effect on prices.

Third, Department analysts point to the extremely small Texas-Oklahoma crop this year and reason that a higher than normal percentage of the cotton sold in 1983 will be in the upper range of qualities, which command a better price.

The fourth factor, and the one which PCG officials think may be the most potent, is the strong possibility that combined 1983 domestic and export demand will exceed 1983 production by a million bales or more. If so, USDA says, we're going to run out of 1982 crop cotton before the 1983 crop becomes available, forcing buyers to meet their needs out of loan stocks. And when that happens, the thinking goes, the carrying charges on loan cotton will exert upward pressure on the market price.

**ROBERT D. GREEN, INC.**  
2400 West American Blvd.  
MULESHOE, TEXAS 79347  
OLDSMOBILE — BUICK — PONTIAC — GAC

**TERRY YELL**  
Sales Representative

Business Phone 806 272-4588 Home Phone 806 272-4948

**Sportsman**

**Complete & Balanced Nutrition Dog Food**

**PUPPY FOOD**  
27% PROTEIN

20 LB. Bag \$5.95

**HI-PROTEIN DOG MEAL**  
26% PROTEIN

50 LB. Bag \$10.59

Five Point

**Dog Food**

50 LB. Bag \$9.36

25 LB. Bag \$5.15

Alert

**Cat Food**

10 LB. Bag \$3.45

CHUNK STYLE Five Point CAT FOOD

**A&M FARM AND RANCH SUPPLY**

## Enochs News

By: Mrs. J.D. Bayless

Mr. and Mrs. J.D. Bayless, Mr. and Mrs. Cleo Hall drove to Lamesa, Saturday afternoon, Sept. 26, and spent the night with Mrs. Bayless' brother and wife, Carl and Rena Coffman. Sunday morning, the Bayless' drove to Big Springs and spent the night with another brother, Chester and Alene Coffman. The Halls and the Carl Coffmans drove to Fluvanna and spent the night with Ray and Olene Cunningham, all of the Coffman family. All of the Coffmans met at Lake Spence, Monday and fished, visited, played 42 and 96, and other games until Saturday. The Carl Coffmans left for home, the Bayless' and the Chester Coffmans drove back to Big Springs. The Bayless' drove home Sunday morning. The Cunninghams and the Halls remained at the lake for further fishing. The biggest fish was caught on a trot line by Ray, Carl and Cleo. It was a striper which weighed 11 pounds. There were over 100 fish caught. They had a wonderful time, and had a fish fry at the lake.

Mr. and Mrs. Edward Crume and her mother, Mrs. Irene Parker, drove to Hereford Friday, to visit her sister, Mrs. Vida Cash.

E.O. Battles is a patient in the Methodist Hospital in Lubbock.

Mr. and Mrs. J.D. Bayless stopped at the Fina station in Big Springs, where his niece and husband, Red and Jean Sullivan work and visited them. They also visited her niece, Barbara and Gean Bryant, who have a new rock home at Big Springs.

Mrs. Dale Nichols, Mrs. Etta Layton, Mrs. Bill Key, Mrs. Ina Roberts, Mrs. Sid Key, Mrs. J.E. Layton, Mrs. Buford Peterson, Mrs. Mike Heady, Mrs. Chester

Petrie and Mrs. Johnny Cox attended the Five Area Associational State Leaders meeting at the First Baptist Church in Lubbock, Tuesday.

Rain received in the area with strong winds and hail

was received last Tuesday. Amount was .7 inch of rain, in the south east of Enochs, hail broke out windows and damaged roofs of houses.

Mrs. Oleta Burris of Wellman, visited Mrs. Etta

Layton, Sunday afternoon. She has been to Muleshoe and was in route home.

Mr. and Mrs. Dale Nichols also, Mr. and Mrs. Kenneth Corbell of Lubbock, did some fishing at Lake Amestad and Pecos River Tuesday thru Friday.

Mr. and Mrs. E.N. McCall visited with their daughter, Mrs. Brenda George and family, and Mrs. Dolores Mosser and family, while they all celebrated their Dad's birthday.

Mrs. Winnie Byars is home from staying with the Gerald Byars again, at the hospital at Crosbyton where Gerald is still a patient, very ill.

J.E. Layton celebrated his birthday Sunday, with a birthday dinner at their home. Other guests were, his mother, Mrs. Etta Layton, Julie Carlisle and her sister.

Mrs. Alberta Bryant of Littlefield attended church at the Baptist Church, Monday morning and had dinner at the church and visited in the home of the J.D. Bayless' in the afternoon.

## State-Owned Cabin Permits Up For Drawing

On December 7, 1982, at the regularly scheduled meeting of the School Land Board in Austin, Texas, the General Land Office and School Land Board will conduct a public drawing to grant permits for the use of state-owned cabins or previous locations on coastal public lands. This year there are 25 cabins available; three in Galveston County, ten in Brazoria County, two in Calhoun County, two in Nueces County, two in Kenedy County, one in Kleberg County, and five in Cameron County. These structures may be used for non-commercial, recreational purposes only.

Those who wish to participate in this free drawing must write to the General Land Office for instructions and application card. All inquiries must be addressed to: Cabin Permit Public Drawing

Coastal Division  
General Land Office  
1700 North Congress  
Austin, Texas 78701

Applicants will receive a listing of the available cabins including location on approximate location, square footage, annual rental rate, a sample contract, and rules governing cabin usage. Each of the cabins to be included in the drawing has been marked with a large fluorescent orange "X" painted on the side.

As a result of Hurricane Allen, only wooden pilings remain at numerous locations, and in some instances even the wooden pilings are absent. Under these circumstances applicants will receive a listing of permissible locations for cabin reconstruction, allow-

able square footage, annual rental rates, a sample contract, and rules governing cabin usage.

Participants must be at least 18 years of age, and each may apply for only ONE cabin. Winners will be notified by mail and will have until January 31, 1983, to submit the necessary fees (\$10.00 filing fees plus annual rental and signed contracts to the General Land Office. No cabin may be used until the General Land Office has received the required fees and contract, and no cabin may be reconstructed before written approval has been received from the General Land Office. The Public Drawing Application Card must be received in the General Land Office by December 1, 1982.

**Rent A Video Disc Player Overnight !**

**ZENITH VIDEO DISC PLAYER**

We Now Have "On Golden Pond", Available.  
Disc Exchange Club Plan Available.

**Wilson**  
117 MAIN Appliances 272-5531

**WEANED SOLD RE-SOLD SHIPPED**

**STRESSED!**

When you worm cattle going on to wheat, use TBZ<sup>®</sup>, the no-stress, no-setback cattle wormer. You won't see muzzle foam or tremors—just cattle that can settle down and begin gaining weight.

**MSD AGVET**  
Division of MERCK & CO., INC.  
Rahway, New Jersey 07065, U.S.A.

TBZ (thiabendazole) is a registered trademark of Merck & Co., Inc.

**TBZ cattle wormer, no stress, no setbacks.**



# BUYING? SELLING? CHECK OUT THE...

# CLASSIFIED ADS

WE RESERVE THE RIGHT TO CLASSIFY, REVISE OR REJECT ANY AD.

NOT RESPONSIBLE FOR ANY ERROR AFTER AD HAS RUN ONCE.

**DEADLINE FOR CLASSIFIED ADS IS TUESDAYS AND FRIDAYS 11:00 A.M.**

## PERSONALS

Want to do babysitting in my home. Call 272-3222. 1-30t-tfc

WILL DO babysitting in my home. Drop-ins are welcome. 272-5209. 1-39S-10TP

## ASSOCIATION FOR RESEARCH AND ENLIGHTENMENT

Better known as, EDGAR CAYCE Study Group, will organize October 19, 1982. Call 965-2731 or write: High Acres Rt. 1 Box 72 Friona, Tx. 79035 1-39S-TTC

## NEED CREDIT?

Information on receiving Visa, Mastercard, with no credit check. Other cards available. Free brochure. Call Personal Credit Service (602) 946-6203 Ext. 0511. 1-40T-2TPTP

## INSTANT CREDIT

Living room group or Bedroom set. \$699.95, \$75.00 down, \$60 per month. Baker Furniture, 108 E. Ave. B, 272-4000. We tote the note. 1-16t-tfc

## Call 272-4536 To Place Your Want Ads

WILL DO babysitting in my home. Call 272-5644. 1-41T-2TP

Training and conditioning for sale or show. Let us put the polish and finish on your horse. Well-groomed animals bring higher sale prices. Call 272-5317 after 6 p.m. Reasonable rates. 1-34t-tfc

Adult Water color classes 9:30 - 12:30 a.m. Beginning Oct. 12 6 weeks

Adult Oil Painting Monday night 6:30 - 9:30 Beginning Oct. 18 6 weeks

Teenager Oil On Tuesdays Beginning Oct. 19 4:15 - 6:15 8 weeks

Adult Basic Drawing Thursday nights 6:30 - 9:30 p.m. 6 weeks.

Rheata White Studios 800 W. Amer. Blvd. 272-3889 or 272-4696 1-41S-2TC

## HELP WANTED

MAKE CHRISTMAS MER-RIER. Sell Avon! Earn Extra \$\$\$ for gifts. Call 272-3208 or 794-3498, Lubbock, Tx. 3-40S-9TC

WANTED: Part-time clerk-typist. Must have typing speed of 60 wpm or more. Write Part-time % Muleshoe Publishing, Box 449, Muleshoe, Tx 79347. 3-40s-tfc

## PERSONALS

DISTRIBUTORSHIP AVAILABLE: National Manufacturing Company based in Denton, Texas, is looking for distributors to handle complete line of low cost steel homes - single and multi-family one and two story and tri-level. Tremendous benefits and earning potential. Show homes available. \$3,000. investment available. Call Mr. Brown (817) 566-1389. 3-41S-2TC

## APARTMENTS

SARATOGA GARDENS 1300 N. Walnut-Friona Phone 247-3666 NOW, 1 MONTH FREE RENT 1, 2 or 3 bedroom apartments, modern, wall to wall carpet, heating/cooling, kitchen equipped, laundry facilities, parking. Low rent for needy families. Call Collect. 8-37T-TFC

## REAL ESTATE

FOR SALE: by owner. 80 acres, irrigated land with good water, large barn underground pipe. Make an offer. Call 272-5578 or 272-3658, evenings or week ends. 8-37T-TFC

FOR SALE: by owner. 2 bedroom house on corner lot. Newly painted and paneled. Call 272-5578 or 272-3658, evenings and week ends. 8-37T-TFC

FOR SALE: by owner. 2 bedroom house with utility and garage, newly redecorated. Call 272-5578 or 272-3658, evenings and week ends. 8-37T-TFC

HOUSE FOR SALE: 3 BR, 1 1/4, LR, kitchen-dining combination, den, ample storage, corner lot, near 3 schools, 1928 sq. ft. living area, 621 West 6th. Phone 272-4732 days or 272-4827 evenings. 8-2s-tfc

LARGE 3 BR, 2 bath home \$67,500. Immediate possession, excellent terms. Excellent financing. Call your local realtor, owner broker. 806-794-5595. 8-31s-tfc

FOR SALE: by owner. 3 bedroom house, 2 baths, recreation room, library, 2 fireplaces, storeroom, large patio and carport. Call 272-5578 or 272-3658, evenings and week ends. 8-37T-TFC

HOUSE FOR SALE: 3 BR brick home for sale or rent. Hyatt Addition, Earth, Texas. Assumable loan or owner will finance. 257-3721. 8-28t-tfc

## Henry Realty

2 BR house, 2 bath. Stucco, 100 ft. lot. Ideal for apartment housing. Located near grade school and downtown.

Small acreage 3 miles east of Muleshoe on highway.

2 BEDROOM Stucco. Storm cellar with storage.

Excellent location, 3 BR, 2 bath brick home in Richland Hills Addition. Living room and large den with fireplace. Priced to sell.

111 W. Avenue B, Muleshoe 272-4581 8-28t-tfc

LARGE FARM HOUSE for sale: On payment, 7 1/2 miles West, on 1760. Shown by appointment only. Call 272-3830. 8-40T-4TP

FOR SALE: 3-1 1/2-2, covered patio, skylight, utility, cathedral ceiling. 1002 W. 7th. 272-4737. 8-39T-TFC

SMALLWOOD REAL ESTATE 232 main 272-4838 See us for Buying or Selling 8-39S-TTFC

KREBBS REAL ESTATE 201 W. Ave. C Appraisals 272-3191 Serving Muleshoe Area 35 years. We Appreciate Your Business. 8-tfc

Bingham & Nieman Realty 116 E. Avenue C 272-5285 nights 965-2488 "We Appreciate Your Business!" George & Dianne Nieman 8-49t-tfc

HOME SWEET HOME Need a home... but can't afford the SWEET? Maybe now you can! Custom Built 3 Bedroom Brick Homes Small or No Down Payment! Low Monthly Payments! 272-3142 REID REAL ESTATE Rex Harris, Broker 8-41T-TTFC

## USED CARS • TRUCKS

1974 Ranchero 500. All new spoke wheels and tires. 272-5168 after 5 p.m. 9-34t-tfc

FOR SALE: 1973 Mercury Marquis. Call 946-3654. 9-38T-TTFC

## FARM EQUIPMENT

FOR SALE: 3 sets of 6-stage, 10 L.B. Peerless Bowls. Used 2 years. Approximately \$500. GPM at 300 Ft.. T.D.N. \$900 to \$1300. 3 Redco bowls, 900 GPM at 300 ft. T.D.N. We also have Column pipe, Gear heads, Discharge heads and 10 KW E phase Alternators. Call 965-2781. 10-38T-12TC

## FOR SALE OR TRADE

FOR SALE: Tomatoes and Bell Peppers, 4 miles West on 1760, & 1 mile North and 1/4 mile back, West. Robert or Frankie Lunsford. 272-3748. 15-38S-TFC

## HONEY FOR SALE

Nick Landers 334 W. Ave. J. 272-3096 11-28S-TFC

FOR SALE: 66 gal. High pressure propane tank for a pickup. 946-3654. 11-40T-TFC

AKC Miniature Schnauzer puppies. \$150.00. Have had shots. Clovis, 763-5801 11-41T-TFC

1967 12x65 2 BR Mobile home. 1 1/2 bath. \$5,900. 272-5323. 205 W. 7th. Muleshoe. 11-41S-2TC

## HOUSEHOLD GOODS

SEWING MACHINES: Viking, New Homes, and others. Save up to \$300.00 on 1982 close-out machines. Repair all makes and models. Pope's Sewing Center. 505-762-6006. 600 Prince Clovis N.M. 12-41S-2TC

2ND AND MITCHELL quality used furniture and upholstery. We appreciate your business. (505)-762-1111. Clovis, N.M. 12-41S-3TC

FRANK'S REFRIGERATION APPLIANCE & SERVICE PARTS & REPAIR 315 W. 3rd. Ph. 272-3822 15-7T-TFC

BURROWS UPHOLSTERY AND FURNITURE REPAIR 209 W. 2nd phone 272-4255 12-44s-tfc

## PROPERTY FOR LEASE

NOW LEASING: Las Bresas Mobile Park. Large spaces for all size mobile homes. Reasonable rates. Conveniently located at Birch and Ithaca Streets. Call 272-5696. 13-33s-tfc

LEASE - 260 Acres irrigated land. Located 6 miles West of Earth, Tx. If interested call (806)-797-9889. 13-41T-TFC

TRAILER SPACE for Rent: Contact Tommy Gunstream, 272-4515 or 272-3006. 13-40S-TFC

80 Acres For Lease Phone 965-2647 13-41S-3TP

## MISCELLANEOUS

DAVIS COMMERCIAL PUMPING "If it's part liquid & not over 20 ft. deep we'll try to drain it."

Phone 806 272-3467 P. O. Box 71 1510 W. Ave. D Muleshoe, TX 15-29s-stfc

## Rent-To-Own Color TV

Stereos Microwave Ovens Dryers Refrigerators Freezers Washers Dishwashers No Service Expense No Interest To Pay

Wilson Appliance MULESHOE 272-5531 117 Main

CUSTOM BUILT storm windows and doors. Call Carl Ellington, 272-5402 after 5:00 for appointment and estimate. 15-37S-TFC

WANTED TO BUY: Used irrigation equipment. 3 in. and 4 in. x 30 ft. sprinkler pipe. Used pivots, 5 in. side rolls with 5 ft. wheels. Massey Irrigation, Lubbock. 806-793-3121 or 793-4452. Will pay cash. 15-41S-TFC

WE BUY USED FURNITURE AND APPLIANCES CALL 272-3030 HARVEY BASS APPLIANCE 18S-TFC

Now through Nov. 20, 1982, Big T Pump in Friona will do your pump work at 15% discount. On all work done, if paid within 10 days. Contact: Dean Butler at Big T Pump for more details. Big T Pump Inc. 247 - 3311 Res. 247-2171 15-41S-11TC

MEN AND WOMEN 17-62 TRAIN NOW FOR CIVIL SERVICE EXAMS No High School Necessary Positions Start As High As \$9.38 HOUR \*POST OFFICE \*CLERICAL \*MECHANICS \*INSPECTORS KEEP PRESENT JOB WHILE PREPARING AT HOME FOR GOVERNMENT EXAMS Write & Include Phone No. To: National Training Svc., Inc. c/o Muleshoe Publishing Box 449 Muleshoe, Texas 79347 15-39T-6TTPS

GARAGE SALE: Sat. Oct. 16, 9 a.m. - 6 p.m. Sun. Oct. 17, 11 a.m. - 4 p.m. 1714 W. Ave. G. Built-in dishwasher, Fire-place screen, 36"x30" and equipment, New carpet remnant, brown plush, (size 6'x10 1/2' with pad), Household items, kitchen items, bed linen, bath linens, men's clothes - work shirts, boots, slacks, jackets. Ladies items - clothes, sizes 10-14, shoes, boots, maternity clothes. Youth - shoe roller skates, size 6, toys. Infant and children items - baby bed, mattress, bumper pad, linens, walker, stroller, car seat, infant seat, diaper bag, bottles, shoes, etc. Clothes sizes, newborn thru 12-14 months. Toys and toy box. 15-41T-1TC

Plaintiff seeks the appointment of a receiver of the interest had, owned or claimed by Defendants in acres, more or less, with authority to execute and deliver to lessee an oil, gas and mineral lease covering said mineral interest had, owned or claimed by said Defendants upon such terms and conditions as the Court may prescribe, all as authorized by and in accordance with the provisions of Article 2320 (b), Revised Civil Statutes of Texas, 1925, as amended. If this Citation is not served within ninety (90) days after date of its issuance, it shall be returned unserved. the oil, gas and other minerals in and under Labors 14, 15, 16 and 17, League 178, Motley County School Land, Bailey County, Texas, containing 708.4 Issued under my hand and seal of said Court at office in the City of Muleshoe, this the 23rd day of September, 1982. /s/ Nelda Merriott Nelda Merriott Clerk of the District Court 154 Judicial District Bailey County, Texas pub. not.-39T-4TTC

## LIVESTOCK

FOR SALE: Excellent, proven barrel and pole mare. Has also been used some on cattle. Call 272 - 5317 after 6 p.m. 16-39T-TFC

## MISCELLANEOUS

## Best Of Press

At Dawning An alarm clock has been described as a mechanism to scare the daylight into you. -News, Boone, Ia.

Best Smile The smile that we appreciate most is the one that comes out of a sober face. -Sentinel, Hartley, Ia.

## SEED & FEED

FOR SALE: Vona Wheat. Please call 806 - 265-3482. Hub. 17-37T-TFC

BALED HEGARI - For Sale: Small stalk, good grain and clean. 272 - 3292. 11-41S-2TSC

## LEGAL NOTICES

CITATION BY PUBLICATION NO. 4851

THE STATE OF TEXAS TO: R.J. OIL COMPANY, a corporation, and its unknown shareholders and directors, Defendants in the hereinafter styled and numbered cause:

You and each of you are hereby commanded to appear before the Honorable District Court of Bailey County, Texas, 154th Judicial District, at the Court-house in Muleshoe, Texas, at or before 10:00 A.M. on the first Monday after the expiration of 42 days from the date of issuance hereof; that is to say, on or before 10:00 A.M. on Monday, the 5th day of November, 1982, and answer the Petition of GETTY OIL COMPANY, Plaintiff in Cause No. 4851, styled GETTY OIL COMPANY vs. R. J. OIL COMPANY, in which GETTY OIL COMPANY is the Plaintiff and the parties herein named as Defendants are Defendants, which Petition was filed in said Court on the 6th day of August 1982, and the nature of which suit is, as follows:

Plaintiff seeks the appointment of a receiver of the interest had, owned or claimed by Defendants in acres, more or less, with authority to execute and deliver to lessee an oil, gas and mineral lease covering said mineral interest had, owned or claimed by said Defendants upon such terms and conditions as the Court may prescribe, all as authorized by and in accordance with the provisions of Article 2320 (b), Revised Civil Statutes of Texas, 1925, as amended. If this Citation is not served within ninety (90) days after date of its issuance, it shall be returned unserved. the oil, gas and other minerals in and under Labors 14, 15, 16 and 17, League 178, Motley County School Land, Bailey County, Texas, containing 708.4 Issued under my hand and seal of said Court at office in the City of Muleshoe, this the 23rd day of September, 1982. /s/ Nelda Merriott Nelda Merriott Clerk of the District Court 154 Judicial District Bailey County, Texas pub. not.-39T-4TTC

## LEGAL NOTICES

NOTICE OF PUBLIC SALE On October 15, 1982, at 2:00 P.M. at the door of the Bailey County Court-house, there will be sold for cash certain real property located in Bailey County, Texas, together with all rights, titles, equities and interests attached thereto, and more particularly described as follows: All of the Northeast Quarter (NE/4) of Section Twenty-Two (22), Block X, W.D. & F.W. Johnson's Subdivision, Bailey County, Texas, together with all improvements located thereon.

This sale is held pursuant to an Order of Sale entered on the 10th day of September, 1982, by the 287th Judicial District Court of Bailey County, Texas, in a partition suit filed under Cause Number 4701 and styled LEONA PATTERSON VS. DONALD PATTERSON. DATED at Muleshoe, Texas, this 28th day of September, 1982. MULESHOE STATE BANK Receiver By: /s/ Robert E. Finney Robert E. Finney, President pub. not.-41T-1TC

## WHO KNOWS?

1. What famous sea captain lost a leg to a whale?
2. Helena is the capital of which state?
3. Who was the first U.S. president to attend an international conference abroad?
4. What was Mark Twain's real name?
5. Who presides over the Senate?
6. What was the salary of a U.S. Senator in 1953?
7. What did the Dirigible Graf Zeppelin accomplish in October, 1928?
8. When did Nikita Khrushchev lose his political power?
9. How many gallons of water are there in 1 inch of rain over 1 acre surface?
10. Which two states claim the birthplace of Andrew Jackson?

## LEGAL NOTICES

NOTICE OF PUBLIC SALE On October 15, 1982, at 2:00 P.M. at the door of the Bailey County Court-house, there will be sold for cash certain real property located in Bailey County, Texas, together with all rights, titles, equities and interests attached thereto, and more particularly described as follows: All of the Northeast Quarter (NE/4) of Section Twenty-Two (22), Block X, W.D. & F.W. Johnson's Subdivision, Bailey County, Texas, together with all improvements located thereon.

This sale is held pursuant to an Order of Sale entered on the 10th day of September, 1982, by the 287th Judicial District Court of Bailey County, Texas, in a partition suit filed under Cause Number 4701 and styled LEONA PATTERSON VS. DONALD PATTERSON. DATED at Muleshoe, Texas, this 28th day of September, 1982. MULESHOE STATE BANK Receiver By: /s/ Robert E. Finney Robert E. Finney, President pub. not.-41T-1TC

## NEWS VIEWS

Donald T. Regan, Treasury Secretary: "Consumers, seeing the high rate of unemployment, plus the fact that they aren't convinced yet that inflation will stay down, have decided to save more of the tax cut."

John Hughes, State Department spokesman, on Beirut massacre: "If you assume military control (Israel) of an area, you are responsible for what happens there."

Bennett Johnston, Senator (D-La), on school prayer bill: "It is now time to face up the fact that (prayer legislation) is not going anywhere."

Allen Sinai, senior economist, Data Resources, Inc.: "We're now returning to the lower plateau of inflation because of the prolonged recession."

Answers To Who Knows  
1. Captain Ahab in Melville's Moby Dick.  
2. Montana.  
3. Woodrow Wilson - at the Versailles peace conference in 1919.  
4. Samuel Clemens.  
5. The Vice President.  
6. \$12,500 a year, with \$2,500 expense allowance.  
7. It flew from Friedrichshafen, Germany to Lakehurst, N.J., October 11-15 and returned October 29-31.  
8. Approximately 27,143 gallons.  
9. 10 North and South Carolina.

## CARD OF THANKS

The family of Florence Holmes wish to express our sincere appreciation for all the many acts of kindness by our friends in the final illness and death of our Mother and Grandmother. Special appreciation to Dr. Bruce Purdy, the nursing staff at West Plains Medical Center and the Rebekah Lodge. May God's richest blessings rest upon each of you.

## CARD OF THANKS

The family of Berntha Beene would like to thank everyone for their many acts of kindness during the illness and loss of our loved one. The flowers, food, cards, phone calls and especially your prayers were greatly appreciated.

Fred Beene, Chris and Jean Smith, Chris and Jean Smith & Family, Joe and Sara Luce & Family, Eddie and Pat Beene & Family





# Food Value Days

ROGER STAUBACH



Double S & H Green Stamps Every Wednesday



**MARYLAND CLUB**  
ALL GRINDS COFFEE  
Reg. \$2.09  
**\$1.59**  
1 LB. CAN With Bonus Booklet

**GOLD MEDAL**  
KITCHEN TESTED FLOUR  
ALL PURPOSE ENRICHED FLOUR  
With Bonus Booklet  
**5 LB. BAG**  
**39¢**  
Reg. 89¢

**SPAM**  
LUNCHEON MEAT  
**HORMEL SPAM**  
12 OZ. CAN  
**89¢**  
Reg. 1.39 With Bonus Booklet

**ICE** NOW AVAILABLE AT YOUR THRIFTWAY STORE  
**FALL WAREHOUSE SALE**  
ASSORTED/DECORATOR/ART  
**SCOTTOWELS**  
Reg. 59¢  
**BIG ROLL**  
**9¢** With Bonus Booklet  
VASELINE LOTION  
**INTENSIVE CARE**  
10 OZ. BTL.  
**\$1.29**

**SAVE NOW!**  
Chef Boy-Ar-Dee  
**PIZZA MIX**  
CHEF BOY AR DEE SAUS/PEPPERONI PIZZA EACH BOX **\$1.89**  
CHEF BOY AR DEE CHEESE PIZZA EACH BOX **\$1.59**  
CHEF BOY AR DEE 2 CHEESE PIZZAS 28 OZ. BOX **\$1.99**

**HANDI WIPES**  
ASSORTED COLORS  
8 CT. PKG. **\$1.19**  
50% OFF LABEL-LIQUID DETERGENT  
**DYNAMO** 64 OZ. BTL. **\$3.29**  
35% OFF LABEL  
**FRESH START** KING SIZE **\$3.29**  
BUY 3 GET 1 FREE  
**IRISH SPRING** 4 BATH BARS **\$1.69**

**BANANAS** LB. **25¢**  
CENTRAL AMERICAN  
**APPLES** WASHINGTON RED or GOLDEN DELICIOUS LB. **49¢**  
FLORIDA RUBY RED GRAPEFRUIT LB. **27¢**  
EAST TEXAS YAMS LB. **35¢**  
PURPLE TOP TURNIPS LB. **35¢**  
CALIFORNIA CELERY HEARTS EACH LARGE PKG. **65¢**  
GREEN TABLE CABBAGE LB. **12¢**

BETTY CROCKER BLUEBERRY **MUFFIN MIX** 13 OZ. PKG. **\$1.19**  
BETTY CROCKER READY TO SPREAD **CANNED FROSTING** 16 OZ. CAN **\$1.39**

25% OFF LABEL-LIQUID  
**PALMOLIVE**  
22 OZ. BTL. **\$1.09**

U.S.D.A. CHOICE BEEF  
**CHUCK ROAST**  
BLADE CUT  
lb. **\$1.28**  
100% PURE  
**GROUND BEEF** lb. **\$1.18**

ROUND BONE U.S.D.A. CHOICE  
**SHOULDER ROAST** lb. **\$1.68**  
BONELESS U.S.D.A. CHOICE  
**SHOULDER ROAST** lb. **\$1.78**  
BONELESS U.S.D.A. CHOICE  
**SHOULDER STEAK** lb. **\$1.98**  
U.S.D.A. CHOICE BEEF  
**7-BONE ROAST** lb. **\$1.48**  
LEAN CUBES  
**STEW MEAT** lb. **\$1.98**  
BONELESS U.S.D.A. CHOICE  
**CHUCK ROAST** lb. **\$1.68**  
BONELESS U.S.D.A. CHOICE  
**CHUCK STEAK** lb. **\$1.88**

BETTY CROCKER ASSORTED **HAMBURGER HELPER** BOX **99¢**  
BISQUICK BUTTERMILK BAKING MIX **BAKING MIX** 40 OZ. PKG. **\$1.69**

BETTY CROCKER SUPERMOIST LAYER  
**CAKE MIXES**  
18 OZ. PKG. **79¢**

**HEALTH & BEAUTY AID SAVINGS**  
30% OFF LABEL  
**AIM TOOTH PASTE** 8.2 OZ. TUBE **\$1.59**  
40% OFF LABEL  
**SIGNAL MOUTH WASH** 24 OZ. BTL. **\$2.19**  
NIGHTTIME COLD MEDICINE  
**VICK'S NYQUIL** 10 OZ. BTL. **\$3.99**  
VICK'S COUGH SYRUP 3 OZ. BTL. **\$2.29**  
REGULAR NASAL SPRAY  
**SINEX** ½ OZ. BTL. **\$1.99**  
LONG ACTING NASAL SPRAY  
**SINEX** ½ OZ. BTL. **\$2.19**  
ASSORTED SHAMPOO  
**AGREE** 16 OZ. BTL. **\$1.99**  
ASSORTED CONDITIONER  
**AGREE** 16 OZ. BTL. **\$1.99**

**THRIFTY GROCERY BUYS**  
NABISCO CHOCOLATE CHIP COOKIES  
**CHIPS AHOY!** 19 OZ. PKG. **\$1.79**  
NEW SIZE FOLGER'S COFFEE  
**CRYSTALS** 8 OZ. JAR **\$3.49**  
DEL MONTE HALVED  
**BARTLETT PEARS** 17 OZ. CAN **79¢**  
DEL MONTE SLICED/CHUNK/CRUSHED/TIDBITS IN NATURAL JUICE  
**PINEAPPLE** 15 ¼ OZ. CANS **59¢**  
DEL MONTE EARLY BLENDED  
**SWEET PEAS** 2 17 OZ. CAN **89¢**  
DEL MONTE WHOLE LEAF  
**SPINACH** 2 15 OZ. CANS **89¢**  
DEL MONTE  
**PINEAPPLE JUICE** 46 OZ. CAN **\$1.19**

DEL MONTE CUT/FRENCH SLICED  
**GREEN BEANS**  
16 OZ. CANS **\$1.00**

WESTERN STYLE  
**VAN CAMPS BEANS** 15 ½ OZ. CANS **39¢**

CAT FOOD  
**LITTLE FRISKIES** 3 6 ½ OZ. CANS **\$1**

**FROZEN FOOD SPECIALS**  
STILWELL WHOLE  
**STRAWBERRIES** 16 OZ. PKG. **\$1.59**  
DOWNY FLAKE HOMESTYLE BONUS PAK  
**WAFFLES** 12 CT. PKG. **79¢**  
SENECA  
**APPLE JUICE** 12 OZ. CAN **89¢**

**FRESH DAIRY SPECIALS**  
PILLSBURY BTRMLK/CNTRY. STYLE  
**BISCUITS** 4 7 ½ OZ. CANS **\$1.00**  
WHIPPED MARGARINE  
**PARKAY** 2-8 OZ. CUPS **79¢**  
KRAFT CRACKER BARREL MILD/MELLOW  
**STICK CHEESE** 10 OZ. PKG. **\$1.69**

With Bonus Booklet  
**CHILI**  
15 OZ. CAN **39¢**  
Reg. 59¢

**DR. PEPPER**  
With Bonus Booklet  
16oz. **99¢**  
Reg. \$1.49



Double S & H Green Stamps Every Wednesday

# SERV-ALL THRIFTWAY

We're proud to give you more!

STORE HOURS:  
8 am-9 pm Weekdays & Sat.  
9am-9pm Sunday

PRICES EFFECTIVE OCT. 14-20, 1982  
WE RESERVE THE RIGHT TO LIMIT QUANTITIES  
WE ACCEPT FOOD STAMPS