

MULESHOE JOURNAL



20¢

'The Community of Opportunity-Where Water Makes the Difference'

Weather

August 15 100 60
August 16 100 59
August 17 100 63

Volume 60, No. 33

10 Pages Today

Published Every Thursday at Muleshoe, Bailey County, Texas 79347

Thursday, August 18, 1983

Around Muleshoe

The annual Meet The Mules night is scheduled for Tuesday, August 23 at 8 p.m. at Benny Douglas Stadium in Muleshoe. More details will follow regarding the event in the Sunday edition of the Journal.

The Muleshoe Mules will scrimmage Shallowater at 5 p.m. on Thursday, August 18 here in Muleshoe at Benny Douglas Stadium.

Rains in the southern part of Bailey County last week gave thirsty crops a badly needed drink, though the area covered was somewhat spotted. In and around Maple and Goodland and north from Maple residents reported up to 2 inches of moisture falling. In most other parts of the county, however, only hints of rain have been evident, teasing county farmers into the hopes of more to come. The lack of a general rain over the entire area still remains in evidence by the hot temperatures and dry farmlands.

The Muleshoe Volunteer Fire Department was called to a house fire at 1907 Avenue H on Tuesday, August 16 about noon. The dwelling belonged to Randall Field and a spokesman indicated that the fire had originated in the attic of the home. No estimates of damages nor cause had been determined at the time of this report.

Rotary Gets Football Preview

The Muleshoe Rotary met at noon Tuesday in the Civic Center for a regular meeting and program which was presented by Dr. Bruce Purdy. Dr. Purdy introduced Coach Windy Williams, head coach and Athletic Director at Muleshoe High School, who gave an up-to-date resume on the forthcoming football season and the Muleshoe Mules Capabilities.

Williams stated that two-a-day practices were

Longhorn's Strength Lies In Offensive Linemen

The Lazbuddie Longhorns have completed the first week of fall football practice with twenty candidates out for the team this year. Six seniors and 12 lettermen will return to the Longhorn squad under the guidance of Rufus "Bo" Williams who will be serving his first year as Lazbuddie as Head Coach and Athletic Director.

Williams will rely heavily on the experience and leadership of the six seniors: Ralph and Noe Gonzales both running backs; Lee Scott, center; Kevin Fuqua, tight end; Roy Gonzales, guard; Dewayne Ivy, tackle; and Larry Nail, fullback.

New Head Coach Williams told the Journal that the 'Horns were learning a new offensive system and it had put them behind schedule. However, the Lazbuddie crew is picking up the new tactics well. Williams expects the Longhorns to be fairly quick, but would like to see a little more size in his team. With a short lineup of players, Williams says that the Longhorns can't afford to lose any players to injuries.

The beginning schedule for the Longhorns includes a scrimmage with the second ranked team in the State, Anton, along with



'BEST OF SHOW' WINNER...R.B. Cunningham drove his mules and wagon to a first place win in the second annual Mule Days Festival held here last Saturday. The festival which benefits Girlstown, U.S.A. was honored by having the Mules Day Festival Queen, Pam Moore riding on the Cunningham wagon. Pam is a resident of Girlstown at Whiteface.

'83 Mule Days, Girlstown Benefit Deemed Success

Though the tallies have not yet been run, by all accounts, the Mule Days Benefit for Girlstown was a success. The crowds which started off with several hundred people early last Saturday morning, by nightfall had built to well over a thousand spectators and contestants in the various contests and events.

Those who were early risers on Saturday could have seen six hot air balloons take to the skies and watched the preparations necessary for the trip. An omelet breakfast, served by the Bailey County 4-H's was enjoyed by over one hundred early risers.

Winners of the partnership golf tournament which kicked off at the Muleshoe Country Club at

8 a.m. included first place - Stan Wilson and Carroll Precure; second place, Micky Wilson and Doug Precure with third; Jerry Harrison and Shirley Hicks. First place through third received four, three and two gold balls as prizes respectively. Fourth through 13th place received one ball each. A total of 13 teams entered the competition.

In the 10K run, headed up by Lonnie Adrian, the overall winner of the two mile race was Ronnie Logsdon. Overall winner of the 6.2 mile race was Muleshoe's own track star, Tony Luna. David Medlin won the 2 mile race in the 14 and under age group and Logsdon won the 2 mile in the 15 to 19 age group. Martin Mendoza placed

second in the 2 mile 15 to 19 age group.

For turtle enthusiasts, a very serious event took place at mid morning at the Smith Barn. Turtle racers in all forms, fashions and in all age groups gathered to pit their turtle against all comers. Winner of the big event was Ricky Rasco.

The balance of the morning was filled with a west-

Cont. Page 6 Col. 1

Safety Stressed As School Days Begin

H. John Fuller and Tom Jinks, Muleshoe School officials, would like to caution everyone relative to safety measures to protect children riding school buses and also children walking to school.

All drivers of school buses have completed a 20 hour course taught by David Gray, a high school instructor, therefore the drivers are certified by the Texas Education Agency.

In general these are the laws that should be obeyed to assure protection of all students: (1) Obey speed limits, especially in the school zones -- the limit is 20 miles per hour (2) Drivers stop completely for unloading students when red flashing lights on the bus are in operation (3) Watch out for small children on their way to and from school (4) Make complete stops, especially where crosswalks are painted (5) Drive as if your child were a pedestrian or a school bus rider (6) Parents should have their children at the assigned pick-up points on time or a little ahead of time (7) Parents of Dillman Elementary students need to help supervise your children at loading or unloading zones and at your pick-up or drop-off points. Please don't let these children cross a highway by themselves. (8) Please do not park in loading zones at Dillman Elementary or Mary DeShazo Elementary Schools. (9) Drive as if YOUR child's life depended on it -- it does!

The Muleshoe School District operates 15 buses and covers 1100 miles in the area each day. This is

offices, are eligible for either free or reduced price meals at 40 cents for lunch and 30 cents for breakfast. To apply for these free meals, an application may be obtained from your child's respective school principal or office and filled out. All questions on the form must be answered, it must be signed and returned to the school. Each application must contain the total household income, the names of all household members, social security numbers of household members 21 years or older and the signature of an adult household member before it can be processed.

There are other various Cont. Page 6, Col. 6

Cotton Bid Signup Plan Ends August 24

'84 Cotton Program Comment Requested

The U.S. Department of Agriculture plans to announce the 1984 upland cotton program on or before November 1, with final decisions to be based on the public's recommendations and the most current data on U.S. and world crop conditions and supply and demand.

According to Everett Rank, administrator of USDA's Agricultural Stabilization and Conservation Service, the deadline for receiving comments is October 4.

Rank said USDA is asking for comments on the following:

-- the base loan rate for the basic grade of upland cotton (strict low middling 1-1/16 inch, micronaire 3.5 through 4.9) at average U.S. location. This base loan rate -- which by law cannot be less than 55 cents per pound -- will be determined according to a statutory formula using domestic and world price data.

-- the 1984 target price and the appropriate level of advance deficiency payments, if any.

-- whether USDA should establish an acreage reduction program and, if so, the level of reduction.

-- the appropriate national program acreage and voluntary reduction percentage if no acreage re-

duction program is announced.

-- whether USDA should establish a paid land diversion program and if so, the percentage of the diversion and level of payment.

-- whether there should be a payment-in-kind program and if so, the provisions of the program.

-- whether to require offsetting compliance if an

Cont. Page 6 Col. 1

Schools' Budget Compares With State

Texas increased spending on local public schools by \$900 million last year, as trustees in 1,071 school districts adopted school budgets totaling \$8.5 billion. That provided more than \$300 in additional funds for each of the 2,678,000 students in the state, according to the Texas Research League.

State foundation school aid was upped by \$345 million, but local property taxpayers were triggered for an additional \$425 million to pay for the increase. The remainder was funded by increases in special state and federal aid programs and by higher local fees and other revenue.

The figures come from the latest issue of *Bench Marks for 1983-84 School District Budgets in Texas*, an annual publication of the League. The Texas Research League is a private, nonprofit, Austin-based, educational corporation engaged in governmental research.

School budgets adopted for 1982-83 called for spending \$2,610.23 per student for current operations. Muleshoe ISD's budget provided for \$2,510.51 per student based on the 1581 students in average daily attendance in 1981-82.

Locally, the Muleshoe ISD's tax levy was decreased by -2.6 percent for 1982-83 as compared to a 14.8 percent increase for the average school district

in Texas.

The average salary for classroom teachers paid by Muleshoe ISD in 1981-82 was \$15,822 which was 10.9 percent above the minimum salary prescribed by the state. The average among all school districts in Texas was \$17,537 per classroom teacher, or 20.6 percent over the minimum. The legislature further increased the state minimum

Cont. Page 6, Col. 4

FARMER'S MARKET SATURDAY

There will be a farmer's market here in Muleshoe this Saturday, August 20, at the old Thornton Chevrolet used car lot on American Boulevard. The farmer's market will feature a variety of locally grown vegetables. It is scheduled to begin at 8:00 a.m. and will run through 12:00 noon, or until all of the produce has been sold. The farmer's market is being sponsored by the Muleshoe Chamber of Commerce and Agriculture. Any area vegetable grower who wishes to participate and has not been contacted should call the Chamber at 272-4248 before Saturday for additional details.

plus needed.

Following the fall-through of "Son of PIK", the USDA came under a rapid fire barrage from merchants, mills and especially producers when the announcement was made that producers without enough cotton in the loan to meet their PIK requirements would be required to relinquish - at loan level - their 1983 crop production to fill the shortages.

Farmers and producers who had sold 1983 crops and PIK cotton ahead, at prices above loan levels and merchants who had contracted cotton to mills could not deliver nor make good their promises if the USDA option ruling stood.

After much deliberation and discussion, this new more attractive bid procedure was initiated and the "Harvest for PIK" suspended for the time being.

Bailey County ASCS and other local and area ASCS offices began accepting bids from producers who are willing to trade loan cotton to the CCC in return for loan forgiveness plus a premium.

The new cotton program permits producers to submit bids "without regard to a maximum bid percent of the total bales offered." In addition, the USDA is prohibited from rejecting any bid on 1982 crop cotton which asks for a premium not in excess of two bales out of ten, unless USDA PIK requirements have been met by previously accepted bids. Bids will also be taken on 1980 and 1981 crop cotton, but at the discretion of the USDA.

Cont. Page 6 Col. 1

AAM Meet Scheduled

The American Agriculture Movement of Texas Inc., District 1, has scheduled a meeting at Duffer's Restaurant in Dumas, Texas on Saturday August 20th, 1983. There will be a meal to start at 7:30 p.m. with a business session to follow.

V.B. Morris, the Dist. 1 Delegate and the National Secretary for the American Agriculture Movement Inc. will report on the last months legislative session in Washington, D.C.

The cost of the target price freeze to the producers, 10% lowering of the

Cont. Page 6 Col. 1



LET 'ER RIP...Suspense was the name of the game Saturday as avid turtle racing fans calmly (?) awaited the start of the big race. All turtles were put under a wash tub and then turned loose with the first one reaching the outer circle of chalk being declared the winner. Ricky Rasco is now renowned for having the fastest turtle on four feet.



MULE DAYS

1983

In Muleshoe



MULE DAYS! **Girlstown U. S. A. Benefit**



SP Fair To Feature Old Time Fiddlers Contest

Fiddlers of all ages will be competing for cash awards and trophies during the 16th annual old time fiddlers contest, one of many free attractions scheduled during the 66th annual Panhandle South Plains Fair in Lubbock September 24-October 1.

The fiddle competition is scheduled to begin at 1 p.m. in Fair Park Coliseum on Sept. 25, according to general manager Steve L. Lewis.

Four age groups will vie for \$3,500 in prize money. Gwen Robison will serve as secretary and Tommy

T.L. Glasscock

Services Held

Here Tuesday

Services for T.L. "Red" Glasscock, 75, of Portales, N.M. were held at 11 a.m. Tuesday, Aug. 16 in the Muleshoe First United Methodist Church with the Rev. Bill Kent, pastor, officiating.

Masonic Graveside Services were conducted at Bailey County Memorial Park. Burial was under the direction of Ellis Funeral Home of Muleshoe. Glasscock died at 1:15 a.m. Monday in Roosevelt General Hospital.

A native of Wellington, Glasscock was born Aug. 18, 1907. He moved to Portales three years ago from Muleshoe where he had lived since 1924. He married Ardath Gilbreath. She died in November of 1978.

Glasscock was a farmer, and was a member of the Muleshoe First United Methodist Church, Muleshoe Masonic Lodge, The Ones of Portales, N.M. and the Portales Senior Citizens.

Survivors include three sisters, Mrs. Polly Cantrell of Harlingen, Mrs. Lela Poust of Austin and Mrs. June Dotson of Tucson, Ariz.; one brother, John Glasscock of Portales, N.M.; and numerous nieces and nephews.

Former Progress

School Teacher

Dies At Tulia

Services for Blanche Faye Gwyn, 75, of Tulia were held August 5. She died Aug. 2 at her home following a lengthy illness.

She was born Dec. 13, 1907 in Camp Spring, Tx. and married W.B. Gwyn, Jr. Nov. 30, 1935, in Lubbock. They moved to Tulia in 1961, from Amherst. She was a member of the First United Methodist Church, taught school at Progress 10 or 12 years.

Survivors include her husband; one son, W.B. Gwyn III, of Fort Worth; two sisters, Maggie Boone and Evelyn Boone, both of Snyder; one brother, Wayne Boone of Messa, Ariz. and two grandchildren. She was a sister in law of Doris Taylor and Byron Gwyn of Muleshoe.

Burger of Burleson will be master of ceremonies.

Age divisions include fiddlers up to 20, 21 to 49, 50

4-H Dog

Show Set

August 20

Texas' 4-H members are busy training and grooming their dogs to compete in the 13th Annual Texas 4-H Dog Show in San Antonio, Aug. 20.

Judging will start at 10 a.m. in the Lou Hamilton Community Center of Lady Bird Johnson Park, located at 10700 Nacogdoches. The park is just north of the city, some two miles from Loop 410 N.E.

Competition will be in a total of 19 classes involving conformation, showmanship and obedience, says Jerry Chavez of Uvalde, 4-H and youth specialist with the Texas Agricultural Extension Service, Texas A&M University System.

Chavez is working with a committee of adult leaders and county Extension agents from Bexar, Bander and Kendall Counties in planning the annual show, which is rotated to various locations over the state.

The show is designed to give 4-H'ers an opportunity to exhibit their dog projects, notes Chavez. Some 3,657 boys and girls from throughout Texas are enrolled in the 4-H dog care and training project.

O.L. Miller

Services Held

In Arizona

Graveside services for O.L. "John" Miller, 79, were conducted at 10:30 a.m. Tuesday, Aug. 16 in Paradise Cemetery at Paradise, Ariz. with the Rev. Gerald Sullivan, Baptist minister of San Simms, Ariz., officiating. Burial was under the direction of Ellis Funeral Home of Muleshoe. Miller was pronounced dead at his home at 8:20 a.m. Saturday.

Born Jan. 20, 1904 in Buffalo Gap, Tex., Miller moved to Muleshoe four years ago from Mansfield, Missouri. He married Mildred McDaniel June 1, 1932, in Phoenix, Ariz. He was in the ranching business and was a Baptist.

Survivors include his wife, Mildred; one son, Ralph E. Miller of Muleshoe; one sister, Mrs. Tommy English of Leavenworth, Washington; and two grandchildren.

Muleshoe Journal (ISSN 0147-0000)
 Established February 23, 1924. Published by Muleshoe Publishing Co., Inc. Every Thursday at 304 W. Second, Box 409, Muleshoe, Texas, 79347. Second class postage paid at Muleshoe, Texas, 79347.
 MEMBER 1983
TEXAS PRESS ASSOCIATION
 1-8 Hall President
 James Woods, Vice President
 Shirley Farmer, Secretary
 Estelita Harris, Secretary

Subscription
 Muleshoe Journal and Bailey County Journal
 One year (12 issues) \$10.00
 Muleshoe Journal and Bailey County Journal
 One year (12 issues) \$12.00
 Outside of Texas \$15.00
 Single Copy \$1.00
 Trade to Carrier \$1.50
 Monthly by Carrier \$4.00
 Advertising rates card on application

to 64 and 65 and older. Top awards in all divisions include a trophy and \$175 for first place, \$150 for second, \$125 for third, \$100 for fourth and \$75 for fifth place.

First and second-place winners in each division will compete for championship prize money beginning at 7 p.m. The grand champion fiddler will collect an additional \$200 and a plaque, while the first, second and third runners-up will receive \$175, \$150 and \$125, respectively. The best accompanist will get \$125 and that runner-up \$100, while the oldest fiddler will get \$75 and the youngest \$50, all with plaques.

Membership in the Texas Old Time Fiddlers Association is required of all contestants and membership applications will be available at the contest. Association dues are \$13 annually with accompanists and associate members (out of state fiddlers, friends and fans) set at \$8 each.

Meanwhile, other stage attractions also have been announced for the coliseum stage this year.

Lubbock's own Mac Davis will launch the fair on its eight-day run on

Sept. 24 with a pair of shows at 7 p.m. and 9 p.m. Tickets are \$8 and \$10 for his show only.

Reba McEntire and the Maines Brothers will co-headline shows at 4 p.m. and 7 p.m. on Sept. 26.

Other attractions include Larry Gatlin and the Gatlin Brothers Band, Sept. 27; Ronnie Milsap, Sept. 28; Conway Twitty, Sept. 29 and Mel Tillis, Sept. 30. These shows all set for 7 p.m. and 9 p.m., will be one-hour long with no in-

termission. Tickets are priced at \$7 and \$9. The October 1 Show will be announced upon completion of negotiations.

Tickets may be obtained at the fair office or by writing Show Tickets, P.O. Box 208, Lubbock, Texas 79408. Mail order requests, which must be accompanied by a stamped, self-addressed envelope, will be processed in the order in which received.

Further information may be obtained by calling 744-9557.

A&M
Five Point
\$10.59
HI PROTEIN DOG FOOD

- A 26% crude protein dog food.
- Formulated for hard working dogs.
- For peak conditioning and performance.

Best Hotel Location in Town

Next to New Orleans' Famous French Quarter

We're on world famous Canal Street in the central business district overlooking the mighty Mississippi River, opposite the Convention Center and next to the exciting historic French Quarter with its sidewalk artists, famous restaurants, antique shops, naughty Bourbon Street and all that jazz.

Just minutes from Louisiana's unrivaled Superdome and 20 minutes from International Airport via Interstate I-10.

Excellent accommodations and service at reasonable prices await you at the first class International Hotel...375 handsomely appointed rooms and suites, color TV, fingertip climate control, great restaurants and lounges, pool, valet parking, airport transportation...everything!

The International Hotel is "the place" to stay in romantic New Orleans...one of the world's most unique cities...debonair, pleasure-loving, with a live and let-live philosophy. New Orleans

FAMILY PLAN (UP TO 4) \$48
 JUNE 15-SEPT. 15
 Subject To Availability

INTERNATIONAL HOTEL
 300 Canal Street, New Orleans, Louisiana 70140
 For Reservations Call Toll Free: Louisiana, 800-662-1930
 United States, 800-535-7783

Attend The Church Of Your Choice

- MULESHOE CHURCH OF CHRIST**
 Clovis Highway
 John A. Boor, Minister
- JEHOVAH WITNESS**
 Friona Highway
 Boyd Lowery, Pastor
- IMMACULATE CONCEPTION CATHOLIC CHURCH**
 Father Patrick Maher
 Northeast of City in Morrison Edition
- ST. MATTHEW BAPTIST CHURCH**
 Corner of West Boston and W. Birch
 M.S. Brown, Pastor
- NEW COVENANT CHURCH**
 Plainview Highway
 Sunday - 10:00 a.m.
 Wednesday - 7:00 p.m.
 Jimmy Low, Pastor
- FIRST ASSEMBLY OF GOD**
 521 South First
 Lee R. Rich, Pastor
- CHURCH OF THE NAZARENE**
 9th and Ave. C
 Jimmie Williams, Pastor
- FIRST CHRISTIAN CHURCH**
 130 W. Ave. G
 Dick Tarr, Pastor
 Sunday School - 10:00 a.m.
 Worship 11:00 a.m.
- LATIN AMERICAN METHODIST MISSION**
 5th and Ave. D
 R.Q. Chavez, Pastor
- THE COMMUNITY CHURCH**
 Morton Highway
 H.D. Hunter, Pastor
- PROGRESS SECOND BAPTIST CHURCH**
 1st and 3rd Sundays
 Clifford Slay, Pastor
- FIRST UNITED METHODIST CHURCH**
 507 W. 2nd, Muleshoe
 Bill Kent, Pastor
- ST. JOHN LUTHERAN**
 Lariat, Texas
 Sunday School - 10:00 a.m.
 Worship Service - 11:00 a.m.
 Herman J. Scheiter, Pastor
- CALVARY BAPTIST CHURCH**
 1733 W. Ave. C

a little BIG NOW

We all get a thrill out of seeing our children put on our hats or shoes. Obviously they don't fit now, but some day he, or she will grow to fit them. At the same time imagine that they are trying on our lives. Would they fit? ... or do you live the type of life that you would want them to grow to. Live a life of worship of the Lord.

"Thou wilt show me the path of life: in thy presence is fulness of joy; at thy right hand there are pleasures for evermore."

The Church is God's appointed agency in this world for spreading the knowledge of His love for man and of His demand for man to respond to that love by loving his neighbor. Without this grounding in the love of God, no government or society or way of life will long persevere and the freedoms which we hold so dear will inevitably perish. Therefore, even from a selfish point of view, one should support the Church for the sake of the welfare of himself and his family. Beyond that, however, every person should uphold and participate in the Church because it tells the truth about man's life, death and destiny; the truth which alone will set him free to live as a child of God.

EVERYONE IN THE CHURCH THE CHURCH IN EVERYONE

Coleman Adk. Sr.

- PRIMITIVE BAPTIST CHURCH**
 621 S. First
- LONGVIEW BAPTIST CHURCH**
 Phone 946-3413
 B.C. Stonecipher, Pastor
- 16 TH AND AVE. D CHURCH OF CHRIST**
 James Johnson, Minister
 Sunday - 10:30 a.m.
 Evening - 6 p.m.
 Wednesday - 8 p.m.
- PROGRESS BAPTIST CHURCH**
 Donald G. Proctor, Pastor
 Progress, Texas
- FIRST BAPTIST CHURCH**
 220 West Ave. E
 J.E. Meeks, Pastor
- EMMANUEL BAPTIST CHURCH**
 Iglesia Bautista Emmaneul
 107 East Third
 Isaias Cardenas, Pastor
- RICHLAND HILLS BAPTIST CHURCH**
 17th and West Ave. D
 Brock Sanders, Pastor
- SPANISH BAPTIST MISSION**
 East Third and Ave. E
 Roy Martinez, Pastor
- TRINITY BAPTIST CHURCH**
 314 Ave. B
- SPANISH ASSEMBLY OF GOD**
 East 6th and Ave. F
 Luis Campos, Pastor
- MULESHOE BAPTIST CHURCH**
 8th and Ave. G
 Bob Dodd, Pastor
- UNITED PENTECOSTAL GOSPEL LIGHTHOUSE CHURCH**
 207 E. Ave. G
 George Green, Pastor
- TEMPLO CALVARIO**
 507 S. Main
 Sunday - 10:00 a.m.
 Sunday evening - 7:00 p.m.
 Evangelistic Services
 J.L. Soto, Pastor

Supported By The Following Merchants To Encourage A Christian Community

True Value HARDWARE STORES

TOOL VALUE OF THE MONTH
6.99
 While Supplies Last
 Lopping Shear
 For trimming branches. Sharp blades. 27 1/2 in. L. 137010
 Quantities Limited

HARDWARE VALUE OF THE MONTH
4.99
 While Supplies Last
 18-In. Garage Broom
 Steel connector handle, sturdy polypropylene bristles. 25-2626
 Quantities Limited

Fry & Cox, Inc.
 401 S. 1st 272-4511

Western Drug Co.	Dairy Queen Margie Hawkins Manager	Muleshoe Co-op Gins	American Valley Inc.
First National Bank "Home Owned"	Irrigation Pumps & Power	Baker Farm Supply Inc.	5-Area Telephone Cooperative Inc.
Bratcher Motor Supply	James Roy Meat Market Co.	Farmers Co-op Elevators 3 Locations To Serve You	Farmers Spraying Service

Double Ring Ceremony Unites Miss Speck, Puckett



MR. AND MRS. DUSTY PUCKETT
(nee Sandra Kay Speck)

Miss Sandra Kay Speck became the bride of Dusty Puckett in a candlelight ceremony June 27 at 8 p.m. in the Muleshoe Trinity Baptist Church. Rev. Don Knight read the double ring vows.

Parents of the couple are Mr. and Mrs. W.L. Speck of Earth, Mr. and Mrs. D.W. Puckett of Muleshoe and Frieda Phillips of Colorado Springs, Colo.

The church was decorated with chandelabras on each side of the platform. The pink candles were accented with greenery and large pink bows. The unity candle was on the left side as the couple exited. Pew markers were burgundy and pink silk flowers with streamers.

Mr. and Mrs. Gary Williams of Snider were accompanied by Bobbie Johnson of Muleshoe, pianist, as they sang "Follow Me" and "There Is Love".

Given in marriage by her father, the bride wore an A-line full length traditional wedding gown with small flowing train. It was made of taffeta overlaid with chiffon. It featured a high waistline and sheer chiffon sleeves with lace contrasting with the bodice.

She carried a bouquet of pink and burgundy silk roses, rose buds, carnations, miniaturized carnations atop the bride's white Bible, the Bible was given to the bride by the Trinity Baptist Church. Her bouquet also had burgundy and pink satin streamers which her grandmother's ring was attached.

In keeping with tradition the bride carried a handkerchief belonging to her late great grandmother, Mrs. H.G. Harvey, and wore her paternal grandmothers, the late Mrs. Minnie Speck, wedding ring. Something new was pearl earrings and shoes, something borrowed was her wedding dress, from a cousin, Rhonda Madrid, and something blue was

her garter.

Railynn Rundell of Ropesville, cousin of the bride served as maid of honor. Bridesmaids were Shelley Sain and Stacy Elder, both of Muleshoe. They wore identical pink shimmering floral chiffon over polished cotton floor length gowns with puffed sleeves, and V-necklines accented with lace.

The maid of honor carried two single silk carnations, one pink and another of burgundy with pink and burgundy satin streamers. The bridesmaids carried one single pink silk carnation with the pink and burgundy streamers.

Erin Williams of Paducah served as flower girl. She wore a dress of the same material as the other attendants. Her dress featured a full skirt and round neckline. She carried a basket of pink and burgundy love knots.

Wayne Precure of Muleshoe served as best man. Groomsmen were Kent Reynolds and Terry Williams, both of Muleshoe.

TOPS Club

TOPS chapter Tx. No. 34 met at 6:30 p.m. Thursday, Aug. 11 in the meeting room of Bailey County Electric with 16 members and one visitor, Kim McDonald, present.

Clara Lou Jones, leader, called the meeting to order. The TOPS pledge was recited and the fellowship song sung. Rose Sain, secretary, read the minutes of the previous meeting. They were approved.

Best loser for the week was Aurora Mata. First runner up was a tie between Lou Knowles and Evelene Harris, Ernestine Steinbock was second runner up.

The meeting was dismissed with the singing of the goodnight song.

Candlelighters were Tracy Puckett, brother of the groom, and Ronda Scott, cousin of the groom, both of Muleshoe. Ushers were Robert King, cousin of the bride, and Curby Brantley, Jr., cousin of the groom, both of Muleshoe.

Following the ceremony a reception was held in the fellowship hall of the church. Lois Witherspoon registered the guests. Members of the houseparty were Lula Maye Shanks, Tommie Bratcher, Ida Clark, Louise King and Lela Sue King.

Those serving included: **Muleshoe Young Homemakers Set**

First Meeting

The first meeting of the Muleshoe Young Homemakers will be held Tuesday, Aug. 23 at 7 p.m. in the Muleshoe High School Home Economics Room. All ladies in the Muleshoe and surrounding area, ages 18 to 35 are urged to attend and join. The first meeting will be a salad supper and all members are asked to take a salad.

The purpose of Young Homemakers is to develop skills and gain information on new and improved methods of homemaking and keep informed on matters effecting people engaged in homemaking.

Some of these year programs will include training in CPR, advertising awareness, wardrobe planning, drug interaction, home security, self defense and child abuse.

Special activities will include a Christmas auction, craft days, stroy hour and more.

Muleshoe Young Homemakers are now selling pecans at a cost of \$4.00 per pound. To order pecans you may call Pam Zwickey at 272-5002 or Debbie Cloud at 272-3584.

Stacy Shroeder, Speck, Misti Prater and Barbie Seaton.

Following a wedding trip to Lubbock, the couple are making their home at Star Route, Earth.

The bride is a 1983 graduate of Muleshoe High School and Puckett is a 1982 Muleshoe High School

In Fashion

Purple will be a popular color this fall. One attractive suit featured a purple-toned block plain jacket over a soft, solid purple wool skirt. Gray blends nicely with most shades of purple.

graduate. They are both employed at Muleshoe Super Market.

A rehearsal party was held at the Dinner Bell Restaurant on Sunday evening. Barbecue was served and the couple was presented a white cake decorated with a double red heart with their names on it.

The Borrower

The neighborhood borrower approached Mr. Smith Sunday noon and inquired: "Say, Smith, are you using your lawnmower this afternoon?"

"Yes, I am," Smith replied warily.

"Fine. Then you won't be wanting your golf clubs--I'll just borrow them."

Lost?

"You say that Maude lost her engagement ring, how." "Washing her hands of Jack."

Pre-School Dance & Gymnastics Classes Begin Sept. 6

The classes concentrate on perceptual, motor, listening & communication skills through dance, gymnastics & trampoline. Classes are for boys & girls 3, 4, & 5 yrs. old.



To Register Call:

965-2353
965-2689
272-4017
272-5190

MEMBER OF THE MULESHOE TWISTERS GYMNASIUM TEAM

Creative Woman

By Sheryl Borden

On August 23 and 27, viewers of "The Creative Woman" show will see how to make carpet rugs, as demonstrated by Laura Robbins and Beverly Bennett, members of the Arch Extension Homemakers Club in Roosevelt County.

Another guest on the show will be Clotilde, a sewing instructor and lecturer, who travels throughout the United States telling other women how to sew for a designer look. She is the co-author of the sewing book "Sew Smart". She will talk about measuring and tell where to take accurate measurements; talk about darts and buttonholes and will also demonstrate special hard-to-find sewing notions and tell how to get these. Clotilde is from Dayton, Ohio.

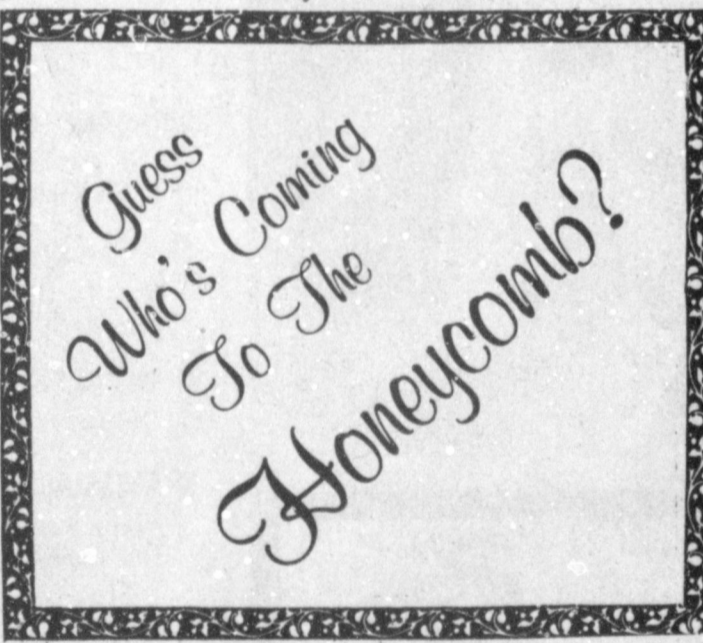
Topics to be presented on the show on August 25 include air layering in plants, consumer tip information and making belt loops.

Jim Sais, Urban Horticulturist with the Cooperative Extension Service in Albuquerque will demonstrate how to do air layering to propagate certain types of houseplants.

"Are you buying the product or the package?" This is the topic to be discussed by Jackie Martin, Family

Finance Specialist with the CES in Las Cruces. Mrs. Martin will talk about package design, how to evaluate the package cost as well as the product cost, the functions of packages and the role color plays in product packaging.

Other guests will be Kaye McCown, Sales Manager and Ann Silva, owner of the Bernina Sewing Center in Albuquerque, and they will show and tell how to make belt loops on the sewing machine and will talk about the advantages of doing this method.



Saturday Only Sale

DOORS OPEN 10 A.M. • DON'T MISS IT • SALE STARTS AT 10A.M.

★ FABRICS AND HOME FURNISHINGS ★
Simplicity and McCalls Patterns..... 1/2 PRICE
Assorted
Cotton Blend Prints..... 97¢ yd
Red Heart Yarn..... 97¢ ea.
Luxuriously Thick
Bath Towels..... 3 for \$12
Lifestyle Bed Pillows..... 2 for \$6

★ BARGAINS ★
San Francisco Ceiling Fans One Day Only..... \$79.88
Close-Up Ceiling Fans One Day Only..... \$99.88
Men's and Ladies Genuine Leather Coatsregular \$149. \$99.

★ WOMEN'S WEAR ★
Ladies
Levi Bendover Slacks..... 16.88
Oxford Shirts 11.88
Ladies Fall Stockton Coordinates 20% off
One Rack Sportswear..... 3.88
Two Racks Sportswear 75% off

★ MEN'S WEAR ★
Special Purchase • Fall Colors
Haggar Sport Coats 59.88
Anthony's Dress Slacks 12.88
Men's Knit Shirts 12.88
Men's Wrangler Jeans 15.88
Men's Levi Jeans 18.88

★ JUNIOR SPORTSWEAR ★
FREE! Levi Screen Print T-Shirt With Purchase of Levi Jeans!
California Straights or Super Straights
LEVI Jeans 22.88
Gloria Vanderbilt or Calvin Klein Jeans \$29.88
Nino Valentino Jeans \$16.88

★ CHILDREN'S WEAR ★
Boys Wrangler Jeans
size 1-7 9.88 size 8-14 11.88 students 13.88
Girls ATB Jeans 12.88
Athletic Running Shoes • Fastbak Joggers
youth's 8.88 boys 9.88 men's 10.88

sale
Peanut Buster Parfait*
99¢



It's a sweet deal from Dairy Queen! Just 99¢ for a cool and fudgy, super-pea-nutty Peanut Buster Parfait. Come taste one today.
Monday, August 15 thru Sunday, August 21



"Dairy Queen just keeps on getting better."™

321 Main Street

Anthony's
C. R. ANTHONY CO.

Visa, Mastercharge Accepted

Journal Files

50 Years Ago

1933

Dr. A.E. Lewis last week bought 31 head of white cattle.

A Clovis, N.M. department store advertised the following items in the Journal this week: boys fast color dress shirts 29 cents each; boys caps 49 cents each; men's shoes, genuine veal upper leather, solid leather insoles rubber heels and a double 10 iron sole, only \$1.98 pair; men's dress socks 15 cents pair; and men's dress shirts 69 cents each.

30 Years Ago

1953

Grocery specials advertised in the Journal this week included: round steak 49 cents a pound; T-bone steak 45 cents a pound; veal chops 45 cents a pound; chuck roast 35 cents

a pound; ground veal 25 cents a pound; sausage 39 cents a pound; pork liver 29 cents a pound; short ribs 19 cents a pound; white trout 23 cents a pound; 12 ounce can pineapple chunks 19 cents; No. 1 can Eagle Brand Milk 29 cents; 3 pound can Crisco 69 cents; and flour 10 pound bag 79 cents.

20 Years Ago

1963

Mrs. Ernest Rmm of Rt. 2 Muleshoe was the lucky winner of a free holiday in Las Vegas, Nev. given by a local furniture store.

10 Years Ago

1973

Miss Sharon Kelton, 18 year old daughter of Mr. and Mrs. Robert Kelton of Muleshoe, was named first runner up in the District II Farm Bureau Queen and talent find contest held recently.

Delbert Watson of Muleshoe received NPA's highest award --- the Safe Pilot Certificate granted to it's members by the nations largest non-profit organization in recognition of skill and flying ability represented by 500 hours or more as pilot-in-command "with-out major accident involving damage to property or injury to person".

Indecision is costly but hasty action sometimes costs more.



KATHY EMBRY

Kathy Embry Named Artist Of The Month

Kathy Embry has been named "Artist of the Month" at the Muleshoe Public Library for the month of August. Some of

her paintings will be on display at the library all during the month.

Ms. Embry said "With the encouragement of my family I find time to enjoy my painting. I work in several medias of art including oils, pastel, pen and ink, charcoal and watercolor.

"As the demand is in-

creasing my plans are to expand by attending area shows."

Some of her paintings have reached several homes and businesses across the United States.

Artists she has studied under include: Paul Wylie, Danny Jamble, Mary Selfridge, Elizabeth Black, Jon Birdsong, Charles Rogers,

Rheata White, Dr. Clarence Kincaid and Jean Green.

Ms. Embry has two children, Kyle, four years; and Bryce 11 and a half months old.

The trouble with moralists is that they want to reform someone according to their ideals.

West Plains Medical Center

ADMITTED

Aug. 11-Pedro Gomez and Diana Lemons
Aug. 12-Rene Garza, Ruby Fulcher, Katherine Rogers, Feliz Rodriguez and O.E. Duncan.

Aug. 13-O.O. Bruce, Marty Hernandez and Emmitt Dean

Aug. 14-Chad Black, Joe Mayes, Juanita Limberere and Jeff McCarty

DISMISSED

Aug. 11-Euna Reed, Lendey Black, Vera Gunstream and Juanita Foreman

Aug. 12-Diane Reyna and baby boy, Micky Price, Pedro Gomez, Jerry Hernandez, Rene Garza, Ene-dena Cortez and Frank Garcia

Aug. 13-Diane Lemons and Inez Garza

Aug. 15-Joe Meyes and Connie Castleman

Amarillo Fair Offers Fun For Kids

Take a ride on the Loop-O-Plane or try a jump from the Paratrooper. Or how about a whip-cracking ride on the Tilt-a-Whirl? Try it all with a foot-long hot dog in one hand and a stick of cotton candy in the other. You will find all this and more at the Bill Hames Shows during the Amarillo Tri State Fair, September 3-10. There are the traditional rides for the kiddies such as the Ferris Wheel, Merry-Go-Round and Pony Ride. And then there are the super rides for the brave of heart like the Twister, Toboggan, Coaster, Zipper or the Scrambler. Buster Brown, president of Bill Hames Shows, is constantly bringing the

newest, most thrilling rides to the fair midway each year.

Peace would automatically descend upon the earth if every individual and every nation would stop trying to secure unearned advantages.

Quanah Exes Host Reunion At County Line

After a conversation with Newt Logan of Chris' Drug of Lubbock it was decided that there were enough people in Lubbock that had lived in Quanah to have a Big Reunion.

Twenty-five got together last summer at County Line and organized an annual affair to meet every year the last Sunday in August for a get together and reunion. Last year the group had ice cream and cake and this year there will be a luncheon at 1 p.m. Sunday, Aug. 28. Everyone attending is asked to take a salad, enough for their family. Drinks and bread will be furnished.

The County Line Club House is located ten miles West of Abernathy or on the corner of Highway No. 179 and No. 597, 12 miles Northwest of Shallowater or ten miles east of Anton.

If you ever lived in Quanah, (Hardeman County) you are urged to attend the fun and fellowship.

Officers elected last summer were Bill Nelson of the County Tax Office of Lubbock; Willie B. Hinton, Carpenter of Lubbock, treasurer; and Faye Ann Nelson of County Line, secretary.

For additional information you may call Faye Ann Nelson at 806 757-2120 in County Line. This includes anyone from area towns around Lubbock also.

Happy 30th

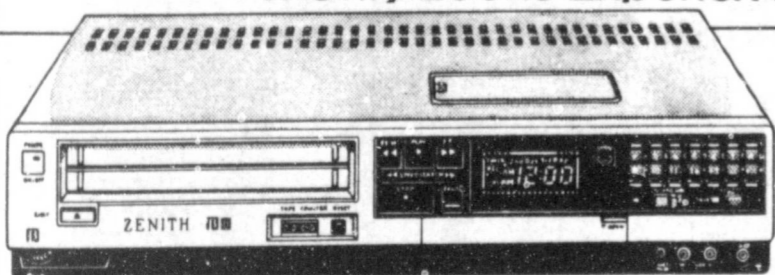


We Love You

The Affordable VCR with a "Touch of Class"

ZENITH HI-TECH VR8510

It Only Looks Expensive



ZENITH BETA PERFORMANCE—YOUR BEST VALUE!

- Low-profile, front-load cabinet—just 3 1/4" high
- Accurate Electronic Tuning with Touch-Command channel selection
- Super-Scan Speed Search picture review during fast forward and rewind
- Pause/Stop Action with picture
- Electronic Feather-Touch controls
- Tape Counter

- Electronic Clock with digital readout
- Beta III Record—Beta III/II Playback

ONLY \$499⁹⁵

WIRELESS, INFRARED REMOTE VIDEO ACTION CONTROL



Advanced infrared technology lets you give recording and playback commands from across the room.

- Power On/Off
- Tap/Tape TV
- Pause/Stop Action
- Play/Record
- FF/Rewind
- Speed Search/Super-Scan Speed Search

Optional At Extra Cost

ZENITH The quality goes in before the name goes on.

VIT Video Hi Tech

Trained Technicians To Service Our Products
117 Main

Wilson Appliances

Store Hours
8:00-6:00
Mon-Sat.
272-5531

SIZZLIN SUMMER VALUES

Steel Radial



\$27

P155-13
FET: \$1.53
Exchange

Size	Price
P155-13	27.00
P185-14	38.00
P195-14	39.00
P205-14	42.00
P215-14	44.00
P205-15	43.00
P215-15	45.00
P225-15	47.00
P235-15	49.00

FET: \$1.53-3.01

FREE MOUNTING!

Alignment

- Set toe-in
- Adjust caster and camber
- Inspect tires



\$11.99

Most American Cars

Belted

SIZE	SALE PRICE
P165-13	\$23.00
P195-14	29.00
P205-14	31.00
P215-14	33.00
P215-15	34.00
P225-15	36.00
P235-15	39.00

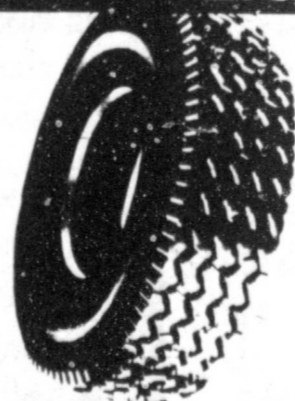
FET: \$1.58-2.72 WHITEWALL

\$23

P165-13
Exchange
FET: \$1.58



LIGHT TRUCK TIRE



Radial \$69⁹⁵

750R16
10 Ply
FET: \$4.20

ROCKET Wheels As Low As \$25

FARM TIRES

DEEP LUG REAR FARM TIRE

\$340

18.4 x 38
8 Ply
FET: \$13.55



Brake Service

Front Disc

- Turn rotors
- Replace front disc pads
- Pack front bearings



\$59.99

Most American Cars

PEACE OF MIND Complete Road Hazard Protection Ask about it at Shook.

SHOOK TIRE & SERVICE

Prices good through August 20, 1983

301 North First • 272-3420
Manager: Don Taylor



Mule Day Winners

Cont. From Page 1

ern arr snow, a square dance exhibition and an old settlers reunion. The oldest settler present for the celebration was Allie Barber who proudly proclaimed to be 89 years young. Bill Miller won the distinction of being in Bailey County the longest (over 50 years) and Mr. and Mrs. Tom Berry claimed the title of being married the longest (57 years). The couple having the most living children (6) was Mr. and Mrs. John Fried (Fiddlin' John). Allie Barber was named as most appropriately dressed and the old settler's door prize went to Thursie Reid.

Near the noon hour, after an eleven o'clock barbecue lunch by the famous Chuckwagon Gang of Odessa, the crowds gathered up and came to town for the Mule Day parade. Highlighting the parade this year was Pam Moore, who is a resident of Girlstown and was named 1983 Mule Days Festival Queen. The Terry County Sheriff's Posse was named as first place riding club, and R.B. Cunningham claimed the "Best of Show" title in the entries. Also participating was the Lamb County S.P. Many prize winners donated their prize money back to the Girlstown benefit.

Following the parade, it was back out to the Smith barn and some good, old time fiddling. About 15-16 fiddlers competed as a crowd of 250-300 people tapped their toes and listened. Winner of the contest was Ricky Turpin of Lubbock. World Champion Fiddler-1983 Ricky Boen of Lubbock and 1983 National Old Time Fiddlers Association Southwestern States Champion Bart Trotter was also on hand for the contest.

One of the largest and most exciting events of the day came next with the mule rodeo which got underway at the Smith arena at about 1 p.m. Winners of the miniature golf tournament held at the Mule Putt were: first place, Sam Gonzales, second, Jackie Holmes and third, Benton Glaze.

The new rodeo arena was the scene of the annual Mule Rodeo and Mule Races on Saturday afternoon. Grady Pierce, who won the all-around honors at the

Program...

Cont. From Page 1
acreage reduction program is established.

-- methods for determining 1984 crop acreage bases for upland cotton.

-- the loan rate for seed cotton.
Comments should be sent to director, analysis division, USDA-ASCS, room 3741-S, P.O. Box 2415, Washington D.C., 20013. Comments will be available for public inspection in that room 8:15 a.m. to 4:45 p.m.

Cotton Plan...

Cont. From Page 1
Bids which were submitted in May on a one for fifteen ration, may be resubmitted at a higher premium.

The new bid program which opened on August 1 will remain open until August 24. USDA officials at this time refuse to make any guesses as to the success of the new program. Cotton producers could still be required to harvest 1983 cotton for PIK if CCC doesn't get the amount required to satisfy PIK's needs.

Official details and explanations of the new upland cotton program may be obtained at local ASCS offices.

ASCS Administrator Everett Rank stated that the USDA is making every effort to inform cotton growers of the re-opened bid program and is giving them an opportunity to submit competitive bids through the August 24 date.

AAM...

Cont. From Page 1
loan rate and various FmHA problems will be discussed.

All farmers, ranchers and interested persons are urged to attend. All area business people are urged to attend.

Murrison, in third. In another division of the Mule Days Festival, Sammy Gonzales won the trophy for first place in the Mule Putt Miniature Golf tournament. In second place was Jackie Holmes and Benton Glaze was in third place.

After rodeo events were ended and sky divers had all landed, a party with supper was provided for those holding tickets to the events. A dance capped off the evening with western music provided.

Since totals of bills and receipts have not yet been completed, a total amount of funds raised for the Girlstown, U.S.A. Benefit has not yet been given, but will be published as soon as it is received.

Chris Cabbiness was first and Grady Pierce, second, in hide dragging and Keith Dixon won the coon mule jumping. Greg Harrison won the mule pulling.

In the races, in the 200 yard division, Supercharge won. He was owned by Verney Moening of Electra; second was Becky Sue, owned by Sharon Betancourt of Dexter, N.M. and in third was Leah, owned by Van Henson of Amarillo.

Black Jack, owned by Verney Moening won the 220 yard race with Lightning Hill, owned by Sue Zargas of El Paso, second, and Elvira, owned by K&G Racing of Dexter, N.M., in third place.

Dexter, owned by Verney Moening, was first in the 250 yard race, followed by Cactus Lee, owned by Van Henson, second and Jessie James, owned by Merie

Rotary...

Cont. From Page 1

now down to 22 people due to various injuries and illnesses. He commented, however, that the team looked very good on paper. Williams explained how critical it is to get in shape and back in practice. Both Williams and his staff have great expectations for the 1983 season.

The Head Coach also elaborated on the capabilities of various players, and explained that the Mules expect to have a passing, as well as a running offense. He further expressed his opinion that Muleshoe has some outstanding receivers on the team this year.

MISD Budget

Cont. From Page 1

personnel have been hired. Locally, classroom teachers were paid 61.0 percent of the school payroll in 1981-82.

The average school property tax rate in 1981-82 was \$0.531 per \$100 of market value (selling price) so that the school tax on a property selling for \$100,000 was \$531 in the average school district. Locally, the rate on market value in Muleshoe ISD was \$.572 or \$.578 on a property selling for \$100,000.

If the property were a homestead or owned by a senior citizen, the school tax would be less because of various exemptions. Open-space land if qualifying would be valued on productivity value rather than market value and would be taxed less.

The report noted that the 68th Legislature increased

appropriations for public school by almost a billion dollars (962 million) for the next biennium. However, only an additional \$192 million increase (5.4 percent) in foundation aid to local school districts will be available for 1983-84 school budgets that school trustees are now working on.

Meals...
Cont. From Page 1
rules regarding verification of information, the reporting of changes, re-application and foster children. In the operation of child feeding programs, no child will be discriminated against because of race, sex, color, national origin, age or handicap. Applicants also have the right to a fair hearing as prescribed by law. This can be done by calling or writing H. John Fuller, Superintendent, Muleshoe I.S.D., 514 West Avenue G, Muleshoe, phone 272-3389.

vide depth and experience for the 'Horns; however the size here will be a definite factor. Tod Daniels, Luis Alarcon and David Schacher will be running behind the three.

The Longhorns start off their 1983 schedule against Smyer on September 2 at 8 p.m. All games will begin at 8 p.m. until October 14. Whiteface is next on the list on September 9 at Lazbuddie. The Sundown Roughnecks come to Lazbuddie on September 16 and Lazbuddie plays Valley on September 23, also on Lazbuddie. On September 30, the Horns will travel to Amherst and then on October 7 they play Happy beginning at 7:30 p.m. October 21 is an open date for the Horns to rest up before coming back against Nazareth on October 28 at Lazbuddie. The final foray for the Horns will come out against Sudan on November 4 on their home territory.

Probable starters for Lazbuddie includes Kevin Fuqua and Robert Tapia, LE; Paul Stanley, LT; Roy Gonzales, LG; Lee Scott, C; Ray Moran, RG; Shannon Weaver, RT; Robert Tapia or Paul Gonzales, RE; QB, Ben Williams; Noe Gonzales, RH; and Larry Nail, FB.

Other candidates for front line action include Guy Brockman, David Schacher, Kurt Miller, Scott Holt, Dustan Jesko, Dewayne Ivy, Todd Daniel and Luis Alarcon.

Coach Williams, and his staff members, Steve Harris and J Craig Terry, feel the Longhorn's strength is in the offensive line with Stanley, Roy Gonzales, Lee Scott, Moran and Shannon Weaver. (Defensively, Scott was the third leading tackler in 1982 at end and should be the heart of Lazbuddie's defense at either end or tackle.) Scott is picked as having all state potential this year.

Ivy, Jesko and Holt will all three provide some depth to the offensive line. Ends Paul Gonzales, Kevin Fuqua and Robert Tapia all have the ability to catch the ball and the 'Horns will expect their help.

Running backs, Ralph and Noe Gonzales along with Larry Nail have speed and quickness and will pro-

vide depth and experience for the 'Horns; however the size here will be a definite factor. Tod Daniels, Luis Alarcon and David Schacher will be running behind the three.

NCC Board Meets In Lubbock
NCC BOARD WILL MEET -- The National Cotton Council Board of Directors will meet September 8-9 at the Holiday Inn Civic Center, Lubbock, Texas. Session 1 of the Cotton Leadership Program, sponsored by the Agrichemical Division of DuPont through a special Cotton Foundation project, will be held at the same location September 6-10 and members of the class will attend the Board meeting.

Plainview Kiwanis Plan Air Show

The 15th Annual Plainview Air Show will be held on Sunday September 11, 1983 from 2:00 to 4:00 p.m. at the Hale County Airport in Plainview, Texas. The main attraction will be Wes Winter from Mesa, Arizona flying a Pitts S-2S and a twin engine Partenavia. Mr. Winter will be performing breath-taking aerobatics including a triple ribbon pick up and a ribbon ballet. As in the past, the show will be sponsored

by the Plainview Kiwanis Club and the Experimental Aircraft Association Chapter No. 438. Doug Maxey is serving as the air show coordinator. Admission will be \$3.00 for adults and \$1.00 for children. Contact Doug Maxey at 806/296-2731 for further details.

H & R Block Tax Course Begins Soon

H&R BLOCK is offering a Basic Income Tax Course starting September 8, 1983. There will be a choice of morning or evening classes held at the H&R Block office at 224 W. 2nd, Muleshoe. The twelve week course is taught by experienced H&R-Block personnel and certificates are awarded to all graduates.

While thousands of job opportunities are available, graduates are under no obligation to accept employment with H&R Block. Courses are licensed by the Texas Education Agency. Registration forms and brochures may be obtained by contacting the H&R Block office at 224 W. 2nd, Ph. 272-3332. ADV

Emotions are valuable, but civilization teaches selfcontrol.

ADV

School District: Muleshoe Independent School District

NOTICE OF CALCULATION OF EFFECTIVE TAX RATE AND PUBLICATION OF ESTIMATED UNENCUMBERED FUND BALANCES

I, Dale F. Jones, Chief App. for MISD, in accordance with the provisions of Sec. 26.04, Property Tax Code, have calculated the tax rate which may not be exceeded by more than three percent by the governing body of the MISD without holding a public hearing as required by the code. That rate is as follows: 3.96 per \$100 of value.

The estimated unencumbered fund balance for Maintenance & Operation fund: \$17,855. The estimated unencumbered fund balance for Interest & Sinking fund: \$10,091.

Dale F. Jones, Chief App. Aug. 10, 1983

CALCULATIONS USED TO DETERMINE EFFECTIVE TAX RATE

I. DATA

1. 1982 Total tax levy from the 1982 tax roll	\$ 1,334,366
2. 1982 Tax rate (\$.57 M&O and \$.06 I&S)	\$.88 /\$100
3. 1982 Debt service (I&S) levy	-\$ -0-
4. 1982 Maintenance and operation (M&O) levy	\$ 1,334,366
5. 1982 M&O taxes on property in territory that has ceased to be a part of the unit in 1983	-\$ -0-
6. 1982 M&O taxes on property becoming exempt in 1983	\$ 460,000
7. 1982 M&O taxes on taxable value lost because property is appraised at less than market value in 1983	-\$ -0-
8. 1983 Total taxable value of all property	\$ 136,934,080
9. 1983 Taxable value of new improvements added since Jan. 1, 1982	\$ 1,450,000
10. 1983 Taxable value of property annexed since Jan. 1, 1982	-\$ -0-
11. 1983 Tax levy needed to satisfy debt service (I&S)	-\$ -0-
*12. Rate to raise 1982 tax levy due to appraisal roll errors (rate that should have been less rate that was levied) (\$.6543 /\$100 - \$.6300 /\$100)	\$.0219 /\$100
*13. Rate to recoup taxes lost in 1982 due to appraisal roll errors (lost dollars divided by the difference of 1983 taxable values minus 1983 over-65 homesteads taxable value) (\$ 17,440 ÷ (\$ 68,410,300 - \$))	\$.0214 /\$100
14. 1983 Taxable value of over-65 homesteads with frozen taxes	\$ 4,807,240
15. Frozen M&O levy of over-65 homesteads with frozen taxes	\$ 21,366
16. Frozen I&S levy of over-65 homesteads with frozen taxes	-\$ -0-

II. CALCULATION

MAINTENANCE AND OPERATION (M&O) TAX RATE

1. (A) 1982 Total tax levy (Data 1)	\$ 1,334,366
(B) Subtract 1982 Debt service levy (Data 3)	-\$ -0-
(C) Subtract 1982 Taxes on property no longer in unit (Data 5)	-\$ -0-
(D) Subtract 1982 Taxes on exemptions (Data 6)	-\$ 100,080
(E) Subtract 1982 Taxes on productivity valuation (Data 7)	-\$ -0-
(F) Subtract frozen M&O levy of over-65 homesteads (Data 15)	-\$ 21,366
(G) Adjusted 1982 M&O levy	\$ 1,212,920
2. (A) 1983 Total taxable value of all property (Data 8)	\$ 136,934,080
(B) Subtract 1983 Value of new improvements (Data 9)	-\$ 1,450,000
(C) Subtract 1983 Value of annexed property (Data 10)	-\$ -0-
(D) Subtract 1983 Value of over-65 homesteads (Data 14)	-\$ 4,807,240
(E) Adjusted 1983 Taxable value for M&O	\$ 130,676,840
3. (A) Divide the adjusted 1982 M&O levy (1-G above) by the adjusted 1983 taxable value for M&O (2-E above) (\$ 1,212,920 ÷ \$ 130,676,840)	\$.009281
(B) Multiply by \$100 valuation	× \$.9281 100
(C) Calculated maintenance and operation (M&O) rate for 1983	\$.9281 /\$100

INTEREST AND SINKING (I&S) TAX RATE

4. (A) 1983 I&S levy needed to satisfy debt (Data 11)	-\$ -0-
(B) Subtract frozen I&S levy of over-65 homesteads (Data 16)	-\$ -0-
(C) Adjusted 1983 I&S levy	\$ -0-
(D) 1983 Total taxable value of all property (Data 8)	\$ 136,934,080
(E) Subtract 1983 Value of over-65 homesteads (Data 14)	-\$ 4,807,240
(F) Adjusted 1983 Taxable value for I&S	\$ 132,126,840
(G) Divide the adjusted 1983 I&S levy (4-C above) by the adjusted 1983 taxable value for I&S (4-F above) (\$ 22,727 ÷ \$ 132,126,840)	\$.000172
(H) Multiply by \$100 valuation	× \$ 100
(I) Calculated interest and sinking rate (I&S) for 1983	\$.000172 /\$100

APPRAISAL ROLL ERROR RATE

5. (A) Rate to raise 1982 levy due to appraisal errors (Data 12)	\$.0219 /\$100
(B) Add rate to recoup taxes lost due to errors (Data 13)	+ \$.0214 /\$100
(C) Total rate to adjust for appraisal roll errors	\$.0404 /\$100

TOTAL EFFECTIVE TAX RATE FOR 1983

6. (A) Calculated maintenance and operation (M&O) rate (3-C above)	\$.9281 /\$100
(B) Add calculated interest and sinking (I&S) rate (4-I above)	+ \$.000172 /\$100
(C) Add rate to adjust for appraisal roll errors (5-C above)	+ \$.0404 /\$100
(D) Calculated 1983 Effective Tax Rate	\$.9685 /\$100

TAKE A 2-LITER COKE HOME FREE!

Your participating Pizza Hut® restaurant has the tastiest deal ever. Buy any large carry-out pizza at regular price. You'll get a big 2-liter bottle of Coke® with it—FREE!

You'll love the rich sauce, the real mozzarella, the scrumptious toppings and the savings. Mmmm and Coke®. Come get both. But hurry! Offer expires August 31, 1983.

Not valid in combination with any other promotional offer. Pepsi and Pepsi-Cola are registered trademarks of PepsiCo, Inc. © 1983 Pizza Hut, Inc.

MULESHOE PIZZA HUT
1412 W. AMERICAN
PHONE 272-4213

School Bus Schedule

The Muleshoe Independent School District School Buses will stop at designated stops only, for eligible bus riders to the Mary DeShazo and Dillman Schools. BUS STOPS FOR MORNING RUN

- Bus # 1
Ave D & East 6th St
Ave D & East 5th St.
DeShazo School
West 10th & Ave D
Dillman School
- Bus # 2
Ave F & East 6th
Ave D & East 5th
Ave D & East 3rd
DeShazo School
10th St & Ave D
14th St & Ave D
Dillman School
- Bus # 3
Birch Ave & Chicago St.
Chicago St & Cedar Ave
DeShazo School
West 10th & Ave D
West 14th & Ave D
- Dillman School
- Bus # 4
Highway 214 & Ave 1
Ave F & 3rd St
DeShazo School
West 10th & Ave D
West 14th & Ave D
Dillman School
- Bus # 6
Joliet & Fir Street
Fir & Ithaca Street
DeShazo School
West 10th & Ave D
West 14th & Ave D
Dillman School
- Bus # 7
Dillman School
West 14th & Ave C
West 10th & Ave C
DeShazo School

- Bus # 8
West Birch & Boston St.
West Birch & Dallas St.
DeShazo School
10th St & Ave D
15th St & Ave D
Dillman School
- Bus # 9
Ivy & Joliet Streets
Ithaca & Country Club
400 Dallas Street
Austin & Birch Street
DeShazo School
West 10th & Ave C
West 14th & Ave C
Dillman School
- Bus # 10
Dillman School
West 14th & Ave C
West 10th & Ave C
DeShazo School
- Bus # 11
Dillman School
West 14th & Ave C
West 10th & Ave C

- DeShazo School
- Bus # 12
West 19th St off Hwy 84
Dillman School
14th St & Ave C
10th St & Ave C
DeShazo School
- Bus # 13
Austin St & Elm Ave
Austin St & Cedar Ave
DeShazo School
West 10th & Ave D
West 14th & Ave D
Dillman School
- Bus # 27
Back of Dinner Bell Cafe
Dillman School
West 14th & Ave C
West 10th & Ave C
DeShazo School
- Bus # 28
Joliet St & Gum Ave
Houston & Hickory Sts
DeShazo School
West 10th & Ave D
West 14th & Ave D
Dillman School

Group Sets Softball Tourney Date

The Brownfield Fireman's Auxiliary will sponsor a Jack and Jill Softball Tournament on August 19, 20, 21. Entry fee will be \$75 per team and proceeds will go to the Muscular Dystrophy Foundation. Deadline for entries is August 18. Trophies will be given for first, second and third place with individual trophies for the first place team. -- a new .20 gauge shotgun donated by NBC Equipment will also be raffled off on August 21, the final day of the tourney. Sanctioned A.S.A. Umpires will be used on all games. Entries may be sent to Elaine Rodgers, 110 N. 6th Street, Brownfield, Tx. 79316 or Scott Jackson, Juvenile Probation Officer.

Terry County Courthouse, Brownfield, Texas or call 806-637-6941.

Take care of your health and your health may take care of you.

Our law-abiding nation will not observe any law that is not enforced.

A Gift for all Seasons PORTRAIT PACKAGE IN LIVING COLOR



TOTAL PACKAGE PRICE **\$12.95**
99¢ DEPOSIT

PACKAGE INCLUDES:
• TWO 8x10's • TWO 5x7's
• TEN WALLET PORTRAITS
Family Groups Welcome At No Extra Charge
Minors Must Be Accompanied By Parent

FRIDAY-SATURDAY
August 19 and 20
From 10 A.M. To 6 P.M.

Serv-All Thriftway
404 W. American Blvd.
Muleshoe - 2/2 4739

PUBLIC NOTICE

At the request of the Office of the General Counsel of the Public Utility Commission, the Commission has established Docket No. 5113 to inquire into pressing issues involving the entire telephone industry in Texas. Docket No. 5113 will deal with many issues resulting from the impending divestiture of American Telephone and Telegraph Company and Southwestern Bell Telephone Company. Some of those issues include establishing the service areas of Southwestern Bell after divestiture and assessing the impact on other telephone companies in Texas, including Five Area Telephone Cooperative, Inc., of current settlement arrangements between Southwestern Bell and those companies. Additionally, Docket No. 5113 will deal with the issues arising from the Federal Communications Commission's Final Order in Docket 78-72 (the Access Charge Docket) as they impact all telephone companies, including Five Area Telephone Cooperative, Inc. It is anticipated that Docket No. 5113 will be evidentiary in nature. RATES FOR FIVE AREA TELEPHONE COOPERATIVE, INC. MAY BE DETERMINED BY THE COMMISSION IN OR AS A RESULT OF THIS PROCEEDING. Interested parties seeking further information or desiring to participate in Docket No. 5113 are advised to write to Rhonda Colbert Ryan, Secretary and Director of Hearings, Public Utility Commission of Texas, 7800 Shoal Creek Boulevard, Suite 400N, Austin, Texas 78757 or telephone the Public Utility Commission Consumer Affairs Division at (512)458-0223 or 458-0227, or (512)458-0221 TTY for the deaf.

The 3rd, 4th & 5th Grade stops will be Ave C & West 10th, Ave C & West 14th and the Dillman School.
The Kindergarten, 1st & 2nd Grade will load and unload at Dillman School, Ave D & West 14th, Ave D & West 10th and DeShazo School.

Roadriders Met Tuesday

The Muleshoe Roadriders met for a regular monthly meeting on Tuesday August 9 with 29 members and four visitors present. Planning for activities for the next spring rally were discussed. The Roadriders took part in the Mule Day parade, with 16 riders participating. Regular monthly meetings for the Roadriders are held on the second Tuesday night of each month at 8 p.m. in the office of the Farmers Spraying Service on the Plainview Highway. On all other Tuesday evenings, the group meets at 8 p.m. on the Muleshoe State Bank parking lot for a supper run. Visitors are encouraged to attend these meetings and participate.

City or Special District: City Of Muleshoe

NOTICE OF CALCULATION OF EFFECTIVE TAX RATE AND PUBLICATION OF ESTIMATED UNENCUMBERED FUND BALANCES

I, Dale F. Jones, Chief App. for City of Muleshoe, in accordance with the provisions of Sec. 26.04, Property Tax Code, have calculated the tax rate which may not be exceeded by more than three percent by the governing body of the City of Muleshoe without holding a public hearing as required by the code. That rate is as follows: \$.71 per \$100 of value.

The estimated unencumbered fund balance for Maintenance & Operation fund: \$ 0-. The estimated unencumbered fund balance for Interest & Sinking fund: \$ 0-.

Dale F. Jones
Dale F. Jones, Chief App.
Aug. 8, 1983

CALCULATIONS USED TO DETERMINE EFFECTIVE TAX RATE

I. DATA

1. 1982 Total tax levy from the 1982 tax roll	\$ 468,440
2. 1982 Tax rate (\$.88 M&O and \$ -.01 I&S)	\$ 63 /\$100
3. 1982 Debt service (I&S) levy	\$ 44,595
4. 1982 Maintenance and operation (M&O) levy	\$ 423,845
5. 1982 M&O taxes on property in territory that has ceased to be a part of the unit in 1983	\$ -0-
6. 1982 M&O taxes on property becoming exempt in 1983	\$ 2622
7. 1982 M&O taxes on taxable value lost because property is appraised at less than market value in 1983	\$ -0-
8. 1983 Total taxable value of all property	\$ 68,410,300
9. 1983 Taxable value of new improvements added since Jan. 1, 1982	\$ 1,404,110
10. 1983 Taxable value of property annexed since Jan. 1, 1982	\$ -0-
11. 1983 Tax levy needed to satisfy debt service (I&S)	\$ 22,727
*12. Rate to raise 1982 tax levy due to appraisal roll errors (rate that should have been less rate that was levied) (\$.8990 /\$100 - \$.8800 /\$100)	\$.0243 /\$100
*13. Rate to recoup taxes lost in 1982 due to appraisal roll errors (lost dollars divided by 1983 taxable values) (\$ 28,319 ÷ \$ 136,934,080)	\$ 4,807,240 ÷ \$ 136,934,080 = .0254 /\$100

* Steps necessary for appraisal roll errors (if more than 1% of total appraisal roll), effective for taxing units on June 17, 1983.

II. CALCULATION

MAINTENANCE AND OPERATION (M&O) TAX RATE

1. (A) 1982 Total tax levy (Data 1)	\$ 468,440
(B) Subtract 1982 Debt service levy (Data 3)	\$ 44,595
(C) Subtract 1982 Taxes on property no longer in unit (Data 5)	\$ -0-
(D) Subtract 1982 Taxes for exemptions (Data 6)	\$ 2622
(E) Subtract 1982 Taxes for productivity valuation (Data 7)	\$ -0-
(F) Adjusted 1982 M&O levy	\$ 421,223
2. (A) 1983 Total taxable value of all property (Data 8)	\$ 68,410,300
(B) Subtract 1983 Value of new improvements (Data 9)	\$ 1,404,110
(C) Subtract 1983 Value of annexed property (Data 10)	\$ -0-
(D) Adjusted 1983 Taxable value for M&O	\$ 67,006,190
3. (A) Divide the adjusted 1982 M&O levy (1-F above) by the adjusted 1983 taxable value for M&O (2-D above) (\$ 421,223 ÷ \$ 67,006,190)	\$.006285
(B) Multiply by \$100 valuation	\$.6286 /100
(C) Calculated maintenance and operation (M&O) rate for 1983	\$.6286 /\$100

INTEREST AND SINKING (I&S) TAX RATE

4. (A) 1983 I&S levy needed to satisfy debt (Data 11)	\$ 22,727
(B) 1983 Total taxable value of all property (Data 8)	\$ 68,410,300
(C) Divide the 1983 I&S levy (4-A above) by the 1983 total taxable value (4-B above) (\$ 22,727 ÷ \$ 68,410,300)	\$.000332
(D) Multiply by \$100 valuation	\$.0332 /100
(E) Calculated interest and sinking rate (I&S) for 1983	\$.0332 /\$100

APPRAISAL ROLL ERROR RATE

5. (A) Rate to raise 1982 levy due to appraisal errors (Data 12)	\$.0243 /\$100
(B) Add rate to recoup taxes lost due to errors (Data 13)	\$.0254 /\$100
(C) Total rate to adjust for appraisal roll errors	\$.0497 /\$100

TOTAL EFFECTIVE TAX RATE FOR 1983

6. (A) Calculated maintenance and operation (M&O) rate (3-C above)	\$.6289 /\$100
(B) Add calculated interest and sinking (I&S) rate (4-E above)	\$.0332 /\$100
(C) Add rate to adjust for appraisal roll errors (5-C above)	\$.0497 /\$100
(D) Calculated 1983 Effective Tax Rate	\$.7118 /\$100

WOODCUTTER SPECIALS

2600 E. Mabry Dr. Clovis, NM 1601 So. Ave D Portales, NM 1302 W. American Blvd. Muleshoe, TX

XEL 12" 12" Electric Chain Saw
69⁹⁵

- 12" steel guide bar
- 5.5 lbs.
- Thick, rubber-coated wrap-around handle bar for added comfort
- Exclusive SAFE-T-TIP® protects you & your saw
- Built-in chain tensioning device
- Safety-lock switch to help prevent accidental starts
- Slip clutch to protect against motor jamming

HOMELITE 330
16" Bar
299⁹⁵

This versatile workhorse from Homelite has a muscular 3.3 cu. in. engine that can handle the toughest cutting jobs. And it has an effective three-point vibration isolation system that lets you cut longer with greater comfort. The popular 330 chain saw also features solid state ignition for dependable all-weather starting, and automatic chain oiling that is calibrated to engine speed to provide longer bar and chain life. The rugged, reliable 330 is built with the advanced technology that has made Homelite the best-selling chain saw in America.

- Powerful 3.3 cu. in. engine
- Three-point vibration isolation system
- Reliable solid state ignition
- Automatic chain oiling, calibrated to engine speed
- Professional style front and rear handguards
- Throttle interlock for easy starting
- Multi-chamber Softone™ muffler provides quiet operation
- Exclusive Safe-T-Tip™ anti-kickback device
- Accel. 1/16" to 24" guide bars to meet a variety of cutting needs
- Exclusive RAKER III™ kickback suppression saw chain

XL Chain Saw 14" Gasoline Chain Saw
134⁹⁵

- Power Tip™ guide bar
- Light weight
- Automatic chain oiler
- Solid state ignition
- Exclusive SAFE-T-TIP™ anti-kickback device

Model XL-14

8 Pound Woodchopper Maul
16⁹⁹

2-Cycle Engine Oil
89^c
1/2 PINT, 32-1

3 1/2 lb. Single Bit Axe
11⁹⁹

Square Head Splitting Wedge
6⁴⁵
5 POUND

3 1/2 lb. Double Bit Axe
12⁹⁹

Three Local Crop Dusters Charged With Bid Rigging

Three local crop dusting companies headquartered near Muleshoe have had suits filed against them by the Texas Department of Agriculture, charging with rigging bids on a state contract earlier this year. One other company along with three individuals have also been named in the suit.

Those named in the suit include Lone Star Spraying, Inc., Agri-Sprayers, Inc. and Longhorn Spraying, Incorporated, all of Muleshoe. Others are Champion Sprayers, Inc. of Friona; two of its directors, Richard Glenn Herring also of Friona; James Haskell Corbell of Clovis, New Mexico, and Charles Casper, address unknown.

This suit, filed Wednesday by Texas Attorney General Jim Mattox, alleges that the defendants conspired to suppress and eliminate competition for a contract to apply an insecticide in portions of Kendall and Kerr Counties in the spring of this year. The state is seeking treble damages from the defendants.

Additionally, the Texas Department of Agriculture is investigating the possibility of suspending or cancelling the application licenses of the defendants.

"I know this sort of thing is not at all representative of the aerial application industry," said Texas Agriculture Commissioner Jim Hightower. "There are 935 aerial applicators in Texas, and we can't let the shady practices of only four of those undermine the high integrity of the rest. We have asked Attorney General Mattox to pursue this matter to the fullest for the benefit of the industry as a whole and the taxpayers of Texas."

The suit alleges that the defendants agreed to submit non-competitive bids for the contract in violation of the Sherman Antitrust Act and that they submitted bids containing fraudulent information. As a result of the defendants' actions, the state suffered delays in the program and substantial financial expense, the suit contends.

"The state wound up paying about ten cents an acre more than the original low bid, which delayed the program for at least a month, so we're not talking just nickels and dimes from the state treasury," Hightower said. "Add it up, and it means they have cheated the people of Texas out of more than \$100,000."

"Some people rob you with a gun, and others use a fountain pen," or so went the old Woody Guthrie song. Both are equally serious, and Attorney General Mattox and I intend to do everything possible to recover the treble damages as provided by the law," Hightower said.

Area Youth Elected To National Office

AREA YOUTH ELECTED TO NATIONAL OFFICE

Melissa Hargett, 16, of Coleman, Texas was recently elected second vice president of the American Quarter Horse Association, the world's largest youth equine organization. Hargett's election came during the annual AQJHA convention July 31 in Tulsa, Oklahoma. The 10,000-member organization promotes youth involvement with Quarter Horses, the world's largest and fastest growing breed, while its youth officers act as the executive branch of the organization. The AQJHA is the youth division of the American Quarter Horse Association, headquartered in Amarillo, Texas.

In the show arena Hargett has proven herself well, winning the 1982 high point all-around (12-14) award at the All-American Quarter Horse Congress and Congress championship titles in western pleasure, western horsemanship and other classes. She also was the 1981 state reserve champion youth. Along with her show experience, Hargett has served as reporter and director for the Texas Junior Quarter Horse Association and was the 1983 Queen of the Texas Quarter Horse Association.

First Things First

The judge pounded his gavel for court to come to order, then turned to the woman in the witness box. "The witness will please state her age," he ordered, "after which she will be sworn in."

Ast Dad

"How many kinds of milk are there?" "Why, there's condensed milk and evaporated milk and—but why do you ask?" "Well, I was drawing a picture of a cow and I want to know how many faucets to put on her."

Firefighters Report

By Wayne Peterson

I am back by unpopular demand with a fireman's report.

During the month of July six fires in city limits and 2 rural were reported in which took 88 man hours and about 88 miles on five units. This is a fair report of fires for July as it has been dry and could have been much worse. We received \$100 from the Nickels Gin at Goodland, which is much appreciated.

As most have read or heard, we did have five firemen to attend A&M Annual Fire School. The continued fire education received from these schools is a must to stay abreast of new types of hazardous materials and action to be taken if and when confronted with such. Owen Jones reported that this year's A&M school was the largest in attendance ever. We want to thank the Farm Bureau for their continued support.

There will also be a number of firemen attending the annual Canyon Fire School to be held Sept. 14 & 15.

The firemen did help in a few ways on the Mules Day Shendig, mainly in cooking and serving the afternoon meal.

Texas Oil Discoveries Increased

Railroad Commission records show that oil discoveries have increased by more than 35 percent during the first half of this year as compared to the same period last year, according to Railroad Commission Chairman Mack Wallace.

Discoveries are wells that are successfully completed in reservoirs that were previously untapped.

The latest figures available show that oil discoveries totaled 430 through June of 1983. During the first six months of 1982, there were 317.

However, gas discoveries have decreased by just over eight percent during the same period. There have been 669 gas discoveries reported so far this year, as compared to 730 through June of 1982.

Total completions, which include discoveries, wells in existing fields and service wells, have also decreased. Through June, the Commission's Austin headquarters office has processed 10,698 completion reports as compared to 12,410 for the first six months of the year.

The number of applications to drill new oil and gas wells is also down compared to last year. A total of 14,847 such applications have been processed through June this year, compared to 15,543 for the same period last year.

Stack crop inputs in your favor.

Profitable yields demand proper soil fertility. If you cut back on fertilizer last year, residual fertility may be inadequate for your yield goals. This year, plan for profit. Apply the crop input that offers the most growth for the dollar—fertilizer. Soil test and fertilize for Maximum ECONOMIC Yields.



WESTERN 66 COMPANY
MULESHOE, TEXAS 79347
PH. 806 272 1556

Come see us for all your fertilizer needs.

Law Enforcement Action Quieter Last Week

Arrests at the Muleshoe Police Department and the Bailey County Law Enforcement Center were at a minimum for the past week. Not all reports included arrests; however as some were reports of incidents.

On August 11, city police arrested Alejandro Navarro on two failure to appear warrants. He was taken before Municipal Judge Huckaby and paid \$100 as a partial fine. He was to return next week and complete the payment according to reports.

Allsup's To Aid In MD Fight

Through Labor Day, September 5th, Allsup's Convenience Store will display Muscular Dystrophy collection canisters in all stores in New Mexico, Texas and Oklahoma. This fund raising activity, along with many others, will help find causes and cures for 40 crippling neuromuscular disorders that affect an estimated one million Americans of all ages.

The programs of the Muscular Dystrophy Association are funded almost entirely by private contributions and corporations. And the research is working! MDA recently announced the first breakthrough in the treatment of amyotrophic lateral sclerosis (ALS) — also known as Lou Gehrig's disease. While the drug — TRH — is classified as experimental, it is the first treatment that has ever resulted in significant improvement in ALS patients and it represents a glimmer of hope for people with this terrible disease. Allsup's is proud to be a part of such worthwhile research.

Again this year, Allsup's invites area youngsters to participate in the annual "Door Bell Brigade for MDA". Kids are encouraged to pick up collection kits at their local Allsup's store on August 27th & 28th. After collecting donations for MDA and "Jerry's Kids", return the collections to the store and each youngster will receive a free fountain drink of their choice. It's Allsup's way of saying thank you to all the kids who care about help-

ing to reports. Jim Noble who resides in Muleshoe reported a burglary of his home on August 14. Upon his return home after being out, Noble found a window broken from a door where intruders apparently reached in and unlocked the door. No missing items or estimates were given.

On August 12, city officers made an arrest for a DWI, however after results of a breath test were taken, the arrested party was released and issued a citation for "Jerry's Kids".

From Jack Crow, Director of Public Relations for Allsup's, "Thanks to all of our friends and customers for your generosity in helping to fight neuromuscular diseases. Your nickels and dimes add up to millions for research and treatment, so look for the MDA coin collection canisters and give to 'Jerry's Kids'. Your change can be the key to the cure".

for a city ordinance violation.

Gilberto Ybarra was arrested by city officers on August 11 after he was stopped for a DWI due to erratic driving. Ybarra became violent and attacked officers and the tow truck driver. He was charged with alleged DWI, resisting arrest and aggravated assault on a police officer. He was taken to the County Jail and held pending bond.

On August 9, Joel Nowlin reported a burglary of construction tools valued at approximately \$800. Nowlin told officers that the tools had been taken sometime during a recent absence from town.

Raul Leal, new owner of Dr. G's Drive In Grocery reported to police on August 8, a burglary of some coin operated machines in the arcade at the store. Suspects were named, but no action had been taken at the time of the report.

In the Bailey County

Sheriff's Department, local DPS troopers made several arrests over the past week and they were placed in the Bailey County Jail.

On August 7, DPS officers arrested Freddie E. Rincon on alleged DWI charges. He was placed in the county jail and later released on a \$500 cash bond.

Raul Trevino was arrested on August 7 by the DPS on alleged DWI charges and was later released on a \$500 cash bond.

Tomas Blanco Martinez was arrested on August 8 by the DPS for alleged DWI (felony). He was later released on \$500 cash bond.

On August 11, Gilbert Ybarra was arrested by the Muleshoe Police on charges of alleged DWI and two charges of assault.

Douglas M. Hughes was arrested on August 11 on charges of alleged public intoxication. He was released after paying a \$106 fine.

Financially Speaking

Randall L. Field, C.P.A.

Williams, Adair, Sudduth & Co.

it comes from taxable sources or from such non-taxable sources as social security.

Another medical expense deduction that you may not be aware of is for a health spa, hot tub or swimming pool that you add to your residence for medical purposes. For instance, if your physician prescribed a specially equipped pool for your arthritic condition, the costs of construction and operation could be deductible to the extent they do not increase the value of your residence. If you spent \$26,000 on the pool, and the property value increased by only \$15,000, you may have a medical deduction of \$11,000.

For 1982 tax returns, medical expenses are deductible as itemized deductions after they exceed 3% of your adjusted gross income. In 1983, medical expenses must exceed 5% of your adjusted gross income to be deductible. Don't overlook any deductions in this area. Review all costs for health care, including health travel, with your accountant at the time your return is being prepared.

Smart Buys for Back-to-School

LOOK FOR BACK TO SCHOOL SUPPLIES AT ALLSUPS!

DR. PEPPER
6 PK \$1.09
10 OZ NON-RETURNABLE

NEW! 14 OZ. COLLECTORS
COKE MUG 99¢ EACH
FILLED WITH COKE ONLY

BETTY CROCKER
CAKE MIXES
LEMON CHOCOLATE YELLOW 79¢

KLEENEX
PAPER TOWELS 59¢ ROLL

NEW! FROM FRITO LAY MELLOW CHEDDAR AND SHARP CHEDDAR FLAVOR



CHEETO'S
TRY THE CRUNCHY AND THE PUFFED!
HALF-POUNDER BAG \$1.19

BORDEN'S 12 PACK
PUDDING BARS \$1.49

BORDEN'S 1/2 GAL. CTN.
HI-PRO MILK \$1.19

COOKED FOOD SPECIAL OF THE WEEK

TACO ROLLS

DELSEY 4 ROLL PK
BATHROOM TISSUE \$1.09

2 FOR 99¢

5 LB LIGHT CRUST ALL PURPOSE
FLOUR 89¢

ALLSUP'S
CONVENIENCE STORES

WHILE SUPPLIES LAST! SELF SERVE GAS

OPEN 24 HOURS FOR YOUR CONVENIENCE!

PRICES EFFECTIVE AUGUST 18-20, 1983



HEY KIDS! JOIN THE ALLSUP'S DOORBELL BRIGADE FOR MDA! AUGUST 27 AND AUGUST 28, 1983!

CHECK YOUR NEARBY ALLSUP'S STORE FOR DETAILS!
"CARING MAKES GOOD NEIGHBORS"

DISCOUNT PRICES
AT
BURRIS DISCOUNT SUPPLY
405 Main
ROOFING MATERIALS

T-Lock 20 Yr. Warranty 240 lb. **\$30.50** plus Tax per sq.

100 or More **\$28.55** plus Tax

3-Tab 17 yr Warranty 240 lb. **\$23.40** plus Tax per sq.

100 Sq. or More **\$23.00** plus Tax

15 or 30 lb. Felt **\$10.28** plus Tax per Roll

Plastic Cement **\$3.65** plus tax Gal.

Discount Prices on Filters: Oil or Air for Cars, Trucks, Tractors or Equipment. (Baldwin Filters) Congratulations To Carl Ellington, winner of 20 FREE Sq of 3-Tab Shingles.

A Pan Full of Pizza

"We start off fresh every morning by kneading our own Pan Pizza dough. Then we add our tangy sauce, rich in herbs and spices. Next comes the cheese... pure mozzarella, heaps of it followed by the toppings of your choice. And finally, for good measure, we add another layer of cheese. It all goes into the oven and is served hot and bubbly in the pan straight from the oven to you. Now that's a Pan Pizza the Pizza Hut restaurant way! Delicious!"

With a Hand Full of Savings!

MULESHOE PIZZA HUT — 1412 W. AMERICAN

Save \$2 or \$1 on Pan Pizza

WITH THIS COUPON—save \$2.00 off the regular price of any large Pizza Hut Pan Pizza or \$1.00 off the regular price of any medium-sized Pan Pizza.

"Five Minute" Personal Pan Pizza with Pepperoni—save \$1.29

WITH THIS COUPON—save 20¢ off the regular price of any large Pizza Hut Pan Pizza or \$1.00 off the regular price of any medium-sized Pan Pizza. Saturday only.

Save \$2 or \$1 on Pizza

WITH THIS COUPON—save \$2.00 off the regular price of any large Pizza Hut pizza or \$1.00 off the regular price of any medium-sized pizza.

Save \$2 or \$1 on Pan Pizza

WITH THIS COUPON—save \$2.00 off the regular price of any large Pizza Hut Pan Pizza or \$1.00 off the regular price of any medium-sized Pan Pizza.

AID TO MILLIONS CLASSIFIED ADS



DEADLINE FOR CLASSIFIED ADS IS TUESDAYS AND FRIDAYS 11:00A.M

CLASSIFIED RATES
1st Insertion Per Word...\$15
Minimum Charge...\$2.30
2nd Insertion Per Word...\$13
Minimum Charge...\$2.00
CARD OF THANKS
Per Word...\$20
CLASSIFIED DISPLAY
\$1.70...per column inch
BLIND AD RATES
50% more
DEADLINES
11 a.m. Tues. for Thurs.
11 a.m. Fri. for Sun.
WE RESERVE THE RIGHT TO CLASSIFY, REVISE OR REJECT ANY AD. NOT RESPONSIBLE FOR ANY ERROR AFTER AD HAS RUN ONCE.

5. APTS. FOR RENT
FOR RENT: One bedroom apartment. Call 272-4754 after 5 p.m.
321-tfc-5

8. REAL ESTATE FOR SALE

FOR SALE BY OWNER: 3 br, 2 bath brick home. Fireplace, carpeted garage. Beautiful yard & covered patio. Close to high school.
272-3402 or 272-3839.
8-19s-tfc

EXTRA NICE 3-1/2-1. New carpet, paneling through out. Screened in patio. Call 4541 or 5671 after 5:00 p.m. Ask for Debby.
8-13t-tfc

HOUSE FOR SALE: 2350 sq. ft. 3 bedroom, 2 baths, formal living room, den with fireplace, dining room, kitchen, laundry room with sewing center, basement, double car garage, patio, storage shed, 2 lots. Located 1/4 miles east from Earth, Texas on hwy 70. Call (806) 257-3785.
8-14s-tfc

Brick Home. 2,700 Sp. Ft. 1 Acre, Near Earth. Call Jack 293-1736.
8-1m-32s

KREBBS REAL ESTATE
If it's Real Estate you want, we have it or can get it.
-Appraisals-
Tele. 272-3191-office and residence
8-16s-tfc

1. PERSONALS

HOT WEATHER Fertilizer for lawns. Baker Farm Supply.
1-30t-8tc

DALLAS DIET: Lose Up To 10 Lbs. In 15 Days. The Most Effective Diet. For Today's Fast-Paced Life Style. Delicious, Safe, Simple. Look & Feel Great! Call: 925-6644. Preferably Mornings. Weekdays. Ellen Glover, Distributor.
1-8tc-32s

CONCERNED about someone's drinking **HELP IS AVAILABLE** through Al-Anon Call 227-2350 or 965-2207 or come to visit Tuesday nights. 8:30 p.m. at 1116 W American Boulevard, Muleshoe.
1-18s-tfc

3. HELP WANTED

WANTED: Sales Representative for Ag-Chemical or Roofing Systems of Lubricants. Call for appointment. 647-5517
3-11tp-28t

NEED FARM worker. Experience required. Top wages. 965-2259 anytime. 272-3257 after 6 p.m.
3-27s-tfc

HELP WANTED: Cooks and Waitresses. Pizza Hut, talk to manager in person.
3-32s-tfc

WANTED: Full-charge Bookkeeper with computer experience. Call: 946-3321.
3-tfc-28t

LVN Wanted to work with South Plains Health Provider, a non-profit Organization. Salary commensurate with Education and Experience. Apply Monday thru Friday, 8-5. Contact Diane Tavarez 806-293-8561 SPHP is an Equal Opportunity Employer. Deadline to apply is August 22.
3-33t-1tc

Part-time RN or LVN to complete Health History's for Insurance Co. Call 806-747-3223.
3-33t-2tc

Bingham & Nieman Realty
116 E. Ave. C
272-5285 *** 272-5286
"We Appreciate Your Business!"
George & Diane Nieman
8-1t-tfc

NEW HOMES
No Down Payment
Low Monthly Payment
You May Qualify!
AMERICAN VALLEY INVESTMENTS REALTORS
Rex Harris John Craig
Broker Builder

To Place Your Want Ads Call 272-4536

1. PERSONALS

From the family of **N.C. Moore**
We would like to express our appreciation to our relatives, friends, Dr. Allgood, the Nursing Home Staff, First Baptist Church Staff, Ellis Funeral Home Staff and to all concerned for your love, prayers, food, flowers and all other kind deeds.
Sammie Moore
Mr./Mrs. Bob Glass
Mr./Mrs. Don Moore
Mr./Mrs. Wiley Moore
The Grand Children
The Greatgrand Children

9. AUTOMOBILES FOR SALE

FOR SALE: 1979 Ford Fairmont, 4-door, power and air, 30,000 miles good rubber. Current tags. Call 272-4613 or see at 1532 W. American Blvd.
9-30t-tfc

FOR SALE: 1980-F150 Ford 1 ton P.U. 4WD-w/automatic. Lock out holes, AM-FM 8 track, Mag wheels; dual exhaust. Black and Silver. \$7,000. 51,000 miles. Call 272-5317, after 6 p.m.
9-tfc

10. FARM EQUIP. FOR SALE

FOR SALE: Avenger 3-Wheel hoe hands with spray tanks attached. Call First National Bank 272-4515.
10-21t-tfc

11. FOR SALE OR TRADE

HOME WITH ACREAGE, Approx. 10 Acres with Spacious 4 bdrm. brick home & Stucco Barn, insulated & Heated horse stable, Domestic Well, Fruit Orchard This is beautiful level land, located 4 miles N.W. of Muleshoe. Small distance off U.S. 84. Priced to Sell! Show by appointment only. Contact HUGULEY AND CO. REAL ESTATE, P.O. Box 1316, Clovis, N.M. 88101. Call 505 763-3851, or evenings 505-762-2185.
33t-4tc-11

FOR SALE: 1967 Hicks Mobile Home. Size 8x48. New Carpet throughout. Personally furnished. Very. Very Good Condition. \$4,900 or Consider Trading for a 32x40 Ft. Travel Trailer. 272-3640.
11-2tc-33s

FOR SALE: 3 br, 2 bath unfurnished mobile home. For information call 272-5370.
11-23t-tfc

Ladies Schwinn Bicycle 5 speed.
27-5617 or 272-3487
11-tfc-28t

FOR SALE: Pure bred Red Doberman puppies. Males, \$45, Females \$35. Call 272-5317 after 6 p.m.
24s-11-tfc

15. MISCELLANEOUS

GARAGE SALE: One day only 9 a.m. to 6 p.m. Saturday, August 20, 337 W. Ave. J. Childrens clothes, Furniture, dishes, toys and much more.
33t-1tp-15

Bring your Aluminum cans to Shorts Iron & Metal for high cash prices. 33 cents per lb. for Aluminum cans. We also buy copper, brass, batteries, radiators, scrap iron and aluminum.
505-762-7337. 511 S. Prince. Next door to American Auto Salvage.
15-33t-tn3

Let Us Paint! House, Trim, Fences, Etc. Free Estimates. Call 272-3600.
33t-3tc-15

LAWN TIRED/SICK? Heal with Lawn Food from Baker Farm Supply.
15-30t-8tc

HONEY FOR SALE
Nick Landers
334 W. Ave. J.
272-3096
15-5t-tfc

Aluminum Cans 31 cents - Garza Scrap Metal. 411 Prince, Clovis, N.M.
32t-9tc-15

FRANK'S REFRIGERATION APPLIANCE & SERVICE PARTS & REPAIR
315 W. 3rd. Ph. 272-3822
15-5t-tfc

WANTED: Used Honey Extractor. 272-4536.
tfc

15. MISCELLANEOUS

J.L. SOTO & SON roofing. Roof Jobs. New Repair, Painting, Carpentry Acoustical Ceilings. 272-3668.
15-30t-8tc

TRAILER SPACE for rent. Call 272-3006
15-28s-tfc

WE BUY USED FURNITURE AND APPLIANCES
CALL 272-3030
HARVEY BASS APPLIANCE
15-5t-tfc

HOME REPAIRS. F.M. Saldana Construction. Licensed and bonded plumber. Specialize in cement, carpenter work, remodeling, painting, acoustical ceilings. 272-4955.
15-16s-tfc

Round-up Application 30" or 40" Rows
Cotton Milo, Soybeans and Layout. Pipe Wick Mounted on Hi-Boy.
Call: Roy O'Brian
265-3247
15-1m-31t

TOO LATE TO CLASSIFY

Relief-Night Watchman Wanted for Feedyard. Apply Parmer County Cattle Co. 4 1/2 miles west on Hwy 60-from Bovina, TX. Contact Frank McSwan. 806 225-4400
tfc-tfc-31t

FOR LEASE FOR SALE FOR LEASE/PURCHASE YOU NAME YOUR OWN TERMS!
640 Acres. 6 wells. 2 Electric Valley Pivots. 6 Siderolls. Ideal for Grazing Operation.
272-4266

AMERICAN VALLEY INVESTMENTS REALTORS
Derrell Matthews
965-2127
Rex Harris 272-5183
tfc-33t-2tp

Sudan News
By Evelyn Ritchie

Mrs. Karen Doty, Stephanie and Dennis of Odessa have been visiting their parents and grandparents, Mr. and Mrs. Wayne Doty and other relatives.

Mr. and Mrs. Philip Gordon, Jeff and Kay Lynn have returned home from vacationing in Red River and other points of interest.

Mr. and Mrs. Robin Davis and girls of Jacksboro are in the process of moving to Littlefield where Mrs. Davis has accepted a teaching position in the school system there. They visited this week with her parents, Mr. and Mrs. Pete Lance and other family members.

Mr. and Mrs. Roger Bellar of Tyler are parents of a daughter, Amanda Loren, who was born July 28, 1983 at 1:25 p.m. in the Mother Frances Hospital in Tyler. Amanda Loren weighed 6 pounds and 12 ounces and was 20" long. Grandparents include Jay Tutt and Mrs. Lon Gipson both of Tyler and Mr. and Mrs. Waymon Bellar of Sudan. Amanda Loren has a four year old brother, Todd.

The 20th Crain family reunion was held recently in Abilene with those from this area attending: Mr. and Mrs. Bud DeLoach, Mr. and Mrs. Wayne Swart, Mr. and Mrs. Robert DeLoach, Chip and Shawni; Mr. and Mrs. James Humphreys and Krystal; all of Sudan and Mr. and Mrs. Mike DeLoach and Kristin of Spade and Mrs. O.W. Testerman of Littlefield.

WE RESERVE THE RIGHT TO CLASSIFY, REVISE OR REJECT ANY AD.
NOT RESPONSIBLE FOR ANY ERROR AFTER AD HAS RUN ONCE.

After Deadline???
You can call 272-4536 until 5:30 p.m. on Friday and Tuesday and get your WORD AD in TOO-LATE-TO CLASSIFY in the next issue!!!
Tuesday for Thursday and Friday for Sunday.

Processed Thought
Some people never have reflections unless they're standing in front of a mirror.

Everyone has good traits, if you will take the time to discover them.

Absolutely!
When a man changes his mind as much as a woman, chances are he's married to her.

HAIL DAMAGE? WIND DAMAGE?

SEE US FOR SHINGLES

SELF-SEALING

White or Lt. Brown

23⁹⁵ sq.

DELIVERY AVAILABLE

Johnson Lumber Co.
1904 W. 7th Clovis, N.M. 505-762-1632

Bailey County

NOTICE OF CALCULATION OF EFFECTIVE TAX RATE AND PUBLICATION OF ESTIMATED UNENCUMBERED FUND BALANCES

1. Dale F. Jones, Chief Appraiser for Bailey County. In accordance with the provisions of Sec. 26.04, Property Tax Code. Have calculated the tax rate which may not be exceeded by more than three percent by the Commissioner's Court of the Bailey County without holding a public hearing as required by the code. That rate is as follows: \$.08635 per \$100 farm-to-market/flood control tax; \$.41871 per \$100 for the general fund, permanent improvement fund and road and bridge fund tax; \$.50236 per \$100 TOTAL COUNTY EFFECTIVE TAX RATE. The estimated unencumbered fund balances are as follows: FARM-TO-MARKET/FLOOD CONTROL Maintenance & Operation: \$26,319. Interest & Sinking: \$-0-. GENERAL FUND maintenance & Operation: \$291,965. Interest & Sinking: \$136.

Dale F. Jones
Dale F. Jones, Chief app.
Aug. 9, 1983.

CALCULATIONS USED TO DETERMINE EFFECTIVE TAX RATE

Separate calculations are performed for each type of tax rate levied by _____ County in order to determine a 1983 total effective tax rate. The following guide corresponds with the calculations shown: A - Farm-to-market Road/Flood Control Tax; B - General Fund Tax;

I. DATA	Type of Tax	
	A.	B.
1. 1982 Total tax levy from the 1982 tax roll	\$ 166,044	\$ 849,758
2. 1982 Tax rate (\$ ____ M&O and \$ ____ I&S)	-\$ /\$100	\$ 40 /\$100
3. 1982 Debt service (I&S) levy	-\$ -0-	\$ 42,488
4. 1982 Maintenance and operation (I&O) levy	\$ 166,044	\$ 807,270
5. 1982 M&O taxes on property in territory that has ceased to be a part of the unit in 1983	-\$ -0-	-\$ -0-
6. 1982 M&O taxes on property becoming exempt in 1983	\$ 17,548, 595	\$ 66,685
7. 1982 M&O taxes on taxable value lost because property is appraised at less than market value in 1983	-\$ -0-	-\$ -0-
8. 1983 Total taxable value of all property	\$ 190,739,699	\$ 195,760,029
9. 1983 Taxable value of new improvements added since Jan. 1, 1982	\$ 1,515,000	\$ 1,533,000
10. 1983 Taxable value of property annexed since Jan. 1, 1982	-\$ -0-	-\$ -0-
11. 1983 Tax levy needed to satisfy debt service (I&S)	-\$ -0-	\$ 41,678
12. Rate to raise 1982 tax levy due to appraisal roll errors (rate that should have been less than that was levied) (\$ ____ /\$100 - \$ ____ /\$100)	\$ -.001609 /\$100	\$ -.0078 /\$100
13. Rate to recoup taxes lost in 1982 due to appraisal roll errors (lost dollars divided by 1983 taxable value) (\$ ____ /\$100 - \$ ____ /\$100)	\$.001717 /\$100	\$.0083 /\$100
* Steps necessary for appraisal roll errors (if more than 1% of total appraisal roll), effective for taxing units on June 17, 1983.		
II. CALCULATION		
MAINTENANCE AND OPERATION (M&O) TAX RATE		
1. (A) 1982 Total tax levy (Data 1)	\$ 166,044	\$ 849,758
(B) Subtract 1982 Debt service levy (Data 3)	-\$ -0-	-\$ 42,488
(C) Subtract 1982 Taxes on property no longer in unit (Data 5)	-\$ -0-	-\$ -0-
(D) Subtract 1982 Taxes for exemptions (Data 6)	-\$ 14,038	-\$ 66,685
(E) Subtract 1982 Taxes for productivity valuation (Data 7)	-\$ -0-	-\$ -0-
(F) Adjusted 1982 M&O levy	\$ 152,006	\$ 740,585
2. (A) 1983 Total taxable value of all property (Data 8)	\$ 190,739,699	\$ 195,760,029
(B) Subtract 1983 Value of new improvements (Data 9)	-\$ 1,515,000	-\$ 1,533,000
(C) Subtract 1983 Value of annexed property (Data 10)	-\$ -0-	-\$ -0-
(D) Adjusted 1983 Taxable value for M&O	\$ 189,224,699	\$ 194,227,029
3. (A) Divide the adjusted 1982 M&O levy (1-F above) by the adjusted 1983 taxable value for M&O (2-D above) (\$ ____ /\$100 - \$ ____ /\$100)	\$.000803	\$.0038129
(B) Multiply by \$100 valuation	\$.08033 /\$100	\$.38129 /\$100
(C) Calculated maintenance and operation (M&O) rate for 1983	\$.08033 /\$100	\$.381 /\$100
INTEREST AND SINKING (I&S) TAX RATE		
4. (A) 1983 I&S levy needed to satisfy debt (Data 11)	-\$ -0-	\$ 41,678
(B) 1983 Total taxable value of all property (Data 8)	-\$ -0-	\$ 195,760,029
(C) Divide the 1983 I&S levy (4-A above) by the 1983 total taxable value (4-B above) (\$ ____ /\$100 - \$ ____ /\$100)	\$ -0-	\$.0002129
(D) Multiply by \$100 valuation	\$ -0-	\$.02129 /\$100
(E) Calculated interest and sinking rate (I&S) for 1983	\$ -0-	\$.02129 /\$100
APPRAISAL ROLL ERROR RATE		
5. (A) Rate to raise 1982 levy due to appraisal errors (Data 12)	\$ -.001609 /\$100	\$ -.0078 /\$100
(B) Add rate to recoup taxes lost due to errors (Data 13)	+\$.001717 /\$100	+\$.0083 /\$100
(C) Total rate to adjust for appraisal roll errors	\$.003326 /\$100	\$.01613 /\$100
1983 EFFECTIVE TAX RATE FOR EACH TAX		
6. (A) Calculated maintenance and operation (M&O) rate (3-C above)	\$.08033 /\$100	\$.38129 /\$100
(B) Add calculated interest and sinking (I&S) rate (4-E above)	+\$ -0-	+\$.02129 /\$100
(C) Add rate to adjust for appraisal roll errors (5-C above)	+\$.003326 /\$100	+\$.01613 /\$100
(D) Calculated 1983 Effective Tax Rate for this tax	\$.08365 /\$100	\$.41871 /\$100
TOTAL EFFECTIVE TAX RATE FOR 1983		
7. Add calculated 1983 effective tax rate for each tax together (\$ ____ /\$100 + \$ ____ /\$100 + \$ ____ /\$100)	\$.50236 /\$100	\$ 5.0236 /\$100
1983 Effective Tax Rate for Each Tax Levied and the Total 1983 Effective Tax Rate are the rates published as required by Sec. 26.04, Property Tax Code.		

Summer Muleshoe Area Business Directory

Bob's Thursday, Friday & Saturday Specials

STARKIST TUNA WATER OR OIL PACK
6 1/2 oz. Can **77¢**



515 W. American Blvd. 272-4406

We Have:
A New Line Of Marble Kitchen Utensils
New Shipment Of Flo-Blue China
Trunks - Completely Renovated
New Pieces Of Fine Brass

Antiques & Junk

109 S. 1st 272-5275

"We Do Custom Processing"
See Us For Your
Meat Orders And Beef & Pork Processing

Winkler Meat 401 Main

272-4703

John Deere Leasing provides low equipment payments

272-4296

1516 W. American

A John Deere lease lets you get the equipment you need with lower payments than other types of financing plans. John Deere is able to take advantage of Investment Tax Credit and depreciation allowances on the leased equipment—you benefit through lower payments on the equipment you lease. If you want new equipment and low payments, look into leasing today.



Dent-Rempe



Thursday Night Special

Sirloin
With Salad Bar
Choice Of Potato

6 oz.....\$4⁶⁵ 8 oz.....\$5²⁵

2103 American **Dinner Bell** 272-3460

Bob's Thursday, Friday & Saturday Specials

EAGLE BRAND MILK 14 oz. Can **\$1⁰⁹**



515 W. American Blvd. 272-4406

Custom-Made Jewelry

- ★ Jewelry Cleaning
- ★ Jewelry Repair
- ★ Stone Setting
- ★ Ring Sizing

Hundreds Of Patterns To Choose From
Muleshoe Pawn Shop

213 S. 1st 272-5105

Camera Special

1/3 off

Polaroid Sun 660 Reg. 110⁰⁰ 73⁰⁰

Kodak Ektralite Reg. 43.50 to 64.95

29.00 to 43.35



308 Main **Damron Rexall Drug** 272-4210

Back To School Sale

20% OFF
All Greenware

DRY BRUSHING CLASSES Start August 29

Chalk Classes September 5

Hours - 10-6 Tuesday - Saturday
1-9 Monday

Duncan Ceramics

1114 W. Amer. Blvd. 272-4143

With The Upcoming
Football Season, Remember
The Dinner Bell For The Best
In Food In A Congenial Atmosphere.
Dinner Bell Will Be Open To Serve
You A Meal -- Or A Snack.

Leal's Known For The Best In Mexican Foods



Closed On Monday

Leal's Nuevo Restaurant

1542 W. American

272-3294

DIET COKE, CAFFEINE FREE COKE, SPRITE, SUGAR FREE SPRITE OR 12 OZ. CANS - 6 PK.

COCA-COLA \$1⁵⁹



SEV-ALL THRIFFWAY

501 W American 272-4739

Bob's Thursday, Friday & Saturday Specials

GIANT SIZE TIDE 25' Off Label 49 oz. **\$1⁹⁹**



515 W American 272-4406

True Value
HARDWARE STORES

WEED TRIMMER

Model 409 Reg. \$32⁹⁹ Now \$22⁹⁹
Model 509 Reg. \$69⁹⁹ Now \$49⁹⁹

Limited To Stock On Hand

Fry & Cox

401 S. 1st 272-4511