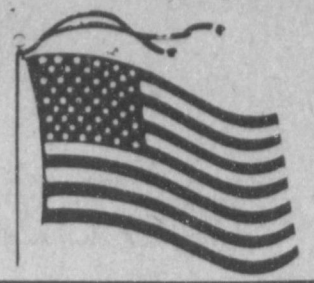


**WEATHER**

March 15	75	35	.00
March 16	68	37	.00
March 17	57	27	.00
March 18	46	25	Tr.

# Muleshoe Journal 20c



'The Community Of Opportunity - Where Water Makes the Difference'

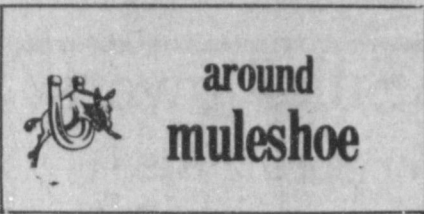
Vol. 64, No. 12

10 Pages Today

Published Every Thursday At Muleshoe, Bailey County, Texas 79347

Thursday, March 19, 1987

## Annual Dinner Theater Will Feature 'Macbeth'



\*\*\*  
Although the Muleshoe City Council met in regular session Tuesday morning, little action took place.

Council members approved two engineering contracts. One was concerning seal-coating of city streets and the other was regarding the proposed new airport to be located east of Muleshoe adjacent to Highway 84.

\*\*\*  
The Muleshoe Chamber of Commerce and Agriculture has begun something new, says Toni Eagle, manager.

Not only will an Employee of the Month be selected, but a Business of the Month and Member of the Month will be selected.

The procedure to nominate a business or member is the same as nominating an employee.

Call the chamber office at 272-4248 and give your nomination.

\*\*\*  
Jack Benham, Goodland, has been elected to membership in the American Angus Association, reports Dick Spader, executive vice president of the national organization with headquarters in St. Joseph, Mo.

\*\*\*  
The 1987 annual Friona Chamber of Commerce and Agriculture Banquet will be held Thursday, March 19, in the Friona Community Center. Tickets are \$12.50 in advance, for adults and \$8 for students, or \$15 at the door.

This year's theme is 'Focus on Friona.' Representatives from EXCEL and Millard Warehouse will inform the audience of past expansion impact as well as possible future expansion plans.

Advance tickets may be ordered by calling Kathy Beard at 806/247-3491.

\*\*\*  
Leslie Langfitt, daughter of He.b and Pat Langfitt, has recently been named to the Dean's List at Sul Ross State University, Alpine.

She was also honored by her classmate by being chosen Freshman Class Favorite.

\*\*\*  
Two Texas Tech University agricultural sciences students have been awarded scholarships by the Department of Animal Science.

Mark Lust of Lazbuddie, and Clifford James of Earth, were awarded the \$250 Block and Bridle Scholarships.

Lust is the son of Mr. and Mrs. Glenn Lust and James is the son of Mr. and Mrs. Jeral James.

\*\*\*  
Rick Shumate of Farwell has won the National Grain Sorghum Producers Association irrigated yield and management contest.

Shumate farms in northern Parmer County and has for the past 21 years. He farms 2,400 acres, about 700 of that devoted to sorghum. His winning entry produced 238.97 bushels.

## Rotary Club Hosts Speaker On Heritage

Guest speaker for the Muleshoe Rotary Club Tuesday at noon was R.A. Bradley of the Muleshoe Heritage Foundation.

Bradley presented an update on activities and renovations underway by the Heritage Foundation, including the old Santa Fe Depot, which is being remodeled into a senior citizen meeting center, and general meeting place.

"We need your support," said Bradley, "and what we need most right now is for you to figure us into your budget. Once the renovation are complete, there will be such things as utility bills and maintenance."

Table and chairs are needed, as well as flatware for the tables. Tables, such as are



**WILL THEY, OR WON'T THEY?**--Fruit trees throughout the area burst into bloom during the past several days, and Lauri Kinard is pictured checking the blossom laden limbs of an apricot tree. As colder weather, accompanied by some frozen moisture, moved back into the area Tuesday afternoon, it became questionable as to whether or not the blooms could withstand the cold temperature enough to hang on enough to produce fruit later this year. Some peach trees were also in bloom, although cherry and apple trees were holding back.

## Tornado Season Brings Tips To Help Save Injuries, Lives

Spring brings rain, the first flowers, trees putting on leaves and fruit trees blooming -- as well as warm weather. But, spring also brings about a natural phenomena that can prove to be very severe and disastrous.

It's tornado time, and although Bailey County is not officially in 'Tornado Alley,' with that location being to the northeast, Bailey County is known to be the beginning of many of the severe storms that trek to the northeast. Storms spawned near Muleshoe very often become raging storms by the time they move slightly to the northeast, and some end up threatening homes, businesses and lives right here.

Although it's true, Muleshoe has escaped a severely damaging tornado since June, 1951, the potential is there in the springtime. Western, Bailey County had a devastating tornado some ten years ago that destroyed teaching housing, along with a portion of the Three Way School. No one was injured in either tornado, but once again, the potential is there.

When severe weather is approaching, the Civil Defense unit is pressed into service, along with city, county and state law enforcement officers and the Muleshoe Fire Department.

They are all trained weather spotters and they watch storm clouds as they are brewing to make sure they do not pose a threat to the immediate area, and pass warnings along to communities in the path of approaching severe weather.

Tornadoes are the most violent of all atmospheric events and usually occur in the spring.

### Eighth Grade Girl Tracksters

#### 1st At Idalou

Last Friday, it really didn't turn out to be "Friday the 13th" for the eighth grade track girls from Watson Junior High School. They went to Idalou to participate in a meet and came home with first place overall.

Coach Roxie Johnson said the girls placed:

**SHOT:** Monica Swint, first, 28 feet; Monica Pacheco, second and Michelle Dent, third.

**DISCUS:** Monica Swint, first, 78 feet, one-quarter inch.

**LONG JUMP:** Missy Smyer, first, 13 feet, nine and one half inches.

**TRIPLE JUMP:** Lupita Pineda, second, 25 feet, eight inches; Missy Smyer, third and Burnley Riley, sixth.

**400 M RELAY:** Monica Swint, first, 56.82; Libby Aguirre, Missy Smyer and Christine Lewis, first, 56.82.

**100 M DASH:** Lupita Pineda, third, 20.61; Lilly Garza, fifth and Sheila Garner, sixth.

**800 M RUN:** Shelia Garner, second, 3:08.34; Lilly Garza, fourth.

**100 M DASH:** Christine Lewis, first, 13.87; Missy Smyer, fourth and Libby Aguirre, fifth.

**800 M RELAY:** Monica Swint, Monica Pacheco, Lupita Pineda and Christine Lewis, first, 2:06.22.

**400 M DASH:** Shawna Smith, third, 1:18.02; Burnley Riley, fifth and Michele Holmans, sixth.

**200 M DASH:** Missy Smyer, third, 30.33; Libby Aguirre, fourth and Monica Swint, sixth.

**MILE RUN:** Lilly Garza, first, 7:06; and Sheila Garner, second.

**MILE RELAY:** Monica Pacheco, Shawna Smith, Burnley Riley and Lupita Pineda, third, 5:29.27.

even though tornadoes have been reported at any month of the year. An average of 110 deaths and thousand of injuries are reportedly blamed on tornadoes each year in the United States, even with modern and advanced weather equipment.

They may form at anytime of the year -- day or night -- and some 700 to 1,200 tornadoes are spotted each year across the nation.

April, May and June are usually the 'peak' months for tornado activity, although tornadoes have reported in the U.S. during each and every month, and each and every state in the nation. However, some 80 percent of the tornadoes are reported during the three spring months.

Tornadoes are said to form when warm moist air from the Gulf of Mexico streams north and collides with cold polar air coming out of the central plains states and warm dry air heading northeastward off the Mexican Plateau.

The three way collision and strong daytime heating makes conditions ideal for tornadoes to form.

The tornadic thunderstorm is usually separated, or isolated.

Cont. Page 6, Col. 3

## CofC, Police Plan Seminar On Shoplifting

Jointly, the Muleshoe Police Department and the Muleshoe Chamber of Commerce and Agriculture have scheduled a seminar on "Shoplifting and Employee Theft" for area businesses.

The seminar has been planned for Tuesday, March 24, at 7 p.m. in the Muleshoe Police Department Training Room. If the attendance will be heavy, the seminar may be changed to another location, said Toni Eagle, manager of the CofC meeting room.

She said all area businesses are urged to be represented at this seminar and participate for the benefit of your own particular business.

A count is needed, so if your business is to be represented, please notify the CofC at 272-4248, with how many will be from your business.

## Spring Fashion Revue, Art And Entertainment

Monday night will be the time for a very popular event in Muleshoe, when the Muleshoe Fine Arts Boosters will be offering entertainment to please everyone, beginning at 6 p.m.

They will be hosting the annual Dinner Theatre and Fashion Revue, complete with live entertainment and art on display.

At a cost of only \$5 for adults and \$2.50 for children, the

## School Board Changes Rule For Discipline

Three of the items considered by the members of the board of trustees for the Muleshoe Independent School District stood out Monday night.

One of the items concerned personnel. Muleshoe Superintendent H. John Fuller said that all recommendations made for re-hiring of personnel by himself were approved except one.

Another item approved by the school board was a Discipline Management Plan for the school. A major change in the DMP is that students may now be suspended for as many as six days, instead of the three days formerly allowed.

And the third item concerned the cheerleaders. In the past, the high school had 11 cheerleaders. In a consolidation move, there will now be eight cheerleaders and one mascot.

Varsity and junior varsity have been combined and each grade level must be represented by at least one cheerleader, with a maximum of three cheerleaders from any one grade level, according to the change by the MISD board.

Although the superintendent had recommended the rehiring of Jerry Johnson as coach, the board failed to approve the recommendation. Ben Roming made a motion to accept the recommendation, but it died for lack of a second, said Fuller.

Coach Johnson has the opportunity to stay with the MISD, but not as a basketball coach, explained the superintendent. The recommendation did not affect the coach with track, or cross country.

evening gets underway with a Mexican dinner at the Muleshoe High School Cafeteria. Prepared and served by parents of students of Fine Arts in Watson Junior High and High School, the meal will consist of Mexican dishes, casseroles, vegetables, salads, desserts and drinks.

Throughout the evening, participants will be entertained by the Muleshoe High School Band, in the specially decorated cafeteria. Decorations will be displays from the junior high and high school art departments.

Enhancing the evening will be the annual Fashion Revue, which will be giving everyone an opportunity to see the newest in spring fashions from local merchants, and modeled by Muleshoe celebrities.

Following the meal and fashion show, those in attendance are cordially invited to the Muleshoe High School drama department's production of "Macbeth," in the high school auditorium, under direction of Kerry Moore and John Gulley. This is a special preview of the one-act play that the

Cont. Page 6, Col. 1

## Lazbuddie FFA In Third Place At Pampa Meet

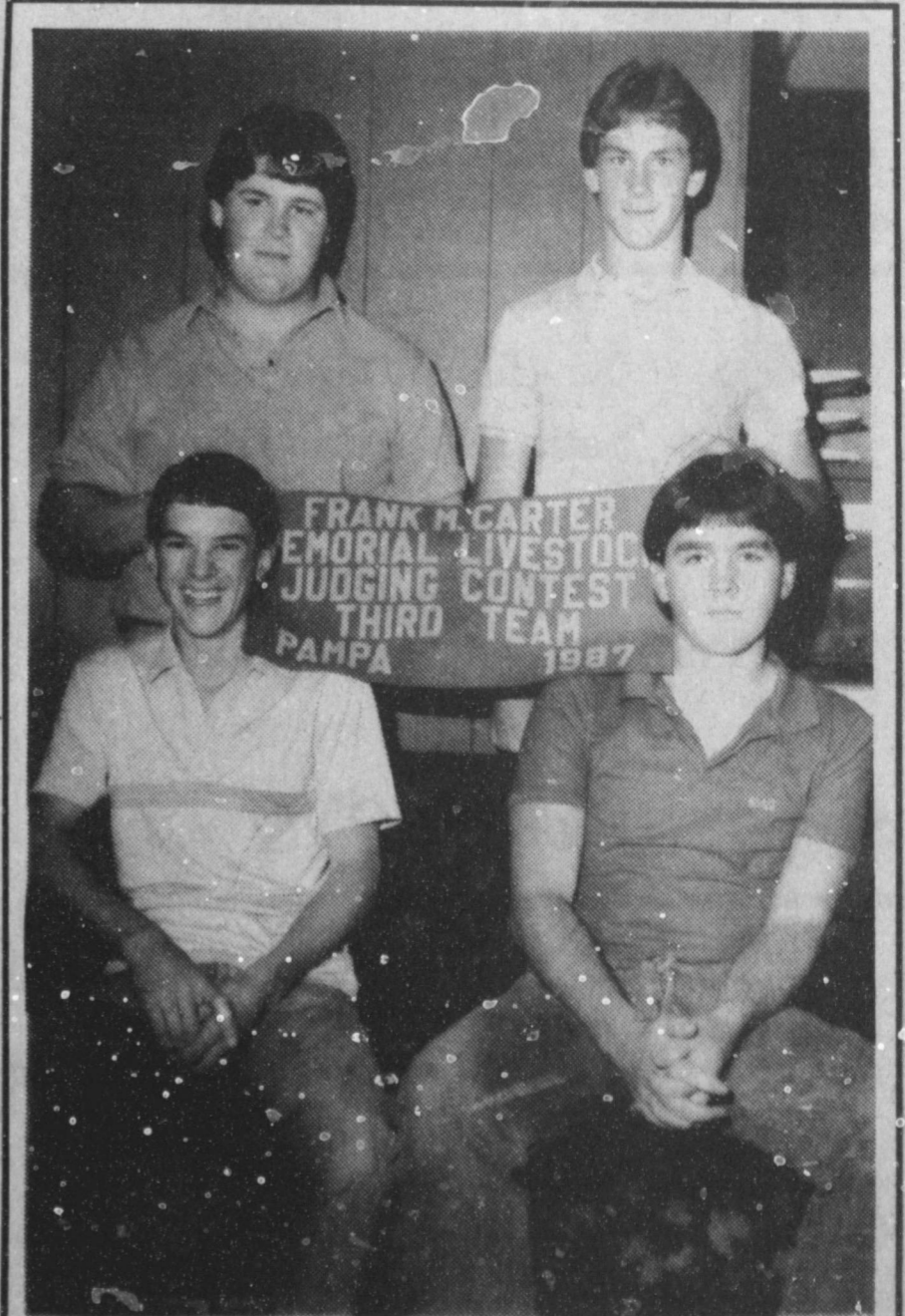
On Saturday, March 14, the Livestock Judging team from the Lazbuddie School participated in a Pampa judging contest and brought home a banner and honors from the competition.

Members of the team are Sheldon Mason, Tim Lust, Scott Mitchell and Steve Bradshaw.

During the meet, Sheldon placed fifth in beef cattle; Scott was first high individual in swine; the team was first high in swine and was fifth high in sheep.

Also, Sheldon was second high individual overall and the team was third high overall for the meet.

Rick Copp, vo-ag instructor for the Lazbuddie School said he was extremely proud of the Livestock Judging team and their efforts.



**LAZBUDDIE LIVESTOCK JUDGING TEAM**--Last weekend in Pampa, the Livestock Judging Team from Lazbuddie School represented their school very well in competition. Members of the team are from left, standing, Steve Bradshaw and Tim Lust; and seated from left are Sheldon Mason and Scott Mitchell.

MULESHOE  
AREA

# Spring '87

BUSINESS  
DIRECTORY  
AND  
SHOPPING  
GUIDE



Come in and let Glenna  
or Pat help you with  
that perfect hair  
style for Spring!!

**Glenna's Beauty Retreat**  
207 Ave. G. 272-3092

## Super Savings

2-1986 Dodge Pickups  
2-1986 Taurus

**3.7 APR**  
Available

**Muleshoe Motor Company**  
1225 W. Amer. Blvd. 272-4251



## Exotic Silk Flowers

For Spring Also  
New Spring Colors In  
Candle Tapers.

- ★ Corn Flower
- ★ Lilac
- ★ Torquise
- ★ Peach Sherbet
- ★ Mint Green

*Art Loft*

272-3485 1529 W. Amer. Blvd.

**3**  
Locations  
To Serve You

Clays Corner Enochs Muleshoe

## Farmers Co-Op Elevators

Phone 272-4335



What if you could have a custom made dress for your daughter this Easter? What if you didn't have to settle for a color less than what you had really hoped for? You would probably be glad to pay more for this delightful treat. But what if it actually cost less than the dress you usually get! You know-the one that has to be repaired the first time it's washed. And when you get to Church on Easter Sunday, you find half of the little girls there liked the dress as much as you did. Well, shop around no more and come on down to the "Lollipop Tree", where "Our Only Limitation is YOUR Imagination". Custom made children's clothing is our speciality along with a complete professional T-Shirt shop. We handle athletic uniforms, caps for your business advertisement a T-shirt just for fun and much much, much more. So come see us at 124 E. Ave. B. (formerly Ann's T-Shirts). You'll walk away with a good deal and a smile.

## Lollipop Tree

124 E. Ave. B.



Dress your little girl for Easter with hairbows to match her dress.

127 Main **Trophies & More** 272-3043

## Ginnie Johansen Scarves & Belts

*Lookin' Good*

206 Main 272-5052

**Drapery Specialist**  
Take Down & Rehang Alterations

We Also Do Sizing In Jeans.  
We Clean & Press Nearly Everything.  
Quality Carpet Cleaning.

## Lambert Cleaners

123 Main 272-4726

**Treat Yourself & A Friend**  
To The Best In Mexican



**Food At Leal's**  
Closed Monday's.

**Leal's El Nuevo Restaurant**  
1542 W. Amer. Blvd. 272-3294



1/4 Ct. Marquise Diamond Set in 14 Karat gold \$850. Reg. 1,100.



\$795. Reg. 1,000. 14KYG 1/2 carat.

Lay A Way Now  
For Mothers Day

202 Main **Lindsey Jewelry** 272-3355



The life of the party.

Send the FTD® Birthday Party® Bouquet. \$18.50 just call or visit us today.



Registered trademark FTD.

**Decorators Nursery & Floral**  
616 S. 1st. 272-4340



New from Max Factor  
Satin Blush and Satin  
Shadows, Refillable  
Compacts and  
Nail Polish in New Spring Colors!!

304 Main **Damron Drug** 272-4210



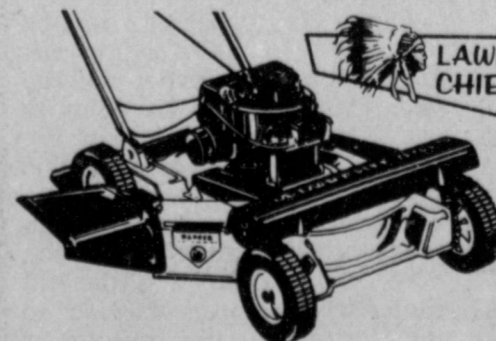
Get Your  
Easter Order  
In Now!!  
It Is Later Than  
You Think!!

**Lollipop Tree**  
124 E. Ave. B.



Let our team of expert  
stylists add a special  
touch to your new  
look for Spring!!

**Main Street Beauty Salon**  
115 Main 272-3448



\$239<sup>88</sup>

3.5-HP, 22-in. Lawn Mower is self-propelled, with front-wheel cog drive, 8-in. wheels, fingertip drive control.

**Fry & Cox, Inc.**

401 S. 1st. 272-4511





MRS. NICK WEEKS  
(nee Cheryl Foster)

## Cheryl Foster, Weeks United In Marriage

Cheryl Foster of Corpus Christi and Nick Weeks of Kingsville were united in marriage Saturday, Feb. 28 in the First United Methodist Church, Shoreline Corpus Christi.

The bride is the daughter of Ginger Foster of Austin and Weeks is the son of Bill and Dorothy Weeks of Premont. The bride is also the granddaughter of Raymond and Ruth Gaede of Muleshoe.

The bride chose a gown of white satin with a deep "V" neckline in front and back. The satin and lace sleeves tapered gracefully to the wrist. The fitted bodice was covered with Alencon lace scattered with pearls and featured a dropped waist tapering to a point. A large white satin bow rested at the base of the bodice in the back. A full satin skirt scattered with appliques of lace flowed into a train, edged all around with Alencon lace and pearls.

On her head she wore a wreath of pearls and silk flowers from which floated illusion, edged all around with pearls.

The bride's attendants were: Tracey Gaede of Stanford, CT, Diana Gaede of Newport Beach, CA, Betty Murry of Corpus Christi, and Melinda Savage of Corpus Christi.

Attending the groom were: Mike Weeks of Premont, Wil-

liam Vogt of Hebbbronville, Jerry LaBarba of Houston and Hugh Schoenewolf of Premont.

Following the ceremony, a reception was held on the 20th floor of Hershey Hotel.

After a cruise to Puerta Vallarta Mexico, the couple will make their home on a ranch outside of Kingsville.

The bride is self-employed as a commercial Real Estate Broker and Weeks is also self-employed.

### Rebekah Lodge

Twenty-four members braved the chilly weather and gathered for the weekly Rebekah Lodge meeting, Tuesday night, March 9.

After the flag was presented and the pledge was given, lodge was opened with a prayer by Chaplain Novella Price.

The roll of officers and members was called and absentees were recorded. Those being ill were reported: Glen Berry is improving, George Gross is home and weak but doing better, Dailey Howell is reported to have an appointment on March 18, James Howell is reported to have gone home, and Beck Allen is slowly improving.

Louise Allen read a poem, which Terrie Snell reported everyone enjoyed.

As a money making project, the lodge members are selling sympathy, get well and all occasion cards by the box. Those wishing to purchase cards are asked to contact Ina at Western Gift Store 272-5601 or Betty at Fry and Cox 272-4511 or any lodge member.

The weigh-in for the arthritis was postponed for two weeks. Lena Hawkins reported on her trip to Oklahoma. There she met a college friend which to her surprise will be a Rebekah for 50 years this May.

Fern Davis, District Deputy, reported on her trip to Dinmitt for a school of instructions.

After the good of the order and a prayer by Velma Howell, refreshments were served to those present by Lillian Sims and Louise Allen.

Happy Birthday was sung to Patsy Chance.

### Young Homemakers

Muleshoe Young Homemakers met Tuesday, March 10 at the 16th and Ave D Church for their March business meeting. Those attending and answering roll call with "What do you do when you get spring fever?" included: Shelia Black, Tori Bruton, Jo Ellen Cowart, Rose Crosswhite, Carren Floyd, Sue Gibson, Pam Hancock, Terri Marricle, Beverly Parker, Glenda Powell, Juana Shelbourne, Tonya Wall and Linda Wimberly.

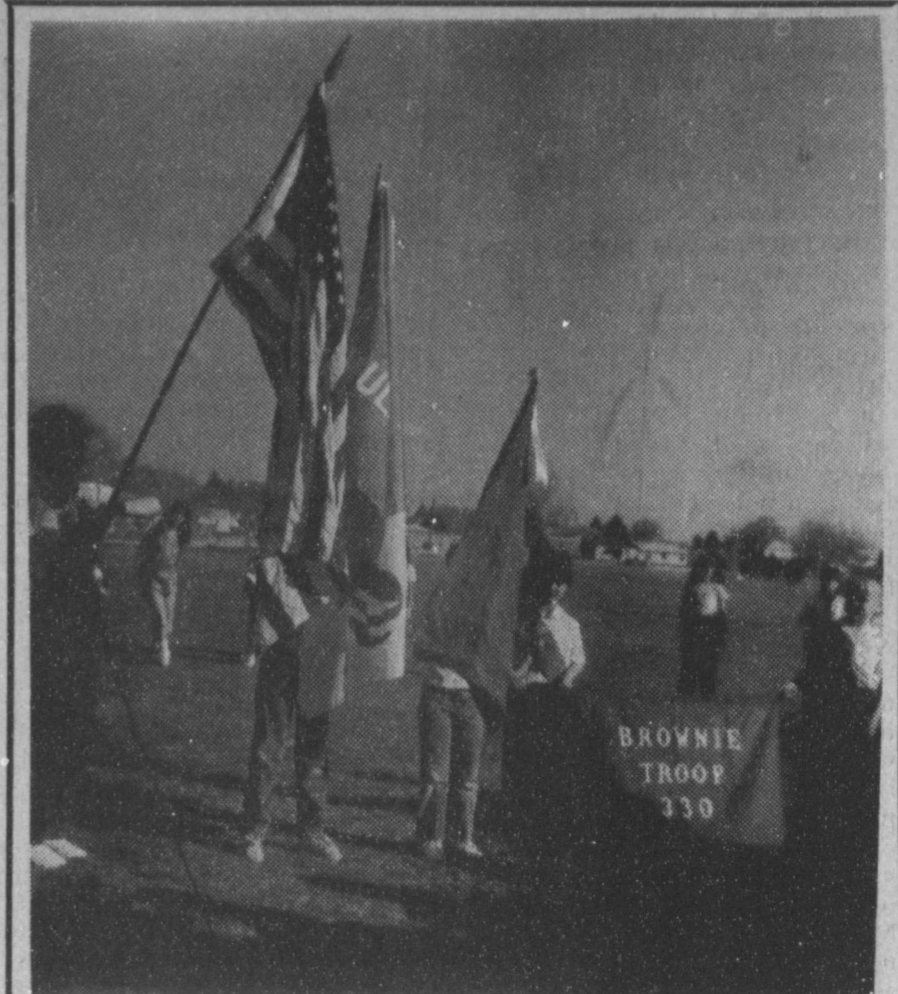
Special guest was Martina Schornhorst, foreign exchange student from Germany. "Martina was very interesting and everyone enjoyed her" said Tori Bruton. "She told us about some of the main differences between Germany and here in Texas."

Hostesses were Shelia Black, Sue Gibson, Debby Scott and Shelly Pickering. They served bundt cakes and tea.

Members received new cross-stitched name tags that some of the members had made for everyone. At the end of the meeting, members present put their name tag in a basket for the drawing of a door prize. The door prize was won by Mrs. Wimberly.

The Young Homemakers sponsored skating Friday, March 13th, and story hour at the Muleshoe Public Library on Wednesday, March 18.

It was reported that craft night will be Tuesday, March 24, the craft will be stuffed or lined baskets. April 14 will be the next business meeting with Marilyn Riley as the guest speaker.



GIRL SCOUTS CELEBRATE--Local Girl Scouts joined other Scouts around the U.S.A. recently and celebrated the Scouts 75th birthday. The Muleshoe Scouts met at the New City Park and formed a Scout Friendship Circle, sang songs and recited the Girl Scout Promise. These activities were followed by a sack lunch.

## Bridal Shower Honors Miss Jacalyn Hale

The home of Mrs. Edwin Harper was the scene of a bridal shower honoring Jacalyn Hale, bride elect of Mark Lane, Saturday afternoon.

A lace edged linen cloth covered the serving table, which was accented with a floral arrangement of white daisies and carnations interspersed with teal statis in a crystal compote. Teal napkins completed the decorations.

Individual cakes, iced in teal flowers, and punch were served from crystal appointments.

The registration table was centered with a tall taper in a circle of teal flowers and baby's breath and tied with teal ribbons.

Special guests included: Mrs. Joan Hale of Iowa Park and Mrs. Nell Lane of Sudan, mothers of the couple; and Debbie Smith of Lubbock, roommate of the honoree.

The hostesses gift was a vacuum cleaner. Hostesses for

the event were Mrs. Adrian Martin, Mrs. Richard Black, Mrs. John Williams, Mrs. Glen Caréwell, Mrs. Radney Nichols, Mrs. Raymond Harper, Mrs. Wayne Rogers, Mrs. Kyle Martin and Mrs. Dyke Gaston.

Also Mrs. Trey Gaston, Mrs. Edwin Harper, Mrs. Bill Boyles, Mrs. Olin Nix, Mrs. Wix Gaston, Mrs. Wayne Whiteaker, Mrs. Bill Curry, Mrs. Harold May, Mrs. Bob Drake, Mrs. Billy Gore, Mrs. Joe Kent, Mrs. Bill Nix, and Mrs. F.M. Smith.

If your grocery budget keeps increasing—remember that you pay extra for convenience foods and ready-for-table foods.

To get maximum volume when beating egg whites, be sure they are room temperature and beat in a glass or metal bowl.

# Ben Franklin

2104 W. Amer. Blvd.

272-3855

Mon-Sat. 8-8

Sun 12-5

## TREES

Ready for Planting

**Shade Trees**  
Globe Willow, Weeping Willow  
Fruitless Mulberry, Silver Maple

5 Gallon

**\$14<sup>97</sup>**

**Fruit Trees**

Santa Rosa Plum, Cherry  
Apple, Apricot, Peach, Pear

5 Gallon

**\$14<sup>97</sup>**

**Roses**

Tropicana, White Magic, Blaze Peace,  
America, Chrysler Imperial Crimson  
Glory, Mirandy

1 Gallon

**\$2<sup>97</sup>**

Turf Magic  
Weed N Feed  
&  
Super Lawn Food  
**\$5<sup>99</sup>**

Covers up to 6400 Sq. ft.

Sunshine  
**Peat Moses**

2 Cu. Ft. **\$5<sup>47</sup>**

4 Cu. Ft. **\$9<sup>67</sup>**

**Peat**  
1.5 Cu. Ft.  
**99c**

**Onions**  
60-100 in a Bunch  
2 Bunches.....**\$1<sup>00</sup>**

**Shrubs**

Berkman's Golden Arborvitae,  
Junipers, Burford Holly, Domestica  
Nandina, Japanese Boxwood

1 Gallon

**\$3<sup>37</sup>**

CALENDAR OF EVENTS  
MARCH 19-25  
THURSDAY, MARCH 19

CHAMBER OF COMMERCE  
11 a.m.

ODDFELLOWS LODGE  
7:30 p.m.

HOBBY CLUB  
2 p.m.

KNIGHTS OF COLUMBUS  
8 p.m.

TOPS CLUB  
6:30 p.m.

FRIDAY, MARCH 20  
KIWANIS CLUB  
6:30 a.m.

FIREMENS AUXILIARY  
SKATING  
7 p.m.

TUESDAY, MARCH 24  
WMU  
2:30 p.m.

ATHLETIC BOOSTERS  
7:30 p.m.

ALCOHOLIC ANONYMOUS  
8 p.m.

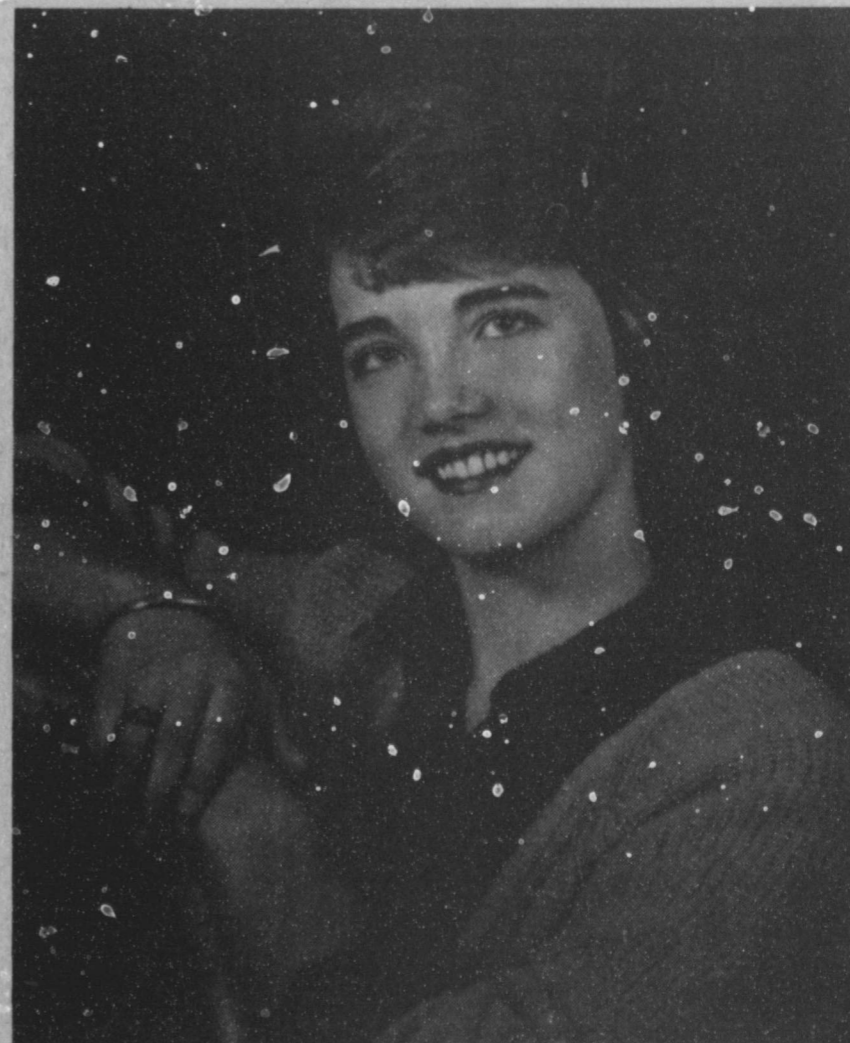
REBEKAH LODGE  
7:30 p.m.

ROTARY CLUB  
12 (noon)

WEDNESDAY, MARCH 25  
LIONS CLUB  
12 (noon)

# SALUTE To Our LEADERS OF TOMORROW

We Believe Our Youth Of Today Will  
Provide Effective Leadership  
Tomorrow!!



LEADER OF TOMORROW--Our Leader of Tomorrow for this week is Melissa Martel the daughter of Mr. and Mrs. Larry Martin. Melissa is a senior at M.H.S. She is the editor of the Mules Tale and is involved in N.H.S., the One Act Play, The Yearbook and theatre. Melissa has also been elected "Best All Around" this year. We are proud to recognize this young lady as a "Leader of Tomorrow."

Proudly Presented By:



# Creative Living

by Sheryl Borden

Back by popular demand! For the last several years, "Creative Living" has put together a special hour-long show for airing during the various pledge drives. This year's special with Sheryl Borden, Producer/Host, will be just that -- very special. Three different segments will be featured between 2 and 3 pm on Saturday, March 21 on KENW-TV. (The times are Mountain).

Mike Kelly, President of Kelly's Crafts in Cincinnati, OH will present a delightful segment on "Fun to Paint Activities". Children and adults alike will enjoy his suggestions. Mike is a former physicist with a major steel company, who now owns and operates a very successful mail order craft business. Some of the projects Mike will show include magnets, suncatchers, wall plaques and photo holders. They are all easy to do, relatively inexpensive and good for gifts or to sell at craft bazaars. Mike terms these projects "goof proof" because they are so easy to make, and he'll demonstrate the step-by-step process.

Another guest will be Eloise Wagers, Sales Manager for JHE International in Denver, CO. Eloise will share some creative ideas for buttons. A few of her ideas will involve using buttons to make earrings, cuff links and decorative pins. The supplies needed are minimal and the finished products are just like ones that can be bought for a much higher price. Buttons have added the finishing touch to garments for years, but now besides being functional, they can be decorative and used for such a wide variety of other uses.

Finally, time-saving techniques for home sewing will be featured as "Creative Living" presents a portion of "Sewing Today Across the USA," an all-day consumer show sponsored by McCall's Patterns, Coats and Clark, Dritz, Pellon, Offray and White Suprapress, and is produced by Palmer/Pletsch Associates, leaders in the field of sewing education and promotion. The show is being held in 30 cities across the country.

## Alpha Zeta Pi

## Elects Officers

## For Coming Year

Alpha Zeta Pi met Tuesday, March 10 at 7 p.m. in the home of Rayniel Bamert. A meal consisting of chicken spaghetti, a tossed salad with ranch dressing, hot rolls and pound cake with a fruit topping was served.

A discussion was held on the sale of Bingo equipment which Alpha Zeta Pi no longer uses. It was decided that it would be advertised and sold. Susan Wedel volunteered her name and phone number to be used.

New officers were elected for the 1987-88 year. Those elected and their office were: Cindy Barrett, president; Susan Wedel, vice president; Pam Atwood, recording secretary; Kay Leopard, treasurer; Starla Ellis, corresponding secretary; Monica Henry, extension officer; and Vicki May and Tammy Elder, City Council representatives.

Those present were Pam Atwood, Rayniel Bamert, Cindy Barrett, Marilyn Crittenden, Tammy Elder, Starla Ellis, Monica Henry, Roxie Johnson, Rhonda Myers, Susan Wedel, Shelly Carver, Colleen Griffiths, Kay Leopard and Vicki May.

this Spring. The fashion show will feature the latest in spring and summer fashions and represents over 25 fabric manufacturers. Viewers will get a first-hand look at some of the newest patterns on the market -- some by such celebrity designers as Brooke Shields and Linda Evans, as well as Liz Claiborne, French Connection and Palmer and Pletsch.

Spring's fashions are streamlined and feminine, form-fitting or form-skimming. Body-conscious silhouettes stand out as a major theme in structured layers, cinched waists and fit and flare shapes. For more relaxed dressing, sexy new safari looks and "Spectator" sports clothes contrast the modern angularity. And, there's also festive fashion fun in ruffled blouses, flounced skirts and capri pants.

Also during the hour-long "Creative Living" special, viewers who pledge will have the opportunity to get a copy of "What a Creative Idea!" booklet, in addition to other fine premiums available from KENW-TV.

Sheryl Borden will be the on-air host and will share information pertaining to each of the segments. Viewers are requested to call in during the Special and pledge their support to KENW-TV, the public television station for Eastern New Mexico and West Texas.

## Latest Arrivals



### Jared Don Prather

Mr. and Mrs. Joe Don Prather are the proud parents of a son born Friday, March 13 in South Plains Hospital in Amarherst.

The young man weighed eight pounds and five and half ounces and was 21 inches long. He has been named Jared Don. The couple have one other child, Jamie 4 years of age.

Maternal grandparents are Mr. and Mrs. Rayburn Ott of Earth and paternal grandparents are Mr. and Mrs. Donald Prather of Muleshoe.

Maternal great grandparents are Mr. and Mrs. James Kelly of Amarillo and Mr. and Mrs. Irvin Ott of Earth.

Paternal great grandparents are Mr. and Mrs. Joe Cone of Leedey, Okla. and Mr. and Mrs. L.H. Prather of Erick, Okla.

### Ronald Williams Featured in Weekly Senior Spotlight

Ronald Williams, 18 year old son of Celia Mae Williams, is featured in this week's Senior Spotlight at Sudan High School. He was born on July 26, 1968, in Littlefield. He has six brothers and eight sisters. He said that his family and friends are the most important things to him.

He plays football, his favorite sport, basketball, runs track and participates in band at SHS.

Ronald is a member of the Mt. Olive Baptist Church.

When asked about SHS, Ronald said "It's the best school in the state of Texas."



MRS. VICTOR (DEBBIE) LEAL

## Bridal Shower Honors Mrs Victor Leal

Mr. and Mrs. Victor Leal were honored with a bridal shower Sunday, March 8 from 2 to 4 p.m. in the Catholic Center.

Guests were greeted by Irma Leal, mother of the groom; and Debbie Leal, honoree; and registered by Ana Gonzales.

Frances Perez and Mrs. Benny Pacheco served cake, cookies, mints and punch from a table covered with a pink tablecloth, with ecru lace on the top, and accented with an arrangement of burgundy silk roses with a lace doll centered. The honoree's corsage consisted of pink carnations with burgundy ribbon.

Special guests included: Alma Leal, sister of the groom; and Katy Ambriz, friend of the bride.

The hostesses gifts were a crystal cake stand and cover with pitcher to match and 'visions' cookware.

Hostesses for the occasion included: Mrs. H.A. Ouglass, Mrs. Bobby Free, Mrs. Gladys Wilson, Mrs. Brad Poynor, Mrs. Dave Poynor, Mrs. Roy Mar-

inez, and Mrs. Aurelio Cuevas. Also, Mrs. Ana Gonzales, Mrs. Patsy Poynor, Mrs. Bill Harmon, Mrs. Armando Flores, Mrs. Frank Hernandez, Mrs. Royce Turner, Mrs. Robert Perez, Mrs. Benny Pacheco, Mrs. Jose Triano, Mrs. Jim Hartline and Anna Ruiz.

As for the future, he says that his goal in life is to be successful in everything.

## NOTES... COMMENTS

Nature is beginning its spring show.

Curiosity is a form of intelligence.

Life is what you make it, or what it makes you.

Sincerity is a pleasing and vanishing virtue.

## Friendship Club

Members of the Muleshoe Friendship Club met in the home of Lois Witherspoon Thursday, March 12. The Meeting was called to order by Oline Watts, president.

Maud Young gave the opening prayer and the roll call was answered by those present. Minutes of the previous meeting were read by Sammie Ethridge, secretary. Gladys Darsey, treasurer, gave the treasurer's report.

Old and new business was discussed and the meeting was closed with a prayer by Jewell Griffiths.

Refreshments were served to Oline Watts, Sammie Ethridge, Lois Witherspoon, Ethel Julian, Pauline Guinn, Jewell Griffiths, Gladys Darsey, Adelyn Swafford and Maude Young.

# Journal Files

## 60 Years Ago

1927  
CITY PLACING MATERIAL ON GROUND FOR WATERWORKS

The first material for the city water works arrived last week and is being unloaded and placed. Three carloads of the largest size pipe are now in place for the ditch digging and pipe laying gang. It is understood that the work will be rushed to completion.

This will give Muleshoe a wonderful fire protection, also plenty of the best water on the plains. Not much can be said for the water in the shallow well in town, but the big wells are located about a mile north of the city and the water is said to be splendid.

Parties desiring to plant trees and beautify their yards will be given a lower rate we understand. Get busy and plant those trees and shrubs and make a pretty lawn.

## 50 Years Ago

1937  
THEFT OF REAL ESTATE

Stealing houses from lots has been going on for some years, but in Dallas last week an attempt was made to steal the lot when the dirt was dug up for depth of five feet and carted away. If the thief is apprehended he will be charged with "Theft of Real Estate."

## 40 Years Ago

1947  
BAILEY COUNTY IS IN AREA OF RAPID GROWTH

Bailey County is smack in the middle of one of the fastest growing areas in point of population in the state of Texas, according to the most recent statistics made public by the Department of Commerce.

A map showing areas of rapid population gain was printed in the Star-Telegram Sunday, with counties gaining most rapidly in growth being Bailey, Lamb, Hale, Cochran and Farmer. In fact most of our neighbors have a great population increase.

## 30 Years Ago

1957  
RED CROSS CHAIRMAN

Mrs. Byron Gwyn is head of the Red Cross drive in this community (Progress). The annual fund will continue through the month of March. Mrs. Gwyn needs more workers for the drive and will appreciate any assistance the residents of the community can give in this work.

## 20 Years Ago

1967  
GIRL SCOUT WEEK SET, LOCAL ORIGIN RECALLED

A full week of activities was planned for the 120 members of the Muleshoe Girl Scouts in observance of Girl Scout Week.

Girl Scouts attended the church of their choice Sunday, March 12 in uniform to kick off the week.

The district celebration was held at the Muleshoe National Wildlife Refuge Saturday when the local troops were on hand to greet troops from Friona, Little-

field, Earth, Bovina and Anton. The girls took a hike over the refuge and saw films.

The other activities were planned for individual troops.

The glow of Girl Scouting was first visioned here in 1932 when a Mrs. Weaver, with two less girls than the organizations founder, Juliette Low, began regular meetings in the court house.

Traces of the history shows that for outings the girls went with their lone leader to a spot most familiarly known to old timers as "Hart's Tank" for recreation. Heart's tank was at one time one of the younger sets recreational spot, located on a farm two miles on Friona Road.

Then the glow faded and then vanished until it was rekindled in 1946, when a troop was organized consisting of some 20 girls.

This troop was registered with the Roswell, N.M. council. Meetings were held in the leaders homes.

The Caprock Girl Scout Council was organized January 8, 1957 at the old Caprock Hotel in Lubbock. The following year, Muleshoe's Scouts joined that council.

The first Girl Scout House here was donated by Irvin 1958 and known as "The Little Hut."

## 10 Years Ago

1977  
LEE'S WESTERN WEAR STORE WILL OPEN

Construction got underway yesterday on Lee's Western Wear, which will be located at 1910 W. American Blvd. Featured in the new store will be basic western clothing and tack. Lee Dunbar, who is opening the new store, said he will be carrying well known brands, and will offer personal service and competitive pricing of all merchandise. Featured will be boots, hats, jeans, shirts, belts, downfilled coats and other items for our locale.

CHARGEBACK RULE PROTECTS CONSUMERS -- A little-known safeguard built into the federal Fair Credit Billing Act can protect consumers from losing money on credit card purchases, says family finance expert Nancy Granovsky.

"A consumer can eliminate a disputed payment from a credit card bill by requesting a chargeback," says the Texas A&M University Agricultural Extension Service home economist. "A chargeback simply means the disputed payment has been charged against the merchant or creditor rather than the consumer." If your problem is a billing error, such as being overcharged, you must notify the card issuer of the problem within 60 days of the date of the last statement. "Withhold payment for ask for a credit when you notify the company," she advises. "The card issuer must answer within two billing cycles or 90 days, whichever comes first."

What has become of the old-fashioned man who thought he should pay his debts in full?

## A good sign for you

Farm Plan signs are cropping up in front of dealerships all over Texas. That's a good sign for you Texas farmers and ranchers. Here's why. Farm Plan works with your local dealer to extend you a dependable line of credit. All you do is fill out a credit application, available at all Farm Plan dealerships. Upon approval, you become a Farm Plan Preferred Member. That means good things. If you choose to make a minimum or partial payment each month, Preferred Members pay a

reduced interest rate on the balance financed. And you'll enjoy flexible repayment terms, and low minimum monthly payments. You and all designated family members and employees will have instant purchasing power at all Farm Plan dealerships. And, record-keeping is simplified since each month you'll receive one easy-to-manage statement. Look for the Farm Plan sign at these dealerships. It's a good sign for you.



- Dent & Co. 806-272-4297 Muleshoe
- Robert D. Green Inc. 806-272-4588 Muleshoe
- Bybel Equipment Co. 806-266-5536 Morton
- Condit Implement 915-758-3643 Seminole
- D & D Tractor Sales 915-758-3234 Seminole
- Steve Implement Co. 806-295-2507 Abernathy
- Armes & Rawls Equipment 806-894-7443 Levelland
- Armes Equip. Co. Inc. 806-365-5108 Littlefield
- Thompson Imp. Inc. 806-285-2636 Ottum
- Western Implement Co. 806-765-5121 Lubbock
- Ross Campbell Equipment 806-637-7043 Brownfield
- Plains Farm Sup. Serv. 806-592-3454 Denver City
- Plains Farm Supply 806-456-2877 Plains



# Dr. Jerry Don Gregory

Osteopathic Physician

has relocated from Stettner Clinic to

## Community Medical Plaza

2402 52nd Street, Suites 6 & 7

Lubbock, Texas

(806) 792-2978

Solo Family Medical Practice Including Weight Control

## Dinner Theatre

Con't From Page 1

students will be taking to UIL competition. "Macbeth" written by William Shakespeare, takes place in Scotland in 1606. Brent Black will be playing the lead character, Macbeth; and backed by other characters, such as Dennis Hayes as Banquo; Melissa Martel, Witch; Jamie Wheeler, Witch; Susan McCarty, Witch and Kevin King, Ross and Second Apparition. Also, Eddie Garcia, Angus/Donalbain/Murderer; Jodie Wheeler, Lady Macbeth; Tim Shipman, Seton/Third Apparition; Rudy Gonzales, Duncan/Murderer/First Apparition/Messenger; John Chamberlain, Lennox; Jeff Hicks, Macduff; Mark Underwood, Malcolm; Lance King, Porter/Doctor and Tracy Long, Gentlewoman. Stage crew for the production include Michael Angeley, Paul

## Youth B-Ball Going Strong At Mid-Season

With the Little Dribbler season for boys in full swing, here are the scores to update the boys' basketball story:  
**FRIDAY, MARCH 6**  
 Third and Fourth Grade: Fields Insurance, 14 and Western '66' 5.  
 Fifth and Sixth Grade: Poyner's 28 and Muleshoe State Bank 19; Irrigation Pumps and Power 34 and McCormick Seed 19.  
**MONDAY, MARCH 9**  
 Third and Fourth Grade: Serv'All Thriftway (Blue) 10 and Western '66' 9.  
 Fifth and Sixth Grade: Irrigation Pumps and Power 19 and Serv'All Thriftway 10; West Texas Karate 24 and Muleshoe State Bank 14.  
**TUESDAY, MARCH 10**  
 Third and Fourth Grade: Serv'All Thriftway (Blue) and C&C Trucking 13; and Fields Insurance 16 and Western Drug 0.  
 Fifth and Sixth Grade: Serv'All Thriftway (Red) 12 and McCormick Seed 11; and West Texas Karate 16 and Poyner's 20.  
**THURSDAY, MARCH 12**  
 Third and Fourth Grade: Fields Insurance 9 and Serv'All Thriftway (Blue) 7; and Western '66' 15 and Western Drug 8.  
 Fifth and Sixth Grade: Muleshoe State Bank 21 and Irrigation Pumps and Power 17; West Texas Karate 13 and Serv'All Thriftway (Red) 12.  
**FRIDAY, MARCH 13**  
 Third and Fourth Grade: C&C Trucking 19 and Western '66' 8.  
 Fifth and Sixth Grade: Muleshoe State Bank 21 and McCormick Seed 14; and Poyner's 27 and Irrigation Pumps and Power 11.

Chamberlain, Greg Young, Roy Ramos, Shannon Berry, Beth Sanders and Jerry Mendoza and the alternates are Casey Williams and Stephanie Cox. The play will be staged at 8:15 p.m. In conjunction with the annual evening, parents are reminded that if they have students involved in band, speech and art, in either Watson Junior High or High School, they are asked to provide a dish for the meal. A spokesperson for the Muleshoe Fine Arts Boosters said, "If you are not contacted, please bring the dish of your choice. Your cooperation and contributions are very necessary to make this project a success, thereby raising money for our kids. "The Fine Arts Boosters appreciate your support of this project and their other projects throughout the year!"

## Rotary...

Con't From Page 1  
 Foundation TV-Auction scheduled for Saturday, May 2 at the Bailey County Coliseum and said assistance would be asked to help with the all-day auction and entertainment. "We are proud of what has been done," commented Bradley, "and we want a facility that the entire community can enjoy. We have also been proud that the entire community, not just the city of Muleshoe, has been involved so far. We have had a lot of donated labor, and donated items. We have paid for a few things, but not that much, when you figure a project as big as this one." Muleshoe Rotary President Bill Liles said the Rotary Club will be sponsoring a blood drive on Thursday, April 9, as 100 units of blood are being sought. It is tentatively set for the Summit Savings meeting room. President Liles also said Olan Burrows and Harvey Bass will be compiling a history of the Rotary Club to be included in the Bailey County History book. He also reminded Rotarians of the May 14-15 District Conference, slated to be held at the Inn of Mountain Gods in New Mexico; and told the Rotary Club about a magic show that will be sponsored here on June 20. Guests at the meeting included Hugh Moseley, Otis McMillan, Abel Arguello, Don Prater, Doretta Bunch and Clea Williams.

Charles J. DiBona, president of the American Petroleum Institute: "Over-dependence on costly and insecure foreign sources of oil could well be the major national problem of the 1990s."

## Tornado Season

Con't From Page 1

from other thunderstorms, allowing the 'cell' to feed on warm moist air that is pushed upward into the turbulent thunderstorm and transformed into a funnel cloud. When the funnel cloud reaches the earth, it is classified as a tornado according to NWS. When conditions are favorable for the information of tornadoes, a NWS tornado watch is issued. The watch is generally issued for an area 80 to 160 miles wide and from 250 to 500 miles long, and is valid for up to six hours. If human ground spotter or weather service radar detect a funnel cloud, a tornado warning is immediately issued for the county or counties concerned. The warning is generally in effect for one hour, and those in the area are advised to secure the safety of themselves and their property. When a tornado touches down, NWS officials advise taking shelter in strong shelters. "In schools, nursing homes, hospitals, factories and businesses, go to pre-designated shelter areas. Interior halls on the lowest floor are usually best. "In homes, take shelter in basements under sturdy structures such as heavy duty work benches, pool tables or staircases. If there is no basement, take cover in a bathroom or an interior closet. Do not use closets that do have an inside

latch or door handle. "In a mobile home, or vehicles, leave them and go to a substantial shelter. If none is available, lie flat in the nearest ditch, ravine or culvert with hands shielding the head. Be aware of flash flooding. "Do not call law enforcement agencies except to report funnel clouds, damage or injuries. All emergency departments will already have their hands full attempting to protect everyone in the area. Instead, listen to your radio, television, or weather alert system. In the case of power failure, it is a very good idea to have a battery-powered radio, as well as a flashlight with strong batteries. Simple precautions can make the difference between injury and death -- or coming through a tornado with little to no injury.

## Light Snow Ends Early Spring Here

Despite blizzard conditions that forced the closing of highways in the Panhandle on Tuesday and Tuesday night, very little impact was noted in the immediate area. Light rain, accompanied by sleet, wind and light snow left only a trace of moisture in Muleshoe for Tuesday, and Wednesday morning, the sky was clear and the sun shining. At the same time, heavy snow had accumulated to more than 10 inches in the far northern Panhandle, north of Amarillo, and was continuing on Wednesday morning. The National Weather Service issued traveler's warnings for the Panhandle, but said the South Plains would be dry and the sun would be shining for the next few days.

## Class Of '77 Plans Reunion For June 20

It's time for the Class of '77 of Muleshoe High School to start planning a ten-year reunion -- and you can help. The reunion is scheduled for June 20, at the Muleshoe Country Club. Members of the Class of '77 being sought, include the following: Max Dubose, Delton Edwards, Ray Garcia, Angelia Gonzales, Irma Hernandez, Connie Johnson, Silvia Reyes, Martha Sanchez, Denny Smith, Mike Williams, Phyllis Campbell, Joyce Patterson, Sarah Lewis, Peggy Lopez, Jackie Lobaugh, Cindy Beneke and Rocky Gafford. If you know where any of the above may be contacted, please notify the following people, Susan Puckett, First Bank of Muleshoe, 272-4515 or Patti Robinson, Route Three, Muleshoe, 965-2637.

## Seventh Grade Girls First At Track Meet

Watson Junior High School seventh grade girls' coach Shelly Turnbow took her track team to Idalou last Friday, and they came home with a first place, and a total of 185 points.  
**FIELD EVENTS**  
**SHOT PUT:** Tory Matthews, first, 26 feet, six and one-quarter inches; Jill Foster, second, 23 feet, six and one-quarter inches and Jill Noble, sixth, 20 feet, one and three-quarter inches.  
**DISCUS:** Jill Foster, first, 65 feet, eight and three-quarter inches; Tory Matthews, second, 60 feet, eight and three-quarter inches; and Tiffany Angeley, fourth, 56 feet, two inches.  
**HIGH JUMP:** Tiffany Angeley, fourth, four feet, two inches.  
**LONG JUMP:** Lisa Coleman, second, 14 feet, three and one-quarter inches; and Lisa Noble, fifth, 12 feet, eight inches.  
**TRIPLE JUMP:** Ronda Scott, fifth, 25 feet, seven and three-quarter inches.

**RUNNING EVENTS**  
**400 RELAY:** Jill Noble, Misty Sawyer, Tiffany Angeley and Lisa Coleman, first, 56.30.  
**100 M HURDLES:** Chanda Kemp, second, 21.03; Jill Foster, third, 21.73; and Erin Kelley, fourth, 21.93.  
**800 M DASH:** Bertha Torres, fourth, 3:08.00 and Isabel Rojas, sixth, 3:29.00.  
**100 M DASH:** Lisa Coleman, second, 13.96 and Misty Sawyer, third, 14.33.  
**800 M RELAY:** Tory Matthews, Misty Sawyer, Tiffany Angeley, Lisa Coleman, second, 2:04:80.  
**400 M DASH:** Jody Field, fifth, 1:19.88.  
**200 M DASH:** Jill Noble, first, 29.87; D'Anne Box, third, 32.08; and Lashelle Scoggin, fifth, 33.72.  
**MILE RUN:** Claudia Reyes, first, 6:46:44; Ana Arzola, second, 6:46:70; and Kathy Contreras, sixth, 7:10:00.  
**MILE RELAY:** Erin Kelley, Jill Noble, Jill Foster, Tory Matthews, second, 5:14:53.

# FRONTIER

## Hybrids

### Corn, Milo, Grazer, Grass

### Corn Seed

Priced As Low As ..... **\$32<sup>90</sup>**


Per 90,000 Kernel Bag

(When Paid For By March 30)


Proven Varieties For The Hi-Plains

## Olton Grain Co-Op.

285-2638 Olton W. Hwy. 70



## Best Yield · Best Price · Best Quality



### Cash Discounts

**\$57<sup>50</sup>** Per Bag (If Pay For By March 20th)

**\$59<sup>00</sup>** Per Bag (Until April 20th)

80,000 or 100,000 (P-30) Kernel Count

Large Rounds & Large Flats

Stauffer Seeds Offers 100% Replant On Corn Only (Minimum Amount Required)

S7751 And S7859 On Frito Lay Approved List

For More Information Call

**Bill Hunt** or **Gene McGuire**

272-3474 272-5544

"H&R Block's TAX FORECASTER™ will tell you what the most sweeping tax changes in history mean to you."

— Henry Block

At H&R Block we know you're concerned how tax reform will affect you. Our new Tax Forecaster™ service provides a written analysis of how you'd come out under the new laws so you'll know whether your tax would go up or down.

**H&R BLOCK**  
THE INCOME TAX PEOPLE

IT'S AVAILABLE  
WHETHER WE PREPARE YOUR RETURN OR NOT.

**224 W. 2nd Wkdys 9-6 Sat. 9-5 272-3332**

## Robert D. Green Inc.

### TIMELY DEAL ON TUNE-UPS!

Keep that great GM feeling, with a professional tune-up by our resident expert... and save!

**Robert D. Green Inc.**  
2400 W. American Blvd. 272-4588

*Mr. Goodwrench*


### TUNE-UP

## 10% off

Parts & Labor

**Robert D. Green Inc.**

Good through 3-31-87



GM QUALITY SERVICE PARTS

**Sudan News**  
by  
**Evelyn Ritchie**

Mr. and Mrs. Sammy Crowson were in Austin during the weekend to attend the girls state basketball playoff games when their daughter, Kim was one of the Hornettes team members. Among others from Sudan were Mr. and Mrs. John Humphreys, Ed King, Mr. and Mrs. Dennis Flowers, Deanna Swart, Mr. and Mrs. Joe Ellison, Mr. and Mrs. Ansil Locke and James, Mr. and Mrs. Tommy Moss, Mr. and Mrs. Bobby Carson, and many other residents and also residents from the surrounding area were there to watch the Sudan Hornettes play.

Eddie Salinas and George Salinas were recently in U.I.L. competition in Lubbock Feb. 26th for Solo and ensemble in band. Both boys received a 1 and the Whitten flute trio composed of Kendra Whitten, Cheri Ford & Linda Wiseman also won a 1. Congratulations go these students as they will be going to State competition to represent Sudan.

Mr. and Mrs. Vern Haberkorn of Dubuque, Iowa and Mr. and Mrs. Joe Markham of Sudan announce the engagement and approaching marriage of their children, Sheri Rose and Jimmy Lynn.

Wedding plans have been set for April 29 in Amarillo.

The bride-elect is employed at North American Loyds of Texas in Amarillo and the prospective groom is employed at SPS Tolk Station.

The couple plans to make their home in Sudan.

Mrs. J.W. Olds, Ms. Bert Vereen and Mrs. Radney Nichols returned home Sunday after attending the funeral of their brother-in-law, John Faris in Duncan, Okla.

Louis Fields returned home last week from the South Plains Hospital in Amherst.

Mae Fisher underwent surgery at the Methodist Hospital in Lubbock.

June Pierce was released Friday from the Methodist Hospital where she underwent surgery recently.

Van Rogers underwent heart surgery at the St. Mary's Hospital Monday.

Mrs. Raymond Gage of Hobbs, N.M. visited recently with her daughter, Mr. and Mrs. Dale Hanna and grandchildren, Mike Hanna and Mr. and Mrs. Pete Edwards and Johnathan.

Mr. and Mrs. W.A. Beale were in Dallas recently to visit his sister, Mattie Ledger & Nellie Beale and were also in Austin to attend the girls basketball playoff games.

Laura Ramos of Amarillo was home during the weekend with her parents, Mr. and Mrs. Fernando Ramos and Carmen.

Lisa Wood was home during the weekend and attended the

games in Levelland Sat. when her brother, David was on the Hornets team. The boys won their game against Dell City Sat. morning but lost to Paducah Sat. night ending their basketball season as 2nd in district.

Kenneth & Rutch Vincent were in Lafayette, La. recently to visit their daughter Sabrina, Mr. and Mrs. Dave McMillan and Brittany and to help observe Brittany's fourth birthday.

Mr. and Mrs. Bob Ford of San Angelo visited during the weekend with their son, Mr. and Mrs. Jay Ford and Jack.

Don Noles, a former Sudan resident, was among those who attended the playoff games in Austin during the weekend when the Sudan Hornettes won State. Also there were Mr. and Mrs. Cliff Stephens, former Sudan teacher, as was Mr. and Mrs. Olin Nix, Rev. and Mrs. Pitts Davis and Sarah, Peggy Baker, Jana Synathschk and Kristy.

U.S. Navy Comdr. Radney Fisher of New Orleans was home with his mother, Mrs. Josephine Fisher and brother, Mr. and Mrs. Mike Fisher and family and then attended the Regional playoffs for the Sudan girls and also attended the first game Thursday in Austin when the Fishers were all there to watch the Hornets win that day and qualified to go on to the State championship.

Capt. and Mrs. L.D. Hall of Austin visited during the weekend with her mother, Mrs. John Thomasson and her aunt, Mrs. Ron Herzog.

Jeannia Nix of Cisco Jr. College has been home this weekend for spring break. She accompanied her parents to Austin for the State basketball playoffs when her sister played with the Sudan Hornettes. Also joining them were Mr. and Mrs. Cliff (Jane) Watson of Longview.

Mr. and Mrs. W.L. Conner of Terrell visited this weekend with her mother, Mrs. Ruth Dunlap and her sister, Mr. and Mrs. Norman Humphreys and other family members.

Stephanie Upshaw of Sweetwater, room mate of Jeannia Nix and David Hackbirth and Ken Reichling both of Hudson, Ohio visited recently with the James Mike Nix family and Jeannia and were here to attend the girls Regional basketball playoffs.

Mrs. Richard Eddings of Littlefield visited during the weekend with Mrs. John Thomasson, Mrs. Ron Herzog and Capt. and Mrs. L.D. Hall who were visiting her mother and aunt.

Weekend visitors with Mr. and Mrs. G.C. Ritchie were their daughter, Mr. and Mrs. Dewayne Phillips, Christie and Michael and also Kim Rylant of Texas Tech and a friend, Wade Knudson of Oah Harbor, Wash.

Mr. and Mrs. Dick West were in Dallas Wednesday for Gwen to undergo a doctors check up following her ear surgery there recently.

The Ruth S.S. Class of the FBC held their March meeting Monday in the home of Sue Chester.

Mary Harper gave the opening prayer. Following the meal of salads, vegetables and fruits and dips, Pill Bellar brought the devotional on "Prayer".

Others attending were Dottie Haynie, Martha Markham, Gwen West, Elsie Seymore, Helen Montemeyer, Evelyn Ritchie, Sue Whiteaker, Mary Hanna and Mutt Hanna and the hostess.

The next social will be hosted by Billye Doty April 13.

Gedonna Williams of Clovis, N.M. and his granddaughter, Kayna Puckett of Muleshoe had lunch Friday with his mother, Edith Williams.

Mr. and Mrs. Buddy Lowrance and Mr. and Mrs. Tommy Laceywell were among those from Sudan who were in Austin during the girls state basketball playoffs. Also there for the playoffs were Mr. and Mrs. Lee Ray, Mr. and Mrs. Carroll Legg, Mr. and Mrs. Sammy Maxfield, Mr. and Mrs. Kevin Humphreys, Missy Fisher, Mr. and Mrs. Pudd Wiseman. Also visiting with the group were Mr. and Mrs. James Withrow who recently moved to Mesquite.

Rev. and Mrs. Jerry Dodson and Jody were in Brownwood during the weekend to visit their sons and brothers, Jerry Jr. and Jeff and other family members.

Mrs. Forrest Powell was released and returned home from the Methodist Hospital on Friday. Her granddaughter Cindy Nichols is staying with them for a few days.

Mr. and Mrs. Jack Noblett of Lubbock visited Saturday with her parents, Mr. and Mrs. Roy Day.

Ruth Lance has been a patient in the hospital for a few days last week. It was reported that she is now doing well.

Edna Seymore underwent surgery Monday morning at the Methodist Hospital in Lubbock. It was reported that she is in serious condition.

Hoyt Robertson remains a patient in the Amherst Hospital.

Mae Fisher underwent surgery at the Methodist Hospital recently.

Jeannie Provence, Danette and Doug were in Austin during the weekend to attend the girls basketball playoff games. Also joining them was Derwin Beauchamp.

Amy, Trey and Bennie Baker, children of Mr. and Mrs. Deck Baker of Paris arrived by plane Saturday to visit their grandparents, Mr. and Mrs. Dexter Baker and other family members and friends. They also attended the Sudan-Paducah basketball game Saturday evening in Levelland.



AWARDS FOR COOKIE SALE--After the annual Girl Scout Cookie Sale was over, members of Brownie Troop 330 was feted at the Dairy Queen, and received awards for their sales. Leaders are Danett Bunch, left and Debbie Tillman. Troop members are from left, back row, Lacy Tillman, Breanne Locker, Heather Hooten, Heather Bunch, who won two camperships and Amy Hooten. Front row, from left are Kayla Magby, Amanda Hahn, Amy Locker and Amy Elliott.

# SPRING FARM TIRE VALUES!

**SALE ENDS March 31**

Get the pull of your life with Dyna Torque II rears

**184x38**

\$375<sup>00</sup>

**6 Ply, Tube Type**

DYNA TORQUE II

- Excellent drawbar pull with long-bar, short-bar lugs for improved traction
- Designed for improved stability and roadability, plus reduced vibration
- Strong angle-braced lugs have self-cleaning design
- High-strength polyester cord body, and heavy-duty rim-shield help protect tire from damage

**700x15**

\$ 55

**6 Ply Tubeless**

**112x15**

\$ 87<sup>50</sup>

**6 Ply Tube Type**

**RIB HI-MILER**

- Strong, bruise-resistant nylon cord body
- Heavy duty, five-rib tread
- Bias-ply construction
- A popular choice for economy-minded buyers

**FOUR RIB**

- Uniform pressure distribution for on-road mobility is important on higher horsepower tractors
- Positive steering
- Bruise-resistant nylon cord

GOOD YEAR

James Crane Tire Co.

322 N. 1st.

Muleshoe

272-4594

## It's Easy To Change Hats!!

Our "New Customer 5+1 program"

has corn & sorghum growers

Switching to GOLDEN HARVEST hybrids

For top yields and savings money, too!

Buy 5 Get 1 Free!

Cash Discounts! SEED DAYS

February 23rd-March 6th

Free Gifts		Savings on orders	
WHOLE FIELD YIELD RESULTS			
HYBRID	ACRES	MOIST	YIELD
J. T. Mayfield			
GH H-2604	62.0	Friona, Tx	21.0% 12,426.4
Austin Farms			
GH H-2601	30.0	Farwell, Tx	19.5% 9,968.0
David Pinkerton			
GH H-2572	22.3	Plainview, TX	17.6% 11,015.2

Golden Harvest. Golden yields.

Wayne Clark 806-965-2895

Willis James 806-925-6716

Horace Morgan 806-925-6725

**Ava M Gaede  
Former Muleshoe  
Resident Dies**

Graveside services for Ava M. Gaede, 90, of Houston will be conducted at 2 p.m. today, Thursday, March 19 in the Muleshoe Cemetery with the Rev. Wilbur Gaede, retired Methodist minister, of Andrews officiating.

Burial will be under the direction of Ellis Funeral Home of Muleshoe. Mrs. Gaede died at 1:46 p.m. Monday in Memorial Hospital S.W. at Houston.

Born May 6, 1896, in St. Francis, Kansas, she had been a resident of Houston since 1966, moving from Muleshoe where she had lived from 1946 to 1964. She was a retired school teacher and a member of the First United Methodist Church of Muleshoe. She was preceded in death by her first husband, Harry Huych in 1946, and her second husband in 1964.

Survivors include two daughters, Leota Potter of Houston and Barbara Altendorf of Wichita Falls; five grandchildren; and two great grandchildren.

**Local Women's  
Brother Dies  
At Lubbock**

Funeral services for Edmund H. Ethridge, 76, of Lubbock were held at 2 p.m. Saturday, March 14 in the Seventh-Day Adventist Church with Robert G. Miller, pastor, officiating.

Graveside services were conducted at 4 p.m. Saturday in Afton Cemetery. Burial was under the direction of Rest Lawn Funeral Home of Wolf-orth. Ethridge died Thursday in Methodist Hospital following a lengthy illness.

Born in Ballinger, he had been a Lubbock resident since 1960. He was a retired farmer and a member of the Seventh-Day Adventist Church. He married Ruby Crabey in October 1968, in Dallas.

Survivors include his wife, Ruby; two sons, James C. of Lubbock and Alvin L. of Dallas; and three sisters, Vera Bell Forbes of Lubbock and Alma Lee Yates and Pearl Dunlap, both of Muleshoe.

**James Marks  
Funeral Services  
Held Sunday**

Services for James R. Marks, 48, of Andrews were held at 3 p.m. Sunday March 15 in Singleton Funeral Home with the Rev. Jim Binnix officiating.

Interment was in Andrews Cemetery under the direction of Singleton Funeral Home. He was pronounced dead shortly before 9 a.m. Friday at the scene of an automobile accident on Texas 114, about three miles north of Seminole. Justice of the Peace Mary Parrott ruled the death an accident.

He was born in Indianapolis, Ind. and had lived in Andrews for the past eight years. He was a district manager for Dairy Queen. He was a U.S. Air Force veteran. He married Dixie Bowlin on July 23, 1979, in Andrews.

Survivors include his wife, Dixie; three sons, Richard of Abilene, Greg Foshee and Todd Foshee, both of Odessa; three daughters, Patricia Kister of Colorado Springs, Colo., Ellen of Denver, Colo., and Paula Avena of Orlando, Fla.; two brothers, William of Mexico City and Bob of Indianapolis, Ind.; a sister, Mary Ann Christenberry of Indianapolis, Ind.; and six grandchildren.

**Letter  
To The  
Editor**

Letter to the Editor:  
Is this happening in your community?

Due to recent circumstances in our rural community, Archer City, Texas, our attention has been drawn to the questionable sanctions imposed upon the doctors of rural areas, in particular, by the Texas Medical Foundation's Peer Review Organization. The criteria set down by this organization is so stringent that no physician could possibly be in compliance with all aspects included.

These sanctions in many cases will result in the closing of many rural hospitals, leaving a large percentage of our population without immediate medical care.

I am interested in finding out how many other communities share our same problems.

Only by cooperation of all Texans and their legislators can something be done to rectify this situation. Many of the legislators are aware of the problem and are investigating the workings of the Federally Funded Texas Medical Foundation.

Due to the stigma this imposes upon the physician the public is not always aware of the situation until it is too late.

We're fighting for our doctor, R.D. Schlomach, M.D. and our hospital, Archer County Hospital. I hope you will be equally as concerned because this could be pertinent to you, your physician, and your hospital(s).

The number of hospitals closed January 1, 1986 through December 31, 1986 is 25. A large number of Texas doctors

**Felix Silhan**

**Services Set**

**Today At Morton**

Funeral services for Felix J. Silhan, 71, of Morton, will be held at 11 a.m. today, Thursday, March 19, in Ellis Funeral Home Chapel in Morton.

Burial will be in Littlefield Memorial Park under the direction of Ellis Funeral Home of Morton. Silhan died at 12:26 p.m. Tuesday in South Park Hospital in Lubbock.

Born Jan. 14, 1916, in Haskell County, he had been a resident of Morton since 1966, moving there from Pep. He was a farmer.

Survivors include two sisters, Ella Marek of Morton and Martha Fain of Lubbock; five brothers, George of Levelland, Eddie of Morton, Frank of Littlefield, Bennie of Pep and John of Morton.

**First nautical archaeologist  
receives prestigious award  
for lifetime of achievement**

COLLEGE STATION — Dr. George Bass, a Texas A&M University researcher who in 1960 was the first archaeologist to dive in order to excavate an ancient shipwreck, was recently rewarded with archaeology's highest honor.

Bass was presented the Gold Medal for Distinguished Archaeological Achievement during the annual meeting of the Archaeological Institute of America (AIA), a group that encompasses both land and nautical archaeologists.

Bass, 54, is the youngest archaeologist ever to receive the AIA's highest award, but the presentation honors what has already been a lifetime of achievement, say colleagues.

have been sanctioned and many more are waiting official sanctions. If the hospital or hospitals in your county and/or town are presently being threatened, or any of the doctors are being investigated and/or sanctioned I would like to hear from you.

This letter could be written about "Your Doctor and Your Hospital," so please let your voice be heard by writing your

legislators in both Texas and Washington along with letters to:

- U.S. Sen. Lloyd Bensten  
Attn: Wanda Garcia  
961 Federal Bldg.  
300 E. 8th St.  
Austin, Texas 78701
  - U.S. Sen. Phil Gramm  
Room 179 Russell Office Bldg.  
Washington, D.C. 20510
- Sincerely A Concerned Citizen,  
Earlene P. Hulse

P.O. Box 688  
Archer City, Texas 76351

Poor health is an alibi more often than a fact.

A time to think is as important as a time to work.

The best thing about spring is that it brings an end to winter

**Soviets Build Radar**

Defense Secretary Caspar W. Weinberger disclosed Thursday that the Soviet Union has begun constructing three new radar receivers that could support a missile defense system violating the Anti-Ballistic Missile Treaty.

*We would like to express our thanks and appreciation to all our friends and loved ones for their support in prayers, visits, flowers, cards, food and kindness shown to us during the illness and death of our father.*

*The family of  
M.L. Carpenter*

*The family of Leo Chavez would like to express their thanks for all the hospital calls, visits, food, flowers, in their recent loss.*

- Annie Chavez
- Mr. & Mrs. Roberto Chavez & Family
- Mr. & Mrs. Leo Chavez, Jr. & Family
- Mr. & Mrs. Ross Chavez & Family
- Mr. & Mrs. Simon Chavez & Family
- Mr. & Mrs. Juan Chavez & Family
- Mr. & Mrs. Bennie Chavez & Family
- Mr. & Mrs. Rudy Campos & Family
- Mrs. Josie Gonzales & Family
- Mr. & Mrs. Pete Fuentez & Family
- Mr. & Mrs. Ruben Gloria & Family
- Mr. & Mrs. Mike Lopez & Family

**Immaculate Conception  
Catholic Church**

Father Patrick Maher  
Northeast of City

**First Baptist Church**

220 West Ave. E.  
Berry Bradley, Pastor

**Emmanuel Baptist  
Church**

Iglesia Bautista Emmanuel  
107 East Third  
Isaias Cardenas, Pastor

**Trinity Baptist Church**

314 E. Ave. B.  
Rev. V.L. "Buster" Huggins

**Primitive Baptist Church**

Corner of Ithaca St. and  
Fir Ave.  
Elder Glen Williams, Pastor

**Circle Back  
Baptist Church**

Intersection FM 3397 & FM 298  
946-3676

**Calvary Baptist Church**

1733 W. Ave. C.  
Rev. Darrel Martin

**Primitive Baptist Church**

621 South First  
Elder George Johnson, Pastor

**Muleshoe Baptist Church**

8th and Ave. G.  
Bob Dodd, Pastor

**Progress Baptist Church**

Paul Brigham, Pastor  
Progress, Texas

**Richland Hills  
Baptist Church**

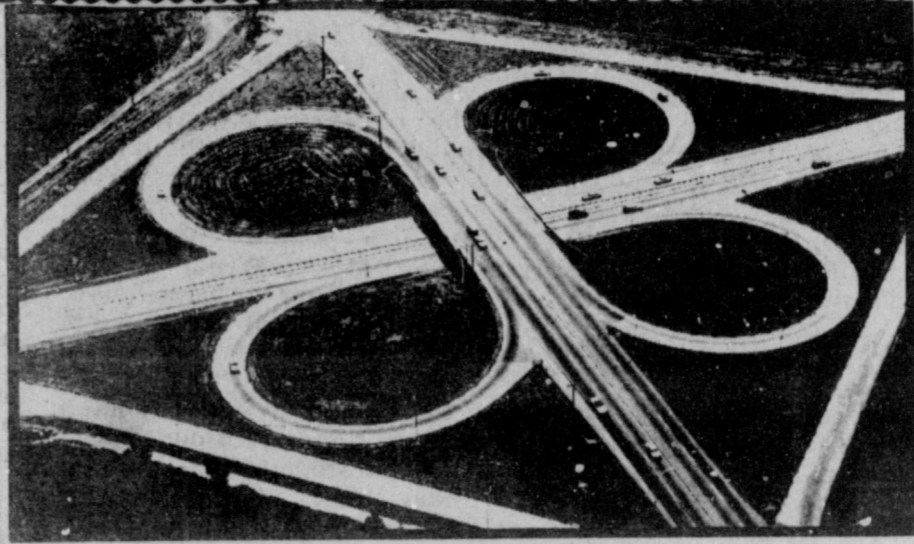
17th and West Ave. D.  
David McAdams, Pastor

**St. Matthew  
Baptist Church**

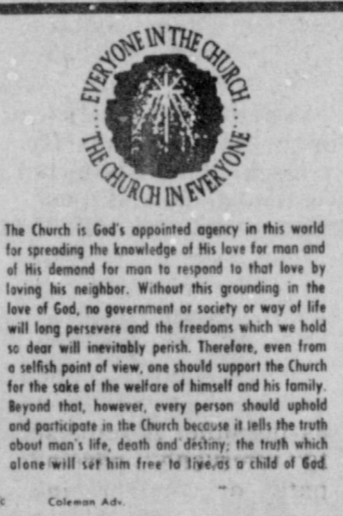
Corner of West Boston &  
West Birch  
M.S. Brown, Pastor

**Progress Second  
Baptist Church**

1st and 3rd Sunday  
Clifford Slay, Pastor



**CLOVERLEAF SAFETY**



Two main highways and heavy traffic lead to death dealing accidents. The remedy... have one highway pass over the other, and lanes coming out in a cloverleaf shape to provide access to each highway, thus giving safety.

The Lord, our God, is our protection, and through his word, God shows us the right way.

"He keepeth the paths of judgment, and preserveth the way of his saints. Then shalt thou understand righteousness, and judgment, and equity; yea, every good path."

**Longview Baptist Church**

965-3413  
B.C. Stonecipher, Pastor

**Primera Iglesia Bautista**

223 E. Ave. E.  
Roy Martinez, Pastor

**Lariat Church Of Christ**

Sunday School 10:00 a.m.  
Worship 11:00 & 6:00 p.m.  
Wednesday Services 7:00 p.m.  
Sam, Billingsley, Minister

**Muleshoe Church  
Of Christ**

Clovis Hwy  
David Alessandro, Pastor

**16th & Ave. D.  
Church Of Christ**

Sunday 10:30 a.m.  
Evening 6:00 p.m.  
Wednesday 8:00 p.m.

**First Assembly  
Of God**

Ron Dysart  
9:45 Sunday School  
11:00 Morning Worship  
6:30 Evening Services  
7:30 Mid Week Services  
272-3984



<b>Western Drug</b> 114 Main 272-3106	<b>Bruce Inc.</b> 272-5244	<b>Dairy Queen</b> 1204 W. American 272-3412
<b>Serv-All Thriftyway</b> 401 W. American Blvd. 272-4739	<b>Lindsey Jewelry</b> 202 Main 272-3355	<b>Kemp's Discount Furniture</b> 414 W. American Blvd. 272-5023
<b>Farmers Spraying Service</b> Lazbuddie 965-2624	<b>Attend The Church Of Your Choice.</b>	<b>Fry &amp; Cox, Inc.</b> 401 S. 1st 272-4511
<b>Main Street Beauty Salon</b> 115 Main 272-3448	<b>Irrigation Pumps &amp; Power</b> West Hwy. 84 272-4483	<b>Bratcher Motor Supply</b> 107 E. Ave. D. 272-4288
<b>KC Mufflers &amp; Manufacturing Inc.</b> 201 North First Phone 806/272-36	<b>Bobo Insurance</b> 108 E. Ave. C. 272-4264	<b>Five Area Telephone Cooperative Inc.</b> 302 Uvalde 272-5522
<b>West Tex Feed Yards</b> 272-7555	<b>American Valley Inc.</b> Hwy. 84 W. 272-4266	<b>Watson Alfalfa</b> Howard, Judy, Troy & Neal <b>West Plains Publishing</b> 272-4681 Leon, Connie, John-Barrett & Lana

I would like to thank all the fine people of Muleshoe who allowed me to treat them while I practiced surgery here during the past five years. I have accepted a position with the Knox Stone Clinic located at 706 East Felt Street in Brownfield. The medical records of those patients who saw me here in Muleshoe will remain here with the hospital. The records of my patients in Amherst will be at The South Pains Hospital in Amherst. Once again, thank you for trusting me to treat your surgical needs. Should you need to contact me for any reason, my phone number in Brownfield is 637-2566 Thank You  
**Dr. Enrique Muyschondt M.D. F.A.C.S.**



# Muleshoe Journal

# Classified

Call 272-4536

**CLASSIFIED RATES**  
 First Insertion Per Word.....\$15  
 Minimum Charge \$2.30

Consecutive Insertions Per Word.....\$13  
 Minimum Charge \$2.00

**CLASSIFIED DISPLAY RATES**  
 \$1.75 Per Column Inch

Blind Ad Rates 50% More

**DEADLINES**  
 12 Noon Tues. For Thursday Paper  
 12 noon Friday For Sunday Paper.  
 We reserve the right to classify, revise, or reject any ad. Not responsible for any error after ad has run once.

### 1. Personals

**CONCERNED** About Someone's Drinking? **HELP IS AVAILABLE** through Al-Anon. Call 227-2350 or 965-2870 or come to visit Tuesday nights, 8:00 p.m. or Saturday mornings at 10:30 a.m. at 1116 W. American Blvd., Muleshoe

### 3. Help Wanted

**EARN \$7.75 HR.** We need assistance in evaluating and responding to daily work reports submitted by our agents throughout the state. No experience necessary; Paid to complete training. Work at home. For information send self-addressed, stamped envelope, 9 1/2 inches long to: AWGA, Dept. E, Box 49204, Atlanta, GA 30359. 3-12t-1tp

**WANTED** good all around farm worker call after 8 p.m. 272-3257. 13-11t-tfc

### 4. Houses For Rent

**HOUSE FOR RENT**, 2 bedroom, double carport, fenced backyard, large metal storage building, in back. Near school. Call 817-663-5857. b4-4t-tfc

### 8. Real Estate

**PRICED FOR QUICK SALE**  
 3 bdrm., 1 bath, with private well, 75'x400' lot, 1/2 mile of city limits, and, 3 bdrm., 2 bath, private well. Heated shop (29'x40') on 85'x400' lot. 1/2 mile of city limits. Call 272-4900 day or night. h8-10s-tfc

**FOR SALE** by Owner Brick home 3-2-2 Central H/A (gas), Sprinkler system, nice view Richland Hills owner Licensed Realtor 272-5629. L8-12t-8tc

**HOUSE FOR SALE** by owner Country Club Addition 3 bdrm., 2 bath, brick home, lots of storage owners must sell. Call 272-3180. s8-11s-tfc

**FOR SALE BY OWNER:** 3 bdrm., 2 bath home on 1 acre. With house well. 3 miles North of Muleshoe on Friona Hwy Phone # 272-5124 or 272-4609 after 4:30. k8-12t-tfc

**James F. Hayes & Co.**  
 Agricultural Real Estate  
 Vic Coker - Agent  
 (806) 965-2468

**Bingham & Nieman Realty**  
 116 E. Ave. C  
 272-5285  
 272-5286

"We Appreciate Your Business!"  
**George & Dianne Nieman**

### 8. Real Estate

**SMALLWOOD REAL ESTATE BROKER**  
 232 Main 272-4838

### 9. Automobiles For Sale

1984 Olds Regency Brougham good condition good price call 225-4400. c9-11s-2tc

**FOR SALE:** 1979 Harley Davidson Sportster. 965-2668 after 5 p.m. L9-11t-4tc

### 11. For Sale Or Trade

**PIANO FOR SALE**  
 Wanted: Responsible party to assume small monthly payments on piano. See locally. Call credit manager 1-800-447-4266. 11-9s-7tp

**FOR SALE** 1 Gifford-hill, 10 tire sprinkler. Call 272-4744. j11-10s-4tc

### 13. Property For Lease

**WANT TO CROP OR CASH LEASE** 600-1200 acres of farmland with good base and yields. Call 806-272-5646. 13-10s-7tp

### 15. Misc.

**WE MAKE** suckers for all occasions. All shapes and flavors available. Call after 5 p.m. 272-3701 (or) Ruthie 272-4417. Shellye. p15-9s-tfc

**MINI MAID** service house cleaning call 272-3836 or 965-2461. 15-11t-4tp

### 18. Legal

**LEGAL NOTICE**  
 The City of Muleshoe will be taking bids on a 1979 GMC Pickup on Tuesday, March 24, 1987 at City Hall. The pickup will be sold "as is". This vehicle may be seen at the Police Department, 215 East Avenue B, Muleshoe, Texas. Sealed bids should be submitted to City Hall, 215 South First, Muleshoe, Texas 79347. The City reserves the right to refuse any and all bids. c18-12t-2tc

### BIBLE VERSE

"The Lord added to the church daily such as should be saved."  
 1. Who wrote the above statement?  
 2. In what great story was it included?  
 3. How many people were converted as a result of this great sermon?  
 4. Where may it be found?

**Answers to Bible Verse**  
 1. The Apostle Luke.  
 2. That of Peter's sermon at Pentecost.  
 3. About 3,000 souls.  
 4. Acts 2:47.

**Wrong Approach**  
 Golf Pro: "Now just go through the motions without driving the ball."  
 Beginner: "That's precisely the trouble I'm trying to overcome."

### 18. Legal

**PUBLIC NOTICE**  
 Five Area Telephone Cooperative, Inc. hereby gives notice it has filed with the Public Utility Commission of Texas for authority to de-tariff the maintenance and installation of simple inside and complex inside wiring in accordance with the Federal Communications Commission's Order in Docket 79-105, and to transfer ownership of single line business/residential premises equipment to the members of the Cooperative. The changes are proposed to become effective on March 26, 1987 except the transfer of ownership of single line business/residential customer premises equipment to members will become effective upon Commission approval. The proposed changes will cause reductions in annual revenues to the Cooperative of \$23,976.00. Persons with questions or who desire more information about the requested rate changes are encouraged to contact the company at 806-272-5533 or 302 Uvalde, Muleshoe, Texas where a complete copy of the filing is available for inspection. Persons who wish to intervene or otherwise participate in these proceedings should notify the Commission as soon as possible. A request to intervene, participate or further information should be mailed to the Public Utility Commission of Texas, 7800 Shoal Creek Blvd., Suite 450N, Austin, Texas 78757. Further information may also be obtained by calling the Public Utility Commission Consumer Affairs Division at 512-458-0227, or 512-458-0221 teletypewriter for the deaf. f18 10t-4tc

### Enochs News by Mrs. J.D. Bayless

Mr. and Mrs. Albert Jackson and boys of Clovis, N.M. spent the weekend with his grandmother, Mrs. Mary Autry. George Autry was dismissed from Methodist Hospital after knee surgery and he stopped to visit his mother Mary on his way home he isn't to go anywhere for 6 weeks.

Mrs. Davis Graves took the youth, Gary Price, Sidney Graves and Curtis Tucker of Three Way and Shan Wall of Morton to the Youth conference at the First Baptist Church in Lubbock, Friday and Saturday evenings.

Dinner guests in the home of Mrs. Etta Layton Sunday were her sons, Mr. and Mrs. J.E. Layton of Enochs, Mr. and Mrs. Harold Layton of Dell City and their son and wife, Robert and Stacy Layton of Littlefield, Mr. and Mrs. Keith Layton and Lance, Mrs. Olive Cox, Mrs. Juanita Snow and Mr. and Mrs. Jerry Nichols, Kristen and Landon all of Muleshoe.

Rev. and Mrs. David Graves drove to the Baptist Plains Assembly at Floydada last Monday to attend a meeting about the camp Monday and Tuesday. Their children, Sidney, Tonya and David stayed with the Glynn Price's while their parents were at camp.

Mrs. Goldman Stroud was in Lubbock Friday and visited her

daughter, Mrs. Sandra Dickey.

Mr. and Mrs. Bill Key drove to Littlefield after church Sunday ate out and visited Mrs. Lucille Johnson.

Graveside services for Robert Rhodes of Clovis, N.M. were in Enochs Cemetery at 3:00 p.m. Friday. Robert was a former resident of Enochs.

Mr. and Mrs. J.E. Layton drove to Lubbock Sunday afternoon to attend the 75th birthday party for an aunt, Mrs. Zola Burns.

Mrs. Bill Key and Mrs. Ellen Bayless attended the funeral service of M.L. Carpenter 3:00 p.m. Thursday at the Trinity Baptist Church in Muleshoe.

Spending Friday night with Mrs. Mary Autry were granddaughters, Dena and Julia Pyburn of Clovis, N.M.

Kelly Mosser of Slaton spent Thursday night till Sunday with his grandparents, Mr. and Mrs. E.N. McCall, and they took him to Lubbock Sunday.



**Not Getting Your Paper? Call Your Carrier!!**

**Stella Orozco 272-4456**  
**Murray Lemons 272-4608**  
**Christy Maxwell 272-5498**

Clip This Ad & Save For Future Reference

**He's got low prices, free answers and dirty hands, your Bumper To Bumper Auto Parts man. If he can't help you, nobody can.**



**VALVOLINE MOTOR OILS**  
 By the Case  
 79¢ qt.  
 89¢ qt.  
 99¢ qt.

**FRAM FILTERS**  
 AIR \$3.49 ea.  
 OIL \$2.29 ea. PHRA  
 \$2.59 ea.

**AUTOLITE SPARK PLUGS**  
 Your Choice  
 REGULARS 79¢ ea.  
 RESISTORS 89¢ ea.

**RESOURCE BATTERIES**  
 50 MONTH WARRANTY \$29.95  
 60 MONTH WARRANTY \$39.95

**MONRO-MATIC PLUS™ SHOCK ABSORBERS**  
 \$1.97 ea.  
 \$2.79 ea.  
 \$9.95 net ea.

**WAGNER SEALED BEAMS**  
 \$3.87 ea.  
 \$5.57 ea.

**ANCO WIPER BLADE REFILLS**  
 \$2.79 net ea. pr.  
 Purchase price \$3.29

**RAIN DANCE CAR WAX**  
 \$4.47 net ea. after \$2 mfg. mail-in rebate.

**CHAMP FIRE EXTINGUISHER**  
 \$12.49 ea.

**AC SPARK PLUGS**  
 REGULARS 89¢ ea.  
 RESISTORS 99¢ ea.

**Bratcher Motor Co.**  
 107 East Avenue B 806-272-4288

### 1. Personals

**CONCHO BELTS**, necklaces, earrings and bandana scarfs. Custom made in all colors: Call Charlie (806) 965-2471. 1-11t-4tp

**OWN YOUR OWN** Jean - Sportswear, Ladies Apparel, Childrens/Maternity, Large Sizes, Petite, Dance-wear/Aerobic or Accessories Store. Jordache, Chic, Lee, Levi, Izod, Gitano, Guess, Calvir Klein Sergio Valente, Evan Picone, Liz Claiborne, Members Only. Gasoline, Healthtex over 1000 others. \$14,800 to \$26,900 Inventory. Training, Fixtures, Grand Opening Etc. Can open 15 days. Mr. Loughlin, (612) 888-6555. 1-12t-1tpts

**OPEN YOUR OWN** beautiful discount shoe store. **LADIES CHILDRENS - MENS.** Over 200 nationally known designer labels-Over 1500 styles -40 to 50% below wholesale prices. \$16,900.00 to \$39,900.00 includes beginning inventory - training - fixtures and grand opening promotions. Call Today. Prestige Fashions 501-329-2362. 1-12t-2tpts

**VISA / MASTER-CARD--Get Your Card TODAY!** Also New Credit Card, NO ONE REFUSED! Call 1-518-459-3546 Ext C6695F 24 HRS 1-11t-3tpts  
**MARY KAY COSMETICS** Josie Flowers 272-3865. fl-49s-tfc

**BABYSITTING** in my home call 272-5027. d1-12t-2tc

**LOT WANTED** for mobile home 16x62 with well if possible. Please contact Cheryl Weaver 965-2156 work 965-2876 home after 3:15 in need of as soon as possible. w1-12t-2tc

**TIFFIN II**  
 Just in larger size blouses also men & boys knit shirts & jams. We carry a large selection of children clothing infants girls thru 14 & boys infant thru 20. New shipment fabric just in. Shop Tiffin II, Earth. t1-12t-1tc

**HALF PRICE!** Flashing arrow signs, \$299! Lighted, non-arrow \$289! Unlighted \$249! Free letters! See locally. Call today! Factory: 1(800) 423-0163, anytime. 1-12t-1tpts

# Nation Salutes America's Farmers

**Farmers and their families are consumers  
And taxpayers as well as best producers**

Like everyone else, the American farmer is a consumer and a taxpayer, as well as a producer.

Farmers pay about \$4.4 billion in farm real estate taxes annually, and \$500 million in personal property taxes.

In 1984, farm operators spent about \$139 billion for goods and services to produce crops and livestock. They had available \$34.6 billion in personal income from farm sources and \$40.0 billion from nonfarm sources to spend for personal taxes, investments, and for the same things that city people buy.

Farmers' 1984 purchases included:  
\*9.5 billion for farm tractors and other motor vehicles, machinery and equipment. About 150,000 employees are required to produce this farm equipment.  
\*\$13.6 billion for fuel, lubricants and maintenance for machinery and motor vehicles used in the farm business. Farming uses more petroleum than any



other single industry.

\*\$24.0 billion for feed and seed.

\*\$8.9 billion for fertilizer and lime.

\*Products containing 360 million pounds of rubber — about 5 percent of the total used in the United States, or enough to put tires on nearly 7 million automobiles.

\*33 billion kilowatt-hours of electricity

— about 2 percent of the nation's total. That's more than the annual residential use in all New England States plus Maryland, Kentucky and Washington, D.C.

\*6 1/2 million tons of steel in the form of farm machinery, trucks, cars, fencing and building materials. Farm use of steel accounts for 40,000 jobs in the steel industry.

Like everyone else, farmers feel the pinch of inflation. In the last 10 years, wage rates for farmworkers have gone up 90 percent, tractors and self-propelled machinery cost 166 percent more, taxes are up 63 percent and feeder livestock prices are up 66 percent.

Overall, the average cost of commodities, services, interest, taxes and farm wage rates has climbed 102 percent in the last 10 years. These sharp increases in the average include the much lower rates of inflation experienced in the past few years.

## Agriculture nation's biggest Industry, largest employer

Agriculture is the nation's biggest industry — farm assets totaled \$956 billion on December 31, 1984.

Agriculture is also the nation's largest employer. Around 21.0 million people work in some phase of agriculture, from growing food and fiber to selling it at the supermarket.

Farming itself uses 2.7 million workers — as many as the combined work forces of transportation, the steel industry, and the automobile industry. The nation's food and fiber system accounted for 18 percent of total GNP in 1984.

Agricultural production is conducted by 2.28 million farms. Recent tabulations show that in 1983:

\*1,433,000 (60.5 percent of all farms) sold less than \$20,000 worth of farm products per farm.

\*272,000 (11.5 percent) sold farm products worth \$20,000 to \$40,000.

\*381,000 (16.1 percent) sold farm products worth \$40,000 to \$100,000.

\*284,000 (12.0 percent) sold farm products worth more than \$100,000. Of these farms, 177,000 had sales totaling \$100,000 to \$200,000; 83,000 had sales of \$200,000 to \$500,000; and 24,000 had sales of \$500,000 and over.

Agriculture requires the services of about 18.3 million people to store, transport, process and merchandise the output of the nation's farms.

Here are a few examples of where these people work:

\*Meat and poultry industry, including meatpacking, prepared meats and poultry dressing plants, employs about 367,000 people and has a payroll of \$4.5 billion.

\*Dairy industry, including manufacturers of such products as fluid milk, concentrated and dried milk, cheese, butter, and ice cream, employs nearly 162,000 people and has a payroll of \$1.6 billion.

\*Canned, cured, and frozen food plants employ nearly 271,000 people and have payrolls of \$2.8 billion.

\*Cotton mills and finishing plants employ nearly 143,000 people and have payrolls of \$1.6 billion.

THAT ADDS UP TO APPROXIMATELY ONE OUT OF EVERY FIVE JOBS IN PRIVATE ENTERPRISE.

## What the farmer receives...

As gross payment from retail food prices the farmer receives (1984 annual average):

\*34 cents per \$1 spent in grocery stores for U.S. farm-grown food.

\*58 cents per \$1 spent for choice beef.

\*43 cents for eggs selling for 80 cents per dozen at retail.

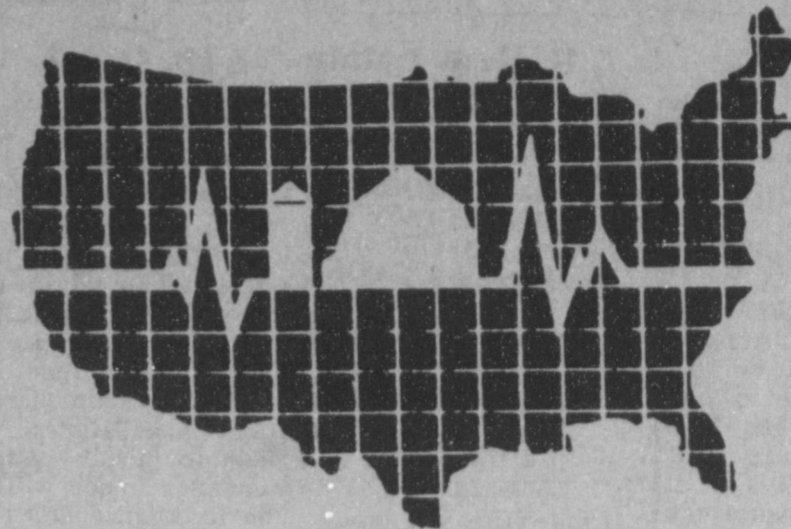
\*4.7 cents for the wheat in a 54-cent loaf of white bread.

FOR THEIR LABOR, CAPITAL AND MANAGEMENT TO THE FARM:  
\*138.7 billion in gross sales of crops and livestock. Their net return for family resources was \$34.6 billion.

(USDA Statistical Information)

Agriculture Day • March 20

**U.S. production  
Up 2 1/2 times  
Levels of 30's**



## AGRICULTURE America's Heartbeat Vital to Us All

### Americans get more food For their money today

Not only have food prices risen comparatively little in the past few years, family income buys considerably more food today partly because agriculture has become much more efficient and partly because consumer incomes have risen faster than food prices. For example, here's what the average U.S. worker could buy with an hour's pay in 1950 and in 1984.

Food Item	1950	1984
White bread.....	10.1 lbs.	15.4 lbs.
Frying chickens.....	2.5 lbs.	10.3 lbs.
Milk.....	8.0 qts.	14.8 qts.
Potatoes, fresh.....	32.7 lbs.	34.4 lbs.
Eggs.....	2.4 doz.	8.3 doz.
Pork.....	2.7 lbs.	5.1 lbs.

Our diets are more varied. The American consumer is eating 35 percent more poultry but eight percent less beef per person than 10 years ago. And eating more fresh vegetables (18 percent) and more fresh fruits (13 percent).

### ON AN ACRE OF LAND. . . .

## Farmers produce 80 percent more crop

American farmers today produce over 80 percent more crop output on an acre of land than did their fathers. Today, one hour of farm labor produces 16 times as much food and other crops as it did in the 1919-21 period.

One farmworker now supplies enough food and fiber for 79 people. Only 10 years ago, the farmworker was producing enough for 59. Because of the farmer's efficient output, we can enjoy a satisfying quantity and variety of food.

In 1934 for example, Americans consumed an average of 144 pounds

(retail weight) of beef, veal, pork, lamb and mutton; 68 pounds of chicken and turkey; 88 pounds of fresh fruits; 75 pounds of fresh vegetables; 308 pounds of dairy products and 73 pounds of potatoes.

Farmers produce not only enough for us, but also enough to make large quantities of farm products available for international trade.

We export more farm products than anyone else in the world.

In 1984, production from one-third (111 million acres) of America's cropland

went overseas.

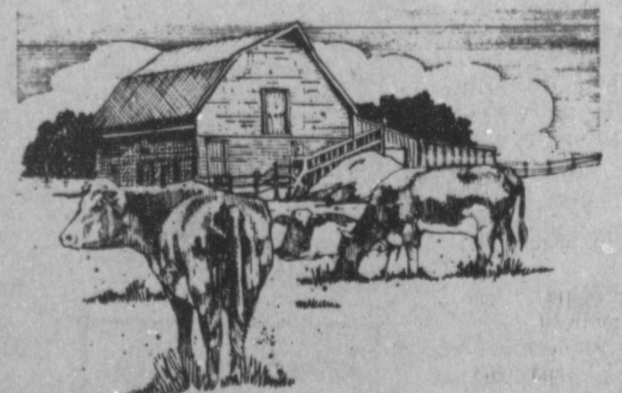
Until recently, farm exports had set successive records, reaching a peak of \$43.8 billion in fiscal year 1981. Because of lower prices and reduced foreign demand, however, exports in fiscal year 1984 totaled \$38 billion and were declining further in 1985.

Even so, farm exports still contributed a net of \$19.1 billion to our balance of trade in 1984, which is another way of saying we got over twice as much for our food and fiber exports as we paid out for food and fiber imports.

**This Special Ag Day Message Sponsored By These Companies...**



**...And These Supporters Of Area Agri-Business...**



- First Bank**
- Dent & Co.**
- Claunch Gin**
- Texas Sesame**
- Foster Fertilizer Co.**
- Farmers Co-Op Elevators**
- Bailey County Farm Bureau**
- Valley Grain Products Inc.**
- Sherley-Anderson Lazbuddie Elevator**