





MAKES MINIATURE STREAMLINED TRAIN

Miss Helen Sage, former resident of Artesia, a teacher in the primary department of the San Diego, California, schools, has recently received quite a bit of favorable mention on the accomplishment of a group of her pupils. The pupils of Miss Sage's room have on display a miniature streamlined train. When completed, the train, about twenty feet long, was placed on exhibit at the San Diego Chamber of Commerce and is said to be one of the best pieces of art work ever turned out by the schools of that city. A photograph of the train with a lengthy write-up appeared in a San Diego paper.

PARIS HONORED

FULTON, Missouri—Jesse C. Paris, of Artesia, received three high awards at Westminster College during the past two weeks. He has been elected president of the Senior Class for the coming year, president of the Highlanders Club, and was selected to be a member of the Skulls of Seven for next year. This is an honorary senior group of seven outstanding students and are selected by the past members.

THE CHURCHES

CHRISTIAN SCIENCE SOCIETY 613 W. Main Street

10:15 a. m. Sunday school. 11:00 a. m. Sunday services. "Soul and Body" is the subject of the lesson-sermon which will be read in all Churches and Societies of Christ, Scientist, and Societies of Christ, Scientist, on Sunday, May 26th. The golden text is: "My soul longeth, yea, even fainteth for the courts of the Lord: my heart and my flesh crieth out for the living God." (Ps. 84:2).

Among the citations which comprise the lesson-sermon is the following from the Bible: "For we know that if our earthly house of this tabernacle were dissolved, we have a building of God, an house not made with hands, eternal in the heavens." (II Cor. 5:1).

The lesson-sermon also includes the following passage from the Christian Science textbook: "Sooner or later we shall learn that the fetters of man's finite capacity are forged by the illusion that he lives in body instead of in soul, in matter instead of in spirit."

FIRST CHRISTIAN CHURCH

Services for the week: Sunday: 9:45 Bible school, Ben Dunn, superintendent. 11:00 Morning worship. Sermon subject: "The Sacredness of a Promise." God keeps His promises; how about yours? 5:00 p. m. Junior Christian Endeavor. 6:45 Young People's Christian Endeavor. Leader, John Shearman, Jr. Topic, "What Shall We Do About Social Injustices?" 7:45 Evening preaching service. Sermon subject: "Crowded Lives." Wednesday: 7:30 Bible study and prayer meeting. Leader, Mrs. F. A. Manda. 8:30 Choir rehearsal. All members of the choir please reserve this hour and be present. Why not come to prayer meeting and remain for the choir rehearsal? THOMAS MASSIE, Pastor.

ALL-DAY MEETING AT CALVARY BAPTIST CHURCH

The Baptist church of Hope has accepted an invitation to come down and have Sunday school and church services with us Sunday. Preaching services at 11:00 a. m. and 7:30 p. m. Lee Frazier will entertain with songs, guitar and piano at 3:00 p. m. Dinner on the ground at 12:00 m. Bring your basket and come along.

CALVARY BAPTIST CHURCH 413 West Main St. Geo. E. Toby, Pastor

Sunday school 9:45 a. m. B. Y. P. U. 6:30 p. m. Preaching service at 11:00 a. m. and 7:30 p. m. Revival services each evening this week beginning at 7:30 p. m., the Rev. Geo. Toby preaching and Lee Frazier leading the singing. Come worship with us.

METHODIST ASSEMBLY PLANS ARE DISCUSSED

The Rev. A. C. Douglas, pastor of the First Methodist church here, was the principal speaker at the luncheon program of the Artesia Rotary club Tuesday and spoke on the Sacramento - Methodist Assembly. The Rev. Douglas gave a brief history of the Assembly from the start to the present time and told of the physical equipment added to the assembly site, which included four dormitories, a mess hall and a number of lodges built by the various churches over the conference. Water has been piped into all buildings and a light plant has been installed recently.

Dates for the intermediate and young people's assembly will be from June 10th to June 15th. Beginning June 15th a six weeks summer school will be conducted by McMurry College.

The Rev. Douglas also announced that Governor Clyde Tingley would address the assembly, but the date set for the governor's address is not yet known. The speaker also issued a general invitation for local people to attend the assembly. "Although it is under the supervision of the Methodist church, people of other denominations are welcome to attend," he said.

Visitors at the Rotary luncheon included Syl Johnson and C. L. Allison of Roswell, Walter Haines of Ponca City, Oklahoma, and S. S. Ward of Artesia.

DUST VALUABLE IN NITROGEN

W. A. Wunsch, county agent, has received a report on the analysis of the dust particles blown in by the recent sand storms. Mr. Wunsch says:

"I received an analysis report on the dust soil that we sent in some time ago. This sample contains 0.238% nitrogen, which is about twice as much as our New Mexico soil contains. It is, however, no higher than the soil in the black land belt of the central states."

Wind and Water Erosion Is Effective in 85 Percent of N. M.

Soil erosion has affected practically the entire area of the state of New Mexico, according to H. H. Bennett, chief of the soil conservation service.

Wind or water erosion, or both, are prevalent on approximately 85 per cent of the total area, Bennett said. Sheet erosion is active on more than 45,500,000 acres, gully-eroding prevails in varying degrees of seriousness on 58,500,000 acres, and wind erosion has affected upwards of 14,000,000 acres.

Bennett's statement was based on results of a reconnaissance survey of New Mexico recently completed by the soil conservation service as part of a nation-wide study to determine the nature and extent of erosion throughout the country. In making public the New Mexico findings, Bennett emphasized that the survey was on a reconnaissance basis and that the results therefore indicate only a general approximation of predominating conditions.

In New Mexico, as in other southwestern states, he pointed out, it was found impracticable to differentiate between accelerated or man-induced erosion and erosion caused by natural geological processes. This was particularly true of some 10,000,000 acres classed as mesas, canyon, rough mountain land and barren mountain tops. Although the other erosion classifications for the state include only man-induced erosion for the most part, some geological erosion in certain isolated areas has been included.

Summarizing erosion conditions in the state by regions, Glenn L. Fuller, chief erosion specialist, who directed the national reconnaissance survey said: "The northwestern part of the state is largely mesas and canyons, where there is considerable erosion, although not much of it has been man-induced."

"Slight sheet erosion is prevalent in a belt around the upper limits of the Gila river watershed in the southeastern part of the state, in the alluvial areas of the Rio Grande valley in the central part, and in the long plain east of the Argan and Franklin mountains and northwest of Clovis in the eastern part of the state."

"The eastern one-third of New Mexico, a continuation of the high plains, is by far the most important agricultural section. Both wind and water erosion have become active throughout this area."

"The desert-mountain section of western New Mexico represents a timbered transition between the mountains and the southwestern desert plains. The higher portions have a fair to good forest cover which becomes thinner at decreasing elevations, until on the fringe of the desert plains there is a thin cover typical of the very arid regions. Considerable wind erosion has affected this area and gully erosion is also active and generally serious."

In 1934 the soil erosion service

of the United States department of the interior established erosion control projects on the Navajo Indian lands, in northwestern New Mexico and on the Gila river watershed in southwestern New Mexico. This land has suffered widespread destruction following overgrazing by goats and sheep. Conservation measures are necessary if the productivity of the land is to be preserved or grazing restored. More recently a similar erosion control project has been established on 11,500,000 acres in the Rio Grande watershed in central New Mexico, comprising the watershed of the Elephant Butte reservoir. It has been reported that the storage capacity of this reservoir was reduced nearly 10 per cent by silting during a period of less than eleven years. Silting constitutes a major problem in connection with all of the large water reservoirs in the southwestern states.

CARLSBAD CHILD BITTEN BY CAT

A warning was issued to Carlsbad residents Friday after a Carlsbad child was bitten and clawed by a cat. It was not known whether the cat had rabies. No new cases of rabies have been reported in the south end of the county since a mad dog was killed in that section several weeks ago. Two hundred and sixty-six dogs have been killed at Malaga and Loving the past two months as a precautionary measure.

Mrs. C. R. Carter and two sisters-in-law, all of Houston, Texas, spent the latter part of the week here visiting at the home of Mrs. Carter's parents, Mr. and Mrs. L. R. Buck of the Cottonwood community. The visitors left Saturday to make a trip thru the Caverns before returning home.

New Mexico Forest Fires Total 563 For The Past Year

ALBUQUERQUE—Five hundred and sixty-three forest fires in New Mexico burned over a total of 12,335 acres in 1934, according to figures released by Stanley F. Wilson, who is in charge of the fire work in region three.

Cost of fire suppression and detection amounted to \$39,311, to say nothing of the actual loss of timber and watershed protection, it was said. In some instances, where forest usage on the part of visitors is heavy, the number of man-caused fires rose considerably above the fifty per cent mark, figures show.

New lookout towers are being erected, and fire breaks established by the Forest Service with the view of cutting these fire costs. Roads are being built also and telephone systems improved in order to give quicker accessibility to burning areas and to offer better means of communication.

On account of the large percentage of fires that are actually man-caused, the Forest Service is again stressing the necessity of care with fire while in the forests. Smokers should not empty pipes or toss burning cigarettes from car windows while driving through the forests. Camp fires should be extinguished before leaving the camp grounds.

Observance of these, and other, fire prevention measures on the part of the public will go a long way in cutting the fire cost in the national forests of the state.

Mr. and Mrs. Finn Watson and small son of Albuquerque arrived last Thursday and met his brother, Berry Watson, who was here from San Pedro, California, for a few days visit with relatives.

SIMPSON CIRCULATES PETITION FOR LENIENCY

News from Lovington last week stated that J. H. Simpson of Tatum, who was convicted of manslaughter in connection with the killing of Oscar Adams several months ago, has been circulating a petition in Lea county for leniency on the part of the authorities. Simpson was convicted of manslaughter and sentenced to serve a term in the state pen, but it out on bond, pending a re-hearing by a higher court.

WANTS TO RUN TRUCK LINE

An application has been filed by the Texas-New Mexico Railroad Company with the New Mexico State Corporation Commission for permission to establish a daily truck line between Monahans, Texas, and Lovington. The hearing has been set for May 25th, according to the Lovington Leader. At present the service is very inconvenient as trains only run three times a week each way.

KC BAKING POWDER

Manufactured by baking powder Specialists who make nothing but baking powder—under supervision of expert chemists.

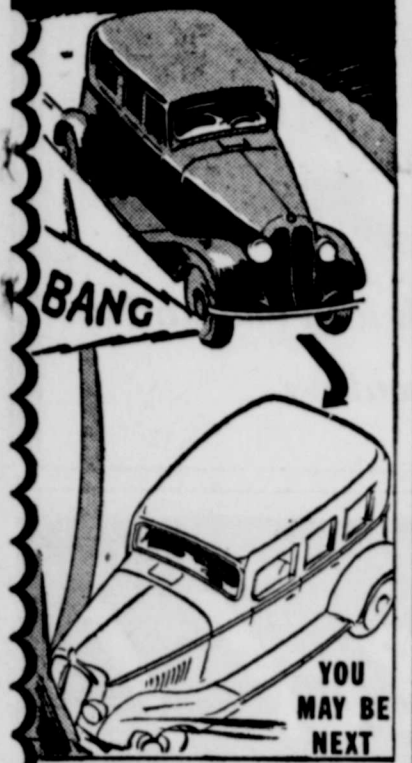
ALWAYS Uniform Dependable

Same price today as 44 years ago 25 ounces for 25c

FULL PACK NO SLACK FILLING

MILLIONS OF POUNDS HAVE BEEN USED BY OUR GOVERNMENT

Blow-out!



BUY THE TIRE WITH THE GOLDEN PLY AND STAY OFF THE ACCIDENT LIST

At the high speeds that are common on the highways these days, you motorists need real protection against dangerous blow-outs. Let us tell you what happens inside tires when you go 40, 50, 60 miles an hour. Terrible heat is generated. . . The rubber and fabric separate. A blister forms—grows bigger and bigger. Then BANG! A blow-out! — and a serious accident may result. But Goodrich Safety Silvertowns are protected from these blow-outs by the famous Life-Saver Golden Ply — the amazing invention that resists this internal heat, and prevents these blow-outs before they start. Get a set of Goodrich Silvertowns today and play safe.



ONE LOOK AT MY COLLECTION OF TRAGIC Blow-out SHOTS AND YOU'D NEVER GAMBLE ON TIRES

Says A. I. SARNO, Staff Photographer, International News Photos

Goodrich Safety Silvertowns WITH LIFE-SAVER GOLDEN PLY

State Oil Service STEVE LANNING Wholesale—Phone 333—Retail MALCO DISTRIBUTOR Batteries Accessories Tires—Tubes Greasing Soft Water Washing Typewriter Ribbons—The Advocate

NEW 1935 G-E REFRIGERATORS CARRY 5 YEARS PERFORMANCE PROTECTION. Attractive Prices on G. E. Flat Top Refrigerators. L. P. Evans Estate Phone 180

Security Safety Our Officers and Stockholders —are actively interested in the welfare of this community. OUR stockholders are a group of average citizens taking part in the home, social and business life of the community. First National Bank Artesia, N. M. Satisfaction Service

ARTESIA'S NEW \$50,000.00 THEATER "THE OCOTILLO" OPENS FRIDAY NIGHT, MAY 24. FRIDAY, MAY 24: GEORGE RAFT, BEN BERNIE AND ALL HIS LADS STOLEN HARMONY. SATURDAY, MAY 25: Tim McCoy "REVENGE RIDER". SUNDAY—MONDAY, MAY 26—27: THEY DEALT IN REPRESSIONS!... CLAUDETTE COLBERT "Private Worlds" CHARLES BOYER · JOAN BENNETT HELEN VINSON · JOEL MCCREA



### Classified

TERMS:—A rate of ten cents per line will be charged for Classified Ads for the first insertion and five cents per line thereafter. No ad accepted for less than 50¢. An average of 5 words ordinarily constitute a line. Charges will be based on this average. Cash must accompany all ads sent by letter, otherwise they will not be inserted.

#### FOR SALE

FOR SALE: Methodist church parsonage property consisting of three lots, residence and double garage. Located corner Fifth and Richardson. See Dr. Stroup. 15-tf

FOR SALE: Two-horse electric motor. Artesia Advocate. 16-tf

FOR SALE: Dangler gas range in good condition. See Mrs. John McCann at the McCann Service Station. 20-2tc

SOWS AND WEANED PIGS FOR SALE. Phone 260. R. L. Paris. 21-2tp

FOR SALE: 320 acres fine land, Upper Cottonwood between Cottonwood and Walnut; good shallow water possibilities. Must be sold, \$2.50 per acre. E. C. Jackson, Lake Arthur, N. M. 21-1tc

FOR SALE: 100 pound ice box, just as good as new, at a bargain. F. E. Painter, 608 Richardson. 21-1tp

#### FOR RENT

FOR RENT: Furnished room, connecting bath, close in. Phone 99. 14-tf

#### WANTED

MEN WANTED for Rawleigh Routes in Eddy County. Write today. Rawleigh Co., Dept. NM-6-SB, Denver, Colo. 19-8tp

#### LOST

##### \$5.00 REWARD

LOST—White bird dog, with black ear, and black ticked. Return to L. B. Myers, east of Artesia. 21-2tp

#### MISCELLANEOUS

HELP YOURSELF LAUNDRY. Opening May 20th, between 1st and 2nd on highway. Hot water and machine furnished, 40 cents per hour. Mmes. Staggs & Blakey. 20-2tp

#### NOTICE FOR BIDS

The Eddy County Board of Education hereby calls for bids on the Upper Cottonwood two (2) acre school site, NW 1/4 NW 1/4 S. 5, T. 16 S., R. 25 E., with good surface well; windmill and tower; four (4) roomed concrete and stucco main school building. All water fountains, light fixtures, pipes, etc., and all other equipment and improvements therein or thereon not specifically enumerated for sale are hereby reserved. All bids must be filed in office of the County Superintendent of Schools, Carlsbad, New Mexico, by 12 noon, June 17th, 1935. The County Board reserves the right to reject any and all bids.

Also 1 acre in Chaves County, directly north of school site described as follows: SW 1/4 SE 1/4 Sec. 35, T. 15 S., R. 24 E., N. M. P. M.

G. R. SPENCER, Secretary County Board of Education. 21-4t

Mr. and Mrs. Alf Coll, their daughter, Miss Marion, and son, Lawrence, left early Wednesday morning on a vacation trip in which they expect to visit the following states: Texas, Louisiana, Arkansas and Oklahoma. They expect to be back home in a week or ten days.

### ALMANAC



"He who minds his own business has no time to mind other folks."

- MAY 21—Democrats hold their first national convention, 1832.
- 22—Rose Stahl opens in "The Chorus Lady," New York, 1910.
- 23—Japanese earthquake does \$50,000,000 damage, 1925.
- 24—John Hancock made president Continental Congress, 1775.
- 25—Blind Tom, world famed negro pianist, born 1849.
- 26—First overhead trolley car line starts, Appleton, Wis., 1886.
- 27—Watertown, Wis., opens first kindergarten in U. S., 1855.

### Eddy County Farm News

W. A. Wunsch, county extension agent, accompanied by Leslie Martin, member of the State Board of Review of the Cotton Adjustment Section, left Carlsbad Tuesday morning to attend a meeting of the State Board of Review held at State College on Tuesday. At this meeting there will be a discussion of a number of vital problems regarding cotton production and adjustment in Eddy, and other cotton producing counties of New Mexico. We feel that this county is very well represented by these two men and will receive due consideration in any problems concerned.

The following persons, who are prominent cotton producers of Eddy county, are attending a general agricultural adjustment meeting held at State College on the 22nd: W. H. Harroun, Dan Harroun, J. L. Williams, C. P. Pardue, C. F. Porter, J. R. Ogden.

This meeting is for the purpose of a general discussion of policies of the Agricultural Adjustment Administration, and the problems arising therefrom. Being well-informed as to the needs of Eddy county, in regard to the agricultural adjustment, these representatives will not hesitate to express their views at any discussion with which this county is concerned.

Due to the high cost of grain, it is highly essential that the proper ration be given laying hens in order to obtain the highest possible egg production. Due to different prices of various feeds, the producer should choose kinds of grains accordingly. With few exceptions, one grain is practically as efficient for scratch as another. The composition of the mixture may be varied as the price of the different grains change. The following scratch mixture is very popular with poultry producers at the present time:

- Wheat, 100 pounds.
- Cracked corn (yellow), 100 pounds.
- Kafir, 100 pounds.

The following formula is recommended as a mash mixture:

- Wheat bran, 100 pounds.
- Wheat shorts, 100 pounds.
- Corn meal (yellow), 100 pounds.
- Pulverized oats, 100 pounds.
- Alfalfa meal, 40 to 50 pounds.
- Meat and bone scraps, 75 to 150 pounds.
- Dried buttermilk, 25 to 50 pounds.
- Fine oyster shell, 10 pounds.
- Fine table salt, 3 to 4 pounds.

#### SOUTHERN N. M. ASSOCIATION REVIVED

At a meeting Tuesday at Alamogordo of several Chambers of Commerce in southern New Mexico, the old Southern New Mexico Association was revived for the purpose of promoting the recreational possibilities of this area. A temporary organization was affected with Dr. Evans of Alamogordo as temporary chairman, and Jack Spence, also of Alamogordo, temporary secretary-treasurer. A meeting is scheduled to be held in July at which time a permanent organization will be formed.

W. B. McCrory, manager of the Artesia Chamber of Commerce, was the only Artesia representative attending.

#### ATTENDING MEDICAL CONVENTION THIS WEEK

Dr. H. A. Stroup and Dr. C. Russell of Artesia are attending the State Medical association, which convened today in Albuquerque for a three-day convention. Dr. Stroup went over with his daughter-in-law, Mrs. Howard Stroup. Mrs. Stroup plans to visit her sister while the convention is in session.

#### JANE ADDAMS DEAD

Jane Addams, aged 74, died late Tuesday at Passavant hospital in Chicago, where she had undergone a major operation. Miss Addams, founder of the famous Chicago social settlement, Hull House, and Nobel prize winner, was a national character.

#### RECITAL MONDAY EVENING

Miss Doris Welborne will present her violin students in a recital at the First Baptist church Monday evening at eight o'clock. Miss Joan Wheatley will accompany at the piano. The public is invited.

Mrs. Moss Spence and mother, Mrs. Moots and family of Lake Arthur, were here yesterday. Mrs. Spence, who is suffering from a throat trouble, came down for medical attention.

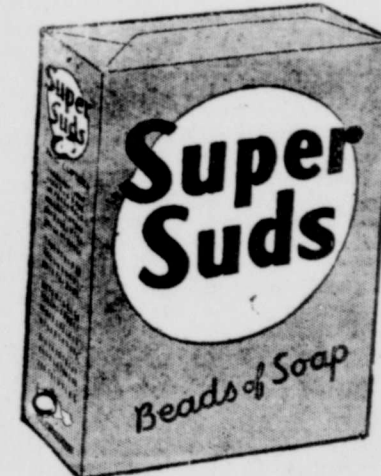
An announcement has been received here of the marriage of Miss Lois Burns to Paul Henderson, which occurred at Los Angeles, California, on May 19th. Mr. and Mrs. Henderson are at home to their friends at Bishop, California. Mrs. Henderson is the daughter of Mrs. Robert Burns, a former resident of Artesia, and is well known to all of the earlier residents.

# This Beautiful CHROMIUM FRUIT BOWL



Diameter 12" . . . . . Stainless

● ● AND ● ●  
**3 Bars Palmolive Soap**  
**1 Package Supersuds**  
**2 GIANT SIZE Bars Crystal White Soap**  
**1 Package Crystal White Chips**  
**\$ 2.50 VALUE**  
**2 All For - 99c**



**Buy Today! — Supply Limited!**  
**These Merchants Have It**  
 Douglas Market      Star Grocery  
 Frank's Market      Safeway Stores  
 Palace of Foods      Sanitary Grocery  
 Wheatley, Price & Thompson

**20 FREE TOURS**  
**.. of EUROPE!**  
 OR \$1000 IN CASH  
 offered by  
**PALMOLIVE**  
 5c  
 the soap made with olive oil  
 ASK US FOR FULL DETAILS ABOUT THIS GREAT CONTEST!



Listen to the Palmolive Beauty Box of the Air every Tuesday at 7:00 P. M., over N. B. C., for complete details.

The principal ingredients of Crystal White Soap are COTTONSEED OIL and COCOANUT OIL . . . These produce a soap not only pure and therefore safe to use on delicate fabrics, but gives quicker and better results.

**Free EACH WEEK!**  
 A Beautiful 1935 **PACKARD**  
 SEDAN OR \$1000.00 IN CASH  
 FOR A LETTER ABOUT **Super Suds**  
 REGULAR 10¢ SIZE  
 Giant Size 20¢  
 ASK US FOR DETAILS!

Listen to House of Glass every Wednesday at 8:30 P. M., over KOA for Complete details.

LEGAL ADVERTISEMENTS

COMMISSIONERS PROCEEDINGS

BE IT REMEMBERED THAT THE Board of County Commissioners of Eddy County, N. M., met in regular session May 6, 1935. Present and presiding: G. R. Brainard, Chairman. Joe Lusk, Commissioner District No. 1. L. B. James, Commissioner District No. 3. R. A. Wilcox, Clerk. Applications for Beer License were presented to the Board by C. S. Devaney, Malaga, and C. L. White for White's Station No. 2, Malaga. After due consideration both applications were disallowed. A written resignation as Constable, District No. 1, was presented to the Board of County Commissioners by Howell Gage, and was carried over for the present time. Agreement was made with Mrs. Belle McCord, Abstractor, for her to check the titles on the Easements secured by the Commissioners on Carlsbad-Malaga Highway. The clerk was instructed to issue warrants Nos. 17797 to 17855. There being no further business the Board adjourned until Wednesday, May 8, 1935. G. R. BRAINARD, Chairman. Attest: R. A. WILCOX, Clerk.

BE IT REMEMBERED THAT THE Board of County Commissioners of Eddy County, N. M., met as a Board of Equalization May 6, 1935. Present and presiding: G. R. Brainard, Chairman. Joe Lusk, Commissioner District No. 1. L. B. James, Commissioner District No. 3. R. A. Wilcox, Clerk. R. H. Westaway, Assessor. Complaints were reviewed for equalization and reduction of valuations and after discussion the following actions were had. Mrs. Margaret Jones, Carlsbad, was allowed \$200.00 exemption, as head of family. Charles S. Brown, Artesia, N. M., the following valuation was allowed, NW 1/4 & W 1/2 of NE 1/4 less 5 acres in Sec. 14, T. 18, R. 26, and E 1/2 NE 1/4 15-18-26, 315 acres. Two hundred acres of irrigated land reduced from \$300.00 per acre to \$22.50 per acre. Cora Maddison, Lot 4 Block 15, C & S Addition, Artesia, N. M., valuation was reduced from \$700.00 to \$600.00. A. F. Doughenbaugh, Lots 13-15, Block 18, Forest Hill Addition, Artesia, N. M. Continued until next meeting. C. R. Roberts, requested reduction from \$500.00 to \$400.00 on improvements, Lot 12, Block 36, Fairview Addition, Artesia, N. M. Continued until next meeting. There being no further business the Board adjourned until June 3rd, 1935. G. R. BRAINARD, Chairman. Attest: R. A. WILCOX, Clerk.

BE IT REMEMBERED THAT THE Board of County Commissioners, Eddy County, N. M., met in special session this 8th day of May, 1935, pursuant to adjournment had Monday, May 6, 1935. Present and presiding as then. The clerk was instructed to issue warrants for remaining bills, warrants Nos. 17856 to 17900. Motion was made and carried that the sheriff be allowed the amount of .55 per day for board of prisoners, meals actually furnished. Motion made and carried that the Sheriff equip his car with bullet-proof wind shield. Motion made and carried that \$30.00 per month be allowed for rental of Armory for offices of the F. E. R. A., said amount to be paid out of the Indigent Fund. There being no further business the Board adjourned subject to call. G. R. BRAINARD, Chairman. Attest: R. A. WILCOX, Clerk.

BE IT REMEMBERED THAT THE Board of County Commissioners, Eddy County, N. M., met in special session this 13th day of May, 1935, pursuant to adjournment previously had. Present and presiding: G. R. Brainard, Chairman. Joe Lusk, Commissioner District No. 1. L. B. James, Commissioner District No. 3. R. A. Wilcox, Clerk. Minutes of the previous meetings were read and approved. Plans for the compilation of the 1935-36 Budget were discussed and it appearing to the Board that further information must be secured before completion of same, the Board adjourned subject to call. G. R. BRAINARD, Chairman. Attest: R. A. WILCOX, Clerk. 21-1tc

IN THE PROBATE COURT OF EDDY COUNTY, STATE OF NEW MEXICO. IN THE MATTER OF THE LAST WILL AND TESTAMENT OF JOHN D. MCCLURE, deceased. NO. 748. NOTICE TO WHOM IT MAY CONCERN: Notice is hereby given that an instrument purporting to be the Last Will and Testament of John D. McClure, deceased, has been filed for probate in the Probate Court of Eddy County, State of New Mexico, and that by order of said court the 7th day of June, 1935, at the hour of 2:00 P. M., at the Court room of said Court, in the City of Carlsbad, New Mex-

ico, is the day, time and place set for hearing proof on said Last Will and Testament. Therefore any person or persons wishing to enter objections to the proving of said Last Will and Testament are hereby notified to file their objections in the office of the County Clerk of Eddy County on or before the time set for said hearing. Dated at Carlsbad, New Mexico, this 7th day of May, 1935. R. A. WILCOX, County Clerk.

21-1tc

21-3t

NOTICE STATE ENGINEER'S OFFICE

Number of application RA-1262 Santa Fe, N. M., May 13th, 1935. Notice is hereby given that on the 2nd day of May, 1935, in accordance with Chapter 131 of the Session Laws of 1931, J. J. Terry of Artesia, County of Eddy, State of New Mexico, made application to the State Engineer of New Mexico for a permit to appropriate the underground waters of the Roswell Artesian Basin to the extent of 450 acre feet per annum by drilling a 12 1/2 inch in diameter shallow well to the approximate depth of 300 feet located in SW 1/4 NW 1/4 Section 11, Township 16 South, Range 25 East, N. M. P. M., for the purpose of irrigating 150 acres of land described as follows: NW 1/4 Section 11, Township 16 South, Range 25 East, 150 acres. Any person, association or corporation deeming that the granting of the above application will be truly detrimental to their rights in the waters of said underground source may file a complete sworn statement of their objections substantiated by affidavits with the State Engineer and file proof of service of a copy thereof upon the applicant with the State Engineer on or before the 22nd day of June, 1935, the date set for the State Engineer to take this application up for final consideration unless protested. THOMAS M. MCCLURE, State Engineer. 21-3t

NOTICE OF PUBLICATION

Pursuant to Section 92-238 of New Mexico Statutes Annotated, Codification of 1929, notice is hereby given of the filing in the office of the State Corporation Commission of New Mexico of a certified copy of Certificate of Incorporation and Statement of SPARKMAN & REUSCH DRILLING COMPANY. 1. The amount of authorized capital stock is \$100,000.00. The amount of capital stock actually issued and with which the company will commence business is \$52,000.00. 2. The names of the incorporators and their postoffice addresses are: Fred H. Reuch, Tulsa, Okla. O. L. Sparkman, Cushing, Okla. Ray S. Fellows, Tulsa, Okla. 3. The objects and purposes of the said corporation are: To establish and maintain an oil and gas business with authority to contract for the lease and purchase of the right to prospect for, develop and use coal and other minerals, Petroleum and gas; Also the right to erect, build and own all necessary oil tank, cars and pipes necessary for the operation of the business of same. To drill and to contract to drill for others in the development of Petroleum and Gas. 4. The principal place of business of the corporation is Artesia, New Mexico, and the name of the statutory agent therein and in charge thereof, upon whom process against the corporation may be served is Frank E. Smith, at Artesia, New Mexico. 5. Filed in the office of the State Corporation Commission on May 4, 1935, No. 19921-22, Cor. Rec'd. Vol. 8, Page 410 at 10:05 A. M. STATE CORPORATION COMMISSION OF NEW MEXICO, By DON R. CASADOS, Chairman. Certified copy of certificate of incorporation has been recorded in the office of county clerk of Eddy County, New Mex., May 15, 1935, at 8 A. M.; Book 4, Page 97. R. A. WILCOX, County Clerk. By DOTTE C. CRAFT, Deputy. (SEAL) 21-1tc

MAY BIRTHS

Eight births since May 15th were reported for the district Monday. The births were as follows: Mr. and Mrs. J. B. Cooper, daughter, May 15th; Mr. and Mrs. E. J. Flowers, daughter, May 16th; Mr. and Mrs. J. L. Young, daughter, May 17th; Mr. and Mrs. R. L. Carl, of Lake Arthur, son, May 17th; Mr. and Mrs. N. J. Abernathy of Lake Arthur, daughter, May 18th; Mr. and Mrs. R. W. Wilson, son, May 18th; Mr. and Mrs. C. C. Stevenson of Pinon report the birth of a son here on May 18th, and Mr. and Mrs. John W. Crowley of the Cottonwood report the birth of a daughter on May 18th.

21-1tc

21-1tc

New Grazing Rule Approved At Denver Meet

DENVER—Representative stockmen of five western states Monday approved regulations governing issuance of federal grazing licenses for cattle and sheep on the public domain in 1935. Action of the stockmen, representing Colorado, New Mexico, Arizona, Montana and Wyoming, brought final approval of the temporary grazing rules affecting the ten states concerned with grazing on the public domain. Stockmen of California, Oregon, Idaho, Nevada and Utah already had approved the plan. The regulations will be effective only until provisions of the Taylor grazing act are placed in full force, probably by next year, federal grazing officials said. F. C. Carpenter, director of grazing for the department of interior, who presided at the meeting, said special grazing regulations applying to particular needs of specific districts will be designed by the advisory boards. Board elections will be completed by June 20, he said, and by July 1 advisory boards will be ready to handle recommendations for temporary licenses for 1935. "Six months operation of these grazing districts will determine whether this is an effective new style of local government," Carpenter told approximately 125 delegates. "The federal government, to enforce its laws, must follow public opinion. To bring satisfactory enforcement in this case, the government must follow the desires of stockmen in local districts." Delegates to the Denver meeting voted a resolution asking the government to make effective, coincident with establishment of the grazing districts, provisions of the Taylor act relating to the exchange of state lands and individual leases and sale of isolated tracts. Advisory board will recommend issuance of grazing licenses for the remainder of 1935 until ten-year grazing permits can be issued under the Taylor act. Under the temporary regulations, licenses for this year will not be issued for more than the total number of livestock on the range in 1934. The number of cattle or sheep on public domain grazing lands will depend under temporary regulations upon location of property, dependency of private property upon public range, capacity of property, proximity of property to the public range, and prior use of public lands by the licensee. Temporary regulations also establish strict prohibitions upon use of public lands without licenses.

WATER LOW AT NOGAL It was announced at Roswell Saturday, water in the Nogal lake was low and no more fishing permits would be issued until the water supply was replenished.

21-1tc

21-1tc

21-1tc

21-1tc

21-1tc

21-1tc

Japanese Imported Cotton Cloth Takes Duty of 14.2c per Pound

Japanese cotton cloth imports into the United States during the month of January paid duties of 14.2 cents per pound, according to figures compiled by the bureau of agricultural economics of the United States department of agriculture, says W. A. Wunsch, county agent. Of this amount 8.7 cents per pound was the ad valorem duty on cotton cloth for January imports. The remainder, 5.5 cents per pound, was the compensatory tax which is levied to offset the processing tax paid by domestic manufacturers. The processing tax applies only to cotton used to make products sold in the United States and competing cotton products, imported from foreign countries, must pay the compensatory tax equivalent to the processing tax, in addition to the normal tariff duty imposed on imports of cotton cloth, it is pointed out by Cully A. Cobb, director of the agricultural adjustment administration's cotton division. Processing taxes on exports of cotton cloth are refunded. An analysis of cotton cloth imports from Japan during January 1935 indicates that the following items were included in their cost before they could be put on United States markets: Average invoice value at point of foreign departure, 31.7 cents per pound of cloth; average import duty, 8.7 cents per pound of cloth; compensating tax levied to offset processing tax, 5.5 cents per pound, which is equal to the rate of 4.2 cents per pound on raw cotton. To these costs must be added ocean shipping charges, insurance and handling charges. Calling Cards, 100 for \$1.75, on best grade paneled or plain stock. —The Advocate.

21-1tc

21-1tc

21-1tc

21-1tc

21-1tc

21-1tc

21-1tc

FRAZIER TO ENTERTAIN

Lee Frazier, former radio artist and known as the "dream singer" will give an entertainment at the Calvary Baptist church Sunday at 3:00 p. m. Program will consist mostly of solos by Mr. Frazier using his guitar as accompaniment. He will also lead the congregation in singing some good old religious songs. To those who have heard Lee, no invitation is necessary. To any who have not heard him a pleasant treat is in store for you. Lee is directing the music at the Calvary Baptist church this week. Services every evening beginning at 7:15 p. m. Mrs. Roy Vermillion and children of Raton are visiting relatives and friends in the Pecos valley this week.

21-1tc

21-1tc

21-1tc

21-1tc

21-1tc

21-1tc

21-1tc

21-1tc

Dr. James F. Zimmerman, president of the University of New Mexico, at Albuquerque, will be the principal speaker at the meeting of the Chaves County Archaeological and Historical Society on May 20th, it was announced last week.

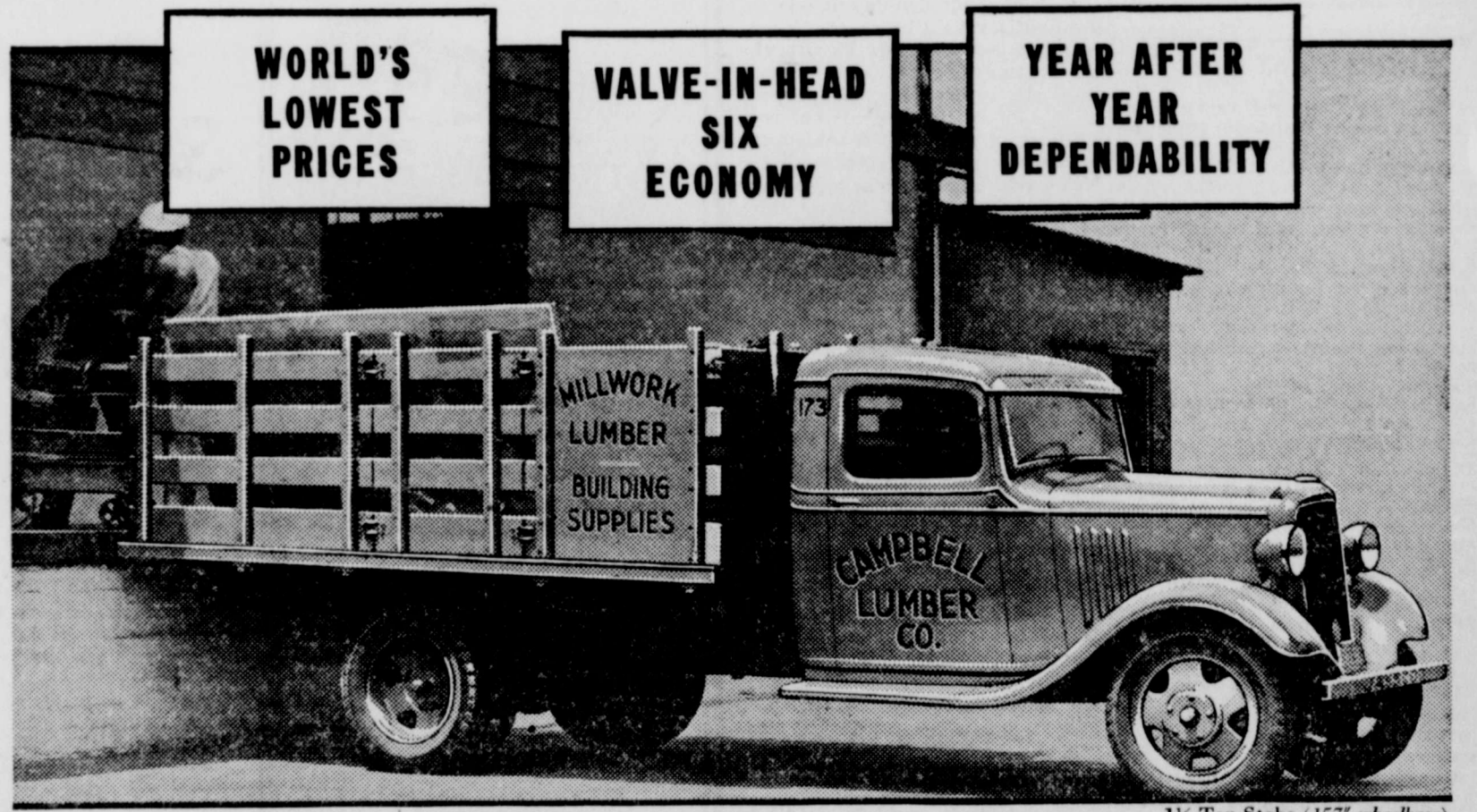
Watch for the New Van Norman Cylinder Reborring Machine that is coming —to— DR. LOUCKS GARAGE \$65

THE ROTOSCOPE A new instrument especially designed for building "a harmonious balance of the various functions," termed ORTHOPTIC TRAINING. Commonly called muscular unbalanced correction. We have added this instrument to our equipment and it is proving to be very beneficial in establishing "Comfortable Vision" . . . Consult EDWARD STONE Optometrist

Wool Growers Let us supply you with Wool Bags, Fleece Ties, Sewing Twine and Branding Liquid. FEED FLOUR E. B. BULLOCK COAL SEEDS "On the Corner 22 Years"

The Big Demand of Truck Buyers Today is for Economy

IT PAYS 3 WAYS TO BUY CHEVROLETS



Today, when every wise buyer of trucks is particularly interested in getting dependable transportation at lowest cost, the money-saving advantages of Chevrolet Trucks have a particularly strong appeal. Truck buyer after truck buyer is discovering that it pays three ways to buy Chevrolets. And truck buyer after truck buyer is deciding to take advantage of the big savings which Chevrolet offers. You, too, will get better haulage service at lower cost by buying a Chevrolet Truck because of these triple economies: 1. Chevrolet Trucks sell at the world's lowest prices. 2. They use less gasoline and oil because they are powered by six-cylinder valve-in-head engines. 3. They give longer, more dependable service because of the extra quality which Chevrolet builds into every part of its products. Visit your nearest Chevrolet dealer—this week. Have a thorough demonstration of the right Chevrolet Truck for your haulage needs. Buy a Chevrolet and get better truck performance at the world's lowest prices!

CHEVROLET MOTOR COMPANY, DETROIT, MICHIGAN. Compare Chevrolet's low delivered prices and easy G. M. A. C. terms. A General Motors Value DEALER ADVERTISEMENT

CHEVROLET TRUCKS GUY CHEVROLET CO. Phone 291 Artesia, N. M.

Best for ALL AGES Our Milk City Dairy Helbert & Tillerson, Props. contains the properly balanced food elements necessary for the health of your family. We sell Grade A Milk produced under Health Department specifications.

To other towns and back in a moment... Place an order . . . Make a sale . . . Get information by— TELEPHONE



