

SPORTS

Mules-Horns To Tangle

-See Below

LOCAL

Hospital Opening Possible

-See Below

BUSINESS

Kassahn Has More Trouble

---See Page 3

WEATHER

| | | | |
|--------------|----|----|-----|
| September 27 | 83 | 53 | .00 |
| September 28 | 88 | 55 | .00 |
| September 29 | 76 | 52 | .00 |
| September 30 | 76 | 46 | .00 |

Muleshoe Journal

20¢

'The Community Of Opportunity - Where Water Makes the Difference'



Vol. 64, No. 40

12 Pages Today

Published Every Thursday At Muleshoe, Bailey County, Texas 79347

Thursday, October 1, 1987

WPMC Hospital To Open If City Grant Approved

Indigent Care Takes 'A Bite' Out Of County

(Editor's note: The Journals wish to express their appreciation to Glen Williams, Area

Aging Officer, for helping compile the following information on laws governing indigent care.)

around muleshoe

If you liked seeing the Mule Mascot arrive by helicopter last Friday night, just wait for your surprise at the Mule-Longhorn game this Friday night.

The monthly MAC Buck drawing will be held at 2 p.m. on Saturday, September 5, at the corner of Main and Ave. C.

Randy Field was in charge of the Rotary program at noon Tuesday. He introduced Deborah Lackey, Jodie Ferris, Kevin King and Sharon Nieman, who gave a talk about their experiences at Rotary Camp Riley. They also showed a video tape of some of the classes they attended.

Guests present were Harry Sheets, Ronald Boyd, Hugh Mosley, Howard Watson, Mike Barres, W.G. Harlen, Jerry Monk, Robert Parker, Don Bert, Bob Kirby, Deborah Lackey, Jodie Ferris, Kevin King and Sharon Nieman.

Bailey County Commissioners will meet in special session today, Thursday, in the Bailey County courthouse.

Getting underway at 10 a.m., items on the agenda for commissioners other than approval of minutes and payment of routine county bills will include: consider repairs to courthouse roof; select nominee to Board of Directors of Bailey County Appraisal District; review overtime policy; consider amendment to FY1988; review departmental reports and miscellaneous items.

The Muleshoe Youth Center will sponsor an after-game dance Friday night, immediately following the Muleshoe-Lockney football game.

The dance will be held until 12:30 a.m. at the American Legion Hall with Scotty of Clovis providing the music.

Admission will be \$3 for MYC members and \$4 for non-members, and all youth are invited to attend.

Army Pvt. Mary E. Norman, daughter of Jim and Ella Norman, Muleshoe, has arrived for duty with the 3rd Armor Division, West Germany.

Norman, a personnel records specialist, is a 1985 graduate of Muleshoe High School.

Pvt. Arthur Silva, son of Gonzalo C. and Lillia L. Silva of Sudan, has completed basic training at Fort Polk, La.

During the training, students received instruction in drill and ceremonies, weapons, map reading, tactics, military courtesy, military justice, first aid, and Army history and traditions.

Two Muleshoe High School graduates are expected to provide good cross country records for Kansas Wesleyan, at Salina, Kansas, according to KWCC Coach David Fritz.

Both Norma Castorena and Rudy Flores, freshmen, will be competing for the Kansas College.

Cont. Page 6, Col. 5

As most of you know, there is much concern regarding the hospital situation in the Muleshoe area, and efforts are being made to re-open the West Plains Medical Center. In that connection it would appear that a number of options for doing so might be available, such as a Public Hospital, a Hospital District, or a Private Hospital.

Of vital interest, and considerable expense, would be the matter of providing medical assistance for indigents. That is a fact of life in our society, as it has been in every society or civilization that ever existed. It is not going away, therefore it must be recognized. And this is written in an effort to provide information regarding indigent care so the public may better understand. We will attempt to explain the situation substantially as it now is, and as it would be under each of the above alternatives.

PRESENT SITUATION
Our hospital is closed, but the County is mandated by law to provide medical assistance for indigents. And treatment can be provided by any legitimate hospital, doctor, or other provider in America. However, the County can, if it so desires, mandate certain providers. These are provisions of the County Indigent Health Care Program as passed by the State Legislature, and which became effective September 1, 1986. Under it the State fixed the responsibility for Counties to provide medical assistance to indigents, spelled out the guidelines, and published minimum rates for payments. However, in areas where there is a Hospital District, the district assumes the responsibility. If there is a Public Hospital it assumes the responsibility. But in the absence of either, responsibility rests with the County. And that is the situation here.

Under the Indigent Health Care Program, the County is 100% responsible for medical assistance for indigents up to 10% of its General Tax Revenues. If and when it spends that 10% on eligible cases the State becomes a participant and pays 80% of all eligible expenses above the 10%. The County pays the remaining

New Tax Effective Here Today
Today, Thursday, a new tax structure for all purchasers in the State of Texas has gone into effect. The state sales tax has been increased by one percent, to make the state taxes six cents. There is a one cent city sales tax to make a total of seven percent, and new taxable items have been added to the state sales tax. Then, on January 1, 1988, an additional one half cent county sales tax will be added to the seven percent.



KIWANIAN OF THE YEAR--Monday night, during the annual Kiwanis Club officer installation banquet, several plaques and awards were presented. Pictured from left, are Keith Turner, who received the "Kiwanian of the Year" plaque from outgoing Kiwanis president, Nick Bamert.

Mules Seek Revenge On Lockney 'Horns

At mid-season last year, the Muleshoe Mules were riding high on a 4-0 record, and six games to go before the end of the 1986 Muleshoe High School football season.

Then came Lockney! With an unimpressive record, the Mules traveled to meet the Longhorns, full of confidence. They met the Longhorns on their own, soggy, rainsoaked field and lo and behold -- The Longhorns proved to be inspired that night, and lambasted the hapless Mules, 21-6, handing them their first loss of the season.

Strong defense held the Mules back, and Sidney Lewis plunged through for the only Mule TD of the game.

This year, the Mules will be looking for revenge against the Lockney Longhorns when they take to the field Friday night at 8 p.m., the Mules, at 3-1 will be attempting to overturn the 1-3 Longhorns.

Prior to gametime, parents of the varsity players will gather at the east side of the home stands, at 7:30 p.m., as it is Parent's Night, and parents will join their sons on the football field to be introduced.

If you are a parent, or parents, of a varsity football player, please be at the football field immediately before 7:30 p.m.

Head Football Coach said Tuesday afternoon, that with the exception of Sergio Garcia, who received a knee injury last week, and James Ziegenfuss, who is still out with a knee injury, the team is in very good shape and ready to play Friday night.

Garcia is out for the season, but Ziegenfuss may see limited action before the season has ended.

After four games this year, the Mules have accumulated 109 points, while holding their opponents to 25 points. Their opponents have managed to score only in the first two

games of 'he year, with both Hart and Springlake-Earth being held scoreless.

In total rushes after four games, the Mules have rushed 178 times for 915 yards; they have held their opponents to 132 rushes for 213 yards.

In passing yards, the Mules have completed 14-63 for 220 total yards and eight interceptions. Their opponents have

Cont. Page 6, Col. 3

Crittenden Installed As Kiwanis President

More than 40 persons were at the Bailey County Civic Center Monday night for the annual Kiwanis Club officer installation banquet.

Following a meal of roast beef and all the trimmings, catered by Tony Palma and his crew from the Hungry Mule Steakhouse, outgoing president Nick Bamert welcomed the members and special guests.

He especially singled out all wives for recognition, along with several other special guests, and introduced the Kiwanis Sweetheart for the next year -- Sue Haire.

The president also introduced Lloyd Hayes, Kiwanis Lieutenant for District 33, from Amarillo, who made brief comments and installed the new officers.

Lt. Gov. Hayes told the Kiwanis group, "You are to be commended for your work in Kiwanis. Your work toward and for Boy Scouts speaks for itself."

First to be installed were new directors, Matt Phelps, Robert Montgomery, James Roy Jones, Jim Lutz, Delton Wilhite and Hugh Young. This was followed by installation of officers for the group, including Max Crittenden, president; Keith Tur-

Immediately following the Tuesday morning meeting of the Muleshoe City Council, a massive telephone campaign began in Muleshoe.

Elder Moves Up From Third To First Place

Right now, after four weeks of the annual Merchant's Football Contest, one contestant, and one contestant only, has a slight edge. Last week, James Elder won third place -- and comes back this week with a first place, giving him currently 14 points toward the grand prize.

Of course, there are many weeks to go in the contest, and if it happens as it usually does, there will be a lot of switching around before the contest is determined in early December.

This week, James Elder was the only contestant to miss only two games, and sits all alone in the third place slot. He missed the LSU-Ohio State tie and was wrong in the Duke-Virginia game.

Second place winner, James Turnbow, a first time winner for this year, missed only three games, and was the only contest to miss only three games. He missed out on the LSU-Ohio games, and was the only contestant to miss only three games. He missed out on the LSU-Ohio State tie, as did each and every contestant; Kansas-Louisiana Tech and Duke-Virginia.

It took a little longer to determine the winner of the third place, as several contestants missed four games. Using the double tiebreakers, Vicki Black was the winner of the third place. She was only 48 points away on the tiebreakers, while all other contestants were from 50-58 points off.

Due to several requests, here are the winners of the games on the contest this week, with the winners placed in () brackets: LSU-Louisiana State (tie); (Penn State) vs. Boston College; (In-

Cont. Page 6, Col. 3

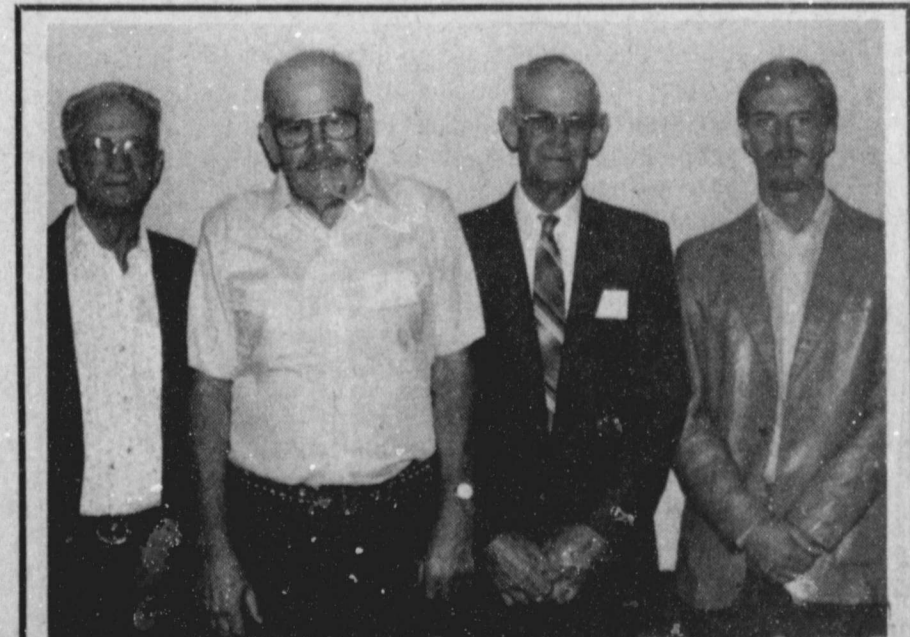
Cont. Page 6, Col. 3

Cont. Page 6, Col. 3

ner, vice president; R.A. Bradley, treasurer and Bill Kinard, secretary.

Hayes concluded his presentation, commenting, "I wish to congratulate the club, and wish you a most successful year.

Cont. Page 6, Col. 5



JUDGES ATTEND SEMINAR--Ninety-five justices of the peace from region 10 attended a 20-hour seminar September 8-11 in Amarillo conducted by the Texas Justice Court Training Center headquartered at Southwest Texas State University in San Marcos. Attending were, from left, C. A. Kitchens of Whiteface, Cochran County, Precinct II; Carl H. Kernell of Morton, Cochran County, Precinct I; Jack Bates of Muleshoe, Bailey County, Precinct I; and Todd Ellis of Muleshoe, Bailey County, Precinct IV, Place I.

The campaign was pure and simple asking businesses and individuals, along with the schools, churches, organizations and everyone possible to write letters of support to the Texas Department of Community Affairs.

According to Resolution No. 461A, unanimously approved by the city council Tuesday morning, "The City Council has reviewed and hereby approves an application for a grant of \$449,394 from the Texas Department of Community Affairs Texas Capital Fund for funds which will be used to reopen the West Plains Medical Center, Inc. Hospital in Muleshoe, Texas."

This grant would include working capital to loan to the WPMC Inc of \$428,542 and \$20,852 for general administration of the funds, for a total of \$449,394.

The city manager, Dave Marr explained that deadline for applying for the grant is Thursday, October 1, today.

He plans to hand deliver the application, along with letters of support to the TDCA in Austin.

He explained that the City of Muleshoe is the only eligible applicant for these funds.

Marr stressed that this is not a health grant, but would mean 35.5 new jobs for the city in unskilled to semi-skilled labor, a pre-requisite in order to obtain the grant.

As the Muleshoe Nursing Home is carrying the entire burden of utilities, insurance, and all expenses pertinent for the large, mostly empty West Plains Medical Center complex on South First, the justification for seeking the grant is for creating jobs and retaining jobs.

It would assure employment for the 40 people currently employed at the nursing home, as well as create many, many new jobs, both for skilled, semi-skilled and unskilled workers.

Marr said he did not believe the city would be liable for the grant money, even loaning it to the hospital for working capital in order for the hospital to again become operational and open.

This would assure emergency room service, as well as in-hospital patient care locally, instead of having to transfer all in-hospital patients out of Muleshoe.

The city manager also said he had been informed by Jim Burgess, chairman of the West Plains Medical Center Board that the hospital would be reopened if the grant money is approved.

Four ordinances concerning the budget for the fiscal year beginning today, October 1,

Cont. Page 6, Col. 2

Carla Franklin Services Held At Morton

Funeral services for Carla Jo Franklin, 34, of Houston were held at 4:30 p.m. Monday, Sept. 28 in Ellis Funeral Home Chapel in Morton with the Rev. Steve Thomas, pastor of the Morton First Baptist Church, officiating.

Burial was in Morton Memorial Cemetery under the direction of Ellis Funeral Home of Morton. Ms. Franklin died at 3 a.m. Saturday in Houston.

A native of Morton, she was born on August 24, 1953, and had been a resident of Houston two years moving from Morton. She was a framer (art-pictures) and a Catholic.

Survivors include a son, Gery Dale Franklin of Levelland; a daughter, Nikki Franklin of Levelland; her parents, Mr. and Mrs. Kenneth Banning, Sr. of Morton; a sister, Mrs. Sid Love of Morton; two brothers, Ken-

Inez Edelman Graveside Services Held At Plainview

Graveside services for Inez Edelman, 76, of Muleshoe were held at 2 p.m. Wednesday, Sept. 30 in Plainview Memorial Park with the Rev. Dennis Peters, pastor of the First Baptist Church in Abernathy, officiating.

Burial was under the direction of Chambers Funeral Home of Abernathy. Mrs. Edelman died at 3 a.m. Monday in Lubbock's Methodist Hospital following a brief illness.

Born in Franklin County, Ala., she moved to Floydada in 1914, before moving to Muleshoe in 1954. She married Grady Edelman on Aug. 20, 1928, in Floydada. She was a member of the First Baptist Church.

Survivors include her husband, Grady; a daughter, Joan Norton of Florence, Colo.; a sister, Fannie Melton of Coleman; a brother, D.I. Bolding of Los Angeles, Calif.; two grandchildren; and four great grandchildren.

neth Banning, Jr. of Houston and Larry Banning of Morton.

Donna Heathington Funeral Services Held Monday

Funeral services for Donna Heathington, 35, were held at 2:30 p.m. Monday, Sept. 28 in the Muleshoe Church of Christ with Bret McCasland, minister, officiating.

Burial was in Muleshoe Cemetery under the direction of Ellis Funeral Home of Muleshoe. Ms. Heathington died at 5:58 p.m. Saturday in Clovis High Plains Hospital in Clovis, N.M.

Born July 13, 1952, in Littlefield, she was a lifelong resident of Muleshoe, and a member of the Muleshoe Church of Christ.

Survivors include her father, Aubrey Heathington of Muleshoe; her mother, Beverly Page of Clovis, N.M.; her grandmother, Hattie Faye Heathington of Muleshoe; and a brother, Don Heathington of Muleshoe.

Travis Melton Local Woman's Brother Dies

Funeral services for Travis F. Melton, 60, of Slaton are pending with Englund's Funeral Service in Slaton. He died at 10:59 a.m. Monday at his residence. Justice of the Peace Arvin Stafford ruled natural causes in the death.

A native of Post, he served in the U.S. Marine Corps during World War II. He was a member of the VFW and a Baptist.

Survivors include two sons, Freddie and Billy Mayo, both of San Angelo; three sisters, Helen Crawford of Ennis, Thelma Bartlett of Muleshoe and Jeffie Dowell of Tulsa, Okla.; and a grandchild.

Special Education Program In Muleshoe Schools Given

The beginning of a new school year brings about the implementation of the school improvement program in the Muleshoe Independent School District. This school improvement program is being implemented throughout the entire system, and includes the Special Education department.

The Muleshoe Independent School District provides comprehensive educational services for handicapped children living in the district. These services are provided through the Special Education department. Handicapped children have special needs, and a free appropriate public education is offered to eligible handicapped children to help meet those needs. These children might have a disability or a combination of disabilities that requires that the teaching/learning process be modified in accordance with each student's individual needs.

Included among the handicapped conditions are speech handicapped, learning disabled, emotionally disturbed, autistic, mentally retarded, orthopedically, and/or other health impaired. Students with severe dyslexia may be learning disabled, and special education teachers in the Muleshoe Independent School District have now been trained to work with these students using Alphabetic Phonics, the program originally developed by Samuel Orton and Anna Gillingham and further developed and refined by Aylett Cox and Dr. Lucius Waites, neurologist. It is the program used by the Texas Scottish Rite Hospital in Dallas and the Scottish Rite Learning Center in Lubbock.

Early diagnosis and attention are crucial in helping handicapped children become as independent and self-sufficient as possible. When begun early, medical care, therapy, education, and training may prevent the disabilities from becoming more severe. Educators work with these children by teaching the children through their best learning modality, whether it be visual, auditory, and/or kinesthetic or a combination, and helping them achieve success, thus preserving the students' pride and self-esteem.

Children who are three years of age or older on September 1, 1987 may be eligible for these services, and visually impaired and hearing impaired children may be eligible from birth. The three and four year old eligible handicapped children are served in the Early Childhood program.

Referrals can come from any source: from parents, school personnel, neighbors, doctors, civic agencies, human resource agencies, and others. The referral may be directed to the principal of the school or directly to the office of Special Education located in the high school.

After the referral is received in the Special Education office, each child receives a comprehensive assessment to aid in determining the needs of that child. Upon completion of the assessment, a committee meets to review the data collected and to determine a student's eligibility for special education services. This committee is the Admission, Review, and Dismissal Committee (ARD Committee), and is attended by the child's parents, teachers, counselor and/or principal, and the appraisal staff. This committee will then develop the child's Individual Educational Plan (IEP) if they determine he is eligible for Special Education services. At this meeting the

student's annual goals are established, as well as short-term instructional objectives.

Muleshoe Independent School District is in compliance with Public Law 94-142, as well as the State Board of Education and Texas Education Agency, implementation of the student's educational plan attempts to provide an appropriate blend of educational and related services in a learning environment which is the least restrictive alternative for the student.

Chapter 75, the school reform bill, has been fully implemented in the Muleshoe schools. This law prescribes the curriculum in twelve basic subject areas and also the scope and sequence for the essential elements in each subject area. The purpose of this plan is to have a uniform and systematic mandated public curriculum for every child in every public school in Texas. This curriculum applies to children in the special education

program as well as children in the regular program unless the ARD Committee deems otherwise.

With an appropriate blend of educational and related services and with placement of the student in the least restrictive environment, the student's program is implemented according to the prescribed essential elements, the individual needs of the student, and at the student's own learning rate. Modifications may need to be made in the essential elements in certain individual cases, as well as in pacing, methods, and materials used. These modifications are developed at the ARD Committee meeting by the members in attendance.

Additional elements considered by the committee to develop an educational program appropriate to the needs of the eligible handicapped student are individualized instruction, special methods, materials, and equipment, service coordination, daily

planning, task analysis, and progress reviews the third week of each six week period. The special education teachers work very closely with the regular education teachers, thus assuming a joint responsibility for teaching the essential elements.

With Muleshoe Independent School District demonstrating its commitment for providing handicapped students with appropriate educational programs, it is anticipated that handicapped students will have the maximum opportunity to develop to their fullest potentials and that they will be able to graduate from high school with the necessary skills and social competencies for successful living.

Additional information in regard to the Special Education program is available in the Special Education Office located in Muleshoe High School. Brochures are available at no charge explaining the different types of handicapping conditions and specific indicators of each. For further information, you may come by the office to pick up one of these brochures and obtain additional information or call Betty Jennings, Director of Special, at 272-5239.

TOWN AND COUNTRY REVIEW

Copyright 1987 by Connie Logan Advertising Company Inc., Oklahoma City, Oklahoma, T.M. Reg. U.S. Patent Office.

Washington, D.C., also Newspaper Accounting Service is solely responsible for sales and collections of this review.

SeedTec International, Inc.

Here is a firm that has added in no small way to the general welfare of our area. SeedTec INTERNATIONAL offer you seeds that you will produce the highest yield for the variety. If you are "shooting for higher yields" see SeedTec who offers Grain Sorghum, Forage Sorghum, Corn and Sunflower. Take your problems to them and they will readily assist you. SeedTec INTERNATIONAL is located in Hereford on Holly Sugar Rd. & Front Street, Phone 364-1424. This is a concern that has continued to excel in their field, maintaining high standards, fair policies, and reasonable prices. We recommend this firm to our readers and suggest that you patronize SeedTec in Hereford for Grain Sorghum, Forage Sorghum, Corn and Sunflower Seeds. They appreciate your business.

If You Need An Ambulance Call 272-4200

NOTICE OF NEW TARIFF OFFERING CENTRANETSM SERVICE

General Telephone Company of the Southwest gives notice of its proposed new tariff offering, CentranetSM Service, which is to be offered in all company wire centers where such facilities exist to provide the service.

Centranet is a central office based service which provides PBX type features to multi-line business customers. Basic operating features include Direct Inward Dialing (DID), Direct Outward Dialing (DOD), Station-to-Station Dialing, Automatic Identified Outward Dialing (AIOD), and Touch Calling. The tariff is designed for Centranet customers with a minimum of 2 and maximum of 100 main station lines.

Effective with this tariff, ECENTREX Service will be limited to existing installations only.

The proposed new tariff offering has been assigned Docket No. 7652, and will become effective upon approval of the Public Utility Commission of Texas.

Rates for service will be applicable to customers who subscribe to the service, therefore, there will be no effect on any other rates of the company. The new offering will increase the company's gross annual revenues by approximately \$423,013 or less than one percent annually.

The proposed rates are on file with the Public Utility Commission of Texas, and are available for public inspection at the offices of General Telephone Company of the Southwest. Persons who wish to intervene or otherwise participate in these proceedings should notify the Commission within fifteen (15) days of the date of this notice. The deadline to intervene in this docket is November 9, 1987.

A request to intervene, participate, or for further information, should be mailed to the Public Utility Commission of Texas, 7800 Shoal Creek Blvd., Suite 400N, Austin, Texas, 78757. Further information may also be obtained by calling the Public Utility Commission Consumer Affairs Division at (512) 458-0223 or (512) 458-0227 or (512) 458-0221 teletypewriter for the deaf.

General telephone



BIBLE VERSE

"Except a man be born of water and of the Spirit, he cannot enter into the kingdom of God."

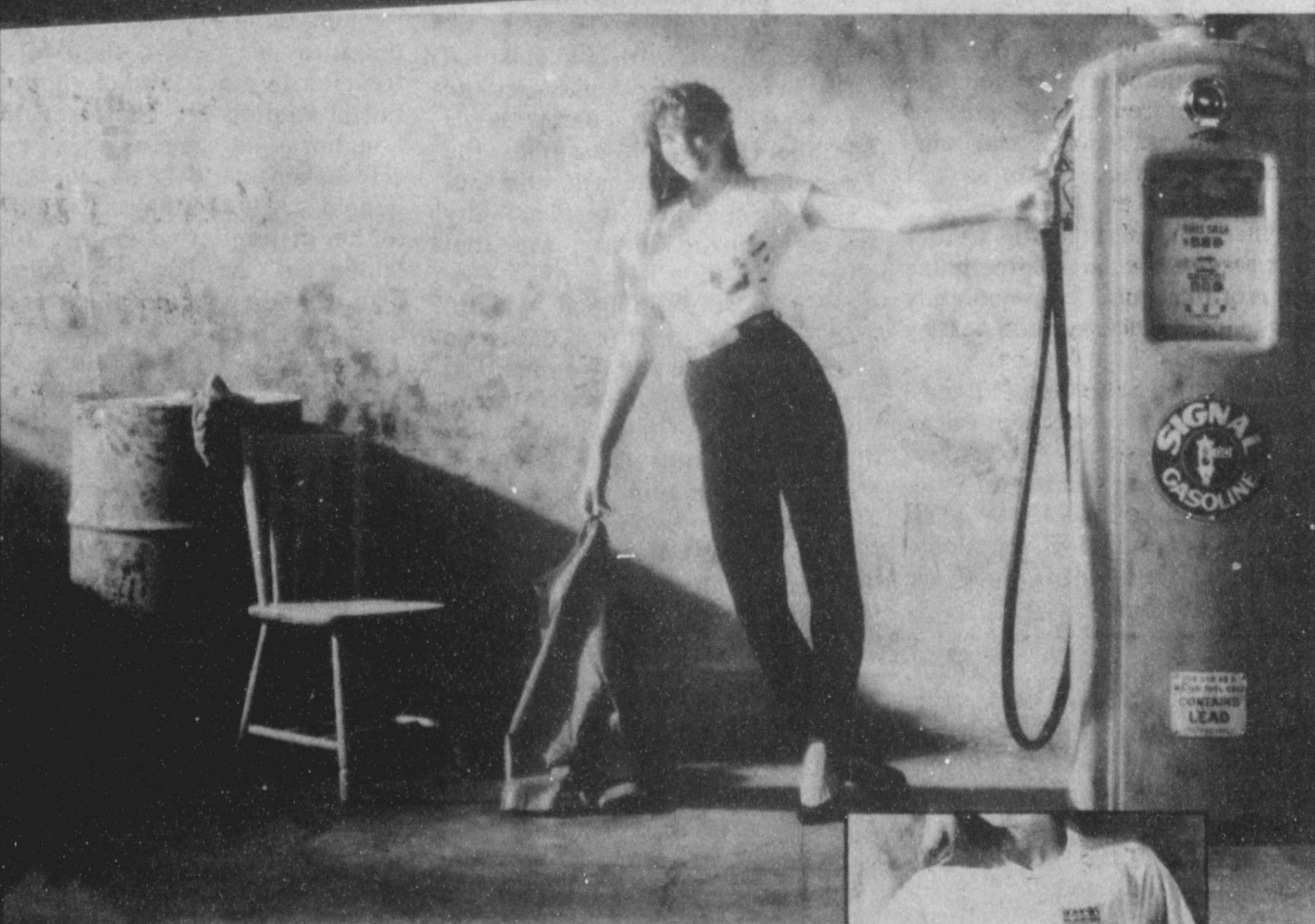
1. Who made the above statement?
2. To whom was it made?
3. What was this man's standing in the community?
4. Where may this statement be found?

Answers to Bible Verse

1. Jesus, as recorded by John.
2. Nicodemus.
3. A ruler of the Jews.
4. John 3:5.

THE LATEST FASHION RAGE

FREE DIRTY HANDS T-SHIRT WITH \$20.00 PURCHASE!



The Official 1987 Bumper To Bumper Dirty Hands T-shirt. Free with any purchase of \$20.00 or more. An \$8.95 Value! Ladies' and gentlemen's sizes. Limit 2.

Available at these participating Bumper To Bumper Auto Parts Stores.

- | | | | | |
|--|--|--|--|---|
| CROSBYTON Rick's Auto Supply 120 East Main (806) 675-2305 | LUBBOCK Burgess Auto Parts #5 6419 University (806) 792-6158 Scotly Auto #11 2908 Slide Road (806) 792-5210 Scotly Auto #17 3319 82nd (806) 792-5951 | LOVINGTON OP Car Parts 719 South Main (505) 396-5318 | PLAIN Buddy's Auto Parts Brownfield Highway (806) 456-2242 | SLATON R&S Auto Parts 136 West Garza (806) 828-6005 |
| LEVELLAND Levelland Parts Center 100 College Avenue (806) 894-9609 | MULESHOE Bretcher Motor Company 107 East Avenue B (806) 272-4288 | SHALLOWATER Lytal Supply Store 609 Avenue G (806) 832-4207 | SUNDOWN South Plains Parts 1505 South Slaughter (806) 229-2591 | |

BUMPER TO BUMPER

Amarillo Bank Sues Kassahn For Millions

(Editors note: Financially troubled Jim Kassahn was filed on late last week in U.S. District Court in Amarillo. First National Bank of Amarillo is seeking more than \$50 million from Kassahn.)

By Frank Rubin
Globe-News Staff Writer

First National Bank of Amarillo has filed an eight-count lawsuit in U.S. District Court seeking more than \$50 million from bankrupt Lubbock cattleman Jim S. Kassahn and eight other defendants.

The lawsuit alleges both civil and criminal wrongdoing by the defendants.

First National claims \$12.75 million in actual damages and three times that amount as a penalty under the Federal Racketeer Influenced Corrupt Organizations Act.

Other defendants are Barrett-Crofoot and Kassahn Cattle Co., an alleged partnership; Barrett-Crofoot Inc.; Barrett-Crofoot Cattle Inc.; Ed C. Barrett, president of Barrett-Crofoot Inc. and Barrett-Crofoot Cattle Inc.; Crofoot Inc.; Crofoot Cattle Co. Inc.; Jay Crofoot, president of Crofoot Inc. and Crofoot Cattle Co. Inc.; and First State Bank of Bovina.

Kassahn's main cattle operation, J.P.'s Family - which was filed for Chapter 11 bankruptcy in Dallas - American State Bank in Lubbock and Herbert Vogel Co., as well as several other entities, are also referred to extensively in the lawsuit.

Trinity Baptist Hosting Couple As Guest Speakers

On Sunday, October 4, Tommy and Carol Speed will be special guests at Trinity Baptist Church in Muleshoe.

Tommy and Carol grew up around Memphis, TX, where he was a plumber until he was called to surrender his life to the Lord's services.

Since that time, he and his wife have been working for Buckner's Children's Homes, a part of the Baptist General Convention. Currently, they are serving at the Buckner West Center at Lubbock.

Trinity Baptist Church minister, V.L. 'Buster' Huggins commented, "Tommy is a very inspiring speaker and Carol is an outstanding and gifted vocalist who thrills your heart every time she sings. She only sings songs that praise the Lord. When you hear her sing one song you will want her to sing one hundred more."

He continued, "We are thrilled to have this couple to make their first West Texas appearance in Muleshoe. Carol will present special music Sunday morning and Tommy will bring God's message. Sunday evening, Carol will bring a gospel message in song. We, of Trinity Baptist Church, invite you to these special services. We know your heart will be blessed if you come."

Service times will be 11 a.m. and 6 p.m., on Sunday, October 4.

although they are not named as defendants.

First National alleges a litany of fraudulent acts that began in early 1984 and finally unravelled this summer.

During 1984-86, a shortage allegedly occurred in numbers of cattle on pasture in the Barrett-Crofoot & Kassahn program. By June 1986, shortages amounted to at least 32,000 head of cattle. According to the suit, Barrett, Crofoot & Kassahn by June 1986 had begun fraudulently altering records so the shortage would not be disclosed.

Lot numbers on cattle dating back to 1984 or earlier were allegedly disguised to update totals by "rolling over" cattle and costs from old lots to new lots as of June 30, 1986, the lawsuit states.

One Director To Be Elected For BWCD

"The Blackwater Valley Soil and Water Conservation District will hold a director election on October 6 for zone three in Bailey County," stated Carl Bamert, chairman. He said the election will be held at the Needmore Co-Op Gin at 8:30 a.m. Refreshments will be furnished.

State law decrees that an eligible voter for Soil and Water Conservation District director election must own land in the zone where the election is being held. The person must also live in the county and must be 18 years old.

Legal qualifications for SWCD director are - must own land in the particular zone represented, must be 18 years old and actively engaged in farming or ranching, and must also live in Bailey County.

Bamert stated, "zone 3 of the district includes an area two miles north of Needmore to the south boundary of the Wildlife Refuge, west to Monument Lake and continues west to the state line. Then, north to the Arch highway, and back east to Coyote Lake and the Longview Church area. The communities it covers are Baileyboro, Stegall and Longview Church area."

Current members of the board of directors are Ernest Ramm, zone 1, Carl Bamert, zone 2; Lewis Dale, zone 3; Lewis Wayne Shafer, zone 4 and Johnny Furgeson, zone 5.

The purpose of the Blackwater Valley SWCD with headquarters in Muleshoe, is to promote sound soil and water conservation programs on farm and ranch lands within the district and to serve as a voice for farmers and ranchers on conservation matters and other issues affecting private property rights of land owners.

The district board of directors coordinates the conservation effort of various local, state and federal agencies, and has authority to enter into working agreements with these agencies and private concerns to carry out its purposes. All conservation programs managed by the district are of voluntary nature to the land owner or operator.

To cover the shortages, Barrett-Crofoot, Barrett - Crofoot Cattle, J.P.'s Family, Crofoot Inc. and Crofoot Cattle Co. Inc. bought cattle by allegedly shifting funds between accounts. Also, Kassahn and J.P.'s Family allegedly began selling cattle to Barrett-Crofoot Cattle, Crofoot Inc. and Crofoot Cattle Co. Inc. at a loss.

The transactions were aimed at reducing financial pressures that stemmed from cattle shortages, the complaint states. On July 30, 1986, many if not all of these disguised cattle did not exist, First National alleges.

ABOUT YOUR HOME

By April Rhodes

Select and order spring-flowering bulbs now for planting (in most areas) during late September or October. Plant in areas that receive four to six hours of direct sunlight.

The best way to air blankets or other large items is to hang them over two lines. This prevents stretching and allows the air to flow through freely.

Barky Cotton Showing Up On Plains

Cotton farmers across the South Plains are again facing the prospect of bark contamination which can reduce their payments for ginned fiber, cautions a cotton specialist with the Texas Agricultural Extension Service.

Because of the late crop, excessive moisture and rank growth in many fields, the problems of barky cotton could be serious again this year, said Dr. James Supak, Extension cotton agronomist.

One thing growers can do to minimize the problem, Supak said, is to pay strict attention to the way their strippers are adjusted before harvesting.

He said the Extension Service has a limited number of copies of a videotape which can help farmers combat bark and stick content which reduce the grade of the fiber. The tape, which runs less than 10 minutes, would be appropriate for use at

gin offices or producer meetings, he said. It is available from Supak.

It explains basic adjustments and stripper modification developed by U.S. Department of Agriculture engineers. The modification has been shown in area demonstrations to reduce the stick content in stripped cotton.

It has been shown, in USDA and Extension tests with producers, that stick content is closely related to the bark content of ginned cotton.

"Reducing the stick content is a good way to reduce the number of barky bales," Supak said. In USDA tests, this modification reduced the number of barky bales up to 65 percent.

In an honest man there is always something of a child.

-Martial

Three-Way News

by Mrs. H.W. Garvin

The New Covenant Church came Sunday for Gospel Music.

Curtis Shelburne and boys visited the Nursing Home Tues. morning.

Emma Schuster was visited by Rev. Mac Bearss last week.

Cordelia Cochran was visited by Beulah Parson of Tulia and Ruth Netham of Calif.

Marlene Harper was visited by her husband Dan Harper Tues.

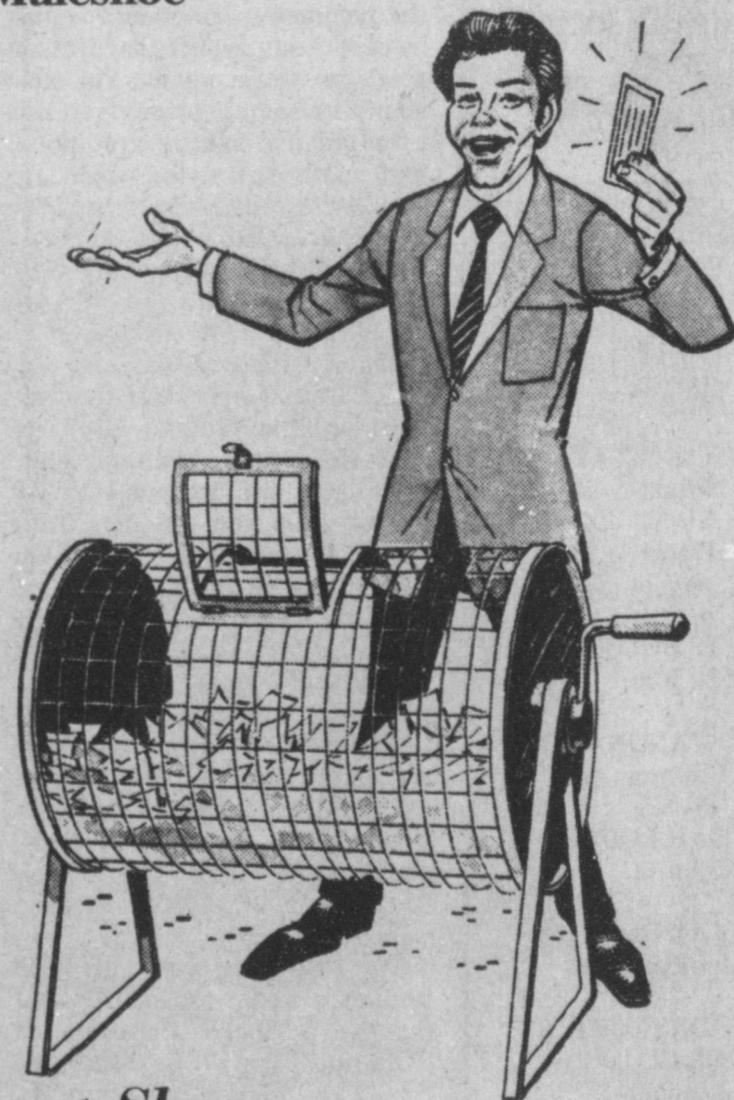
Lula May Shanks and Louise King made and served home made ice cream to the residents after beauty shop, Tues. afternoon.

You Are Invited To The Monthly MAC Buck Drawing Saturday, October 3, at 2 p.m.

Downtown Muleshoe

This Invitation Issued By The Following Businesses:

- Serv-All Thriftway*
- Bomer Electric*
- Wes-Tex Feed Yard*
- Alex's Tire Service*
- Ben Franklin*
- Bernice's Beauty Shop*
- Bobo Insurance*



- Webb's Spudnut Shop*
- Lindsey Credit Jewlers*
- Glenna's Beauty Retreat*
- Atkins Insurance Agency*
- Main Street Beauty Salon*
- Skagg's Motor Machine Shop*
- Williams Brothers Office Supply*
- Joe's Boot Shop & Country Junction*
- Muleshoe Truck & Auto Service Center*

Ask the Land Bank about...

money to buy land or improve your farm.

Farmers today are looking at ways to increase their productivity...buying or improving land...building or remodeling facilities.

Whatever way you choose to grow, the Federal Land Bank can provide long-term credit to help.

So when you're looking to buy or build, stop in and talk to the long-term farm credit specialist at your Federal Land Bank Association.

Federal Land Bank Of Muleshoe



316 Main 272-3010

Miss Wheeler, Dempsey United In Marriage

Miss Toni Roan Wheeler became the bride of Thomas Michael Dempsey in a candlelight ceremony Saturday, Aug. 29 at 7 p.m. in the Bruckner Chapel at Texas Boys Ranch. Robert Lee Brewer read the double ring vows.

Parents of the couple are Mr. and Mrs. Carl Wheeler of Muleshoe and Ms. Loleta Davis of Post and the late Tom Dempsey.

Vows were exchanged before a 17 branch heart shaped candelabra with white candles decorated with mauve and grey flowers. Two tier candelabras decorated with mauve and grey flowers, greenery and mauve and grey bows were also used in the decorations.

Kelly Purkerson, soloist, sang "There Is Love" and "Wedding Prayer".

Given in marriage by her parents, the bride chose a romantic gown of delustered satin encrusted with handbeaded sequins and pearls on silk Venise lace. The bodice featured a sabrina neckline of scalloped lace and a deep basque waistline.

The long satin sleeves were appliqued in pearled and sequined lace. The low V'd back filled with illusion net was highlighted with lace and pearl

buttons. The ornately detailed skirt, adorned with schiffli cutouts, flowered into a cathedral train.

To complete her attire, the bride wore an imported pearl braided headband accented with a back puff and a two tier illusion veil.

Her bridal bouquet was made of mauve miniature silk roses buds accented with baby's breath and small white silk flowers, and mauve and grey streamers.

Kelly Purkerson of Lubbock served as maid of honor. Bridesmaid was Angie Wheel-

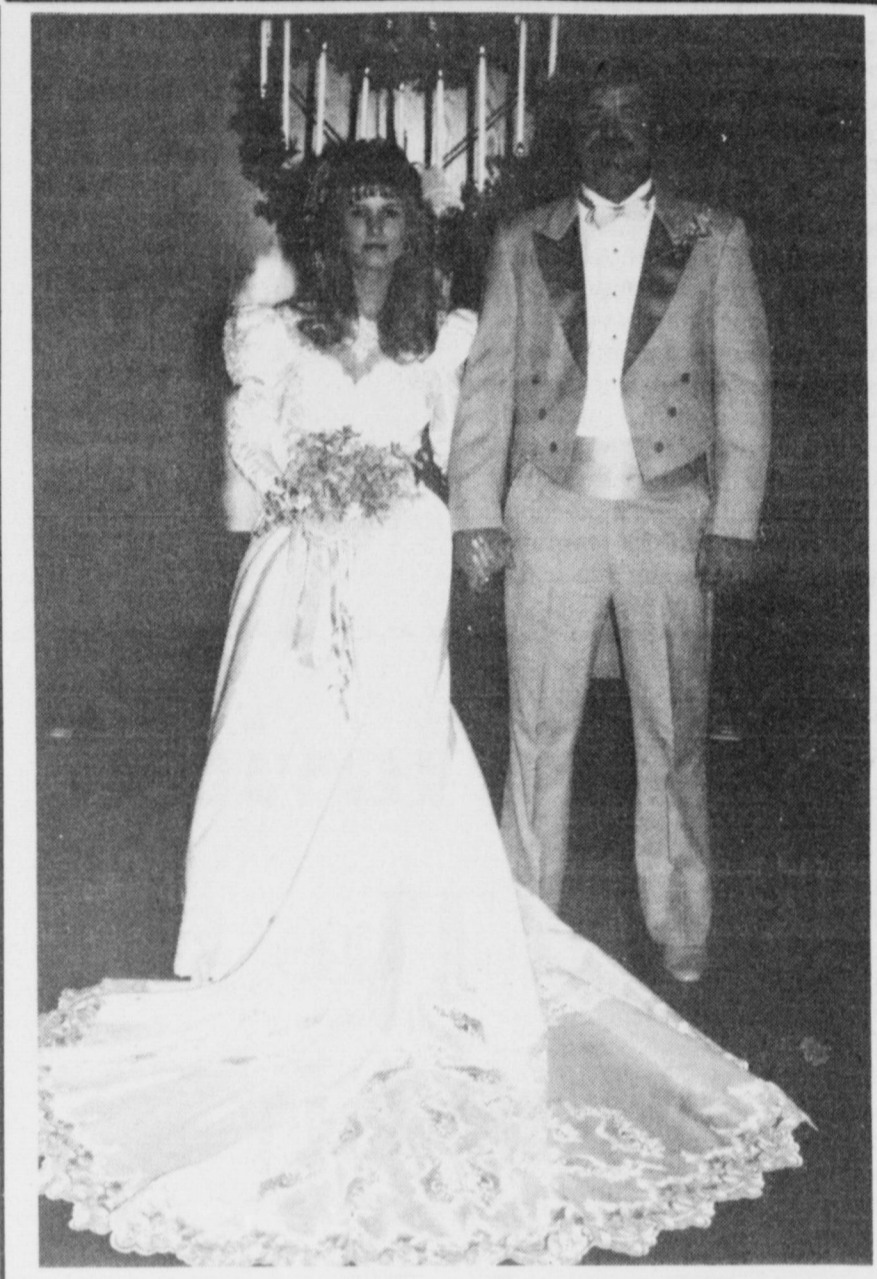
er, niece of the bride, of Las Cruces, N.M. They wore identical mauve colored floor length gowns made of taffeta featuring off-the-shoulder ruffled necklines, and a V-waistline. A ruffle extended around the hemline and was caught at the side with rosette. They carried bouquets of miniature mauve colored carnations accented with baby's breath and mauve & Grey ribbons.

Randi Wheeler, niece of the bride, of Clovis, N.M. was flower girl. She wore a pink and grey Martha Miniature dress, white lace tights and pink ballerina shoes.

Dwain Dempsey of Midland, brother of the groom, served as best man. Groomsmen was J.L. Davis of San Angelo, brother of the groom.

Monty Wheeler of Clovis, N.M. and Shawn Wheeler of Muleshoe, brothers of the bride, served as candlelighters and ushers. Jeffrey Wheeler of Muleshoe, brother of the bride, was ring bearer.

Following the ceremony, a reception was held at Cone Hall, Texas Boys Ranch. Elaine Wheeler registered the guests. Boys of Texas Boys Ranch, Kevin, Chris, Michael, Kris, served at the reception.



MR. AND MRS. THOMAS MICHAEL DEMPSEY
[nee Toni Roan Wheeler]

Lazbuddie Young Homemakers Begin Year

"Let's Make Everyday a Sundae", was the theme for the Lazbuddie Young Homemakers meeting held on September 17 in the Home Economics room of the school with Betty Wagon of Muleshoe as special guests.

Mrs. Wagon began by introducing her mother, Mrs. Wright. Mrs. Wagon spoke on the changes of color and trends in decorating, which have taken place in recent years. She also showed some place settings exemplifying country, traditional and southwest styles which are popular within her store. "We appreciate Mrs. Wagon taking time-out from "Something Special" to give this lovely program" said Pat Randolph.

The business discussion centered around the water fountain for the playground. Due to problems with obtaining some materials, the Homemakers voted to drop this project. They voted to purchase some new VCR tapes for the grade school. Also discussed was helping the school purchase new curtains for the auditorium.

It was announced that the first shipment of pecans have arrived. They are still on sale for \$3.50 per pound or \$42.00 a case. If you wish to purchase pecans you may call Mandi Seaton at 965-2430 or Lana Copp at 965-2806.

The meeting closed with sundaes and cookies. "Our thanks to Shelly Pickering of "Gourmet Pops" in Muleshoe

for sending out her delicious specialties" Mrs. Randolph continued.

Janice Bradshaw won the door prize. Members present included: Janice Bradshaw, Mandi Seaton, JoAnn McDonald, Debbie Magby, Tonya Scisson, Pat Randolph, Lana Copp and Barbara Lust, advisor.

The next meeting will be on October 1, when secret pals will be drawn.

Bailey County History Book

Nearing Reality

The Bailey County History Book is nearing reality more every day! "Many reports coming in to us are that citizens have two, three or more stories that they are finishing up," said Billie Downing. "We are glad to hear this and we encourage contributors to bring their stories to the library as soon as each one is finished.

"There is a lot of indexing, proofing, processing to be done to keep all of the information intact and ready to forward to the publishers. There are still people still willing to type your story for you."

In the past few days, the final brochure has been mailed to people whom stories have not been received. The brochure has sample stories of a pioneer family and a relatively new family. It is hoped that these stories will help you and you will decide to write your story before the December 1 deadline.

Books may be purchased for \$55.00 each, if picked up, plus a three dollar shipping charge if mailed. A down payment of \$20.00 may be made with the balance being due by January 15, 1988. If you made a down payment earlier, your second payment of \$20.00 is due now.

Business, churches, community histories are needed to make the book complete. Your children and grandchildren will enjoy reading stories of what you were doing way back in 1987!

Time is running out for getting your entry in the "Name the Book" contest which will end today, Thursday, Oct. 1. A name for the book will soon be selected and someone will win a History Book. It could be you!

Individuals, like successful generals, have to be bold enough to take some chances if they wish to become successes.

| | |
|------------------------|-----------|
| CALENDAR OF EVENTS | |
| OCT. 2-8 | |
| THURSDAY, OCT. 2 | |
| ODDFELLOWS LODGE | 7:30 p.m. |
| HOBBY CLUB | 2 p.m. |
| KNIGHTS OF COLUMBUS | 8 p.m. |
| TOPS CLUB | 6:30 p.m. |
| MULESHOE MULE SKINNERS | 7:30 p.m. |
| FRIDAY, OCT. 3 | |
| KIWANIS | 6:30 p.m. |
| COMMISSIONERS COURT | |
| 10 a.m. | |
| SUNDAY, OCT. 5 | |
| GUADALUPANA SOCIETY | 2 p.m. |
| MONDAY, OCT. 6 | |
| AAUW | 7 p.m. |
| TUESDAY, OCT. 7 | |
| ALPHA ZETA PI | 7 p.m. |
| XI OMICRON XI | |
| 7:30 p.m. | |
| EASTERN STAR | |
| 8 p.m. | |
| WMU | |
| 2:30 p.m. | |
| ATHLETIC BOOSTERS | |
| 7:30 p.m. | |
| ALCOHOLIC ANONYMOUS | |
| 8 p.m. | |
| REBEKAH LODGE | |
| 7:30 p.m. | |
| ROTARY CLUB | |
| 12 (noon) | |
| WEDNESDAY, OCT. 8 | |
| LIONS CLUB | |
| 12 (noon) | |

Adidas • Nike • Reebok • Bush Pilot • Coca-Cola • Ship Shore

Grand Opening

Saturday, October 3rd

TJ's Outpost is celebrating their Grand Opening by offering the following values:

| | |
|---|--|
| Boys Reversible Waterproof Jackets \$19.99 | For Juniors Guess Jeans \$37.99 |
| Wrangler Pro Rodeo Cowboy Cut Jeans \$13.95 | Silver Spur Long Sleeve Western Shirts \$14.00 |

Drawings for door prizes hourly 12:00-5:00

T. J.'s Outpost

Open: 9:30 AM to 6:00 PM Monday thru Saturday

1910 W. American Blvd. 272-5361

Oshkosh • Career Club • Chestertield • Sasson • Karman

Senior Citizens

The Bailey County Senior Citizens met Monday, Sept. 28 in the fellowship hall of the First United Methodist Church for their regular covered dish luncheon. J.C. Shanks gave the invocation. Twenty were present including two visitors, Mrs. Velma Guinn and R.A. Bradley, for what was reported to be a delicious meal.

Mildred Head, president, welcomed the visitors. Mae Wilterding was in charge of the program and she introduced Bradley, who gave information about the depot and how beautiful it is, and that it was made to be used. The group voted to have their next meeting in the depot.

A motion was made and carried to send the Methodist Church a card of appreciation for them providing a nice place for the Senior Citizens to meet all these many years.

The birthday song was sung for Mae Wilterding. Cards were signed for Ray Edwards and Myrtle Chambliss.

Today, Thursday, October 1 is the Senior Citizens day at the Lubbock fair, the van will leave the courthouse at 7:30 a.m. and if any one wants to go, they are asked to call Ed Harp or Glen Williams.

J.C. Shanks, Mae Wilterding, Eva Ashford and Clara Coffman sang several songs and it was reported that everyone enjoyed them.

The group was dismissed by singing of "Bless Be The Tie That Binds."

Pretty soon we'll be sorry summer is gone.



GOLDEN ANNIVERSARY CELEBRATION SET--Mr. and Mrs. Earl Routon will be honored with a golden wedding anniversary reception Sunday, Oct. 11 in the Farwell Community Center. Mr. and Mrs. Routon will receive friends and relatives between the hours of 2 and 4 p.m. Children of the couple, Betty Ramage of Muleshoe, Faye Gully of Amarillo, and Carolyn Owen of Salado, will be hosting the event. The Routons' were married on Oct. 9, 1937, at Haskell and moved to the Oklahoma Lane community in 1946. In addition to their three children they also have eight grandchildren, and six great grandchildren.

AARP Holds Regular Monthly Meeting

Muleshoe AARP met Friday, Sept. 25 at the Bailey County Civic Center for their regular monthly meeting and luncheon.

Myrtle Creamer, president, introduced Angela McGranahan from the Women's Protective Service at Lubbock. She spoke to the group about the shelter in Lubbock for abused and battered women and children and encouraged each one to be aware of person's around them that may be in need of such services. Stating that it is their responsibility to help those who cannot help themselves.

Phil Kent of Muleshoe brought a talk about the Depot building, its history, fee structure and the Thrift Shop. He urged each Senior Citizen to make use of the depot which is open free of charge to Senior Citizens Monday through Friday each week from 10 a.m. to 2

p.m. The AARP members voted to meet each Wednesday at 10:30 a.m. to play games and have fellowship. Each one is asked to take a sack lunch.

Mrs. Creamer was in charge of the business meeting in the absence of Dorothy Bowers. Minutes of the previous meeting were read by Luise Bennett. Muriel Lewis gave the treasurer's report.

Thirty-one members and guest were present for the covered dish luncheon.

Shop Muleshoe First!

'88 Seniors

Photography By Lonnie Gibson understands that you have to go elsewhere to have your portrait made in order to be on the senior composite, but

We Can Make Your Senior Portraits Much More AFFORDABLE!!!

We will furnish to you at no charge, your portrait for the annual.

| | | | |
|--------------------------|-------|---------------------------------|--------|
| 1-8x10 2-5x7 | 42.40 | 1-16x20 | |
| 1-8x10 2-5x7 4-4x5 | 61.60 | 2-8x10 18-Wallets | 120.00 |
| | | 1-8x10 4-4x5 2-5x7 9-Wallets | 70.40 |
| | | 1-11x14 2-8x10 16-Wallets | 88.80 |

(These packets are available to anyone! Not just Seniors!)

Photography By Lonnie Gibson offers you a choice of indoor or outdoor photography with the use of his courtyard. No setting fee.

Photography By Lonnie

One-Fourth Mile North on Briana Hwy. Muleshoe
(Lonnie & Sue Gibson)
806-272-5151



MRS. EDDIE JOHNSON

Baby Shower Honors Mrs. Eddie Johnson

Mrs. Eddie, Mitzi, Johnson was honored with a baby shower Sunday, Sept. 28 from 2:30 to 4 p.m. in the home of

Mrs. Brad Poynor. Guests were greeted by the honoree and her mother, Mrs. Donna Gill.

Tammy Elder served sherry punch, assorted cookies, nuts and mints from silver appointments.

The serving table was covered with an ecru table cloth with lace trim, and accented with a centerpiece, made of a rocking horse, and teddy bear. The honoree's corsage consisted of peach carnations.

Special guests included Mrs. Donna Gill, honoree's mother; Mrs. Flo Merrick, grandmother of the honoree; and Mrs. Debbi Ellena, sister of the honoree.

The hostesses gifts were a stroller and baby book. Hostesses for the occasion included: Mrs. Brad Poynor, Mrs. Cliff Black, Mrs. Greg Gessler, Mrs. Jerry Gleason, Mrs. Barry Cowart, Mrs. Preston Scoggins, Mrs. Betty Carpenter, Mrs. Betty Obenhaus, Mrs. Jonie Branscum and Mrs. Tammy Elder.

Study Club News

The Muleshoe Study Club met Thursday, Sept. 24 in the home of Mrs. T.R. White for their first meeting of the year. New club books were passed out and discussed briefly.

The roll call was read by Mrs. Wanda Lewis and answered by 11 members. Mrs. Lewis also read the minutes of the previous meeting and they were approved as read.

The club was led in the Pledge of Allegiance to the Flag and the club creed was read. Mrs. John Agee gave a program on the first constitutional convention where the constitution was written and adopted.

"There isn't much said on the conditions and activities surrounding the writing of this document. There were 61 delegates appointed, only 55 attending. This group met in Philadelphia and were there for four months and worked on the document day after day. All this time before being sent to the states for ratification.

"These states had to sign it before it was ratified and signed into law. The majority of the states would not sign until the bill of rights was added. The bill of rights was ratified on Dec. 15, 1791. Of these 55 men, nearly one half of them was college graduates.

"James Madison was considered to be the greatest farmer. Thirteen of these men were large land holders, but gave of their time to stay the four months working on the constitution."

The next club meeting will be on Oct. 8 in the meeting room of the library with Mrs. Shain as hostess.

Those present were: Mrs. Charles Shain, Mrs. John Agee, Mrs. Betty Jo Carpenter, Mrs. Wanda Lewis, Mrs. L.O. Gregory, Mrs. Doyle Turner, Mrs. Rufus Gilbreath, Mrs. Wilma Thompson, Mrs. J.G. Arnn, Mrs. Joe Costen, and the hostess, Mrs. T.R. White.

Muleshoe Singing Group

The Muleshoe Singers met Saturday, Sept. 26 at 7 p.m. in the fellowship hall of the Trinity Baptist Church. Mrs. Dorothy Bowers gave the invocation.

Twenty-five were present including five from Earth. Special music was given by Cecil Rundell on the harmonica with Ealand Upchurch on the guitar and Mrs. Odessa Shanks at the piano.

Mrs. Irene Dilts and Gene Meador sang a duet, Mr. and Mrs. Marvin Sanders also did a duet. Muleshoe Singers sang a quartet and Mrs. Irene Dilts and Cecil Rundell sang solos.

It was reported that this is a non-denomination group and everyone is welcome to attend.

Marvin Sanders gave the benediction.

Shop Muleshoe First!

Kristy's Plants
Has Fall Flowers, Bulbs,
Trees and Fresh Strawberries.

1516 American Blvd.
Monday - Friday 9 to 6
Saturday 9 to 2

Journal Files

60 Years Ago

1927

IT PAYS TO ADVERTISE

The Journal editor is convinced that it pays to advertise in the home town paper. Last week we ran a small 25 cent ad; Clean rags wanted. This week we are forced to say we do not need any more rags for a while. We have plenty.

50 Years Ago

1937

The fall sale is still on at a local department store and specials advertised in the Journal include: 8 ounce weight duck 13 cents yard; 36 inch beautiful fast color prints 8 cents yard; boys overalls from 69 to 73 cents each; cowboy boots, guaranteed all leather, \$2.69; men's oxfords, all leather \$2.49; boys and girls all leather school shoes \$1.39; quilt bundles, 2 1/2 pounds fast colors, 23 cents; and school

tablets, big 8X10 size (limit 5) one cent.

40 Years Ago

1947

FRIDAY AND SATURDAY GROCERY SPECIALS

10 pounds sugar 98 cents; peaches \$1.14 gallon; boysen berries 98 cents gallon; hominy, No. 2 can 9 cents; 3 pounds shortening \$1.05; vienna sausages 15 cents; peach preserves 25 cents pound; coffee, any brand 49 cents pound; bell pepper 15 cents pound; fresh tomatoes 8 cents pound; onions 7 cents pound; honey dew mellons 12 cents pound; beef liver 39 cents pound; sugar cured jowels 45 cents pound; and 2 pound box cheese 88 cents.

30 Years Ago

1957

LARGEST MILO CROP IN HISTORY BEGINS ROLLING IN TO LOCAL ELEVATORS

What promises to be the largest milo harvest of Plains history is rapidly getting underway on the West Plains, with loaded trucks of grain arriving at local elevators every day in increasing numbers. A good year of dryland production topped by an outstanding yield of hybrid grains on irrigated land has caused the biggest crop of sorghum grain in this area.

Presently every elevator in the area has received some grain already, and combining is getting off to a good start.

Some of the hybrid grains are producing fantastic yields, adding to the high output brought about by good seasonal weather, are causing some farm observers to ponder what price the grain is going to bring by end of season.

At present the going price in Muleshoe is \$1.50, but the consensus of opinion by elevator men here is that the price will shortly drop to as low as \$1.30.

They base their opinion on the fact that the crop is the largest ever, and is expected to total somewhere in the neigh-

borhood of 200 million bushel in Texas.

Yields from hybrid grain fields of as much as 8,000 pounds per acre have been reported, and one area farmer has reported what he believes to be some 10,000 pound hybrid near Lazbuddie.

20 Years Ago

1967

MULES TAIL IN THIS EDITION

With this issue of Bailey County Journal, the second year of the school page, "Mules Tale" begins.

The page was started near the beginning of school last year for the first year of publication and reports turned in by the reporters and teachers through the school were compiled by the annual staff with Larry Meyers as editor and assisted by Wayland Ethridge.

This year "Mules Tale" has as co-editors, Betty Harbin and Lindy Kerr and will be under the advisory of Wayland Ethridge.

10 Years Ago

1977

NEW PLANT LOCATION 11 MILES FROM HERE

Southwestern Public Service Company has announced that it will invest in excess of \$200 million during the next four years, for the construction of a new electric generating station on the South Plains of Texas.

SWPS's new plant will be located approximately one mile south and two miles west of Nickels Gin on Highway 70 east of Muleshoe and west of FM 303.

More than 200 people will be employed at the plant when it is completed and workmen who will be constructing the plant will be looking for housing while in the construction stages, according to a spokesman for SPS.

Construction of the new plant will begin early next year, and is scheduled for completion in 1982. Plans also call for a second 565,000 Kilowatt unit to be completed in 1985 apparently at the same location.

Both plants will be seven miles west of "Plant X" which was constructed in 1948-49 south of Earth in Lamb County. The new plants will also be constructed in Lamb county, according to SWPS.

Motivation Equals Success For Sheryl Borden

When it comes to success, motivation is the key for Sheryl Borden. She does more than teach others how to live more creatively-she lives it! Sheryl Borden is a home economist and a former New Mexico Extension Home Economist who has turned her interest in the home arts into a successful television series Creative Living with Sheryl Borden.

Sheryl, herself, is very creative and has abundant energy. She maintains a beautiful balance of personal and family life, productive professional career and active community service, with more time than most for new ventures.

Her interest in home economics began when she became a 4-H club member in her hometown of Muleshoe, Texas. During her nine years in 4-H, she decided that county extension work would be her career choice. In college she majored in home economics and upon graduation at 21 became the youngest extension home economist ever to work in the New Mexico system.

While working with the New Mexico Cooperative Extension Service, she developed educational programs centered around such areas as foods, clothing, health, safety and interior decorating and presented them to a variety of audiences. She also worked extensively with 4-H and other youth programs. Through her Extension work, she became acquainted with Extension personnel across the country and has used these contacts in her current position.

While working for Extension, Sheryl returned to college to pursue a Masters Degree, and her days as a producer began during this time.

She agreed to help a friend do a 15-minute closed circuit TV program for a college project. The friend received an "A", and Sheryl benefited from the first-hand experience of working in television. Later, she approached the manager of the local public TV station with the idea of producing teaching videos for high school home economics classes in the state. (This is a project she still hopes to do someday.) Instead, however, she was offered the opportunity to produce and host a show for women. The Creative Woman show presented up-to-date educational materials pertaining to home and family life and was planned as a woman's show. After doing the show for several years, and receiving lots of viewer feedback, "we realized," says Sheryl, "that in addition to our women viewers, many men were watching and enjoying the show. When the show began making the Nielsen Ratings, their statistics confirmed this fact. In fact the percentage of male viewers was higher than that of women viewers! In order to reflect that

viewership, we decided on a name change." So, The Creative Woman show became Creative Living with Sheryl Borden. According to Sheryl, "The change has allowed us to expand the kinds of topics covered and to meet ever-changing lifestyles. It allows us to appeal more often to singles, older people, women in the work force and men interested in homemaking skills--or what is now being called the bachelor arts. It also allows us to attract an even wider variety of guests to appear on the show."

Pacific Mountain Network, Denver, Colorado began distributing the show six years ago, and they continue to request a new series every six months. The show has attracted guests from all walks of life and is carried by over 95 public television stations in the continental U.S., Canada, Guam and Puerto Rico.

Sheryl is a busy wife and the mother of three (a son who is 16 and a son and daughter, 8-year old twins) who knows the importance of applying to her own life the organization principals she preaches. She is currently president (for the second year) of the local Woman's Club, Secretary /-

Treasurer for the Chamber of Commerce Board of Directors, President of her local sorority, and active member of various other civic organizations, serves as room mother for her children's school, and serves on a number of advisory committees. She has been selected for an

Outstanding Young Woman of America award and has been named among the Outstanding Young Women in American Colleges and Universities. She was recently selected as one of the "10 Best Dressed Businesswomen" in New Mexico, and was featured in the October issue of the New Mexico Business Journal. She has been nominated as an Outstanding Alumni candidate for her alma mater, Eastern New Mexico University. She serves as a spokesperson for several businesses, and presents numerous speeches, seminars and workshops each year on a variety of topics.

Her professional associations include the American and New Mexico Home Economics Association, Home Economists in Business and is a charter member of the Eastern New Mexico Chapter of Home Economists in Business.



HISTORY BOOK COMMITTEE--Pictured are some of the History Book committee, during the recent fair and depot dedication ceremony. Members of the history book committee include: Vivian White and Thursie Reid, co-chairman; Ann Camp, Bobbie Harrison, Nelda Merriott, Marjorie Merritt; Donna Kirk, Billie Downing, Katherine Taylor, Donna Noriega, Pat Moore, Neva Grey, Evelyn Harris, Sandi Robinson, Evelyn Peat, Nelda Hunt, Carajohn Schuster, Mary Palma and Loyce Killingsworth, not in order.

Billie Gibson



Out of the Fast Lane

DATE:
October 11-14
TIME: Sunday
10:45 a.m. and
6:30 p.m.
Mon.-Fri. 7:30p.m.
LOCATION:
First Assembly of God
521 South First
Rev. David McCune

Muleshoe Journal
Published February 22, 1924
Published by the Texas Press Association
Muleshoe, Tex. 79051
Second Class postage paid at Muleshoe, Tex.
MEMBER 1987
TEXAS PRESS ASSOCIATION
C. H. B. - 8 X 10 - 5 CENTS
Subscription rates: \$2.00 per year in advance.
Single copies 10 cents.
Advertising rates: See page 34.
Muleshoe Journal and Bailey County Journal
Muleshoe, Texas 79051
Yearly fee \$2.00
All strong ads paid on application



KIWANIS LIEUTENANT GOVERNOR VISITS-In Muleshoe Monday night to install incoming officers for the Muleshoe Kiwanis Club was Lloyd Hayes, Kiwanis Lt. Gov., from Amarillo, left. Pictured with him are new Kiwanis Sweetheart, Sue Haire, and new Kiwanis president, Max Crittenden.

Indigent Care

Cont. from Page 1

20%. In our case approximately \$76,000.00 was budgeted for fiscal year 1986-87. Approximately \$36,000.00 was expended through June of this year. Twenty-four applications have been received, of which 12 were approved. The total cost for administering the program runs about \$300.00 a month.

The program is designed to assist "the poorest of the poor." So, in general, there is three basic considerations that determine eligibility. (1) RESIDENCE: the applicant must be a bona fide resident of the County. (2) RESOURCES: an applicant cannot have more than \$1,000.00 in resources above his home, a \$1,500.00 equity in a car and the usual household items. Money, vehicles, real estate, stocks, bonds, livestock, and other similar items count as resources. Cemetery lots, furs, jewelry, and a few other items are exempt. (3) INCOME: there is two kinds of income -- earned and unearned. Earned income is that which is had from employment. And there is certain off-setting credits for working, and for payments for necessary child or adult care. For example, the limit of countable earned income permitted for a one member family is \$75.00 per month. For a five member family it is \$262.00 a month. Other family sizes are in similar ratios. There are no off-sets against unearned income. But SSI payments and foods stamps do not count as income. The limit of the County's liability to any one patient is \$30,000.00 or a thirty day stay in the hospital in one fiscal year. Medical assistance covers most any type treatment, other than mental illness, that is medically necessary. And legislation has been proposed to expand the program so as to cover mental illness.

A PUBLIC HOSPITAL
A PUBLIC HOSPITAL means one owned or operated by a political entity such as a county or city. And in either case the political entity would have the responsibility to provide medical assistance to eligible indigents residing within its boundaries. For example, a County Hospital here would embrace all of Bailey County. And whether owned, leased, or operated by the County it would have the responsibility to provide indigent medical care as required by the Indigent Health Care Program, substantially as set out above. However, the \$30,000.00 and 30 day limitations, now existing, would not apply. And there would be a few other minor variations affecting certain providers. But if there was a Hospital District within the County then in that event the County would have responsibility for only that portion of the County situated outside the Hospital District. There is a difference in a PUBLIC HOSPITAL and a HOSPITAL DISTRICT. That difference is important and should be clearly defined.

HOSPITAL DISTRICT
A HOSPITAL DISTRICT may cover all of a County, part of a County, more than one County, or parts of more than one County. But in either case it can only be created by vote of the

people residing in the proposed district area. It is governed by a Board of Directors elected by the qualified voters residing in the district. It has taxing authority and therefore levies and collects taxes to help support its operations. But it is not subject to the eligibility requirements, payment schedules, or liability limits of the Indigent Health Care Program. According to present law, it could write its own eligibility requirements and payment standards. Consequently its limits of liability could be less restrictive, or they might be more restrictive.

PRIVATE HOSPITAL
A PRIVATE HOSPITAL is one owned, leased or operated for profit and, like any other private enterprise, "it runs its own business". Neither the County, City, or Public Hospital would have any voice in its operation. But the County would have the same responsibility that it now has to provide medical assistance for indigent health care.

In all instances however, the County is the payor of last resort. That is, if an applicant is eligible for assistance under any other program or from any other source, such as medicare, medicaid, or private health insurance, the County has no responsibility. But, in the absence of other assistance, the County has the responsibility to provide medical assistance as required by law.

Hospital...

Cont. from Page 1

were almost buried under the urgent business of applying before deadline for the TDCA grant.

The ordinances adopted a budget; levied taxes of use and support of the municipal government, 54.5 cents; updated items pertaining to the Texas Municipal Retirement System and an ordinance affecting participation of city employees in the Texas Municipal Retirement System, granting additional rights, credits and benefits.

After discussion, the ordinances were approved.

Marr did note that the budget is considerably larger than last year, but much of that pertains to the construction of the new airport southeast of Muleshoe.

He said \$1,275,000 had been received from FAA for the airport project.

Bids for the airport project included a bid of \$1,191,434.25 from Caprock Highway Construction Company for dirt and paving and \$59,871 from Pecan Valley for electrical work.

Extensive work is expected to be underway as soon as the right-of-way acquisition to the airport site has been completed.

Council members transferred delinquent accounts in the amount of \$1,957.24 to bad debts. This included almost \$1,400 owed by Westworld Community Healthcare, Inc. from their operations of West Plains Medical Center, Inc.

Truck parking at the Mule Lot also came under discussion, with no decisions reached on that non-agenda item.

Muleshoe Mules

Cont. from Page 1

completed 21-67 for 216 yards and eight interceptions.

The Mules have punted 13 times for 421 yards, an average of 32.4 yards per punt; their opponents have punted 27 times for 704 yards, an average of 28.2 yards per punt.

The Mules have 43 first downs by rushing; 10 passing; and three by penalties for a total to date of 56. Their four prior opponents have 15 by rushing; eight by passing and six by penalties for a total of 29 first downs.

Also, the Mules have had 31 penalties to 23 for their opponents. The Mules and their opponents have each lost eight

Contest...

Cont. from Page 1

diana vs. Missouri; (Floydada) vs. Lockney; (Texas) vs. Oregon State; Springlake-Earth at (Muleshoe); Washington State vs. (Colorado); Dimmitt at (Abernathy); and (Auburn) vs. Tennessee.

Also, (Littlefield) at Dalhart; Duke vs. (Virginia); Olton at (Friona); (Clemson) vs. Georgia Tech; (Tulia) at Sanford-Fritch; (Georgia) vs. South Carolina; New Mexico vs. (Angelo State); (Southern California) vs. California; and Kansas Vs. (Louisiana Tech).

For the tiebreakers, it was Baylor 36 and Texas Tech 22; and Houston 38 and Sam Houston 34.

fumbles since the 1987 football season got underway.

Michael Dunham has carried the ball 59 times for 314 yards; Armando Del Toro, 39 for 226 yards; Daniel Olivas, 26 times for 202 yards; Shannon Simnacher, 18 times for 74 yards; Jerry Mendoza, six times for 41 yards; Jeff Hicks, 20 times for 29 yards; Timmy Shipman, six times for 18 yards and Johnny Garcia, four times for 11 yards.

Jeff Hicks has completed 12-46 passes for 192 yards and two touchdowns and Johnny Garcia has completed two of 17 passes for 28 yards.

Receivers include Daniel Olivas, five for 59 yards and one TD; Estevan Sandeval, four for 74 yards; Sergio Gonzalez, three for 41 yards; Jerry Mendoza, two for 24 yards; Timmy Shipman, two for 19 yards and Miguel Sanchez, one for three yards.

Daniel Olivas is leading scorer with five touchdowns; Michael Dunham has four TDs; Jeff Hicks possesses two TDs; and Sergio Gonzalez, Armando Del Toro, Jerry Mendoza, and Shannon Simnacher each have one TD; while Ronnie Perez has all the Mules' extra points with 15.

Kiwanis Club

Cont. from Page 1

Your district, along with Kiwanis International, is available and ready to give you service

Muleshoe...

Cont. from Page 1

Lazbuddie Young Home-makers have received their first shipment of Del Cerro pecan halves and they are currently delivering them.

If you need pecans for holiday cooking and baking, call Mandi Seaton at 965-2438. They will deliver the pecans to you at \$3.50 per pound, cheaper than last year.

A turkey shoot, with proceeds to benefit the Bailey County EMS and the Muleshoe Peace Officers Association, is scheduled for Sunday, October 4, at 1 p.m. at the Police Department Firing Range on East Highway 84, has been scheduled.

A concession stand will be operated by the Bailey County EMS, and entry fee is \$2 per round. Ear protection is required, and will be available at the shoot.

For more information, call 806/272-4390, Monday-Friday, 8-5 p.m.

anytime you need it."

Special plaques were presented Lyndon Huckaby, for his work as chairman of the Fireworks Project, where more than \$2,700 was raised; and to Keith Turner for the Flag Project, which brought in more than \$2,500.

It was noted that the Muleshoe Kiwanis Club brought in more than \$4,700 and gave away that amount -- mostly for youth-oriented organizations.

Keith Turner was chosen 'Kiwanian of the Year' and received a plaque for his activities with the Kiwanis Club during the past year.

Officer plaques were presented to R.A. Bradley, Bill Kindard and Max Crittenden.

Four new members were added for the past year, including Oscar Hernandez, J.O. Parker, Jerry Hutton and Scott Churchman.

Following entertainment by a local group, the Gospel Notes, comprised of Jacque Baker, Jeanine Gable, Duane Lloyd and R.A. Bradley, incoming president, Max Crittenden, made closing remarks.

Crittenden spoke of the two \$500 scholarships presented to senior students; the Boy Scouts and other organizations who benefitted from the Kiwanis Club funds, and said, "we are a small club, but we raise a lot of money, and have no problem giving it away."

We believe most people are ready for autumn this year.

Shop Muleshoe First!

MAGNUM



Introducing the first all-new tractors from Case IH

Case IH put more into the new MAGNUM tractor line than any farm tractors developed in over twenty years. Here's why you'll get more out of it:

MAGNUM means more. Outstanding field performance from a new 505 cubic inch turbocharged engine with reserve power. MAGNUM power.

The MAGNUM tractor's powershift puts 18-speeds of shift-on-the-go workpower at your fingertips—standard. And only MAGNUM tractors offer a full powershift creeper transmission with six additional speeds from .5 to 2.1 mph...for more control and performance. MAGNUM performance.

The MAGNUM tractor's new larger cab has 48 square feet of window area...virtually unobstructed visibility...more room...and more seating comfort. MAGNUM comfort.

It all adds up: Case IH MAGNUM tractors are setting new standards for the 130-195 PTO hp power range and for you. See us for details.

MAGNUM means more.

C & H Equipment

Telephone 806/272-5514

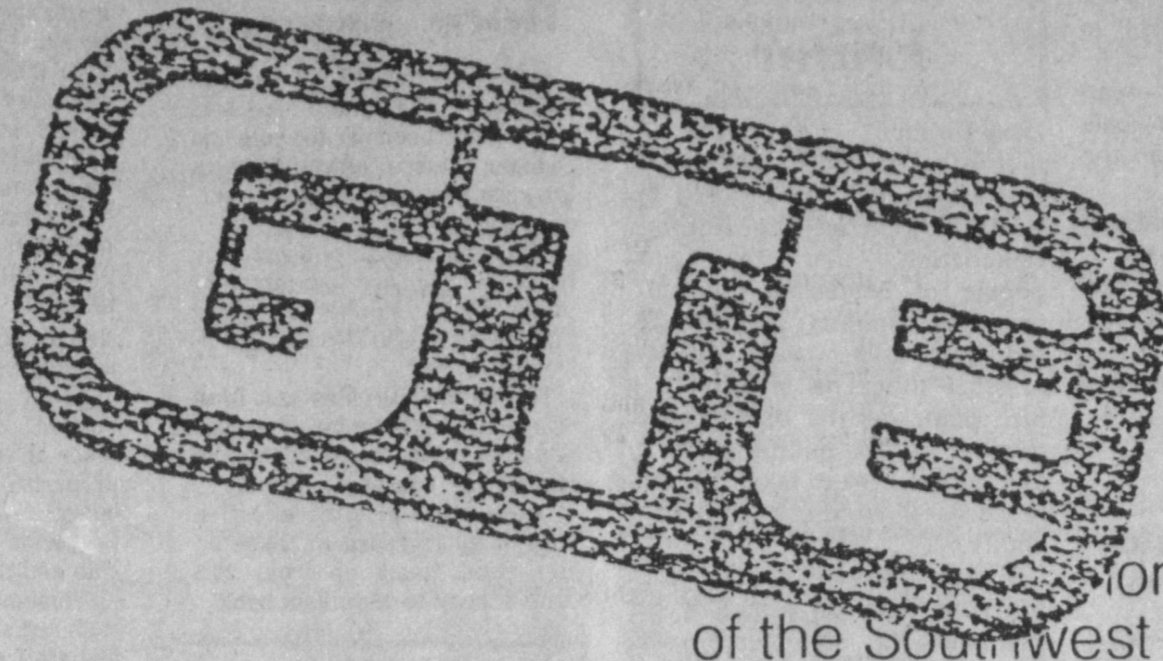
WOOD - JORDAN INC.

PHONE (806) 257-3484

West Highway 84 • Muleshoe, Texas 79347

P.O. BOX 415 EARTH, TEXAS 79031

Case IH



Telephone Company
of the Southwest

ATTENTION GENERAL TELEPHONE CUSTOMERS IN MULESHOE

NEW LONG DISTANCE SERVICE EFFECTIVE SEPTEMBER 30, 1987, AT 12:01 A.M..

With this new service, some dialing changes will be necessary...

LONG DISTANCE CALLS... To place station-to-station calls, dial 1 plus the area code (if different from your own), plus the seven digit number. Calls for one-party customers will be completed automatically.

For special services calls, i.e., collect, person-to-person, credit card or third number billing, dial 0 plus the area code (if different from your own) plus the seven digit number. Customers using GTE or AT&T credit cards (credit cards may be obtained by contacting your local business office), may complete their billing by entering their card number at the sound of the tone.

If you have questions regarding these changes, please call the business office (toll-free) at (806) 637-7571.

Sincerely,

O.D. Hearn

Brownfield Operations Manager

Sandhills Philosopher

Editor's note: The Sandhills Philosopher on his Johnson grass farm on Sandy Acres examines newspaper and television news this week.

Dear editor:

Whether a piece of news is good or bad sometimes depends on your situation. A weather forecast of rain is good news to a rancher and bad news to a farmer with a crop ready to harvest. A rise in interest rates is good news to a lender and bad news to a borrower.

Now here's a piece of news: A recent study claims that newspapers have more influence on voters than television.

Offhand, that sounds like good news for newspapers.

But there's another side to it. I don't believe that anything I've ever written for a newspaper has influenced any voters, but if it has I wish I knew what it was so I won't repeat it. I don't want anybody blaming me for some of the politicians we've got on hand today. It wasn't me; it was television that did it.

You see, television people claim the public gets most of its news from television. (If it wants to take credit for Congress, let it.) This may be true of some kinds of news, but try depending on television instead of THE MULESHOE JOURNAL to keep up with what's going on

in Muleshoe.

I read the other day that there are nearly as many TV stations in the country as there are daily newspapers, 1,611 to 1,657.

At the same time, I read that there are 56 million cats and 52 million dogs in the United States.

Also there are 14 candidates running for President.

If you can make anything out of this, I wish you'd let me know.

Yours faithfully,
J.A.

More dogs surviving gunshot wounds due to 1930s technique revival

COLLEGE STATION — An increasing number of dogs with gunshot wounds to their limbs now return to an active life, thanks to the revival of techniques first devised in the 1930s, says a Texas A&M University veterinary surgeon.

A modest rate of success is also being experienced in birds of prey which have suffered gunshot injuries to their all-important wings, talons and legs, said Dr. Michael Herron, a board-certified surgeon with Texas A&M's small animal medicine program.

Texas is among the national leaders — and perhaps worldwide — in terms of pets who have received wounds from gunshots, said Herron. Rural landowners have a long tradition of shooting at unrestrained dogs, especially where livestock and wildlife seem threatened.

By reinstating and adapting the half-pin splint or Kirschner device, long bones shattered by bullets or shotgun pellets are often stabilized enough to allow near-normal recovery, said Herron.

Letters To The Editor

Dear Editor:

It is with much enthusiasm that I write you this letter. I am so thrilled about the Heritage Foundation, that the good people of Muleshoe and surrounding territory, have donated, time, money, work and lots of other things to make such a nice place for the older people to meet in. We intend to use it, and do our best to take care and preserve it to the best of our ability.

I have always liked to live in Muleshoe and am proud of our Chamber of Commerce who have done a good job to keep our town looking good and on the move.

And I think the Nursing Home staff, who take such good care of the older people who can not be out to enjoy the town and county, which they have loved for so long, are to be complimented, for their good work. The ambulance crew, the fire department, the police dept., the schools, the doctors, well just about everybody that makes Muleshoe such a good place to live. And who could wish for better churches, to worship in.

After all Our Lord is watching over us all, and I hope everybody will realize without him we are nothing.

Thank you
Sincerely,
Myrtle Creamer
For AARP #3169

October 1 Will Bring More Taxes

State Comptroller Bob Bullock Thursday said many new services will become taxable on October 1, when the state's sales tax rate increases from 5 1/4 percent to 6 percent.

"The tax change will not only hit items which are now currently taxed, but a number of newly taxable items and services," Bullock said.

The expanded sales tax base was a major element of a \$5.7 billion tax bill approved by the Legislature this past summer.

October 1 is also the effective date of an increase in taxes on cigarettes, going up from 20.5 cents a pack to 26 cents a pack.

Three-Way News
By: Mrs. H.W. Garvin

Mr. and Mrs. George Tyson were in Lubbock Friday on business.

The Three Way football team played Cotton Center on the home field Friday night with Three Way winning. The seniors and parents served supper before and after the game.

We wish to express our sympathy to the family of Mrs. Tommy Galt who died Friday morning in Methodist Hospital in Lubbock. Funeral services were held Saturday at Rest Haven Chapel in Lubbock. Mrs. Galt was one of the pioneers.

Mrs. Baxter Vaughan and son from Plainview spent the week with her parents the Adolph Wittners.

Mrs. D.A. Williams from Enochs visited her parents, the George Tyson, Wednesday evening.

Mr. and Mrs. Rodger Hatcher and daughter from Clovis visited her parents, the Jack Lanes Tuesday afternoon.

The Legislature extended the sales tax to several broad categories of services such as real property services, including landscaping, janitorial, garbage collection and pest control; security services, including private investigators and armored car services; information furnished by credit bureaus; and debt services, such as adjustments and repossessions.

The expanded tax base is expected to add more than 64,000 Texas businesses to the state's tax rolls, joining the more than 420,000 merchants and businesses already collecting sales taxes.

Newly taxable items include custom computer programs, labor on installations to tangible property, some transportation charges on the sale of goods, telephone service and membership and dues to private clubs.

"Businesses need to reprogram cash registers and alert workers and staff of the new rate taking effect October 1," Bullock said.

There is no increase in the one-percent local option tax collected in some areas of Texas.

A fee for getting a sales tax

permit and an increase in the state's motor vehicle sales and hotel motor room taxes went into effect on September 1.

A rollback in the state's motor fuels tax from 15 cents to 10 cents a gallon was also cancelled on September 1.

Starting January 1, 1988, the sales tax will be further extended to data processing services, including work processing, data entry, retrieval and search as well as payroll and business accounting, data production, time sharing and computer management.

Taxes will also be due on repair and remodeling services, except on new construction and owner-occupied residences starting January 1, 1988.

Shop Muleshoe First!

Pitt Predicted Winner Over Boston College

Boston College's schedulers weren't doing the Eagles any favors when they glued together the games for the 1987 season. Two weeks ago, they played Southern California (there); last week, Penn State; and this week, Pittsburgh at Pitt. Incidentally, their final three games of the season are Tennessee, Notre Dame, and Syracuse.

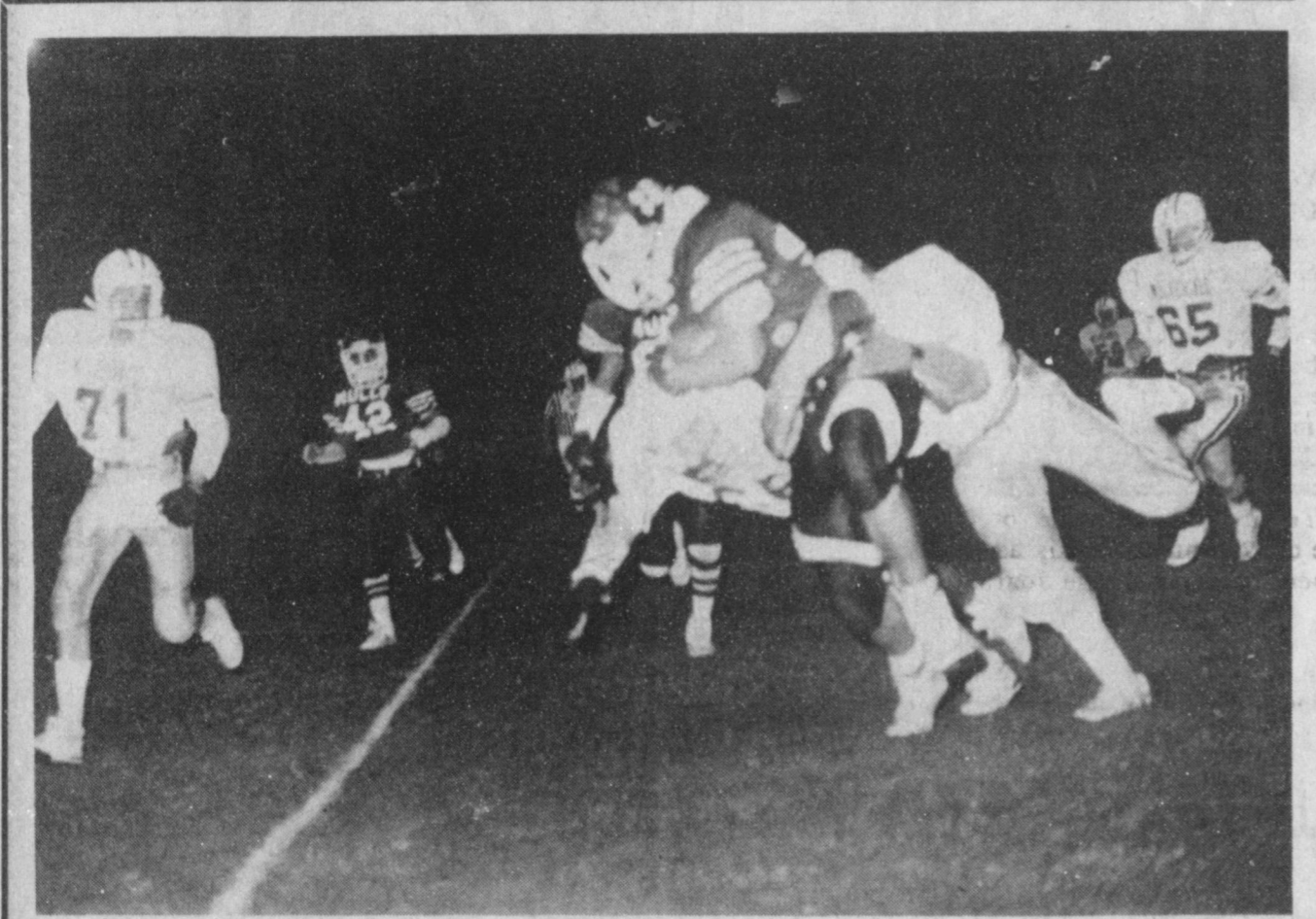
'Nuff said. Pittsburgh, in spite of a 21-24 upset loss to Temple, has been very impressive in its four outings, a far cry from its 5-5-1 season in 1986. Boston College has beaten Pitt only three times in 12 meetings, and this appears to be another Panther victory. Coming off a trip and a loss to Southern California plus an emotional high against Penn State, BC may have its problems.

Iowa and Michigan State kick off the Big Ten season in Iowa City. And after their "warm-ups"—Iowa played Tennessee and Arizona, Michigan State played Southern Cal, Notre Dame, and Florida State-facing

each other just might be a relief. Not so. It will be a major battle between two favorites for the conference title. The Hawkeyes slipped by the Spartans last year 24-21 on their way to a third place finish in the conference. Michigan State finished 5th. This year's winner, Iowa again.

Miami whipped Florida State last year 41-23. In 1985, it was Miami, 35-27. It went the other way three years ago as Florida State blasted the Hurricanes 38-3. Hazardous a forecast with two such formidable offenses is a tough challenge. The Seminoles are the hosts, but we're picking Miami.

Southeast Conference champion L.S.U. plays its fourth consecutive game at home. The visitor this time, Florida, a shocking winner over Alabama two weeks ago, 23-14. The Tigers disposed of the Gators in 1986, 28-17, but it appears they have a whole new breed of Alligator to worry about this year. Florida is the favorite in this one.



IT TAKES A LOT TO TAKE HIM DOWN--Michael Dunham, No. 44, forefront, gains good yardage against the Springlake-Earth Wolverines in homecoming action in Muleshoe last Friday night. Coming up to assist in the background is Armando Del Toro, No. 42. The Mules took the homecoming victory, 39-0.

True Value
Anti-Freeze
\$2.85 GALLON
\$17.10
6 GALLON CASE
\$149.50
55 GAL. BARREL



471599

Fry & Cox, Inc.

401 S. 1st

272-4511

The Bob Harmon Forecast

Sat., Oct. 3 - Major Colleges - Div. 1-A

| | | | |
|--------------------|----|----------------------|----|
| Air Force | 26 | Utah | 13 |
| Alabama | 28 | SW Louisiana | 7 |
| Arizona | 37 | Bowling Green | 8 |
| Arizona State | 23 | Texas-EI Paso | 17 |
| Arkansas | 24 | T.C.U. | 10 |
| Auburn | 31 | North Carolina | 12 |
| Baylor | 24 | Houston | 7 |
| Brigham Young | 30 | Utah State | 10 |
| Central Michigan | 20 | Kent State | 17 |
| Colorado | 37 | Colorado State | 7 |
| Duke | 21 | Rutgers | 17 |
| Eastern Michigan | 17 | Northern Illinois | 13 |
| Florida | 24 | L.S.U. | 20 |
| Fresno State | 22 | Long Beach State | 14 |
| Georgia | 24 | Mississippi | 17 |
| Georgia Tech | 27 | North Carolina State | 7 |
| Hawaii | 41 | Yale | 6 |
| Indiana | 28 | Northwestern | 16 |
| Iowa | 24 | Michigan State | 21 |
| Kansas | 21 | Southern Illinois | 16 |
| Kentucky | 36 | Ohio U. | 6 |
| Miami, FL | 28 | Florida State | 17 |
| Miami, OH | 26 | Ball State | 14 |
| Michigan | 28 | Wisconsin | 14 |
| Minnesota | 28 | Purdue | 13 |
| Mississippi State | 24 | Memphis State | 23 |
| Nebraska | 30 | South Carolina | 14 |
| Nevada-Reno | 23 | Nevada-Las Vegas | 14 |
| Ohio State | 23 | Illinois | 6 |
| Oklahoma | 49 | Iowa State | 0 |
| Pacific | 21 | New Mexico State | 14 |
| Penn State | 33 | Temple | 13 |
| Pittsburgh | 23 | Boston College | 21 |
| San Jose State | 27 | Fullerton State | 10 |
| South n California | 27 | Oregon State | 12 |
| So. Mississippi | 23 | Louisville | 13 |
| Syracuse | 20 | Missouri | 13 |
| Tennessee | 35 | California | 13 |
| Texas | 24 | Rice | 8 |
| Texas A & M | 28 | Texas Tech | 12 |
| Toledo | 23 | Western Michigan | 7 |
| Tulsa | 27 | Kansas State | 6 |
| U.C.L.A. | 27 | Stanford | 13 |
| V.P.I. | 34 | Navy | 7 |
| Vanderbilt | 26 | Tulane | 20 |
| Virginia | 31 | V.M.I. | 0 |
| Wake Forest | 23 | Army | 10 |
| Washington | 20 | Oregon | 13 |
| West Virginia | 17 | East Carolina | 14 |
| Wyoming | 27 | San Diego State | 17 |

Other Games - East

| | | | |
|------------------------|----|------------------------|----|
| Albany, NY | 32 | R.P.I. | 6 |
| Amherst | 27 | Bowdoin | 12 |
| Bloomburg | 20 | East Stroudsburg | 10 |
| Brookport | 23 | Buffalo State | 7 |
| California State, PA | 26 | Lock Haven | 21 |
| Clarion | 23 | Shippery Rock | 17 |
| Delaware Valley | 20 | Albright | 7 |
| Emory & Henry | 33 | Dickinson | 7 |
| Gettysburg | 40 | Johns Hopkins | 13 |
| Hamilton | 30 | Williams | 10 |
| Indiana U., PA | 24 | Edinboro | 13 |
| Ithaca | 23 | Alfred | 10 |
| Junata | 21 | Widener | 20 |
| Lycoming | 28 | Lebanon Valley | 10 |
| Montclair | 45 | Ramapo | 0 |
| New Haven | 24 | Central Connecticut | 17 |
| Plymouth | 33 | Fitchburg | 6 |
| Shippensburg | 22 | Mansfield | 21 |
| Southern Connecticut | 21 | American International | 14 |
| Trinity, CT | 27 | Bates | 7 |
| Tufts | 31 | Worcester Tech | 14 |
| Union, NY | 33 | Colby | 10 |
| Wagner | 23 | Buffalo U. | 20 |
| Washington & Jefferson | 36 | Thiel | 10 |
| Westchester State | 34 | Kutztown | 7 |

Other Games - Midwest

| | | | |
|-----------------------|----|-----------------------|----|
| Albion | 23 | Kenyon | 8 |
| Augustana, IL | 42 | Wheaton | 17 |
| Baldwin-Wallace | 21 | Wabash | 17 |
| Bethany, KS | 31 | Sterling | 6 |
| Bluffton | 27 | Defiance | 7 |
| Butler | 23 | NE Missouri | 14 |
| Cameron | 21 | Central Oklahoma | 10 |
| Central Missouri | 31 | SW Baptist | 7 |
| Dana | 24 | Concordia, NE | 10 |
| Dayton | 27 | Adrian | 10 |
| Fort Hays | 22 | Missouri Southern | 21 |
| Franklin | 24 | Valparaiso | 15 |
| Georgetown, KY | 40 | Urbana | 0 |
| Grand Valley | 23 | Wayne State, Mich. | 10 |
| Gustavus Adolphus | 33 | St. Olaf | 7 |
| Hillsdale | 21 | Saginaw Valley | 14 |
| Hiram | 24 | Grover City | 7 |
| Hope | 24 | Findlay | 17 |
| Indianapolis | 23 | Ashland | 20 |
| Kansas Wesleyan | 21 | Tabor | 13 |
| Lakeland | 21 | Concordia, IL | 20 |
| Macalester | 20 | Carleton | 17 |
| Milwaukee | 26 | Carthage | 13 |
| Minnesota-at-Duluth | 24 | Winona State | 10 |
| Missouri Valley | 26 | Mid-America | 7 |
| Muskingum | 22 | Heidelberg | 17 |
| Nebraska-at-Omaha | 24 | South Dakota State | 14 |
| Nebraska Wesleyan | 17 | Benedictine | 13 |
| North Dakota State | 41 | Morningside | 7 |
| North Dakota U | 28 | St. Cloud | 10 |
| Northern Michigan | 41 | Ferris | 7 |
| Northwood | 27 | Michigan Tech | 6 |
| Peru | 26 | Iowa Wesleyan | 14 |
| SE Oklahoma | 23 | Southern Arkansas | 21 |
| Southwestern Missouri | 24 | NW Missouri | 12 |
| Washington | 26 | Missouri Western | 17 |
| Wisconsin-at-Lacrosse | 24 | Wis.-at-Stevens Point | 23 |
| Wittenberg | 24 | Mount Union | 21 |

Other Games - South & Southwest

| | | | |
|----------------------|----|----------------------|----|
| Arkansas-Monticello | 20 | Ouachita | 10 |
| Carson-Newman | 28 | Catawba | 10 |
| Centre | 20 | Sewanee | 17 |
| Concord | 23 | West Virginia Tech | 13 |
| Cumberland | 27 | Maryville | 12 |
| Delta State | 24 | North Alabama | 21 |
| Fort Valley | 32 | Clart | 6 |
| Gardner-Webb | 38 | Wingate | 6 |
| Georgia Southwestern | 23 | Ferrum | 21 |
| Glenville | 26 | West Liberty | 14 |
| Guilford | 20 | Bowie | 14 |
| Hampden-Sydney | 37 | Bridgewater, VA | 7 |
| Jacksonville State | 23 | Valdosta | 17 |
| Lenoir-Rhyne | 22 | Eton | 20 |
| Livingston | 42 | Miles | 6 |
| Mars Hill | 21 | Newberry | 10 |
| Mississippi | 23 | Rhodes | 20 |
| Presbyterian | 24 | Wofford | 13 |
| Salisbury | 40 | District of Columbia | 20 |
| Savannah State | 27 | Morris Brown | 20 |
| Tarleton | 20 | Evangel | 10 |
| Tennessee-Martin | 21 | Mississippi College | 17 |
| Troy | 41 | West Georgia | 7 |


Other Games - Far West

| | | | |
|--------------------|----|---------------------|----|
| Cal-Davis | 24 | Cal Poly | 13 |
| Claremont | 30 | Pomona | 6 |
| Colorado Mines | 25 | Western New Mexico | 20 |
| Eastern New Mexico | 28 | Texas Lutheran | 14 |
| LaVerne | 21 | Azusa | 17 |
| Markato | 24 | Northern Colorado | 14 |
| Menlo Park | 23 | Occidental | 20 |
| Northridge | 31 | Hayward | 12 |
| Oregon Tech | 35 | Eastern Oregon | 0 |
| Puget Sound | 21 | Linfield | 20 |
| San Diego U | 21 | Whittier | 14 |
| Santa Barbara | 38 | Redlands | 6 |
| Santa Clara | 24 | Sacramento State | 7 |
| Southern Oregon | 30 | Lewis & Clark | 7 |
| Southern Utah | 30 | Cal Lutheran | 7 |
| St. Marys | 28 | San Francisco State | 12 |

Sponsored By:

Farmers Co-Op Elevators

Wilson Drilling Co.
Water Well Drilling
and Service
Gould Pumps
Stanley Wilson
Dee Puckett
TX License 02628W
NM License WD1152
WASHINGTON vs OREGON



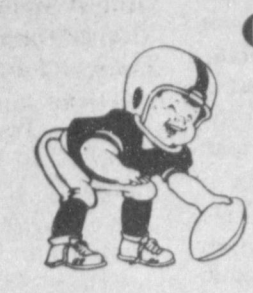
Ben Franklin
Better quality for less
Bath Towels
\$4.27
2.99 Reg.
Mon.-Sat. 8 to 8
Sun. 12 to 5
2104 W. Amer. Blvd.
HOBBS, N.M. at LITTLEFIELD





Ask Us About Family
Insurance Review!
Call Rickey Barrett
Free- No Obligation Available To Anyone
Bailey County Farm Bureau
• LIFE • AUTO • HOME • CROP
1612 W. American Blvd.
272-4567
MISSISSIPPI vs MEMPHIS STATE



Muffler
Custom Exhaust
Specialists
201 N 1st
Muleshoe
272-5333
ABERNATHY at FLOYDADA






Higginbotham-Bartlett Co
JOHN-MANVILLE
INSULATION
R-11 3 1/2 in. 14¢ Sq. Ft.
R-19 6 in. 23 1/2¢ Sq. Ft.
215 Main 272-3351
LOCKNEY at MULESHOE





FOOTBALL CONTEST
Grand Prize: \$50⁰⁰
Weekly Prizes
1st \$10⁰⁰ 2nd \$7⁵⁰ 3rd \$5⁰⁰

Henry Insurance Agency, Inc.
Kenneth R. Henry
CERTIFIED INSURANCE COUNSELOR
REAL ESTATE BROKER
Ronnie Holt AGENT
Judy Coker AGENT
111 W. Ave. B
272-4581
MIAMI, FL vs FLORIDA STATE

Viola's Restaurant
For The Best Mexican Food
Come To Viola's!!
Open 11am. - 9:30
Closed On Tuesday
2002 W Amer. Blvd.
272-3838
VANDERBILT vs TULANE



CONTEST RULES:
1. IN EACH ADVERTISEMENT YOU WILL FIND A GAME LISTED. CIRCLE THE TEAM YOU THINK WILL WIN. The person's score that most closely matches the TIE BREAKER SCORE will be declared the winner. If several persons are still tied the prize money will be split.
2. The contestant must be 12 years of age or older.
3. Only one entry per person may be made for any one contest.
4. Bring your entry blank by The Journal office by 5:00 p.m. Friday, or, if mailed, the entry must be postmarked no later than 5:00 p.m. Friday. Write "FOOTBALL CONTEST" on the mailed entry, and mail to P.O. Box 449, Muleshoe, Texas 79347.
5. Circle the winners and WRITE IN THE SCORE of the tiebreaker game. This score will be used to break weekly as well as determine the grand prize winner. Decision of The Journal's scoring judges will be final.
6. Check the team you think will win; 10 points for first place, 6 points for second place and 4 points for third place.
7. To count for grand prize, entries must be on official blank printed in the paper.

Leal's El Nuevo Restaurant
Celebrating 30
Years of Business
in Muleshoe.
Closed Mondays
1542 W. Amer. Blvd.
272-3294
DUKE vs RUTGERS



Shipman's Body Shop
Auto Painting
FREE ESTIMATES
Tractor Glass & Windshields
"We Appreciate Your Business"
410 N 1st 272-4408
ARIZONA STATE vs TEXAS-EL PASO



SUPPORT THE MULES

Official Entry Blank

name _____
address _____
phone _____

TIEBREAKERS

FLORIDA VS L.S.U.
TEXAS A&M VS TEXAS TECH

Bob Stovall Printing
No Job Too Large
Or Too Small
Visit Bob Stovall
For All Your Commercial Printing
221 E. Ave. B 272-3373
DALHART at TULIA




WES-TEX FEED YARDS, INC.
Custom Cattle Feeding
272-7555
Muleshoe, Texas 79347
PITTSBURGH vs BOSTON COLLEGE



1st **James Elder** 3rd **Vicki Black**
2nd **James Turnbow**

Western Drug Co.
"For All Your Prescription Needs Visit The Friendly People At Western Drug"
144 Main 272-3106
IOWA vs MICHIGAN STATE



Farmers Co-Op Elevators
3 Locations To Serve You
Clays Corner
Enochs
Muleshoe
272-4335
GEORGIA vs MISSISSIPPI



★ District 2-AAA

1987 "MULES" Football Schedule

| | | | |
|---------|---------------------------|------|-------|
| Oct. 2 | Muleshoe vs Lockney | 8:00 | Here |
| Oct. 9 | ★ Muleshoe vs Friona | 7:30 | Here |
| Oct. 16 | ★ Muleshoe vs Floydada | 7:30 | There |
| Oct. 23 | ★ Muleshoe vs Littlefield | 7:30 | There |
| Oct. 30 | ★ Muleshoe vs Tulia | 7:30 | Here |
| NOv. 9 | ★ Muleshoe vs Dimmitt | 7:30 | There |

Lenau Lumber Company
For all your fix-up, paint-up needs remember Lenau Lumber. 202 E. Ash
272-4222
Our Specialty Is Quality Building Materials
WYOMING vs SAN DIEGO STATE



Decorator's Nursery and Floral Inc.
A Complete Floral Service
616 S. 1st 272-4340
PACIFIC vs NEW MEXICO STATE



Irrigation Pumps & Power, Inc.
LINDSAY
Pump Sales & Service
Pivot Parts & Service
Pump Efficiency Testing
Hwy 70 Earth 257-3855
W. Hwy 84 Muleshoe 272-4483
KANSAS vs SOUTHERN ILLINOIS



Muleshoe Fertilizer SUPPORTS
The Muleshoe Mules
Kearney, Preston & Jason Scoggin
Hwy 70 Office 272-3443
Home 272-4846
Mobile 272-3001
OLTON at DIMMITT



BAMERT TRUSTWORTHY
Rt. 3 Box 1120
272-4787 or 272-3539
ARKANSAS vs T.C.U.



Sudan News
by
Evelyn Ritchie

Glenn Parrott of Baton Rouge, La. visited last week with his aunt, Mr. and Mrs. Jack Scott and also with Mrs. Jean Muller and the Phillip Gordon family. He is a chemist at Exxon there in Baton Rouge.

Mrs. Dail Burnett had as guests recently, her sister, and brother-in-law from Ardmore, Okla. Also accompanying them were her niece Mr. and Mrs. Troy Brown of Ardmore; Mr. and Mrs. Leon Gunn and Mr. and Mrs. Alford Campbell, Holly and Ladona all of Dimmit, Flora and Roxann Gunn, Pam Williams, Dottie Haynie, Loretta, Suzanne and Jill Reid all of Sudan, Nell Hilliard of Littlefield and Craig, J'Lee and Brandi Turner of Canyon.

Lula Burnett and Loretta, Suzanne and Jill Reid all visited last week in Canyon with their aunt, Delia Taylor who is critically ill.

Mr. and Mrs. Craig Turner and Brandi of Canyon visited recently with relatives including her mother, Mrs. Jean Muller.

FHA To Sponsor

Pregame

Dinner Friday

Muleshoe High Future Homemakers of America will sponsor the pregame dinner before the Mules game Friday night. Serving will begin at 5:30 and end at 7:30. Mexican Food will be on the menu. All you can eat. Enchiladas, tocas, beans, Spanish rice, chili con queso, chips, sauce with coffee and tea will be served.

FHA members are selling tickets and tickets will also be sold at the door. Take out orders will be offered. Call 272-3080 for the Home Economics department. Future Homemakers work each year for a scholarship to be presented to a worthy member.

Mr. and Mrs. Harold Haynie have returned home from vacationing for the past several days in Mississippi.

Mr. and Mrs. B.A. Beauchamp have returned home from vacationing in Astoria, Oregon with their son, Mr. and Mrs. Danny Beauchamp, Sean, Todd and Erin.

Mrs. Gwenn Schweppe has returned to her home in Illinois following a visit here with her parents, Mr. and Mrs. G.C. Churchman and other family members. She was here to be with her mother while she underwent surgery. Also visiting with the Churchmans were her sisters, Joy Talkington and Jo Hert of Austin and also her brothers, Mr. and Mrs. Jerry Ethridge and family of Hereford and Mr. and Mrs. Scott Churchman and children of Muleshoe have also been here to visit with them during her hospital stay and since she's been home.

Mrs. Judy Kelly and boys of Canyon visited during the weekend with her parents, Mr. and Mrs. Dick West and were here to visit with Gwen since she came home from the hospital in Lubbock following her surgery there last week. Also Gwens mother, Mrs. Stella Chester of Hereford visited with them Friday and Saturday.

Faye Dorsey was released from the Methodist Hospital last week and is recuperating at home.

Mr. and Mrs. Carrol Gillet and Dana of Baird and Mrs. Judy Konigsmark and Keagan of Arkansas visited during the weekend with their daughter and sister, Mr. and Mrs. Bo Lance., Danya and Macie.

Karen Rich of Vernon visited during the weekend with her parents, Mr. and Mrs. Jack Ingram.

Mr. and Mrs. Dewayne Phillips, Christie and Michael spent part of Grandparents Day with Mr. and Mrs. G.C. Ritchie. They also visited in Morton with his parents, Mr. and Mrs. Morris

Phillips and other family members.

Valda Bishop and her mother, Mrs. Katie Turner have returned home from Hamlin where they went last week to attend funeral services for their brother and son, Floyd Turner who died last Sunday.

Mr. and Mrs. Gery Donnell were in Lubbock during the weekend to visit their son, Wade, who is attending Texas Tech there and they all attended the football game when Texas Tech won over Colo. State U.

Jeff Gordon, of Grapevine was home for the weekend with his parents, Mr. and Mrs. Phillip Gordon and Kay Lynn.

Agricultural producers recruiting Amish families to replace illegal aliens

COLLEGE STATION — New Amish agricultural labor communities are sprouting up in Texas and may eventually replace widespread illegal alien labor, says a Texas A&M University sociologist.

The Amish — a society, a religion, a way of life unmetamorphosed by the present — are coming to Texas in larger numbers than ever to seek employment opportunities, and they are finding them, says Dr. William Kuvlesky.

Since the passage of the Immigration Reform and Control Act last November, illegal aliens are finding it difficult to qualify to work in non-perishable industries such as dairy, poultry and livestock, he explained. Agricultural producers are hiring — even recruiting — Amish families to work in these areas.

Sociologist Kuvlesky said the new wave of Amish settlements began around 1980, and consisted until recently of transient workers who simply wanted to earn enough money to buy land back home in Missouri, Ohio and other areas.

But once in Texas, Kuvlesky said, some began to settle down and show no signs of going back.

"The Amish are pioneering a brand new labor structure for Texas and agricultural producers seem happy about it," he said. "Not only are they skilled in agriculture, but they also speak English, are accustomed to managing an enterprise and they live to work and serve God. That is advantageous to the entire community."

**Shop
Muleshoe First!**

Enochs News

By: Mrs. J.D. Bayless

Mr. and Mrs. Goldman Stroud was in Clovis, N.M., went to the sale and visited his sister-in-law, Mrs. Frankie Stroud while there.

Mr. and Mrs. Robert George of Lubbock and Mr. and Mrs. Steve Mosser and children, Kerry and Kelly, Chris and his girl friend, Courtney Greg, of Slaton surprised their granddad with a steak supper at the Steak and More Restaurant in Little-

field for his birthday Mr. and Mrs. McCall and ever one enjoyed it very much. Then they all watched Slaton play ball in Littlefield.

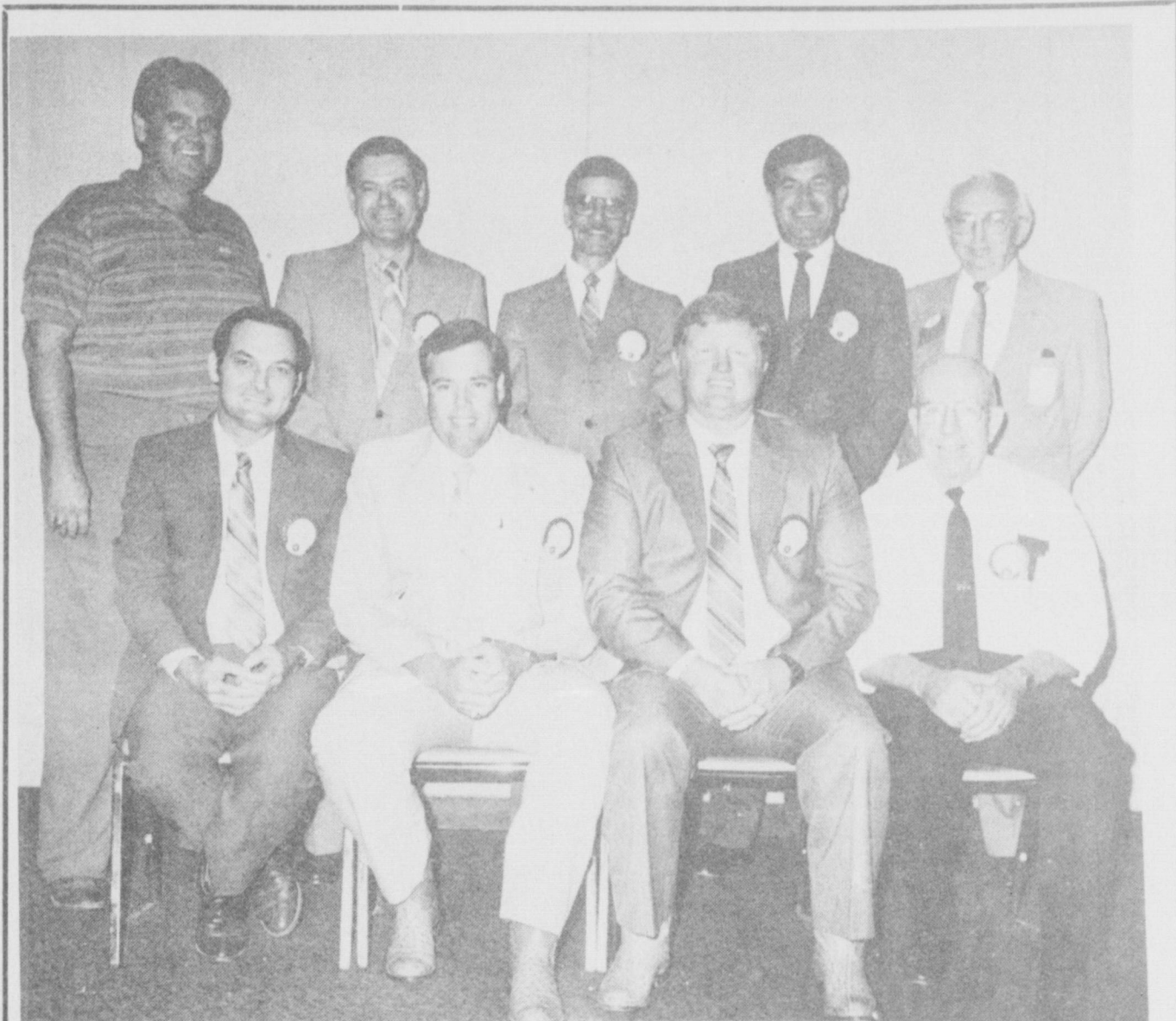
Mrs. Bill Key visited her sister, Mrs. Bonnie Long, in Morton Sunday afternoon.

Mr. and Mrs. Dale Nichols visited Mr. and Mrs. Neal Caswell and they went to Clovis, N.M. Friday evening and ate at Poor Boy Cafe.

Mrs. Doris Huff visited her sister, Mrs. Bill Key Saturday.

Debbie and Glenn Green of Lubbock visited her parents, Mr. and Mrs. Bobbie Adams Sunday.

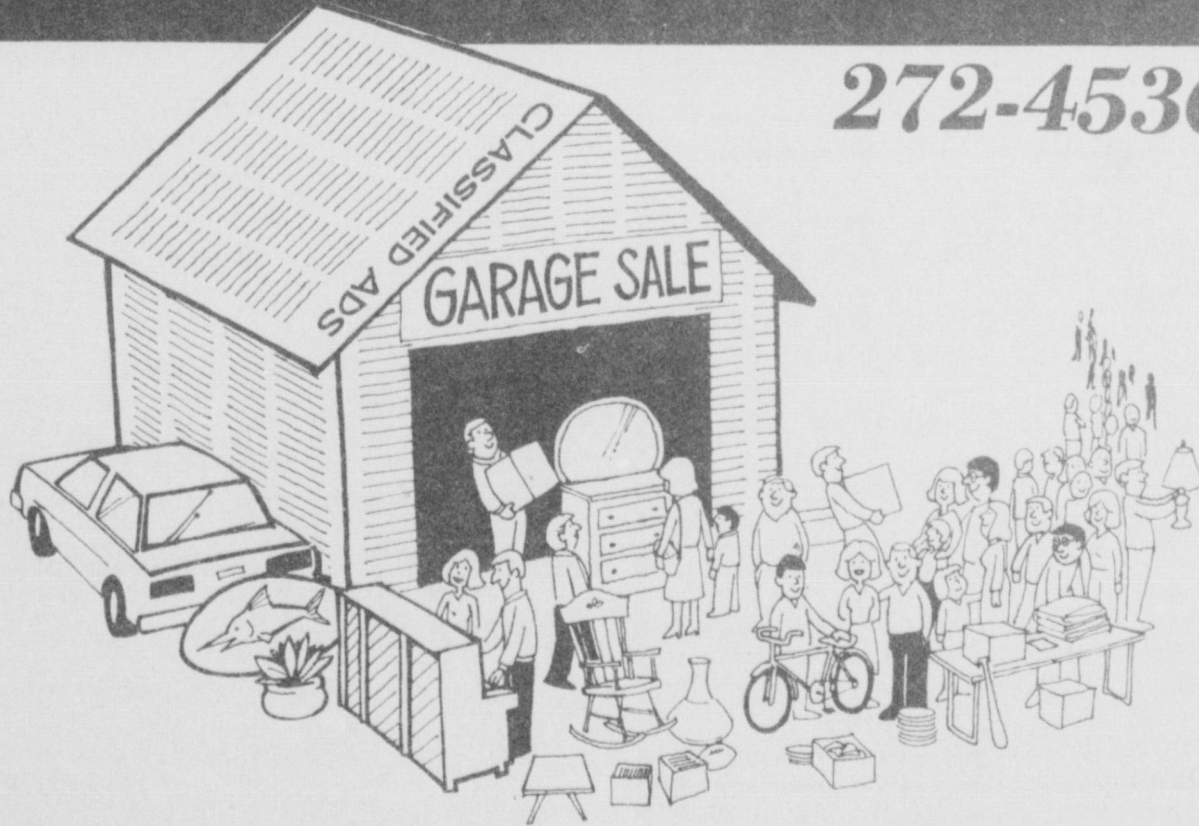
Mrs. Ellen Bayless went to Seminole and visited a sister-in-law, Mrs. Pruda Coffman at the Nursing Home then drove to Odessa and spent the afternoon with a nephew and wife, Mr. and Mrs. David Coffman, her daughter, Mrs. Myrtie Finley came over and had supper with them. Mrs. Bayless then spent till Saturday with her daughter and husband. Friday evening the Finleys and Larry and Mrs. Bayless were supper guests in the home of Mr. and Mrs. Kevin Jones and family then they visited in the home of Mr. and Mrs. Ernest Burns. The Jones' and Burn's and Larry Finley are grandchildren of Mrs. Bayless



KIWANIS OFFICERS INSTALLED FOR NEXT YEAR--During the annual Kiwanis banquet Monday night, new officers and directors were installed for the incoming year. They are from left standing: Directors Delton Wilhite, James Roy Jones, Hugh Young and Robert Montgomery and Lt. Gov. Lloyd Hayes of Amarillo. Not pictured is director Jim Lutz. Seated from left are Bill Kinard, treasurer; Max Crittenden, president; Keith Turner, vice president; and R. A. Bradley, secretary.

CLEAN OUT YOUR GARAGE AND MAKE MONEY TOO!

272-4536



One job everyone hates is to clean out the garage!

Let our classified pages do the job for you. Immediate results and money you didn't know you had!

Classified Rates Per Word 15¢
Minimum Charge \$2.30
CALL TODAY !!!!
Muleshoe / Bailey County Journal

FOOD CORN PREMIUM TEXAS SESAME

MULESHOE, TEXAS
PHONE: 272-4231

**FOOD CORN VARIETIES:
PIONEER 3192 AND 3186**

**CASH PRICE \$4.00 cwt
JANUARY 1988 \$4.20 cwt**

PLUS "PIK & ROLL" PROFIT
We Appreciate Your Business

**Wayne Crittenden
Manager**



**Mark Glawe
Vice President**

Muleshoe Journal

Classified

Call 272-4536

CLASSIFIED RATES
Per Word.....\$.15
Minimum Charge \$2.30

Consecutive Insertions
Minimum Charge \$2.00

CLASSIFIED DISPLAY RATES
\$.15
Per Column Inch

DEADLINES
12 noon Tues.
For Thursday Paper
12 noon Friday
For Sunday Paper
We reserve the right to classify, revise, or reject any ad. Not responsible for any error after ad has run once.

1. Personals

MARY KAY COSMETICS Josie Flowers 272-3865. fl-49s-tfc

OFFICE SPACE & storage space for rent call 272-4754. sl-29s-tfc

CUSTOM ROUND hay baling call after 7:00 Larry Free 925-6739. fl-18s-tfc

MILO & FALL harvesting wanted, 3, L-2 grainers. Rates negotiable. Call Collect 405-536-7269. cl-39s-4tc

PAINTING of all kinds home auto and equipment call 272-4980 or come by 1420 W. Ave. B and ask for Tom Page. 1-39s-2tp

MASTERCARD / VISA! Regardless of credit history. Also, new credit card. No one refused! For information call ... 1-315-733-6062 EXT. M1741. 1-40t-6ttpts

OWN YOUR OWN Apparel or Shoe Store. Choose From: Jean / Sportswear, Ladies Apparel, Mens, Children/ Maternity, Large Sizes, Petite, Dancewear /Aerobic, Bridal, Lingerie, Or Accessories Store. Add Color Analysis. Brands: Liz Claiborne, Gasoline, Healthtex, Levi, Lee, Camp Beverly Hills, St. Michele, Chaus, Outback Red, Genesis, Forenza, Organically Grown, Over 2000 Others. Or \$13.99 One Price Designer, Multi Tier Pricing Discount Or Family Shoe Store. Retail Prices Unbelievable For Quality Shoes Normally Priced From \$19. To \$80. Over 250 Brands 2600 Styles. \$14,800 to \$26,900: Inventory, Training, Fixtures, Grand Opening, Airfare, Etc. Can Open 15 Days. Mr. Loughlin (612) 888-6555. 1-40t-1tpts

Painting-Repair Inside Outside. Free Estimates. Howard Griffin Snyder, Tx. 1-234-2128. 1-36s-7tp

PLEASE CHECK your ad for error the first day your ad appears. The Muleshoe/Bailey County Journals will not be responsible for more than one day incorrect insertion. Request for adjustments must be made by the advertiser within one week after final insertion of the advertisement.

1. Personals

CONCERNED About Someone's Drinking? **HELP IS AVAILABLE** through Al-Anon Call 227-2350 or 965-2870 or come to visit Tuesday nights, 8:00 p.m. or Saturday mornings at 10:30 a.m. at 1116 W. American Blvd., Muleshoe.

2. Lost & Found

LOST 500 pound steer in the Pleasant Valley community, with a pistol brand on right hip. Call 272-5035. g2-40t-tfc

LOST red female chow. Black nylon collar call 272-3333 or 272-5767. Reward offered. e2-38t-tfc

3. Help Wanted

FEDERAL, STATE & CIVIL SERVICE JOBS \$16,707 to \$59,148/Year, Now Hiring. CALL JOB LINE 1-518-459-3611 EXT F6695E for info 24 HR. 3-38t-3tpts

4. Houses For Rent

FOR SALE or rent 3 bdrm, 1 1/2 bath house, 2 car garage, 2 1/2 acres & outbuildings. Call Jeff Price 806-624-2303. p4-34s-tfc

5. Apts. For Rent

APT. & duplex for rent. Call 272-7575. p5-38t-tfc

FOR RENT real nice 1 bdrm apt. fully carpeted, refrigerator & cook stove furnished. Plumbed for washer & dryer. Call 272-4986 or come by at 101 W. Ave. J. w5-40t-1tc

8. Real Estate

PRICED REDUCED! For sale by owner 3 bdrm, 2 baths, 2 carport, den with fireplace, large utility room, central A/H, storage galore over 2000 sq. ft. Call 883-2704. w8-38t-tfc

FOR SALE newly remodeled 3 bedroom, 1 bath, living room and den, fireplace, carport, fenced yard, storage buildings. Call 272-4967. 221 E. Birch Lower 30's. g8-38s-8tc

PRICE TO SELL: Nice 3 bdrm., 2 bath, brick home, 2 car garage, high efficiency, central refrig. air & heat. Concrete patio with back yard. Call for appointment. 909 Hickory, 272-5045. c8-27t-tfc

\$99 total down payment for 1987 double wide 3 Bedroom - 2 bath. Delivered to your location. 120 months 11.0% APR at \$333 per month. Call Art 806/376-5630. a8-39t-

8. Real Estate

WHITT-REID REAL ESTATE
201 Main Office 272-3611

4 Bedroom - 1 bath - 10th Street \$28,500
Need to sell badly - Make offer - 25H-25

3 Bedroom - 1 and 3/4 bath - \$28,000
On Ave. E - 25H-30

FmHA Houses - Move in - \$600.00 Approximately for those who qualify - If you earn less than \$15,000 per year - Come see us - 3 Bedroom - 1 Bath - Brick - \$30-\$35,000

We Need Listings

- We need irrigated & dry
- Acreage on pavement
- Nice 3 bedroom homes

Roy Whitt Thursie Reid
272-3058 272-5318
Certified Appraiser

8. Real Estate

\$98 monthly payment for a new 1988 double wide 3 Bedroom - 2 bath. Free delivery and set up. 13% APR at \$1,630 down payment at 240 months. Ask for Frank 806/376-8611. a8-39t-

8. Real Estate

Credit Problem? Down payment problem? I specialize in approval with easy terms! For sincere help call Collect 806-763-4051. 8-39s-tfc

8. Real Estate

116 E. Ave. C. BINGHAM & NIEMAN REALTY 272-5285 --- 272-5286
We have homes for as little as \$600.00 total move in cost, with payment scheduled according to income for qualified buyers!!!!

RICHLAND HILLS
NICE-3-2-2 Brick, Cent. A&H, built-ins, FP, fenced yard, & more.....

IMMACULATE 3-2-2 Brick, corner lot, Cent. A&H, built-ins, FP, loads of storage & closet space, sprinkler sys.!!!!

PRICE REDUCED-3-1-1 Brick, Cent. heat, Evap. air, built-ins, fenced yard.....

HIGHLAND ADD.
SPACIOUS 3-2 1/2-2 Brick Home on corner lot, Cent. A&H, built-ins, fireplace, loads of storage, 2900 plus sq. ft. of Lv. area, lots of extras, undrgrd. sprinkler sys., fenced yard. A GREAT BUY!!

JUST LISTED-NICE 3-2-2 Brick Home (2 story), on corner lot, Cent. A&H, built-ins, and much more. LET'S LOOK TODAY!!!!

2-1-1 home, wall heat, evap. air, fenced yard. \$20's.....

PARKRIDGE
IMMACULATE 3-2-2 Brick Home, Cent. A&H, built-ins, fireplace, energy efficient, nicely decorated, plus beautifully landscaped yard. \$50's!!!!

HIGH SCHOOL
PRICE REDUCED-3-2-2 Brick, Cent. A&H, built-ins, nice carpet, FP, basement!!!!\$40's.

JUST LISTED-3-2-2 home, corner lot, nice carpet, fenced yard. \$30's!!!!

3-1-1 home, corner lot, Cent. A&H, built-ins. \$30's.....

SPACIOUS 3-2 Brick, Cent. A&H, built-ins, nice den w/FP, fenced yard, storage bldg., & much more. \$70's!!!!

2-1-1 home, wall furnace heat, nice carpets. \$16,000.....

JUST LISTED-3-1 home, nice carpets, new roof, storm windows, & much more. \$20's!!!!

NICELY REMODELED 3-2-1 carport home, Cent. heat, evap. air, built-ins, utility, earthtone carpets, ceiling fans, covered patio, fenced yard & more. \$30's!!

3-2-1+2 carport home, Cent. A&H, built-ins, fireplace, fenced yard & more. \$40's!!!!

DIANNE NIEMAN, BROKER "WE APPRECIATE YOUR BUSINESS"

8. Real Estate

SMALLWOOD REAL ESTATE BROKER
232 Main 272-4838

\$130 monthly payments for 14-foot wide mobile home. Remodeled and ready for delivery. 12.77% APR at \$500 down at 60 months. Call 806/376-4612, ask for Harley. a8-39t-

NEW 3 Bedroom - 2 bath Tiffany, for only \$203 per month, fully furnished and free delivery. 240 months at 13.5% APR at \$1,628 down payment. A-1 MOBILE HOMES 806/376-5363. a8-39t-

11. For Sale Or Trade

FOR SALE like new queen size mattress, box springs, lounge chair, with ottoman. Call 272-4096. d11-39s-tfc

PIANO FOR SALE
Wanted: Responsible party to assume small monthly payments on piano. See locally. Call credit manager 1-800-447-4266. 11-39s-7tp

11. For Sale Or Trade

FOR SALE OR RENT 2 mobile home lots, call 385-5304. 111-38t-8tc

FOR SALE: Black rat-ran chairs with white ultra suede cushions. 272-3747.

FOR LEASE BY THE acre 2 - 510 Internationals, double disc-drills. Phone 272-3733. 11-32s-tfc

17. Seed & Feed

J.G. BAKER Seed cleaning in Friona offers the best in new equipment for seed cleaning. Fast service in & out. 50 cents bushel for cleaning. 50 cents treating seed wheat. Call day 247-3505 night 247-3087 service anytime. 1 block west Friona Wheat Growers. 17-37s-6tc

TURN KEY job seeding CRP acres. Also have buyers for CRP acres. Wiley - Sawyer 806-769-4427, 806-396-2070. s17-39s-6tsc

Microprocessors in automobiles control engines with a precision that minimizes fuel consumption and exhaust emissions.

8. Real Estate 8. Real Estate

Henry Realty
111 W. Ave. B. Muleshoe 272-4581

SPACIOUS-2 bedroom, 1 bath, 1-car garage, storm cellar, Good location. \$19,000.....

JUST LISTED 2 Br. - 1 bath, large utility. Nice fenced yard in Country Club Addition. Financing available.

NEAR EARTH - 3 Br., rural home. Immediate possession \$17,000.

ONE ACRE sites for home construction. 3 miles East of Muleshoe on Hwy. 3 lots remain.

FOR LEASE 3 bedroom, 2 bath, large living room, kitchen and dining. Excellent condition, near high school.

COMMERCIAL PROPERTY on Main Street, over 4,000 Sq. Ft., income producing property.

COMMERCIAL PROPERTY Excellent rental income from .4 separate offices. Lease agreements in force.

3 Br., 2 bath, spacious home outside city limits, near city on highway. 29'x40' metal building. Lot 85'x620'.

3 Br., 1 bath, completely remodeled, edge of city on highway.

VACANT LOT for Mobile home immediate possession.

COMMERCIAL PROPERTY on West American Blvd. ideal location. Building ready for occupancy.

NEW LISTING IN CONTRACT Country Club Addition appointment. \$35,000.

Kenneth R. Henry Broker
272-4581
Judy Coker Agent 965-2468

GRAIN PRICES
YELLOW CORN.....331 cwt
YELLOW FOOD CORN...381 cwt
WHITE FOOD CORN...421 cwt
MILO.....301 cwt
SOYBEANS.....466 cwt
NEW WHEAT.....217 cwt
COMMODITY CERTIFICATES 105%
Prices-September 28, 1987
Markets Courtesy of FARMERS CO-OP ELEVATORS
272-4335 Muleshoe, Texas

Too Late To Classify
TIFFIN II
HOMECOMING Sale 15% off green and gold. Fri. and Sat. you pick your own discount, up to 25% off. Shop Tiffin II. Earth 257-2223. r1-40t-1tc

Sudan New
by Evelyn Ritchie

The Young Baptist Women will be meeting at 7:00 p.m. Monday Sept. 28 at the home of Tracy Provence for a planning meeting for the upcoming year. All interested young Baptist women are invited and urged to attend this planning meeting.

Cross country, the sport that takes everything you've got, is one of the Hornettes as proud to be able to compete in. They began their schedule last Saturday at the Brownfield meet. They competed rather well and represented Sudan with pride. The Hornettes that ran were Teena Newman, Shannon Peck, Kristi Hargrove, Gayla Rasco, Kathy Powell, Ambry Donnell, Darlene Henley, Mandy Carr, Janie Valero, Olga Ruiz, and Brandi Martin.

For Your Classifieds CALL Muleshoe Journal

GEORGE NIEMAN, BROKER