

SPORTS

Football Contest

--See Page 3

FARM

Tips On Chemical Harvest-Aid

--See Page 4

Foreman Company
68
outh, Ill.

WEATHER

October 11	59	34	.00
October 12	72	35	.00
October 13	81	35	.00
October 14	85	49	.00

Muleshoe Journal 20¢

'The Community Of Opportunity - Where Water Makes the Difference'



Vol. 64, No. 42

12 Pages Today

Published Every Thursday At Muleshoe, Bailey County, Texas 79347

Thursday, October 15, 1987

1987 County Cotton Crop Expected To Be 'Good'

around
muleshoe

Next Tuesday, October 20, Texas State Senators Bill Sarpalius, Amarillo, and Chet Edwards, Dallas, will be in Muleshoe for a brief meeting.

All interested persons are encouraged to be at the Santa Fe Depot, at the Muleshoe Heritage Center, at 1 p.m.

"Cry From The Mountain" will be presented by the Community Church on Wednesday, October 21, at 7 p.m.

The film concerns a fight for survival for a father and son who ran into trouble during a kayak trip.

It is termed a voyage that changed their lives forever.

All interested persons are encouraged to attend this special movie.

Lazbuddie, who handed undefeated Jayton Jaybirds a 48-0 loss last Saturday afternoon will be taking on the Bethel Christian College this Saturday at 2 p.m. in Lazbuddie.

Amherst had cancelled a game with the Lazbuddie Longhorns, declining to play them, leaving an open date, and a homecoming shifted to Friday, October 23.

Lazbuddie handed the Jayton team their second loss in the last 46 games played by the six man football team. The Longhorns, under leadership of Coach C.W. Williams, formerly of the Three Way Eagles, are riding on a 6-0 record at this time.

Friday night, the Jennyslips will be sponsoring youth skating at the Bailey County Civic Center, 7-9 p.m. Admission will be \$1 per skater.

Cont. Page 6, Col. 2

Bus Laws
Ignored
At Schools

Muleshoe City Police Sgt. Richard Bonham has issued a warning to motorists who travel in the vicinity of the four Muleshoe schools, especially during the time the schools are getting ready to begin in the morning, and immediately after they are dismissed in the afternoon.

He said he has already issued over 30 tickets in the city limits since school began, with most of the tickets being written for violation of school bus laws.

Despite what motorists may think, it is illegal to pass a bus IN EITHER DIRECTION when a bus is stopped, with red lights flashing, loading or unloading students.

Sgt. Bonham said most of the violators have been ticketed in the areas around DeShazo and Dillman Elementary Schools.

Other violations in the school zones have included speeding and failure to stop for the stop signs. New stop signs around Dillman Elementary are, in some instances, being ignored.

The police department is conducting stringent patrols in the areas of the schools, and said the sure way to avoid receiving a citation is to obey all laws, beginning with those governing buses.



SCHOOL BOARD PRESIDENT, NEWS MEDIA CUT RIBBON--Sunday afternoon, the Muleshoe Independent School District conducted an open house at the new school administration building. To officially kick off the open house, MISD Board of Trustees President, Julie Cage, center front, and members of the news media cut the interwoven black and white taffeta ribbon, at the entrance of the beautiful new building. In the background are school officials, including the Superintendent, H. John Fuller, Assistant Superintendent Elizabeth Watson, and members of the school board.

Mules Traveling This Week;
Taking On 5-1 Whirlwinds

At presstime, it was still 'up in the air' as to who would be starting as quarterback for the Muleshoe Mules Friday night at Floydada. Last Friday, in action against the Friona Chieftains, QB Jeff Hicks received a foot injury.

He was x-rayed following the game, and it was determined that he had three broken bones in his foot. He will be out for the season. In the same game, QB Johnny Garcia, who was the starting quarterback for the Mules, received a concussion. This came on top of a pre-season knee injury that had held him to limited play.

Among several players working out for possible quarterback

County Judge

Talks To Rotary
On Amendments

Seven guests attended the Tuesday meeting of the Muleshoe Rotary Club, with guest speaker, Rotarian Bailey County Judge Gordon H. Green.

Guests at the meeting included Ken Box, Sam Wrinkle, Pete Perez, Bill Shannon, Howard Watson and Cleta Williams.

Judge Green spoke on the upcoming constitutional amendments, with some 25 amendments and two referendums to be shown on the November 3 ballot.

He explained that people regularly overlook the Texas State Constitution, which is not modeled after the U.S. Constitution.

The judge said the Texas constitution includes different things to the U.S. Constitution, for instance, Equal Rights in Texas has been part of the state constitution since 1972.

Judge Green then briefly discussed the impact of seven of the 25 amendments, and their possible impact on the state's economy.

All the amendments concerned future general obligation bonds, some for as much as \$400 to \$500 million dollars.

Rotary President Tommy Gunstream told the Rotarians that he had declined an offer for the Rotary to sponsor another movie show in Muleshoe.

action was Ronnie Perez, who completed a touchdown pass after the two regular QB's were injured.

Last year, the Floydada

Women Win
This Week
In Football

Well, it finally happened! For the second week in a row, The Journal has received a football contest entry that was filled in, the tiebreaker scores filled in, and no name or address. The tragedy is -- the entry would have either been a second or third place for this week.

Please, remember to fill in the name and address blank on your entry, so this would not occur. Last week, the entry would not have been a winner, but this week's entry, which is being discarded, would have been a winner.

This week, the women came through, and all three winners were female entrants. Ruth Malone was the only contestant to miss only four games, so takes the first prize of \$10 along with 10 points.

Second place winner Marilyn Engelking, and the discarded entry each missed five games -- so Marilyn sits in second place all by herself. She was the winner of \$7.50 and six points.

A whole 'flock of folks' missed six games, but only Jo Wood was super close to the tiebreaker scores. She was only 20 points away on the double tiebreaker, and all other contestants were 30 or more points off. Mrs. Wood is the weekly winner of \$5 and four points.

In the tiebreakers, TCU downed Rice, 30-16; and Arkansas defeated Texas Tech, 31-0.

Winners are shown in brackets for the other games, including: Pacific/Long Beach State; Dimmitt / (Littlefield); Southern California / (Oregon); (Floydada)/Tulia; (Stanford) / Washington State; (Oregon State)/Akron; (Wyoming)/Brigham Young; (Oklahoma State) /Colorado; (Oklahoma)/Texas;

Cont. Page 6, Col. 5

Whirlwinds came to Muleshoe, and for the second week in a row, the Mules played football in a steady rain. The water-logged Mules lost to Friona by a score of 28-7, losing out on the second district game for the season.

Floydada sits in second place in district ratings, with a season record of 5-1 and are 1-0 in district action. Last Friday, they defeated Tulia by 20-12, and Tulia evened up with Muleshoe, with a 4-2 season record.

Tied for first place in the district are Friona, listed first, followed by Littlefield. Each has a season record of 6-0; and will be playing in Friona Friday night.

Thus far in the season, the Mules are looking like this:

With six of ten games behind the Muleshoe Mules now, they have accumulated 154 points

Cont. Page 6, Col. 1

Report Cards
To Be Picked
Up By Parents

Despite some potential confusion, all students on all four campuses will receive their report cards this first six weeks by their parents picking them up at the school they attend.

AFTER the first six weeks, report cards from Muleshoe High School will be mailed to the parents for the remainder of the school year, explained H. John Fuller, superintendent.

The superintendent said parents could call at the child/children's school or schools on Wednesday afternoon or Thursday afternoon to pick up the report cards. He said this will be an 'open house' where parents can visit with teachers and determine their child/children's progress.

Teachers will also be at the schools from 6-8 p.m. today, Thursday, to accommodate parents who work.

Superintendent Fuller said the hours for Wednesday were from 1:30-5 p.m. and the same hours for Thursday, except parents may visit the schools 6-8 p.m.

Freeze Holds Off; Allows
Extended Cotton Maturity

Following a tour of Bailey County crops last week, especially the cotton crops, Bailey County Extension Agent Spencer Tanksley and Dr. James A. Supak have painted a more optimistic picture.

Tanksley said they toured cotton test plots conducted with farmers in different areas of the county. He said the duo looked at probably 25 different cotton varieties planted in the plots, trying to determine the percentage of open bolls and maturity of the overall crop.

Those varieties classes as 'very early' and 'early' had a percentage of open bolls of 30-60 percent. With the varieties of 'medium' to 'medium late' the percentage of open bolls ranged from 0-15 percent open.

Dr. Supak, an Extension Agronomist-Cotton, from Lubbock, continues to believe that the counties on the western side of the High Plains, including Bailey County, does have some of the earliest and best cotton on the Plains.

Tanksley says the reason for this cotton being better is because this area did not have a lack of early moisture, or rainfall delay in the spring as southern counties experienced.

"Out cotton received timely moisture in mid-May and got off to a good start," added Tanksley. "Another reason the cotton is better is that we received very little adverse weather, which caused little to none replanting to cotton."

"We won't forget bad hailstorms in the Circleback area in both late June and early July, where most producers lost their cotton."

Tanksley continued, "A word of caution from Dr. Supak is issued to all growers, in that they should not jump in too early and apply harvest-aid chemicals."

"I would like to refer our readers to an article on harvest-aid chemicals in this week's Muleshoe Journal. We're real concerned about mis-using harvest-aid chemicals that will cause yield loss."

"We have been very concerned about the quantity and quality of our crop," added Tanksley. "Our best estimate is that cotton should produce exceptionally good yields, however, the micronaire (mike) or fiber size should be low."

Remember that Bailey County micronaire averages 3.2, with premium being 3.5 to 5.0.

"We believe that staple length and staple strength will be above average this year," he continued.

"Based on the quality of cotton we produce, growers will receive premium prices. For the cotton that does not meet high quality standards (micronaire, strength, and length) prices will be lower on a per pound basis," added the county agent.

"The out looks good, but it cannot be said, we still don't know how much we will be able to get when the 'green card' gets back."

Tanksley explained how the 'heat units' have affected the cotton. "Although we have low morning temperatures during the last part of September and first of August, high temperatures have been very favorable," said Tanksley. "I feel that has been very favorable and pulled us through. The heat units will be at least average. We continue to need weather that is warm to hot as we possibly can get to make the cotton crop."

"We suspect the cotton crop will deplete soil moisture and that winter moisture in the terms of snow, or spring rains, as very necessary for next year's crop," he said. "We need two weeks more maturing time to get an average harvest, and that would put the date right at the average freeze time for this area."

As far as other crops are concerned, Tanksley said the corn harvest is in full swing in this area, and has reached probably the 80 percent completion in the fields.

Good yields have been reported, not 'bumper', but very good yields.

The county agent said we will be noticing more grain sorghum beginning to come in within the 10 days, as the crop is maturing rapidly, especially on the dryland acres in the county.

He predicts that many fields will be cutting above average yields.

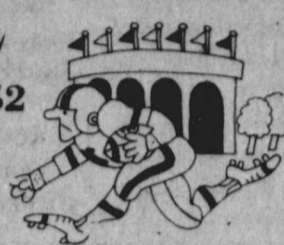
Tanksley also said we are continuing to see a lot of vegetable activity in the area and pumpkins are being moved out at this time.

Harvest in continuing for

Cont. Page 6, Col. 6



LAZBUDDIE ACCIDENT CLAIMS LIFE--Just before 8 p.m. Monday evening, a pickup driven by a 19-year old woman, slammed into the back of a large truck northwest of Lazbuddie on a country dirt road. Around midnight, after being taken to Clovis High Plains Hospital by the Bailey County Ambulance Service, the woman lost her unborn child.

Wilson Drilling Co.
 Water Well Drilling
 and Service
 Gould Pumps
 Stanley Wilson Dee Puckett
 TX License 02628W
 NM License WD1152

 HAWAII vs UTAH

Ben Franklin
 Better quality for less
Hersheys Milk
Chocolate
 With Almonds \$1.99
 12 OZ. Snack Size Bar
 Mon.-Sat. 8 to 8
 Sun. 12 to 5
 2104 W. Amer. Blvd.
 BOSTON COLLEGE vs RUTGERS

Ask Us About Family Insurance Review!
Call David Tipps, Agency Mgr. or Rickey Barrett
 Free- No Obligation Available To Anyone
Bailey County Farm Bureau
 • LIFE • AUTO • HOME • CROP
 1612 W. American Blvd.
 272-4567
 NORTHERN ILLINOIS vs SW MISSOURI

Muffler
 Custom Exhaust Specialists
 201 N 1st
 Muleshoe
 272-5333
 LITTLEFIELD at FRIONA

Higginbotham-Bartlett Co
 SKIL TWIST
 CORDLESS SCREWDRIVER
 • 1/4" hex collet
 • Unique power screwdriver
 • Drives and removes a wide range of screws
 • Convenient-always ready to use
 • Phillip/slotted bit included
 • Stores in handy recharging stand
 MODEL 2105
 215 Main 1777
 272-3351
 CENTRAL MICHIGAN vs TULSA

FOOTBALL CONTEST
 Grand Prize: \$50⁰⁰
 Weekly Prizes
 1st \$10⁰⁰ 2nd \$7⁵⁰ 3rd \$5⁰⁰

Henry Insurance Agency, Inc.
 Kenneth R. Henry
 CERTIFIED INSURANCE COUNSELOR
 REAL ESTATE BROKER
 Ronnie Holt AGENT
 Judy Coker AGENT
 111 W. Ave. B
 272-4581
 PENN STATE vs SYRACUSE

Viola's Restaurant
 For The Best Mexican Food
 Come To Viola's!!
 Open 11am. - 9:30
 Closed On Tuesday
 2002 W Amer. Blvd.
 272-3838
 MULESHOE at FLOYDADA

CONTEST RULES:
 1. IN EACH ADVERTISEMENT YOU WILL FIND A GAME LISTED. CIRCLE THE TEAM YOU THINK WILL WIN. The person's score that most closely matches the TIE BREAKER SCORE will be declared the winner. If several persons are still tied the prize money will be split.
 2. The contestant must be 12 years of age or older.
 3. Only one entry per person may be made for any one contest.
 4. Bring your entry blank by The Journal office by 5:00 p.m. Friday, or, if mailed, the entry must be postmarked no later than 5:00 p.m. Friday. Write "FOOTBALL CONTEST" on the mailed entry, and mail to P.O. Box 449, Muleshoe, Texas 79347.
 5. Circle the winners and WRITE IN THE SCORE of the tiebreaker game. This score will be used to break weekly as well as determine the grand prize winner. Decision of The Journal's scoring judges will be final.
 6. Check the team you think will win; 10 points for first place, 6 points for second place and 4 points for third place.
 7. To count for grand prize, entries must be on official blank printed in the paper.

Leal's El Nuevo Restaurant
 Celebrating 30 Years of Business in Muleshoe.
 Closed Mondays
 1542 W. Amer. Blvd.
 272-3294
 MINNESOTA vs INDIANA

Shipman's Body Shop
 Auto Painting
 FREE ESTIMATES
 Tractor Glass & Windshields
 "We Appreciate Your Business"
 410 N 1st 272-4408
 TOLEDO vs BOWLING GREEN

SUPPORT THE MULES

Official Entry Blank

name _____
 address _____
 phone _____

TIEBREAKERS

T.C.U. VS NORTH TEXAS
 TEXAS VS ARKANSAS

Bob Stovall Printing
 No Job Too Large
 Or Too Small
 Visit Bob Stovall For All Your Commercial Printing
 221 E. Ave. B 272-3373
 SOUTH CAROLINA vs VIRGINIA

WES-TEX FEED YARDS, INC.
 Custom Cattle Feeding
 272-7555
 Muleshoe, Texas 79347
 NORTH CAROLINA vs NORTH CAROLINA STATE

1st Weekly Winners: 3rd
Ruth Malone 2nd **Jo Wood**
 Marilyn Engelking

Western Drug Co.
 "For All Your Prescription Needs Visit The Friendly People At Western Drug"
 144 Main 272-3106
 NEVADA-LAS VEGAS vs FULLERTON STATE

Farmers Co-Op Elevators
 3 Locations To Serve You
 Clays Corner
 Enochs
 Muleshoe 272-4335
 TEXAS A&M vs BAYLOR

★ District 2-AAA

Football Schedule

Oct. 16	★ Muleshoe vs Floydada	7:30	There
Oct. 23	★ Muleshoe vs Littlefield	7:30	There
Oct. 30	★ Muleshoe vs Tulia	7:30	Here
NOV. 9	★ Muleshoe vs Dimmitt	7:30	There

Lenau Lumber Company
 For all your fix-up, paint-up needs remember Lenau Lumber. 202 E. Ash
 272-4222
 Our Specialty Is Quality Building Materials
 SOUTHERN CALIFORNIA vs WASHINGTON

Decorator's Nursery and Floral Inc.
 A Complete Floral Service
 616 S. 1st 272-4340
 ILLINOIS vs WISCONSIN

Irrigation Pumps & Power, Inc.

 Pump Sales & Service
 Pivot Parts & Service
 Pump Efficiency Testing
 Hwy 70 Earth 257-3855
 W. Hwy 84 Muleshoe 272-4483
 TENNESSEE vs ALABAMA

Muleshoe Fertilizer SUPPORTS
 The Muleshoe Mules
 Kearney, Preston & Jason Scoggin
 Hwy 70 Office 272-3443
 Home 272-4846
 Mobile 272-3001
 MIAMI, OH vs OHIO U.

BAMERT TRUSTWORTHY
 Rt. 3 Box 1120
 272-4787 or 272-3539
 TULIA at DIMMITT

Baby Shower Honors Mrs. Connie James, Son

The home of Darla Poyner was the scene of a baby shower Saturday, Oct. 10 honoring Connie James and son, William Myles James.

Mrs. James, Myles, and grandmothers, Laverne James and Della Puckett greeted the guests as they arrived between the hours of 10 and 11:30 a.m. Diane Saylor registered the guests.

Pam Atwood and Lisa Whalin served orange juice, sausage balls, blueberry and bran muffins and coffee from a brass coffee server and crystal pitcher and dishes.

The serving table was covered with a white lace table cloth and accented with a potty chair filled with fresh ivy and balloons and elephants. The honoree's corsage consisted of silk daisies with a baby spoon in the center.

Special guests included William Myles' grandmothers, Laverne James and Della Puckett; great grandmother, Mrs. Audrey Dudley; and aunts, Tonya Pool, Glenda Copley, Dianne James, and Melissa Puckett.

The hostesses gifts were a stroller and high chair. Host-

esses for the occasion included: Pam Atwood, Lisa Whalin, Diane Saylor, Linda Pearson, Hattie Kinnard, Debra Noble, Kathy Embry, Lela Ann Smith, Kristi Campbell, Darla Poyner, LaVon Hunt and Susan Wilson.

Lazbuddie Young Homemakers

Lazbuddie Young Homemakers held their monthly meeting October 1 in the homemaking room of the school. Mrs. Nelda Hunt of Muleshoe was the special guest.

Mrs. Hunt gave a demonstration on color analysis using Beauty Control Cosmetics and a live model. Mrs. Hunt determined the model's personal colors and then proceeded to demonstrate the use of makeup and clothing using these colors.

During the business meeting the Homemakers voted to save Campbell Soup labels. The Campbell Soup program enables groups to purchase playground equipment and other items for their organizations, with these labels.

The Homemakers second shipment of pecans arrived, and can be purchased for \$3.50 a pound or \$42 a case. If you wish to purchase pecans you are asked to call Mandi Seaton at 965-2430 or Lana Copp at 965-2806.

Also discussed was the Halloween Carnival on October 24. The Homemakers agreed to continue the contest for grade school again this year. They will also be selling room tickets and balloons.

The costume contest will start at 6 p.m. and prizes will be given in the following categories: Most Original, Cutest, and Scariest. Divisions will be infant - 3 years; 4 years - kindergarten; 1st - 2 grade; and 3 - 5 grades.

The Homemakers welcomed three new members this year, Sarah Black, Lorinda Bodiford, and Jo Donna Terry. Sarah Black won the door prize.

Cookies and tea were served and the meeting concluded by drawing for secret pals.

Those present included: Lorinda Bodiford, Sarah Black, Debbie Magby, Lana Copp, Jo Ann McDonald, Mandi Seaton, Pat Randolph, Reta Mimms and Barbara Lust, advisor.

The next meeting will be on November 5.

MICROWAVE COOKING

By Linda Attaway

Covering food in microwave ovens can be an important factor in cooking. Covers in microwave cooking serve much the same function as in conventional cooking.

A cover serves to hold in steam and moisturize food, thereby tenderizing, shortening cooking time.

Foods covered during conventional cooking should be covered while microwaving.

Caution is in order, however, because steam may not be as apparent in a microwave oven as on a conventional range, but it is still steam and can burn.

Covers for microwave cooking may be glass, wax paper, plastic wrap, or paper towels.



MRS. CONNIE JAMES AND WILLIAM MYLES

Miss Texas U. S. Teen Pageant Set

Applications are now being accepted from girls 13 through 19 for the 1987, Miss Texas U.S. Teen Pageant.

The Texas winner will receive \$300 in cash, partial four year college scholarship, all expense paid trip to the national pageant including airfare, watch, diamond pendant, color portrait, crown, banner, trophy, and a host of gifts and products.

In addition to the state title, awards will be given in the leadership, scholarship, friendship, and photogenic categories.

The Texas pageant will be held in Dallas at the airport

Muleshoe Singing Group

The Muleshoe Singers met Saturday, Oct. 10 at 7 p.m. in the fellowship hall of the Trinity Baptist Church with 20 present. Those visiting were Mr. and Mrs. Pat Childers, Nadine Luce, Lucille Teal and Buford Hubbs, all from Portales, N.M.

Ealand Upchurch played his guitar and sang a song. Cicil Rundell and Janie Moraw sang a duet.

It was reported that Clara Coffman, a member of the singing group was carried by her daughter, Maudie R. and W. L. Speck, to the emergency room at Methodist Hospital Sunday morning. She was met there by Dr. King and Dr. John Taylor and following examination was put in a room for observation. Visiting her in the afternoon was a brother Clark Harvey and wife, Carol of Lubbock, a granddaughter, Rai Lyn Rundell, a student from Texas Tech, and a granddaughter, Sandra Puckett and husband, Dusty from Plainview.

Monday she was visited by another brother, Rudolph Harvey. She was dismissed at 5:30 to return home.

J.C. Shanks gave the benediction.

Shop Muleshoe First!

In Fashion

Raincoats in lightweight nylon come both lined and unlined. A good buy is one with a zip-in lining which will be more comfortable in seasonal weather changes.

An attractive garment designed for the half-size figure is the tunic dress. The three-quarter length tunic over a below-the-knee skirt usually hangs freely. This one, however, offers a matching scarf and belt that can add elegance to this outfit.

Knitted fabrics in wool jersey continue to be popular in the fall fashion season.

Jeans for casual wear continue to be the top priority. This year denim is being combined with corduroy.

Golden Glams

He who throws away a friend is as bad as he who throws away his life. Sophocles

A faithful friend is a strong defense: and he that hath found such an one hath found a treasure. Ecclesiasticus 6:14.

A brother may not be a friend, but a friend will always be a brother. Benjamin Franklin.

TO COMPLETE A LOOK ACCESSORIZE



NECK FAN

Fold opened square in accordion pleats, 4 in. wide each. Place around the neck from back to front with ends even length. Keeping ends pleated, tie a square knot. Open ends out to sides of knot forming a fan-like bow. (36 in. square scarf)

Lookin' Good

206 Main

272-5052

Country Basket

SALE \$1.89

Crisp, tender, chicken-fried fingers of 100% beef, golden fries, Texas toast and creamy country gravy. That's the one and only Dairy Queen Country Basket. So come on by for the Texas taste that's just this side of heaven — now at a heavenly sale price!

Monday, October 19 thru
Sunday, November 1
at participating stores.

**Dairy
Queen**

"better than ever."



© Copyright 1985 by D. Q. Co. All Rights Reserved. TM Trademarks of the Int. D. Q. Council. * Registered Trademark Am. D. Q. Corp.

You Are Invited To
OUR SECOND ANNIVERSARY
SOUTH PLAINS RETIREMENT CENTER, INC.
Amherst, Texas

Saturday, October 17, 1987 6 - 8 p.m.

Open House, Refreshments, and Entertainment With

THE ANCHOR BROTHERS

SPECIAL: NO DEPOSIT ON ANY APARTMENT RENTED THAT DAY!

Journal Files

60 Years Ago

1927

WILL JEFFERSON'S BIRTHDAY BE NEW NATIONAL HOLIDAY

If a proposal which is expected to be made before the next session of congress is carried out, April 13 may become a new national holiday. For that is the day upon which a great Virginian was born—Thomas Jefferson, author of the Declaration of Independence and third President of the United States.

This proposal has special interest at this time because of several new Jefferson letters which have recently come to light.

50 Years Ago

1937

SCHOOL OUT FOR PICKING

Bula and Watson districts last Friday dismissed schools for cotton picking, a months vacation from studies for work in the fields being scheduled.

40 Years Ago

1947

ADDITIONS NOW EXCEED ORIGINAL TOWNSITE AREA

Additions that have been made to the original town of Muleshoe now add up more blocks than there were in the

Sandhills Arts

And Crafts

Show Scheduled

The Olton chapter of Young Homemakers are finalizing plans for their third annual Sandhills Arts and Crafts show. Artists and craftsmen will be showing their wares, Saturday, Nov. 28 from 9 a.m. to 5 p.m. at the Olton School cafeteria which is located at 7th and Ave G in Olton.

Craft booths will be filled with an array of items which will include wooden toys, oil paintings, ceramics, dolls, jewelry, toll painting, crochet, metal crafts, stuffed baskets, and a variety of clothing.

Hand-made doll clothes, decorated sweatshirts, wreaths, clocks and much, much more, will be featured in the booths. "This will be a good time to do some Christmas shopping and selling, as there will be gift ideas for everyone on your list" said Jeannie Purnell, publicity chairman for the Olton Young Homemakers.

An admission charge of one dollar will entitle each person who attends to a chance at the door prizes which will be awarded throughout the day. This money will be used by the Olton Chapter of Young Homemakers to benefit charities in the Olton community.

Homemade items will be available in the concession stand, including donuts, grilled hamburgers, frito pies and desserts. These will be available throughout the day.

"A limited number of booths are still available at this time and anyone interested in renting a booth may contact Kayla Parkey, HC 2, Box 48, Littlefield, Tx. 79339 (806) 262-4021 or Jeannie Purnell, Box 238, Olton, Tx 79064 (806) 285-2727."

The Olton Young Homemakers will welcome everyone who wishes to visit the Sandhills Arts and Crafts Show on Saturday, Nov. 28.

old townsite, a survey of additions recently brought into the city limits, shows.

In the original townsite there were 48 blocks. Some 59 blocks have been added, mostly in the last three years. There are Warren Additions Nos. 1, 2, and 3; Golf Course Addition; Pool Addition; Hillcrest Additions Nos. 1 and 2, North Side Addition.

There are now two more additions being prepared for use as residence acres, but these are not yet formally included in the city.

30 Years Ago

1957

ATTEND RUIDOSO ASPENCADE FETE

Mr. and Mrs. John Fried and children, Betty and Peggy, attended the annual "Aspenade" held at Ruidoso, N. M. last weekend. They accompanied the Cochran County Sheriff's Posse, of which they are members. The Frieds' rode in the big parade Saturday.

Sunday they attended worship services, a feature of the "Aspenade" observance. They said it was real cold at Ruidoso, with plenty of snow on Old Baldy's summit.

About twenty mounted units took part in the affair.

20 Years Ago

1967

Grocery specials advertised this week in the Journal included: Ranch Style beans 6 No. 300 cans \$1; No. 303 can applesauce 2 for 25 cents; 6 No. 303 cans sweet peas \$1; coffee 58 cents pound; quart jar salad dressing 25 cents; sugar 10 pound bag 96 cents; giant box Cheer 68 cents; ground chuck 59 cents pound; pork sausage 49 cents pound; whole or half ham \$1.29 pound; picnic hams 39 cents pound; fryers 29 cents pound; frozen fish fillets 39 cents pound; 2 pound package bacon, thick or thin slices, \$1.59 and turkeys 35 cents pound.

10 Years Ago

1977

4-H AWARDS BANQUET HELD TUESDAY NIGHT

A surprised duo found themselves named Gold Star Boy and Girl of the County 4-H Clubs in Bailey County. The awards were made during the annual 4-H awards banquet Tuesday night in the fellowship hall of First United Methodist Church in Muleshoe.

This year's Gold Star Boy is Curtis Hunt, and to her surprise, Gold Star Girl is his sister, Sheila. They are the children of Mr. and Mrs. Robert Hunt.

Who Knows?

1. Where is the National Football Hall of Fame?
2. Where is the Mt. Pelee volcano?
3. Identify sphygmomanometer.
4. What are trade winds?
5. How long is one fathom?

Answers to Who Knows

1. On the campus of Rutgers University.
2. On the French Caribbean island of Martinique.
3. Instrument for measuring blood pressure.
4. A part of the system of winds that blow toward the equator.
5. Six feet.



MARRIAGE ANNOUNCED—Ms. Betty Campbell of Kent, WA, formerly of Muleshoe, wishes to announce the marriage of her daughter, Britta Kay O'Tay to David Michael Kuhn, son of Mr. and Mrs. William Kuhn of Seattle, WA. Vows were exchanged at 7:30 p.m. Friday, Aug. 28 in the Church of Christ at Kent. Richard Tucker, Minister, read the single ring vows. A reception in honor of the couple was held in the home of the bride's cousins, Mr. and Mrs. Warren Jones with approximately 100 friends and relatives in attendance. Following a brief honeymoon in Canada and various points of interest in Washington, the couple will make their home in Kent where the groom is employed by Better Home Deliveries. The bride is the granddaughter of Gladys Pierce of Kent, formerly of Muleshoe, and the late S.H. Pierce.

Imitation Cheeses Common

In Frozen Meat Pizza

The picture on the front of the frozen pizza package may not tell you what you're getting, says a Texas A&M University Agricultural Extension Service nutritionist.

According to Dr. Alice Hunt, almost three-fourths of frozen pizzas with meat contain imitation cheese.

"Under current U.S. Department of Agriculture guidelines, frozen meat pizzas may contain up to 90 percent imitation cheese without having to be labeled as such," she says.

"As long as the pizza with

imitation cheese tastes good, many consumers may not mind the substitution," Hunt notes.

"However, for people who are trying to reduce their sodium intake, pizza with imitation cheese may not be the best choice," she adds.

The nutritionist explains that imitation cheeses are usually made from milk protein with vegetable fat or soybean oil, and generally contain twice as much sodium as real cheeses.

When it comes to frozen cheese pizza without meat, consumers can easily tell whether they are getting real or imitation cheese because it must be stated on the front label, says Hunt.

The difference in labeling rules results from the fact that different federal agencies regulate pizza content. The Food and Drug Administration regulates non-meat pizzas, and requires front labeling for imitation cheese.

The USDA regulates meat pizzas and does not require the front labeling.

"The only way for consumers to determine whether artificial cheese is used in a frozen meat pizza is to find and read the ingredient listing on the package," remarks the nutritionist.

Hunt notes that the National Milk Producers Federation is now lobbying Congress to pass legislation requiring front-of-package labeling for imitation cheese.

This is the time of year to check your fire insurance.

Life's hardest task: living each day by the Golden Rule.

Latest Arrivals



Haley Breanne Henry

Mr. and Mrs. Mike Henry are the proud parents of a daughter born at 11:46 a.m. Friday, Oct. 9 in the Methodist Hospital at Lubbock.

The young lady weighed seven pounds and five ounces and was 20 inches long. She has been named Haley Breanne. She has an older brother, Blake, three years of age.

Grandparents are Mr. and Mrs. Gary Dale of Muleshoe and Marcia Henry of Lubbock.

Great Grandparents are L.R. Hall of Muleshoe, Dorothea Dale of Abernathy, Mr. and Mrs. Clyde Henry of Canyon, and Mrs. Selma Smith of Granite Shoals, Tx.

Myths About Mental Health And Aging

Old age isn't a time of mental illness. Yet, if you believe many of the common myths about aging, it would certainly appear to be so.

"Accepting a stereotype of generally poor mental health among the elderly often causes us to deal ineffectively with elderly parents and family members we care about," says Dr. Judith Warren, a gerontology specialist.

She says one of the greatest myths is that the incidence of serious mental illness increases with age.

"It's true that if you count the number of adults who are

mentally ill and grow old, the rates of mental disorders will rise steadily and peak in the oldest age group," notes Warren. "However, when the one-year rates of new episodes of mental illness are counted, the rates are lowest after age 65."

In other words, a mentally healthy adult is likely to be a mentally healthy elder. While the older adult may have to cope with more life stresses than at earlier ages, the aging process itself does not lead to serious mental illness, she emphasizes.

"Many people also think that confusion and memory loss in the elderly must be due to inevitable and irreversible brain disease," says Warren, a specialist with the home economics program of the Texas A&M University Agricultural Extension Service.

"While it's true that confusion is a symptom of Alzheimer's disease, stroke and brain tumors, they can also result from less serious, treatable conditions."

According to the specialist, acute reactions to fever, medication interactions, high blood pressure or anemia can produce confusion which may be reversed with treatment.

"Assuming that poor mental health is a natural part of old age, means family members may not seek professional help when it could greatly contribute to the quality of life for both the elder and the rest of the family," cautions Warren.

Good News

The latest measurement—a massive government survey—found that Americans are continuing to kick the tobacco habit. As of last year, only 26.5 percent of the population was hooked on cigarettes.

This is about one in four and shows what the educational and health campaign against tobacco addiction has accomplished in 22 years. It was in 1964 that the Surgeon General broke a controversial silence and flatly told fellow Americans that tobacco annually kills hundreds of thousands prematurely.

Males have done a better job of kicking the habit than females. In 1964, 53 percent of American males smoked cigarettes, as compared to 32 percent of U.S. females.

In 1986 only 29.5 percent of U.S. males smoked, less than one in three. The female percentage had dropped from 32 percent to 23.8 percent, or less than one in four. The female rate might have dropped faster but cigarette advertisers have targeted females in recent years in an effort to entice them into addiction.

Whatever the reasons for this improvement in health care, the latest survey of the National Center for Disease Control is good news, life-saving news for thousands of Americans.

Muleshoe Journal USPS 367-820
Established February 23, 1924. Published by Muleshoe Publishing Co., Inc. Every Thursday at 304 W. Second, Box 449, Muleshoe, Texas 79347. Second Class postage paid at Muleshoe, Texas 79347.

MEMBER 1987
TEXAS PRESS ASSOCIATION

Member NATIONAL NEWSPAPER ASSOCIATION
Member PANHANDLE PRESS ASSN.
Member WEST TEXAS PRESS ASSOCIATION

L.B. Hall President & Publisher
Sammye Hall-Vice President & Controller
Cleta Williams-News
Eveline Harris-Society
Dorsett Busch-Advertising
Lillie Nino-Bookkeeping

SUBSCRIPTIONS
Muleshoe Journal and Bailey County Journal
Bailey and surrounding counties
Muleshoe Journal and Bailey County Journal
Elsewhere in Texas \$14.75
Muleshoe Journal and Bailey County Journal
Outside of Texas \$16.50
Yearly by Carrier \$12.50
Advertising rate card on application

"Advertisers should check their ad the first day of insertion. The Journal will not be liable for failure to publish an ad or for a typographical error or errors in publication except to the extent of the cost of the ad for the first day insertion. Adjustment for errors will be limited to the cost of that portion of the ad where the error occurred."

Don't wait for 2nd best. We Do **QUALITY WORK & GUARANTEE IT.**

We save \$50 deduction on all windshields at

Williams Body Shop

1111 East 9th Littlefield, Texas

In business for 35 years. Give Us A Call 385-4577.

The family of Jerry Helton wishes to express their thanks and appreciation to those who remembered him in his illness and death with your prayers, calls, visits, cards and flowers. We would especially like to express our thanks to Dr. Bruce Purdy and Ellis Funeral Home. We appreciate every expression of love and concern and will treasure these memories.

Laura, Justin, Brad,
and Jolly Helton

Attend the 13th Annual Running Water Arts and Crafts Festival

October 16-18, 1987

Hale County Agricultural Center Plainview, Texas

Friday 12:00 p.m. to 8:00 p.m.
Saturday 10:00 a.m. to 8:00 p.m.
Sunday 12:00 p.m. to 5:00 p.m.

"Buy Something Original This Year"

Plainview Convention and Tourism Committee

Spartan is here

8:00 a.m. To 5:00 p.m. Five Days Per Week Just For You.

Medicaid Patients Please Give a 24 hour Advance Notice

Local Transportation Every Monday

1. To provide access for all citizens within the eight-county area served by South Plains Community Action Association to public places where services or goods are provided for the general public. This means that access will be provided by SPARTAN from the passengers residence to post offices, shopping centers, doctor's offices, job sites, social service offices, and any other location which is considered a public place.
2. To provide transportation for the transportation disadvantaged. In this group may be considered handicapped persons, elderly persons unable to drive, persons with a temporary disability which had deprived them from the ability to use their own vehicle, members of a one vehicle household in which the breadwinner must use the vehicle to earn a living or to go to a place where he can earn a living therefore making the rest of the household transportation disadvantaged, members of a family in which the driver has lost the privilege to drive because of legal or financial circumstances.
3. To contribute to energy conservation by combining passengers into one trip where otherwise each passenger would have to use other autos to make the same trip, such as pooling to work sites, pooling to medical clinics, family planning clinics, pooling students traveling to higher education institutions.
4. We provide Transportation to all centers for RHI, Family Planning, and Medical Transportation.

Toll Free
1-800-462-8747

804 W. American Blvd.
272-5130

Muleshoe Center Workers
Yolanda Bara
Janie Garcia

Mules...

Cont. from Page 1
this season, while holding their opponents to only 52 points. This includes the two losses by the Mules, to Boys Ranch, 7-13; and to Friona, 17-27, last Friday night.

At this point in the season, the Mules have made 261 rushes for 1313 yards, an average of 5.0 yards per game; while holding their opponents to 225 rushes for 487 yards, or 2.2 yards per game.

They have completed 29-97 pass attempts for 373 yards, while their opponents have completed 25-82 attempts for 285 yards. The Mules have an average of 29.9 completion for 12.9 yards per attempt; and their opponents have a 30.5 percent completion ratio for an average of 11.4 yards per try.

The Mules hold a slight edge in punting averages, with 24 punts for 733 yards, an average of 30.5 yards; and their opponents have 38-1149 yards for an average of 30.2 yards per punt.

Shown are 83 first downs for the Mules; 63 rushing, 15 passing and five through penalties. Their opponents have a total of 52 first downs; 37 rushing; nine passing and six through penalties.

Penalties shown are 42 for the Mules for 455 yards; and eight fumbles lost; and their opponents show 32 penalties for 286 yards and 10 fumbles lost.

The Mules have made 21 touchdowns; 20 extra points kicking; one extra point by rushing and three safeties.

Rushing yardages show Michael Dunham leading with 490 yards in 88 carries; Armando Del Toro has carried 63 times for 342 yards; Daniel Olivas has 265 yards in 42 carries; Shannon Simnacher has carried 21 times for 100 yards; Jerry Mendoza has 10 carries for 59 yards; Jeff Hicks shows 26 carries for 27 yards; Timmy Shipman, six carries for 18 yards; Johnny Garcia, four carries for 11 yards and Ronnie Perez, one carry for 0 yards gained.

Jeff Hicks has completed 21 of 68 pass attempts for 288 yards, five interceptions and two TDs; Johnny Garcia has had five completions for 21 yards and four interceptions; and Ronnie Perez has three of eight passing attempts, and one TD.

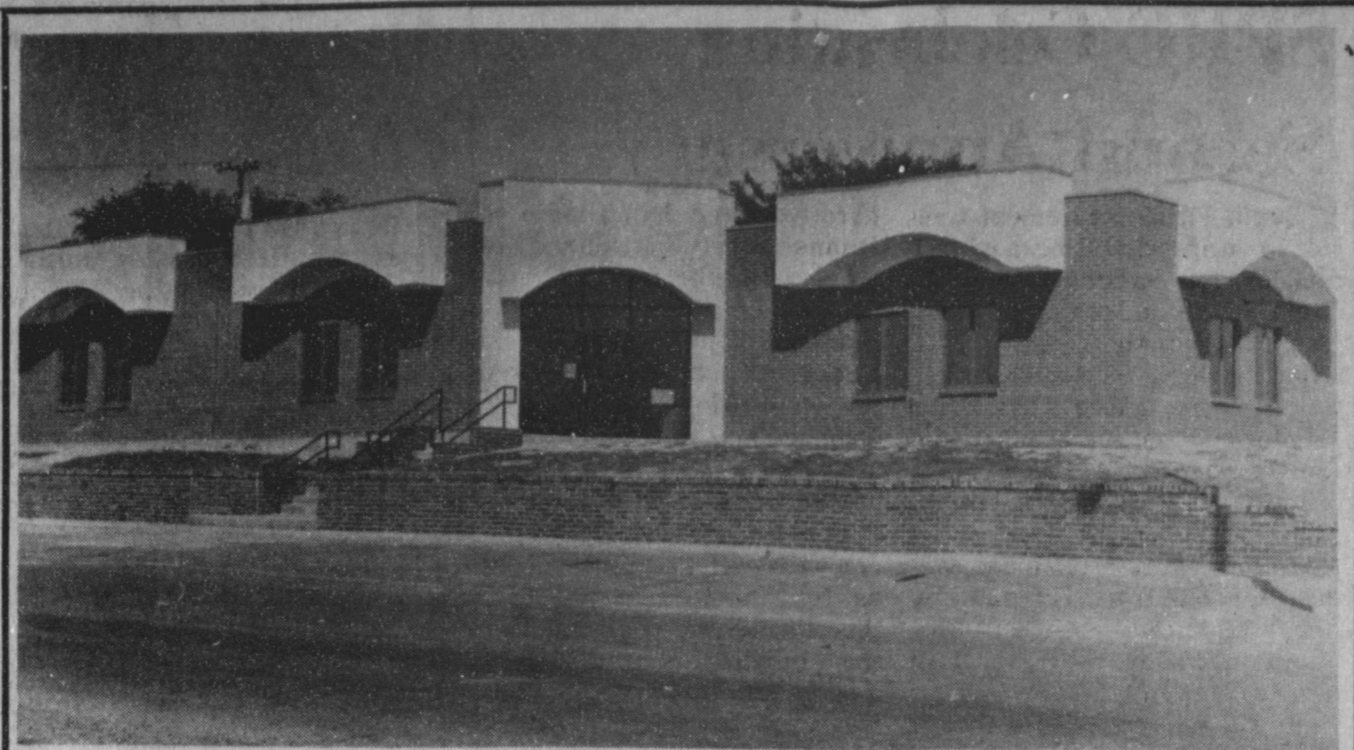
Daniel Olivas has 11 aerial receptions for 126 yards and one TD; Estevan Sadeval has five receptions for 83 yards; Jerry Mendoza, three for 30 yards; Sergio Gonzales, three for 41 yards and one touchdown; Michael Dunham, three receptions for 40 yards and one touchdown; Armando Del Toro, two for 13 yards; Timmy Shipman, two for 18 yards; Ramon Garcia, two for 18 yards; Miguel Sanchez, one for three yards.

Ronnie Perez has 23 punts for 695 yards and Alex Bachicha has one punt for 38 yards.

This Friday night, the Muleshoe Friday need and deserve your support when they travel to Floydada to take on the Whirlwinds. Show your support by being at the football stadium at gametime, 7:30 p.m.

Life's Puzzle: "Who writes the words to our popular songs, and why?"

Never lose your temper because someone else can't think clearly.



NEW SCHOOL ADMINISTRATION BUILDING--With the completion of the new school administration building, new offices have been added, such as a board room for meetings; a professional library and workroom; a mail room; and importantly, Assistant Superintendent Elizabeth Watson and her longtime secretary, Betty Cowan, have moved out of a converted classroom at Watson Junior High School into their own offices in the new building. With the new construction, the building has increased in size 163 percent.

Harvest-Aid To Be Cautiously Used

By James R. Supak
Extension Agronomist-Cotton

Timely harvest to preserve lint yield and quality is an important aspect of profitable cotton production. This year, much of the April-May planted cotton and possibly some June planted fields on the Texas High Plains may warrant termination with harvest-aid chemicals.

Growth of the indeterminate branch habit of cotton, timing crop termination is one of the most difficult decisions confronting producers. It usually involves a compromise between halting further top boll maturation and minimizing bottom (open) boll deterioration.

Premature crop termination by weather or harvest-aid chemicals can lower yields and quality. On the other hand, delays in harvest once cotton is ready may result in economic losses on the order of four to five dollars per bale per week.

The key to making sound decisions about chemically terminating a cotton crop is a sound estimate of crop maturity. The most visible indicator of maturity is boll opening.

The Texas Agricultural Extension Service recommends that the use of defoliant be delayed until 60 percent or more

Muleshoe...

Cont. from Page 1

The Jennysippers are asking all the skaters to come in Halloween costumes, or with masks or faces painted for Halloween.

There will be witches' brew available, along with some possible prizes to be awarded.

Stars of the "Lawrence Welk Show" will perform at the Lubbock Civic Center Theater Sunday, Oct. 18, at 2 p.m.

The three-hour show will boast the talents of entertainers Jo Ann Castle, "Queen of the Honky-Tonk Piano"; Dick Dale; Raina English (Lubbock's own); and Jim Turner. The Otwell Twins from Tulsa will make a special appearance.

The event is co-sponsored by ValucAre of Methodist Hospital KTX-TV's 25th Anniversary Committee.

General admission tickets will cost \$12. For more information, call 806-793-4218.

of the bolls are open, and the remaining, harvestable bolls are mature. The use of desiccants should be delayed until 80 percent or more of the bolls are open and the remaining harvestable bolls are too hard to be dented by pressing with the thumb and forefinger or to be easily sliced with a sharp knife.

These are sound recommendations, but often tend to be conservative for the Texas High Plains where cool night temperatures and other factors may delay natural opening of mature bolls.

A better way to assess maturity is by careful field inspection. At random spots in the field, pull up at least five normally fruited plants. Slice through the unopen bolls with a sharp knife and examine the seed coats and seed embryos. The boll is essentially mature if the embryo has solidified and has a normal bright yellow color and if the seed coat is already dark brown or black in color.

If harvestable bolls do not meet these criteria, it is too early to apply harvest-aid chemicals.

On the other hand, be realistic about what is considered to be a harvestable boll. Remember that the early set bolls will be the most mature of the best quality. Once open, the fiber in these bolls begins to gradually lose weight, discolor and trap various contaminants (plant debris, soil particles, etc.). Consequently, weathering losses may more than offset any yield gains provided by the later set bolls.

Once mature, harvest-aid chemicals may be used to prepare the crop for timely harvest. These chemicals fall into three groups: growth regulators, defoliants and desiccants.

Prep is a growth regulator and is used to hasten boll opening. In addition to forcing bolls to open, Prep will induce shedding of immature fruit and some defoliation. Once Prep is applied, further fiber development is halted; consequently, this chemical should not be used until all harvestable bolls are mature.

Prep activity in the plant is highly temperature dependent. For best results, warm, open conditions are needed for five or more days following treatment. About a pound of Prep per acre is required for boll opening; higher rates may be needed to compensate for cooler temperatures. Prep treatments must be followed up with desiccants or a hard freeze to condition the crop for stripper harvest.

Defoliants are chemicals that cause abscission and shedding of leaves. Typically, defoliants do not kill the plant but effectively stop further plant, fiber and seed development. The use of defoliants may be economically warranted in fields where rank growth and dense foliage are likely to contribute to significant grade reductions if the leaves are not removed prior to desiccation and harvest.

Where cotton is stripper harvested, desiccants are needed to kill plant tissues and cause rapid drying of leaves and stems. Normally, it takes 7 to 10 days after desiccation (or a killing freeze) to dry plant components and condition the crop for harvest. Arsenic acid and paraquat (sold under the tradename of Cyclone and Gramoxone Plus) are both effective desiccants. Arsenic

acid may be more effective in fields where regrowth is a problem.

The use of desiccants a week or so before an expected killing freeze may be justified in that the treatment will hasten the boll opening-plant drying processes and allow harvest to begin earlier.

Cotton producers applying harvest-aid chemicals often encounter situations in which results range from good to very poor. Usually these differences can be traced to weather and plant conditions during and following treatment.

Good results are most likely when bolls are treated under the following conditions: weather is warm, calm and sunny; soil moisture is low but adequate to maintain plants in a non-stressed condition; soil nitrogen is nearly depleted as cotton matures; leaves are active and uniformly expanded on the plant; little or no vegetative of secondary growth is evident; some mature leaves are shedding and a high percentage of bolls are open.

Conversely, poor results with harvest-aid chemicals are attributed to just the opposite conditions.

Good harvest-aid management should include treating only sufficient acreage to stay ahead of harvesting operations. Before treating, it is wise to check weather forecasts to avoid as much unfavorable weather as possible. After applying a desiccant, a 7 to 14 day "curing out" period is required to condition the crop for steeper harvest.

Barky cotton can result from either stripping too early after treatment or delaying the stripping operation too long after desiccation. Seed cotton and all plant parts should be dry before stripping. Plants ready for harvest will have cotton that fluffs well and plant parts that are crisp and brittle.

Producers should remember that the maturity of cotton cannot be hastened through the use of harvest-aid chemicals. Only time and favorable weather will mature cotton. However, harvest-aid chemicals will promote more rapid opening of mature bolls and prepare the crop for timely harvesting.

Texas A&M project concludes that teachers should be allowed input

COLLEGE STATION — If Texas wants to improve mathematics and science education, teachers should be included in the decision-making process in schools, new teachers should be mentored by "master" teachers and effective teachers need to be rewarded monetarily.

These are the findings of a project of the Texas Alliance for Science, Technology and Mathematics Education at Texas A&M University. The alliance is a consortium of Texas business, higher education and school leaders formed to improve science and mathematics in the schools through local partnerships with the private sector.

"We have had a very 'top-down' approach to change in education in Texas which has ignored what teachers know and can do to improve science and mathematics education," said Dr. Robert K. James, professor of science education and director of the Center for Mathematics and Science Education at Texas A&M.

"If Texas is to maintain business and industry vital to its economic growth and recovery, it must provide a work-force with appropriate scientific and technological skills to survive and compete with the technology of the 21st century."

Nursing Home Heading Up Card Project

"How would you like to have your name, family name, or your business listed on a gigantic Community Christmas Card and help a very worthy project at the same time?" asks the Muleshoe Nursing Home.

It's almost time for the ever-popular annual Community Christmas Card project! This year, the project will be sponsored by the Muleshoe Nursing Home, and they hope that in lieu of sending Christmas cards locally, that your money be used to participate in this community-wide project.

The Nursing Home reminds that this is the perfect way to use the cost of cards and postage to wish a Happy Holiday Season to your friends and business associates.

Then, in the Christmas issue of the newspaper, your name will appear on a large Christmas Card page, greeting your friends and expressing concern for your fellow man. The Muleshoe Journal and Bailey County Journal has co-sponsored this project for many years, helping to obtain many items for the hospital when it was open, and the Nursing Home.

Proceeds from this project will be used to help continue the efforts that never end -- adding to the happiness and comfort of the Nursing Home residents.

Football...

Cont. from Page 1

(Friona)/Muleshoe; Nevada-Las Vegas/Utah State; (LSU)/Georgia; (Kentucky) / Mississippi; Illinois/(Purdue); (Hawaii)/New Mexico; (Bowling Green)/Ohio U.; Arizona State/(Washington); and a tie for Arizona/California.

Contributions will be received, beginning on November 9, with the cutoff date set for Friday, December 18, 1987 at 5 p.m. Your contribution may be left at either bank or mailed to: Muleshoe Nursing Home, Christmas Card Project, 106 W. Ave. H, Muleshoe, TX 79347.

Cotton...

Cont. from Page 1
peppers, carrots, cabbage and sugar beets.

Weather conditions have favored harvest for these vegetables, and both quality and quantity have been good.

On many fields, wheat is in excellent condition and stocker cattle are being placed on them for grazing.

Despite no reports of fall armyworms in the small grains, Tanksley said producers should be checking fields for infestations as they can quickly do a considerable amount of damage.

Engomologists are beginning to report armyworm damage to wheat crops to the north and west of Bailey County, especially in northern Curry County, N.M.

Winding up his report to The Journal, Tanksley said some late planted wheat is starting to dry out and may need fall irrigation.

All in all, the crop outlook is much brighter for the county, related the county extension agent, and harvest is being aided by excellent harvest weather.

One thing that fiction often has on life is the happy ending.

People only get old; life is continually new and full of changes.

The know-how is less important than the do-it-now.

It doesn't take an expert to spend money faster than it can be made.



PACKED WITH SURPRISES...Oct 19 Marks The Start Of The Annual THINK CHRISTMAS WEEK At The Art Loft.

Pd. Adv.

A Land Bank loan... for more than just buying land

Many people think of the Federal Land Bank only when buying land. Truth is, there are many other ways to use long-term Land Bank loans.

You can:

- ✓ Refinance debts
- ✓ Improve land
- ✓ Build or remodel

Long-term Land Bank loans keep payments manageable so that these and other farm needs can be handled more easily. So stop by and see how the Land Bank can help.

Federal Land Bank Association Of Muleshoe



272-3010

"CHRISTMAS"

In October Sale

All Giftware And Picture Frames

1/2 PRICE

Other Bargains Throughout Store.

Do your early Christmas shopping while supplies last!!

Higginbotham-Bartlett Co.

214 MAIN
MULESHOE, TEXAS



CELEBRATING AN ANNIVERSARY--This Saturday, residents of the South Plains Retirement Center at Amherst will be celebrating their second anniversary. The retirement center is located in the former hospital building in downtown Amherst. Part of the celebration will include the Anchor Brothers Band from Sudan, who will perform 7-8 p.m.

**Arthur Damron
Funeral Services
Held At Lubbock**

Funeral services for Arthur "Joe" Damron, 79, of Lubbock were held at 10 a.m. Tuesday, Oct. 13 in St. John's United Methodist Church with the Rev. Ted Dotts, pastor, officiating.

Burial was in Resthaven Memorial Park under the direction of Wilson's Funeral Directors. Damron died at 11:10 a.m. Sunday in Methodist Hospital following a lengthy illness.

Born in Portales, N.M., he

married Mary Frances Wason on June 21, 1957, in Amarillo. He worked for the Lubbock Fire Department and Woody Tire Company and was a member of St. John's United Methodist Church.

Survivors include his wife; two sons, Walter Erwin Cox of Snyder and G. Ray Cox of Amarillo; a daughter, Donna Whitson of Laramie, Wyo.; a brother, Clarence G. of Needmore; a sister, Frances Lou Moore of Gainesville; four grandchildren; and a great-grandchild.

A friend should bear his friend's infirmities. Shakespeare



BOARD PRESIDENT IN THE BOARD ROOM--With the completion of the new school administration building, MISD Board of Trustees President, Julie Cage, sits at the board member table in the new board room. The room is now large enough to host visitors at meetings.

Congratulations

**Muleshoe Independent
School District**

**On The Completion Of
A Beautiful School
Administration Building**

*We are happy to have
been the contractors.*

M & S Construction

**Reginal Stephens Donald Miller
Levelland, Texas**

**SPRC Celebrating
Second Anniversary**

South Plains Retirement Center in Amherst will be having a celebration Saturday, Oct. 17 from 6 - 8 p.m., commemorating their Second Anniversary. Open House will be held at that time for everyone to take tours of the Center and see the changes and improvements they have made during the past two years. Refreshments will be served and special entertainment will be provided from 7-8 p.m. by the well-known "Anchor Brothers" of Sudan. SPRC will also be celebrating their second anniversary by offering a special for that day only -- no deposit charged on any apartment rented Oct. 17.

Ray and Becky Dunn, owners and operators of South Plains Retirement Center, would like to invite everyone to come by the Center from 6 to 8 p.m. and look at rooms, visit with them and their residents, and enjoy the refreshments and entertainment.

The Dunns purchased the building formerly occupied by South Plains Hospital - Clinic in late summer, 1985. With lots of

hard work and dedication by the Dunns family members, and employees, the new retirement center officially opened to the public on Jan. 1, 1986. Ray and Becky and their children, Jennifer and Joe, moved from Lubbock into the center in June, 1986, also moving their insurance office here with them.

Construction has been nearly constant over the past two years as total renovation began. At this time, approximately 3/5 of the building has been remodeled, with work still under way.

The beautiful and comfortable lobby is the scene for domino games daily and twice weekly with the public invited to join in the fun. There are also musicals provided each week for the residents' and visitors' pleasure. A family-type atmosphere has been created in the spacious dining room with three meals a day being served the retired persons. The dining room also offers a hot cup of coffee any time during the day, or a snack of fresh fruit and maybe homemade cookies.

Franklin Starkey

**Services Set
At Earth**

Services for Franklin H. Starkey, 52, of Big Spring will be held at 10 a.m. today, Thursday, Oct. 15 in Myers and Smith Funeral Chapel in Big Springs with the Rev. Keith Wiseman, pastor of the First United Methodist Church of Big Spring, officiating.

Graveside services will be held at 10 a.m. Friday in Earl Memorial Cemetery with the Rev. Steve Branson, pastor of Springlake Baptist Church, officiating. Burial will be under the direction of Parsons-Ellis Funeral Home of Earth. Starkey died Monday in St. Mary's Hospital in Lubbock.

A native of Springlake, Starkey was born on Jan. 10, 1935, and moved to Big Spring in 1963.

He was a truck driver with Steere-Tanklines, Inc. for 21 years, and was a member of the Church of Christ. He married Twila Strickland on Dec. 9, 1961, in Farwell.

Survivors include his wife, Twila; two sisters, Maudie May Zarkou of Roy, Utah and Hayme Christensen of Minneapolis, Minn.; four brothers, Johnny Starkey of Rome, N.Y., Jack Wilson Starkey of Woodbridge, Virginia, Jess David Starkey of Dumas, and Bill R. Starkey of Sacramento, Calif.; and a number of nieces and nephews.

He was preceded in death by his parents, Andy and May Starkey, and a brother, Andrew Starkey.

**Troy Veach
Funeral Services
Held Monday**

Funeral services for Troy Veach, 81, were held at 11 a.m. Monday, Oct. 12 in Ellis Funeral Home Chapel of the Chimes with the Rev. Tommy McKibben, pastor of Faith Tabernacle of Lubbock, officiating, assisted by the Rev. E.R. Lanham, minister of the Pentecostal Church at Eastland, and the Rev. J.A. Torres of Hobbs, N.M.

Burial was in Muleshoe Cemetery under the direction of Ellis Funeral Home. Veach died at 2:50 p.m. Friday in the Methodist Hospital at Lubbock.

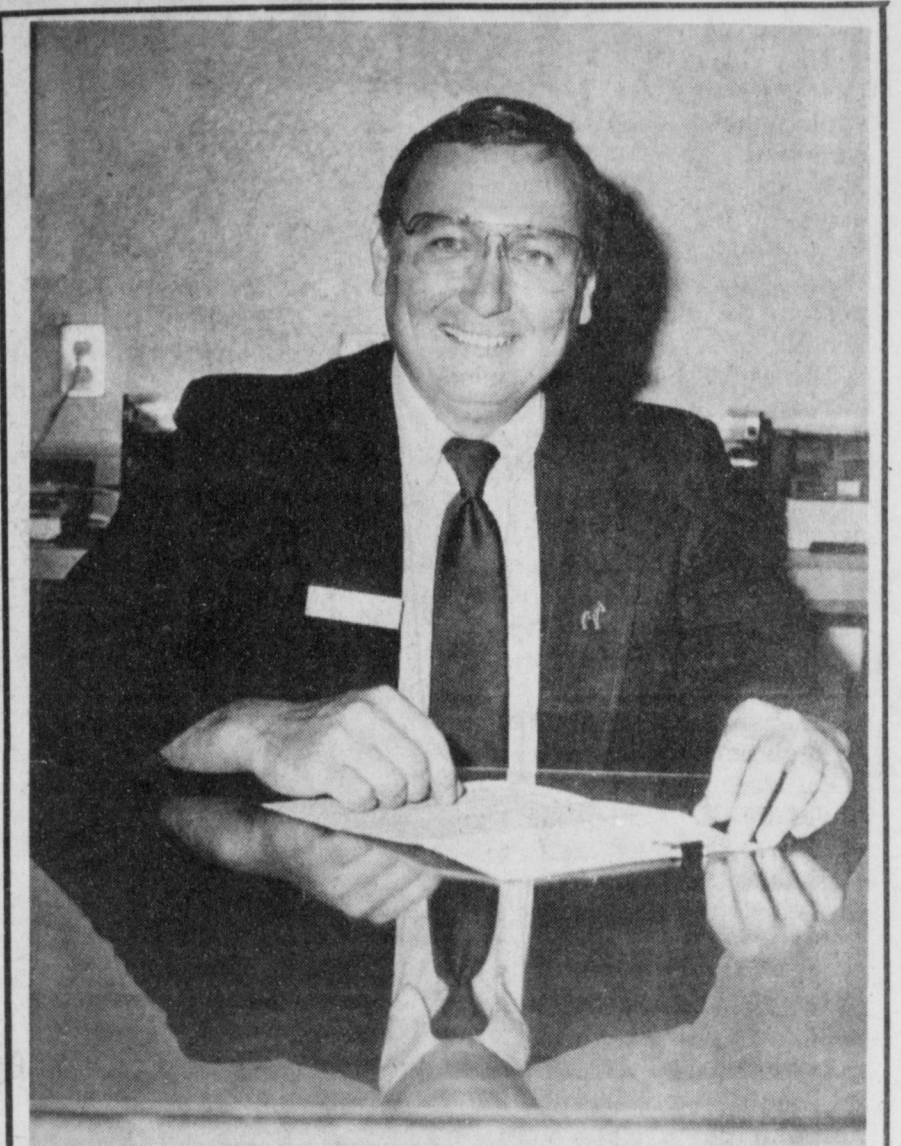
Born on Nov. 19, 1905, in Bridgeport, Veach had been a resident of Muleshoe since 1960, moving here from O'Donnell. He was in the lumber yard business and was a member of the Muleshoe Pentecostal Church. His first wife, Vivian Jackson Veach died Aug. 9, 1979, and he married Zay Dee Rule on July 7, 1980, in Muleshoe.

Survivors include his wife, Zay; a daughter, Wanda McKibben of Hereford; three sons, Henry (Budedy) Veach of Pampa, Ray Veach of Gatesville, and Jerry Veach of Plainview; three sisters, Ruby Pate of Center, Pauline Spruiell of Levelland, and Eva Dean Cowle of Oklahoma City, Okla.; two brothers, Oscar Veach of O'Donnell and Eugene Veach of Midland; 12 grandchildren; and eight great grandchildren.

There are four apartments of different sizes completed and available now, with plans for a total of 40 when construction is completed. There are many residents living in the Center at this time. There is a new beauty shop available, a laundry room, and in the future an upstairs recreation room with T.V. and game table and a pool room.

Sunday School is provided on Sunday mornings and a Sunday afternoon worship service is held at 3 p.m. for those who wish to attend.

The Dunn's motto concerning the retirement center is "Not just a place to live, but a reason to live". They stated that SPRC is not a healthcare organization, but one that has the desire to keep the older folks in a continued state of independence, dignity and well-being. They feel that life at SPRC will appeal to those who desire privacy and independence in their retirement living without the high cost of maintaining a home.



SUPERINTENDENT AT NEW DESK--MISD Superintendent H. John Fuller says he is very proud of the new school administration building, which adds to the efficiency of the operations of the school.

**Golden
Gleams**

In Autumn, there's a lustre in its sky,

Which thro' the Summer is not heard or seen.

P.B. Schelley.

I saw old Autumn in the misty morn

Stand shadowless like silence.

Thomas Hood.



BUMPER TO BUMPER

**YOUR
BUMPER TO BUMPER
MAN HAS SOMETHING
SPECIAL FOR YOU!**

The Official 1987 Bumper To Bumper Dirty Hands T-shirt. Free with any purchase of \$20.00 or more. Available for a limited time only! Sizes for men and women.

CHAMPION COPPER PLUS

A CHANGE FOR THE BETTER

REGULARS

64¢ ea.

99¢ sale price

25¢ mfg. mail-in rebate

64¢ net ea. after mail-in rebate

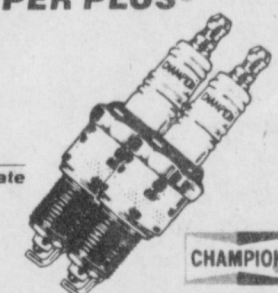
RESISTORS

74¢ ea.

99¢ sale price

25¢ mfg. mail-in rebate

74¢ net ea. after mail-in rebate



For most cars & trucks. Limit 1¢

ROCKHILL HEAVY DUTY SHOCK ABSORBERS

\$8.95 ea.

4800 Series Exceeds original equipment quality.

VALVOLINE MOTOR OIL

30 HD HPO \$10.68 case sale price

5.00 mfg. mail-in rebate

\$5.68 case after mail-in rebate

10W30 & 10W40 ALL CLIMATE

\$11.88 sale price

5.00 mfg. mail-in rebate

\$6.88 case after mail-in rebate

Limit 1 rebate per household.

ANCO WIPER BLADE REFILLS

\$2.79 ea.

net ea. pr. after mfg. mail-in rebate

Sale price \$3.79.

Quick clearing dependability now with rebate.

11-15, 11-16, 11-18

Rebate must be postmarked by October 31.

LOCTITE REAR VIEW MIRROR ADHESIVE

\$1.99 ea.

#11067-2

PERMATEX GAS TANK & RADIATOR REPAIR

\$2.77

#GTR-1

ARMORALL PROTECTANT

\$2.49 ea.

It's science, but it works like magic.

#11080 8 oz.

3M BRAND SUPER WEATHERSTRIP ADHESIVE

\$2.97 ea.

For trim, gaskets, weatherstrips, headliners.

Fast drying

Exceptional bonding strength

#08001 5 oz.

KRYLON PAINT

Decorator Colors

Rust Magic

Engine Paint

\$1.99 ea.

Limit 6"

TRAQ 200 PSI COMPRESSOR

\$19.95 ea.

Runs on 12V D.C. cigarette lighter

Built-in PSI gauge

#TMC7

MOOG CARGO COIL

Variable Rate Springs

Quick, easy solution to overload problems.

Lifetime guarantee

Easy to install

SAVE \$\$ NOW

Moog Smooths the Road. Carries the Load.

ROCKHILL BOOSTER CABLE

GOOD #8 - 8 ft. **\$4.99** set

BETTER #12R - 12 ft. **\$9.99** set

BEST #164R - 16 ft. **\$19.49** set

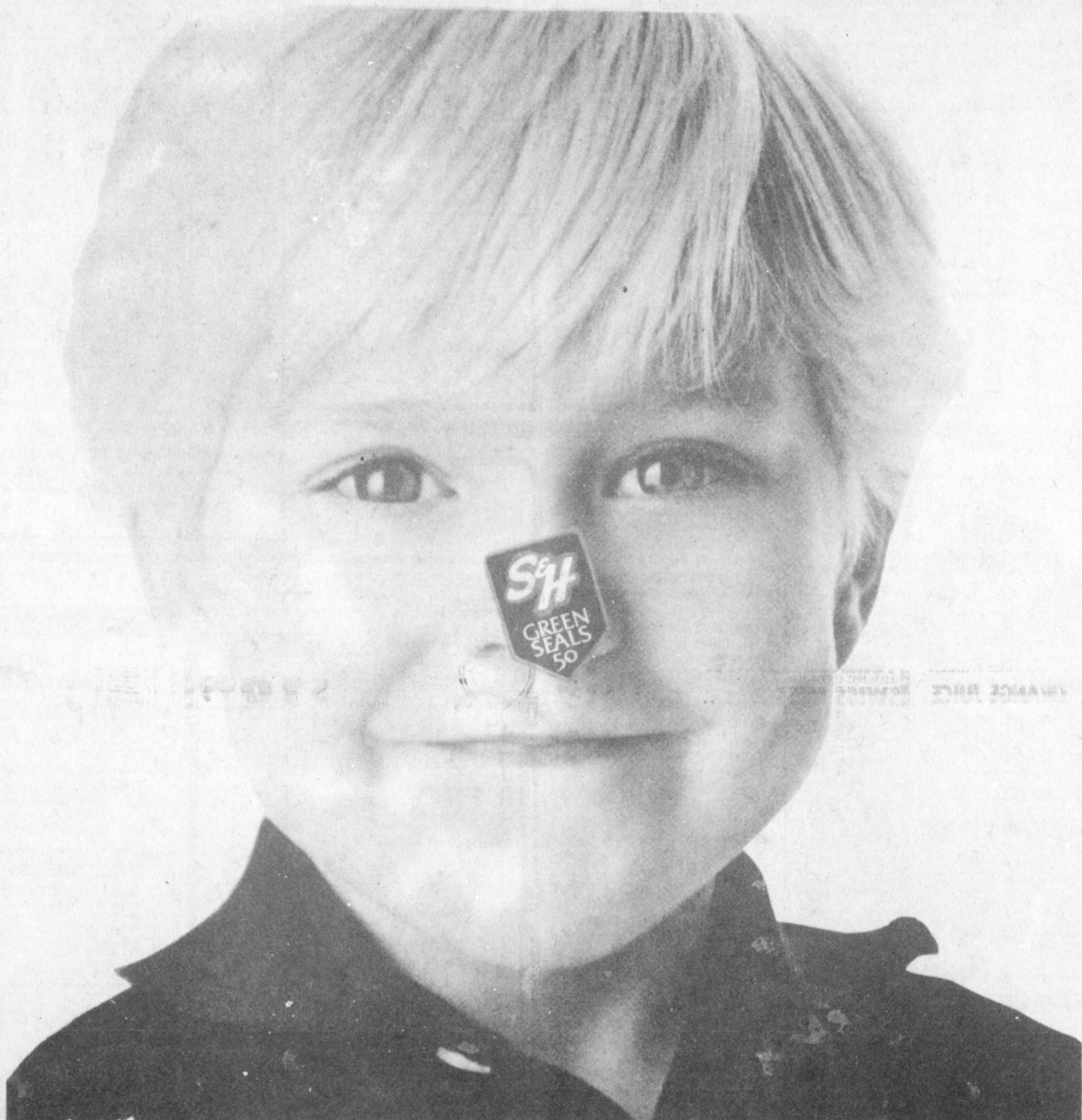
Prices good at participating Bumper To Bumper Auto Parts Stores through October 19, 1987. Items in excess of the limits can be purchased at the regular purchase price. Details in stores.

Bratcher Motor Co.

107 E. Avenue B
806/272-4288



Your Meat and Produce Store



They Just Can't Be Licked.

The new S&H Green Seals.

S&H Green Seals. An even better idea.

Pressure-sensitive stickers that you just peel and stick. Simple. Neat. No licking. No mess. No delay.

And they come only in 50s. So saving them takes less space, less time.

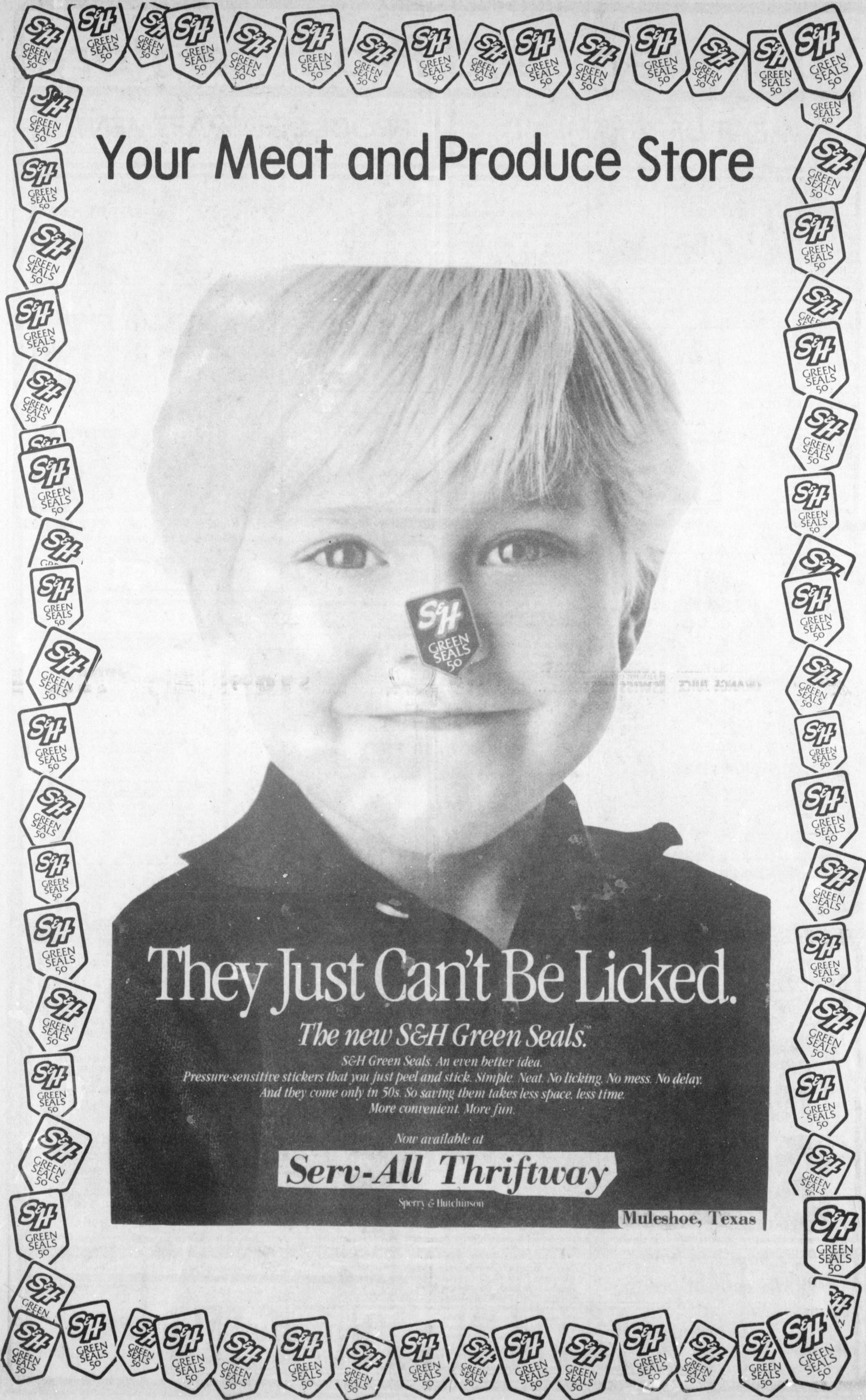
More convenient. More fun.

Now available at

Serv-All Thriftway

Sperry & Hutchinson

Muleshoe, Texas



Your Meat and Produce Store

MEAT DEPARTMENT

WILSON'S 96% FAT FREE BONELESS FULLY COOKED **HALF HAMS**

 HONEY CURED
 2-4 LB. AVG.
\$2.58 LB.

PILGRIM'S PRIDE U.S.D.A. GRADE A **WHOLE FRYERS**

49¢ LB.

PILGRIM'S PRIDE SPLIT FRYER **BREAST**

\$1.29 LB.

PILGRIM'S PRIDE FRYER THIGHS OR **DRUMSTICKS**

89¢ LB.

WILSON'S REG./POLISH/BEEF SMOKED **SAUSAGE**

\$1.99 LB.

SHURFRESH REG./HOT WHOLE HOG PORK **SAUSAGE**

\$1.69 1 LB. ROLL
 2 LB. ROLL \$3.37

PRODUCE DEPARTMENT

WASHINGTON DELICIOUS **RED OR GOLDEN APPLES**

 3 LB. BAG
99¢

FRESH DELICIOUS **BARTLETT PEARS**

39¢ LB.

CALIFORNIA **FRESH CARROTS**

 4 1 LB. BAGS
\$1

RED **POTATOES**

\$1.99 20 LB. BAG

FRESH **SPINACH**

 3 BUNCHES
\$1

TEXAS LARGE **BELL PEPPERS**

39¢ LB.


FROZEN FOODS


ORE-IDA 15 OZ. GOLDEN PATTIES OR SHREDDED **HASH BROWNS**

\$1.29 24 OZ. PKG.

CITRIS HILL FROZEN **ORANGE JUICE**

89¢ 12 OZ. CAN

EL CHARITO ASST. 13 1/2 OZ. PKG. **MEXICAN DINNERS**

\$1.29 PKG.

1/2 GAL. BORDEN **ICE CREAM**

\$1.69

40% OFF LABEL DETERGENT W/ FAB. SOFTENER **FAB**

 42 OZ. BOX
\$1.89

HUNT'S **MANWICH**..... 15 OZ. CAN **99¢**
 HUNT'S **TOMATO KETCHUP**..... 32 OZ. BTL. **\$1.19**
 ASST. HOT COCOA MIX **SWISS MISS**..... 12 CT. PAK **\$1.59**
 KELLOGG'S CEREAL **RAISIN BRAN**..... 20 OZ. BOX **\$2.39**
 DOG FOOD **KEN-L-RATION**..... 2 25 OZ. CANS **\$1.00**
 CLEAN COOKING **WESSON OIL**..... 38 OZ. BTL. **\$1.69**
 SUNSHINE CHEEZ-ITS OR **HI-HOCRACKERS**..... 16 OZ. BOX **\$1.79**
 OCEAN SPRAY 48 OZ. MAUNA LA IGUAVA **GRAPEFRUIT JUICE**..... BOTTLE **\$1.99**

LIQUID **PINE-SOL**

 28 OZ. BTL.
\$1.99

10 OZ. KRAFT **COLBY CHEESE**

99¢

WASH-A-BYE **WIPES**
 160 CT. **\$2.49** CTN.
PAMPERS
 96 MED./64 LGE. "PLUS"
\$18.99 JUMBO BOX

QUAKER ASSORTED **GRANOLA DIPPS**..... 6 CT. PAK **\$1.79**
BUY 1 FREE GET 1 FREE AT THE CHECK OUT!
 From QUAKER® GRANOLA DIPPS®
 BUY: Any One (1) box of Quaker® Granola Dipps® Bars
 PRESENT: This coupon to the cashier along with purchase
 RECEIVE: One (1) box of Quaker® Granola Dipps® Variety Pack **FREE**
THRIFTWAY COUPON 5000051201

PARKAY MARGARINE SOFT-SPREAD **\$1.09** 2 LB. BOWL
MARGARINE QUARTERS PARKAY
3 1 LB. BOXES \$1


DAIRY SPECIALS


KRAFT DELUXE AMERICAN PIMENTO/ SWISS **SINGLES**

\$1.39 8 OZ. PKG.

KRAFT CHILLED ORANGE **JUICE**

\$1.99 64 OZ. BTL.

SOUTHERN/ BUTTER/ BUTTERMILK/ BIG COUNTRY **PILLSBURY BISCUITS**

\$1 2 12 OZ. CANS

BORDEN **POINSETTIA HOMO MILK**

\$1.95 1 GAL.

BORDEN **COTTAGE CHEESE**

\$1.39 24 OZ.

Soft n' pretty **BATHROOM TISSUE**

SOFT N' PRETTY
 4 ROLL PKG.
89¢

REG./ UNSALTED SUNSHINE CRISPY **CRACKERS**
 16 OZ. BOX **89¢**
WOLF BRAND CHILI
 NO BEANS
WOLF CHILI
 19 OZ. CAN
99¢

Folgers **FOLGER'S COFFEE**

 ALL GRINDS
\$5.49 3 LB. CAN

16 OZ. Plastic Throw Away Blt. \$1.59
COCA-COLA
 ALL TYPES
\$1.78 6 PACK CANS

Double Stamps On Wednesday

272-4739

SERV-ALL

401 WEST AMERICAN BLVD.

THRIFTWAY

Prices Effective Oct. 11-17, 1987



SHE HAS AN OFFICE NOW--After spending years in a converted classroom, Assistant Superintendent Elizabeth Watson has an office, and her secretary, Betty Cowan, also has an office in the new school administration building.

**From The Desk Of
Police Chief
Wayne Holmes**

The Muleshoe Police Officers have been encountering several motorists passing school buses during the loading and unloading of children.

I have also been contacted by concerned citizens complaining about school buses being passed while the bus is displaying the visual signals for motorists to stop.

This is a Texas State Law, concerning the overtaking and passing of school buses.

TEXAS MOTOR VEHICLE LAWS

Sec. 104. OVERTAKING AND PASSING SCHOOL BUS. (a) The driver of a vehicle upon a highway inside or outside of a business or residence district upon meeting or overtaking from either direction any school bus which has stopped on the highway for the purpose of receiving or discharging any school children shall stop the vehicle before reaching such school bus when there is in operation on said school bus a visual signal as specified in Section 124 of this Act, and said driver shall not proceed until such school bus resumes motion or is signaled by the school bus driver to proceed or the visual signals are no longer actuated. A violation of this subsection is punishable by a fine of not less than \$50 nor more than \$200.

(b) The driver of a vehicle upon a highway with separate roadways need not stop upon meeting or passing a school bus which is on a different roadway or when upon a controlled-access highway and the school bus is stopped in a loading zone which is a part of

or adjacent to such highway and where pedestrians are not permitted to cross the roadway.

The Laws of Texas were written and passed for the protection of property and lives. While our school year is in session, please be aware of the laws governing the passing of school buses and help us in our efforts to make our citizens more conscientious of our children's safety.

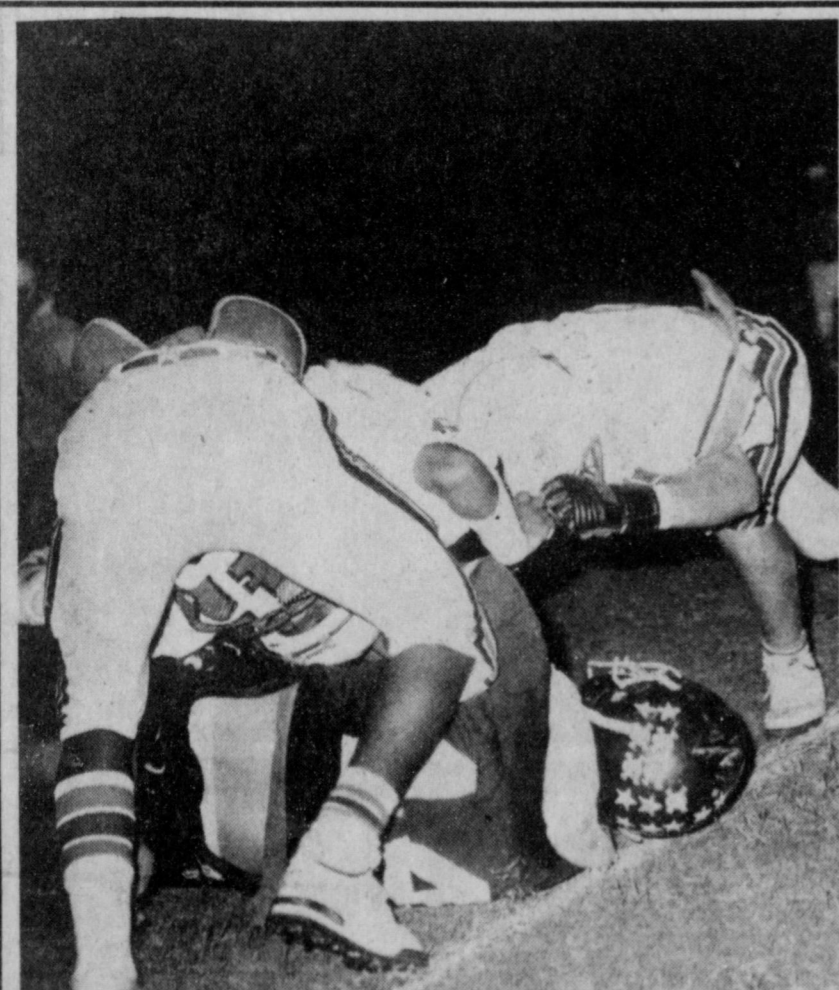
Aggies smell success with novel fragrances for college students

COLLEGE STATION -- Two Texas A&M University business students are hoping to parlay their college education into dollars and "scents" by striking it rich in the cologne and perfume business.

Cliff Mack Carruth and Scott Gregory, principal partners of the Mack-Gregory Co. Wholesalers, are marketing their first product: "Scholar," a floral-woody fragrance guaranteed to enhance the appeal of any college student, in or out of the classroom.

The fragrance formula was mixed by a Dallas perfume manufacturer that Carruth and Gregory approached last fall with their idea for a scent that would appeal to college-aged youths. The two described generally what they wanted, and the manufacturer came up with numerous samples, which were sent back and forth between Dallas and the students' College Station apartment for refinements.

GRAIN PRICES	
YELLOW CORN.....	341 cwt
YELLOW FOOD CORN.....	391 cwt
WHITE FOOD CORN.....	482 cwt
MILO.....	302 cwt
SOYBEANS.....	476 cwt
NEW WHEAT.....	236 cwt
COMMODITY CERTIFICATES	
105½	
Prices-October 13, 1987	
Markets Courtesy of	
FARMERS CO-OP	
ELEVATORS	
272-4335	Muleshoe, Texas



A LESSON IN SLAMMING--Mule No. 44, Michael Dunham, gets a good lesson being slammed during the Muleshoe-Friona football game last Friday night. He was hit from all sides as he tried to gain yardage against the Chieftains.

**Nursing Home News
By Joy Stancell**

Zeffa Shafer visited Olin Whitmire Tues. ***

Joyeline Costen visited her mother Thelma Stearns. ***

Juanita was visited by Irene Steinbock, Dicie Snetker, Etta Layton Wed. ***

Thurs. afternoon J.E. Embry, Minnie Berry, Nelda Mullins came to visit and play games with the residents. Lola Embry with the help of Cari Kidd served the residents candy bars. ***

Fri. morning Lena Ruthardt came to show the residents two films from the Library. ***

Friday afternoon Zora Gatewood entertained the residents with piano music. Calvin & Lona Embry brought watermelons and served them to the residents. ***

Thursday morning Clara Jones and Zora Mae Bellar came to sing and play gospel songs and to share a Devotional with the residents. ***

Sunday morning the Muleshoe Church of Christ brought communion. Earl Peterson taught the Bible Study. Sun. afternoon The Calvary Bapt. Church came for Gospel Singing and music. ***

Sat. afternoon LaVerne James, Ruth Clements played bingo with the residents. ***

Monday the Muleshoe Church of Christ came to visit and play games with the residents. ***

Among those visiting Mrs. Davis this week were Fern Davis, Olive Cox, Blanch Aubrey visited Mon. ***

Lois Ethridge was visited by Judy Kay Marlow. ***

Ella Faubus was visited by her daughter Johnnie, and Blanche Aubrey. ***

Tues. morning The Muleshoe Young Homemakers came to visit and decorate the Nursing Home for Halloween. Among the ghost and goblins they left a lot of friendly cheers. Homemakers that helped decorate were Terry Byers, Terry Maricle, Linda Wimberly, Juana Shelburne, Nancy Benham, and several children. ***

Louise Legg from Me Ma's Ceramic Shop came Tues. for ceramic lessons. Residents participating were Effie Smith, Emma Schuster, Stella Morgan, Oneita Wagnon, Thelma Stearns, Clara Weaver, Ora Roberts, Lois Ethridge, Ruby McCamish and Julia Hawkins. ***

Florene Upchurch & Clara Jones joined us for exercise class Tues. morning. ***

Irene Steinbock and Olive Cox were among our special guest at the Sing-A-Long Wed. lead by Glenda Jennings and Iva Carpenter. ***

Tues. night Oct. 6th was our first Family Council meeting. We want to thank all who attended and participated. ***

Mr. & Mrs. James Shaddix, their daughter Mellisa & son John came to visit Ruth Williams Sun. Lorene Shaddix, Mrs. Williams daughter will stay and visit about two weeks. Her family returned home on Sun. ***

Thank you Laverne James, Beth Watson, Ruth Clements, Jackie Johnson, Lula Maye Embry, Olive Cox, Ernestine Steinbock for helping in the Beauty Shop. Tues. Our ladies hair looked lovely. ***

Don Bruns brought nice fresh tomatoes to be served for the residents meals this week. It sounds like they have really been enjoyed. ***

Our than' to St. John Lutheran Church for bringing us copies of large print Portals of Prayer. ***

**The Shortest Distance
Between a Buyer and
a Seller is a "Line"
in the Classifieds!
They're Your
"Anchor" to the
World.**



For buying and selling, a Classified ad is the most direct, people-to-people course to follow -- and at the least cost! Say "bon voyage" to your discards, discover a new career, buy a pet chihuahua. Whatever your needs, there's a treasure to be found by navigating through the columns of the Classifieds!

**CALL OUR
CLASSIFIED DEPT. TODAY!**

**Muleshoe Journal
272-4536.**

Muleshoe Journal

Classified

Call 272-4536

CLASSIFIED RATES
Per Word.....\$.15
Minimum Charge \$2.30

Consecutive Insertions Minimum Charge \$2.00

CLASSIFIED DISPLAY RATES
\$1.75
Per Column Inch

DEADLINES
12 noon Tues.
For Thursday Paper
12 noon Friday
For Sunday Paper
We reserve the right to classify, revise, or reject any ad. Not responsible for any error after ad has run once.

1. Personals

CONCERNED
About Someone's Drinking?
HELP IS AVAILABLE
through Al-Anon
Call 227-2350 or 965-2870 or come to visit Tuesday nights, 8:00 p.m. or Saturday mornings at 10:30 a.m. at 1116 W. American Blvd., Muleshoe.

2. Lost & Found

LOST red female chow. Black nylon collar call 272-3333 or 272-5767. Reward offered. e2-38t-tfc

LOST 500 pound steer in the Pleasant Valley community, with a pistol brand on right hip. Call 272-5035. g2-40t-tfc

3. Help Wanted

TEXAS MIGRANT COUNCIL Head Start is now taking applications for bus driver / custodian. Must have good driving record, chauffeur license. Starting salary \$4.00 an hour and good benefits. Come by 101 E. Ave. B. t3-41s-2tc

RESPONSIBLE person for fast growing manufacturing company. Secretarial / bookkeeping duties, honesty and maturity a must. Experience helpful. Apply in person at KC Mufflers & MFG. Inc. 201 North 1st, Muleshoe. k3-40s-4tc

4. Houses For Rent

FOR RENT 2 bedroom house, newly redecorated. Call early or late 272-4475 or 946-3476. h4-41t-tfc

3 BEDROOM house for rent. For information call 272-5322. 1-41t-1ttpts

5. Apts. For Rent

APT. & duplex for rent. Call 272-7575. p5-38t-tfc

8. Real Estate

PRICE TO SELL: Nice 3 bdrm., 2 bath, brick home, 2 car garage, high efficiency, central refrig. air & heat. Concrete patio with back yard. Call for appointment. 909 Hickory, 272-5045. c8-27t-tfc

FOR SALE newly remodeled 3 bedroom, 1 bath, living room and den, fireplace, carport, fenced yard, storage buildings. Call 272-4967, 221 E. Birch Lower 30's. g8-38s-8tc

PRICED REDUCED! For sale by owner 3 bdrm, 2 baths, 2 carport, den with fireplace, large utility room, central A/H, storage galore over 2000 sq. ft. Call 883-2704. w8-38t-tfc

5. Apts. For Rent

5. Apts. For Rent

5. Apts. For Rent

8. Real Estate

8. Real Estate

8. Real Estate

!!ATTENTION!!

Are you tired of the high cost of housing?
Do you pay more than 30% of your income for housing?
Are you over 62, or handicapped, or disabled?
If you have answered yes to these three questions—
We have the answer

MID—TULE VILLAGE APARTMENTS
Spacious Affordable Housing
Featuring 1 & 2 Bedroom Apartments
Group Activities--Pot Luck, Dominos, Cards
And Much More
Large Community Room Available For Get Togethers

★★★RETIRE TO THE GOOD LIFE AT★★★
MID—TULE VILLAGE APARTMENTS
321 S.E. 7th Street, Tulia, Texas 79088
806/995-2442
Equal Opportunity Housing 8-42t-2teotcts

BELOW appraisal 1 1/2 ac. over 3000 sq. ft. 2 story, well kept home. Call 272-4987 or 272-4344. 8-41t-8tp

SMALLWOOD REAL ESTATE BROKER
232 Main
272-4838

\$179 per month for 3 bdrm, 2 bath home completely refurbished new carpet. \$743 down at 12.77% APR at 84 months. Free delivery & set up A-1 Mobile Homes. 806-376-5365. a8-39t-6tc

\$99 total down payment for 1987 double wide 3 bdrm, 2 bath delivered to your location. 120 months at 11% APR at \$333 per month. Call Art at 806-376-5630. a8-39t-6tc

11. For Sale Or Trade

Credit Problem?
Down payment problem? I specialize in approval with easy terms! For sincere help call Collect 806-763-4051. 8-39s-tfc

\$206 per month for new 1988 double wide 3 bdrm, 2 bath, free delivery & set up. 13.75% APR at 240 months at \$1591.00 down. Ask for Rubin at 806-376-8611. a8-39t-6tc

\$130 monthly payment for 14 ft. wide mobile home remodeled & ready for delivery 12.77% APR at \$500 down at 60 months. Call 806-376-4612. Ask for Tim. a8-39t-6tc

PIANO FOR SALE
Wanted: Responsible party to assume small monthly payments on piano. See locally. Call credit manager 1-800-447-4266. 11-39s-7tp

16 E. Ave. C BINGHAM & NIEMAN REALTY 272-5285 --- 272-5286

We have homes for as little as \$600.00 total move in cost, with payment scheduled according to income for qualified buyers!!!!

RICHLAND HILLS
NICE-3-2-2 Brick, Cent. A&H, built-ins, FP, fenced yard, & more.....

IMMACULATE 3-2-2 Brick, corner lot, Cent. A&H, built-ins, FP, loads of storage & closet space, sprinkler sys.!!!!

PRICE REDUCED-3-1-1 Brick, Cent. heat, Evap. air, built-ins, fenced yard.....

HIGHLAND ADD.
SPACIOUS 3-2 1/2-2 Brick Home on corner lot, Cent. A&H, built-ins, fireplace, loads of storage, 2900 plus sq. ft. of Lv. area, lots of extras, undrgrd. sprinkler sys., fenced yard. A GREAT BUY!!

JUST LISTED-NICE 3-2-2 Brick Home (2 story), on corner lot, Cent. A&H, built-ins, and much more. LET'S LOOK TODAY!!!

2-1-1 home, wall heat, evap. air, fenced yard. \$20's.....

PARKRIDGE

IMMACULATE 3-2-2 Brick Home, Cent. A&H, built-ins, fireplace, energy efficient, nicely decorated, plus beautifully landscaped yard. \$50's!!!!

HIGH SCHOOL

PRICE REDUCED-3-2-2 Brick, Cent. A&H, built-ins, fireplace, energy efficient, nicely decorated, plus beautifully landscaped yard. \$50's!!!!

JUST LISTED-3-2-2 home, corner lot, nice carpet, fenced yard. \$30's!!!!

3-1-1 home, corner lot, Cent. A&H, built-ins. \$30's.....

SPACIOUS 3-2 Brick, Cent. A&H, built-ins, nice den w/FP, fenced yard, storage bldg., & much more. \$70's!!!!

2-1-1 home, wall furnace heat, nice carpets. \$16,000.....

JUST LISTED-3-1 home, nice carpets, new roof, storm windows, & much more. \$20's!!!!

NICELY REMODELED 3-2-1 carport home, Cent. heat, evap. air, built-ins, utility, earthtone carpets, ceiling fans, covered patio, fenced yard & more. \$30's!!

3-2-1+2 carport home, Cent. A&H, built-ins, fireplace, fenced yard & more. \$40's!!!!

LENAU ADD.

3-1 1/2-1 home. Central Heat, Nice. Priced To Sell.

NICE 3-2-2 Brick, Cent. A&H, built-ins, fenced yard. \$40's!!!!

3-2-2 carport home, corner lot, nicely remodeled. \$30's.....

COUNTRY CLUB
3-2-2 Brick, Cent. A&H, built-ins, fenced yards, & more. \$50's!!!!

COUNTRY HOMES
JUST LISTED-2-1-1+1 carport home on 1 acre on pavement close to town, built-ins, wall furnace heat, evap. air, satellite system, and fenced area for horses or calves. \$20,s!!!!!!!

3-1-2 home, 1/2 acre, Cent. A&H, new paint, nice carport, cellar. \$30's!!!!

2-1 home, 20 acres, sub. pump, -sprinkler, barns & corrals. \$40's!!!!

SPACIOUS 3-2 1/2-2 Brick Home on 5 acres, Cent. A&H, built-ins, fireplace, sunroom, finished basement, sprinklers sys., storage bldg., horse barn, calf barn, corrals & much more. Close to town. MUST SEE TO APPRECIATE!!!

3-2 home on 1 acre on pavement close to town, Cent. A&H, built-ins, storm windows & doors, fenced yard. \$30's!!!!

3-1 home on .59 acres on highway at edge of town plus 1-1 mobile home for rental unit, storage, or workshop. A GOOD BUY!!!

LARGE BUILDING on 2 lots, paved parking.....

JUST LISTED-Nice, well-maintained Self-Service Laundry, 34 washers, 16 dryers in nice, modern building, excellent location. Books available to qualified Buyer.

PRICED TO SELL-Office Bldg. across from courthouse.....

APPROX. 3,000 sq. ft. bldg.. Railroad frontage. CASH PRICE \$15,000.00.

DIANNE NIEMAN, BROKER **GEORGE NIEMAN, BROKER**
"WE APPRECIATE YOUR BUSINESS"

Henry Realty
111 W. Ave. B. Muleshoe 272-4581

SPACIOUS-2 bedroom, 1 bath, 1-car garage, storm cellar, Good location. \$19,000.....

JUST LISTED 2 Br. - 1 bath, large utility. Nice fenced yard in Country Club Addition. Financing available.

NEAR EARTH - 3 Br., rural home. Immediate possession \$17,000.

ONE ACRE sites for home construction. 3 miles East of Muleshoe on Hwy. 3 lots remain.

FOR LEASE 3 bedroom, 2 bath, large living room, kitchen and dining. Excellent condition, near high school.

COMMERCIAL PROPERTY on Main Street, over 4,000 Sq. Ft., income producing property.

COMMERCIAL PROPERTY Excellent rental income from 4 separate offices. Lease agreements in force.

3 Br., 2 bath, spacious home outside city limits, near city on highway. 29'x40' metal building. Lot 85'x620'.

3 Br., 1 bath, completely remodeled, edge of city on highway.

VACANT LOT for Mobile home immediate possession.

COMMERCIAL PROPERTY on West American Blvd. ideal location. Building ready for occupancy.

NEW LISTING IN CONTRACT Country Club Addition IN CONTRACT. \$35,000.

Kenneth R. Henry
Broker
272-4581
Judy Coker
Agent 965-2468

WHITT-REID
REAL ESTATE
201 Main Office 272-3611

4 bedroom - 1 bath - 10th Street \$28,500
Need to sell badly - Make offer - 25H-25

3 Bedroom - 1 and 1/2 bath - \$28,000 On Ave. E - 25H-30

REDUCED Nice brick 2 & 3 bedroom homes to eligible buyers. Low closing cost & low interest. See us for these economical buy's.

We Need Listings

- We need irrigated & dry
- Acreage on pavement
- Nice 3 bedroom homes

Roy Whitt Thursie Reid
272-3058 272-5318
Certified Appraiser

11. For Sale Or Trade

FOR LEASE BY THE acre 2 - 510 Internationals, double disc drills. Phone 272-3733. 11-32s-tfc
FOR SALE: Black rattan chairs with white ultra suede cushions, 272-3747.

14. Farm Property
260 Acres Farmer Co. Texas, 206 CRP, 3 miles West and 1 mile North of Lazbuddie. Call 806-765-8861 Ext. 232 for information. f14-41s-8tc

15. Misc.

DELIQUIDATION SALE
1. 1 1/2 acres of land, 82nd street in Lubbock, North of Antioch Baptist Church.
2. 1959 Edsel, 37,000 original miles.
3. 16 ft. travel trailer.
4. 6 utility trailers. Call 272-5946. s15-42t-4tc

Too Late To Classify

KNOWLES USED CARS property for sale. Four lots and two buildings. Inquire at 516 14. 1st or call 272-3733 or 272-4993. All customers make payments there or at residence. t1tc-42t-2tc

Think Classified!

Three-Way News

By: Mrs. H.W. Garvin

Smyer Thursday afternoon losing to Smyer.

Mr. and Mrs. S.G. Long spent the last few days in Canyon and Amarillo visiting their children.

The Three Way home coming game Friday night was played with Smyer on the home field with Three Way winning. At half time Three Way crowned their King and Queen. Brian Kindle was crowned King and Mellisa Turney the Queen.

Mr. and Mrs. Douglas Dupler from San Antonio and Mr. and Mrs. Chuck Dupler and boys from Sundown visited their grandmother, Mrs. Minnie Dupler Thursday.

Maple Co-Op gin ginned their first bale of cotton Tuesday. Grown by Bobby Kindle on a farm one mile South of Maple.

Cotton in the community is beginning to open.

Leon Dupler from Andrews visited his mother, Mrs. Minnie Dupler, Saturday afternoon.

Mr. and Mrs. Rodger Hatcher and daughter from Clovis visited her parents, the Jack Lanes Thursday.

Richard Hearth from Cosey, N.M. visited Mr. and Mrs. George Tyson Sunday afternoon.

Mrs. Adolph Wittner visited her daughter, the Baxter Vaughn family in Plainview Saturday.

Mr. and Mrs. Jessie Wynn Tyson and Eugene Whittner spent the past week end in Ruidoso, N.M. visiting the Wind Caves and attending the chili cook off.

Mr. and Mrs. George Tyson were in Lubbock Wednesday on business.

Mr. and Mrs. Bill Dolle, Darla and Belenda spent the past week in Florida sightseeing. Some of the places were the Kennedy Space Center and Disney World.

The Three Way Junior High School football team played Whitherrell Thursday afternoon with Three Way losing the game. The Three Way High School team played New Home Friday night there with Three

Way losing the game. Saul Guillen suffered an injury and will be out for the year.

Mrs. Jim Simpson and Mrs. W.T. Simpson were in Lubbock Friday on business and also visited relatives.

Mr. and Mrs. H.C. Toombs are fishing at Lake Kemp this past week.

Mr. and Mrs. Jack Lane and children visited her mother, Mrs. Nettie Quesinbery in Muleshoe Saturday. Also visited her cousin, Klel Quesinbery, and family. Rev. Klel Quesinbery is pastor of First United Methodist Church in New Castle. Rev. Klel Quesinbery was pastor of Maple for the first four years of his ministry.

Mrs. Margie Davis from Lubbock visited the Three Way Baptist Church Sunday.

The Tye Nelson Carlsile home was the scene of a bridal shower honoring Miss Patti Lee Middleton, bride elect of James Simpson. A former resident of Maple.

The Kindle families all had lunch Sunday in the James Kindle home.

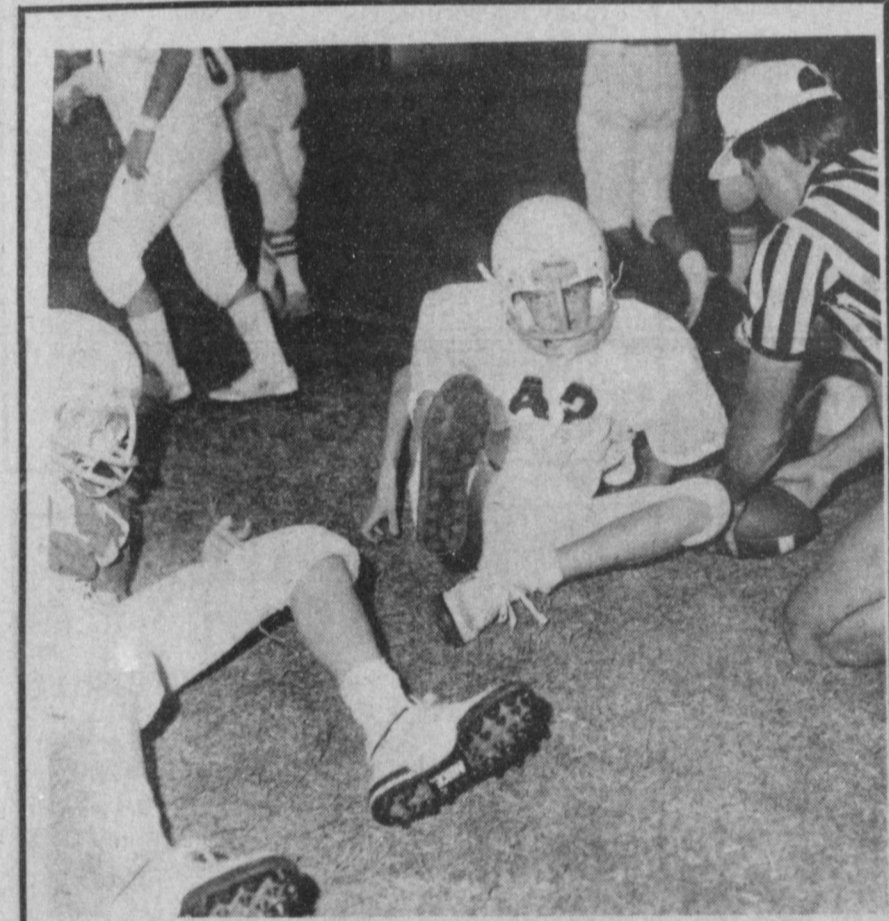
Mr. and Mrs. Troy Young from Portales visited Mr. and Mrs. Adolph Wittner and Mr. B.J. Emersons Sunday. Mrs. Young is Mr. Emersons sister.

Rev. and Mrs. Al Jennings

from Morton visited Mrs. H.W. George Tyson Thursday afternoon. Garvin and Mr. and Mrs. noon.



AT LEISURE...FOR A LITTLE WHILE--They don't appear too energetic, but, this foursome, including one who can't be seen behind Brad Poynor, took time out for a little refreshment and rest between games last Thursday night at Benny Douglass Stadium. At left is Terry Hutto and in the center is Dr. Robert Lepard.



EVERY WHICH WAY BUT LOOSE--And, it's really not as bad as it may look, as the little Mule for the seventh grade has just made good yardage in a seventh grade game last Thursday that saw the seventh grade Mules down the seventh graders from Friona.

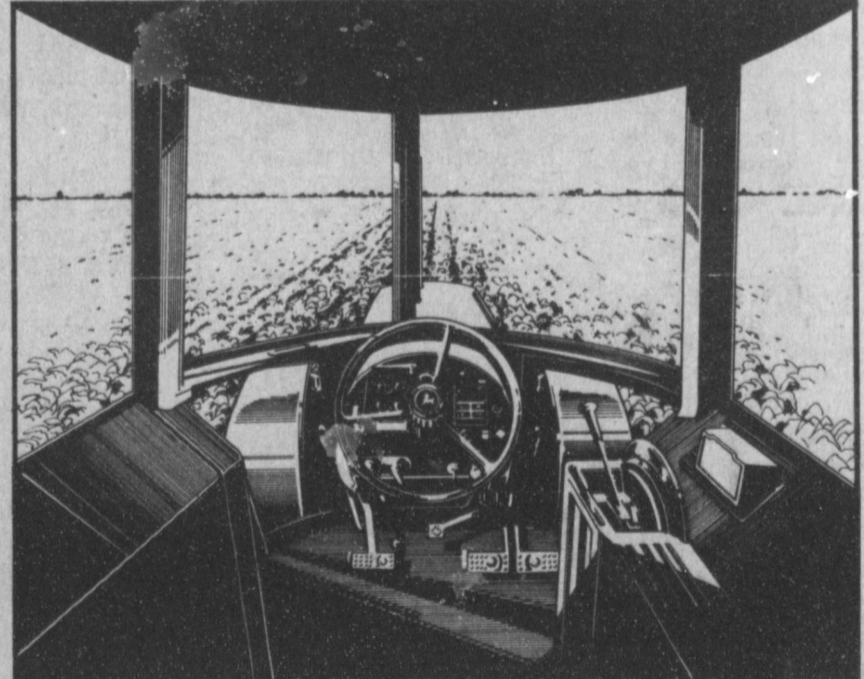
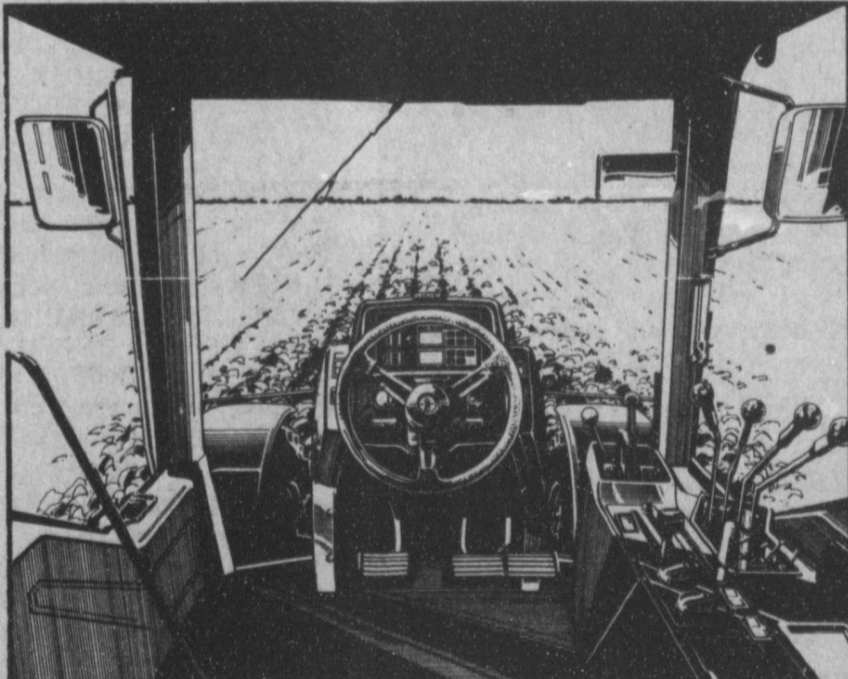


TOM JINKS, ASSISTANT SUPERINTENDENT--He's happy with his new office, adjacent to the offices of Jo Addine Mayhugh and Pauletta Crawford. They occupy a 'space' where the superintendent and secretary offices were located.



CONTRACTOR AT OPEN HOUSE--Joe Cearley, left, escorts Mr. and Mrs. Trevor Ford, and children, on a tour of the new school administration building. Ford, a graduate of Muleshoe High School, was architect for the new building.

**SEE
17% MORE.
FEEL
100% BETTER.**



Just one look and you'll see how the all-new cab on Case IH MAGNUM tractors offers you greater visibility than John Deere. Compare a MAGNUM tractor's 48 square feet of tinted glass to Deere's 41. Compare the Case IH floor-to-ceiling front glass, one-piece side picture window, wide rear window, and unique sloping hood that gives you optimum visibility. There's no air

intake or muffler sticking straight up through the MAGNUM tractor hood (both are neatly tucked inside). And no cab post or cab cross members block your view ahead. See for yourself why MAGNUM tractors outperform other 130 to 195 PTO hp models in visibility, comfort, power and more. Ask us about these four all-new Case IH tractors... MAGNUM tractors... tractors that will do more for you.



C & H Equipment

MAGNUM means more.

Telephone 806/272-5514

West Highway 84 • Muleshoe, Texas 79347

WOOD - JORDAN INC.

PHONE (806) 257-3484

P.O. BOX 415
EARTH, TEXAS 79031

