

## WEATHER

January 1	60	15	.00
January 2	63	18	.00
January 3	63	36	.00
January 4	59	37	.00

# Muleshoe Journal

The Community Of Opportunity-Where Water Makes The Difference

The Foreman Co.  
Box 68  
Monmouth, Ill. 61462



Vol. 67, No. 1

10 PAGES TODAY

Published Every Thursday At Muleshoe, Bailey County, Texas 79347

20¢

Thursday, January 5, 1988

## Annual Ag Conference Slated Monday

### First Time Entrant Wins Bowl Contest

You can call it 'beginner's luck' or you may call it 'just plain lucky,' but Peggie Hicks calls it an extra \$50 to spend.

Mrs. Hicks, entering her very first football contest "ever," won the final football contest for the 1988-89 football season, the annual Bowl Game Contest.

Mrs. Hicks was the only contestant to miss only two games in the annual contest, so was all alone with her victory.

She was very pleased that she could brag to Alfred and Keith Hicks, who have entered faithfully for a number of years. They have won several first, second or third place prizes in the weekly contests in the fall for the past few years.

Nearly sliding through to a victory was J. E. McVicker, another faithful contest entrant during the fall. He was the only one to miss just three games, and until toward the end of grading for the contest sheets, it was looking like he perhaps had it all wrapped up. But alas, on the third from the last entry, Mrs. Hicks' entry showed up, with her two wrong guesses.

Missing four games were C. O. LaRue Jr. of Amarillo, and formerly of Muleshoe; John A. Hayes, Muleshoe; and Debbie Weir and Marilyn Engelking, mother and daughter, and both from the Lazbuddie community.

Thanks again for your tremendous response to the 1988-89 football contest, and be ready to sharpen up your pencils -- and your wits -- this fall when it's time to start football again.

### State Climatologist Keeps Weather Record

Anyone interested in Texas weather data needs to make only one phone call or personal visit--to the Office of the State Climatologist at Texas A&M University.



Jim Cope, volunteer with the American Cancer Society, is looking for an ex-smoker to help him conduct a local Non-Smoking Clinic.

Cope said there are only two requirements. You need to be an ex-smoker for at least a year, and willing to spend one evening in training in Lubbock.

If you are interested in helping with this, call him at 965-2356.

### Crime Line ALERT!

Bailey County Crime Line is offering a \$400 reward for information leading to the arrests of the suspects involved in the theft of a 1986 New Holland Hay Baler, Model No. 316, and red in color. This item was taken four miles west of Muleshoe on Highway 1760. The theft date is between December 16, 1988 and December 19, 1988.

Remember, you will remain completely anonymous.

For information about the theft of the 1986 New Holland Hay Baler, Model No. 316, red in color, you are asked to call Crime Line, 272-HELP.



RECEIVING THE OATH OF OFFICE--From left, Linda Elder, county attorney; Jerry Hicks, sheriff; Gerry Pierce, constable and Rich Magby, constable; each received the oath of office for their particular office on Tuesday morning in the District courtroom at the Bailey County courthouse. Administering the oaths was Bailey County Judge Jim Watson. (Journal Photo)

### Cancer Volunteer Talks About Free Equipment And Supplies

Jim Cope, who is pastor of the Community Church, and volunteer for the Bailey County Chapter of the American Cancer Society, was guest speaker for the Muleshoe Rotary Club Tuesday at noon.

He presented a short film on special equipment and items available at no charge from the American Cancer Society.

The film stressed items such as dressings and drain supplies,

citing that one county in Florida dispenses 4,000-5,000 dressings each month.

According to the film, there are many ways to volunteer services to cancer victims. These include donating blood, time; driving patients to cancer centers and visiting and reading to the

### Wind Break Tree Seedlings Available

By: Rodney Duus  
Soil Conservationist

The Blackwater Valley SWCD is again providing reasonably priced wind break tree seedlings. Wind break trees have many benefits: (1) they protect soil resources from wind erosion; (2) they help prevent wind damage to farmsteads; (3) they control snow deposits; (4) trees provide shelter for livestock, as well as improve an area for wildlife; and (5) trees also beautify the area around farmsteads, reduce excessive noise and help reduce energy consumption.

Seedling trees need supplemental watering during the first three years of growth. The SWCD also has drip irrigation systems for your wind break trees. These systems help insure a good survival rate as well as an increased growth rate. Drip systems are the most efficient way to water young trees. The drip system for your wind break trees will be designed by SCS technicians and priced at 20 percent below retail.

Wind break tree seedlings need protection from both strong winds and rodents the first year. Closely spaced wooden shingles for wind protection and a fine mesh wire for rodent protection usually solve these problems. Wind breaks should be cleanly cultivated to reduce competition from weeds and to protect plantings from fire. To reduce wind erosion, a cover crop can be planted for winter protection.

Deadline for ordering trees is February 27, 1989. If you are interested in wind break trees should order early since there are limited quantities of some trees. For more information, contact the SCS at 272-5154 or come by the office at 105 East Ave. D in Muleshoe.

hospitalized cancer patients.

Volunteers can also fix brown bag lunches for cancer patients facing all day waits at a clinic to be checked; help with exercise therapy; help cancer patients with recreation; baby sit; or sponsor Stop Smoking Clinics, such as the clinic scheduled for Muleshoe in the near future.

"We need people, a lot of people," said Cope. "The hours are long, and the pay is lousy."

He added, "This type of work is not right for everybody. It takes some very special people to volunteer to help with cancer patients."

"If you know someone with cancer who needs help, ask them to call me, Jim Cope, at 965-2356. I can help see that they get the help they need."

He also said that two motels in Lubbock now provide free overnight housing for cancer patients and their spouses. This same type service is also now available for cancer patients going to the M. D. Anderson Hospital.

He cited figures that cancer can be cured -- if it is detected soon enough. His figures showed that five million Americans are alive today with a history of cancer. They have been killed.

More figures show that cancer kills more children between the ages of 3-14 than any other disease.

Another startling figure. Some 985,000 people will be diagnosed as having cancer this year. Of this number, 53,000 will be in Texas. Some 1,350 people die each day from cancer, but five out of ten people, or 395,000 will be alive five years from now.

Cope said do not wait until it's too late. He gave symptoms and said if these are present, check with your doctor to have peace of mind.

Citing that a few things can cause cancer, he said, most lung cancer is from cigarettes. Most skin cancer is from overexposure to sunlight.

A very small number of cancers are related to a person's occupation.

Rotary President George Nieman said Kerry Moore will be bringing a student each month as a Rotary guest to become acquainted with Rotary.

J. D. Cage was the winner of the Polio Plus drawing.

Guests included Dr. Lawrence Ward, G. B. Shelburne Jr. and Rotaryann Judy Watson.

### Farm Programs; Insect Information Scheduled

Bailey Co. Extension Agent Spencer Tanksley said the Ninth Annual Bailey County Winter Agricultural Conference will be held on Monday, January 9 at the Bailey County Coliseum.

The program will begin at 9 a.m. Tanksley said the program has been planned to provide timely information on crop production for every farmer in the county.

"The conference will begin with registration and coffee at 8:15 a.m.," added the county agent. "It will conclude about 12 noon."

The program agenda includes the following speakers and program topics:

8:15-8:45-Registration and Coffee; 8:45-8:50-Purpose of Meeting; 8:50-9:15-1989 Farm Program Update with Danny Noble, ASCS, County Executive Director.

9:15-9:30-Conservation Compliance Program with Jim Lutz, SCS, District Conservationist; 9:30-9:45-FHA Farm Loan Program with Jay McKay, FHA, County Supervisor; 9:45-10:15-Label Restriction okn Ally and Gleam with Terry Brandt, Dupont Chemical Company; and

10:15-10:30, Coffee Break.

10:30-10:50-Right To Know Law & Mite Control in Corn with Dr. Pat Morrison, Entomologist, TAES; 10:50-11:05 - Russian Wheat Aphids with Mike Blanton, Entomologist, TAES; 11:05-11:30-Cotton Seed Quality - Pix Treatments with Dr. James Supak, Cotton Specialist, TAES; 11:30-11:50-Wheat Diseases with Dr. Harold Kaufman, Plant Pathologist, TAES; and 11:50-12:10-Corn Stalk Rots Disease with Dr. Allen Knutson, Entomologist, TAES.

According to the County Agent, this conference is co-sponsored by the Texas Agricultural Extension Service and Blackwater Valley Soil and Water Conservation District.

Texas Agricultural Extension Service programs are open to the public and serves people of all ages, regardless of socioeconomic level, race, color, sex, religion, handicap or national origin.

"The conference committee hopes everyone will make plans to attend this informative event where the latest in agricultural programs will be discussed," concluded Tanksley.

### Lubbock's 4th Cavalry Will Be In Parade

(The following story was written by former Muleshoe resident, Leon Watson, now of Lubbock, and provided to The Journal by Watson.)

One of the most unique historical units in the Southwestern United States has accepted an invitation to participate in the inaugural parade in Washington, D.C. on January 20, according to Ray Thomas, first sergeant of the regiment.

The invitation to participate in the parade commemorating the inauguration of President-elect George Bush, came about through the efforts of Congressman Larry Combest, Texas Railroad Commissioner Kent Hance, and United States Senator Phil Gramm.

Working with members of the Lubbock-based cavalry, Gramm, Combest and Hance contacted Mr. Bush's Inaugural Committee about the unit and secured the

invitation.

"The 4th U. S. Cavalry Regiment Memorial is an educational organization which reenacts the South Plains history for the benefit of schools, community celebrations, and special events," Hance told the committee. "I believe this non-profit military reenactment organization will certainly enhance the day's activities."

Sergeant Thomas expressed the group's excitement when he said this was the biggest thing which has happened to the unit.

"We'll have 18 to 20 mounted troops in the parade," he said. "The major hurdle facing us is funding to get to Washington and back. We also need to know if anyone in the area has some dark colored horses, 14 to 15 hands, which they would loan us for this parade."

The 4th Cavalry was organized in 1985 for the purpose of



CANCER VOLUNTEER TALKS TO ROTARY--Wade Littlefield, left, in charge of the program Tuesday for the Rotary Club, introduced Jim Cope, right. Cope is the pastor of the Community Church and a volunteer for the Bailey County Chapter of the American Cancer Society. Cope spoke on the cancer program. (Journal Photo)

## Journal Files

### 60 Years Ago

1929  
RUSH IS NOW ON FOR 1929 LICENSE TAGS AT COLLECTORS OFFICE  
The rush for new car licenses began here last Monday. Only a small percent of the car owners in this county had obtained the new tags up to Wednesday when 124 cars and 37 trucks had been registered. The number will probably be around 1,000 it is said at the Collectors office.

In some cases the job of registering is a tedious one, due to the owners failing to submit the correct numbers through carelessness. This causes much delay in the office as well as extra work.

### 50 Years Ago

1939  
\$178,000 R.E.A. PROJECT GIVEN APPROVAL  
That the Rural Electrification project in Bailey County has been approved by the Washington office is the gist of information contained in a letter received by Cecil H. Tate, attorney for the organization.  
The letter gives authority for the organization officials to begin work of construction, executing notes and deeds of trust. The \$178,000 project, which extends into Lamb, Castro, Farmer and Cochran Counties has been let to the J.E. Morgan Construction

Co., Waco, and actual construction is expected to begin in the near future.

Those interested in the project who have not yet signed easements across their lands for the lines, please call at the project office in the court house and do so promptly.

### 40 Years Ago

1949  
POSTAL RECEIPTS AT RECORD HIGH  
Muleshoe postoffice receipts for 1948 were highest in history of office, a report issued this week by A.J. Gardner, postmaster showed.  
For the first time receipts passed the \$20,000 mark, totaling \$20,168.88 for 1948, an increase of \$961.63 net over the figure for 1947.

The only thing which marred the report was a decrease shown in the last quarter over the comparable period of 1947, of \$486.86.

### 30 Years Ago

1959  
1958 RAINFALL SET AT 20.95  
Rainfall and moisture in Muleshoe at the weather station kept by R.J. Klump amounted to an overall 20.95 inches during 1958, an increase of 1.68 inches over the annual moisture recorded during 1957.

September was the wettest month of the year with 4.18

inches, followed by May, October and April.

However, each month showed some moisture, with December the driest month with only .07 of an inch.

By months, here is how the moisture fell during the year just ended; Jan., 1.80; Feb. 1.80; March, 2.11; April, 1.46; May, 2.84; June 1., 72; July, 2.07; Aug., .98; Sept., 4.18; Oct., 2.13; Nov., .66; and Dec., .07.

### 20 Years Ago

1969  
CLASSIFIED ADS  
For Rent: Two bedroom house, newly painted with garage. Rents for \$65 a month.

\*\*\*  
For Sale: 80 Acres-2 1/2 mi. N.W. of Muleshoe \$550 Per Acre \$10,000 down, Bal. 20 Yr. 6 percent interest.

### 10 Years Ago

1979  
COLD FRONT WHISTLES IN; DUMPS SNOW

Late Monday night, a cold front whistled through the area, and a brief heavy snow accompanied the storm.

After a brief respite cold weather which has clung to the area since the first of the year, the cold front quickly dropped temperatures to below 20 degrees.

Little snow was realized from the latest storm, and most streets had thawed and dried during the day Tuesday, while light snow remained in shady locations.

No moisture is expected for the remainder of the week until late Friday or Saturday, when the next cold front is expected to clam through the area.

### Holiday Reunion Held Here

The family of Mrs. Selma Smith met for a holiday reunion on Sunday, Dec. 27 at the Bailey County Coliseum.

Those attending were J.L. and Lynn Redwine of Panhandle and their children, Mr. and Mrs. Leslie Redwine, Mr. and Mrs. Mike Watson, Erin and Reece, Mrs. Leasha Hobbs, Lanny Redwine and Shannon Haire of Hereford.

Mr. and Mrs. Jackie Redwine of Hereford, Kip, Chad, and their granddaughter, Carley Lassiter and Vicki Mongold.

Marcia Henry of Wolfthorpe and Kacy and Kristi, Jason Scoggin, and Curley Mardis. Mr. and Mrs. Mike Henry, Blake and Haley of Lubbock, Mrs. Belinda Henry and Beau and Brad of Muleshoe.

Mr. and Mrs. Robert Hunt, Mr. and Mrs. Kim Black and Landon and Andi Kim, Mr. and Mrs. Joey Bruton, Mrs. Curtis Hunt, Cory and Coley.

Mrs. Billie Downing, Mr. and Mrs. Quincy Kirven and Trey from Lubbock.

Mr. and Mrs. Dempsey Smith of Granite Shoals visited in the area with all of their children.

## After The Holidays Feasting

So you overdid it on the holiday eating and now it's time to hop on the diet bandwagon.

To help you fulfill your New Year's vow to lose weight, the magazines will be filled with diet plans and the commercial weight loss programs will advertise heavily in January. The question is, how to choose.

You may not need a "special diet" at all, according to Dr. Mary Kinney Sweeten, a registered dietitian and nutrition specialist with the Texas Agricultural Extension Service.

"People with an extra two to five pounds from overdoing it during the holidays can probably drop the weight just by cutting back on extra calories and getting on an exercise program, such as walking a mile or two each day," she said.

"Following the low-fat recipes

from a magazine diet plan may help some people do that. But if you're already 20 to 30 pounds overweight and have added even more over the holidays, it's time for a significant diet," said Sweeten.

Although a post-holiday fad diet may help in the short run, research indicates that 95 percent of the people who go on them regain the weight within a year, said the specialist.

Before choosing a diet book, class or plan in hopes that it will help you with significant and permanent weight loss, Sweeten suggests asking the following questions:

- What's the source of the diet? Is it a reliable health organization?
- How is the effectiveness of the diet documented? Be wary of testimonials by "successful" clients. Ask for figures on long-term maintenance as well.

•Are sensational claims made for the diet? Does it make sense that you can "lose ten pounds overnight" or "eat all you want" and still lose weight?

•Is the program supervised by qualified personnel, such as a physician or a registered dietitian?

•Along with calorie reduction, does the diet include instruction in behavior and lifestyle modification to help maintain the weight loss?

•Is this a one-food diet or a liquid diet? In addition to being boring, these diets omit necessary nutrients and can be a danger to your health.

•Is the diet nutritionally balanced? It should include foods from the major food groups of meat, poultry and fish; fruits and vegetables; dairy products; and grains and cereals.

•What is the cost of the diet? If you have to buy special foods, devices, supplements or books will it be worth it?

## health hints

### Wash Your Hands of Colds

It's said nothing will cure a cold. That's why it's a good idea to avoid catching one in the first place. Many health experts say the best way to reduce the risk of catching a cold—or spreading colds to others—is through frequent hand washing.



Clinical studies show the virus causing colds contaminates the hands of most sufferers. Hand washing or even rinsing the hands can help break the chain of infection.

Most people spend 15 seconds or less in handwashing. Not long enough—at least 30 seconds is recommended to flush germs away.

The maker of Liquid Dial, new germ-killing liquid hand soap, offers the following tips for proper washing of hands: Use soap and warm running water. Scrub hands vigorously for at least 30 seconds. Wash the backs of hands, wrists, between fingers and under fingernails. Rinse well and dry hands with clean paper or cloth towel.

**Muleshoe Journal** USPS 567-820  
Established February 23, 1924. Published by Muleshoe Publishing Co., Inc. Every Thursday at 304 W. Second, Box 449, Muleshoe, Texas 79347. Second Class postage paid at Muleshoe, Texas 79347.  
Member NATIONAL NEWS PAPER ASSOCIATION, WEST TEXAS PRESS ASSOCIATION, PANHANDLE PRESS ASSOCIATION.  
L.B. Hall, President & Publisher; Sammy Hall, Vice-President & Controller; Clara Williams, News Editor; Evelyn Harris, Society Editor.  
SUBSCRIPTIONS: Muleshoe Journal and Bailey County Journal, Bailey and Surrounding Areas, Muleshoe Journal and Bailey County Journal, Elsewhere in Texas \$14.75; Muleshoe Journal and Bailey County Journal, Outside of Texas \$18.50. Yearly by Carrier \$12.50. Advertising rate card on application.

## Clearance Sale

Open 8:00 A.M. Tues.

Sweaters	Wool Pants
50% OFF	60% OFF

Entire Stock of Fall & Winter Separate Sweaters

2 Large Racks Buy One Get One FREE

Lady You-Reque 420 Main

Tess Blouses & Misc. Sweaters by Ruff Hewn & Hunter Hill	60% OFF
Turtleneck	50% OFF
Zena & Cherokee	50% OFF
Jeans	50% OFF
Evan Picone Hose	50% OFF
Dresses	50% OFF
Belt	50% OFF
Coats Long & Short Wool	50% OFF
Herman Geist	50% OFF
Jones New York	50% OFF
Corduroy Pants	50% OFF

## clearance sale

Open 8:00 A.M. Tues.

Suits by Paul Rene' \$99.95 (reg. \$215.00)	Sport Coats \$49.95 (reg. \$125-\$165)
Wools & Wool Blends Sizes 36S to 48L	
Dress Shirts 14.95 (Lucasini & Enro)	Sweaters 50% OFF
Wool and Leather Coats 50% OFF	Sport Shirts 50% OFF
Dress Pants 24.95 (Beltless Flex Waist)	Jeans 50% OFF (Jordache, Calvin Klein, Ruff Hewn)
Jockey Underwear 50% OFF	Down Filled Coats 50% OFF
Gloves 50% OFF	PJ's & Nightshirts 50% OFF
Ties	Hats & Caps 30% OFF

BOB'S M R. shop

## All Fall & Winter Merchandise

# 25% to 75% off

Special Things Boutique

701 W. 2nd Portales 359-1423  
New Hours: 9:00 - 5:30 Mon.-Sat.

# SPRING REGISTRATION

Jan. 9  
Returning Students  
(Only those who were enrolled for Fall 1988 semester)

Jan. 10  
New and Readmission Students

Classes begin Jan. 11  
(Late registration continues through Jan. 20)

Applications for admission must be completed prior to registration

"Discover the Eastern Edge"

## ENMU Clovis

Eastern New Mexico University-Clovis  
417 Scheppe Blvd. • Clovis, New Mexico • 769-2811

## Lazbuddie Young Homemakers Hold Family Christmas Party

The Lazbuddie Young Homemakers held their regular monthly meeting on December 6. Mary Blinderman of Southwestern Public Service presented

### Putting Dietary Recommendations Into Practice

Hosts of health organizations are making recommendations for healthier eating, but getting people to implement the recommendations can be difficult.

"The challenge is putting guidelines into practice," says Charles DiSogra, Dr. P.H., cancer control epidemiologist, California Public Health Foundation. The bottom line of dietary guidelines, DiSogra says, is to have the greatest impact in reducing fat intake and increasing fiber and fruit intake.

The American Cancer Society stresses the importance of early cancer detection and cancer prevention. In addressing the latter, it has established these dietary guidelines:

- 1) Avoid obesity
- 2) Cut down on total fat intake
- 3) Eat more high fiber foods
- 4) Include foods rich in vitamins A and C in your daily diet
- 5) Include cruciferous vegetables (cauliflower, cabbage, Brussels sprouts, broccoli, turnips, and rutabagas) in your diet
- 6) Eat moderately of salt-cured, smoked and nitrite-cured foods
- 7) If you do drink, keep alcohol consumption moderate

To aid the consumer in implementing these guidelines the cancer society developed a collection of recipes that demonstrate how to cut down fat intake and increase consumption of high fiber foods, for example.

"In fact they may seem tough to do but they're not," DiSogra says. By following such dietary guidelines individuals can enjoy multiple benefits he says. By incorporating these guidelines into their lifestyle a person can not only reduce his cancer risk but he can also reduce his risk of heart disease.

DiSogra advocates selecting from a wide variety of foods--choosing more of some foods and less of others--to improve the diet and reduce cancer risk.

Among foods to choose more often are whole-grain products, fruits and vegetables, lowfat or skim dairy products, lower fat poultry, fish and meat. Foods to choose less often are bakery products such as quick breads, biscuits, croissants, pastries and cookies, nuts and seeds, fats and oils.

Becoming familiar with such guidelines and making changes in the way you select and/or prepare foods can lead to a healthier lifestyle with reduced disease risk.

"We can cut the incidence of colon cancer in half if individuals will follow a diet low in fat and high in fiber," DiSogra says.

the program.

Mrs. Blinderman's program featured holiday cooking and she demonstrated many recipes out of S.P.S. Cookbook. Mrs. Binderman also showed the homemakers a new Anniversary Cookbook full of S.P.S. recipes collected over the last 25 years.

Business centered around the successful book fair held by the homemakers in November. Memorials were made to the Lazbuddie Scholarship Funds in memory of O.F. Davis and Finis Jennings. The Young Homemakers also made plans to honor their Senior Citizens with gifts for Christmas.

The meeting was adjourned and refreshments were served and plans made for the family Christmas party. Pat Randolph won the door prize.

Members present were: Lana Copp, Lorinda Bodiford, Jana St.Clair, Sarah Black, Mandi Seaton, Gay Williams, JoAnn McDonald, Reta Mimms, Pat Randolph, Judy Steinbock and Debbie Roberts.

The family Christmas party was held on Friday, Dec. 9 in the Lazbuddie School Cafeteria.

Casseroles, salads, and de-

serts were served to sixteen families.

Everyone was surprised by a visit from Santa and the children received gifts. The homemakers exchanged secret pal gifts and it was reported that everyone had a good time.

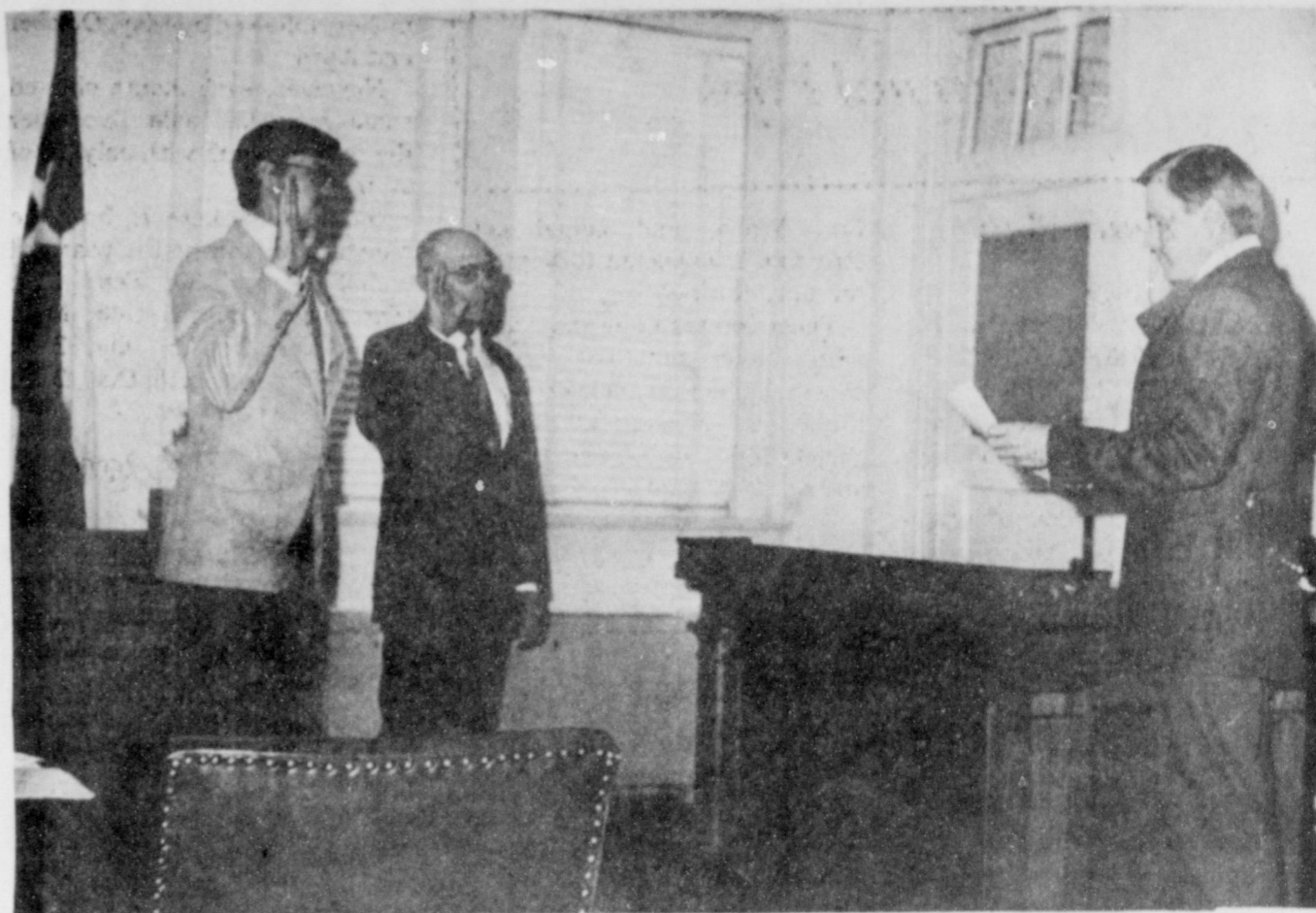
Families attending were: the Ricky Blacks', Carl Bodifords', Kirby Birchs', Rick Cops', Steve Gartins', Todd Gregorys', Donnie McDonalds', Skip Magbys', LynEldon Randolphs', Randy Roberts', Rick Seaton's, Tommy St.Clairs', Terry Steinbocks', Edward Terrys', C.W. Williams', and the Glenn Lusts'.

## In Fashion

Jewelry designers are showing an exciting kaleidoscope of colors for spring and summer '89. These new bolder colors and designs are for those who dare to be different.

A red and gold collar has matching drop earrings that give a classical look to navy and white costumes. A wristful of red bangles add to the new look.

Striking in appearance is a collar of triangle and circular shapes, with overlays of gold on porcelain white. Matching button earrings complete this set.



COUNTY COMMISSIONERS RECITE OATH--With Bailey County Judge Jim Watson, right, reciting the oath of office, Bailey County Commissioners Joey Kindel, Precinct Three, left; and R.L. Scott, Precinct One, center; repeated their oaths on Tuesday morning at the Bailey County courthouse.

(Journal Photo)

Errors of opinion may be tolerated where reason is left free to combat it. —Thomas Jefferson

There is no error so crooked, but it hath in it some lines of truth. —Martin F. Tupper.

Who says he does not err, errs in conceit. —John Norden.

## CREATIVE COOKING



### BANANA CHOCOLATE CREAM PIE

- 2 packages (3-1/2 oz. each) chocolate pudding and pie filling mix (not instant)
- 2 cups milk
- 2 ounces unsweetened chocolate, melted
- 2 firm, large Dole Bananas, peeled, sliced
- 1 cup whipping cream, whipped

### Chocolate Cookie Crust

- 2 cups chocolate wafer crumbs
- 1/2 cup butter or margarine, melted

Combine pudding mix with milk in a saucepan. Follow package directions for preparing pie filling. Stir in melted chocolate. Remove from heat. Cool. Alternately layer pudding and bananas into prepared Chocolate Cookie Crust. Chill. Garnish with whipped cream and banana slices. Makes 1 (8 or 9-inch) pie.

CRUST: Combine chocolate wafer crumbs and melted butter. Blend well. Press evenly over bottom and sides of 8 or 9-inch pie pan. Chill.

# Bentley's

Smart Fashion

# 1/2

# PRICE

# Clearance

SHOP ALL DEPARTMENTS FOR 25%-50% SAVINGS

WE'RE MAKING ROOM FOR SPRING MERCHANDISE ARRIVING DAILY

ALL SALES FINAL, NO LAYAWAYS

VISA/AMERICAN EXPRESS/ MASTERCARD/DISCOVER ACCEPTED

110 Main  
Muleshoe  
272-4119  
Open Mon.-Sat.  
9-6

**WOMEN'S & JUNIORS:**  
COORDINATES  
BLOUSES  
DRESSES  
SKIRTS  
SWEATERS  
SLEEPWEAR  
ROBES

**MEN'S**  
SWEATERS  
SUITS  
SPORTCOATS  
NECK TIES  
SLACKS  
COATS  
DESIGNER JEANS

**WOMEN'S ACCESSORIES:**  
SHOES  
HANDBAGS  
JEWELRY  
HOSIERY

**CHILDREN'S & INFANTS:**  
PLAYWEAR  
DRESSES  
SWEATERS  
JACKETS  
JOG WEAR  
SLEEPWEAR

SAVINGS

 <p><b>\$21.95</b></p> <p>602581 Portable Fan-Forced Electric Heater &amp; Cooling Fan. 3 heat settings. HR 15</p>	 <p><b>\$49.99</b></p> <p>375550 Multiple-Heat Fan-Forced Electric Heater w/3 settings to warm you economically. HR 40</p>	 <p><b>\$49.99</b></p> <p>621938 7-Fin Oil-Filled Radiator offers 3 settings to meet your heating needs in any room. 7000</p>
---	---	--

Fry & Cox, Inc.

401 S. 1st
Sale Date 1/5/89 Thru 1/20/89
272-4511

**STATE CAPITAL**



**HIGHLIGHTS**

By Lyndell Williams  
TEXAS PRESS ASSOCIATION

**AUSTIN**—Most observers agree Texas fared well under a plan announced last week by a Pentagon committee calling for the closure of 34 military installations in the United States.

Although the proposal calls for the cancellation of a planned Navy base in Galveston and the transfer of basic training programs from El Paso's Fort Bliss, Texas stands to gain 2,200 military and civilian personnel.

**School Financing**

The bad news is the Legislature must grapple with public school financing reform when it convenes next week, and reform usually is another word for tax hike.

The good news is that the Democrat-controlled budget writing panel and the Republican governor are not so far apart in their vision of spending.

That, plus a chance at resolving issues which can free up existing monies, indicates a tax hike may be sidestepped.

Gov. Bill Clements and Lt. Gov. Bill Hobby may also be nearing agreement on a plan of incentive funding for school districts.

The idea is to reward with extra cash the school districts which show improved student performance, reduced dropouts, and successful drug and alcohol abuse programs.

Still to be worked out is how the cash will be awarded and how to make sure poor districts are not penalized under the plan.

**Scenario Going In**

The scenario going into the session is there is probably enough budget surplus available to address school finance reform, if lawmakers can perform yeoman service early in the session.

Basically, lawmakers must work to free \$1.5 billion reserved for possible legal judgements, or face the prospect of cutting \$1 billion from the budget for certain programs over 1990-91.

The Big Three: Clements, Hobby and Speaker Gib Lewis, all expressed agreement with the budget attack plan.

**Extra Money, Bonds**

Shortly before the holidays, Gov. Clements wrote lawmakers he agrees the starting point is the budget proposed by the Legislative Budget Board. That, in itself, should avoid a lot of budget bloodletting.

The plan proposed \$1 billion in cuts over 1990-91, mainly in higher education, prison construction and programs for the poor and mentally ill.

Clements will send emergency legislation authorizing bonds for prison construction.

Extra money could be freed if lawmakers can resolve legal problems on tax issues that prompted the comptroller to reserve \$1.5 billion for possible lawsuit judgements.

The possible judgements are tied to insurance premiums, utility and franchise tax issues.

**Insurance Board Ripped**

Meanwhile, the State Board of Insurance continues to draw criticism of mis-management and footdragging in cases involving unhealthy insurance companies.

Such criticism has already led to the resignation of one commissioner, and now critics say that taxpayers will soon be paying for the board's ineptness.

While they're in Austin for the 140-day session, lawmakers will no doubt want to take a close look at that troubled agency.

**20 Troubled Companies**

Surfacing as an issue are some 20 troubled insurance companies which the State Board of Insurance recently placed under official rehabilitation. It had 17 such cases in 1987.

Critics within the agency say delays by the agency, not trouble in the insurance industry, caused the rehabilitation umbrella to be unfolded.

What is at risk for taxpayers is this:

If any of these companies fail, as some critics predict, the cost of covering their policyholders will be paid from a guaranty fund underwritten by healthy insurance companies.

However, the cost to the healthy companies will be written off as tax deductions, meaning taxpayers may be asked to make up the loss to general revenue with higher taxes.

**Volunteer Lawyers Wanted**

The president of the State Bar of Texas is seeking more volunteers to represent indigent death row inmates who do not have lawyers. Some 70 law firms have responded to his call.

By law, the state only pays for trials and first appeals and many court-appointed lawyers drop their clients after the first appeal is lost.

Bar president Jim Sales wants volunteers to pick up those cases, but said he has gotten so many unsympathetic replies that he may start drafting volunteers or seek help from federal judges.

**Weather...**

Cont. from Page 1

--Prepares special publications on the Texas climate, including "Climatology of Texas," a single sheet item covering various weather events; "Agroclimatic Atlas of Texas" and "Engineering Climatic Atlas of Texas," book-type series; and a special series on "100 Years of Texas Weather, 1880-1979," and "Climates of the 254 Texas Counties."

--Answers questions from the public, industry, organizations and state agencies.

The Office of the State Climatologist is located in Room 1017 of the Oceanography and Meteorology Building at Texas A&M, said Tanksley. The telephone number is 409-845-5044.

**Golden Gleams**

Error is always in haste.  
—Thomas Fuller

To err is human, to forgive divine.  
—Alexander Pope



**SHERIFF'S OFFICE RENEWS OATH**--From left, Deputy Sheriffs Richard Bonham, Jan Pierce and Steve Bearden all renew their vows to uphold the laws of Bailey County, as Bailey County Judge Jim Watson administered the oath of office during ceremonies in the Bailey County District courtroom Tuesday morning. (Journal Photo)

**Lubbock 4th Cavalry**

Cont. from Page 1

contributing to the education of the people of this area on the Indian Wars period of our history (1869-1876).

"We are a reenactment group that is dedicated specifically to the period of time when Colonel Ranald S. Mackenzie and his 4th Cavalry actually operated in this area," said Major Larry Goldston, adjutant/executive officer of the regiment. "All of our uniforms, equipment, weapons and saddle gear are period replicas or authentic antiques. We pride ourselves in recreating the trooper as he actually was and not as he has been portrayed by artists and by the movies."

Colonel Mackenzie's cavalry was able to achieve the distinction of being "the most successful regiment" in all of the army during the Indian Wars. "Our unit commemorates this immense victory by heralding to all this part of history, by helping to educate the public through reenactment, displays and discussions at school and public events," Major Goldston said. "We promote historical preservation, research and authentic

living history."

Because the group is registered as a non-profit organization it relies on membership dues and tax-deductible donations of cash as well as horses and equipment. "We need horses," Major Goldston said. "There may be some people who have horses which they are not using. They might realize more out of their horses by donating them than they could by selling them; with the assurance that the mounts would be well cared for and would be providing a useful service. We will even come get them."

He also stated that the 4th cavalry will accept donations of wagons, horse drawn ambulances, weapons and saddle equipment. The donors will be given a receipt for their tax purposes.

Lieutenant Colonel Robert Marlett, commander of the regiment, said the 4th Cavalry has a place for everyone. "We realize that nothing worthwhile ever gets accomplished by limiting participation to a few," he said. "We welcome all to come join and share in the thrill."

LTC Marlett said it is not

mandatory to own a horse, and a member will be advised by the board of standards the method of obtaining the correct items.

The 4th Cavalry is always seeking invitations from area citizens for parades, demonstrations or performances. All correspondence should be directed to Major Larry Goldston, Adjutant, 4th Cavalry Regiment (Memorial), Box 64394, Lubbock, TX 79464, Phone 792-3390.



**FOURTH CAVALRY REGIMENT OF LUBBOCK**--The 4th Cavalry Regiment of Lubbock has been invited to march in the inaugural parade in Washington, D.C. on January 20, during ceremonies when George Bush will be given the oath of office as President of the United States. (Guest Photo)

**Cash Rewards  
Up To \$1,000  
For Information!**

**Call  
Bailey County  
Crime Line  
272-HELP**

**Health Insurance:  
Stop Renting...  
START OWNING!**

Most people agree it makes sense to own your car and your home.

Ownership lets you build equity. After a number of years, your car, or your home, is paid up. It's part of the American Dream. And yet, most people continue to "rent" their health insurance.

You pay the premium each month. And after years of payments through sickness and health you have no ownership. No equity. No dollars. And that doesn't seem fair. Or smart.

But until now you've had no choice.

**Introducing a new way of thinking\***

Our concept allows you to build while you make your payments. It lets you control cost and manage your health cost risks by letting you accumulate funds each month. Regardless of how many claims you may have.

This unique concept was developed exclusively for the members of Communicating for Agriculture, a national rural association made up of self-employed people throughout the U.S.

More than 80,000 people throughout the U.S. are protected-- and enriched-- by this concept.

Health insurance is a big expense. Cost keep rising every year. Isn't it time you took control of these costs? Start "owning,"... and stop renting.

For additional information, call  
Jim Pechacek  
**794-2938**

**CAI**

\*The CDC Concept is available exclusively to members of Communicating for Agriculture. It is underwritten by Life Investors Insurance Company of America, Cedar Rapids, IA.

**PARTS VALUE OF THE MONTH**

**Pre-Season Service Savings**

**BE READY TO GO!**

Get a Performance Plus Checkup and save on service work, too!

January SPECIAL

**SAVE 10% on parts** when work is done in our Service Center

**plus SAVE 10% on labor**

Get your tractor in top shape for the busy season and save at off-season prices. We'll send a service technician directly to your farm for a Performance Plus Checkup of your Case, IH, or Case International tractor. Then, if you want repairs, we'll do them in our Service Center at a special discount. Don't wait until the busy season hits. Get your tractor ready to roll now at special Pre-Season Service Savings.

**case IH**

**C & H Equipment**

Telephone 806/272-5514  
West Highway 84 • Muleshoe, Texas 79347

**BROWN BAG IT!**

**2 REGULAR BURGERS 2 ORDERS OF FRIES 2 MEDIUM COKES\***

Perfect for carry-out convenience or enjoying in your car! Just head to your nearest Sonic Drive-In and let 'em know you want to Brown Bag It!

**\$3.99** PLUS TAX

\*OR ANY OTHER MEDIUM SOFT DRINK

**SONIC** 1633 W. American Blvd.  
272-3998

# Race Horse Clinic Slated At Houston

Race horses will be featured in Houston February 16, 17 and 18 when the International Stockmen's School presents a Race Horse Industry Seminar.

A trade show and social will be held Thursday evening, February 16, at the AstroVillage Hotel. The Trade Show will include booths and exhibits by breed associations, race industry groups, breeding farms and product/service companies. Displays will also be offered by equine researchers in Animal Science and Veterinary Medicine Departments from Texas A&M University. Various video and live horse demonstrations are also planned for the evening.

Presentations will be offered on Friday, February 17, in concurrent sessions for both race horse professionals and newcom-

ers to the industry. A representative of the Texas Racing Commission will talk about the current status of racing in Texas. Ricky Knox, Executive Director of the Texas Horse Racing Association, will discuss the expected impact of racing on statewide growth and development.

Trainers, breeders and owners will hear the latest information on exercise physiology research as it relates to training race horses from Dr. Don Toppliff, Oklahoma State University and Dr. Gary Potter of Texas A&M University. Geneticist and breeder of half million dollar winner, Passover, Dr. Nat Kieffer, will discuss breeding systems for producing successful race horses. Dr. Calvin Kobluk, DVM, University of Minnesota, will

summarize the findings of an in-depth study on race track breakdowns. And, Dr. Robert Lewis, DVM, of Elgin, Texas, will address the topic of stress related lameness and use of orthopedic surgery. Feeding the race horse will also be covered by Dr. Pete Gibbs, Texas Agricultural Extension Service.

Newcomers, potential owners and enthusiasts will get the chance to learn more about race horse terminology for Ken Campbell of the Texas Horse Racing Association. Jeff Hooper, Executive Director of the Texas Thoroughbred Breeder's Association in Austin, Texas, will discuss key factors to consider in reading a horse's pedigree and a sales catalog. Nationally recognized racing and breeding consultant, Ken Carson, who assisted with selections of the All-Time Thoroughbred money earner, Alysheba, will outline important points in the selection of yearlings. Dan Fick, the American Quarter Horse Association's Director of Racing, will present a video explaining a day at the races, and Dr. Jerry Rheudasil, DVM, who bred and raised the All-American Futurity winner, On A High, will explain those things that occur daily in the life of a race horse.

On Saturday, February 18, participants will take a farm tour to Shady Oak Race Farm Training and Conditioning Facility in Magnolia, Texas. Mr. Ted Kieffer, owner of the facility, will host the tour. Training programs will be demonstrated and participants will have the opportunity to evaluate yearlings being condi-

tioned for upcoming sales.

A special feature, accompanying the Race Horse Industry Seminar will be a catered Bar-B-Que supper on Friday evening at the Houston Livestock Show and Rodeo Astro Hall followed by a Texas Horse Industry Showcase. This highly entertaining program will feature presentations by breed or performance associations depicting the versatility and national reputation of horses and horse people in Texas.

The Race Horse Industry

Seminar is sponsored by the Texas Agricultural Extension Service, the Houston Livestock Show and Rodeo and AgriServices Foundation. Coordinators for the seminar are Dr. Pete Gibbs and Dr. Doug Householder, Extension Horse Specialists (409) 845-1562. For preregistration information, contact Dr. L.S. Pope, Director, International Stockmen's School, Kleberg Center, Room 249, Texas A&M University, College Station, Texas, 77843-2471 or (409)845-3808.

## Who Knows?

1. After what war was Memorial Day inaugurated?
2. With whom was the phrase, "Peace in our times" associated?
3. If a senator dies in office, how is the vacancy filled?
4. Who painted the "Sistine Madonna"?
5. Who wrote, "A man is a worker. If he is not that, he is nothing"?

## Answers to Who Knows

1. The Civil War, first observed in 1868.
2. The late Neville Chamberlain, just after Munich.
3. The governor of his state appoints his successor.
4. Raphael.
5. Joseph Conrad.

## Best of Press

It is  
A youthful figure is something you get when you ask an older woman her age.  
U.S. Naval Depot, Ogden

## Patients In West Plains Medical Center

THURSDAY, DEC. 29  
Fermin Rosas, Ben Allison, Sherri Stovall and Rosalinda Toscano

FRIDAY, DEC. 30  
Fermin Rosas, W.T. Millen, Willie Mae Walker, Bobby Angeley, Sherri Stovall, Rosalinda Toscano and Ben Allison

SATURDAY, DEC. 31  
Fermin Rosas, W.T. Millen, Willie Mae Walker, Bobby Angeley, Sherri Stovall and Ben Allison

SUNDAY, JAN. 1  
Elizabeth Watson, Willie Mae Walker, Bobby Angeley, Theodore Mesman and Austin Green

MONDAY, JAN. 2  
Theodore Mesman, Austin Green and Willie Mae Walker

TUESDAY, JAN. 3  
Theodore Mesman, Austin Green and Willie Mae Walker

# New Year Resolution Could Be On Finances

If it's January, it must be time for new year's resolutions. Lose weight. Balance the checkbook. Visit your mother. Plan your funeral.

Plan your funeral? According to family finance expert Nancy Granovsky, that's not a morbid resolution.

"Considering what would happen to your family if you or any other wage-earner should die suddenly should be a normal part of an annual review of the family's finances," she said.

Granovsky, a specialist with the Texas Agricultural Extension Service at Texas A&M University, said January is an ideal time to go through what she calls a "financial contingency day."

"The purpose is simply to review all aspects of your family finances, update needed information and set goals for the coming year," she said.

"Its side benefits are helping you get records organized for tax purposes and having ready the financial information you'd need in case of a death, accident or major family crisis."

The specialist suggested several items to consider on a financial contingency agenda:

- Write out a net worth statement. That means listing the value of all your assets, and listing all your debts. The difference between the two is your net worth.

- Plan your financial goals for the next year. Those could include such things as reducing your debt load, saving a certain amount in a college fund for the children, or financing a new car.

- Establish a household budget or revise last year's to reflect new financial goals and/or changes in the family's economic status. If one spouse is going back to work, going from part-time to full time employment or retiring, for example, it will have a great impact on income and expenses.

- Check with your lawyer to have a will drawn up or to see that existing wills are up-to-date. Review how assets and property will be handled in case of a death.

- Prepare or review a letter of last instruction. This letter informs survivors of financial matters needing immediate attention and also describes what funeral plans, if any, you have made.

- Re-calculate survivor's income and expenses in case of a death of a wage-earner. Make out a tentative budget for survivors and list all sources of income they can depend upon.

Granovsky said younger couples are often especially reluctant to go through this process, although they may need it most.

"Young families often have higher debt loads, more dependents and are less likely to have substantial resources to carry survivors through until they can get back on their feet financially," she said. "That makes some planning all the more important."

Most families won't have to put their contingency plans into action, but going through the process will help them get a grip on their family finances for 1989.



## KNOW THE WEATHER

Salesmen know the value of good weather. Low pressure which precedes and accompanies a storm is not a good time for salesmen to call on customers.

On the other hand, people are more alert and active under the influence of a high pressure area. They are more likely to buy, to listen carefully and enthusiastically to the salesman.

When pressure is low, people often become sad, irritable or moody. Trying to talk and convince people in this mood is much more difficult than when they're feeling better and more alert.

King Alfred—a thousand years ago—is said to have observed: "So it falls that all men are with fine weather happier far."

What he was talking about was the pressure of the layer of gases surrounding the earth, which we call the atmosphere. When we are under a high, that means a mountain of gases are above us and the weight of the atmosphere is higher than the average.

When we are under low pressure we are under a valley in the layer of gases surrounding the earth. It's then that the pressure of the air fails to squeeze as much oxygen into our bloodstream as when under higher pressure.



## ONE MINUTE SPORTS QUIZ

By Christian Thorlund  
1. Who is the coach of the Minnesota Vikings?  
2. Who is Dick Sheridan?  
3. What was the score of the recent Bengal-Redskin pro football game?  
4. Who is Reggie Lewis?  
5. What teams met in the NCAA Division I-AA football playoff game?

The Answers:  
1. Jerry Burns.  
2. College football coach at N.C. State.  
3. Cincinnati 20, Washington 17.  
4. Star of the Boston Celtics (pro basketball).  
5. Furman and Georgia Southern.

## AMALIE

**Better than it has to be.®**

Wiedebush and Company  
is having another Truckload Oil Sale.

**Amalie Products**  
Now  
**10% Off Regular Price**  
Buy 10 Cases, Drums, or 5-Gallon Cans  
Get One Unit FREE!

Good Dec. 1, 1988 - Jan. 31, 1989

## Wiedebush & Co.

1620 W. American Blvd. 272-4281

**OFF-SEASON SPECIAL**

JOHN DEERE MOISTURE TESTER

REGULARLY \$283.00  
SALE PRICE \$195.00

**BATTERIES**

PICKUP:	REG.	SALE	TRACTOR:	REG.	SALE
TY6135	\$53.99	\$45.90	TY6119	\$82.99	\$70.54
TY6136	61.19	42.00			

**DENT & CO.**  
Hwy. 84 East  
Muleshoe, TX 806-272-4296  
SALE ENDS JANUARY 20, 1989

THINK RESULTS! THINK CLASSIFIEDS! THINK RESULTS! THINK CLASSIFIEDS! THINK RESULTS! THINK CLASSIFIEDS!

## Got The Winter Blahs?

**Get Rid Of Your Junk**  
Through The Journal Classifieds.

**Muleshoe and**  
**Bailey County Journals**  
**272-4536**

THINK CLASSIFIEDS! THINK RESULTS! THINK CLASSIFIEDS! THINK RESULTS! THINK CLASSIFIEDS! THINK RESULTS! THINK CLASSIFIEDS!

# Exercise Will Help You Achieve

## Many New Year's Goals

How many times have we faced a new year making the same resolutions as the year before? And the year before that? Losing weight, getting into shape and having more energy, are common New Year's resolutions.

"There's one thing you can do that will help you achieve all of these goals — regular aerobic exercise," says Diane DeMarco, executive director of The National Exercise For Life Institute.

The purpose of the institute is to collect and disseminate information on the value of regular aerobic exercise, so that more Americans will start and maintain a program of regular aerobic exercise.

"Every year there are new wonder diets that promise fast weight loss. Some of them do result in rapid loss, but much of it is water weight and even some muscle tissue. And the loss is often temporary, so that the next year you have to lose the same weight all over again," says DeMarco.

According to the "set point" theory advocated by Dr. William Bennett and Joel Gurin, authors of *The Dieter's Dilemma*, each indi-

vidual has a tendency for a particular body-fat percentage. This set point functions as a fat-monitoring process that tries to maintain the body-fat content it considers "normal."

It's easy to raise your set point by eating sweets and fats, but the only way to reduce that set point is by aerobic exercise.

If you attempt to reduce body fat only by lowering your caloric intake, you'll first lose water, then muscle and fat — in that order. You'll also feel sluggish and weak because you're burning muscle for fuel.

In fact, your body further fights to maintain its set point by lowering your metabolic rate and increasing your appetite. That makes it even tougher for you to lose that fat.

However, aerobic exercise not only burns more calories during the time you're exercising, but it also increases your metabolic rate for up to 24 hours after you exercise.

Aerobic exercises can also make you look slimmer than anaerobic exercises, such as weight lifting. That's because lift-

ing weights merely strengthens the muscles underneath the fat. This enlarges the muscle, raising the fat to the surface.

As Jane Brody notes in her *Good Food Book*, regular exercise causes body fat to be replaced by lean muscle tissue. "Pound for pound, muscle tissue uses more calories to sustain itself than fat tissue does. The more muscle tissue you have and the less body fat, the more calories you can consume without gaining weight — or the faster you can lose weight without drastically reducing the amount of calories you consume. Furthermore, muscle tissue takes up less room than the same weight of body fat, so that even if you don't lose an ounce, you'll look thinner if you have good muscle tone and less fat," says Brody.

"Regular aerobic exercise will also give you more energy, which will help you accomplish many of your other new year's goals," says DeMarco.

### Fitting Exercise Into Your Schedule

To maximize the benefits of aerobic exercise, it generally needs to be done about half an hour, three days a week. To build cardiovascular fitness, the exercise

must elevate your heart rate to at least 60 percent of your maximum heart rate (although the most desirable heart rate for exercising is between 70 and 85 percent of maximum).

The most effective forms of aerobic exercise are continuous motion activities, such as fast walking, cycling, swimming, running, cross-country skiing, rowing or jumping rope.

"Choose an activity that you enjoy, and that you know can be done on a regular basis," advises DeMarco. Because cross-country skiing is widely recognized as the most effective form of exercise in terms of toning the entire body and achieving cardiovascular fitness, many people are using NordicTrack, the original cross-country ski exercise machine.

"The standing, total body skiing motion of NordicTrack is so efficient that you can tone your entire body — legs, arms, shoulders, midriff and buttocks — and achieve cardiovascular fitness, in just 20 minutes, three times a week," says Ed Pauls, inventor and founder of NordicTrack.

At-home exercise equipment such as NordicTrack is gaining popularity because it's fast and convenient, and can be done no matter what the weather. "Many NordicTrack users supplement their running or other outdoor exercise programs with indoor training on

the NordicTrack," notes Pauls.

"NordicTrack's fluid, smooth motion eliminates the pounding that can result in joint and back injuries caused by running, and the back strain associated with rowers," adds Pauls.

### The Modern Way

He—It will be real simple for us to get married, darling. My father is a minister.

She—Okay, let's give it a whirl. Mine's an attorney.

### BIBLE VERSE

*A thousand years in thy sight are but as yesterday when it is past, and as a watch in the night.*

1. Who is the author of the above statement?
2. In what particular writing is it found?
3. Of what was the author complaining?

### Answers to Bible Verse

1. Moses.
2. Psalms.
3. Of human frailty.

**GRAIN PRICES**  
 FEED CORN. 4.89 cwt  
 WCY. 5.70 cwt  
 RCY. 5.15 cwt  
 WHITE FOOD CORN. 6.85 cwt  
 MILO. 4.23 cwt  
 SOYBEANS. 7.34 cwt  
 NEW WHEAT. 3.61 cwt  
 97%  
 Prices January 3, 1989  
 MARKETS COURTESY OF  
 FARMERS CO-OP  
 ELEVATORS  
 Muleshoe, Texas  
 272-4335

**Cash Reward**  
**Up To \$1,000**  
**For Information!**  
 Call  
**Bailey County**  
**Crime Line**  
**272-HELP**

# SPECTACULAR 1ST OF THE YEAR SAVINGS



**Hooded Jacket**  
(Laminated)  
For Only: **\$12.99**  
Reg. \$17.99



**10 Amp Automatic Battery Charger**  
No. SE40M  
Now: **\$29.99**  
Reg. \$44.99

You never know when you might need it.



**Blizzard Proof Arctic Jacket**  
Now: **\$34.99**  
Reg. \$44.99

ARCTIC FLYER JACKET  
This jacket doubles as a streetwear or snowwear. With a tough 200 denier nylon shell (urethane coated) lined with 100% nylon tulle and overlaid with 6 oz. of warm polyester fiberfill. Its smooth shell resists snow, rain, sleet, and frost. It's complemented by a hand flange, a strap fly over the front zipper and a snug shirred elastic waistband. Easy fitting raglan sleeves have hook and loop cuff adjustments. Hook and loop tabs keep no self fabric roll over zippered wrist pocket.

**Chunk Style Dog Food**  
21% Protein  
50 Lb. Bag:  
Just: **\$8.99**



**Always Handy Yellow Canvas Chore Gloves**  
\$1.29 For 1 Pair or  
6 Pair For **\$5.99**  
13 Oz. #03030



**Thermal Knits**  
Tops or Bottoms  
Your Choice  
Only: **\$3.99**  
No. 9045L 9045D



**LaCrosse Men or Boys Moon Boots**  
Was: \$19.99 - \$20.99  
Your Choice  
Only: **\$14.99**



**Gilson 100,000 B.T.U. Space Heater**  
For: **\$279.99**  
#50217 Reg. \$326.50



**Men's Wool Blend Shirts**  
Was Now  
Tall \$34.99 \$24.99  
Assorted \$29.99 \$20.69  
Big Men \$35.99 \$25.19



**Lined Suede Gloves With A Free Pair Of Chore Glove**  
Just: **\$8.49**  
Reg. \$9.49 #W094



**Clearance Rack Of Sweatshirts**  
Now Priced  
At: **30%-50% Off**  
Regular Priced \$5.99-\$24.99



**RAGS RAGS RAGS RAGS RAGS**  
Like-Rags™ are the first and only real rag replacement!  
• Feels and looks like a cloth rag  
• Large and tough (really reusable)  
• Thick and bulky (like T-shirt)  
• Highly absorbent  
• Consistent quality and case count  
• Cost less than rags

Just: **\$3.99**  
Reg. \$4.99 A Box 1101-PPG



**Floating Stock Tank Heater**  
For: **\$23.99**  
1000 Watts: No. ST1000  
Reg. \$27.25



**CORDOVAN 24 or 24F Battery**  
5000 Series  
Only: **\$34.99**  
# GB1183 3 yr - Pro Rated Warranty  
# GB1193 Reg. \$38.99  
(Exchange Required)





**A&M Farm & Ranch Supply**  
Sale Good Through Jan. 7th, 1989

2500 Mabry Dr. Clovis, N.M.  
1-505-762-7717  
1601 S. Ave. D, Portales, N.M.  
1-505-356-8543

All Stores Open Monday-Saturday  
7:30 A.M. - 6:00 P.M.

Sundays  
12:30 - 5:00 P.M.

Shopping at A&M is Easy, You Can Use  
• Layaways  
• Credit Cards: Visa, Mastercard, Discover  
• Financing w/ Approved Credit  
• A & M's Gift Certificate  
• "CASH"

# Unpredictable Forecast? Shop The Classifieds

272-4536



**CLASSIFIED RATES**  
Minimum Charge \$2.30

Consecutive Insertions Minimum Charge \$2.00

**CLASSIFIED DISPLAY RATES**  
\$1.75 Per Column Inch

**DEADLINES**  
12 noon Tuesday For Thursday Paper  
12 noon Friday For Sunday Paper  
We reserve the right to classify, revise, or reject any ad. Not responsible for any error after ad has run once.

**1. Personals**

An opportunity to share the Bible.  
Write P.O. Box 753, Muleshoe.

**FRANK'S**  
Refrigeration & Appliance Service Parts & Repairs.  
817 Gum Muleshoe, Texas 79347  
PHONE Home 272-3822 fl-6s-tfc

Call your local used cow dealer for 7 day a week dead stock removal. 965-2903 or 1-800-692-4043. cl-37t-tfc

**STORAGE ROOMS & office space for rent call 272-4754. sl-53s-stfc**

**CONCERNED**  
About Someone's Drinking?  
**HELP IS AVAILABLE**  
through Al-Anon  
Call 272-2350 or 965-2870 or come to visit Tuesday nights, 8:00 p.m. or Saturday mornings at 10:30 a.m. and through AA call 965-2870 or come visit Tuesday nights, 8:00 at 620 W. Second, Muleshoe.

**Mary Kay Cosmetics**  
**Josie Flowers**  
272-3865

**3. Help Wanted**

ENJOYABLE full, part-time work for someone with pleasing personality, neat dress, and correct speech. Experience in teaching, church work or Youth groups helpful. Guaranteed income plans available. No previous sales experience required. Call (806) 794-4931 before 9:00 a.m. f3-52t-3tc

**MAN EXPERIENCED**  
in irrigation well repair. Call 806-238-1596 day or 238-1328 nights. b3-49s-tfc

**3. Help Wanted**

**NEED SOMEONE** with some fabrication, instrument action, and/or electrical experience. Apply or send resume: 409 S. Norris, Clovis, NM 88101. c3-52s-4tc

**METHODIST Hospital** Levelland, a 78-bed general acute care hospital located in Levelland, Texas, has an immediate opening for a M.T. or M.L.T. (ASCP or equivalent) to work full-time in the laboratory. Please call Personnel collect at 1-894-4963 or apply in person at 1900 College Avenue in Levelland, Texas.

**5. Apts. For Rent**

**GOOD LOCATION**, partly furnished. One bedroom apartment. Water paid. 272-7575. kitchenettes 272-4533. p5-50t-tfc

**8. Real Estate**

**FOR SALE:** 3-2-2 Brick house, corner lot, WBFP, CH/A, Maintenance free trim. Call 272-3072 for appointment. b8-1s-6tc

**FOR SALE:** 2 bedroom, 1 bath mobile home on 60 x 100 lot with 2 car carport in Country Club Addition. Call: 925-6480 after dark. 08-45s-tfc

**NICE 3 bedroom, 2 bath house, 2 miles west of Muleshoe.** With large barn. Nice location. Call 946-3340. d8-25s-tfc

**ATTENTION:** First time home buyers, 2 and 3 bedroom Mobile Homes. No credit needed. We deliver. Call 806-894-7212. b8-52t-8tc

**REPOS:** 2 and 3 bedroom Mobile Homes No credit needed. Low down payment. Low monthly payments. Call 806-894-8187. b8-52t-8tc

**JoAnn Chester Realty**  
Five Bailey County Farms of 1,235 acres with 531 acres dry land, 504 acres irrigated with pivot sprinklers South of Muleshoe 806-221-2368

**11. For Sale**

**HAY FOR SALE:** wheat/alfalfa mix and side oats grama grass. Call Buster Evins at 272-4934. f11-47t-tfc

**15. Misc.**

**A J.T.P.A...** Staff person will be available at Muleshoe Community Action on Tuesdays 9:30-3:30 to discuss applications and available services. sl-1t-16tc

**15. Misc.**

**MIDWEST CONSTRUCTION**  
763-3742  
P.O. BOX 152 CLOVIS, N.M. 88102-0152  
NM LIC.#27599  
New Construction & Remodeling

**8. Real Estate**

**Seasons Greetings From**  
**JAMES F. HAYES & CO.**  
AGRICULTURAL REAL ESTATE  
And The Vic Coker Family

Come See Our **NEW OFFICE**  
310 MAIN SUITE 103  
272-3100  
home 965-2468

**BINGHAM & NIEMAN REALTY**  
116 E. Ave. 272-5285 or 5286

**PRICES REDUCED UP TO \$7,000** on 2 & 3-1-1 Brick Homes, Cent. heat, Energy Efficient. PRICED FROM \$23,500!!! Approx. \$600.00 total move-in, payments based on income for qualified Buyers!!!

**RICHLAND HILLS**  
**IMMACULATE** 3-2-2 Brick, corner lot, Cent. A&H, built-ins, FP, loads of storage & closet space, much more!  
\*\*\*\*\*  
**PRICE REDUCED** 3-1-1 Brick, Cent. Heat, Evap. air, built-ins, fenced yard.....  
\*\*\*\*\*  
**JUST LISTED**-Very nice 3-2-3 Home, Cent. A&H, built-ins, FP, fans, spktr. sys., fenced. PRICED TO SELL!!!!  
**JUST LISTED-VERY NICE** 3-2-2 Brick Home, Cent. A&H, built-ins (inc. kitchen ctr., compactor, & microwave), Jacuzzi, loads of storage, basement, aut. spktr. sys. & Much More!!!!!!!

**HIGHLAND AREA**  
**JUST LISTED** - Nice Large 2-2-2 Brick, Cent. A&H, utility, cov. patio, fenced yard & more!!!!!!!!!!!!!!!!!!!!  
**VERY NICE** 3-2-2 Brick, Cent. A&H, newly remodeled kitchen with built-ins, storm windows, fenced yard, storage bldg. and much more!!!!  
\*\*\*\*\*  
**NICE** 3-2-2 Brick Home (2 story), on corner lot, Cent. A&H, built-ins, and much more. LET'S LOOK TODAY!!!!!! 60's  
\*\*\*\*\*  
2-2-1 carport Brick, Cent. A&H, built-ins, fenced yard & much more. PRICED TO SELL!!!!  
\*\*\*\*\*  
Nice 5-3 Brick Home, Cent. A&H, built-ins, utility earthenware carpets, covered patio, fenced yard & much more! \$60's!!!!  
\*\*\*\*\*  
**JUST LISTED**-nice 3-2-1 carport home, approx. 1800' of lv. area, fenced yard, workshop-storage area. Much More.PRICED TO SELL!!!!  
\*\*\*\*\*  
**JUST LISTED**-Nice 3-1/4-1 Brick Home, Cent. A&H, built-ins, large den w/fireplace, fenced yard, storage bldg. \$50's!!!!!!

**HIGH SCHOOL**  
3-2-1 Brick 1/2 carport, built-ins, fenced yard, or workshop & storage area IN CONTRACT!!!!  
\*\*\*\*\*  
3-1-1 home, corner lot, Cent. A&H, built-ins. \$30's.....  
\*\*\*\*\*  
**PRICE REDUCED FOR QUICK SALE!** Nice 2-1-1 Home, Cent. Heat, carpets, work-storage area, and much more. \$19,950.00!!!!

**DIANNE NIEMAN, BROKER**

**18. Legals**

**NOTICE TO ALL PERSONS HAVING CLAIMS AGAINST THE ESTATE OF R.L. FIELDS a/k/a ROBERT LUTHER FIELDS, DECEASED**

Notice is hereby given that original Letters Testamentary for the Estate of R.L. fields a/k/a Robert Luther Fields were issued on November 28, 1988, in Cause No. 1782, pending in the County Court of Bailey County, Texas, to: Doris Ann Fields Coleman, Paul J. Coleman, Barbara Fields Symank and Opal C. Renfrow.

The post office address for Doris Ann Fields Coleman, Paul J. Coleman, Barbara Fields Symank and Opal C. Renfrow is: R.L. Fields Estate

c/o Aldridge, Harding, Aycock & Acktinson P.O. Box 286 Farwell, Texas 79325  
All persons having claims against this Estate which is currently being administered are required to present them within the time and in the manner prescribed by law.  
DATED the 30th day of December, 1988.  
**ALDRIDGE HARDING, AYCOCK & ACKTINSON, P.C.**  
P.O. Box 286 Farwell, Texas 79325  
Telephone No. 806/481-3361  
By Charles F. Aycock Attorneys for the Estate a18-1t-1tc

**8. Real Estate**

**Whitt-Reid Real Estate**  
Homes, Farms, Ranches, Commercial  
201 Main 272-3611

**8. Real Estate**

**IMMACULATE** 3-2-1 1/2 carport, Brick Home, Cent. A&H, built-ins, nice finished basement with fireplace, spktr. sys., & much more!!!!  
\*\*\*\*\*  
**8% A.P.R. FINANCING TO QUALIFIED BUYER** on this 3-2 Brick, Cent. A&H, built-ins, 2 fireplaces, nice large rooms, sprinkler sys.!!!!  
\*\*\*\*\*  
**LENAU ADDITION**  
**COZY** 3-1/2-1 home, Cent. heat, nice earthenware carpets, fenced yard, storage bldg., & more!!!!  
\*\*\*\*\*  
3-1-1 home, Cent. A&H, utility, storage bldg., cellar, gas grill & more. \$20's!!!!  
\*\*\*\*\*  
**COUNTRY HOMES**  
**NICE** 3-2-2 Brick on 1 acre on pavement, close to town, DW, WB stove, utility, storm windows, doors. \$50's!!!!  
**VERY NICE** 3-2-1 Home on 1 acre, close to town, Cent. Heat, Evap. air, nice carpets, nicely remodeled. \$30's!!!!  
\*\*\*\*\*  
**HOME TO BE MOVED**, Nice 4-3-2 Home. Cent. A&H, built-ins, fireplace, loads of storage & closet area, 2150 sq. ft. of living area, much more, \$40's!!!!!!!!!!!!  
\*\*\*\*\*  
2-1 home, 20 acres, sub. pump, sprinkler, barns & corrals. \$40's!!!!  
\*\*\*\*\*  
Nice, well maintained Self-Service Laundry. 34 washers, 16 dryers in nice, modern building, excellent location. Books available to qualified Buyer.  
\*\*\*\*\*  
**SALE OR LEASE** nicely remodeled office bldg. with over 3,000 sq. ft. of area, excellent location across from Courthouse. PRICED TO SELL!!!!  
\*\*\*\*\*  
**APPROX. 3,000 sq. ft. bldg.** Railroad frontage. CASH PRICE \$15,000.00.  
\*\*\*\*\*  
69+ acres, improved pasture, 8' well, undgrd. line, fenced, plus nice 3-2-2 home, Cent. A&H, built-ins, utility, storm cellar, the shop, & much more, close to town!!!!  
\*\*\*\*\*

**"Seasons Greetings From Our Family To Yours"**

**GEORGE NIEMAN, BROKER**

For Your Classified Call Muleshoe Journal 272-4536

**Educating young America is essential to U.S. economic development**

**COLLEGE STATION** - Economic development of the United States will be seriously damaged within two years if educators and the general public do not renew their commitment to the fundamental promise of American education - that everyone has a right to learn - says Dr. Dean Corrigan, Texas A&M University's dean of education.

"We are a society with a shortage of youth and rapidly increasing senior citizen population," said Corrigan. "We've got to educate all of our children because we simply cannot afford to waste them, economically or otherwise," he said. "A growing number of young people are out of school and out of work with no skills to make a living," said Corrigan.

While the Department of Education sets the current dropout rate at over 30 percent, a number of studies by other agencies suggest this figure is low.

Texas' dropout rate is a travesty," said Corrigan. "Fifty percent of Hispanic students and 40 percent of black students in Texas never finish high school." Eighty-five percent of Texas' prison inmates are dropouts, costing the state \$24,000 for each year of incarceration, he said.

"It would be less expensive to send them to Harvard," said Corrigan.

More important than the economic development argument, he said, is the humane argument. "The great vision of America is the belief that the whole country is improved when all of the children of all the people receive a quality education, not just the children of the rich and powerful," he said.

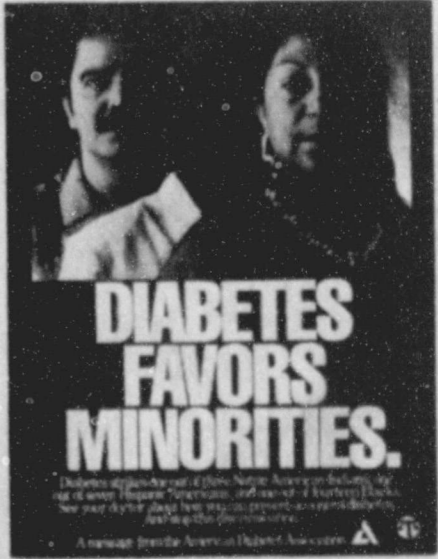
**spotlight on health**

Here's a surprising fact: the incidence of diabetes has doubled among white Americans in the last 20 years. However, this dangerous, chronic disease actually favors minority populations in the United States.

Non-insulin-dependent (type II) diabetes has grown even faster in minority populations. Among Americans of Spanish descent, the incidence is three times more than that of whites; Native Americans have the highest rate of diabetes of any population in the world; among Black Americans, diabetes is the third leading cause of death; and incidence is higher among Asian Americans.

An estimated 11 million Americans have diabetes, a disease in which the body doesn't produce or respond to insulin. The resulting high blood sugar can severely damage the heart, blood vessels, kidneys, eyes and nerves and left untreated can lead to death.

Minority groups may encounter special problems in receiving proper health care due to language barriers, lack of financial resources, or no insurance protection. Cultural barriers often stand in the way of nutrition and health education—key elements in treating diabetes. Fortunately, one organization works to help insure that minorities have equal opportunity to diabetes care and education.



The American Diabetes Association (ADA) is the nation's leading voluntary health organization supporting diabetes research and education. It serves the entire diabetes community through the efforts of thousands of volunteers from over 800 affiliates and local chapters across the United States.

ADA's community-based chapters work with health clinics, churches, neighborhood groups and other organizations that work with minorities to make sure those groups get the help they need to treat diabetes. To learn more contact your local ADA chapter or call, toll-free: 1-800-ADA-DISC (in Virginia and metro Washington, DC call 703-549-1500).